

NEW PRODUCTS

Clementine 6.5 **SPSS, Inc.**

Chicago, IL
Pricing available from company
312-651-3000
www.spss.com

DATA MINING

As data sets increase in size, the need for powerful software for extracting information ("data mining") increases. The new version of SPSS's data-mining program, Clementine 6.5, is one such package which has uses that run the gamut

from industrial product safety evaluations to microarray analysis.

Clementine, with its user-friendly interface, is easy to master. "Nodes" are essential parts of the program that perform functions such as assisting the importation and filtering of data, applying sophisticated modeling techniques, and displaying the results in specific formats. Data analysis is performed by passing information through a series of nodes to form a "stream." By connecting the nodes in a particular order and including specialized types of nodes, the stream can be customized to a specific analytic output. Streams are built by pointing and clicking on nodes and then connecting them with arrows to specify the logical flow. Right clicking on a node allows one to specify its options. Nodes can be added or deleted from the stream with simple clicks, and merge nodes may be created that contain only specific subsets of the data. This is valuable when examining the importance of individual parameters or groups of parameters on the outputs. Other nodes will actually balance data so that the program will not ignore the more sparse data types while performing an analysis, thus maximizing the likelihood of detecting patterns in several groups. The program uses its own language (CLEM) to tailor nodes to specific purposes.

Clementine makes the mathematical models underlying its output available, something many other data-mining programs do not do. Information is readily available from the Model/Browse menu item. For exploratory data analysis, user-customizable Plot, Distribution, and Histogram nodes assist in data visualization. With these, one can highlight areas of data, label subsets, and test subsets on the basis of their location in the output graph. Nodes may be generated to manipulate data only in prespecified areas of the graph. Especially useful is the ability to construct plots showing the relations between any subgroups of data. Overlay fields allow one to differentiate categories of data on a graph by using colors. One example from the manual shows the distribution of sodium to potassium ratios in cells using drug type as an overlay. To extend the utility of nodes, many mathematical, trigonometric, and statistical functions are available.

Clementine has a remarkable repertoire of functions useful for research scientists in many fields. Pricing is far higher than for routine data analysis packages, but this program's utility is a bit more than the average. Technical papers on using Clementine are available for download from the Web at addresses obtainable from SPSS.

This release is designed to work with computers running Windows 98, 2000, or NT 4.0 with Service Pack 3 or higher. A minimum of 256 MB of RAM is recommended. —**John A. Wass**

Immunochimistry R&D, Abbott Laboratories, D9HC AP30-LL, Abbott Park, IL 60064-3537, USA. E-mail: John.Wass@abbott.com

Optronics

For more information
805-968-5563
www.optronics.com
www.scienceproductlink.org

DIGITAL MICROSCOPE IMAGING CAMERA

The MicroFire digital microscope imaging camera provides 2-megapixel image capture, ad-

vanced image processing, full-screen live viewing, fast live color binning, video-rate color imaging, and programmed sequence imaging. MicroFire features the PictureFrame user interface, which paints a full-resolution color image on any large format monitor at live imaging rates. The user can superimpose the camera controls over this image in any chosen position or display the image without borders or controls, with the benefit of an enhanced viewing experience with additional image depth and detail. MicroFire also provides an advanced image processing toolbox that allows processed images to be interactively mixed with their unprocessed counterparts to delineate or define a desired image feature. The patented circuit and case design permits efficient operation at extended exposures. Artifact-free exposures as long as 1 min are possible. Framing and focusing for long exposures are simplified by advanced color binning, which also permits video-rate color imaging when a quick scan of the subject matter is required.

Carl Zeiss

For more information
03641 64-2770
www.zeiss.de

www.scienceproductlink.org

MOTORIZED MICROSCOPY

The motorization of the Axioskop 2 mot plus makes microscopic examinations in pathology, cytology, cell biology, and genetic engineering easier, faster, and more efficient.

While the Z-drive, permitting precise and highly reproducible operations, is always motorized, the choice between further manual, coded, and motorized components permits the microscope to be exactly tailored to specific requirements. The Axioskop 2 mot plus provides imaging quality in all transmitted and reflected light techniques, which makes it suitable not only for morphologic examinations of stained and unstained specimens, but also for single fluorescence and multifuorescence applications. The examination of living cells, for example by using fluorescent proteins, is particularly easy thanks to the motorization of the reflector turret and the reflected-light shutter. The various fluorochromes are easy to examine without any need for bleaching. The motorized components can be controlled directly via keys on the stand.



Bio-Rad Laboratories

For more information
800-424-6723
www.discover.bio-rad.com
www.scienceproductlink.org

LIVE CELL STUDIES WITHOUT PHOTO DAMAGE

Exclusion of out-of-focus light to generate a confocal image reduces the total signal that passes to the detectors and can affect detection sensitivity. When working with fixed cells, detection signals can be increased by using slow scan speeds, opening the confocal iris, or increasing the laser power, although too much can cause bleaching. However, when imaging live cells or tissues over prolonged periods, phototoxic effects must also be considered, so increasing laser power is not desirable. Similarly, opening the confocal aperture increases signal but decreases confocal sectioning. To overcome these problems and open new opportuni-

ties in live cell imaging, the Signal Enhancing Lens System has been added to the Bio-Rad Radiance2100 range. This accessory reduces the image magnification at the level of the confocal aperture and captures in-focus but scattered light. The advantage it provides for live-cell imaging is that it allows the use of lower laser power and/or increased scan speed, which in turn gives less photo-bleaching and pronounced improvements in survival rates of live cells during imaging. When using Radiance2100, researchers have the flexibility to simply flip the lens system in or out of the optical path by using the software-driven motor.

Bio-Synthesis

For more information
800-227-0627
www.biosyn.com

www.scienceproductlink.org

products; carbohydrates; organometallics; inositol phosphates; and heterocyclic compounds. Custom synthesis of bioconjugates includes oligonucleotides to peptides, peptides to small molecules, and oligonucleotides to small molecules.

Applied Biosystems

For more information
617-450-4281
www.appliedbiosystems.com
www.scienceproductlink.org

The system combines two important mass spectrometry technologies, triple quadrupole and ion trap, to identify proteins and peptides in proteomics research and small molecule drug metabolites important in therapeutic development. The system is based on a patented linear hybrid technology.

Synbiosis

For more information
+44 (0) 1223 727125
www.synbiosis.com
www.scienceproductlink.org

tomation produces. $\hat{\text{a}}\text{COLyte}$ has been developed as an alternative to traditional light box manual counting, a tedious task prone to operator errors and fatigue. It is available with two levels of functionality, Click'n'Count and SuperCount. With Click'n'Count, colony counting is just a matter of pointing at each colony and clicking to count. This is at least as fast as any light box counter and offers many benefits including totally eliminating time-consuming keying steps. Each result is instantly stored in a printable results page with a time and date stamp. SuperCount is a fully automated version that offers all the features of Click'n'Count with many additional benefits. The software automatically corrects for background variations and different media types. At the click of a button up to 500 colonies are counted in just 1 s, approximately 100 times faster than a manual enumeration. The system comes complete with software and features a live, color,

CUSTOM ORGANIC SYNTHESIS

A custom organic synthesis service can offer: multistep synthesis for medicinal chemistry and pharmacology research; starting materials, intermediates, and final

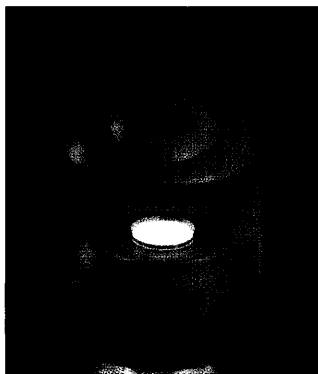
MASS SPECTROMETER

The Q TRAP high-performance mass spectrometer is for use in both proteomics and early-state small molecule drug development.

The system combines two important mass spectrometry technologies, triple quadrupole and ion trap, to identify proteins and peptides in proteomics research and small molecule drug metabolites important in therapeutic development. The system is based on a patented linear hybrid technology.

AUTOMATED COLONY COUNTER

The $\hat{\text{a}}\text{COLyte}$ is an automated colony counter for laboratories that have a limited budget yet need the speed and accuracy au-



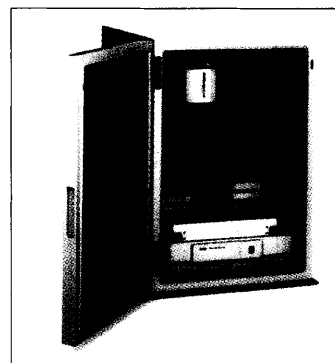
on-screen image that can be saved and printed. Two arrays of LEDs allow incident, transmitted, and darkfield illumination, enabling colonies on any plate type to be counted.

Biopharma Technology

For more information
+44 (0) 1962 841092
www.lyophilizationtechnology.com
www.scienceproductlink.org

FREEZE-DRYING MICROSCOPE SYSTEM

The Lyostat 2 is the latest version of a compact freeze-drying microscope system. Lyostat 2 enables quick and accurate identification of key parameters in freeze-drying cycle development, such as collapse temperatures. The process begins with a small sample of product being loaded into a stage chamber under the microscope, which acts like a micro-freeze-dryer. The sample is then frozen down to a preselected temperature and cooling rate, after which a vacuum is pulled in the chamber to begin the drying process. The temperature of the stage can then be manipulated in order to identify the temperature at which the product will collapse or melt. This process can be viewed either through the microscope or via a computer using the camera and image capture program supplied with the system. The Lyostat 2 includes all software needed to control the freeze-drying remotely via a computer.



The Binding Site

For more information
800-633-4484
www.bindingsite.co.uk
www.scienceproductlink.org

LITERATURE

Immunobiological Reagents Product Listing 2002 includes information on polyclonal and monoclonal antisera and conjugates to human and animal immunoglobulins and IgG subclasses, complement components, coagulation/hemostasis proteins, cell surface markers, enzymes, and other serum proteins. Enzyme-linked immunosorbent assay kits for quantitation of matrix metalloproteinases and sCD23 are described along with kits for quantitation of mouse and rat immunoglobulins and IgG subclasses.

Eppendorf

For more information
+49 40-5 38 01-0
www.eppendorf.com
www.scienceproductlink.org

Peak of Perfection is a brochure on a new generation of high-precision pipette tips, the epTIPS (Totally Integrated Pipetting System). All the details of a familiar and proven tip system have been optimized or reconceived, including the material and its properties, fit, design, and the forces required for operation. The epTIPS are available in three purity variants and a variety of packaging forms, such as bagged products, boxes, refill trays, and single-wrapped tips, enabling more flexibility than ever.

Newly offered instrumentation, apparatus, and laboratory materials of interest to researchers in all disciplines in academic, industrial, and government organizations are featured in this space. Emphasis is given to purpose, chief characteristics, and availability of products and materials. Endorsement by *Science* or AAAS of any products or materials mentioned is not implied. Additional information may be obtained from the manufacturer or supplier by visiting www.scienceproductlink.org on the Web, where you can request that the information be sent to you by e-mail, fax, mail, or telephone.

Classified Advertising

For full details on advertising rates, deadlines, mechanical requirements, and editorial calendar go to

www.sciencecareers.org
and click on

How to Advertise

UNITED STATES

Display Classified Advertising

Bren Peters (Midwest and Mid-Atlantic)
PHONE: 202-326-6541

Kathleen Clark (Southeast and Canada)
PHONE: 202-326-6555

Jill Steinberg (Northeast)
PHONE: 914-834-8733

Kristine von Zedlitz (West Coast)
PHONE: 415-956-2531

FAX: 202-289-6742
E-MAIL: science_displayads@aaas.org

Line Classified Advertising

Christina Geiger
PHONE: 202-326-6532

Sussy Castilla
PHONE: 202-326-6740

FAX: 202-289-1451
E-MAIL: science_classifieds@aaas.org

Online Classified Advertising

Beth Dwyer (Internet Sales Manager)
PHONE: 202-326-6534
FAX: 202-289-6742
E-MAIL: bdwyer@aaas.org

AD MATERIALS: Send to:
Science Classified Advertising,
1200 New York Avenue, NW, Room 911,
Washington, DC 20005

EUROPE

Display, Line, and Online Classified Advertising

Deborah Harris
PHONE: +44 (0) 1223 326 500
FAX: +44 (0) 1223 326 532
E-MAIL: european_ads@science-int.co.uk

AD MATERIALS: Send to:
Science International, Advertising Dept.,
Bateman House, 82-88 Hills Road,
Cambridge CB2 1LQ, United Kingdom

MEETINGS / ANNOUNCEMENTS

Kathleen Clark
PHONE: 202-326-6555

Richard Walters
PHONE: +44 (0) 1223 326 527

To subscribe to Science
call 202-326-6417
or 1-800-731-4939

POSITIONS OPEN



ARIZONA STATE UNIVERSITY

MUSEUM CURATOR Arizona State University Main Campus

We invite applications for a position as Museum Curator of the vertebrate and invertebrate collections in the Department of Biology beginning January 2003. A Ph.D. in a biological science is required at the time of appointment, and candidates for the position also must have a minimum of one year of museum curatorial experience, a working knowledge of electronic archiving techniques, and experience in specimen-based research. The successful candidate will be expected to (1) conduct long-range planning and care of collections of over 250,000 specimens, richest in taxa of insects, amphibians, reptiles, and fishes; (2) cooperate with a wide range of Arizona State University faculty and associates in seeking external funding to support the collections; and (3) interact with the public in outreach programs. While this is a year-to-year state-funded appointment, it is expected to be long-term and renewable on the basis of satisfactory performance. Starting salary will be competitive, depending on work-related experience.

See **website: biology/text/museumcurator/details.htm** for more information on the collections, salary, and other details of the position.

Applicants must submit curriculum vitae, copies of up to three selected reprints, a concise statement of museum and collections management experience and goals, a statement of research interests, and arrange to have three letters of reference sent directly to: **Chair, Museum Curator Search Committee, Department of Biology, Arizona State University, Box 871501, Tempe, AZ 85287-1501**. Reference letters may also be sent to **e-mail: nclesko@asu.edu**. Application deadline is September 20, 2002, or, if not filled, weekly thereafter until the search is closed. *Arizona State University is an Affirmative Action/Equal Opportunity Employer.*

MICROSCOPIST

The Scripps Research Institute, the nation's largest, private nonprofit biomedical research facility, seeks a Microscopist for its Core Microscopy facility. The successful candidate will assist in all aspects of fluorescence microscopy; experimental design, and interpretation, as well as teach confocal, deconvolution, and laser capture microdissection microscope systems. A Bachelor's degree (biology preferred) is required, and an advanced degree in biological or physical science is desired. One to three years of experience in confocal and deconvolution microscopy, immunocytochemistry/immunofluorescence and Unix is essential. Familiarity with computer graphics; PC, Apple, Silicon graphics systems, upgrades and data archives is desired. Apply online or e-mail your résumé to **e-mail: resumes@scripps.edu** or send to: **TSRI, 10550 North Torrey Pines Road, TPC-11, La Jolla, CA 92037**. **Website: http://www.scripps.edu**. *Equal Opportunity Employer. Minorities/Females/Veterans/Disabled.*

The Department of Chemistry and Biochemistry at the University of Texas at Austin is seeking to expand its faculty with the addition of a tenure-track **ASSISTANT PROFESSOR** position starting September 1, 2003. We seek the best candidate with interests in teaching and research in all areas of biochemistry and molecular biology. Special emphasis will be placed on individuals with interests at the interface of these areas with material science and biotechnology. Visit **website: http://www.cm.utexas.edu** for information on the Department. Applications received after October 15, 2002, may not receive full consideration and early applications are encouraged. Candidates should forward curriculum vitae, a short description of research plans, a statement of teaching philosophy, and three letters of reference to: **Biochemistry Search Committee, Department of Chemistry and Biochemistry, The University of Texas at Austin, Austin, TX 78712**. *Equal Employment Opportunity/Affirmative Action.*

POSITIONS OPEN

ASSISTANT PROFESSOR University of Missouri

A tenure-track position is available in the area of pathobiology or mammalian genetics in the Research Animal Diagnostic Laboratory (RADIL). Candidates with a wide range of expertise including pathology, molecular or population genetics, the genetic basis of disease, reproductive biology, creation of transgenic or knockout animals, and immunology will be considered. Established research programs in infectious disease, cryopreservation, and animal models of human disease exist in the RADIL. The RADIL is one of four Mutant Mouse Research and Resource Centers nationwide and the only Rat Resource and Research Center. These Centers are funded by the NIH and serve as international repositories for genetically altered rodent models. Similar centers are being developed for swine and nonhuman primate animal models. These Centers offer tremendous opportunities for the candidate to be involved in characterization of unique animal models for human diseases and to develop enhanced methods for creation/characterization of new models. The successful candidate will be expected to develop an extramurally funded research program, participate in graduate and postdoctoral training, and be involved in diagnostic and/or genetic evaluations of laboratory animals. Applicants should possess a Ph.D., D.V.M., and/or M.D. degree. Interested individuals should send curriculum vitae, a statement of goals, and names and contact information of at least three references to: **Dr. Lela Riley, E111 Veterinary Medicine, University of Missouri, Columbia, MO 65211**. Application review will begin August 15, 2002, and continue until a suitable candidate is identified.

The University of Missouri is an Equal Opportunity Institution and complies with the guidelines of the Americans with Disabilities Act of 1990. If you have special needs as addressed by the ADA and need assistance with this or any portion of the application process, notify us at the above address as soon as possible. Reasonable efforts will be made to accommodate your special needs.

Saint Louis University, a Catholic Jesuit Institution dedicated to education, research, and health care, has a **POSTDOCTORAL POSITION** available immediately to study the cellular and molecular mechanisms by which transcription is regulated by SNF2-Related CBP Activator Protein (SRCAP). By structural homology SRCAP is a member of the SNF2 family of proteins whose functions include remodeling of chromatin and regulation of transcription. SRCAP activates the transcriptional activity of the histone acetyltransferase CBP (*JBC* 274:16370, 1999) and functions as a coactivator of CREB-mediated transcription (*JBC* 276:4072, 2001) and GR-mediated transcript (see poster P2-1). SRCAP also interacts with several viral proteins involved in regulation of transcription Hepatitis C virus-NS5a protein (*JBC* 275:7184) and the Adenovirus DBP protein (*J. of Virol.* 75:10033, 2001). Candidates should possess a Ph.D. degree and experience in either molecular biology or protein purification techniques. Contact: **John C. Chrivia, Ph.D., Associate Professor, Saint Louis University School of Medicine, Saint Louis, MO 63104 U.S.A. E-mail: Chrivia@slu.edu**. *Saint Louis University is an Equal Opportunity/Affirmative Action Employer. Women and minorities are encouraged to apply.*

DIRECTOR OF SCIENTIFIC PROGRAMS

The Ecological Society of America, a nonprofit scientific membership organization, seeks an experienced Scientist to direct the scientific program office of the Society. Exciting opportunity to develop innovative approaches to science-policy linkages and to lead a successful program as it plans for the future. Experience in fundraising and program management, Ph.D. in Ecology or related science, and eight to ten years experience required. Nonprofit or government agency experience desirable. Competitive salary and benefits. Send cover letter, résumé, salary history, and names of three references to: **Science Director Search, ESA, 1707 H Street, NW, Washington, DC 20006**. FAX: 202-833-8775. No telephone calls. Application deadline: August 30, 2002.



Canada Research Chairs

The University of Lethbridge is recruiting **four Canada Research Chairs** as members of the **Water Institute for Semi-Arid Ecosystems (WISE)** and professors in the appropriate academic departments. These researchers will be part of the core research group in a multi-disciplinary institute with Government of Canada, Government of Alberta and Alberta provincial partners. These partners will contribute researchers and scientists to this initiative, which will be housed in a new, purpose-built facility at The University of Lethbridge.

One **Canada Research Chair** will be at the Tier I level, and three at the Tier II level. We are seeking researchers and scientists with expertise in the area of water resources and ecology in semi-arid regions (e.g. prairie). We encourage applications or nominations of candidates with backgrounds in one or more of the following areas: biological sciences, chemistry and biochemistry, environmental microbiology, geographical information sciences, economics, sociology and any related areas.

The **WISE** has three theme areas: climate change and prairie ecosystems, aquatic (including riparian and wetland) ecosystems, and water quality and health safety. In addition to individual thematic foci, all themes will include spatial analyses, using geographical information systems (GIS), remote sensing, digital mapping and other applications of information technology, as well as analyses of economic and social impacts. Information about The University of Lethbridge and the WISE can be obtained at: www.waterinstitute-wise.ca

The Tier I candidate will be a well-established scholar who has made a major impact in his/her field. Tier II candidates will be researchers showing substantial promise. Additional information regarding the **Canada Research Chairs** programme is provided at www.chairs.gc.ca.

The University of Lethbridge is becoming a national leader in water resources research and, among smaller universities, is the top-ranked Canadian university in NSERC-funded scientific research. The University of Lethbridge is an obvious locus for research of this type in Canada because of its location and because Lethbridge is home to two Government of Canada research stations that are both partners in this initiative, including Canada's largest Agriculture and Agri-Food Canada research station, as well as Health Canada.

Candidates and nominees should submit a curriculum vitae, three letters of reference, a single-page research proposal, and a letter of application or nomination indicating their interest and anticipated contribution to:

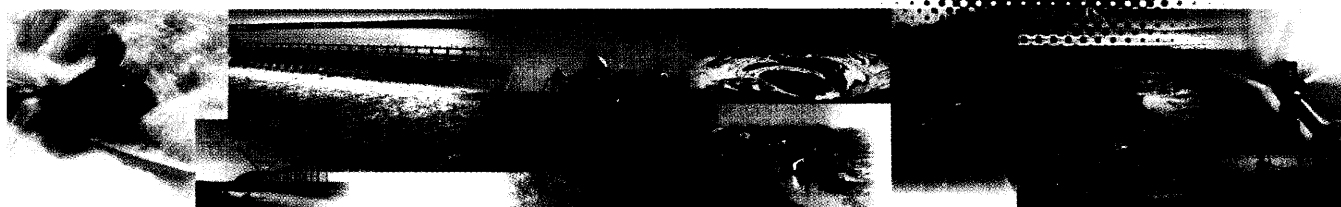
Dr. C.J. Nicol, Chair, WISE Search Committee and Dean of Arts and Science, The University of Lethbridge, Lethbridge, Alberta T1K 3M4.

Applications will be accepted until the positions are filled.



WISE
The Water Institute for
Semi-arid Ecosystems

The University of Lethbridge is an equal opportunity employer.



SENIOR INVESTIGATOR/ IMMUNOLOGY



The Blood Research Institute of The Blood Center Of Southeastern Wisconsin is seeking qualified research faculty at the level of ASSOCIATE PROFESSOR OR PROFESSOR. We would be especially interested in developing the areas of immune regulation, innate immunity, B cell function, infectious immunity, and antigen presentation, processing, and recognition.

Our current expertise is in regulation of autoimmune responses, the role of minor histocompatibility antigens, the development of T cell repertoires, the role of PLC- γ and B and T cell function, alloimmune responses to blood cells, the role of PECAM-1 in T cells, MHC class II structure/function, reproductive immunology, and thymic maturation.

The Blood Research Institute is a state-of-the-art facility and offers a fertile environment for interaction. We offer excellent core laboratory support including transgenic/knockout, flow cytometry, mAb, molecular biology, surface plasmon resonance, real time PCR, and microarray reader. Our location, adjacent to the Medical College of Wisconsin (MCW), provides opportunities for further interdisciplinary collaboration with colleagues in basic and clinical departments.

Please visit our website at
www.bloodctrwise.org/research/immuno.htm
for further information

Successful candidates will have a demonstrated track record of scholarly contributions to the scientific literature and a history of continuous grant funding. Ample laboratory and office space, as well as start-up funds will be provided.

Send CV and letter detailing your specific training and research interests, and the names and addresses of three references to:

Jack Gorski, Ph.D.
Blood Research Institute
c/o Dept. of Human Resources
PO Box 2178
Milwaukee, WI 53201-2178
Or email: jagorski@bcsew.edu

THE BLOOD CENTER
OF SOUTHEASTERN WISCONSIN, INC.

<http://www.bloodctrwise.org>



The Blood Center of Southeastern Wisconsin is an Equal Opportunity/Affirmative Action Employer. Women and minorities are encouraged to apply.

RESEARCH GENETICIST (ANIMALS)

The U.S. Department of Agriculture, Agricultural Research Service, invites applications for the position of Research Geneticist (Animals), GS-12/13/14 (\$54,275 to \$99,150 per annum, salary commensurate with experience). This position will be located at the Hatfield Marine Science Center (HMSC), Oregon State University (OSU) at Newport, Oregon. The Geneticist will conduct basic and applied research on the quantitative and molecular genetics of shellfish, with a primary emphasis on oysters, which leads to improved broodstock management programs for enhanced production efficiency, product quality, and producer and consumer benefits. Collaboration is anticipated with the Molluscan Broodstock Program, as well as other HMSC and OSU research programs. A Ph.D. or equivalent in Genetics or a closely related field is desired. **Contact Dr. Robert Matteri (510-559-6063) for additional program information.** This is a competitive, permanent appointment and U.S. Citizenship is required. Applications must be marked **ARS-X2W-2307. For specific application procedures and requirements, please call Lynn Parks, 301-504-1389** OR you may obtain a copy of the full vacancy announcement from the ARS Home Page (<http://www.afm.ars.usda.gov/divisions/hrd/index.html>) under announcement **ARS-X2W-2307**. Applications must be postmarked by **September 3, 2002**. *ARS is an equal opportunity provider and employer. Women and minorities are encouraged to apply.*



PROCESS CHEMIST

Archer Daniels Midland Co. is currently seeking a talented individual for a Process Chemist position at our Corporate Headquarters Research Facility in Decatur, IL. We are looking for a highly motivated, career-oriented individual with a desire to contribute to the overall success of the company.

This position will be responsible for conducting research in separation of bioproducts and nutraceuticals. Ability to work in a team and ability to work in lab and pilot plant environment is essential.

Daily activities include interacting with ADM production facilities, conduct research to develop novel processes, optimize plant operations and provide plant support to troubleshoot problems and offer solutions or recommendations. The position will plan, design and execute experiments, then analyze, interpret and communicate the data through reports, both verbal and written.

The ideal candidate will possess a B.S./M.S. in Chemistry or 0 - 2 years of research experience. A strong background and a good working knowledge in separation technology, as well as experience in process development research are required. The individual should be a team player and have good written and verbal communication skills.

Archer Daniels Midland Company (ADM) is a world leader in agricultural processing. The Company is the world's largest processor of soybeans, corn, wheat and cocoa. ADM is also a leader in soy meal and oil, ethanol, high fructose corn syrup (HFCS) and flour. In addition, ADM is building a position in such value-added products as food additives and nutraceuticals (such as Vitamin E and sterols). Additional information can be found at <http://www.admworld.com>.

ADM offers a complete benefit package including health, dental and life insurance, pre-tax spending accounts, fitness center, pension and 401k/ESOP. A pre-employment physical and drug screen is required.

Interested candidates should submit or e-mail resumes, cover letter and salary requirements to: IT-employment@admworld.com; Subject line - Process Chemist or Jan Minks Runion, Employment Assistant, Archer Daniels Midland Co., P.O. Box 1470, Decatur, IL 62525.

ADM is an Equal Opportunity Employer

PENNSTATE



The Milton S. Hershey Medical Center
The College of Medicine

Post-Doctoral Positions Available


The Musculoskeletal Research Laboratory and the recently established Center for Biomedical Devices and Functional Tissue Engineering at Penn State College of Medicine has several NIH funded post-doctoral positions available. Faculty research interests include age-related changes in bone and cartilage cell signal transduction, gap junctional intercellular communication, mechanotransduction, membrane biophysics, bone cell differentiation, bone metastasis, tissue engineering and orthopaedic biomaterials. The ideal candidate would have experience in bioengineering or molecular biology and a strong interest in one of the research areas listed above. The Musculoskeletal Research Laboratory has an outstanding record of placing post-doctoral trainees in tenure track faculty positions. Salaries for fellows are highly competitive and well above current NIH guidelines. The Penn State College of Medicine is located in semi-rural Hershey, Pennsylvania and offers a highly desirable lifestyle and an affordable cost of living in close proximity to many metropolitan areas including Baltimore, Washington, D.C., Philadelphia and New York City. Send curriculum vitae and names of three references to:

Henry J. Donahue, Ph.D, Professor and Director
Musculoskeletal Research Laboratory
The Pennsylvania State University College of Medicine
500 University Drive, P.O. Box 850 (MC H089)
Hershey, PA 17033-0850
Tel: 717-531-4819 • Fax: 717-531-7583
email: hdonahue@psu.edu

AA/EOE

AAAS Membership
including **Science**
and **Science Online**

Science
Discover the Future

 THE AMERICAN ASSOCIATION FOR
THE ADVANCEMENT OF SCIENCE

***We invite you to join AAAS and be
a part of one of the world's
leading scientific communities.***

AAAS provides valuable
information to enhance research
and assist in the communication of
science worldwide. To find out
more, visit:

www.aaas.org

When you join you'll receive:

- 51 issues of **Science**
- full text access to **Science Online**
- daily news updates through
ScienceNOW

only personal membership includes:

- **Science Express** advance access
to **Science** articles online
- **AAAS Membership Directory**
- **Science's historical archives**
through JSTOR
- **Member discounts** through
AAAS online bookstore
- **Cite Track** individually tailored
email alerts

Your support greatly assists the
non-profit work of the AAAS
directorates in their many
programmes including education,
human rights, and development.

For more about **Science**, visit:
www.scienceonline.org

***To join AAAS and receive Science, or to receive more
information about any AAAS products, contact us:***

USA:
AAAS
Tel: 202 326 6417
Fax: 202 842 1065
Email: membership@aaas.org

Europe:
Science International
Tel: +44 (0) 1223 326500
Fax: +44 (0) 1223 326535
Email: subs@science-int.co.uk

 **AAAS**

Advancing Science Worldwide

Publisher of **Science**

Creating Drugs That Regulate Gene Expression



Tularik Genomics Division, located in Greenlawn, NY, is engaged in the discovery and validation of novel amplified oncogenes. We are seeking an outstanding Scientist to join this effort, which is part of a broader initiative focused on the discovery and development of novel cancer therapeutics.

SCIENTIST

This position involves collaboration with scientists at Tularik in South San Francisco and at Cold Spring Harbor Laboratory. Qualified candidates will possess a Ph.D. in Molecular Biology or a related field, a significant publication record and experience working with array technology. Great communication skills are also essential. Tularik offers stock options and a competitive salary and benefits package.

Please submit your CV to:

Tularik Genomics Division, Human Resources
266 East Pulaski Road, Suite 1, Greenlawn, NY 11740
Fax: (631) 271-6560; email: rsayles@tularik.com

EOE

www.tularik.com

interview after interview after
after interview after interview
interview after interview after
after interview after interview
interview after interview after
after interview after interview
interview after interview after
after interview after interview
interview after interview after
after interview after interview
interview after interview after
after interview after interview

Science @
CAREERS

The search stops here.

career advice
e-mail job alerts
graduate programs
job postings

www.sciencecareers.org



**UNIVERSITÉ DE GENÈVE
SWITZERLAND**

FACULTY OF MEDICINE – call for candidates for the position of
Full or associate professor of genetics of complex traits

Position endorsed by the Giorgio Cavaglieri foundation.

The Medical Faculty of the University of Geneva, Switzerland, is seeking a full-time geneticist with special emphasis and expertise on the genetics of complex, polygenic traits. Areas of competence may include quantitative genetic analysis, statistical genetics, population genetics, linkage and association studies, linkage disequilibrium analysis. The desired candidate (MD or PhD) may be appointed in the rank of Associate (Professeur adjoint in the local academic system) or Full professor (professeur ordinaire) according to qualifications, and should have a demonstrable record of an independent and productive program.

Knowledge of French is required for the teaching responsibilities.

This position is open for January 2003.

Please submit curriculum vitae, list of publications, and names, addresses, and telephone numbers of three individuals who are highly familiar with your work and willing to serve references to :
Peter M. SUTER, MD, Dean, Faculté de médecine, Centre Médical Universitaire, 1, rue Michel-Servet, CH 1211 Genève 4, Switzerland.

Information can also be obtained from Denis Hochstrasser, MD, head of the nomination committee.

Applications must be sent before September 10, 2002.

The University of Geneva is an equal opportunity employer. All qualified applicants will receive consideration for employment without regards to gender, ethnic group, nationality, and religious preferences.

Women are encouraged to apply.

PENNSTATE



**The Milton S. Hershey Medical Center
The College of Medicine**

Cell and Molecular Biology Faculty Position

The Department of Orthopaedics and Rehabilitation of the Pennsylvania State University College of Medicine announces a search for an Assistant or Associate Professor (tenure track or tenured) in the area of cell and molecular biology. This position includes a highly competitive salary and significant start-up funds. The ideal candidate will be an individual who has strong interest in cell and molecular biology as it applies to the musculoskeletal system and a desire to establish an independent research program with strong extramural grant support. This is a unique opportunity to join a well-established, highly interactive research group consisting of engineers, clinical and basic scientists focusing on musculoskeletal research. Additional faculty with interests in bone cell biology, bone cancer, the function of stem cells in skeletal development and skeletal biomechanics can be found throughout the Colleges of Medicine, Engineering and Sciences. A joint academic appointment will include a primary appointment in the Department of Orthopaedics and Rehabilitation and a secondary appointment in an appropriate basic science department.

The Department of Orthopaedics and Rehabilitation is nationally ranked in the top 5 in NIH funding and has made a commitment to expand its research effort. The Penn State College of Medicine is located in semi-rural Hershey, Pennsylvania and offers a highly desirable lifestyle and an affordable cost of living in close proximity to many metropolitan areas including Baltimore, Washington, D.C., Philadelphia and New York City.

Applications will be accepted until the position is filled.

Send curriculum vitae to:

**Shirley Marks in care of the Skeletal Biology Search Committee,
Musculoskeletal Research Laboratory,
Department of Orthopaedics and Rehabilitation
The Pennsylvania State University, College of Medicine
500 University Drive, H163, Hershey, PA 17033.**

Computational Chemistry
Harlow, Essex

Provide the science required for our innovation.

At GlaxoSmithKline, Research and Development plays an important part in our success. R&D innovation enables us to help people feel better and live longer. Join our Computational Chemistry Group, in Harlow, and you'll add to this success by supporting Discovery Research and our Centres of Excellence for Drug Discovery (CEDDs).

Using high-specification computer hardware and state-of-the-art software packages, you'll support the discovery of therapies for neurological, psychiatric and infectious diseases. You'll also provide computational support for medicinal chemistry activities, and work alongside chemistry teams to optimise ligands for targets. All of which will give you wide exposure within the business.

Our drug discovery teams will look to you to ensure key questions are addressed and you'll undertake QSAR support for lead optimisation programmes. In addition to utilising appropriate structural information to understand drug-target interactions, you'll ensure ADMET properties are considered in the design of molecules. You'll also identify gaps in existing approaches, before defining and implementing the appropriate solutions.

Every member of our R&D teams is dedicated to creating outstanding achievements in science. These teams contain some of the most talented people in their field and you'll get to share in their knowledge as you work together to improve lives around the world. And since we rely on our people to deliver life-enhancing solutions, it only seems fair that we provide them with the best working environment to do it in.

With a PhD in Chemistry or a related discipline and a minimum of two years' experience in supporting drug discovery, you'll have expertise in computational chemistry, QSAR, statistical methods

and small molecule modelling techniques. Knowledge of protein-ligand interactions, homology modelling and medicinal chemistry would also be useful, as would the ability to implement novel methodology.

GlaxoSmithKline is dedicated to workplace innovation and will support you with career-long opportunities and learning. We offer competitive compensation and benefits packages designed to attract and retain the very best.

To help guarantee a quicker response, you can now apply online at www.gsk.com quoting Req ID 2719. Should you have any difficulties in finding a local facility to access the internet, call the government's 'UK online' helpline on 0800 77 1234.

If a disability prevents you from getting online, please call the GSK response centre on 0208 047 4777 between 13.00 - 01.00, who'll do everything they can to help.

For a full listing of current opportunities, please visit our website at www.gsk.com

All data processed in accordance with the provisions of the Data Protection Act. Developing talent through equality of opportunity.

Together we can make life better.



GlaxoSmithKline



ÉCOLE POLYTECHNIQUE
FÉDÉRALE DE LAUSANNE

Faculty position in physics of quantum nanodevices

at the Swiss Federal Institute of Technology Lausanne (EPFL)

The Swiss Federal Institute of Technology in Lausanne (EPFL) is inviting applications for an assistant professor appointment (tenure-track) in its Institute of Quantum Electronics and Photonics.

The field of research should be well correlated with the topics pursued within the National Center of Competence in Research in Quantum Photonics (NCCR-QP) established with EPFL as the leading house, and involving a number of Swiss institutions. In particular, program orientations related to quantum devices incorporating low dimensionality semiconductors, more specifically III-V semiconductors, including nitrides, photonic bandgaps and micro-cavities will be considered favorably.

The appointee will have an interdisciplinary vision and a strong record of accomplishments and will initiate independent, creative research programs and participate in both undergraduate and graduate teaching. Substantial start-up resources will be available, in addition to the wide range of semiconductor epitaxial growth systems, characterization tools and processing facilities present in the Institute. Exceptional candidates could be hired as full professor.

We offer internationally competitive salaries and benefits.

Applications with curriculum vitae, publication list, concise statement of research and teaching interests as well as the names and addresses (including e-mail) of at least five references should be



sent by September 15, 2002, to

Professor Giorgio Margaritondo
Dean
Faculty of Basic Sciences
EPFL
CH-1015 Lausanne, Switzerland

For additional information on the EPFL, please contact:
Prof. B. Deveaud-Plédran (deveaud@dpmail.epfl.ch)

and see the faculty web site :

<http://sb.epfl.ch/>, <http://ipeqwww.epfl.ch/>
or the NCCR web site <http://nccr-qp.epfl.ch>

The EPFL is an equal opportunity employer.

Innovative Technology Exceptional Opportunity

Amgen, the world's leading biotechnology company, is dedicated to improving patients' lives by offering new human therapeutics. Our first two products, EPOGEN® (Epoetin alfa) and NEUPOGEN® (Filgrastim), are among the most successful human therapeutics ever launched.

AMGEN PROTEIN FORMULATION GROUP

PROTEIN FORMULATION RESEARCH SCIENTIST

The Pharmaceuticals Department at AMGEN is recruiting researchers at the PhD level with a degree in Chemistry, Biochemistry, Biophysics, Pharmaceutical Sciences, or related discipline to support formulation development projects for liquid, lyophilized, and alternative dosage forms. The successful candidate will develop liquid and lyophilized formulations of protein therapeutics. Primary responsibilities include evaluating the physical and chemical stability of proteins peptides, and performing applied research in the separation and characterization of degradation products. Extensive knowledge in protein characterization is required. A strong background in chromatographic matrices, HPLC, and analytical method development, peptide mapping and mass spectrometry is preferred. Experience in formulation development of proteins/antibodies is preferred. Applicants must have excellent written and oral skills, effective problem-solving ability, experience working within a multi-disciplinary team, and the ability to supervise research associates. Post-doctoral and/or industrial experience is preferred. Job Codes: 01-0001120, 02-0000313, 02-0001053.

RESEARCH ASSOCIATE/ASSOCIATE SCIENTIST (BS/MS level)

The successful candidate will join the Protein Formulation group within the Pharmaceuticals Department. The candidate will be part of a team to develop formulations for proteins. Job responsibilities will include setting up stability studies, developing assays and data analysis. The candidate must have a strong interest in protein characterization using analytical and spectroscopic techniques. Proficiency in the use of HPLC instrumentation is required. Excellent verbal and written communication skills and an ability to work in a team environment are important. PC proficiency is essential. The ideal candidate will have a BS/MS degree in the Life Sciences. Job Code: 02-0000653.

For immediate consideration, forward your resume, including **Job Code** to: jobs@amgen.com; or by mail at: **Amgen Staffing, P.O. Box 2569, Thousand Oaks, CA 91319-2569**. For additional information on Amgen, please visit our website at www.amgen.com.

AMGEN®

Amgen
Thousand Oaks, CA

EOE/AA Employer M/F/D/V

© 2002 Amgen. All rights reserved

www.amgen.com

The
Jackson
Laboratory



Scientific Curators

Professional positions are available for Scientific Curators in the expanding Mouse Genome Informatics Programs at The Jackson Laboratory, working with the Mouse Genome Database, Gene Expression Database, Mouse Genome Sequence Project and the Gene Ontology Project. Successful candidates will be primarily responsible for: data acquisition and analysis, evaluating and annotating data to be incorporated into the databases, integrating information from disparate sources, and interacting with research laboratories and genome centers to facilitate data transfer. In addition, Curators take part in database and interface design by contributing biological perspectives to new data content and displays.

Areas of preferred expertise include mammalian or comparative genomics, molecular, cellular, or developmental biology, anatomy, sequence analysis, and biochemistry. Other desirable attributes include excellent writing/communication skills and the ability to work effectively in a team environment. Ph.D. degree in Life Sciences or M.S. with appropriate experience required.

The Jackson Laboratory is one of the world's foremost centers for mammalian genetics research. Located in Bar Harbor, Maine, the lab is adjacent to Acadia National Park. Mountains, ocean, forests, lakes, and trails are all within walking distance. If you love high tech challenges but you're looking for a more natural environment, this is the opportunity you've been searching for.

Interested applicants should send cover letter and c.v. to:

Posting # sci/SC/2T, Human Resources, The Jackson Laboratory
600 Main Street, Bar Harbor, Maine 04609

Phone: (207) 288-6103 ■ **Fax:** (207) 288-6106 ■ **Email:** jobs@jax.org

The Jackson Laboratory is an equal opportunity/affirmative action employer.

www.jax.org



FLORIDA STATE UNIVERSITY EMINENT SCHOLAR CHAIR

The Department of Nutrition, Food and Exercise Sciences at Florida State University invites nominations and applications for the Lincoln Chiropractic College Eminent Scholar Chair in biomechanical research.

Applicants must have qualifications commensurate with appointment at the level of full professor. These include advanced degree in Biomechanics or related field and demonstrated excellence in research accomplishments as judged by record of external grant funding, publications, and training of graduate students.

The role of the Eminent Scholar Chair will be to develop a nationally recognized and externally funded research program in health-related biomechanics with relevance to the practice of chiropractic medicine. In particular, we seek candidates utilizing innovative approaches to investigate the function and dysfunction of the neuromuscular-skeletal complex. The Department has identified health related biomechanics as an area for program expansion and is currently developing new facilities to support these efforts. We anticipate the holder will be instrumental in the planning of the new laboratory of biomechanics. Send nominations or letters of application along with curriculum vitae, names of references, copies of representative publications, a summary of past research and teaching accomplishments and a specific statement of future research plans to: **Search Committee Chair, The Lincoln Chiropractic College Eminent Scholar Chair, Chiropractic and Biomechanical Research Center, Department of Nutrition, Food and Exercise Sciences, Florida State University, Tallahassee, FL 32306-1493.**

The initial screening of applications will begin September 30, 2002. The search process will remain active until the position is filled with full consideration given to applications received by the initial screening date. A complete position description is available upon request.

The Florida State University subscribes to equal opportunity and pluralism and complies with the Americans with Disabilities Act. All eligible candidates are, therefore, invited to apply for position vacancies as appropriate. Florida State University is a public records agency pursuant to Chapter 119, Florida Statutes.



Activate your mind & innovate medicine.

Think of it—a place where you can use your mind to innovate human pharmaceuticals. That's the exciting drug discovery environment you'll find at Roche Bioscience. Our scientists are focused on medicines for the treatment of central nervous system and genitourinary disorders, arthritis, osteoporosis, and respiratory and viral diseases. Our cutting-edge technologies and instrumentation provide us the necessary elements to achieve success. Join us and innovate medicine in Palo Alto, California.

Research Scientist I/II/Principal Research Scientist, Toxicology

Responsible for the safety evaluation programs of New Chemical Entities (NCEs), you will design integrated non-clinical safety strategies for NCEs, conduct/monitor toxicology studies, interpret data, communicate study results, and contribute to regulatory submissions (i.e., CTXs, INDs, Expert Reports). You will serve as the study director for in-house studies, act as the study monitor for outsourced work and interact with consultants and development partners. Requires a PhD/DVM or equivalent in Toxicology or related field and a minimum of 0–2 years experience (Research Scientist I), 4+ years experience (Research Scientist II), or 7+ years experience (Principal Research Scientist) in GLP toxicology. You must be able to manage multiple scientific projects, make sound interpretations/judgments, and effectively communicate toxicological data to project teams. Detailed knowledge of safety pharmacology, DMPK, pathology, and the regulatory process, plus project management skills would be advantageous.

Located in the heart of innovation, our park-like campus offers a wide array of employee services, including an on-site fitness center. We also are pleased to provide a competitive compensation program with a generous vacation and holiday schedule, relocation assistance, plus retirement and pension plans. To apply, send your resume, indicating Job Code 1396-SCI, to paloalto.hr_staffing@roche.com. As an equal opportunity employer, we are committed to workforce diversity. Visit our website at <http://paloalto.roche.com>.



Roche Bioscience

Opportunity in suburban
Philadelphia, PA.

Exploratory Medical Science Physician/Scientist

GlaxoSmithKline (GSK), a leading Pharmaceutical Research and Development organization, has a unique opportunity for an outstanding scientist or physician to contribute to the discovery of new medicines for respiratory and inflammatory diseases.

In an effort to provide greater alignment between traditional drug discovery and clinical science GSK has integrated early clinical development with biology and chemistry groups to create Centers of Expertise in Drug Discovery. One component of this drug discovery model is Exploratory Medical Science (EMS). EMS will comprise highly qualified clinical scientists and physicians who will support drug discovery by conducting top quality clinical research in two key areas. First, EMS will support biology research groups in the identification and validation of new drug targets. Second, EMS will support early phase clinical development teams by identifying and validating markers of disease progression and regression. Members of the EMS group will be required to have a strong, relevant clinical and scientific background and exceptional team skills. Scientific and clinical expertise will be required in order to independently generate scientific hypotheses to meet the objectives of EMS. Team skills will be necessary to obtain internal support for scientific programs and also to bring together diverse groups inside and outside GSK to maximum effect. Critical relationships will need to be established with researchers in genetics, genomics, proteomics, imaging and assay labs and a network of external collaborators must be rapidly developed.

This is an excellent first position in Pharmaceutical R&D for a scientifically trained physician allowing the use of clinical and scientific skills to establish a reputation prior to exploring the broader opportunities offered by the industry. Similarly this represents an ideal opportunity for a Ph.D. scientist, with Postdoctoral research experience in respiratory or inflammatory disease, to move from basic to clinical research while maintaining close contact with laboratory science.

GlaxoSmithKline is dedicated to an innovative work place and supports you with career-long opportunities and learning. We offer a competitive benefit and compensation package. For confidential consideration and efficient processing of your resume, please visit our Web site at www.gsk.com. Indicating Req. ID: 3045 is essential to search. Principals only, no agencies, please.

Developing talent through equality of opportunity MIF/DIV.

If you are unable to visit our Web site, please call 1-888-493-6756.

Together we can make life better.



GlaxoSmithKline



Ambion is looking for exceptional candidates for

Senior Scientist

and other research positions.

Ambion's track record for developing innovative products and technologies is outstanding. Most of our products and technologies are invented here rather than licensed from outside. This high productivity can be attributed to our creative, interactive research environment.

Senior Scientists lead small research groups with the freedom to become involved in a variety of business development and marketing activities, in addition to research. Areas of expertise range from organic chemistry to protein chemistry to many areas of molecular biology, often with a strong emphasis of RNA. This blend of Principle Investigator and entrepreneur is not found in many other research environments.

If this sounds appealing to you and you have a strong publication record and an innovative and entrepreneurial spirit, please contact us by visiting our website at www.ambion.com. Please include a cover letter, resume, references, and a list of your publications. You may also mail or fax your resume to the address below.

Applicants with backgrounds in clinical or diagnostic areas are especially encouraged as we are expanding our RNA Diagnostic Division.

EOE/AA

Ambion

THE RNA COMPANY

Ambion, Inc.

2130 Woodward St. Austin, TX 78744

Fax (512) 651-0201 • www.ambion.com/jobs

**BIOZENTRUM
UNIVERSITY of BASEL**

Assistant Professorships in Biochemistry

Positions are vacant for two tenure-track Assistant Professors in Biochemistry. Applications are invited from candidates using biochemical approaches to study important basic mechanisms of eukaryotic cell biology. The successful male and/or female candidates are expected to develop strong research programs that will complement the activities already existing at the Biozentrum in the areas of membrane traffic and signal transduction. A contribution to the teaching at the Biozentrum, both at the undergraduate and graduate levels, is expected. The University provides a core of salaried positions, equipment, and running costs.

Applications including a curriculum vitae, a list of publications, reprints of two representative publications, and a short overview of past, present and planned research activities should be submitted by **September 30, 2002**, to the Dean of the Faculty of Sciences at the following address:

**Dekan der Philosophisch-Naturwissenschaftlichen
Fakultät der Universität Basel
Klingelbergstrasse 50
CH4056 Basel, Switzerland**

For further information, please contact
Prof. Joachim Seelig, Biozentrum,
Klingelbergstr. 70, CH4056 Basel, Switzerland
(Tel: +61 267 2190; FAX: +61 267 2189;
E-mail: Joachim.Seelig@unibas.ch)



UNI
BASEL

DEAN OF THE SCHOOL OF MEDICINE AND VICE CHANCELLOR-MEDICAL AFFAIRS University of California, San Francisco

The University of California, San Francisco (UCSF) invites nominations and applications for the position of Dean of the School of Medicine and Vice Chancellor-Medical Affairs.

UCSF is the only campus of the University of California that is devoted solely to the health sciences, with professional schools of dentistry, medicine, nursing, and pharmacy, plus a graduate division. The School of Medicine has affiliated programs at over 100 medical centers and hospitals in the state.

Responsibilities: The Dean, through the leadership of 26 departments, 9 organized research units, 7 interdisciplinary research units, and 19 associate and vice deans, is responsible for teaching and research programs and for allocation of the School's resources. The Dean provides leadership and direction for an academic program which includes some 600 medical and 450 graduate students, over 1000 housestaff, 170 postdoctoral fellows, and 1450 full-time and 3500 volunteer faculty. As Vice Chancellor-Medical Affairs, the individual assists the Chancellor and the CEO of the UCSF Medical Center in oversight of the Center and serves as liaison between the Center and the School of Medicine.

Qualifications: The successful candidate must be a distinguished academic physician with substantial administrative and scholarly achievements in teaching and research in the health sciences field. Applicants/nominees must have proven leadership abilities in the administration of a major health sciences unit.

Position Open: July 1, 2003

Salary: Negotiable and commensurate with qualifications.

Closing Date for Applications: September 13, 2002; position open until filled.

To Apply or Nominate: Send application or nomination with complete curriculum vitae, bibliography, and names of three references to: **Assistant Chancellor Susan Montrose, Search Committee, Dean, School of Medicine, Office of the Chancellor, University of California, San Francisco 94143-0402.**

AFFIRMATIVE ACTION/EQUAL OPPORTUNITY EMPLOYER

Manager, Cell Biology and Immunology Southern Research Institute Birmingham, Alabama

The Cell Biology and Immunology Group within the Cancer Therapeutics Department of Southern Research Institute is currently seeking candidates for the position of Research Scientist. The successful candidate will interface with clients and potential clients to obtain independent funding, design projects and individual studies as well as oversee the daily operation of a laboratory including managerial responsibilities. In addition, the successful candidate will generate cost estimates and proposals for GLP and non-GLP studies, oversee the implementation of the studies/projects, write interim and final reports, and assure the completion of tasks and projects within constraints of time, quality, and cost. Individuals applying for this position must demonstrate the ability to efficiently and effectively manage the Cell Biology and Immunology Group, direct other scientists, and work with minimal supervision. Individuals should be enthusiastic about constantly improving the functions of the laboratory. Typically these abilities will be demonstrated by a combination of a Ph.D. in molecular biology, *in vitro* toxicology, or relevant discipline with extensive expertise in the particular field. Management and GLP experience preferred.

Southern Research Institute, a non-profit research organization, employs approximately 600 professional, technical and support personnel, and has annual revenues over \$58 million. Birmingham has a high standard of living afforded by a moderate climate, beautiful, wooded terrain, outstanding residential communities and schools, world-class healthcare, and a vibrant arts and entertainment scene. Its cost of living is at or below the national average, as are healthcare and housing costs.

We offer a competitive salary, generous benefits, modern equipment and facilities, and an extensive technical library. Application letters should be accompanied by curriculum vitae, names and addresses of three references, and a summary of current research activities and support. Forward to **Southern Research Institute, HR Dept., PO Box 55305, Birmingham, Alabama 35255-5305.** Must refer to **position #1046.** Inquiries may be directed to **Dr. William R. Waud, Director, Cancer Therapeutics.** E-mail: s.r.brown@sri.org, www.sri.org, Fax: (205) 581-2880. EOE/AA

Be an NCI Cancer Prevention Fellow

THE NATIONAL CANCER INSTITUTE (NCI) sponsors the Cancer Prevention Fellowship Program (CPFP). Its purpose is to train individuals from a multiplicity of health professions and biomedical science disciplines to become leaders in the field of cancer prevention and control.

What will I get out of the program?

- Master of Public Health degree
- NCI Summer Curriculum in Cancer Prevention
- Mentored research opportunities at the NCI
- Professional development and leadership training

What areas of cancer prevention research are available?

- Chemoprevention
- Clinical/Translational Research
- Early Detection/Biomarkers
- Epidemiology
- Ethics and Evidence-Based Decisionmaking
- Intervention Studies
- Laboratory-Based Research
- Primary Prevention
- Social and Behavioral Research
- Statistical Methodology

Am I eligible?

You must have a doctorate degree (M.D., D.D.S., D.O., J.D., Ph.D. or equivalent). Foreign education must be comparable to that received in the United States.

You must also be either a citizen of the U.S. or a resident alien eligible for citizenship within 4 years at the time of application (September 1).

How long is the program?

Fellows are accepted for up to 5 years of training beginning in July. The typical duration is 3 years (year 1: M.P.H.; years 2-3: NCI Summer Curriculum and mentored research).

When are applications due?

Applications are due September 1, 2002, for entry into the program July 1, 2003.

How do I apply?

To receive a catalog*, contact:
Douglas L. Weed, M.D., M.P.H., Ph.D.
Director, Cancer Prevention
Fellowship Program
National Cancer Institute
6130 Executive Boulevard (EPN)
Suite 3109, MSC 7361
Bethesda, MD 20892-7361

* Please provide home address, telephone, e-mail, and where you heard about the program.

Further inquiries:

Mrs. Barbara Redding
Phone (301) 496-8640
Fax (301) 402-4863
E-mail br24v@nih.gov

For more information visit our Web site at:

<http://cancer.gov/prevention/pob/>
<http://resresources.nci.nih.gov/links.cfm>

Selection for these positions will be based solely on merit, with no discrimination for non-merit reasons, such as race, color, gender, national origin, age, religion, sexual orientation or physical or mental disability. NIH provides reasonable accommodations to applicants with disabilities. If you need reasonable accommodation during any part of the application and hiring process, please notify us. The decision on granting reasonable accommodation will be handled on a case-by-case basis.

THE NATIONAL CANCER
INSTITUTE IS AN EQUAL
OPPORTUNITY EMPLOYER.



Biological Sequence Analyst Biostatistician

Two positions are available in Computational Biology Resources. The **Biological Sequence Analyst** will provide data analysis support for sequence analysis and annotation efforts at The Jackson Laboratory. Experience in gene finding/prediction, positional cloning/candidate analysis, SNP analysis, and comparative sequence analysis is required.

The **Biostatistician** must quickly understand biological problems and formulate solutions by developing and implementing statistical algorithms. Experience with statistical methods for gene mapping and familiarity with genetics concepts are crucial. Advanced degrees in Molecular Biology, Genetics, Statistics, and/or Computer Science are required for each position.

The Jackson Laboratory is one of the world's foremost centers for mammalian genetics research. Located in Bar Harbor, Maine, the lab is adjacent to Acadia National Park. Mountains, ocean, forests, lakes, and trails are all within walking distance. If you love high tech challenges but you're looking for a more natural environment, this is the opportunity you've been searching for.

Interested applicants should send cover letter and c.v. to:

Posting # sci/232/233, Human Resources, The Jackson Laboratory,
600 Main Street, Bar Harbor, Maine 04609

Phone: (207) 288-6103 • **Fax:** (207) 288-6106 • **Email:** jobs@jax.org

The Jackson Laboratory is an equal opportunity/affirmative action employer.

www.jax.org



**Statistical Genetics
Tenure-Track Investigator
Mood and Anxiety Disorders Program
National Institute of Mental Health
Bethesda, MD, USA**

The Section on Developmental Genetic Epidemiology, Experimental Therapeutics and Pathophysiology Branch in the Mood and Anxiety Disorders Program at the National Institute of Mental Health, Intramural Research Program is recruiting a scientist for a tenure-track position to develop research in statistical genetics in a new cross-institute program in neurogenetics. The candidate will have the opportunity for collaboration with scientists in diverse research areas in genetics (i.e., genetic epidemiology, biostatistics, statistical genetics, molecular genetics), as well as neuroscience and relevant clinical disciplines. The candidate is expected to have an M.D. or a Ph.D. in (1) biostatistics; (2) population or human genetics; or (3) genetic epidemiology. The applicant should have experience and interest in statistical analysis of genetic studies, and in developing new methods or adapting traditional statistical methods to identify the role of genes in the etiology of complex disorders. This position includes an attractive start-up package and operating budget in an exciting multidisciplinary research environment. Preference will be given to candidates with a background and interest in complex disorders, particularly neuropsychiatric disorders. Applicants should send a curriculum vitae, statement of research interests, and three letters of recommendation to Dr. Kathleen Merikangas (kathleen.merikangas@nih.gov), Search Committee, National Institutes of Health, 15 K North Drive, MSC#2670, Bethesda, MD 20892, by November 1, 2002.

NIH is an equal opportunity employer





**POSTDOCTORAL FELLOWSHIP
LENTIVIRAL VECTORS; GENE THERAPY OF EYE DISEASES
Molecular Medicine Program
Mayo Clinic, Rochester, MN, USA**

Opportunity for a virologist, vision scientist, or ophthalmologist to develop lentiviral vector-based gene therapy for glaucoma (Loewen et al., *Hum Gene Ther* 12: 2109, 2001; Loewen et al., *IOVS*, In press 2002; Whitwam et al., *J Virol* 75: 9407, 2001; Poeschla et al., *Nature Medicine* 4: 354, 1998). Project has specific NIH (NEI) funding. Experience in retro/lentivirology, and/or eye experimentation desirable. Experience in molecular biology, tissue culture, animal experimentation essential. Other diseases are studied in basic and applied HIV/FIV virology and vectorology projects. The laboratory is located within the Molecular Medicine Program, a virology and gene therapy department with a dedicated viral vector production facility and strong collaborative opportunities.

Salary will be determined by the successful candidate's experience. There is an attractive benefit package. Mayo Clinic is a not-for-profit organization. Mayo integrates research with clinical practice and education in a multi-campus environment. Rochester is a charming, affordable small city consistently ranked as one of the best in the US for quality of life.

Please send curriculum vitae, bibliography, summary of past research accomplishments, and names of three references. If applying via email, entitle it "Lentiviral Vector Gene Therapy." Send to:

Dr. Eric M. Poeschla
Molecular Medicine Program
Guggenheim 18
Mayo Clinic
200 First Street SW
Rochester, MN, 55905, USA
Tel: (507) 284-3178
Fax: (507) 266-2122
Email: emp@mayo.edu

Mayo Foundation is an Affirmative Action and Equal Opportunity Employer and Educator.



**POSTDOCTORAL
TRAINING
IN
CANCER BIOLOGY**

MOUNT SINAI
SCHOOL OF
MEDICINE

Mount Sinai School of Medicine has Postdoctoral positions available immediately through its recently awarded NCI training program in cancer cell biology. Areas of interest include: translational aspects of cellular signaling, developmental biology, cell cycle, or molecular epidemiology. These positions are open to U.S. citizens or permanent residents with an M.D. or Ph.D. with experience in molecular/cellular biology. Salary will follow NIH guidelines and depend on experience.

Highly motivated candidates are encouraged to send a brief statement of research experience and interest, curriculum vitae, and contact information for three references to:

**Postdoctoral Training in Cancer Biology
Box 1130
Ruttenberg Cancer Center
Mount Sinai School of Medicine
One Gustave L. Levy Place
New York, NY 10029**

**E-mail: cancer.biology@mssm.edu
Website: www.mssm.edu/
cancerctr/biology_postdoc_training.shtml**

Equal Opportunity Employer.

**TENURE-TRACK FACULTY POSITION
UNIVERSITY OF MICHIGAN MEDICAL SCHOOL**

Applications are invited for a tenure-eligible faculty position in the Department of Dermatology. The individual recruited would complement some of the current research in the Department (*Nature*, 379:335-339, 1996; *New England Journal Medicine* 337(20) 1419-1428, 1997; *JCI* 101:1432-1440, 1998; and *Nature Medicine* 5(4) 418-422, 1999; *JCI* 106:663-670, 2000). We are particularly interested in individuals using or developing innovative approaches to study molecular mechanisms of aging/photoaging. The ongoing comprehensive research effort in aging/photoaging provides a unique opportunity to investigate fundamental molecular mechanisms in human organ in vivo.

All candidates must have a Ph.D. and/or M.D. degree, at least 5 years of postdoctoral experience, and a strong record of research accomplishments with peer-reviewed publications and excellent command of written and verbal English. The successful individual will be expected to establish primary and collaborative research programs, obtain extramural funding, and participate in teaching. An outstanding start-up package with competitive salary and fringe benefits is available. Interested applicants should submit curriculum vitae, brief description of research and career objectives (max. one page and double-spaced), and 3-5 qualified references to: John J Voorhees, M.D., Chair, Department of Dermatology, University of Michigan, 1910 Taubman Center, Ann Arbor MI 48109. Review of candidates will begin on August 1, 2002, and continue until the position is filled.

We encourage applications from candidates who will enrich and contribute to the cultural diversity of our University.



COLLEGE OF AGRICULTURE

The Department of Animal and Range Sciences (ARSc) invites applications for the position of Department Chair. The department has 25 full-time faculty and 40 support personnel. Strong programs of research are conducted in several areas ranging from animal production systems to molecular biology. Centers of excellence include reproductive physiology, ruminant nutrition, range science and natural resource management. Departmental facilities include extensive animal units and an off-campus range research facility. ARSc faculty advise approximately 220 undergraduate students and 45 graduate students. Strong extension programs are conducted in range, beef, dairy, sheep, swine and animal products. The successful candidate will serve as administrative officer and program leader for the department and will provide leadership and participate in the ARSc research, teaching and extension programs. The Chair will represent the department to the university, professional associations and related groups, and will interact with Directors of the Ag Experiment Station, Extension Service and off-campus Research and Extension Centers. The successful candidate must have a doctorate in Animal or Range Sciences or a related field, demonstrate significant accomplishments in teaching and research, and be qualified for appointment to the rank of Professor with tenure in the department. Candidates must demonstrate leadership, communication and team-building skills and possess strong interpersonal abilities. Preference will be given to candidates with administrative experience in fiscal and personnel management, and with a commitment to the land grant mission. For further details see the departmental web site: <http://www.ag.ndsu.nodak.edu/ars/templates/indexes/programindex.htm>.

Review of applications begins September 1, 2002 and will continue until a suitable candidate is identified. Send (1) a statement of interest and evidence of qualifications for the position, (2) curriculum vitae, (3) a statement of the role of an Animal and Range Sciences Department in the college, state, and region, and (4) names, telephone numbers, postal and e-mail addresses of 5 references to: **Dr. Douglas A. Freeman, Committee Chair, Department of Veterinary and Microbiological Sciences, 150 Van Es Hall, 1523 Centennial Blvd, North Dakota State University, Fargo, ND 58105, PH. 701-231-8504, FAX. 701-231-7514, email: douglas.freeman@ndsu.nodak.edu.**

NDSU is an Equal Opportunity Institution.



Genetic Epidemiology
Tenure-Track Investigator
Mood and Anxiety Disorders Program
National Institute of Mental Health
Bethesda, MD, USA

The Section on Developmental Genetic Epidemiology, Experimental Therapeutics and Pathophysiology Branch in the Mood and Anxiety Disorders Program at the National Institute of Mental Health, Intramural Research Program, is recruiting a scientist for a tenure-track position to develop research in genetic epidemiology in a new cross-institute program in neurogenetics. The candidate will have the opportunity for collaboration with scientists in diverse research areas in genetics (i.e., genetic epidemiology, biostatistics, statistical genetics, molecular genetics), as well as neuroscience and relevant clinical disciplines. The candidate should have an M.D. or Ph.D. in (1) epidemiology; (2) genetic epidemiology; (3) human genetics; or (4) psychology. In addition, the applicant should demonstrate significant experience in the design, implementation and/or analysis of genetic epidemiologic studies of complex diseases. This position includes an attractive start-up package and operating budget in an exciting multidisciplinary research environment. Preference will be given to candidates with a background and interest in complex disorders, particularly neuropsychiatric disorders. Applicants should send a curriculum vitae, statement of research interests, and three letters of recommendation to Dr. Kathleen Merikangas (kathleen.merikangas@nih.gov), Search Committee, National Institute of Mental Health, 15 K North Drive, MSC#2670, Bethesda, MD 20892, by November 1, 2002.

NIH is an equal opportunity employer



MAYO CLINIC

POSTDOCTORAL
Division of Experimental Pathology
Rochester, Minnesota, U.S.A

Postdoctoral research positions supported by the National Institutes of Health are available for highly motivated individuals interested in: (1) structure-function studies of the BRCA2 breast cancer susceptibility gene; (2) characterization of novel oncogenes involved in breast cancer development and progression. *In vitro* molecular assays and animal models will be used for both studies. Applicants should be career minded and self-motivated and should have a Ph.D. with experience in molecular and cellular biology.

Salary will be determined by the successful candidate's experience. There is an attractive benefit package. Mayo Clinic is a not-for-profit organization. Mayo integrates research with clinical practice and education in a multi-campus environment. For further information please visit <http://www.mayo.edu/research/>.

Applications, including curriculum vitae and bibliography, summary of past accomplishments, and the names of three references, should be sent to:

Fergus J. Couch, Ph.D.
Experimental Pathology
Guggenheim 1001 A
200 First Street SW
Rochester, MN 55905
Ph: 507-284-3626; Fax: 507-266-0824
couch.fergus@mayo.edu

Mayo Foundation is an Affirmative Action and Equal Opportunity Employer and Educator.



Celgene is a pharmaceutical company with a major focus on the discovery, development and commercialization of small molecules for the treatment of cancer and immunological diseases. The Signal Research Division of

Celgene, located in San Diego, has the following career opportunities:

**SCIENTIST – LEAD DISCOVERY
ASSAY DEVELOPMENT**

The successful candidate has a Ph.D. in Biochemistry with a minimum of 2-4 years of industry experience. Candidate will be responsible for characterizing protein reagents for assay development and structural biology, including measuring binding constants for protein-protein interactions in multi-component complexes and analysis of post-translational modifications. Candidates will be involved in kinetic characterization of enzymes, inhibitor identification and mechanism of action studies. Essential experience includes protein purification and protein chemistry, enzyme assays and assay development. Knowledge of enzyme kinetics is a distinct advantage. Experience with radiometric and fluorescence systems is a must and experience in biophysics and mass spectrometry is a plus. Proficiency in Excel, Activity Base and graphing software is desirable. **Code: SSC7.**

**SENIOR SCIENTIST – IN VIVO PHARMACOLOGY
DEPARTMENT, PK/ADME GROUP**

Ideal candidate is a preclinical pharmacokinetics/ADME expert to conduct PK and metabolism studies of small molecule research compounds. Qualifications include a Ph.D. degree, 4-8 years of industry experience with successful track record in small molecule drug discovery. Experience with quantitative and qualitative LC/MS-based bioanalytics and expertise in metabolite profiling, metabolite structure elucidation, and *in vitro* metabolism methodologies is expected. A strong publication record and leadership skills are essential. **Code: SSMS7.**

SCIENTIST – TARGET DISCOVERY

Department of Cell Signaling and Target Discovery

This department works as a multidisciplinary team to discover and validate targets in the therapeutic areas of cancer and inflammation. We are seeking a creative, energetic Biochemist or Cell Biologist. The ideal candidate will have a Ph.D. with 1-5 years of postdoctoral/industrial experience in cell cycle regulation and signal transduction. Experience with cancer biology and regulated protein turnover by ubiquitin/proteasome pathway is desired. **Code: SSFM7**

Good written and verbal communication and problem solving skills and the desire to work in a fast-paced, team environment are essential in the above positions.

Position is commensurate with the experience level of the candidates.

Celgene offers a competitive compensation package that includes equity participation. If your skill set fits the job description, please send resume (indicating job code) to:

Celgene Corporation
Signal Research Division, Attn: L. Cain
5555 Oberlin Dr., San Diego, CA 92121
or e-mail: lcain@signalpharm.com AAE/EEO

www.celgene.com

POSITIONS OPEN

SUSTAINABLE SYSTEMS IN BUSINESS AND INDUSTRY. The School of Natural Resources and Environment at the University of Michigan seeks to fill a nine-month tenure-track position, at the **ASSISTANT** or **ASSOCIATE PROFESSOR** rank, with a person whose scholarship examines private-sector interactions with the environment. Possible research emphases include, but are not limited to, energy (especially renewable); transportation; land use; partnerships among business, government, and activist groups; "green" product development; consumption; life-cycle analysis; systems analysis of the environmental impacts of products and processes; ecological and social sustainability; and corporate environmental responsibility. Disciplinary backgrounds include, but are not limited to, policy or managerial sciences, business, planning, engineering, systems modeling, technology and society, and economics. A Doctoral degree or other terminal degree is required. The successful candidate is expected to establish a strong program of funded research and to teach at the undergraduate and graduate levels. A more detailed description of the position is available at [website: http://www.snre.umich.edu](http://www.snre.umich.edu).

Candidates should forward a statement of research and teaching interests, curriculum vitae, a representative sample of scholarly work, and three letters of reference to: **Sustainable Systems in Business and Industry Search Committee, School of Natural Resources and Environment, The University of Michigan, 430 East University, Ann Arbor, MI 48109-1115.** Review of applications will begin September 30, 2002, and will continue until a suitable candidate is found. For further information contact: **Michael R. Moore; Telephone: 734-647-4337; e-mail: micmoore@umich.edu.**

The University of Michigan is an Affirmative Action/Equal Opportunity Employer.

The Department of Plant Pathology and Microbiology at Texas A&M University invites applications for a tenure-track, 12-month position at the **ASSISTANT PROFESSOR** level in the area of fungal biology. Preference will be given to applicants that employ functional and comparative genomic approaches to study fundamental problems in fungal development and host-pathogen interactions, taking advantage of the rapidly accumulating fungal genome sequences and using bioinformatic tools as part of their research program. The incumbent will be expected to develop an internationally recognized and competitively funded research program and participate in teaching at the undergraduate and graduate level. Applicants must have a Ph.D. and experience in some aspect of molecular biology with emphasis in functional and comparative genomics. Send a letter of application, transcripts, curriculum vitae, statement of research and teaching interests, and three letters of reference to: **Dr. Dennis Gross, Professor and Head, Department of Plant Pathology and Microbiology, Texas A&M University, 2132 TAMU, College Station, TX 77843-2132. Telephone: 979-845-7313; E-mail: plpm-head@ppserver.tamu.edu.** Screening of applicants will begin September 15, 2002, and will continue until a suitable candidate is identified. For additional information about our department see: [website: http://plantpathology.tamu.edu](http://plantpathology.tamu.edu). *An Equal Opportunity/Affirmative Action Employer.*

MOLECULAR GENETICIST. The National Marine Fisheries Service is seeking candidates for a permanent position at the Santa Cruz Laboratory in Santa Cruz, CA, studying the molecular genetics of Pacific salmon. Research will determine genetic diversity of salmon populations to address ecological adaptations, endangered species, and fishery management issues. Applicants must be U.S. citizens, have a Ph.D. or equivalent education and experience, and have a strong record of molecular genetics research and publication. Salary range is \$59,471 to \$77,309. To apply, see [website: http://www.usajobs.opm.gov](http://www.usajobs.opm.gov), Announcement W/NMF/SWC/020208.JC or call **Telephone: 206-526-6420** for more information. Closes August 17, 2002. *Equal Opportunity Employer.*

POSITIONS OPEN

DIRECTOR

Institute for Nanoscale Science and Engineering at Vanderbilt University

Vanderbilt University seeks an outstanding leader to assume the directorship of its newly formed Vanderbilt Institute for Nanoscale Science and Engineering (VINSE). The successful candidate will have an earned Doctorate in chemistry, physics, applied physics, engineering, or a related field; a significant and distinctive record of research accomplishment in one or more areas of nanoscale science, engineering, or technology; and will qualify for a senior faculty appointment in one or more of the University's academic departments. The VINSE Director will be expected to combine a clear intellectual vision for the evolution of the field of nanoscale science and engineering with the experience and the interpersonal and leadership skills needed to attract others to that vision. Vanderbilt's major, on-campus Medical Center (with annual research expenditures exceeding \$180 million) and Vanderbilt's proximity to the Oak Ridge National Laboratory are but two examples of nearby opportunities for collaboration. Initially funded as part of Vanderbilt's ongoing strategic planning, VINSE is expected to become a highly visible interdisciplinary research center that will encourage the growth of new research and collaborations as well as nurture existing theoretical and experimental research. A partial list of areas of current activity or interest includes fundamental and applied condensed-matter physics and materials science/engineering at the nanoscale, spintronics and nanoscale electronics, nanocrystal, nanoparticle and nanoshell fabrication and characterization, optical and photonic interactions and devices, novel thin-film structures, and connections with the biological and biomedical sciences. Founded in 1873, Vanderbilt is a private, coeducational university with approximately 6,000 undergraduates and 4,000 graduate and professional students. Vanderbilt currently awards approximately 170 Ph.D. degrees annually.

Individuals interested in being considered for this position are encouraged to provide a cover letter, curriculum vitae that includes a complete list of publications and a clear record of experience, and a list of five references. The references will not be solicited for letters without first contacting the individual being considered. Each cover letter should describe both the sender's views about research directions in nanoscale science and engineering that merit special attention and the sender's teaching and research interests. Nominations and initial, confidential telephone or e-mail inquiries are welcome. Please send the requested materials to (or otherwise contact): **Professor Dennis G. Hall, Associate Provost for Research, 401 Kirkland Hall, Vanderbilt University, Nashville, Tennessee 37240. Telephone: 615-322-6067. E-mail: dennis.g.hall@vanderbilt.edu.** *Vanderbilt University is an Equal Opportunity, Affirmative Action Employer.*

TUBERCULOSIS TEAM LEADER

CEDPA has been awarded a USAID contract to provide Technical Advisors in AIDS and Child Survival (TAACS) to USAID offices overseas and in Washington. This position requires U.S. citizenship. Security clearance will be required.

The position is located in USAID/Washington. The Team Leader will lead the development of strategies, plans, and program guidance for USAID regarding TB prevention and control programs and will provide technical guidance to USAID missions. Incumbent will lead the USAID TB team. Must possess an MPH or relevant advanced degree. Minimum of seven to ten years experience overseas in international health programs, preferably with an emphasis in TB control. Solid management skills are a must for this position. USAID or other donor organization experience is desired. Travel is expected to be 20 to 25 percent.

Excellent benefits. Send résumé/curriculum vitae and cover letter: **FAX: 202-667-4371; or e-mail: taacsjobs@cedpa.org.** Please reference where you saw this job listing.

POSITIONS OPEN

FACULTY SEARCH

Department of Bioengineering University of Utah

Applications are invited for an assistant- or associate-level, tenure-track **FACULTY POSITION** in Bioengineering. The candidate will be responsible for developing and teaching a cornerstone upper undergraduate-level course in biomedical instrumentation covering topics in biosignals/systems and biosensors, participating in the graduate-level core curriculum, and developing an externally funded, independent research program. Individuals with expertise in biosensors and applied neuroscience are encouraged to apply; however, highly qualified applicants in other areas of bioengineering will also be given consideration. A doctoral degree, with a background in the physical sciences or bioengineering, demonstrated research productivity, and a commitment to undergraduate/graduate education are required. Applications are particularly encouraged from individuals who have experience in working with and teaching undergraduate and/or graduate students. The appointee will be expected to secure ongoing extramural research support and establish or maintain an international presence in his or her field. See [website: http://www.bioen.utah.edu](http://www.bioen.utah.edu) for further information.

Complete curriculum vitae, names of three references, and a short description of current research activities, teaching experience, and career goals should be sent to:

**Faculty Search Committee
Department of Bioengineering
University of Utah
50 South Central Campus Drive, Room 2480
Salt Lake City, UT 84112-9202**

Review of applications will begin August 31, 2001, and continue until a qualified candidate is selected.

The University of Utah, an Affirmative Action/Equal Opportunity Employer, encourages applications from women and minorities and provides reasonable accommodation to the known disabilities of applicants and employees.

PLANT BIOLOGY ASSISTANT PROFESSOR

The Institute of Biological Chemistry at Washington State University invites applications for a tenure-track Assistant Professor position to begin August 2003. Applicants must have a Ph.D., or equivalent, as well as a strong record of research and publications in plant biochemistry, molecular genetics, genomics, or another area of modern plant biology. The ability and commitment to build a dynamic, well-funded program of international stature is essential. The Institute ([website: http://ibc.wsu.edu](http://ibc.wsu.edu)) provides an excellent research environment with more than 120 Scientists, excellent equipment and facilities, and ready access to specialized techniques in biochemistry, cell biology, and genomics. Candidates should submit curriculum vitae, a statement of research interests, and a description of future plans. In addition, applicants should arrange for three letters of reference to be sent to: **Dr. John Browse, Search Committee Chair, Institute of Biological Chemistry, Washington State University, P.O. Box 646340, Pullman, WA 99164-6340. Telephone: 509-335-5496; FAX: 509-335-7643; e-mail: maertens@wsu.edu.** Review of applications will begin on September 17, 2002, and continue until the position is filled. *Equal Opportunity Employer/Affirmative Action/ADA.*

POSTDOCTORAL POSITION in the development of fluorescent bio-sensing materials at Analytical Biological Services Inc., starting October 2002. A Doctorate in biochemistry with experience in immunology is required. Working knowledge of organic chemistry and assay development is also desired. Candidates must be comfortable with multi-disciplinary projects, have excellent written and oral communication skills, and permanent authorization to work in the U.S. Competitive salary and benefits. Résumés should be sent to: **Dr. Reppy, ABS Inc., P.O. Box 862, New Castle, DE 19720.**

AWARDS

Call for Entries!

The Woods Hole Oceanographic Institution Award for Excellence in Ocean Science Journalism

The \$5,000 award honors work that, in a clear, broad and accurate way, shows originality and insight, and has made a significant and lasting contribution to public awareness and understanding of issues and advances in ocean sciences and their impact on society as a whole. The award will be given in two categories: print and broadcast.

www.whoi.edu/media/OSJAward.html

Deadline August 1, 2002



NATIONAL UNIVERSITY of SINGAPORE

LEE KUAN YEW POSTDOCTORAL FELLOWSHIP

Applications are invited from young and outstanding academics for Lee Kuan Yew Postdoctoral Fellowship (LKY PDF) positions with the School of Computing and the Faculties of Engineering, Medicine and Science at the National University of Singapore (NUS).

ELIGIBILITY

- New or recently graduated PhD
- Below 35 yrs of age
- Submission of a statement of research intent. Preference will be given to candidates with research interests that fit the NUS' strategic directions
- Strong research training
- Strong motivation for an academic research career
- Fluent in spoken & written English

The Fellowship will be tenable for up to 3 years in the first instance, with possible extension for 2 further years. PDFs can apply for academic positions following the Fellowship.

REMUNERATION

Gross annual salary ranges from **S\$56,043** to **S\$99,112** with commencing salary depending on qualifications and experience.

Leave and medical benefits will be provided. Other benefits may include: provident fund benefits or an end-of-contract gratuity, a settling-in-allowance, subsidized housing, passage assistance and baggage allowance on appointment.

LKY PDFs will be entitled to the same eligibility as normal academic staff for research support, including research grants.

APPLICATIONS

Applicants are to send the following documents to the relevant NUS Faculty/School. Contact details at www.nus.edu.sg/ore/resrces/fac_resrc.htm:

- NUS Personal Particulars Form
- Detailed Curriculum Vitae & Educational Certificates
- 3 International Referee Reports (including contact details)
- Statement of Research Intent
- List of Publications

Closing Date: 1 Sep 2002

Further Information:

www.nus.edu.sg/ore/funding/fellowship/lky_pdf.htm

General Enquiries:

oremyn@nus.edu.sg

TO LAND THE
PERFECT JOB
YOU SHOULDN'T
HAVE TO SCOUR
THE EARTH.

That is unless you're
a planetary scientist.

Science @
CAREERS
www.sciencecareers.org

job postings
resume/CV database
e-mail job alerts
employer profiles

SUPERVISORY PLANT PATHOLOGIST or SUPERVISORY GENETICIST (Interdisciplinary)

The U.S. Department of Agriculture, Agricultural Research Service, National Clonal Germplasm Repository for Citrus and Dates located in Riverside, CA., invites applications for the position of Repository Leader, GS-13 (\$68,944 to \$89,624 per annum, salary commensurate with experience). The Repository Leader supervises the Repository staff and acts as advocate and spokesperson on assigned germplasm issues. The Repository Leader also conducts a personal research program in pathogen detection, pathogen elimination, pathogen tolerance and/or resistance, epidemiology, disease characterization; or in population genetics related to germplasm collection and maintenance. The Repository collections contain approximately 350 citrus accessions and are maintained in collaboration with the University of California Citrus Variety Collection to coordinate exploration, acquisition, preservation, evaluation, and distribution of plant germplasm. A Ph.D. or equivalent in Plant Pathology, Plant Genetics, or a closely related field is desired. This is a competitive, permanent appointment and U.S. Citizenship is required. Applications must be marked, **ARS-X2W-2370**. For specific application procedures and requirements, please call Ms. Veronica Cullum (510)559-6071; vcullum@pw.ars.usda.gov. You may obtain a copy of the vacancy announcement from Ms. Cullum or from the ARS Home Page (<http://www.ars.usda.gov/afm/hrd/resjobs/index.html>) under announcement ARS-X2W-2370. Applications must be postmarked by July 29, 2002. ARS is an Equal Opportunity Provider and Employer. Women and minorities are encouraged to apply.

WAYNE STATE UNIVERSITY

Wayne State University, Detroit, MI. One or more openings exist in the **Department of Biological Sciences** as follows:

Post-Doctoral Research Associate(s) who will have primary responsibility for developing, evaluating and applying novel molecular approaches for detecting and quantifying genetic responses and damage resulting from adverse environmental exposure, including analyses of tumor cells. Related emphases could include research on individual susceptibility to cancer; chemical and ionizing radiation exposure; bioinformatics of radiation-responsive genes, and application of analytical instrumentation to problems of molecular cytogenetics.

Research Assistant(s) at the B.S./M.S. level who will have responsibility for assisting with developing, evaluating and applying novel molecular approaches for detecting and quantifying genetic responses and damage resulting from adverse environmental exposure, including analyses of tumor cells. Experience with routine molecular biological tools including fluorescence *in situ* hybridization, PCR, and gel electrophoresis is essential, as is experience with mammalian tissue culture and handling of laboratory rats and mice.

Successful applicant(s) should send a cover letter, CV, and three recommendation letters to: **Dr. James Tucker, c/o Gayle Chlebnik, Wayne State University, Biological Sciences Dept., 5047 Gullen Mall, Detroit, MI 48202**; or email documents to: jtucker@biology.biosci.wayne.edu

POSITIONS OPEN

FACULTY POSITIONS HUMAN CANCER GENETICS

The Human Genetics Program invites applications for two **ASSISTANT** or **ASSOCIATE PROFESSOR** level positions to investigate genetic aspects of cancer. The Program is an expanding, highly interactive, multidisciplinary group with a broad spectrum of research interests relevant to human cancer. A detailed description of ongoing investigations can be found on our website: <http://www.fccc.edu/research/programs>.

Fox Chase Cancer Center is an NCI-designated Comprehensive Cancer Center with more than 25 shared resources, such as our Biosample Repository, Biostatistics, DNA Sequencing, DNA Microarray, and Transgenic Mouse Core Facilities. Other relevant research programs include biomolecular structure and function, biochemistry, tumor cell biology, developmental biology, epidemiology, immunobiology, proteomics, virology, and pharmacogenetics.

New faculty will receive a generous start-up package including funds for equipment, technical assistance and operating expenses, and laboratory space in a new, state-of-the-art research building. Interested candidates should send curriculum vitae, summary of research interests, and two letters of references to: **Dr. Joseph R. Testa, Director, Human Genetics Program, Fox Chase Cancer Center, 7701 Burholme Avenue, Philadelphia, PA 19111. Equal Opportunity Employer.**

TENURE-TRACK FACULTY POSITIONS PHARMACOLOGY

The Department of Pharmacology and Experimental Therapeutics at the Louisiana State University Health Sciences Center in New Orleans ([website: http://www.medschool.lsuhsu.edu/phar](http://www.medschool.lsuhsu.edu/phar)) invites applications for three tenure-track positions (open rank). Individuals with expertise or interest in integrating molecular and systems pharmacology to understand drug action and disease mechanisms are particularly encouraged to apply. The Department has strengths in a broad range of research areas including cardiovascular, neuroscience, cancer, drug metabolism, and behavioral pharmacology. There is significant growth in multiple areas of the Health Sciences Center and opportunities exist for interaction with the Program in Gene Therapy and Centers of Excellence in Cardiovascular Biology, Cancer, Neuroscience and Oral Biology. The successful candidate will have a demonstrated ability or potential to establish an externally funded research program, to train graduate students/Postdoctoral Fellows and participate in the teaching activities of the Department. Qualified individuals should send their curriculum vitae, reprints of three publications, a list of references, and a statement of current interests and future goals that emphasizes how their interests might complement the existing strengths of the Department. Please send to: **Stephen M. Lanier, Ph.D., Head of Pharmacology, 1901 Perdido Street, New Orleans, LA 70112-1393. Send electronically to e-mail: tevens@lsuhsc.edu. LSUHSC is an Equal Opportunity Employer/Affirmative Action.**

POSTDOCTORAL/RESEARCH ASSOCIATE

Two positions are available immediately to investigate molecular mechanisms of replicative senescence in mammalian cells and its role in aging and tumorigenesis. We have mapped two genes, each in a 1Mb genomic region, and identified BAC clones, which induce senescence on transfer into immortal tumor cells. Further work involves cloning of candidate cDNAs and functional characterization to investigate signal transduction pathways. Applications are encouraged from recent Ph.Ds with expertise in molecular genetics. Send curriculum vitae, statement of research interest, and names of three references to: **Professor Raghbir S. Athwal, Fels Institute for Cancer Research, Temple University School of Medicine, 3307 North Broad Street, Philadelphia, PA 19140. FAX: 215-707-2989. E-mail: rathwal@unix.tem121c.edu. Equal Opportunity Employer, Minorities/Females/Disabled/Veterans.**

POSITIONS OPEN

PENNSTATE



TENURE-TRACK NEUROSCIENCE FACULTY POSITION Pennsylvania State University College of Medicine

A tenure-track Neuroscience Faculty Position is available to strengthen and complement the existing neuroscience research in the Department of Anesthesiology. The Department currently has an established and fully-funded basic research program in neurophysiological mechanisms of pain, neuropharmacology of analgesia, and neural control of circulation. The candidate must have an outstanding record of research accomplishments, as documented by publications in leading peer-reviewed journals. Specific areas of emphasis include, but are not limited to, molecular and cellular neuroscience, ion channels, and signal transduction. The successful applicant will be provided with competitive start-up funds, laboratory space, and salary, and would be expected to establish a competitive externally-funded research program. Applicants should send curriculum vitae, a statement of research interests, and three representative publications to: **Berend Mets, M.B., Ch.B., Chair of the Department of Anesthesiology (H187), Pennsylvania State College of Medicine, P.O. Box 850, Hershey, PA 17033. E-mail: kbowman@psu.edu.**

DIRECTOR OF THE ANIMAL RESOURCES CENTER

The University of Chicago searches for an academically oriented individual to direct as a **FACULTY** a dynamic and growing animal resource program at a major research institution. The individual should have experience in the management of an animal resource facility and be familiar with the standards of AAALAC accreditation and regulatory compliance issues. Candidates must have a D.V.M. or equivalent degree from an AVMA-accredited institution. The Director will participate in teaching and/or training and will be expected to develop new programs for faculty and institutional development. The University's research programs include sponsored projects of \$268 million annually with approximately 500 animal research protocols. The Center is responsible for the care and housing of laboratory animals used at the University. Animal facilities encompass 110,000 square feet with a census of approximately 25,000 animals. Salary and level of academic appointment will be commensurate with experience and qualifications. Interested candidates should submit curriculum vitae, letter of interest, and three references to: **Ms. Marquette Woods, c/o The Academic Search Committee, 5841 South Maryland Avenue, MC 1000, Chicago, IL 60637-1463. The University of Chicago is an Equal Opportunity/Affirmative Action Employer. Underrepresented minorities and women are encouraged to apply.**

MICROSCOPY AND IMAGING FACILITY MANAGER

Children's Hospital/Harvard Medical School

Position available for Manager of a microscopy and imaging core facility in a neuroscience research setting. Responsibilities will include operating and maintaining a confocal/multi-photon microscope and associated computer system, as well as providing instruction and assistance to researchers using the facility. Experience with microscopy and fluorescent labeling of biological samples, competence with multiple computer platforms, and general technical ability are desirable. Please send curriculum vitae/résumé and cover letter to:

**Scott Pomeroy, M.D., Ph.D.
Division of Neuroscience
Children's Hospital
300 Longwood Avenue
Boston, MA 02115**

**E-mail: scott.pomeroy@tch.harvard.edu
Harvard Medical School is an Equal Opportunity/Affirmative Action Employer. Women and Minority candidates are encouraged to apply.**

POSITIONS OPEN

Chief, Aquatic Ecology and Invasive Species Branch (DB-4). Environmental Laboratory, U.S. Army Engineer Research and Development Center (ERDC). Responsible for managing, developing, planning, and executing multidisciplinary research in freshwater biology, fish and invertebrate ecology, and invasive species control. Studies performed for Corps of Engineers, Department of Defense, and other federal and state agencies. Oversees/supervises three research teams and one field research laboratory; 15 or more professional federal employees, on-site contractors, and contract students. Advanced degree in aquatic ecology or related field preferred. Must demonstrate outstanding management abilities, creativity, originality, and exceptional capacity for scientific judgment. Position located at Waterways Experiment Station, Vicksburg, Mississippi. Starting range: \$76,271 to \$99,150 per annum. Contact Ms. Colleen Hughlock at Telephone: 603-646-4132 or e-mail: colleen.b.hughlock@erdc.usace.army.mil for information on application process. Job Announcement posted at website: <http://www.usajobs.opm.gov>, announcement #14DF1193Y2 and at website: <http://www.cpol.army.mil>, announcement #284093NO2. Applications must be received by 23 August 2002. This is a competitive, permanent appointment. United States citizenship is required. ERDC is an Equal Opportunity Employer. Women and minorities are encouraged to apply.

SCIENTIST/SR. SCIENTIST MOLECULAR BIOLOGY

Dendreon Corporation is a public biotechnology company dedicated to the discovery and development of novel products for the treatment of cancer through its innovative manipulation of the immune system.

We are currently recruiting a Scientist or Senior Scientist to work in our Molecular Biology group. You will be involved in planning and conducting research in the fields of gene discovery, characterization, and recombinant expression of proteins, as well as developing assay systems for immunotherapy. If you are experienced in the use of basic and applied molecular biology techniques used in an immunology setting, and have a scientific track record in studying immunology and/or cancer biology, we'd like to see your curriculum vitae. A Ph.D. in Molecular Biology or related discipline with at least three years of post-doctoral experience is required. Experience in immunology and mammalian cell culture is highly desirable. We offer a competitive compensation and benefits package, including bonus, matching 401(k), and stock options. For consideration, please send your résumé to: **Human Resources; FAX: 206-256-0571; or e-mail: hr@dendreon.com. Website: <http://www.dendreon.com>.**

PHYSICAL OCEANOGRAPHER SALINITY DRIVEN PHYSICAL PROCESSES

The Naval Research Laboratory at Stennis Space Center, MS, is seeking a Physical Oceanographer with the knowledge of microwave remote sensing for retrieving sea surface salinity and related oceanographic parameters in coastal oceans, and experience planning and executing relevant physical oceanographic and remote sensing research. The applicant must possess strong knowledge and experience in continental shelf-scale circulation with specialization in observing and analyzing coastal buoyancy features. Interested candidates should view **Vacancy Announcement DM-NRL-02-0587-NR** at website: <http://amp.nrl.navy.mil/code1800> or call Telephone: 215-408-5621 for more information. Announcement opens 21 Jun 2002 and closes 19 Jul 2002. Applications must be postmarked by the closing date. The Naval Research Laboratory is an Equal Opportunity Employer.

ASSOCIATE RESEARCH SCIENTIST, Yale University, Department of Psychiatry. Five-year NIMH funding to map EEG and evoked potentials from surface, and depth electrodes onto MRI. Ongoing research includes ERPs in schizophrenia and cocaine abuse and TMS measures of cortical excitability. Ample time for the candidate to pursue his/her own projects. Yale is a very intense research environment. For more information please e-mail: nash.boutros@yale.edu.



It's about your **CAREER.**

Science CAREER FAIR

BOSTON, MA • 5 AUGUST 2002

**11:00 AM–4:30 PM • Hynes Convention
Center • 900 Boylston Street, Room 302, 3rd level**

Resume Expert on hand to help you refine your resume/CV.

For more information & a list of exhibitors, visit www.sciencecareers.org & click on Career Fairs or call 202-326-7018. Bring multiple copies of your CV or resume to the Career Fair; a copy will be necessary for admittance to the hall. *Admission is free.*



Science is a proud
sponsor of the upcoming
**Drug Discovery Technology™ 2002
Meeting** in Boston, MA, 4–9 August
2002. For further information, go
to www.drugdisc.com.

For information contact Daryl Anderson
phone 202-326-6543
fax 202-289-6742
e-mail danderso@aaas.org

Science @
CAREERS
www.sciencecareers.org



POSITIONS OPEN



MOLECULAR EPIDEMIOLOGY POSITION

The Section of Cancer Prevention and Control is seeking experienced laboratory investigators to develop and validate molecular biomarkers for early cancer detection and risk assessment, assessment of neoplastic progression, and response to chemopreventive agents. Independent laboratory research and collaborative research with epidemiologists and clinicians in cancer prevention and control will be essential to this position. Candidates for this tenure-track position should have a Ph.D. or equivalent degree and a background of research in the molecular aspects of cancer.

The Feist-Weiller Cancer Center has both strong clinical and translational cancer research programs. A state-of-the-art research facility is available with a core facility that provides a wide variety of technologies including gene array analysis and proteomics. The Cancer Center is an endowed facility, with a new, large, multidisciplinary clinical building, and is planning a new research building. Interested applicants should send curriculum vitae with a cover letter describing qualifications and research plans and names/addresses of references to:

Jerry McLarty, Ph.D.
Professor of Medicine and
Director of Cancer Prevention and Control
Feist-Weiller Cancer Center
LSUHSC-Shreveport 1501 Kings Highway
Shreveport, LA 71130
jmcclar@lsuhsc.edu

LSU Health Sciences Center is an Affirmative Action Employer.

CHEMISTS (Two). GS-13/14/15 (\$66,229 to \$119,682). The Office of Naval Research is seeking two qualified individuals to manage sponsored basic/applied research, and advanced development programs/projects. Program Officer, Solid State, and Materials Chemistry. Research areas include: synthesis of inorganic or hybrid organic/inorganic solid state compounds; materials and devices for solid state cooling and thermal management; synthesis, characterization, and assembly of nanoscale components into macroscopic materials; carbon nanotube synthesis, functionalization, and processing; novel concepts in conversion of thermal or photo sources into useful energy; phase change materials for thermal management; synthesis, characterization, and property measurements of new compositions of matter. Program Officer - Polymer, Organic, and Macromolecular Chemistry. Research areas include: polymer processing methodologies; synthesis of novel polymers; chemical methods and processes for degradation of chemical agents and contaminants; polymers for Navy-related coatings; novel membrane technologies; solid state electrolytes; electronic/optoelectronic materials/devices; new sensing materials/methods; and novel polymer based composites. For information on qualifications and how to apply, visit our website: <http://www.onr.navy.mil/hr> to view ONR's job vacancy announcements. Tech Info: Dr. John Pazik at Telephone: 703-696-4404.

POSTDOCTORAL POSITION To Investigate The Role Of p53 Mutations In Oncogenesis Using Microarray Technology

Applications are invited for a Postdoctoral position to understand the molecular biology of the tumor suppressor p53. Individuals with expertise in microarray hybridization analysis, recombinant DNA technology, real time PCR, cDNA technology, and mammalian cell culture systems are encouraged to apply. Salary is negotiable. Send complete curriculum vitae and names of three references to: **Sumitra Deb, Ph.D.**, Professor, Massey Cancer Center and Department of Biochemistry and Molecular Biophysics, Medical College of Virginia, Virginia Commonwealth University, Richmond, VA 23298. FAX: 804-827-1427. E-mail: sdeb@hsc.vcu.edu.

POSITIONS OPEN



The Naked DNA Company™

Due to our growth we have the following opportunities:

PHARMACOLOGIST/TOXICOLOGIST. Incumbent will be responsible for contracting and management of pre-clinical pharmacology and GLP toxicology/safety studies in the field of plasmid DNA gene delivery. Requires a Ph.D. in pharmacology/toxicology or a related field or a D.V.M. with three-plus years of experience in managing contract pharmacology/toxicology studies, or an MS with a minimum of five years of similar experience. A strong background in animal physiology, pharmacology, toxicology, and the management of pre-clinical studies in several species is essential. Experience in the design and drafting of pre-clinical *in vivo* studies and preparation of regulatory documents is also required. Must possess excellent written and verbal communication skills and work in a team environment. Experience in the management of an animal facility is desired, but not required.

RESEARCH SCIENTIST/CELL BIOLOGY. Incumbent will be responsible for designing and subcloning candidate vector improvements for plasmid DNA-based vaccines and therapeutics, subcloning of candidate antigen and therapeutic genes, development of assays for the expressed gene products, experimental testing of plasmids *in vivo* in animal models, and oral and written presentation of experimental data. Minimum requirements are a Ph.D. or Master's in a biological science with five-plus years of bench experience. Expertise in plasmid DNA vectorology, polymerase chain reaction, preparation of mRNA from cell or tissue samples, immunometric (ELISA) and enzymatic assays, and western blotting. Advanced knowledge of nonviral gene therapy, transcriptional and post-transcriptional gene regulatory elements and mechanisms.

If you are looking for a company that can challenge you scientifically and provide excellent benefits, please send your resume to: **Human Resources, Vical Inc.**, 9373 Towne Centre Drive, Suite 100, San Diego, CA. Or by e-mail: cgoodall@vical.com; or by FAX: 619-646-1150. Equal Opportunity Employer. Minorities/Females/Disabled/Veterans.

BIOINFORMATICS ENGINEER II: Perform a wide range of technical tasks involving creation and use of software for display and manipulation of biological data. Create software for display and manipulation of biological data; maintain close familiarity with in-house software for management of biological data; add new software to in-house genome annotation system; and utilize knowledge of biology to improve biological data mining and management techniques used to understand human genome sequence and enhance analysis and identification of human disease genes. BS in biological/computer science; one year of experience as bioinformatics engineer or in bioinformatics software development; knowledge of Perl, SQL, HTML, CGI, relational databases and Unix shell scripting; and knowledge of C/C++ and/or Java. Send resume and salary requirements to: **TIGR, Attn: HR/1178, 9712 Medical Center Drive, Rockville, MD 20850.** E-mail: jobs@tigr.org. FAX: 301-838-0257. Equal Opportunity Employer.

POSTDOCTORAL POSITION available immediately for motivated individual to investigate Notch signaling in hematopoiesis using ES cells (mouse and human) and chimeric mouse model. M.D. or Ph.D. in a relevant field with experience in molecular biology and cell culture required. Collegial, interactive environment. Please send curriculum vitae and references to: **Laurie A. Milner, Center for Human Genetics and Molecular Pediatric Disease, University of Rochester**, 601 Elmwood Avenue, Box 703, Rochester, NY 14642. E-mail: Laurie_Milner@urmc.rochester.edu.

POSITIONS OPEN



MEDICAL COLLEGE OF GEORGIA

Institute of Molecular Medicine and Genetics

POSTDOCTORAL POSITIONS in Cancer Research to study: **Andrew C. Phillips, Ph.D.**: The role of apoptosis in tumor suppression, with particular emphasis on E2F-RB and p53 pathways. **Hernan Flores-Rozas, Ph.D.**: The role of replication in mismatch recognition by mismatch repair. Further information can be obtained from the faculty profiles at website: <http://www.mcgc.edu/Institutes/IMMAG/faculty.html>. Interested candidates should e-mail cover letter, curriculum vitae, and e-mail addresses of three references to either e-mail: anphillips@mail.mcgc.edu or hffloresrozas@mail.mcgc.edu. Equal Employment Opportunity/Affirmative Action/Equal Access Employer (PO# 030009825).

POSTDOCTORAL FELLOWSHIP High-Throughput Protein Expression and Purification Structural Genomics

A Postdoctoral position is available for a recent Ph.D. to spearhead the development and optimization of methods for high-throughput protein expression and purification using multiple affinity tags. The goal of this basic research project is to devise generic strategies for the production of proteins that will be suitable for large-scale structural genomics initiatives. Our collaborators include affiliates of the Northeast Structural Genomics Consortium (website: <http://www.nesg.org>). Further information about this project can be found at the website: <http://mccl.ncicfcrf.gov/whugh.html>. Applicants must have a solid background in a related scientific discipline and be good communicators. Self-motivated, creative thinkers are especially encouraged to apply. Starting salary is commensurate with experience. Cover letter and curriculum vitae may be mailed to: **David S. Waugh, Ph.D.**, Macromolecular Crystallography Laboratory, NCI-Frederick, P.O. Box B, Frederick, MD 21702. FAX: 301-846-7148; or e-mail: waughd@ncicfcrf.gov.

POSTDOCTORAL POSITION available in the Lombardi Cancer Center, Georgetown University School of Medicine. We use human somatic cell gene targeting to study the function of commonly-mutated oncogenes and tumor suppressor genes. We are also currently focusing on the intersections of the Wnt and BMP signalling pathways in cancer (see *Cancer Research* 62:2744). Send or e-mail cover letter, curriculum vitae, and the names of three references to: **Todd Waldman, M.D., Ph.D.**, Georgetown University School of Medicine, Research Building, Room E304, 3970 Reservoir Road, NW, Washington, DC 20057. E-mail: waldmant@georgetown.edu.

POSTDOCTORAL POSITIONS available to study the genetics, molecular biology, and biochemistry of aging with emphasis on yeast. (*EMBO J* 20: 2655, 2001; *J. Theor. Biol.* 213:599, 2001; *Mech. Ageing Dev.* 122:865, 2001). Recent Ph.D.s with proficiency in molecular techniques are encouraged to apply. Send complete curriculum vitae, including bibliography, and e-mail of three references to: **S. M. Jazwinski**, Department of Biochemistry, LSU Health Sciences Center, 1901 Perdido Street, New Orleans, LA 70112. E-mail: sjzawi@lsuhsc.edu. Affirmative Action/Equal Opportunity Employer.

POSTDOCTORAL POSITION to study molecular and cellular mechanisms of angiogenesis, with particular emphasis on neovascular eye diseases such as diabetic retinopathy. Prior background in molecular and/or cell biology would be helpful, but is not essential. Send curriculum vitae and names of three references to: **Dr. E. Duh**, Johns Hopkins University School of Medicine, 600 North Wolfe Street, Jefferson 3-109, Baltimore, MD 21287. E-mail: eduh@jhmi.edu. Equal Opportunity Employer.

GRANTS

Creating the future of biotech—Together

Invitrogen's Research Tools Development Grants Program provides funding for investigators developing innovative tools for use in life science research. Total funding is US\$5 million per year, with annual individual awards of up to US\$100,000. Grants are provided quarterly.

Third quarter 2002 funding is for novel approaches in the **separation and purification** of biomolecules. Proposals to develop enrichment, fractionation and labeling technologies are also of interest. Deadline for full Grant Proposals is September 1. A preproposal is required. For more information, visit www.invitrogen.com, e-mail grants@invitrogen.com, or call 800 955 6288, ext. 66140.

1600 Faraday Ave., Carlsbad, CA 92008 USA
P: 760 476 6140 F: 760 602 6563
www.invitrogen.com



FIRST MEETING OF THE AMERICAN SOCIETY FOR MATRIX BIOLOGY

November 6 - 9, 2002

JW Marriott Hotel - Houston, Texas

Keynote Address, Philip Beachy; **Assembly and Remodeling**, Erhard Hohenester, Zena Werb, Kevin Campbell, Jouni Uitto, Craig C. Garner; **ECM and Signaling**, Ernestina Schipani, Filippo Giancotti, Erkki Ruoslahti, Eric Brown, Joan Brugge; **Migration and Motility**, Peter Friedl, Douglas A. Lauffenburger, Ruth Lehmann; **Cell Differentiation and Cell Fate**, Francesco Ramirez, Charles Emerson, James Kramer; **Structural Biology of ECM Components**, Timothy Springer, Iain Campbell, Wolfram Bode; **ECM, Infection and Host Defense**, Ralph Isberg, David Denhardt, Chris Overall; **Cell Adhesion Mechanisms**, Ivan Stamenkovic, Reinhard Fässler, Joshua Sanes; **ECM and Vascular Biology**, M. Luisa Iruela-Arispe, Alan Rapraeger, David Cheresch; **ECM and Skeletal Development**, Matthew L. Warman, Stefan Mundlos, Andrew McMahon; **Degenerative and Chronic Diseases Involving ECM**, Daniel Rifkin, Harry C. Dietz, Rikard Holmdahl. Additional speakers to be chosen from abstracts.

Six special interest sessions have been added from noon until 5pm on Wednesday, November 6. See web page for details.

Abstract Deadline: August 15, 2002

Advanced Registration Deadline: August 15, 2002

Further information available at:

www.asmbmeeting.org
or call: (713) 792-2222



Germ Cells



October 9 - 13, 2002

Abstracts due: July 17, 2002



Harborside Picnic at CSHL Cardiovascular Symposium, May 2002

Organized by:

Ruth Lehmann, HHMI/NYU School of Medicine
David Page, HHMI / Whitehead Institute / MIT

Topics and Co-Chairs

- **Germ Cell Origins**
Geraldine Seydoux & Christopher Wylie
- **The Embryonic Germline**
Allan Spradling & Brigid Hogan
- **Germ Line Stem Cells**
Judith Kimble & Margaret Fuller
- **Germ Line-Soma Interactions / Sex Determination**
Anne McLaren & Stephen DiNardo
- **Spermatogenesis**
Mary Ann Handel & Tim Schedl
- **Oogenesis**
Anne Ephrussi & John Eppig
- **Gamete Success & Evolution**
Andrew Clark & John Schimenti

CSHL Summer & Fall 2002 Meetings

- **Cancer Genetics and Tumor Suppressor Genes** Aug 14 - 18
 - **Molecular Genetics of Bacteria & Phages** August 20 - 25
 - **Mouse Molecular Genetics** August 28 - September 1
 - *** Translational Control** September 10 - 15
 - **Dynamic Organization of Nuclear Function** Sept 18 - 22
 - **Axon Guidance & Neural Plasticity** September 25 - 29
 - **Molecular Genetics of Aging** October 2 - 6
 - **Human Origins & Disease** October 30 - November 3
 - **Tissue Engineering** November 21 - 24
 - **Therapeutic Opportunities in Neurodegenerative Diseases** December 5 - 8
 - **Comparative Plant Genomics** December 12 - 15
- * Oversubscribed as of July 12. Please call for availability.

Cold Spring Harbor Laboratory

Meetings & Courses Programs

1 Bungtown Road, Cold Spring Harbor, NY 11724

www.cshl.edu/meetings Tel: (516) 367-8346

Fax: (516) 367-8845 email: meetings@cshl.edu

POSITIONS OPEN

POSTDOCTORAL AND RESEARCH ASSOCIATE POSITIONS Department of Pharmacology University of Minnesota

The Department of Pharmacology, University of Minnesota Medical School, has Postdoctoral and Research Associate openings in several laboratories. Our faculty members are well-funded and direct strong multidisciplinary approaches to the molecular mechanisms of drug actions.

Their research focuses range from the molecular and cell biology of drug addiction, regulation of gene expression, modulation of ion channels functions and regulation of second messenger pathways, to the diverse area of cancer research involving the studies on the functions of critical enzymes, and the development of specific anticancer drugs. These studies utilize the state-of-the-art molecular and cell biology techniques such as single cell imaging and electrophysiological recordings and the generation of gene-altered animals. Please visit our departmental website: <http://www.pharmacology.med.umn.edu> for further details.

Interested applicants should send curriculum vitae, a statement of research interests, and names of three references to: **Dr. Horace H. Loh, Professor and Head, Department of Pharmacology, University of Minnesota, 6-120 Jackson Hall, 321 Church Street Southeast, Minneapolis, MN 55455. E-mail: lohxx001@umn.edu. FAX: 612-625-8408.**

The University of Minnesota is an Equal Opportunity Educator and Employer.

POSTDOCTORAL POSITION Yale University School of Medicine

We use both mammalian cells and yeast to study RNA-binding proteins that are important for RNA folding and RNP assembly. One protein under study binds misfolded RNAs and contributes to cell survival following ultraviolet irradiation (see *Genes & Dev.* **14**: 777-782; *EMBO Journal* **19**: 1650-1660, *EMBO J.* **17**: 7442-7453; *Cell* **89**: 393-402). Candidates should possess a recent Ph.D. degree and have experience in genetics, biochemistry, or molecular biology. Please send curriculum vitae, a brief summary of research experience, and the names of three references to: **Dr. Sandra L. Wolin, Departments of Cell Biology and Molecular Biophysics and Biochemistry, Howard Hughes Medical Institute, Yale University School of Medicine, 295 Congress Avenue, New Haven, CT 06536. E-mail: sandra.wolin@yale.edu.**

POSTDOCTORAL FELLOW POSITION

The Vermont Lung Center/University of Vermont College of Medicine is seeking a motivated Postdoctoral Fellow (Ph.D., M.D., or M.D./Ph.D.) to join a cutting edge environment in lung gene and stem cell therapy. Ongoing work includes evaluation of mesenchymal stem cell repopulation of lung epithelium and improved strategies for gene delivery and expression in lung with a focus on developing therapeutic approaches for acute lung injury as well as for cystic fibrosis. Experience/expertise in working with viral vectors, cell culture, small animal handling (rodents), and molecular biology techniques is highly desirable. Please send curriculum vitae and three letters of reference to: **Daniel J. Weiss M.D., Ph.D., Vermont Lung Center/University of Vermont, 226 Health Sciences Research Center, 149 Beaumont Avenue, Burlington, VT 05405. E-mail: daniel.weiss@uvm.edu. The University of Vermont is an Equal Opportunity/Affirmative Action Employer.**

POSTDOCTORAL/RESEARCH ASSOCIATE position for a Ph.D. or equivalent to perform crystallographic studies on proteins involved in amyloid peptide metabolism. Experience in protein crystallography is desirable. Send curriculum vitae and names of three references to: **Dr. Louis Hersch, Department of Biochemistry, MS607, University of Kentucky, Lexington, KY 40536-0298. An affirmative action/Equal Opportunity Employer.**

POSITIONS OPEN

POSTDOCTORAL FELLOWSHIP Antibioterrorism Research (X-ray Crystallography)

An opportunity is available for a Ph.D. with less than five years of Postdoctoral experience to participate in structural studies of virulence mechanisms in potential agents of bioterrorism, with emphasis on plague and smallpox. The ideal candidate already possesses strong X-ray crystallography skills and wants to maintain this focus while also gaining exposure to state-of-the-art methods for recombinant protein expression and purification. This is an outstanding opportunity for a highly motivated person to establish a foothold in the rapidly growing field of antibiobioterrorism research. More information about this project, including links to recent publications, can be found at website: <http://mc11.ncicrf.gov/waugh.html>. Starting salary is commensurate with experience. Cover letter and curriculum vitae may be mailed to: **David S. Waugh, Ph.D., Macromolecular Crystallography Laboratory, NCI-Frederick, P.O. Box B, Frederick, MD 21702-1201; or FAX: 301-846-7148; e-mail waughd@ncicrf.gov.**

GENOMICS/MOLECULAR GENETICS

Three POSTDOCTORAL and/or RESEARCH ASSISTANT positions are available in September at the Samuel Roberts Noble Foundation, Inc., to work on functional genomics/molecular genetics of legume root development. Successful candidates will contribute to projects on molecular characterization of components of polar auxin transport and ATP-binding cassette (ABC) transporters in the model organisms *Medicago truncatula* and *Arabidopsis thaliana*. Experience in molecular and cell biology is required. Salaries begin at \$36,500 for Postdoctoral and \$28,800 for Research Assistant, based on experience. Applicants should send curriculum vitae, cover letter, and names and addresses of three references to: **The Noble Foundation, Attn: Human Resources, Job #: Postdoctoral Fellow-Job #PB-S095-17 or Research Assistant-Job #PB-S095-17RA, P.O. Box 2180, Ardmore, OK 73402. Or e-mail your curriculum vitae and application (please include position number) to e-mail: nfh@noble.org. Applications are available at website: www.noble.org or by calling Telephone: 580-223-5810 or toll-free Telephone: 866-223-5810. Equal Opportunity Employer.**

POSTDOCTORAL POSITION available in Dr. Sara Courtneidge's laboratory at the Van Andel Research Institute. We seek a talented and motivated person to join us in elucidating the function of a novel adaptor protein, Fish (see *EMBO J* **17**: 4346-4357, 1998). Candidates should be recent graduates skilled in biochemistry, cell biology, and/or molecular biology who have an interest in cancer research. The Van Andel Research Institute is an independent organization dedicated to becoming one of the world's pre-eminent private medical research institutes by building on the extraordinary discoveries in molecular biology and genetics (website: <http://www.vari.org>). Qualified applicants should send their curriculum vitae and the names of three references to: **Dr. Sara A. Courtneidge, Van Andel Research Institute, 333 Bostwick, Grand Rapids, MI 49503 (e-mail: sara.courtneidge@vai.org). Equal Opportunity Employer.**

Positions available in the Experimental Therapeutics Laboratory in the Division of Medical Oncology at Columbia University, College of Physicians and Surgeons, at **ASSOCIATE RESEARCH SCIENTIST and POSTDOCTORAL RESEARCH SCIENTIST** level. Experience in molecular biology, pharmacology, and cell biology required. Ph.D. or M.D. required. Experience in drug resistance and apoptosis research preferred. Send curriculum vitae and three letters of recommendation to: **Dr. Robert Fine, Columbia University, College of Physicians and Surgeons, 650 West 168th Street, Room BB 20-05, New York, NY 10032. Columbia University is an Equal Opportunity/Affirmative Action Employer. Women and minorities are encouraged to apply.**

POSITIONS OPEN

POSTDOCTORAL POSITION IN ANGIOGENESIS AND VASCULAR BIOLOGY

Center for Vascular Biology
University of Connecticut Health Center
Farmington, CT

The CD13/APN cell surface peptidase is a potent regulator of new blood vessel formation in pathologic conditions (*Blood* **97**:652, 2001) and the receptor for the tumor-targeting peptide NGR (*Cancer Research* **60**: 722, 2000; *Science* **299**:377, 1998; *Nature Medicine* **5**:1032, 1999; *Nature Biotechnology* **18**:1185, 2000) and typifies a novel class of angiogenic modulators. The goal of this project is to elucidate the molecular mechanisms of CD13/APN regulation of angiogenesis and its role in endothelial cell biology. The Center for Vascular Biology is a highly interactive group of Researchers (website: <http://www.cvb.uconn.edu>) focusing on molecular aspects of blood vessel formation and function. Interested individuals with molecular/biochemistry background should mail their curriculum vitae including names of three references to:

**Linda H. Shapiro, Ph.D.
Center for Vascular Biology
Department of Physiology
University of Connecticut Health Center
263 Farmington Avenue
Farmington, CT 06030
E-mail: lshapiro@neuron.uconn.edu.**

UCHC is an Equal Opportunity Employer; Minorities/Females/Veterans/Persons with Disabilities.

POSTDOCTORAL POSITION IN EXPERIMENTAL HEMATOLOGY

A Postdoctoral position is available in the Cell Manipulation Center of the Blood and Marrow Transplant Program at the MD Anderson Cancer Center. Projects include translational research in cellular immunotherapy, purification, and *ex vivo* expansion of cord blood and other stem cells, and phenotype analysis of cultured cells by flow cytometry. A Ph.D. in cell biology or related field is essential. A background in dendritic cell biology and experience in flow cytometry analysis is desirable. Starting salary commensurate with experience.

Please submit a letter of interest and curriculum vitae to: **Corliss Denman, UT MD Anderson Cancer Center, Box 423, 1515 Holcombe Boulevard Houston, Texas 77030. FAX: 713-745-1278; e-mail: cdenman@mail.mdanderson.org. MD Anderson is an Equal Opportunity And Affirmative Action Employer. We encourage minorities and women to apply for this position.**

POSTDOCTORAL POSITION, Beth Israel Deaconess Medical Center and Harvard Medical School, available immediately to study interaction of hepatitis C virus (HCV) and cellular immune responses. Newly NIH-funded project will determine role of HCV in inducing apoptosis of T cells and role of this process in tissue injury. Candidates should have a background in immunology and experience with mice; experience in cell culture and cell signaling desirable. Please send curriculum vitae and names of three references to: **Dr. Margaret Koziel, Beth Israel Deaconess Medical Center, Infectious Disease, Harvard Institutes of Medicine Room 223a, 330 Brookline Avenue, Boston MA 02215. E-mail: mkoziel@caregroup.harvard.edu.**

POSTDOCTORAL POSITION Motor Neuron Disease Research

NIH-funded Postdoctoral position is available to study Kennedy's disease, a polyglutamine expansion disorder affecting motor neurons. Projects utilize knock-in and cDNA array technology to study mechanisms of neurodegeneration. Please send curriculum vitae and names of three references to: **Andrew Lieberman, M.D., Ph.D., Department of Pathology, University of Michigan, 4233 Medical Science 1, 1301 Catherine, Ann Arbor, MI 48109. FAX: 734-763-6476. Equal Opportunity Employer.**

POSITIONS OPEN

TRANSATLANTIC POSTDOCTORAL Plant Cell Communication Noble Foundation/John Innes Centre

Unique **POSTDOCTORAL POSITION** now available using genetic approaches to identify factors involved in plant cell-to-cell communication and systemic virus infection. Part of an international collaborative research program between **Dr. Richard S. Nelson** (Samuel Roberts Noble Foundation, Inc., Ardmore, Oklahoma, U.S.A.) and **Dr. Andrew J. Maule** (John Innes Centre, Norwich, U.K.). The successful applicant will spend approximately nine months in Norwich and three months in Ardmore. Employment is through the Noble Foundation. The successful candidate will apply molecular and cell biological and genetic approaches in this position. Applicants should have a Ph.D. in molecular biology or virology or a related field. Microscopy experience is an advantage. Minimum salary is \$36,500. Applicants should send curriculum vitae, cover letter, and three reference names with addresses to: **The Noble Foundation, Attn: Human Resources, Job # PB-S095-66, P.O. Box 2180, Ardmore, OK 73402.** Or by e-mail (please include position number) to e-mail: nfhr@noble.org. Applications are available at website: www.noble.org or by calling Telephone: 580-223-5810 or toll-free Telephone: 866-223-5810. Position remains open until a suitable candidate is identified. *Equal Opportunity Employer.*

POSTDOCTORAL RESEARCH POSITIONS, University of Wisconsin-Madison Medical School Psychiatry Department. Two Postdoctoral positions available in **Dr. Ned Kalin's** laboratory. Doctoral degree required with emphasis in neuropharmacology, behavioral neuroscience, and/or molecular neuroscience. Requires strong oral and written communication skills. This individual will investigate the mechanisms underlying behavioral and biochemical changes associated with stress, fear, and anxiety. The laboratory is especially interested in the underlying neural circuitry and molecular mechanisms. Salary range begins at \$31,092. Please send a letter of interest along with your curriculum vitae to: **Dr. Ned Kalin, UW Department of Psychiatry, 6001 Research Park Boulevard, Madison, WI 53719.** *The University of Wisconsin is an Equal Opportunity/Affirmative Action Employer. Unless confidentiality is requested in writing, information regarding the applicants must be released upon request. Finalists cannot be guaranteed confidentiality.*

POSTDOCTORAL/RESEARCH ASSOCIATE POSITION IN IMMUNOLOGY

A NIH-funded Postdoctoral Fellow/Research Associate position is available for two to three years to study immunological basis of demyelination/remyelination in mouse models of autoimmune disease, multiple sclerosis. Ph.D. degree in immunology from the United States or Canada is required. Salary is \$32,000. Experience in molecular techniques is desirable. Please send curriculum vitae and names of two to three references to:

Dr. F. Mokhtarian, Associate Professor of Medicine and Microbiology and Director of Immunology Research Laboratory, SUNY, Downstate Health Science and Maimonides Medical Centers, 4802 10th Avenue, Brooklyn, NY 11292. *SUNY/Maimonides is an Equal Opportunity Employer committed to excellence through diversity.*

POSTDOCTORAL POSITION to study the pathogenesis of hepatitis C virus disease at the University of Washington Medical Center. Translational research opportunity involves sophisticated analysis of HCV infection in well-characterized human patient populations, and use of *in vitro* model systems to recapitulate essential aspects of disease pathogenesis. Excellent resources to study viral-host interactions in this important human disease. Interested candidates should send cover letter, curriculum vitae, and contact information of three references to: **Dr. David Gretsch, Harborview Medical Center, Box 359690, 325 Ninth Avenue, Seattle, WA 98104-2499.**

POSITIONS OPEN

POSTDOCTORAL RESEARCH ASSOCIATE

Position available immediately for a recent Ph.D. with molecular genetics experience. Incumbent will develop SNP markers from genes preferentially expressed in developing rice grain and perform QTL analyses to identify markers associated with rice milling quality. Applicant should have knowledge of a wide range of recombinant DNA techniques for development and screening of cDNA libraries, DNA sequencing, sequence data analysis, and determining mRNA transcript levels. Knowledge of bioinformatic approaches to gene identification, genetic mapping, and quantitative genetics is desirable. Preference will be given to applicants having interest and experience in genetic or biochemical analysis of starch metabolism. Two years appointment with benefits. Salary commensurate with experience (\$45,285 to \$70,555). To apply, send curriculum vitae with names of three references to: **Dr. Robert Fjellstrom, USDA-ARS, Rice Research Unit, 1509 Aggie Drive, Beaumont, TX 77713. Telephone: 409-752-5221. E-mail: fjellstrom@tamu.edu.** For further information, contact **Dr. Fjellstrom** or refer to our website: <http://www.ars.usda.gov>, click: Careers with ARS, and continue to announcement: RA-02-034H. *The USDA is an Equal Opportunity Provider and Employer.*

POSTDOCTORAL POSITION Evolutionary Genomics of Drosophila

A full-time Postdoctoral position is available to study the comparative genomics of *Drosophila melanogaster* group species. The research project would involve comparison of sequence divergence, identification of rapidly evolving genes, and molecular evolution of sex and reproduction related genes. Required education and experience: Ph.D. in biology, genetics, molecular biology, or evolutionary biology. Previous experience in molecular evolution, microarrays and computer analysis is essential. Position is available beginning September 1, 2002. Search will continue until position is filled. Competitive salaries are available for outstanding applicants. To apply submit a letter of interest, curriculum vitae, and the names and e-mail addresses of three references to: **Rama Singh, Department of Biology, McMaster University, 1280 Main Street West, Hamilton, Ontario L8S 4K1 Canada. Telephone: 905-525-9140 extension 24378; FAX: 905-522-6066; e-mail: singh@mcmaster.ca.**

POSTDOCTORAL FELLOWSHIP in Proteomics and Biological Mass Spectrometry

The candidate must have completed a Doctoral degree in a suitable discipline (biochemistry, chemistry, molecular biology, or protein mass spectrometry). The project involves quantitative mass spectrometry in apoptosis signaling as described in *Nature Biotechnology* 19:946-951, 2001. Send curriculum vitae, three letters of recommendation, and copies of significant publications to: **Dr. David Han, Assistant Professor of Physiology, Director, Proteomics and Biological Mass Spectrometry Facility, University of Connecticut Health Center, MC 3501, 263 Farmington Avenue Farmington, CT 06030. E-mail: han@nso.uchc.edu; Telephone: 860-679-2444.** *UCHC is an Equal Opportunity Employer. Minorities/Females/Veterans/Persons with Disabilities.*

POSTDOCTORAL-Symbiotic nitrogen fixation. Postdoctoral position available immediately to work on the biochemistry, genetics and physiology of bacterial energy metabolism and alfalfa gene expression in symbiotic nitrogen fixation. Appointment will be for one year but may be extended for additional years. Please send curriculum vitae and contact information for three references to: **Dr. Michael Kahn, Institute of Biological Chemistry, Washington State University, Pullman, WA 99164-6340; Telephone: 509-335-8327; FAX: 509-335-7643; e-mail: kahn@wsu.edu.** *WSU is an Equal Opportunity/Affirmative Action Employer.*

POSITIONS OPEN

PLANT GENOMICS

Three **POSTDOCTORAL** and/or **RESEARCH ASSISTANT** positions are available in October at the Samuel Roberts Noble Foundation, Inc., to work on genomics of plant-pathogen interactions. Successful candidates will contribute to projects involved in understanding Pto mediated disease resistance in tomato and non-host resistance in *Medicago truncatula*. Hands-on experience in basic molecular biology techniques is required. Experience in gene expression profiling and virus induced gene silencing in plants desirable. Salaries begin at \$36,500 for Postdoctoral and \$28,800 for Research Assistant, based on experience. Applicants should send curriculum vitae, cover letter, and names and addresses of three references to: **The Noble Foundation, Attn: Human Resources, Postdoctoral Fellow-Job #PB-S095-28 or Research Assistant-Job #PB-S095-28RA, P.O. Box 2180, Ardmore, OK 73402.** Or you may e-mail your curriculum vitae and application (please include position number) to e-mail: NFHR@noble.org. Applications are available at website: <http://www.noble.org> or by calling Telephone: 580-223-5810 or toll-free Telephone: 866-223-5810. *Equal Opportunity Employer.*

MARKETPLACE

DNA Sequencing MJ Genomics Services

Unsurpassed Data Quality

650 phred Q>20 bases, 1Kb alignable

Expert Project Planning

Project completion with fewer reactions and decreased turnaround time

Personalized Customer Service

Speak directly with your project manager

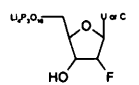
Offered by:



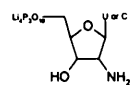
INCORPORATED

800-522-5228 • info@mjr.com • www.mjr.com

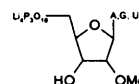
Modified Triphosphates



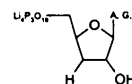
2' Fluoro



2' Amino



2' Methoxy



3' Deoxy

We carry over 80 modified NTPs
Modified bases and sugars, dNTP and NTP
Custom Synthesis Available

Trilink BioTechnologies, Inc.

www.trilinkbiotech.com

Sales@trilinkbiotech.com

800-863-6801 fax 858-546-0020

MARKETPLACE



**MORE PRODUCTS
ON PREVIOUS PAGE**

**Lysyl Endopeptidase
(Achromobacter Protease 1)**
Cleaves all Lys-X bonds

Wako

Wako BioProducts
www.wakousa.com
(877) 714-1920

**NEW
LOW
PRICES**

**VOLUME DNA SEQUENCING
CALL (800) 720-GENE**

- HIGH-THROUGHPUT
GENOME SEQUENCING
- NO ROYALTIES
OR LICENSE FEES
- SHOTGUN SEQUENCING
EXPERTISE
- LARGE & SMALL
PROJECTS ACCEPTED

seqwright
THE GENE DISCOVERY SUPPORT LAB

(713) 528-4363 PHONE
(713) 528-6232 FAX
www.seqwright.com
email: seq@blkbbox.com

**H
S
A**

**RECOMBINANT
HIGH PURITY PATHOGEN FREE**

Numerous Applications:
• Cell & Tissue Culture • Product Formulation
• Protein Stabilization • Pharmaceutical R&D
Technical data and pricing available at
www.newcenturypharm.com

New Century Pharmaceuticals, Inc. 256-461-0024

CUSTOM MICROARRAYS

RELIABLE FAST ACCURATE

MICROARRAYS, INC.
(615) 327-5495
www.microarrays.com



DNA

PEPTIDES

Free Set-up and
Desalting

Call and Compare

**Gene Synthesis, Site Mutagenesis,
Protein Expression and more**

COMPARE AND SAVE

DNA Sequencing: as low as \$15 per run

Custom Anti-peptide Antibody
(including peptide synthesis)

\$850

GENEMED SYNTHESIS

800.344.5337 Fax: 650.952.9540
Web Site: www.genemedsyn.com

Custom RNA Synthesis from IDT

Proof that we are more
than just your DNA company!

IDT

www.idtdna.com
1-800-328-2661

MARKETPLACE

**Custom Peptides
& Antibodies**

Best Service & Price! Compare and Save!

Alpha Diagnostic (800) 786-5777

Fax (210) 561-9544; info@4adi.com
Web site: http://www.4adi.com

QUALITY DNA SYNTHESIS

MALDI-TOF Mass Spectrometry Quality Control

Check our new prices
and order at
our new website.

www.oligos.com

MIDLAND

MIDLAND CERTIFIED REAGENT COMPANY, INC.

Phone: 800.247.8766 • Fax: 800.359.5789
email: orders@oligos.com

Quality Peptides & Antisera

Friendly, Personal Service
www.genosys.com

Custom Peptide Synthesis

- sequence analysis
- IG, >70%, >80%, >95% purity
- scales from 2 mg-1 g
- synthesis up to 120 residues
- variety of modifications available
- mass spec & HPLC on every peptide
- satisfaction guaranteed

Polyclonal Antisera Service

- antigen design assistance
- synthesis, conjugation and sera collection
- rabbits, chickens, sheep & goats available
- flexible protocol
- phospho-specific antibody production

**SIGMA
GENOSYS**

North America

1-888-663-3693

ginformation@sial.com

Europe

(+44) (0) 1223 839000

info@sigma-genosys.co.uk

BLACK HOLE QUENCHER™ DYES

- Dark Quenchers for rtQ-PCR
- Only source for BHQ columns & amidites
- Top Quality • Best Pricing • Great Support



**BIOSEARCH
TECHNOLOGIES**
Chemistry for Genomics™

1.415.883.8400

www.biosearchtech.com

Array Designer 2

Design oligos/primers for



- ◆ Expression studies
- ◆ SNP genotyping

www.PremierBiosoft.com Call: 888-847-7494

MARKETPLACE

Q: Custom Peptides, DNA, Antibodies,
Bioconjugates, Organic Synthesis



Bio•Synthesis, Inc.

1-800-227-0627

www.biosyn.com

sales@biosyn.com

3 O.D. Select Oligos

NEW LOW PRICE

Just \$0.45/base*

We'll ship your 3 O.D. Select oligos in just 24-48 hours.
Every oligo is QC'd by PAGE analysis, and each batch is
performance-tested by mass spec.

Order by fax: 281-363-2212, email: gordenentry@sial.com
or web: www.genosys.com.

*Desalted only. Oligos must be 10 to 35 bases in length.
No modifications or additional purification. Offer valid in U.S. only.

**SIGMA
GENOSYS**

North America: 1-877-710-1504 • email: ginformation@sial.com

CUSTOM PEPTIDES

QUICK QUOTE
MOST QUOTES IN AN HOUR

FAST DELIVERY
2 WEEKS FOR MOST ORDERS
100% SATISFACTION GUARANTEE

MADE EASY!
**NEW ENGLAND
PEPTIDE, INC.**
Tel: 888-343-5974

Fax: 978-343-5940 www.newenglandpeptide.com

ViraQuest Inc.

Custom Adenovirus Services

Sub-cloning, Recombination,
Amplification, Purification, Titering

www.viraquest.com

North Liberty, IA (319) 665-4190

Custom

Peptides & Antibodies

- Experts in Antigen Design
- Phosphopeptides
- Phosphospecific Antibodies

1 800 435 2080

e-mail:

peptide@biosource.com



Amplify your Message

Do for your RNA what electricity did for the guitar.



The new MessageAmp™ aRNA Kit

can amplify your
mRNAs 1000X
in a single reaction. This
means you can get that valu-
able array data from your limiting
RNA samples. Each step of the
MessageAmp procedure has been optimized
for high efficiency and high yields, and the kit
is compatible with both biotin and Cy™ dye
labeling. The procedure can be completed in less
than one day.

MessageAmp is based on the Eberwine¹ procedure
and contains reagents for first-strand cDNA synthe-
sis, RNase H digestion, second-strand synthesis,
cDNA purification, in vitro transcription (using
MEGAscript™ technology) and aRNA purification.

For more information about the MessageAmp Kit visit:
www.ambion.com/messageamp

Cy™ is a trademark of Amersham Biosciences
MessageAmp™ is covered by patents exclusively licensed to Incyte Genomics.

1. Van Gelder, et.al. (1990) PNAS 87: 1663-1667.

Ambion®

THE RNA COMPANY

US: 800-888-8804 • EUROPE: + 44 (0)1480 373 020

For a complete list of distributors visit www.ambion.com

Copyright © 2002 • ADSC1.0 (2.02.MAMP)

R&D Systems, the world leader in cytokine research reagents, offers an extensive selection of products for protease research applications.

PROTEASE RESEARCH REAGENTS

- Recombinant Proteins
- Fluorogenic Peptide Substrates
- Antibodies
- ELISAs
- Activity Assays
- Inhibitors
- Primer Pairs
- Purification Kits

ASPARTIC PROTEASES

- BACE-1
- Cathepsin D

CYSTEINE PROTEASES

- Caspase-1, -2, -3, -4, -6, -7, -8, -9, -10 and -13
- Cathepsin B, C, H, L and X/Z/P
- Livin β /ML-IAP

PROTEASE INHIBITORS/MODULATORS

- HAI-1 • cIAP-2 and -2 • SMAC/Diablo
- Survivin • TIMP-1, -2 and -3 • XIAP

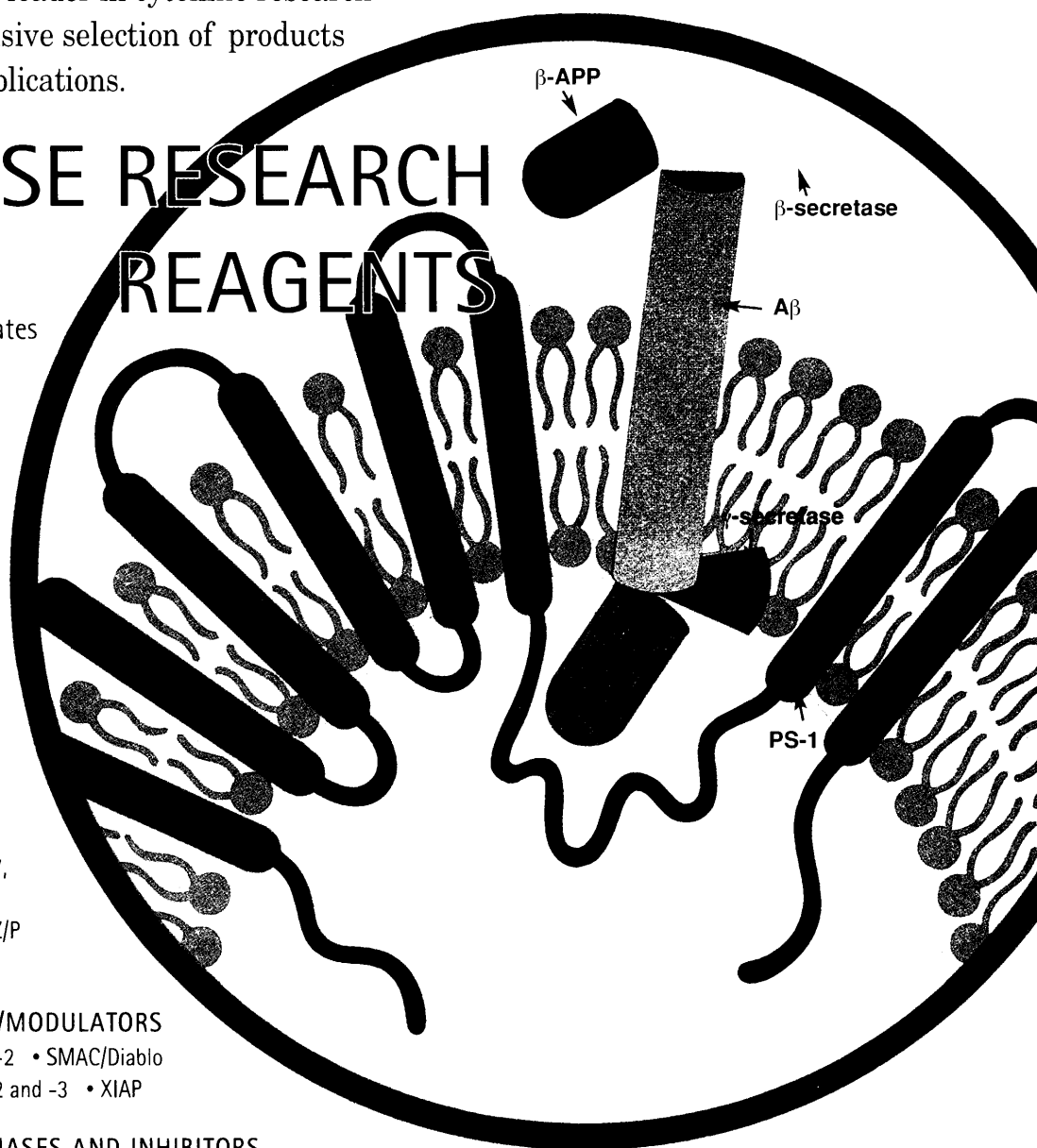
METALLOPROTEINASES AND INHIBITORS

- ACE and ACE-2 • ADAM8, 9, 10, 12 and 15
- ADAMTS4 and 5 • EMMPRIN • TACE/ADAM17
- MMP-1, -2, -3, -7, -8, -9, -10, -11, -12, -13, -14 and -24

SERINE PROTEASES

- Cathepsin A • DPPIV/CD26
- AND MANY MORE...

Three proteases, α -, β -, and γ -secretase, are involved in the cleavage of amyloid precursor protein (APP). BACE (β -secretase) cleavage releases soluble APP (β -APP) and subsequent γ -secretase cleavage releases amyloid β ($A\beta$). Presenilins (PS-1 and PS-2) have been linked with γ -secretase activity. Cleavage of APP by α -secretase (TACE/ADAM17 and ADAM10 are α -secretase candidates) occurs within the $A\beta$ sequence and prevents $A\beta$ formation.



Visit us at www.RnDSystems.com for specific information on available analytes, product inserts, and reviews/technical information.

FOR RESEARCH USE ONLY.
NOT FOR USE IN DIAGNOSTIC PROCEDURES.

North America
R&D Systems, Inc.
614 McKinley Place NE
Minneapolis, MN 55413, USA
Tel: 612 379-2956
Fax: 612 379-6580
info@RnDSystems.com

Europe
R&D Systems Europe Ltd.
19 Barton Lane
Abingdon Science Park
Abingdon, Oxon, OX14 3NB, UK
Tel: +44 (0)1235 529449
Fax: +44 (0)1235 533420
info@RnDSystems.co.uk

Germany
R&D Systems GmbH
Borsigstrasse 7
65205 Wiesbaden-Nordenstadt
Germany
Tel: +49 (0)6122 90980
Fax: +49 (0)6122 909819
info@rmbh@RnDSystems.co.uk

Europe Free Phone –
Belgique/België: 0800 10 468
Danmark: 80 01 85 92
France: 0800 90 72 49
Nederland: 060 225607
Norge: 800 11033
Sverige: 020 79 31 49
Switzerland: 0800 55 2482

R&D
SYSTEMS
1-800-343-7475