

NEW PRODUCTS

ModKine, version 1.2 Biosoft

Ferguson, MO
\$499
314-524-8029
www.biosoft.com

MODELING DRUG ACTION

ModKine is a Windows modeling program useful to pharmacologists and biochemists dealing with model parameters and simulations. Students will find it convenient for curve fitting and for help in understanding some of the

consequences of drug action on metabolism. The software includes Python programming functions, which provide flexibility and permit custom modeling of diverse data sets. New users will find a few maddening routines to deal with (the case sensitivity of the language, the many steps needed to actually produce an analysis, and the frequent movement from detail window to toolbar), but the learning curve is not steep. It takes but a few sample problems to become well acquainted with the steps.

Program operation begins with data entry or import into a spreadsheet layout. Once this is accomplished, the first of the wizards is invoked and parameters of interest are entered. A second wizard allows one to annotate the data set with specific notes and comments. Users next select relevant subsections of the data, after which roles are assigned (dependent or independent variables) and constants are defined. The process of curve fitting begins with model selection (there are a number of canned selections, but experienced users may program templates for their own specific models). Subsequent steps allow the use of weighting, application of model variables or constants to the data set, and entry of initial parameter values and bounds.

The program will then attempt to fit the data with a curve. If successful, a dialog box appears with such useful diagnostics as the chi-square statistic, the coefficient of correlation, a standard error, and the *F* statistic. It is, of course, useful to have more than the correlation coefficient to assess a fit, and the software developers should be congratulated for not relying on a single statistic. The final step, model creation, may be a bit trickier, because the user needs to know a bit about the Python programming language to enter code at strategic locations. This has been made easy by a clear tutorial that illustrates the general methods and includes a short section on coding. Much of the routine has already been hard-wired into the program so that the need for coding is kept to a minimum. Once a proper code is entered, the lines are interpreted and the final model is available for inspection. Routines can then be recycled and used as a template for similar analyses or minimally changed for other biochemical systems.

The physically small ModKine program contains many advanced features. Data may be dragged and dropped, and noncontiguous columns may be selected for deletion or other actions. The wizards also provide much assistance. Help is available as context-sensitive help (with the F1 key) or through a very complete help menu, a tutorial, or a technical help line. Additional useful information is available on the Web site.

—John A. Wass

Immunochemistry R&D QA, Abbott Laboratories, Abbott Park, IL 60064, USA. E-mail: John.Wass@abbott.com

Bio-Rad

For more information
800-876-3425

www.discover.bio-rad.com

www.scienceproductlink.org

TWO-DIMENSIONAL GEL ANALYSIS

The PDQuest 7.0 automates the processing of two-dimensional electrophoresis gel images to elimi-

nate a major bottleneck in protein research. The new release incorporates "SPoT" (Streamlined ProteOmic Tools) technology, which completely automates the front end of 2-D analysis, including spot detection on all gel images, archiving gel relationships within an experiment, matching protein spots across all gels within the study, and auto-alignment of SPoT Cutter excision targeting.

Leica

For more information
800-248-0123

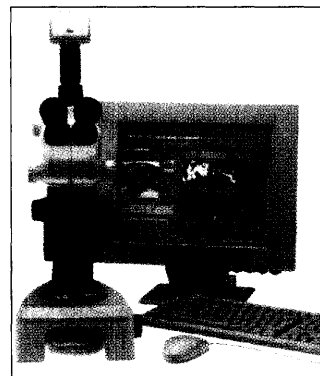
www.leica-microsystems.com

www.scienceproductlink.org

STEREOMICROSCOPE

The new S8 APO is a high-performance Greenough-style stereomicroscope with a fully apochromatic corrected zoom system. The 8:1 apochromatic corrected zoom system can yield 600 line pairs/mm resolution. Modular system options include supplemental objectives that produce magnifica-

tions of 3.2X to 640X. A built-in photo port for easy adaptation to any digital camera provides 100% of the light to the camera for the best image quality possible in low-light applications. The standard working distance is 75 mm, which balances high resolution with easy specimen accessibility. There are adjustable upper and lower zoom magnification stops for repeatability at required magnifications.



Kodak

For more information
203-786-5631

www.kodak.com

www.scienceproductlink.org

MULTI-BLOT KIT FOR PROTEINS

The BioMax Multi-Blot Kit for Proteins allows the simultaneous production of 10 blots from a single protein gel. Based on proprietary technology and compatible with

existing protein immunoblotting tank transfer apparatus, the kit eliminates the inconsistency of running multiple gels or same blot stripping and reprobing. Within minutes after transfer, total protein distribution can be visualized (via membrane staining), and each blot can be screened with one or more different antibodies, significantly improving the speed, productivity, and accuracy of multiple antibody screening.

Biomax Informatics

For more information
+49 89 895574-0

www.biomax.de

www.scienceproductlink.org

GENE EXPRESSION DATA SOFTWARE

The Biomax Gene Expression Analysis Suite is for systematic analysis and visualization of gene expression data from different experiments. The

software provides comprehensive and integrative analysis of complex data sets using available gene annotation. With this software suite, users can quickly find groups of tightly co-expressed genes, evaluate active metabolic pathways, and predict interactions among the corresponding proteins. Offering a sophisticated repertoire of functions, the software reduces complexity of data by clustering genes based on their experimental expression profiles, displays detailed expression information for any selected

CONTINUED ON PAGE 762

cluster and provides links to annotations for each gene using the hierarchical Biomax functional catalog to characterize protein function. The software displays the distribution of genes belonging to specified functional categories among the gene clusters and identifies groups of clusters containing co-expressed genes of selected functional categories and overlaps between such groups. Genes of interest are placed in a biochemical context by constructing both pathway models and protein interaction networks.

Celonex

For more information
780-408-8820
www.celonex.com

www.scienceproductlink.org

raying. Larger loading capacity, higher sensitivity, and better function preservation of the arrayed molecules make ceramic chips largely superior to traditional glass slides. In addition, CeramiChip slides are able to endure high pressure and heat. Most importantly, compared with glass slides, CeramiChip slides allow for stronger signals due to higher binding capacity, as well as more uniform spotting since spots do not run.

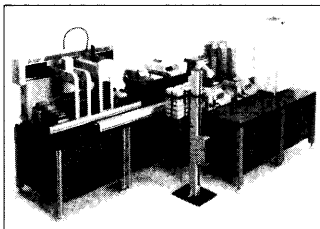
Beckman Coulter

For more information
714-871-4848

www.beckmancoulter.com

www.scienceproductlink.org

Improvements to nucleic acid preparation. New capabilities added to the SAGIAN Core Systems include plate sealing, plate piercing, and thermal cycling. These new components enable increased automation of nucleic acid prep processes such as polymerase chain reaction (PCR), sequencing reactions, and plasmid preparation. The "plug and play" design of Core Systems enables the user to easily reconfigure components for changing applications. Products recently added to the "Core Menu," indicating technical compatibility with SAGIAN Core Systems, include the ABgene Model ALPS 300 Plate Sealer, the ABgene Model ASP 50 Automated Seal Piercer, and the Applied Biosystems AutoLid Dual 384-Well GeneAmp PCR System 9700 thermal cycler. These components can be integrated with existing specialized components, including the Biomek FX Magnetic Bead Automated Labware Positioner (ALP) and the Tetrads thermal cycler from MJ Research. Beckman Coulter also offers cooling accessories, including a chilled ALP and the Kendro Cytomat line of incubators and cold storage systems.



Tecan

For more information
+41 1 922 88 88
www.tecan.com

www.scienceproductlink.org

nucleotides. It offers three detection modes in one instrument (absorbance, fluorescence, and luminescence). In recognition of the unprecedented number of reaction vessel formats used by researchers, GENios has been designed to handle different microplate formats (6 to 384 wells), PCR tubes, and cuvettes, making it a suitable solution for many standard molecular biology procedures. It can be used in many applications ranging from

CERAMIC SLIDES

CeramiChip is a unique slide suitable for DNA and protein microarray applications. These quality ceramic slides have ultra-smooth surfaces, allowing for high-density ar-

IMPROVEMENTS TO NUCLEIC ACID PREPARATION DEVICE

New capabilities added to the SAGIAN Core Systems include plate sealing, plate piercing, and thermal cycling. These new com-

gene expression and transfection studies, binding assays, enzyme-linked immunosorbent assays, and enzymatic kinetic measurements up to cell growth and proliferation studies, cytotoxicity, and apoptotic assays. Added to these distinctive advantages is top-to-bottom reading capability with a single mouse click, which is particularly useful for measuring samples with high turbidity. For cell-based assays, the GENios can also detect multiple labels per well. It can also be integrated into the Genesis Robotic Sample Processor to give laboratories flexible detection options in their automated systems.

Pierce

For more information
815-968-0747
www.piercenet.com

www.scienceproductlink.org

Northern, and Southern blots and gel-shift and ribonuclease protection assays. The Erase-It Kit, which works with any brand of film, corrects all of these problems without the need to re-expose the film or re-perform the experiment. It works well on both newly exposed film or exposed film that has been stored for years. For applications requiring densitometric measurement, the Erase-It Background Eliminator reduces signal evenly over the film so that relative densitometry values are consistent.

BACKGROUND ELIMINATOR

Erase-It Background Eliminator allows for the fast, easy removal of high background, shading, overexposed bands, and speckling on exposed x-ray film for Western,

Electron Microscopy Sciences

For more information
215-646-1566
www.emsdiasum.com

www.scienceproductlink.org

includes items such as tissue processors and tissue slicers, digital cameras and software, microwave ovens, vacuum equipment, critical point driers, cryobiology supplies, diamond knives, tweezers, microtomy tools, and embedding kits.

LITERATURE

A Galaxy of Products for Microscopy and Histology is a catalog on research and clinical products for the fields of microscopy, histology, neuroscience, cell biology, anatomy, materials science, and more. It in-

Millipore

For more information
800-645-5476
www.millipore.com

www.scienceproductlink.org

engineering considerations for clinical diagnostic, medical device, and industrial applications. The new booklet is divided into three product function disciplines: finished medical filtration devices, roll stock membrane for filtering liquids and gases, and products for the rapid diagnostics market.

OEM Design Guide is a 40-page reference that provides engineers with detailed product specifications on Millipore's extensive selection of membrane filter products as well as applications information and engineering considerations for clinical diagnostic, medical device, and industrial applications. The new booklet is divided into three product function disciplines: finished medical filtration devices, roll stock membrane for filtering liquids and gases, and products for the rapid diagnostics market.

Thermo Orion

For more information
800-225-1480
www.thermoorion.com

www.scienceproductlink.org

2002 Laboratory Products Catalog: 40th Anniversary Edition is a 136-page publication that contains sections dedicated to pH, ion-selective electrode, colorimetry, conductivity, and dissolved oxygen products.

Newly offered instrumentation, apparatus, and laboratory materials of interest to researchers in all disciplines in academic, industrial, and government organizations are featured in this space. Emphasis is given to purpose, chief characteristics, and availability of products and materials. Endorsement by *Science* or AAAS of any products or materials mentioned is not implied. Additional information may be obtained from the manufacturer or supplier by visiting www.scienceproductlink.org on the Web, where you can request that the information be sent to you by e-mail, fax, mail, or telephone.

Classified Advertising

For full details on advertising rates, deadlines, mechanical requirements, and editorial calendar go to

www.sciencecareers.org

and click on

How to Advertise

UNITED STATES

Display Classified Advertising

Bren Peters (Midwest and Mid-Atlantic)

PHONE: 202-326-6541

Kathleen Clark (Southeast and Canada)

PHONE: 202-326-6555

Jill Steinberg (Northeast)

PHONE: 914-834-8733

Kristine von Zedlitz (West Coast)

PHONE: 415-956-2531

FAX: 202-289-6742

E-MAIL: science_displayads@aaaas.org

Line Classified Advertising

Christina Geiger

PHONE: 202-326-6532

Sussy Castilla

PHONE: 202-326-6740

FAX: 202-289-1451

E-MAIL: science_classifieds@aaaas.org

Online Classified Advertising

Beth Dwyer (Internet Sales Manager)

PHONE: 202-326-6534

FAX: 202-289-6742

E-MAIL: bdwyer@aaaas.org

AD MATERIALS: Send to:

Science Classified Advertising,

1200 New York Avenue, NW, Room 911,
Washington, DC 20005

EUROPE

Display, Line, and Online Classified Advertising

Deborah Harris

PHONE: +44 (0) 1223 326 500

FAX: +44 (0) 1223 326 532

E-MAIL: european_ads@science-int.co.uk

AD MATERIALS: Send to:

Science International, Advertising Dept.,
Bateman House, 82-88 Hills Road,
Cambridge CB2 1LQ, United Kingdom

MEETINGS / ANNOUNCEMENTS

Kathleen Clark

PHONE: 202-326-6555

Richard Walters

PHONE: +44 (0) 1223 326 527

**To subscribe to Science
call 202-326-6417
or 1-800-731-4939**

POSITIONS OPEN

FACULTY POSITIONS

**Neurobiology in Biomedical Engineering
University of Rochester**

Applications are invited for tenure-track **ASSISTANT/ASSOCIATE PROFESSOR** positions within an extensive multidisciplinary neuroscience and biomedical engineering (BME) community. Applicants should have a Ph.D. and/or M.D. with training in both engineering and cellular neuroscience and should have established an independent research program. Particular areas of research interest include neural tissue engineering, sensory and motor cellular neuroscience, and neural prosthetics. Successful candidates will form a productive, independent, and externally supported research laboratory and will also lead the establishment of a multidisciplinary focus connecting cellular engineering with neuroscience within the BME program. Participation in teaching activities in both the BME and neuroscience programs is expected. Competitive start-up packages are included. Salary is commensurate with rank and experience. Appointments may begin as early as July 2002. Applications including curriculum vitae, statement of career goals, at least three letters of recommendation, and several publications should be sent to: **Richard E. Waugh, Chair, Department of Biomedical Engineering, University of Rochester, 601 Elmwood Avenue, Box 639, Rochester, NY 14642.** The University of Rochester is an Equal Opportunity/Affirmative Action Employer.

TENURE-TRACK POSITION

Host Response

The Forsyth Institute invites applicants for a tenure-track position in its host response research program to complement our current programs in the immunological aspects of oral diseases. Individuals with expertise in innate immune mechanisms, immunology of infectious disease, or signal transduction are especially encouraged to apply.

The successful candidate for this position will have a strong record of novel and significant research accomplishment, supported by publications in high-quality journals, as well as a demonstrated ability to attract extramural funding. The Forsyth Institute offers newly renovated laboratory space, competitive start-up packages, and generous fringe benefits. Joint appointments are offered through our affiliation with Harvard University.

Please send letter of application, curriculum vitae, and the names of three references to:

**Department of Human Resources
The Forsyth Institute
140 The Fenway
Boston, MA 02115**

Forsyth is an Equal Opportunity/Affirmative Action Employer; women, minorities, and persons with disabilities are encouraged to apply.

INSTRUCTOR

Instructor position available at the National Prion Disease Pathology Surveillance Center at Case Western Reserve University School of Medicine as of July 1, 2002, to study prion diseases. Candidate should have expertise in running a diagnostic laboratory for prion diseases using Western blot on brain tissues. Position also includes semi-independent research projects on purification and characterization of the human prion protein using 1- and 2-D gel electrophoresis, N-terminal microsequencing, and mass spectrometry. Qualified candidates should send curriculum vitae and three letters of reference to: **Dr. Pierluigi Gambetti, Director, National Prion Disease Pathology Surveillance Center, Institute of Pathology, CWRU, 2085 Adelbert Road, Cleveland, OH 44106.** Attention: Sandy Bowen. CWRU is an Affirmative Action/Equal Opportunity Employer.

POSITIONS OPEN

ASSISTANT PROFESSOR POSITIONS

**Department of Physiology and Biophysics
Dalhousie University**

The Department of Physiology and Biophysics in the Faculty of Medicine has two positions available at the Assistant Professor level. Applicants whose research is in any area of molecular, cellular, or systems physiology will be considered. Preference will be given to candidates whose research interests complement current research strengths of the Department in molecular or cellular physiology or membrane biophysics. Candidates must have a Ph.D. and/or M.D. degree in physiology or related discipline, several years of postdoctoral training, and demonstrated excellence in basic research. They will be expected to participate fully in the research and teaching programs of the Department.

This is a salaried, probationary tenure-track appointment. However, the successful applicants will be expected to apply for external salary support from appropriate granting agencies.

Send curriculum vitae, a brief description of research interests, and the names of at least three references to: **Dr. Paul R. Murphy, Head, Department of Physiology and Biophysics, Faculty of Medicine, Dalhousie University, Sir Charles Tupper Medical Building, Halifax, Nova Scotia B3H 4H7 Canada.** Further information about the Department is available at website: <http://www.physiology.dal.ca>. Applications must be received no later than May 31, 2002.

All qualified candidates are encouraged to apply; however, Canadians and permanent residents will be given priority. Dalhousie University is an Employment Equity/Affirmative Action Employer. The University encourages applications from qualified aboriginal people, persons with a disability, racially visible persons, and women.

HEMATOPATHOLOGIST

The University of Wisconsin-Madison, Department of Pathology and Laboratory Medicine, is soliciting applications for the position of Hematopathologist at the **ASSISTANT PROFESSOR** level on the tenure track. The individual will be expected to contribute to the mission of the Department via participation in the teaching program; training of residents, Fellows, graduate students, and medical students; mentoring of trainees; and participation in the continuing medical education program. Candidates must have an M.D. or M.D./Ph.D.; be Boarded or Board eligible in hematopathology; be qualified for unrestricted licensure in Wisconsin; have a strong, fundable basic research program; and experience sufficient to meet criteria for appointment at Assistant Professor rank on the tenure track. Applications will be accepted until the position is filled. Send a letter of interest, current curriculum vitae, and the names of four references to: **Michael Hart, M.D., c/o Cameron Millard, 6120 Medical Science Center, 1300 University Avenue, Madison, WI 53706-1532.** For more information on the University of Wisconsin-Madison, see our website: <http://www.wisc.edu>. *Unless confidentiality is requested in writing, information regarding the names of applicants must be released upon request. Finalists cannot be guaranteed confidentiality. UW-Madison is an Equal Opportunity/Affirmative Action Employer and, as such, women and minorities are encouraged to apply.*

The Department of Neurology at the University of New Mexico School of Medicine invites applications for the position of **MR CORE DIRECTOR**. Rank, tenure, and salary will be awarded based upon qualifications. Minimum qualifications include M.D. or Ph.D. and experience in animal research and with high-field MR. A full description of the job can be found at website: <http://hscapp.unm.edu/fjp/display/postings.cfm>. For best consideration, send curriculum vitae; signed letter of interest; and three letters of reference/recommendation by July 31, 2002. Send information to: **Catherine Osborn, Search Coordinator, UNM SOM Department of Neurology, 915 Camino de Salud N.E., Albuquerque, NM 87131.** Please reference Job Requisition Number 4869 on the application packet. *Equal Employment Opportunity/Affirmative Action.*

LOVELACE RESPIRATORY RESEARCH INSTITUTE...Giving the Gift of Breath

Scientist Position Available

Lovelace Respiratory Research Institute is committed to the cure of respiratory diseases through research aimed at understanding their causes and biological mechanisms, eliminating exposures to causal agents, and developing improved treatments. Based on its diverse research capabilities, its close working relationships with universities and national laboratories, and its endowed and sponsored research programs, LRRI is one of the nation's largest independent, nonprofit biomedical research organizations, and the nation's only such organization wholly dedicated to basic research on respiratory health problems. We invite you to visit our Web site: www.lrrri.org.

(S2402) Associate Scientist with **Dr. Yung-Sung Cheng**. Ph.D. in Science and Engineering (Chemical Engineering, Mechanical Engineering, Environmental Science or Engineering) with dissertation in Aerosol Science and Engineering. Minimum of two (2) years of directly related postgraduate experience, working in aerosol sampling, aerosol instrument and design, aerosol research, preferably with computational fluid dynamics calculation.

(S1202) We are looking for scientists at the Research Associate professor-level who are investigators with a history of funding from the NIH and who are interested in developing a long-term career in respiratory research. The Institute offers excellent laboratory facilities, a highly competitive salary and an excellent start-up package. These positions would work with **Dr. Steven Belinsky** or **Dr. Mohan Sopori**.

Contact Diane Sparago, Human Resources, LRRI, 2425 Ridgecrest Drive SE, Albuquerque, NM 87108; 505-348-9445; dsparago@lrrri.org. An Equal Opportunity/Affirmative Action Employer. M/F



Keck Graduate Institute of
Applied Life Sciences

Postdoctoral Fellows

The Keck Graduate Institute of Applied Life Sciences is seeking highly creative and motivated postdoctoral research fellows to participate in the following research areas of the faculty members:

- **Animesh Ray:** Analysis of gene regulatory network by whole-genome mRNA expression profile and genetic analysis. Candidates with training in yeast genetics, and/or mRNA microarray analysis will be preferred. There will be opportunity for close interaction with computational biologists.
- **David Wild:** Development of Bayesian network models for protein fold recognition. This project is part of a collaborative effort to develop a community resource to enable the emerging science of structural genomics. Candidates should have a Ph.D. in computational biology or a quantitative field such as theoretical physics, applied mathematics etc. and a strong interest in molecular biology.

KGI is located 35 miles east of Los Angeles, at the foot of the San Gabriel Mountains. Its campus is contiguous with those of the other Claremont Colleges, which together with surrounding educational institutions in Southern California provide a rich intellectual and cultural environment.

Prospective candidates should apply with a cover letter stating interest in a particular laboratory, a CV, and two letters of recommendation and sent to the individual faculty member at: **Keck Graduate Institute, 535 Watson Drive, Claremont, CA 91711. Email: animesh_ray@kgi.edu, david_wild@kgi.edu. Web Site: www.kgi.edu.**

EOE



UNIVERSITY of NEW HAMPSHIRE

Institute for the Study of Earth, Oceans, and Space and Department of Physics

Peter T. Paul Chair in Space Science

The University of New Hampshire seeks an outstanding individual in space science to fill the newly endowed Peter T. Paul Chair in the Space Science Center within both the Institute for the Study of Earth, Oceans, and Space and the Department of Physics. The tenure-track Chair includes a substantial annual research stipend that may be used for graduate, postgraduate, equipment or staff support.

The Institute for the Study of Earth, Oceans, and Space (EOS) is a multidisciplinary scientific research institute dedicated to understanding the integrated behavior of the Earth and its surroundings. As a world leader in the fields of space science, terrestrial ecosystems, oceanography, atmospheric science and global climate change, EOS provides graduate education with an emphasis on interdisciplinary studies that contribute to understanding the dynamics of the Earth and the Earth-Sun system. The Department of Physics provides comprehensive undergraduate and graduate studies in physics, with specializations in space science, nuclear physics, and condensed matter physics.

The successful candidate will enhance the prominence of the Space Science Center and the Institute in the space sciences, while helping to create and strengthen the interdisciplinary scientific environment that distinguishes the Institute. We seek an individual with the ability and desire to participate in graduate and undergraduate education and to lead a major, independent research effort in any of the active fields of the Center. These fields include solar, heliospheric, magnetospheric, ionospheric, and planetary physics, as well as high-energy astrophysics, with programs such as WIND, POLAR, ACE, SOHO, CLUSTER, EQUATOR-S, FAST, CGRO, SOLAR-B, HESSI, INTEGRAL, and STEREO. An active sounding rocket program, a theoretical group with strong ties to solar and interplanetary physics, and several technology development programs are also part of the Center.

Location: The University of New Hampshire in Durham is located in the New Hampshire Seacoast Region, a region of natural beauty and pleasant communities within an hour's drive of Boston and Portland, and nearby the city of Portsmouth, located on a harbor, with unique shops and historic sites.

Requirements: Distinguished record of publication and research expertise in areas that complement and enhance Space Science Center programs. Applicants must have a Ph.D. in Physics, Space Physics, Astrophysics, or related fields, seven or more years of professional research experience beyond the Ph.D.

Inquiries and applications, including curriculum vitae, bibliography, a brief summary of teaching interests and future research plans, and the contact information of at least four references, should be directed to Prof. Roy Torbert, Dir., Space Science Center, EOS, Morse Hall, Univ. of NH, Durham, NH 03824. Applicant review begins Sept. 1, 2002. UNH is committed to excellence through diversity among its faculty and encourages women and minorities to apply. <http://www.eos.sr.unh.edu/Resctr/SSC>



MOUNT SINAI
SCHOOL OF
MEDICINE

Postdoctoral Fellow

Mount Sinai School of Medicine is currently seeking a Postdoctoral fellow with training in cell/molecular biology/animal models to work on projects involving the role of inflammation and diabetes on atherosclerosis/arterial injury. Studies involve work with knockout/transgenic mice as well as tissue culture.

Send CV and names of 3 references to: **Dr. Hayes M. Dansky, Assistant Professor of Medicine, Cardiovascular Institute, Box 1269, Mount Sinai School of Medicine, One Gustave L. Levy Place, New York, NY 10029. E-mail: hayes.dansky@msnyuhealth.org. EOE.**

challenge innovation teamwork

The Face of Pfizer

careers that matter



Each Person Counts.

At **Pfizer Global Research & Development**, we build our success on the innovation, skills and entrepreneurial spirit of each of our colleagues. As an integral member of our team, you will find myriad opportunities to assert your scientific independence as you generate results that will advance our ultimate goal of creating life-enhancing therapies. Count the ways you can impact lives as you bring your ideas to life at Pfizer.

www.pfizer.com



Global Research & Development

Group Leader and Research Scientist La Jolla, California

Two positions are available within the Ophthalmology Therapeutic Area for experienced scientists to identify and develop new targets and approaches for the treatment of age-related macular degeneration, diabetic retinopathy and other serious ocular diseases. The Group Leader will lead a pharmacology group dedicated to the discovery and testing of novel therapeutics, and requires 8+ years experience in drug discovery and a thorough knowledge of retinal diseases. A minimum of two years postdoctoral experience is sought for the Research Scientist position. Both require familiarity with *in vitro* and *in vivo* models of ocular angiogenesis. When applying, please refer to Req. #01-0621-5V125SG, and indicate the appropriate job title.

Postdoctoral Fellow, Molecular Sciences and Technologies Ann Arbor, Michigan

In this position, you will study the role of nuclear receptors in lipid metabolism. This will be accomplished through defining receptor-receptor interactions and the mechanisms controlling tissue-selective expression of specific target genes, as well as identifying new target genes. Your studies will complement ongoing company research projects, and will involve both industry and academic collaborations. You must have a recent PhD in the biological sciences, or an MD with significant research experience. Preference will be given to applicants with a strong record of publication in peer-reviewed journals and a demonstrated knowledge of the molecular and cellular biology of eukaryotes. Experience in signal transduction, *in situ* hybridization or immunocytochemistry is desirable. Req. #01Mar0211452

Postdoctoral Fellow, Molecular Sciences and Technologies Ann Arbor, Michigan

As a member of a multidisciplinary team, you will investigate the genetic changes that occur during cartilage degeneration in various models of osteoarthritis. This research will require the integrated and balanced use of molecular/cellular biology and bioinformatic skills to identify novel regulatory mechanisms that underlie the gross changes that occur during disease. This position requires a PhD in Biochemistry, Molecular Biology or Cellular Biology. Familiarity with the generation and analysis of RNA expression profiling data is preferred, as is a general understanding of joint biology and osteoarthritis. Req. #01Apr0212032

We encourage all applicants to apply by emailing your resume, indicating the appropriate Req. # in the subject field, to SCI@pfizerresumes.com. If necessary, you may also mail your resume, indicating Req. #, to Pfizer Resume Processing Center, 630 Boston Road M-104, Billerica, MA 01821, Attn: Softshoe Resumes. EOE.



CONSUMER PRODUCTS WORLDWIDE
Division of Johnson & Johnson Consumer Companies, Inc.

The Skin Research Center of Johnson & Johnson, located at Skillman NJ, conducts basic research of skin and hair and is committed to the identification of new insights and targets for skin care. The Skin Research Center is involved in molecular, cellular and biochemical studies, understanding cell-cell interactions, regulation of gene expression, and skin delivery studies, contributing to target validation and to the discovery of new technologies for skin care. The Skin Research Center is seeking motivated individuals with the following qualifications:

Postdoctoral Scientists, Molecular and Cellular Biology

Ph.D. in biological sciences. Knowledge of molecular and cellular mechanisms, signal transduction, and cell-cell communication. Experience with molecular and cellular biology techniques, mammalian tissue culture and microscopy is required. Ability to work independently within a team environment. Computer literacy and good communication skills required.

Postdoctoral Scientists, protein and peptide biochemistry

Ph.D. in protein chemistry or biochemistry. Knowledge of protein transport in cellular environments. Experience with biological systems is required. Ability to work independently within a team environment. Computer literacy and good communication skills required.

The successful candidates will work in a team involved in basic research and interacting with other technology groups.

**Please forward your resume to
RG25, J&J Skin Research Center, 199
Grandview Rd., Skillman, NJ 08558.
An equal opportunity employer,
m/f/d/v, committed to diversity in the
workplace.**



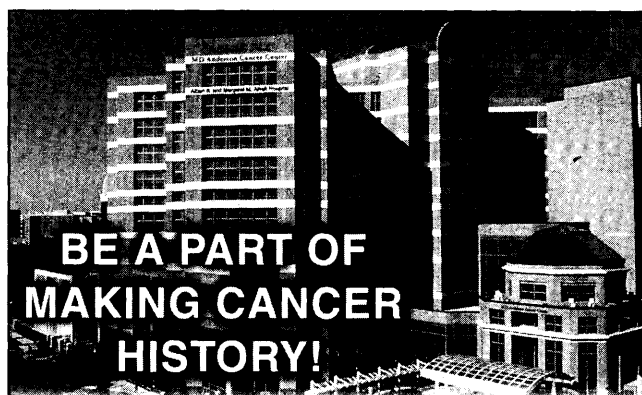
Ibis Therapeutics is a division of Isis Pharmaceuticals, Inc., a leading genomics-based drug discovery and development company focused on RNA. Our goal is to create important new drug discovery technology platforms that will improve the productivity of the pharmaceutical industry, and will enable our discovery and development of important new drugs to treat disease and improve the lives of patients. We have utilized our expertise to create an exciting new technology known as Ibis Therapeutics and currently seek the following professional to work within our Molecular Biology Group.

SENIOR SCIENTIST, MOLECULAR BIOLOGY

Successful candidates will have experience with control of translation initiation in eukaryotes and/or viruses. A background in RNA structures or protein elements, as well as experience with IRES driven translation and microarray technologies is extremely valuable. Must have a Ph.D. and completion of 2+ years' appropriate postdoctoral work. **Job Code: 424-LB.**

Please send resume, referencing Job Code, to: Isis Pharmaceuticals, 2292 Faraday Ave, Carlsbad, CA 92008; Fax: (760) 603-2700; E-mail: resume@isisph.com. Principals only. No phone calls please. EOE.

PUSHING THE LIMITS OF DISCOVERY



The University of Texas M. D. Anderson Cancer Center, ranked one of the top two cancer centers in the country and nominated in four other categories by *U.S. News & World Report*, is actively recruiting for a:

Director, Research Planning and Development Division of Cancer Medicine

In this key role, you'll be responsible for developing and implementing new research programs and enhancing existing research programs in the Division of Cancer Medicine through coordination with faculty and research staff. Additionally serve as an experienced expert for faculty regarding all research-related issues and providing support to faculty with regard to the institution's new drug development effort. Coordinate the preparation, submission of research proposals, as well as research and propose solutions to grant-related problems.

Qualifications: • Ph.D. degree in science or medically-related specialty preferred • 3 years' business and/or research experience in an industry or academic setting • 3+ years of extensive experience in clinical research operations including grants, contracts and laboratory and research program development

We offer a highly competitive compensation package. For confidential consideration, please send resumes to: **UT M. D. Anderson Cancer Center, P.O. Box 301402, Unit 632, Attn.: Administrative Staff Recruitment, Houston, TX 77030 or e-mail: khhbrown@mdanderson.org. EEOE.** Smoke-free environment.

**THE UNIVERSITY OF TEXAS
MD ANDERSON
CANCER CENTER**
Making Cancer History®

Lilly is about breakthrough medicines and treatments to confront many of the most challenging diseases. While employing more than 41,000 individuals in 159 countries, Lilly continues to earn consistent recognition for creating an exceptional work environment.

1) BS/MS/Ph.D. VIROLOGISTS

Seeking scientists with research experience using eukaryotic virus systems.

2) BS/MS/Ph.D. BIOCHEMISTS

Seeking biochemists that have a proven expertise in standard biochemical methods.

3) BS/MS/Ph.D. MOLECULAR BIOLOGISTS

Seeking molecular biologists with experience in molecular biology techniques, recombinant DNA techniques, mammalian tissue culture studies, and gene expression.

4) BS/MS/Ph.D. CELLULAR BIOLOGISTS

Seeking individuals with cell biology and tissue culture experience.

5) BS/MS/Ph.D. MICROBIOLOGISTS

Seeking microbiologists with basic micro techniques understanding of aseptic techniques.

6) MS/Ph.D. BIOINFORMATICS

Seeking individuals in biological sciences with experience in statistical genetics interface.

7) MS/Ph.D. IN VIVO PHARMACOLOGISTS

Seeking in vivo pharmacologists with technical expertise in in vivo pharmacology and in vivo modeling.

8) MS/Ph.D. MEDICAL WRITERS

Seeking qualified candidates with an educational background in science and demonstrated expertise in medical writing/clinical data integration.

9) MS/Ph.D. TOXICOLOGISTS

Seeking individuals with expertise in toxicological testing to determine safety of pharmaceutical compounds.

10) MS/Ph.D. HEALTH OUTCOMES RESEARCH ASSOCIATES

Seeking qualified candidates with an educational background in Economics/Pharmacoeconomics and expertise in incorporating, analyzing, and reporting health outcomes data.

For talented people who are passionate about doing their work in the most innovative ways possible, we have answers. Please refer to code ADSCMIMB when applying online. Lilly is an equal opportunity employer that values the strength diversity brings to the workplace.



www.lilly.com/careers

Lilly

Answers That Matter.

An extraordinary day. An extraordinary company.

Purdue Pharma L.P. is one of the fastest-growing pharmaceutical companies in the world today. Together with its associated companies worldwide, Purdue produces a variety of prescription and non-prescription products and is known for its pioneering research on a principal cause of human suffering: chronic pain. Purdue's Discovery Research Group in central New Jersey is collaborating to discover new approaches to the treatment of cancer and pain. Their work is supported by state-of-the-art facilities, sophisticated information services and an extensive library of scientific literature.

The following positions are currently available:

Senior Research Associate - In Vivo

In this role, you will be required to establish in vivo models of chronic inflammatory and nerve injury related pain and behavioral pharmacological assays of analgesia. Working as a member of a team of in vivo pharmacologists, you will participate in small molecule in vivo screening programs leading to the discovery of novel analgesic drugs as well as in pharmacological research studies leading to the validation of novel targets for the treatment of chronic pain syndromes.

This position requires a BS/MS in Biology, Pharmacology or a related discipline and at least 2 years' experience with in vivo pharmacological techniques, surgery, drug administration and behavioral pharmacology. Experience with pain models strongly preferred.

Research Investigator - In Vivo

The successful candidate will lead a group of research associates to establish and validate in vivo models of cancer and perform studies to evaluate new anti-tumor agents. These models will include human tumor xenograft studies as well as the development and evaluation of new models for the testing of immunotherapeutic agents.

We are searching for an experienced in vivo tumor biologist to join an expanding discovery research program focused on the identification of novel immunotherapeutic agents for the treatment of cancer. PhD or equivalent in pharmacology, physiology, veterinary medicine or related fields and significant experience and expertise with in vivo techniques and surgery are required. Knowledge of and experience working with immunotherapeutic agents for the treatment of cancer and experience managing research associates are also essential. Experience with the techniques required for histological analyses of tumors and the evaluation of tissue sections is preferred.

Research Investigator - Immunology

In this position, you will be part of an expanding discovery research program focused on the identification of novel immunotherapeutic agents for the treatment of cancer. You will lead a group whose functions will include the measurement of both humoral and cellular immune responses to Purdue's novel immunotherapeutic agents, both in vitro and in vivo, and enhance our capabilities in dendritic cell biology and antigen processing and presentation.

The ideal candidate will be an experienced cancer immunologist with a PhD or equivalent in immunology or a closely related field and at least 5 years' experience working in industry (following postdoc). Candidates must have extensive knowledge of immunology, antigen presentation, the induction and measurement of both humoral and cellular immune responses, and tumor models for assessing the efficacy of immunotherapeutic agents. Knowledge of cancer biology and the development of immunotherapeutic agents for the treatment of cancer and a proven track record managing both PhD and non-PhD scientists are also required.

Purdue Pharma L.P. offers competitive salaries, an attractive benefits package and opportunities for personal advancement and professional growth. For consideration, qualified applicants should mail their resumes, indicating position of interest, to: **Recruiter, Human Resources, 6 Cedar Brook Drive, Cranbury, NJ 08512** or e-mail to: jmmrecruiter@pharma.com.

Corporate standards require drug testing and background investigation. We are an equal opportunity employer committed to a diverse workforce. M/F/D/V.

If you'd like to see what a difference a day can make and learn about our career opportunities, please visit www.purduepharma.com.

PURDUE

TM

YOUR DAY WILL BE DIFFERENT HERE.

MUSC

MEDICAL UNIVERSITY
OF SOUTH CAROLINA

Tenure Track Faculty Positions Department of Cell and Molecular Pharmacology Medical University of South Carolina Charleston, South Carolina

The Department of Cell and Molecular Pharmacology at the Medical University of South Carolina seeks applicants for new tenure track faculty positions. Applicants at the Assistant Professor level are preferred, but appointments at the Associate Professor level will be considered for applicants with independent, funded research programs. Candidates are sought, in particular, to complement existing research programs of the department in cell signaling, cancer biology, cardiovascular pharmacology, and toxicology through the application of pharmacogenomics, bioinformatics, or molecular modeling; but applications will be considered in all fields. New faculty will have access to competitive salary and startup funds and benefit from protected time for the establishment of a nationally competitive research program.

The department provides teaching to multiple colleges within the university, and all faculty are expected to participate in both professional and graduate education as well as maintain an active research program. The Medical University of South Carolina is a rapidly growing research environment. Extramural research support has consistently increased over the past 10 years, topping \$123 million last year. Major research centers include the Hollings Cancer Center, Gazes Cardiovascular Research Institute, Neuroscience Institute, Children's Research Institute, Center for Aging, and the Center for Advanced Imaging Research. New program development is underway in Structural Biology, Bioinformatics, and Bioengineering. State-of-the-art research facilities include x-ray crystallography, mass spectrometry, proteomics, microarrays, functional imaging, and confocal microscopy. The Charleston area provides an outstanding quality of life in a historic coastal community offering excellent opportunities in the arts, sports, recreation, and cuisine.

Please send a curriculum vitae, statement of research interests, and three letters of recommendation addressing both research and teaching potential to: **Pharmacology Search Committee, c/o Jerry G. Webb, Ph.D., Department of Pharmacology, Medical University of South Carolina, 173 Ashley Avenue, Charleston, SC 29425.**

<http://www2.musc.edu/pharm/pharm.html>

The Medical University of South Carolina is an Affirmative Action/Equal Opportunity Employer.



NEW ENGLAND BOARD OF HIGHER EDUCATION

DIRECTOR OF EXCELLENCE THROUGH DIVERSITY PROGRAM

The New England Board of Higher Education (NEBHE) seeks an exemplary education professional to serve as its Director of Excellence through Diversity. The mission of NEBHE's diversity program is to increase the participation and retention of underrepresented populations in higher education, particularly in the science, mathematics, engineering and technology (SMET) disciplines. NEBHE is a non-profit, regional compact of the six New England states with a mission to increase the educational opportunities and services. For more information about the agency, please visit our website, www.nebhe.org. To direct this important work, NEBHE seeks a professional with several competencies. Competitive candidates must have the optimal combination of:

- A Master's level degree and seven years academic service experience or equivalent combination of education and experience are required. Ph.D. and a background in STEM are preferred,
- experience with higher education environments including best practices in recruitment and retention, cultural diversity, affirmative action policies, and organizational change,
- extensive experience with higher education models and an understanding of primary and secondary education issues,
- program evaluation and policy research skills, and
- demonstrated experience with successfully securing and managing large grants from public, private and corporate foundations.

As a regional, non-degree granting organization that serves over 270 public and private educational institutions, NEBHE achieves its broadest and most comprehensive results in collaboration with many educational institutions. Hence, successful applicants will demonstrate:

- prior success with building collaborative networks oriented toward achieving measurable outcomes, and
- leadership, planning, management, coalition building, presentation, and supervisory skills.

NEBHE is an EEO/AA employer and offers competitive salary and an excellent benefit package. Please submit a cover letter, resume, and salary history to Phyllis Maguire, NEBHE, 45 Temple Place, Boston, MA 02110 or to pmaguire@nebhe.org.

FINDING THE
RIGHT JOB
SHOULDN'T
BE LIKE
MAPPING THE
HUMAN
GENOME.

That was yesterday.

Science @
CAREERS
www.sciencecareers.org

job postings
resume/CV database
e-mail job alerts
employer profiles

Head, Mass Spectrometry Protein Microcharacterization Core Facility

The NIEHS/NIH, in RTP, North Carolina, is recruiting a Head of the Mass Spectrometry Protein Microcharacterization Core Facility in the Division of Intramural Research. The successful applicant will be a Staff Scientist in the Laboratory of Structural Biology under the supervision of Dr. K. Tomer and be responsible for the MALDI/MS and capillary HPLC/ESI/MS/MS identification of proteins isolated by 1-D and/or 2-D gel electrophoresis, in-gel digestion, determination of sites of post-translational protein modifications, identification of sites of interactions in protein complexes by limited proteolysis, protein purification by LC, and use of affinity techniques combined with MS. Additional duties will include close interaction with Institute scientists serving as a mass spectrometry expert during the planning and execution of experiments, and supervision of laboratory technicians.

Minimum qualifications include a PhD in Analytical Chemistry and a working knowledge of the application of mass spectrometry to protein characterization, determination of posttranslational modifications, capillary LC purification. Priority will be given to individuals with demonstrated experience in the use of MALDI/TOF and electrospray ionization/hybrid quadrupole/time-of-flight mass spectrometers and their application to protein identification and characterization. Applications from women and minorities are particularly encouraged. Interested parties should submit curriculum vitae, bibliography, brief statement of research interests and arrange for the submission of three letters of recommendation to be sent by May 28, 2002 to:

Ms. Tammy Locklear (HNV02-17)
NIEHS Human Resource Management Branch
P.O. Box 12233, Maildrop NH-01
Research Triangle Park, NC 27709
919-541-3317 e-mail: locklea1@niehs.nih.gov

NIEHS/NIH is an Equal Opportunity Employer



FACULTY POSITIONS

Associate/Full Professor and Assistant Professor Molecular Biology/Physiology

The University of Missouri is accepting applications for two tenured or tenure track investigators (Associate/Full Professor and Assistant Professor) with demonstrated research achievements in molecular biology and interest in its application to understanding mechanisms involved in neurohumoral control of physiological systems. Desirable research interests include synaptic transmission, sensory processing, or receptor systems in central autonomic pathways. Outstanding candidates in related areas also are encouraged to apply. The primary research focus may vary, but the individual should have an active interest in applying information gained in molecular studies to functional aspects of neurohumoral control of the cardiovascular system. The successful candidate will exhibit an active, well established, nationally recognized research program. A desire to lead research and training initiatives to integrate molecular biological with functional approaches related to neurohumoral control of the circulation is essential. This position is a Mission Enhancement Initiative of the University in support of the existing excellence in neurohumoral control of the circulation on campus. A successful senior candidate will have the opportunity to participate in the Mission Enhancement Initiative for recruitment of a junior level investigator with complementary research interests. Teaching requirements will be commensurate with the expertise of the individual. The appointment is in Biomedical Sciences, College of Veterinary Medicine, with joint appointments in the College of Medicine (e.g., Physiology) and the Dalton Cardiovascular Research Center, as appropriate. Applications should include a curriculum vitae, names of three references, and a letter stating professional goals. Review of applications will begin on July 1, 2002, and continue until the position is filled.

Interested individuals should send a curriculum vitae, statement of research interests, and three references to: Eileen M. Hassler, Ph.D., Dalton Cardiovascular Research Center, 134 Research Park, University of Missouri, Columbia, MO 65211-3300; Telephone: 573-882-6125; e-mail: HasslerE@missouri.edu.

Post-Doctoral opportunity
Suburban Philadelphia, PA.

It's more than a career. It's a defining experience.

Driving the success of GlaxoSmithKline – the world's leading pharmaceutical organization – is a continual search for innovation. Apart from a research and development capability that sets the benchmark for our industry, we're committed to recruiting and retaining the best and brightest by providing unequalled individual and career development opportunities within our organization.

Tuberculosis Research

GSK, in collaboration with Professor Brennan's group at Colorado State University, has been participating for several years in the NIH/NIAID/NCDDG-OI initiative to discover novel drugs which have utility in the treatment of Mycobacterium tuberculosis infections. GSK's integrated expertise in bacterial genomics, bioinformatics, biochemistry and enzymology, molecular biology, high throughput screening (HTS), and medicinal chemistry forms the platform for this exciting project. We wish to recruit a PhD level individual to carry out fundamental research into novel mycobacterial targets, especially those involved in cell envelope biogenesis. Responsibilities will include the steady-state characterization of novel enzymes, the development of primary and secondary assays for HTS and SAR evaluation, and the mechanistic and biophysical characterisation of enzyme-inhibitor interactions.

Your experience in generating, collating, evaluating and drawing conclusions from experimental data is necessary. Experience with mycobacteria, especially fatty acid, mycolic acid and cell envelope biogenesis is highly desirable, while your familiarity with a wide range of assay formats/instrumentation is preferred. Oral scientific presentation skills, and the ability to function both independently and in a research team environment is essential.

GlaxoSmithKline is dedicated to an innovative workplace and supports you with career long opportunities and learning. We offer a competitive benefits and compensation package designed to attract and retain the very best. For confidential consideration and efficient processing, visit our Web site: www.gsk.com Indicating Req ID: 1763 is essential to search. Principals only, no agencies please.

Developing talent through equality of opportunity, M/F/D/V.

Together we can make life better



GlaxoSmithKline

GLOBAL OPPORTUNITIES

deCODE Genetics

The success of deCODE scientists in defining the genetics of complex traits using the genealogic approach creates new entry points for understanding their molecular bases and offers the prospect of more specific therapeutic intervention. We seek to fill several of the following positions:

Research Scientist/High Throughput Screening

You will join a multidisciplinary team using protein and cell based assays to identify chemical leads against novel drug targets identified through human genetics. Past experience in protein- or cell-based assays is desirable as would be experience with robotics and laboratory automation.

Research Scientist/Molecular Biology/Cell Biology

You will join a multidisciplinary team using functional assays to validate therapeutic targets identified through human genetics. Past experience in molecular cloning, analysis of gene expression, fluorescence imaging techniques, or cell fractionation would be desirable.

Research Scientist/Pharmacology

You will join a multidisciplinary team assessing drug action in vitro and in vivo. Prior experience with GPCR expression, ligand binding assays, and functional assays in cells is desirable.

Research Scientist/Senior Research Scientist: Human Genetics

You will lead a project that applies our genealogic approach to the discovery of major genes contributing to the pathogenesis of a common disease. You will be responsible for project strategy and the analysis of genetic data derived from the largest microsatellite genotyping facility in the world. Past experience in linkage and association analysis desirable.

Research Scientist: Cytogenetics

You will be responsible for screening regions of the genome identified by in our genetics projects for rearrangements. Experience with interphase cytogenetics is desirable.

Requirements include a PhD degree in genetics, molecular biology, cell biology or related fields, as well as strong experience in DNA cloning and cellular assay development. Those with MD degrees with postdoctoral experience are also encouraged to apply.

The positions are located in Reykjavik, Iceland.

deCODE Genetics offers an attractive compensation package, stock-ownership opportunities, relocation assistance and, most importantly, a unique opportunity to participate in genetic research at the cutting edge.

For more information, please contact: Director of HR, deCODE genetics, Sturlugata 8, IS-102 Reykjavik, Iceland (careers@decode.is) or visit our website (www.decode.is). Applications should include a statement of purpose, a curriculum vitae, a list of publications and three references.

Based in Reykjavik, Iceland, deCODE genetics is a population-based genomics company conducting research into the inherited causes of common diseases. deCODE genetics operates one of the most technologically advanced, highthroughput genotyping laboratories in the world. Together with pharmaceutical companies and other healthcare institutions, deCODE genetics aims to utilize its research to develop new methods for identifying, treating and preventing diseases.



Postdoctoral fellowships: Endocrinology and Diabetes

The NIH-funded University of Pennsylvania Training Program in Diabetes, Endocrinology and Metabolic Diseases announces the immediate availability of postgraduate positions for advanced training in research in Endocrinology and Diabetes. Positions are available on a competitive basis to qualified candidates already having received a PhD and/or MD degree in a related area of cell and molecular biology, developmental biology, physiology or biochemistry. Laboratories currently participating in the training program include those directed by the following University of Pennsylvania faculty:

Morris Birnbaum, Director: Regulation of growth and metabolism by insulin
Rexford Ahima: Hormone-neural interactions in energy homeostasis
Lawrence Brass: Signaling mechanisms in platelet activation
Nancy Cooke: Expression of the human growth hormone cluster
Leonard Jarett: The role of IRS-1 in insulin-resistant diabetes mellitus
Klaus Kaestner: Transcriptional control of pancreatic development
Helen Korchak: Regulation of protein kinase C
Mitchell Lazar: Control of gene expression and metabolism by nuclear receptors
Mark Lemmon: Receptor tyrosine kinases and inositol phospholipids
David Manning: Heterotrimeric G proteins and G protein-coupled receptors
Judy Meinkoth: Hormone signaling through cAMP, Ras and Rap1
Franz Matschinsky: Glucokinase and insulin secretion
Ali Naji: Islet transplantation and immunology
Trevor Penning: Aldo-keto reductase genes and proteins
Richard Spielman: Genetics of complex traits and diseases
Charles Stanley: Genetic defects of insulin secretion: hyperinsulinism and MODY
Doris Stoffers: Regulation of endocrine pancreatic growth
Bryan Wolf: Signaling mechanisms of insulin secretion
Fuad Ziyadeh: Diabetic nephropathy

Interested candidates should submit a cover letter that indicates any preferences for laboratory, a CV, and a list of three references to:

Ms. Cass Lutz at lutzc@mail.med.upenn.edu
 or University of Pennsylvania, CRB Room 305
 415 Curie Blvd, Philadelphia, PA 19104.



The University of Pennsylvania is an Equal Opportunity/Affirmative Action Employer. Women and minority candidates are encouraged to apply.

Postdoctoral and Postmaster's Research Positions Functional and Microbial Community Genomics Oak Ridge National Laboratory

The Oak Ridge National Laboratory (ORNL) (<http://www.ornl.gov>) Environmental Sciences Division (<http://www.esd.gov>) invites persons with training in molecular biology, biochemistry, and microbiology to apply for postdoctoral and postmaster's positions at ORNL.

Successful candidates will participate in a wide range of functional genomics projects focusing on *Shewanella oneidensis* MR-1, *Rhodopseudomonas palustris*, *Deinococcus radiodurans*, and *Nitrosomonas europaea*. Research opportunities are also available in the emerging field of microbial community genomics, in which microarray technology is used to analyze the structure, composition, and dynamics of microbial communities in natural environments.

Candidates must have a PhD. or M.S. degree with demonstrated experience in molecular techniques such as gene cloning, gene expression, vector development, DNA/RNA isolation and analysis, PCR, and mutagenesis. Additional experience is desired in bioinformatics, biochemistry, and microarray technology. Individuals will work cooperatively with scientists at ORNL, Michigan State University, Stanford University, California Technology Institute, and/or Argonne National Laboratory.

Send a curriculum vitae, a description of research accomplishments and interests, and the names and telephone numbers of three references to: **Dr. Jizhong Zhou, Oak Ridge National Laboratory, P.O. Box 2008, Oak Ridge, TN 37831-6038 (Phone: 865-576-7544; Fax: 865-576-8646; e-mail: zhouj@ornl.gov; website, <http://www.esd.ornl.gov/people/zhou/zhou.html>)**. Please reference the position title and number (ORNL02-19-ESD), when corresponding about this or any other position listed on this site.

This appointment will be offered through the ORNL Postdoctoral/Postmaster's Research Program (<http://www.ornl.gov/orise/edu/postgrad/ornlpdoc.htm>). Salaries will be very competitive. The program is open to all qualified U.S. and non-U.S. citizens without regard to race, color, age, religion, sex, national origin, physical or mental disability, or status as a Vietnam-era veteran or disabled veteran.

Heart of the City

www.mshri.on.ca

The Samuel Lunenfeld Research Institute, one of Canada's premier biomedical research facilities, is affiliated with the University of Toronto and located at Mount Sinai Hospital. We have 32 basic and clinical scientists and over 200 graduate students and postdoctoral fellows. Key focus areas include Development and Fetal Health, Molecular Biology and Cancer, Epidemiology and Biostatistics, and a new 20,000 square foot facility for Proteomics, Molecular Medicine, and Genomic Research including Bioinformatics.

Faculty Position Molecular Medicine

As part of a new initiative, the Samuel Lunenfeld Research Institute together with the University of Toronto is searching for a faculty member in the area of Molecular Medicine. To qualify, you have an MD and clinical training in an appropriate specialty as well as a PhD or equivalent post-graduate experience in molecular biology. Capable of mounting an original, competitive, and independently funded research program in any area of molecular medicine relevant to the interests of the Samuel Lunenfeld Research Institute, you will also be expected to participate in the development of academic programs within the interdepartmental program in molecular medicine at the Faculty of Medicine and to fulfill nominal clinical duties within an appropriate clinical department at Mount Sinai Hospital.

You will benefit from a larger effort at the University of Toronto and affiliated teaching hospitals to expand research in proteomics, genomics, and cell imaging through academic programs and a new infrastructure. This appointment will be made at the scientist level at the Samuel Lunenfeld Research Institute with a faculty appointment within an appropriate department at the University of Toronto.

In accordance with our employment equity policy, we encourage applications from qualified women and men, members of visible minorities, aboriginal peoples, and persons with disabilities. Please send a CV, a summary of research interests, and three letters of reference by June 14th to:



Dr. S. J. Lye, Acting Director, Samuel Lunenfeld Research Institute
Mount Sinai Hospital, 600 University Avenue, Room 982
Toronto, ON M5G 1X5 Canada
Fax: (416) 586-8869 e-mail: director@mshri.on.ca

We are a fully accredited hospital and an equal opportunity employer.

A WORLD CLASS FACILITY IN THE HEART OF TORONTO



Italian National Research Council

DIRECTOR POSITION IN THE ISTITUTO DI RICERCA SUI SISTEMI GIUDIZIARI - BOLOGNA

The activities of the Institute are the following:

Analysis of recruitment, training, professional evaluation, judicial personnel discipline; Analysis of the forms of government of the judicial apparatuses; Functioning of juvenile justice and related social organizations; Planning processes of organizational and technological modernization in the judicial apparatuses.

DIRECTOR POSITION IN THE ISTITUTO PER IL RILEVAMENTO ELETTROMAGNETICO DELL'AMBIENTE - NAPOLI

The activities of the Institute are the following:

Active microwave remote sensing; Evaluation of exposure and biological effects of magnetic fields; Sensors and dedicated electronic systems for remote sensing and electromagnetic diagnostics; Passive remote sensing in optics; Methodologies for automatic interpretation and integration in GIS; GPS and geo-referencing.

The deadline for application is May 9th, 2002. For detailed information on how to apply - no application must be sent by e-mail - reference should be made to the original and full vacancy notices issued by CNR on the website: <http://www.urp.cnr.it/concorsi.htm>. For any question please send an e-mail to das.rep3@dcas.cnr.it or contact Franca Rossi, Consiglio Nazionale delle Ricerche - Dipartimento Attività Scientifiche e Tecnologiche, +39-06-49932408.

Staff Scientist Position Proteomics Research Core Facility Division of Intramural Research, NHLBI

The Intramural Research Program of the National Heart, Lung, and Blood Institute is accepting applications for a Staff Scientist to head its Proteomics Research Core Facility. The successful candidate should have a Ph.D. in biochemistry, chemistry, molecular biology, or a related discipline. The candidate should have experience in protein separation techniques, including the generation and analysis of 1D/2D-gels from complex biological samples. A unique environment (for proteomics) is being created in the NHLBI for rapid automated proteomic analysis of complex biological samples from the generation of 2-D gels through gel analysis, spot picking, digestion and mass spectroscopy. The incumbent of this position will oversee the protein separation aspect of this program. This core will work in close coordination with the bioinformatics, mass spectroscopy, and genomics cores of the intramural program.

The successful candidate will be offered a competitive salary commensurate with experience and qualifications under Title 42. Appointees must be US citizens, resident aliens, or non-resident aliens with a valid employment authorized visa.

Applicants should submit curriculum vitae and bibliography and arrange for three letters of reference to be sent to:

Ms. Kim Westervelt, Human Resources Branch
National Heart, Lung, and Blood Institute
31 Center Drive, MSC 2484
Building 31, Room 5A28
Bethesda, MD 20892-2482

Please include vacancy identifier, **HL-02-0035** on ALL correspondence. Applications must be received no later than 6 weeks after posting.

NIH is an Equal Opportunity Employer. Applications from women, minorities, and persons with disabilities are strongly encouraged. The NHLBI/NIH is a smoke-free workplace.

THE UNIVERSITY of EDINBURGH



THE WELLCOME TRUST CARDIOVASCULAR RESEARCH INITIATIVE (CVRI)

RESEARCH FELLOWSHIPS

The University of Edinburgh is one of the UK's leading institutions for biomedical research and, through a substantial award from The Wellcome Trust's Cardiovascular Research Initiative opportunities, are immediately available for outstanding basic and clinical scientists to develop their careers in molecular and cellular aspects of research into the cardiovascular system.

Candidates with an interest in the following areas of research are particularly encouraged to apply:

- Functional genomics and physiology • Zebrafish and mouse genetics
- In vivo imaging • Molecular cardiology.

The CVRI is led by Professors Keith Fox (Vascular Injury), Christopher Haslett (Inflammation Research), John Mullins (Molecular Physiology), Jonathan Seckl and Brian Walker (Programming and Endocrinology), and David Webb (Endothelial Cell Biology and Molecular Cardiology). Further information can be found at <http://www.cvri.med.ed.ac.uk>

Applicants should have significant research experience from the date of their doctoral degree and will be expected to have published their findings in leading journals and be able to demonstrate the ability to pursue independent research.

If you are interested in developing your career in cardiovascular research please contact Professor John Mullins with a letter of application, CV and details of 3 referees, together with an outline of your proposed area of research by Friday 10 May 2002.

Professor John J. Mullins, Programme Director, Wellcome Trust Cardiovascular Research Initiative, The University of Edinburgh, Wilkie Building, Medical School, Teviot Place, Edinburgh EH8 9AG. Tel: 0131 651 1597. E-mail: j.mullins@ed.ac.uk

www.ed.ac.uk



Howard Hughes Medical Institute and Department of Human Genetics University of Chicago

*The University of Chicago is an Equal
Opportunity/Affirmative Action Employer.*

Postdoctoral Positions Stem Cell Biology, Neurogenetics and Genomics

Seeking highly motivated individuals to embark on innovative projects in stem cell biology, neurogenetics and genomics, as described below.

Stem cell biology: (1) isolating factors that maintain pluripotency of stem cells; (2) analyzing chromatin modifications that accompany stem cell differentiation; (3) reprogramming cells by nuclear transfer, transplantation and molecular manipulations. **Neurogenetics:** (1) analyzing neurodevelopment in mice using a powerful gene-trap technology; (2) studying the developmental potential of neural stem cells; (3) investigating the molecular basis of human and mouse brain degeneration/malformation. **Genomics:** (1) exploring the genetic basis of human brain evolution; (2) investigating whole-genome function and evolution using sophisticated bioinformatics tools. For details of our research interests, see website <http://www.genes.uchicago.edu/>. Follow link to Faculty and Research, then Bruce Lahn.

Candidates should be highly ambitious, and with strong publications in international journals. Send CV to Dr. Bruce Lahn at blahn@genetics.uchicago.edu.



COLBY COLLEGE

VISITING INSTRUCTOR/ ASSISTANT PROFESSOR OF BIOLOGY

Colby College is seeking a **Geneticist** to fill a one-year position as Visiting Instructor or Assistant Professor of Biology to begin September 2002. Candidates should be ABD or have a Ph.D. in the biological sciences with broad training in genetics. Teaching assignments will include Genetics, and two additional laboratory courses in the candidate's area of expertise. Familiarity with liberal arts colleges, teaching experience, and post-doctoral experience are desirable.

Please submit a letter of application, statement of teaching interests, curriculum vitae, reprints of no more than three publications, undergraduate and graduate transcripts, and three letters of recommendation to: **W. Herbert Wilson, Jr., Chair, Department of Biology, Colby College, 5720 Mayflower Hill, Waterville, Maine 04901, Tel: (207) 872-3432, Email: whwilson@colby.edu.** Applications will be reviewed as they are received and will continue until the position is filled.

Applications and nominations of women and minorities who would enrich the diversity of the campus community are strongly encouraged. For more information about the College, please visit the Colby web site: www.colby.edu.

Executive Director and Chief Executive Officer

The New York Academy of Sciences seeks a leader with strategic vision to serve as its Executive Director and Chief Executive Officer. Founded in 1817, the Academy is the third oldest scientific organization in America and one of New York City's most enduring cultural institutions. With an annual operating budget of approximately \$10 million, the Academy is an independent, non-profit organization with some 25,000 members in 150 countries. The Academy promotes vital discourse among scientists across boundaries of discipline and geography, and advances public understanding of the role of science in society.

The Academy convenes and facilitates communication among scientists, policy makers, educators and journalists from around the world through interdisciplinary conferences and publications. Its programs also serve civic purposes relevant to the scientific community locally and globally, ranging from pre-college science education programs in the New York City schools to human rights advocacy on behalf of scientists around the world.

Reporting to the Board of Governors, the Executive Director serves as Chief Executive Officer. The successful candidate will have an advanced degree in science or technology with a broad understanding of current scientific research and its societal implications, as well as an interest in science education at all levels. S/he will have a gift for thinking strategically about the Academy's assets and opportunities, and a track record of leadership success, preferably including experience in fund-raising and with a membership organization. Familiarity with publishing and conference development is also important. The new Executive Director will have an outstanding personal presence and a demonstrated capacity to represent the Academy's membership and interests in a wide variety of settings.

Inquiries, applications and nominations should be directed to:
Sarah Herman, Isaacson, Miller, 334 Boylston Street, Suite 500, Boston, Massachusetts 02116; Fax: 617-262-6509; E-mail: 2462.nyas@imsearch.com
Electronic submission of credentials is strongly encouraged.

*More information about the
New York Academy of Sciences
can be found at www.nyas.org.
The Academy is an equal
opportunity employer and
actively seeks a diverse
pool of candidates.*



ALZA

It's all about IMPROVING LIFE.

ALZA, a member of the Johnson & Johnson family of companies, is focused on developing products with enhanced therapeutic value based on our innovative drug delivery technologies. In our role as a developer and manufacturer of breakthrough products, we are committed to creating innovative solutions to advance patient care. Our mission is to improve the lives of people everywhere.

Sr. Director, Receptor Biology Biological Sciences

We are seeking an experienced scientist to lead a research effort in biological-targeted drug delivery. This is an opportunity to build a world-class discovery capability to exploit known and novel ways of targeting and transporting xenobiotics, drugs and proteins across biological barriers, including the GI tract, brain and tumors. In this leading role, you will define and manage external industry/academic collaborations and build an internal team of highly motivated scientists to identify, characterize and utilize receptor systems for improved drug targeting and transport. You must have a PhD in Biology, Physiology, Pharmacology or Receptor Pharmacology and 10-15 years of experience. You should

be a recognized expert in receptor biology with emphasis on drug targeting and lead a cutting-edge research program in academia or industry. Experience in GI pharmacology/physiology is a plus.

Please send resume, indicating Job Code 368-SCI, to:
**ALZA Corporation, HR Dept., 1900 Charleston Road,
PO Box 7210, Mountain View, CA 94039-7210, fax
(650) 564-5656, email jobs@alza.com (ASCII files
only), Job Hotline (650) 564-5319.**

Our hiring managers will review all qualified resumes. ALZA is proud to be an Equal Opportunity Employer.

www.alza.com



The Metabolism Branch, National Cancer Institute, is offering a postdoctoral research training fellowship position in the laboratories of Drs. Thomas Waldmann and L. P. Perera. The selected candidate should have interests in investigating new therapeutic approaches directed toward the IL-2/IL-15 and HER2/neu receptors and their signaling pathways or interests in participating in vaccine studies using IL-15 as a molecular adjuvant against cancer and infectious diseases, including HIV.

The applicant should have completed an M.D. or Ph.D. and be a highly motivated individual interested in joining a progressive translational research program. An interview is mandatory for this position, and it is expected that the candidate will have experience in standard immunological, biochemical, and molecular biology techniques in addition to good organizational skills and effective verbal and written skills.

Interested candidates should send their resume with statement of interest, c.v. and three references to:

**Mrs. Jean Decker
Bldg. 10, Room 4N115
NIH**

**Bethesda, Maryland 20892-1374
E-mail jrmdeck@helix.nih.gov**

NIH is an Equal Opportunity Employer.

THE UNIVERSITY of EDINBURGH



**CENTRE for MATERIALS SCIENCE and ENGINEERING
and SCHOOL of ENGINEERING and ELECTRONICS**

ROYAL SOCIETY BRIAN MERCER POSTDOCTORAL RESEARCH FELLOWSHIP

Chemomechanics of damage, durability and conservation of building stone

You will work with Professor Christopher Hall on the chemomechanics of damage and durability in building stone and investigate the micromechanics of chemical damage in stone as a basis for developing new practical approaches to the treatment and conservation of stone in heritage buildings and prevention of damage to new buildings in which stone is used.

You will join an established research group in the University's interdepartmental Centre for Materials Science and Engineering (www.ed.cmse.ac.uk). Some parts of the project will be undertaken in collaboration with Professor George Scherer at Princeton University. You must have a PhD in a relevant science or engineering discipline. Knowledge of micromechanics, crystal growth, interfacial chemistry or porous media would be valuable, together with an aptitude for innovative experimentation.

The post is funded for 3 years by the Royal Society and is available immediately. Informal enquiries may be made to Professor Christopher Hall. E-mail: christopher.hall@ed.ac.uk or tel: +44 (0) 131 650 5679.

Salary scale: £24,435 – £32,537 p.a. Please quote REF: 311317SI. Closing date: 10 May 2002.

Apply online, view further particulars or browse more jobs at our website.

Alternatively, telephone the recruitment line on 0131 650 2511.

Committed to Equality of Opportunity

www.jobs.ed.ac.uk

POSITIONS OPEN

The Department of Ecology and Evolutionary Biology, jointly with the NCI-designated Chao Family Comprehensive Cancer Center and the Epidemiology Division of the Department of Medicine, University of California, Irvine, seeks applicants for a faculty position in the general area of the relationships between genetics and disease (broadly defined). Possible areas of specialization include statistical genetics, population genetics and molecular evolution, and molecular cancer epidemiology. Applicants interested in theory and modeling as well as those conducting laboratory or population studies will be considered.

Preference will be given to candidates qualifying for appointment at the **ASSISTANT or ASSOCIATE PROFESSOR** levels but distinguished candidates qualifying for a **FULL PROFESSOR** appointment will also be considered. Appointment will be in the Department of Ecology and Evolutionary Biology with opportunities for interaction with a strong group in Epidemiology.

Applications will be accepted until the position is filled but they will be considered starting on September 1, 2002.

Please submit letter of application, curriculum vitae, and a sample of recent publications. Assistant Professor applicants: Please request that a minimum of three letters of reference be sent to the address below. Associate and Full Professor applicants: Please provide a minimum of three names and addresses of individuals from whom we may request letters of reference. Further information may be obtained at website: <http://ecoevo.bio.uci.edu/>.

Send to: **Genetic Epidemiology Search Committee, Department of Ecology and Evolutionary Biology, 321 Steinhaus Hall, University of California, Irvine, CA 92697-2525.**

The University of California, Irvine, has an active career partner program; is an Equal Opportunity Employer committed to excellence through diversity; and has a National Science Foundation Advance Gender Equity Program.

THE UNIVERSITY OF TEXAS HEALTH SCIENCE CENTER AT SAN ANTONIO Department of Molecular Medicine

POSTDOCTORAL POSITIONS are available immediately to study mechanisms of DNA replication, repair, and recombination in yeast and mammalian cells. Relevant articles: *Mol. Cell* 8:1105, 2001; *Current Biol.* 10:919, 2000; *J. Biol. Chem.* 275:26196, 2000; *J. Biol. Chem.* 274:21679, 1999. These positions offer a highly competitive salary and generous fringe benefits in an interactive department. Prior training in molecular biology and protein biochemistry is desirable.

Prospective candidates should forward their curriculum vitae and the names of three professional references to:

**Dr. Alan Tomkinson, Associate Professor
Institute of Biotechnology and
Department of Molecular Medicine
The University of Texas Health Science
Center at San Antonio
15355 Lambda Drive
San Antonio, TX 78245-3207
Telephone: 210-567-7327; FAX: 210-567-7277
E-mail: tomkinson@uthscsa.edu**

The University of Texas Health Science Center at San Antonio is an Equal Employment Opportunity/Affirmative Action Employer.

FORT LEWIS COLLEGE: BIOCHEMISTRY. Sabbatical replacement position beginning September 2002 with possibility of continuing tenure track. Courses include biochemistry and general chemistry with laboratories. Ph.D. required. Submit letter of application, curriculum vitae, graduate and undergraduate transcripts, statement of teaching philosophy, and three letters of recommendation to: **Dr. Ron Estler, Department of Chemistry, 1000 Rim Drive, Fort Lewis College, Durango, CO 81301.** Review of application materials will begin on May 1, 2002, and continue until position is filled. For details, see website: <http://www.fortlewis.edu/acadaff/arts-sci/chem/chemdegr.html>. FLC is an Affirmative Action/Equal Opportunity Employer.

POSITIONS OPEN



VERA PHARMACEUTICALS

Avera Pharmaceuticals is an evolving specialty pharmaceutical company focused on the development of novel neurotherapeutic agents through in-licensing. We are seeking to fill two key positions:

VICE PRESIDENT CLINICAL DEVELOPMENT

The successful candidate will be a Board-certified Psychiatrist or Neurologist and have prior pharmaceutical company experience.

NEUROPHARMACOLOGY DIRECTOR

Requirements include a Ph.D. degree and five to 10 years of pharmaceutical industry experience with an emphasis on neuroscience drug discovery. Responsibilities include evaluation of in-licensing opportunities and management of external research and preclinical development activities.

Compensation packages for these positions include a competitive salary and equity reflecting the early stage of development of the company. Please send your résumé to:

**Avera Pharmaceuticals, Inc.
12230 El Camino Real, Suite 300
San Diego, CA 92130
Attention: Human Resources**

POSTDOCTORAL/RESEARCH ASSOCIATE RNA Polymerase II Evolution and Function

Position available to join an investigation of evolutionary and functional constraints on the RNA polymerase II C-terminal domain. Overall research program includes comparative molecular evolution, genome-level bioinformatic comparisons, and genetic analyses of CTD function in yeast. Applicants with experience in one or more of these areas and an interest in broad, interdisciplinary approaches are encouraged. Interested applicants should forward curriculum vitae, a summary of research experience and goals, and names of at least three individuals willing to submit letters of reference to: **Dr. John Stiller, Department of Biology, Howell Science Complex N108, East Carolina University, Greenville, NC 27858. Telephone: 252-328-2738; FAX: 252-328-4178; e-mail: stillerj@mail.ecu.edu.** For more information, see website: <http://personal.ecu.edu/stillerj/> or use contact information above.

East Carolina University is an Equal Opportunity/Affirmative Action University and accommodates persons with disabilities. Applicants must comply with the Immigration Reform and Control Act. Official transcript required upon employment.

The University of South Alabama invites applications for a full-time, 12-month faculty position with primary teaching responsibility in human anatomy and physiology for nursing and allied health students. The successful candidate must have qualifications to teach anatomy and physiology; however, it is desirable that he/she also have the expertise to teach either hematology or clinical chemistry. Minimum qualifications: Ph.D. in appropriately related field or M.D. The position is available to start in summer 2002. Deadline for applications is May 15, 2002, or until filled. Interested candidates should submit curriculum vitae with a cover letter along with the names of three references to: **Dr. Dan Sellers, College of Allied Health Professions, University of South Alabama, Mobile, AL 36688. Telephone: 251-380-2785; FAX: 251-380-2787; e-mail: dsellers@usouthal.edu.** Affirmative Action/Equal Employment Opportunity/Minorities/Females/Disabled.

POSITIONS OPEN

FACULTY POSITION Molecular Imaging and Contrast Agents The University of Arizona

The University of Arizona is seeking applications for a tenure-track faculty position. The primary appointment could be held in either the Department of Chemistry or the Department of Biochemistry and Molecular Biophysics. A joint appointment within The College of Science or College of Engineering and Mines is also possible. The successful candidate will be expected to have a strong background in chemistry or biochemistry and interests in developing a program in molecular imaging and creation of contrast agents. We expect to fill this position at the **ASSISTANT PROFESSOR** level but qualified applicants at other levels are invited to apply. Ph.D. in chemistry or biochemistry is required. Candidates with a strong motivation toward development of a vigorous and productive research program and a commitment to excellence in teaching chemistry or biochemistry and interdisciplinary courses at the undergraduate and graduate levels are preferred. This position will also be responsible for supervising B.S., M.S., Ph.D. students, and Postdoctoral Researcher.

To apply, please submit a letter of application, curriculum vitae including list of publications, a short research plan, and arrange for three letters of recommendation to be sent to: **Dr. Jennifer Barton, Department of Biomedical Engineering, Imaging Faculty Search Committee, The University of Arizona, 1230 East Speedway Boulevard, Tucson, AZ 85721-0104.** Please reference Job Number 20935. Review of application materials will begin January 15, 2002, and will continue until position is filled. The University of Arizona is an Equal Employment Opportunity/Affirmative Action Employer; Minorities/Women/Disabled/Veterans. Proof of authorization to work in the United States is required.

ASSISTANT PROFESSOR Molecular Virology

The Department of Microbiology, Molecular Genetics, and Immunology at the University of Kansas Medical Center invites applications for a full-time, tenure-track appointment at the Assistant Professor level in the area of molecular virology. Candidates must have a Ph.D. or M.D. degree or equivalent with training in virology/molecular biology, postdoctoral experience in molecular virology with proven accomplishments, and demonstrated ability to pursue an independent research program. The successful candidate will be expected to develop and maintain an externally funded research program in molecular virology and participate in the medical and graduate teaching of the Department. Interested applicants should submit their curriculum vitae, description of current and future research plans, copies of recent representative publications, and names and contact information of at least three references to: **Dr. Bala Chandran, Search Committee Chair, Department of Microbiology, Molecular Genetics, and Immunology, University of Kansas Medical Center, 3901 Rainbow Boulevard, Kansas City, KS 66160-7420. Website: <http://www.kumc.edu>.** Review of applications will begin July 1, 2002, and will continue until the position is filled. The University of Kansas Medical Center is an Equal Opportunity/Affirmative Action Employer.

POSTDOCTORAL RESEARCH ASSOCIATE

Two positions are available for individuals trained in biochemistry or molecular/cellular biology to conduct research on the role of oxidative stress in the aging process. Applicants should have a Ph.D. with one year of experience. Directly related education and experience in research specialization with advanced knowledge of equipment, procedures, and analysis as well as certification in working with radioactive substances is desirable. University of Southern California has particular strength in the areas of free radicals and gerontology. Please apply online at website: <http://www.usc.edu/jobs>; reference Requisition Number H08546 or H08547 under Search/Apply. Affirmative Action/Equal Opportunity Employer.



MOUNT SINAI
SCHOOL OF
MEDICINE

POSTDOCTORAL POSITION

Molecular Analysis of Hematopoietic and Vascular Stem Cells

A postdoctoral position is available to study induction of hematopoiesis and vascular growth during development. The work will focus on inductive interactions, signaling pathways and transcription factors involved in the formation of hematopoietic/vascular endothelial stem and progenitor cells and will make use of a novel explant culture system developed in this lab (see Develop. 125:5009, 1998 and Develop. 128:1717, 2001); mouse and human embryonic stem (ES); and transgenic and knockout mouse strategies.

A strong background in molecular or developmental biology is required. Preference will be given to applicants who seek their first postdoctoral position. By interview only. Salary range commensurate with experience. Please send CV, summary of research accomplishments, and the names of three references to: **Margaret H. Baron, M.D., Ph.D., Departments of Medicine, Molecular, Cell and Developmental Biology, Mount Sinai School of Medicine, Box 1079, 1425 Madison Avenue, 11-70B, New York, NY 10029-6574. Fax: 212-849-2442. E-mail: margaret.baron@mssm.edu. EOE.**

The National Institute of Dental and Craniofacial Research (NIDCR), NIH is seeking applicants for a Health Scientist Administrator position in the Division of Basic and Translational Sciences (DBTS). The position will be filled in the civil service as a GS-14 or under Title 42.

The position is for a **Director of the AIDS and Immunosuppression Program**. This Program emphasizes and encourages basic and translational research in relevant areas including the oral complications of HIV infection and AIDS; the oral transmission of HIV; opportunistic oral infections secondary to HIV infection or immunosuppression attributable to other factors such as cancer therapy; genomics and proteomics of opportunistic oral pathogens including *Candida albicans*; the development of biomedical strategies to prevent oral HIV transmission; and novel approaches to the treatment of HIV and oral opportunistic infections.

The incumbent will direct, administer and evaluate a portfolio of extramural grants, contracts and interagency agreements and will stimulate interest in and provide advice to the extramural community regarding the respective portfolio. In addition, the incumbent will participate in funding decisions, policy development, as well as implementation and coordination with other programs both within and outside the NIDCR.

The applicant is required to have a D.D.S./D.M.D., M.D., or Ph.D degree. The incumbent must have a broad scientific background in microbiology and immunology. She/he must have the ability to communicate effectively, both in writing and orally, and must also possess interpersonal skills.

The starting salary for this position is \$78,265 per annum; higher salary available commensurate with experience. A relocation bonus of up to 25% may be available to a permanent Federal employee who must relocate to accept this position, subject to individual approval. A recruitment bonus of up to 25% of base pay may be available to a non-Federal selected candidate. Physicians may be eligible for a Physician's Comparability Allowance up to \$20,000 per annum.

Copies of the full text vacancy announcement may be found on the World Wide Web at <http://www.nidcr.nih.gov/about/joblist.asp>. Interested candidates may contact **Ms. Judith Dulovich, Human Resources Management Branch at (301) 496-6971 or by email at Judith.Dulovich@nih.gov**. The application deadline for this position is June 28, 2002. Applications will be accepted if postmarked, emailed, faxed or hand carried by the close of business on the deadline date.

NIH is an Equal Opportunity Employer.



Hutchison Whampoa Limited (HWL) is a multinational conglomerate with close to 100,000 employees worldwide and a market capitalization of more than US 35 billion dollars. Hutchison Healthcare is a newly formed division under Hutchison Whampoa (China) Limited (HWCL), a wholly owned subsidiary of HWL, with its focus on botanical drug development and other healthcare related business. Currently, the Company has an opening of discovery pharmacology/biology director in its Global R&D Division located in Shanghai, China.

Director, Discovery Pharmacology/Biology

This position will lead the discovery biology/pharmacology research and provide the scientific insights in drug discovery and the latest technological developments in the field of pharmaceutical and biotechnology. The position reports directly to the Senior Vice President of the Hutchison Healthcare division based in Hong Kong. The successful candidate will be responsible for evaluating drug discovery proposals, designing, and implementing *in-vivo* animal and *in-vitro* cell models for screening active herbal extractions for metabolic diseases or cancer. Qualifications include a Ph.D. degree in life science with 5 plus years of postgraduate experiences in a drug discovery setting. Broad knowledge of molecular pharmacology/biology, functional genomics, and pathology is desired. This position requires a highly motivated individual with a strong spirit of entrepreneurship. In addition, this position commands excellent oral and written communication skills in both English and Chinese. **We also have other senior R&D positions in the following areas: clinical research, natural product chemistry, and toxicology.**

If you share our dedication to become the global leader in botanical drug development and enjoy the ever-growing healthcare industry in China after WTO entry, we want you to submit your CV by e-mail to hr-china@hwcl.com.hk or by mail to the Human Resources Department of Hutchison Whampoa (China) Limited at Rm 2108, Hutchison House, 10 Harcourt Road, Central, Hong Kong.

Health Scientist Administrator (Biological Sciences)

The Office of Scientific Review of the National Institute of General Medical Sciences, National Institutes of Health in Bethesda, MD is seeking a scientific review administrator to perform a variety of functions associated with the scientific and technical merit review of research and research training support grant applications. Duties include providing guidance on program guidelines and initiatives and on policies and procedures of the NIH peer review system. The candidate will also participate in site visits, attend meetings of study sections and review committees, prepare summary statements of review group findings and recommendations, and attend advisory council meetings to provide information concerning the review of grant applications.

Qualifications: U.S. Citizenship or Permanent Resident; Ph.D.; independent work in planning, organizing, and conducting biomedical research; and research program administration experience. Candidates must have demonstrated knowledge of biomedically relevant research and training areas, including cell and molecular biology, pharmacology, physiology, biological chemistry, and biophysics, with expertise in one or more areas. Demonstrated knowledge of bioinformatics, computational biology, or clinically related research is also desirable. Salary will be commensurate with qualifications and experience. Full Federal benefits package will be provided.

Details about the position, qualifications, and how to apply can be obtained by accessing the full vacancy announcement at http://careerhere.nih.gov/CHPublic/HRShowVac.taf?&VACANCY_uid=11218

To learn more about NIGMS, visit our Web site at www.nigms.nih.gov

NIH is an Equal Opportunity Employer



POSITIONS OPEN

THE UNIVERSITY OF TEXAS SOUTHWESTERN MEDICAL CENTER

ASSISTANT PROFESSORS: The Department of Physiology invites applications from outstanding Scientists with Ph.D., M.D., or equivalent degrees for two tenure-track Assistant Professor positions. Of particular interest are candidates who will develop independent research programs in integrative biology using genetic engineering approaches to study physiological processes in tissues and whole animals. Additional areas of interest include molecular and biophysical approaches to cell physiology involving the fields of motility and the cytoskeleton in addition to transport and ion channels. However, the excellence of the successful candidates is more important than the particular area of research. These positions are part of the continuing growth of the Department at one of the country's leading academic medical centers and will be supported by significant laboratory space, competitive salaries, and exceptional start-up packages. The UT Southwestern faculty includes four Nobel Prize winners and 11 members of the National Academy of Sciences and conducts more than 2,000 research projects annually with support totaling more than \$200 million. Applicants should submit curriculum vitae, a brief statement of research plans, and arrange to have three letters of reference sent to: **James T. Stull, Ph.D., Department of Physiology, The University of Texas Southwestern Medical Center, 5323 Harry Hines Boulevard, Dallas, TX 75390-9040.** UT Southwestern strongly encourages applications from women, minorities, and people with disabilities. An Affirmative Action/Equal Opportunity Employer.

FACULTY POSITION IN CELL BIOLOGY University of Texas Southwestern Medical Center at Dallas

The Department of Cell Biology of The University of Texas Southwestern Medical Center at Dallas seeks applications for a tenure-track position at the level of **ASSISTANT PROFESSOR**. Applicants must have a Ph.D. or M.D. degree, at least two years of postdoctoral training, and experience teaching human anatomy. Candidates are expected to develop an independent research program. Preference will be given to candidates with research programs in one of the following general research areas: cell biology, neuroscience, or functional morphology. The successful candidate will be joining a highly interactive and collegial teaching faculty.

Send curriculum vitae, a brief description of teaching experience and proposed research, and the names of five references to: **Dr. Richard G. W. Anderson, The University of Texas Southwestern Medical Center, Department of Cell Biology, 5323 Harry Hines Boulevard, Dallas, TX 75390-9039.** The University of Texas Southwestern Medical Center is an Equal Opportunity Employer.

BIOSCIENCE SYSTEM ADMINISTRATOR

The Department of Ecology and Evolution and the Undergraduate Biology Program at Stony Brook University are searching for an individual with a background in biology or a related field and experience in system maintenance of UNIX and Windows NT servers in an academic environment. The successful candidate must have a Bachelor's degree (Master's degree preferred) in biology, computer science, statistics, or a related field and five years of experience including support, maintenance, and administration of UNIX and Windows NT servers; applications support; Web page design and Web server administration; and networking of PCs and Macs. The ideal candidate will actively participate in research projects and provide leadership in the innovative use of computers in education. Tenure-track equivalent position. Application deadline is May 31, 2002; desired starting date is August 1, 2002. Please send résumé including names of three references to: **Gwen Luke, Ecology and Evolution, Stony Brook University, Stony Brook, NY 11794-5245.** Visit our website: <http://www.stonybrook.edu/cjo>. Affirmative Action/Equal Opportunity Employer.

POSITIONS OPEN

FACULTY POSITION Department of Neurosurgery University of Pennsylvania

The Department of Neurosurgery at the University of Pennsylvania is seeking an outstanding Scientist for a research-track faculty position at the **ASSISTANT PROFESSOR** level. The successful candidate is expected to develop a high-quality, independent, and extramurally funded research program in basic and applied neural stem cell biology and CNS gene therapy. Preference will be given to individuals with demonstrated experience in the isolation, culture, manipulation, and transplantation of neural stem cells; the generation and use of viral vectors for targeted delivery of marker and therapeutic genes to neural cells *in vivo* and *in vitro*; and/or the development of novel therapeutic strategies in animal models of neurologic disease, injury, or tumors. The successful candidate will be expected to interact with other Investigators in the Department on projects on brain tumor biology, traumatic brain injury, cerebral ischemia, and neurodegenerative diseases. The candidate must have a Ph.D., M.D., or M.D./Ph.D. and three to five years of postdoctoral training in neurobiology or a relevant discipline. Curriculum vitae, three letters of recommendation, a statement of research interests, and pertinent publications should be sent to:

**M. Sean Grady, M.D.
Professor and Chair
Department of Neurosurgery
University of Pennsylvania
Philadelphia, PA 19104**

The deadline for submission of applications is July 1, 2002. Additional information about research programs in the Department may be found at websites: <http://www.uphs.upenn.edu/neurosurg/index.html> and <http://www.headinjurycenter.com>. The University of Pennsylvania is an Equal Opportunity/Affirmative Action Employer. Women and minorities are encouraged to apply.

VISITING ASSISTANT PROFESSOR Ecologist/Marine Biologist

Washington College's Department of Biology invites applications for a one-year Visiting Assistant Professor position beginning August 2002. The successful candidate will teach two upper-division courses (Ecology and one in an area of interest) and two courses for nonmajors (Genes, Nature, and Society and Ecology, Society, and the Chesapeake Bay). Candidates should possess a Ph.D. although individuals near degree completion will be considered. Applicants having knowledge of estuarine ecosystems will receive preference. Washington College, a selective college of 1,200 students, is located on a tributary of the Chesapeake Bay. The college is within easy driving distance to Washington, D.C., Baltimore, Maryland, and Philadelphia, Pennsylvania. Send statement of interest, curriculum vitae, copies of undergraduate and graduate school transcripts, and three reference letters to: **Dr. Rosemary H. Ford, Chair, 300 Washington Avenue, Chestertown, MD 21620.** Review of applications will begin May 24, 2002. Washington College is an Equal Opportunity Employer. Women and minorities are especially encouraged to apply.

MARINE ECOLOGIST: The Division of Marine Science at Harbor Branch Oceanographic Institution invites applications for an **ASSISTANT SCIENTIST** (equivalent to Assistant Professor) to complement existing programs ([website: http://www.hboi.edu](http://www.hboi.edu)). We are seeking a Ph.D.-level Marine Ecologist with an established record of scientific productivity and a proven track record of external funding. Respond by 1 July 2002 by submitting curriculum vitae, reprints of five important publications, outline of research interests, and names of three references to: **Personnel Service, Harbor Branch Oceanographic Institution, 5600 North U.S. Highway 1, Fort Pierce, FL 34946.** FAX: 772-466-3644; e-mail: personnel@hboi.edu. Equal Opportunity Employer/Affirmative Action.

POSITIONS OPEN

TENURE-TRACK POSITIONS MEMBRANE PHYSIOLOGY AND TRANSPORT BIOPHYSICS Department of Physiology and Biophysics Case Western Reserve University

The Department of Physiology and Biophysics invites applications for tenure-track faculty at the junior level or from more senior faculty in the general area of membrane physiology and/or transport biophysics. We particularly encourage candidates with expertise in ion channel biophysics, ion/solute transporter biophysics, membrane protein structure, and/or proteomics. Excellence in cutting-edge biomedical research rather than specific topic area is of greatest importance.

(1) The Department has very strong research programs in molecular biophysics, cellular biology and physiology, integrated system physiology, and exercise physiology. (2) We offer a highly interactive environment, a positive and supportive research culture, and a highly competitive start-up package. (3) Life in Cleveland, Ohio, offers many cultural opportunities, low cost of living, and short commute times.

Please submit (1) curriculum vitae; (2) a statement of future research directions; (3) three representative reprints; and (4) the names, addresses, e-mail addresses, and telephone numbers of four references to: **Robert Harvey, Ph.D., Membrane Transport Faculty Search, Department of Physiology and Biophysics, Case Western Reserve University, 10900 Euclid Avenue, Cleveland, OH 44106-4970.** E-mail: rdh3@po.cwru.edu. For more details, see website: <http://physiology.cwru.edu>. CWRU is an Affirmative Action/Equal Opportunity Employer.

FACULTY POSITION The Center for Environmental and Genetic Medicine

The Institute of Biosciences and Technology, a component of the Texas A&M University System Health Science Center, seeks a tenure-track **ASSOCIATE or FULL PROFESSOR**. The candidate should have an established record of independent research productivity. Research area should include developmental molecular genetics with an emphasis on gene-environment interactions. The use of animal model systems and genome engineering technologies is preferred.

Submit curriculum vitae, statement of research interests, and the names of three references to: **Richard R. Sinden, Ph.D., CEGM Search Committee, Institute of Biosciences and Technology, 2121 West Holcombe Boulevard, Houston, TX 77030-3303.** Website: <http://www.tamu.edu/ibt/ibt.htm>. An Affirmative Action/Equal Opportunity Employer committed to diversity.

BIOINFORMATICS TOOLS FOR COMPARATIVE GENOMICS

July 15-19, 2002

University of California
Berkeley/LBNL/NHLBI

Designed for Postdoctoral, Medical, and especially Cardiovascular **RESEARCHERS** interested in applying bioinformatics tools to their research. Techniques include database searches, annotation, SNPs, microarray analysis, and more. No tuition. For further information, e-mail: pgaworkshop@lbl.gov; Telephone: 510-486-4162. Apply before June 1, 2002, at website: <http://pga.lbl.gov/workshop>.

POSITION VACANCIES

William Robert Mills Chair in

Equine Infectious Diseases

Jes and Clementine Schlaikjer Chair in
Equine Infectious Diseases

The mission of these positions will be to advance understanding of the equine immune response to microbial infection, emphasizing those aspects related to pathogenesis and protective immunity. Job descriptions may be viewed at website: <http://www.uky.edu/Agriculture/VetScience/Gluck1.htm>. The University of Kentucky is an Equal Opportunity Employer.



Cystic Fibrosis Chloride Channels Postdoctoral Scholar

Join a collaborative research group using biophysical and biochemical approaches to study the function of CFTR. Requires Ph.D. or M.D., and background in electrophysiology, (especially single-channel recording), protein biochemistry or metallobiochemistry. The successful candidate will participate in a career development program leading toward independent research and funding. Salary commensurate with experience.

Please send C.V., and names of three references to:

David C. Dawson, Ph.D.
Dept. of Physiology and Pharmacology
Oregon Health & Science University
3181 S.W. Sam Jackson Park Road L334
Portland, OR 97201
dawsonda@ohsu.edu

The National Institute of Dental and Craniofacial Research (NIDCR), NIH is seeking applicants for a Health Scientist Administrator position in the Division of Basic and Translational Sciences (DBTS). The position will be filled in the civil service as a GS-14 or under Title 42.

The position is for a **Director of the Molecular and Cellular Neurobiology Program**. This program emphasizes and encourages basic and translational research in orofacial pain and temporomandibular joint disorders (TMDs). Relevant areas include studies of peripheral and central sensitization of nociceptors related to the induction of orofacial pain (pain associated with temporomandibular disorders, etc.); the development of improved animal models for assessing pathobiological changes in the temporomandibular joint or masticatory muscles; neurotransmitters, neuromodulators and signaling pathways involved in nociception and neuroregeneration; the development of biomarkers for assessment of neuropathic conditions or neurodegenerative conditions affecting oral-craniofacial tissues; the application of genomics and proteomics to elucidate the pathological basis for orofacial pain; and the development of novel approaches to the treatment of orofacial pain.

The incumbent will direct, administer and evaluate a portfolio of extramural grants, contracts and interagency agreements and will stimulate interest in and provide advice to the extramural community regarding the respective portfolio. In addition, the incumbent will participate in funding decisions, policy development, as well as implementation and coordination with other programs both within and outside the NIDCR.

The applicant is required to have a D.D.S./D.M.D., M.D., or Ph.D degree. The incumbent must have a broad scientific background in neurobiology. She/he must have the ability to communicate effectively, both in writing and orally, and must also possess interpersonal skills.

The starting salary for this position is \$78,265 per annum; higher salary available commensurate with experience. A relocation bonus of up to 25% may be available to a permanent Federal employee who must relocate to accept this position, subject to individual approval. A recruitment bonus of up to 25% of base pay may be available to a non-Federal selected candidate. Physicians may be eligible for a Physician's Comparability Allowance up to \$20,000 per annum.

Copies of the full text vacancy announcement may be found on the World Wide Web at <http://www.nidcr.nih.gov/about/joblist.asp>. Interested candidates may contact **Ms. Judith Dulovich, Human Resources Management Branch** at (301) 496-6971 or by email at Judith.Dulovich@nih.gov. The application deadline for this position is June 28, 2002. Applications will be accepted if postmarked, emailed, faxed or hand carried by the close of business on the deadline date.

NIH is an Equal Opportunity Employer.



RESEARCH FELLOW Transplant Biology Program Rochester, Minnesota, U.S.A

A postdoctoral research position is available in the laboratory of Dr. Amy Tang of the Transplant Biology Program at Mayo Clinic in Rochester, Minnesota, (ref *Cell* 90:459-467, 1997; *Genetics* 148:277-286, 1998; *Development* 128:801-813). Applicants must have a Ph.D. and/or M.D. and should have experience in the fields of signal transduction, molecular biology, biochemistry, genetics, or pharmacogenomics. Experience with *Drosophila*, forward and reverse genetic screens, and mutant analyses is highly desirable.

Salary will be determined by the successful candidate's experience. There is an attractive benefit package. Mayo Clinic is a not-for-profit organization. Mayo integrates research with clinical practice and education in a multi-campus environment. For further information please visit <http://www.mayo.edu/research/>.

Applications, including curriculum vitae and bibliography, summary of past accomplishments, and the names of three references, should be sent to:

Dr. Amy Tang
Transplantation Biology
Medical Sciences 2-85
Mayo Clinic, 200 First Street SW
Rochester, MN 55905
507-538-1878
Tang.Amy@mayo.edu

Mayo Foundation is an affirmative action and equal opportunity employer and educator.



Help shape the future of Basic and Clinical Neuroscience at the NIH

The National Institute of Neurological Disorders and Stroke, NIH, is seeking a scientist or physician with experience in Immunology or Virology to serve as **Program Director** for the planning, evaluation, and administration of research on **HIV infection of the nervous system**. The successful candidate will join a highly interactive group of scientists and clinicians directing research programs in all areas of modern neuroscience and neurological disorders. He/she will plan and implement a cutting edge research program through active communication with the professional and lay communities as well as program staff from other institutes and agencies.

Applicants should have a Ph.D. and/or M.D. degree in a relevant field of biomedical science. This is a GS 13/14 civil service position (salary range \$66,229.00 - \$101,742.00). Physicians may be eligible for a Physician's Comparability Allowance. Permanent U.S. residents may apply for consideration under temporary appointments.

Applicants should submit by **July 1, 2002** a letter of application (refer to vacancy # **NINDS-02-0600**), a brief description of career interests, and a curriculum vitae and bibliography to: **Mr. Luis Arvelo, HRB, NINDS, NIH, Building 31, Room 8A23, 31 Center Drive, MSC 2540 Bethesda, MD 20892-2540; Tel. (301) 435-6033. FAX: (301) 480-0383; e-mail: la45j@nih.gov**. Applicants are **strongly encouraged** to obtain specific information concerning the knowledge, skills and abilities (KSAs) needed for the position by contacting **Mr. Arvelo at (301) 435-6033**. For complete information regarding the vacancy please see our Web site at: http://careerhere.nih.gov/CHPublic/HRShowVac.taf?&VACANCY_uid1=11361

NIH IS AN EQUAL OPPORTUNITY EMPLOYER

POSITIONS OPEN

PATHOLOGIST **Cancer Research Center of Hawaii**

The University of Hawaii is seeking a Research Pathologist to fill a faculty position at the Cancer Research Center of Hawaii. The Center is an NCI-designated cancer center that capitalizes on unique research opportunities related to the multiethnic population in Hawaii. The Center has several well-funded research programs and an emerging clinical investigations program. Additional resources include a population-based tumor registry and a growing tissue repository. The successful candidate will be expected to pursue independent research, to collaborate in ongoing epidemiologic and molecular investigations, and to direct a research pathology core facility. The incumbent will also be encouraged to provide instructional and consultative services at the University and its affiliated medical centers. Candidates must be Board certified in anatomic pathology or anatomic and clinical pathology, have significant experience in molecular pathology, and must have demonstrated research productivity. Faculty rank and salary will be commensurate with experience. Position will remain open until filled. Please send application, a statement of current and future research interests, and the names of three references to: **Brian F. Issell, M.D., Chair, Pathology Search Committee, 1236 Lauhala Street, Honolulu, HI 96813. Telephone: 808-586-3015; e-mail: personnel@crch.hawaii.edu; website: <http://www.crch.org>. Equal Employment Opportunity/Affirmative Action Employer.**

HEALTH SCIENCE SPECIALIST **U.S. Department of Veterans Affairs** **Medical Research Service**

Medical Research Service, Department of Veterans Affairs (VA), is recruiting for the position of Health Science Specialist to be located at VA Central Office, Washington, D.C. Candidates must have a Ph.D. degree with a research background in an area relevant to biomedical research. Experience in human experimentation and grant writing and/or review is desirable. Applicants with IRB experience will receive special consideration. *Applications will only be accepted from U.S. citizens.* Position is at the GS-13 level. Benefits package and limited relocation assistance available. Applicants should send recent curriculum vitae and a letter summarizing research and administrative experience to: **Director, Medical Research Service (121F), VA Central Office, 810 Vermont Avenue N.W., Washington, DC 20420.** Applications will be accepted until May 30, 2002. For further information, contact: **LeRoy Frey, Ph.D.; Telephone: 202-408-3630; e-mail: leroy.frey@hq.med.va.gov.** VA is an Equal Opportunity Employer. Reasonable accommodations will be made for applicants with disabilities.

RESEARCH ASSOCIATE/ **POSTDOCTORAL FELLOW** **Molecular Immunology/Biology**

A full-time position is available to develop novel antibody constructs for applications in the detection, diagnosis, and therapy of cancer. Must have experience in gene construction and protein expression. Experience with immunotechnology is desirable but not necessary. Send a cover letter describing research interests, curriculum vitae, and the names of three references to: **Director, Laboratory Administration, Garden State Cancer Center, 520 Belleville Avenue, Belleville, NJ 07109. FAX: 973-844-7020; e-mail: gsc@att.net. Equal Opportunity Employer.**

CHEMIST: Research, analyze, design synthetic schemes for pharmaceutical intermediates, metabolites, by-products, active pharmaceutical products, standards, and chemicals needed for pharmaceutical research. Requires Ph.D. in chemistry plus three years of experience in research, which must include synthetic design, isolation and purification techniques, drug design, and molecular manipulation. Nine a.m. to five p.m.; salary is \$69,398. Apply to nearest Job Service office or submit résumé to: **717 Market Street, Wilmington, NC 28401.** Résumés must include Social Security number. Job Order NC9521552/DOT code 022.061-010.

POSITIONS OPEN



RESEARCH SCIENTIST **U.S. Department of Agriculture (USDA)** **Agricultural Research Service (ARS)**

The U.S. Department of Agriculture, Agricultural Research Service, Plant Sciences Institute, Nematology Laboratory in Beltsville, Maryland, is seeking applications for an Interdisciplinary Research Plant Pathologist/Zoologist/Microbiologist, GS-12/13-434/410/403. Salary is commensurate with experience (GS-12: \$55,694 to \$72,400; GS-13: \$66,229 to \$86,095 per annum) plus benefits. *Candidates must be U.S. citizens.* The incumbent's research assignment will involve planning and conducting independent and cooperative research primarily on the biological and chemical mode of action of soil amendments useful for controlling plant-parasitic nematodes and associated crop losses. For information on the research program, contact: **Dr. David J. Chitwood; Telephone: 301-504-5660; e-mail: chitwood@ba.ars.usda.gov.**

Candidates must request a copy of the Vacancy Announcement (ARS-X2E-2268) by either calling **Telephone: 301-504-1482** or by copying the full text announcement from the ARS website: **<http://www.ars.usda.gov>.** Candidates must submit specific information as outlined in the vacancy announcement. Applications must be postmarked by the closing date of May 20, 2002. *USDA/ARS is an Equal Opportunity Provider and Employer.*

SENIOR GOOD CLINICAL PRACTICES QUALITY ASSURANCE SPECIALIST. Conduct GCP (good clinical practices) audits at investigation sites to ensure clinical trials comply with all guidelines/regulations established by FDA, ICH and Company's standard operating procedures and directives. Develop and implement a quality management system to evaluate company's internal systems for clinical document control and clinical supply management. Provide guidance, support, and training to quality assurance staff and provide ongoing feedback to management on quality assurance-related risks and compliance issues. Review/audit clinical study report, protocol, case report form (CRF), source documentation worksheet, and informed consent. Requires: B.S. in life sciences or M.D. and three or more years of experience in job offered or related occupation as Clinical Quality Assurance Auditor/Scientist/Specialist. Experience must reflect in-depth knowledge of ICH GCP guidelines and federal regulations relevant to clinical research (21 CFR parts 50, 54, 56, 312, and 314). Must be available for frequent domestic travel (40%). Salary commensurate with experience. **Aventis Pharmaceuticals, Bridgewater, NJ.** Résumé to: **P.O. Box 110, 1200 New York Avenue, N.W., Washington, DC 20005.**

SENIOR RESEARCH SCIENTISTS. Job duties in Biophysics Research Institute include: Determine neuronal circuitry of cocaine-induced craving in the human brain from four-dimensional functional MRI (fMRI) data sets. Determine preclinical risk marker for Alzheimer's disease from mildly cognitive-impaired subjects. Develop and/or implement signal/image processing strategies for fMRI studies, especially on the spontaneous low frequency analysis. Independently develop computer programs for applying statistical methods to elucidate mechanisms of fMRI signals. Minimum requirements: Ph.D. in signal processing plus two years of experience in job offered or in medical image processing. Forty hours per week from 8:30 a.m. to 5 p.m. *Applicants must have proof of present legal authority to work in the United States on a full-time basis.* Applicants should contact: **Employment Office SRS0203, Medical College of Wisconsin, 8701 Watertown Plank Road, Milwaukee, WI 53226. FAX: 414-456-6502; e-mail: mcw_ee@mcw.edu; website: <http://mcw.edu/hr>.** Call our Jobline at **Telephone: 414-456-6502.** *Equal Opportunity Employer; Minorities/Females/Disabled/Veterans.*

POSITIONS OPEN

RESEARCH MOLECULAR BIOLOGIST **(PLANTS) GS-0401-12/13 OR RESEARCH** **PLANT PHYSIOLOGIST GS-435-12/13**

The U.S. Department of Agriculture, Agricultural Research Service, Wheat, Sorghum, and Forage Research Unit, which is stationed on the East Campus, University of Nebraska-Lincoln, is seeking a Research Plant Physiologist or Research Molecular Biologist GS-12/13. Salary range is \$54,275 to \$83,902 and is commensurate with experience. *Candidates must be U.S. citizens.* The incumbent is a member of a research team that is developing germplasm of perennial grasses with improved biomass yield and quality attributes for use in bioenergy production systems or by ruminant animals using conventional and molecular technologies. The incumbent is responsible for conducting research using biochemical, physiological, and molecular technologies to identify and characterize plant physiological processes, biochemical pathways, and genes that control biomass feedstock quality and production traits including biomass yield. Emphases will be on plant cell wall composition and properties. The incumbent will utilize this information to assist other team Scientists in developing improved cultivars and management practices for use as biomass energy crops or for forage. Candidates must have an advanced degree(s) in plant molecular biology, plant physiology or cell biology, or plant biochemistry with a strong emphasis on molecular biology methods and techniques for studying plant physiological processes and products. In order to ensure submission of a complete application, applicants must request a copy of the Vacancy Announcement by calling **Telephone: 301-504-1484** or by printing from the website: **<http://www.afm.ars.usda.gov/divisions/hrd/index.html>** and referencing position ARS-X2W-2241. Additional information on the position can be obtained by contacting: **K.P. Vogel; Telephone: 402-472-1564.** Applications must be postmarked by June 6, 2002. *USDA/ARS is an Equal Opportunity Employer and Provider.*

EDITOR-IN-CHIEF **BioScience**

The American Institute of Biological Sciences, a nonprofit scientific association in Washington, D.C. (**website: <http://www.aibs.org>**), seeks an Editor-in-Chief to join the staff of its peer-reviewed monthly publication, *BioScience*. Responsible for the acquisition, selection, and peer review of scientific manuscripts on a broad range of biological topics. Requires a Ph.D. in a scientific discipline commensurate with the AIBS mission and prior experience in scientific journal editorial operations. The successful candidate will be a team-oriented leader/innovator who thrives in a fast-paced environment, welcomes challenges, and seeks growth beyond the status quo. Benefits include health care and retirement plan. Send cover letter, résumé, and salary requirements to: **Executive Director, Attention: Editor Search, AIBS, 1444 Eye Street N.W., Suite 200, Washington, DC 20005. FAX: 202-628-1509; e-mail: rogrady@aibs.org.**

NEUROBIOLOGY POSTDOCTORAL POSITIONS available immediately to study the cellular and molecular basis of odor and pheromone sensing in genetically altered mice (*Nature* 405:792, 2000; *TINS* 24:191, 2001; *Science* 294:2172, 2001). Highly motivated candidates with a track record in either patch clamp recording, Ca²⁺ imaging, molecular genetics, or mouse behavior are encouraged to apply. Applicants must have a Ph.D. or M.D. Positions offer highly competitive salary/fringe benefits and interaction with Neuroscientists in the Department (**website: <http://neurobiology.umaryland.edu>**) and the Neuroscience Program (**website: <http://neuroscience.umaryland.edu/>**). Send curriculum vitae and names of three references to: **Dr. Frank Zufall, Department of Anatomy and Neurobiology, University of Maryland School of Medicine, 685 West Baltimore Street, Baltimore, MD 21201. E-mail: zfuf001@umaryland.edu.**

**University of Rochester School of Medicine and Dentistry
Departments of Pediatrics and Environmental Medicine and
The Cancer Center**

Faculty Positions in Pulmonary Biology and Lung Cancer

The University of Rochester is seeking three faculty positions at the Assistant or Associate Professor level. All three recruits will be housed in a new medical research building where the third floor is dedicated to Lung Biology and Disease. A state-of-the-art inhalation toxicology and gene therapy facility is under construction. The new recruits will complement an existing team of interactive and well-funded investigators whose research focuses on adult and pediatric lung disease. The first position is for a PhD or MD level scientist interested in molecular and cellular aspects of oxidative cell injury, signal transduction and repair, or lung remodeling. Applicants interested in lung development are also encouraged to apply. The second position is for an MD or MD/PhD board eligible/certified in Hematology/Oncology with an active program in the area of lung cancer. This position is 80% protected time for research, with 20% patient care. The third position is for a PhD or MD/PhD scientist with research emphasis on molecular and cellular aspects of environmental/occupational lung disease and respiratory toxicology. Experience with in vivo models of inhalation toxicology is highly desirable. All three positions are tenure track, with outstanding start-up and relocation packages. Candidates with existing grant support are especially encouraged to apply. All faculty appointments have the opportunity to participate in NIH funded pre-doctoral and post-doctoral training programs.

Review of applications by the search committee will continue until the positions are filled. Applicants should submit a cover letter indicating to which position they are applying, a curriculum vitae that includes a summary of research accomplished and research plans, and the names and addresses of three references to: **Pulmonary Biology Search Committee, c/o Ms. Kim Butler, Box 850, MRBX Rm 3-111137, University of Rochester School of Medicine and Dentistry, 601 Elmwood Ave., Rochester, NY 14642.**

*The University of Rochester is an Equal Opportunity
Employer and Educator*

**Tenure-track Scientist -
Auditory Neuroscience**

MRC Institute of Hearing Research, Nottingham

The postholder will be part of a large, well supported team working on a new initiative in cognitive hearing research. The work in this post will involve combined neurophysiological recording and psychoacoustic training and testing. The aim is to strengthen our understanding of behavioural influences on sound representation and processing in the central auditory system. A background in auditory neuroscience is desirable, but we welcome enquiries from those with other relevant skills and experience. The postholder will be expected to build up and lead a small research team.

The applicant should have a PhD and at least 3-5 years' post-doctoral experience in one or more appropriate research placements.

The position is initially for 5 years, with the subsequent opportunity of conversion to permanent status. The appointment, according to qualifications and experience, will be to a starting salary in the range £26,163 to £31,396, plus a 6% scientific supplement (rising to 9% in August 2002).

For an informal discussion about this position, please contact Professor David Moore on (01865) 272507 or email dmoore@physiol.ox.ac.uk.

Further particulars and an application form (quoting ref. DM01) are available by:

- Writing to Personnel, MRC Institute of Hearing Research, University Park, Nottingham NG7 2RD
- Downloading off the "Job Vacancies" section of the Institute's website (<http://www.ihr.mrc.ac.uk>)
- Sending an email to jobs@ihr.mrc.ac.uk or
- Phoning the IHR job line on 0115 951 8501

Applicants should send a CV and completed application form with a letter outlining interest and experience and details of at least three referees to be received by 17th May 2002.

MRC
Medical Research Council

*The Medical Research Council is an
Equal Opportunities Employer.
'Leading Science for Better Health'*

*It's what we do.
It's who we are.*

Employment opportunities in PA

Merck & Co., Inc. is a global leader in the research, development, manufacturing, and delivery of world-class pharmaceutical products and services. That's just one of the reasons we're consistently recognized by *Fortune* Magazine as one of "America's Most Admired Companies." We currently have a Postdoctoral position available immediately in our **West Point, PA** facility for a:

MOLECULAR BIOLOGIST

In this role, you will be involved with molecular characterization of a schizophrenic model in rodents. A Ph.D. in Molecular Biology, MD with experience in neurobiology and/or molecular biology, or equivalent is preferred. Experience with transcription profiling technology and/or neuroscience is a plus.

In return for your considerable skills, we offer an excellent salary, one of the best 401(k) plans in the nation, and opportunities for personal growth. Please visit our Website at www.Merck.com/careers. You should create a profile and submit your resume. In order to be considered for this position, please reference job number **A114101, Molecular Biologist**. We are an Equal Opportunity Employer. M/F/D/V.



MERCK

**COMMITTED TO BRINGING OUT
THE BEST IN MEDICINE**

Visit us at www.merck.com/mrl

SOUTHWESTERN

RESEARCH SCIENTIST

Molecular Biology/Nuclear Receptors

Refer to Job # 02-975

A position is available immediately to investigate the mechanisms whereby xenobiotics, bile acids, and fatty acids regulate gene expression and biological processes through activation of nuclear receptors. A wide variety of projects are available including the identification of novel ligands, the identification and characterization of nuclear receptor target genes and elucidation of nuclear receptor function through the use of transgenic/knock out systems. Applicants should have a Ph.D. and 3-4 years experience in molecular biology. Experience in pharmacology is highly desirable.

Please submit an Interest Form via the Human Resources website at hr.swmed.edu or apply in person to: **Office of Human Resources, Monday-Friday, 8 a.m.-5 p.m., Exchange Park, 14th floor, 6300 Forest Park Rd., Dallas, TX** or send resume to: **P.O. Box 45310, Dallas, TX 75245, FAX: 214-648-9809.**

POSTDOCTORAL POSITIONS

Applicants should have a Ph.D. that includes 3-4 years of experience in molecular biology.

Please send curriculum vitae, a summary of research experience, and the names of three references to:

**Dr. Steven Kilewer
The University of Texas Southwestern
Medical Center at Dallas
5323 Harry Hines Blvd.
Dallas, Texas 75390-8594**

UT Southwestern is an equal opportunity institution.

POSITIONS OPEN

STAFF FELLOW

The Division of Viral Products of the Center for Biologics Evaluation and Research, FDA, has an immediate opening for a Staff Fellow; laboratories are located on the NIH campus in Bethesda, Maryland. The successful applicant would join a team of Investigators in a research program that addresses issues related to the development and evaluation of new-generation smallpox vaccines. The area of poxvirus-host interactions is of particular interest. The selected candidate would also be expected to participate in regulatory review of viral vaccine applications. Candidates should have a Ph.D. or M.D.; laboratory experience and training in virology, molecular biology, or biochemistry (but less than five years since granting of degree); and demonstrated interest in poxvirus pathogenesis and/or host responses. Appointment is for an initial two-year period but may be extended by mutual agreement. *Candidates must be either U.S. citizens or resident aliens eligible for citizenship within four years.* Salary is dependent on training and experience. Candidates should note Weir-SF on all correspondence and send curriculum vitae, bibliography, statement of research interests, and names/contact information for three references to: **CBER Recruitment Staff, 1401 Rockville Pike, HFM-123, Rockville, MD 20852-1448.** E-mail: recruitment@cber.fda.gov. *FDA is an Equal Opportunity Employer. This agency provides reasonable accommodations to applicants with disabilities.*

RESEARCH ASSISTANT

This Research Assistant position is available immediately in the Department of Urology. We are seeking a Researcher to study free radicals in cell injury associated with kidney diseases. Candidates should hold a Bachelor's degree with research experience using modern techniques in molecular biology and cellular biochemistry. Experience in animal handling and cell culture is desirable.

Applicant should forward curriculum vitae and names of three references to:

**Henry Ford Health System
Urology Research, 2F71
Attention: Michelle Holz
1 Ford Place
Detroit, MI 48202
E-mail: mholz1@hfhs.org
Telephone: 313-874-4785
FAX: 313-874-4729**

Equal Opportunity Employer.

POSTDOCTORAL POSITION Cornell University

Postdoctoral position at Cornell University to investigate the role of prefrontal noradrenergic and dopaminergic systems in attentional function and dysfunction (prenatal cocaine exposure). This is an interdisciplinary project involving the integration of behavioral (attentional) and neural data in a rodent model. Experience in rodent behavioral work is highly desirable as is expertise in statistical analysis and managing large data sets. Please send curriculum vitae, a one-page statement of research interests and goals, and three letters of reference to: **Barbara Strupp, Ph.D., Department of Psychology and Division of Nutritional Sciences, 109 Savage Hall, Cornell University, Ithaca, NY 14853-6401.** E-mail: bjs13@cornell.edu; FAX: 607-255-1033.

RESEARCH ASSOCIATE

Position available for a Scientist interested in characterizing gene expression in HBV and HCV-associated liver cancer. This will require *in situ* hybridization, Northern and Western blotting, and immunostaining. The candidate should collect surgical tumor and nontumor samples from patients for this work. This person will also have a strong background in molecular and cell biology and be able to evaluate liver pathology. Please send curriculum vitae to: **Dr. Mark Feitelson, Room 222 Alumni Hall, Thomas Jefferson University, 1020 Locust Street, Philadelphia, PA 19107.** E-mail: mark.feitelson@mail.tju.edu. *Equal Opportunity Employer.*

POSITIONS OPEN

GROUP LEADERS/STAFF SCIENTISTS/RESEARCH ASSOCIATES Drug Metabolism and Pharmacokinetics Genomics Institute of the Novartis Research Foundation

In support of the new drug discovery efforts at GNF, several positions are available immediately to conduct *in vitro* and *in vivo* drug metabolism and pharmacokinetic studies such as metabolic stability, permeability, CYP inhibition, metabolite ID, animal PK, and bioanalytical chemistry. Qualified candidates should have B.S./M.S. or Ph.D. in drug metabolism, pharmacokinetics, or pharmaceutical sciences and two to five years of industrial experience in the above areas. Other desirable attributes include enthusiasm for fast-paced drug discovery work; good communication skills; team spirit; the ability to introduce innovative, high-throughput technologies; and an understanding of drug absorption, metabolism, and kinetics.

Please submit curriculum vitae and any supporting documents to: **Genomics Institute of the Novartis Research Foundation (GNF), Job Code: KZ, 10675 John Jay Hopkins Drive, San Diego, CA 92121.** FAX: 858-812-1670; e-mail: jobs@gnf.org (subject line must include Job Code); web-site: <http://www.gnf.org>.

The Genomics Institute of the Novartis Research Foundation (GNF), located in the Torrey Pines area of San Diego, California, is funded by the Novartis Research Foundation and dedicated to the development and application of new methods and techniques for genome-wide biological discovery and biomedical research. GNF offers excellent compensation and a great benefit package. *Equal Opportunity Employer.*

ASSOCIATE PROFESSOR/FULL PROFESSOR. The Division of Medical Oncology in the Department of Medicine at the University of Texas Health Science Center at San Antonio is seeking outstanding individuals to join our faculty as **DIRECTOR OF PROSTATE CANCER RESEARCH.** The Director will serve as a leader of the Prostate Cancer Program of the San Antonio Cancer Institute and will coordinate our thematic approach to the prevention and treatment of prostate cancer. An ability to interact and collaborate with researchers with diverse backgrounds is required as current programs range from prevention research to the use of innovative therapies for advanced disease. The successful applicant must possess a Ph.D., M.D., or equivalent degree and have an active, independently funded laboratory research program in the general area of prostate cancer biology. Competitive start-up funds, salary, and laboratory space are available. Please respond with a letter describing your research interests and curriculum vitae to: **Robert A. Marciniak, M.D., Ph.D., Search Committee Chair, Medical Oncology, UTHSCSA, 7703 Floyd Curl Drive, MSC 7884, San Antonio, TX 78229-3900.** Applications should be received no later than August 31, 2002, and may be sent as PDF or MS Word files to e-mail: facultysearch@oncology.uthscsa.edu. *UTHSCSA is an Equal Opportunity/Affirmative Action Employer.*

POSTDOCTORAL RESEARCH ASSOCIATE positions are open to study bidirectional signaling by Eph receptor tyrosine kinases and ephrin ligands and its role in development and tumor metastasis (*Nature Cell Biol.* 2:62, 2000; *Nature Cell Biol.* 3:527, 2001). Model systems in use include cell migration and morphogenesis *in vitro*, tumor metastasis *in vivo*, proteomics, peptide phage display, and experimental therapy using genetically engineered mice. Motivated and creative candidates with Ph.D. and/or M.D. degree and background in molecular/cell biology, biochemistry, or tumor biology/transgenic mice are welcome to apply. We offer generous salaries and fringe benefit packages. Please send your curriculum vitae to: **Dr. Bing-Cheng Wang, Rammelkamp Center for Research R421, Case Western Reserve University School of Medicine, 2500 Metro-Health Drive, Cleveland, OH 44109.** E-mail: bxw14@po.cwru.edu. *Equal Opportunity Employer.*

POSITIONS OPEN

FACULTY POSITION BIOLOGY Rocky Mountain College

Tenure-track position for an **ECOLOGIST.** Seeking a Biologist with a Ph.D. (by fall 2002) with teaching experience and expertise in ecology. Other teaching responsibilities include general biology, genetics, evolution, conservation biology, and a course in candidate's specialty area. GIS skills valuable. Interest in interdisciplinary teaching is preferred. Rocky Mountain College is a private, liberal arts college with a diverse selection of professional and academic programs. The College is located in Billings, Montana, a community of approximately 100,000 residents. It is the oldest institution of higher education in Montana, predating statehood by 11 years, and today stands as one of only two private liberal arts colleges in a two-state region. It is distinctive in its small student body (800), a student: faculty ratio of approximately 14:1, and the ability to empower students with individual support. Submit a letter of interest, curriculum vitae, transcript from graduate institution, and three letters of recommendation to: **Bob Robertson, Director of Personnel, Rocky Mountain College, 1511 Poly Drive, Billings, MT 59102.** E-mail: jobs@rocky.edu. For more information about RMC, refer to our website: <http://www.rocky.edu>. We will begin reviewing applications immediately. *Rocky Mountain College is an Equal Opportunity/Affirmative Action Institution.*

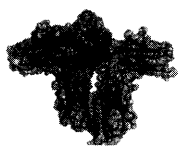
ASSISTANT PROFESSOR Viral Immunology

The New England Regional Primate Research Center (NERPRC) of Harvard Medical School seeks applicants for a tenure-track Assistant Professor position. Primary responsibility will be to establish a high-quality, independent research program that can integrate and cooperate with other research activities at NERPRC. Applications are particularly encouraged from those with an interest in the cellular immune responses to herpesviral or other viral infections with nonhuman primate models. Candidates should have a Ph.D., M.D., or D.V.M. degree and at least three years of postdoctoral research experience. Send letter of interest, curriculum vitae, reprints of key publications, and names of three references to: **Dr. Ronald C. Desrosiers, Director, New England Regional Primate Research Center, One Pine Hill Drive, Box 9102, Southborough, MA 01772-9102.**

Harvard University is an Affirmative Action/Equal Opportunity Employer and encourages the applications of qualified women and minorities.

Senior POSTDOCTORAL POSITION with managerial responsibility: Play a major role in the development of a genetic interaction map in budding yeast. Join a funded multilaboratory collaboration (**Spencer/Boeke/Boone**) to discover synthetic lethal interactions in a genome-wide strategy and develop tools to evaluate the biological significance of this resource. The ideal candidate will have previous experience in budding yeast molecular genetics, microarray hybridization, and/or high-throughput genome work as well as demonstrated experience in managing people. The successful applicant will manage a team of at least two technicians to carry out the microbiological and microarray aspects of this project. Forward curriculum vitae and three references to: **Forrest Spencer, Johns Hopkins University School of Medicine, Ross 850, 720 Rutland Avenue, Baltimore, MD 21205.** E-mail: fspencer@jhmi.edu.

ASSOCIATE RESEARCH SCIENTIST, Yale University, Department of Psychiatry. Five-year NIMH funding to map EEG and evoked potentials from surface and depth electrodes onto MRI. Ongoing research includes ERPs in schizophrenia and cocaine abuse and TMS measures of cortical excitability. Ample time for the candidate to pursue his/her own projects. Yale is a very intense research environment. For more information, please e-mail: nash.boutros@yale.edu.



Postdoctoral Fellowships in Structural Biology and Protein Chemistry at the University of Chicago

Join a stimulating environment for collaborative research at the interface of chemistry, biology and biophysics. Postdoctoral Research Associate positions are immediately available in the following laboratories in the Department of Biochemistry and Molecular Biology and the Institute for Biophysical Dynamics:

Stephen Kent: Chemical protein synthesis; the chemical basis of protein function, particularly enzyme catalysis; Design and build protein molecules with novel properties.

Shohei Koide: Folding and assembly mechanisms of "single-layer" beta-sheets; Protein design; Engineering of small antibody-mimics, "monobodies"; NMR spectroscopy.

Anthony Kossiakoff: Structural basis of cytokine-induced receptor signaling; Engineering novel protein-protein interfaces; X-ray crystallography; Phage display; Surface plasmon resonance.

Please send application including CV and contact information for two or more referees to:

Post-Doctoral Fellowships
Department of Biochemistry and Molecular Biology
University of Chicago
920 East 58th Street, Chicago, IL 60637
E-mail: bmbjobs@bsd.uchicago.edu

For more details please visit <http://bmb.bsd.uchicago.edu/>

*The University of Chicago is an Affirmative Action/
Equal Opportunity Employer*



Postdoctoral Positions Available



Research Training in Hematology, Immunology and Stem Cell Biology



Children's Hospital Oakland Research Institute invites applications for a laboratory-based Investigator position in molecular and cellular biology. This position provides the opportunity for research training in a wide variety of areas, including translational clinical research in sickle cell anemia and thalassemia, red cell membrane structure and function, immunologic development and immune response to vaccines, bioiron, molecular regulation of ferritin synthesis and iron toxicity, lipid mediated signal transduction, genetic polymorphisms contributing to disease severity, cord blood stem cell biology, transfusion medicine biology and stem cell transplantation. Eligible trainees with PhD, MD/PhD or MD degrees and a strong background in cell or molecular biology, genetics, biochemistry, transplantation biology, transfusion biology or clinical research are encouraged to apply.



For more information, please visit our websites
www.childrenshospitaloakland.org
and www.chori.org

Applications must be received by March 1, 2003.
Please send curriculum vitae and a one-page candidate statement to: **Dr. Elizabeth Theil, Senior Scientist, Co-Director, T32 Training Program, Children's Hospital Oakland Research Institute, 5700 Martin Luther King Jr. Way, Oakland, CA 94609.** EOE

CHILDREN'S HOSPITAL



& RESEARCH CENTER AT OAKLAND



**HARVARD
UNIVERSITY**

*Faculty of Arts
& Sciences*

CENTER FOR IMAGING AND MESOSCALE STRUCTURES

Microscopist for Environmental/ Biological Imaging

Harvard University's Center for Imaging and Mesoscale Structures (CIMS) seeks an electron microscopist to operate and maintain an FEI (Philips) Environmental Scanning Electron Microscope (ESEM). This state-of-the-art, computer-controlled ESEM enables the imaging of biological samples near atmospheric pressures through the use of a gaseous secondary detector. The applicant would spend half time working with users of the ESEM in Harvard's Organismic and Evolutionary Biology (OEB) Department; and half time assisting users of CIMS' microscope facilities. Manage, operate, interpret images, and maintain the new ESEM in OEB. Operate 3 SEMs and X-ray spectroscopy (EDS) at CIMS. Perform biological and materials sample preparation. Train and assist faculty and student users of the microscopes.

Degree in Electron Microscopy and relevant experience using microscopes required. Demonstrated experience in biological, environmental, or medical imaging. Must have working knowledge of the design and functioning of electron microscopes, digital image acquisition and processing, and computer systems. Self-motivation, patience, and the ability to work well with a growing technical staff, faculty, and students. The position offers significant opportunity for growth as CIMS expands. To learn more about the Center for Imaging and Mesoscale Structures visit our website: www.cims.harvard.edu. **Req. #13184**

For more information on careers or to apply on-line, visit www.hr.harvard.edu/employment or send your resume and cover letter to Harvard University, Req. #13184, Resume Processing Center, 11 Holyoke Street, Cambridge, MA 02138.

At Harvard University, diversity is an essential source of vitality and strength.

MSU-DOE PLANT RESEARCH LABORATORY Michigan State University

Faculty Positions in Plant Biology

The MSU-DOE Plant Research Laboratory (PRL) has **two tenure-track faculty positions** available at the Assistant Professor level. The specific areas of research are not defined, but candidates should plan to employ optimal technologies to investigate important unsolved problems in plant biology. We are especially interested in identifying individuals whose expertise complements that of the existing faculty and who are studying problems that are unique to plants or where plant systems offer particular advantages.

The PRL, with funding from the U.S. Department of Energy, provides an excellent environment for creative research in plant biology. Modern laboratory space, set-up funds, and continuing research support will be provided. Michigan State University, with unusual breadth and depth in the plant sciences, provides a stimulating atmosphere with excellent colleagues and facilities. PRL faculty members are jointly appointed in an appropriate academic department.

Applicants should have postdoctoral research experience with demonstrated productivity and evidence of potential for independent research. Women and minorities are particularly encouraged to apply. To assure consideration, applications should be received by June 1, 2002. Applications should include a curriculum vitae, a summary of research accomplishments, and a brief description of future plans. Candidates should arrange to have three letters of reference sent to the search committee. All materials should be sent to:

Faculty Search Committee
MSU-DOE Plant Research Laboratory
Michigan State University
East Lansing, MI 48824

*Michigan State University is an Equal Opportunity/
Affirmative Action Employer.*

POSITIONS OPEN

STAFF SCIENTIST Gene Knockouts

The Central Transgenic Facility (CTF) of the National Eye Institute (NEI), National Institutes of Health (NIH), in Bethesda, Maryland, is recruiting for a Staff Scientist (Doctoral level) to generate gene knockout mice as part of a service organization. The NEICTF is well established and has provided NEI researchers with quality transgenic technology and expertise for over 10 years. The position involves providing advice to Researchers on design and construction of gene targeting vectors; maintaining mouse embryonic stem (ES) cells; transfecting, selecting, and screening ES cell clones for targeted alleles; and injecting targeted ES cells into mouse blastocysts to generate chimeric mice. This position might also include generating transgenic mice and rats depending on facility demands. The position is a term appointment, renewable indefinitely upon mutual agreement, and is intended to be long-term with the individual playing a major role in the development of genetically altered animal models in the NEI. *Applicants must be U.S. citizens or permanent residents and have a Ph.D. or M.D. degree.* Previous experience in mouse ES cell work and gene targeting is essential. Salary is commensurate with the degree of relevant experience and training in the field with the range starting at \$66,229. Attendance at one national scientific meeting per year may be possible. This is not a Principal Investigator position and is not endowed with independent funding, space, or autonomy. Please send curriculum vitae, bibliography, and contact information for three references to: **Ms. Regina Reiter, NIH, NEI Personnel Office, 6120 Executive Boulevard, Suite 200, MSC 7131, Bethesda, MD 20892-7131.** Applications must be received or postmarked by May 10, 2002. Incomplete applications will not be considered.

NIH/NEI is an Equal Opportunity Employer.

RESEARCH: Research position in the Division of Rheumatology, Department of Medicine, at the University of Colorado Health Sciences Center in Denver, Colorado. This position requires a Ph.D. in immunology and at least two years of postdoctoral training in immunology. The applicant must have substantial expertise in the analysis of B cell signal transduction using single cell methods as well as traditional flow cytometric and biochemical techniques. The primary responsibility will be to determine the role of complement receptor Type 2 (CR2) and other B lymphocyte coactivators in cellular activation of lymphocytes and other receptor-expressing cells. The Researcher will also present results at national and international meetings as well as participate in the writing of manuscripts and grants and contribute to the smooth operations of the laboratory. Salary: \$36,000 to \$40,000 per year plus benefits. The University will accept applications starting June 1, 2002. Send application and résumé to: **V. Michael Holers, M.D., Head, Division of Rheumatology, B-115, University of Colorado Health Sciences Center, 4200 East Ninth Avenue, Denver, CO 80262.** The University of Colorado is committed to diversity and Equality in Education and Employment.

POSTDOCTORAL POSITION University of California, Davis

An NIH-funded Postdoctoral position is available immediately to investigate the role of MeCP2 in the epigenetic pathogenesis of the neurodevelopmental disorder Rett syndrome. Projects currently include the investigation of MeCP2 expression in the developing brain by immunofluorescence, tissue microarrays, and laser scanning cytometry (*Hum. Mol. Genet.* 10:1729-1740, 2001) and the nuclear organization of parentally imprinted chromosomes in brain by fluorescence *in situ* hybridization (*Science* 272:725-728, 1996). Highly motivated individuals with a recent Ph.D. and experience in molecular genetics, cytogenetics, or neuroscience are encouraged to apply. Submit curriculum vitae, statement of research interests, and names of three references to: **Janine LaSalle, Ph.D., Medical Microbiology and Immunology, University of California, Davis, CA 95616.** E-mail: jmlasalle@ucdavis.edu.

POSITIONS OPEN

POSTDOCTORAL ASSOCIATE Genomics Institute of the Novartis Research Foundation

The Cancer Genomics Group seeks a talented Postdoctoral Fellow to spearhead one or more projects related to novel gene discovery in cancer, genetic approaches to drug target discovery, and chemical genomics approaches to cancer drug discovery. The ideal candidate will have recently completed Ph.D. studies in a relevant biological discipline or have at most one to two years of postdoctoral experience. The individual must be a team player possessing excellent verbal, written, and technical skills and have the ability to handle many tasks and priorities at the same time. A demonstrated record of accomplishment is required as well as the ability to succeed in a fast-paced environment.

Send curriculum vitae to: **Genomics Institute of the Novartis Research Foundation (GNF), Job Code: GH, 10675 John Jay Hopkins Drive, San Diego, CA 92121. FAX: 858-812-1670; e-mail: jobs@gnf.org** (subject line must include Job Code); **website: <http://www.gnf.org>.** The Genomics Institute of the Novartis Research Foundation (GNF), located in the Torrey Pines area of San Diego, California, is funded by the Novartis Research Foundation and dedicated to the development and application of new methods and techniques for genome-wide biological discovery and biomedical research. GNF offers excellent compensation and a great benefit package. *Equal Opportunity Employer.*

POSTDOCTORAL FELLOWSHIP MARINE ECOLOGY

Available immediately. Minimum two-year term with option for extension. Strong research support. Considerable latitude to develop research consistent with your personal interests within broad subject areas. Candidates with training and publication record in one of the following fields are invited to apply: fish ecology, fisheries oceanography, ecology, ecological theory, physical/biological interactions. Research experience in marine systems not a prerequisite.

Interested candidates should submit curriculum vitae; statement of research interest; details of availability; and names, addresses, and telephone and e-mail contacts of three references by e-mail simultaneously to: **Dr. W.C. Leggett (e-mail: wcl@post.queensu.ca) and Dr. K.T. Frank (e-mail: frankk@mar.dfo-mpo.gc.ca).**

The Viral Diseases Unit at the University of Pittsburgh is recruiting a Research Virologist, Viral Immunologist, or Biochemical Pharmacologist with interests in virology at the rank of **ASSISTANT or ASSOCIATE PROFESSOR.** Candidates should have an M.D., Ph.D., or equivalent and have sufficient experience to establish an independent, funded research program in basic virology, immunology, or biochemical pharmacology. Competitive salary and start-up packages are available including newly renovated laboratory and office space. Send curriculum vitae, summary of research interests, and names of three references to: **John W. Mellors, M.D., Chief, Infectious Diseases Division, Director, HIV/AIDS Program, University of Pittsburgh, Scaife Hall, Suite 818, 3550 Terrace Street, Pittsburgh, PA 15261. Telephone: 412-624-8512; FAX: 412-383-7982; e-mail: fern@pitt.edu.** The University of Pittsburgh is an Affirmative Action/Equal Opportunity Employer.

SENIOR RESEARCH TECHNICIAN: A position is open in an exciting new yeast genomics project. The ideal candidate will have at least three years of experience in yeast molecular genetics including yeast transformation and nucleic acid hybridization techniques and experience with microarray hybridization and analysis. Performance excellence and a dedicated research orientation are requirements. Forward curriculum vitae and contact information for three professional references to: **Forrest Spencer, Johns Hopkins University School of Medicine, Ross 850, 720 Rutland Avenue, Baltimore, MD 21205.** E-mail: fspencer@jhmi.edu.

POSITIONS OPEN

POSTDOCTORAL POSITION PROTEIN ARRAY TECHNOLOGY Genomics Institute of the Novartis Research Foundation

We have established a highly flexible and fully automated protein array platform. Our current focus is on antibody arrays for the quantitative detection of proteins in serum and lysates using a new ultra-sensitive detection method but we are exploring other applications such as proteomics arrays for enzyme activity profiling. For the development of novel array-based proteomics approaches, we are looking for a highly motivated Postdoctoral Fellow with a background in protein biochemistry, cell biology, or molecular biology. Experience in protein expression of mammalian proteins is a definite plus; creativity and the willingness to be part of a team in an exciting multidisciplinary environment is a must. The position is available immediately.

Please submit your curriculum vitae with selected reprints/preprints and arrange for letters of reference to be sent to: **Genomics Institute of the Novartis Research Foundation (GNF), Job Code: BG, 10675 John Jay Hopkins Drive, San Diego, CA 92121. FAX: 858-812-1670; e-mail: jobs@gnf.org** (subject line must include Job Code); **website: <http://www.gnf.org>.**

The Genomics Institute of the Novartis Research Foundation (GNF), located in the Torrey Pines area of San Diego, California, is funded by the Novartis Research Foundation and dedicated to the development and application of new methods and techniques for genome-wide biological discovery and biomedical research. GNF offers excellent compensation and a great benefit package. *Equal Opportunity Employer.*

FACULTY POSITION University of North Carolina at Chapel Hill Division of Medicinal Chemistry and Natural Products

The Division of Medicinal Chemistry and Natural Products invites applications for a tenure-track position available in the 2002/2003 academic year. Applicants at all levels are encouraged to apply. Candidates for **ASSISTANT PROFESSOR** must have a Ph.D. degree and postdoctoral experience is desirable. The position requires development of an internationally recognized program of scholarly research and the demonstration of commitment to excellence in teaching at the professional and graduate levels. Programs in all areas of medicinal chemistry, pharmacology, and biochemistry will be considered but preference will be given to studies that focus on drug discovery and design and the function of molecular targets. Applicants should submit curriculum vitae, publication list, a concise description of proposed research, and arrange for four letters of recommendation to be sent to: **Professor Harold Kohn, Chair, Division of Medicinal Chemistry and Natural Products, School of Pharmacy, University of North Carolina at Chapel Hill, CBN 7360, Beard Hall, Chapel Hill, NC 27599-7360.** Applications will be reviewed upon receipt and continue until the position is filled. *The University of North Carolina at Chapel Hill is an Equal Opportunity Employer. Women and members of minority groups are encouraged to apply.*

POSTDOCTORAL POSITION in experimental neurophysiology and epilepsy. The Neural Dynamics Laboratory, Krasnow Institute of George Mason University, seeks Researcher for NIH-sponsored project using electric field adaptive control of neuronal networks to study intracellular interactions of epileptic seizures. Candidate should have experience in patch clamp recording. Salary: \$32,500. More information at **website: <http://www.krasnow.gmu.edu/neuraldyn>.** Consideration through at least May 30, 2002. Send letter, curriculum vitae, and three references to: **Dr. Steven Schiff, Krasnow Institute, MS 2A1, George Mason University, Fairfax, VA 22030.** E-mail: sschiff@gmu.edu; Telephone: 703-993-4336. *Affirmative Action/Equal Opportunity Employer.*

AWARDS



F O U N D A T I O N

Is pleased to announce the 2002 Beckman Scholars Program Institutional Awards

Established in 1997, The Beckman Scholars Program is an invited program for accredited universities and four-year colleges in the United States. It provides scholarships that contribute significantly in advancing the education, research training and personal development of select students in chemistry, biochemistry, and the biological and medical sciences. The sustained, in-depth undergraduate research experiences and comprehensive faculty mentoring are unique in terms of program scope, content and level of scholarship awards (\$17,600 for two summers and one academic year). To date, the Arnold and Mabel Beckman Foundation has provided for 297 scholarships in the amount of \$5.2 million at 55 colleges and institutions nationwide. The following are this year's academic institutional recipients of the Beckman Scholars Program grant awards for 2002:

Boston University, Boston, MA
*Biology, Biomedical Engineering,
and Chemistry*

California State University, Los Angeles
*Biology, Microbiology, Chemistry,
and Biochemistry*

Duke University, Durham, NC
Biology and Chemistry

Furman University, Greenville, SC
Chemistry

Haverford College, Haverford, PA
Biology and Chemistry

Hope College, Holland, MI
Biology and Chemistry

San Francisco State University
Biology, Biochemistry, and Chemistry

Smith College, Northampton, MA
Biological Sciences and Chemistry

University of California, Los Angeles
*Chemistry; Biochemistry; Microbiology;
Molecular Genetics; Molecular, Cell, and
Developmental Biology*

University of Delaware, Newark, DE
*Chemistry, Biochemistry, and
Biological Sciences*

University of Kentucky, Lexington, KY
Arts and Sciences, Agriculture, and Medicine

Washington University, St. Louis, St. Louis, MO
Biology and Chemistry

Wellesley College, Wellesley, MA
Biology and Chemistry

At these thirteen institutions, 65 students will be selected as Beckman Scholars.

The Arnold and Mabel Beckman Foundation is an independent, non-profit foundation established in September 1977 for the purpose of promoting research, primarily in the fields of chemistry and the life sciences, and particularly to foster the invention of methods and materials that will open up new avenues of research in science.

Website:
<http://www.beckman-foundation.com>

Bioinformatics Opportunity

£ Competitive

Cambridge

The Wellcome Trust Sanger Institute is one of the leading genomics centres in the world, dedicated to analysing and understanding genomes. Our Informatics Group is involved in research and support in software and design for the sequencing and mapping operations, sequence analysis/annotation and in maintaining systems hardware and network support for the whole Sanger Institute.

Research Associate – Information retrieval & text analysis

A research position is available to connect information emerging from genome and protein datasets with knowledge captured in traditional publication resources. This will involve information retrieval, text analysis techniques and natural language processing (corpus-based and syntactic).

The successful applicant should have a strong research background with a Computer Science or Maths related degree, a PhD would be a strong advantage. You should be familiar with ontologies, citation analysis and extraction tools for semi-structured data. Experience of literature analysis would be highly desirable, as would some programming skills. You will need good communication skills and have the ability to work within a team environment.

This position will be offered on a four year contract.

To apply, please write with your CV and current salary details quoting reference 375 to:

The Personnel Officer, The Wellcome Trust Sanger Institute, Wellcome Trust Genome Campus, Hinxton, Cambridge CB10 1SA.

Closing date: Friday 10th May 2002.

All candidates will be contacted after: Monday 20th May 2002.

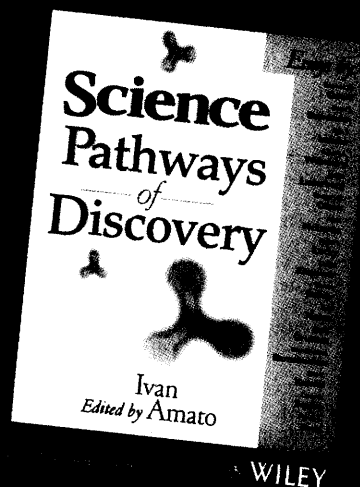
For further information, please refer to our web-site www.sanger.ac.uk



The Wellcome Trust Sanger Institute

A Definitive History from the World's Leading Scientists

Some of the sharpest minds of our time reveal what science has in store by examining the histories of a dozen crucial areas of scientific inquiry. First published as a year-long series in *Science*, this compendium features brilliant, provocative contributions from a stellar cast of authors including Nobel laureates.



Order online at the AAAS Bookstore, www1.fatbrain.com/aaas,

and receive a 20% discount

POSITIONS OPEN



POSTDOCTORAL ASSOCIATE Atmospheric Modeling

The Massachusetts Institute of Technology's Center for Global Change Science seeks applicants with a Ph.D. in a field relevant to global climate modeling to participate in the development and application of a coupled atmosphere-ocean general circulation model to be used in studies of predictability and climate-ecosystem interactions. The coupled model is based on a novel approach in which atmosphere-ocean fluid isomorphisms are used to derive, from a single hydrodynamical core, atmospheric and oceanic counterparts. We are seeking to appoint a candidate with experience in atmospheric modeling to help further develop the physics and radiation of the atmospheric model, which makes use of representations of atmospheric clouds and convection developed by Professor Kerry Emanuel. The candidate will join a small group of model developers pursuing innovative approaches to coupled climate and ecosystem modeling. Candidates with experience in atmospheric physics and three-dimensional general circulation modeling will be given preference. Salary will be commensurate with experience. Proposed start date is as soon as possible.

Qualified candidates should send a copy of their curriculum vitae and names of three references to: Professor Peter Stone, MIT, Room 54-1718, 77 Massachusetts Avenue, Cambridge, MA 02139 U.S.A. FAX: (+1) 617-253-6208; e-mail: pstone@mit.edu. Further information is available at website: <http://web.mit.edu/cgcs/www/jobs.html>. MIT is an Equal Opportunity/Affirmative Action Employer.

POSTDOCTORAL RESEARCH FELLOWSHIP

A Postdoctoral position is currently available in the Department of Neurology and Developmental and Molecular Biology (DMB) of the Albert Einstein College of Medicine in New York City. The position is funded to study the regulation of cell cycle and differentiation in normal cells and their alterations in cancer of the nervous system. The main focus of our laboratory is to study the role of the protein Id2 in cell cycle, differentiation, and tumorigenesis. The ideal applicant should be highly motivated and should have expertise with cellular and molecular biology techniques. Previous work with transgenic animals will also receive high consideration. Applicants should send curriculum vitae and the names and addresses of three references to: Dr. Antonio Iavarone, Department of Neurology, Albert Einstein College of Medicine, Jack and Pearl Resnick Campus, 1300 Morris Park Avenue, Bronx, NY 10461. Telephone: 718-430-3347; FAX: 718-430-8785; e-mail: iavarone@accu.yu.edu. Equal Opportunity Employer.

POSTDOCTORAL RESEARCH ASSOCIATE position available immediately to study mechanisms of drug tolerance using whole cell recording in brain slices and dissociated neurons. Electrophysiology experience required. Send curriculum vitae and references to: E.I. Tietz, Ph.D., Professor of Pharmacology, Medical College of Ohio, 3035 Arlington Avenue, Toledo, OH 43614. E-mail: etietz@mco.edu; website: <http://www.mco.edu/depts/pharm/tietz.html>. Affirmative Action/Equal Opportunity Employer.

POSITIONS OPEN

POSTDOCTORAL FELLOWSHIP Bioinformatics The Mount Sinai School of Medicine

The Department of Biomathematical Sciences of the Mount Sinai School of Medicine invites applications for a National Science Foundation-funded project to build a database of DNA repeats. The Fellow will work with the project Scientist and a team of software developers and students on methods to detect novel DNA patterns, repeat comparison and clustering, data visualization automated annotation, and Web-based database design.

Candidates must have a Ph.D. in computer science with a strong background in the design and analysis of algorithms, proficiency in programming, working knowledge of molecular biology, and good communication skills. Position is for one year and renewable for a second year.

To apply, please send a cover letter, curriculum vitae, representative publications, and three letters of reference to: Dr. Gary Benson, Department of Biomathematical Sciences, Box 1023, The Mount Sinai School of Medicine, One Gustave L. Levy Place, New York, NY 10029-6574. E-mail: benson@camelot.mssm.edu. Equal Opportunity Employer.

POSTDOCTORAL POSITIONS

Positions are open for qualified individuals to investigate morphological, functional, and genetic basis of gonadal and nongonadal phenotype in LH receptor knockout mice. We are looking for highly motivated individuals with experience or exposure to contemporary cell and molecular biology techniques including functional genomics, proteomics, conditional knockouts, transgenics, and gene therapy. If interested, contact: Dr. C. V. Rao, Department of Obstetrics, Gynecology, and Women's Health, 438 MDR Building, University of Louisville Health Sciences Center, Louisville, KY 40292. E-mail: cvrao001@gwise.louisville.edu.

POSTDOCTORAL POSITIONS

Postdoctoral positions are available within the Molecular Cardiology Institute at Stony Brook. Salary: \$30,000 to \$35,000 per year. The Institute is focused on a multidisciplinary approach to understanding cardiac function. Ph.D. candidates with training in electrophysiology of ion channels or transporters are encouraged to apply. Interested applicants should write to: Dr. Ira Cohen or Dr. David McKinnon, HSC, Institute of Molecular Cardiology, Department of Physiology and Biophysics, Stony Brook University/SUNY, Stony Brook, NY 11794-8661. Website: <http://www.stonybrook.edu/cjo>. Affirmative Action/Equal Opportunity Employer.

Two **POSTDOCTORAL POSITIONS** available on NSF-funded project: information processing in micropatterned neuronal networks in culture using microelectrode arrays. Ideal candidate knows neural cell culture, electrophysiology, with experience in modeling. See also website: <http://soma.npa.uiuc.edu/labs/wheeler/home.html>. One position is at the Beckman Institute, University of Illinois, Urbana, Illinois (Dr. Bruce Wheeler; e-mail: bwheeler@uiuc.edu; Telephone: 217-333-3236); one is at Southern Illinois University Medical School, Springfield, Illinois (Dr. Gregory Brewer; e-mail: gbrewer@siu.edu; Telephone: 217-545-5230).

POSTDOCTORAL POSITIONS available to study molecular mechanisms of ovarian cancer metastasis. Projects focus on role of adhesion molecules and proteolytic enzymes in tumor invasion and metastasis. Requires Ph.D. and experience in protein chemistry/enzymology, molecular biology, or cell biology. Two-year, renewable contract. Send curriculum vitae and three reference letters to: David A. Fishman, M.D., Northwestern University Medical School, Department of Obstetrics and Gynecology, Prentice Woman's Hospital, 333 East Superior Street, Suite 420, Chicago, IL 60611.

POSITIONS OPEN

NIH 2002 = [OPPORTUNITY]^N

Train at the bench, the bedside, or both. The NIH offers **POSTDOCTORAL** and **CLINICAL FELLOWSHIPS** as well as tenure-track positions.

For details, visit our website:
www.training.nih.gov

NIH is dedicated to building a diverse community in its training and employment programs.

POSTDOCTORAL AND RESEARCH ASSOCIATE POSITIONS University of Massachusetts Medical School

Available immediately to join a chemical biology group studying molecular mechanisms involved in gene expression (see website: <http://www.umass-med.edu/bmp/faculty/rana.cfm>). We are seeking innovative individuals with strong research accomplishments in chemistry or biology and who are interested in applying chemical tools to understanding biology and playing an active role in a chemical libraries screening facility. The screening facility includes state-of-the-art screening robotics and diverse sets of chemical libraries. (1) Molecular/Cell Biologists: to study protein-protein interactions in human cells and develop screening assays to control cellular pathways with small molecules. Strong background in biochemistry or cell biology is required. (2) Organic/Analytical/Physical Chemists: Projects involve combinatorial libraries synthesis, designing new screening technologies, and fluorescence spectroscopy to analyze the structures of RNA-protein complexes. Send curriculum vitae and names of three references to: Dr. Tariq M. Rana, Professor and Director of Chemical Biology Program, Department of Biochemistry and Molecular Pharmacology, University of Massachusetts Medical School, 364 Plantation Street, Floor 8, Worcester, MA 01605. E-mail: tariq.rana@umassmed.edu.

POSTDOCTORAL POSITIONS for studies of proteolytic mechanisms in neurotransmission and neurodegenerative diseases. Studies in the laboratory of Dr. Vivian Hook will define the proteases and protease inhibitors involved in (1) producing active neuropeptide transmitters (enkephalin, β -endorphin, ACTH, and others) and (2) proteolytic mechanisms involved in Alzheimer's and Huntington's neurodegenerative diseases. Interdisciplinary approaches in molecular biology with genomics and proteomics, protease/peptide biochemistry and mass spectrometry, and cell biology/gene expression are utilized. A Ph.D. degree with experience in at least two of these disciplines is required. State-of-the-art proteomic and genomic facilities are available at the new Buck Institute (website: <http://www.buckinstitute.org>) located near San Francisco. Projects involve research collaborations with University of California San Francisco and University of California San Diego. We offer a competitive salary, excellent benefits, and dynamic work environment. To apply, submit curriculum vitae with names of three references to: Dr. Vivian Hook, c/o Human Resources. Reference VH/PD/15 on subject line of e-mail: hr@buckinstitute.org. Mail: Buck Institute for Age Research, 8001 Redwood Boulevard, Novato, CA 94945. FAX: 415-899-1810.

POSTDOCTORAL POSITIONS Urothelial Growth and Differentiation

Positions are available to study the cell and molecular biology of bladder epithelial differentiation. Background in molecular biology, genetics, or developmental biology preferred. Send curriculum vitae with names of three references to: Dr. Henry Tung-Tien Sun, Rudolf L. Baer Professor and Head of Epithelial Biology Unit, Department of Dermatology, New York University Medical School, 550 First Avenue, New York, NY 10016. FAX: 212-263-8561; e-mail: sunt01@med.nyu.edu.

GRADUATE PROGRAMS

Two Taiwan International Graduate Programs in Chemical Biology and Molecular Biophysics and Molecular Dynamics and Spectroscopy Academia Sinica, Taiwan

The Taiwan International Graduate Program has been established to attract high-quality young researchers from abroad. "Chemical Biology and Molecular Biophysics" and "Molecular Dynamics and Spectroscopy" are the first of the interdisciplinary and crossinstitutional Ph.D. graduate programs in Taiwan administrated jointly by Academia Sinica, National Taiwan University and National Tsing Hua University. The former program stresses student training with a strong research emphasis in basic and applied science at the interface between Chemistry/Physics and Biology. The latter one is designed to offer specific training and research opportunities to Ph.D. students interested in working on dynamics and spectroscopy of molecules in the gas phase as well as in condensed phases. Applicants with undergraduate degrees in the general science and engineering disciplines are welcome to apply. Students must have a B.S. or M.S. degree from an accredited institution in order to be considered for admission.

Interested applicants are requested to send (1) undergraduate and graduate (if applicable) academic records, or transcripts; (2) Graduate Record Examination (GRE) scores, including subject test scores in Chemistry, Physics, Mathematics or Biology; (3) TOEFL: all applicants whose first language is not English must submit the TOEFL score, except those who have recently completed two or more years of study in an English-speaking country; (4) three letters of recommendation; (5) plan of graduate study to: Nancy Yang, Taiwan International Graduate Program, Academia Sinica, No.128, Academia Road Sec. 2, Nan-Kang Taipei, 11529, Taiwan by May 31, 2002. Inquiries can be made via FAX: 886-2-27898045; e-mail: tigp@gate.sinica.edu.tw; website: <http://www.sinica.edu.tw/~tigp>.



nature structural biology

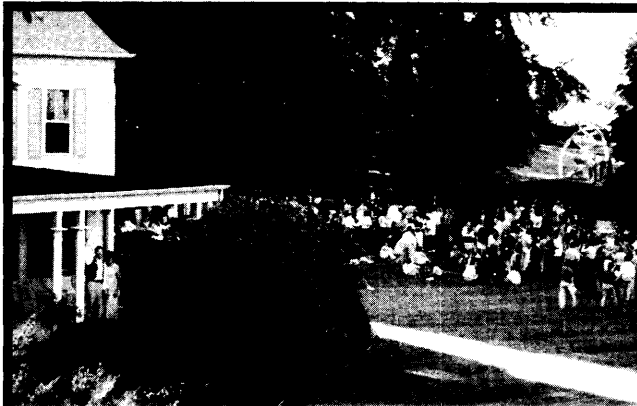
seeks an **ASSISTANT EDITOR, SIX MONTH TERM**

Nature Structural Biology is a prestigious international monthly journal covering all aspects of research pertaining to biomolecular form and function. We have an exciting opportunity available for a scientist eager to gain experience in editing and writing for a scientific journal. *Nature Structural Biology* seeks an Assistant Editor to help develop the journal. This is a six-month position. During this time the successful candidate will work full time in our New York City office and participate in all aspects of the editorial process, including manuscript selection and editing, commissioning and editing News & Views and Reviews, and writing for the journal. The job also involves attending scientific meetings and forging links with the international scientific community. The new editor will work with our small team of editors within the larger publishing group that also produces *Nature Genetics*, *Nature Medicine*, *Nature Biotechnology*, *Nature Neuroscience* and *Nature Immunology*. The successful applicant will also enjoy a close working relationship with the London-based *Nature*, *Nature Cell Biology*, and *Nature Reviews* teams.

Applicants should have an intense curiosity about science and a broad understanding of the field, and should have a Ph.D. and preferably post-doctoral experience with a strong research background in molecular biology, biochemistry or structural biology. The ideal candidate will also have excellent literary skills and an enthusiasm for and commitment to the communication of science.

Please submit a curriculum vitae, a short (500–1000 words) News and Views-style article on an exciting and newsworthy recent development in a relevant scientific area, and a cover letter explaining your interest in the position to Human Resources Department, Re: *Nature Structural Biology*, 345 Park Avenue South, New York, NY 10010 (fax: 212-696-9594; email: admin@natureny.com). Consideration will begin as soon as applications arrive; applications should arrive **no later than June 25, 2002**. EOE

MEETINGS



wine & cheese on Airside lawn overlooking Cold Spring Harbor



Mouse Molecular Genetics

August 28 - September 1, 2002

abstracts due: June 5, 2002

Organized by:

Richard Behringer, University of Texas/M.D. Anderson Cancer Center
Carmen Birchmeier, Max Delbrück Center, Berlin, Germany
Hiroshi Hamada, Osaka University, Osaka, Japan
Terry Magnuson, University of North Carolina at Chapel Hill

Rosa Beddington Lecture: Kathryn Anderson

Sessions & Discussion Leaders

- Signals, Receptors, Transcription: Rudi Grosschedl, David Ornitz
- Neurobiology: Richard Palmiter & Mary Beth Hatten
- Organogenesis: Lothar Hennighausen
- Models of Human Disease: Cory Abate-Shen & Andrew Copp
- Patterning: Yumiko Saga & Magdalena Zernicka-Goetz
- Genetics: En Li & Ward Wakeland
- Functional Genomics: Lisa Stubbs & William Skarnes
- New Technologies: John Schimenti & Francis Stewart
- Special Workshops: Francis Stewart & Larry Mobraaten

Other 2002 CSHL Meetings

Gene Expression and Signalling in the Immune System April 24 - 28

Molecular Chaperones and the Heat Shock Response May 1 - 5

* Genome Sequencing & Biology May 7 - 11

The Cell Cycle May 15 - 19

* Retroviruses May 21 - 26

67th CSHL Symposium: The Cardiovascular System May 29 - June 3

Cancer Genetics and Tumor Suppressor Genes August 14 - 18

Molecular Genetics of Bacteria & Phages August 20 - 25

Translational Control September 10 - 15

Dynamic Organization of Nuclear Function September 18 - 22

Axon Guidance & Neural Plasticity September 25 - 29

Molecular Genetics of Aging October 2 - 6

Germ Cells October 9 - 13

Human Origins & Disease October 30 - November 3

Tissue Engineering November 21 - 24

Therapeutic Opportunities in Neurodegenerative Diseases Dec 5 - 8

Comparative Plant Genomics December 12 - 15

* oversubscribed as of April 26 - please to call to inquire

Cold Spring Harbor Laboratory

Meetings & Courses Programs

1 Bungtown Road, Cold Spring Harbor NY 11724

www.cshl.edu/meetings

Tel 516 367 8346 Fax 516 367 8845 email meetings@cschl.edu

AWARDS



F O U N D A T I O N

Is pleased to announce the

2002 Beckman Young Investigator Awardees

The Beckman Young Investigator Program, established in 1991, provides research support to the most promising young faculty members who are in the first three years of tenure-track appointments in academic and non-profit institutions conducting fundamental research in the chemical and life sciences. Each grant recipient will receive \$240,000 awarded over a three-year term to conduct innovative scientific research. To date, the Arnold and Mabel Beckman Foundation has provided support to 176 scientists in the amount of \$35.4 million at 70 institutions nationwide. The following are this year's recipients of the Beckman Young Investigator grant awards for 2002:

Heather Carlson, Ph.D.

University of Michigan

*"Incorporating Protein Flexibility and Bioinformatics into Drug Design"***David Chan, Ph.D.**

California Institute of Technology

*"Molecular Dissection of Mitochondrial Fusion"***Guoping Feng, Ph.D.**

Duke University Medical Center

*"Molecular Architecture of Excitatory Synapses on Interneurons"***Jason Hafner, Ph.D.**

Rice University

*"Nano-Wells for Biological Scanning Probe Microscopy"***Shiv Halasyamani, Ph.D.**

University of Houston

*"New Electro-Photonic Materials for Advanced Optical Applications"***Carla Koehler, Ph.D.**

University of California, Los Angeles

*"Mitochondrial Biogenesis in Health and Disease"***David Liu, Ph.D.**

Harvard University

*"Evolving Libraries of Non-Natural Synthetic Small Molecules"***Bingwei Lu, Ph.D.**

Rockefeller University

*"A Functional Genomic Approach to Neuronal Subtype Specification and Survival"***Daniel Minor, Ph.D.**

University of California, San Francisco

*"Discovery of Novel Potassium Channel Modulators by Molecular Evolution"***Colin Nuckolls, Ph.D.**

Columbia University

*"Nanoscale Energy Conversion, Electrical Conduction, and Hierarchical Assembly"***Andrei Sanov, Ph.D.**

University of Arizona

*"Photoelectron Imaging of Inhomogeneous Cluster Anions"***James Schneider, Ph.D.**

Carnegie Mellon University, Pennsylvania

*"Novel Nucleic Acid Separations for Microchip Analysis and Plasmid Purification"***Yi Sun, Ph.D.**

University of California, Los Angeles - Medical School

*"A Genetic Approach to Control the Differentiation of Neural Stem Cells"***Melody Swartz, Ph.D.**

Northwestern University

*"In Vitro Formation of a Functional Capillary Bed"***Gregory Weiss, Ph.D.**

University of California, Irvine

*"Molecular Recognition by Libraries of HIV Nef and Streptavidin"***Peigong Yang, Ph.D.**

University of California, Berkeley

"Semiconductor Nanowire Arrays"

The Arnold and Mabel Beckman Foundation is an independent, non-profit foundation established in September 1977 for the purpose of promoting research, primarily in the fields of chemistry and the life sciences, and particularly to foster the invention of methods and materials that will open up new avenues of research in science.

Website: <http://www.beckman-foundation.com>

Getting the
word out to scientists
about your
event

The Science Meetings & Announcements Database

A comprehensive
listing of events,
grants announcements,
courses & training
and more...
in print and online.

When you run your ad in
Science, it is automatically
posted in the Meetings &
Announcements database
at sciencemeetings.org.
This online posting receives
a free hyperlink from any
e-mail or web address.
The Meetings & Announcements
page is searchable by keyword,
discipline, geographic region,
or category/subject.
It doesn't get any easier.

Is your event listed?

In the U.S. call Kathleen Clark
at 202 326-6555

In Europe ring Richard Walters
on +44 (0) 1223 326 500

Science
www.sciencemeetings.org

GRANTS

Invitrogen's Research Tools Development Grants Program

Creating the future of biotech — together

New and established investigators working in academics, not-for-profit institutions, and for-profit companies are encouraged to apply for Invitrogen's Research Tools Development Grants Program. Grants are provided on a quarterly basis, with total funding of US\$5 million per year and annual awards up to US\$100,000.

The second quarter 2002 focus is on **Functional Analysis**, understanding how genes and their corresponding proteins function and interact *in vitro* and *in vivo*. Deadline for full Grant Proposals is June 1. A preproposal is required. Visit www.invitrogen.com for more information, or contact us at grants@invitrogen.com.

1600 Faraday Ave., Carlsbad, CA 92008 USA
P: 760 476 6140 F: 760 602 6563
www.invitrogen.com



CONFERENCES



Genome Informatics



Second Annual

Cold Spring Harbor / Wellcome Trust Conference
September 4 - 8, 2002

Wellcome Trust Genome Campus, Hinxton, UK
abstract deadline: June 14, 2002

Arranged by:

Ewan Birney, *European Bioinformatics Institute*
Suzanna Lewis, *University of California, Berkeley*
Lincoln Stein, *Cold Spring Harbor Laboratory*

Keynote Speaker:

Sydney Brenner, *The Salk Institute*

Topics, Speakers & Discussion Leaders:

- **Comparative Genomics:** Sean Eddy & Lior Pachter
- **Annotation Pipelines:** James Gilbert & Mark Yandell
- **Functional Genomics:** Mike Eisen & Wyeth Wasserman
- **Data Correlations:** Arek Kasprzyk & Fritz Roth
- **Biological Ontologies:** Robert Stevens & Chris Mungall

**For Further Information,
Registration, and Abstracts:**
www.cshl.org/meetings/hinxton.htm



THE ACADEMY OF
MOLECULAR
IMAGING

CALL FOR ABSTRACTS

DUE MAY 17, 2002

FOR THE ANNUAL CONFERENCE

OCTOBER 23 - 27, 2002

SAN DIEGO SHERATON HOTEL AND MARINA

There will be a **\$3,000** cash prize for the top abstracts in the clinical, basic science and drug development categories. A **\$10,000** award will also be given to the AMI Distinguished Scientist of the Year. Abstracts will be published in a special supplement of *Molecular Imaging and Biology*.

(supported by a generous gift from
CTI, CPS, P.E.T. Net Pharmaceuticals
and G.E. Medical Systems)

Drug Development Categories
(Society of Non-Invasive Imaging in
Drug Development-SNIDD)



- Drug development
- New drugs/tracers
- Clinical trials of new drugs/radiopharmaceuticals

**Basic Science Categories (Institute for
Molecular Imaging / HiRes)**



- Molecular imaging assays
- Small animal imaging instrumentation
- Optical, PET, MRI, SPECT, CT and Ultrasound imaging
- Multimodality imaging approaches
- Imaging of cellular events
- Imaging endogenous/reporter genes

Clinical Categories
(Institute for Clinical PET)



- PET in medical management
- Multitmodalities: PET, CT, MRI, SPECT, Ultrasound
- New PET technologies and procedures
- Cost analysis of clinical PET use

Young Investigator Category

Five travel scholarships will be awarded to the top abstract submissions by graduate and medical students and postdoctoral fellows. The award includes airfare and lodging during the conference (meeting registration for students is free). Additionally, the top abstract in this category will receive a cash prize of \$1,000.

Details are available at
www.ami-imaging.org or call 310-267-2614

POSITIONS OPEN

POSTDOCTORAL POSITION Molecular Neurobiology Harvard Medical School

A Postdoctoral position is available to study the genetic and molecular mechanisms by which mammalian circadian clocks regulate physiology and behavior. Applicants should be accomplished in molecular biology, biochemistry, and/or genomics. Experience with transgenic/knockout mice would be especially desirable. Please send a cover letter; curriculum vitae; and the names, telephone numbers, and e-mail addresses of three references to: **Charles J. Weitz, M.D., Ph.D., Department of Neurobiology, Harvard Medical School, 220 Longwood Avenue, Boston, MA 02115. E-mail: cweitz@hms.harvard.edu.**

CAREER IN OPTOMETRY, OPTOMETRIC RESEARCH, OR TEACHING

The New England College of Optometry offers a unique program for those with a Doctorate in the sciences: biology, chemistry, physics, psychology, etc. Candidates have the opportunity to obtain the Doctor of Optometry (O.D.) degree in 27 months. The program begins annually in June. Employment opportunities exist in clinical practice, industry, optometric faculty positions, and research. Contact: **Admissions Office, Department S, 424 Beacon Street, Boston, MA 02115. Telephone: 1-800-824-5526; e-mail: admisso@ne-optometry.edu; website: http://www.ne-optometry.edu.**

POSTDOCTORAL FELLOW POSITION available immediately for a functional neurogenetics study of CNS plasticity evoked by drugs of abuse. DNA array expression profiling is being used to identify gene regulation networks operant in behavioral responses to acute drug exposure, sensitization, and self-administration. Exposure to state-of-the-art approaches in DNA arrays is offered. Experience in neuroscience is required and expertise with molecular biology preferred. Send curriculum vitae and three references to: **Michael Miles, M.D., Ph.D., Department of Pharmacology and Toxicology, Virginia Commonwealth University, P.O. Box 980599, Richmond, VA 23298. E-mail: mfmiles@vcu.edu.**

POSTDOCTORAL POSITION is available to study the role of micronutrients in heart development using novel folate transport knockout mouse model systems. Ph.D. with experience in molecular biology and heart development preferred. Please send curriculum vitae and names of three references to: **Dr. Richard Finnell, Director, The Texas A&M University System Health Science Center, Institute of Biosciences and Technology, 2121 West Holcombe Boulevard, Houston, TX 77030. E-mail: rfinnell@ibt.tamu.edu. An Affirmative Action/Equal Opportunity Employer committed to diversity.**

A **POSTDOCTORAL POSITION** is available to study the mechanism of adenoid cystic carcinoma of the salivary gland (see *Neoplasia* 3:173-178). A Ph.D. and strong background in molecular biology and genetics are required. Interested candidates should send curriculum vitae and names of three references to: **Dr. Christopher Moskaluk, University of Virginia Health System, Department of Pathology, P.O. Box 800214, Charlottesville, VA 22908. Position will remain open until filled. The University of Virginia is an Equal Opportunity/Affirmative Action Employer.**

POSTDOCTORAL POSITIONS available immediately to study the immunobiology of cancer-testis antigens and identify novel tumor antigens in ovarian cancer. Applicants must have Ph.D. in immunology, molecular, and/or cell biology. Expertise in immunological monitoring is desirable. E-mail or send curriculum vitae and names of three references to: **Kunle Odunsi, M.D., Ph.D., Department of Gynecologic Oncology, Roswell Park Cancer Institute, Elm and Carlton Streets, Buffalo, NY 14263. E-mail: kunle.odunsi@roswellpark.org.**

POSITIONS OPEN

POSTDOCTORAL FELLOW POSITIONS University of Texas Health Science Center Sam and Ann Barshop Center for Longevity and Aging Studies

Postdoctoral Fellows to participate in a program of research on transplantation of genetically modified adrenocortical cells in scid mice. See *Nature Medicine* 3:978, 1997; *Nature Biotechnology* 18:39, 2000. Also see website: <http://physiology.uthscsa.edu/Faculty/hornsby/hornsby.html>. Two positions are available. For the first, the successful applicant will have good skills in rodent surgery and may be interested in learning molecular and cellular biology techniques. For the second, the successful applicant will have good skills in molecular biology and may be interested in being trained in cell transplantation techniques. For both positions, an interest or previous experience in tissue engineering, biosensors, or a related bioengineering field would be advantageous but is not required. Salary will be \$40,000 per year. Send curriculum vitae and names of three references to: **Peter J. Hornsby, Ph.D., Professor, Department of Physiology, Sam and Ann Barshop Center for Longevity and Aging Studies, University of Texas Health Science Center, 15355 Lambda Drive STCBM 2.200, San Antonio, TX 78245. Applications may also be sent by e-mail: hornsby@uthscsa.edu. Important: Please state which of the two positions you are applying for. The University of Texas Health Science Center at San Antonio is an Equal Employment Opportunity/Affirmative Action Employer.**

The Department of Pharmacology and Toxicology on the Medical College of Virginia campus of Virginia Commonwealth University seeks applications for a collateral **RESEARCH ASSOCIATE** position. Needed is a qualified M.D. or Ph.D. to study signaling processes in mouse pancreatic islets and insulin-secreting cell lines. Qualified individuals should have at least three years of postdoctoral research experience working with pancreatic islets including expertise in the isolation and culture of islet tissue and beta cells and patch clamping of mouse beta cells, whole islets, and clonal cell lines. In addition, the applicant should be experienced in the use of fura-2 measurements of cell calcium, cloning of islet ion channels, confocal microscopy, Western blotting, RT-PCR, antisense oligonucleotides, and related molecular techniques. Interested applicants should send curriculum vitae; statement of research interests; and three letters of recommendation by May 31, 2002, to: **Search Committee (F5166), Department of Pharmacology and Toxicology, P.O. Box 980613, Richmond, VA 23298-0613. Position description available. VCU is an Equal Opportunity/Affirmative Action Employer and encourages women, minorities, and persons with disabilities to apply.**

A **POSTDOCTORAL POSITION** is available to study the molecular and cellular biology of transcriptional regulation in mammalian cells. The work will focus on biological roles and mechanisms of actions of transcriptional coregulators. Cell culture and gene-targeted knockout mice are used as model systems.

This position is available immediately. A Ph.D. and/or M.D. and strong background in molecular and cellular biology are required. Experience in research on transcriptional regulation is preferred. Applicants should send curriculum vitae and three references to: **Dr. Toshi Shioda, Department of Tumor Biology, Massachusetts General Hospital Cancer Center, Building 149, Seventh Floor, 13th Street, Charlestown, MA 02129. E-mail: shioda@helix.mgh.harvard.edu.**

POSTDOCTORAL POSITION to study the molecular biology of lung morphogenesis. Basic cloning techniques, *in situ* hybridization, and/or immunohistochemistry are required. Excellent benefits with possibility of promotion. Contact: **Dr. Parviz Minoo, Director of Research, Department of Pediatrics, University of Southern California School of Medicine, 1801 East Marengo Street, Los Angeles, CA 90033. E-mail: minoo@hsc.usc.edu.**

POSITIONS OPEN

Aventis Behring is providing millions of patients with products that make a difference in life and death situations; Aventis Behring is a world leader in the plasma protein industry. Our mission is to improve human health by innovating and supplying the highest quality life-sustaining therapeutic proteins, constantly improving value for our patients, customers, associates, and shareholders. Please visit us at website: <http://www.aventisbehring.com>.

We currently are looking for a **POSTDOCTORAL FELLOW** in molecular biology. The candidate will be responsible for contributing to the success of a newly formed molecular biology/protein expression group within the Preclinical Research and Development Department. The group is responsible for designing, generating, and optimizing expression systems for the production of proteins of therapeutic interest. In addition, the group will be involved in fermentation scale-up and optimization as well as the purification of recombinant proteins. This position requires a Ph.D. in a relevant biological science and a strong background in cell transfection, mammalian cell culture, and protein expression optimization. Experience in cloning techniques, construction of expression plasmids, and protein purification is an advantage, along with an interest in creating novel therapeutic biologics related to plasma proteins. The position requires excellent written and oral communication skills and a willingness to work in a team atmosphere and train colleagues as needed. The position will be for two years. For consideration, please submit your curriculum vitae to: **Aventis Behring, Attention: Human Resources, P.O. Box 511, Kankakee, IL 60901. FAX: 815-935-3190; e-mail: kanhr@aventisbehring.com.**

We are an Equal Employment Opportunity Employer; Minorities/Females/Veterans/Disabled.

RESEARCH GENETICIST (POSTDOCTORAL RESEARCH ASSOCIATE)

U.S. Department of Agriculture (USDA), Agricultural Research Service (ARS), Corn Insects and Crop Genetics Research Unit, Ames, Iowa, has a position available immediately for a recent Ph.D. with an understanding of molecular genetics. Some experience in computer programming is required. The incumbent will be involved in analysis of EST data requiring DNA sequence alignment, identification of gene variants, and primer prediction in support of a major soybean genomics program. Knowledge of statistics is desirable. A component of the position is upgrading a major crop genetic database, SoyBase. Ph.D. is required and should have been awarded within the past four years. *Candidate must be a U.S. citizen.* Two-year appointment with benefits. Salary commensurate with experience (\$45,285 to \$70,555 per year). For specific information on the position, contact: **Dr. Randy Shoemaker; Telephone: 515-294-6233; e-mail: rcshoe@iastate.edu.** Applications in response to this advertisement should be sent along with three letters of reference to: **Dr. Randy Shoemaker, G401 Agronomy Hall, Iowa State University, Ames, IA 50011.** For further information, please refer to our website: <http://www.ars.usda.gov>, click Careers with ARS, and continue to announcement RA-02-017H. *The USDA is an Equal Opportunity Provider and Employer.*

A **POSTDOCTORAL RESEARCH ASSOCIATE** position is immediately available for an NIH-funded project involving development of pharmacogenetic therapy for the treatment of inflammatory diseases and cancers. Applicants should have a Ph.D. or M.D. degree and a strong background in molecular biology and immunology. In addition, applicants should be familiar with the following techniques including gene cloning, Western and Northern blotting, RT-PCR, and tissue culture. Experience with animal study, phage display, and gene transfer (viral or nonviral) is also preferred. Applicants should send curriculum vitae and names of three references to: **Dr. Song Li, Center for Pharmacogenetics, University of Pittsburgh, 639 Salk Hall, Pittsburgh, PA 15213. FAX: 412-648-1664; e-mail: sol4@pitt.edu.**

POSITIONS OPEN

POSTDOCTORAL POSITION Immunology National Institutes of Health

A Postdoctoral position in immunology is available in the Molecular Immunology Section, Neuroimmunology Branch, National Institute of Neurological Disorders and Stroke. The primary focus of research is on mechanisms of T cell receptor interaction with Class I MHC/peptide complexes (Baker et al., *J. Exp. Med.* 193:551-562, 2001.). Current projects involve identification of the architecture of Class I MHC molecules that control MHC-restricted, peptide-specific T cell receptor recognition and mechanisms of control of peptide conformations by MHC molecules. Fellowship includes full salary support for up to three years. Preferred applicants will have a background in immunology and molecular biology. Interested candidates should contact: **Dr. William Biddison** for further information: Telephone: 301-496-9009; e-mail: web@ninds.nih.gov.

Applicants are requested to send curriculum vitae; a brief statement of research experience and interests; and the names, telephone numbers, and e-mail addresses of three references to:

Dr. William Biddison
Molecular Immunology Section
NINDS, NIH
Building 10/Room 5B-16
Bethesda, MD 20892

The NIH is an Equal Employment Opportunity and Affirmative Action Employer.

POSTDOCTORAL POSITIONS

Several Postdoctoral positions are available in the newly established nutritional molecular biology laboratory of **Dr. Steven D. Clarke** at the Pennington Biomedical Research Center in Baton Rouge, Louisiana. Positions are available in a wide array of research topics including fatty acid control of lipogenic gene transcription and its regulation of lipid and glucose metabolism, fatty acid regulation of SREBP-1 mRNA decay, fatty acid signaling of kinase cascades, non-sense-mediated decay of delta-5 desaturase, fetal and maternal expression of delta-6 and delta-5 desaturases, and yeast expression of desaturases for structure/function analyses. Salary will follow NIH guidelines and depend upon experience. Applications are to include curriculum vitae, a summary of research experience, and the names of three references. Applications will be accepted until suitable candidate is found. Please submit applications to:

Steven D. Clarke
Pennington Biomedical Research Center
6400 Perkins Road
Baton Rouge, LA 40808
E-mail: hrm@pbrc.edu
Reference: Clarke 028089-028093

LSU/PBRC is an Equal Opportunity/Affirmative Action Employer.

POSTDOCTORAL POSITION University of Massachusetts Medical School

We are seeking a Postdoctoral Fellow to study toll/interleukin 1 receptors and their role in inflammatory disease pathogenesis using human cells and mouse models. Candidates should have a Ph.D. or M.D. degree or have completed degree requirements. Experience in immunology, molecular biology, and/or biochemistry and publication of papers in the areas of cytokine biology, receptor biochemistry, and/or cell signaling required. Those interested should send curriculum vitae and names of three references by FAX or mail to:

Evelyn A. Kurt-Jones, Ph.D.
University of Massachusetts Medical School
Department of Medicine
364 Plantation Street
LRB226
Worcester, MA 01605

POSITIONS OPEN

POSTDOCTORAL POSITIONS Genomics and Bioinformatics The University of California, Irvine

Two positions for Molecular Biologists seeking postdoctoral training in genomics and bioinformatics are available in the laboratory of **Professor G. Wesley Hatfield**. These positions are funded by an interdisciplinary NIH training grant to provide Life Scientists with in-depth training in computational sciences with an emphasis in bioinformatics approaches to problems in molecular structure prediction and functional genomics. Projects include (1) the use of DNA microarrays (Affymetrix GeneChips®) and proteomic techniques to study the roles of DNA topology and chromosome structure on global gene expression in the model organism *E. coli*, (2) the use of laser capture microdissection and GeneChips to determine differentiation patterns of human skin for the development of custom diagnostic chips, and (3) the development and robotic automation of methods for the design and construction of spatially addressable three-dimensional DNA nanostructures. Opportunities for interactions and collaborations with Southern California Pharmaceutical and biotechnology companies are available. Salary range: \$31,092 to \$48,852 commensurate with experience. Applicants should send curriculum vitae, a description of research interest, and three letters of reference to: **Elaine Ito, Department of Microbiology and Molecular Genetics, College of Medicine, University of California, Irvine, CA 92697-4025. E-mail: etito@uci.edu.**

The University of California, Irvine, is an Equal Opportunity Employer committed to excellence through diversity.

The College of Sciences and Mathematics at Auburn University, located in Auburn, Alabama (web site: <http://www.auburn.edu/cosam>), is seeking candidates for the position of **POSTDOCTORAL FELLOW** in the sciences and mathematics. From time to time, Postdoctoral positions become available under a variety of research grants and projects in the college. We are seeking applications from individuals with a Ph.D. in any one area such as biology, chemistry, geology, geography, mathematics, statistics, physics, or related fields. The positions are available for a minimum of one year as full-time, 12-month with renewal possible. Salary will be commensurate with education and experience. Review of applications will begin after May 13, 2002, and continue throughout the year as positions become available. Please send curriculum vitae and statement of research interests along with a list of three references and contact information to: **Dr. Marie Wooten, Associate Dean for Research, COSAM, 331 Funchess Hall, Auburn University, Auburn, AL 36849. E-mail: wootemw@auburn.edu; FAX: 334-844-9234. Auburn University is an Affirmative Action/Equal Opportunity Employer. Minorities and women are encouraged to apply.**

MOLECULAR IMMUNOPHARMACOLOGY FELLOWSHIP

University of California San Francisco

Expression and functions of T cell G protein-coupled receptors for lysophospholipids, immunity in transgenic and knockout mouse models, and characterization of pharmacological probes. Ph.D./M.D.-Ph.D. **CELL BIOLOGIST/IMMUNOLOGIST**; experience in receptor experience. Contact: **Dr. Edward J. Goetzl**; FAX: 415-476-6915; E-mail: egoetzl@itsa.ucsf.edu.

POSTDOCTORAL POSITION to study the role of the endoproteolytic enzymes prohormone convertases 1, 2, and 5 in the posttranslational processing of pro cholecystokinin in endocrine cells and rodent brain. Previous experience with molecular biology and cell culture desirable. Please send curriculum vitae and list of references to: **Margery C. Beinfeld, Ph.D., Department of Pharmacology and Experimental Therapeutics, Tufts University School of Medicine, 136 Harrison Avenue, Boston, MA 02111. E-mail: margery.beinfeld@tufts.edu.**

POSITIONS OPEN

POSTDOCTORAL POSITION in pre-mRNA splicing. We are studying the cyclophilin USA-CyP, which functions in both steps of pre-mRNA splicing (*EMBO. J.* 21:470, 2002) and the Prp18 protein, which is both a focus of work and a tool for investigating the mechanism of the second step of splicing. Experience in molecular biology is essential; some experience in protein biochemistry or *in vitro* RNA work is desirable. This position is fully funded by an NIH grant. Salary and benefits are highly competitive. If interested, please send curriculum vitae including the names of three references to: **Dr. David Horowitz, Department of Biochemistry, Uniformed Services University of the Health Sciences, 4301 Jones Bridge Road, Bethesda, MD 20814. Telephone: 301-295-3589; FAX: 301-295-3512; e-mail: dhorowitz@usuhs.mil. Affirmative Action/Equal Opportunity Employer.**

MARKETPLACE

protein-DNA interaction transcription factors

Multi-Function Protein Arrays
Refer to code: SM042602

Panomics

1-877-726-6642
www.panomics.com

MULTI-PLEX CLONING
Build Your Own Chromosomes
NATURE TECHNOLOGY CORPORATION

The Leader in Custom DNA
SEQUENCING
Lark

U.S.: 800.288.3720 Europe: +44 (0) 1799 503 123

• GLP Compliant • DNA Sequencing
including FDA Submission Quality • Genotyping
• Genetic Stability Testing • Quantitative PCR

**DNA Sequencing
MJ Genomics Services**

Unsurpassed Data Quality

650 phred Q>20 bases, 1Kb alignable

Expert Project Planning

Project completion with fewer reactions
and decreased turnaround time

Personalized Customer Service

Speak directly with your project
manager

Offered by:
MJ Research
INCORPORATED

888-8437 • info@mjr.com • www.mjr.com

MARKETPLACE



**MORE PRODUCTS
ON PREVIOUS PAGE**

CUSTOM MICROARRAYS

RELIABLE FAST ACCURATE

MICROARRAYS, INC.
(615) 327-5495
www.microarrays.com



ANTISENSE

- Complete Proven Antisense Program
- Low Toxicity, 2nd Generation Oligomers
- Research Rights to Key Patents



SEQUITUR 888-923-1459
www.oligo.com

Widely
Recognized
Original &
Guaranteed

KlenTaq1

8¢/u
Truncated
Taq DNA
Polymerase
Withstand 99°C

US Pat # 5,436,149

Call: **Ab Peptides** 1-800-383-3362
Fax: 314-968-8988 www.abpeps.com

**Plasmid DNA Contract
Manufacturing Service**

- High-quality, endotoxin-free, plasmid DNA
- Comprehensive Quality Control
- Fast turnaround times
- Batch sizes from 100 mg up to 5 g plasmid DNA
- Robust and scalable process



Europe: +49-2103-29-12400
North America: 800-426-8157
www.qiagen.com/palliance

Poorly Expressed Proteins?

Maximize your protein production

- Media formulas for high performance
 - Media Optimization Kit™ for just the right one
- For more information visit
www.athenaes.com

AthenaES Specialists in Protein Production

Do you have a large-volume oligo order?

Discover high-throughput service that you can count on.



www.idtdna.com
1-800-328-2661

MARKETPLACE

**Custom Peptides
& Antibodies**

Best Service & Price! Compare and Save!

Alpha Diagnostic (800) 786-5777

Fax (210) 561-9544; info@4adi.com
Web site: http://www.4adi.com

QUALITY DNA SYNTHESIS

MALDI-TOF Mass Spectrometry Quality Control

Check our new prices
and order at
our new website.

www.mcrc.com

MIDLAND

MIDLAND CERTIFIED REAGENT COMPANY, INC.
Phone: 800.247.8766 • Fax: 800.359.5789
email: orders@oligos.com

Quality Peptides & Antisera

Friendly, Personal Service
www.genosys.com

Custom Peptide Synthesis

- sequence analysis
- IG, >70%, >80%, >95% purity
- scales from 2 mg-1 g
- synthesis up to 120 residues
- variety of modifications available
- mass spec & HPLC on every peptide
- satisfaction guaranteed

Polyclonal Antisera Service

- antigen design assistance
- synthesis, conjugation and sera collection
- rabbits, chickens, sheep & goats available
- flexible protocol
- phospho-specific antibody production

SIGMA
GENOSYS

North America 1-888-663-3693
information@sial.com
Europe (+44) (0) 1223 839000
info@sigma-genosys.co.uk



Need Abs.?

- Over 30 Years Experience
- Unlimited Capacity
- USDA/NIH/OPRR Assured
- Custom Antibody Production
- Services From \$350
- Apoptosis, p53, HIV, Neurobiology
- Immunology, Signal Transduction

www.prosci-inc.com

MERLIN® Custom Services



Adenovirus Production

Construction, Amplification,
Purification & Titration
Research or cGMP Grade

1-888-DNA-KITS • www.qbiogene.com

MARKETPLACE

Quality Fast Reliable Bio-Synthesis Call for specials. 1-800-227-0627

★ Proteomics ★ Array/Formats ★ oligos

PEPTIDES

antibodies ***NEW*** Bioconjugates

www.biosyn.com

3 O.D. Select Oligos

NEW LOW PRICE

Just \$0.45/base*

We'll ship your 3 O.D. Select oligos in just 24-48 hours. Every oligo is QC'd by PAGE analysis, and each batch is performance-tested by mass spec.

Order by fax: 281-363-2212, email: gorderentry@sial.com or web: www.genosys.com.

*Desalted only. Oligos must be 10 to 35 bases in length. No modifications or additional purification. Offer valid in U.S. only.

SIGMA
GENOSYS

North America: 1-877-710-1504 • email: ginformation@sial.com

CUSTOM PEPTIDES

QUICK QUOTE
MOST QUOTES IN AN HOUR

FAST DELIVERY
2 WEEKS FOR MOST ORDERS
100% SATISFACTION GUARANTEED

...MADE EASY!
NEW ENGLAND
PEPTIDE, INC.
Tel: 888-343-5974

Fax: 978-343-5940 www.newenglandpeptide.com

rtQ-PCR FRET PROBES

- Black Hole Quencher™ dyes
- 3', 5' or internal modifications
- Top Quality • Best Pricing • Great Support

BIOSEARCH
TECHNOLOGIES
Chemistry for Genomics™

1.415.883.8400
www.bioserchtech.com

DNA

PEPTIDES

Free Set-up and
Desalting

Call and Compare

**Gene Synthesis, Site Mutagenesis,
Protein Expression and more**

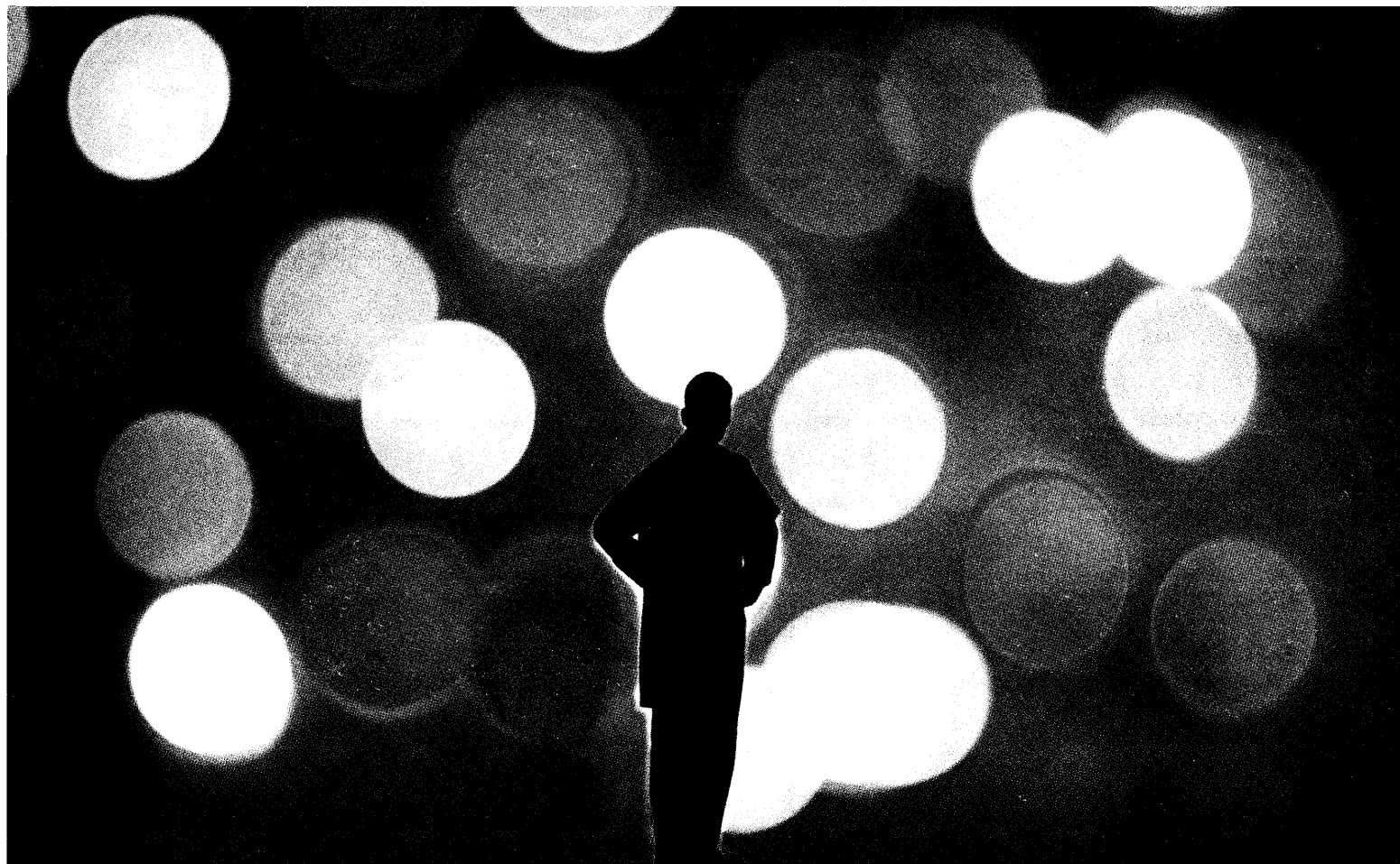
COMPARE AND SAVE

DNA Sequencing: as low as \$15 per run

Custom Anti-peptide Antibody
(including peptide synthesis)
\$850

GENEMED SYNTHESIS

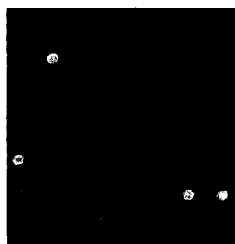
800.344.5337 Fax: 650.952.9540
Web Site: www.genemedsyn.com



More fluorescence. Bright signals. Target success with FluoroScript™ RT.

Don't be left in the dark. The FluoroScript™ cDNA Labeling System from Invitrogen clears the way to successful microarray hybridization. Get high incorporation of fluorescent nucleotides in your cDNA targets. See brilliant colors in your arrays. Set the stage for the best experimental results.

Strong signal intensity. Start with the right reverse transcriptase. FluoroScript™ RT is engineered to give you greater fluorescence into your cDNA. At the same time, it's RNase H minus, so you get great yield. With FluoroScript™, there are no tradeoffs.



Cyanine-labeled cDNA synthesized with the FluoroScript™ cDNA Labeling System hybridized to a glass microarray slide.

Streamlined protocol. Generate your labeled cDNA quickly and easily. Start with total or poly (A)⁺ RNA. Use either cyanine-labeled dUTP or dCTP. With efficient direct labeling and one-step purification, you'll get speed and convenience—without compromising results.

Clear results. When you want to see bright signal intensity in your microarrays, get the high fluorescence incorporation that only FluoroScript™ can deliver. To find out more, contact Invitrogen today, or visit our web site at www.invitrogen.com/fluoroscrypt.



Corporate Headquarters:
Invitrogen Corporation
1600 Faraday Avenue
Carlsbad, California 92008 U.S.A.
Tel: 1 760 603 7200
Tel (Toll Free): 1 800 955 6288
Fax: 1 760 603 7229
Email: tech_service@invitrogen.com

European Headquarters:
Invitrogen Ltd
3 Fountain Drive
Inchinnan Business Park
Paisley PA4 9RF, UK
Tel: +44 (0) 141 814 6100
Fax: +44 (0) 141 814 6260
Email: eurotech@invitrogen.com

For an office near you go to:
www.invitrogen.com

KODAK IMAGE STATION

Visit us at ASM
Booth # 1018

Choosing The Best Is Easy.

Introducing the NEW Image Station 1000, Kodak's newest cooled CCD imaging system for high performance digital imaging of chemiluminescent, fluorescent and chromogenic labels.

- Mega pixel camera provides 20 micron resolution for clear, sharp images
- High sensitivity detection of chemiluminescent, fluorescent and chromogenic labels
- Produce up to 32 bit image files for extended dynamic range and increased quantitative accuracy
- Multiple capture modes permit kinetic, time-lapse and single/multiple captures, increasing versatility
- Unique design accommodates a variety of sample types including wet gels, blots, film, microplates and chromatograms
- Fire Wire Interface for MACINTOSH or PC platforms

KODAK Image Station 440CF
The chemiluminescence imaging system
of choice for thousands of
scientists worldwide

NEW - KODAK Image Station 1000

The Image Station 1000 and the Image Station 440CF were developed by Kodak, a world leader in scientific imaging, and are available exclusively through PerkinElmer® Life Sciences.

For more information, visit www.kodak.com/go/IS1000h or contact PerkinElmer at 1-800-551-2121 (US only), +1-617-350-9300 (world-wide). In Europe, contact your local PerkinElmer sales office: BE: 0800 94540, FR: 0800 907762, DE: 0800 1 810032, IT: 800 790310, NL: 0800 0223042, CH: 0800 555027, SE: 020 790735, GB: 0800 896046

KODAK SCIENTIFIC IMAGING SYSTEMS

