

- 79, 583 (1994).
11. P. Montalbini, *J. Phytopathol.* **134**, 218 (1992); *Riv. Patol. Veg.* **4**, 81 (1994). Allopurinol (400 mM) in water was applied as a soil drench 8 days before either shift to LD conditions or application of INA.
 12. Z. Chen, H. Silva, D. F. Klessig, *Science* **262**, 1883 (1993); P. Sánchez-Casas and D. F. Klessig, *Plant Physiol.* **106**, 1675 (1994). Compounds tested were 3-amino triazole (0.2 to 4 mM), which inhibits catalase and therefore may act to increase local H₂O₂ concentrations; catalase itself (1.2 to 120 U/ml); and the oxygen radical scavenger Tiron (4,5-dihydroxy-3,5-disulfonic acid; 1 to 10 mM) (Sigma).
 13. INA (0.4 mM as 25% active compound and 75% wettable powder mix in water) and SA (2 mM) (Fig. 1) (9) were applied to imminent runoff as described (3).
 14. J. T. Hancock and O. T. G. Jones, *Biochem. J.* **242**, 103 (1987). DPI was inoculated in 0.1% dimethyl sulfoxide.
 15. C.-K. Ådh and T. M. Murphy, *Plant Physiol.* **107**, 1241 (1995); S. C. Dwyer, L. Legrendre, P. Low, T. L. Leto, *Biochem. Biophys. Acta* **1289**, 231 (1995); T. Jabs *et al.*, unpublished data.
 16. V. B. O'Donnell, D. G. Tew, O. T. G. Jones, P. J. England, *Biochem. J.* **290**, 41 (1993).
 17. RNA (5 µg per lane) was isolated (10 leaves from three plants) and blots were prepared, probed, and washed as described [S. Kiedrowski, P. Kawałek, K. Hahlbrock, I. E. Somssich, J. L. Dangi, *EMBO J.* **11**, 4677 (1992)]. The probes used were *PR-1* cDNA [S. Uknes *et al.*, *Plant Cell* **5**, 159 (1993)] and ESTs [T. Newman *et al.*, *Plant Physiol.* **106**, 1241 (1994)]. The ESTs were from the Arabidopsis Biological Resource Center, Ohio State University. EST identification numbers are as follows: B25XP, homologous to *PRXcb* (GenBank accession number X71794); 90B13T7, *GST* (GenBank accession number T20657), and a type III *GST*, similar to an auxin-regulated protein and *GST* clones [F. N. J. Droog, P. J. J. Hooykaas, B. J. van der Zaal, *Plant Physiol.* **107**, 11139 (1995)]. Other *Arabidopsis* *GSTs* described are class I (*GST2* and PMA239x14). ESTs showing no difference in expression between *Isd1* and the wild type putatively encode Fe-SOD (34D9T7); Cu/Zn-SOD (2G11T7P and 92L6T7); Mn-SOD (105G4T7); Catalase I (35F2T7, 38C1T7, and 40A1T7); anionic lignin-forming peroxidase (ATTS0592); cationic peroxidase (40H1T7); P7 peroxidase (11B11T7); glutathione peroxidase (139F9T7); and lipoxigenase I (92H8T7). The apparent lack of SA-induced *PR-1* mRNA accumulation in wild-type leaves (Fig. 2D) is due to deliberate underexposure of the autoradiogram in order to visualize the stronger signals. Normal exposure clearly shows *PR-1* mRNA accumulation.
 18. D. Inze and M. Van Montagu, *Curr. Opin. Biotechnol.* **3**, 153 (1995); M. C. Mehdy, *Plant Physiol.* **105**, 467 (1994); C. J. Baker and E. W. Orlandi, *Annu. Rev. Phytopathol.* **33**, 299 (1995).
 19. J. G. Scandalios, *Plant Physiol.* **101**, 7 (1993); S. Streller and G. Wingsle, *Planta* **192**, 195 (1994).
 20. Fast neutron-mutagenized *Isd1* seed was grown under SD conditions. Ten M2 seed lots from ~200 M1 individuals were screened for wild-type plants after shift to LD conditions at 2 weeks of age. Lesion initiation in young seedlings is lethal. Loci defined by these suppressor mutants are named *PHOENIX* (*phx*), after the mythological bird risen from its own ashes. M3 progeny of survivors were retested, and suppressors were categorized by segregation of the *Isd1* phenotype in F₁ individuals and F₂ populations of backcrosses to Ws-0 and *Isd1*. These analyses established that *phx21* is unlinked to *Isd1*, recessive to its wild-type allele, and has no obvious phenotype in combination with *LSD1* (R. A. Dietrich *et al.*, unpublished data). NBT staining after shift to LD conditions was also abolished (9).
 21. G. Wu *et al.*, *Plant Cell* **7**, 1357 (1995); I. Apostol, P. F. Heinstein, P. S. Low, *Plant Physiol.* **99**, 109 (1989); C. J. Baker, N. O'Neill, L. Keppler, E. W. Orlandi, *Phytopathology* **81**, 1504 (1991); R. Vera-Estrella, E. Blumwald, V. J. Higgins, *Physiol. Mol. Plant Pathol.* **42**, 9 (1993); M. J. May, K. E. Hammond-Kosack, J. D. G. Jones, *Plant Physiol.* **110**, 1367 (1996).
 22. A. J. Enyedi, N. Yalpani, P. Silverman, I. Raskin, *Proc. Natl. Acad. Sci. U.S.A.* **89**, 2480 (1992).
 23. T. P. Delaney *et al.*, *Science* **266**, 1247 (1994); K. Weyman *et al.*, *Plant Cell* **7**, 2013 (1995); H. Kauss and W. Jeblick, *Plant Physiol.* **108**, 1171 (1995); H. Kauss, E. Theisinger-Hinkel, R. Mindermann, U. Conrath, *Plant J.* **2**, 655 (1992); L. A. J. Mur *et al.*, *ibid.* **9**, 559 (1996); U. Neuenschwander *et al.*, unpublished data.
 24. These hypotheses suggest that the *Isd1* mutation is a strong loss-of-function or null allele, and our preliminary characterization of a candidate gene supports this (R. A. Dietrich, M. H. Richberg, J. L. Dangi, unpublished data).
 25. B. N. Ames, M. K. Shigenaga, T. M. Hagen, *Proc. Natl. Acad. Sci. U.S.A.* **90**, 7915 (1993); J. Busciglio and B. A. Yanker, *Nature* **378**, 776 (1995); P. C. Wong *et al.*, *Neuron* **14**, 1106 (1995); M. Wiedau-Pazos *et al.*, *Science* **271**, 515 (1996); F. Morel, J. Doussiere, P. V. Vignais, *Eur. J. Biochem.* **201**, 523 (1991).
 26. We thank J. Ryals and S. Uknes for critical comments on the manuscript and the *PR-1* cDNA, and U. Ringeisen (Köln) and S. Whitfield (Chapel Hill) for help in preparing figures. Supported by grants from the German Research Society's (Deutsche Forschungsgemeinschaft) "Arabidopsis" Focus Program (to J.L.D.) and the EEC-BIOTECH Project of Technological Priority (to J.L.D.) and by a Max-Planck-Society fellowship to T.J.

21 March 1996; accepted 9 August 1996

Genetic Restriction of HIV-1 Infection and Progression to AIDS by a Deletion Allele of the *CKR5* Structural Gene

Michael Dean,* Mary Carrington,* Cheryl Winkler, Gavin A. Huttley, Michael W. Smith, Rando Allikmets, James J. Goedert, Susan P. Buchbinder, Eric Vittinghoff, Edward Gomperts, Sharyne Donfield, David Vlahov, Richard Kaslow, Alfred Saah, Charles Rinaldo, Roger Detels, Hemophilia Growth and Development Study, Multicenter AIDS Cohort Study, Multicenter Hemophilia Cohort Study, San Francisco City Cohort, ALIVE Study, Stephen J. O'Brien†

The chemokine receptor 5 (*CKR5*) protein serves as a secondary receptor on CD4⁺ T lymphocytes for certain strains of human immunodeficiency virus-type 1 (HIV-1). The *CKR5* structural gene was mapped to human chromosome 3p21, and a 32-base pair deletion allele (*CKR5Δ32*) was identified that is present at a frequency of ~0.10 in the Caucasian population of the United States. An examination of 1955 patients included among six well-characterized acquired immunodeficiency syndrome (AIDS) cohort studies revealed that 17 deletion homozygotes occurred exclusively among 612 exposed HIV-1 antibody-negative individuals (2.8 percent) and not at all in 1343 HIV-1-infected individuals. The frequency of *CKR5* deletion heterozygotes was significantly elevated in groups of individuals that had survived HIV-1 infection for more than 10 years, and, in some risk groups, twice as frequent as their occurrence in rapid progressors to AIDS. Survival analysis clearly shows that disease progression is slower in *CKR5* deletion heterozygotes than in individuals homozygous for the normal *CKR5* gene. The *CKR5Δ32* deletion may act as a recessive restriction gene against HIV-1 infection and may exert a dominant phenotype of delaying progression to AIDS among infected individuals.

In all well-characterized epidemics there are individuals in the population that respond differently to the infectious agent (1, 2). Although resistance to infection is the most common variable phenotype, variation in disease outcomes has also been observed. Epidemiologic studies have shown that inherited factors are involved in the risk of mortality from infectious agents (3, 4). The HIV-1 epidemic presents a critical challenge for the application of current genetic techniques to the study of host genetic variation for infection and susceptibility to infection. This problem is confounded in the studies of HIV-1 by the rapid rate of evolution of the virus (5–7). However, a

number of groups have shown that specific alleles of the human lymphocyte antigen (HLA) locus are associated with different rates of progression from infection to an AIDS diagnosis (8). Yet little evidence for non-HLA loci regulating HIV-1 infection or AIDS progression has been reported, although it does seem likely that other host genetic factors would play a role in AIDS epidemiology (8, 9).

The recent demonstration that the chemokines RANTES, MIP-1α, and MIP-1β act as natural suppressors of HIV-1 infection (10) has focused attention on the role of these chemokines during HIV-1 infection and clinical pathogenesis. Feng *et al.*

Table 1. AIDS cohorts studied. [A list of researchers and their affiliations for HGDS and MHCS are given in (52).]

Study name	Acronym	Risk group	Enrollment	Participants	Sites*	Principal investigators	Reference
Hemophilia Growth and Development Study	HGDS	Hemophiliacs	1989–1990	333	14	E. D. Gomperts, M. W. Hilgartner, W. K. Hoots, S. M. Donfield	(31)
Multicenter Hemophilia Cohort Study	MHCS	Hemophiliacs	1985–1990	2472	10	J. J. Goedert	(32)
DC Gay Cohort Study	DCG	Homosexual men and intravenous drug users†	1982	307	3	J. J. Goedert, R. J. Biggar	(33)
Multicenter AIDS Cohort Study	MACS	Homosexual men	1984	5000	4	A. Munoz, J. P. Phair, R. Detels, C. R. Rinaldo Jr., A. J. Saah	(34)
San Francisco City Clinic Cohort	SFCC	Homosexual men	1978–1980	6704	1	S. P. Buchbinder	(35)
AIDS Link to the Intravenous Experience	ALIVE	Intravenous drug users	1988–1990	2958	1	D. Vlahov	(36)

*Sites for HGDS: New York Hosp.–Cornell Med. Ctr.; Childrens Hosp., Los Angeles; Gulf States Hemophilia Ctr., Univ. of Texas Med. Sch., Houston, TX; Children's Mercy Hosp., Kansas City, MO; Louisiana Comprehensive Hemophilia Care Ctr., New Orleans; Univ. of California–San Diego Med. Ctr.; Indiana Hemophilia Comprehensive Ctr., Indianapolis; Children's Hospital of Oklahoma, Oklahoma City; Mt. Sinai Hemophilia Ctr., New York; Nebraska Regional Hemophilia Ctr., Omaha; Santa Rosa Med. Ctr., San Antonio, TX; Children's Hosp. of Michigan, Detroit; Hershey Med. Ctr., PA; and Dept. of Pediatrics, Univ. of Iowa, New England Research Institutes, Incorporated, Watertown; Baylor College of Med. Sites for MHCS: Mt. Sinai Med. Ctr., New York; Cornell Univ. Med. Ctr.; Tulane Univ. Sch. Med.; Univ. of North Carolina; Cardeza Foundation Hemophilia Ctr., Philadelphia; Children's Hosp. of Philadelphia; Pennsylvania State Univ. Sch. of Med.; Hemophilia Ctr. of West Pennsylvania, Pittsburgh; Case Western Reserve Univ.; and Uniformed Services Univ. of the Health Sci., Washington, DC. Sites for DCG: Washington, DC, and New York. Sites for MACS: Howard Brown Memorial Clinic–Northwestern Univ.; UCLA Sch. of Public Health, Los Angeles; Univ. of Pittsburgh, Graduate Sch. of Public Health; Johns Hopkins Univ. Sch. of Hygiene and Public Health; and Univ. of Maryland Cancer Ctr. Sites for SFCC: Dept. of Public Health, San Francisco; and Center for Disease Control and Prevention, Atlanta. Sites for ALIVE: Johns Hopkins Univ. School of Public Health. †Includes 62 individuals from an intravenous drug use study.

(11) identified a chemokine receptor, fusin (12–14), as an HIV-1 entry cofactor (or co-receptor) with CD4 (15) for T cell line-tropic strains. Several groups then showed that the cysteine-cysteine (C-C)-linked chemokine receptor CKR5 (also called CC-CKR5, CCR5, and designated with gene

symbol CMKBR5) (16), which serves as the principal cellular receptor for RANTES, MIP-1 α , and MIP-1 β , is an efficient co-receptor for macrophage-tropic isolates of HIV-1 (17–22). The closely related CKR2B and CKR3 molecules can also act as co-receptors for some HIV-1 strains (20, 21). In addition, Dragic *et al.* (17) observed that CD4⁺ T cells from some HIV-1-exposed individuals who have remained uninfected are relatively resistant to infection, suggesting that a defect in co-receptors or their expression may protect some individuals from infection.

The C-C or β chemokine receptors belong to the heterotrimeric GTP-binding protein (G protein)-coupled receptor superfamily (22–24). The C-C chemokine receptors consist of seven transmembrane domains and typically contain no introns (12–14, 16). The genes for the C-C chemokines are linked in a cluster on chromosome 17 (24). In contrast, the genes for the receptors are dispersed in the genome as single genes or in small clusters of genes that have related function and sequence (24).

To genetically map the locus encoding fusin and the CKR5 locus, we used gene-specific polymerase chain reaction (PCR) primers designed from the sequences of the genes (13, 16) to screen a panel of 90 radiation hybrid (RH) DNA samples (25). The RH panel is designed to retain small segments of the human genome in different

combinations so that the map location of new markers is implicated by their concordant occurrence in the panel with previously mapped markers (Fig. 1A) (25). The distribution of RH results indicates that fusin maps to chromosome 2q21, proximal to the

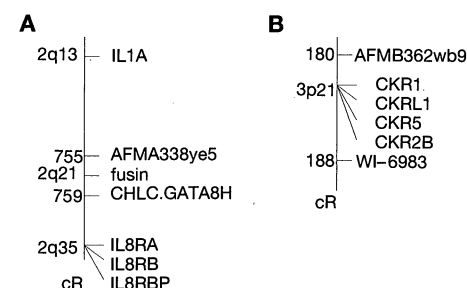


Fig. 1. Mapping of CKR genes. (A) The location of the gene encoding fusin is shown on the map of chromosome 2 in relation to the interleukin-1 α (IL1A) gene and the closely related interleukin-8 receptor A and B (IL8RA, IL8RB) and their pseudogene (IL8RBP). (B) The CKR5 gene was also typed in this RH panel and is located in the same cluster on chromosome 3p21 as CKR1, CKR1-like gene; CKR2B, C-C chemokine receptor 2B. Flanking framework markers are shown above and below the mapped genes, and their centirad (cR) distance from the top of the chromosome is shown to the left. AFMA338ye5, CHLC.GATA8H, and AFMB362wb9 are CA repeats, and WI-6983 is the RII subunit of cyclic AMP-dependent protein kinase. Methods are described in (51).

M. Dean, G. A. Huttley, R. Allikmets, S. J. O'Brien, Laboratory of Genomic Diversity, National Cancer Institute (NCI), Frederick, MD 21702–1201, USA.

M. Carrington, C. Winkler, M. W. Smith, Intramural Research Support Program, Science Applications International Corporation Frederick, NCI, Frederick, MD 21702–1201, USA.

J. J. Goedert, Viral Epidemiology Branch, NCI-Executive Plaza North, 6130 Executive Boulevard, Bethesda, MD 20892, USA.

S. P. Buchbinder and E. Vittinghoff, San Francisco City Clinic, Department of Public Health, 24 Van Ness Avenue, San Francisco, CA 94102–8033, USA.

E. Gomperts, Childrens Hospital Los Angeles, 4650 Sunset Boulevard, Los Angeles, CA 90027, USA.

S. Donfield, New England Research Institute, Incorporated, 9 Galen Street, Watertown, MA 02172, USA.

D. Vlahov, Department of Epidemiology, The Johns Hopkins School of Hygiene and Public Health, 615 North Wolfe Street, Baltimore, MD 21205, USA.

R. Kaslow, Department of Epidemiology, University of Alabama at Birmingham, 720 South 20th Street, Birmingham, AL 35294–0008, USA.

A. Saah, The Johns Hopkins School of Hygiene and Public Health, 615 North Wolfe Street, Baltimore, MD 21205, USA.

C. Rinaldo, University of Pittsburgh School of Public Health, 4200 5th Avenue, Pittsburgh, PA 15213, USA.

R. Detels, University of California, Los Angeles, Schools of Public Health and Medicine, 10833 Le Conte Avenue, Los Angeles, CA 90025–1772, USA.

*These authors contributed equally to this study.

†To whom correspondence should be addressed.

related interleukin-8 receptor (*IL8RA*, *IL8RB*) genes, and distal to the *IL-1* and *IL-1* receptor (*IL1*, *IL1R*) gene cluster (12). *CKR5* maps to chromosome 3p21, very close to the *CKR1* gene, which we also physically mapped in this analysis (Fig. 1B). *CKR2B* has been previously shown to be 18 kb from *CKR5* (16) and can therefore also be assigned to 3p21. These gene-mapping assignments provide additional evidence for the occurrence of chemokine receptor genes in small clusters in different regions of the human genome.

We identified alterations in the *CKR5* gene by amplifying portions of the entire coding region, digesting the fragments with *Hinf* I, and resolving the fragments by a combined single-stranded conformation polymorphism-heteroduplex analysis approach (26, 27). DNA from more than 600 individuals (healthy controls, HIV-1 at-risk seronegatives, HIV-1-infected, non-AIDS, and AIDS patients) was typed by this procedure, and eight molecular genetic variants were identified. One of the alterations occurred in ~10% of the individuals, and this allele was sequenced. This variant contains a 32-base pair (bp) deletion (*CKR5*Δ32) that causes a frame shift at amino acid 185. After this manuscript was submitted, Samson *et al.* (28) and Liu *et al.* (29) also described the same *CKR5* deletion mutation. The *CKR5*Δ32 allele is nonfunctional both as a chemokine receptor and an HIV-1 co-receptor.

The other seven variants we found were all rare and were observed in ≤1% of the individuals studied (30).

Lymphoblastoid B cell lines were established for over 1900 participants who are members of six well-characterized long-term cohorts of hemophiliac, homosexual male, and intravenous drug user risk groups (Table 1) (31–36). Genomic DNA from 156 cell lines derived from Caucasian participants from the DCG and MACS studies was screened by using 170 defined and mapped polymorphic loci (37), including candidate genes (for example, *CD4*, chemokine *SCYA1*, *HLA-DQA1*, *TCRA*, *TCRB*, and *CKR5*), for distortion of allele and genotype frequency among HIV-1-infected versus HIV-1 antibody-negative individuals at risk for exposure to HIV-1. Loci were selected on the basis of available polymorphisms, potential involvement in retroviral infection or pathogenesis, and their genetic location, producing an average 20-centimorgan interval of markers (37, 38). The significance level estimated with a G test (39) for each of the 170 loci for the occurrence of genotypic association between HIV-1-infected versus HIV-1 antibody-negative individuals is presented in Fig. 2. With the exception of *CKR5*, none of the loci tested displayed a significant distortion of genotype frequencies among the infected versus uninfected individuals. The genotypic distribution of the two common alleles of

CKR5 [normal or wild type (+) and *CKR5*Δ32 deletion] in 738 Caucasian homosexual men displays a highly significant ($P = 2.0 \times 10^{-5}$) departure from genotypic equilibrium when frequencies among HIV-1-infected versus uninfected individuals are examined. Although these 170 markers scan only a portion of the genome for HIV restriction loci, the absence of any association at any of the loci suggests that there is not a major effect on HIV-1 infection from genes close to (within 1 cM of) the test markers. The list includes the HIV receptor (*CD4*), a β chemokine (*SCYA1*), and several immune function genes. These markers provide negative controls for the result observed with *CKR5*.

To examine further the role of the *CKR5*Δ32 allele in HIV-1 infection, we determined the distribution of alleles and genotypes with genomic DNA from 1955 individuals from the six cohorts listed in Table 1. Each of these studies represents a long-term epidemiological project designed to characterize important variables in HIV-1 infection and disease progression. All cohort participants are in high-risk groups for HIV-1 infection; namely, hemophiliacs potentially exposed to contaminated clotting factor before HIV-1 screening and viral inactivation, sexually active homosexual men, and intravenous drug users. Participants include HIV-1-exposed seronegative individuals, HIV-1-infected AIDS patients, and HIV-1-infected individuals

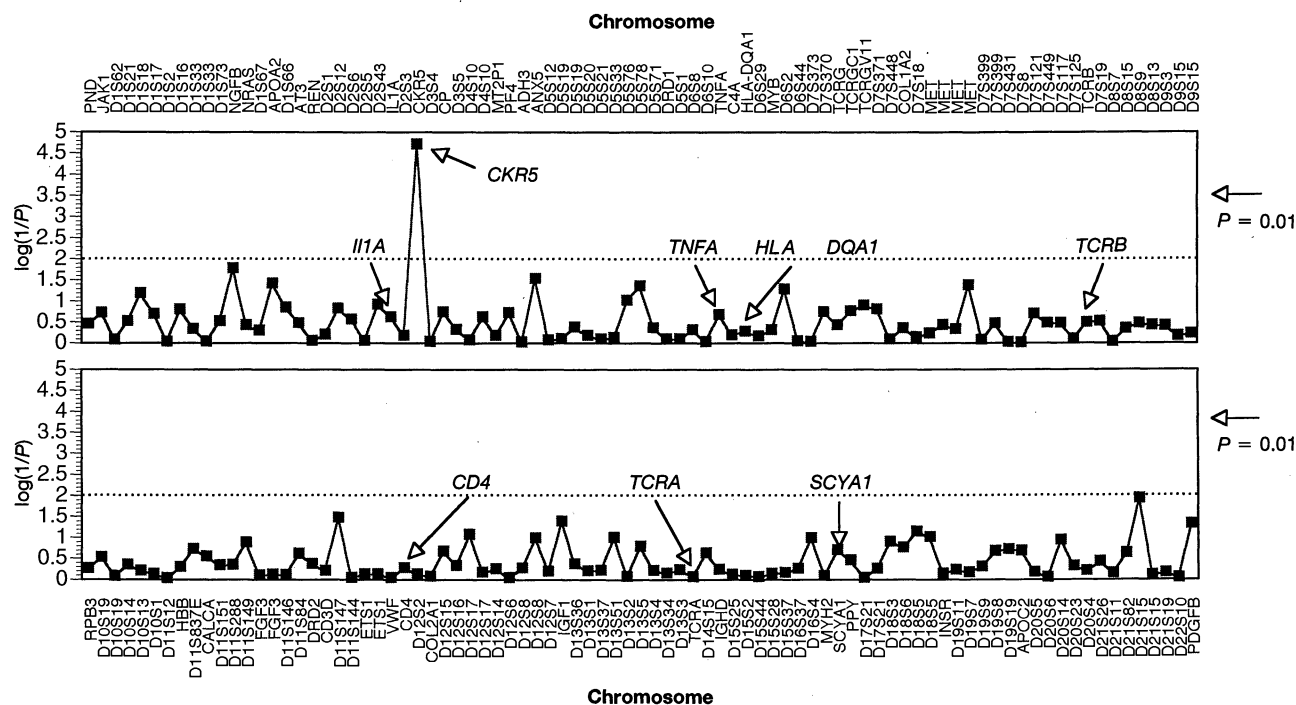


Fig. 2. Genotypic markers 37 and HIV-1 infection [G test (39)]. The significance value of the genotype association for each marker is plotted in physical order along each chromosome. The dotted line corresponds to significance

at the 1% level for individual tests. The right arrow corresponds to an experiment-wide 1% significance level, estimated with the Bonferroni procedure for multiple samplings [see (43)].

studied for various periods who have not progressed to clinical AIDS. Among Caucasian participants in AIDS cohorts, the allele frequency of *CKR5* Δ 32 was 0.115 ($n = 1250$), whereas the frequency among Caucasians not part of an HIV-1 high-risk group was 0.080 ($n = 143$). The frequency among African Americans was lower (0.017; $n = 620$) (40).

There was no significant difference in the allele frequencies of *CKR5* between HIV-1-infected and HIV-1 antibody-negative individuals in any of the cohorts (41); however, a dramatic difference became apparent when the *CKR5* genotype distribution was examined (Table 2). There were 17 homozygotes for *CKR5* Δ 32 found among the individuals tested, all of which were HIV-1 antibody-negative individuals with a high risk for HIV-1 exposure. The association of the Δ 32/ Δ 32 genotype with HIV-1-negative status is highly significant overall ($G = 35.0$, $P = 2.5 \times 10^{-8}$; Table 2), as well as in each of three individual cohorts (MACS, SFCC, and MHCS, Table 2) (42). Hence, the *CKR5* Δ 32 allele appears to con-

fer a recessive phenotype that is associated with resistance to HIV-1 infection and antibody production.

Although we did not find individuals homozygous for *CKR5* Δ 32 among 1343 HIV-1-infected patients, there was a sufficient number of heterozygous (+/ Δ 32) infected patients ($n = 195$) for us to examine the cohorts for an association between *CKR5* genotype and different rates of progression to AIDS. The homosexual cohorts, but not the hemophilia cohorts, showed greater than twice the percentage of heterozygotes among long-term nonprogressors compared with rapid progressors (Fig. 3A) (43).

Although there are differences in ascertainment and disease group definition between these groups (for example, there are fewer AIDS cases in the hemophilia cohorts), the frequency of the +/ Δ 32 genotype was not significantly different between rapid progressors and long-term nonprogressors in the hemophilia cohorts when different AIDS endpoints [for example, 1987 AIDS definition (44), CD4⁺ T cell counts ≤ 200 , or death by AIDS] were used or the

"middle groups" of patients with intermediate criteria were subtracted. The differential response of hemophiliacs versus homosexual men may be related to different routes of transmission, to exposure levels, or to viral load among individuals in different risk groups. Hemophilia patients received large doses of HIV-1-contaminated clotting factors by intravenous injection, whereas sexual transmission would involve HIV-1 infection of mucosal epithelium.

Survival analyses using the clinical 1992 AIDS definition (which includes HIV-1 infection plus either AIDS-defining illness or a decline of CD4⁺ T cell numbers below 200) (45) were performed for each cohort and for combined cohorts comparing the *CKR5* genotypes (+/+ and +/ Δ 32). The results demonstrate that +/ Δ 32 heterozygotes have a delayed progression to AIDS compared with *CKR5* +/+ homozygotes ($\chi^2 = 8.1$, $P = 0.0045$) (Fig. 3, B and C, and Table 3). After correction for multiple tests, this result is still significant, and the same result is also found when the stricter 1987 AIDS definition (HIV-1 infection plus AIDS-defining pa-

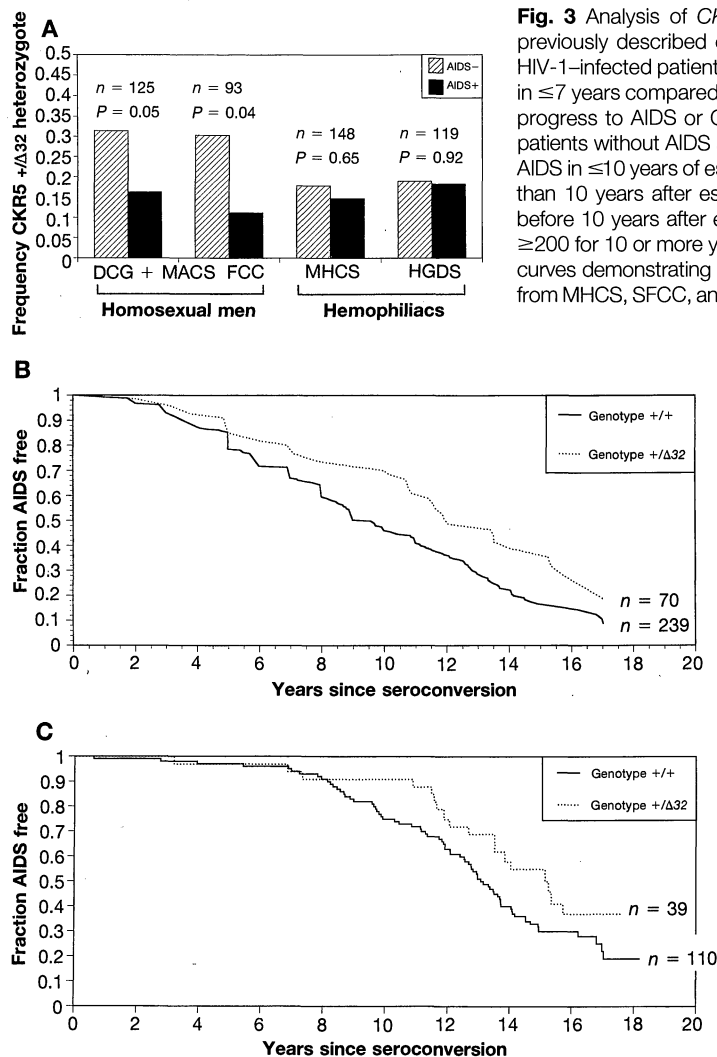


Fig. 3 Analysis of *CKR5* Δ 32 genotypes with reference to progression to AIDS (43) based on previously described clinical disease categories. **(A)** Frequency of *CKR5* Δ 32/+ heterozygotes in HIV-1-infected patients: DCG plus MACS, seroconversion patients who progressed to clinical AIDS in ≤ 7 years compared with patients that did not progress to AIDS in 7 years (8); SFCC, patients that progress to AIDS or CD4⁺ T cell counts < 200 within 10 years of seroconversion compared with patients without AIDS and CD4 counts ≥ 200 for 10 or more years (35); MHCS, patients with clinical AIDS in ≤ 10 years of estimated seroconversion compared with patients without clinical AIDS for more than 10 years after estimated seroconversion dates (32); HGDS, patients with CD4 counts ≤ 200 before 10 years after estimated seroconversion date compared with patients that had CD4 counts ≥ 200 for 10 or more years after estimated seroconversion (31). **(B)** Kaplan-Meier survival distribution curves demonstrating the dependence of disease progression on *CKR5* genotype in seroconverters from MHCS, SFCC, and DCG (8, 33–35). A total of 309 patients with known seroconversion dates and

for which long-term data were available were followed for development of AIDS [as defined in 1993 definition (45)—progression to an AIDS-defining illness, CD4 counts ≤ 200 , or death]. The HGDS was not included because all patients were seropositive on study entry. The curves were different significantly [$\chi^2 = 8.1$, 1 degree of freedom (df), $P = 0.005$]. Relative hazard equals 0.61 in a Cox proportional hazards model. **(C)** Kaplan-Meier survival distribution curves demonstrating the dependence of disease progression to AIDS (1993 definition) on the *CKR5* genotype, among 148 HIV-1-seropositive members of the SFCC with well-characterized dates of seroconversion who were seen for the study after 1987 ($\chi^2 = 3.9$, 1 df, $P = 0.05$). A value of $P = 0.05$ would not be significant when a correction for multiple tests is applied. Relative hazard, controlling for age, was 0.59 in a Cox proportional hazards model. The endpoint was defined as the first of two consecutive CD4 counts < 200 or diagnosis of AIDS, with followup censored at the beginning of April 1996. CD4 counts were ascertained at 6- to 12-month intervals from the beginning of recruitment in 1984; AIDS diagnoses have been ascertained by active local surveillance by the San Francisco Department of Public Health as well as regular matches with the Centers for Disease Control and Prevention registry of AIDS cases.

Table 2. *CKR5* genotype distribution among HIV-1-seropositive and HIV-1-seronegative individuals in the same risk group. G tests (39) for departure of three observed *CKR5* genotypes within HIV-1-infected versus uninfected compared with overall cohort genotypic frequencies are listed. G tests using only Caucasian individuals are given in parentheses in the G and P columns. NC, no Caucasians.

Cohort	Risk group	HIV-1 antibody status	Total	Number of patients (% of total) with <i>CKR5</i> genotype			Statistics	
				+/+	+/ Δ 32	Δ 32/ Δ 32	G	P
DCG	Homosexual men	Positive	137	118 (86)	19 (14)	0 (0)	2.0 (1.6)	0.38 (0.44)
		Negative	212	175 (83)	33 (16)	4 (2)		
		Total	349	293	52	4		
MAC	Homosexual men	Positive	265	201 (76)	64 (24)	0 (0)	9.9 (9.6)	0.007 (0.008)
		Negative	24	14 (58)	6 (25)	3 (17)		
		Total	289	215	70	3		
SFCC	Homosexual men	Positive	150	110 (73)	40 (27)	0 (0)	9.2 (7.9)	0.01 (0.02)
		Negative	42	34 (81)	5 (12)	3 (7)		
		Total	193	145	45	3		
HGDS	Hemophiliacs	Positive	133	106 (80)	27 (20)	0 (0)	0.62 (0.1)	0.73 (0.85)
		Negative	104	87 (84)	17 (16)	0 (0)		
		Total	237	193	44	0		
MHCS	Hemophiliacs	Positive	192	156 (81)	36 (19)	0 (0)	8.0 (8.9)	0.02 (0.01)
		Negative	191	158 (82)	26 (14)	7 (4)		
		Total	383	314	62	7		
ALIVE	Intravenous drug users	Positive	466	457 (98)	9 (2)	0 (0)	0.1 (NC)	0.77 (NC)
		Negative	39	39 (100)	0 (0)	0 (0)		
		Total	505	496	9	0		
All cohorts	Homosexual men and hemophiliacs	Positive	1343	1148 (85)	195 (15)	0 (0)	35.0 (33.3)	2.5×10^{-8} (5.8×10^{-8})
		Negative	612	508 (83)	87 (14)	17 (3)		
		Total	1955	1656	282	17		

thologies) is used (Table 3). The contribution of the individual cohorts to the combined analysis in Fig. 3B is shown in Table 3. The same trend (longer survival of +/ Δ 32 individuals) was observed in all cohorts except DCG, which only contributes 43 pa-

Table 3. Survival analysis for progression to AIDS among HIV-1-infected seroconverters of individual cohorts. The number of seroconverters is shown for each cohort, broken down into homozygous wild-type (+/+) and heterozygous (+/ Δ 32) individuals. The χ^2 and uncorrected with 1 df P values for a difference between the +/+ and +/ Δ 32 survival curves were computed for each cohort using both 1987 and 1992 AIDS definitions (44, 45).

Cohort	<i>Genotype</i>		Total	χ^2	<i>P</i>
	+/+	+/ Δ 32			
<i>1987 AIDS definition as survival outcome</i>					
MACS	91	24	115	1.5	0.22
SFCC	110	39	149	1.2	0.27
MHCS	78	17	95	0.83	0.36
DCG	33	9	42	0.01	0.93
All	312	89	401	4.0	0.04
<i>1992 AIDS definition as survival outcome</i>					
SFCC	110	39	149	3.36	0.07
MHCS	96	21	117	3.98	0.05
DCG	33	10	43	0.04	0.84
All	239	70	309	8.1	0.005

tients. These data suggest that the single-gene effect of *CKR5* Δ 32 may be dominant and that interaction with other genes or the environment or both is necessary to prolong AIDS onset in infected patients. Epistatic analyses with other variables (such as age and HLA type) are required to more accurately characterize this effect.

Our data strongly suggest that the *CKR5* protein plays a regulatory role in HIV-1 infection as well as in the rate of progression of the disease. Individuals homozygous for a deletion in *CKR5* appear to have a greatly reduced risk of HIV-1 infection. The simplest explanation for the gene action is that homozygous recessive Δ 32/ Δ 32 individuals avoid infection because of the absence of a functional *CKR5* co-receptor. Alternatively, heterozygotes (+/ Δ 32) can be infected, but the gene dosage effect of the requisite HIV-1 co-receptor limits virus spread in infected patients [and virus load is correlated to AIDS progression (46, 47)], postponing AIDS onset.

Further studies of homozygous Δ 32/ Δ 32 individuals to determine whether they have a memory T cell response to the virus, which would indicate that they were infected and mounted a successful immune response, would be enlightening. It is possible that Δ 32/ Δ 32 individuals could become infected by certain strains of HIV-1 (for example, syncytium-

forming viruses or isolates adapted to CD4-fusin receptor entry), or by certain routes of infection (for example, transfusion). However, we have observed Δ 32/ Δ 32, HIV-1-seronegative individuals in homosexual, hemophilic, and intravenous drug-use cohorts, suggesting that this genotype confers broad protection against infection.

In addition to *CKR5* Δ 32, we also found unique SSCP conformers in other patients, several of whom were long-term nonprogressors (30). We speculate that at least some of these alleles also disrupt *CKR5* function and inhibit the spread of HIV-1 or progression to AIDS. The entire coding region of *CKR5* should be screened in additional HIV-1-seronegative, long-term nonprogressors and in rapid progressors to identify other *CKR5* variants. The *CKR2B* and *CKR3* proteins are also capable of acting as receptors for macrophage-tropic HIV-1 strains (19, 20). Alterations in these genes, as well as in *fusin*, may also influence HIV-1 infection or progression.

The identification of *CKR5* as a critical molecule for HIV-1 infection suggests alternative antiviral therapies. Native or altered forms of the *CKR5* ligands (RANTES, MIP-1 α , MIP-1 β) could potentially block or delay infection. Alternatively, fragments of the HIV-1 *env* protein product that bind to *CKR5* may be effective in

competing for HIV-1 binding sites on $CKR5^+$ cells. Drugs or gene-targeting constructs that down-regulate or inactivate $CKR5$ may have therapeutic value. It is also possible that transplantation of bone marrow stem cells from a $\Delta 32/\Delta 32$ donor could have therapeutic benefit. Anti- $CKR5$ therapies may augment the effectiveness of other anti-HIV-1 compounds already in use.

A large difference in the frequency of the $CKR5\Delta 32$ allele was observed between Caucasians (0.11) and African Americans (0.017). If widespread screens of African racial groups affirm the absence of the $CKR5\Delta 32$ allele as has been reported in a survey of 124 Africans (29), it may be that $CKR5\Delta 32$ is a recent mutation that occurred on the Caucasian lineage subsequent to divergence from the African-Caucasian ancestor estimated to have occurred 150,000 to 200,000 years ago (48). The frequency observed in African Americans could be entirely due to admixture from Caucasian gene flow in the New World, estimated to be as high as 30% (49). The relatively high prevalence of the inactivating $CKR5\Delta 32$ allele is suggestive of an historic selective pressure among Caucasians, perhaps by another pathogenic virus or parasite, that also used the $CKR5$ receptor as an entry point. Such historic increases in recessive disease mutations due to epidemiologic agents have been suggested for other hereditary diseases, including sickle cell anemia, thalassemia, and lysosomal storage diseases (50).

Liu *et al.* demonstrated that the well-characterized EU2 and EU3 patients (29) are $CKR5\Delta 32$ homozygotes and that no functional $CKR5$ protein is present on the cell surface. In addition, they showed that cells from $CKR5\Delta 32$ homozygotes fail to respond to MIP-1 α in vitro. Samson *et al.* found no $CKR5\Delta 32$ homozygotes among 723 HIV-1-infected individuals and a rather low frequency for the $CKR5\Delta 32$ allele (0.054) in HIV-1-infected patients, leading them to suggest that $+/ \Delta 32$ heterozygotes may be less susceptible to infection than $CKR5$ $+/+$ individuals (28). Our results (Table 2) did not reveal a difference in $CKR5\Delta 32$ allele frequency in HIV-1-infected (0.11) compared with HIV-1-negative exposed (0.12) individuals. Our data suggest that in the heterozygous state, the $CKR5\Delta 32$ allele does not markedly affect susceptibility to infection but does postpone progression to AIDS in infected patients.

REFERENCES AND NOTES

1. R. May and R. Anderson, *Infectious Disease in Humans* (Oxford Univ. Press, New York, 1995).
2. S. S. Morse, Ed., *Emerging Viruses* (Rockefeller Univ. Press, New York, 1993).
3. T. I. A. Sorensen, G. G. Nielsen, P. K. Andersen, T. W. Teasdale, *N. Engl. J. Med.* **318**, 727 (1988).
4. A. G. Motulsky, *Human Genetics: Patterns and Approaches* (Springer-Verlag, Berlin, 1981).
5. S. Wain-Hobson, *Curr. Opin. Genet. Dev.* **3**, 878 (1993).
6. J. M. Coffin, *Science* **267**, 483 (1995).
7. E. L. Delwart *et al.*, *ibid.* **262**, 1257 (1993).
8. R. A. Kaslow *et al.*, *Nature Med.* **2**, 405 (1996); B. F. Haynes, G. Pantaleo, A. S. Fauci, *Science* **271**, 324 (1996).
9. W. A. Paxton *et al.*, *Nature Med.* **2**, 412 (1996); R. Detels *et al.*, *AIDS* **10**, 102 (1996).
10. F. Cocchi *et al.*, *Science* **270**, 1811 (1995); M. Baier, A. Werner, N. Bannert, K. Metzner, R. Kurth, *Nature* **378**, 563 (1995).
11. Y. Feng, C. C. Broder, P. E. Kennedy, E. A. Berger, *Science* **272**, 872 (1996).
12. B. Federspiel *et al.*, *Genomics* **16**, 707 (1993).
13. H. Herzog, Y. J. Hori, J. Shine, L. A. Selbie, *DNA Cell Biol.* **12**, 465 (1993).
14. H. Nomura, B. W. Nielsen, K. Matsushima, *Int. Immunol.* **5**, 1239 (1993).
15. P. J. Madden *et al.*, *Cell* **47**, 333 (1986).
16. C. Combadiere, S. K. Ahuja, H. L. Tiffany, P. M. Murphy, *J. Leukocyte Biol.* **60**, 147 (1996); M. Samson, O. Labbe, C. Mollereau, G. Vassart, M. Parmentier, *Biochemistry* **35**, 3362 (1996).
17. T. Dragic *et al.*, *Nature* **381**, 667 (1996).
18. G. Alkhatib *et al.*, *Science* **272**, 1955 (1996).
19. H. Choe *et al.*, *Cell* **85**, 1135 (1996).
20. B. J. Doranz *et al.*, *ibid.*, p. 1149.
21. H. Deng *et al.*, *Nature* **381**, 661 (1996).
22. P. M. Murphy, *Annu. Rev. Immunol.* **12**, 593 (1994).
23. K. Neote, D. DiGregorio, J. Y. Mak, R. Horuk, T. J. Schall, *Cell* **72**, 415 (1993).
24. C. J. Raport *et al.*, *J. Leukocyte Biol.* **59**, 18 (1996).
25. M. A. Walter, D. J. Spillet, P. Thomas, J. Weissbach, P. Goodfellow, *Nature Genet.* **7**, 22 (1994).
26. M. White, M. Carvalho, D. Derse, S. J. O'Brien, M. Dean, *Genomics* **12**, 301 (1992); M. Ravnik-Glavac, D. Glavac, M. Dean, *Hum. Mol. Genet.* **3**, 801 (1994).
27. M. Orita, Y. Suzuki, T. Sekiwa, K. Hayashi, *Genomics* **5**, 874 (1989).
28. M. Samson, *Nature* **382**, 722 (1996).
29. R. Liu *et al.*, *Cell* **86**, 367 (1996).
30. Eight $CKR5$ variant alleles were found. These include the $\Delta 32$ deletion; a variant that occurred as a heterozygote in 15 individuals of ~600 screened by SSCP; four variants found as heterozygous in single individuals that were HIV-1 infected, but had not progressed to AIDS after 7 to 10 years; and two variants in HIV-1-infected individuals that had not been followed for long term as yet. Preliminary sequence analysis revealed missense alterations in codons for conserved amino acids in three of the variants.
31. M. W. Hilgartner *et al.*, *Am. J. Pediatr. Hematol. Oncol.* **15**, 208 (1993).
32. J. J. Goedert *et al.*, *N. Engl. J. Med.* **321**, 1141 (1989).
33. J. J. Goedert *et al.*, *Am. J. Epidemiol.* **121**, 629 (1985).
34. R. A. Kaslow *et al.*, *ibid.* **126**, 310 (1987); J. Phair *et al.*, *J. AIDS* **5**, 490 (1992); R. Detels *et al.*, *ibid.* **7**, 1263 (1996).
35. S. P. Buchbinder, *AIDS* **8**, 1123 (1994).
36. D. Vlahov *et al.*, *NIDA Research Monograph Series 103* (Public Health Service, Alcohol and Drug Abuse Administration, Washington, DC, 1991).
37. M. Dean *et al.*, *Am. J. Hum. Genet.* **55**, 788 (1994).
38. J. C. Stephens, D. Briscoe, S. J. O'Brien, *ibid.*, p. 809.
39. The G test is a likelihood ratio test that is equivalent to the χ^2 test but is less sensitive to very low "expected" values [J. H. Zar, *Biostatistical Analysis* (Prentice-Hall, Englewood Cliffs, NJ, 1984), p. 71]. With the Williams correction, G values are comparable with χ^2 values [R. R. Sokal and F. J. Rohlf, *Biometry* (Freeman, New York, 1981)]. For all significant values, a Fisher's exact test gave similar results.
40. The ALIVE cohort is composed of African American intravenous drug users and includes 496 homozygous $(+/+)$ and 9 heterozygous $(+/ \Delta 32)$ individuals. With so few individuals with the $CKR5\Delta 32$ allele, the ALIVE cohort was not included in subsequent computations. Although behavioral variables are probably more important, the relatively low $CKR5\Delta 32$ allele frequency in African Americans may contribute to a higher rate of infection in this ethnic group among intravenous drug users [D. Vlahov *et al.*, *Am. J. Epidemiol.* **132**, 847 (1990)].
41. M. Dean *et al.*, data not shown.
42. A significant reduction in heterozygotes $(+/ \Delta 32)$ was observed among HIV-1-seronegative individuals. This result warrants further study.
43. With the Bonferroni correction for multiple tests (four tests), the individual homosexual cohorts are not significant. When the two homosexual cohorts are combined, although they have different definitions of rapid progression, the result is significant ($P = 0.005$), even after corrections for multiple tests [B. S. Weir, *Genetic Data Analysis II* (Sinauer, Sunderland, MA, 1996)].
44. Centers for Disease Control, *Morb. Mortal. Wkly. Rep.* **36** (suppl. 1) (14 August 1987).
45. ———, *ibid.* **41** (18 December 1992). This publication contains a revised classification system for HIV infection and an expanded surveillance case definition for AIDS among adolescents and adults.
46. J. W. Mellors *et al.*, *Science* **272**, 1167 (1996).
47. T. R. O'Brien *et al.*, *J. Am. Med. Assoc.* **276**, 105 (1996).
48. R. L. Cann, M. Stoneking, A. C. Wilson, *Nature* **325**, 31 (1987).
49. R. Chakraborty and P. E. Smouse, *Proc. Natl. Acad. Sci. U.S.A.* **85**, 3071 (1988).
50. S. J. O'Brien, *Curr. Biol.* **1**, 209 (1991).
51. Radiation hybrid DNAs, obtained from Research Genetics, were amplified for 20 min in a 10- μ l PCR reaction with the following primers: for $CKR5$, primers CCK5F2 (5'-GGTGGAAACAAGTGGATTAT-3') and CCK5R2 (5'-CATGTGCACAACCTCTGACTG-3'); for $fusin$, primers FUSF1 (5'-TGACGTGTGTCTAGCGAGG-3') and FUSR1 (5'-TGTAGGTGCTGAAATCAACCC-3'); and for $CKR1$, primers CKRF1 (5'-TCCACTGCCAAGAAGCTTG-3') and CKRR1 (5'-TTCGCCAGGATTCACAGAG-3'). Samples were amplified with 5 units of Taq Gold (Stratagene) in the supplier's buffer in a Cetus 9600 PCR machine with a 58°C annealing temperature and loaded onto a 1.5% agarose gel. Scores for 90 radiation hybrids were recorded, and the results were analyzed by the Whitehead Mapping Server (<http://www-genome.wi.mit.edu/cgi-bin/contig/rhmapper.pl>) to determine significant linkages onto the framework map. RH typing data is available on request at e-mail address dean@ncicrf.gov.
52. HGDS investigators: A. Willoughby, National Institute of Child Health and Human Development, Bethesda, MD; W. Kesell, Bureau of Maternal and Child Health and Resources Development, Bethesda, MD; D. Mann, Univ. of Maryland; W. Pequegnat, National Institute of Mental Health, Bethesda, MD. The following individuals are the center directors, study coordinators, or committee chairs of the HGDS study: Children's Hospital, Los Angeles—F. Kaufman, M. Nelson, S. Pearson; The New York Hospital-Cornell Medical Ctr.—M. Hilgartner, S. Cunningham-Rundles, J. Gertner, I. Goldberg; Univ. of Texas Medical Sch., Houston—W. K. Hoots, K. Loveland, M. Cantini, G. Casterline; NIH, National Institute of Child Health and Human Development, Bethesda, MD—A. Willoughby; New England Research Institutes, Incorporated (Data Coordinating Center), Watertown—S. Donfield, M. A. Maeder; Baylor College of Medicine—C. Contant Jr.; Univ. of Iowa Hospitals and Clinics, Iowa City—C. T. Kisker, J. Stehbins, J. Bale, S. O'Connor; Tulane Univ.—P. Sirosi; Children's Hospital of Oklahoma, Oklahoma City—C. Sexauer, H. Huszti, S. Hawk, F. Kiplinger; Mount Sinai Medical Ctr., New York City—S. Arkin, A. Forster; Univ. of Nebraska Medical Ctr.—S. Swindells, S. Richard; Univ. of Texas Health Science Ctr., San Antonio—J. Mangos, A. Scott, R. Davis; Children's Hospital of Michigan, Detroit—J. Lusher, I. Warrier, K. Baird-Cox; Milton S. Eyster, E. Pattishall, D. Ungar, S. Neagley; Univ. of Indiana, James Whitcomb Riley Hospital for Children—A. Shapiro, S. Hatcher; Univ. of California—San Diego Medical Ctr.—G. Davignon, P. Rabwin; Kansas

City Sch. of Medicine, Children's Mercy Hospital—B. Wicklund, A. Mehrhof. **MHCS investigators:** M. E. Eyster, Milton S. Hershey Medical Ctr., Hershey; M. Hilgartner, Cornell Medical Ctr.; A. Cohen, Children's Hospital of Philadelphia; B. Konkle, Thomas Jefferson Univ. Hospital; G. Bray, Children's Hospital National Medical Ctr., Washington, DC; L. Aledort, Mount Sinai Medical Ctr., New York City; C. Kessler, George Washington Univ. Medical Ctr.; C. Leissinger, Tulane Medical Sch.; G. White, Univ. of North Carolina; M. Lederman, Case Western Reserve Medical School, Cleveland; P. Blatt, Christiana Hospital; M. Manco-Johnson, Univ. of Colorado.

53. We are indebted to the children, adolescents, adults, and parents who have volunteered to participate in this study, and to the members of the

Hemophilia Treatment Centers. We thank D. Lomb, S. Edelstein, M. Malasky, T. Kissner, D. Marti, B. Gerrard, A. Hutchinson, M. Weedon, X. Wu, P. Lloyd, E. Wendel, M. McNally, R. Boaze, L. Keneff, M. Konsavich, C. Stewart, and S. Cevario for technical assistance, and B. Weir, M. Clegg, R. Adamson, and R. Gallo for helpful discussions. Computing resources were provided by the Frederick Biomedical Supercomputing Center. Supported by the Bureau of Maternal and Child Health and Resources Development (MCJ-060570), the National Institute of Child Health and Human Development (NO1-HD-4-3200), the Centers for Disease Control and Prevention, the National Institute of Mental Health, and the National Institute of Drug Abuse (DA04334). Additional support has been

provided by grants from the National Center for Research Resources (General Clinical Research Centers) of NIH to the New York Hospital-Cornell Medical Center Clinical Research Center (MO1-RR06020), the Mount Sinai General Clinical Research Center, New York (MO1-RR00071), the University of Iowa Clinical Research Center (MO1-RR00059), and the University of Texas Health Science Center, Houston (MO1-RR02558). The content of this publication does not necessarily reflect the views or policies of the Department of Health and Human Services, nor does mention of trade names, commercial products, or organizations imply endorsement by the U.S. Government.

7 August 1996; accepted 3 September 1996

CD40 Ligand-Dependent T Cell Activation: Requirement of B7-CD28 Signaling Through CD40

Yiping Yang and James M. Wilson*

The role of CD40 ligand (CD40L) in the primary activation of T cells is not clear. The cellular and humoral immune responses to adenoviral vectors in a murine model of liver-directed gene transfer were studied to define the mechanisms responsible for CD40L-dependent T cell priming. CD40L-deficient mice did not develop effective cytotoxic T cells to transduced hepatocytes, and T cell-dependent B cell responses were absent. Full reconstitution of cellular and humoral immunity was achieved in CD40L-deficient mice by administration of an activating antibody to CD40 that increased expression of B7.2 on spleen cells. Wild-type mice could be made nonresponsive to vector by administration of antibodies to B7. Thus, CD40L-dependent activation of T cells occurs through signaling of CD40 in the antigen-presenting cell to enhance requisite costimulatory pathways that include B7.

The role of CD40L in humoral immunity is illustrated by the multiple defects in B cell activation that characterize its genetic deficiency in mice and humans, including a failure to form germinal centers, activate memory B cells, and class switch (1). Experiments in knockout mice have implicated CD40L in the antigen-specific priming of T cells, although the precise mechanism by which this occurs is unclear (2). Enhanced susceptibility of CD40L-deficient (CD40L^{-/-}) mice to leishmania infection is consistent with an important role of this molecule in cellular immunity (3). The relation between CD40L and other T cell costimulatory pathways such as B7-CD28 is unclear; in models of allograft rejection, these signaling pathways appear uncoupled (4).

Adenoviral vectors are being tested as a possible approach to gene therapy, but the cytotoxic T lymphocyte (CTL) and B cell responses to the viral proteins and transgene products make this strategy less tenable (5). Activation of CD4⁺ T cells to input viral capsid proteins, which requires stimulation through the CD40L-CD40 and B7-CD28 pathways, is necessary for both the CD8⁺ T cell (that is, CTL) and B cell (that is, neutralizing antibody) effects (6–8). If one could minimize the immune response, the adenovirus becomes a viable option. We have used this well-studied immune response to further elucidate the mechanisms of CD40L-dependent activation of T cells (9).

Infusion of adenovirus missing the early (E1) genes and containing the *lacZ* gene into C57BL/6 mice led to transgene expression in 93% of hepatocytes in liver harvested 3 days later that diminished to undetectable levels by day 24 (Table 1). Analysis of CD4⁺ lymphocytes in vitro demonstrated activation of T helper (T_H) cells to viral antigens of both the T_H1 [that is, secretion of interferon- γ (IFN- γ) and interleukin-2 (IL-2)] and T_H2 (that is, secretion of IL-4 and IL-10) subsets (Fig. 1A) (10). Chromium release assays showed the presence of

CTLs to viral-infected targets in splenocytes harvested 10 days after gene transfer (Fig. 1B) (10). Infusion of vector stimulated the development of germinal centers [20.4 ± 1.5 per section (11)] and the formation of antiviral antibodies of immunoglobulin M (IgM), IgG1, and IgG2 isotypes (Fig. 2) that are neutralizing (Table 1).

Similar studies performed in mice genetically deficient in CD40L demonstrated the requirement of CD40L-CD40 interactions in the full spectrum of cellular and humoral immune responses to adenoviral vectors in mouse liver; transgene expression was stable for 24 days in CD40L^{-/-} mice (82% of hepatocytes still express *lacZ*, Table 1), and activation of CTLs to viral-infected cells was markedly blunted (8) (Fig. 1B). CD4⁺ T cells harvested 10 days after gene transfer failed to respond to viral antigens; however, the basal secretion of cytokines was increased as compared with that observed in C57BL/6 mice (Fig. 1A). CD40L^{-/-} mice failed to develop germinal centers [that is, no germinal centers were detected in four sections from two mice (11)] or neutralizing antibodies (Table 1). Antiviral IgM was formed, but class switch to IgG1 or IgG2a was virtually absent (Fig. 2).

Several models have been suggested to explain the dependent role of CD40L on T cell priming. A critical question is whether CD40L directly transduces an activating signal to the T cell at the time of engagement with its receptor CD40, or whether the role of CD40L is indirect, effecting T cell activation through CD40-mediated signaling in the antigen-presenting cell (APC) that leads to enhanced costimulation of downstream pathways. Previous in vivo studies in the CD40L^{-/-} mouse documented a primary defect in T cell priming to soluble antigens without clarification of the mechanisms (2), although in vitro studies have shown that wild-type but not CD40L-deficient T cells activate costimulatory activity in B cells (12). Activation of CD40L with soluble CD40 in the CD40L^{-/-} mice partially reconstituted formation of germinal centers, although isotype switching was not observed (2); thus,

Y. Yang, Institute for Human Gene Therapy and Department of Molecular and Cellular Engineering, University of Pennsylvania Medical Center, Philadelphia, PA 19104, USA.

J. M. Wilson, Institute for Human Gene Therapy and Department of Molecular and Cellular Engineering, University of Pennsylvania Medical Center, and the Wistar Institute, Philadelphia, PA 19104, USA.

*To whom correspondence should be addressed at Institute for Human Gene Therapy, Wistar Institute, Room 204, 3601 Spruce Street, Philadelphia, PA 19104-4268, USA.