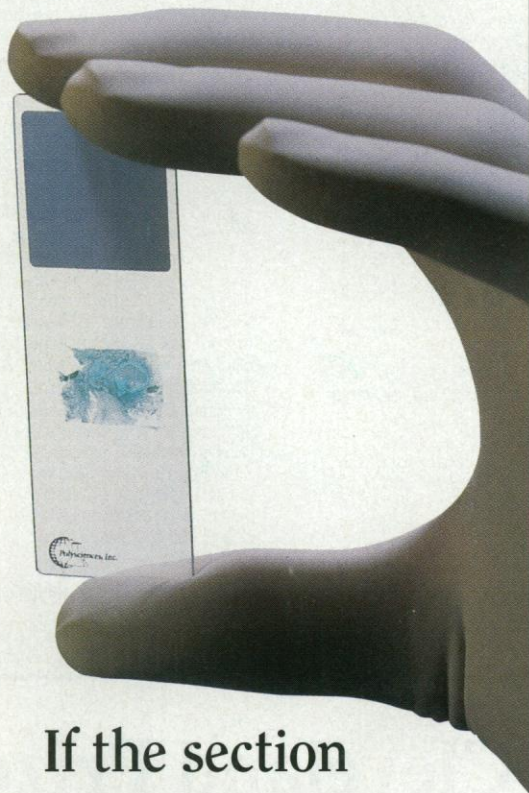


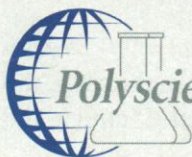
After 20 procedures and
36 hours, this slide should
be ready to examine.



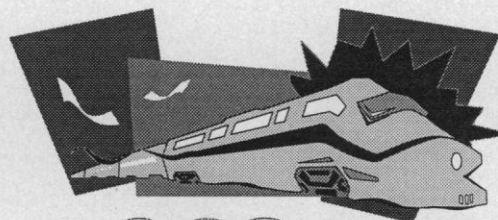
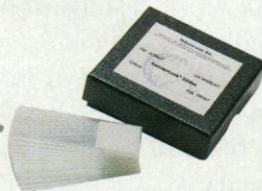
If the section
hasn't slipped off.

You've carefully selected tissue. Painstakingly fixed it, processed it, embedded it in paraffin or plastic, sectioned it and put it on slides. Then you've subjected the sections to a difficult and time-consuming protocol. Finally, it's ready for study. Except that the sections have slipped off the slide!

If you've experienced the frustration of folded or lost sections, you should know about new SectionLock™ slides from Polysciences. Treated with a specially formulated aminoalkylsilane, they provide a positively-charged surface which permits covalent coupling of negatively-charged tissue sections. The result is a firm bond that stands up even to the very aggressive solutions used in In-Situ Hybridization procedures. Color-coded, SectionLock slides are ready for instant use and need no activation. Call Polysciences today at 1-800-523-2575 for ordering information or to request our Particle, Polymer/Monomer, Microscopy/Histology or Biochemicals catalog.



Polysciences, Inc. • 400 Valley Road • Warrington, PA 18976
1-800-523-2575 FAX: 1-800-343-3291 E-Mail polysci@tigger.jvnc.net



The *Kinetic City Super Crew* is an award-winning radio drama for children, broadcast nationally each week. Join the Crew and their computer friend ALEC as they travel around the world using teamwork to solve science mysteries.

To find out where *Kinetic City Super Crew* broadcasts in your area or to hear the hands-on experiment of the week call:

1-800-877-CREW (1-800-877-2739)

ORDER AN EPISODE ON CASSETTE

"Concrete Jungle, or the Case of the City Safari." Take a nature walk with the Crew in New York City and discover that wild animals are as plentiful in the Big Apple as they are in the jungle.

Tapes are only \$7.95 (residents of CA and Washington, DC add appropriate sales tax). Make checks payable to AAAS and send to:

***Kinetic City Super Crew
AAAS, Department 1
1333 H Street, NW
Washington, DC 20005***

Check out our web site:

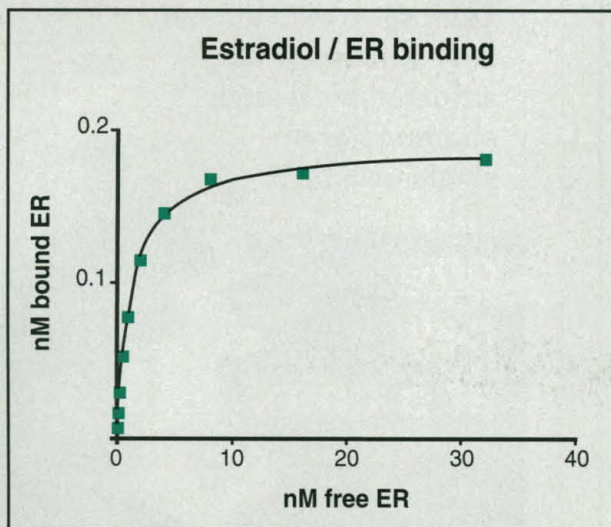
<http://www.aaas.org/EHR/KCSuper.html>

Kinetic City Super Crew is a production of the American Association for the Advancement of Science. Funding is provided by the National Science Foundation and other contributors.



High Activity Excellent Performance

PanVera's highly purified, recombinant human **Estrogen Receptor (ER)** is both soluble and functionally active. The baculovirus expression system used to produce this protein yields a recombinant product with posttranslational modifications similar to those found in mammalian cells. PanVera also offers purified, native, recombinant human **Vitamin D₃ Receptor (VDR)**. Both products are performance tested for hormone binding and specific binding to their appropriate hormone response elements.



Binding of PanVera recombinant human estrogen receptor to [³H]-estradiol using a hydroxylapatite batch assay. $K_d=1.2$ nM.

*In Japan contact: TaKaRa Shuzo Co., Ltd,
Otsu, Shiga, Japan, Phone +81 775-43-9254*

**For More Information on
PanVera's Recombinant
Human Proteins for
Steroid Biochemistry
and Signal Transduction
Research Call:**

1-800-791-1400

(In the USA and Canada)

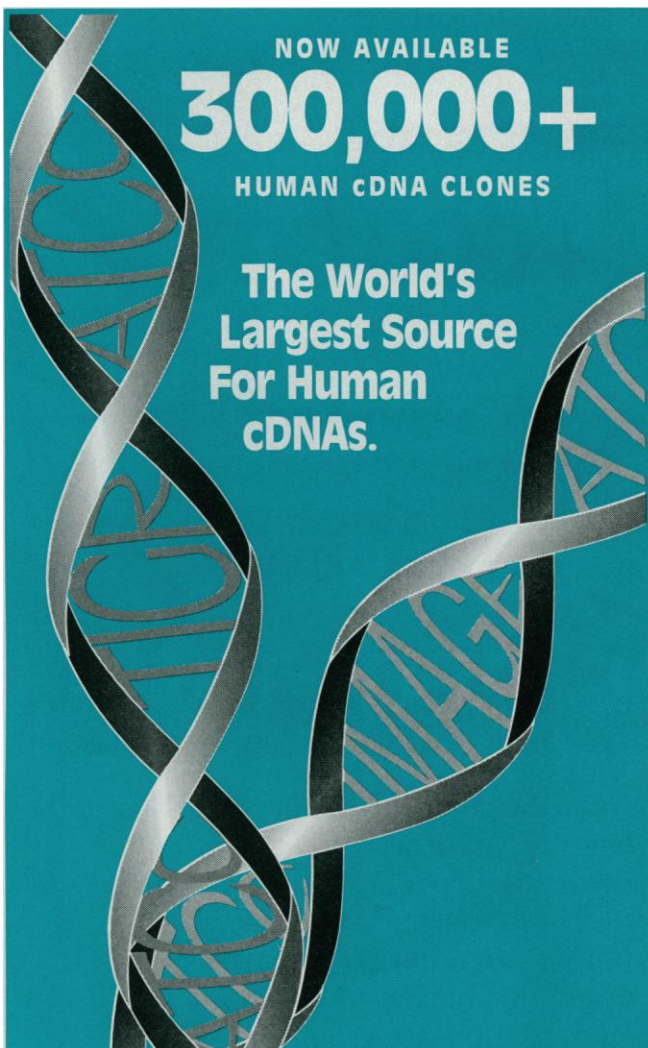


PanVera Corporation

545 Science Drive, Madison, WI 53711 USA
Phone: 608-233-5050 • Fax: 608-233-3007
Homepage: <http://www.panvera.com/>
E-Mail: info@panvera.com

NOW AVAILABLE
300,000+
 HUMAN cDNA CLONES

The World's
 Largest Source
 For Human
 cDNAs.



**The TIGR/ATCC Special Collection
 cDNA clones from I.M.A.G.E.*,
 TIGR and J. Sikela**

All clones are available from ATCC with two levels of characterization:

- Directly from plate arrays
- Resequenced to verify the reported Expressed Sequence Tag (EST)

For more information, contact ATCC:

WWW: <http://www.atcc.org>
 E-Mail: sales@atcc.org
 Phone: 1-800-638-6597 (U.S. & Canada)
 Fax: 1-301-816-4361




12301 Parklawn Dr., Rockville, MD 20852

* The I.M.A.G.E. Consortium: An Integrated Molecular Analysis of Genomes and their Expression.
 Lennon, G.C., Auffray, C., Polymeropoulos, M. and Soares, M.B. (1995) Genomics (in press).

Circle No. 37 on Readers' Service Card


**SPECIAL ANIMAL
 SERVICES**



• Transgenics Services • Model Development
 • Cryopreservation • Rederivation • Husbandry • Surgery
 • Health & Genetic Monitoring • Quarantine Services

Charles River
 LABORATORIES

Contributing to the Search for Healthier Lives™
 1-800-LAB-RATS



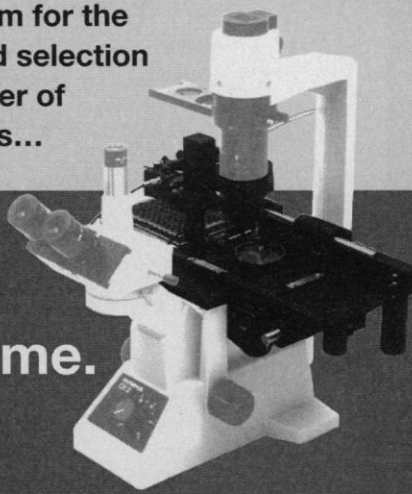
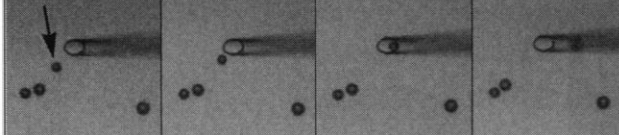
URL: <http://www.criver.com> E-Mail: comments@criver.com
 © Charles River Laboratories, 1996

Circle No. 58 on Readers' Service Card

NEW TECHNOLOGY

**Quixell – a revolutionary
 new system for the
 automated selection
 and transfer of
 single cells...**

**one
 cell
 at a time.**

Selected cell being drawn into Quixell's glass micropipette. All other cells remain undisturbed.

STOELTING

Stoelting Co. 620 Wheat Lane
 Wood Dale, IL 60191 USA
 (708) 860-9700

Circle No. 19 on Readers' Service Card



MOLECULAR RESEARCH CENTER, INC. presents

SMART SOLUTIONS

The most reliable and cost-effective reagents for DNA and RNA isolations. Using separation technology based on the recognition of target molecules by a liquid phase, these innovative reagents outperform traditional DNA and RNA isolation methods. No enzymatic treatments! No columns! No prolonged protocols!

DNAzol™

a new standard of simplicity and effectiveness in the isolation of high quality genomic DNA, developed by P. Chomczynski.



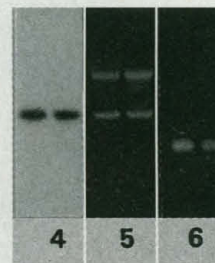
- Requires only 10 - 30 minutes
- Effective with cells, tissue and liquid samples, including blood.
- No phenol or other toxic agents
- Isolated DNA ② is ready for Southern blotting, restriction analysis ①, PCR ③, molecular cloning and other applications.

TRI REAGENT®

the most advanced version of the single-step method of RNA isolation.



- Isolates high quality total RNA in less than one hour
- Can be used to simultaneously isolate RNA, DNA and proteins
- Effective with cells, tissue and liquid samples, including blood.
- Isolated RNA ⑤ is ready for Northern blotting ④, RT-PCR ⑥, and other applications



For information or to place an order from USA, Canada and countries not listed below call 1-800-462-9868, 513-841-0900 or Fax 513-841-0080.

MRC

MOLECULAR RESEARCH CENTER, INC.
5645 Montgomery Rd. Cincinnati, OH 45212

AUSTRIA: Biomedica Gesellschaft 43-222-292-3527; AUSTRALIA: A.G.P. Technologies Pty Ltd 1-800-631-093; FRANCE: Euromedex 33-88-180722; GERMANY: BioTech Trade & Service GmbH 49-6227-51308 WAK-Chemie Medical 496-172-22073; HONG KONG: Onwon Trading Ltd. 852-275-77569; INDIA: Lab Care Products 91-11-6425156; ISRAEL: Tal Ron 972-8-472563; ITALY: Bio-Optica Milano SpA 39-2-2640274; JAPAN: Cosmo Bio 81-3-5632-9630; KOREA: Choong Il Chemical, Inc. 822-294-6411; MALAYSIA: Far East Scientific 603-718-7457; SWITZERLAND: Lucerna Chem Ag 41-41-369636; TAIWAN: Pan Asia Biomedical Technology, Inc. 886-2-7418169; UNITED KINGDOM: Molecular Research Centre Oxford 44-993-706736.

Circle No. 15 on Readers' Service Card



Pure substance.

It's clear to see why researchers around the world value **CURRENT CONTENTS®** so highly.

Each week, it provides more information than you could otherwise uncover about current developments in your field. Detailed bibliographic data...complete author abstracts... and more. Useful data carefully extracted from the most scholarly journals in the world.

And because ISI® indexes that information so thoroughly, you can retrieve it easily, and access the full text through The Genuine Article®. After all, ISI has been making things easy for researchers for nearly forty years. By knowing what you value...and giving you what you need.

For a free trial

Call:
215.386.0100

Email:
sales@isinet.com

Web:
<http://www.isinet.com>

Visit us at
**AMERICAN SOCIETY
FOR MICROBIOLOGY**
Booth 808

**CURRENT
CONTENTS®**
Now available
for Windows®

A wealth of
valuable
information.

Creative Solution #12



Purify PCR* products in one step

Separate amplified DNA from contaminating primers, dNTPs and salts in one easy step with Microcon® microconcentrators. Remove over 90% of non-incorporated primers and dNTPs. It's fast and simple.

Discover Amicon's creative solutions in membrane separation, based on our unique experience.

We'd like to send you 19 of them now!

* PCR (polymerase chain reaction) is covered by U.S. patents issued to Hoffmann-LaRoche, Inc.

For more information and protocols, please call 1-800-343-1397.




amicon®
Amicon, Inc., 72 Cherry Hill Drive, Beverly, MA 01915


Circle No. 42 on Readers' Service Card

Discover New Effective Drugs For Human Cancer

METAMOUSE™



- Evaluates all anti-tumor and anti-metastatic therapeutics
- Replicates human clinical responses including metastasis
- More clinically relevant than subcutaneous or transgenic models
- Same-organ tumor transplantation: fresh patient tumors or established lines
- All major cancer types available
- Contract research or models available for shipment



Wang, X. et al. Matrix metalloproteinase inhibitor BB-94 inhibits human colon tumor growth and spread in a patient like orthotopic model in nude mice. *Cancer Res.* 54, 4726-28 1994

Hoffman, R. Orthotopic is orthodox: why orthotopic transplant metastatic models are different from all other models? *J. Cellular Biochem.* 56, 1-4, 1994

For more information call:

Tel-(800) 511-2555 • Tel-(619) 654-2555 • Fax-(619) 268-4175
USA/Canada

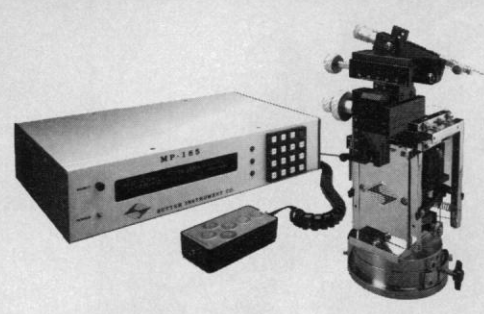
7917 Ostrow Street **ANTICANCER** INCORPORATED San Diego, CA 92111, USA

Circle No. 18 on Readers' Service Card

MICROMANIPULATORS

STABILITY

MP-185 MICROMANIPULATOR



ULTRASTABLE MOTORIZED MICROMANIPULATION

PRECISION MOVEMENT WITH 25NM STEP SIZE

LOCAL HAND-HELD OR COMPUTER CONTROL

CONTINUOUS OR STEPPED MOTION

SERIAL INTERFACE FOR ROBOTIC APPLICATIONS

SUTTER INSTRUMENT COMPANY
40 LEVERONI COURT, NOVATO, CA 94949
PHONE: 415.883.0128 FAX: 415.883.0572
INFO@SUTTER.COM HTTP://WWW.SUTTER.COM

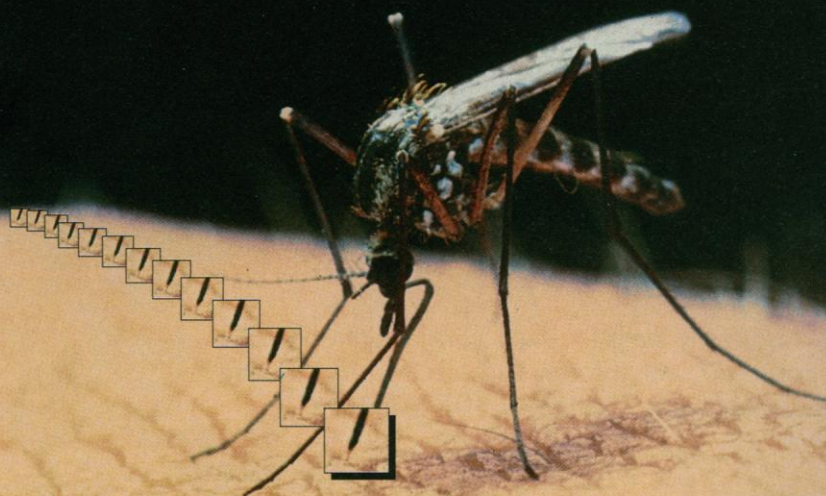
MICROPIPETTE/NEEDLE PULLERS

MICROELECTRODE BEVELERS

OPTICAL FILTERWHEELS

Circle No. 9 on Readers' Service Card

Whatever your target...



Be sure to get the native DNA!

Proteinase K–DNA grade

... ready-to-use solution of the highest purity available ... free of contaminating nucleic acids ... packed under laminar flow in an aerosol free environment ... the next generation of quality!

For further information, please contact us:

Merck KGaA, Darmstadt/Germany
Phone (+49) 6151-72 75 93
Fax: (+49) 6151-72 68 59

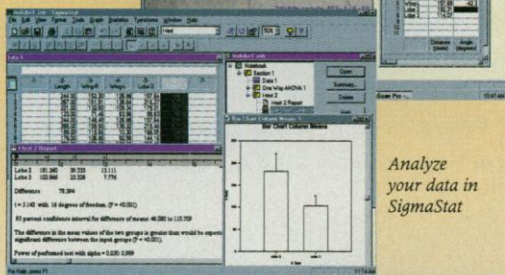
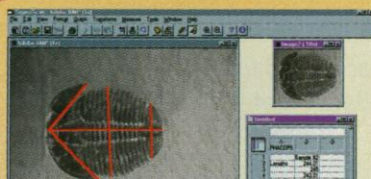
Circle No. 29 on Readers' Service Card

**JANDEL
VALUE
PACK**

Three integrated scientific tools that deliver triple the ease, power and value!

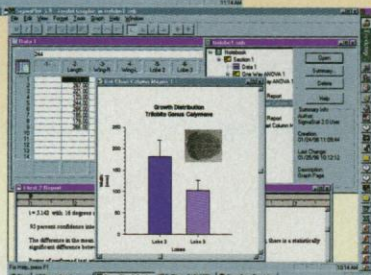
**RUNS ON
WINDOWS 95, NT, 3.1**

Measure
your images in
SigmaScan



Analyze
your data in
SigmaStat

Graph your
results in
SigmaPlot



For the research pro who needs powerful scientific graphing, statistical analysis or image measurement software, SigmaSuite is your best value. SigmaSuite is packed with the tools you need to work smarter, faster and more efficiently all in one money-saving package. With SigmaSuite, you get

- an intuitive Windows 95 interface for easy learning.
- OLE 2 architecture for state-of-the-art integration to increase productivity.
- 32-bit power and performance.
- three integrated, award-winning programs that give you all the powerful features you look for in serious scientific applications.

SIGMAPLOT® – From nonlinear regressions to multiple axes per graph, over 100,000 researchers depend on award-winning SigmaPlot's flexibility and power to analyze and graph their technical data the way they want.

SIGMASTAT® – The only statistical software with an "expert system" design that features the Advisor Wizard, automatic assumption checking, "messy" data handling and reports complete with an explanation of the results.

SIGMA SCAN™ – Point-and-click to analyze research images quickly and accurately. Select from 44 different measurement types, calibrate in units of your choice, capture images with any TWAIN-compatible device and more. SigmaSuite offers you three powerful programs for powerful accomplishments at a incredible value.



TO ORDER CALL 1-800-4-JANDEL (1-800-452-6335)

FOR MORE INFORMATION PLEASE CALL, FAX OR E-MAIL:

Jandel Scientific: 2591 Kerner Blvd., San Rafael, CA 94901 415-453-6700
Fax 415-453-7769 e-mail: sales@jandel.com, Internet: http://www.jandel.com
In Europe: Jandel Scientific, Schimmelbuschstrasse 25, 40699 Erkrath, Germany
02104/9540 02104/95410 (FAX). All company and/or product names are trademarks of their respective companies. ©1996 Jandel Corporation.

Jandel
SCIENTIFIC SOFTWARE

ASCJS056

Circle No. 49 on Readers' Service Card

1step Bibliographies in Microsoft® Word with the new EndNote® Add-in

Create a bibliography in one step:

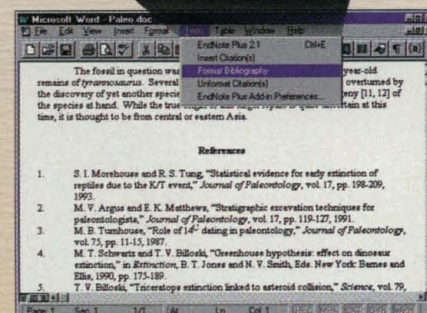
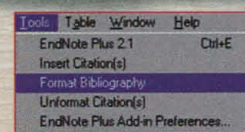
In some bibliographic programs it takes as many as 10 steps to create a bibliography once the in-text citations have been placed in your document. With the new **EndNote Add-in** (included in **EndNote Plus 2.1**), simply choose *Format Bibliography* from Word's *Tools* menu and **EndNote** will create the bibliography instantly!

Keep track of only one document:

When formatting bibliographies in some other bibliographic programs, you have to keep track of up to 3 separate documents. Using the **EndNote Add-in**, you can kiss this confusion goodbye!

Revise the same document as many times as you need:

The **EndNote Add-in** has no problem with last-minute revisions that you've made to your document. You can select another bibliographic style or you can even add or delete citations. Each time you choose *Format Bibliography*, the **EndNote Add-in** will automatically update your citations and bibliography in your document.



To create a bibliography, simply select *Format Bibliography* from Word's *Tools* menu.



Available for Macintosh and now for Windows!

- Speedy 32-bit processing
- Works under Windows 3.1, Windows 95, Windows NT and Macintosh
- Works with Microsoft Word 6 and 7 (Windows); 5 and 6 (Macintosh)
- A true Word Add-in (not just a collection of Word Basic macros)

There's More ...

- **EndNote** is compatible with WordPerfect and other word processors (no Add-in)
- Includes bibliographic styles for more than 300 journals
- **EndLink** (sold separately) imports from more than 100 online databases and CD-ROMS
- Imports from Reference Manager®, PAPERMAN® and some other bibliographic programs
- If you use any bibliographic program, you qualify for a competitive upgrade price. Call us for details.



Compatible with
Windows 3.1,
Windows NT, Windows 95
and the MacOS.

All trademarks are property of their respective companies. Mac and the Mac OS logo are trademarks of Apple Computer, Inc. Microsoft Windows and the Windows logo are registered trademarks of Microsoft Corporation.

© Copyright 1996, Niles & Associates, Inc.



Niles & Associates, Inc.

"... the most powerful citation manager you can find, short of a personal librarian."

— PC Magazine, December 1995

"Despite its power, EndNote Plus remains surprisingly easy to learn and use."

— Macworld, April 1995

"So the next time you need to prepare a bibliography, don't sweat it—use EndNote Plus 2."

— PC/Computing's Windows 95 Buyer's Guide

800 Jones Street Berkeley California 94710 USA Phone 800.554.3049 or 510.559.8592 Fax 510.559.8683

E-mail: info@niles.com World Wide Web: <http://www.niles.com>

Australia (+61) 66.58.3674 Germany (+49) (0) 69.970841.11 Japan (+81) 3.3384.8861 Scandinavia (+46) 481.511.23 UK (+44) (0) 1865.784800

Circle No. 20 on Readers' Service Card

PRODUCTS & MATERIALS

Endotoxin Extracting Solution

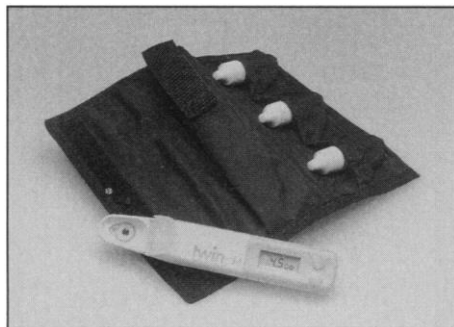
Endotoxin Extracting Solution provides more effective, complete detection of endotoxin presence and contamination than is obtained by the commonly used water extraction method. The product is effective because of the affinity of its primary component, human serum albumin, toward endotoxin. **Wako BioProducts. Circle 138.**

Blot Detection in Less Than 2 Hours

The dioxetane-based detection reagent CDP-Star offers the ability to detect 0.05 pg of DNA in a Southern blot in under 2 hours. Because the initial light output of CDP-Star is so high, complete protocols from probe labeling to blot detection can be completed in a single day. The reagent is available as part of a complete labeling and detection system, including all reagents necessary to perform complete protocols. **Amersham International. Circle 139.**

pH Meter

The Cardy pH Meter incorporates a replaceable flat sensor pad that measures the pH of solids as easily as liquids. The compact meter can be used in three different ways: by plac-



ing drops directly on the sensor pad, by laying solids on the sensor pad and moistening if necessary, or by wiping moistened surfaces such as skin, saliva, or tears with sample

sheets and placing the sample sheet on the sensor pad. The meter measures from pH 2 to 12 with a resolution of 0.01 and accuracy of ± 0.1 . **Whatman LabSales. Circle 140.**

Differential Display Analysis

The Hieroglyph mRNA Profile System consists of five related kits, each designed to screen approximately 20% of eukaryotic pools for expression-related events. **Genomix Corp. Circle 141.**

Solid-Phase DNA Sequencing

Purification and sequencing of polymerase chain reaction (PCR) fragments up to 3.5 kb can be accomplished quickly and accurately using MPG Streptavidin magnetic porous glass particles. After PCR with biotinylated primers, the amplified 5' biotinylated PCR fragments are captured on MPG Streptavidin. Magnetic separation enables quick and efficient removal of nonincorporated deoxynucleotide triphosphates, enzymes, and buffers. Complementary strands are melted away, leaving the purified single-stranded immobilized template ready for sequencing. This method eliminates the need for lengthy purification steps requiring spin columns, gels, and precipitations. These templates are compatible with either fluorescent or isotopic labeling techniques. **CPG. Circle 142.**

Antibodies

Three monoclonal antibodies (mAbs) against P-glycoprotein are available for multi-drug resistance (MDR) research. They are specific for MDR1 gene product and MDR3 gene product and can be used in flow cytometry and immunocytochemistry. The mAb Adnab-9 is raised against colonic adenomas and shows specificity for tissues or effluent from the gastrointestinal tract and does not cross-react with benign or malignant specimens from noncolonic specimens. A TdT polyclonal antibody is

Newly offered instrumentation, apparatus, and laboratory materials of interest to researchers in all disciplines in academic, industrial, and government organizations are featured in this space. Emphasis is given to purpose, chief characteristics, and availability of products and materials. Endorsement by *Science* or AAAS is not implied. Additional information may be obtained from the manufacturers or suppliers named by circling the appropriate number on the Readers' Service Card and placing it in a mailbox. Postage is free.

Super Choices!

SORVALL® Superspeeds.



More SORVALL® Superspeeds are installed around the world than any other superspeed centrifuge. With good reason. Because when it comes to reliability, versatility and safety, there are no other centrifuges in the 20,000-26,000 rpm range like ours. All SORVALL® centrifuges deliver maximum performance and reliability without any belts, gears or vacuum systems—plus they're CFC-free.

What's more, SORVALL® offers the widest choice of standard or SUPER-LITE™ rotors, tubes, bottles and adapters—all interchangeable between SORVALL® Superspeed floor models, so your rotor inventory won't become obsolete as your research needs change.

For more information on the variety of choices you have with SORVALL® Superspeeds, call 1-800-522-SPIN in the U.S. or Fax to (203) 270-2166. In Europe call (44) 1438 73 47 16 or Fax to (44) 1438 73 43 76. In other areas, contact your local SORVALL® representative.

Please join us at ASM Booth 519

SORVALL®...a better choice



SORVALL® Centrifuges

CE marked for safety as appropriate.

*All SORVALL® centrifuge products are manufactured under an ISO 9001 quality system registered with UL and approved by BSI.

compatible with formalin-fixed, paraffin-embedded sections. TdT is expressed by the majority of cortical thymocytes, and elevated levels have been documented in neoplasms derived from immature lymphoid cells. **Dako Corp. Circle 143.**

■

DNA Quantitation

Using Turner Designs' TD-700 Laboratory Fluorometer and Molecular Probes' PicoGreen Assay, double-stranded DNA can be quantitated as low as 25 pg/ml, even



in the presence of RNA, proteins, and nucleotides. The fluorometer can also be used with Hoechst 33258, Thiazole Orange, and

other fluorescent dyes for low-level double-stranded DNA quantitation. The TD-700 comes equipped with a quick-change filter cylinder, allowing the user to easily switch between assays and compare results. The TD-700 is a compact, easy-to-use benchtop instrument and comes standard with automatic range optimization, multi-point calibration, and ASCII data output. **Turner Designs. Circle 144.**

■

Literature

Sigma on Disk: Biochemicals, Organic Compounds, and Diagnostic Reagents is a CD-ROM catalog indexed for fast, full-text searching under electronic publishing software. This edition includes a "shopping cart" function to facilitate ordering, plus full-color photographs of equipment and supplies. It is compatible with MS-DOS, Windows, and Macintosh computers. **Sigma Chemical Co. Circle 145.**

HPLC Mobile Phase Management Systems contains a variety of new products for high-performance liquid chromatography including the Economy 3-Hole Cap System, Waste-Watcher Waste Bottle Monitor, Easy Prime

Primer and Debubbler, and a vacuum degassing cap with vacuum station. **Kimble/Kontes. Circle 146.**

The Direct Reading Echelle ICP describes a spectrometer that can be customized in any configuration and easily interchanged and upgraded. **Leeman Labs. Circle 147.**

"Micropure-EZ: An Enzyme Removal Device for Molecular Biology" is an article in the newsletter *bioSolutions* that describes a device for removing enzymes from double-stranded DNA solutions in a single centrifugation. **Amicon. Circle 148.**

Nucleopore Polycarbonate Membranes describes capillary pore membranes manufactured by the track-etch process. Used in areas from cell biology to hematology to rapid microbiological analysis, the membranes display high flow rates, strength, and chemical and thermal resistance. **Corning Costar. Circle 149.**

Solving Problems in Environmental Analysis with Perkin-Elmer Support highlights how the company's instruments, applications support, and service combine to keep laboratories operating at peak efficiency. **Perkin-Elmer. Circle 150.**



Unprecedented simplicity and versatility in osmometry

That's what makes the new menu-driven Wescor Vapro® Vapor Pressure Osmometer the ideal

instrument for researchers who have to measure osmolality precisely.

It's quick and simple to use and all key functions, including calibration and statistical analysis, can be selected from its menu.

The Vapro osmometer accepts all biological samples and measures them at room temperature in natural equilibrium. As a result the Vapro avoids all the artifacts that may compromise freezing point determinations.

The versatile Vapro osmometer is widely used in marine biology, tissue culture, soil and plant water potential measurements, and lab animal studies. You'll also find it performing Q.C. work in the food, pharmaceutical, beverage, and ophthalmology industries.

Contact us for more details or to arrange a demonstration. Wescor, Inc., 459 South Main Street, Logan UT. 84321. Phone 1-800-453-2725. FAX 801-752-4127.

WESCOR®

DNA Sequencing

Double-Stranded
Single-Stranded
Highest Quality

Custom Oligo Synthesis
\$1.50 Base / No Setup

Fast Turn-around
Cost Effective
Call for Prices

Molecular Biology Into the 21st. Century

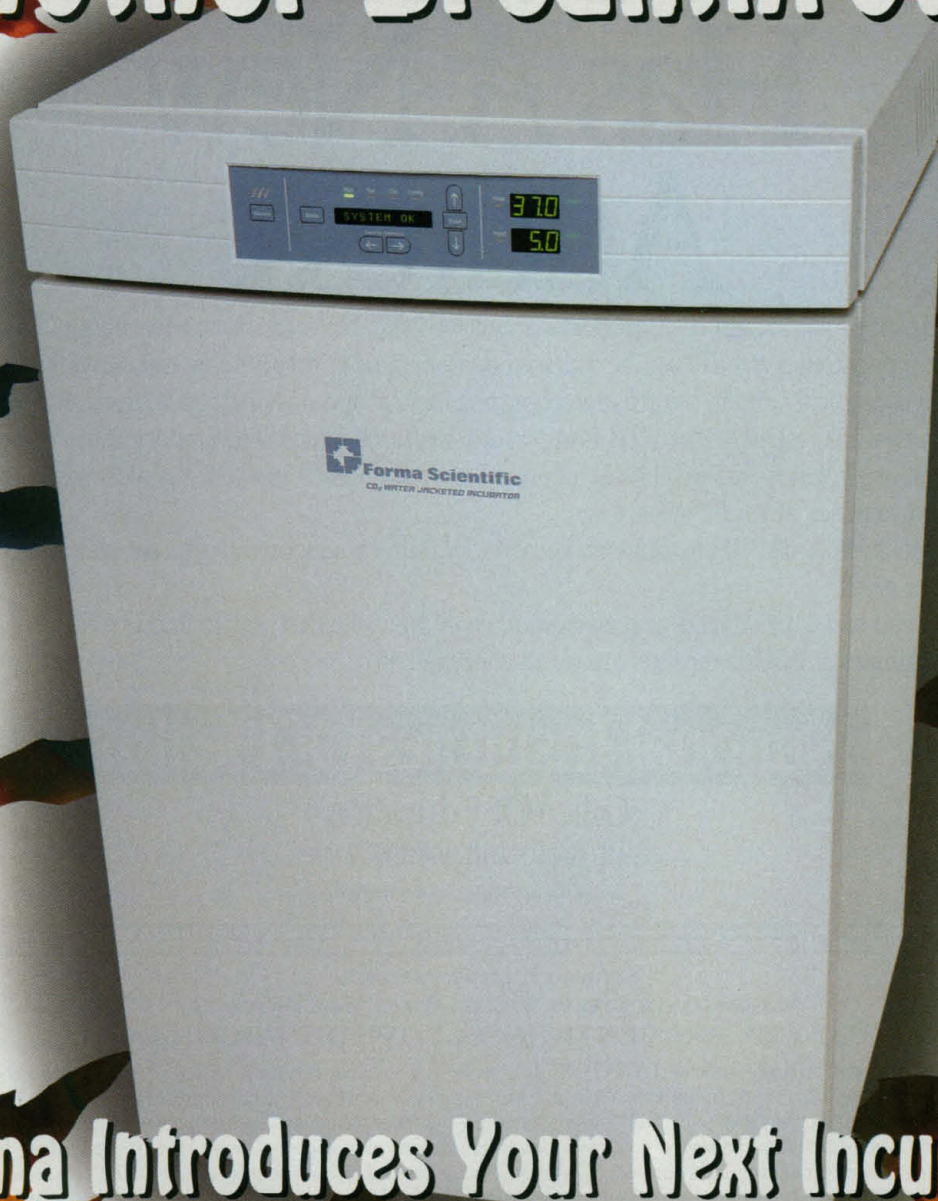
South West Scientific Resources
5300 Sequoia NW, Suite 150
Albuquerque, NM 87120

Phone: (800)343-8998

Fax: (505)831-2635

<http://www.ssr4dna.com>

Another Breakthrough



Forma Introduces Your Next Incubator.

- 100% HEPA Filtered Airflow System continuously filters entire chamber volume every 60 seconds.
- Heated, dual pane, inner glass door with clear, heat conducting film eliminates condensation while providing faster temperature recovery and improved temperature uniformity.
- Chamber interior is constructed of mirror finish stainless steel with 100% coved corners for easy cleaning.
- Forma is the only manufacturer who covers construction and integrity of the water jacket chamber for the lifetime of the unit.
- Contact Forma Scientific or your local sales representative regarding additional advances and features of our new Universal CO₂ Water Jacketed Incubators.



Forma Scientific, Inc.

Box 649, Marietta, OH 45750

1-614-373-4763 • Fax: 1-614-373-6770

USA and Canada 1-800-848-3080

International Distributors Worldwide

An ISO 9001 Company

NIH Has A New Address.

The National Institutes of Health has introduced a new web site. Now, the latest news about clinical and research training opportunities at NIH can be accessed by visiting us at <http://helix.nih.gov:8001/oe/>

At the site, you can quickly obtain information regarding clinical and postdoctoral training. Review the NIH tenure-track openings. Take a look at the NIH Postdoctoral Research Fellowship Opportunities Catalog which chronicles research being conducted in all NIH laboratories. You can even apply electronically for positions.

All from the convenience of your keyboard.

Plus, the web site links to all NIH institute and laboratory home pages, provides a calendar of events, and offers links to many other areas.

We used to ask you to call us or send your *curriculum vitae*. Now, the best way to find out about world class opportunities at NIH is through the world wide web.



National Institutes Of Health

Office Of Education

<http://helix.nih.gov:8001/oe/>

The NIH is an Equal Opportunity Employer

NATIONAL CANCER INSTITUTE NATIONAL INSTITUTES OF HEALTH, PUBLIC HEALTH SERVICE CANCER PREVENTION FELLOWSHIP PROGRAM

The **Division of Cancer Prevention and Control (DCPC)**, NCI, is accepting applications for the Cancer Prevention Fellowship Program (CPFP). The purpose of this program is to train individuals from a multiplicity of health science disciplines in the field of cancer prevention and control. The program provides for: *Master of Public Health training* (at accredited university programs); participation in the *DCPC Cancer Prevention and Control Academic Summer Course* (open to physicians and scientists interested in specialized instruction on the principles and practice of cancer prevention and control); *working directly with individual preceptors at DCPC* on cancer prevention and control projects; *brieffield assignments* in cancer prevention and control programs at other institutions. Funding permitting, Fellows will be accepted for up to three years of training, beginning July 1, 1997. Benefits include selected relocation and travel expenses, paid federal holidays, and participatory health insurance.

ELIGIBILITY

M.D., D.D.S., or D.O. from a U.S., territorial, or Canadian Medical School. Foreign medical graduates must have current USMLE or ECFMG certification and appropriate experience, e.g., one year residency in a training program approved by the Accreditation Council for Graduate Medical Education.

OR

Ph.D. or other doctoral degree in a related discipline (epidemiology, biostatistics, and the biomedical, nutritional, public health or behavioral sciences). Foreign education must be comparable to that received in accredited U.S., territorial, or Canadian institutions.

PLUS

The applicant must be a U.S. citizen or resident alien eligible for citizenship within four years.

For details and an application catalog either call, fax, email, or send a postcard or letter with your name, home address, and where you heard about the program to:

Douglas L. Weed, M.D., M.P.H., Ph.D.
Director
Cancer Prevention Fellowship Program
Division of Cancer Prevention and Control
National Cancer Institute
Executive Plaza South, Suite T-41
6130 Executive Blvd MSC 7105
Bethesda MD 20892-7105

Further inquiries: Mrs. Barbara Redding, Telephone: (301) 496-8640; Fax: (301) 402-4863; email: reddingb@dcpcps.nci.nih.gov

DEADLINE FOR RECEIPT OF APPLICATIONS: SEPTEMBER 1, 1996

NIH is an Equal Opportunity Employer

Working in Regulatory Affairs Is a Way to Get the Broad View

Early in my career I was told that it was important to obtain a broad view of the pharmaceutical industry," says Kelly Freeman. The motivation behind the advice was that having the broad view promotes more effective communication between the divisions in a large pharmaceutical company. Freeman's response to the advice was to seek a position in an area of the pharmaceutical industry that's often overlooked by outsiders: regulatory affairs.

Freeman, who came to Eli Lilly in 1988 with a newly minted Ph.D. in analytical chemistry from the University of Oklahoma, says, "I was involved in developing methods for clinical trials and heard they were looking for someone in the regulatory group. I thought that working in regulatory would help me obtain that broader view."

And indeed it has. In her role as a regulatory affairs specialist at Lilly, Freeman interacts with a wide variety of people, from the company's marketing group to folks at the Food and Drug Administration (FDA) to patients receiving Lilly products. As a regulatory affairs specialist, her responsibility is to see that a new drug application moves smoothly through the long, complex FDA approval process.

Freeman is one of a growing number of scientists who are finding their way out of the lab into the world of regulatory affairs. Regulatory affairs professionals work at many different levels, from the entry level to top management, in private industry and in agencies such as FDA, the U.S. Department of Agriculture, and the Environmental Protection Agency. Some of them, like Freeman, are responsible for shepherding a new drug application through the approval process; others make sure companies comply with federal regulations regarding laboratory and manufacturing practices; still others are responsible for making sure that products are safe

before they go on the market.

Although their responsibilities can vary widely, almost all the regulatory affairs specialists interviewed by *Science* agree that

This is the third in a series of six pages in *Science* linked to features on the *Science's* Next Wave, the new AAAS/*Science* World Wide Web project for young scientists (<http://sci.aas.org/nextwave>). This story focuses on scientifically trained people who made the transition to a new career niche in regulatory affairs.

scientific training is a big help in their work. Lionel Bourdrel, who has a B.S. in biology from the University of Southern California and works in the regulatory affairs division at Amgen, says that his "broad background in molecular biology, protein chemistry, process development, and toxicology" helps him "understand the rationale

that the FDA uses to evaluate the science." On the other side of the fence, at the FDA, drug reviewer Shannon Williams agrees: "The experience you gain in experimental design is invaluable, because it allows you to critically evaluate the science in a new drug application."

Although a strong science background is an asset in regulatory affairs, not all scientists are necessarily cut out for this kind of work. Regulatory affairs, say those involved in it, is a people-intensive trade, and people skills are critical. Larry Davenport, a manager of regulatory affairs at Genentech, says that those in regulatory affairs must be able to work well with people scattered throughout their company, as well as with people in government agencies. In fact, says Davenport, "formal training in dealing with people"—something not many scientists get—"would be helpful for young scientists contemplating entering the field."

The reasons researchers make the transition to regulatory affairs vary widely. Many cite the breadth of experience that drew Freeman to the field. But others, including Christine Czarniecki, are simply looking for a new challenge. Czarniecki started her research career in biotech in 1981 following a postdoc at NIH. Her initial move to industry was connected to her research aspirations. "My colleagues and I were very committed to

our interferon research," she says. "At the time interferon was very hard to get. I had this idea that if I could find a source, then I could do all these wonderful experiments."

Czarniecki joined the research team at Genentech and worked on interferons there for 9 years. In 1988, when she was promoted to the level of senior scientist, she began to think about new goals. The stimulus for this kind of thinking was not just intellectual curiosity—it was also a strategic career move. "I'm always looking for ways to broaden myself and become more marketable," she says.

Czarniecki tried project management and business development before settling on regulatory affairs. She says that regulatory affairs was attractive because it requires a "a very science-based technical background." In addition, she liked the fact that "there was a lot to learn." Czarniecki's sense that broadening herself would advance her career was correct: In 1993 she was hired by the Seattle-area biotech firm ICOS as director of regulatory affairs, with the challenge of building their regulatory affairs department.

Other scientists find that the move into regulatory affairs may enable them to break through a glass ceiling. One ceiling-smasher is Craig Mintz. Mintz has a Ph.D. in health sciences from Columbia Pacific University and works in Research Triangle Park as a director in the regulatory affairs division of Glaxo Wellcome. Three years ago he made the transition from clinical research to regulatory affairs because he isn't a physician and "for a non-M.D. continued career progression may be difficult in clinical research."

The capacity of regulatory affairs to break through a glass ceiling, its capacity to provide career growth, and the pleasure it gives many of its practitioners all seem to be connected to two factors. The first is that it is closely connected to the industry's scientific base, from basic research right through to product approval. The second is the quality that drew Kelly Freeman in the first place: the broad view.

As George Fuller, a regulatory affairs director at Monsanto, puts it, "I like working in regulatory because it gives you a big picture of the company." And, with career development an ever more crucial issue, the big picture may be one that more and more young scientists are interested in viewing.

—Nicole Ruediger

Nicole Ruediger is a young biologist living in Florida. Like many of her peers, she is considering a variety of career options.

For more information on making the transition to a career in regulatory affairs, please go to *Science's* Next Wave, on the World Wide Web at <http://sci.aas.org/nextwave>, and look under the "New Niches" heading on the home page. There you will find the stories of the "Role Models" who have already made this transition, along with "Resources" that will help you make it yourself.

SCIENCE

DISPLAY CLASSIFIED ADVERTISEMENTS

Call for rate and deadline information on display classified advertisements.

Bethany Ritchey
Recruitment Display Advertising
Telephone: (202) 326-6541
FAX: (202) 289-6742

Janis Crowley
Recruitment Advertising Manager
Telephone: (212) 496-7704
FAX: (202) 289-6742

Debbie Cummings
European Recruitment Advertising
Telephone: +44 (0) 1223 302067
FAX: +44 (0) 1223 576208

For **SYMPOSIUM AND CONFERENCE** display advertisements, turn to pages 1055 and 1057.

LINE CLASSIFIED ADVERTISEMENTS

How to Submit a Line Classified Ad: Submit double-spaced typewritten copy. Do not include any abbreviations. SCIENCE will edit and typeset ads according to SCIENCE guidelines. Include billing information and desired publication date. Available categories: Positions Open, Meetings, Announcements, Courses and Training, Services. SCIENCE cannot provide proofs of typeset line ads. Line advertisements are not commissionable.

Estimates: SCIENCE will provide a cost estimate for line ads. This is an approximate cost only. Allow for variation between estimated lines and actual typeset lines and resulting final cost. Purchase orders must allow for some degree of flexibility and/or adjustment.

For line advertising deadlines, call Nancy Hicks.
Telephone: (202) 326-6555;
FAX: (202) 289-6742.

Credit Cards: SCIENCE accepts American Express, MasterCard and VISA. Discount does not apply to credit cards.

Cancellations: Deadline for cancellation is Tuesday, 10 days prior to issue date.

Discounts: A 3% cash discount is granted to all prepaid ads.

Ads from Outside the U.S.: A discount of \$30 will be offered to advertisers making payment in U.S. dollars by checks drawn on U.S. banks. Contact Debbie Cummings. Telephone: +44(0) 1223 302067; FAX: +44(0) 1223 576208.

SCIENCE Global Career Network: Unless otherwise instructed, every classified advertisement submitted for publication in SCIENCE is automatically posted on SCIENCE's on-line classified advertising service, SCIENCE Global Career Network, at no additional charge.

SCIENCE Global Career Network address:

WWW: <http://www.aaas.org>
Gopher: <gopher.aaas.org>

Mail, FAX or Email materials to:

SCIENCE Classified Advertising
1200 New York Avenue, N.W., Room 911
Washington, DC 20005
FAX: 202-289-6742

Internet Email: science_classifieds@aaas.org
(please include your telephone number in Email)

SCIENCE reserves the right, at its discretion, to edit or decline to publish advertisements submitted to it.

POSITIONS OPEN

DIRECTOR BIOTECHNOLOGY FACILITY Indiana University School of Medicine

The Department of Biochemistry and Molecular Biology is seeking a faculty member at the **ASSISTANT** or **ASSOCIATE SCIENTIST** level to serve as director of the Biotechnology Facility. The position offers a unique opportunity for an individual who combines expertise in the synthesis and analysis of macromolecules with strong administrative skills. Applicants should have a Ph.D. or equivalent degree and postdoctoral experience in molecular biology/biochemistry. Major current services include peptide and DNA synthesis and sequencing, and mass spectrometry. The facility has a staff of two and a half full-time personnel, operates more than \$700,000 worth of equipment, and has a generous space allocation. The successful candidate would be encouraged to initiate research programs, independently or in collaboration with other faculty. Limited teaching is expected but this aspect of the position could be developed further. Applicants should submit their curriculum vitae and the names of three references to: **Dr. Robert A. Harris, Department of Biochemistry and Molecular Biology, Indiana University School of Medicine, Indianapolis, IN 46202-5122.** *Indiana University is an Equal Opportunity/Affirmative Action Educator, Employer, and Contractor.*

FACULTY POSITION Immunology and Bioinformatics

The Department of Biology, Rochester Institute of Technology (RIT), invites applications for a **TENURE-TRACK, ASSISTANT PROFESSOR** position to enhance its B.S. in Biotechnology Degree Program. Develop and teach an immunology lab/lecture course (to include antibody engineering) and add expertise in bioinformatics to the curriculum (emphasizing database applications to mapping/genomics, sequence structure/function analyses and molecular biology concepts). Share in other department teaching and student advising duties. Research in specialty area is encouraged. Department has 320 majors and 10 full-time faculty, and offers B.S. degrees in biotechnology and biology. Ph.D. required. Previous teaching experience preferred. Starting date: September 1, 1996 (December 1, 1996 and March 1, 1997 also considered). Applications accepted and reviewed until position is filled. Submit curriculum vitae and arrange to have three letters of reference sent to: **Chair, Search Committee, Biology Department, Rochester Institute of Technology, 85 Lomb Memorial Drive, Rochester, NY 14623.** *RIT is an Equal Opportunity/Affirmative Action Employer. Members of protected classes and individuals able to contribute in a meaningful way to the Institute's continuing commitment to cultural diversity, pluralism, and individual differences are encouraged to apply.*

DIRECTOR Bioreactor/Cell Culture Facility

Lampire Biological Laboratories, Inc., a leader in the development of biological reagents for the *in vitro* diagnostic and pharmaceutical industries, has an opening for a **DIRECTOR** of its new Bioreactor/Cell Culture Facility. Qualified candidates will have either a Master's degree or Ph.D. in the biological sciences with three to five years of hybridoma production and protein purification. Additional expertise in the generation of peptide immunogens and immunoassay development is desirable. Suitable applicants should be capable of making presentations to potential consumers of our technology.

If you wish to participate in this exciting new venture, please forward your résumé to: **Mr. Gregory Krug, Lampire Biological Laboratories, Inc., P.O. Box 270, Pipersville, PA 18947.**

DIRECTOR PROGRAM IN DIABETES RESEARCH

Department of Medicine at Case Western Reserve University (CWRU), University Hospitals of Cleveland, and the V.A. Medical Center seek an outstanding **INVESTIGATOR** (M.D. or Ph.D.) to develop and direct a Program in Diabetes Research. Applicants should submit curriculum vitae and names of three references to: **F. Ismail-Beigi, M.D., Ph.D., Clinical and Molecular Endocrinology, Case Western Reserve University, 10900 Euclid Avenue, Cleveland, OH 44106-4951.** *CWRU is an Equal Opportunity/Affirmative Action Employer. Applications from women and minority groups are encouraged.*

POSITIONS OPEN

ASSISTANT PROFESSOR

The Applied Animal Biotechnology Laboratory, Department of Poultry Science, Louisiana State University (LSU), Baton Rouge, Louisiana, is accepting applications for an **ASSISTANT PROFESSORSHIP**. Applicants must have a Ph.D. in molecular biology/microbiology or closely related discipline. Required experience includes cloning, site directed mutagenesis, fusion protein expression systems, DNA sequencing, and gene mapping; protein chemistry experience is desired but not essential for acceptance. The successful applicant will join an active multidisciplinary research team currently engaged in the examination of endocrine mechanisms that stimulate ovulation in avian species. The candidate will also assist in the continued development of biotechnology applications to the poultry industry. Salary commensurate with training and experience. Benefits include University holidays, earned annual and sick leave, and optional group hospitalization and group life insurance. This is a non-tenure-track position with a minimum appointment of two years. The laboratory has received significant funding from a strong corporate sponsor as well as state funding for the past several years. Application deadline is June 17, 1996 with the position open July 1, 1996. Applicant should send a letter containing names of three references, a brief statement of research interests, and a complete curriculum vitae to:

**Dr. Roger A. Teckel, Chairman
Department of Poultry Science
LSU Agricultural Center
Baton Rouge, LA 70803-4606
Telephone: 504-388-4481**

Louisiana State University and the Louisiana Agricultural Experiment Station are Equal Opportunity/Affirmative Action Employers.

ASSISTANT OR ASSOCIATE PROFESSOR OF MICROBIOLOGY The University of Iowa

The Department of Microbiology, The University of Iowa College of Medicine, invites applicants for a tenure-track **FACULTY POSITION** at the Assistant/Associate Professor level. Outstanding candidates investigating the interaction between human viruses, such as HIV, and the immune system are encouraged to apply. All applicants must have a Ph.D. and/or M.D. degree, postdoctoral research experience, and a strong record of research accomplishments. Successful applicants are expected to establish an extramurally funded research program. Participation in the Department's teaching programs is also expected. The Department of Microbiology consists of 28 faculty members with research programs in immunology, virology, pathogenic bacteriology, microbial genetics, and microbial physiology. The University has strong research programs in molecular virology and immunology. The Department is under the leadership of a new head and the research facilities of the department have undergone complete renovation. Applicants should send their curriculum vitae, a statement of research interests, and the names of at least three references before August 1, 1996 to: **Mark F. Stinski, Ph.D., Search Committee Chair, Department of Microbiology, 3-403 Bowen Science Building, The University of Iowa, Iowa City, IA 52242.** Anticipated start date is July 1, 1997. *The University of Iowa is an Equal Opportunity/Affirmative Action Employer. Women and minorities are strongly encouraged to apply.*

IMMUNOLOGIST/PATHOGENIC MICROBIOLOGIST Two Faculty Positions

The Microbiology Department at Oregon State University (OSU) seeks applicants for **TENURE-TRACK** positions at the Assistant Professor rank, one in Immunology and one in Pathogenic Microbiology. The positions require individuals with strong commitments to developing extramurally funded research programs, training graduate students, and participating in the undergraduate teaching program. Positions are available to begin September 1, 1996. Screening will begin immediately and will continue until the positions have been filled. For full consideration apply by July 1, 1996. Send a letter of application, curriculum vitae listing all publications, six letters of recommendation, and transcripts to: **Dr. J. C. Leong, Microbiology, 220 Nash Hall, Oregon State University, Corvallis, OR 97331-3804.** Telephone: 541-737-4441; FAX: 541-737-0496; Email: leongj@ccmail.orst.edu. *OSU is an Affirmative Action/Equal Opportunity Employer and has a policy of being responsive to the needs of dual career couples and differently-abled individuals.*

Be at the forefront...

...of drug discovery research with The DuPont Merck Pharmaceutical Company. We are focused on meeting unmet medical needs through the discovery and development of innovative compounds leading to novel pharmaceuticals.

SENIOR SCIENTIST-CELLULAR BIOCHEMISTRY or CELL BIOLOGY

INFLAMMATORY DISEASE RESEARCH

A position is available for a senior level scientist who will make an impact on the discovery of novel therapeutics for inflammatory diseases. This individual will be responsible for defining new targets of action as well as coordinating the discovery and development efforts around current targets. The preferred area of interest for this candidate is cell associated targets, particularly dealing with cell surface signaling molecules and signal transduction mechanisms.

The ideal candidate will possess an MD and/or PhD with a minimum of 7 years as a principal investigator. Areas of expertise will include cell biology, cell biochemistry, immunology or inflammation.

STAFF SCIENTIST-MOLECULAR BIOLOGY

CNS RESEARCH

A position is available for a motivated and experienced Molecular Biologist who will be responsible for carrying out experiments requiring skills in Cell and Molecular Biology such as: gene cloning, DNA sequencing, PCR, site directed mutagenesis, preparation of gene constructs for expression in mammalian cells and transgenic mice, and methods to analyze gene structure and expression at DNA, RNA and protein levels.

Further experience in Neurobiology, tissue culture of primary and established cells, ES cells, transfection procedures, and in making and analyzing transgenic mice would be a plus.

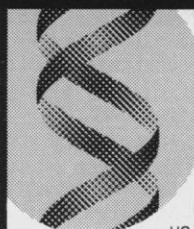
The ideal candidate should possess a BS or MS degree in Molecular Biology or a related field and have several years of relevant work experience.

Our location, near Wilmington, DE, offers an attractive lifestyle with easy access to all the cultural, academic and recreational activities of the Eastern Seaboard. The DuPont Merck Pharmaceutical Company can offer you an excellent compensation and benefits package. To be considered, please forward your resume, indicating position of interest, to: Human Resources-KD, The DuPont Merck Pharmaceutical Company, Experimental Station, 400/2413, P.O. Box 80400, Wilmington, DE 19880-0400. An equal opportunity employer M/F/D/V.

**DU PONT
MERCK**

The DuPont Merck Pharmaceutical Company
Merging Strengths...Emerging Opportunities.

QUALITY PRODUCTS. QUALITY CAREERS.



Genentech is a pace-setting biotechnology company that discovers, manufactures and markets human pharmaceuticals for significant unmet medical needs. Our product pipeline is the richest in the industry and we are the only biotech company with five marketed products. To continue our record of success, we are seeking the following professionals for our growing organization.

Manager, Regulatory Affairs

Under the strategic guidance of the Associate Director, you will be responsible for the development and implementation of regulatory strategies for manufacturing and facility projects. Your duties will include submission preparation, evaluation of technical changes for regulatory impact and FDA facility inspections support.

This opportunity requires a BS in a scientific field and 5+ years' experience in the pharmaceutical/biotechnology industry, preferably in Regulatory Affairs/Quality. Demonstrated understanding of regulations governing drug manufacture, experience with submissions to regulatory agencies and excellent written/verbal communication skills are essential. Job code: EOAB

Regulatory Affairs Associate/Assistant

Reporting to the Manager of Computer Validation Compliance, you will help assure implementation and maintenance of computer validation projects and documentation in the pre-clinical, clinical and related areas covered by GLP/GCP regulations.

We seek a detail oriented individual with a Bachelor's degree in a scientific, health care or related field or equivalent and 2-5 years' experience in the biotechnology, pharmaceutical or other health care products industry where you have gained a knowledge/understanding of the use of computer systems to collect, store/retrieve, analyze, manipulate and present product development or production information. A basic understanding of FDA regulations/requirements, i.e. cGMPs, GLPs and GCPs, is essential; knowledge of QA/QC and auditing methods is desirable. Job code: EODL

Join us and enjoy our exciting success and progressive benefit package that includes free health club membership, 3 weeks paid vacation, 6 weeks sabbatical after 6 years, fully paid medical/dental/vision coverage, and Company stock purchase opportunities for full time employees. For consideration, send your resume indicating appropriate Job code to Genentech, Inc., Human Resources Dept., 460 Pt. San Bruno Blvd., South San Francisco, CA 94080. We value creativity at Genentech, but our scanning equipment does not. Please avoid bold, underline or italic type faces. You may also e-mail your resume indicating Job code to jobs@gene.com (ASCII files only with a maximum line width of 76 characters). Find out more about Genentech at <http://www.gene.com/>. Genentech is an Equal Opportunity Employer. We value the contributions of our diverse workforce.

Genentech, Inc.



SOLVAY PHARMACEUTICALS

SUPERVISOR, PRODUCT LABELING Marietta, Georgia

Solvay Pharmaceuticals, Inc., a subsidiary of Solvay S.A., is a research based, marketing driven company with a long tradition of innovation. Our corporate headquarters is located just north of Atlanta, GA. We are currently seeking a:

SUPERVISOR, PRODUCT LABELING

Candidate will direct the preparation of labeling sections of submissions and supplements, act as the FDA Liaison with regard to labeling submissions, and be responsible for ensuring that product labeling conforms to Federal and State regulations by providing direction to the review, revision, and approval of marketed product labeling, and conducting analysis of new regulations. Additional responsibilities include establishing and implementing computer applications for labeling submissions and representing the organization to outside groups and vendors with emphasis on labeling issues.

The ideal candidate will have a Bachelor's degree in the life sciences or liberal arts, six years of experience in regulatory affairs, and two years of supervisory experience. Experience with international labeling issues is also desired.

Our salary and benefits package is extremely competitive and includes relocation assistance. Interested candidates may contact Jennifer Phillips at the DIA Conference or forward resume and salary history to:

Solvay Pharmaceuticals
Attn: Peggy Watson
901 Sawyer Road
Marietta, Georgia 30062
FAX: (770) 578-5924

A Passion for Progress

An Equal Opportunity Employer M/F/D/V



LABORATORY DIRECTOR HLA Services

The Department of Pathology/Clinical Laboratories at Duke University Medical Center & Health System is currently seeking candidates for the position of Laboratory Director, HLA Services. The successful candidate will hold an M.D./Ph.D with particular emphasis in the application of molecular diagnostics principles to test development and implementation in Clinical HLA testing. The HLA Services Director will assume principal responsibility for HLA Molecular Test Development, as well as the coordination of the two current transplant serology activities in solid organ donor transplant and bone marrow transplant support. Applicants should have a solid R&D base in the field as well as significant clinical applications experience and be Board Certified or certifiable. Applicants should submit current Curriculum Vitae with names and addresses of four references to:

**Laboratory Director Search, Salvatore V. Pizzo, M.D., Ph.D,
Professor and Chairman, Department of Pathology, PO Box
3712, Duke University Medical Center & Health System,
Durham, NC 27710.**

**Duke University
Medical Center**

Duke University is An Equal Opportunity/Affirmative Action Employer.

REGULATORY
AFFAIRS
ASSOCIATE

Corning Besselaar, a leader in the Contract Clinical Research industry and part of Corning, Inc., has dedicated itself to supplying its clients with unsurpassed service and the security of working with a company committed to their success. Rapid expansion has created an exciting position for an experienced Regulatory Affairs Associate in our Princeton, NJ facility.

In order to assure proper handling and distribution of study supplies, the selected candidate will be responsible for assisting in the randomization of patients in a strictly controlled environment. Additionally, the selected individual will perform audits of pharmacies to guarantee proper distribution of supplies and maintenance of study medication to USFDA and DEA requirements. Qualifications for this position include a BS degree in a related industry (Chemistry, Pharmacy, Biology or Nursing) and 3-5 years background with the drug development process (including GMPs and FDA regulations regarding the distribution and maintenance of drugs and/or investigational drugs). Prior clinical research experience a must.

In return for your contribution, we offer a competitive salary and benefits package including medical/dental/vision insurance and an excellent retirement savings plan. For immediate consideration, mail/fax your resume to: **Human Resources Dept. DS, Corning Besselaar, Inc., 210 Carnegie Center, Princeton, NJ 08450-6233. FAX: (609) 734-0064.** All applicants subject to drug screening. Equal Opportunity Employer M/F/D/V.

CORNING Besselaar

RESEARCH SCIENTIST II

Genetic Therapy, Inc., based in the Washington, D.C. area, is expanding its research activities in the area of retroviral vector mediated gene transfer to human hematopoietic stem cells. This program will complement existing activities in retroviral vector development and will provide opportunities for collaborative interactions with research groups working to develop gene therapies for inherited and acquired disorders. We are seeking a Research Scientist II to work in this group.

Applicants must have a Ph.D. and 2 years of experience in gene therapy research or related field, or equivalent. Applicants should have extensive lab experience in human and/or murine *in vitro* hematopoietic cell culture assays such as methylcellulose progenitor assays and long-term cell culture. Experience with murine transplantation models for evaluation of human hematopoiesis is desired. Should have good communication skills and a strong publication record.

GTI, a subsidiary of Sandoz Ltd., offers a stimulating and challenging environment with an excellent salary and benefits package. Please specify position when applying. Fax or send resume to:

**Genetic Therapy, Inc.
938 Clopper Road
Attn: 67-016-7/S
Gaithersburg, MD 20878
Fax: (301) 948-0503**



Genetic Therapy is an Equal Opportunity Employer

Transcell Technologies, Inc. is dedicated to developing carbohydrate-based pharmaceuticals. We currently have outstanding opportunities available for dedicated professionals to fill the following positions.

MICROBIOLOGIST (Ph.D.)

We are seeking a Microbiologist with 3 to 5 years of postdoctoral, pharmaceutical research experience dealing with the physiological and biochemical processes involved in growth, function and pathogenesis of bacteria for our antibiotic discovery program. Experience with the design, purification and practical utilization of molecular targets for drug identification and mechanism is also necessary. The ability to clone and express genes is a plus.

MOLECULAR BIOLOGIST (Ph.D.)

A skilled and versatile Molecular Biologist is being sought to contribute to our program in the identification, cloning and expression of genes that can serve as molecular targets for antibiotics. We desire a highly productive individual with at least 2 years of postdoctoral experience. Experience with cloning strategies for new genes, PCR, site-directed mutagenesis, DNA sequencing and bacterial expression is required. Familiarity with yeast expression systems is also desirable.

Transcell Technologies occupies modern corporate and research facilities in the Princeton area. We offer a competitive salary and a comprehensive benefits package including medical and dental insurance and 401(k) plan. Please send resumes with salary requirement to: **Transcell Technologies, Inc., Human Resources, 2000 Cornwall Road, Monmouth Junction, NJ 08852.** No phone calls please.



We are an
Equal Opportunity
Employer M/F/D/V.

SYMPOSIUM

SEMINAR TOUR

Gene Analysis in Diagnostic Research

TO REGISTER:

- **Phone:**
1-800-526-3593 ext. 2222
to register via voice mail
- **Fax:**
1-908-457-8301 include your name,
address, phone and fax number, seminar city/date
- **E-mail:**
tsealf.pharmaciabiotech.com
include your name, address, phone and fax number,
seminar city/date

Visit our World Wide Web site

<http://www.biotech.pharmacia.se>



Program Agenda

CHICAGO & BOSTON	
8:00 - 9:00 AM	Registration & Continental Breakfast
9:00 - 12:00 PM	Seminars on: p53 in Breast Cancer, Alzheimers Research and Automated DNA Sequencing as a Clinical Tool
12:00 - 1:30 PM	Complimentary Lunch
1:30 - 3:00 PM	Workshops on: HLA Typing, RAPD, Automated DNA Sequencing and Mutation Detection
ATLANTA	
9:00 - 12:00 PM	Seminars on: Alzheimers Research, HLA Typing and Automated DNA Sequencing as a Clinical Tool
12:00 - 3:00 PM	see schedule for Chicago and Boston
SAN DIEGO & SAN FRANCISCO	
9:00 - 12:00 PM	Seminars on: p53 in Breast Cancer, HLA Typing and Automated DNA Sequencing as a Clinical Tool
12:00 - 3:00 PM	see schedule for Chicago and Boston

X-RAY CRYSTALLOGRAPHY

CENTER FOR MOLECULAR ONCOLOGY THE UNIVERSITY OF CHICAGO

Interdisciplinary research and fellowship positions are available in macromolecular x-ray crystallography in a setting of multidimensional NMR spectroscopy and genetic engineering. Graduate or Post-graduate experience with structure determination of proteins or nucleic acids is required. Opportunities exist for interaction with new synchrotron source (APS) at the Argonne National Laboratory.

Send curriculum vitae, bibliography, statement of research interests and 3 letters of recommendation to: **Michael A. Weiss, MD, Ph.D., ATTN: X-Ray Crystallography, Center for Molecular Oncology, The University of Chicago, 924 E. 57th St-R310, Chicago, IL 60637-5419.** The University of Chicago is an Affirmative Action/Equal Opportunity Employer.



THE UNIVERSITY
OF CHICAGO

RESEARCH UPDATE

The expanding focus of the Molecular Genetics Screen Design group has created a unique interdisciplinary research opportunity. Here at our 640 acre campus-like headquarters, just minutes from Princeton University, you'll find a highly supportive community of experienced scientists, and work in an atmosphere deeply committed to employing advanced biotechnology and the highest quality science.

MOLECULAR BIOLOGIST Molecular Genetics Screen Design

Your research will combine the tools of molecular biology and the use of microbial systems to support research programs in the agricultural products and medical research divisions. Research focuses on investigation of protein interactions of agricultural and medical importance, and microbial based screen design.

To qualify, you must have an MS or BS with 3 years of laboratory experience and strong analytical, organizational and communication skills. Experience in molecular biology is essential and knowledge of yeast systems, protein biochemistry and peptide receptor systems is extremely helpful. Additionally, you should be multi-task and team oriented.

For prompt and confidential consideration, forward your resume and salary history to: **Employment Office, Dept. KK/SC, American Cyanamid Company, Agricultural Research Center, P.O. Box 400, Princeton, NJ 08543-0400.** No phone calls or agencies please. Equal opportunity employer m/f/d/v.



New & improved web site



you

What's the shortest distance between two points?



**great career
opportunities**

SCIENCE CLASSIFIED ADVERTISING ON-LINE

What's the shortest distance between two points? A straight line, of course. And that's exactly what SCIENCE's Classified Advertising On-line delivers: a direct link for talented scientists just like you, to the most comprehensive listing of new scientific career opportunities you can find anywhere.

Here's what's new:

- **New easy-to-use format:** SCIENCE now has a new easy-to-use format designed by Stanford University's Highwire Press. The new enhancements make finding great career opportunities even easier!
- **New search engine:** Now all classified ads are fully searchable in a format that allows you to narrow your recruitment search by discipline and geographic area.
- **New system enhancements:** Look for additional features and services throughout 1996 to help you find the perfect career opportunity!

Make a straight line to your computer and check out the new and improved SCIENCE Classified Advertising On-line!

<http://www.aaas.org>

Select SCIENCE Classified Advertising from the menu

SCIENCE

DIRECTOR, DIVISION OF KIDNEY, UROLOGIC, AND HEMATOLOGIC DISEASES (DKUHD)

The National Institute of Diabetes and Digestive and Kidney Diseases (NIDDK), located in Bethesda, MD, is seeking an outstanding physician for the position of Director, Division of Kidney, Urologic, and Hematologic Diseases (DKUHD). This is a Senior Executive Service (SES) permanent full-time position with a salary range of \$100,526 to \$122,688 per annum commensurate with qualifications. Applicants must demonstrate research experience and knowledge of research programs in one or more areas related to kidney, urologic, and hematologic diseases. May be eligible for Physicians Comparability Allowance of up to \$20,000 per year. A recruitment bonus of up to 25% may be available to a non-Federal applicant. *The deadline for receipt of application is July 31, 1996.*

The Director, DKUHD, is the principal advisor to the Director, NIDDK, on matters and policies pertaining to research grants, contracts, training and specialized programs in kidney, urologic, and hematologic diseases including basic and applied research, training fellowships and institutional training awards, and clinical trials. Additionally, the incumbent may have the opportunity to conduct independent research projects in the area of kidney, urologic and hematologic diseases.

FOR MORE INFORMATION CONTACT Ms. JOANNA VOIGHT, NIDDK PERSONNEL OFFICE, BLDG. 31, ROOM 9A30, 9000 ROCKVILLE PIKE, BETHESDA, MARYLAND 20892; (301) 496-4231.

U.S. Citizenship Required / NIH is an Equal Opportunity Employer

QUALITY ASSURANCE ASSOCIATE

Pfizer Inc, pioneering a new generation of pharmaceuticals that will help shape the future of health care, has an immediate opportunity for a resourceful professional to provide QA guidance and support in the manufacture of sterile clinical supplies.

As a key member of our team, you will lead environmental monitoring program and associated trend analysis, understand manufacturing equipment and facilities, participate actively in validation teams, and audit systems and records review. We will also rely on you to qualify and manage vendor manufacturing sites, perform product investigations, monitor regulatory trends, and lead cGMP training.

The qualified candidate will have a BS/MS degree or equivalent in microbiology and work experience with sterile manufacturing process equipment and validation programs. An understanding of cGMP regulations and federal guidances and developed communication and auditing skills are essential.

Complementing the professional advantages of one of the world's finest corporate scientific communities are the many cultural, recreational, and educational amenities easily assessable to our southeast Connecticut location. For confidential consideration, please forward your resume suitable for electronic scanning (i.e., eliminate italics, bullets, bolds, underlines and staples) to: **Employee Resources, Ad#1116, Pfizer Inc, Central Research Division, Eastern Point Road, Groton, CT 06340.**



We're part of the cure.

We are an equal opportunity employer M/F/D/V.

W E D E P E N D O N T H E



A commitment to redefining the future of health care.

That's Abbott Laboratories. And it's the talent of our professionals that makes us the leader we are today. If you're looking for a professional environment built on innovation, look at the opportunities available with Abbott Laboratories. We have the following positions available.



SENIOR RESEARCH COMPUTER SCIENTIST

Working in a multi-vendor distributed computing environment and leading/supervising a technical staff with advanced degrees, you will provide project leadership in software research. This will include development and management of chemical information systems, evaluation and implementation of new technology and the development of short and long range project plans.

We require 4-6 years of experience in organic, physical, theoretical or analytical chemistry. We also require 4-6 years in the design and development of computer applications and problem solving/systems analysis in chemistry, medical or a related field. Additionally, you will need 2-5 years of project/ team industrial experience. Macintosh software development experience is a plus. The qualified candidate must have excellent interpersonal and communications skills, and be an independent worker and a self-starter. (Job # 96-1355)

ASSOCIATE RESEARCH COMPUTER SCIENTIST

You will provide programming support on software development teams, design and install computer systems, and apply scientific and mathematical data analysis techniques to present pharmaceutical data. You will also learn and apply new computer technology to support the research, discovery and development efforts of our pharmaceutical R&D.

We require 2-4 years experience in software systems development in a scientific research environment and the ability to program client/server applications. Solid experience with fourth generation languages, project management and CASE tools is essential. Windows, Macintosh or Open/VMS software development experience is a plus, as is experience with OO technologies. (Job #95-1314)

We offer an excellent salary and benefits package, including profit sharing and a stock retirement plan. For consideration, please send your resume with salary history to: Abbott Laboratories, Job # _____, D583, AP6B, 100 Abbott Park Rd., Abbott Park, IL 60064. Abbott is an Affirmative Action Employer/Smoke-Free Environment.

**ABBOTT
LABORATORIES**
Quality Health Care Worldwide

POSITIONS OPEN

PLANT BIOLOGY

USDA/ARS Children's Nutrition Research Center
Baylor College of Medicine

The USDA/ARS Children's Nutrition Research Center at Baylor College of Medicine invites applications for a **PLANT PHYSIOLOGIST/MOLECULAR BIOLOGIST**, GS-12, beginning October 1996. This is a 100% research position. ARS is seeking applicants with a strong background in molecular biology/genetics and research interests in membrane transport phenomena, phloem physiology, macro/micronutrient nutrition. The research will be integrated with existing plant and biomedical research programs at the Center and Baylor College of Medicine. Applicants must have a Ph.D. or equivalent doctoral degree in a related scientific discipline or one year of specialized experience. *U.S. citizenship is required.*

For position details, please call: **Dennis Bier, Center Director, Telephone: 713-798-7022.** For application procedures and forms, please call: **Dawn McCourt, Telephone: 301-344-1504.** Applications in response to this advertisement should be marked ARS-D6S-042 (S-6-011). Applications must be mailed to: **USDA/ARS, 6305 Ivy Lane, Room 337, Greenbelt, MD 20770-1435**, and be postmarked by July 9, 1996. *USDA/ARS is an Equal Opportunity Employer.*

Ecosystem-Based Natural Resource Management. **ASSISTANT/ASSOCIATE PROFESSOR**, Department of Natural Resources and Environmental Sciences, University of Illinois at Urbana-Champaign. Position: Full-time, tenure-track, 60% research, 40% teaching and outreach. Responsibilities: Conduct research aimed at solving natural resource management problems at the interface of agricultural, natural, and urban ecosystems; serve as catalyst for team-based research in ecosystem management within the Department and College; develop an interdisciplinary research program; teach at the graduate and undergraduate level; assist in departmental outreach efforts. Qualifications: Ph.D. in any one, or preferably a combination of, the following or related areas: landscape ecology, systems ecology, natural resource management, agro-ecology, resource economics, or resource policy. Appointment: Available August 21, 1996. Salary commensurate with experience. To ensure full consideration, send a letter of application, résumé, transcript, and three letters of reference by June 7, 1996 to: **Ms. Joyce Canaday, W-503 Turner Hall, Department of NRES, University of Illinois, 1102 South Goodwin Avenue, Urbana, IL 61801.** Telephone: 217-333-2771; FAX: 217-244-3219.

The University of Illinois is an Affirmative Action/Equal Opportunity Employer.

RESEARCH ASSISTANT PROFESSOR

The Department of Pharmacology at the University of Illinois at Chicago (UIC) invites applications for two **RESEARCH ASSISTANT PROFESSOR** (non-tenure-track) positions to participate in a funded research project in vascular biology. Candidate for one position should have a strong background in molecular biology, protein chemistry, and cell biology. Candidate is expected to clone and express endothelial cell proteins and to develop gene-knock-out animal models. The candidate for the other position should have a strong background in electrophysiology in vascular biology. Candidate is expected to perform physiological experiments using animal model. Candidates should possess a Ph.D. degree and at least three years of postdoctoral research experience in either molecular biology or physiology. Beginning date is July 1, 1996. For fullest consideration submit curriculum vitae with names of three references by May 30, 1996 to: **Barbara Frese, Department of Pharmacology (M/C 868), 835 South Wolcott, Room E403 MSB, Chicago, IL 60612-7343.** UIC is an Affirmative Action/Equal Opportunity Employer.

GRIFFITH UNIVERSITY, AUSTRALIA School of Applied Science Gold Coast Campus

Lecturers in Ecology (three positions). Preferred expertise: vertebrate ecology, marine biology, and/or microbiology.

Lecturer in Environmental Management (one position, readvertised). Preferred expertise: EIA, audit, EMS.

Tenurable. Salary: Australian \$43,042 to \$51,114 per annum. Closing date: 14 June 1996.

Information contact: **Sue Thorne, HRM Griffith University, Telephone: 61-7-5594-8624; FAX: 61-7-5594-8777; Email: S.Thorne@hrm.gu.edu.au.**

An Equal Opportunity Employer.

POSITIONS OPEN

Indiana—Oral Biology. A full-time, **TENURE-TRACK** position for an anatomist in the Department of Oral Biology at Indiana University School of Dentistry is available July 1, 1996. Applicants should have a Ph.D. degree in anatomy and experience teaching anatomy in a medical or dental school. The D.D.S./D.M.D. degree is also highly desirable. Main responsibilities include development and administration of a Biomedical Sciences Resource Laboratory and teaching in the undergraduate (D.D.S.) program. This position will require collaboration with multidisciplinary teaching teams in the development of a systems-based biomedical sciences curriculum. Demonstrated ability in independent and collaborative research is also highly desirable. Academic rank and salary are commensurate with experience and qualifications.

Please send curriculum vitae and names and addresses of three references to: **Dr. Marilyn Lantz, Chair, Department of Oral Biology, Indiana University School of Dentistry, 1121 West Michigan Street, Indianapolis, IN 46202.** *Indiana University is an Equal Opportunity Employer.*

PENSACOLA JUNIOR COLLEGE PENSACOLA, FLORIDA

ZOO ANIMAL TECHNOLOGY—Job Number 0638. A Master's degree in zoology (vertebrates) and experience with zoo animal and/or exotic species care and management required. Prefer a Ph.D. in vertebrate zoology or D.V.M. and teaching experience. Prefer experience working with a zoological park; breeding/managing endangered vertebrate species; organizational and interpersonal skills; and the ability to work with other cultures. Salary: \$31,760 to \$37,940.

For official application materials, please call: **Pensacola Junior College Employment Office. Telephone: 904-484-1799** by May 28, 1996. *Pensacola Junior College is an Equal Opportunity Institution. Minorities are encouraged to apply.*

EAST CAROLINA UNIVERSITY SCHOOL OF MEDICINE

Department of Microbiology and Immunology

Faculty position available at the **ASSISTANT or ASSOCIATE PROFESSOR** level in the area of virology, emphasizing molecular biology approaches to viral pathogenesis related to human health and disease. Salary and rank will be commensurate with qualifications. Successful candidates will develop an extramurally funded research program and will participate in team-taught courses in the Medical and Graduate Schools. Appointment at the Associate Professor level requires a strong record of continuous research funding including current extramural support and evidence of leadership in teaching and service. The Department has 13 full-time tenure-track faculty positions and is fully equipped with advanced core facilities for research in virology, molecular biology, genetics, and immunology. Please provide curriculum vitae, a letter describing research and teaching goals, and names and addresses of three references to: **Virology Search Committee, Department of Microbiology and Immunology, School of Medicine, East Carolina University, Greenville, NC 27858-4354.**

East Carolina University is an Equal Opportunity/Affirmative Action University. Accommodates individuals with disabilities. Applicants must comply with the Immigration Reform and Control Act.

The Department of Veterinary Anatomy and Public Health at Texas A&M University, College of Veterinary Medicine, invites applications for a 12-month, fully budgeted, **TENURE-TRACK** position available on or after September 1, 1996.

Applicants must hold the Ph.D. and/or D.V.M. degree. Postdoctoral training is desirable, but not mandatory. Applicants must have a strong background in the anatomical sciences, evidence of excellence in classroom teaching, and a proven record of productivity in the advancement of innovative teaching methods. The appointee will teach anatomy, develop an independently funded program in anatomical teaching technologies, and provide leadership for other faculty in innovative teaching programs.

Priority consideration will be given to applications received by August 15, 1996, but the search will continue until a final candidate is selected. For further information contact: **Dr. Lynn Ruoff, Chair of Search Advisory Committee, Department of Veterinary Anatomy and Public Health, College Station, TX 77843-4458. Telephone: 409-845-2828; Email: internet:p-enfield@vetmed. TAMU.edu.**

Texas A&M University is an Affirmative Action/Equal Opportunity Employer.

POSITIONS OPEN

BIOMEDICAL ENGINEER (Scientist) for company in Northeastern Ohio that develops, manufactures, sells, and services medical diagnostic imaging equipment. Job duties: devise and implement 2D and 3D image processing and graphics for use in UNIX-based medical workstations; develop visualization techniques for 3D rendering of graphics and medical volumetric data; develop and implement image processing segmentation, and registration algorithms for MR and Ultrasound images to be used in surgical guidance; investigate and benchmark multi-media hardware and software techniques for use in medical visualization; integrate medical monitors, surgical tools, and operating microscopes into computer assisted surgery software; investigate the needs for innovative surgical tools in studying physiological diseases. Tools used: graphical packages including TCL/TK, AVS, Open GL, DEC Alpha workstation. Must have M.E. or M.S. in biomedical engineering and one year with job duties listed above or one year of experience with developing analysis software for segmentation, tracking, and visualization of ultrasound images using snake algorithm, and medical research in human physiological diseases (such as cardiac diseases) in a clinical environment. Experience may be gained before, during, or after degree. Must also have ability to develop segmentation technique for MRI using snake algorithm as evidenced by a research paper, thesis, or professor/employer testimonial. Must have hands-on ability using X-Windows, Sun SPARC, or DEC Alpha workstation, UNIX, C and C++ programming, user interface development package TCL/TK, and graphic packages including AVS and Open GL as verified by professor or employer. Must have one graduate-level course each in advanced computer vision, digital picture processing, medical image analysis. 40 hours per week, 8:00 a.m. to 5:00 p.m., \$45,500 per year. Send two résumés and cover letters (no calls) to: **T. Do, Reference Number 1731, Ohio Bureau of Employment Services, P.O. Box 1618, Columbus, OH 43216.**

FOREST ECOSYSTEM HEALTH

The School of Forestry at Northern Arizona University invites applications for a nine-month, tenure-track **ASSISTANT PROFESSOR** position. The appointee will teach at all levels, advise graduate students (M.S., Ph.D.), and develop an externally funded research program. Applicants must have a doctorate with emphasis on the role of biotic agents in ecosystem-level processes of wildlands. Preference will be given to candidates with coursework in or experience with forestry, forest ecosystem indicators, forest ecosystem monitoring, forest diseases, forest microbial ecology, mycorrhizae, and incorporation of forest ecosystem health concepts into management planning; teaching experience, a commitment to teaching excellence, and experience working in a multicultural environment containing Native American or Hispanic populations; evidence of ability to obtain external funding for research; and peer-reviewed publications. Please send a statement of qualifications and interests for teaching and research, a curriculum vitae, three letters of recommendation, up to five different reprints, copies of college transcripts, a listing of courses grouped by subject area, and evidence of teaching experience and performance, by September 3, 1996 to: **Stephen C. Hart, School of Forestry, Northern Arizona University, Flagstaff, AZ 86011-5018. Telephone: 520-523-6637; FAX: 520-523-1080; Email: steve.hart@nau.edu.** *Northern Arizona University is a committed Equal Opportunity/Affirmative Action Institution. Minorities, women, individuals with disabilities, and Veterans are encouraged to apply.*

ACADEMIC TOXICOLOGIST

The Department of Pharmacology and Toxicology, Queen's University at Kingston, seeks a **TOXICOLOGIST** well-grounded in general toxicology and skilled in modern methods. We can offer an excellent research and teaching environment and an initial term appointment; the candidate is expected to apply for a competitive external award. See our Web page at <http://meds-s10.meds.queensu.ca/medicine/pharm/> for details.

Closing date is August 15, 1996. Contact: **Dr. Kanji Nakatsu, Department of Pharmacology and Toxicology, Queen's University, Kingston, Ontario K7L 3N6 Canada. Telephone: 613-545-6106; FAX: 613-545-6412; Email: nakatsuk@post.queensu.ca.** *In accordance with Canadian Immigration regulations, this advertisement is directed to Canadian citizens and permanent residents. Queen's University has an employment equity program and encourages applications from all qualified candidates, including women, aboriginal peoples, people with disabilities, and visible minorities.*

Tumor Postdoctoral Fellowship Positions

Immediate opening for two full-time Postdoctoral Fellowships in the Tumor Immunology Section, Surgery Branch, National Cancer Institute, National Institutes of Health, Bethesda, Maryland, to study the immune response to tumor cells in murine models and in humans.

We seek candidates with experience in molecular biology for one position, and someone with experience in cellular immunology for the second position. Ongoing projects include the study of breaking immune tolerance to tumor-associated differentiation antigens and the development of synthetic and recombinant anti-cancer vaccines.

Selections for these positions will be based solely on merit, with no discrimination for non-merit reasons such as race, color, religion, gender, national origin, politics, marital status, physical or mental disability, age, sexual orientation, or membership or non-membership in an employee organization. *The NIH is an Equal Opportunity/Affirmative Action Employer.*

Send cover letter, CV, and statement of research interests to: **Steven A. Rosenberg, M.D., Ph.D., Chief of Surgery, National Cancer Institute, Building 10, Room 2B42, Bethesda, Maryland 20892-1502, (301) 496-4164.**

Director Office of Grants and Research Administration

The Long Island College Hospital, a premier, not-for-profit medical center located in the Brooklyn Heights Section of Brooklyn, New York, is a major teaching affiliate of the State University of New York Health Sciences Center at Brooklyn. The Institution has a full-time faculty of more than fifty physicians and scientists engaged in basic and clinical research.

Applications are invited for the newly created position of Director of Grants and Research Administration. The successful applicant will be responsible for the overall development and coordination of research activities at the Long Island College Hospital. We are seeking a scientist with proven research achievement who will help to provide leadership for the development of multidisciplinary, inter-institutional research programs attractive to funding opportunities from both the private and public sectors. The successful candidate should have an MD, or Ph.D., administrative and leadership ability, experience in working in an interdisciplinary setting, and familiarity with regulations concerning welfare of human subjects (Institution Review Board) and welfare of animals used in research (IACUC).

The Long Island College Hospital offers an attractive compensation and benefits package. For confidential consideration please fax a cover letter and names of three references to: David Goddard, MD, The Long Island College Hospital, FAX: (718) 780-2983. Equal opportunity employer M/F/D/V.

 **The Long Island
College Hospital**

Medicine At The Core Of Life

Few biotechnology companies can offer you the promise and excitement of Gilead Sciences. We are a leader in the discovery and development of a new class of broad spectrum antiviral therapeutics that will provide powerful new treatments for CMV retinitis, HIV and other viruses. Here, you'll be a part of a company that takes pride in its achievements, knowing that patients may benefit from the products we create.

RESEARCH SCIENTIST Drug Delivery/Metabolism

You will work as part of a team responsible for designing and conducting *in vivo* and *in vitro* drug metabolism studies to support discovery and development. This will involve identifying, developing and applying novel bioanalytical methods, isolating and identifying metabolites, and performing bioavailability studies. You will also analyze and interpret pharmacokinetic data and generate reports to support regulatory filings. Your PhD in pharmaceutical sciences, bioanalytical chemistry or a related field should be supported by at least 5 years of hands-on experience in the pharmaceutical industry conducting drug metabolism studies, applying *in vivo/in vitro* methods and novel bioanalytical techniques. Your background must also demonstrate extensive experience in the application of non-linear models, along with excellent interpersonal communication and report preparation skills.

At Gilead, we are committed to developing important treatments for a wide range of viral diseases, including AIDS. As you will discover, we are as committed to opportunity as we are to scientific achievement. To learn more, please send or fax your C.V./resume to: **Human Resources, Gilead Sciences, Inc., 353 Lakeside Drive, Foster City, CA 94404, fax (415) 573-4800.** We are proud to be an equal opportunity employer.

GILEAD
S C I E N C E S

Faculty Position Albert Einstein College of Medicine X-Ray Crystallography

The Department of Biochemistry at the Albert Einstein College of Medicine is seeking a faculty member with experience in solving biochemical problems by X-ray crystallography. Faculty rank in this tenure-track position will be determined by prior experience. The X-ray crystallography laboratory is well-equipped with area detectors and molecular graphics equipment. A synchrotron resource facility at Brookhaven National Laboratory is operated by the College. Numerous collaborative projects are available within the College. Applicants should send a curriculum vitae, letters from three or more references, and a summary of research interests and future research plans to: **Search Committee, Department of Biochemistry, Albert Einstein College of Medicine, Jack and Pearl Resnick Campus, 1300 Morris Park Avenue, Bronx, NY 10461.** Applications will be reviewed beginning July 1, 1996. EOE.

**ALBERT EINSTEIN
COLLEGE OF MEDICINE**
Toward the
advancement of medicine
...and your career



Clinical Research Fellow

Cato Research Ltd., a rapidly growing clinical research organization located in Research Triangle Park, NC, has an exciting opportunity for a self-starter with a scientific background who wants to learn and grow in a creative environment. The Clinical Research Fellow will receive training in the scientific, regulatory, medical and financial aspects of pharmaceutical development. The ideal candidate will possess the following:

- ▼ Ph.D. in biological sciences.
- ▼ Excellent written and verbal skills.
- ▼ Initiative and strong interpersonal skills.
- ▼ Ability for critical and analytical thinking.

CRL provides an opportunity for the right individual to become a part of the pharmaceutical drug development industry. CRL offers personal and professional growth opportunities, a competitive salary and an excellent benefits package. For consideration, please send or FAX [(919) 361-2290] a resume and writing sample to: **DS/SC, Cato Research Ltd., 4364 S. Alston Ave., Suite 201, Durham, NC 27713-2280.** No phone calls or third party agencies, please. EOE.

CATC
RESEARCH

Looking for Talent in Bioinformatics?

**JUST ADDED! Special Product Advertising Supplement focusing on
Computers in Science -- 7 June 1996.**

***NEW! Bioinformatics Banner Highlights
Your Organization's Career Opportunities!***

In this issue, SCIENCE will highlight recruitment advertisements targeted to scientists with computer expertise under a new **Bioinformatics banner**. This is the perfect place to promote your career opportunities.

***Get extra exposure with SCIENCE Classified
Advertising On-line...Now completely upgraded!***

The best on-line classified advertising service for scientific careers just got better:

- **New easy-to-use format:** An updated design by the Stanford University's High Wire Press makes finding your organization's career opportunities a snap for scientists.
- **New Search Engine:** Now both display and line ads will be posted in a fully searchable text format that allows scientists to narrow their recruitment search by discipline and geographic area.

• **New Internet Staff:** The new SCIENCE Internet staff assures that your electronic recruitment ads receive the same top service and care as your print advertising.

• **New System Enhancements:** Look for additional upgrades and features in 1996!

For more information contact:

US: Janis Crowley
Phone: (212) 496-7704
Fax: (202) 289-6742

Europe: Debbie Cummings
Phone: +44 (0) 1223 302067
Fax: +44 (0) 1223 576208

Space Reservation Deadline: 21 May 1996

SCIENCE

NOTE: This is a special product advertising supplement. Recruitment advertisements will appear in the traditional classified advertising section in the back of the book.

Myco Pharmaceuticals, a leader in microbial genetic engineering applied to small molecule drug discovery, has an excellent opportunity in its research division. We offer a scientifically rewarding environment and a top-notch research staff in the heart of the Cambridge biotechnology community. Myco seeks candidates with a high level of commitment, diligence, and excellent communication skills.

Senior Scientist Cell and Molecular Biologist

We seek a motivated and experienced cell biologist with a thorough understanding of the mechanisms that drive cell proliferation in cancer and the immune system. The candidate will lead the Cell Proliferation project and develop the research and drug discovery effort. The search for antineoplastic agents and immune response modifiers will utilize Myco Pharmaceuticals' novel molecular genetic and chemical approaches. Requires Ph.D, postdoctoral, and 9 years' experience in drug discovery and molecular biology with an understanding of the utility of genomics data.

Please send your resume by May 31, 1996 to: **Human Resources, Job Code CP, Myco Pharmaceuticals Inc., One Kendall Square, Building 300, Cambridge, MA 02139; FAX (617) 225-2997. NO PHONE CALLS.**

MYCO PHARMACEUTICALS INC.

An equal opportunity employer

Boehringer Ingelheim Pharmaceuticals, together with all Boehringer Ingelheim companies worldwide, share a commitment to innovative research and scientific exploration. This commitment is evident in our world-class R&D facilities, programs and scientific staff and has established us as a major international pharmaceutical company.

Working in our analytical sciences department, your major responsibilities include: maintaining a cell culture and bioassay laboratory including operation and validation of equipment; maintaining mammalian cell lines and virus stocks; performing ELISA and biological assays to support product development and stability studies; and preparing methods and reports for regulatory submission. Scientific publication is encouraged.

To qualify, you must have a M.S. in Chemistry, Biochemistry, Molecular Biology or Cellular Biology with 3-6 years relevant experience. Applicants with a B.S. and 7-10 years experience will be considered. Experience with clean sterile technique, tissue culture (including cell culture laboratory management) quantitative and instrumental analysis related to cell-based biological assays and immunoassays is required. Knowledge of GLP/GMP compliance in a biological laboratory is also required. The ability to work independently to make scientific decisions, develop methods and problem solve is a must, as are strong interpersonal and communication skills.

Boehringer Ingelheim's facility is located on a campus-like setting in a beautiful area of Western Connecticut bordering New York. We offer excellent benefits and a supportive, challenging environment. For an opportunity to be part of our growing team, please send your resume and salary requirements to: **Dept, BB-RD53-96R,**

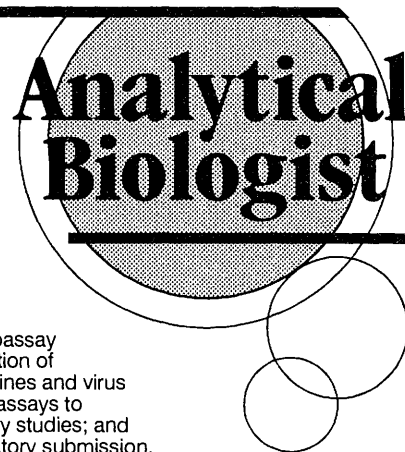
Boehringer Ingelheim Pharmaceuticals, Inc., 900 Ridgebury Road, P.O. Box 368, Ridgefield, CT 06877-0368.

NO PHONE CALLS PLEASE.

We are an equal opportunity employer. As a progressive healthcare company, we have non-smoking environment.



**Boehringer
Ingelheim**



Quality Control Scientist

NeoRx Corporation, a Seattle-based, publicly held biotechnology company develops targeted biopharmaceuticals to treat cancer and cardiovascular disease.

Our Quality Control department is seeking an innovative scientist who will be responsible for developing and performing assays to ensure the safety, purity, and functionality of products for manufacturing and clinical use. The selected applicant will report to the Manager of Quality Assurance and will:

- Develop and validate methods to test the identity, strength, purity, and functionality of raw materials, bulk substances, and final product.
- Perform quality control analysis in accordance with cGMP and cGMP.
- Create and revise Standard Test Methods and Standard Operating Procedures.
- Perform control charting and statistical analysis of test methods.
- Prepare analytical reports for FDA submissions.

The successful candidate will have a Ph.D. degree in biochemistry and 2-5 years' relevant experience with HPLC, SDS-PAGE, IEF, ELISA, GC, IR, and NMR. Excellent oral and written communication skills are a must.

Interested candidates are invited to forward their resume with a cover letter, in strict confidence, to: **Denise Carlson, NeoRx Corporation, 410 West Harrison Street, Seattle, WA 98119; fax: (206) 284-7112; NeoRx is an equal opportunity employer.**

NEORX

ANIMAL FACILITIES MANAGER

The Biology Division of the Oak Ridge National Laboratory (ORNL) is seeking an experienced manager for its Mouse Genetics Facility, which houses 125,000 mice and underpins a multidisciplinary genetics program. Responsibilities include oversight of supervision of the animal care staff, of animal husbandry, and of procurement of supplies and equipment. The manager must be able to interact effectively and positively with research staff on all issues related to animal care and use.

The ideal candidate is a Doctor of Veterinary Medicine, certified by the American College of Laboratory Animal Medicine with experience in management of mouse facilities. In-depth knowledge of NIH guidelines for animal care and of associated standards for accreditation by the American Association for the Accreditation of Laboratory Animal Care is essential. Excellent interpersonal skills are imperative.

More information about ORNL, the Biology Division, and this position is available on the Internet at the following addresses:

<http://www.ornl.gov>

<http://www.ornl.gov/divisions/biology>

<http://www.ornl.gov/employment>

For immediate consideration, send resume to **Dr. F.C. Hartman, Biology Division, Oak Ridge National Laboratory, Dept. SCI-5/17, P.O. Box 2009, Oak Ridge, TN 37831-8007.**

ORNL is an equal opportunity employer committed to building and maintaining a diverse workforce.

Oak Ridge National Laboratory

A U.S. Department of Energy Laboratory managed by
Lockheed Martin Energy Research Corp.

POSITIONS OPEN

ASSISTANT/ASSOCIATE PROFESSOR MOLECULAR BIOLOGIST University of Kentucky

The Department of Horticulture and Landscape Architecture, University of Kentucky, invites applications for a twelve-month, **TENURE-TRACK**, research and teaching position in Horticulture-Molecular Biology (90% Research/10% Teaching). The successful candidate must develop a basic research program utilizing molecular genetics or cellular biology to address problems and opportunities important to Kentucky horticulture. The applicant is expected to secure outside funding, publish research in refereed journals, foster intra- and interdepartmental research, teach a graduate-level course, and advise graduate students. A Ph.D. in horticulture, molecular genetics, plant physiology, plant biochemistry, or a related plant science field with an emphasis in molecular biology or genetics is required. Educational background and/or experience with horticultural crops and postdoctoral training are desirable. The individual must function within a team environment and communicate effectively. Applications will be accepted until July 15, 1996 or until a qualified applicant is found. To apply, send a letter highlighting education, experience, and career interests; a résumé; transcripts; and the names and addresses of five referees to: **Dr. Dwayne Ingram, Chair, Horticulture and Landscape Architecture Department, University of Kentucky, Lexington, KY 40546-0091. Telephone: 606-257-1601.** The University of Kentucky is an Equal Opportunity Employer.

FACULTY POSITIONS in cellular and molecular mechanisms of animal health and disease. The Department of Veterinary Pathobiology, University of Minnesota, wishes to fill multiple faculty positions in the area of animal health and disease with emphasis on cellular and molecular mechanisms. Candidates will be expected to establish a competitively funded research program in the areas of microbiology, virology, genetics, or immunology; teach in the professional curriculum; train pre- and postdoctoral scientists; and provide leadership in interdisciplinary collaborative efforts in animal health and disease. Rank, tenure status, and terms of appointment will depend on qualifications and experience. Ph.D. or equivalent and up to two years of postdoctoral experience is required. D.V.M., M.D., or equivalent is desirable. Start date: on or after July 1, 1996. Send a letter describing your research and teaching interests and career objectives, a curriculum vitae, and names of three referees to: **Dr. Michael Murtaugh, Chair, Search Committee, Department of Vet Pathobiology, College of Vet Medicine, University of Minnesota, 1971 Commonwealth Avenue, St. Paul, MN 55108. Email: malak001@maroon.tc.umn.edu.** Completed applications will be considered upon receipt until June 28, 1996. The University of Minnesota is an Equal Opportunity Educator and Employer.

POSTDOCTORAL POSITION available to study comparative limb function during the locomotion of lizards. Applicant must have completed a Ph.D. before starting. Funds are available for more than two years of support. Start date is flexible but September–December 1996 will be preferred. The research involves quantitative analysis of motion and muscle activity. Consequently, the candidate should have strong quantitative skills and be proficient with a variety of software including spreadsheets and statistical programs. A strong background in vertebrate morphology is desirable but not essential. Review of applications will begin immediately and continue until the position is filled. Send curriculum vitae, Ph.D. transcript, select reprints, and two letters of reference (via Email is fine) to: **Bruce C. Jayne, Department of Biological Sciences, University of Cincinnati, Cincinnati, OH 45221-0006. Telephone: 513-556-7012; FAX: 513-556-5299; Email: bruce.jayne@uc.edu; web page: http://ucbio21.rvs.uc.edu/fac2/jayne/bruce.htm.**

Two **POSTDOCTORAL POSITIONS** available at the Whitehead Institute to study molecular aspects of hematopoiesis. Experience in the biochemistry of protein prenylation and/or expertise in techniques of *in vitro* bone marrow culture relevant. Please send curriculum vitae and three references to:

George Q. Daley, M.D., Ph.D.
Whitehead Institute for Biomedical Research
9 Cambridge Center
Cambridge, MA 02142
FAX: 617-258-6505

POSITIONS OPEN

ASSOCIATE DIRECTOR

Derek Bok Center for Teaching and Learning. Full or half-time starting summer 1996. Works to improve undergraduate teaching in the Faculty of Arts and Sciences, Harvard University. Implements existing training programs and develops new ones for teaching fellows and faculty. Substantial teaching experience at university level, Ph.D. required. Expertise in a specific science discipline and faculty development highly desirable. Send letter relating skills to job description, résumé, and one-page statement of teaching philosophy by June 14, 1996 to: **Dr. James Wilkinson, Derek Bok Center, One Oxford Street, Cambridge, MA 02138. Email: jwilkins@fas.harvard.edu. Equal Opportunity/Affirmative Action Employer.**

MICROBIAL ECOLOGIST

The Department of Plant Pathology and Microbiology invites applications for a 12-month tenure-track position at the level of **ASSISTANT PROFESSOR**. The individual will be expected to establish a self-supporting research program with emphasis in agricultural environmental issues related to plants or microbes. Teaching responsibilities will be primarily in our expanding undergraduate Bioenvironmental Sciences program. Applicants should have a Ph.D. in a relevant field and postdoctoral experience. Screening of applications will begin on July 15, 1996. Send a letter of application, curriculum vitae, a statement of research and teaching goals, and three letters of reference to: **Dr. Neal K. Van Alfen, Department of Plant Pathology and Microbiology, Texas A&M University, College Station, TX 77843-2132. Email: vanalfen@tamu.edu.** For departmental information see: <http://cygnus.tamu.edu/PLPA/dept-toc.html>. An Equal Employment Opportunity/Affirmative Action Employer.

POSTDOCTORAL POSITIONS available immediately to study molecular mechanisms of vascular oxidative stress, angiotensin receptor function, and signal transduction in response to physical forces. Previous experience in molecular biology and/or biochemistry is required. Persons interested must send curriculum vitae and three references to: **Kathy Griendling, Ph.D., Division of Cardiology, Emory University School of Medicine, 319 WMB, 1639 Pierce Drive, Atlanta, GA 30322. Email: kgriend@emory.edu. Emory University is an Equal Opportunity/Affirmative Action Employer.**

A **POSTDOCTORAL POSITION** is available immediately to study the inhibition of tumor cell proliferation by interferon focusing on events in the cell cycle. Applicants should have a recent Ph.D. with strong background and experience in biochemistry/molecular biology. Send curriculum vitae and list of references to: **Human Resources, Hippie Cancer Research Center, 4100 Kettering Boulevard, Dayton, OH 45439. FAX: 513-293-7652.**

POSTDOCTORAL POSITION

From July 1, 1996 for person experienced in expression cloning of membrane proteins; interest in monocytes and inflammation desirable. Send curriculum vitae and references to: **Dr. Wayne Hancock, Sandoz Center for Immunobiology, 99 Brookline Avenue, Boston, MA 02215. Telephone: 617-632-0824; FAX: 617-632-0825; Email: whancock@nedhmailnedh.harvard.edu. Equal Employment Opportunity/Affirmative Action.**

POSTDOCTORAL/RESEARCH ASSOCIATE

Position available in neurochemistry to study signal transduction, G-protein, transcription factor, and gene expression alterations in manic-depression and/or Alzheimer's disease in well-funded laboratory at one of the top 20 NIH-funded institutions. Send curriculum vitae and names of references to: **Dr. Richard Jope, SC 1057, University of Alabama at Birmingham, School of Medicine, Birmingham, AL 35294-0017.**

POSTDOCTORAL POSITION

Available July 1, 1996. Study lipid-mitigated signal transduction in yeast and higher eukaryotes. Applicants with a strong background in molecular biology and/or yeast genetics are encouraged to apply. Send curriculum vitae and three references to: **Human Resources, Children's Hospital Oakland, 747 52nd Street, Oakland, CA 94609. FAX: 510-428-3306. Equal Opportunity Employer.**

POSITIONS OPEN

MOLECULAR BIOLOGIST

A tenure-track **ASSISTANT/ASSOCIATE PROFESSORSHIP** is available for a molecular biologist whose research interests in nerve and/or muscle cells complement those of the neurobiology or cardiopulmonary faculty in the Department. The successful candidate must have a Ph.D. or equivalent degree, and is expected to establish an extramurally funded research program as well as participate in teaching general physiology, developmental biology, or related courses to graduate and undergraduate students. The deadline for applications is July 15, 1996 with a starting date between December 1, 1996 and August 1, 1997. An application letter, description of current and long-term research interests, description of teaching experience and interests, curriculum vitae, and four letters of reference should be sent to: **Dr. Douglas N. Ishii, Search Committee, Department of Physiology, Colorado State University, Fort Collins, CO 80523. Colorado State University is an Equal Opportunity/Affirmative Action Employer. Women and ethnic minorities are strongly urged to apply.**

POSTDOCTORAL POSITION—Lipid or Membrane biologist—to study liposome-DNA and protein/lipid interactions. Ph.D. or equivalent in biochemistry, chemistry, physics, or related field. Experience in lipid metabolism or time resolved fluorometry desirable. Send curriculum vitae and three letters of reference to: **Dr. F. Schroeder, Department of Physiology and Pharmacology, Texas A&M Veterinary Medical Center, Texas A&M University, College Station, TX 77843-4466. An Equal Opportunity/Affirmative Action Employer.**

POSTDOCTORAL POSITION available immediately to study molecular regulation of apoptosis in hormone-dependent tumors. We are interested in applying gene transfection to investigate the roles of protooncogenes in cell death regulation. Experience in molecular biology is essential. Submit curriculum vitae and the names of three references to: **Dr. Arthur Buckley, Department of Pharmacology and Toxicology, University of North Dakota School of Medicine and Health Sciences, P.O. Box 9037, Grand Forks, ND 58202-9037. FAX: 701-777-6124. University of North Dakota is an Equal Opportunity Employer.**

POSTDOCTORAL POSITION

**National Institute of Allergy and Infectious Diseases
National Institutes of Health**

Position available August 1, 1996 for Ph.D. and/or M.D. with training in virology, molecular biology, and genetics to do research on the molecular pathogenesis of Simian and Human Immunodeficiency Viruses (SIV and HTV-1) using animal models. This position offers in-depth training leading to ability to pursue original, independent research. Send curriculum vitae and three references to: **Dr. Vanessa Hirsch, 2441 Parklawn Drive, Rockville, MD 20852.**

POSTDOCTORAL FELLOW to isolate, characterize, and clone *Drosophila* 5S RNA and tRNA processing enzymes (see *Vasishth et al., JBC* 269:18, 468, 1994 and *Levinger et al., JBC* 270:18, 903, 1995). Qualifications include enzyme isolation and cloning experience and interest in RNA processing. Curriculum vitae and references to: **Louis Levinger, Natural Sciences/Biology, York College/CUNY, Jamaica, NY 11451. FAX: 718-262-2652; Email: louie@mbrse.york.cuny.edu. Equal Opportunity/Affirmative Action Employer.**

Three **POSTDOCTORAL POSITIONS** available immediately to study 1) cutaneous basement membrane zone biology 2) cutaneous gene regulation and gene therapy, and 3) biology of microvascular endothelial cells. Experience in molecular biology and biochemistry preferred. Send curriculum vitae and names of three references to: **Drs. S. Herron, P. Khavari and P. Marinkovich, Stanford University School of Medicine, P204 MSLS, Stanford, CA 94305. FAX: 415-723-8762.**

POSTDOCTORAL POSITIONS

Positions available immediately to study polypeptide growth factor-inducible gene expression in mouse fibroblasts. Research experience in molecular biology is essential; background in either protein kinases, transcription factors, or transgenic/knockout mice is preferred. Send curriculum vitae to: **Holland Laboratory, Human Resources (MolBio-JW), American Red Cross, 15601 Crabbs Branch Way, Rockville, MD 20855. Equal Opportunity Employer. Minority/Female/Disabled/Veteran.**



FACULTY POSITION IN RETROVIROLOGY

The Ohio State University is undertaking a major initiative in Molecular Life Sciences Research. The Department of Veterinary Biosciences invites applications for a tenure-track faculty position and member of the University Center for Retrovirus Research. The Center consists of 25 faculty plus graduate and postdoctoral students interested in the role of retroviruses in the pathogenesis of human and animal diseases, and is part of the most comprehensive health sciences center in America. Among other resources, The Ohio State University has an NIH-designated comprehensive cancer center, AIDS clinical trials unit, and AIDS malignancy tissue bank. Support facilities include a recently completed BSL-3 containment laboratory, state-of-the-art cytometry facility, and a new non-human primate complex.

The applicant should have a Ph.D. degree or equivalent, relevant postdoctoral experience, and an established record of research excellence in molecular aspects of retrovirus-associated diseases. Senior candidates should have a proven record of obtaining extramural research funds; junior candidates should have excellent potential. Preference will be given to candidates with experience in molecular approaches to the study of retrovirus diseases such as AIDS-cancer model systems, neurobiology of retroviral infections, and molecular immunobiology. Maintenance of an independent research program, development of collaborative research efforts, and a strong commitment to graduate education are essential.

Applications should include a curriculum vitae, statement of career goals, summary of current research activities, and names of at least four individuals from whom letters of reference may be solicited. Academic rank and salary are negotiable. Consideration of applications will begin on 1 June 1996, but applications will be accepted until the position is filled. Address all correspondence to: **Dr. Larry Mathes, Chair of Search Committee, Department of Veterinary Biosciences, The Ohio State University, 1925 Coffey Road, Columbus, OH 43210-1093.**

The Ohio State University is an EO/AA employer. Women, minorities, Vietnam era veterans, disabled veterans and individuals with disabilities are encouraged to apply.

PROGRAM DIRECTOR FOR DIABETES SCIENTIFIC PROGRAM MANAGER

The National Institute of Diabetes and Digestive and Kidney Diseases (NIDDK) is seeking applicants for the position: Director for the Non-Insulin Dependent Diabetes Mellitus (NIDDM) Research Program. This position is located in Bethesda, Maryland, and is a permanent full-time position for a Scientific Program Manager (GS-13 or -14) with a salary range of \$52,867 to \$86,411 per annum commensurate with qualifications. Physicians may be eligible for Physician Comparability Allowance ranging from \$5,000 to \$20,000 per year.

The Director for NIDDM Research Program is responsible for planning, developing, managing, and evaluating a multimillion dollar program of grants and contracts which supports high quality basic and clinical studies throughout the world. This individual will be responsible for identify research priorities, organizing scientific meetings and closely interacting with leading researchers in the field. This grant portfolio focuses on research related to NIDDM including insulin resistance, glucose metabolism, and the mechanism of insulin action. Applicant scientists (Ph.D., M.D., or equivalent) should have a track record of accomplishments in biomedical research related to diabetes and excellent interpersonal and written communication skills.

For application forms and a copy of the requirements, contact the Office of Human Resources Management NIDDK. **The deadline for applications is June 17, 1996.** Submit an Application for Federal Employment (OF-612), or Resume CV and bibliography to:

Mr. Ronald Sleyo, Personnel Officer
National Institute of Diabetes and Digestive and Kidney Diseases, National Institutes of Health, Building 31,
Room 9A34, Bethesda, MD 20892; (301) 496-4231

This vacancy announcement and other related information can be obtained via fax by calling (301) 594-2953 or 1-800-728-5627 and requesting FAX ID# 3208.

U.S. Citizenship Required / NIH is an Equal Opportunity Employer
Minority and Women Applicants are Encouraged to Apply.

National Institute of Arthritis and
Musculoskeletal and Skin Diseases (NIAMS)
National Institutes of Health (NIH)
Public Health Service (PHS)
Bethesda, Maryland

CHIEF, LABORATORY OF PHYSICAL BIOLOGY (LPB)

NIAMS invites applications and nominations for the position of Chief, LPB. Investigators in LPB traditionally have employed biophysical approaches to study muscle contraction and other problems in structural biology. NIAMS seeks an investigator interested in pursuing research in related areas and whose leadership will continue the long and prestigious history of this Laboratory. The individual selected may be considered for appointment in the Senior Biomedical Research Service which has a salary range of \$69,300 to \$148,000 per annum. Applicants should submit a curriculum vitae including bibliography and a brief statement of their current interests. Further information can be obtained from: **Dr. H. Metzger, Director, Intramural Research Program, NIAMS, NIH, Bldg. 10/Rm. 9N-228, 10 CENTER DR MSC 1820, Bethesda, MD 20892-1820 (e-mail hni@box-h.nih.gov).** **Applications must be postmarked by the end of July.**

NIH is an Equal Opportunity Employer

CONFERENCE

Tuskegee University

Conference on the Human Genome Project

Program Description

This three-day conference, the first of its kind in the South and on a Historically Black College and University campus, is organized for the purpose of increasing awareness in the African American community of the Human Genome Project (HGP). Presentations and workshop discussions by eminent and recognized leaders will focus on the technological, ethical, and social aspects of the HGP with significant opportunities for interaction with students and faculty. In addition to plenary presentations, specific workshops will provide a forum for interactive discussion and exchange of ideas.

Aristides Patrinos (DOE): *The Human Genome Project: What is it?*

David Botstein (Stanford University): *Of Genes and Genomes*

Marilyn Thompson (Vanderbilt University): *After the End of the Beginning: The Story of the Breast Cancer Gene*

Maynard Olson (University of Washington): *Genome Centers: Will They Take the Broader Biological Community With Them?*

Richard Cooper (Loyola University): *Genes and the Environment: Hypertension in the African Diaspora*

Luca Cavalli-Sforza (Stanford University): *Race Differences: Genetic Evidence*

Patricia King (Georgetown University): *The Dilemma of Difference*

Raymond Zilinskas (University of Maryland): *Global Perspectives on the HGP: HUGO and Other International Initiatives*

Georgia Dunston (Howard University): *G-RAP: A Model HBCU Genomic Research and Teaching Program*

Paula Gregory (NCHGR): *NCHGR Educational Programs: Increasing Awareness of the HGP*

Robert Yuan (University of Maryland): *The Virtual Workplace: A Model Biotechnology Classroom Program*

Robert Murray (Howard University): *The Ethics of Predictive Genetic Testing: Are the Benefits Worth the Risks?*

Fatimah Jackson (University of Maryland): *Bioanthropological and African American Concerns About the HGP*

Jon Beckwith (Harvard University): *Genetics and Racism: Is it Ancient History or Have We Seen the Future?*

Thomas Murray (Case Western Reserve): *What is this Thing We Call Genetic Discrimination? What Makes it Wrong?*

Arnold Dicke (American Academy of Actuaries): *Insurance Concerns: Are the Fears Exaggerated?*

Volunteer Posters: Please submit a half-page abstract of not more than 250 words on or before June 30, 1996. Limited travel support for minority students presenting posters.

Contact: Ed Smith at 109 Milbank Hall, Tuskegee University, Tuskegee, AL 36088; Phone: 334-727-8028; fax: 334-727-8552; and edsmith@acd.tusk.edu for details; www.acd.tusk

POSITIONS OPEN

ASSISTANT RESEARCH SCIENTIST needed to perform studies in the Department of Obstetrics and Gynecology requiring basic molecular biology skills. The emphasis of this research will be on the study of genes causing human disorders, including cloning of genes, *in vitro* functional study of products encoded by these genes, evaluation of these genes as candidates for human disease, and creation of murine models of human disease by gene targeting. Requires a doctoral degree in molecular biology or equivalent combination of education and experience, demonstrated ability to plan independently and carry out a research project, and one to three years of experience in murine gene targeting, including analysis of phenotype. Desirable qualification is proficiency in a wide variety of molecular biology techniques. Please send résumé with telephone number to: **Roger Williamson, M.D., University of Iowa Department of Obstetrics and Gynecology, University of Iowa College of Medicine, Iowa City, IA 52242.** *The University of Iowa is an Equal Opportunity/Affirmative Action Employer. Women and minority candidates strongly encouraged to apply.*

POSTDOCTORAL POSITION Cognitive Neuroscience

New laboratory using magnetoencephalography (MEG) and functional MRI seeks energetic researcher to work with normal volunteers and patients. Ph.D. in cognitive experimental psychology or neuroscience (or related field) required, and experience with computers (Unix and Mac) desirable. We are particularly interested in researchers pursuing vision, attention, or language. Send curriculum vitae, a brief statement of research interests, and three references to: **David Poeppel, Ph.D., Biomagnetic Imaging Laboratory, University of California San Francisco, 513 Parnassus Avenue, San Francisco, CA 94143-0628.** FAX: 415-502-4302; Email: poeppel@itsa.ucsf.edu.

POSTDOCTORAL POSITIONS

POSTDOCTORAL POSITIONS available immediately for an NCI training program in molecular and cellular mechanisms of carcinogenesis at The University of Texas (U.T.) M.D. Anderson Cancer Center—Science Park. Research programs focus on the following areas: DNA repair and mutagenesis, carcinogen metabolism and adduct formation, tumor promotion, role of oncogenes and/or tumor suppressor genes in multistage carcinogenesis, normal and tumor cell differentiation, retrovirology, chemoprevention, and nutrition in cancer. *Applicants must be U.S. citizens or permanent residents and must have a Ph.D., M.D., or D.V.M. degree.* For application forms, contact: **Dr. Thomas Slaga, Director, U.T. Science Park—Research Division, P.O. Box 389, Smithville, TX 78957.** Telephone: 512-237-2403. *We are an Equal Opportunity/Affirmative Action Employer. Women and minorities are encouraged to apply.*

POSTDOCTORAL POSITION in biochemistry to study lipid-modification of ocular lens proteins. Previous work on fatty acid acylation and prenylation of proteins is desirable. Ph.D. required. The position is available starting September 1996, and will provide a salary of \$28,000 plus benefits. Send curriculum vitae; statement of research experience; and names, addresses, and telephone numbers of three references to: **Dr. Richard Cancedella, Department of Biochemistry, Kirksville College of Osteopathic Medicine, Kirksville, MO 63501.** Telephone: 816-626-2347; FAX: 816-626-2728. *Equal Opportunity/Affirmative Action Employer.*

POSTDOCTORAL POSITIONS

One or more **POSTDOCTORAL** positions are to be available in the Department of Physics, University of Oregon. The purpose is to work with **R. J. Donnelly's** group on the application of cryogenic liquid and gaseous helium to the generation of ultra-high Reynolds numbers. Applicants must be familiar with liquid helium technology and be interested in fluid dynamics. The positions are tenable for one year, with the possibility of renewal for two further years. Send curriculum vitae with names of two references to: **R. J. Donnelly, Department of Physics, 1274 University of Oregon, Eugene, OR 97403.** Email: russ@vortex.uoregon.edu; FAX: 541-346-4708. For full consideration apply before June 15, 1996. Applications will be processed until the positions are filled.

The University of Oregon is an Equal Opportunity/Affirmative Action/ADA institution committed to cultural diversity.

POSITIONS OPEN

RESEARCHER, PHARMACOLOGY

We have a **POSTDOCTORAL POSITION** available in the Department of Pharmacology to study G-protein coupled receptor signal transduction. Applicants should have a Ph.D. in pharmacology or a related field. Previous experience with radioligand binding, receptor autoradiography, or *in vitro* functional assays is desirable. The ideal candidate will possess effective written and oral skills, and be motivated to work effectively in a team oriented environment. Respond to: **Department 179, Synaptic Pharmaceutical Corporation, 215 College Road, Paramus, NJ 07652.**

RESEARCH ASSOCIATE. Seeking postdoctoral to work on NIMH-funded quantitative, neural network theory of hippocampal function using network simulations. Candidates will be judged on their relevant research experience and communication skills. A variety of research backgrounds are appropriate, e.g. cognitive science, biophysics, or computational neuroscience. Send curriculum vitae and three references to: **W. B. Levy, Department of Neurosurgery, University of Virginia, HSC Box 420, Charlottesville, VA 22908.** Telephone: 804-924-5014; Email: WBL@virginia.edu. *Affirmative Action/Equal Opportunity Employer.*

POSTDOCTORAL POSITIONS MOLECULAR ENDOCRINOLOGY

Two **POSTDOCTORAL POSITIONS** are available for highly motivated, independent individuals interested in applying modern techniques in molecular, biochemical, and cellular biology to explore the actions of placental lactogens and/or growth hormone on ovarian and mammary gland function. Applicants should have a Ph.D. and relevant technical experience. Please send a curriculum vitae, summary of past research accomplishments, and four letters of reference to: **Dr. Frank Talamantes, Sinsheimer Laboratories, University of California, Santa Cruz, CA 95064.** *The University of California at Santa Cruz is an Affirmative Action/Equal Opportunity Employer.*

POSTDOCTORAL POSITION

POSTDOCTORAL POSITION is currently available to study genetic components that predispose prematurely born infants to respiratory disease/regulation of surfactant protein gene expression. A variety of molecular and molecular genetics techniques will be needed. Preference will be given to those with relevant training. Applicants are invited to send their curriculum vitae; list of publications; and the names, addresses, and telephone numbers of three to four referees to: **Joanna Floros, Ph.D., Professor, Department of Cellular and Molecular Physiology, The Pennsylvania State University College of Medicine, 500 University Drive, Hershey, PA 17033.** For your health, Hershey Medical Center is a smoke-free campus. *We are an Equal Opportunity/Affirmative Action Employer and encourage minority and female applicants to apply.*

POSTDOCTORAL FELLOWSHIP IMMUNOLOGY AND INFECTIOUS DISEASES

A position is available immediately for a Ph.D. or M.D. to investigate mechanisms of host resistance against opportunistic pathogens. Project includes study of role of cellular immunity and cytokines. Appropriate prior experience in immunology/molecular biology/cell biology preferred. Send curriculum vitae and three references to: **Dr. Yasuhiro Suzuki, Research Institute, Palo Alto Medical Foundation, 860 Bryant Street, Palo Alto, CA 94301.**

Three **POSTDOCTORAL RESEARCH ASSOCIATE** positions, funded by NIH, are available September 1, 1996, to study the acute and chronic aspects of the negative effect of alcohol on cardiovascular neurobiology. Studies will involve hemodynamic and electrophysiologic measurements in chronically instrumented conscious rats as well as central administration of drugs to investigate the role of central sympathetic pathways in the interaction. Candidates must have a Ph.D., M.D., D.V.M., or equivalent degree. Familiarity with molecular neurobiology and autoradiography are desirable. Send curriculum vitae, description of research experience, and names of three references to: **Dr. Abdel A. Abdel-Rahman, Department of Pharmacology, East Carolina University School of Medicine, Greenville, NC 27858.** Federal law requires proper documentation of identity and employability at the time of employment. *Affirmative Action/Equal Opportunity Employer.*

POSITIONS OPEN

POSTDOCTORAL POSITION: Angiotensin Converting Enzyme (ACE) and Renal Development, Department of Pathology, Emory University. An NIH-funded position is immediately available to study knockout mice lacking ACE. These animals have a developmental defect of the renal medulla and cannot concentrate urine (*Lab. Invest.*, May 1996). The project is a wonderful opportunity to study the role of ACE and angiotensin II in growth and development. Applicants should have a Ph.D. or M.D. with experience in molecular biology and protein biochemistry. Send curriculum vitae, reprints, and references to: **Ken Bernstein, M.D., Department of Pathology, Room 2309, WMRB, 1639 Pierce Drive, Emory University, Atlanta, GA 30322.** *Emory University is an Affirmative Action/Equal Opportunity Employer.*

POSTDOCTORAL FELLOWSHIP POSITION

POSTDOCTORAL FELLOWSHIP position available immediately to work on the mechanism of translation regulation as it relates to growth control and oncogenesis. Experience with yeast genetics, molecular biology, and biochemistry is required.

Send complete curriculum vitae, statement of current and future research directions, and three reference letters to: **Ricky DeBenedetti, Ph.D., Department of Biochemistry and Molecular Biology, LSU Medical Center, 1501 Kings Highway, Shreveport, LA 71130-3932.** FAX: 318-675-5180.

An Affirmative Action/Equal Opportunity Employer.

THE J. DAVID GLADSTONE INSTITUTES

POSTDOCTORAL FELLOW position available at the J. David Gladstone Institute of Cardiovascular Disease, to study mouse models of lipoprotein metabolism using gene targeting techniques. Ph.D. or M.D./Ph.D. with experience in molecular biology required; experience with transgenic/knockout mice preferred. Please send curriculum vitae and names of three references to: **HR-C96-011, Gladstone Institutes, P.O. Box 419100, San Francisco, CA 94141.** FAX: 415-826-3708. *Affirmative Action/Equal Opportunity Employer.*

POSTDOCTORAL POSITION available to study medial temporal lobe contributions to learning and memory in the monkey. Applicants must have a Ph.D. in neurobiology, psychology, or related discipline. Previous nonhuman primate research experience is highly desirable. Submit curriculum vitae, statement of interest, and three letters of recommendation to: **Peter R. Rapp, Ph.D., Center for Behavioral Neuroscience, State University of New York at Stony Brook, Stony Brook, NY 11794-2575.** Deadline for submission of applications is June 17, 1996. *State University of New York at Stony Brook is an Equal Opportunity/Affirmative Action Employer. Minorities and women are strongly encouraged to apply.*

STEROID HORMONE RECEPTORS UNIVERSITY OF VIRGINIA

POSTDOCTORAL POSITION available to study the expression, identification, and regulation of estrogen receptors in the heart and peripheral vasculature. *U.S. citizenship or permanent residency is required.* Send résumé and names of four references to: **C. Desjardins, Medical Center Box 391, University of Virginia, Charlottesville, VA 22908.** Email: reprod@virginia.edu.

POSTDOCTORAL POSITION in Insect Molecular Biology to characterize genes encoding pheromone biosynthetic enzymes. Experience with protein expression also desirable. One-year appointment, renewable for another year; available July 1, 1996. Salary \$23,000 per year. Send curriculum vitae, publication list, and names of three references to: **Dr. Wendell Roelofs, Department of Entomology, New York State Agricultural Experiment Station, Cornell University, Geneva, NY 14456.**

CYSTIC FIBROSIS RESEARCH

POSTDOCTORAL POSITIONS available to study sodium and chloride channel physiology and molecular biology in normal and Cystic Fibrosis-affected epithelial tissues. Emphasis is on electrophysiology, mammalian and *Xenopus* oocyte expression systems, and mutation analysis. Some experience in the electrophysiology of ion channels is preferred. Send curriculum vitae and the names of three references to: **The Director of Cystic Fibrosis Research, Department of Physiology, Johns Hopkins University School of Medicine, 725 North Wolfe Street, Baltimore, MD 21205.** Email: wguggin@wpo.bs.jhu.edu.

Development of New Therapeutic Approaches for the Treatment of Childhood Cancers

Tenure-track position available (equivalent to that of an Assistant Professor) to develop new therapeutic approaches for the treatment of childhood cancers with an emphasis on central nervous system tumors. These new therapies will incorporate innovative approaches based on the biology of the tumors and will be evaluated in *in vitro* and animal models. Translational clinical trials designed to test the most promising new approaches are performed in children with cancers that are refractory to standard treatments. Collaboration with other interested children's cancer centers and cooperative groups is encouraged. Resources include laboratory space, shared facilities, equipment and supplies, a part-time research nurse, and support for one technician and postdoctoral fellows from the clinical training program. Candidate must have an M.D. degree with training and experience in pediatric hematology/oncology, and in performing research and clinical trials in children with cancer. Please send a cover letter, curriculum vitae, bibliography, and a two-page statement including research interests and career goals to **Lee Helman, M.D., Pediatric Branch, National Cancer Institute, Building 10, Room 13N240, 10 Center Drive, MSC 1928, Bethesda, MD 20892-1928**. In addition, arrange to have letters of reference sent to the same address from three scientists who can provide an evaluation of your qualifications. Applications must be received within six weeks of the publication of this advertisement. *The National Institutes of Health is an Equal Opportunity Employer.*

SALSBURY CHAIR IN VETERINARY MEDICINE

Department of Microbiology, Immunology and Preventive Medicine (MIPM), Colleges of Agriculture and Veterinary Medicine, Iowa State University. The department and the colleges are seeking to identify qualified individuals for the endowed Salsbury Chair at the rank of full professor (with tenure). The appointee will have an outstanding record of competitive funding and an international reputation in the area of epidemiology of human foodborne diseases of animal origin. The extensive Ames research community offers unique opportunities to persons with an interest in food safety and epidemiology. The incumbent will be expected to participate in academic activities of the department, including instruction in the professional curriculum, direction of graduate students, research and outreach. Persons with a D.V.M., Ph.D., or equivalent and who are Board certified in preventive medicine or epidemiology are preferred. Names of nominees should be submitted to the chair of the search committee. Interested individuals should submit full curriculum vitae to: **Dr. D. L. Harris, Chair, Search Committee, MIPM, 207 Science I, ISU, Ames, IA 50011-3211 (internet: hharris@iastate.edu; telephone: 515-294-1664)**. Deadline for receipt of applications: 1 August 1996 or until position is filled. Confidentiality will be maintained as long as required.

Iowa State University is an equal opportunity/affirmative action employer.

Smart Science

PURSuing THE QUESTIONS.

Focused Groups

FINDING THE ANSWERS.

The scientists at Roche Bioscience work in focused research groups to discover and develop innovative pharmaceuticals that significantly improve the quality of life. The Inflammatory Diseases Group is using their expertise in cell biology and endocrinology to create advanced compounds to treat osteoporosis, osteoarthritis, rheumatoid arthritis and inflammatory conditions. Within that organization, we have the following exciting opportunity for a Senior Research Scientist.

Senior Research Scientist

Reporting to the Therapeutic Area Head of Osteoporosis and Endocrine Research, you will act as Deputy in leading and directing this organization of 60 people. You will lead project teams involved in clinical trials, in selecting compounds and in planning and directing chemistry resources, as well as developing budgets and program timelines. Requirements include a PhD in Chemistry, or a related field, with 10+ years of relevant academic and industry experience.

We offer competitive salaries, generous benefits and relocation assistance. For immediate consideration, please send your resume, indicating Dept. SC1517KH, to: Roche Bioscience, Professional Staffing, 3401 Hillview Avenue, Suite A1-160, Palo Alto, CA 94304. Fax (415) 424-8159. See us on the WWW at <http://www.roche.com/bioscience>. We are an equal opportunity employer committed to a diversified workforce.



Roche Bioscience



The Division of Cardiovascular Diseases of the Mayo Clinic and Foundation invites applications for an established investigator position at the rank of Associate or full Professor. Applicants should have an M.D. or Ph.D. degree and an established record of accomplishment in basic cardiovascular research such as in molecular or cellular biology which focuses upon endothelial, vascular smooth muscle or cardiac myocyte biology. Excellent institutional resources and long-term support are available. Written applications including CV, three letters of recommendation and a description of research interests should be sent to: **John C. Burnett, Jr., M.D., Cardiovascular Chair for Research, Director, NIH Cardiovascular Research Training Program, Mayo Clinic, 200 First Street, SW, Rochester, MN 55905**. Applications will be considered until September 1, 1996. *Mayo Foundation is an affirmative action and equal opportunity educator and employer.*

Showcase Your Scientific Career Opportunities On-line for Two Months

Bioinformatics Careers Forum

Beginning on July 12, the exciting topic of careers in bioinformatics will be discussed in a two-month interactive forum on SCIENCE's Next Wave, a new on-line publication. During that time, your organization's logo will appear on this forum and will be linked to a listing of your scientific career opportunities or your homepage, all for only \$2,500. Because this publication is on-line, you will have the flexibility to change the career opportunities posted throughout the two-month period. Only SCIENCE brings you this opportunity to make information about careers at your organization accessible to the thousands of scientists who visit SCIENCE's World Wide Web site every day.

**For more information contact: Janis Crowley
Phone: (202) 326-6532; Fax: (202) 682-0816**

**SCIENCE'S
next wave**

<http://sci.aaas.org/nextwave>

GET IN TOUCH WITH HANDS ON SCIENCE!



NEW WORKSHOPS FROM

The SLIC Institute

an initiative of Science
Linkages in the Community
American Association for
the Advancement of Science

**IN TOUCH
WITH
Mathematics**

**IN TOUCH
WITH
Preschool
Science**

**IN TOUCH
WITH
Environmental
Science**

**TEACHING
SCIENCE
to Students
with
Disabilities**

Call 1-800-351-7542
for dates and details

Tenure-Track Position Assistant Professor Equivalent Molecular Pathology and Epidemiology Laboratory of Human Carcinogenesis Division of Basic Science

A tenure-track position is available for an M.D. or M.D./Ph.D. scientist to develop an independent research program investigating the molecular pathogenesis of human lung, liver, and esophageal cancer and mutational spectra of human cancer. Candidates should have extensive experience and record of scientific accomplishment in molecular pathology of human cancer. Candidates should have evidence of independent research; a substantial number of quality, peer-reviewed published reports; numerous invited presentations at national and international conferences; and Board eligibility or certification in anatomic pathology. Support by a technician, a postdoctoral fellow, and a fully equipped laboratory (200 sq. ft.) will be provided. A two-page statement of research interests and goals should be submitted in addition to three letters of recommendation and a curriculum vitae to: **Ms. Bonnie Richards, National Cancer Institute, NIH, 41 Library Drive, MSC 5055, Room A206, Bethesda, MD 20852, (301) 496-2288.** Applications must be received by July 12, 1996. *The National Cancer Institute is an Equal Opportunity Employer. Selection for this position will be based solely on merit, with no discrimination for non-merit reasons such as race, color, religion, gender, national origin, politics, marital status, physical or mental disability, age, sexual orientation, or membership or non-membership in an employee organization.*

University of Virginia School of Medicine Chairperson, Department of Biochemistry

The University of Virginia School of Medicine invites applications and nominations for chairperson of the Department of Biochemistry. The Department of Biochemistry is one of six basic science departments within the School of Medicine, and has an outstanding research reputation. The department has a well-established and strong graduate program, and participates in the education of medical students as well as in a combined M.D./Ph.D. program. The University of Virginia is in the process of expanding each of the basic science departments in the School of Medicine, and an exceptional recruitment package is available, including multiple new tenure-track positions (at both the junior and senior level), and expanded departmental space in a new research building.

Candidates for this position should have a Ph.D. and/or M.D. degree, a distinguished record of scholarly activity, an internationally recognized research program, the ability to administer a comprehensive academic program, and proven leadership skills. Applications are encouraged from outstanding scientists in a wide range of disciplines, including biochemistry, biophysics, molecular biology, cell biology, structural biology, or molecular regulation of gene expression. The University of Virginia is noted for its strengths in the areas of signal transduction and protein structure, and we hope to attract an individual who will complement and/or enhance these two areas of strength.

Interested individuals should submit a letter of application, curriculum vitae, a research summary, and three references to **Gary K. Owens, Ph.D., Chair, Search Committee, Department of Molecular Physiology and Biological Physics, University of Virginia School of Medicine Box 449, Charlottesville, Virginia 22908.**

The University of Virginia is an affirmative action/equal opportunity employer. Women and under-represented minorities are encouraged to apply.

SEMINAR

EXECUTIVE SEMINAR

September 15-17, 1996

Sponsored by the Center
for Advanced Technology
in Biotechnology
and
the Johnson Graduate
School of Management

For more information:

phone: 607 255-4251
fax: 607 255-0018
e-mail: execed@cornell.edu

ON BIOTECHNOLOGY

CORNELL
UNIVERSITY



Technical Manager for a Core Image Analysis Facility

We seek a technical manager to oversee day-to-day computer-based operations in a sophisticated Core Digital Imaging Facility that serves members of the Institute of Molecular Medicine and Genetics at the Medical College of Georgia. Duties will include assisting faculty, postdoctoral fellows, and students in the use of imaging equipment; scheduling usage; maintaining computer hardware, peripherals, microscopes, and software in good working order; and performing system software and hardware upgrades as needed. Good working knowledge of Unix and Mac platforms is essential. Candidates who have experience with fluorescent microscopy, analog and digital video cameras, and/or network management will be given priority. Good interpersonal and organizational skills are essential. Send C.V., names of three references, and indication of which faculty member is of interest to: **Ann Gambill, Institute of Molecular Medicine and Genetics, Medical College of Georgia, Augusta, GA 30912-3175. MCG is an EEO/AE.**

Special Advertising Supplement Career Opportunities for Scientists with Disabilities

Issue date: 14 June 1996 • Advertising space reservation deadline: 21 May

On 14 June, SCIENCE will publish a special advertising section devoted to career opportunities for scientists with disabilities. This section will examine the steps being taken by employers to make their work environments accessible to all scientists.

Bonus Distribution

This issue will be distributed to the AAAS Resource Group of Scientists and Engineers with Disabilities.

Benefits to Full Page Advertisers:

• **Special Positioning**

Full page recruitment advertisements will receive placement throughout the career-related special advertising section.

• **Advertiser Indexes**

An index of full page recruitment advertisements referring readers to your ad in the special section will be published in this issue.

Names of full page recruitment advertisers will also be listed on an index affixed to the covers of magazines mailed to the AAAS Resource Group of Scientists and Engineers with Disabilities.

• **The Internet**

The advertising supplement will also be published on SCIENCE Classified Advertising On-line. An on-line advertiser index will link directly to your full page ad, and we will link your on-line ad to a listing of your career opportunities or your home page for no additional charge.

To advertise contact Janis Crowley
Phone: (212) 496-7704; FAX: (202) 289-6742
<http://www.aaas.org>

SCIENCE

BONUS DISTRIBUTION!

INTERNATIONAL UNION OF BIOCHEMISTRY & MOLECULAR BIOLOGY

Edinburgh, Scotland, 14-16 July

28 June 1996

Reach top European biochemists and molecular biologists by placing your vacancy announcement in this issue of SCIENCE. Call now for more information.

Booking Deadline: 11 June

Contact: Debbie Cummings
Phone: +44 (0) 1223 302067
Fax: +44 (0) 1223 576208

SCIENCE

Recruitment Advertisers

SAVE 25%

Running your recruitment ad once may not be enough. Place the same ad again within the next eight issues and get 25% off your second insertion.

Reach the global scientific community you need to maximize your recruitment efforts. SCIENCE does it bigger, better and at greater savings for you.

For advertising information, please call :

In Europe,

+44 (0) 1223 302 067, or fax: +44 (0) 1223 576 208

In the U.S.,

(202) 326-6532, or fax: (202) 682-0816.

In Japan,

+81 3 3235-5961, or fax: +81 3 3235-5852

In Australia,

+61 02 922 2977, or fax: +61 02 922 1100

SCIENCE

COVERS THE WORLD

CORNELL UNIVERSITY ENERGY SYNCHROTRON SOURCE (CHESS)

The Cornell High Energy Synchrotron Source (CHESS), a user-oriented national facility, provides state-of-the-art synchrotron x-ray facilities to the scientific community at large. CHESS supports a multifaceted research and development program. About 500 scientists per year from universities, national laboratories, and industry use the high intensity, high energy x-ray photon flux produced by the Cornell Electron Positron Storage Ring (CESR). CHESS provides high level staff support for novel experimental applications, particularly in the materials and biological sciences. CHESS also houses the NIH-funded Macromolecular Crystallography Research Resource (MacCHESS), which provides specialized assistance for structural biology. The Director serves as the chief administrative officer of CHESS (about half-time) and half-time as a professor in an academic department and as Principal Investigator for the cooperative agreement with the National Science Foundation (NSF). Selection will be based upon experience consistent with the goals of the CHESS which span research and user needs. Demonstrated scientific leadership in the field of synchrotron radiation and proven administrative ability essential. Send a letter of application with complete resume to:

Dr. N. R. Scott, Vice President for Research and Advanced Studies, Cornell University, 314 Day Hall, Ithaca, New York 14853, Telephone: (607) 255-7200, Fax: (607) 255-9020, E-mail nrs5@cornell.edu.

Cornell University is an equal opportunity, affirmative action educator and employer.



Agricultural Research Service
United States Department of Agriculture

**United States Department of Agriculture
Agricultural Research Service
Research Entomologist (Insect Pathologist)**

ARS, USDA is seeking applicants for the position of Insect Pathologist at the European Biological Control Laboratory, Montpellier, France. The incumbent will explore and conduct research on insect pathogens of immigrant agricultural pests in the U.S. Exploration will be throughout Eurasia, North Africa, the Middle East, and the Orient. Emphasis will be on epizootiology, pathology, and related sciences to identify exotic entomopathogens for establishment in the U.S. Candidate must be a U.S. citizen. This appointment is a permanent position, with a tour of duty in France up to 5 years, and subsequently at an ARS location in U.S. Salary commensurate with experience (\$41,926 to \$76,591), plus housing and cost of living allowances in France. For information contact **Dr. R. S. Soper, (301) 504-5605, fax: (301) 504-5298, or Dr. Lloyd Knutson, (33) 67.04.56.00, fax: (33) 67.04.56.20, or email: ebcl@cirad.fr.** For an application package with complete qualification requirements and instructions, contact the **Human Resources Division, (301) 344-4638 or (301) 344-2288** and request vacancy announcement number ARS-D-H-6-010, Research Entomologist, GS-414-12/13/14. Applications must be marked ARS-D-H-6-010-B604 and postmarked by July 1, 1996.

USDA/ARS is an Equal Opportunity Employer

RESEARCH SCIENTIST

VICAL INCORPORATED, a leader in the development of gene-based pharmaceutical products for human gene therapy, is currently seeking a Research Scientist. The incumbent will be responsible for carrying out original and applied *in vivo* research in the area of gene therapy. The incumbent will be expected to provide experimental and intellectual contributions to Vical's primary direct DNA injection technology in the area of animal models of disease, particularly as it applies to cancer. The ideal candidate will possess the following:

- A Ph.D. with a minimum of 2-3 years of postdoctoral experience;
- A strong background in animal physiology and animal models of disease;
- A background in cancer immunotherapy and animal tumor models is desirable;
- Excellent communication skills and team skills;
- Strong publication record.

Please send your resume to **Vical Inc., Human Resources, 9373 Towne Centre Drive, Suite 100, San Diego, CA 92121, or fax to (619) 646-1150.**

EOE M/F/D/V

ANIMAL/MOLECULAR AND MICROBIOLOGY

The Department of Biology of the University of Waterloo invites applications for a minimum of two **tenure track assistant professorships**, with an anticipated starting date of 01 September 1996. Applicants must have a Ph.D., preferably with postdoctoral experience, and demonstrate outstanding ability or potential in research and teaching. Duties include independent research, teaching at the undergraduate and graduate levels, and graduate student supervision. The Department is supportive of interdisciplinary and collaborative research. We currently require teaching in the areas of animal physiology, genetics, immunology and microbiology.

One search seeks candidates in the area of animal/molecular biology who are interested in studying the molecular biology of an animal system. We will, for example, consider candidates who use recombinant DNA techniques to study physiological (e.g. endocrinology, immunology, neurobiology or developmental biology, etc.) problems in animal systems.

The second search seeks candidates in the area of microbiology with demonstrated competence in the molecular aspects of the discipline.

Salary range commensurate with qualifications and experience. Applicants should send their curriculum vitae, the names of three individuals willing to furnish letters of reference, and an outline (1-2 pages) of their proposed research program to: **Dr. D. George Dixon, Professor and Chair, Department of Biology, Faculty of Science, University of Waterloo, Waterloo, Ontario, N2L 3G1 CANADA.**

The closing date for applications is June 30, 1996.

In accordance with Canadian immigration requirements, this advertisement is directed to Canadian citizens and permanent residents. *The University of Waterloo encourages applications from all qualified individuals, including women, members of visible minorities, native peoples, and persons with disabilities.* These appointments are subject to the availability of funds.

Additional information on the Department is available at <http://www.science.uwaterloo.ca/biology/biology.html>



The **Alfred-Wegener-Institute for Polar and Marine Research**, Bremerhaven, F.R.G. will develop a new facility for applications of magnetic resonance spectroscopy in ecophysiological research.

We invite applications for a permanent position in the Department of Biology. The position is available for an experienced experimental biologist or physicist (PhD) who uses nuclear magnetic resonance spectroscopy to answer physiological and biochemical questions.

The successful applicant will contribute to the development of a laboratory for NMR spectroscopy at the AWI for ecophysiological studies in marine invertebrates and vertebrates (fishes) mainly from polar areas. Research will include animal experimentation and intensive cooperation with scientists working in this field. The successful candidate will also supervise the installation of a new wide bore, high field NMR spectrometer at AWI.

Qualifications: The applicant should be qualified to facilitate initial installation and subsequent operation of an *in vivo* NMR system, predominantly for research in aquatic organisms, based on solid knowledge of the physical and technical principles. He/she should be able to solve special problems for work with cold marine fauna and be knowledgeable in the field of metabolic physiology and biochemistry. He/she should be willing to take part in longer expeditions to polar areas.

The position is expected to be filled by summer or fall in 1996. Interested individuals should submit a statement of research interests, curriculum vitae, certificates, a selection of representative publications, and three letters of reference to:

**Alfred-Wegener-Institute
for Polar and Marine Research**

— Personalabteilung —
Postfach 12 01 61, re: BIO I 4/96
27515 Bremerhaven

Closing date for application: May 30, 1996
The Alfred-Wegener-Institute promotes equal opportunity policy.

GLOBAL CAREER OPPORTUNITIES



Chair of Biochemistry

(Re-advertisement - Ref: RF-95/96-75)

Applications for the Chair are invited from individuals of outstanding academic calibre who will be able to provide strong leadership in promoting excellence in teaching and research. Expertise of the applicant should lie in the broad discipline of molecular life sciences.

The Department of Biochemistry provides a high standard of teaching in Biochemistry and Molecular Biology for the Faculties of Medicine, Science and Dentistry. Together with about 40 postgraduate students, they actively pursue research in molecular genetics, molecular embryology, neurochemistry, immunology, regulation of cell growth, and structure and function of proteins and complex carbohydrates. Research facilities are excellent and projects are well supported. Ongoing development/expansion plans entail construction of a new preclinical building, targeting 2002 for completion. There are strong links with other basic science and clinical departments in the University and with several institutions in China and overseas. There is also industrial support for applied research and a training centre in transgenic technology has been established within the Department.

The post is available on contractual or superannuable terms, as negotiated with the appointee and attracts substantial fringe benefits, such as travel, children's education, medical benefits and housing, the latter at a charge of a percentage of salary, currently 7.5%.

Annual salary will be within the professorial range, of which the minimum is HK\$1,007,220 and the average is HK\$1,245,780 (approx. US\$130,808 & US\$161,790 respectively; US\$ equivalents as at 23 April 1996). At current rates, salaries tax will not exceed 15% of gross income. The appointee on contractual terms will be given a 15% (taxable) terminal gratuity. The appointee can expect to command a salary commensurate with his/her experience.

Further particulars and application forms may be obtained either on WWW at <http://www.hku.hk>, or from the Appointments Unit, Registry, The University of Hong Kong, Hong Kong (Fax (852) 2540 6735/2559 2058; E-mail: APPTUNIT@REG.HKU.HK).

Closes: 14 June 1996.

AMERICAN PARALYSIS ASSOCIATION RESEARCH AWARDS

Effective July 15, 1996, the American Paralysis Association will accept proposals for one-year awards at a maximum funding level of \$50,000 (including direct and indirect costs, 10% for the latter). Program goals are to: (1) encourage promising new investigators to undertake research on regeneration and functional recovery, particularly as relates to spinal cord injury; (2) encourage scientists established in other fields to transfer their expertise and focus to spinal cord research; and (3) enable investigators with novel ideas to develop the pilot data needed to apply for larger awards from the National Institutes of Health and other funding sources. These APA awards may be used to provide support to well-established investigators as well as to qualified postdoctoral scientists.

Proposals are accepted from American and foreign investigators and requests for continued support will be considered, but reviewed as competing renewal applications.

Current research program guidelines and application forms may be obtained by calling APA at 201-379-2690.



University of Zürich

The Department of Zoology
invites applications for a

Research Position in Ecology

Community ecology, behavioral ecology, physiological ecology, population genetics or evolutionary biology. Our research projects aim at combining theoretical and empirical as well as ultimate and proximate approaches to the study of adaptation. A major research goal is directed at amphibians, but birds and other vertebrate taxa are also under study.

The position is comparable to an Assistant Professorship with a competitive salary. Applicants must possess a Ph.D., and should have some postdoctoral experience and a strong experimental and quantitative background. The successful candidate is expected to participate in ongoing research and teaching programs and to develop his/her own program with independent research funding and supervision of graduate students.

The position is available from 1 October 1996 for a period of three years and is potentially renewable to a maximum of six years in three steps of one year each. If you are interested, please send me your application with curriculum vitae, list of publications, summary of research goals and three letters of reference.

Prof. Dr. Heinz-Ulrich Reyer, Zoologisches Institute
der Universität Zürich
Winterthurerstrasse 190, CH-8057 Zürich, Switzerland
Telefax: 01/361 31 85 E-mail: ulireyer@zool.unizh.ch



THE UNIVERSITY OF SHEFFIELD

DEPARTMENT OF BIOMEDICAL SCIENCE

TWO LECTURESHIPS IN BIOMEDICAL SCIENCE

As a result of a new contract between the University of Sheffield and the ASEAN Medical College in Malaysia, the University of Sheffield Medical School will be admitting an additional 120 medical students in 1997 leading to a class of 320 students per year. The Department of Biomedical Science is now seeking two highly motivated individuals to assist in adapting our Anatomy and Physiology courses for teaching this increased number of students and to participate in that teaching. The appointees will also be expected to develop an active research programme in one of the growing areas of activity within the Department, notably Cell Differentiation and Developmental Biology, Cell Membrane Function and Signal Transduction, and Neuroscience.

Salary in the range £15,154 - £19,848, according to experience.

Closing date for applications: 31 May 1996. (Ref: R903)

Further particulars from the Director of Human Resource Management, The University of Sheffield, Western Bank, Sheffield S10 2TN, UK Tel: +44 114-279 9800.

Founded in 1905, the University of Sheffield provides higher education within a research-led environment. We encourage equality of opportunity for all.

POSITIONS OPEN

POSTDOCTORAL FELLOWSHIP PARASITE IMMUNOLOGY Department of Veterinary Science University of Arizona, Tucson

Applications are invited from highly qualified scientists to participate in an NIH-funded research program on the cellular immunology of *Cryptosporidium parvum* infections in murine models. The two to five year position involves development of CD4⁺ and CD8⁺ T cell clones and characterization of mucosal cytokine responses. Starting salary will be in the range \$21,000 to \$22,000. Minimum qualifications include a Ph.D. degree, M.D./Ph.D., or Ph.D. with a strong background in immunology and tissue culture, some publications relevant to parasitology and/or immunology, and willingness to conduct bench research as part of an interactive team. To apply send a curriculum vitae outlining previous research achievements and experience, along with contact details for three referees, to: **F. Javier Enriquez, M.D., Ph.D., Department of Veterinary Science, Building 90, Room 202, University of Arizona, Tucson, AZ 85721, U.S.A.** Closing date May 17, 1996.

PH.D. POSTDOCTORAL POSITIONS

The Department of Medicine/Medical Oncology of The University of Texas Health Science Center at San Antonio (UTHSCSA) has positions available for Ph.D. **POSTDOCTORAL TRAINEES** in our NIH-funded Training Program in Translational Breast Cancer Research. Areas of research include molecular characterization of ER variants, mechanisms of chemotherapeutic and Tamoxifen resistance, genetic markers of premalignant disease, oncogenes and tumor suppressors in breast cancer, transgenic mouse models, signal transduction, transcription factors, bone metastasis, and peptide growth factors. Minimum requirements are Ph.D. degree in molecular or cellular biology and U.S. citizenship or permanent residency status. Stipend to be determined by NIH fellowship guidelines. Send curriculum vitae, letter of research interests, and names of three references to: **Suzanne A. W. Fuqua, Ph.D., Department of Medicine/Medical Oncology, UTHSCSA, 7703 Floyd Curl Drive, San Antonio, TX 78284-7884.** The UTHSCSA is an Equal Opportunity/Affirmative Action Employer.

POSTDOCTORAL POSITION MOLECULAR NEUROENDOCRINOLOGY UNIVERSITY OF CALIFORNIA, SAN DIEGO

Molecular and biochemical investigations of regulatory proteases and protease inhibitors required in prohormone processing for the biosynthesis of peptide hormones and neurotransmitters (*FASEB J*, 8:1269, 1994). The selective roles of proteases, belonging to multiple classes, in the biosynthesis of opioid peptides, neuropeptide Y, and ACTH will be analyzed by gene cloning and expression (sense and antisense), and mutagenesis. Experience in molecular biology and/or gene expression of enzymes/proteins is required. Send curriculum vitae with three references to: **Dr. Vivian Hook, Department of Medicine, University of California, San Diego, 9500 Gilman Drive, Number 0822, La Jolla, CA 92093-0822.**

POSTDOCTORAL POSITION available to investigate the mechanisms that contribute to pathological alterations of the cytoskeleton during apoptosis and in response to oxidative stress. The position offers opportunity for research in an established, well-equipped lab that studies neurodegenerative processes related to Alzheimer's disease at one of the top 20 NIH-funded research institutions. Experience in biochemistry/molecular biology is essential; cell biology experience desirable. Send curriculum vitae and the names of three references to: **Dr. Gail V. W. Johnson, SC 1061, University of Alabama at Birmingham, School of Medicine, Birmingham, AL 35294-0017.** Email: neur012@uabdp.dpo.uab.edu.

POSTDOCTORAL FELLOWSHIP available (NIH-funded) to study the immunopathogenesis of acute simian immunodeficiency virus (SIV) infection, using SIV strain PBj14. Studies will include analysis of the mechanism(s) of virally induced T cell proliferation, and experiments to determine the role of pro-inflammatory cytokines in virally induced acute disease. Send curriculum vitae and names of three references to: **Steve Dewhurst, Department of Microbiology and Immunology, University of Rochester Medical Center, 601 Elmwood Avenue, Box 672, Rochester, NY 14642.** Email: dwt@bphvax.biophysics.rochester.edu.

POSITIONS OPEN

TRUDEAU INSTITUTE, INC.

A **POSTDOCTORAL POSITION** in immunology is available for a person with training in cellular and/or molecular immunology to study the immune response to bacterial infections. The laboratory is currently emphasizing immunity to experimental tuberculosis.

The Trudeau Institute is a well-endowed, not-for-profit, basic research institute with modern facilities, up-to-date equipment, in-house animal production, efficient management, and an international reputation for excellence. The Trudeau Institute is located on the shore of Saranac Lake, eight miles from Lake Placid. Competitive salary and fringe benefits are offered and institute housing will be made available.

Applications consisting of a curriculum vitae and the names and addresses of three references should be addressed to:

**Robert J. North, Ph.D., D.Sc.
Director
Trudeau Institute, Inc.
P.O. Box 59
Saranac Lake, NY 12983**

POSTDOCTORAL POSITION: Molecular Biology of Color Vision. A position is available immediately to study molecular biology of vertebrate vision, including characterization of opsin genes and structure/function relationships of opsins using *in vitro* analyses. Experience with cell and molecular methodology (cell culture, protein biochemistry, recombinant DNA techniques) is required and a strong interest in molecular evolution is desirable. Send curriculum vitae, a statement of research interests, and three references to: **Dr. Shozo Yokoyama, Department of Biology, Syracuse University, 130 College Place, Syracuse, NY 13244.** Telephone: 315-443-9166; FAX: 315-443-2012. Email: syokoyam@mailbox.syr.edu. Affirmative Action/Equal Opportunity Employer.

POSTDOCTORAL POSITION DEVELOPMENTAL NEUROBIOLOGY

Position available to study neuronal differentiation and development of synaptic pathways in the rat spinal cord. Experience in electrophysiology is desirable. Please send curriculum vitae and the names of three references to: **Dr. Lea Ziskind-Conhaim, Department of Physiology and Center for Neuroscience, 1300 University Avenue, University of Wisconsin Medical School, Madison, WI 53706.** FAX: 608-265-5512.

ANNOUNCEMENTS

NASA RESEARCH ANNOUNCEMENTS FOR MICROGRAVITY BIOTECHNOLOGY

The National Aeronautics and Space Administration (NASA) announces a solicitation for scientific research **PROPOSALS**. Release date for the Announcement is May 24, 1996.

**NASA Research Announcement
(NRA-96-OLMSA-03)
Microgravity Biotechnology:
Research and Flight
Experiment Opportunities**

Letters of Intent due: July 19, 1996

Proposals due: August 27, 1996

Proposals requested by these announcements may be for ground-based research investigations or space flight experiments designed for spacecraft such as the Space Shuttle or the International Space Station.

The solicitation is available electronically via the Internet at <https://peer1.1di.usra.edu>

Paper copies of this announcement are available to those who do not have access to the Internet by calling 202-358-4180 and leaving a voice mail message. Please leave your full name and address, including zip code and telephone number with area code.

Questions regarding this research announcement can be addressed to: **NASA Headquarters, Code UG/Microgravity Science and Applications Division, Washington, DC 20546, Attn: Dr. Stephen Davison, Telephone: 202-358-0813; Email: stephen.davison@hq.nasa.gov.**

ANNOUNCEMENTS

The Association of Biomolecular Resource Facilities (ABRF) announces presentation of the ABRF Award for Outstanding Contributions to Biomolecular Technologies, sponsored by Hewlett-Packard, to

David J. Lipman

The \$10,000 **AWARD** will be presented at the ABRF Symposium preceding the Protein Society Meeting; August 3, 1996, 1:00 to 5:00 p.m., San Jose, California. Free Registration. Information: **FASEB Meetings Office, Telephone: 301-530-7010.**

MEETINGS

American Aging Association, Annual Scientific Meeting, October 4 to 8, 1996, San Francisco, California. Conference Theme: **Nutrition and Functional Aging**. Students/postdoctorals can submit abstracts for award competition and prize. Scientists can submit research abstracts related to aging and nutrition. Abstract submission deadline is July 29, 1996. For registration and information contact: **Arthur K. Balin, M.D., Ph.D., FACP, American Aging Association, 2129 Providence Avenue, Chester, PA 19013.** Telephone: 610-874-7550; FAX: 610-876-7715; Email: AmerAging@aol.com.

AN INTERNATIONAL SYMPOSIUM The Explorers Club FIRST ANNOUNCEMENT Presents an International Interdisciplinary Conference

**OCEAN PULSE: A Critical Diagnosis
Our Global Oceans as Earth's Last Frontier
and Door to the Past**

**September 29—October 4, 1996
Istanbul, Turkey**

The conference will focus on the Harvests from the Sea with special emphasis on Aquaculture techniques and progress (Section I); Marine Archaeology, its preservation and knowledge base (Section II); and Marine Technology including deep ocean exploration (Section III). Conference Section Chairs include: **Dr. Sylvia A. Earle, Dr. George Bass, Dr. Robert Abel, Dr. Jerry Schubel, Dr. John Loret, Dr. William Phoebe, Dr. Paul Sandifer**, and a host of over 40 leading scientists presenting their most recent scientific findings. Organizers: **Dr. John T. Tanagerdi, U.S. National Park Service** and **Dr. John Loret, The Explorers Club**. Initial Co-Sponsors: United Nations (NGO); Explorers Club; Deep Ocean Engineering Inc. and Megatrails Consultants. Contact: **Mr. Sedat Nemli, Megatrails, 400 Madison Avenue, Suite 307, New York, NY 10017 USA.** Telephone: 212-888-9422; 800-547-1211; FAX: 212-888-9819; Email: mega@brainlink.com. Conference package: RT NYC/Istanbul, Turkey; Hotel/meals/conference registration now through June 15, 1996, \$2,168.00 per person.

MARKETPLACE

DNA Technologies, Inc.

Custom Baculovirus Cloning • Expression	Custom <i>in-vitro</i> Mutagenesis
Custom DNA Sequencing	Custom Plasmid DNA Isolation
7860 Beechcraft Ave., Gaithersburg MD 20879 USA TEL 1-800-998-3628 • FAX 301-990-4063 • eMail dntech@erols.com	

Circle No. 65 on Readers' Service Card



ABR Affinity BioReagents, Inc.
800-527-4535; Fax: 303-278-2424
E-mail: affinity@bioreagents.com
<http://www.bioreagents.com/affinity>
Brain NOS • Endothelial NOS • Inducible NOS

Circle No. 23 on Readers' Service Card

Marketplace ads continue on page 1066

MARKETPLACE

TITERFLUOR™

FLUORESCENCE EIA ANSWERS

A complete reagent, instrument & data analysis system.

- Up to 100X increased sensitivity
- Superior expanded dynamic range
- Novel non-isotopic format

New TiterFluor Kits Measure:
Cytokines • Cyclic Nucleotides • Eicosanoids

Tel: 1.800.899.5858 x 7845
Fax: 1.508.383.7885



PerSeptive Biosystems

◆ Circle No. 34 on Readers' Service Card

ONLY DNA

No frills, just good DNA at very low prices

69¢ per base, NO setup charge

Ultra-small scale synthesis gives 1 A₂₆₀ unit
Some restrictions apply; Call for details
1-800-359-5794 e-mail onlydna@oligos.com

Circle No. 11 on Readers' Service Card

SFM-Human Keratinocyte Cell System

Start up a 75 for LESS than a 25
More Cells / Lowest Price / Highest Quality
CSC Certificate™ #30467



1-800-697-1211

Circle No. 21 on Readers' Service Card

CUSTOM PEPTIDES

Quality Peptides at Competitive Prices.
Experienced Company offering:

- ◆ Synthesis of difficult sequences
- ◆ Fluorescent labeling
- ◆ Phospho peptides
- ◆ Peptide conjugation
- ◆ Biotinylated peptides
- ◆ Large scale synthesis
- ◆ Special amino acid containing peptides

Welcome to American Peptide. We can satisfy your peptide needs
from small to large quantities at *considerably reduced*
prices. We offer different purity levels to match your exact needs,
whether for screening, antibodies production or drug development.

NEW 1996-97 CATALOG

Many new peptides. Comprehensive Selection: Amyloids, Endothelins,
Neuropeptides, Substrates, Toxins & many more. Call / Fax for a free copy!

88-1-10	Endothelin-1	98%	0.1 mg	60.00
			0.5 mg	175.00
			1.0 mg	285.00
60-1-11	NPY, human	98%	0.5 mg	85.00

AMERICAN PEPTIDE COMPANY
TEL: 408.733.7604 FAX: 408.733.7603

777 E Evelyn Ave., Sunnyvale, CA 94086 USA

Circle No. 48 on Readers' Service Card

◆ See us on Science Electronic
Marketplace: www.aaas.org

MARKETPLACE

PeptidoGenic

The Peptide Engineering Specialist

E-mail: pkim@ccnet.com
Fax: 510-371-1156
Voice: 800-597-7873
510-371-1070

Custom
Peptide

: \$20 /residue/crude/5days

No Setup Fee,
Free HPLC &
IonSpray Mass.

Circle No. 56 on Readers' Service Card

Custom DNA from \$1.00/base



ransom hill bioscience, inc.
<http://www.ransomhill.com>

no setup, no minimum, no baloney!
email: visla@ix.netcom.com fax: (800) 597-8509

Circle No. 6 on Readers' Service Card

XX IDT[®]
INTEGRATED DNA TECHNOLOGIES, INC.Custom DNA Synthesis
\$1.50 / Base

200 nmole Scale

No Set-up Fee

Column Purified

24 Hour Shipping

Q.C. by PAGE on Every Oligo

Call today, join over 250
institutions already on our
discount programs!

E-mail: orders@idtdna.comWeb Site: <http://www.idtdna.com>

Fax: 1-319-645-2921

Phone: 1-800-328-2661

◆ Circle No. 7 on Readers' Service Card

CUSTOM DNA SYNTHESIS

PURE & SIMPLE

• Superb Technical Support

• Impeccable Quality

• World's Fastest Service

• Cap Gel & TOF Mass Spec

* Some restrictions apply. Please call for details.

\$1^{19*}
per base
\$10 setup
50 nmole
scale

MIDLAND

STILL THE UNDISPUTED #1 CUSTOM DNA SYNTHESIS SERVICE

THE MIDLAND CERTIFIED REAGENT COMPANY

Phone 1-800-247-8766 FAX 915-694-2387

email mrcr@oligos.com

Circle No. 10 on Readers' Service Card

FLUORESCENT MICROSPHERES

Distinctive colors for biology, diagnostics, physiology, aerosol, and
filter testing applications.

- Diameters from 0.025 µm to 10 µm in red, green, blue fluorescence
- Assorted surface properties for protein coupling
- Free catalog available

Call 800-334-3883 Toll Free or in Calif. 415-424-1177, FAX 415-424-1158

Duke Scientific
Corporation

P.O. BOX 50005
2463 FABER PLACE
PALO ALTO, CA 94303

Circle No. 2 on Readers' Service Card

MARKETPLACE

Princeton BioMolecules

80%
PURE¹⁰⁰⁰⁰ PEPTIDES

Reliability + Quality + Service = Value

80+% purity, 15+mg, free HPLC trace, free MS, no setup fee

Call: 614-487-3663 Fax: 614-487-3664

Dedicated to providing the best service

Circle No. 3 on Readers' Service Card

DNA | PEPTIDES

89¢
per baseDeprotected
and Desalted
5-10 OD\$15
per residueQuantity 15
to 40 mg

No Set-up Charge. Quality Guaranteed.
Some Restrictions May Apply. Please Call.

GENEMED BIOTECHNOLOGIES
1 (800) 344-5337 • Fax (415) 952-9540

Circle No. 16 on Readers' Service Card

Thermostable
TAQUENASE™

Reduce the sequencing cost to 25¢/Rxn
Also minimize the number of N

SCIENTECH CORP.

T: 1-800-645-0089 F: 314-645-0177

Circle No. 17 on Readers' Service Card

CELL CULTURE

Microvascular & Arterial Endothelial Cells;
HUVEC; Smooth Muscle Cells;

Fibroblasts; Hepatocytes; Custom Isolations.
High purity, normal human cells, animal cells, and cell
lines. Ready to use total kits and detailed instructions.

Cell Applications, Inc. 800-645-0848

Circle No. 35 on Readers' Service Card

Custom Polyclonal Antibodies
BEST PRICES • BEST ANIMALS
ANIMAL PHARM SERVICES
(800) 808-0550

Circle No. 52 on Readers' Service Card

Custom DNA

Purified & Delivered in 48 Hours

\$1.20 per base • Purified

<http://www.resgen.com>

Research Genetics, Inc.

1-800-533-4363

◆ Circle No. 8 on Readers' Service Card

TO OFFER
Quality DNA for
\$0.80
PER BASE,
OPERON *must*
BE ZUCCHANAS.



THE ZUCCHANA

You'd be bananas to pass this up. Or is that zucchanas? Operon now offers a price of just \$0.80 per base with a \$10 set-up fee for synthesis of custom DNA on a 50 nmole scale. So you can afford to do more experiments and get more results.

As the world's leading supplier of synthetic DNA, Operon gives you more than just a great price. We also offer unsurpassed purity, fast delivery, and an unconditional guarantee. Not to mention a customer service line that lets you speak to a person, not just a machine. We also

offer the best value in the industry on the larger 1.0 μ mole scale, at just \$2.40 per base with a \$20 set-up fee, and a 0.2 μ mole scale for just \$1.60 per base with a \$15 set-up fee.

Quality DNA for just \$0.80 per base. Now you don't have to settle for second best to save a bunch.

For more information, or to place an order, call Operon at 1-800-688-2248.

OPERON

WORLD'S LEADING SUPPLIER OF SYNTHETIC DNA

© 1996 Operon Technologies, Inc. 1000 Atlantic Avenue, Alameda, CA 94501, Phone: (510) 865-8644, Fax: (510) 865-5255, NIHBP 263-00033233.

E-mail: DNA@OPERON.COM Web: HTTP://OPERON.COM

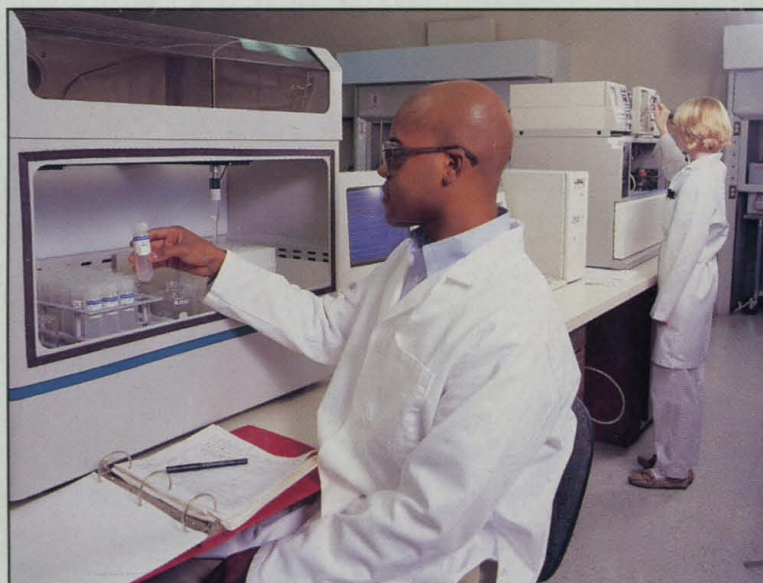
Circle No. 62 on Readers' Service Card

New Lower Peptide Prices!

\$18.00 per residue*

*8 residue minimum

Researchers can now get the same high quality and fast delivery they have come to expect from Research Genetics at an even lower price. This service includes 15-40 mg of 10-20mer peptides shipped in just 5 days. Just one more example of how Research Genetics is continually improving upon its products and services.



Monoclonal and Polyclonal Antibodies

Research Genetics is proud to provide an economical 'start-to-finish' peptide antibody service.

- Polyclonal Antibodies - delivered within 16 weeks - starting at \$1,195
- Monoclonal Antibodies - delivered within 24 weeks - \$8,500

Research Genetics, Inc.

2130 Memorial Pkwy, SW • Huntsville, AL • 35801

U.S. or Canada 800-533-4363 • U.K. 0-800-89-1393 • FAX 205-536-9016

Homepage <http://www.resgen.com>

Circle No. 54 on Readers' Service Card
See us on Science Electronic Marketplace: www.aaas.org