

years ago. "In the absence of more direct evidence about the emergence of HIV-1s," the paper continues, "this inference remains decidedly tentative." As far as the types of monkeys Koprowski used, I based what I wrote both on what he told me and on what he published at the time (3).

There is a real problem with undetected viruses contaminating primary cell cultures that are used to make vaccines. But, given the evidence to date, there also is a real problem linking that issue to the origin of AIDS.—Jon Cohen

#### REFERENCES

1. World Health Organization, *Wkly. Epidemiol. Rec.* 35, 269 (1985).
2. J. Salk, *Am. J. Publ. Health* 46 (no. 1), 1 (1956).
3. H. Koprowski, *J. Am. Med. Assoc.* 178, 151 (1961).

#### Correction

I would like to correct a misattribution in the 10 April "This Week in Science" (p. 155) in the discussion of our report in the same issue (p. 243) (1). We (1) did not inject lithium into cells of the early frog embryo and show that it disrupts mesoderm development. Rather, this was first done by Kao, Masui, and Elinson (2), and in later work Gimlich and I (3) extended these studies and demonstrated that myo-inositol counteracted lithium's effect. In our study of lithium-sensitive polyphosphoinositide cycle activity during mesoderm induction (1), we added  $\text{Li}^+$  to the bathing medium; no microinjections were performed.

William B. Busa  
Department of Biology,  
Johns Hopkins University,  
Baltimore, MD 21218

#### REFERENCES

1. J. A. Maslanski, L. Leshko, W. B. Busa, *Science* 256, 243 (1992).
2. K. R. Kao, Y. Masui, R. P. Elinson, *Nature* 322, 371 (1986).
3. W. B. Busa and R. L. Gimlich, *Dev. Biol.* 132, 315 (1989).

#### Corrections and Clarifications

In Joseph Palca's article "The case of the Florida dentist" (News & Comment, 24 Jan., p. 392), it should have been made clear that when Barbara Mishkin was indirectly quoted as saying that data gathered by government scientists is fair game for Freedom of Information Act requests, she was speaking of data generated by scientists in the National Institutes of Science intramural research program, unless those data fall within one of the statutory exemptions.

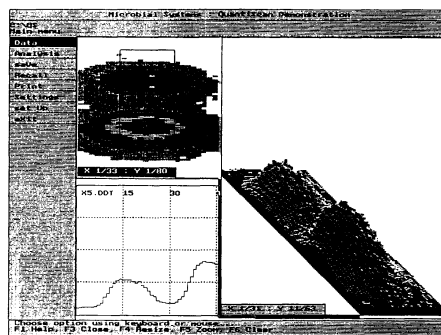
## Could you use \$10,000?

If you were going to spend it on a densitometer you have the chance to find out, because

### QuantiScan

takes output from ordinary office scanners and outputs results as good as dedicated densitometers. New features in Version 2.0 include automatic calculation of molecular weights.

\* FREE DEMO \*



QuantiScan accepts 4-bit (16 grayscale) and 8-bit (256 grayscale) TIFF files from office scanners linked to IBM PC/PS2 or compatibles. The TIFF images can be displayed as grays or pseudo-color, and can be zoomed or resized. Images can be inverted, enabling analysis of 'white on black' or 'black on white'. Selected areas can be displayed in pseudo 3-D. Densitometry peaks can be located in manual, tangential and automatic modes. Integration of peaks can be performed in X or Y direction and the results displayed as comprehensive tables of dimensions and location. Two-dimensional integration can be performed enabling location of 2-D peaks. Smoothing, editing and background subtraction can be performed on plots. Results can be stored and exported or printed as ASCII, MSP or BMP files. QuantiScan has context sensitive help and a comprehensive manual. \$499

**BIOSOFT**

PO Box 10938, Ferguson, MO 63135  
Tel: (314) 524-8029 Fax: (314) 524-8129

Europe: BIOSOFT, 22 Hills Road,  
Cambridge CB2 1JP, U.K.  
Tel: +44 223 68622  
Fax: +44 223 312873

Circle No. 12 on Readers' Service Card

A new kind of conference for cutting-edge researchers...

## Science *Innovation* '92

New Techniques and Instruments in Biomedical Research

21-25 July 1992 ♦ San Francisco

Sponsored by the American Association for the  
Advancement of Science and *Science* Magazine

**There's never been a meeting like it.**

- ♦ **Acquire an overview of new technologies** each morning in plenary sessions by great pioneers of science.
- ♦ **Get practical solutions to your research problems** each afternoon in intimate advanced-technology workshops.
- ♦ **Introduce your own techniques** at evening poster sessions.
- ♦ **Experience new technologies up close** daily at the exhibition and in evening industry workshops.
- ♦ **Preview emerging technologies** at a unique, last-day session spotlighting the next frontiers of science.

**For more information** about the scientific program, exhibiting, or submitting abstracts for poster sessions, please contact: AAAS Meetings Office, 1333 H Street, NW, Washington, DC 20005 (Phone: 202-326-6461; Fax: 202-289-4021).