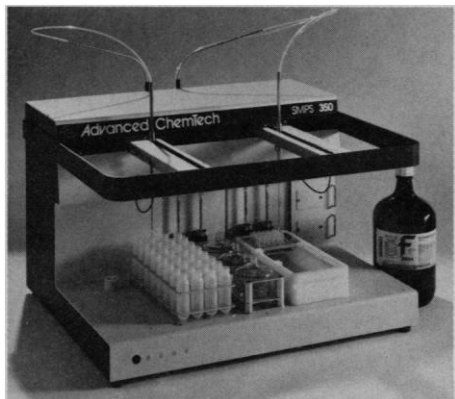


### Multiple Peptide Synthesizer

The ACT Model 350 Multiple Peptide Synthesizer is a fully automated instrument capable of the rapid small-scale synthesis of up to 96 different peptides and peptide analogs in one run. The unit permits both



single and double couplings and produces 5 to 50 mg of each peptide at two operating scales, amounts suitable for most analytical and biological screening methods, enzyme-linked immunosorbent assays, and molecular structure evaluations. Advanced ChemTech. Circle 536.

### Statistical Analysis Software

S-Plus for DOS is a DOS version of a successful UNIX-based statistical analysis software program. The program provides interactive computing, with both a full-featured graphical and data analysis system, and an advanced statistical programming language. With more than 500 functions—including time series analysis, modern regression, robust methods, and multivariate analysis—S-Plus for DOS graphically displays results to legends, tables, text, pie charts, histograms, time series plots, and color or gray-scale image displays. The pro-

Newly offered instrumentation, apparatus, and laboratory materials of interest to researchers in all disciplines in academic, industrial, and government organizations are featured in this space. Emphasis is given to purpose, chief characteristics, and availability of products and materials. Endorsement by *Science* or AAAS is not implied. Additional information may be obtained from the manufacturers or suppliers named by circling the appropriate number on the Readers' Service Card and placing it in a mailbox. Postage is free.

gram requires an 80386 IBM PS/2 or compatible with a 387 math chip, two-megabyte random access memory, hard disk with 10 to 15 megabytes of available storage, and PC-DOS 3.1 or higher. Statistical Sciences. Circle 543.

### Image Processing Added to LabVIEW Software

LABVIEW 2, a program for data acquisition and analysis and process control on the Macintosh II, now includes image-processing abilities. Potential image-processing and machine vision applications include thermography, automatic testing, microscopy imaging, quality assurance, and medical imaging. National Instruments. Circle 527.

### Programmable Slide Stainers

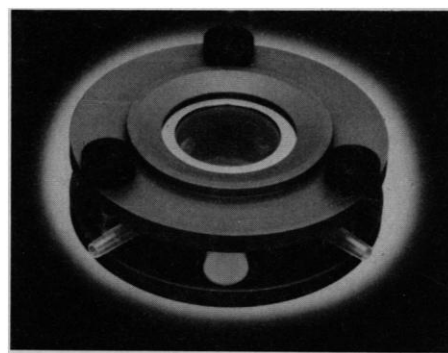
The HMS Series of programmable slide stainers range from 6 to 22 stations with 50- to 100-slide capacity. The modular design of the series allows the user to upgrade to a higher reagent capacity system (from single- to double-sided) as requirements change. The user can select manual, automated, or computerized modes. Up to nine user-defined programs can be stored in the permanent battery-powered memory. Each program can contain up to 50 steps related to reagent, wash, or dry. Sequence, time per step, and agitation can be separately programmed for each step. Carl Zeiss. Circle 539.

### Oligonucleotide Primers for DNA Studies

Pre-designed oligonucleotide primers available for amplification of human DNA include pairs of oligonucleotides for 49 polymorphic loci, 3 *Alu* consensus sequences, and 1 LINE sequence. Each oligonucleotide is distributed as a 2.5-nmol aliquot sufficient for 50 standard 100- $\mu$ l reactions. American Type Culture Collection. Circle 519.

### Closed Perfusion Chamber

A closed microperfusion chamber for single-cell fluorescence measurements is designed for use on the stage of upright and inverted microscopes. The system consists of standard circular glass cover slips that are attached by snap-type fittings. Cells are grown on these cover slips and attached to the top or bottom of the chamber depending on the



microscope used. Short optical paths between cover slips (14 mm) allow fluorescence, phase contrast, interference contrast, and confocal microscopy. Eight conically drilled holes in the side of the chamber can be used to insert perfusion lines, special purpose probes, and a thin spiral stainless steel tube to control the chamber environment when perfusion is stopped. Medical Systems Corp. Circle 503.

### Software for HPLC Control

The 715 HPLC (high-pressure liquid chromatography) System Controller Software controls up to four gradient pumps and one injection pump, and offers four-channel data analysis. Features include on-screen comparison of up to four chromatograms, storage of calibration curves, four formats for viewing and printing calibration curves, automatic storage of calibration summaries, and automatic chromatography calculations. The software, compatible with IBM PS/2 computers, runs under Microsoft Windows with pull-down menus. Gilson Medical Electronics. Circle 542.

### Literature

*Reagents for Bioengineering Research* is a catalog featuring more than 130 new products, including restriction endonucleases, methylases, modifying enzymes, DNA substrates, and growth factors. Accurate Chemical & Scientific Corp. Circle 573.

*Biological Abstracts/RRM (Reports, Reviews, Meetings) on Compact Disc* provides references to papers from international meetings and symposia, books, book chapters, and review publications. Approximately 9000 life science periodicals from more than 100 countries are monitored. BIOSIS. Circle 575.

*Autosystem Gas Chromatograph* illustrates the capabilities and features of this instrument in 12 color pages. Perkin Elmer. Circle 541.

# Personnel Placement

## LINE CLASSIFIED ADVERTISEMENTS

**DEADLINES:** Ads are due by Thursday, 10 a.m., 2 weeks prior to the issue date. *Science* publishes each Friday, except the last Friday of the year. Advertisements must be submitted in writing.

**HOW TO SUBMIT A CLASSIFIED AD:** Prepare double-spaced typewritten ad copy on a separate sheet. Do not include any abbreviations. *Science* will edit and typeset ads according to *Science* guidelines. Deadline for applications stated in ad must be at least 2 weeks after date of publication. Also include a cover sheet which gives name and phone number of contact person, desired date of publication, and billing information, including any special invoicing requests. Mail or FAX materials to:

**SCIENCE Classified Advertising**  
1333 H Street, N.W., Room 940  
Washington, DC 20005  
Telephone: 202-326-6555  
FAX: 202-682-0816

**CLASSIFICATIONS:** *Science* publishes line classified ads under the following headings: **Positions Open, Employment Agencies, Situations Wanted, Courses and Training, Meetings, Announcements, and Marketplace.** Advertisers should specify classification desired.

**HOW TO CALCULATE RATE FOR CLASSIFIED AD:** Ads are \$41 per line with a \$410 minimum. One line equals 52 characters and spaces; centered headings equal 32 characters and spaces.

To ESTIMATE ad cost, count total number of 52 character lines and multiply by \$41 to find approximate cost of ad per week. Each line of centered heading counts as one line. Also count one line for white space between headline and first line of text; all partial lines are also counted as full lines (including all centered reply information).

Remember, this is a rough estimate only. Allow for variation between estimated typewritten lines and ads when actually typeset for magazine. Therefore, purchase orders must allow additional funds for flexibility and/or adjustment. *Science* cannot provide proofs of typeset ads.

**PREPAYMENT DISCOUNT:** A 3% cash discount is granted to all prepaid line ads. Prepayment made in U.S. dollars by checks drawn on U.S. banks is required on all foreign ads.

**CREDIT CARDS:** *Science* accepts MasterCard and VISA. Both personal and corporate cards may be used. Prepayment does not apply to credit cards.

**BOXES AND LOGOS:** Any line classified ad can be boxed and/or published with logo to increase its visibility on page. Since the box takes up additional space, one line now equals 48 characters and spaces; two additional lines will be added to allow for top and bottom rules. Logos are billed according to the number of lines needed to fit logo in space.

**CANCELLATIONS:** Deadline for cancellation is 10 a.m., Tuesday, 10 days prior to issue date.

## DISPLAY PERSONNEL ADVERTISEMENTS

For rates, deadlines, and information about fractional display ads (all ads 1/6 page and larger) and all Marketplace listings of available products and services, contact:

**Scherago Associates**  
1515 Broadway  
New York, NY 10036  
Telephone: 212-730-1050  
FAX: 212-382-3725

**CONDITIONS:** Personnel advertising is accepted only with the understanding that the advertisers do not discriminate among applicants on the basis of race, sex, religion, age, color, national origin, handicap, or sexual preference. *Science* reserves the right, at its discretion, to decline to publish advertisements submitted to it and to decline classifications which it considers misleading.

## POSITIONS OPEN

**ASSISTANT PROFESSOR, ANATOMY.** The University of Pittsburgh is seeking an individual with outstanding teaching ability to provide instruction in human anatomy and physiology to the Schools of Health Related Professions and Nursing. Candidates should have a Ph.D. in anatomy or a related discipline, experience in health professional education, and a serious commitment to teaching excellence. Send curriculum vitae and names of three references to: **Dr. Kathleen D. Vergona, Department of Anatomy/Histology, University of Pittsburgh, 631 Salk Hall, Pittsburgh, PA 15261.** The University of Pittsburgh is an Equal Opportunity Employer. Women and minority candidates are encouraged to apply.

## NEUROSCIENCES

**ASSISTANT/ASSOCIATE/PROFESSOR OF PHARMACOLOGY.** One or more tenured or tenure-track, university-supported positions are available for individuals whose interests are within the neurosciences, including neurological and behavioral disorders and neuroregulatory aspects of any organ system. They will complement a growing group interested in experimental epilepsy, neurotoxicology, CNS receptors, and CSF flow dynamics, with resources including: GEPR colony, microdialysis, PET/MRI scanning, tissue culture, evoked potentials, scanning/transmission electron microscopy, and a regional referral center of 150 neuro beds with 14 neurosurgeons and neurologists.

Requirements: Assistant professor candidates should have a period of productive postdoctoral training and show promise of developing a strong, independent, fundable research program. Associate professor candidates should be established independent investigators with peer-reviewed grants and research publications as well as experience in teaching and participation in national scientific affairs.

Positions available as early as 1 July 1991; the search will continue until the positions are filled. Salary and rank commensurate with qualifications. Limited clinical practice is possible. Recently constructed space and start-up funds are available. *The University of Illinois is an Equal Opportunity/Affirmative Action Employer.* Send curriculum vitae and names of three references to: **Brian A. Curtis, Ph.D., Chair, Search Committee, Department of Basic Sciences, University of Illinois College of Medicine at Peoria, P.O. Box 1649, Peoria, IL 61656.** For information discussion, call 309-672-8537.

**ASSISTANT/ASSOCIATE PROFESSOR OF BIOLOGY.** The Department of Biological Sciences at The Wichita State University (WSU) is actively recruiting a gifted individual with demonstrated research and teaching skills in biology and protein biochemistry for a tenure-eligible position at the assistant/associate professor level. A research emphasis in protein structure and function is preferable. This position requires significant postdoctoral training, a record of productive research, the ability to interact collegially, and demonstrated capacity to direct a protein core laboratory in the department. Appointment at the associate level requires a demonstrated record of funded research activity. Salary competitive with start-up funds available. Deadline for applications is 8 April 1991. Submit curriculum vitae, summary of current and future research, and names of three references to: **Chairperson, Search Committee, Department of Biological Sciences, Campus Box 26, The Wichita State University, Wichita, KS 67208-1595.** WSU is an Affirmative Action/Equal Opportunity Employer.

The Department of Pharmacology at the University of Iowa College of Medicine invites applications for a position in cardiovascular pharmacology at the **ASSISTANT, ASSOCIATE, OR FULL PROFESSOR** level. Applicants will be expected to have an outstanding record of achievement in cardiovascular research, a demonstrated externally funded research program, and a willingness to participate in programs of teaching and research within the department. The position also offers the opportunity to interact extensively with investigators in the nationally prominent Cardiovascular Research Center at the university. Send curriculum vitae, a list of publications, and names/addresses of three references to: **Cardiovascular Pharmacology Search Committee, Department of Pharmacology, The University of Iowa, Iowa City, IA 52242.** Wheelchair-accessible campus. Women and minorities are encouraged to apply. The University of Iowa is an Equal Opportunity/Affirmative Action Employer.

## POSITIONS OPEN



## ASSISTANT PROFESSOR, PHARMACOLOGY

The Division of Pharmacology of The Ohio State University invites applications for a tenure-track position beginning 1 September 1991. Candidates should have a Ph.D. in pharmacology, toxicology, or related field; a commitment to quality research and teaching; and a willingness to work in a collaborative environment with nine other pharmacologists. Research areas of high priority include biochemical, molecular, or cellular studies involved in the pharmacological, toxicological, or immunological actions of drugs. Applicants should send curriculum vitae, proposed research program, and the names of three references to: **Dennis R. Feller, Ph.D., Chair, Search Committee, Division of Pharmacology, College of Pharmacy, The Ohio State University, 500 West 12th Avenue, Columbus, OH 43210-1291.** Review of candidates will begin 15 April 1991. *The Ohio State University is an Affirmative Action/Equal Opportunity Employer. Women and minorities are encouraged to apply.*

## THE UNIVERSITY OF CALGARY

The University of Calgary Department of Biological Sciences invites applications for an **ASSISTANT PROFESSOR** in cellular and molecular biology. Individuals specializing in the study of cellular and molecular biology of the eukaryotic cell cycle are especially encouraged to apply; however, consideration will also be given to outstanding applicants in other areas of cellular and molecular biology. Appointment date September 1991 but a later date can be arranged by mutual consent.

Qualifications include a Ph.D. and postdoctoral experience, a commitment to excellence in teaching at the undergraduate and graduate levels, and a demonstrated ability to conduct productive research of high quality. Salary commensurate with qualifications and experience.

*In accordance with Canadian immigration requirements, priority will be given to Canadian citizens and permanent residents of Canada. The University of Calgary has an Employment Equity Program and encourages applications from all qualified candidates, including women, aboriginal people, visible minorities and people with disabilities.*

Applicants should send curriculum vitae and the names of three referees before 15 July 1991 to:

**Dr. R. W. Davies, Head  
Department of Biological Sciences  
The University of Calgary  
2500 University Drive N.W.  
Calgary, Alberta, Canada T2N 1N4**

## BIOCHEMIST/CHEMIST

A tenure-track position is available in the area of application of computational techniques to the structure and dynamics of biological macromolecules. The successful applicant would have a joint appointment in the Departments of Biochemistry and Chemistry, teach graduate and undergraduate courses in physical biochemistry and chemistry, and direct graduate student research. The successful applicant must have a Ph.D. degree. Postdoctoral experience is preferred. The appointment will be at the **ASSISTANT PROFESSOR** level with a competitive salary, commensurate with qualifications and experience. Applications will be considered on 30 March 1991 and every 2 weeks thereafter until the position is filled. Applicants should submit curriculum vitae and statement of current research pursuits and specific research plan, and have three letters of recommendation sent to: **Dr. Carey Johnson, 2010 Malott Hall, University of Kansas (KU), Lawrence, KS 66045-0046.** KU is an Equal Opportunity/Affirmative Action Employer.

**EXERCISE SCIENTIST, ASSOCIATE/ASSISTANT PROFESSOR.** Tenure-track position in exercise science starting September 1991. Candidates should possess the Ph.D., postdoctoral experience, and a research specialization in exercise epidemiology or exercise physiology (physiology research focus in molecular biology, neurobiology, endocrinology, or immunology). Submit letter of application, curriculum vitae, three reprints of most current research, and names, addresses, and telephone numbers of four references to: **Kirk J. Cureton, Chair, Exercise Science Search Committee, Physical Education Building, University of Georgia, Athens, GA 30602.** Applications received through 1 April 1991 are assured of consideration. *An Affirmative Action/Equal Opportunity Employer.*

## POSITIONS OPEN

### ASSISTANT PROFESSOR OF BIOLOGICAL CHEMISTRY JOHNS HOPKINS SCHOOL OF MEDICINE

The Department of Biological Chemistry at Johns Hopkins University School of Medicine invites applications for a tenure-track position at the assistant professor level. The applicant should have a commitment to excellence in research and teaching in biochemistry or molecular biology. Before 15 May 1991, applicants should submit a curriculum vitae with list of publications, representative reprints, three letters of recommendation, and a summary of research plans to: **Dr. Paul T. Englund, Search Committee Chairperson, Department of Biological Chemistry, Johns Hopkins University School of Medicine, 725 North Wolfe Street, Baltimore, MD 21205. Equal Opportunity/Affirmative Action Employer.**

### FRESHWATER/ESTUARINE ICHTHYOLOGIST TULANE UNIVERSITY

We seek an individual with broad vision to curate and capitalize on one of the major collections of fresh water and estuarine fishes in the United States. This individual's research interest should address important questions in organismal, ecological, or evolutionary biology.

This is a tenure-track position at the rank of **ASSOCIATE OR FULL PROFESSOR**. One of the responsibilities of the position will be securing extramural funding for support of the collection. The successful applicant also will be expected to develop undergraduate courses in vertebrate evolution as well as in his or her specialty, and to participate actively in departmental affairs. A Ph.D. and teaching experience are required. Applications including curriculum vitae, a statement of research interests, reprints, and the names and addresses of at least three references should be sent to: **Search Committee, Department of Ecology, Evolution, and Organismal Biology, Room 210, Dinwiddie Hall, Tulane University, New Orleans, LA 70118-5698. Closing date: 29 March 1991.**

*Tulane University is an Affirmative Action/Equal Opportunity Employer, and applications from qualified women and minority group members are especially encouraged.*

The University of Florida, College of Medicine, invites nominations and applications for the position of **DIRECTOR** of the Center for Transplantation Biology. Candidates must have the Ph.D. and/or M.D. degrees and demonstrated excellence in the investigation of basic processes relating to the study of transplantation biology, the process of graft rejection, immunological tolerance, and/or immunological diseases.

The director will report to the dean for center activities but will be appointed to membership in an appropriate department. The director will be expected to provide leadership for a growing focus of excellence in transplantation biology within the College of Medicine. Resources to be made available will include competitive salary, additional faculty positions, and refurbished and newly equipped research space. The University of Florida is the major campus in the state and is situated in Gainesville, a pleasant college town in northern Florida. Send applications and curriculum vitae by 1 June 1991 to:

**Noel K. MacLaren, M.D.  
Professor and Chairman  
University of Florida**

**Department of Pathology and Laboratory Medicine  
Box J 275 JHMHC  
Gainesville, FL 32610-0275**

*Affirmative Action/Equal Opportunity Employer.*

### BONUS CIRCULATION FOR YOUR CLASSIFIED AD AT FASEB/ASBMB MEETING

Our issue of 5 April 1991 will be distributed to scientists attending the 1991 FASEB/ASBMB Meeting in Atlanta, Georgia.

Deadline for submission of line classified ads:  
**21 March 1991**

# SCIENCE

Classified Advertising  
Telephone: 202-326-6555  
FAX: 202-682-0816

## POSITIONS OPEN

### UNIVERSITY OF CALIFORNIA SAN FRANCISCO

The Department of Stomatology in the School of Dentistry, the Department of Microbiology and Immunology in the School of Medicine, and the Program in Biological Sciences (PIBS) at the University of California, San Francisco (UCSF), are jointly seeking a microbiologist in the tenure-track or tenure series at the **ASSISTANT, ASSOCIATE, OR FULL PROFESSOR** level. Qualifications should include the Ph.D., D.D.S., or M.D. degree, or their equivalent, advanced training with evidence of promise and/or productivity in research, and a genuine commitment to teaching microbiology. Duties to include predoctoral and graduate courses and the development of a successful research program which is consistent with the goals and interests of the two departments and at a standard consistent with membership in PIBS. Salary commensurate with qualifications and experience. Nominations and applications with three letters of recommendation, current curriculum vitae, and a short summary of research plans should be sent by 15 May 1991 to: **Susan J. Fisher, Ph.D., Chair, Division of Oral Biology, HSW 604, University of California, San Francisco, CA 94143-0512. UCSF is an Equal Opportunity/Affirmative Action Employer. Women and minorities are encouraged to apply. Position open until filled.**

### CHAIRMAN DEPARTMENT OF PSYCHIATRY UNIVERSITY OF ALABAMA SCHOOL OF MEDICINE

The University of Alabama School of Medicine at Birmingham (UAB) is seeking a person to fill the position of chairman, Department of Psychiatry. The department is responsible for teaching medical students, residents, and graduate students in psychiatry and relevant areas of the neurosciences, as well as conducting multidisciplinary research on psychiatric disorders and related topics in the neurosciences. Patient care responsibilities include a comprehensive mental health center, inpatient and outpatient services, as well as substance abuse programs. A new 90-bed psychiatric hospital is under construction and scheduled for completion in 1992. Inquiries and applications should be addressed to:

**Mrs. Antonietta D. Hyché  
Director, Academic Support Programs  
Office of the Dean, MEB 310  
University of Alabama School of Medicine  
UAB Station  
Birmingham, AL 35294-3293**

*An Affirmative Action/Equal Opportunity Employer.*

**ALDABRA CONSERVATION OFFICER.** Seychelles Islands Foundation manages Aldabra Atoll and research done there. Conservation officer is in charge of station and staff, monitors programs, and assists visitors' research. Candidate needs biology degree, fluency in English and/or French, experience managing research station, and tolerance of remote living. Salary: Seychelles rupees 80,000 per annum, gross. Free travel, food, and accommodation for officer; partner pays accommodation. Contract is 18 months, with 3-week mid-term leave in Seychelles. Send curriculum vitae and three references by 1 April 1991 to: **Dr. David Challinor, National Zoo, Washington, DC 20008.**

**ENVIRONMENTAL SCIENCES PROGRAM DIRECTOR,** Northern Arizona University (NAU). **ASSOCIATE PROFESSOR** to lead in the development of a growing multidisciplinary Environmental Sciences Program. Responsibilities include administering the program, conducting research, advising students, and teaching environmental science courses. Successful applicant will be expected to build upon the program's financial base of DOE, NSF, industry, and university support. Candidate must qualify for a joint appointment in either the Biology, Chemistry, or Geology Departments, all of which have active graduate and undergraduate programs. Available fall 1991. Salary is negotiable. Position will remain open until filled, but review of applications will begin 8 April 1991. *NAU is a committed Equal Opportunity/Affirmative Action Institution. Minorities and women are encouraged to apply.* Send curriculum vitae, letter of application, and the names, addresses, and telephone numbers of three references to: **Dr. Harold K. Speidel, Environmental Sciences Search Committee, Box 5640, Northern Arizona University, Flagstaff, AZ 86011-5640. Telephone: 602-523-7232.**

## POSITIONS OPEN

**DEAN, SCHOOL OF SCIENCES AND MATHEMATICS.** The College of Charleston invites applications and nominations for the position of dean of the School of Sciences and Mathematics. This newly formed school includes the Departments of Biology, Chemistry, Computer Science, Geology, Mathematics, and Physics with approximately 75 faculty members and 875 majors. The dean, a full-time administrative appointee, will have responsibilities for program development, faculty recruitment and evaluation, fund raising, and other administrative duties. The dean will serve as the spokesperson for the school both within and outside the academic community and will report to the senior vice president for academic affairs.

Candidates must hold an earned doctorate in one of the disciplines within the school and demonstrate a solid record in teaching and scholarly achievement sufficient to warrant tenure as a senior faculty member in the school. Evidence of successful administrative experience at the chair level or above for a minimum of 4 years is required.

The College of Charleston, founded in 1770 and the 13th oldest institution of higher learning in the country, is a senior state college with an enrollment of approximately 7500 students, undergoing a period of growth and program expansion at the undergraduate and graduate levels. The sciences and mathematics have been identified as academic areas of special significance for the college offering undergraduate and graduate degrees in marine biology and mathematics.

The Search Committee began its review of applications on 15 February 1991. Initial applications should include current curriculum vitae, a formal letter of application, and three letters of recommendation. Dean Pamela Tisdale of the School of Education will serve as chair of the Search Committee. Applications should be sent to the address listed below and received no later than 22 March 1991. *Equal Opportunity/Affirmative Action Employer.*

**Dr. Conrad D. Festa  
Office of Academic Affairs  
66 George Street  
College of Charleston  
Charleston, SC 29424**

**DEAN,** University of South Florida (USF) College of Medicine. The University of South Florida College of Medicine is seeking applicants for the position of dean. The dean is responsible for the education, research, and clinical programs conducted at the University of South Florida College of Medicine. The college is one of three in the state of Florida. USF opened in 1960 and the College of Medicine began in 1971. USF is the 35th largest university in the nation with more than 30,000 students and is located in an expanding metropolitan area of more than 2 million people. The Health Sciences Center also includes a College of Public Health and a College of Nursing. It has approximately 475 faculty and 96 students in each class. Applicants should have an M.D. degree or equivalent; should have considerable academic, administrative, and leadership skills; and should meet standards for appointment at the full professor level. Applicants should send their curriculum vitae and the names of five references to: **Allan L. Goldman, M.D., Chairman, Dean Search Committee, University of South Florida College of Medicine, Box 19, 12901 Bruce B. Downs Boulevard, Tampa, FL 33612. USF is an Equal Opportunity/Affirmative Action Employer.**

### LABORATORY DIRECTOR PARKINSON'S DISEASE CENTER

The Department of Neurology, Henry Ford Hospital and Health Sciences Center, is seeking an established neuroscientist (Ph.D. or M.D.) to direct research into the mechanisms of neuronal injury and death or with an interest in tissue transplantation. Generous funding is available to set up a major new laboratory for research in Parkinson's disease.

The Neurology Department is a major research center with active university affiliations and pre- and postdoctoral programs. It has an NINDS Cerebrovascular Research Center as part of a wide spectrum of basic and clinical research in CNS disease. Applicants should send a letter of application, curriculum vitae, and three letters of recommendation to: **Jay M. Gorell, M.D., Director, Gossett Parkinson's Disease Center, Department of Neurology, Henry Ford Hospital and Health Sciences Center, 2799 West Grant Boulevard, Detroit, MI 48202. Henry Ford Hospital is an Equal Opportunity Employer.**

## POSITIONS OPEN

### DIRECTOR ENVIRONMENTAL SCIENCE PROGRAM

Marist College is a 4-year, independent, private liberal arts institution located in New York's Hudson Valley, which is 70 miles north of New York City and 70 miles south of Albany.

We are seeking a trained ecologist/environmental scientist to serve as director of the Environmental Science Program. Responsibilities of the director include program administration; recruitment of students; teaching, including a course in field ecology; and direction of undergraduate research. Interest and background in river and/or wetland studies highly desirable. Rank and salary commensurate with experience. Candidates for the position must have completed a Ph.D. in ecology, environmental science, biology, or a related discipline.

Please submit: (i) a cover letter stating your views on the role of science in a liberal arts education, and the role of research in undergraduate science training; (ii) a résumé; (iii) a list of three references or three letters of recommendation; and (iv) a statement of teaching and research interests by 22 March 1991 or until a suitable candidate is identified to:

Carol A. Coogan  
Director of Human Resources  
Marist College  
Poughkeepsie, NY 12601

*Marist College is an Equal Opportunity/Affirmative Action Employer.*

**HEAD, MICROBIOLOGY.** Montana State University (MSU) seeks candidates to lead department which enjoys exceptional intradepartmental collegiality, research productivity, and teaching excellence. Head will administer teaching, research, and service activities; maintain rigorous research program; and perform minimal teaching. Position available after 1 July 1991; salary negotiable. Department has nine faculty, 150 undergraduate students, and 18 M.S./Ph.D. students and instructs first-year medical students in regional cooperative program. Candidates must have Ph.D., M.D., or equivalent; record of teaching or research experience sufficient to qualify for senior academic rank; proven administrative and leadership skills; established extramurally funded research program; and demonstrated teaching ability. Specialization in molecular or cellular immunology or host (mammalian)-parasite interactions preferred. Screening of applicants will begin 1 May 1991 and continue until position is filled. Send letter describing qualifications, curriculum vitae, and names and addresses of five references to:

Department Head Search Committee  
Department of Microbiology  
Montana State University  
Bozeman, MT 59717  
Telephone: 406-994-2902

*MSU provides preference in employment to eligible veterans. For information, contact HR/AA, 210-C MH, MSU, Bozeman, MT 59717. MSU is an Affirmative Action/Equal Opportunity Employer.*

### PEDIATRIC PATHOLOGY

The Department of Pathology and Laboratory Medicine of Emory University is expanding its program in developmental and pediatric pathology at Egleston Hospital for Children and Grady Memorial Hospital. We seek a pathologist or doctoral level scientist with clinical interest and expertise in one or more areas of pediatric or laboratory medicine. Candidates must have demonstrated commitment and productivity in a research program using modern techniques that are applicable to pediatric disease. Candidate will be expected to participate in medical student, resident, and fellowship training in pediatric pathology. Academic rank and salary are commensurate with qualifications. The closing date for receipt of applications is 1 April 1991. Letter of application, curriculum vitae, and names of four persons from whom references may be obtained should be sent to:

Kenneth W. Sell, M.D., Ph.D.  
Professor and Chairman  
Department of Pathology  
Room 701 WMB  
Emory University  
Atlanta, GA 30322

*Emory University is an Equal Opportunity/Affirmative Action Employer. Women and minorities are encouraged to apply.*

8 MARCH 1991

# POSTDOCTORAL SCIENTISTS

## The Commitment To Discovery Is World-Class.

The Medical Research Division of American Cyanamid is recognized as a leader in the research and development of therapeutic compounds. Our products have been instrumental in the treatment of infectious diseases, cancer, cardiovascular and central nervous system diseases. To build upon our strengths and create an environment that will foster an even stronger and more dynamic R&D organization, we currently have two immediate openings for Postdoctoral scientists.

### Molecular Pharmacology

Working in the Molecular Pharmacology Group of the Cardiovascular/Central Nervous System Disease Research Section, your basic research interests will focus on the molecular aspects of receptor-ligand interactions and signal transduction mechanisms. The successful candidate should have experience with recombinant DNA techniques to perform research on the cloning, expression and structure-function relationships of cellular receptors. Additional experience in the kinetic characterization of receptor-ligand interactions would be beneficial. Publication and presentation of research are actively encouraged.

The candidate should possess a Ph.D. degree in Biochemistry or Molecular biology. The appointment is for one year, renewable for a second year upon mutual agreement. Compensation includes a very competitive salary along with an attractive benefits package and relocation assistance. (Dept. R.M.)

### Molecular Neurobiology

The other position is available in the Molecular Neurobiology Group of the CNS Research Department to study molecular mechanisms of Alzheimer's disease. Basic research interests will focus on the amyloid gene and its regulation of expression at the level of transcription, translation and post-translational modification.

The candidate should possess a Ph.D. in either Protein Biochemistry, Cell Biology or Molecular Biology. The starting salary is very competitive and includes comprehensive benefits. (Dept. J.S.)

These positions are located at the Lederle Laboratories campus of American Cyanamid in Rockland County just 25 miles north of NYC which affords easy access to several universities and medical schools. For consideration, interested candidates may send a resume/c.v. with the names and telephone numbers of three references and indicate the department code for the position of your choice, to: Professional Employment Office, Medical Research Division, Lederle Laboratories, Pearl River, NY 10965. An Equal Opportunity Employer M/F.



**Dedicated People Dedicated to People Since 1906.**

Schering

# Scientist

**Take action contributing to significant developments in drug metabolism.**

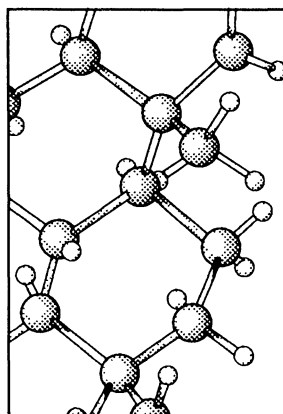
We're a highly progressive division of a \$3+ billion pharmaceuticals company with a worldwide reputation for dedication and discovery. If you're a broadly experienced Scientist who shares our goals, there's exciting challenges in Animal Health Drug Metabolism awaiting you at our Lafayette, NJ research facility.

This is an outstanding opportunity to enhance your own considerable expertise working alongside a team of creative scientists like yourself. To qualify, you must have either a BS in Chemical/Biological Sciences and 7 years' relevant experience or an MS and 5 years' experience. A strong background in modern analytical techniques including gas, liquid and thin-layer chromatography is essential. Experience in tissue residue studies and capillary chromatography is preferred.

We offer a very competitive salary and benefits package, and an environment encouraging your personal and professional development. For prompt consideration, please forward your resume to: Mr. B. Decker, Schering-Plough Research, 60 Orange Street, Bloomfield, NJ 07003. We are an equal opportunity employer.

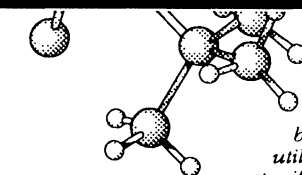
*What you have in mind, we put into action.*

 Schering-Plough



**"Harnessing the body's power to heal."**

## Creating A Better Future With Nature's Building Blocks



At Genetics Institute, we have attained leadership in biopharmaceutical research and development by focusing our efforts on the utilization of intricate proteins, specifically those proteins that are too rare to be produced from natural sources. Through scientific excellence, innovative manufacturing, and the highest standards of quality, Genetics Institute is successfully developing complex products and building a better future.

### Developmental Biologist - Embryonic Growth Factors

A position is currently available for an embryologist in the Developmental Biology group headed by Dr. Gordon Wong. This group is dedicated to the identification and isolation of protein regulatory factors and cellular mechanisms affecting determination and differentiation in early development. The ideal candidate would have a recent Ph.D., direct experience in manipulating and culturing early mouse, chicken or amphibian embryos in vitro, cell lineage mapping or in the in vitro culture of embryonic stem cells/embryonic cancer cells and their biology. This position provides the opportunity to apply biotechnology to classical developmental biology.

### Cell Biologist - Hematopoiesis

We currently have an opening in the Hematopoiesis research department for a staff scientist position in cellular biology. Candidates must have a strong research background using modern cell biology technology. The main focus of the position is to isolate and study factors which regulate hematopoietic stem cells. Experience with FACS analysis and cell sorting is particularly desirable. Candidates should hold a recent Ph.D. in cell biology or a related discipline.

### Pharmacologists - Cytokine Biology/Bone Growth & Wound Healing

We are currently seeking several senior staff (Ph.D., M.D.) positions within our pre-clinical biology laboratory. One position will require significant expertise and experience in the discovery and characterization of colony stimulating factors, as well as the ability to develop and utilize in vivo models in cytokine function and tumor biology. The second position requires expertise in the discovery and characterization of bone growth factors, and the ability to develop and utilize in vivo models in bone growth and wound healing.

Please forward your resume to Sheri Rist, Genetics Institute, 87 CambridgePark Drive, Cambridge, MA 02140. An equal opportunity employer.

**Genetics Institute, Inc.**

**Intramural Research Resources  
National Center for Research Resources  
National Institutes of Health**

**Deputy Director**

The National Center for Research Resources (NCRR) is seeking applicants for the position of Deputy Director for Intramural Research Resources (DDIRR). This position is located in Bethesda, Maryland and is a Senior Executive Service position with a salary range from \$87,000 to \$100,500 per annum commensurate with qualifications. Additional salary incentives are available should a physician be selected for this position.

The Deputy Director for Intramural Research Resources is responsible for planning, directing and evaluating the Center's intramural programs. These programs provide centralized support services for the NIH in the following areas: (1) applications of engineering, mathematics, physics, and the physical sciences to the solutions of problems in medicine and biology; (2) professional and technical support services related to the provision, care and use of animals, along with research consultation and disease control services; (3) comprehensive research library support to NIH scientific, clinical and management programs through an extensive collection of books and journals, access to computer information banks, and staff assistance and consultation in information handling and retrieval; and (4) a visual communications program utilizing design, graphics, medical illustrations, photography and video recordings for documentation for medical research programs and data for all NIH information dissemination needs.

The Intramural Research Resources component, NCRR, is responsible for providing centralized engineering, scientific information, and technical services to all institutes and divisions of NIH and to the intramural programs of the National Institute of Mental Health, the Center for Biologics Evaluation and Research, the Food and Drug Administration, and the National Institute on Alcohol Abuse and Alcoholism in support of biomedical research. The programs are: (1) production, procurement, and holding of animals used in medical research projects, including Interagency Research Animal Committee (IRAC); (2) engineering design and fabrication of biomedical research instrumentation systems and equipment; (3) a multimedia visual communication program providing medical arts, fine and applied arts, and still and motion picture photography services; and (4) comprehensive research library support to the NIH scientific, clinical and management programs through an extensive collection of books and journals, access to computer information banks, and staff assistance and consultation in information handling and retrieval. The NCRR includes a total of 550 employees with a total budget of approximately \$336 million. The intramural division has approximately 450 employees and a budget of \$70 million. Applicants for this Senior Executive Service position must have a doctoral level degree or equivalent in one of the biomedical sciences. Send applications to:

**Ms. Pathenia Wiggins  
National Center for  
Research Resources  
Bldg. 31, Room 2B09  
9000 Rockville Pike  
Bethesda, MD 20892**



For an application and a copy of the requirements, contact Ms. Wiggins at NCRR on (301) 496-1524.

**Deadline for applications is March 18, 1991.**

Public Health Service Commissioned Officers interested in performing the duties of the position within the Commissioned Corps may submit a resume to the above address.

*NIH is an Equal Opportunity Employer*

**ANNOUNCEMENT**

**Director  
Institute of Geophysics  
and Planetary Physics at  
University of California,  
Riverside**

The University of California at Riverside (UCR) invites applications and nominations for the Director of the Riverside Branch of the Institute of Geophysics and Planetary Physics (IGPP). The UCR IGPP is a branch of the University-wide IGPP and was established to conduct and promote faculty research and teaching in the areas of Astrophysics and Earth Sciences. It has a staff of about 25 professional scientists and technicians who are working in selected areas of astrophysics, geochronology, geophysics, geothermics, and space physics. The Director of the IGPP is the scientific and administrative head of the Institute. The candidate should be eligible for appointment at the tenured professor level in an appropriate department. He/she should have a record of distinguished scholarly achievements, a willingness to encourage and foster the active seeking of grants and contracts, a demonstrated ability for administrative and scientific leadership especially in an interdisciplinary setting, and a commitment to a strong graduate program. The candidate's field of specialty ideally should be in those areas identified above, although other areas of interest are not precluded.

The University of California, Riverside, is an equal opportunity/affirmative action employer. Applications from and nominations of qualified women and minority candidates are particularly encouraged.

The review of Candidates will begin on May 1, 1991, with an appointment date after July 1, 1991. The final closing date for receipt of applications is May 30, 1991. Nominations and applications, including a current professional resume containing the names and addresses of at least three referees, should be sent to:



**Professor Robert L. Heath, Chair  
Search Committee for the  
Director of IGPP  
Office of the Chancellor  
University of California  
Riverside, CA 92521**



## Research Opportunities

### San Francisco Bay Area

GlycoGen, Inc., a young biotechnology company focused on the enzymatic synthesis of complex carbohydrates for human therapeutic products has the following exceptional opportunities available at our South San Francisco research facility. We offer an exciting professional environment in the following areas:

**Director—Molecular and Cell Biology** Responsible for leading a team of molecular biologists and cell biologists in a highly focused research effort, in coordination with researchers working in related areas. The successful candidate will not only manage but be actively involved in the research effort. Candidate should have a Ph.D in molecular biology, cell biology, or a related field with extensive experience in recombinant DNA techniques and gene expression, as well as mammalian tissue culture.

**Scientist—Protein Biochemistry** Responsibilities include the purification and stabilization of enzymes from natural sources and heterologous expressions systems. A Ph.D with two years' post doctoral experience in biochemistry, chemistry or related fields, and experience in protein purification and enzymology is required. Knowledge of complex carbohydrates is a plus.

**Scientist or Sr. Research Associate—Carbohydrate Biochemistry** Responsibilities include the synthesis of complex carbohydrates by chemical and enzymatic means, optimization of reaction conditions, carbohydrate purification and analysis. A Ph.D with post doctoral experience, or a master's degree with experience in chemistry, biochemistry or a related field and first hand experience in carbohydrate research is required. Experience with GC, HPLC, NMR and MS is highly desirable.

**Scientist—Mammalian Cell Biology** Responsibilities include cloning and expressing glycosyltransferases in mammalian cell culture. A Ph.D with two years of post doctoral experience in mammalian cell culture, transfection and FACS analysis is required.

GlycoGen offers competitive salary and benefits. Please send your resume to GlycoGen, Inc., 180 Kimball Way, South San Francisco, CA 94080. We are an equal opportunity employer.

## GlycoGen, Inc.

## MOLECULAR BIOLOGIST

Senior level position for a molecular biologist with an interest in the neurobiology and/or treatment of Alzheimer's Disease to join the new Alzheimer's Research Group at the Mayo Clinic Jacksonville. Presently three full-time staff researchers comprise this group: Dr. E. Richelson, M.D. is a psychiatrist and molecular pharmacologist who also serves as the Director; Dr. A.P. Kozikowski and his group are chemists with extensive experience in the development of neuroactive agents; Dr. M. McKinney works in the areas of molecular pharmacology and molecular biology of cholinergic systems. Preference will be given to researchers with internationally recognized research programs.

Send curriculum vitae and names of three persons who can write letters of reference to:



Dr. M. McKinney, Ph.D.  
**MAYO CLINIC  
JACKSONVILLE**  
4500 San Pablo Road  
Jacksonville, FL  
32224

Equal Opportunity Employer

Smoke-Free & Drug-Free Workplace



### Professor and Head Department of Physical Medicine and Rehabilitation University of Minnesota Medical School and Minneapolis Veterans Affairs Medical Center

The University of Minnesota Medical School and the Veterans Affairs Medical Center, Minneapolis, are seeking outstanding candidates for the position of Professor with tenure and Head of the Department of Physical Medicine and Rehabilitation, and Clinical Chief of Rehabilitation Medicine at the Minneapolis Veterans Affairs Medical Center and the University of Minnesota Hospital and Clinic. It is expected that the candidate selected will provide leadership for the educational and service programs of the Department of Physical Medicine and Rehabilitation. In addition, the Department Head will be responsible for providing leadership in the development of a Center for Rehabilitation Treatment, Research and Education located at the Minneapolis Veterans Affairs Medical Center in conjunction with multiple disciplines. The objectives of the Center will be to foster basic and applied studies in the neurosciences, engineering and orthopaedic and rehabilitation sciences, including quantitative physical and cognitive outcome evaluations.

We seek candidates with an M.D. degree who are board certified or board eligible in psychiatry, possibly in conjunction with other disciplines. The candidates should have a strong academic record in research and demonstrated administrative and leadership skills.

Submit inquiries and curriculum vita by June 30, 1991 to:

Richard W. Price, M.D.  
Chairman, PM&R Search Committee  
University of Minnesota Medical School  
Box 295 UMHC  
420 Delaware St. S.E.  
Minneapolis, Minnesota 55455

*The University of Minnesota is an equal opportunity educator and employer.*

### Immunologist / Microbiologist Texas A & M University College of Medicine

#### Position Description

The Department of Medical Microbiology and Immunology invites applications for a tenure-track faculty position at the Assistant Professor level. This is a regular, 12-month appointment with competitive salary, excellent facilities, and substantial start-up funds. This faculty member will be expected to participate in medical and graduate student teaching programs and establish a vigorous and independent research program. Preference will be given to individuals with research interests in molecular aspects of immunology or microbial pathogenesis, however, all areas of microbiology and immunology will be considered. The department is located on the main campus of Texas A&M University and participates in campus-wide programs in Molecular and Cell Biology, Genetics, and others.

#### Qualifications

1. Ph.D. and/or M.D. degree and two or more years of relevant post-doctoral research training.
2. Potential for initiating and sustaining an independent and productive research program.
3. Ability and enthusiasm for teaching at the graduate and professional levels.

#### Application

Deadline for applications is 15 June, 1991. Interested applicants should send a detailed curriculum vitae, a brief statement of research interests and goals, pertinent reprints, and a list of three references to:

David N. McMurray, Ph.D.  
Chair, Search Committee  
Department of Medical Microbiology and Immunology  
Texas A&M University  
College Station, TX 77843-1114

Texas A & M University is an affirmative action/equal opportunity employer and encourages applications from women and minorities.

# WE HAVE A 103-YEAR TRACK RECORD OF NEW DRUG DISCOVERIES.

From our breakthrough work with erythromycin to our present HIV research, Abbott Laboratories has remained committed to improving the quality of human life. Today, with significant R&D spending fueling our pharmaceutical pipeline, we continue our leadership in the health care industry.

*Experience The  
Abbott Edge.*

## BIOANALYTICAL CHEMIST

The selected candidate with 3-4 technicians will evaluate biological fluids to determine the pharmacokinetics of new antibacterial, antifungal and antiviral agents, using HPLC, other chromatography methods and bioassay. We require a Ph.D. in bioanalytical chemistry, pharmaceutical chemistry, pharmacology or related field, and at least 2-4 years experience in pharmaceutical analysis, pharmacokinetics and analytical assay development. Job # 19998.

## VIROLOGIST

The selected candidate will conduct in vitro evaluation of new antiviral agents, carry out mechanism-of-action studies, and design/implement new assay systems. Focused primarily on HIV, this position will also be involved with herpesviruses, hepatitis, and other viral types. We require a Ph.D. and at least 2-6 years experience in virological research and/or antiviral drug evaluation. Detailed knowledge of HIV and other medically significant viruses is essential. Experience with mechanism-of-action studies and molecular virology is preferred. Job # 19914.

Abbott provides an excellent salary and benefits package including profit sharing and a stock retirement plan. We are located approximately 30 miles north of Chicago. For confidential consideration, please send a resume with salary history to: **Patricia Handy, Corporate Placement, Abbott Laboratories, One Abbott Park Rd., Abbott Park, IL 60064.** (To facilitate the handling of your resume, please indicate appropriate Job # on your cover letter or resume). Abbott is an Affirmative Action Employer.

## ABBOTT LABORATORIES



Quality  
Health Care  
Worldwide  
1888-1991

**THE CHINESE UNIVERSITY OF HONG KONG** (founded 1963) offers comprehensive programmes up to PhD level in the Humanities, Business Administration, Science, Medicine, Social Science, Education, Engineering and Architecture. Current student enrollment is 8,000 full-time equivalent, which will expand to 11,500 by 1994-95. The University is very active in promoting research and consultancies and liaising with industry and the business sector worldwide. Both English and Chinese are used in teaching and administration.

Applications are invited for

### Department of Biochemistry Lecturer

Applicants should have a relevant higher degree (preferably a Ph.D. degree) with sufficient research and teaching experience to indicate significant accomplishment as well as outstanding promise. Established skills in immunology or cancer research and biotechnology will be an advantage.

### Annual Salary

HK\$279,299-317,580 by 2 increments BAR  
HK\$336,420-467,700 by 7 increments  
(approx. exchange rate: US\$1=HK\$7.8; £1=15.3)  
Starting salary will be commensurate with qualifications and experience.

### Conditions of Service

The University offers a competitive remuneration package. For superannuable appointment, benefits include leave with full-pay, contributory superannuation scheme (University 15%, appointee 5%), medical and dental care, education allowances for children, housing benefit for an appointee with annual salary of HK\$298,740 or above (with appointee contributing 7.5% of salary towards the provision of housing benefit). Appointment may also be made on fixed term contracts which carry equivalent benefits including a contract-end gratuity (15% of basic salary) in lieu of superannuable benefits. The University may also consider more flexible terms for suitable candidates subject to mutual agreement.

### Application Procedure

Send full resume in duplicate, giving full particulars as well as names and addresses of 3 referees, together with copies of qualification documents and recent publications to the Personnel Section, The Chinese University of Hong Kong, Shatin, Hong Kong before March 28, 1991. Please quote the reference number 7/509/2/91 and mark "Recruitment" on cover.

## MASSACHUSETTS INSTITUTE OF TECHNOLOGY

# Massachusetts Institute of Technology

is seeking a

## Dean of the School of Science

to take office July 1, 1991  
Please send nominations or expressions  
of interest by March 31 to  
Chairman, Advisory Committee  
for the Dean of Science  
Office of the Provost  
MIT, Room 3-208  
77 Massachusetts Avenue  
Cambridge, Massachusetts  
02139

# MIT

MIT is an Equal Opportunity/  
Affirmative Action Employer



# Help Advance The Quality of Life Through Drug Discovery

The R.W. Johnson Pharmaceutical Research Institute integrates worldwide R&D efforts for five Johnson & Johnson Companies to maximize our traditional research efforts and our strengths in biotechnology. Expanding drug discovery programs have created the following opportunities at our campus-like setting in central New Jersey, midway between New York City and Philadelphia.

## Principal Scientist and Sr. Scientist (Immunology)

These individuals will be expected to work collaboratively in a group that will be responsible for the development of the *in vitro* and *in vivo* systems to test monoclonal antibodies and other recombinant proteins being developed as immunosuppressive drugs for use in transplantation and autoimmune diseases.

Candidates should have a Ph.D. or equivalent in Immunology or a related field and at least 4 years (for Senior Scientist) or 8 years (for the Principal Scientist) research experience in molecular or cellular immunology. This should be reflected in a significant bibliography of research publications in the area of T cell activation, transplantation, autoimmune diseases, tolerance induction, or mechanisms of immunosuppression. (HR Dept. 11A)

## Postdoctoral Research Scientist (Molecular Biology)

This opportunity requires a Ph.D. in Molecular Biology, Microbiology, Biochemistry or related discipline and a strong background in protein structure/function relationships. Experience in receptor-ligand interactions and computer-based protein modeling and design is a plus. The selected candidate will investigate the structure/function relationships of hematopoietic growth factors and their receptors using recombinant DNA techniques, including PCR amplification, gene cloning, mutagenesis techniques. You will work with our Protein Modeling Group to conduct rational design of altered protein molecules and interface extensively with other research groups. (HR Dept. 11B)

We offer competitive salaries and comprehensive benefits including health/dental insurance, 401(k) plan, tuition reimbursement, our LIVE FOR LIFE Wellness Program with on-site fitness center, and a smoke-free workplace.

Please send your resume, including salary requirements, to: Ms. Robin Seiz, indicate Dept. # for the position of your choice, R.W. Johnson Pharmaceutical Research Institute, P.O. Box 300, Raritan, NJ 08869-0602

An Equal Opportunity Employer, M/F



R.W. JOHNSON

PHARMACEUTICAL RESEARCH INSTITUTE

A Johnson & Johnson Company

## POSITIONS OPEN

**NEUROSCIENTISTS, CELL AND MOLECULAR BIOLOGISTS.** Tenure-track **FACULTY POSITIONS** open in gross and microscopic anatomy. Research interests in neurosciences, cell and molecular biology. Rank and salary commensurate with experience. Research start-up funds available. Send curriculum vitae, statement of research interests, and the names and addresses of three references to: **Dr. James C. Story, Chairman, Department of Anatomy and Cell Biology, Meharry Medical College, 1005 D. B. Todd Boulevard, Nashville, TN 37208** by 1 May 1991. *An Equal Opportunity/Affirmative Action Employer.*

### HIV CELL BIOLOGIST/VIROLOGIST

**FACULTY POSITION (ASSISTANT OR ASSOCIATE PROFESSOR LEVEL)** for Ph.D. or M.D. to establish research and diagnostic laboratory as component of multidisciplinary research program in children with AIDS. In addition, opportunity to develop personal research interests in either basic or clinical aspects of AIDS. Knowledge and experience required in cell culture, PCR, RIA, ELISA, and blotting techniques related to HIV. Contact: **Walter T. Hughes, M.D., St. Jude Children's Research Hospital, Memphis, TN 38101.** *Affirmative Action/Equal Opportunity Employer.*

### CNS PHARMACOLOGIST

The Department of Pharmacology at the Northeastern Ohio Universities College of Medicine invites applications from individuals with strong research credentials in any aspect of CNS pharmacology for a **TENURE-TRACK POSITION** available July 1991. Rank and salary commensurate with experience. Senior applicants are encouraged to respond. Candidates must have a Ph.D. in pharmacology with postdoctoral training and the demonstrated ability to conduct independent research. Some teaching experience is desirable since the position requires participation in teaching of medical and graduate students. Excellent laboratory facilities and start-up funds are available. Successful applicant will interact with present faculty whose research interests include: opiate analgesia, genetics of alcoholism, behavioral pharmacology, and molecular biology of substance abuse. Send curriculum vitae including names of three (3) references by 20 April 1991 to: **Dr. Martin D. Schechter, c/o The Office of Human Resources, Northeastern Ohio Universities College of Medicine, P.O. Box 95, Rootstown, OH 44272.** *An Affirmative Action/Equal Opportunity Employer.*

**CAREER SCIENTIST (TENURE-TRACK FACULTY).** Position with primary appointment in the Department of Anesthesiology and possible joint appointment in a basic science department. Candidate should possess a Ph.D., M.D., or equivalent degree with postdoctoral experience and demonstrated ability to attract extramural research funding. Primary research interests should be in the areas of molecular pharmacology, physiology, or biochemistry with direct or indirect applicability to anesthesiology, critical care medicine, or pain management. Generous laboratory space and start-up funds provided. Academic rank will be determined by qualifications. Established investigators are especially encouraged to apply. Please send a description of research interests, curriculum vitae, and names and telephone numbers of three references to: **P. R. Housmans, M.D., Ph.D., Mayo Medical School, Rochester, MN 55905** by 1 May 1991. *Mayo Foundation is an Affirmative Action/Equal Opportunity Educator and Employer.*

**POSTDOCTORAL POSITIONS.** Two postdoctoral positions are available immediately (one of the positions is for a U.S. citizen or permanent resident) to investigate the structure, function, and developmental regulation of *ets*-related genes [see *Science* 237, 635 (1987); *Science* 244, 66 (1989)]. Current projects include: (i) Identifying the target sequences, (ii) localization of the sequence-specific DNA binding and transactivation domains, (iii) studying *in situ* hybridization and development regulation of *elk-1* in mouse testis, (iv) expression and purification of *ets* proteins in *E. coli* and insect-virus systems. Experience in molecular biology, protein-DNA interactions, protein purification, *in situ* hybridization in mouse tissues preferred. Send curriculum vitae and names, addresses, and telephone numbers of two references to: **Rita Taylor, Thomas Jefferson University, 381 Jefferson Alumni Hall, 1020 Locust Street, Philadelphia, PA 19107-6799.** *We are committed to a smoke-free environment. Equal Opportunity Employer.*

## POSITIONS OPEN

**POSTDOCTORAL RESEARCH/IMMUNOLOGY.** Several positions, available now or in the fall, for study in one of ten laboratories dealing with cellular and molecular immunology, and focusing on the control of leukocyte growth, activation, and function; immune dysregulation; and transcriptional control. Positions are supported by an NIH training grant and limited to U.S. citizens. Contact: Dr. David Beller, Department of Medicine, E-337, Boston University Medical Center, 88 East Newton Street, Boston, MA 02118.

### POSTDOCTORAL POSITION MOLECULAR BIOLOGY/CELL MOTILITY

A postdoctoral position is available to investigate the cell and molecular biology of mitotic and neuronal microtubules. Background in molecular biology helpful, but not essential. Send curriculum vitae, including names of three references, to: Dr. Richard Vallee, c/o Personnel Office, Worcester Foundation for Experimental Biology, 222 Maple Avenue, Shrewsbury, MA 01545.

**POSTDOCTORAL POSITION.** In behaving monkey neurophysiology. Available August/September 1991. Visual and visuomotor single unit studies in the thalamus and cortex of behaving macaques. Fully equipped state-of-the-art laboratories with on-line computer facilities (MASSCOMP SLS-5450-01 Scientific Laboratory System), magnetic eye coil, multiple electrode techniques, surgical suites, neuroanatomical laboratories, etc. Computer programming and single unit recording experience desirable. Telephone 301-328-7090 and send curriculum vitae and references to: Dr. Louis Benevento, Anatomy Department, Room 5E-18, University of Maryland, 666 West Baltimore Street, Baltimore, MD 21201. *Equal Opportunity Employer.*

**POSTDOCTORAL POSITIONS, MOLECULAR ONCOLOGY.** Positions open to study the molecular biology of colon cancer development and progression. Areas of interest include: (i) role of src-related tyrosine protein kinases in tumor development, (ii) regulation of promoter activity and expression of the *lck* gene in colon cancer cells, and (iii) analysis of genes involved in the regulation of the transformed and differentiated phenotypes of colonic epithelial cells. Please send curriculum vitae and two letters of reference to: Neal Rosen, M.D., Ph.D., Memorial Sloan-Kettering Cancer Center, 1275 York Avenue, New York, NY 10021, Attention: Department of Medicine, Box 75. *An Equal Opportunity/Affirmative Action Employer, M/F/H/V.*

**POSTDOCTORAL POSITION.** At Oak Ridge National Laboratory (ORNL) to do research on ultra-sensitive detection techniques as applied to DNA sequencing problems. Degree in analytical/physical chemistry or applied physics with background in optical spectroscopy preferred; should have experience with lasers and optics and background in instrumentation. For position information, contact: J. Michael Ramsey, ORNL, P.O. Box 2008, Oak Ridge, TN 37831-6142. For application material, contact: Postgraduate Research Program/Genome, Science/Engineering Education Division, Oak Ridge Associated Universities, P.O. Box 117, Oak Ridge, TN 37831-0117. Telephone: 615-576-3456.

### POSTDOCTORAL POSITION VASCULAR RESEARCH DIVISION DEPARTMENT OF PATHOLOGY BRIGHAM AND WOMEN'S HOSPITAL AND HARVARD MEDICAL SCHOOL

A postdoctoral position is available to study structure/function relationships of the adhesive protein, thrombospondin. Current projects include: the study of protein and gene structure, expression of thrombospondin in mammalian cells, the identification of functional domains through site-directed mutagenesis, and the interaction of thrombospondin with integrins on the endothelial cell surface. Applicants should have a strong background in biochemistry, molecular biology, and/or cell biology.

Send curriculum vitae, a description of research interests, and the names of three references to:

Dr. Jack Lawler  
Department of Pathology  
Brigham and Women's Hospital  
Thorn Building, Third Floor  
20 Shattuck Street  
Boston, MA 02115



## A TIME FOR ACHIEVEMENT

*The opening of Glaxo Inc.'s \$350 million Girolami Research Center in Research Triangle Park, NC represents a monumental commitment in the pharmaceutical industry to the discovery of drugs for unmet patient needs. Scientists engaged in Glaxo's expanding research and development programs at the Center have a premier facility in which to work. The following opportunities are now available in the Department of Safety Assessment:*

### TOXICOLOGY SUPERVISOR

*Responsibilities include conducting and supervising all technical operations of GLP in vivo toxicity studies. Additional duties include planning and scheduling of studies, training, purchasing equipment and supplies, facility maintenance, methods development, and preparation and review of SOP's, protocols and reports. Supervisory responsibilities include daily supervision of other toxicology technicians, preparation of performance evaluations, and recruitment of new employees to fill anticipated job vacancies in our growing Department.*

*Candidates should have supervisory experience and a BS/MS Degree in a Life Science with a minimum of 6 years of pharmaceutical or contract industry experience.*

*Refer to Job #8111XO50 on all resumes.*

### CLINICAL LABORATORY SUPERVISOR

*A BS/MS qualified Clinical Laboratory Technologist with a minimum of 5 years experience is required to manage the hematology and clinical chemistry function within our department. Experience at working to GLP in a regulatory toxicology environment would be a great asset.*

*Refer to Job #8111XO52 on all resumes.*

*Our Research Triangle Park, NC location (near Raleigh, Durham and Chapel Hill) offers a lot more for people who seek a well-rounded lifestyle. This world-famous scientific, industrial, and academic community affords access to respected universities, beautiful residential areas, major retail centers, excellent health care and abundant cultural and recreational facilities. Join Glaxo and enjoy an excellent salary, flexible benefits, an on-site recreation and fitness center, a spirit of enthusiasm and teamwork and outstanding opportunities for career satisfaction.*

*Send your resume, INDICATING THE CORRESPONDING JOB # and salary history, to: Human Resources Department, Glaxo Inc., P.O. Box 13398, Research Triangle Park, NC 27709. (No Phone Calls or Agency Referrals, Please.) An Equal Opportunity Employer M/F/H/V.*

# Glaxo Inc.

## POSITIONS OPEN

**POSTDOCTORAL POSITION.** Available September 1991 to investigate the biochemical and molecular properties of proteins associated with synapses of the CNS. Experience in molecular biology preferred. Send curriculum vitae and three references to: **Dr. James W. Gurd, Division of Life Sciences, Scarborough Campus, University of Toronto, West Hill, Ontario M1C 1A4, Canada.**

**POSTDOCTORAL/DOCTORAL POSITIONS.** Available immediately to study gene expression, RNA processing, and molecular pathogenesis of trypanosomes and/or *Pneumocystis carinii*. Experience in biochemistry or molecular genetics. Send curriculum vitae and names of three referees to: **Dr. G. A. Buck, Department of Microbiology, Box 678 MCV Station, Virginia Commonwealth University, Richmond, VA 23298.**

**POSTDOCTORAL POSITION.** Available immediately to study expression and regulation of proteases and protease inhibitors. Background in cell/molecular biology would be helpful. Send curriculum vitae and names and addresses of three references to: **Dr. David H. Perlmutter, Department of Pediatrics, Cell Biology, and Physiology, Washington University School of Medicine, 400 South Kingshighway Boulevard, St. Louis, MO 63110.**

**POSTDOCTORAL POSITIONS.** Available to study (i) regulation of expression of genes related to fatty acid and phospholipid biosynthesis in developing lung and cultured type II pneumocytes and (ii) signal-transduction mechanisms in the regulation of lung surfactant secretion. Send curriculum vitae and names of three references to: **Dr. Seamus A. Rooney, Department of Pediatrics, Yale University, P.O. Box 3333, New Haven, CT 06510.**

**POSTDOCTORAL POSITION.** Available in September to join in the investigation of the mechanisms of gene expression in trypanosomes. We are working toward understanding mRNA transcription and RNA splicing signals using DNA transfection technology and molecular genetics. Experience in molecular biology is required. Send curriculum vitae and two letters of reference to: **Dr. Vivian Bellofatto, Laboratory of Molecular Parasitology, The Rockefeller University, 1230 York Avenue, New York, NY 10021.**

The Beckman Laser Institute and Medical Clinic, University of California, Irvine, is seeking to fill **POSTDOCTORAL POSITIONS** (Ph.D. or M.D./Ph.D.) in the areas of photochemistry, biophysics, cell biology, oncology, cardiology, and surgery. Candidates should have interest or experience in working with lasers.

Please reply to: **Michael W. Berns, Ph.D., Beckman Laser Institute and Medical Clinic, University of California, Irvine, 1002 Health Sciences Road East, Irvine, CA 92715. The University of California, Irvine, is an Equal Opportunity/Affirmative Action Employer.**

### POSTDOCTORAL POSITION

A postdoctoral fellowship position is available immediately in pediatric GI/nutrition research. The fellow would study the regulation of glutathione peroxidase by selenium and/or oxidative damage to polarized enterocytes using cell culture techniques, in vitro labeling, protein immunoprecipitation, and Northern blot analysis. Applicants should hold a Ph.D. or equivalent and have experience in molecular biology and protein electrophoresis. Please send curriculum vitae and three letters of reference to: **Susan S. Baker, M.D., Ph.D., Division of Pediatric Gastroenterology and Nutrition, University of Massachusetts Medical Center (UMMC), 55 Lake Avenue North, Worcester, MA 01655. UMMC is an Equal Opportunity Employer.**

### BONUS CIRCULATION FOR YOUR CLASSIFIED AD AT FASEB/ASBMB MEETING

Our issue of 5 April 1991 will be distributed to scientists attending the 1991 FASEB/ASBMB Meeting in Atlanta, Georgia. Deadline for submission of line classified ads: 21 March 1991.

SCIENCE Classified Advertising  
Telephone: 202-326-6555  
FAX: 202-682-0816

## POSITIONS OPEN

**POSTDOCTORAL POSITION.** Available immediately to study the effects of modified glycosylation on immune responses to SIV vaccines. The position requires expertise in glycoprotein carbohydrate analysis. Experience in cell culture and immunoassays is also desired. Send curriculum vitae and names and addresses of three references to: **Dr. David C. Montefiori, Department of Pathology, Vanderbilt University Medical School, Nashville, TN 37232-2561.**

**POSTDOCTORAL POSITION.** Available in cellular neurobiology. Laboratory, which is in Center for Neurobiology and Behavior, is studying cellular and molecular events underlying promotion of neurite growth by extracellular matrix proteins, as well as role of cytoskeleton in organizing and regulating the growth cone. Video (VEC-DIC, fluorescence,  $Ca^{2+}$ /pH imaging) and confocal microscopy, as well as biochemical techniques, are used. Send curriculum vitae and names of three references to: **Dr. Daniel J. Goldberg, Department of Pharmacology, Columbia University, 630 West 168th Street, New York, NY 10032. Columbia University is an Equal Opportunity/Affirmative Action Employer.**

**POSTDOCTORAL POSITION.** Available immediately for doctoral-level candidate to work with the direction of Dr. J. K. Hilliard in our Department of Virology and Immunology. Studies to elucidate basic genomic organization and physical mapping of nonhuman primate herpesvirus DNA's to produce/characterize recombinant probes and gene expression products. Candidates must have experience in recombinant DNA technology. Salary ranges from \$22,339. Send curriculum vitae and names of three references to: **Personnel Director (107), Southwest Foundation for Biomedical Research, P.O. Box 28147, San Antonio, TX 78228-0147. Equal Opportunity Employer, M/F/H.**

### POSTDOCTORAL ASSOCIATE

A postdoctoral position is open immediately to study the control of translation by polyadenylation during early *Xenopus* development. Pertinent references for the project include *Genes Dev.* 3, 803 (1989); *MCB* 10, 5634 (1990); *EMBO J.* 9, 3743 (1990). Please send curriculum vitae and names, addresses, and telephone numbers of three persons who may supply references to: **Dr. Joel Richter, c/o Personnel Office, Worcester Foundation for Experimental Biology, 222 Maple Avenue, Shrewsbury, MA 01545. An Equal Opportunity/Affirmative Action Employer, M/F/H.**

### POSTDOCTORAL POSITION NEUROBIOLOGY

Immediate opening for postdoctoral study of molecules involved in cell adhesion and cell-matrix interactions in the nervous system. Our laboratory utilizes a combination of cell biology, molecular biology, immunology, and biochemistry. Applicants should have Ph.D. or M.D. and current experience in one or more of these disciplines. Send curriculum vitae, including names and addresses of three references, to: **Dr. William B. Stallcup, La Jolla Cancer Research Foundation, 10901 North Torrey Pines Road, La Jolla, CA 92037. Equal Opportunity Employer.**

### POSTDOCTORAL POSITION CANADIAN BACTERIAL DISEASES NETWORK

Postdoctoral fellowship positions of 2 to 3 years duration are available immediately in the Departments of Pediatrics and Microbiology, University of British Columbia (UBC), to study aspects of intracellular parasitism, particularly the mechanisms of bacterial entry and survival within mononuclear phagocytes. Successful candidates will work in a laboratory supported with funds awarded by the Canadian Network Centres of Excellence program (Canadian Bacterial Diseases Network). Funds are available for travel to other network laboratories to establish and consolidate collaborations and to complement the cell biological investigations in this laboratory. *Canadian citizenship is not required.* Salary range: \$25,000 to \$39,000 per year. *UBC encourages qualified women and minority applicants.* Please send curriculum vitae and names and addresses of three referees to: **Dr. David Speert, The Research Centre, 950 West 28th Avenue, Vancouver, British Columbia, Canada V5Z 4H4. Telephone: 604-875-2436. FAX: 604-875-2496.**

## POSTDOCTORAL RESEARCH AT THE WISTAR INSTITUTE

Postdoctoral positions in cancer-oriented research are available at The Wistar Institute for candidates with a strong background in molecular and cell biology, virology, immunology, genetics or protein chemistry. Specific areas of research include: molecular oncology, molecular virology, developmental biology, tumor biology and immunology, cell and molecular immunology and structural biology. The Wistar Institute is an independent institute, located on the campus of the University of Pennsylvania, and is equipped with the latest biotechnology facilities.

Interested applicants are requested to send Curriculum Vitae and the names of 3 references to:

**Coordinator of Research Training  
The Wistar Institute  
3601 Spruce Street  
Philadelphia, PA 19104**

Equal Opportunity Employer

THE  
WISTAR  
INSTITUTE



## Geisinger Clinic

### ASSOCIATE SCIENTIST POSITION

Position available for an individual with three years of postdoctoral experience in biochemistry, molecular biology, pharmacology or cell biology. The successful applicant will clone and express novel forms of adenylyl cyclase (see Science 244:1558-1564). Emphasis will be placed on determining those structural features of adenylyl cyclase subtypes that are responsible for mediating unique physiological responses.

Competitive salary and fringe benefits are available. Send curriculum vitae with the names and telephone numbers of three references to: **Dr. John Krupinski, Weis Center for Research, Geisinger Clinic, Danville, PA 17222-2610. Equal Opportunity Employer M/F/H/V.**

Geisinger

## RESEARCH BIOCHEMIST

Merck Sharp & Dohme Research Laboratories has career opportunities for highly motivated scientists at the BS/MS levels. Responsibilities include the purification and characterization of therapeutically important enzymes.

Position requires a BS or MS in Biochemistry or other closely related discipline with 1-2 years of relevant experience in a biochemistry laboratory.

Excellent salary and benefit programs accompany this position at our modern research facilities located 25 miles northwest of Philadelphia.

Please send curriculum vitae with cover letter to: **Personnel Manager, Ad #D-6, Research Personnel, WP42-2, Merck Sharp & Dohme Research Laboratories, West Point, PA 19486.**

EEO/AA/VH/Employer



Merck & Co., Inc.

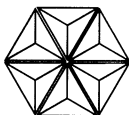
## RESEARCH SCIENTIST

Bristol-Myers Squibb Company, a worldwide leader in the development and marketing of sophisticated pharmaceutical, medical care, consumer and nutritional products, has the following exceptional opportunity available at our Wallingford, Connecticut research facility.

The selected individual will contribute to the discovery of novel immunomodulatory compounds by undertaking activity and cellular and molecular mechanisms of action studies in vivo and in vitro, in allograft and other antigen models.

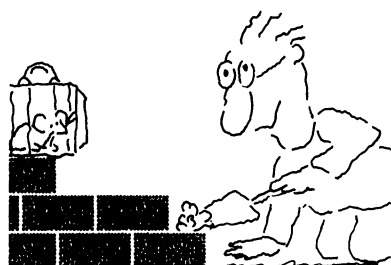
Requirements include a recent Ph.D. in a biological science, preferably immunology, cellular immunology or molecular immunology, with 2 or more years of post-doctoral experience in preclinical research in mechanism of cellular immunology, to include in vivo model work and in vitro assays. Candidates should also have the ability to collaborate with scientists at several levels within the immunology department and with scientists from other disciplines including molecular biology and chemistry. Extensive team/collaborative work should be expected.

Bristol-Myers Squibb careers offer the advantages of sustained growth, highly competitive salaries, extensive benefits and professional support in pursuing excellence. Please send resume with salary history to: **BRISTOL-MYERS SQUIBB COMPANY, Pharmaceutical Research Institute, Dept. TZ-SC1, P.O. Box 5101, Wallingford, CT 06492-7661.** Equal Opportunity Employer, M/F/H/V.



Bristol-Myers Squibb Company

## We'll Help You Build A New Lab



Let the free Science product information service put you in touch with the vendors whose products you will need.

Simply write us a letter stating the specifics about your proposed lab and the instruments and supplies you need. We will do the rest. Write to:

SCIENCE Magazine  
New Lab Service Department  
1515 Broadway  
New York, NY 10036

**Science**  
The Global Weekly of Research

## Senior Molecular Biologist

CLONTECH Laboratories, Inc. has an opening for a Ph.D. with at least 2 years of extensive experience in vector construction and general recombinant DNA technology. Candidates for this position must also be creative in vector design and application. A successful candidate will lead a high-growth group with potential for rapid expansion.

## Protein Chemist

A position is also available for a Ph.D. with at least 2 years professional and extensive experience in the protein/peptide research industry. This candidate should possess an innovative approach in the development of new and exciting products in the protein/peptide area.

We are located in the hub of Silicon Valley, close to Stanford University and more than 150 biotechnology companies. CLONTECH offers a stimulating environment for career growth, and excellent salary and compensation packages. Please send a resume and three references in confidence to:

**Debbie Homeyer**  
Human Resources  
CLONTECH Laboratories, Inc.  
4030 Fabian Way  
Palo Alto, CA 94303

**CLONTECH**  
**CLONTECH**  
**CLONTECH**

Shaping Tomorrow's Biotechnology

# REGENERON

**Regeneron** seeks to apply recent advances in the understanding of neuronal growth and regeneration to the development of novel therapeutic products for degenerative and traumatic neurological disorders. Key projects focus on the discovery of novel neurotrophic growth factors and their receptors, and on the assessment of the biological roles and therapeutic potentials of such factors. **Regeneron** offers an exciting, collegial environment in which state-of-the-art skills in molecular and cellular biology are brought to bear on outstanding problems in neurobiology and medicine. Research positions for Ph.D. scientists are currently available in the following areas:

**Eukaryotic Gene Expression** with relevant research experience, preferably in an industrial setting. The work involves the use of existing vectors for the expression of recombinant genes in mammalian and insect cells, the development of novel vectors, and the study of major factors that affect gene expression, such as transcriptional and translational control and cell trafficking.

**Protein Purification/Process Development** with experience on purification of recombinant proteins, preferably in an industrial setting. The work involves the purification and study of recombinant proteins. Experience with additional aspects of Process Development and/or Production is desirable.

**Membrane Protein/Receptor Biochemistry** with postdoctoral experience. Ongoing studies focus on the identification, isolation and characterization of receptors and membrane proteins from natural and recombinant sources, and the signal transduction pathways activated by these receptors.

**Molecular Neurobiology** with specialized skills in recombinant DNA technology, as well as an interest in applying those skills to the discovery and characterization of novel neurotrophic factors, receptors and signal transduction pathways.

**Regeneron's** modern facility offers suburban living, and ready access to the cultural and business centers of New York City. Please send your resume indicating the relevant position, in confidence, to: Ms. Carol Deaken, **Regeneron**, 777 Old Saw Mill River Rd., Tarrytown, NY 10591-6707

**REGENERON**  
**Pharmaceuticals, Inc.**

## RESEARCH BIOLOGIST NATIONAL INSTITUTES OF HEALTH

Vacancy for a Research Biologist in the NICHD, NIH. The successful candidate will be expected to conduct and supervise research on the actions of neuropeptide hormones on anterior pituitary function, with emphasis on the control of gonadotropin secretion. Applicants must possess an M.D. or Ph.D. degree or equivalent experience and have experience in techniques of cell biology and molecular endocrinology. Expertise in pituitary cell culture, peptide receptor characterization, radioimmunoassay and plaque assays, electrophysiology and patch clamp procedures, and single-cell cytoplasmic calcium analysis, is required. Salary range: \$45,000 to \$52,000. Send CV, and statement of research experience, and three letters of recommendation **by March 29, 1991** to:

**Dr. Kevin J. Catt**  
**Endocrinology and Reproduction**  
**Research Branch**  
**National Institutes of Health**  
**Building 10, Room B1-L400**  
**9000 Rockville Pike**  
**Bethesda, MD 20892**



*NIH is an Equal Opportunity Employer*

## SCIENCE COORDINATOR

This position, Science Coordinator, of the Environmental and Occupational Health Sciences Institute (EOHSI) requires someone with a doctoral degree in a related science. The Science Coordinator will develop an overall strategy to guide implementation of the Institute's mission, which is to foster interdisciplinary research, education, and health in Environmental Science, and develop measures that will allow progress to be monitored. The candidate will work with all EOHSI divisions to integrate existing program components, facilitate teaching and research efforts, and make specific recommendations concerning the use of results, including communication with decision makers.

The Science Coordinator will also organize & implement conferences, lecture programs, colloquia and seminars, garner outside support for the EOHSI mission, and contribute to its implementation. Excellent writing skills are required to reinforce the communication process, both internal and external. Salary commensurate with experience. Send curriculum vitae and three letters of recommendation to: **Dr. Bernard Goldstein, Director, Environmental and Occupational Health Sciences Institute, 675 Hoes Lane, Piscataway, NJ 08854-5635.** EOHSI is jointly sponsored by the University of Medicine & Dentistry of New Jersey-Robert Wood Johnson Medical School and Rutgers, The State University of New Jersey. The UMDNJ is an Affirmative Action, Equal Employment Opportunity Employer, m/f/h/v, and a member of the University Health System of New Jersey.





# SENIOR RESEARCHERS

PhD or  
Post-doctoral  
level

## BIOLOGY/BIOCHEMISTRY

A leading private medical research centre, based in the Paris area and part of one of France's leading pharmaceutical companies, is now seeking two senior research scientists for its Department of Cellular and Molecular Biology.

The successful candidates will be creative and independently-minded researchers with sound experience of receptor cloning.

Please submit your cv, a handwriting sample to Médio-System, 6 impasse des Deux Cousins, 75849 Paris Cedex 17, France quoting ref. 14342 on the envelope.

MEDIA-SYSTEM



C A B M<sup>®</sup>

CENTER FOR  
ADVANCED  
BIOTECHNOLOGY  
AND  
MEDICINE

### POSTDOCTORAL POSITIONS: CRYSTALLOGRAPHIC AND BIOCHEMICAL STUDIES OF HIV REVERSE TRANSCRIPTASE

X-RAY CRYSTALLOGRAPHY/  
PROTEIN-NUCLEIC ACID INTERACTIONS/  
PROTEIN ENGINEERING/DRUG DESIGN

Highly motivated postdoctoral researchers are sought to participate in the structure determination of HIV-1 and other retroviral reverse transcriptases (RTs) by X-ray crystallography and in studies of the interactions of RTs with nucleic acids and inhibitors. Multiple types of RT crystals have been obtained. Other current projects include vaccine engineering by modifying human rhinoviruses to display immunogens from other pathogens, crystallographic studies of human rhinoviruses complexed with antiviral agents, and structure determination of a number of proteins and viruses for which high resolution crystals have been obtained for the first time. State-of-the-art facilities are available for crystallography, protein chemistry, molecular biology, virology, and molecular modeling. Successful applicants will be supported by federally funded research grants, but encouraged to apply for independent fellowship support. An Affirmative Action/Equal Employment Opportunity Employer, m/f/h/v. Send CV and arrange to have three letters of reference sent to: EDWARD ARNOLD, CABM and Rutgers University, 679 Hoes Lane, Piscataway, NJ 08854-5638

Phone: (908) 463-5323

Jointly Administered by The University of Medicine and Dentistry of New Jersey and Rutgers, The State University of New Jersey

## Harvard Medical School - McLean Hospital

### Alcohol and Drug Abuse Research Center

#### Behavioral Science Laboratory

Applications are invited for a junior faculty research position at the Harvard Medical School as an Assistant Director of the Behavioral Science Laboratory at the Alcohol and Drug Abuse Research Center, McLean Hospital (tenure-track). This is an excellent opportunity for a well-trained, productive, behavioral or biological scientist (Ph.D. or M.D./Ph.D.) to collaborate in an ongoing Behavioral Science Research program and to develop independent research projects supported by extramural funding.

Experience in behavioral pharmacology research (drug self-administration and drug discrimination) is essential. Responsibilities will include conduct of research and supervision of pre- and post-doctoral fellows and research assistants. Macintosh computer skills are desirable. Applicants may participate in medical school teaching, but there are no formal teaching requirements. Applicants should have at least three years of post-doctoral experience and be qualified for an appointment at the Assistant Professor level. Salary is commensurate with experience.

The Alcohol and Drug Abuse Research Center is a broad-based basic and clinical multidisciplinary research program with a current emphasis on the behavioral pharmacology of substance abuse, the neuroendocrine consequences of cocaine and alcohol abuse, and the effects of drug abuse on the brain as assessed by brain imaging techniques (MRI, SPECT, and EEG). The Center's treatment research unit evaluates the safety and effectiveness of new pharmacotherapies. The McLean Hospital is an affiliate of the Harvard Medical School and the Massachusetts General Hospital, located in Belmont, a suburb of Boston.

Please send a curriculum vita, reprints of at least five recent papers, a brief statement about research interests and goals, and the names of three references (including complete address and telephone number) to Dr. Nancy K. Mello, Professor of Psychology (Neuroscience) and Director, Alcohol and Drug Abuse Research Center, McLean Hospital, 115 Mill Street, Belmont, MA 02178. McLean Hospital is an equal opportunity/affirmative action employer.



McLean Hospital



THE U.S. DEPARTMENT OF ENERGY  
SPONSORS

**GLOBAL CHANGE  
DISTINGUISHED  
POSTDOCTORAL FELLOWSHIPS**

Research opportunities in technical areas related to the interdisciplinary science elements of global change: climate and hydrologic systems, biogeochemical dynamics, ecological systems and dynamics, Earth system history, human interactions, solid Earth processes, and solar influences.

- \* U.S. citizens and permanent resident aliens
- \* Doctoral degree within last three years
- \* Tenable at various university and federal laboratories, including those of DOE & NASA
- \* Stipends: \$35,000
- \* Deadline: May 1, 1991

For application materials contact:  
**Global Change Postdoctoral Fellowships  
Science/Engineering Education Division  
Oak Ridge Associated Universities  
P.O. Box 117  
Oak Ridge, TN 37831-0117  
(615) 576-4805**

**PhDs • Pharmacology  
• Physiology**

**Your scientific expertise is the  
foundation for a strong future**

Hoechst-Roussel Pharmaceuticals Inc., major subsidiary of Fortune 100 Hoechst Celanese Corporation, one of the world's leading producers of chemicals and pharmaceuticals, has immediate opportunities for published Pharmacologists or Physiologists. Primary responsibilities will entail developing contacts within medical institutions, universities, teaching hospitals and government research groups. In addition, you will prepare auxiliary technical materials and deliver technical updates/training to field sales personnel.

Ideal candidates will possess a BS in Pharmacy, a PhD in Physiology or Pharmacology, and 2-3 years teaching experience at the university level and/or experience in clinical pharmacy.

These highly visible positions will provide direct contact with prominent figures in the medical field. We offer a superb compensation package, including an excellent salary plus expense account, a company car and outstanding company benefits. Positions are available in the Northeast, Southeast, Northwest and upper Midwest.

These positions, located in our modern corporate complex in a pleasant suburban setting provide an excellent salary with a flexible benefits program including dental, 401(k) savings and a company Performance Sharing Plan. For prompt consideration, please send curriculum vitae with salary history/requirements to: Manager, Human Resources, Room B214, Hoechst-Roussel Pharmaceuticals Inc., P.O. Box 2500, Routes 202-206, Somerville, NJ 08876. An affirmative action employer M/F/H/V.

**Hoechst-Roussel Pharmaceuticals Inc.**

**Hoechst** 

The Hoechst name and logo are registered trademarks of Hoechst AG ©

**SCIENTIST—IMMUNOLOGY**

**ImmuLogic is dedicated to the creation of novel therapeutic products to modulate and monitor the human immune system. We employ state-of-the-art techniques and proprietary knowledge in immunology, biochemistry, and molecular biology to develop products in allergy and autoimmune disease areas. We collaborate with world leaders in the pharmaceutical industry and in academic institutions and are recognized as a leading force among companies focusing on immunology. ImmuLogic provides an outstanding working environment and a unique opportunity to broaden your scientific and technical knowledge.**

The successful candidate will play a key role in our human cellular immunology group, working on T cell reactivity of allergens and epitope definition. Primary responsibilities include the initiation of new

scientific programs aimed at understanding the basic mechanisms involved in allergic responses, and facilitating related research activities. This is an ideal opportunity to direct a personal research program consistent with ImmuLogic's strategic plan.

This position requires a Ph.D. or M.D. in a medical science with specialization in Immunology, and 2-6 years' Postdoctoral work with a strong record of scientific achievement in human immune systems. A broad-based knowledge of cellular activation mechanisms is desirable.

ImmuLogic offers a competitive salary and benefits package. Please forward your resume and cover letter to: **Human Resources, ImmuLogic Pharmaceutical Corporation, One Kendall Square, Building 600, Cambridge, MA 02139.** An Equal Opportunity Employer.

**IMMULOGIC**   
Pharmaceutical Corporation

**Opportunities in San Diego developing  
novel immunoregulatory drugs**

**Immunopharmacologist**

Ph.D. in pharmacology or immunology, 2-5 years' industrial animal drug testing/serology/ELISAs and other immunoassays.

**Pharmacologist**

Ph.D. in pharmacology, physiology, or immunology, 2-5 years' industrial animal drug testing/immunoassays and evaluation of animal models of neuromuscular disease.

**Pharmaceutical  
Manufacturing Manager**

Ph.D. in chemistry or biochemistry, with 4-7 years' pharmaceutical GMP manufacturing/synthesis, purification/characterization of DNA oligomers, and conjugation to amino acid polymers. Candidates must possess good communication skills and have a record of team building and accomplishment.

Competitive salary and stock options. Send resume to: **Stephen Coutts, Ph.D., Executive Vice President of Research, La Jolla Pharmaceutical Company, 6455 Nancy Ridge Drive, San Diego, CA 92121.** An Equal Opportunity Employer.

**LJP**

**Look for us at FASEB**

# RESEARCH OPPORTUNITIES STEM CELL BIOLOGY

**Amgen** has emerged as a recognized leader in the development of human therapeutics through applications of biotechnology. Our success has been a result of our ongoing commitment to research and to providing the resources necessary for scientists to develop their full potential. As a result of this continuing commitment, we have opportunities available for Postdoctoral Scientists and Research Associates in our hematology and stem cell biology programs.

## POSTDOCTORAL SCIENTISTS

### Dept. #571

As part of an overall program in stem cell biology, we have two opportunities for postdoctoral scientists. All candidates for postdoctoral positions must have a Ph.D. in a relevant discipline and experience as stated.

The first position will focus on basic research in *in vivo* and *in vitro* stem cell biology including purification and characterization of stem cell populations as well as development of hematopoietic bioassay. Candidates must have experience in *in vitro* and *in vivo* hematology and cell sorting.

The second opportunity will include development of *in vitro* culture conditions and parameters for primitive hematopoietic cells utilizing various extracellular matrix components. Candidates for this position must have experience in bio-matrix induced attachment and culture of mammalian cells. Prior experience in hematopoiesis is not a prerequisite.

## RESEARCH ASSOCIATE

### Dept. #572

The responsibilities of this position will include *in vivo* bioassay support, research in radiation models, *in vivo* hematopoietic models and bone marrow transplantation. Qualified candidates must have a BS or MS in an appropriate life science and a minimum of two years' experience with *in vivo* studies.

**Amgen** offers a stimulating and challenging research environment on the leading edge of biotechnology as well as an excellent compensation and benefits package.

If you have the necessary qualifications and would like to be a part of an organization that places a high priority on its human resources, please send a CV, in confidence, to:

**AMGEN, INC.**  
**Recruitment, Dept. # (please specify)**  
**Amgen Center**  
**Thousand Oaks**  
**CA 91320-1789**

Equal  
Opportunity  
Employer

# AMGEN

## POSITIONS OPEN

**POSTDOCTORAL POSITION, MOLECULAR BIOLOGY/BACULOVIRUSES.** Available April 1991 for 2 years to study (i) molecular mechanisms regulating baculovirus gene expression in insect cell lines and/or (ii) functional characterization of a baculovirus major envelope glycoprotein. Studies will involve in vitro mutagenesis of baculovirus genes and regulatory regions and functional analysis. Experience in molecular biology is essential. Send complete curriculum vitae, relevant publication reprints, and names and addresses of three references to: **Dr. Gary W. Blissard, Boyce Thompson Institute at Cornell University, Tower Road, Ithaca, NY 14853-1801. Telephone: 607-254-1366.**

The Jackson Laboratory invites applications for **POSTDOCTORAL POSITIONS** in developmental genetics, experimental hematology and immunology, and gene regulation in normal and malignant cells. Research emphasis at the laboratory: cellular, molecular biological approaches utilizing the mouse as a model eukaryotic organism. Send curriculum vitae, research interests, list of publications, and names of three references to: **Phyllis Mobraaten, Office of Training and Education, The Jackson Laboratory, 600 Main Street, Bar Harbor, ME 04609. Equal Opportunity/Affirmative Action Employer.**

### POSTDOCTORAL FELLOWSHIP

A postdoctoral position is available to study the structure and function of phosphatidylinositol (PI)-anchored membrane proteins. Studies involve the nature of the signal for PI-anchor attachment, and the role of these proteins in lymphocyte activation, transplantation, and inflammation. Background in molecular or cell biology or immunology is desirable. Send curriculum vitae and names and addresses of three references to: **Dr. Douglas M. Lublin, Department of Pathology, Washington University School of Medicine, 660 South Euclid Avenue, Box 8118, St. Louis, MO 63110. An Equal Opportunity Employer.**

**POSTDOCTORAL FELLOWSHIP.** University of California, Irvine (UCI). To work on basic mechanisms of human melanocyte transformation. Projects include role of protein kinase C isoforms, effects of ultraviolet light on PKC and selected oncogenes, and chemoprevention. Training in molecular biology essential and tumor biology desirable. Salary commensurate with experience and position. Send letter, curriculum vitae, and list of three references to: **Frank L. Meyskens, Jr., Director, Clinical Cancer Center, UCI Medical Center, 101 City Drive, Building 44, Route 81, Orange, CA 92668. Will begin evaluation of applications 1 April 1991 and continue until position is filled.**

### POSTDOCTORAL FELLOW

Postdoctoral fellow is required for the genetic engineering of monoclonal antibody genes in order to increase the effectiveness for the diagnosis and treatment of human cancer. Experience in molecular biology is desirable but not essential for a very bright, interested candidate. The Wistar Institute is an independent institution, located on the campus of the University of Pennsylvania, and is equipped with the latest biotechnology facilities.

Interested candidates should send curriculum vitae and the names and addresses of at least two references to:

**Peter Curtis, Ph.D., Professor  
The Wistar Institute  
3601 Spruce Street  
Philadelphia, PA 19104  
Equal Opportunity Employer.**

### POSTDOCTORAL FELLOWSHIP

Available to study the biochemistry and molecular biology of protease (e.g., urokinase) expression in monocyte/macrophages. Studies are focused on the role of proteases and their receptors in myeloid cell adhesion and differentiation. Projects involve studies of receptor structure and mechanisms of protease-mediated signal transduction. Experience in molecular biology and/or biochemistry of membrane proteins desired. Please contact:

**Dr. Harold A. Chapman  
Department of Medicine  
Respiratory Division  
Brigham and Women's Hospital  
75 Francis Street  
Boston, MA 02115  
Telephone: 617-732-7420**

Harvard Medical School and Brigham and Women's Hospital are Equal Opportunity Employers.

## POSITIONS OPEN

### POSTDOCTORAL FELLOW

Project to study the role of class I molecules and cytokines in T cell-mediated responses to tumors. Approaches involve the use of molecular biology techniques to alter tumor and established T cell clones. Contact: **Dr. Edith Lord, Cancer Center, Box 704, University of Rochester, Rochester, NY 14642.**

**POSTDOCTORAL FELLOWSHIP.** Work will involve cloning antibody genes and analysis of catalysis by antibodies, neuropeptides, and receptors. Experience in nucleic acid and protein techniques required, as is a working knowledge of immunology and enzymology. Salary range is \$22,000 to \$30,000, depending on experience. Send curriculum vitae and names and telephone numbers of three referees to: **Sudhir Paul, Ph.D., Associate Professor, Departments of Pharmacology, Biochemistry, and Internal Medicine, University of Nebraska Medical Center, 600 South 42nd Street, Omaha, NE 68198-6260.**

**POSTDOCTORAL FELLOWSHIP IN MOLECULAR IMMUNOLOGY.** (Search reopened.) Position available at new NIH-supported Clinical Research Center. Person will be expected to maintain and screen recombinant libraries for antibody production, develop applications, and establish a related fundamental research program. Applicants must have a Ph.D. degree, including experience in immunology and molecular biology. Please send curriculum vitae and three letters of reference by 1 April 1991 to: **Dr. Mark C. Herzberg or Dr. Ambika Mathur, Molecular/Cell Analysis Core, School of Dentistry, University of Minnesota, 515 Delaware Street, S.E., Minneapolis, MN 55455. The University of Minnesota is an Equal Opportunity Educator and Employer and specifically invites and encourages applications from women and minorities.**

### CANCER RESEARCH POSTDOCTORAL FELLOWSHIPS IN MOLECULAR GENETICS, ENDOCRINOLOGY, IMMUNOLOGY, AND TUMOR BIOLOGY

The University of Rochester Cancer Center invites applications for postdoctoral positions in our research training program. Trainees can select from among interactive laboratories dedicated to applying modern techniques to problems of cancer. Projects involve oncogene, growth factor and hormonal regulation of gene expression, analysis of the genes that control metastases, mechanisms by which tumors respond to or escape immunological destruction, the process of immunotolerance, disease modeling in transgenic mice, investigation of cell cycle regulation using flow cytometry, antitumor drug inhibition of cell growth, mechanisms of drug resistance, and control of DNA synthesis, repair, and protein synthesis in tumor viruses and cells. Please send résumé and three letters of recommendation to: **Dr. Edgar Henshaw, University of Rochester Cancer Center, 601 Elmwood Avenue, Box 704, Rochester, NY 14642. The University of Rochester is an Equal Opportunity/Affirmative Action Employer. Members of underrepresented minority groups are particularly encouraged to apply.**

**POSTDOCTORAL RESEARCH FELLOWSHIPS.** Two positions are available to (i) study the regulation of a polycyclic hydrocarbon-inducible cytochrome P450IA2 in liver, and (ii) investigate the mechanisms of induction of a DNA repair protein by irradiation in cells and liver. A background in molecular biology and/or molecular pharmacology would be useful. Send curriculum vitae and the names of three referees to: **Edward Bresnick, Ph.D., Department of Pharmacology and Toxicology, Dartmouth Medical School (DMS), HB 7650, Hanover, NH 03756. DMS is an Equal Opportunity/Affirmative Action Employer.**

**POSTDOCTORAL RESEARCH ASSOCIATE.** Position available for recent Ph.D. to study the mutation, function, and regulation of thymidylate synthase in human cancer cells, to determine events that influence programmed cell death, and the influence of interferons in these processes. Techniques include molecular biology, gene sequencing, protein purification, enzyme kinetics, HPLC, and cell culture. A strong background in molecular biology, biochemistry, or molecular pharmacology is required. Send curriculum vitae and three letters of reference to: **Dr. J. A. Houghton, Department of Pharmacology, St. Jude Children's Research Hospital, 332 North Lauderdale, Memphis, TN 38101. An Affirmative Action/Equal Opportunity Employer.**

## POSITIONS OPEN

**POSTDOCTORAL/RESEARCH ASSOCIATE POSITION.** Available to study mechanisms of action of antivirals and regulation of expression of eukaryotic enzymes involved in nucleotide metabolism. Candidates with Ph.D. should have experience in molecular biology and/or virology of herpes or HIV. Salary: \$23,000 to \$26,000 per year. Send inquiries and curriculum vitae to: **Dr. Arnold Fridland, Department of Pharmacology, P.O. Box 318, St. Jude Children's Research Hospital, Memphis, TN 38101. An Affirmative Action/Equal Opportunity Employer.**

**ELECTROPHORESIS TECHNICIAN/STAFF ASSOCIATE.** Position in start-up medical instrument company. B.S., M.S., or equivalent experience required. Knowledge of electrophoresis of biological molecules and 3 to 5 years of experience required. Problem-solving and supervisory skills desired. Biotechnology industry-level salary and fringe benefits offered. *Equal Opportunity Employer.* Send résumés to: **Glyko, Inc., 81 Digital Drive, Novato, CA 94949.**

### TRANSPLANTATION IMMUNOBIOLOGY

The Transplant and Immunogenetics Laboratory at Oregon Health Sciences University is recruiting a recent graduate of a Ph.D. program in immunology, who has had at least one postdoctoral position, to conduct research in human immunobiology as it relates to organ transplantation. A recruitment package of salary, space, and start-up funds is available. The individual should be self-supporting within 3 years. Contact: **D. J. Norman, M.D., Oregon Health Sciences University, 3181 S.W. Sam Jackson Park Road, Portland, OR 97201.**

### OCCULAR MOTOR NEUROPHYSIOLOGIST

The Playfair Neuroscience Unit and the Division of Neurology at The Toronto Hospital and the University of Toronto are seeking a neurophysiologist with expertise in eye movement control and vestibular function. A background in mathematics or biomedical engineering is desirable. Preference will be given to an investigator with aptitude for interaction with clinical researchers within the environment of The Toronto Hospital. The successful applicant will be expected to conduct an active research program that complements the bench-to-bedside research endeavors of the Neuroscience Unit. Academic rank is dependent on prior qualifications. Candidates should have a Ph.D. or equivalent. Please send curriculum vitae, statement of research goals, and three letters of reference by 30 April 1991 to: **Dr. James A. Sharpe, Chairman, Division of Neurology, The Toronto Hospital, University of Toronto, 399 Bathurst Street, Toronto, Ontario M5T 2S8, Canada. The University of Toronto encourages applications from qualified women and men, members of visible minorities, aboriginal peoples, and persons with disabilities. In accordance with Canadian immigration requirements, this advertisement is directed firstly to Canadian citizens and permanent residents.**



## ANNOUNCING A NEW SERVICE FROM SCIENCE

Now you can pay for your line classified ad with a credit card — we accept MasterCard and VISA.

Please let us know on your ad order that you wish to take advantage of this service, or ask us for further details.

**SCIENCE Classified Advertising  
Tel: 202-326-6555 FAX: 202-682-0816**

## Explore A New Realm Of Leadership.

As the global leader in the competitive diagnostics industry, Abbott Laboratories has made developing new technology a central priority. Today, we're looking for a problem solver, who will provide project leadership and technical support to our diagnostic customers.

### BIOCHEMIST

The selected candidate will provide technical support for immunodiagnosics, and act as a liaison between customers, operations and Abbott product designers. We are seeking an individual with 0-4 years postdoctoral and/or industrial experience, plus a Ph.D. in Biochemistry or a related field. Experience with EIA, RIA and protein purification is desired but not necessary.

Our corporate headquarters is located in an attractive suburban area, just 30 miles north of Chicago. In addition to an environment of exceptional business performance and high technology, we offer an excellent compensation and benefits package including profit sharing and a stock retirement plan. For consideration, please submit your resume to: **S.M. O'Hara, Job #55606, Corporate Placement, Abbott Laboratories, One Abbott Park Road, Abbott Park, IL 60064.** Abbott is an Affirmative Action Employer.

**Meeting Bound?**  
**See Abbott Representatives**  
**at FASEB April 15-18**

### ABBOTT LABORATORIES



Quality  
Health Care  
Worldwide  
1888-1991

*Experience The Abbott Edge.*

## Clinical Associate or Senior Staff Fellow

The Laboratory of Clinical Studies, National Institute on Alcohol Abuse and Alcoholism, Public Health Service, invites applications for a position to study alcoholism and its complications. Unique opportunity to become a member of a multi-disciplinary team working in a 10-bed research ward and outpatient clinic at the National Institutes of Health Clinical Center, Bethesda, Maryland. State-of-the-art equipment and experienced technical support available. The salary range is \$40,000 to \$52,000 per annum commensurate with qualifications. Interested candidates must be board certified or eligible internists who are U.S. citizens or permanent residents. Position information and qualification requirements may be obtained by contacting:

**Ted George, M.D.**  
**National Institute on Alcohol**  
**Abuse and Alcoholism**  
**Laboratory of Clinical Studies**  
**Building 10, Room 3B-19**  
**9000 Rockville Pike**  
**Bethesda, Maryland 20892**  
**Telephone Number 301-496-9705**



Submit Curriculum Vitae and names of three references to Dr. George. The position is available now.

NIAAA is an Equal Opportunity Employer

### CALL FOR ABSTRACTS

## Fifth Annual North American Cystic Fibrosis Conference

Loew's Anatole Hotel  
Dallas, Texas  
October 2-5, 1991

A multidisciplinary conference for researchers, physicians, and allied health professionals on the latest advances in CF research and care.

**PROGRAM CHAIRMEN**  
Richard C. Boucher, M.D.  
Paul M. Quinton, Ph.D.

### ■ PLENARY SESSIONS

*The Gene Two Years Later:*  
*Progress and Projections*  
Francis S. Collins, M.D., Ph.D.

*New Frontiers in Therapy*  
Ronald G. Crystal, M.D.

### ■ SPECIAL SESSION: Late Breaking Science

■ **SYMPOSIA:** Functional Consequences of CFTR Expression • Aerosol Antibiotic Therapy • CF 101 • GI Issues • Psychosocial Functioning and Illness Progression • Infant Management • Regulation of Electrolyte Transport • Non-epithelial Expression Systems for Structure/Function Analysis • Pseudomonas Adherence Mechanisms • Controversies in Nutrition • Diagnosis of Respiratory Tract Infections • Rehabilitation • Localization, Function & Endogenous Metabolism of CFTR • Gene Transfer • Regulation of Virulence Genes in Pseudomonas • Eating Behaviors • Transplantation • Controversies in Care

■ **SHORT COURSES:** Designing and Implementing Clinical Trials • Molecular Biology 101 • Research Nurse/Study Coordinator's Training Course • Airway Clearance Techniques

Conference proceedings will be published as a supplement to *Pediatric Pulmonology*. **ABSTRACT DEADLINE: May 15, 1991.**

For abstract forms and registration information, contact:



6931 Arlington Rd.  
Bethesda, MD 20814  
Attn: Caroline McPherson  
(301) 951-4422 FAX (301) 951-6378

## POSITIONS OPEN

**MOLECULAR BIOLOGIST.** Position available for individual interested in collaborative projects on recombinant bioengineering, cloning, and expression of genes for membrane-associated receptors, carbohydrate-binding proteins, and glycosyltransferases. Several years of postdoctoral research experience in molecular biology preferable. Nonprofit research institute located in Seattle, affiliated with University of Washington. Excellent benefit package. Salary is dependent on qualifications. Send curriculum vitae with names and telephone numbers of three references to: **Dr. Steve Anderson, The Biomembrane Institute, 201 Elliott Avenue West, Seattle, WA 98119.** No telephone calls please. Deadline: 30 March 1991.

**NEUROSCIENTIST.** Position at **RESEARCH ASSOCIATE** level available for neuroscientist with interests in cell, developmental, or molecular neurobiology, or physiology/biophysics as related to motor neurons and their pathobiology. Incumbent will join multidisciplinary group studying the response of spinal neurons to pathological insults and/or neural regeneration and plasticity. Excellent facilities and superb opportunities for interaction with a multidisciplinary research group. Send curriculum vitae and three letters of reference by 19 April 1991 to: **Stephen G. Waxman, M.D., Ph.D., Professor and Chair, Department of Neurology, Yale University School of Medicine, 333 Cedar Street, New Haven, CT 06510.** Equal Opportunity/Affirmative Action Employer.

### STAFF SCIENTIST

The Lawrence Berkeley Laboratory's Energy Analysis Program is seeking a highly qualified scientist for a career position.

**ENERGY AND ENVIRONMENTAL ANALYST (B/6277):** Coordination of projects promoting energy efficiency policy innovation in developing countries, with special emphasis on China and Southeast Asia. Prefer Ph.D. in energy-related discipline.

To apply or receive detailed position description, submit résumé to: **Lawrence Berkeley Laboratory, Employment Office, Building 90/1042 (specify job B/6277), 1 Cyclotron Road, Berkeley, CA 94720.** An Equal Opportunity Employer, M/F/H.

### COMPUTATIONAL CRYSTALLOGRAPHY

Immediate openings for **SCIENTIFIC PROGRAMMERS/RESEARCH ASSOCIATES** for computational research and software development in the area of macromolecular crystallography. Development is aimed at extending the program X-PLOR into a comprehensive and flexible crystallography package. Qualified candidates must have several years of experience in crystallography and computer programming. Competitive salary and benefits. Send curriculum vitae and three references to:

**Dr. Axel T. Brunger**  
Department of Molecular Biophysics  
and Biochemistry  
Yale University  
260 Whitney Avenue, P.O. Box 6666  
New Haven, CT 06511

### RADIATION BIOLOGIST WANTED RADIATION BIOLOGY PROGRAM DEPARTMENT OF RADIATION ONCOLOGY KAISER PERMANENTE MEDICAL GROUP LOS ANGELES, CALIFORNIA

Applications for one staff position in radiation biology, available immediately, are invited from individuals with postdoctoral experience in one or more aspects of the radiation sciences. The individual is expected to participate in graduate teaching and a special course for resident training in therapeutic radiology. The successful candidate will be expected to have, or to quickly develop, a program of peer-reviewed research funding. The salary for the position is funded by Kaiser Permanente Medical Group. A wide variety of research interest is acceptable. Professional rank and salary will be consistent with the applicant's experience. Applicant should include complete curriculum vitae, statement of research interests, and the names of three scientists who are willing to write letters of recommendation. Applications should be sent to: **A. Robert Kagan, M.D., Chairman, Department of Radiation Oncology, 4950 Sunset Boulevard, Department J0U-097-03/08/91, Los Angeles, CA 90027.** We are an Equal Opportunity/Affirmative Action Employer.

## POSITIONS OPEN

Applications are sought for the position of **RESEARCH ASSOCIATE** in the Analytical Instrumentation Facility (AIF) at North Carolina State University (NCSU). The successful applicant will report to the director of the AIF and will be responsible for training and graduate level teaching programs in SEM and TEM laboratory practice. Direct experience required in application and maintenance of TEM, STEM, and UHRTEM; field emission and conventional SEM with emphasis on semiconductor applications. The applicant will be required to assist in securing funds from external funding agencies for salary support. A Ph.D. in materials science and engineering and at least 5 years of postdoctoral experience are required. A demonstrated ability to contribute in a mixed service, training, and research environment required. Deadline is 31 March 1991. Send or FAX résumé and three letters of reference to: **P. E. Russell, Director, AIF, Box 7916, NCSU, Raleigh, NC 27695.** FAX: 919-737-2932.

**RESEARCH ASSOCIATE.** The U.S. Department of Agriculture (USDA), Agricultural Research Service (ARS), is seeking a postdoctoral research associate to fill a Biochemist, Insect Biochemist, or Entomologist position, GS-11/12 (\$31,116 to \$37,294 per annum), to work at the Subtropical Agricultural Research Laboratory in Weslaco, Texas. The incumbent will join an international group on in vitro culture of parasitoids. Objective is to economically mass-produce insect parasitoids for biocontrol augmentation programs using artificial media devoid of insect components; viz., insect hemolymph. Incumbent will be involved in research dedication to the identification of ovipositional stimulants, growth factors, and other chemicals. Ph.D. obtained in the last 3 to 4 years is desired in biochemistry, chemistry, or entomology with strong training in analytical chemistry, biochemistry, entomology, nutrition, physiology, and/or tissue culture. Contact: **Dr. William C. Nettles, Jr., USDA, ARS, SARC, 2413 East Highway 83, Weslaco, TX 78596,** or telephone 512-969-4868 or 512-968-7546. Applications in response to this advertisement should be marked S-1-014 (RA-90-68). USDA is an Equal Opportunity Employer.

**RESEARCH ASSOCIATE.** The job to be performed includes highly sophisticated laboratory investigation studying various aspects of age on the hematologic and immune systems. To be qualified for this position an individual must be fully versed with the study of the hematologic and immune systems in both animals and in man. The work includes in vitro culture of bone marrow in order to identify primitive erythroid, myeloid, and megakaryocytic stem cells. In addition, an ability to quantitate and evaluate the effects of various cytokines produced by immune cells on erythropoiesis and myelopoiesis are required. Familiarity with high-pressure liquid chromatography, scintillation counter, radioimmunoassay, and in situ hybridization are included in the work to be performed. The candidate should have an M.D. with course work in biology or physiology and have completed at least 3 years of postdoctoral training in a laboratory involved in the study of immunologic/hematologic system. To apply: mail résumé with copy of ad attached or apply in person with a copy of this ad to: **Arkansas Employment Security Division, P.O. Box 34047 Little Rock, AR 72203, J.O. #538663.** Must have proof of legal authority to work in the United States.

### RESEARCH SCIENTIST IN MOLECULAR BIOLOGY PARASITOLOGY RESEARCH LABORATORY COLORADO STATE UNIVERSITY (CSU)

A Ph.D. scientist with a minimum of 4 to 5 years of post-Ph.D. experience is sought to participate in research into molecular cloning and expression of parasitic nematode antigens.

Molecular biology expertise is essential. Experience in construction of cDNA libraries, eukaryotic gene expression, and supervision of technical staff in related areas will be required. The incumbent will also be expected to interact extensively with parasitologists and immunologists involved in the same overall project.

Salary commensurate with credentials. Deadline: 1 May 1991 (search may be extended if suitable candidate is not found). Please send application materials to: **Dr. Robert B. Grieve, Professor, Department of Pathology, Colorado State University, Fort Collins, CO 80523.** Telephone: 303-491-4964.

CSU is an Equal Opportunity/Affirmative Action Employer. E.O. Office: 314 Student Services Building.

## POSITIONS OPEN

**RESEARCH SCIENTIST, ASSOCIATE.** To assume lead role in plant canopy process/micrometeorology modeling as part of integrated modeling team. Duties include modifying current version of generic growth and canopy model and adapting to loblolly pine and other plant species, developing approach for scaling stomatal responses of leaves to whole canopies, and modeling canopy processes, particularly micrometeorological and multilayer radiative transfer phenomena. Ph.D. in agricultural science with emphasis in meteorology; 1 year of experience in job offered required. Job and interview site: San Diego, California. Salary: \$2682 per month; 40 hours per week. Send this ad and your résumé to: **Job #PM10070, P.O. Box 9560, Sacramento, CA 95823-0560** no later than 30 March 1991.

## COURSES AND TRAINING

**FLOW CYTOMETRY APPLICATIONS COURSE** will be presented at the University of New Mexico (UNM) School of Medicine, Albuquerque, 9 to 14 June 1991. The course, cosponsored by the National Flow Cytometry Resource (NFCR) and UNM, will emphasize applications in immunology and cell biology. Course tuition: \$595. For information, contact: **Mary Cassidy, NFCR, MS M888, Los Alamos National Laboratory, Los Alamos, NM 87545.** Telephone: 505-667-3914.

## MARKETPLACE

**Custom DNA**  
Best quality and value  
**Call Midland**  
1-800-247-8766

### DNA SEQUENCING

- Fast. Accurate. Affordable.
- Definitive Nucleotide Sequence
- Subcloning, Mapping, *in vitro* Mutagenesis, Library Construction
- Complete Molecular Biology Services

**Ambion** 1-800-888-8804  
1-512-445-7139 FAX

Circle No. 163 on Readers' Service Card

### MYCOPLASMA TESTING SERVICES



**Cell Cultures** **Bioproducts**  
**Sera** **Vaccines**  
**Media** **GLP Testing**

**BIONIQUE TESTING LABORATORIES, INC.**  
RR 1 Box 2 Bloomingdale Road  
Saranac Lake, New York 12983  
518-891-2356 FAX: 518-891-5753

Circle No. 121 on Readers' Service Card

### HIGH PURITY PHOSPHOLIPIDS

Grams to kilograms, top quality, good prices.  
DSPC, DPPC, DMPC, DLPC, DOPC, EPC,  
DLoPC, H-SPC

**Princeton Lipids**  
1-800-678-LIPIDS (5474)

Circle No. 58 on Readers' Service Card

**Custom DNA**  
Purified and  
Delivered in 48 hours.

\$10.00 a base for the first 15 bases, \$7.50 for each additional base. No additional charges.

**Research Genetics**

1-800-533-4363

Circle No. 5 on Readers' Service Card



# You have two choices in the lab:

1. Work long and hard
2. Work long and easy



## Consider the new Nikon Labophot-2.

We can't change the number of working hours in your day, but we can help to make them more pleasant *and* productive with the new Nikon Labophot-2.

Labophot-2 has been newly designed for the highest level of performance and comfort: improved contrast and reduced lens flare, glare and light transmission loss provide significantly brighter and sharper images, with truer color fidelity. Plus, there's improved efficiency with a larger viewing field and brilliant, 30-watt halogen illumination.

Try the new Labophot-2 and you'll feel the difference: large, soft controls for fine and coarse focusing; a graduated field diaphragm control ring; effortless stage movement; simplified illumination controls; conveniently placed filters; one-hand adjustment for eyepiece diopter setting; and easily accessible reverse-facing nosepiece.

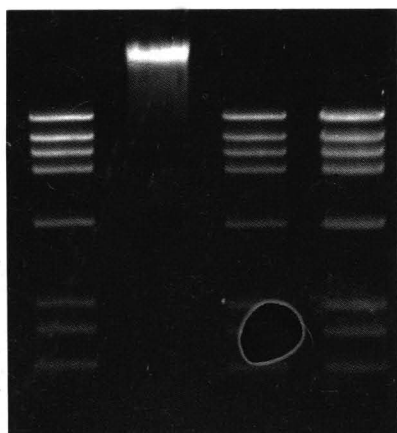
When you work long hours in the lab, the choice becomes obvious—the new Nikon Labophot-2. For information, call your local dealer or Nikon at (516) 547-8500.

# Nikon

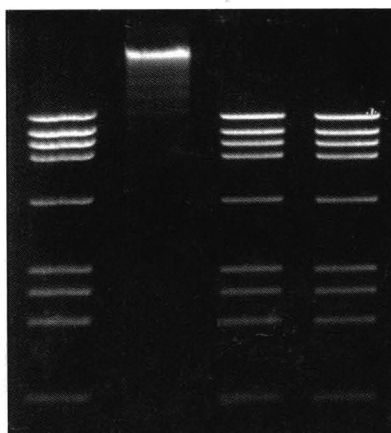
Nikon Inc., Instrument Group, 1300 Walt Whitman Rd., Melville, NY 11747-3064.Circle No. 92 on Readers' Service Card



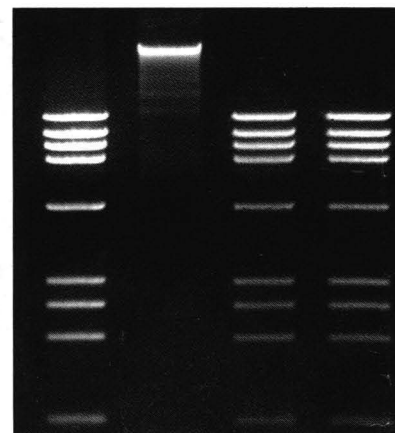
# Quality Isn't The Difference Anymore.



*Which enzyme is the one you typically use?\**



*You really can't tell, can you?*



*Because product quality isn't really the difference anymore.*

At least not in deciding which enzymes to buy. As these gels indicate, biological enzyme quality has become an industry standard. Most product prices and selections are equal as well. That's why IBI and VWR are working hard to provide you with a product that does make a difference...Outstanding Service.

## **Having The Best Distribution Makes A Difference.**

You've probably heard about our partnership with VWR Scientific, one of the market's leading distributors. Now you can one-stop-shop for all your laboratory products and elimi-

nate expensive and time-consuming sourcing and ordering paperwork.

## **Having The Best Response Time Makes A Difference.**

To provide immediate shipping and eliminate the time change between the East and West Coasts, VWR stocks IBI biologicals at three U.S. locations. With 250 representatives nationwide, you can count on personalized attention and timely response.

## **Having The Best Guarantee Makes A Difference.**

Our promise is simple. IBI enzymes perform to their stated specifications

or you get a credit for twice the value of your purchased product.

## **Your Satisfaction Makes A Difference.**

We're taking service very seriously. After all, when product quality, price and selection are the same, getting the best service makes all the difference.

For additional information, please contact IBI Technical Resources at (800) 243-2555 or your local VWR Sales Office. Outside of the U.S., contact the IBI International Sales Department at (203) 786-5600 for the name of the distributor nearest you.



**INTERNATIONAL BIOTECHNOLOGIES, INC.**  
Subsidiary of Eastman Kodak Company  
P.O. Box 9558, New Haven, CT 06535

Distributed by

**VWR Scientific**

A VWR COMPANY

\* Lane 1: *Kpn*I cut Adenovirus Type 2 DNA, 5 Units/ $\mu$ g DNA; Lane 2: ligated product; Lane 3: ligated product recut with 5 U *Kpn*I/ $\mu$ g DNA; Lane 4: overdigest, 30 U/ $\mu$ g DNA.  
If you would like to review the specifics of these assays or know which companies were involved, contact one of the numbers listed.

Circle No. 159 on Readers' Service Card