

gas sippers, but to economic questions involving more money, such as installation of a solar energy system on your house to cut your gas and electric bills.

ROBERT G. CHAMBERLAIN
Operations Research Group,
Jet Propulsion Laboratory,
California Institute of Technology,
Pasadena 91103

References and Notes

1. Discussions with Doug Armstrong of the Milwaukee *Journal* have caused me to realize that I should have pointed out that all percentages have to be converted to fractions (by dividing by 100 percent) before they can be used in the second equation in my earlier letter. More important, the "improvement" obtained by using the second equation instead of the first is quite small: If $d = 10$ percent, then $i = 1.5$ percent per month (18 percent per year compounded monthly, a rather high rate) and $K = 0.25$ percent per month (3 percent per year compounded monthly, a rather low rate) and Y only increases by a factor of 1.3. Reversing the values of i and k decreases Y by the same factor. The adjustment for the gasoline inflation rate, g , is a rather weak approximation.
2. All percentages must be converted to fractions (by dividing by 100 percent) before use in equations.

Brown's Administrative Philosophy

Luther J. Carter's article "Carter and the environment" (News and Comment, 14 Mar., p. 1190) leaves the impression that I, among others, might not share the judgment of the League of Conservation Voters that, on the issues, California Governor Brown had the strongest record of any of the candidates. On the contrary, I was extensively consulted by the League in developing the material on Brown and believe that those materials fairly represent his record. His administrative weaknesses are explicitly referred to in a number of places. If, as I believe, certain programs have moved ahead more swiftly in Brown's absence, it should not be overlooked that they have been moved ahead by appointees of the Governor's choosing, as part of an explicit philosophy of public administration. Governor Brown's explicit philosophy is to appoint men and women with whom he is in agreement on priorities and values. This contrasts with President Carter's approach when he appointed James Schlesinger to head the Department of Energy and then tried to steer the Secretary down the path of presidential values. On the record, Brown's approach seems to work better for the environment than Carter's.

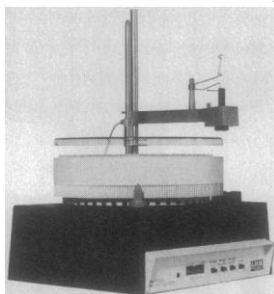
CARL POPE

Sierra Club, 530 Bush Street,
San Francisco, California 94108

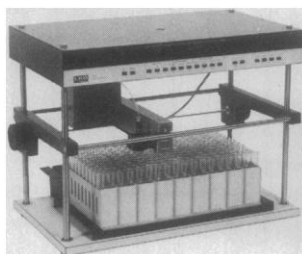
Erratum: The price of *The Properties of Diamond*, J. E. Field, Ed., Academic Press, reviewed by F. P. Bundy (29 Feb., p. 974), is \$75.

25 APRIL 1980

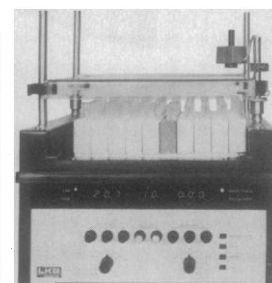
Fraction collectors from LKB span a range of capability and cost— every one provides LKB reliability



RediRac: portable—
economical—variable
tube size



MultiRac: overhead
microprocessor—
programmable—solvent
resistant



UlteroRac: rugged—easy
to use—200 tube capacity

The three fraction collectors LKB makes today range from a portable circular unit to one with microprocessor control that can collect from microliters to gallons. Each is engineered from a bench worker's viewpoint—a fact of life for us from the time we made equipment for Svedberg and Tiselius.

Some say LKB uses circuitry, mechanical systems, materials of construction and QC methods which far exceed normal requirements. *Nostra culpa*. We believe in giving good value for money no matter how simple or sophisticated the instrument. Far better than compromising quality for price.

And if you ever need service, you get it fast from LKB without having to ship your unit back to us. (Money-saving service contracts are available.) Even better—we can furnish in-depth training for *your own* service people.

Reliability of design, reliability of manufacture, reliability of service: they all add up to reliability of performance. Is it prudent to settle for anything less? Contact LKB today for information on RediRac®, UlteroRac® and MultiRac™ fraction collectors.

LKB

LKB Instruments Inc.
12221 Parklawn Drive, Rockville, MD 20852
301: 881-2510

Circle No. 216 on Readers' Service Card

83A-316