

per's College Press, New York, 1977. xvi, 510 pp., illus. \$14.95.

**The Physical Chemistry and Mineralogy of Soils.** Vol. 2, Soils in Place. C. Edmund Marshall. Wiley-Interscience, New York, 1977. xvi, 314 pp., illus. \$25.

**The Plundered Past.** Karl E. Meyer. Atheneum, New York, 1977. xxii, 354 pp. + plates. Paper, \$5.95. Reprint of the 1973 edition.

**Polymer Syntheses.** Vol. 2. Stanley R. Sandler and Wolf Karo, Eds. Academic Press, New York, 1977. xii, 402 pp., illus. \$39.50.

**Problems for Musical Acoustics.** William R. Savage. Oxford University Press, New York, 1977. vi, 204 pp., illus. Paper, \$3.50.

**Prospecting in Areas of Glaciated Terrain 1977.** Papers from a symposium, Helsinki, Aug. 1977. Institution of Mining and Metallurgy, London, 1977. vi, 140 pp., illus. Paper, \$30.

**Psychobabble.** Fast Talk and Quick Cure in the Era of Feeling. R. D. Rosen. Atheneum, New York, 1977. xii, 234 pp. \$8.95.

**Psychological Linguistics.** J. R. Kantor. Principia Press, Chicago, 1977. xvi, 304 pp. \$15.

**Psychoticism as a Dimension of Personality.** Hans J. Eysenck and Sybil B. G. Eysenck. Crane, Russak, New York, 1976. xii, 232 pp., illus. \$16.

**The Raised Curtain.** Report of the Twentieth Century Fund Task Force on Soviet-American Scholarly and Cultural Exchanges. Background Paper by Herbert Kupferberg. Twentieth Century Fund, New York, 1977. viii, 102 pp. Paper, \$3.

**The State of the Art in Numerical Analysis.** Proceedings of a conference, York, England, April 1976. D. Jacobs, Ed. Academic Press, New York, 1977. xx, 978 pp., illus. \$39.

**Statistical Mechanics.** Part B, Time-Dependent Processes. Bruce J. Berne, Ed. Plenum, New York, 1977. xvi, 262 pp., illus. \$39.50. Modern Theoretical Chemistry, vol. 6.

**Success with Corydoras Catfish.** Steven Dow. Arco, New York, 1977. 90 pp., illus. Cloth, \$7.95; paper, \$4.95. Pet Reference Series No. 4.

**Systematics.** Don Hegberg. Systematic Development Incorporated, P.O. Box 52, Pasadena, Calif. 91102, 1977. xiv, 748 pp. Paper, \$12.60.

**Textbook of Human Genetics.** Max Levitan and Ashley Montagu. Revised by Max Levitan. Oxford University Press, New York, ed. 2, 1977. x, 1012 pp., illus. \$20.

**Trade Preferences for Developing Countries.** Tracy Murray. Halsted (Wiley), New York, 1977. xiv, 172 pp. \$17.75. Problems of Economic Integration.

**Urban Utopias in the Twentieth Century.** Ebenezer Howard, Frank Lloyd Wright, and Le Corbusier. Robert Fishman. Basic, New York, 1977. xiv, 332 pp. + plates. \$13.95.

**The Visible Hand.** The Managerial Revolution in American Business. Alfred D. Chandler, Jr. Belknap Press of Harvard University Press, Cambridge, Mass., 1977. xvi, 608 pp. \$18.50.

**Volcanic Regimes in Canada.** Proceedings of a symposium, Waterloo, Ontario, May 1975. W. R. A. Baragar, L. C. Coleman, and J. M. Hall, Eds. Geological Association of Canada, Toronto, 1977. viii, 478 pp., illus. \$18; to members, \$15. Geological Association of Canada Special Papers, No. 16.

**Whitney's Star Finder.** A Field Guide to the Heavens. Charles A. Whitney. Knopf, New York, ed. 2, 1977. xx, 106 pp., illus. Paper, \$5.95.

## Our compact MM-33 micromanipulator drives by hand or motorized 'joy stick'.

Ideal for working at magnifications up to 250X, the MM-33 provides coarse movements in 3 planes (XYZ) plus fine movement in the thrust axis. Excursions calibrated in millimeters with vernier readings to 0.1 mm; final drive calibrated to 10 microns. Ball-bearing raceways assure smooth, backlash-free operation. All controls aligned in same vertical plane permits use of several MM-33's side by side. Mounts on Flexbar or a variety of bases.

Also available in a motorized version (MM-33M), with 'Joy Stick' remote unit for vibration-free control of speed and direction. For literature, write: Brinkmann Instruments, Cantiague Rd., Westbury, N.Y. 11590.

**Brinkmann Micromanipulators**

Circle No. 18 on Readers' Service Card

## HAND-HELD DISPENSER.



This handy device will dispense 1/50th of the syringe volume every time you push the button. Disposable tips available. Write for free catalog. Hamilton Com-

pany, P.O. Box 10030, Reno, Nevada 89510.

**HAMILTON**

Circle No. 69 on Readers' Service Card

# Compare...



## There is no better way to identify particles

Chemical microscopy combines the best features of other analytical techniques—it is rapid, non-destructive, sensitive, and identifies an unknown substance in terms of molecular composition, as well as the solid phase in which it occurs. However, even the most skillful microscopist is limited by experience—you must have seen a particle in order to identify it. But there is an excellent substitute for having previously seen a particle: The Particle Atlas—a unique data bank consisting of 4,500 expert micrographs and complete particle descriptions of 1,020 particles.

Here is your opportunity to greatly expand your expertise in particle identification/analysis. Send for a full-color, descriptive brochure and complete details on the new, 6-volume Particle Atlas (McCrone & Delly).



**ANN ARBOR SCIENCE**  
PUBLISHERS INC

P.O. BOX 1425 • ANN ARBOR, MICH. 48106

Circle No. 80 on Readers' Service Card

# cGMP (8,5'-<sup>3</sup>H) 35-50Ci/mmol

- Protein binding studies
- Radioimmunoassay
- Assay of 3',5'-cyclic nucleotide hydrolyzing enzymes

**Guanosine 3',5'-cyclic phosphate, ammonium salt, [8,5'-<sup>3</sup>H]-**

35-50Ci/mmol Ethanol:water, 1:1, shipped in dry ice.

NET-554 250μCi 1mCi

Also:

**Adenosine 3',5'-cyclic phosphate, ammonium salt, [<sup>3</sup>H(G)]-**

30-50Ci/mmol Ethanol:water, 1:1, shipped in dry ice.

NET-275 250μCi 1mCi 5mCi

Send for our new Nucleotides Brochure.

Not for use in humans or clinical diagnosis.



**New England Nuclear**

549 Albany Street, Boston, Mass. 02118

Customer Service 617-482-9595

NEN Chemicals GmbH, Dreieich, W. Germany; NEN Canada Ltd., Lachine, Quebec

Circle No. 93 on Readers' Service Card

## Journal of Environmental Pathology and Toxicology

Official Organ of the American College of Toxicology

SPECIAL ISSUE Vol. I, No. 2

**THE STATUS OF PREDICTIVE TOOLS IN APPLICATION TO SAFETY EVALUATION (CARCINOGENESIS AND MUTAGENESIS)**

THIS MONOGRAPH PRESENTS STATE OF THE ART DATA BY 67 EXPERTS REPRESENTING THEIR RESEARCH AND CONCLUSIONS CORRELATING THE RELATIONSHIP BETWEEN MUTAGENICITY AND CARCINOGENICITY. A SPECIFIC SECTION IS DEVOTED TO CURRENT APPROACHES TO DETERMINE THE MUTAGENIC PROPERTIES OF CHEMICALS AND THEIR POTENTIAL RISK TO FUTURE GENERATIONS.

A SPECIAL REPORT IS INCLUDED OF THE SUBCOMMITTEE ON INHALATION TOXICOLOGY OF THE DHEW COMMITTEE TO COORDINATE TOXICOLOGY AND RELATED PROGRAMS.

388 pages — 155 tables

ISBN 0-930376-02-1

ISSN: 0146-4779

Lib. of Cong. Cat. No.: 77-91833

\$23.00 (Hard cover) \$18.50 (Soft cover)

Make check or money order payable to:



**PATHOTOX PUBLISHERS, INC.**  
2405 BOND STREET  
PARK FOREST SOUTH, ILLINOIS  
60466 U.S.A.

(312) 563-1770

Circle No. 149 on Readers' Service Card

## New from California

### BMDP-77

Biomedical Computer

Programs, P-Series

Edited by W. J. Dixon

and M. B. Brown

893 pages, graphs, charts

equations throughout,

paper \$11.50

### The Molecular Biology of Plant Cells

Edited by H. Smith

Botanical Monographs #14

520 pages, Illustrated, \$25.00

Second Edition—

### Tumors in Domestic Animals

Edited by

Jack E. Moulton

478 pages, 457 photos, 20

tables, \$30.00

### Solute

### Movement in the Soil-Root System

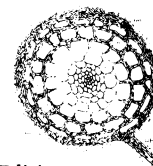
P. H. Nye and

P. B. Tinker

Studies in Ecology #4

356 pages, 41 tables,

132 figures, 7 photos, \$23.00



Second Edition—

### Plant Tissue and Cell Culture

Edited by H. E. Street

626 pages, 180 illustrations,

\$40.00

At bookstores

University of California Press Berkeley 94720

Circle No. 131 on Readers' Service Card

# Personnel Placement

Personnel advertising is accepted only with the understanding that the advertiser does not discriminate among applicants on the basis of race, sex, religion, age, color, national origin, or handicap.

**Positions Wanted:** 40¢ per word; \$4 extra for use of box number. \$10 minimum charge, per insertion. Prepayment required. This rate is available only to individuals; personnel agencies, companies, colleges, and universities take display rate for all advertising.

**Display (Positions Open, Market Place, and so forth):** \$5.80 per millimeter; \$145 minimum charge, per insertion (covers 25 millimeters on single column; 25 millimeters equals 10 lines of 50 spaces per line). No charge for use of box number. No agency commission for ads under 103 millimeters (4 inches). No cash discount. Prepayment required for foreign advertising. Purchase orders and billing information required for all other ads.

SCIENCE is published weekly, on Friday. Copy must be received in writing by Wednesday, 3½ weeks before Friday issue date required. Send copy for all positions wanted ads and display ads under 5 inches to:

SCIENCE, Room 207  
1515 Massachusetts Ave., NW  
Washington, D.C. 20005  
Telephone: 202-467-4456

Send copy for display ads, 1/6 page and larger, to:

Scherago Associates, Inc.  
1515 Broadway  
New York, N.Y. 10036  
Telephone: 212-730-1050

Blind ad replies should be addressed as follows:

Box (give number)  
SCIENCE  
1515 Massachusetts Ave., NW  
Washington, D.C. 20005

## POSITIONS WANTED

**Biochemical Endocrinologist.** Ph.D. Two years of independent postdoctoral research and teaching. Extensive experience in human and experimental mammary cancers, hormone receptors, tissue culture, and RIA. Broad proficiency in biochemical techniques. Publications, societies, honors, and references. Prefers academic or industrial position. Available summer 1978. Box 18, SCIENCE. X

**Biostatistics** Ph.D. (1977) with broad mathematics/statistics background and 1½ years of government-contract research and development experience; seeks challenging, rewarding position as mathematical modeler/analyst for biomedical, environmental science, or other applications. Box 80, SCIENCE. 3/16, 24

**Electron Microscopist.** Ph.D. Broad undergraduate and graduate teaching experience in biology, research in ultrastructure of airways and lung, experience with histochemistry of mucosubstances, grant-supported, publications, societies, honors, references. Seeks academic, research/diagnostic position. New York metropolitan area. Box 82, SCIENCE. X

**Human Cytogeneticist.** Ph.D. Experience in cell culture chromosomal banding, amniocentesis, research publications. Seeks relocation. Box 83, SCIENCE. X

**Microbiology-Biochemistry-Toxicology.** (Ph.D. 1970). Two-year postdoctoral, NIH; 3 years of chemical industry R & D; 3 years of government contract research in chemical carcinogenesis. Development of short-term mammalian genetic toxicology assays. Seeks position in science-based R & D environment. Box 81, SCIENCE. X

**Oncologist ABIM.** MO. Medical school faculty with administrative health care experience; desires relocation. Preference: medical school interested in developing cancer program. Box 64, SCIENCE. X

**Toxicologist.** Ph.D. 1976, M.S. biochemistry. Broad background, chemistry emphasis, with interests in analytical methods, biochemical mechanisms, and specific enzyme inhibition. Desires challenging position. Postdoctoral experience in reaction mechanisms of environmental importance. Box 84, SCIENCE. X

## POSITIONS OPEN

### APPLIED AND COMMUNITY NUTRITIONIST TEACHING AND RESEARCH

Memorial University of Newfoundland seeks a faculty member for teaching and research in the Department of Biochemistry. Applicants should have a Ph.D. degree, or its equivalent, with a strong background in applied nutrition. Experience and interest in community nutrition are desirable. Applications with biography, transcripts, research interests, and names of references should be sent to: **Professor N. F. Haard, Chairman, Search Committee, Department of Biochemistry, Memorial University of Newfoundland, St. John's, Newfoundland, Canada A1B 3X9.** Salary and position commensurate with training and experience.

**ASSISTANT DIRECTOR, Ohio Agricultural Research and Development Center, Wooster, Ohio.** Opening 1 May 1978. Requirements: Ph.D. degree in a plant science discipline, agricultural engineering, or natural resources with experience in agricultural research, teaching and/or extension activities. Applicant must have demonstrated ability and interest in research administration. Forward nominations or letters of interest with résumé by 3 April to: **Dr. Charles Johnston, Ohio Agricultural Research and Development Center, Wooster, Ohio 44691.** An Equal Opportunity/Affirmative Action Employer.

**ASSISTANT OR ASSOCIATE PROFESSORSHIP** available by 1 July 1978 for teaching and conducting research on functional properties of food constituents. Investigations will emphasize scientific principles underlying the role of constituents and their interactions in producing desirable properties in foods. Specific research programs will depend upon the expertise and interests of the candidate. Teaching responsibilities include coordinating laboratory courses on principles of food composition and properties. Requirements include a Ph.D. degree in an area pertinent to food science (biophysics, biochemistry, chemistry, physics, food science, nutrition, or a related field) and a demonstrated interest in food science. Send curriculum vitae, transcripts of undergraduate and graduate work, and publications to: **Professor T. A. Nickerson, Chairman, Search Committee, Department of Food Science and Technology, University of California, Davis, California 95616.** At least three persons should be requested to send letters of recommendation. Applications must be received by 1 May 1978. An Equal Opportunity/Affirmative Action Employer.

**ASSISTANT PROFESSOR** wanted by 1 July 1978 for teaching and conducting research in cryoscience and technology, emphasizing investigation of the fundamental scientific principles of the frozen state and application of such principles to improving frozen food quality. Requirements include a Ph.D. degree pertinent to food science (biophysics, biochemistry, botany, chemistry, engineering, food science, physics, or a related field) and an interest in food science. Send curriculum vitae, transcripts of undergraduate and graduate work, and publications to: **Professor W. D. Brown, Chairman, Search Committee, Department of Food Science and Technology, University of California, Davis, California 95616.** At least four persons should be requested to send letters of recommendation. Applications must be received by 1 May 1978. An Equal Opportunity/Affirmative Action Employer.

**ASSISTANT PROFESSOR.** Ph.D. in biochemistry, must have the ability to carry out a successful research program in protein chemistry, enzymology, or biochemical pharmacology. Send a detailed curriculum vitae, publication list, and three letters of recommendation to: **Dr. R. E. Townshend, Department of Chemistry, Concordia University, Montreal, Quebec, Canada H3G 1M8.**

### ASSISTANT PROFESSOR OF EXPLORATION GEOPHYSICS IN THE UNIVERSITY OF CALIFORNIA, BERKELEY

Applications are invited for an assistant professor in the engineering Geoscience Group in the field of applied or exploration geophysics. Applicants should have a Ph.D. and have an interest in teaching and research dealing with the application of geophysics in the broad area of energy and mineral exploration. Address inquiries to: **Chairman, Department of Materials Science and Mineral Engineering, University of California, Hearst Mining Building, Berkeley, California 94720.** The University of California is an Affirmative Action/Equal Opportunity Employer. Minority and women candidates are encouraged to apply.

## POSITIONS OPEN

### CORNELL UNIVERSITY

The Department of Poultry Science has an opening for an **ASSISTANT PROFESSOR OF ANIMAL PHYSIOLOGY** beginning 1 July 1978. Preference will be given to those who have experience in using immunological concepts and techniques in the testing hypotheses and solutions of problems in endocrinology or reproductive physiology. Training and/or experience in endocrinology and immunology are desirable. Applicants should submit curriculum vitae, names of three references, a synopsis of research, and reprints before 1 June 1978 to: **Dr. A. van Tienhoven, Rice Hall, Cornell University, Ithaca, New York 14853.** Cornell University is an Equal Opportunity Employer.

**ASSISTANT PROFESSOR OF BIOCHEMISTRY.** Applications are invited for the position of an assistant professor of biochemistry at the Department of Biological Chemistry, University of California at Los Angeles (UCLA), School of Medicine, in conjunction with the biochemistry section of the Mental Retardation Research Center at UCLA. The successful candidate is expected to participate in the biochemical research program of the MRR Center, devoted largely to the study of inborn errors of metabolism (enzyme deficiency diseases) at the molecular level, for example, elucidation of the nature of genetic mutations leading to catalytically impaired enzymes, or of altered metabolic pathways as a result of enzyme mutations. Experience in enzymology, protein chemistry, intermediary metabolism, amino acid metabolism, and application of GC-mass spectrometry for analysis of complex mixtures will be considered an advantage. A degree of Ph.D. in biochemistry or related subject is essential. Teaching duties will be in the Department of Biological Chemistry for medical and graduate students of biochemistry. The biochemistry section of the MRR Center is led by Dr. George Popjak and has fully equipped laboratories. Applications containing curriculum vitae, past research experience, list of publications, future research objectives, and names of three referees should be sent to: **Chairman, Search Committee, Department of Biological Chemistry/MRR Center, UCLA School of Medicine, Center for Health Sciences, Los Angeles, California 90024.** Deadline for applications: 1 April 1978.

UCLA is an Equal Opportunity Employer conforming to Affirmative Action policies.

### ASSISTANT PROFESSOR—BIOCHEMISTRY

The Department of Biochemistry at Michigan State University invites applications from individuals of demonstrated research capability for a position as assistant professor. This position will be available on or after 1 September 1978.

Applicants should hold the Ph.D. degree in biochemistry or a related field and have had postdoctoral research experience. The successful candidate is expected to develop a strong, independent research program utilizing previous expertise with recombinant DNA methodology. In addition, the training of students, staff, and postdoctoral associates in recombinant DNA techniques is expected.

Interested individuals should submit, prior to 15 April 1978, a complete curriculum vitae, the names of at least three references, and a statement describing their proposed research program to:

**Dr. Robert Barker, Chairman  
Department of Biochemistry  
Michigan State University  
East Lansing, Michigan 48824**

Michigan State University is an Equal Opportunity/Affirmative Action Employer.

### ASSISTANT OR ASSOCIATE PROFESSOR (TWO POSITIONS)—BIOLOGY

The department invites applications from qualified individuals with a commitment to teaching and research. Postdoctoral experience desirable. Demonstrated ability to conduct research in one of the following: cytology, cytochemistry, developmental biology, physiology, entomology, or ecology. The successful candidate will be expected to participate in the teaching of undergraduate courses, develop an advanced course in an area of specialization, and supervise graduate students. Applications including curriculum vitae should be sent to:

**Ruth Witkus  
Department Biological Sciences  
Fordham University  
Bronx, New York 10458**

Fordham University is an Equal Opportunity/Affirmative Action Employer.

## POSITIONS OPEN

### ASSISTANT PROFESSOR OF MEDICINE AND PHARMACY IN-RESIDENCE

The School of Pharmacy and Division of Clinical Pharmacology, School of Medicine, University of California, San Francisco, is recruiting for an assistant professor in-residence who will also serve as an academic administrator and medical director for an organized research activity, the Drug Studies Unit. This unit performs phase I through IV clinical trials in normal volunteers and in patients. Required: medical degree, postgraduate training in pharmacology and pharmacokinetics. Duties: medical director, Drug Studies Unit; coordination clinical pharmacology consultation service, Moffitt Hospital; teaching clinical pharmacology fellows, and clinical pharmacy and medical students; and research. *All qualified candidates welcome; minorities and women encouraged to apply.* Send curriculum vitae and three references before 15 April 1978 to:

Dr. Leslie Z. Benet  
926 S  
University of California  
San Francisco, Calif. 94143

### DEPARTMENT OF OPHTHALMOLOGY COLUMBIA UNIVERSITY

Seeking full-time academic staff member at the ASSISTANT PROFESSOR level. Accomplished scientist, demonstrated capability in biophysics, optical physics, optical and laser engineering, research and teaching. *An Affirmative Action/Equal Opportunity Employer.* Send curriculum vitae to: Edward S. Harkness Eye Institute, Box 20, 635 West 165 Street, New York, New York 10032.

### ASSISTANT PROFESSOR— PLANT STRESS PHYSIOLOGY

The Horticulture Department invites applications for tenure-track assistant professor position in stress physiology. The primary research effort (70 percent) will include fundamental problems of low moisture and/or high temperature. Some teaching (30 percent) at the undergraduate and graduate levels is expected. Applicants should have a Ph.D. in some area of plant science and have demonstrated interest and ability to conduct basic research and to participate in a team effort to solve short range problems relating to drought and heat stresses. Salary is competitive and commensurate with training and experience. Candidates with superior qualifications may be considered at a more senior level. Applications will be accepted through 1 May 1978 or until the position is filled. Send biographical information, reprints of pertinent publications, transcripts, and names of four references to: J. H. Cherry, Chairman, Search Committee, Department of Horticulture, Purdue University, West Lafayette, Ind. 47907; telephone: 317-749-2261.

*Purdue is an Equal Access/Equal Opportunity University.*

## WEBER STATE

### JOB OPENINGS

**ASSISTANT PROFESSOR OF ZOOLOGY**—Ph.D. degree in zoology from an accredited university, with competency in physiology and anatomy required. Teaching experience preferred. Teaching subjects may include physiology, anatomy, general zoology, invertebrate zoology, and vertebrate zoology. Research interest and experience desirable. Position will start fall quarter 1978. Job won't be filled prior to 15 April 1978.

APPLY—W.S.C. PERSONNEL OFFICE  
ADMINISTRATION BLDG., ROOM 111  
3750 HARRISON BLVD., OGDEN, UT 84408  
AN EQUAL OPPORTUNITY /  
AFFIRMATIVE ACTION EMPLOYER—M/F

## POSITIONS OPEN

**BIOLOGY FACULTY.** Liberal arts college with commitment to teaching seeks assistant professor to teach anatomy, physiology, and nutrition to nursing students. Opportunity to develop specialized undergraduate courses for biology majors. Position starts September 1978. Ph.D. and teaching experience required. Salary competitive. Send curriculum vitae to: **Academic Dean, Briar Cliff College, Sioux City, Iowa 51104.** *Equal Opportunity/Affirmative Action Employer.*

## BIOMETRICIAN

Merck Sharp & Dohme Research Laboratories is presently seeking an outstanding biometrician to join our Department of Virology and Cell Biology. This individual will be involved in the planning, execution, analysis, and control of functions required in the biological clinical studies program. The candidate should have a Ph.D. in preventive medicine or epidemiology with the equivalent of an M.S. in statistics. A person with a Ph.D. in statistics and an M.S. in one of the biological sciences will also be considered. This is an unusual career opportunity which offers a highly stimulating, interdisciplinary work environment. Publication of results is strongly encouraged. Compensation and benefit package is excellent. Applicants should send curriculum vitae and the names and addresses of three references to:

VAUGHN L. SWOPE

## Merck Sharp & Dohme

Research Laboratories  
Division of Merck & Co., Inc.  
West Point, Pa. 19486

*An Equal Opportunity Employer*

**CARDIOVASCULAR TRAINING POSITIONS.** The Department of Pharmacology at the Medical University of South Carolina offers postdoctoral training opportunities in cardiovascular function, dysfunction and the action of cardiovascular drugs. Ongoing studies, carried out at the chemical, biochemical, biophysical, morphological, physiological, and clinical levels, focus on the role of vasoactive substances (for example, catecholamines, renin, kinins, and prostaglandins) in control of arterial pressure, the molecular and biophysical basis for cardiac and vascular diseases and cardiovascular drug action, metabolism of drugs, action of drug metabolites, and new drug development. Stipends are available and applications from individuals holding the Ph.D. and/or M.D. degree with backgrounds in the physical and/or biomedical sciences should be addressed to: **Postdoctoral Training Committee, Department of Pharmacology, Medical University of South Carolina, 171 Ashley Avenue, Charleston, S.C. 29403.** *Affirmative Action/Equal Opportunity Employer.*

### CHAIRPERSON, MEDICAL TECHNOLOGY DEPARTMENT

Duties include administration of a new medical technology program, teaching, and student counseling. MT(ASCP) certification or equivalent required. Master's degree applicants with exceptional experience considered, but doctoral degree preferred. Minimum of 5 years of academic/clinical experience required; academic experience in teaching and administration desirable. Salary and academic rank negotiable and dependent upon qualifications. Position is available immediately; closing date for receipt of letters of interest is 30 April 1978. Write for an application to: **Dr. Sidney Rodenberg, Dean, College of Health Related Professions, Wichita State University, Wichita, Kansas 67208.** *An Affirmative Action Employer.*

### CHEMISTRY FACULTY POSITION

**Visiting assistant professor.** Ph.D. with specialty in analytical-inorganic or physical-inorganic. Teach and direct student research in ACS-accredited undergraduate program at small, liberal arts college. One-year position beginning 1 September 1978, with possibility of extension. Send résumé, undergraduate and graduate transcripts, and three letters of recommendation to: **Dr. Robert W. Ridgway, Chairman, Department of Chemistry, Rollins College, Winter Park, Florida 32789.** The deadline for applicants is 1 April 1978. *An Affirmative Action/Equal Opportunity/Title IX Employer.*

## POSITIONS OPEN

### ENDOWED CHAIR— PROFESSOR/DIRECTOR, BIOMEDICAL ENGINEERING AND SCIENCE INSTITUTE

Drexel University invites nominations and applications for the position of Ernest N. Calhoun Professor of the Biomedical Engineering and Science Institute. This generously endowed chair is designed for a productive scholar with established records of teaching and research, and having strong leadership and interest in directing the university's Institute for Biomedical Engineering and Science. This multidisciplinary institute is comprised of 13 full-time faculty from the various colleges of the university, and offers programs leading to the master's and doctorate degrees in biomedical engineering and science. Over 50 students are enrolled in the institute programs. The institute also has close academic/research relationships with Philadelphia area medical schools.

Interested applicants should submit their curriculum vitae and names of five references. *Drexel University is an Equal Opportunity Employer.*

Send application material to:

Dr. Hun H. Sun, Chairman  
Search Committee for Calhoun Professor/  
Director Biomedical Institute  
Drexel University 7-412  
Philadelphia, Pa. 19104

**DIRECTOR—ALLERGY-IMMUNOLOGY DIVISION.** The Children's Hospital of Philadelphia (Department of Pediatrics, School of Medicine, University of Pennsylvania) has begun a search for a director of its Allergy-Immunology Division. A nationally known research-oriented immunologist with leadership qualities and administrative competence is sought. If interested, please address inquiries to: **Dr. Thomas R. Boggs, Chairman, Allergy-Immunology Search Committee, Room 2143, One Children's Center, 34 and Civic Center Boulevard, Philadelphia, Pennsylvania 19104.** *An Affirmative Action/Equal Opportunity Employer.*

### ECOLOGY POSTDOCTORALS (TWO)

Positions available immediately for a **physiological plant ecologist** and a **systems ecologist** for integrated studies of grass physiology and modeling of an East African grazing ecosystem where large ungulates are major herbivores. The physiological ecologist will be responsible for studies of the effects of soil water and foliage clipping on gas exchange, growth, and assimilate distribution in grasses; previous experience with IRGA, radioisotopes, or root growth physiology is desirable. The systems ecologist will be responsible for developing a grazing ecosystem model; some knowledge of Box's statistical methods for defining response surfaces is desirable. Starting salaries are \$12,000 annually; continuation beyond 1 year is contingent upon mutual consent. Send curriculum vitae and three letters of evaluation to: **Professor S. J. McNaughton, Biological Research Laboratories, 130 College Place, Syracuse, New York 13210** by 15 April 1978. *Syracuse University is an Equal Opportunity/Affirmative Action Employer.*

**EDITOR,** beginning level. Position soon available in New York City with major private publisher of scientific literature. Activities initially in life sciences, geology, and environmental sciences. Duties to eventually include acquisitions, liaison with authors and in-house staff (production, marketing, and so forth). Academic background in chemistry or geology preferred, master's level or equivalent. Publishing experience desirable; knowledge of German useful, not essential. Send résumé and letter of introduction to: **Box 78, SCIENCE.**

**EDITOR/WRITER** for monthly science-news magazine. Must have college degree and education or experience in both earth science and journalism. Will be required to work in all phases of magazine editing and production: reporting, writing, rewriting, copyediting, proofreading, makeup, production scheduling, budgeting, advertising sales, promotion of circulation, and liaison with typesetter, printer, and mailer. With first inquiry send short résumé, sample of writing, brief statement of career goals, salary requirements, and names of three professional references. **Box 79, SCIENCE.**



## POSITIONS OPEN

### CHAIRPERSON DEPARTMENT OF BIOCHEMISTRY

The University of Maryland School of Medicine is seeking a highly qualified individual with demonstrated research capabilities in biochemistry. The individual should have a demonstrated competence in teaching medical and graduate students. Ample, new facilities are available; state salary support plus additional faculty are negotiable. Applicants should send curriculum vitae, bibliography, and names of three references by 5 April 1978 to: **Dr. Edson X. Albuquerque, Chairman, Biochemistry Search Committee, University of Maryland School of Medicine, 660 West Redwood Street, Baltimore, Md. 21201. An Equal Opportunity/Affirmative Action Employer. Qualified minorities and women are encouraged to apply.**

### CHAIRMAN DEPARTMENT OF PHARMACOLOGY

The Creighton University is seeking a chairperson for the Department of Pharmacology to begin with the 1978-1979 academic year. The university, located in Omaha, Nebraska, has a student enrollment of approximately 5,000 students. The Department of Pharmacology is currently a department associated within the Medical School, but with programs in the other Health Science Schools of the university (Nursing, Dentistry, Allied Health, and Pharmacy).

Candidates for this position should have the following qualifications:

- 1) Ph.D. and/or M.D. in medical pharmacology or related field. Preference will be given to candidates with specialization in medical or applied pharmacology;
- 2) Proven administrative ability for standing as a senior faculty scientist;
- 3) Member of the American Society for Pharmacology and Experimental Therapeutics and/or the Federation of American Scientists in Experimental Biology; and
- 4) Ability to provide overall direction to the program in pharmacology as it relates to the School of Medicine and to the other Health Science Schools of the university.

Applicants should send curriculum vitae and the names of three references to: **Dr. M. J. Severin, Chairman, Search Committee—Pharmacology, Creighton University, School of Medicine, Omaha, Nebraska 68178. Application deadline is 15 April 1978.**

*The Creighton University is an Equal Opportunity/Affirmative Action Employer.*

**COMPARATIVE PHYSIOLOGISTS.** Assistant professor, effective September 1978. Nontenured appointment up to 4 years, primarily for graduate instruction in the Boston University Marine Program at the Marine Biological Laboratory, Woods Hole. Research and teaching experience involving marine aspects desirable but not essential. Two years of postdoctoral experience required. Send curriculum vitae and three letters of reference by 15 April to: **Dr. Arthur G. Humes, Director, Boston University Marine Program, Marine Biological Laboratory, Woods Hole, Mass. 02543. Boston University is an Equal Opportunity/Affirmative Action Employer.**

### DIRECTOR OF ANIMAL TUMOR RESEARCH FACILITY (ATRF)

The University of Rochester Cancer Center, University of Rochester School of Medicine and Dentistry, is seeking a **DIRECTOR** for its Animal Tumor Research Facility (ATRF), available to start 1 July 1978. The appointment will be at an academic rank commensurate with the applicant's experience and will be a joint appointment in the most appropriate pre-clinical or clinical department of the Medical School. The director is responsible for supervision of the ATRF, which functions as a central service of the center for acquisition, maintenance, and manipulation of experimental animal tumors. Applicants should have qualifications and interests in tumor morphology and are expected to engage in research, preferably directed towards animal tumor systems, and to provide consultation for other Cancer Center investigators using animal tumor systems. Applicants should submit curriculum vitae and three references to: **Dr. Russell Hilf, Chairman, Search Committee, Department of Biochemistry, University of Rochester School of Medicine and Dentistry, 601 Elmwood Avenue, Box 607, Rochester, New York 14642. An Equal Opportunity/Affirmative Action Employer.**

## POSITIONS OPEN

### DEPARTMENT OF GEOSCIENCES CALIFORNIA STATE UNIVERSITY NORTHBRIDGE, CALIFORNIA 91330 DEPARTMENT CHAIR

Applications are invited for the position of chair of the Department of Geosciences effective August 1978. Currently the department has 15 full-time faculty positions, 3 secretaries and 1 equipment technician. A total of nearly 200 majors are divided into graduate (M.S.) and undergraduate (B.S., geology or geophysics, and B.A., earth science) degree options.

It is anticipated that the successful candidate will have a Ph.D., a strong academic background, a commitment to teaching excellence and an interest in research. Candidates with experience in administration, and research interests or experience in economic geology, geophysics, or hydrology (preferably in the western United States) will be given preference. Applicants from industry who meet these requirements will be welcome. Appointment will be made at the associate or full professor level.

Applications, including a complete curriculum vitae and the names and addresses of at least three references, should be sent to: **Dr. G. C. Dunne, Chairman, Search and Screen Committee, Department of Geosciences.**

Closing date: 1 April 1978.

*An Equal Opportunity/Affirmative Action Employer*

Applications are invited for the position of **DIRECTOR** of Electron Microscope Core Laboratory and **ASSISTANT PROFESSOR OF CELL BIOLOGY** for the newly developed Northeastern Ohio Universities College of Medicine (NEOUCOM), operating in concert with The University of Akron, Kent State University, and Youngstown State University.

The director of Electron Microscope Core Laboratory will develop/manage a core support laboratory of electron microscopy (I-TEM; I-SEM), and be responsible for teaching cell biology lectures as a block in medical microscopic anatomy, with opportunities for participation in ongoing graduate programs and time for independent research.

Qualifications: 3 years of experience following award of graduate degree in teaching cell biology and/or management of EM facility. Salary commensurate with experience.

Send curriculum vitae no later than 15 April 1978 to: **Charles V. Blair, Vice Provost for Administration, NEOUCOM, Rootstown, Ohio 44272. An Equal Opportunity/Affirmative Action Employer.**

### UNIVERSITY OF CANTERBURY CHRISTCHURCH, NEW ZEALAND DIRECTOR OF STUDIES IN ENVIRONMENTAL SCIENCES

The councils of the University of Canterbury and Lincoln College invite applications for the position of director of studies in environmental sciences. The appointee will take up the position as soon as possible and will be expected to coordinate teaching and research in the Joint Centre for Environmental Sciences using the resources and facilities of both institutions. The salary of the director will be within the senior lecturer/professorial salary range. At present the scales are as follows: senior lecturer: NZ\$13,424 to NZ\$15,411 (bar), NZ\$16,546; reader: NZ\$19,101; professorial range: NZ\$20,804 to NZ\$26,481, per annum. Applications close on 30 April 1978 with the undersigned, from whom further particulars can be obtained. Apply: **Registrar, University of Canterbury, Christchurch, New Zealand.**

### FACULTY POSITIONS BIOCHEMISTRY AND BIOPHYSICS

Tenure-track positions are available at the assistant/associate professor level for individuals with postdoctoral experience and whose research interests may include: biochemical endocrinology, membranes, and cell surfaces; structure and regulation of the genetic apparatus including differentiation, molecular genetics, and recombinant DNA research; or macromolecular interactions including protein structure and function. Candidates qualified to teach general biochemistry are preferred. Applications, including a curriculum vitae, short description of research interests, and names of three individuals from whom we may request letters of recommendation should be sent by 1 May 1978, to: **Dr. R. W. Bernlohr, Department of Biochemistry and Biophysics, The Pennsylvania State University, 108 Althouse Laboratory, University Park, Pennsylvania 16802.**

*An Affirmative Action/Equal Opportunity Employer*

## SCIENTISTS

**Hazleton Laboratories America**, a leading independent contract research laboratory, is seeking scientists in the following disciplinary areas as a result of an expansion program.

### Director—Department of Chemistry

To direct and manage the scientific, operational, and developmental aspects of a Chemistry Department with a staff complement of 40. Desire Ph.D. with a minimum of six to eight years of experience to include at least three years of demonstrated experience in research administration. Research experience preferred in analytical and/or metabolic chemistry. Other duties include supervision, planning, and control functions.

### Chemist

To act as study director and supervise four to eight employees in the analytical chemistry group. Desire Ph.D. with two to four years of related experience. Good knowledge of gas and liquid chromatography and atomic absorption and infrared spectrophotometry. Require familiarity with FDA and EPA requirements concerning pesticides, foods, drugs, heavy metals and air pollutants.

### Inhalation Toxicologist

To assist and/or act as study director of client-sponsored projects assessing the pulmonary toxicity of a variety of materials including gases, vapors, dusts, and aerosols. Ph.D. in toxicology, physiology or pharmacology required. Prefer one to three years of experience but will also give consideration to a recent graduate in the same disciplines. Good communication skills and interpersonal abilities needed.

### Molecular Biologist

To join an on-going research team in viral oncology. Candidate should have a recent Ph.D. in biochemistry or virology. The position involves studies of translational products of mammalian retroviruses and cell-tumor virus interactions.

**HLA** offers a full benefit program, salaries commensurate with experience and training, and modern laboratory facilities comprised of over 350,000 sq. ft. of laboratory and animal accommodations. Our campuses are located in Northern Virginia and provide easy access to NIH, FDA, EPA, as well as three major airports.

Candidates should submit their resumes in confidence, stating salary history and requirements, to **Michael J. Mackert, Director of Personnel, Hazleton Laboratories America, Inc., 9200 Leesburg Turnpike, Vienna, Virginia 22180. An Equal Opportunity Employer, M/F**

 **HAZLETON**  
LABORATORIES AMERICA, INC.

## POSITIONS OPEN

### ELECTRON MICROSCOPY—MICROPROBE TECHNICIAN, CORNELL UNIVERSITY

Applications are invited for a technician position in the electron microprobe, electron microscopy facility of the Materials Science Center. Experience with electron optical equipment is essential; some background with computers and automated microprobes is desirable. Responsibilities will include maintenance of and student instruction on a new, fully automated SEM microprobe. The facility serves both the materials and geological communities.

Correspondence should be addressed to: **Professor D. L. Kohlstedt, Department of Materials Science and Engineering, Bard Hall, Cornell University, Ithaca, N.Y. 14853.**

### FACULTY POSITION IN BIOCHEMISTRY

Department of Chemistry at University of Southern Mississippi seeks a **BIOCHEMIST** for tenure-track position beginning 1 September 1978. Assistant or associate professor rank, depending on qualifications. Competitive salary. Ph.D. required, postdoctoral experience preferred. Excellence in graduate and undergraduate teaching required. Vigorous research program expected. Applications should include curriculum vitae, complete transcripts, description of research and teaching interests, and three letters of reference to be sent to: **Dr. John H. Bedenbaugh, Chairman, Chemistry Department, Box 43, University of Southern Mississippi, Hattiesburg, Mississippi 39401.** Deadline: 7 April 1978. *An Equal Opportunity/Affirmative Action Employer.*

### FACULTY POSITION IN REGULATORY BIOCHEMISTRY

Candidates must have a Ph.D. or M.D., a minimum of 2 years of postdoctoral training in regulatory aspects of mammalian biochemistry, and demonstrated productivity in original research. Preference will be given to strong candidates working in the areas of stimulus-secretion coupling or regulatory mechanisms associated with membrane function. Candidates should be prepared to establish an independent research program and to participate in the teaching of metabolism and biochemical endocrinology to medical, graduate, and undergraduate students. Please send curriculum vitae, bibliography, and a brief description of research interests, career objectives, and names of at least three references by 15 April 1978 to: **Dr. Michael P. Czech, Section of Physiological Chemistry, Division of Biology and Medicine, Brown University, Providence, Rhode Island 02912.**

*Brown University is an Equal Opportunity/Affirmative Action Employer.*

### FACULTY POSITION—IMMUNOLOGY

A faculty position, assistant or associate professor, is available for an immunologist with background in cellular immunity and immunogenetics. Candidates should forward curriculum vitae and names of three references to: **Dr. D. M. Goldenberg, Division of Experimental Pathology, MS409, University of Kentucky, College of Medicine, Lexington, Kentucky 40506.** *Equal Opportunity/Affirmative Action Employer.*

### FACULTY POSITION—VIROLOGY

A faculty position, assistant or associate professor, is available for a viral oncologist interested, preferably, in herpes viruses. Candidates should forward curriculum vitae and names of three references to: **Dr. D. M. Goldenberg, Division of Experimental Pathology, MS409, University of Kentucky, College of Medicine, Lexington, Kentucky 40506.** *Equal Opportunity/Affirmative Action Employer.*

### FACULTY POSITION, MEMORIAL UNIVERSITY OF NEWFOUNDLAND

**Ph.D. food scientist, teaching and research.** The Department of Biochemistry, Memorial University of Newfoundland, is seeking an individual for teaching and research with a new undergraduate and graduate program of food and nutrition. Applicants should have a demonstrated ability for research in food science. An interest in fish and other marine sources of food is highly desirable. Date of availability: on or before September 1978. Résumé should include biography, transcripts, and names of references. Respond to: **Dr. Norman F. Haard, Department of Biochemistry, Memorial University of Newfoundland, St. John's, Newfoundland, Canada A1B 3X9.**

## POSITIONS OPEN

Uniformed Services University of the Health Sciences (USUHS). **FACULTY POSITION, PHARMACOLOGY.** Assistant or associate professor of pharmacology. Candidates are sought with a background in neuropharmacology who are interested in developing strong research and teaching programs. Adequate funding is available to support faculty research programs, and salaries are competitive with regional medical school scales. Send curriculum vitae, bibliography, a brief statement of career objectives, and the names of three references to:

**Lewis Aronow, Ph.D.,  
Department of Pharmacology  
Uniformed Services University of the Health Sciences  
4301 Jones Bridge Road  
Bethesda, Md. 20014  
Attn: Personnel**

*An Affirmative Action/Equal Opportunity Employer*

The University of Michigan School of Natural Resources is seeking applications for an academic-year teaching-research position at the assistant or associate level in **FISHERY MANAGEMENT.** An earned Ph.D. and postdoctoral experience are desired. Apply to: **Dean William J. Johnson, School of Natural Resources, The University of Michigan, 3516 Dana Building, Ann Arbor, Mich. 48109** before 30 March 1978. *A nondiscriminatory, Affirmative Action Employer.*

### DEPARTMENT OF RADIOLOGICAL SCIENCES UNIVERSITY OF CALIFORNIA, IRVINE

The Department of Radiological Sciences at the University of California, Irvine, invites applications for a full-time position in **GASTROINTESTINAL RADIOLOGY** at assistant professor level. Applicants should be Board-certified radiologists with special training in G.I. radiology. Preference will be given to candidates with training in radiological research. In addition to the clinical service the successful applicant will be responsible for the academic aspects of G.I. radiology and will be expected to develop a strong research program and to take a vigorous part in resident training. The successful candidate will be based at the VA Hospital, Long Beach (chief of radiology, Dr. Henry Pribram) and will be appointed to the faculty of the University of California, College of Medicine, Irvine. *Applications from all qualified candidates are welcome; minorities and women are encouraged to apply.* Applications, including a biography and copies of any publications, should be sent to:

**Eric N. C. Milne, M.B., Ch.B., F.F.R.  
Professor and Chairman  
Department of Radiological Sciences  
University of California, Irvine  
College of Medicine  
Irvine, California 92717**

Closing date: 15 April 1978.

### DEPARTMENT OF RADIOLOGICAL SCIENCES UNIVERSITY OF CALIFORNIA, IRVINE

The Department of Radiological Sciences at the University of California, Irvine, invites applications for a full-time position in **URORADIOLOGY** at assistant or associate professor level. Applicant should be Board-certified in diagnostic radiology with special training in uroradiology, preferably at a university medical school; applicant must have experience in interventional uroradiology, interest in the problems of spinal cord injury patients, and be prepared to develop a research program in uroradiology. The post will include responsibility for the clinical operation of the Uroradiological Division and teaching at undergraduate and resident levels. The successful candidate will be based at the VA Hospital, Long Beach (chief of radiology, Dr. Henry Pribram), and will be appointed to the faculty of the University of California, College of Medicine, Irvine. The residency program in radiological sciences is completely integrated between the University of California, Irvine Medical Center, the VA Hospital, Long Beach, and Memorial Hospital, Long Beach. *Applications from all qualified candidates are welcome; minorities and women are encouraged to apply.* Applications, which must include a short biography and copies of any publications, should be sent to:

**Eric N. C. Milne, M.B., Ch.B., F.F.R.  
Professor and Chairman  
Department of Radiological Sciences  
University of California, Irvine  
College of Medicine  
Irvine, California 92717**

Closing date: 15 April 1978.

## POSITIONS OPEN

**FACULTY POSITION.** The Department of Biochemistry at the University of Nebraska Medical Center in Omaha announces a position at the assistant professor level. The applicant must have postdoctoral experience and a demonstrated ability to conduct an independent research program. Opportunities are available to teach a variety of health science students and to participate in the department's Ph.D. program. Send curriculum vitae and three references to:

**W. R. Ruegamer, Ph.D., Chairman  
Department of Biochemistry  
University of Nebraska Medical Center  
Omaha, Nebraska 68105**

*An Equal Opportunity/Affirmative Action Employer*

### FACULTY POSITION: RESIDENTIAL COLLEGE OF INTERDISCIPLINARY STUDIES

Western College of Miami University, an undergraduate residential college, with an evolving curriculum of interdisciplinary studies, seeks candidates with doctoral degrees for a full-time appointment at the assistant professor level for a one-semester (possibly two semesters) replacement position. Persons with preparation and experience in biology, environmental science, or physical geography, and preparation and experience in science and public policy, environmental history, or history of science and technology should apply.

Applications, letters of recommendation, supporting documents, and a full statement of interest are due by 24 March. Send to: **Elizabeth Dean, Chairperson, Western College of Miami University, Oxford, Ohio 45056.** *Miami University is an Affirmative Action Employer. We encourage applications from women and minorities.*

### GENETICIST

Pepperdine University, an independent institution, with a Christian heritage, is seeking applicants for an assistant professorship in biology beginning September 1978. Candidates should have a Ph.D. with training in genetics, cell biology, and biochemistry. Population genetics desirable. Salary competitive. If interested in a Christian atmosphere, send résumés to: **Dr. Loyd Frasier, Pepperdine University, Malibu, Calif. 90265.**

### GEOCHEMIST, UTAH

The Department of Geology and Geophysics, University of Utah, invites applications for a faculty position of assistant professor of geochemistry beginning fall 1978. Applicants should have strong formal training in chemistry, be qualified to teach undergraduate and graduate courses in geochemistry, and have demonstrated the ability to conduct an active research program. A letter of application, résumé, and names of four references should be sent to: **Dr. S. H. Ward, Chairman, Department of Geology and Geophysics, University of Utah, Salt Lake City, Utah 84112.** Applications should be received by 15 April 1978.

*The University of Utah is an Equal Opportunity/Affirmative Action Employer.*

### GRANT COORDINATOR

Assist medical and other health professions faculty in securing grant support for research training and other sponsored activities. Administer awards in conformity with appropriate laws and regulations, university liaison with sponsoring agencies. Degree in life, health, and related sciences required. Grant administration experience desirable. Salary: \$15,786 to \$19,000. Send curriculum vitae and references to: **Dr. A. R. Macon, Associate Provost for Research, Office of Research, University of South Carolina, Columbia, S.C. 29208.** Applications not accepted after 15 April 1978. *An Affirmative Action/Equal Opportunity Employer.*

**THE UNIVERSITY OF DELAWARE:** three non-tenure track **LECTURER POSITIONS** for the 1978-1979 academic year with teaching responsibilities in **general chemistry.** Ph.D. in chemistry required; background in analytical or physical chemistry preferred. Curriculum vitae and three teaching recommendations to: **Dr. Henry N. Blount** (analytical applicants) or **Dr. Robert H. Wood** (physical applicants). **Department of Chemistry, University of Delaware, Newark, Del. 19711,** by 31 March 1978. *The University of Delaware is an Equal Opportunity/Affirmative Action Employer.*

## POSITIONS OPEN

**IMMUNOLOGIST OR VIROLOGIST:** available summer 1978. Requirements: Ph.D. in animal virology or immunology and a demonstrated ability to conduct a high quality research program. Preference will be given to candidates with postdoctoral experience. Duties include shared participation in instruction of medical microbiology to medical students, instruction of graduate students, and conduct of independent research. Appointment will be at assistant or associate professor level to a state-funded tenure-track position. Salary will be commensurate with experience. Send curriculum vitae and names of three references to: **Dr. Thomas R. Kozel, Chairman, Department of Microbiology, University of Nevada, Reno, Nevada 89557.** Application deadline is 15 April 1978 or whenever a suitable candidate is found. *The University of Nevada, Reno, is an Equal Opportunity Employer and does not discriminate on the basis of sex, race, color, religion, handicaps, or national origin in the educational programs or activities it operates.*

**IMMUNOLOGIST.** Postdoctoral position in immunology as applied to the gastrointestinal tract. Requirements include experience in immunochemistry and interest in cell membrane receptors for immunoglobulins or tumor immunology. Position involves work with gastroenterologist-immunologist, immunopathologist, and graduate trainees in gastrointestinal immunology. Collaboration with National Jewish Hospital and University of Colorado Medical Center. Contact: **William R. Brown, M.D., Veterans Administration Hospital, 1055 Clermont Street, Denver, Colo. 80220.** *The Veterans Administration is an Equal Opportunity Employer.*

### CUYAHOGA COMMUNITY COLLEGE WESTERN CAMPUS INSTRUCTOR IN BIOLOGY

Instructor of biology will be responsible for teaching chemistry for Allied Health Sciences. Additional responsibilities will include introductory biology, general biology, anatomy and physiology, microbiology, comparative anatomy, embryology, and field botany. M.S. and B.S. in biology with a chemistry minor. Experience should include: 2 years of full-time community college teaching, innovative ability to develop behavioral objectives for each course offered in the Department of Biology, an in-depth knowledge of science required for allied health program, and willingness to accept assignments during the day and evening. Salary will be commensurate with experience and education for this full-time assignment beginning September 1978. Applications will be accepted until 1 June 1978. Please send résumé and salary history to:

**Joseph S. Nolan  
Dean, Natural Science and Health  
Cuyahoga Community College  
Western Campus  
11000 Pleasant Valley Road  
Cleveland, Ohio 44130**

The Research Institute of Pharmaceutical Sciences, School of Pharmacy, University, Mississippi, is seeking a **MASS SPECTROSCOPIST.** Candidates with a B.S. in pharmacy with a Ph.D. and subsequent experience in a life science field are preferred. Salary commensurate with experience. Send biographical data, publications, and so forth, to: **Dr. Carlton Turner, Associate Director, Research Institute, School of Pharmacy, University, Mississippi 38677.** Application deadline: 15 April. *Equal Opportunity Employer, M/F.*

### MICROBIOLOGIST

Advanced degree in microbiology is required; Ph.D. and association with an engineering organization is preferred. Must have experience in environmental microbiology and systems for detection and containment. As a member of technical staff will institute and execute research in methods for the detection and enumeration of microorganisms, containment systems for microorganisms, bioconversion, and environmental ecology.

Send résumé to: **Professional Staffing, Department 690, The Jet Propulsion Laboratory, Pasadena, Calif. 91103.**

*An Equal Opportunity Employer*

## POSITIONS OPEN

The Department of Microbiology and Public Health, California State University, Los Angeles, invites applications from qualified persons for 20 tenure-track positions to begin fall quarter, 27 September 1978.

**MICROBIOLOGIST** to teach in areas of general microbiology, medical microbiology, and hematology. Ph.D. required. Preferred: clinical experience in hematology and medical technologist license.

**ANAEROBIC BACTERIOLOGIST** to teach in areas of general and medical microbiology. Ph.D. required. Postdoctoral experience preferred.

Applicants are expected to develop advanced courses in their specialty and to develop a research program involving graduate supervision. Salary: assistant professor, \$14,256 to \$17,136 (academic year), depending upon qualifications and experience.

Send curriculum vitae and three letters of recommendation by 15 April 1978 to: **Dr. Kenneth L. Anderson, Chairperson, Department of Microbiology and Public Health, California State University, Los Angeles, Los Angeles, Calif. 90032.**

*Equal Opportunity/Affirmative Action, Handicapped/Title IX Employer.*

### MOLECULAR BIOPHYSICIST—BIOCHEMIST.

The Biophysics Laboratory and the Biochemistry Department, University of Wisconsin-Madison will soon consider applications for appointment of a molecular biophysicist/biochemist. The beginning date of the appointment has not been determined. Preference will be given to appointees at the assistant or associate professor level. Applicants must have an outstanding record of achievement in research with special emphasis on structure and synthesis of nucleic acids and/or viruses. Applicants must have a research program suitable for training and supporting postdoctoral fellows and graduate students in biochemistry and biophysics. Applicants must have interest and demonstrable aptitude for providing formal instruction to undergraduate and graduate students in biochemistry. Applicants should send curriculum vitae, bibliography, a description of future research interests, and should identify prospective and past sources of research support. Applicants should list four references who can evaluate their research accomplishments, teaching ability, and personal characteristics. Materials should be sent by 1 May 1978 to: **Professor Paul Kaesberg, Chairman, Biophysics Laboratory, University of Wisconsin, Madison, Wisconsin 53706.** *The University of Wisconsin is an Affirmative Action/Equal Opportunity Employer.*

**NATURAL SCIENCES.** Chairperson, Division of Natural Sciences in state-supported 4-year teacher-training and liberal arts college. Approximate enrollment: 1600. Salary range: \$17,000 to \$21,000. Salary and rank dependent upon qualifications and experience. Ph.D. and academic administrative experience preferred. Minimum of 3 years of college teaching experience required. Six to nine semester hours teaching from one or more of: physical sciences, chemistry, biology, mathematics, and computer science. Applicants should send curriculum vitae to: **Willis Hill, Natural Science Search Committee, Concord College, Athens, West Virginia 24712,** prior to 1 April 1978. *Equal Opportunity/Affirmative Action Employer.*

**NEUROPHYSIOLOGIST—COMPARATIVE NERVOUS SYSTEMS.** Rank and salary open, for fall 1978. Teaching includes undergraduate and graduate instruction, largely in neurophysiology. Postdoctoral research experience, publications, and strong biological background essential. Applications with a statement of current and future research should be received by 15 April 1978. Apply to: **Dr. James E. Heath, Department of Physiology and Biophysics, 524 Burrill Hall, University of Illinois, Urbana, Ill. 61801.** *The University of Illinois at Urbana-Champaign is an Affirmative Action/Equal Opportunity Employer.*

**NEURORADIOLOGIST.** Director of neuroradiology in the Department of Radiology at the Massachusetts General Hospital, Boston. Clinical competence and academic achievements essential. Cooperation with neurology and neurosurgery in patient care, teaching, and research expected. Reply to: **Juan M. Taveras, M.D., Radiologist-in-Chief, Massachusetts General Hospital, Boston, Mass. 02114.** *Equal Opportunity Employer.*

## POSITIONS OPEN

### NEUROBIOLOGIST

The Department of Physiology is seeking a neurobiologist at the assistant professor level. Preference will be given to individuals whose work relates to the function of the central nervous system. The position permits considerable time for research; opportunities exist for graduate and medical student teaching.

Please send curriculum vitae, bibliography, and the names and addresses of three references to:

**Chairman, Neurobiologist Search Committee  
Department of Physiology  
Yale University School of Medicine  
333 Cedar Street  
New Haven, Conn. 06510**

*Applications from women and members of minority groups are encouraged. An Equal Opportunity/Affirmative Action Employer.*

Applications should be received before 30 March 1978.

**OCCUPATIONAL MEDICINE.** The Rocky Mountain Center for Occupational and Environmental Health (RMCCEH) at the University of Utah is seeking an M.D. Board-eligible/certified in occupational medicine. Advanced degree (M.P.H., Ph.D.) strongly recommended. Field and research experience desirable. RMCCEH is a major occupational/environmental health training and research center in OM, ON, IH, safety, and toxicology. *The University of Utah is an Equal Opportunity Employer.* Inquiries and curriculum vitae to: **William N. Rom, M.D., M.P.H., RMCCEH, Room BC 106, University of Utah Medical Center, 50 North Medical Drive, Salt Lake City, Utah 84132.** Telephone: 801-581-8719.

### UNIVERSITY OF MICHIGAN MEDICAL SCHOOL

Position available 1 July 1978. Prefer Board-certified **PHYSIATRIST** with 3 to 5 years experience with the severely disabled. Level from instructor to associate professor. Code 200DO. Send résumé to: **Box 34, SCIENCE.** *A nondiscriminatory, Affirmative Action Employer.*

### PHYSICAL OCEANOGRAPHER

Faculty position open at the assistant or associate professor level for a physical oceanographer in the Department of Oceanography, Florida State University. Primary emphasis is placed on a candidate's training in fluid mechanics, ability to contribute new ideas and experience in physical oceanography. The position is available in September 1978, although an earlier starting date is possible. Please direct inquiries to: **Dr. G. L. Weatherly, Search Committee, Department of Oceanography, Florida State University, Tallahassee, Fla. 32306; telephone: 904-644-6700.** *We encourage applications from women and minority groups; Florida State University is an Equal Opportunity/Affirmative Action Employer.*

### PHYSICAL OCEANOGRAPHY POSTDOCTORAL

Postdoctoral position in physical oceanography available immediately in a challenging research program concerning continental shelf circulation. Applicants should have a Ph.D. degree in physical oceanography and expertise in numerical modeling and data analysis. Field experience with standard oceanographic equipment will be helpful. Salary \$14,000 to \$16,000 a year. Applicants should submit a résumé and names of three references to: **Dr. Y. Hsueh, Department of Oceanography, Florida State University, Tallahassee, Fla. 32306.** *Florida State University is an Equal Opportunity/Affirmative Action Employer.*

### POPULATION BIOLOGIST

Instructor or assistant professor, tenure-track; Ph.D. required; expertise in computer programming preferred; and experience in helping minority students. Responsibilities include teaching general biology and invertebrate zoology, advising undergraduate and graduate students, and assisting in the graduate program. Send by 7 April 1978: curriculum vitae, names and addresses of three referees, transcripts, and a statement of professional goals, to: **Dr. James C. Hull, Chairperson, Population Biologist Selection Committee, Department of Biological Sciences, Towson State University, Towson, Maryland 21204.** *An Equal Opportunity/Affirmative Action Employer.*

## POSITIONS OPEN

**POSTDOCTORAL AND ASSISTANT RESEARCH BIOLOGIST POSITIONS IN CELL BIOLOGY** available to study receptor-ligand interactions leading to cell division and gene activation, using cell culture model systems responsive to epidermal growth factor, nerve growth factor, protein toxins, and other protein ligands. Experience in cell culture, membrane biochemistry, immunochemistry, or protein chemistry is desirable. Annual stipends are \$10,000 to \$12,000 (postdoctoral) and \$14,000 to \$18,000 (assistant research biologist). Send curriculum vitae and three references to: **Dr. Harvey Herschman, Laboratory of Nuclear Medicine and Radiation Biology, 900 Veteran Avenue, University of California, Los Angeles, Los Angeles, Calif. 90024.** *An Affirmative Action/Equal Opportunity Employer.*

**POSTDOCTORAL ASSOCIATES.** Two positions available 1 July 1978. (i) With Dr. Fred R. Butcher concerns the role of calcium and cyclic nucleotides in stimulus-secretion coupling. (ii) With Dr. James B. Blair concerns the hormonal regulation of hepatic pyruvate kinase. Send curriculum vitae and three references to:

**Dr. Eugene G. Sander, Chairman  
Department of Biochemistry  
West Virginia University Medical Center  
Morgantown, West Virginia 26506**

### POSTDOCTORAL FELLOW

Position available for research on globin gene regulation and nucleic acid sequencing techniques. Project will involve recombinant DNA technology. Send curriculum vitae, bibliography, summary of past research experience, and names of references to: **Dr. Gary Paddock, Department of Basic and Clinical Immunology and Microbiology, Medical University of South Carolina, 171 Ashley Avenue, Charleston, South Carolina 29403.** *An Equal Opportunity Employer.*

The Department of Anatomy at the School of Medicine, University of California, Los Angeles, invites applications from qualified candidates for appointments as **POSTDOCTORAL FELLOWS** in the following areas: cell biology, neuroanatomy, neurophysiology, and neuroendocrinology. Support for these positions may be obtained by the candidate with the help of a faculty member by applying to government or private sources or by applying to faculty member(s) for positions on their research grants. Inquiries may be made to: **Dr. Emery Zimmermann, Vice Chairman for Graduate Affairs, Department of Anatomy, University of California School of Medicine, Los Angeles, California 90024.** *The University of California is an Equal Opportunity Employer.*

**POSTDOCTORAL POSITION** in immunology available for 2 years beginning 1 July 1978, for Ph.D. or M.D. with training in immunology to join ongoing research in autoimmunity dealing with immune response to neoantigens. Supported by the National Retinitis Pigmentosa Foundation. Send résumé, statement of research interests, and three references to: **Dr. Roberta L. Meyers, Jules Stein Eye Institute, University of California, Los Angeles, School of Medicine, Los Angeles, California 90024.** *Equal Opportunity/Affirmative Action Employer.*

### POSTDOCTORAL POSITIONS

Two postdoctoral positions available immediately in a fully equipped laboratory for research related to chemical carcinogenesis in primary cultures of hepatocytes. Background in tissue culture or chemical carcinogenesis or nucleic acid and protein separation techniques is desirable. Interested persons should submit curriculum vitae, two letters of recommendation, and reprints or preprints of publications to: **George Michalopoulos, M.D., Ph.D., Jones Center for Cancer Research, Duke University Medical Center, P.O. Box 3156, Durham, North Carolina 27710.** *Duke University is an Equal Opportunity/Affirmative Action Employer.*

**POSTDOCTORAL POSITION—MUSCLE PHYSIOLOGY.** Available immediately for a person with a doctoral degree interested in studying the mechanical properties of the isolated single cardiac muscle cell. Background in muscle physiology, biophysics, or bioengineering desirable. Send curriculum vitae, including names of three references, to: **Dr. Merrill Tarr, Department of Physiology, University of Kansas Medical Center, Kansas City, Kansas 66103.** *An Equal Opportunity/Affirmative Action Employer.*

## POSITIONS OPEN

**POSTDOCTORAL POSITION** available immediately to Ph.D. in biochemistry or molecular biology for research in corneal proteoglycans, glycosaminoglycans, or collagen. Send curriculum vitae, two references, and supporting materials to: **Dr. G. K. Klintworth, Department of Pathology, Duke University Medical Center, Durham, N.C. 27710.**

*An Equal Opportunity/Affirmative Action Employer*

**POSTDOCTORAL POSITION** available immediately. Photosynthesis research for candidates with biochemistry, biophysics, or instrumentation background. Send inquiry and résumé to: **Dr. Bacon Ke, Charles F. Kettering Research Laboratory, Yellow Springs, Ohio 45387.**

**POSTDOCTORAL POSITION** available immediately. Chemical carcinogenesis, mammary gland, organ culture. Send résumé by 15 April 1978 to:

**M. R. Banerjee  
Tumor Biology Laboratory  
University of Nebraska-Lincoln  
Lincoln, Nebraska 68588**

*An Equal Opportunity Employer*

**POSTDOCTORAL POSITION.** Available July 1978, duration 2 to 3 years. Compensation according to research experience at the level of NIH fellowships. Research area: expression of mammalian genes. Required training: Ph.D. in biochemistry or molecular biology; research experience in nucleic acids, biochemistry, and recombinant DNA technology. Direct inquiries to: **Walter Sauerbier, Ph.D., Head, Department of Genetics and Cell Biology, 250 BioScience Center, 1445 Gortner Avenue, University of Minnesota, St. Paul, Minn. 55108.** *The University of Minnesota is an Equal Opportunity Educator and Employer.*

### UNIVERSITY OF CALIFORNIA, IRVINE

The Program in Social Ecology invites applications for a **POSTDOCTORAL RESEARCH POSITION** which is contingent on the award of a grant. Candidates must have a Ph.D. in microbiology or in an equivalent field. The research will involve the study of the relationship between bacterial populations in water distribution systems and inhibition of coliform organisms. Knowledge of physical and chemical components of aquatic systems which affect coliform bacteria, and the effect of particulates on bacteria are needed. To ensure consideration, apply before 1 April 1978. *The University of California is an Equal Opportunity Employer; minorities and women are encouraged to apply.* Send curriculum vitae and three references to: **Dr. B. H. Olson, Program in Social Ecology, University of California, Irvine, Calif. 92717.**

**NIH POSTDOCTORAL RESEARCH TRAINING POSITIONS—MAMMALIAN GENETICS,** available on and after 1 July 1978. Areas of research include cytogenetics, biochemical genetics, formal genetics, immunogenetics, and developmental genetics in collaboration with D. W. Bailey, D. L. Coleman, E. M. Eicher, T. H. Roderick, B. A. Taylor, and others. Stipends range from \$10,000 to \$13,000. U.S. citizenship or permanent residence visa required. Send curriculum vitae, description of research interest, and names of three references to:

**Training Office  
The Jackson Laboratory  
Bar Harbor, Maine 04609**

*An Equal Opportunity/Affirmative Action Employer*

### PSYCHOBIOLOGY/NEUROBIOLOGY

The Departments of Psychology and Psychiatry of the University of Pittsburgh may have a tenure-stream, joint appointment at the assistant professor level, starting in September 1978. Candidates must have exceptional research potential and teaching ability in an area of specialization within psychobiology or neurobiology. Preference will be given to individuals with postdoctoral experience. Send curriculum vitae, examples of research, and a brief statement of planned research program to: **Dr. Anthony R. Caggiula, Chairperson, Psychology/Psychiatry Search Committee, Department of Psychology, University of Pittsburgh, Pittsburgh, Pa. 15260.**

*An Equal Opportunity/Affirmative Action Employer under the mandates of Title IX.*

## POSITIONS OPEN

### RADIOCHEMICAL PRODUCTION MANAGER

Continued expansion has created this challenging position within our Radiochemistry Section. The right individual must possess several years of supervisory experience in the batch separation and processing of radiochemicals. Experience with remote handling equipment desired. Salary commensurate with experience and education. Send detailed résumé with salary requirements in confidence to:

**Personnel Department  
Mount Sinai Medical Center  
4300 Alton Road  
Miami Beach, Florida 33140**

**REPRODUCTIVE ENDOCRINOLOGY,** School of Veterinary Medicine, University of Pennsylvania (*An Affirmative Action Employer*). Position in clinical section for reproductive endocrinologist dealing with problems in domestic animals, with responsibilities in teaching, research, and clinical service. Salary: open. Send curriculum vitae and names of five referees to: **Chairman, Department of Clinical Studies, School of Veterinary Medicine, University of Pennsylvania, 3800 Spruce Street, Philadelphia, Pa. 19104.**

### REPRODUCTIVE PHYSIOLOGIST—ANIMAL SCIENCE

The department is seeking a Ph.D. for an assistant or associate professor position. Duties: teaching two or three one-term courses at the undergraduate and graduate levels including sections of production courses, supervise graduate students and conduct research in area of cattle and/or swine reproduction. Send curriculum vitae, including transcripts and three letters of recommendation, to: **Dr. S. P. Touchburn, Chairman, Department of Animal Science, Macdonald College of McGill University, Ste. Anne de Bellevue, Quebec, Canada H0A 1C0.**

**RESEARCH ASSOCIATE: BIOCHEMISTRY.** Position available April 1978 for someone with a background in nucleic acid biochemistry (preferably purification of DNA/RNA interacting proteins) to join a group commencing research on the organization of chromatin structure. Starting salary: \$13,735 (with annual increment). Send curriculum vitae and names of three references to: **Dr. J. Sygusch, Département de Biochimie, Centre Hospitalier Universitaire, Sherbrooke, Quebec, Canada J1H 5N4.**

The Center for Reproductive Sciences of the International Institute for Study of Human Reproduction invites applications for a position as **RESEARCH ASSOCIATE** in the Electron Microscopy Core involving collaboration of several investigators studying a variety of reproductive tissues. Will be responsible for operation and maintenance of a JEM 100C and a JSM-U3, preparative techniques, and photographic work. B.S. and 3 years of experience required. Salary commensurate with credentials. Applications should include names of three references and be addressed to:

**Georgiana Jagiello, M.D., Director  
Center for Reproductive Sciences  
College of Physicians and Surgeons of  
Columbia University  
630 West 168 Street  
New York, N.Y. 10032**

*Columbia University is an Equal Opportunity/Affirmative Action Employer.*

**RESEARCH ASSOCIATE.** Postdoctoral position available 1 July 1978 for interdisciplinary research in mammalian thermoregulation. Applicants should have experience with cellular aspects of metabolism, especially related to nonshivering thermogenesis. Associate will receive training in quantitative genetic analysis of thermoregulation in mice. Minimum salary: \$10,000. Send curriculum vitae and names of two references by 15 April to: **Dr. Carol B. Lynch, Department of Biology, Wesleyan University, Middletown, Conn. 06457.** *An Equal Opportunity/Affirmative Action Employer.*

**RESEARCH ASSOCIATE** position is open for studies on **CHROMOSOMAL PROTEASE.** Minimum requirements: Ph.D. in biochemistry or biology with experience in tissue culture and electron microscopy. Send curriculum vitae to: **Dr. Chi-Bom Chae, Department of Biochemistry 202H, University of North Carolina, Chapel Hill, N.C. 27514.** *Equal Opportunity/Affirmative Action Employer.*



Coming  
Soon . . . .

the tool for  
selecting all your  
science books

## Science Booklist Supplement

1970-1977



### FACULTY POSITIONS College of Medicine, King Faisal University Dammam, Saudi Arabia

Applications are invited from qualified men and women in:

Biology	Biochemistry
Chemistry	Hematology
Physics	Biostatistics
Anatomy	Microbiology
Human Physiology	Parasitology
Pathology	Pharmacology
Epidemiology	General Surgery
Community Medicine	Internal Medicine

Doctorate or equivalent degree required. Language of instruction is English. Positions available starting September 1978; interviews scheduled with the dean in the United States and Great Britain early in 1978.

Salary ranges (monthly salary in Saudi riyals or approximate annual equivalent in U.S. dollars)—professor: SR6,000 to 6,600 or \$20,300 to \$22,300; associate professor: SR4,800 to 5,800 or \$16,300 to \$19,600; and assistant professor: SR3,600 to 4,600 or \$12,200 to \$15,600.

(M.D. degree commands a higher salary, up to 50 percent if a clinical as well as academic appointment is held.)

Free furnished accommodations. Airfare to and from Saudi Arabia once a year plus a 45- to 60-day holiday. No Saudi income tax.

Send complete curriculum vitae plus addresses and telephone numbers of three references to:

**Mohammed T. Altorki, M.D., MRCP**  
Dean of the Medical Faculty  
King Faisal University

c/o Saudi Arabian Educational Mission  
2223 West Loop South, Suite 400  
Houston, Texas 77027

**Mohammed T. Altorki, M.D., MRCP**  
Dean of the Medical Faculty  
King Faisal University

P.O. Box 9  
Isleworth, Middlesex TW7 4LZ  
England

Specify dates of teaching appointments and availability.

### INVITATION TO SPACE

QUEST/78 has reserved room for an experiment aboard an early flight of the U.S. Space Shuttle. Purpose: to help make the program accessible to deserving experimenters who lack resources to develop and finance such projects on their own. QUEST/78 invites groups or individuals to submit ideas for the best use of the Shuttle reservation and will donate it to the winner, in addition to sharing the experimenter's NASA fees and developmental costs, according to financial need.

The winning project can be in almost any field, ranging from astrophysics to medicine, economics to molecular biology. But it must be an experiment that can be done only aboard the Space Shuttle, fit into a container measuring five cubic feet, and weigh less than 200 pounds. Most important, QUEST/78 will give special consideration to proposals that promise some tangible, significant benefit to humankind (e.g., the eradication of disease, more efficient energy use, etc.). Sheer commercial or military projects will not be considered.

Deadline for QUEST/78 Space Shuttle Experiment Competition is September 1, 1978. Early entries are desirable. If you have sufficient background to design and construct an appropriate project, write a succinct description of your idea in 500 words, enclosing any necessary diagrams together with a résumé or any other information that would indicate your ability to carry out such a project. Send your proposal and credentials, with a stamped, self-addressed envelope, to: QUEST/78, Space Shuttle Experiment Competition, 1133 Avenue of the Americas, New York, NY 10036. For more information see the March/April issue of QUEST/78.

### GASTROINTESTINAL RESEARCH

Merrell Research Center has a new position in the department of pharmacology which requires an individual with a PhD in pharmacology or physiology with at least 2 years post doctoral training in the gastrointestinal area. A strong background in local and CNS control of gastrointestinal function with commensurate technical experience is required. The objective will be initiation of a research effort toward new approaches to drug therapy of gastrointestinal diseases.

Please address inquiries with curriculum vitae in confidence to:

Dr. Richard C. Ursillo  
Head, Department of Pharmacology

**MERRELL RESEARCH CENTER  
MERRELL-NATIONAL  
LABORATORIES**

A Division of Richardson-Merrell, Inc.  
110 East Amity Road  
Cincinnati, Ohio 45215  
An Equal Opportunity Employer M/F/H

**Merrell**

### Manager NUTRITION RESEARCH

A position of responsibility with excellent potential in now available in our Animal Health Division which is embarking on a new and exciting research effort. Individual will supervise the activities of nonruminant nutrition research. Responsibility includes development of model *in vitro* test system and compound screening technique, establishment and operation of instrumental analytical procedures, associated with the program and supervision of associated animal test systems.

A PhD in Biochemistry is required along with experience in biochemical parameters of the monogastric digestive tract. Knowledge of the microbiology of the area would be helpful.

Send vitae to: A. D. Schwait, Senior Employment Administrator, SMITH KLINE & FRENCH LABORATORIES, A Division of SmithKline Corporation, 1500 Spring Garden Street, P.O. Box 7929, Philadelphia Pennsylvania 19101. An Equal Opportunity Employer M/F.

**SmithKline**  
Smith Kline & French Laboratories

## POSITIONS OPEN

### SWISS FEDERAL INSTITUTE OF TECHNOLOGY (ZURICH)

#### RESEARCH ASSOCIATE OR FELLOW IN BIOCHEMISTRY

Applications are invited for the post of research associate or fellow to work on a project concerning protein sequence determinations. Experience in biochemistry, especially in the techniques of protein sequence determination, is essential. A Ph.D. or equivalent is preferred. The project is supported for 2 years by a grant of the Swiss Federal Institute of Technology. The salary will be the SFr. ~40,000/year (\$ ~20,000/year, £ ~15,000/year).

Applications, including the names of two referees, should be sent to: **Professor Dr. K. H. Winterhalter, Labor für Biochemie I, Universitätstr. 16, 8092 Zurich, Switzerland**, from whom further details may also be obtained. Please quote Reference 326211.

### RESEARCH ASSOCIATE

Immediate opening for recent Ph.D. to study developmental morphology and permeability of ocular vessel systems. The position requires a strong background in electron microscopy and the ability to do independent research.

The position provides training and postdoctoral experience in a multidisciplinary approach to eye research, an area of increasing importance to both clinical and basic science investigators.

Current position is for 2 years with a beginning salary of \$12,000. Future potential based upon appropriate funding. Send résumé, bibliography, and names of three references to:

**Dr. Roy W. Bellhorn**  
Associate Professor, Department of Ophthalmology  
**Montefiore Hospital & Medical Center**  
Albert Einstein College of Medicine  
111 East 210 Street  
Bronx, N.Y. 10467  
*Equal Opportunity Employer, M/F*

### RESEARCH TRAINING IN SALIVARY SECRETION

Positions are available 1 July 1978 for research training in the biochemistry, cell-biology, pharmacology, physiology and/or pathology of salivary secretion. Applicants should have Ph.D. or a professional degree (M.D., D.D.S., D.V.M., or equivalent) and must be U.S. citizens or have permanent visas. Graduate programs leading to Ph.D. or M.S. are available. Stipends: \$10,000 to \$14,000, depending on experience.

Send curriculum vitae and statement of research interests to: **Dr. Patricia Keller, Department of Oral Biology, University of Washington School of Dentistry, Seattle, Wash. 98195.**

*University of Washington is an Equal Opportunity Employer.*

### SCIENCE AREA POSITION

The Science Area, with a strong commitment to teaching excellence, invites applications for a 1-year position teaching lower division courses, predictably social biology. Applicants should have broad interdisciplinary interests and training. Ph.D. required, preferably in life sciences. Instructor or assistant professor, salary up to \$13,000, depending on qualifications. Applicants submit detailed letter of application, curriculum vitae, and three references to: **R. Flaspohler, Chairperson, Science Area, College of General Studies, Western Michigan University, Kalamazoo, Michigan 49008.** *An Equal Opportunity/Affirmative Action Employer.*

**VERTEBRATE PHYSIOLOGIST.** Assistant professor or possible chairmanship for one experienced. Strong Ph.D. and commitment to teaching mandatory. Responsibilities include: teaching general biology, vertebrate physiology, radiation biology, and directing undergraduate research in these fields. Submit résumé to: **Professor Dorothy Fuller, Department of Biology, Stetson University, DeLand, Fla. 32720.** *Stetson University is an Equal Opportunity Employer.*

## POSITIONS OPEN

The Arab Development Institute in the Socialist People's Libyan Arab Jamahiriya, Tripoli, Libya, announces the availability of positions for highly qualified and experienced specialists in the following areas of research:

- 1) **INDUSTRIAL DEVELOPMENT**, and
- 2) **AGRICULTURAL DEVELOPMENT.**

All related aspects of scientific, technical, economic, and social development are included.

Appointees are to be assigned to plan and to undertake scientific and integrated studies directly dealing with agricultural, industrial, and developmental processes in this country.

Factors of evaluation include: level of academic qualification, length and scope of practical experience, and willingness to relocate.

Among benefits included are: paid annual leave, travel and medical expenses, and children's educational assistance.

Details relative to salary and related inquiries will be furnished to those whose applications may be considered suitable. Positions for both short-term and regular contractual arrangements may be available.

If interested, please apply to either:

**Office of the Technical Counselor  
for Scientific Research  
Embassy of the Socialist People's  
Libyan Arab Jamahiriya  
1118 22 Street, NW  
Washington, D.C. 20037  
or  
Arab Development Institute  
Post Office Box 8004  
Tripoli, Libya, North Africa**

### SENIOR FACULTY POSITION BIOCHEMICAL PSYCHOPHARMACOLOGIST

**CODIRECTOR** of a new major neurobiology laboratory for multidisciplinary studies of the major psychoses. Faculty appointments in both psychiatry and pharmacology with grade and salary dependent upon experience and qualifications. Candidates should have experience with drug, enzyme, and metabolite assays using GC, radio- and immunologic techniques. Interests in neuroendocrinology and CNS peptides would also be desirable. Candidates should have demonstrated laboratory-clinical collaborative skills and an ability to attract additional research dollars for multidisciplinary work in the affective disorders and the schizophrenias.

Send curriculum vitae, list of publications, and selected reprints to: **Donald G. Langsley, M.D., Chairman, Department of Psychiatry, 231 Bethesda Avenue, Cincinnati, Ohio 45267.**

*The University of Cincinnati is an Equal Opportunity/Affirmative Action Employer.*

### SPECIALIST

Position available immediately for specialist to perform chemical and microstructural analysis using scanning electron microscopy and electron spectroscopy for chemical analysis (ESCA). Duties include maintaining SEM and ESCA facilities, training of students in their use, and providing service on these instruments to research groups. A limited opportunity for independent research exists.

Requirements: Ph.D. or equivalent in experience, experience in at least one, preferably both, techniques. Ultrahigh vacuum and electronics experience desirable. Salary range: \$14,000 to \$18,000 depending on qualifications. Send résumé and names of three references by 15 April 1978 to: **Hiring Committee, Materials Science Center, Attn: M. G. Lagally, 1500 Johnson Drive, University of Wisconsin, Madison, Wis. 53706.**

*An Equal Opportunity Employment Institution*

**VETERINARY PATHOLOGISTS** for teaching, research, and diagnostic pathology in a progressive interdisciplinary department; opportunities for advancement and tenure after appropriate service; two positions. Rank: assistant or associate professor. Salary: competitive and dependent on qualifications. Requirements: D.V.M., Ph.D., with ACVP certification or intention. Teaching experience and research accomplishment helpful. Contact: **Robert B. Wilson, Chairman, Department of Veterinary Microbiology and Pathology, Washington State University, Pullman, Wash. 99164.** *This University is an Equal Opportunity/Affirmative Action Employer. In order to assist our efforts to meet Affirmative Action goals, minority, women, or handicapped candidates are encouraged to identify themselves as such in their applications.*

## POSITIONS OPEN

### STAFF ASSOCIATE

Seeking postdoctorals for staff positions in laboratory devoted to endocrine control of gene expression in normal development and neoplasia. The research training experience will generally entail a commitment of 2 years. *Equal Opportunity Employer.* Salary negotiable and dependent on postdoctorate level. Send résumé to:

**Deputy Director for Administration  
Department of Biochemistry  
Institute of Cancer Research  
701 West 168 Street  
New York, New York 10032**

**TECHNICAL INFORMATION SPECIALIST**—Salary range: \$18,258 to \$23,341 per annum, depending upon qualifications. The Smithsonian Science Information Exchange is seeking two technical information specialists to process cancer-related information of ongoing research. This will include indexing and development of index structure, retrieval, preparation of different output products, abstracts, and extracts. These positions will be contract/grant positions and will last through December 1979. Other contract employment may be available after that date. Requires education and/or experience in the fields of immunology, biochemistry, pathology or virology. As a minimum, a master's degree plus 2 years of experience or a doctoral degree are required. Laboratory experience in the above subject fields and/or knowledge of cancer research is highly desirable. Submit applications to: **Box 325, Smithsonian Institution, Office of Personnel Administration, Room 1410, 900 Jefferson Drive, SW, Washington, D.C. 20560.**

*Equal Opportunity Employer*

## WORKSHOP

### SCANNING AND TRANSMISSION ELECTRON MICROSCOPY WORKSHOPS AND SEMINARS

#### WORKSHOPS

13 and 14 April	Fixation Techniques
27 and 23 April	X-ray Fluorescence
11 and 12 May	Intermicroscope Correlations in Biology
18 and 19 May	Electron Diffraction
1 and 2 June	Darkfield TEM
15 and 16 June	Stereology

#### SEMINARS

17 to 21 July	Introduction to TEM
31 July to 4 August	Introduction to SEM

Contact: **Dr. William Sawyer, Electron Microscopy Laboratory, Department of Physics, Elmhurst College, Elmhurst, Ill. 60126.** Telephone: 312-279-4100, extension 476.

## COURSES

### UNIVERSITY OF SOUTHERN CALIFORNIA CATALINA MARINE SCIENCE CENTER SUMMER NEUROBIOLOGY COURSE 31 JULY TO 2 SEPTEMBER 1978

An intensive "hands on" electrophysiology course. The major emphasis will be on the membrane properties of neurons and their interactions which produce organismic behavior patterns. Topics covered will include excitability mechanisms, synaptic processes, neuronal interactions, and neuronal correlates of behavior. Techniques will include intracellular and extracellular recording, voltage clamping, ionic replacement studies, intracellular staining, microiontophoresis, statistical analysis of synaptic phenomena, and recording from intact animals. Experimental preparations will come primarily from invertebrates, including *Aplysia*, leech, and lobster.

Instructor: **Charles Lent** (State University of New York, Stony Brook). Participants: **S. Hagiwara, F. Bezanilla, D. Junge** (University of California, Los Angeles); **A. Siger, M. O'Shea** (University of Southern California); **A. Selverston, W. Kristan, D. Hartline** (University of California, San Diego); **R. McCaman** (City of Hope); and **D. Willows** (University of Washington).

Financial aid is available on a competitive basis through the generosity of the University of Southern California Oceanographic Associates. For information about application and financial aid, contact: **Dr. Alvin Siger, Department of Biological Sciences, University of Southern California, University Park, Los Angeles, Calif. 90007.**

# MATERIALS SCIENTIST, GS-14

**\$30,750 to \$39,975**  
(depending on qualifications)

Plans, initiates, organizes, and coordinates contract research programs involving the use of ceramics and other materials for naval requirements.

PhD or equivalent experience in ceramic science, metallurgy, chemistry (inorganic) or physics with knowledge of the properties of ceramics, other inorganic solids, metals and special materials; scientific administrative ability; familiarity with industrial and technological processes and wide personal acquaintance with industrial and university research scientists.

Send resume or SF-171 by 15 April to:

Office of Naval Research (7212)  
800 N. Quincy Street  
Arlington, VA 22217  
Attn: M. Talbot 78-05

Equal Opportunity Employer

# BIOLOGICAL PRODUCTION MANAGER

Fortune 500 firm seeks PhD in biological sciences/bio-chemistry with minimum 4-5 years experience to head manufacturing operations of its viral vaccine department.

The successful candidate will have experience in viral or bacteriological vaccine processing and will be responsible for the coordination of all aspects of the manufacturing process. Must be able to work closely with research & development staff; will work with 8-10 professional subordinates and a work force of 70-100 employees.

This position offers outstanding growth potential for the individual who can accept the challenge of combining technical expertise with managerial ability.

Entry compensation is in the mid \$30,000 year range. The company is located in a highly desirable PHILADELPHIA SUBURBAN AREA.

Reply in complete confidence with curriculum vitae and current compensation to:

**Box 86, SCIENCE**

An Equal Opportunity Employer (M/F)

PHARMACEUTICALS

# REGIONAL MEDICAL ASSOCIATE PHARMACEUTICAL MARKETING

Unique growth opportunity for an individual to combine scientific expertise and marketing skills. Responsibilities are to establish effective relationships within key medical institutions, providing scientific liaison and in-depth information essential to appropriate use of SK & F's products. Will also have training responsibility at the Representative, Medical Staff, and Pharmacy levels. Travel approximately 50%.

Qualifications include PhD in a biological or pharmaceutical discipline. Must possess initiative, ability to communicate, and interest in marketing.

Please send resume and current earnings to:  
SMITH KLINE & FRENCH LABORATORIES,  
A Division of SMITHKLINE CORPORATION,  
1522 Spring Garden St., P.O. Box 7929,  
Philadelphia, Pa. 19101. An equal opportunity employer, M/F.

**SmithKline**  
Smith Kline & French  
Laboratories

# KINGDOM OF SAUDI ARABIA UNIVERSITY OF RIYADH FACULTY OF SCIENCE

The Faculty of Science, University of Riyadh, Saudi Arabia, invites applications for the following teaching positions for the academic year 1398/1399 H, 1978/1979:

**MATHEMATICS:** real analysis, functional analysis, homological algebra, category theory, differential equations, algebraic and differential topology, ring theory, probability theory, operation research, and mathematical statistics.

**PHYSICS:** astrophysics, quantum statistical mechanics, low-temperature physics, atomic and molecular spectroscopy, nuclear spectroscopy, magnetic resonance, and solid state physics (theoretical).

**GEOLOGY:** hydrogeology.

**ZOOLOGY:** embryology, physiology and comparative anatomy (of vertebrates), and ornithology.

**BOTANY:** cytology, genetics and molecular biology, and microbiology.

Qualifications: Ph.D. plus 5 years of experience in teaching and research. A working knowledge of the Arabic language would be useful but is not essential.

Résumés and copies of qualifications and references should be sent as soon as possible to:

**The Dean, Faculty of Science  
University of Riyadh  
P.O. Box 2454  
Riyadh  
SAUDI ARABIA**

## COURSES

**SCANNING AND TRANSMISSION ELECTRON MICROSCOPY**—Classes are designed to introduce the participants to the theoretical and practical aspects of electron microscopy. Primary emphasis will be on specimen preparation, operation of electron microscopes, photographic and darkroom techniques. Tuition: \$550 for TEM, 5 to 16 June (2 weeks); \$475 for SEM, 19 to 23 June and 26 to 30 June (1 week each); \$850 for combined program, 5 to 23 June. For information write or phone: **Fred Lightfoot, Department of Anatomy, George Washington University, 2300 I Street, NW, Washington, D.C. 20037. Telephone: 202-676-2881 or 3511.**

## FELLOWSHIPS

**COMPUTERS IN MEDICINE.** One-year National Library of Medicine traineeship for academically oriented physicians and postdoctoral scientists. Start 1 July 1978. Fundamentals of computer science taught with emphasis on clinical practice and medical research. No formal mathematical training required. Topics include: computer systems, decision-making, operations research, statistics, and pattern recognition. Applicants must be U.S. citizens or have permanent immigrant status. No pay-back clause. For brochure, write: **Aran Safir, M.D., Director, Institute of Computer Science, Mount Sinai School of Medicine, 1 Gustave Levy Place, New York, N.Y. 10029.**

## REPRODUCTIVE ENDOCRINOLOGY PROGRAM POSTDOCTORAL FELLOWSHIPS

Training can be obtained in association with faculty in anatomy, biochemistry, biological sciences, cell and molecular biology, internal medicine, obstetrics and gynecology, pathology, pediatrics, pharmacology, and physiology. Applications and other information may be obtained from: **Dr. J. S. Richards, Program Coordinator, Reproductive Endocrinology Program, The University of Michigan, Ann Arbor, Michigan 48109. An Equal Opportunity/Affirmative Action Employer.**

## POSTDOCTORAL POSITIONS

Positions are available for recent Ph.D. graduates interested in advanced training and research on the mechanisms of selectivity of drug action. Areas currently under study are: (i) the biochemical-pharmacological basis for the effects of anticancer and antiviral treatments, inclusive of pharmacokinetics, drug biotransformation, and target cell determinants of drug action; (ii) the selective effects of drugs on the various components and interactions involved in immune responses to tumor and non-tumor antigens; (iii) the regulation of cell metabolism by hormones, nucleotide pools and cyclic nucleotides, particularly cyclic CMP; (iv) the pharmacological and cellular basis for chemical carcinogenic transformation in animals and in tissue culture; and (v) clinical pharmacological studies on drug selectivity. Nucleosides, antifolates, carbohydrates affecting the plasma membrane, and anthracycline antibiotics are among the classes of agents studied. Reply in writing to: **Dr. E. Mihich, Department of Experimental Therapeutics, Grace Cancer Drug Center, Roswell Park Memorial Institute, Buffalo, N.Y. 14263.** Please include curriculum vitae and indicate at least two references.

**POSTDOCTORAL FELLOWSHIP** is available in summer 1978 for Ph.D. or M.D. trained in biophysics/biochemistry to work on the development of molecular probes to investigate chromatin structure in neoplasia and development. Please send résumé to: **Dr. H. Simpkins, Department of Pathology, University of California, Irvine Medical Center, Orange, California 92668.**

## FELLOWSHIP

Openings for biochemists, neurologists, neuropathologists, pharmacologists in NIH-sponsored multidisciplinary postdoctoral training program in **biochemical neuropathology.** Trainees will participate in graduate courses and seminars and will pursue individual research projects in one of the following areas: brain tumor metabolism, biochemistry of spinal cord injury, disorders of lipid metabolism and experimental demyelinating conditions, peripheral nerve disorders, muscle histochemistry, and experimental neurology of the nervous system. Send inquiries to: **Dr. J. Norman Allen, Division of Neurology, Ohio State University, 466 West Tenth Avenue, Columbus, Ohio 43210.**

## TRAINING PROGRAM

**STUDENT FELLOWSHIPS** available for United States citizens and permanent residents toward Ph.D. in pharmacology. Diversified training related to the pharmacological and biochemical basis for drug action with emphasis on cancer therapeutics, inhibitions of nucleic acid, protein and membrane components, enzyme activity regulation, coenzyme action and inhibition, basis for selective toxicity, pharmacokinetics and drug metabolism in animals and cells, medicinal chemistry of nucleosides, carbohydrates and antifolates, immunotherapy, immunosuppression, experimental chemotherapy, molecular pharmacology, endocrine pharmacology and metabolic regulators, hematology, preclinical and clinical pharmacology. Stipends are \$3900 per annum. Write to: **E. Mihich, M.D., Chairman, Graduate Pharmacology Program, Roswell Park Memorial Institute, Buffalo, N.Y. 14263.**

**GRADUATE TRAINING PROGRAM IN OCCUPATIONAL HEALTH AND SAFETY.** September 1978. Twelve-month interdisciplinary program leading to M.S. degree. Involves instruction in all aspects of occupational health and safety, seminars, special projects, field trips, and conferences. A limited number of fellowships are available. For further information write to: **Dr. Samuel Elkin, Director, Center for Environmental Studies, Temple University, 3307 North Broad Street, Philadelphia, Pennsylvania 19140.**

## GRADUATE STUDY

### GRADUATE STUDY

Predoctoral traineeships are available to qualified applicants for study in the Microbiology Department of the Mount Sinai School of Medicine of the City University of New York (CUNY). Graduate training will lead to a Ph.D. degree in the biomedical sciences. Research areas under investigation within the department include genetics and biochemistry of animal viruses, cellular immunity, physicochemical studies of nucleic acids, structure of cell nuclei, regulation of gene expressions in bacteria, and microbial assays for detection of chemical carcinogens. Stipends are currently at the level of \$4,500 per year. Interested persons may contact: **Dr. E. D. Kilbourne, Department of Microbiology, THE MOUNT SINAI SCHOOL OF MEDICINE, CUNY, One Gustave Levy Place, New York, N.Y. 10029. An Equal Opportunity Employer.**

We are now accepting applicants for **GRADUATE STUDY** leading to the M.S. and Ph.D. degrees. The master's degree in chemistry related to the health sciences encompasses physical, inorganic, and organic chemistry in addition to biochemistry. The Ph.D. degree in biochemistry (pending) is a joint program between University of Maryland Baltimore County (UMBC) and the Departments of Biochemistry (School of Dentistry) and Department of Biological Chemistry (School of Medicine). Areas of research for the Ph.D. degree include membrane transport processes, nucleic acid structure and function, physical chemistry of proteins, bioorganic chemistry, bioinorganic chemistry, and enzymology.

For further information as well as applications please write:

**V. P. Vitullo  
Department of Chemistry  
University of Maryland Baltimore County  
Baltimore, Maryland 21228**

In addition, please indicate your expected area of interest. *UMBC is an Equal Opportunity Employer.*

Teaching assistantships are available for graduate students in the Department of Chemistry at the University of Maryland Baltimore County.

## GRADUATE STUDY IN PHARMACOLOGY OR TOXICOLOGY

Applications are invited from students interested in pursuing graduate studies in pharmacology or toxicology. Research training is available in biochemical, endocrine, neuro- and renal pharmacology, transport mechanisms, drug metabolism, and environmental toxicology. Interested applicants should contact: **Leonard C. Waite, Ph.D., Director of Graduate Training, Department of Pharmacology and Toxicology, School of Medicine, Health Sciences Center, University of Louisville, P.O. Box 35260, Louisville, Kentucky 40232.**



In order to obtain a 10-day free trial copy of any book listed, circle the number appearing below it on the Reader's Service Card (pages 1162A and 1234A). All publishers represented reserve the right to bill for books not returned within 10 days after receipt.

**ECOLOGICAL FANTASIES: Death From Falling Watermelons**—by Cy A. Adler, A Defense of innovation, science and rational solutions to environmental problems.

—Eugene P. Odum: "much need to keep all of us honest!"

—Abel Wolman: "long overdue . . . this book should be read and taught."

—Amer. Ass. of Univ. Woman: "... out of the ordinary . . . challenges environmentalists to give closer consideration to the assumptions many are eagerly and quickly adopting."

—Charles (Con. Ed.), Luce: "... a timely and daring challenge . . ."

—Detlev Bronk: "I find it excellent."

**ADOPTED AT MANY UNIVERSITIES**

350 pages \$11.95  
Green Eagle Press 241 W. 97 Street New York 10025

To order this book  
Circle No. 193 on Readers' Service Card

REPRINTS	
INTRODUCTION TO ATOMIC AND NUCLEAR PHYSICS: O. Oldenberg and W.G. Holladay	
Orig. ed. 1949 Reprint 1977	424 pp. \$16.75
INTRODUCTION TO SPECIAL RELATIVITY: H.M. Schwartz	
Orig. ed. 1968 Reprint 1977	458 pp. \$18.50
R.E. KRIEGER PUBLISHING CO., INC. 645 New York Ave., Huntington, N.Y. 11743 U.S.A.	

Circle No. 147 on Readers' Service Card

## MARKET PLACE



**Medwire Corp.**  
stocks a wide variety of  
**TEFLON\* COATED**  
Platinum alloys,  
stainless steel,  
silver, multistrand  
and single strand  
available for prompt  
shipment. Write for  
descriptive brochure  
and price lists.

**Medwire Corp.**  
Affiliate of Sigmund Cohn Corp.  
122 So. Columbus Ave.  
Mt. Vernon, N.Y. 10553  
914-664-5300  
\*Reg. T.M. E. I. Dupont

Circle No. 40 on Readers' Service Card

**PO<sub>2</sub> MEASUREMENTS**

- Microelectrodes, 2-μm tip diameter, for intracellular studies. Reliable in moving solutions.
- 22-gauge Needle Electrodes for extracellular PO<sub>2</sub>.
- O<sub>2</sub> Meter, Calibration Cell, Other Accessories.

Call 313/769-1900 or write:

**TG TRANSIDYNE GENERAL CORPORATION**  
903 Airport Dr. • Ann Arbor, MI 48106

See you at :  
**FASEB !**  
Booths S-13 and 14

Circle No. 108 on Readers' Service Card



# CANALCO<sup>®</sup>

## DISC ELECTROPHORESIS

### ALIVE AND WELL

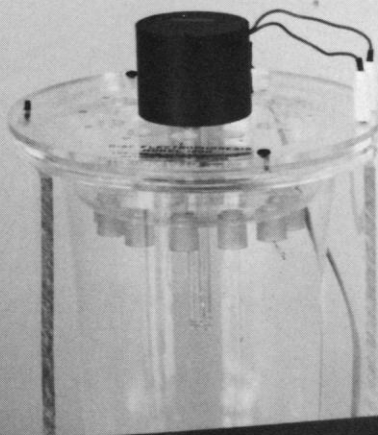
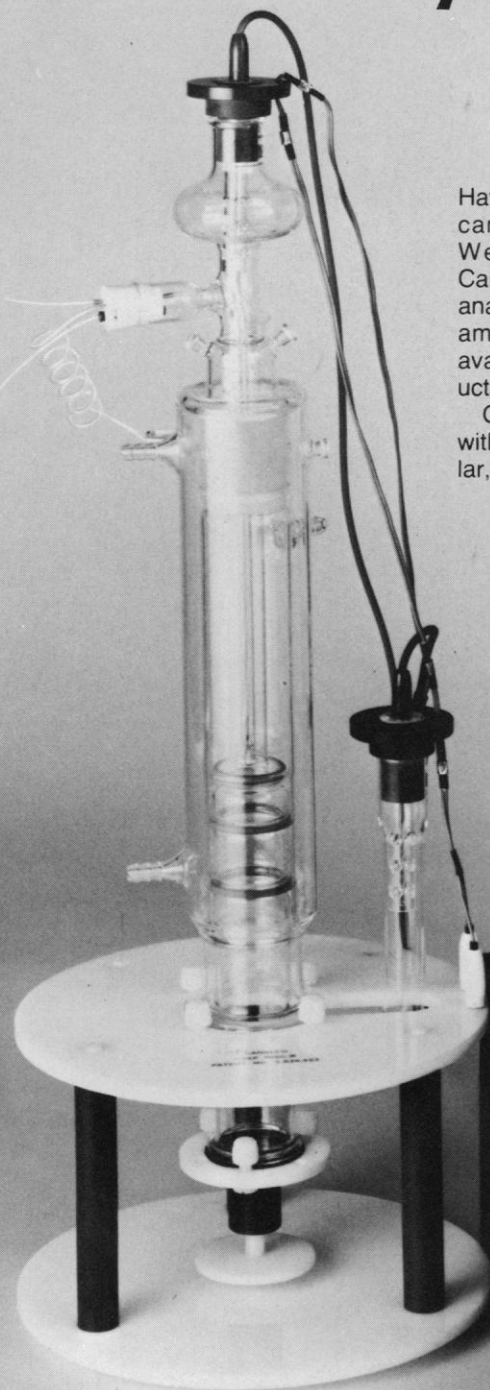
### AT MILES

Have you lost sight of us since we became part of Miles Laboratories? We've had a change of venue. Canalco equipment and reagents for analytical and preparative polyacrylamide gel electrophoresis are now available from Miles Research Products, Elkhart, Indiana.

Canalco is a name long associated with PAGE techniques, and in particular, disc electrophoresis. Now, as part

of Research Products, we can provide improved service and technical support. Often we will know as much about your sample as we know about electrophoresis.

Perhaps you have a special problem or a question relating to techniques? Perhaps you just want to buy some spare parts or some chemicals? Drop us a line. Give us a call. Get a copy of our catalog. We'd like to keep in touch.



RESEARCH PRODUCTS

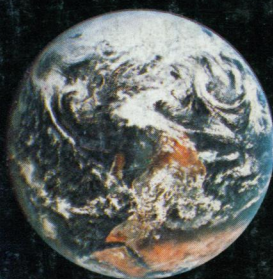


Research Products  
Miles Laboratories, Inc.  
Elkhart, Indiana 46514  
Phone: 219-264-8804





Photomicrograph by John Delly,  
McCrone Research Institute



FOR THE CREATIVE CHEMIST:

## **EASTMAN REAGENTS FOR GEL ELECTROPHORESIS.**

Colorful currents soaring from the universe? No. It's actually a photomicrograph of EASTMAN Organic Chemical 8154, Phthalaldehyde, by John Delly, McCrone Research Institute. It demonstrates what can happen when you use your imagination and our chemicals.

For everyday applications, you'll appreciate the quality of our more than

120 Eastman gel-forming reagents, catalysts/initiators, buffers, dyes, stains, and other reagents for creative chemists working in acrylamide gel electrophoresis.

Dealers offering EASTMAN Organic Chemicals can also offer you thousands of other organics for electrophoresis; liquid scintillation counting; protein chemistry; dyes, stains, and indicators.

See them for fast, reliable delivery and service, and a free reminder that chemistry is creative.

For a detailed description of Eastman reagents for gel electrophoresis, send for free technical literature, JJ-11. Write Eastman Organic Chemicals, Eastman Kodak Company, Dept. 412L, Rochester, N.Y. 14650.



Take a close look at EASTMAN Organic Chemicals. Dealers handling EASTMAN Organic Chemicals: American Scientific & Chemical, Bio Clinical Laboratories, Brand-Nu Laboratories, Inc., Bryant Laboratory, Inc., Custom Chemical Laboratories, Inc., Fisher Scientific, GAC Laboratories, Inc., Labproducts, Inc., Midland Scientific, Inc., North-Strong, Inc., Preiser Scientific, Sargent-Weich, Scientific Products, Scientific & Industrial Sales & Service, Inc., VWR Scientific Inc., Ward's Natural Science Establishment, Inc.