

Principles of Microbe and Cell Cultivation. S. John Pirt. Halsted (Wiley), New York, 1975. x, 274 pp., illus. \$34.

Problems in Stellar Atmospheres and Envelopes. B. Baschek, W. H. Kegel, and G. Traving, Eds. Springer-Verlag, New York, 1975. xx, 378 pp., illus. \$20.70.

Proceedings of the WHO/IAMAP Scientific Conference on Weather Modification. Tashkent, Soviet Union, Oct. 1973. World Meteorological Organization, Geneva, 1974 (U.S. distributor, Unipub, New York). xxvi, 538 pp., illus. Paper, \$23.50. WMO No. 399.

Protein and Nutrition Policy in Low-Income Countries. Francis Aylward and Mogens Jul. Halsted (Wiley), New York, 1975. xiv, 150 pp. \$6.95.

Prothrombin and Related Coagulation Factors. Proceedings of a conference, Leiden, Netherlands, 1974. H. C. Hemker and J. J. Veltkamp, Eds. Leiden University Press, Leiden, 1975. 294 pp., illus. Dfl. 68. Boerhaave Series for Postgraduate Medical Education No. 10.

Quality of Horticultural Products. V. D. Arthey. Halsted (Wiley), New York, 1975. xii, 228 pp., illus. \$16.75.

The Quest for Man. Vanne Goodall, Ed. Praeger, New York, 1975. 240 pp., illus., + plates. \$17.50.

Radioactivity and Atomic Theory. Presenting Facsimile Reproduction of the Annual Progress Reports on Radioactivity 1904-1920 to the Chemical Society by Frederick Soddy. Thaddeus J. Trenn, Ed. Taylor and Francis, London, and Halsted (Wiley), New York, 1975. xviii, 518 pp. \$35.

Recent Trends in Cardiovascular and Thoracic Surgery. Joseph B. Borman, Ed. Grune and Stratton, New York, 1975. vi, 222 pp., illus. \$17.50.

Research and Control of Onchocerciasis in the Western Hemisphere. Proceedings of a symposium, Washington, D.C., Nov. 1974. Pan American Health Organization, Washington, D.C., 1974. xii, 154 pp., illus. Paper, \$7.50. Scientific Publication No. 298.

Science Development. Toward the Building of Science in Less Developed Countries. Michael J. Moravcsik. PASITAM, International Development Research Center, Indiana University, Bloomington, 1975. xxvi, 294 pp. Paper, \$6.

The Science of Life. Contributions of Biology to Human Welfare. K. D. Fisher and A. U. Nixon, Eds. FASEB, Bethesda, Md., and Plenum, New York, 1975. xxvi, 358 pp. \$27.50. FASEB Monographs, vol. 1. Reprinted from *Federation Proceedings*, vol. 31, No. 6, part II, Nov.-Dec. 1972.

The Smooth Muscle of the Artery. Proceedings of a conference, Heidelberg, Germany, Oct. 1973. Stewart Wolf and Nicholas T. Werthesen, Eds. Plenum, New York, 1975. xiv, 374 pp., illus. \$29.50. Advances in Experimental Medicine and Biology, vol. 57.

Solar Gamma-, X-, and EUV Radiation. Papers from a symposium, Buenos Aires, Argentina, June 1974. Sharad R. Kane, Ed. Reidel, Boston, 1975. xii, 440 pp., illus. Cloth, \$58; paper, \$39.50. International Astronomical Union Symposium No. 68.

Solutions and Solubilities. Part I. Michael R. J. Dack, Ed. Wiley-Interscience, New York, 1975. xiv, 476 pp., illus. \$29.50. Techniques of Chemistry, vol. 8.

Surgical Disorders of the Adrenal Gland. Physiologic Background and Treatment. Timothy S. Harrison, Donald S. Gann, Anthony John Edis, and Richard H. Egdahl. Grune and Stratton, New York, 1975. x, 150 pp., illus. \$14.50. Modern Surgical Monographs.

28 NOVEMBER 1975

Personnel Placement

Only those employers who will not discriminate on the basis of race, sex, religion, age, color, or national origin should submit Personnel Placement advertising.

POSITIONS WANTED: 40¢ per word; use of Box Number counts as 10 additional words. Minimum charge \$10. Prepayment required. This rate applies to individuals only; personnel agencies and companies take display rate for all advertising.

DISPLAY (POSITIONS OPEN, MARKET PLACE, AND SO FORTH): \$110 per inch, minimum (1 inch is equivalent to 12 lines of 48 characters each). Ads over 1 inch billed to nearest quarter inch. No charge for Box Number. Rates net. No agency commission allowed for ads under 4 inches. No cash discount. Prepayment required for foreign advertising. Purchase orders and billing information must accompany all other advertising.

COPY for ads must reach SCIENCE by Wednesday, 3-1/2 weeks before issue date (Friday of each week) requested. Send copy for all positions wanted ads and display ads under 5 inches to:

SCIENCE, Room 207
1515 Massachusetts Ave., NW
Washington, D.C. 20005

Send copy for display ads, 1/6 page and larger, to:

Scherago Associates, Inc.
11 West 42nd Street
New York, N.Y. 10036

BLIND AD replies should be addressed as follows:

Box (give number)
SCIENCE
1515 Massachusetts Ave., NW
Washington, D.C. 20005

POSITIONS WANTED

Biochemist, Ph.D., 1966. Four years of postdoctoral research in lipid/carbohydrate chemistry and animal cell virology; 5 years of teaching, undergraduate/graduate; current research grants, nuclear and plasma membranes/cell cycle/herpes simplex virus; publications; desires research/teaching position; available immediately; prefers Northeast, Northwest, Southwest, Mountain. Box 467, SCIENCE X

Biologist: Ph.D., have grants, will travel. Seeks teaching and research position. Research interests: parental care (presocial) in insects. Eight years of teaching experience and publications. Box 480, SCIENCE. X

Ecologist/Ichthyologist, Ph.D. Postdoctoral training; experienced in graduate and undergraduate teaching. Research in environmental monitoring, estuarine, continental shelf and continental slope ecosystems, functional anatomy, systematics. Desires teaching, research, or administrative position. Box 471, SCIENCE. X

Electron Microscopist, Ph.D. Four years of postdoctoral experience in neuroanatomy, with publications. Qualified, reliable, and versatile. Seeks new and interesting permanent position (academic, research institution, or industry) in Europe or America. Languages: English and German. Box 481, SCIENCE. X

Microbiologist: Ph.D., June 1976. Teaching and research experience in biology, ecology, and microbiology. Research experience in marine microbiology and microbial ecology. Three years of supervisory experience (U.S. Army Reserve). Have excellent academic record, funded by competitive university fellowship. Looking for postdoctoral, teaching, or industrial position. A. Rosenberg, Department of Microbiology, Spaulding Life Science Building, University of New Hampshire, Durham, New Hampshire 03824. X

Ph.D. **Somatic Cell Genetics.** Training in population genetics and statistics. Expert with computers. Publications. Desires teaching/research position. Box 478, SCIENCE. 12/5, 12

POSITIONS OPEN

ANIMAL ECOLOGIST

The Department of Zoology, University of California, Davis, is seeking applicants for a position on its faculty. The individual will be expected to teach a one-quarter course in general animal ecology and an advanced course or graduate seminar in his or her own field of specialization. He or she will also be asked to participate in the offering of the department's introductory courses. It is expected that the individual will initiate and carry on a productive research program. Salary and academic rank will be determined by the individual's qualifications and experience.

Persons interested should send a curriculum vitae, a description of their research program and future plans, a summary of their teaching capabilities, and three letters of recommendation. *The University of California is an Equal Opportunity/Affirmative Action Employer.* Send applications to Dr. George W. Salt, Chairman of the Search Committee, Department of Zoology, University of California, Davis, Calif. 95616. Screening of applications began 15 November. Closing date for receipt of applications is 15 February 1976.

ASSISTANT PROFESSORSHIPS

Department of Biology University of California, Riverside

The Biology Department at the University of California, Riverside, is seeking appropriate additions to its faculty starting in the 1976 academic year. Candidates must show evidence of ability to initiate and sustain a productive, high-quality research program and show enthusiasm and skill for teaching biology at both undergraduate and graduate levels.

Developmental Biology. Ph.D. degree or equivalent with teaching and research emphasis in one (or more) of the following: animal morphogenesis, cell organization and development, membrane structure and function, developmental genetics. Primary teaching responsibilities in embryology/developmental biology with some participation in upper division introductory and graduate courses expected.

Genetics. Ph.D. degree or equivalent with teaching and research experience in one (or more) of the following: somatic cell genetics, developmental genetics, immunogenetics, experimental cytogenetics, genetics of gametes, polygenic inheritance, or behavioral genetics. Primary teaching duties in general genetics course with participation in other departmental offerings in genetics.

Vertebrate Physiology. Ph.D. degree or equivalent in vertebrate physiology, endocrinology, or other closely related discipline. Teaching duties to include upper division physiology and anatomy courses, with possible participation in lower division and graduate-level biology courses. If interests and specializations allow, participation in the Biomedical Sciences Program may be possible.

Population Ecology. Ph.D. degree or equivalent. Research interest in animal population ecology. Teaching responsibilities to include introductory course in population biology, upper division population ecology, and a graduate-level seminar.

Applicants should provide a curriculum vitae, list of publications, and a brief description of research and teaching interests. Additionally, at least three letters of support should be sent. *The University of California is an Equal Opportunity and Affirmative Action Employer. Applications are invited from all qualified individuals, especially women and members of minority groups.*

Send applications to:

Chairman
Department of Biology
University of California
Riverside, Calif. 92502

Applications and supporting documents should be received in Riverside not later than 15 January 1976.

The University of California, Irvine, College of Medicine is seeking a **CHAIRMAN** for the Department of Anatomy. Candidates must be eligible for appointment to the rank of professor. Candidates should have demonstrated excellence in biomedical research and teaching and should preferably have administrative experience. Candidates should be capable of providing academic leadership in the reorganization and development of the department. *Applications from all qualified candidates are welcome; minorities and women are encouraged to apply.* Send curriculum vitae before 15 December 1975, to Richard F. Thompson, Chairman of the Search Committee, Department of Psychobiology, University of California, Irvine, California 92664.

POSITIONS OPEN

ASSISTANT/ASSOCIATE PROFESSOR OF ANATOMY. Available 1 September 1976 to teach gross anatomy. Research interest open. Send curriculum vitae, list of publications, and names of references to: **Dr. Harold Brody, Chairman, Department of Anatomical Sciences, State University of New York at Buffalo, Buffalo, New York 14214. An Equal Opportunity/Affirmative Action Employer.**

ASSISTANT PROFESSORSHIPS IN PHYSIOLOGY AND DEVELOPMENTAL BIOLOGY. Two faculty positions in physiology and one in developmental biology beginning 1 September 1976. Teaching duties include undergraduate and graduate courses in physiology and in developmental biology. Establishment of independent research program expected. Ph.D. degree required; broad background in biology and some teaching experience desirable. Send letter of application, curriculum vitae, and names of three references to: **Dr. Donald J. Plocke, Chairman, Department of Biology, Boston College, Chestnut Hill, Mass. 02167. An Affirmative Action/Equal Opportunity Employer.**

ASSISTANT PROFESSOR OF CLINICAL MEASUREMENT SCIENCE (instrumentation) in the Department of Bioengineering, University of Pennsylvania, Philadelphia, Pennsylvania 19174. Ph.D. required. Experience in hospital environment desirable. Send curriculum vitae to the **Chairman, Abraham Noordergraaf, The University of Pennsylvania is an Equal Opportunity Employer.**

DEPARTMENT OF RADIOLOGICAL SCIENCES UNIVERSITY OF CALIFORNIA COLLEGE OF MEDICINE, IRVINE

The Department of Radiological Sciences in the College of Medicine at the University of California, Irvine, invites applications for a position at **Assistant Professor** level in **diagnostic radiology**. Applicants must be qualified radiologists with demonstrated evidence of clinical and academic ability. Preference will be given to candidates with a special interest in ultrasound, chest, and/or genitourinary radiology. Duties will include film-reporting and teaching at graduate and undergraduate levels. Applicants will also be expected to develop their own research protocols.

The individual selected will be a member of the staff of the Veterans Administration Hospital, Long Beach, California (Chief of Radiology, Dr. Henry Pribram), and will be appointed to the faculty of the College of Medicine of the University of California, Irvine.

Applications from all qualified candidates are welcome; minorities and women are encouraged to apply.

If you are interested in this position, please write to the address below including a curriculum vitae, an autobiographical letter, and copies of any publications. Closing date: 1 January 1976. Contact **Eric N. C. Milne, M.B., Ch.B., F.F.R., Professor and Chairman, Department of Radiological Sciences, College of Medicine, University of California, Irvine, Irvine, California 92664.**

ASSOCIATE DIRECTOR

A scientist-administrator is sought. The duties include various aspects of the administration of a unique and growing interdisciplinary research institute. Unlimited challenge in an exciting environment. Doctoral level candidates in areas of biological or medical sciences with a record of scientific and administrative accomplishment desired. Should be capable of interacting with a diverse group of scientists and administrators in academia, government, and industry.

Apply by 1 January 1976 to **Box 483, SCIENCE.**



UNIVERSITY OF CAPE TOWN DEPARTMENT OF BIOCHEMISTRY C.S.I.R.—CHROMATIN RESEARCH UNIT

Applications are invited for the post of **Research Assistant** in the Chromatin Research Unit. Salary, depending on qualifications, will be between R3,300 to R6,660 per year.

The Chromatin Unit undertakes research into the structure of chromosomal proteins. Inquiries to be directed to **The Director, C.S.I.R. Chromatin Research Unit, Department of Biochemistry, University of Cape Town, Private Bag, Rondebosch, Cape Town 7700, South Africa.**

POSITIONS OPEN

Ph.D. BIOCHEMIST, Endocrinology Research Laboratory, experience in calcium or carbohydrate metabolism desired. Salary \$14,000 to \$16,000, dependent on qualifications. University hospital on Long Island. Résumé and references to **Box 486, SCIENCE.**

The Faculty of Medicine of The Memorial University of Newfoundland, St. John's, Newfoundland, invites applications for a position as **ASSISTANT PROFESSOR OF BIOCHEMISTRY** from those who have major but not sole interest and expertise in the application of GC-MS to problems of biochemical interest. The successful candidate will be responsible for the operation of a combined GC-low resolution MS computer system which will be used principally for research, but will also be available for identification of toxic substances in body fluids. Her or his teaching role will include general biochemistry, teaching medical students in a course that is integrated with other aspects of cell biology. An annual travel allowance is provided. Research space will be available in association with Dr. James C. Orr, who will join the faculty on 1 December 1975. Applications should include a curriculum vitae, along with the names of three referees, and be addressed to: **Dr. James C. Orr, Associate Dean, Basic Medical Sciences, Faculty of Medicine, Memorial University of Newfoundland, St. John's, Newfoundland, Canada, A1C 5S7.**

BIOLOGY DEPARTMENT AT UCLA

Opening for a faculty member with research interests in molecular, cellular, or biochemical aspects of plant development. Teaching duties at the undergraduate and graduate levels in related areas. Applicants should have postdoctoral research experience. Provide a curriculum vitae noting research and teaching interests and include names of three referees from whom references can be requested. Send materials to: **Chairman, Biology Department, University of California, Los Angeles, California 90024. Deadline: 1 February 1976. An Equal Opportunity Employer. Applications from women and members of minority groups are encouraged.**

CHAIRPERSON OF MEDICAL MICROBIOLOGY: Applications and nominations are invited for the position of Chairperson, Department of Medical Microbiology, Stanford University School of Medicine. The Department is a basic science department with responsibility for research and teaching of medical, undergraduate, and graduate students in the broad areas of bacterial physiology and genetics, animal virology and immunology. Candidates will be evaluated on the basis of their scientific stature, proven teaching ability, and administrative competence. Applications should be dated no later than 15 January 1976 for an appointment that may begin 1 September 1976. Send curriculum vitae and names of at least three references to **David Korn, M.D., Chairman, Department of Pathology, Stanford Medical School, Stanford, Calif. 94305. Stanford University is an Equal Opportunity Employer and welcomes nominations of women and minority group members and applications from them.**

CHAIRPERSON DEPARTMENT OF CLINICAL NUTRITION

The College of Nursing and Allied Health Sciences, Rush University, is actively seeking a chairperson educated in nutrition, dietetics, biochemistry, physiology, or a nutrition-related field with extensive clinical experience in patient care and teaching. This position involves the administration and development of the educational, clinical, and research activities of a new department. Educational activities include an M.S. program in clinical nutrition, the possibility of development of a coordinated graduate program, and teaching of nutrition in the nursing programs and the Rush Medical College. Salary will be commensurate with the experience of the candidate and compatible with the salary structure of Rush University. Candidates are invited to send application letter, curriculum vitae, bibliography, and three letters of recommendation to:

**Dr. H. H. Sky-Peck
Chairman, Search Committee
Department of Biochemistry
Rush Medical College
1753 West Congress Parkway
Chicago, Illinois 60612**

Rush-Presbyterian-St. Luke's Medical Center is an Equal Opportunity/Affirmative Action Employer.

POSITIONS OPEN

DEPARTMENT OF BIOLOGICAL SCIENCES UNIVERSITY OF CINCINNATI CINCINNATI, OHIO 45221

Applications are invited for three positions starting September 1976. Ph.D. required and candidates will be expected to develop an active research program within their specialty. Send curriculum vitae and three letters of reference to the appropriate committee chairman listed below:

(i) **DEVELOPMENTAL BIOLOGIST**—teaching responsibilities include undergraduate developmental biology; area of specialty is open. **Dr. Bruce L. Umminger, Search Committee.** (ii) **INVERTEBRATE ZOOLOGIST**—to teach a basic upper-level undergraduate course and an advanced course in specialty. **Dr. Frank J. Eiges, Search Committee.** (iii) **PLANT PHYSIOLOGIST OR PHYSIOLOGICAL ECOLOGIST**—to teach an undergraduate course in plant physiology and an advanced course in specialty. **Dr. Jerry A. Snider, Search Committee.**

The University of Cincinnati is an Equal Opportunity Employer with an Affirmative Action Program. Applications are invited from women and minority groups.

CHAIRMAN, PATHOLOGY AND ONCOLOGY UNIVERSITY OF KANSAS MEDICAL CENTER KANSAS CITY, KANSAS

The University of Kansas Medical Center, College of Health Sciences and Hospital, is seeking a Chairman for the Department of Pathology and Oncology. Candidates should have established reputations for significant scientific accomplishments and present evidence of interest and proficiency in teaching and training in pathology and related fields. Candidates should provide evidence for leadership and administrative ability. Interested persons as candidates or nominees should submit a curriculum vitae including a bibliography and three references to **K. E. Ebner, Chairman of Search Committee, Department of Biochemistry, University of Kansas Medical Center, 39 and Rainbow Boulevard, Kansas City, Kansas 66103. Applications close 1 January 1976.**

The University of Kansas is an Equal Opportunity/Affirmative Action Employer.

POSITION AVAILABLE

CHAIRMAN of a unique program in man-environment studies concentrating on innovative undergraduate teaching. Canadian experience advantageous.

Teaching staff has varied backgrounds covering the major disciplinary areas. Department in Faculty, which includes architecture, geography, and urban and regional planning.

Applications with full curriculum vitae should be submitted to **P. Brother, Executive Assistant to the Dean, Faculty of Environmental Studies, University of Waterloo, Waterloo, Ontario, Canada N2L 3G1.**

UNIVERSITY OF LOUISVILLE LOUISVILLE, KENTUCKY

CHILD PSYCHIATRIST—Two positions, full-time, requiring Board certification or Board eligibility. Appointment in approved Community Child Guidance Clinic and Inpatient Child Psychiatry Unit.

CLINICAL CHILD PSYCHOLOGISTS—Two Ph.D. positions requiring at least 2 to 4 years of post-doctoral clinical experience are available. The candidates must be interested in teaching, clinical service, supervision of students, and research and scholarship, and have the flexibility to work in a multidisciplinary university medical center, child psychiatric setting.

Academic appointments for the above positions will be in the Department of Psychiatry and Behavioral Sciences, at the rank of assistant or associate professor, depending on qualifications. Résumés for the positions should be addressed to **M. Shaffii, M.D., Medical Director, Bingham Child Guidance Clinic, 200 East Chestnut Street, Louisville, Kentucky 40202.**

An Equal Opportunity/Affirmative Action Employer

COMPARATIVE PSYCHOLOGIST. Assistant professor. Ph.D. in comparative which includes experience with primate behavior and strong background in zoology and animal behavior. Quantitative methods/statistics as second area of competence desirable. Responsible for established primate colony. Send curriculum vitae, statement of research interests, and names of three references to **Charles N. Stewart, Chairman, Department of Psychology, Franklin and Marshall College, Lancaster, Pennsylvania 17604. Equal Opportunity Employer M/F.**

POSITIONS OPEN

DIRECTOR, SANDERS-BROWN KENTUCKY RESEARCH CENTER ON AGING

The University of Kentucky is establishing an institute for study of the basic biological processes of aging. For a director, we seek a person of international scientific stature, firmly committed to the scientific study of the aging process. The Sanders-Brown Center, expected to be completed in late 1978, will consist of 17,500 square feet of space including ten laboratories, offices, conference rooms, library, animal space, and administrative offices. We need a director who can begin to develop program and funding in temporary quarters until the Center is completed. Write to: Dr. J. W. Hollingsworth, Department of Medicine, University of Kentucky College of Medicine, Lexington, Kentucky 40506. *The University of Kentucky is an Equal Opportunity and Affirmative Action Employer.*

DIRECTOR OF CLINICAL DRUG ANALYSIS LABORATORY AND ASSISTANT/ASSOCIATE PROFESSOR OF PHARMACY

Ph.D. with background and experience in analysis of drugs and metabolites in biological fluids utilizing GC, HPLC, fluorimetry, and so forth, and preferably GC-mass spectroscopy. A background in pharmacy, pharmacutics, or pharmacology desirable.

This person will supervise the Drug Assay Laboratory of the Clinical Pharmacokinetics Service. This laboratory monitors drug levels in patients and research subjects. In addition, he/she will develop an individual research program in analytical methodology, coordinate a graduate analytical course, and participate in other teaching activities.

Please submit résumé to:

Dr. William H. Barr, Chairman
Department of Pharmacy
MCV Station, Box 666
Virginia Commonwealth University
Richmond, Virginia 23298
Equal Opportunity Employer

ANGLO-AUSTRALIAN TELESCOPE BOARD

The Directorship of the Anglo-Australian Observatory becomes vacant during 1976. Applications are invited by the Board for appointment to the post at a salary currently within the range of \$A25,338 to \$A30,270 with appropriate allowances.

Candidates are invited to send personal and professional details with the names of three referees to the Secretary, Anglo-Australian Telescope Board, c/o Department of Science and Consumer Affairs, Post Office Box 449, Woden, A.C.T. 2606 Australia.

Further details are available on request. Applications should be received by the Secretary no later than 7 January 1976.

ECOLOGIST. Assistant professor level. Must demonstrate a commitment to excellence in undergraduate instruction. Preference will be given to applicants with a background in physiological, population, or community ecology. Candidate is expected to assist in the development of an ecology-environment concentration. Send résumé, transcripts, and three letters of reference by 1 January to: Dr. R. P. Kernaghan, Department of Biological Sciences, Salisbury State College, Salisbury, Maryland 21801. *An Equal Opportunity/Affirmative Action Employer.*

ENZYMOLOGIST

To isolate and characterize bacterial enzyme receptors for cancer drugs (thymidylate synthetase) in collaboration with NMR spectroscopists. Write

J. D. Glickson
Comprehensive Cancer Center
University of Alabama
Birmingham, Alabama 35294
Equal Opportunity Employer

INSECT ECOLOGIST. Assistant professor with equal responsibilities for teaching and research. Responsibilities will include teaching graduate course in insect population dynamics and analysis, and undergraduate course in general ecology. Research will involve biological control of weeds. Ph.D. required, with training/experience in quantitative ecology and insect-plant interactions. Closing date 31 January 1976. For complete details contact: Dr. C. S. Koehler, Chairman, Department of Entomology, Oregon State University, Corvallis, Oregon 97331. *Oregon State University is an Equal Opportunity/Affirmative Action Employer.*

POSITIONS OPEN

FACULTY POSITIONS IN ECOLOGY

The Department of Ecology and Behavioral Biology at the University of Minnesota invites applications for two faculty positions, one in **POPULATION ECOLOGY**, emphasizing species interactions, community structure, and theory; the other in **ECOSYSTEM ECOLOGY**, with emphasis on terrestrial systems or linkages between terrestrial and aquatic systems. Both positions start in September 1976 and are at the assistant professor level, although there is a possibility one might be filled at a higher rank. Preference will be given to applicants with postdoctoral experience. Applications are due 15 December and should include curriculum vitae, list of graduate courses, résumé of research interests and future plans, statement of teaching experience and interests, reprints of published papers and copies of unpublished manuscripts, and three letters of reference. Respond to Professor John R. Tester, Head, Department of Ecology and Behavioral Biology, 310 Biological Sciences Center, University of Minnesota, St. Paul, Minnesota 55108. *An Affirmative Action/Equal Opportunity Employer*

FACULTY POSITION IN BIOPSYCHOLOGY. The Committee on Biopsychology at the University of Chicago is seeking applications for a faculty appointment. Preference will be given to candidates with research interests in the field of the physiology of learning. Applicants should submit their curriculum vitae, publications, and the names, addresses and phone numbers of three references to: E. H. Murphy, Chairman, Committee on Biopsychology, Department of Behavioral Sciences, 5848 South University Avenue, Chicago, Illinois 60637. *An Equal Opportunity/Affirmative Action Employer.*

HEAD DEPARTMENT OF PHYSICAL EDUCATION, HEALTH AND LEISURE STUDIES Purdue University

The head will be responsible for the administration of undergraduate and graduate (M.S. or Ph.D.) programs which includes study in the areas of physical education, health and safety education, recreation and leisure studies within the School of Humanities, Social Science, and Education. Initial responsibility will be the implementation of programs of study in a new department resulting from the combining of the departments of physical education for men and physical education for women. The position is available 1 July 1976. Candidates must possess an earned doctorate and qualify for the rank of full professor. A demonstrated record of scholarship, leadership, and administrative experience or potential is required. Applications and nominations will be received until 10 January 1976. Early applications are encouraged. Send applications and nominations to:

Robert L. Ringel, Dean
School of Humanities, Social
Science, and Education
Stanley Coulter Hall
Purdue University
West Lafayette, Indiana 47907
An Equal Access/Equal Opportunity University

IMMUNOGENETICIST

Opening at assistant professor level at Yale University School of Medicine for M.D. or Ph.D. to pursue active research and participate in an active teaching program. Interested applicants should send curriculum vitae to:

Richard K. Gershon, M.D.
Department of Pathology
Yale University School of Medicine
310 Cedar Street
New Haven, Connecticut 06510
An Equal Opportunity Employer

TUMOR IMMUNOLOGIST

Position open for an M.D. or Ph.D. with an interest and demonstrated competence in basic immunology and with significant research experience in tumor immunology to act as coordinator of tumor immunology program at Yale. Send application with curriculum vitae to:

Richard K. Gershon, M.D.
Department of Pathology
Yale University School of Medicine
310 Cedar Street
New Haven, Connecticut 06510
An Equal Opportunity Employer

UNIVERSITY OF CINCINNATI Invites Applications for the Position of DEAN OF THE McMICKEN COLLEGE OF ARTS AND SCIENCES

The Dean of the McMicken College of Arts and Sciences provides academic and administrative leadership to the largest of the sixteen colleges comprising the University of Cincinnati, which has a total enrollment of 38,000 students. The College enrolls 5,000 undergraduates and 1,300 graduate students within nineteen departments having a total of 475 faculty and awards B.A. or B.S. degrees in thirty-seven disciplinary and cross-disciplinary areas. As one of the two universities designated by the State Board of Regents as comprehensive graduate institutions in Ohio, it offers doctoral programs in seventeen disciplines.

Applicants should present evidence of scholarly achievement in addition to an aptitude for academic and administrative leadership.

Candidates must be able to assume the position no later than September 1, 1976.

Applications and/or letters of nomination (with full professional vita) should be sent by February 1, 1976, to:

Gene D. Lewis, Provost
Attn: A&S Search Committee
101 Administration Bldg.
University of Cincinnati
Cincinnati, Ohio 45221
An Equal Opportunity/Affirmative Action Employer

QUANTITATIVE ECOLOGIST

Immediate position for a person with education at the M.S. or Ph.D. level. This person should have experience in applied mathematics, statistics, and ecology. Knowledge of population dynamics theory as it is applied to fisheries is desirable. This position involves the application of statistical analysis and mathematical modeling to environmental impact assessment.

Please send resume,
academic transcript
and references to
Mr. A. J. Arapino.



STONE & WEBSTER
ENGINEERING CORPORATION

P. O. Box 2325
Boston, Mass. 02107
An Equal Opportunity Employer

POSITIONS OPEN

UNIVERSITY OF SOUTH CAROLINA

A FACULTY POSITION has been requested but not yet approved for a joint appointment in the Marine Science Program and the Department of Geology. In particular, candidates with an expertise in one of the following areas are invited to apply: (i) suspended sediments, (ii) sediment-organism processes, (iii) wetlands management.

Salary and rank commensurate with experience. Apply to:

Chairman, Search Committee
Department of Geology
University of South Carolina
Columbia, S.C. 29208

University of South Carolina is an Affirmative Action Employer.

DEPARTMENT OF LIFE SCIENCES UNIVERSITY OF PITTSBURGH

Applications are invited for a number of positions available in a newly organized Department of Life Sciences formed by merger of existing Departments of Biochemistry, Biology, and Biophysics and Microbiology, with Dr. M. Sussman as chairman. Areas of interest include: immunobiology, neurophysiology, animal virology, genetics, chromosome structure and function in eukaryotes, and systems analysis of ecological problems. Applicants should provide evidence of creative and productive research capability, as well as excellence in teaching. Successful applicants will be expected to participate in graduate and undergraduate teaching and to establish vigorous research programs with grant support. Rank and salary will be commensurate with the qualifications of the applicants. Curriculum vitae and the names of at least three referees should be sent to: **Dr. T. G. Cooper, Department of Biochemistry, Faculty of Arts and Sciences, University of Pittsburgh, Pittsburgh, Pennsylvania 15261.** Deadline for receipt of applications is 10 January 1976.

The University of Pittsburgh is an Equal Opportunity/Affirmative Action Employer.

MEDICAL GENETICIST—A faculty position is open within the medical genetics group for a pediatrician with training in medical genetics and demonstrated expertise in human biochemical genetics to assume responsibility for the diagnosis, counseling, and management of patients with inherited metabolic disorders. Applicants should send their curriculum vitae to: **Dr. Charles J. Epstein, Department of Pediatrics, University of California, San Francisco, California 94143.** *The University of California is an Equal Opportunity/Affirmative Action Employer.*

MOLECULAR BIOLOGIST

Individuals with research interests in the molecular aspects of developmental biology are invited to apply for a position as assistant professor at the University of Georgia. Applicants should have demonstrated excellence in research and have a firm commitment to teaching. The successful candidate will participate in the Interdepartmental Program in Developmental and Molecular Biology and be appointed in one or more of the five departments (biochemistry, botany, entomology, microbiology, zoology) comprising the Division of Biological Sciences. Applications, including curriculum vitae, detailed research plan and three letters of recommendation, should be sent to **Dr. Leon Dure, Chairman, Search Committee, Department of Biochemistry, University of Georgia, Athens, Georgia 30602**, prior to 15 December 1975.

The University of Georgia is an Equal Opportunity/Affirmative Action Employer and encourages applications from women and individuals from minority groups.

The Section of Neurobiology and Behavior in the Division of Biological Sciences at Cornell University has an opening for a **NEUROBIOLOGIST**. The position will be filled at the assistant professor level. The candidate must have strong training and research commitment in fundamental problems involving cellular or molecular approaches to the nervous system. Areas of research could include, but are not restricted to: neurodevelopment, neural integration, or synaptic transmission. A curriculum vitae with bibliography, one or two recent reprints, and letters from three people who know the candidate's work well should be sent to: **Dr. Jeffrey M. Camhi, Chairman, Neurobiology Search Committee, Section of Neurobiology and Behavior, Langmuir Laboratory, Cornell University, Ithaca, New York 14853.** Deadline for receipt of applications is 1 March 1976.

POSITIONS OPEN

MASS SPECTROSCOPIST RICE UNIVERSITY

The Department of Biochemistry of Rice University announces the availability of a staff position of an experienced bioorganic mass spectroscopist to operate GC-MS unit and to participate in research on sterol biosynthesis and chemistry of complex lipids. Additional experience in IR and NMR desired, but not essential. Salary open. Position available immediately. Interested persons should send résumés to: **G. J. Schroepfer, Jr., Biochemistry Department, Rice University, Houston, Texas 77001.** *An Equal Opportunity/Affirmative Action Employer.*

NEUROLOGIST to be director of neuromuscular research center at large university medical school. High level candidate sought (associate or full professor) with extensive background in experimental neurology and with particular emphasis on research of striated muscle and its diseases. **Box 484, SCIENCE.**

An Equal Opportunity/Affirmative Action Employer.

OCEAN ENGINEER

A nonprofit research organization is seeking an individual to assist the executive director in the administration of a board concerned with ocean engineering. Responsibilities will include providing professional staff support for studies, preparing reports, effecting liaison with government agencies, maintaining both national and international communications with the ocean engineering community and identifying ocean engineering policy, program, and organizational issues.

Candidate should have an advanced degree in the engineering field, management experience, practical experience working in the ocean, and a knowledge of government agencies involved in ocean science and engineering. Salary range \$16,500 to \$27,500 depending upon qualifications. Send curriculum vitae to **Box 482, SCIENCE.** *An Equal Opportunity Employer.*

PHARMACOLOGY

The Department of Pharmacology and Therapeutics, Schools of Medicine and Dentistry, State University of New York at Buffalo, invites applications for a full-time faculty position as assistant professor or, if especially qualified, associate professor. Candidates for assistant professorship must have a Ph.D. or M.D. degree and 2 or more years of research experience and publications. Duties include teaching of medical, dental and graduate students. The position will best be filled by an individual who plans a lifelong career of research and teaching in academic pharmacology.

Send curriculum vitae and also request that three letters of recommendation be sent directly to: **Dr. Edward A. Carr, Jr., 122 Farber Hall, Box M, State University of New York at Buffalo, Buffalo, N.Y. 14214.**

An Equal Opportunity/Affirmative Action Employer

POPULATION BIOLOGIST, Department of Ecology and Evolution, State University of New York at Stony Brook. Two temporary (1 year) openings may become available, appropriate to people at the level of assistant professor or to more senior individuals looking to spend sabbatical time in a stimulating atmosphere. Expertise in one or more dimensions of modern population biology is required. Teaching duties would include one or more of the following: undergraduate courses in general ecology, marine ecology, and evolutionary theory; or a graduate-level course in multivariate statistics. Applicants should send curriculum vitae and names of three references to: **D. J. Futuyma, Department of Ecology and Evolution, State University of New York at Stony Brook, Stony Brook, New York 11794.** *An Equal Opportunity/Affirmative Action Employer.*

POSTDOCTORAL FELLOW

The Laboratory of Human Reproduction and Reproductive Biology is seeking a postdoctoral fellow trained in bioorganic chemistry with experience in mass spectrometry. The individual appointed would also carry the title of research fellow in biological chemistry. The subjects of major interest are steroid hormones and peptides in relation to human reproduction. Opening available 1 January 1976. Send application, including curriculum vitae and bibliography, and solicit letters from three persons familiar with your research, to: **Dr. Lewis L. Engel, Laboratory of Human Reproduction and Reproductive Biology, Harvard Medical School, 45 Shattuck Street, Boston, Mass. 02115.** *An Affirmative Action/Equal Opportunity Employer.*

POSITIONS OPEN

PERMANENT POSITION

Full-time permanent **TEACHING POSITION IN BIOLOGY** Department for September 1976. Ph.D. with teaching experience; physical geology, historical geology, and comparative vertebrate anatomy and embryology preferred. Small, independent liberal arts college is active in interdisciplinary studies; outstanding record in premed admissions and in biology-geology field expeditions. Apply to **Dr. Christian H. Fismann, Interim Dean, The College of Idaho, Caldwell, Idaho 83605.** Telephone: 208-459-5313. *Equal Opportunity/Affirmative Action Employer.*

POSTDOCTORAL POSITION. Immediate opening for a recent Ph.D. in chemistry, biochemistry, or biophysics to work in the general area of thermodynamics of biological macromolecules. Experience in enzymology, immunochemistry, or nucleic acid physical chemistry desirable. Salary negotiable. Send curriculum vitae and two letters of reference to: **Dr. Rodney L. Biltonen, Department of Biochemistry, University of Virginia, Charlottesville, Virginia 22901.**

UNIVERSITY OF MASSACHUSETTS DEPARTMENT OF BIOCHEMISTRY

Postdoctoral Position: Available 1 January 1976. Structural studies on fungal cell wall polysaccharides and development of techniques for in situ localization of hyphal polysaccharides. Candidate should have background in carbohydrate structural techniques. Salary \$9,000 per year. Send curriculum vitae and names of three references to: **Dr. J. Nordin, Department of Biochemistry, University of Massachusetts, Amherst, Mass. 01002.** *An Affirmative Action/Equal Opportunity Employer.*

POSTDOCTORAL POSITION: Two openings available immediately. One for a biochemist with experience in enzyme purification, assay, and characterization and one for a cell biologist with experience in tissue culture methodology. Both openings are for candidates interested in the area of biochemical pharmacology studies in (i) cancer and viral chemotherapy; (ii) deoxynucleotide metabolism in noninfected cells or herpes viral infected cells. Salary range \$9,500 to \$11,000. Send résumé and references to **Dr. Yung-chi Cheng, Department of Experimental Therapeutics and Grace Cancer Drug Center, Roswell Park Memorial Institute, 666 Elm Street, Buffalo, New York 14263.** Telephone: 716-845-3006.

POSTDOCTORAL POSITION

In clinically applicable tumor cell kinetics. Experience with autoradiography desired. Send résumé and references to:

Lewis M. Schiffer, M.D.
Cancer Research Unit
Allegheny General Hospital
320 East North Avenue
Pittsburgh, Pa. 15212

POSTDOCTORAL RESEARCH PHYSIOLOGIST

Position available immediately with salary of \$12,000 for research on regulation and exchange in the microcirculation. Candidates should have prior experience and training in the field of peripheral circulation or microcirculation. Send résumé to **Dr. Robert W. Gore, Physiology Department, College of Medicine, University of Arizona, Tucson, Arizona 85724.**

The University of Arizona is an Equal Opportunity/Affirmative Action Employer.

POSTDOCTORAL TRAINEESHIP

Available immediately in the field of mitochondrial oxidative phosphorylation. Experience in enzymology, protein chemistry, or biophysics is preferred. Candidates with up to 2 years of postdoctoral experience may apply with curriculum vitae, transcripts, and references to **D. R. Sanadi, Boston Biomedical Research Institute, 20 Staniford Street, Boston, Mass. 02114.**

RESEARCH ASSOCIATE, VIROLOGY. Available immediately. Ph.D. in virology or microbiology. Requires experience and publications in molecular biology of oncogenic viruses. Salary \$16,800. Send résumé to **H. Rouhandeh, Ph.D., Cooperative Research in Molecular and Cancer Virology, Life Science I, Room 10, Southern Illinois University, Carbondale, Illinois, 62901.**

BIOMEDICAL ULTRASOUND Senior Researcher



San Francisco Bay Area

Candidates should have extensive experience in this field and must be capable of conducting independent research and directing the research of others.

Specific areas of investigation will include the bioeffects of low-intensity ultrasound and the application of ultrasonic imaging to medical diagnosis. Prefer candidates with Ph.D. in one of the following areas: Biology, Biophysics, Physiology, Bioengineering.

Please send curriculum vitae to:
J. R. McDonald

STANFORD RESEARCH INSTITUTE

333 Ravenswood Ave.
Menlo Park, CA 94025

An Equal Opportunity Employer

Head of Microbial Research Laboratories

The Corporate Research Division is seeking a senior research scientist to assume scientific and management responsibility for a substantial staff of research scientists and technical support personnel.

This individual will direct: new product research for antibiotic and synthetic anti-infectious agents; the design of new approaches to the discovery of novel antibiotic agents; the development of new and refinement of existing assays; the development of drug candidates to the clinical stage; will actively collaborate with fermentation microbiologists, molecular biologists, and chemists in chemical modification programs. There will also be follow-up responsibility with physicians monitoring clinical trials of the newly generated drug candidates. Sensitivity to marketing needs will be expected in product planning, and interface with a professional marketing staff will be a part of the position responsibility.

It will be essential that this person have interdisciplinary strengths in medical microbiology, biochemistry, and microbial genetics. The curriculum vitae with publications will indicate a successful record of research over the last several years. There must be indicated a proven ability to successfully direct research and management endeavors either in a major health care industry or a University Hospital - Research Institute Complex.

Abbott Laboratories is located in North Chicago, Illinois, midway between Chicago and Milwaukee, Wisconsin. Responses including salary requirements may be sent in confidence to:



NORTH CHICAGO, ILL. 60064

Louann Gonzalez
Professional
Employment

Abbott is an Affirmative Action Employer



State Government
of New South Wales

DEPARTMENT OF CULTURE,
SPORT AND RECREATION
AUSTRALIAN MUSEUM

CURATOR/ASSISTANT CURATOR

Department of Marine Invertebrates
(Crustacea and Coelenterates)

SALARY:

ASSISTANT CURATOR — \$A7,590 range \$A11,691.

CURATOR — \$A12,709 range \$A13,555 with progression to \$A14,570 subject to certain conditions.

QUALIFICATIONS: Essential — Postgraduate qualifications from a recognised University; or equivalent experience; appropriate research background.

Desirable — Experience in maintaining Museum collections including cataloguing retrieval systems.

DUTIES: Curation of collections of Crustacea, Coelenterates and Bryozoans; carrying out research on taxonomy and/or biology of Crustacea or Coelenterates; answering scientific enquiries; participation in the exhibits and education programmes of the Museum.

GENERAL: The Australian Museum is located in Sydney and is the largest and oldest history Museum in Australia with rich collections and active research programmes. Of the collections of Marine Invertebrates those of decapod Crustacea and corals are especially large. There are good facilities for fieldwork and close liaison is maintained with universities, other museums and government departments.

CONDITIONS: Subject to certain conditions the successful applicant will be eligible for:

- Payment of fares to Sydney
- Financial assistance towards cost of removal expenses
- Financial assistance towards initial accommodation expenses.

Applications close with the Official Secretary, N.S.W. Government Offices, 66 Strand, London, WC2N 5LZ, England, by 9th January, 1976.

CELL RESEARCH HISTOCHEMIST

We are an international corporation headquartered in suburban New York with an outstanding position for a Senior Scientist to perform research & experimental investigations in cellular chemistry, developing unique staining techniques for cells in liquid suspensions. Familiarity with cytophotometric & related instrumentation desirable. Requires Ph.D. or M.D. plus a minimum of 3-5 years experience.

Opportunity to join progressive research team developing automated analytical instruments for use in medicine & public health. Excellent compensation programs.

Submit curriculum vitae in confidence to:

MANAGER, TECHNICAL STAFFING



**Technicon
Instruments Corp.**

511 Benedict Avenue
Tarrytown, NY 10591

An Equal Opportunity Employer M/F

POSITIONS OPEN

POSTDOCTORAL RESEARCH FELLOW

Ph.D. in biochemistry with interest and competence in protein chemistry. To study biosynthesis, structure and function of human hemoglobin variants, including investigation on the sickling phenomenon. Available 1 February 1976. U.S. citizens and permanent residents. Salary: \$10,000 to \$12,500 depending on relevant experience. Submit curriculum vitae, three letters of reference, and brief statement of research interests to **Dr. H. Franklin Bunn, Peter Bent Brigham Hospital, Boston, Mass. 02115. Harvard Medical School is an Equal Opportunity/Affirmative Action Employer.**

ALASKA LEGISLATIVE STAFF PROFESSIONAL OPPORTUNITY

The Alaska State Legislature is receiving applications for Research Analyst positions with the Legislative Affairs Agency in Juneau, at salaries ranging from \$16,000 to \$25,000 per year. Persons applying for these posts should have a demonstrated ability to apply technical expertise and/or economic theory to complex public issues; they should be capable of communicating the implications of various policy alternatives to persons with nontechnical backgrounds. The successful applicants will probably have at least 6 years of professional education and/or experience, some of which will have brought them into contact with legislative decision-makers. Experience and present or prior residence in Alaska, though not mandatory, would be desirable. Persons with program experience in the following areas (or allied fields) are particularly urged to apply:

FISHERIES, Renewable Resource Economics, Common Property Resource Management

LAND USE MANAGEMENT and Planning, Land Economics

PUBLIC UTILITY REGULATION, Government Regulation of Business, Transportation System, Planning

Applications and detailed résumés accompanied, if possible, by a representative sample of prior work, should be submitted to:

**Director of Research Services
Legislative Affairs Agency
Pouch Y
Juneau, Alaska 99811**

TOXICOLOGIST. Assistant professor. The Food Research Institute (Department of Food Microbiology and Toxicology), University of Wisconsin, is seeking an individual with a Ph.D. or professional degree in the area of toxicology, toxicopathology, or related field to conduct research relating to mode of action of food-borne toxicants. An individual whose training has emphasized biochemistry and morphological pathology including electron microscopy is desirable. In addition to developing an independent research program, a portion of the time will be spent in cooperative research. Send curriculum vitae and three letters of recommendation to **E. M. Foster, Director, Food Research Institute, University of Wisconsin, Madison, Wisconsin 53706. An Equal Opportunity/Affirmative Action Employer.**

UNIT LEADER

ANTI-BACTERIAL R & D

An excellent opportunity for a Ph.D. microbiologist capable of providing scientific leadership to a unit seeking new anti-bacterial agents. Candidates must possess supervisory ability, relevant postdoctoral experience, and be capable of interfacing with other staff members including biostatisticians and computer scientists. The successful candidate will be responsible for developing improved microbiological methods suitable for support of quantitative structure activity relationships used in drug design and the secondary evaluation of experimental drugs.

Our laboratories are located in a small, yet remarkably complete city in rural central New York State. Salary commensurate with capability. If interested, send résumé in confidence to:

**Stuart P. Spence, Sr.,
Employment Representative
Eaton Laboratories and
Norwich Pharmacal Company
Division Morton-Norwich
Products, Inc.**

Norwich, New York 13815
An Equal Opportunity Employer, M/F



POSITIONS OPEN

SUPERINTENDENT to provide research leadership and administer a large research center, Washington State University at Prosser, Washington. Qualifications: an earned doctorate; 10 years of total work experience in agriculture, at least 5 years in research. Nominations, applications, and additional information requests should be addressed to: **D. W. Evans, Irrigated Agriculture Research and Extension Center, Washington State University, Prosser, Wash. 99350.** Applications must be received by 31 December 1975. *Washington State University is an Equal Opportunity/Affirmative Action Employer.*

TEACHING POSITION available: **General Ecologist.** Ph.D. required. Teaching includes (but not necessarily limited to) ecology, general botany, general biology, nature study. Education and experience in cryptogamic botany desirable. Assistant Professor. Probationary or fixed term conditions depending on qualifications. Salary determined by education and experience. Application deadline: 31 December 1975. Apply to:

**Dr. Dan L. Willson
Dean of Arts and Sciences
Winona State University
Winona, Minnesota 55987**

VERTEBRATE ECOLOGIST

A position for an assistant professor is available in the Department of Zoology for a field-oriented vertebrate ecologist with experience in avian and mammalian research. Candidates need not have a degree in wildlife biology but must have an interest in the subject and be able to teach courses in wildlife management. Applicants should send a curriculum vitae and three letters of recommendation to:

**Dr. Robert D. Ohmart
Search Committee
Department of Zoology
Arizona State University
Tempe, Arizona 85281**

Send material no later than 15 January 1976. *An Equal Opportunity/Affirmative Action Employer.*

VICE PRESIDENT FOR MEDICAL AFFAIRS

The George Washington University School of Medicine and Health Sciences is seeking candidates for the office of Vice President for Medical Affairs. This senior officer is a member of the President's immediate staff and serves the Trustees. He is the chief executive officer of the Medical Center and is responsible for all University health-related programs including the School of Medicine and Health Sciences, the University Hospital, the Ambulatory Care Division clinic, affiliated hospitals, and Allied Health Science programs. Candidates should have doctoral-level professional qualifications, in a field and of a quality suitable for professional appointment in a University department. Substantial senior administrative and executive experience, preferably in an academic health center or its equivalent, is necessary. Résumés should be sent no later than 15 January 1976 to the **Search Committee for the Vice President for Medical Affairs, George Washington University Medical Center, Warwick Building, 2300 K Street, NW, Washington, D.C. 20037.**

George Washington University is an Equal Opportunity/Affirmative Action Employer

PROGRAMS

PROFESSIONAL PROGRAM: Doctor of Optometry (O.D.). Accelerated professional program of two calendar years specifically designed for the Ph.D. in physical, biological, behavioral, or applied sciences. An opportunity for an independent professional career; program starts July 1976. **Division of Special Studies, Massachusetts College of Optometry, 424 Beacon Street, Boston, Mass. 02115. Telephone: 617-261-3430, Extension 32.**

FELLOWSHIPS

Announcing a new **PROGRAM** in the Molecular Biology of Prokaryotes and Eukaryotes leading to the Ph.D. degree. Areas of research include bacterial and animal viruses, cell surfaces and membranes, and biological regulatory mechanisms. Applications are invited for enrollment in the program as of September 1976. Annual stipend is \$3900 and tuition is waived. Application forms can be obtained from **Dr. Andrew Wright, Department of Molecular Biology, Tufts Medical School, 136 Harrison Avenue, Boston, Mass. 02111.**

FELLOWSHIPS

PRE- AND POSTDOCTORAL FELLOWSHIPS IN CLINICAL BIOCHEMISTRY

Predocutorial fellowships in biochemistry with research on basic and health-related problems available 1976-77; chemistry or biology degree required. Postdoctoral fellowships in a 2-year program combining research and clinical chemistry laboratory experience, available July 1976, for candidates with training in chemistry or biochemistry. Limited to U.S. citizens or permanent residents. Contact **Thomas M. Devlin, Ph.D., Chairman, Department of Biological Chemistry, Hahnemann Medical College, 230 North Broad St., Philadelphia, Pa. 19102.**

Two **POSTDOCTORAL FELLOWSHIPS** are now available to study pharmacological and immunological aspects of inflammation, including cell membrane receptors. Salary \$10,000 to \$10,500. Applicants should send a curriculum vitae to either **Dr. K. E. Eakins or Dr. W. Manski, College of Physicians and Surgeons, Columbia University, 630 West 168 Street, New York, N.Y. 10032. Columbia University is an Equal Opportunity Employer.**

MARKET PLACE

**One GLC—Hewlett Packard.
Used approximately 1 month.
Price of \$10,000 includes all attachments.**

Box 485, SCIENCE

The Divisions of Applied Mathematics and Physical Sciences of **WORLD OPEN UNIVERSITY**, a non-resident graduate school, offer general information for M.S. and Ph.D. degrees, and course descriptions are available on request. Enclose \$4.00 for cost and postage. For chemical and environmental science write to the **Division of Physical Sciences, 566 Sunset Drive, Angwin, California 94508.** For mathematics, space science and astronomy, physics, biophysics, and medical physics write to the **Executive Office, P.O. Drawer 5505, Orange, California 92667.** Advanced Seniors may enroll on approval.

INNOVEX DUAL DISKETTE

Full PDP-8E/F interface. 99K 12-bit words/disc. Used 300 hours; \$4450 new. Price \$2250 + crate, ship.

**W. T. Powers, 1138 Whitfield
Northbrook, IL 60062**

HERBICIDES-C-14

From Stock Custom Preparation

**CALIFORNIA BIONUCLEAR
CORPORATION**

7654 San Fernando Road
Sun Valley, Calif. 91352 (213) 767-4400

Circle No. 422 on Readers' Service Card

Thermocouple THERMOMETERS

We make 14 thermometers, with digital or meter readout. All read in 2 secs, are extremely easy to use. Simply apply probe — read temperature.

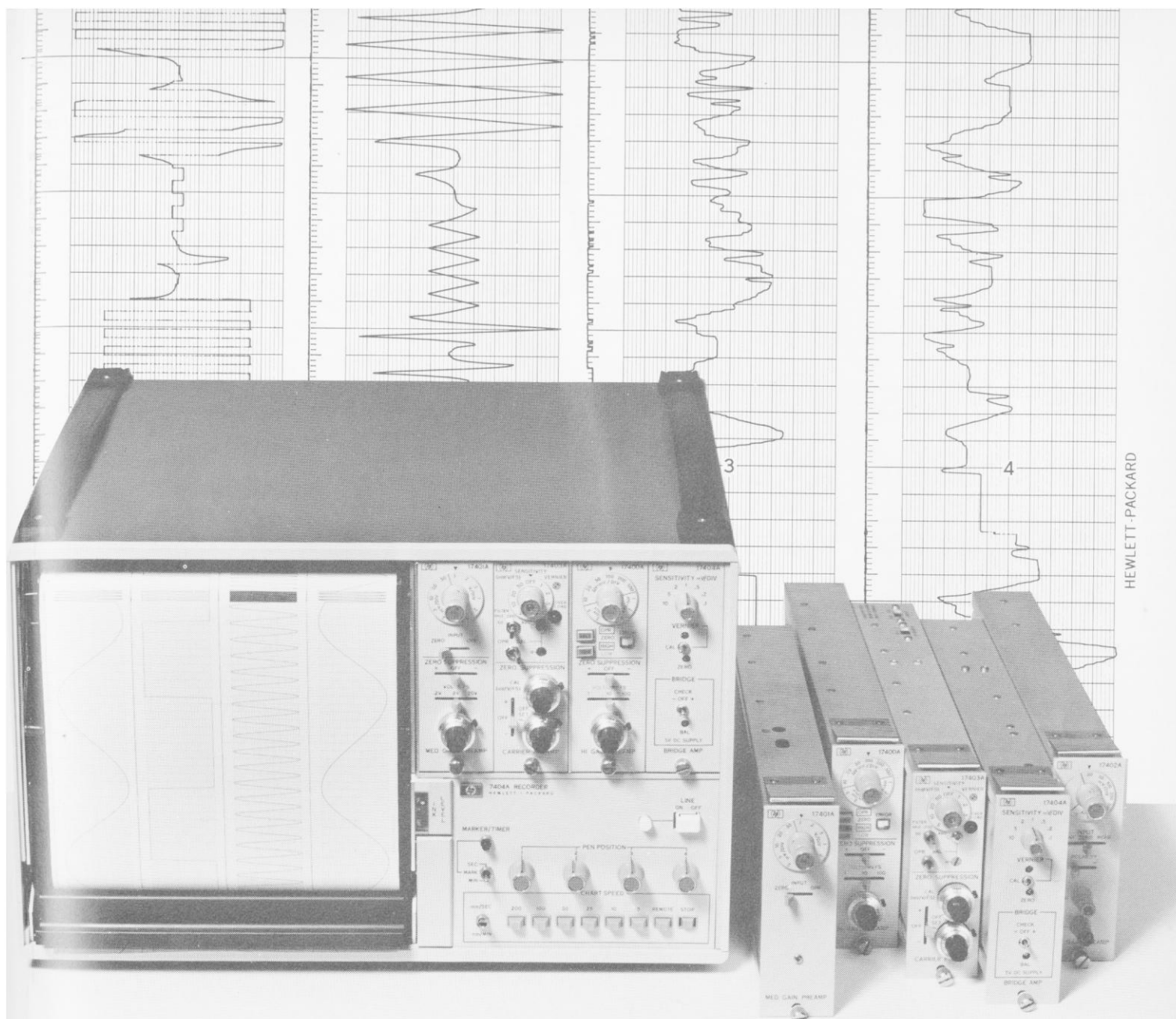
Unbreakable probes are steel sheathed including World's Smallest Microprobe, 0.01" dia.

Models
BAT-4 BIOLOGICAL
BAT-5 CRYOGENIC
BAT-7 INDUSTRIAL
BAT-8 DIGITAL °C or °F
TH-2 CLINICAL

The Modern Way to Measure

BAILEY INSTRUMENTS INC.
Saddle Brook, N.J. 07662 • (201) 845-7252

Circle No. 81 on Readers' Service Card



Now the oscillographic recorder that gives you more of everything, gives you two more channels.

Introducing HP's new 4-channel oscillographic recorder.

Shop around. Compare performance, trace quality, standard features and options. Compare price.

It's the only way to see exactly why HP oscillographic recorders give you more of everything. In the two channel model 7402A. And the versatile new four channel model 7404A.

Trace quality is just what you see here. Crisp and clear. Instantly dry. No blobs or smears, even at high speeds. At the flip of a switch, those four channels convert to two double-width channels that provide twice the resolution. Non-fatiguing stainless steel pens, with

long-life carbide tips, can't be damaged by input signal frequency.

Like the two channel machine, the 7404A has handy front panel chart controls including a remote pushbutton for speed selection by TTL or contact closure. And there's the added flexibility of event markers, timer and a 60:1 "seconds-to-minutes" speed reducer. (Standard on the 7404A and optional on the 7402A.)

An assortment of options, including paper take up, along with interchangeable plug-in signal conditioners let you adapt either machine to specific appli-

cations. Amplify and measure a broad range of DC signals, or record AC/DC excited transducer outputs.

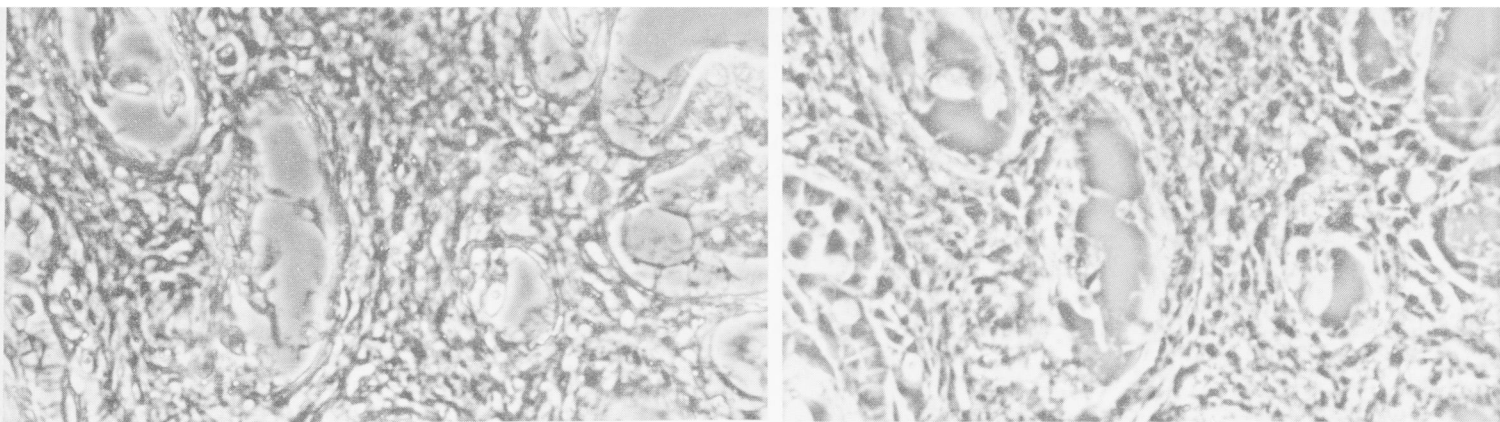
Base price for our new four channel machine is \$4400 (domestic USA price only). Compare the value against any other recorder. At any price. You'll see for yourself just how much more you're getting.

11502

HEWLETT  PACKARD

Sales and service from 172 offices in 65 countries.
1501 Page Mill Road, Palo Alto, California 94304

Circle No. 561 on Readers' Service Card



See Phase Contrast from Dark to Bright and Everything in Between with the AO[®] POLANRET[™] Microscope

Now you can see living, unstained, transparent or low contrast specimens as never before. Continuously variable phase and amplitude contrast is a dramatic improvement over fixed phase contrast microscopes.

Detail can be made to appear progressively brighter or darker in enhanced contrast to your individual preference at a turn of a knob. Even obstructions to essential detail may be readily eliminated by varying the contrast or amplitude.

The AO POLANRET Microscope is easy to use and allows quick change over from variable phase contrast to conventional brightfield microscopy.

Ask your AO Dealer or Sales Representative for a demonstration or write for full color brochure on this new exclusive from American Optical, Scientific Instrument Division, Eggert Road, Buffalo, New York 14215.



AO[®]
American
Optical

Circle No. 460 on Readers' Service Card