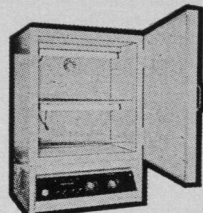
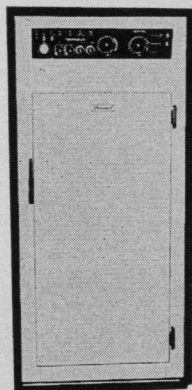




...the name to remember for versatile Biological Incubators



**Model I-30b**  
This 8 cubic foot lighted table top incubator with over-sized evaporator and low velocity air circulation will hold your most delicate materials without desiccation. Options are available for additional lighting.

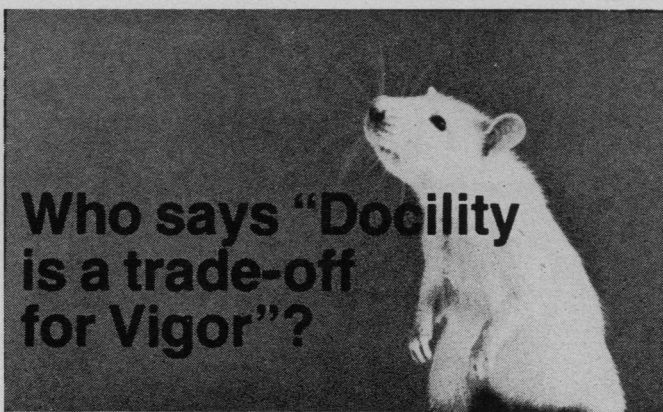


**Model I-35**  
25 cubic feet of precision controlled incubator. The four shelves can be fully loaded without vertical gradient. Designed for versatility, this unit offers five different lighting configurations.

Percival has the experience, the know-how and the product line to serve your needs. Whether it's a simple biological incubator or a highly sophisticated plant growth chamber, Percival can supply it for you. We will prepare a recommendation to fit your requirements whether they be table models or giant walk-ins.

Consider your requirements carefully and then contact us. Write today for more information and the new complete Percival catalog.

**PERCIVAL MANUFACTURING CO.**  
P.O. Box 249 Boone, Iowa 50036  
Serving Science since 1955



## FREE Trial Supply

(To Research Laboratories only)

Just fill out and mail coupon. Let us prove what we say. All Holtzman Rats are air-shipped in close weight and age groups. Safe arrival and satisfactory quality guaranteed. Extra rats included.

Mail to: **Holtzman Company, Dept. T**

P.O. Box 4068  
Madison, Wisconsin 53711

Air-Ship me a free supply of the Holtzman Rat. I prefer \_\_\_\_\_ (type)

Name \_\_\_\_\_ Title \_\_\_\_\_

Institution \_\_\_\_\_

Address \_\_\_\_\_

City \_\_\_\_\_ State \_\_\_\_\_ Zip \_\_\_\_\_

### AAAS Audiotapes

# Inventory Sale

To make room for new stock, we are offering the following audiotapes at greatly reduced rates—\$10 for the first session and \$5 for each additional session. You may wish to check the list to see if any of the tapes pertain to your field of interest.

- 17-69 Manned Lunar Space Program (I)
- 22-69 The International Study of Eskimos (I-II)
- 23-69 Physiological Effects of Audible Sound (I-IV)
- 25-69 Technology Assessment and Human Possibilities (I-III)
- 31-69 Academic Research and the Military (I-III)
- 34-69 The Behavioral and Social Sciences: Outlook and Needs (I)
- 45-69 Innovation (I)
- 58-70 Are We Winning the War Against Urban Fires? (I)

- 62-70 University Open Admissions (I-II)
- 75-70 Is There a Generation Gap in Science? (I)
- 94-71 Value and Knowledge Requirements for Peace (II-V)
- 105-71 How Valuable is Human Health? (I-II)
- 124-72 Crime Prevention: Heredity and Environment Revisited (I-II)

[The hyphenated numbers preceding the symposium titles identify each title by tape number (preceding the dash) and by year of taping (after the dash). Roman numerals following the titles designate the number of sessions in each symposium.]

Money order or check payable to AAAS—No cash. Credit sales subject to \$1.50 handling charge. Allow 3 to 4 weeks for delivery. Please check: \_\_\_\_\_ Reel \_\_\_\_\_ Cassette

Tape No. \_\_\_\_\_ Session No. \_\_\_\_\_

Tape No. \_\_\_\_\_ Session No. \_\_\_\_\_

Tape No. \_\_\_\_\_ Session No. \_\_\_\_\_

Tape No. \_\_\_\_\_ Session No. \_\_\_\_\_

Name \_\_\_\_\_

Street \_\_\_\_\_

City \_\_\_\_\_

State \_\_\_\_\_

Zip \_\_\_\_\_



Department GF-1

**AMERICAN ASSOCIATION for the ADVANCEMENT of SCIENCE**

1515 Massachusetts Avenue, N.W., Washington, D. C. 20005

# Personnel Placement

It is requested that only those employers who will not discriminate on the basis of race, sex, religion, color, or national origin submit positions open advertising.

**POSITION WANTED:** 40¢ per word, minimum charge \$10. Use of Box Number counts as 10 additional words. Payment in advance is required. These rates apply to individuals only. Personnel agencies and companies take display rate for all advertising.

**POSITIONS OPEN:** \$110 per inch. No charge for Box Number. Rates net. No agency commission allowed for ads under 4 inches. No cash discount. Ads over 1 inch will be billed to the nearest quarter inch. Payment in advance is required except where satisfactory credit has been established.

**COPY** for ads must reach **SCIENCE** 4 weeks before issue date (Friday of every week). Send copy for Personnel Placement advertising to:

**SCIENCE, Room 207**  
1515 Massachusetts Ave., NW  
Washington, D.C. 20005

Replies to blind ads should be addressed as follows:

Box (give number)  
**SCIENCE**  
1515 Massachusetts Ave., NW  
Washington, D.C. 20005

## POSITIONS WANTED

**Anesthesiologist, M.D., 47** (experience in research, teaching, and administration). Present interest in study of system analysis methods and applications to operating room performance of anesthesiologist; seeks position at chairman level in medical school. Box 444, **SCIENCE**. 11/1; 12/6; 1/10

**Anthropologist, Ph.D.,** Washington State University (1974). Fieldwork in Nepal. Specific interests include peasants, cultural ecology, and economic anthropology. Publications. Seeks teaching and/or research position. Available immediately. Peter H. Prindle, 223 South Main Street, Sherborn, Mass, 01770. X

**Aquatic Biologist, M.S. 1974.** Broad background lab/fieldwork. Thesis topic: New reservoir benthos. Seeks employment. Route 12, Box 527, Salisbury, N.C. 28144. X

**Biochemist/Cell Biologist/Developmental Biologist** seeks research position. Ph.D. 1972. Two years of postdoctoral research experiences in endocrinology, hematology, and tissue cultures. Publications. Available January 1975. Box 445, **SCIENCE**.

**Biologist/Nutritionist, Ph.D.** Two years of postdoctoral medical research; B.A., mathematics-sociology. Multicultural background. Experience in writing, teaching, digestive enzymes, and nutritional studies. Publications. Prefers interdisciplinary health-related subject matter. Available June 1975. Box 446, **SCIENCE**. X

**Geneticist/Psychogeneticist, Ph.D.** Experience in behavioral and alcohol research. Publications. Grants. Extensive teaching. Seeking research and/or teaching position. Box 447, **SCIENCE**. X

**I Am a Hybrid.** Ph.D. Biochemist, M.P.H. Epidemiologist, investigative journalist of regional (and a bit of national) repute. I'd like to integrate it all—with book publisher, newspaper, magazine, radio, TV, or what have you. Experience: research, teaching and writing (both scholarly and journalistic); 46, recently divorced, and free to relocate, but prefer West Coast or Washington, D.C., area. Box 448, **SCIENCE**. X

**Immunologist, Ph.D. 1971.** Expertise in cellular immunology, biochemistry of nucleic acids, microassays measuring immunocompetence and responses to tumors. Creative. Fourteen publications. Seeks research, research/teaching position preferably in California. Box 449, **SCIENCE**. X

**Neurochemist, Ph.D.,** biochemical pharmacology of psychotropic drugs. Biochemistry of neuropsychiatric diseases. Publications. Research with/without teaching wanted. Box 451, **SCIENCE**. X

**Neuroendocrinologist/Pharmacologist; Ph.D. 1974.** Research experience and publications in neuropharmacology, endocrinology, neurochemistry, and cardiovascular pharmacology. Nine years of industrial research experience including supervisory responsibilities. Seeking industrial or academic position. Box 452, **SCIENCE**. X

## POSITIONS WANTED

**Membrane Physiology/Biophysics, Ph.D. 1965.** Postdoctoral here and abroad; presently on medical school faculty. Research: active transport and excitation (nerve and muscle). Also interested in junctional physiology. Publications in well-reviewed journals. Desire faculty position permitting continuing research and teaching. Some preference for Northeast, but consider particular departmental ambience of greater importance. Box 450, **SCIENCE**. 10/4, 18; 11/1

**Pharmacologist, Ph.D.** Pharmaceutical company assistant director medical communications with clinical drug research experience, seeks appropriate directorship. Box 440, **SCIENCE**. 10/4

**Pharmacologist, Ph.D. 1972.** Experience in behavioral and biochemical pharmacology of narcotics and hallucinogens, drug discrimination. Good publications. Seeks challenge, research position. Box 453, **SCIENCE**. X

**Ph.D.** Research experience: EEG-behavior relationships, EEG and HR conditioning, learning, aggression, pharmacology. Teaching experience: experimental and physiological psychology. Write 1307 Blakeslee, Kalamazoo, Mich. 49007. X

**Radiation/Cell Biologist, M.S.,** 3 years of laboratory experience, 1 year of teaching, seeks research, academic, or industrial position. Ronald Clawson, 602 Aspen, Edgewood, Md. 21040. X

## POSITIONS OPEN

### ASSISTANT PROFESSOR

Ph.D., or M.D., to take charge of the operation of a protein chemistry laboratory in a center for membrane studies in normal and diseased cells. The applicant should have advanced training in general protein chemistry and extensive experience with amino acid analyzers, peptide sequence analyzers, automated peptide synthesizers, and supporting equipment. The position involves part-time independent or collaborative research on membrane proteins, part-time service and advising on related projects, and part-time graduate teaching. Send curriculum vitae and names of persons who could supply references to the **Section of Cell Biology, Yale University School of Medicine, 333 Cedar Street, New Haven, Conn. 06510.** Applications from women and minority group members are encouraged.

**Assistant Professor in Ophthalmology Department.** Ph.D. in Biochemistry with postdoctoral experience in neurochemistry, immunological systems and enzyme mechanisms, receptor mechanisms and isolation, to carry out fundamental studies on adrenergic system of the eye. Salary commensurate with qualifications and experience. Send biographical outline including list of publications and names of 3 or more references to:

P.O. Box 649  
New Haven, Connecticut 06503

### CORNELL UNIVERSITY DEPARTMENT OF MATERIALS SCIENCE AND ENGINEERING

A junior faculty opening exists at the **ASSISTANT PROFESSOR** level to extend our research and teaching capabilities in the area of **CERAMICS, GLASSY OR POLYMERIC MATERIALS.** Postdoctoral or industrial experience desirable, but new and recent Ph.D.'s will be considered. The primary duties of this position include development of a strong graduate research program in one of the above areas, participation in teaching programs at both the graduate and undergraduate level, and advising students. Applicants should send a résumé, a list of three references, and a description of research and teaching goals to **R. W. Balluffi, Director, Materials Science and Engineering, Bard Hall, Cornell University, Ithaca, New York, 14850** by 15 November 1974. An equal opportunity/affirmative action employer

**ASSISTANT OR ASSOCIATE PROFESSOR OF BIOCHEMISTRY** with experience and research interest in the field of biochemical endocrinology. Candidates for this position should hold a Ph.D. or M.D. degree with postdoctoral experience related to the effects of hormones on reproduction and development. A strong commitment to the teaching of these subjects to medical students and to graduate students is required. The successful candidate must have a vigorous on-going research program in the biochemistry of development and/or reproduction. The appointment is on a 12-month basis with salary and rank commensurate with training and experience. Qualified applicants should send a curriculum vitae and the names of three persons who may be contacted for letters of references to: **Appointments Committee, Department of Biochemistry, Temple University School of Medicine, Philadelphia, Pa. 19140.** An equal opportunity employer.

## POSITIONS OPEN

### FACULTY POSITIONS OPEN AT THE UNIVERSITY OF COLORADO SCHOOL OF PHARMACY

1) **Assistant Dean.** For this position we shall consider an individual who holds a Ph.D. degree in pharmacology or pharmacy and who has knowledge of clinical pharmacy programs. Responsibilities will include assisting in: (i) further development of a consortium with the University of Colorado School of Medicine and other medical teaching facilities in the Denver-Boulder area; (ii) recruiting of additional clinical pharmacy faculty and establishment of a research base within the clinical pharmacy program; and (iii) direction of, and participation in, programs of continuing education.

This person must have a good understanding of health care delivery systems and be competent to maintain good relations between the School and pharmacists of Colorado as well as physicians and other health personnel who function in the clinical program. An opportunity to perform limited teaching duties in areas related to the clinical component will be provided.

2) **Assistant Professor—Pharmacology.** A person with a Ph.D. degree with experience in research as well as teaching. The responsibilities of this individual will include undergraduate teaching in the areas of pathology and pathophysiology, as well as pharmacology. He or she will be expected to teach graduate courses in pharmacology, develop a research program, and seek funds for such research from various sources including the Department of Health, Education, and Welfare. An excellent opportunity exists for collaborative research and teaching with faculty members of the School of Pharmacy as well as with those of other divisions of the University, and emphasis is given to interdisciplinary research and teaching.

Please send résumés to: **Dean V. Gene Erwin, School of Pharmacy, University of Colorado, Boulder, Colorado 80302.**

*The University of Colorado is An Equal Opportunity Employer*

Applications are invited for the position of **ASSISTANT OR ASSOCIATE PROFESSOR, COLLEGES OF MEDICINE AND VETERINARY MEDICINE, UNIVERSITY OF FLORIDA.** This position will be jointly appointed in the College of Medicine's Division of Anatomy and the College of Veterinary Medicine, D.V.M. and/or Ph.D. required. Applicants should be interested in actively participating in teaching veterinary gross anatomy and have demonstrated competence in independent research. Persons having a background in any of the anatomical sciences will be considered. Position available on or after 1 January 1975.

Applicants should send a curriculum vitae along with the names of three references, bibliography, and a summary of research plans to:

**Dr. Michael H. Ross, Division of Anatomy, Department of Pathology, P.O. Box 371, J. Hillis Miller Health Center, University of Florida, Gainesville, Florida 32611**

OR

**Dr. Emerson L. Besch, College of Veterinary Medicine, P.O. Box 216, J. Hillis Miller Health Center, University of Florida, Gainesville, Florida 32611**

*The University of Florida is an Equal Opportunity/Affirmative Action Employer.*

### ASSISTANT TOXICOLOGIST

Chemical analysis in postmortem medical legal cases. Experience in drug analysis and background in medicinal chemistry or pharmacology desirable. Ph.D. Please send résumé to: **Yale H. Caplan, Ph.D., Toxicologist, State of Maryland, Office of the Chief Medical Examiner, 111 Penn Street, Baltimore, Maryland 21201.**

### CANCER RESEARCH

Immediate opening in viral oncogenesis; studies to be concerned with development and therapy of viral leukemia in murine model systems. Recent Ph.D. with background in hematology and/or immunology preferred. Annual stipend \$10,000. Send curriculum vitae and references to **James P. OKunewick, Ph.D., Head, Viral Oncogenesis, Cancer Research Unit, Clinical Radiation Therapy Research Center, Allegheny General Hospital, Pittsburgh, Pa. 15212.**

## POSITIONS OPEN

### ASSISTANT PROFESSOR OF BIOLOGY

At Lehigh University, with speciality in marine biology. Responsibilities include teaching undergraduate and graduate courses in marine biology, advising M.S. and Ph.D. candidates, and conducting research in the marine field. Position is available September 1975; applications accepted until 15 January 1975. Preference will be given to candidates with postdoctoral experience. Salary and fringe benefits are competitive. Send curriculum vitae and three letters of reference to: **Professor Sidney S. Herman, Search Committee, Department of Biology, Lehigh University, Bethlehem, Pa. 18015.**

*Lehigh University is an equal opportunity employer and applications from minority groups and women are encouraged.*

### BIOCHEMIST

University academic position for Ph.D. biochemist in Midwest psychiatric institute. *Equal Opportunity Employer.*

Box 442, SCIENCE

### BIOCHEMIST

Assistant Professor, Ph.D. with two or more years of experience. Teaching. Research related to human health. Possible planning of a new medical school curriculum. Start 1 January 1975. Closing date for applications, 12 November. Salary \$16,000, negotiable, academic year. Send curriculum vitae and references to: **Dr. F. H. Radke, Chairman, Department of Biochemistry, University of Maine, Orono, Maine 04473.**

### BIOCHEMICAL PHARMACOLOGIST

Ph.D. experienced in biochemical aspect of pharmacology with special experience in experimental animal work, biochemical synthesis, and kinetics of pharmacologic compounds in animals and humans. Post recently vacated by professor with joint appointment in Department of Pharmacology. Academic appointment at appropriate level available. Position is presently in a large Rheumatology Division, Department of Medicine, in which extensive research in clinical pharmacology, biochemical pharmacology, immunology, and experimental pathology is currently ongoing. Send curriculum vitae and supportive material to **Carl M. Pearson, M.D., Division of Rheumatology, Department of Medicine, University of California at Los Angeles, California 90024.**

**BIOLOGIST.** Applications are requested from individuals with proven teaching and research effectiveness, and leadership potential including a working knowledge of grantsmanship. The individual selected may be appointed as department head. Rank commensurate with experience. Competitive salary and excellent fringe benefits. Effective date of appointment to staff is August 1975. Send applications to **Dr. Jerome F. Wermuth, Department of Biology, Purdue University Calumet Campus, Hammond, Indiana 46323.** *We are an equal opportunity, affirmative action employer.*

Positions available in **CANCER RESEARCH PROGRAM.** Postdoctoral level or faculty rank, depending on credentials. Interested in following individuals: immunochemist (antigen isolation and characterization), macromolecular biologist (enzymology) and macromolecular virologist. Excellent facilities and stable funding. Opportunity to teach at graduate level if desired. Send résumé to: **A. Y. Elliott, Ph.D., Department of Urologic Surgery and Microbiology, University of Minnesota, 412 Union St. SE, Minneapolis, Minnesota 55455.**

### CHAIRPERSON

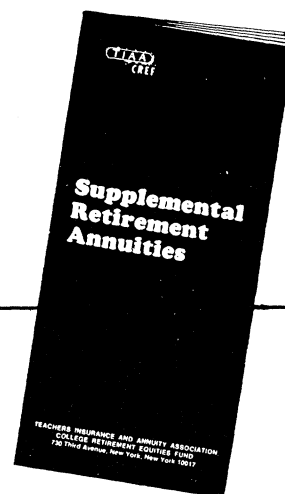
**Chairperson** to lead Ph.D.-granting department, beginning 1 July 1975, or later. Record of successful research funding and publications essential. Rank, salary negotiable. Send complete résumé and list of references by 15 December to **Chairman, Search Committee, Chemistry Department, University of Maine, Orono, Maine 04473.**

**POSTDOCTORAL** (M.D. or Ph.D.). Applications are invited for a 2-year position beginning 1 November 1974. Research involves cell wall and membrane biochemistry of bacterial pathogens and their aberrant forms. A strong bacteriological and biochemical background, with isotope training, is essential. Send curriculum vitae to: **Professor Charles Panos, Department of Microbiology, Thomas Jefferson University, 1020 Locust St., Philadelphia, Pa. 19107.**

4 OCTOBER 1974

# TIAA-CREF Supplemental Retirement Annuities

## for tax-deferred annuity programs



Supplemental Retirement Annuities (SRA's) are new forms of TIAA and CREF contracts designed expressly for use by persons who want to set aside tax-deferred retirement funds over and above amounts being accumulated under their institution's basic retirement plan. They are available for employees of colleges, universities, private schools and certain other nonprofit educational organizations with tax-deferred annuity (salary-or-annuity option) programs. Through a properly drawn agreement with their institution, staff members may divert part of their compensation before taxes to the purchase of these new contracts.

**And SRA's are cashable at any time.** This means that if the money accumulated by salary reduction is needed before retirement, the SRA contracts can be surrendered for their cash value. Benefits, whether payable in cash or as income, are taxable as ordinary income when received.

For more information and answers to questions send for your copy of the booklet on Supplemental Retirement Annuities.

**S**end me a booklet describing  
TIAA-CREF Supplemental Retirement Annuities.

Name \_\_\_\_\_

Address \_\_\_\_\_  
Street

City \_\_\_\_\_ State \_\_\_\_\_ Zip \_\_\_\_\_

Nonprofit  
Employer \_\_\_\_\_

Teachers Insurance and Annuity Association  
730 Third Avenue, New York, New York 10017

wi

## POSTDOCTORAL RESEARCH

The National Research Council announces the Research Associateship Programs for 1975. The programs provide scientists and engineers opportunities for postdoctoral research on problems in the fields of CHEMISTRY - SPACE SCIENCES - PHYSICS - ATMOSPHERIC & EARTH SCIENCES - ENGINEERING - LIFE SCIENCES - MATHEMATICS AND ENVIRONMENTAL SCIENCES.

Appointments are made on a competitive basis, and are tenable in selected federal research laboratories at more than 80 locations.

Appointments are open to recent recipients of the doctorate and in some cases to senior investigators. Some are open to non-U.S. citizens also.

Approximately 250 awards will be made in 1975. Stipends (subject to income tax) will range from \$15,000 upwards. Grants will be provided for family relocation and for professional travel during tenure.

Applications must be postmarked by 15 January 1975. Awards will be announced in April.

Information on specific research opportunities and application materials are available from

Associateship Office JH606-S

**NATIONAL RESEARCH COUNCIL**  
2101 Constitution Avenue, N.W.  
Washington, D.C. 20418

## RESEARCH VETERINARIAN

A good opportunity exists with biological laboratory of Fortune 500 pharmaceutical firm. As resident veterinarian, your duties will include research pathology, toxicology and animal care operations for this human vaccine research and production facility.

We seek a candidate with a DVM and emphasis in laboratory animal medicine plus 2-3 years of practical experience. A very liberal salary and benefit program, good growth potential and desirable geographic location are available to the right person.

Please forward curriculum vitae and salary requirements to: **D. H. Gattone, Personnel Manager.**

**Merrell**

MERRELL-NATIONAL LABORATORIES  
Division of Richardson-Merrell Inc.  
SWIFTWATER, PA. 18370

An Equal Opportunity Employer M/F

## POSITIONS OPEN

### DARTMOUTH MEDICAL SCHOOL DARTMOUTH COLLEGE, HANOVER, N.H. CHAIRPERSON, DEPARTMENT OF COMMUNITY MEDICINE

Dartmouth Medical School which returned to granting the M.D. degree two years ago, after a lapse of over half a century, seeks to fill this vital position. The department is responsible for teaching in the M.D. program as well as the development of a physician-manager training program for primary care physicians. Of particular challenge is the development of community health programs and health delivery systems in a rural setting, and their integration into the teaching program.

Applications with supporting curriculum vitae should be directed to: **P. C. Whybrow, M.D., Chairman, Community Medicine Search Committee, Dartmouth Medical School, Hanover, New Hampshire 03755. Dartmouth College is an equal opportunity/affirmative action employer. Women and minority group candidates are encouraged to apply.**

### CHAIRPERSON

Department of Microbiology, New York Medical College. Applicants for the position of Professor and Chairperson of Microbiology from qualified individuals are requested. *New York Medical College is an affirmative action/equal employment employer.* Applicants should submit curriculum vitae and bibliography to **Robert Goldstein, M.D., Chairman of Search Committee, Department of Medicine, New York Medical College, 1249 Fifth Avenue, New York, New York 10029.**

### DIVISION DIRECTOR

The Division of Man-Environment Relations, a multidisciplinary, multiprofessional unit of the College of Human Development, The Pennsylvania State University, concentrates on (i) the study of effects of the man-made environment on biological, behavioral, and social functioning, and (ii) the development and teaching of improved methods for organizing environments to support biological, behavioral, and social functioning. Its teaching, research, and service activities range from the theoretical to the applied. It prepares people for professional roles on the staffs of city, county, metropolitan, regional, and state planning organizations; renewal, development, and housing agencies; architectural and planning offices, consulting firms, and resource management agencies; public housing and food services; and social welfare agencies.

We are seeking a Director of demonstrated scholarly and professional competence to assume academic and administrative responsibilities for the activities of the division. A key responsibility of the Director will be to create conditions for effective and creative research in a multidisciplinary, multi-professional faculty. Inquiries to: **Robert M. Griffin, Jr., The Pennsylvania State University, 5-126 Henderson Human Development Building, University Park, Pa. 16802.**

### EXPERIMENTAL PLANT MORPHOLOGIST

A position is available in August 1975 for an individual qualified to share in the instruction of introductory plant morphology and to establish an advanced course in plant development. Research experience in the general area of experimental morphology of embryophytes is required.

Submit complete résumé and three letters of reference to **C. J. Arntzen, Department of Botany, 289 Morrill Hall, University of Illinois, Urbana, Illinois 61801.** Closing date for receipt of applications is 1 December 1974.

*The University of Illinois is an Affirmative Action-Equal Opportunity Employer and encourages applications from members of minority groups and women.*

### FACULTY POSITION

The Department of Pharmacology is seeking Faculty in the areas of Cardiovascular, Autonomic, and Psychopharmacology. Successful candidates for these positions (Assistant or Associate Professor, dependent on experience) will be expected to teach medical and graduate courses in these areas and to conduct an active research program. Applicants for assistant professor should have not less than 3 years of postdoctoral experience. Please send complete curriculum vitae, list of publications, and names and addresses of at least two references to: **Dr. Murray Heimberg, Department of Pharmacology, University of Missouri, School of Medicine, Columbia, Mo. 65201. The University is an affirmative action, equal opportunity employer.**

## POSITIONS OPEN

### FACULTY POSITION

The Zoology Department, Arizona State University, seeks applications for a physiology position at the Assistant or Associate Professor level for fall 1975 to complement an environmentally oriented program. Applicants must have Ph.D., strong background in biochemistry, and research experience in enzymology and/or neuroendocrine functions. Teaching responsibilities include participation in an elementary physiology class and development of graduate course in research specialty. Salary negotiable. Application deadline is 15 January 1975. Send curriculum vitae and three letters of recommendation to:

**Neil F. Hadley  
Search Committee  
Zoology Department  
Arizona State University  
Tempe, Arizona 85281**

*Affirmative Action/Equal Opportunity Employer*

### GENETICIST-DEVELOPMENTAL BIOLOGIST

Assistant Professorship in undergraduate institution available for February or September 1975. Teaching responsibilities: Genetics, developmental biology, and part-time instruction in introductory biology courses. Ph.D. required. Send complete curriculum vitae and three letters of recommendation to: **Dr. Philip Stukus, Chairman, Department of Biology, Denison University, Granville, Ohio 43023.**

*Denison University is an Equal Opportunity Employer*

### DEPARTMENT OF PHYSIOLOGY AND PHARMACOLOGY UNIVERSITY OF PENNSYLVANIA SCHOOL OF MEDICINE

This new department expects to make two appointments at the Assistant Professor level for the forthcoming academic year. Applications are requested from individuals with research interests in all aspects of cellular physiology or pharmacology who can contribute to the teaching of physiology or pharmacology to dental students and to graduate education in a university-wide graduate group in a biomedical science.

Please send your résumé along with the names of three or more references to **Dr. Richard Orkand, Department of Physiology and Pharmacology, University of Pennsylvania, School of Dental Medicine, Philadelphia, Pa. 19174. An Equal Opportunity Employer.**

### POSTDOCTORAL

Available immediately—Two positions. Research interests include proteins and peptides chemistry and conformation; structure-function relationships, allosteric effectors. Salary: \$10,000. Address curriculum vitae and references to **Dr. E. Bucci, Department of Biological Chemistry, University of Maryland School of Medicine, 660 W. Redwood St., Baltimore, Md. 21201.**

### POSTDOCTORAL

Available for spring of 1975. Research interests include microbial membrane functions, biogenetics and active transport. Salary: \$9000. Address curriculum vitae and references to **Dr. Barry Rosen, Department of Biological Chemistry, University of Maryland School of Medicine, Baltimore, Maryland 21201.**

### POSTDOCTORAL RESEARCH ASSOCIATE

Postdoctoral Research Associate position available immediately for the study of brain glycolipids. Send résumé and three letters of reference to:

**Dr. R. K. Yu  
Department of Neurology  
Yale University School of Medicine  
New Haven, Conn. 06510**

### POSTDOCTORAL RESEARCH ASSOCIATE IN NEUROPHYSIOLOGY

To collaborate in research on the cellular organization of lamprey central nervous system. Knowledge of intracellular neurophysiological techniques desirable. *The University of Colorado is an equal opportunity employer.* Apply to:

**Dr. Warren O. Wickelgren  
Department of Physiology  
University of Colorado Medical Center  
Denver, Colo. 80202**



## DIRECTOR OF MICROBIOLOGY

A rapidly growing, medium-sized multi-national medical supply company is seeking a qualified individual to take charge of its Microbiology activities, including biological control and microbiological research.

The individual we are seeking should have a strong background in bacteriology and has demonstrated administrative abilities in a supervisory position.

The qualified candidate should have a PhD in Microbiology. Experience in radiation sterilization and with regulatory agencies would be desirable.

We offer excellent salary and benefits program. Send resume, in confidence, to:

Box 460, SCIENCE

An Equal Opportunity Employer M/F

Abbott has a vital, goal-oriented Research Laboratory of approximately 1,000 scientists. The Department of Pharmacology, located in its modern, rural-suburban laboratory in Lake County, Illinois, has two key openings:

### LABORATORY MANAGER CARDIOVASCULAR PHARMACOLOGY

Supervise 10-15 professionals—including administrative as well as technical leadership—engaged in screening and discovery of new C.V. agents, especially antihypertensives, diuretics and anti-anginals. Must be recognized CV Pharmacologist and have had supervisory experience.

### SECTION HEAD NEUROPHARMACOLOGY

Primarily responsible for devising new methods for the discovery of original CNS agents in the area of antidepressants, tranquilizers and antiparkinsons. Supervise laboratory efforts of 5 scientists. Would require at least 3 years postdoctoral experience, demonstrated innovative skills.

Salaries are appropriate to the responsibilities of the positions. Please send your résumé with salary history to:

J. B. Gaddis

Professional Employment

**ABBOTT**  
NORTH CHICAGO, ILL. 60064

An Equal Opportunity Employer—M/F

## REGULATORY AFFAIRS MANAGER

### RADIOPHARMACEUTICAL AND DIAGNOSTIC PRODUCTS

This professional opportunity is in our Corporate Regulatory Affairs Division and encompasses total responsibility for all relationships with FDA, AEC and other agencies involving the production and marketing of radiopharmaceutical and diagnostics to the health care industry.

We would require a strong scientific background in radiopharmaceuticals or diagnostics, direct experience in dealing with regulatory agencies, and experience in the pharmaceutical industry.

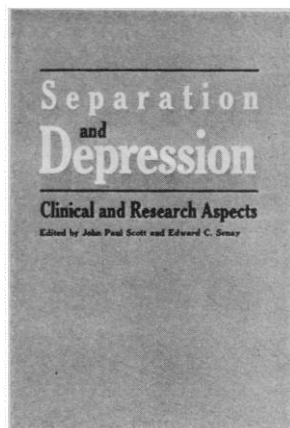
Location is a rural-suburban, Abbott Park in Lake County, Illinois—40 miles north of Chicago. Please send résumé and salary history to:

J. B. Gaddis

Professional Employment

**ABBOTT**  
NORTH CHICAGO, ILL. 60064

An Equal Opportunity Employer M/F



## Separation and Depression

Edited by  
John Paul Scott  
and  
Edward Senay

This volume brings together contributions from behavioral biology, animal behavior studies, clinical psychopharmacology, psychoanalysis, and social systems research and, thus, bridges the gaps between animal behavior models and the human clinical situation.

256 pages. Illustrations and tables. A comprehensive index, and references. Retail price: \$19.95. AAAS Member price (with check accompanying order): \$16.95. ISBN-087168-094-7

Send orders to Department SD

**AAAS**  
**AMERICAN ASSOCIATION for the  
ADVANCEMENT of SCIENCE**  
1515 Massachusetts Avenue, N.W.  
Washington, D. C. 20005

### AAAS Memberships and Subscriptions

- Whenever you write us about your membership or subscription, please attach a Science address label to assure prompt service.
- Mail to: Membership and Subscription Records, AAAS, 1515 Massachusetts Ave., NW, Washington, D.C. 20005.
- ☐ **Change of Address:** Please provide 6 weeks' notice. Paste an address label from a recent issue in the space provided. Print new address below.
- ☐ **Query:** If you have a question, place your address label here and attach this form to your letter.
- **To join or subscribe:** Mail this form with your payment, mark the appropriate boxes, and print your name and address in the space below. (For renewals, attach label.)

#### ☐ Membership rates (individual only)

- ☐ \$21 USA ☐ \$26 Canada, PUAS ☐ \$27 Foreign  
☐ \$41 Airlift to Europe, North Africa, Near East

#### ☐ Subscriber rates

- ☐ \$40 USA ☐ \$46 Canada, PUAS ☐ \$48 Foreign  
☐ \$60 Airlift to Europe, North Africa, Near East

- ☐ Payment enclosed ☐ Bill me later

Name  Please print

Address

City  State  Zip  MJ09

ATTACH  
LABEL  
HERE

## POSITIONS OPEN

### CLINICAL BIOCHEMIST

Ph.D. National Registry; with experience to direct a well-equipped, automated-computerized Clinical Chemistry Laboratory in an 870-bed teaching, general hospital in the Rush-Presbyterian-St. Luke's Medical Center. Academic appointment commensurate with experience and interests. Apply, giving complete curriculum vitae to: **Dr. H. H. Sky-Peck, Chairman, Department of Biochemistry, Rush-Presbyterian-St. Luke's Medical Center, Chicago, Ill. 60612.** An affirmative action/equal opportunity employer.

### DIRECTOR OF RESEARCH AND DEVELOPMENT LABORATORY

The University of Washington seeks experienced administrator in science or engineering for Applied Physics Laboratory with staff of 150 engaged in sponsored research cooperating with other University divisions. Most activities are ocean related, a substantial part for the U.S. Navy. The director must have extensive research and development experience and must be qualified for appropriate faculty appointment, preferably with faculty experience. Send résumé and availability to: **Dean of Engineering, University of Washington, Seattle, Wash. 98195.** An equal opportunity employer.

### FACULTY POSITION

Assistant Professor, Ph.D. Appointment to be made by August 1975. To teach Histology (mammalian) in a baccalaureate program and develop an advanced course in histo- and ultrastructural cytochemistry. Participation in graduate program is expected. One or two years of postdoctoral experience is preferred. Strong commitment to research expected. Send complete curriculum vitae and three letters of recommendation to:

**Dr. Nalin J. Unakar, Ph.D., Chairman,  
Department of Biological Sciences  
Oakland University  
Rochester, Michigan 48063**

An Equal Opportunity Employer

### FACULTY POSITIONS

**Cancer Immunologists, Cellular Immunologists, Immunogeneticists, Immunochemists, Clinical Immunologists, Molecular Virologists,** and so forth, Ph.D. and/or M.D. being sought for an exciting new Department of Basic and Clinical Immunology and Microbiology in 300-year-old seacoast city with unique recreational opportunities (fresh and salt water sailing and fishing and year-round tennis, golf, and swimming).

All faculty positions funded by state appropriations. Technical, editorial, and secretarial assistance available in the department, in addition to graduate student stipends. All positions competitive on an international level. Rank and salary commensurate with qualifications, experience and teaching competency, and recent (past 3 to 5 years) documented productivity.

If interested please apply to: **Dr. H. H. Fudenberg, Chairman, Department of Basic and Clinical Immunology and Microbiology, Medical University of South Carolina, Charleston, S.C. 29401.** An equal opportunity employer. Women and minority group candidates are encouraged to apply.

### SCIENCE WRITER

A rapidly expanding Basic Sciences Department has created a need for a Science Editor capable of translating first draft of manuscripts into scientifically correct English and to aid in teaching postdoctoral fellows, and so forth, in scientific writing. Persons experienced in biological sciences with Master's in English preferred. If interested, send résumé to: **Dr. H. H. Fudenberg, Chairman, Department of Basic and Clinical Immunology and Microbiology, Medical University of South Carolina, 80 Barre Street, Charleston, South Carolina 29401.** An equal opportunity employer. Women and minority group candidates are encouraged to apply.

### TECHNICIAN POSITIONS

Positions in cancer immunology, cellular immunology, immunogenetics, virology, and so forth, available in exciting new Department of Basic and Clinical Immunology and Microbiology in 300-year-old seacoast city with unique recreational opportunities (fresh and salt water sailing and fishing, and year-round tennis and golf).

All positions competitive; rank and salary commensurate with qualifications and experience.

If interested please apply to: **Dr. H. H. Fudenberg, Chairman, Department of Basic and Clinical Immunology and Microbiology, Medical University of South Carolina, Charleston, S.C. 29401.** An equal opportunity employer. Women and minority group candidates are encouraged to apply.

## POSITIONS OPEN

### EXPERIMENTAL PSYCHOLOGIST/ BEHAVIORAL PHARMACOLOGIST

Three or more years post-Ph.D. research experience, preferably involving small primates. Record of independent achievement and publication in the experimental analysis of behavior (animal) and the effects of drugs on behavior. Must have strong commitment to behavior as a valid subject matter in itself, rather than as a reflection of things occurring at different levels of analysis. Availability of one's research funds in addition to concrete plans for expansion and support are desirable. *The Worcester Foundation is an Equal Opportunity/Affirmative Action Employer.* Send résumés and references to **Dr. Ashton Gibbons, Director of Personnel, Worcester Foundation for Experimental Biology, 222 Maple Avenue, Shrewsbury, Mass. 01545.**

### FACULTY LEVEL SCIENTIST

To conduct research concerning (i) the role and mechanism of action of steroids, biogenic amines, and prostaglandins in the central nervous regulation of oxytocin secretion; (ii) the mechanism of action of oxytocin on the myometrium with special reference to the intermediary roles of prostaglandins and cyclic nucleotides; (iii) the role of prostaglandins synthesized by the central nervous system in various neuroendocrine regulatory systems. Research at the Worcester Foundation for Experimental Biology, Inc., is supported by outside grants. Subsequent to hiring, scientists are expected to generate their own grant support to cover salary and project costs. *The Worcester Foundation is an Equal Opportunity/Affirmative Action Employer.* Interested persons should send résumés and references to **Dr. Ashton Gibbons, Director of Personnel, Worcester Foundation for Experimental Biology, 222 Maple Avenue, Shrewsbury, Mass. 01545.**

### THE UNIVERSITY OF MANITOBA

Invites applications for the position of **PROFESSOR AND HEAD OF THE DEPARTMENT OF BOTANY** in the Division of Biological Sciences. Currently there are 11 faculty members in the department which offers undergraduate and graduate programs. A large and multidisciplinary complex of laboratories and institutes located on the campus provides a stimulating environment for research and teaching. The current salary minimum for a Professor is \$18,500.00 but the actual appointment will be made at whatever higher salary level is appropriate to the qualifications of the appointee. The academic position will carry tenure on appointment, the administrative role as Department Head will be for an agreed period of years and is renewable under terms of the university's administrative bylaws.

Apply, giving curriculum vitae, to: **Dr. N. E. R. Campbell, Associate Dean of Science, University of Manitoba, Winnipeg, Manitoba, R3T 2N2.**

Deadline for receipt of applications is 1 November 1974.

**HEAD, DEPARTMENT OF ENERGY ENGINEERING.** The department offers areas of concentration leading toward B.S., M.S., and Ph.D. degrees in Chemical Engineering, Environmental Engineering, Fluids Engineering, and Thermomechanics and Energy Conversion. Candidates should have a strong research record in one or more of these areas, and demonstrated capabilities and wide interest in the general fields of energy and the environment. *An Equal Opportunity/Affirmative Action Employer.* Send résumé to: **Dr. Richard M. Michaels, Chairman of Search Committee, Director, Urban Systems Laboratory, University of Illinois at Chicago Circle, Box 4348, Chicago, Illinois 60680.**

### HUMAN PHYSIOLOGIST

Doctorate and teaching required; some medical college experience preferred. Teaching primary emphasis. Position to be filled 1 January 1975. Apply to **Dr. Marlin H. Dearden, School of Health Sciences, Grand Valley State Colleges, Allendale, Michigan 49401.**

### INSTRUCTOR/ASSISTANT PROFESSOR

Position available in the Department of Internal Medicine, University of Michigan Medical School. Candidate must be a physician. Board qualified in clinical oncology, with research ability/interest in a laboratory aspect of oncology. Will function as an internist and clinical oncologist and will also have teaching responsibilities in the Medical School. Code #4300FO. Send résumé to **Box 443, SCIENCE, A Nondiscriminatory Affirmative Action Employer.**

## POSITIONS OPEN

### JUNIOR FACULTY POSITION—PATHOLOGY

A University of Washington position is available at the Instructor or Assistant Professor level in the Department of Pathology. We seek someone interested in teaching medical students general and systemic pathology and working closely with a senior staff person to develop this presentation, not only in Seattle but in our WAMI sites in Alaska, Montana, and Idaho. In addition, this person will also be able to develop their background in neoplasia or liver disease by initiating their own work or by collaborating in ongoing investigation. Send letters of inquiry and curriculum vitae to **Dr. Edward A. Smuckler, Department of Pathology, University of Washington, Seattle, Washington 98195.**

An Equal Opportunity—Affirmative Action Employer

### MANAGER, VIRAL PRODUCTS RESEARCH

We are seeking an individual with a Ph.D. or Ph.D./D.V.M. in Microbiology or related science and extensive experience in applied virology or microbiology in a commercial laboratory or research institute who is willing to accept the challenge and responsibility to demonstrate technical and managerial expertise and ability.

Will be responsible for supervising the staff and coordinating the activities of several groups of scientists associated with the research and development of veterinary viral vaccines.

Please send summary of training and experience, data available and salary requirements to:

**L. V. Wyatt, Personnel Administrator  
Affiliated Laboratories Division  
Whitmoyer Laboratories, Inc.  
Subsidiary of Rohm and Haas Company  
P.O. Box 221  
White Hall, Illinois 62092**

An Equal Opportunity Employer

### MICROBIOLOGIST—ASSISTANT PROFESSOR

Ph.D. with 2 years' experience. Teaching. Research. Pathogenic Bacteriology, Virology or Immunology. Possible involvement in new medical school planning. Start 1 January 1975. Salary \$16,000, negotiable, academic year. Apply to **Darrell Pratt, Chairman, Microbiology, University of Maine, Orono, Maine 04473.**

### MICROBIOLOGIST

Position immediately available for an Assistant Professor to teach courses in medical and ecological aspects of microbiology. Research opportunities. Ph.D. degree required. Send résumé and three letters of reference to: **Dr. Robert C. Stones, Head, Department of Biological Sciences, Michigan Technological University, Houghton, Michigan 49931.**

An Equal Opportunity Employer

### NEUROBIOLOGIST

Assistant Professor with a strong background in the neurosciences to teach neurophysiology to advanced undergraduate and graduate students and develop an upper division course in neurobiology. Candidate is expected to establish an independent research program. Opportunities for collaborative work with other neuroscientists. Send curriculum vitae, three letters of recommendation, and pertinent reprints to **R. L. Boord, Department of Biological Sciences, University of Delaware, Newark, Delaware 19711.** An Equal Opportunity/Affirmative Action Employer.

**POST DOCTORAL** position available for research in radioimmunoassay with particular emphasis on fundamental aspects. Position involves interdisciplinary work with organization's medical department in the area of oncology. Background in organic chemistry and radioisotope use desirable. Send résumé to **Dr. A. P. Wolf, Chemistry Dept., Brookhaven National Laboratory, Associated Universities Inc., Upton, N.Y. 11973.** An Equal Opportunity Employer M/F.

## POSITIONS OPEN

### NEUROPHYSIOLOGIST

With minimum of 4 years of postdoctoral experimental research experience on sensory motor control of head and neck musculature and expertise in the recording of single motor units in the supra- and infra-mandibular muscles. The position at Associate or Assistant Professor level in the School of Dentistry is dependent on grant support. **School of Dentistry, University of California, San Francisco, Calif. 94143.** The University of California, San Francisco, is an equal opportunity employer with an affirmative action program.

### TWO NEUROSCIENTISTS

The Department of Neuroscience of the University of Florida College of Medicine has two openings. One position is for a D.V.M. and/or Ph.D. at the Assistant or Associate Professor level to organize the teaching of neuroscience for students in veterinary medicine and function as an independent basic research neuroscientist with graduate teaching responsibilities in the Ph.D. program. This position is open January 1975, or a later agreeable date. The other position is for a Ph.D. neuroscientist at the Assistant Professor level whose responsibilities will include independent research as well as medical and graduate teaching in the Ph.D. program. Postdoctoral experience is preferred. This position is open September 1975. We intend to fill at least one of the two positions with a neuroanatomist, while the area of research for the other position is open. Send curriculum vitae, references, reprints, and research and teaching goals to **Dr. Frederick A. King, Chairman, Department of Neuroscience, University of Florida College of Medicine, Gainesville, Florida 32610.** An affirmative action/equal opportunity employer.

### PHYSIOLOGIST

Ph.D. or M.D. Teaching graduate and undergraduate physiology; research in renal or pulmonary physiology preferred. Qualifications will determine rank and salary. Send curriculum vitae, reprints and three letters of recommendation to: **Dr. H. W. Shirer, Department of Physiology and Cell Biology, University of Kansas, Lawrence, Kansas 66045.** An Equal Opportunity Employer.

### POSTDOCTORAL

Position immediately available for person with training in Immunology to work on the genetic control of the immune response to murine plasmacytoma antigens. Available for 2 to 3 years. Salary \$11,000 plus fringe benefits. Send curriculum vitae and names, addresses, and telephone numbers of three references to **Dr. Julia M. Phillips-Quagliata, Department of Pathology, New York University Medical Center, 550 First Avenue, New York, N.Y. 10016.** An Equal Opportunity Employer, M/F

### POSTDOCTORAL POSITIONS

Postdoctoral positions are available in two research groups in the Department whose research areas are (1) cyclic AMP metabolism and (2) regulation and mechanism of sugar transport across membranes. Available for 2 years, \$9000 per year. Send résumé to **Dr. H.-C. Li or Dr. T. A. Krulwich, Department of Biochemistry, Mount Sinai School of Medicine of the City University of New York, New York, NY. 10029.** An equal opportunity employer

### POSTDOCTORAL FELLOW

The American Red Cross Blood Research Laboratory, Bethesda, Maryland, has an opening for a biologist or cell physiologist experienced in tissue culture techniques to join studies of cell surface events accompanying the normal and unrestricted cell proliferation. Please send current curriculum vitae to: **Mrs. Kaye Boesel, Office of Personnel, American National Red Cross, 18th and D Streets, NW, Washington, D.C. 20006.**

### PROTEIN CHEMIST

Applications are invited for a full-time position as a Protein Chemist to establish a project in development and application of new techniques in protein separation at the American Red Cross Blood Research Laboratory, Bethesda, Maryland. The level of appointment and salary depends on qualifications and experience. **EOE.** Please send current curriculum vitae to: **Mrs. Kaye Boesel, Office of Personnel, American National Red Cross, 18th and D Streets, NW, Washington, D.C. 20006.**

## POSITIONS OPEN

### MASS SPECTROSCOPIST ASSISTANT PROFESSOR

Applications are invited for a position as Assistant Professor of Mass Spectroscopy in the departments of Pediatrics and Pharmacology at the University of Colorado Medical Center, Denver. Candidates are expected to have a Ph.D. in Organic Chemistry and at least 3 years of postdoctoral experience, preferably in the biochemical applications. The successful applicant will be required to keep charge of a Clinical Organic Chemistry Laboratory and to work in the areas of inborn errors of metabolism, toxicology, and steroid metabolism. Send curriculum vitae to **Dr. Donough O'Brien, Department of Pediatrics, University of Colorado Medical Center, 4200 East Ninth Avenue, Denver, Colo. 80220.**

The University of Colorado is an equal opportunity and affirmative action employer; female and minority persons are urged to apply.

### RESEARCH ASSISTANT PROFESSOR

A position at the level of Research Assistant Professor is available in the Department of Pathology at the University of Washington. Credentials for the position include the following: The individual must have training at the doctoral level in protein biochemistry with extensive experience working with the extracellular connective tissue constituents in normal and diseased tissues. In addition, a knowledge of basic principles of pathology and teaching experience are desirable. The individual will become a member of a research group whose activities are accompanying various inflammatory and other chronic diseases. In addition, the individual will provide biochemical expertise in the connective tissue area to other scientists and graduate students within the Department of Pathology and devote approximately 15 percent of his time to graduate and undergraduate teaching. Send letters of inquiry and curriculum vitae to: **Dr. Roy Page, Department of Pathology, University of Washington, Seattle, Washington 98195.** An equal opportunity/affirmative action employer

### RESEARCH ASSOCIATE POSITION

For person interested in the primary structure of animal virus RNA. Experience with Sanger's two-dimensional electrophoresis technique required. Funds available for 3 years. Apply with curriculum vitae and references.

**M. E. Reichmann  
Department of Microbiology  
University of Illinois  
Urbana-Champaign, Illinois 61801**

### RESEARCH ASSOCIATE

Research associate position available now for 1 year of research in (i) protein synthesis by and (ii) steroid-protein interactions of developing reproductive organs. Annual salary is \$12,000 to \$13,000. Send résumé and references to: **Dr. E. Bloch, Department of GYN-OBS., Albert Einstein College of Medicine, Bronx, N.Y. 10461.**

### TEACHER OPENINGS

Research-oriented individual for faculty position in physical anthropology or functional morphology. Teaching responsibilities include physical anthropology, primatology and biomechanics/functional morphology at the graduate and undergraduate levels. Candidates must have Ph.D. degree in the area of physical anthropology and functional morphology with a minimum of 1 year of teaching experience. Preference will be given to individuals with demonstrated research abilities. Reply to: **Dr. M. M. Dewey, Chairman, Department of Anatomical Sciences, Health Sciences Center, State University of New York at Stony Brook, Stony Brook, New York 11794.** An Equal Opportunity/Affirmative Action Employer

### TECHNICAL WRITER/EDITOR

Assignment will involve rewriting and editing technical progress reports and journal articles in the nuclear field. Desirable background will include a B.S. or B.A. degree in an engineering or scientific discipline or equivalent experience and a thorough knowledge of printing procedures and grammar. Technical writing/editing experience in nuclear fields is particularly desirable. We offer competitive salaries and excellent benefits. Submit résumé and salary requirements to:

**P.O. Box 281  
ARGONNE NATIONAL LABORATORY  
9700 South Cass Avenue  
Argonne, Illinois 60439**

An Equal Opportunity Employer

## POSITIONS OPEN

### PROFESSORS AND CHAIRMEN FOR THE DEPARTMENT OF MICROBIOLOGY AND PARASITOLOGY AND THE DEPARTMENT OF NUTRITION AND FOOD SCIENCE

These positions have been created as a result of the formation of the two new, amalgamated departments, effective 1 July 1975. Applicants should have an M.D., Ph.D., fellowship or similar qualification, with wide research and practical and teaching experience. The Chairman will be expected to teach courses in his own special area and to administer the Department. The salary is negotiable.

Applications should be submitted to the **Dean, Faculty of Medicine, Medical Sciences Building, University of Toronto, Toronto, Ontario, Canada, M5S 1A8.**

Closing date for applications is 1 December 1974.

### RESEARCH ASSOCIATE IN NEUROBIOLOGY

Positions available for persons with experience in molecular biology or neurochemistry to pursue research in molecular differentiation of neural tissue. Send letter and curriculum vitae to **Department of Neurology, Laboratory of Neurobiology, University of Texas Southwestern Medical School, Dallas, Texas 75235.**

### RESEARCH ASSOCIATE

Interest and several years of experience in protein chemistry required. Main responsibility will be to supervise protein sequence work including amino acid analysis, electrophoresis, chromatography, and an automatic sequencer. Must have strong interest in design and maintenance of sophisticated equipment. Contact **Dr. William Konigsberg or Dr. Yale Nemerson, Yale University School of Medicine, 333 Cedar Street, New Haven, Conn. 06510.** Yale University is an equal opportunity employer.

### SCIENTIST

### DEPARTMENT OF SCIENTIFIC AND INDUSTRIAL RESEARCH NEW ZEALAND

The Chemistry Division of the DSIR, Lower Hutt, has a vacancy for a scientist to work on a wide range of projects in water research. Duties will include research into the chemistry of natural surface and underground water, and development of analytical and water treatment methods.

**Qualifications:** Ph.D. preferred, with honours in chemistry or geochemistry.

**Salary.** Up to NZ\$11,153 per annum dependent on qualifications and experience.

Details of passage assistance and application forms may be obtained from the **New Zealand Embassy, 19 Observatory Circle, NW, Washington, D.C. 20008.** Applications should quote Vacancy No. 5088. Closing date for applications will be 15 November.

## GRADUATE STUDY

### GRADUATE STUDY IN THE SCIENCES OF NUTRITION, FOOD, AND TEXTILES

Teaching and Research Assistantships are available for qualified students in applications of physiology, biochemistry, biology, and chemistry to problems of man's near environment. For details write: **Director of Graduate Studies, N116 MVR, New York State College of Human Ecology, Cornell University, Ithaca, New York 14853.**

## SCIENTIFIC EXCHANGES

### Commission on International Relations U.S.S.R./E.E.

**National Academy of Sciences,  
2101 Constitution Avenue, Washington, D.C. 20418**

Applications are invited from American scientists interested in making professional visits during the period September 1975 through August 1976 in the U.S.S.R., Bulgaria, Czechoslovakia, Hungary, Poland, Romania, or Yugoslavia. Short-term visits are 1 month; longer visits for research are 3 to 12 months. Applicants must be U.S. citizens and have a doctoral degree in the natural or social sciences. Deadline for receiving completed applications is 21 November 1974.





**The AO MICROSTAR<sup>®</sup> Microscope** has a new high intensity illuminator with a 20 watt tungsten Halogen lamp that gives more light and longer lamp life. High color temperature offers greater operating efficiency and truer color rendition particularly for photomicrography. Further, the lamp is self-cleaning to assure consistent brightness throughout the exceptionally longer life. The lamp control is solid state and continuously variable to give you the exact illumination intensity desired. A transformer is neatly fitted inside

the microscope base, out of the way.

Of course there is more. An infinity corrected optical system, focusable nosepiece, vibration-free stage that locks to the stand and dual viewing models—all pioneered by AO to give you the finest laboratory microscope available today.

Ask your authorized AO dealer or sales representative for a demonstration. In the meantime send for detailed brochure.

American Optical, Scientific Instrument Division, Eggert Rd., Buffalo, N.Y. 14215

**AO<sup>TM</sup>**  
American  
Optical