

Utah Division of Kennecott Copper. The Hughes "employee counseling program" advertises that it is available for family, legal, financial, emotional, drug, and alcohol problems for employees and members of their families. Kennecott has a community-oriented program called "Insight," which is really a kind of return to the best elements of old-style paternalism. The director, Otto Jones, can be reached by any employee, family member, or friend by dialing I-N-S-I-G-H-T. Jones will make an appointment to see a troubled caller anywhere at any time. He has dealt with an endless variety of problems, ranging from racial conflicts to LSD overdose, and the program has created a considerable amount of goodwill toward the company within the community, most of whose members have some connection with Kennecott.

Despite obvious successes, companies are still very reluctant to get involved with such programs. The fear that an organized and visible program will be construed by the public as evidence of massive alcoholism within the company cannot be overestimated. The fear is bolstered by ignorance: since full-blown alcoholism can take decades to develop, its overt manifestation on the job is rare.

So far, only big companies have programs, but Godwin of NIAAA already has visions of small companies banding together to set up a centralized counseling and referral service. Meanwhile, the NCA is encountering enthusiastic responses among the top management officials it has been meeting with at seminars in major cities throughout the country. As more and more problem drinkers learn, or are forced, to seek help before their addiction has become uncontrollable, even the medical profession may come around to diagnosing and treating America's number-one drug addiction for what it is.

—CONSTANCE HOLDEN

Erratum: In the report "Ragweed hay fever: Genetic control and linkage to HL-A haplotypes" by B. B. Levine *et al.* [178, 1201 (1972)], in line 4 of the abstract "HL-A associated IgE antibody responsiveness was antigen specific and extended also to IgE antibody production," should read, "HL-A associated IgE antibody responsiveness was antigen specific and extended also to IgG antibody production."

Erratum: Figure 3 of the report "Ultraviolet reflection of a male butterfly: Interference color caused by thin-layer elaboration of wing scales" by H. Ghiradella *et al.* [178, 1214 (1972)] was printed upside down. The figure was printed correctly on the cover. This was not done, as has been suggested, out of respect for the antipodal position of the third author, T. Eisner, who is currently in Australia.—ED.

Personnel Placement

POSITION WANTED: 40¢ per word, minimum charge \$10. Use of Box Number Counts as 10 additional words. Payment in advance is required. These rates apply to individuals only. Personnel agencies and companies take display rate for all advertising.

POSITIONS OPEN: \$110 per inch. No charge for Box Number. Rates net. No agency commission allowed for ads under 4 inches. No cash discount. Ads over 1 inch will be billed to the nearest half inch. Payment in advance is required except where satisfactory credit has been established.

COPY for ads must reach **SCIENCE** 4 weeks before issue date (Friday of every week). Send copy for Personnel Placement advertising to:

SCIENCE, Room 211
1515 Massachusetts Ave., NW
Washington, D.C. 20005

Replies to blind ads should be addressed as follows:

Box (give number)
SCIENCE
1515 Massachusetts Ave., NW
Washington, D.C. 20005

POSITIONS WANTED

Aquacultural Research Assistant/Technician; B.S. biology, experience with effluent and upwelling systems, some graduate credits in field. Write Elliott Zucker, RFD Lakeshore Drive, Mohegan Lake, N.Y. 10547. X

Biochemist, Ph.D., 1971. Regulation of gene expression, transcription mechanisms, DNA organization. Publications, strong oral-written communication skills. Seeks academic, industrial, governmental, private position. Expanding interests in drug metabolism, tissue culture, carcinogenesis. Box 28, SCIENCE X

Biochemist-Chemist (Physiology), M.S., Ph.D. Broad research interest and experience. College teaching, industry, hospital clinical chemistry, cancer. Desires academic, research institute, or industry. Publications. East, Box 29, SCIENCE.

Biologist returning to the United States. NIH postdoctorate and private research experience. Diverse interests and broad training in ecology, physiology, vertebrate zoology. Box 460, SCIENCE. X

Dedicated, Excellent, University-Level Biology Teacher, Ph.D. (genetics), postdoctoral training, 15 years of professional experience. Special interest innovative teaching, curriculum planning. Desires senior position in undergraduate-oriented department. 2266 Lake Circle, Jackson, Mississippi 39211. X

Biophysicist, Ph.D., with postdoctoral experience, interdisciplinary background, major experience in virus structure, ribosome conformations, laser light scattering spectroscopy, and analytical ultracentrifugation; also experience with transfer RNA and enzymes. Seeks work in environmental or other socially related problem. Box 33, SCIENCE.

Electron Probe Analysis, Electron Microscopy, Histochemistry, experienced electron probe operator and microscopist, Ph.D., desires position in research and teaching at medical center, university, or research institution. Publications, grants, consultations. Box 34, SCIENCE. 2/2

Endocrinologist-Reproductive Physiologist; Ph.D., finished postdoctoral training and now an instructor desires teaching/research position in Department of Physiology. Research on female reproduction employing gonadotropin radioimmunoassays, organ culture, and experimental surgery. Teaching experience in histology, physiology, and reproductive physiology. Numerous publications. Box 35, SCIENCE. X

Immuno/Cell Biologist, Ph.D., 40. On European leave. Wishes research and/or teaching position in English- or German-speaking country. Numerous publications. References. Box 36, SCIENCE. X

POSITIONS WANTED

Research Development/Administration, Ph.D. Major university. Extensive experience in developing faculty research potential. Multidisciplinary, interdisciplinary programs. Wide experience with federal, state, private, and industrial sponsors; grants-contracts. Good speaker. Unique knowledge of university operations. Desires more challenging position. Box 37, SCIENCE. X

Virologist, Ph.D., 15 years of research experience (cancer, infectious diseases), administration, teaching. Seeks supervisory position with a group, preferably industry or civil service. Box 38, SCIENCE. X

POSITIONS OPEN

AQUATIC ECOLOGIST

An assistant professorship in aquatic plant ecology is open for September 1973. Duties include teaching an introductory course in biology or botany, and a graduate level course in aquatic ecology. The appointee is expected to organize an active graduate research program in ecology of fresh water plants. An interest in physiological ecology is desirable. Send a complete résumé, including courses taken, publications, references and research interests, to **PROFESSOR GOVIND-JEE, DEPARTMENT OF BOTANY, 289 MORRILL HALL, UNIVERSITY OF ILLINOIS, URBANA, ILLINOIS 61801.**

An equal opportunity, affirmative action employer.

ASSISTANT PROFESSOR POSITION AVAILABLE

in the Department of Pharmacology, University of Michigan Medical School, for 1 July 1973. Position deals with biochemical pharmacology or drug metabolism. Candidate must have Ph.D. in pharmacology and/or M.D. Should have independent research experience and must be able to teach students in several areas of classical pharmacology. Code #600J. Send résumé to **Box 30, SCIENCE.** A Nondiscriminatory Affirmative Action Employer.

ASSISTANT PROFESSOR OF PSYCHOLOGY

New position, Beginning September 1973. Salary competitive. Interested in Ph.D. with strong research and teaching interests. Prefer someone who expects to be great. Area of specialty not particularly important but a scientific orientation is. Contact: **B. G. Tate, Chairman, Department of Psychology, University of Mississippi, University, Mississippi 38677.** We are an equal opportunity employer.

THE DEPARTMENT OF BIOLOGICAL SCIENCES

THE UNIVERSITY OF ILLINOIS AT CHICAGO CIRCLE

Invites applications for faculty positions in **Ecology, Genetics, Microbiology, Vascular Plant Morphology, Vertebrate Morphology, and Vertebrate or Neural Physiology.** The appointees will be expected to participate in undergraduate and graduate teaching and research. These positions are available commencing September 1973.

The department also invites applications from individuals with research interests in **Development, Protozoology, Vertebrate Biology or Computer Assisted Instruction** for faculty positions in the **Introductory Biology** program. The appointees will be expected to participate in graduate teaching and research. These positions are available commencing September 1973. Submit curriculum vitae and three letters of recommendation to:

Dr. Elmer B. Hadley
Department of Biological Sciences
University of Illinois at Chicago Circle
Post Office Box 4348, Chicago, Illinois 60680

Faculty opening in biochemistry, nucleic acid biosynthesis, 2 to 3 years of postdoctoral experience, assistant professor. **Department of Chemistry, University of Montana, Missoula, Montana 59801.**

An Equal Opportunity Employer

PRINCETON UNIVERSITY

Applications or nominations are invited for one faculty appointment in **geochemistry** (organic, inorganic, or isotopic) and one in **paleobiology** (paleontology or paleoecology, with research specialty in any plant or invertebrate animal group). Candidates available in September 1973 or September 1974 will be considered. One appointment may go to a senior scientist. Any candidate should have Ph.D. or equivalent by starting date.

Younger scientists should include a curriculum vitae and names of suggested referees. Send applications and nominations to: **Professor Sheldon Judson, Chairman, Department of Geological and Geophysical Sciences, Princeton University, Princeton, New Jersey 08540, U.S.A.**

An Equal Opportunity Employer

Drug Metabolism Scientist (Ph. D.)

Responsibilities: comparative studies of absorption, distribution and elimination of drugs in animals and man.

Department: Drug Metabolism and Pharmacokinetics

Requirements: Ph.D. in biochemistry, pharmacology or pharmacy with training in drug metabolism required. A strong background in mathematics, kinetics, organic chemistry and physiochemical/radiotracer analytical methods is desirable.

Please send a confidential resume including your education, specific training and salary requirements to:

Professional Employment

Bristol Laboratories

Division of Bristol-Myers Company

P. O. Box 657, Syracuse, New York 13201

An Equal Opportunity Employer

CHEMICAL OCEANOGRAPHER. To join an existing group working on "nitrogen dynamics in the sea and estuaries." Preference will be given to applicants with experience in nutrient chemistry, analytical techniques, and shipboard experience. Extended periods of work at sea will be required. Please send résumé to **M. W. BURTON, LAMONT DOHERTY GEOLOGICAL OBSERVATORY of COLUMBIA UNIVERSITY, Palisades, New York 10964.**

An Equal Opportunity Employer

UNIVERSITY OF LIBYA FACULTY OF MEDICINE

Applications are invited for academic staff members in Pharmacology. Applicants must have obtained the Ph.D. degree in the field. Duties include lecturing and assisting in the pharmacology laboratories in courses given to medical students. Duties begin by the academic year 1973/1974, and appointments are expected to be in by June 1973 at the latest. The Medical Faculty and the Department of Pharmacology are both newly established. Other pertinent information will be supplied on request. Applications should be accompanied by qualifications, curriculum vitae and references. All applications should be received by April 1973, addressed—**Head Office of Academic Staff, University of Libya, Box 1308, Benghazi, Libya.**

INSTRUCTOR POSITION AVAILABLE

Department of Pharmacology, University of Michigan Medical School for 1 July 1973. Candidate must have M.D., internship, and some residency training plus Ph.D. in pharmacology or related basic medical science is required. Teaching experience desirable. Code #300J. Send résumé to **Box 31, SCIENCE, A Nondiscriminatory Affirmative Action Employer.**

TECHNICAL WRITER-EDITOR

A highly skilled professional is needed who can rapidly and efficiently take a techno-economic report (some being as lengthy as 500 pages), check it for mathematics, logic, and technical accuracy, and make it into a well-organized, sectionalized, readable document with good tabular and graphical presentation. The job also involves keeping a small technical library in order. If you wish to join our small, rapidly expanding Management Consulting Organization, please send a detailed, typewritten resume.

ROBERT S. FIRST, INC.
405 Lexington Avenue
New York, N. Y. 10017

PROFESSOR POSITION AVAILABLE

Department of Pharmacology, University of Michigan Medical School. Position is in CNS pharmacology. Candidate must have Ph.D. and/or M.D. Extensive experience with primates necessary. Interest in narcotics, hallucinogens, and drugs of abuse is essential. Teaching of pharmacology to students is a major responsibility of this position. Code #700J. Send résumé to **Box 32, SCIENCE, A Nondiscriminatory Affirmative Action Employer.**

TUMOR VIROLOGIST Ph.D.

Opportunity for qualified investigator to conduct studies with tumor viruses and develop tissue culture systems and animal models for the detection and evaluation of chemotherapeutic and immunotherapeutic agents.

Qualifications include at least 2 to 3 years of post doctoral research experience with oncornaviruses. Strong background in immunology and expertise in both tissue culture and animal work preferred.

Send résumé, including salary history and requirements, in confidence, to: **Mr. C. L. Hill**

LEDERLE LABORATORIES

American Cyanamid Co.
Pearl River, New York 10965
An equal opportunity employer, m/f

GRADUATE STUDY

PREDOCTORAL FELLOWSHIPS leading to M.A. and Ph.D. degrees. Organic synthesis and reaction mechanisms, bioorganic and protein chemistry, chemistry of vitamins and hormones, immunochemistry, nuclear chemistry, biophysical chemistry, and chemical carcinogenesis, nmr, esr, ord, cd, ms, X-ray crystallography, \$2400 to \$5000, and tuition. Write (U.S. citizen) indicating credentials and career objectives, to: **Chemistry Program, Director of Graduate Studies, Roswell Park Graduate Division of State University of New York at Buffalo, N.Y. 14203.**

NOTICE OF RESEARCH TRAINING PROGRAM

The Fertilization and Gamete Physiology Research Training Program will be held at the Marine Biological Laboratory, Woods Hole, Mass., 12 June to 25 August 1973. Emphasis will be on immunological, cytological, biochemical, and physiological research on marine organisms available at Woods Hole. Pre- and postdoctorals are accepted. Financial support is available for U.S. nationals. Applications must be filed by 15 February 1973 with: **Dr. Charles B. Metz, Institute for Molecular and Cellular Evolution, University of Miami, 521 Anastasia Avenue, Coral Gables, Florida 33134.**

PREDOCTORAL TRAINEESHIPS IN BIOMETRY: Applications are sought from candidates with training in the health sciences and substantial supplementary training in mathematics for traineeships in biometry. The doctoral program is strongly based on statistical theory and probability with special courses and applications in the health sciences together with an internship program and the continuation of study in a health science. Stipends are at prevailing federal rates and tuition is paid—open to U.S. citizens and permanent residents. Other fellowships and assistantships for graduate study in statistics, probability, and operations research are available also. Inquiries to **Dr. R. A. Bradley, Head, Department of Statistics, Florida State University, Tallahassee, Florida 32306.**

POSTDOCTORAL FELLOWSHIPS

Department of Physics, University of Waterloo Waterloo, Ontario, Canada
Applications are invited for post-doctoral research fellowships in physics.
Fellowships carry a stipend of \$8,520.00 per annum which is subject to Canadian income tax. The awards are tenable for a period of one year with a possible renewal for a second year.
Research areas include:
Astronomy and Astrophysics, Atomic and Molecular Physics, Biophysics, Crystallography, Electron Microscopy (thin crystal defects and interfacial structures), Ellipsometry, Condensed Inert Gas Properties, Laser Physics, Microwave Physics, Nuclear Magnetic Resonance, Solid State Physics (insulators, metals, non-linear dielectrics, and semiconductors), Statistical Mechanics, Superfluidity, Superconductivity, and Ultrasonics.
For further information write to: **Dr. J. W. Leech, Chairman, Department of Physics, University of Waterloo, Waterloo, Ontario, Canada—N2L 3G1.**

UNIVERSITY OF CALGARY, Graduate Teaching and Research Assistantships are available for students proceeding to the Ph.D. or M.Sc. degrees in all branches of **CHEMISTRY AND BIOCHEMISTRY.** The assistantships are valued from \$3600 to \$4600 per annum and carry remission of fees and a travel allowance. For further information write to: **Department of Chemistry Chairman of Graduate Studies, University of Calgary, Calgary, Alberta, T2N 1N4, Canada.**

TRAINING PROGRAM

Physiology and Biophysics of Excitable Membranes
Marine Biological Laboratory, Woods Hole, Mass.
18 June thru 24 August 1973

Lectures, laboratory workshops, research experience. Experimental and theoretical aspects of structure and function of excitable membranes. Emphasis on modern viewpoints and techniques. Limited to 12 students at pre- and postdoctoral level with suitable backgrounds in quantitative biology, physiology, physics, chemistry, or engineering.

For details, write to **Dr. D. E. Goldman, Department of Physiology and Biophysics, Medical College of Pennsylvania, Philadelphia, Pa. 19129.**

POSTDOCTORAL FELLOWSHIPS

Available immediately in Respiratory Physiology and Cardiovascular-Renal Physiology at a Medical School Department of Physiology and Biophysics. Background in Physics and/or Biochemistry of Physiology is desirable. Must be U.S. permanent resident.

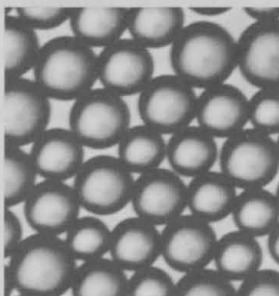
Box 39, SCIENCE

WORKSHOP

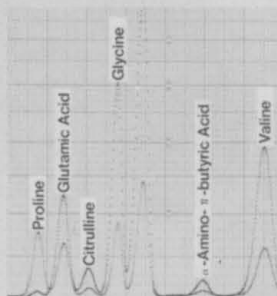
MOLECULAR TECHNIQUES IN DEVELOPMENTAL BIOLOGY

Sixth Annual Summer Workshop to be held 2 July to 28 July 1973 at the San Diego (La Jolla) campus of the University of California. The workshop emphasizes laboratory instruction in molecular and biochemical techniques useful to animal and plant physiologists and developmental biologists. Enrollment restricted to 22 participants. Expenses are paid by the National Science Foundation. For further information and application forms write to **Dr. Stephen Howell, Department of Biology, University of California San Diego, La Jolla, Calif. 92037.** Deadline for applications: 1 April 1973.

Rapid screening of amino acids in 30 minutes. That's fast!



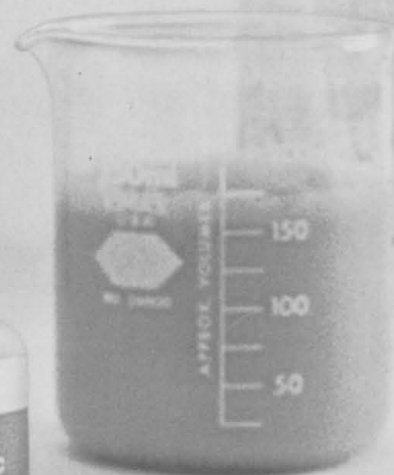
Average bead diameter
12 microns.

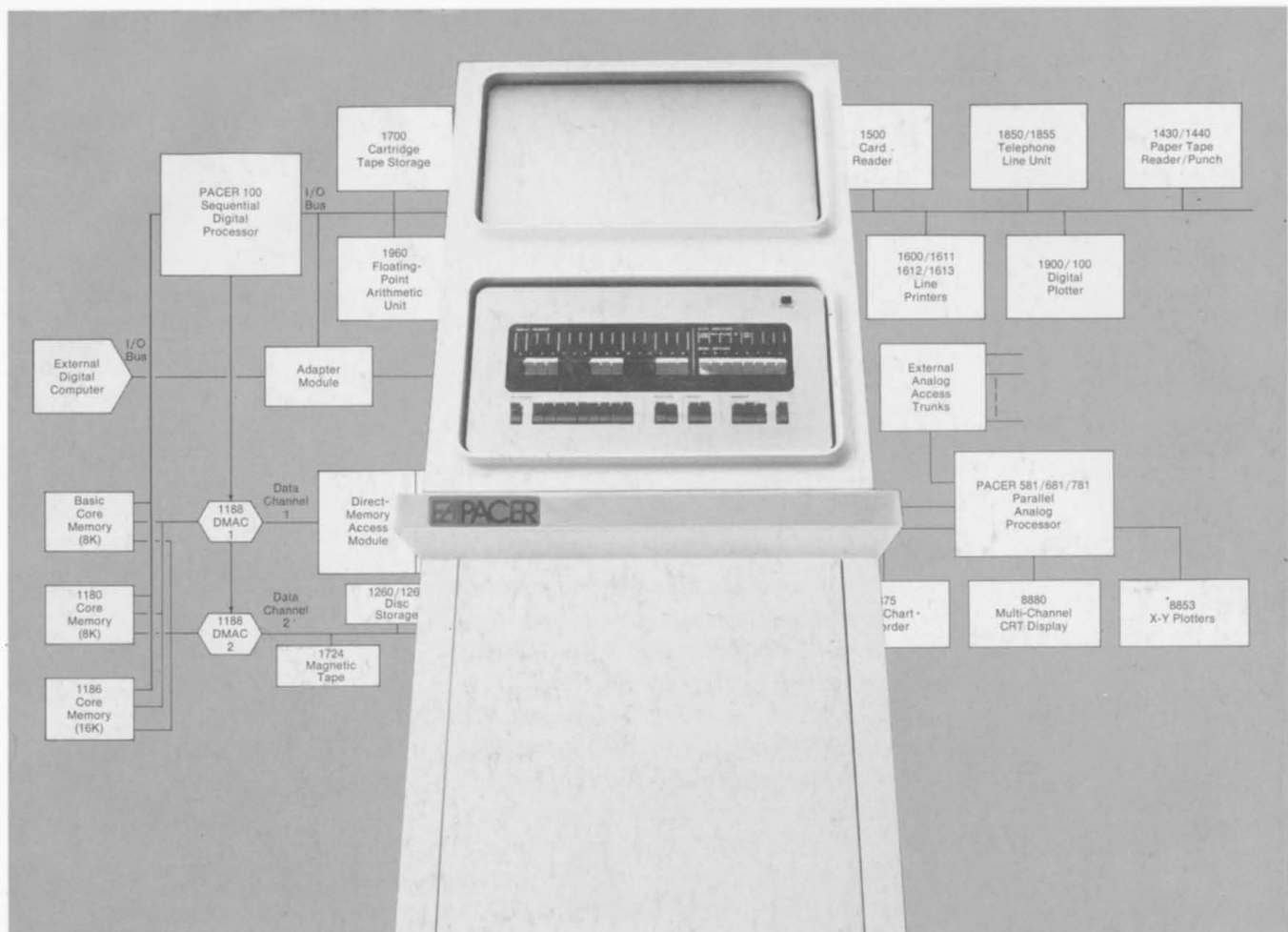


Chromatograms and method-
ologies are available.

With our new resins . . . and some simple, but highly developed methodologies . . . you can achieve a rapid screening analysis of selected amino acids in 60, 45, and as fast as 30 minutes. And you don't need an expensive new instrument. All you need are our Spherical Chromatographic Resins (which we'll sell you) and our methodologies (which we'll give you). You'll be able to reduce analysis time, get excellent results, and probably reduce your resin and buffer costs. □ If you analyze amino acids, give our resins and buffers a try. For literature and information, write to J. V. Benson, Hamilton Company, Post Office Box 7500, Reno, Nevada 89502.

HAMILTON





PACER 100

What a Way to Grow!

It's EAI's digital cornerstone. Our PACER™100 is no ordinary computer. It's the beginning of a new growth story, a digital especially designed to work with our new parallel processors. And work it does in expandable systems that provide unequaled throughput in scientific and engineering problem solving.

We put the PACER 100 at the digital corner of three different series of new PACER systems, each larger than the next: PACER 500. PACER 600. PACER 700.

Then we provided options to help you grow, to let you fine-tune your system to exactly the type and scale of problems you face. Up to giant-sized.

At each level, your PACER system can deliver far more scientific and engineering design-problem solutions—per day or per dollar—than any other system available.

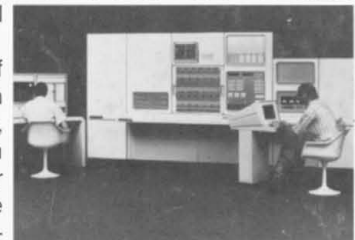
Meanwhile, your techniques and solutions will be state-of-the-art in the areas you choose: Optimization. Simulation. Control. Design. Data Reduction.

Further, we have a huge library of software to help you—including a foreground/background Real-Time Operating System. And we have more than 5,000 case

histories of applications to prove our software expertise.

As you can see, we make no ordinary claims. Now, thanks in part to our new digital, we can make one more dramatic assertion: PACER systems can offer you performance/price ratios that run to over 100 times those of conventional digital systems.

That's the sort of efficiency that's worth writing home about or, more to the point, worth writing to us. The faster you do, the sooner we can send you more information to help you start a new growth story of your own.



Electronic Associates, Inc.
185 Monmouth Parkway
West Long Branch, New Jersey 07764
(201) 229-1100