

Agriculture, Washington, D.C., 1968 (available from Superintendent of Documents, Washington, D.C.). xlv + 386 pp., illus. \$3.

The Science of Coexistence. Ambrose Ryder. Philosophical Library, New York, 1968. 96 pp. \$4.

Science Year. The World Book Science Annual, 1968. Field Enterprises, Chicago, 1968. 450 pp., illus. \$6.95; to owners of *The World Book Encyclopedia*, \$5.95.

Selected Applications of Nonlinear Programming. Jerome Bracken and Garth P. McCormick. Wiley, New York, 1968. xiv + 114 pp., illus. \$8.95.

The Signal Flow Graph in Linear Systems Analysis. A Programmed Text. John R. Ward and Robert D. Strum. Prentice-Hall, Englewood Cliffs, N.J., 1968. Unpaged. Spiral bound, \$5.95.

So Human an Animal. René Dubos. Scribner, New York, 1968. xiv + 272 pp. \$6.95.

Soil Physics. Helmut Kohnke. McGraw-Hill, New York, 1968. x + 230 pp., illus. \$10.50. McGraw-Hill Publications in the Agricultural Sciences.

The Soil Resources of Tropical Africa. A Symposium of the African Studies Association of the United Kingdom. R. P. Moss, Ed. Cambridge University Press, New York, 1968. xvi + 228 pp., illus. \$7.

Some Diseases of Animals Communicable to Man in Britain. Proceedings of a symposium, London, 1966. Oliver Graham-Jones, Ed. Pergamon, New York, 1968. xvi + 340 pp., illus. \$16.

The Story of Medicine. Roberto Margotta. Paul Lewis, Ed. Golden Press, New York, 1968. 320 pp., illus. \$17.95.

The Story of Quantum Mechanics. Victor Guillemin. Scribner, New York, 1968. xviii + 334 pp., illus. \$8.95.

The Study of Policy Formation. Raymond A. Bauer and Kenneth J. Gergen, Eds. Free Press, New York; Collier-Macmillan, London, 1968. xxiv + 392 pp. \$9.95.

The Teachings of Don Juan. A Yaqui Way of Knowledge. Carlos Castaneda. University of California Press, Berkeley, 1968. xii + 196 pp. \$5.95.

Tropical Crops: Dicotyledons. J. W. Purseglove. Wiley, New York, 1968. 2 vols., xx + 719 pp., illus. \$8.50 each.

The Unified Theory of Electrical Machines. Charles V. Jones. Plenum, New York; Butterworths, London, 1968. x + 542 pp., illus. \$18.

Varieties of Police Behavior. The Management of Law and Order in Eight Communities. James Q. Wilson. Harvard University Press, Cambridge, Mass., 1968. xiv + 312 pp. \$6.50.

Water Deficits and Plant Growth. T. T. Kozlowski, Ed. Vol. 2, Plant Water Consumption and Response. Academic Press, New York, 1968. xiv + 333 pp., illus. \$15.

World Directory of National Science Policy-Making Bodies. Vol. 2, Asia and Oceania (xii + 157 pp., illus. Paper). Vol. 3, Latin America (xiv + 187 pp., illus. Paper). U.N. Educational, Scientific and Cultural Organization, Paris, 1968.

Yanomamö. The Fierce People. Napoleon A. Chagnon. Holt, Rinehart and Winston, New York, 1968. xvii + 142 pp., illus. Paper, \$2.50. Case Studies in Cultural Anthropology.

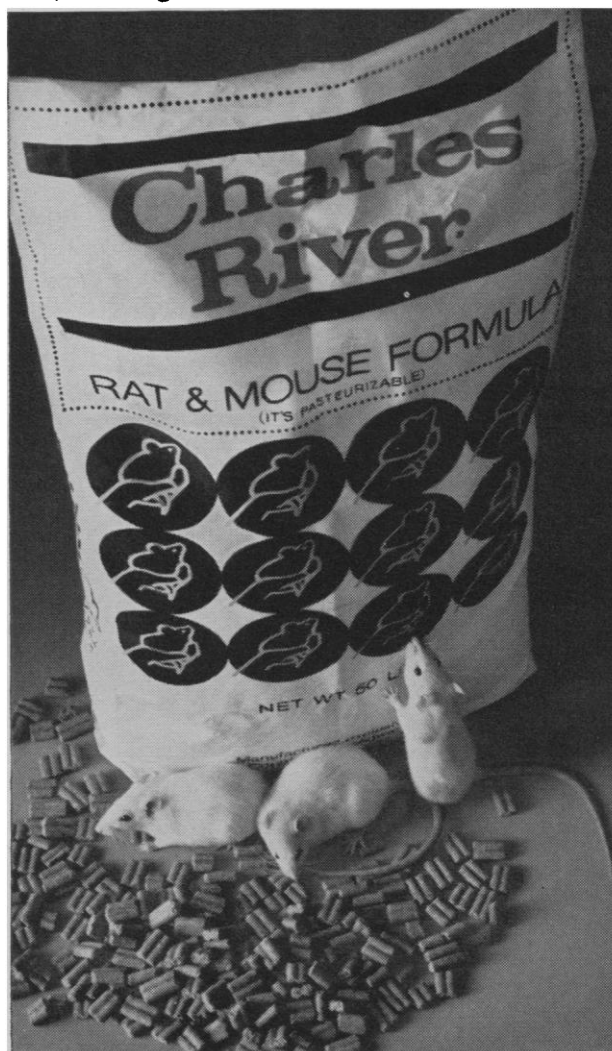
A formula for success.

Our newly-available Charles River Rat and Mouse Formula. The same formula used for successful breeding and raising of all Charles River animals.

Now offered to help you control an important research variable. Now offered to allow your animals' diet to be the same, from birth through experimentation.

Our formula is vitamin prefortified for pasteurization. Specially-shaped for maximum steam penetration. Clump-free after steam processing. Uniformly consistent, calibrated and regulated. And each 50-pound package is rupture-resistant under high vacuum steam processing.

Available soon to researchers everywhere from Country Best-Agway, Inc., through your local feed distributor. Charles River Breeding Laboratories, Inc., Wilmington, Massachusetts 01887.



Food for thought.

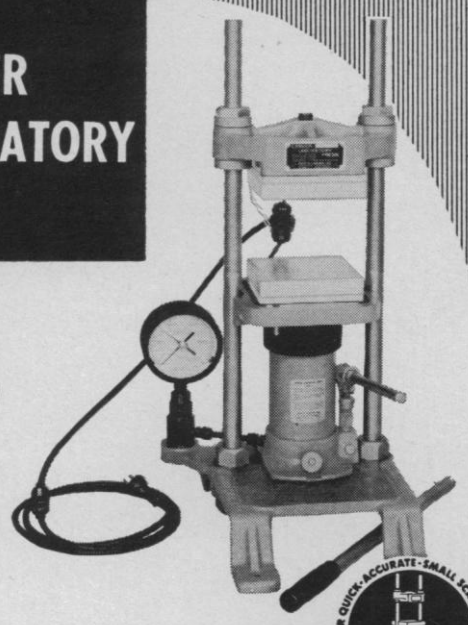
Charles River  FROM THE HAND OF THE VETERINARIAN TO RESEARCH
BREEDING LABORATORIES, INC.
Circle No. 45 on Readers Service Card

INDEX OF ADVERTISERS—6 December 1968

Ainsworth, Wm., & Sons, Inc.	1055	Heat Systems Co.	1192A	Phipps & Bird, Inc.	1205
Amicon Corp.	1060A	Houghton Mifflin Co.	1066	Photovolt Corp.	1182
Barnstead Still and Sterilizer Co.	1077	Instrumentation Associates, Inc.	1204	Plenum Publishing Corp.	1072, 1197
Bausch & Lomb	1185	Instrumentation Laboratory Inc.	1050	Precision Scientific Co.	1065
Beckman Instruments, Inc.		Instrumentation Specialties Co., Inc.	1192	Professional Tape Co., Inc.	1181
.....	1044, 1045, 1183	International Equipment Co.	1073	Rare Earth Div., American Potash	
Blickman, S., Inc.	1202	Intertechnique Instruments Inc.	1196	& Chemical Corp.	1192B
Brinkmann Instruments, Inc.	1053	Isotopes	1177	Sargent-Welch Scientific Co.	1071
Carver, Fred S., Inc.	1204	Kirschner Manufacturing Co.	1188	Schleicher & Schuell	1192
Cary Instruments	1126, 1127	Klett Manufacturing Co., Inc.	1197	Schoeffel Instrument Co.	1201
Charles River Breeding Laboratories	1203	Kontes	1187	Scientific Glass Apparatus Co.	1060
Chemical Rubber Co.	1184	Labindustries	1199	Shandon Scientific Co., Inc.	1182
Clevite Corp., Brush Instruments		Lea & Febiger	1056	Sherer-Gillett Co.	1181
Div.	1051, 1052	LKB Instruments, Inc.	1074	Sigma Chemical Co.	1205
Coleman Instruments Div., Perkin-		Maryland Plastics, Inc.	1070	Sobotka, Eric, Co., Inc.	1200
Elmer Corp.	1062	Melabs Scientific Instruments	1201	Sorvall, Ivan, Inc.	1048, 1049
Curtin, W. H., & Co.	1186	Mercer Glass Works, Inc.	1187	Springer-Verlag New York Inc.	1128
Davis, F. A., Co.	1191	Mettler Instrument Corp.	1201	Technicon Corp.	1080
Durrum Instrument Corp.	1195	Miles Laboratories, Inc., Research		Technilab Instruments, Inc.	1193
E & M Instrument Co., Inc.	1198	Products Div.	1198	Thermolyne Sybron Corp.	1190
E-C Apparatus Corp.	1190	Mistaire Laboratories	1202	Thomas, Arthur H., Co.	1210
Electronic Associates, Inc.	1209	Nalgene Labware Div.	1178	Transidyne General Corp.	1076
EON Corp.	1206	Nikon Inc. Instrument Div.	1069	Unitron Instrument Co.	1057
Fish-Schurman Corp.	1198	Ohaus Scale Corp.	1181	Wang Laboratories, Inc.	1189
Fisher Scientific Co., Instrument Div.	1180	Oxford University Press	1194	Waring Products Div., Dynamics	
Forma Scientific, Inc.	1193	Packard Instrument Co.	1202	Corporation of America	1068
Freeman, W. H., & Co.	1193	Parr Instrument Co.	1188	Western Electric	1125
General Electric Co.	1067	Pentex Inc.	1063	Whittaker Corp.	1183, 1196
Gilford Instrument Laboratories,		Percival Refrigeration & Mfg. Co.,		Wild Heerbrugg Instruments, Inc.	1179
Inc.	1061	Inc.	1188	Wilkens-Anderson Co.	1184
Gilson Medical Electronics, Inc.	1078	Perkin-Elmer Corp.	1054	Wisco Div., ESB Inc.	1197
Hacker Instruments	1177	Pharmacia Fine Chemicals, Inc.	1076	Worthington Biochemical Corp.	1200
				Zeiss, Carl, Inc.	1059


The
**CARVER
LABORATORY
PRESS**

**for Your
Pressing
Problems
in
R&D**



The Carver Laboratory Press is standard equipment for research and development. Provides accurately controlled pressures to 24,000 lbs. Carver Standard Accessories include Electric or Steam Hot Plates, Carver Test Cylinders, Swivel Bearing Plates, Cage Equipment. Promptly available from stock. Write for latest bulletin.

FRED S. CARVER INC.
HYDRAULIC EQUIPMENT
52 RIVER ROAD, SUMMIT, N.J. 07901



Circle No. 111 on Readers' Service Card

Mix & Dispense
Two Gases
to $\pm 0.05\%$ Accuracy
with the

**i/a CALI-GAS
MIXING
PUMP**

Ideal for
■ Instrumentation Standardization ■ Critical Mixing
Requirements ■ Metering Gases ■ Gas Standards

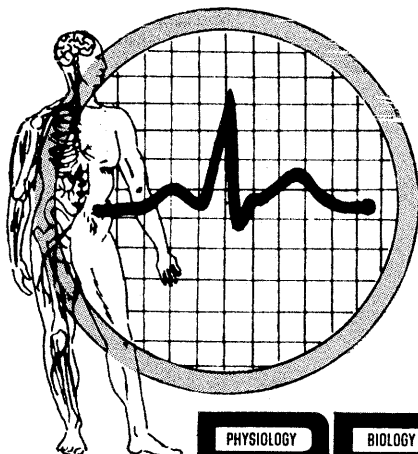
Two pistons, timed to each other, enables the i/a Cali-Gas Mixing Pump to combine and dispense two pure gases to highly accurate calibration ranges. Complete with two pumps, bronze gears, oil bath housing and plastic case — \$775.

For Complete Information, Write:
i/a INSTRUMENTATION ASSOCIATES, INC.
17 West 60th St. New York, N.Y. 10023 (212) 245-0840

Scientific Instruments for Medicine & Industry



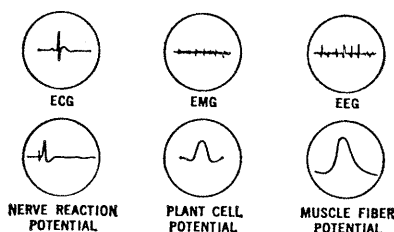
Circle No. 110 on Readers' Service Card



OSCILLOSCOPE
BIO-AMPLIFIER
STIMULATOR

PB-3 SCOPE

COMPACT • ECONOMICAL • VERSATILE

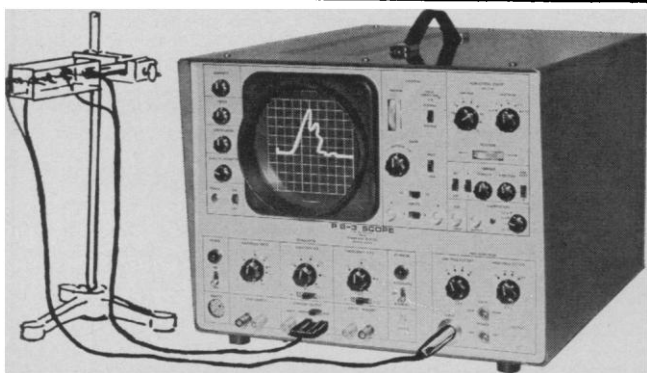


PB-3 SCOPE SPECIFICATIONS

VERTICAL AMPLIFIER				
BAND WIDTH	SENSITIVITY	RISE TIME	IMPEDANCE	ACC.
D.C. to 50 KC	Oscilloscope 50 MV to 50V/CM Bio-amplifier in 10 μ V/CM to 100 MV/CM	Less than 7 μ sec.	Oscilloscope 1 Meg— Single End Bio-amplifier 20 Megs— Balanced 10 Megs— Single End	$\pm 5\%$
TIME BASE		CRT		STIMULATOR
SPEED	TRIG- GERING	DIA.	PHOSPHOR	PHYSICAL
10 μ sec. CM to 1 sec/cm	Internal or External Slope, + or —	5"	P7 (Filters available)	Amplitude .04 to 100 volt frequency 1 to 1000 cps Duration .04 to 32 ms
				DIM. & WT. 16" x 18" x 12" 45 lbs.

Catalog Number 7092—680

For 115 Vac 50-60 cycles 90 watts



PHIPPS & BIRD, INC.

Manufacturers & Distributors of Scientific Equipment
6th & Byrd Streets — Richmond, Virginia
For additional information write for Bulletin PB2-65
Circle No. 63 on Readers' Service Card



SIGMA IS PLEASED TO OFFER
ADENOSINE CYTIDENE, GUANOSINE
AND THYMIDINE NUCLEOTIDE
CARBOHYDRATE CONJUGATES

ADENOSINE DIPHOSPHOGLUCOSE

Disodium Salt

10 mg	\$ 9.75	100 mg	\$ 64.00
25 mg	19.50	250 mg	127.50

ADENOSINE DIPHOSPHOMANNOSE

Salt as available

5 mg	\$6.25	25 mg	\$20.50
		250 mg	\$175.00

ADENOSINE DIPHOSPHORIBOSE

Sodium Salt

10 mg	\$4.50	100 mg	\$ 24.50
25 mg	9.00	500 mg	115.00

CYTIDINE DIPHOSPHOCHOLINE

Sodium Salt, Sigma Grade,
Crystalline, Almost 100%,
First isolated and Crystallized by Sigma

10 mg	\$ 3.60	100 mg	\$ 20.00
25 mg	7.20	500 mg	90.00
50 mg	12.00	1 g	150.00

CYTIDINE

DIPHOSPHOETHANOLAMINE

Approx. 90% pure
Free Acid or Salt as available
100 mg \$20.00

CYTIDINE DIPHOSPHOGLUCOSE

Salt as available

10 mg	\$10.00	100 mg	\$ 64.50
25 mg	19.75	250 mg	129.00

GUANOSINE DIPHOSPHOGLUCOSE

(GDP)

Salt as available

5 mg	\$ 6.00	100 mg	\$ 62.50
25 mg	19.50	250 mg	125.00

THYMIDINE DIPHOSPHOGLUCOSE

Synthetic, Salt as available

25 mg	\$19.25	100 mg	\$64.00
		250 mg	\$128.00

GUANOSINE

DIPHOSPHO-D-MANNOSE

Sodium Salt, From Yeast
Purity approx. 90%; balance mostly GDP-D-glycero-D-
Mannoheptose, per Ginsberg, O'Brien and Hall,
J. Bio. Chem., 237, No. 2 (1962). Also available
as part of kit.

AND MORE TO COME!

ORDER DIRECT TELEPHONE COLLECT
from ANYWHERE in the WORLD

Day, Station to Station, 771-5750

Night, Person to Person,

Dan Broida, 993-6418



TWX (Teletype) Day or Night: COLLECT-314-556-0594
TELEGRAM: SIGMACHEM, St. Louis, Missouri

The Research Laboratories of

SIGMA CHEMICAL COMPANY

3500 DE KALB ST. • ST. LOUIS, MO. 63118 • U.S.A.

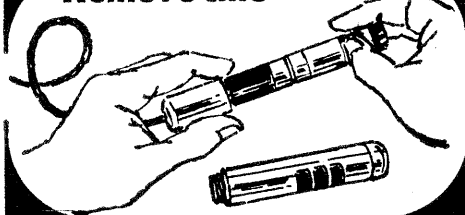
MANUFACTURERS OF THE FINEST BIOCHEMICALS AVAILABLE

Distributed in the United Kingdom through
SIGMA LONDON Chem. Co. Ltd., 12, Lettice St., London, S.W.6, Eng.
Phone RENown 5823 (Reverse Charges)

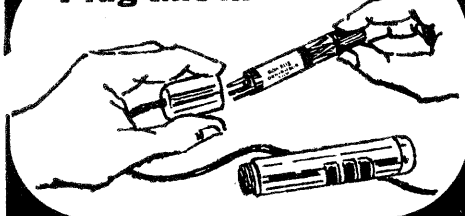
Circle No. 60 on Readers' Service Card

**Less than
30 seconds and
\$17.50 completely
converts your present
50 mR/hr. Survey Meter
to a 500 mR/hr.
unit.**

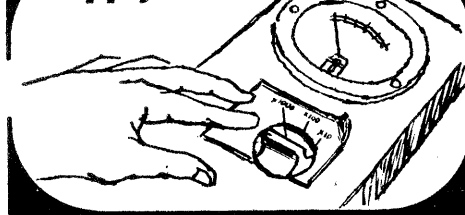
Remove this*



Plug this in



Apply this



**...that's all
there is to it**

This simple change is compatible with CDV-700 Survey Meters manufactured by EON — ANTON — VICTOREEN — LIONEL — Electro-Neutronics — Tracerlab — Baird-Atomic — Picker — Atomic Accessories — REAC — or at any other company.

Send for your kit — now. Kit includes EON Type 5115 detector, range decal and easy-to-follow instructions — \$17.50 F.O.B. Brooklyn. Delivery from stock.

*You can save it for low level uses



175 Pearl Street, Brooklyn, N.Y. 11201
(212) 858-0250

Personnel Placement

POSITIONS WANTED

Aquatic Biologist. Ph.D., postdoctoral, with extensive teaching experience. Research in pollution biology, aquatic systems, and teaching. Desires teaching/research/administrative position. Box 446, SCIENCE. 12/13

Biologist. Ph.D., 26, 1-year postdoc in laser biology and tissue culture, seeks teaching/research position at major East or West Coast university; will teach genetics, embryology, or evolution; ten publications; department must be willing to finance initiation of laser biology research program. Box 438, SCIENCE. 12/6

Developmental Biologist, Biochemist. 29, Ph.D. 1967, currently postdoctoral fellow, publications. Seeks teaching/research position, preferably West or East Coast. Box 447, SCIENCE. X

BUSINESS ADMINISTRATOR, new construction management, grants, contracts, personnel, cost reduction. Box 448, SCIENCE. X

Crystallographer (protein, organic). Ph.D. (biophysics). Four years' experience. Publications. Desires research position industry/university in crystallography, protein chemistry, or polymers. Box 449, SCIENCE. 12/13

Electronic Designer. Medical electronics, telemetry, analytical instruments. Has own facilities. Part-time; free-lance. Box 450, SCIENCE. 12/13

Pharmacologist. Ph.D.; 8 years of varied experience. Desires supervisory or administrative position. Box 432, SCIENCE. 12/6

Translations of scientific literature from German and French into impeccable English. P.O. Box 489, Forest Hills, N.Y. 11375.

Translations, of scientific and technical material from German and French into German. Abstracting of papers for current information on foreign publications. Backed by extensive research engineering and translating experience. Box 430, SCIENCE. 12/6

POSITIONS OPEN

Marine Biology, Chemistry, Physics, Geology
Academic position open at 4-year State college in Maryland. Candidates should have or be within reach of the Ph.D. Development of an undergraduate marine biology program is in progress. Write to **Chairman, Science-Mathematics Division, St. Mary's College of Maryland, St. Mary's City, Maryland 20686.**

BIOLOGIST

Chairman for Biology Department, liberal arts orientation, who wants to develop an integrated teaching and research program. Ph.D. with research and administrative experience preferred. Salary \$13,000-\$17,000. Address inquiries to:

President John J. O'Neill
Boston State College
625 Huntington Ave.
Boston, Mass. 02115

VIROLOGIST Ph.D.

Position immediately available in expanding department of life science research laboratory in Maryland suburb of Washington, D.C. Experience in oncology or simian virology desirable. Recent graduates will be considered. Salary commensurate with excellence of training and experience. Excellent employee benefit program. Reply with résumé to Personnel.

BIONETICS RESEARCH LABORATORIES, Inc.
DIV. OF LITTON INDUSTRIES
7300 Pearl Street
Bethesda, Md. 20014
An Equal Opportunity Employer

POSITIONS OPEN

BIOLOGIST or MICROBIOLOGIST

Immediate opening for M.S. or equal requiring strong tissue culture background including 3 to 5 years recent experience. SAN FRANCISCO BAY AREA. Send résumé to: H. B. Snalder, **STANFORD RESEARCH INSTITUTE**
333 Ravenswood Ave., Menlo Park, Calif. 94025
An Equal Opportunity Employer

AUSTRALIA

UNIVERSITY OF MELBOURNE

LECTURESHIP

in the

DEPARTMENT OF ZOOLOGY

QUALIFICATIONS: Applications are invited in the following fields: physiology of insects or other invertebrates; developmental biology; cell ultrastructure.

DUTIES: Will include lecturing to junior and senior science biology students and conducting laboratory classes.

The Department has excellent modern facilities for electronmicroscopy, electrophysiology, histo- and cytochemistry, tissue culture and bioacoustics. The head of the department is Professor G. Burnstock.

It is desirable that the appointees should be able to take up their positions as soon as possible after 1 March 1969.

SALARY RANGE: Is \$5,400 to \$7,300 p.a. (Aust.)

Initial salary will be determined according to qualifications and experience.

Further information, including details of superannuation, travel and removal expenses, housing assistance and conditions of appointment, is available from the Registrar, (appointment F 84), University of Melbourne, Parkville, Victoria, 3052, Australia. Applications close on 17th January 1969.

UNIVERSITY OF SASKATCHEWAN

Regina, Saskatchewan
Canada

The Division of Natural Sciences invites applications for academic posts as of 1 July 1969. Applicants should have completed (or be completing) work for the Ph.D. degree. Duties consist of research and teaching at undergraduate and graduate levels. Present student enrollment of 4000 expected to increase to 9500 by 1974-75.

1968-69 Salary Ranges: (12-month basis)

Professor	\$16,900-
Associate Professor	\$12,800-\$16,300
Assistant Professor	\$ 9,200-\$12,200

Rank and salary dependent on training and experience. Closing date for applications, 1 February 1969.

Biological Sciences

Preferred areas of interest are population genetics, mycology and animal parasitology, but applicants in other areas will be considered.

Chemical Sciences

Preferred areas of interest are analytical chemistry and biochemistry.

Geological Sciences

Preferred areas of interest are igneous petrology (geochemical background) and structural geology or sedimentology.

Mathematical Sciences

Preferred areas of interest are algebra, geometry, computer science, and applied mathematics, but applications in all fields are invited.

Physics

Specialization open, but a preference exists for a biophysicist interested in x-ray crystallographic studies of molecular structures, but applications in all fields will be considered.

Send complete curriculum vitae, small photograph, and names of three or four references, or request for further information to:

Chairman, Division of Natural Sciences
University of Saskatchewan, Regina Campus
Regina, Saskatchewan, Canada

POSITIONS OPEN

RESEARCH PHARMACOLOGIST

We are seeking an individual to carry out long-range research in the cardiovascular area relating to fundamental aspects of blood pressure control. Candidates should possess a B.S. or M.S. in the biological sciences, 3 to 5 years' applicable laboratory experience and a working knowledge of electronic equipment (polygraph, tape recorder, stimulator, etc.) used in a physiology laboratory.

In addition to a stimulating research atmosphere and well-equipped laboratories, we offer excellent salary and benefit programs and the opportunity for personal and professional growth.

Please send complete résumé in confidence to:

ROBERT B. TURNBULL

**SMITH KLINE & FRENCH
LABORATORIES**



1500 Spring Garden Street
Philadelphia, Pa. 19101

An Equal Opportunity Employer
Member of Plans for Progress

Ph.D. MICROBIOLOGIST

Scientific interest in research aspects of medical microbiology. This position is in our Life Systems Division and entails coordinating research programs and supervising laboratory technicians and medical technologists.

HAZLETON LABORATORIES, specializing in the life and environmental sciences, is located in the suburban area of Washington, D.C. If you have 0 to 3 years of medically oriented research experience, please send résumé to Mr. Michael J. Mackert.

**HAZLETON
LABORATORIES, INC.**
A subsidiary of TRW Inc.

P.O. BOX 30
FALLS CHURCH, VIRGINIA 22046

An Equal Opportunity Employer

COLLOQUIUM

Colloquium on Theoretical Biology. The annual NASA-AIBS colloquium will be held at Colorado State University, 13 July to 15 August 1969. It will be concerned with theory of the cell. Pre- and postdoctoral fellowships are available for some of the participants. The main working parties will be concerned with (1) Time-dependent variation in cells; (2) intracellular relationships and cell reassembly; (3) morphogenesis and pattern generation; (4) self-reproducing automata; (5) information processing by cell assemblies; (6) relational systems and cell theory. For further information write to the Director, Dr. J. F. Danielli, Center for Theoretical Biology, 4248 Ridge Lea Road, Amherst, New York 14226.

GRADUATE STUDY

Predocutorial Traineeships in Biochemistry are available at the University of Kentucky to qualified U.S. citizens. First-year stipends are \$2400 plus tuition, plus a \$500 allowance for each dependent. Department is well equipped and faculty has varied research interests. Address inquiries to Dr. George W. Schwert, Chairman, Department of Biochemistry, Medical Center, University of Kentucky, Lexington, Kentucky 40506.

6 DECEMBER 1968

Clinical Research Associate

Expansion and acceleration of our R&D program has created an outstanding opportunity for a Ph.D. experienced in NDA-oriented clinical studies of new therapeutic agents.

FUNCTIONS: The position, reporting to the Director of Clinical Investigation, entails all activities relating to clinical trials, including development of experimental designs and preparation of protocols, liaison with investigators, monitoring, as well as collection and coalation of data, and supervision of data analyses. The clinical studies, which encompass a broad therapeutic spectrum, include toxicity, pharmacodynamics, dose-response, absorption, fate, and excretion.

QUALIFICATIONS: The candidate, whose Doctorate may be in the Biological or Chemical disciplines, must be conversant with Federal regulations relating to new-drug trials, and have at least 3 years' direct experience with a recognized U.S. ethical pharmaceutical manufacturer in conducting such studies.

Compensation is open, and includes excellent fringe benefits. Your curriculum vitae will be treated in strictest confidence. Send to:

William A. Schuh, Manager Industrial Relations



ARMOUR PHARMACEUTICAL COMPANY

401 North Wabash Chicago, Illinois 60611

An Equal Opportunity Employer

VETERINARY PATHOLOGIST



A newly-created position exists for a Pathologist at the SANDOZ research laboratories. Desired is someone with interest and/or experience in morphological evaluations of effects of drugs on tissues. Position calls for dividing time between light microscopic examinations and electron microscopy (EM).

The person who fills this position will be assigned responsibility for setting up and directing an EM laboratory in TOXICOLOGY/PATHOLOGY.

Previous experience in EM desirable.

SANDOZ offers an excellent fringe benefit program, including liberal vacations and holidays, life insurance, a savings plan, educational assistance, hospital, surgical and major medical programs; as well as many other benefits.

Call Mr. Jim Sinkway collect: 201 386-7716

Or forward resume in strict confidence, including salary history to Mr. Sinkway

SANDOZ, INC

Route 10

Hanover, New Jersey 07936

An Equal Opportunity Employer m/f

ASSISTANT DIRECTOR of CLINICAL INVESTIGATION

For ethical
pharmaceutical
company located
in Metropolitan
New York City.

Previous experience in design
and monitoring of clinical in-
vestigation desirable, but will-
ing to train qualified candidate.
Prefer Board Certification or
eligibility in internal medicine.

SALARY BASED ON QUALIFICATIONS

Send resume & salary history to:
Box 346-B, 20 W. 43 St., N.Y. 10036

An equal opportunity employer

Senior Scientist

Can You

Provide technical leadership in the
R&D of biological products for the
Animal Health Division of a nation-
ally known corporation?

We Need:

A Scientist who probably has:
A Ph.D. in Microbiology or Vi-
rology, 3 to 5 years of relevant
experience

(Virology)
(Tissue culture)
(Microbiology)

We Offer:

Excellent Compensation and Ben-
efits. An opportunity for Pro-
fessional and Personal Growth
in a stimulating and challenging
environment.

If qualified, send your resume
in complete confidence to:

BOX 451, SCIENCE

An Equal Opportunity Employer

GRADUATE STUDY

Applications for **Advanced Studies** in a diversi-
fied, creative **biochemistry** program, including
clinical biochemistry, leading to a Ph.D., are
now being considered for September 1969. Tuition
free. Predoctoral fellowships are available, also
postdoctoral fellowships in clinical biochemistry.
**Chairman, Admissions Committee, Biochemistry
Department, State University of New York at
Buffalo, Buffalo, N.Y. 14214.**

GRADUATE FELLOWSHIPS for study lead-
ing to Ph.D. in biochemistry. Excellent facilities
and living conditions. Expanding faculty of ten
covering most research interests.

**Dr. Robert G. Langton, Chairman,
Department of Biochemistry,
University of Florida College of Medicine,
Gainesville, Florida 32601.**

GRADUATE TRAINEESHIPS AND FELLOWSHIPS IN BIOCHEMISTRY ST. LOUIS UNIVERSITY SCHOOL OF MEDICINE

Large staff and expanded facilities of the Edward
A. Doisy Department of Biochemistry offer ideal
opportunity for graduate training in major fields
of biochemistry and molecular biology leading to
Ph.D. degree. Funds available are primarily for
U.S. citizens. Beginning stipend \$2400 plus \$500
for each dependent, and cost of tuition and fees.
Apply now for academic 1969-70 to: **Dr. Robert
E. Olson, Chairman, Department of Biochemistry,
St. Louis University School of Medicine, St.
Louis, Missouri 63104.**

PREDOCTORAL ASSISTANTSHIPS AND TRAINEESHIPS IN MICROBIOLOGY AND IMMUNOLOGY

Excellent opportunities for chemistry and biology
majors with at least a B average to do graduate
work leading to the Ph.D. Ample stipends and
free tuition. Training and research in immuno-
chemistry, immunogenetics, molecular and cell
biology, virology, mycology, and bacteriology.
Write for details to: **Dr. Sheldon Dray, Head,
Department of Microbiology, University of Illinois
at the Medical Center, P.O. Box 6998, Chicago,
Illinois 60680.**

GRADUATE STUDY IN PHARMACOLOGY.
A program leading to the Ph.D. degree involving
course work and research training which stresses
research on fundamental mechanisms of drug
action on neural, neuro-humoral, membrane
transport, and endocrine systems using electro-
physiological, biochemical, and computer tech-
niques. Full stipend and tuition available. Early
application for September 1969 strongly advised.
**Department of Pharmacology, Schools of Medi-
cine and Dentistry, State University of New York
at Buffalo, 122 Capen Hall, Buffalo 14214.**

**PREDOCTORAL FELLOWSHIPS IN PHYSIO-
LOGY**—Training leading to the Ph.D. with special
orientation in physiological control systems, cardio-
vascular, temperature regulation, endocrinology,
and neurophysiology. Emphasis upon preparation
for academic careers combining teaching and re-
search. Stipends with tuition and dependency al-
lowance available to qualified undergraduates in
engineering, biology, chemistry, mathematics, or
physics. A maximum of five new students ac-
cepted each year, maintaining a low student-
adviser ratio. Detailed information from **Depart-
ment of Physiology, Loyola University, 1400 South
First Ave., Hines, Illinois 60141.**

RADIATION BIOPHYSICS FELLOWSHIPS.
Applications are invited for a M.S. degree pro-
gram in Radiation Biophysics. Specialties em-
phasized are medical radiation physics, radiological
health, and radiobiology. There are active re-
search programs in these fields in excellent phys-
ical facilities of a large medical center complex.
Contact **Dr. Billy G. Dunavant, University of
Florida, College of Medicine, Radiology Depart-
ment, Gainesville, Florida 32601.**

RADIATION HEALTH FELLOWSHIPS: Begin-
ning September 1969. Degree programs leading
to M.S. (Hyg.), Sc.D., Ph.D. Background in
physics, engineering, biology, chemistry, or medi-
cine required. Active research program in large
health center complex. Specialties available in
radiation medicine, radiobiology, radiation chem-
istry, cytogenetics, health physics, radiation ecology
and radiological engineering and physics. Full
tuition and fees, tax-free stipend of \$3000 to
\$4800 per year. Citizens only. **Dr. Joseph A. Wat-
son, Radiation Health Division, Graduate School
of Public Health, University of Pittsburgh, Pitts-
burgh, Pa. 15213.**

The Market Place

BOOKS • SERVICES • SUPPLIES • EQUIPMENT

\$1600 CONTEST for **WRITERS** OF UNPUBLISHED MANUSCRIPTS

Send for contest rules and free
Brochure on publishing your book.

PAGEANT PRESS, INC. Dept. SX
101 Fifth Ave., New York, N. Y. 10003

SPRAGUE-DAWLEY, INC.
Pioneers in the development of the
STANDARD LABORATORY RAT
P.O. Box 4220
Madison, Wisconsin
CE 3-5318



Histology Service, Inc.

Servicing Pharmaceutical Industry.
Toxicologists and Research Projects.
Emergency Service for peak load
periods.
Serial Sections—Special stains.
Full Range of Histology Studies and
Chemical Analyses.

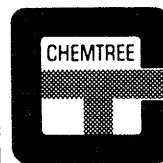
HISTOLOGY SERVICE, Inc.

6190 Rising Sun Avenue
Phila., Pa. 19111 (215) RA 5-5103

HEAVY WATER

For new lowest prices call

BIO-RAD Laboratories 32nd and Griffin,
Richmond, Calif. 94804
Phone (415) 234-4130. Ask for Isotope
Sales. Write for new catalog, Price List J.



SPECIAL NUCLEAR SHIELDING

CHEMTREE CORPORATION
Central Valley, N.Y.
914-928-2293

SPECIAL LIGHT SOURCES

- Mercury Point Sources
- Raymaster Blacklight (long and short wave ultraviolet)
- Sodium Vapor
- Mercury Vapor
- Zirconium, Xenon, Deuterium and Hydrogen Arc Lamps
- Imported Spectral Lamps
- Photochemical or High Intensity "Uviars"
- Auxiliary Operating Equipment for above

**WRITE FOR FREE CATALOG OR CONTACT
YOUR LABORATORY SUPPLY DEALER**

GATES

GEORGE W. GATES & CO.
LUCILLE AVE. FRANKLIN SQUARE, L.I., N.Y.