

GOT A MINUTE? AUTOMATE YOUR LABWASHING

Patent 3,516,925



The CRC Labwasher ©

CRC LABWASHER®

In one minute, you can automate your lab glassware washing with the Mobile CRC Labwasher. Without costly installation charges. Without inconvenience. Just plug it in, and add water by connecting to any faucet. (We even provide adapters to fit various faucets)

The Mobile model will clean and dry 90% of your most commonly-used glass labware. With 50% less breakage than handwashing. 15 auxiliary stainless steel racks available for volume washing.

In a short time, the Mobile CRC Labwasher pays for itself in man-hours saved. It's 12 Cu. Ft. of pure convenience.

Bulletin S 7111 and in-the-field user reports available upon request.

Find out more. Write to:



Dept. S 7111 • 18901 Cranwood Parkway
Cleveland, Ohio 44128

whether public health administrators are the best source for leadership in creating effective family planning organizations. There was some feeling that the intense specialization required for membership in this group does not lend itself readily to the kind of flexible inventiveness needed for family planning programs.

In summing up the conference Lyle Saunders (Ford Foundation) compared contemporary family planning programs with the Wright brothers' airplane—a creaky and ungraceful invention of limited performance. The effort of this conference was to explore ways in which the social sciences can improve both the form and the performance of this innovation. A great variety of areas were explored where the innovation can benefit from a great deal more social science involvement. The conference also demonstrated that scientists can work in this applied field without losing their status in the scientific community.

The conference was sponsored jointly by the AAAS Council Study Committee on Population Explosion and Birth Control and the National Institute of Child Health and Human Development.

MARGARET SNYDER

*National Institute of Child Health
and Human Development,
Bethesda, Maryland*

Calendar of Events—November

National Meetings

8-10. Eastern Analytical Symp., New York, N.Y. (E. G. Brame, Jr., Elastomer Chemistry Dept., duPont Experiment Sta., Wilmington, Del. 19898)

8-10. American Water Resources Assoc., 3rd annual conf., San Francisco, Calif. (A. A. Stone, International Engineering Co., 74 New Montgomery St., San Francisco 94105)

8-11. Respiratory Therapy, 4th annual conf., Boston, Mass. (M. J. Nicholson, 6 Beacon St., Suite 620, Boston 02108)

9-11. Gerontological Soc., Inc., 20th annual mtg., St. Petersburg, Fla. (Mrs. M. Adler, 660 S. Euclid St., St. Louis, Mo.)

10. Laboratory Animal in Gerontologic Research, symp., St. Petersburg, Fla. (R. H. Yager, Natl. Acad. of Sciences-Natl. Research Council, 2101 Constitution Ave., NW, Washington, D.C.)

10-11. New England Psychological Assoc., annual mtg., Hartford, Conn. (M. M. Riggs, New Hampshire Child Guidance Clinics, 121 S. Fruit St., Concord 03301)

11-12. American Acad. of Psychotherapists, annual conf., Warrenton, Va.

'Jo blocks' of the light world:



25 Spectrolab precision filters

It's available now — this exceptional laboratory set of dielectric optical filters that are reliable, accurate wavelength standards for any application involving study, measurement or control of light.

The 25 humidity-sealed filters are Spectrolab Type P narrow bandpass, with center wavelengths graduated in 200-Angstrom increments over the range from 4350 through 9150 Angstroms.

Typical applications: spectral analysis, colorimetry, light-isolation, color TV development, photometry, light study, photometric measurement, bacteriology, and others... in short, any application needing precise wavelength control.

Filter half-peak bandwidths are 75 ± 5 Angstroms; peak transmission, including blocking, is 55% or higher, with peak wavelength tolerance within 0.2% of center wavelength. Filters are one-inch diameter, thickness up to $\frac{1}{8}$ inch. Over the entire sidebands from 3000 to 9500 Angstroms, there is virtually total rejection... less than 0.001% transmission 125 Angstroms from the filters peak wavelength.

Filter set comes in lined and compartmented hardwood case, with easy identification markings on the separation spacers. Individual transmission curves are supplied for each filter.

Price is a low \$1500 — about half the cost of the filters if bought individually — and sets are available for immediate delivery. Contact Spectrolab for ordering information or more detailed technical data.

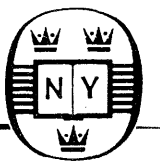


spectrolab

A **Textron** Company

12484 Gladstone Ave., Sylmar, California 91342
Telephone: (213) EM 5-4623

Oxford



Key to the Families of Flowering Plants of the World

REVISED AND ENLARGED FOR USE AS A SUPPLEMENT TO "THE GENERA OF FLOWERING PLANTS"

By JOHN HUTCHINSON, Formerly Keeper of Museums of Botany, Royal Botanic Gardens, Kew. This separate key is a companion to the author's *Genera of Flowering Plants* and can be used in the field to identify the family (but not the species) of a very large percentage of flowering plants, in any part of the world. The key is arranged in artificial groups for ready identification. Popular names are not included but there is a glossary of botanical terms and some simple diagrams for the student.

Cloth, \$5.50. Paper, \$3.75

Dictionary of Organic Compounds

THE CONSTITUTION AND PHYSICAL, CHEMICAL AND OTHER PROPERTIES OF THE PRINCIPAL CARBON COMPOUNDS AND THEIR DERIVATIVES, TOGETHER WITH RELEVANT LITERATURE REFERENCES, FOURTH EDITION, THIRD SUPPLEMENT

Edited by the late SIR IAN HEILBRON and others, this volume by ROGER STEVENS. The majority of the new entries in this Third Supplement are derived from papers published during the year of 1966, although entries have been added for notable omissions and errors in the main work and in earlier supplements. The *Dictionary* has been brought up-to-date in the light of the work of F. A. Allen and D. Rogers, who have provided a reference list of organic structures whose absolute configuration has been determined by X-ray fluorescence crystallography.

illus. \$28.00

A Dictionary of Geology

THIRD EDITION

By JOHN CHALLINOR. This book, when it was first published in 1960, was the pioneer work in the field of geological nomenclature. The growth of the science of geology has necessitated a new edition every three years to keep pace with the new data. Again in this third edition a thorough revision has been made, new material incorporated, new terms added. Over two thousand names and terms have been carefully selected, a special feature being the many quotations and references which are scattered over the whole field of geological literature.

\$6.75

The Properties of Liquid and Solid Helium

By J. WILKS, Pembroke College, Oxford. This volume presents an extensive and critical survey of the physical properties of condensed ^3He and ^4He . The behavior of the liquid and solid phases are discussed against the theoretical background, which is now sufficiently developed to unify many diverse experimental results. Particular attention is also given to the wide variety of experimental techniques employed in the study of helium at low temperatures. 365 figures, 3 halftone plates. (*International Series of Monographs on Physics*)

\$20.20

OXFORD
UNIVERSITY
PRESS

200 Madison Avenue,
New York, N.Y. 10016

(H. Rockberger, Conference Chairman, 44 South Munn Ave., East Orange, N.J. 07017)

11-15. American Soc. for Cell Biology, 7th annual mtg., Denver, Colo. (M. J. Moses, Box 2982, Duke Univ. Medical Center, Durham, N.C. 27706)

12-17. American Soc. of Mechanical Engineers, winter annual mtg., Pittsburgh, Pa. (A. B. Conlin, Jr., 345 E. 47 St., New York 10017)

13-15. Industrial Diamond Revolution, technical conf., Columbus, Ohio (Conference Hq., 330 S. Wells St., Chicago, Ill. 60606)

13-15. American Petroleum Inst., 47th annual mtg., Chicago, Ill. (American Petroleum Inst., 1271 Ave. of the Americas, New York 10020)

13-16. Engineering in Medicine and Biology, 20th annual conf., Boston, Mass. (Professional Assocs., 6520 Clayton Rd., St. Louis, Mo. 63117)

14-16. American Federation of Information Processing Societies, fall joint computer conf., Anaheim, Calif. (Executive Secretary, 211 E. 43 St., New York 10017)

14-17. American Acoustical Soc., fall mtg., Miami Beach, Fla. (J. Steinberg, Inst. of Marine Science, Univ. of Miami, Miami 33149)

14-18. Air-Conditioning and Refrigeration Inst., annual mtg., Miami, Fla. (1815 N. Fort Myer Dr., Arlington, Va. 22209)

15-18. American Society of Tool and Manufacturing Engineers, semi-annual conv., Dearborn, Mich. (The Society, 20501 Ford Rd., Dearborn 48128)

16-18. American Physical Soc., New York, N.Y. (W. W. Havens, 538 W. 120 St., New York 10027)

16-19. National Soc. for Crippled Children and Adults, annual mtg., Los Angeles, Calif. (K. Bauer, Director of Public Relations, 2023 W. Ogden Ave., Chicago, Ill.)

17-18. Computer Applications in Clinical Electrocardiography, postgraduate program, Washington, D.C. (J. S. France, Assistant Director, American College of Cardiology, Bethesda, Md. 20014)

19-21. International College of Surgeons, 5th Western regional mtg., Las Vegas, Nev. (F. M. Turnbull, Jr., 1127 Wilshire Blvd., Los Angeles, Calif. 90017)

19-22. Association of Military Surgeons of the U.S., annual mtg., Washington, D.C. (Brig. Gen. F. E. Wilson, AMSUS, 1500 Massachusetts Ave., NW, Suite 132, Washington, D.C. 20005)

20-21. Manpower for Oceanography, education symp., Houston, Tex. (American Soc. for Oceanography, 854 Main Building, Houston 77002)

20-22. Society of Economic Geologists, New Orleans, La. (J. O. Kalliokoski, Dept. of Geology, Princeton Univ., Princeton, N.J. 08540)

20-22. American Physics Soc., annual Fluid Dynamics mtg., Bethlehem, Pa. (P. S. Klebanoff, Natl. Bureau of Standards, Connecticut Ave. at Van Ness St., NW, Washington, D.C. 20234)

20-22. Geological Soc. of America, annual mtg., New Orleans, La. (G. E. Murray, Texas Technical College, Box 4680, Technical Station, Lubbock, Tex., or Miss D. Curtis, Shell Oil Co., Box 60193, New Orleans 70160)

Oxford



Technology in Western Civilization

Volume I:

The Emergence of Modern Industrial Society—Earliest Times to 1900

Volume II:

Technology in the Twentieth Century

Edited by MELVIN KRANZBERG, Case Western Reserve University, and CARROLL W. PURSELL, JR., University of California, Santa Barbara

1967 1,550 pp. 400 illus.
text edition, each volume, \$ 8.50
trade edition, boxed set, \$27.50

Invertebrate Zoology

By PAUL A. MEGLITSCH, Drake University

1967 990 pp. 400 illus. \$11.00

Inorganic Chemistry

By C. S. G. PHILLIPS and R. J. P. WILLIAMS, both of Oxford University

Volume I: Principles; Non-Metals

1965 700 pp. illus. \$8.00

Volume II: Metals

1966 696 pp. illus. \$8.00

Genetics

SECOND EDITION

By ROBERT C. KING, Northwestern University

1965 450 pp. 159 illus. \$9.50

The Second Law:

AN INTRODUCTION TO CLASSICAL AND STATISTICAL THERMODYNAMICS

By HENRY A. BENT, University of Minnesota

1965 442 pp. illus. cloth \$8.00
paper \$3.75

Population in Perspective

Edited by LOUISE B. YOUNG, Science Editor, American Foundation for Continuing Education

Spring 1968 approx. 400 pp.
cloth \$8.50
paper \$4.95

OXFORD
UNIVERSITY
PRESS

200 Madison Avenue,
New York, N.Y. 10016

20-22. **Geochemical Soc.**, annual mtg., New Orleans, La. (E. C. T. Chao, % U.S. Geological Survey, Washington, D.C.)

20-22. **Mineralogical Soc. of America**, New Orleans, La. (G. Switzer, % U.S. National Museum, Washington, D.C. 10025)

20-22. **Paleontological Soc. of America**, New Orleans, La. (R. L. Langenheim, Dept. of Geology, Univ. of Illinois, Urbana)

26-29. **American Medical Assoc.**, clinical conv., Houston, Tex. (W. E. Burmeister, Director, Convention Services Dept., AMA, 535 N. Dearborn St., Chicago, Ill.)

26-30. **American Inst. of Chemical Engineers**, 60th annual mtg., New York, N.Y. (H. I. Wolff, Shell Chemical Co., 50 W. 50 St., New York 10020)

26-1. **Radiological Soc. of North America**, 53rd annual mtg., Chicago, Ill. (M. D. Frazer, RSNA, 713 East Genesee St., Syracuse, N.Y.)

27-29. **American Astronautical Soc.**, natl. mtg., New York, N.Y. (N. Levin, Guidance and Control, Plant 35, Grumman Engineering Corp., Bethpage, N.Y. 11714)

27-30. **Entomological Soc. of America**, annual mtg., New York, N.Y. (R. H. Nelson, ESA, 4603 Calvert Rd., College Park, Md.)

27-1. **Chemical Industries**, New York, N.Y. (International Exposition Co., 200 Park Ave., New York 10017)

28. **American Soc. of Therapeutic Radiologists**, Chicago, Ill. (J. A. Del Regato, Penrose Cancer Hospital, Colorado Springs, Colo. 80907)

29-30. **Society for Industrial and Applied Mathematics**, fall mtg., Santa Barbara, Calif. (H. B. Hair, 33 S. 17 St., Philadelphia, Pa. 19103)

29-1. **Wire and Cable Symp.**, Atlantic City, N.J. (J. Spengel, USAEC, Fort Monmouth, N.J. 07703, attn: AMSEL-KL-EE)

30-3. **American Anthropological Assoc.**, annual mtg., Washington, D.C. (C. Frantz, 1530 P St., NW, Washington, D.C. 20005)

International and Foreign Meetings

6-14. **Dentistry**, intern. symp., Quito, Ecuador. (O. C. Jaramillo, Decano, Facultad de Odontologia, Universidad Central, Quito)

6-24. **Meteorological Instructors**, regional seminar, Santiago, Chile. (World Meteorological Organization, 41, Av. Giuseppe Motta, Geneva, Switzerland)

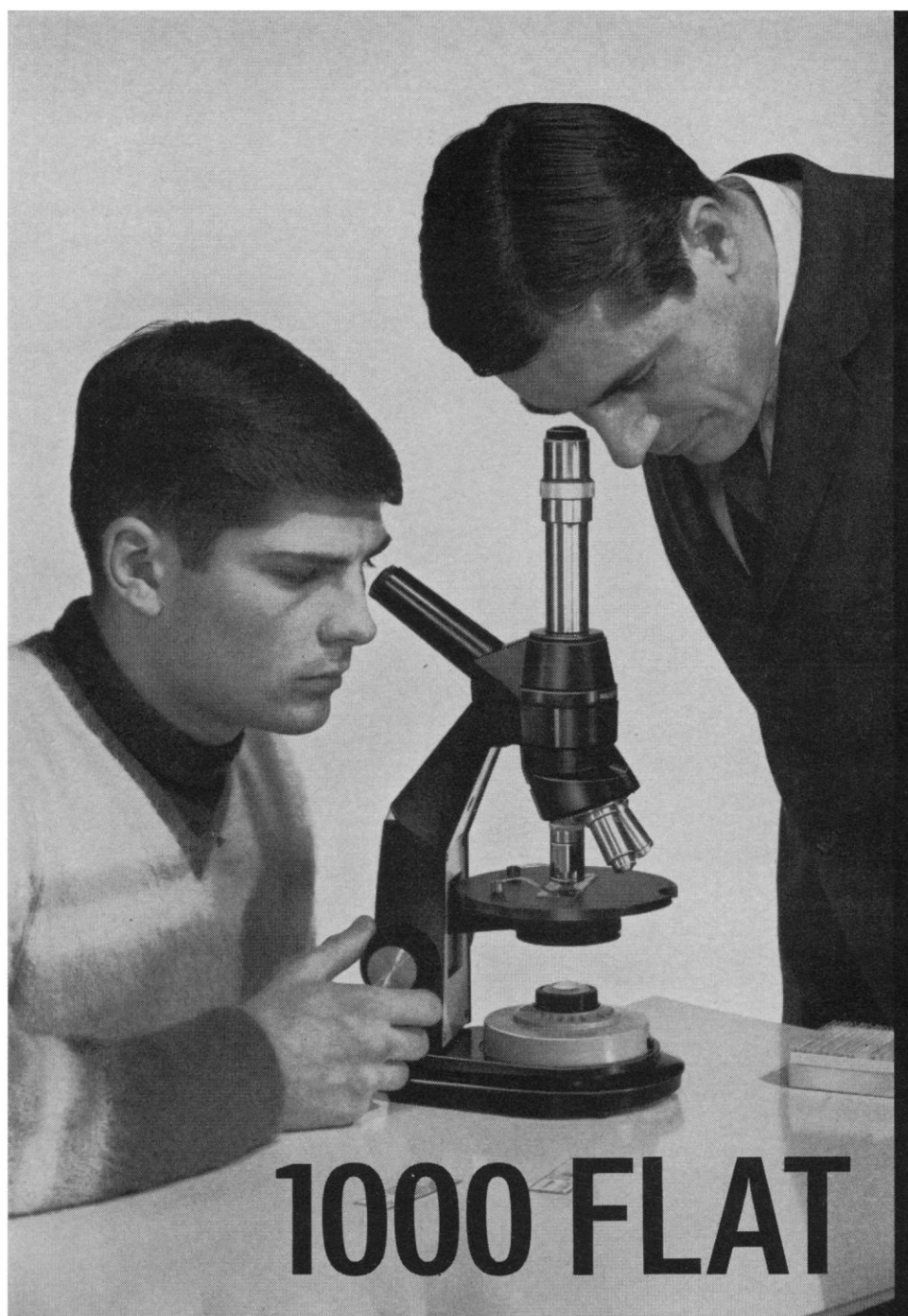
7-10. **Methods in Soil Ecology**, symp., Paris, France. (UNESCO, Pl. de Fontenoy, Paris 7)

8-10. **Electroplating**, intern. conf., Erfurt, Germany. (Dr. Burkhardt, PV Elektrotechnik, Pa 16, Galvanotechnik, Kammer der Technik, Torgauer Str. 76, 705 Leipzig 5, Germany)

9-10. **American Anthropological Assoc.**, annual mtg., Toronto, Ontario, Canada. (Executive Secretary, 1530 P St., NW, Washington, D.C. 20005)

9-11. **Hematology**, 2nd natl. conf., Bucharest, Rumania. (I. Caloenescu, Union of Medical Science Societies of the Socialist Republic of Rumania, 8 rue Progresul, Bucharest)

10-11. **Psychosomatic Disorders**, 11th



Need oil immersion 1000 \times magnification for true edge-to-edge images of cell nuclei? Or for histological, bacteriological, or morphological studies? Then your students should have professional quality Academic 255 Flat Field Microscopes by Bausch & Lomb. These new instruments are built for long lasting, maintenance-free service, but are priced well within school/college budgets. They feature an optional double-viewing head with measuring pointers to help the student learn faster. To get all the details, of this and all the other Academic 255 Microscopes, write for our Catalog 31-2172. There's no obligation. Write Bausch & Lomb, 85647 Bausch Street, Rochester, New York 14602.

BAUSCH & LOMB

ADVANCING ELECTRONIC/OPTICAL
INSTRUMENTATION

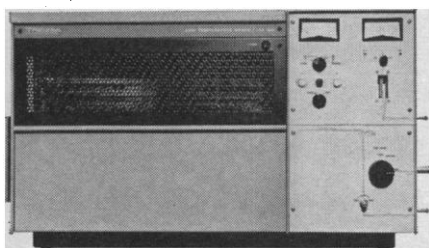
Ashing below 150°C retains inorganics



Pyrometer shows that Tracerlab's LTA-600 can ash samples thoroughly at temperatures well below 150°C — low enough to leave all inorganic constituents unaltered. A cold plasma of atomic oxygen does the ashing, while our accessory pyrometer keeps you posted on the temperature.

This low-temperature dry asher permits more accurate quantitative elemental and structural analyses of plant and animal tissues, bones, coal, oil well cores, polymers, and radioactive materials. Prepares pure samples for atomic adsorption spectrophotometry, mass spectrometry, emission spectroscopy, X-ray diffraction, and electron microscopy.

Send for literature on equipment, techniques and services.



TRACERLAB
A Division of Laboratory For Electronics, Inc.

2030 WRIGHT AVENUE, RICHMOND, CALIFORNIA
In Europe: Mechelen, Belgium

annual conf., London, England. (A. H. Crisp, % Academic Psychiatric Unit, Middlesex Hospital, London, W.1)

13-18. International Federation of Cotton and Allied Textile Industries, Delhi, India. (M. Ludwig, Director, 29 am Schanzengraben, Postfach 280, 8093 Zurich, Switzerland)

14-16. Ecology of Atherosclerosis, intern. symp., Chicago, Ill. (P. L. White, Héart Assoc., 22 W. Madison St., Chicago 60602)

14-18. Industrial Electronics, 3rd intern. exhibition, Basel, Switzerland. (Fachmessenspektariat, Schweizer Mustermesse Basel, 4000 Basel 21)

15-17. Powder Metallurgy in Nuclear Technology, symp., London, England. (Inst. of Metals, 17 Belgrave Square, London, S.W.1)

15-29. World Meteorological Organization, Commission for Agricultural Meteorology, 4th session, Manila, Philippines. (41, Av. Giuseppe Motta, P.O. Box 1, Ch-1211, Geneva 20, Switzerland)

17-18. International Game and Fish Conf., San Juan, Puerto Rico. (D. P. de Sylva, 1 Rickenbacker Causeway, Miami, Fla. 33149)

19-22. Asia-Oceania Congr. of Otorhinolaryngology, 1st, Manila, Philippines. (T. F. Garcia, Manila Doctors Hospital, 667 United Nations Ave., Manila 00100)

20-28. Hurricanes and Tropical Meteorology, 5th technical conf., Caracas, Venezuela. (K. V. Spengler, American Meteorological Soc., 45 Beacon St., Boston, Mass.)

21-25. Radioisotope Tracers in Industry and in Geophysics, symp., Prague, Czechoslovakia. (Intern. Atomic Energy Agency, 11 Kartner Ring, Vienna 1, Austria)

23-27. Geological Soc. of America, field trip, Yucatán, Mexico. (B. B. Hanshaw, U.S. Geological Survey, Washington, D.C.)

26-30. Pan American Medical Assoc., 42nd annual congr., Buenos Aires, Argentina. (J. J. Eller, Director General, 745 Fifth Ave., New York 10022)

26-1. World Federation for Mental Health, 20th annual mtg., Lima, Peru. (Administrative Hq., 1, rue Gevray, Geneva, Switzerland)

27-2. Science and Technology in Developing Countries, Beirut, Lebanon. (C. Nader, American Univ. of Beirut, Beirut)

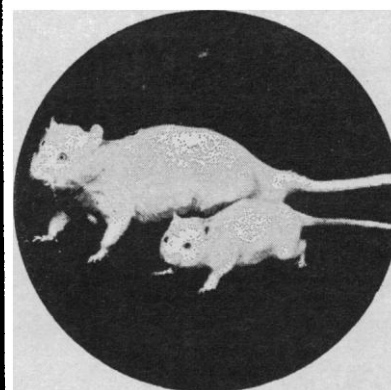
28-30. Decomposition of Organometallic Compounds to Refractory Ceramics, Metals and Metal Alloys, intern. symp., Dayton, Ohio. (E. W. Stefanko, Univ. of Dayton, Dayton 45409)

28-30. Trombosis, intern. mtg., Washington, D.C. (S. Sherry, Washington Univ. School of Medicine, St. Louis, Mo.)

29-1. Polymer Characterization, intern. symp., Columbus, Ohio (J. Bonds, Battelle Memorial Inst., Columbus Laboratories, 505 King Avenue, Columbus 43201)

29-5. Inter-American Congr. of Radiology, 9th, Montevideo, Mexico. (P. J. Hodes, Jefferson Medical College Hospital, 11th and Walnut Sts., Philadelphia, Pa. 19107)

30-1. Mission Planning and Planetology, intern. mtg., New York, N.Y. (R. Enzmann, chairman, 29 Adam St., Lexington, Mass.)



Harford cages
designed to your
specifications
and new Federal
regulations!

HARFORD GIVES YOU A CHOICE of quality cages for holding, testing or isolation of poultry, water fowl, game birds, mice, rats and other rodents.

HARFORD GIVES YOU A FULL SELECTION of cages for primates, dogs, cats, rabbits and guinea pigs designed and constructed to conform to new Federal Regulations!

We build cages with your animals in mind. Whether it's one cage or an entire system in special sizes conforming to Federal Regulations, ask us. Send your specifications today.



Manufacturing animal cages since 1938

Harford

Metal Products, Inc.
Building 101
Aberdeen, Md. 21001
272-3400 (301)