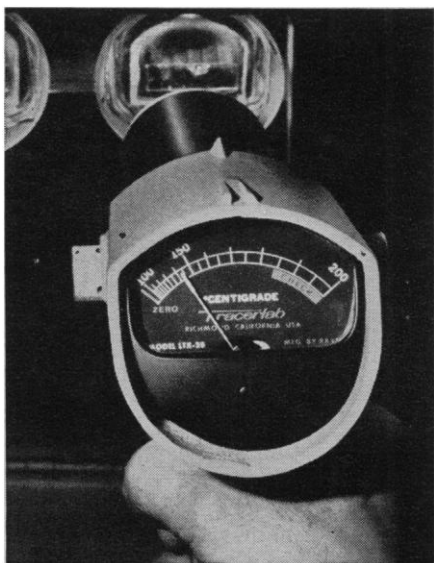


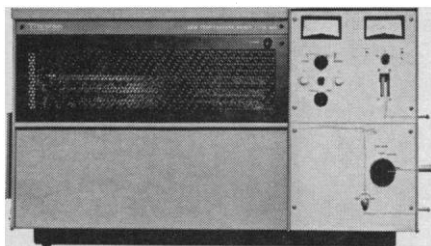
Ashing below 150°C retains inorganics



Pyrometer shows that Tracerlab's LTA-600 can ash samples thoroughly at temperatures well below 150°C—low enough to leave all inorganic constituents unaltered. A cold plasma of atomic oxygen does the ashing, while our accessory pyrometer keeps you posted on the temperature.

This low-temperature dry asher permits more accurate quantitative elemental and structural analyses of plant and animal tissues, bones, coal, oil well cores, polymers, and radioactive materials. Prepares pure samples for atomic adsorption spectrophotometry, mass spectrometry, emission spectroscopy, X-ray diffraction, and electron microscopy.

Send for literature on equipment, techniques and services.



LFE | TRACERLAB
A Division of Laboratory For Electronics, Inc.
2030 WRIGHT AVENUE, RICHMOND, CALIFORNIA

genetic translation in cells. He further pointed out the need for new morphological or biochemical markers, or both, associated with the different metabolic states, especially during interphase. He contrasted natural synchrony with induced synchrony and pointed out some of the problems associated with the different methods of synchrony.

The conference was held under the joint sponsorship of the Biology Division of the Oak Ridge National Laboratory and Duke University. It was attended by 130 investigators from Canada, England, Scotland, Germany, Japan, Russia, and the United States and dealt with recent advances in the synchronization of cell division. Fifty-one papers were presented, and discussions were interspersed throughout the entire program.

G. L. WHITSON

W. D. FISHER

Biology Division, Oak Ridge National Laboratory, Oak Ridge, Tennessee*

G. M. PADILLA

Department of Physiology, Duke University, Durham, North Carolina, and Wrightsville Marine Biomedical Laboratory, Wilmington, North Carolina

I. L. CAMERON

Department of Anatomy, Upstate Medical Center, State University of New York, Syracuse

Note

*Operated by Union Carbide Corporation for the United States Atomic Energy Commission.

Calendar of Events

Courses

Hydrospace: State of the Art, Hopatcong, N.J., 25-29 Sept. Fee: \$200. (B. Nierenberg, Oceanics Workshop, Saul Gordon Associates, Center for Professional Advancement, P.O. Box 66, Hopatcong, 07843)

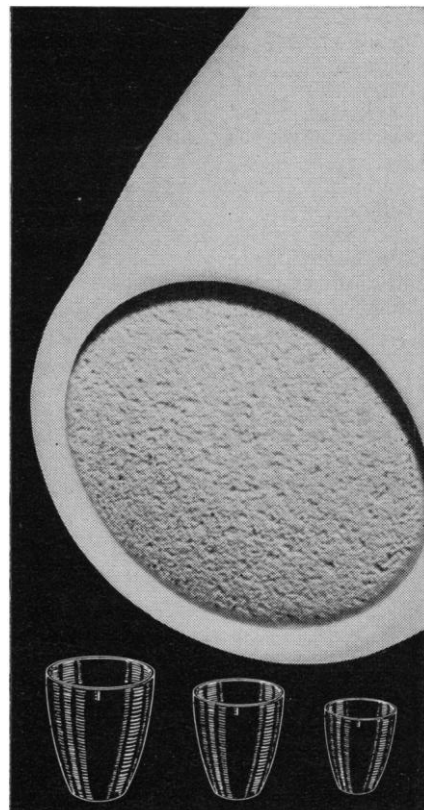
Cardiopulmonary Problems in Children, Chicago, Ill., 21-23 Sept. (American College of Chest Physicians, 112 E. Chestnut St., Chicago 60611)

Cancer Chemotherapy, Houston, Tex., 18-29 Sept. The chemistry, pharmacology, and clinical application of the antimetabolites, hormones and miscellaneous newer drugs will be reviewed. (E. Frei, 6723 Bertner Ave., Houston 77025)

Modern Aspects of Communication Theory, Austin, Tex., 25-29 Sept. Fee: \$175. (D. E. Griffith, College of Engineering, University of Texas, Austin 78712)

Water Utility Management, Urbana, Ill., 29 Oct.-2 Nov. Is intended to aid the water commissioner, manager, and supervisors to increase their management skills. (E. Lyons, 116e Illini Hall, Champaign, Ill. 61820)

Porous BOTTOM crucibles



Coors Porous Bottom crucibles give the chemist sturdy, dependable filtering crucibles for unlimited service under the most exacting conditions. An exclusive process developed by Coors provides a porous disc, formed into the crucible wall, that will not crack or drop out during use at room or elevated temperatures. The disc will not disintegrate when subjected to acids (except HF) or moderate alkali solutions. When these Coors crucibles are ignited even to extremely high temperatures, the porous disc will not crack, nor will the pore size be altered. Carefully controlled pore sizes are available in three ranges: (1) for bacterial separation and (2) fine filtering and (3) coarse precipitates. The crucibles are easily cleaned and readied for re-use. The same filtering disc may be ordered in the Coors Emich micro-filter stick for immersion filtration. Write for Bulletin No. 548. Coors Porous Bottom crucibles are immediately available through your nearest laboratory supply dealer.

INSIST THAT YOUR LABORATORY PORCELAIN
WARE CARRY THIS MARK OF DEPENDABILITY

COORS U.S.A.

COORS PORCELAIN COMPANY, GOLDEN, COLORADO

Analysis of Atmospheric Inorganics, Cincinnati, Ohio, 25-29 Sept. (Chief, Training Program, National Center for Air Pollution Control, 4676 Columbia Parkway, Cincinnati 45226)

Modern Approaches to Drug Discovery and Development, Hopatcong, N.J., 23-27 Oct. Fee: \$200. (W. Orosnik, Saul Gordon Associates, P.O. Box 66, Hopatcong 07843)

September

National Meetings

17-20. **Petroleum Mechanical Engineering**, conf., Philadelphia, Pa. (A. B. Conlin, Jr., ASME, 345 E. 47 St., New York 10017)

18-20. **Electrical Insulation and Dielectric Phenomena**, conf., Pocono Manor, Pa. (Col. R. A. Cliffe, Conf. on EIDP, National Acad. of Sciences, 2101 Constitution Ave., NW, Washington, D.C.)

18-20. **Society of Logistics Engineers**, 2nd annual conv., Washington, D.C. (J. L. Carpenter, Jr., Martin-Marietta, Friendship Intern. Airport, Baltimore, Md.)

18-20. **Standards Engineers Soc.**, 16th annual mtg., Detroit, Mich. (B. J. Powell, Bendix Corp., Res. Lab. Div., Southfield, Mich. 48076)

18-21. **Marine Corrosion**, seminar, Wrightsville Beach, N.C. (T. P. May, Box 656, Wrightsville Beach)

18-21. **Pulp and Paper**, 22nd engineering conf., Atlanta, Ga. (H. B. Harris, Jr., Union Camp Corp., Savannah, Ga.)

18-22. **Localized Excitations in Solids**, Los Angeles, Calif. (A. A. Maradudin, Dept. of Physics, Univ. of California, Irvine 92664)

19-22. **Pulsed High-Density Plasmas**, conf., Los Alamos, N.M. (F. L. Ribe, Los Alamos Scientific Lab., Box 1663, Los Alamos 87544)

21-24. **American Medical Writers' Assoc.**, annual mtg., Chicago, Ill. (E. G. Dailey, AMWA, Box 267, Arlington, Va.)

22-30. **American Soc. of Clinical Pathologists** and College of American Pathologists, joint annual mtg., Chicago, Ill. (M. Damron, ASCP, 445 N. Lake Shore Dr., Chicago 60611)

25-27. **Environmental Effects on Aircraft and Propulsion Systems**, 7th annual conf., Princeton, N.J. (H. F. Sander, IES, 940 E. Northwest Highway, Mount Prospect, Ill.)

25-28. **Association of Iron and Steel Engineers**, annual conv., Chicago, Ill. (T. J. Ess, AISE, 1010 Empire Bldg., Pittsburgh, Pa. 15222)

25-28. **Human Factors Soc.**, 11th annual mtg., Boston, Mass. (P. G. Ronco, Systems Bldg., Tufts Univ., Medford, Mass.)

26-28. **Survival and Flight Equipment Assoc.**, 5th natl. symp., San Diego, Calif. (J. Dolan, 939 Nolan Way, Chula Vista, Calif.)

26-29. **American Roentgen Ray Soc.**, annual mtg., Washington, D.C. (T. F. Leigh, ARRS, Emory Univ. Clinic, Atlanta, Ga. 30322)

27-29. **American Assoc. of Petroleum Geologists**, mid-continent section mtg., Wichita, Kan. (R. J. Gutru, Beardmore Drilling Co., 700 One Twenty Bldg., Wichita 67202)

Self Sticking **TIME** TAPES & LABELS

(we make them)

You can stick them on

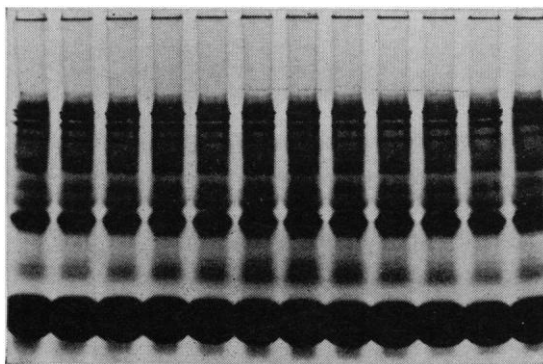
**PLASTIC • GLASS • METAL
WOOD • CLOTH • RUBBER**



Write for complete information
about our full line of Laboratory
Tapes and Labels

PROFESSIONAL TAPE COMPANY, INC.
365 East Burlington Road, Riverside, Ill. 60546

*if discontinuous
electrophoresis means
something to you...
so will our E-C 470
vertical gel cell.*



The discontinuous ("Stacked Gel") method showing
12 separations of the same serum.

The discontinuous, or "Stacked Gel" method rounds out the E-C 470 as the most versatile apparatus in its field.

- Separates 12 samples simultaneously on the same gel. Flat gel eliminates difficulties of cylindrical form for densitometer readings.

- Preparative separations are easily eluted.

- True two-dimensional gel electrophoresis for even greater resolution.

- Rapid separations for screening of hemoglobins or serum proteins with fully developed techniques.

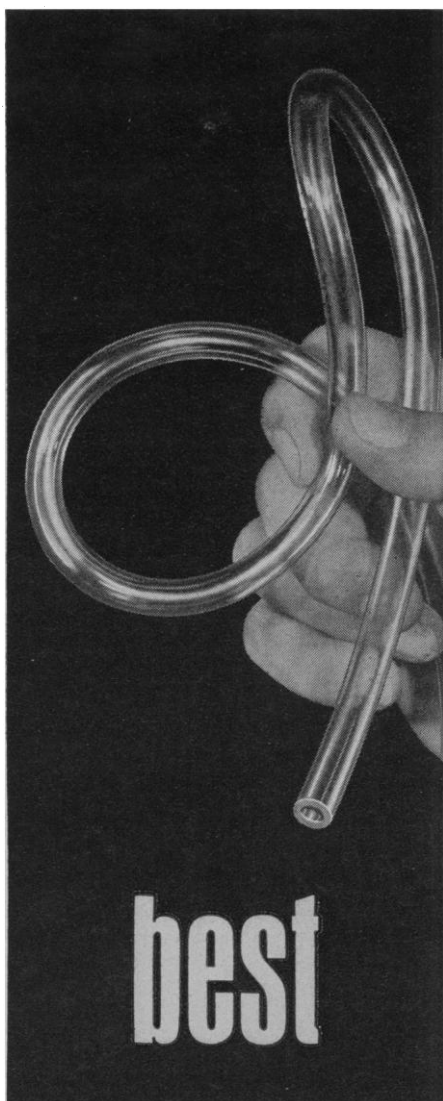
- Favored in specialized research on lipoproteins, histones, and enzyme systems.

**CIRCLE READER SERVICE
CARD FOR**

"Total Electrophoresis System"
"Stacked Gel Electrophoresis"

E-C APPARATUS CORPORATION
ELECTROPHORESIS & COUNTERCURRENT
755 St Marks St. • Philadelphia, Pa. 19104

For seminar dates, call our applications laboratory: 215-382-9100



Day in and day out, the reliability, long life and versatility of Tygon flexible plastic Tubing proves over and over that it's your best laboratory tubing investment.

TYGON® TUBING

**Crystal-clear
Flexible
Chemically inert
Non-oxidizing
73 standard sizes**

At laboratory supply houses everywhere, or write Plastics & Synthetics Division, U. S. Stoneware, Inc., Akron, Ohio 44309.



466-R

1226

28-30. **Surgery of Trauma**, mtg., Chicago, Ill. (S. B. Gaston, AAST, 80 Fort Washington Ave., New York 10032)

28-30. **Cervix Uteri**, symp., Miami, Fla. (J. W. Scott, 701 du Pont Bldg., Miami 33131)

29-3. **American Soc. of Anesthesiologists**, annual mtg., Las Vegas, Nev. (W. S. Marinko, ASA, 515 Busse Hwy, Park Ridge, Ill. 60608)

International and Foreign Meetings

7-9. **Analytical Chemistry**, symp., Sackville, Canada. (T. H. G. Michael, Chemical Inst. of Canada, 151 Slater St., Ottawa 4)

10-14. **American Soc. of Psychosomatic Dentistry and Medicine**, 18th annual mtg., Mont Gabriel, Canada. (L. Wollman, ASPDM, 2177½ Seneca St., Buffalo, N.Y.)

10-15. **Illuminating Engineering Soc.**, conf., Montreal, Canada. (A. D. Hinckley, IES, 345 E. 47 St., New York 10017)

11-15. **Cybernetics**, 5th intern. congr., Namur, Belgium. (International Assoc. for Cybernetics, 13 Rue Basse-Marcelle, Namur)

11-15. **High Energy Accelerators**, 6th intern. conf., Cambridge, Mass. (W. A. Shurcliff, Cambridge Electron Accelerator, 42 Oxford St., Cambridge 02138)

11-15. **Information Theory**, Inst. of Electrical and Electronic Engineers, intern. symp., San Remo, Italy. (D. Schilling, Polytechnic Inst. of Brooklyn, 333 Jay St., Brooklyn, N.Y.)

13-15. **American Fisheries Soc.**, 97th annual mtg., Toronto, Canada. (R. F. Hutton, AFS, Suite 1040, Washington Bldg., 15th and New York Ave., NW, Washington, D.C.)

17-20. **High Temperature**, 3rd intern. symp., Asilomar, Calif. (Dept. 366, Stanford Research Inst., 333 Ravenwood Ave., Menlo Park, Calif. 94025)

17-23. **Neuro-Genetics and Neuroophthalmology**, 2nd intern. congr., Montreal, P.Q., Canada. (A. Barbeau, Section de Neurologie, Univ. of Montreal, Montreal)

18-19. **American Assoc. of Botanical Gardens and Arboreturns**, Hamilton, Ontario, Canada. (F. Widmoyer, Dept. of Horticulture, New Mexico State Univ., University Park)

18-20. **Buoy Technology**, 2nd intern. symp., Washington, D.C. (M. H. Simons, MTS, 1030 15th St., NW, Washington, D.C. 20005)

20-23. **Use of Radioactive Isotopes in Pharmacology**, intern. conf., Geneva, Switzerland. (B. Glasson, School of Medicine, Univ. of Geneva, 1211 Geneva 4)

24-27. **American Inst. of Chemical Engineers** and Mexican Inst. of Chemical Engineers, joint mtg., Mexico City. (J. Henry, AICE, 345 E. 47 St., New York)

24-30. **International Astronautical Federation**, 18th annual congr., Belgrade, Yugoslavia. (American Inst. of Aeronautics and Astronautics, 1920 Sixth Ave., New York 10019)

25-29. **Mass Spectrometry**, intern. conf., West Berlin, Germany. (Geschäftsstelle der Gesellschaft Deutscher Chemiker, z Hd von Herrn Dr. W. Fritsche, 6 Frankfurt/Main, Postfach 9075, Germany)

CON- CEN- TRATE & DESALT FAST!

A new family of equipment based on a unique principle lets you concentrate and desalt aqueous solutions of large molecules many times faster than other techniques. Electro-osmosis with a special electrolyte pulls water and low-MW ions through dialysis membrane at rates so fast you can take a 45 ml sample almost to dryness and zero salt in half an hour with the convenient "Start Kit" (pictured below).

The Start Kit, intended to introduce you to the technique, costs just \$90.00 delivered to any point in the U.S. or Canada. Now available for immediate shipment, it comes complete with all parts (including power supply) and chemicals. It accommodates a single sample cell holding up to 60 ml or 3 cells holding up to 10 ml each, and can

- concentrate at rates up to 1.5 ml per minute water removal;
- desalt from 3% ammonium sulfate down to 1/100% in half an hour.

Gentle low-temperature action gives typical enzyme activity recovery of better than 80% after 50-fold concentration!

The Start Kit will fully satisfy the requirements of some users, and will demonstrate the technique's utility to others who need higher capacity for routine use. Larger units for multiple aliquots (up to 45), and for homogeneous samples up to dozens of liters, will soon be available. Other apparatus will permit filtering, fractionating, washing and sterilizing, all enhanced by electrophoretic phenomena. Descriptive literature is available on all equipment.

Order your Start Kit now. Discover a powerful new way to speed your work.



"START KIT"
\$90.00 delivered



**CANAL
INDUSTRIAL
CORPORATION**

5635 Fisher Lane
Rockville, Maryland 20852
Telephone (301) 427-1515

SCIENCE, VOL. 157