

Self Sticking **TIME** TAPES & LABELS

(we make them)

You can use them in

**OVENS • STERILIZERS • AUTOCLAVES
INCUBATORS • WATER BATHS
OIL BATHS • DEEP FREEZERS
REFRIGERATORS**

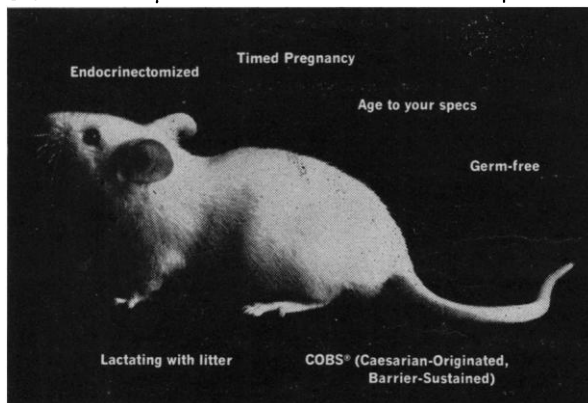


Write for complete information
about our full line of Laboratory
Tapes and Labels

PROFESSIONAL TAPE COMPANY, INC.
365 East Burlington Road, Riverside, Ill. 60546

The better mouse.

Presenting Charles River's CD-1®. A superior lab animal. Raised under the strictest controls. From sterilized bedding, to continual virus monitoring and a nucleus stock kept in germ-free isolation. The result means absolute quality. So animals exhibit a uniform, reproducible response. □ At Charles River, small lab animals are a big business. Our only business. Available in any number you need. In the U.S.A. or Europe within 24 hours. Write for our price list.



Send us your mouse specs.

Charles River
LABORATORIES, INCORPORATED
Wilmington, Mass. U.S.A. • Elbeuf, France

Calendar of Events

National Meetings

August

23-25. **Gas Dynamics Symp.**, Evanston, Ill. (The Symposium, Northwestern Univ., Evanston)

23-25. **Wave Propagation and Dynamic Properties of Earth Materials**, symp., Albuquerque, N.M. (G. E. Triandafilidis, Univ. of New Mexico, P.O. Box 188, University Station, Albuquerque 87106)

23-26. **American Physiological Soc.**, fall mtg., Washington, D.C. (Executive Secretary, 9650 Wisconsin Ave., Bethesda, Md.)

24-26. **Phytochemical Soc. of America**, annual mtg., Madison, Wis. (T. J. Mabry, Univ. of Texas, Austin 78712)

27. **American Assoc. of Electromyography and Electrodiagnosis**, annual mtg., Miami Beach, Florida. (M. K. Newman, 16861 Wyoming Ave., Detroit, Mich.)

27-31. **American Soc. for Pharmacology and Experimental Therapeutics**, fall mtg., Washington, D.C. (Executive Officer, 9650 Wisconsin Ave., Bethesda, Md.)

27-1. **American Congr. of Physical Medicine and Rehabilitation**, 45th annual session, Miami Beach, Fla. (Executive Director, 30 N. Michigan Ave., Chicago, Ill.)

27-1. **American Inst. of Biological Sciences**, 18th annual mtg., College Station, Tex. (AIBS, 3900 Wisconsin Ave., NW, Washington, D.C.)

The following societies will meet in conjunction with the AIBS. Additional information is available from AIBS or from the program chairmen listed below.

American Bryological Soc. (Secretary-Treasurer, Box 36, S.W. Missouri State College, Springfield)

American Soc. for Horticultural Science. (Executive Director, 615 Elm St., St. Joseph, Mich. 49085)

American Soc. of Human Genetics. (c/o Division of Medical Genetics, Dept. of Medicine, Johns Hopkins Hospital, Baltimore 5, Md.)

American Soc. of Naturalists. (Executive Director, 3900 Wisconsin Ave., NW, Washington, D.C. 20016)

American Soc. of Plant Physiologists. (Secretary, c/o Dept. of Biology, Yale Univ., New Haven, Conn.)

American Soc. of Plant Taxonomists. (Secretary, c/o Botany Dept., Univ. of California, Berkeley)

Botanical Soc. of America. (Secretary, c/o Botany Dept., Indiana Univ., Bloomington)

Ecological Soc. of America. (Secretary, c/o Ecology Section, Health Physics Div., Oak Ridge National Lab., Oak Ridge, Tenn.)

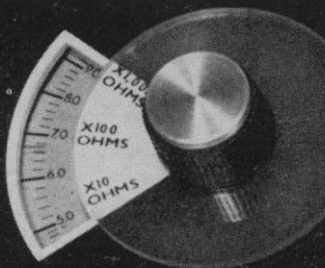
Genetics Soc. of America. (Executive Director, 3900 Wisconsin Ave., NW, Washington, D.C. 20016)

Mycological Soc. of America. (Secretary-Treasurer, c/o Pioneering Res. Div., Natick Labs., Natick, Mass.)

28-30. **Gatlinburg Conf. on Special Topics in Nuclear Education and Research**, Gatlinburg, Tenn. (J. E. Mott, Oak Ridge Associated Universities, Box 117, Oak Ridge, Tenn. 37830)



a new
easy to use
direct reading
laboratory
conductivity
bridge



The YSI Model 31 Conductivity Bridge is brand new and specifically designed for laboratory use. Measure conductivity and resistivity with convenience, speed, and accuracy at 60 cycles or 1 kc. Use it over the entire range of electrolytic conductance from demineralized water to strong acids.

A unique multiplier scale, overlapping the basic scale, permits fast, easy direct reading. A high intensity parallel bar electron ray tube provides easy, exact determination of null. Line cord and electrodes are located out of the way.

Specifically designed for the laboratory, the YSI Model 31 is the most easy to use conductivity bridge available. Three new laboratory designed precision conductivity cells also are available. Ask us for full details.



YELLOW SPRINGS INSTRUMENT CO.
YELLOW SPRINGS, OHIO

28-30. Preparation and Properties of **Electronic Materials**, 9th annual conf., New York, N.Y. (L. R. Weisberg, RCA Labs., David Sarnoff Research Center, Princeton, N.J. 08540)

28-30. **Space Program Issues of the 70's**, conf., Seattle, Wash. (AIAA, Meetings Manager, 1290 Sixth Ave., New York 10019)

28-31. **Clay Minerals Soc.**, 16th natl. conf., Golden, Colo. (L. G. Schultz, U.S. Geological Survey, Bldg. 25, Federal Center, Denver, Colo. 80225)

28-1. **Electron Microscope Soc. of America**, 25th annual mtg., Chicago, Ill. (Executive Director, c/o School of Chemical Engineering, Olin Hall, Cornell Univ., Ithaca, N.Y. 14850)

28-2. **Alaska Science Conf.**, 18th, College. (P. Morrison, Inst. of Arctic Biology, Univ. of Alaska, College 99735)

29-31. **Association for Computing Machinery**, 22nd natl. conf., Washington, D.C. (T. Willette, Box 6, Annandale, Va. 22003)

29-1. **Electron Microscopy Soc. of America**, annual mtg., Chicago, Ill. (A. V. Loud, Pathology Dept. College of Physicians and Surgeons, Columbia Univ., 630 W. 168 St., New York 10032)

31-2. **American Physical Soc.**, Seattle, Wash. (Executive Secretary, 538 W. 120 St., New York 10027)

31-6. **American Psychological Assoc.**, annual mtg., Washington, D.C. (APA, 1200 17th St., NW, Washington 20036)

International and Foreign Meetings

August

22-25. **Nematology**, 9th intern. symp., Warsaw, Poland. (H. Sandner, c/o Inst. of Ecology, Dept. of Applied Biology, Nowy Swiat 72, Warsaw)

22-31. **International Astronomical Union**, 13th general assembly, Prague, Czechoslovakia. (Asst. Secretary-General, Astronomical Institute, Czechoslovak Acad. of Sciences, Budecka 6, Prague)

23-25. **Canadian Assoc. of Physical Medicine and Rehabilitation**, 15th annual mtg., Winnipeg, Man., Canada. (Secretary-Treasurer, 153 Lyndhurst Ave., Toronto 4, Ontario)

23-25. **Computational Linguistics**, intern. conf., St. Martin-Dheres, France. (A. H. Roberts, Center for Applied Linguistics, 1717 Massachusetts Ave., NW, Washington, D.C. 20036)

24-28. **Anaesthesia**, 3rd intern. symp., Poznan, Poland. (W. Jurczyk, Ul. Długa 1/2, Poznan)

24-28. **Marine Biology**, 2nd European symp., Bergen, Norway. (H. O. Brattstrom, Biological Station, Univ. of Bergen, Bergen)

25-30. **Hyperfine Interactions Detected by Nuclear Radiation**, intern. conf., Pacific Grove, Calif. (K. E. Sebrell, Lawrence Radiation Lab., Univ. of California, Berkeley 94720)

25-31. **Physical Medicine**, 5th intern. congr., Montreal, P.Q., Canada. (B. Talbot, 6300 Darlington Ave., Montreal 26)

25-1. **First Intern. Health Conf.**, Copenhagen, Denmark. (P. A. Wells, 90 Buckingham Palace Rd., London, S.W.1, England)

BOOKS RECEIVED

(Continued from page 675)

Handbook of Electronic Instruments and Measurement Techniques. Harry E. Thomas and Carole A. Clarke. Prentice-Hall, Englewood Cliffs, N.J., 1967. 410 pp. Illus. \$16.

The Hidden Order of Art: A Study in the Psychology of Artistic Imagination. Anton Ehrenzweig. Univ. of California Press, Berkeley, 1967. 320 pp. Illus. \$8.95.

High-Temperature Polymers. A symposium (Los Angeles, Calif.), November 1965. Charles L. Segal, Ed. Arnold, London; Dekker, New York, 1967. 205 pp. Illus. \$8.75. Ten papers previously published in *Journal of Macromolecular Science (Chemistry)*, vol. A1, No. 1, 1967.

Histologie und Mikroskopische Anatomie des Menschen. W. Bargmann. Thieme, Stuttgart, 1967. 796 pp. Illus. DM 69.80.

A History of Psychology in Autobiography. vol. 5. Edwin G. Boring and Gardner Lindzey, Eds. Appleton-Century-Crofts (Meredith), New York, 1967. 463 pp. Illus. \$8. Century Psychology Series.

Human Neural and Behavioral Development: A Relational Inquiry, with Implications for Personality. Esther Milner. Thomas, Springfield, Ill., 1967. 419 pp. Illus. \$17.50.

Hyperfine Interactions. Arthur J. Freeman and Richard R. Frankel, Eds. Academic Press, New York, 1967. 774 pp. Illus. \$16. Twenty-five papers.

The Importance of Antibonding Orbitals. Milton Orchin and H. H. Jaffé. Houghton Mifflin, Boston, 1967. 112 pp. Illus. Paper, \$2.50.

Informal Geometry. Lawrence A. Ringenberg. Wiley, New York, 1967. 163 pp. Illus. \$5.50.

Instrumentation in Nuclear Medicine. vol. 1. Gerald J. Hine, Ed. Academic Press, New York, 1967. 676 pp. Illus. \$27.50. Twenty-one papers.

The Intellectuals and McCarthy: The Radical Specter. Michael Paul Rogin. M.I.T. Press, Cambridge, Mass., 1967. 384 pp. Illus. \$12.50.

Intravenous Abdominal Aortography and Placentography. Melvyn H. Schreiber, Fred J. Wolma, and Charles K. Hendrick. Thomas, Springfield, Ill., 1967. 67 pp. Illus. \$8.75.

Introduction to Computational Linguistics. David G. Hays. Elsevier, New York, 1967. 247 pp. Illus. \$9.75. Mathematical Linguistics and Automatic Language Processing Series.

Introduction to Geochemistry. Konrad B. Krauskopf. McGraw-Hill, New York, 1967. 735 pp. Illus. \$12.50.

An Introduction to Magnetohydrodynamics. P. H. Roberts. Elsevier, New York, 1967. 274 pp. Illus. \$11.

Introduction to Organic Chemistry. Charles H. DePuy and Kenneth L. Rinehart, Jr., Wiley, New York, 1967. 406 pp. Illus. \$8.95.

Introduction to Probability and Statistics. San Francisco, 1967. 592 pp. Illus. \$10.75. Holden-Day Series in Industrial Engineering and Management Science.

Introduction to the Principles of Heterogeneous Catalysis. J. M. Thomas and