

# Pharmaceutical Personnel

Continued rapid expansion of Syntex, an ethical pharmaceutical company, located on the San Francisco Peninsula, has created two new positions in the section preparing submissions and reports to the Food and Drug Administration.

**ADMINISTRATOR** Must have proven ability in order to coordinate, interpret and finalize submissions to the Food and Drug Administration. A scientific or technical background with knowledge of drug laws and regulations is required.

**COORDINATOR** A Pharmaceutical or Analytical Chemist with MS degree or equivalent experience. Will prepare manufacturing and control sections of submissions to the Food and Drug Administration.

Interested candidates should submit comprehensive resume including salary to Robert P. Dilks, Employment Manager.

**SYNTEX**   
LABORATORIES, INC.

3401 Hillview Avenue Palo Alto, California  
An Equal Opportunity Employer

## Air Conservation

Report of the AAAS Air Conservation Commission 348 pp., illus., bibliography, index. 1965. Price: \$8. AAAS members' cash orders: \$7.

"Chaired by Dr. James P. Dixon, the twelve member Commission provided an outstanding representation of the many physical, chemical and social disciplines involved in the definition and dissection of the problem of air pollution. In the course of their deliberations the Commission called upon no less than fifty-five experts; a situation which led to acknowledgments to a list of people which reads like 'Who's Who in Air Pollution.' As the result of these deliberations, this book probably represents the most thoughtful, realistic, and penetrating analysis of air pollution as a factor in the societies of today and tomorrow now available. It is a 'must' for the serious student and professional, and can be highly recommended to the interested citizen."—(*Bulletin American Meteorological Society*, December 1966)

**American Association for the  
Advancement of Science**  
1515 Massachusetts Ave., NW  
Washington, D.C. 20005

**EDUNET**



EDUNET is a far-reaching proposal for an inter-university communications network through which information and knowledge would be shared and disseminated.

The EDUNET Report is a compilation of papers from a 4-week conference of 181 educators and scientists in government, industry, medicine, and higher education. Held under the auspices of EDUCOM (Interuniversity Communications Council), EDUNET is a practical proposal calling for action-now on the part of educators, foundations, librarians, hospital officials, and government, plus members of the communications, publishing, and data processing industries.

## EDUNET

Report of the Summer Study on Information Networks

Conducted by the Interuniversity Communications Council  
(EDUCOM)

Edited by **GEORGE W. BROWN, JAMES G. MILLER,**  
and **THOMAS A. KEENAN.**

Published June 1st: \$3.95.

**JOHN WILEY & SONS, Inc.**  
605 Third Avenue, New York, N.Y. 10016

# Get 'em while they're hot!

## New C-14 Research Compounds

p-Aminohippuric acid-(carboxyl-C-14)  
Cyclohexylcarboxylic acid-(carboxyl-C-14)  
Cytidine-2-C-14  
2-Deoxy-D-glucose-UL-C-14  
2-Deoxy-D-ribose-UL-C-14  
D-Fucose-UL-C-14  
Gold thioglucose-(glucose-UL-C-14)  
2-Ketoglutaric acid-UL-C-14  
L-Lactic acid-UL-C-14  
Pentaerythritol-UL-C-14  
Thymidine-2-C-14 5'-monophosphate (TMP-2-C-14)  
Thymidine-2-C-14 5'-triphosphate (TTP-2-C-14)

A dozen new labeled compounds air shipped under ICN's permanent policy of same day service. Exacting in quality, these in-stock chemicals are backed by our exclusive guarantee to meet or exceed your standards.

That means we make certain they're pure. And hot.



**Chemical & Radioisotope Division**  
13332 East Amar Road  
City of Industry, California 91743  
Telephone: (213) 962-3475

Leading Manufacturer in Chemicals for Research

## Let us Show You — What these new microscopic techniques Can do for You

### Interference Contrast (Nomarski)

This new contrast technique reveals specimen details not obtainable by any other contrast method.

### Contrast Fluorescence Microscopy

This technique enables examination of fluorescent specimens in positive and negative phase contrast (simultaneous contrast fluorescence).

### Microphotometric Measurements

For the quantitative determination of reflectivity, absorptivity and extinction or fluorescence intensity and their variation with wave length by means of the new Reichert microphotometer (spectrophotometer) in combination with the "Zetopan."

### Automatic Photomicrography

The new Reichert "Photo Automatic" is a fully automatic photomicrographic camera.

These and other advanced techniques in optical microscopy are available to you with the . . .

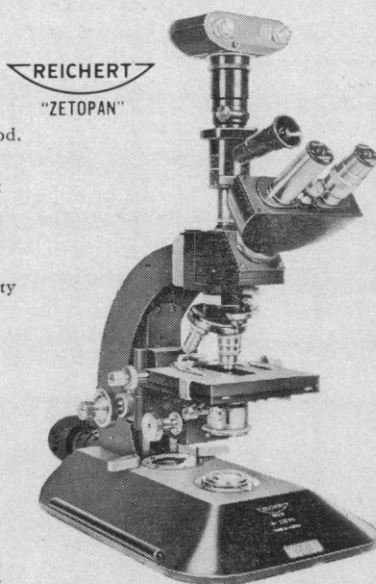
### REICHERT RESEARCH MICROSCOPE "ZETOPAN"

The "ZETOPAN" has built-in illuminating systems for reflected, transmitted and mixed light. Separate independent tube for convenient photomicrography. Automatic and semi-automatic exposuremeters.

Request literature and demonstration of the "ZETOPAN"  
Write to:

**William J. Hacker & Co., Inc.**

Box 646, West Caldwell, New Jersey 07006  
(201) 226-8450



*Hacker*

## Personnel Placement

### POSITIONS WANTED

**Coordinator of Research.** Ph.D. Chemistry (1941). Outstanding record with university, industry, government. Box 480, SCIENCE. 6/23

**Research Veterinarian.** 34, B.V.Sc., Ph.D., desires to relocate. Experience in animal biochemistry, toxicology, and pharmacology. Publications, etc. Diversified interests. Box 493, SCIENCE. 6/30; 7/14, 28

(a) **ELECTRON MICROSCOPIST.** M.S. microbiology major; parasitology, biochemistry minors; clinical experience; seeks academic or clinical position. (b) **PSYCHOLOGY.** Ph.D. 1966. Neuropsychology minor; taught learning mechanisms; prefers CNS research or teaching appointment. Write **WOODWARD MEDICAL PERSONNEL BUREAU**, 185 North Wabash, Chicago 60601. X

**Biologist.** Ph.D., 30. Broad teaching, field research experience. Ethology, ecology, game biology. Desires teaching and/or research position. Box 482, SCIENCE. X

**Biochemist-Cellular Biology.** Ph.D., 1957. Teaching, research administration, ion transport enzymology, publications. Box 483, SCIENCE. X

**Biochemist.** Ph.D., 15 years' diversified academic and industrial experience, seeks challenging position in research, teaching, or administration. Washington, D.C. area only. Box 484, SCIENCE. X

### POSITIONS OPEN

#### Help Wanted

**Graduate Registered Pharmacists** to work in hospital pharmacy, with or without experience; age open; salary commensurate with background; excellent benefits. Please write or call **Personnel Department, Indiana University Medical Center**, 1100 West Michigan Street, Indianapolis, Indiana.

(a) **Ph.D. MICROBIOLOGIST:** NW to manage lab. Respon. for med. qual., sterility control and FDA contact, \$20,000. (b) **Ph.D. RESEARCH CHEMIST:** SW for detection techniques in drug addiction, \$10-14,000. (c) **FACULTY POSTS:** Ph.D. **ENTOMOLOGY**, Ph.D. **PHYSICS:** East \$10-13,500; MW **VIROLOGIST**, **CYTOLOGIST**, **INVERTEBRATE PHYSIOLOGY**, open; NW **INSTRUCTOR IN NEUROANATOMY:** \$11-13,000. (d) **Ph.D. PHARMACY:** To create, develop and evaluate new dosage forms, tabletting exp. desirable, to \$14,000. (e) **DIR. of PROFESSIONAL SERV.** Pub. relations, technical representative, counsel sales force on veterinary technical matters, \$12-16,000. (f) **GENERAL SCIENCE EDITORIAL WRITERS:** Broad ranging curiosity rather than intense concentration of researcher. Fee paid. Open. (g) **PHYSIOLOGISTS:** E. for research in reproductive physiology and cardiovascular-endocrine relationships, \$10-15,000. (h) **CLINICAL PSYCHOLOGIST.** M.S.; with one year exp. as clinical psychologist in psychiatric hosp., \$11,000. (i) **ASS'T. PROF. in PSYCHOLOGY:** NW to teach semester course in experimental psychology, open. **The Medical Bureau**, 900 North Michigan Ave., Chicago, Ill. 60611.

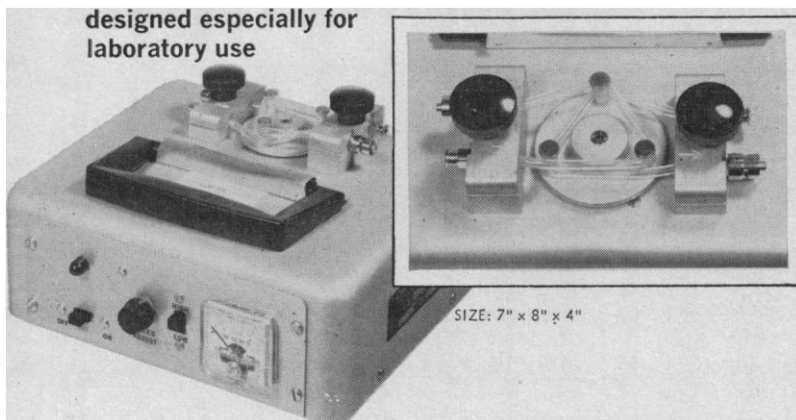
#### Predoctoral Assistantships and Traineeships in Physiology

Excellent opportunities for graduate students leading to the Ph.D. Ample stipends and free tuition. Training and research in endocrinology, gastrointestinal, water and electrolyte metabolism, cardiovascular, sensory physiology, energy metabolism and bioengineering. Write for details, to: **Head, Department of Physiology, University of Illinois at the Medical Center**, P.O. Box 6998, Chicago, Illinois 60680.

**Professor and Head, Department of Biological Sciences, Michigan Technological University;** located in Houghton on Michigan's scenic Upper Peninsula; applications invited from qualified individuals with experience and publications in either Bioengineering or Limnology; young, vigorous department with a faculty of 8; strong supporting departments in basic sciences, engineering, and forestry; new building under construction; salary to \$20,000; contact **Dr. D. W. Stebbins, Vice President of Academic Affairs.**

## DUAL ACTION MICRO INFUSION PUMP

designed especially for  
laboratory use



New bilateral roller pump PUMPS TWO LIQUIDS AT ONCE, up to 2500 cc/hr., with  $\pm 1\%$  accuracy. Custom-designed by The Holter Company. Compact construction. Light weight (only four pounds). Fully warranted. Four battery-operated pumps also available starting at \$129.50.



**extracorporeal  
and medical specialties  
company, Incorporated**

Church Rd., Exit 4, N.J. Turnpike  
Mt. Laurel Township, N.J. 08057  
Phone Area Code 609-235-7530

ALSO SPECIALISTS IN SILICONE COMPONENTS

## POSITIONS OPEN

**Pathologist, M.D., D.V.M. or Ph.D.**, to join team investigating aspects of atherogenesis. Must have experience in atherosclerosis research and training in electron microscopy. Salary and time commitment negotiable. Send resume to **Dr. Sanford C. Spraragen, Chief, Radioisotope Service, 800 Poly Place, Brooklyn, New York 11209. Telephone 212-836-6600, Ext. 271.**

## POSITIONS OPEN

**B.A., M.A. or Ph.D. level**

**HISTOLOGIST or ZOOLOGIST** with interest in action of chemicals on cells.

**ANATOMIST** with interest in embryology.

**BIOCHEMIST** with knowledge of thin layer and vapor phase chromatography.

Academic institution. Send detailed Curriculum Vitae to

**Box 472, SCIENCE**

**NUCLEAR REACTOR POSITIONS.** The U.S. Geological Survey is staffing a new nuclear research center in Denver, Colorado. The center will have a TRIGA Reactor and other particle sources, and modern fully equipped radiochemical laboratories. Immediate vacancies exist for Reactor Facility Supervisor and Chief Reactor Operator. Reactor Facility Supervisor, GS-11 to GS-13, salary from \$9,536 to \$13,321 a year, requires a Master's degree or equivalent experience, preferably in nuclear science engineering or physics and must be AEC licensed as Senior Reactor Operator for TRIGA Mark I. Chief Reactor Operator, GS-11 or GS-12, salary from \$9,536 to \$11,306 a year, requires prior experience and AEC license as Senior Operator. A Bachelor of Science degree is desirable. These positions are in the career civil service. Grade and salary will be determined by amounts of pertinent education and experience. Consideration will be given to all applicants without regard to sex, politics, race, creed, color, national origin or age. Applications for Federal Employment (SF-57) or resume should be sent to **Mr. Walton H. Durum, U.S. Geological Survey, Washington, D.C. 20242.**

## POSITIONS OPEN

### GROSS ANATOMIST

Ph.D. to assist in teaching gross anatomy in expanding program in new quarters. Opening exists at assistant professor rank; minimum salary \$10,000 on nine-month contract with seven-month teaching schedule.

Please send experience and qualifications on initial inquiry to **Dr. R. V. Gregg, Chairman, Dept. of Anatomy, School of Dentistry, University of Southern California, Los Angeles, California 90007.**

## POSITIONS OPEN

### RESEARCH PHARMACOLOGISTS

Hazleton Laboratories, a rapidly expanding company located in Suburban Washington, D.C., requires two Pharmacologists with Ph.D. degrees. One should have 2-5 years' experience and will serve as the principal investigator of an ongoing cancer chemotherapy research program. The other should have a strong research background, 5-10 years' experience, and an interest in developing new contract research programs in renal, cardiovascular, or neuropharmacology. Excellent employee benefits program including profit sharing. Please write:

**HALL A. ACUFF, Assistant Personnel Manager**

**HAZLETON LABORATORIES, INC.**

P.O. Box 30, Falls Church, Virginia 22046

An Equal Opportunity Employer M/F

## VETERINARY MICROBIOLOGISTS

Our expanding research program in the veterinary sciences has created the following opportunities for qualified candidates:

**SENIOR RESEARCH BACTERIOLOGIST**—Ph.D. or equivalent (M.S. and 3-5 yrs experience in CRD). To design, conduct and supervise research in poultry CRD infections leading to development of new products.

**RESEARCH BACTERIOLOGIST**—M.S. or equivalent (B.S. and 2-4 yrs experience in bacteriology). To assist Sr. Researcher in developing methodology for *IN VITRO* and *IN VIVO* screening or new products.

**RESEARCH PARASITOLOGIST**—M.S. or equivalent (B.S. and 2-4 yrs experience in parasitology). To work on research problems of coccidiosis in poultry.

Our laboratories and vet research center are located in a pleasant, small city in central New York State. We have an up-to-date salary schedule and fringe benefit programs.

*Interested candidates please send resumes to F. J. Benenati, Prof. Empl. Repr.*

**THE NORWICH PHARMACAL COMPANY  
AND EATON LABORATORIES DIVISION**

**NORWICH, NEW YORK 13815** *An equal opportunity employer*

# CHIEF RESEARCH BIOCHEMIST

**in Psychiatric Research**

**Saskatchewan Department of Public Health**

**Location: Saskatoon, Saskatchewan**

### Duties:

- Initiate and conduct chemical and biochemical research, under the direction of the Director of Psychiatric Research, within areas related to mental illness.
- Suggest new areas.
- Lead technical staff through projects under way or evolving from the above.
- Prepare reports and papers for publication and presentation, and stimulate other staff to do the same.
- Maintain and encourage working relationships with university departments and psychiatric units conducting research in this field.

### The man or woman:

- Ph.D. Biochemistry or Chemistry.
- Demonstrated ability to carry on a research program and lead other scientists.
- Quality of published work.
- Suitable experience.

### Salary:

\$11,906-14,460. Starting salary depends on qualifications and experience. Civil service fringe benefits.

**For application forms or further information contact:**

**Personnel and Training  
Provincial Health Building  
Regina, Saskatchewan**

## POSITIONS OPEN

### X-RAY CRYSTALLOGRAPHER

Crystallographer to assist in X-Ray Diffraction Laboratory. Must have at least a bachelor's degree, or equivalent, and preferably three to five years experience in the use of diffraction equipment. Duties will include the use of high- and low-temperature powder equipment as well as single crystal devices. Excellent benefits and promotional opportunities. An equal opportunity employer. Contact Employment Manager,

#### ARGONNE NATIONAL LABORATORY

9700 South Cass Avenue, Argonne, Illinois 60439.

## POSITIONS OPEN

### Ph.D. VIROLOGIST

Unique opportunity for a Ph.D. with broad biological interests in drug research and development. To provide essential liaison between laboratory and clinical scientists, aid in evaluating scientific data and help plan R & D activities. Occasional travel and attendance at scientific meetings is an integral part of this position. Prior industrial experience is not required.

Please send resume to Cyrus M. Greenberg, Ph.D., Director of Scientific Employment,

#### SMITH KLINE & FRENCH LABORATORIES

1534 Spring Garden Street,  
Philadelphia, Pa. 19101

An Equal Opportunity Employer



## POSITIONS OPEN

### BIOLOGISTS

HAZLETON LABORATORIES, a leading independent company specializing in the Life Sciences, needs B.S. or M.S. Biologists with 1-3 years' experience to train for responsible technical or supervisory positions in the Toxicology Division. Chemists who have undergraduate minors and strong interests in biology will also be considered. Applicants must have an undergraduate average of B or better, draft exempt, and experience or interest in supervising small groups. Stable employment, chance for advancement, competitive salaries, excellent educational assistance policy, and a profit-sharing plan. Please send resume or write for application. HALL A. ACUFF, ASSISTANT PERSONNEL MANAGER, HAZLETON LABORATORIES, INC., P. O. BOX 30, FALLS CHURCH, VIRGINIA 22046. (Metropolitan Washington, D. C.)

An Equal Opportunity Employer M/F

### IMMUNOLOGIST

For research to study radiation effects on immune mechanisms, autoantibodies. Requires Ph.D. and experience in immunologic techniques or teaching.

The Lovelace Foundation for Medical Education and Research. Attn.: Personnel, 5200 Gibson Blvd., S.E., Albuquerque, New Mexico 87108. An Equal Opportunity Employer

## FELLOWSHIPS

Postdoctoral fellowship in plant biochemistry available immediately for participation in U.S.-A.E.C. funded research on chlorophyll biosynthesis. Stipend \$6000 p.a. plus travel allowance. Send curriculum vitae and three letters of reference to Dr. H. J. Perkins, Chairman, Faculty of Science and Mathematics, State University College, Plattsburgh, N.Y. 12901. An equal opportunity employer M/F.

## GRADUATE STUDY

GRADUATE SCHOOL, MEDICAL COLLEGE OF GEORGIA. Study leading to Ph.D., M.S., in Biochemistry, Endocrinology, Microbiology, Physiology, Anatomy, and Pharmacology. Graduate Fellowships, Traineeships, NSF and NIH. Also Institutional Graduate Teaching and Research Assistantships. Write to: F. J. Behal, Ph.D., Director of the Graduate School, Medical College of Georgia, 1459 Gwinnett Street, Augusta, Georgia 30902.

## The Market Place

BOOKS • SERVICES • SUPPLIES • EQUIPMENT

## PROFESSIONAL SERVICES

### HISTOLOGY SERVICE

RAPID SERVICE Large Orders Quickly Processed! Quickly Shipped! Professional supervision of every order. Free estimates on special problems. Distant points serviced swiftly. Special stains and techniques available. Fully protected shipments. HISTOLOGY SERVICE, INC. 4801 N. Broad St., Philadelphia, Pa. Zipcode 19141. (215) DAvenport 4-5800

## TRACE ELEMENT PROBLEMS?

Contact: Activation Analysis Service, Dept. A-129, General Atomic Division, General Dynamics, P.O. Box 608, San Diego, California 92112. Or phone: Area Code 714, 453-1000, Ext. 613.

## SUPPLIES AND EQUIPMENT

### • HYPOPHYSECTOMIZED RATS

Shipped to all points via Air Express  
For further information write

HORMONE ASSAY LABORATORIES, Inc.  
8159 South Spaulding Ave., Chicago 29, Ill.

## Roche has opportunities for STATISTICIANS with backgrounds in BIOLOGY or PHYSICAL SCIENCES

Roche, a leading and expanding pharmaceutical and fine chemical company, offers these opportunities to join a sophisticated staff of professionals. Our emphasis on research, and on the use of advanced methods in all our activities, assures you the fullest appreciation and recognition by research and administrative management.

Working conditions are exceptional. Remote terminal access to large scale computer equipment is available, along with ample clerical help.

### Senior Statistician, Ph.D. or Equivalent

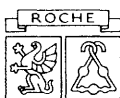
Degree or equivalent experience is required, with background in biological or physical sciences. Mathematical training should be adequate to permit developing new statistical techniques for unusual situations. Work involves independent consultation with MD and R&D personnel in design and analysis of drug research, and developmental analysis. Must be able to carry projects from raw data through to final reports, using EDP and programming services available.

### Associate Statistician

MS with 1-2 years' experience, and background in biological or physical sciences is required. Work involves design and analysis of clinical and laboratory experiments. Ability to work with other statisticians and write clear, meaningful reports for R&D personnel and MDs seeking a statistical interpretation is essential. Should have some familiarity with EDP techniques, and be able to present a problem to a programmer for numerical solution.

Roche salaries, benefit program, and environment will be found attractive. Location is our private park headquarters, about 30 minutes from Manhattan, in suburban New Jersey. Many desirable communities are close by. Inquiries about these openings will receive prompt and thorough attention. Please send resume to:

MR. R. M. CALLAN EMPLOYMENT MANAGER DEPT. S



## HOFFMANN LA ROCHE INC.

Nutley, New Jersey 07110

An Equal Opportunity Employer



## This well-traveled Torbal® balance...has bounced over 100,000 miles of dusty, bumpy roads... and still has its high accuracy and sensitivity

This standard TORBAL DWL-2-1 balance travels inside a mobile chemical laboratory . . . which so far has ranged from Connecticut to Florida, New York to California and 30 other states in between. The purpose: on-site evaluation of a given municipal, industrial or commercial raw water treatment problem. The water treatment laboratory was developed by the research personnel of Johns-Manville's Celite Division.

Initially the Labmobile was to be equipped with a conventional knife edge balance. However, Johns-Manville engineers were concerned that the balance might not stand the shock of starting, stopping and bouncing associated with over-the-road travel, frequently onto unimproved roads, and the vibrations caused by the operation of the Labmobile power plant and pumps. They found their answer in the use of a TORBAL DWL-2-1 Torsion balance.

All TORBAL balances utilize a torsion fulcrum mechanism which eliminates the need for knife edges. There are no bearing surfaces nor other points where one component moves in contact with another. Therefore the mechanism is virtually immune to the effects of vibration, jarring and jouncing.

The TORBAL balance has also been found to give more rapid weighings than the knife edge type. Only two dials permit instant readings from 9 gm to thousandths of a gram.

The balance is secured quickly and easily for travel . . . in three minutes. No maintenance or service has been required since its installation over 18 months and 100,000 miles ago.

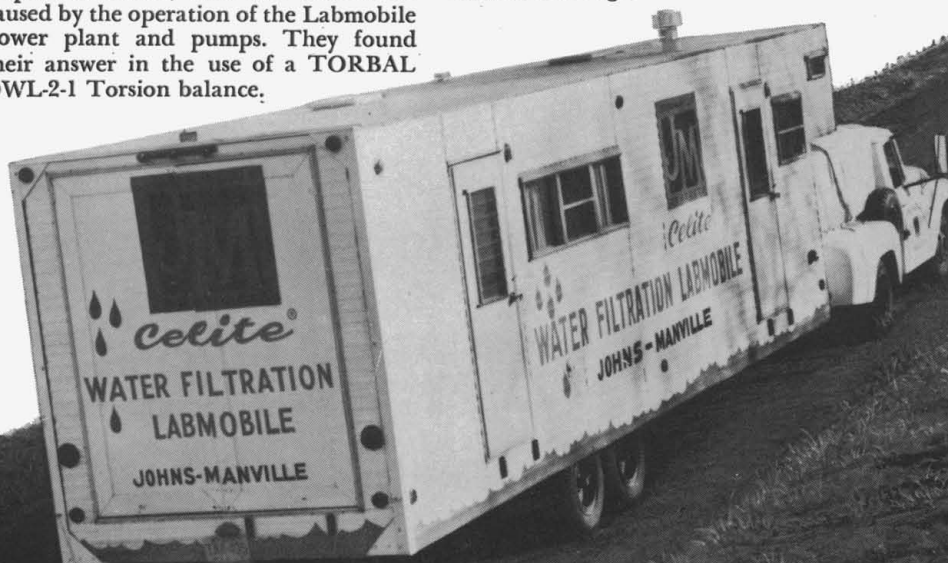
*You may not need a balance for travel. But if you want a rugged, trouble-free balance that retains its accuracy and sensitivity under all conditions, investigate a TORBAL balance first. Write for literature, or for a demonstration.*

### THE TORSION BALANCE COMPANY

Department S

Main Office and Factory: Clifton, New Jersey

Sales Offices: Birmingham, Ala., Chicago, Ill., Lynfield, Mass., Pittsburgh, Pa., Richardson, Tex., San Mateo, Cal., Santa Ana, Cal.



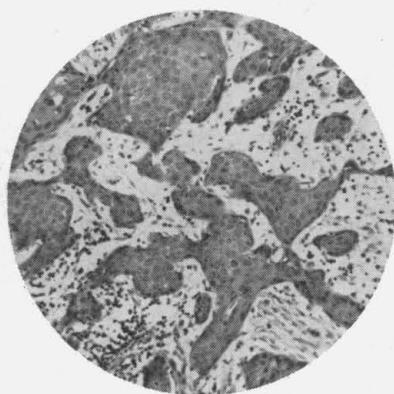


## You can expect considerably more from the AO Microstar Microscope

For instance, the AO Microstar<sup>†</sup> Microscope has the unique Autofocus stop. A great time-saver. It so simplifies operation, that perfect focus is just a matter of touching the fine adjustment. And there's your choice of mechanical stages so you can face the front or back of the Microstar Microscope, use your right or left hand.

In addition, to aid teaching and consultation, you and another can examine the same specimen simultaneously through the Dual Viewing attachment with exclusive illuminated pointer.

More plusses: 35mm, Polaroid<sup>®</sup> or 4 x 5 photography; an auxiliary



viewing screen; minimum slide breakage because the objective nosepiece floats if contact is made with slide; minimum maintenance throughout.

There are improved flatness of field and outstanding image quality—achieved by the pacesetting infinity-corrected optical system. Call your AO Sales Representative or write for a demonstration or further information. The Microstar Microscope will more than live up to your expectations.



©by Polaroid Corporation  
†Registered Trademark American Optical Company



**AMERICAN OPTICAL COMPANY**  
INSTRUMENT DIVISION • BUFFALO, NEW YORK 14215