

production, but much more careful investigation must be carried out before the mechanism of their action is fully understood.

PHILIP A. CORFMAN
*National Institute of Child Health and Human Development,
Bethesda, Maryland*

SHELDON SEGAL
Population Council, New York

Thermoluminescence of Geological Materials

Investigations of the thermoluminescence of geological materials have been carried on by geologists and others for several decades. Detailed studies of the phenomenon were only begun about 20 years ago by Farrington Daniels and his associates at the University of Wisconsin. Since that time, several widely separated groups of investigators have continued research on the subject. In order to allow North American, European, and Asian researchers to meet and exchange information on current developments in the field, the 1st International Symposium on Applications of Thermoluminescence to Geological Problems, was held in Spoleto, Italy, 5-6 September 1966. Participants included geologists, archeologists, physicists, chemists, and astronomers from Austria, Belgium, Canada, Denmark, England, France, Germany, Greece, India, Italy, Japan, Malaysia, Mexico, Switzerland, Thailand, the United States, and Venezuela. Sixty-five papers were presented covering all aspects of thermoluminescence investigations as well as such related phenomena as electron spin resonance and exoelectron emission.

Farrington Daniels opened the technical program with a review of the pioneering work of such investigators as Lind, Wick, Urbach, Randall, and Wilkins, and the studies carried out at the University of Wisconsin between 1946 and 1959.

Thermoluminescence radiation dosimetry is a recently developed medical technique by which the thermoluminescent response of irradiated crystalline materials, such as LiF, can be utilized as a means of measuring the amount of radiation received by the crystals. The application of the principles of thermoluminescence radiation dosimetry to determine the radiation conditions of a sedimentary environment, the measurement of very low radioactivity

of geological and archeological samples, geothermometry, paleoclimates, and sedimentary transport was the subject of several papers.

One of the earliest applications of thermoluminescence to geological problems has been the attempt to determine the age of carbonate rocks by using either radiation damage or dosimetry methods. This subject received considerable attention, both from the theoretical and applied points of view. Attempts to apply similar techniques to the dating of ancient pottery, meteorites, recent lava flows, and orogenic events were described.

In addition to radioactivity, several factors may influence the thermoluminescent response of geological materials; such factors include: pressure, mineralogy, trace element content, temperature of formation, polymorphic phase transitions, and adsorbed gases. These were considered, both from the point of view of "spurious" thermoluminescence, which may cause problems in investigations of age determination, and as direct applications in investigations of rock mechanics and the search for mineral deposits.

With the objectives of maintaining the exchange of information between laboratories and promoting further research in thermoluminescence of geological materials, several committees were appointed: International Symposium on Thermoluminescence of Geological Material (1969), E. Tongiorgi (Laboratorio di Geologia Nucleare, Pisa, Italy) and D. J. McDougall (Loyola College, Montreal, Canada); Committee on Thermoluminescence Standards, D. R. Lewis (Shell Development Co., Houston, Texas) and J. Kaufhold (Universität zu Köln, Köln, Germany); Bibliography, Norbert Grögler (Universität Bern, Bern, Switzerland); Liaison between Laboratories, Edward Zeller (University of Kansas, Lawrence).

Laboratories or individuals who would like to be kept advised of the work of these committees should contact E. Tongiorgi or D. J. McDougall. Support for the meeting was provided by NATO; the U.S. Air Force; the National Research Council of Canada; the United States National Science Foundation; Loyola College, Montreal, Canada; and the Laboratorio di Geologia Nucleare, University of Pisa, Italy. Proceedings of the meeting will be published by Academic Press, London, probably in mid-1967.

DAVID J. MCDUGALL
Loyola College, Montreal, Canada

Stereology

"Universities have departments of various disciplines. But nature knows of no departments. It is one indivisible whole." This statement made by Buckminster Fuller in the opening session of the Second International Congress for Stereology (8-13 April 1967, Chicago, Illinois) characterizes the spirit and work of the Congress.

Scientists from various disciplines and countries discussed problems which they all have in common. Problems of structure common to astronomy, ceramics, geology, metallurgy, anatomy, botany, cytology, embryology, neurology, pathology and zoology were attacked with the methods of conventional geometry, integral geometry, and topology. Aspects of instrumentation formed an integral part of the program.

Stereology in the strict sense is defined as three-dimensional interpretation of flat images. These images may be sections or projections. The internal structure of complex solids can be studied, without disturbing the dimensions and mutual relationship of parts, by sectioning. The flat images with which metallurgists are confronted are planes of polish. These are true mathematical planes without any thickness. In the life and earth sciences, we deal with translucent slices of finite thickness. In astronomy and cosmology we are confronted with images which in essence are projections of objects on a sphere circumscribed around the observer.

In all these cases, direct access to the objects to be studied is impossible, be they metallic or mineral particles, components of living tissues or galaxies. Their visible images do not give direct information on many aspects of their three-dimensional structure, orientation, or mutual relation. We are dealing in these cases with uniaxial viewing.

In order to obtain the desired information we must extrapolate from two- to three-dimensional space. The procedures involve measurements of lines as well as counts of points or profiles in grids superimposed on the plane of observation. In most cases the algebraic formulas, often found independently with much labor by several investigators who did not know of each other's work, are astonishingly simple.

For example, the total length of a system of lines per unit volume is represented by $L_V = 2\bar{P}_A$, where \bar{P}_A is the average number of intersections of those lines with the test area A in the sections. The equation for the total

area of interphase between two substances mixed in a specimen is $S_v = 2\bar{P}_L$, where \bar{P}_L is the average number of intersections with a test line of length L . The volume fraction of a component is given by $V_v = P_p$. This simple formula means that the percentage of space occupied by a specific component of a specimen equals the number of points out of 100 points which "hit" the profiles of the component.

More difficult is the determination of size. Various algebraic and analytic procedures have been developed by which a particle size distribution curve can be derived from a frequency distribution curve of dimensions of profiles or intercepts of these particles on section. But all these methods for determination of size yield only approximations. Nevertheless, these approximations are good enough for practical purposes because the primary measurements of the profiles on section cannot be accurate themselves due to irregularities of the structures.

Measurements of axial ratios (quotients of length over width) of profiles and their classification yield information on the three-dimensional shape of the objects, cut or seen on photographic plates of celestial objects.

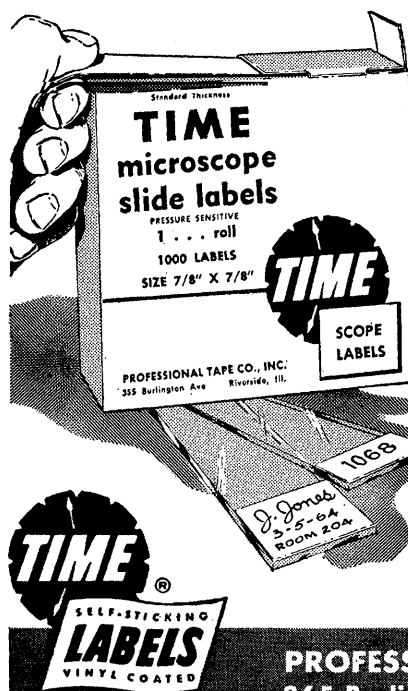
The foregoing relations are valid under the assumption of random arrangement of objects in space. In cases of preferred orientation of parts in a sample, randomness can be produced by repeated random sectioning or by other methods of sampling.

The program included a few papers on stereoscopy and photogrammetry. This approach to the study of three-dimensional structure is based on bi-axial viewing (parallax) and therefore is not really connected with stereology. Nevertheless the participants in the Congress, being concerned with every possible approach to the investigation of three-dimensional structure were equally interested in the papers on photogrammetry and stereoscopy.

Many representatives of the inorganic sciences became acquainted for the first time with various techniques of reconstruction from serial sections, so frequently used in the life sciences. They recognized that this method might be of advantage for the study of their own objects. Mathematical stereology as described previously is applicable only where many components of similar geometrical properties and of relatively simple shape are examined. But when a single object of complicated structure

LABEL SLIDES

Quickly • easily • permanently with...

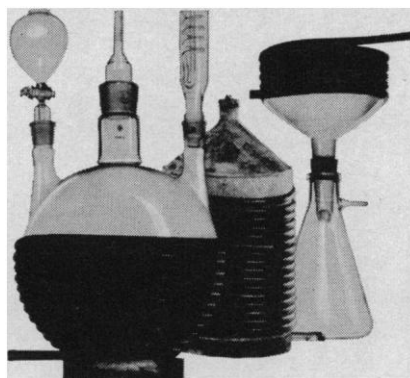


TIME SCOPE LABELS

Identify glass slides in an instant with Time Scope Labels. Permanent self-sticking adhesive labels meet all legal requirements . . . eliminate unsanitary licking. Available in Standard or Tissue high thickness, Time Scope Labels measure $\frac{7}{8}$ " x $\frac{7}{8}$ ". In plain white or imprinted with laboratory name, Time Scope Labels can be pre-numbered if desired. Plain white end labels $\frac{3}{8}$ " x $\frac{7}{8}$ " also in Standard or Tissue high thickness. Pencil, pen, grease marker — all write perfectly on Time Scope Labels. In easy-to-use dispenser or sheet form.

See your laboratory or hospital supplier for service.

PROFESSIONAL TAPE COMPANY, INC.
365 Burlington Ave. • Riverside, Ill. • 60546



CalorexTM: the absurdly simple heat exchanger

But safe: Explosion-proof, doesn't use electricity.

But versatile: Flexible, flat-sided tubing and so can be easily wrapped around any contour of any size (flasks, distillation columns, piping, centrifuges, tanks, tubes, drums, etc., etc.).

But utilitarian: Multiple uses in laboratory, pilot plant, production.

But temperature-tolerant: Several materials permit wide temperature range for heating or cooling: -75° to $+480^{\circ}\text{F}$.

But option-providing: Three diameters (8, 15 and 30mm.), various lengths (25, 50 and 100 feet).

But communicative: As our 16-page brochure demonstrates.

For the Calorex brochure, prices and distributors, request file 118S

Thermoflex, Inc., 128 W. 59th St., New York 10019 • (212)-582-5462

FEED IT

WITH BRS TAPE PUNCH AND READER SYSTEMS

SOLID STATE SIMPLICITY describes this combination of two BRS punched tape systems for data handling and equipment control. Designed with interfacing and controls adaptable to a variety of equipment, this package gives you versatility and computer-like efficiency for tape oriented systems.

PUNCH IT

DATA PUNCH SYSTEM TPS-3—Can be utilized to generate standard one inch 5-, 7- and 8-level tape in any data format directly from experimental or control equipment. The BRS-designed Tape Control Unit includes a data buffer to store asynchronous inputs for simultaneous presentation of data to the tape punch. Fifty 8-level characters-per-second are recorded during synchronous operation, or up to 30 characters-per-second with asynchronous punch commands. Front panel switches are provided for manual system control.

Connected to the Control Unit is the punch mechanism, with self contained tape supply drawer and take up reel. Power requirements—12 VDC @ 750 ma and 28 VDC @ 1.2 amp.

Manual entry of tape characters is available with the KB-001 auxiliary keyboard. \$120



READ IT

PUNCHED TAPE READER SYSTEM TRS-3—A flexible system for programming and control tasks, reading up to 100 characters-per-second, of eight-level paper tape. Its photo-electric read circuits accurately transform binary tape characters to normal and inverted outputs on eight pairs of parallel lines; front-panel lamps indicate the state of data being read. Capable of continuous or incremental tape feed by an external signal with sense switches to stop tape on blank code, skip code or both. Power requirements—117 VAC, 60 cps @ 1 amp.



For complete information on all BRS products, write for free BRS catalog, Dept. 505.

BRS electronics

5451 HOLLAND DRIVE, BELTSVILLE, MD.

is studied, geometricostatistical stereology is of no avail; serial sectioning is, at this time, the best known method of attack.

Another, extremely interesting approach to the study of three-dimensional structure of opaque objects is serial section cinematography. This process involves staining or etching the surface of the remaining block of a specimen, while the slices are discarded. The stained, exposed block surfaces are recorded on successive frames of a motion picture film. When projected, the film reveals the topological qualities of a specimen such as continuity, contiguity, connectivity, isolation, as well as the genus of a component of a specimen. Primarily, however, such films give very specific information on the arrangement of parts. Whenever a component has a shape other than that of a cylinder or pyramid oriented perpendicularly to the cutting plane, the film, when projected, gives the visual impression of change of shape or movement.

This chain of thought leads to "hyperstereology," the extrapolation from three- to four-dimensional space which might at a later time help in the clarification of certain cosmological phenomena.

The Congress was supported by a grant from the National Science Foundation. The complete program of the Congress with abstracts of all papers constitutes volume 6, No. 1, of *Stereologia*, the bulletin of the International Society for Stereology. The proceedings of the Congress, now in press, will be published by Springer-Verlag, New York and Heidelberg.

HANS ELIAS

Chicago Medical School,
710 South Wolcott Avenue,
Chicago, Illinois 60612

Calendar of Events

National Meetings

June

8-9. **Photographic Systems for Engineers**, seminar, Newton, Mass. (Soc. of Photographic Scientists and Engineers, 1330 Massachusetts Ave., NW, Washington, D.C. 20005)

8-9. **Post Irradiation Recovery Kinetics**, symp., Bethesda, Md. (M. F. Canning, Information Div., Technical Information and Services Dept., Armed Forces Radiobiology Research Inst., Defense Atomic Support Agency, Bethesda 20014)

8-10. **Fourth Pacific Northwest Plastics Workshop**, Spokane, Wash. (R. Raff, Re-

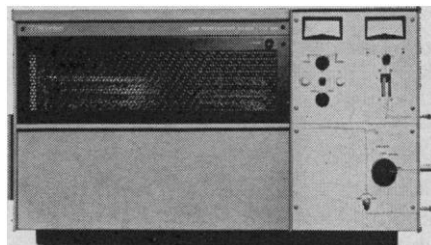
Ashing below 150°C retains inorganics



Pyrometer shows that Tracerlab's LTA-600 can ash samples thoroughly at temperatures well below 150°C—low enough to leave all inorganic constituents unaltered. A cold plasma of atomic oxygen does the ashing, while our accessory pyrometer keeps you posted on the temperature.

This low-temperature dry asher permits more accurate quantitative elemental and structural analyses of plant and animal tissues, bones, coal, oil well cores, polymers, and radioactive materials. Prepares pure samples for atomic adsorption spectrophotometry, mass spectrometry, emission spectroscopy, X-ray diffraction, and electron microscopy.

Send for literature on equipment, techniques and services.



TRACERLAB
A Division of Laboratory For Electronics, Inc.

2030 WRIGHT AVENUE, RICHMOND, CALIFORNIA

SCIENCE, VOL. 156