

and Mtg. Bureau, 840 N. Lake Shore Dr., Chicago, Ill. 60611)

19-21. **Child Dental Health**, intern. symp., London, England. (D. S. Berman, British Paedodontic Soc. London Hospital Dental Inst., Stepney Way, London, S.E.1)

19-21. Institute of **Electrical and Electronics Engineers**, southwestern conf., Dallas, Tex. (Office of Technical Activities Board, IEEE, 345 E. 47 St., New York 10017)

20-21. Middle Atlantic States **Textile Industry Conf.**, Charlotte, N.C. (G. L. Bassett, Micro Switch, 2410 Dunavants, Charlotte 28203)

20-22. **Biological Energy Conversion**, conf., NASA Ames Research Center, Moffett Field, Calif. (Letters and Science Extension, Univ. of California, 2223 Fulton St., Berkeley)

20-22. **Ohio Acad. of Science**, 76th annual mtg., Dayton, Ohio. (J. H. Melvin, Executive Officer, The Academy, 505 King Ave., Columbus, Ohio 43221)

20-23. **German Roentgen Soc.**, 48th congr., Baden Baden. (H. Poppe, 34 Göttingen, Gosslerstrasse 10, West Germany)

21-24. **American Oil Chemists' Soc.**, Memphis, Tenn. (C. H. Hauber, Executive Secretary, 35 E. Wacker Dr., Chicago, Ill.)

23-26. **European Congr. of Neurosurgery**, 3rd, Madrid, Spain. (S. Obrador, Eduardo Dato, 23, Madrid 10)

23-27. **American Soc. of Mechanical Engineers**, Chicago, Ill. (Meetings Manager, The Society, 345 E. 47 St., New York 10017)

27-28. **Care of Animals for Medical Research**, symp., Kingston, Ont., Canada. (D. B. Jennings, Dept. of Physiology, Queen's University, Kingston)

27-29. **Southwestern Psychological Assoc.**, 14th annual, Houston, Tex. (Mrs. C. Cleland, Southwestern Psychological Assoc., 2104 Meadowbrook Dr., Austin, Tex. 78703)

27-29. **Wildflower Pilgrimage**, 17th annual, Great Smoky Mountains Natl. Park. (Dept. of Botany, Univ. of Tennessee, Knoxville 37916)

28-29. **Biology Colloquium**, 28th annual mtg., Corvallis, Ore. (W. P. Lowry, 1967 Biology Colloquium, Dept. of Statistics, Oregon State Univ., Corvallis 97331)

28-29. **Physics of Superconducting Devices**, symp., Univ. of Virginia, Charlottesville. (B. S. Deaver, Jr., Organizing Committee, Dept. of Physics, Univ. of Virginia, Charlottesville 22903)

28-30. **Wisconsin Acad. of Sciences**, Arts and Letters, annual mtg., Wisconsin State Univ., Oshkosh. (J. Thompson, Birge Hall, Univ. of Wisconsin, Madison 53706)

29. **American Soc. for Clinical Nutrition**, annual mtg., Atlantic City, N.J. (A. B. Eisenstein, 818 S. Meramec Ave., St. Louis, Mo. 63105)

29-4. **American Ceramic Soc.**, 69th annual mtg., New York, N.Y. (Technical Secretary, The Society, 4055 N. High St., Columbus 14, Ohio)

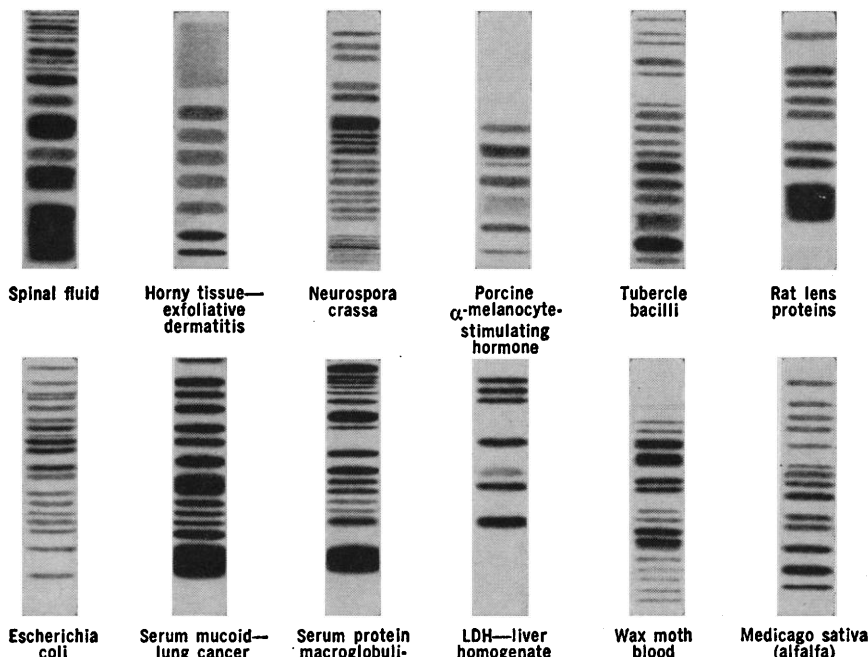
30-3. **Underwater Technology Conf.**, American Soc. of Mechanical Engineers, Hampton, Va. (Meetings Manager, The Society, 345 E. 47 St., New York 10017)

30-5. **International College of Surgeons**, congr., Bal Harbor, Fla. (S. E. Henwood, 1516 Lake Shore Dr., Chicago, Ill. 60610)

Where the finest separation, analysis and purity evaluation of protein systems is being carried out...

DISC ELECTROPHORESIS

is in the act.



Copyright 1965 Canal Industrial Corp.

Now in use in more than 2000 laboratories, Disc Electrophoresis offers unequalled sensitivity (to 0.01 microgram), speed (separation in 10-30 minutes), simplicity and reproducibility. Disc Electrophoresis is applicable to almost every area of protein research and clinical investigation, improving over separations by other methods and giving new separations never before possible by any technique.

In Disc Electrophoresis, migration of sample substances through specially prepared columns of polyacrylamide gel produces exceptionally sharp bands of isolated fractions, "stacked" in disc-like zones as little as tens of microns thick. A random sample of the recent literature reporting uses of Disc Electrophoresis includes:

SOURCES: Amoebae, E. coli, flu virus, micobacteria, neurospora, polio virus, ribosomes, slime mould, staphylococci, tubercle bacilli; algae, cats, cattle, dogs, earthworms, fish, guinea pigs, hamsters, horses, humans, insects, lobsters, mice, pigs, plants, quail, rabbits, rats, sea urchins, sheep, snails, squid; tissue extracts of aorta, brain, horny tissue, kidney, lens, muscle, pancreas, parotid, pituitary, skin, thymus, thyroid; fluids such as axoplasm, blood, cerebrospinal fluid, milk, pancreatic juice, saliva, sperm, umbilical cord serum, urine and uterine fluid.

SUBSTANCES SEPARATED: Proteins, including C-reactive proteins, glycoproteins, mucoproteins, nucleic acids, nucleo-proteins and thyroxin-binding proteins; hemoglobins and haptoglobins; globulins, histones, human and bovine growth hormones, ovine follicle stimulating hormone, human chorionic gonadotropin, enterotoxins, Hageman factor, α-crystallin, collagen, diglyceride and prolactin; amylase, aminopeptidase, phosphatases; β-galactosidase, carbonic anhydrase, carboxypeptidase, dehydrolipamide dehydrogenase, glycogen phosphorylase, lipase, lactic and malic dehydrogenase, Phosphorylase, ribonuclease, sialidase, transaminase and transpeptidase. **DIAGNOSIS OF:** Acute schizophrenia, cancer of the breast and lung, glomerulonephritis, liver pathology, lupus erythematosus, macroglobulinemia, milk allergy, myeloma, myocardial infarction, nephrosis, normal and abnormal pregnancy, pneumonia, primary tumor sites, rheumatic fever, sickle cell anemia, thalassemia, tuberculosis and uremic-hemolytic syndrome.

See how you can apply the benefits of Disc Electrophoresis to your own research. Send now for complete information, including bibliography, without cost or obligation. Write



CANAL INDUSTRIAL CORPORATION
5635 Fisher Lane Dept. S-41
Rockville, Maryland 20852/(301) 427-1515

Sales and Service Offices in • Boston • Houston • New York • Chicago
• Los Angeles • Pittsburgh • Washington, D.C. • Cincinnati • St. Louis • Toronto
• Cleveland • Minneapolis • San Francisco • Denver • Philadelphia • Ottawa

APPLETON-CENTURY-CROFTS announces . . .

A PRICE REDUCTION FOR A MORE USEABLE CRYSTALLOGRAPHY PROGRAM

CRYSTALLOGRAPHY: A Programmed Course in Three Dimensions: by Bruce Chalmers of Harvard University, James G. Holland of the University of Pittsburgh, Kenneth A. Jackson of the Bell Telephone Laboratories, and R. Brady Williamson of Massachusetts Institute of Technology.

ELEMENTS OF CRYSTALLOGRAPHY \$9.95

- Books 1 PACKING: The Crystal as an Assembly of Spheres
1A THE PACKING OF SPHERES OF DIFFERENT SIZES—INTERSTITIAL SPACE
2 UNIT CELLS AND SPACE LATTICE
3 MILLER INDICES: PRESENTATION OF PLANES AND DIRECTIONS

Model material, Panel Book, Steroscopic viewer for use with 3-dimensional drawings which appear throughout text.

MORE ELEMENTS OF CRYSTALLOGRAPHY \$9.95

- Books 4 CRYSTAL SYSTEMS
5 BRAVAIS LATTICES
6 INTRODUCTION TO X-RAY DIFFRACTION
7 LAUE PATTERNS
8 POWDER PATTERNS: THE DEBYE-SCHERRER METHOD
Stereoscopic viewer, Geringer chart, X-ray chart and Panel Books.

REPLACEMENT MODEL MATERIALS \$3.95

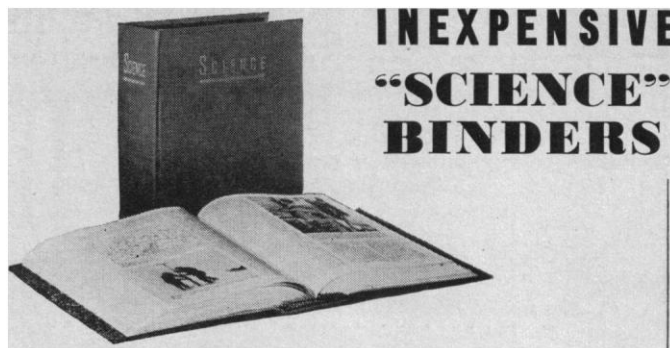
The model material consists of spheres, template, plastic cement, and stereoscopic viewer.

Send orders or requests for 30-day examination copies to Programming Department, CR-1. Desk copies available upon adoption only.



Appleton-Century-Crofts

Division of Meredith Publishing Co. 440 Park Ave. South, New York, N.Y. 10016



INEXPENSIVE "SCIENCE" BINDERS

Keep your copies of **SCIENCE** always available for quick, easy reference in this attractive, practical binder. Simply snap the magazine in or out in a few seconds—no punching or mutilating. It opens **FLAT**—for easy reference and readability. Sturdily constructed, this maroon buckram binder stamped in gold leaf will make a fine addition to your library.

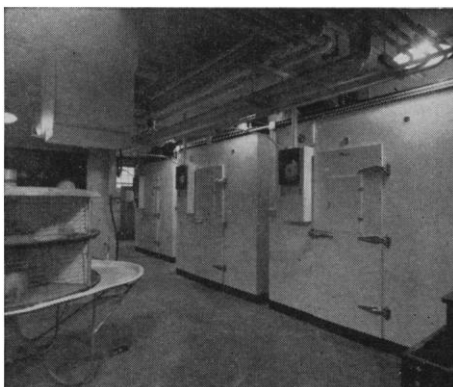
SCIENCE Binders hold one three-month volume of **SCIENCE**. They have a 3¼-inch back and 13 flat fasteners. \$3.25 each. Four binders, \$12.00.

For six-month volumes, through December 1961, **SCIENCE** binders with 4-inch back and 26 flat fasteners are available. \$3.25 each.

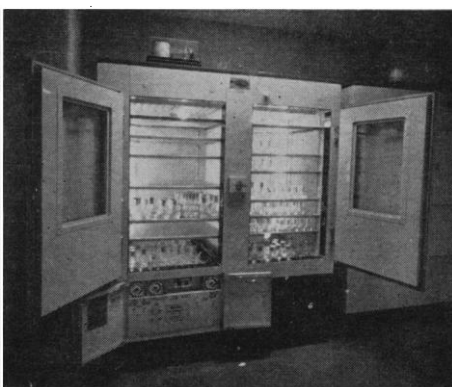
Add 50¢ for orders outside the U.S. Name of owner, 75¢ extra; year of issues, 50¢ extra.

SCIENCE • 1515 Massachusetts Ave., NW,
Washington, D.C. 20005

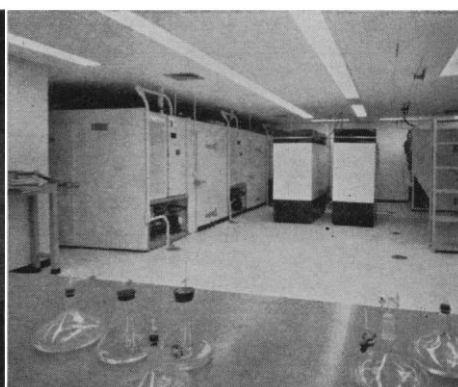
Sherer controlled environment equipment offers wide choice in size, instrumentation



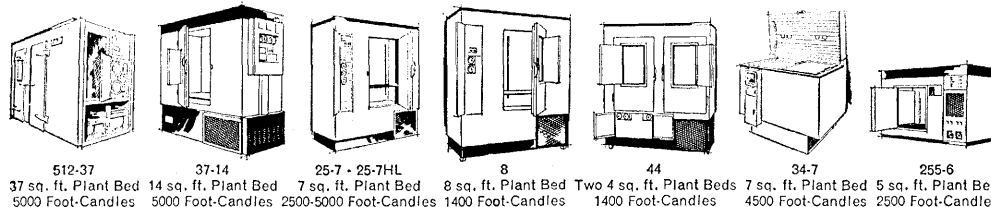
Three walk-in models used in the Animal Department of a state university for swine and rodent research.



A Model CEL 4-4, two-compartment, and CEL-8, one-compartment, with remote temperature recorder, vertical lights, multiple shelves.



Several walk-in and reach-in type chambers in a midwestern university Biochemistry Department.



CER Rooms, Various sizes, Standard or Custom
Detailed Specification Sheets Available, Write:



ENVIRONMENTAL DIVISION
SHERER-GILLET COMPANY
Marshall 3 Michigan 49068

PERSONNEL PLACEMENT

CLASSIFIED: Positions Wanted. 25¢ per word, minimum charge \$4. Use of Box Number counts as 10 additional words. Payment in advance is required. Send copy for position wanted ads to:

SCIENCE
1515 Massachusetts Ave., NW
Washington, D.C. 20005

COPY for ads must reach SCIENCE 2 weeks before issue date (Friday of every week).

DISPLAY: Positions Open. Rates listed below—no charge for Box Number. Rates net. No agency commission allowed for ads under 4 inches. No cash discount. **Minimum ad:** 1 inch. Ads over 1 inch will be billed to the nearest quarter inch. Frequency rate will apply only to repeat of same ad. No copy changes. Payment in advance is required except where satisfactory credit has been established. Send copy for display advertising to:

SCIENCE
Room 1740
11 West 42 St.
New York 36

Single insertion \$75.00 per inch
4 times in 1 year 70.00 per inch

For **PROOFS** on display ads, copy must reach SCIENCE 4 weeks before date of issue (Friday of every week).

Replies to blind ads should be addressed as follows:

Box (give number)
SCIENCE
1515 Massachusetts Ave., NW
Washington, D.C. 20005

POSITIONS WANTED

Biochemical Physiologist, M.D. 1961, M.S., 1962. Postdoctoral experience in the field of muscle biochemistry, teaching experience, publications; NIH and MDAA grant awardee; muscle biochemistry, muscular dystrophy, and related fields, research and teaching position desired. Available September 1967. Box 352, SCIENCE. 4/7

Biochemist, Ph.D. Research experience and publications. Desires teaching position. Box 417, SCIENCE. X

Business Administrator, university, hospital, medical institute background. Creative and effective. Box 398, SCIENCE. X

Cell Biologist—Physical Biochemist, Ph.D. Tissue culture, protein fractionation, embryology, electrochemistry, biophysics, radiobiology. Experienced; publications. Desires academic research teaching position. West Coast, Mountain States. Box 415, SCIENCE. 4/14

Medical Products Executive Director. Well-known medical instrumentation scientist-engineer, with extensive managerial background in industry and government, desires to join a strong eastern company or division considering immediate entry into biomedical products and research fields. Company should be willing to invest in acquisitions. Box 416, SCIENCE. X

Physiologist, Ph.D. Canadian, 10 years of medical-paramedical teaching, desires relocation. Researches: temperature regulation, thyroid and catecholamine metabolism. Box 418, SCIENCE. X

Physiological Chemistry Ph.D. 1967; instrumentation, experimental surgery, steroid interests; available for industrial or academic position. (b) **M.D.;** neurophysiology postdoctorate; pharmacology research and teaching background; desires industrial, clinical, or academic appointment. Write Woodward Medical Personnel Bureau, 185 North Wabash, Chicago 60601. X

Vertebrate Zoologist, Ph.D., Phi Beta Kappa, 15 years' teaching/research experience, seeks position at midwestern school. Box 407, SCIENCE. 4/7, 14, 21

POSITIONS WANTED

Biologist, Ph.D. Botany-physiology/biochemistry; married, 38, 12 years' teaching and research experience; desires teaching position; have taught introductory botany, general biology, and general biochemistry, Box 395, SCIENCE. 4/7

Professor from California, extraordinary teacher, biology, physiology. Thirteen years' experience, few publications. Offer me research and teaching freshman. Recommendations, vita. Dr. Charles E. Smith, Biology, San Jose State College, San Jose, California 95114. 4/7

Summer teaching. Phi Beta Kappa, Ph.D., at Midwestern university seeks summer teaching position in general biology, field zoology, ornithology, ecology and so forth. Box 386, SCIENCE. X

POSITIONS OPEN

CLINICAL BACTERIOLOGIST

M.S. or equivalent, to supervise very active microbiology laboratory in 523-bed teaching hospital. Ability to deal with people essential, interest in development preferred. Attractive salary. Apply: **Alex Sonnenwirth, Ph.D., Div. of Microbiology, Dept. of Laboratory Medicine, Jewish Hospital, 216 So. Kingshighway; St. Louis, Missouri 63110.**

Faculty Position—Biology. Starting Sept. 1967. Ph.D. preferred. Specialty in Ecology. Primary duties teaching but ample facilities and opportunities for research. Rank and salary dependent upon qualifications and experience. Write: **Chairman, Biology Department, Rider College, Trenton, New Jersey 08602.**

POSITIONS WANTED

Microbiologist, Ph.D. to teach General Microbiology and Genetics starting August 1967. Will also be expected to direct senior research in area of specialization. Excellent opportunity for recent graduate. Send resume to: **Dr. James J. Dyar, Department of Biology, Bellarmine College, Louisville, Ky. 40205.**

RESEARCH PLANNING—Marketing inclined MBA graduate with B.S. in science or engineering. Job involves evaluating of market potential of new technology originating from the Research Center. Conduct market studies to relate corporate capabilities for marketing new products. This is a ground floor opportunity in an expanding organization in the consumer product field. Salary commensurate with ability, company-paid benefits including profit sharing, relocation expenses. Send resume to **Administrative Assistant, Philip Morris Research Center, P.O. Box 3-D, Richmond, Virginia 23206.** An equal opportunity employer.

UNIVERSITY OF SASKATCHEWAN

Department of Anatomy
Saskatoon, Sask., Canada

EMBRYOLOGISTS and/or HISTOCHEMISTS are invited to apply for a position in the Department of Anatomy to teach medical and graduate students. Ample opportunities for research in various fields. The appointment will be made with rank and salary according to qualifications and will become effective July 1, 1967. Salary ranges: Lecturer \$6800-\$9200; Assistant Professor \$8700-\$11,700; Associate Professor \$12,200-\$15,500. Apply to **Head of Department of Anatomy** at the above address.

CHEMICALLY ORIENTED CNS PHARMACOLOGIST

Arthur D. Little, Inc. has a challenging opening for a Ph.D. level neurochemist or biochemical pharmacologist to work in a problem-oriented environment with medicinal chemists, bio-organic chemists, psychopharmacologists, etc.

Principal areas of research will involve studies of behavioral drugs, psychotomimetics and other drugs of abuse, CNS stimulants and depressants, narcotics and analgesics.

Candidates should have research experience with catechol amine metabolism and/or a fundamental knowledge of other molecular events in the CNS.

Some training, knowledge and/or experience in chemistry is necessary. Graduate or post-doctoral studies in drug research, or experience in the pharmaceutical industry is desirable.

If you are interested in and qualify for the position, please forward resume to **Dr. Harry G. Pars, 15 Acorn Park, Cambridge, Massachusetts 02140.**



Arthur D. Little, Inc.

RESEARCH • ENGINEERING • MANAGEMENT CONSULTING

An Equal Opportunity Employer

Statisticians

Immediate and June openings exist for Statisticians with a masters degree or equivalent experience. You will consult with physicians on the design of clinical research, analyze the data and write meaningful reports of your analyses.

A knowledge of E. D. P. techniques and a biological background is helpful but not a must.

These positions are in Syracuse, N.Y., where you and your family can enjoy the benefits of both rural and city life.

Please send a resume of your training, experience and salary desired to:

Professional Employment

Bristol Laboratories

Division of Bristol-Myers Company

Syracuse, New York 13201

An Equal Opportunity Employer

INHALATION TOXICOLOGIST

Hazleton Laboratories' Inhalation Division, one of the world's largest facilities for experimental work in inhalation toxicology, requires an Inhalation Toxicologist with a Ph.D. in Physiology, Pharmacology, or Toxicology with 0-3 years' experience, preferably in inhalation research. Duties include fundamental investigations of air pollutants and airborne hazards sponsored by industry and government; supervision of technical staff members. Equipment and instrumentation include over 50 stainless steel and glass dynamic exposure chambers, body plethysmographs, spirometers, gas and particle analyzers, specialized transducers and recorders, and an IBM 1800 real time computer. Resumes and publications of Inhalation staff members are available on request. Excellent employee benefit program including a profit sharing plan. Please send resume to: HALL A. ACUFF, Assistant Personnel Manager, Hazleton Laboratories, Inc., P. O. Box 30, Falls Church, Virginia 22046.

An Equal Opportunity Employer M/F

PHARMACOLOGIST

Challenging Senior Research position with leading pharmaceutical firm located in Suburban Philadelphia.

Ph.D. with keen interest in cardiovascular pharmacology or physiology is desired.

Consideration will be given to recent graduates and candidates with industrial or academic experience. Write giving educational background and experience, indicating salary requirements, to:

Personnel Department

WYETH P.O. BOX 8299
Philadelphia, Pa. 19101

An Equal Opportunity Employer

Predoctoral Assistantships and Traineeships in Physiology

Excellent opportunities for graduate students leading to the Ph.D. Ample stipends and free tuition. Training and research in endocrinology, gastrointestinal, water and electrolyte metabolism, cardiovascular, sensory physiology, biophysics and bioengineering. Write for details, to:

Head, Department of Physiology
University of Illinois at the Medical Center
P.O. Box 6998
Chicago, Illinois 60680

UNIVERSITY OF ALBERTA Faculty of Agriculture VACANCY

Assistant Professor of Animal Physiology, Department of Animal Science, Ph.D., preferably with emphasis on environmental and digestive physiology. Duties include teaching; research with livestock and poultry; limited extension responsibilities. Starting salary approximately \$9,500; to begin preferably July 1, 1967. Forward applications, including curriculum vitae and names of three referees, before May 15, to Head, Department of Animal Science, University of Alberta, Edmonton, Alberta.

The School of Geological Engineering and Mining invite applications for the following positions: Professors for Soil Mechanics, Rock Mechanics, Ore Dressing, Exploitation of Mines. Preferently Eng. Ph.D. or MD.

A minimum of 5 years experience is required. Salary and advancement commensurate with experience and ability. Submit Curriculum to the Director Escuela de Geo-Minas, Nucleo de Bolivar, U.D.O., Venezuela, before 1 June.

UNIVERSITY OF MELBOURNE

LECTURESHP in the

DEPARTMENT OF ORGANIC CHEMISTRY

Applications are invited for the above-mentioned position.

The appointee will participate in the teaching of undergraduate and graduate students. The School of Chemistry is particularly well equipped for research in nuclear magnetic resonance with Varian HR60 and HA100 spectrometers and with access to computer facilities. Equipment for electron spin resonance and high resolution mass spectrometry is also available.

SALARY: \$A4,800-\$6,300 p.a. Initial salary will be determined according to qualifications and experience.

Further information, including details of F.S.S.U. type superannuation, travel and removal expenses, housing assistance and conditions of appointment, is available from the Association of Commonwealth Universities (Branch Office), Marlborough House, Pall Mall, London, S.W.1.

Applications close in Australia and London on 30th April, 1967, and the appointee will be required to begin duties as early as possible this year.

RESEARCH VIROLOGIST

Ph.D. Recent graduate or with experience. Background and interest in virus research. Medical microbiologist can qualify. Graduate students expecting degrees in the near future will be considered. Interested persons should write to:

MR. G. L. GERHARD

**MERCK SHARP & DOHME
RESEARCH LABORATORY**

West Point, Pa. 19486

An Equal Opportunity Employer

RADIOLOGICAL HEALTH TRAINEESHIPS

Graduate program leading to M.S. and Ph.D. Financial support includes full tuition, fees, tax-free stipend (up to \$4800 per year, depending on background), and dependency allowance. For further information, write to Dr. H. Cember, Technological Institute, Northwestern University, Evanston, Illinois 60201.

The Market Place

BOOKS • SERVICES • SUPPLIES • EQUIPMENT

PROFESSIONAL SERVICES

HISTOLOGY SERVICE

RAPID SERVICE Large Orders Quickly Processed! Quickly Shipped! Professional supervision of every order. Free estimates on special problems. Distant points serviced swiftly. Special stains and techniques available. Fully protected shipments. HISTOLOGY SERVICE, INC. 4801 N. Broad St., Philadelphia, Pa. Zipcode 19141. (215) DAVenport 4-5800

SUPPLIES AND EQUIPMENT

• HYPOPHYSECTOMIZED RATS

Shipped to all points via Air Express
For further information write

HORMONE ASSAY LABORATORIES, Inc.
8159 South Spaulding Ave., Chicago 29, Ill.

Now Contracting

MINIATURE PIGS

These Animals Have Never Been on the Ground
Available in Lots Up to 50 of One Age
Will Contract for 500 in One Year

VITA VET LABS
Box 108, Marion, Ind. 46952 317-664-0013

Antibodies Incorporated

HELP SPREAD THE RUMOR

OUR FLUORESCENT LABELLED

ANTI-HUMAN γ G GLOBULIN

FOR THE ANA TEST

IS THE FINEST AVAILABLE

RT. 1, BOX 1482-DAVIS, CALIFORNIA

Hypophysectomized Rhesus Monkeys

Hypophysectomized Guinea Pigs

Prepared on Order

The Endocrine Laboratories, Inc.

P. O. Box 1436

979 Jonathan Drive, Madison, Wisconsin 53701

MICROBIOLOGISTS

Charles River CD@-1 mice are virus-defined, for consistency of response in potency evaluation testing. Our environments are impeccable. Facilities incomparable.

**Charles River Mouse
Farms, Inc.**

Department S

251 Ballardvale Street

Wilmington, Mass. 01887

617 658-3333

Before you specify your next centrifuge...

**You will
want to
check the
extra versatility,
greater capacities
and lower cost of
Lourdes Centrifuges**

Greater Capacity 4,000 ml to 12,500 x G.
(Lourdes Beta-Fuge A-2)

Increased Versatility Wider speed ranges, combining
low-speed, super-speed and ultra-speed in one unit. (Lourdes Clini-Fuge 30-R)

Rotors are interchangeable without special attachments.

Lourdes Beta-Fuge^{T.M.} A-2

4,000 ml to 12,500 x G. Automatic. Refrigerated. For batch or continuous flow. Takes 15 interchangeable heads. Safety features include "Fail-Safe" brush life control to prevent motor damage. Automatic imbalance trip to stop unit if there is excessive vibration. Double independent shafts so rotor cannot fly off. Temperature control $\pm 1^\circ \text{C}$ \$2,570 with rotor.



Lourdes Clini-Fuge^{T.M.} 30-R

Automatic. Refrigerated. For batch and continuous flow. Combines low-speed, super-speed and ultra-speed capacities in one unit. Only one attachment needed to increase maximum rpm from 6,000 to 25,000. Contains all safety features as in Beta-Fuge. Refrigerated (No. 30-R) \$2,550
Non-refrigerated (No. 30) \$995



Lourdes Versa-Fuge Bench Type

For batch and continuous flow. Super-speed. Versatile. Speeds to 17,000 rpm. Forces to 34,800 x G. \$420



Lourdes Model AX Bench Type

16,500 rpm with up to 400 ml. Forces to 34,800 x G. \$265



Lourdes Continuous Flow System

Increased efficiency in separating solids from large volumes of liquids. Faster Separation; Larger Sediment Capacity; Simpler Operation.

LOURDES

Detailed data sheets available on request. Write to Dept. S-47

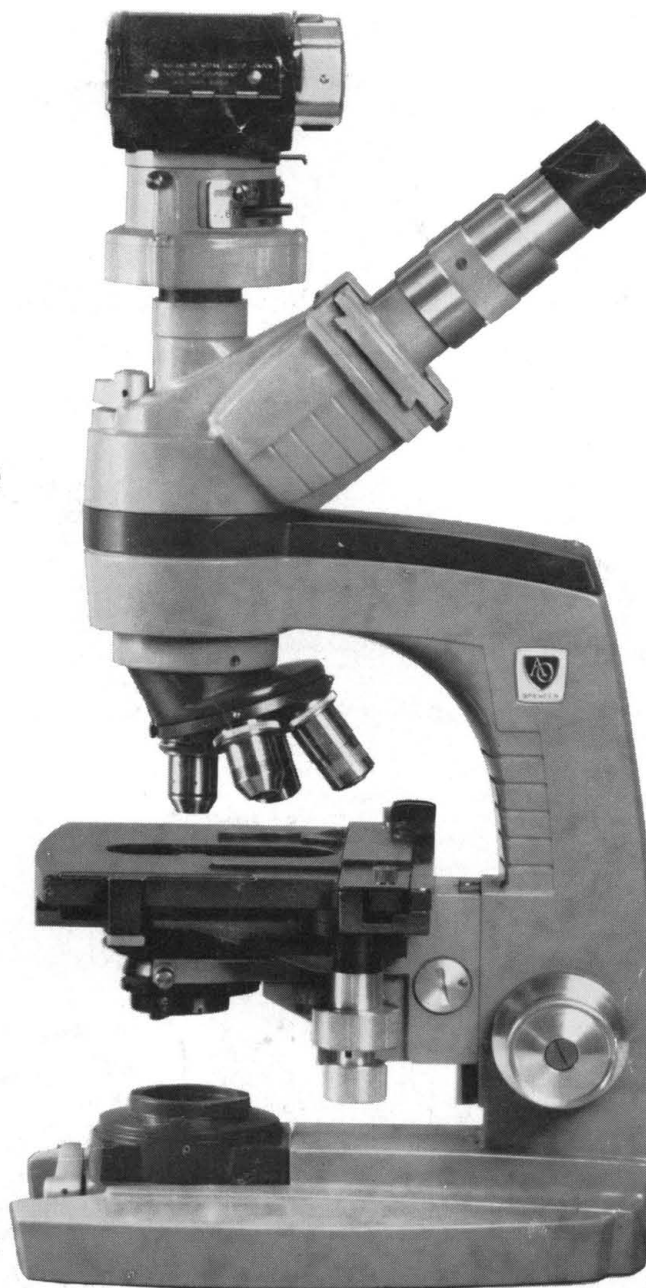
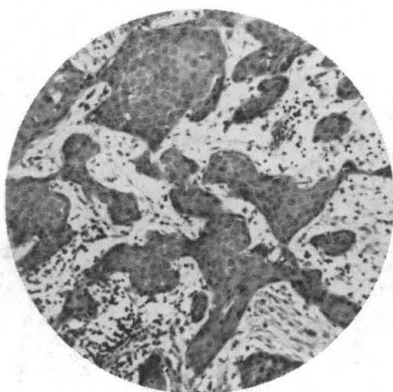
148 Sweet Hollow Road, Old Bethpage, N.Y. 11804 (516) 694-8686

You can expect considerably more from the AO Microstar Microscope

For instance, the AO Microstar[†] Microscope has the unique Autofocus stop. A great time-saver. It so simplifies operation, that perfect focus is just a matter of touching the fine adjustment. And there's your choice of mechanical stages so you can face the front or back of the Microstar Microscope, use your right or left hand.

In addition, to aid teaching and consultation, you and another can examine the same specimen simultaneously through the Dual Viewing attachment with exclusive illuminated pointer.

More plusses: 35mm, Polaroid[®] or 4 x 5 photography; an auxiliary



viewing screen; minimum slide breakage because the objective nosepiece floats if contact is made with slide; minimum maintenance throughout.

There are improved flatness of field and outstanding image quality—achieved by the pacesetting infinity-corrected optical system. Call your AO Sales Representative or write for a demonstration or further information. The Microstar Microscope will more than live up to your expectations.



[®]by Polaroid Corporation

[†]Registered Trademark American Optical Company



AMERICAN OPTICAL COMPANY
INSTRUMENT DIVISION • BUFFALO, NEW YORK 14215