

simple, and accurate method for indicating hormonal changes during pregnancy and the postpartum period. However, the cause and effect relations between LAPA and sex hormones are not known. An elevated LAPA index was considered a better test for pregnancy than the *Rana pipiens* or the human chorionic gonadotrophin tests.

Several hypotheses on regulatory mechanisms of LAPA were presented. The gene-dosage hypothesis would account for the abnormalities resulting in trisomy-21 in children and in strains of cultured leukocytes from patients with trisomy-21. Other suggestions on the mechanism of LAPA control included the possibilities of a complex interaction of physiological and genetic determinants, hormonal action on granules of neutrophils, the presence of several types of granulocytes in blood, and a shorter half-life of neutrophils in Down's syndrome.

Leukocyte glucose-6-phosphate dehydrogenase (G6PD), which is sex-linked in man and other animals, is also elevated in Down's syndrome. Three lines of evidence indicate that genetic control of G6PD is the same in leukocytes as erythrocytes.

A monograph containing the 30 papers will be published by the New York Academy of Sciences, the sponsor of this conference.

MARGARET A. KELSALL
Cleveland Psychiatric Institute,
Cleveland, Ohio

Forthcoming Events

March

8-10. **Viscoelastic Response of Engineering Materials**, Boston, Mass. (R. H. Supnick, 4 Mercer Rd., Natick, Mass.)

9-11. **National Medicolegal Symp.**, Miami Beach, Fla. (Miss B. Spies, Law Dept., American Medical Assoc., 535 N. Dearborn St., Chicago, Ill. 60610)

10-11. **National Conf. on Rural Health**, Charlotte, N.C. (B. L. Bible, Secretary, American Medical Assoc., 535 N. Dearborn St., Chicago, Ill. 60610)

10-12. **American Assoc. of Pathologists and Bacteriologists**, Washington, D.C. (J. L. Orbison, School of Medicine and Dentistry, Univ. of Rochester, 260 Crittenden Blvd., Rochester, N.Y.)

10-15. **American Assoc. of Pathologists and Bacteriologists**, 64th annual mtg. and Intern. Acad. of Pathology, 56th annual mtg., Washington, D.C. (Miss J. Graves, Intersociety Committee on Pathology Information, 1501 New Hampshire Ave., NW, Washington, D.C. 20036)

12. **Mental Depression**, symp., Washington, D.C. (Dr. Z. M. Lebensohn, 2431 K St., NW, Suite 215, Washington, D.C. 20037)

13-14. **Astronautics**, symp., Ottawa, Ont., Canada. (The Secretary, Canadian Aeronautics and Space Inst., 77 Metcalfe St., Ottawa 4, Ont.)

13-14. State Univ. of New York, Downstate Medical Center, "Visiting Scholar Lecture Series," **Arnold J. Toynbee**, Brooklyn, N.Y. (Office of Public Relations, Downstate Med. Ctr., 450 Clarkson Ave., Brooklyn, N.Y. 11203)

13-15. **32nd North American Wildlife and Natural Resources Conf.**, San Francisco, Calif. (Wildlife Management Inst., 709 Wire Building, Washington, D.C. 20005)

13-17. **International Laboratory Apparatus and Materials Exhibition**, London, England. (U.T.P. Exhibitions Ltd., 3 Racquet Court, Fleet St., London E.C.4)

13-17. **Use of Plutonium as a Reactor Fuel**, intern. symp., Brussels, Belgium. (J. H. Kane, Div. of Technical Information, U.S. Atomic Energy Commission, Washington, D.C. 20545)

14-15. **American Astronautical Soc. 5th Goddard Memorial Symp.**, "The Voyage to the Planets," Washington, D.C. (M. B. Lees, General Electric Co., Defense Programs Div., 777 14th St., NW, Washington, D.C. 20005)

14-15. **Space**, natl. mtg., Los Angeles, Calif. (D. P. Chandler, 3370 Miraloma Ave., Anaheim, Calif. 92803)

Optical Rotary Dispersion

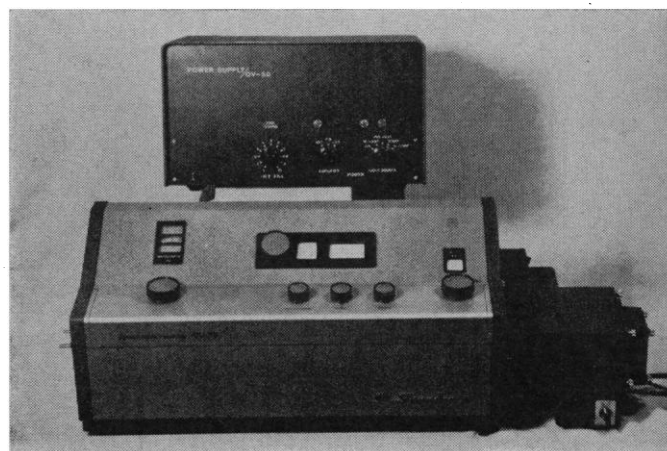
Shimadzu QV-50 (null-type) SPECTROPHOTOMETER

ultraviolet and visual ranges of
220 to 1200 mμ with

Efficient—The compact unit attaches to the QV-50, which employs a 500 watt Xenon lamp as a light source. Linearly polarized light passes through the sample cell and analyzer, then enters the measuring unit of the spectrophotometer. The rotation angle of the sample is read out by means of the reading microscope.

Accurate—The intense light source makes measurement possible even under high absorbance. And the simplicity of the optical system keeps optical loss at a minimum. Reading of the angular degree is accurate to within $\pm 2/1000^\circ$.

Time-Saving—Measurement is superior to other methods of calculation: the specific angular displacement is controlled easily by lever, and the position of the analyzer affords directly the rotation angle of the sample simply by finding a steady point on the null meter.



Other Accessories are—
• Vacuum Flow Dichroism
• Vacuum Circular Dichroism
• Direct Meter Readout
• Digital Readout

• Recorder
• Reflectance
• Spectrofluorimetry
• Flame Photometry

COSMOS SCIENTIFIC CO.

1108 Trust Co. of New Jersey Bldg.,
921 Bergen Ave., Jersey City, N.J. 07306

Stocking & Servicing Dealers:

• ACE SCIENTIFIC SUPPLY CO.

1420 E. Linden Ave.,
Linden, N.J. 07036

• PREISER SCIENTIFIC, INC.

900 MacCorkle Ave.,
Charleston, W.Va. 25322

14-15. **Temperature Measurements Soc.**, 5th conf., Los Angeles, Calif. (R. A. Finch, Conf. and Exhibit Chairman, Atomics International, P.O. Box 309, Canoga Park, Calif. 91304)

15-17. **Instrumentation for the Iron and Steel Industry**, Natl. Instrument Soc. of America, 17th conf., Pittsburgh, Pa. (F. J. Barchfeld, Jones & Laughlin Steel Corp., 900 Agnew Rd., Pittsburgh 15230)

15-17. **New Jersey Mosquito Extermination Assoc.**, 54th annual mtg., Atlantic City, N.J. (D. M. Jobbins, Dept. of Entomology and Econ. Zoology, Rutgers—State Univ., New Brunswick, N.J.)

16-17. **Hypervelocity Techniques**, 5th symp., Denver, Colo. (A. A. Ezra, Research Inst., Univ. of Denver, Denver 80201)

16-18. **Geological Soc. of America**, Northeastern Sect., 2nd annual, Boston, Mass. (M. Prinz, Tufts Univ., Medford, Mass.)

16-18. **Texas Acad. of Science**, College Station, Tex. (W. E. Norris, Jr., Biology Dept., Southwest Tex. State Coll., San Marcos, Tex. 78666)

16-19. **International Assoc. for Dental Research**, 45th general mtg., Washington, D.C. (G. H. Rovelstadt, c/o Navy Dental School, Natl. Naval Medical Center, Bethesda, Md. 20014)

17-19. **Fourth Intern. Vacuum Congress**, Univ. of Manchester Inst. of Science and Technology, Manchester, England. (The Secretary, Joint British Committee for Vacuum Science and Technology, 47 Belgrave Sq., London, S.W.1, England)

17-21. **National Science Teachers Assoc.**, conv., Detroit, Mich. (Executive Secretary, NSTA, 1201 16th St., NW, Washington, D.C. 20036)

18-19. **Twelfth Annual Natl. Conf. on Linguistics**, New York, N.Y. (L. Pap, State Univ. College, Div. of Foreign Languages, New Paltz, N.Y.)

19-24. **Southeastern Surgical Congress**, Bal Harbour, Fla. (A. H. Letton, Executive Secretary, 340 Boulevard N.E., Atlanta, Ga. 30312)

19-26. **Canadian-American Medical and Dental Assoc.**, Vail, Colo. (T. Trapasso, Secretary, 816 Ashmun St., Sault Ste. Marie, Mich. 49783)

20. **Field-Ion Microscopy**, mtg., Cambridge, England. (Meetings Officer, Inst. of Physics and Physical Society, 47 Belgrave Sq., London S.W.1, England)

20-22. **Physical Electronics**, annual conf., Cambridge, Mass. (Research Lab. of Electronics, Massachusetts Inst. of Technology, Cambridge)

20-23. **Institute of Electrical & Electronics Engineers**, intern. conv., New York, N.Y. (A. B. Giordano, The Institute, 345 E. 47 St., New York 10017)

22-24. **American Astronautical Soc.**, Rocky Mountain Section, mtg., New Mexico State Univ., University Park, N.M. (Austin Vick, Box 996, Las Cruces, N.M. 88001)

22-24. **Astrogeology**, symp., University of Michigan, Ann Arbor, Mich. (E. W. Heinrich, Dept. of Geology and Mineralogy, Univ. of Michigan, Ann Arbor 48104)

22-24. **Modern Optics**, intern. symp., New York, N.Y. (J. Fox, Polytechnic Inst. of Brooklyn, 333 Jay St., Brooklyn, N.Y. 11201)

New from Bio-Rad!

Bio-Gel® A, spherical agarose for gel filtration

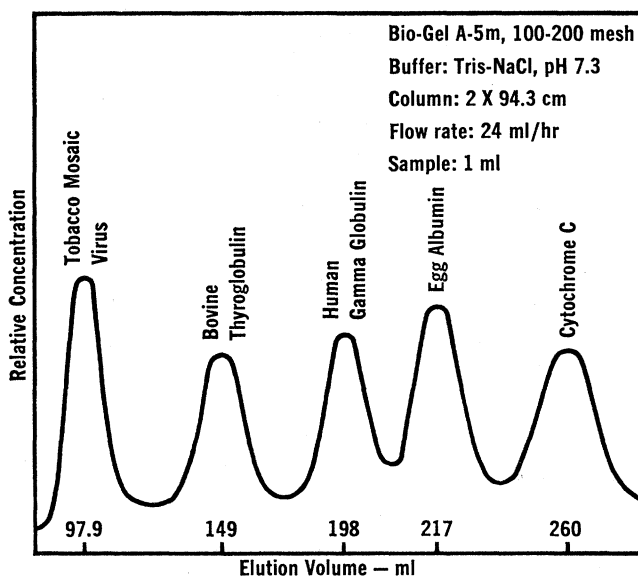
Extends the range of aqueous gel filtration to 150,000,000 molecular weight.

Bio-Gel A is agarose in spherical bead form, produced by Bio-Rad's own unique process. There are six gels in the series which give an overall operating range from 10,000 to 150,000,000 molecular weight. This range means that Bio-Gel A is applicable for use with viruses, large proteins and other macromolecules that have not been separable up to now by gel filtration techniques.

Techniques and Applications Bio-Gel A is used in columns for the separation of materials by differences in their molecular weights. It operates essentially the same as other aqueous gel filtration media, including Bio-Gel P, Bio-Rad's polyacrylamide gel series.

A typical application is illustrated in the curve below, which shows the separation of a mixture that ranges in molecular weight from Tobacco Mosaic Virus at approximately 30,000,000 down to Cytochrome C at 13,000.

Availability Bio-Gel A is supplied fully hydrated in buffer, in 500 ml and liter quantities. Each gel is available in two particle sizes: 50-100 mesh beads for maximum flow rate and 100-200 mesh beads for maximum resolution.



Full technical information and details of the reasonable pricing are given in a new bulletin, BG-5, now ready for distribution. For your free copy please fill out the coupon below and return it to Bio-Rad.

*BIO-RAD Laboratories

Dept. S-26

Bio-Rad Laboratories, 32 & Griffin Avenues, Richmond, California
Gentlemen: Please send my free copy of your new Bulletin BG-5, which describes Bio-Gel A for aqueous gel filtration of macromolecules.

NAME _____ TITLE _____

ORGANIZATION _____

ADDRESS _____

CITY _____ STATE _____ ZIP _____