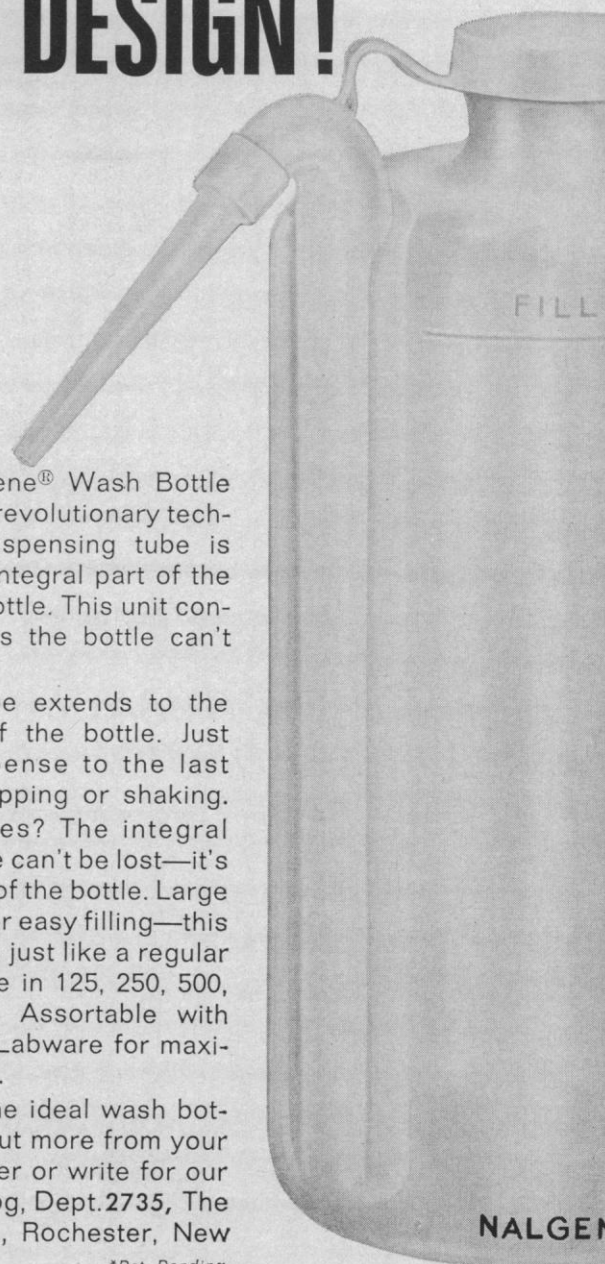


in coals of the Appalachian region," Peter Zubovic, Taisia Stadnichenko, and Nola B. Sheffey (37 pp., 20¢); No. 1156-E, "A hydrologic analysis of postulated liquid-waste releases—Brookhaven National Laboratory, Suffolk County, New York," Wallace de Laguna (51 pp., 25¢); No. 1163-C, "Surficial geology of the Athol quadrangle, Worcester and Franklin Counties, Massachusetts," Donald F. Eschman (20 pp., maps); No. 1192, "Geology and uranium deposits of the Temple Mountain district, Emery County, Utah," C. C. Hawley, D. G. Wyant, and D. B. Brooks (1965. 154 pp., maps); No. 1199-M, "Bauxite deposits of Northwest Georgia," Walter S. White and Norman M. Denson (42 pp., maps); No. 1203-D, "Method-dependent values of bulk, grain, and pore volume as related to observed porosity," G. Edward Manger (20 pp., 15¢); No. 1205, "Geology of the Garns Mountain quadrangle, Bonneville, Madison, and Teton Counties, Idaho," Mortimer H. Staatz and Howard F. Albee (122 pp., maps); No. 1206, "Geology of the Bridgewater quadrangle, Aroostook County, Maine," Louis Pavlides (1965. 72 pp., maps); No. 1207, "Economic geology of Fort Meade quadrangle, Polk and Hardee Counties, Florida," James B. Cathcart (97 pp., maps); No. 1208, "Economic geology of the Idaho Springs district, Clear Creek and Gilpin Counties, Colorado," Robert H. Moench and Avery Ala Drake, Jr. (91 pp., maps); No. 1209, "Rapid modal analysis of some felsic rocks from calibrated x-ray diffraction patterns," D. B. Tatlock (41 pp., 20¢); No. 1213, "Geology of the Ransom quadrangle, Lackawanna, Luzerne, and Wyoming Counties, Pennsylvania," Thomas M. Kehn, Ernest E. Glick, and William C. Culbertson (81 pp., maps); No. 1214-C, "Beryllium content of volcanic rocks," Daniel R. Shawe and Stanley Bernold (11 pp., maps, \$1.25); No. 1221-B, "Geology of the Hames Valley, Wunpost and Valleton quadrangles, Monterey County, California," David L. Durham (53 pp., maps); No. 1222-F, "Direction of movement of jasperoidizing solution," T. S. Lovering (25 pp., 15¢); No. 1222-G, "Coking-coal deposits of the Western United States," Paul Averitt (48 pp., 25¢); No. 1224-H, "Stratigraphy and regional relationships of a reference section for the Juana Lopez Member, Mancos Shale, in the San Juan Basin, New Mexico," Carle H. Dane, William A. Cobban, and Erle G. Kauffman (15 pp., 15¢); No. 1224-I, "Harrodsburg Limestone in Kentucky," E. G. Sable, R. C. Kepferle, and W. L. Peterson (12 pp., 10¢); No. 1230-A, "Mineral resources of the San Rafael primitive area, California," H. D. Gower, J. G. Vedder, H. G. Clifton, and E. V. Post (28 pp., maps); No. 1230-B, "Mineral resources of the Spanish Peaks primitive area, Montana," George E. Becraft, James A. Calkins, Eldon C. Pattee, Robert D. Weldin, and Joseph M. Roche (45 pp., maps); No. 1230-E, "Mineral resources of the stratified primitive area, Wyoming," K. B. Ketner, W. R. Keefer, F. S. Fisher, D. L. Smith, and R. G. Raabe (56 pp., maps, 60¢). Superintendent of Documents, Washington, D.C., 1966.

# A REVOLUTIONARY WASH BOTTLE! NEW CONCEPT! NEW DESIGN!



The new Nalgene® Wash Bottle incorporates a revolutionary technique.\* The dispensing tube is molded as an integral part of the polyethylene bottle. This unit construction means the bottle can't leak!

And, the tube extends to the very bottom of the bottle. Just squeeze. Dispense to the last drop without tipping or shaking.

More features? The integral snap-on closure can't be lost—it's molded as part of the bottle. Large neck opening for easy filling—this wash bottle fills just like a regular bottle. Available in 125, 250, 500, 1000 ml sizes. Assortable with other Nalgene Labware for maximum discounts.

Sound like the ideal wash bottle? It is. Find out more from your lab supply dealer or write for our new 1966 catalog, Dept. 2735, The Nalge Co., Inc., Rochester, New York 14602.

\*Pat. Pending

 **NALGENE  
LABWARE**  
THE NALGE CO., INC.  
a subsidiary of Ritter Pfaudler Corporation

Another  
new product of  
Nalge Research

## INDEX TO ADVERTISERS—4 November 1966

Ace Glass Inc. ....	696	International Equipment Co. ....	582	Polaroid Corp. ....	567
Ajusto Equipment Co. ....	695	Janis Research Co. Inc. ....	684	Professional Tape Co., Inc. ....	686
Allied Chemical Corp. ....	569	Jarrell-Ash. Co. ....	573	Reeve Angel ....	691
American Instrument Co., Inc. ....	558	Jeolco, Inc. ....	697	Revco Inc. ....	698
American Optical Co. ....	712	Kontes ....	700	Sage Instruments, Inc. ....	692
Baird-Atomic ....	568	Labindustries ....	702	Sargent, E. H., & Co. ....	565
Beckman Instruments, Inc. ....	596	Lea & Febiger ....	705	Sartorius Balances, Div. of	
Bel Art Products ....	682	Leeds & Northrup ....	593	Brinkmann Instruments ....	576
Brinkmann Instruments ....	562	Leitz, E., Inc. ....	594	Scientific Products ....	686
BRS Electronics ....	692	Lindberg Hevi-Duty, Div. of Sola		Sherer-Gillett, Environmental Div. ....	685
Brush Instruments Div., Clevite		Basic Industries ....	554	Shimadzu Seisakusho Ltd. ....	698
Corp. ....	560, 561	Lourdes ....	574	Sigma Chemical Co. ....	700
Buchler Instruments, Inc. ....	699	Mathatronics ....	689	Sobotka, Eric, Co., Inc. ....	682
Cary Instruments ....	579	Mettler Instrument Corp. ....	555	Sorvall, Ivan, Inc. ....	578
Chemical Rubber Co. ....	688	Miles Laboratories, Inc. ....	703	Technical Measurement Corp. ....	581
Clay-Adams, Inc. ....	585	Millipore Corp. ....	706	Technicon Chromatography Corp. ....	583
Corning Glass Works ....	580	Nalge Co., Inc. ....	707	Tenney Engineering, Inc. ....	695
Digital Equipment Corp. ....	586, 587	New Brunswick Scientific Co.,		Texas Instruments Inc. ....	631
Electronic Associates, Inc. ....	706	Inc. ....	570, 703	Thermolyne Corp. ....	706
Elgeet Optical Co., Inc. ....	688	Nikon Inc. ....	577	Tracerlab ....	687
Fisher Scientific Co. ....	683	Nuclear-Chicago Corp. ....	564, 590	Unitron Instrument Co. ....	563
General Motors Research		Nuclear Data Inc. ....	566	Vacudyne Corp. ....	559
Laboratories ....	591	Orion Research Inc. ....	592, 704	Vickers Instruments, Inc. ....	690
Hacker, William J., Co., Inc. ....	687	Owens-Illinois ....	575	Wang Laboratories, Inc. ....	704
Hamilton Co. ....	696	Perkin-Elmer Corp. ....	634	Warner-Chilcott Laboratories ....	632, 633
Hartford Metal Products, Inc. ....	706	Pharmacia Fine Chemicals Inc. ....	696	West Eleven Inc. ....	701
Honeywell ....	584	Phipps & Bird, Inc. ....	703	Worthington Biochemical Corp. ....	695
Hyland Laboratories ....	685	Phoenix Precision Instrument Co. ....	691	Yellow Springs Instrument Co. ....	684
Instrumentation Specialties Co. ....	711	Photometric Research Corp. ....	705	Zeiss, Carl, Inc. ....	588
		Photovolt Corp. ....	699		

### Come to **MELPAR**

*Where PERFORMANCE  
and RECOGNITION*

**Come FIRST!**

At Melpar, our emphasis on individual recognition of accomplishments is not just a printed policy statement nor just a talking matter. It represents the very foundation of our personnel management system.

For more than 20 years, Melpar has enjoyed an enviable reputation as a leader in Space and Defense.

Are you qualified to join us?

*Immediate openings exist in the following areas:*

**Adaptive Systems • Antenna Systems • Communications • Countermeasures • Electro-Optical Data Processing • General Purpose Computer Applications • Information Systems • Intelligence Collection • Simulation and Training • Tactical Avionics**

*Write, in confidence, to:*

**Clarence Endsley, Professional Placement**

**MELPAR INC**

A SUBSIDIARY OF WESTINGHOUSE AIR BRAKE COMPANY  
7736 ARLINGTON BOULEVARD, FALLS CHURCH, VIRGINIA  
(10 miles S.W. of Washington, D. C.)

An equal opportunity employer M/F

### director of research

FOR THE NAVAL RESEARCH  
LABORATORY, WASHINGTON, D.C.

*The Navy's Corporate Laboratory*

**\$25,890 per annum**

An outstanding opportunity for a person capable of directing programs embracing the entire range of physical and engineering sciences and covering research from basic investigations of fundamental problems to applied and developmental research for the Office of Naval Research, for Systems Commands of the Navy, for other components of the Department of Defense, and for other Agencies of the government.

The person will head the Research Department of the Laboratory which includes approximately 1100 professional scientists and engineers. Another 2300 employees support the work of the professional research staff.

Applicants should have an appropriate degree and at least seven years of broad and significant experience in a professional, scientific, or technical field; and must have demonstrated superior ability in planning, organizing, directing and coordinating research programs of major importance.

Career Civil Service position with full benefits. Send resume of education and professional experience (preferably SF-57) and evidence of professional stature such as list of publications, patents, memberships in professional societies, and honors to: **Director (Code 1818-2) Naval Research Laboratory, Washington, D.C. 20390, no later than December 1, 1966.**

*An Equal Opportunity Employer*

# Personnel Placement

## POSITIONS WANTED

(a) **Parasite Biochemistry Ph.D.** 1966; antibiotic studies; seeks commercial or academic research opportunity. (b) **Microbiology Ph.D.**; Histology minor; ASCP; clinical laboratory, cytology supervising; desires medical appointment. Write **WOODWARD MEDICAL PERSONNEL BUREAU**, 185 North Wabash, Chicago 60601.

## POSITIONS OPEN

### ACADEMIC VACANCIES in Canadian Universities and Colleges

A list of teaching and administrative openings is published in November, February and April by the Association of Universities and Colleges of Canada, 151 Slater Street, Ottawa 4, Canada.

Annual subscription: \$2.00.

**Biochemist or Physiologist, Ph.D. degree**, for research position on work involving corticoid biosynthesis and mode of action of ACTH in adrenal glands. Salary dependent upon experience. For further information write to **Mrs. Jacobsen, Worcester Foundation for Experimental Biology, Shrewsbury, Mass.**

### CHEMIST

B.S. or M.S. to head chemistry section in 515-bed, modern hospital. Well staffed with latest equipment. Recent grad acceptable. Nice salary and living conditions; ideal for family. Write in confidence to **Personnel Director, Lancaster General Hospital, Lancaster, Pa.** or call collect 717-393-5801.

## INTERNATIONAL MINERALS AND CHEMICAL CORPORATION

Industrial Chemicals Division  
Wasco, California

### MICROBIAL GENETICIST

M.S. or B.S., Microbiology with completed course-work in bacterial physiology and genetics sufficient to allow initiation of experimental work with a minimum period of training. Established and expanding research group offers exceptional opportunities for work in modern bacterial genetics. Central California location with modern research and instrumentation facility.

Inquire  
Personnel Office, Bioform-IMC  
P.O. Bin B, Wasco, Calif.

Attn: Mr. Russell

An equal opportunity employer

## POSITIONS OPEN

### ASST. DIR. OF MEDICAL RESEARCH

A mature scientist with graduate or professional degree and substantial personal experience in biologically oriented research is required as full-time assistant to the Scientific Director. Ability to interpret and evaluate investigations and research plans in several disciplines, administrative competence and an aptitude for clarity in written and oral exposition are requisites for this position. Salary will be commensurate with qualifications. Pension plan and other benefits are available. New York headquarters.

Send résumé and other information to

Box 226, SCIENCE.

### Department of Microbiology, School of Hygiene University of Toronto

**Associate Professor or Professor of Virology**  
Post will fall vacant July 1st, 1967, owing to promotion. Rank will depend on experience. Applications invited from well qualified animal virologists. Teaching experience essential. Duties include teaching virology to B.Sc., Diploma in Bacteriology, and graduate degree students. Good facilities for research and supervision of graduate students. Salary, \$14,000, with University pension and insurance benefits. Applications to **Dr. A. J. Rhodes, Director, School of Hygiene, University of Toronto, Toronto 5, Canada.**

### POSTDOCTORAL TRAINEESHIPS IN CLINICAL CHEMISTRY

are available July 1, 1967 at the Biochemistry Department, University of Washington School of Medicine, and the University Hospital. The program is primarily for those with a Ph.D. degree in Biochemistry who wish to become clinical chemists in a research-oriented hospital. The appointments are for two years with a stipend of \$5,000 to \$6,000 per annum (depending upon postdoctoral experience), plus an allowance of \$500 per dependent. The stipends are partially tax exempt in most cases. Please apply to: **Dr. Alex Kaplan, Associate Professor, Department of Biochemistry and Director, Clinical Chemistry Laboratory, University Hospital, Seattle, Wash. 98105.**

Predocutorial traineeships and assistantships in the Anatomical Sciences are available at the University of Tennessee Medical Units with training in the research areas of cytology, histology, cytogenetics, histochemistry, cytochemistry, electron microscopy, neuroanatomy, embryology, teratology, endocrinology and fetal physiology. Stipends and free tuition. For further details write to **Chairman, Department of Anatomy, University of Tennessee Medical Units, Memphis, Tennessee 38103.**

### • PSYCHOLOGIST •

Challenging opportunity for Psychologist with 3-10 yrs. post PhD training and research experience in neurophysiology, for correlation of behavioral and neurophysiological functions on problems of growth and development, learning and memory. Please send resume, with salary requirements, to **H. J. Snider, STANFORD RESEARCH INSTITUTE, 333 Ravenswood, Menlo Park, California.**

—an equal opportunity employer—

## POSITIONS OPEN

**Clinical Microbiologist**, large general medical and surgical hospital in New York City. Will assist in direction of about 20 employees performing tests in Bacteriology, Serology, Parasitology, Mycology, and Blood Banking; participate in special studies, consultations, clinical conferences and perform research in the fields mentioned above. Qualifications: Baccalaureate Degree plus three years of progressively responsible professional experience in one or more fields of microbiology. Salary is about \$11,000.00 to start. Nondiscrimination in employment. Contact: **Chief, Laboratory Service, Veterans Administration Hospital, 130 W. Kingsbridge Road, Bronx, N.Y. 10468.**

**Postdoctoral Fellow desired.** Department of Dermatology, Tufts University School of Medicine. Training in diagnostic dermatopathology and research in this field. Salary to be arranged. Send particulars to: **Dr. Milton R. Okun or Dr. Walter F. Lever, Dermatology Laboratory, Boston City Hospital, 818 Harrison Avenue, Boston, Mass.**

### CHIEF CLINICAL CHEMIST CHIEF CLINICAL MICROBIOLOGIST

#### SALARY OPEN.

Five years post-doctorate experience and U.S. citizenship required. Opportunities for research.

—Excellent laboratory facilities.

—Unusual diversity of clinical data.

1800-bed municipal general hospital located in the heart of a new multi-discipline Science Center.

Send resumes including minimum salary to: **500 Municipal Services Building, Philadelphia, Pa. 19107. Att: Dr. Henry P. Schwarz, Chairman, Department of Clinical Pathology, Philadelphia General Hospital.**

## RESEARCH PHARMACOLOGISTS BIOCHEMICAL CARDIOVASCULAR CENTRAL NERVOUS SYSTEM

Positions available in expanding basic Drug Research Program at our new Biomedical Research Laboratories. Responsibilities will include planning and conducting evaluation studies on efficacy and pharmacodynamics of prospective new drugs. Additionally, our staff members have the opportunity to engage in individual exploratory research.

Minimum requirement is a Ph.D. in Pharmacology. Some industrial or postdoctoral experience is desirable but not mandatory.

ATLAS is a well established diversified company with annual sales in the \$100 million range. Pharmaceuticals are manufactured and distributed by the Stuart Company, a major ATLAS Division.

Our location offers excellent schools, housing and living conditions in a pleasant suburban environment with many cultural and recreational centers nearby. Wilmington is approximately 30 miles from Philadelphia and 100 miles from New York City and Washington, D.C.

To Investigate The Opportunities To Assume A Key Role In This New Major Research Effort, Please Send Curriculum Vitae And Salary Requirements To:

R. A. GRUBB

**ATLAS**  
CHEMICAL INDUSTRIES, INC.  
Wilmington, Delaware 19899

An Equal Opportunity Employer

## SENIOR IMMUNOLOGIST

Excellent opportunity for Ph.D. with broad experience in immunology to work in one or more of the following areas — autoimmune disease, adjuvants, immune techniques in detection and identification of antigens, tissue transplantation, antibodies to enzymes, development of new vaccines or related areas.

CONTACT: MARTIN N. SCHULER



**MIDWEST  
RESEARCH  
INSTITUTE**

425 VOLKER BOULEVARD  
KANSAS CITY, MISSOURI 64110

An Equal Opportunity Employer M/F

## POSITIONS OPEN

(a) **Biochemistry Lab Director** teach, supv 12; research consultant; large univ hosp; to \$25,000; E. (b) **Nutritional Research Senior Scientist**; basic metabolism studies; admin ability; to \$20,000; drug mfr, MidW. (c) **Research Scientist** nucleic acid, abnormal growth studies; univ research inst; \$12,000; MidW. (d) **Academic Dean** admin exp; direct new small college expand rapidly; \$14,000; E. (e) **Microbiologist**, research and clinical functions; to \$20,000; research found; E. (f) **Biochemist**, pathology group serving many hosps; \$18,000; Calif. Write **WOODWARD MED. PERS. BUREAU**, 185 N. Wabash, CHICAGO 60601  
*Professional Placement Services for 70 Years*

### CLINICAL CHEMIST

University of Guelph,  
Ontario Veterinary College,  
Department of Physiological Sciences.  
Applications are invited for an Associate Professorship in the Division of Physiology.  
**Qualifications:**

D.V.M., with postgraduate training at the Master's or Doctorate level in aspects of clinical chemistry or biochemistry.

#### Duties:

To teach aspects of clinical chemistry in an undergraduate course in Veterinary Physiology and to supervise a one-semester laboratory in Physiological Chemistry. To develop appropriate graduate courses and to carry out personal research in a similar field.

#### Salary:

\$11,000 minimum, dependent on qualifications and experience.

Inquiries to: **H. G. DOWNIE, PROFESSOR AND HEAD OF THE DEPARTMENT.**

### VETERINARY PATHOLOGIST

Hazleton Laboratories, a leading independent company specializing in the Life Sciences, needs a Veterinary Pathologist with the DVM and Ph.D. degrees. Position involves gross and microscopic evaluation of tissues from a variety of laboratory animals; design of experiments; and consultation with other research staff members. Opportunity for publications and scientific meetings attendance. Excellent employee benefits program including profit sharing. Salary commensurate with education and experience. Please send resume to: Hall A. Acuff, Assistant Personnel Manager, Hazleton Laboratories, Inc., P.O. Box 30, Falls Church, Virginia 22046 (Metropolitan Washington, D.C.) An Equal Opportunity Employer M/F.

## FELLOWSHIPS

### TRAINING AND RESEARCH PROGRAM IN BIOMEDICAL ENGINEERING

leading to M.S. in Biomedical Engineering or Science. Two year Program open to life scientists (M.D., D.V.M., D.D.S., Ph.D., etc.) and physical scientists and engineers. Course work and research in areas relevant to biomedical engineering. Curriculum specifically designed to overcome deficiencies of various backgrounds. A limited number of fellowships will be available for 1967-68. Applications for other financial support should be completed before Jan. 1, 1967. Address inquiries to: **Director, Biomedical Engineering & Science Program, Drexel Institute of Technology**, 32nd & Chestnut Sts., Philadelphia, Pa. 19104.

## The Market Place

BOOKS • SERVICES • SUPPLIES • EQUIPMENT

### SUPPLIES AND EQUIPMENT

#### • HYPOPHYSECTOMIZED RATS

Shipped to all points via Air Express  
For further information write

**HORMONE ASSAY LABORATORIES, Inc.**  
8159 South Spaulding Ave., Chicago 29, Ill.

Hypophysectomized Rhesus Monkeys  
Hypophysectomized Guinea Pigs  
Prepared on Order

**The Endocrine Laboratories, Inc.**

P. O. Box 1436  
979 Jonathan Drive, Madison, Wisconsin 53701

### LABORATORY SPONGES

Chemically Resistant Ethyl Carbamate  
Proven in Many Univ. Labs. Soft & Tough

**SAMPLE FREE ON REQUEST**

**PAX SCIENCE SERVICE**  
Box 312, Andover, N.J.

## PHARMACOLOGISTS & TOXICOLOGISTS

Rapid expansion of our research program has created openings for Ph.D. Pharmacologists and Ph.D. or D.V.M. Toxicologists.

*Atherosclerosis                      Analgesia*  
*Inflammation                      Reproductive Endocrinology*  
*Cardiovascular and Autonomics*

Please send a complete resume including training, experience and salary requirements, to:

*Professional Employment*

**Bristol Laboratories**

Division of Bristol-Myers Company  
Syracuse, New York 13201

An Equal Opportunity Employer

## TOXICOLOGIST

Opportunity available for scientist, Ph.D. or D.V.M. to head unit responsible for chronic & reproductive toxicity studies in rodents. Position affords opportunity for original research. Candidate with experience in field preferred.

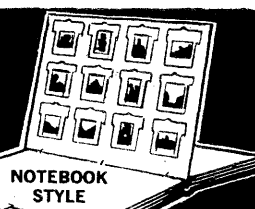
Meeting attendance, publication & professional society membership encouraged. In confidence kindly submit curriculum vitae & statement of salary requirement to: Professional Employment Manager

*Schering*

**SCHERING CORPORATION**  
Bloomfield . . . New Jersey 07003

An equal opportunity employer

**NEW  
SLIDE  
FILE**



- 3-hole punched to fit Ring Binder!
- 8½ x 11" size fits File Drawer!
- Displays 12, 2x2" or 2¼x2¼" slides!
- Box of 25 - \$8.75 Box of 100 - \$35

FREE 68th Annual Photo Tools Catalog write  
**BURKE & JAMES, INC., 333 W. Lake St.**

Chicago, Ill., 60606 • Est. 1897

Circle 85 on Readers' Service Card

## BOOKS AND MAGAZINES

### UNPUBLISHED MANUSCRIPTS WANTED AT ONCE

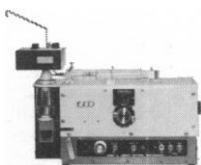
We will publish, promote, distribute your book. If your manuscript has unusual possibilities, we will publish it on a straight royalty or partial subsidy basis. Send manuscript for free report or write for Brochure SX.

*Seth Richards*  
PUBLISHER

**PAGEANT PRESS**

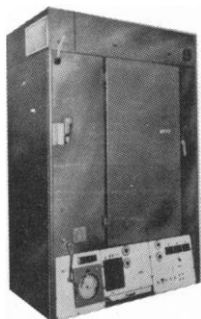
101 Fifth Avenue, New York, N.Y. 10003

# Here are some ISCO instruments...



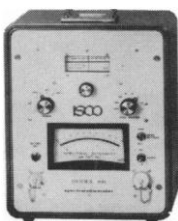
## DENSITY GRADIENT FRACTIONATORS...

two models specially designed for this new technique. A dense solution is injected into the bottom of a density-gradient centrifuge tube, floating the contents up through an ultraviolet analyzer for a quantitative UV absorbance profile. This patented principle insures better zone resolution and quantitative accuracy than any other method. \$395 & 1350



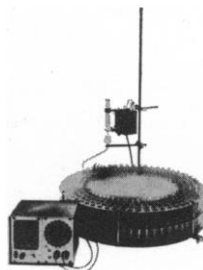
## PLANT GROWTH CHAMBERS...

feature a completely unique control concept to prevent temperature and humidity oscillations. Relative humidity is kept within  $\pm 2\%$ , and temperature to within  $\pm \frac{1}{2}^\circ$  Fahrenheit over 90% of the range. Reach-in and walk-in models available. \$3200 & 5700



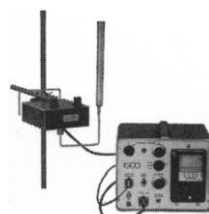
## SPECTRORADIOMETER...

measures the spectral distribution and intensity of light sources. The spectrum from 380 to 1050 m $\mu$  can be scanned with a continuous dial control without the need for filter interchange. Features: 8 full scale ranges of intensity; direct reading in spectral intensity units; true cosine response; extreme portability; and a remote extension probe. \$1990



## FRACTION COLLECTORS...

offer the versatility of either volumetric or timed control, or both. Extras include a drop counter and a Volumeter adjustable from 1 to 20 ml. Choose from any of the four basic models, some of which feature convenient lift-off reels. Complete Systems from \$190 to 775



## ULTRAVIOLET ANALYZERS...

monitor linear absorbance of flow streams with single or dual beams at either 254 or 280 m $\mu$ . The narrow bandwidth, linear absorbance recording optical system provides precise, quantitative accuracy. Each UV absorbing fraction can be automatically deposited in a separate collecting tube. \$650 to 1150



## PROGRAMMED GRADIENT PUMP...

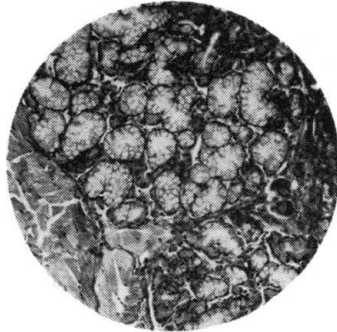
any simple or complex gradient formed by combining two liquids can be dialed directly into the DIALAGRAD. A completely mixed, non-pulsating flow at a uniform rate is produced with no cams to cut, or multiple solutions to mix at guessed concentrations. Program duration is adjustable from 10 minutes for forming density gradients to 12 days for long elutions. Flow (total of both liquids) at 50 psi. is adjustable from 0.5 ml/hr. to 500 ml/hr. An optional booster will raise the output pressure to 1,000 psi. \$1495

**there's lots more  
in our catalog  
Send for it today.**

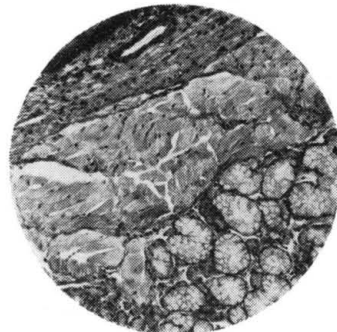
**ISCO** INSTRUMENTATION SPECIALTIES COMPANY, INC.

ATTN: SALES MANAGER • 5624 SEWARD AVE. • LINCOLN, NEBRASKA 68507, U.S.A. • PHONE (402) 434-8265 • CABLE ADDRESS: ISCOLAB LINCOLN

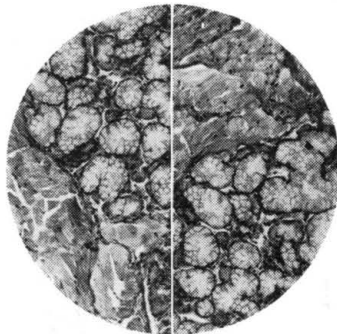
Can you recall these details . . .



when examining these?



Compare them simultaneously with AO's Duo-Star Microscope.



You view two specimens side by side with the split field of AO's unique Duo-Star Microscope. No guesswork. No back-and-forth specimen changes. No chance of memory playing tricks.

The rugged optical bridge connects two of AO's famous Microstar Laboratory Microscopes. A movable vertical line divides the two images. It is moved transversely so that either field can be viewed individually, or portions of both fields can be viewed simultaneously. You can match, compare and study specific areas of interest.

Either binocular or trinocular bodies can be accommodated. An optional viewing screen fits on the third tube of the trinocular body to facilitate teaching and group observation. Or this third tube will accept an optional camera for photomicrography.

Unless you possess total recall, investigate the Duo-Star Microscope. Just contact your AO Sales Representative or write for more facts.



**AMERICAN OPTICAL COMPANY**  
INSTRUMENT DIVISION • BUFFALO, NEW YORK 14215

