

Election of AAAS Officers

The following nominees for AAAS offices were selected by the AAAS Committee on Nominations and Elections at a meeting held on 15 May. All have agreed to serve if elected.

President-elect (one to be elected)

Walter Orr Roberts
William W. Rubey

Members of the Board of Directors (two to be elected)

Barry Commoner
Gerald Holton
Neal E. Miller
Richard Brooke Roberts

Members of the Committee on Council Affairs (three to be elected)

Claude C. Albritton, Jr.
Nyle C. Brady
Henry W. Riecken
John A. Moore
Charles F. Savage
William C. Steere

On petition signed by no fewer than 30 members of the Council and submitted to the Executive Officer no later than 1 November, the names of additional nominees may be included on the election ballot that will be mailed to Council members shortly after 1 November. Results of the election will be announced at the Council meeting on 30 December at Washington, D.C.

Brief biographies of the nominees follow.

For President-Elect

The nominee who is elected will serve as president-elect in 1967, as president in 1968, and as retiring president and chairman of the Board of Directors in 1969.

Walter Orr Roberts

Walter Orr Roberts, 51 (astronomy), observer-in-charge, superintendent, and later director, High Altitude Observatory, Climax and Boulder, Colorado,

1940–60; director, National Center for Atmospheric Research, 1960–; director, University Corporation for Atmospheric Research, 1960–; national lecturer, Sigma Xi, 1951–53; chairman, Solar Technical Panel, U.S. National Committee for the International Geophysical Year, 1957–60; director, World Data Center A for Solar Activity, 1957–61; Advisory Committee on Grants, Research Corporation, 1957–65; chairman, Colorado Weather Control Commission, 1958–60; chairman, Panel on Atmospheric Sciences, National Science Foundation, 1959–61; Council, American Astronomical Society, 1960–63; Council, American Meteorological Society, 1960–63; trustee, MITRE Corporation, 1960–; visiting scholar, Phi Beta Kappa, 1963–64; Advisory Committee, World Meteorological Organization, 1963–; Solar Physics Subcommittee of the Space Science Steering Committee, National Aeronautics and Space Administration, 1964–66; trustee, Amherst College, 1964–; trustee, Charles F. Kettering Foundation, 1964–; U.S. National Commission for UNESCO, 1964–; Advisory Committee on Atmospheric Water Resources, Bureau of Reclamation, 1964–; Pacific Science Board, National Academy of Sciences, 1964–; Aspen Society

of Fellows, Aspen Institute for Humanistic Studies, 1964–; Editorial Advisory Board, *Journal of Planetary and Space Science*, 1958–; associate editor, *Journal of Geophysical Research*, 1960–64.

AAAS activities: committeeman-at-large, Section on Astronomy (D), 1959–61; Committee on Science in the Promotion of Human Welfare, 1961, 1963–65; Council, 1962–; Board of Directors, 1963–66; vice president and chairman, Section D, 1964; chairman, Committee on Public Understanding of Science, 1965–.

William W. Rubey

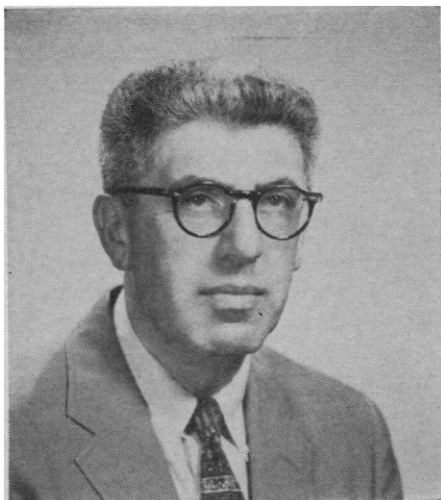
William W. Rubey, 67 (geology), instructor in geology, Yale University, 1922–24; from geologic aide to principal geologist, U.S. Geological Survey, 1920–44, geologist in charge, Division of Areal Geology and Basic Sciences, 1944–47, research geologist, 1947–60; professor of geology and geophysics, University of California, Los Angeles, 1960–; National Research Council: chairman, Division of Geology and Geography, 1943–46, chairman, 1951–54; deputy chairman, Committee on Geophysics and Geography, Research and Development Board, Office of Secretary of Defense, 1947–50; National Academy of Sciences: chairman, Section on Geology, 1947–50, Council, 1951–54, 1965–, Committee on Science and Public Policy, 1961–64; president, Geological Society of America, 1949–50; Divisional Committee for Mathematical, Physical, and Engineering Sciences, National Science Foundation, 1951–55; vice president, American Geological Institute, 1951, 1959; guest scientist, Institute of



Walter Orr Roberts



William W. Rubey



Barry Commoner

Geophysics, University of California, 1954; visiting professor of geology, California Institute of Technology, 1955, Johns Hopkins University, 1956; director, Geochemical Society, 1955-57; councillor, American Philosophical Society, 1956-59; National Science Board, 1960-66; U.S.-Japan Committee on Scientific Cooperation, U.S. State Department, 1961-64; trustee, Carnegie Institution of Washington, 1962-, Woods Hole Oceanographic Institution, 1966-; Award of Excellence, U.S. Department of Interior, 1943; Penrose Medal, Geological Society of America, 1963; National Medal of Science, 1965.

AAAS activities: Committee on Section E, 1939-42; Council, 1950, 1957-63; Committee of Judges, Newcomb Cleveland Prize, 1951, 1957-61, chairman, 1958-59; AAAS representative on Science Service Board of Trustees, 1956-63; Board of Directors, 1957-63; Executive Committee, 1958-59.

For Board of Directors

Two of the four nominees are to be elected for 4-year terms.

Barry Commoner

Barry Commoner, 49 (biology), university fellow, Harvard University, 1937-40; instructor, Queens College, 1940-42; lieutenant, U.S. Naval Reserve, on active duty with Naval Air Force, 1942-46; associate professor of plant physiology, Washington University, 1947-53, professor, 1953-; secretary, Committee on Cancer Research, 1953-58; chairman, Committee on Molecular Biology, 1957-61; chairman,



Gerald Holton

Planning Council for Biology, 1962-64; chairman, Department of Botany, 1965-; director, Center for the Biology of Natural Systems, 1965-; Board of Directors, St. Louis Committee for Nuclear Information, 1958-, president, 1965-66; Council, Society of General Physiologists, 1961; Board of Directors, Scientists' Institute for Public Information, 1963-, co-chairman, 1965-; Governing Board, American Institute of Biological Sciences, 1965-; Editorial Boards, *International Review of Cytology*, 1957-65, *American Naturalist*, 1959-63, *Theoretical Biology*, 1960-64; Advisory Board, *Science Year*, 1965-; AAAS Newcomb Cleveland Prize, 1953.

AAAS activities: chairman, Committee on AAAS Research Grants, 1954-58; secretary, Section on Botanical Sciences (G), 1954-59; Council, 1954-60, 1964-; Committee on Nominations, 1956; Committee on Social Aspects of Science, 1956-58; Committee on Popular Science Books, 1956-61; Steering Committee, AAAS Parliament of Science, 1958; chairman, Committee on Science in the Promotion of Human Welfare, 1958-65; vice president and chairman, Section G, 1960; Committee on AAAS Meetings, 1960-61; Committee on Council Affairs, 1961-62, 1965-; Committee of Judges, Newcomb Cleveland Prize, 1965-.

Gerald Holton

Gerald Holton, 44 (physics), assistant in physics, Wesleyan University, 1940-42; instructor, Brown University, 1942-43; research under Office of Scientific Research and Development, Harvard University, 1943-45; various faculty ranks, Harvard Univer-

sity, 1945-59, professor of physics, 1959-; chairman, Committee on Concentration in Chemistry and Physics, 1955; co-director, Project Physics, 1963-; visiting lecturer, University of California, Berkeley, 1949, 1957; National Science Foundation fellow, Sorbonne and Centre National de la Recherche Scientifique, Paris, 1960-61; member, Institute for Advanced Study, Princeton, 1964; Council, History of Science Society, 1958-61, 1963-; chairman, Committee on History and Philosophy of Physics, American Institute of Physics, 1961-; Advisory Panel for History and Philosophy of Science, National Science Foundation, 1963-65; Council, Federation of American Scientists, 1963-65; trustee, Boston Museum of Science, 1964-; corresponding member, Académie Internationale d'Histoire des Sciences; editor-in-chief, American Academy of Arts and Sciences, 1957-63, founding editor, *Daedalus*; author of *Introduction to Concepts and Theories in Physical Science*, 1952; Outstanding Achievement Citation, Wesleyan University, 1961; Distinguished Service Citation, American Association of Physics Teachers, 1962.

AAAS activities: committeeman-at-large, Section on History and Philosophy of Science (L), 1960-63; vice president and chairman, Section L, 1962; George Sarton Memorial Lecturer, 1962; Council, 1962-; Committee on Council Affairs, 1966-.

Neal E. Miller

Neal E. Miller, 57 (psychology), assistant professor to professor, Institute of Human Relations, Yale University, 1936-52, James Rowland Angell professor, 1952-66; professor, Rockefeller University, 1966-; Army Air Corps, 1942-46; Division of Anthropology and Psychology, National Research Council, 1950-53, chairman, 1958-60; Committee on Human Resources, Research and Development Board, Office of the Secretary of Defense, 1951-53; president, Eastern Psychological Association, 1952-53; American Psychological Association: president, Division of Experimental Psychology, 1952-53, Council, 1954-58, president, 1960-61; Advisory Panel on Personnel and Training Research, Office of the Assistant Secretary of Defense for Research and Development, 1954-57; National Institute of Mental Health: Board of Scientific Counsellors, 1957-61, Committee on Psychopharmacology, 1960-

65; Board of Scientific Overseers, Roscoe B. Jackson Memorial Laboratory, 1959–, chairman, 1962–; expert consultant, Air Force Personnel and Training Research Center; associate trustee, University of Pennsylvania; adviser to the Department of Psychology, University of Brasilia; member, National Academy of Sciences, chairman, Section on Psychology, 1965–; Warren Medal, Society of Experimental Psychology, 1954; AAAS Newcomb Cleveland Prize, 1956; APA Award, 1959; National Medal of Science, 1964.

AAAS activities: vice president and chairman, Section on Psychology (I), 1957; Council, 1957; Committee of Judges, Newcomb Cleveland Prize, 1957; Editorial Board, 1963–.

Richard Brooke Roberts

Richard Brooke Roberts, 55 (biophysics), staff member, Department of Terrestrial Magnetism, Carnegie Institution of Washington, 1937–, chairman, Biophysics Section, 1953–63; Applied Physics Laboratory, Johns Hopkins University, 1942–46; Committee on Civil Defense, National Academy of Sciences, 1955–60; Committee on Arms Control, National Planning Association, 1958–61; Princeton University: Advisory Committees, Department of Physics, 1960–64, and Department of Chemistry, 1960–, Graduate Council, 1961–; consultant, U.S. Arms Control and Disarmament Agency, 1962–63; president, Biophysical Society, 1964–65; member, National Academy of Sciences; Editorial Boards, *Biophysical Journal*, *Journal of Cellular and Comparative Physiology*; Editorial Advisory Board, *Journal of Molecular Pharmacology*; editor, *Microsomal Particles and*

Protein Synthesis, 1958, *Studies of Macromolecular Biosynthesis*, 1964; Presidential Medal of Merit, 1947.

AAAS activities: Council, 1949, 1966; vice president and chairman, Section on Zoological Sciences (F), 1966.

For Committee on Council Affairs

Three of the six nominees are to be elected for 3-year terms.

Claude C. Albritton, Jr.

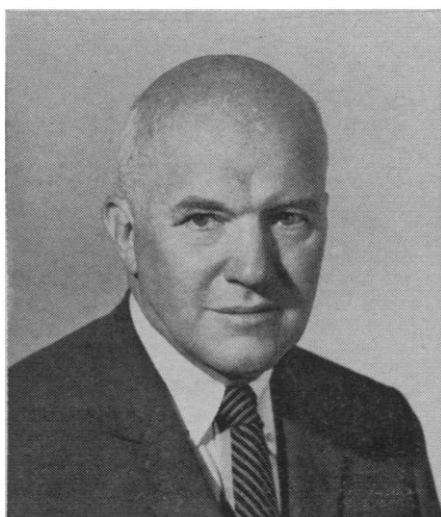
Claude C. Albritton, Jr., 53 (geology), instructor to associate professor, Southern Methodist University, 1936–42; geologist, U.S. Geological Survey, 1942–47; professor, Southern Methodist University, 1947–, chairman of Department, 1947–52, dean of faculty, College of Arts and Sciences, 1952–57, dean of Graduate School, 1957–, W. B. Hamilton Professor of Geology, 1962–; visiting scientist, Texas Academy of Science, 1965–; director, Dallas Council on World Affairs, 1952–55; treasurer, Paleontological Society, 1955–63; Executive Committee, John E. Owens Foundation, 1955–; Geological Society of America: councilor, 1957–60, chairman, 75th Anniversary Committee, 1960–63; trustee, Dallas County Board of Education, 1957–; trustee, E. DeGolyer Foundation, 1960–; U.S. National Committee of the International Union of Geological Sciences: Subcommittee for Documentation, 1962–66, International Commission for the History of Geological Sciences, 1965–; Board of Directors, Dallas-Fort Worth Council of Scientific Societies, 1963–66; American Ge-

ological Institute: chairman, Panel on Role of Geology in Liberal Education, 1963–, Committee on Education, 1965–; chairman, Executive Committee, Southern Methodist University Board of Publications, 1964–; trustee, Fort Burgwin Research Center, 1964–; trustee, Association for Graduate Education and Research in North Texas, 1965–; director, Science Information Institute, 1965–; Committee on Education, American Association of Petroleum geologists, 1966–; editor, *Journal of the Graduate Research Center*, 1962–; editor and coauthor of *The Fabric of Geology*, 1963, *Uniformity and Simplicity: an Inquiry into the Principle of the Uniformity of Nature*, 1966.

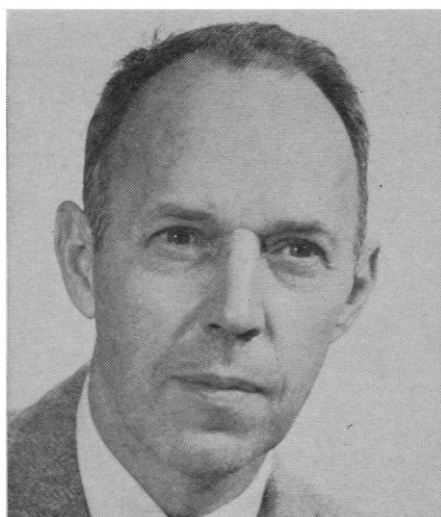
AAAS activities: Council, 1962–.

Nyle C. Brady

Nyle C. Brady, 45 (soil science), research instructor, North Carolina State University, 1946–47; assistant to associate professor of agronomy, Cornell University, 1947–52, professor of soil science, 1952–, head, Department of Agronomy, 1955–63; director of science and education, U.S. Department of Agriculture, 1963–65; director of research and director of Agricultural Experiment Station, New York State College of Agriculture, Cornell University, 1965–; visiting professor, Cornell University Project, University of the Philippines, 1953–55; assistant to the director of agricultural relations, Tennessee Valley Authority, 1959; president, Soil Science Society of America, 1964; vice-president, Commission IV, Eighth International Soil Science Congress, 1964; Environmental Pollution Panel and World Food Supply



Neal E. Miller



Richard Brooke Roberts



Claude C. Albritton, Jr.



Nyle C. Brady

Panel, President's Science Advisory Committee, 1965; editor-in-chief, *Proceedings of Soil Science Society of America*, 1957-62; coauthor, *Nature and Properties of Soil*, 1960; Outstanding Professor Award, New York State College of Agriculture, Cornell University, 1952; James E. Talmage Scientific Achievement Award, Brigham Young University, 1966.

AAAS activities: vice president and chairman, Section on Agriculture (O), 1966; Council, 1966.

Henry W. Riecken

Henry W. Riecken, 48 (social psychology), social science analyst, U.S. Department of Agriculture, 1941-46; personnel consultant, Army Air Corps, 1943-45; research assistant, Harvard University, 1946-49, lecturer in social psychology and research associate in



Henry W. Riecken

clinical psychology, 1949-54; professor of sociology and senior staff member, Laboratory for Research in Social Relations, University of Minnesota, 1954-58; assistant director (Division of Social Sciences), National Science Foundation, 1958-64, associate director (education), 1964-66; vice president, Social Science Research Council, 1966-; Board of Directors, Association for Aid to Crippled Children, 1962-; president, Sociological Research Association, 1966; American Psychological Association: Publications Board, 1962-, Committee on Professional and Scientific Aims in Psychology, 1963-, Ad Hoc Committee on Public Affairs, 1966-.

AAAS activities: Committee of Judges, Socio-Psychological Prize, 1960-61; committeeman-at-large, Section on Social and Economic Sciences (K), 1963-; Committee on Affiliation, 1965-; Council, 1966-.

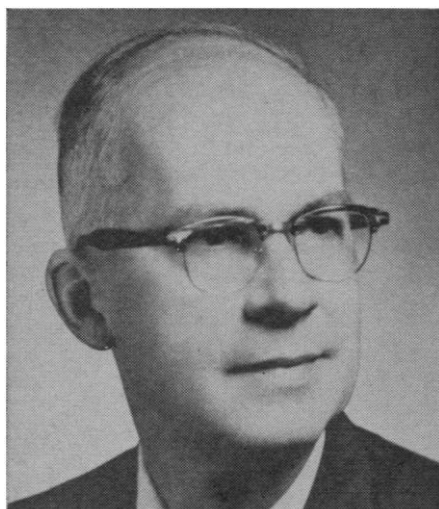
John A. Moore

John A. Moore, 51 (biology), tutor in biology, Brooklyn College, 1939-41; instructor in biology, Queens College, 1941-43; assistant professor to professor of zoology, Barnard College and Columbia University, 1943-; research associate in herpetology, American Museum of Natural History, 1942-; Fulbright research fellow, Australia, 1952-53; Guggenheim fellow, 1959-60; supervisor, Yellow Version, Biological Sciences Curriculum Study, 1959-; program chairman, XVI International Congress of Zoology, 1963; president, Society for the Study of Evolution, 1963; U.S. National Commission for UNESCO, 1964-66; member, National Academy of Sciences; managing editor, *Journal of Morphology*, 1955-60; Editorial Boards, *American Zoologist*, *Ecology*, *Columbia Biological Series*; author of *Principles of Zoology*, 1957, *Heredity and Development*, 1963.

AAAS activities: committeeman-at-large, Section on Zoological Sciences (F), 1959, 1964-; Council, 1966-.

Charles F. Savage

Charles F. Savage, 60 (engineering), with General Electric Company since 1928: division engineer, Meter and Instrument Department, 1939-47, assistant to manager—Engineering, 1947-53, manager—Engineering Administrative Service, 1953-54, consultant—Engineering Professional Relations, Engineering Services, 1954-60, manager—Engineering Placement and Professional Relations, 1960-; adviser,



John A. Moore



Charles F. Savage



William C. Steere

Defense Advisory Committee on Professional and Technical Compensation, 1956-57; chairman, Instrumentation Division, American Institute of Electrical Engineers, 1957-58; Institute of Aerospace Sciences: Instrument Editorial Board, 1945-53, chairman, Boston Section, 1952, Council, 1953-54; Committee on Development of Young Engineers, Engineers Council for Professional Development, 1961-; Engineers Joint Council: chairman, Technical Planning Committee, 1962-, Board of Directors, 1963-; Institute of Electrical and Electronics Engineers: Intersociety Relations Committee, 1963-65, chairman, Professional Relations Committee, 1964-; chairman, Professional Engineers Conference Board for Industry, 1964-; Committee on Qualifications for Registration, National Council of State Boards of Engineering Examiners, 1964-; Intersociety Relations Committee, American Institute of Aeronautics and Astronautics, 1965-; patents: gyroscope attitude indicator, pressure sensitive recording paper, thermostat design.

AAAS activities: committeeman-at-large, Section on Engineering (M), 1959-63, 1966-; vice president and chairman, Section M, 1964-65; Council, 1964-.

William C. Steere

William C. Steere, 58 (botany), instructor in biology, Temple University, 1929-31; instructor in botany to professor and chairman of the department, University of Michigan, 1931-50; professor of biology, Stanford University, 1950-58, dean of the Graduate Division, 1955-58; director, New York Botanical Garden, 1958-; professor of botany, Columbia University, 1958-; exchange professor, University of Puerto Rico, 1939-40; senior botanist, U.S. Board of Economic Warfare Cinchona Missions, Colombia, 1942-43, Ecuador, 1943-44; senior botanist, Alaska Terrain and Permafrost Section, U.S. Geological Survey, 1949-54; program director for systematic biology, National Science Foundation, 1954-55; president, American Bryological Society, 1936-38; president, California Botanical Society, 1953; president, American Society of Naturalists, 1957; president, Botanical Society of America, 1959; president, American Society of Plant Taxonomists, 1959; president, Cryptogenic Section, Sociedad Argentina de Botánica, 1960;

president, Torrey Botanical Club, 1961; president, New York State Association of Museums, 1961-62; Science Award Committee, Phi Beta Kappa, 1962-64, chairman, 1965; president, Biological Abstracts, 1964-65; vice president, American Association of Museums, 1966; editor-in-chief, *The Bryologist*, 1938-54, *American Journal of Botany*, 1953-57; section editor, *Biological Abstracts*, 1958-.

AAAS activities: vice president and chairman, Section on Botanical Sciences (G), 1949; Council, 1949, 1963-; Committee on AAAS Meetings, 1959-61; committeeman-at-large, Section G, 1959-66; Committee on Nominations and Elections, 1964-65; Council Study Committee on Cooperation with Developing Countries, 1965-66; vice president and chairman, Section on Information and Communication (T), 1966.

Human Factors Society

The Human Factors Society was elected as an affiliate at the AAAS annual meeting in Berkeley, California, December 1965. The Society is a professional, nonprofit organization founded in 1957 with the following objectives: (i) To increase knowledge about man in relation to machines and working environments; (ii) to promote the application of human factors knowledge to the design of systems and devices of all kinds; and (iii) to provide for the exchange of ideas among specialists engaged in developing and applying human factors information. The Society meets these objectives through its publications, meetings, and local chapter activities.

The annual dues include a subscription to the following three publications which are sent to each member.

Human Factors, the bi-monthly journal of the Society, publishes a wide range of original papers. These articles contain experimental, analytical, and methodological studies relative to the knowledge of man in relation to machines and environmental factors. Typical areas which are covered in these articles are: visual displays, effects of vibration on human performance, anthropometry, human factors in systems engineering, evaluation and prevention of human errors, and man as a controller. Frequently an entire issue of *Human Factors* will be devoted to a

single topic, such as man-in-space or vision. These issues soon become standard reference documents.

The *Human Factors Society Bulletin*, issued monthly, contains news of the human factors profession and people, a calendar of meetings and conferences, announcements of new publications, and listings of employment opportunities. The Bulletin also reports Society and local chapter activities, elections, and other items of business.

The *Directory*, published annually with an updated semi-annual appendix, contains a biographical list of members cross-referenced by state and employer. Society and local chapter officers are listed and analyses of membership composition, summaries of local chapter activities, and the by-laws of the Society are included.

The annual meeting of the Society, held for three days in late autumn at a different location each year, is open to members and all other interested persons. In addition to the business meetings, technical sessions are held featuring invited addresses, individual research papers, panel discussions, symposia, and working conferences. The 1966 annual meeting will be held in Los Angeles at the Disneyland Hotel, 1-4 November. The 1967 convention is scheduled for Boston, Massachusetts.

Throughout the country local organizations affiliated with the national Society provide continuing opportunities for professional activities through their programs, meetings, and publications. California Chapters are located in Los Angeles, Sacramento, San Diego, and the San Francisco Bay Area. The Southern Ohio Chapter serves the Dayton-Columbus-Cincinnati area, and the North Texas Chapter serves Dallas and Fort Worth. The Metropolitan Chapter is located in New York City. During 1965 three new local chapters were installed in Huntsville, Alabama; Boston, Massachusetts (New England Chapter); and Seattle, Washington (Puget Sound Chapter).

Most of the local chapters meet monthly and often hold joint meetings with local groups of other societies such as the ASME, IEEE, and AIAA on topics of mutual interest. A number of local chapters have held joint meetings including a yearly full-day symposium sponsored by the four California chapters at a central location.

There are three categories of membership in the Human Factors Society.

Member. Any person having a bach-