

# SPRINGER-VERLAG NEW YORK INC.

*Published by Springer-Verlag Berlin · Heidelberg · New York:*

*Publication Date:*

*Summer 1965*

*4 Issues per Year*

## MINERALIUM DEPOSITA

International Journal on the Geology, Mineralogy and Geochemistry  
of Economic Mineral Deposits

### Editorial Board:

Professor Paul RAMDOHR, Heidelberg  
Professor Paul ROUTHIER, Paris  
Mr. J. PEREIRA, London  
Professor A. MAUCHER, München  
Professor J. DE MAGNEE, Bruxelles  
Professor G. C. AMSTUTZ, Heidelberg

With the cooperation of leading  
specialists in twenty-five countries.

This journal introduces basically new observations, principles, and interpretations from the field of economic mineral deposits. It contains comprehensive articles, brief original reports, scientific discussions, and news on meetings and on events in the mineral industry. Emphasis is placed on high quality of contents and form of all articles and on an international coverage of subject matter. In accordance with the character of the science of mineral deposits this journal will be a link between research and application and, consequently, is of interest to those active in mineral research as well as to the exploration geologists.

## Personnel Placement

### POSITIONS WANTED

**Biochemist, Pharmacist, M.S.** degree. Enzyme experience. Research preferred. Male, age 54. Box 217, SCIENCE. X

**Biochemist, Ph.D.**, 33, 4 years of teaching and research: enzyme isolation, kinetics, mechanisms. Desires research and/or teaching position. Pa.-N.J. area. Box 221, SCIENCE. X

**Electronics Engineer** seeks position on research team working in life sciences. Eleven years' experience in bioinstrumentation for aerospace research and development. Will relocate world wide. Horace T. Castillo, 2611 Pontiac Drive, Alamogordo, New Mexico, U.S.A. Phone 505-473-1034. 8/6

**General Physiologist Ph.D.** seeks teaching/research position. Box 220, SCIENCE. 8/6

**Immunohematologist-Immunogeneticist Ph.D.** Human genetics training, blood group serology experience. Seeking clinical blood bank or hematology research teaching position; publications. Box 219, SCIENCE. X

**Parasitologist, Ph.D.** (Illinois), 14 years' research, 4 years' teaching experience. Desires teaching/research position. K. N. Mehra, Veterinary College, Pantnagar, Nainital, India. X

**Product Development**, diagnostic and surgical instruments, dental and hospital fields. Market research, literature research, writing and editing. Box 222, SCIENCE. X

**Reproductive Physiology, Endocrinology, Ph.D.** publications, 9 years' experience, seeking academic position with existing or proposed graduate program. Box 218, SCIENCE. X

### POSITIONS OPEN

#### CLINICAL PHARMACOLOGIST

World-leading Midwestern pharmaceutical house has an immediate opening on its Clinical Investigation staff for an M.D. with advanced training in a basic science. Clinical training and/or interest in pharmacological investigative methodology or Board eligibility in Internal Medicine desired. Board certification not required.

Reply with complete resume including salary requirements to Box 215, SCIENCE.  
an equal opportunity employer

#### ENTOMOLOGIST

for permanent civil service position in mosquito control program of Jefferson Parish, Louisiana (suburban New Orleans). Must have master's degree in entomology plus at least 1 year of related work experience. Starting salary \$615 per month.

Apply to Jefferson Parish Personnel Department, Room 818, Courthouse, Gretna, Louisiana. X

**Microbiologist**; 350-bed general hospital in Milwaukee, Wisconsin, with a large departmentalized laboratory has an opportunity for an experienced clinical microbiologist. The present staff of 3 full-time pathologists and 63 staff employees (46 technical) is presently undergoing expansion to include a fourth pathologist and key personnel in the technical areas. The hospital and laboratory have well-developed plans for expansion.

Responsibilities will include active participation in the daily work, supervision of staff (present three full-time and two part-time staff members), development of procedures, participation in investigational studies, teaching of medical technology students (School of Medicine Technology is affiliated with two colleges) and so forth. Candidates should have an advanced degree and experience in clinical microbiology. Experience in seroimmunology would be desirable but not required.

First inquiry should contain résumé and reference as well as salary expected. Submit reply to Dr. Norbert Enzer, Director, Department of Pathology and Clinical Pathology, Mount Sinai Hospital, Milwaukee, Wisconsin. 8/6

## RESEARCH PHARMACOLOGIST

Expanding pharmaceutical company has a position available for a Ph.D. in pharmacology or toxicology with several years experience in toxicological investigations and research.

Program assignments are of an order of difficulty requiring an application of advanced skills and knowledge.

Salary is commensurate with education, background and experience. In addition to a superior benefits program, the company does pay relocation expenses.

Inquiries, including positions held, salaries received, expected salary, education and personal data, may be directed in confidence to:

L. A. Conches

Placement Manager, Dept. 214

**MILES  
LABORATORIES, INC.**  
ELKHART, INDIANA

An Equal Opportunity Employer

# PHARMACOLOGIST

This senior position requires a Ph.D. in Pharmacology or an allied field and at least 3 years of well-related experience. You will be in charge of a lab of several professional people and will be required to organize and develop a program under the general supervision of the department head. Areas for exploration include analgesia, hypertension, neurophysiology, and respiratory functions. Your imaginative approach to research will be well rewarded and you will be encouraged to publish your findings. Time is also available for original research.

As the central research facility for the Warner-Lambert Pharmaceutical Company, the Research Institute is well-equipped to explore all avenues of research in the hunt for new and better therapeutic agents.

The starting salary for this position will be commensurate with the background and experience of the individual.

Please address your inquiry in confidence to Mr. R. L. Bowlby, Technical Employment

## WARNER-LAMBERT RESEARCH INSTITUTE

170 Tabor Road  
Morris Plains, New Jersey

An Equal Opportunity Employer

### POSITIONS OPEN

#### ASSISTANT PHYSIOLOGIST-PHARMACOLOGIST

To study central coronary flow regulation. Experience preferred but not essential. A knowledge of stereotaxic procedures and techniques is desirable. Excellent benefits. Salary open. Send résumé to Mr. J. G. Charlé Personnel Administrator, The Brookdale Hospital Center, Linden Blvd. & Rockaway Parkway, Brooklyn 12, N.Y.

**Deans: Engineering, Science, Medicine**  
Have complete bioengineering program (emphasis) ready for immediate institution to strengthen upper undergraduate and graduate curricula. Includes work in quantitative biology, biotechnology, biodynamics, industrial hygiene engineering, environmental science, reliability engineering, computer methods. Box 405, Beaverton, Ore. 97005.

#### MUSEUM CURATOR

Background in geology-paleontology basic requirement; some astronomy and knowledge of electronics desired.

Salary dependent on qualifications.

Apply: Director, Dayton Museum of Natural History, Dayton, Ohio 45414.

Predoctoral Assistantships and traineeships in food toxicology leading to M.S. and Ph.D. degrees available to qualified candidates.

For application form and information write:

Professor Leo Friedman

Department of Nutrition and Food Science  
Room E18-666

Massachusetts Institute of Technology  
Cambridge, Massachusetts 02139

## NEUROPHYSIOLOGIST

An attractive opening exists for a young Ph.D. with one to three years of postdoctoral experience in our Neurobiology Department. Versatility in neurophysiologic experimentation and interest in our complex program encompassing neuropharmacologic and neuroendocrine exploration of CNS drugs is desirable. Main emphasis is on basic research with steroid hormones. Send resume and inquiries in complete confidence to Personnel Department.

## SYNTEX LABORATORIES INC.

Palo Alto, California  
3401 Hillview Avenue

### POSITIONS OPEN

#### ENDOCRINE- PHYSIOLOGIST

Seeking a Ph.D. with a strong formal training in endocrine physiology and experience or interest in the biochemistry of endocrine functions. Duties will involve aiding in the design, direction and evaluation of fundamental research efforts in various aspects of the endocrine system as well as some future product development. Prior experience in diabetes would be helpful. In addition, individual will supervise a group of two or three junior scientists. Liberal company benefit program.

Please send résumé to Cyrus M. Greenberg, Ph.D., Director of Scientific Employment.

SMITH KLINE & FRENCH LABORATORIES, 1584 Spring Garden Street, Philadelphia, Pa. 19101.

An Equal Opportunity Employer



**Faculty positions, Ph.D.**, assistant professor. Cellular physiology, cellular and molecular genetics, biochemistry, developmental biology. Rapidly developing, modern biology department, in state-supported institution only 7 years old. A "ground-floor" opportunity of unusual potential for a young man of pioneering spirit.  
For details write to Dr. Jack Carlton, Dean, College of Sciences, Louisiana State University in New Orleans, New Orleans, Louisiana. 7/30

## TECHNICAL SALES REPRESENTATIVES

New York & Boston area openings for selling biochemical instrumentation. Past history of successful selling is a must. Related background in the areas of spectroscopy or radiochromatography would be helpful. Excellent growth opportunity with a leading producer of nuclear instrumentation.

Send resume including salary requirements to Mr. Stanley Seadale.

Vanguard Instruments  
Division of



TECHNICAL  
MEASUREMENT  
CORPORATION

441 Washington Ave., North Haven, Conn.  
An Equal Opportunity Employer

## The Market Place

### BOOKS AND MAGAZINES

Symposium publishers in medicine and ancillary discipline.

Inquire of: Editor

Franklin Publishing Company  
2047 Locust Street  
Philadelphia, Pa. 19103

### SUPPLIES AND EQUIPMENT

#### • HYPOPHYSECTOMIZED RATS

Shipped to all points via Air Express  
For further information write

HORMONE ASSAY LABORATORIES, Inc.  
8159 South Spaulding Ave., Chicago 29, Ill.

# Now you can centrifuge safely up to 40,000 g's in glass

See the advantages you get with new, super strong COREX® high-speed glass centrifuge tubes:



...the strength that protects samples at 40,000 g's or 20,000 RPM

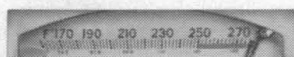


...the transparency of glass

...the resistance of glass to practically all solvents



... the sterilizability of glass



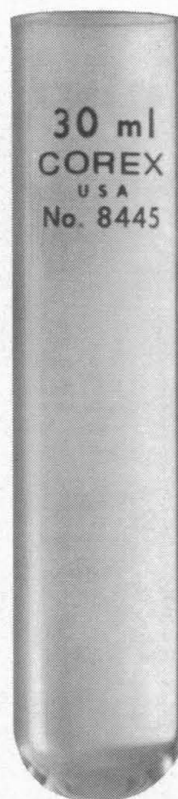
Order COREX® tubes from your CORNING® labware dealer today. Put all the benefits of glass to work for you in high-speed centrifugation.

Prices:

No. 8441, 15 ml, 60 cents each, \$25.92 per case of 48. These must be used with 8441 rubber-sleeve adapter, \$1.60 each, \$17.28 per case of 12.

No. 8445, 30 ml, 90 cents each, \$29.16 per case of 36. These must be used with 8445 rubber-sleeve adapter, \$1.70 each, \$18.36 per case of 12.

Greater discount savings are available to you on larger quantities.



Our 1965 warranty covers COREX high-speed tubes. Any you buy which are unserviceable as of December 31, 1965, will be replaced without charge.

New, and available now, for speeds up to 15,000 g's No. 1265 bottle, 150 ml, with autoclavable cap. For speeds up to 5,000 g's or 5,000 RPM, there are five low-speed COREX tubes.

Write for complete information on high- and low-speed COREX tubes and for new sizes and types soon to be released. Laboratory Glassware Dept., Corning Glass Works, 9207 Crystal Street, Corning, N. Y.

**CORNING**

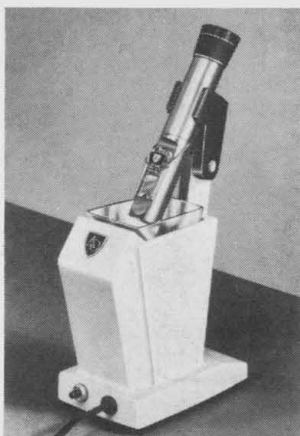
THE MAKERS OF PYREX® LABWARE

1915-1965 PYREX® Ware—beginning another 50 years of leadership for science

		Sorvall	IEC	Lourdes
	15-ml No. 8441 tube with 8441 adapter fits 50-ml cavities in these rotors	SS-1	862	9 RA
		SS-34	856	16 RA
	30-ml No. 8445 tube with 8445 adapter fits 50-ml cavities in these rotors	H B-4		
		SP/X		
	150-ml No. 1265 bottle with adapter fits 250-ml cavity in this rotor	SS-1	862	9 RA
		HB-4	856	16 RA
		SS-34		
		SP/X		
		GSA	—	—



## Direct determinations of solution concentrations ... with a single drop of sample!



**Optional Illuminated Table Stand provides utmost convenience for laboratory applications.**

**Countless Applications:** The new Model 10402 Goldberg T/C\* Refractometer can be used as a "concentrimer" to check and adjust concentrations of laboratory reagents and preparations, pharmacy batches and prescriptions. It's an ideal teaching and research tool for chemistry and physics laboratories.

**Automatic Temperature Compensation:** Unique, hermetically-sealed liquid prism eliminates error due to temperature changes. No water bath or temperature controller needed.

**Ultra-Micro Analysis:** Small sample needed, no more than 0.02 ml ... a single drop of solution.

**Instant Readings:** Read index of refraction and index of refraction difference direct from built-in double scale.

**Accurate:** Refractive index scale reads directly to 0.0002, comparable in accuracy to large bench-type Abbe refractometers.

**Tables Available:** Table of Properties of aqueous solutions related to index of refraction, consisting of 70 common laboratory reagents and other solutions is available from American Optical at \$15.00.

\* The new Goldberg Refractometer and its use as a "concentrimer" were developed in cooperation with Dr. A. V. Wolf, Head of the Dept. of Physiology, University of Illinois, College of Medicine.



**AMERICAN OPTICAL COMPANY**  
INSTRUMENT DIVISION • BUFFALO, NEW YORK 14215

Dept. S-5

Please send complete information on the Model 10402 Goldberg T/C Refractometer.

Name \_\_\_\_\_

Address \_\_\_\_\_

City \_\_\_\_\_ State \_\_\_\_\_ Zip \_\_\_\_\_

IN CANADA: P. O. Box 130, Postal Station R, Toronto 17, Ontario