

Athens, Greece. (Intern. Organizations Staff, Bureau of Intern. Commerce, U.S. Dept. of Commerce, Washington, D.C.)

28-30. **Hypnosis and Psychosomatic Medicine**, intern. congr., Paris, France. (H. C. Harding, 2050 NW Lovejoy, Portland 9, Ore.)

28-30. National Soc. for **Prevention of Blindness**, Houston, Tex. (J. W. Ferree, 16 E. 40 St., New York 10016)

28-1. **Biometric Soc.**, Florida State Univ., Tallahassee. (E. L. LeClerg, 6804 40th Ave., University Park, Hyattsville, Md.)

28-1. **American College Health Assoc.**, Miami Beach, Fla. (R. E. Boynton, 5518 Merrick Dr., Coral Gables, Fla.)

29-30. **Space Navigation and Communications**, natl., Houston, Tex. (P. Schrock, Inst. of Navigation, 711 14th St. NW, Washington, D.C. 20005)

29-30. Association for **Symbolic Logic**, Chicago, Ill. (T. Hailperin, Dept. of Mathematics, Lehigh Univ., Bethlehem, Pa. 18015)

29-1. American Assoc. of **Endodontists**, Detroit, Mich. (E. C. Van Valey, 9 Rockefeller Plaza, New York 10020)

29-1. American Assoc. for **History of Medicine**, Philadelphia, Pa. (J. B. Blake, Natl. Library of Medicine, 9600 Wisconsin Ave., Bethesda, Md.)

29-1. American Acad. of **Neurology**, annual, Cleveland, Ohio. (AAN, 7100 France Ave. S., Minneapolis, Minn. 55410)

29-1. **Midwestern Psychological Assoc.**, 27th annual, Chicago, Ill. (F. A. Mote, Psychology Bldg., Madison, Wis. 53706)

29-1. American **Philosophical Assoc.**, western div., Chicago, Ill. (L. E. Hahn, Dept. of Philosophy, Southern Illinois Univ., Carbondale)

29-2. Protides of the **Biological Fluids**, 13th colloquium, Bruges, Belgium. (P.O.B. 71, Bruges 1)

29-2. Association of **Clinical Scientists**, New York, N.Y. (R. P. MacFate, ACS, 300 N. State St., Chicago, Ill. 60610)

29-2. **Pan American Medical Assoc.**, 40th annual congr., Grand Bahama Island. (PAMA, 745 Fifth Ave., New York 10022)

29-2. **Roentgen**, 46th German congr., Nuremberg, Germany (A. Jakob, c/o Strahleninstitut der Stadt, Krankenhaus, Flurstr. 17, 85 Nuremberg)

30-1. **Colorado-Wyoming Acad. of Science**, annual, Univ. of Denver, Denver, Colo. (C. Norton, Dept. of Botany and Plant Pathology, Colorado State Univ., Fort Collins)

30-1. **Indiana Acad. of Science**, Culver. (C. F. Dineen, St. Mary's College, Notre Dame, Ind. 46556)

30-1. **Nebraska Acad. of Sciences**, Lincoln. (C. B. Schultz, Morrill Hall 101, Univ. of Nebraska, 14th and U St., Lincoln 68508)

30-2. Society of **Biological Psychiatry**, New York, N.Y. (G. N. Thompson, 2010 Wilshire Blvd., Los Angeles, Calif.)

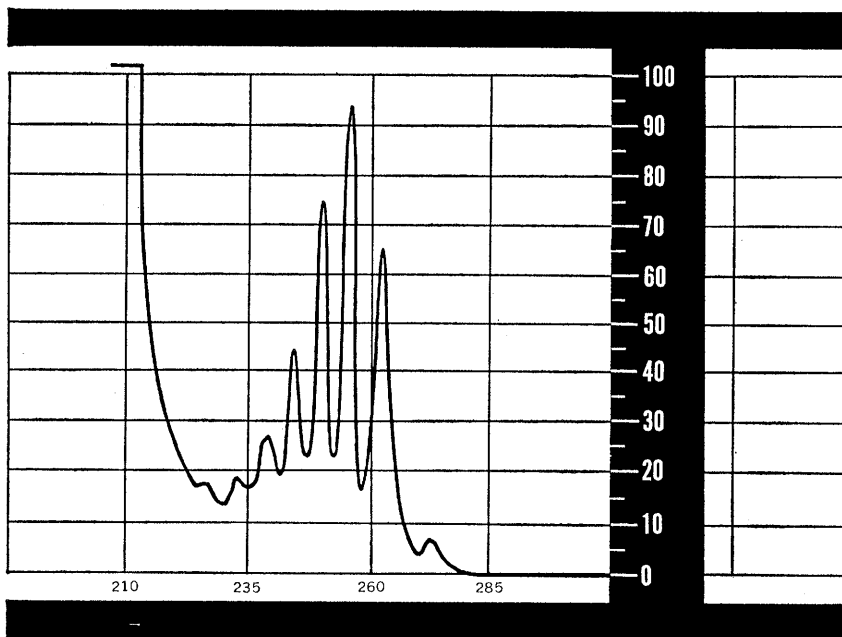
30-2. Academy of **Psychoanalysis**, annual, New York, N.Y. (A. H. Rifkin, 125 E. 65 St., New York 10021)

30-2. American **Psychosomatic Soc.**, annual, Philadelphia, Pa. (APS, 265 Nassau Rd., Roosevelt, N.Y. 11575)

30-3. American **Psychoanalytic Assoc.**, 52nd annual, New York, N.Y. (APA, 1 E. 57 St., New York 10022)

2 APRIL 1965

The Finest Spectrophotometers are at Matheson Sci.



Coleman ■ Bausch & Lomb
Carl Zeiss (West Germany)

Matheson carries the top lines at—

CHICAGO, 1735 N. Ashland Ave.
CINCINNATI, 6265 Wiehe Road
CLEVELAND, 4540 Willow Pkwy.
DETROIT, 9240 Hubbell Ave.
HOUSTON, 6622 Supply Row
KANSAS CITY, MO., 3160 Terrace Street
LOS ANGELES, 5922 Triumph Street
OAKLAND, 5321 East 8th Street
PHILADELPHIA, Jackson & Swanson Sts.

MAIL COUPON FOR SPECTROPHOTOMETER DATA

Matheson Scientific, Inc., P.O. Box 85, East Rutherford, N. J. 07073

Please send literature on the following spectrophotometers:

☐ Coleman ☐ Bausch & Lomb ☐ Zeiss

NAME _____

FIRM _____

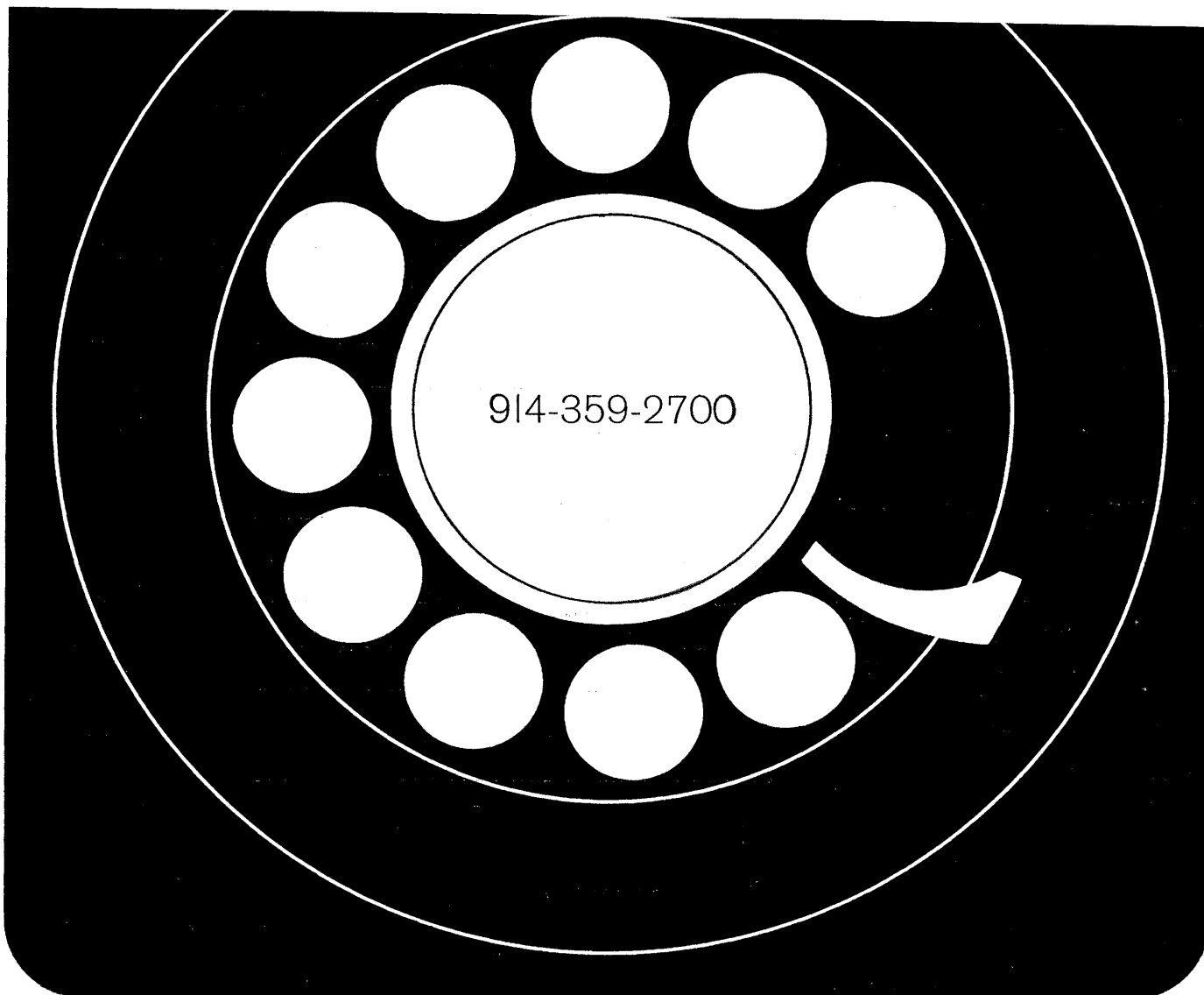
ADDRESS _____

CITY _____

STATE _____



MATHESON SCIENTIFIC
Division of The Matheson Company, Inc.



Call collect and ask for Maryann

That is, if you need C^{14} , H^3 or S^{35} labeled amino acids — or information about them — call her. She'll fill your order for any (or all) of the essential amino acids with C^{14} labeling the minute you hang up. She has most of the essential amino acids H^3 labeled too. Some with S^{35} . (It's true that she'll also happily fill your order for a wide variety of labeled and unlabeled nucleotides, antimetabolites, sugars and other things. But that's not what this ad is about. Our catalog is complete though. Why not ask for it?)

Back to the labeled amino acids. Ours are generally lowest in price. Perhaps more important, however, are our quality and activity specifications. They're the highest. And, with each shipment we try to prove this by sending a Product Analysis Report covering the specific material you receive. Gives you all the quality control data. Also a radiochromatogram with 0.5% sensitivity. This precise evidence of quality enables you to use all your time doing research. You can leave the quality control to us.

Schwarz BioResearch, Inc.

Orangeburg, New York 10962



New Products

Refrigerated cabinet, Frigid-Cab 13, explosion-proof inside and out, approved by Underwriters' Laboratories for refrigerated storage of flammable materials in potentially explosive atmospheres; storage capacity, 13 ft³. Protects from explosion hazards due to: fumes from containers in the chamber and leaking therefrom; fumes in the environment. Temperature ranges: from 35° to 50°F in the main storage area; from 0° to 20°F in the freezer compartment. No internal controls; all wiring and controls are housed in approved conduit or aluminum castings. Compressor is hermetically sealed and explosion proof. Storage chamber, 25 by 21 by 33 inches high (63 by 53 by 83 cm); freezer, 22 by 13.5 by 8 inches high. Four shelves. External dimensions: 30 by 32 by 59 inches high.—D.J.P. (Lab-Line Instruments, Inc., 15th and Bloomingdale Aves., Melrose Park, Ill.)

Circle 1 on Readers' Service card

Expanded-scale pH meter, covers the range 0 to 14 pH or 0 to ± 1400 mv; full-scale deflection of any 3-pH unit range or of 0 to ± 300 mv obtained by pulling the control knob. No batteries; calibration potential is provided by a Zener-diode referenced power supply. Input signal is modulated by a solid-state chopping system; use of a-c circuitry reduces drift to less than 0.005 pH per day. Repeatability better than ± 0.005 pH, with relative accuracy of 0.01 pH when operating in the expanded mode. Ten-inch taut-band suspension meter has a mirror scale to eliminate parallax. Temperature compensation, manual or

The material in this section is prepared by Denis J. Prager (D.J.P.), Laboratory of Technical Development, National Heart Institute, Bethesda 14, Md. (medical electronics and biomedical laboratory equipment).

The information reported here is obtained from manufacturers and from other sources considered to be reliable. Neither *Science* nor the writer assumes responsibility for the accuracy of the information. A Readers' Service card for use in mailing inquiries concerning the items listed is included on page 109. Circle the department number of the item in which you are interested on this card.

automatic, from 0° to 100°C. Usable with grounded or ungrounded solutions and all standard electrodes. Supplied with the Corning pH electrode, with triple-purpose glass membrane for general purpose, low sodium-error, or high-temperature pH measurements. Dimensions: 15 inches square by 7 inches deep.—D.J.P. (Corning Glass Works, Corning, N.Y.)

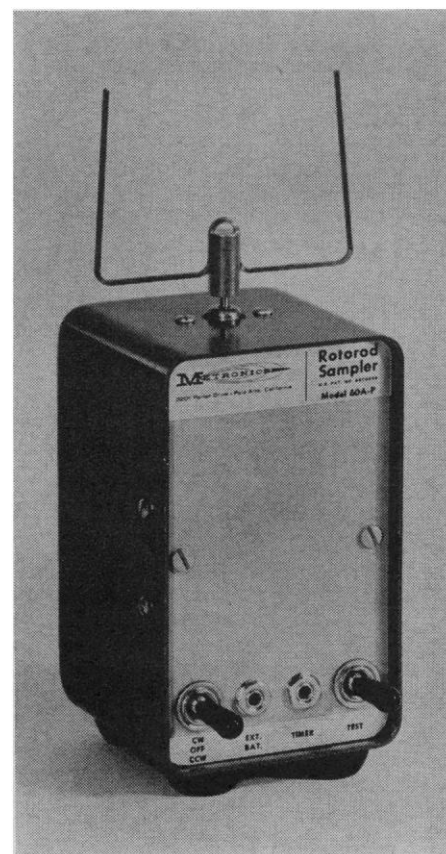
Circle 2 on Readers' Service card

Well scintillation counter, detects solid or liquid low-level gamma- or beta-ray emitting samples in test tubes or bottles of small diameters. Crystal detector is a 1.75-inch diameter by 2-inch (4.5 by 5.1 cm) sodium iodide crystal integrally assembled with a 2-inch photomultiplier tube. This assembly forms an optically coupled plug-in unit—light-tight and shielded from magnetic fields. The well in the NaI crystal is 0.66 inch in diameter by 1.55 inches deep; holds 5-ml samples. Crystals up to 3 inches in diameter may be counted with this or a replacement detector. Lead shielding is 2.25 inches thick, except at the bottom. Efficiency for iodine-131 is 45 percent; background level, 250 count/min. Access to the sample is by way of a swivel lid (no lifting). Transistorized pre-amplifier has a gain of 10; provides output pulses of up to 5 volts negative. Output impedance, 100 ohms; rise time, 0.3 μ sec; decay time, 1.6 μ sec. Designed for use with standard Baird-Atomic scalars, amplifiers, and rate meters which supply the required high and low voltages. Dimensions: (model WC-173) 8-inch diameter by 13 inches. Weight: 250 lb (112 kg). List: \$995.—D.J.P. (Atomic Accessories Inc., 811 West Merrick Road, Valley Stream, N.Y.)

Circle 3 on Readers' Service card

Atmospheric particle sampler, versatile, compact, economical, collects particles $\geq 1 \mu$ from large volumes of air (≤ 115 lit./min) on miniature-battery power. The portable Rotorod has two

components: constant-speed motor in a case measuring 1.5 by 1.5 by 3.5 inches high (3.8 by 3.8 by 8.9 cm); and a rotating collector rod. Particles are collected by impaction on the leading edge of the rotating rod. Volume of air sampled is that swept out by the collection surface; sampling rate is constant if motor speed is constant. Number, character, and size of particles collected are determined microscopically, and volume of air sampled and particles per unit volume are calculated. Motor speed is constant at 2400 rev/min ± 2 percent at from 9 to 16 volts. Battery life for continuous operation: 4 hours on two 6-volt radio batteries; 50 hours on 12-volt lantern battery; 700 hours on 12-volt automobile battery. Rods available in two configurations: type H for particles of 1 to 10 μ (sampling rate, 41 lit./min); type U for particles $\geq 10 \mu$ (115 lit./min). Collecting surface is coated with tacky silicone grease or other suitable material. Samples may be collected on either side of the rod by reversing battery polarity (and rod rotation). Model 60A (170 g) can be tripod-mounted or suspended from a balloon; several can be arranged for sequential measurements. For laboratories or industries concerned with measuring indoor-air pollution, table-



book
news
from



W & W

Levander:

INDUCTION PHENOMENA IN TISSUE REGENERATION

This careful study of the physiology, histology and histochemistry of tissue regeneration contains both clinical and experimental work. In it the author concentrates on the principal idea that regeneration of tissue is a repetition of its embryonic development, and, therefore, a mechanism common to both fetal and post-fetal growth must be sought. Much of the book is based on hitherto unpublished research, performed at the Experimental Department of Köping Hospital by Dr. Levander and colleagues.

By *Gustav Levander*, Department of Anatomy, University of Uppsala, Uppsala, Sweden

1965

211 pp., 67 figs.

\$12.00

THE WILLIAMS & WILKINS CO.

428 East Preston Street

Baltimore, Maryland 21202

*Publishers of Books and Periodicals
in Medicine and the Allied Sciences.*

mount model 60A-P has: both batteries and a jack for external power, reversing switch, and jack for timer. Model 60A costs less than \$100.—D.J.P. (Metronics Associates, Inc., 3201 Porter Drive, Stanford Industrial Park, Palo Alto, Calif.)

Circle 4 on Readers' Service card

Sample chromatograms of physiological fluid analyses made in 11 hours with Beckman Instruments model 120B amino acid analyzer are featured in a new brochure, DS-248. The accelerated run-times result from the use of spherical resins as the column packing. All peaks are labeled, and accelerated run times are indicated. Samples represented are human urine, human plasma, and a synthetic mixture of amino acids and related compounds normally found in physiological fluids (the concentration of each component of this mixture is indicated). Column size and height, flow rates, back pressure, sample size, buffers and times, and column temperatures and times are given. The brochure is a convenient reference, and a convincing advertisement for the Beckman analyzer. Dimensions: 21.75 by 16.75 inches (55 by 42 cm). Copies of the brochure are available from Beckman. —D.J.P. (Spinco Div., Beckman Instruments, Inc., Palo Alto, Calif.)

Circle 5 on Readers' Service card

Thermoelectric microwave power meter, measures from 0.3 μ w to 100 mw full scale within 1 percent. Power heads employ a well-matched load which absorbs the incident radio-frequency power; the load is made up of bismuth and antimony films vacuum-deposited on a Mylar substrate in a configuration that produces a number of thermoelectric junctions. Some junctions are thermally "sunked" to the transmission line; others are located in the air space within the line. The absorbed power increases the temperature of these junctions relative to the "sunked" junctions, and a thermoelectric emf, linearly proportional to the power, is generated. This voltage is fed to a chopper-stabilized d-c voltmeter (calibrated to read in power) whose noise and drift are specified at less than 1 percent peak-to-peak of full scale on the lowest ranges and correspondingly less on higher ranges. Dynamic operating range of the voltmeter is 65 db, permitting measurements of rf power from 0.3 μ w full scale to 100 mw full scale in 12 ranges. Accuracy is \pm 1 percent of full scale; am-

bient-temperature sensitivity is less than 0.1 percent of reading per degrees centigrade. Three coaxial power heads, each with a dynamic range of 45 db and each covering the frequency range from 10 Mcy/sec to 12.4 Gcy/sec, are available. Two such heads, models N421 and N422, cover the rated power range, with a 25 db (5 scale) overlap; the third head, model N420, covers an intermediate range from 3 μ w full scale to 10 mw full scale. Waveguide power heads, covering the frequency range from 8.2 to 40.0 Gcy/sec and rated from 3 μ w to 10 mw, are also available. The voltmeter zero-set position carries over from range-to-range. The power heads require no bias current, so that after zero-setting the operator simply connects to the source under test and reads rf power. Several heads can be used with a single meter for multi-point monitoring. Junction box for manual switching between five different power heads is an accessory. List: voltmeter model 454A, \$475; power heads, \$250 to \$400.—D.J.P. (General Microwave Corp., 155 Marine St., Farmingdale, N.Y. 11735)

Circle 6 on Readers' Service card

Laboratory laser kit, an easily assembled ruby laser head and power supply, makes available to research and school laboratories a medium-power laser at reasonable cost. Laser head, model 300, furnishes a coherent laser beam of 6943 Å at room temperature, with either high- or low-voltage supply. Provided are: adapter for mounting on tripod or optical bench; feet for tabletop operation. Lasing duration, 1 msec, with 12-milliradian dispersion (typical). Rate of firing, 1 pulse per 2 minutes. Typical output power density, 30,000 watt/cm², with energy output of 35 millijoules. Dimensions: 3.5 by 4 by 7.5 inches deep (9.6 by 10 by 19 cm). Weight: 3 lb (1.37 kg). List: kit, \$310; assembled and tested, \$330; ruby rod (0.150 by 1.50 inches), dielectric coated, \$120. Model 310 is a low-voltage supply designed specifically for the model-300 head; output power, 450 volts (324 joules). Provided with charge-discharge switch and fire switch. Output voltage is continuously monitored by panel meter. Flash-tube trigger voltage of 15,000 volts. Dimensions: 8 by 9.5 by 12 inches deep. Weight: 21 lb. List: kit, \$185; assembled and tested, \$215.—D.J.P. (Interphase Corporation—West, 1060 E. Meadow Circle, Palo Alto, Calif. 94303)

Circle 7 on Readers' Service card

Technical Coordinator

FDA RELATIONS

This is an opportunity for the right man who has a Ph.D. in biochemistry, physiology or pharmacology and who no longer feels his best future lies in the laboratory, to join an important growing department of an expanding major pharmaceutical manufacturer located in New Jersey.

The man we seek must be interested in learning administrative work required in the processing of New Drug Applications including review, interpretation and organization of chemical, pre-clinical and clinical data.

Salary open. Excellent fringe benefit program.

Send résumé, including present salary in complete confidence to **Box SM 1816, 125 W. 41 St., New York 36, N.Y.**

An equal opportunity employer

MOSSBAUER EFFECT SOURCES NEW LOWER PRICES

COBALT-57

Custom 1mc source \$195
Demonstration source (1mc)
\$115

TIN-119m

Custom 1mc source \$240

NO HANDLING CHARGE

NEN

**LABELED
CHEMICALS**

HAncock 6-7311

NEW ENGLAND NUCLEAR CORP.
575 ALBANY STREET, BOSTON 18, MASSACHUSETTS

PERSONNEL PLACEMENT

POSITIONS OPEN

A distillery plant has a vacancy for a science graduate or other study-trained individual possessing knowledge of general microbiology, preferably with some experience of biochemistry and industrial fermentation processes.

Salary according to experience and ability. Usual company benefits. Pleasant living environment. Apply to the Managing Director, **P.O. Box #727, Halifax, Nova Scotia.** 4/2, 9

ELECTRON MICROSCOPIST

Doctoral level. Established department, fully equipped. Interest and experience in human and/or veterinary pathology. Open salary. University appointment. Fringe benefits. Opportunity for self-expression and original investigation. Write **Box 104, SCIENCE.** 4/2, 9

CLINICAL PHARMACOLOGIST

World-leading midwestern pharmaceutical house has an immediate opening on its Clinical Investigation staff for an M.D. with an advanced degree in a basic science. Clinical training in pharmacological investigative methodology or Board eligibility desired. Board certification not required.

Reply with complete resume including salary requirements to **Box 126, SCIENCE.**

an equal opportunity employer

POSITIONS OPEN

ELECTRON MICROSCOPIST

Vacancy for individual qualified in electron microscopy of biological materials. Position would require some teaching. Salary dependent upon qualifications. Write: **Dr. Richard H. McBee, Head, Department of Botany and Bacteriology, Montana State College, Bozeman, Montana.**

HUMAN CYTOGENETICS

OPPORTUNITY FOR POSTDOCTORAL RESEARCH EXPERIENCE IN EXPANDING NEW FIELD. PH.D. OR SC.D. STIPEND COMMENSURATE WITH BACKGROUND. EXCELLENT SKIING, TROUT FISHING. LARGE UNIVERSITY MEDICAL CENTER, UPSTATE NEW YORK. POSITION CURRENTLY AVAILABLE.

BOX 125, SCIENCE

UNIVERSITY OF ALBERTA

Application is invited for the position of Assistant Professor of Botany. Preference will be given to applicants who hold the Ph.D. degree, have a well-established research program and some teaching experience.

The applicants' principal interest should be plant morphogenesis and closely related subjects. The incumbent will be expected to teach one or more courses in the field named and to participate in the introductory courses in some capacity.

For this position, appointment to date from September 1, 1965, the salary offered is \$8200 per annum or higher depending upon qualifications.

Applications should be submitted to **Dr. H. J. Brodie, Department of Botany, University of Alberta, Edmonton, Canada,** not later than May 1, 1965. Each applicant should provide a curriculum vitae, a transcript of record, a recent photograph and letters of recommendation sent directly to **Dr. Brodie.**

**Department of Botany
University of Alberta
Edmonton, Alberta, Canada**

POSITIONS OPEN

VETERINARY PATHOLOGIST



We have a new opening for a DVM with a M.S. or Ph.D. in pathology and 0-3 years experience to direct and conduct toxicological and pathological research. He will be responsible for the design of an experimental program for the evaluation of the safety of new drugs, direction of toxicology section and the examination and evaluation of pathological specimens. ACVP certification is desirable but not essential. ORTHO is a pharmaceutical and diagnostic reagent firm. We lead the industry in our fields of interest and are involved in a period of exceptionally rapid growth. Our research facility is located in an attractive suburban community 1½ hours from New York City & Philadelphia. Publication of work & attendance at scientific meetings are encouraged. Group insurance, retirement & stock investment plan are provided. Relocation expenses paid.

SEND RESUME TO
Mr. L. F. SIMPKINS

ORTHO

Pharmaceutical Corp.

ROUTE 202 RARITAN, N.J.
(An Equal Opportunity Employer)

BIOCHEMIST

Opening for a recent Ph.D., with or without postdoctoral experience. Expanding R&D division with new, ultra-modern facilities. Work independently on drug metabolism studies. Publication encouraged. Our employees know of this ad. Submit résumé in confidence to:

Director of Research
Endo Laboratories, Inc.
1000 Stewart Avenue
Garden City, N.Y. 11533
An equal opportunity employer

(a) **Editor**; medical abstractor; new house organ; Central; \$12,000 up. (b) **Hospital Market Manager**; hospital administration or marketing experience. (c) **M.S./Ph.D. Microbiologist**; tissue culture experience; Midwest drug firm. (d) **Bacteriology Technician**; Central company. *Faculty Appointments*: (e) **Ph.D. Cytologist**; develop graduate research; Southwest. (f) **Mathematician**; IBM 1620, Fortran experience; Central. (g) **Ph.D. Pharmacologist**; Midwest professional college. (h) **Ph.D. Radiation Biology**, genetics training; Southwest. Please write Science Service, The Medical Bureau, Inc., 900 North Michigan Avenue, Chicago, Illinois 60611. X

VETERINARY PATHOLOGIST

Hazleton Laboratories, a leading independent company specializing in the life sciences, needs a veterinary pathologist (D.V.M.-M.S. or Ph.D.) experienced or inexperienced. Position involves examination and evaluation of histology slides from a variety of research animals; supervision of gross autopsies; and research coordination including experiment design and evaluation. Position also offers applicable experience toward Board certification. Opportunity for scientific meetings attendance and publications. Liberal employee benefit program including profit sharing. Salary commensurate with experience and education. Please send résumé to:

Hall A. Acuff
Assistant Personnel Manager
Hazleton Laboratories, Inc.
P.O. Box 30
Falls Church, Virginia
(Suburban Washington, D.C.)

An Equal Opportunity Employer

Research Associate

Ph.D. or M.D. Full time research in microbial or human biochemical genetics. Salary: \$7,000-\$9,500, depending on qualifications.

Fellowships in Mental Retardation

Ph.D., or M.D. One or two year Fellowships offering training in laboratory and/or clinical aspects of detection, diagnosis and study of mental retardation. Laboratory emphasis is on biochemical genetics.

Robert Guthrie, Ph.D., M.D.
Department of Pediatrics
State University of New York at Buffalo
Children's Hospital
219 Bryant Street
Buffalo 22, New York

Pfizer

BIO-ORGANIC CHEMIST

Pfizer Diagnostics, an expanding new department of Chas. Pfizer & Co., Inc., offers an excellent opportunity in research for a Ph.D. in Organic or Biochemistry.

Research assignments will be directed toward the development of new diagnostic reagent products and immunochemical techniques. Laboratories are located in New York City.

To apply send résumé including education, experience and present salary to:

MR. J. F. ANDERSON

Chas. Pfizer & Co., Inc.

235 East 42nd St., New York, N.Y. 10017
An Equal Opportunity Employer

HEMATOLOGIST

Immunohematologist or clinical immunologist. Doctoral level. Training and experience in immunologic methodology. Open salary. University appointment. Fringe benefits. Opportunity for original investigations. Write Robert C. Grauer, M.D., Director, Singer Research Institute, Allegheny General Hospital, Pittsburgh, Pennsylvania 15212. 4/2, 9

MICROBIOLOGIST

Hematologist

Ph.D. preferred. To do original research in immunological and hematological techniques leading to the development of automated analytical procedures. Must be able to conduct research independently. Excellent research environment. Excellent company benefits. For further information, please send your résumé in confidence to BOX 123, SCIENCE.

PHYSICAL CHEMIST

Research on development of instruments for automatic continuous flow chemical analysis. New laboratory facilities. Excellent location. Rapid growth company. Opportunity to do varied and interesting work. Responsibility for complete developments. Unusually good salary and company benefits. Ph.D. preferred. For further information, send résumé in confidence to:

Box 124, SCIENCE

RADIOCHEMISTS WANTED for semi-micro organic synthesis of research and clinical isotopic products. Interviewing in Chicago, Los Angeles and FASEB. Contact in confidence, M. E. Volk, Ph.D., 8260 Elmwood Avenue, Skokie, Illinois

STEROID CHEMIST

Doctoral level. Formally trained in steroid chemistry. Position available in research institute Department of Research in Endocrinology and Metabolism. Open salary. University appointment. Fringe benefits. Opportunity for original investigation. Write Robert C. Grauer, M.D., Director, Singer Research Institute, Allegheny General Hospital, Pittsburgh, Pennsylvania 15212. 4/2, 9

MENTAL HEALTH STATISTICIAN

To direct statistical section in Illinois Department of Mental Health. Requires M.S. in mathematical statistics or equivalent, 3 to 5 years' supervisory experience in biostatistics and epidemiology, and in use of IBM 1400 computer systems. Will also include consultation in experimental design, cohort studies, and development of psychiatric registry. Inquiries to A. Herzog, Division of Planning & Evaluation Services, Department of Mental Health, 160 N. LaSalle Street, Chicago, Illinois 60601. X

COURSES

Summer Programs in the BioSciences University of California, Berkeley

BIO-MEDICAL TELEMETRY

May 28-30

Miniature radio transmitters that can be swallowed or implanted in man or animals are being used to extend our knowledge in an ever-increasing number of fields. This three-day intensive program will provide systematic instruction, outline salient research problems, and indicate probable future developments. Topics include electronic concepts, sensors and transducers of physiological variables, active and passive transmitters, terrestrial and aquatic animal studies, medical applications. Tuition: professional, \$125; graduate students, \$60.

BIOLOGICAL ELECTRON MICROSCOPY

June 28-July 9

Rapid advances in electron microscopic applications to biological materials and the development of new techniques make electron microscopy an increasingly important field of modern science. This course will include a comprehensive series of lectures, demonstrations, and individual and small-group instruction by a faculty of 24 eminent scientists. Tuition: \$300.

BIOLOGICAL ELECTRON MICROSCOPY

LABORATORY July 12-23

Provides participants with a unique opportunity to develop skill in electron microscopy while working on a research project of their own design in an electron microscope laboratory. Participants will work directly under the supervision of a laboratory director and his assistant. Prerequisites: BIOLOGICAL ELECTRON MICROSCOPY (June 28-July 9). Tuition: \$300.

For further information, please write or telephone Letters and Science Extension, University of California, Berkeley, California 94720; 415-845-6000, ext. 1061, Mr. Patterson.

The Market Place

PROFESSIONAL SERVICES

INSTITUTE FOR COMPUTER ANALYSIS OF SYSTEMS AND PROCESSES, INC.

188 NEEDHAM ST., NEWTON, MASS. 02164
Telephone No.: AC 617 969-9190

Analog computer analysis of systems and processes in biology, medicine, chemistry, engineering, economics, industry.

Mathematical formulation, quantitative synthesis of functional systems, kinetic analysis.

SERVICES SUB-CONTRACTS LONG AND SHORT-TERM RESEARCH CONTRACTS*

*Scientists are invited to send proposals for cooperative research in applied and basic sciences for application of contracts.

SUPPLIES AND EQUIPMENT

SPRAGUE-DAWLEY, INC.

Pioneers in the development of the
STANDARD LABORATORY RAT.

P.O. Box 4220

Madison, Wisconsin

CE 3-5318

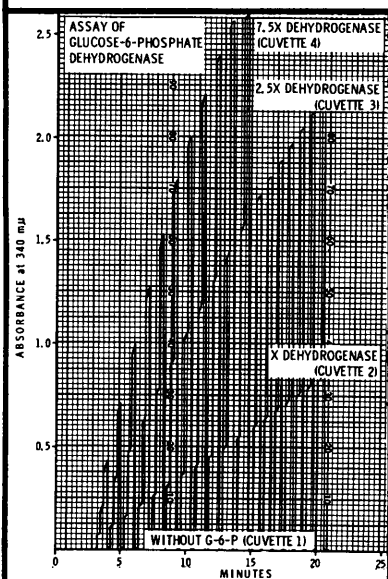
Enzyme Reaction Rates

Liquid Column Chromatography

Sucrose Density Gradients

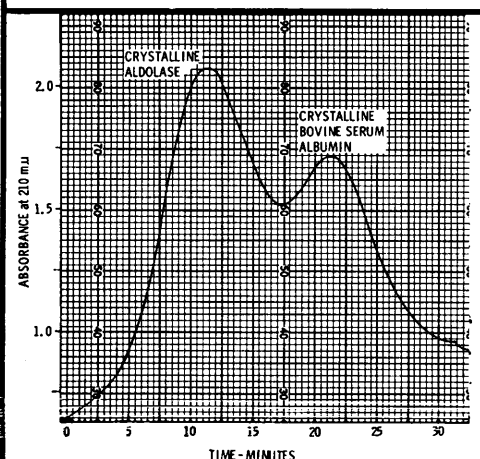
DNA-RNA Thermal Denaturation

All of These and Many Other Possible Applications with One Versatile Research Tool having 4 Channel Recording Capability



Reproduction of continuous linear recording of assay of G-6-P Dehydrogenase illustrates one of the many types of enzyme kinetic recordings obtainable virtually automatically with the Model 2000 or Series 200 Modular Gilford System.

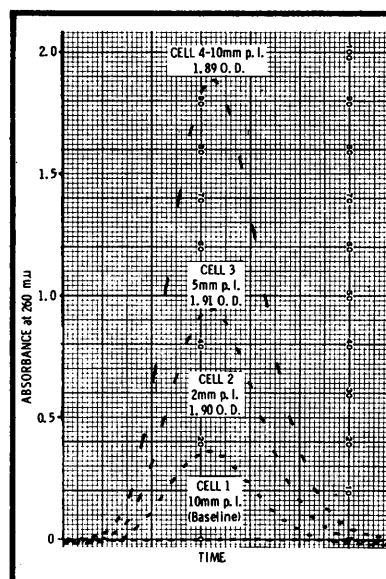
Scanning for protein using the sucrose density gradient method. A 10 mm pathlength Gilford Flow-Through Cuvette was employed with the Gilford Spectrophotometric Recording System to produce the record shown.



The Gilford Model 2000

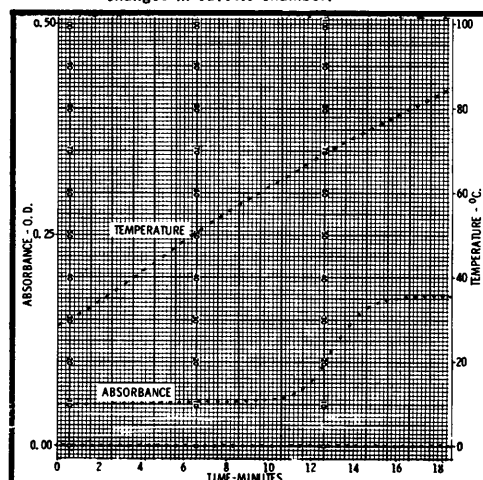
This highly productive spectrophotometric system has the essential flexibility to keep pace with changing directions in research. Based upon a unique photometric system with an output linear with absorbance over a wide range, the Model 2000 system offers exceptional sensitivity and stability together with low noise level and high accuracy. The inherent capability of the photometric element is greatly extended by automation of the sample handling device to provide precise positioning of up to four sample cells with programmed timing. Additions of flow cells, a temperature recording channel, automatic baseline compensation and wavelength programming facilities further enhance the usefulness of the Model 2000. Request brochure and quotation.

Conventional Absorbance Measurements also easier, more accurate. Digital readout: 0.00 to 3.000 O. D. Sensitivity, dark current controls and shutter eliminated. Line operated.



Chromatogram of Dowex-1 column eluted with Formic Acid shows section with AMP peaks only. Record made with Gilford Model 2000 equipped with Gilford Flow-Through Cuvettes and Automatic Blank Compensator.

Salmon Sperm DNA profile illustrates linear registration of both temperature and absorbance changes on the same scale. Gilford Model 2000 equipped with Gilford Linear Thermosensor which measures temperature changes in cuvette chamber.



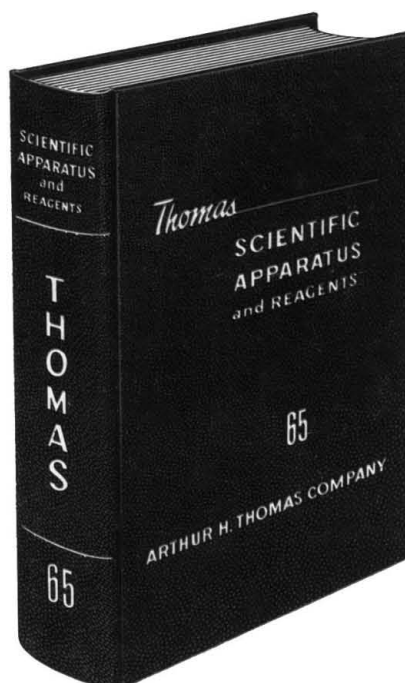
gilford

**INSTRUMENT
LABORATORIES
INCORPORATED
OBERLIN, OHIO**

**Factory Trained Technical
Consultants Provide Direct
Representation Throughout
The U.S.A.**

NEW...

Thomas



CATALOG

ANNIVERSARY EDITION

More than 22,000 stock items

New edition lists more than 22,000 items, adequate supplies of which are regularly maintained in our headquarters stock for immediate shipment.

Selection of Apparatus

Based on careful review and evaluation by our Technological staff. Quality maintained by our Inspection staff. Includes many new lines and items.

Guarantee

We accept full responsibility for quality and performance of every item listed.

Detailed, factual descriptions

All items fully described, carefully indexed and cross-referenced.

Technological Service

Qualified experts available for consultation and service.

Prompt shipments

We offer unexcelled service because of our large stocks and streamlined order handling system, combined with an international airport, excellent motor transport networks and a major seaport.

Copies sent to laboratories and purchasing personnel on request.

ARTHUR H. THOMAS COMPANY

Scientific Apparatus and Reagents

PHILADELPHIA, PA. 19105

*More and more laboratories
RELY ON THOMAS*