

BIOSONIK®

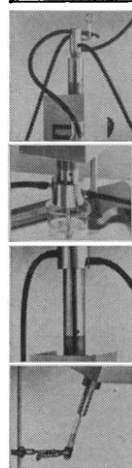
...the Foremost High Intensity, Ultrasonic, Cell Disintegrating Probe

Only with the BIOSONIK Probe can you get 125-watt output or 240-watt peak capacity. This extra power, with localized high intensity, means shorter runs and better efficiency. The BIOSONIK Probe does everything . . . biological cell disruption, tissue culture dispersion, botanical specimen disintegration, suspension preparation of difficult-to-dissolve substances (such as pesticides), mixing immiscible solutions, emulsification or ultrasonic welding and heating . . . and it does them rapidly!

FEATURES:

- Intense cavitation—20 KC resonating frequency
- Exclusive air-cooled magnetostrictive transducer . . . almost indestructible
- Simple tuning . . . variable power easily reproduced
- Universal support clamp . . . holds probe in any position during processing

BIOSONIK Probe, Bronwill No. BP-1, complete . . . \$820.00



BIOSONIK PROBE ATTACHMENTS ADD VERSATILITY

For processing from micro-volumes to continuous flow, at even higher intensities (sufficient to disrupt 2ml of aged yeast cells with ease) . . . the Bronwill Continuous Flow/High Intensity Chamber, autoclavable, jacketed for cooling, batch capacity $\frac{1}{2}$ to $3\frac{1}{2}$ ml . . . \$150.00

For more efficient cooling of samples . . . the Bronwill Cooling Jacket slips over standard probe and keeps tip temperature under $+10^{\circ}\text{C}$ (when using ethylene glycol at -10°C as coolant) . . . \$50.00

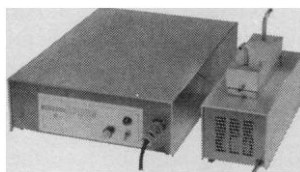
To clean micro components . . . and provide intense cavitation within 25ml chamber of inverted probe . . . the Bronwill Cup Probe Tip, with cap to prevent spattering (requires cooling jacket above) . . . \$70.00

To process micro quantities in narrow tubes . . . the Bronwill Needle Probe Tip, only $\frac{1}{8}$ " diameter, interchangeable with standard $\frac{3}{8}$ " probe . . . \$57.50

The Larger BIOSONIK Model U-20...for high protein-enzyme yields

For sonic research on liquids, living organisms, or chemical mixtures where large volume is essential, turn to the BIOSONIK U-20. Cavitation is uniform throughout the large chamber. Effective cell disruption takes place under controlled temperature . . . no excessive or uneven heating. Accommodates a wide range of samples . . . from $\frac{1}{4}$ ml (in Mylar-enclosed test tubes) to 240ml (maximum capacity). It's pre-tuned for 20 KC . . . operation is quiet without requiring shielding or sound-proofing. The tuning remains stable throughout the run and can be accurately repeated. Construction is of stainless steel . . . completely steam sterilizable. 1200-watt peak output, too.

A BIOSONIK large volume continuous flow model is also available. If you'd like additional information or our recommendations, please write us stating your requirements.



BRONWILL SCIENTIFIC
A DIVISION OF WILL SCIENTIFIC, INC.
130 N. GOODMAN ST., ROCHESTER 1, N. Y.

decision-making games. These sessions were made possible through the cooperation of the Texas Technological College Computer Center.

Newly elected officers of the Division include president-elect, Earl D. Camp (Texas Technological College) and a member of the Executive Committee, John Lacher (University of Colorado). A. B. Meinel (University of Arizona), having served during the past year as president-elect, becomes the president. Marlowe G. Anderson (New Mexico State University) will continue as executive secretary-treasurer and as council representative.

Flagstaff, Arizona, was duly confirmed as the location for the 1965 meetings, and invitations were accepted to hold the 1966 meetings in Las Cruces, New Mexico, 1967 in Tucson, Arizona, and 1968 in El Paso, Texas.

MARLOWE G. ANDERSON
New Mexico State University,
University Park

Forthcoming Events

July

10-11. Rocky Mountain Cancer Conf., Denver, Colo. (N. P. Isbell, 1809 E. 18 Ave., Denver 80218)

10-15. Pleistocene Geomorphology, symp., Exeter, England. (T. H. Elkins, Royal Geographical Soc., Kensington Gore, London, S.W.7)

12-15. Solid Propulsion, NASA meeting, Philadelphia, Pa. (W. H. Hunter, Office of Program Development, Washington, D.C. 10025)

12-16. Gastroenterology, 9th Pan American congr., Bogotá, Colombia. (C. A. Estape, Soriano 877, Montevideo, Uruguay)

13-15. Problems of Capillary Permeability in Health and Disease, Univ. of Michigan 1964 summer symp., Ann Arbor, Mich. (M. M. Dewey, Dept. of Anatomy, Univ. of Michigan, Ann Arbor)

13-15. Data Processing and Acquisition in Biology and Medicine, conf., Rochester, N.Y. (K. Enslein, 42 East Ave., Rochester 14604)

13-17. Canadian Teachers' Federation, Lac Beauport, P.Q., Canada. (G. Nason, 444 MacLaren St., Ottawa, Ont., Canada)

13-17. Chemistry of Carbohydrates, intern. symp., Münster, Germany. (F. Micheel, Organisch-Chemisches Institut, Universität, Hindenburgplatz 55, Münster)

13-17. International Assoc. for Child Psychiatry and Allied Professions, London, England. (F. H. Stone, Royal Hospital for Sick Children, 70 University Ave., Glasgow, W.2 Scotland)

13-18. Instrumental Analytical Chemistry, 3rd annual symp., Bethlehem, Pa. (A. J. Diefenderfer, Dept. of Chemistry, Lehigh Univ., Bethlehem)

13-18. Latin Federation of Medical

Electro-Radiological Socs., 6th congr., Brussels, Belgium. (Secretariat, 256 Chaussee de Wavre, Heverle-Louvain, Belgium)

14-17. Rarefied Gas Dynamics, 4th intern. symp., Toronto, Ont., Canada. (G. N. Patterson, Inst. of Aerophysics, Univ. of Toronto, Toronto 5)

14-17. Regional Science Assoc., 4th congr., Ghent, Belgium. (W. Isard, Univ. of Pennsylvania, Philadelphia 19104)

14-17. Western Resources Conf., Boulder, Colo. (Bureau of Continuation Education, 352 Chemistry Bldg., Univ. of Colorado, Boulder)

14-19. Sociology, 7th Latin American congr., Bogotá, Colombia. (C. E. Angulo, Facultad de Sociologia, Universidad Nacional de Colombia, Bogotá)

15-19. Pleistocene Geomorphology, symp., Cambridge, England. (T. H. Elkins, Royal Geographical Soc., Kensington Gore, London, S.W.7, England)

16-24. British Medical Assoc., annual, Manchester, England. (D. Gullick, BMA, Tavistock Sq., London, W.C.1, England)

16-24. Organic Photochemistry, intern. symp., Strasbourg, France. (G. S. Hammond, Gates and Crellin Laboratories of Chemistry, California Inst. of Technology, Pasadena)

18-22. International Union of Biological Sciences, 15th general, Prague, Czechoslovakia. (G. L. Stebbins, Dept. of Genetics, Univ. of California, Davis)

19-24. American Veterinary Medical Assoc., 101st annual, Chicago, Ill. (AVMA, 600 South Michigan Ave., Chicago 5)

19-25. Polarography, 3rd intern. congr., Southampton, England. (D. A. Pantony, Dept. of Metallurgy, Royal School of Mines, Prince Consort Rd., London, S.W.1, England)

19-26. Comparative Endocrinology, 4th intern. symp., Paris, France. (L. Gallien, Laboratoire d'Embryologie, Faculte des Sciences de Paris, 9 quai St-Bernard, Paris 5^e)

20-22. Magnetic Resonance in Biological Systems, Boston, Mass. (R. G. Shulman, Bell Telephone Laboratories, Murray Hill, N.J.)

20-23. New Mexico Acad. of General Practice, Ruidoso. (H. L. Douglas, Box 767, Tatum, N.M.)

20-24. International Diabetes Federation, 5th congr., Toronto, Ont., Canada. (H. Best, Organizing Council, 477 Mt. Pleasant Rd., Toronto 7)

20-24. Nuclear Radiation Effects, technical conf., Seattle, Wash. (Inst. of Electrical and Electronics Engineers, Box A, Lenox Hill Station, New York, N.Y.)

20-24. Organic Reaction Mechanism, intern. symp. Cork, Ireland. (General Secretary, Chemical Soc., Burlington House, London, W.1, England)

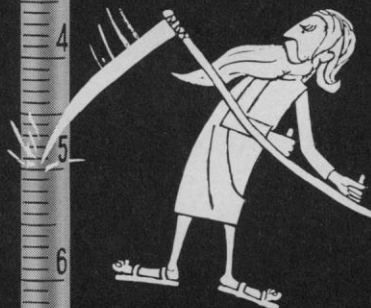
20-24. Semiconductor Physics, intern. conf., Paris, France. (M. Balkanski, Laboratoire de Physique, Ecole Normale Supérieure, 24, rue Lhomond, Paris 5^e)

20-25. Catalysis, 3rd intern. conf., Amsterdam, Netherlands. (D. M. Brouwer, c/o Badhuisweg 3, P.O. Box 3003, Amsterdam-N, Netherlands)

21-23. Physiology and Experimental Psychology of Color Vision, Ciba Foundation symp., London, England. (Ciba Foundation, 41 Portland Pl., London, W.1)

21-24. American Malacological Union,

MARKINGS: GOOD FOR LIFE!



NALGENE® UNBREAKABLE

PIPETS are marked, in vivid color, with big, bold "Magni-Vue" graduations which are fused on permanently. These markings cannot be removed chemically or mechanically. Not even repeated autoclaving can dim their original appearance. They can't fade, rub off, scrub off or wear off—ever!

Nalgene unbreakable pipets are easy to read, and they stay that way—"for life." Rugged, chemically-resistant polypropylene is non-reflective. You'll never be bothered with light glare. You see the full liquid column clearly. No meniscus to prevent accurate reading.

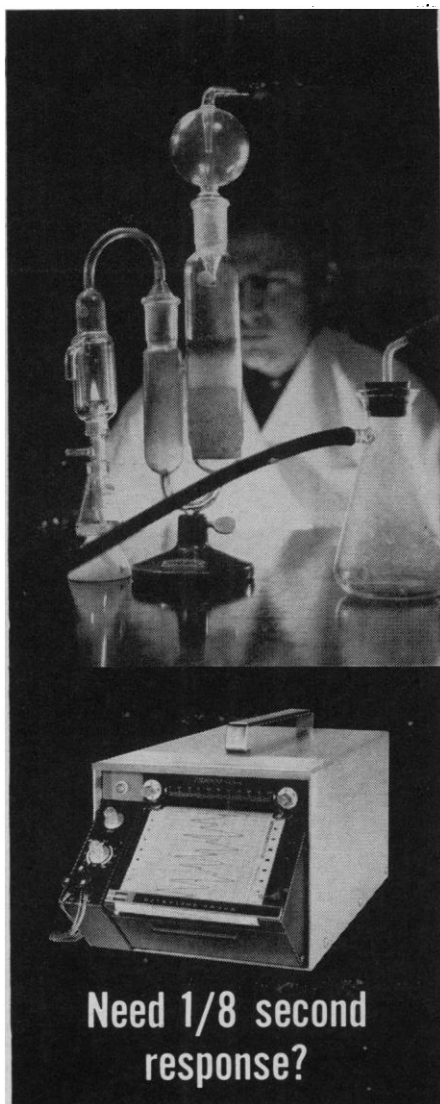
Nalgene unbreakable pipets are individually calibrated for maximum precision. Limits of error do not exceed 0.06 ml for the largest sizes. Lifetime accuracy is assured.

Nalgene unbreakable pipets are available in transfer, serological and measuring styles, sizes 1 ml to 10 ml. Priced from \$2.10 to \$2.80 each. See your lab supply dealer, or write Dept. 2706, The Nalge Co., Inc., 75 Panorama Creek Drive, Rochester, New York 14625.



Leader in quality plastic labware since 1949

Visit our Booth 26 at the 6th International Congress of Biochemistry, July 27-31, New York Hilton.



Only the Esterline Angus Speedservo has it. Eight times faster than most, the Speedservo records 4 cycle per second signals without significant attenuation, and handles virtually all signals, even those of one millivolt level.

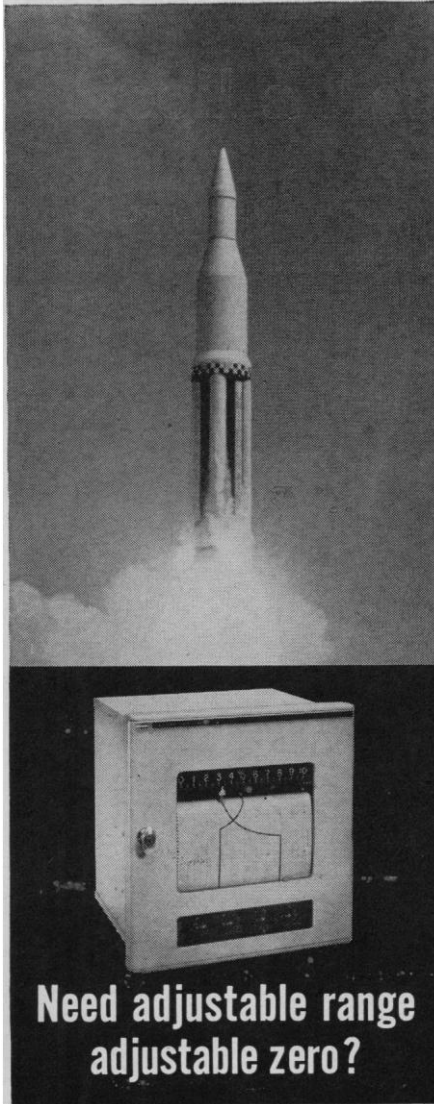
Its unique shuttle servo motor has no drive cords to break or gears to wear. One-piece construction of drive coil, pen assembly and sliding contact provides low inertia and accompanying high response speed.

The Speedservo's feedback potentiometer has virtually unlimited life.

The Speedservo is available in the illustrated portable, sloped writing surface model or in a flush model with 8" x 8" case front.

Write for Series "S" catalog.

ESTERLINE ANGUS INSTRUMENT COMPANY, INC., Box 596L, Indianapolis, Indiana 46206



You get both with wide chart Esterline Angus servo recorders. You can adjust range from as low as 1 millivolt, with zero adjust several times the minimum range.

This is only one example of the versatility built into all Esterline Angus Series "E" recorders.

Two-channel Overlapping and Two-channel, Two-zone Recorders can write two records such as temperature and humidity on one wide chart. We also have a Single-channel Servo Recorder.

Series "E" instruments can record pressure, flow, pH, conductivity, strain, volts, amperes, watts, millivolts, milliamperes and speed ratio. They also find extensive use in gas chromatography.

Write for Series "E" catalog.



ESTERLINE ANGUS

Excellence in instrumentation for over 60 years

New Orleans, La. (M. C. Teskey, Rt. 2, Box 318, Marinette, Wis.)

21-28. International **Geographical Union**, 20th intern. congr., London, England. (T. H. Elkins, Royal Geographical Soc., Kensington Gore, London, S.W.7)

25-1. **Religion and Science**, 11th conf., Star Island, Portsmouth, N.H. (Religion and Science, 280 Newton St., Brookline, Mass. 02146)

26-29. **Photobiology**, 4th intern. congr., Oxford, England. (Blandford Site, Whiteknights Park, Reading, England)

26-31. American **Crystallographic Assoc.**, Bozeman, Mont. (B. Post, Brooklyn Polytechnic Inst., Brooklyn, N.Y.)

26-31. **Mineralogical Soc. of America**, Bozeman, Mont. (G. Switzer, MSA, U.S. Natl. Museum, Washington, D.C. 20560)

26-31. **Pharmacology**, Teachers' Seminar, Univ. of Connecticut, Storrs. (M. H. Malone, School of Pharmacy, Univ. of Connecticut, Storrs)

26-1. **Biochemistry**, 6th intern. congr., New York, N.Y. (R. A. Harte, 6th Intern. Biochemistry Congr., 9650 Wisconsin Ave., NW, Washington, D.C. 20014)

27-28. International **Cartographic Assoc.**, 2nd general assembly, London, England. (D. E. Imhof, Kartographisches Institut, Eidgenössische Technische Hochschule, Zurich, Switzerland)

27-30. Technical Assoc. of the **Pulp and Paper Industry**, engineering conf., Seattle, Wash. (TAPPI, 360, Lexington Ave., New York, N.Y. 10017)

27-31. American **Dietetic Assoc.**, 47th annual, Portland, Ore. (ADA, 620 N. Michigan Ave., Chicago, Ill. 60611)

27-21. **Engineering Foundation Research Confs.** Andover, N.H. (United Engineering Center, 345 E. 47 St., New York 17)

30-1. International Soc. for **Human and Animal Mycology**, 3rd, Edinburgh, Scotland. (R. Vanbreuseghem, Inst. of Tropical Medicine, 155 rue National, Antwerp, Belgium)

August

2-4. American Assoc. of **Colleges of Pharmacy**, New York, N.Y. (C. W. Bliven, 1507 M St., NW, Washington, D.C. 20005)

2-7. American **Pharmaceutical Assoc.**, 111th annual, New York, N.Y. (G. B. Griffenhagen, Div. of Communications, 2215 Constitution Ave., NW, Washington, D.C.)

2-8. **Applied Psychology**, 15th intern. conf., Ljubljana, Yugoslavia. (B. Petz, Inst. of Psychology of Zagreb, Djure Salaja b.b., Zagreb, Yugoslavia)

2-8. **Reactivity of Solids**, 5th intern. symp., Munich, Germany. (B. Stuke, Physikalische-Chemisches Institut, Sophienstr. 11, Munich)

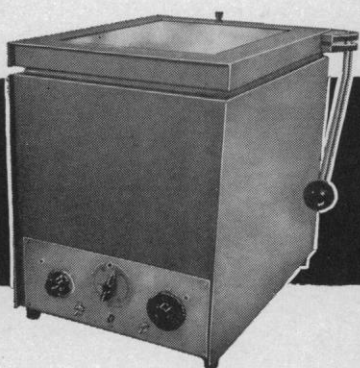
3-5. Compounds of Interest in **Nuclear Reactor Technology**, intern. symp., Boulder, Colo. (J. T. Waßer, Los Alamos Scientific Laboratories, P.O. Box 1663, Los Alamos, N.M. 87544)

3-7. Instrument Soc. of America, **instrumentation conf.**, Geneva, N.Y. (H. S. Kindler, 530 William Penn Place, Pittsburgh, Pa.)

3-7. World Federation for **Mental**

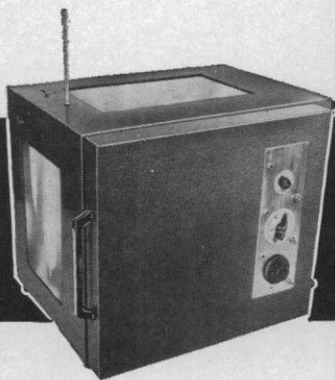
**you asked for a way to
agitate, extract and
mix...in an oven...
under controlled, dry
heat...with maximum
reproducibility**

...WE FOUND IT!



DIFFUSION OVEN (OD370):

This versatile apparatus assures gentle, swirling mixing at controlled temperatures. Use it with dishes, Erlenmeyer flasks and beakers. Performs standard Conway procedures in one-tenth usual time. Speed is adjustable for rapid, accurate, reproducible diffusions.



ROTATOR OVEN (OR350):

Mix and extract...at controlled temperatures...in test tubes, bottles, syringes and closed containers. And—you can combine agitation and heat to speed micro diffusion procedures, decalcification of bone, tablet disintegration and solubility tests.

AT YOUR LABORATORY SUPPLY DEALER

another quality product of

Scientific Industries INC.

Dept. S664, 220-05 97th Avenue,
QUEENS VILLAGE 29, NEW YORK

Health, 17th annual, Bern, Switzerland. (F. Cloutier, 1, rue Gevray, Geneva, Switzerland)

3-8. **International Years of the Quiet Sun**, regional symp., Buenos Aires, Argentina. (J. G. Roederer, Facultad de Ciencias, Perú 272, Buenos Aires)

3-10. **Anthropologists and Ethnologists**, 7th world conf., Moscow, U.S.S.R. (American Anthropological Assoc., 1530 P St., NW, Washington, D.C. 20005)

3-12. **Botanical Congr.**, 10th intern., Edinburgh, Scotland. (Miss S. C. Penny, 5 Hope Park Sq., Edinburgh 8)

4-7. **Poultry Science Assoc.**, annual, Minneapolis, Minn. (E. L. Johnson, Dept. of Poultry Science, Univ. of Minnesota, St. Paul 55101)

4-17. **Methods of Hydrological Forecasting**, 3rd inter-regional seminar, World Meteorological Organization/UN Economic Commission for Asia and the Far East, Bangkok, Thailand. (WMO, Secretariat, Geneva, Switzerland)

5-7. **Sonic Investigations on Internal Damping in Solids**, symp., London, England (Administration Assistant, Institute of Physics and the Physical Society, 47 Belgrave Square, London, S.W.1)

5-12. **Atmospheric Radiation**, symp., World Meteorological Organization/Intern. Union of Geodesy and Geophysics, Leningrad, U.S.S.R. (Secretariat, WMO, Geneva, Switzerland)

5-15. **High Energy Physics**, 12th intern. conf., Dubna, U.S.S.R. (M. L. Goldberger, Commission on High Energy Nuclear Physics, IUPAC, Princeton Univ., Princeton, N.J. 08540)

6-11. **American Podiatry Assoc.**, New York, N.Y. (F. A. Kalbacher, American Podiatry Assoc., 3301 16th St., NW, Washington, D.C. 20010)

7-14. **Scientific Study on Mental Retardation**, intern. congr., Copenhagen, Denmark. (A. Dupont, Statens Andssvageforsorg, Nyropsgade 28.2, Copenhagen 5)

9-12. **Heat Transfer**, 7th natl. conf., Cleveland, Ohio. (W. Chenoweth, American Inst. of Chemical Engineers, 345 E. 47 St., New York 17)

9-13. **American Soc. of Animal Science**, Knoxville, Tenn. (J. E. Oldfield, Dept. of Animal Science, Oregon State Univ., Corvallis)

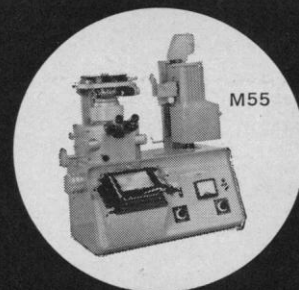
9-14. **South American Union of Engineers' Federations**, 10th conv., Rio de Janeiro, Brazil. (Federação Brasileira de Associações de Engenheiros, Caixa Postal 1229, Rio de Janeiro)

10-14. **Structural Developments in Inorganic Chemistry**, New Hampton, N.H. (W. G. Parks, Dept. of Chemistry, Univ. of Rhode Island, Kingston)

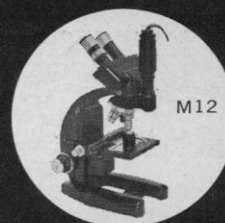
10-15. **Pan American Federation of Engineering Socs.**, 8th biennial conv., Caracas, Venezuela. (L. K. Wheelock, Engineers Joint Council, 345 E. 47 St., New York 10017)

11-14. **American Soc. for Pharmacology and Experimental Therapeutics**, San Francisco, Calif. (H. G. Mandel, George Washington Univ. Medical School, Washington, D.C. 20005)

12-14. **Ballistic Missile and Space Technology**, 9th symp., U.S. Naval Training Center, San Diego, Calif. (C. Morrow,



**VICKERS
Metallurgical
MICROSCOPES**



M55 Vickers Metallograph . . . Automatic camera-microscope . . . zoom optical bellows . . . truly universal high-performance optical capability.

B0832 Metalette . . . inverted design for convenient routine examinations . . . gliding stage . . . conventional or auto-exposure 35mm cameras can be supplied.

M12 Metallurgical — WIDE FIELD, FLAT FIELD optical performance . . . a microscope stand of unrivalled stability well-suited for photographic applications of all kinds.



**COOKE,
TROUGHTON
& SIMMS, Inc.**

91 WAITE STREET, MALDEN 48, MASSACHUSETTS

Aerospace Corp., P.O. Box 95085, Los Angeles, Calif. 90045)

12-14. **Galaxies**, preliminary conf., Uppsala, Sweden. (T. Page, Van Vleck Observatory, Wesleyan Univ., Middletown, Conn. 06457)

12-14. **X-Ray Analysis Applications**, 13th annual conf., Denver, Colo. (W. G. Mueller, Metallurgy Div., Denver Research Inst., Denver 80210)

13-15. **International Soc. for Horticultural Science**, Edinburgh, Scotland. (G. de Bakker, Le v.d. Boschstraat 4, The Hague, Netherlands)

16-21. **Histochemistry and Cytochemistry**, intern. congr., Frankfurt am Main, Germany. (T. H. Schiebler, Anatomisches Institut der Universität, Koellikerstr. 6, 87 Würzburg, Germany)

16-23. **Latin American Schools of Medicine**, 4th conf., Pocos de Caldas, Brazil. (O. Versiani Caldeira, Univ. of Minas Gerais Medical School, Belo Horizonte, Minas Gerais, Brazil)

16-24. **Human Economy**, conf., Inst. of Paper Chemistry, Appleton, Wis. (A. N. McLeod, IPC, Appleton)

17-20. **American Assoc. of Clinical Chemists**, 16th natl., Boston, Mass. (F. F. Ronan, AACC, 19 Bay State Rd., Boston 15)

17-20. **Natural Ultra Low Frequency Electromagnetic Fields**, symp., Boulder, Colo. (W. H. Campbell, National Bureau of Standards, Boulder)

17-21. **Combustion**, 10th intern. symp., Cambridge, England. (Combustion Inst., 986 Union Trust Bldg., Pittsburgh 19, Pa.)

17-21. **Cryogenic Engineering**, conf., Philadelphia, Pa. (K. D. Timmerhaus, Engineering Research Center, Ketchum 129, Univ. of Colorado, Boulder)

17-21. **Simulation in Space Technology**, Blacksburg, Va. (F. J. Maher, Virginia Polytechnic Inst., Blacksburg)

17-22. **International Astronomical Union**, symp., Thessaloniki, Greece. (Maj. B. R. Agins, Air Force Office of Scientific Research, SRMA, Washington, D.C. 20333)

17-22. **Cardiology**, 4th European congr., Prague, Czechoslovakia. (H. Kafka, Karlovo nám. 32, Prague 2)

17-22. **Endocrinology**, 2nd intern. congr., London, England. (A. S. Mason, London Hospital, Whitechapel, London, E.1)

17-22. **Social Psychiatry**, 1st intern. congr., London, England. (J. Bierer, 7 Hollycroft Ave., London, N.W.3)

17-28. **Molecular Biophysics**, intern. inst., Squaw Valley, Calif. (Prof. Weissbluth, Biophysics Laboratory, Stanford Univ., Stanford, Calif.)

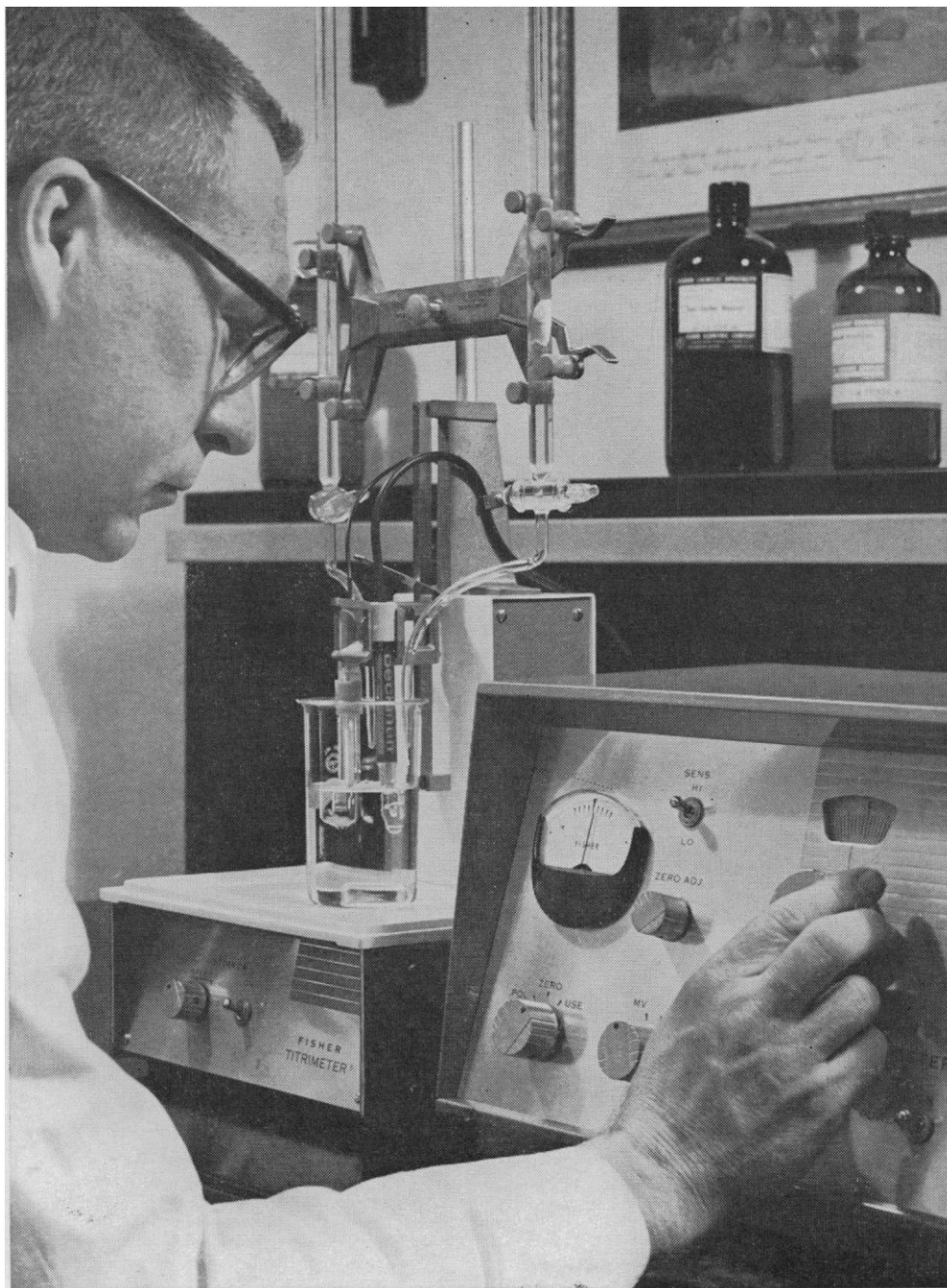
18-20. **International Assoc. of Milk and Food Sanitarians**, Portland, Ore. (H. L. Thomasson, P.O. Box 437, Shelbyville, Ind.)

19-21. **Physiology of Digestion in the Ruminant**, 2nd intern. symp., Ames, Iowa. (R. W. Dougherty, Box 70, Ames)

20-21. **National Council of Teachers of Mathematics**, Minneapolis, Minn. (J. D. Gates, NCTM, 1201 16th St. NW, Washington, D.C. 20036)

22. **American Inst. of Ultrasonics in Medicine**, 9th annual, Boston, Mass. (W. J. Fry, Biophysical Research Laboratory, Univ. of Illinois, Urbana)

26 JUNE 1964



PINPOINT ENDPOINTS PRECISELY WITH NEW FISHER TITRIMETER®

Precision electronics, wide choice of electrodes permit exceptionally close determination of titration endpoints. Range: 0 to ± 1400 mv, 0 to 14 pH. Resolution: ± 2 mv, ± 0.02 pH. Accuracy: $\pm 0.5\%$. New Titrimeter, Fisher's potentiometric titrator (patent pending), comes in two designs: Model 35 for manual titrations; time-saving Model 36 for automatic and manual titration. Optional accessory kits for micro- and Karl Fischer titrations. Full details from your nearest Fisher branch, or write Fisher Scientific Company, 139 Fisher Building, Pittsburgh 19, Pa., for information Bulletin FS-247.

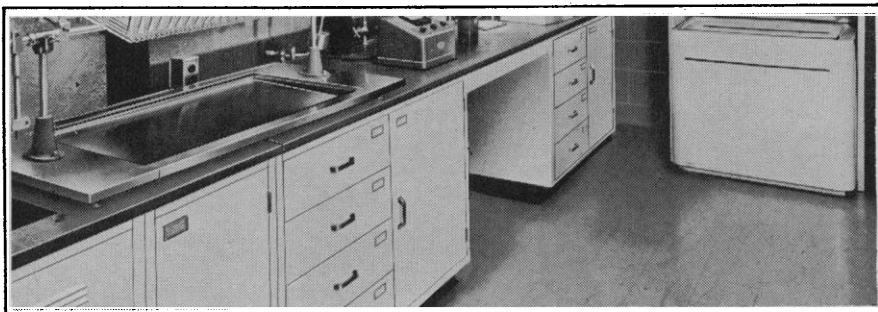
J-160



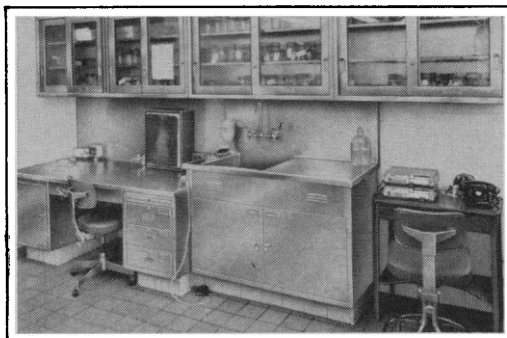
FISHER SCIENTIFIC

World's Largest Manufacturer-Distributor of Laboratory Appliances & Reagent Chemicals

Boston • Chicago • Fort Worth • Houston • New York • Odessa, Tex. • Philadelphia
Pittsburgh • St. Louis • Union, N. J. • Washington • Edmonton • Montreal • Toronto

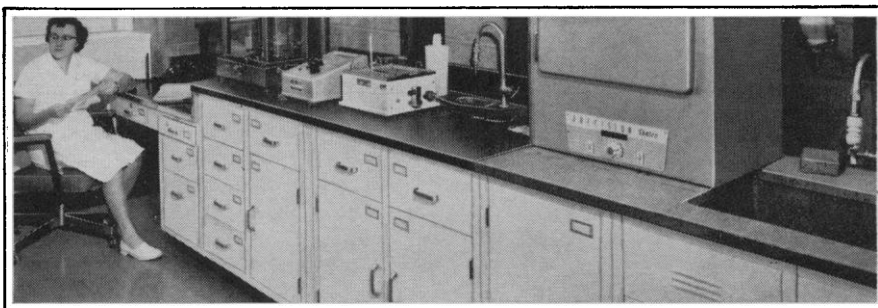


*Research Laboratory, 5th floor,
Obstetrics and Gynecology,
University Hospital Building*



*Autopsy Room, Medical
Science Building*

*Chemistry Laboratory, 3rd floor,
University Hospital Building*



Time for a change?

UNIVERSITY HOSPITAL OF THE NEW YORK UNIVERSITY MEDICAL CENTER INSTALLED CONFLUX* LABORATORY FURNITURE

Got a minute? You've got time to rearrange doors and drawers on your Conflux laboratory furniture. No real tools needed. Just a screwdriver and an idea! Conflux construction means convertible and flexible. It allows for change of mind or needs.

The University Hospital of the New York University Medical Center has installed Blickman Conflux furniture in all of its laboratories. Though no laboratory looks or operates like any other, the same basic Blickman equipment was utilized in each room. Unscrew a door, or add a drawer—it was just that easy to tailor-design each laboratory with Conflux. Rearranging is so simple that

one of NYU's chemistry labs transforms on request into an "automation" room for analyzing sodium and potassium.

Conflux cabinets are welded of enameled steel for non-wear, non-warp utility. Their phosphatized-bonderized finish renders non-rust, chemical resistant and impact resistant service. And it's so easy to clean! Conflux can be cleaned by vacuum, steam or sterilized with germicidal solution.

Obsolescence is a word of the past! Let the man at Blickman tailor-design a combination of Conflux units that give you "Planned Longevity." Send for catalogs on Conflux Laboratory Furniture and Fume Hoods.

S. BLICKMAN, INC.
6906 Gregory Ave., Weehawken, N. J.



*trademark

22-24. **History of Astronomy**, symp., Hamburg, Germany. (B. Sticker, Institut für Geschichte der Naturwissenschaften, Universität Hamburg, Hartnungstr. 5, 2 Hamburg 13, Germany)

22-28. **American Soc. of Human Genetics**, Boulder, Colo. (S. H. Boyer, Johns Hopkins Hospital, Baltimore, Md.)

23. **American Assoc. of Electromyography**, annual, Boston, Mass. (M. K. Newman, 16861 Wyoming Ave., Detroit, Mich. 48221)

23-26. **American Phytopathological Soc.**, Lafayette, Ind. (J. R. Shay, Purdue Univ., Lafayette)

23-26. **Soil Conservation Soc. of America**, 19th annual, Jackson, Miss. (SCS, 7515 Northeast Ankeny Rd., Ankeny, Iowa)

23-28. **American Inst. of Biological Sciences**, annual, Boulder, Colo. (AIBS, 2000 P St. NW, Washington, D.C. 20036)

23-28. **American Congr. of Physical Medicine and Rehabilitation**, Boston, Mass. (G. Gullickson, Jr., 30 N. Michigan, Chicago, Ill.)

24-26. **American Inst. of Aeronautics and Astronautics**, Los Angeles, Calif. (AIAA, 1290 Sixth Ave., New York, N.Y.)

24-26. **Society for Cryobiology**, annual, Washington, D.C. (V. P. Perry, Tissue Bank Dept., U.S. Naval Medical School, National Naval Medical Center, Bethesda, Md. 20014)

24-26. **Education in the Nuclear Power Era**, conf., Gatlinburg, Tenn. (M. L. Nelson, Education Div., Oak Ridge Natl. Laboratory, P.O. Box 117, Oak Ridge, Tenn.)

24-26. **Mathematical Assoc. of America**, summer meeting, Univ. of Massachusetts, Amherst. (H. M. Gehman, Univ. of Buffalo, Buffalo 14, N.Y.)

24-27. **American Hospital Assoc.**, Chicago, Ill. (E. L. Crosby, 840 N. Lake Shore Dr., Chicago 11)

24-27. **Toxicology and Occupational Medicine**, 4th inter-American conf., Miami Beach, Fla. (W. Machle, Univ. of Miami School of Medicine, Coral Gables, Fla.)

24-28. **International Council of the Aeronautical Sciences**, 4th congr., Paris, France. (American Inst. of Aeronautics and Astronautics, 2 E. 64 St., New York, N.Y. 10021)

24-28. **Astrodynamics Guidance and Control**, conf., Los Angeles, Calif. (K. Watanabe, 4731 B Engineering Building III, University of California, Los Angeles 24)

24-28. **American Astronautical Soc.**, military space applications symp., Stanford, Calif. (AAS, 516 Fifth Ave., New York, N.Y.)

24-28. **Society for Industrial and Applied Mathematics**, Amherst, Mass. (W. S. Dorn, T. J. Watson Research Center, I.B.M., P.O. Box 218, Yorktown Heights, N.Y.)

24-28. **Scandinavian Mathematical Congr.**, Copenhagen, Denmark. (Secretariat, The Congress, c/o Mathematical Inst., H. C. Ørsted Inst., Universitetsparken 5, Copenhagen Ø)

24-28. **American Mathematical Soc.**, New York, N.Y. (G. L. Walker, AMS, 190 Hope St., Providence, R.I.)