

Cancer, Hotel-Dieu de France, Beirut, Lebanon)

24-28. Institute of **Food Technologists**, 24th annual, Washington, D.C. (A. Kramer, Dept. of Horticulture, Univ. of Maryland, College Park)

24-29. International Federation for **Information Processing**, global conf., New York, N.Y. (A. P. Speiser, I.B.M. Research Laboratory, Zurichstr. 108, Adliswil-Zurich, Switzerland)

25. **Organic Solid State**, 2nd symp., Franklin Inst., Philadelphia, Pa. (M. M. Labes, Franklin Inst. Laboratories, 20th and The Parkway, Philadelphia 3)

25-27. American **Gynecological Soc.**, Hot Springs, Va. (American Gynecological Soc., 3800 Reservoir Rd., Washington, D.C. 20007)

25-27. **Power Reactors and Radioisotopes**, Canadian Nuclear Assoc., Toronto, Ont. (CNA, 19 Richmond St. West, Toronto 1, Ont.)

25-29. Society of **Physical Chemistry**, 14th annual, Bordeaux, France. (G. Emshwiller, Soc. de Chimie physique, 10, rue Vauquelin, Paris 5<sup>e</sup>, France)

26-29. **Water Studies**, 17th intern. conf., Liège, Belgium. (Cebedeau-Journees 1964, 2, rue A. Stevart, Liège)

27-29. American **Ophthalmological Soc.**, Hot Springs, Va. (AOS, 108 E. 68 St., New York, N.Y. 10021)

27-29. Canadian **High Polymer Forum**, 12th, Ste. Marguerite, Quebec. (H. Daoust, Dept. of Chemistry, University of Montreal, P.O. Box 6128, Montreal, P.Q.)

27-29. **Operations Research Soc.** of America, Montreal, P.Q., Canada. (G. D. Shellard, New York Life Insurance Co., 51 Madison Ave., New York, N.Y. 10010)

28-30. American Assoc. of **Museums**, St. Louis, Mo. (S. F. Borhegyi, Milwaukee Public Museum, Milwaukee 3, Wis.)

28-31. **Rockets and Space Flight**, 13th symp., Darmstadt, Germany. (A. F. Staats, Hermann-Oberth-Gesellschaft, Gesellschaft zur Förderung der Erforschung und Erschliessung des Weltraumes, Fritz-Beindorff-Allee 9, Hanover, Germany)

30-7. **Medical Surgical** meetings and film festival, 5th intern., Turin, Italy. (Minerva Medica, Corso Bramante n. 83-85, Turin, Italy)

#### June

1-3. Instrument Soc. of America, **Analysis Instrumentation** Div., symp., San Francisco, Calif. (Northern California Sec., ISA, 1341 Seventh St., Berkeley, Calif. 94710)

1-3. **Chemical Inst. of Canada**, 47th annual, Kingston, Ont. (D. G. Diaper, Royal Military College, Kingston)

1-3. **Subunit Structure of Proteins**, 17th biology symp., Brookhaven Natl. Laboratory, Upton, N.Y. (S. Lacks, Dept. of Biology, Brookhaven Natl. Laboratory, Upton 11973)

1-4. Basic Science and Clinical Aspects of **Muscle**, Edmonton, Alberta, Canada. (G. Monckton, Univ. of Alberta Hospital, Edmonton)

1-5. **Medical Library Assoc.**, 63rd an-

nual, San Francisco, Calif. (MLA, 919 N. Michigan Ave., Chicago 11, Ill.)

1-5. Society of the **Plastics Industry**, natl. conf., New York, N.Y. (W. C. Bird, 250 Park Ave., New York 10017)

1-6. **Gastroenterology**, 7th intern. congr., Brussels, Belgium. (Assoc. of Natl. European and Mediterranean Socs. of Gastroenterology, 43, rue des Champs-Élysées, Brussels 5)

2-3. **Photovoltaic Specialists**, 4th annual conf., Cleveland, Ohio. (P. Rappaport, RCA Laboratories, Princeton, N.J.)

2-4. **Global Communications**, intern. symp. (Globcom VI), Philadelphia, Pa. (R. Guenther, RCA Communications Systems Div., Bldg. 1-3-1, Camden, N.J.)

2-4. **Telemetering**, natl. conf., Los Angeles, Calif. (W. S. Pope, 8420 Quinn St., Downey, Calif.)

2-5. **Food Microbiology**, 4th intern. symp., Göteborg, Sweden. (N. Molin, Swedish Inst. for Food Preservation Research, Göteborg 16)

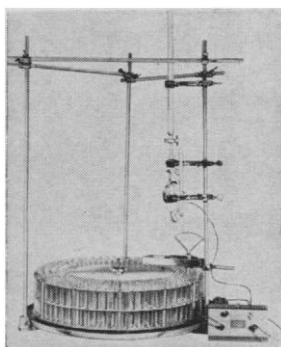
2-6. **Acoustical Conf.**, 3rd., Budapest, Hungary. (Acoustics Div., Hungarian Soc. of Optics, Acoustics, and Film Techniques, Szabadság tér 17, Budapest 5)

2-6. **Ophthalmic-Optics**, intern. congr., Copenhagen, Denmark. (Danmark Special Optiker-Forening, Vesterbrogade 41B, Copenhagen 5)

3-5. Collaborative **Pesticides** Analytical Committee, 8th, Wageningen, Netherlands. (R. de B. Ashworth, c/o Plant Pathology Laboratory, Hatching Green, Herpenden, Hertfordshire, England)

## FRACTION COLLECTORS

for every program ... for every budget!



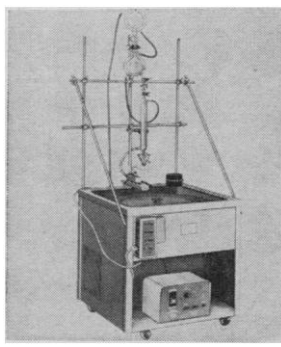
### CONTINUOUS . . .

for long-term or overnight use.

- 240 test tubes, 18 x 150 mm.
- Four rows of 60 each.
- Turntable, 24" diameter.
- Time drop and volume collection.

25 different models, including SECTIONAL (for processing during fraction collecting)

For complete description of all Fraction Collectors, write for Bulletin S-3-4000



### REFRIGERATED . . .

the mobile coldroom, refrigerated from column to collecting tubes.

- Fractions in the turntable temperature-controlled.
- Fraction collectors removable for all-purpose, cold-room work.
- Mobile—on casters.

## The VARIGRAD

### VARIABLE GRADIENT MIXER FOR CHROMATOGRAPHY

A unique apparatus FOR PRODUCING PRECISELY-CONTROLLED AND REPRODUCIBLE GRADIENTS Developed at the National Institutes of Health

- Makes small changes in specific portions of an elution gradient to improve resolution in certain regions to chromatograms.
- Presents gradient data for duplication in any laboratory.
- Single apparatus can be used to supply identical gradients simultaneously to several columns.
- Any number of independent gradients of different molecular or ionic species can be produced simultaneously.



Send for Bulletin S-3-6000 for complete information

LABORATORY APPARATUS



PRECISION INSTRUMENTS

**BUCHLER INSTRUMENTS, INC.**

1327 16th Street, Fort Lee, New Jersey

Phone 201-945-1188 or call N.Y.C. direct LO 3-7844

# Personnel Placement

**CLASSIFIED:** Positions Wanted. 25¢ per word, minimum charge \$4. Use of Box Number counts as 10 additional words. Payment in advance is required.

**COPY** for ads must reach **SCIENCE** 2 weeks before issue date (Friday of every week).

**DISPLAY:** Positions Open. Rates listed below—no charge for Box Number. Rates net. No agency commission allowed for ads under 4 inches. No cash discount. Minimum ad: 1 inch. Ads over 1 inch will be billed to the nearest quarter inch. Frequency rate will apply only to repeat of same ad. No copy changes. Payment in advance is required except where satisfactory credit has been established. Send copy for display advertising to **SCIENCE**, Room 1740, 11 West 42 St., New York 36.

Single insertion \$65.00 per inch  
4 times in 1 year 60.00 per inch

For **PROOFS** on display ads, copy must reach **SCIENCE** 4 weeks before date of issue (Friday of every week).

Replies to blind ads should be addressed as follows:

Box (give number)  
**SCIENCE**  
1515 Massachusetts Ave., NW  
Washington, D.C. 20005

## POSITIONS WANTED

**Editor-Writer.** Versatile, experienced science editor with physics and medical training; available for freelance assignments. Box 404, **SCIENCE**. 5/8

**Electron Microscopist,** chief technician, university educated, EM-histology, ultramicrotomy, vacuum technique, electronics, EM-micrography, photomicroscopy. Presently in permanent, sole charge of widely known EM-laboratory. Proven record, references. Seeks change for personal reasons. Box 408, **SCIENCE**. X

**Interdiscipline-Oriented Ph.D. Psychology.** Desires research setting strongly emphasizing creativity, originality and cross-discipline approach. Interested in establishing-participating in program relating human psychological, physiological, and biochemical behavior. Current research investigates personality/catecholamine relationships. Considerable research and administrative experience. Northeast preferred. Midteen salary. Box 405, **SCIENCE**. X

(a) **Pharmacologist,** lacks thesis for Ph.D., desires research, teaching appointment. (b) **Zoology Ph.D.,** avail. for teaching, research in physiology, biology, or embryology. For details write Woodward Medical Personnel Bureau, 185 N. Wabash, Chicago, Ill. 60601. X

**Ph.D.'s, June-October degrees.** (a) **Virologist,** teaching/research; East; publications; electron microscopy, immunology. (b) **Physiologist,** comparative, sensory electrophysiology, publications, teaching experience, teaching with research. Box 406, **SCIENCE**. X

(a) **Ph.D. Biochemist** (minor, natural products identification), comparative physiology, comparative endocrinology research interests; prefers university teaching/research; West Coast location. (b) **1964 Ph.D. Marine Microbiologist,** strong oceanography background; wishes teaching and research in West. (c) **1964 Ph.D. Physiologist** (biology, chemistry minors), electrophysiology research interest; prefers teaching with research. (Please write for information regarding these and other scientists, senior and junior, in all fields.) Science Division, The Medical Bureau, Inc., 900 North Michigan Avenue, Chicago, Illinois 60611. X

**Ph.D. Biologist-Zoologist,** Biochemistry minor; 21 years of university teaching experience; 3 years chairmanship; publications; seeks research and/or interim teaching appointment for 1964-65, sabbatical leave. Box 407, **SCIENCE**. X

**Physiologist, Ph.D.,** 20 years of experience in teaching and research in medicine. Cardiovascular, renal, and endocrine research. Seek academic medical administrative position. Box 409, **SCIENCE**. 5/8

## POSITIONS OPEN

**Full-time Researchers** in the fields of internal medicine, biochemistry and physiology desired for research-teaching program in continuing education. Salary \$25,000 to \$30,000 per annum.

Box 367, **SCIENCE**

## HISTOCHEMIST EXPERIMENTAL MORPHOLOGIST

Ph.D. or equivalent. Active research program in enzyme and electron histochemistry. Hospital-affiliated research institute. New York.

Box 376, **SCIENCE**

(a) **Immunologist,** research w. leading drug mfr., MidW; \$11,500 up. (b) **Biochemist,** 900-bed hsp.; univ. affil. w. active research-teaching program E; to \$13,000. (c) **Pharmaceutical Chemist** supv. ab. as Product Develop. Director for specialty drug mfr.; SW; to \$15,000. (d) **Virologist,** conduct and direct vaccine research projects for drug firm; E; \$11,000. (e) **Physiologist** for research, teaching, consulting w. large clinic and 400-bed hsp.; MW; around \$10,000. (f) **Biochemist** for univ. research and teach.; E; open. (g) **Clinical Biochemist,** modern 300-bed hsp. w. some teaching and research; E; \$14-15,000. For details of our nationwide positions at B.S., M.S., Ph.D., M.D. levels write Woodward Medical Personnel Bureau, 185 N. Wabash, Chicago, Ill. 60601.

Professional Placement Service for 68 Years

(a) **Ph.D. Pharmacologist,** head new medical unit, major manufacturing company; North Central location; open. (b) **Ph.D. Plant Physiologist,** cancer research; East; to \$12,000. (c) **Ph.D. Microbiologist,** research, production and supervision; midwestern organization. (d) **Ph.D. Biologist,** microbiology training; develop systems for chemical agent testing; East; to \$10,000. (e) **B.S./M.S. Assistant to Director,** pharmacology training preferred; liaison, drug consulting, some travel; to \$8000.

**Faculty Appointments:** (f) **Ph.D. Mycologist,** experienced in research, directing doctoral students; state university; Central. (g) **M.S. Biological Sciences,** small liberal arts college; Florida. (h) **Ph.D. (or near) Astronomy,** mathematical statistics background; Central state university. (i) **M.S. Biologist,** small liberal arts college; Midwest. (j) **Ph.D. Biological Science,** strong biochemical background; undergraduate, graduate teaching; research; Southeast. Many other opportunities available for both junior and senior scientists. Please write to Science Division, The Medical Bureau, Inc., 900 North Michigan Avenue, Chicago, Illinois 60611. X

## PHYSIOLOGIST (animal)

with broad basic biological training. Teaching stressed. Rank and salary according to preparation and experience. Fall 1964. Apply **Dean Wilhelm Reuning,** Susquehanna University, Selinsgrove, Pa., or call 717-374-2345.

## RESEARCH ASSOCIATE

**LOBUND LABORATORY, UNIVERSITY OF NOTRE DAME**

Division of Biochemistry and Nutrition

Opportunity to work independently on cholesterol and bile acid metabolism in the unique germ-free animal. Position requires M.S. in biochemistry with background in nutrition. Direct inquiries to **Personnel Director, University of Notre Dame, Notre Dame, Indiana.** 5/8

**RESEARCH SCIENTIST—VIROLOGY.** Madison, Wisconsin. Annual Salary Range \$11,970-\$15,120. Program emphasizes care, training and research in mental retardation. Close liaison with University of Wisconsin. Modern, well-designed biochemical and psychophysiological research facilities. Set up a basic or applied research program in the virological aspects of mental retardation. Need Ph.D. in virology and 3 years of postdoctoral research experience. **Mr. Harvey Stevens, Central Colony, P. O. Box 3128, Madison, Wisconsin 53701.**

# \$15,665 plus\* for a RESEARCH BIOCHEMIST at ONR, Boston

The Office of Naval Research supports basic and applied research in the physical sciences through contracts and grants with universities, institutions, foundations, and industrial laboratories. Planning, administering, and evaluating this work is handled by regional offices—five of them in this country.

ONR's Boston Office has ten Senior Scientists who are responsible for research programs in Physics, Mathematics, Chemistry, Metallurgy, Meteorology, Oceanography, etc. *We are seeking a recognized research professional—PhD or MD if possible—to take over research throughout New England in BIOLOGY, PSYCHOLOGY, and MEDICINE.*

In addition to liaison work with such institutions as Harvard, MIT, Woods Hole Oceanographic Institution, Marine Biology Laboratory, Tufts University, and Worcester Foundation for Experimental Biology, you will participate in overall planning and evaluation of nation-wide bioscience research programs sponsored by the Office of Naval Research. And it will be up to you to interpret military research objectives to your ONR contractors such that newly-discovered principles and phenomena will find the best possible Naval utilization.

To fully accomplish your assignments you will prepare state-of-the-art summaries and scientific surveys, much of it resulting from personal contact with fellow workers in the biosciences wherever they may be. Participation in professional activities will be encouraged.

*\*The starting salary for this position is \$15,665 per annum, with step increases to \$19,270—plus the many benefits of Career Civil Service. If you have considerable advanced education in the biosciences, as well as professional experience of increasing responsibility, send your qualifications to Mr. K. C. Bernstein. (A Standard Form 57, available at any Post Office, would expedite consideration.)*

## U.S. NAVY

## office of naval research

495 Summer Street  
Boston, Mass., 02210

An Equal Opportunity Employer

## POSITIONS OPEN

### UNIVERSITY OF QUEENSLAND SECOND PROFESSOR OF AGRICULTURE

The University invites applications for the Second Chair of Agriculture. A candidate should hold a university degree, preferably a higher degree. He should have competence in a field of science pertaining to agriculture, as indicated by publication. He should also be able to give evidence of leadership and instructional ability. Knowledge or experience in tropical or sub-tropical agriculture is desirable but not necessarily a requisite.

The salary will be at the professorial rate of £A4600 per annum.

The University provides F.S.S.U. type of superannuation, housing assistance, study leave, and travel grants.

Additional information and application forms will be supplied upon request to the Registrar, University of Queensland, Brisbane, Australia with whom applications close on 29 May 1964. X

## UNIVERSITY OF YORK

### Department of Biology

Applications are invited for eight posts in October, 1965. Of these, four will probably be in Biochemistry, Biochemical Genetics and Microbiology, two in Embryology and Plant and Animal Physiology, one in Plant Ecology and one in Population Genetics. Two of the appointments may be at the grade of Reader or Senior Lecturer. It is hoped that some of those appointed will be able to take up their duties in July, 1965.

Four copies of applications, naming three referees, should be sent by 30 June 1964, to the Registrar, University of York, Heslington, York, England, from whom further details may be obtained. Short-listed candidates in North America will be interviewed in Boston, Massachusetts, on 20 July.

## MONASH UNIVERSITY

### Victoria, Australia

### FACULTY OF SCIENCE

Applications are invited for appointment to vacancies for SENIOR LECTURERS, LECTURERS, SENIOR TEACHING FELLOWS and TEACHING FELLOWS in the Departments of:

**CHEMISTRY:** Inorganic, Organic, and Physical Chemistry. (Professor B. O. West)

**PHYSICS:** Experimental and Theoretical Physics. (Professor R. Street)

**MATHEMATICS:** Pure Mathematics, Applied Mathematics, Mathematical Statistics (Professor K. C. Westfold)

**ZOOLOGY AND COMPARATIVE PHYSIOLOGY:** Various fields, including Embryology. (Professor A. J. Marshall)

Each of these departments has developed strong graduate research schools and Heads of Departments will provide information.

#### Salary ranges:

Senior Lecturer	£A2,700—£A3,250
Lecturer	£A1,850—£A2,600
Senior Teaching Fellow	£A1,500—£A1,750
Teaching Fellow	£A1,250—£A1,400

with superannuation provision on the F.S.S.U. basis for appointees of Senior Teaching Fellow status and above.

Full information on application procedure etc. is available from the Secretary of the Association of Commonwealth Universities, Marlborough House, Pall Mall, London, S.W.1., or the Registrar of the University, P. O. Box 92, Clayton, Victoria, Australia.

Closing date: 8th June, 1964

F. H. Johnson Registrar

## POSITIONS OPEN

### Animal Pathologist, M.D. or D.V.M. (\$15,960).

To study effects of parasites in simian primates and other animals; emphasis in neuropathology. Federal research grant, 1 to 4 years, starting 1 September 1964.

Write to Department of Parasitology, University of Hawaii, Honolulu, Hawaii. X

### Clinical Laboratory Supervisor

Experienced in biochemistry, bacteriology, and serology. Experience in blood typing desirable. Salary up to \$8400 per year.

H. C. Bryant, M.D.  
326 North Ingalls Street  
Ann Arbor, Michigan

Graduate assistantships and research associates in Tropical Medicine and Medical Parasitology are available beginning September 1964. Salary ranges from \$2400 to \$3000. Course and research activities leading to the M.S. or Ph.D. are available. Departmental research activities include studies on the ultrastructure, immunology, and biochemistry of endoparasites. Interested applicants should apply to Dr. J. C. Swartzwelder, Chairman, Department of Tropical Medicine and Medical Parasitology, Louisiana State University School of Medicine; 1542 Tulane Avenue, New Orleans 12, Louisiana. 5/8, 15, 22

## PATHOLOGIST-TOXICOLOGIST VETERINARY

Excellent opportunity in research laboratory of prominent pharmaceutical manufacturer, located on East Coast, for certified veterinary pathologist to assist in the planning and execution of toxicity studies, including evaluation of histopathological preparations and to handle some administrative functions. Toxicologist with interest in and potential for field will be considered.

In confidence kindly submit complete résumé to

Box 410, SCIENCE

### RESEARCH BIOCHEMIST

Biochemist or Biologist with Ph.D. or M.S. for biochemical and immunological research on lipocarbohydrates. Age under 35. Excellent salary. Direct résumé to Personnel Director, Evanston Hospital Association, 2650 Ridge Avenue, Evanston, Illinois.

### RESEARCH PARASITOLOGIST

Recent Ph.D. with major training and interest in helminthology to assume responsibility for search and evaluation of new antiparasitic agents for veterinary applications. Will consider M.S. degree with sufficient experience. Excellent opportunity offering independence and good future. Send detailed résumé to Box 403, SCIENCE. X

An Equal Opportunity Employer

### ZOOLOGIST

Recent Ph.D. with teaching experience to teach general zoology and comparative anatomy. Position starts 1 September 1964. Send résumés to Chairman, Biology Department, Philadelphia College of Pharmacy and Science, Philadelphia, Pennsylvania, 19104.

## AWARDS

**AWARDS FOR MEDICAL RESEARCH.** The new LAWSON TAIT MEMORIAL TRUST of London, England, is offering awards up to £3000 for original research, done without the use of living animals.

These awards will appeal to men and women who are interested in trying new fields of medical research based on clinical work.

For further information, write our Canadian branch: THE LAWSON TAIT MEMORIAL TRUST, Box 674, Station "F", Charles Street East, Toronto 5, Ontario, Canada.

## FELLOWSHIPS

### CLINICAL RESEARCH FELLOWSHIPS: 1)

Cancer: chemotherapy, endocrinology, radiotherapy, or 2) Metabolic aspects of cardiovascular disease: emphasis on studies of endocrine-nutritional-lipid interrelationships. Fellowships include study and care of patients in a research hospital, laboratory and clinical research project opportunities, participation in University of Oklahoma Medical Center teaching activities. Basic stipend: \$5500-\$7500 yearly, with allowance for dependents. Available July 1, 1964. Write: Executive Director, Oklahoma Medical Research Foundation, 825 NE 13th St., Oklahoma City, Okla., 73104

### Graduate Fellowships in Biochemistry

Teaching and research appointments leading to Ph.D. available for academic year 1964-65. Varied department research programs include mammalian and microbial metabolism and enzymology, nucleic acid biochemistry, neurochemistry. Excellent facilities in new building. Annual stipend starts at \$2400 plus, dependency allowance and tuition.

Address further inquiries to Head, Department of Biochemistry, University of Maryland, School of Medicine, Baltimore 1, Maryland. 4/24

### Biophysics Training Program Fellowships

Applications are invited from candidates with M.S. or Ph.D. degrees in either physical or biological sciences. A major aspect of the program is the conduct of a specific research project and current studies include problems in radiobiology, neutron activation and neutron dosimetry, processing of biological data and medical engineering. Training stipends in the range of \$5000-6500. Further information from Dr. G. L. Brownell, Head, Physics Research Laboratory, Massachusetts General Hospital, Boston 14, Massachusetts.

### CAREERS IN BIOCHEMICAL PHARMACOLOGY

Postdoctoral research fellowships are available for training and research directed towards an understanding of the molecular basis of drug action, with particular emphasis on chemotherapy, development of resistance, amino acid and vitamin metabolism, drug adaptation, metabolic inhibitors, and mechanism of drug/enzyme interactions. Interested applicants should contact the Chairman, Department of Pharmacology, Tufts University School of Medicine, Boston, Mass. 02111. 5/22

## The Market Place

**DISPLAY:** Insertions must be at least 1 inch in depth. Weekly invoices will be sent on a charge account basis—provided that satisfactory credit is established.

Single insertion	\$65 per inch
4 times in 1 year	60 per inch
13 times in 1 year	50 per inch
26 times in 1 year	50 per inch

**PROOFS:** If copy is to be set, and proofs submitted for approval, complete copy and cuts must be received 4 weeks in advance of issue date (Friday of each week); complete plates no later than 3 weeks in advance of issue date.

### BIOLOGICAL PRECISION ANALYSTS

Specialists in Pituitary Trophic Assays (Growth, LH, FSH, Prolactin, etc.)

Small Animal Surgery

### BIOMATICS, INC.

P.O. Box 926

Chicago 42, Illinois

### JR. SCIENTIFIC SUMMER

EXPLORE western history and natural history in the Sierra Nevada & Great Basin. Ecological studies in mountains, desert, antelope refuge & forest reserve. Strong riding, swimming, crafts. Challenge to alert boys & girls 9-14. Six-week session, July 19 to Aug. 30.

Dr. & Mrs. Richard G. Miller, 621 Rt. 1, Carson City, Nevada, Code 702, GR 2-1728  
WASHOE PINES RANCH

### SPRAGUE-DAWLEY, INC.

Pioneers in the development of the  
STANDARD LABORATORY RAT.

P.O. Box 4220

Madison, Wisconsin

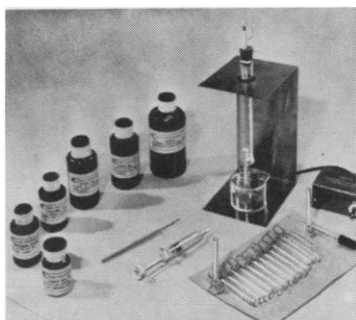
CE 3-5318

# HIGH RESOLUTION DISC ELECTROPHORESIS

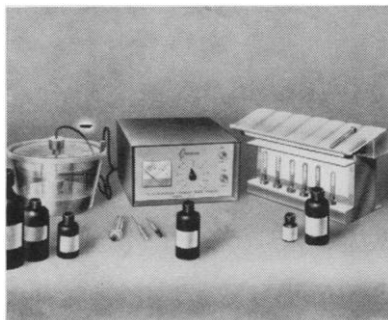
(patents pending)



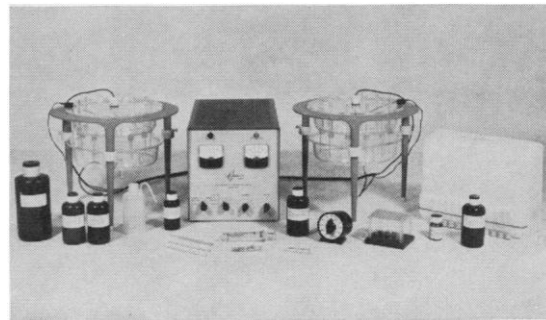
now in **3** sizes to fit each need . . . and budget



**Trial Kit, with Power Source 150** for the student or occasional user. Runs one sample at a time. Price in U.S.A. \$69.\*



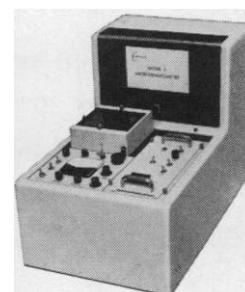
**New Model 6, with Power Source 200** for the limited-budget laboratory with regular but modest volume. Runs six samples at a time. Price in U.S.A. \$636.\*



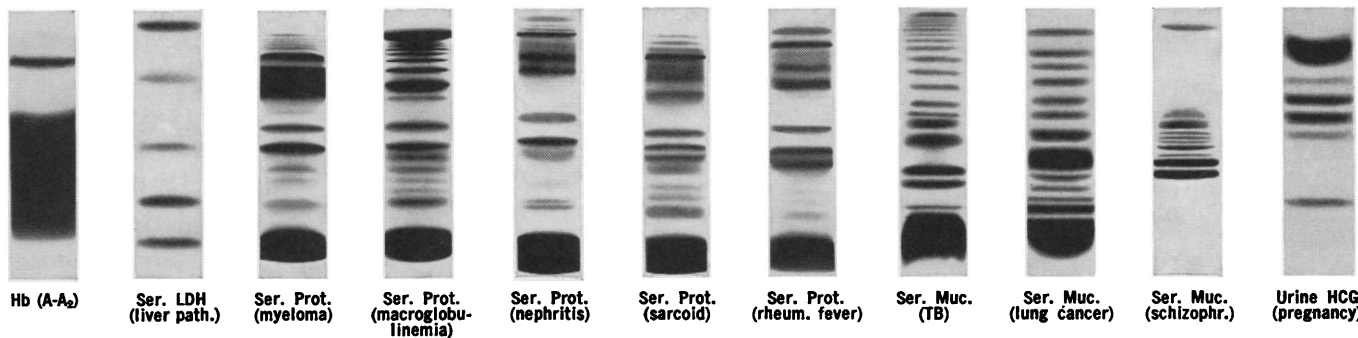
**The Model 12, with Power Sources 300 or 1400** (as shown) for the busy researcher or high-volume clinical laboratory. Runs 12-36 samples at a time. Prices in U.S.A. from \$1080.\*

All systems include full set of glassware, accessories, and chemicals needed to produce the remarkably sharp and precise separation shown in the normal serum sample above. Resolution is thousands of times more sensitive than paper, agar, cellulose acetate or starch block, and many times finer than starch gel. Fast (30 minute separation) and reproducible. Gels are transparent for quantitation and photography on the Model E Microdensitometer.

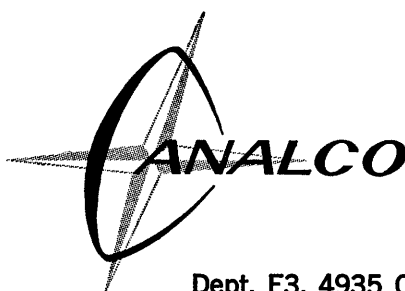
Already widely used in animal and plant protein research and in clinical investigation, Disc Electrophoresis now opens the way to sophisticated diagnostic-prognostic indications not previously obtainable. **Some typical separations of clinical significance:**



**Model E  
Microdensitometer**



**For further details write to:**



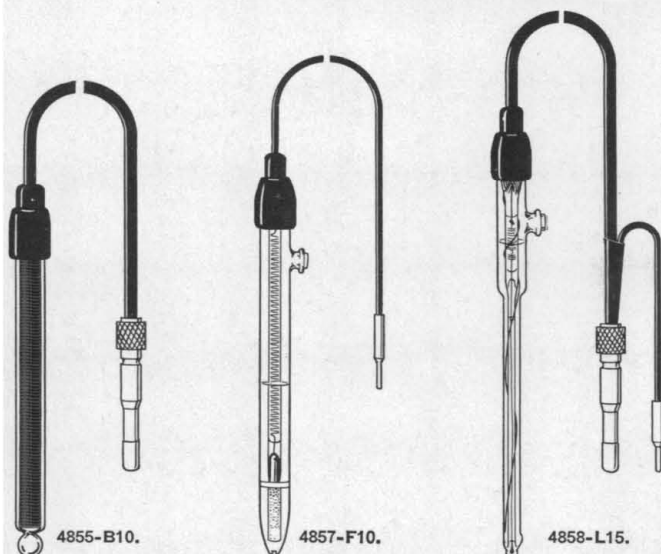
\*Export prices on request

Dept. E3, 4935 Cordell Avenue, Bethesda, Maryland 20014



**For fast response on pH Meters . . .**

# Thomas UNIVERSAL pH ELECTRODES



- **Low resistance**
- **Fast response**
- **Rugged tips**

- **Combination electrode for 0.5 ml samples**

A series of glass and reference electrodes, 5 inches long  $\times$   $\frac{1}{2}$ -inch diameter, for use in standard electrode holders and with connector plugs which fit existing pH Meters directly or through available adapters.

The glass electrodes are of low resistance with concomitant fast response but without the usual fragility of bulb. Reference electrodes, both calomel and silver-silver chloride, have clog-resistant, porous ceramic liquid junction plugs; all types, including combination, have removable caps for KCl refill. The combination glass and reference electrodes are much more sturdy than those heretofore available in the U. S. They are not only lower in price than two separate electrodes, but are easier to manipulate and clean and fit into smaller vessels.

**Glass Electrodes.** Usable with any pH meter calibrated for zero potential at 7 pH, the usual standardization point for all pH-scaled deflection-type meters. The general purpose electrodes are comparable to many "heavy duty" or "rugged tip" electrodes offered to date. Internal shielding prevents electrostatic interference. Ag-AgCl filling is permanently sealed; glass-to-metal seals prevent electrolyte leakage where electrical leads pass into the body of the electrode. Rubber cap relieves strain on lead wire at top of electrode.

**Reference Electrodes.** Calomel ( $\text{Hg-Hg}_2\text{Cl}_2$ ) and Ag-AgCl (mercury-free) types are provided. Liquid junction with sample is established by sintered ceramic disc sealed in tip. Porous disc is less subject to clogging and erratic flow than fiber-type junctions.

**Combination Electrodes.** Particularly useful for small sample volumes. Single 6-inch body contains both measuring electrode and calomel reference elements. No. 4858-Q15 is identical with 4858-L15 but is  $\frac{1}{2}$ -inch diameter over entire length; No. 4858-L15 has  $\frac{1}{4}$ -inch body over 4 inches of stem and fits easily into test tubes or micro cells for measuring samples as small as 0.5 ml.

Catalog Number	Type	pH Range	Temp. Range °C	Lead, Inches	Price
<b>GLASS ELECTRODES</b>					
4855-B10	Gen'l Purpose	0-11	0-70	12	17.25
4855-B15	Gen'l Purpose	0-11	0-70	30	17.25
4855-J15	High pH	0-14	0-70	30	18.50
4855-M15	High Temp	0-14	0-100	30	26.75
4855-U15	High Strength	0-11	5-70	30	23.00
<b>REFERENCE ELECTRODES</b>					
4857-F10	Calomel	—	0-70	12	14.00
4857-F15	Calomel	—	0-70	30	14.00
4857-P15	Ag-AgCl	—	0-100	30	15.35
<b>COMBINATION ELECTRODES</b>					
4858-L15	$\frac{1}{4}$ -in. diam.	0-11	0-70	30	29.50
4858-Q15	$\frac{1}{2}$ -in. diam.	0-11	0-70	30	28.00

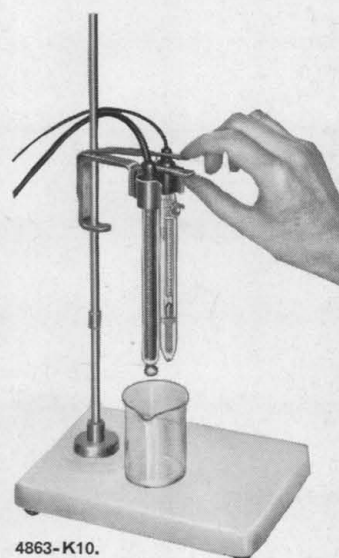
## NEW CORROSION-RESISTANT SUPPORT

**Electrode Support and Holder, Thomas.** A corrosion-resistant assembly for use with standard 5 or 6-inch shielded electrodes at a distance from the pH meter to prevent accidental splashing of the meter.

Consisting of spring-loaded, nickel plated Holder and 5  $\times$  7-inch stable porcelain base with 12  $\times$   $\frac{1}{4}$ -inch stainless steel rod. Holder has spring clips to take standard  $\frac{5}{8}$ -inch electrode caps and can be quickly released by one-hand pinch-grips for raising or lowering.

**4863-K10. Support and Holder, complete but without electrodes. . . . . 14.30**

**4863-K50. Holder, only. . . . . 8.40**  
**4863-L10. Support, only, i.e. porcelain base with  $\frac{1}{4}$ -inch stainless steel rod. . . . . 5.90**



**Bulletin 147, giving detailed information, sent upon request**



**ARTHUR H. THOMAS COMPANY**

*Scientific Apparatus and Reagents*

VINE STREET AT 3RD • P. O. BOX 779 • PHILADELPHIA 5, PA., U. S. A.