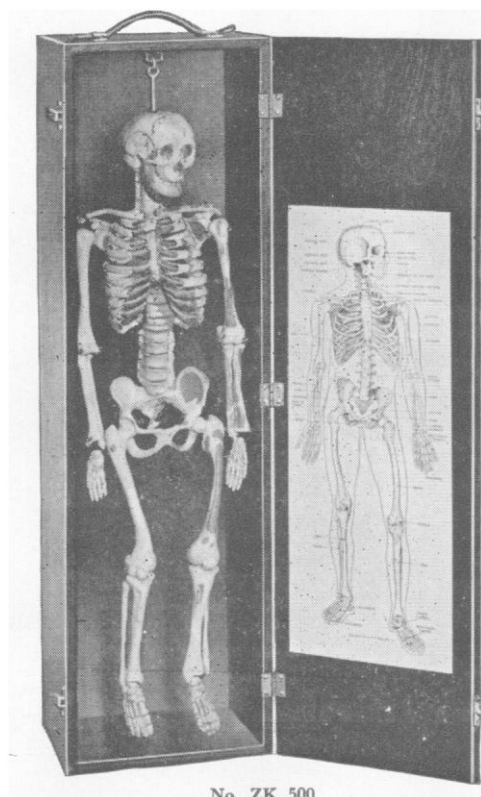


— The Welch —

SYNTHETIC MINIATURE HUMAN SKELETON

Only 26 Inches Tall



No. ZK 500

**Accurately Scaled
In Durable, Washable
Synthetic Material**

•

**A Wooden Case
And Plastic Cover
Are Included**

•

**Especially Adapted For
Elementary Work Where
Economy Is Important**

Designed for use in elementary biology courses, the miniature skeleton has proved of value in psychology, health, safety, first aid, and physical education courses. The low price enables the smaller schools to have at least one skeleton in the science department. The skeleton, with wooden case, weighs less than 20 pounds making it easy to carry from room to room.

The wooden case is constructed to permit the rotation of the skeleton within the case. An illustrated key card on the door identifies the principal bones. This arrangement permits a student to study the guide and skeleton together in order to more easily understand the skeleton. If desired, the skeleton can be removed from the case and hung in a more convenient place. The hook on the skull provides for attachment to other types of support.

Each skeleton includes an attractive wooden case, plastic skeleton cover, and an illustrated key card.

ZK500. MINIATURE SKELETON, Painted. The muscular origins are painted in blue, and the muscular insertions are in red on one side of the skeleton. Complete, with wooden case, plastic skeleton cover, and illustrated key card. **Each, \$130.00**

ZK510. MINIATURE SKELETON. The skeleton is the same as ZK500, but the muscular origins and insertions are not painted. Many teachers prefer to paint the muscular insertions and origins themselves, and the surfaces of these skeletons readily accept paint. Complete with attractive wooden case, illustrated key card, and plastic cover. **Each, \$115.00**

Full, Life Size Skeletons available at \$190.00

W. M. WELCH SCIENTIFIC COMPANY

DIVISION OF W. M. WELCH MANUFACTURING COMPANY

— ESTABLISHED 1880 —

1515 Sedgwick Street, Dept. E Chicago 10, Illinois, U. S. A.

Manufacturers of Scientific Instruments and Laboratory Apparatus