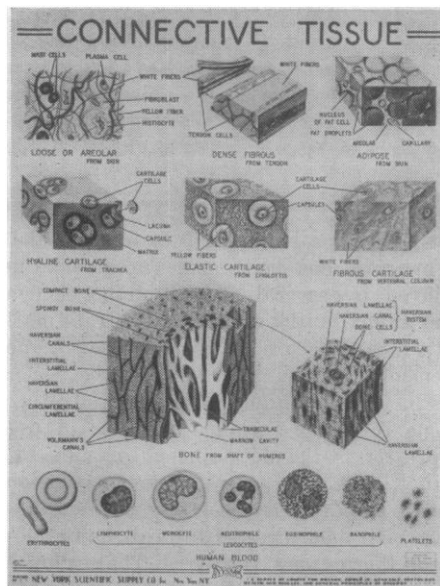


# NYSSCO—HISTOLOGY CHARTS



A new series of four "NYSSCO" Charts, fully colored, and accompanying series of nine Laboratory Notebook and Test Sheets.

These charts meet a long-felt need on both secondary and college levels, and in medical and nurses' training schools, etc. They are well-planned, with the figures beautifully executed, scientifically accurate, and vividly colored.

The charts are cloth-backed, size 36" x 50". With wood rollers, \$7.25. Test Sheets (8 1/2" x 11")—\$2.75 per C, \$.50 per dozen of a kind.

Chart No.	Titles	Test Sheet No.
BEC 1000	Epithelial Tissue	BT 1000A,B
BEC 1005	Connective Tissue	BT 1005A,B
BEC 1010	Muscular Tissue	BT 1010A,B
BEC 1015	Nervous Tissue	BT 1015A,B,C

Ask for Cat. No. 7J—"NYSSCO Biology Models and Charts."

EST.  1919

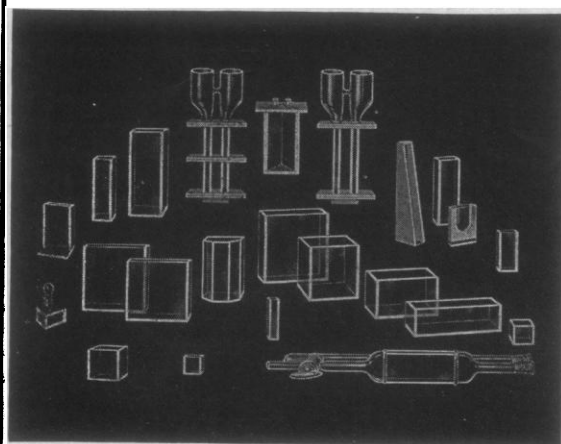
## NEW YORK SCIENTIFIC SUPPLY CO.

28 West 30th St.

New York 1, N. Y.

## GLASS ABSORPTION CELLS

made by **KLETT**



Makers of Complete Electrophoresis Apparatus

SCIENTIFIC APPARATUS

Klett-Summerson Photoelectric Colorimeters—  
Colorimeters—Nephelometers—Fluorimeters—  
Bio-Colorimeters—Comparators—Glass Stand-  
ards—Klett Reagents.

**Klett Manufacturing Co.**

179 East 87 Street, New York, New York

Biochemically and Clinically Important

ADENOSINE PHOSPHATES

**Schwarz**

Research workers will find Schwarz Laboratories' highly purified products well suited for studies in cell metabolism, coenzyme systems, and other physiologic processes. Clinicians investigating cardiovascular and rheumatic diseases, pruritus, muscle dysfunction, etc. can rely on Schwarz facilities for ample supplies.

**LYCEDAN**

Trademark  
Brand of Adenosine-5-Phosphoric Acid

**Schwarz**

**TRIPHOSADEN**

Trademark  
Brand of Adenosine Triphosphate

**Schwarz**

Convenient for Parenteral Administration

Inquiries from qualified investigators are cordially invited.

**Schwarz**

**SCHWARZ LABORATORIES, INC.**

204 East 44th St., New York 17, N. Y.