

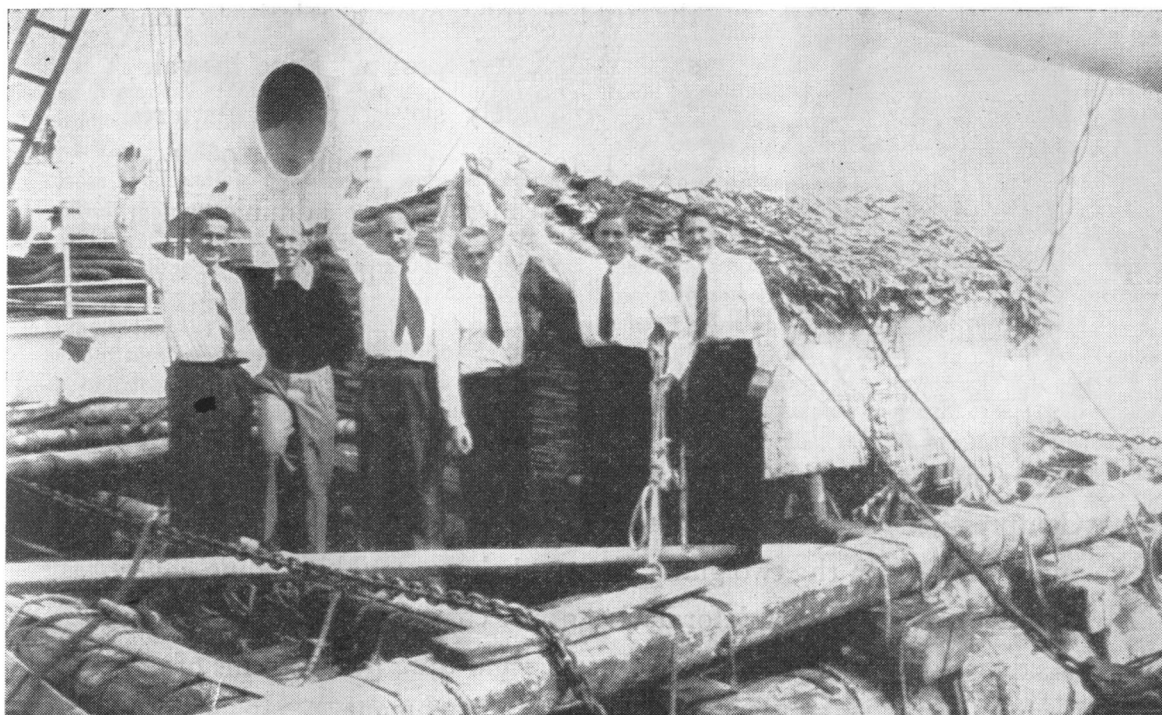
Vol. 106
No. 2756

Pages 379-404

October 24, 1947

Science

THE SCIENTISTS NEWSWEEKLY



Kon-Tiki returning to San Francisco with her crew after having traveled the 4,300 odd miles from Callao, Peru, to Raroia in the Tuamotu Archipelago along the course of the Humboldt Current. The journey, which required 101 days, was planned by Thor Heyerdahl, Norwegian ethnologist, in an effort to prove that the early American Indians might have sailed the route to settle Polynesia. Constructed chiefly of balsa and bamboo bound together with rope and having a 15 × 18 foot canvas sail, the primitive craft was built by Heyerdahl and Herman Watzinger in the style believed to have been used during the pre-Inca period. Other members of the crew were Bengt Danielson, Torstein Raaby, Erick Hesselberg, and Knut Haugland.

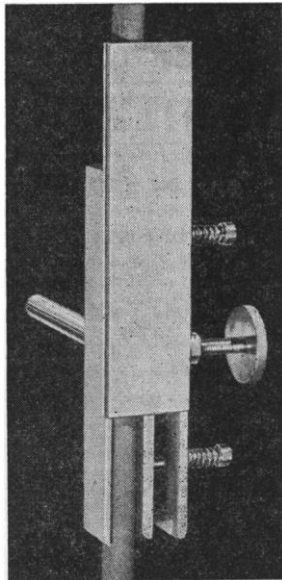
Published by the
AMERICAN
ASSOCIATION
FOR THE
ADVANCEMENT
OF SCIENCE

Genetic Control of Lymphomatosis in the Fowl
F. B. Hutt and R. K. Cole

TUNNEL CLAMP

FOR HOSPITAL AND LABORATORY

Rate of infusion accurately controlled



One-half the actual size

Delicate adjustment of flow in intravascular infusions is afforded by the Shannon-Bradley device for compressing the rubber tube over a relatively long segment. It has proved of special value where extremely slow input is required (e.g. 1 to 2 cc. per minute) for long periods, as in *penicillin* administration.

The material is brass, heavily nicked, permitting sterilization. Compression plate is assured steady contact with adjusting screw by springs acting on the two guide-pins, and the removable sliding cover is so flanged as to resist deformation of the casing during compression. A side-rod is provided for fixation to a rigid upright by means of our Heavy Clamp, or similar device for firm attachment.

*Write for our current price-list
of physiological apparatus*

The HARVARD APPARATUS COMPANY, Incorporated
Dover, Massachusetts

[A non-profit organization for the advancement of teaching and research in physiology and allied sciences]