

# SCIENCE

VOL. LXV

JUNE 3, 1927

No. 1692

## CONTRIBUTIONS OF SCIENCE TO THE LIGHTING ART<sup>1</sup>

### CONTENTS

|  |     |
|--|-----|
| <i>Contributions of Science to the Lighting Art:</i>   |     |
| M. LUCKIESH .....  | 531 |
| <i>Barro Colorado Island Biological Station:</i> DR. VERNON KELLOGG .....  | 535 |
| <i>Report of the President of the Ecological Society of America on the Questionnaire of 1926:</i> PROFESSOR JOHN W. HARSHBERGER .....  | 536 |
| <i>Scientific Events:</i>  |     |
| <i>The Russian Academy of Science; Opening of the Uwekahuna Observatory; Award of Commonwealth Fund Fellowships; Field Work of the California Academy of Sciences</i> .....  | 538 |
| <i>Scientific Notes and News</i> .....   | 540 |
| <i>University and Educational Notes</i> .....  | 544 |
| <i>Discussion and Correspondence:</i>  |     |
| <i>The Whale Shark at the Galapagos Islands:</i> DR. E. W. GUDGER. <i>The Need of Studies of the Mineral Nutrient Contents of Foods and Feeds:</i> DR. PAUL E. HOWE. <i>English vs. Metric System:</i> DR. H. J. PAGE. <i>The Logarithms of Napier:</i> PROFESSOR FLORIAN CAJORI. <i>An Unauthorized Reprint:</i> DR. KARL PEARSON ..... | 545 |
| <i>Scientific Books:</i>   |     |
| <i>Patten's Embryology of the Pig:</i> DR. HENRY MCELKNOWER .....  | 548 |
| <i>Scientific Apparatus and Laboratory Methods:</i>  |     |
| <i>A Rapid Method for Mechanical Analysis of Soils:</i> PROFESSOR GEORGE J. BOUYOUCOS .....  | 549 |
| <i>Special Articles:</i>   |     |
| <i>Oceanographic Reconnaissance of the Northern Sector of the Labrador Current:</i> DR. HENRY B. BIGELOW and C. ISELIN. <i>Exchangeable Hydrogen and Soil Reaction:</i> C. J. SCHOLLENBERGER. <i>Tumors in Kale:</i> P. N. ANNAND .....  | 551 |
| <i>Science News</i> .....  | x   |

SCIENCE: A Weekly Journal devoted to the Advancement of Science, edited by J. McKeen Cattell and published every Friday by

THE SCIENCE PRESS

New York City: Grand Central Terminal.

Lancaster, Pa.

Garrison, N. Y.

Annual Subscription, \$6.00. Single Copies, 15 Cts.

SCIENCE is the official organ of the American Association for the Advancement of Science. Information regarding membership in the Association may be secured from the office of the permanent secretary, in the Smithsonian Institution Building, Washington, D. C.

Entered as second-class matter July 18, 1923, at the Post Office at Lancaster, Pa., under the Act of March 3, 1879.

SCIENTIFIC work is so varied in viewpoint and objective and it is so complexly interwoven with human interpretations and technical and commonsensical applications of knowledge that it is impossible—at least in a brief paper—to establish a definite boundary between science and any of its fields of usefulness, such as a branch of engineering. Even in the scientific realm itself there is now no definite boundary between what have been termed *pure science* and *applied science*—a distinction which, in the last analysis, is now largely hypothetical. Wherever the distinction exists or is useful, perhaps the distinguishing factor is the immediate objective of the individual or of the institution which is prosecuting the work. I should define *pure science*, in the relatively rare cases where a useful purpose is served by doing so, as work done solely for the purpose of advancing knowledge. However, I have no patience with the implication of exalted purpose, as has been openly declared by some of the past members of the aristocracy of science and is still more or less delicately implied by the few remnants of that threadbare aristocracy. The old-fashioned idea of the purification of scientific work by intending and hoping and praying that it would never be put to the vulgar use of benefiting the multitude has almost completely atrophied—from lack of any use for it. Now scientific workers are rare whose viewpoint—if not their objective—is not the eventual usefulness of knowledge. Unless blinded by tradition one sees on every hand the benefits of applications of scientific knowledge. This commendable change in viewpoint and objective has also contributed toward the obliteration of the boundary line already referred to.

With gracious thanks for the knowledge inherited from pure science, the scientific worker, with increased happiness of mankind for his objective, may proudly stand alongside the so-called pure scientist. The latter follows his curiosity, overcoming obstacles or diverting his course as he wishes. The former with a definite objective before him requires not only the mental equipment of the former, but he must also be an interpreter of this knowledge into every-day usefulness and he must surmount the obstacles encountered.

<sup>1</sup> Abstract of an address before Section M, American Association for the Advancement of Science, Philadelphia, December 29, 1926.

# RECORD MAKING

is an essential factor in all scientific work. The ideal scientific record is the photograph since it is permanent and indisputable.

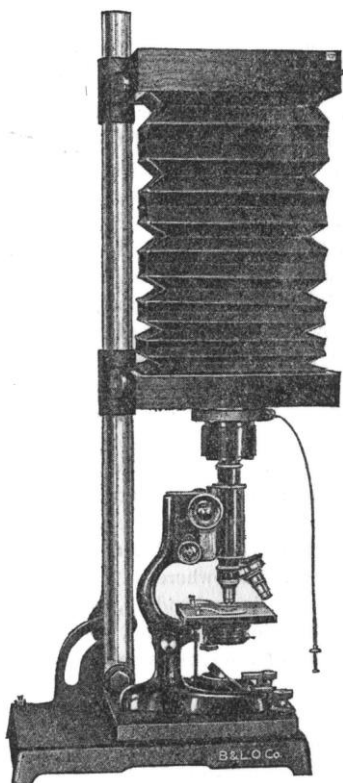
*In The Laboratory*

## Bausch & Lomb Photomicrographic Cameras

[models to suit every need]

may be used in connection with any microscope for photographing micro slides, or with

Micro Tessar lenses for gross specimens under low magnifications.

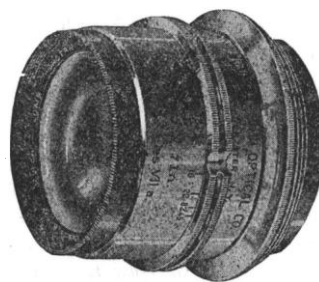


*In The Field*

a good camera, equipped with well corrected lenses of a variety of focal lengths, is basic equipment.

Let us tell you about

## Bausch & Lomb Convertible Protar Lenses



*Write for Catalogue*

# BAUSCH & LOMB OPTICAL CO.

632 St. Paul Street, Rochester, N. Y.

## Marine Biological Laboratory Woods Hole, Mass.

### INVESTIGATION Entire Year

Facilities for research in Zoology, Embryology, Physiology, and Botany. Fifty-two private laboratories \$100 each and ninety-four private laboratories \$200 each for not over three months. Fifty-six tables are available for beginners in research who desire to work under the direction of members of the staff. The fee for such a table is \$50.00.

### INSTRUCTION June 28 to August 8, 1927

Courses of laboratory instruction with lectures are offered in Invertebrate Zoology, Protozoology, Embryology, Physiology, and Morphology and Taxonomy of the algae. Each course requires the full time of the student. Fee, \$75.00.

### BIOLOGICAL SUPPLIES

For the classroom, museum or collector.

First class preparations. Send for new (1926) Catalogue No. 1. Zoological and Embryological material, Life Histories and Habitat Groups.

Catalogue No. 2, Botanical material.

Catalogue No. 3, Microscopic slides.

Address all correspondence regarding material and catalogues to:

Supply Department,  
GEO. M. GRAY,

Curator, Woods Hole, Mass.

The annual announcement will be sent on application to The Director, Marine Biological Laboratory, Woods Hole, Mass.

### SUPPLY DEPARTMENT Open the Entire Year



## The Biological Laboratory

Cold Spring Harbor, Long Island, N. Y.

### Investigation

Facilities for research in Physiology, Protozoology, Embryology and other branches of Zoology, and Botany. Fee for private room \$75.

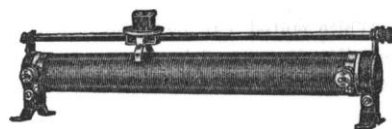
Special equipment for mammalian work.

Opportunities for beginning investigators. Fee \$50.

### Instruction

Six weeks, June 29th to August 9th. Courses in Field Zoology, Physiology, Experimental Surgery, Endocrinology, Field Botany and Plant Ecology. Tuition \$70.

Situated in a region rich in marine, fresh water, woodland and meadow life. One hour from the center of New York City. For information, address the Biological Laboratory, Cold Spring Harbor, Long Island, N. Y.



By means of sliding-contacts the resistance value of

### JAGABI RHEOSTATS

can be varied from zero to full rating in exceedingly small steps.

They are eminently suited for, and are largely used in Educational, Research and Industrial Laboratories.

Write for Illustrated Bulletin 1140-S

JAMES G. BIDDLE, PHILADELPHIA  
1211-13 ARCH STREET

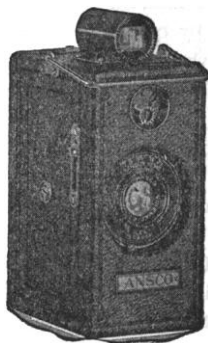
You SEE it  
and —  
You HAVE it

### Ansco Memo Camera



50 Pictures on a 50 cent Film

Actual photographic records of anything and everything by a practical new method which at negligible cost gives you miniature prints on paper, enlargements hand-camera size, or still-film movie rolls for screen projection. Camera \$20. Weighs only 12 ounces loaded. Send for illustrated 48-page booklet describing this epoch-making advance in photography.



Ansco Photoproducts,  
Inc.  
Binghamton, N. Y.

## Barnstead Water Stills

Heated by steam, gas, electricity, gasoline or kerosene.

Ask for Bulletin 295

### EIMER & AMEND

Est. 1851

Inc. 1897

Third Ave., 18th to 19th St. New York, N. Y.

## THE SCIENCE PRESS PRINTING COMPANY

PRINTERS OF

SCIENTIFIC AND EDUCATIONAL JOURNALS,  
MONOGRAPHS AND BOOKS

Correspondence Invited

LANCASTER, PENNSYLVANIA



## School of Medicine

### NEW ADMISSION REQUIREMENTS

At least three years of approved college work including specified requirements in the sciences.

### DEGREE OF B.S. IN MEDICAL SCIENCE

This degree may be awarded at the end of the third or fourth year to students fulfilling certain conditions including the preparation of a thesis.

### DEGREE OF DOCTOR OF MEDICINE

Upon satisfactory completion of prescribed four-year course.

For catalogue and information, address  
**THE DEAN, Washington University**  
 School of Medicine, St. Louis,  
 Missouri

## Johns Hopkins University SCHOOL OF MEDICINE

The School of Medicine is an Integral Part of the University and is in the Closest Affiliation with the Johns Hopkins Hospital.

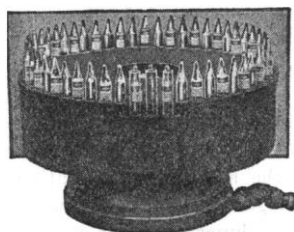
### COURSES FOR GRADUATES

In addition to offering instruction to students enrolled as candidates for the degree of Doctor of Medicine, the School also offers Courses for Graduates in Medicine. In each of the clinical departments opportunity for advanced instruction will be offered to a small number of physicians, who must satisfy the head of the department in which they desire to study that they are likely to profit by it.

Students will not be accepted for a period shorter than three academic quarters of eight weeks each, and it is desirable that four quarters of instruction be taken. The courses are not planned for purposes of review but for broad preparation in one of the lines of medical practice or research. The opportunities offered will consist in clinical work in the dispensary, ward-rounds, laboratory training, and special clinical studies.

The academic year begins the Tuesday nearest October 1 (October 4, 1927), and students may be admitted at the beginning of any academic quarter. The charge for tuition is \$50 a quarter, payable in advance.

Inquiries should be addressed to the Executive Secretary of the School of Medicine, Johns Hopkins University, Washington and Monument Streets, Baltimore, Maryland.



Pat. applied for.

## UNVARYING ACCURACY WITH LAMOTTE STANDARDS

Scientists, teachers and research workers find the LaMotte Roulette Comparator the ideal equipment for making hydrogen ion tests because of its simplicity, convenience and accuracy. LaMotte Color Standards insure absolute accuracy at all times. They are standard equipment in many important laboratories.



Write for a copy of our interesting brochure, "The ABC of Hydrogen Ion Control," explaining this modern control method in simple language. Free upon request.

**LaMOTTE CHEMICAL PRODUCTS CO.**  
 418 Light St. Baltimore, Md., U. S. A.

## School of Medicine and Dentistry THE UNIVERSITY OF ROCHESTER

Medical School, Strong Memorial Hospital and Out-Patient Department of the University of Rochester and the Municipal Hospital of the City of Rochester, all under one roof. Medical, Surgical, Obstetric, Pediatric, Contagious and Neurological patients admitted. Unusual opportunities for school and hospital cooperation in medical and dental teaching.

### Admission

Medical and dental candidates must have completed three years of college work with special requirements in chemistry, physics and biology. The entering class will not exceed 40, men and women being admitted on equal terms.

### Tuition

Charge for tuition will be \$300 per annum, payable in equal installments at the beginning of each semester.

For information address

The Dean—School of Medicine and Dentistry, Crittenden Blvd., Rochester, N. Y.