

NEW PRODUCTS

GM-10 and GM-45 Radiation Systems Black Cat Systems

Westminster, MD
GM-10 serial, \$149;
GM-10 USB, \$179;
GM-45 serial, \$299
www.blackcatsystems.com

Müller radioactivity monitor. This is unfortunate, because the computer can be a useful tracking device for monitoring radioactive emissions over time.

Black Cat Systems recognized the need for an easily interfaced radioactivity monitor and created the GM-10 and GM-45 detection systems, which are designed to connect to a personal computer's serial (or USB) interface from which they derive their power. The software interface for data collection is a program called Rad that has been designed for both Macintosh and Windows computers.

Rad installs from a CD-ROM and is easily linked to the GM monitors after configuring the appropriate serial port. At that point, the program automatically begins data collection and presents a variety of options for formatting the output. Controls are arranged as a set of tabbed items in the main program window. Choices include saving the data to a text file, control of the appearance of the graph of sampled data, simple statistical options, and FTP functions for uploading data from remote locations.

The radiation detecting hardware for the GM-10 is reasonably sensitive and that of the GM-45 is even more so, though both gave a lower signal for the same amount of radioactivity than a standard commercial handheld monitor tested simultaneously. The systems require a cable linkage to the computer in order to function, and it is this restriction that precludes the devices from being used routinely (or at least conveniently) in the laboratory. One setup in which the GM-10 and GM-45 systems might prove useful, however, is for remote sensing of radiation levels. The company Web site describes data collected on aircraft, and one can imagine novel applications anywhere a laptop could be taken.

With the Rad program's built-in FTP functions, the system can send data uploads on a regular basis to a central system for collection and display on Web pages. A welcome enhancement of this technology would involve incorporation of the wireless Bluetooth technology to eliminate the need for a cable altogether.

The serial version of GM-10 and GM-45 is available for Macintosh (MacOS 7.6 to 9.2 and OS X) and Windows (98, ME, NT, and 2000) systems. Each requires one available RS-232 serial port (or a serial/USB adapter, which is not included). The Rad software is shipped free with purchase of either monitor.

—Kevin Ahern

Department of Biochemistry/Biophysics, Oregon State University, Corvallis, OR 97331, USA. E-mail: ahernk@ucs.orst.edu

Ambion

For more information
800-888-8804
www.ambion.com
www.scienceproductlink.org

ONLINE RADIOACTIVITY DETECTION

Integration of laboratory instruments such as spectrometers and chromatographic systems with computer workstations has been commonplace for some time. One laboratory instrument that has generally remained computer-independent, however, is the Geiger-

Müller radioactivity monitor. This is unfortunate, because the computer can be a useful tracking device for monitoring radioactive emissions over time.

Black Cat Systems recognized the need for an easily interfaced radioactivity monitor and created the GM-10 and GM-45 detection systems, which are designed to connect to a personal computer's serial (or USB) interface from which they derive their power. The software interface for data collection is a program called Rad that has been designed for both Macintosh and Windows computers.

Rad installs from a CD-ROM and is easily linked to the GM monitors after configuring the appropriate serial port. At that point, the program automatically begins data collection and presents a variety of options for formatting the output. Controls are arranged as a set of tabbed items in the main program window. Choices include saving the data to a text file, control of the appearance of the graph of sampled data, simple statistical options, and FTP functions for uploading data from remote locations.

The radiation detecting hardware for the GM-10 is reasonably sensitive and that of the GM-45 is even more so, though both gave a lower signal for the same amount of radioactivity than a standard commercial handheld monitor tested simultaneously. The systems require a cable linkage to the computer in order to function, and it is this restriction that precludes the devices from being used routinely (or at least conveniently) in the laboratory. One setup in which the GM-10 and GM-45 systems might prove useful, however, is for remote sensing of radiation levels. The company Web site describes data collected on aircraft, and one can imagine novel applications anywhere a laptop could be taken.

With the Rad program's built-in FTP functions, the system can send data uploads on a regular basis to a central system for collection and display on Web pages. A welcome enhancement of this technology would involve incorporation of the wireless Bluetooth technology to eliminate the need for a cable altogether.

The serial version of GM-10 and GM-45 is available for Macintosh (MacOS 7.6 to 9.2 and OS X) and Windows (98, ME, NT, and 2000) systems. Each requires one available RS-232 serial port (or a serial/USB adapter, which is not included). The Rad software is shipped free with purchase of either monitor.

—Kevin Ahern

Department of Biochemistry/Biophysics, Oregon State University, Corvallis, OR 97331, USA. E-mail: ahernk@ucs.orst.edu

HIGH-THROUGHPUT RNA CLEAN-UP

The MEGAclean-96 Kit is designed for high-throughput and rapid clean-up of large-scale transcription reactions. It offers more consistent results and higher recovery than generic RNA isolation methods that have been adapted as an afterthought for RNA

clean-up. MEGAclean efficiently removes unincorporated nucleoside triphosphates, enzymes, and buffer components, making it suitable for applications including RNA amplification, array hybridization, and RNA interference studies.

Kimble-Kontes

For more information
888-546-2531
www.kimble-kontes.com
www.scienceproductlink.org

KOOL-GRIP FLASKS AND BEAKERS

Kool-Grip flasks and beakers feature rugged, heat-insulating cork jackets permanently bonded to high-quality, borosilicate glass flasks and beakers. These safe and convenient laboratory beakers and round-bottom Kjeldahl and Erlenmeyer flasks are autoclavable and dishwasher safe. The cork jacket's textured composition permits secure handling and comfort.

Mirus

For more information
608-441-2824
www.genetransfer.com
www.scienceproductlink.org

OLIGONUCLEOTIDE TRANSFECTION REAGENT

TransIT-Oligo Transfection Reagent is used for the efficient delivery of a variety of oligonucleotides into mammalian cell lines. The reagent provides high-efficiency delivery with an easy-to-use protocol and high reproducibility. It can be used in the presence of serum, thus eliminating the need to change media during the transfection process.

Varian

For more information
800-882-7426
www.varianinc.com
www.scienceproductlink.org

ION VACUUM PUMPS

A new family of ion pumps is designed to deliver one of the highest achievable vacuum environments in certain mass spectrometers, electron microscopes, and other analytical instruments requiring ultra-high vacuum. Called the VacIon Plus line, these pumps are also critical to other scientific applications including particle accelerators, beam lines, synchrotron light sources, space simulator chambers, and nuclear fusion research. For demanding analytical instrument applications that often involve pumping noble gases, such as air that includes some ambient argon, the Noble Diode and Starcell configurations are available for fast pumping speed and stable performance in the 10^{-7} to 10^{-9} mbar range. Interference between the pump and the instrument is minimized, thereby limiting stray magnetic field and particle emissions that can affect analytical performance.



Accelrys

For more information
800-756-4674
www.accelrys.com
www.scienceproductlink.org

BIOINFORMATICS AND CHEMISTRY SOFTWARE

Discovery Studio is a powerful research platform for the life sciences that integrates a comprehensive suite of informatics, modeling, and simulation solutions, and provides access to them on standard desktop personal computers. Designed to be an integrated platform to reduce the time and cost involved in the discovery and development of novel drugs, therapies, and other biologically active substances, it

will include wide-ranging informatics capabilities and modeling tools to identify and characterize protein targets and design drugs. The first suite of Windows-based applications has been released. Discovery Studio (DS) Gene is for viewing, editing, and analyzing DNA and protein sequences. DS ViewerPro is a molecular modeling and visualization tool. DS MedChem Explorer is a pharmacophore modeling and design application. These products can be integrated through DS Project Knowledge Manager, an Oracle-based groupware infrastructure that captures and stores the information and knowledge generated by Discovery Studio applications and facilitates effective re-use across research teams. Over the coming months, additional products and technologies will be added to Discovery Studio.

Applied Biosystems

For more information
800-327-3002
www.appliedbiosystems.com
www.scienceproductlink.org

DNA ANALYSIS MACHINES

The Applied Biosystems 3730 and 3730xl DNA Analyzers offer the potential to increase production capacity and decrease time needed to complete projects compared with previous models. The new knowl-

edge gained using these instruments will facilitate genome-based disease diagnosis, drug development, and biological discovery of the human, mouse, and other important genomes.

Biometra

For more information
0049-551-50686-0
www.biometra.com
www.scienceproductlink.org

PROTEOMICS BLOTTER

The Fastblot B64, a large proteomics blotter with an effective blotting area of 23.5 cm by 38.5 cm, is designed for blotting large, two-dimensional gels and sequencing

gels or for simultaneous transfer of multiple gels. Special synthetic carbon electrodes make the system highly corrosion-resistant and allow the use of both continuous and discontinuous buffer systems with pH from 3 to 9 as well as the use of sodium dodecyl sulfate. The system is built for the homogeneous, fast, and efficient transfer of proteins and nucleic acids from gels. Typical transfer times are 10 to 30 min.

Platypus Technologies

For more information
866-296-4455
www.platypustech.com
www.scienceproductlink.org

GOLD-COATED SUBSTRATES

A line of gold-plated glass slides, glass coverslips, mica, and silicon wafers offers superior quality, reliability, and reproducibility. They allow researchers to avoid clean room access

fees, contamination problems from multi-use evaporators, and reproducibility problems. Gold films are deposited onto substrates under tightly controlled conditions, thus offering highly reproducible surfaces for a wide range of physical and biological experiments. Areas of application include scanning probe microscopy, surface plasmon reflectometry, protein/DNA microarrays, and cell culture.

Schleicher & Schuell

For more information
800-245-4024
www.s-and-s.com
www.scienceproductlink.org

PROTEIN ARRAY KIT

The FAST PAK 2 protein array kit is part of a growing family of proteomics products. The original FAST PAK produces arrays with ongoing protein stability data for more than 22 months on FAST

Slides, which are nitrocellulose-coated slides for protein arraying. The new kit expands customers' abilities by allowing two arrays to be printed and processed side-by-side on the same slide, resulting in more data from each slide and reducing sample volumes and costs. The kit is suitable for multiplexing experiments.

Both signal strength and spot morphology are reproducible pad-to-pad and slide-to-slide. It is designed to allow life science and medical researchers in pharmaceutical and academic laboratories to quickly and conveniently produce protein microarrays.

Genotech

For more information
314-991-6034
www.genotech.com
www.scienceproductlink.org

DOT BLOT SYSTEM

The Enhancer Dot Blot System concentrates samples in a small area at the point of application and enhances the signal strength. The device consists of sample tubes (strips) provided with micro-capillary openings. The user simply loads the samples into the sample tubes. The samples will slowly diffuse into the membrane by capillary action at the point the sample tubes contact the membrane. As the sample enters, it tightly binds to the membrane, which concentrates the sample in a smaller area. Once the sample is bound to the membrane, it will not leach out during the washing steps.



Mo Bio Laboratories

For more information
800-606-6246
www.mobio.com
www.scienceproductlink.org

HIGH-THROUGHPUT DNA KITS

The UltraClean-htp 96 Well Kits are high-throughput kits for producing soil, plant, tissue, microbial, and blood DNA. The kits feature a silica spin filter plate method and require a 96-well plate shaker. A PCR (polymerase chain reaction) Clean-up kit comes in either vacuum or centrifuge format. The kits yield high-quality DNA with A_{260}/A_{280} ratios of 1.8 to 2.0. The genomic kits yield DNA greater than 50 kb in length.

Eppendorf

For more information
+49 40-538 01-0
www.eppendorf.com
www.scienceproductlink.org

LITERATURE

Your Next PCR Party Will be a Complete Success is a brochure on the cMaster reverse transcription-polymerase chain reaction (RT-PCR) kits, which are based on a modular system. Interchangeable kit components enable maximum flexibility, regardless of whether the goal is cDNA synthesis or one-step or two-step RT-PCR. The key to higher processivity is a genetically modified and protein-technology modified RT enzyme. Thanks to a newly developed buffer technology, optimization experiments for determining the optimal magnesium concentration are unnecessary. The buffer automatically sets the optimal concentration depending on the requirement.

MicroSolv Technology

For more information
732-229-3400
www.MicroSolvTech.com
www.scienceproductlink.org

The Database of CE References is a user-friendly and easy-to-install CD-based listing of more than 10,000 capillary electrophoresis citations that are easily searched.

Users can search by title, author, keyword, date, and journal. This tool makes finding methodologies and ideas easy and quick.

Newly offered instrumentation, apparatus, and laboratory materials of interest to researchers in all disciplines in academic, industrial, and government organizations are featured in this space. Emphasis is given to purpose, chief characteristics, and availability of products and materials. Endorsement by *Science* or AAAS of any products or materials mentioned is not implied. Additional information may be obtained from the manufacturer or supplier by visiting www.scienceproductlink.org on the Web, where you can request that the information be sent to you by e-mail, fax, mail, or telephone.

Classified Advertising

For full details on advertising rates, deadlines, mechanical requirements, and editorial calendar go to

www.sciencecareers.org

and click on

How to Advertise

UNITED STATES

Display Classified Advertising

Bren Peters (Midwest and Mid-Atlantic)

PHONE: 202-326-6541

Kathleen Clark (Southeast and Canada)

PHONE: 202-326-6555

Jill Steinberg (Northeast)

PHONE: 914-834-8733

Kristine von Zedlitz (West Coast)

PHONE: 415-956-2531

FAX: 202-289-6742

E-MAIL: science_displayads@aaas.org

Line Classified Advertising

Christina Geiger

PHONE: 202-326-6532

Sussy Castilla

PHONE: 202-326-6740

FAX: 202-289-1451

E-MAIL: science_classifieds@aaas.org

Online Classified Advertising

Beth Dwyer (Internet Sales Manager)

PHONE: 202-326-6534

FAX: 202-289-6742

E-MAIL: bdwyer@aaas.org

AD MATERIALS: Send to:

Science Classified Advertising,

1200 New York Avenue, NW, Room 911,

Washington, DC 20005

EUROPE

Display, Line, and Online Classified Advertising

Deborah Harris

PHONE: +44 (0) 1223 326 500

FAX: +44 (0) 1223 326 532

E-MAIL: european_ads@science-int.co.uk

AD MATERIALS: Send to:

Science International, Advertising Dept.,

Bateman House, 82-88 Hills Road,

Cambridge CB2 1LQ, United Kingdom

MEETINGS / ANNOUNCEMENTS

Kathleen Clark

PHONE: 202-326-6555

Richard Walters

PHONE: +44 (0) 1223 326 527

To subscribe to Science

call 202-326-6417

or 1-800-731-4939

POSITIONS OPEN

FACULTY POSITION HIV/AIDS Virology

The Department of Molecular Virology and Microbiology at Baylor College of Medicine invites applications for a full-time, tenure-track/tenure faculty position at the **ASSISTANT** or **ASSOCIATE PROFESSOR** level. All HIV/AIDS research interests will be considered but applicants interested in the pathogenesis of infections or vaccine development are especially sought. Applicants should have a Ph.D. and/or M.D. degree, relevant postdoctoral experience, and demonstrated research productivity. The successful candidate will be expected to maintain an independent, externally funded research program; participate in graduate training; and supervise the Center for AIDS Research (CFAR) Virology Core. This is an opportunity to join a vibrant, interactive department with strong research and training programs in the rich scientific setting of the renowned Texas Medical Center. Current research interests of an exceptional faculty focus on viral and bacterial gene expression and pathogenesis, RNA and DNA viruses of human diseases, vaccine evaluation, and microbial genomics and proteomics. The interdepartmental CFAR offers excellent opportunities for collaborative research, especially with international AIDS research programs; the Baylor Pediatric AIDS Clinical Trials Unit; and the CPCRA at the University of Texas. An NIH-funded training program for clinical research on AIDS supports postdoctoral trainees. A start-up package, modern laboratory space, and access to outstanding core facilities are available. Send curriculum vitae; a statement of current research activities; a concise summary of future plans; and arrange to have three letters of recommendation sent by October 15, 2002, to: **Dr. Janet S. Butel, Faculty Search Committee, Department of Molecular Virology and Microbiology, Mail Stop BCM385, Baylor College of Medicine, Houston, TX 77030. E-mail: mvm-facultypos1@bcm.tmc.edu.** Baylor College of Medicine is an Affirmative Action/Equal Opportunity Employer.

FACULTY POSITION in chemistry and biochemistry. Miami University, Oxford Campus, Department of Chemistry and Biochemistry invites applicants with a Ph.D. degree in biochemistry or related areas for a tenure-track **ASSISTANT PROFESSOR** position starting August 2003. Preference will be given to candidates whose research addresses important problems in metabolism, specifically those who will use modern biochemical approaches such as metabolic profiling to explore pathways and their regulation for secondary metabolite production in plants or microorganisms.

Applicants should have a strong commitment to developing an externally funded research program and to teaching at the undergraduate and graduate level. Qualified persons should (1) submit curriculum vitae and a detailed description of their proposed research and (2) arrange for three letters of recommendation to be sent to: **Biochemistry Search Committee, Department of Chemistry and Biochemistry, Miami University, Oxford, OH 45056.** Review of complete applications will begin Friday, November 1, 2002. The search will continue until the position is filled. More information concerning the Department and this position can be found at our website: <http://www.cas.muohio.edu/chm/>. Because Miami University is an Equal Opportunity/Affirmative Action Employer, women and minorities are particularly encouraged to apply for this position.

The Department of Ecology and Evolutionary Biology, Tulane University, invites applications for one tenure-track position of **ASSISTANT PROFESSOR** in tropical biology (see website: http://www.tulane.edu/~eeob/faculty_search.html). Send curriculum vitae, statements of research and teaching interests, selected publications, and names of three references to: **David C. Heins, Chair, Department of Ecology and Evolutionary Biology, 310 Dinwiddie Hall, Tulane University, New Orleans, LA 70118-5698.** Review of applications will begin October 14, 2002, and the search will remain open until the position is filled. Tulane University is an Affirmative Action/Equal Employment Opportunity Employer.

POSITIONS OPEN

The Great Lakes Cancer Institute (GLCI), a joint venture between Michigan State University and McLaren Health Corporation, seeks to recruit an experienced M.D. or M.D./Ph.D. Oncologist to serve as **ASSOCIATE DIRECTOR FOR CLINICAL RESEARCH**, located at the Flint, Michigan, campus. This individual will be expected to design, organize, and execute Phase I and Phase II clinical trials in the region of the hospitals and clinics under the jurisdiction of the McLaren Corporation and Michigan State University. He/she will participate in the formulation of the overall GLCI clinical trials development strategy, organization of project proposals for submission to government and industry funding agencies, and in the establishment of a communication system with community Oncologists that will facilitate the recruitment of patients and orderly execution of clinical trials. He/she will be responsible for organization of quality assurance audits and cooperation with the Chairman of the IRB. The Associate Director will participate in the teaching of Fellows and Residents located at the Flint Campus and will participate in teaching conferences at the Lansing Campus.

Inquiries, curriculum vitae, and references should be directed to: **Robert Hall, M.D., Ph.D., Director of GLCI, Michigan State University, Department of Medicine, B-226 Life Sciences Building, East Lansing, MI 48824-1317.** Applications due September 30, 2002, or until position is filled. If you need additional information, call: **Dr. Hall; Telephone: 517-334-2909; e-mail: rob.hall@ht.msu.edu.**

Michigan State University is an Affirmative Action/Equal Opportunity Institution. Disabled individuals have the right to request and receive reasonable accommodation. Applicants who are not U.S. citizens or permanent residents must provide documentation evidencing employment authorization in the United States.

FACULTY POSITION Pharmacology and Toxicology

The Department of Medical Pharmacology and Toxicology at Texas A&M University System Health Science Center invites applications for a tenure-track faculty position at the **ASSISTANT** or **ASSOCIATE PROFESSOR** level. Outstanding applicants should have an externally funded and established research program and experience in teaching medical or graduate students. Special consideration will be given to individuals who are particularly interested in toxicology, although applications from all areas in pharmacology will be considered. Information about the Department can be found at website: <http://medicine.tamu.edu/pharm/>. Excellent laboratory space and attractive start-up benefit packages are offered. Deadline to ensure consideration is November 15, 2002. Submit a letter of application; curriculum vitae; statement of research interests; and the names, addresses, telephone/FAX numbers of three references to: **Dr. J. P. Trzeciakowski, Chair, Search Committee, Department of Medical Pharmacology and Toxicology, Texas A&M University System Health Science Center, College Station, TX 77843-1114.** The TAMU System is an Equal Opportunity Employer.

FUNDING GRANT

Position (NIH-funded program project grant) of **RESEARCH ASSISTANT PROFESSOR** or **POSTDOCTORAL RESEARCH ASSOCIATE** is available to study mechanisms of G protein-regulated cellular events (website: <http://www.uic.edu/depts/mcph/facultyrs.html>). Experience with mice models is preferred. The successful candidate will have Ph.D. or M.D., research expertise in molecular biology and/or protein biochemistry, credible publication record, and potential for independent funding and tenure-track position. For fullest consideration, qualified candidates should submit curriculum vitae and list of three references by September 30, 2002, to: **Dr. Tatyana Voyno-Yasenetskaya, Department of Pharmacology, University of Illinois at Chicago, 835 South Wolcott Avenue, Room E403 (M/C 868), Chicago, IL 60612. E-mail: tvy@uic.edu.** The University of Illinois at Chicago is an Affirmative Action/Equal Opportunity Employer.



**UNIVERSITY OF MICHIGAN
BIOLOGICAL SCIENCES SCHOLARS PROGRAM
For Junior, Tenure-Track Faculty**

The University of Michigan Medical School announces recruitment for the Biological Sciences Scholars Program (BSSP) to enhance investigational strength in the life sciences at the University of Michigan.

Now entering its sixth year, this Program has led to the recruitment of outstanding young scientists in the areas of genetics, microbiology, virology, structural biology, pharmacology, biochemistry, molecular pharmacology, stem cell biology, and the neurosciences. The Program seeks individuals with PhD, MD, or MD/PhD degrees, at least two years of postdoctoral research experience, and evidence of superlative scientific accomplishment and scholarly promise. Successful candidates will be expected to establish a vigorous, externally-funded research program, and to become leaders in departmental and program activities, including teaching at the medical, graduate, and/or undergraduate levels. Primary college and department affiliation and rank will be determined by the applicant's qualifications and by relevance of the applicant's research program to departmental initiatives and focus. Preference will be given to appointments at the Assistant Professor level, though outstanding applicants at a more advanced career stage will also be seriously considered.

Applicants should send their current curriculum vitae (including bibliography), three letters of support, and a two to four page summary of their current research program and future research plans to the address below. Applications will be considered on a rolling basis, although candidates are strongly encouraged to submit their applications by October 31, 2002.

John B. Lowe, MD, Chair, BSSP Search Committee
Warner-Lambert/Parke-Davis Endowed Professor in Medicine
University of Michigan Medical School
Dean's Office / 4107S Medical Science I / 1301 Catherine St.
Ann Arbor, MI 48109-0624

The University of Michigan is an Affirmative Action/Equal Opportunity Employer



McGILL UNIVERSITY
UNIVERSITÉ MCGILL
Faculty of Medicine/Faculté de médecine

**Director
McGill Centre for Bioinformatics**

McGill University is currently seeking a Director for the McGill Centre for Bioinformatics which will be supported by a Tier I Canada Research Chair position. In addition to outstanding biomedical research programmes, McGill University also has significant programs in genomics, proteomics, and structural biology in the Faculties of Medicine and Science. Currently within these programs there are several large-scale bioinformatics projects under way in collaboration with the Departments of Computer Science, Mathematics, and Biomedical Engineering. McGill University has a large and dynamic life sciences research community and Montreal has a burgeoning biopharmaceutical industry.

The Director's mandate is to build upon existing bioinformatics research capacity at McGill, to develop training programs, to address the diversity of this field, and to coordinate the Centre's activities with other organizations, nationally and internationally. The Director will play a key leadership role in the development of bioinformatics in the Montreal research community. He or she should have demonstrated the ability to develop multidisciplinary research programs and have a clear, unique vision of the future of bioinformatics. This is an outstanding opportunity to develop bioinformatics research in an academic context.

Please send a curriculum vitae, a short statement of research interest and the names of three references to:

Chairman of the Bioinformatics Search Committee
Faculty of Medicine
McGill University
McIntyre Medical Sciences Building
3655 Promenade Sir William Osler
Montréal, QC H3G 1Y6

*McGill University is committed to equity in employment.
In accordance with Canadian immigration requirements, priority will be given to Canadian
citizens and permanent residents of Canada.*



Genomics

A *Science* Advertising Supplement

Issue date: 4 October 2002

Reserve ad space by: 17 September 2002

Employment opportunities in genomics await both new graduates and tenured scientists. Molecular biologists continue the work of sequencing the genomes of more organisms. Other types of life scientists can then start to convert the sequencing information into practical knowledge for use in medicine and agriculture. This supplement will outline the career options in academe and industry that genomics offers researchers in life science.

Advertiser Benefits

Maximum Exposure to the World's Top Scientists Paid circulation of over 143,000¹ *Science* subscribers, plus pass-along readers, brings total global weekly readership to over 750,000.²

¹ *Science* June 2002 BPA Publisher's Statement.

² *Science* Harvey Research Readership surveys: 14 January 2000, 4 February 2000, 4 June 1999 (Japan) as applied to *Science* June 2002 BPA Publisher's Statement, publisher's own data.

Special Bonus Distributions

- **NIH Career Fair**
15 October 2002, Bethesda, MD
- **NIH Research Week**
17–18 October 2002, Bethesda, MD
- **American Society of Human Genetics**
15–19 October 2002, Baltimore, MD

ScienceCareers.org posting available

Reach an expanded audience by posting your ad on our website, ScienceCareers.org, for a nominal fee.

Resume/CV Database Access Running your ad in print allows you to purchase 1-day access to *Science*'s Resume/CV Database for only \$250. Search over 500 resumes from genomics researchers.

Exclusive Job Alerts E-mail your job opportunities directly to *Science* Job Alerts recipients. Prices start at \$600.

To advertise, contact:

U.S. – Daryl Anderson (202) 326-6543
Europe – Deborah C. Harris +44 (0) 1223 326 500
Australia – Keith Sandell +61 29922-2977
Japan – Mashy Yoshikawa +81 3 3235-5961

Science @
CAREERS
www.sciencecareers.org

**Department of Health and Human Services
National Institutes of Health
National Heart, Lung, and Blood Institute**

With nation-wide responsibility for improving the health and well being of all Americans, the Department of Health and Human Services oversees the biomedical research programs of the National Institutes of Health and those of NIH's research Institutes.

SCIENTIFIC REVIEW ADMINISTRATORS

The National Heart, Lung, and Blood Institute (NHLBI), a major research component of the National Institutes of Health (NIH) and the Department of Health and Human Services, is seeking three Scientific Review Administrators for the Review Branch, Division of Extramural Affairs. Through interaction with established scientists in a variety of fields, Scientific Review Administrators organize and manage the comprehensive scientific and technical merit review of grant applications and contract proposals. Scientific Review Administrators are responsible for assuring the fairness and consistency of the review process, and for providing technical guidance to applicants, reviewers, and Institute staff.

Qualifications Required: Individuals with a Ph.D. or M.D. degree or equivalent, and a scientific background in disciplines relevant to heart, lung, blood, or sleep disease research are encouraged to apply. Experience in grant preparation and in the peer review process is desirable. For the basic qualification requirements, please refer to the NIH guidance for Health Scientist Administrators at <http://www.nhlbi.nih.gov/about/jobs/hsaguide.htm>.

Salary: The current salary range is \$55,694 - \$101,742. In addition, a recruitment bonus may also be considered. Position requirements and detailed application procedures are provided on vacancy announcement **HL-02-0113**, which can be obtained by accessing <http://careerhere.nih.gov> or by calling **1-800-728-JOBS (fax file #4048) or 301-594-2953**.

How to Apply: Submit a Standard Form 171, Application for Federal Employment; OF-612, Optional Application for Federal Employment; current curriculum vitae/bibliography or other format to: **National Heart, Lung, and Blood Institute, Human Resources Branch, Building 31, Room 5A28, Center Drive, MSC 2484, Bethesda, MD 20892-2484**. All applications must be postmarked by September 30, 2002. For additional information contact **Ms. Michele Quander at (301) 496-6477**.

HHS/NIH is an Equal Opportunity Employer



**Tenure-Track
Faculty Position in:**



TUMOR IMMUNOLOGY/CANCER BIOLOGY

The Department of Biology invites applications for a tenure-track faculty position in Tumor Immunology/Cancer Biology. The successful applicant will have the opportunity to collaborate with the newly formed Georgia Cancer Coalition, which provides funding for cancer research. Applicants at the Assistant Professor level are expected to demonstrate the potential to establish an independent, externally funded research program in his/her specialized field while applicants at more senior levels should have an established, externally funded research program. The successful applicant is also expected to interact in interdisciplinary research with other faculty, direct graduate student research, and instruct upper level undergraduate and graduate courses in immunology and cell biology. Applicants with research that complements the interests of current faculty in the Ph.D. programs in Cell Biology and Physiology or Molecular Genetics and Biochemistry are particularly welcomed (See website: <http://biology.gsu.edu>). The Department has excellent research core facilities. Review of applications will commence on October 1, 2002 and the appointment will start in August 2003.

Applications including CV, reprints, statement of research interests and plans, and three letters of recommendation should be sent to:

**Chair of Immunology/Cancer Biology Search Committee
Georgia State University
33 Gilmer St SE Unit 8
MSC 8LO389
Atlanta GA 30303-3088**

Georgia State University, a Research University of the University System of Georgia, is an Equal Opportunity Employer.

**Diabetes Branch Tenure-Track Investigators
Mechanisms of Diabetes/Obesity**

With nation-wide responsibility for improving the health and well being of all Americans, the Department of Health and Human Services oversees the biomedical research programs of the National Institutes of Health and those of NIH's research Institutes.

The Diabetes Branch, NIDDK, NIH/DHHS in Bethesda, MD seeks to recruit two tenure-track scientists (one at the associate professor and one at the assistant professor level) who will use cellular, molecular, and/or genetic approaches to study molecular mechanisms relevant to type 2 diabetes and/or obesity. The investigator will be given resources and laboratory space to pursue a vigorous and effective research program. The position offers unparalleled opportunities for multi-disciplinary research and for interaction with a diverse group of outstanding scientists in the NIDDK and throughout the NIH. For information about the NIDDK and the Diabetes Branch, see <http://www.niddk.nih.gov>.

Candidates must have a Ph.D., M.D. or equivalent degree in the biomedical sciences, demonstrated research productivity, and capability of establishing an innovative and independent research program. Competitive salary and benefit packages are available. Applicants should send a Curriculum Vitae and list of publications, copies of three major publications, a plan for future research, and three letters of reference by November 1, 2002 to: Dr. Rick Proia, Chair of the Diabetes Branch Search Committee, c/o Christine Biser, Building 10, Room 8D12, 10 Center Drive, MSC 1758, Bethesda, MD 20892-1758.



NIH/DHHS is an equal opportunity employer.

POSITIONS OPEN

UNIVERSITY OF Nebraska Medical Center

FACULTY POSITIONS

Biochemistry and Molecular Biology

The Department of Biochemistry and Molecular Biology ([website: http://www.unmc.edu/Biochemistry/](http://www.unmc.edu/Biochemistry/)) invites applications for tenure-leading faculty positions. Qualifications include a Ph.D. or M.D. degree and relevant postdoctoral experience. Preference will be given to outstanding candidates who can apply state-of-the-art biochemical and molecular approaches to biomedical research.

Applicants will be expected to have or develop a funded, independent research program and to contribute to the teaching programs of the Department. Submit curriculum vitae, selected reprints, description of current and future research interests, teaching experience, and names and contact information of three references to: **Chair, BMB Search Committee, Department of Biochemistry and Molecular Biology, 984525 Nebraska Medical Center, Omaha, NE 68198-4525.**

University of Nebraska Medical Center is an Equal Opportunity/Affirmative Action Employer. Minorities and women are encouraged to apply.

ASSISTANT PROFESSOR OF BIOLOGY Amherst College

The Biology Department of Amherst College invites applications for a tenure-track position at the Assistant Professor level for an Organismal Biologist. We desire candidates who study behavioral, physiological, or environmental questions involving animals or microbes in terrestrial, freshwater, or marine systems in order to complement our existing strengths in plant organismal biology. Teaching duties include participation in a team-taught, introductory organismal course with laboratory and two upper-level courses in the candidate's area, one with laboratory. Ph.D. is required and postdoctoral experience is preferred. Send curriculum vitae and a statement of research and teaching interests to: **Organismal Biologist Search Committee, Department of Biology, Amherst College, Amherst, MA 01002-5000.** Have three letters of recommendation sent separately. Review of applications will begin on October 15, 2002, and continue until the position has been filled. Further information on the Department can be found at [website: http://www.amherst.edu/~biology](http://www.amherst.edu/~biology).

Amherst College is a private, undergraduate liberal arts college for men and women with 1,600 students and 165 faculty. Located in the Connecticut River Valley of western Massachusetts, Amherst participates with Hampshire, Mount Holyoke, and Smith Colleges and the University of Massachusetts in the Five College Consortium. *Amherst College is an Equal Opportunity/Affirmative Action Employer and encourages women, minorities, and persons with disabilities to apply.*

The Biology Department at Muskingum College ([website: http://www.muskingum.edu/~biology/](http://www.muskingum.edu/~biology/)) invites applications for a tenure-track position at the rank of **ASSISTANT PROFESSOR** to begin August 2003. Over a two-year cycle, this faculty member will teach courses in functional histology, comparative anatomy and physiology, human anatomy, and general introductory courses. Significant opportunities for collaboration exist with colleagues in molecular biology and neurobiology. The successful applicant will be expected to establish research programs that actively involve students.

Candidates will be expected to demonstrate a keen interest and proficiency in teaching as well as a positive disposition to intensive student interaction. Please send curriculum vitae, copies of recent publications, a statement of teaching philosophy, a research statement, and contact information for three references to: **Dr. Danny Ingold, Biology Department, Muskingum College, New Concord, OH 43762.** Review of applications will begin on 18 October 2002 and continue until the position is filled.

POSITIONS OPEN

MICROBIOLOGY: tenure track, **ASSISTANT PROFESSOR** level, beginning fall 2003 in the Biology Department at Colorado College, a private, highly selective, undergraduate liberal arts institution enrolling approximately 1,900 students. We seek candidates who explore evolutionary questions about microorganisms using the tools of molecular biology. Organismic specialty open but the successful candidate is expected to teach an introductory course in microbiology, intermediate courses in cell biology or genetics, develop upper-level courses in area of specialty, and undertake research involving undergraduates. Candidates with expertise in developmental biology and/or bioinformatics are especially welcome and should describe their experience in a cover letter. Ph.D. required; teaching and postdoctoral experience highly desirable. Applicants should send (1) a cover letter that includes description of professional background; (2) a statement of teaching philosophy; (3) curriculum vitae with e-mail address; (4) copies of undergraduate and graduate transcripts (unofficial copies acceptable); and (5) four letters of reference to: **Microbiology Search Committee, Department of Biology, Colorado College, 14 East Cache La Poudre Street, Colorado Springs, CO 80903** by September 27, 2002. More information about Colorado College and the Department of Biology is available at [website: http://www.ColoradoCollege.edu](http://www.ColoradoCollege.edu).

Colorado College is an Equal Opportunity Employer committed to increasing the diversity of the college community. Candidates who can contribute to that goal are particularly encouraged to apply and identify their strengths in this area. The Colorado College welcomes members of all groups and reaffirms its commitment not to discriminate on the basis of race, color, age, religion, sex, national origin, disability, or sexual orientation in its educational programs, activities, and employment practices.

RESEARCH ASSISTANT PROFESSOR for educational institute in Cincinnati, Ohio. Will be a creative Scientist with the ability to develop a vigorous, independent research program in the field of functional and molecular regulation of electrolytes, acid base, and water transporters in renal epithelial cells. This research requires but is not limited to expertise in techniques involving measurement of intracellular pH and intracellular calcium ion flux as well as molecular biology procedures such as RT-PCR, Northern hybridization, and immunoblotting. Studies will be using *in vivo* and *in vitro* models. For *in vitro* studies, expertise in isolating tubular suspensions (proximal tubules, medullary thick ascending limb, and inner medullary collecting duct) is required. Ph.D. or M.D./Ph.D. in renal physiology required. Three years of experience as Research Assistant Professor or Postdoctoral Fellow required. Forty hours per week; 8 a.m. to 5 p.m. Monday through Friday. \$62,000 per year. *Must have proof of legal authority to work permanently in the United States.* Please send two résumés and cover letters (no calls) to: **Reference Number 9760JED, P.O. Box 16808, Columbus, OH 43216.**

BRIGHAM AND WOMEN'S HOSPITAL Department of Anesthesiology, Perioperative, and Pain Medicine

The Department of Anesthesia, Perioperative, and Pain Medicine at Brigham and Women's Hospital and Harvard Medical School invites applications for a faculty position at the **ASSOCIATE PROFESSOR** level. Qualified applicants should have an M.D./Ph.D. degree and be experienced in measuring intracellular Ca²⁺ of skeletal muscle, myoballs, and cardiomyocytes with Ca²⁺ selective microelectrodes. Successful candidates should have a funded program to study malignant hyperthermia and be willing to establish new programs to study skeletal and cardiac EC coupling. Interested candidates please respond by three weeks after the print date. Send curriculum vitae, a brief statement of research plans, and names and addresses of three potential references to: **P.D. Allen, M.D., Ph.D., Brigham and Women's Hospital, 75 Francis Street, Boston, MA 02115.** *An Affirmative Action/Equal Opportunity Employer.*

POSITIONS OPEN



ASSISTANT/ASSOCIATE PROFESSOR Baylor College of Medicine

The Division of Cardiothoracic Surgery, Michael E. DeBakey Department of Surgery at Baylor College of Medicine, has a tenure-track faculty position available at the Assistant or Associate Professor level. The successful candidate will serve a bridging function between basic and clinical Scientists in a large research setting that focuses on the molecular mechanisms of cardiovascular diseases such as aortic aneurysms and cardiac abnormalities. The new faculty member will be expected to develop an independent grant portfolio and participate in collaborative research. Candidates must possess a Ph.D. or M.D. degree. Interested applicants should submit complete curriculum vitae, a brief description of research interests, and names and addresses (including e-mail and telephone numbers) of three references to:

**Alan P. Stolz, M.Ed.
Baylor College of Medicine
One Baylor Plaza, FBRN B-452
Houston, TX 77030
E-mail: astolz@bcm.tmc.edu**

Baylor College of Medicine is an Equal Opportunity/Affirmative Action/Equal Access Employer.

FACULTY POSITIONS Chemistry and Biochemistry Purdue University Department of Chemistry

The Department of Chemistry at Purdue University expects to have full-time openings at the **ASSISTANT, ASSOCIATE, and FULL PROFESSOR** levels in all areas of chemistry and biochemistry. Candidates should have a Ph.D. degree and should demonstrate exceptional promise in research and teaching at the undergraduate and graduate levels.

Applicants should send curriculum vitae, a summary of planned research, and three letters of recommendation to: **Professor Ian Rothwell, Head, Department of Chemistry, Purdue University, 1393 H. C. Brown Laboratory of Chemistry, West Lafayette, IN 47907-1393.** Files will be reviewed beginning October 15, 2002.

Purdue University is an Equal Opportunity/Affirmative Action Employer fully committed to achieving a diverse workforce. Women and minority applicants are encouraged to apply.

ASSISTANT PROFESSOR OF CHEMISTRY

Clark University invites applications for a tenure-track position for fall 2003. Ph.D. required and demonstrated excellence in research in materials science with preference for synthesis (all areas) or solid state NMR/EPR. Clark, located 40 miles west of Boston, Massachusetts, has a strong commitment to undergraduate and graduate teaching and research. The Department is instrumentally and computationally well equipped and has a modern NMR facility (600, 400-solids, 200 MHz). Applications, which should include a résumé; research accomplishments; a research proposal; and a statement on teaching interests and experience should be sent to: **Professor M. Turnbull, Department of Chemistry, Clark University, Worcester, MA 01610.** E-mail: mturnbull@clarku.edu. Three letters of recommendation should be sent to the same address. Review of applications begins October 15, 2002. *Affirmative Action/Equal Opportunity Employer. Women and minorities are especially encouraged to apply.*

POSTDOCTORAL/ RESEARCH ASSOCIATE

Position is available immediately to investigate NIH-funded projects examining the immunopathogenesis of HIV infection and gene therapy using novel SCID-hu and transgenic mouse models. Experimental approaches used include generation and analysis of transgenic mice, microgene array analysis, tissue culture, and virology.

A Ph.D. or M.D. degree with extensive experience and skill in Molecular Biology is required.

Send curriculum vitae and names and telephone numbers of 3 references to:

Dr. Harris Goldstein

Chanin Room 601

Albert Einstein College of Medicine

Jack and Pearl Resnick Campus

1300 Morris Park Avenue

Bronx, NY 10461 EOE

E-mail: hgoldste@aecom.yu.edu



**ALBERT EINSTEIN
COLLEGE OF MEDICINE**

Advancing science, building careers

Yale University

Faculty Position in Behavioral or Physiological Ecology

The Department of Ecology and Evolutionary Biology at Yale University invites applications for an assistant professorship in behavioral or physiological ecology. We are interested in individuals doing research either on behavior or physiology in their evolutionary and ecological context and on the underlying mechanisms. A record of achievement and a promising research program are more important than the specific research area. The Department of Ecology and Evolutionary Biology is a new and expanding department.

Interested candidates should submit their CVs, three relevant reprints or manuscripts, a brief research and teaching statement, and the names and addresses of four potential evaluators by October 5, 2002. Send all materials to:

Chair

Ecology Search Committee

Department of Ecology and

Evolutionary Biology

P. O. Box 208106

Yale University

New Haven, CT 06520-8106

E-mail: francine.horowitz@yale.edu

*Yale University is an Equal Opportunity/
Affirmative Action Employer.*

**Center for
Integrative
Genomics**



UNIVERSITÉ DE GENÈVE



The Center for Integrative Genomics (CIG) is a new interdisciplinary research and training institute of the University of Lausanne set up in collaboration with the University of Geneva and the Swiss Federal Institute of Technology in Lausanne. It is associated with a major program to develop mammalian genomics and biological imaging in the western part of Switzerland. The CIG is also supported by the Swiss Institute for Experimental Cancer Research, the Ludwig Institute for Cancer Research, Lausanne Branch, the Swiss Institute for Bioinformatics and the University Hospitals at both Geneva and Lausanne. With the goal of rapidly becoming a leading international center of excellence in functional genomics, the CIG will promote an integrated approach to the study of the fundamental principles of gene function and their allied applications. The CIG will offer core competence in bioinformatics, RNA profiling and proteomics. A large-scale state-of-the-art animal house will be part of the facility. Research at the CIG will benefit from the established competence and infrastructure of the above-mentioned partner institutions.

Within the next four years, up to fifteen research groups will be established at the CIG. To fill the faculty positions available as early as 2003, we are seeking

Professors/Group leaders in genomics

with expertise and demonstrated achievements in one or more of the following fields:

- **Fundamental genomics:** genome evolution, structure and function, polymorphism, and co-evolution
- **Regulatory pathway genomics:** molecular signalling, intracellular regulation, cellular and tissue differentiation
- **Complex traits/characters:** development, organogenesis, gene networks, modelling of functional gene interactions
- **Behavioral genetics:** genetic control of behavior and cognitive functions, social behavior

Applications from outstanding candidates in other fields of genomics will also be considered. Although research at the CIG will concentrate on mammalian genomics, applications from candidates studying other model systems are encouraged.

Appointments will be at the assistant professor (tenure track), associate professor, or full professor level, depending on qualifications. Generous start-up grants will be available. Candidates should have a minimum of three years postdoctoral experience, demonstrated ability to conduct independent research, and leadership and team-building skills. Applicants for senior level positions should have an international reputation for outstanding research, a distinguished publication record, and demonstrated ability to secure public funding. Preference will be given to candidates willing to develop strong collaborative projects with newly appointed or existing teams; the CIG strongly encourages scientific collaborations with the above-mentioned partner institutions.

The Lausanne region is known for its excellent public schools, an attractive cultural atmosphere, a growing economy, and its beautiful environment.

Enquiries for detailed information on the CIG, on the research facilities in the Lausanne or Geneva area, or on the requirements for the available positions can be made to Prof. W. Wahli (walter.wahli@iba.unil.ch), director of the CIG, or to Prof. D. Arlettaz (dominique.arlettaz@ima.unil.ch), chairman of the selection committee. Applications should be sent before **November 15, 2002** to Professor D. Arlettaz, Décanat de la Faculté des sciences, Université de Lausanne, 1015 Lausanne, Switzerland.

POSITIONS OPEN

EXECUTIVE DIRECTOR

The Executive Board of Louisiana Universities Marine Consortium (LUMCON), an organization of Louisiana's public universities established to conduct research and promote education in the marine sciences, invites applications and nominations for the position of Executive Director. The Executive Director is the chief administrative officer of the consortium whose duties include the supervision and administration of activities at the W. J. 'Woody' DeFelice Marine Center and other Consortium facilities. These activities consist of research and education programs, research vessel operations, and financial and physical plant operations. The Executive Director represents the Consortium on local, state, and national levels. LUMCON, housed in the W. J. 'Woody' DeFelice Marine Center, is located on the central Louisiana coast approximately 80 miles southwest of New Orleans and features state-of-the-art research, teaching, and library facilities. At present, there is a resident research faculty of seven Doctoral-level Scientists and a supporting staff of over 70 personnel. The education program includes K-12 and public outreach activities as well as university-level courses. The R/V Pelican, a designated UNOLS vessel, is operated by the Consortium and based at the Marine Center. LUMCON also operates other smaller vessels. For additional information, visit website: <http://www.lumcon.edu>, the Consortium's website. Applicants and nominees should be Marine Scientists with a strong record of research accomplishments that merit a senior faculty appointment and proven leadership and administrative abilities. The individual selected as Director must become a visible representative of LUMCON in the local community. Deadline for receiving applications is December 1, 2002, with the goal to fill the position by July 1, 2003. A letter of application together with a résumé and list of references should be submitted to:

Dr. David E. Boudreaux
Search Committee
Nicholls State University
P. O. Box 2066
Thibodaux, LA 70310

BIOCHEMISTRY TENURE-TRACK FACULTY POSITION San Diego State University

The Department of Chemistry at San Diego State University (website: <http://www.chemistry.sdsu.edu/chemistry/>) announces a tenure-track faculty position in biochemistry at the **ASSISTANT PROFESSOR** level with appointment to begin fall 2003. Applicants should have background and research interests in one of the following areas: metabolic biochemistry, metabolomics, receptor biochemistry, or signal transduction. A research emphasis on structure-function relationships is highly desirable. The Department is particularly interested in hiring in interfacial areas that will promote and strengthen interactions with the rapidly growing biotechnology and pharmaceutical industries in San Diego, California. Postdoctoral research experience is essential, and the successful candidate will be expected to maintain a vigorous research program that attracts external funding. Applicants should also be willing to participate in the Department's instructional program at any level from freshman chemistry through the Ph.D. program. Applicants must submit complete curriculum vitae, a description of research plans, an estimated equipment budget, relevant reprints and preprints, a brief description of teaching interests, and arrange to have three letters of recommendation sent to: **Faculty Search Committee Chair, Department of Chemistry, San Diego State University, San Diego, CA 92182-1030**. Review of completed applications will begin on October 8, 2002, and will continue until the position is filled. *SDSU is a Title IX/Equal Opportunity Employer and does not discriminate against individuals on the basis of race, religion, national origin, sexual orientation, gender, marital status, age, disability, or veteran status including veterans of the Vietnam era.*

POSITIONS OPEN

PROGRAM ADMINISTRATOR/ SENIOR PROGRAM OFFICER The National Academies Research Associateship Programs

The Research Associateship Programs Office administers Postdoctoral and senior Research awards in all fields of science and engineering. Awardees conduct research in residence at federal laboratories in the United States and abroad. A position is currently available for a Program Administrator/Senior Program Officer. Responsibilities of this position include developing and maintaining programs with federal sponsors, promoting the programs to prospective applicants, managing review panels of technical experts, and overseeing the tenure of awardees. Applicants should hold a research degree in a field of science or engineering; some knowledge of the federal research enterprise is desirable.

For more information, visit our employment website: <http://national-academies.org> view by the Major Unit-Policy and Global Affairs Division or send FAX to: **Office of Human Resources; Telephone: 202-334-3552.**

National Academy of Sciences
National Academy of Engineering
Institute of Medicine
National Research Council
500 Fifth Street, N.W.
Washington, DC 20001

Equal Opportunity Employer/Minorities/Females/Disabled/Veterans.

MICROBIOLOGY/MICROBIAL ECOLOGY

The Biology Department of St. Lawrence University invites applications for a tenure-track position starting fall 2003 at the **ASSISTANT PROFESSOR** level. A Ph.D. as of fall 2003 is required. The successful candidate will be expected to teach introductory microbiology and genetics and to develop upper-level courses according to his/her expertise. Other areas of interest to the Department include microbial ecology, evolution, bioinformatics, molecular biology, and microscopy. Preference will be given to candidates who can bridge the molecular/cellular and the ecological/evolutionary disciplines. A demonstrated expertise in the use of computers and instructional technologies is also preferred.

The successful candidate will also be expected to participate in our introductory biology courses that offer an investigational, inquiry-based, collaborative, and personalized learning environment. This would include teaching in these courses on a rotational basis. A demonstrated expertise in the use of computers and instructional technologies is preferred. The normal academic load is two courses per semester. The development of a research program that involves undergraduate student majors will also be expected.

As part of the general education curriculum at St. Lawrence, all first-year students enroll in a team-taught course that seeks to develop skills in critical thinking, writing, and research. The successful tenure-track candidate will have the opportunity to teach in the First-Year Program. Interested candidates should submit a letter of application, curriculum vitae, a statement of teaching experience and philosophy that reflects innovative and progressive pedagogies, a statement of research interest, and have three letters of recommendation forwarded to: **Dr. T. Budd, Biology Department, St. Lawrence University, Romoda Drive, Canton, NY 13617**. Applications will be reviewed until the position is filled.

St. Lawrence University, chartered in 1856, is the oldest coeducational university in New York State. Please see the University website: <http://www.stlawu.edu> and the biology website: <http://it.stlawu.edu/~biology> for more information.

St. Lawrence University is an Affirmative Action/Equal Employment Opportunity Employer. Women, minorities, veterans, and persons with disabilities are encouraged to apply.

POSITIONS OPEN

MOLECULAR AND BIOMEDICAL PHARMACOLOGY

The Department of Molecular and Biomedical Pharmacology, University of Kentucky College of Medicine at Lexington, is seeking qualified applicants for a tenure-track position at the **ASSISTANT** or **ASSOCIATE PROFESSOR** level. We encourage applications from candidates utilizing modern molecular approaches in the study of cancer biology. Areas of specific interest include but are not restricted to regulation of oncogene and tumor suppressor genes, classical and transgenic/knockout models of oncogenesis and malignant progression, nuclear/steroid receptors, cell signaling and cell cycle progression. However, candidates with interests in other important areas of biomedical research such as neurodegeneration, cardiovascular disease, and aging will also be considered. Competitive candidates should have a Ph.D. or M.D. with several years of postdoctoral experience and should have a clear record of research productivity and creativity commensurate with experience level. The successful candidate will be expected to develop a dynamic, well-funded research program as well as contribute to pharmacology teaching programs for professional and graduate students. Interested candidates should send curriculum vitae and the names, addresses, and telephone numbers of three references to: **Faculty Search Committee, Department of Molecular and Biomedical Pharmacology, University of Kentucky College of Medicine, MS-305 Medical Center, Lexington, KY 40536-0298.**

ECOLOGIST: ASSISTANT or ASSOCIATE PROFESSOR, tenure track, in biology beginning September 2003 (see website: http://www.brynmawr.edu/academic/fields_study/biology.shtml). Among teaching responsibilities are courses in ecology (including a field course) and involvement in team-taught introductory biology. Maintenance of an active research program and participation, with the potential for leadership, in an interdisciplinary program in Environmental Studies are expected. A Doctorate and at least one year of postdoctoral research experience are required. Send curriculum vitae; statement of research and teaching interests; three letters of recommendation; and research budget by November 1, 2002, to: **Peter D. Brodfuehrer, Chair, Department of Biology, Bryn Mawr College, 101 North Merion Avenue, Bryn Mawr, PA 19010-2899**. Bryn Mawr is a liberal arts college for women with coeducational graduate programs in sciences, some humanities, and social work. The College supports faculty excellence in both teaching and research and provides a rigorous education in the context of a diverse and pluralistic scholarly community. Located 11 miles west of Philadelphia, Pennsylvania, Bryn Mawr participates in consorial programs with the University of Pennsylvania and Haverford and Swarthmore Colleges. *Bryn Mawr College is an Equal Opportunity/Affirmative Action Employer. Minority candidates and women are especially encouraged to apply.*

The Department of Earth and Environmental Sciences and the Lamont-Doherty Earth Observatory of Columbia University seek applicants for a tenure-track **ASSISTANT PROFESSOR** or a tenured **ASSOCIATE or FULL PROFESSOR** in solid earth geochemistry. The successful applicant will have a strong research program and complement existing strengths in geochemistry; experimental petrology; geology; and geodynamics of the mantle, ocean floor, and continents. Minimum qualifications: Ph.D. in a relevant field with appointment to senior-level position contingent upon years of experience, scholarly credentials, professional standing, and demonstrated scientific creativity. Screening will commence September 1, 2002, and continue until the position is filled. Send detailed statement of research and teaching objectives, names of references, and full curriculum vitae to: **Professor David Walker, Chair of Search Committee, LDEO, Route 9W, Palisades, NY 10964 U.S.A. E-mail: dwalker@ldeo.columbia.edu**. Columbia University acts Affirmatively toward Equal Opportunity. Women and minorities are encouraged to apply.



The University of Texas at Austin

Senior Faculty Positions

The Institute for Cellular and Molecular Biology

The Institute for Cellular and Molecular Biology invites applications for tenured Associate Professor or Professor positions, including two Endowed Chair positions. Academic appointments will be held in an appropriate academic unit in the College of Natural Sciences. Candidates should have a well established research program involving application of molecular biological and/or biochemical approaches to important biological problems. The positions carry excellent salaries and start-up packages in a supportive, interactive and interdisciplinary research environment.

The Institute provides administrative and financial support for the University-wide Graduate Program in Cell and Molecular Biology and for the state-of-the-art core facilities for DNA and protein analysis, electron and confocal microscopy, mouse genetic engineering, DNA microarrays and robotics.

Building on a strong existing faculty, recent hires include Andy Ellington, Ellen Gottlieb, Robin Gutell, Adron Harris, Jon Huibregtse, Vishwanath Iyer, Ken Johnson, Bob Krug, Ben Liu, Paul Macdonald, Edward Marcotte, Tanya Paull, Rick Russell, John Sisson, David Stein, Scott Stevens and John Tesmer.

Austin is located in the Texas hill country and is widely recognized as one of America's most beautiful and livable cities.

Please send curriculum vitae, summary of research interests, and names of at least three references to:

Dr. Alan M. Lambowitz, Director
Institute for Cellular and Molecular Biology
The University of Texas at Austin
2500 Speedway
Austin TX 78712-1095

Homepage • <http://www.icmb.utexas.edu>

The University of Texas at Austin is an Equal Opportunity Employer. Qualified women and minorities are encouraged to apply.

The Cleveland Clinic Foundation Departments of Biomedical Engineering and Orthopaedic Surgery Orthopaedic Research Center

Faculty Position in Orthopaedic Molecular Biology

The Departments of Biomedical Engineering and Orthopaedic Surgery at the Cleveland Clinic Foundation are seeking applications from early or mid-career scientists with records of achievement in the area of Orthopaedic Molecular Biology. The successful candidate will become a member of two outstanding departments and will be an integral part of the Orthopaedic Research Center, which focuses the resources of the two departments in the area of Orthopaedic Research. Strong opportunities for collaborative research exist, and there are excellent linkages between basic and clinical research. Areas of interest include the cellular and molecular biology/tissue engineering of soft tissues relevant to skeletal function (such as tendon, ligament, and meniscus) and other state-of-the-art applications relevant to Orthopaedics. The successful candidate will have a Ph.D. and/or M.D. degree, a strong record of independent extramural funding and publication in peer-reviewed journals, and the desire and ability to work closely with practicing orthopaedic surgeons.

Applicants should submit a letter of application, complete curriculum vitae, a statement of current and future research goals, and details of three references to:

Peter R. Cavanagh, Ph.D.
Chairman
Department of Biomedical Engineering, ND-20
The Lerner Research Institute
The Cleveland Clinic Foundation
9500 Euclid Avenue
Cleveland, OH 44195

Or by Email: cavanagh@bme.ri.ccf.org

More information on the departments is available at <http://www.lerner.ccf.org/bme/> and <http://www.clevelandclinic.org/ortho/home.htm>

*The Cleveland Clinic Foundation is an Equal Opportunity/
Affirmative Action employer.*



**St. Jude Children's
Research Hospital**

ALSAC • Danny Thomas, Founder

POSTDOCTORAL POSITIONS (REQ #1603)

A postdoctoral fellow position is available immediately in the laboratory of Vincent J. Kidd, Ph.D. to study the mechanisms of apoptotic signaling in human neuroblastoma. Ongoing projects related to neuroblastoma are focused on determining why specific apoptotic genes are silenced in certain tumors and how these alterations impact the ability of tumor cells to undergo drug- and radiation-induced cell death. In addition, mouse models are being created to examine the possible relationship between MYC gene amplification and silencing of caspase-8, as well as other apoptotic genes. This work is based upon previous reports from our laboratory (Teitz et al., *Nature Medicine* **6**:529-535, 2000; Takita et al., *Oncogene* **20**:4424-4432, 2001; Teitz et al., *Oncogene* **21**:1848-1858, 2002) as well as others. Description of the research project as well as a list of current publications can be found at www.stjude.org. Experience in molecular biology, cell culture and genetic manipulation of mice is beneficial for the cancer studies. Applicants must either have a Ph.D., M.D./Ph.D., or M.D. degree, or be currently enrolled in a graduate program and completing their degree. Please send a current C.V. as well as the names and addresses of three references including REQ #1603, to:

Vincent J. Kidd, Ph.D.
Full Member
Department of Genetics and Tumor Cell Biology
St. Jude Children's Research Hospital
332 N. Lauderdale
Memphis, TN 38105
E-mail: vincent.kidd@stjude.org

St. Jude is an equal opportunity/affirmative action employer.

www.stjude.org

POSITIONS OPEN

ASSISTANT PROFESSOR of biochemistry. McDaniel College, founded as Western Maryland College, a selective, private, liberal arts and sciences college located near Baltimore, Maryland, and Washington, D.C., invites applications for a tenure-track position at the level of Assistant Professor to begin in August 2003. Ph.D. in biochemistry or a related field and a demonstrated potential for excellence in teaching are required. Teaching responsibilities for this position will include continuing development of a two-semester biochemistry sequence with laboratories and participation in both introductory chemistry and the development of a course designed for nonscience majors. The successful candidate will be expected to develop and sustain an active undergraduate research program in experimental biochemistry and have a commitment to attracting external funding. Submit a letter of application, curriculum vitae, philosophy of teaching and research at a liberal arts and sciences college, academic transcripts, and three letters of recommendation to: **Chair, Biochemistry Search Committee, Office of Academic Affairs, McDaniel College, 2 College Hill, Westminster, MD 21157.** Review of applications will begin on October 15, 2002, and will continue until the position is filled. Questions about the position may be directed by e-mail: chemsrch@mcdaniel.edu. *McDaniel College is an Affirmative Action/Equal Employment Opportunity and an award-winning Americans With Disabilities Act Employer. Women and minorities are encouraged to apply.*

FACULTY POSITION EXPERIMENTAL PHYSICAL CHEMISTRY University of California, Los Angeles

The Department of Chemistry and Biochemistry of the University of California, Los Angeles, intends to make a tenure-track faculty appointment in experimental physical chemistry. Candidates at all ranks will be considered. Candidates must give evidence of great distinction (for a senior appointment) or exceptional promise (for a junior appointment) in research and teaching. Applications should include curriculum vitae, a statement of research accomplishments and description of proposed research (not exceeding four pages), reprints of representative publications, and a list of professional references. Junior faculty applicants should arrange to have three letters of recommendation sent at the time of application. To assure consideration, all application materials should be received by November 1, 2002, and directed to:

**Chair, Physical Chemistry Search Committee
Department of Chemistry and Biochemistry
University of California
Los Angeles, CA 90095-1569
FAX: 310-206-8010**

The University of California is an Equal Opportunity/Affirmative Action Employer.

Two positions in **MACROMOLECULAR CRYSTALLOGRAPHY**. The University of Louisville is seeking to add two exceptional Macromolecular Crystallographers to strengthen and complement its expanding program in structural biology. One of these tenure-track **ASSISTANT PROFESSORSHIPS** will have a primary appointment in the James Graham Brown Cancer Center in the School of Medicine and the other will be appointed in the Chemistry Department in the College of Arts and Sciences. Secondary appointments are encouraged for both because of the close existing educational and research ties between the Cancer Center and the Chemistry Department, providing excellent opportunities for collaboration. The structural biology program is developing excellent facilities; an 800 MHz NMR spectrometer was installed in July 2002. The successful candidates will be provided competitive start-up funds and laboratory space with access to core facilities. Send curriculum vitae including research plans and three letters of recommendation to: **Andrew Lane, Ph.D., Structural Biology Program, James Graham Brown Cancer Center, 529 South Jackson Street, Louisville, KY 40202.** E-mail: anlane01@gwise.louisville.edu.

The University of Louisville James Graham Brown Cancer Center is an Equal Opportunity/Affirmative Action Employer.

POSITIONS OPEN

ASSISTANT PROFESSOR OF BIOLOGY University of Portland

The Department of Biology at the University of Portland invites applicants for a tenure-track faculty position at the Assistant Professor level beginning fall 2003. Candidates must possess a Ph.D. and undergraduate teaching experience. Teaching duties will include the cell and molecular portion of the general biology sequence and upper-division courses in the candidate's area of expertise. Preferred areas of specialty include immunology, genetics, or neurobiology. Exceptionally strong candidates with other specialties will be considered. The University of Portland is a Catholic liberal arts college with a strong tradition of excellence in undergraduate teaching and research.

Submit curriculum vitae with a list of publications, summary of research interests, teaching philosophy, and three letters of recommendation to:

**Professor Amelia Ahern-Rindell
Department of Biology
University of Portland
5000 North Willamette Boulevard
Portland, OR 97203-5798**

Application and letters must be received by November 15, 2002. *The University of Portland is an Equal Opportunity Employer.*

FACULTY POSITION Department of Physics The University of Texas at Austin

The Department of Physics at the University of Texas at Austin invites applications for a tenure-track **ASSISTANT PROFESSORSHIP** starting in September 2003. In exceptional cases, a more senior appointment with tenure will be considered. This is a research and teaching position.

Applicants must have a Ph.D. (or equivalent) and should have a proven record of experimental research in biological physics, soft condensed matter, and/or nonlinear/non-equilibrium phenomena. The successful candidate will assume full teaching responsibilities in the Department of Physics. Prior teaching experience is desirable and excellent English language communication skills are required. Applicants should send curriculum vitae, a list of publications, a statement of research accomplishments, a research plan, and arrange for at least five letters of reference to be sent to: **Professor Roy Schwitters, Chairman, Department of Physics, RLM 5.208, The University of Texas at Austin, Austin, TX 78712-1081.** Review of completed applications will begin November 1, 2002, and will continue until the position is filled. *The University of Texas at Austin is an Equal Opportunity/Affirmative Action Employer.*

ASSISTANT PROFESSOR Immunopathogenesis Department of Microbiology and Immunology Medical College of Ohio

Applications are invited for a 12-month tenure-track faculty position. The successful candidate is expected to develop an independent, extramurally funded research program in an area related to immune response to microbial infection. In addition to teaching medical and graduate students, the successful candidate will be expected to participate in existing bacterial and fungal pathogenesis programs within the Department.

The Department is in a growth phase with focus on the development of immunology. MCO is a state school with a modern campus. To learn more about the Department and MCO, visit our website: <http://www.mco.edu>. Applicants should submit a statement of research goals with representative reprints, curriculum vitae, and three letters of recommendation to: **Garry T. Cole, Ph.D., Chair, Department of Microbiology and Immunology, Medical College of Ohio, 3055 Arlington Avenue, Toledo, OH 43614-5806.** Applications should be received by September 1, 2002. *Affirmative Action/Equal Opportunity Employer.*

POSITIONS OPEN

ASSISTANT PROFESSOR

A tenure-track Assistant Professor position is available in the Immunology and Flow Cytometry Section of the Center for Vaccine Development (CVD) and the Division of Infectious Diseases and Tropical Pediatrics, Department of Pediatrics of the University of Maryland, to study the mechanisms of protective immunity elicited in humans by vaccines against typhoid fever, shigellosis, measles, and other infectious diseases. The selected individual will be expected to develop a strong program leading to the understanding of the humoral and/or cellular immune mechanisms involved in protection, to participate in teaching activities, and to successfully compete for independent funding. Areas of interest include antigen processing and presentation, effector immune responses, function of dendritic cells, homing of B and T lymphocytes, mucosal immunology, immunoregulation, and microarray profiling. The CVD is a recognized international leader in vaccinology and offers a stimulating research environment. Ph.D., M.D., or equivalent degrees; a minimum of three years of relevant postdoctoral experience; extensive experience in performing immunological assays; and a solid record of publications in the field are required. Clinically qualified individuals with the appropriate laboratory expertise are encouraged to apply. The salary range will be \$55,000 to \$90,000 with full fringe benefits depending on qualifications and experience. Applicants should submit curriculum vitae, a summary of research accomplishments and future research plans, and three letters of reference to: **Dr. Marcelo B. Szein, Selection Committee Chair, Center for Vaccine Development, 685 West Baltimore Street, Room 480, University of Maryland, Baltimore, MD 21201.** E-mail: mszein@medicine.umaryland.edu. *The University of Maryland, an Equal Opportunity Employer, welcomes applicants representing recognized minority groups.*

VERTEBRATE MORPHOLOGIST

Tenure-track **ASSISTANT PROFESSOR** in biology with specialty in vertebrate morphology beginning 1 September 2003. Ph.D. required; postdoctoral and teaching experience desirable. Responsibilities: Teach courses in human anatomy and comparative anatomy and share in teaching of introductory biology, develop a research program in vertebrate morphology, pursue extramural funding, and supervise M.S. theses. Letter of application, brief statements of teaching philosophy and research interests, curriculum vitae, reprints, three letters of recommendation, and transcripts to: **Chair, Department of Biology and Microbiology, University of Wisconsin Oshkosh, Oshkosh, WI 54901** by 4 October 2002. For additional information, see the departmental website: <http://www.uwosh.edu/departments/biology/>. At least one of the letters of recommendation should come from the institution to which the candidate is currently attached.

The University of Wisconsin Oshkosh is an Affirmative Action/Equal Opportunity Employer and values diversity.

FACULTY POSITION Pharmacology and Toxicology Indiana University School of Medicine

The Department of Pharmacology and Toxicology at Indiana University School of Medicine invites applications from individuals for a tenure-track **ASSISTANT PROFESSOR**. We seek motivated individuals with outstanding scholarship in the fields of molecular and cellular pharmacology or toxicology but other exceptional candidates will be considered. The successful candidate is expected to establish a competitive, externally funded research program. The position requires a Ph.D. or M.D. and three years of postdoctoral experience. Interested individuals should send curriculum vitae, a statement of their past research contributions and future plans, and the names of three to five references to: **Dr. Grant Nicol, Pharmacology and Toxicology Search Committee, Department of Pharmacology and Toxicology, 635 Barnhill Drive, Indiana University School of Medicine, Indianapolis, IN 46202.** *Indiana University is an Equal Opportunity Employer.*

Vanderbilt University Medical Center

**Pharmacology
Faculty Positions
in Regulation of
Synaptic Transmission**

The Department of Pharmacology and the Center for Molecular Neuroscience in the **Vanderbilt University School of Medicine** are recruiting faculty in the area of **Regulation of Synaptic Transmission**. We invite applications for faculty positions at the Assistant, Associate and Full Professor levels from individuals using molecular, biochemical, electrophysiological, imaging and structural approaches in such areas of synaptic regulation as control of the exocytotic process, protein and lipid signaling complexes, the integration of pre-synaptic signaling pathways, lipid signaling, and structural studies of molecules involved in exocytotic fusion or regulatory complexes.

Candidates should send curriculum vitae, description of research interests and accomplishments, and supporting letters from at least three mentors or former colleagues to:

Heidi E. Hamm, Chair
Department of Pharmacology
Vanderbilt University School of Medicine
442 Robinson Research Bldg.
Nashville, TN 37232-6600
p: (615) 343-3533 f: (615) 343-1084
E-mail: heidi.hamm@vanderbilt.edu

*VSM is an Equal Opportunity/
Affirmative Action Employer*



University of Toronto

Cell/Developmental Biologists

Two tenure-stream assistant professorships are available within the Molecular Genetics and Cell/Developmental Biology research group of the Department of Zoology. One of the successful candidates will be nominated for a Tier II Canada Research Chair. We will consider all outstanding applicants but are especially interested in researchers using state-of-the-art experimental approaches who study animal morphogenesis or evolutionary developmental biology. See www.zoo.utoronto.ca/devbio/devohome for details of the Department's Developmental Biology group. The University of Toronto has an outstanding presence in Developmental Biology and over 30 labs actively participate in the Collaborative Graduate Program in Developmental Biology (www.utoronto.ca/devbiol/). Review of applications begins October 15, 2002 and continues until positions are filled.

Neurophysiologist and Stress Physiologist

Two tenure-stream assistant professorships are available within the Physiology research group of the Department of Zoology. All excellent candidates are encouraged to apply but we are especially interested in researchers using modern experimental approaches to study (1) neural or neuroendocrine mechanisms of physiological systems, and (2) cellular and systemic adaptation to physiological stressors. The University of Toronto has a large and vibrant physiology community and candidates with both a biomedical or a broad integrative/comparative perspective will be considered. Review of applications begins November 22, 2002 and continues until the positions are filled.

Toronto offers the opportunity to work and live in one of the most diverse cities in the world. The University of Toronto has one of the most dynamic research communities comprising several hundred laboratories in the life sciences. Further information on the Department can be found at www.zoo.utoronto.ca. We are searching for candidates with proven excellence in research and demonstrated promise in teaching that will build internationally recognized research programs and participate in graduate and undergraduate teaching. Positions can be filled as early as July 1, 2003. Submit a CV, brief statements of research plans and teaching interests, and have three letters of reference sent to: **Professor James Thomson, Chair, Department of Zoology, University of Toronto, Ontario M5S 3G5 Canada** (jthomson@zoo.utoronto.ca).

All qualified candidates are encouraged to apply; however, Canadian citizens and permanent residents will be given priority. The University of Toronto is strongly committed to diversity within its community. The University especially welcomes applications from visible minority group members, women, aboriginal persons, persons with disabilities, members of sexual minority groups and others who may contribute to the further diversification of ideas.



City of Hope

BECKMAN FELLOWS PROGRAM

Postdoctoral Research Fellowships
Beckman Research Institute of the City of Hope

The prestigious Beckman Fellows program, established by the Arnold and Mabel Beckman Foundation, provides support and resources for postdoctoral fellows to develop rapidly into independent investigators. The fellowship is designed for beginning or advanced postdoctoral fellows with strong records of accomplishment, who have a clear sense of direction and/or a novel idea they wish to develop in collaboration with one or more City of Hope investigators.

Two fellows will be selected in the current competition. Each will be provided a **salary of \$55,000 per year** and a **research allowance of \$55,000 per year** for supplies, equipment, travel and/or technical support. Fellowships are renewable for three years.

For applications and eligibility requirements please visit
the Beckman Fellows Web site:
<http://beckmanfellows.coh.org>.

For a list of potential mentors and their research interests, please visit:
<http://bricoh.coh.org> and go to Divisions and Programs.

Application Deadline: October 15, 2002

*City of Hope is an Equal Opportunity/Affirmative Action Employer.
Women, minorities, veterans and disabled persons are encouraged to apply.*



Department of Health and Human Services
National Institutes of Health
National Institute of Environmental Health Sciences

MECHANISMS OF CELL SIGNALING

With nation-wide responsibility for improving the health and well being of all Americans, the Department of Health and Human Services oversees the biomedical research programs of the National Institutes of Health and those of NIH's research Institutes.

The National Institute of Environmental Health Sciences, a major research component of the National Institutes of Health (NIH) and the Department of Health and Human Services, is recruiting for a postdoctoral scientist in the Laboratory of Signal Transduction to study mechanisms of cell signaling mediated by G protein coupled receptors. Areas of interest include: receptor-G protein interaction, receptor structure and regulation of receptor levels. Molecular biology, biochemistry and imaging techniques shall be applied. Applicants must have a Ph.D. and a background in biochemistry or pharmacology. The research will be carried out in the Receptor Regulation Group within the Laboratory of Signal Transduction, where scientists apply multidisciplinary approaches to the study of cell signaling. For additional laboratory information, access website <http://dir.niehs.nih.gov/dirlist/>. Send curriculum vitae and a list of at least three references to:

Mariel Birnbaumer, Ph.D.
National Institute of Environmental Health Sciences
Building 101, Room F187A, Maildrop F2-10
111 T.W. Alexander Drive, P.O. Box 12233
Research Triangle Park, NC 27709
phone: (919) 541-1433 e-mail: birnbau2@niehs.nih.gov



DHHS and NIH are Equal Opportunity Employers



POSITIONS OPEN

FACULTY POSITIONS Department of Chemistry Boston College

Applications are invited for two tenure-track faculty positions effective September 2003. Areas of interest include but are not limited to physical, materials, analytical, organic, inorganic, and biological chemistry as well as related interdisciplinary areas. Successful applicants are expected to establish a prominent, externally funded research program and will join a department of approximately 100 Doctoral students, 25 Postdoctoral Fellows, and an internationally recognized faculty. Boston College is located in a residential community bordering Boston, Massachusetts, and within 20 minutes of the other major universities in the Boston/Cambridge area. Applicants at the beginning **ASSISTANT PROFESSOR** level should indicate their area or areas of research and their teaching interests by submitting both a detailed research plan and a brief statement of teaching interests along with their curriculum vitae and a summary of previous research accomplishments. In addition, applicants should arrange to have three letters of reference transmitted. Established Investigators should send a letter of application and appropriate supporting materials. All materials should be sent to: **Chair, Faculty Search Committee, Department of Chemistry, Boston College, Chestnut Hill, MA 02467-3860.** The application deadline is October 15, 2002. Website: <http://chemserv.bc.edu>; FAX: 617-552-2705. Boston College, a university of 14 schools and colleges, is an Equal Opportunity Employer and supports Affirmative Action.

DUKE UNIVERSITY DEPARTMENT OF CHEMISTRY

The Department intends to make two faculty appointments, rank open. All areas of chemistry will be considered. Applications in the nanosciences including the synthesis, assembly, interrogation, and manipulation of natural and designed structures are particularly encouraged. Applications received by October 15, 2002, will be given full consideration. Appointments will commence on September 1, 2003. Applicants must be strongly motivated toward creative research and committed to teaching at the undergraduate and graduate levels. All applicants must provide the following materials in PDF format: current curriculum vitae and list of publications and statement of research interests. Please e-mail materials to e-mail: positions@chem.duke.edu. For **ASSISTANT PROFESSOR** positions, arrange to have three letters of reference sent on your behalf to e-mail: positions@chem.duke.edu or mailed directly to the Department Chair.

Duke University is an Affirmative Action/Equal Opportunity Employer and is eager to identify minority persons and women with appropriate qualifications.

A **POSTDOCTORAL POSITION** is available to study the functions of the ATM and ATR protein kinases in cellular DNA damage responses and cancer. Ideal candidate will have a strong background in molecular cell biology and/or biochemistry and a passion for cancer cell biology research. Prior experience in signal transduction considered a plus but not essential. Please send curriculum vitae and contact information for three references to:

Randal Tibbetts, Ph.D.
Department of Pharmacology
University of Wisconsin—Madison
1300 University Avenue
Madison, WI 53706
E-mail: rstibbetts@facstaff.wisc.edu

Two senior **POSTDOCTORAL** (or **RESEARCH ASSISTANT PROFESSOR**) positions to study the role of angiotensinogen gene in hypertension. Experience in molecular cloning, gel shift assay, protein-protein interactions, yeast hybrid assay, transgenic animals. Send curriculum vitae to: Dr. Ashok Kumar, Pathology Department, New York Medical College, Valhalla, NY 10595. FAX: 914-594-4163; e-mail: ashok_kumar@nymc.edu.

POSITIONS OPEN

DIRECTOR, HOLLINGS MARINE LABORATORY

Director, Hollings Marine Laboratory, Charleston, South Carolina. Federal full-time permanent position. Position is located at the U.S. Department of Commerce, National Oceanic and Atmospheric Administration (NOAA), National Ocean Service (NOS), National Centers for Coastal Ocean Science (NCCOS), Hollings Marine Laboratory (HML), Charleston, South Carolina. Incumbent will direct research activities for the HML, an established partnership laboratory between federal [National Institutes of Standards and Technology (NIST), NOS] and state (South Carolina Department of Natural Resources, Medical University of South Carolina, and the College of Charleston) institutions. The Director will have oversight responsibility for all research conducted and all administrative and operational responsibility for the facility supporting such research. The Director will promote the mission of the HML to provide science to sustain, protect, and restore coastal ecosystems emphasizing the linkages between the environment and health of both marine/estuarine animals and humans. The Director will foster collaborations and utilize unique capabilities of the HML partnership to establish a national and international research laboratory of excellence. Applications may be made at website: <http://www.jobs.doc.gov/> from August 14, 2002, to September 25, 2002. Websites: <http://www.jobs.doc.gov/> and <http://www.cofc.edu/~grice/hml>.

DEVELOPMENTAL BIOLOGY; PHYSIOLOGICAL/ENVIRONMENTAL MICROBIOLOGY. The University of Louisiana at Monroe invites applications for two tenure-track **ASSISTANT PROFESSOR** positions, one in developmental biology and one in physiological or environmental microbiology, beginning fall 2003. The successful candidates will be expected to teach courses in their respective areas and other areas depending on the candidates' backgrounds and departmental needs. Each will be expected to develop an active research program involving undergraduate and graduate (M.S.) students with support available through an HHMI grant. Applicants must have a Ph.D. and a commitment to excellence in teaching. Teaching and postdoctoral experience preferred. Submit curriculum vitae, statements of teaching and research interests, up to three reprints, unofficial transcripts, and names and contact information of three references to: **Developmental Biology Search Committee or Microbiology Search Committee, Department of Biology, The University of Louisiana at Monroe, Monroe, LA 71209.** For further information, contact e-mail: bifindley@ulm.edu (Developmental); e-mail: bipritchett@ulm.edu (Microbiology); e-mail: bibeason@ulm.edu; website: <http://www.ulm.edu/biology>. Review of applications will begin October 15, 2002, and continue until the positions are filled. ULM is an Affirmative Action/Equal Opportunity Employer.

POSTDOCTORAL RESEARCH ASSOCIATE position available to study serotonin (5-hydroxytryptamine) receptors. A Research Associate position is available for a highly motivated individual to study the structure and function of 5-HT_{2A} serotonin receptors in the laboratory of Bryan Roth M.D., Ph.D., in the Department of Biochemistry at Case Western Reserve University Medical School. Experience in cell and molecular biology is essential and expertise in receptor pharmacology is useful. Prior postdoctoral experience is not necessary. Representative recent publications include Gray and Roth, *Science*, in press; Roth et al., *PNAS*, in press; and Shapiro et al., *J. Biol. Chem.* 277(13):11441-11449, March 29, 2002. See laboratory website: <http://rothlab.cwru.edu/rothlabhomepage/Default.htm> for further details.

POSITIONS OPEN

CANCER MOLECULAR CLINICAL EPIDEMIOLOGIST Indiana University School of Medicine

Indiana University (IU) School of Medicine seeks candidates for a tenure-track position in the Department of Medicine with academic base in the Regenergie Institute for Health Care and the IU Cancer Center. Qualifications include a Doctoral degree (Ph.D. or M.D.), demonstrated research record, and strong communication skills. The successful candidate will function as a member of an interdisciplinary team committed to an integrated basic science (genomics, cellular biology) and clinical epidemiological approach to arriving at a deeper understanding of variations in cancer risk, natural history, and responsiveness to therapy. IUSM is uniquely suited to undertake such a cutting-edge research initiative, given the presence of remarkable programs in clinical informatics, genetics, and cancer molecular biology as well as an NIH-funded cancer center, a cancer registry, a university initiative in the ethics of medicine, and a \$105 million Lilly Endowment, Inc.-funded genomic initiative. Under development is an National Cancer Institute-funded system for linking deidentified data about laboratory test results, pathology reports, inpatient medications, radiology reports, operative notes, and tumor registry data from all of the major hospital systems in Indianapolis. This system will serve as a major resource for this position. Curriculum vitae should be sent to: **Clement J. McDonald, M.D., Director, Regenergie Institute, 1050 Wishard Boulevard, RG5, Indianapolis, IN 46202-2872.** Indiana University is an Equal Opportunity/Affirmative Action Employer.

POSTDOCTORAL POSITIONS Department of Molecular and Cellular Biochemistry The Ohio State University

Postdoctoral positions available immediately in a well-established laboratory to work on promoter methylation and silencing of growth suppressor genes and transcriptional control mechanisms in cancer and other diseases. A Ph.D., degree in biochemistry or molecular biology with experience in molecular biology techniques as evidenced by one or two publications is essential. Applicants must already possess at least a J1 visa. Recent publications include *JBC* 274: 28584-28589; 275:539-547; *MCB* 21:8301-8317; *JBC* 277:16048-16058; *Prog. Nucleic Acid Res. Mol. Biol.* 66:357-384. Highly competitive salary and benefit package. Send curriculum vitae (as attachment) and names of three references to e-mail: tauber.2@osu.edu; FAX: 614-688-5600.

The Ohio State University is an Equal Opportunity Employer.

POSTDOCTORAL RESEARCHER University of Texas Southwestern Medical Center

Postdoctoral Researcher position available to study kidney-specific gene regulation, kidney development, and polycystic kidney disease using knockout, transgenic, and conditional knockout mice. Ph.D. or M.D. with strong background in gene regulation or mouse genetics required. Send curriculum vitae and names of three references to:

Dr. Peter Igarashi
Chief, Division of Nephrology
UT Southwestern
5323 Harry Hines Boulevard
Dallas, TX 75390-8856
FAX: 214-648-2071

E-mail: peter.igarashi@utsouthwestern.edu
Website: http://www.utsouthwestern.edu/home_pages/nephrology/faculty/igarashi.html

UT Southwestern is an Equal Opportunity/Affirmative Action Employer.

SK BIO-PHARMACEUTICALS

- **CLINICAL RESEARCH LEADER**
Experience in CNS and clinical compound evaluation desired
- **CLINICAL RESEARCH ASSOCIATE**
- **RESEARCH PHARMACOLOGIST, NEUROSCIENCE**
- **CELL/MOLECULAR BIOLOGIST, DIABETES**

BS/MS/PhD candidates with a minimum of 3 years pharmaceutical industry experience desired. Qualifying candidates should forward resume/CV with cover letter to:

**Human Resources Department
SK Bio-Pharmaceuticals
140A New Dutch Lane
Fairfield, NJ 07004
Fax: (973) 227-4488
Email: cson@skbp.com
www.skbp.com**

University of Ottawa Faculty of Medicine

Department of Cellular and Molecular Medicine



The Department of Cellular and Molecular Medicine is embarking on the next phase of its research expansion. We are therefore seeking dynamic individuals to fill up to six tenure-track positions at the junior or senior level. Outstanding candidates will be eligible for Canada Research Chairs. Strong candidates using innovative approaches to study important biological problems in any field are invited to apply. Current research strengths in the Department range from Molecular Studies to Systems Biology and are focused on the fields of Neuroscience, Muscle Biology, Kidney Research and Growth and Development. Members of the Department have the opportunity to also interact with scientists from affiliated hospital based research institutes and Federal government agencies. Attractive start-up packages are available. Candidates will be expected to develop a vigorous and independent research program and to contribute to the teaching mission of the Department. Since the University of Ottawa is a bilingual institution, proficiency in both English and French would be an asset.

As Canada's National Capital, Ottawa is a vibrant and attractive city with a high standard of living. It has several cultural amenities and offers easy access to winter and summer outdoor activities.

Interested individuals are requested to submit a curriculum vitae, a list of at least three references and a statement of research interests to:

**Dr. Bernard J. Jasmin
Professor and Chair
Department of Cellular and Molecular Medicine
Faculty of Medicine
University of Ottawa
451 Smyth Road
Ottawa, Ontario
Canada K1H 8M5**

Applications will be accepted until the positions are filled.

All qualified candidates are encouraged to apply; however, Canadians and permanent residents will be given priority. Equity is a University of Ottawa policy; women, aboriginal people, members of visible minorities and persons with disabilities are invited to apply. More information on the Department can be obtained at: <http://www.uottawa.ca/academic/med/cellmed/>.

BIOMOLECULAR SCIENCE CENTER Faculty Positions

The University of Central Florida has made a major commitment to strengthen its Life Science programs by launching an interdisciplinary BioMolecular Science Center. The research focus of the Center is in the general area of "Molecular and Genomic Basis of Diseases and Therapeutics."

At least 20 new faculty members will be hired in the next 5 years. We currently seek tenure track or tenured faculty members at ANY RANK. Exceptional senior candidates will be considered for a Provost's Distinguished Research Professorship. Successful candidates will establish outstanding research programs relevant to the theme of the Center including Molecular Biology, Macromolecular Structure, Function and Interactions, Bioinformatics, Biophotonics and Nanotechnology. They will teach within suitable academic areas and actively participate in the PhD program in Biomolecular Science (www.bmsc.ucf.edu). Tenure will be in the Center or in a partner Department in the Colleges of Arts and Sciences, Health and Public Affairs, Engineering and Computer Science or in the School of Optics/CREOL. Research Laboratories and Core Facilities are located in the new BioMolecular Science Building. Competitive salaries and attractive laboratory set-up package will be provided.

The University of Central Florida has nearly 40,000 students and an outstanding technology-based infrastructure. It is located in Orlando, a dynamic and progressive metropolitan region, a major player in high-tech industry and a great place to live and work. Review of candidates will begin on October 20, 2002. Submit curriculum vitae, a summary of research plans and the names and contact information of three referees to: **Dr. P.E. Kolattukudy, Director, BioMolecular Science Center, University of Central Florida, 12722 Research Parkway, Orlando, FL 32826, pkolattu@mail.ucf.edu.**

The University of Central Florida is an Affirmative Action/Equal Opportunity employer. As a member of the Florida State University System, all application materials and selection procedures are available for public review.



THE UNIVERSITY OF NEW MEXICO • HEALTH SCIENCES CENTER
SCHOOL OF MEDICINE

Cancer Biochemist

The **Department of Biochemistry and Molecular Biology** invites applications for one or more tenure-track positions at either the Assistant or Associate Professor level. Applicants must have a Ph.D., M.D. or equivalent degree with experience in biochemistry, molecular biology or a related discipline commensurate with appointment at the level of assistant or associate professor, 3 years of relevant postdoctoral experience and recent publications in top-tiered journals. Preference will be given to individuals with extramural-grant support, documented teaching experience and whose research activities complement those of the Department and the School of Medicine. Of particular interest is research on gender-specific cancers, protein biochemistry and proteomics. Members of underrepresented groups are strongly encouraged to apply, as the Department is highly committed to diversity within its faculty, staff and students. Salary will be commensurate with experience and qualifications.

For best consideration, application materials must be received by **October 18, 2002** and must include a signed letter of interest, *curriculum vitae*, names and email addresses of three references, and a concise description of future research objectives. Send application to: **Chair, Faculty Search Committee, JR7011, c/o Ms. Kristin Gates, Department of Biochemistry and Molecular Biology, University of New Mexico School of Medicine, Basic Medical Sciences Bldg, Room 249, 915 Camino De Salud, Albuquerque, NM 87131-5221.** This position may be subject to criminal records screening in accordance with New Mexico law. For further details go to website: hsc.unm.edu/som/bmb/.

*The University of New Mexico is an Equal Opportunity/
Affirmative Action Employer & Educator.*

POSITIONS OPEN



RESEARCH MOLECULAR BIOLOGIST/PLANT PHYSIOLOGIST/ RESEARCH GENETICIST (PLANTS)

The United States Department of Agriculture, Agricultural Research Service, is seeking a Scientist for a permanent position at the Western Regional Research Center in Albany, California. The Scientist will develop strategies and tools to measure and minimize potential negative impacts of transgene insertion and expression on nontarget metabolic processes of plants. Experience with high-throughput transcriptional analyses (computer analyses of EST data or laboratory experience in one of the following techniques: SAGE, DNA chips, microarrays, or macroarrays) essential. Yearly salaries are commensurate with relevant experience, starting at \$59,471 to \$108,642 plus benefits. *Candidates must be U.S. citizens.* To apply, contact: **Center's Personnel Department; Telephone: 510-559-6090 or see website: <http://www.ars.usda.gov>.** Select "Careers in ARS," then "Research Scientist," and find Announcement Number ARS-X2W-2437. Applications must be postmarked before September 24, 2002. *The USDA is an Equal Opportunity Provider and Employer.*

ASSISTANT PROFESSOR Terrestrial Ecosystem/Plant Ecologist University of California, Santa Barbara

Search reopened. The Department of Ecology, Evolution, and Marine Biology (EEMB) seeks an Ecologist for a tenure-track position for research and teaching in terrestrial ecosystem/plant ecology. We seek candidates whose research is focused on terrestrial ecosystems and plant community dynamics. We are especially interested in applicants whose research is aimed at understanding ecosystem processes and who are solidly grounded in plant ecology. The scale of research can vary from the plot to the landscape. Examples of potentially relevant areas include but are not limited to interactions between community composition/diversity and species invasions with carbon and nutrient cycles, changing CO₂/climate effects on ecosystems, and landscape/soil controls on community dynamics. Teaching responsibilities will include instruction in ecosystem and plant ecology at both the undergraduate and graduate levels. Applicants who have completed at least one year of postdoctoral research will be preferred. Submit curriculum vitae, selected reprints, a brief description of previous and anticipated research, and arrange to have at least three letters of reference sent to: **Ecosystem Ecology Search Committee, Department of Ecology, Evolution, and Marine Biology, University of California, Santa Barbara, CA 93106.** Review of applications will begin November 15, 2002, and will continue until the position is filled. *The Department is especially interested in candidates who can contribute to the diversity and excellence of the academic community through research, teaching, and service. An Equal Opportunity/Affirmative Action Employer.*

INSTRUCTOR Department of Anesthesia

The University of Medicine and Dentistry of New Jersey, Robert Wood Johnson Medical School, seeks a faculty member to develop an independent research program in the area of ryanodine-dependent intracellular calcium regulation. You will be expected to seek extramural funding to support salary and research and participate in the training of graduate students, residents, and Fellows.

Interested candidates should send their curriculum vitae to: **Jerome Parness, M.D., Ph.D., Department of Anesthesia, UMDNJ-RWJMS, 125 Paterson Street, Clinical Academic Building, Suite 3100, New Brunswick, NJ 08901.** *UMDNJ is an Affirmative Action/Equal Opportunity Employer; Minorities/Females/Disabled/Veterans.*

POSITIONS OPEN

DIRECTOR DEPARTMENT OF PATHOLOGY Division of Molecular and Cellular Pathology The University of Alabama at Birmingham

The Department of Pathology at the University of Alabama at Birmingham is pleased to announce recruitment for Director of the Division of Molecular and Cellular Pathology. We are inviting applications from qualified candidates at the **ASSOCIATE PROFESSOR/FULL PROFESSOR** level. This is a full-time, tenured position through the Department of Pathology, School of Medicine and Dentistry. The candidate should have a Doctoral degree: M.D., Ph.D., D.V.M., D.D.S., or any combination thereof.

Candidates should have a nationally recognized, extramurally funded research program and the experience to lead a group of talented Scientists. The Department has a comprehensive mission in service, teaching, and research with more than \$15 million in annual research dollars and a University commitment to expand over the next five years. Growth of the research enterprise will be dependent upon recruiting new faculty in the Division of Molecular and Cellular Pathology. The Director will be responsible for all aspects of pathology graduate education (currently 44 Ph.D. students), play a major role in strategic planning for expansion, and interface with Researchers within the Department and programs in other departments. The position as Vice Chair for Research is possible based upon the candidate's qualifications.

The University of Alabama at Birmingham is a leading research institution consistently ranked in the top 20 institutions in the country in NIH research funding. Outstanding centers and core facilities for advanced microscopy, molecular genetics, and macromolecular structure are among the attractions at the Institution. The deadline for applications for this position in the Department of Pathology is November 1, 2002. Individuals that wish to be considered should submit comprehensive curriculum vitae, statement of research interests, and the names of at least three individual references to: **Dr. Jay McDonald, Professor and Chair, The Department of Pathology, University of Alabama at Birmingham, 619 19th Street South, WP P220, Birmingham, AL 35294.** **E-mail: mcdonald@path.uab.edu.** *The University of Alabama is an Affirmative Action/Equal Opportunity Employer. Women and minority applicants are encouraged to apply.*

VIROLOGY AND FUNCTIONAL GENOMICS POSITIONS

The University of Washington is seeking talented and motivated individuals for future job openings to participate in an expanding virology and functional genomics initiative in the Department of Microbiology and the Washington National Primate Research Center. Applicants are invited for Technologists, Scientists, Postdoctoral Fellows, Bioinformatics Specialists, and Biostatisticians. Research areas include influenza virus, hepatitis C virus, Ebola virus, AIDS, bioterrorism, and nonhuman primate genomics. Positions are located in a modern research building with state-of-the-art microarray and computing facilities, a strong bioinformatics program, and a new proteomics effort. Ideal candidates will have a background in genome-based studies, an interest in technology, and excellent computer skills. Send cover letter, curriculum vitae, and contact information for three references to: **Dr. Michael G. Katze; e-mail: mistyn@u.washington.edu.** Applicants will go through a competitive process to be hired.

The University of Washington is an Equal Opportunity Employer.

STAFF ASSOCIATE
Bilingual (Spanish/English) **PROJECT COORDINATOR** for study of neurocysticercosis. Master's of Public Health or equivalent clinical trials experience required. Send curriculum vitae to: **Allen Hauser, M.D., G. H. Sergievsky Center, Columbia University, 630 West 168th Street, P and S Unit 16, New York, NY 10032.** *We take Affirmative Action toward Equal Employment Opportunity.*

POSITIONS OPEN

COMPUTATIONAL GENOMICS CONSULTANT

The University of Minnesota Supercomputing Institute seeks to hire a Bioinformatics/Computational Genomics Specialist to join a dynamic group that provides a high level of technical support for researchers at the University of Minnesota Supercomputing Institute for Digital Simulation and Advanced Computation. Salary: \$60,000 to \$80,000 depending on qualifications.

Please visit website: <http://www.msi.umn.edu/general/employment.html> for details. E-mail Ann Johns at e-mail: johns@dtc.umn.edu or Telephone: 612-624-1556.

The University of Minnesota is an Equal Opportunity Educator and Employer.

EVOLUTIONARY ECOLOGIST

The Department of Biology at The University of Memphis invites applications at the **ASSISTANT PROFESSOR** level for an Evolutionary Ecologist. Proficiency with multiple molecular techniques is required. Research interests are open but preference will be given to candidates who address organismal-level questions and whose interests complement the existing strengths of the Department of Biology. The successful applicant will be expected to develop an externally funded research program, supervise Ph.D. and M.S. students, and contribute to the teaching curriculum. A course in molecular techniques is expected. Candidates must have a Ph.D., postdoctoral training, a record of peer-reviewed publication and scholarly accomplishments commensurate with experience, and evidence of funding potential. Position begins 21 August 2003. Applicants should submit a letter of application; curriculum vitae; a concise description of research and teaching interests; and names, telephone numbers, and e-mail addresses of at least four references (do not send reference letters) to: **Search Committee, Department of Biology, The University of Memphis, Memphis, TN 38152.** Contacts for more information: Telephone: 901-678-2758; FAX: 901-678-4746; e-mail: jwloff@memphis.edu; website: <http://www.people.memphis.edu/~biology/>. Review of applications will begin 4 October 2002 and may continue until the position is filled. *The University of Memphis is an Affirmative Action/Equal Opportunity Employer. Women and minority candidates are encouraged to apply.*

An NIH-funded **POSTDOCTORAL RESEARCH ASSOCIATE** position is available to perform research on the structure of nucleic acids, particularly using X-ray diffraction methods to study the structures of DNA Holliday junctions, the detailed transition between double-helical forms of DNA, and the structures of drug cross-linked DNAs. Recent graduates with a Ph.D. degree in biochemistry or a related field and experience in macromolecular crystallography and/or nucleic acid structure are invited to apply. Please send a letter of interest; curriculum vitae; three letters of recommendation; and a sample publication to: **P. Shing Ho, Department of Biochemistry and Biophysics, ALS 2011, Oregon State University, Corvallis, OR 97331** by September 15, 2002, for full consideration. *Oregon State University is an Affirmative Action/Equal Opportunity Employer and has a policy of being responsive to the needs of dual-career couples.*

RESEARCH ASSOCIATE

Baylor College of Dentistry, a component of The Texas A&M University System Health Science Center, has a position available in the Department of Periodontics. Master's degree with two to three years of research experience. Ph.D. preferred. Experience in molecular biology, protein chemistry, and immunology. Apply in person, by FAX, or e-mail.

**3302 Gaston Avenue
Dallas, TX 75246
FAX: 214-828-8904
E-mail: jobs@tambcd.edu**

BIOINFORMATICS AND COMPUTATIONAL BIOLOGY RANK OPEN

The Department of Biometry and Epidemiology (DBE) at the Medical University of South Carolina (MUSC) invites applications for a tenure track position in Bioinformatics and Computational Biology, with a focus on functional analysis of genomic data. The Department offers numerous opportunities for collaboration with colleagues in basic science and clinical departments and in various centers on campus. The computational biology activities in MUSC are supported by the Departments of Pharmacology, Biochemistry, and others.

The successful applicant will be expected to pursue an independent research program and collaborate with investigators in the basic and clinical sciences. Rank and salary will be commensurate with the applicant's qualification and experience. Applications should include a CV with bibliography, names and addresses of three references, three representative reprints, and a brief description of research plan. Application materials should be addressed to: **Eberhard O. Voit, Professor and Chair of Bioinformatics Search Committee, Department of Biometry and Epidemiology, P.O. Box 250835, Medical University of South Carolina, 135 Cannon Street, Charleston, South Carolina, 29425; E-mail: VoitEO@MUSC.edu.** Evaluation of applications will begin immediately, but the search will remain open until the position is filled.

MUSC is an Equal Opportunity/Affirmative Action Employer; women/minorities are encouraged to apply.



UNIVERSITY OF OREGON

DIRECTOR, ZEBRAFISH INTERNATIONAL RESOURCES CENTER

The Zebrafish International Resource Center at the University of Oregon seeks a Director. The Resource Center acquires, maintains, and distributes genetic stocks of wild-type and mutant zebrafish and materials used in zebrafish research. Major research activities include health and husbandry of research colonies. The Director will be responsible for operations of the Resource Center and management of the staff (the Resource Center will be recruiting 4-5 new staff members during the coming year). The Director will need to interact effectively with the research community to solicit submission of mutant strains. Candidates should have training in biology, experience with embryology and genetics (preferably zebrafish), and strong organizational and management skills. PhD preferred. More complete information at http://frost.zfin.org/zf_info/stckctr/director.html.

Send completed applications to: **ZIRC Director Search, E. McCumsey, 1254 University of Oregon, Eugene, OR 97403-1254; or fax (541)346-4548.** Applications received before October 1, 2002, will be given first consideration.

AA/EO/ADA institution committed to cultural diversity.



Faculty Positions - New Cancer Center Medical College of Georgia

We seek distinguished investigators at the junior and senior levels to join us as the Medical College of Georgia establishes a new cancer center. Candidates will be expected to develop strong extramurally funded research programs and will have the opportunity to participate in Ph.D. and M.D./Ph.D. education. We offer generous start-up packages and access to state-of-the-art core facilities for microarray, proteomics, cell imaging, and transgenic animal work. Successful candidates will become members of the Institute of Molecular Medicine and Genetics with tenure track appointments in the indicated academic departments. Academic rank is open, except as indicated. All positions require a doctoral degree and additional postdoctoral training. Send c.v., names of 3 references, and research plans to search committee chair for position of interest.

- **Cancer Proteomics.** We seek an investigator at the Assistant Professor level in cancer proteomics, broadly defined to include the use of new technologies to identify patterns of protein expression in cancer and the exploitation of this knowledge for diagnosis or therapy. An established proteomics core facility supports Amersham Pharmacia 2D-Fluorescence Difference Gel Electrophoresis, SELDI, and MALDI MS/MS. Joint recruitment with Dept. of Pathology, which is under new leadership and is expanding its research programs. ACH # 45288. Contact: **William Dynan, Ph.D., CB-2803, Medical College of Georgia, Augusta, GA 30912. E-mail: wdynan@mail.mcg.edu.**
- **Genetics and Biology of Cervical Cancer.** We seek an investigator with interests in fundamental events leading to progression of cervical neoplasia or in translational applications of this knowledge. We encourage applicants using microarray and proteomics approaches. Position offers exciting opportunities for collaboration with our clinical research program, which maintains an extensive gynecologic neoplasia tissue bank. Joint recruitment with Dept. of Obstetrics and Gynecology. ACH#45287. Contact: **Daron Ferris, M.D., HH-105, Medical College of Georgia, Augusta, GA 30912. E-mail: dferris@mail.mcg.edu.**
- **Radiation Oncology.** We seek a physician-investigator with a strong interest in directing or developing an independent basic research program. Position offers excellent opportunities for interactions with investigators in DNA damage and repair and other relevant fields. Board certification or eligibility in Radiation Oncology required. Our free-standing radiation therapy facility houses three linear accelerators, CT and conventional simulators, and a 3D treatment planning system, with significant additional capabilities planned. Our vision is to develop premier radiation therapy and cancer imaging programs as components of the new cancer center. Joint recruitment with Dept. of Radiology. Contact: **W. Chris Sheils, M.D., Building HK, Medical College of Georgia, Augusta, GA 30912. AC # 43193. E-mail: csheils@mail.mcg.edu.**

The Medical College of Georgia is the health sciences campus of the University System of Georgia. It is located in a historic city with excellent recreational and lifestyle opportunities. Current strengths in cancer research span DNA mismatch and double-strand break repair, molecular chaperones, genomics and proteomics, oncogenes, cytokines, and immunotherapy. Searches are part of a 5-year Georgia Cancer Coalition-sponsored initiative to recruit 150 new cancer scientists to public and private institutions in the State of Georgia. Review of applications will begin October 15, 2002, and will continue until the positions are filled.

Applications from women and members of under-represented minority groups encouraged. EEO/AA/Equal Access employer (PO#E-03013098).

POSITIONS OPEN

POSTDOCTORAL/RESEARCH ASSOCIATE positions at the Virginia Institute for Behavioral and Psychiatric Genetics. VIPBG (website: <http://www.vipbg.vcu.edu>) is a well-funded institute focusing on the genetic epidemiology of psychiatric and substance use disorders. The positions concentrate on one or (if desired) a mix of the following topics: (1) statistical approaches to the measurement of psychiatric disorders. Requires expertise in statistics, psychometrics, or structural equation modeling. (2) Integration of candidate genes in statistical/theoretical models of mental health. Candidates interested in the interplay of genes and environment are encouraged to apply. (3) Analysis of molecular genetic data. Requires knowledge of statistics, bioinformatics, database management, and laboratory work. For Position One, contact: **Michael Neale**; e-mail: neale@hydro.psi.vcu.edu; for Positions Two and Three, contact: **Edwin van den Oord**; e-mail: ejvandenoord@hsc.vcu.edu. VCU is an Equal Opportunity/Affirmative Action Employer. Women, minorities, and persons with disabilities encouraged to apply.

Clinical chemistry POSTDOCTORAL TRAINING/RESEARCH at The University of Texas Medical Branch. Applications invited from individuals with Ph.D. in analytical chemistry (or equivalent Doctoral degree in chemistry or related biological sciences) interested in a career in clinical chemistry. Our ComAAC-accredited program provides a two-year practical training in a major medical school teaching hospital with opportunities for basic, translational, and clinical research. Candidates who complete the training are eligible take the board examination for certification by the American Board of Clinical Chemistry. The application deadline is November 15, 2002, for appointment beginning in July 2003. Send letter of interest, curriculum vitae, official transcript, and three letters of recommendation to: **Anthony O. Okorodudu, Ph.D., Professor and Director, Clinical Chemistry Division, Department of Pathology, UTMB, Galveston, TX 77555-0551**. UTMB is an Equal Opportunity/Affirmative Action Employer; Minorities/Females/Disabled/Veterans. UTMB hires only individuals authorized to work in the United States.

DREYFUS POSTDOCTORAL POSITION Environmental Chemistry Iowa State University

The Department of Chemistry at Iowa State University invites applications for a Postdoctoral position in environmental chemistry supported by the Dreyfus Foundation. Appointment is for one year at a salary of \$35,000 with a second year possible on mutual agreement. Complete details maybe found at website: <http://www.chem.iastate.edu/dreyfus>. Applications will begin to be reviewed October 15, 2002. Iowa State University is an Equal Opportunity/Affirmative Action Employer.

POSTDOCTORAL POSITION ON YEAST PRIONS

Available to study the role of Hsps and cytoskeleton in amyloidosis and protein-based inheritance. Applicants with Ph.D. and experience in yeast genetics or molecular biology, protein chemistry, or fluorescence microscopy are sought. Send your curriculum vitae and statement of research interests (two to four pages) and arrange to send three letters of reference to: **Dr. Yury O. Chernoff, School of Biology, Georgia Institute of Technology, 310 Ferst Drive, Atlanta, GA 30332-0230**. FAX: 404-894-0519; e-mail: yc22@prism.gatech.edu.

POSTDOCTORAL POSITION to work on transcriptional regulation of lung alveolar epithelial cell differentiation *in vitro* and in transgenic models. Strong molecular biology background required. Potential for advancement.

Respond to: **Zea Borok, M.D.**; e-mail: zborok@usc.edu; FAX: 323-442-2611.

POSITIONS OPEN

POSTDOCTORAL RESEARCH TRAINING Postdoctoral Research Training in Comparative and Experimental Pathology

The Division of Comparative Pathology of the New England Regional Primate Research Center located at the Southborough campus of Harvard Medical School has two openings for Postdoctoral Fellows. The objective of this program is to provide highly motivated veterinarians (D.V.M./V.M.D. or equivalent) with the requisite training and research experience in pathology to compete successfully for academic positions and research funding on a national level. Trainees acquire in-depth knowledge and hands-on experience with investigative tools and techniques such as immunohistochemistry, *in situ* hybridization, confocal microscopy, transmission and immunoelectron microscopy, quantitative image analysis, viral isolation, flow cytometry, and PCR. Research projects may be conducted in the areas of pathogenesis of AIDS and associated opportunistic infections, vaccine development, drug addiction, neuropsychiatric disorders, or viral-induced cancer. The program meets all requirements of the American College of Veterinary Pathologists for board eligibility. The Fellowship is a three-year appointment. Salary range is \$31,092 to \$48,852 per year. Applicants must be citizens or noncitizen nationals of the United States or must be lawfully admitted to the United States for permanent residence. To apply, send a letter of intent, curriculum vitae, veterinary school transcript, and the names of three individuals who may be contacted for references to: **Sherry Klumpp, D.V.M., Assistant Professor of Pathology, New England Regional Primate Research Center, Harvard Medical School, One Pine Hill Drive, P.O. Box 9102, Southborough, MA 01772-9102**. Harvard University is an Affirmative Action/Equal Opportunity Educator and Employer. Individuals from underrepresented minorities are strongly encouraged to apply.

POSTDOCTORAL POSITIONS Center for Space Research

Massachusetts Institute of Technology (MIT)

The MIT Center for Space Research has openings for two Postdoctoral Research Associates in the group of **Professor Walter Lewin** to actively participate in data reduction (image analysis and spectroscopy) using Chandra, XMM, and HST data. The candidates should have a strong background in observational astronomy with a proven ability to conduct independent research. Both positions require a Ph.D. in astronomy or physics. The appointments will be for two years, renewable for one to two additional years based on satisfactory performance.

Applicants should send curriculum vitae, bibliography and statement of research interests, and arrange to have three letters of recommendation sent. The application deadline is October 15, 2002. Interested candidates may apply online at website: <http://web.mit.edu/personnel/www/resume.htm>. If you do not have access to the Web, a cover letter and résumé may be submitted to: **MIT Human Resources, Job Number 02-0651, P.O. Box 391229, Cambridge, MA 02139-0013**. Equal Opportunity Employer.

BIOLOGY OF HEPATITIS C VIRUS University of California and VAMC, San Francisco

NIH-funded research **ASSOCIATE/POSTDOCTORAL POSITIONS** are available immediately to study virus-host interactions in hepatitis C. Hepatitis C virus is a leading cause of chronic hepatitis, cirrhosis, and hepatocellular carcinoma. We are studying the subcellular localization of several viral proteins and their role in viral replication and disease pathogenesis. Individuals with recent Doctorate degrees and strong training in biochemistry, cell biology, and/or molecular biology are encouraged to apply. Salary will be commensurate with experience and full benefits are provided. Send curriculum vitae, statement of research interests, and three references to: **T. S. Benedict Yen, Department of Pathology (113B), 4150 Clement Street, San Francisco, CA 94121**. FAX: 415-750-6947; e-mail: yen@itsa.ucsf.edu.

POSITIONS OPEN

POSTDOCTORAL/RESEARCH STAFF POSITIONS Microfluidics, DNA Computing

Postdoctoral/Research Staff positions are available in the Departments of Ecology and Evolutionary Biology and Physics at Princeton University to develop a microfluidic chip that is capable of performing molecular (DNA/RNA) computation. The project involves a collaboration with groups at Princeton, Berkeley, and Stanford to develop this chip. The successful candidate will be expected to work with members of these groups to develop (1) microfluidic switches and valves and (2) electronic sensors for detecting on-chip the DNA/RNA computing elements. Experience with micro- and nanofabrication desirable but not necessary. The initial appointment for the position is for one year and can be extended, upon mutual agreement, for up to two years. Send curriculum vitae and names of three references to: **Dr. Laura Landweber, Department of Ecology and Evolutionary Biology, Princeton University, Princeton, NJ 08544**. Princeton University is an Equal Opportunity/Affirmative Action Employer.

POSTDOCTORAL POSITIONS

Molecular Biology/Behavioral Pharmacology

Applicants are invited for Postdoctoral positions available immediately in a genomics laboratory to participate in several multidisciplinary research projects involved in the characterization of susceptibility genes for nicotine dependence, schizophrenia, and other mental disorders in human and animals. Ph.D. in molecular biology, neuroscience, pharmacology, or related fields is desired. Experience in microarray technology, protein chemistry, *in situ* hybridization, and immunohistochemistry would be advantageous but other highly motivated individuals are encouraged to apply. Submit curriculum vitae and names, addresses, and telephone numbers of three references to: **Dr. Ming D. Li, Department of Psychiatry, The University of Texas Health Science Center at San Antonio, Mail Code 7792, 7703 Floyd Curl Drive, San Antonio, TX 78229**. FAX: 210-567-0853; e-mail: lim2@uthscsa.edu. The University of Texas Health Science Center at San Antonio is an Equal Opportunity/Affirmative Action Employer.

The Institute of Marine and Coastal Sciences at Rutgers, The State University of New Jersey, invites applications for a full-time **POSTDOCTORAL ASSOCIATE (IMCS, website: <http://marine.rutgers.edu>)**. Topic: phylogenetics, molecular evolution, symbiosis, and biogeography of open ocean calcareous plankton. Ph.D. in marine biology, molecular evolution/ecology, population/phylogenetics, or a related field; skills in molecular techniques and statistical analyses of molecular data required. Use of living planktonic *Foraminifera* and their algal symbionts as a model to study biodiversity, biogeography, and population structure in open ocean microorganisms.

\$35,000 per year plus benefits. Application letter, résumé, and the names of three references should be sent to: **Dr. Colombar de Vargas, Rutgers, The State University of New Jersey, Institute of Marine and Coastal Sciences, 71 Dudley Road, New Brunswick, NJ 08901-8521**. Telephone: 732-932-6555/Extension 236; e-mail: vargas@imcs.rutgers.edu.

Rutgers is an Equal Opportunity/Affirmative Action Employer. Women and minorities encouraged to apply.

POSTDOCTORAL or RESEARCH ASSOCIATE POSITIONS are available to study molecular pathways related to Alzheimer's disease using mouse genetic approaches. Previous experiences in gene knockout technology and/or neuroscience are preferred. Competitive salary will be offered and will be based on experience. Send your curriculum vitae to: **Hui Zheng, Ph.D., Huffington Center on Aging, Baylor College of Medicine, One Baylor Plaza, M320, Houston, TX 77030**. E-mail: hui@bcm.tmc.edu. Baylor College of Medicine is an Equal Opportunity/Affirmative Action/Equal Access Employer.



Sierra Sciences, Inc. (SSI) is seeking scientists with excellent credentials in protein chemistry, molecular biology, and cellular biology. SSI is an early stage biotechnology company focused on developing therapies to control **telomere length** and reverse the effects of human aging.

Nestled in the foothills of the Sierra Nevada mountain range, the Reno/Lake Tahoe area offers great year-round recreational and cultural opportunities, along with very competitive housing and schools. Further information about Sierra Sciences and our research may be viewed on our website listed below.

Sierra Sciences currently has positions open for:

Post Doctoral - Purify/characterize transcription factors that regulate expression of the **telomerase** gene. Experience in protein chemistry.

Research Assistants/Associates - Molecular biology and cell culture experience. BA/BS or masters in related field and 3-5 years of experience.

Lab Technician - BA/BS in biology or related field.

Applicants should be interested in working in a very collaborative environment that encourages creative thinking.

Interested applicants are invited to e-mail/Fax/send their resumes to:

Sierra Sciences, Inc.
Human Resources
250 So. Rock Blvd., Suite 130
Reno, NV 89502
Fax: 775-856-9510
E-mail: hr@sierrasci.com
Website: www.sierrasci.com

The Section of Infectious Diseases in the Department of Medicine and the Committee on Microbiology invite applications for a faculty position in microbiology. This search is aimed at identifying outstanding investigators in microbiology. Applications at all levels (**Full Professor, Associate Professor and Assistant Professor**) will be considered. Applicants must have a M.D. degree with training in internal medicine and infectious diseases (board certification). The recruited individual is expected to participate in the teaching and training activities of the Section of Infectious Diseases and the Committee on Microbiology. There will be opportunities for limited clinical activity. Additional information about this position can be obtained by e-mail (oschnee@delphi.bsd.uchicago.edu).

Applicants should send a curriculum vitae, statement of research interest and at least three letters of recommendation by November 15, 2002 to:

Dr. Olaf Schneewind
Chairman of the Infectious Diseases Search Committee
The University of Chicago
920 East 58th Street
Chicago, Illinois 60637



**THE UNIVERSITY
OF CHICAGO**

*The University of Chicago is an Affirmative Action/
Equal Opportunity Employer*

Science's first-ever Top Employers Survey!

advertising supplement



Limited space still available.

Contact:
U.S.: Daryl Anderson 202-326-6543
Europe: Deborah C. Harris +44 (0) 1223 326 500
Australia: Keith Sandell +61 29922-2977
Japan: Mashy Yoshikawa +81 3 3235-5961

Who are the best companies to work for?

**Find out in the 20 September 2002
"Top Employers" advertising supplement**

• **Bonus Distribution**

ICAAC (Interscience Conference on
Antimicrobial Agents and Chemotherapy)
27-30 September 2002, San Diego, CA

Science @
CAREERS
www.sciencecareers.org

AAAS Advancing science • Serving society

POSITIONS OPEN

POSTDOCTORAL POSITIONS Molecular Neuroscience

Postdoctoral positions are available to study the molecular mechanisms regulating Ca^{2+} -dependent synaptic plasticity. We are especially interested in how neuron-specific Ca^{2+} binding proteins modulate neurotransmission and neuronal excitability through interactions with voltage-gated Ca^{2+} channels and other molecular targets. We employ a diverse array of techniques including molecular biology, biochemistry, immunocytochemistry, fluorescent imaging, and electrophysiology. Our laboratory is located in the Department of Pharmacology at Emory University, which provides a stimulating and collegial research environment with many opportunities for collaboration. Applicants with a Ph.D. and a strong background in neuroscience should send a statement of research interests and curriculum vitae including the contact information for two to three references to: **Dr. Amy Lee, Emory University Department of Pharmacology, 5015 Rollins Research Building, 1510 Clifton Road, Atlanta, GA 30322. E-mail: alee@pharm.emory.edu.** For more information, see website: <http://www.pharm.emory.edu/alee/index.htm>.

Three POSTDOCTORAL POSITIONS are available in the group of **Dr. H. James Harmon** in the Department of Physics at Oklahoma State University in the following areas: (1) quantum mechanical modeling of the interaction between porphyrins and organic molecules using programs such as Gaussian; (2) analytical chemistry to determine the products of the breakdown of nitroenergetics using GC-MS, HPLC, IC, and UV-VIS-NIR; and (3) molecular imprinting for detection and catalysis of organics. Experience with these compounds is highly desirable. The positions are initially for one year and available immediately. Submit résumé/curriculum vitae and contact details of three references to: **Dr. H. James Harmon, Department of Physics, Oklahoma State University, Stillwater, OK 74078-3072. E-mail: jharmon@okstate.edu.** Oklahoma State University is an Equal Opportunity Employer. Women and minorities are encouraged to apply.

CAREER IN OPTOMETRY, OPTOMETRIC RESEARCH, OR TEACHING

The New England College of Optometry offers a unique program for those with a Doctorate in the sciences: biology, chemistry, physics, psychology, etc. Candidates have the opportunity to obtain the Doctor of Optometry (O.D.) degree in 27 months. The Program begins annually in March. Employment opportunities exist in clinical practice, industry, optometric faculty positions, and research. Contact: **Admissions Office, Department S, 424 Beacon Street, Boston, MA 02115. Telephone: 1-800-824-5526; e-mail: admissions@ne-optometry.edu; website: <http://www.ne-optometry.edu>.** Application deadline: February 1, 2003.

Two NIH-supported POSTDOCTORAL POSITIONS are available in the area of redox regulation of cellular processes (website: <http://www.unl.edu/biochem/gladyshev>). Successful candidates will employ biochemistry, bioinformatics, and/or functional genomics tools. We offer outstanding research environment and competitive compensation. Please send your curriculum vitae and addresses of three references to: **Dr. Vadim Gladyshev, Department of Biochemistry, The Beadle Center, University of Nebraska, Lincoln, NE 68588. E-mail: vgladyshev1@unl.edu.**

POSTDOCTORAL AND STAFF RESEARCH ASSOCIATE POSITIONS UCLA Center for Environmental Genomics (CEG)

The positions are to work with CEG Investigators on the molecular basis of the causation of disease through environmental exposure making use of UCLA's state-of-the-art facilities for gene expression, profiling, and proteomics. Please apply to: **Robert H. Schiestl, Ph.D.; e-mail: botayde@mednet.ucla.edu.**

POSITIONS OPEN

NIH 2002 = [OPPORTUNITY][™]

Train at the bench, the bedside, or both. The NIH offers POSTDOCTORAL and CLINICAL FELLOWSHIPS as well as tenure-track positions.

For details, visit our website:
www.training.nih.gov

NIH is dedicated to building a diverse community in its training and employment programs.

POSTDOCTORAL POSITION AVAILABLE Plant Evolutionary Genomics

A Postdoctoral position is available to study gene expression in basal angiosperms and gymnosperms as part of a multi-institutional, NSF-funded plant genome research project investigating the evolution of flowers. The work at University of Alabama will involve development and implementation of high-throughput *in situ* RT-PCR assays (see *Plant Physiol.* 123:1203) for a variety of plant species. Applicants should be interested in evolutionary aspects of plant development and hold a Ph.D. in plant molecular biology or a related discipline. Experience with *in situ* hybridization techniques is preferred. Additional opportunities exist for collaborative research with **Dr. Victor Albert** at the University of Oslo, Norway.

Applicants should send a cover letter, curriculum vitae, copies of up to five relevant publications, and contact information for three references to: **Dr. David G. Oppenheimer, Department of Biological Sciences, University of Alabama, 301 Biology, Tuscaloosa, AL 35487-0344. E-mail: oppenhei@bama.ua.edu.** Screening of applications will begin immediately. The University of Alabama is an Affirmative Action/Equal Opportunity Employer.

POSTDOCTORAL POSITIONS Bacteria-Induced Signaling Networks

Positions available immediately to study the bacteria-induced signaling networks involved in the pathogenesis of respiratory infections (*PNAS* 98:8774, 2001; *JBC* 277:949 and 277:17263, 2002). Applicants should have a Ph.D. or M.D. with a strong background in one of the following areas: signal transduction, protein purification, molecular biology, microbiology, immunology, immunohistochemistry, and mouse model. The institute houses state-of-the-art research facilities and has access to shared core facilities through our academic affiliation with University of Southern California. Excellent salary and benefits. Send curriculum vitae and names of references to: **Dr. Jian-Dong Li, Department of Cell and Molecular Biology, House Ear Institute, 2100 West Third Street, Los Angeles, CA 90057. FAX: 213-273-8088; e-mail: jdli@hei.org; website: <http://www.hei.org>.** Equal Opportunity Employer.

POSTDOCTORAL POSITIONS Protein NMR

Two Postdoctoral positions are available in the laboratory of **Martin J. Stone**, Department of Chemistry, Indiana University, Bloomington. Projects include (1) the structural basis of chemokine:receptor recognition; and (2) the dynamical properties of proteins and their functional consequences. Applicants should have experience in protein NMR spectroscopy and other biochemical/biophysical methods. Send résumé to e-mail: **mastone@indiana.edu**; Telephone: 812-855-6779.

POSTDOCTORAL POSITION is available to study genetically engineered cellular drug delivery systems (*Cancer Res.* 62:1382-1387, 2002). Seek independent person experienced in cell and molecular biology interested in joining pharmacokinetic and drug delivery laboratory. Send résumé and references to: **James M. Gallo, Department of Pharmacology, c/o Human Resources, Fox Chase Cancer Center, 7701 Burholme Avenue, Philadelphia, PA 19111.** Equal Opportunity Employer.

POSITIONS OPEN

POSTDOCTORAL POSITION AVAILABLE

The Laboratory of Molecular Microbiology seeks a POSTDOCTORAL FELLOW (M.D./D.V.M. and/or Ph.D.) with a background in molecular virology who has a particular interest in either AIDS vaccine development or pathogenesis. The laboratory uses simian immunodeficiency virus (SIV) infection of monkeys as a model for human AIDS. Vaccine studies focus on the use of live viral vectors to express SIV proteins and study of correlates of immunity. Pathogenesis studies involve the virology and immunology of asymptomatic infection of the natural host species of SIV, African green monkeys. Studies would involve assessment of viral evolution, target cells using confocal microscopy, and viral load and distribution and immunologic responses in naturally and experimentally infected African green monkeys. The applicant should have experience in molecular virology, cellular immunology, or comparative pathology. The position is available immediately for a duration of two to five years. Starting salary is dependent on qualifications. Applicants are requested to submit curriculum vitae and three letters of reference to: **Dr. Vanessa Hirsch, Laboratory of Molecular Microbiology, NIAID Twinbrook II Facility, 12441 Parklawn Drive, Rockville, MD 20852 U.S.A. E-mail: vhirsch@niaid.nih.gov.** NIH is an Equal Opportunity Employer.

Two POSTDOCTORAL POSITIONS are available to study sphingolipid-mediated fungal pathogenesis or function of alpha-hydroxyl sphingolipids, led by **Drs. Maurizio Del Poeta** (website: <http://biochemistry.musc.edu/faculty/delpoeta>) and **Hiroko Hama** (website: <http://biochemistry.musc.edu/faculty/hama>) in the Department of Biochemistry and Molecular Biology at the Medical University of South Carolina. The Department is the center of an interactive group of Scientists in the world-premier sphingolipid research laboratories at MUSC. The minimum starting salary of these positions is \$32,000 plus fringe benefits. Please send cover letter, curriculum vitae, and contact information for at least two references to: **Ms. LuAnne Harley, Biochemistry and Molecular Biology, MUSC, 173 Ashley Avenue, BSB 501, P.O. Box 250509, Charleston, SC 29425. E-mail: harleylu@musc.edu.** For more information, visit our departmental website: <http://biochemistry.musc.edu/>. MUSC is an Affirmative Action/Equal Opportunity Employer.

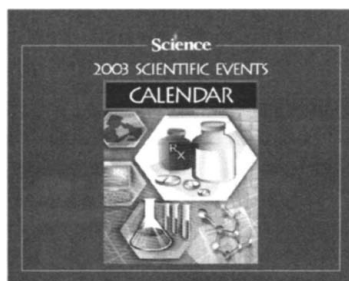
POSTDOCTORAL POSITION is available to study the molecular mechanism of retroviral DNA integration and the structure and function of the proteins involved. Experience in molecular biology and biochemical/biophysical analysis of biological macromolecules is desirable. Candidates must have less than five years of postdoctoral experience. Send cover letter, summary of research experience, and the names and addresses of three references by e-mail or mail to: **Dr. Robert Craigie, Laboratory of Molecular Biology, National Institute of Diabetes and Digestive and Kidney Diseases, NIH/HHH, Building 5, Room 301, 5 Center Drive, Bethesda, MD 20892 U.S.A. E-mail: bobc@helix.nih.gov.** For information, see website: <http://orac.niddk.nih.gov/www/craigie/crahome.html>.

HHH and NIH are Equal Opportunity Employers.

POSTDOCTORAL FELLOWS Cardiovascular Sciences/Biochemistry

The Program in Integrative Cardiac Metabolism at the University of Illinois College of Medicine announces Postdoctoral positions. The Program seeks individuals in cardiovascular sciences with experience in immunoassay, HPLC, gene transfer, or NMR along with isolated hearts or cardiomyocytes. Applicants must hold an M.D. or Ph.D. Send curriculum vitae and research interests to: **Dr. E. Douglas Lewandowski, Department of Physiology and Biophysics (MC901), University of Illinois College of Medicine, 835 South Wolcott, Chicago, IL 60612. FAX: 312-996-2870. UIC is an Affirmative Action/Equal Opportunity Employer.**

Will your event be listed in *Science's* 2003 Events Calendar?



Calendar being published by Science Business Office.

The 2003 Scientific Events Calendar

will be published in our 13 December 2002 issue. Deadline for submissions is 8 November 2002. This calendar reaches nearly 800,000¹ *Science* readers who could be potential delegates, exhibitors, and sponsors for your event.

To submit a free listing go to **www.sciencemeetings.org** or call your *Science* sales representative for more information on multiple listings and advertising in this year-round resource.

¹ *Science* Harvey Research Readership surveys: 14 January 2000, 4 February 2000, 4 June 1999 (Japan) as applied to *Science* December 2001 BPA Publisher's Statement, publisher's own data.

For full details contact:

In the U.S. Kathleen Clark
phone 202-326-6555
fax 202-289-6742
e-mail kclark@aaas.org

In Europe Richard Walters
phone +44 (0) 1223 326 500
fax +44 (0) 1223 326 532
e-mail .. rwalters@science-int.co.uk

Science@
www.sciencemeetings.org

AAAS

Postdoctoral and Postmaster's Research Positions Functional and Microbial Community Genomics

The Oak Ridge National Laboratory (ORNL) (<http://www.ornl.gov>) Environmental Sciences Division (<http://www.esd.gov>) invites persons with training in molecular biology, genetics, biochemistry, and microbiology to apply for six to eight postdoctoral and postmaster's positions available at ORNL. Opportunities exist for successful applicants to participate in a wide range of functional genomics projects focusing on *Shewanella oneidensis* MR-1, *Nitrosomonas europaea*, *Deinococcus radiodurans*, *Rhodospseudomonas palustris*, *Desulfovibrio vulgaris*, and *Geobacter metallireducens* using both microarray-based genomic and/or phage display-based proteomic approaches. Research opportunities are also available in the emerging field of microbial community genomics, in which microarray technology is used to analyze the structure, composition, and dynamics of microbial communities in natural environments.

Candidates must have a Ph.D. or M.S. degree with demonstrated experience in molecular techniques such as gene cloning, gene expression, vector development, DNA/RNA isolation and analysis, PCR, mutagenesis, protein isolation and chemistry. Additional experience is desired but not required in bioinformatics, physiology, microarray technology, two-hybrid systems, and phage display. Individuals will work cooperatively with scientists at ORNL, Michigan State University, Stanford University, University of Iowa, Oregon State University, Ohio State University, University of Missouri, University of Southern California, Baylor College of Medicine, Pacific Northwest National Laboratory, Lawrence Berkeley National Laboratory, and/or Argonne National Laboratory.

Interested candidates should send a curriculum vitae, a description of research accomplishments and interests, and the names and telephone numbers of three references to: **Dr. Jizhong Zhou, Oak Ridge National Laboratory, P.O. Box 2008, Oak Ridge, TN 37831-6038 (Phone 865-576-7544; Fax: 865-576-8646; e-mail: zhouj@ornl.gov; web site <http://www.esd.ornl.gov/facilities/genomics/index.html>**. Please reference the position title and number (ORNL02-24-ESD), when corresponding about this position.

This appointment will be offered through the ORNL Postdoctoral/Postmaster's Research Associates Program (<http://www.ornl.gov/orise/edu/postgrad/ornlpdoc.htm>). Salaries will be competitive. *The program is open to all qualified U.S. and non-U.S. citizens without regard to race, color, age, religion, sex, national origin, physical or mental disability, or status as a Vietnam-era veteran or disabled veteran.*

Faculty Positions in Neurology/ Neuroscience

Department of Neurology University of California, San Francisco Veterans Affairs Medical Center

The University of California, San Francisco Department of Neurology and Veterans Affairs Medical Center, San Francisco seeks highly qualified neurologists with experience in neuroscience research for two faculty positions. These VA-salaried appointments will be at any UCSF academic rank, depending on qualifications. Appointees will join an expanding research community at the VAMC and will have substantial opportunities to interact with clinical and basic neuroscience programs at the nearby UCSF campus. We seek applications from qualified and highly motivated individuals who have completed at least 2-3 years of relevant postdoctoral training or independent research. Candidates should hold an M.D. degree with board-eligible training in Neurology and must be capable of directing a rigorous research program in neuroscience. Recruits are expected to participate in Neurology Department teaching activities and patient care. Send CV and names of 3 references to:

Ivan Diamond, M.D., Ph.D.
Chair, Neurology Search Committee
Ernest Gallo Clinic and Research Center
5858 Horton Street, Suite 200
Emeryville, CA 94608

UCSF is an Affirmative Action/Equal Opportunity Employer. The University undertakes affirmative action to assure equal employment opportunity for underutilized minorities and women, for persons with disabilities, and for Vietnam-era and special disabled veterans.

RUSH UNIVERSITY Department of Biochemistry

Assistant/Associate Professor Position is available in the Department of Biochemistry at Rush Medical College at Rush-Presbyterian-St. Luke's Medical Center, Chicago, IL. The successful applicant will join a nationally recognized program in cartilage biology, biochemistry and the pathobiochemistry of osteoarthritis. Applicants should have a Ph.D. or a M.D./Ph.D. in biochemistry or related biological science. The focus will be on research in cell signaling or molecular biology that can be applied to cartilage and cartilage-bone interface. However, those with interests in related areas are strongly encouraged to apply. The applicant should have at least 3 years of postdoctoral experience and a demonstrated publication record. The successful applicant will be expected to develop a rigorous, independent research program funded by external support and contribute to the educational programs in the graduate and medical schools. An excellent start up package with new laboratory space is available.

Applications will be reviewed upon receipt and accepted until the position is filled. Please send a letter of interest, statement of research plans, curriculum vitae, and the names of three references to:

Theodore Oegema, Ph.D., Chairman
Department of Biochemistry
Rush Medical College
1653 W. Congress, Pkwy, 402 Senn
Chicago, IL 60612
Ted_Oegema@rush.edu

Equal Opportunity/Affirmative Action Employer.

The Florida State University



College of Medicine

The newly established Department of Biomedical Sciences has state-funded, tenure-track positions available in organ systems physiology, pharmacology, anatomy, microscopic anatomy, development, biochemistry, microbiology of infectious diseases, immunology, neuroscience and pathophysiology. Preference will be given to candidates with research interests in the molecular and cellular function of the genome as it relates to the subject areas listed above. Applicants will be expected to develop strong independent research programs. Although most of the positions are at the junior faculty level, exceptionally qualified senior faculty are encouraged to apply. Research will be supported by attractive start-up packages and new facilities. Teaching assignments will be customary for medical schools and the College is specifically seeking teaching excellence in the context of an integrated medical curriculum. Applicants should have a Ph.D. or equivalent in the appropriate field and two or more years of post-doctoral experience.

Applications should include a curriculum vitae, a brief summary of research interests, a statement on teaching, and the names of three references. Applications will be reviewed starting October 1, 2002 and should be received no later than November 15, 2002. Send email application (preferred) as a Microsoft Word formatted document to: biomed@med.fsu.edu, or a hard copy to Faculty Search, Department of Biomedical Sciences, College of Medicine, The Florida State University, Tallahassee, FL 32306-4300.

FSU is an Equal Opportunity Employer.
<http://www.fsu.edu/~medicine>

Associate Dean for Academic Affairs and Education

The University of North Dakota School of Medicine & Health Sciences invites applications and nominations for the position of Associate Dean for Academic Affairs and Education. We seek a talented and enthusiastic individual to coordinate and facilitate these critical areas. We have an outstanding patient-centered medical curriculum, rapidly growing research programs and enthusiastic faculty. The candidate must possess strong academic credentials including an M.D. or Ph.D. degree, and medical leadership experience along with excellent interpersonal and managerial skills. Our medical school class size is small (62 students/class) allowing for an innovative patient-centered curriculum with extensive small group instruction. The associate dean also will oversee our successful allied health programs in occupational therapy, physical therapy, clinical laboratory sciences, athletic training and a physician assistant program. All of the allied health programs have strong leadership. He /she will report to the dean and join an outstanding team of leaders.

Grand Forks/East Grand Forks is a community of 70,000 people, home of the University of North Dakota (12,000 students), excellent public schools, a vibrant culture and outstanding quality of life with easy access to magnificent lake country.

Interested individuals should send a letter of interest and curriculum vitae to:

Judy L. DeMers, Associate Dean
Student Affairs & Admissions
UND School of Medicine & Health Sciences
501 North Columbia Road
Grand Forks, ND 58202-9037
jdemers@medicine.nodak.edu

Applications will be accepted until the position is filled.

SENIOR FACULTY POSITION DEPARTMENT CHAIR Biomolecular Nutrition / Genomics / Metabolomics

Prominent candidates with a Ph.D. or M.D./Ph.D. in biochemistry, physiology or a related discipline are sought whose experience and attributes assure outstanding leadership in emerging areas of basic biomedical research. UW-Madison has a rich history and strong foundation in biochemical and molecular nutrition. This individual will work to identify new opportunities for integrating cell and molecular information with whole body and population-based efforts aimed at understanding the role of diet in normal physiological processes and/or disease states. Priority will be given to candidates whose research takes advantage of the many resources and new initiatives in genomics, proteomics and systems biology at UW-Madison. Consideration will be given to individuals working on nutritionally relevant problems at any phylogenetic level. Formal training in Nutrition is not required.

The successful candidate will also have an aptitude for leadership in teaching and outreach programs and will maintain teaching and research activities. Candidate must have a sustained record of publications and research funding, and a record of scholarly achievement that merits tenure at UW-Madison. Send a cover letter describing your interests in, and qualifications for, this position (PVL # 42756), a CV, a statement of research interests, and three letters of reference to:

Rick Eisenstein Ph.D.
University of Wisconsin-Madison
Department of Nutritional Sciences
1415 Linden Drive
Madison, WI 53706

Respond on or before November 25, 2002 to ensure full consideration but applications may be reviewed until the position is filled. Unless confidentiality is requested in writing, information regarding the applicants must be released upon request. Finalist cannot be guaranteed confidentiality.

UW-Madison is an Equal Opportunity Affirmative Action Employer.

FINDING THE RIGHT
JOB SHOULDN'T BE
LIKE MAPPING THE
HUMAN GENOME.

That was yesterday.

Science @
CAREERS
www.sciencecareers.org

job postings
resume/CV database
e-mail job alerts
employer profiles



PURDUE CANCER CENTER

Structure, Synthesis and Molecular Mechanisms for Drug Discovery

FACULTY POSITIONS

As part of a campus-wide expansion in basic cancer research, the NCI-designated Cancer Center at Purdue University and the Walther Cancer Institute announce the availability of four tenure-track faculty positions to augment a core group of highly interactive, interdisciplinary scientists targeting the interface between the biology and chemistry of cancer. Positions are available at all levels, and applicants must have a Ph.D. or equivalent degree and relevant postdoctoral experience. Candidates with interests in structural, synthetic and molecular aspects of drug targets and discovery are sought from the biological, biochemical, chemical and engineering sciences. Academic appointments are available in a variety of departments.

Applicants should submit a curriculum vitae, a description of future research plans, and arrange to have three letters of reference sent to: **Richard F. Borch, M.D., Ph.D., Director, Purdue Cancer Center, Hansen Life Sciences Research Building, Purdue University, West Lafayette, IN 47907.** Applications will be considered until the positions are filled.

Purdue University is an Equal Opportunity / Affirmative Action Employer. Women, minorities and dual career couples are especially encouraged to apply.

GRANTS

Creating the future of biotech—Together

Invitrogen's Research Tools Development Grants

Program provides funding for investigators developing innovative tools for use in life science research. Total funding is US\$5 million per year, with annual individual awards of up to US\$100,000. Grants are provided quarterly.

Third quarter 2002 funding is for novel approaches in the **separation and purification** of biomolecules. Proposals to develop enrichment, fractionation and labeling technologies are also of interest. Deadline for full Grant Proposals is September 1. A preproposal is required. For more information, visit www.invitrogen.com, e-mail grants@invitrogen.com, or call 800 955 6288, ext. 66140.

1600 Faraday Ave., Carlsbad, CA 92008 USA
P: 760 476 6140 F: 760 602 6563
www.invitrogen.com



CONFERENCE

A Conference of the Association of American Veterinary Medical Colleges

AGENDA FOR ACTION: VETERINARY MEDICINE'S ROLE IN BIODEFENSE AND PUBLIC HEALTH

November 1-3, 2002

Washington, DC

Plenary presentations and breakout sessions will focus attention on the critical role that veterinary school faculty, veterinary colleges, and other organizations must take to meet the growing emergencies that this country must face in its biodefense, and especially how we can control both incidentally emerging and induced infectious diseases in both humans and animals.

Led by speakers of international renown, the conference will focus attention on the recruitment, motivation and education of veterinarians to meet these challenges of public health, and the role that veterinarians, both specialist and those in general practice, must play to combat both the deliberate release or spontaneous dissemination of infectious diseases, each of which poses major threats to animals and humans, and to national and global economies.

The conference will be held at the National Press Club and the JW Marriott Hotel, Washington DC. For the full conference program and information on hotel reservations, please refer to the web site www.aavmc.org.

The conference is generously supported by a grant from the Annenberg Sunnyslands Trust to the University of Pennsylvania. Conference coordination is provided by the AAVMC.

SYMPOSIA

St. Jude Children's Research Hospital CANCER CENTER - SYMPOSIUM 2002

"Sarcomas: Bench to Bedside"
Friday, November 1, 2002

The St. Jude Children's Research Hospital (SJCRH) Cancer Center is pleased to host its 2002 symposium. The program will include individual presentations and a panel of discussants addressing major issues in pediatric sarcomas, ranging from biology and pathology to preclinical models and therapy.

Featured Speakers:

Fred Barr, MD, PhD, Univ. of PA School of Medicine
Gerard Grosveld, PhD, St. Jude Children's Research Hospital
Peter Houghton, PhD, St. Jude Children's Research Hospital
Matt Krasin, MD, St. Jude Children's Research Hospital
Paul Meltzer, MD, PhD, Natl. Human Genome Res. Institute
Glenn Merlino, PhD, National Cancer Institute
Stephen Skapek, MD, St. Jude Children's Research Hospital
Rick Womer, MD, Children's Hospital of Philadelphia

Co-organizers: Michael Kastan, MD, PhD, and Larry Kun, MD.

Registration fee of \$50 includes continental breakfast and lunch. Please register by mailing a check payable to St. Jude Children's Research Hospital to: Barbara Outlaw, SJCRH, Dept. of Radiation Oncology, 332 North Lauderdale St., Rm. C2002, Memphis, TN 38105. Telephone (901) 495-360

MARKETPLACE

CUSTOM MICROARRAYS

RELIABLE FAST ACCURATE

MICROARRAYS, INC.
(615) 327-5495
www.microarrays.com



MICROARRAYS, INC.

UNIQUE DNA SYNTHESIS REAGENTS

- Black Hole Quencher™ columns & amidites
- CPGs—FAM, TET, HEX, ROX
- Top Quality • Best Pricing • Great Support



**BIOSEARCH
TECHNOLOGIES**
Chemistry for Genomics™

1.415.883.8400
www.biosearchtech.com

Widely
Recognized
Original &
Guaranteed

KlenTaqI

8¢/u
Truncated
Taq DNA
Polymerase
Withstand 99°C

US Pat # 5,436,149

Call: **Ab Peptides** 1-800-383-3362
Fax: 314-968-8988 www.abpeps.com

**The Oligonucleotide
Synthesis Service**

- High coupling efficiency and salt-free synthesis conditions
- Unique longer capability
- Large number of modifications available
- Reliable service



Europe: 00800-67673377
North America: 800-688-2248
www.operon.com

Do you have a large-volume oligo order?

Discover high-throughput service that you can count on.



www.idtdna.com
1-800-328-2661

MARKETPLACE

**Custom Peptides
& Antibodies**

Best Service & Price! Compare and Save!

Alpha Diagnostic (800) 786-5777

Fax (210) 561-9544; info@4adi.com

Web site: http://www.4adi.com

QUALITY DNA SYNTHESIS

MALDI-TOF Mass Spectrometry Quality Control

Check our new prices
and order at
our new website.

www.oligos.com

MIDLAND

MIDLAND CERTIFIED REAGENT COMPANY, INC.

Phone: 800.247.8766 • Fax: 800.359.5789
email: orders@oligos.com

Quality Peptides & Antisera

Friendly, Personal Service
www.genosys.com

Custom Peptide Synthesis

- sequence analysis
- IG, >70%, >80%, >95% purity
- scales from 2 mg-l g
- synthesis up to 120 residues
- variety of modifications available
- mass spec & HPLC on every peptide
- satisfaction guaranteed

Polyclonal Antisera Service

- antigen design assistance
- synthesis, conjugation and sera collection
- rabbits, chickens, sheep & goats available
- flexible protocol
- phospho-specific antibody production

**SIGMA
GENOSYS**

North America 1-888-663-3693
ginformation@sial.com
Europe (+44) (0) 1223 839000
info@sigma-genosys.co.uk

DNA

Free Set-up and
Desalting

PEPTIDES

Call and Compare

**Gene Synthesis, Site Mutagenesis,
Protein Expression and more**

COMPARE AND SAVE

DNA Sequencing: as low as \$15 per run

Custom Anti-peptide Antibody

(including peptide synthesis)

\$850

GENEMED SYNTHESIS

800.344.5337 Fax: 650.952.9540
Web Site: www.genemedsyn.com

MARKETPLACE

Bio•Synthesis, Inc. 1-800-227-0627

Quality Custom Synthesis

- Peptides
- Antibodies
- Bioconjugates
- Organic Synthesis
- DNA
- Molecular Beacons

www.biosyn.com

sales@biosyn.com

3 O.D. Select Oligos

NEW LOW PRICE

Just \$0.45/base*

We'll ship your 3 O.D. Select oligos in just 24-48 hours. Every oligo is QC'd by PAGE analysis, and each batch is performance-tested by mass spec.

Order by fax: 281-363-2212, email: gorderentry@sial.com or web: www.genosys.com.

*Desalted only. Oligos must be 10 to 35 bases in length. No modifications or additional purification. Offer valid in U.S. only.

**SIGMA
GENOSYS**

North America: 1-877-710-1504 • email: ginformation@sial.com

CUSTOM PEPTIDES

QUICK QUOTE
MOST QUOTES IN AN HOUR

FAST DELIVERY
2 WEEKS FOR MOST ORDERS
100% SATISFACTION GUARANTEED

...MADE EASY!
**NEW ENGLAND
PEPTIDE, INC.**
Tel: 888-343-5974

Fax: 978-343-5940 www.newenglandpeptide.com

Mutagenesis

High Throughput

www.irismetgenetics.com

phone (713) 682-5825

IRIS

What's the shortest distance between two points?



www.scienceproductlink.org

Find out about products advertised
in Science — instantly.

EXPRESSION PROFILING

Introducing Genome-Wide OLIGONUCLEOTIDE Libraries.

Designed by:
compugen

The Difference Is In The Design.

Accurate design is critical when performing high-throughput gene expression profiling. Sigma-Genosys and Compugen introduce three new Oligonucleotide Libraries, designed using Compugen's proprietary LEADS™ technology for transcriptome prediction and manufactured using Sigma-Genosys' patented Abacus™ oligo synthesis platform.

- Comprehensive collections of gene specific oligos
- Broader genome representation of mRNA's and EST's
- Alternative splice variant modeling
- Grouped by Gene Ontology™* assignment

Contact us at 1-877-710-1501 or go to www.labonweb.com/chips to find out more information about these new genome-wide oligo collections for high-throughput formats and applications.

* Gene Ontology is a trademark of Gene Ontology Consortium

Our New Oligonucleotide Libraries

- Human Library
(18,861 oligos)
- Mouse Library
(7,524 oligos)
- Rat Library
(4,854 oligos)

www.genosys.com

LEADERSHIP IN LIFE SCIENCE, HIGH TECHNOLOGY AND SERVICE

1442 LAKE FRONT CIRCLE • THE WOODLANDS, TX 77380-3600
1-877-710-1501 • FAX: 281-363-2212 • EMAIL: GINFO@SIGMA.COM • A Member of the Sigma-Aldrich Family

SIGMA
GENOSYS

Jumpstart your expression research with ViraPower™.

Energized Viral Expression.

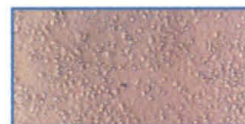
Now you can get powerful mammalian expression with efficient gene delivery to dividing and non-dividing cell lines. Boost your research with ViraPower™ Lentiviral for stable expression or ViraPower™ Adenoviral for transient expression.

Power your stable Lentiviral expression.

Achieve stable gene expression in any mammalian cell type—even neuronal and other non-dividing cells. With ViraPower™ Lentiviral Expression System, you'll achieve the stable expression results you've been dreaming of.



ViraPower™ Lentiviral Neuronal Transduction



Classic Retroviral Neuronal Transduction

It's an easy jump to efficient Adenoviral expression. With superior efficiency and a simple recombination step using Gateway™ Technology, ViraPower™ Adenoviral delivers a higher percentage of correct viral clones than traditional methods. You'll save time, avoid screening aggravation, and get great expression results.

Recharge your imagination with ViraPower™.

ViraPower™ Viral Expression Systems are the smart choice for your expression work—no matter which cell type you choose. Demanding experiments need the system that delivers. Count on ViraPower™ to come through. Check www.invitrogen.com/virapower today to find out more details.



Corporate Headquarters:
Invitrogen Corporation
1600 Faraday Avenue
Carlsbad, California 92008 U.S.A.
Tel: 1 760 603 7200
Tel (Toll Free): 1 800 955 6288
Fax: 1 760 603 7229
Email: tech_service@invitrogen.com

European Headquarters:
Invitrogen Ltd
Inchinnan Business Park
3 Fountain Drive
Paisley PA4 9RF, UK
Tel: +44 (0) 141 814 6100
Fax: +44 (0) 141 814 6260
Email: eurotech@invitrogen.com

For an office near you go to:
www.invitrogen.com