

# NEW PRODUCTS

## Freezerworks Unlimited Dataworks Development, Inc.

Mountlake Terrace, WA  
Please contact manufacturer for  
pricing  
425-673-1974  
[www.dwdev.com](http://www.dwdev.com)

## TRACKING FROZEN ASSETS

The rising costs of laboratory reagents, the increasing number of items to track, and the rapid turnover of lab personnel make managing the resources of a modern scientific laboratory quite a challenge. Recognizing these challenges, designers of software have begun to develop products expressly to help lab managers do their jobs efficiently. Freezerworks Unlimited is the most recent of these and is designed to assist with laboratory supply inventories. Designed for Windows 98, 2000, NT, or Macintosh Power Mac computers [and available in a client/server version for open database connectivity (ODBC)], Freezerworks Unlimited is a relational database that aims to help lab managers track the use and contents of items in their freezers.

Probably the biggest hurdle in keeping accurate lab inventories is getting laboratory workers to incorporate the use of a system into their daily routine. Typing information into a computer program each time a microliter of an enzyme solution is used adds a considerable amount of tedium to a simple task. A major consideration in designing useful tracking software, therefore, is creating a system that encourages lab workers to use it by reducing the input effort. Freezerworks Unlimited has some intelligently designed features that will encourage the consistent use of the program necessary to keep current the information in the database. The program can print informative labels and bar codes for attaching to tubes. When using an optional bar code reader (not tested for this review), researchers can easily retrieve and modify records of the tube's contents at the time of use.

The program also allows users to develop databases resembling a schematic of their refrigerator layout. Freezerworks Unlimited allows for 16 million records to be entered into an unlimited number of freezers. Moving items in the database is almost as easy as physically moving items in a freezer because the program's "drag and drop" functions facilitate easy rearrangement of records. Search functions give users easy access to information, and import and export options are available. These are designed primarily for tab, comma, or semicolon delimited files, as opposed to specific common file formats, such as Excel or FileMaker Pro.

The program's interface for designing freezer database files, at least on a Macintosh, is a bit unusual, with a nonresizable main window and rather plain-looking records. The look is stark, and most commands are not intuitive. The program does not appear to have been created with first-time database designers in mind. The cost of the software, however, does include 6 hours of configuration assistance and 60 days of free support, which help to overcome some of these obstacles.

Security is a strong suit. The program permits administrators to control access of individual users and groups of users to program information, a reasonable feature for the large lab setting. And audit trails provide accountability.

All in all, Freezerworks Unlimited is a mixed bag. Its ambitious attempts to simplify use of the program overlook the difficulty in designing databases that work as hoped. Simplification of the database design interface is needed if the software developers seek to widen the base of interested users.

—Kevin Ahern

Department of Biochemistry and Biophysics, Oregon State University, Corvallis, OR 97331, USA. E-mail: [ahernk@orst.edu](mailto:ahernk@orst.edu)

## Stratagene

For more information  
800-424-5444  
[www.stratagene.com](http://www.stratagene.com)

[www.scienceproductlink.org](http://www.scienceproductlink.org)

## HUMAN FIRST STRAND cDNA

Human First Strand cDNA for polymerase chain reaction (PCR)-based gene expression analysis eliminates the need for time-consuming RNA-isolation and cDNA synthesis protocols when analyzing gene expression across a variety of tissues. It offers the highest level of quality control and well-documented donor and tissue pathology information, and is PCR-application ready. Human First Strand cDNA can detect gene expression patterns at various abundance levels and works well for investigating gene expression of rare transcripts that are difficult to detect with protein immunoblot analysis.

## McPherson

For more information  
800-255-1055  
[www.mcphersoninc.com](http://www.mcphersoninc.com)  
[www.scienceproductlink.org](http://www.scienceproductlink.org)

## EXTREME ULTRAVIOLET SPECTROMETER

Model 248/310G grazing incidence spectrometer operates from <1 to 310 nm with a variety of gratings. These spectrometers are optimal for use at less than 100 nm and work best in the extreme ultraviolet (EUV) and soft x-ray wavelength range. The working range of these EUV spectrometers provides generous overlap with crystal and normal incidence spectrometers. Model 248/310G features variable angles of incidence, built-in filter holders, and various single and multichannel detection schemes. High-vacuum and ultra-high-vacuum versions of the model are available.



## Spectral Dimensions

For more information  
301-260-0290  
[www.spectraldimensions.com](http://www.spectraldimensions.com)  
[www.scienceproductlink.org](http://www.scienceproductlink.org)

## CHEMICAL IMAGING SYSTEM

The Chimera 1.7S near infrared (NIR) chemical imaging system advances the state of chemical imaging technology to permit rapid analysis of both moving and static chemical samples. Although the system is designed for use in the NIR spectral range, its basic platform can be extended into the visible and mid-IR spectral range. The system is particularly suited for on-the-fly chemical imaging analysis of materials of heterogeneous composition. Chimera 1.7S system applications include noninvasive screening of pharmaceutical clinical trial drugs, powder blending uniformity, and high-throughput inspection.

## Syngene

For more information  
304-876-9289  
[www.syngene.com](http://www.syngene.com)  
[www.scienceproductlink.org](http://www.scienceproductlink.org)

## GEL DATA STORAGE AND ANALYSIS SOFTWARE

Version 1.02 of GeneDirectory, a gel data storage and analysis software program, is designed to save time by clustering different types of DNA data and allowing easy export of all relevant information. The program allows molecular biologists to view data on screen as gel tracks and assess it by either cluster, VNTR, or bandmatching analysis. The new version permits information collected from several different experiments to be collated in the cluster analysis.

CONTINUED ON PAGE 120



## CD1 & NKT Cell Workshop 2002

2<sup>nd</sup> International Workshop on CD1 Antigen Presentation & NK T cells  
November 5-8, 2002

### CD1 & NK T Cell Workshop 2002

November 5-8, 2002  
2<sup>nd</sup> International Workshop on CD1 Antigen Presentation and NK T Cells

The growth of knowledge and interest in the intimately related areas of NK T cells and the CD1 antigen presenting system has been explosive. This workshop will attempt to integrate information on these topics and bring forward new findings in many areas of immunological interest, including NK T cell development and homeostasis, CD1 structure and function, anti-microbial immunity, tumor immunity, and autoimmunity.

Co-organizers: Mitchell Kronenberg & Steven Porcelli

**Advisory Committee:** Albert Bendelac, Princeton (USA), Dale Godfrey, Praharan (Australia), Andrew Nicol, Brisbane (Australia), Michael Brenner, Boston (USA), A. Herbelin, Paris (France), Masaru Tanaguchi, Chiba (Japan), Gennaro de Libero, Basel (Switzerland), H. Rob MacDonald, Lausanne (Switzerland), Chyung-Ru Wang, Chicago (USA)

For more information: [www.liai.org/meetings/cd1nkt/](http://www.liai.org/meetings/cd1nkt/)

## What's the shortest distance between two points?



**[www.scienceproductlink.org](http://www.scienceproductlink.org)**

Find out about products advertised in *Science* — instantly.

*Science* announces a great way to find out about new products advertised or featured in *Science* — instantly. *Science's* Product Link is a new online reader service program and online product information service that allows readers to search for products advertised or featured in *Science* by

- product category,
- company name,
- keyword, and
- page number.

You can look for product information in current and back issues. You can even link to advertisers' websites for more information.

If you prefer, you can request to have product information delivered via

- e-mail,
- regular mail,
- telephone, and
- fax.

What's the shortest distance between two points? *Science's* Product Link.



**Science**  
Discover the Future

CONTINUED FROM 119

NEW PRODUCTS

sis view to show one definitive consensus experiment. This is particularly useful for plant or clinical geneticists who want, for example, to have different types of DNA fingerprint results from one specific species or individual in one place. As well as exporting results to Excel spreadsheets, GeneDirectory Version 1.02 now allows users to transfer both relational dendrograms and gel images to Word or metafiles. This makes producing high-quality papers or reports with Word files or PowerPoint presentations using metafiles very simple and can save molecular biologists hours of unnecessary administration.

### Amersham Biosciences

For more information  
732-457-8056  
[www.amershambiosciences.com](http://www.amershambiosciences.com)  
[www.scienceproductlink.org](http://www.scienceproductlink.org)

### PEPTIDE AND PROTEIN FRAGMENT COLUMN

The Source 5RPC ST 2.1/150 is a prepacked stainless steel column designed primarily for peptide and protein fragment analysis with liquid chromatography-mass spectrometry (LC-MS), especially when high pH is required. It offers high resolution over a broad pH range (1 to 12), enabling a wide variety of different peptides to be analyzed without the need for different columns. Columns packed with Source 5RPC can be used repeatedly without significant loss of their superior resolution or capacity, can be cleaned in place, and do not need to be changed when running separations at different pH levels.

### Stoelting

For more information  
630-860-9700  
[www.stoeltingco.com](http://www.stoeltingco.com)  
[www.scienceproductlink.org](http://www.scienceproductlink.org)

### MICROMANIPULATORS

Precision Dovetail Slide Micromanipulators combine the best features of classic dovetail slide micromanipulators with several improvements and innovations. An adjustable probe clamp accommodates a wide range (1/4 inch to 1/2 inch) of probe and electrode diameters, providing a steadfast grip of probes, rods, and electrode holders. In addition, the brass construction is more durable than some other materials and holds greater weight without slippage or drift. The micromanipulator is available with a fixed or tiltable x axis arm, and in right- and left-hand models.



### Tepnel Life Sciences

For more information  
+44 (0) 161 946 2200  
[www.tepnel.com](http://www.tepnel.com)  
[www.scienceproductlink.org](http://www.scienceproductlink.org)

### NONCHLOROFORM DNA PURIFICATION

Two new kits for the purification of genomic DNA from whole blood and mousetails eliminate concerns over the use and disposal of chloroform by using no organic solvents or generating any chlorinated waste byproducts. The kits can also handle samples that are old or have been poorly stored. Because the DNA extraction system is not based on a column format, scaling up to large sample volumes is simple and economical.

### Brinkmann Instruments

For more information  
800-645-3050  
[www.brinkmann.com](http://www.brinkmann.com)  
[www.scienceproductlink.org](http://www.scienceproductlink.org)

### PCR PLATES

The twin.tec polymerase chain reaction (PCR) plate features increased frame strength with thin-walled wells. The plates feature "twin-shot" technology, an innovative injection-mold manufacturing process that combines a polycarbonate plate frame and polypropylene wells for optimal results. The polypropy-

## NEW PRODUCTS

lene wells ensure minimal binding of DNA, RNA, and enzymes, while delivering maximum recovery even when working with ultra-small volumes. The wells are also 20% thinner than conventional thin-walled plates, providing increased heat transfer and a secure fit against thermal blocks.

### PerkinElmer

For more information  
203-925-4600

[www.perkinelmer.com](http://www.perkinelmer.com)

[www.scienceproductlink.org](http://www.scienceproductlink.org)

### ICP MASS SPECTROMETRY SYSTEMS

Two new ELAN inductively coupled plasma mass spectrometry (ICP-MS) systems have been introduced.

The ELAN 9000 system simplifies

ICP-MS by providing an easy-to-use, easy-to-maintain tool for routine ultratrace level analysis, while the ELAN DRC II system offers maximum performance for traditionally difficult samples. The innovative ELAN DRC II eliminates polyatomic interferences completely and features a patented Dynamic Reaction Cell with Axial Field technology. Through use of a process called chemical resolution, the ELAN DRC II instrument eliminates plasma-based polyatomic interferences before they reach the quadrupole mass spectrometer. The ELAN 9000 system provides excellent detection limits, high sample throughput, and the stability required by environmental, clinical, geochemical, and general testing laboratories with moderate to heavy loads of ultratrace level samples. The ELAN 9000 ensures accuracy and improves method development. It consistently delivers the right answer, reducing rework and improving productivity. The new instruments are built on a platform that features a dual inlet turbomolecular pump and improved cooling systems.

### MWG Biotech AG

For more information  
+49 8092 828 9929

[www.mwg-biotech.com](http://www.mwg-biotech.com)

[www.scienceproductlink.org](http://www.scienceproductlink.org)

### HUMAN GENOME ON ONE CHIP

A new microarray set contains the complete human genome with 30,000 of the human genes known to date. This new series allows the study of gene activity in a variety

of biological and pathogenic processes in fast, cost-efficient, and highly precise ways. Several thousand genes can be evaluated at a defined point in time or in a certain type of tissue in comparison to one another in just one step. The 30,000 genes are distributed over three slides with the designation 10K A, B, and C. Each of the slides contains approximately 10,000 genes and quality-control sequences. The allocations of the genes to the three slides followed the latest research insights and the functional descriptions available for each of the sequences.

### Bio-Rad

For more information  
+44 (0) 208 328 2000

[www.microscopy.bio-rad.com](http://www.microscopy.bio-rad.com)

[www.scienceproductlink.org](http://www.scienceproductlink.org)

### LITERATURE

*Fluorophore Wall Chart* is a resource that provides at-a-glance data, showing both the excitation and emission maxima (nm) to aid the user in selection of the correct flu-

orophore for use with their samples and microscope. The inclusion of numerous spectacular images taken by Bio-Rad users around the world makes it an attractive and useful addition to the laboratory wall.

Newly offered instrumentation, apparatus, and laboratory materials of interest to researchers in all disciplines in academic, industrial, and government organizations are featured in this space. Emphasis is given to purpose, chief characteristics, and availability of products and materials. Endorsement by *Science* or AAAS of any products or materials mentioned is not implied. Additional information may be obtained from the manufacturer or supplier by visiting [www.scienceproductlink.org](http://www.scienceproductlink.org) on the Web, where you can request that the information be sent to you by e-mail, fax, mail, or telephone.

*After 3D Deconvolution*

*After Image Acquisition*

*Triple Labeled CHO Cell (Rhodamine, FITC, DAPI)*

## The Ultimate Deconvolution Machine.

When image quality is essential and capturing lost information is a must, Carl Zeiss 3D Deconvolution system is the answer.

Our fast, intuitive software allows reassignment of non-focal haze, noise and blur to provide image restoration to its brilliant best. Choose between theoretically calculated or measured PSF, iterative or non-iterative method, and the Zeiss 3D Deconvolution will do the rest.

Whether conventional widefield or confocal fluorescence imaging, your own 3D deconvolution system from Zeiss takes you to new heights of image fidelity.

**Let us show you how!**

For immediate demonstration, call 800-233-2343.

Carl Zeiss MicroImaging, Inc.  
[micro@zeiss.com](mailto:micro@zeiss.com)  
[www.zeiss.com/micro](http://www.zeiss.com/micro)



## Classified Advertising

For full details on advertising rates, deadlines, mechanical requirements, and editorial calendar go to

**www.sciencecareers.org**

and click on

## How to Advertise

### UNITED STATES

#### Display Classified Advertising

**Bren Peters** (Midwest and Mid-Atlantic)

PHONE: 202-326-6541

**Kathleen Clark** (Southeast and Canada)

PHONE: 202-326-6555

**Jill Steinberg** (Northeast)

PHONE: 914-834-8733

**Kristine von Zedlitz** (West Coast)

PHONE: 415-956-2531

FAX: 202-289-6742

E-MAIL: science\_displayads@aaas.org

#### Line Classified Advertising

**Christina Geiger**

PHONE: 202-326-6532

**Sussy Castilla**

PHONE: 202-326-6740

FAX: 202-289-1451

E-MAIL: science\_classifieds@aaas.org

#### Online Classified Advertising

**Beth Dwyer** (Internet Sales Manager)

PHONE: 202-326-6534

FAX: 202-289-6742

E-MAIL: bdwyer@aaas.org

#### AD MATERIALS: Send to:

Science Classified Advertising,  
1200 New York Avenue, NW, Room 911,  
Washington, DC 20005

### EUROPE

#### Display, Line, and Online Classified Advertising

**Deborah Harris**

PHONE: +44 (0) 1223 326 500

FAX: +44 (0) 1223 326 532

E-MAIL: european\_ads@science-int.co.uk

#### AD MATERIALS: Send to:

Science International, Advertising Dept.,  
Bateman House, 82-88 Hills Road,  
Cambridge CB2 1LQ, United Kingdom

### MEETINGS / ANNOUNCEMENTS

**Kathleen Clark**

PHONE: 202-326-6555

**Richard Walters**

PHONE: +44 (0) 1223 326 527

**To subscribe to Science  
call 202-326-6417  
or 1-800-731-4939**

### POSITIONS OPEN

## Bates College

### ASSISTANT PROFESSOR of Biology (Cell Biology)

The Department of Biology at Bates College invites applications for a full-time, two-year Cell Biologist, beginning September 2002. This position is one of nine full-time Biology faculty. The successful candidate will team teach the required Cellular and Molecular Biology core course, and offer three additional courses, one of which must be at the introductory level. Preference will be given to candidates who could teach a junior-senior level elective lecture and laboratory course in Immunology. A Ph.D. is required; teaching experience is preferred.

Bates College, a highly selective liberal arts institution of 1,750 students and 200 faculty, is located in southern Maine, two and a half hours from Boston and 45 minutes from Portland. With 24 departments and eight interdisciplinary programs, Biology faculty contribute to the Biological Chemistry, Women and Gender Studies, Neuroscience and Environmental Studies programs. Review of applications begins immediately and will continue until the position is filled. Applicants should submit a cover letter, curriculum vitae, statement of teaching philosophy and interests, graduate and undergraduate transcripts, and three letters of recommendation to:

#### Biology Lecturer Search Committee (#R2306)

c/o Bates College Academic Services  
2 Andrews Road, 7 Lane Hall  
Lewiston, ME 04240

Website: <http://www.bates.edu>

*Bates College values a diverse college community and seeks to assure Equal Opportunity through a continuing and effective Affirmative Action Program.*

### SYSTEMS NEUROSCIENTIST

The Department of Anatomy at the University of Wisconsin-Madison is seeking a neurophysiologist for a tenure-track position as an Assistant Professor. We are soliciting applicants who have a Ph.D., M.D., or M.D./Ph.D., extramural funding, and a strong research background in studies of auditory and visuomotor processing in awake behaving cats and primates; extension of these studies to humans is especially important. The selected candidate will be expected to teach in one of the Department's medical or graduate courses and to participate in the training of graduate students and postdoctoral fellows. Applicants should send curriculum vitae and a list of three references to: **Dr. John K. Harting, Chair, Department of Anatomy, University of Wisconsin Medical School, 1300 University Avenue, Madison, Wisconsin 53706.** The deadline for applications is August 13, 2002. *The University of Wisconsin is an Equal Opportunity/Affirmative Action Employer.* Unless confidentiality is requested in writing, information regarding the names of applicants must be released upon request. Finalists cannot be guaranteed confidentiality.

### WILDLIFE BIOLOGIST

Assistant Professor tenure-track position in Department of Fishery and Wildlife Biology, Colorado State University, Fort Collins. Mammalian Ecologist emphasizing research on large mammals with preference given to those with experience in conservation and management. Applications must be received by 11 October 2002 for full consideration. See website: <http://www.cnr.colostate.edu/FWB/> for details. *CSU is an Equal Opportunity/Affirmative Action Institution.*

### POSITIONS OPEN

**PHARMACOLOGIST** (Open Rank, Tenure-Track) The Department of Biomedical Sciences at Colorado State University (website: <http://www.cvmbs.colostate.edu>) seeks a Pharmacologist for research and teaching. Candidates will be expected to contribute to teaching in the graduate and professional veterinary program, especially in the area of autonomic pharmacology. They will be expected to establish a vigorous, funded research program. The candidate's research interests may overlap one of the University's Programs of Research and Scholarly Excellence, including the two within the department: the Molecular, Cellular and Integrative Neuroscience Program or the Animal Reproduction and Biotechnology Laboratories. Applicants must have a Ph.D., D.V.M., M.D., or equivalent degree. Post-doctoral experience and evidence of excellence in teaching and research are highly desirable. A letter of application including a statement of research and teaching interests, curriculum vitae, and the names and contact information of three references should be sent electronically or by post to: **Dr. Kathy Partin, Pharmacologist Search Committee, Department of Biomedical Sciences, Colorado State University, Fort Collins, CO 80523.** E-mail: [kpartin@lamar.colostate.edu](mailto:kpartin@lamar.colostate.edu). Review of applications will begin August 15, 2002, and will continue until a suitable candidate is found. *Colorado State University is an Equal Opportunity/Affirmative Action Employer. Women and minority candidates are especially encouraged to apply.*

### FACULTY POSITION

#### Department Of Physics The University Of Texas At Austin

The Department of Physics at the University of Texas at Austin invites applications for a tenure-track Assistant Professorship starting in September 2003. In exceptional cases, a more senior appointment with tenure will be considered. This is a research and teaching position.

Applicants must have a Ph.D. (or equivalent) and should have a proven record of experimental research in biological physics, soft condensed matter, and/or nonlinear/non-equilibrium phenomena. The successful candidate will assume full teaching responsibilities in the Department of Physics. Prior teaching experience is desirable and excellent English language communication skills are required. Applicants should send curriculum vitae, a list of publications, a statement of research accomplishments, a research plan, and arrange for at least five letters of reference to be sent to: **Professor Roy Schwitters, Chairman, Department of Physics, RLM 5.208, The University of Texas at Austin, Austin, Texas 78712-1081.** Review of completed applications will begin November 1, 2002, and will continue until the position is filled. *The University of Texas at Austin is an Equal Opportunity/Affirmative Action Employer.*

### ASSISTANT PROFESSOR Of Neuroscience Research

The Department of Neurosurgery at Louisiana State University Health Sciences Center in Shreveport is seeking two tenure-track research faculty positions at the Assistant Professor level. The candidates should have a Ph.D./M.D. with a minimum three years of postdoctoral training. The ideal candidates will have research interests in the areas of stroke, brain trauma, or spinal cord injury. Preference will be given to applicants with established research programs. The successful applicants will become faculty members in the Department of Neurosurgery and have the potential for appointments to adjunct positions in basic science departments. Interested applicants should submit a letter of application with a statement of career goals, curriculum vitae, and the names of three references to:

#### LSU HSC-S

**Human Resource Management  
Unclassified Hiring Manager  
1501 Kings Highway  
Shreveport, LA 71130**

E-mail: [mmaciv@lsuhsc.edu](mailto:mmaciv@lsuhsc.edu)

FAX: 316-675-6500; Attn: Unclassified Manager  
*LSU HSC is an Equal Opportunity Employer.*

We're driven by  
scientific  
distinction.



What  
drives  
you?



Be part of the legacy of pharmaceutical innovation at Schering-Plough Research Institute. Since our inception in 1851, we've continued to discover new treatments that extend and enhance the lives of millions around the world. From TRIMETON® and GARAMYCIN® to INTRON® A and CLARINEX®. And you could be our next innovator in one of the following exceptional positions at our Kenilworth, Union and Lafayette, NJ locations:

- Drug Safety & Surveillance
- Regulatory Compliance
- Regulatory Affairs
- Quality Assurance
- Validation
- Drug Discovery
- Biotechnology
- Analytical Chemistry
- Clinical Research
- Information Technology

For more information and to apply online, search jobs at [www.schering-plough.com/careers](http://www.schering-plough.com/careers). Select search jobs, enter keyword information, select **RESEARCH & DEVELOPMENT** business division and click on submit. Or mail your resume, referencing job code PAD/SCJ/SRI, to: Schering-Plough c/o Resume Processing, P.O. Box 549248, Suite 187, Waltham, MA 02454-0248. *By responding to this ad, you may be considered for other potential opportunities throughout the Schering-Plough organization. If a potential match exists, you will be notified. An equal opportunity employer.*



Schering-Plough  
Research Institute

Search jobs @  
[www.schering-plough.com/careers](http://www.schering-plough.com/careers)



The  
Consortium for  
Post-Genome Science



THE UNIVERSITY  
of LIVERPOOL

## TWO POSTDOCTORAL RESEARCHERS IN MICROARRAYING TECHNOLOGY AND EXPRESSION SCREENING

*School of Biological Sciences*

*Centre for BIOARRAY Innovation*

**Initial salaries within the range £17,626 - £23,373 pa**

Applications are invited for two three year postdoctoral positions in the multi-disciplinary 'Centre for BIOARRAY Innovation' to develop and deploy microarray techniques in animal physiology. Both are available immediately. Informal enquiries to Professor Andrew Cossins on 0151 794 4992, email: [cossins@liv.ac.uk](mailto:cossins@liv.ac.uk)

**Post 1** will apply DNA-chip and proteomic techniques to identify novel systems contributing to environmental stress responses in animals. Experience with molecular biology techniques is essential and experience of cDNA library screening, microarraying, QPCR and proteomics would be an advantage. *Quote Ref: B/860(a)/S*

**Post 2** will develop and deploy new microarray technologies within a multi-disciplinary research environment linking genomic science with surface and nanoscale science laboratories ([www.postgenomeconsortium.com/bioarray](http://www.postgenomeconsortium.com/bioarray)). We seek a postdoctoral chemist or physicist with a background in physical or chemical modifications of surfaces, or a technically orientated molecular biologist. Experience with arrayed systems would be an advantage. *Quote Ref: B/860(b)/S*

**Closing date for both of the above posts: 26 July 2002**



Further particulars and details of the application procedure should be requested from the Director of Personnel, The University of Liverpool, Liverpool L69 3BX on 0151 794 2210 (24 hr answerphone) or via email: [jobs@liv.ac.uk](mailto:jobs@liv.ac.uk) or are available online at <http://www.liv.ac.uk/university/jobs.html>

**COMMITTED TO EQUAL OPPORTUNITIES**

### GLOBAL OPPORTUNITIES

## Call for Applications for Team Leaders 2002 RIKEN Research Center for Allergy and Immunology (RCAI)

### Outline of RCAI

The Institute of Physical and Chemical Research, known as RIKEN, has established a new institute, the Research Center for Allergy and Immunology, fully supported by the Japanese Government. This center has been founded for the purposes of creating a new paradigm in allergy and immunology and developing strategies to solve immunological problems, such as allergic disorders, autoimmune diseases, cancer, Graft-versus-Host diseases, and organ transplantation, by clarifying their basic mechanisms. In order to achieve these purposes we call for applications for new project team leaders from throughout the world.

**Site of RCAI:** A new building will open in FY 2003 in Yokohama, Japan.

**Support Laboratories:** Animal resources (capacity of 50,000 mice) and genetic engineering, FACS analysis and sorting with 6-11 colors, DNA chip, transcriptomic/proteomic technology, bioinformatics, & immunological joint ventures.

### Call for Applications

#### 1. Research teams and working conditions of team leaders

We invite applications for leaders of several teams. Each team will consist of a team leader, researcher(s), technician(s), and a secretary if necessary. The total budget for each team is approximately 700 thousand US dollars. A 4-year employment contract is offered at first and can be extended after evaluation. A working contract for every team member, including a team leader, will be entered into annually. The team leaders are requested to be full-time RIKEN employees, but the position may be an additional one if deemed necessary.

#### 2. Application deadline

Wednesday July 31, 2002. E-mail submissions are acceptable.

#### 3. Application documents

(1) Curriculum Vitae, including affiliation, position, birthday, title, nationality, present address & phone/fax/e-mail address, research/working history and one color photo. (2) List of publications and patents in the past 10 years. (3) Names and addresses of 3 references with phone/fax numbers and e-mail addresses. (4) Proposal (double-spaced in A4 paper). • Title/purpose of your research/summary/keywords (1 page). • Overview of proposed research (<4 pages). • Proposed research (<15 pages): scientific background of the proposal/research projects/references. • Budget proposal (equipment/salaries, etc.). • Current research support/grants. (5) The proposed place of research until moving to the new building in Yokohama, Japan.

Research Promotion Division, RIKEN Yokohama Institute 1-7-22 Suehiro, Tsurumi, Yokohama, 230-0045, Japan  
Attn: Ms. Sayori Nodomi FAX: 81-45-503-9112 e-mail: [rcai@postman.riken.go.jp](mailto:rcai@postman.riken.go.jp)  
<http://www.riken.go.jp/eng/r-world/research/lab/rcai/index.html>

# Be a part of it.

Work and train beside some of today's most respected scientists at the Oklahoma Medical Research Foundation – and be a part of something important.

Biomedical research continues to be at the forefront of human ingenuity and scientific exploration. At OMRF, we've made leadership in these areas a tradition for over fifty years.

Located in the heart of the Oklahoma Health Center – a mecca of medical and research-oriented institutions – OMRF is home to world-renown scientists and numerous biomedical accomplishments. Research at OMRF focuses on the basic science of human disease: immunology, biochemistry, and molecular/cellular biology. And in the past decade alone, our scientists have been responsible for major breakthroughs in cardiovascular disease, Alzheimer's disease, and lupus.

## It's only the beginning.

The Oklahoma Medical Research Foundation is accepting applicants for both graduate and post-graduate doctoral fellowship training programs, as well as independent investigators/members. (Graduate Degrees are granted through the University of Oklahoma Health Sciences Center.) Be a part of it. Find out more by visiting [www.omrf.org](http://www.omrf.org), or call 1-800-522-0211 today.

### Cardiovascular Biology

A postdoctoral position is available to study the enzymology and biology of tyrosine sulfation, a post-translational modification mediated by one of two tyrosylprotein sulfotransferases (TPSTs) in the mammalian genome. A small set of proteins is known to undergo tyrosine sulfation and require tyrosine sulfation for function, including certain adhesion molecules and chemokine receptors. Our lab focuses on studies to determine the substrate preferences and catalytic mechanism of TPST-1 and TPST-2 and on in vivo studies of *tpst1*<sup>-/-</sup> and *tpst2*<sup>-/-</sup> mice. The later studies are designed specifically to assess the function of chemokine receptors in TPST-deficient mice and more generally to assess the complexity of the substrate repertoire of this enzyme system and how these two isoenzymes interact in biological systems. Experience in molecular biology, cell biology and/or biochemistry are desirable. Applicants must have a Ph.D. and/or M.D. Please send a CV, summary of research experience and interests and three references to: **Kevin Moore, M.D., Oklahoma Medical Research Foundation, 825 NE 13th Street, Oklahoma City, OK 73104. FAX: 405-271-7417; email: [Kevin-moore@omrf.ouhsc.edu](mailto:Kevin-moore@omrf.ouhsc.edu)**

### Molecular Immunogenetics

A postdoctoral position is available immediately to utilize molecular and transgenic approaches in the study of mature B cell differentiation and immunity in mice and humans. The successful candidate should have a PhD and a strong background in molecular biology and immunology. Experience with mouse gene targeting/transgenics is preferable. Qualified applicants should send curriculum vitae, a brief statement of research interests, and three references to: **Patrick C. Wilson, PhD., Molecular Immunogenetics Program, Oklahoma Medical Research Foundation, Oklahoma City, OK 73104. email: [patrick-wilson@mail.omrf.ouhsc.edu](mailto:patrick-wilson@mail.omrf.ouhsc.edu)**

### Molecular Immunogenetics

A postdoctoral position is immediately available in the Molecular Immunogenetics Program examining the properties of lipid rafts in T cell signaling. Our research employs state of the art fluorescence imaging techniques to measure lipid rafts in situ. Projects include determining the signals and mechanisms underlying targeting of lipid rafts to immune synapses and their association with the actin cytoskeleton. A Ph.D. in the biological sciences is required, and individuals with experience in cell biology, biochemistry, or immunology are particularly encouraged to apply. At least one position is available with a minimum appointment of 3 years. **Contact Bill Rodgers, Ph.D. email: [william-rodgers@omrf.ouhsc.edu](mailto:william-rodgers@omrf.ouhsc.edu)**

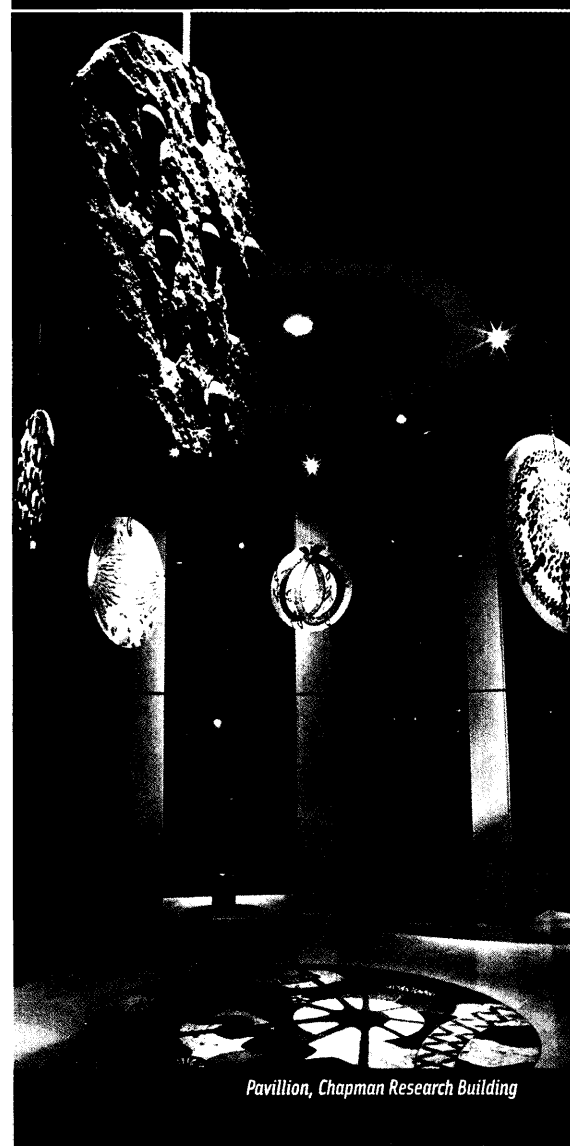
### Free Radical Biology and Aging

A postdoctoral position is available immediately to study the role of microglia in neurodegenerative disease. Our laboratory is currently identifying mechanisms by which microglia become activated by pro-inflammatory cytokines within the spinal cord and motor cortex of transgenic mice expressing mutant human superoxide dismutase (SOD1), which causes heritable forms of amyotrophic lateral sclerosis. Other projects assess the role of microglia and glial-neuronal interactions in Alzheimer's disease, Parkinson's disease and Huntington's disease. Long-term goals of our laboratory include the identification of novel biochemical pathways involved in neurodegeneration, and development of new therapeutic strategies for manipulating these pathways. The successful applicant will have an interest in both basic and applied research, combined with practical experience in cell biology, protein chemistry or molecular biology. Experience with organic or medicinal chemistry is preferred but not essential. Initiative, creativity, and intellectual independence will be encouraged. Please send curriculum vitae, a statement of postdoctoral goals, and three references to: **Kenneth Hensley, PhD, Free Radical Biology and Aging Research Program, Oklahoma Medical Research Foundation, 825 NE 13th Street, Oklahoma City, OK 73104; Email [Kenneth-Hensley@omrf.ouhsc.edu](mailto:Kenneth-Hensley@omrf.ouhsc.edu)**

*"...that more may live longer, healthier lives"*

# OMRF

Oklahoma Medical Research Foundation



*Pavillion, Chapman Research Building*

OMRF is accepting applicants for both graduate and post-doctoral fellowship training programs.

Find out more by visiting [www.omrf.org](http://www.omrf.org), or call 1-800-522-0211 today.



FOR MORE INFORMATION AND JOB OPENINGS, VISIT [www.omrf.org](http://www.omrf.org)

The Oklahoma Medical Research Foundation

825 NE 13th Street • Oklahoma City, OK 73104-5046 • 1-800-522-0211 • [www.omrf.org](http://www.omrf.org)

EOE/AA Employer





Roche

Vitamins

## Postdoc - Analytics

### Who we are

Roche Vitamins is the world's largest producer of vitamins and carotenoids after nature itself. We produce and market products for use in the animal feed, food, pharmaceutical, and cosmetics industries. At the Division's headquarters in Kaiseraugst, near Basel, Switzerland, the Biotechnology department is seeking a Post-doctoral fellow.

### The position

The successful candidate will be responsible for the development of analytical methods for the monitoring of fermentation processes as well as for the testing of engineered microbial strains for the industrial production of vitamins and fine chemicals. A primary goal of analytical method development currently is to broaden the application range of the methods for more global analysis of microbial metabolism.

### Who you are

The successful candidate requires extensive knowledge primarily in LC/MS and/or GC/MS, but also in other analytical technologies for biomolecules. Experience in extraction of metabolites from bacteria is appreciated. Good computer skills are mandatory.

### Who to contact

If the above profile fits your background and experience and you are interested in this position, please forward your full application documentation to: Roche Vitamins Ltd, Mrs Beatrice Holzwarth, VH, Building 241/703, P.O. Box, CH-4070 Basel, quoting reference HW5516. For further information please contact Dr. Markus Wyss, Tel. 0041-61-688 29 72.

## Post-Doctoral IRTA Position Rocky Mountain Laboratories Hamilton, Montana Salary Commensurate with Experience/Education

A postdoctoral intramural research training award (IRTA) position is available to study the interactions of *Borrelia burgdorferi* with its tick vector and mammalian hosts. Projects are available to investigate the oxidative stress response, gene regulation, and signal transduction in the bacterial cell. These projects involve microbial physiology, molecular biology, protein biochemistry, and genomic analysis using microarray.

The Rocky Mountain Laboratories (RML) branch of NIH is a state of the art facility with BSL3 rooms, animal facilities, and excellent support services including microarray chip printing and reading, DNA sequencing, and electron microscopy. The laboratory is located in the beautiful Bitterroot Valley of western Montana with easy access to some of the best hiking, skiing, kayaking, mountain biking, and trout fishing in North America.

Please send CV and three letters of reference to:  
**Frank Gherardini, PH.D., Rocky Mountain Laboratories, Laboratory of Human Bacterial Pathogenesis, NIAID, NIH, 903 S. 4th Street, Hamilton, MT 59840; Email: fgherardini@niaid.nih.gov.**

*NIH is an Equal Opportunity Employer*

## CHAIR DEPARTMENT OF PHARMACOLOGY, PHYSIOLOGY AND THERAPEUTICS

The University of North Dakota School of Medicine and Health Sciences invites applications and nominations for the position of CHAIR of the Department of Pharmacology, Physiology and Therapeutics. We seek an outstanding medical scientist with a strong research record, including extramural support, using state of the art approaches to the study of pharmacology and physiology, preferably in the area of neuroscience, who will complement, expand and strengthen existing areas of research in the Department. The candidate will be expected to participate in medical and allied health education and therefore must be committed to excellence in teaching. The applicant should also possess interpersonal and leadership skills in mentoring faculty, directing students and performing administrative duties.

The Chair will oversee a department whose active research interests include aging, neurodegenerative disease, neurotoxicology, synaptic transmission, lipid metabolism, cardiovascular physiology, molecular pharmacology and cancer biology. The department offers M.S., Ph.D., and M.D./Ph.D. degrees, instructs first and second year medical students, and provides undergraduate courses to nursing students and other allied health and non-majors. Further information is available at: <http://www.med.und.nodak.edu/bimd/pharm/html>

The University of North Dakota is committed to doubling its research funding and achieving the Carnegie classification of "Doctoral/Research Universities - Extensive" by 2006. The University is located in Grand Forks and currently enrolls 11,000 students. Grand Forks is a family-friendly community located in a region offering excellent and rapidly expanding cultural, recreational, and sporting activities. To learn more about the University of North Dakota and Grand Forks visit: <http://www.und.edu> and <http://www.grandforksgov.com>

Review of applications will begin April 1, 2002, and the search will remain open until the position is filled. Applicants should submit a detailed curriculum vitae, a statement of administrative experience, research goals and teaching interests, and the names and addresses of three references to: **Dr. Thomas Mohr, Professor and Chair of the Department of Physical Therapy and Chair of the Search Committee, c/o Office of the Dean, School of Medicine and Health Sciences, University of North Dakota, Box 9037, Grand Forks, North Dakota 58202-9037.**

*The University of North Dakota is an Equal Opportunity/Affirmative Action Institution.*



## CALIFORNIA INSTITUTE OF TECHNOLOGY Division of Engineering and Applied Science

*The Division of Engineering and Applied Science at the California Institute of Technology invites applications and nominations for a tenure-track faculty position at the assistant professor level in the academic program of Environmental Science and Engineering.*

The primary area of interest is Environmental Fluid Mechanics. We are seeking an individual who has an outstanding research record in fluid mechanics applied to environmental systems and who has a commitment to teaching and research in the environmental sciences. Possible research areas in environmental fluid mechanics include, but may not be limited to: hydrology, environmental transport phenomena, hydrologic transport processes (in rivers, lakes, estuaries, and groundwater), physical oceanography, atmospheric dynamics, computational fluid dynamics, multiphase flow, and sediment transport processes. Interested candidates are asked to complete the on-line application summary at:

**ENVIRONMENTAL FLUID MECHANICS**  
<http://www.eas.caltech.edu/env-fluids>

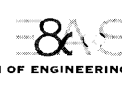
Candidates with a particular interest and research focus on fluid dynamics and a preference for experimental work or candidates with a research focus on large-scale atmosphere or ocean dynamics are informed that companion invitations for these areas are available at:

**FLUID MECHANICS**  
<http://www.galcit.caltech.edu/fluids-search>

**ATMOSPHERIC SCIENCE**  
[http://www.gps.caltech.edu/positions/pos\\_asstprof\\_atmos.html](http://www.gps.caltech.edu/positions/pos_asstprof_atmos.html)

**OCEANOGRAPHY**  
[http://www.gps.caltech.edu/positions/pos\\_asstprof\\_ocean.html](http://www.gps.caltech.edu/positions/pos_asstprof_ocean.html)

Initial appointments at the Assistant Professor level are for four years and contingent on completion of the PhD degree. Exceptionally qualified applicants at the associate or full professor level are also encouraged to apply.



CALTECH DIVISION OF ENGINEERING & APPLIED SCIENCE

*Caltech is an Equal-Opportunity/Affirmative-Action Employer. Women, minorities, veterans, and disabled persons are encouraged to apply.*





ÉCOLE POLYTECHNIQUE  
FÉDÉRALE DE LAUSANNE

## Professor of Functional Films and Surfaces at the Swiss Federal Institute of Technology Lausanne (EPFL)

The EPFL plans a substantial expansion in engineering sciences. As part of this broad program, the Institute of Materials Science and Engineering has an opening at the full professor level. Applications for an appointment at the Associate and Assistant Professor (tenure-track) level will also be considered. We seek outstanding individuals in the area of functional films and surfaces, committed to a career in research and teaching, with an interdisciplinary vision and a strong record of accomplishments.

In charge of the Functional Films and Surfaces Laboratory, the new professor will initiate independent, creative research programs and participate in undergraduate and graduate teaching. Start-up resources will be available. We offer internationally competitive salaries and benefits.

Applications, with curriculum vitae, publication list, concise statement of research and teaching interests as well as the names and addresses (including e-mail) of at least five referees, should be sent by August 31, 2002 to:



**Professor M. Declercq**  
**Dean, School of Engineering**  
**Swiss Federal Institute of Technology (EPFL)**  
**CH-1015 Lausanne, Switzerland**

For additional information on the EPFL and its Institute of Materials Science and Engineering, please consult:  
<http://www.epfl.ch> and <http://dmxwww.epfl.ch>

The EPFL is an equal opportunity employer.

## Leader Sought for Revitalized VA Research Program Chief Research and Development Officer



The Department of Veterans Affairs (VA) invites applications for the position of Chief Research and Development Officer (CRADO). The CRADO has overall responsibility for the scientific and managerial aspects of the VA research program, which currently has an appropriated budget of over \$370 million. VA supports biomedical, health services, and rehabilitation research, including large scale multi-center clinical trials. The program funds approximately 3000 VA scientists, more than 70 percent of whom are clinicians. In addition, VA scientists receive nearly \$400 million in research support from extra-VA sources, including the National Institutes of Health, other federal agencies, and private and commercial sponsors.

VA's research program is strongly committed to support of high quality, patient-oriented research across the entire spectrum from basic science to clinical applications of new knowledge. The CRADO is responsible for policy development, program management, and budget formulation. The incumbent will have a critical role in: effectively integrating basic, clinical and applied research to best meet veterans' health care needs; sustaining a superior environment of inquiry conducive to the highest quality research, education, and patient care; effectively transferring research results to advance veterans' healthcare, and capitalizing on VA's value as a national research asset to target research efforts in areas where VA can make a unique contribution. Candidates are expected to have both strong scientific and managerial experience demonstrated by a record of scientific research and publications and experience at a responsible level in managing a substantial research program. Candidates must hold an M.D. degree. Knowledge of the VA's organization and mission is desirable. Salary is \$ 170,000 to \$ 200,000 for physicians. Qualified applicants are invited to send a curriculum vitae, including complete list of scientific publications, and three letters of reference by August 16, 2002 to:

**Department of Veterans Affairs**  
**Management Support Office (10A2B)**  
**ATTN: Diane Harvey**  
**810 Vermont Avenue**  
**N.W., Washington, DC 20420**

**For further information, call William Judy at 202-565-8440.**

The Department of Veterans Affairs is an  
Equal Opportunity/Affirmative Action Employer



**POSTDOCTORAL RESEARCH FELLOW  
Gastroenterology and Hepatology  
Rochester, Minnesota, U.S.A**

A postdoctoral position is available at the Mayo Medical School in the laboratory of **Nicholas F. LaRusso** within the Center for Basic Research in Digestive Diseases for a highly qualified, experienced individual with an interest in cellular and molecular approaches to study mechanisms of hepatic epithelial cell function and dysfunction. The research approaches utilize cells in culture, isolated organelles, transgenic/knockout mice, sophisticated microscopy, and biochemical and molecular approaches to study regulatory aspects of solute and water transport, membrane recycling, and gene expression in hepatocytes and cholangiocytes. The laboratory is equipped with state-of-the-art equipment, and is supported by sophisticated institutional core facilities. Expertise in cellular and molecular biology with experience in gene expression and regulation analysis as well as functional proteomics preferred. Applicants should have an M.D. and/or Ph.D. degree.

Salary will be determined by the successful candidate's experience. There is an attractive benefit package. Mayo Clinic is a not-for-profit organization. Mayo integrates research with clinical practice and education in a multi-campus environment. For further information please visit <http://www.mayo.edu/research/>.

Applications, including curriculum vitae and bibliography, summary of past accomplishments, and the names of three references, should be sent to:

**Nicholas F. LaRusso, M.D.**  
**Chairman of Medicine**  
**Department of Gastroenterology and Hepatology**  
**200 First St. SW**  
**1727 Guggenheim Building**  
**Rochester, MN 55905**  
**507-284-1006**  
**hintz.debbie@mayo.edu**

*Mayo Foundation is an Affirmative Action and  
Equal Opportunity Employer and Educator.*

**Options. For life.**

**Schneider Children's Hospital**

Recipient of ANCC Magnet Recognition



As one of America's largest healthcare systems, North Shore-Long Island Jewish Health System is a network of 18 hospitals, long-term care facilities, trauma centers, and home health and hospice agencies, located throughout Long Island, Queens and Staten Island. And this means more options. More opportunities. For you. For your career.

**Endowed Investigator**

The Division of Pediatric Hematology/Oncology and Stem Cell Transplantation at Schneider Children's Hospital of The Long Island Jewish Medical Center is seeking a distinguished laboratory investigator with expertise in the control of blood cell differentiation and mechanisms of neoplasia to fill the position of The Les Nelkin Investigator in Pediatric Oncology. The applicant should have the necessary credentials for appointment as Professor of Pediatrics at the Albert Einstein College of Medicine. The Division consists of 10 full-time faculty with diverse clinical and research interests. The Nelkin Investigator will direct the 4000 sq. ft. Les Nelkin Pediatric Oncology Research Laboratory, located at the North Shore-LIJ Research Institute and be expected to develop and lead a program in basic and translational research. The Les Nelkin Investigator in Pediatric Oncology must have a Ph.D. and/or M.D. degree and an outstanding record of scientific accomplishment and demonstrated teaching and administrative abilities. Candidates should submit their CV, a statement of research interests and the names and addresses of 3 references to: Jeffrey M. Lipton, M.D., Ph.D., Chief Pediatric Hematology/Oncology and Stem Cell Transplantation, Schneider Children's Hospital, Professor of Pediatrics, Albert Einstein College of Medicine, 269-01 76th Ave, New Hyde Park, NY 11040.

An equal opportunity employer.

[www.northshorelij.com](http://www.northshorelij.com)



**NORTH SHORE - LONG ISLAND JEWISH HEALTH SYSTEM**



**Setting New Standards in Healthcare.**

**UNIVERSITY OF CALIFORNIA AT IRVINE  
POSTDOCTORAL POSITIONS  
IN INDUSTRIAL ECOLOGY**

Postdoctoral positions are available immediately for highly motivated researchers to join the multidisciplinary program in industrial ecology for projects entitled "Managing Toxic Metals in Electronic Waste: Future Implications of Alternative Policies for the Health, Environment, and Economy Sectors in California", and "Biocomplex Dimensions of Industrial Ecology". Successful candidates will have a Ph.D. in a relevant discipline, such as economics, engineering, materials science, environmental science, public health, or policy analysis. Individuals with experience in conducting environmental life cycle assessments, burden of disease studies, decision analysis, or cost-benefit analysis are strongly encouraged to apply.

Applications will be received until the position is filled, but early submission is encouraged. The position is available for 2 years depending on satisfactory performance.

Applications should include a letter of interest, curriculum vitae, and up to three reprints of research publications. Applicants should also arrange to have three letters of recommendation sent directly to:

**Dr. Dele Ogunseitan**  
**Department of Environmental Analysis and Design**  
**University of California, Irvine, CA 92697-7070, USA**

For further information, please check the project website at:  
<http://www.industrial-ecology.uci.edu>

Pre-application inquiries may be directed to any of the collaborating faculty: **Dele Ogunseitan** ([oaogunse@uci.edu](mailto:oaogunse@uci.edu)) **Julie Schoenung** ([jms@uci.edu](mailto:jms@uci.edu)) **Jean-Daniel Saphores** ([saphores@uci.edu](mailto:saphores@uci.edu)) **Andrew Shapiro** ([aashapiro@uci.edu](mailto:aashapiro@uci.edu))

*The University of California, Irvine is an Equal Opportunity  
Employer committed to excellence through diversity.*

**UNITED STATES DEPARTMENT OF AGRICULTURE**

**Cooperative State Research, Education,  
and Extension Service  
(CSREES)**

**DEPUTY ADMINISTRATOR, FAMILIES, 4-H, AND NUTRITION**

The Department of Agriculture (USDA) is seeking to fill the position of Deputy Administrator, Families, 4-H, and Nutrition, for the CSREES. The incumbent provides leadership and support for cooperative research, extension, and education programs, and other cooperative activities that are carried out at land-grant universities and other cooperative institutions. The incumbent administers a number of programs, in cooperation with State partners, including Children, Youth, and Families at Risk; Expanded Food and Nutrition Education; and 4-H and Youth Development. The incumbent has frequent contacts with top officials of USDA; other government agencies; 1862, 1890, and 1994 land-grant universities; other public and private colleges and universities; private organizations and corporations; national and international associations; Department and Ministries of Agriculture in other nations; and members of Congress and their staffs. For more information about CSREES, go to the CSREES homepage at [www.reecusda.gov](http://www.reecusda.gov).

This is a Senior Executive Service position. The salary ranges from \$125,972 to \$138,200 (including locality pay), commensurate with experience. A Ph.D. in a discipline related to the position is highly desirable. For more information on the position, call Stacy Aldrich or Lee Triplett at 301-504-1448. A copy of the vacancy announcement may be located on the Office of Personnel Management web page at <http://www.usajobs.opm.gov/>. Applications must be received by August 2, 2002.

**U.S. CITIZENSHIP REQUIRED**  
**USDA IS AN EQUAL OPPORTUNITY PROVIDER AND EMPLOYER**

**The Positron Emission Tomography (PET) Department of the Warren G. Magnuson Clinical Center, National Institutes of Health, Bethesda, MD,** is seeking a Board Certified Nuclear Medicine physician with extensive clinical, research, and management experience to serve as the Deputy Director for Clinical Applications. The PET Department presently has 3 cyclotrons, 3 PET scanners, and oversees numerous active protocols employing various combinations of their IND radiopharmaceuticals. The incumbent will coordinate the operation of existing imaging technology and the development of advanced experimental imaging applications. Familiarity with all aspects of PET from cyclotron operation, to radiotracer production, to pre-clinical and clinical studies is required.

Salary and resources are negotiable and commensurate with experience.

Please submit your curriculum vitae, bibliography, and a letter describing your clinical, research, and management experience to: **Ms. Gwen Shinko, HR Specialist, OHRM/CC/NIH, 6100 Executive Blvd., Rm. 3E01, MSC-7509, Bethesda, MD 20892-7509. Phone no. 301-496-6924. Email: gshinko@nih.gov**

For priority consideration, application packages should be submitted as early as possible, but no later than August 31, 2002.

*NIH is an Equal Opportunity Employer. Selection for this position will be based solely on merit, without discrimination for non-merit reasons such as race, color, religion, sex, national origin, politics, marital status, sexual orientation, physical or mental disability, age or membership or non-membership in an employee organization.*

**Post-Doctoral Position  
Rocky Mountain Laboratories  
Hamilton, Montana  
Starting salary \$33,000 to \$50,000:  
Commensurate with Experience/  
Education**

**NATIONAL INSTITUTES OF HEALTH.** A postdoctoral position is available to study the apoptosis in human polymorphonuclear leukocytes. Studies will include proteomics and genomics strategies to identify proteins of interest in human PMNs after phagocytosis (see *PNAS*, 99:6901-6906). Candidates should have a strong background in biochemistry with experience in protein analysis. Experience with two-dimensional gel electrophoresis is desirable. State-of-the-art genomics, proteomics, DNA microarray, microscopy, and sequencing facilities are available to help identify and characterize proteins important in the process of PMN apoptosis. The Rocky Mountain Laboratories' research campus includes an excellent electron microscopy facility, and new Biosafety Level 3 and non-human primate facilities. The laboratories are located in a very scenic mountainous area, which supports skiing, climbing, hiking, cycling, and trout fishing. A Ph.D. or M.D. in an appropriate discipline is required (with 5 or fewer yrs relevant post-doctoral experience; excluding 2 yrs clinical work for M.D.s).

Please send CV, a 1-2-page career summary including research interests and three letters of reference to: **Frank R. DeLeo, Ph.D., Rocky Mountain Laboratories, Laboratory of Human Bacterial Pathogenesis, NIAID, NIH, 903 South 4th Street, Hamilton, MT 59840; E-mail: fdeleo@niaid.nih.gov.**

*NIH is an Equal Opportunity Employer.*



Vitamins

## Research Positions in Biotechnology

### Who we are

Roche Vitamins is the world's largest producer of vitamins and carotenoids after nature itself. We produce and market products for use in the animal feed, food, pharmaceutical, and cosmetics industries. Currently we have a number of positions available in the Biotechnology Research Department at the Division's headquarters in Kaiseraugst, near Basel, Switzerland.

### Lab Leader - Biochemistry

**The Position:** We are seeking an individual with broad expertise in Biochemistry/Molecular Biology to investigate and optimize the activities of biosynthetic enzymes involved in the production of vitamins and fine chemicals. The candidate will be part of a multidisciplinary team also covering bacterial genetic engineering and fermentation technology, which will establish an integrated approach for the development of new fermentation products and processes.

**Who you are:** Qualified applicants should have a Ph.D. in Biochemistry, Molecular Biology, or related field, with a minimum of two years post-doctoral research experience and three years of industrial experience. The candidate needs to be experienced in bacterial enzyme regulation and post-translational modification, enzyme assay development, and protein isolation/purification. Knowledge of metabolic engineering methodology is also required. Familiarity with bacterial physiology and Gram-positive organisms desirable.

### Lab Leader - Fermentation

**The Position:** We are seeking an individual with broad expertise in Fermentation Engineering to develop and optimize processes for the production of vitamins and other fine chemicals at the lab scale. The individual will also interact closely with pilot and fermentation scale-up staff who will implement process improvements in larger-scale bioreactors.

**Who you are:** Qualified applicants should have a Ph.D. in Biochemical Engineering, Biotechnology or related field, with a minimum of two years post-doctoral research experience and three years of industrial experience. Experience with different cultivation methods for microorganisms (batch, fed-batch, and continuous culture), preferably in small or medium size-scale (shake flask to 20-L bioreactor) required. Experience in metabolic pathway analysis, on-line monitoring, and product processing also required. Experience in cultivation of Gram-positive microorganisms desirable.

### Lab Leader - Bacterial genetics and molecular biology

**The Position:** The successful candidate will construct and evaluate metabolite-overproducing bacteria by a combination of molecular and classical genetic approaches. He/she will be responsible for all strain improvement activities (expected 80% time at the bench, plus direction of technicians) and will interface extensively with fermentation and enzymology/biochemistry groups to analyze strain performance and subsequently create new strains.

**Who you are:** This position requires a Ph.D. in microbiology or related field plus a minimum of 2 years postdoctoral experience in academic or industrial laboratory. In addition, two or more years of industrial experience at the lab leader level is required. Candidate must have proven experience in the creation, screening and characterization of mutants by classical and recombinant methods. A solid publication record is also required that documents a strong understanding of microbial physiology. This individual must be able to work within a multidisciplinary team and have previous experience supervising laboratory technicians. Additional experience in biochemical pathway analysis (metabolite measurements, enzyme assays, etc.) and screening/selection of microorganisms for novel traits is highly desirable.

### Who to contact

If the above profile fits your background and experience and you are interested in this position, please forward your full application documentation to: Roche Vitamins Ltd, Mrs Beatrice Holzwarth, VH, Building 241/703, P.O. Box, CH-4070 Basel, quoting reference HW 5476.

## POSITIONS OPEN

### ASSISTANT/ASSOCIATE PROFESSOR University of Florida Kennedy Space Center

Applications are invited for a 12-month tenure-track faculty position (90 percent research, 10 percent teaching) in the Space Agriculture and Biotechnology Research and Education Center (SABRE) of the University of Florida, Institute for Food and Agricultural Sciences branch located at the Kennedy Space Center. The interdisciplinary biotechnology programs of the Center emphasize the fundamental biology of organisms involved in development of advanced life support strategies critical for space flight and long-term explorations of space. The areas of focus include community development and adaptive evolution in bacteria and fungi, especially within confined spacecraft, closed atmospheric conditions, bioreactors, and plant cultivation systems. Additional areas of research interest include rhizosphere community dynamics and processes, planetary contamination, molecular plant microbe interactions, and waste processing. The individual should have a strong background in molecular aspects of microbial ecology and is expected to establish and maintain an active, externally funded research program with an emphasis on biotechnology approaches to microbial ecology as it relates to the space program. To learn more about the position, visit our website: <http://microcell.ufl.edu/departments/postdoc.html>. Applicants should submit a statement of research goals with representative reprints, curriculum vitae, and three letters of reference by September 30, 2002, to: **SABRE Search, Department of Microbiology and Cell Science, Building 981, University of Florida, Gainesville, FL 32611-0700**. Submission of electronic files is encouraged: E-mail: [wgurley@ufl.edu](mailto:wgurley@ufl.edu). The University of Florida is an Equal Opportunity/Equal Access/Affirmative Action Institution.

### FACULTY POSITION Department of Biochemistry and Molecular Biology

The Department of Biochemistry and Molecular Biology at Baylor College of Medicine invites applications for a tenure-track faculty position. We are seeking outstanding candidates in the field of development and differentiation, preferably with an emphasis on stem cell biology. The Department of Biochemistry and Molecular Biology wishes to build on its research strengths in molecular genetics, developmental biology, cell biology, signal transduction, genomics, and computational and structural biology. As part of the Texas Medical Center, Baylor is a focal point for outstanding basic research and clinical science and actively encourages inter-institutional and cross-departmental collaboration. Candidates should send their curriculum vitae, preprints and reprints of significant work, a statement of present and future research activities, and arrange to have three letters of recommendation forwarded by November 1, 2002, to:

**John H. Wilson, Ph.D.**  
Search Committee Chair  
c/o Sylvia Ledesma  
Department of Biochemistry, MS 357A  
Baylor College of Medicine  
One Baylor Plaza  
Houston, TX 77030

*Baylor College of Medicine is an Equal Opportunity/ Affirmative Action/ Equal Access Employer.*

**FACULTY POSITION:** A postdoctoral position is open immediately in DNA replication. Experience in protein chemistry, enzymology, and/or enzyme kinetics would be preferred. Please send curriculum vitae and three letters of reference to:

**Professor Stephen J. Benkovic**  
The Pennsylvania State University  
Department of Chemistry  
414 Wartik Laboratory  
University Park, PA 16802  
FAX: 814-865-2973  
E-mail: [sjb1@psu.edu](mailto:sjb1@psu.edu)

*Penn State is committed to Affirmative Action, Equal Opportunity and the diversity of its workforce.*

## POSITIONS OPEN



### DEPARTMENT OF CELL AND DEVELOPMENTAL BIOLOGY University Of Michigan Medical School

The Department of Cell and Developmental Biology at the University of Michigan Medical School invites applications for tenure-track **ASSISTANT PROFESSOR** positions. We are seeking outstanding scholars, with Ph.D., M.D., or equivalent degrees and relevant postdoctoral experience, who show exceptional potential to develop an independent research program that will address fundamental issues in cell or developmental biology. Applicants should send curriculum vitae, copies of up to three reprints, a one- to two-page summary of research plans, and arrange to have three letters of reference sent directly, by September 30, 2002, to: **Search Committee, Department of Cell and Developmental Biology, University of Michigan Medical School, 4643 Medical Sciences Building II, 1335 Catherine Street, Ann Arbor, MI 48109-0616**.

*The University of Michigan is an Affirmative Action/Equal Opportunity Employer.*

### ASSISTANT PROFESSOR OF PHARMACOLOGY TOXICOLOGY Duquesne University Pittsburgh, PA

The Pharmaceutical Sciences Division of the Mylan School of Pharmacy and the Graduate School of Pharmaceutical Sciences seeks to fill a tenure-track position in Pharmacology-Toxicology beginning July 1, 2002. Applicants should possess a Ph.D. degree in a suitably related field. Postdoctoral experience is required and a pharmacy background is desirable. Successful candidates will be expected to teach in the Doctor of Pharmacy program and M.S./Ph.D. graduate programs and to develop vigorous, creative, and extramurally funded research programs. Applicants should submit a letter of intent accompanied by curriculum vitae, a summary of research interests, and at least three letters of reference to: **Dr. David A. Johnson, Chair, Search Committee, Pharmaceutical Sciences Division, Duquesne University, Pittsburgh, PA 15282. Telephone: 412-396-5952. FAX: 412-396-4660. E-mail: [johnsond@duq.edu](mailto:johnsond@duq.edu)**. Applications will be accepted until the position is filled. For more information about the Mylan School of Pharmacy, the Graduate School of Pharmaceutical Sciences, and Duquesne University, visit our website: <http://www.pharmacy.duq.edu>. An Affirmative Action Employer.

### FACULTY POSITIONS Assistant/Associate/Full Professor Cell, Molecular, and Developmental Biology University of Rochester

The Department of Biology (website: <http://www.rochester.edu/College/BIO/dept.html>) invites applications for several tenure-track positions to be filled within the next two to three years. Current faculty employ genetic and molecular approaches to study cellular, developmental, and evolutionary biology. Additional colleagues with allied interests are located in the adjacent Medical School. We will consider individual applicants as well as applications from groups of individuals working in the same general area, such as basic cellular processes using genetically tractable lower eukaryotes or developmental evolution (evodevo). Especially strong candidates may be considered at the Full Professor rank. Review of applications will begin immediately and continue until the positions are filled. Applicants should submit curriculum vitae, bibliography, summary of research and teaching interests, and request three references to send letters of recommendation to: **Chair, CDM Faculty Search Committee, Department of Biology, Box 270211, University of Rochester, Rochester, NY 14627**. The University of Rochester is an Equal Opportunity Employer.

## POSITIONS OPEN

### FACULTY POSITIONS IN HUMAN GENETICS, GENOMICS, PROTEOMICS, MODELS OF HUMAN DISEASE, STEM CELL BIOLOGY, BIOINFORMATICS

University of Rochester School of Medicine - Center for Human Genetics and Molecular Pediatric Disease. The University of Rochester is recruiting tenure-track faculty at all levels to its new Center for Human Genetics and Molecular Pediatric Disease. This center is focusing on a multidisciplinary approach to genetic disease, gene-environment interactions, and the molecular basis of cancer and other childhood diseases. The Center is housed in a 20,000 square foot floor of a new, state-of-the-art research building and is one of six centers of discovery in the University's Aab Institute of Biomedical Sciences. The Center has state-of-the-art equipment including robotics, and provides a highly interactive and collaborative environment with both Ph.D. and M.D. Scientists with diverse backgrounds. Faculty will have tenure-track appointments in existing academic departments of the University and be expected to develop independent, extramurally-funded research programs. Applicants should submit curriculum vitae, a statement of current and future research interests, and arrange for three letters of reference to be sent to: **Dr. Richard A. Insel, Center for Human Genetics and Molecular Pediatric Disease, University of Rochester School of Medicine, 601 Elmwood Avenue, Box 703, Rochester, New York 14642. E-mail: [richard\\_insel@urmc.rochester.edu](mailto:richard_insel@urmc.rochester.edu)**.

*The University of Rochester is an Affirmative Action/Equal Opportunity Employer.*

### PROFESSOR AND DEPARTMENT HEAD Department of Pathobiology and Veterinary Science

The College of Agriculture and Natural Resources invites applications and nominations for the position of Head of the Department of Pathobiology and Veterinary Science. A D.V.M. and Ph.D. (or equivalent) in a pathobiology related discipline is required. Leadership skills and records of excellence in teaching, research, and/or extension are preferred.

Department website and full description available at website: <http://www.patho.uconn.edu>. To apply, send a statement of research interest, teaching and extension philosophy, curriculum vitae, and the names and contact information for three references (include e-mail addresses) to: **Department Head Search Committee, Department of Pathobiology and Veterinary Sciences, Unit 3089, The University of Connecticut, 61 North Eagleville Road, Storrs, CT 06269-3089. E-mail: [patadm05@uconnvm.uconn.edu](mailto:patadm05@uconnvm.uconn.edu)**. The University of Connecticut actively solicits applications from minorities, women, and people with disabilities. (Search #02A1)

The Department of Neurology at the University of Texas Medical Branch (UTMB) at Galveston is recruiting a faculty member at the **ASSISTANT/ASSOCIATE PROFESSOR** level. M.D. or Ph.D. degree and a track record in basic neuroscience research are required. Send curriculum vitae to: **Dr. T. Ashizawa, Department of Neurology, UTMB, 301 University Boulevard, Galveston, TX 77555-0539**. UTMB is an Equal Opportunity/Affirmative Action Employer. Minorities and women are encouraged to apply. UTMB is a smoke-free/drug-free workplace. UTMB hires only individuals authorized to work in the United States.

Department of Neurology at The University of Texas Medical Branch (UTMB) at Galveston is recruiting a faculty at the **PROFESSOR** level. M.D. or Ph.D. degree required and strong track record/leadership in basic research of Alzheimer's disease are required. Send curriculum vitae to: **Dr. T. Ashizawa, Department of Neurology, UTMB, 301 University Boulevard, Galveston, TX 77555-0539**. UTMB is an Equal Opportunity/Affirmative Action Employer. Minorities and women are encouraged to apply. UTMB is a smoke-free/drug-free workplace. UTMB hires only individuals authorized to work in the United States.



## It's about your CAREER.

### ScienceCAREER FAIR

**BOSTON, MA  
5 AUGUST 2002**

**11:00 am – 4:30 pm**  
Hynes Convention Center  
900 Boylston St., Rm. 302, 3<sup>rd</sup> level

**A Resume Expert will  
be on hand to help you  
refine your resume/CV.**

For more information &  
a list of exhibitors, visit  
[sciencecareers.org](http://sciencecareers.org),  
click on Career Fairs  
or call 202-326-7018.  
Bring multiple copies  
of your CV or resume  
to the Career Fair; a  
copy will be necessary  
to gain admittance.

Admission is free.



Science is a proud sponsor of  
**Drug Discovery Technology™  
2002 Meeting** in Boston, MA,  
4–9 August 2002. Information  
at [www.drugdisc.com](http://www.drugdisc.com).

For information contact  
Daryl Anderson

phone ..... 202-326-6543  
fax ..... 202-289-6742  
e-mail ..... [dandersonAaaas.org](mailto:dandersonAaaas.org)

**Science @**  
CAREERS  
[www.sciencecareers.org](http://www.sciencecareers.org)



## TWO SENIOR CANADA RESEARCH CHAIRS BIOMEDICAL SCIENCES AND PATHOBIOLOGY

*at the Ontario Veterinary College (OVC), University of Guelph*

The Department of Biomedical Sciences and Pathobiology at the Ontario Veterinary College, University of Guelph, seeks highly qualified candidates for nomination as Tier 1 Canada Research Chairs ([www.chairs.gc.ca](http://www.chairs.gc.ca)). Tier 1 (senior) Research Chairs are targeted at experienced researchers who are acknowledged by their peers as world leaders in their own fields.

The Chair in Biomedical Sciences will provide leadership in Reproductive Biotechnology in collaboration with faculty and other scientists working in the Canada Foundation for Innovation (CFI) Institute for Animal-Human Links in Health Research and the Food System Biotechnology Centre. Research should be appropriate for funding by the Canadian Institutes for Health Research (CIHR).

In the Department of Pathobiology, the CRC Chair will provide a focal point for research in the host: agent: environment triad as it relates to health and disease in animals, food and water-borne diseases or zoonoses. Research should be appropriate for funding by the Natural Sciences and Engineering Research Council of Canada (NSERC).

Candidates should have a solid record of research productivity as judged by refereed publication, patents or proprietary agreements, training of highly qualified personnel, and international scientific recognition. They must be recognized as leaders in the scientific community. The successful candidates will be expected to participate fully in the graduate programs at OVC (supervise graduate students, serve on advisory and examination committees, and participate in graduate courses). Strong emphasis will be placed on the ability to interact and collaborate effectively with colleagues, and to operate within a research team as well as independently.

The Department of Biomedical Sciences ([www.ovc.uoguelph.ca/BioMed/](http://www.ovc.uoguelph.ca/BioMed/)) has recognized strengths in comparative reproductive biology and reproductive biotechnology, developmental biology, gamete and embryo cryopreservation, in vitro fertilization, cloning, and stem cell research; molecular biochemistry and the cellular basis of disease; immunology, inflammation and coagulation; biomedical pharmacology and toxicology; whole animal, tissue and organ regulation and function; and the morphology of normal and abnormal cells and tissues. Faculty have established research programs with funding from provincial and federal sources, including a recent CFI award which permits development of a new laboratory complex in support of research.

The Department of Pathobiology ([www.ovc.uoguelph.ca/PathoBio/](http://www.ovc.uoguelph.ca/PathoBio/)) has recognized strengths in mammalian and comparative pathology, including avian, aquatic, laboratory, wildlife and exotic species as well as domestic animals; veterinary clinical pathology; veterinary infectious diseases; viral, bacterial and parasitic; zoonotic infections and food safety; toxicology and basic and applied immunology, especially immunogenetics. Faculty have established research programs funded through provincial, federal, and industrial sources and the Department has excellent infrastructure to support research in a variety of animal species.

Opportunities for collaboration with investigators representing a diverse range of research areas at the University of Guelph and at nearby universities and medical schools are abundant. The Animal Health Laboratory and the Veterinary Teaching Hospital serve the University and the veterinary community at large with a broad range of diagnostic and clinical specialists, diagnostic services and well equipped facilities. The City of Guelph ([www.city.guelph.on.ca](http://www.city.guelph.on.ca)) a pleasant community of 100,000 people, is located in southern Ontario approximately one hour west of Toronto.

*The University of Guelph is committed to an employment equity program that includes special measures to achieve diversity among its faculty and staff. We therefore, particularly encourage applications from qualified aboriginal Canadians, persons with disabilities, members of visible minorities and women.*

Salary is negotiable and commensurate with qualifications. The appointment is subject to final approval by the Canada Research Chairs Program. The deadline for applications is **September 15, 2002** or until suitable candidates are found. Please send a complete curriculum vitae and the contact information for three references to: **Dr. John Leatherland,**

**Chair, Department of Biomedical Sciences, University of Guelph, Guelph, Ontario, CANADA N1G 2W1; e-mail: [jleather@ovc.uoguelph.ca](mailto:jleather@ovc.uoguelph.ca) OR Dr. Patricia E. Shewen, Chair, Department of Pathobiology, University of Guelph, Guelph, Ontario, CANADA N1G 2W1; e-mail: [pshewen@uoguelph.ca](mailto:pshewen@uoguelph.ca)**

**UNIVERSITY  
of GUELPH**

## POSITIONS OPEN

### POSTDOCTORAL POSITION

Interested individuals in this Postdoctoral position should be familiar with protein chemistry and have a good understanding of proteins at the biochemical and biophysical levels. Emphasis of study will be to understand the protein-protein and protein-DNA interactions involved in assembly of macromolecular complexes capable of mediating the retrovirus integration process. Integration of the retrovirus DNA genome into the host chromosome requires the retrovirus integrase. A variety of biochemical and molecular techniques, including DNA cloning and sequencing, site-directed mutagenesis, protein expression in bacterial cells, protein purification, and biophysical measurements will be employed. Please send curriculum vitae and names of three references to: **Dr. Duane Grandgenett, St. Louis University Health Sciences Center, Institute for Molecular Virology, 3681 Park Avenue, St. Louis, MO 63110. Telephone: 314-577-8411; e-mail: grandgdp@slu.edu.** Saint Louis University is an Affirmative Action, Equal Opportunity Employer, and encourages nominations of and applications of women and minorities.

Illinois: **ASSISTANT PROFESSOR.** The Department of Pathology at Loyola University Chicago's Stritch School of Medicine is seeking an Assistant Professor. This research intensive position is responsible for overseeing a neuroscience laboratory, including technicians and graduate students. Additional responsibilities include writing manuscripts and grants. Candidates should have either an M.D. or a Ph.D. degree, two to three years of postdoctoral experience, and expertise in the neurosciences. Preferences will be given to applicants who have experience in neurodegeneration. Interested individuals should submit curriculum vitae and a list of references to: **John M. Lee, M.D., Ph.D., Chairman, Department of Pathology, Stritch School of Medicine, Loyola University Medical Center, 2160 South First Avenue, Maywood, IL 60153.** Loyola University Chicago is an Equal Opportunity Employer/Educator.

### NEUROSCIENTIST

Private research organization has an immediate opening for a Neuroscientist to work with team of Researchers investigating repair of the damaged spinal cord in mammals. The applicant should have experience in creating uniform lesions in the spinal cord and be able to assay the effects of experimental treatments with behavioral, electrophysiological, or histological methods. We currently work with rats but our long-term goal is to apply cutting-edge scientific methods to the restoration of spinal cord function in humans. Our modern research facility is in a suburban area located in the Rocky Mountains. We offer pleasant working conditions and a competitive salary based on experience. To apply, please send curriculum vitae, contact information for three references, and a cover letter describing your vision of how this field of research should proceed to: **Director of Research, Box #113, 1200 New York Avenue, NW, Room 914, Washington, DC 20005.**

**BIOSCIENTIST** wanted by pharmaceutical company in Stamford, Connecticut. Design and implement research programs to discover and validate molecular targets with therapeutic potential for treatment of chronic pain. Establish *in vivo* models of chronic inflammatory and nerve related pain in rodents. Requires a Master's in biology or closely related life sciences field and one year of experience. Send résumé to: **Human Relations Department, Purdue Pharma L.P. 1 Stamford Forum, Stamford, CT 06901-3431.**

### RESEARCH SCIENTIST

Investigating the role of matrix metalloproteinases in tissue destruction during atherosclerosis. M.D. or Ph.D. required. Send curriculum vitae to: **Dr. D'Armiento, Department of Medicine, Division of Molecular Medicine, Columbia University, 630 West 168th Street, New York, NY 10032.** We take Affirmative Action toward Equal Employment Opportunity.

## POSITIONS OPEN

### ASSISTANT PROFESSOR/ASSOCIATE PROFESSOR GASTROENTEROLOGY

The Digestive Disease and Nutrition Center, Children's Hospital of Buffalo, State University of New York, is seeking a basic research Scientist with a doctoral degree and at least three years experience. The successful candidate will run a laboratory studying the molecular basis for GI permeability during acute inflammation. Supervisory skills as well as firsthand knowledge of molecular biology, cell culture, and protein characterization techniques are necessary. This is a chance to establish an independent research area with solid support.

Send curriculum vitae with references to: **Robert D. Baker, M.D., Ph.D.,** or to: **Susan S. Baker, M.D., Ph.D., Digestive Disease and Nutrition Center, Children's Hospital of Buffalo, 219 Bryant Street, Buffalo, NY 14222.** Or e-mail: **rbaker@upa.chob.edu** or **sbaker@upa.chob.edu,** or Telephone: 716-878-7198.

*Affirmative Action/Equal Opportunity Employer.*

### POSTDOCTORAL POSITION Developmental Neurobiology

A Postdoctoral position is available in the Laboratory of Cellular and Developmental Neuroscience at the Sloan-Kettering Institute to study the molecular mechanisms of synapse formation *in vivo*. Utilizing viral vectors to express wild type and mutated molecules with dominant negative effects in the developing embryo, the expression and/or function of surface receptors is perturbed and their consequences analyzed at the morphological and functional level. Interested applicants should send curriculum vitae and the names and e-mail addresses of three references to: **Juan Bruses, Sloan-Kettering Institute, 1275 York Avenue (box 290), New York, NY 10021 U.S.A. E-mail: j-bruses@ski.mskcc.org.**

**Chief, Aquatic Ecology and Invasive Species Branch (DB-4).** Environmental Laboratory, U.S. Army Engineer Research and Development Center (ERDC). Responsible for managing, developing, planning, and executing multidisciplinary research in freshwater biology, fish and invertebrate ecology, and invasive species control. Studies performed for Corps of Engineers, Department of Defense, and other federal and state agencies. Oversees/supervises three research teams and one field research laboratory; 15 or more professional federal employees, on-site contractors, and contract students. Advanced degree in aquatic ecology or related field preferred. Must demonstrate outstanding management abilities, creativity, originality, and exceptional capacity for scientific judgment. Position located at Waterways Experiment Station, Vicksburg, Mississippi. Starting range: \$76,271 to \$99,150 per annum. Contact **Ms. Colleen Hughlock** at Telephone: 603-646-4132 or e-mail: **colleen.b.hughlock@erdc.usace.army.mil** for information on application process. Job Announcement posted at website: **http://www.usajobs.opm.gov, announcement #14DF1193Y2** and at website: **http://www.cpol.army.mil, announcement #284093NO2.** Applications must be received by 23 August 2002. This is a competitive, permanent appointment. *United States citizenship is required. ERDC is an Equal Opportunity Employer. Women and minorities are encouraged to apply.*

Two **POSTDOCTORAL POSITIONS** in biomaterials research funded by the David and Lucile Packard Foundation are available immediately at Haverford College (near Philadelphia). One position requires experience in organic chemistry to be applied in chemical modification of synthetic peptides. The second position requires experience in physical techniques or single molecule measurements. For further information, see website: **http://www.haverford.edu/biology/Nanoscience\_Program/nanoscience.htm.** Teaching opportunities possible. Attractive salary and benefits available. Send curriculum vitae, research experience, and the names and phone numbers of three references to: **Kay Warner, Haverford College, Haverford, PA 19041.** Haverford College is an Equal Opportunity/Affirmative Action Employer; women and minority candidates are encouraged to apply.

## POSITIONS OPEN

### ASSISTANT PROFESSOR OF ANATOMY AND CELL BIOLOGY The University of Iowa

**Roy J. and Lucille A. Carver College of Medicine**

A tenure-track position in the newly renovated Department of Anatomy and Cell Biology is available. Candidates must have a Ph.D., M.D., or equivalent, postdoctoral experience, and an active research program with current or high potential for attracting external support. Although individuals in a variety of research areas will be considered, preference will be given to Scientists engaged in research concerning molecular medicine, cell and developmental biology, molecular neurobiology, or cancer. The successful candidate will be expected to participate in a team-taught course for professional students such as Gross Anatomy, Histology, Cell and Molecular Biology, Developmental Biology, or Neuroscience and a graduate course in their area of expertise.

For more information, visit our website: **http://www.uiowa.edu/anatomy/.** Interested individuals should send curriculum vitae, bibliography, a brief statement of research and teaching experience, plus the names of three references to: **Dr. Mary J.C. Hendrix, Head, Department of Anatomy and Cell Biology, College of Medicine, The University of Iowa, Iowa City, IA 52242.**

*The University of Iowa is an Equal Employment Opportunity and Affirmative Action Employer. Women and minorities are encouraged to apply.*

### FISHERY POPULATION DYNAMICIST SALMON POPULATION BIOLOGIST

The National Marine Fisheries Service is seeking two Research Fishery Biologists for its Population Dynamics Branch, located in Woods Hole, Massachusetts. The first position will conduct a variety of studies evaluating the effects of fishing on long-term dynamics of exploited populations. Strong skills in quantitative/population ecology and analysis are required. The second position will conduct studies on endangered populations of Atlantic salmon, and evaluate factors influencing their recovery. Positions can be filled at the GS-12 (\$54,275) or GS-13 (\$64,542) levels. More detailed information is available online at website: **https://www.jobs.doc.gov.** Search under National Oceanic and Atmospheric Administration, Vacancy Announcements: E-NMF-FC-02299.SDT (GS-12) and E-NMF-FC-02306.SDT (GS-13). For additional information contact: **Dr. Steven Murawski; e-mail: Steve.Murawski@noaa.gov; telephone: 508-495-2303.** Applications must be completed by July 15, 2002. The USDOC is an Equal Opportunity/Affirmative Action Employer.

**POSTDOCTORAL POSITIONS** for the following studies are available: (1) molecular mechanisms regulating neutrophil apoptosis; (2) signaling mechanisms leading to neutrophil phagocytosis and the oxidative burst and (3) determinants of immune complex-mediated neutrophil recruitment. Strong background in molecular biology/cell biology or small animal experimentation, especially intravital microscopy, is desired. Publication(s) in international journals is a prerequisite. Send curriculum vitae and names of three references to: **Tanya Mayadas, Ph.D., Associate Professor of Pathology, Brigham and Women's Hospital and Harvard Medical School, 221 Longwood Avenue, Room 404, Boston, MA 02115. FAX: 617-732-5933.**

**POSTDOCTORAL FELLOW.** Position available immediately to undertake studies investigating hazards of deep space radiation environment to human hematopoietic stem cells. Identification of threat and design of countermeasures are immediate goals. Work is directly relevant to planned Mars exploration and is funded for three years by National Space Biomedical Research Institute. Applicant must have prior training in hematopoietic cell and molecular biology. An interest in DNA repair and experience with array technology a plus. Strong English language skills an absolute requirement. Contact: **Alan M. Gewirtz, M.D., University of Pennsylvania, Division of Hematology/Oncology, 421 Curie Boulevard, Philadelphia, PA 19104.**



*The Commonwealth Scientific and Industrial Research Organisation (CSIRO) Australia is seeking to appoint two outstanding professionals to positions of Chief of Division to succeed the current Chiefs who retire later in the year.*



## Chief, Entomology - Canberra

CSIRO Entomology generates economic, social and environmental benefit through understanding the role of insects and other invertebrates in ecosystems, developing sustainable methods of pest and weed management, and using insects as models to understand fundamental biological processes. The Division has 290 staff and an annual budget of \$32 million. Its headquarters are in Canberra and it has 10 other sites in Australia and overseas.

### ROLES:

- Responsible for leading the Division's research, planning, customer and stakeholder relations and business development, as well as growing the Division's commercialisation capabilities.
- Manages the Division's staff and resources and effectively represents CSIRO in interacting with industry, other R&D providers, Government and the community.
- Stimulates and champions new areas of science in response to research opportunities and stakeholder priorities.
- Works effectively with the CSIRO Executive Team and other Divisional Chiefs in the development of CSIRO strategic directions.

### QUALIFICATIONS:

- Outstanding research leadership experience, vision and management skills; with strong strategic planning skills and an international reputation for scientific accomplishment.
- A record of achievement in developing research partnerships and delivering science outcomes for government, industry and the community.
- Good understanding of business functions, including commercialisation and management of intellectual property.
- Excellent communication, relationship management and people skills.

For further information and contact details see <http://www.csiro.au/careers> or telephone Dr Jim Cullen (Entomology) on (61-2) 6246 4025 or Dr Nan Bray (Marine Research) on (61-3) 6232 5037

S78544

**Australian Science, Australia's Future**



**The Victor Chang**  
CARDIAC RESEARCH INSTITUTE  
Sydney, Australia

## POSTDOCTORAL FELLOW

Applications are invited for a Postdoctoral Fellow position within the Institute's Gene Expression Unit for research into the translational control of eukaryotic gene expression. Applicants will be expected to hold an MD or PhD and to have a record of high-quality training, and expertise in molecular studies of RNA metabolism. Experience with microarray studies, yeast genetics, mammalian cell culture or *in vitro* translation systems is highly desirable. Details of the Institute are available at: [www.victorchang.com.au](http://www.victorchang.com.au)

Applicants should send a curriculum vitae and the names of three referees to:

**Dr Thomas Preiss**  
Laboratory Head  
Gene Regulation Unit  
Victor Chang  
Cardiac Research Institute  
384 Victoria Street  
Darlinghurst NSW 2010  
Australia  
Fax: (612) 9295 8501  
Email:  
[t.preiss@victorchang.unsw.edu.au](mailto:t.preiss@victorchang.unsw.edu.au)

# www.jobsatUQ.net

## Senior Lecturer in Physiology

Department of Physiology and Pharmacology, School of Biomedical Sciences

**The role:** Establish an independent research program and attract external funding for research; strengthen and complement the school's research interests in molecular and cellular physiology and pharmacology; collaborate with other research programs in the school, Faculty of Biological and Chemical Sciences and Institute for Molecular Bioscience.

**The person:** PhD or equivalent; expertise in modern research techniques.

**Remuneration:** AUD\$76,828 - \$88,587 p.a., which includes employer superannuation contribution of 17%. Assistance with relocation costs and generous laboratory set-up funds may also be negotiated. Continuing, full-time appointment at Senior Lecturer (Academic Level C).

**Contact:** Ms Susan Sellar, facsimile +61-7-3365-1613, email [s.sellar@mailbox.uq.edu.au](mailto:s.sellar@mailbox.uq.edu.au). Contact Professor David Adams, Head of School, telephone +61-7-3365-2905, facsimile +61-7-3365-1766, email [d.adams@mailbox.uq.edu.au](mailto:d.adams@mailbox.uq.edu.au) to discuss the role further.

**Applications close:** 29 July 2002.

**Reference No:** 1049913.

The University is an equal opportunity employer.

### How to apply:

- visit [www.jobsatUQ.net](http://www.jobsatUQ.net) to obtain a copy of the position description and selection criteria
- include a covering letter, curriculum vitae and statement addressing the selection criteria

University Provider Number 00029B

**WORLD CLASS  
BE PART OF IT**



**THE UNIVERSITY  
OF QUEENSLAND**



## POSITIONS OPEN

### BIOLOGY OF INFECTIOUS DISEASES.

Tenure-track ASSISTANT PROFESSOR position to begin January 1, 2003, or later. The focus of this new position will be the study of host-pathogen interactions. The suitable candidate will interact with multiple investigators studying host-pathogen interactions in wild vertebrate populations. Establishment of a productive, independent research program and direction of graduate students are expected. Will instruct an undergraduate course in biology of infectious diseases and participate in a team-taught introductory biology course. An additional graduate course in the candidate's area of interest will be expected in the future. Ph.D. required and postdoctoral experience desirable. This position may be offered as a postdoctoral position with an earlier start date, depending on the availability of suitable candidates. For additional information about our department, consult website: <http://www.und.edu/dept/biology/jobs.html>. Send curriculum vitae, statements of teaching and research interests, three representative reprints, a list of relevant coursework, and have three letters of reference sent to: **Chair, Infectious Disease Search Committee, Department of Biology, University of North Dakota, Grand Forks, ND 58202-9019**. Review of applications will begin August 30, 2002, and will continue until the position is filled. UND is an Affirmative Action, Equal Opportunity Employer.

### POSTDOCTORAL POSITION

Department of Pathology and Laboratory Medicine

Emory University School of Medicine

An NIH-funded Postdoctoral position available to study the intracellular signaling initiated by angiotensin II. Angiotensin II is a peptide that acts to raise blood pressure through several different physiological mechanisms (vasoconstriction, aldosterone release, salt reabsorption, etc.). These different responses are triggered by binding to the seven transmembrane AT<sub>1</sub> receptor. This position is to study angiotensin II activation of the Jak-STAT signaling pathway (JBC 276: 10556, 2001; JBC 276:20954, 2001). In particular, we are interested in the biochemistry and physiology of Jak2 kinase activation by the seven transmembrane AT<sub>1</sub> receptor. This is a strong project for someone with experience in the biochemistry, physiology, or cell biology of cell signaling. Reply to: **Ken Bernstein, Room 7109 WMB, Department of Pathology, Emory University, Atlanta, GA 30322**.

Emory is an Equal Opportunity/Affirmative Action Employer.

### ASSISTANT/ASSOCIATE PROFESSOR (Tenure track)

Comparative Biomedical Sciences

Required qualifications: Ph.D. or equivalent degree in biological/biomedical sciences or related field, postdoctoral experience, research background in cell/molecular biology, ability to teach in a team-taught course in the professional curriculum, and have or will have extramural funding. Responsibilities: Establishes and maintains an extramurally funded research program and teaches in the professional curriculum and in a graduate course. Salary and rank will be commensurate with qualifications. Application deadline is August 1, 2002, or until candidate is selected. Submit letter of application and résumé to:

**Gary E. Wise, Ph.D.**  
Professor and Head

Comparative Biomedical Sciences  
Reference Number 000638  
Baton Rouge, LA 70803  
Telephone: 225-578-9889

LSU is an Equal Opportunity/Equal Access Employer.

**POSTDOCTORAL or RESEARCH ASSOCIATE POSITION** is available to study signal transduction pathways that control aging in *Saccharomyces cerevisiae*. Expertise in cell biology or signal transduction is essential. Send résumé with names of three references to: **Robert Dickson, Department of Biochemistry, University of Kentucky, Lexington, KY 40536**. E-mail: [bohd@uky.edu](mailto:bohd@uky.edu).

## POSITIONS OPEN

### NIH 2002 = [OPPORTUNITY]<sup>N</sup>

Train at the bench, the bedside, or both. The NIH offers **POSTDOCTORAL and CLINICAL FELLOWSHIPS** as well as tenure-track positions.

For details, visit our website:  
[www.training.nih.gov](http://www.training.nih.gov)

NIH is dedicated to building a diverse community in its training and employment programs.

### POSTDOCTORAL FELLOW/RESEARCH ASSOCIATE.

Available immediately to join a collaborative effort of Memorial Sloan-Kettering Cancer Center and Cornell Medical College. Individual will elucidate the mechanisms underlying carcinogenesis with the goal of developing targeted therapeutics. This will be accomplished using both *in vitro* and *in vivo* models of head and neck cancer. The qualified candidate will possess a Ph.D. in biochemistry, pharmacology, or related discipline. Individuals with expertise in molecular and biochemical techniques are preferred. Other attributes include hands-on expertise working with *in vivo* models of cancer. Salary and position title are based on academic achievements and experience. To apply, FAX or send résumé to: **Andrew J. Dannenberg, M.D., c/o Sally Oh, Weill Medical College of Cornell University, Department of Medicine, Room F-206, 525 East 68th Street, New York, NY 10021**. FAX: 212-746-4885.

### POSTDOCTORAL FELLOWSHIP IN IMMUNOLOGY.

A position is available for a Research Fellowship to study the role of proteases in dendritic cell (DC) trafficking and antigen presentation by MHC Class II. The research will focus on aspects of cysteine proteases and immunity: elucidation of how differential expression of proteases by murine DC subsets influences CD4<sup>+</sup> T cell response, mechanisms by which protease expression leads to loss of epithelial cell attachment by DC important to migration, and the role of specific proteases in allergen-induced T cell responses by human DC. The laboratory has established assays of immunity and DC migration, and the appropriate gene-targeted mice, to pursue these experiments both *in vitro* and *in vivo*. The fellow will be fully integrated into the didactic and collaborative opportunities of the Immunology Program at the University of California at San Francisco. Send curriculum vitae to: **Hal Chapman; e-mail: [halchap@itsa.ucsf.edu](mailto:halchap@itsa.ucsf.edu)**.

### POSTDOCTORAL POSITIONS

Two Postdoctoral positions are available to study the G-protein coupled receptor and signal transduction mechanisms in cardiovascular diseases such as hypertension and hypertrophy. This project is funded by Canadian Institute of Health Research. Preference will be given to candidates who have recent Ph.D. and experience in the techniques of modern biochemistry including molecular biology. This position is available for a period of two to three years. Send curriculum vitae and the names of three references to: **Dr. Madhu B. Anand-Srivastava, Professor Department of Physiology, University of Montreal, C.P. 6128, Succ. Centre-ville, Montreal, Quebec, H3C 3J7 Canada**. E-mail: [anandsrm@physio.umontreal.ca](mailto:anandsrm@physio.umontreal.ca).

**POSTDOCTORAL POSITIONS** available immediately to study structure and signaling mechanism of guanylate cyclase-coupled transmembrane receptors. Studies will involve combinations of biochemistry, molecular biology, biophysics, and structural biology. One position requires experience in protein expression and purification, and the other in renal or cardiovascular physiology. Projects are funded by grants from NIH, AHA, and industry. Please send curriculum vitae and names of references to: **Dr. Kunio Misono, Lerner Research Institute, NB50, Cleveland Clinic Foundation, 9500 Euclid Avenue, Cleveland, OH 44195**. FAX: 216-444-9263. E-mail: [misonok@ccf.org](mailto:misonok@ccf.org).

## POSITIONS OPEN

### RESEARCH FELLOW MEMORIAL SLOAN-KETTERING CANCER CENTER

The Best Cancer Care. Anywhere.  
Proteomics of the Human Transcriptional Machinery

The Protein Center division of Memorial Sloan-Kettering Cancer Center has established a Targeted Proteomics program for systematic profiling of protein interactions and modifications in multi-subunit complexes that control transcription in human cells. The Center is internationally renowned for protein discovery and supported by NCI Technology Development Funds, with an emphasis on protein nanocapture, display, identification, and molecular databasing. Mass spectrometric, computing, and engineering facilities are available.

We are looking for a **MOLECULAR BIOLOGIST** to assist in development of the project and to subsequently generate proteomic catalogs. The successful candidate will have a Ph.D./M.D. degree and a background in several of the following: study of transcriptional regulation, creating stable cell lines with tagged proteins, general immunocytochemistry, affinity capture, and microsample handling. Basic knowledge of current protein analytical chemistry is a plus; instruction in mass spectrometry will be provided as necessary. Genuine interest in the biology of the project and a high level of collaborative work are demanded.

Please send inquiries, curriculum vitae, research summary and names of three references to: **Paul Tempst, Ph.D., Professor of Molecular Biology and Director, Protein Center, Memorial Sloan-Kettering Cancer Center, 1275 York Avenue, New York, NY 10021**. E-mail: [p-tempst@mskcc.org](mailto:p-tempst@mskcc.org). Websites: <http://www.mskcc.org/> and <http://www.ski.edu>. Memorial Sloan-Kettering Cancer Center is an Equal Opportunity Employer. Smoke-free environment.

### X-RAY CRYSTALLOGRAPHER Faculty Position

The University of Maryland Greenebaum Cancer Center and the Department of Biochemistry and Molecular Biology within the University of Maryland, Baltimore, School of Medicine seek a qualified candidate with expertise in the area of X-ray crystallography for a full-time, tenure-track appointment at the level of Assistant Professor. The position will complement the rapidly growing research focus in structural biology that is ongoing within the University Schools of Medicine and Pharmacy. Applicants should have a Ph.D. in an appropriate biological or chemical science with a minimum of three years of postdoctoral experience. The research interest of the candidate will be focused in the area of the molecular mechanisms of cancer and drug discovery. An extensive background in biomolecular crystallography, with the potential for strong interaction with The Cancer Center's research programs in molecular and structural biology, prostate and aerodigestive cancer, and experimental therapeutics is required. The successful candidate will be expected to establish an independent and innovative research program and contribute to teaching at both the professional and graduate levels. Review of applications will begin in September and will continue until the position is filled. Please submit a letter of intent, curriculum vitae, statement of research and teaching objectives, and addresses of at least three references to:

**Dr. Peter W. Melera, Chair  
Crystallography Search Committee  
Department of Biochemistry and  
Molecular Biology**

University of Maryland School of Medicine  
108 North Greene Street  
Baltimore, MD 21201-1180

The University of Maryland is an Affirmative Action/Equal Opportunity/ADA Employer. Minorities and Women are encouraged to apply.



**Genetic Epidemiology**  
**Tenure-Track Investigator**  
**Mood and Anxiety Disorders Program**  
**National Institute of Mental Health**  
**Bethesda, MD, USA**

The Section on Developmental Genetic Epidemiology, Experimental Therapeutics and Pathophysiology Branch in the Mood and Anxiety Disorders Program at the National Institute of Mental Health, Intramural Research Program, is recruiting a scientist for a tenure-track position to develop research in genetic epidemiology in a new cross-institute program in neurogenetics. The candidate will have the opportunity for collaboration with scientists in diverse research areas in genetics (i.e., genetic epidemiology, biostatistics, statistical genetics, molecular genetics), as well as neuroscience and relevant clinical disciplines. The candidate should have an M.D. or Ph.D. in (1) epidemiology; (2) genetic epidemiology; (3) human genetics; or (4) psychology. In addition, the applicant should demonstrate significant experience in the design, implementation and/or analysis of genetic epidemiologic studies of complex diseases. This position includes an attractive start-up package and operating budget in an exciting multidisciplinary research environment. Preference will be given to candidates with a background and interest in complex disorders, particularly neuropsychiatric disorders. Applicants should send a curriculum vitae, statement of research interests, and three letters of recommendation to Dr. Kathleen Merikangas (kathleen.merikangas@nih.gov), Search Committee, National Institute of Mental Health, 15 K North Drive, MSC#2670, Bethesda, MD 20892, by November 1, 2002.

NIH is an equal opportunity employer



**NATIONAL INSTITUTES OF HEALTH**  
**NATIONAL EYE INSTITUTE**

## Job Opportunities

The National Eye Institute Intramural Program at the NIH campus, Bethesda, MD., is seeking highly qualified Postdoctoral Fellows, Research Associates and Staff Scientists in the following areas:

- **Molecular Biology**
- **Cell Biology**
- **Immunology**
- **Psychophysics**
- **Biochemistry**
- **Genetics**

**Salaries range from \$30,800 to \$125,700 per annum, based on experience and type of appointment.**

NEI offers an extensive benefits package that you may be eligible for, depending on the appointment mechanisms: Health Benefits, Life Insurance, Retirement Benefits, Annual and Sick Leave, Formal Training Program, Recruitment Bonus, Retention Allowance, Relocation Allowance, Loan Repayment Program, and Travel Benefits.

Candidates interested in specific job opportunities at the NEI may visit the NEI web site at <http://www.nei.nih.gov/> listing the most current positions available.

**NIH/NEI is an Equal Opportunity Employer**



### Staff Clinician Position in Diabetes at NIH

The Diabetes Unit in the Laboratory of Clinical Investigation at the National Center for Complementary and Alternative Medicine (NCCAM), National Institutes of Health (NIH) is seeking a staff clinician to conduct patient-oriented research in the intramural program at the Clinical Center of NIH. Applicants must possess an M.D. degree, have a valid U.S. medical license, be board certified in Internal Medicine, and board certified/eligible in Endocrinology and Metabolism. Prior experience in clinical research and a strong publication record are essential. The successful applicant will write clinical research protocols and conduct patient-oriented research focused on understanding metabolic and vascular physiology and pathophysiology. This will include exploring areas relevant to complementary and alternative medicine approaches for the treatment of diabetes, obesity, and cardiovascular diseases using the extensive clinical research facilities of the NIH Clinical Center. Salary and benefits will be commensurate with experience.

NCCAM provides state-of-the-art research facilities in the intramural program at NIH in addition to a collegial and nurturing working environment. Please forward your CV, bibliography, list of three references, and a cover letter stating your scientific interests and experience to:

**Michael J. Quon, M.D., Ph.D.**  
**Chief, Diabetes Unit, LCI, NCCAM**  
**National Institutes of Health**  
**Building 10, Room 8C-218**  
**10 Center Drive MSC 1755**  
**Bethesda, Maryland 20892-1755**  
**Fax (301) 402-1679**  
**Email: quonm@nih.gov**

*NIH IS AN EQUAL OPPORTUNITY EMPLOYER*



**Statistical Genetics**  
**Tenure-Track Investigator**  
**Mood and Anxiety Disorders Program**  
**National Institute of Mental Health**  
**Bethesda, MD, USA**

The Section on Developmental Genetic Epidemiology, Experimental Therapeutics and Pathophysiology Branch in the Mood and Anxiety Disorders Program at the National Institute of Mental Health, Intramural Research Program is recruiting a scientist for a tenure-track position to develop research in statistical genetics in a new cross-institute program in neurogenetics. The candidate will have the opportunity for collaboration with scientists in diverse research areas in genetics (i.e., genetic epidemiology, biostatistics, statistical genetics, molecular genetics), as well as neuroscience and relevant clinical disciplines. The candidate is expected to have an M.D. or a Ph.D. in (1) biostatistics; (2) population or human genetics; or (3) genetic epidemiology. The applicant should have experience and interest in statistical analysis of genetic studies, and in developing new methods or adapting traditional statistical methods to identify the role of genes in the etiology of complex disorders. This position includes an attractive start-up package and operating budget in an exciting multidisciplinary research environment. Preference will be given to candidates with a background and interest in complex disorders, particularly neuropsychiatric disorders. Applicants should send a curriculum vitae, statement of research interests, and three letters of recommendation to Dr. Kathleen Merikangas (kathleen.merikangas@nih.gov), Search Committee, National Institutes of Health, 15 K North Drive, MSC#2670, Bethesda, MD 20892, by November 1, 2002.

NIH is an equal opportunity employer





### MICROBIOLOGY GROUP LEADER

The DOE Joint Genome Institute (JGI) was formed in 1997 as a partnership of several national laboratories with its main facility in Walnut Creek, CA (San Francisco Bay area). This laboratory has extensive sequencing capabilities—currently greater than 1000 million raw bases per month. High depth, draft genome sequences have already been completed for a basidiomycete fungus (*Phanerochaete*), a tunicate (*Ciona*), and a pufferfish (*Fugu*), plus scores of prokaryotes (see <http://www.jgi.doe.gov/>). Many other exciting projects are currently underway.

In addition, the JGI has established scientific groups in Computational Genomics, Functional Genomics, and Genome Diversity Studies. The JGI is now seeking to augment this with a significant program in Microbiology, and a Group Leader is being sought. This person will develop and lead a research initiative focusing on some aspects of bacterial genetics or the functional genomics of microbes, provide scientific guidance to the JGI regarding the biological applications of microbial genomic sequence, and represent the JGI in contacts with internal and external organizations and funding agencies.

Candidates for this position should have a PhD and/or MD in Microbiology, or a closely related discipline with equivalent experience. Significant research work beyond this degree is expected. A strong record of research accomplishment, scientific publication, and funding is essential. The candidate should demonstrate excellence in leadership and management of complex research efforts.

Those interested should send a letter of intent, CV, and the names of three professional references to Dee Catino, Human Resources Department, DOE Joint Genome Institute, 2800 Mitchell Drive, Walnut Creek, CA 94598. Reference Job #GN/014942/JS in your cover letter. This position will be functionally attached to the JGI, but the occupant will formally have an appointment at one of the three participating national laboratories: Lawrence Berkeley, Lawrence Livermore, and Los Alamos National Labs. We are an Equal Opportunity Employer with a commitment to workforce diversity.

### SUPERVISORY PLANT PATHOLOGIST or SUPERVISORY GENETICIST (Interdisciplinary)

The U.S. Department of Agriculture, Agricultural Research Service, National Clonal Germplasm Repository for Citrus and Dates located in Riverside, CA., invites applications for the position of Repository Leader, GS-13 (\$68,944 to \$89,624 per annum, salary commensurate with experience). The Repository Leader supervises the Repository staff and acts as advocate and spokesperson on assigned germplasm issues. The Repository Leader also conducts a personal research program in pathogen detection, pathogen elimination, pathogen tolerance and/or resistance, epidemiology, disease characterization; or in population genetics related to germplasm collection and maintenance. The Repository collections contain approximately 350 citrus accessions and are maintained in collaboration with the University of California Citrus Variety Collection to coordinate exploration, acquisition, preservation, evaluation, and distribution of plant germplasm. A Ph.D. or equivalent in Plant Pathology, Plant Genetics, or a closely related field is desired. This is a competitive, permanent appointment and U.S. Citizenship is required. Applications must be marked, **ARS-X2W-2370**. For specific application procedures and requirements, please call Ms. Veronica Cullum (510)559-6071; [vcullum@pw.ars.usda.gov](mailto:vcullum@pw.ars.usda.gov). You may obtain a copy of the vacancy announcement from Ms. Cullum or from the ARS Home Page (<http://www.ars.usda.gov/afm/hrd/resjobs/index.html>) under announcement ARS-X2W-2370. Applications must be postmarked by July 29, 2002. ARS is an Equal Opportunity Provider and Employer. Women and minorities are encouraged to apply.



### Research Scientists: Cell Adhesion — Angiogenesis Rochester, Minnesota

The Mayo Clinic Cancer Center, the Department of Medicine, and the Department of Biochemistry Molecular Biology announce openings for geneticists, and cell and molecular biologists at the Assistant, Associate, and Professor levels to study the molecular basis of cell adhesion, cell-cell contact, and angiogenesis. Qualified individuals are expected to initiate and maintain an outstanding, extramural-funded, research program in these fields as they apply to cancer or cardiovascular diseases. Requirements include evidence of an ability to obtain extramural funding and to work in a collaborative environment. Opportunities at Mayo include well-equipped core facilities, interaction with talented basic and clinical scientists with an outstanding track record in obtaining extramural federal funding, and access to a wide array of clinical material. Women and minorities are encouraged to apply.

Applicants should send a curriculum vitae and a statement of research interests by e-mail or mail to:

Ms. Kristi Simmons  
(Cancer Cell Biology Search)  
Mayo Clinic  
Guggenheim 1701  
200 First St. S.W.  
Rochester, MN 55905  
[simmons.kristi@mayo.edu](mailto:simmons.kristi@mayo.edu)

Mayo Foundation is an Equal Opportunity and Affirmative Action Employer and Educator.



### Chair, Department of Molecular Biology and Genetics The Johns Hopkins University School of Medicine

The Johns Hopkins University School of Medicine is seeking an eminent molecular biologist to chair the Department of Molecular Biology and Genetics. The Department of Molecular Biology and Genetics at Johns Hopkins is one of the leading molecular biology departments in the country and has a long history of scientific excellence. The new Chair will be the Boury Professor of Molecular Biology and Genetics and have the unique opportunity to lead this dynamic and interactive Department. In addition, the new Chair will participate in significant new research initiatives at the School of Medicine, including the recently formed Institutes of Basic Biomedical Sciences and Genetic Medicine. Applicants for the position should have demonstrated leadership qualities, administrative experience and outstanding abilities in research and teaching.

Please send letter of application, curriculum vitae and bibliography to:

Richard Lewis Haganir, Ph.D.  
Chair, Molecular Biology & Genetics Search Committee  
Johns Hopkins University, School of Medicine  
720 Rutland Avenue, Room 100 SOM  
Baltimore, MD 21205-2196

or by e-mail to [dlabuda@jhmi.edu](mailto:dlabuda@jhmi.edu)

Applications should be submitted by August 15, 2002.

An Affirmative Action/Equal Opportunity Employer



**Senior Scientist Position Available:  
Pre Clinical Support Service  
Experimental Transplantation and Immunology Branch,  
Center for Cancer Research, National Cancer Institute**

The Experimental Transplantation and Immunology Branch of the Center for Cancer Research, NCI, invites applications for a laboratory based Senior Scientist position to lead the Pre Clinical Support Service. Candidates must have a M.D. or Ph.D., and a strong record of accomplishment. This service will have the goal of facilitating the movement of laboratory findings to clinical application and to carry out investigations related to clinical efforts in the branch.

Successful candidates will join the Experimental Transplantation and Immunology Branch that includes in its membership basic science and clinical investigators carrying out studies in immunology, vaccine biology, gene transfer, angiogenesis, and stem cell transplant/immune therapies. The position provides full salary support, and the service has an assigned research budget and technician support.

Applicants should send curriculum vitae and statement of the candidate's proposed research program to:

**Dr. Giovanna Tosato  
Chairman, Search Committee  
c/o Jason M. Ford  
Experimental Transplantation and Immunology Branch  
National Cancer Institute  
Building 10, Room 12C110  
10 Center Drive, Bethesda, MD 20892-1906**

*The National Cancer Institute is an Equal Employment Opportunity and Affirmative Action employer that values and fosters diversity throughout the entire organization.*

All applications must be received by COB August 9, 2002.

## Chief, Scientific Computing Section (SCS)

**National Institutes of Health:  
National Institute of Arthritis and Musculoskeletal and Skin Diseases  
Intramural Research Program**

The National Institute of Arthritis and Musculoskeletal and Skin Diseases (NIAMS) is seeking an exceptional individual to establish and serve as **Chief of the Scientific Computing Section (SCS)** within the Intramural Research Program (IRP). The incumbent will provide expertise to support biomedical research activities within the IRP. Areas of current IRP focus include (1) statistical design and analysis of experiments utilizing the draft human genome sequence, SNPs, and gene expression profiling, (2) development of databases for clinical, genotype (i.e., SNP), and gene expression data, and (3) bioinformatics including implementing web accessible tools for querying and analyzing relevant databases. The incumbent will be responsible for providing overall SCS supervision and planning. Individuals within the SCS will collectively span the fields of bioinformatics, statistics, database technology and image analysis. Functions of SCS will include (1) assessing the scientific computing needs of the IRP scientists, (2) developing strategies and computational tools for meeting those research needs, (3) ensuring the availability of those resources to IRP scientists by providing training and by participating in joint research projects. Ideal candidates should have advanced degrees in computational biology, bioinformatics, and/or in other fields relevant to the objectives of SCS. Candidates should have several years of experience in bioinformatics research, experience in managing a research information technology organization and supervising a technical staff. A strong publication record and experience with various programming languages and operating systems is highly encouraged. Salary will be commensurate with the qualifications and experience of the candidate.

Applicants should submit their curriculum vitae, bibliography, a statement of career plans, and the names of three references to: Dr. Peter Lipsky c/o Lori Thompson  
NIAMS, HRMB  
Building 31, Room 4C13  
31 Center Drive, MSC 2350  
Bethesda, MD 20892  
E-mail: [ss403p@nih.gov](mailto:ss403p@nih.gov)  
Applications must be postmarked by September 4, 2002

**NIH is an Equal Opportunity Employer**



## MAYO CLINIC

**Research Scientist: Cardiac and Vascular Biology  
Rochester, Minnesota**

The Department of Biochemistry and Molecular Biology, and the Division of Cardiovascular disease at Mayo Clinic Rochester have joint positions open for a junior or senior scientist with research interests in vascular or cardiac biology. The individual should have an MD or PhD and research interest in the broad field of cardiac or vascular biology as it pertains to heart failure or arteriosclerosis and thrombosis. Particular interests in cardiac development, bio-molecules that alter-regulate cardiac function, endothelial cell biology, and smooth or cardiac muscle biology are useful. Requirements include evidence of an ability to obtain extramural funding and to work in a collaborative environment with scientists, clinician-investigators and clinicians. Opportunities at Mayo include interaction with talented basic and clinical scientists with an outstanding track record in obtaining extramural federal funding, a longstanding cardiovascular training grant, and access to a wide array of clinical material and a research community. Women and minorities are encouraged to apply.

Applicants should send a curriculum vitae and a statement of research interests by e-mail or mail to:

**Ms. Kristi Simmons  
(CV Search)  
Mayo Clinic  
Guggenheim 1701  
200 First St. S.W.  
Rochester, MN 55905  
[simmons.kristi@mayo.edu](mailto:simmons.kristi@mayo.edu)**

*Mayo Foundation is an Equal Opportunity and Affirmative Action  
Employer and Educator.*

### Tenure Track Position

The Craniofacial and Skeletal Diseases Branch in the National Institute of Dental and Craniofacial Research is seeking a cell and molecular biologist to fill a tenure-track position. The incumbent will be expected to develop and direct an outstanding research program in dental biology, including characterization of cells of teeth, bone and associated periodontal tissue in health and disease, and to pursue independent as well as collaborative studies using cutting edge technologies. The incumbent should have the capacity to supervise technical staff, to train post-doctoral and other scientific staff, and to interact in a productive manner with other principal investigators in the branch.

This position is associated with several centralized facilities, both in the branch and in the institute, and the appropriate space, technical and post doctoral fellowship support and sufficient budgetary support, as well as sufficient budget for supplies, animal costs and equipment will be made available. Salary will be commensurate with the experience and qualifications of the candidate. Time to tenure decision depends upon the selectee's accomplishments, not to exceed 5 years from the time of appointment.

Candidates should have a Ph.D., M.D., D.D.S. or D.M.D. degree, and have an outstanding record of research accomplishments as evidenced by publications in major peer-reviewed journals demonstrating a clear dedication to oral and craniofacial biology, and must be a U.S. citizen or permanent resident of the USA. For additional information concerning the position, contact **Ms. Esther Weiss at 301-496-6971** or by email at [weisse@email.nidcr.nih.gov](mailto:weisse@email.nidcr.nih.gov). For a description of the Craniofacial and Skeletal Diseases Branch, visit the <http://csdb.nidcr.nih.gov/csdb/> website. Interested parties should submit their curriculum vitae, a summary of past research and future plans, reprints of three scientific publications, and have three letters of reference sent directly to **Ms. Esther Weiss, NIDCR HRMB, Bldg. 31, Rm. 2C39, 31 Center Drive, MSC 2290, Bethesda, Maryland, 20892-2290** by July 31, 2002.

*NIH is an Equal Opportunity Employer*



Bioscience

## Activate your mind & innovate medicine.

Think of it, a place where you can use your mind to innovate human pharmaceuticals. That's the exciting drug discovery environment you'll find at Roche Bioscience. Our scientists are focused on medicines for the treatment of central nervous system and genitourinary disorders, arthritis, osteoporosis, and respiratory and viral diseases. Our cutting-edge technologies and instrumentation provide us the necessary elements to achieve success. Join us and innovate medicine.

### PRINCIPAL RESEARCH SCIENTIST

#### ARTHRITIS RESEARCH

Lead a dynamic group in the discovery of potential new targets and drug candidates for the treatment of musculoskeletal diseases, in particular rheumatoid and osteo-arthritis. Participating as a senior member in our Arthritis & Osteoporosis Therapeutic Area, you will provide scientific leadership and mentor multidisciplinary project teams. Requires a PhD or equivalent in Molecular and Cellular Biology or Pharmacology and 7+ years experience in the pharmaceutical industry demonstrating experience performing molecular and cellular assays related to signal transduction, inflammation and joint biology. Expert knowledge in kinase and nuclear hormone receptor biology preferred.

Located in Palo Alto, the heart of innovation, our park-like campus provides a wide array of employee services including an on-site fitness center. We also are pleased to offer a competitive compensation program with a generous vacation and holiday schedule, relocation assistance, plus retirement and pension plans. To apply, send your resume, indicating Job Code 2535-SCL, to [paloalto.hr\\_staffing@roche.com](mailto:paloalto.hr_staffing@roche.com). As an equal opportunity employer, we are committed to workforce diversity. Visit our website at <http://paloalto.roche.com>.

### Celmed BioSciences

**Scientist I - Cell Culture:** Perform a variety of laboratory procedures using established synthetic methods and techniques under the guidance of the Lab Director. Conducts experiments, some moderately complex, and interprets routine experimental data. Has experience with cell culture and stem cell manipulation, GLP standards and procedures, animal stereotaxic surgery and immunocytochemistry. Relies on instructions and pre-established guidelines to perform the functions of the job. Works under the immediate supervision of the Lab Director. Requires a Ph.D. in area of specialty and 0-2 years of experience in the field or in a related area or BSc/MSc with 10 years experience with stem cells and with the field of Neurobiology and Hematology.

**Scientist III:** Supervises associate scientists in daily operations as well as conducting research for purposes in diverse biological areas and against a variety of targets. Has strong experience with GLP standards and procedures, animal protocols, surgery, clinical trials co-investigation, stem cell manipulation, cell culture and molecular biology. Familiar with a variety of fields' concepts, practices and procedures, especially in the areas of animal protocol. Relies on extensive experience and judgement to plan and accomplish goals. May lead and direct the work of others as well as the development of new concepts and devices. A wide degree of creativity and latitude is expected. Requires a Ph.D. in their field of specialty and at least 6 years of experience with stem cells and with the field of Neurobiology and Hematology.

We would like to hire highly qualified scientists to fill these positions at our facility in Los Angeles. Please send resumes to e-mail: [gparent@celmedbio.com](mailto:gparent@celmedbio.com).

### Hutchison China

The China operations group of  
Hutchison Whampoa Limited



### CAREER OPPORTUNITIES IN SHANGHAI, CHINA

Hutchison Whampoa Limited (HWL) is a multinational conglomerate with close to 100,000 employees and a market capitalization of more than 36 billion US dollars. Hutchison Healthcare is a newly formed division under Hutchison Whampoa (China) Limited, a wholly owned subsidiary of HWL, with its focus on botanical drug development and other healthcare related business. Currently, the Company has openings in its Global R&D Center located in Shanghai, China.

**Discovery Biology, Director/Associate Director** — You will be responsible for leading the discovery biology efforts to discover novel herbal drug candidates by HTS screening and biological tests in various models.

**Discovery Pharmacology, Director/Associate Director** — You will be responsible for leading the pharmacological studies to evaluate, characterize, and file regulatory submissions for herbal drug candidates.

**Drug Metabolism, Director/Associate Director** — You will be responsible for leading PK/ADME studies for supporting R&D efforts.

**Bioinformatics/Herbalinformatics, Director/Associate Director** — You will be responsible for leading the identification and validation of novel drug target.

**Toxicology, Director/Associate Director** — You will be responsible for leading the toxicological studies for evaluating and regulatory submission of herbal drug candidates.

**Clinical R&D, Director/Associate Director** — You will be responsible for leading the global clinical research for company's drug candidates.

We also have senior positions in **Intellectual Property, Pharmaceutical R&D, Analytical R&D, Phytochemistry, Business Development**, please contact our Human Resources for detailed job descriptions. All directors and associate positions require a Ph.D. or equivalent degree with at least eight and five years' industrial experience, respectively in related field.

If you share our dedication to become the global leader in botanical drug development and enjoy the ever-growing healthcare industry in China, we want you to submit your CV by e-mail to [hr-china@hwcl.com.hk](mailto:hr-china@hwcl.com.hk) or fax to us on 852-2868 3583 or mail to the Human Resources Department of Hutchison Whampoa (China) Limited at Rm 2108, Hutchison House, 10 Harcourt Road, Central, Hong Kong.

**Saint Louis University**, a Catholic, Jesuit institution dedicated to education, research and healthcare, is seeking applicants for two NIH funded postdoctoral positions available immediately in the Department of Biochemistry & Molecular Biology at Saint Louis University School of Medicine to study the structure and function of coagulation proteases and their inhibitors. A Ph.D. degree in biology, biochemistry or in a related field with some background in routine molecular biology methods and/or enzyme kinetics is desired. A competitive salary and fringe benefits are offered.

Send curriculum vitae and the name of three references to:

**Dr. Ray Rezaie**  
Department of Biochemistry  
and Molecular Biology  
St. Louis University  
School of Medicine  
1402 S. Grand Blvd.  
St. Louis, MO 63104 USA  
E-mail: [rezaiear@slu.edu](mailto:rezaiear@slu.edu)  
Tel: 314-577-8130  
Fax: 314-577-8156

*Saint Louis University is an Affirmative Action, Equal Opportunity Employer, and encourages nominations of and applications of women and minorities.*



**CLINICAL PSYCHIATRIC INVESTIGATOR**  
Rochester, Minnesota

The MAYO CLINIC is pursuing a national search for an outstanding psychiatric investigator to join a research team that is developing an integrated program of clinical research focusing on mood disorders but involving a broad spectrum of additional psychiatric disorders. Expertise in psychiatric genetics and interest in genomic investigations is important given the development of the programmatic priorities of the Department and Clinic. Demonstrated competence in the initiation and conduct of clinical research and evidence of successful extramural funding support is essential.

New research facilities within the Department at the Mayo Clinic have been developed and support for research staff and operations is available. The compensation package at the Mayo Clinic is highly competitive and includes exceptional professional benefits. The successful candidate will also receive an academic appointment at the Mayo Medical School.

For further information, please send a detailed letter describing your research interests and a complete curriculum vitae by e-mail or traditional mail to:

**David A. Mrazek, M.D., F.R.C. Psych.**  
Professor and Chair  
Department of Psychiatry and Psychology  
Mayo Clinic  
200 First Street SW  
Rochester, MN 55905  
E-mail: [mrazek.david@mayo.edu](mailto:mrazek.david@mayo.edu)

*Mayo Foundation is an Affirmative Action and Equal Opportunity Employer and Educator.*

## Bridge the Gap Between Discovery and Clinical Testing

Access the National Cancer Institute's (NCI) vast resources free of charge to help move therapeutic agents for cancer to the clinic. The National Cancer Institute invites the submission of proposals to:

### Rapid Access to Intervention Development

#### RAID

RAID is not a grant program. Successful applicants instead will receive products or information generated by NCI contractors to aid the applicant's development of novel therapeutics towards clinical trial. The goal of RAID is the rapid movement of novel molecules and concepts from the laboratory to the clinic for proof-of-principle clinical trials. RAID will assist investigators by providing any (or all) of the preclinical development steps that may be obstacles to clinical translation. These may include, for example, production, bulk supply, GMP manufacturing, formulation and toxicology.

- The next deadline for receipt of applications is August 1, 2002
- Further information about this program can be found at: <http://dtp.nci.nih.gov>
- Inquiries can be made to the RAID Program Coordinator by telephone at 301-496-8720 or by e-mail a [RAID@dtpax2.ncicrf.gov](mailto:RAID@dtpax2.ncicrf.gov)

**RAID**  
Developmental Therapeutics Program  
National Cancer Institute  
6130 Executive Blvd., RM 8024  
Rockville, MD 20852  
Tel: 301-496-8720; Fax: 301-402-0831  
[raid@dtpax2.ncicrf.gov](mailto:raid@dtpax2.ncicrf.gov)



## PARATEK PHARMACEUTICALS

Paratek Pharmaceuticals, Inc. is a growing pharmaceutical company dedicated to the synthesis and development of new antibiotics against drug-resistant pathogens. We offer competitive salaries, benefits, stock options and the opportunity and challenge of a start-up company expanding in a first class research environment.

We have an immediate opening for a highly motivated individual to participate in research efforts that will provide in vitro characterization and validation of novel therapeutic targets for the treatment of infectious diseases. Studies will be designed to identify and characterize bacterial genes and pathways suitable for high throughput assay development and anti-microbial compound screening. Candidate will be required to validate novel targets for drug discovery and handle multiple ongoing projects.

Requirements include a BS/MS/PhD in Microbiology, Biology, Molecular Biology, or a related field with 2 - 4 years of biotech/pharmaceutical experience. The ideal candidate will have a strong background in molecular biology and microbiology. First consideration will be given to those individuals with experience working with micro/macroarray experiments and data analysis. Experience in the evaluation of antimicrobial agents and drug resistance studies are highly desirable. Experience working with a variety of screening formats is desirable, as is work with protein expression, protein purification and enzyme assays.

Send resumes to:

**Human Resources**  
Paratek Pharmaceuticals  
75 Kneeland Street  
Boston, MA 02111  
Email: [hr@paratekpharm.com](mailto:hr@paratekpharm.com)  
fax: 617/275-0039  
[www.paratekpharm.com](http://www.paratekpharm.com)

### THE QUEEN'S MEDICAL CENTER, Honolulu, Hawaii ASSISTANT/ASSOCIATE DIRECTOR OF RESEARCH

The Queen's Medical Center, located in Honolulu, Hawaii is seeking a qualified Assistant/Associate Director of Research.

This position will supervise the research division; trains, mentors and evaluates research team. Serves as an Investigator on research projects and grants. Responsible for the administrative operations of research areas including grants proposals, oversight of budget and finances and other research expenditures. Collaborates with Principal Investigators, IRB members and others involved with human subject ethics; ensures compliance with grants management and regulatory agencies.

Establishes and implements clinical research activities and goals tied to the mission/vision/goals of the department and QMC. Conducts research in area as assigned and disseminates research findings in peer-reviewed journal articles. For more information about The Queen's Medical Center, you are welcomed to visit our website at [www.queens.org](http://www.queens.org).

The qualified applicant should have a Ph.D. in natural, health or social science. Candidate will have a strong knowledge of grants management, budget preparation and regulatory requirements. Should have prior experience building and maintaining a clinical research team within an organization. Extensive experience in preparing, writing and submitting clinical research grants as the primary author/Principal Investigator of NIH projects. Prior experience as an Investigator or Co-Investigator is required. Qualified candidate should also have progressive management/supervisory experience.

Qualified applicants should include a current curriculum vitae, a list of references and a cover letter to include relevant experience and qualifications. Please submit applications to: **Diane Thompson, MD, Director, Clinical Research, The Queen's Medical Center, 1301 Punchbowl Street, Honolulu, Hawaii 96813. Phone: (808) 537-7180; fax: (808) 586-3044. E-mail: [dthompson@queens.org](mailto:dthompson@queens.org)**. Screening of applications will begin immediately, and will continue until the position is filled.

AA/EOE

## GRANTS

# Creating the future of biotech—Together

**Invitrogen's Research Tools Development Grants Program** provides funding for investigators developing innovative tools for use in life science research. Total funding is US\$5 million per year, with annual individual awards of up to US\$100,000. Grants are provided quarterly.

Third quarter 2002 funding is for novel approaches in the **separation and purification** of biomolecules. Proposals to develop enrichment, fractionation and labeling technologies are also of interest. Deadline for full Grant Proposals is September 1. A preproposal is required. For more information, visit [www.invitrogen.com](http://www.invitrogen.com), e-mail [grants@invitrogen.com](mailto:grants@invitrogen.com), or call 800 955 6288, ext. 66140.

1600 Faraday Ave., Carlsbad, CA 92008 USA  
P: 760 476 6140 F: 760 602 6563  
[www.invitrogen.com](http://www.invitrogen.com)



## AWARDS



### New Funding Opportunities FOR PROSTATE CANCER RESEARCH

CaP CURE, The Association for the Cure of Cancer of the Prostate is a public charity with a single mission: **to eradicate prostate cancer as a health risk to men and their families.** CaP CURE will now modify its research funding strategy to focus greater resources on programs that promise high levels of multidisciplinary intra- and inter-institutional collaboration.

We are now funding two new types of research awards:

- 1. Expanded Competitive Award.** Proposals will be entertained for highly novel prostate cancer research programs with an expanded scope. Applicants should consider multi-disciplinary approaches involving significant intra- and inter-institutional collaboration. We will not fund programs that are simple extensions of work in progress. The successful applicant will propose a highly coordinated research program with potential for near term translation to the clinic or immediate clinical application. These awards are for one year and will be budgeted up to \$500,000 each. Deadline for submission will be October 25th, 2002.
- 2. Donald S. Coffey-CaP CURE Physician-Scientist Award.** This new program replaces the CaP CURE Young Investigator Award and reflects forward integration of our programs toward patient care. The successful candidate will maintain a clinical practice caring for prostate cancer patients and an active, recognized prostate cancer research program based in the clinic or laboratory. These awards will provide support for three years at the rate of \$50,000 per year. Deadline for submission will be June 1st, 2003.

Instructions for submission of these applications may be found at [www.capcure.org](http://www.capcure.org). For additional information contact **Dr. Howard Soule** at [capcuregrants@capcure.org](mailto:capcuregrants@capcure.org).

## LSRO

The Life Sciences Research Office announces an ongoing project to evaluate the relative risk of non-tobacco ingredients added to cigarettes and solicits input from the scientific community to help guide the process.

### Open Meeting on the Relative Risk of Non-Tobacco Ingredients Added to Cigarettes

**August 26, 2002  
Hyatt Regency Hotel  
Bethesda, MD**

This study is evaluating the relative health risks of ingredients (other than tobacco) in cigarettes. The study is based on the known health risks of smoking cigarettes and on the assumption that, short of avoidance or cessation, there is no effective way of eliminating those risks. In conjunction with an Expert Panel, the LSRO is reviewing the scientific evidence to address the following issues:

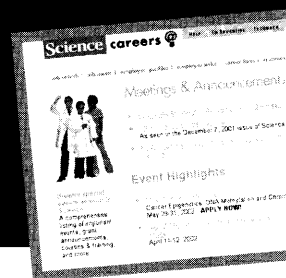
- Whether it is feasible to pursue the development of review criteria.
- Whether a meaningful estimate of relative health risk can be ascertained for ingredients (other than tobacco) used in the production of cigarettes.
- What are the appropriate criteria for such a review?

**Submission instructions:** You may submit comments addressing the issues listed above either by oral presentation at the open meeting and/or by sending written comments to the LSRO. Detailed instructions for submission of comments may be obtained from our web site or by contacting LSRO (see below). Comments received after September 15, 2002, not addressing the specific subject, or not complying with the instructions will not receive consideration by the Expert Panel.

**Registration information:** For more information about submission of comments and to obtain registration information for the meeting visit our web site: [www.lsro.org](http://www.lsro.org) or contact us at **301-530-7030** or via Email at [AIRC@lsro.org](mailto:AIRC@lsro.org). Space is limited, registering before August 5, 2002 is highly recommended.

[www.lsro.org](http://www.lsro.org)

## The Science Meetings & Announcements Database



**A comprehensive listing of events, grant announcements, courses & training, and more... in print and online.**

When you run your ad in *Science*, it is automatically posted in the Meetings & Announcements database at [Sciencemeetings.org](http://Sciencemeetings.org). This online posting receives a free hyperlink to any e-mail or web address. The Meetings & Announcements page is searchable by keyword, discipline, geographic region, or category/subject. It doesn't get any easier.

### Is your event listed?

In the U.S. call Kathleen Clark at 202-326-6555

In Europe ring Richard Walters on +44 (0) 1223 326 500

**Science @**  
[www.sciencemeetings.org](http://www.sciencemeetings.org)





## POSITIONS OPEN

### POSTDOCTORAL FELLOWSHIPS LEUKEMIA BIOLOGY AND THERAPEUTICS

#### Department of Pediatrics

Exciting opportunities for M.D./Ph.D./D.V.M. Scientists to join a new laboratory in cytokine receptor signaling at M.D. Anderson. Preference will be given to those with experience in transgenic mice models, stem cell biology, viral gene delivery, and RACE-PCR. M.D. Anderson is one of the world's outstanding cancer centers with the busiest leukemia service. Houston offers a wide range of ethnic and cultural attractions with a low cost-of-living.

Candidates should send letter of career interests, past experience, and résumé with names of references to: **Seth Corey, M.D., Section Chief, Pediatric Leukemia, M.D. Anderson Cancer Center, 1515 Holcombe Boulevard, Houston, TX 77030. E-mail: coreylab@yahoo.com. Website: http://www.pitt.edu/~scorey.**

*Equal Opportunity Employer/Smoke-Free Environment.*

A **POSTDOCTORAL POSITION** is immediately available to study epithelial physiology *in vitro* and *in vivo*. The position requires a person with training in physiology, biophysics, or bioengineering. Experience in imaging, animal models, histology, cell culture, or molecular biology is also desirable. Interested candidates should send (e-mail or FAX) their curriculum vitae and contact information (e-mail and telephone number) for three references to: **Dr. Sheldon Miller, Vision Science Graduate Program and Department of Molecular and Cell Biology, 360 Minor Hall, University of California, Berkeley, CA 94720-2020. FAX: 425-952-0627; e-mail: smiller@socrates.berkeley.edu; website: http://vision.berkeley.edu/VSP/SSM/.**

**POSTDOCTORAL POSITION** is available to study molecular pathways involved in breast cancer initiation and progression (**laboratory website: http://research.dfci.harvard.edu/polyaklab**). Strong background in molecular biology and cancer genetics is required. Please send letter of interest, curriculum vitae, and three references to: **Kornelia Polyak, M.D., Ph.D., Assistant Professor of Medicine, Dana-Farber Cancer Institute, 44 Binney Street, D740C, Boston, MA 02115. E-mail: Kornelia.Polyak@dfci.harvard.edu. Equal Opportunity Employer.**

### POSTDOCTORAL POSITIONS Viral Immune Evasion Oregon Health Sciences University

Two Postdoctoral positions are available to study the molecular mechanisms and the *in vivo* biological consequences of immune evasion genes of murine cytomegalovirus. A background in immunology, virology, molecular biology, BAC manipulation, or cell biology would be useful. Please apply to **Ann Hill** by e-mail: **hillan@ohsu.edu**. More information is available at **website: http://www.ohsu.edu/hr/.**

**POSTDOCTORAL POSITION** available to join our NIH- and NSF-funded projects on elucidating the ATP controlled electron transfer and substrate binding in the metalloenzyme nitrogenase. See the **website: http://www.chem.usu.edu/faculty/seefeldt**. Send curriculum vitae and names of three references to: **Professor Lance C. Seefeldt, Department of Chemistry and Biochemistry, 0300 Old Main Hill, Utah State University, Logan, UT 84322. Utah State University is an Affirmative Action/Equal Opportunity Employer.**

Two **POSTDOCTORAL POSITIONS** are available to study oxidative/nitrosative signaling mechanisms in apoptosis using combined molecular biological, biochemical, and chemical approaches. Candidates with interests/experience in free radical/cell biology are preferred. Send curriculum vitae and names of references to: **Dr. Valerian E. Kagan, Department of Environmental Health, University of Pittsburgh, 3343 Forbes Avenue, Pittsburgh, PA 15260. E-mail: kagan@pitt.edu.**

## POSITIONS OPEN

### POSTDOCTORAL POSITION

#### Immunogenetics and Cellular Immunology

Postdoctoral positions are available immediately in the Division of Immunogenetics, Department of Pathology, University of California, Los Angeles. Investigational projects involve the study of mechanisms causing allograft rejection and transplant arteriosclerosis. Specific areas of investigation include *in vitro* and *in vivo* characterization of class I mediated alterations in endothelium and smooth muscle and analysis of intracellular signaling pathways, *in vitro* characterization and regulation of T cell alloreactivity to MHC class I and class II antigens, and development of novel immunoassays to monitor the immune status of the patient following transplantation. Candidates should have a recent Ph.D. degree in Immunology, Cell Biology, or a related discipline with a background in cell culture, molecular biology and biochemistry preferred. Please forward curriculum vitae, statement of research interest, and names of three references to: **Dr. Elaine Reed, Professor, Department of Pathology, UCLA School of Medicine, 1000 Veteran Avenue, Los Angeles, CA 90095. E-mail: ereed@mednet.ucla.edu; FAX: 310-206-3216. UCLA is an Equal Opportunity/Affirmative Action Employer.**

### POSTDOCTORAL FELLOWSHIP IN MOLECULAR VIROLOGY

Positions are available to study the molecular biology of Epstein-Barr Virus latency and gene expression. Two positions are available: (1) regulation of plasmid maintenance and DNA replication by the interaction of EBNA1 with OriP, and the role of telomeric proteins and poly ADP-ribosylation on EBV plasmid maintenance (**Deng et al., Mol. Cell. 9, 2002**), and (2) characterization of the B-cell signaling and immediate early transcription induction upon viral reactivation from latency (**Mol. Cell. Biol. 21:476; J. Virol. 75:10334**). Applicants should send curriculum vitae and the names of three references to: **Paul M. Lieberman, The Wistar Institute, 3601 Spruce Street, Philadelphia, PA, 19104-4295. Or by e-mail: lieberman@wistar.upenn.edu.**

## FELLOWSHIPS

### THE RADCLIFFE INSTITUTE FOR ADVANCED STUDY at Harvard University

The Radcliffe Institute for Advanced Study at Harvard University awards about 40 fully-funded **FELLOWSHIPS** each year. Radcliffe Institute fellowships are designed to support scholars, Scientists, artists, and writers of exceptional promise and demonstrated accomplishment who wish to pursue work in academic and professional fields and in the creative arts. Applicants must have received their doctorate or appropriate terminal degree at least two years prior to appointment or comparable professional achievement in the area of the proposed project. Radcliffe welcomes proposals from small groups of scholars who have research interests or projects in common. Please check the website for more information.

The stipend amount is \$50,000. Fellows receive office space and access to libraries and other resources of Harvard University. Residence in the Boston area and participation in the Institute community are required during the fellowship year, which extends from September 8, 2003, through June 14, 2004. Fellows are expected to present their work-in-progress and to attend other fellows' events.

For more information, visit our **website: http://www.radcliffe.edu**. Write, call, or e-mail for an application:

**Radcliffe Application Office  
34 Concord Avenue  
Cambridge, MA 02138  
Telephone: 617-496-1324  
FAX: 617-495-8136**

**E-mail: fellowships@radcliffe.edu**

Applications must be postmarked by October 1, 2002.

## GLOBAL OPPORTUNITIES

### TENURE-TRACK FACULTY POSITIONS

at Ben-Gurion University (BGU). The Life Sciences Department (**website: http://www.bgu.ac.il/life**) invites applications from outstanding young Scientists for two tenure-track positions in biology with preference in molecular and cell/developmental biology. BGU is a dynamic research environment with an emphasis on interdisciplinary research. We offer new laboratory space with state-of-the-art equipment and start-up funding. The applicant will teach undergraduate/graduate courses in Hebrew and supervise research students. Send applications (curriculum vitae, publications, research interests, and the names of three references) to:

**Professor V. Shoshan-Barmatz, Chair  
Department of Life Sciences  
Ben-Gurion University  
P.O. Box 653, Beer-Sheva 84105 Israel  
E-mail: vardasb@bgumail.bgu.ac.il**

## GRANTS

### REQUEST FOR RESEARCH GRANT APPLICATIONS

The Wound Biotechnology Foundation is accepting research grant applications for US organizations. This year's theme is "Signal Transduction Aspects of Tissue Repair."

An award of \$20,000 will be made on a competitive basis. No indirect costs will be permitted. The application should consist of no more than a total of 10 pages describing the following: hypothesis, specific aims, experimental design, budget, and references. Curricula vitae are required for all individuals involved in the project. Deadline for submission is August 1, 2002. Applications should be sent to **e-mail: foundation@woundbiotechnology.com**.

## MARKETPLACE

### BOOST CELL ATTACHMENT SURVIVAL RATE FROM 5% TO 95%!

*Speed cell attachment and increase viability of mammalian cell lines.*

Protein-based coating mix  
now available for distribution  
beyond select universities  
and manufacturers.

More information at  
**www.athenaes.com/fnc.htm**  
or call AthenaES™  
at 1-888-892-8408



### Need Abs.?

- Over 30 Years Experience
- Unlimited Capacity
- USDA/NIH/OPRR Assured
- Custom Antibody Production
- Services From \$350
- Apoptosis, p53, HIV, Neurobiology
- Immunology, Signal Transduction

**www.prosci-inc.com**

### Vapor Pressure Osmometer

**The preferred method of  
measuring the osmolality  
of any biological fluid.**  
**WESCOR, INC. 1-800 453-2725**

## PROTEIN ONE

*Proteins for Drug Discovery*

**Now Available • Customized and In-Stock**

**TRANSCRIPTION FACTORS & CANCER  
RELATED PROTEINS**

**www.ProteinOne.com**

Tel: (301) 314-6594

Fax: (301) 314-6588

MARKETPLACE



**MORE PRODUCTS  
ON PREVIOUS PAGE**

## Custom

*Peptides & Antibodies*

- Experts in Antigen Design
- Phosphopeptides
- Phosphospecific Antibodies

**1 800 435 2080**

e-mail:  
peptide@biosource.com



## ANTISENSE

- Complete Proven Antisense Program
- Low Toxicity, 2nd Generation Oligomers



**SEQUITUR**

**888-923-1459**  
www.ologo.com

## rtQ-PCR FRET PROBES

- Black Hole Quencher™ dyes
- 3', 5' or internal modifications
- Top Quality • Best Pricing • Great Support

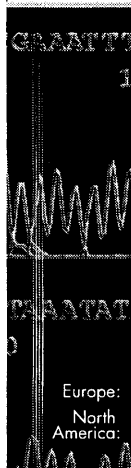


**BIOSEARCH  
TECHNOLOGIES**  
Chemistry for Genomics™

**1.415.883.8400**  
www.bioserachtech.com

## QIAGEN Genomic Services

- Accurate SNP genotyping
- SNP discovery and verification
- High-quality DNA sequencing
- Genomic DNA isolation



Europe: +49-2103-29-12400  
North America: 800-426-8157  
www.qiagenomics.com

## Support Your Research with

• High Quality Labeled  
• High Quality Dark Quenchers  
• High Quality Dyes Available

www.iddna.com  
1-800-320-3661

MARKETPLACE

## Custom Peptides & Antibodies

**Best Service & Price! Compare and Save!**

**Alpha Diagnostic (800) 786-5777**

Fax (210) 561-9544; info@4adi.com

Web site: http://www.4adi.com

## QUALITY DNA SYNTHESIS

MALDI-TOF Mass Spectrometry Quality Control

Check our new prices  
and order at  
our new website.

**www.ologos.com**

**MIDLAND**

MIDLAND CERTIFIED REAGENT COMPANY, INC.

Phone: 800.247.8766 • Fax: 800.359.5789  
email: orders@ologos.com

## Quality Peptides & Antisera

Friendly, Personal Service  
www.genosys.com

### Custom Peptide Synthesis

- sequence analysis
- IG, >70%, >80%, >95% purity
- scales from 2 mg-1 g
- synthesis up to 120 residues
- variety of modifications available
- mass spec & HPLC on every peptide
- satisfaction guaranteed

### Polyclonal Antisera Service

- antigen design assistance
- synthesis, conjugation and sera collection
- rabbits, chickens, sheep & goats available
- flexible protocol
- phospho-specific antibody production

**SIGMA  
GENOSYS**

North America  
1-888-663-3693  
ginformation@sial.com

Europe  
(+44) (0) 1223 839000  
info@sigma-genosys.co.uk

## CUSTOM MICROARRAYS

RELIABLE FAST ACCURATE

**MICROARRAYS, INC.**  
(615) 327-5495  
www.microarrays.com



Widely  
Recognized  
Original &  
Guaranteed

**KlenTaq1**

8¢/u  
Truncated  
Taq DNA  
Polymerase  
Withstand 99°C

US Pat # 5,436,149

Call: **Ab Peptides** 1-800-383-3362  
Fax: 314-968-8988 **www.abpeps.com**

MARKETPLACE

Ⓢ Bio•Synthesis, Inc. 1-800-227-0627

## Quality Custom Synthesis

- Peptides
- Antibodies
- Bioconjugates
- Organic Synthesis
- DNA
- Molecular Beacons

www.biosyn.com

sales@biosyn.com

## 3 O.D. Select Oligos

## NEW LOW PRICE

**Just \$0.45/base\***

We'll ship your 3 O.D. Select oligos in just 24-48 hours. Every oligo is QC'd by PAGE analysis, and each batch is performance-tested by mass spec.

Order by fax: 281-363-2212, email: gorderentry@sial.com or web: www.genosys.com.

\*Desalted only Oligos must be 10 to 35 bases in length. No modifications or additional purification. Offer valid in U.S. only.

**SIGMA  
GENOSYS**

North America: 1-877-710-1504 • email: ginformation@sial.com

## CUSTOM PEPTIDES

**QUICK QUOTE**  
MOST QUOTES IN AN HOUR

**FAST DELIVERY**  
2 WEEKS FOR MOST ORDERS  
100% SATISFACTION GUARANTEED

**...MADE EASY!**  
**NEW ENGLAND  
PEPTIDE, INC.**  
Tel: 888-343-5974

Fax: 978-343-5940 www.newenglandpeptide.com

## ViraQuest Inc.

Custom Adenovirus Services

Sub-cloning, Recombination,  
Amplification, Purification, Titering

**www.viraquest.com**

North Liberty, IA (319) 665-4190

## DNA

## PEPTIDES

Free Set-up and  
Desalting

Call and Compare

**Gene Synthesis, Site Mutagenesis,  
Protein Expression and more**

**COMPARE AND SAVE**

**DNA Sequencing:** as low as \$15 per run

**Custom Anti-peptide Antibody**  
(including peptide synthesis)

**\$850**

**GENEMED SYNTHESIS**

800.344.5337 Fax: 650.952.9540  
Web Site: www.genemedsyn.com

Making the Complex Achievable

**TransIT-TKO®**

## Deliver A Knock-Out

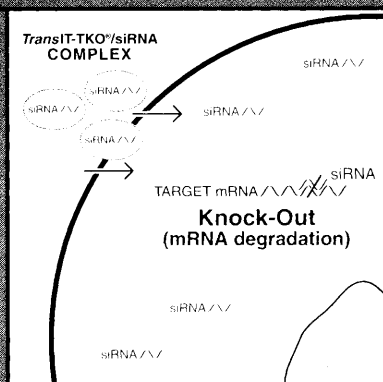
**siRNA  
Transfection**

### **TransIT-TKO® siRNA Transfection Reagent**

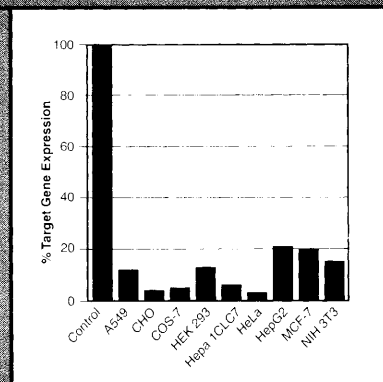
RNA interference is a powerful mechanism for silencing genes and has become the chosen method for studying gene function and control. Mirus' **TransIT-TKO®** Transfection Reagent is the first reagent specifically developed for optimal transfection of siRNA in mammalian cells and is used by researchers worldwide. Join the leaders in the field and use the "gold standard", **TransIT-TKO®** siRNA Transfection Reagent.

- **Optimized** - High efficiency transfection of siRNA for silencing endogenous genes and transgenes.
- **Versatile** - Low toxicity reagent proven to perform in a wide variety of cell lines.
- **Convenient** - One step reagent; add complexed **TransIT-TKO®** reagent and siRNA directly to cells in media.

Mirus specializes in developing and manufacturing state-of-the-art nucleic acid transfer and labeling technologies for use in biomedical research and drug discovery.



**TransIT-TKO®** delivers siRNA to the cytoplasm where it binds to the target mRNA. The target mRNA is degraded resulting in inhibition of mRNA translation.



Efficiency of knock-out using **TransIT-TKO®** Transfection Reagent with 5 nM anti-firefly luciferase siRNA in various cell lines.

Call Mirus today to request a free copy of Mirus' *Technical Report on TransIT-TKO®* Transfection Reagent.

888-530-0801  
[www.genetransfer.com](http://www.genetransfer.com)

**Mirus**

*Gene Transfer Specialists™*

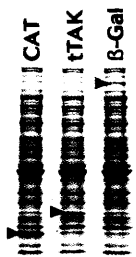
# From 0 to 50 $\mu\text{g}$ in 2 hours flat.

## Protein synthesis with Expressway™



Speed your way to downstream functional analysis with the Expressway™ *In vitro* Protein Synthesis System. Get the protein you need quickly and efficiently in a convenient, single-tube reaction.

**Rapid, high-yield synthesis.** With Expressway™ you can generate up to 50  $\mu\text{g}$  per reaction of recombinant protein in just two hours. You'll save hours of time and labor over traditional cell-based expression systems and produce a high protein yield for your functional studies.



Protein Expression  
with Expressway™

**Convenient format.** Expressway™ provides everything you need for optimal protein production, including T7 RNA polymerase, an *E.coli* extract containing cellular machinery to drive synthesis, and a robust energy source. Simply add your DNA template and incubate. Taking control of your gene expression has never been easier. Let Expressway™ lead the way to faster, more efficient protein expression results. Visit our website, [www.invitrogen.com](http://www.invitrogen.com), or call Invitrogen to order today.

**Invitrogen™**  
life technologies

**Corporate Headquarters:**  
Invitrogen Corporation  
1600 Faraday Avenue  
Carlsbad, California 92008 U.S.A.  
Tel: 1 760 603 7200  
Tel (Toll Free): 1 800 955 6288  
Fax: 1 760 603 7229  
Email: [tech\\_service@invitrogen.com](mailto:tech_service@invitrogen.com)

**European Headquarters:**  
Invitrogen Ltd  
3 Fountain Drive  
Inchinnan Business Park  
Paisley PA4 9RF, UK  
Tel: +44 (0) 141 814 6100  
Fax: +44 (0) 141 814 6260  
Email: [eurotech@invitrogen.com](mailto:eurotech@invitrogen.com)

For an office near you go to:  
[www.invitrogen.com](http://www.invitrogen.com)