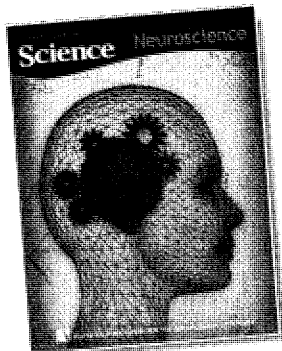


The Best of *Science*— Neuroscience



The most important and
comprehensive neuroscience
research in one complete volume

Full-text articles and reports
straight from the pages of
Science—complete and unabridged

Special introduction from Floyd E.
Bloom, former Editor-in-Chief
of *Science*

The Best of Science—Neuroscience brings you the best
work we've published in this field. These full-text
articles and reports comprise the most comprehensive
collection of neuroscience research ever available from
Science—all in one limited-edition breakthrough
volume essential to every reference desk and shelf.



YES!

Please send me my copy of *The Best of Science*—
Neuroscience as soon as possible to address below.

☐ **AAAS Member Price**

AAAS Membership Number (required)

US.....\$19.95 \$17.45 Outside US.....\$23.95 \$21.95

☐ **Non-Member/Institution Price**

US.....\$29.95 \$27.95 Outside US.....\$33.95 \$31.95

Name _____

Address _____

City _____ State/Province _____ Zip/Postal Code _____

Email _____

Phone _____

Payment Method:

Please send me _____ copies of *The Best of Science*—*Neuroscience*.

☐ Check Enclosed for \$ _____.

☐ Please charge \$ _____ to my credit card.

☐ VISA ☐ MasterCard ☐ American Express

Credit Card No. _____ Expiration Date _____

Signature _____ Date _____

Place this form in an envelope and mail to:

Neuroscience Compendium • AAAS • 1200 New York Avenue NW;
Room 1209 • Washington, DC 20005

Or FAST FAX your order to us at 202-842-1065. (Credit Card Only.) Prices
listed include shipping and handling. Please allow 6-8 weeks for delivery.

Science
Discover the Future

AAAS AMERICAN ASSOCIATION FOR THE
ADVANCEMENT OF SCIENCE

With Unique Proteomics Technologies

refolding the human genome

BACE

**A Proteomics
Company Specializes
in Inclusion Body
Refolding.**

"Universal" Refolding is
the Core Technology.

BACE2

**HIV
Protease**

VEGI

Streptokinase,
Plasminogen
(Catalytic Domain),
C-11 (Lipase Co-factor),
Fez 1, Rab 5, CD42,
POMC, TCCR, ZNF230
(Spermatogenesis
Protein), SAP1, SAP2,
SAP3, SAP4, Human
Kinases, and Many
Other Human Proteins



ProteomTech, Inc.

Tel: 405-271-7521

Fax: 405-271-7810

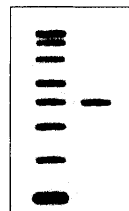
www.ProteomTech-Inc.com

On-target results. One easy process.

MagicMark™ Western Standard

Go ahead, take direct aim. With MagicMark™ Western Protein Standard from Invitrogen, you can bypass the maze of steps that conventional standards require. Visualize standard bands and your target protein simultaneously on western blots—and see superior results.

One-step accuracy. MagicMark™ lets you estimate molecular weight directly on your western blot. No aligning. No marking. No extra reagents. Simply load MagicMark™ onto your gel, then electrophorese and perform the immunoassay of your choice. You'll spot standard bands together with your target protein, minimizing errors.



MagicMark™ detected
simultaneously
with target protein

Superior results. Capture clear, sharp MagicMark™ bands with the same conjugated antibody and protocol you use to detect your target

protein. Choose chemiluminescent or colorimetric detection methods for your analysis. Because they are not chemically modified, MagicMark™ proteins offer superior sizing accuracy. Eight distinct bands let you easily identify your protein of interest on your blot (see figure).

Land on target. When you need a protein standard for western blots, get the accuracy and convenience that only MagicMark™ can deliver. To learn more, call Invitrogen today or visit us at www.invitrogen.com.



United States Headquarters:
Invitrogen Corporation
1600 Faraday Avenue
Carlsbad, California 92008
Tel: 1 760 603 7200
Tel (Toll Free): 1 800 955 6288
Fax: 1 760 603 7229
Email: tech_service@invitrogen.com

European Headquarters:
Invitrogen Ltd
3 Fountain Drive
Inchinnan Business Park
Paisley PA4 9RF, UK
Tel (Free Phone Orders): 0800 269 210
Tel (General Enquiries): 0800 5345 5345
Fax: +44 (0) 141 814 6287
Email: eurotech@invitrogen.com

International Offices:
Argentina 5411 4556 0844
Australia 1 800 331 627
Austria 0800 20 1087
Belgium 0800 14894
Brazil 0800 11 0575
Canada 800 263 6236
China 10 6849 2578
Denmark 80 30 17 40

France 0800 23 20 79
Germany 0800 083 0902
Hong Kong 2407 8450
India 11 577 3282
Italy 02 98 22 201
Japan 03 3663 7974
The Netherlands 0800 099 3310
New Zealand 0800 600 200
Norway 0800 5456 5456

Spain & Portugal 900 181 461
Sweden 020 26 34 52
Switzerland 0800 848 800
Taiwan 2 2651 6156
UK 0800 838 380
Other countries see our website

www.invitrogen.com

NEW PRODUCTS

TheSky Software Bisque

Golden, CO

\$129 to \$249

800-843-7599

www.bisque.com/Products/TheSky/TheSky.asp

BIG PICTURE

Astronomy buffs, from novices to serious amateurs, will find version 5 of the software package called TheSky very useful. The product is available in three different levels, named II, III, and IV. Standard with all three levels are the Hipparcos, Tycho, and Hubble Guide Star catalogs; 700

full-size images; and over 100 Hubble Space Telescope images. Level III adds the ability to import and export data, and Level IV includes 70,000 thumbnail images, client/server Internet Telescope support, and other options. Level IV was used for this review.

The software's "3D Solar System Mode" allows viewing of the Solar System from any position in space (with or without celestial background) and can be viewed in a wide range of time periods (spanning almost 15,000 years). Another feature makes it easy to find and animate each lunar or solar eclipse over the next decade. It also shows the shadow on Earth for a total or an annular eclipse. If the eclipse is not viewable from a particular selected viewing location, the software will inform the user. There is a day-time sky function that can be used to view objects observable at sunrise or sunset, a feature that helps capture every possible viewing moment. For a fun diversion, one can download the coordinates of satellites from the Internet to view them.

TheSky can "Time Skip" or carry out a simulation of the movement of celestial bodies over user-selected accelerated time intervals. Individuals can create their own QuickTime movies of any succession of screens or animations, a handy option that allows users to save and, later, share interesting views. Another useful function is the Expert feature, where user-defined queries can help one sift through vast amounts of astronomical information to locate desired data. The software also permits users to link to telescopes with optical encoders for computer-controlled location and tracking of desired objects.

The printed manual accompanying the software is clear and, despite its compact size, provides users with an adequate tutorial for the program. Also helpful are the Help area and the general astronomy tutorial section. The user interface is easy to use and to customize so that each object type is identifiable through the color, screen, and toolbar settings. One simply needs to give the correct coordinates of one's geographical location to view the celestial sky in his or her area. An interactive user's group is also available on the Internet for the discussion of the features of the product.

TheSky combines education with entertainment. Though it can be used by professional astronomers, the veritable army of backyard stargazers will more likely welcome the many functions TheSky has to offer.

—AL Wilson

The author is at the Department of Information Systems, The Children's Hospital of Pennsylvania, Philadelphia, PA 19104, USA. E-mail: wilson@email.chop.edu

Alexis Biochemicals

For more information

800-900-0065

www.alexis-corp.com

www.scienceproductlink.org

CYTOKINE ASSAY KITS

A new generation of bead-based quantification (BBQ) assay kits offers quantitative detection of cytokines and other cell communication factors using flow cytometry.

Quick and easy to use, these flexible assays require fewer washing steps and allow longer incubation and storage times than enzyme-linked immunosorbent assay. The BBQ Assay kits are mag-

netic particle-based immunoassays and are available for human IL-4, IL-5, IL-6, IL-12 (p70), Fas ligand, and Granzyme B, as well as both human and mouse IFN- γ , IL-10, and TNF- α . The kits offer broad detection ranges, permit multiparametric analysis, and can be used with cell culture media, sera, and plasma.

Beckman Coulter

For more information

800-742-2345

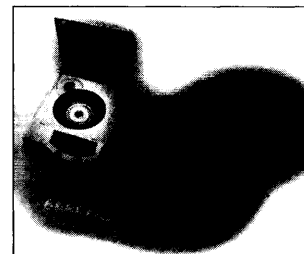
www.beckmancoulter.com

www.scienceproductlink.org

PCR TUBE STRIP ROTOR

The F12x8.2 PCR Tube Strip Rotor for the Microforge 22R microcentrifuge provides high capacity and power for DNA applications. The new rotor min-

imizes condensation from polymerase chain reactions (PCR) by providing quick spins and can be used for post-reaction cleanup. The new rotor can accommodate up to 12 strips of eight 200- μ l tubes at a maximum of 20,800g. The rotor features an aerosol-tight lid and is autoclavable at 121°C.



Affinity Bioreagents

For more information

800-527-4535

www.bioreagents.com

www.scienceproductlink.org

PROTEASOME REAGENTS

A new range of polyclonal antibodies includes more than 20 antibodies to the different subunits of the proteasome complex. Proteolytic degradation is crucial in maintain-

ing appropriate levels of short-lived regulatory proteins. The new line includes antibodies to the 20S, 26S, and 19S proteasome and their subunits; proteasome activators; inhibitors I, II, III, and IV; and a large selection of ubiquitin products. All these antibodies have been optimized for protein immunoblotting applications in a wide range of species.

Ambion

For more information

800-888-8804

www.ambion.com

www.scienceproductlink.org

MODIFIED NUCLEOTIDES

A variety of modified nucleotides and the MODIscrip Kit (an in vitro transcription kit) were developed for studying RNA catalysis, protein binding, and RNAi. The modified nucleotides confer unique characteristics to RNA molecules into which they are incorporated and are useful tools for biochemical and molecular biology studies. The MODIscrip Kit makes use of T7 RNA polymerase to synthesize modified RNA transcripts. A single MODIscrip reaction will yield 0.1 to 2 μ g of modified RNA.

Amersham Biosciences

For more information

800-333-5703

www.mdyn.com

www.scienceproductlink.org

SARASTRO 2000 AND MULTIPROBE 2010

The Sarastro 2000 is an integrated confocal laser scanning microscope system designed to meet the demanding requirements of three-dimensional (3D) microscopy. The system offers new methods and techniques to extract, visualize, and quantify microscopic information in virtually every field where microscopy is used. The design incorporates efficient optics, precise scanning, and ultra-sensitive detectors to achieve exceptional image quality. In addition, the in-

CONTINUED ON PAGE 1744

egrated Silicon Graphics Workstation is controlled by software that provides ease of operation, fast 3D reconstructions, and powerful graphic visualization. The MultiProbe 2010 inverted confocal laser scanning microscope system is a powerful new tool for biological research. Applying patented techniques of confocal sectioning and 3D reconstruction, the system combines high-resolution confocal imaging and ultra-sensitive detection with ease of use and unobstructed sample access.

Genotech

For more information

314-991-6034

www.genotech.com

www.scienceproductlink.org

PROTEIN EXTRACTION FROM MAMMALIAN CELLS

Mammalian Cell-PE LB for extraction of protein from mammalian cells can be used for both suspension and adherent cells. The protein extract prepared with the reagent can be used for most enzyme assays, including reporter gene assays, kinases, and immunoassays.

Upchurch Scientific

For more information

800-426-0191

www.upchurch.com

www.scienceproductlink.org

NANOFOLD CONNECTORS

New Nanofold connectors have been added to a line of micro- and nano-specific components. With internal port-to-

port volumes as low as 25 nl, these biocompatible "nano-scale manifolds" allow the combining or splitting of up to seven streams in such applications as multiport mixing chambers and multiple flow-path unions. The Nanofold permits direct connection of 360- μ m capillary tubing without additional fittings.



Trevigen

For more information

800-873-8443

www.trevigen.com

www.scienceproductlink.org

APOPTOSIS DETECTION KIT

VasoTACS is a kit developed for the detection of apoptosis by researchers interested in angiogenesis and vascular disorders. The kit makes use of Trevigen's unique

panel of optimized reagents for detection of DNA fragmentation using TdT, special enzymes, and counterstains tailored for use in vascular tissue. The kit comes complete with permeabilization and labeling reagents, TACS-Nuclease to generate a positive control, and TACS Blue Label detection reagent.

Olympus

For more information

800-645-8160

www.olympusamerica.com

www.scienceproductlink.org

FLUOVIEW

The Olympus FluoView is a point-scanning, point-detection, confocal laser scanning microscope for biology research applications. Excellent resolution, efficiency of excitation,

an intuitive user interface, and affordability are key characteristics. The system is available with the IX70 inverted research microscope and the AX70, BX50 BX60, and BX50WI upright research microscopes. The efficient point scan/pinhole detection confocal optics of the FluoView perform optical sectioning of specimens and produce high-contrast images. This detection method virtually eliminates light contribution from the neighborhood of the scanning spot in the specimen and blocks "out of focus" light. Various lasers, including argon, green helium neon, yellow krypton, and yellow and red krypton, are available to suit any application.

BioWhittaker Molecular Applications

For more information

207-594-3480

www.biowhittaker.com

www.scienceproductlink.org

REPORTER GENE ASSAY

ReportaLight BioAssay kits are for rapid and convenient detection of firefly luciferase in mammalian cells transfected with the bioluminescent reporter gene luciferase. The kit is optimized to provide high sensitivity, signal, and reagent stability for both laboratory and high-throughput screening applications. It is complete and easy to use. Its low-viscosity reagents allow for easy automation. The assay can detect as little as 0.1 fg luciferase and has a linear range of more than seven orders of magnitude. A 96-well assay requires only 3 min per plate.

MicroSolv Technology Corp.

For more information

732-229-3400

www.MicroSolvTech.com

www.scienceproductlink.org

CAPILLARIES FOR PROTEIN OR PEPTIDE ANALYSIS

CelerityCE Bonded Capillaries, made with patented etching and bonding technology, offer a new development for protein or peptide analysis by capillary electrophoresis. Bare fused silica capillaries are etched to greatly increase surface area and then silanol sites are removed and a hydride, covalent bond is created between the silicon atoms and the ligand, making it resistant to acid or base hydrolysis. The lack of silanol sites make it an ideal capillary for protein separations that are best performed at or near neutral pH. Capillaries are available with various bonded phases.

Zeiss

For more information

800-233-2343

www.zeiss.com/micro

www.scienceproductlink.org

DIGITAL CAMERA

The AxioCam MR digital color camera and a Peltier-cooled monochrome camera are designed to meet a wide variety of requirements. AxioCam MR camera makes use of a 12-bit digitization process for improved image and color quality. A 36-bit color depth allows for a large number of resolvable brightness gradations. In addition, a wide range of variable exposure times can be selected to accommodate different application techniques. The AxioCam MR monochrome version is suitable for fluorescence microscopy, particularly in applications with long exposure times and high resolution such as deconvolution. The camera comes with a computer interface and special operating software that controls all camera functions as well as simple image capture and processing. The photographic conditions can be reproduced quickly and easily.

JM Science

For more information

716-774-8706

www.jmscience.com

www.scienceproductlink.org

LITERATURE

Shodex Packed Columns for HPLC is a 21-page catalog that describes more than 300 different analytical and preparative high-performance liquid chromatography columns for normal and reversed phase, ion exchange, affinity, sugar and organic acid analysis, chiral, gel filtration, multimode and multisolvent, gel permeation, and ion chromatography. Columns are available in preparative and process versions from 10 mm to 300 mm.

Newly offered instrumentation, apparatus, and laboratory materials of interest to researchers in all disciplines in academic, industrial, and government organizations are featured in this space. Emphasis is given to purpose, chief characteristics, and availability of products and materials. Endorsement by *Science* or AAAS of any products or materials mentioned is not implied. Additional information may be obtained from the manufacturer or supplier by visiting www.scienceproductlink.org on the Web, where you can request that the information be sent to you by e-mail, fax, mail, or telephone.

Classified Advertising

For full details on advertising rates, deadlines, mechanical requirements, and editorial calendar go to www.sciencecareers.org and click on How to Advertise

UNITED STATES

Display Classified Advertising

Bren Peters (Mid-Atlantic, Midwest)
Tel: 202-326-6541
Kathleen Clark (Southeast, Canada)
Tel: 202-326-6555
Jill Steinberg (Northeast)
Tel: 914-834-8733
Kristine von Zedlitz (West Coast)
Tel: 415-956-2531
Fax: 202-289-6742
E-mail: science_displayads@aaas.org

Line Classified Advertising

Jody Fenty
Tel: 202-326-6722
Christina Geiger
Tel: 202-326-6532
Fax: 202-289-1451
E-mail: science_classifieds@aaas.org

Online Classified Advertising

Beth Dwyer
Tel: 202-326-6534
Fax: 202-289-6742
E-mail: bdwyer@aaas.org

www.sciencecareers.org

Ad Materials: Send to: *Science Classified Advertising*, 1200 New York Avenue, NW, Room 911, Washington, DC 20005

EUROPE

Display, Line, and Online Classified Advertising

Deborah Cummings
Tel: +44 (0) 1223 326 500
Fax: +44 (0) 1223 326 532
E-mail: european_ads@science-int.co.uk

Ad Materials: Send to: *Science International, Advertising Dept.*, Bateman House, 82-88 Hills Road, Cambridge CB2 1LQ, United Kingdom

MEETINGS/ANNOUNCEMENTS

Kathleen Clark
Tel: 202-326-6555
Richard Walters
Tel: +44 (0) 1223 326 500

To Subscribe to *Science* call:
202-326-6417 or 1-800-731-4939

POSITIONS OPEN

FACULTY POSITIONS Department of Biochemistry and Molecular Biology

The University of North Dakota School of Medicine and Health Sciences

The Department of Biochemistry and Molecular Biology of the University of North Dakota School of Medicine and Health Sciences is undergoing vigorous expansion and has two faculty openings at the level of **ASSISTANT** or **ASSOCIATE PROFESSOR**. The University of North Dakota is committed to doubling its research funding and achieving the Carnegie classification of Doctoral/Research Universities Extensive by 2006. We seek two candidates who can contribute in terms of research, teaching, and service. The Department currently has seven primary faculty members with research interests in signal transduction, regulation of dopamine transporter and cocaine addiction, drug resistance mechanisms in human pathogens, enzyme and metabolic regulation, protein-protein interactions, biochemistry of osteoarthritis, and molecular biology of SV40. Several Investigators with the Grand Forks Human Nutrition Research Center, one of six U.S. Department of Agriculture national centers, also have faculty appointments and focus on trace metal metabolism and function and the roles of mineral nutrition in cancer and heart disease. Qualified applicants must have a strong potential for NIH funding and will have biomedical research interests in proteomics (skills in computational biology, bioinformatics, or mass spectrometry are highly desirable) and/or molecular biology (skills in signal transduction analysis, microarray technology, and/or gene knockout approaches are highly desirable). Candidates who apply such expertise to neuroscience research are particularly encouraged to apply. New or planned facilities of the university include a modern animal care facility, neuroscience research building, computational chemistry and biology network, PET scan facility, light and electron microscopy facility, and proteomics core facilities. Both candidates will participate in a nationally recognized patient-centered learning medical school curriculum as well as teach courses in their expertise in a graduate program that offers M.S., Ph.D., and M.D./Ph.D. degrees. Faculty members also participate in undergraduate courses for premedical and allied health science students. The University is located in Grand Forks and currently enrolls 12,000 students. The Grand Forks community is family-friendly with excellent public schools and offers rapidly expanding cultural, recreational, and sporting activities. Grand Forks is situated in a beautiful four-season prairie setting near the northern Minnesota lake country that offers excellent opportunities for outdoor enthusiasts. Further information on the Department is available at [website: http://www.med.und.nodak.edu/bimdb/biochem.html](http://www.med.und.nodak.edu/bimdb/biochem.html). To learn more about the University of North Dakota and Grand Forks, visit [websites: http://www.und.nodak.edu](http://www.und.nodak.edu) and <http://www.grandforksgov.com>. Applicants should submit detailed curriculum vitae that suggests strong potential for NIH funding and addresses of three references to: **Search Committee, The Department of Biochemistry and Molecular Biology, The University of North Dakota School of Medicine and Health Sciences, P.O. Box 9037, Grand Forks, ND 58202**. Review of applications will begin immediately and the search will remain open until the positions are filled. *The University of North Dakota is an Equal Opportunity/Affirmative Action Institution.*

POSTDOCTORAL FELLOW/RESEARCH ASSOCIATE positions available immediately to study the signal transduction in endothelial cells and endothelial dysfunction. Projects focus on vascular endothelium, tyrosine phosphatases, and renin-angiotensin system. Strong background in biochemistry, molecular biology, and signal transduction is required. Send curriculum vitae to: **Dr. Hua Tang, Department of Biochemistry, University of Texas Health Center at Tyler, Tyler, TX 75708**. E-mail: hua.tang@uthct.edu; FAX: 903-877-2881. *An Equal Opportunity Employer. Minorities/Females/Veterans/Disabled.*

POSITIONS OPEN

ASSOCIATE PROFESSOR Exercise Physiology

West Virginia University School of Medicine

The Division of Exercise Physiology, School of Medicine, West Virginia University, invites applications for a new tenure-track faculty position. Applicants must hold a Ph.D. in exercise physiology, physiology, or a related biological field and have a strong and continuing record of independent research and extramural funding. Candidates using modern cell/molecular and/or physiological tools to address significant problems in one of the research strengths of the Department are especially encouraged to apply. The successful candidate must have good oral and written communication skills and must qualify for graduate faculty status. Postdoctoral training is preferred and candidates should have an outstanding publication record as well as substantial recent success in obtaining peer-reviewed extramural grant support. The faculty appointment will be made at the appropriate rank with salary commensurate with qualifications. Opportunities are available to develop and teach new courses in the candidate's area of expertise. Applications received by April 15, 2002, will be assured of consideration during the first cycle of review. However, the search will remain active until the position is filled. Applicants should send curriculum vitae, a brief outline of research interests, and the names and full contact information of three references to: **Dr. Stephen E. Alway, Director of Graduate Studies, Faculty Search Chair, Division of Exercise Physiology, West Virginia University School of Medicine, Robert C. Byrd Health Science Center, P.O. Box 9227, Morgantown, WV 26506-9227**. E-mail: salway@hsc.wvu.edu. For a full description of the position, see [website: http://www.hsc.wvu.edu/som/ep/positions](http://www.hsc.wvu.edu/som/ep/positions). For information on the Division of Exercise Physiology, see [website: http://www.hsc.wvu.edu/som/ep](http://www.hsc.wvu.edu/som/ep).

An Equal Opportunity/Affirmative Action Employer. Women and minorities are encouraged to apply.

ASSISTANT PROFESSOR CELL BIOLOGIST Position Announcement

The Department of Biology at East Carolina University is seeking to fill a tenure-track faculty position. The successful applicant will have a Ph.D. in the biological sciences, postdoctoral experience, be committed to high-quality teaching, and is expected to establish a strong research program with extramural funding. Research questions should be addressed at the cellular level. Send curriculum vitae, a copy of official graduate transcripts, statement of teaching and research interests and expertise, and three current letters of reference to: **Dr. Gerhard W. Kalmus, Search Committee, Department of Biology, East Carolina University, Greenville, NC 27858-4353**. [Website: http://www.ecu.edu/biology](http://www.ecu.edu/biology). Application deadline will be April 19, 2002. *East Carolina University is an Equal Opportunity/Affirmative Action University and accommodates persons with disabilities. Proper documentation of identity and employability is required at the time of employment.*

FACULTY POSITION Tufts University School of Medicine

The Department of Biochemistry invites applications for a tenure-track position at either a junior or senior level. The successful candidate will complement existing research activities in the Department ([website: http://www.tufts.edu/med/biochemistry/biochem.html](http://www.tufts.edu/med/biochemistry/biochem.html)). Applicants with interests in chemical biology or crystallography and other biophysical approaches are particularly encouraged to apply. Curriculum vitae, a brief statement of research plans, and three letters of recommendation should be sent to: **William Bachovchin, Chair of the Search Committee, Department of Biochemistry, Tufts University School of Medicine, 136 Harrison Avenue, Boston, MA 02111-1800**. Evaluation of candidates will begin March 1, 2002, and continue until the position is filled.

Tufts University is an Equal Opportunity Employer.



Public Service Commission
of Canada

Commission de la fonction publique
du Canada

Chief, National Laboratory for Enteric Pathogens

Health Canada

WINNIPEG, MANITOBA

Open to persons residing across Canada and abroad. (Preference will be given to Canadian citizens.)

This is a key leadership role within the National Microbiology Laboratory (NML). Housed in the Canadian Science Centre for Human and Animal Health in Winnipeg, NML is the Canadian federal government's national laboratory responsible for work with human pathogens requiring biocontainment levels 2, 3 and 4. Expert diagnostic and reference laboratory services for bacterial, viral and prion agents are provided to public health laboratories across Canada. We also deliver the laboratory component of national surveillance programs and disease outbreak investigations, and carry out applied research to improve diagnosis, prevention and control of bacterial, viral and prion diseases. Working in our state-of-the-art facilities, you will use your scientific expertise to help the NML address emerging disease issues through a network of partners, including governments, public health organizations, universities and industry. Your annual salary will range between **\$77,352** and **\$98,337**.

To meet the challenges of this senior mandate, you must have an acceptable doctoral degree from a recognized university, with a specialization in Microbiology, and be experienced in providing scientific advice to support policy development in the area of enteric diseases, and food and water safety. A background in laboratory management and directing bacterial disease programs is essential, as is success in obtaining external peer-reviewed funding from external and internal agencies, and in documented research productivity in microbiology in the form of peer-reviewed papers.

Proficiency in English is essential.

Note: A secret security clearance and a pre-employment medical clearance will be conducted prior to appointment. A written examination may be administered. Candidates with foreign educational credentials are required to provide proof of Canadian equivalency (please consult the Canadian Information Centre for International Credentials at <http://www.cicic.ca> for further information). This competitive process may be used to staff similar positions.

If you are interested in this permanent opportunity, please apply on-line or forward your resume and/or a completed PSC application form 3391 (available from the Public Service Commission of Canada), clearly indicating how you meet the above requirements, stating your citizenship and **quoting reference number SHC15934FF65**, by **April 5, 2002**, to: **Public Service Commission of Canada, 344 Edmonton Street, Room 100, Winnipeg, Manitoba, R3B 2L4. Fax: 204-983-8188.**

As an equal opportunity employer, Health Canada is committed to achieving a skilled, diversified workforce that reflects the diversity of the Canadian population. We encourage members of the following designated groups to apply and to self-identify: women (especially in non-traditional occupational groups), members of a visible minority group, Aboriginal people and persons with a disability. Priority may be given to members of the above-mentioned target groups.

We thank all candidates who apply; only those selected for further consideration will be contacted. Preference will be given to Canadian citizens.

*Vous pouvez obtenir ces
renseignements en français.*

<http://>

jobs.gc.ca

Canada

Principal Investigator Dermatology Branch, Center for Cancer Research (CCR) National Cancer Institute

The Dermatology Branch CCR, NCI seeks an energetic and accomplished, tenure track or tenure eligible Principal Investigator to join a group of colleagues who are committed to excellence in research, training and patient care. The group is currently comprised of seven physicians who are engaged in laboratory- and clinic-based research. The successful candidate will establish an independent laboratory that conducts high quality research in an important area of contemporary skin biology. It is anticipated that the area of emphasis will complement those that are already represented in the Branch and be relevant to the diagnosis or care of patients with cancer. Candidates must be Board-certified in Dermatology, hold a valid state medical license and be eligible for NIH Clinical Center privileges. Ideal candidates will, in addition, have a commitment to, and active interest in, clinical medicine and must be willing to contribute to the development of a Branch clinical research program. Research activities will be fully supported. Compensation and other resources are negotiable and dependent on qualifications. Loan repayment programs may be available for qualified applicants. Applicants should send a letter of interest and curriculum vitae to: **Dr. Lee Helman, Chair, Dermatology Branch Principal Investigator Search Committee, c/o Ms. Sallie Baird, Dermatology Branch, CCR, NCI, Building 10, Room 12N238, Bethesda, MD 20892-1908.** Applications must be postmarked by May 30, 2002.

*The National Cancer Institute is an
Equal Opportunity Employer.*



DONALD DANFORTH PLANT SCIENCE CENTER

Faculty Positions-Plant Biology

The Danforth Center announces positions for Principal Investigators at the Associate and Assistant Member levels to direct fundamental research programs. Seeking scientists with broad interests/training in at least two scientific disciplines and well-formed research programs that will benefit from interactions with scientists of other disciplines. Demonstration of prior or current support and of interdisciplinary research beneficial. Four faculty appointments will be considered in biochemistry, structural biology, phytochemistry/neutraceuticals, fundamental aspects of animal or human nutrition, cell biology, and abiotic stress biology.

Send resume, brief description of research interests, reprints of three key publications, and names of three references. Visit www.danforthcenter.org, for more information.

Send to: **Ms. Billie Broeker, Human Resources, Donald Danforth Plant Science Center, 975 North Warson Road, St. Louis, MO 63132.**

The Donald Danforth Plant Science Center is an Equal Opportunity/Affirmative Action Employer and encourages applications from underrepresented groups, including minorities, women and people with disabilities.

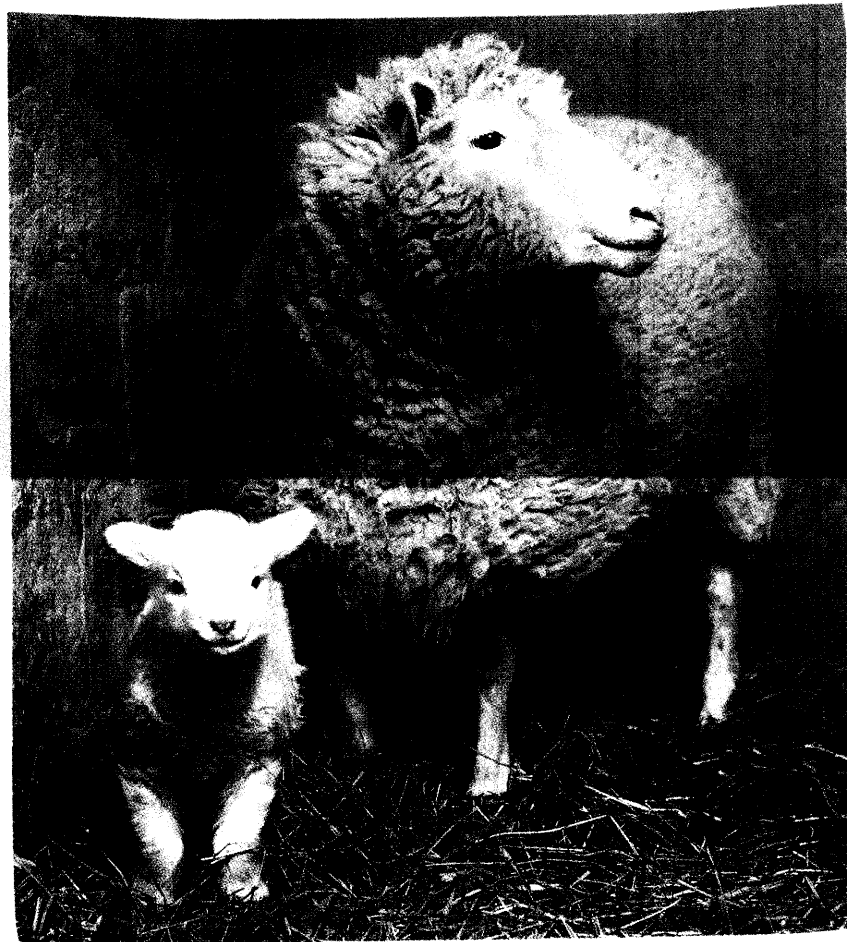
WE KNOW YOU WANT TO HEAR ABOUT OUR LATEST GENE SEQUENCING FACILITIES AND NEWEST CYTOPLASMIC REPLACEMENT TECHNOLOGY.

BUT DOLLY INSISTS ON TOP BILLING.

Dolly was the first mammal cloned from an adult cell, refuting the popular belief that cells from adult mammals could not be used to regenerate a whole animal.

Since Dolly the Sheep, scientists have used the techniques pioneered in Scotland to clone cattle, sheep, mice, goats and pigs.

She came to life in July 1996 near Edinburgh with a lot of help from Ian Wilmut and his colleagues at the Roslin Institute and PPL Therapeutics.

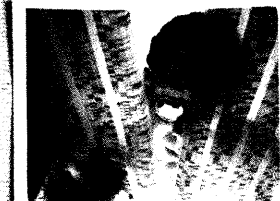
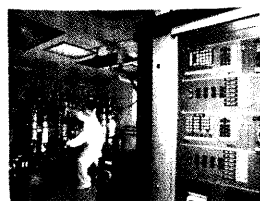


Dolly the Sheep was born in Scotland, but her fame is international. And she's just one example of Scotland's unique capacity for innovation in everything from biotech to electronics.

As the first mammal cloned from an adult cell, Dolly was a direct result of Scotland's thriving and inventive biotech industry. In electronic design, our innovative Alba Campus is leading the world's R&D in System Level Integration technology and promoting enormously successful collaborations between top universities and private sector partners in the industry.

Our highly skilled, highly motivated and experienced workforce has enticed a number of companies to expand in Scotland — including Quintiles, Agilent, Panasonic Owl, IBM and Sun Microsystems. Scottish Development International is a government-funded organisation that provides your business with recruitment, location and support services. This ensures you full access to

the knowledge of our Scottish companies, our research, technology, innovation, people and wit. To find out more about bringing your business to Scotland, or bringing Scots to your business, visit our Web site. www.scottishdevelopmentinternational.org



SCOTTISH DEVELOPMENT INTERNATIONAL

©2002 Scottish Development International



**St. Jude Children's
Research Hospital**

ALSAC • Danny Thomas, Founder

POSTDOCTORAL POSITION (REQ #2980)

A **Postdoctoral Position** in molecular and cell biology is available immediately to investigate the regulation of phospholipids and their role in developmental physiology. Cultured cell systems and knockout mouse models will be used, together with contemporary techniques in molecular biology and biochemistry, to study the function of several novel genes encoding important lipid biosynthetic enzymes. For a review of the topic, refer to Regulation of Mammalian Cell Membrane Biosynthesis, 2000, Progress in Nucleic Acid Research and Molecular Biology, 65:361. Mechanisms of lipid interaction with the phosphocholine cytidyltransferase protein are also a focus of investigation using recombinant protein mutants which are heterologously expressed via baculovirus (see Biochemistry 40:494, 2001). The role of lung surfactant phospholipid production during development and in response to challenge with infectious agents that target the respiratory tract are of particular interest in the mouse model.

A productive working environment with excellent resources, competitive salary and benefits are offered. Applicants with a recent Ph.D. or MD/Ph.D. and, most importantly, a desire to study the molecular and cell biology of lipids, should send a curriculum vitae, a short statement of research interest, the names of three references including requisition #2980 to:

Dr. Suzanne Jackowski, Protein Science Division, Department of Infectious Diseases, Danny Thomas Research Tower, Rm. 4007B, St. Jude Children's Research Hospital, 332 North Lauderdale, Memphis, Tennessee 38105 USA, or e-mail: suzanne.jackowski@stjude.org EOE

ASSISTANT PROFESSOR HEMATOLOGIC MALIGNANCY PROGRAM

The Cardinal Bernardin Cancer Center of Loyola University Medical Center has an opportunity for an Assistant Professor for the Hematologic Malignancy Program. Research interests of current faculty in the program include: the role of fusion proteins in leukemogenesis, co-repressors as tumor suppressors, hematopoietic lineage commitment and differentiation, epigenetic inheritance, and mechanisms that mediate chromosomal structural abnormalities. We seek candidates who have outstanding research experience or exhibit interest in these or other complementary areas.

Located in the west suburbs of Chicago, the Medical Center is housed in a new building with both research laboratories and outpatient facilities. The Medical Center is also the site of the Stritch School of Medicine and seven training graduate programs in the Biological Sciences.

Interested applicants may send CV, publications list, and the names of three references to:

Manuel O. Diaz, MD
Loyola University Medical Center
Cardinal Bernardin Cancer Center
Bldg. 112, Rm. 333
2160 S. First Avenue
Maywood, IL 60153

LOYOLA
UNIVERSITY
CHICAGO



An equal opportunity employer/educator.

EPIDEMIOLOGY AND BIOSTATISTICS PROGRAM DIRECTOR NATIONAL CANCER INSTITUTE

The Division of Cancer Epidemiology and Genetics (DCEG) is seeking a visionary, experienced senior scientist to lead the National Cancer Institute's intramural program in cancer epidemiology and biostatistics. Candidates should be internationally recognized experts in cancer epidemiology with demonstrated leadership in the development and management of large, diverse interdisciplinary research programs. The Epidemiology and Biostatistics Program (EBP) is one of two major programs within the DCEG. The Program currently includes six branches, with a staff of a 150. The Program encompasses research on viral, occupational, radiation, hormonal, nutritional and environmental epidemiology, development of biostatistical methods, and investigation of interactions of genes and the environment on cancer risk. The EBP Director plays a vital role in the success of a complex research program that is central to the NCI mission and has substantial international visibility.

Successful candidates will have an M.D. degree and formal training in epidemiology, multidisciplinary research experience, and an extensive record of peer-reviewed publications. They should have the ability to interact with diverse constituencies and demonstrate vision, innovation and creativity in their approach to the management of a dynamic research program. The ability to work well in collaborative settings is essential. Salary is commensurate with experience. The NCI is an Equal Opportunity Employer. Please mail or fax a C.V. and letter of interest no later than March 22, 2002, to Shelia Zahm, Sc.D., Deputy Director, Division of Cancer Epidemiology and Genetics, National Cancer Institute, 6120 Executive Blvd., MSC 7242, Rm. 8074, Bethesda, MD 20892.



NIH is an equal opportunity employer



Chair in Prostate Cancer Research

The **Princess Margaret Hospital/Ontario Cancer Institute** is searching for an excellent candidate to fill a newly created Chair in Prostate Cancer Research: The Brazilian Ball/Tannenbaum Chair.

The successful candidate will hold the MD and/or PhD degree and will have already established an enviable record of research accomplishment. The area of research is not specified and may span a wide spectrum including laboratory based cellular, molecular or structural biology, genomics, proteomics, diagnostics, imaging physics, or other area of tumour biology relevant to prostate cancer.

The successful candidate will be expected to maintain a well-funded research program and become a leading member of a dynamic prostate research team that already includes individuals pursuing clinical, translational, and basic research questions. In addition to appointment to the Research Institute, the candidate will be eligible for appointment at the Assistant, Associate, or Professor level in a relevant Academic Department of the University of Toronto. Qualified candidates will also be eligible for a clinical appointment at the Princess Margaret Hospital.

The Princess Margaret Hospital/Ontario Cancer Institute (PMH/OCI) is a comprehensive Cancer Treatment and Research Centre with more than 100 radiation, surgical, and medical oncologists and more than 50 staff scientists. PMH/OCI is a member of the University Health Network, which also includes the Toronto General Hospital and Toronto Western Hospital and is fully affiliated with the University of Toronto.

Applicants should forward their CVs, in confidence, by April 1, to: **Dr. Christopher Paige, Vice President, Research, University Health Network, 610 University Avenue, 7-504, Toronto, Ontario, M5G 2M9.**

We wish to thank all applicants for their interest, however, only those selected for an interview will be contacted. The Ontario Cancer Institute is the Research Institute of Princess Margaret Hospital which, along with the Toronto General Hospital and the Toronto Western Hospital, is a member of the University Health Network, an Equal Opportunity Employer. In accordance with Canadian Immigration requirements, this advertisement is directed in the first instance to Canadian citizens and permanent residents, although others are welcome to apply.

Be a part of it.

Work and train beside some of today's most respected scientists at the Oklahoma Medical Research Foundation – and be a part of something important.

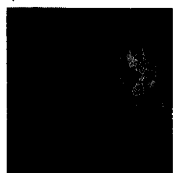
Biomedical research continues to be at the forefront of human ingenuity and scientific exploration. At OMRF, we've made leadership in these areas a tradition for over fifty years.

Located in the heart of the Oklahoma Health Center – a mecca of medical and research-oriented institutions – OMRF is home to world-renown scientists and numerous biomedical accomplishments. Research at OMRF focuses on the basic science of human disease: immunology, biochemistry, and molecular/cellular biology. And in the past decade alone, our scientists have been responsible for major breakthroughs in cardiovascular disease, Alzheimer's disease, and lupus.

It's only the beginning.

The Oklahoma Medical Research Foundation is accepting applicants for both graduate and post-graduate doctoral fellowship training programs, as well as independent investigators/members. Be a part of it. Find out more by visiting www.omrf.org, or call 1-800-522-0211 today.

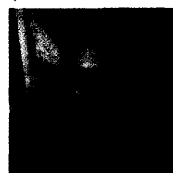
Charles T. Esmon, Ph.D.
Head, Cardiovascular Biology



Linda F. Thompson, Ph.D.
Immunobiology and Cancer



Michael E. Dresser, M.D., Ph.D.
Molecular and Cell Biology



Ute Hochgeschwender, M.D.
Developmental Biology



Arthritis and Immunology

A postdoctoral position is available in the Arthritis and Immunology Research Program to study the mechanisms of tolerance and autoimmunity to nuclear antigens using state of the art techniques including T and B cell receptor transgenic mice, HLA transgenic mice, MHC class II/peptide tetramers, and microarray analysis. The successful applicant will have experience in molecular cloning techniques and a strong interest in immunology. Applicants must have a Ph.D. or M.D. Please send a curriculum vitae, summary of research interests and three letters of reference to: **Amy Darise Farris, Ph.D., Arthritis and Immunology Program, Oklahoma Medical Research Foundation. FAX: 405-271-4110. E-mail: Darise-Farris@omrf.ouhsc.edu.**

Cardiovascular Biology

A postdoctoral position is available in Cardiovascular Biology studying the structure and function of the coagulation proteins. Using X-ray crystallography, our work deals with the allosteric role of cofactors upon enzymatic activity. Candidates should have a strong background in either biochemistry or crystallography, and ample opportunities exist for training in each area. We are part of a well-funded and highly congenial department with many collaborations and several projects immediately available. All data collection and computational facilities are available and we are members of a synchrotron consortium with regular beam-line access. For more information, contact **Tim Mather, Ph.D., Cardiovascular Biology Program, Oklahoma Medical Research Foundation. E-mail: tim-mather@omrf.ouhsc.edu.**

Protein Studies

Alzheimer's Disease Neuroscience and Enzymology. Positions are available to study beta-secretase function and activity *in vitro* and *in vivo*, in cell lines and animal models, extending to the broader field of aspartic protease structure and function. Candidates should have a strong background in cell biology, molecular biology, enzymology, or protein biochemistry. Research experience with Alzheimer's disease neuroscience or animal models is especially desired. Experience with methods for detection of beta-secretase activity is preferred. Send CV and contact information to: **Jordan Tang, Ph.D. E-mail: Jordan.Tang@omrf.ouhsc.edu.**

Arthritis and Immunology

A postdoctoral position is available in the area of cytokine signaling. Our lab is currently focused on delineation of second messenger kinase-mediated signaling defects that lead to human autoinflammatory disease. Current investigations are performed on transfected cell culture-based models of human myeloid cells (specifically neutrophils and monocytes) and isolated human peripheral blood leukocytes. Future investigations will include transgenic mouse models. Our laboratory works in concert with the OMRF microarray research facility, which provides access to state-of-the-art genomics and proteomics tools for ongoing studies. Applicants with prior experience in second messenger immunobiology are encouraged to apply. Please send a CV, statement of research experience and future interests, and three references to **Dr. Michael Centola (Ph.D.), Arthritis and Immunology Program, Oklahoma Medical Research Foundation. FAX: 405-271-4110; E-mail: centolam@omrf.ouhsc.edu.**



FOR MORE INFORMATION AND JOB OPENINGS, VISIT www.omrf.org

The Oklahoma Medical Research Foundation

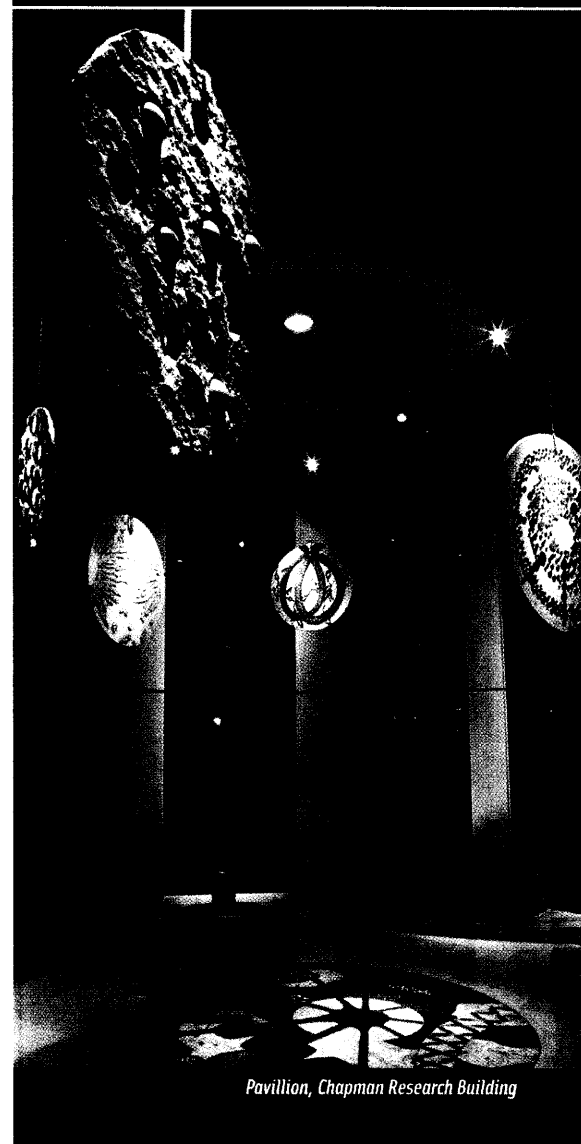
825 NE 13th Street • Oklahoma City, OK 73104-5046 • 1-800-522-0211 • www.omrf.org

EOE/AA Employer

"...that more may live longer, healthier lives"

OMRF

Oklahoma Medical Research Foundation



Pavillion, Chapman Research Building

OMRF is accepting applicants for both graduate and post-doctoral fellowship training programs.

Find out more by visiting www.omrf.org, or call 1-800-522-0211 today.

Scientific Computing and Mathematical Modeling
opportunity in suburban Philadelphia, PA.

Mathematical Modeler

Driving the success of GlaxoSmithKline – the world's leading pharmaceutical organization – is a continual search for innovation. Apart from a research and development capability that sets the benchmark for our industry, we're committed to recruiting and retaining the best and brightest by providing unequalled individual and career development opportunities within our organization.

As part of the Scientific Computing and Mathematical Modeling group, you will conduct research and develop mathematical models of biological systems for the purposes of advancing drug discovery and development efforts. Some of the current areas we're going after include osteoporosis, cancer, diabetes, blood clotting, asthma, and drug delivery from medical devices.

We are looking for that rare individual who can successfully integrate sophisticated mathematics and computer software with biological problems. This will involve understanding the complexities of the biology (e.g. the chemical, genetic, cellular, tissue, spatial, temporal, and geometric aspects), the needs of the drug development team involved, and formulating a proper computational approach. That approach will then be translated into a series of mathematical models which are to be numerically solved and the solutions delivered to the team. You will often interact with a larger team composed of other computational scientists and pharmaceutical researchers, so it is necessary to have the ability to communicate results with those who are neither comfortable nor familiar with mathematical terminology.

An advanced degree (Ph.D.) in a scientific field as well as excellent grounding in several of the following: modeling, numerical analysis, differential equations, function approximation, dynamical systems, fractals and stochastic processes, and other modern computational techniques are necessary. A good general scientific or engineering background (e.g. mathematics, physics, chemistry, electrical engineering, etc.) as well as a biological one is important.

GlaxoSmithKline is dedicated to an innovative workplace and supports you with career long opportunities and learning. We offer a competitive benefits and compensation package designed to attract and retain the very best. For confidential consideration and efficient processing, visit our Web site: www.gsk.com. Indicating Job Code: 02-0010 is essential to search. Principals only, no agencies please.

Developing talent through equality of opportunity, MIF/DIV.

Together we can make life better.



WAYNE STATE UNIVERSITY

Institute of Environmental Health Sciences Assistant/Associate Professor or Professor

The Institute of Environmental Health Sciences at Wayne State University invites applications for tenure-track positions at all ranks in the area of molecular genomics, including the use of high through-put technologies, such as microarray/global gene expression analysis and polymorphism analysis, as used in research on cell signaling, cell function, gene-environment interactions and disease. The IEHS offers highly competitive start-up packages and a research-intensive environment. The Institute of Environmental Health Sciences is the home of the Environmental Health Sciences Center in Molecular and Cellular Toxicology with Human Applications (www.ehscenter.org) which provides cell culture, imaging and cytometry and high through-put molecular genomics facility core support.

Please send curriculum vitae and the names of three references to:

Raymond F. Novak, Ph.D.
Director, Institute of Environmental Health Sciences
2727 Second Avenue, Room 4000
Detroit, MI 48201

Wayne State University is a premier institution of higher education offering more than 350 academic programs through 14 schools and colleges to more than 31,000 students in metropolitan Detroit.

WSU is an Equal Opportunity/Affirmative Action Employer.



MOUNT SINAI
SCHOOL OF
MEDICINE

Postdoctoral Research Positions

Mount Sinai School of Medicine is a leader in medical education and research. To enable us to maintain our high standards, we are seeking individuals for the following postdoctoral opportunities:

Apoptosis – Molecular Virology

The Mount Sinai School of Medicine has openings for Postdoctoral Researchers in its Molecular Herpes Virology Laboratory to study host cell – herpes simplex virus interactions. Applicants with biochemistry and/or molecular genetics experience should send their curriculum vitae, 3 references, and a one-page research summary to: **John A. Blaho, Ph.D., Department of Microbiology, Mount Sinai School of Medicine, Box 1124, One Gustave L. Levy Place, New York, NY 10029. Visit our website: www.mssm.edu/micro/faculty/blaho.html.**

Immunologist/Cell Biologist

The Division of Experimental Diabetes and Aging is seeking a Postdoctoral Researcher with expertise in immunology. Individuals interested in applying should have experience in cellular immunology and molecular biology. Familiarity with autoimmune disease and diabetes is preferred. Salary commensurate with experience. Interested candidates should fax their curriculum vitae, cover letter and list of references to: (212) 849-2652 or mail to: **Search Committee, Mount Sinai School of Medicine, Box 1640, One Gustave L. Levy Place, New York, NY 10029.**

EOE

Aventis Pharma



Aventis Pharma in Germany.

With our innovative drugs and services, we contribute to health and quality of life for people all over the world.

As one of the world's leading pharmaceutical companies, Aventis Pharma is at the cutting edge of drug discovery and development. Our state-of-the-art Drug Innovation and Approval center in Frankfurt, Germany, is excellently equipped to deliver new drugs that will insure a higher quality of life for people around the globe.

We are looking for

Research Scientists Chemoinformatics

to join our Chemoinformatics group in Frankfurt. Members of this group work closely with chemists and biologists in Lead Generation and Optimization as well as colleagues in Information Solutions to design methods and tools for drug discovery.

Successful candidates will possess a PhD in Chemistry or a related discipline. The background must include experience in at least one of the following areas:

- prediction of physicochemical properties and/or ADME (Absorption/Distribution/Metabolism/Excretion) data,
- data mining and analysis of screening results,
- database experience (chemical databases, relational databases), and programming (Perl, C, Java) on UNIX machines, client/server or web development.

Strong communication skills with the ability to work in multidisciplinary teams are essential.

We offer a creative scientific and international environment, which will allow you to further develop your skills very quickly. Our state-of-the-art facilities provide you with every opportunity to be successful in this challenging position and prepare you for your future career. In addition we offer a competitive salary and an attractive bonus package which will suit your qualification.

To be considered, please submit your résumé indicating salary requirements, to

Aventis Pharma Deutschland GmbH
Human Resources Recruitment & Marketing
Building D 706
D-65926 Frankfurt am Main
Germany
E-Mail: ApplicationService.Pharma@Aventis.com



ASSISTANT PROFESSOR
Department of Pharmacology
University of California, San Diego

Department of Pharmacology of the University of California, San Diego invites applications for a tenure-track position at the Assistant Professor level. Applicants must hold a Ph.D., M.D., or M.D./Ph.D. degree. Candidates whose fields of interest include molecular specificity of therapeutic agents, cell signaling or pharmacogenomics will be given strongest consideration. Incoming faculty must be willing to teach pharmacology and therapeutics to professional students (M.D., Pharm.D), mentor thesis studies of Ph.D. students and carry a scholarly and contemporary research program. Incumbent will be expected to conduct an extramurally funded research program involving graduate students and postdoctoral fellows, and participate in administrative functions of the department and the University. Candidates will be expected to show evidence of their potential through letters of recommendation and a publication record appropriate for their experience. Salary and appointment level will be commensurate with qualifications and experience, and based on published UC pay scales. **Closing Date for applications is April 30, 2002.** To apply, send a detailed resume, a short description of future research plans and copies of selected recent publications. Additionally, please provide names of at least three individuals who will write letters of recommendation and ask that they be sent immediately. Direct all materials to:

Chair, Search Committee (SC0202)
Department of Pharmacology
University of California, San Diego
9500 Gilman Drive, La Jolla, CA 92093-0636

UCSD is an Affirmative Action/Equal Opportunity Employer committed to excellence through diversity.



FACULTY POSITION
Associate Professor
Center for Cell Biology & Cancer Research
Albany Medical College

The Center for Cell Biology & Cancer Research at the Albany Medical College announces the availability of a tenure-track faculty position at the Associate Professor level. The successful candidate's research will interface with scientific programs within the Center which has a strong focus on tissue remodeling, wound repair and tumor growth/metastasis. Studies by Center Faculty concentrate on molecular mechanisms regulating cell adhesion and motility, angiogenesis, growth factor- and matrix-dependent signal transduction, and gene therapy of cancer. The applicant will be expected to have an extramurally funded research program emphasizing molecular and/or genetic approaches to problems relating to these focus areas.

Qualifications include a Ph.D. degree and a demonstrated track record of excellence in research. Applicants will be expected to participate in the teaching missions of both the Graduate and Medical School.

Full consideration will be given to those applications received by May 1, 2002. A curriculum vitae, description of research interests, and at least three letters of reference are required; providing copies of published papers is strongly encouraged. Application materials should be submitted to:

Paul J. Higgins, Ph.D.
Cell Biology & Cancer Research (MC-165)
Albany Medical College
47 New Scotland Avenue
Albany, NY 12208

*The Albany Medical College is an Equal Opportunity,
Affirmative Action Employer*

GLOBAL OPPORTUNITIES

**The Takeda
Techno-Entrepreneurship Award 2002**
Announcement

The Takeda Foundation will present six Techno-Entrepreneurship Awards for R&D activities that will lead to the creation of new businesses. *Each award will be for up to 10 million yen (approximately US\$80,000) per year for up to three years.* Two awards will be made in each of three application fields: social/economic well-being (information and electronics), individual/humanity well-being (life sciences), and world environmental well-being (world environment).

Eligibility

The Award is open to individuals of all nationalities and all organizational affiliations (e.g., company, university, or independent).

Award Process

Winners will be selected based upon competitive cyber (online) workshops held in specific technical subjects. *The Foundation is requesting suggestions for these cyber-workshops topics until March 15.* After the session topics are determined, the call for research proposals will be from April 1 to May 31.

For More Information See the Takeda Foundation Website:

<http://www.takeda-foundation.jp/>

or contact Ms. Mariko Tsusaka, The Takeda Foundation, St. Luke's Tower, MS33, 32Fl., 8-1 Akashi-cho, Chuo-ku, Tokyo 104-6591 Japan. **Phone:** 81-3-3549-2781, **Fax:** 81-3-3549-2787. **E-mail:** t-tea@takeda-foundation.jp



**PATIENT-ORIENTED
MEDICAL RESEARCH**
THE ROCKEFELLER UNIVERSITY

One junior or senior appointment to the tenure-track as Head of Laboratory will be made in medical sciences. The University seeks an outstanding physician-scientist to lead a molecular program that includes patient-oriented research protocols in the NIH-supported General Clinical Research Center at the University's research hospital.

Applicants should submit a Curriculum Vitae (with publications list) and a statement of current and future research interests (no longer than three pages) to: **Dr. Barry S. Collier, Physician-in-Chief, V.P. for Medical Affairs, The Rockefeller University, 1230 York Ave, Box 55, New York, NY 10021 USA.**



The Rockefeller University is an Affirmative Action/Equal Opportunity Employer. Further information about the researcher and educational programs of the Rockefeller University can be found on the internet at **<http://www.rockefeller.edu/>**.

EOE/AA Employee

PROFESSOR AND
CHAIR, DEPARTMENT
OF INTERDISCIPLINARY
ONCOLOGY, COLLEGE
OF MEDICINE

ASSOCIATE VICE
PRESIDENT FOR
INTERDISCIPLINARY
ONCOLOGY, HEALTH
SCIENCES CENTER

UNIVERSITY OF SOUTH
FLORIDA

ASSOCIATE CENTER
DIRECTOR – CLINICAL
INVESTIGATIONS,
ENDOWED CHAIR IN
CANCER RESEARCH

The University of South Florida (USF) College of Medicine and Health Sciences Center, and the H. Lee Moffitt Cancer Center & Research Institute at USF are seeking a physician scientist to serve as Chair of the Department of Interdisciplinary Oncology (DIO), as Associate Vice President for Interdisciplinary Oncology, and as Associate Center Director for Clinical Investigations at the Cancer Center.

The DIO is comprised of a diverse group of clinicians, physician scientists and basic scientists that function in a multi-disciplinary academic setting with dedication to the prevention and cure of cancer. The DIO has more than \$20M in external grant peer reviewed funding. In addition, there are excellent opportunities for basic and clinical research collaboration with a large translational research emphasis.

As Chair of the DIO, the incumbent will report to the Dean of the College of Medicine and assume responsibility for leading the department to a position of academic and professional eminence. Specifically the Chair will be responsible for managing department fiscal and human resources; fostering excellence in education, training, research and patient care activities; recruiting and retaining a diverse and talented faculty; and, contributing to the reputation and overall welfare of the college and university. In addition, the incumbent will be responsible for maintaining a mutually supportive relationship with the Moffitt Cancer Center and other departments within the College of Medicine.

As Associate Vice President for Interdisciplinary Oncology, the incumbent will report to the Vice President of the Health Sciences Center and will be responsible for fostering interdisciplinary oncology research and teaching efforts among the colleges within the Health Sciences Center and throughout the University.

As Associate Center Director for Clinical Investigations, the incumbent will report to the Cancer Center Director, and be responsible for directing and fostering the clinical research programs of the cancer center. The newly established Frank and Carolyn Morsani Chair in Cancer Research will be assigned to this position.

The H. Lee Moffitt Cancer Center & Research Institute is an NCI-designated Comprehensive Cancer Center, adjacent to the Health Sciences Center of USF. The Center is a 162-bed in-patient and ambulatory cancer care facility, with a 25-bed blood and marrow transplant program, 12 state of the art operating

suites, and a high volume screening program including a fixed site and mobile units, and an expanding basic science research facility which will total 300,000 square feet by 2003. The Center also has its own 17 bed Clinical Research Unit for Phase I Trials. Outpatient visits for the 2001 calendar year were in excess of 160,000 and inpatient admissions were in excess of 5,800.

Successful candidates must have a M.D. or MD/Ph.D. degree, and be appropriately Board certified. Candidates must have an outstanding, established laboratory program, peer reviewed funding, and teaching and scholarly accomplishments appropriate for appointment as a tenured full professor in the College of Medicine. Experience in a multi-disciplinary university clinical setting is preferred, along with demonstrated leadership and management competencies, and a nationally recognized reputation in the area of cancer research. Florida medical license or eligibility is required.

Appointment at the Professor rank ordinarily requires at least five years at the rank of Associate Professor and evidence of academic accomplishment and scholarly productivity. The position is tenure earning and salary is negotiable. **We offer an outstanding compensation package with incentive bonus potential, competitive benefits, and relocation assistance.**

Interested candidates should send a letter of interest and curriculum vitae to:

Robert A. Clark, M.D., M.B.A., Search Committee Chairman, Department of Radiology, H. Lee Moffitt Cancer Center & Research Institute, 12902 Magnolia Drive, MCC-Rad, Tampa, FL 33612.

Applications will be accepted until the position is filled. The evaluation of applications will begin on April 2, 2002. Applications for the position should address the required and preferred qualifications listed above; include a complete curriculum vitae and provide the names and addresses of five references.

www.moffitt.usf.edu

H. LEE
MOFFITT
Cancer Center & Research Institute

The End Of Cancer Begins Here.

A National Cancer Institute
Comprehensive Cancer Center
At the University of South Florida

USF University of
South Florida
College of Medicine

The University of South Florida is an EO/AA/EA institution. For disability accommodations, contact C. Saunders at (813) 975-7894 a minimum of 5 working days in advance. According to Florida law, applications and meetings regarding them are open to the public.

ASSISTANT EDITOR



Cold Spring Harbor Laboratory Press Department, located in Woodbury, NY, is searching for a Scientist interested in making a career in the communication of science.

The applicant must have a Ph.D. and Post Doctoral training in the biological sciences, preferably with experience in genetics and genomic science. The successful candidate will be a self-starter, have a broad perspective in science, and the ability to spot areas of emerging interest in current research. Strong writing ability, exceptional organizational skills, creativity, ability to meet deadlines, and the capacity to handle many projects at once is a must. Evidence of prior interest in the communication of science would be helpful. We seek a team player with energy, enthusiasm, and excellent interpersonal skills who is comfortable interacting with scientists at all levels.

We offer a competitive salary and comprehensive benefits. Please send resume with cover letter and salary history in confidence to:

Human Resources Department - AE
Cold Spring Harbor Laboratory
1 Bungtown Road, Cold Spring Harbor, NY 11724
Visit our web site: www.cshl.edu



COLD SPRING HARBOR
LABORATORY

Equal Opportunity Employer

As a major European pharmaceutical company, our success depends upon the dynamism of our research directed towards the discovery of new drugs. Thanks to its specialised researchers, our growing company has a pipeline of drugs in development.

In our Research centre near Paris, a major and expanding scientific and medical hub within Europe, and within easy reach of the French countryside, we are offering a position

Scientist in pharmacology, PhD specialised in ONCOLOGY

Our oncology research team is involved in the discovery of new drugs. You will join a high-level multidisciplinary team and will participate to the *in vivo* evaluation of new molecules. You will be also in charge of the development and validation of new pharmacological models. The successful candidate is innovative, enthusiastic and hard-working Scientist, with relevant experience in modern techniques of biology.

You are interested in the above position ?

Please send your application (cover letter, CV, quoting job code) to PUBLIVAL/2068 - 27 Route des Gardes, 92190 MEUDON (FRANCE)

A Passion
for excellence
in all things.

Baxter Healthcare Corporation is passionate about success - for the patients who depend upon our outstanding therapies, and for our dedicated professionals who make it all possible. We accomplish both by allowing the most talented, ambitious individuals in every area to pursue their dreams with a highly supportive atmosphere fostering creativity and personal empowerment. If you're passionate about your work, spend your career with others who feel the same. Join our BioScience division in Duarte, CA.

Sr. Research Associate

PhD in analytical chemistry, biochemistry or related field with 3 years experience in elucidation of protein structure and biophysical aspects of recombinant proteins using various biophysical techniques, or Master's in pharmaceuticals or biochemistry with 3-5 years experience in protein characterization and analysis required. (805HS)

Research Associate III

Bachelor's in biochemistry or related field with 5 years laboratory experience, or Master's with 2-3 years laboratory experience required. Background in analytical and protein chemistry techniques and knowledge of assays using microtiter plate readers necessary. (773HS)

Research Scientist

PhD in pharmaceuticals or chemical engineering with 3-5 years experience in formulation development of proteins and peptides and in-depth knowledge of physico-chemical behavior of proteins required. (766HS)

Associate Research Scientist

PhD in molecular biology, biochemistry or related field with 0-2 years experience required. Demonstrated knowledge and research experience in cellular protein expression and analytical protein characterization necessary. (1165HS)

As a global leader dedicated to unprecedented success, Baxter offers competitive compensation and full benefits. For consideration, please apply on-line at www.baxter.com/job_seekers and indicate position of interest by requisition number, or forward your resume via e-mail with salary history and requisition number to: mark.klopper@baxter.com Baxter is committed to a diverse workforce. EOE M/F/D/V

www.baxter.com

A Passion
for Life

Baxter
BioScience

POSTDOCTORAL FELLOWSHIPS IN CANCER RESEARCH

The M. D. Anderson Cancer Center Odyssey Program sponsors high quality postdoctoral research at the University of Texas M. D. Anderson Cancer Center. Odyssey Fellowships or Odyssey Scholarships are awarded, depending upon the level of experience, to postdoctoral applicants with the strongest credentials and most promising proposals. The winners of the Odyssey competition receive up to 3 years of support to explore novel areas of clinical or basic cancer research while preparing for successful and independent careers. Provided support includes a generous stipend and a yearly research allowance for supplies, small equipment, and meeting attendance.

Application deadlines: M. D. Anderson Odyssey Fellows:

- Notice of intent: March 18, 2002
- Application deadline: April 1, 2002
- Notice of intent: September 16, 2002
- Second application deadline: October 1, 2002

M. D. Anderson Odyssey Scholars:

- Notice of intent: 3 weeks before submitting complete application
- Application deadline: No fixed deadline

For further information, consult our web site:

<http://www.mdanderson.org/odyssey>

MDACC is an Equal Opportunity Employer; smoke-free environment.

THE UNIVERSITY OF TEXAS
MD ANDERSON
CANCER CENTER
.....
Making Cancer History™



Opportunity to join Europe's largest structure-based drug discovery company

Astex Technology is a structure-based drug discovery company pioneering the use of structural screening - a unique method in which protein crystal structures are used to guide the *in silico* design and selection of many thousands of drug fragments for progression into high-throughput x-ray crystallographic and biophysical screening. This coupling of *in silico* and experimental technologies results in a powerful process for rapid structure-based lead generation, and is applied to proprietary and public domain protein targets. Optimisation of ADMET properties of our lead compounds is further enhanced by our recently determined crystal structure of a human Cytochrome P450.



Structural Biologists and Computational Scientists

Astex is seeking Structural Biologists and Computational Scientists to support its current structure-based lead discovery programs. The company has several openings for candidates with experience in any of the following areas: protein crystallography, ligand screening using NMR, protein bioinformatics, molecular modeling and/or computational chemistry. Previous experience in a pharmaceutical or biotechnology environment would be an advantage.

The salary and benefits package, including stock options, will be highly competitive. Please send CV, quoting reference SBCCs, to Personnel, Astex Technology Ltd, 250 Cambridge Science Park, Milton Road, Cambridge, CB4 0WE, UK.
Tel: +44 (0)1223 226200
e-mail info@astex-technology.com The closing date for receipt of applications is 31st March 2002.

www.astex-technology.com

Project Leader Tropical Forestry Research

The USDA Forest Service International Institute of Tropical Forestry, located in Río Piedras, Puerto Rico, announces an opportunity to lead its research program focused on the forests of tropical America. The Project Leader will direct a staff that includes 10 full time Ph.D. level scientists and approximately 30 professional and support personnel. The program involves research in biogeochemistry, hydrology, wildlife, forest ecology, landscape ecology, and soil biology. Currently the Program includes research in Puerto Rico, the Caribbean, and Central and South America. Facilities include a modern analytical chemistry laboratory, a large library specialized in tropical forestry, field stations at the Luquillo Experimental Forest - site of the Luquillo Long-Term Ecological Research Program - and excellent research infrastructure. The Project Leader manages the research program and conducts research in his/her area of expertise.

The work environment is culturally diverse and language skills in Spanish and/or Portuguese are desirable. This is a permanent position with health and life insurance benefits, annual leave (vacation) and sick leave. Starting salary is commensurate with the credentials of the incumbent plus a cost of living allowance of 11.5 percent for service in Puerto Rico.

For information about applications and further details about the position and closing dates, contact: **Elizabeth Hernandez** at 787-766-5335, or FAX: 787-766-6259, or E-mail: ehernandez@fs.fed.us, or by mail at: **PO Box 25000, Río Piedras, PR 00928-5000**. Vacancy announcement can be found in www.usajobs.opm.gov

The USDA is an Equal Opportunity Employer.

NATIONAL INSTITUTES OF HEALTH NATIONAL INSTITUTE ON ALCOHOL ABUSE AND ALCOHOLISM

Chief, Imaging Section, Laboratory of Molecular Physiology Division of Intramural Clinical and Biological Research

Applications are invited for a Section Chief position (tenure-track/tenured) to develop an Imaging Section within the Laboratory of Molecular Physiology (headed by **Dr. Stephen Ikeda**) focused on understanding basic mechanisms of signal transduction and membrane physiology using state-of-the-art imaging techniques. The successful candidate will have an internationally recognized research program with a demonstrated expertise in advanced imaging techniques as documented by an outstanding publication record and, when applicable, a history of significant extramural grant support. Those with a demonstrated ability to integrate multiple types of research approaches, collaborate effectively with other investigators, and adapt new optical methods to problems of signal transduction and membrane physiology are especially encouraged to apply. The successful candidate will be provided significant resources to establish a state-of-the-art imaging laboratory, offered a competitive salary and benefits package, and may be eligible for relocation and/or other bonuses. Those interested should submit their C.V., list of publications, a brief statement of research interests, and the names of 3 individuals who could be contacted for reference to:

Ms. Kathleen Hanratty
NIAAA Intramural Personnel Office
NIH, Bldg. 31, Room 1B58
31 Center Drive MSC 2088
Bethesda, MD 20892-2088

Applications must be received by March 31, 2002.

*NIH is an Equal Opportunity Employer. Applications from women, minorities, and persons with disabilities are strongly encouraged.
The DIBR/NIAAA is a smoke-free environment.*



Postdoctoral Training in Basic and Clinical Research for the Rheumatic Diseases

Research and training is available at Northwestern University Medical School through a recently funded NIH (T32) training grant. The disease focus of investigation includes basic and clinical investigation in the study of rheumatoid arthritis, systemic lupus erythematosus, osteoarthritis, and juvenile dermatomyositis, including experimental models, epidemiology, and health services research. The topics of investigation in the basic sciences include macrophage biology, apoptosis, the mechanisms of cytotoxic cell granule-mediated apoptosis signal transduction, angiogenesis and vascular biology, lymphocyte activation, CD40L regulation, and tolerogenic peptide therapy. The topics of investigation in clinical research include epidemiology of longterm consequences of systemic lupus erythematosus (outcomes include osteoporosis, cardiovascular disease, and cancer); epidemiology of juvenile dermatomyositis (outcomes include antecedent illness, disease activity, treatment from a national NIH funded registry) and cellular and genetic determinants of disease; determinants of structural disease progression and functional status decline in patients with knee osteoarthritis; and finally, health disparities from longitudinal national databases focusing on the impact of arthritis on functional limitations and medical utilization in geriatric populations.

The faculty members involved have international recognition and are currently funded by multiple NIH grants. Their work is on the cutting edge of translational research, defining molecular and cellular mechanisms that contribute to the pathogenesis of rheumatic diseases, developing novel therapies, and traditional and novel risk factors that compromise outcomes. The scope of patient-oriented research in osteoarthritis, systemic lupus erythematosus, and self-reported arthritis also addresses the importance of these frequent conditions with respect to loss of function/quality of life, and/or health care resources burden as well as the ability to address important societal issues, most notably the health disparities noted in minority patients with arthritis and musculoskeletal diseases. Candidates (PhD or MD) must be US citizens or lawful permanent residents at the time of appointment. Applicants should send CV, statement of research interests, and names and addresses of three references to: **Dr. Richard Pope, Northwestern University Medical School, Division of Rheumatology, 303 E. Chicago Ave., Chicago, IL 60611. Tel: 312-503-8003; Fax: 312-503-0994.**

Northwestern is an Affirmative Action/Equal Opportunity Employer.

Assistant/Associate Professor Pharmacology and/or Pharmaceutics Auburn University

The Department of Pharmacal Sciences at Auburn University's Harrison School of Pharmacy invites applications for two 12-month tenure-track faculty positions as Assistant/Associate Professor in Pharmacology and/or Pharmaceutics. Auburn University is a land grant university and is the only publicly funded college of pharmacy in Alabama. Auburn University is an AA/EEO employer and has a strong institutional commitment to diversity. In that spirit, we are particularly interested in receiving applications from a broad spectrum of people, including women, minorities, and persons with disabilities. The University places a high priority on quality undergraduate and professional teaching with a tradition of excellence in research, graduate education, outreach, and service. The Doctor of Pharmacy, Masters of Science, and Doctor of Philosophy degrees are offered within the School and Department. Candidates must have a demonstrated interest in education of health professionals, graduate students, and research. Pharmacology applicants must have a Ph.D. or equivalent degree in pharmacology or related areas. Demonstrated research abilities in neuropharmacology and related areas are preferred. Pharmaceutics applicants must have a Ph.D. or equivalent degree in pharmaceutics or a related area. Preference will be given to applicants with demonstrated research abilities in dosage form development, manufacturing (CGMP), novel drug delivery, or pharmacokinetics/biopharmaceutics. For all applicants, postdoctoral training and a professional degree in pharmacy are desirable, but not essential. The successful candidate will be actively involved in professional and graduate teaching and is expected to develop both an independent and collaborative research program.

Review of applications will begin immediately and continue until the positions are filled. The positions are available August 1, 2002. Candidates should submit by mail a letter of application, curriculum vitae, a detailed description of their research abilities and plans, and names (include e-mail address and phone #) of three references to: **Maynard Hamrick, Ph.D., Chairperson, Search Committee, Department of Pharmacal Sciences, Harrison School of Pharmacy, 401 Walker Building, Auburn University, AL 36849-5503.**

*Auburn University is an Equal Opportunity/Affirmative Action Employer.
Women and minorities are encouraged to apply.*

ASSISTANT PROFESSOR THE UNIVERSITY OF BRITISH COLUMBIA Department of Biochemistry and Molecular Biology

The Department of Biochemistry and Molecular Biology at the University of British Columbia is seeking an outstanding new investigator for a tenure track faculty position. Candidates must have a Ph.D. degree or equivalent, a minimum of 2 years postdoctoral research experience, and a record of accomplishment that demonstrates their potential as an independent researcher. Candidates with research interests in any area of contemporary Biochemistry or Molecular Biology are encouraged to apply. All members of the Department maintain active, well-funded research programs that encompass many areas of modern biochemistry, molecular and structural biology (<http://www.biochem.ubc.ca/>). Successful candidates should complement and extend the Department's expertise in research and education. Applicants should send their curriculum vitae, relevant reprints, the names and Email addresses of three individuals willing to furnish letters of reference, and a brief (2-3 page) outline of their proposed research program to:

**Dr. George A. Mackie, Head
Department of Biochemistry and Molecular Biology
The University of British Columbia
2146 Health Sciences Mall
Vancouver, B.C.
V6T 1Z3 Canada
Email: sabrinac@interchange.ubc.ca**

The deadline for applications is April 15, 2002. The anticipated starting date is July 1, 2003 or as negotiated. UBC hires on the basis of merit and is committed to employment equity. We encourage all qualified persons to apply. This is a full-time tenure track appointment which is subject to final budgetary approval. Salary and rank will be commensurate with qualifications and experience.

All qualified candidates are encouraged to apply; however, Canadian citizens and permanent residents of Canada will be given priority.

DEPARTMENT OF BIOLOGY

2 New Research Chairs in Protein and/or Metabolic Engineering Centre for Novel Agricultural Products (CNAP)

CNAP is a new academic research centre within the Department of Biology at York. CNAP's focus is fundamental molecular science underpinning the use of plants and micro-organisms as cell factories to manufacture industrial products of value to society. CNAP is supported by substantial core funding to establish a wide-ranging research programme, commercial development office and centre infrastructure.

Outstanding individuals with an internationally recognised track-record of creativity and innovation are invited to apply for 2 Research Chairs in CNAP to complement the expertise and research areas of the existing Chairs: Dianna Bowles, Neil Bruce, Ian Graham and Simon McQueen Mason. Successful candidates will have an interest in both fundamental and strategic research, with expertise relevant to the development of one or more of the following areas: therapeutic proteins or glycans, pharmaceuticals, secondary metabolites and chemical feedstocks. Our aim is to develop new science relevant to the design of non-food, industrial products from plants and micro-organisms. At capacity, CNAP will consist of 100-120 Researchers.

CNAP will be located in the new £21 million bioscience development on the York campus, which, in addition to research laboratories, includes a Technology Facility encompassing state-of-the-art molecular facilities.

We are looking particularly for individuals who enjoy working in a collaborative, multi and inter-disciplinary way and who are keen to apply their creative energy to research addressing societal needs.

Salaries will be in the professorial range (current minimum £39,394 p.a.). October 2002 is the anticipated start date. Informal inquiries can be made to the Director of CNAP, Professor Dianna Bowles, on +44 (0)1904 434334, email: djb32@york.ac.uk

Further information and details of how to apply are available from the Personnel Office, University of York, Heslington, York YO10 5DD, or email: jobs@york.ac.uk or see: <http://www.york.ac.uk/admin/person/jobs/academic.htm>

Closing date: 28 March 2002.

THE UNIVERSITY of York

EXTENDING & ENHANCING HUMAN LIFE.**DISCOVERY SCREENING DEPARTMENT****Research Investigator****Job Code: 4437SM/MSRS**

The successful individual will operate in multidisciplinary teams involved in exploratory and early phase drug discovery. Duties include facilitating technology transfer to other scientists within the research institute, working with external companies, building and validating assays, and developing support infrastructure. Selected candidates will additionally help with focused or thematic screening campaigns, provide significant scientific and technological input into hit identification teams and target class teams, and support downstream aspects of drug discovery when necessary.

To qualify for this position, candidates must have a Ph.D. in Biology, Biochemistry or a related discipline with a minimum of 2 to 5 years' relevant experience in the biotech or pharmaceutical industry. Broad experience in screening techniques is required, including cell biology, quality control statistics, data analysis and method development. Demonstrated skill in using cellular assay techniques in early drug discovery is essential. Strong written and verbal communication skills are necessary. Preference will be given to candidates that have experience in high throughput screening and a strong technological awareness in miniaturization and automation.

Research Scientist**Job Code: 4436SM/MSRS**

The selected candidates will work on the design, execution and analysis of high and medium throughput screening assays, prepare written reports, and present data at departmental and interdepartmental meetings. The position will require working with multidisciplinary teams across sites and providing superior communication within those teams. In addition, the selected individual will be responsible for the mentoring and coaching of collaborators in disease management areas and providing new leads on screening techniques.

To qualify for this position, candidates must have an MS or BS in Biology or a related discipline with minimum of 2 to 3 years of relevant experience in the biotech or pharmaceutical industry. A strong knowledge of assay techniques for drug discovery targets such as G protein coupled receptors, nuclear hormone receptors, or enzymes in early drug discovery is required; modern HTS assay techniques, quality control, data analysis and method development knowledge preferred. Excellent written and verbal communication skills are essential.

We are the Bristol-Myers Squibb Pharmaceutical Research Institute (PRI), one of the world's most productive, respected and innovative research organizations. We are dedicated to extending and enhancing human life by discovering and developing innovative, cost-effective medicines that address significant unmet medical needs.

If you would like to join our highly collaborative team, please forward your resume to:

**Bristol-Myers Squibb
Pharmaceutical Research Institute
PO Box 4000, Princeton, NJ 08543-4000
Fax: (609) 252-3242
E-mail: recruit.pri@bms.com
Please reference job code.**

Bristol-Myers Squibb is proud to be an equal opportunity employer, M/F/D/V.



Bristol-Myers Squibb
Pharmaceutical Research Institute

Discover the pathways to success

Molecular Biologist / Biochemist

£competitive + excellent benefits • Sandwich, Kent

Pfizer enjoys one of the best reputations in the global pharmaceutical industry, thanks both to an unrivalled commitment to investment in R&D, and to scores of dedicated scientists. Our aim is to pioneer compounds that relieve suffering for millions of people worldwide - at the same time recognising those who contribute to our continued success. Now, we're inviting an ambitious, experienced Molecular Biologist/Biochemist to join one of our Therapeutic Areas within Discovery Biology.

You're an inquiring and innovative scientist, enthusiastic about using your skills and knowledge within a multi-disciplinary team to translate novel human genomic information into biological function. You'll use a variety of techniques to identify and analyse intracellular signal transduction pathways that will enable the modulation of disease pathology. You'll hold a PhD or BSc with at least two years' lab-based experience in relevant molecular and biochemical techniques. Able to research, absorb and assimilate pertinent literature effectively, you'll also be proficient in turning this information and your experimental findings into

new research ideas and, ultimately, helping to establish new drug discovery programmes.

In return, we'll provide a supportive environment with state-of-the-art facilities, excellent resources and ready access to a wide range of scientific expertise within other therapeutic areas and technology groups, both locally and globally. Furthermore, in order to help sustain an awareness of new science and technological processes, maintaining strong links with those in academia and publishing will be encouraged. Additional opportunities for professional and career development will also be provided.

So if you have what it takes to make a significant contribution to an industry leader, please write with your CV, quoting ref: T067/2002/S to the Discovery Resourcing and Selection Team, Pfizer Global Research and Development (IPC 077), Ramsgate Road, Sandwich, Kent CT13 9NJ. Closing date: 22nd March 2002.

www.pfizer.co.uk



Global Research and Development



1997



2000 • 2001

AWARDED TO PFIZER LIMITED



Immunologist/Cell Biologist

We are seeking an immunologist/cell biologist to evaluate critical proteins and signaling pathways required for cytokine and chemokine gene expression.

The candidate will be expected to establish cell-based systems for identifying and characterizing key proteins and signaling pathways linked to the activation of cells involved in innate immunity. In addition, the candidate will establish cell-based systems for identifying novel small molecules used to modulate immune responses.

The candidate must have broad expertise in cellular immunology. A strong background in toll-like receptor biology and innate immunity is highly preferred. In addition, a solid background in dendritic cell biology is a plus. The candidate should have technical expertise or knowledge in the following areas: FLOW cytometry, immunocytochemistry, ELISA, basic molecular biology, and cell isolation techniques.

The successful candidate must have a Ph.D. degree in immunology, cell biology or a related discipline, at least three years post-doctoral research experience, and a proven track record of independent thinking.

Excellent communication skills and an aptitude to work in a highly collaborative environment are essential. Industrial and supervisory experience is preferred.

3M provides an excellent benefits package with salary commensurate with experience. For confidential consideration please e-mail your resume to: 3mpfarm@kenexa.com or send two resumes (no phone calls or agencies) to:

NAS Reply
Dept. 3MP13
Job # 015241
Riverview Office Tower
8009 34th Avenue South
Minneapolis, MN 55425-1619

Visit our website www.mmm.com

We Are An Equal Opportunity Employer M/F/D/V



ExSeed Genetics, a wholly owned division of BASF Plant Science, is focused on developing high yielding, nutritionally enhanced crops for food, feed and industrial uses through biotechnology. ExSeed offers an excellent benefits package and stimulating entrepreneurial environment for scientists to succeed. Research positions are currently available at our Ames, Iowa facility.

Research Associates. The successful candidates will conduct research in plant metabolic engineering to improve yield and nutrition in cereal crops and to integrate gene expression with trait development. The candidates must have B.S. or M. S. in Molecular Biology or Plant Biology. The candidates must have working knowledge in a wide range of molecular and biochemical techniques (i.e., cDNA library construction, gene cloning, DNA and RNA isolation and characterization, enzyme mutagenesis and characterization.) Knowledge of DNA microarray and bioinformatics is desirable.

Postdoctoral Research Associates. The successful candidates, with a Ph.D. in Biological Sciences, are to conduct research on gene discovery and metabolic engineering.

For immediate consideration, forward your C.V. by e-mail to [Carol Thompson, thompsonc1@basf-corp.com](mailto:Carol.Thompson@basf-corp.com), **ExSeed Genetics, Iowa State University Research Park, 2901 South Loop Drive, Bldg. 3, Suite 3800, Ames, Iowa 50010.** Evaluation of candidates will begin Tuesday, April 2, 2002.

*ExSeed Genetics is an
 Equal Opportunity Employer.*

U. S. Department of Energy Office of Science Office of Basic Energy Science Director, Chemical Sciences, Geosciences and Biosciences Division \$125,972 to \$138,200 per annum

The U.S. Department of Energy is seeking applicants for the position of Division Director for Chemical Sciences, Geosciences and Biosciences who is responsible for a broad portfolio of fundamental, basic research in areas of atomic, molecular and optical science; chemical physics; combustion chemistry/turbulence; photochemistry; radiation chemistry; physical chemistry; inorganic chemistry; organic chemistry; analytical chemistry; separation science; heavy element chemistry; photosynthesis, biochemistry, biophysics, and aspects of geochemistry and geophysics. Incumbent will provide leadership and direction in establishing vision, strategic plans, goals, objectives and adequate funding for the research activities supported by the Division and conducted in DOE laboratories, universities, and other public and private institutions.

Exceptional difficulty in recruiting highly qualified candidates may be the basis for paying a recruitment bonus and relocation costs (up to 25% of base pay), requesting approval of a dual compensation waiver for civil and uniformed service retirees or annual pay.

Applications (3 copies) must be postmarked no later than April 15, 2002 citing ETR-02-ES-001. Direct inquiries to: **Executive Resources, ME-531, 4E-084 FORS, DOE, Washington, DC 20585.**

EEO employer. U.S. citizenship required.

GRADUATE PROGRAMS



University of Massachusetts Graduate Education in Marine Science and Technology

The University of Massachusetts Intercampus Graduate School of Marine Sciences and Technology is inviting applicants for newly established M.S. and Ph.D. degree programs. This interdisciplinary graduate program is supported by the research efforts of its 81 faculty on four campuses. Successful applicants will be able to focus their interests in one of several areas of concentration: (1) Integrated Coastal Management, (2) Living Marine Resources Science and Management, (3) Ocean and Human Health, 4) Marine Biogeochemical Cycles and Environmental Change, (5) Marine and Atmospheric Systems Analysis and Modeling, (6) Coastal Systems Science, and (7) Marine Observational Technologies. Some assistantships will be available. For further details regarding the program and its faculty, see our web site at <http://www.umassmarine.net>.

Contacts: **Dean Brian Rothschild**, University of Massachusetts Dartmouth, 706 South Rodney French Boulevard, New Bedford, MA 02744-1221, tel: (508) 999-8193, fax: (508) 999-8197, email: brothschild@umassd.edu.

Associate Dean Robert R. Gamache, Environmental Earth & Atmospheric Sciences, One University Avenue, Lowell, MA 01854-5045, tel: (978) 934-3904, fax: (978) 934-3069, email: Robert_Gamache@uml.edu.

Prof. Wendell Brown, Program Director, School for Marine Science and Technology, University of Massachusetts Dartmouth, 706 South Rodney French Boulevard, New Bedford, MA 02744-1221, tel: (508) 910-6395, fax: (508) 999-8197, email: wbrown@umassd.edu.

Prof. Frank Colby, Environmental Earth & Atmospheric Sciences, University of Massachusetts Lowell, One University Avenue, Lowell, MA 01854-5045, tel: (978) 934-3906, fax: (978) 934-3069, email: Frank_Colby@uml.edu.

Prof. William C. McComb, Head, Department of Natural Resources Conservation, University of Massachusetts Amherst, 160 Holdsworth Way, Amherst, MA 01003-4210, tel: (413) 545-1764, fax: (413) 545-4358, email: bmccomb@forwild.umass.edu.

Prof. Curtis R. Olsen, Chair and Director, Department of Environmental, Coastal, and Ocean Sciences, University of Massachusetts Boston, 100 Morrissey Boulevard, Boston, MA 02125-3393, tel: (617) 287-7440, fax: (617) 287-7474, email: Curtis.Olsen@umb.edu.

Division Head, Molecular Pharmacology

You will build a laboratory group in molecular pharmacology capable of supporting target validation and drug discovery programs within deCODE Genetics. 3-5 years postgraduate experience required in cell biology, GPCR/ligand interaction, G protein signalling, and methods of assay. You will work with our genetics groups to support target validation and with our high throughput screening group to support assay development and hit characterization.

Division Head, Biochemistry

You will build a laboratory group capable of supporting protein purification, characterization, and assay development. 3-5 years postgraduate experience required in protein expression, refolding, purification, characterization, and assay development. Experience in an industrial/biotechnology setting is preferred. You will work with multiple project teams to transition protein targets into high throughput screening.

Division Head, Medicinal & Analytical Chemistry

You will build a Medicinal Chemistry group at our Reykjavik site that is able to interface with our biology and HTS groups (also located in Reykjavik) as well as with our chemistry and structural proteomics groups located at Medichem Life Sciences (Chicago) and Emerald Biostructures (Seattle). 3-5 years of postgraduate experience in drug discovery is required. Experience in a pharmaceutical company setting is preferred.

The positions are located in Reykjavik, Iceland.

deCODE Genetics offers an attractive compensation package, stock-ownership opportunities, relocation assistance and, most importantly, a unique opportunity to participate in genetic research at the cutting edge.

For more information, please contact: Director of HR, deCODE genetics, Sturlugata 8, IS-102 Reykjavik, Iceland (careers@decode.is) or visit our website (www.decode.is). Applications should include a statement of purpose, a curriculum vitae, a list of pub-lications and three references.

Based in Reykjavik, Iceland, deCODE genetics is a population-based genomics company conducting research into the inherited causes of common diseases. deCODE genetics operates one of the most technologically advanced, high-throughput genotyping laboratories in the world. Together with pharmaceutical companies and other healthcare institutions, deCODE genetics aims to utilize its research to develop new methods for identifying, treating and preventing diseases.


Post-Doctoral Fellowship in Molecular Pathology
National Cancer Institute

The Thoracic Oncology Section, Surgery Branch, NCI seeks to recruit an individual with molecular pathology experience to support laboratory studies and clinical trials pertaining to gene induction in thoracic malignancies mediated by DNA demethylating agents and HDAC inhibitors. Candidates must have documented expertise in molecular pathology techniques including immunohistochemistry and quantitative RT-PCR, and demonstrate expertise or familiarity with laser capture microdissection and amplification techniques for analysis of gene induction in clinical samples.

Please send cover letter, curriculum vitae and statement of research interests to:

David S. Schrump, M.D.
Head, Thoracic Oncology Section
Surgery Branch
National Cancer Institute
Building 10, Room 2B-07
Bethesda, MD 20892-1502
Tel: 301-496-2128
Fax: 301-402-1788
Email: David_Schrump@nih.gov

The National Institute of Health is an Equal Employment Opportunity and Affirmative Action employer that values and fosters diversity throughout the entire organization.


Post-Doctoral Fellowship in Molecular Biology
National Cancer Institute

The Thoracic Oncology Section, Surgery Branch, NCI seeks to recruit a post doctoral fellow to extend ongoing studies pertaining to gene induction in thoracic malignancies mediated by DNA demethylating agents and HDAC inhibitors. Candidates must have documented expertise in molecular biology, and experience with cDNA arrays, as well as MSP, bisulfite sequencing, and ChIP techniques.

Please send cover letter, curriculum vitae and statement of research interests to:

David S. Schrump, M.D.
Head, Thoracic Oncology Section
Surgery Branch
National Cancer Institute
Building 10, Room 2B-07
Bethesda, MD 20892-1502
Tel: 301-496-2128
Fax: 301-402-1788
Email: David_Schrump@nih.gov

The National Institute of Health is an Equal Employment Opportunity and Affirmative Action employer that values and fosters diversity throughout the entire organization.

POSITIONS OPEN



VICE PROVOST FOR RESEARCH University Of Missouri, Columbia

The University of Missouri, Columbia, is seeking a scholar and administrator of national prominence for the position of Vice Provost for Research. The position reports to the Provost and is responsible for leadership and administration of research and technology development. The leadership of the Vice Provost will help establish a system of infrastructure and incentives that will enable faculty to achieve eminence in their research and scholarly goals. Responsibilities include (1) administration of the Division of Sponsored Programs, (2) creation of programs to generate increased funding and to diversify sources of funding, (3) implementation of a strategic plan that enables the University to excel in identified areas of current or emerging research strength, (4) representing MU's research initiatives at national institutes and foundations, (5) oversight of seven research centers with over 350 staff, (6) administration of the University's responsibilities for compliance with federal regulations on human subject and animal research, and (7) oversight and coordination of the four-campus UM Technology Transfer Program.

The successful candidate will have an earned Doctorate. In addition to an exemplary record of research, the person will have proven experience with national, state, and private funding sources. Proven administrative and budgetary experience at or commensurate with departmental chair level or above; good interpersonal skills; and a commitment to collegial, creative leadership in a highly diverse university system are expected.

The University of Missouri, Columbia, was established in 1839 as the first public university west of the Mississippi River. It is the flagship of four campuses of the University of Missouri system and is one of the five most comprehensive and diverse universities in the United States. A research-extensive institution, MU is a land grant university and a member of AAU. It offers Baccalaureate, Master's, and Doctoral degree programs. With a thriving campus of approximately 24,000 students and faculty dedicated to excellence in teaching and research, MU is situated in the attractive community of Columbia, nationally ranked as one of the five most livable cities in the United States. New federal awards have increased by 132% in the past four years (the fastest growth among AAU public universities), royalties and patent applications have doubled in the past year, and a technology business incubator is in the final planning stages. In the humanities, MU holds a large number of national awards and Fellowships from public and private agencies.

Nominations and applications are welcome. Applications should include detailed curriculum vitae, addresses and telephone numbers of three references, and a two- to three-page personal statement of the applicant's research leadership philosophy. Active review of applications and nominations will begin March 25, 2002. The search will continue until the position is filled. Direct nominations and applications to:

Vice Provost for Research Search Committee
Office of the Provost
University of Missouri, Columbia
114 Jesse Hall
Columbia, MO 65211
Website: <http://www.missouri.edu/>

The University of Missouri is an Equal Opportunity/Affirmative Action Employer and complies with the guidelines set forth in the Americans With Disabilities Act of 1990.

POSTDOCTORAL FELLOW

To perform research on the intestinal absorption of fat using animal models. Must have Ph.D. or M.D. degree by June 2002 and must be familiar with techniques of studying intestinal absorption including lymph duct cannulation. Send curriculum vitae to **e-mail: spartha@emory.edu** with names of three references by March 15, 2002.

POSITIONS OPEN

CHIEF ENGINEER: The Gemini Observatory, an international partnership with telescopes at sites in Hawaii and Chile, is seeking a talented, experienced Chief Engineer. The position assures that development efforts and technical operations are being planned and conducted on a sound engineering basis with proper controls and management of technical/engineering systems. Requires high degree of professionalism and discretion. A key requirement is the ability to see the "big picture" and to advise the Director on the need for change and then to catalyze that change in a complex internal scientific environment. Requires flexibility, adaptability, and unflappable demeanor. Ability to manage competing demands and distinguish between important and urgent issues. Frequent international travel required. Must be willing to live either in Hilo, Hawaii, or La Serena, Chile. Advanced degree in engineering or physics preferred. Previous experience managing large projects and facilities. Background in aerospace and/or astronomy desirable; previous experience managing large software and/or adaptive optics programs very helpful. Directly relevant experience in high-profile astronomical facility preferred. Previous experience managing in excess of \$10 million budgets for large projects highly desirable. Will require demonstrated ability to work effectively in a team environment; proven track record in establishing programs of excellence, innovation, and inspiration; good communication skills; ability to develop/deliver clear presentations. Bilingual (Spanish/English) preferred. For more information, visit our website: <http://www.gemini.edu/jobs>. Send detailed résumé in English with a cover letter explaining how background and experience relate to the qualifications of the position (include salary requirements and availability with cover letter) to: **Gemini Observatory, Human Resources Department/CE, 670 North A'ohoku Place, Hilo, HI 96720 U.S.A. FAX: 808-935-9802; e-mail: gemini-jobs@gemini.edu.**

EXPERIMENTAL ATOMIC, MOLECULAR AND OPTICAL PHYSICS Yale University

The Department of Physics invites applications for a faculty appointment at the **ASSISTANT PROFESSOR** level in the broadly defined area of experimental atomic, molecular, and optical physics. Exceptional applications in related subfields will be considered. Interested applicants should arrange to have three letters of recommendation sent independently and should provide curriculum vitae including e-mail address and/or FAX number, a list of publications, teaching experience, and a brief outline of future research plans. Information about current research activities in physics and applied physics at Yale can be found at websites: <http://www.eng.yale.edu/aphy/> and <http://www.yale.edu/physics/>. Applications and supporting materials should be sent to arrive no later than April 1, 2002, to: **Professor R. Shankar, Chair, Department of Physics, Sloane Physics Laboratories, 217 Prospect Street, P.O. Box 208120, New Haven, CT 06520-8120.** Yale is an Affirmative Action/Equal Opportunity Employer and welcomes applications from qualified women and minority group members.

LIGHT MICROSCOPIST

Ph.D. with strong experience and understanding of digital light microscopy is sought to serve as **DIRECTOR** for widefield, deconvolution, scanning, and spinning disk confocal fluorescence microscopy facilities. \$45,000 per year plus benefits. For details, see website: <http://www.bio.indiana.edu/events/jobs/currentjobs.html>. Send résumé and three letters of reference to: **Margi Lockhart, Department of Biology, Indiana University, Jordan Hall, 1001 East Third Street, Bloomington, IN 47405.** Deadline: March 15, 2002. Will begin reviewing applications on February 25, 2002, and will continue until the position is filled. *Equal Opportunity/Affirmative Action Employer.*

POSITIONS OPEN



DISTINGUISHED PROFESSOR OF MARINE SCIENCES

University of North Carolina at Wilmington

The Department of Biological Sciences (website: <http://www.uncwil.edu/bio>) and the Center for Marine Science (website: <http://www.uncwil.edu/cmsr/>) invite applications for the Frank Hawkins Kenan Distinguished Professorship in Marine Sciences. The individual filling the endowed position will be expected to develop strong interdisciplinary research relationships among the faculty at UNCW and in the state. Although all strong applications will be considered, we prefer an individual who can take a leadership role in existing areas of excellence in the Department, which include: marine mammalogy, crustacean biology, coastal and estuarine biology, or molecular biology and systematics of marine organisms. Exciting research opportunities for the Kenan Professor will be enhanced by the newly built Center for Marine Science. The successful candidate is expected to have a vigorous, externally funded research program and to excel in the classroom at the undergraduate and graduate levels. Screening of the applicants will begin April 15, 2002. Please submit a letter of application, curriculum vitae, summary of research plans, and names and addresses of three references to: **Dr. Ronald K. Sizemore, Department of Biological Sciences, UNCW, 601 South College Road, Wilmington, NC 28403-5915.** *University of North Carolina at Wilmington is an Equal Opportunity/Affirmative Action Employer. Women and minorities are encouraged to apply.*

FACULTY POSITION IN LANGUAGE NEUROSCIENCE McGill University

The School of Communication Sciences and Disorders of McGill University invites applications for one junior tenure-track appointment at the **ASSISTANT/ASSOCIATE PROFESSOR** level. The selected candidate will have the opportunity to participate in a major multidisciplinary initiative at McGill including collaborations with the recently established Centre for Research on Language, Mind, and Brain; the Montreal Neurological Institute; and the Lady Davis Institute of the Sir Mortimer B. Davis Jewish General Hospital, all of which have benefited from an expansion of experimental facilities made possible by grants from the Canada Foundation for Innovation. We are particularly interested in applicants with an established record of research in the neural bases of higher levels of language processing. Expertise in multimodal neural imaging techniques (e.g., MEG, TMS, ERP, fMRI, PET) is preferred.

Interested applicants should send their curriculum vitae and a short statement of research interests; selected reprints; and the names and contact information of three references to: **Shari R. Baum, Ph.D., School of Communication Sciences and Disorders, McGill University, 1266 Pine Avenue West, Montreal, QC H3G 1A8 Canada** by June 1, 2002.

All qualified candidates are encouraged to apply; however, Canadians and permanent residents will be given priority. McGill University is committed to Equity in Employment.

RHEUMATOLOGY RESEARCHER/ASSISTANT PROFESSOR. Top academic research institution in the Manhattan area needs an M.D./Ph.D. with excellent clinical training in internal medicine and rheumatology and also extensive research experience in immunology. The candidate needs to have had previous academic appointments at the **ASSISTANT PROFESSOR** of medicine level in the United States. He/she must have demonstrated ability to obtain independent funding for his/her research and be at the present time the Investigator of at least one funded research project. Must be proficient in cell biology, immunology, protein chemistry, molecular biology, and laboratory animal handling. FAX résumé to: **FAX: 212-598-6449.**



Life through Discovery

Servier is the leading independent French pharmaceutical laboratory employing more than 13,600 people world-wide. Our strong growth and our dedication to research and development of new drugs, mainly in diabetes, cardiovascular disease, neuroscience, oncology, bone and joint disease are a reflection of our dynamism and enthusiasm. Our success lies in the quality of our teams and our strong human values.

Thanks to its 2,200 specialised researchers, our growing company has a pipeline of drugs in development.

In our Research centre near Paris, a major and expanding scientific and medical hub within Europe, we are offering a new position for a:

Bioanalyst

Within our Molecular and Cellular Pharmacology Department, you will be responsible for the analysis of information from gene expression profiling and public/proprietary databases, and for the evaluation and integration of sequence analysis tools.

IT environment:

LASSAP, Blast, Accelrys, GCG and databases, UNIX, Web

The ideal candidate will have a Ph.D. in bioinformatics or MS with at least 3 years relevant experience. He/She is an innovative person with strong communication skills. The successful candidate will work closely with molecular biologists and our IT Department.

Our company provides a dynamic atmosphere and our material and technical facilities are excellent.

If you are interested in the above position, please send your application (cover letter and CV), quoting Job Code R001, to: Vincent Minvielle,

SERVIER, 11 rue des Moulineaux, 92150 Suresnes, FRANCE.

e-mail: vincent.minvielle@fr.netgrs.com

Postdoctoral Positions in Eicosanoid Research at NIEHS/NIH

Three postdoctoral positions are currently available at NIEHS/NIH in Research Triangle Park, North Carolina in the field of eicosanoid metabolism. One position is to study basic mechanisms responsible for the anti-carcinogenic activity of NSAIDs and to investigate carcinogenesis associated with aberrant expression of cyclooxygenase and lipoxygenase. The second position is to investigate the mechanisms by which COX-1 and/or COX-2 contribute to the tumorigenesis process. The third position is to study the regulation and functional significance of eicosanoid metabolizing enzymes in cardiovascular tissues and their relevance to cardiovascular disease and hypertension. Emphasis for all three positions will be placed on studies which examine the effects of altered gene expression on cell/organ function utilizing in vitro systems and transgenic/knockout mice. Research will also involve the use of state-of-the-art techniques including DNA microarray and differential expression.

QUALIFICATION: Applicants should possess a M.D. or Ph.D. degree in Molecular Biology, Cell Biology, Biochemistry, Toxicology, Pharmacology, or a related field, and have no more than five years of relevant postdoctoral experience

TO APPLY: Submit or e-mail cover letter, curriculum vitae including publication list, and the names/phone numbers of three people who could provide letters of reference to one of the following investigators:

Thomas Eling, Ph.D.
eling@niehs.nih.gov

Robert Langenbach, Ph.D.
langenbach@niehs.nih.gov

Darryl C. Zeldin, M.D.,
zeldin@niehs.nih.gov



NIH is an equal opportunity employer



NATIONAL INSTITUTES OF HEALTH
NATIONAL EYE INSTITUTE

Job Opportunities

The National Eye Institute Intramural Program at the NIH campus, Bethesda, MD., is seeking highly qualified Postdoctoral Fellows, Research Associates and Staff Scientists in the following areas:

- Molecular Biology
- Cell Biology
- Immunology
- Psychophysics
- Biochemistry
- Genetics

Salaries range from \$30,800 to \$125,700 per annum, based on experience and type of appointment.

NEI offers an extensive benefits package that you may be eligible for, depending on the appointment mechanisms: Health Benefits, Life Insurance, Retirement Benefits, Annual and Sick Leave, Formal Training Program, Recruitment Bonus, Retention Allowance, Relocation Allowance, Loan Repayment Program, and Travel Benefits.

Candidates interested in specific job opportunities at the NEI may visit the NEI web site at <http://www.nei.nih.gov> listing the most current positions available.

NIH/NEI is an Equal Opportunity Employer

POSITIONS OPEN



TENURE-TRACK FACULTY POSITIONS Georgetown University School of Medicine Department of Pharmacology

The Department of Pharmacology, Georgetown University School of Medicine, is beginning recruitment for tenure-track faculty positions at the rank of **ASSISTANT/ASSOCIATE PROFESSOR**. These positions provide a competitive salary and generous start-up package. We are seeking candidates whose research emphasizes the use of targeted gene disruption, stem cell biology, transgenic animal models, molecular imaging, or electrophysiology to investigate problems in neurobiology, cardiovascular biology, or other areas of contemporary pharmacology. The Department has national prominence, substantial extramural funding, and a very active graduate training program, providing an enriching environment for research collaborations, mentorship, and excellence in teaching. Applicants should send their curriculum vitae, a statement of their research goals, three reprints, and arrange to have three letters of reference sent to: **Dr. Kenneth L. Dretchen, Chairman, Department of Pharmacology, Georgetown University School of Medicine, 3900 Reservoir Road, N.W., SE 402 Med-Dent Building, Washington, DC 20007. FAX: 202-687-2585; e-mail: dretchenk@georgetown.edu.** For more information, visit our website: <http://www.georgetown.edu/departments/pharmacology/index.html>. Applications are encouraged from women and underrepresented minorities.

FACULTY POSITION Immunology/Infectious Disease

Montana State University Department of Microbiology invites applications for a tenure-track faculty position at the **ASSISTANT/ASSOCIATE PROFESSOR** level. We seek an individual with potential to establish or who currently has an established extramurally funded research program in the general area of immunology or infectious diseases. An earned Doctorate (Ph.D., M.D., or D.V.M.) and postdoctoral research training are required. The successful candidate is expected to contribute to undergraduate, graduate, and medical student instruction. The position includes state-supported salary and a generous start-up package. The Department of Microbiology is a diverse department with a strong record of research productivity and funding. A complete position announcement and information about the Department can be found at website: <http://www.montana.edu/wwwmb>.

Send letter of application, summary of teaching and research accomplishments, curriculum vitae, selected reprints, and contact information for three professional references to: **Chair, Microbiology Search Committee, Department of Microbiology, Lewis Hall Room 109, Montana State University, Bozeman, MT 59717. E-mail: cross@montana.edu.** Review of complete applications will begin March 1, 2002, and continue until position is filled. *Americans With Disabilities Act/Equal Opportunity/Affirmative Action/Veterans' Preference.*

VICE PRESIDENT FOR RESEARCH University of Kentucky

The University of Kentucky invites nominations and applications for the position of Vice President for Research. The Vice President is the senior administrator responsible for the supervision and coordination of research at the University and reports directly to the President. The University seeks candidates who have a record of outstanding achievement in research and education; a dynamic and active approach to facilitate academic research enterprises; an ability to deal innovatively with government agencies, business, and industry; and experience in obtaining funds for research from private and government sources. Further information on this position can be found by visiting our website: <http://www.rgs.uky.edu/>.

POSITIONS OPEN

ASSISTANT PROFESSOR Bioinformatics

The University of Nebraska at Omaha announces a tenure-track position as Assistant Professor of biology starting August 2002. We seek someone with research interests in molecular biology/bioinformatics, genomics, or proteomics. The position is supported by an NIH Biomedical Research Infrastructure Network (BRIN) grant. Substantial computational and experimental resources exist for interdisciplinary programs with the College of Information Science and with collaborating Research I institutions in the state. We seek a team-oriented individual who will help foster collaborative interactions with Researchers in these programs. Ph.D. and postdoctoral experience is required. The successful candidate will develop an active research program that involves undergraduates in research and supports development and training of undergraduate BRIN scholars. Teaching responsibilities will include a bioinformatics course for undergraduates as well as contributions to existing courses. For more information, see website: <http://www.unomaha.edu/~wwwbio/>. Screening of applications will begin 15 March 2002 and continue until the position is filled. Send curriculum vitae, statements of research and teaching objectives, and three letters of recommendation to: **Chair, Department of Biology, University of Nebraska at Omaha, 6001 Dodge Street, Omaha, NE 68182-0040.** We are strongly committed to achieving diversity among faculty and staff and strongly encourage applications from members of underrepresented groups, women, and persons of color.

The Department of Pharmacology at the Boston University School of Medicine invites applications for a faculty position at the rank of **ASSOCIATE or FULL PROFESSOR**. The successful candidate will contribute to graduate and medical student teaching and will have interests and expertise that complement and broaden existing departmental strengths in molecular biology, neuropharmacology, drug abuse, neuropeptides, and neurodegeneration. The position is designed for a primary appointment based in pharmacology with a joint appointment in the Department of Biomedical Engineering. This combination is motivated by a \$14 million Leadership Award from the Whitaker Foundation designed to integrate both disciplines. We are particularly interested in individuals utilizing state-of-the-art parallel or multiunit electrophysiological techniques (*in vitro* or *in vivo*) as well as candidates with expertise in the fields of bioengineering, neuroinformatics, genomics, proteomics, or nanotechnology. Applicants should have an independent research program and extramural funding. A generous start-up package is available. Please send curriculum vitae, statement of research interests, and the names of three references to: **Bryan K. Yamamoto, Ph.D., Chairman of the Pharmacology Search Committee, Department of Pharmacology and Experimental Therapeutics, Boston University School of Medicine, 715 Albany Street, Boston, MA 02118.** An Equal Opportunity/Affirmative Action Employer.

OPHTHALMOLOGY AND VISUAL SCIENCE

University of Texas Medical School at Houston

Applications are invited for one or two tenure-track faculty positions, probably at the **ASSISTANT PROFESSOR** level, to join a team working on the organization of the mammalian retina. We seek candidates holding or with strong potential to obtain funding from the National Eye Institute and with novel physiological, molecular, or genetic approaches to the structure and function of the retina. A competitive salary start-up package will be provided. Send applications with curriculum vitae; research outline; and the names of three references by March 31, 2002, to: **Dr. Stephen C. Massey, Research Director, Ophthalmology and Visual Science, University of Texas Medical School at Houston, 6431 Fannin, Suite 7.024, Houston TX 77030. E-mail: steve.massey@uth.tmc.edu.** The University of Texas is an Equal Opportunity/Affirmative Action Employer.

POSITIONS OPEN

UIC The University of Illinois at Chicago

Three new positions at the **ASSISTANT/ASSOCIATE PROFESSOR** level are available within the Center for Magnetic Resonance Research (website: <http://www.uic.edu/com/mrc>) with cross-appointments to Departments in the Colleges of Medicine, Arts and Sciences, and Engineering at the University of Illinois at Chicago. The research MRI equipment includes a 3T whole-body scanner (GEMS Signa, LX) housed in a new facility adjacent to the hospital and animal care facility. The world's first 9.4 Tesla whole-body human scanner is under production for delivery in the summer of 2002 when its new building will be completed. In addition to conventional MRI, the research capabilities include diffusion tensor, perfusion, sodium, phosphorus, routine functional (BOLD) MR imaging, MRA, and MR spectroscopy. Potential clinical and research collaborations exist with Neurosurgery, Neurology, Cardiology, and Psychiatry. The successful applicants will have at least two years of experience in MR physics and MR instrumentation on human scanners along with a Ph.D. in a mathematical, scientific, or computer science discipline. Experience in pulse sequence development and hardware on the GEMS platform is preferred.

The candidate should be motivated to work in a collaborative, state-of-the-art clinical and research environment and be able to demonstrate independent research abilities. Please forward curriculum vitae and introduction letter by April 6, 2002, to: **Keith Thulborn, M.D., Ph.D., Professor and Director of Center for MR Research, University of Illinois at Chicago, Room 1191 OCC (M/C 711), 1801 West Taylor Street, Chicago, IL 60612.** UICMC is an Affirmative Action/Equal Opportunity Employer offering competitive salary and benefits package.

VERTEBRATE BIOLOGIST

The Vertebrate Biologist teaches anatomy, vertebrate biology, anatomy and physiology, and general biology and is responsible for developing specialty courses, mentoring undergraduates, and participating in personal scholarship.

Minimum qualification: a Doctorate in biology or a related field.

The University: Azusa Pacific University is a Christian, coeducational, university accredited by the Western Association of Schools and Colleges, offering more than 40 areas of undergraduate study, 20 Master's degrees, and three Doctorates. As an evangelical Christian institution, Azusa Pacific affirms the supremacy of Christ in all areas of life and expects its employees to model Christian values in their Christian faith verbally and in writing.

Application procedures: Applicants should submit a letter describing qualifications and interest for the position; curriculum vitae; a statement of Christian faith; and names, addresses, and telephone numbers of five references to: **Patricia S. Anderson, Ph.D., Provost, Azusa Pacific University, 901 East Alosta Avenue, P.O. Box 7000, Azusa, CA 91702-7000. Telephone: 626-812-3087; e-mail: psander@apu.edu.**

POSTDOCTORAL POSITION is available immediately in a translational laboratory that employs engineered antibody-based molecules to treat cancer. The successful candidate will focus on either the development of intrabodies to block the activity of telomerase or on utilizing bispecific single-chain Fv molecules to alter the signaling of members of the EGFR/HER2 family of proteins. A Ph.D. with a strong background in molecular biology, signal transduction, and/or phage display is required. Excellent writing and speaking skills desired.

Applications including a cover letter, curriculum vitae, and three letters of reference should be sent to: **Gregory P. Adams, Ph.D., Department of Medical Oncology, Fox Chase Cancer Center, 7701 Burholme Avenue, Philadelphia, PA 19111. E-mail: gp_adams@fccc.edu.** Equal Opportunity Employer.



6th Annual Conference & Exhibition

Drug Discovery

TECHNOLOGY Europe

Where Science Meets Business

15-19 April 2002 • Messe Stuttgart International Germany

contact Elaine Crehan by

email: elaine.crehan@informa.com Tel: +44 (0)20 7453 2758



IBC Life Sciences

For the full conference programme and exhibition information please visit:

www.drugdisc.com

Register online for your FREE exhibition ticket:



Staff Scientist

Primate Neurobiology Core Facility
Mood and Anxiety Disorders Program
National Institute of Mental Health
National Institutes of Health
Bethesda, MD, USA

The Intramural Research Program of the National Institute of Mental Health, invites applications for a staff scientist position to manage the NIMH Primate Neurobiology Core facility in Poolesville, Maryland. The incumbent will be expected to play a key supervisory role for the multiple diverse studies that will be conducted at the Core Facility. The studies will include, behavioral paradigms, brain imaging, as well as genomic and proteomic studies. The incumbent will also be expected to participate in training and supervising technicians, advising/training "clients" and managing databases. In addition, the successful candidate will be actively involved in collaborative scientific studies. The successful candidate should have a Ph.D. or M.D. degree and an established record of scientific accomplishments as well as demonstrated organizational, managerial and teaching skills. Preference will be given to applicants with: 1) 4 or more years of experience in primate behavioral studies, 2) a strong background in primatology or ethology, 3) familiarity with primate pharmacological studies. Salary is very competitive and consistent with the level of experience of the candidate. The position will include an operating budget in an exciting multidisciplinary research environment.

Applicants should send a curriculum vitae, statement of research interests, and have three letters of recommendation sent, by May 3, 2002 to: Dr. Hussein K Manji, Chair, Search Committee for Primate Neurobiology Core Facility, NIMH, Bldg. 49, Room B1EE16, 49 Convent Dr MSC 4405, Bethesda, MD 20892-4405.



The National Institutes of Health is an equal opportunity employer

National Institutes of Health

Director

National Institute on Alcohol Abuse and Alcoholism

The NIH seeks exceptional candidates for the position of Director, National Institute on Alcohol Abuse and Alcoholism (NIAAA).

The nation's preeminent alcohol research organization, NIAAA conducts and supports studies on the causes, treatment, and prevention of alcohol abuse and alcoholism and its medical consequences. NIAAA research spans diverse biomedical, behavioral, and psychosocial disciplines. The breadth of these studies creates unique opportunities for interdisciplinary collaboration and demands strong and visionary leadership. The NIAAA Director is seen as the Nation's chief expert on alcohol research and as the leading voice in the dissemination of research-based information on alcohol abuse treatment and prevention. The Institute consists of 400 employees and has a budget of about \$385 million.

The NIAAA Director will develop a long-range plan for alcohol research and strengthen an integrated program of research and research training. He or she will build upon existing partnerships and collaborations with other NIH Institutes, Federal agencies, and non-government organizations and strengthen NIAAA alliances with the myriad scientific, treatment, and advocacy constituencies engaged in alcohol abuse efforts and which look to NIAAA for leadership and guidance. The NIAAA Director also advises the Director, NIH of developments and opportunities in the alcohol research field.

Applicants must possess a medical or doctoral degree and must be recognized for their scientific expertise in alcohol research. Experience in leading a multidisciplinary alcohol research program is required and should include extensive program planning, assessment and analysis; resolution of major operational issues; management of financial and human resources; and significant interaction with diverse alcohol research, treatment, and advocacy groups. To apply, submit a current Curriculum Vitae, and bibliography to:

Ms. Ann Nucci, Human Resources Officer, NIA, National Institutes of Health, Building 31, Room 2C02, 31 Center Drive MSC2203, Bethesda, MD 20892-2203. Applications may also be sent via email to nuccia@nia.nih.gov.

APPLICATIONS MUST BE RECEIVED BY CLOSE-OF-BUSINESS
MAY 1, 2002

NIH is an equal opportunity employer



POSITIONS OPEN

DEVELOPMENTAL BIOLOGIST POSITION Department of Ophthalmology and Visual Sciences University of Michigan

The Department of Ophthalmology and Visual Sciences has a tradition of outstanding basic research and formal ties to basic science departments in the University through joint appointment of its faculty. In keeping with the tradition of excellence, we are seeking candidates for a faculty position at the level of **ASSISTANT PROFESSOR** that use vertebrate models to investigate fundamental cellular and molecular mechanisms that regulate the development of ocular tissues. We are particularly interested in individuals with research interests in stem cell biology. Qualifications include a Ph.D. degree and postdoctoral experience in cell biology or neurobiology. The successful candidate will be expected to establish and maintain a robust, NIH-funded program of research and seek opportunities for collaboration with departmental colleagues (see [website: http://www.kellogg.umich.edu](http://www.kellogg.umich.edu)). Applications from Senior Scientists with productive and funded research programs will also be considered. Applications should include curriculum vitae, a statement of research interests and plans, and contact information for three references. Applications should be sent to:

Dr. Peter Hitchcock
W. K. Kellogg Eye Center
Department of Ophthalmology and
Visual Sciences
University of Michigan
1000 Wall Street
Ann Arbor, MI 48104-0712

The University of Michigan is an Affirmative Action/Equal Opportunity Employer. Women and minorities are encouraged to apply.

ASSISTANT PROFESSOR, ecology/conservation: The Department of Biological Sciences at Ferris State University invites applications for a tenure-track Assistant Professor position in ecology/conservation. The candidate will be responsible for teaching an upper-level course in environmental conservation, microbial ecology, and an introductory course in biology. Development of a research program that will involve undergraduates is encouraged but not required. Required: Ph.D. with emphasis in ecology/environmental biology; at least one year of full-time, college-level teaching experience; a strong commitment to undergraduate teaching; ability to contribute to the ongoing development of the Department; and interpersonal and communication skills sufficient to be able to work effectively with a diverse array of students and colleagues. Preferred: general biology teaching experience at the introductory level, background in plant biology, and the background and interest to contribute to the Department's community outreach activities in the natural sciences. Salary is comparable with other Michigan state-supported universities. The position begins August 2002. Review of applications will begin February 22, 2002, and continue until March 17, 2002, or until position is filled. Applicants must submit a letter of application; résumé; statement of teaching philosophy; unofficial copies of all college transcripts (both undergraduate and graduate); and names, addresses, telephone numbers, and e-mail addresses of three references. Final candidates will be required to provide official transcripts. Send all materials to: **Dr. C. Boogaard, Ferris State University, 420 Oak Street, PRK-150, Big Rapids, MI 49307-2020**. For more information about Ferris, visit our [website: http://www.ferris.edu](http://www.ferris.edu). *An Equal Employment Opportunity/Affirmative Action Employer.*

POSTDOCTORAL POSITION immediately available to study the mechanism of inhibition of GSK-3 β by testosterone (*PNAS* 99:1140, 2002). Experience in molecular biology, enzymology, and protein purification required. Send curriculum vitae to: **Sozoz Papasozomenos, M.D., University of Texas Houston Medical School, 6431 Fannin, Houston, TX 77030**. Telephone: 713-500-5340; e-mail: sozoz.c.papasozomenos@uth.tmc.edu.

POSITIONS OPEN

ASSISTANT/ASSOCIATE PROFESSOR (Pathogenic Microbiologist/Virologist/Immunologist). The Department of Veterinary Science at South Dakota State University invites applicants for a tenure-track, 12-month, 90% research and 10% teaching appointment. Outstanding candidates with research interests in infectious disease research and experience and capability in the areas of food animal infectious disease research will be given preference. Applicants must have a Ph.D., D.V.M./Ph.D., or M.D./Ph.D. along with postdoctoral training and/or demonstrated outstanding research accomplishments. Applicants at the Associate level must have five years of successful college teaching or research experience. Applicants should be prepared to establish an independent, extramurally funded research program. Extramural funding experience and the willingness to develop collaborative research programs are desirable. The successful candidate will join a state-of-the-art equipped multiinvestigator laboratory with a new BL-2 and BL-3 animal care research facility. Start-up funds are available. Applicants are expected to participate in teaching in the Department and the graduate program. Interested candidates should submit curriculum vitae, a statement of research interests, and three letters of reference to: **Dr. Chris Chase, Search Committee Chairman, Department of Veterinary Science, Box 2175, South Dakota State University, Brookings, SD 57007**. Telephone: 605-688-5652; FAX: 605-688-6003; e-mail: christopher_chase@sdstate.edu (inquiries only). Call or write for full list of qualifications. Application deadline is May 1, 2002, and position will remain open until filled. Preferred starting date is June 1, 2002. SDSU is an Affirmative Action/Equal Employment Opportunity Employer and encourages applications from women and minorities. ADA accommodations: Telephone: 605-688-4504/TTY 605-688-4394.

FACULTY POSITION, Department of Microbiology, The Ohio State University. Applications are invited for a tenure-track faculty position at the **ASSISTANT PROFESSOR** level in the Department of Microbiology at The Ohio State University. Applicants must have a Ph.D. in microbiology or a related discipline, postdoctoral research experience, documented research productivity, and a commitment to an academic career within a research-oriented program. The successful applicant will be expected to develop and maintain a research program with extramural support and to teach at both the undergraduate and graduate levels. Preference will be given to applicants with expertise and a research plan that focuses on microbial pathogenesis and/or the host's response to the microbial pathogen. A competitive salary with benefits, research space, and an excellent start-up package are available. To expedite the review process, applicants should send a copy of their curriculum vitae and a description of their research plans by e-mail, with names and addresses of three potential references, to: **e-mail: microsearch@osu.edu**. A hard copy should also be sent to: **Dr. Richard F. Mortensen, Search Committee, Department of Microbiology, Ohio State University, 484 West 12th Avenue, Columbus, OH 43210**. The Department of Microbiology [website: http://www.biosci.ohio-state.edu/~microbio/](http://www.biosci.ohio-state.edu/~microbio/). *Ohio State University is an Equal Opportunity/Affirmative Action Employer. Women, minorities, veterans, and individuals with disabilities are encouraged to apply.*

Beloit College seeks two **VISITING PROFESSORS** of biology for the 2002-2003 academic year, full-time to teach botany and biological issues in the fall and environmental biology and ecology in the spring and half-time to teach microbiology in the fall and cellular/developmental biology in the spring. Ph.D. or A.B.D. in biology. An excellent opportunity to gain experience in a department nationally known for innovative pedagogy. Submit letter of interest, curriculum vitae, transcripts, and three letters of reference to: **Ken Yasukawa, Beloit College, 700 College Street, Beloit, WI 53511** by 1 March 2002. *Beloit College is committed to cultural and ethnic diversity and urges all interested individuals to apply. Affirmative Action/Equal Opportunity Employer.*

POSITIONS OPEN

ASSISTANT/ASSOCIATE PROFESSOR (TENURE TRACK) Physiologist/Bioengineer University of Pennsylvania

The Department of Anatomy and Cell Biology of the School of Dental Medicine is seeking applicants for a tenure-track position in the standing faculty at the Assistant/Associate Professor level. Successful candidates are expected to participate in the teaching of human physiology and to have strong research programs that use innovative approaches to study significant problems in cell physiology or molecular biology. These problems include but are not limited to ion channel structure-function relationships, signal transduction mechanisms in neurons, endothelium or smooth muscle, actions of G proteins, and trafficking and regulation of receptors or other proteins. Excellent opportunities for collaboration exist at the School of Dental Medicine and at other schools within the University. If the successful candidate is a bioengineer, he or she may qualify for a secondary appointment in the School of Engineering and Applied Science. The successful applicant at the Associate level will be expected to have ongoing external grant support. The position will be available September 1, 2002. Applicants with either a Ph.D. or a dual degree (D.M.D.-Ph.D., M.D.-Ph.D., D.V.M.-Ph.D.) are invited to submit curriculum vitae, a letter outlining research interests, and the names of at least three references to: **Edward J. Macarak, Ph.D., Professor and Chair, Department of Anatomy and Cell Biology, School of Dental Medicine, University of Pennsylvania, Philadelphia, PA 19104**. E-mail: macarak@biochem.dental.upenn.edu; FAX: 215-898-1687.

The University of Pennsylvania is an Equal Opportunity/Affirmative Action Employer. Women and minorities are encouraged to apply.

RESEARCH ENTOMOLOGIST/ ECOLOGIST

The U. S. Department of Agriculture, Agricultural Research Service, Western Integrated Cropping Systems Research Unit, Shafter, California, is recruiting for a permanent full-time Research Entomologist or Ecologist. Incumbent will investigate the ecology, host range, and habitat preference of insects affecting cotton. These pests include plant bugs, aphids, mites, and whiteflies. Utilization of remote sensing imagery will play a large part in locating likely places within the landscape of the central valley of California that may harbor these pests. In addition, incumbent will investigate the use of remote sensing practices for identification of early infestations within a crop and develop precision methods for ameliorating the infestation. In collaboration with biocontrol or IPM specialists, incumbent may release newly discovered entomopathogens or arthropod biological control agents or identify other useful means of managing the pest population to prevent economic injury. Applicants must have a Ph.D. with emphasis on entomology, ecology, or related field. Salary range is \$54,275 to \$99,150 (GS-12/13/14) per year (salary commensurate with experience). Obtain the full vacancy text via [website: http://www.ars.usda.gov](http://www.ars.usda.gov) or call **Barbie Ballengee**; Telephone: 661-746-8000; indicate Announcement Number ARS-X2W-2166. For technical details of the position, contact the **Research Leader, Michael R. McGuire**; Telephone: 661-746-8001. Applications must be postmarked by April 2, 2002. USDA-ARS is an Equal Opportunity Provider and Employer. Applicants must be U. S. citizens.

POSTDOCTORAL POSITION available immediately for a motivated Molecular Biologist to study the contribution of proteinases to craniofacial development. Research projects include the characterization of a profound phenotype present in a matrix metalloproteinase-20 (MMP-20) knockout mouse and the characterization of MMP-20 domain structure by introduction of transgenes into the knockout background. For more information, contact: **Dr. John D. Bartlett, Harvard-Forsyth Department of Oral Biology, The Forsyth Institute, 140 Fenway, Boston, MA 02115**. E-mail: jbartlett@forsyth.org; FAX: 617-456-7732. Visit our [website: http://www.forsyth.org](http://www.forsyth.org) to learn more about our Institution and its people.

The National Institute of Dental and Craniofacial Research (NIDCR), NIH is seeking applicants for a Health Scientist Administrator position in the Division of Basic and Translational Sciences (DBTS). The position will be filled in the civil service as a GS-14 or under Title 42.

The position is for a Director of the Small Business Innovative Research/Small Technology Transfer Research Programs and Technology Transfer Issues. This program will emphasize technology development, industrial relations, small business and technology transfer research, identification of new technologies of potential interest for oral health research, and interactions with other NIH Institutes and other Agencies (e.g., FDA, NIST). Although not exclusive, areas of research interest in this program include the development of new dental restorative materials, novel technologies for tissue repair and restoration, techniques for controlling oral microbial infectious agents and unique approaches for the early detection, diagnosis and prognosis of orofacial diseases and disorders.

The incumbent will direct, administer and evaluate a portfolio of extramural grants, contracts and interagency agreements and will stimulate interest in and provide advice to the extramural community regarding the respective portfolio. In addition, the incumbent will participate in funding decisions, policy development, as well as implementation and coordination with other programs both within and outside of the NIDCR.

The applicant is required to have a D.D.S./D.M.D., M.D., or Ph.D. or an advanced degree in engineering and relevant experience equivalent to a Ph.D. degree. The NIDCR SBIR/STTR program is a crosscutting program that encourages and supports research from small businesses on the etiology, pathogenesis, prevention, diagnosis, and treatment of oral, craniofacial, and dental diseases and disorders. Therefore, the incumbent must have a broad scientific background and should be able to establish a program to promote maturation of NIDCR-funded technologies in the extramural community (academic technology developers and small businesses). S/he must have the ability to write reports and make oral presentations, and needs to possess interpersonal skills.

The starting salary for this position is \$78,265 per annum; higher salary available commensurate with experience. A relocation bonus of up to 25 percent may be available to a permanent Federal employee who must relocate to accept this position in a different commuting area, subject to individual approval. A recruitment bonus of up to 25% of base pay may be available to a non-Federal selected candidate. Physicians may be eligible for a Physician's Comparability Allowance (PCA) up to \$20,000 per year.

Copies of the full text vacancy announcements may be found on the World Wide Web at: <http://www.nidcr.nih.gov/about/joblist.asp>. Interested candidates may contact **Ms. Judith Dulovich, Human Resources Management Branch**, at (301) 496-6971 or by email: Judith.Dulovich@nih.gov. The application deadline for these positions is April 5, 2002. Applications will be accepted if postmarked, emailed, faxed or hand carried by the close of business on the deadline date.

NIH is an Equal Opportunity Employer.

YOUR FUTURE LIES WITHIN YOU.

The goal: To contribute to create in Quebec one of the leading research centres in the world in genomics and proteomics including both academic and industrial research.

The means: Recruit top-level scientific talent to work on major projects.

The search: Génome Québec and McGill University are looking to recruit talented individuals in the fields of genomics, proteomics, and bioinformatics to participate in large-scale projects or work at the Montréal Genomic and Proteomic Centre (the expertise centre of Génome Québec). Projects are under the responsibility of researchers funded by Génome Québec/Genome Canada.

Specifically, we are seeking:

- I Ph.D. level Research Associates with research experience in molecular genetics or genomics in industry, university, or research institutes
- I M.Sc./B.Sc. level Research Assistants

For the following projects:

- I Marker development (SNPs...)
- I Database development
- I High throughput sequencing
- I DNA microarray-based expression profiling
- I Proteomics analyses
- I Large-scale genetic interactions and protein-protein interaction in model organisms
- I Bioinformatics

The opportunity: Successful applicants will work on the McGill University campus, and actively collaborate with scientists at the Montréal Genomic and Proteomic Centre (the expertise centre of Génome Québec), as well as with other scientists from McGill University and Génome Québec.

The process: Screening of applicants will continue until all positions are filled. Salaries and benefits will be commensurate with experience, and appointment will be subject to final budget approval. McGill University and Génome Québec hire on the basis of merit and are committed to employment equity. In accordance with Canadian immigration requirements, priority will be given to Canadian citizens and permanent residents of Canada. All qualified individuals are encouraged to apply.

Content and contact: Please send a cover letter indicating your expertise, your CV, a list of publications, and the names of three individuals who can provide references to:

Génome Québec, Human Resources Department
630 Blvd. René-Lévesque West, Office 2660
Montréal QC H3B 1S6
E-mail: info@genomequebec.com



Genome Québec  **McGill**

THE FUTURE LIES WITHIN US.

2002 AUGUST COURSES

Fundamental Issues in Vision Research

August 11-24, 2002

A lecture and laboratory course, experimentally based, and problem oriented, intended for graduate students and postdoctoral fellows currently training in molecular biology, cell biology, and neurosciences and who are not currently involved in vision research, and others in early stages of vision research who wish to broaden their interests in the field. Selected students in NEI-sponsored training grants who are now involved in research in related, but non-vision projects, may apply. Limited to 20 students.

The goal of this course is to present, in depth, the exciting theoretical and experimental approaches to fundamental research problems in vision so that students can evaluate the potential for active research in this field. The faculty will describe and direct laboratories of ongoing research in the tissues of the eye of invertebrates and vertebrates.

Course Directors: Sandra K. Masur, *Mount Sinai School of Medicine*; and David S. Papermaster, *University of Connecticut Health Center, Farmington*

Costs of attending this course, including travel, housing and meals at the MBL are fully supported by the National Eye Institute, NIH.

Molecular Biology of Aging

July 30 - August 17, 2002

A three-week lecture and laboratory course featuring the newest and most exciting ideas in aging research, with emphasis on molecular approaches. A distinguished faculty will interact with approximately 20 students via lecture, discussion, hands-on experiments and analysis of data. Lecture topics encompass model systems (yeast, *Drosophila* and *C. elegans*); mitochondrial defects and oxidative stress, DNA mutations and repair; telomeres and cellular senescence; mammalian aging; and evolutionary considerations. Laboratory exercises will examine aging in the model systems of *S. cerevisiae* and *C. elegans*; DNA changes in old versus young animals including mitochondrial, ribosomal, and other DNA species; mammalian aging in old versus young mice and in various mutant strains; and the molecular basis of Werner's syndrome.

Course Directors: Leonard Guarente, *Massachusetts Institute of Technology*; and Douglas Wallace, *Emory University*

Costs of attending this course, including travel, housing and meals at the MBL are fully supported by the Ellison Medical Foundation.

FINANCIAL ASSISTANCE AVAILABLE FOR THESE COURSES!

Methods in Computational Neuroscience

August 4 - September 1, 2002

Animals interact with a complex world, encountering a wide variety of challenges: they must gather data about the environment, discover useful structures in these data, store and recall information about past events, plan and guide actions, learn the consequences of these actions, etc. These are, in part, computational problems that are solved by networks of neurons, from roughly 100 cells in a small worm to 100 billion in humans. Careful study of the natural context for these tasks leads to new mathematical formulations of the problems that brains are solving, and these theoretical approaches in turn suggest new experiments to characterize neurons and networks. This interplay between theory and experiment is the central theme of this course.

In each of the first three weeks, the course will focus on a distinct question: Can we measure the quality of the brain's solutions to the complex computational problems that arise in the natural environment? Can these problems be decomposed into manageable pieces, and can we relate such mathematical decompositions to the observable properties of individual neurons and circuits? Can we identify the molecular mechanisms that provide the building blocks for these computations, and understand how these building blocks are organized into cells and circuits that perform useful functions?

Course Directors: William Bialek, *Princeton University*; and Rob de Ruyter van Steveninck, *NEC Research Institute*

This course is supported by the National Institute of Mental Health, NIH.

Molecular Mycology

Current Approaches to Fungal Pathogenesis

August 12 - August 30, 2002

This course provides state-of-the-art training in molecular methods for studying fungal pathogens important in human disease. The course is designed for advanced graduate students, postdocs, and independent investigators. Limited to 16 students.

The goal of the course is to instruct students in the application of molecular methodologies to problems posed by medically important fungi. The main areas covered by the course include an introduction to medically important fungi, molecular manipulation and analysis of these fungi, host-fungal interactions, and the application of molecular methods to the analysis of fungal disease.

Training is provided by laboratory exercises, visiting seminar speakers, and informal panel discussions. Laboratory exercises focus on *Candida*, *Aspergillus*, and *Cryptococcus* and invited seminar speakers will provide introductions to *Candida*, *Aspergillus*, *Cryptococcus*, *Histoplasma*, *Coccidioides*, and *Pneumocystis*, as well as more specialized seminars in areas of drug targets, molecular diagnostic techniques, virulence, genome structure, evolution, vaccine strategies, and host defenses.

Course Directors: J.E. Edwards, *Harbor/UCLA Medical Center*; and Aaron P. Mitchell, *Columbia University*

This course is supported by contributions from the Burroughs Wellcome Fund and Pfizer, Inc.

2002 AUGUST COURSES

Neuroinformatics

August 17 - September 1, 2002

The ability to digitally acquire, store and analyze large volumes of multichannel data in the neurosciences, ranging from multiple spike trains to brain images, has given rise to a new and growing body of research. This two-week course is structured around the related issues, and will contain both pedagogical lectures on the basic statistical techniques as well as focussed mini-workshops on specific neuroscience topics where applications of these techniques are critical. The course is an outgrowth of the Workshop on the Analysis of Neural Data, which was previously held at the Marine Biological Laboratories from 1996-2001. Limited to 25 participants.

Scope: The scope is all forms of time series data gathered in a neuroscientific context. This includes point processes (single and multiple spike trains) and continuous processes (local field potential, EEG/MEG recordings, optical imaging data, fMRI and PET data). Techniques for exploratory and confirmatory analysis of the data will be treated along with the underlying scientific questions and potential biomedical applications. The goal is to provide pedagogical material as well as a forum for discussion. Questions of data formats, databases etc, will also be included in the workshop to the extent that they relate to the data types described above.

Course Directors: Emery Brown, *Massachusetts General Hospital*; and Partha Mitra, *Lucent Technologies, Bell Laboratories*

Neural Development & Genetics of Zebrafish

August 18-31, 2002

An intensive two-week course for advanced graduate students, postdoctoral fellows and independent investigators that will focus on the development and genetics of zebrafish with special emphasis on the nervous system. The first week of the course will cover the early development and genetics of zebrafish and the relevant methodologies. The second week will focus on the nervous system. Mornings will be devoted mainly to lectures and discussion and afternoons to three- to four-hour laboratory exercises. Limited to 18 students.

Laboratory exercises in the first week will introduce students to developing wild-type and mutant embryos, techniques of nucleic acid injection, gene-mapping, cell transplantation, *in situ* hybridization, and the labeling of single cells. In the second week, students will dissect the zebrafish nervous system, study brain histology, perform behavioral tests on wild-type and mutant animals, and learn axonal pathfinding techniques.

Course Directors: Cecilia Moens, *Fred Hutchinson Cancer Research Institute*; and William S. Talbot, *Stanford University School of Medicine*.

Partial funding for this course is provided by the National Institutes of Health, the Grass Foundation, and the International Brain Research Organization.

Workshop on Molecular Evolution

July 28 - August 9, 2002

Now in its fifteenth year, the Workshop on Molecular Evolution is the finest course of its type in the world. The Workshop consists of a series of lectures, demonstrations and computer labs that cover various aspects of molecular evolution. A distinguishing feature of the Workshop is a well-equipped computer laboratory for comparative analysis of molecular data. The laboratory is equipped with Linux and Unix workstations and servers. Authors and experts in the use of computer programs and packages such as Clustal W and Clustal X, COMPARE, FASTA, GAML, GCG, LAMARK, MPSRCH, PAML, PAUP, and PHYLIP will provide demonstration and consultation. This two-week program is designed for established investigators, postdoctoral fellows, and advanced graduate students with prior experience in molecular evolution and comparative genomics. Scientists with a strong interest in molecular evolution, systematics, and population genetics are encouraged to apply. Enrollment is limited to 60 students.

Course Director: Michael Cummings, *Marine Biological Laboratory*

Partial funding support comes from the National Science Foundation (NSF); National Aeronautics and Space Administration (NASA); GlaxoSmithKline Pharmaceuticals; and The Josephine Bay Paul Center for Comparative Molecular Biology and Evolution, Marine Biological Laboratory.



For Application Forms & Deadlines,

Visit our Web-Site

<http://courses.mbl.edu>

Or Contact:

**Carol Hamel, Admissions Coordinator
Marine Biological Laboratory
7 MBL Street
Woods Hole, MA 02543-1015
(508) 289-7401
admissions@mbi.edu**

The MBL is an EEO/Affirmative Action Institution

MARINE BIOLOGICAL LABORATORY

POSITIONS OPEN

CELL BIOLOGY

The Department of Cell Biology, Faculty of Medicine and Dentistry, at the University of Alberta invites applications for a tenure-track position at the **ASSISTANT/ASSOCIATE PROFESSOR** level. We seek an individual who will complement and extend our existing strengths in cell signaling/cell cycle, protein targeting, organelle biogenesis, cell-cell interactions, and neurobiology. Applicants should have a Ph.D., a proven record of research achievement, and will be expected to apply for funding from the Alberta Heritage Foundation for Medical Research. The successful candidate will be expected to carry on an independent research program but will also have the opportunity for collaborative interactions with several multidisciplinary research groups within the University. A contribution to the Department's teaching program will also be expected. Please send curriculum vitae, a two-page statement of research interests, and arrange to have three letters of reference sent on your behalf to: **Dr. Richard Rachubinski, Chair, Department of Cell Biology, 5-14 Medical Sciences Building, University of Alberta, Edmonton, Alberta T6G 2H7 Canada.** Deadline for receipt of applications is May 31, 2002. Further information about the position and department can be obtained at website: <http://www.ualberta.ca/cellbiology>. The records arising from this competition will be managed in accordance with provisions of the Alberta Freedom of Information and Protection of Privacy Act (FOIPPA). The University of Alberta hires on the basis of merit. We are committed to the principle of Equity in Employment. We welcome diversity and encourage applications from all qualified women and men including persons with disabilities, members of visible minorities, and aboriginal persons. All qualified candidates are encouraged to apply; however, Canadians and permanent residents will be given priority. If suitable Canadian citizens and permanent residents cannot be found, other individuals will be considered.

ASSISTANT PROFESSOR Biology

The Department of Evolution and Organismal Biology at The Ohio State University at Newark invites applicants for a nine-month, tenure-track Assistant Professor in biology to begin September 2002. The Newark campus is an extended campus of The Ohio State University system and is located about 35 miles east of the central Columbus campus.

Candidates should be committed to undergraduate education and be able to develop an externally fundable research program involving undergraduate students. We especially encourage applicants with research interests and fieldwork in evolution, genetics, cellular, organismal, or ecological aspects of biology to apply. Additionally, experience in human anatomy and physiology may be useful.

Duties: Teaching responsibilities include introductory majors and nonmajors courses (lectures and laboratories and intermediate-level courses in the candidate's area of expertise). Day and occasional night classes are taught. Classes are small, and the general teaching load is six courses per academic year.

Qualifications: Doctoral degree in one of the biological sciences is required. Candidates should also have strong teaching credentials and be committed to undergraduate education. Successful candidates should have strong research credentials.

Salary: \$41,000 to \$46,000 depending on qualification and experience. A comprehensive benefits package is included.

Application procedures: To assure consideration, please send a letter of application, curriculum vitae, statement of teaching and research interests, copies of relevant publications, and three letters of recommendation to: **Assistant Professor of Biology Search, The Ohio State University at Newark, 1179 University Drive, Newark, OH 43055.** Evaluation of candidate materials will begin April 1, 2002, and will continue until the position is filled. *OSU-N is an Equal Opportunity/Affirmative Action Employer. Women, minorities, veterans, and individuals with disabilities are encouraged to apply.*

POSITIONS OPEN

POSTDOCTORAL RESEARCH POSITIONS Department of Pharmacology University of Cambridge Cambridge CB2 1QJ, UK

Three Wellcome Trust-funded Postdoctoral positions are available to study the regulation of Ca^{2+} -sensitive adenylyl cyclases and the roles of these enzymes in cell signaling in the laboratory of **Dr. Dermot Cooper**, who is moving to Cambridge from Denver.

Three interactive projects are ongoing: (1) structure-function studies of adenylyl cyclases, (2) studies of local cAMP and $[\text{Ca}^{2+}]_i$ signals using electrophysiological and imaging techniques, and (3) determination of factors that cause the association of adenylyl cyclases with Ca^{2+} entry channels. Prior experience in $[\text{Ca}^{2+}]_i$ or cAMP-signaling is desirable. Extensive background in either cell biological, molecular biological, or electrophysiological methods is required. The positions will be up to three years in duration; starting as soon as possible after July 1, 2002; and salaried at the appropriate point on the Wellcome scale depending on experience plus benefits.

Please send inquiries (with full curriculum vitae) and names of references before July 1, 2002, to: **D.M.F. Cooper, Department of Pharmacology, University of Colorado Health Sciences Center, Box C-236, Denver, CO 80262 U.S.A.** E-mail: dermot.cooper@uchsc.edu. After July 1, 2002, please use the University of Cambridge address above. For recent papers, see website: <http://porsche.uchsc.edu/pharm/faculty/Cooper/DCmain.asp>. For information on the Department, see website: <http://www.phar.cam.ac.uk/>.

FACULTY POSITION Biophysical Chemistry

The Department of Chemistry at the University of Nebraska-Lincoln seeks to fill a tenure-track position in biophysical chemistry at the **ASSISTANT PROFESSOR** level, starting fall 2002. Candidates who are interested in the structural determination of biomolecules using NMR are especially encouraged to apply. Our department has 600, 500, and 300 MHz NMR spectrometers; a new 400 MHz NMR spectrometer will be installed in 2002. All applicants should have a demonstrated research record, the potential for establishing a significant externally funded research program, and an interest in undergraduate and graduate teaching. Preference will be given to those whose interests complement current research in the Department. Candidates should submit a letter of application, curriculum vitae and statement of research interests, and should also arrange to have three letters of reference sent to the Search Chair. Reply to: **Professor Larry Parkhurst, Biophysical Search Committee Chair, Department of Chemistry, 525 Hamilton Hall, University of Nebraska-Lincoln, Lincoln, NE 68588-0304.** FAX: 402-472-2044; e-mail: lgalusha2@unl.edu. The screening of applicants will begin May 1, 2002, and will continue until a suitable candidate is found. More information on our department can be found at website: <http://www.chem.unl.edu>. The University of Nebraska is committed to a pluralistic campus through Affirmative Action and Equal Opportunity and is responsive to the needs of dual-career couples. We assure reasonable accommodation under the Americans With Disabilities Act. For assistance, contact Leann Galusha; Telephone: 402-472-3034.

POSTDOCTORAL POSITIONS are available to investigate the Ca^{2+} signaling functions and regulation mechanisms of the pathways mediated by cyclic ADP-ribose and NAADP. Experience with Ca^{2+} imaging, molecular biology, enzyme purification, and/or single-cell microinjection is desirable. Please send curriculum vitae and reference letters to: **Dr. Hon-Chung Lee, Department of Pharmacology, 321 Church Street, S.E., University of Minnesota, Minneapolis, MN 55455.** E-mail: leehc@tc.umn.edu. Equal Opportunity/Affirmative Action Employer.

POSITIONS OPEN

TENURE-TRACK FACULTY POSITION Reproductive Biology

ASSISTANT/ASSOCIATE PROFESSOR/PROFESSOR, Position Number 84128, 13/14/15. Institute for Biogenesis Research, Department of Anatomy and Reproductive Biology, University of Hawaii, John A. Burns School of Medicine. General funds, full-time, nine- or 11-month, tenure track, to begin in the fall of 2002 subject to position clearance and availability of funds. Duties: Engage in research in molecular and cell biological procedures to analyze the processes of cell differentiation and embryo development by incorporating animal cloning technology. Engage in scholarly activities, creative endeavors, and lead a research team that contributes to the mission of the Institute for Biogenesis Research. Minimum qualifications: Ph.D. degree or equivalent in biological science. Assistant Professor: at least two years of postdoctoral experience with publications in reputable, referred journals and demonstrated ability as a teacher of graduate students. Associate Professor: at least four years at the rank of Assistant Professor. Proven ability to obtain major federal or private research funding and evidence of proficiency in teaching. Professor: same as Associate Professor but with national and international recognition in research. Desirable qualifications: evidence of skills and knowledge in molecular biology, cell biology, embryology, and reproductive biology. Experience in micromanipulation of gametes and/or embryos is preferable. Salary: negotiable. To apply: Send curriculum vitae, list of publications (with key reprints), a brief description of long-term research goals, and five names of references to: **Dr. Ryuzo Yanagimachi, Institute for Biogenesis Research, Department of Anatomy and Reproductive Biology, University of Hawaii School of Medicine, 1960 East-West Road, IBR Building E-124, Honolulu, HI 96822.** FAX: 808-956-7316; e-mail: [yana@hawaii.edu](mailto: yana@hawaii.edu). Closing date: Application materials must be received by April 30, 2002. An Equal Employment Opportunity/Affirmative Action Institution.

RESEARCH ASSOCIATE/TEAM LEADER Nucleic Acid Chemistry Biotechnology Resource Center Cornell University

The Biotechnology Resource Center at Cornell University seeks an innovative individual to provide scientific leadership and direction for a team of Scientists working in an high-throughput core facility providing such services as sequencing, genotyping, and synthesis. An additional major responsibility associated with this position includes assisting faculty, students, and industrial partners in planning and executing research projects involving these technologies. The successful candidate will possess a Ph.D. in molecular or cell biology or related field and have demonstrated expertise in a wide array of molecular biology techniques including a solid background in DNA synthesis, sequencing, genotyping, and data analysis. Strong technical, organizational, and communication skills and ability to troubleshoot are essential. Send curriculum vitae and the names and contact information for three references to: **Theodore W. Thannhauser, Ph.D., Director, BioResource Center, 149 Biotechnology Building, Cornell University, Ithaca, NY 14853-2703.** E-mail: tt34@cornell.edu; website: <http://brweb.bio.cornell.edu>. Cornell University is an Equal Opportunity/Affirmative Action Employer and Educator.

POSTDOCTORAL RESEARCH ASSOCIATE position available immediately to study mechanisms of drug tolerance using whole cell recording in brain slices and dissociated neurons. Electrophysiology experience required. Send curriculum vitae and references to: **E.I. Tietz, Ph.D., Professor of Pharmacology, Medical College of Ohio, 3035 Arlington Avenue, Toledo, OH 43614.** E-mail: etietz@mco.edu; website: <http://www.mco.edu/depts/pharm/tietz.html>. Affirmative Action/Equal Opportunity Employer.



ANTI-AGEING MEDICINE

1st Asia Pacific Conference and Exhibition

June 23rd - 26th, 2002 • Raffles City Convention Centre, Singapore

1st Asia Pacific Conference & Exhibition on ANTI-AGEING MEDICINE 2002

From molecular mechanisms to therapies

23-26 June 2002 Raffles Convention Centre, Singapore.

Organized by the Office of Life Sciences and the Faculty of Medicine
in honour of the 75th Anniversary of the Department of Biochemistry, NUS, and
by the American Academy of Anti-Aging Medicine.



Key themes include:

- Molecular mechanisms of ageing and neurodegenerative disease
- New developments in the treatment of neurodegenerative disease
- Critical examination of the use of antioxidant and other nutritional supplements and hormone replacement therapies in care of the ageing patient

Chairs of the Organizing Committee:

Barry Halliwell and Peter Wong, National University of Singapore;
Bob Goldman, American Academy of Anti-Aging Medicine.

Speakers include:

Louis J. IGNARRO (UC, Los Angeles), Nobel Laureate
"Nitric oxide as a unique signalling molecule in vascular biology"

Erik ANGGARD (William Harvey Research Unit, UK)
"Novel agents combining NO donation and antioxidant properties"

Simin N. MEYDANI (Tufts University)
"Nutrition to preserve the immune system in the elderly"

Flint BEAL (Cornell Medical Center)
"Mechanism and treatment of neurodegenerative disease"

Lis MOSEKILDE (University of Aarhus)
"Mechanisms of aging-related bone loss"

Dale E BREDESEN (Buck Institute)
"Molecular mechanisms of neuronal cell death in aging-related neurodegenerative diseases"

Sampath PARTHASARATHY (Emory University)
"Oxidative damage in atherosclerosis and reproductive disorders"

Ashley BUSH (Massachusetts General Hospital)
"Metals, free radical damage and Alzheimer's disease"

Lester PACKER (UC, Berkeley)
"Use of molecular genetic techniques to investigate the effects of natural products beneficial to the brain"

Allan BUTTERFIELD (University of Kentucky)
"The future of research into aging and age-related diseases; is oxidative stress the key linkage?"

Russel J REITER (University of Texas)
"Melatonin in the context of aging and aging-related diseases?"

Anthony CERAMI (Warren Labs)
"Glycation, glycoxidation and how to counter them"

Michael R. ROSE (UC Irvine)
"Can human aging be postponed?"

Shamal DAS DE (National University of Singapore)
"Treatment of Osteoporosis"

Jukka T SALONEN (Kuopio University)
"Ongoing trials of nutritional supplements"

Eduardo DE ROSE (International Olympic Committee)
"Aging and exercise: how to keep it going"

Jerry W SHAY (University of Texas)
"Ageing and cancer: the telomere and telomerase connection"

Adrian DOBS (Johns Hopkins)
"Androgen Replacement therapy in Men and Women: Is it necessary?"

Stephen SINATRA (University of Connecticut)
"Therapy with coenzyme Q"

Elliot FISHMAN (Johns Hopkins)
"Whole body CT scanning - A new imaging paradigm"

David A SNOWDON (University of Kentucky)
"Is the secret to successful aging to live like a nun?"

Peter St. GEORGE-HYSLOP (University of Toronto)
"Treatment of Alzheimer's disease"

Hongjun SONG (Salk Institute)
"Regeneration and neurogenesis in the brain"

Naoaki ISHI (Tokai University)
"Genetics of aging in C.elegans"

Robert STAN (University of Texas)
"Andropause"

Ishwarlal JIALAL (University of Texas)
"Should we treat diabetes with antioxidants?"

José VINA (University of Valencia)
"Gender differences in oxidative stress explain the higher longevity of females when compared with males."

Cynthia KENYON (UC, San Francisco)
"Neurobiology of the C.elegans genome"

Richard WEINDRUCH (University of Wisconsin)
"Molecular mechanisms of ageing: the effects of caloric restriction"

David J LINDEN (Johns Hopkins)
"Cerebellar motor learning: from molecules to behavior"

Bengt WINBLAD (Karolinska Institute)
"Treatment strategies in Alzheimer's Disease"

Simon MELOY (Buck Institute)
"Pharmacological interventions in aging and mitochondrial oxidative stress"

Steven H ZEISEL (University of North Carolina)
"Diet and Brain Development: Implications for memory in the aged"

Poster sessions will offer the opportunity for participants to present their own work. Selected abstracts may be presented as oral communications.
Abstract Submission Deadline: 31 March 2002

For further information, abstract forms, registration fees and online registration visit our website at www.antiaging2002.org or contact the **Event Organizer** Medical Conferences Pte Ltd, 30 Cuscaden Road, #09-00 HPL House, Singapore 249724.
E-mail: antiaging@hotelprop.com
To contact the programme organisers, Email: bcbh@nus.edu.sg or phcwh@nus.edu.sg

For more information on Singapore's biomedical science initiatives, please visit www.biomed-singapore.com

Supported by the Singapore Economic Development Board and the Agency for Science, Technology & Research (A*STAR)



**AGENCY FOR SCIENCE,
TECHNOLOGY & RESEARCH**

POSITIONS OPEN



University Corporation for Atmospheric Research
National Center for Atmospheric Research • UCAR Office of Programs

DIRECTOR Unidata Program Center

The University Corporation for Atmospheric Research (UCAR) invites applications and nominations for the position of Director of the Unidata Program Center. UCAR intends to fill the position promptly and seeks to have the new Director in place by summer-fall 2002.

Unidata is a program funded by the National Science Foundation to enable university researchers and educators to acquire and use atmospheric and related data. Currently, Unidata provides this service to roughly 150 universities and colleges. The Director is responsible for overall program leadership and direction and for ensuring that Unidata systems and services meet the needs of the Unidata community. The effectiveness of Unidata depends on a positive and constructive relationship with research, educational, and operational institutions in atmospheric and related sciences. Major direction and management decisions generally are made in consultation with the Unidata staff and the Unidata Policy Committee, a group of community members appointed by the UCAR president.

Candidates for this position should have a breadth of interests in computing and science, a compelling vision for the application of the information sciences to the needs of educators and researchers in the geosciences, a demonstrated ability to engage the community as participants and collaborators, and a desire to represent and advocate for the community to funding agencies and data providers. Planning and decision-making abilities require technical expertise integrated into a global perspective that encompasses scientific, educational, organizational, political, and budgetary issues.

Salary will be in the range of \$97,000 to \$120,000. Actual salary will be based on qualifications. UCAR offers a competitive employee benefit package.

Unidata is a division of the UCAR Office of Programs (UOP). UOP is administered by UCAR and is located in Boulder, Colorado. UCAR is a nonprofit consortium of 66 North American universities that grant Doctorates in the atmospheric and related sciences. Unidata has approximately 25 staff members and annual expenditures of about \$3.5 million.

Applications and nominations should be received by May 1, 2002, to receive full consideration and should be accompanied by complete curriculum vitae and list of references.

View detailed job description at [website: http://www.unidata.ucar.edu/director](http://www.unidata.ucar.edu/director). Initial consideration will be given to applications received prior to May 1, 2002. Thereafter, applications will be reviewed on an as-needed basis. Apply online or via e-mail: ucar.ncar@rpc.webhire.com or send scannable curriculum vitae (and references) to: **3450 Mitchell Lane, Boulder, CO 80307**. (Reference Job Number 2115 SCI). *UCAR's strength lies in the diversity of its people and the ways in which they contribute to the success and mission of the organization. Affirmative Action/Equal Opportunity Employer.*

RESEARCH ASSISTANT PROFESSOR. College of Medicine, Department of Internal Medicine. The successful candidate must have at least three years of postdoctoral experience. Ph.D. or equivalent terminal degree is required. This is a three-year, annually renewable appointment. The appointment will be mentored with the long-term goal of achieving a scientifically independent program for the candidate with the possibility for tenure. This individual will assist in the coordination of the Chairman's research program in the molecular basis for hereditary insulin resistance with the current emphasis being expression of glucose transporter isoforms in skeletal muscle. Send letter of application, curriculum vitae, and two letters of reference to: **Charles A. Stuart, M.D., Professor and Chair, Internal Medicine, East Tennessee State University, Box 70622, Johnson City, TN 37614-1709.**

POSITIONS OPEN

RESEARCH MOLECULAR BIOLOGIST, GS-0401-12/13/14. The United States Department of Agriculture (USDA), Agricultural Research Service (ARS), National Animal Disease Center, Periparturient Diseases of Cattle Research Unit, Ames, Iowa, is recruiting a permanent position in proteomics research. A Ph.D. is preferred with knowledge and skill in molecular biology, microbiology, biochemistry, and immunology. The successful applicant will serve as an independent Investigator and as a team member on periparturient disease and nutritional immunology projects. The research focus will be host-pathogen interactions within mammary tissue and use of proteomics and molecular/biochemical techniques to assist in identifying disease-specific proteins. The incumbent will oversee the daily operation of the unit's MicroMass Q-TOF Ultima Mass Spectrometer. Salary is fully funded and commensurate with experience (\$54,275 to \$99,150). The research program will fully support the incumbent's independent research and salary for a technician. Comprehensive benefits package includes paid annual and sick leave, life and health insurance, and a savings and investment plan in addition to a federal retirement plan. *U.S. citizenship required.* For further information, please contact: **Dr. Ron Horst; Telephone: 515-663-7312; e-mail: rhorst@nadc.ars.usda.gov.** Applications in response to this advertisement must be postmarked by May 13, 2002, and reference Vacancy Announcement Number ARS-X2W-2155. Vacancy announcements and application information can be obtained by ARS DIAL-A-VACANCY Telephone: 301-504-1482 or **Janae Lentz; Telephone: 515-663-7277; ARS website: <http://www.ars.usda.gov>** (click Employment with ARS). *The USDA is an Equal Opportunity Provider and Employer.*

POSTDOCTORAL POSITIONS

The Birkedal-Hansen Laboratory of the National Institute of Dental and Craniofacial Research (NIDCR) at NIH is seeking Postdoctoral Fellows to join the ongoing research program.

The research of the MMPU is focused on understanding the role of proteolytic enzymes in tissue remodeling during development, in growth, and in disease with specific emphasis on morphogenesis and pathophysiological processes associated with tissue destruction. The research of the laboratory currently is focused on the biologic function of matrix metalloproteinases and their inhibitors. Our approaches are mainly genetic (gene targeting including gene ablation and replacement) and cell biological (regulation of cell and enzyme function).

Candidates must possess a D.D.S., D.M.D., Ph.D., or M.D. or equivalent degree with a strong background in one or more of the following relevant areas: mouse and human molecular genetics, cell biology, and experimental disease models. Submit an application including curriculum vitae, relevant publications, and names of individuals who can provide letters of recommendation. Applications should be sent to: **Dr. Henning Birkedal-Hansen, NIDCR, Building 30, Room 132, 30 Convent Drive, MSC 4326, Bethesda, MD 20892.** E-mail: hbhansen@dir.nidcr.nih.gov. *NIH is an Equal Opportunity Employer.*

Research positions (**POSTDOCTORAL** and **RESEARCH ASSISTANT**): Study (1) DNA damage and repair in lung carcinogenesis; (2) roles of gene activity and chromosomal structure on DNA repair; (3) synergistic effect of metal and PAH on DNA damage and mutagenesis (experience in molecular biology, biochemistry, and genetics); and (4) changes in gene expression by metal and carcinogens. Laboratory is located in a beautiful rural setting in Sterling Forest, Tuxedo, New York. Curriculum vitae and references by e-mail: tang@env.med.nyu.edu or by mail to: **Dr. Moon-shong Tang, Department of Environmental Medicine, New York University School of Medicine, Tuxedo, NY 10987.**

POSITIONS OPEN



PhageTech

ENZYMOLOGIST/BIOCHEMIST

Phagetech, a research and development company dedicated to the discovery of novel anti-infectives, is recruiting an Enzymologist/Biochemist to join their Assay Development group. The candidate will be responsible for characterization of drug targets as well as development of screening assays and derivatized substrates. He will have to combine scientific knowledge with technical expertise to achieve characterization of enzymes and inhibitors. Qualifications: Ph.D. in biochemistry or equivalent; strength in chemistry is an asset as well as excellent analytical, organizational, and communication skills.

Reply to: **Sarita Benchimol, Phagetech Inc., P.O. Box 387, Place Du Parc, Montreal, Quebec H2X 4A5 Canada.** E-mail: saritab@phagetech.com.

CELL BIOLOGIST

The Department of Biology at Saint Louis University, a Catholic Jesuit institution dedicated to education, research, and health care, is seeking applications using integrative approaches to eukaryotic cell biology and/or developmental mechanisms and their evolution. The **ASSISTANT PROFESSOR** position is tenure track and begins August 2002. Successful candidates must have a Ph.D. and a record of research productivity; postdoctoral or equivalent experience preferred. Candidates will be expected to develop an independent, extramurally funded research program involving graduate and undergraduate students and participate in undergraduate and graduate teaching. Opportunities exist to join in collaborations with area medical schools and universities. Competitive start-up available. Applicants should submit curriculum vitae, statements of teaching and research goals, reprints, and three letters of recommendation to: **Dr. Richard L. Mayden, Department of Biology, Saint Louis University, 3507 Laclede Avenue, St. Louis, MO 63103-2010.** E-mail: maydenrl@slu.edu. Visit [website: http://bio.slu.edu](http://bio.slu.edu) for more information. Review of candidates will begin immediately and continue until the position is filled.

Saint Louis University is an Affirmative Action/Equal Opportunity Employer and encourages nominations of and applications of women and minorities.

Research positions at several levels (**ASSOCIATE RESEARCH SCIENTIST/STAFF ASSOCIATE/POSTDOCTORAL RESEARCH SCIENTIST**) available immediately for Ph.D.s with training in cellular, molecular, and/or free radical biology to work on projects involving mechanisms of environmental carcinogenesis (arsenic/asbestos/radon) using mammalian and human cell culture models (*PNAS* 98:1643, 2001; 98:14410, 2001). Send curriculum vitae, reprints, and names of three references to: **Professor Tom K. Hei, Center for Radiological Research, Columbia University, 630 West 168th Street, New York, NY 10032.** E-mail: tkh1@columbia.edu. *An Affirmative Action/Equal Opportunity Employer.*

POSTDOCTORAL POSITIONS

**Cytokine Biology, MIF
Inflammation and Immunity
Yale University
School of Medicine**

Positions available to study the molecular and cellular biology of MIF and its role in innate and acquired immunity. Experience in molecular biology and immunology is necessary. Send curriculum vitae and research interests to: **Richard Bucala, M.D., Ph.D., Yale University School of Medicine, P.O. Box 208031, New Haven, CT 06520-8031.** E-mail: rbucala@earthlink.net.

Affirmative Action/Equal Opportunity Employer.



NATIONAL INSTITUTES OF HEALTH

NATIONAL CANCER INSTITUTE At Frederick

Postdoctoral Research Positions

Postdoctoral fellowships for candidates with five years or less experience are available to work within a multi disciplinary program to develop and study new targeted therapeutics for AIDS and cancer. Potential areas of research include HIV entry, inhibitors and vaccines, mechanisms of cell death as well as designing and developing novel antibody targeting agents. Applicants should have backgrounds in molecular biology and cellular biology, virology, proteomics or computational biology. Experience with antibody engineering and phage display would be a strong asset. Starting salaries are commensurate with experience. Please send a curriculum vitae and three references to:

Ms. Miriam Hursey
Bldg. 320, Room 7
National Cancer Institute at Frederick
Frederick, MD 21702
Email: hurseym@mail.ncifcrf.gov

Further information can be found at: <http://www-lecb.ncifcrf.gov/~dimitrov/dimitrov.html>

NIH/NCI is an Equal Opportunity Employer.

We invite applications from individuals with an established track record of expertise in molecular biology and/or virology (with emphasis on generation of virus-based gene delivery vectors). Candidates should have a PhD in life sciences with at least one year post-doctoral training or industry experience. Demonstrated skills and achievements in nucleic acid manipulation, gene transfection, gene expression analysis, real-time PCR, protein expression and analysis are highly desired. Effective leadership, communication and interpersonal skills are essential. Successful applicants will work with other scientists and researchers in a collaborative and multidisciplinary environment to initiate, direct and execute research in one of the following areas (1) optimization of gene delivery to the intestine; (2) generation of novel gene therapy viral vectors; (3) validation of new therapeutic targets.

enGene, Inc. is located in Vancouver, BC, Canada. We are dedicated to the development of gene therapy technology for various human diseases, with emphasis on metabolic diseases. We are recruiting motivated and innovative scientists to join us in building a new biotech company with promising new approaches in treating diabetes (Science 290: 1959-1962, 2000). enGene actively collaborates with top-flight academic labs. The Company is well-funded and rapidly expanding its operations with immediate openings in R+D. There are excellent opportunities for innovation and career development at enGene. We are strongly committed to promoting a creative and collegial working environment. In addition, we offer competitive salary, generous stock options and excellent benefits.

Email CV + 3 references to Dr. Anthony Cheung, hr@engeneinc.com

ANNOUNCEMENTS



Medicines for Malaria Venture

Medicines for Malaria Venture (MMV) Call for Letters of Interest

FUNDING OPPORTUNITIES

1. **Malaria Drug Discovery Research Proposals**
2. **Malaria Drug Development Proposals**
3. **Malaria Drug Natural Products R&D Proposals**

MMV is an independent foundation committed to the sustainable discovery and development of affordable antimalarial chemotherapies. It is based on a partnership between public sector agencies, philanthropic organisations and the pharmaceutical industry. The venture operates under the umbrella of the World Health Organization Roll Back Malaria Project.

MMV has currently a portfolio of 11 discovery and development projects that will be funded up to a level of \$15 million in 2002. MMV intends to expand its R&D portfolio in order to deliver a consistent stream of novel antimalarial agents over the next decade. Generous donations from several agencies now enable MMV to initiate a third round of portfolio projects for the year 2002. Three project categories are defined for this year's proposals.

1. **Malaria drug discovery projects** that are directed toward the identification of a candidate compound(s) for entry into preclinical development
 - Projects may be at an early or late stage of the discovery process.
 - Most successful projects in the previous years were based on a partnership between an academic centre and a pharmaceutical company. However, applications from single institutions (Academic or Biotech or Pharma) are welcome. The key determinant for funding will be the perceived chance of project success.
2. **Malaria drug development projects** where a single molecule or combination has been identified with demonstrably acceptable preclinical properties and a potential for clinical development.
 - The molecule (or combination) may be at either preclinical or clinical stage of development.
3. **Malaria natural product projects** are also solicited. They are more likely to succeed if applicants have a well established infrastructure for a natural product programme, and can demonstrate one or more of the following characteristics:
 - Activity of the extracts, or identified compounds, against *P. falciparum* *in vitro* and in animal models, or evidence of efficacy in humans.
 - Methodology for the identification and optimisation of active agent(s). Projects that have already identified active agent(s) are strongly encouraged to apply.

Application for funding is initially requested through submission of a 3 page letter of interest, in hard copy, to reach MMV Offices (see below) by September 30th, 2002.

Details of the desired content of the letter of interest for the three project categories, as well as the project selection process can be obtained from the MMV web site (www.mmv.org) or by directing inquiries to the MMV offices, to the attention of:

Dr. Solomon Nwaka,
Medicines for Malaria Venture,
P.O.Box 1826, CH-1215 Geneva 15,
Switzerland.
Fax: +41 22 799 4061, E-mail: applications@mmv.org

MMV gratefully acknowledges the funding and support it has received from: Bill and Melinda Gates Foundation, Global Forum for Health Research, International Federation of Pharmaceutical Manufacturers Associations, Rockefeller Foundation, Roll Back Malaria Partnership, Swiss Agency for Development and Cooperation, The Netherlands Minister for Development Cooperation, United Kingdom Department for International Development, World Bank, World Health Organization, ExxonMobil Foundation, WHO/TDR.

www.mmv.org

PRIZES

KUWAIT PRIZE 2002

Invitation for Nominations

The Kuwait Foundation for the Advancement of Sciences (KFAS) institutionalized the KUWAIT Prize to recognize distinguished accomplishments in the arts, humanities and sciences. The Prizes are awarded annually in the following categories:

- A. Basic Sciences
- B. Applied Sciences
- C. Economics and Social Sciences
- D. Arts and Letters
- E. Arabic and Islamic Scientific Heritage

The Prizes for 2002 will be awarded in the following fields:

- 1. Basic Sciences : Microbiology
- 2. Applied Sciences : Marine Pollution
- 3. Economic and Social Sciences : Educational Planning and its relationship with Economical Development
- 4. Arts and Literature : Studies in Formative Art in The Arab World
- 5. Arabic and Islamic Scientific Heritage : Navigation in Arab Heritage

Foreground and Conditions of the Prize:

- 1. Two prizes are awarded in each category:
 - A Prize to recognize the distinguished scientific research of a Kuwait citizen,
 - And,
 - A prize to recognize the distinguished scientific research of an Arab citizen.
- 2. The candidate should not have been awarded a Prize for the submitted work by any other institution.
- 3. Nominations for these Prizes are accepted from individuals, academic and scientific centers, learned societies, past recipients of the Prize, and peers of the nominees. No nominations are accepted from political entities.
- 4. The scientific research submitted must have been published during the last ten years.
- 5. Each Prize consists of a cash sum of K.D. 30,000/-(approx. U.S. \$100,000/-), a Gold medal, a KFAS Shield and a Certificate of Recognition.
- 6. Nominators must clearly indicate the distinguished work that qualifies their candidate for consideration.
- 7. The results of KFAS decision regarding selection of winners are final.
- 8. The documents submitted for nominations will not be returned regardless of the outcome of the decision.
- 9. Each winner is expected to deliver a lecture concerning the contribution for which he was awarded the Prize.

Inquiries concerning the KUWAIT PRIZE and nominations including complete curriculum vitae and updated lists of publications by the candidate with four copies of each of the published papers should be received before **October 31, 2002** and addressed to:

The Director General
The Kuwait Foundation for the Advancement of Sciences
 P.O. Box 25263
 Safat - 13113, Kuwait
 Tel: (+965) 2429780
 Fax: 2403891
 E Mail: prize@kfas.org.kw

SYMPOSIA



The Buck Institute
 Symposium on
 Aging

BUCK
INSTITUTE
 SYMPOSIUM 2002



“Neuroendocrine Systems and Lifespan Determination”

September 24-27, 2002
Novato, California

The Buck Symposium aims to bring together researchers from a wide variety of disciplines to discuss and challenge major issues in aging research. The symposium will focus on the relationship between neuroendocrine signaling, metabolism, stress response, and aging. Participants will discuss the conservation of aging processes between invertebrates and mammals and will focus on the molecular and biochemical mechanisms of aging.

Featured speakers:

Steve Austad, Ph.D., Department of Zoology, Univ. of Idaho
 Richard Morimoto, Ph.D., Northwestern Univ.
 Gary Ruvkun, Harvard Medical School
 Arlen Richardson, Ph.D., U. of Texas Health Science Ctr.
 William Sonntag, Wake Forest Univ.
 Cynthia Kenyon, Ph.D., UCSF
 Leonard Guarente, Ph.D., MIT

Co-Organizers:

Dale E. Bredesen, M.D., President & CEO, Buck Institute
 Simon Melov, Ph.D. and Gordon Lithgow, Ph.D., Buck Institute Faculty
 Tom Johnson, Ph.D., Institute for Behavioral Genetics, Univ. of Colorado, Boulder

Scholarships are being offered to 20 graduate students, postdoctoral fellow and junior faculty. To apply, send letter of interest and qualifications to symposium@buckinstitute.org by July 1, 2002. Space is limited to 250.

To receive program and registration details contact: symposium@buckinstitute.org

Buck Institute for Age Research
 8001 Redwood Blvd. Novato, CA 94945
 (415) 209-2000
www.buckinstitute.org

Research Tools Development Grants Program

Creating the future of biotech—together

Invitrogen announces the Research Tools Development Grants Program for the discovery, development, and commercialization of innovative tools in life science research. New and established investigators working in academics, not-for-profit institutions, and for-profit companies such as start-up biotechs are encouraged to apply. Funded at \$5 million per year, annual awards can be up to \$100,000. Grants are provided on a quarterly basis, with each quarter focusing on a specific field of interest.

For the second quarter of 2002 we're funding research in **Functional Analysis**, understanding how genes and their corresponding proteins function and interact *in vitro* and *in vivo*. This includes expression, identification, interactions, localization, modifications, and activities, as well as bioinformatics and microarray projects. Deadline for full Grant Proposals is June 1. Future topics for 2002 are separations and purification (deadline September 1) and amplification, labeling, and quantitation (deadline December 1). Please submit a preproposal prior to a full Grant Proposal. Visit www.invitrogen.com for more information, or contact us at grants@invitrogen.com or at 800 955 6288, ext. 66140 (760 476 6140).

1600 Faraday Ave. Carlsbad, CA 92008 P: 760 476 6140 F: 760 602 6563 www.invitrogen.com



Endoderm

Endoderm
Development,
differentiation
and cancer

August
18-22
2002

Arolla
Switzerland

Topics:

- Endoderm formation and patterning
- Signaling pathways in epithelial development
- Stem cells and tissue homeostasis
- Cancers of endodermal origin

ISREC | EMBO | WORKSHOP

Speakers include:

H.-H. Arnold (Germany), K. Basler (CH), M. Blien (UK), W. Birchmeier (Germany), E. Bottinger (USA), D. Constam (CH), P. Dotto (CH), R. Fodde (Netherlands), J.-N. Freund (France), J. Gurdon (UK), J. Heasman (USA), D. Hochstrasser (CH), M. Karin (USA), R. Kemler (Germany), O. Madsen (Denmark), A. McMahon (USA), A. Neish (USA), P. Polakis (USA), L. Robertson (USA), R. Schmid (Germany), D. Stainier (USA), I. Schwarte-Waldhoff (Germany), M. Takeichi (Japan), M.M. Taketo (Japan), J.-P. Thiery (France), M. Weiss (France), Z. Werb (USA), C.V.E. Wright (USA), M. Yaniv (France), X. Zhou (Germany)

Applications:

Applications including a short CV and an abstract of current research should be sent to Gillian Kalter at ISREC - Swiss Institute for Experimental Cancer Research, 1066 Epalinges, Switzerland by fax +41 21 952 89 33 or by e-mail: gillian.kalter@isrec.unil.ch

The number of participants is limited to 150 including the invited speakers. Participants are expected to present a poster. The organizers will select some abstracts for oral presentation and discussion. The registration fee of 500 EUR (448\$) covers accommodation and meals.

Full program: www.isrec.ch/arolla

Application and abstract deadline: April 30, 2002

Organizers: Michel Aguet, Daniel Constam, Jean-Pierre Kraehenbuhl, Peter Wellauer



FELLOWSHIPS

POST-DOCTORAL FELLOWSHIP IN TISSUE ENGINEERING

The Pittsburgh Tissue Engineering Initiative (PTEI) invites applicants for its innovative two-year post-doctoral fellowship program in Tissue Engineering. One fellow will be selected this year. The post-doctoral fellow will pursue training of his or her choice in one of seven focus areas: Artificial Organs; Bioimaging; Biomaterials; Bone and Muscle; Gene Therapy; Stem Cell Biology; and Transplantation.

PTEI is a unique consortium of all the major universities in Pittsburgh, with linkages to many biotechnology companies throughout the southwestern Pennsylvania region. Potential training sites for fellows encompass all the programs and laboratories within this network.

Inter-institutional training sites for each focus area will be selected by the fellow and the PTEI program officers on an individualized basis. Fellows also learn about the range of issues related to intellectual property protection and product commercialization. At the completion of the two-year fellowship, many attractive employment opportunities in academia and the expanding biotechnology enterprise in southwestern Pennsylvania should be available.

Both national and international applicants are encouraged to apply. We desire candidates who will strongly consider remaining in southwestern Pennsylvania after their fellowship, in order to contribute to our region's growing tissue engineering enterprise. Applicants with a Ph.D., M.D., and related advanced degrees are eligible. Proficiency in written and spoken English is essential. The starting date will be flexible and will be between July 1, 2002 and January 1, 2003. Competitive salary and fringe benefits package will be provided.

For further information and application materials, please contact:

Joan E. Schanck, M.P.A., Educational Program Manager
Pittsburgh Tissue Engineering Initiative, Inc.
425 Sixth Avenue, Suite 1810 • Pittsburgh, PA 15219
Phone: 412-395-4200 • FAX: 412-395-4208
E-mail: jschanck@ptei.org



PTEI is an Equal Opportunity Employer.

PITTSBURGH TISSUE ENGINEERING INITIATIVE, INC.

POSITIONS OPEN

MOLECULAR BIOLOGY/BIOCHEMISTRY

The University of Montana-Western seeks an innovative, energetic Scientist for a **RESEARCH FACULTY POSITION** in molecular biology or biochemistry. This research position is supported by an NIH grant intended to enhance biomedical research infrastructure within the state of Montana. The new faculty member will establish a program in some area of biomedical research. Rank is negotiable according to the terms of the faculty collective bargaining agreement but a preference will be given to hiring at the rank of **ASSISTANT PROFESSOR** (minimum salary: \$35,472 for 10 months or \$43,355 for 12 months). The 10- or 12-month option is negotiable depending on the needs of the campus and the interest of the new hire. The new faculty member will join the Western community starting in August 2002.

Applicants should submit curriculum vitae; graduate transcript; a summary of research interests; and names, addresses, and telephone numbers of three references to: **Dr. Steve Mock, Dean of Arts and Sciences, The University of Montana-Western, Dillon, MT 59725**. Visit our website: <http://www.umwestern.edu> for a more complete position description. Applications will be reviewed starting March 25, 2002. *UM-Western is an Equal Opportunity Employer building strength through diversity; all candidates who are legally authorized to work in the United States are encouraged to apply.*

FACULTY POSITIONS

Institute for Research in Reproduction (Indian Council of Medical Research)

The Institute for Research in Reproduction conducts and promotes clinical, epidemiological, biomedical, and social science research in different components of reproductive health. The Institute is looking for Team Leaders (at **ASSOCIATE PROFESSOR** level, around 35 years, Ph.D. or M.D.) to initiate research programs in the areas of stem cells, functional genomics, reproductive tract infections, toxicology, population genetics, pharmacogenomics, and epidemiology. For further information, before 15 April 2002 contact: **Institute for Research in Reproduction, Mumbai 400012, India**. Telephone: 91 22 4137730; FAX: 4139412; e-mail: dirirr@vsnl.com.

RESEARCH FISHERY BIOLOGIST

The National Marine Fisheries Service is seeking applicants for a permanent position at our Santa Cruz Laboratory, Santa Cruz, California, studying estuarine and ocean ecology of Pacific salmon. The incumbent serves as a **PRINCIPAL INVESTIGATOR** conducting research on the influences of environmental variables on salmon physiology and ecology to address endangered species and fishery management issues. *Applicants must be U.S. citizens*, have a Ph.D. or equivalent education and experience, and have a strong record of research and publication. Salary range: \$59,471 to \$77,309. To apply, see website: <http://www.jobs.doc.gov> (Announcement W/NMF/SWC/020231.JC); Telephone: 206-526-6420 for more information. Closes March 22, 2002. *Equal Opportunity Employer.*

POSTDOCTORAL POSITIONS are available in cellular and molecular neuroscience. Candidates should have broad training in electrophysiology, neuropharmacology, or molecular biology. Ongoing studies include mechanisms of pain, analgesia, and cardiovascular control. Send curriculum vitae and names of references to: **Dr. Hui-Lin Pan, Department of Anesthesiology, H187, Pennsylvania State University College of Medicine, Hershey, PA 17033**. E-mail: hpan@psu.edu. *Affirmative Action/Equal Opportunity Employer.*

POSITIONS OPEN

DIRECTOR Public Outreach

The American Association of Pharmaceutical Scientists (AAPS), an international professional association in the metropolitan Washington, D.C., area, seeks Director of Public Outreach to lead the Association's efforts in advancing scientific awareness to members, educational leaders, students, and the general public. Incumbent will promote career opportunities in the pharmaceutical sciences to students. Successful candidate will possess excellent written and oral communication skills; personal computer skills; interpersonal skills to interact with members and staff; and ability to interact with other associations, higher education institutions, and granting agencies. Must have more than five years of experience and a background in pharmaceutical sciences or related disciplines such as chemical or bioengineering and chemistry (among others). Ph.D. preferred. For more information on AAPS, visit our website: <http://www.aapspharmaceutica.com>. Excellent benefits. Send résumé and salary requirements to: e-mail: hr@aaps.org. Mail to: **AAPS-HR, 2107 Wilson Boulevard, Suite 700, Arlington, VA 22201**. FAX: 703-243-9054. *Equal Opportunity Employer.*

RESEARCH ASSOCIATE AND POSTDOCTORAL FELLOW POSITIONS

Several Research Associate and Postdoctoral Fellow positions are available to investigate the functional genomic process determining aging and age-dependent diseases. Opportunities are available to work in microarray gene screening, DNA chip technology, stem cell research, and genetics of animal models as well as well-characterized human centenarian cohorts. Opportunities are also available to investigate translational control of age-dependent cardiac disorders mechanisms involved in replicative senescence as well as molecular mechanisms involved in space flight. These positions are supported by funding from NIH, DARPA, and NASA. Expertise in molecular and cell biology is required. Please send your curriculum vitae and names of three references to: **Dr. Eugenia Wang, 570 South Preston Street, Department of Biochemistry and Molecular Biology, School of Medicine, University of Louisville, Louisville, KY 40202**. E-mail: eugenia.wang@louisville.edu.

GENOMIC COLLABORATIONS SCIENTIST, Santa Clara, California. Initiate/manage collaborations with Affymetrix customers. Travel required. Requires a Ph.D. in molecular biology, bioinformatics, or related; two to five years of experience in research and development, product/software development, or commercial collaborations; and two to four years of experience with microarray and/or other expression technologies. Excellent presentation skills and commercial experience in business development, marketing, or liaison between scientific staff and sales. Submit résumés to website: <http://www.affymetrix.com/about/careers>. *Equal Opportunity Employer.*

POSTDOCTORAL POSITION available in June 2002 to study protein chaperone interactions with yeast prion proteins. Experience in biochemistry or yeast genetics is required. Send curriculum vitae and references to: **Daniel C. Masison, Ph.D., Building 8, Room 407, National Institutes of Health, Bethesda, MD 20892-0851**. E-mail: masison@helix.nih.gov. *NIH is an Equal Opportunity Employer.*

POSITIONS OPEN

POSTDOCTORAL POSITIONS Molecular Microbiology and Microbial Pathogenesis

Postdoctoral positions funded by an NIH training grant are available at the University of Colorado Health Sciences Center in Denver. *All applicants must be United States citizens or permanent residents.* Training on molecular mechanisms of bacterial infections, viral infections, innate immunity, and cytokine biology is available with members of the training program faculty. Candidates with a Ph.D. or an equivalent Doctoral degree in basic science must have experience in microbiology, bacteriology, virology, immunology, molecular biology, genetics, biochemistry, cell biology, or a closely related field. Candidates with an M.D., D.O., D.V.M., or an equivalent Doctoral degree in clinical science must have demonstrated interest and competency for laboratory research related to our training program. Stipend is determined by years of prior postdoctoral experience. Submit curriculum vitae, bibliography, representative publications, and names of three professional references to: **Dr. Randall Holmes, Training Program Director, Department of Microbiology, Box B-175, University of Colorado Health Sciences Center, 4200 East Ninth Avenue, Denver, CO 80262**. *The University of Colorado Health Sciences Center is committed to Equal Opportunity and Affirmative Action. Individuals from groups currently underrepresented in biomedical research are encouraged to apply.*

POSTDOCTORAL POSITIONS

A Postdoctoral position is available to study signal transduction in tumors. The areas include signaling by a naturally occurring variant EGF receptor, the Gab1 docking protein, JNK in tumorigenesis and proteolytic processing of CD44 (*Nature* 379:560; *PNAS* 94:12419; *JBC* 273:2817; *J. Cell Biol.* 155: 755). A second Instructor/Postdoctoral position is available in conjunction with the Department of Neurosurgery. The individual will help develop a clinical trial using a novel antisense/dendritic cell therapy for brain tumors (*J. Clin. Oncol.* 19:2189). Previous experience in cellular immunology is essential and experience with tumor vaccines is preferable. Based on qualifications, the applicant may qualify for a faculty position. Please send or e-mail curriculum vitae to: **Albert Wong, M.D., Kimmel Cancer Institute, Thomas Jefferson University, BLBS 1002, 233 South 10th Street, Philadelphia, PA 19107**. U.S.A. E-mail: albert.wong@mail.tju.edu. *Equal Opportunity Employer.*

POSTDOCTORAL POSITION available immediately within a large, NIH-funded, multidisciplinary, multilaboratory research group to study the regulation of ciliary activity in the airways by G protein-coupled receptor pathways. Candidates with a Doctoral degree in physiology, pharmacology, or cell biology should have a strong background in signal transduction and possess or desire experience in microscopy, particularly live cell fluorescence imaging. Please submit curriculum vitae, statement of research interests, and contact information for three references to: **C. William Davis, Ph.D., Cystic Fibrosis/Pulmonary Research and Treatment Center, University of North Carolina, Chapel Hill, NC 27599-7248**. E-mail: c_wm_davis@med.unc.edu. *The University of North Carolina at Chapel Hill is an Affirmative Action/Equal Opportunity Employer.*

LEAD BIOLOGIST Gene Network Sciences, Inc.

PH.D./POSTDOCTORAL-level positions in molecular and cancer biology. Join the multidisciplinary team of Gene Network Sciences in creating the largest dynamic computer simulation of a human cancer cell. Details at website: <http://www.gnsbiotech.com>. Competitive salary and stock options. GNS—simulating life for drug discovery.



The National Center for Genome Resources is a non profit research organization at the cutting edge of bioinformatics and computation biology. If you are interested in a career opportunity with a growth-oriented research center and excellent employee benefits, join our team of professionals in a dynamic team-oriented environment in Santa Fe, NM!

**GROUP LEADER
COMPUTATIONAL BIOLOGY**

Experience in simulation modeling of complex systems such as Gene Regulatory Networks, Metabolic Pathways, and Evolution using such methods as Bayesian Networks, Monte Carlo Simulations, and Ordinary Differential Equations. Experience with mathematical modeling, algorithm development, evolutionary molecular systems and knowledge of software development processes.

- Ph.D. in mathematics, engineering, computer science, statistics, molecular biology, biochemistry, or related field
- Proven managerial experience
- excellent communication and interpersonal skills
- Record of successfully obtaining grants and contracts.

**GROUP LEADER
BIOINFORMATICS**

Will lead a group of bioinformaticists in creating and implementing integrated software systems enabling the NCGR staff and collaborators to make appropriate inferences from biological data. Require: experience in development of software systems for structural and functional genomics information

- Ph.D. in computer science, molecular biology, biochemistry, mathematics, or related field
- Proven managerial experience
- excellent communication and interpersonal skills
- Record of successfully obtaining grants and contracts.

Minimum 3 years experience

Please make all responses with this code: Science.

To find out more about NCGR, you may access our home page at www.ncgr.org
Email to tae@ncgr.org (in ascii format) or send via fax to : 1-505-995-4407
Send via mail to: NCGR, 2935 Rodeo Park Drive East, Santa Fe, NM 87505, USA

EOE

ANNOUNCEMENTS



International Aspirin® Award

Young Researchers' Aspirin® Award

The objective of the Young Researchers' Aspirin® Award is to encourage scientific research into the mechanism of action and clinical use of acetylsalicylic acid, the active ingredient of Aspirin®. Scientists who have contributed to the knowledge of Aspirin® through original independent scientific research in the field of theoretical (experimental) and/or clinical medicine are invited to compete for the Award. The results of their work should have a direct effect on the knowledge or use of Aspirin® and be based on a peer-reviewed publication, accepted and/or published. The publication should not be older than two years. The age limit of the Young Researchers' Aspirin® Award in the year of candidature is 40.

The Young Researchers' Aspirin® Award is valued at Euro 10,000.

Entries will be judged by an international scientific committee representing basic and clinical research.

Young researchers are invited to order either a hardcopy or a CD-ROM of the complete application documents from the following address:

International Aspirin® Award
c/o Bayer AG
Consumer Care Business Group
Medical Department
Dr. Gisela Latta
Building C 151
D-51368 Leverkusen/Germany
Fax: ++49-214-30-55184
E-mail: gisela.latta.gl@bayer-ag.de

The application documents are also available on the internet at <http://www.award.aspirin.com>

The deadline for submission is April 30th, 2002
(Date of receipt of documents by Bayer AG)



POSITIONS OPEN

POSTDOCTORAL AND RESEARCH ASSISTANT POSITIONS Gene Therapy and Molecular Virology Children's Research Institute Columbus, Ohio

Gene therapy and molecular virology with research projects that include fundamental studies on adeno-associated virus (AAV) entry as well to fill Postdoctoral and Research Assistant positions. Proficiency in advanced molecular biology and tissue culture techniques is required. Research experience in virology, especially AAV virology, vector targeting, or cancer gene therapy is highly desirable. Competitive salary with full benefits is available to the successful candidates. Send letter of application, curriculum vitae, and names and contact details of three references to: **Dr. Jeffery S. Bartlett, Center for Gene Therapy, Children's Research Institute, Room W531, 700 Children's Drive, Columbus, OH 43205. E-mail: bartlettj@pediatrics.ohio-state.edu.**

Postdoctoral and Research Associate positions are available to study (1) neurofibromatosis 2 gene function and regulation, (2) neural-specific serotonin receptor expression, or (3) regulation of DNA polymerase by RNA editing. Applicants with expertise in gene regulation, gene targeting, protein purification, or receptor signaling are preferable. An interactive environment combining both Physicians and basic science Researchers is provided. Salary will be commensurate with the experience. Please forward curriculum vitae and three references to: **Dr. Long-Sheng Chang, Department of Pediatrics, Children's Hospital and The Ohio State University W230, 700 Children's Drive, Columbus, OH 43205 U.S.A. Telephone: 614-722-2804; FAX: 614-722-2774; e-mail: lchang@chi.osu.edu. Website: <http://www.columbuschildrens.com>.**

You'll enjoy such benefits as paid vacation, tuition reimbursement, 401(K) and much, much more. *Equal Opportunity Employer/Affirmative Action. Women and minorities are encouraged to apply.*

HIV/SIV PATHOGENESIS

The Laboratory of Molecular Microbiology, NIAID, is seeking highly qualified **POSTDOCTORAL FELLOWS** with experience in HIV and SIV research to study determinants of retroviral disease induction and control in nonhuman primate systems. Applicants must have a Ph.D. or M.D. degree and should have a strong background in cell biology, virology, and molecular biology. Interested candidates must have less than five years of previous postdoctoral training. Successful applicants for this position are eligible for the NIH AIDS Loan Repayment program. Salary is commensurate with experience. Send curriculum vitae and the names of three references to:

Malcolm A. Martin, M.D.
Laboratory of Molecular Microbiology
NIAID/NIH
Building 4, Room 315
4 Center Drive, MSC 0460
Bethesda, MD 20892-0460
E-mail: malm@nih.gov

NIH is an Equal Opportunity Employer.

POSTDOCTORAL ASSOCIATE Weill Medical College of Cornell University

A Postdoctoral position is available to study the phosphorylation and regulation of neurabin-1, a neuronal actin and phosphatase-1 binding protein (see **McAvoy et al., Biochemistry 38:12934, 1999**). Experience in protein biochemistry, molecular biology, and/or cell biology is desirable. NIH-funded projects involve identification of phosphorylation sites *in vitro* and in intact cells and studies of protein interactions. Send curriculum vitae and the names of three references to e-mail: hchemmi@med.cornell.edu.

POSITIONS OPEN

POSTDOCTORAL POSITIONS in molecular genetics of tumorigenesis and tumor suppression. Two Postdoctoral positions are available to study the role of oncogenes and terminal differentiation/growth arrest/DNA repair genes in breast carcinogenesis and leukemogenesis, taking advantage of recently generated knockout mouse models (*Oncogene* 19:2967-2977, 2000; *Blood* 96:475-482, 2000; *Oncogene* 17:3351-3357, 1998 Review; *MCB* 14:2361-2371, 1994; *JBC* 275:16810-16819, 2000; *JBC* 276:2766-2774, 2001; *Oncogene* 17:3319-3329, 1998 Review). Applications are encouraged from individuals with strong background in molecular and cellular biology. Send curriculum vitae and three letters of reference to: **Drs. D.A. Liebermann and B. Hoffman, Fels Institute for Cancer Research and Molecular Biology, Temple University School of Medicine, 3307 North Broad Street, Philadelphia, PA 19140-5101. FAX: 215-707-2805; e-mail: lieberma@unix.temple.edu or hoffman@unix.temple.edu. Temple University is an Affirmative Action/Equal Opportunity Employer.**

POSTDOCTORAL POSITION to Study Ca^{2+} Signaling from the ER

A Postdoctoral position is currently available to study the modulation of ER Ca^{2+} release and uptake pathways by luminal molecular chaperones of the calreticulin/calnexin family. A combination of single and multiphoton confocal Ca^{2+} imaging, molecular biological, and biochemical techniques are used in these studies. Candidates with experience in either imaging, molecular, or biochemical techniques will be considered. Please include current curriculum vitae, three references, and contact information. The position is available immediately. Please address all inquiries to: **Patricia Camacho, Ph.D., Associate Professor, University of Texas Health Science Center at San Antonio, 7703 Floyd Curl Drive, San Antonio, TX 78229-3900. E-mail: camacho@uthscsa.edu.**

The University of Texas Health Science Center at San Antonio is an Equal Employment Opportunity/Affirmative Action Employer.

GASTROINTESTINAL POSTDOCTORAL RESEARCH POSITION

A full-time Postdoctoral and/or Instructor position is available to characterize protein mutations in inflammatory GI pathogenesis. A Ph.D. degree or equivalent and demonstrated research productivity is required. Candidates with a strong background in molecular biology (e.g., characterizing mutations, PCR, sequencing genomic DNA, and related analysis) and cell biology and/or transgenic models are encouraged to apply. Salary is commensurate with experience. Please send curriculum vitae, contact information, and names of three references to: **Dr. Ali Keshavarzian, c/o Dr. Ali C. Banan, Rush University College of Medicine, 1725 West Harrison, Suite 206, Chicago, IL 60612. Telephone: 312-942-8973; FAX: 312-563-3883; e-mail: ali_banan@rush.edu. Rush University is an Equal Opportunity/Affirmative Action Employer.**

POSTDOCTORAL FELLOWSHIPS Oncolytic Viruses/Glioma Invasion

Excellent opportunities for young Scientists are available through funded Postdoctoral positions in: (1) oncolytic viruses (*JNCI* 93:903, 2001; *Science* 282:1332, 1998) and (2) mechanisms of invasion (*Nat. Neur. Rev.* 2:502, 2001; *Clin. Cancer Res.* 5:845, 1999) in brain tumors.

Applicants must have a Ph.D., M.D., or equivalent as well as experience in virology, molecular biology, biochemistry, cell biology, or related disciplines. Applications accepted on an ongoing basis. Please submit curriculum vitae, a letter of research interests and goals, and the names of three references to: **Peter Forsyth, Department of Oncology, Tom Baker Cancer Center, 1331 29th Street N.W., Calgary, AB T2N 4N2 Canada. E-mail: peter.forsyth@cancerboard.ab.ca.**

POSITIONS OPEN

Stony Brook University is seeking a **POSTDOCTORAL POSITION**. Molecular Biologist/Enzymologist: ambitious Ph.D. in biochemistry or related field with experience in molecular biology and a strong interest in the enzymology of signal transduction. Projects include structure/function of adenyl cyclases and enzymes involved in nucleoside 3-polyphosphate metabolism and actions and the development and use of nucleotide prodrugs to regulate function, growth, and development in isolated cells and tissues. Send curriculum vitae, a statement of research interests, and the names of three references to: **Roger A. Johnson, Ph.D., Department of Physiology and Biophysics, Stony Brook University/SUNY, Health Science Center, Stony Brook, NY 11794-8661. E-mail: rjohnson@ms.cc.sunysb.edu; website: <http://www.pnb.sunysb.edu/faculty/johnson/johnson.htm>. Affirmative Action/Equal Opportunity Employer.**

POSTDOCTORAL POSITION Microbial Pathogenesis

A position is available to study mycobacterium tuberculosis at the Sloan-Kettering Institute, Memorial Sloan-Kettering Cancer Center. We are investigating the role of the Mtb cell envelope in host-pathogen interactions (see *Mol. Cell* 5:717-727; *J. Biol. Chem.* 276:2228-2233; *Cell* 104:477-485). Experience in molecular biology techniques is essential. The Sloan-Kettering Institute offers a superb scientific environment and outstanding facilities. Send curriculum vitae and contact information for three references to: **Dr. Michael Glickman, Laboratory of Microbial Pathogenesis, Box 9, Memorial Sloan-Kettering Cancer Center, 1275 York Avenue, New York, NY 10021. E-mail: glckmam@mskcc.org.**

POSTDOCTORAL POSITION Molecular Microbiology

Molecular control of spore/mycotoxin production in fungi of agricultural impact: *Aspergillus/Fusarium* spp. Ph.D. required in molecular microbiology or related field and gene cloning experience. E-mail curriculum vitae and arrange to have three original recommendation letters sent to: **Dr. Ana Calvo, Biology Department, Northern Illinois University, DeKalb, IL 60115 U.S.A. E-mail: amcalvo@niu.edu; Telephone: 815-753-0451. Deadline: March 30, 2002. Northern Illinois University is an Affirmative Action/Equal Employment Opportunity Institution.**

STANFORD UNIVERSITY SCHOOL OF MEDICINE

One **POSTDOCTORAL POSITION** is available immediately for a highly motivated individual to study transcriptional control in human diseases. A recent Ph.D. degree with strong background in molecular biology is required. Prior experience in transcription regulation, nuclear hormone receptors, and signal transduction is highly desirable. Send curriculum vitae and the names of three references to: **Dr. Z.J. Sun/Homer Abaya, Edwards R135, Departments of Surgery and Genetics, Stanford University Medical School, Stanford, CA 94305-5328. E-mail: zsun@stanford.edu.**

One **POSTDOCTORAL FELLOW** position is available immediately. The focus of our laboratory is on lymphocyte biology and the molecular profiling of lymphomas using cDNA microarray. The postdoctoral work will be mainly involved in gene expression profiling of normal and activated lymphoid tissues for gene discovery and the characterization of genes selected for analysis based on the microarray data. Experience in cell culture and molecular biology and in-depth knowledge in immunology are desirable. Interested candidate should contact: **Dr. W. C. Chan, University of Nebraska Medical Center, Department of Pathology, 983135 Nebraska Medical Center, Omaha, NE 68198-3135.**

POSITIONS OPEN

POSTDOCTORAL POSITIONS Vascular Cell and Molecular Biology Harvard Medical School

Immediate openings for Postdoctoral Fellowships in the Vascular Research Division, Departments of Pathology, Brigham and Women's Hospital, to study (1) structure and function of proteins that constitute endothelial cell junctions and regulate leukocyte trafficking during inflammation (*J. Cell Biol.* 148:203, 2000; *J. Immunol.* 167:2323, 2001); (2) T lymphocyte-endothelial cell adhesion and signaling with emphasis on biochemical and molecular identification of selectin ligands (*Nature* 398:718; *J. Immunol.* 162:3193; *J. Immunol.* 167:4476); (3) intravital microscopy (IVM) techniques for leukocyte-blood vessel wall interactions focusing on endothelium and its junctional components during inflammation (see website: <http://fwl.bwh.harvard.edu>). Requires recent Ph.D., M.D., M.D./Ph.D. and strong background in molecular biology, intracellular signaling, and biochemical techniques. Send curriculum vitae, brief description of research, and names/telephone numbers of three references to: Dr. F. W. Lusinkas, Brigham and Women's Hospital, Boston, MA. FAX: 617-582-6188; e-mail: flusinkas@rics.bwh.harvard.edu. We are an Equal Opportunity Employer.

POSTDOCTORAL FELLOW POSITION Stem Cell Plasticity Tulane University Health Sciences Center

Candidates with Ph.D., M.D., or equivalent are invited for a Postdoctoral position. State-of-the-art techniques including stem cell transplantation in animal models are preferred. The goal is to examine the potential of isolated populations of candidate stem cells from bone marrow and peripheral blood to regenerate liver tissue in a primate model. Candidates should send curriculum vitae and names of three references to:

Vincent F. La Russa, Ph.D.
Research Associate Professor
Department of Pharmacology
Bone Marrow Transplant Program SL-34
1430 Tulane Avenue
New Orleans, LA 70112
E-mail: vlarus@tulane.edu

Tulane University is an Equal Opportunity/Affirmative Action Employer and invites applications from all qualified individuals.

Three POSTDOCTORAL POSITIONS are available with tenure of two to three years. One Postdoctoral Fellow will study the molecular basis of various K channels using molecular biology techniques. One Fellow will focus on the patch clamp study with expertise in whole cell and single channel recording techniques. The third Fellow should have expertise on physiology/pharmacology of gaseous vasoactive factors including CO and H₂S. Please send updated curriculum vitae and names of three references to: Dr. Rui Wang, Department of Physiology, University of Saskatchewan, Saskatoon, SK S7N 5E5 Canada. E-mail: wangrui@duke.usask.ca.

POSTDOCTORAL POSITION available at the University of Pennsylvania to study the biology of aging. We use mouse, yeast, and human cell culture models to study the premature aging disease Werner syndrome, focusing on the role of the WRN protein in telomere maintenance. Please send curriculum vitae, research summary, and names of three references to: F.B. Johnson, M.D., Ph.D., 413A Stellar Chance Laboratory, 422 Curie Boulevard, Philadelphia, PA 19104. E-mail: johnsonb@mail.med.upenn.edu; FAX: 215-573-6523. Affirmative Action/Equal Opportunity Employer.

Two POSTDOCTORAL positions and one TECHNICIAN position are immediately available for Molecular Biologists with interests in tumor immunology. A Ph.D. in molecular biology or related field is required for the Postdoctoral position and all candidates should possess good interpersonal communication and teamworking skills. Send curriculum vitae and two references to: Dr. Ana Jewett, Division of Oral Biology and Medicine, UCLA School of Dentistry, 10833 Le Conte Avenue, Box 951668, Los Angeles, CA 90095-1668. E-mail: ajewett@ucla.edu.

POSITIONS OPEN

NIH 2002 = [OPPORTUNITY]^N

Train at the bench, the bedside, or both.
The NIH offers POSTDOCTORAL and CLINICAL FELLOWSHIPS as well as tenure-track positions.

For details, visit our website:
www.training.nih.gov

NIH is dedicated to building a diverse community in its training and employment programs.

RESEARCH ASSOCIATE or POSTDOCTORAL POSITION available immediately for a Ph.D./M.D. to join an NIH-sponsored laboratory focusing on gene regulation in the immune system.

Expertise in PCR, vector construction and transfection, gel shift, cloning and sequencing procedures, genomic footprinting, CHIP assay, etc. Immunological methods in animal immunizations, cell culture, ELISA, antigen presentation, etc., desirable. Ability to troubleshoot techniques and maintain a current knowledge in the field.

Send curriculum vitae and names of three references to: Thomas B. Tomasi, M.D., Ph.D., Roswell Park Cancer Institute, Elm and Carlton Streets, Buffalo, NY 14263. E-mail: dolores.czerwinski@roswellpark.org.

GLOBAL OPPORTUNITIES

TWO TENURE-TRACK FACULTY POSITIONS AVAILABLE Institute of Biological Chemistry Academia Sinica, Taiwan

We seek applicants at the level of ASSISTANT RESEARCH FELLOW (equivalent to ASSISTANT PROFESSOR) but may consider more advanced faculty. Applicants should have a Ph.D. and/or M.D. degree plus postdoctoral training. The ability to pursue independent research is of critical importance for consideration. Areas of particular interest include structural biology, molecular biophysics, proteomics, membrane/receptor biology, integrative biology, and related areas in biochemistry. Investigators employing high-throughput experimental genomic approaches that extend existing strengths at IBC are particularly encouraged. The Institute will provide excellent start-up funds and laboratory space as well as state-of-the-art common facilities. Interested applicants are requested to send (1) description of previous research experience; (2) representative reprints of research papers; (3) description of proposed research; (4) résumé; and (5) three letters of recommendation to: Dr. Andrew H.-J. Wang, Director of the Institute of Biological Chemistry, Academia Sinica, Nankang, Taipei, Taiwan by April 15, 2002. Inquiries can be made via Telephone: 886-2-27855696, Extension 1015; FAX: 886-2-27889759; e-mail: tan@gate.sinica.edu.tw.

MEETINGS

NEUROFIBROMATOSIS
Meeting Announcement and Call for Abstracts
The NNEF International Consortium for Molecular Biology of NF1 and NF2
Sunday, June 9–Wednesday, June 12, 2002
Hotel Jerome, Aspen, Colorado

Abstracts are invited to address the following topics as they relate to NF1, NF2, or schwannomatosis:

- (1) therapeutic strategies and clinical results,
- (2) model systems,
- (3) molecular and cellular biology,
- (4) tumorigenesis, and
- (5) neural crest cells.

For more information on the call for abstracts, please visit website: http://www.nf.org/latest_developments/call_for_abstracts.htm.

FELLOWSHIPS

DARWIN FELLOW

The Graduate Program in Organismic and Evolutionary Biology at University of Massachusetts Amherst announces a two-year POSTDOCTORAL RESEARCH/LECTURESHIP. More than 80 faculty members in 10 campus departments are committed to the study of ecology, organismic, and evolutionary biology, offering unique training and research opportunities for recent Ph.D.s. Our Research/Lecture position allows independent research with a faculty member and experience developing and teaching a one-semester introductory ecology course. Position subject to availability of funds. First-year salary: \$29,000. Second-year salary: \$31,000.

To apply, send curriculum vitae, three letters of reference, statements of research and teaching interests, and letter of support from your proposed UMASS Amherst faculty sponsor. A list of faculty and additional information is available at website: <http://www.bio.umass.edu/oeb>.

OEB Darwin Fellow
319 Morrill Science Center
University of Massachusetts Amherst
Amherst, MA 01003
Telephone: 413-545-0928
E-mail: darwin@bio.umass.edu

Application review begins March 25, 2002. Position remains open until successful candidate is selected. Start date: September 1, 2002.

The University of Massachusetts Amherst is an Affirmative Action/Equal Opportunity Employer. Women and members of minority groups are encouraged to apply.

MEETINGS

INTERNATIONAL SOCIETY FOR THE
STUDY OF XENOBIOTICS
Eleventh North American ISSX Meeting
October 27–31, 2002
Orlando, Florida

Visit website: <http://www.issx.org> to view meeting program. Abstract deadline: June 7, 2002. Contact ISSX for more information at e-mail: nholahan@issx.org; Telephone: 301-983-2434.

MARKETPLACE

Vapor Pressure Osmometer

The preferred method of
measuring the osmolality
of any biological fluid.
WESCOR, INC. 1-800 453-2725

DNA	PEPTIDES
Free Set-up and Desalting	Call and Compare
Gene Synthesis, Site Mutagenesis, Protein Expression and more	
COMPARE AND SAVE	
DNA Sequencing: as low as \$15 per run	
Custom Anti-peptide Antibody (including peptide synthesis)	
\$850	
GENEMED SYNTHESIS	
800.344.5337 Fax: 650.952.9540	
Web Site: www.genemedsyn.com	

MARKETPLACE



**MORE PRODUCTS
ON PREVIOUS PAGE**

The Oligonucleotide Synthesis Service

- High coupling efficiency and salt-free synthesis conditions
- Unique longer capability
- Large number of modifications available
- Reliable service



Europe: 00800-67673377
North America: 800-688-2248
www.operon.com

Widely
Recognized
Original &
Guaranteed

KlenTaq1

8¢/u
Truncated
Taq DNA
Polymerase
Withstand 99°C

US Pat # 5,436,149
Call: **Ab Peptides** 1-800-383-3362
Fax: 314-968-8988 www.abpeps.com

PROTEIN

Now Available • Customized and In-Stock

TRANSCRIPTION FACTORS & CANCER
RELATED PROTEINS

www.ProteinOne.com

Tel: (301) 314-6594 Fax: (301) 314-6588

ANTISENSE

- Complete Proven Antisense Program
- Low Toxicity 2nd Generation Oligomers



SEQUITUR

888-923-1459
www.oligo.com

Peptide

Custom Synthesis from **\$10/Residue**
Including MASS & HPLC analysis

www.peptron.com
peptide @ peptron.com

Custom Gene Synthesis from IDT

Synthetic Double Stranded DNA
Cloned into a Plasmid and Sequence
Verified.

always convenient, fast, reliable and affordable

XX-IDT www.idtdna.com
1-800-328-2661

MARKETPLACE

Custom Peptides & Antibodies

Best Service & Price! Compare and Save!

Alpha Diagnostic (800) 786-5777

Fax (210) 561-9544; info@4adi.com

Web site: http://www.4adi.com

QUALITY DNA SYNTHESIS

MALDI-TOF Mass Spectrometry Quality Control

Fluorescent Dyes & Other Modifications
Gene Construction & Sequencing Services
Custom RNA Oligos & Antisense DNA Oligos
Custom Primers for PCR & Sequencing
Long Oligos (up to 150-mers)
Competitive Pricing

MIDLAND

The Midland Certified Reagent Company Inc.

1-800-247-8766 • FAX: 1-800-359-5789

www.mcrc.com • email: mcrc@oligos.com

3 O.D. Select Oligos

NEW LOW PRICE

Just \$0.45/base*

We'll ship your 3 O.D. Select oligos in just 24-48 hours.
Every oligo is QC'd by PAGE analysis, and each batch is
performance-tested by mass spec.

Order by fax: 281-363-2212, email: gorderentry@sial.com
or web: www.genosys.com.

*Desalted only. Oligos must be 10 to 35 bases in length.
No modifications or additional purification. Offer valid in U.S. only.

SIGMA

North America: 1-877-710-1504 • email: ginformation@sial.com

**NEW
LOW
PRICES**

VOLUME DNA SEQUENCING CALL (800) 720-GENE

- HIGH-THROUGHPUT
GENOME SEQUENCING
- NO ROYALTIES
OR LICENSE FEES
- SHOTGUN SEQUENCING
EXPERTISE
- LARGE & SMALL
PROJECTS ACCEPTED

DNA SEQUENCING

seqwright

*THE GENE DISCOVERY SUPPORT LAB

(713) 528-4363 PHONE
(713) 528-6232 FAX
www.seqwright.com
email: seq@bikbox.com

MERLIN® Custom Services



Adenovirus Production

Construction, Amplification,
Purification & Titration
Research or cGMP Grade

1-888-DNA-KITS • www.qbiogene.com

MARKETPLACE

Quality Fast Reliable custom peptides antibodies

Bio-Synthesis
Proteomics
Array/Formats

Call for specials
oligos
antibodies
NEW
Bioconjugates

1.800.227.0627

Quality Peptides & Antisera

Friendly, Personal Service
www.genosys.com

Custom Peptide Synthesis

- sequence analysis
- IG, >70%, >80%, >95% purity
- scales from 2 mg-1 g
- synthesis up to 120 residues
- variety of modifications available
- mass spec & HPLC on every peptide
- satisfaction guaranteed

Polyclonal Antisera Service

- antigen design assistance
- synthesis, conjugation and sera collection
- rabbits, chickens, sheep & goats available
- flexible protocol
- phospho-specific antibody production

SIGMA
GENOSYS

North America
1-888-663-3693
ginformation@sial.com

Europe
(+44) (0) 1223 839000
info@sigma-genosys.co.uk

CUSTOM PEPTIDES

QUICK QUOTE
MOST QUOTES IN AN HOUR

FAST DELIVERY
2 WEEKS FOR MOST ORDERS
100% SATISFACTION GUARANTEED

...MADE EASY!
NEW ENGLAND
PEPTIDE, INC.
Tel: 888-343-5974

Fax: 978-343-5940 www.newenglandpeptide.com

CUSTOM MICROARRAYS

RELIABLE FAST ACCURATE

MICROARRAYS, INC
(615) 327-5495
www.microarrays.com



Be First - Go Custom!

CUSTOM PEPTIDE & ANTIBODY PRODUCTION

- Leading manufacturer of
phosphospecific antibodies
- Unsurpassed technical support

800-435-2080

On-line: peptide@biosource.com

biosource.com

Array-Ready Oligo Sets™



The rest is up to you.

QIAGEN Operon now offers its newest Array-Ready Oligo Set™ for rat. Each Array-Ready Oligo Set consists of optimized, arrayable 70mer oligos that can be used as probes for thousands of genes in a particular genome. Each 70mer is designed to have optimal specificity for its target gene and is melting-temperature normalized. Strict quality control procedures ensure high quality.

All sets are conveniently offered in 384-well plate format at 600 and 1,200 pmol.

Upgrades to the human and mouse Array-Ready Oligo Sets are also available, providing researchers with a broader set of genes for use in gene expression analysis. No other commercially available microarray product for the human and mouse genomes represents so many well-characterized genes.

Visit our web site at www.operon.com or call us for further information.

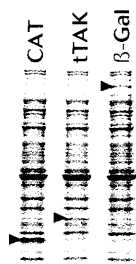
From 0 to 50 μg in 2 hours flat.

Protein synthesis with Expressway™



Speed your way to downstream functional analysis with the Expressway™ *In vitro* Protein Synthesis System. Get the protein you need quickly and efficiently in a convenient, single-tube reaction.

Rapid, high-yield synthesis. With Expressway™ you can generate up to 50 μg per reaction of recombinant protein in just two hours. You'll save hours of time and labor over traditional cell-based expression systems and produce a high protein yield for your functional studies.



Protein Expression with Expressway™

Convenient format. Expressway™ provides everything you need for optimal protein production, including T7 RNA polymerase, an *E.coli* extract containing cellular machinery to drive synthesis, and a robust energy source. Simply add your DNA template and incubate. Taking control of your gene expression has never been easier. Let Expressway™ lead the way to faster, more efficient protein expression results.

Call Invitrogen to order today.



United States Headquarters:
Invitrogen Corporation
1600 Faraday Avenue
Carlsbad, California 92008
Tel: 1 760 603 7200
Tel (Toll Free): 1 800 955 6288
Fax: 1 760 603 7229
Email: tech_service@invitrogen.com

European Headquarters:
Invitrogen Ltd
3 Fountain Drive
Inchinnan Business Park
Paisley PA4 9RF, UK
Tel (Free Phone Orders): 0800 269 210
Tel (General Enquiries): 0800 5345 5345
Fax: +44 (0) 141 814 6287
Email: eurotech@invitrogen.com

International Offices:
Argentina 5411 4556 0844
Australia 1 800 331 627
Austria 0800 20 1087
Belgium 0800 14894
Brazil 0800 11 0575
Canada 800 263 6236
China 10 6849 2578
Denmark 80 30 17 40

France 0800 23 20 79
Germany 0800 083 0902
Hong Kong 2407 8450
India 11 577 3282
Italy 02 98 22 201
Japan 03 3663 7974
The Netherlands 0800 099 3310
New Zealand 0800 600 200
Norway 00800 5456 5456

Spain & Portugal 900 181 461
Sweden 020 26 34 52
Switzerland 0800 848 800
Taiwan 2 2651 6156
UK 0800 838 380
Other countries see our website

www.invitrogen.com