

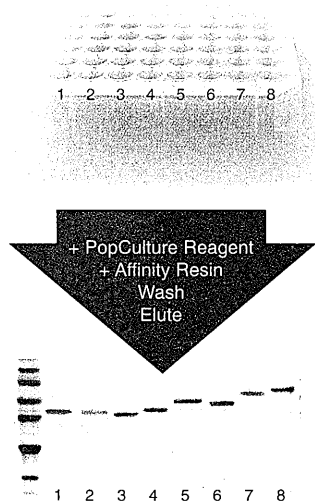
*Get to Your Protein
without ever using a
centrifuge!*

POPCULTURE[™]

Reagent

Go directly from cultures to pure protein without centrifugation.

...makes high throughput expression bloom



PopCulture[™] Reagent is a ready-to-use liquid reagent that lyses *E. coli* directly in the medium. It is ideal for high throughput applications.*

*patent pending

 **Novagen[®]**

A brand of CN Biosciences, Inc.
an affiliate of Merck KGaA, Darmstadt, Germany

800.526.7319

For more information: www.novagen.com • US and Canada 800.526.7319
• Germany 0800.6931.000 • UK 0800.622935 • or your local sales office



As an educator with Sesame Street, **Dr. Charlotte Cole** works with muppets the world over. And she knows that things aren't always as they appear. So when reviewing savings plans for her son's education, she often **wondered if there were strings attached.** That's why she turned to us, the people with over 80 years of experience helping educators with their financial needs. We were able to offer her flexible college savings options, with low fees and a variety of tax advantages. So now she controls her son's education, not the other way around.

Log on for ideas, advice, and results. TIAA-CREF.org or call 1.800.842.2776



*Managing money for people
with other things to think about.™*

RETIREMENT

INSURANCE

MUTUAL FUNDS

COLLEGE SAVINGS

TRUSTS

INVESTMENT MANAGEMENT

Charlotte Cole became a participant in 1985. TIAA-CREF Individual and Institutional Services, Inc., and Teachers Personal Investors Services, Inc., distribute securities products. College Savings Programs are managed by TIAA-CREF Tuition Financing, Inc. Education IRAs are offered by TIAA-CREF Mutual Funds. © 2001 Teachers Insurance and Annuity Association-College Retirement Equities Fund (TIAA-CREF), New York, NY. A charitable donation was made on behalf of Charlotte Cole. Sesame Street characters © 2001 Sesame Workshop.

NEW PRODUCTS

Beacon Designer PREMIER Biosoft International

Palo Alto, CA
\$1885
650-856-2703
www.premierbiosoft.com

SHEDDING LIGHT ON BEACONS

Molecular beacons are powerful tools for detecting and quantitating specific nucleic acid sequences. A molecular beacon consists of a DNA strand with self-complementary ends flanking a sequence that is complementary to a target sequence. One end of the beacon bears a fluorophore (fluorescent molecule); the other, a quencher molecule. When the beacon is not bound to its target, its complementary ends bind each other, forming a hairpin that brings the fluorophore and quencher together. The result is an absence of fluorescence. If the beacon binds to a target, however, the hairpin unfolds, the quencher and fluorophore separate, and the beacon fluoresces. Because excess probe does not fluoresce, it doesn't need to be removed from the sample. Molecular beacons can, thus, provide a sensitive assay that permits real-time monitoring of DNA concentration as one might wish to do in quantitative polymerase chain reaction (PCR).

Designing a beacon involves a number of steps including selection of a probe sequence, design of complementary flanking arms, and elimination of potential areas of complementarity to primers, targets, or other beacons. Because beacons cost from \$325 to over \$700 to synthesize, errors in design can be costly.

PREMIER Biosoft International's Beacon Designer 2.0 software helps eliminate such errors. Sequences can be imported into the program via Entrez or from local files. Primers can be identified using free energy calculations or by manual methods. Once a target is defined, the program works to identify an appropriate molecular beacon, automatically adjusting stem lengths to give optimal melting temperatures. The program uses Zucker's quickfold server (1) to test for good energy and structural properties. Primers' suitability for multiplex reactions can be analyzed, and the region to be amplified can be matched against other sequences using the integrated BLAST interface. Information can also be exported to a spreadsheet to facilitate ordering of materials and documentation of the experiment.

Advanced users can customize many of the parameters of primer and beacon design, but Beacon Designer's preset values save novice users the difficult task of optimizing them. Other information important to good beacon design, such as guanine's tendency to quench fluorescence when adjacent to the fluorophore, has been coded into the program. Beacon Designer 2.0 also facilitates the design of probes for use with Applied Biosystems's TaqMan system for real-time PCR product detection, a system similar in concept to the molecular beacon.

Beacon Designer is easy to learn and eliminates costly guesswork. With this new version, most of the interface problems in the first release of the program have been fixed. Improvements include dramatically better handling for large sequences and the ability to generate and compare alternate primers, beacons, and TaqMan probes. The program still lacks an "undo" feature. Beacon Designer relies on access to online resources such as Zucker's quickfold server, Entrez, and BLAST. Though this may not affect most users, those with slow Internet connections may find it problematic.

—Jeremy Peirce

Department of Molecular Biology/LTL, Princeton University, Princeton, NJ 08544, USA. E-mail: jlpeirce@princeton.edu

Reference

1. M. Zucker, D. H. Mathews, D. H. Turner, in *RNA Biochemistry and Biotechnology*, J. Barciszewski, B. F. C. Clark, Eds. (Kluwer Academic, New York, 1999), pp. 11–43.

Chemicon

For more information
800-437-7500
www.chemicon.com
www.scienceproductlink.org

MEMBRANE REJUVENATION KIT

The *Blot Restore* Membrane Rejuvenation Kit allows the multiple reuse of membranes that were developed with substrate and subsequently dried. In model experiments, both polyvinylidene difluoride (PVDF) and nitrocellulose membranes showed excellent performance after having been dried for 2 months. The kit is effective for hydrating dry membranes and removing antibodies from protein immunoblots that have been developed with chemiluminescence or color substrates. The *Blot Restore* system is designed for use with subsequent chemiluminescent detection.

Labconco

For more information
800-821-5525
www.labconco.com
www.scienceproductlink.org

VARIABLE HEIGHT MOBILE BENCH

The Variable Height Mobile Bench is a heavy-duty auxiliary bench that supports loads up to 540 pounds. A corrosion-resistant work surface of melamine high-pressure laminate measures 38 inches by 28 inches by 1 1/8 inch thick, providing a large work area. The height adjusts in four increments from 29 5/8 inches to 37 3/8 inches through the use of steel pins with nuts inserted into vertical frame members. The durable welded frame of 2-inch-square tubing is coated with corrosion- and abrasion-resistant baked-on epoxy powder. Five-inch-diameter hard rubber casters are easy to steer and absorb vibration for smooth trips over uneven floors. Toe-locks prevent movement when a stationary bench is required.



AMRESKO

For more information
800-448-4442
www.amresco-inc.com
www.scienceproductlink.org

PROTEIN GEL STAINS

SYPRO Red, Orange, and Tangerine stains are available for fast, simple, sensitive staining of proteins in electrophoresis gels. SYPRO Tangerine is also a versatile stain for proteins in sodium dodecyl sulfate gels. The procedure does not require the use of acids or organic solvents and is fast, simple, and sensitive. Staining can be done in a simple saline solution. According to the manufacturer, SYPRO protein gel stains have many advantages over conventional colorimetric stains: high sensitivity, rapid staining, a simple procedure, compatibility with standard laboratory equipment, cost-effectiveness, low protein-to-protein variability, high selectivity for proteins, and a broad linear range of detection.

SciTegic

For more information
858-279-8800
www.scitegic.com
www.scienceproductlink.org

DRUG DISCOVERY INFORMATICS

Pipeline Pilot version 1.5 for drug discovery informatics research makes use of an approach called data pipelining to process large data sets through flexible computational protocols. Many enhancements facilitate control over how data collections are manipulated and permit greater integration with other industry-standard tools. Pipeline Pilot now provides sup-

CONTINUED ON PAGE 2382

port for third-party tools such as Oracle, ISIS/Host, ISIS/Base, RS³, and Spotfire DecisionSite. New components have been added to the system to aid the integration and aggregation of data, including data merging functions like merge, unmerge, join, pivot, and unpivot. The user interface is more intuitive with real-time data flow indicators and context-sensitive online help.

EDAX

For more information
801-495-2750
www.tsl-oim.com

www.scienceproductlink.org

tion imaging microscopy. The DigiView 1612 camera optimizes performance for the different requirements demanded by automated crystallographic analysis in the scanning electron microscope. The camera operates in slow-scan mode for optimal image resolution for phase identification applications and in a fast-scan mode for optimal speed for orientation mapping. The maximum image resolution is 1300 by 1030 pixels with 12-bit dynamic range. Maximum image read-out speed is 64 frames per second for images binned down to 162 by 128 pixels. The camera achieves indexing speeds of up to 50 points per second, which permits the collection of crystal orientation maps of 25,000 points in 10 min.

Bio-Rad Laboratories

For more information
510-741-1000
www.bio-rad.com

www.scienceproductlink.org

for easy loading and tracking of results. The design of the ReadyAgarose two-sided tray ensures dependable, reproducible, and straight lanes. The patent-pending lock-tab tray design holds the trays securely during loading and running. The gels are cast with high-strength, high-resolution agaroses that provide superior resolution and are certified for molecular biology applications. They are available in 0.8%, 1%, and 3% agarose to separate DNA from 20 to 20,000 bp. The gels are supplied in TBE or TAE buffer, with ethidium bromide as an option.

There are 57 gels for a wide range of well numbers and sample capacities, available in mini- and wide mini-gel formats with 8, 12, 20, 32, or 64 wells for all loading volume needs. The gels are designed to fit nearly every electrophoresis subcell available.

Eppendorf

For more information
+49 40-5 38 01-0
www.eppendorf.com

www.scienceproductlink.org

from 96 bacteria clones is ready for use. Short incubation times, a reduced number of steps, and constant buffer solution volumes make the handling particularly simple. The plasmid DNA can be used for all downstream applications, such as manual and automated sequencing, polymerase chain reaction or transformations, and transfections. The plasmid DNA can be used directly after elution without the need for precipitation. It is free from salts or alcohol residues.

HIGH-SPEED, HIGH-RESOLUTION CCD

The DigiView 1612 is a new high-resolution, high-speed charge-coupled device camera for electron backscatter diffraction and orienta-

tion imaging microscopy. The DigiView 1612 camera optimizes performance for the different requirements demanded by automated crystallographic analysis in the scanning electron microscope. The camera operates in slow-scan mode for optimal image resolution for phase identification applications and in a fast-scan mode for optimal speed for orientation mapping. The maximum image resolution is 1300 by 1030 pixels with 12-bit dynamic range. Maximum image read-out speed is 64 frames per second for images binned down to 162 by 128 pixels. The camera achieves indexing speeds of up to 50 points per second, which permits the collection of crystal orientation maps of 25,000 points in 10 min.

PRECAST GELS

ReadyAgarose precast gels are cast in their own ultraviolet-transparent running trays, which minimizes handling. Fluorescent well numbers and rulers are painted on the trays



NetGenics

For more information
216-377-2877

www.NetGenics.com

www.scienceproductlink.org

DiscoveryCenter allows life science companies, especially pharmaceutical and biotech organizations, to seamlessly integrate public and proprietary data of all types. An intuitive interface permits companies to integrate their proprietary data with all available public data and perform advanced searches on the data simultaneously. The software allows researchers to perform a simple search on a gene and track the gene all the way through to their assay results and compound database.

Ychem International

For more information
408-391-9735

www.ychem.com

www.scienceproductlink.org

ready-to-use kits offer results within 24 hours with no additional setup required. Each disposable kit comes with 48 heat- and chemical-resistant glass vials for easy robotic manipulations. The vials come equipped with a magnetic stirrer and are open-cap with a Teflon-rubber septum. Each vial contains a mixture of resolving agent and solvent.

Alpha Innotech

For more information
800-795-5556

www.alphainnotech.com

www.scienceproductlink.org

chemiluminescent, and colorimetric gels, films, membranes, macroarrays, and microplates. New features include completely integrated one-lane densitometry, molecular weight determination, band scoring, and pattern matching. Enhanced system control features provide automatic exposure capability with user-defined settings for fluorescent, colorimetric, and chemiluminescent samples, real-time display updates, and intuitive software controls for motorized zoom optics. It includes extensive standard curve libraries. AlphaEaseFC software is available as a stand-alone package that can be used with images captured from charge-coupled device, laser, or scanner-based image acquisition systems and integrated into the FluorChem, Chemilmager, and AlphaImager imaging systems manufactured by Alpha Innotech.

Hach

For more information
800-227-4224

www.hach.com

www.scienceproductlink.org

Laser Nephelometry is a technical publication focused on the newest form of turbidity measurement. It provides in-depth information on filtration management, laser nephelometry design, the FilterTrak 660 Laser Nephelometer specifically, and a variety of turbidity monitoring applications. It covers particle counting technology and includes comparisons of particle counters and conventional turbidimeters that operate with an incandescent or light-emitting diode light source.

Newly offered instrumentation, apparatus, and laboratory materials of interest to researchers in all disciplines in academic, industrial, and government organizations are featured in this space. Emphasis is given to purpose, chief characteristics, and availability of products and materials. Endorsement by Science or AAAS of any products or materials mentioned is not implied. Additional information may be obtained from the manufacturer or supplier by visiting www.scienceproductlink.org on the Web, where you can request that the information be sent to you by e-mail, fax, mail, or telephone.

Classified Advertising

For full details on advertising rates, deadlines, mechanical requirements, and editorial calendar go to www.sciencecareers.org and click on How to Advertise

UNITED STATES

Display Classified Advertising

Bren Peters (Mid-Atlantic, Midwest)
Tel: 202-326-6541
Kathleen Clark (Southeast, Canada)
Tel: 202-326-6555
Jill Steinberg (Northeast)
Tel: 914-834-8733
Kristine von Zedlitz (West Coast)
Tel: 415-956-2531
Fax: 202-289-6742
E-mail: science_displayads@aaas.org

Line Classified Advertising

Jody Fenty
Tel: 202-326-6722
Christina Geiger
Tel: 202-326-6532
Fax: 202-289-1451
E-mail: science_classifieds@aaas.org

Online Classified Advertising

Beth Dwyer
Tel: 202-326-6534
Fax: 202-289-6742
E-mail: bdwyer@aaas.org

www.sciencecareers.org

Ad Materials: Send to: *Science Classified Advertising*, 1200 New York Avenue, NW, Room 911, Washington, DC 20005

EUROPE

Display, Line, and Online Classified Advertising

Deborah Cummings
Tel: +44 (0) 1223 326 500
Fax: +44 (0) 1223 326 532
E-mail: european_ads@science-int.co.uk

Ad Materials: Send to: *Science International, Advertising Dept.*, Bateman House, 82-88 Hills Road, Cambridge CB2 1LQ, United Kingdom

MEETINGS/ANNOUNCEMENTS

Kathleen Clark
Tel: 202-326-6555
Richard Walters
Tel: +44 (0) 1223 326 500

To Subscribe to *Science* call:
202-326-6417 or 1-800-731-4939

POSITIONS OPEN

WILDLIFE ECOLOGY: ASSISTANT/ASSOCIATE PROFESSOR, tenure track. Teaching duties include courses in wildlife management/wildlife populations (alternate years), mammalogy, and ornithology. Shared teaching duties with other faculty could include a nonmajors field course, introductory biology for majors, ecology, and graduate courses. A research program that contributes to professional development and involves undergraduate and graduate students is expected. Advising and committee participation are expected. Ability to teach effectively, perform scholarly achievement or research, continued preparation and study, contribution to student growth and development, and service to the university and community are required. Ph.D. in wildlife biology or related area at time of appointment. Training and experience in wildlife biology (including mammalogy and ornithology), wildlife management, and population ecology. Academic training and experience compatible with current faculty interests in aquatic biology, landscape ecology, plant systematics, and animal behavior. Postdoctoral experience required. Preference to candidates with successful postsecondary teaching experience, strong commitment to teaching, and research programs involving undergraduate and Master's-level students. The successful candidate will have demonstrated ability to teach and work with persons from culturally diverse backgrounds. Send letter of application including statements of research plans and teaching philosophy; curriculum vitae; transcripts (copies acceptable for initial screening); and the names, telephone number, postal and e-mail addresses of three references. We will contact references to comment specifically upon your teaching ability, experience, and professional preparation. Submit materials to: **Chair, Department of Biological Sciences, St. Cloud State University, 720 Fourth Avenue South, MS-262, St. Cloud, MN 56301-4498. Telephone: 320-255-4736; FAX, 320-255-4166; e-mail, biology@stcloudstate.edu; website: <http://www.StCloudState.edu/~biol>.** All materials must be postmarked by January 14, 2002, to be considered. E-mail or FAX applications received after January 14, 2002, are not guaranteed for consideration. *St. Cloud State University is committed to excellence and actively supports cultural diversity. To promote this endeavor, we invite individuals who contribute to such diversity to apply, including minorities, women, GLBT, persons with disabilities, and veterans.*

CANADA RESEARCH CHAIR CONSERVATION BIOLOGY Department of Biology McGill University

The Department of Biology at McGill University invites applications for a Canada Research Chair in conservation biology. This appointment can be in any field of conservation. This position is at the Tier II (ASSISTANT or ASSOCIATE PROFESSOR) level, although exceptional senior candidates may be considered for hiring at the Tier I (PROFESSOR) level. We seek a colleague to complement a research group with strengths in plant and marine conservation, biodiversity, evolution, ecology, and aquatic science. The successful applicant will be expected to conduct a vigorous program of independent, externally funded research and to teach at both the undergraduate and graduate levels in the area of conservation biology. Candidates must have a Ph.D. or equivalent degree and a track record demonstrating excellence in their field. The University operates several field stations in a variety of climates (Schefferville, Mont St. Hilaire, Memphremagog, Barbados) and has a teaching and research alliance with the Smithsonian Tropical Research Institute in Panama. Candidates whose research would benefit from these facilities would be particularly attractive. Applicants should forward curriculum vitae, copies of representative reprints, statement of research interests, statement of teaching interests, and arrange to have three letters of reference sent to the following address: **Conservation Biology Search, c/o Louise Sabaz, Department of Biology, McGill University, 1205 Avenue Docteur Penfield, Montreal, Quebec H3A 1B1 Canada.** Application deadline is February 15, 2002.

POSITIONS OPEN

ASSISTANT/ ASSOCIATE/FULL PROFESSOR Environmental Respiratory Biology and Genomics

The Department of Environmental Health, Molecular Toxicology Division, is seeking applicants for a faculty position to conduct research in respiratory molecular biology, molecular genetics, or functional genomics. Preference will be given to candidates interested in the genetic determinants of chronic obstructive pulmonary disease in model systems or in human populations. This individual will join a well-funded research program in respiratory cell biology and will be provided sufficient start-up funds to establish a laboratory. The successful candidate will have a Doctorate and postdoctoral research experience in a related field and a willingness to train graduate students and Postdoctoral Fellows in molecular biology in their laboratory. The Department of Environmental Health has over 40 faculty interested in ecogenetics, genetic toxicology, signal transduction, and population genetics and has graduate programs in environmental toxicology and molecular epidemiology. Submit curriculum vitae, research interests, names of three references, and three manuscripts to: **Ms. Amy Nawaz, Program Coordinator, Molecular Toxicology Division, University of Cincinnati, P.O. Box 670056, Cincinnati, OH 45267-0056.**

AQUATIC TOXICOLOGY

FACULTY POSITION in aquatic toxicology with broad expertise in the mechanisms of toxic action in marine/aquatic animal models as they relate to human health risks and ecotoxicology. Study of a particular class of toxicants is less important than a mechanistic approach, but those of interest include marine and freshwater toxins, carcinogens, and metals. The successful candidate will contribute to a graduate academic program in the Division of Marine Biology and Fisheries (MBF) as well as interdisciplinary research programs in MBF and in the University of Miami-wide National Institute of Environmental Health Sciences (NIEHS)-sponsored Marine and Freshwater Biomedical Sciences Center. A history of or potential for funding by NIEHS, other NIH institutes, and/or EPA is an important criterion for selection. Rank and salary are open, and a secondary appointment in another school of UM is encouraged. Applicants should send curriculum vitae; statement of research and teaching interests; up to five selected reprints; and arrange for at least three letters of reference to be sent to: **Dr. Patrick J. Walsh, Toxicology Search Chair, MBF/NIEHS Center, University of Miami, Rosenstiel School of Marine and Atmospheric Science, 4600 Rickenbacker Causeway, Miami, FL 33149** by January 1, 2002.

An Equal Opportunity/Affirmative Action Employer.

ASSISTANT PROFESSOR PLANT BIOLOGY

The Institute of Biological Chemistry at Washington State University invites applications for a tenure-track Assistant Professor position to begin August 2002. Applicants must have a Ph.D. or equivalent as well as a strong record of research and publications in plant biochemistry, molecular genetics, genomics, or another area of modern plant biology. The ability and commitment to build a dynamic, well-funded program of international stature is essential. The Institute ([website: http://ibc.wsu.edu](http://ibc.wsu.edu)) provides an excellent research environment with more than 120 Scientists; excellent equipment and facilities; and ready access to specialized techniques in biochemistry, cell biology, and genomics. Candidates should submit curriculum vitae, statement of research interests, and a description of future plans. In addition, applications should arrange for three letters of reference to be sent to: **Dr. John Browse, Search Committee Chair, Institute of Biological Chemistry, Washington State University, P.O. Box 646340, Pullman, WA 99164-6340. E-mail: maertens@wsu.edu.** Applications will be accepted until January 23, 2002, or until the position is filled.

Discovery:

One of the world's leading
pharmaceutical companies,
active in 100 countries

10,000 people dedicated to
R&D, with centres of
research excellence in the
UK, US, Canada and Sweden

Over £5 million invested
each working day to ensure
a flow of new medicines that
make a difference

Increased research
efforts in Research
Area CNS&Pain Control
at site Södertälje

the chance to

Drug Discovery & Development

The department of DMPK & Bioanalytical Chemistry is part of Discovery Research Area CNS & Pain Control, located in Södertälje, Sweden. The department is divided into 5 sections, in total 45 scientists. We are now expanding our research efforts by recruiting the following 5 positions. The post doctoral projects will be conducted over two years and basic requirements are a Ph. D. in a relevant discipline and excellent spoken and written English. More details can be found at www.astrazeneca.se. If you are interested in any of the positions below, please quote the reference given on all correspondence.

Director of DMPK and Bioanalytical Chemistry

#10-5460 We are looking for a person who will be expected to play a major role in the evaluation and prioritization of research projects and in the strategic planning process as part of the local management team, as well as for Global DMPK. This important position requires a Ph. D. degree in either Drug Metabolism, Pharmacokinetics or Bioanalytical Chemistry, combined with well-developed leadership, administrative and interpersonal skills. Several years experience of this or similar positions are essential. For more information please contact: Silvana Lindgren, silvana.lindgren@astrazeneca.com

Associate Director of Pharmacokinetics

#10-5461 You will lead a team exploring and increasing our understanding of the pharmacokinetic/pharmacodynamic characteristics of compounds in our research pipeline. The position requires a Ph. D. in Pharmacokinetics, Biopharmaceutics or related field, with 1-5 years of postdoctoral experience. You will design and conduct preclinical PK/PD studies, prepare summaries for IND and NDA submission, and participate in presentations and defense of regulatory filings and approvals. You will also be expected to actively participate in and make significant contributions to inter-departmental project teams. For more information please contact: Magnus Halldin, magnus.halldin@astrazeneca.com



make a difference

Post doc. position, Metabonomics

#10-5343 The goal is to identify biomarkers of more generalized tissue injury and to establish a general approach to discover biomarkers for unique toxicities and metabolic pathways using NMR and multivariate analysis. The major responsibility will be to initiate and coordinate a multi-disciplinary approach and therefore, ability to take the initiative and to work both in a team and independently is required. The project involves collaboration with toxicologists and pharmacologists. For more information please contact: Eva Klasson Wehler, eva.klassonwehler@astrazeneca.com.

Post doc. position, Reactive metabolites.

#10-5480 The aim of the project is to develop methods for the identification of reactive metabolites, to rank the reactivity of structurally different types of metabolites and to correlate those to risk for toxic effects. The major responsibility for the candidate will be to develop analytical methods for the identification of reactive intermediates and their adducts. Knowledge in organic chemistry and chemical reactivity is essential and experience of analysis by LC/MS/MS and radiodetection techniques are considered a merit. For more information please contact: Eva Klasson Wehler, eva.klassonwehler@astrazeneca.com.

Post doc. position, Pharmacokinetics/Pharmacodynamic (PK/PD) Modelling

#10-5495 You will apply novel methods of modelling and simulations in the preclinical development of selected compounds. These methods include PK/PD modelling, disease modeling and simulations of experimental design. This project is aimed to exemplify the possibility of estimating drug and system specific parameters by means of PK/PD modelling in both preclinical and clinical studies for the purpose of refining subsequent protocols, for extrapolation across species, and assessment of the pharmacodynamic interaction potential. Experience with WinNonlin and WinNonmix is an advantage. For more information please contact: Johan Gabrielsson, johan.gabrielsson@astrazeneca.com

Please send your written application marked with Ref. nr for the specific position you want to apply for to:
AstraZeneca R&D Södertälje, Human Resources, Lili Hofbauer, S-151 85 Södertälje, Sweden.

Closing date: 7 January 2002.

For further information visit our website at www.astrazeneca.se



AstraZeneca 

Leading Innovation In World Healthcare



**DIRECTOR and SCIENTIFIC LEADER
ADVANCED NEUTRON
DIFFRACTOMETER/REFLECTOMETER**

The University of California at Irvine seeks a senior scientist to serve as the Director and scientific leader for the Advanced Neutron Diffractometer/Reflectometer (AND/R) under construction at the NIST Center for Neutron Research, located at the National Institute for Standards and Technology (NIST) in Gaithersburg, Maryland. The AND/R is the centerpiece of the Cold Neutrons for Biology and Technology (CNBT) partnership, recently funded by the NIH National Center for Research Resources as part of the NIH Biotechnology Research Partnership program. The CNBT is a collaborative effort supported additionally by NIST, UC Irvine, and the University of Pennsylvania with the involvement of investigators from Duke, Rice, and Carnegie Mellon, and Los Alamos National Laboratory. The focus of the CNBT is structural studies related to biomembranes and biomembrane-based sensors, with emphasis on membrane proteins. CNBT funding includes positions for an instrument scientist, computer programmer, and postdoctoral students, all of whom will report to the Director. These appointments are expected to be made in the autumn of 2002.

The Director will hold an academic rank at UC Irvine equivalent to associate or full professor, with a starting salary range of \$61,300 to \$84,400 per fiscal year. Depending upon qualifications, interest, and experience, the appointment will be made in the Professional Research or Professor In-Residence series, the latter carrying full membership in the Academic Senate. S/he will be responsible to the CNBT Principal Investigator for matters related to the management of the AND/R. Otherwise, the Director is expected to maintain a vigorous, independent research program. Candidates should hold a Ph.D. in physics, chemistry, biophysics, or biochemistry and have an established research program involving neutron and/or x-ray studies of membranes and/or related systems. Demonstrated leadership ability in a collaborative scientific environment is highly desirable. The position of Director will be available on 1 May 2002, and will remain open until filled. Review of applications will commence on 15 January 2002. Applications should include a curriculum vitae, a brief description of research focus and plans, six key publications, and the names of three or more referees from whom letters may be solicited. Address applications to the CNBT Principal Investigator:

Professor Stephen H. White
University of California at Irvine
Department of Physiology and Biophysics
Medical Sciences I, D346
Irvine, CA 92697-4560

Inquiries for further information are welcome (shwhite@uci.edu, 949.824.7122).

*The University of California at Irvine is an Equal Opportunity Employer
committed to excellence through diversity.*

Buffalo State

State University of New York

Geneticist

Buffalo State will receive applications for an anticipated opening for a tenure-track assistant professor in biology to begin fall 2002.

Responsibilities: Teach genetics and other undergraduate and graduate courses appropriate to training. Develop genetics research program. Service to department and college. **Required Qualifications:** Doctoral degree in biological science with broad training in genetics and research experience in that area. **Preferred Qualifications:** Postdoctoral research and/or teaching experience; expertise in ecological evolutionary or conservation genetics which would support and enhance the Great Lakes Center for Environmental Research and Education and Buffalo State.

Review of applications will begin immediately and continue until the position is filled. Applicants should send a curriculum vitae, letter of interest, and have three letters of reference sent to: Dr. Douglas Easton, Chairman, Genetics Search Committee, Department of Biology, Buffalo State College, 1300 Elmwood Ave., Buffalo, NY 14222-1095. For more information about the college, visit www.buffalostate.edu.

Buffalo State is the largest four-year comprehensive college in the State University of New York (SUNY) system. The campus is located in the museum district of Buffalo, the second largest city in New York State. The area offers a wide variety of cultural and recreational activities.

Buffalo State is an affirmative action/equal opportunity employer and encourages applications from women, racial/ethnic minorities, persons with disabilities, and Vietnam-era veterans.

Department Chair Department of Molecular Medicine

Cornell University, College of Veterinary Medicine invites applications and nominations for the position of Chair, Department of Molecular Medicine. The department consists of 14 professorial faculty and approximately 60 graduate students and post-doctoral associates/fellows. Internationally recognized faculty research programs are currently focused on cancer biology (G protein-coupled signal transduction, integrin signaling, lipid second messengers, metastasis), calcium signaling, exocytosis and secretion, and neurotransmitter receptor structure and function. Faculty profiles and research descriptions are available at: www.vet.cornell.edu/public/pharmacology/MolecMed.html.

We are seeking a scholar of recognized scientific stature to provide leadership and programmatic direction. Requirements include Ph.D., DVM or MD with evidence of an outstanding, extramurally-funded research program. The Chair will be expected to strengthen the interface between the department and other university initiatives including Chemical Biology (www.chem.cornell.edu), the Comparative Cancer Program (www.vet.cornell.edu/cancer), the Cornell Genomics Initiative (www.genomics.cornell.edu), and the Nanobiotechnology Center (www.nbt.cornell.edu).

Send a letter of nomination or intent outlining career goals and professional interests, curriculum vitae and the names and addresses of 3 individuals who may be contacted by the Search Committee to provide references. Screening of applications will begin immediately and will continue until the position is filled. Applications from women and minorities are strongly encouraged. Direct applications and questions to:



Dr. Rodney L. Page
Professor and Chair of Search Committee
Box 31, College of Veterinary Medicine
Cornell University
Ithaca, New York 14853-6401
e-mail: rlp24@cornell.edu

An Affirmative Action/Equal Opportunity Employer and Educator

<http://www.cornell.edu>
<http://chronicle.com/jobs/profiles/2377.htm>



Rensselaer

Why not Change the World?

CHAIR Chemistry Department

The RPI Department of Chemistry invites applications for the position of Department Chair. The successful candidate must bring an established reputation in research and teaching in a field consistent with the areas of focus in the Institute strategic plan and that complements this existing strength in the department. The candidate's area of expertise is open. Evidence of administrative experience and leadership are important. The Department Chair will be expected to lead the department through a period of expansion facilitated by the imminent availability of new faculty positions, as well as those created by normal retirements. Rensselaer is undergoing unprecedented growth in the areas of Biotechnology, Information Technology and enabling fields as a result of major capital investments and faculty hires guided by the Rensselaer Plan- a document that outlines a process that has already been supported by an anonymous \$360 million gift in addition to the proceeds of a large capital campaign. In this climate of change and rapid progress, the Chemistry Department Chair will be expected to create and implement strategies for the expansion of the graduate and undergraduate programs commensurate with the Rensselaer Plan.

Applicants should submit a curriculum vitae/resume, a description of research plans and names of at least three references indicating job number 2001115 to:

Professor Curt M. Breneman
Chair, Leadership Search Committee
Department of Chemistry
Rensselaer Polytechnic Institute
110, 8th St., Troy, NY 12180

Review of applicants will begin immediately.
See also: www.chem.rpi.edu, www.rpi.edu, www.rpi.edu/polymers

*Rensselaer is an Affirmative Action/Equal Opportunity Employer.
Women and minorities are strongly encouraged to apply.*

DIRECTOR



MERGER OF THE INSTITUTE OF MOLECULAR AND CELL BIOLOGY AND THE INSTITUTE OF MOLECULAR AGROBIOLOGY SINGAPORE

An exciting new development is taking place in Singapore. Two key research institutions are to become one in a merger between the Institute of Molecular and Cell Biology (IMCB) and the Institute of Molecular Agrobiology (IMA). This follows a decision to focus life science research in Singapore on the Biomedical Sciences. The merger will enhance our capabilities and bring the biomedical sciences in Singapore to a higher level.

The IMCB was established in 1987 with a small group of scientists and has now grown into a world-class research institute with an international complement of 250 scientists. IMCB is a leading centre for innovative research in biomedical sciences in the heart of the Asia-Pacific region. The Institute's strengths are in cell cycling, cell signalling, cell death, cell motility and protein trafficking as well as in the development of the nervous and immune systems using the fly, mouse, rat and pufferfish as models.

The IMA was established in 1995 and has become a world-class centre for agrobiology research. With around 190 research scientists the IMA focuses on a strategic mix of basic and applied research biology. IMA carries out cutting-edge research into bacterial quorum sensing, plant genetics, yeast cell biology, animal and plant virology, and development studies using the zebrafish as a model.

The merged institute will benefit from its new location within the Biopolis, a purpose built, state-of-the-art biomedical science park set for completion in 2003. The Biopolis is an initiative to create a stimulating environment for both public and private sector biomedical science researchers. The institute will be situated close to Singapore's other research institutions, universities and hospitals creating an ideal environment for close-knit interactions and collaboration.

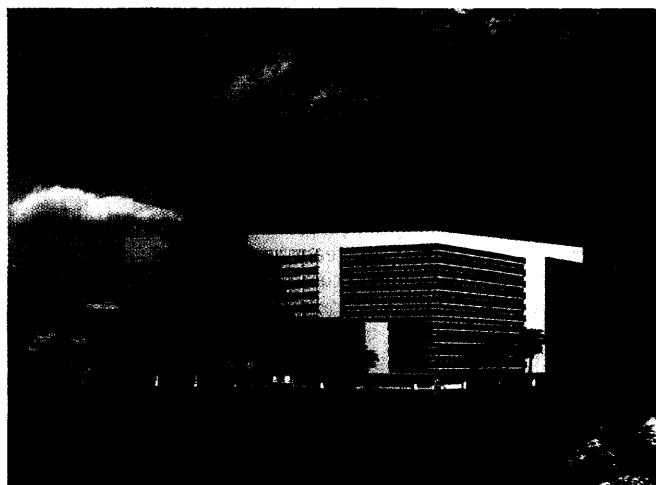
We now seek an Executive Director who can first of all oversee the complex merger, and then build on existing strengths to develop a new, leading entity. A world-class scientific leader with breadth and authority who can lead the next generation of scientists is required for this challenging and exciting opportunity. He/She should have at least 10 years experience as a principal investigator with an outstanding research and collaborative record and demonstrable management and leadership skills.

Nominations and/or applications should include a complete CV and names and addresses of three referees sent by 15 February 2002, to:

Mabel Teo
250 North Bridge Road
#15-01/02 Raffles City Tower
Singapore 179101
Tel: (65) 8379 180
Fax: (65) 8379 190
Email: Mabel_Teo@nstb.gov.sg

Search Committee:

Sydney Brenner, Salk Institute, USA (Chairman)
Alice Huang, Caltech, USA
Fotis Kafatos, EMBL, Germany
Chris Leaver, University of Oxford, UK
Louis Lim, NSTB, Singapore
Tony Pawson, Samuel Lunenfeld Research Institute, Canada
Randy Schekman, University of Berkeley, USA





CONSUMER PRODUCTS WORLDWIDE

Division of Johnson & Johnson Consumer Companies, Inc.

The Skin Research Center of JOHNSON & JOHNSON, located at Skillman NJ, conducts basic research of skin and hair and is committed to the identification of new insights and targets for skin care. The Skin Research Center is involved in molecular and cellular studies, understanding cell-cell interactions, regulation of gene expression and proof of principle studies, contributing to target validation and to the discovery of new technologies for skin care. The Skin Research Center is seeking motivated individuals with the following qualifications:

Staff Scientist, skin biology

Ph.D. in biological sciences, at least five years of postdoctoral experience, with strong knowledge of skin biology. Familiarity with molecular and cellular mechanisms, signal transduction, and cell-cell communication. Understanding and experience in biochemistry, molecular and cellular biology, microscopy and imaging, in vivo and cell culture techniques. Ability to learn and perform in new areas and to handle multiple tasks. Ability to work independently within a team environment. Good communication and organization skills and computer literacy. The successful candidate will head a team involved in basic research and will interact with other technology groups.

Scientist/ Sr. Scientist, molecular and cellular biology

BS/MS, experience in biochemistry, molecular and cellular biology, microscopy and imaging techniques. Extensive mammalian tissue culture experience. Ability to learn and perform new techniques. Ability to handle multiple tasks. Ability to work independently within a team environment. Good communication and organization skills and computer literacy. Familiarity with skin biology is preferred. The successful candidate will work in a team involved in basic research and interacting with other technology groups.

Postdoctoral Scientist, Molecular and Cellular Biology

Ph.D. in biological sciences. Knowledge of molecular and cellular mechanisms, signal transduction, and cell-cell communication. Experience with molecular and cellular biology techniques, mammalian tissue culture and microscopy is required. Ability to work independently within a team environment. Computer literacy and good communication skills required. The successful candidate will work in a team involved in basic research and interacting with other technology groups.

Please forward your resume to Dr. M. Seiberg, J&J Skin Research Center, 199 Grandview Rd., Skillman, NJ 08558. An equal opportunity employer, m/f/d/v committed to diversity in the workplace.

Postdoctoral Positions in Research and Education Available in the Innovative SPIRE Training Program

The University of North Carolina at Chapel Hill (UNC-Chapel Hill) and collaborating historically minority universities (HMUs) in the state of North Carolina are seeking outstanding candidates in genomics/bioinformatics to join a unique NIH-supported postdoctoral training program. Seeding Postdoctoral Innovators in Research and Education (SPIRE) is designed for scientists interested in academic careers that emphasize both research and teaching. We currently have two fellowship positions recently funded by the National Human Genome Research Institute. These multi-year fellowships will enable postdoctoral fellows to pursue independent, original research in the fields of bioinformatics, proteomics, and genomics in laboratories at UNC-Chapel Hill, Duke University or NC State University. These three North Carolina universities provide an excellent environment for research training in these cutting-edge disciplines. In addition to an excellent research environment, fellows will receive training in science education, pedagogy, information technology-supported learning, and other workplace professional skills. To gain teaching experience, fellows will work with teaching mentors to develop and teach a course in genomics/bioinformatics to undergraduates and/or graduate students at partner HMUs. SPIRE's collaboration with North Carolina HMUs enables fellows to contribute to increasing equal access to information and technology as well as diversity in the sciences. As a Community of Postdoctoral Scholars fellows host an Annual Distinguished Scholar seminar series for the university and surrounding community, as well as participate in an Annual SPIRE Symposium. Each fellowship includes a generous stipend and health insurance, a yearly budget for research and teaching activities, support of an undergraduate apprentice, and a laptop computer and printer. Applicants can be either new PhDs or postdocs with up to three years postgraduate training. Women and minority candidates are strongly urged to apply.

Candidates should send curriculum vitae, a letter explaining how the SPIRE program will help them achieve their career goals, and three letters of reference to **Dr. Leslie S. Lerea, SPIRE Coordinator, CB#3280, University of North Carolina at Chapel Hill, NC 27599-3280**. Applications may be submitted electronically and must be received by January 18, 2002. For further information please visit our website at <http://www.unc.edu/depts/spire/spire/index.html> or contact **Dr. Lerea** directly at (919) 962-2505 or Lerea@unc.edu.

UNC-Chapel Hill is an Affirmative Action/Equal Opportunity Employer.



MAYO CLINIC CANCER CENTER

The Mayo Clinic Cancer Center announces openings for faculty positions at the Assistant, Associate, and Professor level. Qualified individuals are expected to initiate and maintain an outstanding research program and to contribute to educational activities in Mayo Graduate School and Mayo Medical School. The Cancer Center is seeking to supplement existing strengths by recruiting faculty members who are interested in the following areas:

Cell Biology and Genetics, with a focus on basic cell biological and signaling mechanisms relevant to cancer initiation or progression. Individuals with interest and expertise in functional genomics using model organisms such as mouse, yeast, fly, or worm are especially encouraged to apply.

Outstanding applicants with research interests in other areas will also be given full consideration. Successful candidates will have an opportunity to interact with basic and medical scientists in areas of cell and molecular biology, structural biology, gene therapy, and medicine. Applicants should send a curriculum vitae and a statement of research interests before March 1, 2002 to:

Ms. Kathryn Streich

Mayo Clinic

Stabile 8

200 First St. SW

Rochester, MN 55905

E-mail: streich.kathryn@mayo.edu

Mayo Foundation is an Affirmative Action and Equal Opportunity Employer and Educator.

The Face of Pfizer



At Pfizer, we build our success on the innovation, skills and entrepreneurial spirit of each of our employees. As an integral member of our team, you'll find myriad opportunities to assert your scientific independence as you generate results that will advance our ultimate goal of creating life-enhancing therapies. You'll also benefit from a wealth of resources, the support of an exceptional team, and the chance to work on some of the most exciting science in the industry. Count the ways you can impact lives as you bring your ideas to life at Pfizer.

Each Person Counts.

Sr. Associate Scientist/Scientist (Ann Arbor, Michigan)

Taking responsibility for data generation for our proteomics research, you'll manage lab operations, ensure high quality control, coordinate requests from colleagues for data generation, and oversee temporary personnel. We require a BS and 5 years experience, an MS and 2 years experience or a PhD with experience in 2D gel electrophoresis, sample preparation and fractionation, and imaging and image analysis. Excellent organization, computer and team skills are critical. Req. #09Nov0108498

Sr. Scientist/Research Associate (Ann Arbor, Michigan)

Applying your proven track record of research in cancer physiology/pathology/molecular biology, you'll be responsible for establishing a cross-site proteomics research program in cancer. You'll also be a major player in a University of Michigan/Pfizer Cancer Proteomics Initiative with the goal of establishing proteomics databases for understanding and developing tumor models for discovery research. Additional responsibilities include coordinating efforts for clinical applications with biomarkers and tumor characterization. We require a BS, MS or PhD with 10-15 years of experience. Req. #06Nov0108463

MicroPET Expert (Ann Arbor)

Acting as the MicroPET expert on the Bioluminescence Center advisory board, you will be responsible for educating the Pfizer scientific community about the potential applications of MicroPET in drug discovery/development. Your primary duties will include identifying new modalities with potential utility in discovery/development; maintaining the daily operation of the Concorde microsystem MicroPET scanner and establishing standard operations for its use; and developing image processing algorithms specific to MicroPET. You'll need a PhD, MD and/or DVM with an emphasis in nuclear imaging, radiotracer design, pharmacokinetic model design/interpretation and 5-10 years experience with animal PET imaging. Req. #13Nov0108559

Postdoctoral Fellow (Ann Arbor)

This fellowship requires a PhD in Chemistry, Biochemistry or a related field, a demonstrated knowledge of biological systems, and experience developing bioanalytical methods. Experience with cytochrome p450 assays, reactive metabolites or structure-activity relationship development is a plus. Familiarity with medicinal chemistry, molecular biology and modeling tools is preferred. Req. #16Nov0108644

Manager/Assistant Director/Director (Groton, Connecticut)

Applying your strong communication and leadership skills, you will lead a team of 10-15 scientists in developing and validating assays for the biomarkers used to measure the efficacy, pharmacodynamics, and safety of clinical candidates. Working closely with therapeutic area project teams, you'll define and implement specific biomarker strategies, convert pre-clinical assays to format suitable clinical studies, establish novel clinical assays, and ensure rigorous quality control of reagents and adherence to assay protocols. This position requires a PhD or the equivalent in Biochemistry or a related field, experience applying analytical biochemistry, a strong background in assay development, and the ability to facilitate the success of cross-functional teams. Req. #17Oct0108114

Research Scientist, Biomolecular Mass Spectrometry (Groton, Connecticut)

In this leading position within the Mass Spectrometry group, you will be responsible for utilizing biomolecular mass spectrometry techniques in support of Discovery Research. You will play a critical role in working with therapeutic area teams and with affiliate groups in the areas of genomics and proteomics, biochemistry and structural biology. This position requires a PhD, 3 years practical and supervisory experience (preferably in an industrial setting), and mass spectrometry expertise. A strong background and record of achievement in the field of biological MS (including aspects of automation, sample handling, MS analysis, data interpretation, proteomics and bioinformatics) is essential. Req. # 12Nov0108543

Pfizer offers an exceptional work environment complete with competitive salaries, excellent benefits and training opportunities designed to develop your professional talents. We encourage all applicants to apply by emailing your resume, indicating the appropriate Req. # in the subject field, to SCI@pfizerresumes.com. If necessary, you may also mail your resume, indicating Req. #, to Pfizer Resume Processing Center, 630 Boston Road M-104, Billerica, MA 01821, Attn: Softshoe Resumes. An equal opportunity employer, Pfizer offers a workplace rich with diversity and potential.

www.pfizer.com



Life is our life's work.



Cytochroma Inc. is a young and dynamic biotechnology company involved in the discovery of new therapeutic agents targeting cytochrome P450s. Cytochroma offers its employees a competitive salary, stock option plan and benefits package as well as a challenging and stimulating environment that rewards team and individual achievements.

Cytochroma is located in Kingston, Ontario, Canada although it is presently considering relocation or expansion to new facilities in Toronto, Ontario, Canada by mid-2003. As a company in a period of rapid growth we have the following opportunities:

- Manager, Chemistry
- Project Leader - LIPIDOMICS™
- Senior Scientists
- Scientists
- Research Associates
- Research Technicians

For additional information on these and other employment opportunities, please visit our website at www.cytochroma.com.

If you would like to contribute to the success of an innovative and fast-paced Canadian biotechnology company that recognizes and values your efforts, we encourage you to submit your resume to:

susanne@cytochroma.com

or

Susanne Whittaker
Cytochroma Inc.

116 Barrie Street, Suite 2424
Bioscience Complex, Queen's University
Kingston, Ontario K7L 3N6
CANADA
Fax: 613-531-6580

DIRECTOR

National Center for Natural Products Research School of Pharmacy, The University of Mississippi

Applications for the position of Director of the National Center for Natural Products Research (NCNPR) at The University of Mississippi (UM) are invited. The applicant should be a recognized research leader with a background in natural products research and drug discovery and development, and experience in research administration. Requirements include a Ph.D. in an appropriate scientific discipline, excellent communication skills, a demonstrated commitment to diversity and to multi-disciplinary research, and the proven ability to manage and lead.

The NCNPR (www.olemiss.edu/depts/ncnpr), a division of the Research Institute of Pharmaceutical Sciences (RIPS) in the School of Pharmacy, is housed in the Thad Cochran Research Center at the UM's Oxford campus. The Director is responsible for resource allocation, fiscal management, strategic planning and the enhancement of the research environment and reputation of the NCNPR. The Director represents the NCNPR on the UM campus, and among other research administrators, legislative bodies and other public and private constituencies. The Director of the NCNPR reports to the Executive Director of RIPS who is also the Dean of the School of Pharmacy.

Applications should include a letter of interest stating how the applicant meets the qualifications, a curriculum vitae, and the names, addresses, and telephone numbers of three references who will not be contacted until the later stages of the search. Evaluation of applications will begin February 15, 2002 and continue until the position is filled or until an adequate applicant pool is reached. The University of Mississippi is an EEO/AA/Title VI/Title IX/Section 504/ADA/ADEA employer. The desired appointment date is July 1, 2002. Applications should be addressed to: **Walter G. Chambliss, Ph.D., Associate Director and Chair of the Search Committee, Thad Cochran Research Center, University, MS 38677; 662-915-1005.**

THE TEXAS A&M UNIVERSITY SYSTEM HEALTH SCIENCE CENTER College Station, Texas

Department of Pathology and Laboratory Medicine Seeks Assistant/Associate Professor

The Department of Pathology and Laboratory Medicine at the Texas A&M University System Health Science Center at College Station, Texas, seeks applications for a tenure track position at the Assistant or Associate Professor level. Level of appointment will be determined by experience and record of accomplishment. Applicants should have an M.D. or M.D./ Ph.D. degree(s) with post-graduate training in pathology and research. The Department, the Medical School, and Texas A&M University provide broad research programs and support.

The successful candidate will receive a competitive salary and start-up package and will be expected to develop an independent research program and participate in teaching medical students and graduate students. Applicants should submit a curriculum vitae, the name of at least three references and a statement of their research goals and interests. For full consideration, completed applications should be submitted by February 15, 2002.

Applications should be submitted to:

George Davis, M.D., Ph.D. or Julian Leibowitz, M.D., Ph.D.
Faculty Search Committee

Pathology and Laboratory Medicine
TAMUSHSC - College of Medicine
208 Reynolds Medical Building
College Station, TX 77845-1114

Tel: (979) 845-7234 * Fax: (979) 862-1299

E-mail: payne@medicine.tamu.edu

*The Texas A&M University System Health Science Center
is an Equal Opportunity Employer/Women
and minorities are encouraged to apply*

GLOBAL OPPORTUNITIES

Novo Nordisk A/S, the world leader in diabetic care, has established an R&D center in Beijing, China. We are dedicated to a center of excellence and an innovative workplace in the field of protein expression and relevant fields. The primary goal of an interdisciplinary project team being assembled is to develop new processes for the production of therapeutic proteins using microbial expression hosts, preferentially *E. coli*. We have the following positions available.

Scientist/Group leader in Protein Chemistry

- Ph.D. in Protein Chemistry, Biochemistry or relevant biological science, 2-5 years experience in protein chemistry.
- A solid theoretical basis and experience within various areas of protein chemistry, e.g., protein purification, characterization and refolding.
- Hands-on experience with numerous purification protocols for a large variety of proteins, especially proteins from *E. coli*.
- Knowledge within up-scaling processes and protein drug development programs would be an advantage.

Scientist in Molecular Biology

- Ph.D. or equivalent qualifications in Biochemistry, Molecular Biology or a relevant biological science, with profound knowledge in microbial genetics and physiology.
- A solid basis in molecular biology with extensive hands-on experience in cloning and expression of various proteins, especially from *E. coli*.
- Ability to analyze and characterize expressed proteins by physical and biological means to evaluate quantity and quality of the proteins.
- Some industrial experience would be advantageous.

The successful candidates must be dynamic personalities who enjoy working in project teams, generating results and enthusiasm. They must have a track record in the relevant field, have good verbal and written communication skills, and love the challenge and excitement of working in Beijing. We offer competitive salary and benefits to attract and retain the best in China. We would like to hear from you if you are a highly energetic and motivated professional with a creative mind and right qualifications.

Please send your CV and a cover letter to: **Novo Nordisk R&D center China, 12 Hongda Street North, Beijing Economic-Technological Development Area, Beijing 100176, China. E-mail: baop@novonordisk.com**

*The Future
is our
Mission*

Forschungszentrum Jülich



*The Research Centre Jülich is the largest interdisciplinary centre
of its kind in Germany:*

*4 200 staff members are concerned with finding solutions
for urgent problems in the fields of "Matter", "Energy",
"Information", "Life" and the "Environment".*

*As a member of the Hermann von Helmholtz Association of
German Research Centres (HGF), the Research Centre Jülich is primarily
committed to issues of public concern.*

The Research Centre Jülich is sponsor of the John von Neumann Institute for Computing (NIC), in cooperation with the German Electron Synchrotron Foundation (DESY). As one of the German high-performance computing centres, NIC has provided computing power nationwide for many years to users from various disciplines. A substantial component of the NIC is the Central Institute of Applied Mathematics (ZAM) at the Research Centre Jülich. As a centre of competence, ZAM conducts scientific research and also operates the supercomputer facilities for the NIC and the Research Centre.

For the **Central Institute of Applied Mathematics** we are seeking a distinguished researcher in the area of high-performance computing as the

Director (C4)

The director of this institute will also be one of the three directors of the **John von Neumann Institute for Computing**.

She or he should have the interest and ability to advance scientific computing in scientific and technological directions. Current emphases here are in the fields of physics, chemistry and in environmental and life sciences. It is expected that cooperation across the various areas of research and application will be cultivated. An important obligation of the future director will be to make efforts to provide the resources and tools of top-level information-technology, and to foster education and the training of personnel. These aims will be supported by experienced staff and appropriate equipment.

The director will be appointed jointly to a chair at one of the universities of North Rhine-Westfalia ("Jülich Model"). The salary will conform to the C4 scale of the German Civil Service. Applicants are required to have "Habilitation" or an equivalent scientific qualification as well as the ability to direct a large research institute and to teach on an academic level.

Equal opportunities is a cornerstone of our staff policy for which we have received the "TOTAL E-QUALITY" accolade. Applications from disabled persons are welcome.

Applications comprising a curriculum vitae, list of publications and a short summary of scientific achievements should be sent by January 25, 2002 to

**Vorstand der Forschungszentrum Jülich GmbH
D-52425 Jülich
Germany**

Internet address:

<http://www.fz-juelich.de>

<http://www.fz-juelich.de/zam/>

<http://www.fz-juelich.de/nic/>



**CANCER EDUCATION AND CAREER DEVELOPMENT FELLOWSHIPS IN
TRANSLATIONAL CANCER RESEARCH
UNIVERSITY OF PITTSBURGH CANCER INSTITUTE**

The University of Pittsburgh Cancer Institute (UPCI) announces the continuation of a unique four-year training program in translational cancer research with Cancer Education and Career Development (CECD) Fellowships. This innovative NCI funded program offers talented young biomedical researchers an interdisciplinary didactic curriculum leading to a M.P.H. degree, collaborative research training experience in cancer biomarkers, early detection and prevention, and dual mentored career development, including submission of a K22 NCI Transition Career Award application, to prepare them for independent faculty level positions.

Individuals with or without previous postdoctoral experience are eligible to apply. Fellows will receive an initial stipend of \$40,000 with annual \$1,500 increases, fringe benefits and health insurance, full support for tuition and textbooks, research supplies, and travel to scientific meetings. Candidates must be U.S. citizens or permanent residents; have completed a Ph.D., M.D./Ph.D. in a basic/biomedical science, or Pharm. D.; demonstrate a high level of interest in earning a M.P.H. degree; and career commitment to translational cancer research in an interdisciplinary collaborative environment.

The CECD program is now seeking applicants for Summer/Fall, 2002. Interested candidates should submit a *curriculum vitae*, graduate transcripts, at least two letters of support from the candidate's previous mentors, and a statement of research goals to: **William L. Bigbee, Ph.D., Program Director, University of Pittsburgh Cancer Institute, Biomedical Science Tower W953, 200 Lothrop Street, Pittsburgh, PA 15213. E-mail: bigbeewl@msx.upmc.edu.** For a full description of the training program, faculty, and the UPCI please see our website: <http://www.upci.upmc.edu/Internet/research/news/cced.html>.

The University of Pittsburgh is an affirmative action, equal opportunity institution.

The Biology Department at Kutztown University seeks to fill two full-time, tenure track positions at the Assistant Professor level for Fall 2002. Requirements include a Ph.D. in Biology, two years college teaching experience, and a commitment to undergraduate education including research with undergraduates. Both positions require teaching non-majors and majors courses.

Aquatic Biologist/Invertebrate Zoologist. Will be expected to teach zoology, invertebrate zoology, and limnology and to participate in the interdisciplinary Environmental Science program. Contact sacchi@kutztown.edu. Deadline extended.

Animal Cell Biologist/Cell Physiologist. Applicant must have expertise in molecular biology; this person will play a key role in developing a Biotechnology program and will pursue extramural funding for teaching and research. Will be expected to teach cell biology and other courses. Candidates with extensive tissue culture experience preferred. Contact baguion@kutztown.edu.

A successful on-campus interview including a lecture/presentation is required. Submit a letter of application, CV, brief statements of teaching philosophy and research interests, copies of transcripts, and three letters of recommendation to: **Chair, Aquatic Biologist Search or Cell Biologist Search, Biology Department, Kutztown University, Kutztown, PA 19530; FAX 610-683-4854.** For more information, visit www.kutztown.edu/employment/faculty.shtml. Materials must be received by 7 January 2002.

The University is interested in hiring faculty who have extensive experience with diverse populations.

KU is an AA/EOE/member of the PA State System of Higher Education and actively solicits applications from women and minority applicants.

**NATIONAL INSTITUTE FOR MEDICAL RESEARCH
Post Doctoral position in Molecular Immunology**

Applications are invited for a three-year postdoctoral position in the Division of Molecular Immunology to work on the development of the lymphoid system in the mouse. The newly established research group will mainly focus on the compartmentalisation of haemato-lymphoid progenitor populations and their developmental potential. To this end, we generate transgenic and knock-out mice for the further dissection of mechanism involved in lymphopiesis (see *Immunity*, 2000, **12**, 653-663; *Curr Top Microbiol Immunol* 2000, **251**, 43-50). The work will involve the generation of genetically engineered mutants, and analysis of lymphoid development and fate specification. Applicants should have a strong background in molecular biology, and experience of some aspect of progenitor cell biology in the haematopoietic system would be advantageous.

Informal enquiries may be made to: Dr Alexandre J. Potocnik by telephone: +44 (0) 20 8959 3666, ext. 2193; or e-mail: apotocn@nimr.mrc.ac.uk

The Institute provides excellent facilities and training for researchers in a multi-disciplinary environment.

Salary for this MRC funded post is from £22,776 to £31,743 per annum (inclusive of Scientist Supplement and Location Allowance). Membership of the MRC Pension Scheme is available.

Formal applications, which should include a full CV and the names and addresses of two professional referees, should be sent to Mark Franklin, Personnel Manager, National Institute for Medical Research, The Ridgeway, Mill Hill, London NW7 1AA quoting reference number IMI/AP/PD.

Closing date: 25th January 2002

'Leading Science for Better Health'

*The Medical Research Council is an
Equal Opportunities Employer and
operates a strict no smoking policy*

MRC
Medical Research Council

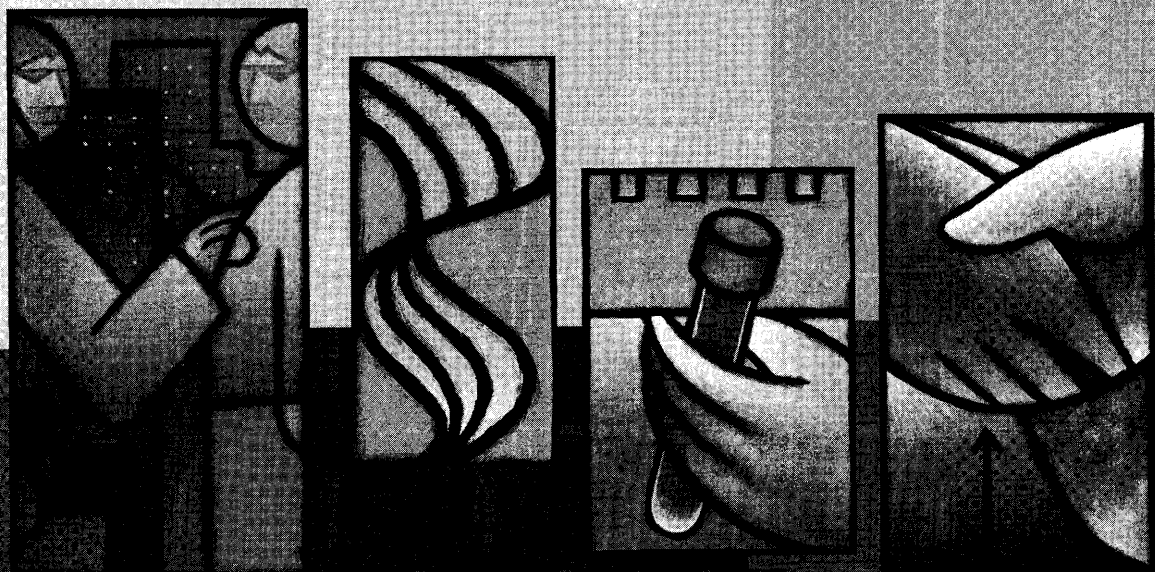


**Tenure track faculty,
Department of Biochemistry
and Molecular Biology,
Medical College of Georgia**

Applications are invited for a faculty position at the level of an Assistant/Associate professor (tenure track) in the Department of Biochemistry and Molecular Biology at the Medical College of Georgia, Augusta, GA beginning July 1, 2002. The faculty member will spend 50% of his/her effort serving as the Director of the Molecular Biology Core Lab and also as an Associate Director of the Genomics and Proteomics Core Lab. In addition, he/she will be expected to have a successful extramurally funded research program or participate in teaching medical students, allied health students, and graduate students. The MCG has recently established several core labs with state-of-the-art instruments and techniques that provide service to the scientists both inside and outside the campus. The MCG is focusing its research in broad areas of cancer, cardiovascular diseases, neurological diseases, and infection and inflammation. We particularly encourage applications from candidates who have research interests that fit into one or more of these thematic areas. Eligible candidates must have a Ph.D. in any of the following: Biochemistry, Molecular Biology, Microbiology and Immunology. In addition, the candidate must be interested in working with modern instruments and techniques used in molecular biology (nucleotide and peptide synthesis, nucleotide and peptide sequencing, microarray analysis, proteomics, etc.).

Interested candidates must send their applications to **Vadivel Ganapathy, Ph.D., Chair, Search Committee, Department of Biochemistry and Molecular Biology, Medical College of Georgia, Augusta, GA, 30912.** A complete application will include a letter addressing the necessary qualifications cited above, curriculum vitae, and addresses and phone numbers of references. Initial review of applications will begin February, 2002.

Medical College of Georgia is an Equal Opportunity, Affirmative Action and Equal Access Institution.



Driving our Products to Market

To fulfill our vision of a great future, Millennium Pharmaceuticals is driven by a single goal: to bring promising therapeutic candidates to market. Our leading product, Campath®, offers new hope to patients with B-cell chronic lymphocytic leukemia. And we're pioneering a new era in treating metabolic diseases with the Phase I clinical trial of MLN4760, the first molecule directed against a genomically-derived target for obesity—and the first molecule to enter clinical development from the Abbott-Millennium alliance.

Be part of this groundbreaking work by joining us in one of these opportunities at our headquarters in Cambridge, Massachusetts:

Scientist II, GPCR Biologist/Assay Configuration

You'll develop sensitive assays for orphan GPCRs in the Metabolic Disease Biology group and implement high throughput screens for these orphan GPCRs. Requires a PhD with 1-3 years experience in cell-based GPCR signaling, the ability to generate stable cell lines overexpressing GPCRs, and significant experience with membrane and cell-based ligand binding assays, site-directed mutagenesis for generating constitutive active receptors, and reporter-based signaling assays.

Scientist II, Leptin Pathway Biology

You'll lead a target discovery and validation program devoted to studying central pathways and molecules regulating mammalian body weight homeostasis. Requires a PhD with 1-4 years postdoctoral training and a strong understanding of multiple aspects of neuroendocrinology with a focus on leptin pathway biology. Classical molecular biology and biochemical skills, animal model development experience and a good understanding of rodent neuroanatomy are essential.

Research Associates, In vivo Pharmacology

Requires a BS or MS in Pharmacology or a related field with 4+ years *in vivo* pharmacology experience using several routes of drug administration and efficacy determination in rodents. Background in pharmacokinetics, drug detection methodology and small animal surgery is a plus.

Scientist II, Pathophysiology/ Type II Diabetes

Applying your significant experience in the pathophysiology of type II diabetes, insulin resistance, obesity and peripheral glucose and lipid metabolism, you'll support the *in vivo* metabolic drug screening process, pharmacological validation of targets, efficacy pharmacology programs and PK/PD assays. Requires a PhD in Physiology or Endocrinology or equivalent with 2-3 years postdoctoral experience in insulin resistance or diabetes.

Research Investigator/Research Associates Pathophysiology/Type II Diabetes

Requires a BS or MS in Physiology or Endocrinology with 5-7 years experience in insulin resistance or diabetes for the Research Investigator position and 2-3 years experience for the 2 Sr. Research Associate positions. Also needed are *in vivo* (GTT, IIT, euglycemic hyperinsulinemic clamp) and *in vitro* (3T3L1 or myocyte culture, enzymatic assays for glucose and lipid metabolism enzymes) experience with diabetes and insulin-resistant animal models.

Help us drive our products through commercialization to market by emailing only one resume to millennium@rpc.webhire.com. Please include the Source Code SCI1201 in your application.

We are an equal opportunity employer committed to discovering the individual in everyone.

www.millennium.com

Transcending the limits of medicineSM





Countering Bioterrorism

The Countering Bioterrorism Initiative is comprised of a number of essential elements for which the Center for Biologics Evaluation and Research plays an integral role. One such element is the expeditious development and licensing of products to diagnose, treat or prevent outbreaks from exposure to the pathogens that have been identified as bioterrorist agents. These products must be reviewed and approved prior to the large-scale productions necessary to create and maintain a stockpile. Staff must guide the products through the regulatory process, including the manufacturing process, pre-clinical testing, clinical trials, and the licensing and approval process. Experts in these areas are needed to expedite the licensing and approval process for these products. This process is extremely complex and early involvement by staff is crucial to the success of the expedited review process.

Consequently, the Center for Biologics Evaluation and Research is actively soliciting applicants to fill a multitude of positions involved in the regulation and research of blood, vaccines and therapeutics including those against bioterrorism agents. For more information, log onto www.fda.gov/cber/inside/vacancy.htm and select Countering Bioterrorism.

*Smoke Free Environment
Equal Opportunity Employer*

This agency provides reasonable accommodations to applicants with disabilities.



Executive Director Division of Hydrologic Sciences Desert Research Institute

The Desert Research Institute (DRI), a component of the University and Community College System of Nevada (UCCSN), seeks an Executive Director of its Division of Hydrologic Sciences (DHS). The Executive Director provides scientific leadership for nearly 100 faculty, support staff, and graduate students engaged in a unique mix of grants and contracts with a total annual budget of \$7 million. With rank equivalent to an academic dean, the Executive Director reports to the President of DRI. Key responsibilities include research and business development, personnel, and financial management. Candidates should have a Ph.D. or equivalent graduate degree. The starting salary for this position is expected to be \$120,000–\$140,000 with an excellent fringe benefits package. For a detailed position description, application procedures, deadlines, and more about DRI, please visit www.dri.edu.

*DRI is an AA/EEO Employer.
We employ only U.S. citizens and those
authorized to work in the U.S.*



Lecturer In Integrative Animal Biology

(Ref 1028/01)

We seek applicants who will further enhance the Integrative Animal Biology Research Group. We are committed to the development of post-genomic animal biology and wish to recruit innovative individuals with strong comparative interests, who can integrate approaches in their research from molecular to whole organism. The group (*see website www.sbs.man.ac.uk/iab*) currently holds substantive (£4million) research funding and will shortly occupy newly refurbished (£1million) space. You will benefit from joining one of the largest Bioscience Research Centres in Europe, with major strengths extending from cellular/molecular biology to integrative physiology.

The group has strengths in Population and Behavioural Genetics; Environmental and Adaptive Physiology (fish and mammals); Immunology, Biological timing, Reproduction and Neurobiology of Behaviour. We particularly welcome applications which further strengthen these fields using either invertebrate, non-mammalian/mammalian vertebrate model organisms.

You will be expected to establish independent, externally funded research programmes and also contribute to Animal Biology and other teaching at the Undergraduate and Postgraduate level.

Informal enquiries may be made to the Chair of the Search Committee via Andrew.Loudon@man.ac.uk. Information on the School can be found on <http://www.biomed.man.ac.uk>

The Lecturer salary ranges are currently £20,267 to £32,215.

Application forms and further particulars are available at <http://www.man.ac.uk/news/vacancies> or from the Office of the Director of Personnel, The University of Manchester, Oxford Road, Manchester M13 9PL tel: +44(0)161 275 2028; fax +44(0)161 275 2471; Minicom (for the hearing impaired): +44(0)161 275 7889; email: personnel@man.ac.uk Please quote reference number.

Closing date: 8 February 2002.



As an Equal Opportunities Employer, the University welcomes applications from suitably qualified people from all sections of the community regardless of race, religion, gender or disability.

Find your next tassel with no hassle.



Academic Connections Graduate Program Profiles

Search listings by

- Name of University or College
- Subject
- Location

Science Careers
www.sciencecareers.org

Timothy A. Cross,
NHMFL & Florida State Univ.
• Project Administration
• Core Protein Production
• Solid State NMR

Michael S. Chapman,
Florida State Univ.
• Holistic Refinement
• X-ray Crystallography

Wah Chiu,
Baylor College of Medicine
• Electron Microscopy

Bing K. Jap,
Lawrence Berkeley National Lab
• X-ray Crystallography

Patrick J. Loll,
MCP - Hahnemann Univ.
• X-ray Crystallography

Alan G. Marshall,
NHMFL & Florida State Univ.
• FT - Ion Cyclotron Resonance

Robert K. Nakamoto,
University of Virginia
• Core Protein Production

Stanley J. Opella,
Univ. of California - San Diego
• Solid State NMR
• Solution NMR

Charles R. Sanders,
Case Western Reserve Univ.
• Solution NMR

Frank D. Sönnichsen,
Case Western Reserve Univ.
• Solution NMR

Cynthia V. Stauffacher,
Purdue University
• X-ray Crystallography

Kenneth A. Taylor,
Florida State University
• Electron Microscopy

Michael C. Wiener,
University of Virginia
• X-ray Crystallography



For more information: please see our web site at:
www.membraneprotein.magnet.fsu.edu

To apply: please specify position and send CV and three reference letters to:
Ms. Judy McEachern
NHMFL
1800 E. Paul Dirac Dr.
Tallahassee, FL 32310
Tel: 850-644-8754
Fax: 850-644-1366
Email: mceacher@magnet.fsu.edu

Membrane Protein Structural Genomics

Mycobacterium tuberculosis

Program Project funded by NIGMS

Project Overview:

A structural genomics approach for membrane proteins is being developed. Due to the many difficulties in structurally characterizing such proteins a multi-disciplinary and multi-technology effort has been devised to facilitate this process. Presently, less than 1% of the entries in the Protein Data Bank are membrane proteins, while they represent 30% or more of most proteomes. Here, the membrane proteins of *M. tuberculosis* are targeted. TB is the #1 cause of infectious disease mortality in the world and multi-drug resistance is a paramount concern. The structures of these proteins will advance drug development efforts.

Goals:

• *Protein Production:* There are 1200 open reading frames coding for membrane proteins in the *M. tuberculosis* genome with 1 to 18 putative trans-membrane helices. Expression of 300 to 400 of these ORFs will be attempted with high yields anticipated from 30% of these.

Research Faculty Positions:

• *Florida State University* - Molecular Biologist to oversee a Core Protein Production facility - extensive experience in the overexpression and purification of membrane proteins.

• *Florida State University* - Networking specialist with a broad range of web based and network skills to facilitate communication among 13 research groups and to the greater scientific community.

Postdoctoral Positions:

• *Case Western Reserve University* - Solution NMR spectroscopist familiar with computational and/or molecular biological skills for structural characterization of integral membrane proteins.

• *Florida State University* - Molecular biologist to develop overexpression and purification schemes for membrane proteins.

• *Florida State University* - Solid State NMR spectroscopist to lead technological effort from sample preparation, data collection to structural analysis.

• *University of California - San Diego* - A solid state NMR spectroscopy for the implementation of high-throughput methods of sample preparation, experiments, and structure determination.

• *Structure Determination:* Sample preparation for multiple structural technologies will be attempted in an collaborative effort to use the most appropriate technology for structural characterization.

• *Holistic Refinement:* Data from multiple technologies will be used in characterizing macromolecular assemblies from a divide and conquer approach. Multiple restraint types will also be used when adequate data is not available from a single technology.

• *Collaboratorium:* The potential of this effort lies in the unique team that is committed to working closely together. Sharing knowledge and skills within this team will be essential. Collaboratorium tool development and implementation of electronic white boards, laboratory notebooks and video will be important for facilitating communication. Sharing results with the overall structural genomics and larger scientific communities is also important for the program.

• *University of Virginia* - An X-ray crystallographer with experience or interest in *de novo* structure determination, crystallization, automation, or molecular biology and protein chemistry methods.

Technical Positions:

• *Florida State University* - Molecular Biologist to implement overexpression and purification protocols for a large number of membrane proteins.

• *Baylor College of Medicine* - Software Specialist for the development of two-dimensional electron crystallographic analysis of membrane protein structures.

• *University of Virginia* - A research technician to carry out molecular biological procedures, bacterial fermentation, and protein purification protocols in a basic science laboratory.

• *University of Virginia* - A research technician to purify membrane proteins, prepare samples for crystallization, and conduct crystallization experiments with manual and or automated methods.

Note: While these are the open positions at this time - there is considerable flexibility as to the level for many of these hires and applicants are encouraged to apply even if you consider yourself to be over- or under-qualified.

POSITIONS OPEN

ASSOCIATE PROFESSOR OR PROFESSOR

The University of Cincinnati seeks an Associate Professor or Professor with specialization in bioinformatics to serve as the Program Director for bioinformatics in the Department of Biomedical Engineering. This individual must have a Ph.D. in biology, biomedical engineering, biometrics, mathematics, or computer science/engineering or other related disciplines. The individual will be expected to develop a strong, independent research and educational program in bioinformatics related to computational or biological modeling leading to significant extramural funding and interdisciplinary collaborations at the University of Cincinnati. The salary is competitive and commensurate with faculty at similar levels of career. Contact:

William S. Ball, M.D.
University of Cincinnati
P.O. Box 210048
Cincinnati, OH 45221-0048
Telephone: 513-556-4131
FAX: 513-556-4162
E-mail: ball@athena.chmcc.org

The University of Cincinnati is an Affirmative Action/Equal Opportunity Employer. (21UC0711)

The Department of Medicine/Division of Cardiovascular Medicine at the University of Pennsylvania's School of Medicine seeks candidates for an ASSISTANT, ASSOCIATE, and/or FULL PROFESSOR position in the nontenure research track, the nontenure Clinician-Educator track, or the tenure track. Track and rank will be commensurate with experience. Expertise in the specific area of molecular biology, genetics, and/or cell biology is required. Applicants must have an M.D. or Ph.D. or equivalent degree. The Molecular Cardiology Research Center is seeking to expand its research faculty in cardiovascular basic sciences. The MCRC is located in state-of-the-art research space and significant core facilities including transgenic, histology, and mouse physiology laboratories, which will be available to the successful applicant. The effective date of appointment will be July 1, 2002. Please submit curriculum vitae, letter of interest, and three reference letters to: Dr. Jonathan Epstein, Associate Professor, Molecular Cardiology Search Committee, 954 BRB II Curie Boulevard, Philadelphia, PA 19104. FAX: 215-573-2094; e-mail: epsteinj@mail.med.upenn.edu. The University of Pennsylvania is an Equal Opportunity/Affirmative Action Employer. Women and minority candidates are strongly encouraged to apply.

FACULTY POSITIONS in rheumatology are available at all levels in the Immunology Division at the University of Cincinnati College of Medicine. Applicants should be U.S. citizens or permanent residents, Board-certified M.D.s in internal medicine, Board certified/qualified in rheumatology. Applicants at the ASSISTANT PROFESSOR level should have evidence of clinical and/or laboratory research productivity; applicants at senior levels should have strong research supports. Start-up funding, protected research time, a 5/8 Veterans Affairs (VA) position, and a competitive salary are available. The division includes eight Rheumatologists, two Ph.D. Scientists, and has over \$1 million in annual research funding from NIH, VA, Arthritis Foundation, and industry. E-mail curriculum vitae and telephone numbers for three references to: Fred Finkelman, M.D.; e-mail: ffinkelman@pol.net. University of Cincinnati is an Equal Opportunity Employer.

DIRECTOR, University of California Integrated Pest Management (IPM) Program (80%), ASSOCIATE or FULL in the Agricultural Experiment Station (20%). Provide direction and leadership for UC-IPM program policies, procedures, and activities. Develop a research program consistent with a 20% research appointment in the home department of his/her research appointment. Detailed information on the position may be found at website: <http://www.ipm.ucdavis.edu>. Send applications to: Brenda Nakamoto, College of Agricultural and Environmental Sciences Dean's Office, University of California, Davis, CA 95616.

POSITIONS OPEN

FACULTY POSITIONS Department of Biomedical Engineering Duke University

The Department of Biomedical Engineering in the Pratt School of Engineering at Duke University invites applications for tenure-track/tenured faculty positions at all ranks.

With strong University support, the Pratt School is undergoing a period of rapid expansion and has identified biomedical engineering as one of three complementary strategic initiative areas. Accordingly, applications are invited from prospective faculty whose research interests are aligned with the Department's broad thrusts in biophotonics, cardiovascular engineering, and therapeutic bioengineering. Candidates should be capable of obtaining competitive external research funding, demonstrated in the case of senior-level candidates by an established, externally funded program. All faculty in the Department actively participate in teaching and advising at both the undergraduate and graduate levels. Candidates should hold a Ph.D. or equivalent in biomedical engineering or a related field. Applicants should submit curriculum vitae including funding history, a summary of research plans, the names of and contact information for three references, and expected date of availability. Send applications in response to the biophotonics and cardiovascular engineering initiatives to:

Chair, Biophotonics/Cardiovascular
Joint Search Committee
Department of Biomedical Engineering
Duke University
Box 90281
Durham, NC 27708-0281

Applications are welcome from individuals interested in any aspect of biophotonics and biomedical optics or cardiovascular research and applications. A successful candidate in biophotonics will benefit from affiliation with the Fitzpatrick Center for Photonics and Communications, a major schoolwide initiative. Send applications in response to the search in therapeutic bioengineering, defined broadly to include biomaterials, cell-surface interactions, drug delivery, neuroengineering, tissue engineering, and related aspects of biomechanics, to:

Chair, Therapeutic Bioengineering
Search Committee
Department of Biomedical Engineering
Duke University
Box 90281
Durham, NC 27708-0281

Applications will be received and reviewed until these positions are filled; however, applications received by February 1, 2002, will be given first consideration.

NMR SPECTROSCOPIST/ FACILITY MANAGER The City College, CUNY Department of Chemistry

Applications invited for a full-time NMR spectroscopist in the Department of Chemistry to manage, administer, and maintain the expanding NMR facility consisting of high-resolution 600, 500, 300, and 200 MHz spectrometers. Additional responsibilities include but are not limited to purchase of supplies; general repair and upkeep of the instrumentation; and instructing, assisting, and collaborating with students, staff, and faculty users of the NMR facility in the design and execution of experiments in areas of organic chemistry, biochemistry, and structural biology. Requirements: Ph.D./chemistry or related fields, expertise in NMR operation and maintenance, and good computer skills. Salary commensurate with experience and qualifications. Send curriculum vitae describing experience and arrange to have three confidential letters of recommendation sent at the time of application to: Professor Stanley Radel, Chair, Department of Chemistry, The City College, CUNY, Convent Avenue at 138th Street, New York, NY 10031. An Affirmative Action/Equal Employment Opportunity/Americans With Disabilities Act/Immigration Reform and Control Act Employer.

POSITIONS OPEN

FACULTY POSITIONS NEUROSCIENCE Medical College of Virginia Campus of Virginia Commonwealth University

The Department of Anatomy at Virginia Commonwealth University School of Medicine invites applications for one tenure-track ASSISTANT/ASSOCIATE PROFESSOR position and one collateral ASSISTANT PROFESSOR position with potential conversion to tenure-track status in two years. We seek exceptional candidates pursuing imaginative cellular, molecular, or systems approaches in areas related to the Department's research strengths: neural development and plasticity, neural injury and repair, sensory systems, motor systems, and the neuromuscular junction. Please visit our website: <http://views.vcu.edu/ana> for more detailed information regarding departmental areas of research.

The successful candidates must have a Ph.D., M.D., or D.D.S. and two or more years of productive postdoctoral research experience. Candidates for Associate Professor must have an outstanding record of research accomplishments, an independent research program, and active extramural funding. Candidates for Assistant Professor must have the potential to establish an independent, nationally funded research program. The candidates are expected to participate in teaching activities in the Department of Anatomy. Attractive salary and start-up packages commensurate with the candidate's qualifications and experience are available for each of these positions.

Candidates should submit a letter of application specifying the position/s of interest; curriculum vitae; brief summary of current research; statement of future research directions; and the names, addresses, telephone numbers, and e-mail addresses of three references. Send materials to:

Chair, Faculty Search Committee
Department of Anatomy, P.O. Box 980709
Virginia Commonwealth University
School of Medicine
Richmond, VA 23298-0709

Virginia Commonwealth University is an Equal Opportunity/Affirmative Action Employer. Women, minorities, and persons with disabilities are encouraged to apply.

Several POSTDOCTORAL POSITIONS are available immediately in the Department of Molecular Physiology and Biophysics at Baylor College of Medicine. Scientific areas of interest include molecular mechanisms of learning and memory (Dr. Eric Klann), a synaptic plasticity and signal transduction (Dr. Gangyi Wu), mechanism of action and biological roles of phosphatidylinositol phosphate kinases (Dr. Jeanette Kunz), cell cycle regulation in mammalian development and human disease (Dr. Pumin Zhang), and structure and function of ligand-gated ion channels (Dr. Steen Pedersen). Positions are supported by NIH research and training grants. Interested candidates should send curriculum vitae including the names of three references to: Dr. Ericka A. Lawson, Department of Molecular Physiology and Biophysics, Baylor College of Medicine, Houston, TX 77030. E-mail: elawson@bcm.tmc.edu; website: <http://www.bcm.tmc.edu/physio/>.

Baylor College of Medicine is an Equal Opportunity/Affirmative Action and Equal Access Employer.

NEUROSCIENCE/NEUROANATOMY INSTRUCTOR. The Department of Basic Medical Science invites applications from individuals qualified to direct a neuroscience course and teach in a laboratory-based neuroanatomy course for medical students. Candidates should have a Ph.D. or equivalent degree in a field relevant to this instruction. The position is not in the tenure track and academic rank and salary will depend upon qualifications. Send curriculum vitae and have three references sent to: Chris Papisian, Ph.D., Chair, BMS, UMKC School of Medicine, 2411 Holmes Street, Kansas City, MO 64108. Applications by e-mail will be accepted (e-mail: papisianc@umkc.edu). The University of Missouri-Kansas City is an Affirmative Action/Equal Opportunity Employer Institution.

**NATIONAL CANCER INSTITUTE
DIVISION OF CANCER TREATMENT AND
DIAGNOSIS DEVELOPMENTAL THERAPEUTICS
PROGRAM DRUG SYNTHESIS & CHEMISTRY BRANCH**

Opening Date: December 11, 2001
Closing Date: January 18, 2002

**Announcement Number: NCI-01-2333
Chemist, GS-1320-14**

The Drug Synthesis & Chemistry Branch of the Developmental Therapeutics Program, National Cancer Institute has an opening for an Organic Chemist to support the preclinical anticancer drug discovery/developmental programs of the Institute. The main responsibility of the position entails the scientific and administrative management of several contracts engaged in the synthesis of a wide variety of organic compounds of biological interest. The candidate must have the ability to organize, plan and accomplish project tasks in a timely and cost-effective manner.

A Ph.D. in organic chemistry is desirable as well as post-doctoral training and extensive experience in multi-step synthesis, isolation, purification and characterization of a wide diversity of organic compounds of varying structural types, and combinatorial chemistry methods. Communication skills and project-management experience are also required.

Salary - ranges from \$74,697 to \$97,108 per annum. Pay may increase up to 4.6% in January 2002. Benefits include health and life insurance options, retirement, paid holidays, vacation and sick leave.

U.S. citizenship is required. In order to validate your qualifications, it is necessary to describe your proficiency in the following knowledge, skill, and/or abilities (KSAs): 1) Knowledge of the principles, theories and practices of organic, synthetic, and combinatorial chemistry; 2) Demonstrated skills in both the multi-step synthesis of a wide diversity of organic compounds of varying structural types; and combinatorial chemistry. 3) Ability to organize, plan, implement and manage diverse synthesis projects.

To obtain the mandatory requirements and other necessary application information, please visit: <http://careerhere.nih.gov>, vacancy announcement, NCI-01-2333. You may also call (301) 594- 2953 to request a fax copy of the vacancy announcement, (Fax ID: 1893).

For more information, contact Ven Narayanan, Ph.D., at (301) 496-8795.

NIH/NCI is an Equal Opportunity Employer



**NATIONAL
CANCER
INSTITUTE**

POSITIONS OPEN

NIH SEEKS SENIOR PHYSICIAN/ SCIENTIST TO HEAD OFFICE OF CLINICAL APPLICATIONS National Institute of Allergy and Infectious Diseases National Institutes of Health

The Division of Allergy, Immunology, and Transplantation, National Institute of Allergy and Infectious Diseases, is seeking an outstanding Physician (M.D.) or Scientist (Ph.D.) to serve as **DIRECTOR** of the Office of Clinical Applications. The incumbent will lead a rapidly expanding extramural research program dedicated to the discovery and evaluation of promising new therapies for immune-mediated diseases. The Director will be responsible for the design, development, and implementation of NIAID-sponsored research initiatives in clinical immunology and will provide scientific, programmatic, and budgetary leadership for the NIAID-sponsored Immune Tolerance Network, an international consortium committed to the discovery and clinical application of new immunotherapies.

The position requires exceptional scientific and clinical expertise as well as outstanding interpersonal and communication skills to interact effectively with academia, industry, other government agencies; public and private research and health organizations; the scientific and lay press; and the general public.

Basic qualifications: Doctor of Medicine, Doctor of Osteopathy, or Ph.D. in a health-related research field with a comprehensive knowledge of basic and clinical immunology, clinical trial design, and regulatory guideline for NIH-sponsored research. Candidates must have expertise in managing complex biomedical research programs and the ability to recruit, inspire, and lead a dedicated staff of Scientists and clinical study coordinators.

Specific application procedures apply. For more information, contact: **Sheila Conner; Telephone: 301-402-0957; e-mail sc23@nih.gov.**

Annual compensation including a possible recruitment or relocation bonus, physician's comparability allowance, or other incentives will be commensurate with experience and level of accomplishment and will range up to \$144,000 (GS-15). A higher salary may be possible through the use of other appointment mechanisms. *NIH is an Equal Opportunity Employer.*

POSITIONS AVAILABLE, molecular genetics and molecular neurobiology of drug abuse. Molecular Neurobiology Research Branch, IRP, NIDA, NIH. Senior and junior **POSTDOCTORAL FELLOW** positions available in the molecular genetics and molecular neurobiology of drug abuse, focusing on identifying and characterizing genes contributing to addiction vulnerability. M.D., D.O., and/or a Ph.D. and experience with molecular and human genetics of complex disorders are preferred. Curriculum vitae; three letters of recommendation; and copies of Doctoral degree(s) (with English translation if appropriate) before January 30, 2002, to: **George Uhl, M.D., Ph.D., Chief, Molecular Neurobiology, 5500 Nathan Shock Drive, Baltimore, MD 21224. E-mail: guhl@intra.nida.nih.gov.** Competitive salaries commensurate with experience. *NIH is an Equal Opportunity Employer; applications from women and minorities are encouraged.*

CAREER IN OPTOMETRY, OPTOMETRIC RESEARCH, OR TEACHING

The New England College of Optometry offers a unique program for those with a Doctorate in the sciences: biology, chemistry, physics, psychology, etc. Candidates have the opportunity to obtain the Doctor of Optometry (O.D.) degree in 27 months. The program begins annually in June. Employment opportunities exist in clinical practice, industry, optometric faculty positions, and research. Contact: **Admissions Office, Department S, 424 Beacon Street, Boston, MA 02115. Telephone: 1-800-824-5526; e-mail: admisso@ne-optometry.edu.** Additional information, see website: <http://www.ne-optometry.edu>. Application deadline: March 1, 2002.

POSITIONS OPEN

BIOLOGY FACULTY

The Department of Biology, University of Louisiana at Lafayette, invites applications for two faculty positions in support of our Doctoral program in environmental and evolutionary biology. One tenure-track position will be related to parasitology or microbiological processes in soils or sediments. Preferred areas of research emphasis include microbiology, marine biology, mycorrhizal ecology, or nematology. The successful candidate is expected to develop an active research program, pursue extramural funding, and participate in undergraduate and graduate education. One position will be for an Instructor for lower-division lecture and laboratory courses including oversight of graduate teaching assistants and other duties normally associated with an academic position. Minimum requirements include an M.S. in biology or a closely related field with at least two years of academic experience.

The Department of Biology (see website: <http://www.louisiana.edu/Departments/BIOL/>) consists of 30 faculty with research interests ranging from molecular to ecosystem studies and with 40 Doctoral and 30 Master's students. Departmental resources are supplemented by specialized equipment and laboratories provided in a number of university centers. Resources and adjunct faculty are available through affiliations with the Louisiana Universities Marine Consortium (LUMCON), which provides marine laboratory and vessel access; the USGS National Wetlands Research Center; and the NOAA Estuarine Habitats and Coastal Fisheries Research Center. Lafayette is the heart of French Louisiana and has a unique fusion of diverse cultures, great food and music, and friendly people.

Applicants should submit curriculum vitae; selected reprints; a concise statement of research goals; and names, addresses, e-mail addresses, and telephone numbers of at least three references. Review of applications will begin 1 February 2002 and continue until the positions are filled. Direct application to: **Faculty Development Search Coordinator, Department of Biology, University of Louisiana at Lafayette, Lafayette, LA 70504-2451. Affirmative Action/Equal Opportunity Employer.**

Department of Pathology at the University of Virginia is recruiting for several full time tenure-track Research Faculty positions at the **ASSISTANT/ASSOCIATE PROFESSOR** level. Rank and compensation are subject to individual qualifications and experience.

The Department is undergoing significant expansion in research efforts including occupation of new research space beginning January 2002. Areas of research emphasis include cancer, signal transduction, and neural and inflammatory degenerative diseases, but outstanding Investigators with any system relevant to human disease will be considered. Applicants should have Ph.D., M.D./Ph.D., or M.D. degrees with laboratory-based postdoctoral experience. Faculty with clinical training in pathology will have the option of developing Clinician-Scientist careers. Faculty will be supported by generous start-up packages and salaries and a graduate (Ph.D.-granting) training program housed within the Department.

The University of Virginia offers the advantage of a major research university in the beautiful and livable community of Charlottesville. The University is located at the foot of the Blue Ridge Mountains in central Virginia, two hours south of Washington, D.C. The Medical School houses world-class Investigators in cancer, signal transduction, and structural biology within a highly collegial and interactive environment.

Applicants should respond with curriculum vitae, two- to three-page research plan, and names and contact numbers of three references to: **Dennis J. Templeton, M.D., Ph.D. Chairman, Department of Pathology, University of Virginia Health System, P.O. Box 800214, Charlottesville, VA 22908. E-mail: templeton@virginia.edu.** Applicants who have previously applied need only submit updated materials. Applications will be considered until all positions are filled. *The University of Virginia is an Equal Opportunity/Affirmative Action Employer.*

POSITIONS OPEN

COLLEGE OF MEDICINE DEPARTMENT OF PATHOLOGY

We anticipate openings between January 1, 2002, and June 30, 2002, in research positions (**RESEARCHER, SPECIALIST, and POSTGRADUATE RESEARCHER** series). Applications are being sought from recent Ph.D. graduates. The current faculty and their research interests are:

P. Carpenter, oncogenes and metastasis-associated genes in breast and ovarian cancer; **J. Chan**, liver development/function and oxidative stress response; **L. De la Maza**, chlamydia trachomatis: immunopathology and vaccine development; **J. Emerson**, NMR and Alzheimer's disease; **M. Jadus**, breast cancer using macrophage clone stimulating factor; **J. Krolewski**, signaling and cell growth; **E. Monuki**, brain development; **A. Ouellette**, mucosal immunity and enteric host defense; **T. Pawlowski**, immunology; **E. Peterson**, chlamydia trachomatis: immunopathology and pathogenicity; **W. E. Robinson**, HIV/SIV: immunopathology and experimental therapeutics; **M. Samoszuk**, investigations into the role of mast cells and eosinophils in modulating hemostasis within tumors; **M. Selsted**, host defense mechanisms in granulocytes; mucosal immunity; antimicrobial function of the lung; **R. Sherman**, wound therapy; **S. Szabo**, growth factor and peptide ulceration.

To apply, send a letter of application, curriculum vitae including a list of publications, and the names of three references (please do not solicit letters) to: **Michael Selsted, M.D., Ph.D., Professor and Chair, Department of Pathology, University of California, Irvine, CA 92697.** Salary range: (Researcher: \$49,700 to \$68,300; Specialist: \$31,044 to \$54,240; Postgraduate Researchers: \$31,044 to \$46,056). *The University of California, Irvine, is an Equal Opportunity Employer committed to excellence through diversity.*

CONSERVATION BIOLOGIST/ POPULATION BIOLOGIST

A tenure-track faculty position in conservation biology/population biology is available at the **ASSISTANT PROFESSOR** level in the Biology Department at Wesleyan University. We are especially interested in candidates whose research addresses conservation biology issues in a broad population biology context by drawing on one or more of the following disciplines: evolutionary genetics, population ecology, behavioral ecology, or ecophysiology. We expect field work on natural populations to be a significant component of the successful candidate's research program. Wesleyan's Biology Department has a research-oriented faculty that successfully attracts outside funding. Candidates should have a Ph.D. and at least two years of postdoctoral experience. The successful applicant will be expected to set up an independent research program and to participate in the departmental Ph.D. program. Teaching will be in the areas of conservation biology, ecology, and evolution at the undergraduate and graduate levels. Please send us your curriculum vitae and a concise statement of future research plans and have three letters of recommendation sent to: **Conservation Biology Search Committee, Department of Biology, Wesleyan University, Middletown, CT 06459-0170** by January 10, 2002. *Wesleyan University values diversity and is an Equal Opportunity Employer.*

DEVELOPMENTAL BIOLOGIST COMMUNITY ECOLOGIST

Gonzaga University invites applications for two tenure-track **ASSISTANT PROFESSOR** positions in the disciplines above to begin in fall 2002. For further information about applying for these positions and about the Biology Department, see our website: <http://www.gonzaga.edu/academics/bioogy/>. For full consideration, applications and letters of reference should be received by January 22, 2002. Gonzaga University is a Jesuit, Catholic, humanistic university looking for candidates who can contribute to its educational needs and missions. *Gonzaga is an Affirmative Action/Equal Opportunity Employer seeking to increase its diversity.*



**Keck Graduate Institute
of Applied Life Sciences**

**Faculty Positions at the Keck Graduate Institute
of Applied Life Sciences**

Computational Biology

Faculty in computational biology/bioinformatics and the modeling of complex biological systems, with dedication to excellence in teaching and research, are sought at all levels, particularly the junior level. Successful candidates will be creative and independent in spirit with significant experience in academic or industrial science and/or engineering, and a desire to build interdisciplinary groups. They will be expected to establish a high quality research program, create and teach in a strong educational program and forge connections with industry (e.g., biotechnology, pharmaceuticals, biomedical instrumentation). The faculty of the Institute comes from both industry and academia. Competitive salaries, excellent facilities, liberal leave and consulting policies also contribute to the spirit of this startup institution. Applicants should send a letter of interest, curriculum vitae, names and contact details of three references to: **Professor Greg Dewey, Keck Graduate Institute, 535 Watson Drive, Claremont, CA 91711. FAX: 909/607-8086. Email: greg_dewey@kgi.edu**

Bioengineering

Applications for a faculty position in bioengineering, with focus on interdisciplinary teaching and research in the applied life sciences, are sought at all levels, particularly the senior level. Successful candidates will be expected to create and teach in a strong educational program and forge connections with industry (e.g., biotechnology, pharmaceuticals, biomedical instrumentation). They will provide leadership in developing collaborative experimental research with other faculty at KGI specializing in biomolecular engineering, genomic technology, microfluidics, and tissue engineering. Applicants should have a Ph.D. or equivalent degree and should submit their curriculum vitae, a statement of research and teaching interests, and a list of three professional references to: **Dr. James D. Sterling, Bioengineering Search Committee, Keck Graduate Institute, 535 Watson Drive, Claremont, CA 91711. FAX: 909/607-9826. Email: jim_sterling@kgi.edu.**

www.kgi.edu
EOE



*Everyone can
be creative*

NOVARTIS

**Labhead in Design of Combinatorial
Compound Libraries**

Basel

Computational and molecular modelling support for design of lead finding and lead optimisation combinatorial libraries
• Identification of specific screening potential of existing and planned compound libraries • Design of potential existing and planned compound libraries • Design of potential follow-up lead exploratory libraries • Identification of novel potential scaffolds for target family focused libraries • Continuous evaluation and implementation of novel methodologies relevant to library design.

The application of diversity-based and structure-based approaches for the design of virtual libraries is crucial for the success of our combinatorial chemistry group. We want to strengthen our efforts in this area in order to support the synthetic combinatorial chemists in the generation of libraries for lead finding and optimisation. As part of the Central Technology of Novartis Research we are looking for a qualified and highly motivated individual with at least post-doctoral experience in the field. The ability to work in a team as well as good written and verbal communication skills (English and German preferentially) is necessary.

For more details about this and other opportunities visit our careers website. Please send your CV by e-mail to willy.kinzy@pharma.novartis.com.



**Postdoctoral fellowships:
Secretases**

Postdoctoral fellowships are available immediately in our NIH-funded research programs focused on the biology of beta- and gamma-secretases, proteases responsible for generation of the Alzheimer amyloid A β protein. The laboratories of Drs. Virginia Lee, Robert Doms, and Robert Siman are taking a collaborative, multi-disciplinary approach to studying the structure, function, assembly and regulation of beta- and gamma-secretases. Projects include:

- (1) Intracellular amyloid formation and extracellular amyloid accumulation in mouse and cell culture models. Under the direction of Dr. Virginia Lee of the Center for Neurodegenerative Disease Research, in collaboration with Drs. Doms and Siman, the roles of BACE and presenilins in production of various A β peptides and evaluation of their pathogenic roles in amyloid formation will be explored.
- (2) Cell biology of BACE, APP, and the presenilins. Under the direction of Dr. Robert Doms of the Department of Microbiology, in collaboration with Dr. Lee, cellular compartments where amyloid is produced and factors that influence APP processing will be identified.
- (3) Alteration of gamma-secretase structure and function by an Alzheimer-causing presenilin mutation. Under the direction of Dr. Robert Siman of the Department of Pharmacology, in collaboration with Dr. Lee, methods in enzymology, protein chemistry and cell biology will be applied to define the mechanism by which a presenilin-1 knock-in mutation alters the structure, function, and assembly of gamma-secretase to promote formation of the pathogenic A β 42 variant.

Interested candidates with graduate training in neurobiology, cell biology, enzymology, protein chemistry or molecular biology should send a cover letter and c.v. to Gayle Viale by e-mail (viale@mail.med.upenn.edu) or fax (215-349-5909).



Affirmative Action / Equal Opportunity Employer

POSITION AVAILABLE:

**The Intramural Research Program (IRP), National
Institute on Drug Abuse (NIDA),** National Institutes of

Health (NIH), located in Baltimore, Maryland, is recruiting for a tenured position in the Medications Discovery Research Branch. The incumbent will lead multi-disciplinary studies dedicated to the hypothesis driven search for medications useful in the treatment of addiction. Candidates should have an international reputation and extended record of accomplishment in the study of brain mechanisms of reward or addiction. A Ph.D., M.D., or D.O. degree and expertise in behavioral neuroscience, behavioral pharmacology, or a related discipline, with at least 5 years of experience as principle investigator in studies relating to the neuropharmacology, neuroanatomy, or neurochemistry of reward or addiction, is desirable. Experience should include the supervision of postdoctoral fellows and scientific staff. Experience in preclinical studies of potential addiction medications is highly desirable.

The position is offered at a competitive salary level and includes a full Federal benefit's package. The successful candidate may also qualify for up to \$35,000 in annual repayment of student loans. Interested candidates must submit a Curriculum Vitae with bibliography, a list of the five most important publications, a description of future research plans (no more than 5 pages), six letters of recommendation from noncollaborators, and a copy of the doctoral degree (if in a foreign language include a certified English translation) to: Morgan DuBrow, Chief, Human Resources Management Section, NIH/NIDA/IRP, 5500 Nathan Shock Drive, Building C, Room 247, Baltimore, MD 21224. Mr. DuBrow is available on 410-550-1638, FAX 410-550-2224, e-mail: MDUBROW@intra.nida.nih.gov. Applications must be received by close of business on January 14, 2002. Late applications will not be considered. You may apply via mail, in person, by fax, or by e-mail.

The NIH is an Equal Opportunity Employer and applications from women and minority candidates are encouraged.



POSITIONS OPEN

TENURE-TRACK POSITIONS GENETIC MEDICINE

Weill Medical College, Cornell University

As part of a significant enhancement of its basic biomedical science research programs and laboratory facilities, Weill Medical College of Cornell University (formerly known as Cornell University Medical College) is undertaking a major program initiative in the area of genetic medicine and is seeking to recruit tenure-track faculty at all levels to its newly formed Institute of Genetic Medicine. We are especially interested in candidates with a focus on identification and characterization of genes controlling differentiation pathways critical to organogenesis, the control of organ architecture, and the initiation of biologic processes that lead to organ repair after injury. Exceptional candidates in other related/appropriate fields will also be considered. Candidates for junior positions should demonstrate the potential of establishing a vigorous, independent research program. Candidates for senior positions should have an outstanding publication record as well as substantial recent success in obtaining peer-reviewed grant support. Appointment of these independent, tenure-track faculty is anticipated in the Institute of Genetic Medicine, directed by **Ronald G. Crystal, M.D.**

Recruited faculty will receive generous start-up support; will occupy newly constructed laboratories; and will have access to the newly completed, 12,000-square-foot Arthur and Rochelle Belfer Gene Therapy Core Facility. Candidates may participate in the Graduate School of Medical Sciences Program, which includes faculty from the Weill Medical College and the Sloan-Kettering Institute, and in the Tri-Institutional M.D.-Ph.D. program, which also includes faculty from The Rockefeller University.

Applications should include curriculum vitae, statement of research interests, and three letters of recommendation. Applications should be sent to: **Jennifer J. Cameron, Genetic Medicine Recruitment Committee (RC), Box Number 27, Weill Medical College of Cornell University, 1300 York Avenue, New York, NY 10021.**

Equal Employment Opportunity/Affirmative Action/Minority/Female/Disabled/Veteran.

ASSISTANT/ASSOCIATE PROFESSOR

Outstanding Scientists using biochemical, cellular, and/or genetic approaches to investigate infectious disease or host response to disease are sought for two tenure-track positions (90% research, 10% instruction). These positions are funded by a competitive, state-supported salary (nine months) and include a technician as well as a generous start-up package. A Ph.D. or Ph.D./D.V.M. in a biomolecular discipline and postdoctoral experience are required for all candidates. The potential to establish or evidence of a competitive, independent research program is required for candidates at the Assistant Professor level. Candidates at the Associate level are expected to have already established extramurally funded research programs. The Department has state-of-the-art facilities for flow cytometry, cell biology, and molecular sciences and extensive large and small animal facilities. Veterinary Molecular Biology faculty have expertise in transgenic and immunological approaches to host disease, and a number of laboratories study viral, protozoal, fungal, or bacterial pathogenesis. Each of the eight laboratories in Veterinary Molecular Biology is fully funded by grants from sources that include NIH, NSF, and USDA and generate a departmental budget of more than \$5 million. Interested applicants should send letter of application, curriculum vitae, selected reprints, a summary statement concerning research plans and grant proposals, and a list of at least three references to: **Chair, Search Committee, Veterinary Molecular Biology, Montana State University, Bozeman, MT 59717-3610.** Screening will begin January 2, 2002, and continue until a suitable applicant is hired. For a full job description and additional information about our department, visit our website: <http://www.montana.edu.vvmbl>. *Americans With Disabilities Act/Equal Opportunity/Affirmative Action/Veterans Preference.*

POSITIONS OPEN

FACULTY RECRUITMENTS BIOINFORMATICS University of Illinois

We invite applications for two faculty positions in plant bioinformatics. One will be at the **ASSISTANT PROFESSOR** rank and one at either **ASSISTANT** or **ASSOCIATE PROFESSOR** rank. These positions are funded partly through a new postgenomics initiative that will expand the capability of bioinformatics on the University of Illinois campus and will also result in a new \$75 million postgenomics institute building. The candidates must have appropriate education in bioinformation sciences, computer sciences, genomics, or related areas. Salary will be commensurate with training and experience. The successful applicants are expected to develop internationally recognized, externally funded research programs. The candidates are expected to develop and apply methods that enhance the generation, analysis, and use of plant structural and functional genomics data, especially in the area of application to plant systems of agronomic importance. The candidates will teach in the area of expertise and will collaborate with genomics faculty within and outside the university. The University of Illinois is home to the National Computational Science Alliance (NCSA) and a terascale computing facility.

Applications received by February 26, 2002, will be given full consideration. Interviews may be conducted before that date; however, full consideration will be given all applications received by February 26, 2002. The desired starting date is May 21, 2002. Candidates must have a Ph.D., and post-Ph.D. experience is desired. Candidates for the Associate rank must have a strong record of scholarship that includes credentials meeting the standards required to attain tenure at the University of Illinois. Interested persons should assemble and submit an application packet consisting of an introductory cover letter, curriculum vitae, and a statement of research and teaching goals and arrange for a complete set of certified university transcripts and three letters of reference to be sent to: **Professor G. H. Heichel, Head, Department of Crop Sciences, University of Illinois at Urbana-Champaign, 1102 South Goodwin Avenue, Urbana, IL 61801. Telephone: 217-333-9480.** For further information about the search, contact: **Dr. Lila Vodkin, Chair, Bioinformatics Search; e-mail: l-vodkin@uiuc.edu.** Additional information about the Department is available at website: <http://www.cropsci.uiuc.edu>. Please cite Announcement Number 11/01A-8101 (Assistant/Associate) or 11/01B-8102 (Assistant) when applying. *The University of Illinois is an Affirmative Action/Equal Opportunity Employer.*

BIOCHEMISTRY/MOLECULAR BIOLOGY: The Biology Department of La Salle University seeks applicants for a tenure-track **ASSISTANT PROFESSOR** position to begin fall 2002. La Salle is a Roman Catholic institution of higher education in the tradition of the De La Salle Christian Brothers. The University strives to offer, through effective teaching, quality education founded on the idea that intellectual and spiritual development go hand in hand, mutually complementing and fulfilling one another. Requirements: Ph.D. in molecular biology, biochemistry, or related discipline; ability and interest to teach molecular biology and biochemistry as well as introductory biology classes for majors and/or non-majors; proven experience in teaching and advising undergraduates. Committee work, student advisement, continued professional development, and active participation in department activities and student research are expected. Apply by January 4, 2002, with letter of application; curriculum vitae; statement of teaching philosophy; transcripts of graduate work; and three letters of recommendation that address teaching potential to: **Search Committee, Biology Department, La Salle University, 1900 West Olney Avenue, Philadelphia, PA 19141-1199. FAX: 215-951-1772; e-mail: oconnor@lasalle.edu.** *La Salle is an Equal Opportunity/Affirmative Action Employer and Educator.*

POSITIONS OPEN

ENDOWED CHAIR IN SUSTAINABLE ENERGY STUDIES

Department of Environmental Earth Science at Eastern Connecticut State University (ECSU). This is a tenure-track position at the rank of **FULL PROFESSOR**. The successful candidate will (1) develop an interdisciplinary, undergraduate energy studies curriculum; (2) seek external funding to develop interdisciplinary initiatives; (3) build connections between the sustainable energy program and the external community to develop workshops and noncredit courses. Required qualifications: earned Doctorate degree in a related area, teaching experience in a related area, outstanding scholarship, ability to develop and implement programs, ability to work cooperatively with faculty and the external community, and ability to obtain external funding. Nominations are invited for this position. Applications are being reviewed now. Candidates should send a letter of interest, a résumé, and three letters of recommendation (include e-mail addresses) to: **Dr. Roy Wilson, Department and Search Committee Chairperson, Department of Environmental Earth Science, Eastern Connecticut State University, 83 Windham Street, Willimantic, CT 06226. Telephone: 860-465-4370; FAX: 860-465-5213; e-mail: wilsonr@easternct.edu.** *ECSU is an Affirmative Action/Equal Employment Opportunity Employer. Women, members of protected classes, and people with disabilities are encouraged to apply.*

ASSISTANT PROFESSOR ANATOMY

Northeastern Ohio Universities College of Medicine (NEOUCOM), Department of Anatomy, is seeking a tenure-track faculty member to participate in teaching medical gross anatomy and contribute to the research program. Applicants should have an active research program in mammalian structure and function at the organismal level or in the area of developmental biology focusing on musculoskeletal development. Experience in teaching dissection-based medical gross anatomy or human embryology is desirable.

NEOUCOM is part of a consortium that includes Kent State, Akron, and Youngstown State universities. The appointment begins July 1, 2002. The deadline for applications is February 15, 2002. Applications consisting of a cover letter indicating position and research interests; curriculum vitae; and three letters of recommendation should be sent to: **Office of Human Resources, Attention: Dr. Steve Ward, Northeastern Ohio Universities College of Medicine, P.O. Box 95, 4209 State Route 44, Rootstown, OH 44272-0095. E-mail: jobs@neoucom.edu.** *NEOUCOM is an Equal Employment Opportunity/Affirmative Action Educator and Employer.*

LECTURER Princeton University

A position as Lecturer in the Department of Molecular Biology is available immediately for an individual with a Ph.D. in molecular biology or a related field as well as experience and a strong interest in teaching at the undergraduate level. Experience at the postdoctoral level is preferred. The primary responsibility of this individual will be to develop and teach approximately 10 new laboratory experiments in a novel introductory molecular biology course to be taught for the first time fall semester 2002. Several experimental organisms, ranging from bacteria to *Drosophila*, will be used as model systems, so breadth of experience is required. This individual will also have teaching responsibilities in another introductory course during spring semester 2002. This position is available for two years at either a part-time or full-time level. Please send curriculum vitae along with three references to: **Lecturer Search Committee, c/o Lynn Egloff, Department of Molecular Biology, Princeton University, Princeton, NJ 08544. FAX: 609-258-3980; e-mail: legloff@molbio.princeton.edu.**

Princeton University is an Equal Opportunity/Affirmative Action Employer.

Max-Planck-Institut für Züchtungsforschung

Max Planck Institute for Plant Breeding Research



Postdoctoral Research in Molecular Plant Pathology

Applications are invited for a postdoctoral (BAT II a) research position in the group of Dr. Jane Parker at the MPIZ. The project aims to examine the biochemical and predicted catalytic properties of two central defence signaling proteins, EDS1 and PAD4 that have been shown to associate in plant cells (EMBO J.(2001) 20, 5400). Work will involve purification of wild-type and mutant forms of these proteins from *in planta* and heterologous expression systems and characterization of their individual and combined activities. Experience in protein biochemistry is essential and molecular biology expertise is desirable. Informal enquiries can be made to Jane Parker (+49 (0)221 5062-303; parker@mpiz-koeln.mpg.de; <http://www.mpiiz-koeln.mpg.de/schlef/>).

Please send applications with CV and names of 3 academic referees to

Mrs. Jutta Weinand

**Max-Planck-Institute for Plant Breeding Research
Dept. Molecular Plant-Microbe Interactions
Carl-von-Linné-Weg 10; D-50829 Köln, GERMANY**

tel: +49(0)221 5062 350/351;

fax: +49(0)221 5062 353

The Max-Planck-Society is an Equal Opportunities Employer



MAX-PLANCK-GESELLSCHAFT



FACULTY POSITIONS

The UNC Lineberger Comprehensive Cancer Center is searching for individuals with promising or established research programs in the broad areas of cancer biology, genetics, therapeutics and immunology.

Candidates should have a Ph.D. or M.D. with a strong record of recent accomplishments as a postdoctoral fellow or sustained productivity as an established faculty member. Candidates chosen will be placed in tenure-track positions at The University of North Carolina at Chapel Hill. Primary department and rank will be determined by the applicant's qualifications. The search will be coordinated by Albert Baldwin, Ph.D., Associate Director, Basic Science.

Areas of interest include but are not limited to: angiogenesis, metastasis, signal transduction, tumor immunology, DNA recombination and repair, cell cycle, cell structure and signaling, gene expression, steroid hormones and receptors, molecular therapeutics, carcinogenesis, animal models of cancer, genetics of cancer predisposition, bioinformatics, tumor virology, and developmental biology.

Applicants should send a curriculum vitae, a description of research plans, and three letters of reference to:

Ms. E. Melissa Stroud

**UNC Lineberger Comprehensive Cancer Center, CB# 7295
University of North Carolina at Chapel Hill
Chapel Hill, NC 27599-7295.**

The committee will begin reviewing applications February 15, 2002.

The University of North Carolina at Chapel Hill is an equal opportunity/affirmative action employer. Women and minorities are encouraged to apply.



**NATIONAL INSTITUTES OF HEALTH
NATIONAL EYE INSTITUTE**

Job Opportunities

The National Eye Institute Intramural Program at the NIH campus, Bethesda, MD., is seeking highly qualified Postdoctoral Fellows, Research Associates and Staff Scientists in the following areas:

- Molecular Biology
- Psychophysics
- Cell Biology
- Biochemistry
- Immunology
- Genetics

**Salaries range from \$30,800 to \$125,700 per annum,
based on experience and type of appointment.**

NEI offers an extensive benefits package that you may be eligible for, depending on the appointment mechanisms: Health Benefits, Life Insurance, Retirement Benefits, Annual and Sick Leave, Formal Training Program, Recruitment Bonus, Retention Allowance, Relocation Allowance, Loan Repayment Program, and Travel Benefits.

Candidates interested in specific job opportunities at the NEI may visit the NEI web site at <http://www.nei.nih.gov/> listing the most current positions available.

NIH/NEI is an Equal Opportunity Employer

National Cancer Institute

POSTDOCTORAL POSITIONS

The Human Retrovirus Pathogenesis Section, Basic Research Laboratory, Center for Cancer Research, National Cancer Institute-Frederick, National Institutes of Health under the direction of Barbara K. Felber, Ph.D., is seeking highly qualified postdoctoral fellows with experience in HIV or SIV immune biology, virology and/or molecular biology.

Current lab projects include the study of mechanisms of pathogenicity and immunogenicity of SIV, to use live-attenuated SIV strains as tools to dissect cellular and viral determinants that contribute to AIDS development.

Appointment duration is for up to 5 years, renewed on a yearly basis. Stipend is based on education and experience, with a range of \$32,004 - \$43,597.

Interested applicants must possess a Ph.D. and/or an M.D. and have no more than five years of postdoctoral experience. Submit a cover letter, CV, bibliography, and three letters of reference to: **Dr. Barbara K. Felber, Basic Research Laboratory, CCR, NCI-Frederick, P.O. Box B, Building 535, Room 110, Frederick, MD 21702-1201 or via email to jonest@mail.ncifcrf.gov.**



NIH is an Equal Opportunity Employer.

POSITIONS OPEN

TENURE-TRACK FACULTY POSITION VANDERBILT UNIVERSITY MEDICAL CENTER Stem Cell and Organogenesis Program

Positions are available for three Scientists/Physician Scientists at the **ASSISTANT** or **ASSOCIATE PROFESSOR** level in the Stem Cell and Organogenesis program under the directorship of **Dr. Brigid Hogan**. The laboratories will be sited in a brand-new, spacious, and well-equipped building connecting with the Medical Center, ready for occupation in April 2002. We are seeking highly motivated, creative, and interactive individuals who will thrive in a dynamic, interdisciplinary, and collaborative environment. Applications are welcome from Scientists working on any aspect of cell fate determination and stem cell biology but we are particularly interested in individuals with experience in plasticity and transdifferentiation, mouse or human adult or embryonic stem cells, and organogenesis. Any relevant systems/organisms will be considered and further hires are expected. High-quality mouse space and gene targeting core are available. Generous start-up packages are available with primary appointments in basic science departments (including cell and developmental biology) and access to excellent graduate students and opportunities for clinical translation. Applications will be considered by an interdisciplinary search committee. For further information, visit website: <http://medschool.mc.vanderbilt.edu/scop/#>. Please send a brief research proposal, curriculum vitae, and letters from three references to:

Angela D. Land-Dedrick
Vanderbilt University Medical Center
C-2310 MCN
Nashville, TN 37232-2175

Screening of applicants will begin on January 1, 2002, and continue until the positions are filled.

RESEARCH POSITIONS

Cardiovascular Research Institute (CVRI) Morehouse School of Medicine, Atlanta, Georgia

The CVRI is seeking candidates for junior faculty, **POSTDOCTORAL FELLOW** and technician positions in molecular cardiovascular and functional genomic research (see website: <http://www.msm.edu/cvri>). The CVRI is an NIH-funded Center of Excellence with state-of-the-art facilities. Our research laboratories are pursuing leading-edge research that incorporates genomic approaches to define the molecular basis of cardiovascular function in health and disease. The Institute's variety research opportunities include **Gary H. Gibbons** (CVRI Director): molecular mechanisms of vascular remodeling; the vascular transcriptome in hypertensive vascular disease. **Eugene Chen**: the role of nuclear receptors such as PPARs and LXR in vasculature. **Matthew J. Pollman** (Director, Functional Genomics): the role of cell fate determinants such as the Notch family in vascular biology and disease. **Qing Song**: genetic susceptibility of cardiovascular and cerebrovascular diseases. **Qinglin Yang**: structure/function relations of cardiac myofibril proteins and molecular mechanisms of cardiac hypertrophy and heart failure. Candidates should have a strong background in molecular biology and/or experience in cell biology and cardiovascular physiology research. Please contact the CVRI by e-mail or FAX. E-mail: cvri@msm.edu; FAX: 404-752-1042.

POSTDOCTORAL POSITION/RESEARCH ASSOCIATE/RESEARCH ASSISTANT PROFESSOR in NIH-funded laboratory studying rheumatoid arthritis: (1) gene therapy and (2) angiogenesis, cell adhesion, and cytokines (*Nature* 376:517; *Science* 258:1798; *J. Clin. Invest.* 101:746). Experience with adenoviral vectors, immunoassays, angiogenesis and cell adhesion assays, arthritis animal models, gene knockout mice, signaling, and molecular biology desirable. Send curriculum vitae and three reference names to: **Dr. Alisa Koch, Northwestern University Medical School, Ward 3-315, 303 East Chicago Avenue, Chicago, IL 60611. FAX: 312-503-0994; e-mail: ae-koch@northwestern.edu.**

POSITIONS OPEN

DEPARTMENT OF MICROBIOLOGY AND IMMUNOLOGY Stanford University

The Department of Microbiology and Immunology at Stanford University School of Medicine invites applications for a tenure-track position at the **ASSISTANT PROFESSOR** level. The appointee will interact with other faculty members who have research interests in broad areas related to stem cell biology or functional genomics. The appointee will be expected to develop a creative, independent research program in basic science investigations of mechanisms of disease in the new Sir Norman Foster-designed Center for Clinical Sciences Research building.

Candidates should have a Ph.D. and/or M.D. degree and postdoctoral research experience. Candidates are encouraged to apply by February 1, 2002, with curriculum vitae and a description of future research plans and arrange to have three letters of reference sent by FAX: 650-736-0080 or mailed to:

Helen M. Blau, Ph.D.
Director, Baxter Laboratory of
Genetic Pharmacology
Department of Microbiology and Immunology
269 Campus Drive, CCSR 4215
Stanford University School of Medicine
Stanford, CA 94305-5175

Stanford University is committed to increasing representation of women and members of minority groups on its faculty and particularly encourages applications from such candidates.

ASSISTANT PROFESSOR CELL AND MOLECULAR BIOLOGY

The Department of Biology at the University of South Florida (website: <http://www.cas.usf.edu/biology>) is recruiting an Assistant Professor who uses molecular techniques to study fundamental questions in eukaryotic or prokaryotic cell biology. This is a nine-month, tenure-track position to start in August 2002 and is part of a commitment to expand our program in cell and molecular biology. Responsibilities include teaching undergraduate genetics or cell biology and graduate courses in the applicant's area of expertise as well as establishing a productive, externally funded research program. We especially encourage applicants whose interests complement departmental strengths in cell and molecular biology. A Ph.D. in biological sciences or a related field and postdoctoral experience are required. Salary is negotiable. Applicants should send curriculum vitae; statements of research and teaching interests; representative reprints; and should have three letters of reference sent to: **Chair, Cell and Molecular Biology Search Committee, Department of Biology SCA110, University of South Florida, 4202 East Fowler Avenue, Tampa, FL 33620** by January 15, 2002. According to Florida law, applications and meetings regarding them are open to the public. *The University of South Florida is an Affirmative Action/Equal Access/Equal Opportunity Employer. Applications from women and minorities are encouraged. For disability accommodations, please Telephone: 813-974-3250 for assistance.*

BARNSTABLE BROWN ENDOWED CHAIR IN DIABETES

The Department of Pediatrics at the University of Kentucky invites applicants for the Barnstable Brown Endowed Chair in diabetes research. The successful candidate should have a Ph.D., M.D., or equivalent degree and have an extramurally funded research program that focuses on diabetes. The recipient of the Endowed Chair may also have an appointment in one of the basic science departments within the College of Medicine. A competitive salary and start-up package is available. Please send nominations or an application packet including a letter of interest, curriculum vitae, and three references to: **Louis Hersh, M.D., Department of Biochemistry, University of Kentucky, 800 Rose Street, Lexington, KY 40536-0284. E-mail: lhersh@uky.edu.** The committee will begin reviewing applications on January 3, 2002. *The University of Kentucky is an Affirmative Action/Equal Opportunity Employer.*

POSITIONS OPEN

NEUROBIOLOGY DEPARTMENT OF BIOLOGY McGill University

The Department of Biology at McGill University is recruiting a tenure-track faculty member in neurobiology. We seek applicants who use molecular and/or genetic approaches to nervous system function or the neural basis of behavior. The Department has strengths in the molecular genetics of several model systems as well as in neuroethology. The successful applicant will be expected to conduct a vigorous program of independent, externally funded research and to teach at both the undergraduate and graduate levels in a department with an established neurobiology curriculum. Candidates must have a Ph.D. or equivalent degree and postdoctoral experience demonstrating excellence in their field. This position is at the **ASSISTANT PROFESSOR** level; however, exceptional senior candidates will also be considered for recruitment at the **ASSOCIATE** or **FULL PROFESSOR** level. Applicants should forward curriculum vitae, copies of representative reprints, statement of research interests, statement of teaching interests, and arrange to have three letters of reference sent to the following address: **Neurobiology Search, c/o Louise Sabaz, Department of Biology, McGill University, 1205 Avenue Docteur Penfield, Montreal, Quebec H3A 1B1 Canada.** Application deadline is February 15, 2002. *In accordance with Canadian immigration regulations, this advertisement is directed in the first instance to Canadian citizens and landed immigrants; however, applications from individuals of other nationalities will also be considered.*

EAST STROUDSBURG UNIVERSITY OF PENNSYLVANIA Department of Biological Sciences

East Stroudsburg University is pleased to invite applications for a full-time, tenure-track Mammalogist at the **ASSISTANT PROFESSOR** level in the Department of Biological Sciences beginning in fall 2002. Requirements: Ph.D. in biological sciences, a strong commitment to undergraduate teaching, and expertise in field-oriented mammalian studies and research. Final selection will be based upon a successful interview, which will include a teaching demonstration. This individual may be asked to teach introductory lectures and laboratories as well as courses in mammalogy, biogeography, and an area of specialization. Applicants should submit a brief letter of introduction; description of teaching and research experience, curriculum vitae; transcripts; and three letters of reference by January 14, 2002, to: **Terry L. Master, Search and Screen Committee Chair, Department of Biological Sciences, East Stroudsburg University, East Stroudsburg, PA 18301.** Visit our website: <http://www.esu.edu>. *East Stroudsburg University is an Equal Opportunity Employer. Minorities and women are strongly encouraged to apply.*

The Department of Zoology at Tel-Aviv University invites applications for a **TENURE-TRACK POSITION**. The Department of Zoology is developing a strong program in organismic animal biology. We are seeking several new faculty members over the next few years with an interest in any of the following fields: ecology, evolution, and behavior; paleontology, taxonomy, systematics, and biogeography; genetics and developmental biology; comparative animal physiology and ecophysiology.

Candidates should have at least one year of postdoctoral experience and an ability to teach undergraduate zoology students (preferably in Hebrew).

Applications for the next academic year (starting October 2002) should arrive no later than February 28, 2002. Later applications will be considered for following years.

Candidates should include curriculum vitae, list of publications, a research plan, and request three letters of references to be sent to: **Professor I. Choshniak, Chairman, Department of Zoology, Tel-Aviv University, Ramat-Aviv 69978, Israel. E-mail: zoology@post.tau.ac.il.**



BOSTON, MASSACHUSETTS- The Dana-Farber Cancer Institute, the Department of Adult Oncology and the Department of Medicine, Brigham and Women's Hospital and Harvard Medical School are inviting applications for a tenure track position at the level of Assistant Professor. Candidates should be capable of basic/translational research with an interest and expertise in solid tumor biology. A focus on the study of lung cancer and other thoracic malignancies is particularly sought. The research should ultimately have an impact on the understanding or treatment of thoracic malignancies. Applicants should have a M.D. or M.D./Ph.D. degree and will be expected to develop an independent laboratory research program. Laboratory space and appropriate start-up funds are available and will be commensurate with the experience and needs of the successful candidate. Salary and benefits will be competitive with other institutions.

Applicants should submit a letter of interest, CV, and two letters of recommendation to: **Bruce E. Johnson, M.D., Chair, Search Committee, Dana Farber Cancer Institute, 44 Binney Street, Boston, MA 02115.**

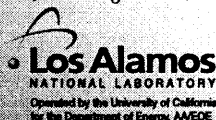
Dana-Farber Cancer Institute is an NCI-designated Comprehensive Cancer Center and is an Equal Opportunity/Affirmative Action Employer.

Postdoctoral Positions in Biological Sciences

The Bioscience Division has two postdoctoral positions open to study the health effects of beryllium exposure and its consequence in Chronic Beryllium Disease. These positions will be part of a multidisciplinary team that is investigating the interactions of beryllium from basic inorganic complexes to more complex protein-Be interactions. The focus of the research is to identify and study protein and peptide targets associated with beryllium and the disease-specific MHC class II receptor. Biochemists with experience in metal-binding proteins, peptides or enzymes, and biologists with experience in cellular and molecular immunology are encouraged to apply.

Demonstrated expertise in mass spectrometry, protein isolation and purification, protein binding, cloning and protein expression, and in vitro selection techniques such as yeast display, flow cytometry, cell culture etc. is essential for these positions. A Ph.D. completed within the last 5 years or soon to be completed is required. For technical inquiries, contact Dr. Nancy N. Sauer at 505-665-3759 or nsauer@lanl.gov.

For further information on the Postdoctoral Program and to apply online for this position, go to www.hr.lanl.gov/Postdoc (reference Job Posting 200556).



www.lanl.gov/jobs

STONY BROOK

STATE UNIVERSITY OF NEW YORK

POSTDOCTORAL POSITIONS

The following postdoctoral positions are anticipated for Spring/Summer 2002.

Nuclear reactions at RHIC energies;
John Alexander and Roy Lacey, Chemistry

Data-based modeling of food web structure and export flux; Robert A. Armstrong, Marine Sciences Research Center, rarmstrong@notes.cc.sunysb.edu

Molecular Virology: Molecular biology of HIV and other retroviruses; Carol Carter, Molecular Genetics & Microbiology, ccarter@ms.cc.sunysb.edu

Cancer Biology: gene expression profiling and proteomics in metastasis; Wen-Tien Chen, Medicine/Oncology

Polyelectrolyte surfactant complexes, nanostructure of polymers, colloids and fibers; Ben Chu, Chemistry, bchu@notes.cc.sunysb.edu

Plant cell and molecular biology; Vitaly Citovsky, Biochemistry & Cell Biology, vitaly.citovsky@sunysb.edu

Cell wall biosynthesis in yeast and pathogenic fungi; Neta Dean, Biochemistry & Cell Biology, Neta.Dean@sunysb.edu

Regulation of exocytosis and morphological reorganization by Phospholipase D; Michael A. Frohman, Pharmacology, michael@pharm.sunysb.edu

Microarray analysis and cell cycle control in yeast; Bruce Futcher, Microbiology & Molecular Genetics

Computational Applied Mathematics: Fluid dynamics; James Glimm, Applied Mathematics & Statistics, glimm@ams.sunysb.edu

Cellular and systems-level basis of visual and oculomotor behavior; Jim Gnadt and Murray Sherman, Neurobiology and Behavior, jgnadt@sunysb.edu or ssherman@notes.cc.sunysb.edu

Regulation of notch signaling through differential glycosylation; Robert S. Haltiwanger, Biochemistry & Cell Biology, rhaltiwanger@ms.cc.sunysb.edu

Adenovirus regulation of cellular proliferation; Patrick Hearing, Molecular Genetics and Microbiology

Theoretical and experimental fields in Physics & Astronomy; Maria Hofer, Physics & Astronomy, Maria.Hofer@stonybrook.edu

Flow-induced polymer crystallization, nanocomposites, nanoparticles and biodegradable polymers; Benjamin S. Hsiao, Chemistry, bhsiao@notes.cc.sunysb.edu

Developing virtual colonoscopy for Cancer Screening; Arie E. Kaufman, Computer Science.

Biochemical, genetic, and structural studies of protein-RNA interactions; Wali Karzai, Biochemistry & Cell Biology, akarzai@ms.cc.sunysb.edu

Molecular neurobiology: differentiation and function of Drosophila sensory neurons; Maurice Kernan, Neurobiology, mkernan@notes.cc.sunysb.edu

Structural studies on DNA repair enzymes and DNA polymerase; Caroline Kisker, Pharmacological Sciences

G protein coupled receptors - yeast signal transduction; James B. Konopka, Molecular Genetics & Microbiology

Glycoproteins: Biosynthesis, folding, and catabolism in yeast; William J. Lennarz, Biochemistry & Cell Biology

Medical Imaging: image reconstruction, segmentation, and graphics in computed tomography (CT), emission CT (SPECT and PET), magnetic resonance imaging (MRI), virtual endoscopy; Jerome Liang, Radiology & Computer Science, jzl@cio.rad.sunysb.edu

Neural Networks: Modeling of self-evolving networks with nanoelectronic synapses; Konstantin K. Likharev, Physics & Astronomy, klikharev@notes.cc.sunysb.edu

Signal Transduction: Regulation of PI 3-kinase by heterotrimeric G proteins; Richard Z. Lin, Medicine, richard.lin@sunysb.edu

Computational Biology: Algorithms for automated morphometry of dendritic spines; Brent Lindquist, Applied Mathematics & Statistics, lindquis@ams.sunysb.edu

Molecular Virology: Hantavirus and rotavirus-directed cell signaling responses; Erich R. Mackow, Medicine, Molecular Genetics & Microbiology, EMackow@notes.cc.sunysb.edu

Viral Pathogenesis: Hantavirus integrin interactions and endothelial cell regulation; Erich R. Mackow, Medicine, Molecular Genetics & Microbiology, EMackow@notes.cc.sunysb.edu

Structure and function studies on beta-adrenergic receptor; Smita Mohanty & Craig Malbon, Biochemistry/Pharmacology, smohanty@notes.cc.sunysb.edu

Genetic Toxicology: Molecular biology of chemical mutagenesis and DNA repair; Masaaki Moriya, Pharmacology, maki@pharm.sunysb.edu

Crystallographic studies of ubiquitin-dependent protein degradation and neuronal receptor anchoring; Hermann Schindelin, Biochemistry & Cell Biology, schindelin@pharm.sunysb.edu

Vertebrate Development: Function of growth factor signals and ubiquitin Ligases; Gerald H. Thomsen, Biochemistry & Cell Biology, gthomsen@notes.cc.sunysb.edu

Cell biology of lipoprotein receptors and atherosclerosis; David L. Williams, Pharmacological Sciences

Molecular mechanisms of viral pathogenesis; Eckard Wimmer, Molecular Genetics & Microbiology

Submit résumés and name of researcher to: George Meyer,
Office of the President, Stony Brook University, Stony Brook, NY 11794-0701
or e-mail: postdocads8@notes.cc.sunysb.edu

AA/EOE

POSITIONS OPEN

FACULTY POSITION

University of Colorado Health Sciences Center Department of Physiology and Biophysics

The Department of Physiology and Biophysics at the University of Colorado School of Medicine invites applications for a tenure-track faculty position at the **ASSISTANT PROFESSOR** level. The applicant should have the Ph.D. and/or M.D. degree and appropriate postdoctoral research experience. We expect the appointee to conduct vigorous independent research and to participate in professional and graduate training. For fullest consideration, applications should be submitted by January 15, 2002. The appointment may begin as early as fall 2002.

We will consider applicants with research interests in any area of cellular or molecular physiology or biophysics. Current faculty have active research programs in ion channel biology, synaptic function, sensory transduction, cell signaling, mammary gland development, immune physiology, and developmental neurobiology. Opportunity exists for participation in interdepartmental programs in biomolecular structure, cell and developmental biology, immunology, molecular biology, and neuroscience. Visit our website: <http://www.uchsc.edu/sm/physiol> to learn more.

Applicants should send curriculum vitae, a one- to two-page statement of research interests, and the names of at least three references to:

Dr. S. R. Levinson

Chair, Faculty Search Committee

**Department of Physiology and Biophysics, C-240
University of Colorado Health Sciences Center
Denver, CO 80262**

FAX: 303-315-8110

The University of Colorado Health Sciences Center is committed to Affirmative Action/Equal Employment Opportunity.

ASSISTANT PROFESSOR ZOOLOGY

The Zoology Department of Ohio Wesleyan University, a selective undergraduate college dedicated to teaching and scholarship, invites applications for a tenure-track position teaching parasitology, introductory cell biology, molecular techniques, and possibly another specialty course in a two-year cycle beginning in August 2002. Additional position and institutional information is available from website: <http://web.owu.edu/jobs/> or the chair of the Search Committee named below (e-mail: dcradaba@owu.edu). Ph.D. required. Send letter of application, current curriculum vitae, statement of teaching and research interests, all undergraduate and graduate transcripts, three letters of recommendation, and up to five reprints to: **Dr. Dennis C. Radabaugh, Department of Zoology, Ohio Wesleyan University, Delaware, OH 43015.** E-mail: dcradaba@owu.edu. The search committee will begin its deliberations on January 31, 2002. *Ohio Wesleyan University is an Equal Opportunity/Affirmative Action Employer and actively seeks applications from women and minorities.*

FACULTY POSITIONS CENTRAL WASHINGTON UNIVERSITY

The Biological Sciences Department invites applications for two nine-month, tenure-track **ASSISTANT/ASSOCIATE PROFESSOR** positions to begin September 2002: (1) Plant Scientist with a focus in plant physiology and (2) Molecular Microbiologist with expertise in medical microbiology. Both positions require a broad academic background in biology and a Ph.D. in an appropriate field. Candidates should be prepared to teach introductory courses as well as advanced courses in their discipline and demonstrate a commitment to teaching and research involving students. Screening will begin January 21, 2001. For position details and application procedures, see our website: <http://www.cwu.edu/~biology/positions.html> or contact: Search Committee Chairs, Plant Scientist: **Dr. S. Johnson**; e-mail: johnsonsh@cwu.edu; Telephone: 509-963-2300. Microbiologist: **Dr. L. Sun**; e-mail: lixing@cwu.edu; Telephone: 509-963-2780. *Affirmative Action/Equal Employment Opportunity/Title IX Institution.*

POSITIONS OPEN

EVOLUTIONARY BIOLOGY DEPARTMENT OF BIOLOGY McGill University

The Department of Biology at McGill University invites applications for a tenure-track position in evolutionary biology. All fields of evolutionary biology will be considered but applications are especially welcome from individuals who work in life history evolution, experimental evolution, evolutionary theory, evolutionary genomics, and phylogenetic approaches to evolutionary questions. The successful applicant will be expected to conduct a vigorous program of independent, externally funded research and to teach at both the undergraduate and graduate levels in a department with an established evolutionary biology curriculum. Candidates must have a Ph.D. or equivalent degree and postdoctoral experience demonstrating excellence in their field. This position is at the **ASSISTANT PROFESSOR** level; however, exceptional senior candidates will also be considered for recruitment at the **ASSOCIATE** or **FULL PROFESSOR** level. Applicants should forward curriculum vitae, copies of representative reprints, statement of research interests, statement of teaching interests, and arrange to have three letters of reference sent to the following address: **Evolutionary Biology Search, c/o Louise Sabaz, Department of Biology, McGill University, 1205 Avenue Docteur Penfield, Montreal, Quebec H3A 1B1 Canada.** Application deadline is February 15, 2002. *In accordance with Canadian immigration regulations, this advertisement is directed in the first instance to Canadian citizens and landed immigrants; however, applications from individuals of other nationalities will also be considered.*

ASSISTANT PROFESSOR POSITION IN ANIMAL PHYSIOLOGY Central Michigan University

The Department of Biology invites applications from broadly trained individuals for an Assistant Professor tenure-track position in animal physiology beginning August 2002 or earlier. Candidates are expected to have a Ph.D. in the biological sciences; excellent verbal and written communication skills; and demonstrate a strong commitment to and potential for teaching, research, and external funding. Postdoctoral experience is preferred. Teaching responsibilities include courses in mammalian physiology, instruction in the individual's area(s) of expertise at the undergraduate and M.S. level, and ability to contribute to the Department's introductory program. Submit a letter of application, curriculum vitae, copies of all transcripts, statement of teaching philosophy and statement of proposed research plans, and three letters of recommendation to: **Animal Physiologist Search Committee, Department of Biology, Central Michigan University, Mt. Pleasant, MI 48859.** Review of applications will begin January 7, 2002, and continue until position is filled. Departmental information is available at website: <http://www.cst.cmich.edu/units/bio>. Serving more than 27,000 students, Central Michigan University is an innovative Doctoral/research-intensive institution recognized for strong undergraduate education and a range of focused graduate programs and research. *CMU, an Affirmative Action/Equal Opportunity Institution, is strongly and actively committed to increasing diversity within its community (see website: <http://www.cmich.edu/aaeo/>).*

The Department of Pathology at the University of Virginia is seeking applicants for an **ASSISTANT PROFESSOR** or **RESEARCH** position (nontenure). Candidates must meet the following requirements: M.D. and/or Ph.D. in pathology or related discipline and at least five years of postdoctoral training. Must have extensive experience in neurobiology and knowledge of biochemical techniques and animal surgery. Please send curriculum vitae and the names of three references to: **Dr. John Savory, Department of Pathology, University of Virginia Health System, P.O. Box 800214, Charlottesville, VA 22908.** Position will remain open until filled. *The University of Virginia is an Equal Opportunity/Affirmative Action Employer.*

POSITIONS OPEN

ENDOWED CHAIR of Environmental Science and Engineering/College of Science, Engineering, and Technology, Murray State University. Full-time, **TENURE-TRACK POSITION** to begin July 2002. Applicants must be recognized leaders in basic and/or applied research in aquatic environmental systems. Chair will have an active role in a new undergraduate environmental engineering program and the Commonwealth Center for Reservoir Research. Qualifications: Ph.D. in environmental science, environmental engineering, or closely related discipline and a distinguished record of research and scholarship appropriate to the rank of **FULL PROFESSOR**. Some environmental engineering credential via degree or experience required. Responsibilities: Develop a nationally visible and externally funded research program that complements existing interdisciplinary research activities in reservoir and watershed science. Teach one upper-level specialty course or seminar course per year. Develop an active graduate program. Specific research area open but should be complementary to both environmental engineering and water science. Application deadline: March 1, 2002. To apply: Send statement of research interests; current curriculum vitae; and names, addresses, and telephone numbers of four references to: **Dr. David S. White, Center for Reservoir Research, 561 Emma Drive, Murray, KY 42071.** Telephone: 270-474-2272. *Women and minorities are encouraged to apply. Murray State University is an Equal Education and Employment Opportunity, Minorities/Females/Disabled, Affirmative Action Employer.*

ASSISTANT PROFESSOR GENETICS

Biology Department invites applications for a tenure-track, Assistant Professor position starting fall 2002 in the area of genetics. Candidates should be committed to excellence in undergraduate education both in the classroom and in their research program. Teaching responsibilities will be genetics, participation in introductory biology sequence for majors, and advanced course in area of expertise. The area of expertise can be anywhere within the full range of genetics, from molecular to population genetics. Founded in 1848, Muhlenberg College is a highly selective, private, liberal arts college of more than 2,000 students. Located in the scenic Lehigh Valley, the college is within easy reach of New York City and Philadelphia as well as coastal and mountain recreation areas. To apply, send curriculum vitae, letter of interest, statements of teaching and research interests, and three current reference letters to: **Dr. Richard Niesenbaum, Chair of Search Committee, Biology Department, Muhlenberg College, Allentown, PA 18104.** Visit our website: <http://www.muhlenberg.edu>. Application review begins January 10, 2002, and will continue until the position is filled. *Muhlenberg College is an Equal Opportunity Employer.*

FACULTY POSITIONS CALIFORNIA STATE UNIVERSITY SAN MARCOS

The Department of Biological Sciences invites applications for three tenure-track **ASSISTANT PROFESSOR** positions to begin fall 2002: (1) Community/Restoration Ecologist, (2) Physiologist/Toxicologist, and (3) Developmental Biologist. All positions require a Ph.D. in the biological sciences; postdoctoral experience is preferred. Successful candidates will develop and teach upper-division courses in their areas of expertise and contribute to some of the following: introductory biology, required core courses, graduate courses, and appropriate courses in general education. Applicants should have the demonstrated ability or potential to effectively instruct undergraduate and graduate students, establish community partnerships, and develop an active, independent research program with undergraduate and graduate students. For details and application instructions, see website: http://www.csusm.edu/A_S/FacSearches. Screening of applications will begin February 1, 2002. *California State University San Marcos is an Affirmative Action/Equal Opportunity/Title IX Employer.*

DIRECTOR OF RESEARCH

Naval Research Laboratory



ES 5 or 6, \$133,700* per annum (includes locality pay)
 *Rate limited to that rate for Level III of the Executive Schedule

Become the leader of an elite research and development community involved in basic and applied scientific research and advanced technological development for tomorrow's Navy and for the Nation.

- Provides executive direction and technical leadership to the scientific and support divisions of NRL, which as the Navy and Marine Corps Corporate Laboratory, conducts a broadly based multi-disciplinary program of scientific research and advanced technological development directed toward new and improved material, equipment, techniques, systems, and operational procedures.
- Directs the planning of a long-range research program and formulates operating policies for the Laboratory.
- Represents NRL and the Commanding Officer in contacts and consultations with other Government organizations and with industrial and university laboratories.
- Applicants should be recognized as national/international authorities and should have planned and executed difficult programs of national significance that show outstanding attainments in their field of research.
- Visit NRL's Executive Search website at <http://www.jobs.nrl.navy.mil/> for application procedures.
- Receipt by 31 January 2002 is required.
- For further information contact Kathy Weaver, Human Resources Office, NRL at Kweaver@HRO1.nrl.navy.mil or (202) 404-8305.

*NAVY IS AN EQUAL EMPLOYMENT OPPORTUNITY EMPLOYER
 WOMEN AND MINORITIES ARE ENCOURAGED TO APPLY*

www.nrl.navy.mil

4555 Overlook Ave SW, Washington DC 20375-5324 Attn: 1810:KW

THE UNIVERSITY of
 EDINBURGH



COLLABORATIVE OPTICAL SPECTROSCOPY, MICROMANIPULATION and IMAGING CENTRE (COSMIC)

POSTDOCTORAL FELLOWSHIP – TIME-RESOLVED FLUORESCENCE SPECTROSCOPY AND IMAGING

COSMIC combines advanced ultrafast laser systems, spectroscopy, imaging and optical micromanipulation for applications in chemistry, physics, biology and biomedical sciences. You will contribute to research activities using time-correlated single-photon counting (TCSPC), fluorescence spectroscopy and fluorescence lifetime imaging microscopy (including single-molecule spectroscopy and imaging, macromolecular dynamics and analysis of living cells). Experience of fluorescence spectroscopy as applied to either the physical or the biological sciences is essential and experience with TCSPC and mode-locked ps/fs lasers is desirable. You will participate in collaborative projects, pursue your own research and contribute to the successful development of advanced fluorescence spectroscopy and fluorescence imaging in the Centre.

Informal enquiries to Dr. J. Crain. Tel: +44 131-650-5265 or e-mail: j.crain@ed.ac.uk

Salary scale: £17,451 - £26,229 p.a. The position is available for 2 years in the first instance. Please quote REF 310998SI.

Closing date: 18 January 2002.

Visit our website for further particulars and to apply online or telephone the recruitment line on 0131 650 2511.
Committed to Equality of Opportunity

www.jobs.ed.ac.uk

Postdoctoral Fellowship Molecular Imaging Branch National Institute of Mental Health, NIH Bethesda, MD, USA

The Molecular Imaging Branch at the National Institute of Mental Health, NIH, has a postdoctoral fellowship immediately available for a duration of one to three years. This new branch has embarked on a major neuroimaging program using state of the art PET (positron emission tomography) techniques and newly developed radioligands to study molecular/protein targets in the brain. New radioligands will be developed and evaluated with PET imaging of animals (mice and monkeys), extended to healthy subjects and then to patients with neuropsychiatric disorders, including schizophrenia, mood disorders, and neurodegenerative disorders such as Alzheimer's disease and Parkinson's disease. Examples of ongoing projects are the development of in vivo probes for amyloid, evaluated with a rodent PET camera in transgenic mice over expressing amyloid; evaluation of serotonergic and dopaminergic markers in primates raised under various degrees of maternal deprivation and with well characterized behavioral phenotypes. The fellow will have ample opportunities to learn from experts in the field and perform skills required to pursue PET imaging research in neuropsychiatry. Applicants should have PhD or MD degree and be interested in working in a multidisciplinary team of chemists, physicists, pharmacologists, biologists, and clinical researchers. Interested applicants should send their CV and the names of three references to: Robert Innis, MD, PhD; Chief, Molecular Imaging Branch, NIMH, Building 1, Room B3, 1 Center Drive MSC, Bethesda, MD 20892. Email: robert.innis@nih.gov.

The National Institutes of Health
 is an equal opportunity employer.
 Women and minorities are encouraged to apply.



POSITIONS OPEN

TENURE-TRACK FACULTY POSITIONS Molecular Biology, Biochemistry

The University of Wisconsin-River Falls has received substantial new funding to expand the interdisciplinary biotechnology major by adding two new faculty positions, increasing technological resources, and recruiting additional students.

The Department of Biology invites applications for an **ASSISTANT PROFESSOR** position to teach molecular biology. Additional courses may include cell biology, genetics and evolution, general biology, and undergraduate research. Experience in molecular biology techniques and bioinformatics is required; experience in genomics, model organisms, and gene transfer into eukaryotic cells is desirable. Full vacancy notice and application information can be found at **website: <http://www.uwrf.edu/biology>**. Contact: **Dr. E. Katherine Miller, Recruitment Committee Chair, Department of Biology; e-mail: e.katherine.miller@uwrf.edu**.

The Department of Chemistry invites applications for an **ASSISTANT PROFESSOR** position to teach biochemistry lecture and laboratory. Additional courses may include biotechnology seminar, undergraduate research, and introductory or liberal arts chemistry courses. Experience in protein chemistry/engineering/expression is required. Experience in bioinformatics, proteomics, and/or molecular biology techniques is desirable. Full vacancy notice and application information can be found at **website: www.uwrf.edu/chemistry**. Contact: **Dr. Michael Keenan, Recruitment Committee Chair, Department of Chemistry; e-mail: michael.v.keenan@uwrf.edu**.

Applicants for both positions must have a Ph.D. in a related discipline; postdoctoral experience is preferred. The usual teaching load is 12 credits per semester. Additional expectations include student advising, maintaining an active research program that provides opportunities for undergraduate participation, and involvement in departmental, college, and university committees. Positions begin August 26, 2002. Review of applications begins January 15, 2002, and continues until the positions are filled.

Two **POSTDOCTORAL POSITIONS** available immediately in the Pharmacology Department, Uniformed Services University (USUHS). One project examines cytokine-induced changes in astrocytes after traumatic brain injury using *in situ*/immunohistochemistry and primary astrocyte culture. The second project examines cytokine regulation of neuronal gene expression. Candidates (Ph.D./M.D.) should either have expertise in neuroanatomical techniques or in transcription and signal transduction. USUHS is located in the suburbs of Washington, D.C., near the NIH campus. Applicants should send curriculum vitae and names of three references to: **Dr. Aviva Symes, Pharmacology, USUHS, 4301 Jones Bridge Road, Bethesda, MD 20814. E-mail: asymes@usuhs.mil; website: <http://www.usuhs.mil/pha/Faculty/asymes.htm>. Affirmative Action/Equal Opportunity Employer.**

POSTDOCTORAL POSITIONS The University of Virginia

The University of Virginia Health System, Department of Pharmacology, is seeking applications for two Postdoctoral positions. The position is to study regulation and function of MAP kinase cascades (see **website: <http://hsc.virginia.edu/signals/>**). Projects include yeast genetics and biochemistry of Rck1p and Rck2p kinases in NIH-funded project on MAP-KAP kinases. A Ph.D. is required in a biological science from a discipline in biochemistry, molecular biology, genetics, pharmacology, or cell biology. To apply, send curriculum vitae to: **Dr. Thomas W. Sturgill, Center for Cell Signaling and Department of Pharmacology, P.O. Box 800577, University of Virginia Health System, Charlottesville, VA 22908. E-mail: tws7w@virginia.edu**. Application deadline: open until filled. The University of Virginia is an Equal Opportunity/Affirmative Action Employer.

POSITIONS OPEN

VIRGINIA COMMONWEALTH UNIVERSITY HEALTH SYSTEM Department of Internal Medicine Division of Hematology/Oncology Richmond, Virginia

The Virginia Commonwealth University (VCU) Health System's Division of Hematology/Oncology is recruiting for three **FACULTY POSITIONS** at the rank of **INSTRUCTOR**.

Each candidate must have an M.D. or Ph.D. degree, postdoctoral research experience (see below for level of experience for each position) utilizing advanced molecular techniques, and experience working in the area of translational studies aimed at developing a basis for using signal transduction and cell cycle modulatory agents in the treatment of hematologic malignancies. The incumbent must also have a successful publication record and the ability to train others how to perform advanced molecular biology techniques.

Additional qualifications for positions are as follows:

Position One: six years or more of experience, the demonstrated ability to supervise Postdoctoral Fellows and ongoing research projects, multiple publications as first author in multiple peer-reviewed scientific journals.

Position Two: four to six years of experience; the ability to design, conduct, and supervise a research project; first author on more than one publication in peer-reviewed scientific journals.

Position Three: two to four years of experience; the ability to design, conduct, and supervise a research project; and at least one publication as first author in a peer-reviewed scientific journal.

Application deadline is January 15, 2002. Interested applicants should forward curriculum vitae and three reference letters to: **Karen Scott, VCU Health System, Hematology/Oncology, P.O. Box 980230, Richmond, VA 23298-0230. E-mail: kgsccott@hsc.vcu.edu. VCU Health System is an Equal Opportunity/Affirmative Action Employer. Women, minorities, and persons with disabilities are encouraged to apply.**

ASSISTANT PROFESSOR Department of Biology

Saint Mary's College, a coeducational Catholic institution in the LaSallian tradition located in the San Francisco Bay Area, seeks applications for a tenure-track position as Assistant Professor in the Department of Biology to begin fall semester 2002. The successful candidate will have a Ph.D. degree in developmental biology or population biology/genetics and demonstrated interest in and commitment to undergraduate teaching and research. Preference will be given to individuals with a strong background in organismal biology with special competence in physiology. An important portion of the individual's teaching responsibilities will include organismal biology, an introductory survey course for biology majors as well as introductory human physiology. Applicants should submit a letter of application; curriculum vitae, three letters of reference; and a statement of teaching philosophy and research interests by January 31, 2002, to: **Dr. Fawzia Saeed, Chair, Department of Biology, Attention: Search Committee, P.O. Box 4507, Saint Mary's College, Moraga, CA 94575. Website: <http://www.stmarys-ca.edu>. Equal Opportunity Employer.**

NIH-funded **POSTDOCTORAL POSITION** available for a recent graduate to study molecular, cellular, and genetic mechanisms underlying anxiety disorders and anxiety-like conditions in transgenic animals. Strong background in molecular and/or cellular biology is highly desirable. More information about the laboratory can be obtained by visiting our **website: <http://www-users.med.cornell.edu/~mtoth/main.html>** (Project C). Interested individuals should send curriculum vitae and contact information for three references to: **Dr. M. Toth, Room LC-522, Department of Pharmacology, Weill Medical College of Cornell University, 1300 York Avenue, New York, NY 10021. Equal Employment Opportunity/Affirmative Action/Minorities/Females/Handicapped/Veterans.**

POSITIONS OPEN

DEAN OGDEN COLLEGE OF SCIENCE AND ENGINEERING Western Kentucky University

Western Kentucky University seeks a dynamic, intellectual leader to serve as Dean of Ogden College of Science and Engineering. The Dean is the chief academic and administrative officer of the College and reports to the Provost. The ideal candidate will be a visionary, creative leader who will guide the continued growth of the College's initiatives in teaching, research, and service.

Western Kentucky University aspires to be among the best comprehensive public institutions in the nation and is deeply committed to diversity throughout the campus community. The University has 16,579 students on the main campus and at three extended campus locations. Ogden College consists of 153 full-time faculty; 2,700 undergraduates; and 175 graduate students. College departments include Agriculture, Architectural and Manufacturing Sciences, Biology, Chemistry, Computer Science, Engineering, Geography and Geology, Mathematics, and Physics and Astronomy. The College houses the Applied Research and Technology Program, a Commonwealth Program of Distinction, with 12 interdisciplinary research centers. Ogden College is currently engaged in extensive renovation and construction of its classroom and laboratory facilities.

Basic qualifications: (1) an earned Doctorate in a College discipline and a documented record of excellence in teaching, research, and service that merits appointment as a **FULL PROFESSOR** with tenure; (2) evidence of effective administrative experience, leadership, and resource development; (3) demonstrated effective interpersonal and communication skills that promote a collegial environment, effective problem solving, and consensus building; (4) demonstrated commitment to recruitment and retention of students, learning outcomes, and faculty development.

The successful candidate must be able to work with external constituencies to promote the College, enhance economic development, and support K-12 education.

The committee will begin reviewing applications on February 1, 2002, and will continue until the position is filled. Starting date is July 1, 2002. For additional information, please visit **website: <http://www.wku.edu/ogdendean>**. The committee invites nominations as well as applications. Applicants should submit letter of application; statement of leadership philosophy; curriculum vitae; and the names, addresses, e-mail addresses, and telephone numbers of at least five references to:

**David Lee, Chair
Ogden Dean Search Committee
200 Fine Arts Center
Western Kentucky University
1 Big Red Way
Bowling Green, KY 42101-3576
E-mail: david.lee@wku.edu**

Affirmative Action/Equal Opportunity Employer. Women and minorities are encouraged to apply.

POSTDOCTORAL POSITIONS Solid State NMR

The research group of **T. A. Cross** at the National High Magnetic Field Laboratory has two Postdoctoral positions available immediately in biological solid state NMR. The research activities will include development of solid state NMR methodology for membrane protein structural and dynamic characterization. The applications will include proteins for *H. influenza* and *M. tuberculosis*. The tuberculosis research is recently funded through an NIH Structural Genomics Program Project grant. Applicants should send curriculum vitae and three reference letters to: **Judy McEachern, National High Magnetic Field Laboratory, 1800 East Paul Dirac Drive, Tallahassee, FL 32310. E-mail: mceacher@magnet.fsu.edu**. Review of applications will begin immediately and continue until the positions are filled.

Discovery is
just taking
CURIOSITY



TO THE EDGE

When curiosity is developed to its full potential, great discoveries are made. At Pharmacia Corporation, we invest more than \$2 billion a year in R&D with major activities focused in the areas of arthritis/inflammation, cancer, ophthalmology, infectious diseases, cardiovascular and metabolic diseases, and disorders of the central nervous system. The following opportunity is a contract position, engaged through Quantum Resources, a third-party employer. The selected candidate will work at our Kalamazoo, Michigan facility under the supervision of Pharmacia scientists. The appointment is for 2 years with an annual stipend of \$40,000 plus benefits, including health care, moving expenses, etc. Support for attendance at scientific conferences is also provided.

POSTDOCTORAL SCIENTIST

Mouse Genetics - Functional Genomics

As a member of the Mouse Genetics Group in Genomic Sciences, you will play an integral role in developing a platform for high-speed mouse model generation. The successful candidate will have a PhD in a molecular genetics-related field, excellent technical and communication skills, and the ability to interact in a multidisciplinary team environment. Expertise in one or more of the following areas is desired: chemical mutagenesis, speed congenics, positional cloning, ES cell mutagenesis techniques, and molecular cloning. Experience in mouse genetics is preferred.

Enjoy a competitive salary and benefits in a professionally encouraging work environment. For confidential consideration, please send your resume, indicating the position of your interest, to: **Beryl Galer, Quantum Resources, 8191 Moorsbridge Road, Suite G, Kalamazoo, MI 49024. Email: bgaler@quantum-res.com. EEO/AA**

For more information and other opportunities, please visit our website.

www.pharmacia.com

PHARMACIA



PIONEER®

A DUPONT COMPANY

DuPont Crop Genetics Research and Development supports both Pioneer Hi-Bred International, Inc. and the Nutrition and Health business unit in the discovery, development and delivery of elite crop genetics. We are committed to developing and incorporating both time-tested approaches and cutting edge technologies that will continue to make our products superior to any in the industry.

ASSOCIATE BIOLOGIST, Wilmington, Delaware - We have an immediate opening for a BS/MS level scientist in our Disease Resistance group. Responsibilities include identification, characterization, and expression of relevant disease resistance genes and use of genetic markers to identify disease resistance loci. A M.S. or B.S. in molecular biology, genetics, or related field is required. Applicants for this position must apply via EMAIL ONLY to apply@dpresearchjobs.com and reference Job Code WCG/NW1/PSC3 in subject line of e-mail.

POST DOCTORATE FELLOW, Wilmington, Delaware - This biologist will work to optimize existing methods of plant transformation and to develop novel technologies that will improve high-throughput transformation for product development and functional genomics. A Ph.D. in plant sciences with a primary emphasis in plant molecular biology, or developmental biology required. Applicants for this position must apply via EMAIL ONLY to apply@dpresearchjobs.com and reference Job Code WCG/NW2/PSC3 in subject line of e-mail.

POST DOCTORATE FELLOW, Wilmington, Delaware - This person will play an integral part in the development and characterization of novel proteins that have activity against economically important agricultural pest species. A Ph.D. in electrophysiology, pharmacology, or related field required. Applicants for this position must apply via EMAIL ONLY to apply@dpresearchjobs.com and reference Job Code WCG/NW3/PSC3 in subject line of e-mail.

SUPPORT SCIENTIST, Wilmington, Delaware - The Insect Control and Herbicide Resistance group has a position open for a support scientist whose primary responsibility will be in bioassay development and implementation against a variety of targets (insects, fungi, and nematodes). A B.S. or M.S. in biology with at least 2 years of experience in the field of entomology or related field is required. Applicants for this position must apply via EMAIL ONLY to apply@dpresearchjobs.com and reference Job Code WCG/NW5/PSC3 in subject line of e-mail.

RESEARCH SCIENTIST, Wilmington, Delaware - Working in a multidisciplinary environment, this individual will develop a research program using advanced genetics and genomic tools to develop hybrid corn with increased resistance fungal pathogens. A Ph.D. and 2-3 years of postdoctoral research experience in plant molecular biology, plant pathology, fungal or plant genetics, or closely related field is required. Applicants for this position must apply via EMAIL ONLY to apply@dpresearchjobs.com and reference Job Code WCG/NW4/PSC3 in subject line of e-mail.

SENIOR RESEARCH ASSOCIATE-Protein Characterization, Johnston, Iowa - The incumbent will apply protein-related tools/methods to molecular analysis of gene networks that underlie maize ear meristem development. The incumbent will have at least a MS degree with four additional years experience or its equivalence in protein characterizations including protein-ligand and protein-protein interactions using biochemical, biophysical and molecular biological techniques and a strong foundation in molecular genetics, plant physiology and computation biological skills. Applicants for this position must apply via EMAIL ONLY to apply@pioneerjobs.com and reference Job Code RES/NP368/PSC in subject line of e-mail.

Visit www.pioneer.com for a detailed description of these and other opportunities.

EOE

POSITIONS OPEN

MOLECULAR MEDICINE PROGRAM DEPARTMENT OF MEDICINE University of California, Irvine

The Department of Medicine at the University of California, Irvine (UCI), College of Medicine, is seeking an Endocrinologist to join the Division of Endocrinology, Diabetes, and Metabolism and to be part of a multidisciplinary program in molecular medicine. This position is tenure-track at the level of **ASSISTANT PROFESSOR**. Start-up funds and research space will be commensurate with the level of the appointment and individual requirements. The Division of Endocrinology has strong research interests in diabetes and its complications, women's health, mechanisms of hormone action, signal transduction, and endocrine aspects of cancer. All of its members are active researchers and many are members of the Chao Family Comprehensive Cancer Center at UCI. There are collaborative interactions between the Division of Endocrinology and Clinicians and Scientists in a wide area of disciplines including developmental and cell biology, molecular biology and biochemistry, microbiology and molecular genetics, epidemiology, oncology, and pharmacology. Candidates must possess an M.D. or M.D./Ph.D. degree(s); be Board eligible in the respective subspecialties; and have interest, knowledge, and experience in molecular medicine and multigenic diabetes/endocrine disorders. Interested applicants should send curriculum vitae and names and addresses of three references to: **Murray Korc, M.D., Chief, Division of Endocrinology, Diabetes, and Metabolism, Department of Medicine, Medical Science I, C240, Irvine, CA 92697-4075.** The University of California is an Equal Opportunity Employer committed to excellence through diversity.

CYTOGENETICS LABORATORY DIRECTOR GENZYME GENETICS

Genzyme Genetics is one of the largest genetic laboratories in the United States. We provide a broad range of genetic diagnostic services including cytogenetic analysis, prenatal biochemical testing, DNA testing for cystic fibrosis, fragile X and other single-gene disorders, and oncology testing. The customer base includes Physicians, university medical centers, hospitals, clinical laboratories, genetics centers, and managed health care organizations throughout the United States and internationally.

Opportunities available in our Santa Fe, New Mexico, and Yonkers, New York, facilities.

Candidates must have a Ph.D. with American Board of Medical Genetics certification (or Board eligible) in clinical cytogenetics. Significant experience in managing a technical production staff is preferred. Genzyme Genetics offers competitive compensation and a comprehensive benefits program that begins on the first day of employment. This includes a 401(k) retirement savings plan with company matching funds, employee stock purchase plan, incentive stock options, relocation assistance, and much more.

Please mail your curriculum vitae to:

**Genzyme Genetics
Human Resources Representative
2000 Vivigen Way
Santa Fe, NM 87505
FAX: 505-438-2277**

E-mail: priscilla.ornelas@genzyme.com

Equal Opportunity Employer.

RESEARCH ASSISTANT I/II

Research Assistant position available immediately for research in reproductive biology to investigate hypertension in pregnancy. Primary focus is on cellular and molecular aspects of reproductive renin-angiotensin system. Training/experience in cellular and molecular biology techniques is essential. Send curriculum vitae and references to: **Dinesh M. Shah, M.D., Director, Maternal-Fetal Medicine, University MacDonald Women's Hospital, Department of Reproductive Biology, Case Western Reserve University, University Hospitals/CWRU are Equal Employment Opportunity/Affirmative Action Institutions.**

POSITIONS OPEN

Luminex

MOLECULAR BIOLOGIST

Luminex, a rapidly expanding biotechnology company, has an immediate opening for an assertive self-starter with excellent problem-solving skills.

Responsibilities: the design, development, evaluation, improvement, and technical support of reagents and methods using Luminex technology. (1) Conduct reagent and method development as a member of the research and development biology team. (2) Plan, design, and propose research and development projects to produce new information and product commensurate with the interests of the company. (3) Generate experimental data and perform analysis to interpret the results. Make recommendations of course of action based on data and interpretation. (4) Support transition of methods and reagents to customers and to customer support. (5) Create novel and patentable methods and procedures.

Requirements: The position requires a Ph.D. with two years, an M.S. degree with five years, or a B.S. degree with eight years of proven experience. The candidate must have the ability to design, plan, and conduct independent research and develop products. The incumbent must also have sufficient knowledge in molecular biology and method development to interpret technical data and communicate effectively with members of the Department and other departments.

No telephone calls or walk-ins, please. Mail, e-mail, or FAX your résumé and references to:

**Luminex Corporation
Attention: Jobcode JM225
12212 Technology Boulevard
Austin, TX 78727-6115**

**E-mail: opportunities@luminexcorp.com
FAX: 512-219-5195**

Website: <http://www.luminexcorp.com>

NASA-FUNDED UNDERGRADUATE TEACHING/RESEARCH FELLOW

Muhlenberg College seeks a Ph.D. Scientist in the field of space or Earth science with experience using satellite imaging and remote sensing data. The Fellow will teach one undergraduate science course per semester, conduct research in collaboration with undergraduate science students, help faculty incorporate NASA data into courses and research projects, and do outreach to local K-12 schools. The position, funded by a NASA appropriation, starts July 1, 2002, and is renewable for up to three years. Requirements: earned Doctorate in the appropriate field and teaching experience at the undergraduate level. Send a letter; curriculum vitae; statement of teaching and research interests; and three letters of recommendation by February 1, 2002, to: **Dr. Robert Milligan, Head, Physics Department, Muhlenberg College, 2400 Chew Street, Allentown, PA 18104.** Muhlenberg College is a liberal arts school of 2,100 students with a long tradition of excellence in undergraduate teaching and research in the sciences. Additional information about the position is available at website: <http://www.muhlenberg.edu/depts/physics/nasa>. *Equal Opportunity Employer.*

POSTDOCTORAL FELLOW/ RESEARCH ASSOCIATE

To identify proteins involved in signal transduction during malignant transformation and apoptosis in leukemia, breast, and prostate cancer. Emphasis on the Pim-1 protein kinase, AML/ETO, and TRAIL-induced death. Individual will interact with five Ph.D.s with strong backgrounds in molecular and cellular biology. Experience in molecular biology and protein chemistry including proteomics desirable. Send résumé and names/contact information of three references to: **Andrew S. Kraft, M.D., University of Colorado Health Science Center, Division of Medical Oncology, 4200 East Ninth Avenue, B171, Denver, CO 80262. E-mail: laura.casias@uchsc.edu.**

POSITIONS OPEN

ASSISTANT PROFESSOR Molecular and Cellular Toxicology

The Division of Pharmacology and Toxicology in the College of Pharmacy at the University of Texas at Austin invites applications for a tenure-track faculty position to start August 2002. Applicants must have a Ph.D. in toxicology or a related discipline. We are particularly interested in recruiting candidates who apply molecular approaches to basic mechanistic problems in toxicology. The potential to develop a strong, extramurally funded research program is essential. Teaching in both the undergraduate and graduate programs is a requirement of the position. Applicants should send a statement of research interests, curriculum vitae, and the names and addresses of at least three references to: **James P. Kehrer, Ph.D., Division of Pharmacology and Toxicology, College of Pharmacy, University of Texas at Austin, Austin, TX 78712-1074. E-mail: kehrerjim@mail.utexas.edu.** Additional information on our program may be found at website: <http://www.utexas.edu/pharmacy/divisions/pharmtox/>. *UT Austin is an Equal Opportunity Employer.*

The Pennsylvania State University Life Sciences Consortium invites applications for the position of **DIRECTOR, DNA Microarray Facility.** The Director's duties include assisting and training faculty, students, and staff in the construction and use of nucleic acid microarrays; developing and implementing microarray hybridization data collection and data analysis methods; identifying and implementing data management/archiving systems; and updating and introducing new equipment and techniques. The Director is responsible for the maintenance and updating of equipment and computer hardware as well as the hiring, training, and supervision of support personnel as the need arises. Requires training and/or experience in molecular biology and computer programming. M.S. or Ph.D. preferred. A cover letter and curriculum vitae should be mailed to: **JEB, Life Sciences Consortium, 519 Wartik Laboratory, The Pennsylvania State University, University Park, PA 16802.** *Penn State is committed to Affirmative Action/Equal Opportunity and the diversity of its workforce.*

POSTDOCTORAL POSITION is available to study the genomics of archaea at the Center of Marine Biotechnology, University of Maryland Biotechnology Institute, in the laboratory of **Dr. S. DasSarma** (website: <http://zdna2.umbi.umd.edu/~dassarma>). A Ph.D. in the biological sciences or chemistry is essential, and experience in bioinformatics and genomics is preferred. Send curriculum vitae and the name, title, and address of three references to: **Ms. Tyra Burman, Position Number R30244, Center of Marine Biotechnology, Suite 236, Columbus Center, 701 East Pratt Street, Baltimore, MD 21202.**

POSTDOCTORAL POSITION available to identify signaling molecules and signal-induced genes and their role in memory consolidation and storage. Experience in molecular biology, biochemistry, or cell biology is required. Send curriculum vitae and three letters of reference to: **P. Dash, University of Texas Health Science Center at Houston, Medical School, Neurobiology and Anatomy, P.O. Box 20708, Houston, TX 77225. Telephone: 713-500-5575. E-mail: p.dash@uth.tmc.edu.** *Equal Opportunity Employer/Affirmative Action/Security Sensitive Position/smoke-free environment.*

The Department of Environmental Science at the University of San Francisco (USF) invites applications for a tenure-track **ASSISTANT PROFESSOR** position in environmental science and studies with a specialty in land use planning and resource management to begin fall 2002. For details, please see website: <http://www.usfca.edu/envsci/>. *University of San Francisco is an Affirmative Action/Equal Opportunity Employer.*

**Position Announcement
Molecular Geneticist
Tenure Track, Assistant Professor**

The interdisciplinary Program in Cellular and Molecular Biosciences and the Department of Biological Sciences of Auburn University are seeking to fill a faculty position in Molecular Genetics. This position will carry a tenure-track, nine-month appointment at the level of Assistant Professor. Successful candidates will be expected to possess expertise in gene identification, functional genomics/operonics, genetic screening or transgenics. Applications from individuals trained broadly in all areas of molecular genetics are encouraged. Preference will be given to those working in areas related to development. The successful candidate will be expected to establish an active, extramurally funded research program with strong scholarly output and graduate student involvement. Instructional responsibilities will include Molecular Genetics/Biology or related courses as necessary (undergraduate). In addition, the successful candidate will be expected to develop a graduate course in their area of expertise. A Ph.D. in Biological Sciences or a related field is required. Post-doctoral experience is preferred.

Women and Minorities are encouraged to apply.

Additional information will be available at <http://www.auburn.edu/cmb/>. Applicant review will begin February 1, 2002 and continue until the position is filled.

To apply, send CV, statement of research/teaching interests and the names and contact information, including email addresses, for three individuals who can provide reference letters, to:

**Molecular Geneticist Search Committee
Cell and Molecular Biosciences
126 O.D. Smith Hall
Auburn University, AL 36849-5319**

Auburn University is an Affirmative Action/Equal Opportunity Employer.



**FACILITY HEAD
INTRAMURAL RESEARCH PROGRAM
NATIONAL INSTITUTE ON AGING
NATIONAL INSTITUTES OF HEALTH**

The Intramural Research Program (IRP) of the National Institute on Aging (NIA) invites applications for a Facility Head to manage the Mass Spectrometry Unit of the Central Laboratory Services Section at the Gerontology Research Center and to conduct a related research program. The unit provides proteomics studies including mapping proteins by HPLC, analyzing peptides by MS, and computer-assisted data processing for all laboratories in the IRP. The ideal candidate is a Ph.D. with at least 3 years experience in LC/MS and associated analytical protein techniques and computer-assisted analysis of results and experience in running a facility.

Applicants should send curriculum vitae, bibliography and three letters of reference, at least two from non collaborators, to:

**National Institute on Aging
Gerontology Research Center
Human Resources Office
Vacancy #NIA-01-064
5600 Nathan Shock Drive, Room 1D09
Baltimore, MD 21224**

Applications must be postmarked no later than January 31, 2002.

NIH is an Equal Employment Opportunity Employer.

Sangstat, a global biotechnology company located in Fremont, CA with both marketed and pipeline products, is seeking talented individuals to join our dynamic organization.

SCIENTIST

Seeking someone with extensive experience in inflammation research and immunology including animal models, as well as working with an experienced scientific staff on the development of novel therapeutics.

The qualified candidate will be able to thrive in a fast paced environment as well as be able to prioritize and manage workload efficiently, effectively and independently. Must have excellent writing, oral communication and interpersonal skills. Candidates must have a minimum of 2 years post-doctoral experience.

RESEARCH ASSOCIATE

The right person will have more than 5 years of experience in a research environment: cellular biology, histology, and immunohistochemistry (including in-situ hybridization). Experience in animal models is a plus. Must have a BS or MS degree.

We offer a comprehensive benefit package that includes medical, dental and vision, and 401(k) matching with stock and bonus potential. For more information visit www.sangstat.com.

Local and qualified applicants encouraged to apply. Please note: **This position does not offer relocation assistance.**

Resumes with cover letter should be sent to hr@sangstat.com, or fax (510) 789-4460.

SANGSTAT

**Genetics/
Molecular
Biologist**

**Assistant Professor
Tenure Track; Start 8/02**

The Biology department at **The College of Mount Saint Vincent** is a joined department with **Manhattan College**. Responsibilities include but are not limited to teaching an introductory level genetics course and an upper division course in molecular biology. A Ph. D is required, as is a strong commitment to undergraduate education, advisement and research. Experience in teaching introductory courses and/or environmental biology is a plus. Applicants should be adept at integrating computers into the curriculum. Send letter of application, curriculum vitae, statement of teaching philosophy, summary of research goals and the names and address of three references by **January 15, 2002**, to: **Dr. William A. Tramontano, Chair, Department of Biology, College of Mount Saint Vincent/Manhattan College, 6301 Riverdale Avenue, Riverdale, NY 10471-1093, Fax: 718-862-7946, E-mail: wtramont@manhattan.edu.**

**COLLEGE OF
MOUNT SAINT VINCENT**

**ASST/ASSOCIATE PROFESSOR
CELL BIOLOGY/ IMMUNOLOGY
STERN COLLEGE FOR WOMEN**

The Biology Department of Yeshiva University's women's undergraduate liberal arts college, conveniently located in midtown Manhattan, invites applications for a tenure-track Assistant/Associate Professor position.

Areas of specialization should include cell biology and immunology. A Ph.D., prior teaching experience, and a proven record of research are required. The Department services a growing number of majors who go on to careers in medicine, biomedical research, both with the faculty on campus as well as the University's Albert Einstein College of Medicine during the summer.

The successful candidate will have a strong commitment to undergraduate education for participation in departmental and college-wide activities. The Department is well equipped for both teaching and research and start-up research funds are available.

Replies, including curriculum vitae and names of at least three references, should be sent to: **Dr. Harvey Babich, Department of Biology, Stern College For Women, 245 Lexington Avenue, New York, NY 10016.** An EOE.

YESHIVA UNIVERSITY
Achievement through knowledge.



POSITIONS OPEN

BIOINFORMATICS SCIENTIST II

Responsibilities include curating and managing large volumes of express data stored in an Oracle relational database, developing and validating novel algorithms for analyzing and mining gene expression data, and supporting the implementation and maintenance of analytical tools. Working with Scientists in various therapeutic areas to apply statistical methods in experimental design, analysis, and interpretation of scientific results and collaborating with software engineers in software requirement specification, database modeling, and software integration associated with microarray platforms and LIMS. Must have a Master's degree in life science or related field; advanced training in molecular cell biology, evolutionary biology, and quantitative data analysis; two years of experience in pharmaceutical industry to apply computational methods in therapeutic research. Experience in Affymetrix's GeneChip® expression platform or related data analysis; ANOVA; ANCOVA; linear and nonlinear model fitting; regression diagnostics, nonparametric, bootstrap, or permutation-based resampling techniques; multivariate analyses; and strong computer science background including programming experience in a science background and experience in SQL, PL/SQL, Splus, Matlab, C/C++, Java and operating systems (UNIX, Windows NT, Mac) and understanding of relational database model and architecture and software engineering life cycle with focus on Windows-based application development and GUI design principle.

Respond to: **Wyeth Genetics Institute, Inc., 87 Cambridge Park Drive, Cambridge, MA 02140, Attention: TM.** An Equal Opportunity Employer.

RESEARCH POSITIONS at Columbia University's Taub Institute for Research on Alzheimer's Disease and the Aging Brain. Research Scientists are sought to join basic and clinical research groups of the Taub Institute, an active research department dedicated to the study of aging and degeneration of the nervous system. Positions are available for **ASSOCIATE RESEARCH SCIENTISTS, STAFF ASSOCIATES and SENIOR STAFF ASSOCIATES; POSTDOCTORAL RESEARCH SCIENTISTS; and POSTDOCTORAL RESEARCH FELLOWS** to join current research efforts focusing on cellular and molecular biology, genetic epidemiology, brain imaging, and neuroscience. Prior training in an appropriate field (e.g., genetics, epidemiology, or molecular biology) is desirable. Send curriculum vitae and the names and telephone numbers of three references to: **Carol R. Tycko, Administrative Director, Taub Institute, Columbia University, 630 West 168th Street, P and S Box 16, New York, NY 10032. E-mail: taubinstitute@columbia.edu.** Columbia University is an Equal Opportunity/Affirmative Action Employer.

POSTDOCTORAL POSITIONS Washington State University Pullman, Washington

Applications are invited for two Postdoctoral positions to join a research program funded by the NSF 2010 Project at the Institute of Biological Chemistry. This three-year study will establish the physiological functions of 248 *Arabidopsis* enzymes and proteins presumed to be involved in various networks of phenylpropanoid-acetate metabolism. One position requires a Ph.D. in molecular biology with expertise in protein overexpression in suitable hosts as well as in *Arabidopsis* transformation and/or metabolic engineering and gene expression. The second position requires a Ph.D. with extensive experience in enzyme purification and characterization. To apply, please send a brief description of research experience and interests; curriculum vitae with list of publications; and three reference letters to: **Dr. Norman G. Lewis, Institute of Biological Chemistry, Washington State University, Pullman, WA 99164-6340. FAX: 509-335-8206; e-mail: lewisn@wsu.edu.**

POSITIONS OPEN

POSTDOCTORAL ASSOCIATE. U.S. Meat Animal Research Center, Clay Center, Nebraska. Incumbent will determine how folate binding proteins interact to accomplish folate transport during pregnancy in pigs. Ph.D. in reproductive biology or a related field is required and should have been awarded within the past four years. Experience working with domestic livestock and molecular biology, receptor analysis, and protein biochemistry techniques preferred.

Salary: approximately \$43,000 per year and position is funded for two years. *Citizenship restrictions apply.* Send a letter of interest and curriculum vitae including three references to: **Dr. Jeffrey L. Vallet, U.S. Meat Animal Research Center, P.O. Box 166, Clay Center, NE 68933. E-mail: vallet@email.marc.usda.gov.** The USDA is an Equal Opportunity Provider and Employer.

POSTDOCTORAL POSITIONS are available for highly motivated individuals interested in pursuing molecular and cellular studies on the basic biology of the ovary in a dynamic, NIH-funded laboratory. Experience in molecular biology is required. Potential projects include an oocyte-specific linker histone and a steroidogenic tissue mitochondrial protein. Located in the Huntsman Cancer Institute at the University of Utah, the laboratory is part of a vibrant intellectual community with state-of-the-art facilities including transgenic/knockout and microarray facilities. Applicants should send curriculum vitae and the name of three references to: **Eli Y. Adashi, M.D., Professor and Chair, Department of Obstetrics and Gynecology, University of Utah, 30 North 1900 East, Suite 2B200, Salt Lake City, UT 84112. E-mail: eadashi@hsc.utah.edu.**

POSTDOCTORAL RESEARCHER CANDIDA PATHOGENESIS

A Postdoctoral position is available to study mechanisms of *Candida albicans* pathogenesis. A Ph.D. degree and demonstrated research productivity are required. Candidates with a strong background in molecular biology and biochemistry are encouraged to apply. Salary is commensurate with experience. Please send curriculum vitae and contact information for three references to: **L. L. Hoyer, Ph.D., University of Illinois at Urbana-Champaign, 2522 VMBSE, 2001 South Lincoln Avenue, Urbana, IL 61802. Telephone: 217-333-5043; FAX: 217-244-7421; e-mail: lhoyer@uiuc.edu.** The University of Illinois is an Equal Opportunity/Affirmative Action Employer.

LIPOPHILIC HORMONE SIGNALING

POSTDOCTORAL POSITION to investigate the molecular mechanisms underlying the transcriptional activities of nuclear hormone receptors and the biological activities of their cognate ligands. Ongoing projects currently focus on retinoid and peroxisome proliferator-activated receptors. Studies include biophysical methodologies and cell/molecular biological approaches as well as the use of animal models. Candidates should have a Ph.D. degree or equivalent with a strong foundation in biochemistry and molecular or cell biology. Send curriculum vitae and names/contact information of three references to: **Noa Noy, 225 Savage Hall, Cornell University, Ithaca, NY 14853. E-mail: nn14@cornell.edu.**

POSTDOCTORAL POSITIONS in protein-protein, protein-surface, and cell-surface interactions. Responsibilities will include development of engineered proteins to control molecular orientation on surfaces and investigate structure-function relationships with applications in the areas of cell sorting and functional characterization, high-throughput screening strategies, and controlled drug and gene delivery. Successful candidates will have backgrounds in chemical or mechanical engineering or, alternatively, experience in recombinant DNA techniques relevant for protein modification. Contact: **Michael B. Lawrence, Ph.D., Associate Professor, Biomedical Engineering, University of Virginia, Health System, P.O. Box 800759, Charlottesville, VA 22903. E-mail: mbl2a@virginia.edu.**

POSITIONS OPEN

The Department of Molecular Biology at Princeton University Announces the LEWIS THOMAS BRISTOL-MYERS SQUIBB FELLOWSHIP PROGRAM in Computational and Physical Biology

A Fellowship program has been established for outstanding young Scientists to work in the Department of Molecular Biology. The program provides opportunities to exceptional individuals holding Ph.D. degrees (or the equivalent) in the areas of physics, chemistry, computer science, mathematics, or computational approaches to biology who wish to gain expertise in molecular biology. Research will be carried out in collaboration with members of the Department of Molecular Biology. The Fellows Program provides an annual salary of \$45,000 and an annual research budget of up to \$15,000 to foster collaborative experimental research in laboratories within the Department of Molecular Biology. Fellows will be appointed for two one-year appointments normally renewable for a third year. The application deadline is January 15, 2002, for a nominal start date of September 1, 2002. For more information about the program and the Department of Molecular Biology, visit our website: <http://www.molbio.princeton.edu>.

Applications must include curriculum vitae, list of publications, brief statement (three pages) of research interests and goals, and the names of three references whom you have asked to send references. Address applications to:

**Lewis Thomas Bristol-Myers Squibb
Fellowship Committee
Department of Molecular Biology
Princeton University, Princeton, NJ 08544-1014**

Princeton University is an Affirmative Action/Equal Opportunity Employer and welcomes applications from women and members of minority groups.

The G. V. (Sonny) Montgomery VA Medical Center in Jackson, Mississippi, is seeking a Board-certified **PHYSICIAN** to direct its research and development program. Candidates must have credentials to receive a faculty appointment at the University of Mississippi School of Medicine and have sufficient administrative, clinical, and academic experience in order to teach medical students and residents. This medical center is a 163-bed, acute care medical center with a 120-bed nursing home care unit, outpatient clinics, and a research and education facility. In addition to an attractive salary, we offer paid malpractice insurance, vacation/sick leave, health/life insurance coverage, and a retirement package including a tax-deferred savings plan. Applicants must be Board certified, proficient in spoken and written English, and subject to drug testing and a preemployment physical. Interested candidates should send or FAX curriculum vitae; references; documentation of Board certification; and a copy of an active, current, full, and unrestricted license to: **Chief of Staff (11), VA Medical Center, 1500 East Woodrow Wilson Drive, Jackson, MS 39216-5199. FAX: 601-364-1456; e-mail: kent.kirchner@med.va.gov.** Closing date: open until filled. *Equal Opportunity Employer.*

BIOENGINEERING POSTDOCTORAL POSITION California Institute of Technology

Research program: conceptual design and experimental assay of novel molecular machines built out of DNA. A strong background in experimental molecular biology is essential. For details, see website: <http://www.acm.caltech.edu/~niles/postdoc.html>. Send detailed curriculum vitae and three reference letters to: **Niles A. Pierce, Caltech, Mail Code 164-30, Pasadena, CA 91125. E-mail: niles@caltech.edu.** Caltech is an Affirmative Action/Equal Opportunity Employer; women, minorities, veterans, and disabled persons are encouraged to apply.

best of both worlds

UCB Research, Inc. brings together the best of two worlds, a pioneering entrepreneurial spirit backed by the strength of an established pharmaceutical industry leader. Together, these attributes allow UCB to advance important new treatments for allergy, immunology, and central nervous system disorders. We are seeking enthusiastic, creative scientists to join UCB Pharma's US based research team located in Cambridge, MA

Safety Evaluation Manager - TOXICOLOGIST

Responsibilities will include the monitoring and review of pre-clinical safety and mechanistic studies performed externally under contract. You will also participate in the preparation and review of regulatory documentation in support of our worldwide submissions and be involved with contacts with regulatory authorities, particularly those in the US and Canada.

The successful candidate will possess a Ph.D. in a toxicology-related field and have extensive experience in a toxicology department of a research organization or a pharmaceutical company

Senior Scientist - BIOINFORMATICS

This position will be responsible for computational analysis and interpretation of a wide array of genomics experiments. This scientist will work with outside genomics partners, with whom UCB Pharma has established collaborations for the discovery of novel gene targets.

Requirements for this position are flexible, although stronger candidates will have a Ph.D. with post doctoral or equivalent industry experience, having performed broadly based bioinformatics research. In addition, computer programming and database development and maintenance skills are a strong plus.



Pharma

UCB Research, Inc.

If qualified, please forward your resume to research.recruiter@ucb-group.com. For detailed information regarding these or other openings at UCB Research please visit our website at:

www.ucbresearch.com

840 MEMORIAL DRIVE, CAMBRIDGE, MA 02139

Faculty Position in Biogeochemistry University of Alaska Fairbanks

We are seeking a colleague for a tenure-track Assistant or Associate Professor joint position with the Water and Environmental Research Center, Institute of Northern Engineering and the Institute of Marine Science, School of Fisheries and Ocean Sciences. A Ph.D. in a physical science (hydrology or marine science preferred) and experience that includes the use of stable isotopes (in natural abundance or as added tracers) in environmental research are required. Applicants must have a strong record of research and publication commensurate with rank. A complete job description can be found at <http://www.uaf.edu/uafhr/jobs/Faculty.html>. The successful candidate will be expected to maintain an extramurally funded research program that includes isotopic approaches for investigating marine or freshwater problems, to teach graduate courses, and to advise graduate students. He/she will also oversee the UAF Mass Spectrometry Facility. A UA Employment Application Form must be completed, signed and submitted. Please also provide cover letter, curriculum vitae and the names and addresses of at least three persons who will be able to provide letters of recommendation to: **Dr. Daniel White, Committee Chair, c/o Kathleen Hill, UAF Human Resources, P.O. Box 757860, Fairbanks, AK 99775-7860; (907) 474-5859 fax; e-mail: fjjobs@uaf.edu.**

Review will commence on January 15, 2002. Applications will be reviewed until the position is filled. The Application Form may be downloaded at <http://www.uaf.edu/uafhr/jobs/index.html>, or picked up in UAF Human Resources, Room 108 Administrative Service Center, 3295 College Road, Fairbanks, AK, 99775.

Person(s) hired by the University of Alaska Fairbanks must comply with the provisions of the Federal Immigration Reporting and Control Act of 1986 and are expected to possess a valid social security card. All Nonresident Aliens must provide proof of eligibility to work. The University of Alaska Fairbanks is an equal employment opportunity/affirmative action employer and educational institution. Your application for employment with the University of Alaska is subject to public disclosure under the Alaska Public Records Act. Women and minorities are encouraged to apply. Applicants needing reasonable accommodation to participate in the application and screening process should contact the Assistant Director at 474-6259.

ANNOUNCEMENTS

NATIONAL INSTITUTES OF HEALTH Undergraduate Scholarship Program

Science-Research Scholarship Available

The **UGSP** is sponsored by the National Institutes of Health (NIH), the Federal Government's premier biomedical research and research training agency. NIH offers scholarships to qualified students who are committed to a career in biomedical research.

Scholarships of up to \$20,000 per year support tuition, educational, and qualified living expenses (room, board, transportation) while students pursue an undergraduate degree.

For each award year, scholars work 10 weeks with salary/benefits in our research laboratories in Bethesda, Maryland. They are assigned mentors, participate in developmental and science enrichment seminars, and are provided with housing and transportation. After graduation, scholars participate in year-long paid research fellowships for each year of their award.

THIS IS A SPECIAL OPPORTUNITY FOR SPECIAL STUDENTS!

Advise students to apply if they:

- Are committed to a career in biomedical research;
- Are from a disadvantaged background;
- Have a GPA of at least 3.5 or are in the top 5 percent of their class;
- Are a U.S. citizen, national, or permanent resident;
- Are enrolled or accepted for enrollment as a full-time student at a qualified accredited institution.



NIH is dedicated to building a diverse community in its training and employment programs.

<http://ugsp.info.nih.gov> • ugsp@nih.gov • 1-800-528-7689

POSITIONS OPEN

The University of Southern California (USC) invites applications for several positions in bioinformatics to start in fall 2002. (1) **ASSOCIATE or FULL PROFESSORSHIP** in Program in Molecular and Computational Biology. The candidate is expected to run a research program in bioinformatics. Special emphasis will be placed on experience in analysis of data arising from new molecular technologies. Responsibilities of the position include development of a universitywide bioinformatics core facility and the supervision of a Research Assistant Professor, student Research Assistants, and computer support personnel. (2) Three **TENURE-TRACK POSITIONS** in the Neurogenetic Institute at the USC Keck School of Medicine. Rank negotiable. This institute is dedicated to studying the genetic basis of neurological disease and is involved in high-throughput genomics and LD mapping of complex traits and multigenic diseases of the brain. Applicants with experience in statistical genetics and comparative genomics are particularly encouraged to apply. Although appointments may be made at any faculty rank, applicants with a proven track record of securing peer-reviewed grant support will be given special consideration.

Interested candidates should send curriculum vitae including research plans and names and addresses of at least three references to: **Michael S. Waterman, Chair, Bioinformatics Search Committee, Department of Biological Sciences, SHS172, University of Southern California, Los Angeles, CA 90089-1340.** Evaluation of applications will begin January 25, 2002. USC is an Equal Opportunity/Affirmative Action Employer.

TENURE-TRACK FACULTY POSITION Biological Physics University of Missouri-Columbia

The Department of Physics and Astronomy at the University of Missouri-Columbia (MU) seeks an outstanding candidate for a tenure-track faculty position in experimental biological physics starting September 1, 2002. The successful candidate will be part of the already existing group of four Biological Physicists of international reputation in the Department. We anticipate hiring at the level of **ASSISTANT PROFESSOR**, but exceptionally qualified candidates will be considered for a higher rank. The position requires a Ph.D. and postdoctoral experience and applications are invited from all areas of experimental biological physics. The successful candidate is expected to establish a strong, externally funded research program; to be committed to excellence in teaching at all levels; to contribute to the Department's aggressive effort to build a multidisciplinary, nationally visible Center for Biological Physics at MU; and to collaborate with other Life Scientists at MU. More information about our department and the life sciences is available at website: <http://www.missouri.edu/~physwww/physics.html>. Candidates should submit curriculum vitae, description of research plans, and arrange for three letters of recommendation to reach: **Biological Physics Search Committee, Department of Physics and Astronomy, University of Missouri, Columbia, MO 65211. Telephone: 573-882-3335; FAX: 573-882-4195; e-mail: ceas@missouri.edu.** Applications will be accepted until the position is filled. To ensure full consideration, applications should be received by January 31, 2002. The University of Missouri is an Equal Opportunity/Affirmative Action Employer. Women and minorities are encouraged to apply. To request ADA accommodations, please contact our ADA Coordinator at 573-884-7278, e-mail: V/TTY@missouri.edu.

POSTDOCTORAL POSITIONS available immediately to develop innovative strategies for using peptide nucleic acids and oligonucleotides to investigate cellular processes. Projects offer an exceptional opportunity at the interface of chemistry and biology. Cover letter and curriculum vitae to: **Dr. David Corey, University of Texas Southwestern Medical Center at Dallas, Dallas, TX 75390-9041. E-mail: david.corey@utsouthwestern.edu.** University of Texas Southwestern is an Equal Opportunity Employer.

POSITIONS OPEN

CENTER FOR VIRAL DISEASES University of Pittsburgh School of Medicine

The Center for Viral Diseases is a newly established research unit at the University of Pittsburgh School of Medicine dedicated to fundamental and translational research into the molecular mechanisms of viral replication, antiviral drug action, and antiviral drug resistance. **POSTDOCTORAL RESEARCH ASSOCIATE** positions are now available for qualified Research Scientists.

Center faculty and their research interests include:

John W. Mellors, M.D. (Director): genetic, biochemical, and structural mechanisms of HIV-1 drug resistance and discovery of new inhibitors active against drug-resistant viral variants.

Michael A. Parniak, Ph.D. (Co-Director): molecular mechanisms of HIV antiviral drug action and resistance; development and characterization of ribonuclease H inhibitors; development of topical HIV microbicides; novel antisense oligonucleotides as antiviral agents.

George J. Hanna, M.D.: resistance and cross-resistance to HIV-1 reverse transcriptase inhibitors and the genotypic and phenotypic correlates of clinical antiretroviral drug failure; sensitivity of resistance assays for HIV-1.

Kelly Stefano-Cole, Ph.D.: virus-specific antibody responses in lentivirus infection and in mediating protection after vaccination; mechanisms of antibody-mediated virus neutralization; envelope protein variation and immunogenicity.

Candidates must have an M.D. and/or Ph.D. with research experience in chemistry, biochemistry, immunology, molecular biology, or virology. Candidates must be highly motivated, possess excellent oral and written communication skills, be able to work in a multidisciplinary team environment, and to oversee several research projects. Salaries will be highly competitive and commensurate with experience. Exceptional Scientists may be provided with the opportunity for tenure-track positions.

Qualified applicants are invited to send curriculum vitae, a description of research accomplishments and interests, and the names and contact information of three references to:

**Michael A. Parniak, Ph.D.
Center for Viral Diseases
University of Pittsburgh
Scaife Hall, Suite 818-D
3550 Terrace Street
Pittsburgh, PA 15213
FAX: 412-648-8521**

E-mail: parniakm@msx.dept-med.pitt.edu

POSTDOCTORAL POSITION DIETARY SUPPLEMENTS AND NEUROPROTECTION University of Alabama at Birmingham

A Postdoctoral opportunity is available to study the neuroprotective actions of grape-based dietary supplements. The project includes (1) small animal microsurgery and microdialysis technology to examine uptake and metabolism of grape polyphenols in brain; (2) *in vitro* brain microtubule experiments to determine whether grape botanicals can attenuate the effects of estrogen loss or oxidative stress; (3) proteomics approaches to identify brain protein changes modulated by grape botanicals. Training in one of the above areas is desirable but not crucial. Of greater importance is your motivation to succeed. The position is in **Dr. Helen Kim's** laboratory, part of a highly interactive NIH-funded Purdue University-UAB Botanicals Center. Send résumé and names of three references to: **Helen Kim, Ph.D., Department of Pharmacology and Toxicology, Director, 2-DE Proteomics Laboratory/UAB Mass Spectrometry Shared Facility, University of Alabama at Birmingham, Birmingham, AL 35294-0024. Telephone: 205-934-3880; FAX: 205-934-6944; e-mail: helenkim@uab.edu.**

University of Alabama, Birmingham, is an Equal Opportunity/Affirmative Action Employer. Qualified women and underrepresented minorities are encouraged to apply.

POSITIONS OPEN

POSTDOCTORAL RESEARCH ASSOCIATE

A Research Associate position is available immediately to study aspects of selenium biology. Specific projects include (1) mechanism of cancer prevention by selenium, (2) regulation of selenoprotein biosynthesis, (3) biological roles of specific selenoproteins. Candidates should have a strong doctoral and postdoctoral record in areas related to molecular biology and biochemistry.

Interested candidates should submit a letter stating their career goals, curriculum vitae, and contact information for three references to:

**Alan M. Diamond, Ph.D.
Professor and Head**

**Department of Human Nutrition (m/c 517)
College of Applied Health Sciences
University of Illinois at Chicago
1919 West Taylor Street
Chicago, IL 60612
E-mail: adiamond@uic.edu**

University of Illinois at Chicago is an Affirmative Action/Equal Opportunity Employer.

POSTDOCTORAL POSITIONS to study how the diversity of G protein alpha and beta-gamma subunits leads to specificity in transmembrane signaling (see website: <http://www.med.virginia.edu/medicine/basic-sci/pharm/Pharm.html>). The major goal is to define the functional roles of beta-gamma dimers expressed in cells. Systems under study include receptor-alpha:beta-gamma coupling, regulation of adenylyl cyclases, regulation of K⁺ channels, and activation of PLC-beta or phosphatidylinositol 3-kinase. Techniques include using pure, recombinant proteins and cell transfection assays to monitor interaction of the beta-gamma dimers on alpha subunits and effectors. A Ph.D. with experience in molecular techniques, biochemistry, and protein purification is required. Send curriculum vitae and list of references to: **Dr. James Garrison, Department of Pharmacology, P.O. Box 800735, University of Virginia, Charlottesville, VA 22908-0735. E-mail: jcg8w@virginia.edu.** UVA is an Equal Opportunity/Affirmative Action Employer.

POSTDOCTORAL RESEARCH ASSOCIATE position available to study the structures and mechanisms of anticancer drug-target (DNA, protein) interactions. Requires Ph.D. in structural biology, biophysics, biochemistry, or molecular biology. Prefer experience in NMR spectroscopy and molecular modeling. The position will involve working in the College of Pharmacy and Arizona Cancer Center and includes access to a new 600 NMR. Submit cover letter, résumé, and three references to: **Dr. Danzhou Yang, Job Number 993301, Department of Pharmacology and Toxicology, College of Pharmacy, University of Arizona, 1703 East Mabel Street, Tucson, AZ 85721-0207.** Review will begin January 4, 2002, and will continue until filled. We offer excellent benefits and competitive salaries. For more information, see website: <http://www.hr.arizona.edu>. The University of Arizona is an Equal Employment Opportunity/Affirmative Action Employer; Minorities/Women/Disabled/Veterans.

The Department of Chemistry is seeking a candidate for tenure track at the **ASSISTANT PROFESSOR** rank in the area of biological chemistry. Outstanding candidates who have completed their Ph.D. with B.S. in chemistry (postdoctorate experience is a plus) and have a strong commitment to teaching and research are encouraged to apply. Duties include teaching biochemistry, organic chemistry, and general chemistry courses. Applicant will be expected to develop biochemistry laboratories and a grant-funded undergraduate research program. Submit letter of application; curriculum vitae; a statement of teaching philosophy; research plans; three letters of recommendation; and transcripts by January 15, 2002, to: **Chair, Search Committee, Department of Chemistry and Physics, Rowan University, Glassboro, NJ 08028. Website: <http://www.rowan.edu>.** Affirmative Action/Equal Opportunity Employer.

POSITIONS OPEN

A **POSTDOCTORAL POSITION** is available immediately to study the molecular architecture and physiology of *Treponema pallidum*, the agent of syphilis. Specifically we are interested in (1) the identification and evaluation of treponemal rare outer membrane proteins as candidate syphilis vaccines (*J. Exp. Med.* 193:1015, 2001) and (2) the characterization of the bacterium's mechanisms of trace metal homeostasis (*Nat. Struct. Bio.* 6:628, 1999). Proficiency with molecular biology techniques and strong backgrounds in bacterial genetics and genomics are desirable. Position includes a competitive salary (negotiable); fringe benefits; and the opportunity to work in a highly productive, rapidly expanding microbial pathogenesis center with state-of-the-art facilities. Send curriculum vitae and the names, addresses, telephone numbers, and e-mail addresses of three references to: **Dr. Justin D. Radolf, Center for Microbial Pathogenesis, School of Medicine, University of Connecticut Health Center, 263 Farmington Avenue, MC 3710, Farmington, CT 06030.** Also visit our Center website: <http://cmp.uhc.edu>. University of Connecticut Health Center is an Equal Opportunity Employer.

POSTDOCTORAL POSITIONS

Available in several laboratories studying cell signaling pathways controlling growth and differentiation, especially in relation to developmental mechanisms underlying birth defects. Visit website: <http://mamba.bio.uci.edu/~pjbryant/dbc/PostdocAd.htm> for details. To apply, correspond with individual Investigators or send curriculum vitae, statement of research interests, and names of three individuals willing to write on your behalf to: **Dr. Peter J. Bryant, Director, Developmental Biology Center, University of California, Irvine, CA 92697.** Telephone: 949-824-5957; FAX: 949-824-3571. Citizenship requirements on some positions. University of California, Irvine, is an Equal Opportunity Employer committed to excellence through diversity.

POSTDOCTORAL POSITIONS available to study mechanisms for the generation and maintenance of immunologic memory mediated by T lymphocytes and the role of immune memory in autoimmunity. Ph.D. in immunology, biochemistry, molecular, or cell biology preferred. For further information on the laboratory and a list of recent publications, check our website: <http://medschool.umaryland.edu/FarberLab/>. To apply, send curriculum vitae and a list of three references to: **Dr. Donna L. Farber, Department of Surgery, University of Maryland Medical School, MSTF Building, Room 400, 685 West Baltimore Street, Baltimore, MD 21201.** E-mail: dfarber@mail.umaryland.edu.

POSTDOCTORAL POSITION available to work on the identification of mammalian signal transduction proteins that regulate multiple stress resistance systems and longevity. A strong background in molecular or cell biology is required. The Fellow will work on mammalian neurobiology and yeast genetics projects. Curriculum vitae; summary of research interests; and names, e-mail addresses, and postal addresses of three references should be sent to: **Dr. Valter D. Longo, Andrus Gerontology Center, Division of Biogerontology and Department of Biological Sciences, University of Southern California, 3715 McClintock Avenue, Los Angeles, CA 90089.** E-mail: vlongo@usc.edu; FAX: 213-821-5714.

POSTDOCTORAL POSITION available immediately to study protein-protein interactions and cell biology of K channels. Molecular biology, molecular genetics, or biochemistry backgrounds desirable. Send curriculum vitae and e-mails of three references to: **Dr. Ligia Toro, Department of Anesthesiology, UCLA, Box 951775, Los Angeles, CA 90095-1175.** E-mail: ltoro@ucla.edu. UCLA is an Equal Opportunity Employer.

POSITIONS OPEN

POSTDOCTORAL POSITIONS are immediately available for research focused on mouse models of human breast cancer by conditional inactivation of p53 and the biological and biochemical functions of the checkpoint genes ATM/ATR. Our recent publications: ATM and NBS1, *Nature* 405:473; ATM and Rad51, *J. Biol. Chem.* 274:12748; ATR and Rad17, *Proc. Natl. Acad. Sci.* 98:13102; tumor models, *Cancer Res.* 57:4123. Training and experience in molecular biology, cell biology, biochemistry, or animal models preferred. Prospective candidates should forward their curriculum vitae and three references to:

Dr. Eva Lee, Professor
Department of Molecular Medicine
15355 Lambda Drive, San Antonio, TX 78245
E-mail: lee@uthscsa.edu
The University of Texas Health Science Center at San Antonio is an Equal Employment Opportunity/Affirmative Action Employer.

POSTDOCTORAL POSITION

Available immediately for Ph.D. or M.D. in immunology. Research will include studies on cellular and molecular mechanisms of human B cell differentiation and lymphomagenesis (reference *J. Immunol.* 157:1006, 1996; *J. Exp. Med.* 191:1077, 2000). Send curriculum vitae to:

Dr. Y. S. Choi
Laboratory of Cellular Immunology
Alton Ochsner Medical Foundation
1516 Jefferson Highway
New Orleans, LA 70121

An Equal Opportunity Employer.

FELLOWSHIPS

REGENTS FELLOWSHIP CONSERVATION BIOLOGY

The Department of Biological Sciences at the University of New Orleans has a Doctoral Fellowship available commencing fall 2002. The Fellowship term is a four-year period and includes a full tuition waiver, an annual stipend of \$20,000, and a research/travel allowance. The Department offers opportunities to conduct research related to conservation biology in areas including biochemical/physiological adaptations, reproduction, genetics, systematics, evolution, and ecology. For more information, send inquiries to e-mail: biograds@uno.edu or see our website: <http://www.uno.edu/~bios>. To apply, contact: **Director of Graduate Studies, Department of Biological Sciences, University of New Orleans, Lakefront Campus, New Orleans, LA 70148.** Equal Employment Opportunity/Affirmative Action Employer.

COURSES

Short course on time-resolved fluorescence spectroscopy. The Center for Fluorescence Spectroscopy at the University of Maryland School of Medicine is offering a short course on "Principles and Applications of Time-Resolved Fluorescence Spectroscopy" in Baltimore, March 25-29, 2002. The course will cover basic and advanced topics in fluorometry including time- and frequency-domain measurements and Forster energy transfer. Advanced topics include chemical sensing, imaging, fiber optics, infrared fluorometry, two-photon excitation, instrumentation, confocal and multiphoton microscopy, protein fluorescence, DNA technology, high-throughput screening, metal-ligand probes, correlation spectroscopy, lanthanides, and immunoassays. Textbook, course materials, lunches, and refreshments will be provided. For further information, a schedule, and fees, please contact: **Ms. Mary Rosenfeld or Professor J. R. Lakowicz, CFS, Department of Biochemical and Molecular Biology, 725 West Lombard Street, Baltimore, MD 21201.** Telephone: 410-706-8409; FAX: 410-706-8408; e-mail: cfs@cfs.umbi.umd.edu; website: <http://cfs.umbi.umd.edu>.

MARKETPLACE

DNA Polymerase Technology, Inc.

Rock your reactions with

ROCK START
BUFFER

The new hot start buffer for PCR.

Beta-test it at www.klentaq.com

ANTISENSE

- Complete Proven Antisense Program
- Low Toxicity, 2nd Generation Oligomers
- Research Rights to Key Patents



SEQUITUR

888-923-1439
www.oligo.com

TREVIGEN

Annexin V

binds like a bulldog!



Trevigen's "Bulldog quality" Annexin V binds early apoptotic cells every time!

1.800.TREVIGEN • www.trevigen.com • info@trevigen.com

Be First - Go Custom!

CUSTOM PEPTIDE & ANTIBODY PRODUCTION

- Leading manufacturer of phosphospecific antibodies
- Unsurpassed technical support

800-435-2080

On-line: peptide@biosource.com

biosource.com

Custom Gene Synthesis

Sigma-Genosys introduces a new service to the molecular biology laboratory - custom designed and assembled genes. Now you can order whole genes, to your exact specifications, as easily as you can order probes and primers.

- Genes custom designed to your requirements
- Guaranteed correct sequence
- Cloned into your choice of vector
- Convenient and affordable

If your research requires custom genes, there's a convenient way to get the exact sequence you need without investing months of valuable lab time. Just call Sigma-Genosys.

SIGMA
GENOSYS

North America
1-877-260-0764
ginformation@sial.com

Europe
(+44) (0) 1223 839000
info@sigma-genosys.co.uk



**MORE PRODUCTS
ON PREVIOUS PAGE**

Customized Project Support

CBI is your source for complete R&D project support, including all peptide, protein, DNA and molecular biological technologies. For a free consultation or a quote, call 1-800-735-9224 or email info@cbi-biotech.com.

**COMMONWEALTH
BIOTECHNOLOGIES, INC.**
From Concept to Clinic

601 Biotech Drive · Richmond, VA 23235
1-800-735-9224 · www.cbi-biotech.com

DNA PEPTIDES

Free Set-up and
Desalting

Call and Compare

**Gene Synthesis, Site Mutagenesis,
Protein Expression and more**

COMPARE AND SAVE

DNA Sequencing: as low as \$15 per run

Custom Anti-peptide Antibody
(including peptide synthesis)
\$850

GENEMED SYNTHESIS

800.344.5337 Fax: 650.952.9540
Web Site: www.genemedsyn.com

CUSTOM MICROARRAYS

RELIABLE FAST ACCURATE

MICROARRAYS, INC.
(615) 327-5495
www.microarrays.com



CUSTOM PEPTIDES

QUICK QUOTE

MOST QUOTES IN AN HOUR

FAST DELIVERY

2 WEEKS FOR MOST ORDERS

100% SATISFACTION GUARANTEE

Fax: 978-343-5940

...MADE EASY!

**NEW ENGLAND
PEPTIDE, INC.**
Tel: 888-343-5974

www.newenglandpeptide.com

Premier Specialty DNA Synthesis

Molecular Beacons, RNA, Antisense
Oligos, Dual-Labeled Fluorescent
Probes & many dyes and other
modifications!

XX IDT www.idtdna.com
1-800-328-2661

Custom Peptides & Antibodies

Best Service & Price! Compare and Save!

Alpha Diagnostic (800) 786-5777

Fax (210) 561-9544; info@4adi.com

Web site: <http://www.4adi.com>

QUALITY DNA SYNTHESIS

MALDI-TOF Mass Spectrometry Quality Control

Fluorescent Dyes & Other Modifications

Gene Construction & Sequencing Services

Custom RNA Oligos & Antisense DNA Oligos

Custom Primers for PCR & Sequencing

Long Oligos (up to 150-mers)

Competitive Pricing

MIDLAND

The Midland Certified Reagent Company Inc.

1-800-247-8766 • FAX: 1-800-359-5789

www.mcrc.com • email: mcrc@oligos.com

3 O.D. Select Oligos

NEW LOW PRICE

Just \$0.45/base*

We'll ship your 3 O.D. Select oligos in just 24-48 hours.
Every oligo is QC'd by PAGE analysis, and each batch is
performance-tested by mass spec.

Order by fax: 281-363-2212, email: gorderentry@sial.com
or web: www.genosys.com.

*Desalted only. Oligos must be 10 to 35 bases in length.
No modifications or additional purification. Offer valid in U.S. only.

**SIGMA
GENOSYS**

North America: 1-877-710-1504 • email: ginformation@sial.com

**your Single-Source
Antibody Authority**



**STRATEGIC
BIOSOLUTIONS**

Custom Antibody Services

- Polyclonal • Monoclonal
- Hybridoma Development • Ascites Production
- In vitro Production • Purification • Conjugation

800.481.9737

www.strategicbiosolutions.com

MERLIN® Custom Services

Plasmid Purification



*Starting at \$59/1 mg**
Endotoxin Removal, Cloning,
Research or cGMP Grade

*minimum of 5 mgs

1-800-4-PLASMID • www.qbiogene.com

BIO●SYNTHESIS, INC.

PEPTIDES, OLIGOS ANTIBODIES

800-227-0627 www.biosyn.com

Quality Peptides & Antisera

Friendly, Personal Service
www.genosys.com

Custom Peptide Synthesis

- sequence analysis
- IG, >70%, >80%, >95% purity
- scales from 2 mg-1 g
- synthesis up to 120 residues
- variety of modifications available
- mass spec & HPLC on every peptide
- satisfaction guaranteed

Polyclonal Antisera Service

- antigen design assistance
- synthesis, conjugation and sera collection
- flexible protocol

**SIGMA
GENOSYS**

North America
1-877-710-1502
ginformation@sial.com

Europe
(+44) (0) 1223 839000
info@sigma-genosys.co.uk

CUSTOM SHOTGUN DNA LIBRARIES

- BAC, PAC, P1, Cosmid or other large insert clones acceptable
- Random M13 or pUC18 plasmid library provided
- High quality: >95% insert ratio
- 1-2 week turnaround time
- Customer satisfaction guaranteed

DNA sequencing and mini-prep services available

seqwright

TEL (713) 528-4363

FAX (713) 528-6232

www.seqwright.com

seq@blkbox.com

800-720-4363

Antibodies That Work!

Great Zymed Performance:
Including The Best Antibody To...

Phosphothreonine

ZYMED LABORATORIES INC.
South San Francisco, California, U.S.A.

www.zymed.com
1-650-871-4494

Widely
Recognized
Original &
Guaranteed

KlenTaq1

8¢/u

Truncated
Taq DNA
Polymerase
Withstand 99°C

US Pat # 5,436,149

Call: **Ab Peptides** 1-800-383-3362

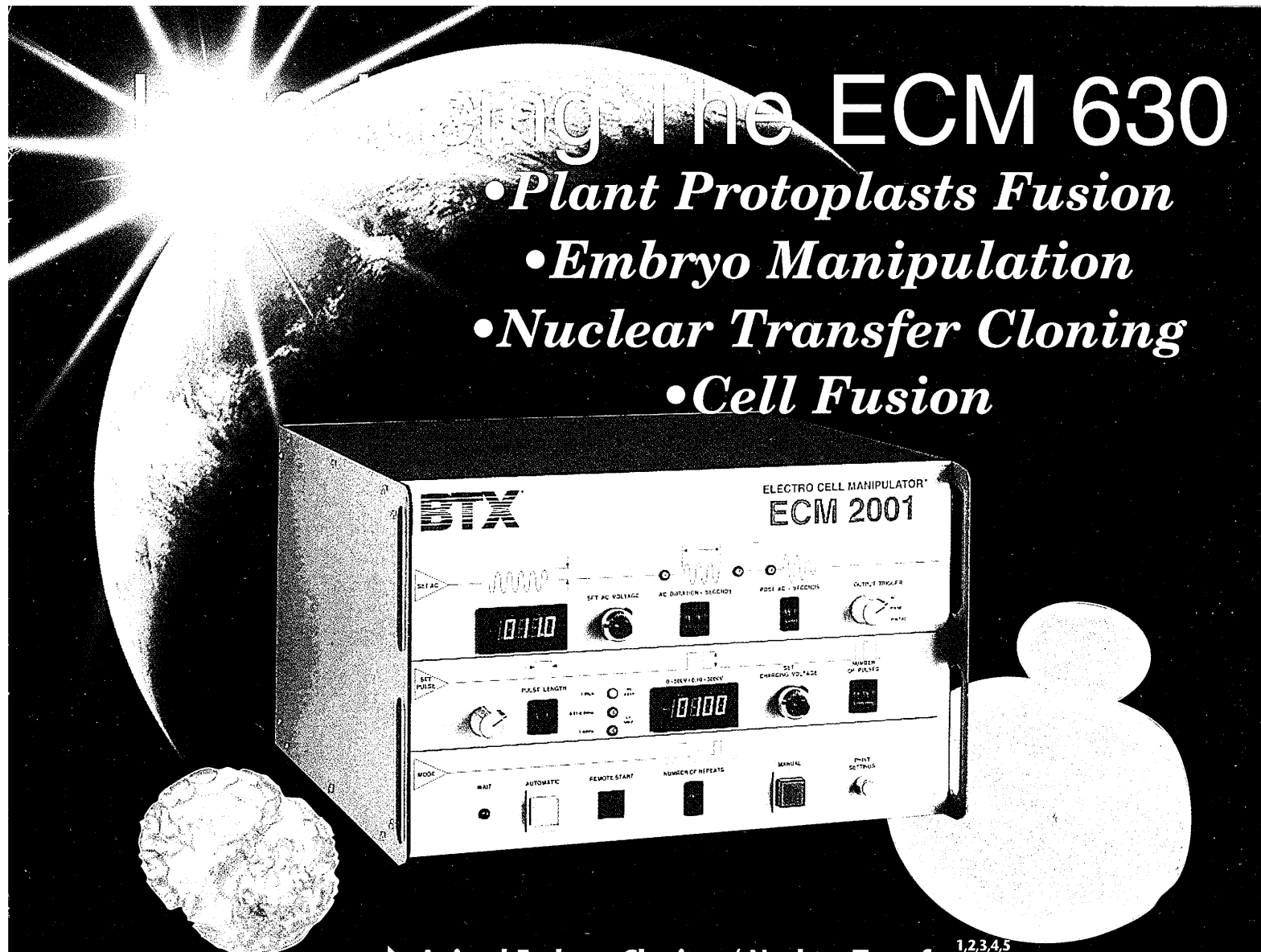
Fax: 314-968-8988 www.abpeps.com

Custom DNA Synthesis

Purified and delivered in 48 Hours
www.resgen.com

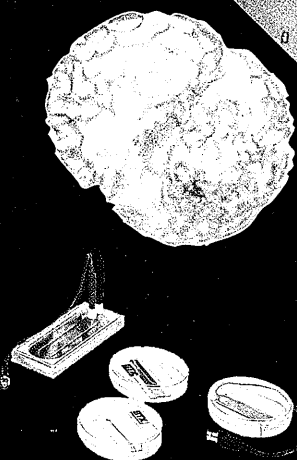
ResGen
Invitrogen Corporation

1-800-533-4363



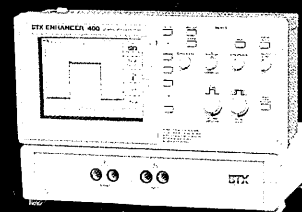
Introducing the ECM 630

- *Plant Protoplasts Fusion*
- *Embryo Manipulation*
- *Nuclear Transfer Cloning*
- *Cell Fusion*



Fusion Chambers

- ▶ **Animal Embryo Cloning / Nuclear Transfer**^{1,2,3,4,5}
- ▶ **Hybridoma & Quadroma Formation to Produce Bispecific Antibodies**^{6,7}
- ▶ **Fusion of Plant Protoplasts**⁸
- ▶ **Electroporation of Plant, Mammalian, Bacteria, Yeast and Fungi**



Enhancer™ 400
Graphic Wave Display

BTX®

The Electroporation Experts

1-800-289-2465

(858) 597-6006 fax: (858) 597-9594

Outside U.S.A. / Canada, contact:

cust@genetronics.com

<http://www.btxonline.com>

BTX is a division of Genetronics, Inc.

¹NATURE, vol. 407: 86-90 (2000). "Cloned pigs produced by nuclear transfer from adult somatic cells"; Irina A. Polejaeva, et al.

²NATURE BIOTECHNOLOGY, vol. 17: 456-461 (1999). "Production of goats by somatic cell nuclear transfer"; Alex Baguisi, Esmail Behboodi, Eric Overstrom

³BIOLOGY OF REPRODUCTION, vol. 60: 821-827 (1999). "Development of Nuclear Transfer and Parthenogenetic Rabbit Embryos Activated with Inositol 1, 4,5-Triphosphate"; SM Mitalipov et al

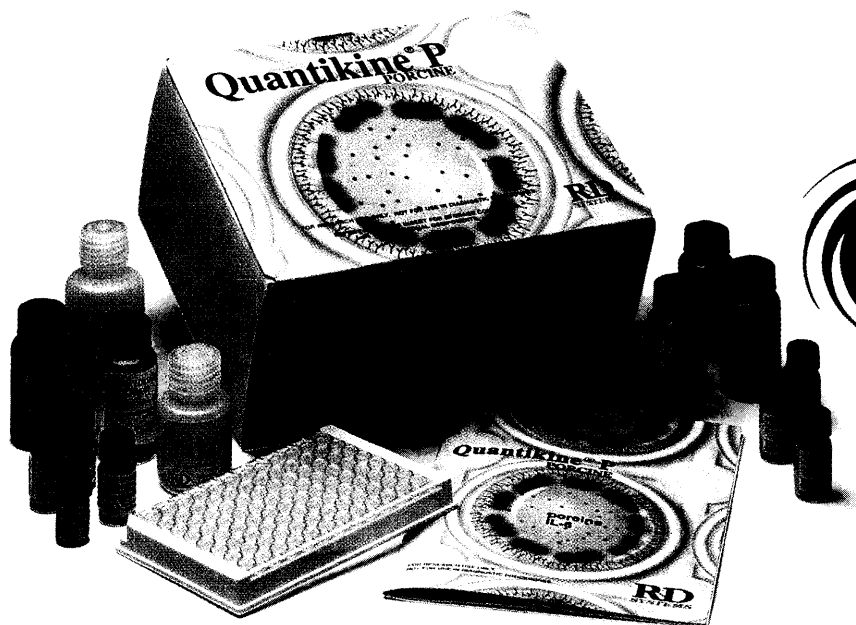
⁴BIOLOGY OF REPRODUCTION, vol. 57: 454-459 (1997). "Rhesus Monkeys Produced by Nuclear Transfer"; Li Meng, John J. Ely, Richard L. Stouffer, Don P. Wolf

⁵ANALYTICAL BIOCHEMISTRY, vol. 208: 1-9 (1993). "Preparation of Nuclear Transplant Embryos by Electroporation"; Robl, J.M. et al

⁶HYBRIDOMA, vol. 17, 267-273 (1998). "A New Method to Generate Quadromas by Electrofusioin and FACS sorting"; F.T. Kruetz, D. Z. Xu, M. R. Suresh

⁷JOURNAL OF IMMUNOLOGICAL METHODS, vol. 187: 1-7, (1995). "A Rapid Non-Selective Method to Generate Quadromas by Microelectrofusioin"; Y. Cao, T. Vinayagamoorthy, A.A. Noujaim, M.R. Suresh

⁸MOLECULAR BIOTECHNOLOGY, vol. 3: 181-189 (1995). "Rapid Optimization of Electroporation Conditions for Plant Cells, Protoplasts, and Pollen"; Saunders J.A. et al



*R&D Systems,
making the cutting edge
discoveries of today your
research tools tomorrow.*

Human

- CD40 Ligand
- Eotaxin-2
- IP-10
- MMP-3
- MMP-13
- TECK
- VEGF R2

Mouse

- Fas Ligand
- OPG
- E-Selectin
- L-Selectin

Porcine

- IL-1 β
- IL-6
- TNF- α

REPRODUCIBLE • SENSITIVE • ACCURATE Immunoassay

R&D Systems offers over 275 assays (human, mouse, rat and porcine) to measure:

- Cytokines and related molecules
- Adhesion Molecules
- Cytokine Receptors
- Eicosanoids
- Cyclic Nucleotides
- Hormones
- Multi-Analyte Profiling
- Enzyme Activity

Our assays have convenient sample sizes, are validated for appropriate sample types and give you the confidence to publish your results.

CYTOKINE TESTING IS ALSO AVAILABLE.

R&D Systems Analytical Testing Service is a GLP-compliant testing service utilizing our assays and expertise. Custom assay development is also available. Contact your Sales Representative for details.

Please visit our web site
at
for new product information
and subscribe to our
weekly new product
E-mail update.



FOR RESEARCH USE ONLY. NOT FOR USE IN DIAGNOSTIC OR THERAPEUTIC PROCEDURES.

North America
R&D Systems, Inc.
614 McKinley Place NE
Minneapolis, MN 55413, USA
Tel: 612 379-2956
Fax: 612 379-6580
info@rndsystems.com

Europe
R&D Systems Europe Ltd.
19 Barton Lane
Abingdon Science Park
Abingdon, OX14 3NB, UK
Tel: +44 (0)1235 529 449
Fax: +44 (0)1235 533420
info@rndsystems.co.uk

Germany
R&D Systems GmbH
Borsigstrasse 7
65205 Wiesbaden, Germany
Tel: +49 (0)6122 90980
Fax: +49 (0)6122 909819
info@rndsystems.co.uk

Europe Free Phone –
Belgique/België: 0800 10 468
Danmark: 80 01 85 92
France: 0800 90 72 49
Nederland: 060 225607
Norge: 800 11033
Sverige: 020 79 31 49
Switzerland: 0800 55 2482

R&D SYSTEMS

1-800-343-7475
www.rndsystems.com