



# A close-up view of 21 CFR Part 11.

It's often hard to know where to begin solving a complex problem. In the case of 21 CFR Part 11 compliance, the leading pharmaceutical companies are rapidly gaining leverage—by implementing powerful electronic records solutions from NuGenesis® Technologies. Why should you talk to us? Because we have amassed a wealth of 21 CFR Part 11 compliance experience. Our web-enabled NuGenesis® Scientific Data Management System has proven to be particularly effective. To find out more, visit [www.nugenesistech.com/key](http://www.nugenesistech.com/key) or email [info@nugenesistech.com](mailto:info@nugenesistech.com).

Also visit [www.21CFRPart11.com](http://www.21CFRPart11.com),  
a special site devoted to compliance.

©2001 NuGenesis Technologies Corporation. All rights reserved. NuGenesis is a registered trademark and NuGenesis Technologies is a trademark of NuGenesis Technologies Corporation.

**NuGenesis®**  
TECHNOLOGIES

More Science. Less Paper. It's About Time.™

Circle No. 18 on Readers' Service Card

# NEW PRODUCTS

## Apollo Lunar Surface Journal

is available as a four-disk CD-ROM set for \$40 (alsj@netcom.ca) or can be viewed free of charge at [www.hq.nasa.gov/alsj/](http://www.hq.nasa.gov/alsj/).

for browser viewing. Highlights of Apollo missions 11 through 17 are presented in audio, video, and text formats and can be viewed either on a four-disk CD-ROM set or at NASA Web pages ([www.hq.nasa.gov/alsj/](http://www.hq.nasa.gov/alsj/)). Users can simultaneously watch the descent of Apollo 11 at their desktops, listen to communications with mission control, and read a transcript of the discussions. Interspersed with the transcript of the communications between the astronauts and mission control are comments from the astronauts' interviews with Jones. These expand the listeners' understanding by explaining most of the technical lingo used by the astronauts. The interviews also help illustrate what was running through the minds of these pioneers as they risked their lives for a chance to walk on the Moon.

Multimedia files are presented in formats commonly used by most Web browsers (RealAudio, RealVideo, and QuickTime). While Jones and colleagues are to be commended for their extensive efforts to assemble the countless multimedia materials for the project, the limited amount of video that can be either stored on disks or effectively downloaded from the Web reduces the views to one-inch windows on the screen. Worse, only a disappointing number of videos are available, many of which show little more than astronauts jumping off the Lunar Module onto the Moon's surface. The CD-ROMs are impressive primarily for sparing download time, but have a few broken links. For example, all of the Apollo 17 videos produce a "File not found" message when clicked from within the browser. Fortunately, the Web site is more robust. It contains a superset of material on the disks, and the links are all intact, thanks to fixes and frequent updates.

Despite their shortcomings, the CD-ROMs are priced right (\$40) and Web access is free. ALSJ documents a unique event of science history and is a must-have for any serious fan of the technological race to conquer outer space.

—Kevin Ahern

Department of Biochemistry and Biophysics, Oregon State University, Corvallis, OR 97331, USA. E-mail: [ahernk@ucs.orst.edu](mailto:ahernk@ucs.orst.edu)

## Zymark

For more information call 508-435-9500 or **circle 141** on the Reader Service Card [www.zymark.com](http://www.zymark.com)

combination permits laboratories to choose any gene target and cell type, and design and run cell-based assays in an automated mode. The Staccato is a scalable workstation that completes 10,000 assays in a 24-hour period and provides the flexibility to make alterations as gene targets change. The QuantiGene HV Kit, for research use only, enables rapid screening of compounds by directly measuring cellular mRNA expression. The assay is unique in that no isolation of mRNA is required. This ability to

## TECHNOLOGICAL TRIBUTE

Developments in rocketry and electronics were among the most significant technological advances of the 20th century. The Apollo Lunar Surface Journal (ALSJ), edited by Eric M. Jones, brings the two together in an impressive collection of material formatted

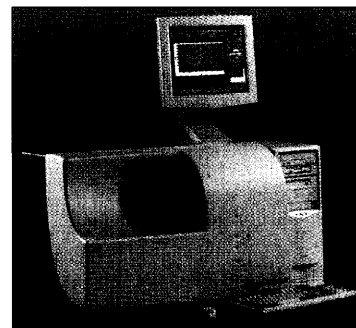
bypass the sample preparation phase saves significant amounts of time. Cell-based assays offer the power to identify false positives earlier in discovery, making it possible for laboratories to dramatically reduce candidate validation costs. The accompanying software allows the laboratory to design specific probe sets for any mRNA target.

## Stratagene

For more information call 800-894-1304 or **circle 142** on the Reader Service Card [www.stratagene.com](http://www.stratagene.com)

## QUANTITATIVE PCR INSTRUMENT

The Mx4000 is a new instrument designed for multiplexed quantitative polymerase chain reaction (PCR) applications. It is intended to create a new standard for data analysis and flexibility for genomic studies using real-time PCR assays in which results are recorded as the amplification reaction occurs. The advanced optical system offers a broad range of excitation and detection ranges, supporting all available fluorescent chemistries. The system provides powerful capabilities for generating and analyzing data for all fluorescent quantitative PCR applications, including allelic discrimination, mutational analysis, and quantification for single or multiplexed targets. The software analysis and detection systems combine to provide real-time amplification plots that can be viewed and accessed while a PCR experiment is in progress. After completion of an experiment, data can be viewed in a variety of formats, including amplification plots, scatter plots, threshold cycle values, and fluorescence intensity screens. Other capabilities include analysis of melting curves and multiple standard curves on the same plot as well as independent evaluation of selected sample wells.



## BioCrystal

For more information call 614-818-0019 or **circle 143** on the Reader Service Card [www.opticell.com](http://www.opticell.com)

## CELL CULTURE INSTRUMENT

OptiCell, a new concept in cell culture technology, is a sterile, sealed cell environment between two optically clear, gas-permeable growth surfaces in a standard microtiter plate-sized frame. Self-sealing ports provide easy, aseptic access to the interior and contents. OptiCell accommodates a full range of high-performance, cost-effective cell culture activities from cell growth and magnetic cell separation to staining, microscopy, transfection, and cloning. OptiCell can also be used for drug discovery and for the production of cell products such as monoclonal antibodies and cytokines. With a media volume of only 10 ml, each OptiCell provides 100 cm<sup>2</sup> of growth surface area in a fraction of the space of conventional cell culture devices. Gas permeability allows diffusion of oxygen and carbon dioxide across the growth surface for optimal cell growth and culture health. Optically clear growth surfaces allow visual access to living cells and processes with any kind of microscope and standard or specialized optics. OptiCell streamlines proce-

CONTINUED ON PAGE 1406

dures, reduces costs, minimizes contamination risks, saves laboratory and incubator space, and reduces solid waste.

#### Pyrosequencing

For more information call  
877-797-6767 or  
**circle 144**  
on the Reader Service Card  
[www.pyrosequencing.com](http://www.pyrosequencing.com)

#### DNA SEQUENCING SYSTEM

Samples can now be processed in parallel in less than 1 hour on the PSQ 96 System for DNA sequencing using new sequence analysis software and reagent kits. With conventional techniques it can take days to identify or

characterize bacteria or viruses. This system can shorten that time to a few hours. The PSQ 96 System can perform rapid, accurate, and reproducible single nucleotide polymorphism analysis and sequence analysis—the analysis of DNA sequences used for identification and characterization—by simply selecting the appropriate software and reagents.

#### AutoGen

For more information call  
800-292-5678 or  
**circle 145**  
on the Reader Service Card  
[www.autogen.com](http://www.autogen.com)

#### NUCLEIC ACID EXTRACTOR

The AutoGenprep 960 is an automated, high-throughput robotic system for DNA extraction. This system purifies nucleic acids from up to four 96-deep well plates per run in just 4 hours. The user simply loads the sample plates directly onto the sample plates, starts the system, and walks away. The system offers low cost, high yield, and high quality.

combines multichannel, plate-to-plate fluid transfer and fluorescence measurement in one system. For drug discovery applications, the system can play a key role in reducing assay development bottlenecks by providing a convenient means of developing assays for later transfer to higher throughput screening. For basic and applied research in life sciences, the system's flexibility enables scientists to develop, optimize, and run their assays on one system with the same small footprint as a standard benchtop microplate reader.

#### Molecular Devices

For more information call  
408-747-3533 or  
**circle 146**  
on the Reader Service Card  
[www.moleculardevices.com](http://www.moleculardevices.com)

#### BENCHTOP WORKSTATION FOR ASSAY DEVELOPMENT

The FLEXstation microplate assay development and detection system provides drug discovery and life sciences researchers a powerful, flexible solution to their research challenges. The FLEXstation

combines multichannel, plate-to-plate fluid transfer and fluorescence measurement in one system. For drug discovery applications, the system can play a key role in reducing assay development bottlenecks by providing a convenient means of developing assays for later transfer to higher throughput screening. For basic and applied research in life sciences, the system's flexibility enables scientists to develop, optimize, and run their assays on one system with the same small footprint as a standard benchtop microplate reader.

#### Beckman Coulter

For more information call  
800-742-2345 or  
**circle 147**  
on the Reader Service Card  
[www.beckmancoulter.com](http://www.beckmancoulter.com)

#### HIGH-SPEED HIT PICKING

The Biomek FX provides speed and flexibility for compound screening applications. This liquid-handling system takes advantage of an eight-channel variable span pipettor to rapidly transfer compound hits from source labware

and reformat and consolidate those hits into destination plates for subsequent screening applications. A software wizard provides a quick and easy tool for developing the appropriate labware handling and pipetting methods. The researcher simply answers a few questions and the method is created automatically. The system can be configured with one or two liquid handling arms and a flexible array of stations on the highest-capacity work deck available. Pipetting options include multichannel and new independent eight-channel pipettors, both of which can be integrated into a single system. The multichannel pipettor is available with interchangeable 96-channel or 384-channel disposable tip pipetting heads.

#### VWR Scientific Products

For more information call  
800-932-5000 or  
**circle 148**  
on the Reader Service Card  
[www.vwrsp.com](http://www.vwrsp.com)

#### AEROSOL FILTER PIPET TIPS

VWR Signature Aerosol Filter Pipet Tips provide protection from sample carry-over by incorporating a robotically inserted, patented filter made from high molecular weight polyethylene. The filters allow the pipettor to draw by venting through a sponge-like pathway de-

signed to trap contaminants. The pores in the pathway have an average size of 10 microns, so even radionucleotides are captured before reaching the pipettor barrel. The tips are available in a range of capacities from 0.1  $\mu$ l to 1000  $\mu$ l and fit a wide number of brand-name pipettors.

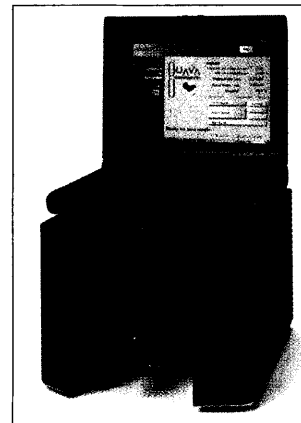
#### Guava Technologies

For more information call  
650-552-0700 or  
**circle 149**  
on the Reader Service Card  
[www.guavatechnologies.com](http://www.guavatechnologies.com)

#### PERSONAL CYTOMETER

The Guava PC (personal computer) is a desktop instrument capable of performing a variety of cell analyses, including cell count and viability, protein expression, and apoptosis assays. The automated system allows users to perform

focused testing in their own laboratories at a significant improvement in speed, precision, and reliability over traditional techniques. The system requires no specialized training to operate. It combines solid-state laser technology, advanced digital signal processing, and a no-sheath-fluid design to deliver precise, accurate results in approximately 30 s with very small sample (minimum 50  $\mu$ l) and little waste. It includes an integrated laptop for computerized control with software that automatically configures tests and collects and analyzes data.



#### RoboDesign

For more information call  
760-438-5282 or  
**circle 150**  
on the Reader Service Card  
[www.robodesign.com](http://www.robodesign.com)

#### MICROARRAYER

The RoboArrayer is a state-of-the-art industrial microarrayer with an integrated vision system linked to a unique print head design. The vision system allows for real-time quantification of spot size and spot volume during the

printing process. A unique print head drastically reduces sample dropouts on microarrays when used in combination with the integrated vision system. Linking these two systems together permits users to automate the quality control and reprinting steps required to generate high-quality microarrays. Other features of the design are matched pin sets for reduced spot variability, an enclosure with high-efficiency particulate air filtration and humidity control, automated microtiter plate handling with a barcode reader for sample tracking, and a self-monitoring system for reduced wash times.

Newly offered instrumentation, apparatus, and laboratory materials of interest to researchers in all disciplines in academic, industrial, and government organizations are featured in this space. Emphasis is given to purpose, chief characteristics, and availability of products and materials. Endorsement by *Science* or AAAS of any products or materials mentioned is not implied. Additional information may be obtained from the manufacturers or suppliers named by circling the appropriate number on the Reader Service Card and placing it in a mailbox. U.S. postage is free.



or [www.sciencecareers.org](http://www.sciencecareers.org)

If you're in the life sciences, you don't have to canvas a parking lot to spread your name in the job market. Go to ScienceCareers.org. Every week you'll find hundreds of new job postings, employer profiles, a resume/CV database and an e-mail alert service that will deliver jobs directly to you. With ScienceCareers.org you'll have all the tools you need to blanket the industry and leave a good impression.

**Science** @  
CAREERS 

[www.sciencecareers.org](http://www.sciencecareers.org)

### Classified Advertising

For full details on advertising rates, deadlines, mechanical requirements, and editorial calendar go to [www.sciencecareers.org](http://www.sciencecareers.org) and click on How to Advertise

#### UNITED STATES

#### Display Classified Advertising

Bren Peters (Mid-Atlantic, Midwest)  
Tel: 202-326-6541

Kathleen Clark (Southeast, Canada)  
Tel: 202-326-6555

Jill Steinberg (Northeast)  
Tel: 212-496-1264

Kristine von Zedlitz (West Coast)  
Tel: 415-956-2531

Fax: 202-289-6742

E-mail: [science\\_displayads@aaas.org](mailto:science_displayads@aaas.org)

#### Line Classified Advertising

Jody Fenty  
Tel: 202-326-6722

Christina Geiger  
Tel: 202-326-6532

Fax: 202-289-1451

E-mail: [science\\_classifieds@aaas.org](mailto:science_classifieds@aaas.org)

#### Online Classified Advertising

Beth Dwyer  
Tel: 202-326-6534

Fax: 202-289-6742

E-mail: [bdwyer@aaas.org](mailto:bdwyer@aaas.org)

[www.sciencecareers.org](http://www.sciencecareers.org)

**Ad Materials:** Send to: *Science* Classified Advertising, 1200 New York Avenue, NW, Room 911, Washington, DC 20005

#### EUROPE

#### Display, Line, and Online Classified Advertising

Deborah Cummings  
Tel: +44 (0) 1223 326 500

Fax: +44 (0) 1223 326 532

E-mail: [european\\_ads@science-int.co.uk](mailto:european_ads@science-int.co.uk)

**Ad Materials:** Send to: *Science* International, Advertising Dept., Bateman House, 82-88 Hills Road, Cambridge CB2 1LQ, United Kingdom

#### MEETINGS/ANNOUNCEMENTS

Kathleen Clark  
Tel: 202-326-6555  
Richard Walters  
Tel: +44 (0) 1223 326 500

To **Subscribe** to *Science* call:  
202-326-6417 or 1-800-731-4939

#### POSITIONS OPEN

## IMMUNEX

### Creating the Future of Medicine™

When you believe anything is possible, it is.

At Immunex, we have the vision and potential to achieve great things. In less than 20 years, we have grown to be one of the largest biotechnical firms in the nation, and Immunex has just been named one of the "Top 100 places to work" by Fortune Magazine! Based in Seattle, Washington, our employees enjoy all the benefits, resources, support, and freedom to accomplish great science.

#### RESEARCH ASSISTANT/ RESEARCH ASSOCIATE

Located on First Hill, the Analytical Chemistry and Formulation Group has an immediate opening for a Research Assistant/Associate to help develop, qualify, validate, and implement chromatographic methods for the characterization of therapeutic proteins. The successful candidate will have a solid understanding of chromatographic principles and experience in the application of modern chromatographic methods to protein analytics. Hands-on experience with HPLC required and familiarity with analytical methods such as electrophoresis, capillary electrophoresis, or mass spectrometry an asset. The ideal candidate will be instrumental in developing informative and robust methods capable of being transferred to a quality control environment. Strong communication and problem-solving skills are essential. B.S./M.S. in biochemistry or related discipline with pharmaceutical or biotechnical experience preferred. (Number 01-0219).

In addition to the tremendously rewarding environment, we offer an exceptional compensation and benefits package. Please submit a scannable résumé specifying job code to **e-mail: [immunexcareers@webhirerpc.com](mailto:immunexcareers@webhirerpc.com)**. *Immunex is an Equal Opportunity Employer committed to diversity.*

#### PH.D. RESEARCHER POSITION

**ANESTHESIOLOGY RESEARCH.** The University of California, Irvine, will be recruiting during the months of April 20, 2001 to July 5, 2001, for an **ASSISTANT PROFESSOR**, tenure track. Requirements include Ph.D. or M.D. with significant research training or experience. Molecular biology experience is an asset. Opportunities for experimental and clinical research and collaborations with the basic sciences, including biomedical engineering. Present departmental research areas include gas kinetics in anesthesia during nonsteady state (NIH-funded program, HL-42637, systems to cellular physiology) and the study of mechanisms of anesthesia and memory (includes PET and MRI imaging technologies). Duties will include teaching of residents and medical students. Apply to: **Peter H. Breen, M.D., FRCP, Vice Chair and Director of Academic Affairs, Search Committee Chair, Department of Anesthesiology, UCI Medical Center, 101 The City Drive South, Orange, CA 92868. FAX: 714-456-7702.** *UCI is an Equal Opportunity Employer committed to excellence through diversity.*

Crop and soil sciences: **ASSISTANT PROFESSOR**, turfgrass physiology/molecular biology (70% research and 30% teaching). A Ph.D. in plant physiology, plant biochemistry, genetics, or closely related area with a working competency in molecular biology is required. By July 15, 2001, applicants should send curriculum vitae; transcripts; three letters of reference; and brief statements of (1) your research and teaching interests and (2) your vision of the future for this position and the team required to successfully complete the vision (not to exceed one page each) to: **Dr. Don Penner, Search Committee Chairperson, Department of Crop and Soil Sciences, Michigan State University, East Lansing, MI 48824-1325. Telephone: 517-353-8853; FAX: 517-353-5174; e-mail: [johns146@msu.edu](mailto:johns146@msu.edu).** *MSU is an Affirmative Action/Equal Opportunity Institution.*

#### POSITIONS OPEN

### FOREST ECOLOGIST AND QUANTITATIVE EXPERIMENTAL ECOLOGIST

James Madison University  
Department of Biology

One and possibly two tenure-track positions at **ASSISTANT** or **ASSOCIATE** level. Start in fall 2001. Ph.D. required.

First position: community ecology. Preference will be given to Forest Ecologists studying plant-plant or plant-animal interactions.

Second position: quantitative experimental ecology. Preference given to Aquatic or Watershed Ecologists.

Both positions: The successful candidates will teach majors' courses in ecology and in areas of specialty and teach nonmajors in the general education program and must show evidence of excellent teaching and communication skills, including familiarity with new classroom and instructional technologies. A continuing commitment to scholarly activity involving research by undergraduate and Master's students is required. Optional teaching available in summers.

The Department has 600 majors, 80 minors, 12 M.S. students, and 31 full-time faculty. We have a departmental focus on involving undergraduates in scholarly research. Please visit our website: <http://www.jmu.edu/biology/>. Submit curriculum vitae, statement of teaching philosophy and experiences, and summary of scholarly interests and goals. Arrange to have three letters of recommendation sent to: **Chair of Ecology Searches, Department of Biology, MSC 7801, James Madison University, Harrisonburg, VA 22807.** Applications will be reviewed beginning June 18, 2001, until suitable applicants are found. *JMU is an Equal Opportunity/Affirmative Action/Equal Access Employer and especially encourages applications from minorities, women, and persons with disabilities.*

#### FACULTY POSITIONS COMPUTATIONAL BIOLOGY AND BIOINFORMATICS

University of Pittsburgh School of Medicine

Two tenure-track positions are available at **ASSISTANT PROFESSOR** or, in special cases, **ASSOCIATE/ FULL PROFESSOR** level at the University of Pittsburgh, Center for Computational Biology and Bioinformatics. The successful candidate will have a Ph.D., multidisciplinary background so as to integrate biological knowledge with theoretical and computational tools, postdoctoral experience in computations applied to biological problems, and a credible publication record. Areas of research include development of theoretical and computational tools for sequence-structure-function prediction, computational genomics, modeling, and simulation of molecular and cellular dynamics. Successful candidates will develop their research programs while contributing to collaborative activities across the Schools of Health Sciences and the Faculty of Arts and Sciences. Please send your curriculum vitae, a brief statement of research interests, the contact information for three references, and reprints of three papers to: **Dr. Ivet Bahar, Director, Center for Computational Biology and Bioinformatics, School of Medicine, University of Pittsburgh, Suite 601, L. Kaufmann Building, 3471 Fifth Avenue, Pittsburgh, PA 15213. E-mail: [bahar@pitt.edu](mailto:bahar@pitt.edu).**

*The University of Pittsburgh is an Affirmative Action/Equal Opportunity Employer. Women and minorities are encouraged to apply.*

**BIOLOGY TEACHER** (anticipated opening). The Arkansas School for Mathematics and Sciences anticipates an opening for a highly motivated individual to teach biology and/or chemistry. Master's degree required; Ph.D. preferred. An applicant that is a noncitizen must obtain a valid visa. Excellent salary/benefits. Job description can be found at website: <http://asms.k12.ar.us/jobs/index.html>. Send résumé, names, and addresses of five references to: **Office of the Director, 200 Whittington Avenue, Hot Springs, AR 71901.** *ASMS is an Equal Opportunity Employer/Affirmative Action Employer.*

Lilly is about breakthrough medicines and treatments to confront many of the most challenging diseases. While employing more than 35,000 employees worldwide and marketing our medicines in 179 countries, Lilly continues to earn consistent recognition for creating an exceptional work environment.

**1) BS/MS/Ph.D. VIROLOGISTS**

Seeking scientists with research experience using eukaryotic virus systems.

**2) BS/MS/Ph.D. BIOCHEMISTS**

Seeking biochemists that have a proven expertise in standard biochemical methods.

**3) BS/MS/Ph.D. MOLECULAR BIOLOGISTS**

Seeking molecular biologists with experience in molecular biology techniques, recombinant DNA techniques, mammalian tissue culture studies, and gene expression.

**4) BS/MS/Ph.D. CELLULAR BIOLOGISTS**

Seeking individuals with cell biology and tissue culture experience.

**5) BS/MS/Ph.D. MICROBIOLOGISTS**

Seeking microbiologists with basic micro techniques understanding of aseptic techniques.

**6) MS/Ph.D. BIOINFORMATICS**

Seeking individuals in biological sciences with experience in statistical genetics interface.

**7) MS/Ph.D. IN VIVO PHARMACOLOGISTS**

Seeking in vivo pharmacologists with technical expertise in in vivo pharmacology and in vivo modeling.

**8) MS/Ph.D. MEDICAL WRITERS**

Seeking qualified candidates with an educational background in science and demonstrated expertise in medical writing/clinical data integration.

**9) MS/Ph.D. TOXICOLOGISTS**

Seeking individuals with expertise in toxicological testing to determine safety of pharmaceutical compounds.

**10) MS/Ph.D. HEALTH OUTCOMES RESEARCH ASSOCIATES**

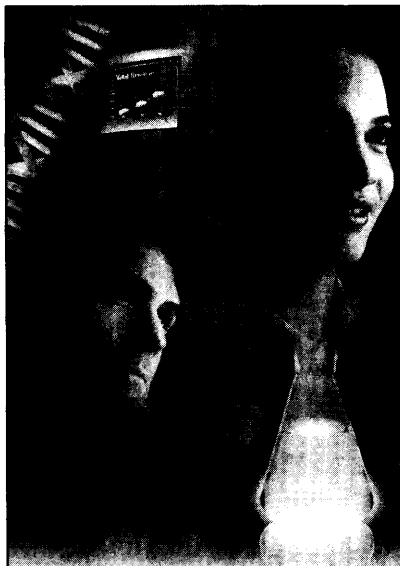
Seeking qualified candidates with an educational background in Economics/Pharmacoeconomics and expertise in incorporating, analyzing, and reporting health outcomes data.

For talented people who are passionate about doing their work in the most innovative ways possible, we have answers. Please refer to code **ADSCMIMB** when applying on-line. Lilly is an equal opportunity employer that values the strength diversity brings to the workplace.

[lilly.com/careers](http://lilly.com/careers)

*Lilly*

Answers That Matter.



challenge innovation teamwork

## The Face of Pfizer

careers that matter

The best is getting even better! As the world's largest pharmaceutical research enterprise, Pfizer is dedicated to providing the best innovations in medicine while pursuing tomorrow's discoveries in research and

development. If you share our dedication to discovering, developing and delivering medicines to improve the health of both people and animals worldwide, we want yours to be the newest Face of Pfizer. Consider the following opportunities at Pfizer Global Research and Development facilities in La Jolla, California, and Groton, Connecticut.

### Research Scientist/Senior Scientist (La Jolla)

Our Molecular Biology Department, the leader in structure-based drug design, is looking for talented and highly motivated scientists to join our team. Apply your expertise by performing protein expression and purification work in interdisciplinary project teams with the goal of finding innovative treatments for diseases in the areas of Oncology, Virology, Ophthalmology, Diabetes and Obesity. This position requires a PhD in Molecular Biology, Biochemistry, or a related discipline and a minimum of 3 years successful postdoctoral research, preferably in a drug discovery environment. Req. #01-0467-5V105SL

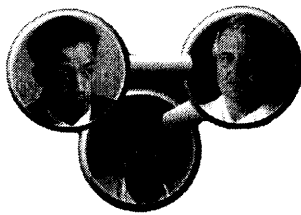
### Research Scientist/NMR Spectroscopist (Groton)

We are seeking an experienced scientist with a strong background in small molecule NMR spectroscopy to assume responsibility for NMR studies in support of Discovery Medicinal Chemistry. You will be making contributions in areas of experimental design, structure confirmation and elucidation, implementation of new hardware and software technologies, data systems management, and supervision and participation in a multidisciplinary team. This position requires a PhD and at least 3 years experience in NMR, preferably in an industrial setting. Expertise in Varian and/or Bruker instrumentation, Unix, SGI, and Solaris workstations is essential. Req. #09Apr0104219

Pfizer offers an exceptional work environment complete with training opportunities designed to develop your professional talents. We encourage all applicants to apply by emailing your resume, indicating the appropriate Req. # in the subject field, to [SCI@pfizerresumes.com](mailto:SCI@pfizerresumes.com). If necessary, you may also mail your resume, indicating Req. #, to Pfizer Resume Processing Center, 630 Boston Road M-104, Billerica, MA 01821, Attn: Softshoe Resumes. An equal opportunity employer, Pfizer offers a workplace rich with diversity and potential.



Life is our life's work.



*Leading the Way  
for a Healthier World*

Lead the way! Become a leader by furthering your career and experience with one of the world's largest research-based companies. At Wyeth, part of American Home Products, your knowledge will help lead the way into a healthier world. Join us in one of the following promising positions in our **Princeton, NJ** facility.

**Sr. Research Scientist, Slice Electrophysiologist**  
(Job#: P884345)

- Join our Neuroscience Ion Channel Research group to research modulation of synaptic plasticity and dendritic excitability
- Establish an independent research lab to support current ion channel programs and identify/characterize new neuroscience targets
- Ph.D. plus 2-5 years' training in Neuroscience and patch-clamp recording using in vitro slice preparations
- Expertise recording from hippocampal and/or spinal cord slices using voltage- and patch-clamp techniques is required; background in dendritic patch-clamp recording and acute/organotypic slice preparation highly desired
- Ideal training also includes experience recording from mouse hippocampal or spinal cord slice preparations
- Must have extensive exposure to computer-assisted data analysis and enjoy working in a collaborative team environment

**Research Scientist II, Slice Electrophysiologist**  
(Job#: P-IonKR)

- Work with our Neuroscience Ion Channel Research group in modulating synaptic plasticity and dendritic excitability
- BA plus 10 years' or an MS plus 8 years' experience with in vitro slice preparations; expertise recording from hippocampal and/or spinal cord slices using voltage- and patch-clamp techniques is required
- Expertise in dendritic patch-clamp recording is highly desirable, as is proficiency in using acute and organotypic slice preparations
- Ideal candidates possess credentials in recording from mouse hippocampal or spinal cord slice preparations
- Advanced skills required in computer-assisted data analysis; must enjoy interacting with multidisciplinary teams

Wyeth offers competitive compensation and benefits programs including stock options, child-care subsidies, flex-time, a business casual work environment, educational assistance and professional development programs. Please forward your resume with salary requirements to: **Wyeth, Reference OPSCI-NEURO, CN 8000, Princeton, NJ 08543-9979. Fax to: (732) 274-4205. E-mail: javorsp@war.wyeth.com**

Principals only. Equal Opportunity Employer. M/F/D/V

For more information, please visit us at:

[www.wyethjobs.com](http://www.wyethjobs.com)



**W WYETH**

A division of American Home Products

**The Wistar Institute,**

a non-profit biomedical research facility,  
has the following positions available:

**Postdoctoral position available to investigate viral and immunopathology studies** centered on HIV-1 infected patient-derived material, treatment interruption strategies, and in vitro models of macrophage and T-cell infection by HIV-1 (See Proc. Natl. Acad. Sci 96, 5215, 1999; J. Infect. Dis. 182, 766, 2000). Experience in HIV-1 research, cellular immunology, and cytokine networks preferred.

**Postdoctoral position available to study antigen presentation,** IL-12, microarray gene expression and inflammation in human and murine models systems. Experience in cellular immunity, infectious disease murine models and dendritic cells preferred.

Please send CV and the names of three references, indicating position of interest, to

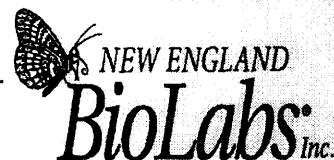
**Human Resources,  
Dr. L. J. Montaner,  
The Wistar Institute,  
3601 Spruce St.,  
Philadelphia, PA, 19104.**

EOE/AA/M/F/D/V.



[www.wistar.upenn.edu](http://www.wistar.upenn.edu)

*New England Biolabs,  
a world leader in the  
manufacture and supply  
of reagents for Molecular  
and Cell Biology, has  
the following position  
available.*



**Postdoctoral Fellow**

Position available immediately for studying protein splicing and its applications (see <http://www.neb.com> for more details). The project will focus on the kinetic and biochemical analysis of protein splicing elements. Knowledge in the area of protein characterization and/or protein engineering is desirable. At NEB, scientists conduct basic research in various disciplines and routinely publish their work in leading journals and present at scientific conferences.

Send a resume and three references to: **Dr. Tom Evans, or e-mail to [evans@neb.com](mailto:evans@neb.com).**

**New England Biolabs, Inc.  
32 Tozer Road  
Beverly, MA 01915**

An Equal Opportunity Employer

# Molecular Toxicologist

National Institute of Environmental  
Health Sciences  
National Institutes of Health  
Research Triangle Park, North Carolina

The Laboratory of Computational Biology and Risk Analysis of the NIEHS announces a tenure-track position to develop an independent research program in molecular toxicology focusing on mechanisms of carcinogenicity and toxicity initiated through ligand-receptor interactions. Applicants should have a Doctoral degree or equivalent with experience or training in molecular toxicology and a strong record of research in molecular toxicology, with publications in peer-reviewed journals. Research interests may include any receptor-mediated toxicants such as TCDD, growth factors or steroids. Time before tenure review will be dependent upon qualifications, but not exceed 8 years. Salary is commensurate with background, and Federal benefits apply. Excellent research support will be available.

For additional information, contact Dr. Douglas A. Bell, Search Committee Chair, at (919) 541-7686. Applications from minorities and women are particularly welcome. Applicants should submit curriculum vitae, brief statement of research interests and arrange for 3 letters of recommendation to be sent and postmarked by June 18, 2001, to:

Ms. Celestine Edwards (Vacancy Number HNV 01-08)  
NIEHS Human Resource Management Branch  
P.O. Box 12233, Maildrop EC-11  
Research Triangle Park, NC 27709  
Phone:(919)316-4602;  
e-mail: edwards3@niehs.nih.gov

NIEHS/NIH Is An Equal Opportunity Employer



As a major European pharmaceutical company, our success depends upon the dynamism of our research directed towards the discovery of new drugs. Thanks to its specialised researchers, our growing company has a pipeline of drugs in development.

*In our Research centre near Paris, a major and expanding scientific and medical hub within Europe, and within easy reach of the French countryside, we offer positions of*

## RESEARCH SCIENTISTS, Ph.D Specialised in the central nervous system

In our cerebral aging and chronic neurodegenerative diseases department :

### NEUROCHEMISTRY

You will be responsible for initiating and developing *in vitro* and *in vivo* neurochemistry studies and you will be in charge of the technical part of a small research team. You have a strong background in technologies used in CNS neurochemistry, in particular *in vivo* microdialyses.

### BEHAVIOURAL PHARMACOLOGY

You will manage a team of research associates involved in screening and target validation activities using behavioural models of age-related cognitive disorders and neurodegenerative diseases.

You have proven abilities in *in vivo* animal models of learning and memory. You have a strong research record in the psychopharmacology of cognitive functions such as attention, working and long-term memory. Previous experience with *in vivo* CNS behavioural screening activities would be advantageous.

You will join a high-level multidisciplinary team. Our company provides an atmosphere that encourages publication and collaboration, and our material and technical facilities are excellent.

The successful candidates are innovative, enthusiastic and hard-working Scientists, with relevant postdoctoral experience in CNS pharmacology, a strong publication record. Industrial experience would be an advantage.

Qualified applicants should send their letter of application, along with their curriculum vitae and photo to PUBLIVAL/5041  
27, Route des Gardes - 92190 Meudon, FRANCE.

## It's More Than A Career. It's A Defining Experience.

GlaxoSmithKline joins together the talented people of Glaxo Wellcome and SmithKline Beecham to create the world's leading research-based pharmaceutical company. We're the market leader in four of the five largest therapeutic categories, with unrivaled global marketing strength and powerful R&D and Manufacturing capabilities supporting a research spend of \$4 billion and sales of \$24.9 billion annually. Best of all, the industry's greatest, most innovative minds are now assembled under one name. If your goal is to change the world with innovative medicines, now is the time to join our respected team. We currently have **Pharmacogenetics and Applied Diagnostic** opportunities available in our state-of-the-art facility, located in Research Triangle Park, NC.

### Senior Scientists

You will identify, develop and validate technologies that support pharmacogenetics, exploratory research, drug discovery and clinical development, in addition to designing and executing laboratory experiments (70% hands-on lab work) with a variety of technologies, such as TaqMan, chips, and immunoassays. While working with multidisciplinary teams, you will participate on international projects with internal and external partners. You will also prepare scientific presentations and documentation for internal and external review. We require a PhD with 2-5 years experience or a BS/MS with at least 5 years experience in Molecular Biology, Biochemistry, Molecular Genetics or Chemistry. Technical and communication skills are also required. Some positions require project management skills. (Job Code: 11908)

### Product Development Specialist

You will provide key interface with external partners, delivering validated pharmacogenetic, prognostic and diagnostic assays and test kits for clinical laboratories or point-of-care. You will also identify and validate Medicine Response Tests (MRT) platform technologies and diagnostic tests to support efforts in pharmacogenetics, exploratory research, drug discovery and clinical development, in addition to designing and executing experiments (50-80% hands-on lab work) with a variety of genotyping and immuno-technologies. We require a BS/BA with 5 years of experience, a MS with 3 years of experience or a PhD. Experience in Molecular Biology, Genomics, Biochemistry, Molecular Genetics or Chemistry required. Project management skills as well as technical and communication skills are also required. (Job Code: 11952)

GlaxoSmithKline is dedicated to an innovative workplace and support you with career long opportunities and learning. We offer a competitive benefits and compensation package designed to attract and retain the very best. For confidential consideration and efficient processing, please visit our website: [www.gsk.com](http://www.gsk.com) Indicating Job Code is essential. Principals only, no agencies please.

*Developing talent through equality of opportunity, MIF/DIV.*







– a company ideally positioned in the post-genomic era –  
is appointing a new

## President

UmanGenomics, located in Umeå, Sweden, is a leading genetics/genomics company in Scandinavia, with a unique opportunity to become a major player on the world market.

UmanGenomics' mission is to identify and validate genes for complex diseases and to facilitate pharmacogenomics. UmanGenomics has an exclusive access to the largest and most complete prospective population-based Biobank in the world, and extensive collections of family material of common diseases. Our customers are the international pharmaceutical and biotech industry.

Today, UmanGenomics consists of a team of highly skilled and motivated people, excellent resources and new and modern facilities.

We seek a high calibre manager with strong leadership skills and a successful track record from pharmaceutical or biotechnology industry. We prefer if you have commercial as well as scientific experience in order to meet our objectives. You are ready to take on the challenge of developing UmanGenomics into a globally leading genetics/genomics company. As an experienced manager you are prepared to interact with a small highly professional team.

We offer competitive salaries, benefit packages and stock options.

If you are interested in joining a highly motivated team with global reach, contact the Chairman of the Board, Dr Jan-Erik Ögren, +46 (0)70 63 82 512 or Dr Monica Holmberg, Vice President R&D, +46 (0)70 268 80 92 for additional information. Send your application (by June 7<sup>th</sup>), including curriculum vitae, indicating your full career, names and addresses of three references to: Hoff & Forslund, Box 5447, SE-11484 Stockholm, Sweden.

*Umeå is rapidly expanding city, beautifully located by the Uman River in the Northern part of Sweden. Umeå has a rich cultural life and is well suited for many outdoor activities. During the last ten years Umeå has twice been voted Sweden's best city to live and work in.*



UNIVERSITY OF DUBLIN

TRINITY COLLEGE

## Lectureships in Genetics

Applications are invited for two Lectureships in the Department of Genetics at Trinity College, Dublin. These appointments, which will be tenable from 1st October, 2001, will be offered on contract for a period of three years, renewable for two further years. Candidates should have research experience in general/molecular biological research. Applications from candidates specialising in the areas of bioinformatics, molecular evolution and developmental genetics will be particularly welcome. The successful candidates will be expected to establish a research group in the Department within the theme of molecular genetics and will be expected to contribute to the undergraduate teaching programme.

**Salary scale:** IR£18,825 - IR£46,504 (€23,903 - €59,048) per annum. Entry to the scale will be at a point commensurate with qualifications and experience to date.

Candidates are invited to submit a full curriculum vitae, to include the names of three referees, to:

**Recruitment & Establishment Manager**  
Staff Office, Trinity College, Dublin 2

Tel: 353-1-608 1678 / Fax: 353-1-677 2169/

Email: [recruit@tcd.ie](mailto:recruit@tcd.ie) / Website: [http://www.tcd.ie/Staff\\_Office](http://www.tcd.ie/Staff_Office)  
to arrive not later than 15th June, 2001.

Further information may be obtained from the above address, or from **Professor Kevin Devine, Head of the Department of Genetics (Email: [kdevine@tcd.ie](mailto:kdevine@tcd.ie))** Tel. 353-1-608 1872. Information about the Genetics Department may be found at <http://www.tcd.ie/Genetics/>

*Trinity College is an equal opportunities employer.*

## Postdoctoral Position

A position is available immediately to study polymorphisms in human and mouse genes, such as receptors, that may be implicated in behavior and other important phenotypes. Position requires some experience in both "wet lab" techniques and bioinformatics and will provide additional training in both fields. The position will be at the new Cold Spring Harbor Laboratory Genome Center in Woodbury, New York. The incumbent will be jointly supervised by W. Richard McCombie and James D. Watson.

Please send applications, including a C.V., publication list and list of 3 references to  
**Maureen Bell, Assistant Director,**

## Cold Spring Harbor Laboratory Genome Center



1 Bungtown Road  
Cold Spring Harbor, New York 11724  
Fax: 516-367-8874

Please address any scientific inquiries to  
**Dr. McCombie at the above address.**

Equal Opportunity Employer

## POSTDOCTORAL SCIENTIST

Funding is anticipated for a full-time year round Postdoctoral Scientist position with the Ecosystems Center of the Marine Biological Laboratory to work with a team of wetland ecologists and biogeochemists studying the response of intertidal marshes to sea level rise and watershed perturbations.

**DUTIES:** The Ecosystems Center is interested in developing scale invariant geomorphic indices of estuarine wetlands and channel networks that will enable us to scale up from plot-level marker horizon and sediment elevation table (SET) measures. We want to know if there is a relation between the stability of coastal wetlands and the geomorphic-fractal signature of wetland drainage networks.

**EDUCATION:** We seek individuals with a Ph.D. and expertise in image analysis, GIS, drainage networks geomorphology, coastal geology or wetland ecology. This position will be at the MBL Ecosystems Center located in Woods Hole, Massachusetts, which can be viewed at <http://ecosystems.mbl.edu> but will involve interaction with scientists at the University of South Carolina and Mt. Holyoke College.

**DEADLINE:** Until a suitable candidate is identified.

Send cover letter with position desired, curriculum vitae, statement of research interests and names and addresses of references to: **Marine Biological Laboratory, Attn: Human Resources, reference code [PDS PIEWETL], 7 MBL Street, Woods Hole, MA 02543; telephone (508) 289-7422.**

*Equal Opportunity/Affirmative Action/Non-smoking workplace.*

## Drug Metabolism Scientists

# P&G

The Procter & Gamble Company has immediate openings for experienced Drug Metabolism Scientists at P&G's new state-of-the-art Health Care Research Center in Cincinnati, Ohio.

# P&G

If you meet the qualifications for this position, please apply online at

[www.pg.com/jobs\\_apply\\_now](http://www.pg.com/jobs_apply_now)  
and reference ad code  
**NAUSR000575**

No agency referrals, please.  
Applicants must be currently living in North America.

An Equal Opportunity Employer

We are seeking scientists with a Ph.D. in Pharmacology, Toxicology, Pharmaceuticals, or related field, and a minimum of 1-5 years pharmaceuticals work experience, to design, execute, and report non-clinical and clinical metabolism studies of new drug candidates. Primary responsibilities include utilization of in vivo methods to describe the metabolic fate of new chemical entities, and summarization of results for submission to regulatory bodies worldwide. Experience in conducting animal studies and utilizing chromatography and structural elucidation data (e.g., mass spectrometry, NMR) to define the pathways of drug metabolism is required. Knowledge or experience in using in vitro methods (e.g., liver microsomes, hepatocytes) is desirable. We require excellent communication and interpersonal skills, necessary for interacting with multifunctional project teams. An understanding of pharmacokinetics principles and GLPs would be considered a plus.

### Procter & Gamble

We are a Fortune 20 company that has been consistently rated as one of the "most admired" corporations in the U.S. Our support for research and development has increased substantially in recent years, with growing emphasis being placed in expanding the Health Care area. This is evidenced by our recent construction of a world class Health Care R&D facility outside of Cincinnati, Ohio.



### NIH Integrated Review Group Chief For Cardiovascular Sciences

The Center for Scientific Review (CSR) at the National Institutes of Health (NIH) seeks to identify a highly qualified research scientist who is interested in serving as the Integrated Review Group (IRG) Chief for the Cardiovascular Sciences (CVS) IRG. An IRG is a group of scientifically related review groups or study sections. The CVS IRG is currently made up of eight scientific review groups with a staff of six Scientific Review Administrators (SRAs), plus support staff.

The CVS IRG Chief should have broad scientific knowledge of, and a history of proven independent research experience in one of the cardiovascular sciences disciplines. Candidates should be highly motivated individuals with excellent judgment and highly developed communication, supervision, analytic, interpersonal, organizational and writing skills. The CVS IRG Chief will help shape and lead the future of scientific review.

The CVS IRG Chief provides supervisory management and scientific leadership for the IRG and is also an SRA. An SRA is responsible for understanding the current state and identifying future directions of a specific area of biomedical and behavioral science; selecting members of review panels; managing study section meetings; facilitating interactions with study section members and communicating the results of their deliberations and recommendations to applicants and the staff of the NIH Institutes that fund the research.

Applicants must have: a Ph.D., M.D., D.V.M., or equivalent degree (or have equivalent training and experience), postdoctoral research training, a significant record of independent research accomplishment, and administrative experience. Salary will depend on experience and accomplishments. A recruitment or relocation bonus may be available.

Please send your curriculum vitae to:

**Michael R. Martin, Ph.D.**  
Center for Scientific Review  
National Institutes of Health  
6701 Rockledge Drive, Room 6160  
Bethesda, MD 20817  
Or  
[SRAJobs@mail.nih.gov](mailto:SRAJobs@mail.nih.gov)

Selection for all positions will be based on merit, with no discrimination for non-merit reasons, such as race, color, sex, national origin, marital status, handicap, age, sexual orientation, or membership/non-membership in an employee organization. Deadline for consideration: July 27, 2001.

NIH is an Equal Opportunity Employer

**upstate**  
biotechnology  
an Argonex Company

### Director Research and Development

Upstate Biotechnology, Inc. is a leading developer and producer of enabling products and services for biotechnology, pharmaceutical, academic, and government researchers. Upstate is looking for a dynamic research manager at the director level to lead Research and Development, Bioproduction, and Technology Transfer based in Lake Placid, NY. The Director of Research and Development will manage these functions to achieve optimal performance and efficiency, foster a stimulating work environment, and lead the company's capabilities into new areas of excellence both internally and through external business development. The successful candidate will have extensive experience developing biochemical research reagents in a commercial biotechnology environment and demonstrable success as a leader of scientists. Particular understanding of cell signaling will be a plus. Travel is required.

Upstate Biotechnology, Inc. is a rapidly growing global company with production facilities in North America and Europe and provides more than 1,800 unique products for laboratory research and drug discovery. The Director will play a key role in building the strength and producing greater levels of success for this evolving and exciting company.

Upstate Biotechnology offers competitive salaries, exceptional benefits, and is located in beautiful and scenic Lake Placid, NY, in the heart of the Adirondack Mountains. Qualified candidates should forward their CV with a cover letter summarizing previous experience to: **Platt Staunton, Principal, Platt Staunton Associates, One Boar's Head Pointe, Charlottesville, VA 22903**, or electronically to [platt@estone.net](mailto:platt@estone.net).



## POSTDOCTORAL POSITION IN IMMUNOLOGY

Positions are available for enthusiastic, hard-working individuals to work in one of the following areas:

- 1) The regulation of T cell homeostasis by LAG-3.
- 2) TCR: CD3 structure, signaling & downmodulation (*Immunity* 12: 665, 2000).
- 3) T cell receptor recognition of MHC: peptide complexes (*Immunity* 7: 387, 1997).

You should have a PhD and/or MD, a solid understanding of basic immunology, and practical experience in molecular biology, cellular immunology, biochemistry or structural studies.

St. Jude Children's Research Hospital has a highly interactive research environment and state-of-the-art facilities including core laboratories for proteomics, microarray analysis of gene expression, transgenic/knock-out technology, etc. The Immunology Department, chaired by Dr. Peter Doherty, consists of eight faculty and 50 support staff. Competitive stipends are available as well as a benefit package that includes professional developmental funds for journal subscriptions and travel.

Send a CV with the names of three references (postal and E-mail addresses, phone and FAX numbers) and an outline of your past accomplishments and future career aspirations to:

**Dr. Dario Vignali**  
Department of Immunology  
St. Jude Children's Research Hospital  
332 N. Lauderdale • Memphis, TN 38105  
Tel: 901-495-2332  
FAX: 901-495-3107  
Equal Opportunity Employer



## Faculty Position in Cellular Neuroscience/ Cellular Neurosurgery

The Department of Neurosurgery at Massachusetts General Hospital, Harvard Medical School is seeking a candidate with experience in the general area of stem cell, neuroprogenitor cell and neuroregeneration research in the central nervous system. The ideal candidate will have an interest in pursuing basic research as well as collaborations leading to potential translational neurosurgical applications. The applicant should have an M.D. or Ph.D. and a demonstrated record of peer-reviewed funding. The candidate will join the faculty at the Assistant, Associate, or Professor level. Salary and academic appointment will be commensurate with level of experience.

The laboratory of the applicant will be adjacent to other neuroscientists and research-oriented neurosurgeons with related interests. We offer a competitive start-up package and opportunities for graduate and medical student teaching. Applications from women and representatives of minority groups are encouraged.

Interested applicants should submit curriculum vitae to:

**Robert L. Martuza, M.D.**  
Chief, Department of Neurosurgery  
Massachusetts General Hospital  
55 Fruit Street, White 502  
Boston, MA 02114-2696

*The Massachusetts General Hospital is an equal opportunity employer.*



Conforma Therapeutics is an exciting early stage biopharmaceutical company pioneering a novel approach to the design and development

of small molecule drugs for the treatment of cancer. Based on work from the Memorial Sloan Kettering Cancer Center, we are developing a platform technology to induce the degradation of disease-causing proteins. We have challenging opportunities for motivated, entrepreneurial Scientists to join our Biology Research team. We are privately held and located in sunny San Diego.

### PhD Scientist - Molecular Biology & Biochemistry

Research will focus on regulation of signal transduction pathways controlled by the HSP90 family of molecular chaperones using novel bifunctional targeted small molecules.

Responsibilities include expression, purification and utilization of recombinant proteins, design and application of biochemical assay systems and contribution to the company's ongoing screening efforts. The position requires a Ph.D. in molecular biology or a closely related field. Postdoctoral and industry experience is desirable. Candidates must have a good working understanding of current molecular biology and biochemistry techniques, hands-on experience of recombinant protein expression, and exhibit excellent problem-solving and interpersonal skills.

We offer competitive compensation, attractive benefits and a generous equity position. This is an exciting opportunity for creative individuals who are interested in making a significant scientific impact in a cutting edge startup company. You are invited to forward your resume to:

Conforma Therapeutics Corporation  
9393 Towne Centre Drive  
Suite 240  
San Diego, CA 92121  
email: [conforma@cts.com](mailto:conforma@cts.com)  
Visit us on the Web at [www.conformacorp.com](http://www.conformacorp.com)

## Laboratory Director, Department of Molecular Diagnosis National Medical Center

The Clinical Molecular Diagnostic Laboratory (CMDL) at City of Hope emphasizes cancer and genetic testing. Innovative methodology is a strength of the laboratory; cost-effective comprehensive mutation analyses of large genes (factor VIII, ATM, and dystrophin) have been developed. The diagnostic lab is closely allied to a Molecular Epidemiology Group and Methodology Development Group. Candidates with either an M.D. or Ph.D., preferably certified by the American College of Medical Genetics or Board eligible. Licensed pathologists with experience in molecular diagnosis are welcome to apply.

Interested candidates should forward their CV, a brief statement of five year goals, and three references to: **Steve S. Sommer, M.D., Ph.D., Chair, Departments of Molecular Diagnosis and Molecular Genetics, City of Hope National Medical Center, 1500 E. Duarte Rd., Duarte, CA 91010, FAX: 626/301-8142, EM: [sommerlab@coh.org](mailto:sommerlab@coh.org)** Visit our web site at: [www.cityofhope.org/cohjobs](http://www.cityofhope.org/cohjobs). EOE.



City of Hope  
National Medical Center

A National Cancer Institute-Designated Comprehensive Cancer Center

**VACANCY ANNOUNCEMENT**  
**Director, Division of Extramural Affairs**  
**National Heart, Lung and Blood Institute**  
**National Institutes of Health**

The Director, National Heart, Lung and Blood Institute (NHLBI), National Institutes of Health (NIH) is seeking a physician or other doctoral-level scientist to serve as the **Director, Division of Extramural Affairs (DEA)** in an exciting, dynamic, and cutting edge environment.

The Director, DEA is a key extramural division director responsible for advising the Director, NHLBI, other Office and Division Directors, and NIH leadership, regarding the Institute's extramural affairs. Specifically, the incumbent is responsible for overseeing and managing the initial scientific and technical merit review of applications in special investigator-initiated and solicited grant programs of the Institute and all research contract proposals; and the administrative management of all NHLBI grant and contract programs. The incumbent is also responsible for the operation of the NHLBI Advisory Council and serves as its Executive Secretary. As such, he/she directs all activities of DEA staff in support of the Council's review of all grant applications. In addition, the Director, DEA coordinates the Institute's Committee Management activities and manages the acquisition, peer review and committee management services to other NIH Institutes and Centers through its Service Center Operations.

**Qualifications Required:** A scientific background at the highest level is required as evidenced by an M.D. degree or Ph.D with major study in the biomedical or health sciences. Of particular importance is familiarity with, and experience in, the mechanisms of grant and contract administration as they relate to the broad range of biological (particularly heart, lung and blood) and clinical research.

**Salary:** Salary will be commensurate with experience.

See Vacancy Announcement #HL-01-0051 at <http://careerhere.nih.gov/> or contact Ms. Michele Quander at (301)496-6477. Closing date for applications is June 20, 2001.

*NIH is an Equal Opportunity Employer.*

**POST-DOCTORAL SCIENTIST**

The Ecosystems Center of the Marine Biological Laboratory is seeking applicants for a full-time Post-Doctoral Research Ecologist.

**DUTIES:** The LTER project is directed at understanding how trophic structure and productivity in estuaries is affected by changes in organic matter, nutrient and water fluxes caused by changing land cover, climate and sea level. The successful candidate will work as part of PIE-LTER team to understand the relationships between salt marsh flooding, food webs and fish projection. This is a 2 year position with the Plum Island Ecosystems Long-Term Ecological Research project.

**SKILLS/EDUCATION/EXPERIENCE REQUIRED:** A Ph.D. in fish, ecology, trophic ecology, salt marshes or modeling. Experience with database management, spreadsheet and statistical programs, scientific writing skills and experience with small boat handling are required.

**CONDITIONS:** Research is conducted in the marshes, tidal creeks and bays of Plum Island Sound, Massachusetts. The successful applicant should be flexible and capable of working long hours with an irregular schedule under sometimes difficult field conditions. Applicants must be able to live at the field station for several days a week (3 hours from Woods Hole) during the field season.

**DEADLINE:** Open until the position is filled. The position will begin in late fall 2001 or January 2002 to be ready for an active field season beginning in April 2002. To learn more about the research, contact: Linda Deegan at [ldeeagan@mbl.edu](mailto:ldeeagan@mbl.edu).

Send cover letter with position desired, curriculum vitae, statement of research interests and the names and address of 3 references to: **Marine Biological Laboratory, ATTN: Human Resources, reference code [PDS PIEFISH], 7 MBL Street, Woods Hole, MA 02543; telephone (508) 289-7422.**

*An Equal Opportunity/Affirmative Action Employer/  
Non-smoking workplace.*



**PIONEER.**  
A DUPONT COMPANY

*Redefining Growth. Rewarding Excellence.*

Pioneer, a DuPont Company, is the world leader in the discovery, development and delivery of elite crop genetics. We are committed to developing and incorporating both time-tested approaches and cutting edge technologies that will continue to make our products superior to any in the industry. All positions are located at our main campus in Johnston, Iowa.

**RESEARCH SCIENTIST, Oilseeds Genotyping** – An individual is needed to manage the Oilseeds Genotyping project in our Analytical Biochemistry Department. This role will include implementing and applying molecular marker technologies support for research & product development for oilseeds crops. Responsibilities include: manage day-to-day lab operations, direct implementation and use of new technologies/equipment and work with scientists to evaluate "next-generation" genotyping technologies. A Ph.D. in molecular biology, genetics or related and 7 years experience is preferred. Experience managing a high-throughput research laboratory and PCR-based technologies are required. Job Code RES/NP153/PSC

**SENIOR RESEARCH ASSOCIATE, Analytical Biochemistry** – We are seeking a motivated individual to provide analytical support for the evaluation of transgenic plants. Primary responsibilities include: application of immunoassays and other biochemical technologies such as ELISA, western blots, TLC's, and enzyme assays. Minimum requirements are: M.S. Degree w/4 years research/supervisory experience in protein biochemistry, immunoassay knowledge (ELISA in particular), use of robotic systems to aid high-throughput sample analysis and experience effectively managing others. PC software experience with Softmax, Excel, Word and PowerPoint is essential. Job Code RES/NP147/PSC

**SENIOR RESEARCH ASSOCIATE, Analytical Biochemistry** - This individual will ensure the work location functions efficiently and perform a variety of duties using procedures to conduct experiments and analyze data. Primary responsibilities include: develop chromatographic methods of protein purification; conduct, maintain, evaluate experiments; inspect & maintain equipment; promote safe work environment. Some experiments conducted will relate to the expression and purification of recombinant protein from such systems as *E. coli*, *P. pastoris*, BES and DES. B.S. or M.S. Degree in biological/agricultural related field with minimum 2 years directly related laboratory experience. Job Code RES/NP144/PSC

**SENIOR RESEARCH ASSOCIATES (2) & RESEARCH ASSOCIATE (1), Agronomic Traits** - These individuals will work as integral members of a cross-functional research effort into the physiological and molecular aspects of stress tolerance in maize, providing aspects of both lab and field support. B.S. Degree in a biological field required, M.S. Degree and experience in plant biology strongly desired. Areas of competency desired include: standard molecular cloning techniques, molecular analyses of gene expression at the mRNA and protein levels including the use of *in situ* technologies, isolation of promoters and their development for transgenic use, analyses of plant development at the cellular and organ levels, analyses of carbohydrate metabolism via both molecular and biochemical techniques. Candidates must be willing to learn new technologies and be fluent with computer applications to biological data acquisition, storage, and analyses. Job Codes: SRA's - RES/NP166/PSC & RES/NP168/PSC, RA - RES/NP174/PSC

For consideration, you must reference the Job Code(s) above and send a scannable resume and cover letter to: **Resume Processing Center, Pioneer Hi-Bred International, Inc., 400 Locust Street, Suite 700, PO Box 14454, Des Moines, IA 50306-3454, or Email: [apply@pioneerjobs.com](mailto:apply@pioneerjobs.com)**

Visit [www.pioneer.com](http://www.pioneer.com) for a detailed description of these and other opportunities. *EOE*



CAREERS IN  
**BIOTECHNOLOGY &  
PHARMACEUTICALS**  
A *Science* Advertising Supplement

Issue Date ..... 15 June 2001  
Space Reservation Deadline ..... 29 May 2001  
Ad Materials Deadline ..... 5 June 2001

### BENEFITS FOR ALL ADVERTISERS

- **Maximum Exposure to the world's top scientists.** Paid circulation of nearly 149,000<sup>1</sup>; weekly readership more than 820,000.<sup>2</sup>
- **Bonus Distributions:**
  - BIO 2001**  
(Biotechnology Industry Organization)  
24–28 June 2001, San Diego, CA
  - BIO Career Fair**  
24 June 2001, San Diego, CA
  - Tissue Repair and Regeneration**  
17–22 June 2001, New London, NH
- **Science Careers posting available**  
For a nominal fee, your recruitment ad can be placed on our website, [sciencecareers.org](http://sciencecareers.org). Eighty percent<sup>3</sup> of Job Alerts recipients do not subscribe to the print journal, so posting online allows you to reach an expanded audience.

1. *Science* December 2000 BPA Publisher's Statement.  
2. *Science* Harvey Research Readership Surveys:  
14 January 2000, 4 February 2000, 4 June 1999, (Japan)  
as applied to *Science* December 2000 BPA Publisher's  
Statement, publisher's own data.  
3. *Science* Internal Management Reports.

To advertise, contact:

U.S.– Bren Peters ..... (202) 326-6541  
Europe – Deborah Cummings ..... +44 (0) 1223 326 500  
Australia – Keith Sandell ..... +61 29922-2977  
Japan – Mashy Yoshikawa ..... +81 3 3235-5961

**Science**  
[www.sciencecareers.org](http://www.sciencecareers.org)

# International Senior Research Fellowships in Biomedical Science

Czech Republic / Estonia / Hungary / Poland

The Trust wishes to invite applications for five year senior research fellowships in biomedical science to be held in the Czech Republic, Estonia, Hungary and Poland to commence in 2001/2002.

## Eligibility

The fellowships are for outstanding researchers, either basic scientists or medically qualified graduates, who wish to establish a research career in a Czech, Estonian, Hungarian or Polish academic institution. It is expected that candidates will have a doctoral qualification (equivalent to a UK PhD) and between five and ten years' research experience at a postdoctoral level or equivalent. They should have a substantial record of publications in their chosen area of research in leading international journals. Applicants need not be nationals of the country where they wish to hold their fellowships. Candidates will normally be expected to have spent part of their research careers abroad; applications will be accepted from those who are currently abroad or who have returned to their home country. However, applications can also be considered from those who have pursued successful careers entirely in-country.

A competitive salary will be offered according to age and experience. The essential costs of the research programmes will also be provided, including research expenses, equipment and research personnel.

## Application Procedure

- Candidates are required to complete a preliminary application form which can be obtained from the Wellcome Trust Office or the Wellcome Trust Web site. The form should be returned by **28 August 2001**. **Late submissions will not be accepted.**
- Short-listed candidates will be notified in writing and invited to submit a full application by late October 2001. These must be returned to the Wellcome Trust by 14 January 2002.
- Those selected for interview will be informed in writing in April 2002 and the interviews will take place in late June 2002.

Enquiries and requests for preliminary application forms may be directed to: **International Biomedical Programme (ISF/CE), The Wellcome Trust, 183 Euston Road, London NW1 2BE, United Kingdom.**

Tel: +44 (0)20 7611 8453/8764; Fax: +44 (0)20 7611 8373.  
E-mail: [international@wellcome.ac.uk](mailto:international@wellcome.ac.uk)



**The Wellcome Trust**

[www.wellcome.ac.uk](http://www.wellcome.ac.uk)

The Wellcome Trust is a Registered Charity, No. 210183, and its mission is to promote and foster research with the aim of improving human and animal health.



**UNIVERSITY OF CALGARY**

Applications are invited from distinguished scholars from academia or industry, with an international reputation, to fill the Westaim/NSERC Industrial Research Chair in Biofilms Engineering. The Chair is supported by Westaim Corporation with matching funds anticipated from the Natural Sciences and Engineering Research Council of Canada (NSERC).

The Chair will be one of the key persons in establishing research excellence in biofilms engineering in collaboration with the existing biofilms and bioengineering researchers in the Faculties of Medicine, Sciences and Engineering to advance the field of biofilms, which has applications in medicine and the oil and gas industries.

The Chair will hold a tenured or tenure-track position in the **Department of Mechanical and Manufacturing Engineering** and can be cross-appointed in other departments in the Faculties of Engineering, Science and Medicine. Rank and salary will be commensurate with the qualifications and experience. This position will commence on July 1, 2001, or as soon as possible thereafter. The selected candidate will be engaged in the completion of an application for a NSERC Industrial Research Chair grant to match the industrial support.

The Department of Mechanical and Manufacturing Engineering currently has 26 full-time faculty, 16 support staff and state-of-the-art research and educational facilities. It offers BSc, MSc, MEng, and PhD degrees in both Mechanical and Manufacturing Engineering, and has over 400 undergraduate students and over 80 graduate students. The Department is committed to excellence in research and education. Innovative research programs are well established in Advanced Manufacturing and Design; Applied Mechanics; Biomechanics; Energy and Thermo-fluids; Materials; and Mechatronics, MEMS, Robotics and Controls. Detailed information is available on our Web site at [www.eng.ucalgary.ca/mechanical](http://www.eng.ucalgary.ca/mechanical).

The University of Calgary is a public institution with a full-time student population of over 25,000. The City of Calgary has a population of over 850,000 and is the Canadian capital of the energy industry. Calgary, home to the 1988 Winter Olympic Games, is one of the fastest growing high-tech cities in Canada. It is situated within an hour's drive of Banff National Park, one of the most beautiful areas of the Rocky Mountains.

Applicants are invited to send their curriculum vitae and a list of names of three references to: **Dr P. Gu**, Professor and Head, Department of Mechanical and Manufacturing Engineering, University of Calgary, 2500 University Drive N.W., Calgary, Alberta, Canada T2N 1N4 E-mail: [pgu@ucalgary.ca](mailto:pgu@ucalgary.ca); Phone: (403) 220-7163; Fax: (403) 282-8406. Recruitment activities will begin **June 30, 2001**.

Applications will be accepted until the position is filled.

To see all our academic career opportunities, please visit [www.ucalgary.ca/HR/career](http://www.ucalgary.ca/HR/career)

*In accordance with Canadian immigration requirements, priority will be given to Canadian citizens and permanent residents of Canada. The University of Calgary respects, appreciates and encourages diversity.*

[www.ucalgary.ca](http://www.ucalgary.ca)



**Celltech R&D** (formerly known as Darwin Molecular Corp.), is an emerging bio-pharmaceutical company where our research is aimed at the discovery and development of innovative, antibody and small-molecule therapeutics, with a focus on autoimmune disease, cancer inflammation, pain and osteoporosis.

Our Seattle Research Center is rapidly growing. We are looking for Associate Scientist/Scientists in key specialties and with varying levels of experience. The positions listed below are only a sampling of jobs currently available.

**Associate Scientist/Senior Associate Scientist-GFTV003**  
Qualifications include a BS or MS in Biochemistry, Molecular Biology or related field with 3 to 6 years of relevant working experience in a molecular biology environment. They will have extensive knowledge of molecular techniques including DNA cloning, vector design, library screening, mRNA isolation, cDNA synthesis and PCR. Knowledge and hands-on experience in mammalian cell culture; recombinant protein expression and protein-protein interaction analysis is preferred.

**Associate Scientist/Senior Associate Scientist-GFTV001**  
Qualifications include a BSc or MS in Molecular Biology, Biochemistry, Cellular Biology or a related field and at least 3-6 years of work experience in a mammalian tissue culture, immunohistochemistry/immunofluorescence, biochemical and ELISA assays, and protein assays (Western blot and immunoprecipitation). Experience with computer-assisted image analyses, adeno/retroviruses, recombinant protein expression and cell line generation is highly desirable.

#### **Scientist/Senior Scientist-GFTV002**

Qualifications include a Ph.D. in Biochemistry, Molecular Biology or Cell Biology with at least 2-4 years of post-doctoral training. Practical knowledge in immunology is essential. Experience in the drug discovery sector (pharmaceutical or biotech) with a specific focus on in vitro and cell-based assay techniques is preferred. Strong experience in molecular biology and protein expression is preferred.

#### **Scientist/Senior Scientist-CG002**

Qualifications include a Ph.D. in Biochemistry, Chemical Biology, or Bioorganic Chemistry with at least 3 years of post-doctoral training, preferably in biotech. Expertise in wet biochemistry including protein expression, isolation, identification and functional characterization is essential. Additional capabilities in protein labeling, bioconjugation, assay development, proteomics, biophysical analysis, immunology and/or cell biology are desirable.

#### **Scientist - Discovery Biology-DB003**

Qualifications include a Ph.D. in Immunology or Cellular Biology and at least 2-5 years of post-doctoral experience. Candidate must have experience with tissue culture of primary lymphoid cells as well as cell lines, T and B lymphocyte isolation and functional assays, flow cytometry and some small animal handling. Knowledge of signal transduction assays and biochemical analyses preferred.

#### **Senior Computational Biologist-INS001**

Qualifications include a Ph.D. or equivalent experience and strong credentials in Computational Biology, Computational Genomics, or Bioinformatics. Candidates must have familiarity with biological databases, computer programming, data structures and algorithms, and probability and statistics. Specific knowledge and experience with protein structure based searches/prediction, algorithms and theoretical concepts used in computational biology including sequence feature identification and annotation, pairwise and multiple sequence alignment, phylogenetic trees and comparative sequence analysis and HMMs are desirable. Experience in providing leadership and direction to successfully guide computational biology projects is essential.

For more information about our company and the multiple opportunities at Celltech please visit our website at [www.celltechgroup.com](http://www.celltechgroup.com).

We offer our employees competitive salaries, excellent benefits, and an attractive stock option program. To apply please send your resume to [careers@sea.celltechgroup.com](mailto:careers@sea.celltechgroup.com) or mail to: **Celltech, Attn: Human Resources, 1631 220th St. SE, Bothell, WA 98021**. Please include the job code.

*Celltech R&D is an equal opportunity employer.*



## **CHAIRPERSON DEPARTMENT OF MOLECULAR, CELLULAR, AND DEVELOPMENTAL BIOLOGY**

College of Literature, Science, and the Arts  
The University of Michigan  
Ann Arbor, MI 48109

The College of Literature, Science, and the Arts at the University of Michigan solicits applications and nominations for the position of Chair of the Department of Molecular, Cellular, and Developmental Biology. This newly formed department is targeted for significant expansion of faculty and staff, as well as of research focus. The position will confer the opportunity to shape the future direction of the department and its integration with the Life Sciences Initiative on campus.

The successful candidate will be an established investigator with an internationally recognized reputation in the field of molecular, cellular, or developmental biology, with the vision and energy to chart the course of the department.

The Chair will hold a faculty appointment as a tenured professor in the department. A record of intellectual leadership is highly desirable. Please send a letter of application/nomination, a current vita, research description, and the names (with phone numbers and email addresses) of three references who can be contacted to: **Rowena G. Matthews, Search Committee Chair, c/o Kay Beattie, 2522 LS&A Building, 500 S. State St., Ann Arbor, MI 48109-1382**. Consideration of applicants will commence on August 1, 2001 and continue until the position is filled.

Additional information about the department and its faculty can be found on its web site: [http://students.biology.lsa.umich.edu/directory/query\\_mcdcb.php](http://students.biology.lsa.umich.edu/directory/query_mcdcb.php)

*The University of Michigan is an Equal Opportunity/Affirmative Action Employer. Women and members of minority groups are especially encouraged to apply.*

## **XX IDT<sup>®</sup> INTEGRATED DNA TECHNOLOGIES, INC.**

**Integrated DNA Technologies, Inc. is currently hiring a  
Research Scientist with microarray experience.**

### **Research Scientist, Molecular Genetics**

This new position will join a rapidly expanding research program developing DNA and RNA probe systems and general molecular biology products. The appointee will take an active role in bench research and product development with a focus on oligonucleotide microarrays. The appointee must have a Ph.D. with a strong background in molecular biology and biochemistry; prior experience with production and analysis of microarrays is required. Post-doctoral experience is preferred but not required. Salary will be commensurate with qualifications.

Integrated DNA Technologies, Inc. is located near major university medical and research centers. Candidates should submit a curriculum vitae with list of publications and a letter of interest outlining relevant areas of expertise to:

**Mark Behlke M.D., Ph.D.**  
**Vice President, Molecular Genetics and Bioinformatics**  
**Integrated DNA Technologies, Inc.**  
**1710 Commercial Park**  
**Coralville, Iowa 52241**  
**[mbehlke@idtdna.com](mailto:mbehlke@idtdna.com)**

*IDT is an equal opportunity employer.*

## Tenure Track Investigator

The National Institute on Aging (NIA), Intramural Research Program, Laboratory of Clinical Investigation is recruiting a Tenure Track Investigator to develop an independent research program in the area of neurodegenerative disease. Candidates should have an MD or MD/PhD with at least 3 years post doc experience and an exceptional publication record. It is desired that the candidate may be a neurologist, psychiatrist, or other related medical specialty and have experience in patient-oriented neurodegenerative disease research with a focus on Alzheimer's disease. As new therapeutic targets are identified, the individual should have appropriate training and experience to exploit them with the development of strategies for clinical exploration of the target. Interested candidates should send curriculum vitae and bibliography, two-page statement of research interests, and three letters of recommendation. Send to LCI/Search Comm. Chair c/o Pat Boyce, Rm 1D09, Box 26, Human Resources Office, National Institute on Aging, Gerontology Research Center, 5600 Nathan Shock Drive, Baltimore, MD 21224-6825. State Announcement # NIA-01-008(GRC) on address. Applications must be received by August 1, 2001.



**NIA is an Equal Opportunity Employer**



University of Lausanne  
Faculty of Medicine

### Professor at the Institute of Physiology

Applications are invited for two full-time tenured or tenure-track positions at the Institute of Physiology, starting on September 1, 2001 or later.

The successful applicants are expected to conduct an original research program in the field of metabolism using innovative molecular, genetic and/or *in vivo* physiological approaches.

Applicants (MD and/or PhD) should have a strong record of research activity and teaching experience in the field of physiology. The successful candidates will participate to the teaching of human physiology of systems and regulatory mechanisms to medical and biology students at undergraduate and graduate level. Teaching in French is required, but a period of adjustment can be granted. We welcome applications from women.

Applicants should send their curriculum vitae, a list of publications, a brief description of future research goals and at least three names of reference before June 15, 2001 to:

Doyen de la Faculté de Médecine, Université de Lausanne,  
Champ de l'Air, Rue du Bugnon 21, CH - 1005 Lausanne.

## Position Announcement FIVE TENURE TRACK FACULTY POSITIONS

University of Connecticut

The University of Connecticut is extending its activities in mammalian embryology, developmental biology, cloning and transgenics and is in the process of establishing a new Connecticut Center for Regenerative Biology (CRB). Applications are invited for **FIVE** tenure track faculty positions at the Assistant or Associate Professor level. Extraordinary individuals with a strong record of extramural support and publication may also be considered at full professor rank. Applicants must have Ph.D. in Developmental Biology or a related field with demonstrated expertise in one of the areas described below. The successful candidates must have demonstrated research capabilities and the potential to develop an extramurally-funded, highly productive, independent research program. He/She will establish collaborative research projects aimed at developing innovative approaches for animal model therapeutic cloning. Candidates will be located at the Center which will be located at the University of Connecticut, Storrs, CT campus and will have the opportunity of holding joint academic appointments at the University of Connecticut Health Center in Farmington, CT. Additional information about the University of Connecticut at Storrs may be found at [www.uconn.edu](http://www.uconn.edu) and the University of Connecticut Health Center at [www.uhc.edu](http://www.uhc.edu).

#### Positions:

1. **Developmental Biologist** with a research emphasis in gene expression during early development and tissue differentiation. (Search # 01A436)
2. **Differentiation Biologist** with a research emphasis on targeted differentiation of mammalian embryonic stem cells. (Search # 01A435)
3. **Molecular Geneticist** with a research emphasis on gene therapy and targeted gene manipulations in primary and established cell lines. (Search # 01A438)
4. **Oocyte Development Biologist** with experience and interest in mammalian oocyte growth and development. (Search # 01A439)
5. **Stem Cell Biologist** with a research concentration in the development and characterization of mammalian embryonic stem cells. (Search # 01A437)

Interested applicants should submit a letter of application containing the position(s) for which you are applying, a statement of research interests, current curriculum vitae (CV) and the names and contact information of three references to:

Ian C. Hart  
Interim Vice Provost for Research  
& Graduate Education  
Interim Dean of the Graduate School  
University of Connecticut  
438 Whitney Road Ext., Unit 1006  
Storrs, CT 06269-1006

Preference will be given to candidates with postdoctoral training and whose materials are received by **August 1, 2001**. Screening will begin immediately after that date and will continue until the five positions are filled.

At the University of Connecticut, our commitment to excellence is complemented by our commitment to building a culturally diverse staff. *We actively encourage minorities, women and people with disabilities to apply.* (Search # 01A435, 01A436, 01A437, 01A438, 01A439)



University of  
Connecticut



**POSITIONS OPEN**

**FACULTY POSITIONS  
DEPARTMENT OF NEUROBIOLOGY  
University of Massachusetts Medical School**

The Department of Neurobiology, recently established as part of the unprecedented research expansion at the University of Massachusetts Medical School, has immediate openings for several junior (tenure-track) or senior (tenured) positions. The Department will be the driving force for neuroscience on campus and augment an already existing interdisciplinary program. The laboratories for the Department will be housed on one floor of a state-of-the-art, new, 340,000-square-foot research building that will be completed in December 2001.

The Department seeks individuals of outstanding potential who are investigating fundamental mechanisms of brain function. Specific areas of emphasis include but are not limited to molecular, cellular, and developmental neurobiology. The positions are highly competitive with regard to start-up funds, laboratory space, and salary. Rank will be commensurate with ability and experience.

Applicants should send curriculum vitae, statement of research interests, and names and addresses of three references to:

**Dr. Steven M. Reppert**  
Chair, Department of Neurobiology  
University of Massachusetts Medical School  
55 Lake Avenue North  
Worcester, MA 01655  
Website:

<http://www.umassmed.edu/neurobiology/>  
*An Equal Opportunity/Affirmative Action Employer.*

**TENURE-TRACK FACULTY POSITION  
IN PROTEOMICS**

The Department of Molecular and Cellular Biochemistry at the University of Kentucky is soliciting applications for an individual specializing in proteomics at the **ASSISTANT** or **ASSOCIATE PROFESSOR** rank. The applicant should have expertise in the application of mass spectrometry and protein chemistry to studies of the structure, function, posttranslational modification, or expression of proteins in biological systems. The successful candidate will be expected to develop an independently funded research program and to participate in departmental teaching. He/she will have the opportunity to be involved in the development of proteomics at the institution. Substantial start-up, equipment funds, and competitive salary are available. Applicants should send a letter of intent, curriculum vitae, a brief description of their research plan, and three letters of recommendation to: **Proteomics Search Committee, Department of Molecular and Cellular Biochemistry, University of Kentucky, 800 Rose Street, Lexington, KY 40536-0298. Website: <http://www.mc.uky.edu/biochemistry/>.** *The University of Kentucky is an Equal Opportunity Employer and encourages applications from qualified women and minorities.*

**POSTDOCTORAL POSITION  
University of North Carolina  
Neuroscience Center**

Postdoctoral positions are available to study molecular basis of neuronal migration and radial glial development in mammalian cerebral cortex. A combination of cell biological, molecular biological, and conditional gene expression approaches is employed to investigate the role of growth factor and cell adhesion signaling in cerebral cortical development. Highly motivated Ph.D. or M.D./Ph.D. candidates with an excellent background in molecular biology, developmental neurobiology, or mouse genetics are encouraged to apply. Send curriculum vitae and names of two references to: **E. S. Anton, University of North Carolina Neuroscience Center, The University of North Carolina School of Medicine, Room 7023, Neurosciences Hospital, Chapel Hill, NC 27599. E-mail: [anton@med.unc.edu](mailto:anton@med.unc.edu).**

**POSITIONS OPEN**



**FACULTY APPOINTMENTS IN  
IMMUNOLOGY AND  
INFECTIOUS DISEASE**

**Trudeau Institute, Saranac Lake, New York**

The Trudeau Institute is recruiting new faculty at junior or senior levels in the areas of immunology and infectious disease. We are interested in individuals who will develop vigorous, extramurally funded research programs in the areas of immunity to infectious disease, molecular pathogenesis, and lung physiology/immunology. In particular, we encourage applications from individuals studying immunity to tuberculosis in mouse models.

The Institute offers excellent well-equipped laboratory space and extensive shared facilities including animal, molecular biology, flow-cytometry, and histology cores. The animal facility is well-stocked with more than 120 strains of standard and genetically altered mice, and the Institute has several Biohazard Level 2 and Level 3 units for handling infected animals. The Institute is partially supported by a large endowment and offers competitive start-up packages with extended support, affordable on-campus housing, and an on-site child care center.

Interested individuals should submit a letter of application including a description of research interests, curriculum vitae, and contact information for three references by June 30, 2001, to: **Faculty Search Committee, Trudeau Institute, Saranac Lake, NY 12983. FAX: 518-891-5126; e-mail: [dwoodland@trudeauinstitute.org](mailto:dwoodland@trudeauinstitute.org).** See our website for further information about the Trudeau Institute: [www.trudeauinstitute.org](http://www.trudeauinstitute.org).

*The Trudeau Institute is an Equal Opportunity/Affirmative Action Employer.*

**ASSISTANT PROFESSOR**, Position Number 83343. University of Hawaii Manoa, CTAHR, Department of Molecular Biosciences and Biosystems Engineering. Full-time; tenure-track; nine-month appointment to begin approximately January 1, 2002. Duties: Teach one senior-level general biochemistry course that serves many agricultural and natural science majors. Develop and teach one graduate course; will be expected to establish an extramurally funded research program in environmental biochemistry and/or food toxicology. Minimum qualifications: Ph.D. in biochemistry or closely related discipline with two or more years of relevant postdoctoral experience. Desirable: proven record or high potential to develop a highly competitive research program, demonstrated experience in teaching, strength in molecular biology, excellent communication skills, and demonstrated ability to work with others. Pay range: R3; minimum \$3,377 per month commensurate with qualifications and experience. To apply: Send a cover letter, curriculum vitae, a brief statement of research interests, three representative reprints, and three letters of recommendation to: **Search Committee Chair, Department of Molecular Biosciences and Biosystems Engineering, University of Hawaii, 1955 East-West Road, Honolulu, HI 96822. Closing date: July 31, 2001. All materials must be postmarked no later than the closing date. Inquiries: Telephone: 808-956-2011.**

A **POSTDOCTORAL POSITION** is available immediately to study genetic interventions in Huntington's disease. The project will utilize imaging techniques in whole animal and tissue culture models. A background in physical biochemistry, liposomes, and molecular biology is desired. Submit curriculum vitae and letters of reference to: **Janet M. Dubinsky, Ph.D., Department of Neuroscience, 6-145 Jackson Hall, 321 Church Street, S.E., Minneapolis, MN 55455. E-mail: [dubin001@tc.umn.edu](mailto:dubin001@tc.umn.edu).** *The University of Minnesota is an Equal Opportunity Employer.*

**POSITIONS OPEN**

**FACULTY POSITION  
MOLECULAR ONCOLOGY  
The George Washington University  
Medical Center**

The Department of Pharmacology is accepting applications for a tenure-track **ASSISTANT, ASSOCIATE, or FULL PROFESSOR** in molecular oncology. The successful applicant will have an outstanding record of research accomplishment in the molecular genetics of cancer (gene mapping, transgenic models); tumor microenvironments (invasion, metastasis, angiogenesis); tumor cell growth and death (cell cycle regulation and apoptosis); or translational molecular therapeutics. Interdisciplinary research is encouraged and facilitated through the George Washington University Institute for Biomedical Science (GWIBS), composed of the GWU Medical Center and Columbian College (located five blocks from the White House), the nearby Children's Research Institute of the Children's National Medical Center, the Holland Laboratory of the American Red Cross, and The Institute for Genomic Research (TIGR). The Institute enjoys close ties with the NIH research campus. The successful candidate will be expected to maintain an extramurally funded research program, provide training opportunities for students and Postdoctoral Fellows in the interdepartmental Ph.D. programs in molecular and cellular oncology and pharmacology, and participate in the teaching of medical and graduate students. Competitive salaries and start-up funds are available for this position. Faculty rank and salary will be commensurate with prior experience. Applicants with a Ph.D. and/or M.D. degree and substantial postdoctoral experience should submit curriculum vitae; a detailed statement of research accomplishments; funding history and future research plans; a description of teaching experience; and the names, addresses, and telephone numbers of at least three references to: **Professor Steven R. Patierno, Chair of the Search Committee, Department of Pharmacology, The George Washington University Medical Center, 2300 Eye Street, N.W., Washington, DC 20037.** Review of applications will continue until the position is filled. *The George Washington University is an Equal Opportunity/Affirmative Action Employer.*

**FACULTY POSITION  
MARINE OR ENVIRONMENTAL  
MICROBIOLOGY**

The Scripps Institution of Oceanography and the Section of Molecular Biology in the Division of Biology, University of California, San Diego, invite applications for an **ASSISTANT (tenure track), ASSOCIATE (tenured) or, in exceptional cases, FULL PROFESSOR (tenured)** in the area of marine or environmental microbiology. The successful candidate will use molecular approaches to the study of fundamental problems in prokaryotic microorganisms, preferably from a marine environment. Areas of interest include but are not limited to archaeal biology, microbial interactions in biofilms or symbioses, and whole genome approaches to microbial evolution and diversity.

The successful candidate will hold joint appointments in the two departments as part of a developing program in microbiology. The successful candidate is expected to develop or continue a vigorous research program of relevance to the goals of both departments and to participate in undergraduate and graduate teaching in microbiology. Candidates must have a Ph.D. or equivalent degree. Salary will be commensurate with level of appointment and based on the University of California salary scale.

Applications received by July 31, 2001, will be assured of consideration. Send a letter of application including curriculum vitae; a complete list of publications; a brief description of research interests and professional goals; and the names, addresses, e-mail addresses, telephone and FAX numbers of at least three references to: **Chair, Marine/Environmental Microbiology Search Committee, SIO Graduate Department/UCSD, 9500 Gilman Drive, La Jolla, CA 92093-0208.** *UCSD is an Affirmative Action/Equal Opportunity Employer.*

PENNSTATE



Milton S. Hershey Medical Center  
College of Medicine

### POSTDOCTORAL POSITION IN BIOMEDICAL ENGINEERING AT THE PENNSYLVANIA STATE UNIVERSITY

A Postdoctoral Research Associate position is available immediately to design and study biodegradable and responsive polymers for drug delivery. Candidates should have prior Ph.D. or postdoctoral experience in polymer and peptide synthesis, light scattering and UV/Vis measurement. Experience in FT-IR, NMR, DSC, HPLC and rheometer is desirable. Familiarity with cell culture is a plus. The appointment is for one year with the possibility of renewal for a second year.

*Interested candidates should send a cover letter, curriculum vitae, and three letters of reference (accepted until position is filled) to:*

**Dr. Tao Lu Lowe**  
Biomedical Engineering Institute  
The Pennsylvania State University  
College of Medicine, M.C. H-151  
P.O. Box 850, Hershey, PA 17033-0850

Penn State is committed to affirmative action, equal opportunity, and the diversity of its workforce.



### ANNOUNCEMENT OF POSITION AVAILABILITY Requisition #20018352



**Department:** Carlsbad Environmental Monitoring & Research Center  
**Position Title:** Director  
**Effective Date:** July 1, 2001  
**Salary:** Commensurate with qualifications  
**Qualifications:** Applicants must have a Ph.D. in a discipline related to the CEMRC primary program areas; 10 years of related experience, prefer 5 years of experience in management of multidisciplinary technical organizations and 5 years of direct research experience resulting in multiple publications in peer-reviewed literature, evidence of successful grantsmanship and recent experience in sponsored project administration in academic institutions. A background in chemistry and radiological sciences is preferred.

**Job Description:** The Director will serve as the Chief Executive Officer of the Center, handling administrative planning, day-to-day operations, and supervision of staff. The Director will serve as liaison with government agencies, industry and the public and will be responsible for overall management of scientific/technical program, facilities, operation and budget.

**Benefits Offered:** Group medical and hospital insurance, group life insurance, long-term disability insurance, state educational retirement, worker's compensation, sick leave, annual leave and unemployment compensation.

**Application:** Please include letter of application, resume, transcript of courses leading to Ph.D., and a list of three references. We will start reviewing applications on June 4, 2001 and will continue until the position is filled. For a complete description of the position, please refer to [www.nmsu.edu](http://www.nmsu.edu). For additional information on the CEMRC, please refer to [www.cemrc.org](http://www.cemrc.org).

**Reply to:** **Dr. Richard G. Hills, Associate Dean/Director**  
NMSU College of Engineering  
Box 30001, MSC 3449  
Las Cruces, NM 88003

Offer of employment contingent upon verification of individual's eligibility for employment in the United States.

*NMSU is an Equal Employment Opportunity/Affirmative Action Employer.  
Position is Contingent Upon Funding*

### UNIVERSITY OF MICHIGAN Developmental Cardiovascular Biologist

The Department of Pediatrics, Division of Pediatric Cardiology at the University of Michigan is seeking a Director of Developmental Cardiovascular Biology. The candidate should be in mid-career and have extensive independent funding, national and international recognition and leadership abilities. Areas of research focus in cardiovascular development may include but not limited to model systems, human disease, ion channel biology, signal transduction and cell cycle mechanisms, transcription control, and physiological control mechanisms involved in normal heart function. The director will design and coordinate a research program comprised of several new positions to be filled by promising young investigators. In addition to being appointed the Director of Developmental Cardiovascular Biology the candidate will also be appointed co-director of the University of Michigan Cardiovascular Research Center and will receive a joint appointment in a basic Science Department within the University of Michigan. Generous start-up funds are available for this position.

Please, send curriculum vitae and names of five references to: **Dr. Albert P. Rocchini, Director of Pediatric Cardiology, L1242 Women's Hospital, University of Michigan Health System, 1500 E. Medical Center Drive, Ann Arbor, MI 48109-0204, e-mail: [rocchini@umich.edu](mailto:rocchini@umich.edu).**

*The University of Michigan is an  
Equal Opportunity/Affirmative Action  
Employer and encourages women  
and minorities to apply.*

A TRADITION OF EXCELLENCE...

## Discover<sup>TM</sup> THE Power TO Innovate

*Are you ready to be part of the solution?  
Are you ready to make a contribution?*

### Technical Staff Member Biosensor and Molecular Technologies Group

We're seeking a motivated professional with a Ph.D. in Virology, Molecular/Cell Biology or a related field to work as part of a team focused on developing and testing antiviral therapies. Applicants must have extensive experience with mammalian tissue culture, virus propagation in cell lines, purification/titration of virus, assays for cell viability and related techniques. Expertise in standard molecular biology techniques, including PCR, subcloning, plasmid maxi/mini preparation, enzymatic manipulation of DNA, bacterial transformation and southern/northern/western blotting is also required. Knowledge of one or more of the following: in vivo delivery methods for genes/proteins/drugs, drug development/evaluation or animal testing a plus.

The Laboratory environment of dedicated people, working in well-equipped state-of-the-art facilities, motivates excellence and innovation. We offer competitive salaries, benefits, and relocation assistance, on-site Health and Wellness and Child Care Centers, a generous tuition assistance, vacation and holiday policy, a basic retirement plan and an employer-matched 401(k) program.

Please forward your scannable resume referencing Job Code SEC84 by E-mail ([resume@ll.mit.edu](mailto:resume@ll.mit.edu)), Fax (781/981-7086), or mail to: Technical Recruitment Manager, Office of Human Resources, MIT Lincoln Laboratory, 244 Wood Street, Lexington, MA 02420-9108.

**We'd like to hear from you and consider your resume!**

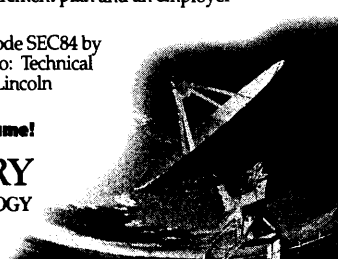


**LINCOLN LABORATORY**  
MASSACHUSETTS INSTITUTE OF TECHNOLOGY

An EEO M/F/D/V Employer. US Citizenship is required.

VISIT US ONLINE TO LEARN MORE AT [WWW.LL.MIT.EDU](http://WWW.LL.MIT.EDU)

.....A HISTORY OF INNOVATION



**POSITIONS OPEN**

**DIRECTOR**, Texas A&M University Transgenic Facility. The Department of Pathobiology in collaboration with the Center for Animal Biotechnology and Genomics and the NIEHS Center for Environmental and Rural Health invites applications for a faculty or **RESEARCH SCIENTIST** position. This individual would have strong expertise in molecular construct design and production and supervise a transgenic mouse core facility to produce overexpressed and gene-ablated mice for campus Investigators. He/she would provide oversight for services to isolate and characterize genes of interest, design and prepare pronuclear and homologous recombination constructs, culture and genetically manipulate embryonic stem (ES) cells, karyotype targeted ES cell lines, and perform PCR/Southern analysis for pronuclear and ES cell blastocyst microinjection in mice. A Ph.D., D.V.M./Ph.D., or M.D./Ph.D. and postdoctoral training is expected of a tenure-track individual, while an M.S. or Ph.D. degree with suitable experience will be considered for a research track position. A detailed position description is posted on the Department website: <http://vtpb-www.cvm.tamu.edu/>. A letter of application with curriculum vitae, statement of research and service goals, and contact information for three references should be sent to: **Transgenic Director Search Committee, Department of Pathobiology, Texas Veterinary Medical Center, Texas A&M University, College Station, TX 77843-4467**. Applications will be received until the position is filled. *Texas A&M University is an Equal Opportunity Employer committed to excellence through diversity.*

Two **POSTDOCTORAL POSITIONS** are available to study mechanisms by which membrane excitability is regulated in the model organism *Paramecium*. The first involves using voltage clamp techniques to determine how cells modulate currents that sustain intracellular Ca<sup>2+</sup> oscillations. Electrophysiological experience would be an advantage. The second is for an experienced Molecular Biologist to investigate molecular mechanisms by which cells regulate intracellular free Mg<sup>2+</sup>. Send curriculum vitae with a summary of research experience, interests, and the names and e-mail addresses of three references to: **Robin R. Preston, Ph.D., Pharmacology and Physiology, MCP Hahnemann University, 245 North 15th Street, MS Number 488, Philadelphia, PA 19102 U.S.A. FAX: 215-762-2299; e-mail: robin.preston@drexel.edu.**

**ASSOCIATE RESEARCH SCIENTIST** positions are available in the Department of Anatomy and Cell Biology at Columbia University. Funding is available to study the role of SNAREs and Rab proteins in regulated secretion by endocrine cell. Separate funding is also available to study the role of the actin cytoskeleton in control of mitochondrial motility and inheritance in budding yeast. All candidates must have a Ph.D. or an M.D. degree and at least three years of postdoctoral experience. Interested candidates must send a cover letter with area of interest, curriculum vitae, and three references to: **Attention: Associate Research Scientist Positions, Department of Anatomy and Cell Biology, Columbia University, 630 West 168th Street, New York, NY 10032.** *We take Affirmative Action toward Equal Employment Opportunity.*

A **POSTDOCTORAL RESEARCH ASSOCIATE** position is available immediately to study the effect of xenobiotics on DNA repair in mammalian cells and to investigate the underlying mechanism. A Ph.D. in biochemistry, molecular biology, or a related field is required. Experience with cell culture, HPLC, protein-DNA binding assays, and molecular biological techniques is desirable. Please send résumé and names of three references to: **Dr. H. Sikka, Environmental Toxicology and Chemistry Laboratory, Great Lakes Center, State University of New York College at Buffalo, 1300 Elmwood Avenue, Buffalo, NY 14222. Telephone: 716-878-5422; FAX: 716-878-5400; e-mail: sikkahc@buffalostate.edu.**

**POSITIONS OPEN**



**GENOMICS SCIENTIST**

The U.S. Department of Agriculture, Agricultural Research Service, National Program Staff in Beltsville, Maryland, is seeking a National Program Leader for Animal Production, GS-401-GS-14/15. Salary commensurate with experience (GS-14: \$74,697 to \$97,108 per year; GS-15: \$87,864 to \$114,224 per year). *Candidates must be U.S. citizens.* The position is responsible for planning, leading, coordinating, and implementing agricultural research programs relating to germplasm improvement and preservation; animal reproduction including gamete biology, molecular biology, or physiology; and animal biotechnology. This position has specific education and experience requirements and factors that must be addressed. In order to ensure submission of a complete application, applicants must request a copy of the announcement by calling **Telephone: 301-504-1482** or by printing it from the Internet at website: <http://www.ars.usda.gov>. Click on Employment with ARS and then REE Job Opportunities. The vacancy announcement number for this position is ARS-X1E-1374. This announcement closes July 14, 2001. *USDA/ARS is an Equal Opportunity Employer and Provider.*

Decision Resources (DR), a leading research and advisory service for the pharmaceutical, biotechnology, and investment communities, is powering up its genomic capabilities. For over 10 years DR has combined deep therapeutic knowledge, expertise, and consulting to deliver valuable insights to its clients. To support our continued growth, DR seeks high-energy, team-oriented, innovative thinkers with the ambition to work with top biopharmaceutical companies as they identify and respond to a rapidly changing market and business environment.

Functioning as a **KEY ANALYST** with the New Product Research group, you will play a key role in this new platform, targeted to the architects of pharmaceutical research and development strategic planning and business development. You will work with senior professionals at the Ph.D., M.D., and M.B.A. level aspects of the pharmaceutical and biotechnology industries. You will interface with leading Scientists and physicians, project teams, and clients to produce new product offerings for an advanced electronic knowledge management platform.

Requirements: Ph.D. in medical science field relevant to genomics and/or development of CNS-acting drugs. Work experience in the health care/pharmaceutical industry desirable. Personal strengths include excellent written and verbal skills, ability to digest and creatively analyze scientific information and, as part of an interdisciplinary team, determine its impact on drug development. Competitive compensation and benefits. Please FAX résumé to: **Judi Barratt; FAX: 781-296-2550.**

**POSTDOCTORAL/RESEARCH ASSOCIATE POSITION** available immediately to study cellular and molecular aspects of peptide hormone action and structure-function of membrane receptors. Strong background in one or more of the following areas: gene expression, site-directed mutagenesis, and/or gene transfer technology is highly desirable. Individuals having strong background in signal transduction will also be considered with preference in renal and/or cardiovascular areas of expertise. Qualified candidates should send curriculum vitae and three references to: **Dr. K. N. Pandey, Department of Physiology SL-39, Tulane University School of Medicine, 1430 Tulane Avenue, New Orleans, LA 70112. FAX: 504-584-2675; e-mail: kpandey@tulane.edu.** *An Equal Opportunity/Affirmative Action Employer.*

**POSITIONS OPEN**

**FACULTY POSITION  
Reproductive Biology**

The Division of Reproductive Biology at the Stanford University Department of Gynecology/Obstetrics invites applications for a full-time, tenure-track position for **ASSISTANT PROFESSOR**.

This appointment is open to candidates with a Doctoral degree and relevant postdoctoral experience demonstrating performance of independent, cutting-edge research. Excellent teaching skills and the potential to obtain research funding are required. Preference will be given to candidates whose research is focused primarily in the molecular and cellular biology of reproductive tissues. The successful candidate will participate in the existing NIH-funded Reproductive Biology Training Program and the Specialized Cooperative Centers Program in Reproduction Research.

Highly motivated individuals interested in excellent collaborative opportunities and a stimulating, challenging research environment are encouraged to apply. Deadline for receipt of applications is June 15, 2001. Send curriculum vitae, copies of three publications, and reference letters to: **Reproductive Biology Faculty Search Committee, Attention: Caren Spencer, Stanford University School of Medicine, Department of Gynecology and Obstetrics, 300 Pasteur Drive, Room A344, Stanford, CA 94305-5217.**

*Stanford University is an Equal Opportunity/Affirmative Action Employer.*

**ASSISTANT/ASSOCIATE PROFESSOR  
Molecular and Cellular Immunology**

Successful applicant will initiate and maintain a productive, independent research program; participate in team-taught courses for medical and graduate students; and direct training of Doctoral and/or Postdoctoral Research trainees. Assistant Professor candidates must demonstrate strong potential for success in these endeavors. Associate Professor candidates also must have a strong publication record and current extramural research funding. Department provides excellent laboratory space, a strong start-up package, a competitive 12-month state salary, a supportive environment with 14 full-time faculty, and an established Doctoral program ([website: www.ecu.edu/microbiology](http://www.ecu.edu/microbiology)). Mail curriculum vitae, letter describing research and teaching goals, and list of three references to: **Immunology Search Committee, Dr. Paul V. Phibbs, Professor and Chair, Department of Microbiology and Immunology, East Carolina University, Brody School of Medicine, Greenville, NC 27858-4354**

*East Carolina University is an Equal Opportunity/Affirmative Action Employer. Applicants must comply with the Immigration Reform and Control Act. We accommodate individuals with disabilities.*

**POSTDOCTORAL POSITION  
Biochemistry/Molecular Biology**

Project involves site-directed mutagenesis and related studies of firefly luciferase. Applicants should have experience in the standard techniques of molecular cloning and enzymology. See [website: http://oak.conncoll.edu/~brbra/pubs.pdf](http://oak.conncoll.edu/~brbra/pubs.pdf) for more information. Applicants should send curriculum vitae and arrange to have at least two letters of recommendation sent to: **Professor Bruce Branchini, Department of Chemistry, Connecticut College, 270 Mohegan Avenue, New London, CT 06320. E-mail: brbra@conncoll.edu.**

**POSTDOCTORAL RESEARCH POSITION** available in mRNA expression analysis of human cancer and cancer models. Skill in use of cDNA microarrays and related technology and some knowledge of computational approaches to data analysis and Ph.D. or M.D. required. Send curriculum vitae, names of references, and a brief description of research interests to: **Lynn Egloff, Department of Molecular Biology, Princeton University, Lewis Thomas Laboratory, Princeton, NJ 08544. FAX: 609-258-3980.** *Princeton University is an Equal Opportunity/Affirmative Action Employer.*

**Post-doctoral Position at Fred  
Hutchinson Cancer Research Center  
Seattle, WA**

The Clinical and Human Biology divisions invite applications from outstanding scientists with interest in muscle cell and/or hematopoietic stem cell biology. We are recruiting a post-doctoral scientist to investigate stem cell plasticity and innovative strategies for stem cell therapy in muscular dystrophy. We are seeking a dynamic individual who has the potential to excel in a multi-disciplinary group to work with our pre-clinical large animal model and to carry out molecular and biochemical studies. This project will delineate the myogenic potential of hematopoietic and muscle-derived stem cells and will test the *in vivo* efficacy of stem cell transplantation for myopathies. The project will be under the joint supervision of laboratories with expertise in stem cell transplantation (**Dr. M.-T. Little and Dr. R. Storb**) and muscle biology (**Dr. S.J. Tapscott**). The FHRC is situated on Southeast Lake Union close to the University of Washington and downtown Seattle. The FHRC provides an outstanding opportunity for scientific education and collaborations with outstanding scientists from many disciplines. Please send Curriculum Vitae, a short statement about past and present research interests and the names of three referees to:

**Dr. Marie-Térèse Little  
Fred Hutchinson Cancer Research Center  
D1-100, 1100- Fairview Avenue, N.  
Seattle, WA 98109, USA**

*An Equal Opportunity Employer Committed to  
Work Force Diversity*

**ETH**

**Eidgenössische Technische Hochschule Zürich  
Swiss Federal Institute of Technology Zurich**

The **Geobotanical Institute** of the ETH Zurich, Stiftung Rübel, is seeking a  
**Plant Population Ecologist/Evolutionary Biologist**

**with experience in modern molecular methods**

**Tasks:** The work will include lecturing and organising practical classes for undergraduate students, co-supervising doctoral and diploma students, and carrying out research work, both independently and in collaboration with colleagues in the institute.

**Knowledge:** The person appointed should have a PhD degree in some field of plant ecology or evolution.

**Position:** The position is available from 1 July 2001 on for a maximum of 3 years and is intended for someone who has postdoctoral research experience.

**Application:** Please send your curriculum vitae, including a list of publications and the names of three references by 25 May 2001 to:  
ETH Zurich, Mr. H.-J. Tschachtli, Personnel Manager, **Code ECOPLANT**,  
ETH Zentrum, CH-8092 Zurich.

For further information please contact:  
Prof. Dr. Peter J. Edwards, Geobotanisches Institut ETH, Zürichbergstr. 38,  
8044 Zürich.  
Telephone +41 1 632 43 30,  
e-mail: peter.edwards@geobot.umnw.ethz.ch.

**Assistant/Associate Professor  
(tenure-track)**

The **Department of Cancer Biology** at **The University of Texas M. D. Anderson Cancer Center** in Houston, TX, is seeking tenure-track Assistant or Associate Professors with expertise in systemic, cellular, and molecular biology to conduct studies relevant to the biology of cancer. Successful candidates are expected to establish a vigorous independent research program that focuses on, but is not necessarily limited to, tumor progression, angiogenesis, invasion, and metastasis, with an emphasis on genetically modified mouse models to study these processes. Additionally, successful candidates will be expected to obtain independent peer-reviewed federal and private grant funding. Competitive start-up packages and space are available.

Interested applicants should send a letter describing their research interests and curriculum vitae to: **Isaiah J. Fidler, D.V.M., Ph.D., UT M. D. Anderson Cancer Center, Department of Cancer Biology, 1515 Holcombe Blvd., Box 173, Houston, TX 77030.**

THE UNIVERSITY OF TEXAS  
**MD ANDERSON  
CANCER CENTER**  
*Making Cancer History™*

*The University of Texas M. D. Anderson Cancer Center values diversity in its  
broadest sense. Diversity works at M. D. Anderson.  
EEO/AA Smoke-free environment.*

**Celgene**

To support our expanding drug discovery efforts in  
Inflammation and Oncology, the Signal Research Division  
of Celgene has the following immediate opportunities:

**Research Scientist - Kinase Discovery  
Department of Cell Signaling and Target Discovery**

This department works as a multidisciplinary team to discover and validate targets in the therapeutic areas of cancer and inflammation. We are seeking a creative, energetic Biochemist or Cell Biologist. The ideal candidate will have a Ph.D. with 1-5 years of postdoctoral/industrial experience. Position requires knowledge and experimental expertise in kinases and signal transduction. Experience with bioinformatics, cancer biology and cell cycle control/apoptosis is desired. **Code: USCS**

**Cellular Pharmacologist**

**Department of Cellular and Molecular Pharmacology**

This department validates novel targets through functional assays, develops *in vitro* and *in vivo* assays for drug discovery, and evaluates small molecule drug candidates. We currently have a Scientist position available for a Ph.D. with 1-3 years' industrial/postdoctoral experience. The ideal candidate will have a proven record of accomplishment in characterization of novel targets using cell-based assays and *in vivo* models. A good understanding of inflammation and cancer biology is required. Must possess proven skills in cellular and molecular pharmacology with small molecule compounds. Flow cytometry, microscopy and functional genomics skills are a plus. **Code: SRHR**

Good communication and problem solving skills and the desire to work in a team environment are essential for both positions. Individuals capable of fostering internal and external collaborations will succeed in this environment.

Position is commensurate with the experience level of the candidates. Celgene offers a competitive compensation package that includes equity participation. If your skill set fits the job description, **please send resume (indicating job code) to: Celgene Corp., Signal Research Division, Attn: L. Cain, 5555 Oberlin Dr., San Diego, CA 92121 or e-mail: lcain@signalpharm.com AAE/EO**

**POSITIONS OPEN**

**TENURE-TRACK FACULTY POSITION**  
**The Johns Hopkins Comprehensive**  
**Cancer Center**  
**The Breast Cancer Research Program**

The Breast Cancer Research Program of the Johns Hopkins Comprehensive Cancer Center invites applications for a tenure-track faculty position at the **INSTRUCTOR/ASSISTANT PROFESSOR** rank. Candidates should have demonstrated excellence in molecular and cellular biology. Applicants are required to have an M.D., Ph.D., or M.D./Ph.D.; appropriate postdoctoral experience; and evidence of ability to develop an independent translational breast cancer research program with extramural funding. Send curriculum vitae, brief summary of research interests, and names of three references to:

**Nancy E. Davidson, M.D.**

**Director, Breast Cancer Research Program**  
**Johns Hopkins Oncology Center**  
**The Bunting/Blaustein Cancer Research Building**  
**1650 Orleans Street, Room 409**  
**Baltimore, MD 21231-1000**

*The Johns Hopkins University is an Affirmative Action/Equal Employment Opportunity Employer and actively encourages interest from minorities and women.*

**VACANCY ANNOUNCEMENT**

Temporary, one-year nontenure-track **ASSISTANT PROFESSOR** replacement position to begin 16 August 2001. Plant or Animal Ecologists with strong statistical backgrounds are encouraged to apply. Successful applicant will instruct a core undergraduate course in ecology, participate in the lecture portion of a team-taught introductory biology course, and offer a course in biometry or a course in area of expertise. Ph.D. required; teaching experience is desirable. Send curriculum vitae and the names, addresses, and telephone numbers of three references to: **Chair, Ecology Search Committee, Department of Biology, University of North Dakota, Grand Forks, ND 58202-9019**. Review of applications will begin 15 June 2001 and continue until the position is filled. *The University of North Dakota is an Affirmative Action/Equal Opportunity Employer.*

**ASSOCIATE RESEARCH SCIENTIST POSITION** available in laboratory of **Dr. Richard J. Deckelbaum** at Columbia University, New York. This position requires a Ph.D. with extensive experience in lipid biochemistry and cell biology (some knowledge of biophysical chemistry preferred). The successful candidate will study selective cholesterol uptake by cells and its relationship to development of atherosclerosis. Salary commensurate with experience. *Applicants must be U.S. citizens or permanent residents.* Kindly mail résumé to: **Ms. Damaris Battaglia, Institute of Human Nutrition, Columbia University, 630 West 168th Street, PH1512, New York, NY 10032.** *Columbia University is an Affirmative Action/Equal Opportunity Employer.*

**POSTDOCTORAL FELLOW/  
 RESEARCH ASSOCIATE**

**University of Colorado Health Sciences Center**

To join group studying malignant and normal hematopoiesis with emphasis on the Pim protein kinase, AML1/ETO, and GM-CSF signal transduction. Experience in molecular and cellular biology including basic protein chemistry expected. Proteomics and transgenic technologies are available. Excellent salary commensurate with experience. Send résumé and names of three references to: **Andrew S. Kraft, M.D., Chief, UCHSC, Division of Medical Oncology, 4200 East Ninth Avenue, B171, Denver, CO 80262.**

**POSITIONS OPEN**



**RESEARCH FOOD SCIENTIST/  
 TECHNOLOGIST/BIO TECHNOLOGIST**

The U.S. Department of Agriculture, Agricultural Research Service (ARS), Food Safety and Health Research Unit, Western Regional Research Center, Albany, California (San Francisco Bay area), is accepting applications for the position of a Food Scientist/Technologist/Biotechnologist (GS-13/14/15 depending upon training and experience; \$67,082 to \$121,218 per annum plus benefits). The incumbent will be a Lead Scientist responsible for conducting and administering a program of basic and applied research pertaining to the microbiological safety of foods. The Unit is composed of Microbiologists, Molecular Biologists, Plant Pathologists, and Biochemists studying the basic biology of *Campylobacter*, pathogenic *E. coli*, *Listeria*, and *Salmonella* species in and on poultry and produce; in manure; and pathogen detection and identification methods. The objectives of the incumbent's personal research are development of rapid molecular methods for detecting multiple food pathogens in produce including the development of novel enrichment and sampling methods compatible with plant/produce samples and applied intervention methods for minimizing pathogens on produce. The incumbent will identify priorities for research through working relationships with academia, industry, and regulatory agencies and provide technical leadership to determine approaches and recommend applied research strategies and priorities to other Unit Research Scientists. Applicants must have a Ph.D. in food technology or a related discipline and one year of specialized experience in food science. Candidates must be U.S. citizens. Go to **website: <http://www.afm.ars.usda.gov/divisions/hrd/index.html>** and find announcement ARS-X1W-1353 for details and how to apply or contact: **Personnel; Telephone: 510-559-6012**. Closing date for applications is June 11, 2001. For information, contact: **Robert Mandrell; e-mail: [mandrell@pw.usda.gov](mailto:mandrell@pw.usda.gov)**. *USDA/ARS is an Equal Opportunity Provider and Employer.*

**CENTER DIRECTOR  
 UNIVERSITY OF ROCHESTER**

The University of Rochester's School of Medicine and Dentistry invites applications and nominations for the position of Director of the Center for Oral Biology in the Aab Institute of Biomedical Research. For full ad, see "Director Search" at **website: <http://www.urmc.rochester.edu/Aab/OralBio2/>**. Candidates must possess an established record of distinguished scholarship, administrative experience, significant extramural funding, and a broad vision of innovative programs in oral biology research and education. Applicants should submit complete curriculum vitae and the names and addresses of at least five references to: **Dr. Steven Spitalnik, Chair, COB Director Search Committee, University of Rochester School of Medicine and Dentistry, Department of Pathology and Laboratory Medicine, Box 626, 601 Elmwood Avenue, Rochester, NY 14642.**

**POSITIONS IN THE AREA OF  
 NEURAL REGENERATION**

**SENIOR RESEARCHER** positions available with a team of Scientists developing clinical applications for the chronically injured CNS using cellular and molecular mechanisms of neuronal regeneration. A major focus will be the analyses of signal transduction mechanisms and gene regulation related to the control of neurite growth. Applicants must have a Ph.D. and experience in cellular and molecular biology. Interested applicants should send curriculum vitae to: **Spinal Cord Society, 19051 County Highway 1, Fergus Falls, MN 56537.**

**POSITIONS OPEN**

**HYDROLOGIST/PHYSICAL SCIENTIST/  
 Atmospheric Scientist/Soil Scientist/  
 Agronomist**

The U.S. Drug Administration, Agricultural Research Service, Hydrology and Remote Sensing Laboratory at Beltsville, Maryland, has an opening for a permanent full-time **RESEARCH SCIENTIST** to join a team whose research mission is to conduct nationally oriented basic and applied research on water resources and remote sensing concerns related to the production of food and fiber and the conservation of natural resources. The candidate should have experience in one or more of the following areas: (1) investigating the effects of scaling-up from point-based process models to landscape, regional, and continental scales; (2) developing methods for modeling and inventorying carbon in soil at various scales from field to continental and relating carbon stocks and sequestration rates to the water cycle, climate, and vegetation; (3) integrating mesoscale atmospheric modeling with remotely sensed data in data assimilation schemes for assessing regional climate effects; (4) developing coupled modeling of land-atmosphere processes leading to improved predictability in the global water and carbon cycles that includes key factors related to agriculture; (5) developing techniques for extracting information from remotely sensed data and a framework to incorporate remotely sensed data into watershed and regional scale hydrologic and climate models; and (6) assisting in technology transfer. *Candidates must be U.S. citizens.* Salary is commensurate with experience (GS-12: \$53,156 to GS-14: \$97,108). For information about the position, contact: **Dr. Walter Rawls; Telephone: 301-504-8745; e-mail: [wrawls@hydrolab.arsusda.gov](mailto:wrawls@hydrolab.arsusda.gov)**. Information about the laboratory is available at **website: <http://hydrolab.arsusda.gov>**. Information about the application procedures may be obtained by contacting: **Beverly Jacobs; Telephone: 301-504-1350; e-mail: [bjacobs@ars.usda.gov](mailto:bjacobs@ars.usda.gov); ARS website: [www.afm.ars.usda.gov/divisions/hrd/index.html](http://www.afm.ars.usda.gov/divisions/hrd/index.html)**. Announcement Number ARS-X1E-1359. Applications must be postmarked by the closing date of July 23, 2001. *USDA-ARS is an Equal Opportunity Provider and Employer.*

**SCIENCE ANALYST**

New York City law firm seeks Science Analyst to join its scientific department in identifying, summarizing, and critically evaluating biological and medical literature and statistical data relevant to product liability litigation. We are seeking epidemiological expertise. Our primary interests include cancer, cardiovascular, respiratory, and other diseases. Good communication skills, both written and verbal, are required to present analyses of medical and scientific issues to nonscientists. Must be a team player and self-starter with the ability to set priorities and meet deadlines. Doctoral degree preferred. Experience in a nonacademic position (consulting, industry, litigation, etc.) a plus. This position does not involve court appearances. Competitive salary, excellent benefits, and a congenial atmosphere. Send curriculum vitae and salary history to: **Ms. Maria Zezula, P.O. Box 238, New York, NY 10185-0238. E-mail: [scientific\\_law@start.com.au](mailto:scientific_law@start.com.au)**.

**POSTDOCTORAL POSITION** in experimental neurobiology and physics. The Neural Dynamics Laboratory, Krasnow Institute, at George Mason University seeks Researcher for NIH-sponsored project combining electric field adaptive control of neuronal networks with study of nonlinear synchronization. Candidate should have biology, physics, or bioengineering Ph.D. with experience in intracellular patch recording and instrumentation design. Salary: \$32,500. More information at **website: <http://www.krasnow.gmu.edu/neuraldyn>**. Consideration through at least June 15, 2001. Send letter, curriculum vitae, and names of three references to: **Dr. Steven Schiff, Krasnow Institute, MS 2A1, George Mason University, Fairfax, VA 22030. E-mail: [jBarreto@gmu.edu](mailto:jBarreto@gmu.edu); Telephone: 703-993-4387.** *George Mason University is an Affirmative Action/Equal Opportunity Employer.*

## Opportunities



### Director, Division of Pediatric Nephrology

The Division of Pediatric Nephrology at Children's Hospital Medical Center of Cincinnati/University of Cincinnati College of Medicine seeks a new division director. An M.D. or M.D./Ph.D. is required; the position will be at the associate or full professor level. The director of nephrology maintains and enhances the division's strong programs in research, fellowship training and clinical nephrology. An outstanding opportunity exists for academic collaboration with excellent developmental biology and molecular biology programs within the Department of Pediatrics. Academic rank will be determined by the candidate's credentials, and clinical and laboratory experience.

Send CV to:

Robert H. Beekman, III, M.D.  
Chairman, Nephrology  
Search Committee  
Children's Hospital  
Medical Center of Cincinnati  
3333 Burnet Avenue  
Cincinnati, OH 45229-3039

Visit our website at [www.cincinnatichildrens.org](http://www.cincinnatichildrens.org)

Children's Hospital Medical Center is an Affirmative Action/Equal Opportunity Institution. Women and minorities are encouraged to apply.



St. Jude Children's  
Research Hospital

ALSAC • Danny Thomas, Founder

### ST. JUDE CHILDREN'S RESEARCH HOSPITAL POSTDOCTORAL FELLOWSHIPS

St. Jude Children's Research Hospital, a premier research center for catastrophic diseases of childhood and biomedical research, offers several named fellowships:

- The **George J. Mitchell Fellowship in Basic Science Research**
- The **Leon Journey Memorial Fellowship in Biomedical Research**
- The **David Karnofsky Memorial Fellowship in Cancer Research**

The George Mitchell Fellowship and the Leon Journey Fellowship are open to junior investigators who have recently completed their M.D., Ph.D., D.V.M., or Pharm.D. degree. The David Karnofsky Fellowship is available to investigators who have completed at least three years of postdoctoral training and who seek additional training experience in one of the specialty areas of biomedical research available at St. Jude Children's Research Hospital. Fellowship award is made for up to three years and is based on merit, recommendations and promise of a productive career in biomedical research. Stipends are highly competitive.

To apply, please visit our web site at <http://www.stjude.org> for details about ongoing research at St. Jude Children's Research Hospital. Applicants should identify 2-3 potential mentors and send a complete packet to include an outline of potential research projects, a curriculum vitae, documentation of doctoral degree and three letters of reference to:

#### Academic Programs Office

**[Provide the name of the fellowship for which you are applying]  
[Identify Mentor(s)]**

**St. Jude Children's Research Hospital  
332 N. Lauderdale Street • Memphis, TN 38105 U.S.A.**

Applications will not be considered unless a specific field of interest and 2-3 mentors have been identified. Deadline for receipt of applications is **June 1, 2001**. Award notification will be announced shortly thereafter.

Equal Opportunity Employer

[www.stjude.org](http://www.stjude.org)



### Universität Heidelberg C4 Professor (Chair) of Bioinformatics

The above position is available in the Faculties of Pharmacy and Molecular Biotechnology of the University of Heidelberg. The position will also involve setting up and leading the laboratory Theoretical Bioinformatics in the National Cancer Research Center (DKFZ) in Heidelberg. The University of Heidelberg and the Heidelberg region offer an extensive and high-quality environment for bioinformatics research. The position will be equipped with excellent start-up and long-term financing.

The successful candidate should perform first-class research in bioinformatics and participate in teaching in the new Molecular Biotechnology curriculum at the university. Success in grant raising and readiness to participate in interdisciplinary research in central scientific institutions in the university will be expected. Participation in the "Biochemical and Molecular Basis of Biotechnology" Graduate College is also desirable. The German "Habilitation" or demonstration of having reached an equivalent research/teaching standard is required.

Section 1, Paragraph 67 of the *Universitätsgesetz* (University law) requires that a candidate without a previous appointment as university professor in the German university system be initially employed on a non-tenured basis. The appointee is not required to reapply for the position if his/her contract is to be extended beyond the initial term. Exceptions to these regulations may be granted if candidates from abroad or from outside the university system refuse to accept an appointment under these conditions. The University of Heidelberg is interested in increasing the number of female professors on the faculty and encourages women to apply for the position.

Candidates should send CV, a research description, list of publications, names and addresses of at least 3 referees and copies of their 5 most important publications to: Prof. Dr. M. Wink, Vorsitzender der Berufungskommission, Institut für Pharmazeutische Biologie, Im Neuenheimer Feld 364, 69120 Heidelberg, Germany. Initial candidates will be reviewed 6 weeks after publication but applications received after this date may also be considered.

*It's what we do.  
It's who we are.*

#### Employment opportunity in PA

**Merck Research Laboratories**, a world leader in Biological and Pharmaceutical Research, attracts scientists who are on the cutting edge of modern biomedical, genetic, chemical, and scientific discoveries and have an unwavering dedication to research. We are currently seeking a Staff Biologist and Research Biologist in our **West Point, PA** facility.

#### STAFF BIOLOGIST/RESEARCH BIOLOGIST

We are seeking two staff scientists to join a team of scientists working on research and development of viral vaccines within the Department of Virus and Cell Biology of Merck Research Laboratories. To qualify, the potential candidates should have an MS or BS in molecular biology. Strong hands-on experience in recombinant DNA, cell culture, and protein analysis/purification, and a minimum of one year's working experience are also required. Experience with in situ hybridization/immunohistochemistry and/or immunology techniques/small laboratory animals would be a plus, but is not required.

We offer an excellent salary and comprehensive benefits program, including tuition reimbursement and one of the best 401(k) plans in the nation, as well as opportunities for personal growth. Please submit your resume and a cover letter indicating salary requirements to: **Merck Research Laboratories, Job Code: XLZZ/SRB, P.O. Box 4, WP26-244, West Point, PA 19486**. Only candidates considered for interviews will receive responses. We are an Equal Opportunity Employer, M/F/D/V.



Visit our website at [www.merck.com](http://www.merck.com)



# Take Your Career



## To New Heights With **PHARMACIA**

At **Pharmacia Corporation**, a first-tier pharma organization with a global presence, we invest \$2+ billion a year in R&D with major activities focused in the areas of arthritis/inflammation, cancer, infectious diseases, cardiovascular and metabolic diseases, and disorders of the central nervous system. **Join our Research Team in Kalamazoo, Michigan as:**

### **SENIOR RESEARCH INFORMATION SCIENTIST** Ad Code #00-1702

As a proactive participant in Pharmacia's Global Information Network (GIN), a worldwide, team-based organization of libraries and information management initiatives and services, the successful candidate will conduct complex research/literature searches utilizing science and technical knowledge resources. The candidate will participate on cross-functional research programs/project teams to determine team information needs and provide research information, alerting systems, and access to end-user resources and tools, and promote and market GIN resources to the client groups. Requirements include an advanced degree in the biomedical/pharmaceutical sciences combined with a minimum of 5 years of experience in information research, preferably in the pharmaceutical industry. MLS in Library/Information Science is welcome. Excellent communication and presentation skills, problem solving and interpersonal abilities, as well as strong collaborative and team skills are essential.

Reach new heights in your career with Pharmacia and enjoy a competitive salary and benefits in a professionally encouraging work environment. For immediate consideration, please respond using our preferred online method at: <http://respond.webhire.com/job/id?479-r1702-J9> Or you may fax your resume to the Pharmacia resume processing center, referencing Ad Code #00-1702/Science Magazine, at 520-287-0963. Pharmacia Corporation is an equal opportunity employer, we value a diverse combination of ideas, perspectives, and cultures. EEO/AA EMPLOYER M/F/D/V

# **PHARMACIA**

[www.pharmacia.com](http://www.pharmacia.com)



UNIVERSITY OF  
**CALGARY**

## **BIOCHEMISTRY**

### **Assistant Professor, Protein Crystallography**

*On the edge and leading the way.*

*The University of Calgary is an innovative university that builds a spirit of discovery and inquiry while delivering a dynamic life and quality learning experience.*

The Department of Biological Sciences wishes to recruit a scientist with an active research program in protein crystallography. We are particularly interested in well-trained individuals, with a PhD degree and postdoctoral experience, who are committed to the analysis of enzyme mechanisms and membrane associated proteins. The successful applicant will become a member of the newly formed Structural Biology Group and he/she is expected to participate in teaching undergraduate and graduate level Biochemistry courses.

Foremost he/she is expected to establish an active independently funded research program. The candidate must compete successfully for salary and establishment grant support from the Alberta Heritage Foundation for Medical Research or a related agency. AHFMR scholars are offered substantial start-up packages and have 75% of their time protected for research. We can offer a well-equipped laboratory and access to an in-house state-of-the-art X-ray generator and area detector. As well, access to the new CLS synchrotron and training have been made through the Alberta Synchrotron Institute.

Salary range will be commensurate with experience. The closing date is **June 30, 2001**.

Please send 6 copies of your complete curriculum vitae complete with e-mail address, five relevant papers, a 2-page statement of your research interests and arrange for three confidential letters of reference to be sent to: **Dr. David M. Reid**, Head, Department of Biological Sciences, University of Calgary, 2500 University Drive N.W., Calgary, AB, T2N 1N4, Canada; E-mail: [dmreid@ucalgary.ca](mailto:dmreid@ucalgary.ca); Phone: (403) 220-5260; Fax: (403) 289-9311.

*In accordance with Canadian immigration requirements, priority will be given to Canadian citizens and permanent residents of Canada. The University of Calgary respects, appreciates and encourages diversity.*

[www.ucalgary.ca](http://www.ucalgary.ca)

### **Tenure-Track Faculty Position in Neuroscience Education**



Georgia State University is engaged in a major expansion of its research and instructional programs in **Behavioral Neuroscience** as part of the recently launched **NSF Science and Technology Center for Behavioral Neuroscience**. Generous state and institutional funds along with \$20 million from the National Science Foundation has been committed to fund the Center for the first five years. The Center is a consortium of more than 60 neuroscientists from Georgia State and other Atlanta area universities including the Atlanta University Center, Emory University, Georgia Tech and Morehouse Medical School. The purpose of the center is to foster interdisciplinary collaborative approaches toward understanding the basic neural mechanisms underlying the regulation of complex social behaviors and emotions. The center is also designed to enhance minority participation in science, to encourage technology transfer to industry, and to aid in bringing research findings to the public.

Applications are invited for an anticipated tenure-track Assistant Professor position in Science Education in the Department of Biology. The successful applicant will establish a research program in behavioral neuroscience. Research programs in fear, aggression, affiliation, and reproduction are particularly welcome. The University will provide lab space and a generous set-up package. In addition, the applicant will direct several education/outreach programs for the Center for Behavioral Neuroscience. The successful applicant should have administrative pre-college educational outreach experience, university level teaching experience, and at least 2 years postdoctoral research training. In addition, interdisciplinary and interinstitutional experience is desirable.

Initial review of applications will begin June 15, 2001. Applications including CV, reprints; a statement of teaching and outreach experience and goals; a statement of research plans; and 3 letters of recommendation should be sent to:

**Chair of Science Education Search Committee**  
**Department of Biology**  
**PO Box 4010**  
**Georgia State University**  
**Atlanta, GA 30302-4010**

*Georgia State University, a Research University of the University System of Georgia, is an Equal Opportunity Educational Institution and an EEO/AA Employer.*



# Find your next tassel with no hassle.



## **Academic Connections Graduate Program Profiles**

**Academic Connections** can help you find and evaluate just the right graduate program.

Search listings by

- Name of University or College
- Subject
- Location

The **Rapid Reply** function allows you to send an e-mail message to the schools of your choice — **instantly**. This feature makes requesting additional program or application information fast, easy, and hassle-free.

**Science Careers**  
[www.sciencecareers.org](http://www.sciencecareers.org)

## REQUEST FOR APPLICATIONS AVAILABLE

Philip Morris Incorporated announces the availability of its 2001 Request for Applications booklet for the Philip Morris External Research Program. The broad range of research interests includes the following scientific areas: Exposure/Biomarkers/Dosimetry, Epidemiological Research, Clinical and Model Systems Research, and Tobacco Smoke and Smoking Behavior. Applications must be received by August 31, 2001.

For more information or a copy of the 2001 Request for Applications booklet, please call or write Research Management Group, coordinator for the Philip Morris External Research Program.

**Research Management Group**  
Attn: Research Manager  
1099 Winterson Road, Suite 280  
Linthicum Heights, Maryland 21090-2216 USA  
Telephone: (410) 684-3782  
Fax: (410) 684-3729  
Email: [rmgroup2000@aol.com](mailto:rmgroup2000@aol.com)

## The David Starr Jordan Prize in Evolution, Ecology, Population or Organismal Biology

In 1986, Cornell, Indiana, and Stanford Universities jointly endowed a Prize, international in scope, to commemorate David Starr Jordan, a scientist, educator, and academic leader associated with all three Universities. The Prize is presented every three years to a young scientist (or scientists; normally no more than 40 years old, or not more than 10 years post-Ph.D.) whose research is redirecting work in one or more areas of Jordan's interest: evolution, ecology, population and organismal biology. In addition to receiving a commemorative medal and a cash award of \$15,000, the recipient(s) will deliver scholarly presentations of his/her work at each of the participating Universities.

The Prize winner, selected by a committee drawn from all three Universities, will be announced in late 2001. Letters of nomination, accompanied by (a) two other letters of support; (b) the nominee's full *curriculum vitae*; and (c) copies of five representative publications by the nominee, should be sent, prior to 15 September 2001, to:

Prof. Ward B. Watt  
ATTN: David Starr Jordan Prize Committee  
Dept. of Biological Sciences  
371 Serra Mall  
Stanford University  
Stanford, CA 94305-5020 USA  
(650)723-4297 · FAX (650)723-6132

## The Science Meetings & Announcements Database

A comprehensive listing of events,  
grants announcements, courses & training,  
and more... *in print and online.*

When you run your ad in *Science*, it is  
automatically posted in the Meetings &  
Announcements database at

**Sciencemeetings.org.**

This online posting receives a free hyperlink  
from any e-mail or web address. The  
Meetings & Announcements page is  
searchable by keyword, discipline,  
geographic region, or category/subject.  
It doesn't get any easier.

## Is your event listed?

In the U.S. call Kathleen Clark at 202 326-6555  
In Europe ring Richard Walters on +44 (0) 1223 326 500

**Science**  
[www.sciencemeetings.org](http://www.sciencemeetings.org)

## CONFERENCES



Joint Cold Spring Harbor Laboratory/  
Wellcome Trust Conference



# Genome Informatics

August 8 - 12, 2001

Wellcome Trust Genome Campus,  
Hinxton, Cambridgeshire, UK

Arranged by:

Ewan Birney, *European Bioinformatics Institute*  
Suzanna Lewis, *University of California, Berkeley*  
Lincoln Stein, *Cold Spring Harbor Laboratory*

Annotation Pipelines Genome Assembly  
Gene Prediction Functional Genomics  
Gene Ontology Genome Visualization  
Software Engineering

*Speakers include:* Michael Ashburner, Mike Cherry,  
Michele Clamp, Richard Durbin, Jim Kent,  
Anders Krogh, John Quackenbush, Jim Mullikin,  
Chris Mungall, John Richter, Joel Richardson

**Abstract Deadline: May 25, 2001**

Further Information, Registration & Abstracts:  
[www.cshl.org/meetings/hinxton.htm](http://www.cshl.org/meetings/hinxton.htm)



LOOKING FOR A JOB ISN'T ROCKET SCIENCE.

What you do every day is.

**Science @**  
CAREERS   
[www.sciencecareers.org](http://www.sciencecareers.org)

job postings  
resume/CV database  
e-mail alerts  
employer profiles

# Research Scientist Positions

Founded in 1985 as a government research institute with its mission to develop fundamental core technologies, the Korea Research Institute of Bioscience and Biotechnology (KRIBB) has been at the forefront of Korea's biotechnological development.

KRIBB invites well-qualified and motivated scientists to join our staff positions in the following areas:

- Animal histopathology
- Biodiversity (microbial genetics)
- Diabetes research
- Drug design
- Genomics, Proteomics, Bioinformatics in the areas of human, animal, plant, insect, and microorganism
- Glycobiology
- Insect pathology
- Molecular pharmacology
- Obesity research
- Risk assessment of living modified organisms
- Antibiotics (molecular biology & biochemistry)
- Bioinformation data processing (min. requirement BS degree)
- Disease animal model
- High throughput screening technology
- Molecular biology of cardiovascular disease
- Nanobiotechnology
- Neurobiology
- Pharmacokinetics
- Structural biochemistry

Qualifications for the above positions except "bioinformation data processing" include a PhD, at least two years of postdoctoral experience and a proven record of excellence in research. Please submit a curriculum vitae and a statement of research interests and 3 letters of reference sent directly, by, June 30, 2001, to:

**Dr. Song-Hae Bok, President, Korea Research Institute of Bioscience and Biotechnology**  
P.O. Box 115, Yusong, Taejon 305-600, Korea

For more information, please visit us at [www.kribb.re.kr](http://www.kribb.re.kr) or contact Mr. Young-Ho Han, Chief of General Affairs Section (Tel: +82-42-860-4020, Fax: +82-42-860-4027, E-mail: [jdpark@mail.kribb.re.kr](mailto:jdpark@mail.kribb.re.kr))

In accordance with Korean Immigration requirements, priority will be given to Korean citizens and permanent residents of Korea.



**The Victor Chang**  
CARDIAC RESEARCH INSTITUTE  
Sydney, Australia

## POSTDOCTORAL POSITION

A Postdoctoral position is available for a highly motivated candidate to join an internationally competitive group studying the molecular basis of heart development and patterning in mice.

The project seeks to elucidate the function of a novel protein expressed in the developing heart chamber myocardium and in skeletal muscle lineages, and which is implicated in modulation of the cytoskeleton during development, growth and adaptation.

A strong background in molecular and cellular biology is essential.

Send CV and names of 3 referees by 31st May, 2001 to:

**Professor Richard P Harvey**  
The Victor Chang

Cardiac Research Institute  
384 Victoria Street

Darlinghurst NSW 2010, Australia  
email:

[r.harvey@victorchang.unsw.edu.au](mailto:r.harvey@victorchang.unsw.edu.au)

## Chief Executive Officer

### CRC for Diagnostics

One of Australia's largest universities, QUT has a breadth of disciplines including Arts, Business, Built Environment and Engineering, Education, Health, Information Technology, Law and Science.

Benefits available at QUT include up to 17% employer superannuation contributions, a generous study assistance scheme, salary packaging, relocation assistance (if applicable), extensive development and training programs and access to a range of QUT's state-of-the-art facilities.

*Fixed-term three years*

*Reference Number: 21149*

We are seeking an exceptional candidate to lead the CRC for Diagnostics into a new era of innovative research and development. The successful applicant will be required to provide leadership to the Centre by coordinating the interactions of the participating partners and promote the commercial activities of the Centre to industry and the wider community. The successful candidate will have industry experience, be internationally recognised for achievements in biological/medical research and meet the university criteria for appointment as a Professor.

*Closes: 1 June 2001*

*Salary: An attractive salary package will be negotiated with the successful candidate.*

**For more information visit "Jobs @ QUT" at [qut.com](http://qut.com)**



If you do not have web access, contact QUT Human Resources department on (07) 3864 4191/4190/4104.

A university for the real world

Queensland University of  
Technology  
GPO Box 2434  
Brisbane QLD 4001



[visit qut.com](http://visit.qut.com)

POSITIONS OPEN

**POSTDOCTORAL AND RESEARCH POSITIONS**  
Carbon Cycle Science and Carbon Mitigation  
Princeton University

The Princeton Environmental Institute is initiating an interdisciplinary, decade-long research effort to understand and manage the global carbon cycle. This will involve at least 10 Researchers in addition to current staff. We are interested in receiving applications from potential Postdoctoral scholars as well as from more experienced researchers in the following areas:

Carbon cycle science: Earth system modeling; development of coupled terrestrial, oceanic, and atmospheric models of the carbon cycle and climate (Pacala, Sarmiento).

Natural carbon sources and sinks: estimation of surface carbon fluxes from atmospheric and oceanic data (tracer-transport inversion) (Sarmiento, Bender, Pacala).

Biogeochemical causes of the glacial/interglacial oscillation (Sigman, Morel).

Carbon sequestration: geologic sequestration of carbon from fossil fuels, modeling the movement and geochemistry of carbon dioxide injected underground, and associated risks (Celia, Prevost, Jaffe, Peters). Chemistry of sequestered CO<sub>2</sub>; high-pressure chemistry of CO<sub>2</sub> and water (Myneni).

Oceanic and biological sequestration of atmospheric carbon and sequestration in carbonate minerals (Sarmiento, Pacala, Morel, Sigman, Myneni, Socolow).

Technology: production of hydrogen and CO<sub>2</sub> from fossil fuel and infrastructure for distribution and sequestration (Socolow, Williams, Ogden, Kreutz).

Low-carbon energy systems for China (Socolow, Williams, Larson).

Economics: economics of carbon management; markets, public incentives, induced technological change, valuation of risk (Bradford).

Please send personal curriculum vitae and a one-page statement of research interests to: **Ranveig Jakobsen, Department of Ecology and Evolutionary Biology, Princeton University, Princeton, NJ 08544-1003.** E-mail: ranveig@princeton.edu.

Princeton University is an Affirmative Action/Equal Opportunity Employer. Applications from women and underrepresented minority group members are especially encouraged.

**POSTDOCTORAL RESEARCHER**

A Postdoctoral research position is available using DNA microarray-based methods and other genomic tools for the study of gene expression in protozoan parasites. This position includes participation in a project to explore the physiological significance of RNA editing in African trypanosomes and its regulation. The position provides substantial opportunity to work with a multidisciplinary team that is utilizing genome sequencing, proteomics, bioinformatics, and data mining. The position requires a Ph.D. and experience in molecular biology. Experience in RNA expression profiling is advantageous.

Send résumé, statement of research interests, and three references to:

**Diane Johnson, Human Resources Manager**  
Seattle Biomedical Research Institute  
4 Nickerson Suite, Number 200  
Seattle, WA 98109  
U.S.A.

E-mail: djohnson@sbri.org

**POSTDOCTORAL POSITIONS** are available immediately to study the genes involved in signal transduction pathways in cancer cells. Recent Ph.D., with experience in molecular biology/biochemistry is desirable. Please send curriculum vitae and the names of three references to: **Prafulla Gokhale, Ph.D., Department of Radiation Medicine, Georgetown University Medical Center, Room E207, The Research Building, 3970 Reservoir Road, N.W., Washington, DC 20007.** E-mail: gokhalep@georgetown.edu.

POSITIONS OPEN

**POSTDOCTORAL POSITIONS** in the training program in cellular and integrative neuroscience. The program provides state-of-the-art interdisciplinary training in the following areas: (1) cell-cell communication, (2) neural systems, (3) molecular studies of cell-cell communication, (4) developmental neuroscience, (5) glia, and (6) the use of optical methods in neuroscience. Over 30 faculty members from four basic science departments and the Program in Neuroscience are mentors in the training program, and applicants can apply to work with one or more than one mentor. Specific training in neuroscience is useful but not required; a Ph.D. in a relevant area of science is required. *Applicants must be U.S. citizens or permanent residents of the United States.* Contact: **B. E. Alger, Ph.D.;** website: <http://neuroscience.umaryland.edu> for information.

**POSTDOCTORAL SCIENTIST**

NIH-funded postdoctoral position available immediately in the area of marsupial genomics. Research will focus on development and use of genetic mapping resources (linkage and physical) in the gray, short-tailed opossum (*Monodelphis domestica*) as a model for comparative biomedical and evolutionary research (additional information at website: [www.sfbr.org/sfbr/departments/genetics/compgen/index.html](http://www.sfbr.org/sfbr/departments/genetics/compgen/index.html)). Applicants must have a Ph.D. or equivalent with emphasis in genetics, cell/molecular biology, or closely related discipline and laboratory experience in modern molecular biology/genetics techniques. Background in comparative immunology/immunogenetics, evolutionary genetics, physical mapping, or gene expression highly desirable. Research will be conducted in the laboratory of **Dr. Paul B. Samollow.** Send curriculum vitae, a brief summary of past and present interests, and the names of three references to: **Director of Human Resources (01-017), Southwest Foundation for Biomedical Research, P.O.B. 760549, San Antonio, TX 78245-0549.** Equal Opportunity Employer.

**POSTDOCTORAL FELLOW:** The University of Medicine and Dentistry of New Jersey has a position available for a Postdoctoral Fellow. Ph.D. or M.D. required. Research on cytokines, receptors, signal transduction, posttranscriptional control mechanisms, and cancer. Strong background in molecular biology, protein purification, and/or molecular modeling necessary. Excellent written and verbal communication skills required. Salary commensurate with experience. Please send curriculum vitae and names and addresses of three references to: **Dr. Sidney Pestka, Chairperson, Department of Molecular Genetics and Microbiology, 675 Hoes Lane, Piscataway, NJ 08854.** E-mail: pestka@mbcl.rutgers.edu. *UMDNJ is an Affirmative Action/Equal Opportunity Employer, Minorities/Female/Disabled/Veterans, and a member of the University Health System of New Jersey. Regrettably we can respond only to those candidates chosen for an interview.*

An NIH-supported **POSTDOCTORAL POSITION** available immediately to study the role of perripherin/rds-mediated fusion in photoreceptor rod outer segment renewal under normal and pathophysiological conditions. Recent graduates with experience in molecular biology, protein phosphorylation, and membrane biophysics desired. Send curriculum vitae and names of three references to: **Dr. K. Boesze-Battaglia, Department of Molecular Biology, University of Medicine and Dentistry of New Jersey, Two Medical Center Drive, Stratford, NJ 08084.** E-mail: battaglia@umdnj.edu. *UMDNJ is an Affirmative Action/Equal Opportunity Employer, Minorities/Females/Disabled/Veterans, and a member of the University Health System of New Jersey.*

POSITIONS OPEN

**POSTDOCTORAL/RESEARCH SCIENTIST POSITION**

Postdoctoral Fellowship/Research Scientist position is available immediately to focus on the role of survival and death signals in angiogenesis. Current projects include studies on how tumor-derived proangiogenic factors promote the survival and growth of tumor-associated microvessels and contribute to tumor progression, the mechanism underlying the acquisition of resistance by endothelial cells and tumor-associated blood vessels to inhibitors of angiogenesis, and development of strategies designed to engineer new blood vessel growth during tissue and organ reconstruction. The successful candidate must have experience in cell and molecular biology. A background in signal transduction or functional genomics/proteomics is highly desirable. Academic appointment and salary are dependent on qualifications and experience. Please send curriculum vitae and three letters of reference to:

**Dr. Peter J. Polverini**  
Office of the Dean

University of Minnesota School of Dentistry  
15-209 Moos Tower, 515 Delaware Street, S.E.  
Minneapolis, MN 55455  
E-mail: neovas@umn.edu

**POSTDOCTORAL POSITION** (Service Fellowship Program) available immediately in microbial pathogenesis in the Laboratory of Respiratory and Special Pathogens, Center for Biologics Evaluation and Research, Food and Drug Administration. Area of focus is the study of secretion of virulence factors from gram-negative bacteria, in particular Type IV secretion in *Bordetella pertussis*. The selected candidate would also be expected to participate in the regulation of bacterial vaccines. Laboratories are located on the NIH campus in Bethesda, Maryland. Appointment is for an initial two-year period and may be extended up to a total of four years by mutual agreement. Candidates must have an advanced degree, e.g., Ph.D. or M.D., and must be U.S. citizens or resident aliens. Salary range for candidates is from \$36,656 to \$99,391 per annum depending on training and experience. Candidates should send curriculum vitae, the names/contact information for three references, and salary requirement to: **Drusilla Burns, Center for Biologics Evaluation and Research, FDA, HFM-434, 1401 Rockville Pike, Rockville, MD 20852.** E-mail: burns@cber.fda.gov.

*FDA is an Equal Opportunity Employer. This agency provides reasonable accommodations to applicants with disabilities.*

**POSTDOCTORAL RESEARCH ASSOCIATE**

Positions are immediately available to study the pathogenesis of AIDS encephalopathy associated with drug abuse. Candidate should have a Ph.D./M.D. with a strong background in cellular/molecular biology and immunology. Experience in tissue culture, RT-PCR, *in situ* hybridization, and apoptosis is desirable. Ability to work independently and cooperatively with established Investigators in a collegial manner is essential. Experience required: must have a minimum of two years of molecular biology and molecular immunology research laboratory experience. Applicants should send curriculum vitae and names of two references to: **Dr. Stanley A. Schwartz, Division of Allergy, Immunology, and Rheumatology, University at Buffalo, Buffalo General Hospital, 100 High Street, Buffalo, NY 14203.** E-mail: sasimmun@buffalo.edu.

**POSTDOCTORAL/RESEARCH ASSOCIATE.** Available immediately to characterize a newly isolated human tumor suppressor gene. A strong background in molecular biology and cell culture experience required. Send curriculum vitae, brief statement of research interests, and the names of three references to: **Dr. Laure Aurelian, Professor, Virology/Immunology Laboratories, University of Maryland School of Medicine, 10 South Pine Street, Baltimore, MD 21201.** Telephone: 410-706-3895; e-mail: laurelia@umaryland.edu.

**POSITIONS OPEN**

**POSTDOCTORAL POSITIONS.** NIH-funded Postdoctoral positions are available to study the molecular endocrinology of pregnancy. Individuals will participate in research on uteroplacental cytokine signaling in the establishment and maintenance of pregnancy. Molecular dissection of signaling pathways will involve *in vitro*, DNA microarray, transgenic, and gene targeting approaches. Applicants should have a Ph.D. and/or M.D. degree and experience in molecular biology, cell biology, biochemistry, or a related area. Competitive salaries will be negotiable and dependent upon experience. Application review begins immediately and will continue until the positions are filled. Please send curriculum vitae, a letter outlining research experience and career goals, and names and addresses of three references to: **Dr. Michael J. Soares, Department of Molecular and Integrative Physiology, University of Kansas Medical Center, 3901 Rainbow Boulevard, Kansas City, KS 66160. E-mail: msoares@kumc.edu.** *The University of Kansas Medical Center is an Equal Opportunity/Affirmative Action Employer.*

**POSTDOCTORAL RESEARCH SCIENTIST POSITION**

A position is available for a Postdoctoral Research Scientist who has expertise in molecular cardiology with a specific emphasis on gene identification and cloning. The successful candidate must have expertise relevant for studying the effects of biological gases on cardiac myocytes, particularly with regard to apoptosis induction or suppression. Also required: an M.D. or a Ph.D. degree and at least three years of relevant laboratory experience. Required areas of expertise include gene sequencing, cell culture, and experimental rodent surgery. Please send curriculum vitae and the names and addresses of two academic references to: **Dr. David Pinsky, College of Physicians and Surgeons of Columbia University, Department of Medicine, P and S 17-401, 630 West 168th Street, New York, NY 10032. Columbia University is an Affirmative Action/Equal Opportunity Employer.**

**POSTDOCTORAL POSITIONS**

Postdoctoral positions are available within the newly formed Molecular Cardiology Institute at Stony Brook. Salary: \$30,000 to \$35,000 per year. This institute is focused on a multidisciplinary approach to understanding cardiac function. Candidates with training in any of the following areas are encouraged to apply: electrophysiology, molecular biology, or protein chemistry of ion channels or transporters. Interested applicants should write to: **Dr. Ira Cohen or Dr. David McKinnon, HSC, Molecular Cardiology Institute, Department of Physiology and Biophysics, Stony Brook University, Stony Brook, NY 11794-8661. Affirmative Action/Equal Opportunity Employer.**

**POSTDOCTORAL POSITION MOLECULAR BIOLOGY OF STROKE AND TRAUMA**

A position is available immediately in the laboratories of **Dr. Robert Dempsey/Dr. Rao Vemuganti** to study the mechanisms of neuronal death following cerebral ischemia/trauma using protein knockdown, gene knockout, gene chips, gene therapy, and proteomics. Candidates must have a Ph.D. with a strong background in neuroscience/molecular biology. Contact: **Dr. Rao Vemuganti, Department of Neurological Surgery, University of Wisconsin-Madison; e-mail: vemugant@neurosurg.wisc.edu; Telephone: 608-263-4055.**

**CLINICAL CHEMISTRY FELLOWSHIP:** Our program provides a two-year clinical and research training at a major medical school teaching hospital. Apply immediately for appointment beginning in July or September 2001. Send résumé, official transcript, and three letters of recommendation to: **Dr. A. O. Okorodudu, Department of Pathology, University of Texas Medical Branch, Galveston, TX 77555-0551. UTMB is an Equal Opportunity/Affirmative Action Employer; Minorities/Females/Veterans/Disabled.**

**POSITIONS OPEN**

**POSTDOCTORAL POSITION** available to study metabolic regulation by cAMP via the evolutionarily conserved bicarbonate sensor, soluble adenylyl cyclase (sAC) [see *Science* 289:625, 2000, or visit website: [www-users.med.cornell.edu/~lleivin/default.html](http://www-users.med.cornell.edu/~lleivin/default.html)]. Current studies focus on molecular, genetic, and biochemical approaches to understanding the physiological significance of sAC. Applicants should possess a Ph.D. or an M.D. with a strong background in molecular or cellular biology, genetics, or biochemistry. Submit curriculum vitae to: **Drs. Jochen Buck and Lonny R. Levin, Department of Pharmacology, Weill Medical College of Cornell University, 1300 York Avenue, New York, NY 10021. Equal Opportunity Employer.**

**POSTDOCTORAL POSITION University of Minnesota School of Medicine VA Medical Center**

A position is available to study molecular mechanisms of cholesterol regulation in astrocytes and neurons. Special emphasis is on the structural and functional interaction of cholesterol and amyloid beta-peptides. A background in cell biology, protein biochemistry, and/or molecular biology is preferred. Send curriculum vitae and names of three references to: **Dr. W. Gibson Wood, GRECC 11G, VA Medical Center, 1 Veterans Drive, Minneapolis, MN 55417. E-mail: woodx002@tc.umn.edu.**

**POSTDOCTORAL RESEARCH POSITIONS AVAILABLE**

(1) **IMMUNOLOGIST:** to investigate the role of glycosylation in immunity. Experience with monoclonal antibodies and protein purification helpful. (2) **BIOCHEMIST:** to investigate glycosyltransferase. Experience in cloning of glycosyltransferases helpful. (3) **CARBOHYDRATE CHEMIST:** Work involves synthesis of complex carbohydrates and their NMR studies. Experience in enzyme catalysis synthesis of oligosaccharides helpful. E-mail: **Dr. Khushi L. Matta (Khushi.Matta@RoswellPark.org) An Equal Opportunity/Affirmative Action Employer.**

**POSTDOCTORAL POSITION** in field of human genetic diseases available immediately in the laboratory of **Dr. Guanqing Wu.** Current projects focus on molecular pathogenesis of human genetic disease such as autosomal dominant polycystic kidney diseases. Systems include stem cell manipulations and animal model. Applicants must have Ph.D. and/or M.D. and a strong background in molecular biology/cell biology. Send curriculum vitae and names of three references to: **Dr. Guanqing Wu, Department of Medicine, Division of Genetic Medicine, Vanderbilt University, 447 MRB II, 21st Avenue, Nashville, TN 37232. E-mail: guanqing.wu@vanderbilt.edu.**

**POSTDOCTORAL POSITIONS**

Transcriptional silencing and small RNA biosynthesis are under investigation in an established laboratory using yeast molecular genetics, biochemistry, and fluorescent microscopy (**Kendall et al., PNAS 97: 13108; Chamberlain et al., Genes & Devel. 12:1678; Bertrand et al., Genes & Devel. 12:2463**). Facilities are new and well-equipped, and the yeast and RNA groups at the University of Michigan are strong and interactive. Please send curriculum vitae, research interests, and contact information for three references to: **David R. Engelke; e-mail: engelke@umich.edu.**

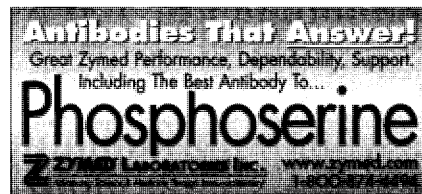
**POSTDOCTORAL POSITION** at Yale University available immediately in neurophysiology to investigate cellular mechanisms of learning. This NIH-funded position involves IR-DIC and whole cell recordings and an opportunity to learn two-photon microscopy. Ph.D. required; background in brain slice neurophysiology preferred. Send curriculum vitae and references to: **T. H. Brown, Department of Psychology, P.O. Box 208205, Yale University, New Haven, CT 06520. Telephone: 203-432-7008; FAX: 7009; e-mail: thomas.brown@yale.edu. Affirmative Action/Equal Opportunity Employer.**

**POSITIONS OPEN**

**POSTDOCTORAL AND RESEARCH ASSOCIATE POSITIONS**

Available immediately for the study of molecular remodeling in heart failure/transplantation. Candidates with experience in cell and molecular biology will be preferred. Please send curriculum vitae with names of references to: **Dr. Adolfo J. de Bold, University of Ottawa Heart Institute, 40 Ruskin Street, Ottawa, Canada. Telephone: 613-761-4265; e-mail: adebold@ottawaheart.ca.**

**MARKETPLACE**



Circle No. 55 on Readers' Service Card

DNA (plasmid, PCR, BAC, genome, genotyping)  
**SEQUENCING** special \$15/RUN  
**Overnight, High Quality**  
 800-214-7722, CustomerService@ElimBiopharm.com

Circle No. 45 on Readers' Service Card

**Custom BAC Library Construction**  
 BAC End Sequencing  
 Inexpensive DNA Sequencing  
 Custom cDNA Libraries  
 DNA Subcloning  
 Protein Expression  
 Amplicon Express  
 Toll Free 1-877-332-8080  
 Phone 1-509-332-8080  
 www.genomex.com  
 koford@genomex.com

Circle No. 29 on Readers' Service Card

For BAC contigs building and comparative genomics  
**The Day Screening**  
 Several clones could be isolated within one day, using screening kits and plates without isotope.  
**Advanced GenoTechs Co**  
 www.geno-gtac.co.jp FAX: +81-298-49-2567

Circle No. 27 on Readers' Service Card

**Toll-Like Receptors!**  
*mAbs to TLR2, TLR4, RP105 & more...*  
**eBioscience**  
 the new standard of excellence™  
 888.999.1371 \* info@ebioscience.com

Circle No. 49 on Readers' Service Card

Genome & EST Sequencing  
**FROM 0.6 CENT/BASE PAIR**  
 Full Service High Throughput Sequencing, Annotation, Reconstruction and Bioinformatic Services From  
**INTEGRATED GENOMICS, INC.**  
 312-491-0846 - www.integratedgenomics.com

Circle No. 30 on Readers' Service Card

 **MORE PRODUCTS  
ON PREVIOUS PAGE**

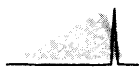
**CUSTOM SHOTGUN DNA LIBRARIES**

- BAC, PAC, P1, Cosmid or other large insert clones acceptable
  - Random M13 or pUC18 plasmid library provided
  - DNA sequencing and mini-prep services available
  - High quality; >95% insert ratio
  - 1-2 week turnaround time
  - Customer satisfaction guaranteed
- seqwright**  
DNA SEQUENCING  
TEL (713) 528-4363  
FAX (713) 528-6232  
www.seqwright.com  
800-720-4363 seq@blkbox.com

Circle No. 42 on Readers' Service Card

**Customized Project Support**

CBI is your source for complete R&D project support, including all peptide, protein, DNA and molecular biological technologies. For a free consultation or a quote, call 1-800-735-9224 or email info@cbi-biotech.com.

 **COMMONWEALTH BIOTECHNOLOGIES, INC.**  
*From Concept to Clinic*  
601 Biotech Drive · Richmond, VA 23235  
1-800-735-9224 · www.cbi-biotech.com

Circle No. 33 on Readers' Service Card

**BAC End Sequencing!** Bio S&T Inc.

High accuracy Only TINY amount of DNA required! Custom BAC Libraries Pre-made BAC Libraries avail.  
New: HandyGun™ T4 Ligase Ready to use! Dry! Stable!  
Web: www.biost.com 888-368-8368  
Fax: 514-433-6011

Circle No. 43 on Readers' Service Card

**CUSTOM OLIGOS**

**synthetic genetics** Buy 5 Get 1 Free!  
• Molecular Beacons  
• AP, HRP Conjugates  
• Fluorescent Dye Oligos  
• Molecular Probes Dyes  
1-800-562-5544 • www.syntheticgenetics.com

Circle No. 28 on Readers' Service Card

**Premier SameDay Oligo Service**

*The best oligos travel quickly!*  
Order via the web by 12:00PM CST today and your oligos will be in your hands tomorrow morning.  
25 nmole scale 15-30 bases unmodified  
**IDT** www.idtdna.com  
1-800-328-2661

Circle No. 35 on Readers' Service Card

**Custom Peptides & Antibodies**

Best Service & Price! Compare and Save!  
Alpha Diagnostic (800) 786-5777  
Fax (210) 561-9544; info@4adi.com  
Web site: http://www.4adi.com

Circle No. 44 on Readers' Service Card

**CUSTOM OLIGOS**

**55¢ per base\***

50 nm scale of synthesis

- Wide range of purifications, custom modifications, FRET probes
- Large scale synthesis available

**800-788-4362**

on-line: dna@keydna.com

**biosource.com**

Circle No. 31 on Readers' Service Card

**3 O.D. Select Oligos**

**NEW LOW PRICE**

**Just \$0.45/base\***

Order through our Web site and we'll ship your 3 O.D. Select oligos in just 24-48 hours. Every oligo is QC'd by PAGE analysis, and each batch is performance-tested by mass spec.

\*Desalted only. Oligos must be 10 to 35 bases in length. No modifications or additional purification. Web orders only. Offer valid in U.S. only.

**SIGMA GENOSYS**

North America: 1-877-710-1504 • email: gorderentry@sial.com

Circle No. 38 on Readers' Service Card

**CUSTOM PEPTIDES**

**QUICK QUOTE** MOST QUOTES IN AN HOUR  
**FAST DELIVERY** 2 WEEKS FOR MOST ORDERS  
**100% SATISFACTION GUARANTEED**  
Fax: 978-343-5940 www.newenglandpeptide.com  
**...MADE EASY!**  
**NEW ENGLAND PEPTIDE, INC.**  
Tel: 888-343-5974

Circle No. 34 on Readers' Service Card

**MERLIN® Custom Services**

**Q** **Plasmid Purification**  
Starting at \$59/1 mg\*  
Endotoxin Removal, Cloning, Research or cGMP Grade  
\*minimum of 5 mgs  
**Q-BIOgene**  
1-800-4-PLASMID • www.qbiogene.com

Circle No. 39 on Readers' Service Card

BIO-SYNTHESIS, INC.

**CUSTOM PEPTIDES, OLIGOS  
ANTIBODIES**

800-227-0627 www.biosyn.com

Circle No. 36 on Readers' Service Card

**Quality Peptides & Antisera**

*Friendly, Personal Service*  
www.genosys.com

**Custom Peptide Synthesis**

- sequence analysis
- IG, >70%, >80%, >95% purity
- scales from 2 mg-l g
- synthesis up to 120 residues
- variety of modifications available
- mass spec & HPLC on every peptide
- satisfaction guaranteed

**Polyclonal Antisera Service**

- antigen design assistance
- synthesis, conjugation and sera collection
- flexible protocol

**SIGMA GENOSYS**

North America 1-877-710-1502  
Europe (+44) (0) 1223 839000  
ginformation@sial.com info@sigma-genosys.co.uk

Circle No. 37 on Readers' Service Card

**DNA PEPTIDES**

Free Set-up and Desalting Call and Compare

**Gene Synthesis, Site Mutagenesis, Protein Expression and more**  
**COMPARE AND SAVE**

**DNA Sequencing:** as low as \$15 per run

**Custom Anti-peptide Antibody**  
(including peptide synthesis)  
**\$850**

**GENEMED SYNTHESIS**  
800-344-3347 Fax: 603-883-1111  
Web Site: www.genemed.com

Circle No. 32 on Readers' Service Card

**Widely Recognized Original & Guaranteed** **KlenTaq I** **8¢/u**  
Truncated Taq DNA Polymerase Withstand 99°C  
US Pat # 5,436,149  
Call: **Ab Peptides** 1-800-383-3362  
Fax: 314-968-8988 www.abpeps.com

Circle No. 41 on Readers' Service Card

**Custom Antibody Production**

**1-800-533-4363**

**ResGen**  
Antibody Production Corporation

Circle No. 40 on Readers' Service Card

# IS THERE A WEAK LINK IN YOUR EXPERIMENT?

STRENGTHEN YOUR RESULTS WITH OUR PRODUCTS AND SERVICES.

## **Custom Oligonucleotide Services**

- Since 1978 Midland has been a leading supplier of synthetic oligonucleotides. We offer a full range of synthesis scales to suit your budget with hundreds of modifications available.

## **Dual-labeled Fluorescent Probes**

- High throughput synthesis
- FAM/TAM probes for today's real-time analyses
- Wide selection of fluorophores and quenchers is available for multiplexing
- Complete Molecular Beacons synthesis and services available

## **Gene Construction & Custom Mutagenesis**

- From gene construction and DNA sequencing to mutagenesis and custom molecular cloning—we have everything you need. Our success rate is 100%!

## **DNA Sequencing**

- When you need quick and accurate results, our automated sequencing services will deliver long reads—up to 1,000 BP—99% accuracy!

## **MALDI-TOF QC Analytical Services**

- Call us for independent mass verification of modified oligonucleotides and other biological molecules.

# MIDLAND

THE MIDLAND CERTIFIED REAGENT COMPANY

*Midland's Services Speak for Themselves. Let's Talk ...*

Circle No. 51 on Readers' Service Card

THE MIDLAND CERTIFIED REAGENT CO.

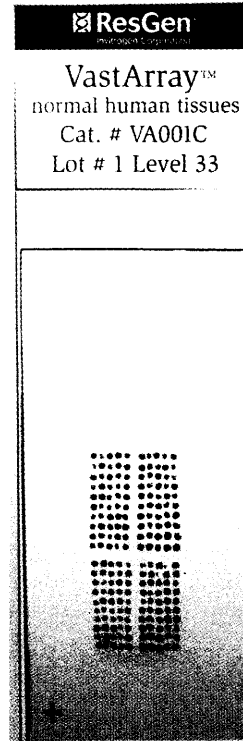
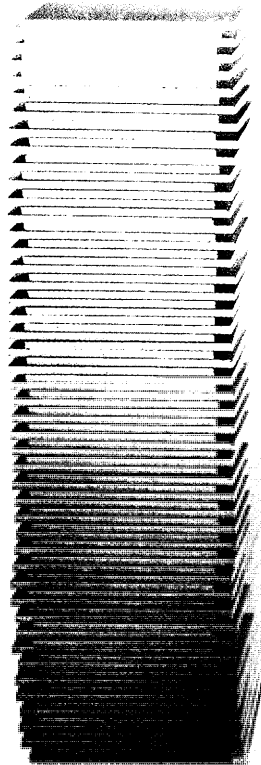
1-800-247-8766

3112-A W. Cuthbert Ave. • Midland, Texas 79701

Order online at: [www.mcrc.com](http://www.mcrc.com)



# One hundred tissue samples. One smart slide.



Why spend your time preparing tissue sections when you can spend it analyzing results with ResGen™ VastArray™ tissue arrays from Invitrogen?

**Smart, high-throughput format.** VastArray™ tissue arrays include up to one hundred 600 µm core tissue samples spotted in duplicate on a standard glass microscope slide. Choose from stock human or mouse arrays or have one custom-made for you. You'll screen up to 100 tissue samples in the time it takes to screen one.

**Rigorous quality control.** Pathologists screen VastArray™ tissues for quality and authenticity. Histologists select

optimum tissue cores—staining each with hematoxylin and eosin (H&E) to confirm morphology and position and immunostaining to ensure preservation of antigenic epitopes. Duplicate spotting and control spots verify the accuracy of your results.

**Time savings.** From protein expression studies and antibody screening to tissue specificity assays and mouse model analyses, one smart slide accelerates your research.



Human colon immunostained with anti-CAM 5.2 antibody

For details on ResGen™ VastArray™ tissue arrays, visit [www.resgen.com](http://www.resgen.com)

**ResGen™**  
Invitrogen Corporation

Circle No. 15 on Readers' Service Card

**United States:**  
ResGen™, Invitrogen Corporation  
2130 Memorial Parkway, SW  
Huntsville, AL 35801  
Tel (Toll Free): 800 533 4363  
Fax: 256 536 9016  
Email: [info@resgen.com](mailto:info@resgen.com)

**Europe:**  
Invitrogen Ltd  
3 Fountain Drive  
Inchinnan Business Park  
Paisley PA4 9RF, UK  
Tel (Free Phone Orders): 0800 269 210  
Tel (General Enquiries): 0800 5345 5345  
Fax: +44 (0) 141 814 6287  
Email: [eurotech@invitrogen.com](mailto:eurotech@invitrogen.com)

**International Offices:**  
Argentina 54 11 4556 0844  
Australia 1 800 331 627  
Austria 0800 20 1087  
Belgium 0800 14894  
Brazil 0800 11 0575  
Canada 800 263 6236  
China 10 6849 2578  
Denmark 80 30 17 40

France 0800 23 20 79  
Germany 0800 083 0902  
Hong Kong 2407 8450  
India 11 577 3282  
Italy 02 98 22 201  
Japan 03 3663 7974  
The Netherlands 0800 099 3310  
New Zealand 0800 600 200  
Norway 00800 5456 5456

Spain & Portugal 900 181 461  
Sweden 020 26 34 52  
Switzerland 0800 848 800  
Taiwan 2 2651 6156  
UK 0800 838 380  
Other countries see our website

[www.resgen.com](http://www.resgen.com)