

# NEW PRODUCTS

## SPSS 10.0 SPSS Inc.

Chicago, IL  
\$499, academic (Base version),  
800-543-2185  
www.spss.com

popular SPSS Base (SPSS 10.0) software to the Macintosh Operating System (Mac OS) for the SPSS company.

The format of data resembles a spreadsheet, with information for each variable stored in a separate worksheet. Data transformation requires the use of additional dialog windows, and summary data must be processed in yet another window. The program can import from various formats, including Excel, dBase, Lotus, ODBC, and ASCII. Shared databases require the SPSS Server 10.0.

SPSS 10.0 for Macintosh provides descriptive statistics, hypothesis testing with regard to differences among means [*t* tests, analysis of variance (ANOVA) models, post-hoc comparisons], nonparametric tests, and linear regression. Data mining procedures such as cluster analysis and discriminant analysis are also available. Results appear in a separate window resembling a browser with frames. Interactive pivot tables facilitate viewing and presentation of results in a large variety of formats.

Details regarding the data handling and statistical capabilities of the program can be obtained from the SPSS Web site, the program's outstanding online help system, and the program manuals. A built-in online tutorial also initiates the inexperienced user into the program. Two other Web sites that facilitate learning SPSS 10.0 are [http://acomp.stanford.edu/acpubs/Docs/using\\_spss\\_mac/#notes](http://acomp.stanford.edu/acpubs/Docs/using_spss_mac/#notes) and <http://www.indiana.edu/~statmath/stat/spss/mac/index.html>.

The program's graphic capabilities are its weakest feature. Standard two-dimensional graphic output is generated automatically as part of the presentation of results. Modifying graphics is difficult due to an excessive number of dialog boxes and a user's limited ability to manipulate specific data points. Although the quality of the output is good for presentation, it is not the best available.

Sophisticated complex analyses, including logistic or nonlinear regression, repeated measures and multivariate analysis of variance, and advanced survival analysis, cannot be performed with the SPSS Base system, but these options can be purchased separately. Specialized research analyses (e.g., dose-response models, Hill plots, Boltzmann fit) and options for analysis of power and sample size estimation should be considered for future versions.

Despite the program's faults, the release of SPSS 10.0 for the Mac is a shot in the arm for Macintosh enthusiasts. Students and professionals in both science and business will find the program useful, and many basic and clinical researchers will find it adequate for their needs as well. System requirements include Mac OS 9.0.4 or higher and a PowerMac G3 or 233 (including iMac) with 64 MB RAM.

—Constantine Sarantopoulos

Department of Anesthesiology, Medical College of Wisconsin, Milwaukee, WI 53226, USA. E-mail: [csar@mcw.edu](mailto:csar@mcw.edu).

## Sigma-Aldrich

For more information call  
800-521-8956 or  
**circle 139**  
on the Reader Service Card  
[www.sigma-aldrich.com](http://www.sigma-aldrich.com)

## WELCOME CONVERSION

Researchers moving from one lab to another have a need for cross-platform software, particularly for commonly used statistical analyses. With this need in mind, the Ukraine-based MacKiev recently converted version 10 of the popular

SPSS Base (SPSS 10.0) software to the Macintosh Operating System (Mac OS) for the SPSS company.

The format of data resembles a spreadsheet, with information for each variable stored in a separate worksheet. Data transformation requires the use of additional dialog windows, and summary data must be processed in yet another window. The program can import from various formats, including Excel, dBase, Lotus, ODBC, and ASCII. Shared databases require the SPSS Server 10.0.

SPSS 10.0 for Macintosh provides descriptive statistics, hypothesis testing with regard to differences among means [*t* tests, analysis of variance (ANOVA) models, post-hoc comparisons], nonparametric tests, and linear regression. Data mining procedures such as cluster analysis and discriminant analysis are also available. Results appear in a separate window resembling a browser with frames. Interactive pivot tables facilitate viewing and presentation of results in a large variety of formats.

Details regarding the data handling and statistical capabilities of the program can be obtained from the SPSS Web site, the program's outstanding online help system, and the program manuals. A built-in online tutorial also initiates the inexperienced user into the program. Two other Web sites that facilitate learning SPSS 10.0 are [http://acomp.stanford.edu/acpubs/Docs/using\\_spss\\_mac/#notes](http://acomp.stanford.edu/acpubs/Docs/using_spss_mac/#notes) and <http://www.indiana.edu/~statmath/stat/spss/mac/index.html>.

The program's graphic capabilities are its weakest feature. Standard two-dimensional graphic output is generated automatically as part of the presentation of results. Modifying graphics is difficult due to an excessive number of dialog boxes and a user's limited ability to manipulate specific data points. Although the quality of the output is good for presentation, it is not the best available.

Sophisticated complex analyses, including logistic or nonlinear regression, repeated measures and multivariate analysis of variance, and advanced survival analysis, cannot be performed with the SPSS Base system, but these options can be purchased separately. Specialized research analyses (e.g., dose-response models, Hill plots, Boltzmann fit) and options for analysis of power and sample size estimation should be considered for future versions.

Despite the program's faults, the release of SPSS 10.0 for the Mac is a shot in the arm for Macintosh enthusiasts. Students and professionals in both science and business will find the program useful, and many basic and clinical researchers will find it adequate for their needs as well. System requirements include Mac OS 9.0.4 or higher and a PowerMac G3 or 233 (including iMac) with 64 MB RAM.

## BENCHTOP GEL LOADING

The QuickComb-96 is a sturdy, porous membrane comb that allows fast, easy benchtop gel loading for electrophoresis. QuickComb-96 eliminates the need for expensive syringe loaders and en-

surges increased data quality and reduced user fatigue compared with standard loading protocols. It is compatible with ABI Prism 377 standard or beveled "step-glass" plates. It is laminated to avoid tearing and bending while inserting the comb. Users can store spotted samples for up to 6 months with no compromise in data quality. QuickComb-96 also provides superior lane tracking capabilities and no loss in signal strength due to sample diffusion.

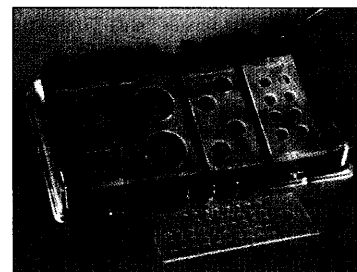
## Grace Bio-Labs

For more information call  
800-813-7339 or  
**circle 140**  
on the Reader Service Card  
[www.gracebio.com](http://www.gracebio.com)

## COVERSLIP INSERTS

The CultureWell Coverslip Plate Inserts facilitate the cultivation of cells on glass coverslips for in situ microscopic analysis of live or fixed cells. They are suitable for use in high-resolution microscopy and quantitative fluorescence imaging.

Each insert consists of noncytotoxic silicone gaskets secured to 24-mm by 50-mm borosilicate coverglasses to create culture wells with a high degree of flexibility in size and volume. The gaskets are securely sealed to prevent well-to-well cross-contamination but can be removed easily from the coverglass for ease of downstream processing. The insert design stabilizes fragile coverglasses, which can be conveniently integrated into protocols for handling microscope slides for high-throughput applications. The inserts are supplied with standard 86-mm by 128-mm sterile plates.



## Digital Instruments

For more information call  
805-967-2700 or  
**circle 141**  
on the Reader Service Card  
[www.di.com](http://www.di.com)

## ATMOSPHERIC HOOD FOR SCANNING PROBE MICROSCOPE

The Atmospheric Hood for the Multi-Mode Scanning Probe Microscope (SPM) allows purging of the MultiMode environment with gases such as O<sub>2</sub>, N<sub>2</sub>, air mixtures, and He and other inert gases at or near atmospheric pressures. Gases can also be controlled with respect to humidity at noncondensing levels. Access ports are provided to support heating accessories or sensors.

## Polymer Laboratories

For more information call  
+44 01694 723581 or  
**circle 142**  
on the Reader Service Card  
[www.polymerlabs.com](http://www.polymerlabs.com)

## HIGH-TEMPERATURE POLYMER SAMPLE PREPARATION

The PL-SP 260 High Temperature GPC Sample Preparation System is designed for easy preparation and filtration of hot polymer solutions for chromatographic and other analyses. It is an optional system designed for use with Polymer Laboratories' PL-GPC 200 integrated gel permeation chromatography (GPC) system and Waters' 2000, 150C, and 150CV systems. The PL-SP 260 operates by agitating polymer samples with dissolution temperatures ranging from ambient to 260°C. For flexibility, the hot blocks are interchangeable to accommodate 2-ml, 4-ml, and 20-ml vials. Filtration is achieved using 0.5-μm, 2-μm, 5-μm, and 10-μm stainless steel frits or nominal 1-μm glass fiber filters.

CONTINUED ON PAGE 118

The lid provides an oven environment that can be extracted for bench operations or purged with nitrogen for an oxygen-free dissolution environment.

#### **Amersham Pharmacia Biotech**

For more information call  
800-526-3593 or  
**circle 143**  
on the Reader Service Card  
[www.apbiotech.com](http://www.apbiotech.com)

and quantifiable protein profiling, which is essential for drug target identification. The automated Ettan Spot Picker offers accuracy and speed, automatically transferring selected protein spots separated on the 2D gels to microplates for mass spectrometry identification without the fear of contamination.

#### **Thermo Haake**

For more information call  
201-265-7865 or  
**circle 144**  
on the Reader Service Card  
[www.thermohaake.com](http://www.thermohaake.com)

elasticity. Yield points can be determined with creep/recovery tests or with stress-controlled ramps. Reactions can be followed by time curves or temperature curves at constant shear rate, shear stress, or frequency. The RS300 modular research rheometers are for more demanding applications and offer all the features of the RS1, with additional features designed to extend control, such as a unique vector-controlled motor that permits high dynamic response in transient tests. The RS300 provides a wide torque range. Its modularity permits interchangeable temperature control capability.



#### **PanVera**

For more information call  
608-233-9450 or  
**circle 145**  
on the Reader Service Card  
[www.panvera.com](http://www.panvera.com)

Best results are achieved when transfections are performed in complete growth medium and the media change is eliminated.

#### **Flow-Amp Systems**

For more information call  
216-721-0590 or  
**circle 146**  
on the Reader Service Card  
[www.flow-amp.com](http://www.flow-amp.com)

capable of enhancing the fluorescent signal of surface molecules up to 100 times more than standard staining methods. The enhanced signal separation obtained with EAS has been used to de-

#### **PROTEOMICS PRODUCTS**

Two new tools for protein expression analysis and identification are designed to meet the accuracy and high-throughput demands of drug discovery. The Ettan DALT II system for two-dimensional (2D) electrophoresis is a high-capacity unit that provides reliable, reproducible,

and quantifiable protein profiling, which is essential for drug target identification. The automated Ettan Spot Picker offers accuracy and speed, automatically transferring selected protein spots separated on the 2D gels to microplates for mass spectrometry identification without the fear of contamination.

#### **RHEOMETERS**

The RS1 and RS300 rheometers provide flexibility and control over rheological tests. RS1 rheometers offer flow curve measurements with defined shear rate or shear stress as well as dynamic measurements for the determination of

tect low-expressing molecules not detected by standard staining methods. Some surface molecules detected with EAS that could not be demonstrated by standard staining methods include the surface expression of Fas ligand, various cytokine receptors, viral glycoproteins, and phosphatidylserine. Kits are available for unconjugated murine primary antibodies and for biotinylated primary antibodies.

#### **Media Cybernetics**

For more information call  
301-495-3305 or  
**circle 147**  
on the Reader Service Card  
[www.mediacy.com](http://www.mediacy.com)

unit. The entire unit is less than 20 pounds and mounts on any transilluminator. It has built-in white light epi-illumination and an ultraviolet-protected viewing port that aids band excising. The kit includes software that enables qualitative molecular weight analysis, quantitative amount analysis, and reporting for gels and dot/slot blots.

#### **NEN Life Science Products**

For more information call  
800-446-0035 or  
**circle 148**  
on the Reader Service Card  
[www.nen.com](http://www.nen.com)

known human genes. In addition, the system includes two practice slides and key reagents for direct fluorescence cDNA labeling. The system requires no amplification step and, as a result, has a broader dynamic range and greater precision, allowing for more detection of differential gene expression in a single experiment.

#### **Roche**

For more information call  
800-428-5433 or  
**circle 149**  
on the Reader Service Card  
[www.roche.com](http://www.roche.com)

Cycler Instrument for quantitative polymerase chain reaction and the Lumi-Imager F1 Workstation for quantitative detection of chemiluminescence.

#### **BD Biosciences**

For more information call  
800-343-2035 or  
**circle 150**  
on the Reader Service Card  
[www.bdbiosciences.com](http://www.bdbiosciences.com)

from 96-, 384-, and 1536-well microplates, including 24-well insert systems, the bulletin covers the entire range of these microplates.

#### **IMAGER KITS**

The Gel-Pro Imager Kit is for acquiring, archiving, documenting, analyzing, and reporting digital images from electrophoresis experiments. It features a camera system with an LCD monitor and controller built into the enclosure

unit. The entire unit is less than 20 pounds and mounts on any transilluminator. It has built-in white light epi-illumination and an ultraviolet-protected viewing port that aids band excising. The kit includes software that enables qualitative molecular weight analysis, quantitative amount analysis, and reporting for gels and dot/slot blots.

#### **MICROARRAY SYSTEM**

The MICROMAX Human cDNA System I-Direct is suited for new users who are just beginning to develop their microarray capabilities and for assays in which the quantity of available RNA sample is not an issue. The system is built on the glass cDNA microarrays containing 2400

#### **LITERATURE**

*2001 Biochemicals Catalog* includes products for molecular biology, cell biology, immunochemistry, biochemistry, drug and disease research, and laboratory reagents. The new instrument section contains information about the Light-

Cycler Instrument for quantitative polymerase chain reaction and the Lumi-Imager F1 Workstation for quantitative detection of chemiluminescence.

*Technical Bulletin #435: Measurements and Plate Characteristics* is a useful almanac for scientists wanting to program their automation and detector settings for optimal sensitivity when working with the BD Falcon and BD BioCoat microplates. Complete with measurements from 96-, 384-, and 1536-well microplates, including 24-well insert systems, the bulletin covers the entire range of these microplates.

Newly offered instrumentation, apparatus, and laboratory materials of interest to researchers in all disciplines in academic, industrial, and government organizations are featured in this space. Emphasis is given to purpose, chief characteristics, and availability of products and materials. Endorsement by *Science* or AAAS of any products or materials mentioned is not implied. Additional information may be obtained from the manufacturers or suppliers named by circling the appropriate number on the Reader Service Card and placing it in a mailbox. U.S. postage is free.

## What would you call mutual funds that combine enhanced indexing with active management?

In investing, timing is everything. Sometimes, following an index works better. And other times, the selectivity of active management will outperform. The good news is you can get the benefits of both with the Dual Investment Management Strategy,<sup>™</sup> from TIAA-CREF Mutual Funds.

It's a strategy not tied to one discipline, but adaptable

to the markets' ever-changing conditions. This flexibility is so impressive that no less than Sheldon Jacobs, the no-load mutual fund authority, calls it "pure genius."

What's more, whether you choose our Growth Equity, Growth & Income, or International Equity Fund, you'll enjoy low fees and no loads so more of your money is working for you.\*

To learn more, call us at

1 800 842-1924 or visit

[www.tiaa-cref.org/mfs](http://www.tiaa-cref.org/mfs)—

and put a bit of genius in your portfolio.



### He calls them "pure genius."

Sheldon Jacobs, Editor-in-Chief—*The No-Load Fund Investor*



Ensuring the future for those who shape it.<sup>™</sup>

1 800 842-1924 dept: NF7

[www.tiaa-cref.org/mfs](http://www.tiaa-cref.org/mfs)

Sheldon Jacobs' quote is an excerpt of the Cable News Network show: CNN Your Money, which aired 9/2/00. A contribution to the Westchester Community College Foundation was made on Mr. Jacobs' behalf in gratitude for his cooperation with the production of this advertisement. \*Our low expenses reflect that a portion of the investment advisory fee and certain separate charges have been waived. This advisory fee waiver is contractual and will remain in effect until at least April 1, 2003. • For more complete information on our securities products, including charges and expenses, call 1 800 842-1924 for prospectuses. Read them carefully before you invest. • TIAA-CREF Individual and Institutional Services, Inc. and Teachers Personal Investors Services, Inc. distribute securities products. • Teachers Insurance and Annuity Association (TIAA), New York, NY and TIAA-CREF Life Insurance Co., New York, NY issue insurance and annuities. • TIAA-CREF Trust Company, FSB provides trust services. • Investment products are not FDIC insured, may lose value and are not bank guaranteed. © 2001 Teachers Insurance and Annuity Association—College Retirement Equities Fund, New York, NY 02/12

## Classified Advertising

For full details on advertising rates, deadlines, mechanical requirements, and editorial calendar go to [www.sciencecareers.org](http://www.sciencecareers.org) and click on How to Advertise

### UNITED STATES

#### Display Classified Advertising

Bren Peters (Mid-Atlantic, Midwest)  
Tel: 202-326-6541  
Kathleen Clark (Southeast, Canada)  
Tel: 202-326-6555  
Jill Steinberg (Northeast)  
Tel: 212-496-1264  
Kristine von Zedlitz (West Coast)  
Tel: 415-956-2531  
Fax: 202-289-6742  
E-mail: [science\\_displayads@aaas.org](mailto:science_displayads@aaas.org)

#### Line Classified Advertising

Jody Fenty  
Tel: 202-326-6722  
Christina Geiger  
Tel: 202-326-6532  
Fax: 202-289-1451  
E-mail: [science\\_classifieds@aaas.org](mailto:science_classifieds@aaas.org)

#### Online Classified Advertising

Beth Dwyer  
Tel: 202-326-6534  
Fax: 202-289-6742  
E-mail: [bdwyer@aaas.org](mailto:bdwyer@aaas.org)

[www.sciencecareers.org](http://www.sciencecareers.org)

**Ad Materials:** Send to: *Science Classified Advertising*, 1200 New York Avenue, NW, Room 911, Washington, DC 20005

### EUROPE

#### Display, Line, and Online Classified Advertising

Deborah Cummings  
Tel: +44 (0) 1223 326 500  
Fax: +44 (0) 1223 326 532  
E-mail: [european\\_ads@science-int.co.uk](mailto:european_ads@science-int.co.uk)

**Ad Materials:** Send to: *Science International*, Advertising Dept., Bateman House, 82-88 Hills Road, Cambridge CB2 1LQ, United Kingdom

### MEETINGS/ANNOUNCEMENTS

Kathleen Clark  
Tel: 202-326-6555  
Richard Walters  
Tel: +44 (0) 1223 326 500

To **Subscribe** to *Science* call:  
202-326-6417 or 1-800-731-4939

### POSITIONS OPEN



The College of Oceanic and Atmospheric Sciences (COAS) at Oregon State University seeks a new faculty member who will enhance COAS research and teaching programs related to the global environment. We particularly encourage applications from those with documented strengths in one or more of the following research areas: biogeochemistry, climate change, atmosphere/ocean interactions, and ocean/solid Earth interactions. The successful candidate should have a commitment to research advancing the quantitative understanding of globally significant couplings among major components of the Earth system, a record of innovative and exciting research, and the clear potential to attract external research funding. It is expected that the position will be filled at either the **ASSISTANT** or **ASSOCIATE PROFESSOR** level.

COAS offers graduate degree programs in oceanography (with subdisciplines of physical, geological, chemical, biological, and interdisciplinary oceanography), atmospheric sciences, geophysics, and marine resources management and is renowned internationally for its academic and research programs. The unique research environment at COAS fosters interdisciplinary interactions among some 190 faculty and staff and 90 graduate students. COAS provides national and international scientific leadership and hosts world-class research facilities for advanced computing, numerical modeling, remote sensing, data analysis and visualization, and isotope and plasma spectrometry. COAS is well known for its seagoing capabilities, including two research vessels and a national coring facility.

Candidates must have a Ph.D. degree in atmospheric, oceanic, or Earth science or a closely related field. Faculty members are expected to develop and maintain a vigorous program of externally funded research and to participate in graduate and undergraduate teaching. Applications should consist of a letter of interest, current curriculum vitae that includes a description of current research interests and a list of publications, and at least three letters of reference sent directly by the references and should be submitted to:

Timothy Cowles, Interim Dean  
College of Oceanic and Atmospheric Sciences  
Oregon State University  
104 Ocean Administration Building  
Corvallis, OR 97331-5503

For full consideration, apply by 1 June 2001. Inquiries about the position may be directed to: **Dr. Roger Samelson**; Telephone: 541-737-4752; e-mail: [rsamelson@oce.orst.edu](mailto:rsamelson@oce.orst.edu); FAX: 541-737-2064. For more information about the COAS, OSU, Corvallis, and the environment, please consult our website: <http://www.oce.orst.edu>. *Oregon State University is an Equal Opportunity/Affirmative Action Employer and has a policy of being responsive to the needs of dual-career couples.*

### DEPARTMENT OF PHYSIOLOGY AND BIOPHYSICS Case Western Reserve University

The Department of Physiology and Biophysics invites applications for **TENURE-TRACK FACULTY** at the junior level. The Department is presently recruiting in the area of papillomavirus biology with an emphasis on molecular, cellular, or whole animal investigation. This individual will join a growing team of Investigators that are presently working in this area. We offer a highly competitive compensation package, ample start-up funds, and state-of-the-art research facilities. Submit curriculum vitae; a brief statement of research interest(s); three representative reprints; and the names, addresses, and telephone numbers of four references to: **Committee on Appointments, Promotions, and Tenure, Department of Physiology and Biophysics, 10900 Euclid Avenue, Cleveland, OH 44106-4970**. *Case Western Reserve University is an Equal Opportunity/Affirmative Action Employer.*

### POSITIONS OPEN

#### DIRECTOR, ARCHAEOLOGICAL SERVICES PROGRAM Illinois State Museum Springfield, Illinois

The Illinois State Museum, through its not-for-profit organization (Illinois State Museum Society), seeks experienced **ARCHAEOLOGIST** to administer cultural resource management program of Midwestern archaeological investigations. Responsibilities include preparing proposals and directing projects. Should have Ph.D. in anthropology, several years of both administrative and field experience in archaeology, expertise in midcontinental archaeology, working knowledge of federal historic preservation laws, and record of publication and grantsmanship. Full-time professional position with full benefits (four weeks of paid vacation per year; sick leave; health, dental, and life insurance; and retirement plan). Salary commensurate with experience. Position available now and open until filled; for optimal consideration, applications should be received by April 30, 2001. Submit cover letter, curriculum vitae, and names and contact information for three references to: **Dr. Bonnie Styles, Associate Director, Illinois State Museum, Research and Collections Center, 1011 East Ash, Springfield, IL 62703**. Direct questions about position to: **Dr. Michael Wiant**; Telephone: 217-785-0134; e-mail: [wiant@museum.state.il.us](mailto:wiant@museum.state.il.us). *Affirmative Action/Equal Employment Opportunity.*

#### EXECUTIVE OFFICER OFFICE OF POLAR PROGRAMS National Science Foundation Arlington, Virginia 22230

NSF's Office of Polar Programs (OPP) seeks qualified applicants for the position of Executive Officer. The incumbent works with the OPP Director to provide overall leadership and coordination and to manage the Office. OPP supports research in all areas of fundamental science and engineering in Polar regions through research grants and awards to universities and other research organizations. Appointment to this senior Executive Service position may be on a career or two- to three-year limited term basis with a salary range of \$120,261 to \$133,700. Alternatively, the incumbent may be assigned under Intergovernmental Personnel Act provisions. The announcements (S20010137), which include position requirements and application procedures, are posted on NSF's website: <http://www.nsf.gov/home/menus/jobs.htm>. Announcements may also be obtained by contacting: **Executive Personnel and Development Branch**; Telephone: 703-292-8755. Hearing-impaired individuals may call TDD; Telephone: 703-292-8044. Applications must be received by May 18, 2001. *NSF is an Equal Opportunity Employer.*

#### SENIOR FACULTY POSITION EXPERIMENTAL PHYSICS Dartmouth College

The Department of Physics and Astronomy at Dartmouth College invites applications for a senior-level faculty position in condensed matter/materials or biophysics. Candidates should have demonstrated outstanding research accomplishments and have an established record of teaching both at the graduate and undergraduate level. The successful candidate will complement active groups in the areas of nanostructures and biophysics. Potential interactions with other faculty in the molecular materials program, engineering, chemistry, biology, and the medical school will be viewed favorably. Applicants should submit curriculum vitae including a full list of publications, a statement of research interests, a brief statement that highlights teaching experience, and a list of at least five references to the following address: **Faculty Search, Department of Physics and Astronomy, Dartmouth College, 6127 Wilder Laboratory, Hanover, NH 03755-3528 U.S.A.** Consideration of applicants will begin in April 2001 and will continue until the position is filled. *Dartmouth College is an Equal Opportunity/Affirmative Action Employer. We encourage applications from women and minority scientists.*

## POSTDOCTORAL FELLOWSHIPS

*DNAX, a long-standing biotechnology company located within the San Francisco Bay Area Biotechnology sector and adjacent to Stanford University, conducts pioneering basic and translational research leading to drug development in the areas of Immunology and Oncology. DNAX offers an unique research environment, taking advantage of advanced technology and bioinformatics platforms including microarray and proteomic technologies and state-of-the-art facilities.*

Postdoctoral Fellowships are an integral component of the DNAX research program. DNAX Fellows come from different parts of the world to work in our rigorous research environment. Fellows are encouraged to publish and to participate in scientific meetings. The program provides full financial support and generous benefits, and creates future career opportunities in both academics and biotechnology. **Several postdoctoral fellowship positions are available:**

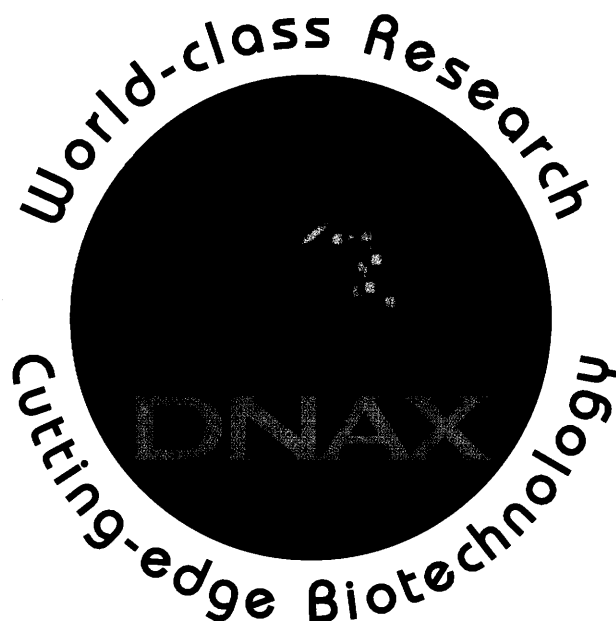
### ONCOLOGY

**Emma Lees.** Our laboratory is interested in the regulation of cell cycle progression and checkpoint control. A postdoctoral fellowship is available to examine the function of various genes involved in the regulation of the mitotic checkpoint in mammalian cells. Ultimately, this project aims to identify enzymes that would preferentially sensitize tumor cells to apoptosis when inhibited, either alone or in combination with conventional chemotherapy drugs. Genomic and proteomic approaches together with standard biochemical techniques will be employed.

**David Parry.** We are interested in the biochemical mechanisms that govern the mammalian response to DNA damage. We are looking for a post-doctoral fellow to examine the activation and interactions of the human CHK2 kinase using a combination of immunological/biochemical techniques and state-of-the-art proteomic methodologies. Our eventual goal is to identify and inhibit suitable target molecules in order to sensitize tumor cells to DNA damage.

### IMMUNOLOGY

**Jonathon Sedgwick.** We seek to understand the mechanisms underlying immunologically-mediated tissue damage, focusing on the central nervous system (CNS), and especially the role of CNS resident macrophages, or microglia. We have defined methods for isolating these cells, and recently identified the OX2 (CD200)-OX2-receptor pathway as an important means through which neurons regulate microglial cells within the brain. We seek a post-doctoral fellow to expand studies on the mechanisms of action of CD200 and to help characterize other similar molecular interactions regulating the broader macrophage/myeloid lineage.



**Joe Phillips.** The main interest of the laboratory is to study the development and regulation of Mast Cells in both rodents and humans. The postdoctoral position involves a culture based project employing cellular immunity, molecular biology and biochemical techniques to identify novel cell surface molecules that regulate Mast Cell responses during infections and allergic reactions. Since this work will involve a range of cellular, molecular and biochemical techniques, experience in these areas will be an advantage.

### PROTEIN AND GENOMIC TECHNOLOGY

**J. Fernando Bazan.** The laboratory is focussed on projects in functional genomics, dissecting protein families that are tied to critical signaling pathways involved in immune regulation. Since this work has a strong foundation in computational and structural analyses of genes and proteins, a background in immunology, biochemistry or molecular biology should be supplemented with interest or experience in bioinformatics, and protein structure and engineering.

Qualified applicants should send a *curriculum vitae*, the names of three references and a one-page statement of research interests to:

#### DNAX

Human Resources Department  
901 California Avenue  
Palo Alto, CA 94304-1104  
Fax: (650) 858-7520  
e-mail: [hr@dnax.org](mailto:hr@dnax.org)

*DNAX is an equal opportunity employer, m/f/h/v.  
DNAX is a biotechnology subsidiary of Schering-Plough Corp.*

"A sailor doesn't ask for tail wind, he learns how to sail"

You'll find a creative and challenging environment

## We're looking for

### People working at the AstraZeneca Transgenic Centre

#### **Three billion base pairs...**

*How to find the genes, understand what they do and their relationships to complex human diseases? In vivo gene function and deciphering target networks will define the competitive edge in the race for new drugs.*

*The AstraZeneca Transgenic Centre (ATC) is a core centre to provide transgenic models used in functional evaluation of genes serving as new drug targets and development of optimal disease models. ATC support AstraZeneca R&D world-wide in applying state-of-the-art transgenic technology and is located at AstraZeneca R&D near Gothenburg on the attractive west coast of Sweden.*

*Techniques for functional evaluation and deciphering of target networks must be operational to fully utilise the information coming from genetic studies and completion of the human genome sequencing. ATC is an established, highly productive internal resource employing 20 staff for evaluation of gene function and will now be expanded with resources for mouse genetics and disease model generation.*

*The selected candidates will work in a team handling multiple projects simultaneously and therefore flexibility and well-developed organisational abilities are prerequisites. A strong desire to learn and apply new techniques and*

*to instruct colleges is required. You are also expected to maintain and extend contacts with external groups, both at universities and other research companies. You will work in an international team with members from six countries and good knowledge in English is required.*

### **scientist 32/01 molecular phenotyping**

We are looking for a highly qualified scientist to be responsible for the molecular phenotyping of mice. You are an experienced molecular biologist with an excellent understanding in signal transduction pathways governing cell proliferation/differentiation or apoptosis. Experience in transcription profiling, primary cell culture and phenotyping of transgenic mice would be an advantage.

### **scientist 33/01 physiology**

We are seeking a highly motivated Ph. D. level scientist with experience in analysing the physiology of transgenic- or knockout mice. Applicants will have a global knowledge of physiology and may be drawn from disciplines that include, but are not limited to, pharmacology, physiology, neuroscience and veterinary medicine. You must have significant expertise using in vivo techniques in mice. You will be in charge to set up an ATC "mouse clinic" for diagnosis in disciplines such as cardiovascular biology, inflammation, metabolism, oncology and neurobiology.

## **technician 34/01 – molecular biology/genetics**

You are a technician with long experience from working with molecular biology in general. You have also been working with genetic studies, preferably in experimental species. You will work in our mouse genetics team with genotyping in positional cloning projects and generation of transgenic constructs for validation of candidate genes.

## **scientist 35/01 – transgenic technology/micro array analysis**

We are looking for a Ph. D. level scientist with experience from generating transgenic and knockout animals. You will work closely with the different projects to design constructs for transgenic or knockout animals requiring profound knowledge in these techniques. You also have experience from expression analysis using micro array technology. You will mainly work in our team to generate and evaluate new disease models by making new transgenic models and evaluate them using expression profiling, functional assays and morphology.

## **technician 36/01 – transgenic technology/molecular biology**

You have a long experience from working with molecular biology techniques and making of constructs for transgenic- and knockout-models. You will be a part of our team for generation of disease models based on making of new transgenics. Experience from micro-injections and embryonic stem-cell culture is not necessary since expertise covering these areas is present at ATC.

## **technician 37/01 physiology**

Strong in vivo analysis will be an important competitive edge when understanding function of specific genes and their relationship to disease. We need a technician with long experience from doing in vivo analysis on mice. It is an advantage if your experience covers multiple areas and a broad range of in vivo technologies in mice.

## **scientist 38/01 bioinformatics**

You have a strong background in biology complemented with computer science. You will work in our teams on comparative genomics,

mouse genetics and expression profiling. Knowledge in statistical analysis would be an advantage.

## **postdoc 39/01 – array analysis**

You have experience in micro array technology to investigate gene expression including analysis of the data. Previous work with Affymetrix technology is an advantage. AstraZeneca has together with research groups in Sweden, Finland, Belgium and Spain received an EU-grant to investigate mitochondrial function in ageing ([www.mitage.org](http://www.mitage.org)). In this postdoc position you will study age-related changes in gene expression in specific transgenic strains. The position will be located at ATC in Sweden.

## **postdoc 40/01 – target validation technology**

The successful applicants will work with developing and evaluating new technology for in vivo understanding of gene function and relationship to disease. Experience from altering gene expression/function in vivo is a prerequisite. You will also be responsible for developing and testing inducible and cell-specific systems to be used in transgenic animals. Previous experience from work with inducible systems in transgenic mice is an advantage.

*For further information, please contact Jan Törnell, phone +46 -31-776 24 69, e-mail: [jan.tornell@astrazeneca.com](mailto:jan.tornell@astrazeneca.com), or Christophe Quéva, phone +46 31 776 21 53 e-mail: [christophe.queva@astrazeneca.com](mailto:christophe.queva@astrazeneca.com). Please send your application marked with the respective job number no later than April 23 to: AstraZeneca R&D Mölndal, Human Resources, Victoria Persson, SE-431 83 Mölndal, Sweden.*

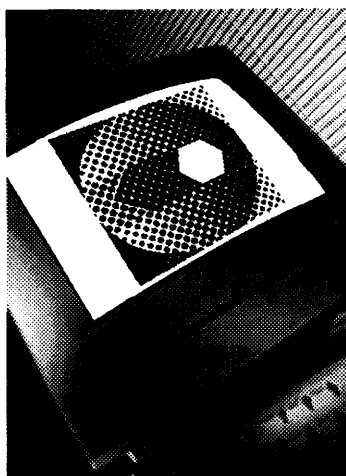
**Further information regarding this and other available jobs can be found on our website. You can also e-mail your application to: [victoria.persson@astrazeneca.com](mailto:victoria.persson@astrazeneca.com)**

**[www.astrazeneca.com](http://www.astrazeneca.com)**

LEADING INNOVATION IN WORLD HEALTHCARE



AstraZeneca is one of the world's leading pharmaceutical companies with approximately 50,000 employees. In Sweden, about 10,000 people work for the company in pharmaceutical research, production and marketing.



## Join the Drug Discovery Team at Pharmacopeia

Pharmacopeia's success has been driven by the synergy of chemistry and biology integrated with innovative computational tools. Come join a world class organization whose research, enabling technologies and services accelerate

drug discovery and chemical development. We are located near Princeton, New Jersey, the home of the US pharmaceutical industry, approximately 1 hour from cultural centers such as NYC and Philadelphia.

### Assistant Director of Drug Discovery

The successful candidate must possess a Ph.D. in Biochemistry, Cell Biology or equivalent with 7+ years experience in drug discovery including screening, screen/assay development, lead identification, lead optimization, and design of secondary assays. Additional experience in ADME-Tox is desirable. This position requires an energetic, strong scientific communicator and decision-maker to lead drug discovery programs and a strong scientific team, and to interface with business representatives from pharmaceutical partnerships.

### Chemistry

Research positions (BS/MS & Ph.D.) are available for synthetic organic chemists in our exciting, dynamic drug discovery oriented company. Successful candidates will be key members of multidisciplinary teams and be directly responsible for research and development in medicinal and combinatorial chemistry projects. Applicants should be familiar with standard synthetic and analytical techniques, and candidates hired at all levels will be expected to make detailed observations, analyze data and interpret results. The Research Scientist (Ph.D.) level will be expected to exercise technical discretion in the design and execution of syntheses and in the interpretation of experiments to drive projects either internally or on behalf of corporate collaborators. Communication of research results and progress, verbally or in technical reports, summaries and protocols may be required. Research scientists are expected to maintain a high level of professional expertise through familiarity with scientific literature, and are encouraged to participate in scientific conferences and to contribute to scientific journals. Additionally, you will be responsible for identifying patentable inventions; creativity and flexibility in addressing synthetic and broader scientific issues is a plus. Successful scientists may act as principal investigators in conducting their own experiments.

### Manager, Software Development

In this executive position, you will be responsible for supporting and maintaining PIE, Pharmacopeia Information Environment, a custom cheminformatics Oracle based system that supports all of Pharmacopeia's business and scientific processes. Duties will include: directing the plan and execution of product development activities for PIE, producing system requirements and functional specifications for projects and leading the software development task force which directs new project prioritization and initiation. B.S. in Computer Science, Engineering, or Physical Science, Chemistry, Cheminformatics and/or Drug Discovery experience and a minimum 2 years experience in Project Management of software development of Oracle database applications supervising a team of programmers/analysts is required. Minimum 3 years Oracle design and PL/SQL development experience and familiarity with various client development environments, such as Oracle Forms, VB, C++ and Java essential.

### Biology

Positions are available for BS/MS level biochemists, molecular and cellular biologists with at least one year of relevant research experience. A background in developing and implementing novel molecular and cellular assays for high throughput screens, cloning and expression of biochemically active proteins, or mammalian tissue culture desired.

Pharmacopeia offers a competitive compensation and benefits package, including stock options, 401(k) and tuition reimbursement, as well as an exciting atmosphere conducive to professional growth. We are an Equal Opportunity Employer. For additional information, please go to [www.pharmacopeia.com](http://www.pharmacopeia.com)

Please submit CV's to [HRReq@pharmacop.com](mailto:HRReq@pharmacop.com) or fax at (609) 452-3671.



**PHARMACOPEIA**



## Associate / Full Professor Position in Cell Biology

The Department of Cell and Developmental Biology invites applications for a faculty position at the associate or full professor level with tenure. The successful candidate will have an exceptional record of research accomplishment in cell biology, as s/he will be expected to take on a leadership role in the future development of cell biology within the department. The Department is equally strong in both cell and developmental biology, with current faculty taking advantage of the most modern approaches, and using various model systems ([www.med.upenn.edu/~cellbio/index.shtml](http://www.med.upenn.edu/~cellbio/index.shtml)). The Department is located in a new, state of the art building within the School of Medicine, in close proximity to the hospital and to other schools, including Schools of Arts and Sciences, Veterinary and Dental Medicine. This offers a strong opportunity for interdisciplinary approaches within the department, the School and across the Penn campus, in a uniquely open and interactive environment. Candidates should submit their curriculum vitae, a statement of research interests, and a minimum of three references to:

**Dr. Charles P. Emerson, Jr.**  
Chair, Department of  
Cell & Developmental Biology  
c/o Ms. Jill M. Carpenter  
University of Pennsylvania  
School of Medicine  
Philadelphia, PA 19104-6058



EQUAL OPPORTUNITY/AFFIRMATIVE ACTION EMPLOYER

### Biotech

Ribozyne Pharmaceuticals Inc, a leader in the development of Ribozyne based pharmaceutical products, has the following opening at our company located in beautiful Boulder, CO.

### Scientist - Bioconjugation and Molecular Detection Systems

Candidates with excellent technical skills are invited to apply for this exciting research opportunity in biochemistry. We seek an individual with a record of scientific accomplishment who can productively work in a team environment. Ability to prioritize and manage multiple tasks in a changing environment is essential. 'Hands on' experience in bioconjugation methodologies and nucleic acid detection is essential. Familiarity with protein purification, catalytic RNA, RNA viruses and/or ELISA is preferred. Our ideal applicant will have experience moving methodologies from the research bench to the marketplace. Candidates from the Research Associate to Postdoctoral level will be considered for positions commensurate with experience. Come be a part of our dynamic team that is developing a novel technology platform for nucleic acid based diagnostics.

RPI offers an excellent salary and benefits package including stock options. For consideration, please send your resume, indicating Job Code #058, to: RPI, Attn: HR-Science - #058, 2950 Wilderness Place, Boulder, CO 80301. Fax: 303-449-6995 or email in PDF or MS WORD format to [jobs@rpi.com](mailto:jobs@rpi.com). Visit us on the web at [www.rpi.com](http://www.rpi.com). EOE.





# DIRECTOR

## INSTITUTE OF MOLECULAR AND CELL BIOLOGY

The Institute of Molecular and Cell Biology (IMCB) was established in 1987 as a first step in developing modern biomedical R&D capabilities in Singapore. From a modest start with a small group of 38 scientists and graduate students, the IMCB has grown into an established research institute with 26 independent research groups comprised of an international complement of 250 scientists, including 70 postdoctoral fellows and 75 graduate students. Today, the IMCB is a leading center for innovative research in biomedical sciences and a top graduate school in the heart of the Asia Pacific region (see NIKKEI AWARD, Millennium 2000 Report [www.imcb.nus.edu.sg], Nature 1998, **394**, p604). IMCB's forte is in cell cycling, cell signaling, cell death, cell motility, and protein trafficking, as well as in the development of the nervous system and the immune system using the fly, mouse, rat, zebrafish and pufferfish as model systems (Nature 2000, **408**, p7).

We now seek a Director to build on the success of the IMCB's first 15 years, and to lead the next generation of scientists. Singapore has identified the Biomedical Science industry as a strategic pillar of a Knowledge Based Economy (Business Week 2000, Nov 27, p41. Nature, **407**, p1). This is an exciting time in Singapore for the Biomedical Sciences, as the technology infrastructure expands with newly established sister institutes such as the Bioinformatics Institute, and the Singapore Genomics Program (Cancer Letters 2001, **27**, p2). IMCB's role is to remain as the key center for basic research and to nurture good science.

The Director will take on the challenges of bringing the IMCB to the next phase of research excellence and of collaborating with its sister institutes in promoting both translational and clinical research. He/she will have considerable freedom and support to lead over 300 scientists in this endeavour. He/She should have at least 10 years of experience as a Principal Investigator with an outstanding research and collaborative record. Nominations and/or applications should include a complete CV and names and addresses of 3 references to:

Lara Whiteman  
Biomedical Research Council  
National Science and Technology Board  
The Alpha Singapore Science Park II  
Singapore 117684  
Tel: (65) 770-5823  
Fax: (65) 779-8061  
Email: Lara\_Jane\_Whiteman@nstb.gov.sg



*Institute of Molecular & Cell Biology, Singapore*

### Search Committee

**Chairperson** Alice S. Huang, California Institute of Technology, US

**Members** Sydney Brenner, Salk Institute, US  
Louis Lim, Biomedical Research Council, Singapore

# Take Your Curiosity

To *The Edge...*

Research and development is the future of any pharmaceutical company. That's why **Pharmacia Corporation** invests more than \$2 billion each year – to discover and develop the medicines that improve the health of people around the world. Our major R&D activities focus in the areas of cancer, arthritis/inflammation, infectious diseases, and disorders of the central nervous system, and we have a presence in ophthalmology, urology, and women's health. It is through exploring new avenues that we break through with world-leading therapeutic compounds and treatments. Take your career to the edge and investigate these challenging opportunities available in our **Kalamazoo, MI** facility:

## ASSOCIATE, SPECIAL PATHOLOGY TECHNIQUES

**Ad Code #01-2590**

Successful candidate will identify/institute technologies in pathology to use in-house for support of Pathology Sciences; coordinate the use of special pathology techniques between Discovery, Investigative Toxicology, and Pathology Sciences; and act as a technical liaison with other Pharmacia pathology sites. Requires a Bachelor's degree in Biological Science with a solid background in medical technology and more than 5 years of laboratory-based experience, preferably in toxicology/pathology, or a Master's degree in Biological Science with more than 2 years of laboratory-based experience; the demonstrated ability to use and develop advanced laboratory techniques applicable to pathology and toxicology problems; and outstanding leadership, organizational and interpersonal skills. Ideal candidate will have experience in histology, immunohistochemistry, in situ hybridization, or PCR as well as experience in searching gene databases and in probe or PCR primer design. **Respond to:** <http://respond.webhire.com/job/id?479-r2590-J7>

## SENIOR RESEARCH SCIENTIST – CARDIAC ELECTROPHYSIOLOGIST

**Ad Code #01-2454**

This Senior Scientist (post-PhD) Researcher will conduct state-of-the-art and leading-edge in vitro electrophysiologic research involving both new and late-stage therapeutic entities and their interaction with various cardiac ion channels. Via these investigative efforts, the selected candidate will play a leading role in the evaluation of safety and cardiovascular risk for compounds in clinical trials, preclinical development and late discovery. This individual can expect to convert/communicate cell-based assay results into an in vivo and human pharmacology context, providing support and assessments on clinical risk/liability for example with QT prolongation. Ideal candidate will be recognized in the area of cardiac ion channel pharmacology and at the leading-edge of contemporary biophysical issues in the field. Experience with a wide variety of ion channels and their pharmacology, various types of assays and development, and semi-throughput ion channel technology is essential. Additional requirements include a PhD in Pharmacology or Physiology with emphasis on Cardiac Cell Biophysics and Electrophysiology; demonstrated expertise in cardiac ion channel physiology and laboratory techniques; and outstanding leadership, organizational and interpersonal skills.

**Respond to:** <http://respond.webhire.com/job/id?479-r2454-J1>

## SENIOR RESEARCH BIOLOGIST

**Ad Code #01-2455**

Working under the direction of a Scientist, the successful candidate will be responsible for planning, conducting, evaluating and reporting safety pharmacology studies, and for collecting/analyzing ECGs on nonrodent toxicology studies in support of early discovery and product development. This associate will be key in the development of new technologies for assessing cardiovascular effects, particularly QT interval prolongation. Requires a BS/MS in a relevant field (Biology, Physiology, Pharmacology, Bioengineering, or Veterinary Technology) combined with 3-5 years experience demonstrating the ability to work in teams and to communicate effectively, both orally and in writing. Experience with instrumented cardiovascular models, surgery, radiotelemetric data acquisition and cardiac electrophysiology is highly desirable. Knowledge of safety pharmacology, experience with GLP regulations, and at least 2 years experience conducting these studies would be very beneficial. Experience in performing animal surgeries and all aspects of studies utilizing computerized radiotelemetric data acquisition is a definite plus. **Respond to:** <http://respond.webhire.com/job/id?479-r2455-J1>

Build a career relationship with an inspired organization. Enjoy a competitive salary and benefits in a professionally encouraging work environment. **For immediate consideration, please respond by our preferred online method utilizing the appropriate URL above. Or, you may fax your resume to the Pharmacia resume processing center, indicating appropriate Position # & referencing Science Magazine, at (520) 287-0963.** As an EEO/AA employer, Pharmacia Corporation values a diverse combination of ideas, perspectives, and cultures. **For more information and other opportunities, please visit our website at [www.pharmacia.com](http://www.pharmacia.com)**

# PHARMACIA



MOUNT SINAI  
SCHOOL OF  
MEDICINE

## FACULTY POSITION

The Institute for Gene Therapy and Molecular Medicine at Mount Sinai School of Medicine is seeking applicants for a tenure-track faculty position at the Associate or Full Professor level. All candidates must have a PhD, MD, or MD/PhD. The successful candidate will be expected to have and to maintain an outstanding and well-funded research program in the fundamental mechanisms that underlie the biology of adeno-associated virus. The candidate will also be expected to contribute to the education of both graduate and medical students. Applicants should submit curriculum vitae, a statement of research goals and the names of three references to: **R. Michael Linden, PhD, Chair of the Search Committee, Institute for Gene Therapy and Molecular Medicine, Mount Sinai School of Medicine, 1 Gustave L. Levy Place, New York, NY 10029. Phone: (212) 659-8278. Fax: (212) 849-2437. E-mail: [michael.linden@mssm.edu](mailto:michael.linden@mssm.edu). EOE.**



UNIVERSITY  
OF BERGEN

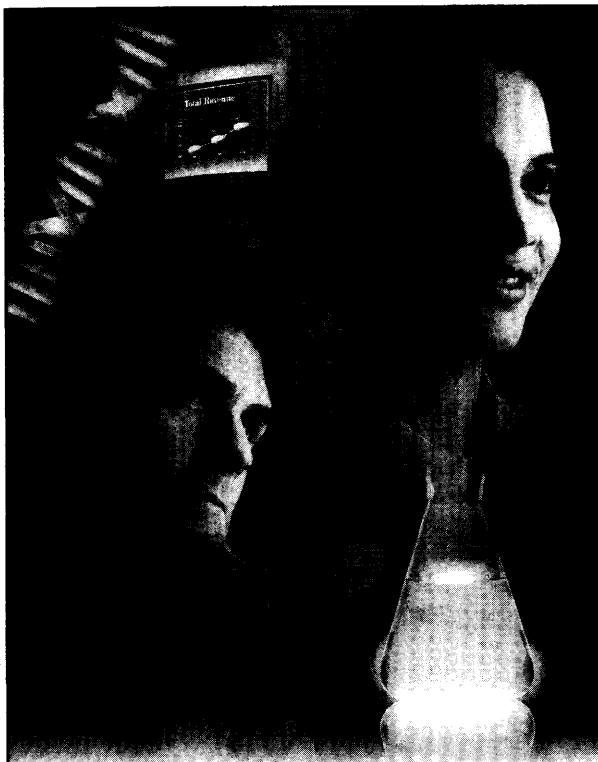
## Professor of Marine Biodiversity

Applicants must document broad experience in relevant research and teaching.

The position requires international recognition in several of the following areas: taxonomy and systematics, biogeography and/or phylogeography, with a documented ability to work at the level of communities. There will also be placed an emphasis on experience of ecologically important taxa.

More at <http://www.uib.no/stilling>

Submit application in six copies, sorted into six bundles, to the University of Bergen, MN-faculty, POBox 7800, N-5020 Bergen, Norway, before 30 April 2001.



**T**he best is getting even better! As the world's largest pharmaceutical research enterprise, Pfizer is dedicated to providing the best innovations in medicine while pursuing tomorrow's discoveries in research and development. With an R&D budget of \$4.7 billion, our team has spurred Pfizer's exceptional performance in 30 countries and across six continents. If you share our dedication to discovering, developing and delivering medicines to improve the health of both people and animals worldwide, we want yours to be the newest Face of Pfizer. Picture yourself in the following opportunities at Pfizer Global Research and Development facilities in Ann Arbor, Michigan



Life is our life's work.

challenge innovation teamwork

## The Face of Pfizer

careers that matter

### Opportunities on the Pharmacokinetic/ Drug Metabolism (PDM) Team

#### Sr. Scientist/Research Associate

You'll provide pharmacokinetic and pharmacodynamic leadership on Antibacterial drug discovery teams and devise and implement a plan to support drug discovery. We require a PhD or equivalent in Pharmacokinetics, Medicinal Chemistry, Biopharmaceutics or a related field and 2-5 years experience in metabolism/pharmacokinetics and PK/PD modeling. Req. #01Mar0103175

#### Sr. Scientist/Research Associate

You will provide metabolism support to toxicokinetic studies in multiple projects, from CAN through NDA. We require an MS/PhD in a relevant area, 5-7 years industrial experience, and proven ability to identify, develop and implement novel *in vitro* and *in vivo* techniques to characterize the disposition of drug candidates at toxicologically and pharmacologically relevant doses. A strong knowledge of hepatotoxicity and reactive intermediates is essential. Req. #01Mar0103202

#### Sr. Research Associate/Director

Leading the PDM effort in a therapeutic area, you'll drive Discovery team strategy, manage the competitive therapeutic landscape from a PDM perspective, and use discovery parameters to develop the pipeline. We require a PharmD or PhD in Pharmacokinetics, Drug Metabolism, Pharmaceutics or a related discipline, 8+ years postgraduate experience in the pharmaceutical industry and demonstrated ability to excel in a matrix environment. Req. #01Mar0103204

#### Sr. Scientist/Research Associate, Biomarker Coordinator

You'll serve as a resource for planning, scheduling and tracking biomarker projects and provide a bridge between various teams. We require an advanced degree in Biology, Physiology, Pharmacology or a related field (BS with 5+ years relevant experience will be considered), an understanding of biomarkers, experience in basic or clinical research and some analytical experience (assay development, ELISA, HPLC, RIA). Req. #01Mar0103200

#### Scientist/Sr. Scientist

This is an excellent introductory PhD-level position in Drug Discovery within PDM. You'll help solve metabolism-related issues with discovery candidates and you may lead a discovery team. You'll need a PhD in Medicinal Chemistry, Biochemistry or Organic Chemistry, with a background in drug metabolism and 0-2 years experience. Previous experience with *in vitro* models is highly desired. Req. #01Mar0103169

Pfizer offers an exceptional work environment complete with competitive salaries, exceptional benefits and training opportunities designed to develop your professional talents. We encourage all applicants to apply by emailing your resume, indicating the appropriate Req. # in the subject field, to [SCI@pfizerresumes.com](mailto:SCI@pfizerresumes.com). If necessary, you may also mail your resume, indicating Req. #, to Pfizer Resume Processing Center, 630 Boston Road M-104, Billerica, MA 01821, Attn: Softshoe Resumes. An equal opportunity employer, Pfizer offers a workplace rich with diversity and potential.



## HOWARD HUGHES MEDICAL INSTITUTE

The Howard Hughes Medical Institute conducts biomedical research in the areas of cell biology, genetics, immunology, neuroscience and structural biology at over seventy locations around the United States. HHMI regularly has positions open for research and administrative personnel.

### Laboratory Positions:

- Postdoctoral Fellowships
- Research Specialists/Technicians
- Research Secretaries

### Administrative Positions:

- Managers
- Administrative Assistants
- Purchasing Coordinators
- Receiving Clerks

Institute employees enjoy competitive salaries and an excellent benefits package. HHMI is an equal opportunity employer. Please visit our website at [www.hhmi.org/jobs](http://www.hhmi.org/jobs) for a listing of available positions.



**Eidgenössische Technische Hochschule Zürich**  
**Swiss Federal Institute of Technology Zurich**

### Assistant Professor of Molecular Membrane Biology

The Swiss Federal Institute of Technology Zurich is seeking to recruit a young investigator to lead an active and independent research programme in this field. Research activities should address either biochemical, biophysical or structural aspects of membranes or membrane components and should complement and expand upon the areas represented by the existing faculty of the Department of Biology. Involvement in teaching is expected at undergraduate and graduate levels.

Assistant Professorships have been established to promote the careers of young scientists. The initial appointment is for three years, with the possibility of renewal for three additional years. An excellent performance provided, the assistant professor may qualify for promotion to associate professor after the two three-year-terms (tenure track).

Please submit your application together with a curriculum vitae, a list of publications, and a research plan to the **President of ETH Zurich, Prof. Dr. O. Kübler, ETH Zentrum, CH-8092 Zurich, no later than May 31, 2001**. The ETHZ specifically encourages female candidates to apply with a view towards increasing the proportion of female professors.



**UNIVERSITY OF  
OXFORD**

Department of Chemistry  
Physical and Theoretical Chemistry  
Laboratory in association  
with Wadham College

### University Lecturership in Physical Chemistry

(ref. PTCL/01/001)

We are seeking to appoint a scientist with a proven record of experimental research in the area of soft condensed phases, broadly interpreted, to a University Lecturership within the Physical and Theoretical Chemistry Laboratory, preferably starting from 1st October 2001. The successful candidate will be offered a Tutorial Fellowship by Wadham College.

The Chemistry Department in Oxford is large, successful and multi-disciplinary, and is in the process of building a brand new £60m state-of-the-art research laboratory.

The combined University and College salary is on an age-related scale up to £39,564 per annum. Additional College allowances are described in the further particulars for Wadham College.

Further particulars concerning the post (both University and College) and the Chemistry Department, as well as of the Application Procedure, can be obtained via <http://www.chem.ox.ac.uk>, and a description of the Physical and Theoretical Chemistry Laboratory is directly available at <http://www.physchem.ox.ac.uk>. These particulars may also be obtained from the Head of Department, Physical and Theoretical Chemistry Laboratory, South Parks Road, Oxford OX1 3QZ (e-mail: [mwallace@physchem.ox.ac.uk](mailto:mwallace@physchem.ox.ac.uk)), to whom applications should be submitted by 14th May 2001.

The University is an  
Equal Opportunities Employer.

# Cardiovascular Biology

## MEDICAL UNIVERSITY OF SOUTH CAROLINA

### *Research and Training Opportunities*

Postdoctoral research fellowships supported by a National Institutes of Health Training Grant are available for outstanding candidates with graduate degrees in the biological, chemical, medical or physical sciences. The training program focuses on the mechanisms of cardiovascular diseases and the development of experimental strategies and technologies to generate novel therapeutic attacks upon these diseases. Emphasis is placed upon an integrated training experience involving molecular concepts of cellular dysfunction in pediatric and adult cardiovascular diseases as well as during organ development. The program includes over 30 research laboratories supported by the National Institutes of Health, National Science Foundation, American Heart Association and private foundations. (<http://www2.musc.edu/Pharm/postdoc.html>)

- CARDIOVASCULAR DEVELOPMENT
  - VASCULAR DISEASE
  - HYPERTENSION
  - CARDIAC FAILURE
- Cell Signaling   Cell Biology  
Computer Modeling   Mass Spectrometry   Bioimaging  
Human Genetics   Gene Transfer   Experimental Therapeutics

#### *Developmental Biology of the Cardiovascular System*

Christopher Drake, Ph.D.	Vascular developmental biology
Robert G. Gourdie, Ph.D.	Developmental biology of heart electrical activation
Michael J. Kern, Ph.D.	Homeobox genes in cardiac development
Edward L. Krug, Ph.D.	Mechanisms of myocardial secretion
Steven W. Kubalak, Ph.D.	Cardiac developmental defects
Roger R. Markwald, Ph.D.	Cardiac morphogenesis
J. Philip Saul, M.D.	Biophysics of catheter ablation in humans and animals
Robert P. Thompson, Ph.D.	Cell biology of developing cardiac muscle

#### *Signal Transduction*

##### *Hypertension/Vascular Disease/Diabetes*

W. Scott Argraves, Ph.D.	Lipoprotein receptor biology
Maria G. Buse, M.D.	Insulin action
James A. Cook, Ph.D.	Signal transduction pathways in shock
Rosalie K. Crouch, Ph.D.	Structure/function of retinoid-binding proteins
Brent M. Egan, M.D.	Lipids and vascular reactivity in hypertension
W. Timothy Garvey, M.D.	Human genetics of diabetes, obesity, and vascular disease
Perry V. Halushka, M.D., Ph.D.	Thromboxane A2 receptors
Yusuf A. Hannun, M.D.	Sphingolipid metabolism and biology
John D. Hildebrandt, Ph.D.	G protein structure and function
Tien Hsu, Ph.D.	Vasculogenesis in <i>Drosophila</i>
Ayad A. Jaffa, Ph.D.	Cell signaling in vascular smooth muscle
David J. Jollow, Ph.D.	Molecular mechanisms of adverse drug reactions
Daniel R. Knapp, Ph.D.	Mass spectrometry, protein structure & function
Kathryn E. Meier, Ph.D.	Phospholipid metabolism in mitogenic signaling
Mark W. Nowak, Ph.D.	Effects of ethanol and nicotine on ion channel function
Shailesh Patel, D. Phil, FRCP	Genetics and biochemistry of cholesterol homeostasis
John R. Raymond, M.D.	GPCR and RTK signaling in kidney
Steven A. Rosenzweig, Ph.D.	IGF signaling, IGF binding proteins and angiogenesis
Kevin L. Schey, Ph.D.	Mass spectrometry and biomolecular structure
Maria Trojanowska, Ph.D.	Mechanism of fibrosis
Ilya A. Vakser, Ph.D.	Computational structural biology
Thomas Walle, Ph.D.	Transport and metabolism of drugs and natural products
Jerry G. Webb, Ph.D.	Second messenger systems in blood pressure control

#### *Cardiac Failure*

George Cooper, IV, M.D.	Molecular properties of adult cardiac muscle
Dhandapani Kuppuswamy, Ph.D.	Signaling mechanisms in myocytes
Paul J. McDermott, Ph.D.	Translational control in the hypertrophied heart
Donald R. Menick, Ph.D.	Membrane transport proteins/Transcriptional regulation
Terrence X. O'Brien, M.D.	Genetic control mechanisms in cardiomyocytes
Francis G. Spinale, M.D., Ph.D.	Cellular mechanisms of heart failure
Michael R. Zile, M.D.	Diastolic heart failure and growth regulation

Individuals must possess a PhD and/or MD degree and US citizenship/permanent residency. Applicants should send a curriculum vitae, a career statement and the names of three references to: **Dr. John Hildebrandt, Program Director, Department of Pharmacology, Medical University of South Carolina, 173 Ashley Avenue, P.O. Box 250505, Charleston, SC 29425** [hildebjd@musc.edu](mailto:hildebjd@musc.edu)

*An Equal Opportunity/Affirmative Action Employer*

“Merck is where I can have the greatest effect on human life.”

**Merck Research Laboratories** is a leading research-driven pharmaceutical products and services company. Recently ranked by *Fortune* among “America's Most Admired Companies,” we continually live up to our reputation with a truly unique work environment that fosters diversity and growth. We currently have career opportunities located at our facilities in **Rahway, NJ** and **West Point, PA** (only 25 miles north of Philadelphia).

### Transgenic Microinjectionist – Rahway, NJ

You will be responsible for providing technical expertise for the production of transgenic and knock-out/knock-in mice. The primary responsibilities include pronuclear and ES cell microinjections. Additional responsibilities include animal health observations, animal ordering and tracking, breeding and weaning of rodents, tail biopsies, record-keeping, superovulation, embryo collection, culturing of embryos up to the blastocyst stage, embryo freezing/thawing, and surgical manipulations such as embryo transfer.

The successful candidate will possess a BS in a biological science, along with 2+ years' experience with transgenic rodents. Experience with cryopreservation is desired, but not required. Candidates must be team oriented and possess excellent written and verbal communication skills.

Please forward your resume and cover letter, including salary requirements, to **Judy Fenyl Melody, RY 80M-160, Ad# 12, Merck & Co., P.O. Box 2000, Rahway, NJ 07065. Fax: 732-594-4495.**

### Molecular Virologists – West Point, PA

The successful candidate should have a working knowledge of standard biochemical, immunological, molecular biological, and virological methods, as well as experience with assay development and validation. The candidate will be expected to solve problems independently, possess excellent communication skills, and work effectively in a team environment.

A BS/MS or equivalent in Biochemistry, Molecular Biology, Virology, or a related field is required. GMP/GLP experience is preferred.

Please send cover letter and resume to: **recruitmentads@merck.com** or mail to: **PRD Recruitment, Merck & Co., Inc., WP42-2, P.O. Box 4, West Point, PA 19486.**

Merck is committed to providing employees with a stimulating work environment, as well as a competitive salary and benefits package. We are an Equal Opportunity Employer, M/F/D/V.



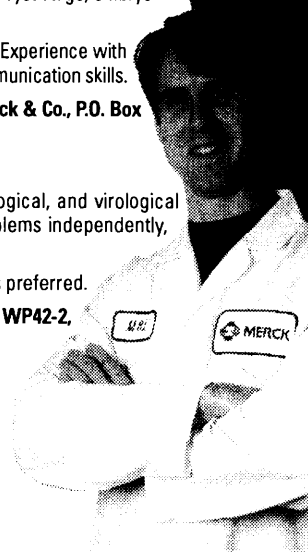
**MERCK**

COMMITTED TO BRINGING OUT THE BEST IN MEDICINE

Visit us at [www.merck.com](http://www.merck.com)

*It's what we do.  
It's who we are.*

At Merck, our first priority is improving the quality of life for people around the world. People who use our products. People who develop them. People like you. Join us in making a world of difference.



GENOMICS INSTITUTE OF THE NOVARTIS RESEARCH FOUNDATION

## Research Group Leaders in Molecular Genetics/Genomics

We are seeking Faculty-Level Scientists to lead research groups in several areas of Biomedical Science:

- Cancer Biology/Signal Transduction
- Immunology
- Neurobiology/Neurodegenerative Mechanisms

We require a strong publication record along with a desire to apply functional genomic approaches in mammalian systems. Three years or more of postdoctoral experience is preferred. GNF provides a unique environment for developing a world-class research program. Outstanding resources include core facilities in RNA profiling, high-throughput protein and antibody production, cell-based screening, proteomics, forward mouse genetics, computational biology and chemistry. Please submit CV and a statement of research interests to:

**Genomics Institute of the Novartis Research Foundation (GNF) Human Resources**

Job Code: SK

3115 Merryfield Row  
San Diego, CA 92121

Fax: 858.812.1670

Email: [jobs@gnf.com](mailto:jobs@gnf.com) (include Job Code on subject line).

The Genomics Institute of the Novartis Research Foundation (GNF) is located in the Torrey Pines area of San Diego, CA. We are developing and applying novel technologies for genomewide functional characterization. A multi-disciplinary research institute fully funded by the Novartis Foundation, we are dedicated to the development and application of new methods and techniques to define novel gene function. EOE

[www.gnf.org](http://www.gnf.org)

## nature medicine

seeks an **Assistant Editor** and a **News & Views Editor** to join its full-time editorial group in New York City.

*Nature Medicine* team is expanding! These two positions offer an exciting and challenging opportunity to enter the world of scientific publishing while remaining at the forefront of research.

The Assistant Editor candidate will be required to have completed a PhD in Immunology with broad-based interest and expertise in the areas covered in *Nature Medicine*. The ideal candidate should have postdoctoral research experience and publications in peer-reviewed journals, excellent written and oral communications skills, good standing in the community and a commitment to the communication of science. Members of the editorial team oversee the selection and preparation of research articles published in *Nature Medicine*; they also commission Commentaries and Reviews and write news items and editorials for the journal. They attend meetings and conferences, visit laboratories and maintain alliances with the international scientific community.

The News & Views Editor candidate will be required to have completed a PhD in any field of biomedical research, and have a sense of literacy, a lively and broad interest in science, excellent sub-editing skills and a personable and professional manner. The main responsibility will be to manage the journal's News & Views section, including the commissioning and editing of News & Views. The successful candidate will therefore be aware of the need to combine newsworthiness, exciting science and good writing. Working closely within a small group of editors, the Assistant Editor for News & Views will also contribute to other areas of the journal (including News, Commentaries, Book Reviews, Reviews and Special Projects), and will represent the journal at scientific meetings.

Please submit a curriculum vitae, a concise cover letter indicating for which position you are applying for and explaining your interest in the post, and a 500-word News & Views style article on an exciting and newsworthy recent development in any area of biomedical research to: **The Editor, Nature Medicine, 345 Park Avenue South, 10th Floor New York, NY 10010-1707, Fax: (212) 683-5751, [medicine@natureny.com](mailto:medicine@natureny.com). The deadline for application is 26 April 2001.**

# EXTENDING & ENHANCING HUMAN LIFE.

We are the Bristol-Myers Squibb Pharmaceutical Research Institute (PRI), a global organization conducting research and development and clinical trials, and seeking regulatory approval around the world. Working in interdisciplinary teams to discover and develop innovative, best-in-class, cost-effective medicines to address unmet medical needs, we dedicate ourselves to the mission of Bristol-Myers Squibb by extending and enhancing human life.

## Lead Discovery Wallingford, CT

**Research Investigator:** Ph.D. in biology or related discipline with 2+ years experience in Biotech or Pharmaceutical industries to design, execute and analyze high-throughput screening assays. Individual will also provide leadership and mentoring in the areas of disease management and Lead Discovery on GPCR screening techniques. Knowledge of assay techniques related to G protein-coupled receptors in early drug discovery required; familiarity with modern HTS assay techniques, quality control, data analysis and method development preferred. **Job Code: PRLG336LG**

## Pharmacogenomics Princeton, NJ

**Molecular Biologist/Geneticist:** Ph.D. in Molecular Biology, Genetics, or related area with 2+ years experience in a high-throughput genomics laboratory, to play a vital role in SNP genotyping operation and Pharmacogenomics projects. Strong laboratory skills are required, and experience in bioinformatics, database management, genetic analysis, or clinical science is helpful. **Job Code: PRMMS336ZT**

**Molecular Biologist:** Ph.D. in Molecular Biology or Genetics with 2+ years postdoctorate experience required; 1+ years industrial experience is beneficial to conduct research in the area of Molecular Biology, Pharmacogenomics and Oncology/Cancer knowledge is required; experience with tissue culture, molecular biology, and micro-array processing is desired. Proficiency in analyzing micro-array data including clustering tools; and advanced statistical knowledge are preferred. **Job Code: PRMMS336LA**

## Aging Research Princeton, NJ

**Research Investigator:** Ph.D. in Molecular Biology, Cell Biology or Biochemistry with 3+ years experience in vision research. Individual will carry out exploratory research with the goal of generating drug discovery programs in eye diseases by identifying and validating molecular targets and designing and executing biochemical or cell-based screens. Experience in retinal biology a strong plus. **Job Code: PRMMS336KM1**

**Associate Research Scientist:** B.S./M.S. in Molecular Biology, Cell Biology or Biochemistry with 2+ years experience to carry out biochemical and cell-based experiments in vision research. Individual will also carry out secondary biochemical or cell biological assays for drug discovery programs. Experience in tissue culture required. Previous experience in retinal biology is a strong plus. **Job Code: PRMMS336KM2**

## Metabolic & Cardiovascular Drug Discovery Princeton, NJ

**Molecular/Cellular Biologist:** M.S./B.S. with 2+ years in an industrial or academic research environment to aid in the development of reagents to be used in the discovery of selective, small molecule modulators of ion channel drug discovery targets. Individual will also participate in research programs directed towards identification of novel drug discovery targets at the molecular level. Background in current techniques of molecular and cellular biology, including mammalian cell culture techniques, is required. Experience with cardiac and smooth muscle ion channel expression and electrophysiology is an asset. **Job Code: PRMR335WL**

**Automation/Robotic Specialist:** B.S. in Biomedical Engineering or related experience with 3+ years to assist in the automation of assays; develop new techniques and implement them in assay design. Individual will also research and evaluate new technologies useful in in vivo and in vitro assays, assist in the implementation and completion of novel assays. Experience in in vitro and in vivo imaging is required, along with laboratory robotics and automation, data I/O and data management, visual basic programming language, in vivo assay design and implementation required. Background in whole tissue physiology is essential; basic understanding of vascular biology and enzyme kinetics desired. **Job Code: PRMR336BP**

## Oncology Drug Discovery Princeton, NJ

**In Vivo Anti-Tumor Drug Evaluation Scientist:** Ph.D. with 3+ years experience with tumor response biomarkers to design, conduct and report studies involving the evaluation of novel anticancer agents. Experience with the utilization of pre-clinical in vivo cancer models to evaluate candidate anticancer agents is required; demonstrated ability in the development of appropriate pre-clinical in vivo cancer models for specified cancer targets is essential. Background in pharmacology of current anticancer agents desired. **Job Code: PRMRS336FL**

## Immunology, Inflammation & Pulmonary Princeton, NJ

**Cell Biologist/Molecular Biologist/Immunologist:** B.S./M.S. with 3+ years experience to identify and validate new targets in asthma/COPD. Working knowledge of GPCRs (expression, assay design) is required and experience with ligand search for orphan receptors is preferred. Experience with FACS analysis, immunohistochemistry and cell transfection is a plus; pulmonary background is preferred. Drug discovery background within a pharmaceutical company preferred. **Job Code: PRMR336MM**

If you are interested in the above career opportunities, please forward your resume to:

Bristol-Myers Squibb, P.O. Box 4000, Princeton, NJ 08543-4000, Fax: (609) 252-3242, E-mail: [recruit.pri@bms.com](mailto:recruit.pri@bms.com).

Bristol-Myers Squibb, Pharmaceutical Research Institute, P.O. Box 5101, 5 Research Parkway, Wallingford, CT 06492-7661, Fax: (203) 677-7762, E-mail: [recruit.pri@bms.com](mailto:recruit.pri@bms.com).

Bristol-Myers Squibb is proud to be an equal opportunity employer, M/F/D/V.



## Bristol-Myers Squibb

Pharmaceutical Research Institute

www.bms.com





Thomas  
Jefferson  
University

An established Basic Science and Clinical Science Research Program is expanding its scope of activities, and as part of this effort a number of new positions will be created. Qualified applicants are being sought for the following:

**Professor of Toxicology:** Special consideration will be given to applicants whose areas of investigation are neurotoxicology, hepatotoxicology, the study of agents that cause cancer, or the study of agents that cause developmental disorders.

**Professor of Epidemiology:** Special consideration will be given to applicants who have experience working with basic and clinical science investigators in the area of cancer research.

**Professor, Associate Professor or Assistant Professor of Toxinology:** The successful applicant must have substantial expertise studying biological toxins that block exocytosis or related phenomena (e.g., botulinum toxin, tetanus toxin, alpha-latrotoxin).

**Postdoctoral Fellows:** Two positions are available for Fellows with experience and interest in the areas of molecular biology and vaccine development.

**Postdoctoral Fellows:** Two positions are available for Fellows with experience and interest in the study of biological toxins. A background in molecular biology and/or protein chemistry is desirable.

Applicants for all positions must have a Ph.D. degree, M.D. degree or equivalent. Applicants for faculty positions must provide substantial evidence of scholarly accomplishments and extramural, peer-reviewed research support. The successful applicants will join a group of more than 40 scientists, physicians, policy makers and others who are members of a multidisciplinary and multidisciplinary group in occupational, environmental and toxicological sciences. Interested persons should send curriculum vitae, history of relevant experience, and the names of at least three persons who can provide letters of evaluation. These materials should be mailed to: **Lance L. Simpson, Ph.D., Professor of Medicine and Director, Jefferson Occupational and Environmental Health Sciences Program, Room 314-JAH, Jefferson Medical College, 1020 Locust Street, Philadelphia, PA 19107.** Jefferson Medical College is an affirmative action/equal opportunity employer.

## Two Positions Open

### Agricultural Research Service Rangeland Scientist/Ecologist and Research Plant Physiologist

The U.S. Department of Agriculture, Agricultural Research Service, Range Management research unit at the Jornada Experimental Range in Las Cruces, NM, invites applications for one of two new positions. These positions are competitive, permanent appointments, GS-11/12/13 (\$43,326-\$80,279), and are within a research unit of 10 ARS scientists. *U.S. citizenship is required.* One position is for a **Rangeland Scientist/Ecologist** (announcement #ARS-X1S-1185) to study ecological constraints to arid land remediation and to develop novel methodologies for overcoming those constraints. The other position is for a **Research Plant Physiologist** (announcement #ARS-X1S-1213) to study environmental factors and plant physiological processes which control primary production and plant community structure in desert environments under a range of present and future environmental conditions, and across a range of spatial and temporal scales. Successful candidates will be expected to develop a creative and collaborative research program that utilizes the field laboratory resources, the interdisciplinary scientific expertise, and the diverse research institutions present at the Jornada Experimental Range. Applications must be marked with the respective announcement number. Specific application procedures and requirements can be obtained from the ARS website: <http://www.ars.usda.gov/afm2/divisions/hrd/vacancy/resjobs/X1S-1185.HTM> for the Rangeland Scientist/Ecologist position, or <http://www.ars.usda.gov/afm2/divisions/hrd/vacancy/resjobs/X1S-1213.HTM> for the Research Plant Physiologist position. You may also contact Ms. JoAnn Fernandez at (505) 646-6316 or [joaferna@nmsu.edu](mailto:joaferna@nmsu.edu) for specific questions regarding either vacancy. By mail submit applications to: **USDA, Agricultural Research Service, Human Resources Division, ATTN: Tricia Higgins, 5601 Sunnyside Avenue, Beltsville, MD 20705-5105.** You may also FAX applications to (301) 504-1535, or EMAIL applications to [scirecruit@ars.usda.gov](mailto:scirecruit@ars.usda.gov). All applications must be postmarked by May 25, 2001. *ARS is an Equal Opportunity Provider and Employer. Women and minorities are encouraged to apply.*



St George's Hospital  
Medical School

University of London

## HOTUNG CHAIR OF MOLECULAR BIOLOGY AS APPLIED TO VACCINES

*Department of Infectious Diseases*

Applications are invited for the recently endowed Hotung Chair of Molecular Biology as applied to vaccines. This exciting development is well supported with £1.5m start-up costs, 2 scientific appointments, secretarial support and running costs, and will potentially integrate with clinical studies in the established St George's Vaccine Institute. It is expected that the applicant will make a major contribution to existing research in the general field of vaccination against infectious diseases.

Although the subject area can be broad, to include pathogen-based and host-based approaches to protective immunisation and understanding of basic mechanisms of protective immunity, applicants should have an international reputation in molecular and cell biology.

Further information on <http://www.vaccine.ac.uk/> from the Personnel Office, St George's Hospital Medical School, Cranmer Terrace, London SW17 0RE, 020 8725 5020 (24-hour answerphone) or email: [personnel@sghms.ac.uk](mailto:personnel@sghms.ac.uk)

Closing date: 18 May 2001. Please quote reference 337/01.

*The School is an Equal Opportunities Employer*

## nature biotechnology

seeks an **ASSISTANT EDITOR**

This is a full-time position within an established editorial team based in New York City.

Applicants should have a strong research background in either commercial or academic research, a keen critical and analytical sensibility, excellent writing and editing skills, a Ph.D in a relevant science, and an appreciation of the history and evolution of molecular biology into biotechnology. As the journal publishes across a number of disciplines, candidates must show a willingness and demonstrated ability to learn new fields.

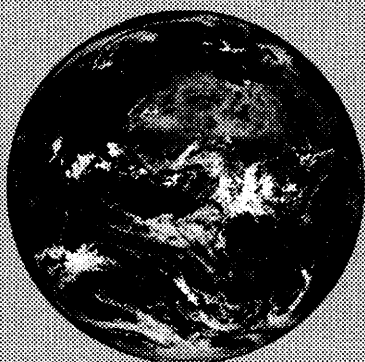
We offer a competitive salary and excellent working conditions within a dynamic editing and publishing group that is also responsible for *Nature*, *Nature Cell Biology*, *Nature Genetics*, *Nature Immunology*, *Nature Medicine*, *Nature Structural Biology*, and *Nature Neuroscience*.

Please submit a CV (with names of three references), a concise letter outlining your credentials and suitability for the position, and a 500-word News & Views style article on a recent exciting and newsworthy development in any area of biotechnology to:

The Editor, *Nature Biotechnology*, 345 Park Avenue South, New York, NY 10010-1707 (Fax: 212 696 6935; e-mail: [biotech@natureny.com](mailto:biotech@natureny.com)) to arrive as soon as possible and **no later than 23rd April 2001.**



**Where  
on Earth  
will Science  
take You?**



**Research Scientist  
Consumer Devices**

**Discovery Science  
Data and Modeling**

UNILEVER has the distinction of ranking with the top consumer products companies in the world in sales and innovation. Our success is built upon collaborative scientific research and product development efforts resulting in over 1000 nationally and internationally known brands including Dove, Lever 2000, Wisk, "all", Vaseline, Pond's, Suave, Thermasilk, Calvin Klein Cosmetics, Lipton, Ben & Jerry's, and Breyer's Ice Cream. These positions are based at our global research facility in Edgewater, NJ, located on the Hudson River within 20 minutes of Manhattan's diverse academic, entertainment and cultural resources.

### **Research Scientist Consumer Devices**

**POSITION CODE: SMS-S**

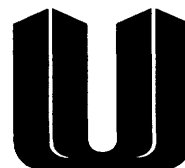
We are seeking a results-oriented, consumer-focused Scientist/Engineer to design, prototype and evaluate measurement devices for use in a consumer setting. You will be a key member of a multi-disciplinary team developing skin measurement technologies to assess skin health and needs in a consumer setting. A PhD, MS or equivalent in Human Factors Engineering, Ergonomics, Engineering Science or Instrumentation Design. Research experience in biophysics, bio-chemical analysis, product design or consumer science is desirable. The candidate must have strong leadership potential and excellent communication skills.

### **Discovery Science Data and Modeling**

**POSITION CODE: DSDM-S**

This is a challenging position seeking relationships in large data bases of biophysical and bio-informatic data. We believe the ideal candidate will have a strong scientific background with a PhD in Physics, Chemistry or related disciplines. Superb mathematical skills applied to structuring heterogeneous data sets including the flexible application of adaptive computational techniques. The position demands a multi-disciplinary thinker with leadership potential.

We offer a competitive salary, benefits including tuition assistance and relocation, and a dynamic environment filled with learning and discovery beyond conventional scientific boundaries. Applicants must be authorized to work in the USA. For consideration please forward your CV to: Human Resources, Unilever Research US, 45 River Road, Edgewater, NJ 07020 or E-Mail: [job.mca@unilever.com](mailto:job.mca@unilever.com). Please place only the position code assigned above as the subject of your e-mail and on your correspondence. Unilever is an Equal Opportunity Employer m/f/d/v.



**Unilever**

**Unilever Research**

For more information about Unilever Research  
and Unilever visit our Internet Web Site at <http://www.unilever.com>

**TEMPORARY POSITIONS IN MOLECULAR AND  
ORGANISMAL BIOLOGY  
JOINT SCIENCE DEPARTMENT  
THE CLAREMONT COLLEGES**

The Biology program of Claremont McKenna, Pitzer and Scripps Colleges of the Claremont Colleges seeks 2 biologists to fill one-year positions at the Visiting Assistant Professor level to begin in late August 2001. Primary teaching responsibilities for the position in Molecular Biology will include undergraduate lecture/laboratory courses in molecular biology. Duties may include participation in the introductory biology course and/or science courses for non-majors. For the second position we seek a Biologist who could teach courses from among the following: introductory biology, marine ecology (lecture/laboratory), biostatistics, and non-majors biology. Supervision of undergraduates in research is desirable. A Ph.D. is required; previous teaching experience and a record of scholarly publication are desirable.

The Biology program is part of the Joint Science Department (<http://www.jsd.claremont.edu/>), an interdisciplinary department that serves three selective liberal arts colleges in the Claremont consortium: Claremont McKenna, Pitzer and Scripps Colleges. The Joint Science faculty consists of 11 biologists, 6 chemists, and 4 physicists. The department offers major programs in Biology, Chemistry, Physics, and various interdisciplinary topics. In 1992, the department moved into the Keck Science Center, a facility well equipped for teaching and research.

Send a CV, a statement of teaching interests and philosophy, and a statement of research interests to **Velda Ross, Keck Science Center, 925 N. Mills Ave., Claremont, CA 91711** (email: [vross@jsd.claremont.edu](mailto:vross@jsd.claremont.edu)). Arrange to have three letters of recommendation sent to the same address. Review of applications will begin April 30, 2001 and continue until the positions are filled. For further information, contact Robin Justice (email: [rjustice@jsd.claremont.edu](mailto:rjustice@jsd.claremont.edu)).

*In a continuing effort to enrich their academic environment and provide equal educational and employment opportunities, The Claremont Colleges actively encourage applications from women and members of historically under-represented social groups in higher education.*



**DISTINGUISHED FELLOWSHIPS IN NEUROBIOLOGY**

The Neurosciences Research Foundation announces a program of Distinguished Fellowships supporting fundamental research in neurobiology. The Fellowships will provide up to \$150,000 per year for a term of three years to cover full salary, benefits and research support at the level of Associate Fellow, equivalent to the academic ranks of Assistant or Associate Professor. Applications will be considered of candidates working in any of a number of fields, including molecular and developmental neurobiology, systems neuroscience, and theoretical and computational neuroscience. Fellows receiving awards will be strongly encouraged to collaborate and span multiple fields. At the completion of the term, Fellowships will be eligible for renewal.

Chosen Fellows will be accorded laboratory space and facilities at no further cost in The Neurosciences Institute (NSI), an independent, non-profit research organization in La Jolla, California. The NSI is dedicated to theoretical and experimental research on the biological bases of brain function. Its prize-winning architectural complex serves as the home of the Neurosciences Research Program, an internationally renowned academy dedicated to brain research. The NSI is located within a growing community of biomedical and neurobiological research organizations in the greater San Diego area.

Interested candidates should send a curriculum vitae, a letter describing a proposed research program, and the names of three references to **Fellowship Committee, Neurosciences Research Foundation, 10640 John Jay Hopkins Drive, San Diego, California 92121** or via e-mail to [Fellowships@nsi.edu](mailto:Fellowships@nsi.edu).

**THE J. DAVID GLADSTONE INSTITUTES**

**POSTDOCTORAL FELLOWSHIP  
OPPORTUNITIES**

Postdoctoral Fellowship in the laboratory of Dr. Israel Charo to study the role of Chemokines and Chemokine/Receptors in human disease and in the regulation of the immune response. Projects feature extensive use of both transgenic and knockout mice. Background in immunology is preferred. Job #C00-29S

Postdoctoral Fellowship in the laboratory of Dr. Douglas Nixon to study HIV pathogenesis, with particular emphasis on cellular immune responses. Candidates should have a background in virology or immunology, preferably with experience in flow cytometry, cell culture, and assays of immunological function. Job #V00-19S.

We offer an exceptional training program for postdoctoral fellows, including rigorous scientific training, personalized attention and mentoring, and a rich research environment to allow our fellows to develop to the fullest of their abilities. In addition, we offer excellent benefits, including three weeks of vacation, employer-paid medical programs, tuition reimbursement, and various retirement programs.

Candidates should possess a Ph.D., M.D., or both. Please send cover letter, curriculum vitae, and three references to:

The J. David Gladstone Institutes  
Postdoctoral Opportunities  
P.O. Box 419100  
San Francisco, California 94141-9100  
Email: [postdoc@gladstone.ucsf.edu](mailto:postdoc@gladstone.ucsf.edu)

To find out more about Gladstone's Postdoctoral Training Program or to view current opportunities, visit our web site at <http://gladstone.ucsf.edu>

AA/ECC M/F/D/V

**nature  
genetics**

Seeks an **ASSISTANT EDITOR**

*Nature Genetics* seeks an Assistant Editor to join its editorial team in New York City. Members of the editorial team evaluate manuscripts, oversee the review process, commission and edit News & Views articles and Reviews, and write news items and editorials. The successful applicant will also participate in building a new genomics web site, attend meetings and conferences, visit laboratories and maintain contact with the international scientific community. Applicants should have a strong research background in genetics (expertise microarray analysis preferred), a broad interest in science and scientific ideas, excellent communication skills, and the ability to work closely with others.

The office is situated in lower Manhattan, and *Nature Genetics* editors work alongside those of other *Nature* sister journals: *Nature Medicine*, *Nature Neuroscience*, *Nature Structural Biology*, *Nature Biotechnology* and *Nature Immunology*.

Applicants should submit a Curriculum Vitae, a short News & Views article (of 500–1,000 words), and a cover letter explaining their interest in the position to: The Editor, *Nature Genetics*, 345 Park Avenue South, New York, New York 10010, USA. (fax: 212 545 8341; e-mail: [genetics@natureny.com](mailto:genetics@natureny.com))

**The deadline for applications is 30 April, 2001.**

## DEPARTMENT CHAIR ENTOMOLOGY

The Department of Entomology at the University of Maryland, College Park, invites applications and nominations for Chair of the Department. The Chair is the chief administrative officer of the unit, with overall responsibilities for faculty and staff recruitment, promotion, graduate programs, instruction, and budget. The department is part of the College of Life Sciences, and the Chair reports to the Dean of the College. However, because a significant number of the unit's faculty and staff members have partial appointments through the Maryland Cooperative Extension and the Agricultural Experiment Station, the position of the Chair will require extensive interactions as well with the Dean of the College of Agriculture and Natural Resources. The successful candidate will have an earned doctorate and be eligible for appointment at the rank of Professor. We are seeking candidates with outstanding records in research and in education, along with administrative skills and vision to lead the unit.

The department currently consists of 19 tenured and tenure-track faculty members and nine adjuncts. The unit is housed in a recently completed building with state-of-the-art research facilities. Because of its proximity to the nation's capital, the department benefits from ongoing interactions with the USDA, Smithsonian, and other federal laboratories. In addition, the unit will profit from a University Biosciences Initiative and an increased commitment to the College of Life Sciences. The department offers M.S. and Ph.D. degrees in Entomology, and its faculty members participate in several interdepartmental graduate programs as well. In addition, the faculty participate in teaching and advising undergraduates majoring in the Biological Sciences Program. Additional information regarding the department is available at: <http://www.entm.umd.edu/>.

Applications should be received by May 10, 2001, to receive full consideration; however, the search will continue until the position is filled. Materials, including a letter of application, curriculum vitae, and the names and addresses of four references, should be directed to:

**Dr. Albert Ades, Chair  
Entomology Chair Search Committee  
Department of Cell Biology and  
Molecular Genetics  
1109 Microbiology Building  
The University of Maryland  
College Park, MD 20742**

*The University of Maryland is an Affirmative Action/Equal Opportunity Employer*

## NASA Goddard Space Flight Center Visiting Fellows Program in Earth Sciences

The Goddard Earth Sciences and Technology Center (GEST) and the NASA Goddard Earth Sciences Directorate are seeking highly qualified Ph.D. scientists for collaboration in scientific research relating to the observation, analysis and modeling of physical processes within the earth-atmosphere system, and to relevant global change issues. Selected candidates will be offered appointments as Visiting Fellows to pursue independent research in collaboration with scientists in the Laboratories within the Earth Sciences Directorate, and will have full access to NASA computing facilities and other resources at either the Goddard Space Flight Center in Greenbelt, MD or at the Goddard Institute for Space Studies in New York, NY. This solicitation is aimed at all levels from post-doctoral to senior scientists. We particularly encourage university faculty interested in sabbatical arrangements.

GEST is a new consortium of three universities (University of Maryland, Baltimore County, Howard University, and Hampton University) and two private industry partners (Caelum Research Corporation and the Northrop-Grumman Corporation) working under a Cooperative Agreement with the Goddard Space Flight Center to promote excellence in Earth science research. Goddard Space Flight Center is a world leader in research on the Earth and its environment through the development and use of near-Earth orbiting spacecraft. Research interests in the Earth Sciences Directorate include attaining knowledge and understanding of the components of the Earth system through experimental and theoretical studies using NASA technology, information science, and space observations. The approach includes instrument, algorithm and model development involving remote sensing and *in situ* measurements. The principal components of research and corresponding research interests are as follows:

**Atmospheric Research:** Involves the structural, dynamic, radiative, and chemical properties of the Earth's troposphere, stratosphere, mesosphere and thermosphere and the atmospheres of other planets. Research interests include ozone, clouds, aerosols, precipitation, regional and global climate, fronts, gravity waves, cyclones, thunderstorms, and convective systems. Data derives from optical, UV, IR and laser sensors, and *in situ* mass spectrometers.

**Terrestrial Physics Research:** Involves geological and geophysical processes of solid Earth and the planets, and global land surface properties, both vegetative and biological. Research interests include Earth and planetary gravity and magnetic fields, Earth's rotation, plate motion, volcanic activity, post-glacial rebound, land surface topography, biospheric processes, vegetation monitoring, and biosphere-atmosphere interactions. Data derives from space and ground based lasers, laser altimeters, field campaigns involving measurements in local ecosystems and the climate/oceanic/biospheric system.

**Hydrospheric Research:** Involves the oceanic, cryospheric and hydrologic sciences. Research interests include the natural variability of the physical climate system on seasonal-to-interannual time scales, the global carbon cycle, global land ice and sea ice covers, the global hydrological cycle, and interactions between the physical climate system and biogeochemical cycles. Data derives from optical, microwave, and laser sensors and *in situ* hydrologic measurements.

To apply, send a current curriculum vitae and the names and email addresses of three professional references before April 20, 2001 along with a brief proposal (maximum three pages) that contains a statement of research interests, expected contributions to NASA's efforts, and your availability to:

**GEST Center  
Visiting Fellows Program  
3.002 South Campus  
University of Maryland, Baltimore County  
1000 Hilltop Circle  
Baltimore, MD 21250**

or send by email to: [abrooks@research.umbc.edu](mailto:abrooks@research.umbc.edu)

Applications will be reviewed and selections made by May 11 by a panel of university and NASA scientists based on relevance to NASA's missions, expertise and credentials offered, and clarity and feasibility of stated research goals within the proposed time frame and available resources. Initial appointments are expected to be up to one year commencing in the fall of 2001, with terms and exact start dates negotiable. In future, applications will be accepted throughout the year. Compensation will be commensurate with experience and qualifications. *GEST partners are equal opportunity/affirmative action employers. Applications from women and minorities are strongly encouraged. Due to NASA Goddard security regulations, citizens of certain nations may be ineligible.*



## Leading the Way for a Healthier World

Lead the way! Become a leader by furthering your career and experience with one of the world's largest research-based companies. At Wyeth, part of American Home Products, your knowledge will help lead the way into a healthier world. Join us in a promising position in our Pearl River, NY facility.

### Senior Research Scientist I

- Apply your expertise in protein and glycoprotein formulation development for new human vaccines delivered by parenteral or alternative routes of administration. You will be involved in the formulation process through the pre-clinical development phase.
- Your primary responsibilities will include development and characterization of liquid and lyophilized vaccine formulations. Experience in immunochemical and physicochemical characterization of biologicals is an asset.
- To qualify, you must have a Ph.D. in Biochemistry or equivalent with 0-2 years' experience, or a Master's degree in Biochemistry with 7 years' experience, along with the ability to work in a multidisciplinary team with the aggressive pace of new product development.
- Excellent communication skills are needed, as you will be expected to provide oral and written technical reports of your work. Database management and data processing experience is necessary.

Wyeth offers competitive compensation and benefits programs including stock options, child-care subsidies, flex-time, business casual work environment, educational assistance and professional development programs. Please forward your resume with salary requirements to: **Wyeth, Attention: KN/WLL882261, 401 N. Middletown Rd., Pearl River, NY 10965. Email: norwook@war.wyeth.com Fax: (845) 732-5375.**

Principals only. Equal Opportunity Employer. M/F/D/V.

For more information, please visit us at: [www.wyethjobs.com](http://www.wyethjobs.com)



**WYETH**  
A Division of American Home Products



## POSTDOCTORAL FELLOWS Mayo Clinic Rochester

Mayo Clinic Rochester has established a Molecular Medicine Program with several groups working on gene therapy using different viral systems. In the group of **Dr. Roberto Cattaneo** motivated individuals are required to continue developing measles virus molecular biology, in particular particle assembly and cell entry, with the aim of transforming a safe and effective vaccine strain in a vector for targeting cancerous cells. Appropriate animal systems will be used to study the *in vivo* effects of the new viruses. Experience in molecular biology is required, training in virology is desirable.

Application deadline is June 1, 2001. Salary will be determined by the successful candidate's experience. There is also an attractive benefit package. Mayo Foundation is a non-profit physician led clinical practice integrated with education and research in a unified multi-campus system. For further information please visit <http://www.mayo.edu/research/mmp>. Please send curriculum vitae and bibliography to:

**Roberto Cattaneo, Ph.D.**

**Mayo Clinic**

**Molecular Medicine Program**

**Guggenheim 18**

**200 First Street SW**

**Rochester, Minnesota, 55905, USA**

**Plempner et al. J. Virol. 74:6485-6493, 2000**

**Schneider et al. J. Virol. 74:9928-9936, 2000**

**Hammond et al. J. Virol. 75:2087-2096, 2000**

**Roscic-Mrkic et al. J. Virol. 75:3343-3351, 2000**

*Mayo Foundation is an affirmative action and equal opportunity employer and educator.*



## The Potsdam Institute for Climate Impact Research (PIK)

*The Potsdam Institute for Climate Impact Research (PIK) is an interdisciplinary research institute in the Berlin area. It has about 130 collaborators working on various aspects of global and regional environmental change, with a strong emphasis on computer modeling.*

The PIK is looking for one/two

### Scientists to join the project "Potsdam Integrated Assessment Modules" (PIAM)

The project aims to develop a family of Integrated Assessment modules flexible enough to be used in different frameworks of policy advice and decision analysis dealing with climate change. The different modules will be designed in an interactive manner between the PIAM project and partners from the different departments of PIK. It will be the very task of the applicant to

- monitor, update and document the interfaces between the different modules
- develop appropriate integration frameworks and techniques designed to allow the usage of the modules in different contexts
- participate in one or the other task force designed to develop particular modules.

With respect to issues of software and algorithm design the successful applicant will closely collaborate with members of the departments for Data and Computation and Integrated Systems Analysis, which will provide major theoretical and technical support. The applicant is expected to

- hold a university degree in economics, physics, mathematics, or in another field that is relevant to climatic change
- have experience in integrated assessment, decision analysis and modelling in general (two out of three required)
- have basic knowledge in climate change, its driving forces and consequences.

The position is available as of now for a duration of three years and will be paid according to the German BAT IIa salary scale. A prolongation is possible.

Further information on the research topic can be obtained from Dr. Gerhard Petschel-Held (Email: [gerhard@pik-potsdam.de](mailto:gerhard@pik-potsdam.de). Phone: +49-331-288-2513).

To apply, send a letter with a statement of research interests, a CV with a complete list of publications, and copies of relevant publications under the keyword "PIAM" to:

**Prof. Dr. Hans-Joachim Schellnhuber, Director, Potsdam Institute for Climate Impact Research, P.O. Box 60 12 03, D-14412 Potsdam, Germany**

## Director, Forestry and Conservation Program

### Wildlife Conservation Society

Founded in 1895 as

The New York Zoological Society

Applications are invited for the position of Director of the Forestry and Conservation Program who will develop and lead a new WCS program applying forestry perspectives and initiatives to the conservation of wildlife and wildlands. The Director will help to establish program priorities, develop strategic approaches, provide support to field programs and liaise with the larger forestry community. Deadline for applications is 15 May, 2001. Applicants must have earned a doctorate in a field related to forestry and forest conservation, preferably in tropical areas; 5 years minimum experience in forestry and conservation programs and policy; a proven record of analysis and publication, fluency in written and spoken English with preference for command of Spanish and/or French as well; ability to foster teamwork and work independently as well as collaboratively; and excellent interpersonal and communication skills. Please send c.v., letter of interest summarizing research and conservation experience, and list of references to:

### Wildlife Conservation Society

**Human Resources, Box DFCP, 2300 Southern Blvd., Bronx, NY 10460**



NATIONAL INSTITUTES OF HEALTH  
NATIONAL EYE INSTITUTE

## Job Opportunities

The National Eye Institute Intramural Program at the NIH campus, Bethesda, MD., is seeking highly qualified Postdoctoral Fellows, Research Associates and Staff Scientists in the following areas:

- Molecular Biology
- Cell Biology
- Immunology
- Psychophysics
- Biochemistry
- Epidemiology
- Biostatistics

**Salaries range from \$29,000 to \$118,400 per annum, based on experience and type of appointment.**

NEI offers an extensive benefits package that you may be eligible for, depending on the appointment mechanisms: Health Benefits, Life Insurance, Retirement Benefits, Annual and Sick Leave, Formal Training Program, Recruitment Bonus, Retention Allowance, Relocation Allowance, Loan Repayment Program, and Travel Benefits.

Candidates interested in specific job opportunities at the NEI may visit the NEI web site at <http://www.nei.nih.gov/> listing the most current positions available.

**NIH/NEI is an Equal Opportunity Employer**

## CALL FOR PROPOSALS

### NIH INTER-INSTITUTE PROGRAM FOR THE DEVELOPMENT OF AIDS-RELATED THERAPEUTICS

The National Institute of Allergy and Infectious Diseases (NIAID) and National Cancer Institute (NCI) invite the submission of proposals to a drug development program initiative designed to help AIDS research investigators facilitate the preclinical development of: 1) therapies for the treatment of HIV disease, AIDS-associated malignancies, opportunistic infections and tuberculosis associated with AIDS, and 2) microbicide-based prevention strategies for HIV. The program does not fund grants. Instead, applications to the program are requests to NIAID and NCI to use their drug development contract resources to conduct specific tasks the applicants themselves are unable to carry out in their efforts to translate basic research findings to applied or clinical practice. Examples of tasks that may be requested include High Throughput Screen (HTS) assay development, evaluation in animal efficacy models, Good Manufacturing Practice (GMP) scale-up synthesis of small molecules and biologics, clinical dosage formulation and manufacturing, and Good Laboratory Practice (GLP) toxicology. Program proposals are solicited twice a year and reviewed in a competitive manner.

The next deadline for receipt of application is **June 1, 2001**, prior to that date (no later than May 1) a Letter of Interest must be submitted to the Inter-Institute Program Coordinator. Further information about this program, including detailed instructions for preparing proposals and the Letter of Interest, can be found at the program-web site at <http://dtp.nci.nih.gov/docs/dart.html>. Inquiries can be made to the Inter-Institute Program Coordinator by telephone at 301-496-8720 or by e-mail at [iip@dtpax2.ncicrf.gov](mailto:iip@dtpax2.ncicrf.gov).

## DIRECTOR, ANIMAL RESOURCE FACILITY DANA-FARBER CANCER INSTITUTE

Dana-Farber Cancer Institute invites applications for the position of Director, Animal Resource Facility (ARF). Reporting to the Director of Research, the successful applicant will serve as institutional veterinarian and director of a large, modern animal research resource. If appropriate, this position can include opportunities for scientific collaboration and academic appointment in a relevant department of Harvard Medical School.

This key position will provide leadership, vision, and direction for an expanding facility that serves the scientific needs of over 300 cancer researchers who hold joint appointments at Dana-Farber Cancer Institute and Harvard Medical School. In addition to animal housing, the facility includes a transgene and gene targeting core, and a mouse specialized services core. This facility is an integral component of the Dana-Farber/Harvard Cancer Center and Dana-Farber's Center for AIDS Research. Responsibilities include overseeing the operation of the ARF and directing a support staff of 42. In addition, the selected candidate will also develop and monitor the budget; oversee space management and allocation and propose capital acquisitions; assist investigators in the development and analysis of animal models; and provide leadership in the transfer of cutting edge animal technology to Dana-Farber Cancer Institute scientists. The Director will serve as a voting member of the Institutional Animal Care and Use Committee; maintain accreditation standards and oversee preparation for AALAC and USDA evaluations; and oversee programs involving off-site animal housing.

The successful applicant must have a DVM or VMD degree from an AVMA-accredited school of veterinary medicine, be ACLAM board certified, be eligible for licensure to practice in Massachusetts, have experience in program management, and be able to work effectively with faculty and academic administrators. Preference will be given to individuals who also have Ph.D. degrees and knowledge of advanced biological and molecular technologies. A superb record of scholarly accomplishment will be required if an academic appointment is sought.

Dana-Farber Cancer Institute is located in the heart of the Harvard Medical School academic complex in Boston, near the medical school and several of its other teaching hospitals. Dana-Farber Cancer Institute offers competitive salaries and excellent benefits. We are an Equal Opportunity Employer.

For consideration, please send cover letter, curriculum vitae, and the names, addresses, telephone numbers, and e-mail addresses of three references to:

**Dr. Barrett J. Rollins, Chair**  
**ARF Search Committee**  
**Mayer 430**

**Dana-Farber Cancer Institute**  
**44 Binney Street**  
**Boston, MA 02115**



**DANA-FARBER**  
CANCER INSTITUTE



U. S. Department of Agriculture (USDA)  
Agricultural Research Service (ARS)



## TWO VACANCIES—Parasite Biology, Epidemiology, and Systematics Laboratory (PBESL)

ARS, Animal and Natural Resources Institute, Beltsville Agricultural Research Center, Beltsville, MD, is accepting applications for two positions as follows:

### **SUPERVISORY RESEARCH BIOLOGIST: GS-14/15** **Announcement no. ARS-X1E-1255A. Closing date: April 30, 2001**

This position is that of the Research Leader of the laboratory. The laboratory's mission is to reduce the economic cost of parasitism in livestock and poultry and to reduce the risk of transmission of parasite zoonoses to humans. Research includes basic and applied studies on mechanisms of parasite transmission, the infection process, parasite development and host parasite interactions; the development of novel methods of parasite control such as vaccines and non-chemical anti-parasitics; the diagnosis and control of livestock parasites transmissible to humans; and the development of new information and concepts for parasite diversity and systematics; and the curation of the US National Parasite Collection. The Research Leader will conduct a personal research assignment related to one or more aspects of the above areas and will supervise a staff of research and support scientists as well as technical and clerical staff.

### **RESEARCH MOLECULAR BIOLOGIST (BIOINFORMATICS), GS-12/13** **Announcement no. ARS-D1E-1254. Closing date: May 7, 2001**

The scientist will serve as a member of a team whose aim is to reduce losses associated with *Eimeria* infection in poultry, and will be responsible for conducting independent and cooperative research on the control of avian coccidiosis, with an emphasis on the development of a defined, multi-species vaccine. The scientist is expected to develop methodologies utilizing new technologies such as genomics and proteomics to identify candidate antigens from *Eimeria* species and to assess the potential of these antigens for the development of protective immunity in poultry. The researcher will establish, annotate, and maintain a database of genotypes, phenotypes, and *Eimeria* EST sequences.

For specific requirements, copy of the vacancy announcements, and/or forms please call 301-504-1482, or view announcements on internet under [www.ars.usda.gov/afm2/divisions/hrd/hrdhomepage/empopp.htm](http://www.ars.usda.gov/afm2/divisions/hrd/hrdhomepage/empopp.htm).

Applications must be submitted by the closing date of the announcement. *USDA, ARS is an equal opportunity provider and employer.*



## MAYO CLINIC POSTDOCTORAL POSITIONS

NIH-funded postdoctoral positions are available immediately to work in the area of DNA damage-signaling pathways and cancer biology. The lab currently focuses on the biochemical and molecular aspects of breast/ovarian cancer and the roles of tumor suppressor genes p53, Chk2, BRCA1/BRCA2 and the DNA damage-signaling pathway in tumorigenesis. The approaches we are using range from mammalian cell culture, molecular biology to mouse and yeast genetics. A strong background in molecular and cellular biology is essential. We are seeking candidates who are self-motivated and career-oriented. The research environment at Mayo Clinic is excellent. Prospective applicants are encouraged to contact me by e-mail at [Chen.junjie@mayo.edu](mailto:Chen.junjie@mayo.edu) or letter to:

Junjie Chen, Ph.D.  
Department of Oncology  
Guggenheim Building, Room 1342  
Mayo Clinic  
200 First Street, SW  
Rochester, MN 55905  
See also: <http://www.mayo.edu/research/>

*Mayo Foundation is an affirmative action and equal opportunity employer and educator.*

## FACULTY POSITIONS NEW YORK MEDICAL COLLEGE

The Department of Biochemistry and Molecular Biology invites applications from candidates with strong biochemical backgrounds and evidence of outstanding promise as scholars for two tenure-track faculty positions. Candidates should have the Ph.D. degree and have developed a strong research direction during their post-doctoral training. Preference will be given to applicants at the Assistant Professor level although exceptional applicants for appointment at the level of Associate Professor will be considered. The research areas are open but we would like to recruit at least one individual with a strong background in protein structure-function relationships or signal transduction. Successful candidates will be expected to develop vigorous research programs and must be prepared to make a strong commitment to excellence in the teaching of medical and graduate students. New York Medical College is situated on an attractive campus in Westchester County, about 20 miles north of New York City. The College is committed to the expansion and development of the Department, and renovated space and start-up funding will be provided to the successful candidates. Applicants should provide a curriculum vitae, a narrative statement of research accomplishments and future research directions, reprints of recent papers and the names of three references to:



Dr. Ernest Y.C. Lee  
Chairman, Department of  
Biochemistry and Molecular Biology  
New York Medical College  
Valhalla, NY 10595

Visit our website at: [www.nymc.edu](http://www.nymc.edu) New York Medical College is an EEO/AA Employer

## Director Burke Medical Research Institute

The Winifred Masterson Burke Medical Research Institute is recruiting a Director. The institute, located in White Plains, New York, is affiliated with the Weill Medical College of Cornell University. It conducts both basic and translational research relevant to neurodegenerative disease and central nervous system injury that result in physical disability.

We are seeking a medically trained scientist with an established record of productive research related to physical disabilities associated with chronic illness. The Director will be responsible for conducting his or her own research and for interacting with and supervising other research scientists at the institute. The Director will oversee a substantial budget, recruit new personnel and interact with the CEO of the Burke Rehabilitation Hospital with respect to clinical research and patient care activities. The person selected as Director should be eligible for an appointment as Associate Professor or Professor at Weill Medical College.

The Director reports directly to the Board of Directors of the Burke Research Institute. The Board consists of medical and lay persons committed to furthering research. Substantial resources and opportunities exist for building new research programs. Women and minorities are encouraged to apply. Interested candidates are invited to send a CV to Jerome B. Posner, MD, Chair, Search Committee, Director of the Burke Research Institute, Memorial Sloan-Kettering Cancer Center, 1275 York Avenue, New York, NY 10021.

Qualified candidates will receive employment consideration without regard to race, sex, sexual orientation, age, religion, national origin, marital status, veteran status or disability. We are committed to diversity in the workplace.

*The Winifred Masterson Burke Medical Research Institute is an Equal Opportunity, Affirmative Action Employer.*

# THE UNIVERSITY OF BRITISH COLUMBIA

## DEPARTMENT OF PSYCHIATRY/BRAIN RESEARCH CENTRE

### JACK BELL CHAIR IN SCHIZOPHRENIA RESEARCH

The University of British Columbia invites applications for a tenured position at the Full Professor level, Division of Schizophrenia, Department of Psychiatry.

The Jack Bell Endowment in Schizophrenia Research will provide support for a clinician/scientist specializing in the application of brain-imaging or molecular biological procedures to investigate the etiology and pathophysiology of schizophrenia. Investigators with an outstanding record of accomplishment in schizophrenia research are encouraged to apply. The incumbent will be expected to develop a vigorous internationally competitive research program, and to interact with a strong core of basic and clinical scientists. Candidates must show clear evidence of independent original work with a demonstrated ability to lead a research group.

The infrastructure for the new Imaging Centre at UBC consists of a high field MR scanner for human studies (optimized for functional MRI and magnetic resonance spectroscopy), a very high field small bore MR scanner for animal studies and an image analysis laboratory. The department also has a close affiliation with the UBC/TRIUMF Positron Emission Tomography (PET) Program, collaboration between the Faculty of Medicine at the University of British Columbia and TRIUMF, Canada's National Laboratory for Nuclear and Particle Physics. The program is dedicated to research in neurology and psychiatry. Equipment includes an ECAT 953/B scanner operated in quantitative 3D mode and a dedicated TR13 cyclotron-radiochemistry laboratory where high specific activity tracers are prepared. The group has recently been funded to purchase a high resolution (<3mm) brain scanner in 2001.

Resources are also available for molecular and cellular neurobiology, bioinformatics, expression profiling, gene-chips and proteomics. Genome BC is developing the infrastructure for genotyping and single nucleotide polymorphism analysis, and facilities also are available for transgenic mouse models.



In accordance with Canadian immigration requirements, priority will be given to Canadian citizens and permanent residents of Canada. UBC hires on the basis of merit and is committed to employment equity. We encourage all qualified persons to apply. Anticipated start date is September 1, 2001. Applicants should send a curriculum vitae, list of publications, a statement of research interests and the names and addresses of three referees by **June 1st, 2001**, to: **Dr. A.P. Zis, Professor and Head, Department of Psychiatry, University of British Columbia, 2255 Wesbrook Mall, Vancouver, BC V6T 2A1 Canada. Fax: (604) 822-0399**

#### Science Writer

The National Institute of Diabetes and Digestive and Kidney Diseases (NIDDK) is seeking applications from individuals who are currently in post-doctoral positions, but who wish to leave laboratory research for a career as a science writer. Particularly encouraged to apply are individuals with post-doctoral experience in molecular biology, coupled with demonstrated writing and other communication skills. Incumbent will develop a wide range of documents that analyze and present the scientific accomplishments and plans of the NIDDK to the Congress, voluntary health organizations, and other lay audiences and must thus be able to convey in global, understandable terms the contributions of biomedical research to human health. Total salary is competitive and will be commensurate with the experience of the selectee.

Please submit current curriculum vitae to the attention of:

Ms. Deidre Davis  
Office of Human Resource Management  
National Institute of Diabetes and Digestive and Kidney Diseases  
National Institutes of Health  
Building 31, Room 9A30  
31 Center Dr., MSC 2560  
Bethesda, Maryland 20892-2560

Applications must be postmarked by April 20, 2001, and received by close of business April 25, 2001.



NIH is an Equal Opportunity Employer

#### Immediate opening for a Molecular Biologist

The Neuromuscular Diseases Section, NINDS, NIH is looking for an experienced postdoctoral fellow in Molecular Biology to actively participate in studies involving regulatory pathways of muscle proteins as related to certain genetic, autoimmune or viral-related neuromuscular disorders. Background in molecular immunology is desirable. Candidates should be US citizens or permanent residents. This is a 2 year appointment as a staff fellow (or senior staff fellow, if more experienced), renewable up to 5 years. The position is available immediately and located at the Clinical Center in the main NIH complex in Bethesda, Maryland.

Interested candidates (PhDs or MDs) should send CV and related information to the **Chief, Neuromuscular Diseases Section, NINDS, NIH, Bldg 10/Rm 4N248, 10 Center Drive MSC 1382, Bethesda, Maryland 20892-1382. NIH is an equal opportunity employer.**

#### Postdoctoral Fellowship in Mammalian Development

Postdoctoral positions are currently available in the Mammalian Development Section of the Cancer and Developmental Biology Laboratory, under the leadership of Dr. Colin Stewart. The interests of the lab are on in genomic imprinting, organization of the Nucleus in development and disease and early development of the mammalian embryo. Up-to-date techniques in genome analysis and the genetic manipulation of mice are utilized in addressing these areas of research. Applicants should have experience in molecular biology and those with experience in mouse embryology will be given preference. More information about the CDBL and its research programs may be found at their website: <http://web.ncifcrf.gov/research/cdbl>.

The position is part of the Center for Cancer Research, National Cancer Institute and is located in Frederick, MD. Salary range for this position is \$31,500 - \$38,020.

If interested, please send or email ([stewartc@mail.ncifcrf.gov](mailto:stewartc@mail.ncifcrf.gov)) a cover letter and your curriculum vitae to Colin L. Stewart, D. Phil., Chief, CDBL, CCR, NCI-Frederick, P.O. Box B, Frederick, MD 21702.

NIH is an Equal Opportunity Employer



## POSITIONS OPEN

**ASSISTANT/ASSOCIATE PROFESSOR:** The Department of Pediatrics, Division of Allergy/Immunology in the College of Medicine, University of South Florida, is seeking a Board certified/Board eligible allergy/immunology specialist. This is a 12-month, full-time, tenure-track position. Responsibilities include teaching resident Fellows in the allergy/immunology training program, medical students and residents, clinical research, and patient care.

Qualifications: must be licensed or eligible for licensure in the State of Florida and must have Board eligibility or certification in allergy/immunology. Candidates should have experience or interest in the care of patients with allergic or immunology diseases. Salary negotiable and appointment rank commensurate with credentials and experience.

Applications must be received by May 31, 2001. Interested physicians should forward current curriculum vitae and five letters of recommendation to: **Dr. Robert A. Good, Department of Pediatrics, Division of Allergy/Immunology, University of South Florida, All Children's Hospital, 801 Sixth Street South, St. Petersburg, FL 33701.** For disability accommodations, please contact: **Linda Callahan; Telephone: 727-892-4470; TDD: 727-892-4470** at least five working days in advance. *The University is an Equal Opportunity/Equal Access/Affirmative Action Institution. According to Florida law, applications and meetings regarding them are open to the public.*

## ENDOWED PROFESSOR

Applications are sought for an Endowed Professor position in the Department of Pharmaceutical Sciences of Texas Tech University Health Sciences Center School of Pharmacy. The Department has 18 faculty members with background and research interests in biotechnology/genomics, cancer, vascular biology, and pharmacokinetics/pharmacodynamics. The Department also has Ph.D./M.S. programs as part of the Graduate School of Biomedical Sciences. The successful candidate must have a strong, independent research program with a national and international reputation. Responsibilities will include teaching and maintaining a strong research program. A background in pharmacy is encouraged but not required. A discretionary fund will be provided to support the research program. Interested applicants should submit (1) curriculum vitae; (2) a summary of research accomplishments and future goals; and (3) the names, addresses, and telephone numbers of three references to: **Dr. Quentin Smith, Texas Tech University HSC, School of Pharmacy, 1300 Coulter, Amarillo, TX 79106. FAX: 806-356-4034; e-mail: quentin@ama.ttuhsu.edu.** For more information, visit our website: <http://pharmacy.ama.ttuhsu.edu>. *TTUHSU is an Equal Opportunity/Affirmative Action Institution. Minorities and women are encouraged to apply.*

University of Maryland Baltimore County (UMBC) seeks applicants for a tenure-track **ASSISTANT PROFESSOR** position in the Department of Chemistry and Biochemistry starting fall 2001. Candidates will be expected to develop a vigorous research program in macromolecular X-ray crystallography/structural biology and teach at the graduate and undergraduate levels. The Department has 17 tenure-track faculty and Ph.D. and M.S. programs in both chemistry and biochemistry. This appointment will be supported with X-ray crystallographic instrumentation and other laboratory needs and will complement existing structural research programs in the Department that employ NMR, rapid spectroscopy, and mass spectrometry. Applicants should submit curriculum vitae, a short description of future research plans, and have three letters of reference sent to: **Dr. Michael Summers, Chair of the Search Committee, Department of Chemistry and Biochemistry, University of Maryland Baltimore County, Baltimore, MD 21250.** Applications will be accepted until the position is filled. *UMBC is an Affirmative Action/Equal Opportunity Employer. Minorities, women, and individuals with disabilities are encouraged to apply.*

## POSITIONS OPEN



## THE CENTER FOR CHILDHOOD COMMUNICATION

The Children's Hospital of Philadelphia

**FACULTY POSITION:** The Center for Childhood Communication at The Children's Hospital of Philadelphia is seeking a faculty member with research emphases in either (1) molecular genetics of hearing disorders or (2) molecular/cellular approaches to ear development or regeneration. Requirements include a Ph.D. degree with at least two years of postdoctoral experience and a strong record of peer-reviewed publications. Candidates will be expected to develop a vigorous, independent research program that will lead to external funding.

This position offers excellent laboratory facilities, ample start-up funds, and the opportunity for collaboration with an outstanding group of Neuroscientists at The Children's Hospital of Philadelphia and The University of Pennsylvania. Academic rank will be commensurate with credentials and experience.

**POSTDOCTORAL POSITION:** A Postdoctoral Fellowship is available to study the cellular and molecular mechanisms that regulate the formation and remodeling of neural connections to developing mammalian auditory hair cells. Approaches include neural tract tracing techniques, immunostaining, *in situ* hybridization histochemistry, organ culture, and time lapse videomicroscopy. The position is NIH funded and the start time is flexible.

Candidates interested in either position should submit their curriculum vitae and names of three references to: **Stephen M. Echter, Ph.D., The Children's Hospital of Philadelphia, Division of Otolaryngology, Abramson Building 510D, 34th Street and Civic Center Boulevard, Philadelphia, PA 19104-4318.**

*The Children's Hospital of Philadelphia and the University of Pennsylvania School of Medicine are Equal Opportunity/Affirmative Action Employers. Women and minorities are encouraged to apply.*

## ASSISTANT PROFESSOR OF MOLECULAR BIOLOGY

The University of Texas Health Center at Tyler is expanding its research program in tuberculosis and is recruiting a faculty member with expertise in molecular microbiology to contribute to ongoing work on the pathogenic factors that control growth of *Mycobacterium tuberculosis*. This is a hard-money, state-funded position. The successful candidate will collaborate with four other NIH-funded Investigators who study the pathogenesis and immune response to tuberculosis. Experience in molecular mycobacteriology preferred. Information about the institution can be obtained at website: [www.uthct.edu](http://www.uthct.edu). Send curriculum vitae and the names of three references to: **Dr. Peter F. Barnes, Director, Center for Pulmonary and Infectious Disease Control, University of Texas Health Center, 11937 U.S. Highway 271, Tyler, TX 75708-3154. E-mail: peter.barnes@uthct.edu.** *Equal Employment Opportunity/Affirmative Action Employer; Minorities/Females/Veterans/Disabled.*

**RESEARCH ASSOCIATE** opportunities in the areas of molecular biology and bioinformatics. Requires B.S./M.S. in life sciences with strong knowledge of molecular biological techniques and familiarity with computational tools. Requires zero to two years of experience. Experience with microarray technologies preferred. Please visit our website: [www.genevention.com](http://www.genevention.com) for more details. Located in Beverly, Massachusetts, GeneVention LLC is a start-up in the area of medical diagnostics using proprietary microarray technologies. To apply, please send résumé with three references to e-mail: [careers@genevention.com](mailto:careers@genevention.com); FAX: 1-801-437-2069. Please indicate salary expectations and date of availability.

## POSITIONS OPEN

## ASSISTANT PROFESSOR BASIC SCIENCE RESEARCH

The Basic Science Research Division of the Institute of Human Virology, University of Maryland Biotechnology Institute, invites applications for a nontenure-track faculty position at the Assistant Professor level. The successful applicant will join a multidisciplinary team that isolates and characterizes novel natural peptide biological control agents against chronic human diseases. Candidates should have a demonstrated expertise in biochemistry, bacteriology, and immunology. They should have demonstrated an ability to work in a team environment. This position requires that the successful candidate have specific experience isolating and characterizing natural peptides relevant for control or modulation of chronic medical conditions. Experience developing novel immunological reagents and analyte assays from such reagents and in the development of and uses for novel gram-negative bacterial systems for recombinant molecule delivery is desirable. The candidate should also have published materials showing specific experience in these areas. Demonstrated ability to collaborate with Investigators in diverse areas of molecular biology and immunology is also required.

Please send curriculum vitae, research interest statement, and names of three references to: **Search Committee, F3-0109, Institute of Human Virology, University of Maryland Biotechnology Institute, 725 West Lombard Street, Baltimore, MD 21201.** Filing deadline for this position is May 5, 2001. *The University of Maryland Biotechnology Institute is an Equal Opportunity/Affirmative Action Employer. Women, minorities, veterans, and candidates with disabilities are encouraged to apply.*

## ASSISTANT PROFESSOR

Position available for Assistant Professor of neurology (neuroscience) for an Electrophysiologist (Ph.D. or M.D.) with expertise in sodium channel physiology/biophysics, pharmacology, and molecular biology. Incumbent will be expected to compete successfully for external funding and to develop a research program on the molecular pharmacology of sodium channels and intracellular cascades that modulate them. Previous experience with patch clamp characterization of DRG-specific sodium channels including Na<sub>v</sub>1, SNS, and Nav1.3 (both heterologously expressed and in their native cells) and with programming is essential; experience with channel inactivation and repriming, *in situ* mutagenesis, and persistent currents is highly desirable. Send statement of interest; curriculum vitae; and three letters of reference by May 7, 2001, to: **Stephen G. Waxman, M.D., Ph.D., Chair, Department of Neurology, LCI 708, Yale University School of Medicine, P.O. Box 208018, New Haven, CT 06520-8018.** *Affirmative Action/Equal Opportunity Employer. Qualified women and members of underrepresented minority groups are encouraged to apply.*

## TENURE-TRACK BIOLOGIST

Responsibilities: Teach 12 credit hours per semester. Teach a lower-division course in general zoology or general botany and upper-division courses in animal ecology or evolution and courses in specialty area or in plant anatomy and physiology or evolution and courses in specialty area.

Qualifications: Required: an earned Doctorate in vertebrate zoology or botany. Broad-based education in biology including a background in cell and molecular biology and a graduate specialization in one or more vertebrate fields or in plant physiology and plant anatomy. Preferred: evidence of successful college teaching experience. Appointment: August 15, 2001. Screening begins March 30, 2001, and continues until interviews are scheduled. Full announcement at website: <http://clem.msced.edu/~biology/> or **Biology Department Search Committee, Metropolitan State College of Denver; Telephone: 303-556-3213.**





# Dartmouth College

## PROVOST

Dartmouth College invites nominations and applications for the position of Provost. Review of applications will begin in April 2001.

## THE INSTITUTION

Dartmouth College, a member of the Ivy League, is a private, four-year coeducational, liberal arts college with schools of Business, Engineering and Medicine, as well as 16 graduate programs in the Arts and Sciences. There are approximately 4400 undergraduates and 1200 graduate students. Doctoral degrees are offered in 13 areas, including all of the science departments and psychology in Arts and Sciences, in Engineering, and in Medicine.

## THE POSITION

Along with the President and working closely with the academic deans, the Provost has the responsibility of supporting and advancing the programs, the teaching, and the scholarship of the Faculty of Arts and Sciences, the Amos Tuck School of Business Administration, the Thayer School of Engineering, and the Dartmouth Medical School. The Provost is responsible for coordinating all academic programs and initiatives that transcend a single faculty and for coordinating institutional academic planning. Serving as chair of the Budget Committee, the Provost has major responsibility for setting budget priorities and developing a strategic financial plan. In addition, the Provost has responsibility for facilities planning, has oversight of the major academic support centers, and coordinates government relation activities.

## QUALIFICATIONS

The successful candidate should possess an earned doctorate or its equivalent and have demonstrated superior teaching and research ability at the university level. The candidate must have appropriate experience as an academic leader and administrator, a strong belief in the importance of an undergraduate liberal education, and a commitment to excellence in graduate and professional programs.

Applications from and nominations of women and members of minority groups are encouraged. All applications, nominations, and inquiries should be directed to:

**Professor Lenore A. Grenoble**  
**Chair, Provost Search Committee**  
**Post Office Box 683**  
**Dartmouth College**  
**Hanover, NH 03755**

*Dartmouth College is an Affirmative Action, Equal Opportunity Employer*

### Post-Doctoral Research Fellowship in Endocrinology at the National Institutes of Health

Post-doctoral position available in the Molecular Regulation and Neuroendocrinology Section, Clinical Endocrinology Branch, NIDDK at the NIH. Our laboratory studies transcriptional regulation by thyroid hormone and steroid hormone receptors and molecular mechanisms of thyroid cancer. We currently are using cDNA microarrays, transgenic and knockout mice, green fluorescent proteins, and chromatin immunoprecipitation assays to study these areas. Strong background in molecular biology required. Applicants must have a Ph.D and/or M.D. as well as 0-5 years post-doctoral experience. Candidates must be U.S. citizens or permanent residents. Please send c.v. and three references to: Paul M. Yen, M.D. Mol. Regulation and Neuroendocrinology Section, Clinical Endocrinology Branch, NIDDK/NIH, Building 10, Room 8D12, 9000 Rockville Pike, Bethesda, MD 20892. Tel: 301-594-6797; Fax: 301-402-4136 e-mail: pauly@bdg10.nidk.nih.gov.

**NIH is an Equal Opportunity Employer**

## GLOBAL OPPORTUNITIES



*Founded 1905*

## NATIONAL UNIVERSITY of SINGAPORE

Department of Surgery

Applications are invited for the following post-doctoral positions in the Department of Surgery:

1. Senior Research Fellow
2. Research Fellow

The candidate for position (1) will head a new laboratory to study the cellular and molecular biology of Beta cells and insulin producing cell cultures as well as establish a program of clinical islet transplantation for treatment of diabetes. The candidate for position (2) will undertake research work in the same laboratory.

### Requirements:

The prospective candidates should have experience in cell culture and molecular biology techniques.

### Terms and Conditions:

The appointments will be for a period of up to three years, in the first instance. Remuneration will be commensurate with the candidates' qualifications and experience. Leave and limited medical benefits will be provided.

### Applications:

Interested candidates should fax/mail/e-mail their applications, giving their detailed curriculum vitae, together with copies of their academic certificates, transcripts of detailed results, and 3 referees' reports by 4 May 2001 to:

**Associate Professor John Isaac**  
**Department of Surgery**  
**Faculty of Medicine**  
**MD3, 16 Medical Drive, Singapore 117597**  
**Tel: [65] 772 4221, Fax:[65] 777 8427**  
**Email: surisaac@nus.edu.sg**

*Only shortlisted candidates will be notified.*

## POSITIONS OPEN

### DEPUTY ASSOCIATE DIRECTOR AND HEALTH SCIENTIST ADMINISTRATORS National Institutes of Health National Institute on Aging Behavioral and Social Research Program (BSR)

Deputy Associate Director and two Health Scientist Administrators sought for fast-paced extramural program office. BSR, one of four NIA extramural research programs, supports training and basic social and behavioral research on aging processes and older people in society. BSR is being reorganized into two branches, one focusing on individual behavioral processes and one on population and social processes. Major areas of emphasis include the aging mind; health disparities; genetics, behavior, and the social environment; increasing health expectancy; health, work, and retirement; and interventions and behavior change. Integration among psychological, physiological, social, and cultural levels of analysis is emphasized. Applications for all three positions must be received no later than April 30, 2001.

For additional information about the BSR program, contact: **Ms. Angie Chon-Lee**; e-mail: [Chon-LeA@exmur.nia.nih.gov](mailto:Chon-LeA@exmur.nia.nih.gov). For qualifications required, evaluation criteria, and application instructions for the Deputy Associate Director, view the vacancy announcement under Current Vacancies at **website: <http://careerhere.nih.gov>**. For qualifications required, evaluation criteria, and application instructions for the Health Scientist Administrator positions, view the vacancy announcement under Current Vacancies at **website: <http://careerhere.nih.gov>**. For information on application procedures, call: **Ms. Christine O'Connor**; Telephone: 301-496-5460. *NIH is an Equal Opportunity Employer.*

**ASSISTANT/ASSOCIATE/FULL PROFESSOR:** The Department of Pediatrics, Division of Allergy/Immunology in the College of Medicine, University of South Florida, is seeking a Board certified/Board eligible allergy/immunology specialist. This is a 12-month, full-time position. The person appointed to this position may or may not become tenure track. Responsibilities include teaching resident Fellows in the allergy/immunology training program, medical students and residents, clinical research, and patient care.

Qualifications: must be licensed or eligible for licensure in the State of Florida and must have Board eligibility or certification in allergy/immunology. Candidates should have experience or interest in the care of patients with allergic or immunology diseases. Salary negotiable and appointment rank commensurate with credentials and experience.

Applications must be received by May 31, 2001. Interested physicians should forward current curriculum vitae and five letters of recommendation to: **Dr. Robert A. Good, Department of Pediatrics, Division of Allergy/Immunology, University of South Florida, All Children's Hospital, 801 Sixth Street South, St. Petersburg, FL 33701**. For disability accommodations, please contact: **Linda Callahan**; Telephone: 727-892-4470; TDD: 727-892-4470 at least five working days in advance. *The University is an Equal Opportunity/Equal Access/Affirmative Action Institution. According to Florida law, applications and meetings regarding them are open to the public.*

### BASIC INVESTIGATOR Heart Failure Research

The Winters Center for Heart Failure Research, Baylor College of Medicine, is seeking a Basic Investigator at the **ASSISTANT PROFESSOR** level to develop a research program focused on mechanisms of disease progression in heart failure. The applicant must have already completed his/her postdoctoral training and must be capable of developing an independent research program. Send curriculum vitae to: **Douglas L. Mann, M.D., Cardiology (151C), Houston VAMC, 2002 Holcombe Boulevard, Houston, TX 77030**. E-mail: [dmann@bcm.tmc.edu](mailto:dmann@bcm.tmc.edu). *Baylor College of Medicine is an Equal Opportunity/Affirmative Action/Equal Access Employer.*

## POSITIONS OPEN

### SCIENTISTS/SENIOR SCIENTISTS Biophotonics/Photobiology/ Optical Microscopy

Applications are invited for Research Faculty appointments at the Ontario Cancer Institute, Princess Margaret Hospital/University Health Network. The successful candidates will carry out independent research programs in therapeutic or diagnostic applications of biophotonics, photobiology, or optical microscopy. Applicants must hold a Ph.D. or M.D. degree and have a strong track record of independent research in one or more of these fields. Candidates must be eligible for cross-appointment in the Department of Medical Biophysics, University of Toronto, at an appropriate rank.

The biophotonics program at OCI/UHN is linked to Provincial and federal photonics networks, and experience in bridging industry and clinical specialties, particularly oncology, would be a particular advantage. Curricula vitae and names of three references should be sent to:

**Dr. Brian Wilson**  
Division of Medical Physics  
Ontario Cancer Institute  
610 University Avenue  
Toronto, ON M5G 2M9 Canada

Inquiries may be directed to **Dr. Wilson**; e-mail: [wilson@uhnres.utoronto.ca](mailto:wilson@uhnres.utoronto.ca). Closing date: May 31, 2001. *The Ontario Cancer Institute at Princess Margaret Hospital is an Equal Opportunity Employer. In accordance with Canadian immigration requirements, this advertisement is directed to Canadian citizens and permanent residents.*

### FACULTY POSITION: MARINE FISH BIOLOGIST Fisheries Division School of Fisheries and Ocean Sciences University of Alaska Fairbanks

This faculty position will be located at the Juneau Center in southeast Alaska and is anticipated to begin fall 2001. The successful candidate will develop a program of research and teaching in marine fish biology on the graduate level. Teaching will include an undergraduate, senior-level course in ichthyology and graduate-level specialty courses. Applicants must have a Ph.D. in fisheries, marine biology, or related field. This is a bargaining unit position and is a nine-month/year appointment with 12 months possible depending upon extramural grant support.

Applicants should send a signed UA employment application, curriculum vitae, e-mail address, statement of research and teaching accomplishments and interests, and the names and addresses of at least three professional references to: **Lewis Halderson, Chair, Search Committee, Juneau Center, School of Fisheries and Ocean Sciences, University of Alaska, 11120 Glacier Highway, Juneau, AK 99801**. E-mail: [fysfosj@uaf.edu](mailto:fysfosj@uaf.edu). Applications must be received by June 1, 2001. For a full description of the vacancy and to obtain a UA employment application form, please see **website: <http://www.uaf.edu/uafhr/jobs>**. *The University of Alaska is an Affirmative Action/Equal Opportunity Employer and Educational Institution.*

**POSTDOCTORAL POSITION** available to study the mechanism and dynamics of protein folding. Candidates should have experience in fluorescence and other spectroscopic methods and a background in NMR. Knowledge of site-directed mutagenesis would be useful. Full descriptions of research can be found at **website: <http://www.biochem.wustl.edu/cflab>**. Send curriculum vitae and names of references to: **Dr. Carl Frieden, Department of Biochemistry and Molecular Biophysics, Washington University School of Medicine, 660 South Euclid Avenue, Box 8231, St. Louis, MO 63110**. E-mail: [frieden@biochem.wustl.edu](mailto:frieden@biochem.wustl.edu). *An Equal Opportunity Employer.*

## POSITIONS OPEN

### DEPARTMENT OF PHYSIOLOGY AND BIOPHYSICS Case Western Reserve University

The Department of Physiology and Biophysics invites applications for **TENURE-TRACK FACULTY** at the junior level or from more senior faculty in the general area of cell biology. Desirable areas of research include basic cell or molecular biology approaches to cytoskeleton or secretion in health and disease, although excellence in science rather than topic area is of greatest importance. The Department is currently ranked sixth in NIH funding and offers a highly competitive compensation package, ample start-up funds, state-of-the-art research facilities, and a positive and supportive research culture. A major strength of the Department is the integration of faculty working in structural biology, membrane and transport, metabolism, cell biology, and integrated systems biology. Submit curriculum vitae; a brief statement of research interest(s); three representative reprints; and the names, addresses, and telephone numbers of four references to: **Cathleen Carlin, Chair, Cell Biology Search, Department of Physiology and Biophysics, 10900 Euclid Avenue, Cleveland, OH 44106-4970**. Visit our **website: <http://physiology.cwru.edu>**. *Case Western Reserve University is an Equal Opportunity/Affirmative Action Employer.*

**FACULTY POSITION** in molecular virology. The Department of Pathobiology at Texas A&M University invites applications for a tenure-track faculty position in molecular virology. This is primarily a research position (75%) with some teaching/service responsibilities (25%). The successful applicant will have outstanding research potential in the area of virology and will establish and maintain a vigorous, extramurally funded research program. Texas A&M University has an active interdisciplinary faculty of virology program, and the appointee will contribute to the undergraduate, professional, or graduate teaching programs in this program. The position will be filled at a rank and salary commensurate with the applicant's experience. Details about the Pathobiology Department are on our **website: [vtpb-www.cvm.tamu.edu](http://vtpb-www.cvm.tamu.edu)** or the Faculty of Virology **website: [www.cvm.tamu.edu/virology](http://www.cvm.tamu.edu/virology)**. Applicants should possess a Ph.D. or D.V.M./Ph.D. with appropriate postdoctoral training. A letter of application with curriculum vitae, statement of career goals, reprints of three recent publications, and contact information for three references should be sent to: **Chair, Virology Search Committee, Department of Pathobiology, Texas Veterinary Medical Center, Texas A&M University, College Station, TX 77843-4467**. Applications will be received until the position is filled. *Texas A&M is an Equal Opportunity Employer committed to excellence through diversity.*

### VISITING FACULTY HUMAN BIOLOGY University of Richmond

The Department of Biology at this highly selective liberal arts university invites applications for a nine-month position as **VISITING INSTRUCTOR** or **VISITING ASSISTANT PROFESSOR** to begin August 2001. We seek persons holding a Master's or Ph.D. to teach general education lectures and laboratories in human biology. Opportunities for collaborative research with biology faculty exist. Review of applications will begin April 23, 2001, and continue until the appointment is made. Applicants should submit curriculum vitae, statement of teaching philosophy, and three letters of recommendation to: **Dr. W. John Hayden, Department of Biology, University of Richmond, Richmond, VA 23173-9998**. For more information, see **website: <http://www.richmond.edu/academics/a&s/biology>**. *The University of Richmond is an Equal Opportunity/Affirmative Action Employer and strongly encourages women and minorities to apply for its positions.*

# Microarray Facility

CENTER FOR CANCER RESEARCH  
National Cancer Institute • National Institutes of Health

The Center for Cancer Research (CCR), National Cancer Institute, National Institute of Health in Bethesda, Maryland has been established to conduct cutting edge basic and clinical research on the discovery of causes and mechanisms of cancer for the prevention, diagnosis and treatment of these diseases. The CCR now invites applications for a Staff Scientist (Facility Head) for its Microarray Facility at the Advanced Technology Center, a joint National Cancer Institute and National Human Genome Research Institute effort.

The Microarray Facility provides high quality cDNA & oligonucleotide microarrays for the NCI intramural community and develops a functional and accessible array database and associated analytical tools for the use of its scientific community, it disseminates array technology through technical training modules, and investigates new technologies and applications associated with microarray fabrication and analysis in order to develop new methods that will enhance the utility of microarrays for cancer research.

**Background:** The candidate should have a Ph.D. or M.D. with expertise in molecular biology and data management and evaluation.

**Required Experience** – The candidate must have experience in the design and production of cDNA microarrays including all

procedures related to clone handling, PCR amplification, array printing, quality control and general issues related to informatics. A thorough knowledge of the scientific principles related to the generation of arrays, their experimental applications, the ability to evaluate and implement new array technologies and to lead a group dedicated to producing high quality arrays are necessary for this position.

**Duties:** To supervise all aspects of microarray production including clone maintenance, PCR production, array printing and distribution to the NCI community. The facility head will interface between the array facility and members of the NCI community and serve as an educator in the techniques of microarray hybridization, scanning, and analysis. The facility head will evaluate new technologies and implement changes under the direction of the Director of the Microarray and the Microarray Steering Committee.

A one or two-page statement of research interests, goals and accomplishments should be submitted in addition to three letters of recommendation and curriculum vitae to:

**Ms. Michelle Porturica**

Administrative Officer

Office of Management, National Cancer Institute  
Building 41, Room A100, Bethesda, Maryland 20892  
301-435-2515, email: [porturim@mail.nih.gov](mailto:porturim@mail.nih.gov)

The NIH is an Equal Opportunity Employer.

## GLOBAL OPPORTUNITIES

### National Health Research Institutes (NHRI)

Taiwan, R.O.C.

#### Investigator and Postdoctoral Fellow Positions

The National Health Research Institutes (NHRI) is a non-profit research organization supported by the Government of the Republic of China. The purpose of NHRI is to promote and develop medical and health related research in the hope of enhancing social welfare. Through intramural and extramural programs, NHRI conducts and supports mission-oriented research in its own laboratories and in other research institutions throughout the country.

The Division of Biotechnology and Pharmaceutical Research is embarking on an innovative and integrated drug discovery program based on molecular biology, combinatorial chemistry, structure-based drug design and high-throughput bioscreening. Applicants are invited in the areas of **tumor biology, cell biology, virology, pharmacokinetics, drug metabolism, organic chemistry, medicinal chemistry, combinatorial chemistry, and computation chemistry**. Investigators of all ranks (assistant, associate and full) and postdoctoral fellow positions are available.

Applicants should have a Ph.D. degree and industrial R & D experiences is highly welcomed. Application should include a letter of intent, curriculum vitae with a publication list, a brief research proposal, reprints of selected publications, and three reference letters. Forward the application to:

**Dr. Chung-Ming Chang, Acting Director**  
Division of Biotechnology and Pharmaceutical Research  
National Health Research Institutes  
128 Yen-Chiu-Yuan Road, Sec II, Taipei 115,  
Taiwan, R.O.C.  
Tel: 886-2-2653-4401 ext 6110; Fax: 886-2-2789-0264  
E-mail: [tonychang@nhri.org.tw](mailto:tonychang@nhri.org.tw)  
NHRI Web site: <http://www.nhri.org.tw>



## PHYSICIST POSITION DIRP/NIMH/NIH

The National Institute of Mental Health (NIMH) invites applications for a physicist position (5-year renewable appointments) in the Division of Intramural Research Programs (DIRP). Candidates must have a Ph.D. in MRI physics or a related discipline and at least two years experience with pulse programming, fast imaging techniques, spectroscopy, and/or MRI hardware development. The physicist's primary responsibilities will include technical support, pulse sequence development, and hardware development on a Bruker 4.7 T / 60 cm vertical bore primate scanner. Secondary responsibilities, depending on the applicant's interests or expertise, will involve functional imaging technique development on a 7T human scanner and two General Electric 3 T - LX platform human scanners. Research on the scanners includes fMRI applications, fMRI contrast mechanisms, and fMRI methodology development, and MR spectroscopy. Physicists in this position are also encouraged to pursue their own research interests and collaborations. Applicants should send a curriculum vitae, and three letters of recommendation by July 15, 2001 to:

Peter A. Bandettini, Ph.D.  
Building 10, Room 1D80  
10 Center Drive  
Bethesda, MD 20892-1148  
301-402-1333  
[bandettini@nih.gov](mailto:bandettini@nih.gov)



NIH/NIMH is an Equal Opportunity Employer

## POSITIONS OPEN

### CHAIR DEPARTMENT OF GENETICS

Case Western Reserve University School of Medicine seeks an accomplished Scientist to serve as Chair of its Department of Genetics.

The Department of Genetics offers an interdisciplinary approach to research that combines training in organismal and molecular genetics with applications in human genetics. Programs lead to the Ph.D., combined M.D./Ph.D., and M.D./M.S. degrees.

Applicants for this leadership position should hold the Ph.D. and/or M.D. degree or equivalent terminal degree. Preference will be given to an individual with an outstanding record of academic accomplishments in any field of genetics including vertebrate or invertebrate model organisms. This individual will develop and implement a long-term vision and strategy for the further development of the Department of Genetics including teaching (to medical and graduate students) and sponsored research in genetics, genomics, and bioinformatics.

CWRU School of Medicine currently ranks 13th among U.S. medical schools in terms of NIH funding. CWRU and its affiliated hospitals form the largest biomedical complex in the state of Ohio.

Please send letters of interest with curriculum vitae to: **Search Committee for Genetics Chair, Room W-427, Case Western Reserve University School of Medicine, Cleveland, OH 44106-4975.**

*Case Western Reserve University is an Affirmative Action/Equal Opportunity Employer. Qualified women and minority group members are encouraged to apply.*

### MAMMALIAN PROTEIN PRODUCTION

Xencor is an exciting, well-financed, biotechnology company that uses breakthrough molecular design methods to develop biological macromolecules for pharmaceutical, agricultural, and industrial purposes. The company consists of Computational and Life Scientists who develop novel methods for improving the property of commercially important proteins. We now have a position in mammalian protein production. The successful candidate will lead a group of Scientists focused on the small-scale production of recombinant protein libraries in mammalian systems. Experience in mammalian vector biology, protein production optimization, and stable cell line development essential. Knowledge of different mammalian protein production systems and cell lines expected. Will develop technology for high-throughput soluble protein production. Experience with developing cell-based assays also desirable, as is supervisory experience. Requirements include a Ph.D. in cell or molecular biology or cell or biochemical engineering and a minimum of two to five years of experience in mammalian protein production. Please submit résumé by mail to: **Xencor, 111 West Lemon Avenue, Monrovia, CA 91016. E-mail: recruiting@xencor.com. Affirmative Action/Equal Opportunity Employer.**

### RESEARCH INVESTIGATOR ORGANIC CHEMISTRY

International biomedical reproductive health research organization is immediately seeking professional to join our group working on development of contraceptive and noncontraceptive vaginal products that will protect women and men against HIV and other STIs. The products under development are sulfated polysaccharides and polymers. This position will involve modification of existing formulations and development of new formulations. Additional responsibilities will be chemical analyses for Food and Drug Administration compliance and assisting in preparing USP monograph(s). Requires a Ph.D. in organic chemistry or related field; experience with polymers is helpful but not essential. Please send résumé and cover letter referencing Job Number 76/00 to: **Ms. Kim Bailey, Human Resources Specialist, Population Council, CBR, 1230 York Avenue, New York, NY 10021; FAX: 212-327-7678; e-mail: jobs@popcouncil.org. Affirmative Action/Equal Opportunity Employer/Minorities/Females.**

## POSITIONS OPEN

### FACULTY POSITION IN TISSUE ENGINEERING Whitaker Biomedical Engineering Institute Johns Hopkins University

The Whitaker Biomedical Engineering Institute at Johns Hopkins University seeks highly qualified candidates for a faculty position in tissue engineering. In particular we are seeking candidates with research interests in both nanostructured materials and biotechnology. Specific areas of interest include biologically inspired materials and structures; nanoscale devices; biomimetic structures engineered at molecular or atomic-length scales; and self-assembling, self-healing hybrid systems involving nanostructured materials and molecules, proteins, and cells. The successful candidate will join the Cell and Tissue Engineering Program in the Whitaker Biomedical Engineering Institute at Johns Hopkins and will have his/her primary appointment in the Department of Materials Science and Engineering. The newly formed Institute provides a highly interactive environment for interdisciplinary research and builds on the internationally recognized research programs based in the School of Medicine and the Whiting School of Engineering, including the Department of Biomedical Engineering and the Department of Materials Science and Engineering. Applicants must be able to establish independently funded research programs and will participate in graduate and undergraduate education. It is anticipated that the appointment will be made at the **ASSISTANT PROFESSOR** level, although an appointment at the **ASSOCIATE** or **FULL PROFESSOR** level will be considered. More information on the Institute and Johns Hopkins University can be found at websites: [www.bme.jhu.edu](http://www.bme.jhu.edu) and [www.jhu.edu/~matsci](http://www.jhu.edu/~matsci). Applicants should submit a detailed résumé, statement of research plans, teaching interests, and the names of three references to: **Bio-materials Search Committee, Department of Materials Science and Engineering, Maryland Hall, Johns Hopkins University, 3400 North Charles Street, Baltimore, MD 21218. The Johns Hopkins University is an Equal Opportunity/Affirmative Action Employer. Women and minorities are strongly encouraged to apply.**

Advanced Viral Research Corporation (ADVR) is seeking a **PEPTIDE CHEMIST** for its expanding facility in Westchester County, New York. Responsibilities will include the design and testing of peptide-nucleic acid pharmaceuticals. Expertise in peptide synthesis (solid- and solution-phase), peptide modification, and characterization and purification essential. Knowledge of multidimensional NMR and computer modeling techniques for the study of polypeptides a plus. Requirements include a Ph.D. or equivalent plus at least two years of postdoctoral experience. Please submit curriculum vitae to: **Position PC, Human Resources Department, Advanced Viral Research Corporation, 200 Corporate Boulevard South, Yonkers, NY 10701. FAX: 914-376-7368. ADVR is an Equal Opportunity Employer.**

### HYBRIDOMA LABORATORY MANAGER

for medical diagnostics company located south of Houston, Texas, needed to operate hybridoma facility, direct laboratory staff, and function as integral part of multidisciplinary team involved in development and manufacturing of immunodiagnostic reagents. Requires Ph.D. in cell biology/immunology or related field with two to three years of experience or M.S. with five years of experience. Submit résumé within 15 days to: **Diagnostic Systems Laboratories, Inc., Attention: Carol; FAX: 281-338-1895; e-mail: cpatton@dslabs.com; website: www.dslabs.com.**

**DIRECTOR OF PROJECTS** wanted by non-profit organization in Washington, D.C. Must have Ph.D. in biology or other life science related to conservation plus two years of experience either overseeing design and implementation of biodiversity conservation project development or as Biodiversity Researcher (experience may be obtained prior to graduate degree). Send résumé to: **Katie Kathman, Conservation International, 1919 M Street N.W., Suite 600, Washington, DC 20036. No telephone calls.**

## POSITIONS OPEN

The Department of Chemistry at North Dakota State University (NDSU) has an immediate faculty opening at the **ASSISTANT PROFESSOR** level for a Biomolecular NMR Spectroscopist. This is a non-tenure-track position with responsibility for operation of the departmental NMR facility, which houses Varian INOVA 400-, 500-, and Mercury 300-MHz spectrometers. The successful candidate will be expected to collaborate with research groups in the Chemistry Department, participate in user training, and will be afforded the opportunity to carry out independent research. Qualifications for the position include a Ph.D. in NMR spectroscopy, experience and expertise in the study of biomolecular structure and dynamics by NMR, facility with UNIX and NMR software packages, and ability to design and implement pulse sequences as well as troubleshoot and maintain NMR instrumentation. Evidence of strong verbal and written communication skills is also required. Possibilities exist for participation in graduate and undergraduate teaching. For detailed information about the NDSU Chemistry Department and the City of Fargo, visit websites: <http://www.chem.ndsu.nodak.edu/> and <http://www.ci.fargo.nd.us/>, respectively. Review of applications will begin on May 15, 2001, and will continue until the position is filled. A letter of application, curriculum vitae, statement of research interests, and three letters of reference should be sent to: **Professor Kenton Rodgers, Department of Chemistry, NDSU, P.O. Box 5516, Fargo, ND 58105-5516. E-mail: kent\_rodgers@ndsu.nodak.edu; FAX: 701-231-1057. North Dakota State University is an Equal Opportunity Institution.**

### ASSISTANT/ASSOCIATE PROFESSOR Environmental Respiratory Biology and Genomics

The Department of Environmental Health, Molecular Toxicology Division, is seeking applicants for a faculty position to conduct research in respiratory molecular biology, molecular genetics, or functional genomics. Preference will be given to candidates interested in the genetic determinants of chronic obstructive pulmonary disease in model systems or in human populations. This individual will join a well-funded research program in respiratory cell biology and will be provided sufficient start-up funds to establish a laboratory. The successful candidate will have a Doctorate and postdoctoral research experience in a related field and a willingness to train graduate students and Postdoctoral Fellows in molecular biology in their laboratory. The Department of Environmental Health has over 40 faculty interested in ecogenetics, genetic toxicology, signal transduction, and population genetics and has graduate programs in environmental toxicology and molecular epidemiology. Submit curriculum vitae, research interests, names of three references, and three manuscripts to: **Ms. Amy Nawaz, Program Coordinator, Molecular Toxicology Division, University of Cincinnati, P.O. Box 670056, Cincinnati, OH 45267-0056.**

### GENETIC MODIFICATION OF HEART FUNCTION

**RESEARCH FACULTY** and **POSTDOCTORAL POSITIONS** are available contingent on experience to investigate cardiac function utilizing transgenesis and DNA viral vector delivery systems (see *PNAS* 96:11982, 1999; *JCI* 103:1459, 1999; *Nature Medicine*, December 1999; *JCI* 107, 2001). See laboratory website for more details: <http://www-personal.umich.edu/~metzgerj/>. Individuals with interests in heart or skeletal muscle and with expertise in the molecular, biochemical, or physiological sciences are sought to join our research group. NIH training requires U. S. citizenship or permanent resident status. Send (1) one-page summary of research accomplishments and career goals, (2) curriculum vitae, and (3) names of three references to: **Dr. Joseph M. Metzger, Department of Physiology, 7730 Medical Science II, University of Michigan, Ann Arbor, MI 48109-0622. E-mail: metzgerj@umich.edu. The University of Michigan is an Equal Opportunity/Affirmative Action Employer.**

# Join the Ambion Team!

**We are seeking to fill key positions in business development, R&D and manufacturing to build a strong team to address our rapidly growing business needs.**

## **Senior Research Scientists (Job #273 & 274)**

We are seeking talented individuals with experience related to any aspect of technologies related to RNA. You should have a Ph.D. in molecular biology, biochemistry, or related field with at least two years of postdoctoral experience, a strong publication record and excellent verbal and written skills. Most importantly, we are searching for entrepreneurial scientists who are stimulated by practicing science in a unique research environment that rewards creative thinking and making things happen.

## **Business Development Professionals (Job #272)**

The Ambion RNA Diagnostics Division seeks creative, high-energy product scientists to advance Ambion's solid RNA technology platforms and create opportunities in the molecular diagnostics industry. You will be responsible for establishing and maintaining dynamic collaborative relationships, creating a solid business reputation, and identifying RNA-product opportunities in the clinical laboratory. A Ph.D. in molecular biology or related field coupled with a diverse background in molecular diagnostics is highly desirable.

## **Production Associates (Jobs #275 & 276)**

Ambion seeks talented scientists to lead the production of products in the areas of RNA-stabilization and isolation, and RNA controls and standards. A BS in molecular biology or related field, MS or Ph.D. preferred and strong experience in RNA related techniques are required. The individual must have strong interpersonal skills, and solid experience manufacturing products in a regulated environment (cGMP).

Visit [www.ambion.com/jobs](http://www.ambion.com/jobs) for position descriptions.

**Ambion is a rapidly growing biotechnology company that focuses on applications related to RNA.** It is located in Austin, the state capital, on the edge of the "Texas Hill Country", which provides rivers, lakes, scenic rolling hills and a comfortable climate. Austin is home to the main campus of the University of Texas and offers an exciting array of restaurants, music and cultural events. Austin is widely recognized as one of America's most livable cities.

We offer a stimulating work environment, competitive salary and benefits, 401(K) plan, employee stock option and bonus plans. Equal Opportunity Employer. M/F/D/V

Reply to: Ambion, Inc., 2130 Woodward St., Austin, TX 78744-1832  
Ph: (512)651-0200 Fax: (512)651-0201 Email: [resumes@ambion.com](mailto:resumes@ambion.com)  
[www.ambion.com](http://www.ambion.com)

**Ambion**  
THE RNA COMPANY™



## **Lectureship in Biological Sciences**

Ref: 252/01

Applications are invited for a Lectureship (fixed-term) underwritten by the award of a 5-year Fellowship to a member of staff in the School by the Lister Institute for Preventive Medicine. We seek applicants with interests complementary to our existing research programmes, and research opportunities are available, either independently or by association with existing groups in the fields of Biochemistry, Developmental Biology, Genetics and Cell Biology, or Biomedical Sciences.

The successful applicant will join one of the largest Biological Sciences Departments in Europe with a strong culture of collaboration and interdisciplinary interactions at all levels of research and teaching across a broad spectrum of Biological and Biomedical Sciences. Applicants will be expected to contribute to existing B.Sc. degree programmes and also to the delivery of pre-clinical teaching to medical and/or dental students.

Salary will be in the range £18,731 - £26,216 p.a., depending on experience.

Informal enquiries from prospective applicants may be made to Professor Mike Grant, Dean of the School of Biological Sciences via [biosearch@man.ac.uk](mailto:biosearch@man.ac.uk) (quote 'Lister').

Extensive information on the School and application forms can be found on <http://www.biomed.man.ac.uk> or can be obtained from the Office of the Director of Personnel, The University of Manchester, Oxford Road, Manchester M13 9PL. Tel: 0161 275 2028; Fax: 0161 275 2471; Minicom (for the hearing impaired): 0161 275 7889; E-mail: [personnel@man.ac.uk](mailto:personnel@man.ac.uk) Web Site: <http://www.man.ac.uk>

Closing date: 4 May 2001. Please quote reference number.

As an Equal Opportunities Employer, the University welcomes applications from suitably qualified people from all sections of the community regardless of race, religion, gender or disability.



## **Head, Department of Microbiology Montana State University**

The Department of Microbiology, Montana State University, Bozeman invites applications for Department Head. The Department offers a B.S. degree in Microbiology with options in Microbiology, Medical Laboratory Science, and Environmental Health, as well as M.S. and Ph.D. degrees in Microbiology. **Qualifications:** Candidates must have a Ph.D. or equivalent in a biomolecular discipline, a substantial record of publication in high quality, peer-reviewed journals, and an established and highly respected, extramurally funded research program, which in broad terms, complements the existing research activities of the Department. Candidates should also have administrative experience managing budgets, personnel and programs, demonstrated excellence in teaching and direction of graduate student research, and a sincere desire to facilitate the professional development of the members of the Department of Microbiology including the tenure-track, research and teaching faculty. The successful applicant can anticipate a competitive salary and start-up package. Appointment to **Associate or Full Professor** will be commensurate with qualifications. A complete position announcement, including position requirements and information about the Department, can be found at the Department's website: <http://www.montana.edu/wwwmb/>. Screening of applications begins May 1, 2001. Formal application for the position should include a letter addressing the qualifications listed above, applicant's leadership/administrative philosophy, a summary of research interests, a CV, and contact information for 5 references. Inquiries and applications should be directed to **Head Search Committee, c/o Timothy Pierce, Department of Microbiology, P.O. Box 173520, Montana State University, Bozeman, MT 59717-3520. tel. (406) 994-2902, fax: (406) 994-4926, e-mail: [tpierce@montana.edu](mailto:tpierce@montana.edu). ADA/EO/AA/Veteran's Preference**

## POSITIONS OPEN



The Agricultural Research Service, Plant Sciences Institute, Bee Research Laboratory, in Beltsville, Maryland, is seeking applications for a **RESEARCH ENTOMOLOGIST**, GS-414-12/13. Salary is commensurate with experience (GS-12: \$53,156 to \$69,099; GS-13: \$63,211 to \$82,180 per annum) plus benefits. *Candidates must be U.S. citizens.* The incumbent will plan and conduct research aimed at developing a liquid dietary supplement to stimulate brood production; understanding the physiology of overwintering bees; and determining the effect of sublethal amounts of acaricides on colony health.

Candidates must request a copy of the vacancy announcement (ARS-X1E-1259) by either calling **Telephone: 301-504-1482** or by copying the full text announcement from the ARS website: [www.ars.usda.gov](http://www.ars.usda.gov). For research information, contact: **Dr. Mark F. Feldlaufer**; **Telephone: 301-504-8637**. Candidates must submit specific information as outlined in the vacancy announcement. Applications must be postmarked by the closing date of May 14, 2001. *USDA/ARS is an Equal Opportunity Provider and Employer.*

### SENIOR SCIENTIFIC INSTRUMENTATION SPECIALIST Chemistry

Swarthmore College seeks a qualified individual to provide high-level support, maintenance, design, and troubleshooting for a wide range of complex electronic, optoelectronic, mechanical, and computer-based instrumentation for the Department of Chemistry's teaching and research programs. Tasks performed with a high degree of autonomy include maintaining and repairing all electronics and related laboratory instrumentation and installing new equipment; consulting with and training faculty members and students on the proper use of equipment; administering computer networks and software; overseeing purchasing and spending; coordinating repairs, modifications, and installation of building utilities and equipment. Master of science degree in the natural sciences or the equivalent three years of relevant experience with a thorough knowledge of digital and fr electronics, test equipment, optics and high-vacuum systems, and scientific instrument repair and maintenance, including the direct support of high-field superconducting pulsed NMR and gas chromatograph/mass spectrometer instruments and their related hardware and software systems. Significant computer experience including knowledge of Mac, DOS, UNIX and computer peripherals, software, and interfacing. Knowledge and experience with a variety of chemical and spectroscopic techniques including GC, HPLC, FTIR, FTNMR, GC/MS, UV/Vis, CD. Must be familiar with handling and transferring of compressed, solid gases and cryogenic materials. Please send letter of interest and résumé to: **Human Resources Department, Swarthmore College, 500 College Avenue, Swarthmore, PA 19081**. Please visit our website: [www.swarthmore.edu](http://www.swarthmore.edu). *Swarthmore College is an Equal Opportunity Employer committed to excellence through diversity.*

### POSTDOCTORAL POSITIONS

Available immediately to (1) perform experiments on the genes, enzymes, and chemistry involved in the degradation of TNT and related nitro compounds by clostridia and (2) perform experiments related to genetic recombination in *E. coli*. Experience with transposons and PCR is helpful. The focus is to design and assemble large DNAs for genetic manipulation of bacteria. Good writing and presentation skills are expected along with experience with enzymes or molecular biology. Submit letter, curriculum vitae, and contact information for three references to: **George Bennett, Department of Biochemistry, Rice University, 6100 Main Street, Houston, TX 77005-1892**. E-mail: [gbennett@bioc.rice.edu](mailto:gbennett@bioc.rice.edu).

## POSITIONS OPEN

**RESEARCH SCIENTIST**, Nutrition and Immune function, USDA/ARS, Western Human Nutrition Research Center, University of California, Davis. This position is open immediately at the GS-13/14/15 level (equivalent to **ASSISTANT, ASSOCIATE**, or **FULL PROFESSOR**). *U.S. citizenship is required.* Opportunities exist for an adjunct faculty appointment at UC Davis. The incumbent will develop an independent research program to examine the mechanisms by which dietary constituents modulate the immune response at the molecular level. The Center has facilities for residential human studies but work in appropriate model systems is also expected. Studies should also address relevant genetic and physiologic factors that affect immune function. Candidates working on oxidative stress or nutrients that modulate gene expression via nuclear receptors (e.g., vitamins A and D, fatty acids) will be viewed positively. A Ph.D. or equivalent degree; postdoctoral research experience; and demonstrated expertise and research productivity in immunology, preferably as it relates to nutrition, is desired. Salary is commensurate with experience in the range of \$63,498 to \$114,742. Applicants must address and meet specific placement factors defined in the official vacancy announcement ARS-X1W-1249 at **Telephone: 301-504-1482** or website: <http://www.ars.usda.gov>. Applications must be postmarked by June 1, 2001. For further information, contact: **Charles Stephensen, Nutrition Department, One Shields Avenue, University of California, Davis, CA 95616**. *The USDA is an Equal Opportunity Provider and Employer.*

**RESEARCH ANIMAL SCIENTIST/PHYSIOLOGIST/MICROBIOLOGIST**, GS-11/12/13. The United States Department of Agriculture (USDA), Agricultural Research Service, West Lafayette, Indiana, announces two Research Scientist positions at West Lafayette, Indiana. The incumbents will be located on Purdue University campus and will be responsible for initiating and developing research directed toward understanding how stress imposed on livestock during transportation and handling affects gut physiology and (or) microbial populations. Research objectives will be directed toward solving preharvest food safety issues. The individual will be part of a team conducting research on the behavior and well-being of food-producing animals. Salary range is \$43,326 to \$80,279 per annum based on qualifications and experience.

For information on application procedures, call **Ms. Jan Overton, Location Administrative Officer**; **Telephone: 765-494-9726** for Vacancy Announcement Number ARS-X1W-1236 or access REE-Employment Opportunities on website: <http://www.usda.gov/services.html>. For information on research project, call: **Dr. Donald C. Lay Jr., Research Leader, Livestock Behavior Research Unit**; **Telephone: 765-496-7750**. Applications must be postmarked by May 4, 2001. This is a competitive, permanent appointment and *U.S. citizenship is required*. *The USDA is an Equal Opportunity Provider and Employer.*

EPIX Medical, a specialty pharmaceutical company engaged in developing targeted contrast agents for MRI, seeks **CHEMIST-STAFF SCIENTIST**, discovery chemistry. Independently design, execute, and interpret complex experiments and analytical procedures to address specific research- and development-related scientific objectives. Please send résumé to: **Human Resources, EPIX Medical, 71 Rogers Street, Cambridge, MA 02142**. FAX: 617-250-6041. Website: [www.epixmed.com](http://www.epixmed.com). *Equal Opportunity Employer.*

**RESEARCH ASSOCIATE POSITION** is available immediately to study mechanisms of pulmonary vascular reactivity. Experience with patch clamping techniques and confocal fluorescent microscopy in cultured cells is required. Send curriculum vitae and three letters of reference to: **J. T. Sylvester, M.D., Division of Pulmonary and Critical Care Medicine, The Johns Hopkins Asthma and Allergy Center, Baltimore, MD 21224**. FAX: 410-550-2612; e-mail: [jsylv@welch.jhu.edu](mailto:jsylv@welch.jhu.edu).

## POSITIONS OPEN



### FIRE SCIENCE POSITIONS

Fire and Environmental Research Applications Team (FERA) of the Pacific Northwest Research Station (U. S. Department of Agriculture Forest Service) seeks dynamic individuals to join forest fire research team in Seattle, Washington.

**RESEARCH SYNTHESIS AND INTEGRATION SCIENTIST**: lead synthesis and analysis team (\$63,000 to \$74,000). **RESEARCH ENGINEER (COMBUSTION ENGINEER)**: combustion processes and moisture exchange in forest fuels (\$53,000 to \$63,000). **RESEARCH PHYSICAL CLIMATOLOGIST**: regional haze and climatology of forest flammability conditions and thresholds (\$44,000 to \$53,000). **FIRE SCIENTIST**: assessment and modeling of wildland fuels (\$44,000 to \$53,000). Reply by April 30, 2001, to: **Ellen Eberhardt**; **Telephone: 541-750-7481**; e-mail: [eeberhardt@fs.fed.us](mailto:eeberhardt@fs.fed.us). For more information and additional openings, see website: [www.fs.fed.us/pnw/fera](http://www.fs.fed.us/pnw/fera).

### PLANT POPULATION OR PLANT COMMUNITY ECOLOGIST

The Institute of Pacific Islands Forestry, Pacific Southwest Research Station, U. S. Forest Service, seeks an Ecologist to conduct research on the ecology of invasions by nonindigenous plants into native Hawaiian and Pacific island ecosystems. The position, based in Hilo, Hawaii, is a GS-12 with a salary range of \$48,223 to \$62,686 plus 16.5% cost-of-living allowance. *Applicants must be U. S. citizens.* A full vacancy announcement is available at website: [www.usajobs.opm.gov](http://www.usajobs.opm.gov) and from: **Personnel Management, Attention: Elvira Metcalfe, Pacific Southwest Research Station, P. O. Box 245, Berkeley, CA 94701**. **Telephone: 510-559-6357**; FAX: 510-559-6352; e-mail: [emetcalfe@fs.fed.us](mailto:emetcalfe@fs.fed.us). Reference: Research Ecologist PSW/DEMO 207-01. Questions regarding the position should be directed to: **Dr. Julie Denslow**; **Telephone: 808-933-8121**, Extension 16; e-mail: [jdenslow@fs.fed.us](mailto:jdenslow@fs.fed.us). Deadline for applications is May 7, 2001. *USDA is an Equal Opportunity Employer.*

### IMMUNOASSAY PROJECT MANAGER AND LEAD SCIENTIST

Matritech, Inc., a Newton, Massachusetts-based, public transportation-accessible, relaxed yet intellectually stimulating environment, is seeking a Ph.D. in biological sciences or clinical chemistry with a minimum of five years of experience in the development and clinical testing of *in vitro* diagnostic immunoassays. Previous experience in project management and FDA submissions is required. The candidate for this newly created position will be the lead Scientist and project manager for a revolutionary new diagnostic test for breast cancer. The position is available immediately.

Interested parties should send or FAX their résumé to: **Christina Beck, Human Resources Manager, Matritech, Inc., 330 Nevada Street, Newton, MA 02460**. FAX: 617-928-0821.

The Cellular Neurophysiology Laboratory at the Evanston Northwestern Healthcare Research Institute seeks a **LABORATORY MANAGER/RESEARCH SCIENTIST**. Must have experience in extracellular and patch clamp recording and manuscript and grant preparation as well as computer skills and excellent command of English. The position requires initial participation in ongoing studies using synaptic plasticity in hippocampal slices (including transgenic mice) to study disorders causing cognitive impairment (e.g., Down syndrome, Alzheimer's disease), with subsequent opportunity for independently initiated projects. Send curriculum vitae, two publications, and two letters of recommendation to: **Joan Eichelberg, Research Coordinator, Evanston Hospital, 2650 Ridge Avenue, Evanston, IL 60201**. E-mail: [jeichelberg@enh.org](mailto:jeichelberg@enh.org).





## NATIONAL UNIVERSITY of SINGAPORE

### DEPARTMENT OF CHEMISTRY

#### *Faculty Appointments*

The National University of Singapore (NUS) invites applications for full-time tenure-track faculty positions in the Department of Chemistry. Applicants must have suitable post-doctoral experience and a strong commitment to excellence in research and teaching.

NUS is a leading Asian university that strives to be one of the best academic establishments in the world. The Department of Chemistry is a PhD-granting body equipped with state-of-the-art research facilities, and supported by about 40 tenure-track faculty members, 170 graduate and over 700 undergraduate students. Research funding in 1999-2000 exceeded US \$3.5m. We are looking for outstanding faculty members with experience in the following areas:

- Chemical Biology
- Bio-organic Syntheses
- Molecular Modelling & Computation
- Green Chemistry
- Combinatorial Synthesis
- Nano-Materials
- Organometallics & Catalysis
- Separation Science

All faculty members are expected to teach undergraduate and graduate courses, supervise graduate students, and conduct rigorous research programs that generate external funding and a scholarship and intellectual output typical of that of a world-class university. Members have ample opportunities to develop collaborative research with the various research centers and institutes in Singapore and institutions overseas.

**Annual Base Salary: (US\$1 ~ S\$1.70)**

Assistant Professor (with PhD)	S\$ 72,000 - 144,000
Associate Professor	S\$108,000 - 204,000
Professor	S\$168,000 - 276,000

Interested parties should submit their applications, supported by a résumé, detailed research plan and three letters of references **immediately** to:

**Chairman, Search Committee**  
**Department of Chemistry**  
**National University of Singapore**  
**3 Science Drive 3, Singapore 117543**  
**Facsimile: (65) 779 1691**  
**Email: chmhead@nus.edu.sg**

Visit our website at <http://www.nus.edu.sg/NUSinfo/Appoint/sci-chem.html> for links to the University and information on other benefits. An application form may also be downloaded from the website.



### VETERINARY MEDICAL OFFICER/MICROBIOLOGIST USDA, Agricultural Research Service National Animal Disease Center-Ames, Iowa

U.S. Department of Agriculture, Agricultural Research Service (ARS), Bacterial Diseases of Livestock Research Unit is seeking two innovative, dynamic and experienced scientists. The mission of this unit is to conduct basic and applied research on prevention, diagnosis, control, and treatment of disease of food producing animals and wildlife caused by mycobacterial, brucellar, and spirochetal infections. Research involves a variety of techniques associated with pathology, cytochemistry, bacteriology, immunology, and molecular biology. The unit's research is multi disciplinary, with an increasing emphasis on new technologies.

**Supervisory Veterinary Medical Officer/Microbiologist** to plan, conduct, and report personal research; to guide research programs and supervise scientists within the laboratory; and to evaluate, review, and recommend or implement changes in the research programs. Requires knowledge of microbiology, molecular biology, epidemiology, and/or veterinary medicine and demonstrable research leadership and management skills. Salary range from \$72,969 to \$111,581 (GS-14/15). Announcement No. ARS-X1W-1221

**Veterinary Medical Officer** to investigate studies concerned with: (1) sequencing the complete *M. paratuberculosis* genome and identify sequences that can be exploited to aid in control of paratuberculosis (2) develop sensitive and specific diagnostic tests for detection of cattle subclinically infected with *M. paratuberculosis*, (3) determine shedding patterns of *M. paratuberculosis* in milk of naturally infected cows and evaluate survival of *M. paratuberculosis* in milk after heat treatment, and (4) identify immunogens of *M. paratuberculosis* by random and directed expression library immunization. Requires degree in veterinary medicine and knowledge of microbiology, molecular biology, biochemistry, immunology, physiology and/or pathology. Salary range from \$51,927 to \$94,862 (GS-12/13/14). Announcement No. ARS-X1W-1220

U.S. citizenship is required. Applicants must meet basic education requirements as described in each announcement, plus directly related Ph.D. and/or professional research experience. Incumbents will be expected to publish and present research results. A comprehensive benefits package includes paid sick and annual leave, life and health insurance, federal retirement and a savings investment plan (401 K - type). For information on application procedures, contact **Janae Lentz** at 515-663-7277 or by copying the full-text announcement from the ARS homepage at website: [www.ars.usda.gov](http://www.ars.usda.gov). For information on the research program and/or position, contact: **Dr. Keith Murray**, telephone 515-663-7201; email: [Kmurray@nadc.ars.usda.gov](mailto:Kmurray@nadc.ars.usda.gov). Applications must be postmarked by June 18, 2001.

The U.S. Department of Agriculture (USDA) prohibits discrimination in all its programs and activities on the basis of race, color, national origin, gender, religion, age, disability, political beliefs, sexual orientation, and marital and family status. (Not all prohibited bases apply to all programs.) Persons with disabilities who require alternative means for communication of program information (Braille, large print, audiotope, etc.) should contact USDA's TARGET Center at 202-720-2600 (voice or TDD).

To file a complaint of discrimination, write USDA, Director, Office of Civil Rights, Room 326-W, Whitten Building, 14th and Independence Avenue, SW, Washington, DC 20250-9410 or call 202-720-5964 (voice or TDD). The USDA is an equal opportunity provider and employer.

## POSITIONS OPEN

### VETERINARY PATHOLOGIST

The Yerkes Primate Research Center of Emory University has an opening for a Veterinary Pathologist in the Division of Research Resources. Minimum qualifications include a D.V.M. or equivalent degree and ACVP Board certification or eligibility. Prior experience with diseases and pathology of nonhuman primates is preferred but not required. Applicants at all levels of experience will be considered. Primary responsibilities include providing a diagnostic pathology service to the Center, both in support of the clinical care of the nonhuman primate colony and in support of a variety of ongoing research projects. The successful applicant will be expected to develop collaborative or independent research projects. Salary is negotiable based on the applicant's experience. The Yerkes Center maintains a colony of approximately 3,000 nonhuman primates, which includes macaques, mangabey monkeys, squirrel monkeys, cebus monkeys, and chimpanzees. Research programs at the Center include infectious diseases and vaccine development (AIDS and malaria), neuroscience, vision research, and psychobiology. Interested individuals should send a letter indicating their experience and research interests, curriculum vitae, and the names of three individuals who may be contacted for references to: **Harold M. McClure, D.V.M., Associate Director for Research Resources, Yerkes Regional Primate Research Center, Emory University, Atlanta, GA 30322.** Emory University is an Affirmative Action/Equal Opportunity Employer.

### X-RAY CRYSTALLOGRAPHY

NIH-funded **POSTDOCTORAL POSITIONS** available immediately at the Center for Advanced Research in Biotechnology (CARB) for Protein Crystallographers with recent Ph.D.s to join multidisciplinary team investigating structural basis of ligand recognition by antibodies, T cell receptors (TCRs), and natural killer (NK) cell receptors. Projects include X-ray crystallographic studies of (1) recombinant TCRs, MHC molecules, and superantigens; (2) antigen-antibody complexes; and (3) NK receptor-MHC complexes. Experience in protein biochemistry highly desirable. (*Science* 267:1984, 1995; *Nature* 374:739, 1995; *Nature* 384:188, 1996; *J. Exp. Med.* 187:823, 1998; *Biochemistry* 37:7981, 1998; *Nature* 391:502, 1998; *Immunity* 9:807, 1998; *Immunity* 10:473, 1999; *Annu. Rev. Immunol.* 17:435, 1999; *Nature* 402:623, 1999; *Biochemistry* 39:15375, 2000; *J. Mol. Biol.* 304:177, 2000; *Immunity* 14:93, 2001. See website: [www.carb.nist.gov/mariuzza.html](http://www.carb.nist.gov/mariuzza.html) for further information. State-of-the-art X-ray and computing facilities. Excellent opportunities for collaborative studies with Molecular Biologists and Physical Biochemists. CARB, a joint research center of the National Institute of Standards and Technology and the University of Maryland, is located in the heart of a major biotechnical community that includes TIGR, Celera, and Human Genome Sciences. Send curriculum vitae and names of three references via e-mail to: [mariuzza@carb.nist.gov](mailto:mariuzza@carb.nist.gov) or mail to: **Dr. Roy Mariuzza, CARB, 9600 Gudelsky Drive, Rockville, MD 20850.**

### POSTDOCTORAL POSITIONS AVAILABLE IMMEDIATELY

Seeking three **POSTDOCTORAL FELLOWS** to join a dynamic research team engaged in studying (1) SIV/HIV pathogenesis in primate models, (2) the role of dendritic cells in HIV infection, and (3) active/passive immunoprophylaxis to prevent mother-to-infant transmission of HIV. Experience in virology, molecular biology, and/or cellular immunology is highly desirable. The positions involve a joint appointment at Harvard Medical School and Dana-Farber Cancer Institute. Send curriculum vitae and names of three references to: **Dr. Ruth Ruprecht, Dana-Farber Cancer Institute, 44 Binney Street, Boston, MA 02115 U.S.A. E-mail: [ruth-ruprecht@dfci.harvard.edu](mailto:ruth-ruprecht@dfci.harvard.edu); FAX: 617-632-3112.**

## POSITIONS OPEN

### SEARCH REOPENED

**ASSISTANT/ASSOCIATE FIRE ECOLOGY RESEARCH SCIENTIST.** We are seeking a Scientist to develop a nationally recognized research program on prescribed fire and vegetation dynamics in Southern pine ecosystems. Duties also include organizing Tall Timbers Fire Ecology Conferences every two to three years and editing proceedings. Qualifications: (1) Ph.D. in ecology or related field, (2) ability to conduct independent and collaborative ecological field research and publish in scientific journals, (3) ability to obtain extramural research funds, and (4) ability to edit scientific publications. To apply, submit curriculum vitae and names, addresses, and telephone numbers for three references to: **L. A. Brennan, Tall Timbers Research Station, 13093 Henry Beadel Drive, Tallahassee, FL 32312.** Review of applications will begin 1 June 2001 and continue until a suitable candidate is identified. See website: [www.talltimbers.org](http://www.talltimbers.org) for complete job description. *Equal Opportunity Employer.*

### ASSISTANT PROFESSOR BIOLOGICAL CHEMISTRY Johns Hopkins University School of Medicine

The Department of Biological Chemistry at the Johns Hopkins University School of Medicine invites applications for a tenure-track position at the Assistant Professor level. The Department is seeking candidates with a commitment to excellence in research and teaching in biological chemistry. Applicants should submit curriculum vitae, list of publications including representative reprints, three letters of recommendation, and a summary of research plans to:

**Dr. Peter C. Agre  
Search Committee Chairperson  
Department of Biological Chemistry  
The Johns Hopkins University  
School of Medicine  
725 North Wolfe Street  
Baltimore, MD 21205**

To ensure full consideration, applications should be received by July 31, 2001. *Equal Opportunity/Affirmative Action Employer.*

### PROTEIN NMR POSTDOCTORAL FELLOW

Available immediately: Postdoctoral position to study solution structure and dynamics of receptor domain protein complexes. Candidates should have a background in multidimensional NMR spectroscopy. Excellent facilities including four channel 750 and 600 MHz Varian NMR spectrometers, workstations, and core facilities for molecular biology and protein chemistry are available. Salary commensurate with experience. Please send curriculum vitae and names of contacts to: **Dr. Krishna Rajarathnam, HBCG, 5.138 MRB, Galveston, TX 77555-1055. E-mail: [krishna@hbcg.utmb.edu](mailto:krishna@hbcg.utmb.edu).** *UTMB is an Affirmative Action/Equal Employment Opportunity Employer; Minorities/Females/Veterans/Disabled.*

**POSTDOCTORAL POSITION** available to join an interactive group in basic immunology and transplantation immunology and study novel signal transduction pathways in effector and memory T cells (see *J. Immunol.* 163:3053; **Krishnan, et al., Blood**, in press) and mechanisms for the generation of T cell memory (see *J. Immunol.* 160:535; 166:926). Applicants should have received their Ph.D. in either biochemistry, molecular/cell biology, microbiology, or immunology. To apply, send curriculum vitae and a list of three references to: **Dr. Donna L. Farber, Department of Surgery, University of Maryland Medical School, MSTF Building, Room 400, 685 West Baltimore Street, Baltimore, MD 21201. E-mail: [dfarber@smail.umaryland.edu](mailto:dfarber@smail.umaryland.edu).**

## POSITIONS OPEN

### POSTDOCTORAL POSITION IN NEURAL PROSTHETICS California Institute of Technology

A Postdoctoral position is available immediately in **Professor Richard Andersen's** laboratory to perform animal studies on the feasibility of developing a neural prosthetic for paralyzed patients. Arrays of electrodes will be implanted in the posterior parietal cortex and the signals recorded and decoded to determine the movement intentions of the animals. The ideal candidate would have experience in electrophysiology, neurophysiology, and animal behavior. A background in bioengineering, biomedical engineering, electrical engineering, experimental physics, or related disciplines would be advantageous also. Please send curriculum vitae and list of three references to: **Richard Andersen, Division of Biology, MC 216-76, California Institute of Technology, Pasadena, CA 91125 U.S.A. E-mail: [cierina@vis.caltech.edu](mailto:cierina@vis.caltech.edu).** *Caltech is an Affirmative Action/Equal Opportunity Employer. Women, minorities, veterans, and disabled persons are encouraged to apply.*

**POSTDOCTORAL POSITION** available to study the structure, mechanism, and regulation of the vacuolar (H<sup>+</sup>)-ATPases. The focus of our laboratory is on structural and functional analysis of the V-ATPase complex using genetic and biochemical approaches. Cellular studies include mechanisms of intracellular targeting and regulation. For recent publications, see website: [www.healthsci.tufts.edu/labs/MForgac](http://www.healthsci.tufts.edu/labs/MForgac). Experience in molecular biology is required. Starting date is flexible (summer 2001 to spring 2002). Send curriculum vitae and the names of three references to: **Dr. Michael Forgac, Department of Physiology, Tufts University School of Medicine, 136 Harrison Avenue, Boston, MA 02111. E-mail: [michael.forgac@tufts.edu](mailto:michael.forgac@tufts.edu); FAX: 617-636-0445.**

### POSTDOCTORAL AND RESEARCH ASSOCIATE POSITIONS

Available immediately for the study of HMGI proteins in obesity, cancer, and development. Candidates with experience in cell and molecular biology or biochemistry will be preferred. Please send curriculum vitae along with names of three references to: **Dr. Kiran Chada, University of Medicine and Dentistry of New Jersey, Robert Wood Johnson Medical School, Department of Biochemistry, 675 Hoes Lane, Piscataway, NJ 08854. FAX: 732-235-3965; e-mail: [chada@umdnj.edu](mailto:chada@umdnj.edu).**

### SIGNAL TRANSDUCTION AND IMMUNOLOGY Harvard Medical School

**POSTDOCTORAL POSITION** to study TcR-CD28/CTLA-4 signaling in T cells. Position also available in Department of Haematology, Imperial College School of Medicine, London, United Kingdom. Send curriculum vitae and references to: **Dr. Christopher Rudd, Dana-Farber Cancer Institute, 44 Binney Street, Boston, MA 02115. Telephone: 617-632-3574; FAX: 617-632-5259; e-mail: [christopher\\_rudd@dfci.harvard.edu](mailto:christopher_rudd@dfci.harvard.edu).**

### SENIOR POSTDOCTORAL RESEARCHER Cell and Molecular Biology

Required qualifications: Ph.D. or equivalent degree with major course work in biological and biomedical science, strong laboratory experience and background in molecular and cellular biology, and three years of postdoctoral laboratory experience. Project is molecular biology of tooth eruption. Salary will be commensurate with qualifications and experience. Application deadline is April 27, 2001, or until candidate is selected. Submit letter of application and résumé to: **Dr. Gary E. Wise, Comparative Biomedical Sciences, School of Veterinary Medicine, Louisiana State University, Reference Number 016526, Baton Rouge, LA 70803.**

*Louisiana State University is an Equal Opportunity/Equal Access Employer.*



The Barbara Ann Karmanos Cancer Institute invites applications for the position of President, Director and Chief Executive Officer. The Institute has been an NCI-designated comprehensive cancer center since 1978. Its programs are operated in collaboration with Wayne State University and its School of Medicine and the clinical facilities of The Detroit Medical Center. Nearly \$40 million in peer reviewed program funding supports the Institute's cancer research programs, and a strong historical base of institutional support has been augmented by successful execution of a \$100 million capital campaign. Two dedicated research buildings focus cancer laboratory research programs at the Institute and Wayne State University and a new, dedicated cancer hospital is being brought on line in 2001 to enhance cancer care delivery to 5,000 cancer admissions and 85,000 outpatient visits each year. The diversity of the metropolitan Detroit community provides outstanding opportunities for community-based research and studies in prevention. The Institute is one of 14 NCI SEER sites and operates the NCI Midwest Cancer Information Service (1-800-4-CANCER), serving all of Michigan, Indiana and Ohio.

The President, Director and Chief Executive Officer is responsible for the Institute's leadership, including program strategic planning and evaluation, scientific direction, community outreach, coordinated delivery of multidisciplinary clinical cancer care, advancement activities and organizational administration. The successful candidate must be a strong leader with the vision to set direction, spirit and vitality for the organization and transform the Barbara Ann Karmanos Cancer Institute to its next level of growth and development. The President, Director and Chief Executive candidate must possess the leadership experience to manage an interdisciplinary cancer institute with a sizable budget and complex array of relationships with partner institutions and community leaders. This individual must hold a doctorate degree and possess qualifications as a scientist to be eligible for the academic rank of Professor at Wayne State University.

Please submit curriculum vitae, nominations and requests for further information to:

**John D. Crissman, M.D.**  
**Dean, Wayne State University School of Medicine**  
**540 East Canfield, Room 1241**  
**Detroit, Michigan 48201**  
**313.577.1335; Fax: 313.577.8777**

*Barbara Ann Karmanos Cancer Institute, The Detroit Medical Center and Wayne State University are equal opportunity/affirmative action employers.*

## Physician/Scientist

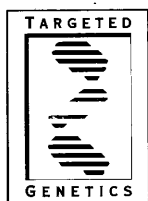
### **The National Institutes of Health (NIH) Office of the Director**

The NIH Office of Biotechnology Activities (OBA) is looking for a highly creative, motivated physician/scientist to lead policy-related activities in recombinant DNA and gene transfer, including serving as the Executive Secretary of the NIH Recombinant DNA Advisory Committee (RAC).

OBA and the RAC serve a critical role in the oversight of federally funded research involving recombinant DNA and gene transfer. The Executive Secretary plans and coordinates RAC meetings; identifies the need, and develops recommendations for new and revised policies, and facilitates and coordinates activities in these areas within NIH and across DHHS.

Interested applicants may go to <http://careerhere.nih.gov> under vacancy announcement OD-01-7065 for mandatory qualification requirements or you may call 301-402-4111 and ask for 97065.

*NIH IS AN EQUAL OPPORTUNITY EMPLOYER*



## Targeted Genetics Corporation

"We discover, develop and deliver molecular medicines to cure diseases."

Targeted Genetics Corporation is a rapidly growing downtown Seattle-based biotechnology company developing gene therapy products for the treatment of acquired and inherited diseases. We are adding motivated professionals to capitalize on our leadership position in the field:

### **Preclinical Biology**

#### **Staff Scientist**

We are seeking a Staff Scientist to join the Preclinical Biology department engaged in the pharmacology and toxicology evaluation of gene therapy product candidates. The successful individual will be responsible for the development of bioanalytical methods (e.g. PCR and ELISA) for testing preclinical and clinical specimens in support of product development. Applicants must have a Ph.D. and experience in real time PCR (TaqMan™). Pharmacology or toxicology background preferred. Strong oral and written communications skills desired.

### **Research**

#### **Staff Scientist Animal/Cellular Biology**

Our Product Discovery Group has an opening for a qualified and highly motivated Animal/Cell Biologist. Participate in a multidisciplinary team effort focused on the discovery of innovative gene-based therapeutics using viral and non-viral gene delivery systems. Applicants must have Ph.D. degree with several years of post-doctoral experience in Animal/Cellular Biology or related science. Position requires use of established or new small animal models of disease appropriate for Proof of Concept of our current and prospective products. The successful candidate will also have a proven record of scientific achievement.

At Targeted Genetics we take great personal pride in our company and the important work we do. Most of all, we value and respect people who share our commitment and passion. If you think you might prosper in a demanding, yet intensely collegial environment where what you do is what matters most, let us know.

For more information on these and other opportunities at Targeted Genetics Corporation, visit our website at [www.targetedgenetics.com](http://www.targetedgenetics.com). For consideration, please send your resume to: **Targeted Genetics Corporation, Human Resources, 1100 Olive Way, Suite 100, Seattle, WA 98101. Fax: (206) 521-4782. Email: [careers@targen.com](mailto:careers@targen.com). EOE**

## POSITIONS OPEN

### POSTDOCTORAL POSITIONS

#### Electrophysiology and Molecular Biology of Auditory and Vestibular System

Applications are invited to investigate physiological and molecular mechanisms of mature and developmental auditory and vestibular hair cells using primary culture, isolated hair cells, high-resolution patch clamp techniques, calcium imaging, ion-sensitive self-referencing electrodes, light/electron microscopy, and molecular genetics.

Three Postdoctoral positions are available. Send curriculum vitae and names of three references to be contacted to:

**Ebenezer N. Yamoah**  
Center for Neuroscience  
Department of Otolaryngology  
University of California, Davis  
1544 Newton Court  
Davis, CA 95616  
FAX: 530-754-7183  
E-mail: enyamoah@ucdavis.edu

### ASSISTANT/ASSOCIATE PROFESSOR Nutritional Biochemistry/Molecular Nutrition University of Arizona

Tenure-track, research/teaching appointment (75/25). Successful candidate will develop a nationally competitive research program in biochemical nutrition or molecular/genetic mechanisms related to nutrient function in health and disease. Review of applications is ongoing and will continue until the position is filled. Applicants should send a cover letter, résumé, and the names and contact information for three references to: **Dr. Fred Wolfe, Head, Department of Nutritional Sciences, University of Arizona, Tucson, AZ 85721.** *University of Arizona is an Equal Employment Opportunity/Affirmative Action Employer; Minorities/Women/Disabled/Veterans.*

### POSTDOCTORAL FELLOWSHIP POSITION AVAILABLE

Immediately available for a motivated individual to study the regulation of lymphocyte development, activation, and autoimmunity by Cbl family signaling molecules (*Nature* 403:216, 2000). The focus of the laboratory is to understand the mechanisms by which these adaptor molecules influence various intracellular signaling pathways required for lymphocyte lineage development and function. Please send curriculum vitae and three letters of reference to: **Hua Gu, Ph.D., Laboratory of Immunology, NIAID/NIH, 12441 Parklawn Drive, Room 125, Rockville, MD 20852 U.S.A.** E-mail: hgu@niaid.nih.gov.

### TWO POSTDOCTORAL ASSOCIATE POSITIONS Plant RNA Virus Replication

Two Postdoctoral Associates are needed to work on protein and RNA components required for plant RNA virus replication using *in vitro* and *in vivo* systems. Candidates should have a Ph.D. in biochemistry or a related field with expertise in protein purification, molecular biology, and virology. Send curriculum vitae and names of three references to: **Dr. Cynthia Hemenway, Department of Biochemistry, Mail Zone 7622, North Carolina State University, Raleigh, NC 27695-7622.** E-mail: cindy@bchserver.bch.ncsu.edu; Telephone: 919-515-5719. *NC State is an Affirmative Action/Equal Opportunity Employer. Americans With Disabilities Act accommodations.*

### SENIOR ANALYST CNS NEW PRODUCT DEVELOPMENT

Help to develop and produce a new multiclient decision analysis tool for the biopharmaceutical industry. Conduct primary research, synthesize secondary research, and develop market forecasts and analyze clinical practice. Ph.D. in neuroscience with up to three years of postdoctoral experience. Visit our website: [www.dresources.com](http://www.dresources.com) to learn more about this position. FAX résumés to: **Judi Barratt; FAX: 781-296-2550.**

## POSITIONS OPEN

### POSTDOCTORAL/RESEARCH ASSOCIATE POSITION Nuclear Transport

A Research Associate position is available immediately to study the mechanisms of nuclear import and export in mammalian cells. Potential projects include (1) analysis of steroid receptor transport and the regulation of transcription (*J. Cell Biol.* 152:127-140, 2001); (2) molecular analysis of transport events that occur at the nuclear pore complex (*J. Cell Biol.* 152:141-155, 2001); (3) biochemical characterization of a new factor that regulates the nuclear GTPase Ran (*J. Biol. Chem.* 275:23175-23180, 2000); and characterization of RNA export pathways (*Mol. Cell Biol.* 21:2545-2554, 2001). An individual with a Ph.D. and prior experience in protein biochemistry, cell imaging, or molecular biology is preferred. The Center for Cell Signaling at the University of Virginia has outstanding facilities and an interactive research environment with laboratories investigating nuclear transport, signal transduction, and gene expression (see website: <http://www.mcd.virginia.edu/medicine/inter-dis/signaling/>). Send curriculum vitae, statement of professional goals, and the names and addresses of three references to: **Bryce M. Paschal, Center for Cell Signaling, P.O. Box 800577, University of Virginia Health System, Charlottesville, VA 22908-0577.** E-mail: [paschal@virginia.edu](mailto:paschal@virginia.edu). Position open until filled. *The University of Virginia is an Equal Opportunity/Affirmative Action Employer.*

**POSTDOCTORAL FELLOW** position available summer/fall 2001 to study iso-IRE, mRNA/protein interactions, and mRNA targeting; requires Ph.D. in biochemistry/molecular biology. The established program in Biolron has recently moved to new facilities at CHORI, the Research Institute of Children's Hospital Oakland, Oakland, California. Salary range: \$33,000 to \$40,000. Send curriculum vitae and two letters of reference to: **Principal Investigator, Dr. Elizabeth C. Theil, Senior Research Scientist, CHORI, 5700 Martin Luther King, Jr. Way, Oakland, CA 94609.** E-mail: [etheil@chori.org](mailto:etheil@chori.org).

**POSTDOCTORAL FELLOW** position available summer/fall 2001 to study ferritin protein folding, iron entry, iron release, and chelator targeting; requires Ph.D. in biochemistry/chemistry. The established program in Biolron recently moved to new facilities at CHORI, the Research Institute of Children's Hospital Oakland, Oakland, California. Salary range: \$33,000 to \$40,000. Send curriculum vitae and two letters of reference to: **Principal Investigator, Dr. Elizabeth C. Theil, Senior Research Scientist, CHORI, 5700 Martin Luther King, Jr. Way, Oakland, CA 94609.** E-mail: [etheil@chori.org](mailto:etheil@chori.org). *An Equal Opportunity Employer.*

### POSTDOCTORAL FELLOWSHIPS University of Pennsylvania/ Children's Hospital of Philadelphia

NIH training grant supporting studies of cardiovascular disease mechanisms and therapies. Project fields include gene therapy, heart valve disease, biomaterials, tissue engineering, stem cell biology, vascular injury, drug delivery systems, cardiac and pulmonary development, and pharmacology. Competitive salary and full benefits. Applicants with Ph.D. and/or M.D. and resident alien or U.S. citizen status should send their curriculum vitae and the names of three references to:

**Robert J. Levy, M.D.**  
**William J. Rashkind Professor**  
University of Pennsylvania School of Medicine  
Training Program Director  
The Children's Hospital of Philadelphia, 7N ARC  
3516 Civic Center Boulevard  
Philadelphia, PA 19104  
FAX: 215-590-5454  
E-mail: [levyr@email.chop.edu](mailto:levyr@email.chop.edu)  
*Equal Opportunity Employer; Minorities/Females/Disabled/Veterans.*

## POSITIONS OPEN

### RESEARCH TAXONOMIST

Brooklyn Botanic Garden seeks a **PLANT TAXONOMIST** with an interest in floristics to join the team writing the New York Metropolitan Flora (see website: [www.bbg.org/research/nymf/index.html](http://www.bbg.org/research/nymf/index.html)). Duties include writing vascular plant descriptions and keys in DELTA language format, performing taxonomic research related to flora, and pursuing other systematics research interests using traditional and/or modern methods. On-site facilities include herbarium of local flora with over 250,000 accessions; 57,000 volume research library; and laboratory equipped for anatomical and molecular techniques. Opportunity to teach at high school and graduate levels. Ph.D. or Master's (with experience) in plant taxonomy. Demonstrated ability to write descriptions and keys required. Field experience, knowledge of Northeastern flora, GIS, and database systems preferred. Ability to work independently and as team member for the research staff. Send curriculum vitae, a letter with statement of research interests and goals, and names and addresses of three references to: **Human Resources, Brooklyn Botanic Garden, 1000 Washington Avenue, Brooklyn, NY 11225.** *Equal Opportunity Employer.*

### POSTDOCTORAL POSITION MICROBIAL TOXINS AND PATHOGENESIS

The University of Virginia Health System, Department of Internal Medicine, Division of Clinical Pharmacology, in Charlottesville, Virginia, is recruiting for a **RESEARCH ASSOCIATE**. A position is available immediately for a Postdoctoral Fellow to work on an exciting and long-standing project investigating adenylate cyclase (AC) toxin from *Bordetella pertussis* and its structure and role in the pathogenesis of pertussis. Required qualification is M.D. and/or Ph.D. The areas of focus include molecular biology, protein chemistry, and cell biology of AC toxin in its interaction with and entry into host cells. Interest and experience in electrophysiology, NMR spectroscopy, or EM/confocal microscopy is desirable. Salary will be commensurate with training/experience and level of expertise. Send résumé to: **Dr. Erik L. Hewlett, Department of Internal Medicine, P.O. Box 800419, University of Virginia Health System, Charlottesville, VA 22908-0735.** E-mail: [eh2v@virginia.edu](mailto:eh2v@virginia.edu). Position open until filled. *The University of Virginia is an Equal Opportunity/Affirmative Action Employer. Females and minorities are encouraged to apply.*

### POSTDOCTORAL POSITIONS IN NEURONAL STEM CELLS

Two Postdoctoral positions are immediately available to work on growth and differentiation of mammalian neuronal stem cells. For examples of research projects, see *Nature Medicine* 6: 826-831, 2000; *Nucl. Acids Res.* 28:3403-3410, 2000. Excellent experience in molecular or developmental biology is required. Please send curriculum vitae and names and addresses of three references to: **Sadhan Majumder, Department of Molecular Genetics, University of Texas M.D. Anderson Cancer Center, 1515 Holcombe Boulevard, Box 11, Houston, TX 77030.** Telephone: 713-792-8920; FAX: 713-792-6054; e-mail: [MAJUMDER@MDANDERSON.ORG](mailto:MAJUMDER@MDANDERSON.ORG). *MDACC is an Equal Opportunity Employer and a smoke-free environment. Women and minority candidates are encouraged to apply.*

**POSTDOCTORAL POSITION** available in molecular oncology to study genes related to lymphoma, uterine sarcomas, and the NOTCH signaling pathway. Applicants should have a strong background in molecular biology including work with both nucleic acids and proteins. For more information, see website: [www.hms.harvard.edu/dms/bbs/fac/sklar.html](http://www.hms.harvard.edu/dms/bbs/fac/sklar.html). Interested individuals should send curriculum vitae and a list of three references to: **Dr. Jeffrey Sklar, Department of Pathology, Brigham and Women's Hospital/Harvard Medical School, 75 Francis Street, Boston, MA 02115.** E-mail: [jsklar@rics.bwh.harvard.edu](mailto:jsklar@rics.bwh.harvard.edu).

PRICEWATERHOUSECOOPERS 

in association with the

ECPI

European Centre for Pharmaceutical Information  
A Division of Terrapinn Limited

# pharma directions

## where research and development meet

EUROPE 2001

Palau de Congressos de Catalunya  
Barcelona 27-29 June 2001

[www.pharma-rd.net](http://www.pharma-rd.net)

Silver Sponsors



**Pharma R&D Directions Europe 2001** incorporating **e-R&D** is THE annual event for top level R&D strategists.

Featuring two high level conference programmes and over 50 top flight speakers, it is an event that no forward-looking senior R&D executive can afford to miss.

Make the journey to Barcelona in June to hear from:

• Roche • GlaxoSmithKline • Eli Lilly & Co • Pharmacia • Dupont Pharmaceuticals • Bristol-Myers Squibb • AstraZeneca • Pfizer • Boehringer Ingelheim • Schering A.G. • Bayer • Novartis • Beaufour Ipsen

To view the full conference agendas and register online, please visit [www.pharma-rd.net](http://www.pharma-rd.net). Alternatively, please e-mail [myriam.girard@terrapinn.com](mailto:myriam.girard@terrapinn.com) or call +44 (0)20 7827 5977

incorporating the launch of  
**e-R&D 2001**  
Web-enabled clinical research  
• Modelling • Simulation • Automation

MEETINGS and ANNOUNCEMENTS

focus on  
CAREERS:

## Informatics

A Science Advertising Supplement

Issue Date ..... 1 June 2001  
Reserve space by ..... 15 May 2001

### Benefits for All Advertisers

Reach 150,026<sup>1</sup> paid subscribers & over 800,000<sup>2</sup> readers every week!

**Bonus Distribution to the Bioinformatics meeting**  
18-22 June, San Francisco, CA

- 1 Science, June 2000, BPA Publisher's Statement
- 2 Science Harvey Research Readership surveys 14 January 2000, 4 February 2000, 4 June 1999 (Japan) as applied to Science-June 2000 BPA Publisher's Statement, publisher's own data.

For information, contact Daryl Anderson  
Tel ..... 202-326-6543  
Fax ..... 202-289-6742  
E-mail ..... [danderso@aaas.org](mailto:danderso@aaas.org)

**Science**  
[www.sciencecareers.org](http://www.sciencecareers.org)

**VCU**

Virginia Commonwealth University

### Faculty Positions Functional Genomics Medical College of Virginia Campus of Virginia Commonwealth University

Applications are invited for TWO faculty positions in a new multidisciplinary program devoted to functional genomic approaches to the study of cancer and cancer-related processes. Academic rank commensurate with experience. Appointments will be made as Assistant or Associate Professor in the Department of Pathology, with membership in the Massey Cancer Center. Joint appointments in human genetics or biochemistry are available for qualified individuals.

We seek applicants with a PhD in molecular genetics, biochemistry, or related disciplines, who have the ability to lead an independent research program and the desire to collaborate with investigators from multiple academic departments in the application of new genomic and proteomic technologies for study of human cancer and cancer-related processes. Applicants with experience in genomic and/or proteomic technologies are strongly preferred.

Submit CV, a brief description of research experience and future plans, and the names of three references to:

Joy Ware, PhD  
Professor of Pathology  
Chair, Functional Genomics Search Committee  
c/o Robert Ferguson  
Box 980662  
Richmond, VA 23298-0662

VCU is an Equal Opportunity/Affirmative Action Employer. Women, minorities and persons with disabilities are encouraged to apply.

## POSITIONS OPEN

**POSTDOCTORAL FELLOWSHIP/RESEARCH ASSOCIATE POSITIONS** are available in Renal-Electrolyte Division of the University of Pittsburgh. Our research efforts are focused on various aspects of ion transport and epithelial cell biology. Current projects include studies of the structure, gating, assembly, intracellular trafficking, and regulation of sodium, potassium, and chloride channels and the regulation of apical protein delivery and endocytosis in polarized epithelial cells. Studies utilize established cell lines, heterologous expression systems, and transgenic/knockout mice. Academic appointment and salary are dependent upon qualifications and experience. Please send curriculum vitae and three letters of reference to: **Thomas Kleyman, M.D., Professor and Chief, Renal-Electrolyte Division, University of Pittsburgh, A919 Scaife Hall, 3550 Terrace Street, Pittsburgh, PA 15261. E-mail: kleyman@pitt.edu.** *The University of Pittsburgh is an Affirmative Action/Equal Opportunity Employer.*

### POSTDOCTORAL POSITION Eunice Kennedy Shriver Center for Mental Retardation

A position is available immediately to study regulation of the mammalian nervous system at the molecular level. The research will focus on isolation of factors which regulate alternative splicing on neuronal-specific genes. Candidates should have a Ph.D. with experience in molecular and cellular biology. Knowledge of protein purification and antibody techniques is desirable. The Shriver Center is an affiliate of the University of Massachusetts Medical School. The Department of Biomedical Sciences provides extensive core facilities and many opportunities for scientific interactions. Send curriculum vitae and the names/telephone numbers/e-mail addresses of three references to: **Athena Andreadis, Ph.D., Shriver Center, 200 Trapelo Road, Waltham, MA 02452. E-mail: Athena.Andreadis@umassmed.edu.** *The Shriver is an Affirmative Action/Equal Opportunity Employer.*

### THE BUCK INSTITUTE FOR AGE RESEARCH

Two **POSTDOCTORAL POSITIONS** are available in the laboratory of **Dr. Mike Ellerby**. The first involves the use of phage display to discover novel anti-cancer drugs (e.g., *Nature Medicine* 5:1032-1038, 1999). Skills preferred include phage display, cDNA cloning, protein expression and purification, and RT-PCR. The second involves the use of *C. elegans* to study aging and neurological disease. Skills preferred include immunofluorescence analysis, gel electrophoresis, RT-PCR, microinjection, and a general knowledge of *C. elegans* biology. Send curriculum vitae to e-mail: **hr@buckinstitute.org**; FAX: **415-899-1810**; website: **www.buckinstitute.org**. Job Code: ME/PD/01.

**POSTDOCTORAL POSITIONS** are available to study cancer genetics or the molecular basis for primate evolution. Both lines of research use state-of-the-art genomic technologies including DNA microarray-based mutation detection and gene expression analysis. Interested persons with a Ph.D. and/or M.D. degree and a strong background in molecular biology, biochemistry, and/or evolutionary biology are encouraged to apply. Please send curriculum vitae and addresses of three references to: **Dr. Joseph G. Hacia, University of Southern California Keck School of Medicine, Institute for Genetic Medicine, 2250 Alcazar Street, IGM 240, Los Angeles, CA 90089-9075. FAX: 323-442-2764; e-mail: hacia@hsc.usc.edu.**

Immediate position available to **POSTDOCTORAL FELLOW** to study regulation of LDL and scavenger receptor gene expression in activated macrophages. Experience in molecular biology, including DNA-protein interactions, is essential. Experience in cell culture is also desirable. Candidate will join a research group investigating inflammation and atherosclerosis. Please send curriculum vitae and three references to: **Maria Lopes-Virella, M.D., Ph.D., Ralph H. Johnson VA Medical Center, 109 Bee Street, Charleston, SC 29403. FAX: 843-876-5133; e-mail: willialb@muscc.edu.**

## POSITIONS OPEN

### POSTDOCTORAL POSITION

**BACTERIAL PATHOGENESIS:** A Postdoctoral position is available to study the syphilis spirochete, *Treponema pallidum*. The research will exploit molecular and cell biology approaches to address issues in treponemal membrane biology, chemotaxis, and other aspects of *T. pallidum*'s parasitic strategy. The position offers the opportunity to carry out research in an attractive, dynamic research environment with outstanding resources, under the codirection of **Drs. Michael V. Norgard and Dr. Kayla E. Hagman**. Candidates should have evidence of a strong background in prokaryotic molecular biology; experience in bacterial membrane biology and/or chemotaxis also is desirable but not required. Please provide curriculum vitae and the names and addresses of three references to: **Dr. Michael V. Norgard, Chairman, Department of Microbiology, University of Texas Southwestern Medical Center, 6000 Harry Hines Boulevard, Dallas, TX 75390-9048. Telephone: 214-648-5900; FAX: 214-648-5905; e-mail: michael.norgard@utsouthwestern.edu.** *UT Southwestern Medical Center is an Equal Opportunity Employer.*

### POSTDOCTORAL POSITIONS AVAILABLE Department of Neurobiology and Behavior Neurodegenerative Diseases

NIH-funded Postdoctoral positions are available immediately for two to three years in the Department of Neurobiology and Behavior to investigate the role of calcium signaling in Alzheimer's disease or to participate in our efforts to model neurodegenerative diseases in transgenic mice. A Ph.D. in neurobiology or related area is required. Applicants should submit curriculum vitae, summary of research experience and interests, reprints, and the names and addresses of three references to: **Dr. Frank LaFerla, Department of Neurobiology and Behavior, 1109 GNRF, Irvine, CA 92697-4550. E-mail: laferla@uci.edu; FAX: 949-824-7356.** Minimum starting salary will range from \$26,800 to \$30,888. Closing date: June 15, 2001. *The University of California Irvine is an Equal Opportunity Employer committed to excellence through diversity. Candidates must be U.S. citizens, noncitizen nationals of the United States, or have been lawfully admitted for permanent residence at the time of the appointment.*

### NIH-FUNDED FELLOWSHIPS

The University of Nebraska Medical Center, Department of Pathology and Microbiology, has NIH-funded **POSTDOCTORAL** and **PREDOC-TORAL FELLOWSHIPS** available to investigate the cellular and molecular basis of proinflammatory cytokines and T cell cytokines in the control of viral replication in hepatocytes. Research projects also include mechanistic studies on the mechanisms of ethanol as a cofactor or mediator of hepatotoxicity. Applicants should have a strong background in biochemistry and cell biology. Please send curriculum vitae to: **Thomas R. Jerrells, Ph.D., University of Nebraska Medical Center, 983135 Nebraska Medical Center, Omaha, NE 68198-3135.**

*University of Nebraska Medical Center is an Equal Opportunity/Affirmative Action Employer. Minorities and women are encouraged to apply.*

### POSTDOCTORAL POSITION MOLECULAR ENDOCRINOLOGY AND RECEPTOR DISEASE

A position is available immediately to study the *in vivo* actions of thyroid hormone receptors using receptor knockout and mutation knock-in mouse models of human receptor diseases. DNA microarrays will be used to discover novel, tissue-specific thyroid hormone responsive genes. Candidates must have a Ph.D. and/or M.D. and have a strong background in cell and molecular biology. Contact: **Dr. Sheue-yann Cheng, Chief, Gene Regulation Section, LMB, National Cancer Institute, Building 37, Room 2D-24, 37 Convent Drive, MSC 4255, Bethesda, MD. E-mail: sycheng@helix.nih.gov; Telephone: 301-496-4280.** *NIH is an Equal Opportunity Employer.*

## POSITIONS OPEN

### POSTDOCTORAL POSITIONS ION CHANNEL ELECTROPHYSIOLOGY

A position is available to study the role of sperm ion channels in mammalian fertilization. Specific projects will focus on the regulation of voltage-sensitive Ca channels (*PNAS* 96:6757, 1999) and of store-operated trp channels (*Mol. Biol. Cell* 11:1571, 2000; *Nature Cell Biol.*, May 2001). Candidates must have prior experience with electrophysiology. Send recent curriculum vitae and three letters of reference to: **Harvey M. Florman, Department of Cell Biology, University of Massachusetts Medical School, Worcester, MA 01655. E-mail: harvey.florman@umassmed.edu.**

**POSTDOCTORAL POSITIONS** available for research on several exciting projects related to the molecular mechanism of retroviral DNA integration and the role of host cell functions. A strong background in cellular biology and/or biochemistry is most appropriate. *Openings are limited to U.S. citizens or noncitizens currently studying in the United States or Europe.* Send a statement of interest, curriculum vitae, and direct three letters of recommendation to: **Dr. A. M. Skalka, Fox Chase Cancer Center, 7701 Burholme Avenue, Philadelphia, PA 19111. E-mail: AM\_Skalka@fccc.edu.** *Equal Opportunity Employer.*

**POSTDOCTORAL POSITION** available to study biochemistry of recombination/repair in mammalian cells. We are interested in the mechanisms of immunoglobulin switch recombination and somatic hypermutation in normal cells and how these processes contribute to genomic instability. To apply, please send curriculum vitae; statement of research experience and interests; and names and e-mail addresses of three references to: **Dr. Nancy Maizels, Departments of Immunology and Biochemistry, University of Washington Medical School, Seattle, WA 98195-7650. E-mail: maizels@u.washington.edu.**

**POSTDOCTORAL POSITION** is available immediately to study calcium sparks and spikes in cardiac excitation-contraction coupling using patch clamp and confocal fluorescence imaging techniques. Experience in electrophysiology is required; immunohistochemistry and/or molecular biology in cardiac myocytes preferred. Send curriculum vitae and three references to: **James S. K. Sham, Ph.D., Division of Pulmonary and Critical Care Medicine, Johns Hopkins Asthma and Allergy Center, 5501 Hopkins Bayview Circle, Baltimore, MD 21224. FAX: 410-550-2612; e-mail: jsks@mail.jhmi.edu.**

**POSTDOCTORAL POSITION** is open to study translation control mechanisms in apoptotic cells, cap-independent translation, and expression of apoptosis regulatory proteins. Must have Ph.D. and demonstrated ability and record of publication in molecular biology/biochemistry. Send curriculum vitae and names of three references to: **Dr. Richard E. Lloyd, Department of Molecular Virology and Microbiology, Baylor College of Medicine, One Baylor Plaza, 739E, Houston, TX 77030. E-mail: rlloyd@bcm.tmc.edu.**

**POSTDOCTORAL FELLOWSHIP** available to study cellular mechanisms of impaired learning and memory through the age spectrum. Studies involve extracellular and patch clamp techniques in hippocampal slices models, including transgenic mice, to study role of agents such as beta amyloid in cognitive disorders including Down syndrome and Alzheimer's disease. Send curriculum vitae and two letters of recommendation to: **Dr. Barbara Trommer, Evanston Hospital, 2650 Ridge Avenue, Evanston, IL 60201. E-mail: btrommer@northwestern.edu.**

**POSTDOCTORAL POSITION** to study skeletal and cardiac muscle transcriptional regulation and intracellular signaling. E-mail your curriculum vitae to: **Jeffery D. Molkentin, Ph.D., Children's Hospital, University of Cincinnati, Cincinnati, OH U.S.A. E-mail: jeff.molkentin@chmcc.org; FAX: 513-636-5958.** *Children's Hospital is an Equal Opportunity Institution.*

## POSITIONS OPEN

### POSTDOCTORAL FELLOWSHIP Genetic Bone Disorder and Gene Therapy by Ribozyme

The molecular biology of the dominant genetic bone disorder *osteogenesis imperfecta* (OI) is being studied with a major emphasis on gene therapy by suppression of mutant mRNA. We have developed a knock-in mouse for OI and are now developing a transgenic mouse expressing mutation-specific ribozyme. Project involves development of gene therapy at *in vitro*, tissue culture, and murine levels. Includes development of expression constructs and assessment of *in vivo* colocalization and efficacy. Strong molecular biology background and experience with murine models preferred.

Candidates should have Ph.D. and/or M.D./Ph.D. degree and less than five years of postdoctoral experience. U.S. citizenship not required. Send curriculum vitae and three references to: Joan C. Marini, M.D., Ph.D., Chief, Heritable Disorder Branch, NICHD, NIH, Building 10, Room 9S241, 10 Center Drive, MSC-1830, Bethesda, MD 20892-1830. Telephone: 301-496-6683; FAX: 301-402-0234. NIH is an Equal Opportunity Employer.

### POSTDOCTORAL POSITIONS Genomics and Proteomics Applied to Cell Signaling

University of Massachusetts Medical School

Postdoctoral positions are available at highly competitive stipends and benefits for research in insulin receptor signaling and membrane trafficking. Research will be carried out in modern facilities and in an exciting scientific environment that includes outstanding core laboratories in the fields of microarrays, proteomics, gene ablation techniques, and digital imaging microscopy (fixed and live cells). This postdoctoral program includes the availability of a track leading to research ASSISTANT PROFESSOR POSITIONS in the same department. Candidates with Ph.D. or M.D. degrees may apply. Applicants should send curriculum vitae and names and addresses of three references to: Dr. Michael P. Czech, Program in Molecular Medicine, University of Massachusetts Medical School, 373 Plantation Street, Worcester, MA 01605. An Equal Opportunity/Affirmative Action Employer.

### POSTDOCTORAL FELLOWSHIPS

Two Postdoctoral positions are immediately available to investigate the mechanisms of translesion replication and mutagenesis. One position is for work with yeast and humans, with emphasis on DNA polymerase zeta and Revlp (see Nelson et al., *Science* 272: 1646, 1996; Nelson et al., *Nature* 382:729, 1996; Gibbs et al., *Proc. Natl. Acad. Sci. U.S.A.* 95:6876, 1998; Gibbs et al., *Proc. Natl. Acad. Sci. U.S.A.* 97: 4186, 2000). The other is for work on *E. coli* (see Vanderwiele et al., *Proc. Natl. Acad. Sci. U.S.A.* 95: 15519, 1998; O'Grady et al., *J. Bact.* 182:2285). Further information can be obtained by e-mailing to the address below. Applicants should send curriculum vitae and the names, e-mail addresses, and telephone numbers of three references to: Christopher Lawrence, Department of Biochemistry and Biophysics, University of Rochester Medical Center, Rochester, NY 14642 U.S.A. Telephone: 716-275-2948; FAX: 716-275-6007; e-mail: christopher\_lawrence@urmc.rochester.edu.

**POSTDOCTORAL POSITION** available immediately to do structural and functional studies of two isoforms of nucleolar RNA helicase II/Gu. This enzyme unwinds a double-strand RNA, introduces secondary structure to a single-strand RNA, and hydrolyzes ATP. We are interested in determining the functions of the two isoforms in ribosomal RNA synthesis. Applicants must have strong molecular biology background. Experience in RNA and protein biochemistry is preferred. Send curriculum vitae and names of three references to: Dr. Ben Valdez, Department of Pharmacology, Baylor College of Medicine, Houston, TX 77030. E-mail: bvaldez@bcm.tmc.edu. Baylor College of Medicine is an Equal Opportunity/Affirmative Action Employer.

## POSITIONS OPEN

**POSTDOCTORAL POSITION** in immunology. Postdoctoral position available immediately for a qualified individual to study anti-DNA antibodies and *lupus nephritis*. The candidate should have a strong background in immunology and experience with cellular and molecular techniques. Interested applicants should send curriculum vitae, statement of research interests, copies of recent publications, and the telephone numbers or e-mail addresses of three references to: Chaim Putterman, M.D., Division of Rheumatology, Jack and Pearl Resnick Campus, Albert Einstein College of Medicine, 1300 Morris Park Avenue, Bronx, NY 10461. E-mail: putterma@aecom.yu.edu. Equal Opportunity Employer.

### RESEARCH ASSISTANT PROFESSOR AND POSTDOCTORAL FELLOWSHIP Lung and Vascular Biology University of Illinois at Chicago College of Medicine Department of Pharmacology

Position (NIH-funded program project grant) of Research Assistant Professor or Postdoctoral Research Associate is available to study novel protein interactions in endothelial cells using the yeast two-hybrid approach. The successful candidate will have Ph.D. or M.D., research expertise in molecular biology and/or protein biochemistry, a credible publication record, and potential for independent funding and tenure-track position. For fullest consideration, qualified candidates should submit their curriculum vitae and a list of three references by July 1, 2001, to: Tatyana Voyno-Yasenetskaya (RAP/PPG), Department of Pharmacology, University of Illinois at Chicago, 835 South Wolcott Avenue, Room E403 (M/C 868), Chicago, IL 60612. E-mail: tvy@uic.edu. The University of Illinois is an Affirmative Action/Equal Opportunity Employer.

**POSTDOCTORAL POSITIONS** are available to study mechanisms mediating activity-dependent gene expression in mammalian skeletal muscle. Candidates must have received their Ph.D. within the past two years and have demonstrated expertise in molecular biology/biochemistry. Send résumé and references to: Dr. Daniel Goldman, University of Michigan, Mental Health Research Institute, 205 Zina Pitcher Place, Ann Arbor, MI 48109. FAX: 734-647-4130. E-mail: neuroman@umich.edu.

## ANNOUNCEMENTS

### THE TRINITY SEMINAR 2001-2002

The Trinity College Center for Collaborative Teaching and Research announces the continuation of the Trinity Seminars. We invite nominations, including self-nominations, of recent advanced-degree recipients in any discipline to deliver a paper or appropriate performance presentation and spend two days in discussions with colleagues and students on campus in Hartford, Connecticut, during the academic year. We seek nominees doing especially exciting, innovative work; interested in engaging an interdisciplinary audience; and able to convey to us an informed access to recent issues in their disciplines. Travel expenses and honorarium will be provided. Submit nominee's curriculum vitae, brief description of current research, and one-page abstract of proposed presentation to: Michael Niemann, Director, Trinity College Center for Collaborative Teaching and Research, Trinity College, Hartford, CT 06106. E-mail: michael.niemann@trincoll.edu. Selections commence April 15, 2001.

### BIOINFORMATICS TOOLS FOR COMPARATIVE GENOMICS LBNL/NHLBI: June 11-15, 2001

Designed for Postdoctorals, Medical, and especially Cardiovascular Researchers interested in applying bioinformatics tools to their research. Techniques include database searches, annotation, microarray analysis. No tuition. Room and board provided. For further information, call Telephone: 510-486-4162; e-mail: pgaworkshop@lbl.gov. Register before April 20, 2001; website: pga.lbl.gov/workshop.

## GLOBAL OPPORTUNITIES

**ASSISTANT PROFESSOR**, organic chemistry/molecular biology/risk assessment for pesticide toxicology. The Graduate School of Science and Technology of Chiba University, Japan, invites applications for a position available from October 1, 2001, at the ASSISTANT PROFESSOR level in pesticide toxicology. A candidate should hold a Ph.D. in related disciplines and have a good command of English. Postdoctoral training desirable. The candidate is expected to participate in collaboration with a Professor in teaching and research in either molecular mechanism of insecticide resistance, pesticide dynamics in the environment, or ecological and human risk assessment of pesticides. The position provides full benefit as Japanese government employee except it is a three-to-five-year appointment. Send curriculum vitae, statement of research interest, and three letters of recommendation to: Dr. Naoki Motoyama, Laboratory of Pesticide Toxicology, Faculty of Horticulture, Chiba University, Matsudo, Chiba-ken 271-8510, Japan. E-mail: motoyama@midori.h.chiba-u.ac.jp. Telephone/FAX: +81-47-308-8830.

## MARKETPLACE

### The World of Science Online

- Science Electronic Marketplace
- Science's Next Wave
- Science NOW
- Science Careers

Science

www.scienceonline.org

### Custom BAC Library Construction

BAC End Sequencing \$37  
Inexpensive DNA Sequencing  
Custom cDNA Libraries  
DNA Subcloning  
Protein Expression  
Amplicon Express  
Toll Free 1-877-332-8080  
Phone 1-509-332-8080  
www.genomex.com  
koford@genomex.com

Circle No. 29 on Readers' Service Card

### BAC End Sequencing! Bio S&T Inc.

High accuracy  
Only TINY amount of  
DNA required!  
Custom BAC Libraries  
Pre-made BAC Libraries avail.

New: HandyGun™ T4 Ligase Ready to use! Dry! Stable!  
Web: www.biost.com  
Fax: 514-633-6011  
**888-368-8368**

Circle No. 35 on Readers' Service Card

### Be First - Go Custom!

### Custom Peptides & Antibodies

- Leading manufacturer of phosphospecific antibodies
- Unsurpassed technical support

800-435-2080

On-line: peptide@biosource.com

biosource.com

Circle No. 30 on Readers' Service Card

MARKETPLACE



**MORE PRODUCTS  
ON PREVIOUS PAGE**

**NEW  
LOW  
PRICES**

**VOLUME DNA SEQUENCING  
CALL (800) 720-GENE**

- HIGH-THROUGHPUT  
GENOME SEQUENCING
- SHOTGUN SEQUENCING  
EXPERTISE
- NO ROYALTIES  
OR LICENSE FEES
- LARGE & SMALL  
PROJECTS ACCEPTED

**seqwright** (713) 528-4363 PHONE  
(713) 528-6232 FAX  
www.seqwright.com  
email: seq@blkbbox.com

Circle No. 33 on Readers' Service Card

# Customized Project Support

CBI is your source for complete R&D project support, including all peptide, protein, DNA and molecular biological technologies. For a free consultation or a quote, call 1-800-735-9224 or email info@cbi-biotech.com.

**COMMONWEALTH  
BIOTECHNOLOGIES, INC.**  
*From Concept to Clinic*

601 Biotech Drive · Richmond, VA 23235  
1-800-735-9224 · www.cbi-biotech.com

Circle No. 47 on Readers' Service Card

**Widely  
Recognized  
Original &  
Guaranteed**

## KlenTaqI

**8¢/u**  
Truncated  
Taq DNA  
Polymerase  
Withstand 99°C

US Pat # 5,436,149  
Call: **Ab Peptides** 1-800-383-3362  
Fax: 314-968-8988 [www.abpeps.com](http://www.abpeps.com)

Circle No. 34 on Readers' Service Card

## ANTISENSE

- Next Generation™ antisense compounds
- Oligofectin™ cellular deliver compounds
- Detailed protocols
- High throughput phenotypic screening

**Sequitur, Inc.**  
(508)650-1459 <http://www.oligo.com>

Circle No. 45 on Readers' Service Card

**Page Purified Custom Oligos**  
If your research requires oligos that are longer than simple primers, IDT's PAGE pure custom oligos are the right choice.

**IDT** [www.idtdna.com](http://www.idtdna.com)  
1-800-328-2661

Circle No. 39 on Readers' Service Card

MARKETPLACE

## Custom Peptides & Antibodies

**Best Service & Price! Compare and Save!**

**Alpha Diagnostic (800) 786-5777**

Fax (210) 561-9544; info@4adi.com

Web site: <http://www.4adi.com>

Circle No. 36 on Readers' Service Card

## QUALITY DNA SYNTHESIS

**MALDI-TOF Mass Spectrometry Quality Control**

Fluorescent Dyes & Other Modifications  
Gene Construction & Sequencing Services  
Custom RNA Oligos & Antisense DNA Oligos  
Custom Primers for PCR & Sequencing  
Long Oligos (up to 150-mers)  
**Competitive Pricing**

**MIDLAND**

The Midland Certified Reagent Company

1-800-247-8766 • FAX: 1-800-359-5789

[www.mcrc.com](http://www.mcrc.com) • email: [mcrc@oligos.com](mailto:mcrc@oligos.com)

Circle No. 42 on Readers' Service Card

## 3 O.D. Select Oligos

**Just \$0.60/base\***

Order through our Web site and we'll ship your 3 O.D. Select oligos in just 24-48 hours. Every oligo is QC'd by PAGE analysis, and each batch is performance-tested by mass spec.

\*Desalted only. Oligos must be 10 to 35 bases in length. No modifications or additional purification. Web orders only. Offer valid in U.S. only.

**SIGMA**  
GENOSYS

North America: 1-877-710-1504 • email: [gordentry@sigal.com](mailto:gordentry@sigal.com)

Circle No. 44 on Readers' Service Card

## CUSTOM PEPTIDES

**QUICK QUOTE**  
MOST QUOTES IN AN HOUR

**FAST DELIVERY**  
2 WEEKS FOR MOST ORDERS  
100% SATISFACTION GUARANTEED

**NEW ENGLAND  
PEPTIDE, INC.**  
Tel: 888-343-5974  
Fax: 978-343-5940 [www.newenglandpeptide.com](http://www.newenglandpeptide.com)

Circle No. 38 on Readers' Service Card

## MERLIN® Custom Services

### Plasmid Purification

Starting at \$59/1 mg\*  
Endotoxin Removal, Cloning,  
Research or cGMP Grade  
\*minimum of 5 mgs

**Q-BIOgene**  
1-800-4-PLASMID • [www.qbiogene.com](http://www.qbiogene.com)

Circle No. 37 on Readers' Service Card

MARKETPLACE

BIO•SYNTHESIS, INC.

## Peptides, Oligos Antibodies

800-227-0627 [www.biosyn.com](http://www.biosyn.com)

Circle No. 40 on Readers' Service Card

## Quality Peptides & Antisera

*Friendly, Personal Service*  
[www.genosys.com](http://www.genosys.com)

### Custom Peptide Synthesis

- sequence analysis
- IG, >70%, >80%, >95% purity
- scales from 2 mg-1 g
- synthesis up to 120 residues
- variety of modifications available
- mass spec & HPLC on every peptide
- satisfaction guaranteed

### Polyclonal Antisera Service

- antigen design assistance
- synthesis, conjugation and sera collection
- flexible protocol

**SIGMA**  
GENOSYS

North America  
1-877-710-1502  
[ginformation@sigal.com](mailto:ginformation@sigal.com)

Europe  
(+44) (0) 1223 839000  
[info@sigma-genosys.co.uk](mailto:info@sigma-genosys.co.uk)

Circle No. 43 on Readers' Service Card

DNA	PEPTIDES
Free Set-up and Desalting	Call and Compare
<b>Gene Synthesis, Site Mutagenesis, Protein Expression and more</b>	
<b>COMPARE AND SAVE</b>	
<b>DNA Sequencing:</b> as low as \$15 per run	
<b>Custom Anti-peptide Antibody</b> (including peptide synthesis) <b>\$850</b>	
<b>GENEMED SYNTHESIS</b> 800.344.5337 Fax: 650.952.9540 Web Site: <a href="http://www.genemedsyn.com">www.genemedsyn.com</a>	

Circle No. 46 on Readers' Service Card

**Antibodies That Answer**  
Great Zymed Performance, Dependability, Support.  
Including The Best Antibody To...

## Phospho p27

**ZYMED LABORATORIES, INC.** [www.zymed.com](http://www.zymed.com)  
Advancing Science & Medicine Through Immunotechnology  
1-800-874-4494

Circle No. 28 on Readers' Service Card

## Custom Antibody Production

**1-800-533-4363**

**ResGen™**  
Invitrogen Corporation

Circle No. 31 on Readers' Service Card



# How to Make the Best RNA for RT-PCR

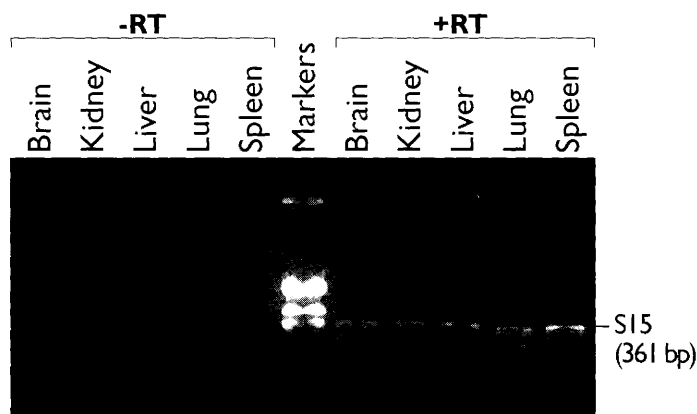
Isolate RNA that is free of contaminating DNA in 45 minutes

Designed for stringent RT-PCR applications

Hazard-free, non-phenol based RNA Isolation

Innovative DNA-free™ DNase removal reagent

THE FIRST ISOLATION KIT SPECIFICALLY DESIGNED TO ISOLATE DNA-FREE RNA



RNAqueous™-4PCR produces DNA-free RNA for RT-PCR. Total RNA samples (1mg) from the indicated tissues were used as template for reverse transcription reactions either with M-MLV RT enzyme (right panel) or without enzyme (left panel). The lack of product in the no-RT control lanes illustrates the absence of contaminating genomic DNA.

RT-PCR applications demand high purity RNA with no trace of contaminating DNA. RNAqueous™-4PCR provides the best combination of performance and convenience for this demanding application.

Commonly used 'on-the-filter' DNase digestion can fail to remove all contaminating DNA. Traditional 'in-solution' digestion is more efficient but requires time-consuming cleanup steps that are likely to compromise the yield and quality of your RNA. RNAqueous-4 PCR combines phenol-free, solid phase RNA extraction with an optimized DNase digestion step and Ambion's DNA-free technology for safe and instant removal of DNase. With RNAqueous-4PCR, you get only ultrapure RNA, ready for RT-PCR, with no phenol extraction, heat inactivation, or alcohol precipitation.



**iBlink™ Info**  
PRODUCT INFO  
IN A BLINK!

To instantly obtain detailed technical information about the RNAqueous-4PCR Kit send an email to [RNA4PCR@ambion.com](mailto:RNA4PCR@ambion.com).

U.S. (800)888-8804

Canada (800)445-1161

For a complete list of distributors visit <http://www.ambion.com>

**Ambion®**

THE RNA COMPANY®

Circle No. 27 on Readers' Service Card

AMBION, INC. • 2130 WOODWARD ST. • SUITE 200 • AUSTIN, TX 78744-1832  
tel(512)651-0200 • fax(512)651-0201 • email: [moinfo@ambion.com](mailto:moinfo@ambion.com) • [www.ambion.com](http://www.ambion.com)



deafness gene identified:  
discovery **Applied**

**AB Applied Biosystems**  
Data. Decision. Discovery.

Childhood deafness is one of the most frequent hereditary defects. Recently, teams of scientists have focused on a gene called CX26, where mutations have been linked to hearing impairment. To identify and characterize how genes like CX26 are involved in intercellular communication, life scientists use DNA linkage and sequencing systems from Applied Biosystems.

Meet the new Applied Biosystems. As a \$1.4 billion company serving 40,000 scientists in over 150 countries, we bring more than just the broadest range of technologies to genetics research, protein analysis, high-throughput screening, and bioinformatics challenges. We also bring hope.

[www.appliedbiosystems.com](http://www.appliedbiosystems.com)

Applera Corporation is committed to providing the world's leading technology and information for life scientists. Applera Corporation consists of the Applied Biosystems and Celeris Genomics businesses. Applied Biosystems is a registered trademark and AB (Design) is a trademark of Applera Corporation or its subsidiaries in the US and certain other countries. ©2000 Applied Biosystems. All rights reserved.

Circle No. 4 on Readers' Service Card