

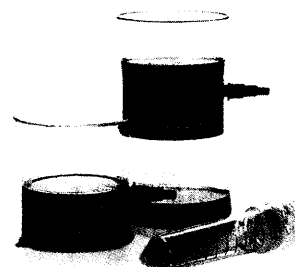


MILLIPORE

purely particular

Without the best filter, your filtration device
is just another piece of plastic.

Of all of the sterile filtration devices on the market, only Stericup™ filters are produced by the leader in membrane technology. And let's face it, you're buying the cup for the filter, not the plastic. Millipore offers membrane choices to fit your application, from MCE for sterilization of aqueous solutions and Durapore® PVDF membrane for low protein binding applications. And for applications that demand the fastest flow and lowest binding, our new Millipore Express™ PES 0.22 µm membranes offer unbeatable filtering speed and reliable retention. Also available in 0.1 µm for mycoplasma removal. Stable, stackable, simple-to-use Stericup filters offer high value and high performance in the original easy-to-grip design. Demand the best, specify Stericup filters from Millipore. Visit www.millipore.com or call 800-MILLIPORE in the U.S. In Europe fax +33-3 88 38 91 95.



©2000 Millipore Corporation or an affiliated company. Durapore and Millipore are registered trademarks of Millipore Corporation or an affiliated company. Millipore Express, Stericup, and the concave flask design are trademarks of Millipore Corporation or an affiliated company.

Circle No. 14 on Readers' Service Card

NEW PRODUCTS

HYDRO GERMINATION SYSTEM

The *Sandra* Hydro Germination System is a novel and extensively studied plant germination system that allows researchers the ability to control and adjust soil moisture level

over an extended period of time and achieve 100% germination in most settings. The system is supplied with clear, graduated germination tubes for monitoring rooting medium. *Sandra* is lightweight and can be easily transported and set up in grow chambers or greenhouses. It is suitable for studies requiring total monitoring, including nutrition, rooting medium, moisture, infection, temperature, and lighting studies.

Geno Technology

For more information call 314-645-2050 or **circle 144** on the Reader Service Card

NYLON MEMBRANE FOR NUCLEIC ACID BLOTTING

The Immobilon-Ny Nylon Blotting Membrane is for nucleic acid blotting applications. Immobilon-Ny consists of uncharged, web-supported nylon 66 with a 0.45- μ m pore size. It can be used to detect sub-microgram quantities of DNA. Because it is nylon, it can be stripped and re-probed. Its open pore structure and uncharged surface allows maximum access to the target sequences and efficient removal of unhybridized probe from the background, thereby increasing sensitivity. It is also a nonsided, noncurling membrane, so it is suitable for doing colony lifts. It is compatible with alkaline transfer, radioactive, and chemiluminescent detection.

Millipore

For more information call 781-533-6000 or **circle 145** on the Reader Service Card

GENOMIC DNA

NucleoSpin Multi-96 Kits can purify genomic DNA directly from mouse tails, tissue samples, and cultured cells in a 96-well plate format. With a benchtop centrifuge, the user can simultaneously purify up to 192 samples on two 96-well plates, with hands-on time of 2 to 3 hours. With the tissue kit, the user can obtain up to 25 μ g of highly pure genomic DNA from two 0.5-cm pieces of mouse tails per well. The blood kit is optimized for purifying up to 10 μ g DNA from 10⁶ cultured cells per well. The purified

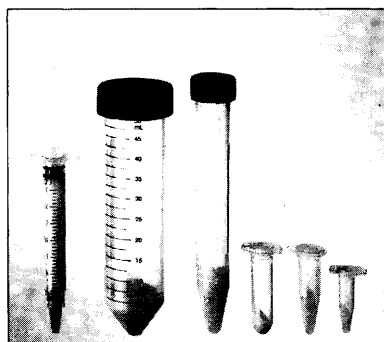
CLONTECH

For more information call 800-662-2566 or **circle 146** on the Reader Service Card

DNA is suitable for polymerase chain reaction, restriction digestion, cloning, Southern blotting, or any enzymatic reaction.

PHASE LOCK GEL

Phase Lock Gel is designed to accelerate and simplify phenol/chloroform extraction from nucleic acids. The gel provides the most benefits to small phenolization volumes, with an increase of up to 30% in the yield of nucleic acid as well as drastic improvements in the purity of the DNA and RNA resulting from the elimination of contamination with interphase material. During centrifugation, Phase Lock Gel forms a solid barrier between the aqueous and the organic phase, which completely seals the organic phase below this barrier. The aqueous phase can then be recovered by simply being pipetted off. Even minute amounts of plasmid DNA, genomic



DNA, DNA from gels, total DNA, lambda DNA, and phage and M13 DNA can be recovered rapidly and safely. Enzyme reactions, such as restriction digestions and ligations, can be carried out in the presence of Phase Lock Gel. The reaction is ended by the addition of phenol/chloroform. The sample can then be extracted immediately.

ORGANELLES ISOLATION

The Dynabeads M-500 Subcellular product is for direct magnetic immuno-isolation of pure subcellular organelles from crude cellular fractions. Dynabeads rapidly isolate >99% of target organelles without inefficient and labor-intensive density gradient centrifugation. In addition, the Dynabeads technique

Eppendorf

For more information call +49 40 53801 0 or **circle 147** on the Reader Service Card

can isolate pure target organelles from all sample sizes and cellular fractions of common density. The new product features a superparamagnetic polystyrene bead with an ultra-smooth surface that can easily be coated with antibodies specific for a target organelle. Magnetic immuno-isolation is rapid and reproducible. The selected organelles can be assayed by all conventional techniques, including chemical, radiolabel, enzyme immunoassay, and gel electrophoresis. Target organelles can also be fixed for electron microscopy.

LITERATURE

A recent issue of *MACS&More* newsletter features different strategies to magnetically isolate T cells with MACS technology. Detailed articles describe the various means to isolate virtually any T cell subtype. With Cytokine Secretion Assay technology, it is possible to isolate living antigen-specific T cells. The new automatic magnetic separation device, AutoMACS, performs efficient magnetic separation and enables the researcher to obtain any target cell population within minutes.

Miltenyi Biotec

For more information call +49 2204 8306 0 or **circle 149** on the Reader Service Card

Biotage Purification Products is a four-color catalog containing 90 pages of chromatography systems and solutions for any purification challenge. More than half the catalog is dedicated to the large variety of quality prepacked FLASH Chromatography cartridges for organic compound and biomolecule separations. A complete selection of parallel purification, decolorization, and high-performance liquid chromatography systems are included to handle samples from the milligram to the kilogram range for any size purification-separation requirement.

Biotage

For more information call 800-446-4752 or **circle 150** on the Reader Service Card

Dynal

For more information call 800-638-9416 or **circle 148** on the Reader Service Card

Newly offered instrumentation, apparatus, and laboratory materials of interest to researchers in all disciplines in academic, industrial, and government organizations are featured in this space. Emphasis is given to purpose, chief characteristics, and availability of products and materials. Endorsement by *Science* or AAAS of any products or materials mentioned is not implied. Additional information may be obtained from the manufacturers or suppliers named by circling the appropriate number on the Reader Service Card and placing it in a mailbox. U.S. postage is free.

Classified Advertising

UNITED STATES

Display Classified Advertising

Bren Peters
Tel: 202-326-6541
Kathleen Clark
Tel: 202-326-6555
Jill Steinberg (Northeast Sales)
Tel: 212-496-1264
Kristine von Zedlitz (West Coast Sales)
Tel: 415-956-2531
Fax: 202-289-6742
E-mail: science_displayads@aaas.org

Line Classified Advertising

Jody Fenty
Tel: 202-326-6722
Christina Geiger
Tel: 202-326-6532
Fax: 202-289-1451
E-mail: science_classifieds@aaas.org

Online Classified Advertising

Beth Dwyer
Tel: 202-326-6534
Fax: 202-289-6742
E-mail: bdwyer@aaas.org
www.sciencecareers.org

Ad Materials: Send to: *Science* Classified Advertising, 1200 New York Avenue, NW, Room 911, Washington, DC 20005

EUROPE

Display, Line, and Online Classified Advertising

Deborah Cummings
Tel: +44 (0) 1223 326 500
Fax: +44 (0) 1223 326 532
E-mail: european_ads@science-int.co.uk

Ad Materials: Send to: *Science* International, Advertising Dept., Bateman House, 82-88 Hills Road, Cambridge CB2 1LQ, United Kingdom

To obtain information on deadlines, editorial features, and bonus distribution schedules, call our sales office or visit *Science* Careers at www.sciencecareers.org and click on "To Advertise." Call to find out how to link to thousands of additional job seekers online with *Science* Careers. All advertising is subject to publisher's approval.

Line ads are not agency commissionable. Ads submitted should not include any bold, italicized, or abbreviated words. *Science* will edit and typeset ads according to *Science* style requirements. *Science* cannot provide proofs of typeset line ads. *Science* will provide an estimated cost of line ads at time of placement. This is an approximate cost only. Please provide contact name, telephone, billing information, and purchase order numbers with your order.

To **Subscribe** to *Science* call:
202-326-6417 or 1-800-731-4939

POSITIONS OPEN

HEAD, DEPARTMENT OF BIOLOGICAL SCIENCES SCHOOL OF SCIENCE Purdue University

Applications are invited for the position of Department Head from dynamic individuals with a creative vision for biology. The Department has 58 full-time faculty and educational programs leading to B.S., M.S., and Ph.D. degrees. Active research programs supported by national funding organizations are directed by faculty in the areas of biophysics, biochemistry, and structural biology; cell, molecular, and developmental biology; ecology, evolution and population biology; microbiology and molecular genetics; and neurobiology and physiology. In addition, the Department has a strong commitment to teaching and to biology education represented by faculty in the biology curriculum and instruction area. Department faculty participate in NIH- and NSF-funded interdepartmental training programs with Biochemistry and Molecular Biology, Genetics, Biophysics, Plant Biology, and Neurobiology. Campus resources include an NIC-designated cancer center. The administration is fully committed to the continued development of this internationally recognized Department. The successful candidate will have an outstanding record of scholarly achievement with demonstrated leadership qualities, an extramurally funded research program, and a commitment to teaching excellence. Strong interpersonal, communication, decision-making, and administrative skills are required. Candidates must have a Ph.D. or equivalent degree and be eligible for tenure at the rank of **PROFESSOR**. Qualified persons should submit a letter of application; a statement of research, teaching and administrative philosophy; and complete curriculum vitae with addresses and telephone numbers of five references. Applications will be reviewed beginning August 31, 2000, and will continue until the position is filled. Send applications, nominations, and inquiries to: **Dr. Joann J. Otto, Chair, Head Search Committee, Department of Biological Sciences, Purdue University, West Lafayette, IN 47907-1392. Telephone: 765-494-4410; FAX: 765-496-1495; website: <http://www.bio.purdue.edu>.**

Purdue University is an Equal Opportunity/Affirmative Action Employer.

FACULTY POSITION IN GENETICS THE CHILDREN'S HOSPITAL, BOSTON HARVARD MEDICAL SCHOOL

The Division of Genetics at Children's Hospital and the Department of Genetics at Harvard Medical School invite applications for a tenure-track faculty position at the **ASSISTANT PROFESSOR** level. Applicants must have a Ph.D. and/or M.D. degree and an interest in genomics and/or the genetics of complex traits. The Division of Genetics has a strong tradition of research investigating the genetics of human disease and is closely aligned with the clinical genetics and neuroscience programs at Children's Hospital and the Department of Genetics at Harvard Medical School. The successful candidate will be expected to develop and maintain an externally funded, independent research program and to participate in the teaching of medical and graduate students. Generous start-up support will be included. This position will be available as early as January 1, 2001. Applicants should submit a letter of interest; curriculum vitae; and brief descriptions of current and future research directions, funding history, and teaching experience; as well as the names, addresses (including e-mail), and telephone numbers of three references to: **Louis M. Kunkel, Ph.D., Chair, Genetics Search Committee, Division of Genetics (Enders 5), The Children's Hospital, 300 Longwood Avenue, Boston, MA 02115. Telephone: 617-355-6729; e-mail: davin@rascal.med.harvard.edu.**

POSITIONS OPEN

DEPARTMENT CHAIR

Applications and nominations are invited for the 12-month tenure-track position of **CHAIR** of the Department of Environmental and Resource Sciences. Minimum required qualifications include a Ph.D. in natural resource, environmental sciences, or closely related fields; and an outstanding record of scholarly achievement (including research, outreach, and teaching) that would qualify the individual for appointment at the **FULL PROFESSOR** level. Administrative abilities in budgetary and personnel matters are required.

The Chair will be expected to provide aggressive leadership for academic programs of research, undergraduate program development, graduate education, and outreach activities. The Chair will provide leadership of a multidisciplinary department consisting of natural resources and environmental sciences (including range and forest management, wildlife conservation, environmental science, and hydrology). The Chair represents the Department to college, university, environmental, agricultural, public, and governmental constituents; promotes teamwork and individual contributions; develops an internal organizational structure to accomplish the Department's mission; and helps establish a culture of academic excellence.

Candidates should submit (1) a letter of interest, including a statement of teaching and leadership philosophy and qualifications; and (2) curriculum vitae. References will be requested only from those candidates selected for interview. Please mail applications to:

Samantha L. Hoole, Search Coordinator
College of Agriculture, Biotechnology,
and Natural Resources, MS 222
University of Nevada, Reno
Reno, NV 89557
Telephone: 775-784-1610
FAX: 775-784-4227
E-mail: shoole@mail.ag.unr.edu

For greatest consideration, applications should have all application information on file no later than September 15, 2000. *Equal Employment Opportunity/Affirmative Action.*

TENURE-TRACK FACULTY POSITION ORGANIC CHEMISTRY

The Department of Chemistry at Texas A&M University invites applications for a tenure-track faculty position from individuals having research interests in any area of organic chemistry with an anticipated starting date of September 2001. Applications from candidates at the level of **ASSISTANT PROFESSOR** are especially sought, but outstanding senior-level candidates will also be considered. The successful candidate will be expected to maintain a vigorous independent research program and to teach at the undergraduate and graduate levels. Candidates should submit curriculum vitae, a brief description of research plans (not to exceed five pages), and arrange for three letters of recommendation to be sent to: **Dr. Emile A. Schweikert, Head, Department of Chemistry, Texas A&M University, P.O. Box 30012, College Station, TX 77843-3012.** Applications must be received by November 1, 2000, to ensure review but will continue to be considered until the position is filled. *Texas A&M University is an Equal Opportunity/Affirmative Action Employer, and applications from underrepresented groups are especially encouraged.*

CURATOR OF THE HERBARIUM of the University of North Carolina at Chapel Hill, a non-tenure-track research, teaching, and public service position, overseeing a collection of 660,000 specimens. The Curator may be appointed to an adjunct position with the Department of Biology for teaching and student committees. Send curriculum vitae and three letters of reference by September 30, 2000, to: **Peter S. White, Campus Box 3375, North Carolina Botanical Garden, University of North Carolina at Chapel Hill, Chapel Hill, NC 27599. E-mail: pswhite@unc.edu.** *The University of North Carolina at Chapel Hill is an Equal Opportunity Employer.*

10 Fellowship Opportunities

Biological and Biomedical Research



Predoctoral Fellow
Ann-Marie White

The Howard Hughes Medical Institute has established fellowship programs that support training in fundamental biological and biomedical research. Graduate students, medical students, and physicians may be eligible to apply for the programs listed below. Awards, based on international competitions, focus on research directed to understanding basic biological processes and disease mechanisms. Fellowships may be held at academic or non-profit research institutions.

Predoctoral Fellowships in Biological Sciences

Five years of support for full-time graduate study toward a Ph.D. degree in designated biological sciences or related fields. Applicants must not have completed the first year of postbaccalaureate graduate study in biology. *Application deadline: mid-November.*



Medical Student Fellow
Obed Cepeda

Research Training Fellowships for Medical Students

An opportunity for medical students in the United States to explore an interest in basic biomedical research. Support is awarded for one year of full-time fundamental research in a laboratory at the student's medical school or another institution (except NIH in Bethesda, Maryland). *Application deadline: early December.*

Research Scholars at the National Institutes of Health

Under this joint HHMI-NIH program, medical students in the United States spend an intensive year in research in the intramural program at NIH in Bethesda, Maryland. Residence is provided at the Cloister on the NIH campus. *Application deadline: early January.*



Physician Postdoctoral Fellow
Chinweike Ukomadu

Postdoctoral Research Fellowships for Physicians

Three years of support for training in basic biomedical research subsequent to at least two years of postgraduate clinical training and no more than two years of postdoctoral research training. *Application deadline: early December.*

The Howard Hughes Medical Institute, an Equal Opportunity Employer, welcomes applications from all qualified candidates and encourages women and members of minority groups to apply.

For more information: www.hhmi.org/fellowships



PHARMACIA

Though our merger is based on hard science, we're
CREATING SPECIAL EFFECTS.

Changing the big picture of the pharma industry, the merger of industry leaders Monsanto and Pharmacia & Upjohn has resulted in the formation of a new first-tier organization known as Pharmacia Corporation. Uniting the ambitions and talents of 60,000 professionals under our \$17 billion company with an R&D pipeline of exceptional strength and depth allows us to have a positive effect upon countless lives. With breakthrough drugs including Detrol® for over-active bladder control and Celebrex® to treat arthritis, we feel that our work is truly special. Discover the unique effect your skills can have by joining our team in St. Louis, Missouri as:

**Molecular Biologist
(Ph.D. Level)**

Strong candidates should possess a Ph.D. in molecular biology with at least two years postdoctoral experience or the equivalent and the ability to initiate and conduct independent research. Expertise in basic molecular techniques (cDNA cloning, Western blots) as well as antibody expression and production (bacterial, phage display, mammalian) are preferred. You will be expected to work in a results oriented, multi disciplinary team environment to identify and develop novel antibodies to address therapeutic challenges in inflammation and oncology. Preferred candidates will have strong computer skills including experience with Excel, Word, and PowerPoint for PCs. Excellent communication and writing skills are essential.

Pharmacia is committed to developing human therapeutics from mammalian cell culture. We offer everything you could want in a career: outstanding compensation, excellent benefits and the realization that you've reached the height of the industry. For immediate consideration submit your resume to: **Pharmacia Corporation, 700 Chesterfield Parkway North, BB4D, Job # 00-0373, Chesterfield, MO 63198.** EEO/AA Employer M/F/D/V

PHARMACIA

www.pharmacia.com

Changing the world with great care.

From its founding in 1865, Bayer Corporation has developed into one of the most broadly based healthcare firms in the United States. The Bayer Center for Biotechnology in Berkeley, CA is responsible for the discovery, production, and preclinical development of novel biopharmaceuticals that address highly unmet medical needs. These agents are developed together with the worldwide Bayer organization, offering you the opportunity to join a global team whose values are linked directly to our patients and to the lives of future generations.



DIRECTOR, PHARMACOLOGY

The Department of Pharmacology is one of four departments in Biotechnology Research in Berkeley. As this group's Director, you will utilize your command of biopharmaceutical drug development, coupled with solid managerial and interpersonal skills, in the efficient and effective daily operations of this team. The ideal candidate will have a PhD in Immunology (Oncology, Physiology, or Respiratory will be considered) and 10+ years' experience, preferably with extensive background in the biotechnology/pharmaceutical industry. A minimum of 5 years' significant management experience is required. Your expertise should encompass supporting drug discovery research as well as development, along with modern genomic technologies and their application to drug discovery and development. Respond to **Job Code SW0875**.

STAFF SCIENTIST Molecular Pathology

Within Preclinical Development, you will establish a core Molecular Pathology research laboratory with capabilities in nonisotopic in situ hybridization procedures, immunohistochemistry, quantitative PCR, RT-PCR, as well as routine histopathology procedures in support of Discovery Research. Requires an MD, DVM or VMD degree, and/or PhD in Comparative Pathology, with 5+ years of relevant experience. Certification or eligibility for certification by the American College of Pathologists or American College of Veterinary Pathologists is preferred. Demonstrated expertise in in situ hybridization techniques is essential, and skills in immunohistochemistry, PCR technology and other molecular techniques are required. Experience with quantitative morphometric techniques is desirable. Excellent verbal and written communication skills along with the ability to contribute effectively on multidisciplinary discovery project teams are essential. Respond to **Job Code SW0524**.

PRINCIPAL SCIENTIST Respiratory Disease Research

Directing two functional laboratories, COPD and Asthma, your group will identify, evaluate and characterize novel genes and proteins as candidate molecules for the treatment of respiratory disease. The ideal candidate will have a PhD in Pharmacology/Physiology with 8+ years of relevant experience in a biopharmaceutical/industrial environment. Direct knowledge of in vitro and in vivo models of Asthma and COPD is essential. Excellent interpersonal, communication, leadership and team-building skills will round out your qualifications. Respond to **Job Code SW0829**.

SCIENTIST/SR ASSOCIATE Analytics & Formulation

You will propose, plan, conduct and evaluate experimental approaches for structural characterization of recombinant glycoproteins. Specifically, primary projects will involve structural characterization of recombinant proteins using a variety of biochemical techniques: amino acid analysis, N-terminal sequencing, SDS-PAGE, HPLC, and mass spectrometry. Requires a PhD or MS with proven experience and accomplishments in the field. Protein structural characterization background is essential. Experience working in a GLP environment would be highly desirable. Respond to **Job Code SW0914**.

SR RESEARCH SCIENTIST Protein Engineering

We are seeking a protein scientist to join an innovative program focusing on the generation of novel therapeutic agents by the engineering of novel functions into proteins. Requires a PhD in Biochemistry, Molecular Biology, or a related field, and 2-6+ years of relevant post-doctoral experience. The successful candidate will have a fundamental understanding of protein structure and function, a record of applying this knowledge in a biological/medical context, and the ability to formulate innovative therapeutic hypotheses. Proven experience with targeted and random mutagenesis strategies as applied to the study of protein function and with biochemical analysis of protein function or protein-protein interactions is required. Supervisory experience is preferred, and the candidate should have excellent communication skills and a proven ability to work in a multidisciplinary, team-oriented research environment. Respond to **Job Code SW0001**.

SR RESEARCH SCIENTIST Pharmacokinetics

Your aim will be to evaluate pharmacokinetic and ADME profiles of therapeutic agents in discovery and development, involving executing studies, and then interpreting and reporting on results. Your collaboration with Bioanalytic Scientists and Toxicologists will drive toward the completion of preclinical safety evaluations of protein therapeutics supporting IND and clinical trials. Requires a PhD and 3+ years' experience in pharmacokinetic modeling to support discovery and development. You must be familiar with standard commercial PK software and have a solid foundation in statistics. Specific experience in PK/PD modeling of protein and peptide therapeutics, along with experience in population approaches to PK modeling, are highly desirable. Excellent communication skills will be essential. Respond to **Job Code SW0938**.

SR SCIENTIST Molecular & Cellular Biology

Your responsibilities will include developing and conducting cell-based assays to analyze candidate protein products. You will also participate in the development and analysis of production cell lines, plus design and construct DNA expression vectors. We will rely on your experience with mammalian cell culture techniques, transfection/selection/amplification, cloning, ELISA analysis in this critical role. Requires a PhD with 2+ years' technical experience in molecular and cellular biology. Your background must include demonstrated scientific contributions through publications and technical presentations. Excellent communication skills and the ability to work within a team environment will be integral to your success. Respond to **Job Code SW0915**.

RESEARCH ASSOCIATE Protein Engineering

You will participate in the generation and execution of structure-function studies of protein-protein interactions and its application to the engineering of novel properties into proteins. Requires an MS degree with 2+ years of relevant experience or a BS with 4+ years in Biochemistry, Molecular Biology, or a related discipline. Proven experience in one or more of the following areas is desirable: Site-directed mutagenesis, phage display, and biochemistry and protein analytics. The candidate should have excellent communication skills and a proven ability to work in a multidisciplinary, team-oriented research environment. Respond to **Job Code BK-0807**.

SR RESEARCH SCIENTIST Functional Genomics

We seek a highly motivated Molecular Pharmacologist with a strong background in pharmacology/physiology/development biology. You will manage a research program aimed specifically toward the understanding of novel gene function. To qualify, you must have a PhD in Pharmacology/Biology/Genetics and 3+ years' supervisory experience in the biopharmaceutical industry. Expertise in the development of in vitro and in vivo models for testing and screening novel gene products is essential. Experience with transgenic/knockout models is strongly desired. Excellent communication and interpersonal skills will be critical to your success. Respond to **Job Code SW0790**.

SR RESEARCH ASSOCIATE Genomics Instrumentation

You will join a group utilizing high-throughput genomic technologies in an interdisciplinary effort to identify protein therapeutics and drug targets. Requires an MS degree with 2+ years of relevant experience or a BS with 4+ years in Chemical Engineering, Molecular Biology, or a related discipline. The successful candidate should have a working knowledge of laboratory molecular biology and proven experience with genomics instrumentation, such as DNA sequencing, gene microarrays, or laboratory robotics. Strong technical, computer, and accurate documentation skills are required. The candidate should have excellent communication skills and a proven ability to work in a multidisciplinary, team-oriented research environment. Respond to **Job Code SW0002**.

SR RESEARCH SCIENTIST Toxicology

This is your opportunity to participate on multidisciplinary international project teams responsible for all aspects of discovery and development of novel therapeutics. Under minimal supervision, you will design and implement preclinical safety studies for the evaluation of biotechnology-derived therapeutic proteins. This will involve identifying appropriate test systems, designing and conducting experiments, and interpreting/reporting results. Requires a PhD with 4+ years' applicable work experience. Eligibility for certification by the American Board of Toxicology highly desirable. Thorough knowledge of GLP regulations and international requirements is required. Excellent communication skills are essential. Respond to **Job Code SW0936**.

Bayer offers an attractive compensation and benefits package. Please forward your resume, indicating Job Code of interest, to: Bayer Corporation, Pharmaceutical Division, P.O. Box 3238, Scranton, PA 18505-0238. Fax: (888) 865-7474. E-mail: bayerpharma@alexus.com. Please indicate appropriate Job Code on all correspondence. For more information on Bayer, search: <http://www.bayerus.com>. An Equal Opportunity Employer M/F/D/V.



**Pharmaceutical
Division**

ProteinChip® Technology

Ciphergen Biosystems is currently expanding its US and European operations and looking for ambitious, commercially-minded Ph.D. biochemists/biologists with excellent communication skills and proven problem solving abilities, at the following locations:

Chicago, Atlanta, Washington, D.C., plus major European cities in France, Germany, Denmark, Switzerland, and Benelux.

In addition, Ciphergen is also looking for an experienced Program Sales Manager for the Central US region, Germany, Switzerland and Benelux.

Field Scientist

Preferably you will have substantial experience in **Protein analysis, purification and/or characterisation** in one or more of the following disciplines:

- Receptor - ligand interactions
- Proteomics / Biomarker discovery
- Immunology
- Protein chemistry
- Immunoassay development

Your role will involve working alongside our clients' scientists, in both industry and academia, developing protocols and rapidly solving biological problems using Ciphergen's proprietary ProteinChip technology.

As well as being a talented research scientist, capable of strong analytical thinking and creativity, you will need good leadership and interactive skills as well as the ability to communicate effectively at all levels. The position involves extensive travel in your local area and occasionally trips to the head office in California.

Program Manager

Your role will be to manage your region's Field Scientists, liaising with customers, organizing demonstrations and most importantly selling Ciphergen's technology to new customers.

Join the Protein Renaissance

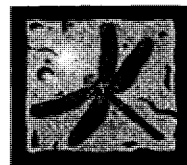
This is a unique opportunity to join a young, rapidly growing company that is working at the forefront of the 'Protein Renaissance'. You will have the opportunity of working alongside our existing team of field scientists, as well as with our customers who are involved at the leading edge of research into the diagnosis, treatment and cure of the most challenging diseases facing us today.

We offer an excellent compensation package, including stock options. Please visit our website at www.ciphergen.com and send your resume to:

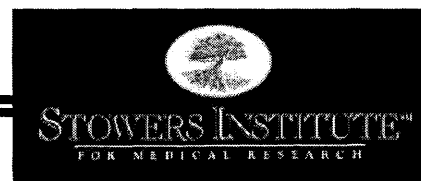
US Resumes
Ciphergen Biosystems, Inc.
Attn: Human Resources
6611 Dumbarton Circle
Fremont, CA 94555

European Resumes
Ciphergen Biosystems Ltd
Attn: Human Resources
Surrey Technology Centre
The Surrey Research Park
Guildford, Surrey GU2 7YG
UK

Or e-mail resume to
cv@ciphergen.com
EOE



Ciphergen



POSTDOCTORAL POSITIONS NOW AVAILABLE

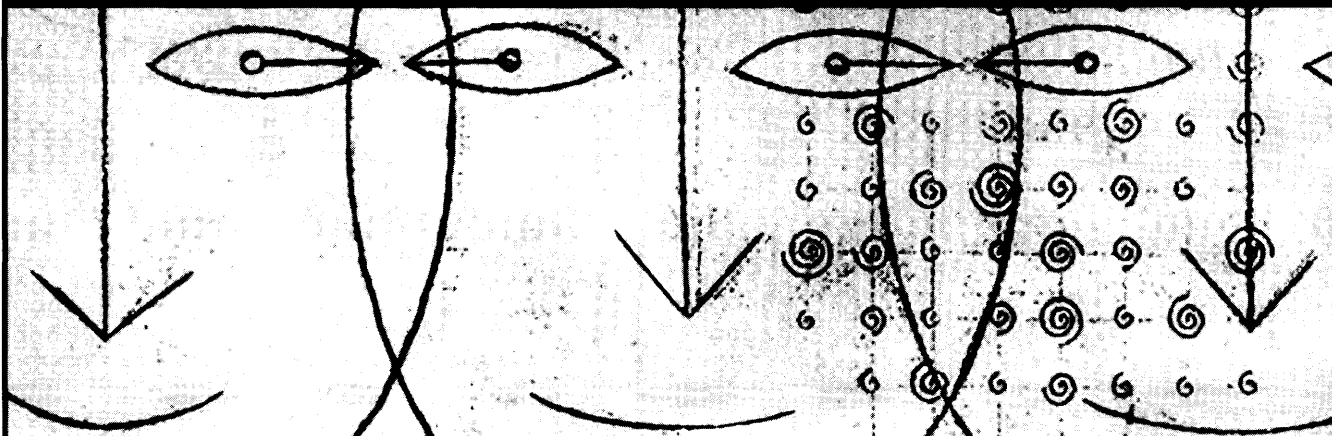
The Stowers Institute for Medical Research in Kansas City, Missouri provides outstanding opportunities for training within a stimulating and interactive environment under the scientific directorship of Dr. Robert Krumlauf. Postdoctoral fellows will work in state-of-the-art laboratories equipped with the most advanced technology and receive competitive salaries and benefits. Institute scientists conduct broad-based, interdisciplinary research directed at understanding the genetic, molecular, and cellular pathways that control how multicellular organisms are normally formed and patterned and how they are altered in disease. Postdoctoral fellowship positions are currently available for specific projects in the following laboratories:

- 1. Notch Signaling Pathway and Underlying Genetic Diseases (Joint position in the laboratories of Drs. Robb Krumlauf and Linheng Li)** – Investigation into the roles of the Notch signaling pathway during embryonic development and its correlation with underlying inherited diseases. This combines genomic and genetic approaches with animal models and clinical syndromes. For related references, please see these publications: *Nature Genetics* 16: 243-250 (1997) and 24: 438-441 (2000). Experience in molecular, genetic, genomic or developmental biology is required Lli@u.washington.edu
- 2. The role of MLL proteins in normal development (LM Wiedemann and Robb Krumlauf)** – Investigation into the regulatory mechanisms and function of the trithorax related MLL gene product, which controls Hox expression and is a target of chromosomal translocations in leukemia. This will involve genetic and *in vivo* techniques to manipulate gene expression in mouse and chick embryos and retroviral technology for targeting primary mouse bone marrow cells. The goal is to investigate the normal and altered function of MLL and MLL-fusion products in development and leukemia using microarray systems and biological read-outs. Experience in hematology, leukemia, molecular biology or developmental biology is required. Leanne@icr.ac.uk or lmw@stowers-institute.org
- 3. Molecular mechanisms governing adult stem cell regulation in both *Drosophila* and mammalian systems (Dr. Ting Xie)** – Identification of growth factors and other molecules involved in the regulation of *Drosophila* ovarian stem cell self-renewal, proliferation and differentiation using a combination of molecular, genetic, biochemical and cell biological approaches. See reference by Xie and Spradling: *Cell* 94: 251-260 (1998). This lab will also use transgenic and conditional knockout techniques in the mouse to study the conservation of molecular mechanisms in adult stem cells in collaboration with Robb Krumlauf. Experience in genetics, cell biology, developmental biology and/or primary cell culture is encouraged. Tgx@stowers-institute.org

Candidates for postdoctoral fellowships should be creative and motivated individuals with M.D., Ph.D. or both degrees. The average starting salary is \$35,000 depending upon experience. Candidates should submit a CV, a statement of current research interests and future plans, and the names of three individuals prepared to provide letters of reference to the attention of the appropriate lab head, c/o Nelson Pleau, Stowers Institute for Medical Research, 1000 E. 50th St., Kansas City, MO 64110. Informal inquiries to the relevant lab head may be made by e-mail.

To learn more about the Stowers Institute and positions available, go to our web site at <http://www.stowers-institute.org>. EOE

the new face IN Pharmaceuticals



Millennium is a different kind of biopharmaceutical company with a unique vision for the future of medicine. We're working to understand the molecular basis of diseases, the essential key to discovering new therapeutic treatments and predictive medicine products. Our goal is to make breakthrough therapies available faster for a full range of major under-served diseases. To this end, we recently formed a unique biotechnology/pharmaceutical alliance with Aventis Pharma that focuses on inflammation. Further, our acquisition of Cambridge Discovery Chemistry bolsters our global capability and promises to significantly accelerate our downstream drug discovery efforts. Come explore the opportunities with a progressive and innovative organization, and see why the face of the future never looked brighter.

Sr. Scientist, Molecular Biology

Collaborate on teams involved in antibody target discovery, validation and *in vitro* pre-clinical studies. Projects will focus on gene expression analysis, antibody target and antibody assessment and will include application of cell culture-based assays for evaluating potential therapeutic antibodies on proliferation, apoptosis and migration/adhesion. This position requires a PhD in Biochemistry, Cell Biology, Molecular Biology, Immunology or a related field and at least 3 years industrial/postdoctoral experience, along with a strong background and experience in cell/tumor biology.

Protein Purification

Work as a protein biochemist responsible for the purification and characterization of multiple and diverse protein targets, as part of a multidisciplinary program to create high throughput screens for novel protein targets.

Scientist – Our scientist position within this program requires a PhD, at least 3+ years postdoctoral experience, and accomplishment in protein purification techniques, including LC, HPLC, and diafiltration, and associated analyses such as SDS-PAGE, Western blot, and protein assays.

Sr. Research Associate – To qualify, you'll need a BS/MS with 5+ years post-degree experience, preferably in industry, as well as proficiency in protein purification techniques, including operation of computer-controlled chromatography systems for affinity chromatography, ion-exchange chromatography, gel filtration chromatography, HPLC, SDS-PAGE, Western blot analyses and enzymatic assays.

Research Associate – We require a BS/MS with 3+ years post-degree experience, preferably in industry, as well as accomplishment in protein purification techniques, including operation of computer-controlled chromatography systems for affinity chromatography, ion-exchange chromatography, gel filtration chromatography, HPLC, SDS-PAGE, Western blot analyses and enzymatic assays.

Sr. Research Associate, E. coli Production

Perform recombinant protein production in bacterial expression systems and develop and implement fermentor production processes for multiple expression projects. We require a BS/MS and 3+ years experience. Experience in protein production in benchtop fermentors is essential.

Research Associate, Protein Expression

Join an existing team focusing on recombinant protein expression. Major responsibilities include DNA isolation, PCR analysis, cell line and culture maintenance, baculovirus preparation, protein analysis, and archiving of vectors and viral stocks. You'll need a BS or a high school diploma with at least 2 years of basic work experience that includes DNA manipulation and analysis, cell culture, and protein analysis.

Research Associate, MABs

Work in a team producing recombinant proteins at gram scale in eukaryotic expression systems including hybridomas, stable mammalian cell lines and baculovirus. This will involve the development of scaled-up production processes as well as implementation of these processes in bioreactor vessels. Your qualifications should include a BS/MS and 3+ years bench experience in the operation of fermentors/bioreactors. Experience in expression process development is desirable.

Join us in building the biopharmaceutical company of the future at our Cambridge facilities. Please respond by sending only one resume using only one of the following methods, indicating the positions you are interested in. Mail your resume to: Millennium Pharmaceuticals, Resume Processing Center, Source Code SC700, PO Box 798, Burlington, MA 01803. Email: millennium@rpc.webhire.com. Fax: (800) 370-6925. A source code must be included with all submissions. We are an equal opportunity employer committed to discovering the individual in everyone.

**Visit our website for complete details on these
and other opportunities:**

www.mlnm.com

Transcending the limits of medicineSM



CHEMIST STAFF SCIENTIST/CHEMICAL DYNAMICS BEAMLINE FACILITY

The Ernest Orlando Lawrence Berkeley National Laboratory's Chemical Sciences Division is seeking a Chemist Staff Scientist to conduct original research in chemical reaction dynamics using the state-of-the-art facility at the Chemical Dynamics Beamline at the Advanced Light Source.

Responsibilities: Conduct research and develop innovative approaches in chemical reaction dynamics and apply molecular beam, laser and imaging techniques in conjunction with intense tunable vacuum ultra-violet radiation to the study of reaction dynamics and photochemistry on the Chemical Dynamics Beamline at the Advanced Light Source (ALS). Publish results in peer-reviewed journals, present research at conferences and develop collaborations with theoretical and experimental colleagues.

The successful candidate will have a record of achievement in the study of the dynamics of basic chemical reactions or molecular spectroscopy as demonstrated by a strong publication record in chemical physics. Experience and ability to work effectively both independently and in collaboration with colleagues, research experience at synchrotron light source and knowledge of laser spectroscopy and photochemistry, VUV photoionization, and the construction of experimental apparatus are required. PhD in Chemical Physics preferred.

Applicants are requested to submit a curriculum vitae, list of publications, statement of research interests, and the names of at least four references to Search Committee, Job CH/012273/JS, Chemical Sciences Division, MS 70A-3307, Lawrence Berkeley National Laboratory, 1 Cyclotron Road, Berkeley, CA 94720.

Applications will be accepted until August 31, 2000. Berkeley Lab is an Affirmative Action/Equal Opportunity Employer committed to the development of a diverse workforce.



Make Your Next Discovery Dynavax!

Dynavax Technologies is a San Francisco Bay Area biopharmaceutical company developing innovative therapeutic and prophylactic products that beneficially alter the immune system to treat allergy, inflammation-mediated disease, infectious disease and cancer. We are currently seeking a hands-on team leader to develop methods for the preparation and purification of immunostimulatory oligonucleotide-protein conjugates.

Scientist/Sr. Scientist-Protein Chemistry

Your team will prepare and characterize mg quantities of proteins (allergens, infectious disease antigens) and their conjugates for pre-clinical, toxicology and research experiments. Along with a PhD in biochemical or chemical science, you will need 5 years industrial experience focused on biologic drug development. Expertise in purifying proteins from various sources at milligrams to gram scales is required. FPLC experience is a must as is familiarity with physio-chemical characterization techniques (spectroscopy, HPLC, and gel/capillary electrophoresis). Excellent management/leadership abilities and highly effective communication and problem-solving skills will be expected.

We offer a fast-paced, team environment supported by an attractive salary and benefits package. For more details, please send your resume/CV to: Dynavax, HR, 717 Potter Street, Berkeley, CA 94710, by email to HR@DVAX.com, or by fax to 510-848-5694. An equal opportunity employer.

DYNAVAX
DYNAVAX TECHNOLOGIES



The Jackson Laboratory is one of the world's foremost centers for mammalian genetics research. Located in Bar Harbor, Maine, the lab is adjacent to Acadia National Park. Mountains, oceans, forests, lakes, and trails are all within walking distance. If you love high-tech challenges, but you're looking for a more natural environment, this could be the opportunity you've been searching for.

DATABASE CURATORS: BIOLOGISTS

Professional positions are available in the expanding Bioinformatics Programs working with the Mouse Genome Database, Gene Expression Database and the new Mouse Sequence Database.

Successful candidates will be primarily responsible for data acquisition and analysis, evaluating and annotating data to be incorporated into the databases, integrating information from disparate sources, and interacting with research laboratories to facilitate electronic data contributions. In addition, they will participate in database and interface design work, through input into database content and display concepts. Applicants should be experienced in molecular biology or mammalian systems and versed in genetics, genomics, cellular or developmental biology. Other desirable attributes include excellent writing/communication skills. Ph.D. degree in Life Sciences or M.S. with appropriate experience required.

Qualified candidates should send resume to: Human Resources Office, The Jackson Laboratory, 600 Main Street, Bar Harbor, ME 04609 • Fax: (207) 288-6106 • Email: jobs@jax.org

AA/EOE

<http://www.jax.org>

OLFACTORY NEUROBIOLOGY RESEARCH-TRACK AND POSTDOCTORAL POSITIONS, AVAILABLE IMMEDIATELY

A-Integrative and/or Cellular Neurophysiologists to study intrinsic properties, synaptic integration and sensory processing in mammalian olfactory bulb and piriform cortex. Experience in optical imaging of voltage-sensitive dyes and/or patch clamping in slices required.

B-Cellular/Molecular Biologist to study olfactory bulb mitral cell dendrite formation. Emphasis will be on the role of BMPs in perinatal mice when major changes in dendrite reorganization and resculpting occur, and following perturbations in adults. Approaches will include characterization of expression, secretion and function of BMPs by manipulation of levels using exogenous sources, and genetic manipulations.

C-Cellular/Molecular Biologist to study transduction mechanisms in newly identified, specialized olfactory sensory neurons. The successful applicant will use gene targeting, molecular biological and biochemical techniques to investigate the function of receptors, enzymes and ion channels in the transduction of behaviorally important stimuli. Experience with molecular or sensory neurobiology preferred.

Ph.D. or M.D. required. Competitive salary/fringe benefits. Opportunity to interact with neuroscientists in the department (<http://neurobiology.umaryland.edu/>) and the Neuroscience Program (<http://neuroscience.umaryland.edu/>). Send CV and 3 references to:

Dr. M. Ennis/M.Shipley (mennis@umaryland.edu) for A
Dr. F. Margolis (margoli@umaryland.edu) for B
Dr. S. Munger (smung001@umaryland.edu) for C

Mailing address:
Dept. Anat. & Neurobiol.
Univ. Maryland Sch. Med.
685 W. Baltimore St.
Baltimore, MD 21201.



U. Maryland is an AA/EEO/ADA employer.

Opportunities



Endowed Chair in Developmental Biology of the Eye: Goldman Scholar Abrahamson Pediatric Eye Institute and Divisions of Developmental Biology and Ophthalmology

The Abrahamson Pediatric Eye Institute, in cooperation with the Divisions of Developmental Biology and Ophthalmology at Children's Hospital Medical Center in Cincinnati, OH, is recruiting an established scientist with a major research program in the development of the eye and visual pathways using animal models. The successful candidate will assume a generously endowed, named Chair with dual appointments in Ophthalmology and Developmental Biology. Package includes junior faculty recruitment, abundant laboratory space, and serious financial commitment commensurate to the position. The candidate will be expected to maintain externally funded programs, contribute to graduate education in the basic sciences, and mentor young clinician-scientists. A strong collaboration with clinicians is encouraged to facilitate transfer of research developments to patient care.

Applicants must have a PhD and/or MD, and have demonstrated scientific leadership and research expertise in basic eye research.

Please submit current curriculum vitae, a one-page summary of research accomplishments and plans, and three letters of support to Drs. West and Wylie, co-chairs, Goldman Scholar Search Committee.

Constance E. West, M.D.

Director, Pediatric Ophthalmology and the Abrahamson Pediatric Eye Institute

Children's Hospital Medical Center
3333 Burnet Avenue
Cincinnati, OH 45229

Christopher C. Wylie, Ph.D.

**Director, Division of Developmental Biology
Associate Chair for Basic Sciences
Children's Hospital Research Foundation**

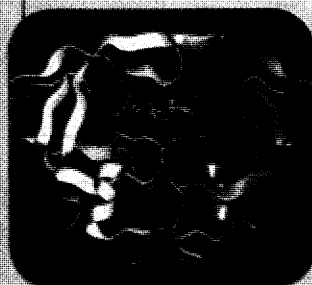
Children's Hospital Medical Center
3333 Burnet Avenue
Cincinnati, OH 45229

Visit our website at www.cincinnatichildrens.org
Children's Hospital Medical Center is an Affirmative Action/Equal Opportunity Institution. Women and minorities are encouraged to apply.

VERTEX

Small Molecules. Huge Discoveries.

Vertex is leading the way in small molecule drug discovery. By pioneering a new, faster approach to drug discovery, our goal is to set the standard for pharmaceutical research and development in the 21st century. Our HIV protease inhibitor, **Agenerase™**, was released in 1999 in partnership with Glaxo Wellcome. And we have a broad array of promising drug candidates expected to launch in the coming years. It's a pipeline packed with huge potential. And it's only at Vertex.



For more information about these and other opportunities, please visit:

www.vertexcareers.com

**Molecular Cloning, PhD
300-13U**

**Protein Biochemistry, PhD
300-14U**

**Cell Biology, PhD
300-10**

**New Target Evaluation/Database Mining, PhD
400-9U**

**Protein Expression, PhD
300-21U**

**Formulations Development, PhD
210-1**

**Process Chemistry, PhD
210-5**

We are an equal opportunity employer who makes diversity the foundation of all success.



We Enjoy a Big Lead in Small Molecules.



MAYO CLINIC POSTDOCTORAL POSITION VASCULAR BIOLOGY

Two positions are available immediately in a laboratory in the Department of Medicine in the area of hepatic vascular biology. The focus of the laboratory is to understand the regulation of nitric oxide production in the liver with an emphasis on regulation of endothelial nitric oxide synthase as it relates to liver cirrhosis and portal hypertension. The **first position** focuses on the molecular regulation of endothelial nitric oxide synthase. Expertise in cellular biology including immunofluorescence techniques and cell fractionation is required as well as experience in standard biochemistry and molecular biology techniques. The **second position** focuses on nitric oxide, hepatic hemodynamics and experimental models of liver disease. Experience with in vivo hemodynamic measurements and in vitro pharmacology in rodent models is required. Please forward curriculum vitae and letter of interest to:

Vijay Shah, M.D.
Alfred 2-435 GI Research Unit
Mayo Clinic
Rochester, MN 55905
E-mail: shah.vijay@mayo.edu

Mayo Foundation is an affirmative action and equal opportunity employer and educator.

Manager, Microarray Facility

As part of a strategic plan to expand its presence in the areas of genomics, proteomics and bio-informatics, Memorial Sloan-Kettering Cancer Center will establish a centralized, advanced resource for the analysis of gene expression and other applications in diagnostic and research genomics, especially as it applies to our quest for better methods to control and cure cancer.

We are looking for a dynamic scientist to assume day-to-day management of the new microarray core facility. The manager will play a key role in the development of the laboratory; train and supervise four staff members, manufacture and optimization of arrays, integration with bio-informatics resources, and offer expertise for experimental design and data validation. The Facility Manager will work closely with clinical and basic science researchers to design, execute and interpret a variety of experiments, utilizing the expanding microarray technology.

The successful candidate must have a Ph.D. (or equivalent) in molecular biology, biochemistry, analytical chemistry or engineering, hands-on experience with micro-arrays and relevant engineering/computer technologies, and some experience in most or all of the following: quantitative nucleic acid hybridization, fluorescent probes, PCR, cDNA preparation, instrumentation and automation, microtiter-based robotics, experimental design and data analysis. Two to three years of postgraduate training in academic or corporate research, attention to detail and accuracy, strong organizational and troubleshooting abilities, and good communication skills are required. Previous management and administrative experience is preferred.

Appointment will be made to the Laboratory (non-tenure) Track Faculty, equivalent to Assistant or Associate Research Professor at most universities. Salary and rank according to qualifications.

Please e-mail all inquiries, C.V. and names of three references to: Dr. Paul Tempst, Professor and Chair, Microarray Search Committee, Memorial Sloan-Kettering Cancer Center, New York, NY 10021. E-mail: p-tempst@mskcc.org. EOE/AA



**Memorial Sloan-Kettering
Cancer Center**

The Best Cancer Care. Anywhere.

www.mskcc.org / www.ski.edu

Department of Biomedical Sciences and Pathobiology Virginia-Maryland College of Veterinary Medicine



Two tenure-track calendar-year Assistant/Associate Professor positions are available January 1, 2001 as follows:

Physiology/Pathophysiology. Preference will be given to candidates working in neural, cardiovascular, gastrointestinal, reproductive, or endocrine systems.

Molecular Immunology. In addition to the appointee's own research, collaboration in ongoing departmental programs in vaccine development, autoimmunity, immunotoxicology, and/or cancer immunology is strongly encouraged. The appointee is also expected to interact with faculty of the Pharmaceutical Engineering Institute, which is focused on transgenic animals and plants. Participation in the Bioinformatics Institute is also possible.

Applicants must have a Ph.D. and post-doctoral experience. In addition, the D.V.M., M.D., or equivalent medical degree is preferred. The appointees will be expected to establish independent and extramurally funded research programs. Though primarily research focused, mentoring of graduate students and participation in the graduate program is expected. Some participation in the D.V.M. instructional program is also anticipated for the Physiology position.

Send a letter of application, description of research goals, curriculum vitae, and names of 3 references to either **Immunology Search** or **Physiology Search**, Department of Biomedical Sciences and Pathobiology, College of Veterinary Medicine, Virginia Tech, Blacksburg, VA 24061.

Individuals with disabilities desiring accommodations in the application process should notify Dr. Ludeman Eng, at the address above, or by calling (540) 231-4652, or by e-mail at laeng@vt.edu, or the Virginia Telecommunications Relay Service (800) 828-1120. Review of applications will begin on August 8, 2000 but applications will be accepted until suitable candidates are identified.

Virginia Tech has a strong commitment to the principle of diversity and, in that spirit, seeks a broad spectrum of candidates including women, minorities, and people with disabilities.

Biotechnology

Have you considered a genomics institute?

Novartis Agricultural Discovery Institute Inc. (NADI), is one of the largest single fully funded research endeavors dedicated to agricultural genomics. We apply cutting-edge biotechnology to match genes with traits and provide advanced technologies that can be used widely in agribusiness research for the development of gene-based products. We currently seek the following exceptional individual to join NADI's growing team:

Postdoctoral Scientist Plant Molecular Biology and Data Mining

Two positions are immediately available to conduct data mining from our extensive plant microarray database. Incumbents are expected to apply the latest bioinformatics tools to assign gene functions from gene expression data generated from a large set of microarray experiments. Publications are strongly encouraged. Candidates should have a Ph.D. in Plant Science and a demonstrated knowledge in signal transduction or transcriptional control. Strong communication, organizational skills and creative thinking is essential. Practical experience of using bioinformatics tools and knowledge of statistics to mine genomics databases is particularly desirable. **Job Code: PDS/TZ-SCI**

NADI offers excellent compensation and a great benefits package. For immediate and confidential consideration, please send resume including salary history and expectations to:

Novartis Agricultural Discovery Institute, Inc., HR Dept./Job Code, 3115 Merryfield Row, Suite 100, San Diego, CA 92121-1102. Fax: (858) 812-1096. EOE

 **NOVARTIS**

www.nadii.com

Opportunities in Drug Discovery & Development

The Liposome Company, a subsidiary of Elan Corporation, is expanding its Oncology Research and Development Group at its Princeton, New Jersey facility. This has created opportunities for individuals eager to apply their experience within a stimulating, small company setting in the following areas:

DIRECTOR/ASST DIRECTOR

PHARMACOKINETICS AND DRUG METABOLISM

We seek an experienced pharmacokineticist to design, conduct and interpret pre-clinical metabolism, pharmacokinetic, toxicokinetic and pharmacodynamic studies for drugs in development. In addition, you will design, coordinate, analyze and interpret clinical pharmacology studies. A Ph.D. in pharmacokinetics or a closely related field, 5+ years of pharmaceutical experience, excellent written and oral communication skills and knowledge of the drug development process are essential. (dept. BST)

ASST DIRECTOR/SR SCIENTIST

IN VIVO PHARMACOLOGY

We are seeking an experimental pharmacologist with experience in *in vivo* animal models, particularly in oncology. A broad understanding of current molecular pharmacological techniques as well as functional pharmacological assays and their application to drug discovery is essential. A Ph.D. or equivalent degree and experience in drug development within the pharmaceutical or biotechnology industry is desired. (dept. MPA)

ASST DIRECTOR/SR SCIENTIST/SCIENTIST

PROCESS DEVELOPMENT/CHEMICAL ENGINEERING

We currently have challenging positions available for scientists in our Formulation Development Group. Experience in the formulation of parenteral drugs, process development and scale up is essential. Familiarity with cGMP and analytical techniques is also necessary. These positions require a Ph.D. or M.S. with 5 years of experience in the pharmaceutical or biotechnology industry. (dept. SBB)

SR SCIENTIST/SCIENTIST

BIOPHYSICAL CHEMISTRY

This person will develop liposome and lipid-based formulations of therapeutic drugs, peptides etc. and physically characterize these systems. Experience with techniques such as DSC, NMR, cryo-EM, etc. is desirable and an understanding of the physical properties of liposomes, emulsions, and other lipid assemblies is required. The qualified candidate possesses a Ph.D. in biophysics, biochemistry or a related discipline. (dept. CEH)

SR SCIENTIST/SCIENTIST

ANALYTICAL CHEMISTRY

We seek a scientist to develop and validate analytical methods in support of new product development in Analytical Research and Development. A Ph.D. in analytical chemistry or related field with substantial knowledge in chromatographic techniques, familiarity with cGMP, and good communication skills are required. Experience in LC-MS with interpretive skills is desired. (dept. YRP)

SR SCIENTIST/SCIENTIST

BIOANALYTICAL CHEMISTRY

We are seeking a bioanalytical chemist with experience in chromatographic and radioisotopic methods. You will develop methods for the analysis of biological samples from preclinical pharmacokinetic and toxicokinetic studies as well as participate in the transfer and validation of methods for clinical pharmacokinetic studies. An M.S. or Ph.D. with a minimum of 1-2 years experience with excellent written and oral communication skills is required. Familiarity with mass spectrometric techniques a plus. (dept. BST)

SR SCIENTIST/SCIENTIST

ORGANIC CHEMISTRY

We are seeking scientists to design, synthesize, characterize and optimize small molecule drug candidates. Experience in lipid chemistry is desirable. These positions require an M.S. or Ph.D. in synthetic organic or medicinal chemistry and the ability to work within a team environment. Experience synthesizing radiolabeled compounds is a plus. (dept. GKI)



THE
LIPO SOME
COMPANY

a subsidiary of Elan Corporation

We offer a competitive salary and comprehensive benefits. For consideration, please forward or fax your resume to: The Liposome Company, Human Resources Dept., One Research Way, Princeton, NJ 08540; Fax: (609) 951-0286. Please reference indicated department. An Equal Opportunity Employer.

CLEMSON UNIVERSITY

The Bioengineering Department at Clemson University has undertaken a significant expansion in its research activities at the intersection of surface chemistry, physiology, and solid-state electronics. This department has been at the forefront of bioengineering innovation for over 20 years and is seeking to train the next generation of bioengineers in the exciting new multidisciplinary areas of biosensors, biological interface design, and biocomputation. We are now reviewing résumés from individuals who have the qualifications listed below.

Visiting Faculty Position (Open Rank)

A Ph.D. with five to ten years of experience in neuroscience with a background in single and dual patch clamp electrophysiology. This person will be actively involved in the set-up and operation of a state-of-the-art electrophysiology lab investigating neuronal and cardiac electrophysiological function. The projects will focus on understanding neuronal development and communication and its application to new sensor concepts and biocomputational investigations.

Postdoctoral Positions (5)

Electrophysiologist: Neuroscience background and patch clamp electrophysiology experience is essential. This person will be working on the electrophysiology of cell-cell communication on *in vitro* circuit patterns.

Cell Biologist/Neuroscientist: Degree in cell biology, neuroscience, or related field with an emphasis in cellular characterization and embryonic development of neuronal systems.

Surface Chemist: Degree in chemistry, bioengineering, or other applicable discipline with knowledge and experience in surface modification, primarily with self-assembled monolayers. Research will include working with basic protein and cellular *in vitro* interactions with SAMs.

Surface Analytical Chemist/Physicist: Two to five years of experience in surface analysis with a degree in chemistry, bioengineering, or other applicable discipline is needed. This person will use primarily XPS analysis for surface characterization of interactions of modified surfaces with proteins.

Biochemist: A degree in Biochemistry or a related field is required for this position. Experience in biochemical assays such as gel electrophoresis, PCR, and enzyme activity assays is necessary. The person will investigate protein interactions with surfaces in static and flow conditions.

Cell Culture Technician

Proficiency in neuronal cell culture with two to five years of experience and a BS or MS degree is required for this position. Primary hippocampal and cortical culture experience is also necessary.

People experienced in multidisciplinary research or desiring to learn and participate in multidisciplinary venues are encouraged to apply. Clemson is located in the beautiful Piedmont section of South Carolina in the midst of lakes and mountains. The region is nationally recognized for its quality of life, outdoor recreation, and low cost of housing and living. Clemson is near several major metropolitan areas and 40 minutes from an international airport. The positions are available immediately and include an attractive compensation package. Inquiries should include the area of interest, vitae, publication list and four references, and be sent to: **Department of Bioengineering, Clemson University, Attn: Vasanti M. Gharpuray, 501 Rhodes Research Center, Clemson, SC 29634-0905**, E-mail: vasanti@clemson.edu. The review process will begin on August 15, 2000, and will continue until the positions are filled. *Clemson University is an Equal Opportunity/Affirmative Action Employer.*

Myriad Genetics has established itself as a leader in the discovery of human disease genes by using a powerful combination of positional cloning, proteomics, bioinformatics and high-throughput sequencing. A wholly owned subsidiary, Myriad Pharmaceuticals, Inc. has been established to use these discoveries to create novel therapeutic products for the treatment of human diseases. Our ProNet program has developed an industrial-scale process for the identification of protein interactions. Our goal is to understand, in great detail, the interactions that occur within the human proteome. We are currently expanding our discovery efforts and are seeking a scientist to join our technology development group.



RESEARCH SCIENTIST - MASS SPECTROMETRY OF PROTEINS

This position is responsible for the development/implementation of mass spectrometry for the characterization of proteins. You must have a Ph.D., 3 - 5 years of relevant experience, and a strong background in MALDI-TOF mass spectrometry. Expertise in the identification and characterization of protein complexes is also essential, as well as excellent communication and organization skills.

Myriad offers an attractive compensation package and a stimulating, interactive research environment. Please send your letter of interest, including a complete resume and the names of three professional references, to: Human Resources Department, Myriad Genetics, Inc., 320 Wakara Way, Salt Lake City, UT 84108; Fax: 801-584-1144; E-mail: humanres@myriad.com

We are an equal opportunity employer. To learn more about Myriad Genetics, visit our corporate web site at <http://www.myriad.com/> or visit our ProNet Online site at <http://pronet.doubletivist.com/>



MYRIAD

www.myriad.com

POSTDOCTORAL FELLOWSHIPS AVAILABLE

CARDIOVASCULAR RESEARCH INSTITUTE

TEXAS A&M UNIVERSITY SYSTEM HEALTH SCIENCE CENTER

The Cardiovascular Research Institute invites applications from highly motivated individuals to fill available positions for postdoctoral studies. Within the Institute, the Divisions of Vascular Biology and Molecular Cardiology are comprised of interdisciplinary groups of scientists focused on investigations of the signaling mechanisms underlying cardiovascular function and dysfunction. Individuals with backgrounds in medical science, molecular biology, bioengineering, or biophysics are encouraged to apply. Current approaches involve transgenics, gene array technology, and analysis of vascular and cardiac function at the physiological and biochemical levels. Unique opportunities for study include:

Molecular determinants and dynamics of cell adhesion and vascular wall function. Cell adhesion molecules, integrins, and extracellular matrix biology. Dr. Gerald A. Meininger, gam@tamu.edu or Dr. Emily Wilson, emilyw@tamu.edu Refer to Job Number 000838.

Regulation of vascular smooth muscle phenotype by oxidative stress. Dr. Emily Wilson, emilyw@tamu.edu or Dr. Kenneth Ramos, kramos@cvm.tamu.edu Refer to Job Number 001063.

Temporal genomic patterns in angiogenesis. Organogenesis: Creation of a complete microvascular bed *in vitro*. Dr. Harris J. Granger, granger@tamu.edu Refer to Job Number 001457.

Cellular and molecular aspects of ischemia-reperfusion and preconditioning of the coronary microcirculation. Dr. Lih Kuo, lkuo@tamu.edu Refer to Job Number 001445.

Signal transduction and gene regulation in diabetes. Gene therapy of cardiovascular diseases. Dr. Sarah Y. Yuan, yuan@tamu.edu Refer to Job Number 001466.

Cellular and molecular mechanisms of tumor angiogenesis and invasion. Dr. Reza Forough, forough@tamu.edu Refer to Job Number 001504.

Cellular and molecular mechanisms of early embryonic heart development in vertebrates with emphasis on myofibrillogenesis and early heart inductive processes. Dr. Larry F. Lemanski, l-lemanski@tamu.edu Refer to Job Number ?

Regulation of contractile protein genes, associated proteins, and cardiac muscle contractility. Dr. Mariappan Muthuchamy, marim@tamu.edu Refer to Job Number 000670.

Positions require a doctoral degree. Competitive salaries based on experience with benefits package. Interested individuals should refer to appropriate Job Number(s), send letter of interest, résumé, and three references to: **Human Resources Department, Employment Office, Texas A&M University, College Station, Texas 77843-1475**. Web site: <http://www.tamu.edu/hrd/>.

Texas A&M University is an Affirmative Action/Equal Opportunity Employer committed to diversity.

You can look toward the future.

Or you can help create it.

At Immunex, we're creating innovative biopharmaceuticals that are giving new hope to people suffering from cancer, inflammatory, and infectious diseases. Our strong pipeline and portfolio of marketed products provides security and a future that few biotechnology-based companies can match.

Based in our downtown Seattle, Washington location, you will enjoy all the benefits of this cutting-edge city. Beautiful scenery from mountains to water, plus all the amenities of urban living are easily within your grasp. Take advantage of this great opportunity that will promise professional challenges in a rewarding, collaborative environment.



Experimental Pathologists

Our Molecular Immunology Department is seeking two Experimental Pathologists to join our multi-disciplinary team in Discovery Research to design and interpret efficacy models on drug development candidates. To qualify, you must have a DVM or MD and a Ph.D., and AVCP board certification in Pathology along with expertise in the application of molecular and cellular pathology techniques to experimental disease models. Specialized research training and diagnostic skills will be required to examine (necropsy, histopathology, clinical pathology, cytology, and electron microscopy) and report investigative and anatomic pathology results. Experience in either developmental biology, vascular biology, oncology or immunology is desirable. Well-developed communication and computer skills also required.

In addition to the tremendously rewarding environment, you will enjoy an exceptional compensation and benefits package. Please submit a resume (Immunex utilizes scanning technology), specifying Job Number 00-0183 /00-0238, to: **Immunex Corporation, 51 University Street, Seattle, WA 98101;**
e-mail: job-info@immunex.com. Immunex is an equal opportunity employer committed to diversity.

IMMUNEX

Creating the Future of Medicine™

For more information on Immunex, the career opportunities available, about Seattle, Washington, and to apply online, please visit our Web site at:

www.immunex.com/careers

Immunex is an equal opportunity employer committed to diversity.

Share the Vision

It's a vision of hope and of bettering the world. At each of our facilities, we're working to make this vision a reality. And, as part of American Home Products, one of the world's leading research-based companies, we deliver. If you're interested in a career in using your pharmaceutical and scientific knowledge to help us help the world, join us in our **PRINCETON, NJ** facility.

RESEARCH SCIENTIST PROTEIN EXPRESSION/PURIFICATION

We seek a technically astute scientist to facilitate the discovery, engineering, and development of proteins for various Neuroscience Division projects. You will be responsible for cloning, high level expression, purification, and scale-up from heterologous expression systems (prokaryotic and eukaryotic), as well as engineering proteins for specific new functionalities.

You must have a Ph.D. in Molecular Biology, Biochemistry, or a related field, 1-3 years' postdoctoral experience in protein expression and purification, and a strong publication/patent bibliography. Hands-on expertise in multiple chromatographic separation techniques and familiarity with FPLC and HPLC instrumentation are essential. Experience in expression vector construction, gene transfection, cell culture, protein refolding methods, and protein mass spectroscopy is preferred.

RESEARCH SCIENTIST NEUROCHEMISTRY

To qualify, you must possess a BS/MS in Pharmacology, Neurochemistry, Biochemistry or a related field with 2-3 years' experience in an academic or industrial environment. A strong background in in vivo models of neurochemistry/neuropharmacology is also required. Experience with in vivo microdialysis and/or modern HPLC techniques (with ECD or fluorometric detection) is desired but not essential.

Wyeth-Ayerst offers competitive compensation and benefits programs including stock options, child-care subsidies, flex-time, educational assistance and professional development programs. Please forward your resume with salary requirements to: **Wyeth-Ayerst, Reference OPSCI-PTN, P.O. Box 7886, Philadelphia, PA 19101-7886.** Fax in fine mode to: **(610) 989-4854.** E-mail: **jobs@RAMAIL1.wyeth.com** (ASCII format, no attachments, subject: resume).

Principals only. Equal Opportunity Employer. M/F/D/V.

For more information, visit us at: **www.wyethjobs.com**

**WYETH
AYERST**
Bringing results home.
A division of American Home Products

STRUCTURAL BIOLOGIST
Southern Research Institute
Birmingham, Alabama

Southern Research Institute is seeking a highly motivated individual to lead an established protein crystallography laboratory. The successful candidate should have a demonstrated record of success in protein crystallography and should possess a Ph.D. degree and several years of appropriate postdoctoral experience. Experience in all aspects of protein crystallography, from molecular biology to protein purification, protein crystal growth, X-ray diffraction data collection, and structure determination and interpretation, is required.

The successful candidate will have the opportunity to participate actively in the many ongoing crystallography projects at Southern Research Institute, as well as to develop new structure-based design programs.

These include the structural biology of human apolipoprotein A-I and drug design programs that target proteins important in cancer and a variety of infectious diseases. All of the current projects in the laboratory are collaborative in nature; thus, excellent communication and interpersonal skills are essential. Southern also has an affiliation with the University of Alabama at Birmingham, which will open additional collaborative opportunities.

Southern Research Institute, a not-for-profit research organization, has revenues of approximately \$50 million and employs approximately 600 professional, technical, and support personnel. As part of the large biomedical research community in Birmingham, we are committed to providing a stimulating and rewarding work environment. Close proximity to UAB allows for interactions with members of the UAB basic science departments, Comprehensive Cancer Center, Cell Matrix and Adhesion Center, Center for AIDS Research, and Center for Biophysical Sciences and Engineering. Birmingham has a high standard of living afforded by a moderate climate; beautiful, wooded terrain; outstanding residential communities and schools; world-class health care; below-average cost of living; and a vibrant arts and entertainment scene.

This full-time position is available immediately. Salary and appointment level will be commensurate with experience. Application letters accompanied by curriculum vitae, name and addresses of three references, and a summary of current research activities should be sent to **Southern Research Institute, HR Dept. # 788, P.O. Box 55305, Birmingham, AL 35255-5305. Must include Dept. #788. Fax (205) 581-2880; e-mail-s.r.brown@sri.org. AA/EOE**

Genomics Faculty Position

Memorial Sloan-Kettering Cancer Center is seeking an outstanding individual to fill a tenure-track faculty position in the area of genomics. Candidates should be applying the techniques of genomic analysis to probe fundamental biological questions relevant to oncogenesis. The successful candidate will be expected to lead a strong independent research program and will join the new Cancer Genetics Program. The faculty member will also assist in the development of a Genomics Core Laboratory and be responsible for its oversight. Memorial Sloan-Kettering provides an extraordinary opportunity for individuals interested in human/cancer genetics through both its clinical and basic science resources. Appointment at any level will be considered.

Candidates should send their CV, a description of their past research, a description of their proposed research, selected reprints, and three letters of reference to: **Genomics Faculty Search, Ms. Linda Smith, Box 150, Memorial Sloan-Kettering Cancer Center, 1275 York Ave, New York, New York 10021. Submission can also be made by e-mail as either Microsoft Word or pdf files to l-smith@ski.mskcc.org. Inquires to either Ms. Smith or Dr. Kenneth J. Marians, Chair, Genomics Search Committee: e-mail: k-marians@ski.mskcc.org. EOE/AA**



Memorial Sloan-Kettering
Cancer Center

The Best Cancer Care. Anywhere.

www.mskcc.org / www.ski.edu

CANCER RESEARCH FUND
OF THE
DAMON RUNYON-WALTER WINCHELL FOUNDATION
DIRECTOR OF AWARD PROGRAMS

The Cancer Research Fund is a nationally prominent foundation committed to supporting biomedical research leading to new discoveries in the treatment and prevention of cancer. Its mission is to identify and support young scientists and physician-scientists dedicated to cancer research. The Fund seeks a Director of Award Programs to oversee its grant programs, which currently total \$8 million annually: the Runyon-Winchell Postdoctoral Fellowships, Damon Runyon Scholar Awards, and Cancer Research Fund-Lilly Clinical Investigator Awards.

Reporting to the Executive Director and working closely with the Fund's internationally recognized scientific advisory boards, the Director of Award Programs will be responsible for maintaining and enhancing the scientific excellence of the grant programs. She/he will be responsible for the effective development, administration, and review of these programs and will represent the Fund within the scientific community.

The successful candidate will have a Ph.D. or equivalent advanced degree in a science or science-related field, experience with research grants, and excellent communication and administrative skills.

Applicants should submit a letter of application and curriculum vitae by no later than September 1, 2000, to:

Lorraine Egan
Executive Director
Cancer Research Fund of the
Damon Runyon-Walter Winchell Foundation
675 Third Avenue
New York, New York 10017

UNIVERSITY OF MICHIGAN COMPREHENSIVE CANCER
CENTER & DEPARTMENT OF DERMATOLOGY

TENURE-TRACK FACULTY POSITION **MELANOMA RESEARCH PROGRAM**

A new tenure-track faculty position is being created by the University of Michigan Comprehensive Cancer Center and Department of Dermatology. Applicants should possess an MD, PhD, or MD/PhD, and have a strong interest in developing a comprehensive basic research program focusing on malignant melanoma. We are seeking a highly-interactive individual who will interface with scientists in our outstanding clinical, translational, and genetics melanoma research programs. Abundant clinical material representing multiple stages in melanoma progression will be available; individuals interested in incorporating genomic and proteomic analysis in their research programs are especially encouraged to apply. The successful applicant will be a vital member of the Comprehensive Cancer Center's Cutaneous Oncology Program, which is partially supported by an NCI Core Grant. Applicants should send a CV, one-page summary of research interests, and three letters of reference to:

John J. Voorhees, M.D., Professor and Chairman
Univ. of Michigan Department of Dermatology
1910 Taubman Center, Ann Arbor, MI 48109-0314

We encourage applications from candidates who will enrich and contribute to the cultural diversity of our University community.

CURAGEN's rapid growth has created new career opportunities. We currently have openings for individuals with backgrounds in molecular biology, biochemistry, biology engineering, bioinformatics, medicine and other related fields. Successful CuraGen employees are exceptionally organized, have an entrepreneurial spirit, a passion for their work, and thrive in a challenging, team oriented environment. We are currently seeking highly driven individuals for the following positions:

Project Leader/Sequencing & Expression Methods

Responsibilities include development of new technologies and processes including optimization of expression and sequencing methods. 2+ years of management experience required. Ph.D. preferred. Job Code: 173-99

Bioinformatics

Positions available, include: Project Leader/Research Scientist/Senior Software Developer/Lead Software Developer. Candidates must have a Masters or Ph.D. in biological or computer sciences. Preferred candidates have worked with gene expression, sequence, protein pathway, or other genomic data. Experience working on large-scale software projects is desired, with experience in three of the following: Java, C/C++, pl/SQL, object-oriented design, relational databases, or Perl. Job Code: 013-00

Research Scientist/Drug Development

In this position, you will be part of a team dedicated to identifying and developing drug candidates in oncology or inflammation/autoimmunity. A proven ability to characterize the in vitro and in vivo activity of proteins or monoclonal antibodies is essential. Ph.D. required. Job Code: 257-99.

Please send cover letter, resume / CV and 3 letters of recommendation. EOE



Focus on the future. Then shape it.

At Boehringer Ingelheim, we believe that the future is not an event to be anticipated...but an opportunity to be shaped. We're ready to transform your innovation and drive into the power to define an industry — to develop and market breakthrough pharmaceuticals that enhance the quality of human life.

Biologist/Immunologist

Establish and follow drug discovery screens in the areas of allergy and asthma. The individual will be responsible for assay design and execution and program coordination. Target areas to include regulation of mast cell signaling and exocytosis, regulation of cytokine production, or regulation of IgE production. Will also be responsible for carrying out, supervising and coordinating target discovery research and target validation in the areas of mast cell biology and signaling or transcriptional regulation in mast cells. The successful candidate will have a Ph.D. in Biology, Biochemistry, or related field and a minimum of 3 years postdoctoral experience. Good written and verbal communication skills and a strong publication record are essential. **Job Code: AD-SCI/RD6500**

At our Ridgefield, CT campus, we offer a dynamic, collaborative environment where insight, inspiration and commitment create opportunity on an entirely new scale. For immediate consideration, please email your resume and salary history to bipi@bi-careers.com OR send to Boehringer Ingelheim Staffing Center, PO Box 534, Waltham, MA 02454-0534. Including Job Code, in your cover letter or subject line will help us to expedite your request and avoid delays in routing your resume. Please, principals only. Unsolicited agency referrals will not be accepted. We are a proud Equal Opportunity Employer and are committed to offering a healthy, non-smoking work environment, M/F/D/V.



**Boehringer
Ingelheim**

Bring your future into focus:

Visit www.bi-pharm.com

AVIVA Biosciences

AVIVA Biosciences is an innovative start-up biotech company based in San Diego. We are developing state-of-the-art biochip technologies for genomic and proteomic applications, and seek talented individuals with interdisciplinary skills in the areas of molecular biology, cell biology, applied physics, bioengineering, mechanical engineering, and microfabrication processing. Current openings include:

Protein Biochemist: PhD in biological sciences with emphasis on protein chemistry. Must have extensive experience in protein expression and purification, protein immobilization, protein detection and analysis. Experience with mass spectroscopy a plus.

Molecular Biologist: PhD in molecular biology or related discipline. Extensive experience in molecular biology with emphasis on DNA/RNA hybridization and single nucleotide mutation analysis.

Sample Preparation Scientist: PhD/MS in biological sciences with engineering or physics background. Responsible for developing biochip technologies for bio-molecule and cell manipulation. Experience in selected areas of on-chip cell/particle manipulation and processing, FACS/MACS, microfluidics, immunoassays, nucleic acid isolation and purification are required.

We offer competitive compensation and benefits package, including equity participation. If you enjoy the challenge of a start-up, send your resume and salary requirement to **AVIVA Biosciences, c/o HR Matters, P.O. Box 234118, Encinitas, CA 92023. Fax 760-632-8293 email: hrmatters@home.com**



Innovation, Speed, Growth. You'll find them at Roche.

*By forging ahead
and investing in the
latest technology,
Hoffmann-La Roche has
remained a leader
in the ever-changing
pharmaceutical industry.
And with over a century
of innovation and
ingenuity behind us,
we are poised to face
the challenges of the
new millennium.*

A passion for discovery. At Roche Pharmaceuticals, it's an essential part of our success. For over a century, we have been at the forefront of pharmaceutical innovation, developing the remarkable treatments that have saved and enriched millions of lives across the globe. Currently, we're seeking an innovative thinker to play a vital role in our continued progress.

SENIOR PRINCIPAL SCIENTIST-ONCOLOGY DEPARTMENT

As a senior level member of the oncology drug discovery team, you will take a leadership role in identifying and initiating new anticancer research projects with a focus on angiogenesis and metastasis. The ideal candidate will possess a sound knowledge of tumor biology and tumor and host interactions, and the desire to apply this knowledge creatively to support the identification of new targets and progression of drug candidates in cellular and/or animal model systems.

Qualifications include a Ph.D. in a biological science plus at least five years of experience in a cancer-related field, including the areas of angiogenesis, metastasis or tumor and host interactions. Pharmaceutical or biotech industry experience is highly desired. Excellent interpersonal skills and the desire to work in a dynamic and highly team-oriented, matrix environment are essential; a strong publication record and the proven ability to present material at scientific meetings would be a decided asset.

Hoffmann-La Roche Inc. offers competitive salaries and an outstanding benefits package that includes on-site childcare, a variety of employee services, and fitness center. For consideration, please send your resume with salary requirements to: **Roche Pharmaceuticals, Bldg. 123/5, 340 Kingsland Street, Nutley, NJ 07110; fax (973) 235-2767; or e-mail nutley.research@roche.com. You must reference Job Code AD0972-FM as subject.** We appreciate your interest in Hoffmann-La Roche Inc., but can only respond to qualified candidates. We are an equal opportunity employer, fully committed to diversity in the workplace.

Visit us at www.rocheusa.com.



Two Tenure-Track Faculty Positions At The Medical College of Ohio

An Assistant Professorship is available for research and teaching in **bacterial pathogenesis**. The successful applicant would join three existing molecular bacteriologists in the Department of Microbiology and Immunology. Applicants with proven ability to obtain extramural funding will be strongly preferred.

Applications are also invited for a joint Assistant Professor position in the department and the Cancer Research Center. Candidates should demonstrate research expertise at the **interface of microbiology/immunology and cancer biology**, and provide evidence of the ability to attract NCI or equivalent grant support.

For both positions, the candidate should have a Ph.D. and/or M.D. and at least two years of postdoctoral research experience. Competitive salary and startup packages are available. Send curriculum vitae, a summary of research interests, three letters of recommendation, and reprints of two recently published articles to:

**Dr. Garry T. Cole, Chair,
Department of Microbiology and
Immunology
Medical College of Ohio
3055 Arlington Avenue
Toledo, OH 43614-5806**

Online applications may be made at <http://www.mco.edu/depts/micro/newfac.html>. Review of applications will begin on September 1, 2000. *The Medical College of Ohio is an Affirmative Action/Equal Opportunity Employer.*

ProCeryon BIOSCIENCES

ProCeryon Biosciences is an emerging computational genomics company. Expansion of ProCeryon's customer base has created the need for a

Scientific Applications Manager

Main responsibilities will be to provide technical support and consulting services. The Scientific Applications Manager will work closely with researchers at leading pharmaceutical and biotechnology companies and will be expected to understand customers' research needs and deliver rapid, effective solutions built on ProCeryon's technology platform.

Applicants must have a Ph.D. in the Life Sciences or related discipline. Postdoctoral experience is highly desirable. Required background includes intimate knowledge of protein structure and function, and experience in one or more of the following: molecular modeling, bioinformatics tools, molecular biology techniques. Strong interpersonal skills and excellent written and verbal English communications skills are a must.

The position will be based at the ProCeryon Biosciences office in New York City.

Fax CV with cover letter to 212-595-1156, or email to: jobs@proceryon.com.

www.proceryon.com



**St. Jude Children's
Research Hospital**
ALBAC • Denny Thomas, Founder

Postdoctoral Research Associate

A newly funded position is available immediately to study mechanisms of mammalian checkpoint control regulated by the ATM and ATR protein kinases. The project will focus on characterizing the function of RAD cell cycle checkpoint genes using biochemical and genetic approaches. Candidates should possess a Ph.D. and have a strong background in molecular biology and biochemistry. Qualified applicants should submit a cover letter, their curriculum vitae, and names of three references to:

**Christine Canman, Ph.D.
Department of
Hematology/Oncology
St. Jude Children's
Research Hospital
332 N. Lauderdale Street
DTRT 1034
Memphis, TN 38105**

www.stjude.org
eoe m/f/d/v

Director, National Eye Institute (NEI) National Institutes of Health (NIH)

The Position

The Director, NEI, provides leadership and direction to the national research program relative to vision, visual diseases and disorders. The Director develops Institute goals, priorities, policies, and program activities, and provides overall leadership and guidance. Through NEI's intramural laboratories and the extramural scientific community, the Institute supports laboratory and clinical investigations and training of scientists with particular interest in the biomedical and behavioral sciences for research careers in the visual health sciences. The Director, NEI serves as the principal advisor to the Director, NIH on research and scientific policy related to vision research. The NEI has a FY 2000 budget of \$450 million to support nearly 1600 research projects. In addition to the leadership and managerial/administrative responsibilities described, the incumbent may carry out his/her own research program. Resources commensurate with the proposed program will be provided.

The Qualifications Required

Senior-level research experience and knowledge of research programs in one or more areas of vision research. Demonstrated leadership of a research program involving dealings with outside groups and extensive planning, program assessment, and analysis of program objectives, the development of plans for the resolution of major operational problems and issues; and management of financial and human resources, including selecting, management, and motivating staff using fair and equitable staffing/recruitment practices. Applicants must possess a M.D., O.D., and/or Ph.D. degree.

The Challenge

To provide strong and effective leadership to an organization dedicated to protecting and improving the visual health of the Nation through the support and performance of the highest quality laboratory and clinical research aimed at increasing our understanding of the eye and visual system in health and disease and developing the most appropriate and effective means of prevention, treatment, and rehabilitation, and through the timely dissemination of research findings and information that will promote visual health. Inherent in this challenge is the investigation of normal tissue and normal visual processes, so that a more complete understanding may be gained of the abnormal processes that lead to diseases of the eye and disorders of vision. These investigations are conducted in hundreds of extramural laboratories and clinics throughout the United States and in the NEI's own intramural facilities in Bethesda, Maryland.

Salary

The Director, NEI, will be appointed at a salary commensurate with his/her qualifications and experience.

How to Apply

Applicants must submit a current Curriculum Vitae and bibliography to: Ms. Carmen Garcia, Division of Senior and Scientific Employment National Institutes of Health, Building 31, Room B3C08 31 Center Drive MSC2203, Bethesda, MD 20892-2203 Applications may also be sent via E-Mail to: garcia@od.nih.gov

Applications must be postmarked by September 15, 2000

NIH is an Equal Opportunity Employer



Discovery, Dedication, Determination. You'll find them at Roche.

*For over a century,
Hoffmann-La Roche has
demonstrated a genuine
commitment to the research
and development of
innovative products.
This, along with our
exceptionally talented
teams of scientific
professionals, creates a
unique environment which
supports the future of
human health.*

Roche Pharmaceuticals has always been about innovation and new ways of thinking. By combining traditional biomedicine, sophisticated biotechnology, and the very latest in genetic research, Roche is continuing its tradition of innovation with a new synergy that promises treatments to save and enhance lives throughout our global markets.

PRECLINICAL INTEGRATED HEALTH CARE MANAGER

As a member of the research function, you will evaluate all research projects in the Metabolic Disease area for Integrated Health Care opportunities, develop and implement IHC strategies and, with the goal of maximizing efforts, bring pharmaceutical and diagnostic activities together. In addition, you will participate in project review, lead multifunctional groups to establish and develop IHC diagnostics, genetic tests and methods for research projects.

To qualify, you must have a Ph.D. or M.D. with related scientific expertise and working knowledge of Metabolic Diseases (specifically Diabetes and Obesity). In addition, you must have knowledge of genetics related to Metabolic Diseases, and leadership experience in an integrated healthcare/matrix environment.

Hoffmann-La Roche Inc. offers competitive salaries and an outstanding benefits package that includes on-site childcare, a variety of employee services, and fitness center. For consideration, please send your resume with salary requirements to: Roche Pharmaceuticals, Bldg. 123/5, 340 Kingsland Street, Nutley, NJ 07110; fax (973) 235-2767; or email nutley.research@roche.com. You must reference Job Code AD001142-FM as subject. We appreciate your interest in Hoffmann-La Roche Inc., but can only respond to qualified candidates. We are an equal opportunity employer, fully committed to diversity in the workplace.

Visit us at www.rocheusa.com



Career Opportunities & Graduate Programs for BS & MS SCIENTISTS

A Science Advertising Supplement

11 August 2000 issue

Reserve space by 25 July 2000

BENEFITS FOR ALL ADVERTISERS:


Maximum Exposure to the World's Top Scientists. Paid circulation of over 152,000¹ *Science* subscribers, plus our pass-along readers, brings total global weekly readership to more than 730,000.²

Largest Bonus Distribution of the Year

- Over 10,000 copies of the 11 August 2000 BS & MS issue will be distributed **to colleges and universities with the top biology and chemistry programs** throughout the United States. This list includes schools with historically high minority enrollments.
- **Science Career Fair**
17 August, Cambridge, MA.
- **Drug Discovery Technology 2000**
14–18 August, Boston, MA.
- **American Chemical Society Annual Meeting**
21–23 August, Washington, DC

Get a 30% Career Fair Discount

By advertising in this issue of *Science*, your organization is entitled to 30% off our exhibitor rate at *Science's* upcoming Career Fair on 17 August in Cambridge, MA.



**Largest bonus
distribution of the year —
over 13,500 copies.**

DEADLINES:

Issue date **11 August 2000**
Space reservation **25 July 2000**
Material closing **1 August 2000**

For more information:

U. S.: Gabrielle Boguslawski
Tel: 718-491-1607
Fax: 202-289-6742
E-mail: science_displayads@aaas.org

EUROPE: Debbie Cummings
Tel: +44 (0) 1223 326 500
Fax: +44 (0) 1223 326 532
E-mail: european_ads@science-int.co.uk

JAPAN: Mashy Yoshikawa
Tel: +81-3-3235-5961
Fax: +81-3-3235-5852

AUSTRALIA: Keith Sandell
Tel: +61-29922-2977
Fax: +61-29922-1100

Science
www.sciencecareers.org

1. *Science* Dec. 1999 BPA Publisher's Statement.

2. *Science* Harvey Research Readership Surveys: 7 Aug. 1998, 18 JULY 1997 (Japan), 1998 European Cumulative Report, as applied to AAAS June 1999 membership profile, publisher's own data.

CHAIR — DEPARTMENT OF CELL AND DEVELOPMENTAL BIOLOGY

SEARCH OPENED

The SUNY Upstate Medical University invites nominations and applications for the position of Chair of the Department of Cell and Developmental Biology. We seek candidates with a nationally recognized, well-funded research program in the general areas of cell and/or developmental biology that complement the major research strengths of our University, along with exceptional leadership skills and the ability to recruit and develop an outstanding faculty. In addition, the candidate should have a record of accomplishment in teaching and administrative service in a medical school environment.

The department has institutional teaching responsibilities in the anatomical, cellular and neural sciences. In addition to offering a Ph.D. program in Cell and Developmental Biology it contributes to two interdisciplinary Ph.D. programs. The University is committed to adding a number of state-funded tenure-track faculty positions with generous start-up packages and laboratory space. This position represents an excellent opportunity to build a thriving department dedicated to excellence in research and education at a time of significant expansion of our basic science mission.

Please submit a curriculum vitae and the names of four references to Dr. Jose Jalife, Chairman, Search Committee, c/o Office of the Provost, SUNY Upstate Medical University, 750 East Adams Street, Syracuse, NY 13210. E-mail address is jalifej@mail.upstate.edu and the Upstate campus web site is <http://www.upstate.edu>.

Review of applications will begin immediately and will continue until the position is filled.



State University of New York
Upstate Medical University

Formerly known as SUNY Health Science Center

SUNY Upstate Medical University is an AA/EEO/ADA employer, committed to excellence through diversity.

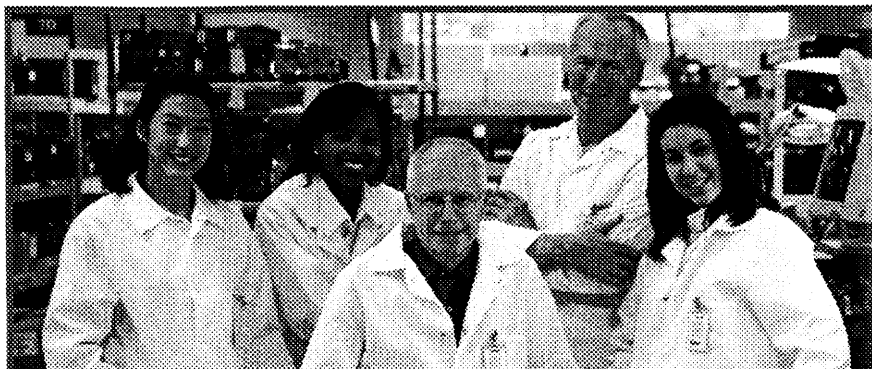
DNX

Senior Scientist

A position is available immediately for a scientist to participate in a large scale research project in phenotypic characterization of genetically modified mice. The successful candidate will have a PhD in Life Sciences and 2 - 5 years postdoctoral experience with a strong background in mouse biology and genetics. Experience in behavioral science is a plus. The position requires an independent individual with a strong drive and well-developed communication and organizational skills.

DNX Transgenic Sciences
5 Cedar Brook Drive
Cranbury, NJ 08512

Fax: (609) 860-8515
Email: lori.todaro@pils.com
Web Site: www.dnxsciences.com



R&D PROFESSIONALS

NEW PRODUCTS ARE YOUR LIFEBLOOD. OURS TOO.

When we at Johnson & Johnson ask "what's new?", we're not speaking casually. We're reflecting a belief we all share—innovation is key. Because it is our ongoing innovation of products that help people, like Risperdal and Retin-A, that leads to the ongoing success of Johnson & Johnson, the world's leading health care products and services company.

If you have an intense desire to make our next innovation your claim to fame, opportunities are now available at the following operating companies.



THE R.W. JOHNSON
PHARMACEUTICAL RESEARCH INSTITUTE

The R.W. Johnson Pharmaceutical Research Institute, located in Raritan, New Jersey, conducts pharmaceutical research in therapeutic areas including anti-microbial, endocrine, inflammation, immunosuppression and reproductive medicine.

Scientist/Senior Scientist Drug Discovery-Drug Metabolism-Pharmacokinetics

Req Code: 0012625CI

We are seeking a Scientist to join our Drug Discovery effort in providing in-vivo pharmacokinetic support. The successful candidate will be responsible for pharmacokinetic evaluation of drug candidates in early drug discovery in order to optimize properties of compounds entering development. The selected individual will have the opportunity to interact closely with the medicinal chemistry and biology groups in a dynamic research setting in providing rapid, diagnostic PK data utilizing LC/MC techniques.

The ideal candidate should possess a Ph.D. in analytical chemistry, biochemistry, pharmaceutical sciences or a related discipline with 1-5 years of relevant experience. A strong background in the generation and evaluation of pharmacokinetic data is required. Familiarity with common software tools for PK analysis and proficiency in the use of LC/MS for quantitation of drug substances and identification of their metabolites in plasma is also desirable.

Johnson & Johnson
CONSUMER PRODUCTS COMPANY
Division of Johnson & Johnson Consumer Companies, Inc.

Johnson & Johnson Consumer Products, Inc., located in Skillman, New Jersey, produces a wide range of products, the most familiar of which is the line of baby and child care products, home health care products such as BAND-AID Brand Adhesive Bandages and an extensive line of skin care products.

Postdoctoral Fellow

Req Code: 0012535CI

The Skin Biology TRC, a mechanism driven research unit in J&J, is seeking a Postdoctoral Fellow. The laboratory's primary focus is on the biology of skin and its appendages with the object of finding new insights into the treatment of important skin disorders. The studies involve the processes of cell growth, cell differentiation, pattern formation, receptor mediated signaling, apoptosis, and cycles in biology.

The successful candidate should have recently completed a Ph.D. and have a solid background in biology, molecular biology and laboratory techniques. Paramount is an enthusiasm for scientific discovery, and learning. Since publications are important to this position, demonstrated ability to write is important. The laboratory enjoys excellent library support, an active research seminar series, weekly journal club meetings, research-in-progress reports and intimate interaction with senior scientists.

As a valued team member, you'll receive a competitive salary and great benefits including medical/dental, a 401(k), a pension plan and a comprehensive wellness program. We strongly encourage individuals to apply on line at www.jnj.com or forward a scannable resume, noting the corresponding Req Code, to: Johnson & Johnson Recruiting, P.O. Box 16597, New Brunswick, NJ 08906-6597. We are an equal opportunity employer totally committed to diversity.

Johnson & Johnson

FOR FURTHER DETAILED INFORMATION REGARDING JOB RESPONSIBILITIES,
WE HIGHLY RECOMMEND YOU VISIT OUR WEB SITE.

www.jnj.com



UNIVERSITIES SPACE RESEARCH ASSOCIATION

Columbia, Maryland

PRESIDENT

The next President of USRA (www.usra.edu), with a distinguished record of accomplishment in space science, engineering, or technology, will have the opportunity to sustain, advance, and develop with vision the institution's diverse programs, to leverage the competencies of member institutions, and to explore appropriate entrepreneurial ventures. The President will lead USRA in the development of future space research and exploration initiatives, particularly with NASA support but also enhancing partnerships with other governmental agencies, including the Air Force and the National Science Foundation, and with organizations in the private sector. In science education and public outreach, the President will join a Board of Trustees poised and eager, utilizing the vast resources of its member universities, to promote an agenda that communicates the accomplishments and future opportunities of space science and exploration as integral to national interests and the world community.

Credential review is underway and will continue until the appointment is made. Nominations, expressions of interest, and inquiries should be forwarded to: USRA, c/o Educational Management Network/Witt/Kieffer, Attn: Nancy A. Martin, 98 Old South Road, Nantucket, MA 02554-6000. Questions or requests for the comprehensive Position Specification may be directed to Ms. Martin at 508-228-6700 or usra@emnemn.com EEO

Educational Management Network/Witt/Kieffer

Science Coordinator

RELOCATION NOT NECESSARY

The A-T Children's Project is a non-profit organization that funds international biomedical research aimed at unraveling the cause of the childhood genetic disease known as ataxia-telangiectasia in order to develop therapeutic interventions. Its activities include awarding nearly US\$2 million per year in research grants, organizing scientific conferences, assuring equitable access to reagents and patient tissue, establishing a clinical center, and providing family support.

A new position of Science Coordinator has been created. The successful candidate will have either a PhD or MD degree, be familiar with the common tools and protocols of molecular biology, plus have a minimum of 4 years of work experience in biological research. Experience in neuroscience though not essential would be advantageous. Applicant must reside in the U.S. but does not need to relocate to our Florida headquarters.

Responsibilities will include promoting scientific excellence, continuously surveying the scientific landscape to stay aware of all relevant developments, interacting with the Scientific Advisory Board, organizing conference programs, reviewing progress reports, conducting site visits, recruiting new scientists into the field, interacting with other grant-giving bodies, and communicating our research strategies to lay audiences through oral and written communication.

In order to receive full consideration, applications must be received by September 15, 2000. Send a letter of application, C.V., 2 letters of reference, and salary history/requirements to the attention of:



Brad Margus, President
A-T Children's Project
668 South Military Trail
Deerfield Beach, Florida 33442

FACULTY POSITION

THE CENTER FOR COMPARATIVE MEDICINE & THE DIVISION OF INFECTIOUS DISEASES

University of California, Davis

Qualified candidates are invited to apply for a position at the level of **ASSISTANT PROFESSOR, ASSOCIATE PROFESSOR, or PROFESSOR**, depending upon qualifications of the applicant. Applicants should have M.D., or M.D./Ph.D. degrees and be board eligible in Infectious Diseases, with postdoctoral experience, a record of publication in mainstream journals, and enthusiasm for the concepts of comparative medicine and investigation of diseases common to humans and animals. Faculty are sought whose research encompasses a variety of disciplines involving mechanisms of host-agent interactions during persistent infections, mechanisms of oncogenesis by infectious agents, and/or development of preventive or interventional strategies during persistent infections. Candidates will be expected to establish and maintain extramurally funded research programs and to participate in the teaching of medical students, residents, and graduate students. Faculty members will hold an academic appointment in the Division of Infectious Diseases within the School of Medicine. The Center for Comparative Medicine is a newly constructed and equipped research center that interdigitates with other campus-wide research programs in the School of Medicine, School of Veterinary Medicine, College of Agriculture, Division of Biological Sciences, California Regional Primate Research Center, Cancer Center, Center for Vector-borne Disease Research, Center for Neurosciences, Center for Genomics, and Mouse Biology Program. This is a tenure-track position in which generous start-up funding, long-term state sponsored 0.5 base salary support and ample laboratory space is provided. Review of applications will commence immediately and be accepted through September, 2000, or until the position is filled.

Submit applications with letter of interest, curriculum vitae, concise statement of present and future research plans, summary of teaching experience/philosophy, up to three representative reprints, and four references (including addresses, telephone numbers, and e-mail addresses) to: **Recruitment Committee Chair, c/o Center for Comparative Medicine, University of California, Davis, CA 95616.**

The University of California is an Equal Opportunity / Affirmative Action Employer

Kathryn Allen Weldon Chair in Alzheimer Research Dalhousie University

The Faculty of Medicine at Dalhousie University and the Dalhousie Medical Research Foundation are pleased to announce the establishment of the Kathryn Allen Weldon Chair in Alzheimer Research. The purpose of the Chair is to foster a major research initiative in Alzheimer's Disease and other dementias which will lead to a better understanding of the causes and treatments of these disorders.

The ideal candidate will be a distinguished scholar, having an international reputation as a clinical or basic scientist with an excellent record of publication, funding and scientific accomplishment. The incumbent will promote research initiatives through successful grant competitions and the development of partnerships with public and private sectors, both nationally and internationally. He or she will be an innovative team builder who will foster collaborative and multidisciplinary research initiatives and who will be a mentor for other investigators.

The successful candidate will hold an appropriate professorial appointment in the Faculty of Medicine, Dalhousie University.

Interested applicants are invited to send curriculum vitae, together with a short statement of their research plans, and the names of three referees, by 1st November 2000 to:

Professor Colin Powell, M.B., F.R.C.P. (Lond, Edin et Glas)
Convenor of the Search Committee
Centre for Health Care of the Elderly
QEII Health Sciences Centre
5955 Veterans' Memorial Lane, Suite 2650
Halifax, NS B3H 2E1

Tel: 902-473-8603
Fax: 902-473-4867

In accordance with Canadian immigration requirements, this advertisement is directed to Canadian citizens and permanent residents of Canada. Dalhousie University is an Employment Equity/Affirmative Action Employer. The University encourages applicants from qualified Aboriginal people, persons with a disability, racially visible persons and women.

Share Our Success Help us Make A Difference

PRAECIS' mission is to discover, develop and commercialize pharmaceuticals through integration of proprietary combinatorial technologies and high-throughput screening capabilities. We are a biopharmaceutical company involved in innovative research in Prostate Cancer, Endometriosis, Alzheimer's Disease and Growth Factor Biology. Phase III trials for Prostate Cancer and Phase II trials for Endometriosis are ongoing.

Analytical Pharmacology-BS/MS

We seek a BS or MS level chemist for our bioanalytical mass spectrometry laboratory to contribute to the Company's clinical and discovery efforts. Requires 2+ years' pharmaceutical experience in the quantitative analysis of compounds from biological matrices by LC/MS/MS. Expert skills in mass spectrometry, chromatography and methods development for the extraction of active compounds from biological samples are required.

Research Associate Phage Display/Assay

Will involve the use of phage display to select ligands from peptide libraries against a wide variety of pharmacologically important targets. The use of molecular biology will be required in the generation of follow-up mutagenesis libraries. The successful candidate will be involved in configuring a variety of cell- and protein-based biological assays on synthetic peptides and their analogues. Requires BS degree or equivalent in a biological science and 3+ years' related experience. Must be fluent in basic molecular biology techniques, phage display, ELISA, SDS-PAGE, Western blotting, competition binding assays (protein and cell-based), protein modification, eukaryotic cell culture and transfection, and flow cytometry. Experience in cell-based biopanning desired.

Please send
your resume to:
Human Resources
PRAECIS Pharmaceuticals, Inc.
One Hampshire Street
Cambridge, MA 02139

Fax: 617-621-8679

We offer a
highly competitive
compensation and
benefits package.
No phone calls, please.
An equal opportunity employer.

Visit our website at

www.praecis.com

PRAECIS
The Future in
Drug Development

Assistant Professor of Forestry: Landscape Ecology Michigan State University

The Department of Forestry at Michigan State University seeks applicants for a full-time (12-month), tenure-track, Assistant Professor (70% research, 30% teaching) position in forest ecology at broad spatial scales. Applicants for this position must have a Ph.D. in forest or plant ecology and demonstrate disciplinary knowledge and the ability to develop a research program centered on ecological processes of forests and mechanisms operating at landscape, regional, or global levels. The successful applicant will be expected to build a nationally recognized scholarly research program, as demonstrated in research grants, publications in leading refereed journals, and graduate student recruitment. Teaching duties will include one departmental undergraduate course per year and a graduate course in forest ecology that will complement existing courses, strengthen departmental course offerings, and enhance graduate education for students in Forestry, and in the Interdepartmental Graduate Program in Ecology, Evolutionary Biology, and Behavior.

To apply, send statements of research and teaching interests, C.V., four letters of reference, and reprints to:

Mike Walters, Chair
Forest Landscape Ecology Search Committee
Michigan State University
Department of Forestry
126 Natural Resources Building
East Lansing, MI 48824-1222

To ensure full consideration, submit application by September 15, 2000. For more information, contact Mike Walters via e-mail (mwalters@msu.edu) or phone (517-355-1762). Michigan State University is committed to building a diverse faculty, so candidates from underrepresented groups are especially encouraged to apply.

*MSU is an Affirmative Action/Equal Opportunity Employer.
Persons with disabilities have the right to request
and receive reasonable accommodation.*

The Science of Agricultural Genetics

Job Code PHI/PHIA092/PSC - Computational Biology Manager, (3 Positions) - The managers will identify, develop and integrate computational gene discovery and characterization technologies within Pioneer's computer environment. They will facilitate the use of genomic information, including DNA sequence, gene expression, proteomics, and functional characterization within our product development processes. A Ph.D. in biochemistry, genetics, computer science or related discipline is preferred.

Job Code PHI/PHIA047/PSC - User Services Manager - This person will lead Life Cycle IM efforts to provide software solutions for molecular marker utilization and genetic linkage mapping research in corn, soybeans, sunflower, wheat, and rice. The manager will work with scientists generating molecular marker data to scientists throughout the research organization. A Ph.D. in plant breeding, molecular genetics or related field is required.

For consideration, you must reference the **Job Code** above and send a scannable resume and cover letter to:

Resume Processing Center
Pioneer Hi-Bred International, Inc.
400 Locust Street, Suite 700
PO Box 14454
Des Moines, IA 50306-3454
or Email: apply@pioneerjobs.com

Visit www.pioneer.com or call our Employment Hotline at 1-800-247-6803 ext. 4000 for a detailed description of these and other opportunities or for information on scannable resumes.

Pioneer Hi-Bred International, Inc., is the world leader in the discovery, development and delivery of elite crop genetics. We are committed to developing and incorporating both time-tested approaches and cutting edge technologies that will continue to make our products superior to any in the industry. Pioneer's research programs, research collaborations, extensive germplasm base and advanced work in genomics are unmatched by our competitors.



**PIONEER HI-BRED
INTERNATIONAL, INC.**
*An Equal Opportunity
Employer*

It's about JOBS.



Science CAREER FAIR

Where scientific professionals can meet in person with representatives from top biotechnology and pharmaceutical organizations.

CAMBRIDGE, MA

PLACE: CAMBRIDGE MARRIOTT

Two Cambridge Center
(corner Broadway & 3rd St.)

Next to the Kendall Square "T" stop
on the Red line. Parking lot adjacent.
(617) 494-6600

DATE: 17 AUGUST 2000

TIME: 11:00 am – 4:00 pm

Remember to bring multiple copies of your CV or resume with you to the Career Fair; a copy will be necessary to gain admission to the hall. Admission is FREE. For more information, call 202-326-7018.

**We want YOU in our Science
Resume/CV Database**

**Post your resume/CV online!
www.sciencecareers.org**

FOR MORE INFORMATION:

U. S.: Gabrielle Boguslawski
Tel: 718-491-1607
Fax: 202-289-6742
E-mail: science_displayads@aaas.org

EUROPE: Debbie Cummings
Tel: +44 (0) 1223 326 500
Fax: +44 (0) 1223 326 532
E-mail: european_ads@science-int.co.uk

JAPAN: Mashy Yoshikawa
Tel: +81-3-3235-5961
Fax: +81-3-3235-5852

AUSTRALIA: Keith Sandell
Tel: +61-29922-2977
Fax: +61-29922-1100

Science
CAREER FAIRS
www.sciencecareers.org

**NIEHS**

POSTDOCTORAL RESEARCH POSITIONS
NATIONAL INSTITUTE OF ENVIRONMENTAL HEALTH SCIENCES
NATIONAL INSTITUTES OF HEALTH
P.O. BOX 12233, RESEARCH TRIANGLE PARK, NC 27709-2233

Activating and Repressing Transcription from Chromatin
 Trevor Archer, Ph.D. (archer1@niehs.nih.gov)

Biological Function and Action of Nuclear Receptors
 Anton Jetten, Ph.D. (jetten@niehs.nih.gov)

Breast Cancer and Mammary Biology
 Richard DiAugustine, Ph.D. (diaugus2@niehs.nih.gov)

Calcium Signaling
 James Putney, Ph.D. (putney@niehs.nih.gov)

Cell Adhesion and Signal Transduction in Tumor Cell Metastasis
 Kenneth Olden, Ph.D./John Roberts, Ph.D. (roberts1@niehs.nih.gov)

Comparative Carcinogenesis
 Roger Wiseman, Ph.D. (wiseman@niehs.nih.gov)

Cytochrome P450 Arachidonic Acid Metabolism
 Darryl Zeldin, Ph.D./Joyce Goldstein, Ph.D. (zeldin@niehs.nih.gov)

Eicosanoids and Pulmonary Immune Function
 Darryl Zeldin, Ph.D. (zeldin@niehs.nih.gov)

Genetic Basis for Human Gene Expression Profiles Using Microarray Technology
 Douglas Bell, Ph.D. (bell1@niehs.nih.gov)

Investigations of Free Radical Metabolism with Electron Spin Resonance and Immunology
 Ronald Mason, Ph.D. (mason4@niehs.nih.gov)

Ion Channel Physiology
 Jerrel Yakel, Ph.D. (yakel@niehs.nih.gov)

Mechanisms by Which Cells Produce Mutations
 Roel Schaaper, Ph.D. (schaaper@niehs.nih.gov)

Mechanisms of Cell Adhesion and Migration
 Steven Akiyama, Ph.D. (akiyama@niehs.nih.gov)

Mechanisms of Renal Xenobiotic Transport
 John Pritchard, Ph.D. (pritchard@niehs.nih.gov)

Mitochondrial DNA Replication
 William Copeland, Ph.D. (copelan1@niehs.nih.gov)

Molecular Epidemiological Studies of Gene-Environmental Interaction
 Douglas Bell, Ph.D. (bell1@niehs.nih.gov)

Molecular Neurobiology
 J.S. Hong, Ph.D. (hong3@niehs.nih.gov)

Molecular Pathology
 Robert Sills, D.V.M., Ph.D. (sills@niehs.nih.gov)

Pharmacology and Molecular Biology
 Lawrence Lazarus, Ph.D. (lazarus@niehs.nih.gov)

Regulation of Signal Transduction Pathways by Adaptor Proteins
 John O'Bryan, Ph.D. (obryan@niehs.nih.gov)

Roles of a Novel Family of Zinc Finger Proteins in Inflammation and Hematopoiesis
 Perry Blackshear, M.D., D.Phil. (black009@niehs.nih.gov)

Signal Transduction by Inositol Phosphates
 Stephen Shears, Ph.D. (shears@niehs.nih.gov)

Stress Induced Signaling Pathways: Preconditioning/Apoptosis
 Elizabeth Murphy, Ph.D. (murphy1@niehs.nih.gov)

Toxicokinetic Modeling
 Ronald Melnick, Ph.D. (melnickr@niehs.nih.gov)

Must possess Ph.D., M.D. or equivalent with no more than five years of postdoctoral experience. For further details, access <http://www.niehs.nih.gov/vacancy/postdoc.htm>. To apply, submit a cover letter, curriculum vitae and the names of three references to the hiring scientist at the above address.

NIH/NIEHS Is An Equal Opportunity Employer

**Looking for brilliant
career opportunities?**



**Then look here...
www.sciencecareers.org**

- Job Search • Job Alerts • Employer Profiles
- Advice and Perspectives
- Meetings and Announcements
- Academic Connections

Science Careers
www.sciencecareers.org

LIFE SCIENCE



Unleash Your Future

Sigma-Aldrich Corporation is the world's leading supplier of Life Science research reagents, chemicals and kits. Our expanded focus on the Life Science market has generated the following career opportunities:

R&D SCIENTIST

A B.S. or M.S. Chemist is needed for the development of products for High Throughput Screening. The Chemist must have experience in organic chemistry and biochemistry, including protein purification and characterization. The candidate must have experience in the development of microtiter plate assays or products. Excellent verbal and written skills are required; team skills are essential.

ASSOCIATE R&D SCIENTIST

A B.S. Biochemist or equivalent is needed for the development of products for Proteomics and/or High Throughput Screening applications. The Chemist will need knowledge and experience in basic biochemistry and related life science areas, especially protein purification and characterization. Knowledge and experience in organic chemistry is desirable. Excellent verbal and written skills are required; team skills are essential.

Sigma-Aldrich
 Human Resources
 Ad Code: Protein R&D
 3050 Spruce Street
 St. Louis, MO 63103
 Fax: (314) 286-7863
 E-mail: akampschroeder@sial.com



SIGMA-ALDRICH

www.sigma-aldrich.com

An equal opportunity employer.

POSITIONS OPEN

GENETICS

The Department of Biology at Juniata College ([website: www.juniata.edu/biology/](http://www.juniata.edu/biology/)) invites applications for a tenure-track position in genetics to begin January 2001. We seek an individual utilizing modern molecular techniques to address questions in population genetics or phylogenetic systematics. Teaching responsibilities may include participation in the combined biology/chemistry freshman laboratory, genetics with a combined genetics/cell biology laboratory, biostatistics, and specialty course in the successful candidate's discipline. This position is made available by a major expansion of the Department's focus in the areas of biochemistry, cell, and molecular biology (BCMB). Construction of a new 75,000-square-foot science building, projected to be complete for the 2002-2003 academic year, will house the BCMB faculty of the Biology Department as well as the Chemistry Department. Juniata College is an undergraduate liberal arts institution with an enrollment of 1,250 and a strong program in the natural sciences. Candidates must be willing to mentor students in supervised and independent research efforts.

Start-up funds and dedicated research space will be provided. Applicants with an earned Ph.D. and postdoctoral or teaching experience should submit one-page statements of (1) teaching experience, philosophy, and interests; and (2) a description of their research program appropriate for engaging undergraduates in research at a liberal arts college; as well as (3) curriculum vitae; (4) undergraduate and graduate academic transcripts; and (5) three letters of recommendation to: **Gail Libby Ulrich, Director of Human Resources, Juniata College, Huntingdon, PA 16652.** Review of applications will begin August 18, 2000, and continue until the position is filled.

FACULTY POSITION

YALE UNIVERSITY

Department of Molecular Biophysics and Biochemistry

The Department of Molecular Biophysics and Biochemistry seeks applications for openings at any level (from **ASSISTANT** to tenured **FULL PROFESSOR**) in the fields of biochemistry, molecular biology, and molecular genetics. Our Department spans a broad range of areas from structural to molecular biology and is located in both the Faculty of Arts and Sciences and the School of Medicine of the University. Applicants should include curriculum vitae, a statement of research interests, and selected reprints or preprints. For Assistant Professor positions, three letters of reference should be forwarded by the deadline. Applications should be sent to: **Faculty Search Committee (Biochemistry), Department of Molecular Biophysics and Biochemistry, Yale University, 260 Whitney Avenue, P.O. Box 208114, New Haven, CT 06520-8114. Telephone: 203-432-5593.** Application deadline: October 1, 2000. *Yale University is an Affirmative Action/Equal Opportunity Employer.*

TENURE-TRACK

ASSISTANT/ASSOCIATE PROFESSOR Department of Pathology, Microbiology, and Immunology

The Department of Pathology, Microbiology, and Immunology has a position immediately available for a Ph.D. or equivalent with postdoctoral experience. Faculty participate in a multidisciplinary microbiologic basis of medicine course taught to medical students. Preference will be given to an applicant with demonstrated experience in teaching microbiology with emphasis on microbial pathogenesis and immunology. The successful candidate should have or should be able to attract extramural funding. Research interests should encompass microbial pathogenesis at the molecular level.

Send curriculum vitae, statement of research interest, and the names and addresses of three references to: **Robert M. Fogel, D.O., Chairman, Department of Pathology, Microbiology and Immunology, Philadelphia College of Osteopathic Medicine, 4170 City Avenue, Philadelphia, PA 19131.** *Equal Opportunity Employer.*

POSITIONS OPEN



EPIGENESIS PHARMACEUTICALS

EpiGenesis is a growing pre-IPO company focused on applying cutting-edge advances in epigenomics to the discovery and development of novel respiratory disease therapeutic products. We are looking for talented individuals from the **RESEARCH ASSOCIATE** level through the **SENIOR SCIENTIST** level for opportunities in our Library Screening, Respiratory Physiology, Molecular Biology, Chemistry, Animal Models, and General Physiology departments. For more information, please visit our **website: www.EpiGene.com**. To apply for any of these positions, please e-mail your cover letter including salary history along with your curriculum vitae or résumé (as a Word attachment) to: **HREPI@EpiGene.com**. Send/FAX to: **EpiGenesis Human Resources Department, 7 Clarke Drive, Cranbury, NJ 08512. FAX: 609-409-6126.** *Equal Employment Opportunity; Minority/Female/Disabled/Veteran.*

GENE DISCOVERY IN HEMATOPOIESIS AND ALLERGIC INFLAMMATION

POSTDOCTORAL POSITIONS are available immediately for Scientists interested in using genomic approaches for studying the regulation of inflammatory cell development and activation in allergic diseases. Projects are using cDNA microarray and genomic strategies to identify and characterize cytokine-mediated signaling pathways and transcriptional regulators relevant to myeloid differentiation, lineage-specific gene expression, and granulocyte activation and studying their roles in progenitor cell development and inflammation using knockout, transgenic, and *in vitro* models. Ph.D. or M.D. graduates or more experienced individuals with molecular biology background using cDNA microarrays, genomics, subtraction cloning, differential display, or Yeast 1 and 2 hybrid cloning systems preferred. Mail résumé and names/telephone numbers of three references to: **Steven Ackerman, Ph.D., Department of Biochemistry and Molecular Biology (MC536), A-312 College of Medicine West, University of Illinois at Chicago, 1819 West Polk Street, Chicago, IL 60612. E-mail: sackerma@uic.edu; FAX: 312-996-5623.** *University of Illinois at Chicago is an Affirmative Action/Equal Opportunity Employer.*

POSTDOCTORAL POSITION available immediately to study the molecular biology of herpes simplex virus Type 1 latency and pathogenesis. Position open for a recent Ph.D. to work on projects from two NIH grants in a well-funded laboratory investigating various aspects of the HSV1 life cycle in a rabbit ocular model of viral latency and reactivation. A strong background in either virology, molecular biology, and/or apoptosis is highly desirable. Send curriculum vitae, names, addresses, telephone numbers, and e-mail addresses of three references to: **Dr. Steven Wechsler, Virology Research Laboratories, Cedars-Sinai Medical Center Research Institute, 8700 Beverly Boulevard, Los Angeles, CA 90048-1869. E-mail: Wechsler@CSMC.edu.**

MEDICAL RESEARCHER assisting M.D.s in a closely monitored environment collecting and reporting statistical data arising from clinical research studies. Will assist with clinical studies and conduct statistical analysis on raw data collected. Will use statistical software to develop reports on large patient records database for supervisor. Must have M.D. degree or higher in medical science. Must have one year of experience with patient data collection in clinical research setting. Experience with medical informatics or statistical-based software applications preferred. Salary: \$38,000 per year. Hours: 9 a.m. to 5 p.m., Monday through Friday. Must be willing to relocate to Allentown, Pennsylvania. To apply, send résumé and cover letter to: **Dr. Yasin Khan, 4825 Tilghman Street, Allentown, PA 18104.**

POSITIONS OPEN

FACULTY POSITION in veterinary biomedical sciences. The Department of Veterinary Biomedical Sciences, University of Missouri-Columbia, is accepting applications for a tenure-track or clinical-track position in veterinary biomedical sciences. Candidates must have a Ph.D., D.V.M., or equivalent degree. Responsibilities include laboratory and lecture instruction to veterinary students in microscopic anatomy and/or gross anatomy. The successful applicant in a tenure-track position will also be expected to develop an independent research program in one or more fields of biomedical science. Preference will be given to candidates whose research interests enhance existing areas of excellence in cardiovascular sciences, exercise physiology, reproductive biology-endocrinology, membrane transport, transmembrane signaling, and immunology. The primary responsibility for a clinical-track appointment will be teaching. However, the successful applicant will also have the opportunity for research in one or more fields of biomedical science.

Applicants should submit curriculum vitae, the names of three references, and a letter stating career goals to: **Dr. Brian Frappier, Veterinary Biomedical Sciences, College of Veterinary Medicine, University of Missouri-Columbia, E102 Veterinary Medicine Building, Columbia, MO 65211-5120.** Completed applications will be reviewed starting October 1, 2000. Applications will be considered until a suitable candidate is recruited. Rank and salary will be commensurate with the successful applicant's qualifications and experience. *The University of Missouri is an Affirmative Action/Equal Opportunity Employer.*

FACULTY POSITIONS IN MOLECULAR BIOLOGY

The Department of Molecular and Cellular Biochemistry of The Ohio State University invites applications for tenure-track positions at the level of **ASSISTANT** or **ASSOCIATE PROFESSOR** as part of a major expansion in molecular biology and molecular genetics. The applicants should have a minimum of three years of postdoctoral experience backed by publications in established journals and ability to generate research support. Preference will be given to candidates with expertise in the molecular aspects of disease processes. Columbus has been ranked by *Newsweek* as one of the country's best places to live and work. The faculty will have access to graduate students from a large pool of interdisciplinary graduate programs. A very attractive start-up package, including modern laboratory space, will be available. Applicants should submit curriculum vitae; selected reprints; a description of research interests and goals; grant support (if applicable); and the names, addresses, and telephone/FAX numbers of three references to: **Chair, Faculty Search Committee, The Ohio State University, College of Medicine, Department of Molecular and Cellular Biochemistry, 333 Hamilton Hall, 1645 Neil Avenue, Columbus, OH 43210-1218.** The Search Committee will begin reviewing applications on September 7, 2000. *The Ohio State University is an Affirmative Action/Equal Opportunity Employer.*

UNIVERSITY OF MIAMI SCHOOL OF MEDICINE

Molecular and Cellular Pharmacology

POSTDOCTORAL ASSOCIATE (Ph.D.) or **SENIOR RESEARCH ASSOCIATE** (M.S.) position is available immediately to study G protein signal transduction using surface plasmon resonance detector BIAcore 2000. Candidates with a track record in protein-protein and protein-lipid interactions are particularly encouraged to apply. Previous experience with BIAcore is not essential but thorough understanding of protein purification, labeling, and immobilization is a must. For more information, visit **website: <http://chroma.med.miami.edu/pharma/faculty/slepak.html>**. Write to: **Dr. V. Z. Slepak, Department of Molecular and Cellular Pharmacology (R-189), University of Miami School of Medicine, P.O. Box 016189, Miami, FL 33101. E-mail: vslepak@newssun.med.miami.edu.** *An Equal Opportunity/Affirmative Action Employer.*

GRADUATE PROGRAM DIRECTORS:

Science offers an
online solution →
to your student
recruitment needs.

Science @
CAREERS Academic

Jobs | Job Alerts | Employer Profiles | En

- **Univer**
Scroll &
univers
- **Subje**
Progra
- **Local**
Scroll



New 1999-2000 Graduate
Program Profiles

Welcome to the 1999-2000
Program Profiles in
Connections. V
informa
select

ACADEMIC CONNECTIONS

Here are **just a few** of the schools with
graduate programs currently listed:

- Albert Einstein College of Medicine
- Arizona State University
- Colorado State University
- Cornell University
- Duke University
- Emory University
- Johns Hopkins University
- Mt. Sinai Graduate School of
Biological Science
- University of Texas at Austin
- University of Toronto
- Vanderbilt University
- Washington University

Drive traffic to your school's web site
by including your graduate program on the
leading scientific web site.

U.S.: **Bren Peters**
Phone 202-326-6541
Fax 202-289-6742
E-mail science_displayads@aaas.org

Europe: **Debbie Cummings**
Phone +44 (0) 1223 326 500
Fax +44 (0) 1223 326 532
E-mail european_ads@science-int.co.uk

Science

www.sciencecareers.org

Click on **Academic Connections**



THE R. W. JOHNSON PHARMACEUTICAL RESEARCH INSTITUTE

Utilize the most advanced techniques in
cellular and molecular biology, discover
novel approaches to unmet medical conditions,
and help us make the difference that will be
measured in the quality of life.

We're the R.W. Johnson Pharmaceutical Research
Institute, a dynamically expanding organization that
conducts research and development in a variety of
therapeutic areas for the Johnson & Johnson family of
companies. Our **La Jolla, California** site focuses on the appli-
cation of science and organic synthetic chemistry to discover
novel approaches to treat unmet medical conditions. A key compo-
nent of our approach is utilizing the latest hardware and software
information technology on genomic sequence data emanating from
public and private efforts to sequence the expressed Human Genome.

To continue to meet the demands of our success, we have outstanding
opportunities in the following areas:

VIROLOGY OPPORTUNITIES

Molecular Virology Scientist/ Senior Scientist

(Job Code # 12562)

As part of our Molecular Virology team, be involved in the discovery and testing of
novel antiviral compounds. In this position, the motivated individual will establish
cell culture and animal models of viral infection, as well as biochemical/cellular
assay development. The successful candidate will then be expected to routinely
evaluate drug candidates in these models for antiviral, efficacy and toxicology.
Ideally, the applicant will have a Ph.D. in virology or cell biology, and 3-5 years
postdoctoral experience in the virology field, particularly in the use of animal/cellular
models of viral infection. Knowledge of assay development and/or pharmacology/
toxicology would be preferred. Good communication skills necessary; should be able
to work both independently and as part of a team.

BIOINFORMATICS OPPORTUNITIES

Genomic Team Experts/Trainees Postdoctoral Position

(Job Code # 12412)

Work closely with our drug discovery teams to analyze DNA/Protein sequences and
microarray-based gene expression data to elucidate gene function and identify
therapeutic targets. Provide expertise in the application of advanced bioinformatics
tools and in-depth knowledge of public and proprietary data sources. Expert
knowledge in a wide variety of sequence analysis software (GCG, BLAST,
HMMER, Gene prediction, etc.) is essential. Programming experience in C/C++,
Java, Perl, HTML, and SQL in UNIX and Windows NT environments is required.
Strong communication and scientific presentation skills plus the ability to work
in a team-oriented environment required. Ph.D. in immunology, microbiology,
virology or neurobiology necessary. Current graduates with a proven
research record in these areas are strongly encouraged to apply.

Scientific Application Developer

(Job Code # 10953)

Join a team of software developers to design and create Bioinformatics
applications, databases and web portal software. Duties include
testing and maintaining existing in-house software applications.
BS/MS degree in Computer Science or a related field required;
2 years of industry programming experience in Cold Fusion,
MS-SQL, Perl, Java, ASP, HTML and C++ is desirable. Know-
ledge in molecular biology is preferred.

Please send your resume to:

Human Resources, RWJPRI
3210 Merryfield Row
San Diego, CA 92121
E-mail: prljhr@prius.jnj.com

Johnson & Johnson

RWJPRI is proud to be
an EOE M/F/V/D

POSITIONS OPEN

DIRECTOR OF THE HERBARIUM

The New York Botanical Garden is seeking an exceptional candidate to fill the position of Director of the Herbarium. The Garden's Herbarium is the fourth largest herbarium in the world, the largest in the Western Hemisphere. Containing more than 6.5 million specimens, it is widely recognized as a research resource of international importance.

The Director manages day-to-day activities in the Herbarium; plans for the future of the Herbarium, including long-term growth and space needs; prepares grant proposals; actively seeks collections; serves as a member of the Science Advisory Group and as chairman or a member of institutional committees; participates in national and international botanical associations and activities; conducts taxonomic research; and assists the Vice President of Botanical Science as needed.

The ideal candidate will have extensive experience in the operation of a large herbarium and a Ph.D. in botany or biology with specialization in plant systematics. He/she must have the ability to create a stable working environment, to maintain high visibility in the scientific community, and to see opportunities for the Herbarium and for the institution. Send curriculum vitae and letter of interest to: **Ms. Sally Gavin, Associate Vice President for Administration, The New York Botanical Garden, 200th Street and Kazimiroff Boulevard, Bronx, NY 10458-5126.** Applications will be accepted until August 31, 2000. *Affirmative Action/Equal Opportunity Employer; Minorities/Females/Disabled/Veterans.*

The Department of Pharmacology, Physiology, and Therapeutics is seeking two tenure-track, federally funded Pharmacologists at the level of **SENIOR ASSISTANT/ASSOCIATE PROFESSOR**, with active research programs. Applicants must have a Ph.D. or M.D. degree. In addition to offering nationally competitive salary, ample space, and start-up funds, the Departments contain 14 faculty, numerous common equipment rooms, and core facilities. Teaching at the graduate, undergraduate, and medical school level will be expected. Submit curriculum vitae, a comprehensive research statement outlining past accomplishments, future goals, and three letters of recommendation to:

**Manuchair Ebadi, Ph.D.
Professor and Chairman**

Department of Pharmacology, Physiology, and Therapeutics

**Professor of Neuroscience/Associate Dean for Research and Program Development
University of North Dakota School of Medicine and Health Sciences**

**501 North Columbia Road
Grand Forks, ND 58203**

University of North Dakota is an Equal Opportunity/Affirmative Action Employer.

ASSISTANT PROFESSOR WEED ECOLOGY

Department of Agronomy, University of Wisconsin-Madison. The position is a 12-month, tenure-track appointment with research emphasis on weed ecology as related to integrated weed management systems and teaching emphasis on weed science principles and practices. Qualifications: A Ph.D. in weed science, plant ecology, or a related discipline and substantive experience conducting research in the areas of weed ecology and integrated weed management are required. Applications must be received by October 15, 2000, and include (1) a letter of application, (2) a complete résumé, and (3) official transcripts. Send application and three letters of reference to: **Dr. David E. Stoltenberg, Search and Screen Committee Chair, Department of Agronomy, 1575 Linden Drive, University of Wisconsin, Madison, WI 53706-1597.** More information is available at [website: http://www.NRCan.gc.ca/~bcampbel/](http://www.NRCan.gc.ca/~bcampbel/). *UW-Madison is an Equal Opportunity/Affirmative Action Employer.*

POSITIONS OPEN

WANTED: SENIOR MOLECULAR GENETICS LABORATORY MANAGER

A Molecular Genetics Laboratory Manager is sought to develop an automated high-throughput genotyping facility at the Channing Laboratory, Brigham & Women's Hospital, and Harvard Medical School. Novel molecular genetic techniques will be utilized with ABI 377/3700 technology and robotics with strong bioinformatics support to create an automated high-throughput genotyping and DNA sequencing facility. Polymorphism identification, PCR optimization, and DNA sequencing will be performed. Responsibilities include performance of technical tasks involved in automated genotyping and DNA sequencing, supervision of laboratory technicians, and interactions with investigators. Successful applicants should have a Master's or Ph.D. in molecular biology or genetics and at least three years of experience with PCR, genotyping, and sequencing. Robotics knowledge preferred.

Desired attributes include good communication skills; familiarity with automated sequencing (i.e., ABI 377); good foundation in DNA biochemistry and genetics; mechanical aptitude; and the ability to troubleshoot at the hands-on level. Experience with the Macintosh platform is also sought, and experience in website design and maintenance would also be valuable. The individual will have wide room for autonomy and personal growth and will report to the directors of the facility, **Dr. Scott Weiss** and **Dr. David Kwiatkowski**. Salary will be commensurate with skills and level of responsibility. A minimum two-year commitment is desired. Send résumé to: **Scott T. Weiss, M.D., M.S., Director of Genetic Epidemiology, Channing Laboratory, 181 Longwood Avenue, Boston, MA 02115.** E-mail: scott.weiss@channing.harvard.edu; FAX: 617-525-2745. *An Equal Opportunity/Affirmative Action Employer.*

FACULTY POSITION IN RENAL PHYSIOLOGY Department of Molecular and Integrative Physiology

The University of Kansas School of Medicine

The University of Kansas Medical Center invites applications for a tenure-track position at the **ASSISTANT or ASSOCIATE PROFESSOR** level. The faculty member will have a primary appointment in the department and will be a member of the Medical Center's Kidney Institute. Preference will be given to outstanding candidates who apply cellular, molecular, or genetic approaches to the study of the mechanisms of renal function. The successful candidate should have a record of productive research that can lead to or has already resulted in an established, independent research program. Responsibilities include building an excellent, extramurally funded research program and participation in the teaching and training of medical and graduate students. Qualifications include an M.D., Ph.D., or equivalent degree and significant postdoctoral experience. Applications will be reviewed as received. To apply, submit a comprehensive statement of research goals, curriculum vitae, and the names and addresses of three individuals who could provide letters of recommendation to: **Chair, Faculty Search Committee, Department of Molecular and Integrative Physiology, University of Kansas Medical Center, 3901 Rainbow Boulevard, Kansas City, KS 66160-7401.** FAX: 913-588-7430; Telephone: 913-588-7025; website: <http://www.kumc.edu/instruction/medicine/physiology/>. *The University of Kansas is an Affirmative Action/Equal Opportunity Employer.*

POSTDOCTORAL POSITION AUTOIMMUNITY

Molecular mechanisms of lupus autoimmunity and immunotherapy (*J. Clin. Invest.* 104:345, 1999; *J. Exp. Med.* 187:367, 1998; *J. Immunol.* 162:5775, 1999; *Nature Med.* 6:259, 2000). Send résumé to: **Dr. Syamal K. Datta, Ward 3-315, Northwestern University Medical School, 303 East Chicago Avenue, Chicago, IL 60611.**

POSITIONS OPEN

The Edison Biotechnology Institute ([website: www.ohiou.edu/biotech/](http://www.ohiou.edu/biotech/)) and Department of Chemistry and Biochemistry ([website: www.chem.ohiou.edu](http://www.chem.ohiou.edu)) at Ohio University invite applications for a joint, tenured or tenure-track appointment at the **PROFESSOR or ASSOCIATE PROFESSOR** level in the area of mammalian molecular biology, pharmacology, biochemistry, or related fields. The candidate should have a Ph.D. or M.D. degree; postdoctoral experience; and an active, extramurally funded research program.

The successful applicant will join a group of scientists with general research strengths in cellular biology, molecular biology, endocrinology, and developmental biology. Experience with transgenic and gene-disrupted mouse models is highly desirable. The applicant will have access to doctoral students in the Department of Chemistry and Biochemistry and state-of-the-art research facilities at the Edison Biotechnology Institute. Duties will include the continued development of a rigorous research program that includes protection of intellectual property with the potential to develop and commercialize the novel technologies through the Edison Biotechnology Institute, an organization that proactively fosters this type of activity. Additionally, the candidate will be expected to assist in graduate teaching and service responsibilities in the Department of Chemistry and Biochemistry.

Applications, including curriculum vitae, a statement of research interest, and three letters of recommendation, should be sent to: **Dr. John Kopchick, Edison Biotechnology Institute, Konneker Research Labs, Ohio University, The Ridges, Athens, OH 45701.** Review of applications will begin on September 4, 2000, and continue until the position is filled. *Ohio University is an Affirmative Action/Equal Opportunity Employer.*

ASSISTANT/ASSOCIATE PROFESSOR CELL/MOLECULAR BIOLOGIST Department of Anatomy and Cell Biology The Brody School of Medicine at East Carolina University

Two full-time, tenure-track positions to begin spring semester of 2001 are available in the Department of Anatomy and Cell Biology. Candidates must have a Ph.D. and a productive postdoctoral experience reflected by peer-reviewed publications and potential for attracting external support. Candidates with a variety of research areas will be considered; preference will be given to those engaged in research in molecular medicine or signal transduction. Successful candidates will be expected to participate in a team-taught course for professional students, such as gross anatomy, histology/cell biology, or neuroscience as well as graduate courses. Academic rank and salary are commensurate with credentials. For more information, visit our [website: anatomy.med.ecu.edu](http://www.anatomy.med.ecu.edu). Send curriculum vitae, supporting statements about your research and teaching philosophies, and names of three references by September 30, 2000, to: **Dr. Jack E. Brinn, Chair, Department of Anatomy and Cell Biology, The Brody School of Medicine, East Carolina University, Greenville, NC 27858.** *Affirmative Action/Equal Employment Opportunity Employer. Accommodates individuals with disabilities.*

Drexel University: **DIRECTOR**, School of Environmental Science, Engineering, and Policy (SESEP). The Director is a member of the Dean's Council and reports to the Provost. The position carries faculty rank. Full information is available at the following [website: http://water.sesep.drexel.edu/dirsearch/](http://water.sesep.drexel.edu/dirsearch/). Applications and nominations will be accepted until the position is filled. Applicants should submit complete curriculum vitae and the full contact information of five references to: **Professor Charles N. Haas, Chair, Director Search Committee, School of Environmental Science, Engineering, and Policy, Drexel University, Philadelphia, PA 19104.** *Drexel University is an Equal Opportunity/Affirmative Action Employer. Qualified women and minorities are encouraged to apply.*

University of California



**Lawrence Livermore
National Laboratory**

Associate Director for Biology and Biotechnology Research

Lawrence Livermore National Laboratory, one of the nation's premier scientific research and development laboratories, is seeking an Associate Director to lead the Laboratory's Biology and Biotechnology Research Program. Will be responsible for oversight of all bioscience and biotechnology at LLNL, for developing and managing a diverse portfolio of interdisciplinary research and technology development programs in cutting-edge bioscience, biotechnology, and biomedicine, and for leveraging capabilities and resources across the Laboratory. Will manage a portfolio of approximately \$60 million and provide leadership for a staff of about 250 employees encompassing three divisions and roughly 30 research groups. The Program is focused on genomics/proteomics, disease susceptibility and prevention, computational biology, and microbiology.

The Associate Director will have nationally recognized research accomplishments in the biosciences, experience in institutional-level program development and management of bioscience programs, demonstrated senior-level leadership and management skills, and knowledge of bioscience and biomedical research activities within the federal government, especially the Department of Energy and the National Institutes of Health.

LLNL offers a challenging environment and a competitive salary/benefits package. Located in the scenic Livermore Valley, we are within easy driving distance to San Jose, San Francisco, and the surrounding Bay Area communities. To apply, send a cover letter with your resume to: bbrpad@llnl.gov. If mailing send to: Ms. Lori Fong, Recruiting and Employment, Lawrence Livermore National Laboratory, PO Box 5510, L-725, Dept. AJSC73000, Livermore, CA 94551. US Citizenship is required. We are proud to be an equal opportunity employer with a commitment to workforce diversity. Review of applicants will begin on October 1, 2000.

For more information about the Biology and Biotechnology Research Program, visit our web site at:
www-bio.llnl.gov/bbrp/bbrp.homepage.html

For information about this position, visit our web site at:
www.llnl.gov/jobs

PROFESSOR OF PATHOLOGY (IMMUNOLOGY)

**TO SERVE AT HARVARD MEDICAL SCHOOL AND
THE CENTER FOR BLOOD RESEARCH**

Harvard Medical School and the Center for Blood Research are seeking a Professor of Pathology to conduct a research program of distinction in the field of immunology, with particular emphasis on B cell development and the biology and pathogenesis of lymphomas. The candidate will be responsible for leadership in this research area, including educational programs for medical students, graduate students, and postdoctoral fellows. Candidates should have a strong record of research and training accomplishments, and an ability to provide leadership. Interested individuals should send a letter expressing interest in the position, and a current CV to:

**Hidde L. Ploegh, Ph.D.
Chair of the Search Committee
Mallinckrodt Professor
of Immunopathology
Department of Pathology
Harvard Medical School
200 Longwood Avenue, D2-137A
Boston, MA 02115**

Harvard Medical School and the Center for Blood Research are equal opportunity, affirmative action employers. Women and minority candidates are particularly encouraged to apply.

HARVARD MEDICAL SCHOOL



GLOBAL OPPORTUNITIES

Research Director

National Acoustic Laboratories, Sydney, Australia

An opportunity now exists for an exceptional person to fill the role of Research Director of the National Acoustic Laboratories. NAL/Australian Hearing was established over 50 years ago and is a world leader in hearing research and the provision of hearing services.

The Research Director will ensure the continuing development of research programs which benefit the Australian and international community. The role involves:

- Contributing at an advanced level to research in the areas of hearing, hearing aids, audiological techniques and rehabilitation and hearing loss prevention;
- Innovative management of the research program;
- Representing and promoting the research organisation publicly;
- Promoting and co-ordinating collaborative research with Australian and international organisations.

The successful applicant will have academic qualifications and internationally recognised expertise in an appropriate field. He/She will have proven scientific research ability and the skill to lead a multidisciplinary team of research scientists, engineers and audiologists.

For application details, contact Peter Deverell, at peter.deverell@hearing.com.au or telephone +61 2 9412 6979, fax +61 2 94101134. For in-depth information about this senior role, contact the HR Manager, Peter Nolan, at peter.nolan@hearing.com.au or telephone +61 2 6257 9436.

Applications should be received by 18 August, 2000.

 **Australian
Hearing**
National Acoustic Laboratories



POSITIONS OPEN

BREEDING ASSOCIATE AND EXTENSION POSITION IN SHELLFISH GENETICS AND BREEDING

Full-time staff position with the Aquaculture Genetics and Breeding Technology Center (ABC) and Marine Advisory Service in support of ongoing breeding programs in shellfish. Incumbent will join a team of about 20 associates at ABC. M.S. degree with experience is a minimum requirement with training in genetics and statistics. The principal responsibility of the incumbent will be to oversee ABC's selective breeding program for hard clams. Responsibilities include coordination of clam spawns at the ABC hatchery; directing nursery care of seed; developing experimental designs of field tests; planting of seed with other ABC personnel; and data collection and analysis for evaluation of stocks initially, then development of specific strains for industry later. The incumbent will be expected to interact closely with the Virginia industry and assist with long-standing program in selection for disease-resistance oysters. In coordination with the Virginia Sea Grant Marine Advisory Service, the incumbent will spend about 35% of his/her time in extension-related activities in support of the clam industry specifically and shellfish aquaculture. Background in aquaculture is preferred, but we are interested in plant geneticists. Start September 2000. Salary \$40,406 to \$63,083. Contact: **Standish K. Allen, Jr., Director** (e-mail: ska@vims.edu; Telephone: 804-684-7710) or **Peggy Cooney, Administrative Assistant** (e-mail: pcooney@vims.edu; Telephone: 804-684-7711). College of William & Mary is an Equal Employment Opportunity/Affirmative Action Employer.

BIOANALYTICAL SCIENTIST STANFORD UNIVERSITY SCHOOL OF MEDICINE

SENIOR RESEARCH SCIENTIST for transplant immunology, Cardiothoracic Surgery Department, to use LC/MS to study PK and metabolism of immunosuppressants in organ transplant recipients. The position is integral to a busy preclinical and clinical immunosuppressive drug discovery and development program. Ph.D. or equivalent and experience with LC/MS required. Knowledge of PK preferred. Excellent speaking and writing skills are required, as is the ability to work with a diverse team. Please send curriculum vitae and a list of five references to: **R. E. Morris, M.D., Chair, Search Committee, Transplantation Immunology, Department of Cardiothoracic Surgery, Falk Cardiovascular Research Building, Stanford University School of Medicine, 300 Pasteur Drive, Stanford, CA 94305-5407. FAX: 650-725-3846; e-mail: kahinke@stanford.edu.**

Stanford University is committed to Equal Opportunity through Affirmative Action in Employment, and we are especially eager to identify minority persons and women with appropriate qualifications.

POSTDOCTORAL POSITIONS

Postdoctoral positions are available to study the translational control of early development (Xenopus, mouse) or the translational control of synaptic plasticity in the mammalian CNS (mouse). All projects will take biochemical and molecular approaches and may employ a large repertoire of reagents, including knockout mice, that have been generated in ongoing studies. Interested parties should consult recent publications from the laboratory such as *Neuron* 21:1129-1139, 1998; *Molecular Cell* 4:1017-1027, 1999; *Nature* 404:302-307, 2000. Please e-mail: joel.richter@umassmed.edu or send complete curriculum vitae and the names and addresses of three references to: **Dr. Joel D. Richter, University of Massachusetts Medical School, Biotech 4, Room 330, 377 Plantation Street, Worcester, MA 01605.**

POSTDOCTORAL POSITION at the University of Wisconsin Comprehensive Cancer Center for research into oncogenes, cell signaling, and apoptosis. For more information, see website: <http://www.humonc.wisc.edu/clark/> or contact: **Steve Clark, Ph.D., Associate Professor, University of Wisconsin Comprehensive Cancer Center, 600 Highland Avenue, Madison, WI 53792.**

POSITIONS OPEN



Emerald BioStructures, a MediChem company, located in Bainbridge Island, Washington, seeks a Ph.D.-level **PROTEIN X-RAY CRYSTALLOGRAPHER**. Qualified candidate must possess a Ph.D. in biochemistry, molecular biology, or a related field with Ph.D. or postdoctoral experience in three-dimensional protein structure determination by X-ray methods. The ideal candidate will have a strong working knowledge of crystallographic computing software and a proven track record in protein purification, crystallization, and X-ray structure determination. Experience with membrane proteins is a plus. Please submit résumé to:

**Emerald BioStructures
Attention: Human Resources
7869 N.E. Day Road West
Bainbridge Island, WA 98110
FAX: 206-780-8549**

Website: www.emeraldbiostructures.com

Equal Opportunity Employer.

SENIOR RESEARCH SCIENTIST

Begin with the incredible in mind at Centocor, a wholly owned subsidiary of Johnson & Johnson. We are creating, acquiring, and marketing cost-effective therapies that yield long-term benefits for patients and the health care community at large. Currently we are seeking a Senior Research Scientist to participate in clinical pharmacology research to investigate how cellular inflammation is mediated. Will have responsibility for managing a variety of external preclinical investigations in novel anticytokine therapies as well as to conduct in-house research using *in vitro* systems or clinical samples. Must have Ph.D. in immunology or other relevant field along with more than five years of research experience to qualify. Strong communication, organizational, and writing skills required; pharmaceutical experience with a therapeutic clinical program desirable. Centocor offers compensation packages in accordance with its leadership role in health care technology including career development opportunities and state-of-the-art work environment in a thriving suburb of Philadelphia. To apply, please send résumé to: **Human Resources, Code: 277-00-LU-01R, Centocor, 200 Great Valley Parkway, Malvern, PA 19355. FAX: 610-651-6330; e-mail: jobbank@centocor.com; website: www.centocor.com.** *Equal Opportunity Employer.*

WETLAND ECOLOGIST. The Institute of Pacific Islands Forestry, Pacific Southwest Research Station, U.S. Department of Agriculture Forest Service, seeks an Ecologist with experience in forested wetlands to be based in Honolulu, Hawaii, and to conduct research on mangrove swamps and freshwater forested wetlands. Most of the research will be conducted in Micronesia, but some may also be in Hawaii. This position is GS-12, with a salary of \$46,955 plus 25% cost of living allowance. *Applicants must be U.S. citizens.* A vacancy announcement that includes qualification requirements and application procedures is available on the USA Jobs website: www.usajobs.opm.gov and from **Personnel Management, Attention: Patricia Steverson, PSW Research Station, P.O. Box 245, Berkeley, CA 94701. Telephone: 510-559-6300; FAX: 510-559-6352; e-mail: psteverson@fs.fed.us.** Questions regarding the position should be directed to: **Dr. Katherine Ewel, Institute of Pacific Islands Forestry. Telephone: 808-522-8230, Extension 109; e-mail: kewel@fs.fed.us.** Deadline for applications is September 8, 2000. *USDA is an Equal Opportunity Employer.*

POSITIONS OPEN

CHEMIST who will be responsible for participating in a team involved in discovering new biologically active peptides and other small molecules with nutritional and other health benefits. Responsibilities include molecular design, synthesis, and purification of reaction intermediates and final products, as well as structural confirmation of synthesized compounds utilizing modern spectroscopic techniques, such as nuclear magnetic resonance (1H-NMR and 13C-NMR), mass spectrometry (MS, LC-MS, and GC-MS), ultraviolet spectrometry (UV), and infrared spectrometry (IR). Duties also include operation and maintenance of an automated peptide synthesizer and high-performance liquid chromatography (HPLC) systems and utilizing principles of coursework in chemical spectroscopy, biochemistry I, reactive intermediates, and chemical separations. Degree requirements include a minimum of a Master's of Science degree in chemistry combined with three years of experience in the job offered or three years of experience as a **RESEARCH ASSISTANT**.

Work experience must have included molecular design and synthesis; utilizing modern spectroscopic techniques, including 1H-NMR, 13C-NMR, MS, GC-MS, UV, and IR; and utilizing HPLC system. Coursework must have included chemical spectroscopy, biochemistry I, reactive intermediates, and chemical separations. Forty hours per week; 9 a.m. to 5 p.m.; \$51,138.50 per year; St. Louis location. *Must have proof of legal authority to work permanently in the United States.* Send two copies of both résumé and cover letter to: **Missouri Department of Labor and Industrial Relations, Division of Workforce, Development, Attention: Ms. J. Gaston, 4040 Seven Hills Drive, Suite 166, Florissant, MO 63033-6700.** Please include Job Number 228317. No calls. *An employer-paid ad.*

Gemin X Biotechnologies Inc., located in Montréal, Québec, specializes in the discovery and development of novel therapeutics that modulate apoptosis. Two of the company's programs deal with small molecules that disrupt crucial Bcl-2 protein interactions and reinstate apoptosis in cancer cells and discovery of therapeutics that selectively activate caspases in cancer. Additional interests are in the areas of viral death proteins as cancer therapeutics and antivirals.

BIOCHEMIST/MOLECULAR BIOLOGIST: Gemin X Biotechnologies Inc. seeks an outstanding Research Scientist to work in the Bcl-2 drug discovery team studying protein-protein and protein-ligand interactions, employing state-of-the-art technology for identifying mechanism of action of drugs and drug profiling. This position requires a Ph.D. in biochemistry/molecular biology with two years of experience in a relevant field and extensive experience and knowledge in protein biochemistry, cell culture, and molecular biology. Candidates must possess excellent written, verbal, and interpersonal skills. Postdoctoral or industry experience is a plus.

RESEARCH ASSISTANT/TECHNICIAN: Gemin X's drug discovery teams need two Research Assistants/Technicians to participate in high-throughput screening and in studies of drug mechanism. Positions require M.S. or B.S. degree with at least two years of experience in cell culture technique and molecular and cell biology.

For a closer look at Gemin X, please visit us at website: www.geminx.com. For consideration, please send or FAX résumé and cover letter to: **Gemin X Biotechnologies Inc., Human Resources, P.O. Box 477, Place du Parc, Montréal, Québec H2W 2M9 Canada. FAX: 514-281-8989.** Deadline for application is August 25, 2000. Only selected candidates will be contacted. *Gemin X is an Equal Opportunity Employer.*

ACADEMIC RESEARCHER or POSTDOCTORAL POSITION available to study tumor angiogenesis-related genes. Needs extensive molecular biology experience. Must have Ph.D. and U.S. citizenship or U.S. permanent residency. Please send curriculum vitae and references to: **Dr. Mai Nguyen, UCLA, Box 951782, Los Angeles, CA 90095. FAX: 310-825-7575; e-mail: Mainguyen@mednet.ucla.edu.**



**FOCUS ON
CAREERS**

Reach postdoctoral
scientists with your
recruiting message.

Postdoctoral Opportunities

A Science Advertising Supplement

1 September 2000 • Submit ads by 15 August 2000

BENEFITS FOR ALL ADVERTISERS

- Reach Over 152,000¹
paid subscribers
- Bonus Distribution:
**GENOME SEQUENCING &
ANALYSIS CONFERENCE**
11 – 14 September 2000
Miami Beach, FL

¹ Science, December 1999, BPA Publisher's Statement

For more information: _____

U. S.: Gabrielle Boguslawski
Tel: 718-491-1607
Fax: 202-289-6742
E-mail: science_displayads@aaas.org

EUROPE: Debbie Cummings
Tel: +44 (0) 1223 326 500
Fax: +44 (0) 1223 326 532
E-mail: european_ads@science-int.co.uk

JAPAN: Mashy Yoshikawa
Tel: +81-3-3235-5961
Fax: +81-3-3235-5852

AUSTRALIA: Keith Sandell
Tel: +61-29922-2977
Fax: +61-29922-1100

Science
www.sciencecareers.org

POSITIONS OPEN

DEPARTMENT OF MEDICINE DIVISION OF NEPHROLOGY

The Department of Medicine, Division of Nephrology, at the University of California, Irvine, is seeking a Senior Research Scientist in the area of nutrition and transport at the level of renal and intestinal epithelia. This is a tenured position at the rank of **ASSOCIATE** or **FULL PROFESSOR** of medicine. The successful candidate must have a M.D., Ph.D., or M.D./Ph.D.; active competitive funding; and national recognition. Responsibilities in addition to research will include participation in quality educational programs. Salary will be commensurate with background and experience. Interested applicants should send curriculum vitae and names and addresses of at least three references to: **Nephrology Search Committee, c/o N. D. Vaziri, M.D., Chief, Division of Nephrology, University of California, Irvine, Medical Center, 101 The City Drive South, Building 53, Route 81, Orange, CA 92868.** The University of California is an Equal Opportunity Employer dedicated to excellence through diversity.

TOXICOLOGY RESEARCH

An exciting position at the level of **RESEARCH ASSISTANT PROFESSOR** or **INSTRUCTOR** is available to function as Study Director to conduct GLP preclinical general toxicology studies for government (NCI, NIDA) and pharmaceutical company sponsors. A Ph.D. is required, and experience/interest in drug safety studies is preferred. Basic research opportunities are also available. For fullest consideration, please submit curriculum vitae and the names of three references by August 22, 2000, to: **Barry S. Levine, D. Sc., D.A.B.T., Director, Toxicology Research Laboratory, Department of Pharmacology, University of Illinois at Chicago, 1940 West Taylor Street, Room 312, Chicago, IL 60612.** E-mail: bslevine@uic.edu. University of Illinois at Chicago is an Affirmative Action/Equal Opportunity Employer.

SCIENTIST

Neose Technologies, Inc., a leader in the development of enzymatic synthesis of carbohydrates, is currently seeking a Ph.D.-level Scientist to join our Molecular Biology Department. The successful candidate will have experience in DNA cloning and manipulation as well as protein expression in both prokaryotic and eukaryotic systems. The ability to interact with a diverse group of scientists across several disciplines is required. Postdoctoral experience is desirable. Please send curriculum vitae and the names of three references to: **Human Resources Department MB800, Neose Technologies, Inc., 102 Witmer Road, Horsham, PA 19044.** E-mail: skeller@neose.com.

RESEARCH ASSOCIATE

Ph.D. in life sciences with three or more years of experience. Background in cellular immunology and experience in cancer immunology preferred. Salary commensurate with experience and training. Send résumé with letters of recommendation to: **Paula B. Turpen, University of Nebraska Medical Center, 984515 Nebraska Medical Center, Omaha, NE 68198-4515.** E-mail: PBTURPEN@unmc.edu. Applications accepted until position is filled. University of Nebraska Medical Center is an Equal Opportunity/Affirmative Action Employer; Minorities and women are encouraged to apply.

RESEARCH SCIENTIST. Ph.D.; postdoctoral experience in DNA cloning and expression (reporter genes) to work on the molecular and cell biology of urogenital tissue fibrosis and the functional characterization of genes detected by DNA microarrays. Background in collagen, ROS, NO, TGF β , or adenovirus in gene therapy a plus. Potential future faculty position. Reply to: **Dr. Nestor Gonzalez-Cadavid, Harbor-UCLA Medical Center, Division of Urology (F-6), 1000 West Carson Street, Torrance, CA 90509.**

POSITIONS OPEN

SENIOR SCIENTIST/PROJECT MANAGER INFECTIOUS DISEASES

Xenogen Corporation is a new, exciting biotechnology company in the San Francisco Bay area, employing a patented technology to use bioluminescence to monitor infectious disease and cancer *in vitro* and in the living animal.

We are seeking an enthusiastic, motivated individual for the position of Senior Scientist/Project Manager in our Infectious Disease group. Requirements include a Ph.D. in microbiology or related, with three to five years or more of postdoctoral or industrial experience. Experience in microbial pathogenesis or interest in animal modeling is a strong advantage. The successful candidate will also possess excellent communication and interpersonal skills. The ability to work in a diverse, team-oriented environment is essential.

Basic scientific responsibilities include performing laboratory studies of microbial virulence characteristics and *in vivo* animal modeling in mice and other rodents. Additionally, this scientist would also immediately assume the administration and execution of an ongoing client project. It is anticipated that this position would involve a minimum of 50%-80% time spent at the laboratory bench. Depending on company needs and candidate interest and experience, the opportunity exists for this position to evolve into a Project Manager position. This individual would be assigned the primary responsibility for scientific interactions with selected clients and for managing these projects for these clients. Occasional domestic and overseas travel may be involved. FAX or mail curriculum vitae to: **Human Resources Department, Xenogen Corporation, 860 Atlantic Avenue, Alameda, CA 94501.** FAX: 510-291-6196. Equal Opportunity Employer.

RESEARCH ENTOMOLOGIST/ MICROBIOLOGIST

The U.S. Department of Agriculture (USDA), Research, Education, and Extension (REE), Agricultural Research Service (ARS), NPA, Bee Biology and Systematics Laboratory accepting applications for a permanent full-time **RESEARCH ENTOMOLOGIST/MICROBIOLOGIST** to provide expertise that contributes directly to the USDA Alternatives to Methyl Bromide initiative and the USDA Small Farms initiative. Specific research objectives: (1) Develop novel approaches for management of chalkbrood (*Ascosphaera* spp.) in nesting materials of commercial-scale populations of the alfalfa leafcutting bee, blue orchard bee, and other bee pollinator species; (2) develop chemical and/or biological control (e.g., sanitation) control methods for commercial-scale bee pollinator species; (3) research the etiology of bee diseases using culture media and diagnostic kits for isolation, identification, and enumeration of specific microorganisms. U.S. citizenship and a Ph.D. or equivalent are desired. Salary (\$50,139 to \$91,589) commensurate with experience. Position information contact: **Dr. W. P. Kemp; Telephone: 435-797-2525; e-mail: wkemp@cc.usu.edu; website: www.ars.usda.gov/afm/hrd/resjobs.** Application procedures information contact: **John Waterson; Telephone: 435-797-3071.** Mark applications ARS-X0W-0342; mail to: **USDA, ARS, HRD, WOB, 5601 Sunnyside Avenue, Beltsville, MD 20705-5106.** Postmark applications by August 7, 2000. USDA is an Equal Opportunity Provider and Employer.

RESEARCH SCIENTIST/POSTDOCTORAL

FELLOW POSITIONS available to study the basic mechanisms and therapeutic effects of gene transfer to the nervous system using recombinant herpes simplex virus vectors. Models actively under investigation include Parkinson's disease, trauma, peripheral neuropathy, and pain. Training and experience in either neurobiology or virology. Please e-mail or mail curriculum vitae and names of three references to: **Dr. David Fink, Department of Neurology, S-520 Biomedical Science Tower, University of Pittsburgh, Pittsburgh, PA 15213.** E-mail: dfink@med.pitt.edu. Equal Employment Opportunity.

POSITIONS OPEN

RESEARCH PLANT PATHOLOGIST/ MICROBIOLOGIST/GENETICIST

The U.S. Department of Agriculture, Agricultural Research Service, Root Disease and Biocontrol Research Unit, Pullman, Washington, is seeking a Research Plant Pathologist, Microbiologist, or Geneticist, GS-11/12/13. Salary range is \$41,834 to \$77,507 and is commensurate with experience. *Candidates must be U.S. citizens.* The incumbent conducts basic studies of the molecular biology and genetics of fungal pathogen-host interactions and the molecular biology of disease resistance. The focus is on root pathogens of wheat and barley. In addition to the basic educational requirements, applicants must demonstrate knowledge of fungal or plant genetics and molecular plant-microbe interactions. Skills in molecular plant pathology and in designing, conducting, and reporting research results are required. For information about the research program, contact: **Dr. David M. Weller; Telephone: 509-335-6210; e-mail: wellerd@mail.wsu.edu.** This position has specific education and experience requirements and factors that must be addressed. In order to ensure submission of a complete application, applicants must request a copy of the vacancy announcement by calling **Pam Dean; Telephone: 509-335-8663** or by printing it from the Internet at **website: http://www.ars.usda.gov.** Applications must be postmarked by September 5, 2000. USDA/ARS is an Equal Opportunity Employer and Provider.

RESEARCH ASSOCIATE MOTOR CONTROL ELECTROPHYSIOLOGY UNIVERSITY OF MINNESOTA

A Research Associate position is available immediately to study the neuronal mechanisms underlying the control and execution of arm movements. Studies involve single-unit recordings in the cerebellar cortex and/or the premotor/motor cortices of the primate. Present research focus of the laboratory includes (1) defining the representation of kinematic and dynamic motor parameters in the cerebellar cortex and motor cortex and (2) evaluation of the visuomotor transformation occurring during visually guided movements. Opportunities also available to collaborate in ongoing functional imaging studies. The University of Minnesota has a large group of neuroscientists working in the field of motor control with an active seminar program and journal clubs. Essential qualifications include a Ph.D. in neuroscience, physiology, or related field with postdoctoral experience in central nervous system behavioral electrophysiology. Competitive salary and benefits package. Applicants should send curriculum vitae with the names of three references to: **Dr. Timothy J. Ebner, University of Minnesota, Department of Neuroscience, Lions Research Building, 2001 Sixth Street S.E., #421, Minneapolis, MN 55455.** The University of Minnesota is an Equal Opportunity Educator and Employer.

RESEARCH ASSOCIATE/FELLOW

Applications invited for a **POSTDOCTORAL POSITION** (depending on experience) to further investigate the intracellular pathways and consequences of a subgroup of autoantibodies that enter cells, transit to the nucleus, and modulate cellular function (e.g., apoptosis). Applicants should have completed a Doctoral degree and have relevant postdoctoral experience in molecular and cell biology, protein chemistry, and/or immunology. The scientist will be responsible for the day-to-day running of the project under the guidance of a project leader; there will also be opportunity to be involved in other ongoing autoimmunity projects within the laboratory and Division. Please send letter of interest with a brief statement and experience and curriculum vitae to:

Michael P. Madaio, M.D.
Renal Electrolyte and Hypertension Division
University of Pennsylvania
700 Clinical Research Building
415 Curie Boulevard
Philadelphia, PA 19104-6144, U.S.A.

The Global Environment: Invitation for RITE Research Proposals

Research Institute of Innovative Technology for the Earth (RITE) is inviting basic research proposals dealing with global environmental problems. Also, research proposals deemed to contribute significantly to the resolution of global environmental problems will be supported by RITE in the form of entrusted research.

1. Category of Research Basic research aimed at the development of innovative technologies which will contribute to the solution of global environmental problems.

2. Themes of Research

(A) Research concerning carbon dioxide, methane and other greenhouse gases considered to be the primary causes of global warming.

- 1) Efficient separation, recovery, disposal, re-use etc. of greenhouse gases.
- 2) Innovative process technologies which limit greenhouse gas generation.
- 3) Research concerning enhancement of CO₂ sinks (e.g. ocean sink, underground storage and reforestation through biotechnology).

(B) Research on other technologies concerning global environmental problems as follows:

- 1) Control of the generation and widespread release of chemical substances, apart from the greenhouse gases mentioned in (A), which are seriously detrimental to the environment, or detoxification of those substances.
- 2) Substitutes for the chemical substances mentioned above.
- 3) Recycling and effective utilization of materials.

3. Number of Research Proposals to be Accepted The number of research proposals to be accepted will be determined after the government budget for FY 2001 has been confirmed. Thirteen new research proposals have been accepted for FY 2000.

4. Research Expenses for Entrusted Research Up to 10 million Japanese yen will be allocated for each research proposal, although the entire cost of research proposal may not be covered by RITE. Research expenses distributed for the research proposals accepted in FY 2000 ranged from 5.0 million to 7.5 million Japanese yen per research proposal, with an average of 6.34 million yen.

5. Deadline for the Submission of Applications Applications must be received by RITE no later than October 31, 2000. Applications received post deadline will be returned unprocessed.

6. Period of the Entrusted Research Period of the entrusted research will be from 1 April 2001 to 31 March 2002. If continuation is deemed necessary, however, RITE may entrust for the next year.

7. Qualified Research Participants Individuals or groups engaged in research activities at research institutions, etc. are eligible. The applicants' citizenship or proposed site for the research will not be considered as criteria for selection.

8. Application Procedure Applicants are asked to contact the RITE Section (as below) for further information on documents to be submitted and the prescribed form thereof. Facsimile transmission is preferred for speed of communication. Please include relevant Tel. and Fax numbers with requests.

**Research Proposals Reception Section
Research Planning Department
RITE**

9-2 Kizugawadai, Kizu-cho, Soraku-gun, Kyoto 619-0292 JAPAN

TEL: +81-774-75-2302 FAX: +81-774-75-2314

email: proposal@rite.or.jp home page: (URL) <http://www.rite.or.jp/>

Principal Investigator

The Preparatory Office of The Institute of BioAgricultural Sciences, Academia Sinica, Taipei, Taiwan

The newly established Preparatory Office of **Institute of BioAgricultural Sciences (IBS)** at the **Academia Sinica** is to pursue basic and applied mission-oriented research in the bioagricultural sciences that has the potential to lead to new platform technologies or develop into novel systems and products in biotechnology. There are four research areas within our institute: (1) crop plant improvement and plant bioreactors, (2) DNA vaccines, (3) environmental/industrial enzymes, and (4) Chinese herbal medicine. For more information, please visit our Web site at http://www.sinica.edu.tw/~ibawww/index_e.html

We are seeking to appoint two to three qualified applicants to serve as **Principal Investigators**, ranking from assistant, associate to full research fellows/professors, in the research areas of the (2), (3) and (4) as mentioned above. Applicants must hold a Ph.D. or an equivalent degree in a biological/biomedical science such as Molecular and Cellular Biology, Immunology, Enzymology/Protein Engineering, Plant Secondary Metabolite, Bio-organic chemistry, Biotechnology, and Phytomedicine. Principal investigators are required to engage in programmatic projects, serving as project team members and/or as collaborative research scientists. The senior research scientists must have at least 10 years of research experience with demonstrated abilities in applied and/or basic research in one of the biotechnology areas indicated above, and evidence of creativity and organizational skills. They would greatly benefit from their familiarity with Taiwan's cultural environment and language. The junior research scientists must have appropriate postdoctoral training and good publications. Applicants are expected to conduct in the above selected expertise or discipline of biology. **Application should include a cover letter, a research proposal, a complete curriculum vitae as well as the names, e-mail and regular addresses, telephone numbers and fax numbers of 5 references.** The closing date for this application is **September 10, 2000**. Review of applications will begin around October 1, 2000, and will continue until suitable candidates are recruited.

**Application should be addressed to: Dr. Kin-Ying To,
The Preparatory Office of The Institute of BioAgricultural Sciences,
Academia Sinica, Nankang 11529, Taipei, Taiwan, R.O.C.**

POSITIONS OPEN

POSTDOCTORAL POSITIONS AVAILABLE NORTHWESTERN DRUG DISCOVERY PROGRAM

Postdoctoral positions are available immediately in X-ray crystallography and computational chemistry at an academic-based drug discovery program at Northwestern University Medical School ([website: http://ddp.nwu.edu](http://ddp.nwu.edu)). Successful applicants will be U.S. citizens or permanent residents with a Ph.D. and documented productivity. Please send current curriculum vitae, names of three references, and a statement of research interests to: **DDP Postdoctoral Program, Attention: Douglas Freymann, Ph.D., MPBC/Ward 8-298, Northwestern University Medical School, 303 East Chicago Avenue, Chicago, IL 60611.** *Affirmative Action/Equal Opportunity Employer.*

POSTDOCTORAL FELLOW position (NIH-funded) available immediately in the Department of Pathology, the Johns Hopkins University. The Fellow will study (1) patient immune responses to novel protein, DNA, and vaccinia-based vaccines against human papillomavirus Type 16, the primary etiologic agent of cervical cancer; and (2) the molecular virology of human papillomavirus. Candidates must hold a Ph.D. or M.D. degree and have experience in immunology, cell biology, or genetics demonstrated by publication. Please mail (or preferably e-mail) your curriculum vitae, a description of your research interests and experience, and three references to: **Dr. Richard Roden, Ross Research Building, Room 656, The Johns Hopkins University, 720 Rutland Avenue, Baltimore, MD 21205.** E-mail: roden@jhmi.edu.

POSTDOCTORAL POSITION available to study the role of paxillin and associate proteins in integrin-mediated cell adhesion, growth factor signaling, and cytoskeletal organization (see *J. Cell Biol.* 145:851-863). Experience in cell biology and/or molecular biology techniques essential. A background in cell adhesion/signaling desirable. Send curriculum vitae and names of references to: **Dr. Chris Turner, Department of Cell and Developmental Biology, SUNY Upstate Medical University, 750 East Adams Street, Syracuse, NY 13210.** *An Affirmative Action/Equal Employment Opportunity/Americans With Disabilities Act Employer committed to excellence through diversity.*

POSTDOCTORAL FELLOW OR RESEARCH ASSISTANT PROFESSOR POSITION to study GTPase-myosin interactions (see *Science* 283:2083, 1999; *J. Biol. Chem.* 273:10,099, 1998; *J. Cell Biol.* 137:481, 1997). Ph.D. and biochemistry, cell biology, and/or molecular biology experience required. Title and salary based on experience. For fullest consideration, send curriculum vitae by August 15, 2000, to: **Primal de Lanerolle, Department of Physiology, University of Illinois at Chicago, 835 South Wolcott, Chicago, IL 60612.** *University of Illinois at Chicago is an Affirmative Action/Equal Opportunity Employer.*

POSTDOCTORAL POSITION available to study molecular mechanisms of apoptosis, especially apoptosis in relation to neurodegeneration and cancer. Excellent research and living environment at University of Washington, Seattle. Experience in cell biology, signal transduction, or molecular biology is desired. Send curriculum vitae and three letters of recommendation to: **Dr. Zhengui Xia, University of Washington, Box 357234, Seattle, WA 98195.** FAX: 206-685-3990; e-mail: zxia@u.washington.edu.

POSTDOCTORAL POSITIONS available immediately in the Department of Medicine/Nephrology at University of Pittsburgh School of Medicine. Major research focus is in the signal transduction pathways of TGF- β receptors in endothelial and mesangial cells. Expertise in cell/molecular biology and signal transduction is required with experience in transgenic mice preferred. Send curriculum vitae and reference letters to: **Mary E. Choi, M.D., 3550 Terrace Street, A919 Scaife Hall, Pittsburgh, PA 15261.** FAX: 412-647-6222.

POSITIONS OPEN

POSTDOCTORAL FELLOWS

Opportunities are available immediately for two Postdoctoral Fellows in the NIH-funded Epilepsy Research Laboratory in the Department of Neurology at the Johns Hopkins University School of Medicine. Ongoing projects include (1) neural network models of excitation, burst generation, and neocortical epilepsy; and (2) signal analysis of intracranial recordings of seizures from patients undergoing presurgical evaluations.

Requirements include Ph.D. in biomedical engineering, computer science, physics, computational neuroscience, or equivalent with proficiency in computer programming. Salary commensurate with experience. Laboratory website: <http://erl.neuro.jhmi.edu/>. Provide current curriculum vitae and two references to: **P. J. Franaszczuk, Ph.D.** (e-mail: pfranasz@jhmi.edu) or **G. K. Bergey, M.D.** (e-mail: gbergey@jhmi.edu), Department of Neurology, Meyer 2-147, Johns Hopkins University School of Medicine, 600 North Wolfe Street, Baltimore, MD 21287. *Johns Hopkins is an Affirmative Action/Equal Opportunity Employer.*

An NIH-funded **POSTDOCTORAL POSITION** is available immediately in the Department of Anesthesia to study the interaction of inhaled anesthetics with small synthetic water-soluble and membrane-soluble α -helical bundle proteins. The research project involves protein design, protein synthesis, and the structural characterization of protein-anesthetic complexes. The applicant must have an M.D. and/or Ph.D. degree and be skilled in biochemistry or spectroscopy. Send curriculum vitae and names and e-mail addresses of three references to:

Jonas S. Johansson, M.D.
Department of Anesthesia
University of Pennsylvania Health System
Dulles 801
3400 Spruce Street
Philadelphia, PA 19104 U.S.A.
Telephone: 215-349-5472
FAX: 215-349-5078
E-mail: johansso@mail.med.upenn.edu

POSTDOCTORAL FELLOWSHIP SOUTH DAKOTA HEALTH RESEARCH FOUNDATION Cardiovascular Research Institute

Postdoctoral Fellowship position will study cytoskeletal remodeling and molecular signaling in cardiac myocytes in hypertrophy and heart failure. Candidates should have a Ph.D. or M.D. or an equivalent degree. A strong background in signal transduction and cell shape regulation and molecular techniques is desirable. Submit letter of application, curriculum vitae, and names of three references to: **Dr. Martin Gerdes, Ph.D., Cardiovascular Research Institute, 1400 West 22nd Street, Sioux Falls, SD 57105.** Telephone: 605-357-1314; FAX: 605-357-1409. Review of applications will begin on August 22, 2000, and continue until a suitable candidate is hired. *Equal Opportunity/Affirmative Action Employer.*

GROWTH FACTOR RECEPTOR SIGNALING AND ENZYMOLOGY

A **POSTDOCTORAL FELLOWSHIP** is available to study the molecular signaling mechanisms and enzymology of the ErbB family of receptor kinases (EGF receptor, ErbB2, ErbB3, ErbB4). For more information, see *JBC* 274:8,900, 1999; *JBC* 273:16,643, 1998. Laboratory is located within the Center for Biologics Evaluation and Research on the NIH campus in Bethesda, Maryland. Experience in protein chemistry, cell biology, and/or molecular biology is required. Highly competitive salary commensurate with experience. Interested candidates should send their curriculum vitae and names of three references to: **Dr. Gibbes Johnson, Division of Therapeutic Proteins, FDA/CBER, 1401 Rockville Pike, HFM-541, Rockville, MD 20852-1448.** E-mail: johnsong@cber.fda.gov.

POSITIONS OPEN

Two **POSTDOCTORAL POSITIONS** available to study the mechanisms of transcriptional regulation by nuclear hormone receptors such as TR and AR in the context of chromatin. The ongoing projects include (1) purification and characterization of corepressors SMRT and N-CoR complexes and their associated proteins (*EMBO J.*, in press); and (2) analysis of coactivators and chromatin remodeling factors (*MCB* 20:2031-2042; *PNAS* 96:9485-9490). Experience with molecular biology essential and protein purification or mice knockout desirable. Salary commensurate with experience. Please send or e-mail curriculum vitae and names and addresses of two references to: **Jiemin Wong, Ph.D., Assistant Professor, Department of Molecular and Cellular Biology, Baylor College of Medicine, One Baylor Plaza, Houston, TX 77030.** E-mail: jwong@bcm.tmc.edu.

POSTDOCTORAL RESEARCH POSITION DEVELOPMENTAL NEUROBIOLOGY

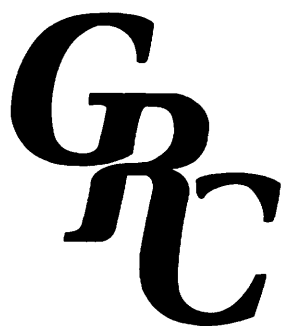
A Postdoctoral position in developmental neurobiology is available in the Developmental Endocrinology Branch, NICHD, NIH, in Bethesda, Maryland. The project aims at elucidation of molecular mechanisms of steroid hormone and peptide growth factor action in brain development and plasticity. A background in molecular biology and/or microarray technology is desirable. Candidates should have an M.D. or Ph.D. and less than five years of postdoctoral experience. Send curriculum vitae and two letters of recommendation to: **Carolyn Bondy, M.D., Chief, DEB, NICHD, NIH, Building 10, Room 10N262, 10 Center Drive MSC 1862, Bethesda, MD 20892-1862.** *NIH is an Equal Opportunity Employer.*

POSTDOCTORAL POSITION is available to study effects of arsenic on expression of oxidative stress-sensitive transcription factors in laboratory animals and tissue cultures. Applicants should have a Ph.D., M.D., or equivalent degree and a strong background in biochemistry (metallobiochemistry) and molecular biology. Please send (FAX, e-mail) curriculum vitae with three references to: **Dr. Miroslav Styblo, Department of Pediatrics, CB-7220, University of North Carolina at Chapel Hill, Chapel Hill, NC 27599-7220 U.S.A.** FAX: 919-966-0135; e-mail: styblo@med.unc.edu.

POSTDOCTORAL POSITION available to study role of signal transduction molecules, transcription factors, and various other genes in epithelial-mesenchymal transformation in the palate. Experience in molecular biology techniques and background in cell and developmental biology desirable. Start as soon as possible. Submit curriculum vitae and references to: **Dr. Elizabeth Hay, Department of Cell Biology, Harvard Medical School, 220 Longwood Avenue, Boston, MA 02115.** FAX: 617-432-0407; e-mail: ehay@hms.harvard.edu. *Equal Opportunity Employer/Affirmative Action.*

POSTDOCTORAL POSITION in axon guidance to join an interdisciplinary team investigating mechanisms of axonal gradient detection in the developing nervous system. Experience in cell/tissue culture and the *in vitro* analysis of axon guidance is highly desirable. For project details, see www.giccs.georgetown.edu/labs/cns/axon.html. Applications to: **Geoffrey J. Goodhill, Department of Neuroscience, Georgetown University Medical Center, 3900 Reservoir Road, N.W., Washington, DC 20007.** E-mail: geoff@giccs.georgetown.edu.

POSTDOCTORAL FELLOWSHIP: Research on early detection/diagnosis of ovarian and breast cancer. Experience in tissue culture, DNA/RNA methodologies, and cell biology techniques desirable. Send curriculum vitae, statement of research experience and interests, and names of references to: **Dr. Eva Sapi, Yale University School of Medicine, Department of Therapeutic Radiology, HRT221, P.O. Box 208040, New Haven, CT 06520.** FAX: 203-785-6309. *An Equal Opportunity Employer.*



GORDON RESEARCH CONFERENCES

Conferences at the Frontiers of the Biological, Chemical and Physical Sciences

- The full 2000 Summer and Fall GRC schedule appeared in the February 11, 2000 issue of **SCIENCE**.

visit the *frontiers of science* at:

WWW.GRC.URI.EDU

Our web site contains the complete schedule of current and upcoming Conferences.
Apply directly from the web! Check it out now, Conferences fill up fast!



POST-DOCTORAL FELLOWSHIP IN STRUCTURAL BIOLOGY AND FUNCTIONAL PROTEOMICS

**MAYO CLINIC AND FOUNDATION
ROCHESTER, MINNESOTA**

A post-doctoral fellowship is available effective December 1, 2000, to study the structure and function of metalloproteins using mass spectrometry and nuclear magnetic resonance purification, and in biophysical methods pertaining to protein structure. Opportunities to develop novel methods in the area of functional proteomics are available. Work will be conducted in the laboratories of Dr. Rajiv Kumar and Dr. Stephen Naylor at Mayo Foundation and in collaboration with Dr. John Cavanagh at Purdue University.

Please send a curriculum vitae and bibliography, and the names and addresses of three individuals from whom letters of reference may be obtained to: **Dr. Rajiv Kumar, Ruth and Vernon Taylor Professor, 911A Guggenheim, Mayo Clinic and Foundation, 200 First Street SW, Rochester, MN 55905**; e-mail rkumar@mayo.edu, fax 507-266-4710, or to **Dr. Stephen Naylor, Professor and Director, Mayo Mass Spectrometry and Functional Proteomics Facility, C-053 Guggenheim, Mayo Clinic and Foundation, 200 First Street SW, Rochester, MN 55905**; e-mail naylor.stephen@mayo.edu.

Mayo Clinic is an equal opportunity employer.

EUROPEAN OPPORTUNITIES



MAX-PLANCK-INSTITUT FÜR MOLEKULARE PFLANZENPHYSIOLOGIE

The Max Planck Institute of Molecular Plant Physiology in Golm close to Berlin offers the immediate opportunity to set up an

Independent Junior Research Group (Ref: 16/00)

The ideal candidate is younger than 35 years, has a proven research record and has been working on one of the following areas:

- Analysis of problems of Plant Physiology on the molecular level
- Development and application of novel techniques in the area of genetics and/or phenotyping suitable for the analysis of problems of Plant Physiology
- Development of bioinformatics in Plant Physiology

The contract is for a group leader position at the Assistant/Associate Professor level (German University Scale C2/C3) and limited to five years. Appropriate laboratory space, equipment and running costs as well as positions for one additional post-doctoral scientist, two graduate students and two technicians will be provided.

Applications including curriculum vitae, list of publications and an outline of previous and future research objectives as well as names of referees should be sent by August 31st, 2000 to

Prof. Dr. Lothar Willmitzer
Max-Planck-Institut für Molekulare Pflanzenphysiologie
D-14424 Potsdam, Germany

BURROUGHS WELLCOME FUND

Awards provide scientists early in their careers with \$210,000 to support basic research.

Open to U.S. and Canadian research scientists.

The application deadline for the 2001 award series is November 1, 2000.

The Burroughs Wellcome Fund is an independent private foundation dedicated to advancing the medical sciences by supporting research and other scientific and educational activities.

P.O. Box 13901
21 T.W. Alexander Dr.
Research Triangle Park, NC 27709-3901
Telephone (919) 991-5100 Fax (919) 991-5160
Website: www.bwfund.org

NEW INVESTIGATOR AWARDS IN THE PHARMACOLOGICAL OR TOXICOLOGICAL SCIENCES

These awards, which provide \$210,000 over a period of three years, are intended to foster the career development of researchers who will bring new approaches and novel thinking to pharmacology or toxicology. Candidates have considerable flexibility in proposing research activities. BWF encourages candidates to define these fields in the broadest terms, so long as the research has application to either the pharmacological or toxicological sciences. It is anticipated that up to a total of 10 awards will be made.

Candidates must be U.S. or Canadian citizens or permanent residents, have an M.D. or Ph.D. degree, and be independent investigators appointed to a tenure-track position of assistant professor or its equivalent within three years of the November 1 application deadline. Candidates need not hold appointments in pharmacology or toxicology. BWF encourages applications from researchers in such diverse departments and fields as biochemistry, genetics, molecular biology, and the physical and computational sciences. Clinical and veterinary scientists engaged in fundamental research also may apply. Please note that this is the last year BWF will offer this program in its current format. Beginning in 2002, support for these fields will be incorporated into other BWF programs.

ADDITIONAL BWF AWARD PROGRAMS FOR BIOMEDICAL SCIENTISTS

- Career Awards in the Biomedical Sciences provide up to \$574,000 over six years to bridge postdoctoral training and initial faculty appointment. *Deadline: October 2, 2000.*
- Clinical Scientist Awards in Translational Research offer \$750,000 to established independent physician-scientists whose work links the laboratory bench and clinical medicine. *Deadline: September 1, 2000.*
- Awards in molecular parasitology, malaria, and molecular pathogenic mycology provide two to five years of support. *Deadline: January 15, 2001.*

Please visit our Web site at www.bwfund.org for complete program information.

**FINAL OFFERING
FOR PROGRAM!**

POSITIONS OPEN

POSTDOCTORAL POSITIONS IN STRUCTURAL BIOLOGY Dana-Farber Cancer Institute Harvard Medical School

Postdoctoral positions are available for structural investigations of recognition and regulation in tyrosine kinase and phosphatase signaling pathways. Using X-ray crystallography and NMR spectroscopy, we are studying the regulation of receptor and non-receptor tyrosine kinases and phosphatases and their interactions with downstream signaling molecules. Individuals with a background in structural biology, protein biochemistry, or signal transduction are encouraged to apply. Send curriculum vitae and names of references to: **Michael J. Eck, Dana-Farber Cancer Institute, Room SM1036, 44 Binney Street, Boston, MA 02115. FAX: 617-632-4393; e-mail: eck@red.dfc.harvard.edu. We are an Affirmative Action/Equal Opportunity Employer.**

POSTDOCTORAL POSITIONS are available in the Programs of Lung and Cell Biology, The Hospital for Sick Children, and the Department of Human Genetics, McGill University. Our laboratories focus on (1) role of glucocorticoid receptors and ion transport (Sweezey, N.) and (2) gene expression and regulation in lung development (Kaplan, F.) and on intracellular trafficking, folding, and degradation of CFTR and the biology of gene transfer and nucleases (Lukacs, G. L.). Dedicated candidates with relevant experience and a recently completed Ph.D. degree are encouraged to apply. Please submit a current résumé, indicating the preferred research area, with the names, addresses, and telephone (FAX) numbers of three references to: **Maggie MacLeod, Program in Lung Biology Research, The Hospital for Sick Children, 555 University Avenue, Toronto, Ontario M5G 1X8 Canada. E-mail: maggie.macleod@sickkids.on.ca; FAX: 416-813-5771.**

POSITIONS OPEN

FACULTY POSITIONS WAYNE STATE UNIVERSITY Human/Mammalian Molecular Genetics

The Center for Molecular Medicine and Genetics invites applications at the Junior or (preferably) Senior level from outstanding Human Geneticists. The successful candidates will enjoy significant support in terms of start-up funds and space. Faculty are expected to maintain strong research programs and to interact fully in the CMMG, medical school, and university environments. To apply, candidates may send or FAX curriculum vitae, a brief statement of research experience and future plans and goals, and the names of three references to:

**Dr. Lawrence J. Grossman
Associate Director
Center for Molecular Medicine and Genetics
Wayne State University School of Medicine
540 East Canfield, Detroit, MI 48201
FAX: 313-577-5218
E-mail: L.grossman@wayne.edu**

WSU is an Equal Opportunity/Affirmative Action Employer.

POSTDOCTORAL POSITION available immediately to study signal transduction pathways regulating apoptosis and NF- κ B activation in mammalian systems. Strong background in molecular biology and protein chemistry is required. Send curriculum vitae and the names and telephone numbers of three references to: **Dr. Gabriel Nunez, Department of Pathology, The University of Michigan Medical School, 1500 East Medical Center Drive, 4219 CCGC, Ann Arbor, MI 48109-0938. E-mail: bcfx@umich.edu. A Nondiscriminatory Affirmative Action Employer.**

POSITIONS OPEN

POSTDOCTORAL POSITION: Department of Physiology, The Brody School of Medicine at East Carolina University. A position is available to study p38-Hsp25 and PKB/Akt signaling in the nervous system during injury, regeneration, postnatal development, and aging. Background in cellular/molecular biology is necessary, and experience in cell signaling studies is desirable. Must have a Ph.D. and/or M.D. degree. Interested applicants should forward curriculum vitae, a summary of research experience and goals, and the names of at least three individuals willing to submit letters of reference to: **Alexander K. Murashov, M.D., Ph.D., Department of Physiology, The Brody School of Medicine at East Carolina University, Brody Medical Sciences Building, Room 6N98, 600 Moye Boulevard, Greenville, NC 27858-4354. FAX: 252-816-3460; e-mail: murashova@mail.ecu.edu. East Carolina University is a member of the University of North Carolina System and is an Equal Opportunity/Affirmative Action Employer.**

POSTDOCTORAL POSITION. The research focuses on the underlying molecular basis of the differences between cultured cells from Alzheimer's disease patients and controls. The research will make extensive use of fluorescence microscopy to examine oxidative stress, calcium, and mitochondrial membrane potentials. Protein chemistry and molecular and cellular biological methods complement the fluorescence microscopy. Contact: **Gary Gibson, Cornell Medical College at Burke Medical Research Institute. E-mail: ggibson@med.cornell.edu.**

POSTDOCTORAL POSITION

NIH-funded Postdoctoral position available to study a mouse model of diabetic embryopathy by conditional and microarray technologies. Contact: **Claudia Kappen, Ph.D., Associate Professor, Center for Human Molecular Genetics and Department of Cell Biology and Anatomy, 985455 Nebraska Medical Center, Omaha, NE 68198-5455. E-mail: ckappen@unmc.edu.**

Scientist, Atomic Force Microscope Protiveris, Inc.

Protiveris, Inc., a start-up biotechnology company located in Rockville, Maryland, is looking for a scientist with strong expertise in using Atomic Force Microscopes (AFM) and Scanning Tunneling Microscopes (STM) to further the company's research on silicon chip technologies. Protiveris is a rapidly growing company developing new silicon based technologies for medical diagnosis and proteomics research.

The successful candidate must have a strong research background with both AFM and STM. The preferred candidate will have a demonstrated track record of successful research using AFM for discovery, particularly surface discovery and discovery of biological processes with AFM technology. A strong background in either biology, chemistry or biochemistry would be particularly useful.

Protiveris, Inc. offers a competitive salary, medical and retirement benefits as well as a stock option plan.

For more information please contact:

Protiveris, Inc.
9700 Great Seneca Highway
Rockville, MD 20850

Tel: (301) 738-7800
Fax: (301) 738-8800
jpeeters@protiveris.com

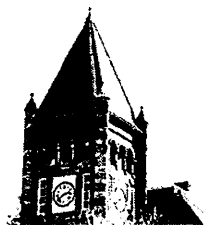
PROTIVERIS, INC.



PROTIVERIS, INC.

ANNOUNCEMENTS

CALL FOR PAPERS



The University of New Hampshire will host the second annual Non-lethal Technology and Academic Research Symposium at the Sheraton Harborside Hotel, Portsmouth, NH, Nov. 15-17, 2000.

Researchers interested in shaping the future of diplomacy, peacekeeping, warfighting, law enforcement and homeland defense are invited to submit a 250-word abstract to UNH.edu/NTAR by September 1, 2000.

For additional information about the symposium, please visit the NTAR web site at:

<http://www.unh.edu/NTAR>

*Roche announces a new initiative between
university scientists and Roche...*



Roche Frontiers



Photo compliments of Drs. Markus U. Ehrenguber (University of Zurich) and Kenneth Lundstrom (Roche)

At Roche, we are committed to discovering important new medicines. To do this most effectively, productive collaborations with world-class academic groups are essential. The Roche Frontiers Programme provides a rapid and effective process to establish these important collaborations. The submission process is simple. A fast response is guaranteed and, in return for fast access to innovative targets and ideas for new medicines, Roche offers interesting payment options for non-exclusive licences to these ideas.

- Simple procedures
- Fast turn-around
- Interesting payment options for non-exclusive licences
- Scientific interaction

How can I submit a proposal?

Roche's submission process is simple – just visit the Roche Frontiers website at **www.Roche-Frontiers.com**

Find out more about Roche Frontiers

Visit the Roche Frontiers website at **www.Roche-Frontiers.com**, or contact us by e-mail, at **Roche.Frontiers@Roche.com**



F. Hoffmann-La Roche Ltd
CH-4070 Basel, Switzerland

POSITIONS OPEN

EMPLOYMENT AT OAK RIDGE NATIONAL LABORATORY

Postdoctoral Opportunity: Microarray Technology ORNL Postdoctoral Research Associates Program

Applications are invited for a Postdoctoral position in the Environmental Sciences Division (**website:** <http://www.esd.ornl.gov>) at the Oak Ridge National Laboratory (ORNL) (**website:** <http://www.ornl.gov>) for the individuals who have training in chemistry, biochemistry, biophysics, and molecular microbiology. The individual will participate in development of oligonucleotide microarrays for environmental studies.

Candidates must have a Ph.D. degree with demonstrated experience in nucleic acid chemistry, surface chemistry, gene probe development, and/or molecular microbial ecology. Additional experience is desired in microarray technology, especially oligonucleotide microarrays, bioinformatics, and 16S rRNA analysis. Successful applicants will work cooperatively with scientists at ORNL, Michigan State University, Pacific Northwest National Laboratory, and/or Argonne National Laboratory.

Interested candidates should send curriculum vitae, a description of research accomplishments and interests, and the names and telephone numbers of three references to: **Dr. Jizhong Zhou, Oak Ridge National Laboratory, P.O. Box 2008, Oak Ridge, TN 37831-6038. Telephone: 865-576-7544; FAX: 865-576-8646; e-mail: zhou@ornl.gov.** Applications will be accepted until August 31, 2000, or until the position is filled.

The appointment will be offered through the ORNL Postdoctoral Research Associates Program. The salary will be very competitive. *The program is open to all qualified U.S. and non-U.S. citizens without regard to race, color, age, religion, sex, national origin, physical or mental disability, or status as a Vietnam-era veteran or disabled veteran.*

AQUATIC TOXICOLOGY

FACULTY POSITION in aquatic toxicology with broad expertise in the mechanisms of toxic action in marine/aquatic animal models as they relate to human health risks and ecotoxicology. Study of a particular class of toxicants is less important than a mechanistic approach but those of interest include marine toxins, carcinogens, and metals. The successful candidate will contribute to a graduate academic program in the Division of Marine Biology and Fisheries (MBF), as well as interdisciplinary research programs in MBF and in the University of Miami universitywide National Institute of Environmental Health Sciences (NIEHS)-sponsored Marine and Freshwater Biomedical Sciences Center. A history of or potential for funding by NIEHS, other NIH institutes, and/or Environmental Protection Agency is an important criterion for selection. Rank and salary are open, and a secondary appointment in another school of University of Miami is encouraged. Applicants should send curriculum vitae, statement of research and teaching interests, up to five selected reprints, and arrange for at least three letters of reference to: **Dr. Patrick J. Walsh, Toxicology Search Chair, MBF/NIEHS Center, University of Miami, Rosenstiel School of Marine and Atmospheric Science, 4600 Rickenbacker Causeway, Miami, FL 33149** by September 1, 2000. *An Equal Opportunity/Affirmative Action Employer.*

A **POSTDOCTORAL POSITION** is available to study the Vitamin K-dependent carboxylase, an enzyme essential for blood clotting and bone development and a target of anticoagulant therapies. Experience in biochemistry and molecular biology is preferred. The project offers broad-based training in protein secretion and structure-function and regulation, using both biochemical and molecular biological approaches and the state-of-the-art facilities in the new Lerner Research Institute (see **website:** www.ri.ccf.org/ri/pi/berknek.html). Send information to: **Dr. Kathleen Berkner, Department of Molecular Cardiology/NB50, Lerner Research Institute, Cleveland Clinic, 9500 Euclid Avenue, Cleveland, OH 44195. E-mail: berknek@ccf.org.**

POSITIONS OPEN

Computational neuroscience: **POSTDOCTORAL FELLOW** to investigate the dynamical properties of nonlinear systems with a particular emphasis on information processing and storage in gene networks and molecular pathways. Applicants should send a letter of application, curriculum vitae, and names of three references to: **Dr. John H. Byrne, Department of Neurobiology and Anatomy, The University of Texas-Houston Medical School, Houston, TX 77030. Affirmative Action/Equal Opportunity Employer.**

ASSISTANT/ASSOCIATE PROFESSOR

Applications are invited for two tenure-track Assistant/Associate Professor positions in the Department of Anatomy, Physiology, and Pharmacology, Auburn University College of Veterinary Medicine. The successful candidate(s) will actively participate in instruction in the professional and graduate curriculum. The professional teaching will be in either anatomy, histology, or pharmacology. The successful candidate(s) will be expected to develop an independent research program which will mesh with the current strengths of the Department in the areas of cardiovascular, endocrine/reproduction, diabetes, sensory, and cell biology. Applicants whose research would complement and extend existing research in cellular and molecular aspects of cell signaling are especially encouraged to apply. Applicants must have a Doctoral degree (D.V.M., Ph.D., or equivalent); a minimum of two years of postdoctoral experience; and be eligible to work in the United States on a full-time basis. Applicants should submit curriculum vitae, statement of research goals, and names of at least three references. Applications will be accepted until the candidate(s) is/are recommended. Applications should be sent to: **Dr. Philip Posner, Auburn University College of Veterinary Medicine, 109 Greene Hall, Auburn University, AL 36849-5518. Auburn University is an Affirmative Action/Equal Opportunity Employer. Women and minorities are encouraged to apply.**

BIOSYSTEMS ENGINEER. The Patrick Center for Environmental Research at the Academy of Natural Sciences invites applications for a career-track, endowment-supported research position in biosystems, agricultural engineering, or a related discipline, with particular emphasis on watershed science and management. We are seeking a broadly trained Engineer/Scientist with interdisciplinary research experience in one or more of the following areas: watershed hydrology, water quality, nonpoint source pollution control and modeling, riparian zone processes and management, application of GIS, and remote sensing in natural resource management. For details, visit **website:** <http://www.acnatsci.org/research/jobs.html#732>. Send curriculum vitae; representative publications; statement of research interests; and names, addresses, telephone numbers, and e-mail addresses of four references to: **Chair, Biosystems Engineering Search Committee, Patrick Center for Environmental Research, Academy of Natural Sciences, 1900 Ben Franklin Parkway, Philadelphia, PA 19103 (website: www.acnatsci.org/research/pcer).** Review of applications will begin September 22, 2000. *An Equal Opportunity Employer.*

POSTDOCTORAL POSITIONS ZEBRAFISH VISUAL NEUROSCIENCE

Postdoctoral positions are available to study zebrafish visual system function and degeneration (*PNAS* 94:11645-11650, 1997; *Vis. Neurosci.* 15: 851-857, 1998; *J. Neurosci.* 20:1883-1892 and 1893-1903, 2000). Send curriculum vitae and names and contact information of three references to: **Dr. Lei Li, Department of Physiology, University of Kentucky, 800 Rose Street, Lexington, KY 40536. E-mail: leili@pop.uky.edu.**

POSITIONS OPEN

DIRECTOR OF RESEARCH PROGRAMS CHILDREN'S HOSPITAL OF ORANGE COUNTY, CALIFORNIA

Children's Hospital of Orange County (CHOC), a private, nonprofit regional pediatric referral center/teaching hospital, seeks a Director of Research Programs. Research Programs include Cancer Center, Cord Blood Bank, Immune and Inflammatory Disease Group, Brain and Tissue Bank, and a growing number of clinical research programs. Facilities include 17,097 square feet of fully equipped research laboratories with small animal facility. The Director of Research Programs will have direct oversight of all basic and clinical research programs and will be responsible for building the overall institutional research program. Initiatives include improved coordination and productivity of the basic research programs, creation of a unified clinical research program/clinical research unit, and strengthening the funding base. Reporting to the Vice President, Medical Affairs, the ideal candidate for this full-time position will have an M.D. or M.D./Ph.D. with clinical experience in a pediatric specialty; a significant track record in a peer-reviewed research productivity; and demonstrated leadership in extramurally funded research preforms. Up to 30% time for personal research and clinical interests is anticipated. This position offers competitive compensation and full benefits package. If interested, send a cover letter, curriculum vitae, and three references to: **Maria Minon, M.D., Vice President, Medical Affairs, CHOC, 455 South Main Street, Orange, CA 92668. Equal Opportunity Employer/Affirmative Action Program.**

POSTDOCTORAL POSITIONS are available to study the molecular mechanisms underlying the acute and long-term neurotrophic regulation of synapse development and plasticity (see *Nature* 381:706; *J. Neurosci.* 15:4796; 17:2947; 18:6830; 19:4972; *JCB* 149:783). Ongoing projects include (1) functional significance of activity-dependent BDNF expression using transgenic/knockout mice, (2) cell and molecular biological study of the trafficking of TrkB receptor tyrosine kinase, (3) imaging analysis of neurotrophin protein secretion and trafficking, and (4) molecular study of the signaling mechanisms for acute and long-term neurotrophic regulation using Xenopus nerve-muscle system. For details, please visit our **website:** <http://dir2.nichd.nih.gov/labs/unit.php3?41>. The candidate will be working with a team of highly interactive electrophysiologists and molecular biologists. A Ph.D. or M.D. and less than five years of postdoctoral training are required. Experience and skills in molecular cloning, mouse genetics, or cell biology are desirable. Send a statement of research interests, curriculum vitae, and three letters of reference to:

Bai Lu, Ph.D.

NICHD, National Institutes of Health Building 49, Room 6A-80, MSC4480 Bethesda, MD 20892-4480 FAX: 301-480-3526; e-mail: lub@codon.nih.gov
NIH is an Equal Opportunity Employer.

POSTDOCTORAL POSITION Investigate the Role of p53 Mutations in Oncogenesis

Applications are invited for a Postdoctoral position in a laboratory involved in understanding the molecular biology of the tumor suppressor p53. Individuals with expertise in recombinant DNA technology, particularly DNA sequencing, cDNA technology, and mammalian cell culture systems, are encouraged to apply. Salary is negotiable. Send complete curriculum vitae and names of three references to: **Sumitra Deb, Ph.D., Professor, Massey Cancer Center and Department of Biochemistry and Molecular Biophysics, Medical College of Virginia, Virginia Commonwealth University, Richmond, VA 23298. FAX: 804-827-1427; e-mail: sdeb@hsc.vcu.edu.**



**Medicines for Malaria Venture
Funding Opportunities
SECOND CALL FOR LETTERS OF INTEREST**

- 1. Malaria Drug Discovery Research Proposals**
- 2. Malaria Drug Development Proposals**

MMV was recently established in Geneva as an Independent Foundation committed to the sustainable discovery and development of affordable antimalarial chemotherapies into the 21st century. It is based on a partnership between several public sector agencies, philanthropic organisations and the pharmaceutical industry. The venture will operate under the umbrella of the World Health Organization Roll Back Malaria Project.

Last year three major drug discovery projects involving academic and industrial research groups were selected for funding at a combined total of \$4 million per year. In addition, several projects were selected for smaller 'seedcorn' grants. Generous donations from several agencies now enable MMV to initiate a second round of project support for the year 2000. Two categories are defined for this years proposals.

- 1. Malaria drug discovery projects** that are directed toward the identification of a candidate compound for entry into preclinical development
 - ⇒ Projects may be at an early or late stage of the discovery process but must clearly outline the steps that will be followed and the issues that will be addressed to identify a candidate molecule.
 - ⇒ Most projects selected for funding last year were based on a partnership between an academic centre and a pharmaceutical company. However, this should not be seen as restrictive and applications are also welcome from stand-alone academic groups or from biotechnology and other pharmaceutical companies. The key determinant for funding will be the perceived chance of project success.
 - ⇒ Where it is thought that a project would benefit from the establishment of a partnership, MMV will make efforts and offer its services to facilitate this.
- 2. Malaria drug development projects** where a single molecule or combination (perhaps with a back-up compound) has been identified with demonstrably acceptable preclinical properties and a potential for clinical development.
 - ⇒ The molecule (or combination) may be at either a preclinical or clinical stage of development. It must have a well-documented activity in an appropriate animal model and/ or in humans. Full details of available data, including preliminary chemistry, formulation, analytics, toxicology and ADME (absorption, distribution, metabolism, excretion) should be provided.
 - ⇒ An established partnership or organisation to take forward the candidate drug through clinical development to registration is desirable, but not an essential prerequisite for funding, as MMV can assist in organising preclinical and clinical development to registration.

Application for funding is initially requested through submission of a 3-page letter of interest to reach MMV offices by September 30th, 2000. Further details outlining the desired content of such a letter for either category (drug discovery or drug development) can be obtained from the MMV web site (www.malariamedicines.org)

Subsequent to the letter of interest, a pre-selection of projects will be made by an Expert Scientific Advisory Committee. The Principle Investigators of these projects will then be asked to prepare a more detailed written proposal and representatives of the project teams will be invited to Geneva for an oral presentation of their projects to the committee in early 2001.

For further information, please contact:

**Medicines for Malaria Venture, MMV Office (L 249)
Tropical Disease Research (TDR), World Health Organisation
CH-1211 Geneva 27, Switzerland**

Fax: +41 22 791 4854

E-mail: mmv@who.int

MMV gratefully recognises the funding and support it has received from the following organisations: Bill and Melinda Gates Foundation, Global Forum for Health Research, International Federation of Pharmaceutical Manufacturers Associations, Rockefeller Foundation, Roll Back Malaria Partnership, Swiss Agency for Development and Cooperation, The Netherlands Minister for Development Cooperation, United Kingdom Department for International Development, World Bank, World Health Organisation

POSITIONS OPEN

TWO POSTDOCTORAL POSITIONS NEUROBIOLOGY/DEVELOPMENTAL BIOLOGY/NEUROENDOCRINOLOGY

Positions available for Intramural Training Awards (Ph.D., M.D., or equivalent). Positions will focus on mechanisms directing (1) cell-specific neuropeptide gene expression, (2) neuronal migration, (3) axonal pathfinding, (4) neuronal secretion, and/or (5) neuronal activity. Projects include isolation of molecules involved in differentiation of cells from the nasal placode, characterization of genes expressed in LHRH neuroendocrine cells prior to (versus after) entrance into the CNS, identification of molecules involved in migration of LHRH neurons from nasal placode into CNS, targeting of axons to the median eminence, and identification of intrinsic properties of LHRH cells resulting in pulsatile secretion. Multidisciplinary approaches are employed, ranging from cellular to molecular biological methods including nasal explants, immunocytochemistry, *in situ* histochemistry, single-cell PCR, subtractive cDNA screening, and calcium imaging. Applicants should have training in neurobiology, developmental biology, molecular biology, or related field. Salary is commensurate with experience. Send curriculum vitae and names of references to:

Dr. Susan Wray
Cellular and Developmental Neurobiology Section
NINDS, NIH
Building 36/Room 5A-25
Bethesda, MD 20892-4156
E-mail: swray@codon.nih.gov
NIH is an Equal Opportunity Employer.

POSTDOCTORAL RESEARCH FELLOWS NEUROSCIENCE: BROWN UNIVERSITY

Postdoctoral positions are available in the neurosciences at Brown University. The Department of Neuroscience offers a unique multidisciplinary, high-quality research environment for advanced studies of the mammalian brain. Fundamental functions such as perception, cognition, learning and memory, development, and synaptic transmission are investigated at behavioral, systems, cellular, and molecular levels. The following laboratories are currently recruiting at the postdoctoral level and are representative of an impressive group of researchers in the brain sciences at Brown. More information can be obtained at **website:** <http://brainscience.brown.edu>. (1) **Justin Fallon:** Regulation of local mRNA translation in synaptic plasticity. (2) **Edward Hawrot:** Protein engineering of neurotoxins to target neuronal nicotine AChRs. (3) **John Donoghue:** Neural coding and representations using multielectrode arrays. (4) **Barry Connors:** Chemical and electrical synapse dynamics in circuit behavior in neocortex.

Applicants will be considered based on their research potential. Ph.D., M.D., or equivalent is required. Résumé, statement of research interest, and three letters of recommendation should be sent to: **Diane Lipscombe, Ph.D., NTG Program Director, Department of Neuroscience, Box 1953, Brown University, Providence, RI 02912. E-mail: neuroscience@brown.edu.** Brown University is an Affirmative Action/Equal Opportunity Employer. Women and minorities are encouraged to apply.

POSITIONS AT RADIOLOGY DEPARTMENT JOHNS HOPKINS UNIVERSITY

Postdoctoral positions and technician available to study the role of homeobox transcription factors in breast cancer (*Nature* 405:974-978, 2000) and develop probes for molecular imaging. Applicants must have experience in molecular biology and tissue culture techniques. A background in developmental biology or apoptosis would be helpful. Please send curriculum vitae and three references to: **Dr. Venu Raman, Department of Radiology, Johns Hopkins University, School of Medicine, Room 340, Traylor Building, 720 Rutland Avenue, Baltimore, MD 21205 U.S.A. E-mail: vrman@jhmi.edu.**

POSITIONS OPEN

NEUROBIOLOGY POSTDOCTORAL POSITIONS PRINCETON UNIVERSITY

Several Postdoctoral positions are available to study molecular mechanisms of synaptic plasticity, learning, and memory using integrated techniques (**Tsien**, *Scientific American*, page 42, April 2000; **Tsien**, *Curr. Opin. Neurobiol.* 10:266, 2000). Applicants with Ph.D. should have solid training and publications in one of these areas: (1) Mouse Geneticists: transgenic and knockout techniques, (2) Molecular Biologist: subtractive library and cloning or genomics and bioinformatics, (3) Biochemist: experience with 2-D gel and protein purification, (4) Electrophysiologists: *in vivo* recording in behaving animals or *in vitro* slice recording, or (5) Behavioral Biologist: rodent learning behaviors.

Please send your curriculum vitae and three references to:

Dr. Joe Z. Tsien
Department of Molecular Biology
Princeton University
Princeton, NJ 08544 U.S.A.

Princeton is an Equal Opportunity/Affirmative Action Employer.

FACULTY POSITION (ASSOCIATE PROFESSOR/PROFESSOR) VIROLOGIST/MOLECULAR VIROLOGIST

The Wisconsin Regional Primate Research Center (WRPRC) and the University of Wisconsin Medical School are recruiting for a Ph.D., M.D., or D.V.M. Virologist at the Associate Professor or Professor level. The successful candidate will conduct a strong program of research with collaborative links and provide scientific and administrative leadership to the WRPRC Immunology and Virology Core Laboratory, and she/he will also be expected to accept some teaching assignments and other duties in an academic department. Preference will be given to applicants with training and experience in molecular virology, specifically as it relates to simian models of human HIV infection. Send a letter of interest, current curriculum vitae, and the names of three references to: **Dr. Michael N. Hart, c/o Cameron Millard, University of Wisconsin-Madison, 6120 MSC, 1300 University Avenue, Madison, WI 53706-1532 by November 1, 2000.** The University of Wisconsin-Madison is an Equal Opportunity Employer and, as such, women and minorities are encouraged to apply. Unless confidentiality is requested in writing, information regarding the applicants must be released upon request. Finalists cannot be guaranteed confidentiality.

POSTDOCTORAL POSITION EXTRATERRESTRIAL MATERIALS RESEARCH

Washington University, St. Louis

We are seeking a capable Experimental Scientist to work on a study of presolar grains (see article in *Physics Today*, December 1997) using a combination of ion microprobe and nuclear particle track techniques. Applicants should have some knowledge of nucleosynthesis and, preferably, extraterrestrial materials research. Preference will be given to persons with experience in both hardware and software development. For further information, contact: **Professor Robert M. Walker, Laboratory for Space Science, Physics Department, and McDonnell Center for the Space Sciences, Washington University, One Brookings Drive, St. Louis, MO 63130. E-mail: rmw@wuphys.wustl.edu; FAX: 314-935-4083.** Affirmative Action/Equal Opportunity Employer Employment. Eligibility verification requested upon hire.

POSITIONS OPEN

POSTDOCTORAL RESEARCHER COMPUTATIONAL BIOLOGY/CHEMISTRY

Sandia National Laboratories in Livermore, California, is seeking Postdoctoral Researchers to be part of a team of scientists. We are working at the interface of high-performance computing, molecular modeling, and a variety of highly sensitive experimental techniques. Our focus is (1) algorithm development for molecular recognition techniques to target families of protein structure and their application to protein toxins; and (2) combining experimental and computational constraints to develop high-throughput medium resolutions structures of proteins, particularly membrane-bound proteins.

We are interested in applicants that have experience in one or more of the following research areas: structural genomics (homology modeling, threading, rapid minimization/optimization techniques) and/or molecular recognition (docking, molecular dynamics, pharmacophore analysis). Successful applicants will have a Ph.D. in chemistry, biophysics, or a related field and proven experience in software development or application of computational biology/chemistry methodologies. Knowledge of C, C++, or JAVA is highly desirable. Good communication skills, both oral and written, are required. The research group has extensive computing resources including SGI octane workstations, dedicated high-performance clusters of multiprocessor PCs, and SMP workstations, as well as teraflop scale massively parallel machines. This position will provide especially exciting prospects for candidates with a strong background in computational methods and who are interested in developing innovative solutions to applied problems. Starting salary: \$61,500 per year. Candidates should send curriculum vitae, statement of research expertise and interests, transcripts, and two letters of reference to: **Sandia National Laboratories, c/o Anna Isham MS 9111, HR Department, CA0078, P.O. Box 969, Livermore, CA 94551-0969.** Equal Opportunity/Affirmative Action Employer. U.S. citizenship is normally required.

BIOCHEMIST

The James Madison University Chemistry Department is committed to excellence in undergraduate instruction and research and seeks a tenure-track **ASSISTANT PROFESSOR** to start fall 2001, pending funding. Ph.D. in biochemistry, chemistry, or related area required; postdoctoral experience desirable. Teaching responsibilities include introductory and upper-division biochemistry courses and the Department's service and laboratory courses. Research with undergraduates required; collaboration with other departments encouraged. Information about the Department can be obtained at **website: www.jmu.edu/chemistry/intro.htm.** Send résumé, statements of teaching philosophy, research interests and start-up requirements, and three letters of recommendation to: **Search Committee, Department of Chemistry, James Madison University, MSC 7701, Harrisonburg, VA 22807.** Complete application should be received by October 1, 2000, to assure consideration. James Madison University is an Equal Opportunity/Affirmative Action/Equal Access Employer and especially encourages applications from minorities, women, and persons with disabilities.

POSTDOCTORAL POSITION is available at the University of California for studies involving a *Drosophila* model of human epilepsy. A familiarity with *Drosophila* genetics, molecular biology, and/or electrophysiology is desirable. Salary will be commensurate with experience. Qualified applicant should send curriculum vitae and the names, addresses, telephone numbers, and e-mail addresses of three references to:

Dr. Mark Tanouye
Department of Environmental Science, Policy,
and Management
University of California
Berkeley, CA 94720
Telephone: 510-642-9404
E-mail: tanouye@uclink4.berkeley.edu

The University of California at Berkeley is an Affirmative Action/Equal Opportunity Employer.

Aventis Pharma



The merger of the pharmaceutical companies Hoechst Marion Roussel and Rhône-Poulenc Rorer into the new global player Aventis Pharma is creating new opportunities within the pharmaceutical industry. Aventis Pharma combines an innovative pipeline with strong growth of new products in all of the world's major markets.

As one of the world's leading pharmaceutical companies, Aventis Pharma is at the cutting edge of drug discovery and development. Our state-of-the-art Drug Innovation and Approval center in Frankfurt, Germany, is excellently equipped to deliver new drugs that will ensure a higher quality of life for people around the globe.

We are expanding our structural biology group in Frankfurt and are seeking

Protein Crystallographers

We are looking for protein crystallographers to work within our structural biology group. He or she will work in multidisciplinary project teams, aimed at specific drug targets.

The candidate should have a solid background in all aspects of protein crystallography and a successful track record. Experience in either MAD/MIR methods or automatic crystallization methods would be a plus.

Strong communication skills with the ability to work in multidisciplinary teams are essential.

We offer a creative scientific and international environment, which will allow you to further develop your skills very quickly. In addition we offer a competitive salary and an attractive bonus package which will suit your qualifications.

To be considered, please send a resume indicating your full career details and your salary requirements to:

Aventis Pharma Deutschland GmbH
Application Service
Building K 607
D-65926 Frankfurt
Germany
e-mail:
ApplicationService.Pharma@Aventis.com

POSITIONS OPEN

POSTDOCTORAL ASSOCIATE. National Center for Ecological Analysis and Synthesis (NCEAS)/University of California, Santa Barbara: Work with/ecologists, statisticians, and resource managers to evaluate international protocols for classifying species conservation status (e.g., IUCN, TNC, USFWS) and quantitative models for estimating extinction risk. Responsibilities: Work with/group to develop a range of population dynamics simulations, analyze data, and coordinate communication. Applicants should possess a Ph.D. or equivalent experience in applied mathematics or ecology. Programming experience in C or C++ and Matlab, S+, or other statistical/mathematical software. Initial funding is for one year; possible extension for a second year. All work will be conducted at NCEAS. Position open until filled. Desired start date: September 1, 2000. Send letter of application, statement of research interest, copies of publications, curriculum vitae, and names (with e-mail) of three references. Applications should have "Extinction Risk" as subject field and be e-mailed to: postapp@nceas.ucsb.edu or mail to: Dr. S. Andelman, NCEAS, 735 State Street, Suite 300, Santa Barbara, CA 93101-5504. NCEAS solicits proposals twice a year for supported activities, including working groups, sabbatical fellows, and Postdoctoral Associates. Next deadline: August 11, 2000. For information about NCEAS and proposal guidelines, consult our website: <http://www.nceas.ucsb.edu>. The University of California is an Equal Opportunity/Affirmative Action Employer.

POSTDOCTORAL RESEARCH ASSOCIATE (GS-11; \$41,834). Biochemist/Microbiologist. U.S. Department of Agriculture, Agricultural Research Service (USDA-ARS), Sidney, Montana, is seeking candidates for a two-year temporary position with possibilities of extension up to a total of four years. The candidate will conduct research to study the lignin-degrading enzyme system of a basidiomycete fungus isolated from cropland. The candidate will examine the enzyme kinetics of a range of substrates and will study how this fungus is able to metabolize lignin in selected crop residues under no-till management practices. Experience in enzyme purification, enzyme kinetics, and microbiology is required. To apply, send a description of your current research; curriculum vitae; and the names, addresses, and telephone numbers of three references to: Dr. T. C. Caesar-TonThat, USDA-ARS, 1500 North Central Avenue, Sidney, MT 59270. E-mail: caesart@sidney.ars.usda.gov. USDA-ARS is an Affirmative Action/Equal Opportunity Employer.

The California Academy of Sciences is announcing the Schlinger Foundation **POSTDOCTORAL FELLOWSHIP** in Systematic Entomology. The recipient will conduct collections-based systematics research on insects, arachnids, or myriapods and will contribute to the development of the entomological collections at CAS. The Fellowship duration is one or two years. The stipend is \$35,000 per year plus benefits and a \$5,000 per year research allowance. Applications should include project description, timetable, budget, curriculum vitae, suggestions of curatorial contribution, and two letters of support. Send applications to: California Academy of Sciences, Human Resources Department Number PDF, Golden Gate Park, San Francisco, CA 94118 before 1 September 2000. See also website: www.calacademy.org/research/entomology.

POSTDOCTORAL POSITION

A Postdoctoral position is available for NIH-supported project to study the role of secreted oxidative stress-induced factors in cardiovascular diseases. Requires a Ph.D. and/or M.D. degree, strong training in molecular biology/biochemistry, and experience with animal model for cardiovascular research. Salary starting from \$30,000 per year. Send curriculum vitae and names of three references to: Dr. Bradford C. Berk, Center for Cardiovascular Research, Box 679, University of Rochester Medical Center, 601 Elmwood Avenue, Rochester, NY 14642. E-mail: bradford_berk@urmc.rochester.edu.

POSITIONS OPEN

POSTDOCTORAL FELLOWSHIP PROGRAM INVESTIGATIVE DERMATOLOGY

Skin Diseases Research Center
Case Western Reserve University

Opportunities are available for training in investigative dermatology in the Skin Diseases Research Center at the Department of Dermatology, Case Western Reserve University. The program provides a top-rated collaborative environment for research training in a wide range of areas, including molecular dermatology, immunodermatology, skin carcinogenesis, photobiology, and skin pharmacology. Research is conducted under the supervision of experienced faculty members known for their excellent teaching skills and for their ability to foster research careers in a friendly and supportive environment. Prior research training is not a prerequisite. Candidates must be U.S. citizens or permanent residents.

Interested candidates should contact: Hasan Mukhtar, Ph.D., Professor and Research Director, Department of Dermatology, Case Western Reserve University, 11100 Euclid Avenue, Cleveland, OH 44106-5028. E-mail: hxm4@po.cwru.edu.

Visit our website: <http://get.to/derm>.

Case Western Reserve University is an Equal Opportunity Employer.

Temple University School of Medicine has a position available immediately in a laboratory with major interests in the role of opioids in thermoregulation and analgesia. Interactions with chemokines and cytokines are also a focus. We require someone with interests in these areas, preferably with experience with neuropeptides, intracerebral microinjections, and microdialysis. A Ph.D. or training in pharmacology is required. This laboratory is part of the Center for Substance Abuse Research at Temple University School of Medicine. Salary commensurate with experience. Send curriculum vitae and names of three references to: Martin W. Adler, Ph.D., Director, Center for Substance Abuse Research, Temple University School of Medicine, 3400 North Broad Street, Philadelphia, PA 19140. E-mail: baldeag@vm.temple.edu; FAX: 215-707-1904. Temple University is an Affirmative Action/Equal Opportunity Employer; Minorities/Females/Disabled/Veterans.

POSTDOCTORAL ASSOCIATE

Position available immediately to study telomere function in yeast. Our laboratory studies both telomerase-mediated and recombinationally mediated telomere maintenance. Experience with molecular genetics desired. Send curriculum vitae and names of three references to: Dr. Michael McEachern, Department of Genetics, Life Sciences Building, University of Georgia, Athens, GA 30602. FAX: 706-542-3910; e-mail: mjm@arches.uga.edu. To assure full consideration, all applications must be received by September 15, 2000. The University of Georgia is an Equal Opportunity/Affirmative Action Employer.

POSTDOCTORAL POSITION to study CNS remyelination in the laboratory of Dr. Regina C. Armstrong (Bethesda, Maryland, U.S.A.). *In vivo* and *in vitro* cellular and molecular techniques will be integrated to identify the role of specific growth factors in mediating remyelination. Send curriculum vitae to: Henry M. Jackson Foundation, Human Resources Department, Attention: Judith Chauhan, 1401 Rockville Pike, Suite 600, Rockville, MD 20852. E-mail: hr@mail.hjf.org. Affirmative Action/Equal Opportunity Employer.

POSTDOCTORAL RESEARCH ASSOCIATE to study various metabolic, molecular, and cellular biological aspects of bladder carcinogenesis in animal models and in humans. Send curriculum vitae and three references to: Dr. Samuel M. Cohen, M.D., Professor and Chair, Pathology and Microbiology, University of Nebraska Medical Center, 983135 Nebraska Medical Center, Omaha, NE 68198-3135. University of Nebraska Medical Center is an Equal Opportunity/Affirmative Action Employer. Minorities and women are encouraged to apply.

POSITIONS OPEN

POSTDOCTORAL FELLOWSHIPS IN TRANSPLANT IMMUNOLOGY

The Transplantation Biology Research Center of Emory University is seeking highly motivated individuals to fill two Postdoctoral positions in the field of transplantation immunology.

The first project will focus on understanding immunologic barriers to successful transplantation of allogeneic islets in murine and nonhuman primate models. In addition, we will apply strategies with demonstrated efficacy in rigorous murine transplant models to the Rhesus Macaque model. Our laboratory focuses largely on cutting-edge tolerance strategies involving costimulation blockade and the transfer of donor-specific hematopoietic cells.

A second position is offered for studies aimed at mapping the specificity of indirect alloimmune responses. This project will involve using new and innovative techniques such as Elispot and MHC tetramers to study the mechanisms of tolerance induction at an antigen-specific level in both the murine model and in humans.

Both studies are part of an NIH-funded program project grant to study transplantation tolerance. Work will be performed at the Emory University School of Medicine under the supervision of Drs. Christian Larsen and Thomas Pearson in collaboration with other investigators at the School of Medicine, Vaccine Center, and VA Hospital. Qualified candidates should have a Ph.D. in the biological sciences, preferably with an emphasis on immunology. Working knowledge of cell culture, molecular biology, and microsurgical techniques is desirable. Competitive salaries will be offered commensurate with experience and qualifications. Please send résumé to: Drs. Christian Larsen, M.D., Ph.D., and Thomas Pearson, M.D., Ph.D., Emory University School of Medicine, Department of Surgery, Division of Transplantation, Woodruff Memorial Research Building, 1639 Pierce Drive, Room 5105, Atlanta, GA 30322.

STAFF SCIENTIST AND POSTDOCTORAL FELLOW POSITIONS

Epimmune Inc., a research and development company dedicated to scientific excellence in the discovery of vaccines to prevent and treat cancer and infectious diseases, is seeking to fill positions at the Postdoctoral Fellow and Staff Scientist levels to contribute to several exciting projects in the cancer and infectious diseases areas.

Candidates should have a Ph.D. and postdoctoral experience in the area of molecular immunology. The successful individual will work as a member of a fast-paced, high-quality scientific team developing epitope-based vaccines for viral, bacterial, and protozoan pathogens as well as cancer. Expertise in immunology and molecular biology is essential. Send curriculum vitae to:

Human Resources
5820 Nancy Ridge Drive
San Diego, CA 92121
FAX: 858-860-2600

Equal Opportunity Employer.

POSTDOCTORAL POSITION IN PROSTATE DEVELOPMENT

The developing mouse prostate is a model system of considerable interest because of its relevance to human prostate disease. There are opportunities for NIH and Department of Defense-funded postdoctoral study in two areas: (1) the role of the sonic hedgehog-Gli signaling pathway in prostate branching morphogenesis and (2) the reactivation of developmental pathways in human prostate cancer. A strong background in molecular biology and/or developmental biology is preferred. Please send curriculum vitae and names of three references to: Wade Bushman, M.D., Ph.D., Department of Urology, Northwestern University, 303 East Chicago Avenue, Chicago, IL 60611 U.S.A. E-mail: w-bushman@nwu.edu.

POSITIONS OPEN

Several **POSTDOCTORAL POSITIONS** are available immediately to study (1) transcription-coupled DNA repair and genetic instability and (2) oligonucleotide-mediated gene expression regulation. Recent Ph.D.s with strong research experience in molecular biology and/or biochemistry are preferred. Send curriculum vitae and e-mail addresses of three references to: **Dr. Gan Wang, Department of Cell Biology and Neuroscience, MSB Room 2312, University of South Alabama College of Medicine, 307 University Boulevard, Mobile, AL 36688-0002. FAX: 334-460-6771; e-mail: gwang@jaguar1.usouthal.edu.**

POSTDOCTORAL FELLOWSHIPS available to work on the roles of NF-kappaB and glycogen synthase kinase 3-beta in the regulation of neuronal survival following exposure to neurotoxins and other stressors. Research is supported by newly funded NIH grants and will include the use of virus vectors, cell culture methods, and phage display technology. Send curriculum vitae and names of three references to: **Dr. Steve Dewhurst, Department of Microbiology, University of Rochester Medical Center, 601 Elmwood Avenue, Box 672, Rochester, NY 14642. E-mail: stephen_dewhurst@urmc.rochester.edu.**

POSTDOCTORAL POSITIONS available immediately to study the role of apoptosis in aging and interaction of mitochondrial permeability pore components *in vivo* using optical microscopic fluorescent techniques. Experience in cell biology, biophysics, molecular biology, or fluorescence microscopy is desirable. Please send curriculum vitae and three letters of recommendation to: **Brian Herman, Ph.D., Professor and Chair, Department of Cellular and Structural Biology, The University of Texas Health Science Center at San Antonio, Mail Code 7762, 7703 Floyd Curl Drive, San Antonio, TX 78229-3900. The University of Texas is an Equal Employment Opportunity/Affirmative Action Employer.**

POSTDOCTORAL POSITIONS available immediately to study the molecular mechanisms of cell-matrix interactions in cartilage. Areas of interest include (1) the metabolism of hyaluronan; (2) interactions of matrix receptors (including CD44) with cytoskeletal elements and other proteins involved in cell signaling, matrix assembly, and endocytosis; and (3) site-directed mutagenesis, transient expression, and antisense inhibition of chondrocyte matrix receptors. Please send curriculum vitae and research interests to: **Warren Knudson, Ph.D., Department of Biochemistry, Rush Medical College, Chicago, IL 60612. E-mail: wknudson@rush.edu.**

POSTDOCTORAL POSITION VERTEBRATE ECOLOGY

Two-year Postdoctoral position to conduct independent research involving terrestrial mammals or herpetiles at Archbold Biological Station, an independent, nonprofit research institute in south central Florida. Research to emphasize, e.g., competition, population biology, landscape ecology, or conservation biology. Opportunity to integrate research with existing data sets. More information at website: <http://www.archbold-station.org/abs/staff/jobs.htm>. Apply by September 15, 2000. Start date: January 1, 2001.

CONFERENCES

UNDERSTANDING PHAGE DISPLAY Structure, Biology, and Applications Conference

Simon Fraser University, Harbour Centre Campus, Vancouver, B. C., Canada; 21-24 September 2000. Organizers: **J. K. Scott, S. J. Opella, L. Makouski.** For registration details and conference schedule, e-mail: Conference_Services@sfu.ca; FAX: 604-291-3420; website: www.sfu.ca/phagedisplay2000.

MARKETPLACE

"SURF" & SAVE \$100/Liter
on all Agarose SEC
or Affinity Beads



"Surf" to www.xcbeads.com
and "Do the Wave"
or call (978) 323-4450

Circle No. 43 on Readers' Service Card

Normal Human Cells
for Biomedical
Research

www.cascadebio.com

Cascade Biologics, Inc.
email: info@cascadebio.com 800-778-4770

Circle No. 50 on Readers' Service Card

Cloning in Methylcellulose-Based Media

ClonaCell™-HY & ClonaCell™-CL

Simultaneous Selection and Cloning of Hybridomas,
Cell Lines, and Primary Cells with Selectable Markers

Tel: (604) 877-0713 Toll-free Tel: 1-800-667-0322
Fax: (604) 877-0704 Toll-free Fax: 1-800-967-2699
info@stemcell.com www.stemcell.com



Circle No. 1 on Readers' Service Card

ATCC™

I.M.A.G.E. EST Clones
Price Reduction

| | |
|--------------------------|-------|
| Unverified | \$20 |
| EST Sequence Verified | \$45 |
| Initial EST Verification | \$65* |

*Risk free, only charged if sequence verifies.

Vitacell®

**Why risk your results with
questionable reagents?**

Use **ATCC tested and certified**
Vitacell Media and Serum for all
your cell culture needs.

www.atcc.org
800-638-6597 • 703-365-2700

Circle No. 52 on Readers' Service Card

MARKETPLACE

LEUPEPTIN: \$57 FOR 25 mg
PEPSTATIN A: \$58 FOR 25 mg



PEPTIDES INTERNATIONAL
800-777-4779 • PEPNET.COM
Fax 502-267-1329

Circle No. 55 on Readers' Service Card

PURE CUSTOM PEPTIDES

✓High Purity Specialists ✓Milligram to Kilogram Quantities
✓Excellent Technical Service ✓Outstanding Prices ✓Complete Confidentiality
✓QC Includes HPLC, Mass Spec & Solubility Specs
✓Biotinylations, Conjugations & Modifications Available
✓Organic Synthesis, HF Cleavages, and Custom Purifications

"People Who Know Peptides"

C S Bio Co. Phone: 800-6-CSBIO-1 • Fax: 650-802-0944
email: peptides@csbio.com • www.csbio.com
Mass Spec • Sequencing • HPLC Services Available!!

Circle No. 28 on Readers' Service Card

PLASMID PRODUCTION



www.aldevron.com
701.297.9256

Ultrapure Plasmid Production • Reporter and Control Plasmids
Custom Cloning / Expression • Hepatitis B Surface Antigen

Circle No. 54 on Readers' Service Card

New on our

WEBSITE

Synthetic chemokines

And more than

7000 peptides,

biochemicals and other life
science products for you.

www.bachem.com

Circle No. 44 on Readers' Service Card

2 min DNA
Clean-up & Concentrate

for PCR, enzyme reactions, "dirty" DNA, etc.

Improved Gel DNA Recovery

for perfect ligations & sequencing, etc.

ZYMO RESEARCH 1-888-882-9682 www.zymor.com

Circle No. 5 on Readers' Service Card

BioSource International

Custom Antibodies
Peptides • Oligos

biosource.com

Circle No. 53 on Readers' Service Card

MARKETPLACE



**MORE PRODUCTS
ON PREVIOUS PAGE**

**your Single-Source
Antibody Authority**

**STRATEGIC
BIOSOLUTIONS**

Custom Antibody Services

- Polyclonal • Monoclonal
- Hybridoma Development • Ascites Production
- In vitro Production • Purification • Conjugation

800.481.9737
www.strategicbiosolutions.com

Circle No. 45 on Readers' Service Card

TriLink BioTechnologies
Superior Quality with Unparalleled Service

Modified NTPs

See the TriLink difference
Experience Matters

www.trilinkbiotech.com 800-863-6801

Circle No. 31 on Readers' Service Card

Custom DNA Sequencing

**Single Strand & Double Strand
Plasmid Inserts**

Sequence done in 3 - 5 days

Short Reads
as low as \$20 for up to 650 bases

Long Reads
\$45 for up to 900 bases
\$70 for up to 1600 bases

Inquire about Large Inserts & Genome Sequencing

**MWG
BIOTECH**

TOLL FREE: 1-877-694-2832
www.mwgbiochem.com • info@mwgbiochem.com

Circle No. 40 on Readers' Service Card

DNA PEPTIDES

Free Set-up and
Desalting

Call and Compare

**Gene Synthesis, Site Mutagenesis,
Protein Expression and more**

COMPARE AND SAVE

DNA Sequencing: as low as \$15 per run

Custom Anti-peptide Antibody
(including peptide synthesis)
\$850

GENEMED SYNTHESIS
800.344.5337 Fax: 650.952.9540
Web Site: www.genemedsyn.com

Circle No. 15 on Readers' Service Card

XX IDT®
INTEGRATED DNA TECHNOLOGIES, INC.

*Premier Specialty Synthesis
Molecular Beacons, RNA,
Antisense Oligos & More*
1-800-328-2661 - www.idtdna.com

Circle No. 48 on Readers' Service Card

MARKETPLACE

Custom Peptides & Antibodies

Best Service & Price! Compare and Save!

Alpha Diagnostic (800) 786-5777

Fax (210) 561-9544; info@4adi.com

Web site: http://www.4adi.com

Circle No. 47 on Readers' Service Card

QUALITY DNA SYNTHESIS

MALDI-TOF Mass Spectrometry Quality Control

Fluorescent Dyes & Other Modifications
Gene Construction & Sequencing Services
Custom RNA Oligos & Antisense DNA Oligos
Custom Primers for PCR & Sequencing
Long Oligos (up to 150-mers)
Competitive Pricing

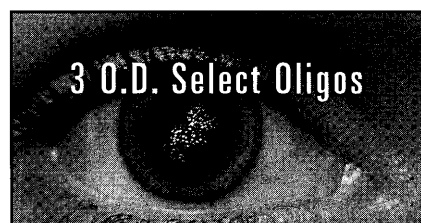
MIDLAND

The Midland Certified Reagent Company

1-800-247-8766 • FAX: 1-800-359-5789

www.mcrc.com • email: mcrc@oligos.com

Circle No. 49 on Readers' Service Card



Just \$0.60/base*

Order through our Web site and we'll ship your
3 O.D. Select oligos in just 24-48 hours. Every
oligo is QC'd by PAGE analysis, and each batch
is performance-tested by mass spec.

*Desalted only. Oligos must be 10 to 35 bases in length. No modifications
or additional purification. Web orders only. Offer valid in U.S. only.

**SIGMA
GENOSYS**

North America: 1-877-710-1504 • email: gorderentry@sial.com

Circle No. 38 on Readers' Service Card

POLYCLONAL ANTIBODIES

QUICK QUOTE
MOST QUOTES IN AN HOUR

FAST DELIVERY
PEPTIDE TO ANTISERUM IN 70 DAYS

100% SATISFACTION GUARANTEED

Fax: 978-343-5940

...MADE EASY!

**NEW ENGLAND
PEPTIDE, INC.**

Tel: 888-343-5974

www.newenglandpeptide.com

Circle No. 3 on Readers' Service Card

MERLIN® CORE SERVICES



**Plasmid Purification
Endotoxin Removal
Any Amount**

1-800-4-BIO-101 • www.bio101.com

Circle No. 46 on Readers' Service Card

MARKETPLACE

BIO•SYNTHESIS, INC.

PEPTIDES*

Milligrams to Grams
Desalted to >95% purity
HPLC and Mass Spec included
High Tra-pur
Fast Turnaround
* Also available: **Antipeptide Antibodies**
www.biosyn.com **1-800-227-0627**

20% OFF
Call for details!

Circle No. 42 on Readers' Service Card

Quality Peptides & Antisera

Friendly, Personal Service
www.genosys.com

Custom Peptide Synthesis

- sequence analysis
- IG, >70%, >80%, >95% purity
- scales from 2 mg-l g
- synthesis up to 120 residues
- variety of modifications available
- mass spec & HPLC on every peptide
- satisfaction guaranteed

Polyclonal Antisera Service

- antigen design assistance
- synthesis, conjugation and sera collection
- flexible protocol

**SIGMA
GENOSYS**

North America
1-877-710-1502
ginformation@sial.com

Europe
(+44) (0) 1223 839000
info@sigma-genosys.co.uk

Circle No. 39 on Readers' Service Card

Highly Purified Salt-Free Oligonucleotides

HPSF® GRADE

No failure products • Salt free • No metal ions

MALDI-TOF MS
Production QC on every oligo

Never a purification or setup fee

Inquire about volume pricing

Online ordering & tracking

**MWG
BIOTECH**

TOLL FREE: 1-877-694-2832
www.mwgbiochem.com • info@mwgbiochem.com

Circle No. 41 on Readers' Service Card

Custom Peptides

\$14/residue
3 days turn around

Free Mass Spec
HPLC/UV Trace
8-17 residues
20-50 mg (Desalted)

Please inquire for modified peptides

Tel: 800-597-7873

925-371-1070

Fax: 925-371-1156

email: peptide@peptidogenic.com

Peptidogenic The Peptide Engineering Specialist

Circle No. 2 on Readers' Service Card

Custom DNA

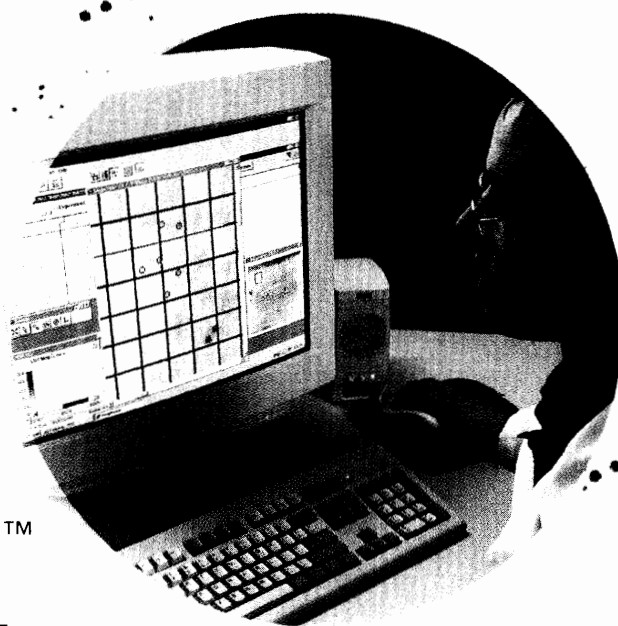
Purified and delivered in 48 Hours
http://www.resgen.com

Research Genetics
1-800-533-4363

Circle No. 51 on Readers' Service Card

ORDER ONLINE!

www.incyte.com/bioreagents



LifeGrid™

High-Density ARRAYS and Reagent Kit

CUSTOM SEQUENCING

CLONE RESOURCES

GENE EXPRESSION

GENE SCREENING

TRANSGENIC TECHNOLOGIES

PLASTICS

ROBOTIC SERVICES

CREATORS OF
LifeSeq® Gold

The World's Most Complete
View of the Human Genome

Generate gene expression data in your own lab with our complete high-density arrays and labeling and hybridization reagents. Each single-channel nylon LifeGrid™ array contains thousands of sequence-verified clones.

Human LifeGrid™ – A broad view of the human genome (8,400 Incyte clones mapped to NCBI's UniGene database).

★ **Mouse LifeGrid™** – A broad view of the *Mus musculus* genome (IMAGE Consortium clones mapped to NCBI's UniGene database).

★ **Arabidopsis LifeGrid™** – A broad view of the *Arabidopsis thaliana* genome (Incyte and Ohio State clones).

Find out more! www.incyte.com/bioreagents

*Coming Soon!

Reagent Kit
Manufactured for
Incyte Genomics by

Ambion
THE RNA COMPANY™

+44 (0) 1223 454 900 (U.K.) | 314.427.3222 (International) | 877.746.2983 (U.S.)

Incyte Genomics Bioreagents and Services

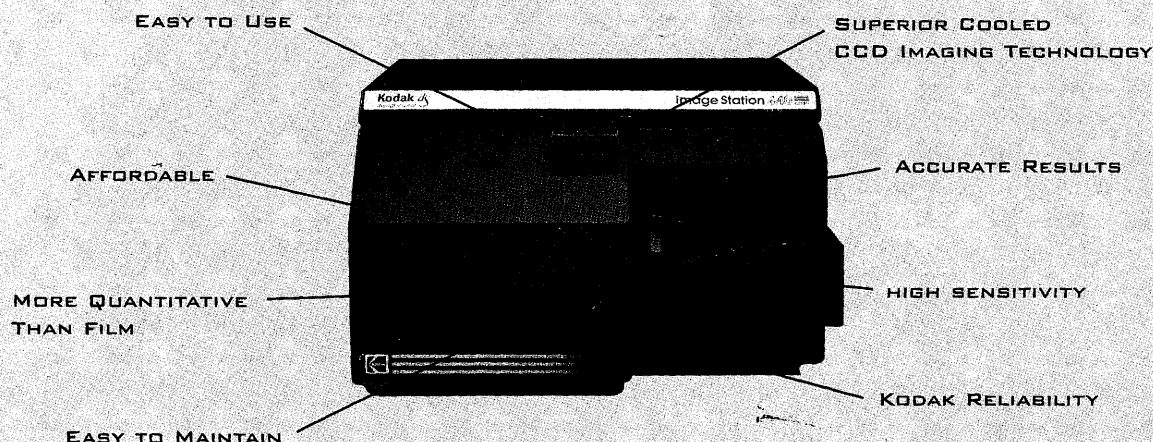
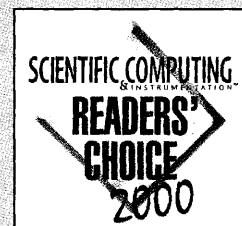
www.incyte.com

Circle No. 36 on Readers' Service Card

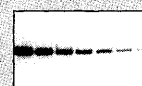


IncyteGenomics
For Life.

OUR NEW CHEMILUMINESCENCE IMAGING SYSTEM REDEFINES THE PHRASE "A KODAK MOMENT"



KODAK IMAGE STATION 440CF



S E V E N O U T O F T E N A G R E E **

KODAK, a world leader in film and digital imaging technology is proud to present the Image Station 440CF- an affordable, multi-purpose digital imaging system that works right on your bench-top. This compact system is easy to use and provides sensitive detection and quantitative analysis of samples labeled with chemiluminescence, fluorescence, or chromogenic compounds, and densitometry. Get the sophisticated performance of a high end imaging system at an affordable price. Available exclusively through **NEN® Life Science Products**, a leader in labelling technology for life science and drug discovery research. For complete information, visit www.kodak.com/go/imagestationp or call 1-877-SIS-HELP, express code 25.

* DEMO THE IMAGE STATION BY SEPT. 30th, 2000 AND GET A FREE KODAK DIGITAL CAMERA FOR YOUR LAB (\$899 VALUE).



*Special rules and eligibility terms apply. For complete program details, visit www.kodak.com/go/imagestationdemo, or call 1-877-SIS-HELP express code 25.

** > 70% of scientists surveyed at the Society for Neuroscience 1999 indicated a preference for KODAK Image Station vs. its major competitors (St Andrews Marketing Group)

Kodak is a trademark. © Eastman Kodak Company, 2000.

