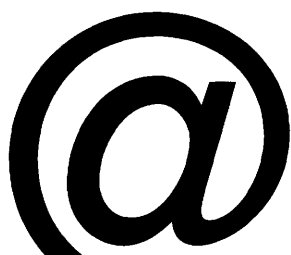


# Chart the right course for your career.

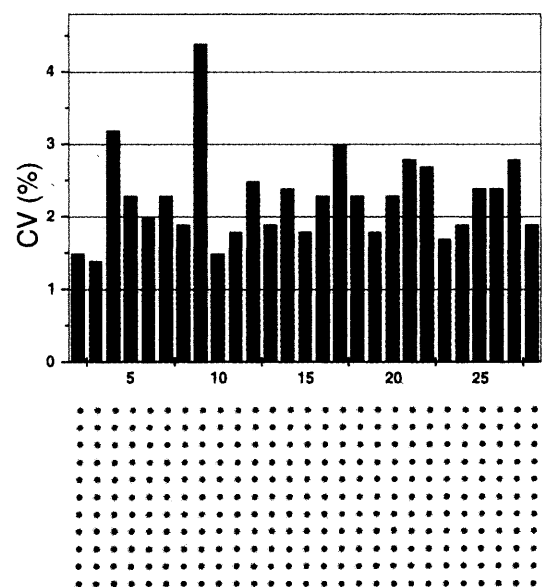


**Steer to these coordinates...**  
**[www.sciencecareers.org](http://www.sciencecareers.org)**

Finding your way to the right job is sometimes like sailing in uncharted waters. **Science Careers** can help you navigate through the myriad career options with its fast, **searchable jobs database** and other useful career information.

**Science Careers**  
**[www.sciencecareers.org](http://www.sciencecareers.org)**

# Your Microarrays and Biochips Should Be This Good!



Replace your pin tools or other inaccurate spotting technologies with the **BioChip Arrayer™** from Packard Instrument Company. With the **BioChip Arrayer** you get accurate spotting of microarrays because of its:

- 4 PiezoTips™ mounted at 9 mm spacing on a precision XYZ-stage
- Ability to aspirate and dispense sub-microliter volumes
- Piezoelectric *drop-on-demand* technology to provide non-contact dispensing
- Reproducible dispensing of volumes from 350 pL to 500 nL
- High density DNA microarrays such as 200  $\mu$ m spots at 300  $\mu$ m spacing.

*For more information – call, write, fax or visit our web site today!*

**PiezoTip:nology**  
At Work •



**Packard Instrument Company**  
Mariden, CT 06450 U.S.A. Tel: 203-639-2598 Toll Free: 1-800-323-1891  
Web Site: <http://www.packardinstrument.com>

For international offices visit our Web Site or contact the Packard U.S.A. office.

Code: AD3008-BCA



# NEW PRODUCTS

## ULTRAVIOLET/VISIBLE SPECTROPHOTOMETER

The stand-alone Ultrospec 3000 *pro* high-performance scanning ultraviolet/visible spectrophotometer has extensive built-in applications software. Results can be printed out or downloaded to a spreadsheet for totally electronic record

### Amersham Pharmacia Biotech

For more information call +44 171 255 1100 or **circle 149** on the Reader Service Card

keeping and project archiving. Suitable for multiuser environments in both industrial and academic bio-pharmaceutical research, the instrument can be used for discrete measurements and experiments on the laboratory bench. The <1.8-nm bandwidth for high-resolution scanning provides sufficient spectral detail to resolve the spectrum of a 0.02% (v/v) solution of toluene in hexane. It offers a self-diagnostics facility with self-tests for bandwidth, absorbance accuracy, wavelength accuracy, and stray light. It has the capacity for 50 stored methods and includes routines for nucleic acid quantification, oligonucleotide characterization, and protein determination. It can also be used under the control of personal computer-based applications software.

cy, and stray light. It has the capacity for 50 stored methods and includes routines for nucleic acid quantification, oligonucleotide characterization, and protein determination. It can also be used under the control of personal computer-based applications software.

## APOPTOSIS RESEARCH REAGENTS

The caspase family of cysteine proteases plays an important role in apoptotic signaling pathways. An extensive series of human, recombinant active caspase enzymes now includes caspase-1, -2, -3, -4, -5, -6, -7, -8, -9, -10, and -14. Each enzyme is cleaved and activated from the proenzyme and its activity is measured in units, defined as 1 pmol/min using a substrate specific to each caspase. Three QuantiZyme Assay Kits for caspase-1, -3, and -8 make use of

### BIOMOL Research Laboratories

For more information call 800-942-0430 or **circle 150** on the Reader Service Card

a 96-well format and colorimetric detection system. The kits can be used to screen compound libraries to discover new inhibitors of these enzymes. A Cellular Activity Assay System is available for measuring caspase-3 and caspase-3-like activity in cellular extracts. Caspase-3 is an important downstream protease that is activated during apoptotic signaling events by a number of upstream proteases; cleavage of caspase-3 is a hallmark of apoptosis. The Caspase-3 Cellular Activity Assay Kit is useful as a positive control and for testing cellular extracts for endogenous inhibitors of caspase-3.

Newly offered instrumentation, apparatus, and laboratory materials of interest to researchers in all disciplines in academic, industrial, and government organizations are featured in this space. Emphasis is given to purpose, chief characteristics, and availability of products and materials. Endorsement by *Science* or AAAS of any products or materials mentioned is not implied. Additional information may be obtained from the manufacturers or suppliers named by circling the appropriate number on the Reader Service Card and placing it in a mailbox. U.S. postage is free.

Looking for  
brilliant career  
opportunities?

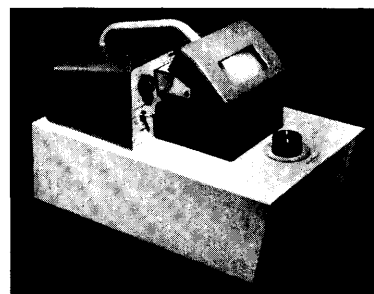


Then look here...  
[www.sciencecareers.org](http://www.sciencecareers.org)

Science Careers  
[www.sciencecareers.org](http://www.sciencecareers.org)

# Beautiful? No. Reliable? You Bet.

VIBRATOME® gives you  
fresh tissue sectioning  
without freezing or embedding.  
Simple, precise adjustments cut fresh or  
fixed tissue evenly from 20 microns up.  
Versatile, too, with a wide variety of  
accessories that make your work easier.



The Vibratome is available with either manual operation or with built-in automation and/or refrigeration. Now that's beautiful. So, if you're more interested in how it works than how it looks, choose Vibratome.

Function is beauty.



TECHNICAL  
PRODUCTS  
INTERNATIONAL, INC.

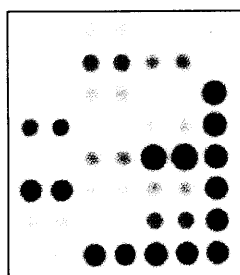
5918 EVERGREEN / ST. LOUIS, MISSOURI 63134 U.S.A.  
(314) 522-8671 (800) 729-4421 FAX (314) 522-6360

<http://www.techprodint.com>  
e-mail: [tpi@techprodint.com](mailto:tpi@techprodint.com)

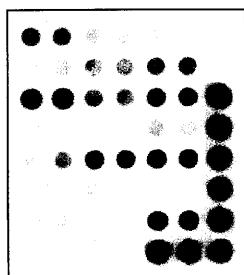
Circle No. 8 on Readers' Service Card

- GENE
- EXPRESSION
- ARRAY
- (GEArray) SYSTEM

---



<sup>32</sup>P



Chemiluminescence

*Simple 3 step protocol*  
*Use of total RNA*  
<sup>32</sup>P or chemiluminescence detection  
*No special equipment*

Cell-cycle    Apoptosis    Signal  
 Transduction

Cancer

## *Pathway Analysis*

Stress/Toxicity

PathwayFinder

Cytokines &  
Immuno-inflammation

*Pathway-specific*  
*Sensitive*  
*Accurate*  
*Economical*

# **Super Array, Inc.**

## **1-888-503-3187**

[www.superarray.com](http://www.superarray.com)

Circle No. 31 on Readers' Service Card

**GEArray Kit**  
**\$249**

**Customized Array**  
**\$19/gene**

## Classified Advertising

### UNITED STATES

#### Display Classified Advertising

Bren Peters Kathleen Clark  
Tel: 202-326-6541 Tel: 202-326-6555  
Fax: 202-289-6742

Kristine von Zedlitz (West Coast Sales)  
Tel: 415-956-2531

E-mail: science\_displayads@aaas.org

#### Line Classified Advertising

Jody Fenty Christina Geiger  
Tel: 202-326-6722 Tel: 202-326-6532  
Fax: 202-289-1451

E-mail: science\_classifieds@aaas.org

#### Online Classified Advertising

Beth Dwyer  
Tel: 202-326-6534  
Fax: 202-289-6742  
E-mail: bdwyer@aaas.org

www.sciencecareers.org

**Ad Materials:** Send to: *Science Classified Advertising*, 1200 New York Avenue, NW, Room 911, Washington, DC 20005

### EUROPE

#### Line, Display, and Online Classified Advertising

Deborah Cummings  
Tel: +44 (0) 1223 326 500  
Fax: +44 (0) 1223 326 532  
E-mail: european\_ads@science-int.co.uk

**Ad Materials:** Send to: Advertising Dept., Bateman House, 82-88 Hills Road, Cambridge CB2 1LQ, United Kingdom

To obtain information on deadlines, editorial features, and bonus distribution schedules, call our sales office or visit *Science Careers* at [www.scienceonline.org](http://www.scienceonline.org) and click on "To Advertise." All advertising is subject to publisher's approval.

Every employment ad placed in *Science* will be featured in our job database online for 4 weeks. Call to find out how to link to thousands of additional job seekers online with *Science Careers*.

Line ads are not agency commissionable. Ads submitted should not include any bold, italicized, or abbreviated words. *Science* will edit and typeset ads according to *Science* style requirements. *Science* cannot provide proofs of typeset line ads. *Science* will provide an estimated cost of line ads at time of placement. This is an approximate cost only. Please provide contact name, telephone, billing information, and purchase order numbers with your order.

To Subscribe to *Science* call:  
202-326-6417 or 1-800-731-4939

### POSITIONS OPEN

#### TENURE-TRACK ASSISTANT PROFESSOR BIOLOGICAL PHYSICS Department of Physics and Astronomy Vanderbilt University

Applications and nominations are invited for a tenure-track Assistant Professor position in any subfield of biological physics or in areas that bridge condensed matter and biological physics. An exceptionally qualified person at a more senior level will be considered. The successful candidate will be expected to establish a leading independent research group and to be highly effective in teaching at the undergraduate and graduate levels. Biophysical research areas within the Department include bioelectric and biomagnetic phenomena; nonlinear dynamics of molecular and cellular systems; fluctuation dynamics of biopolymers and proteins; molecular motors and micromanipulation; interactions of IR, visible, and UV lasers with biological systems; bioinformatics; and applications of tunable, monochromatic X-rays to medical imaging and biological physics. Candidates can take advantage of opportunities for interdisciplinary research at the W. M. Keck Free Electron Laser Center collaborations with the Schools of Engineering and Medicine, as well as other projects in the Transuniversity Initiative in Biomedical Science and Technology. Applications, including a résumé and the names and addresses of three or more references, should be sent to:

Thomas W. Kephart  
Chair, Biological Physics Search Committee  
Vanderbilt University  
Box 1807, Station B  
Nashville, TN 37235  
FAX: 615-343-7263  
E-mail: kephartt@ctr.vax.vanderbilt.edu

Review of applications will begin immediately and will continue until the position is filled. The starting date may be as early as 1 January 2001. *Vanderbilt University is an Equal Opportunity/Affirmative Action Employer. Women and minority candidates are particularly encouraged to apply.*

#### FACULTY POSITIONS IN NEUROBIOLOGY MCP-HAHNEMANN UNIVERSITY

As part of a continuing universitywide neuroscience initiative, the Department of Neurobiology and Anatomy in the School of Medicine is inviting applications for tenure-track faculty positions. Successful candidates will be expected to establish and maintain externally funded research programs and contribute to the graduate and medical educational programs of the Department. Candidates from all areas of neuroscience will be considered, but the initial emphasis will be the fields of spinal cord injury, molecular and developmental neurobiology, and cellular or integrative neuroscience. The academic rank is open, from ASSISTANT PROFESSOR to FULL PROFESSOR, with competitive start-up packages commensurate with experience.

The goal of this recruiting effort is to identify individuals whose interests complement those of existing (website: <http://neurobio.mcphuh.edu>) and new faculty and, by so doing, continue the tradition of highly interactive research activities within the Department. Faculty in the Department will also have the opportunity to collaborate with a broad-based and expanding community of clinical and basic neuroscientists throughout the School of Medicine.

Applicants should submit curriculum vitae, statement of research interests, and names of three references to:

Barry D. Waterhouse, Ph.D.  
Chair, Faculty Search Committee  
Department of Neurobiology and Anatomy  
MCP-Hahnemann University  
3200 Henry Avenue  
Philadelphia, PA 19129

*MCPHU is an Equal Opportunity Employer fostering diversity in the workplace.*

### POSITIONS OPEN

The Division of Child and Adolescent Psychiatry and Child Development in the Department of Psychiatry and Behavioral Sciences at Stanford University School of Medicine is seeking a qualified Psychiatrist/Psychologist for a full-time academic appointment at the ASSISTANT or ASSOCIATE PROFESSOR level. The person we are seeking must have a Ph.D. or M.D./Ph.D. (or equivalent training) and a significant track record of training and academic productivity in biostatistics and research methodology. A strong background in genetics, epidemiology, and/or imaging also is preferred. At the Associate Professor level, this person would be considered for the position of Director of Research in the Division.

The individual in this position would provide methodological and biostatistics collaboration and supervision for the Division in addition to pursuing independent research in clinical, genetic, or epidemiologic aspects of childhood neuropsychiatric or neurodevelopmental disorders. Applicants should be able to participate in the development of innovative clinical programs and research efforts that span multiple levels of scientific inquiry. Additionally, the individual will be expected to take an active part in teaching of Stanford medical students and psychiatry trainees.

Candidates holding an M.D. must be Board-eligible or Board-certified in psychiatry and either hold or be eligible for California licensure. Salary and rank will depend upon qualifications. Applicants should forward curriculum vitae and the names of five references to: Dr. Carl Feinstein, Chairman of the Search Committee, c/o Department of Psychiatry, Stanford Medical Center, Stanford, CA 94305-5719. *Our Medical School is committed to increasing representation of women and members of minority groups among its faculty, and we particularly encourage you to nominate such candidates.*

A STAFF ASSOCIATE POSITION for a Genetic Counselor is available immediately in the Department of Neurology, Division of Movement Disorders, at Columbia University. The Staff Associate will act as study coordinator for funded clinical genetics projects and as the genetics counselor for the Center for Parkinson's Disease and other Movement Disorders at Columbia Presbyterian Center. Primary responsibilities include enrolling families into the studies and obtaining family histories, interviewing patients and family members, organizing data for grants and manuscripts, collecting blood from subjects for DNA analysis, and genetic counseling. Some travel is required. The applicant should have an M.S. degree in genetic counseling and one to two years of related experience. Certification as a phlebotomist is required. Send curriculum vitae and names of three references to:

Stanley Fahn, M.D.  
Department of Neurology  
710 West 168th Street  
New York, NY 10032

*Columbia University is an Equal Opportunity/Affirmative Action Employer.*

#### CHAIR OF NEWLY FORMED DEPARTMENT OF NEUROLOGICAL SCIENCES

University of Nebraska College of Medicine

Applications/nominations are invited for the position of PROFESSOR and Chair of the newly formed Department of Neurological Sciences. Candidates for this position would be expected to develop a strong program in neurological sciences to address clinical, educational, and research needs of our campus. Applications should include curriculum vitae and the names, addresses, and telephone numbers of no more than three references. Send letter and curriculum vitae to: Lyal G. Leibrock, M.D., Chairman, Neurological Sciences Chair Search Committee, c/o Dean's Office, University of Nebraska College of Medicine, 986545 Nebraska Medical Center, Omaha, NE 68198-6545. Review of applications will begin on June 30, 2000, and continue until the position is filled. *The University of Nebraska is an Equal Opportunity/Affirmative Action Employer. Individuals of multiculturally diverse backgrounds are encouraged to apply.*

# Research Opportunities in Reproductive Biology



As the world's premier biotechnology company in Reproductive Health, we are committed to the discovery of new innovative medicines for treating infertility and reproductive illness. To ensure a strong science base we are also dedicated to support exploratory research with the goal of publishing high quality papers. To lay the foundation of our future growth in these areas, we currently have the following exciting drug discovery and basic research opportunities.

With recombinant molecules in the areas of Reproductive Health, Growth, Wasting, Multiple Sclerosis and Immunology/Oncology under current development, Serono ranks today among the world's leading Biotech companies. With sales of \$1 billion in 1999, and an annual R&D investment exceeding \$200 million, Serono can offer its employees financial stability, entrepreneurial spirit, an innovative product line, and a unique, fully integrated biotech operation.

Be part of Serono's future.

## Senior Medicinal Chemist

Will be in charge of leading a team of medicinal chemists in the design and synthesis of small molecule drug candidates in hits-to-leads and lead optimization phases. Must have excellent communication skills and be able to work in a highly collaborative environment with researchers in biology, biochemical pharmacology and cheminformatics. Ph.D. in Organic/Medicinal Chemistry, at least 5 years' relevant postdoctoral experience in drug discovery or pharmaceutical research.

E-mail inquiries to: [nabil.eltayar@serono.com](mailto:nabil.eltayar@serono.com)

## Medicinal Chemists

Will design, synthesize, characterize and optimize small molecule drug candidates. These positions demand Ph.D. level synthetic organic chemists who are highly communicative and comfortable working within a team environment as well as interacting with drug-design chemists, biologists, and biochemical pharmacologists.

E-mail inquiries to: [nabil.eltayar@serono.com](mailto:nabil.eltayar@serono.com)

## Informatics Scientist

We are looking for a bioinformatics/cheminformatics scientist to play a leading role in the design and implementation of state-of-the-art bioinformatics analysis and database mining tools in order to support and empower our genomics and proteomics research scientists. Provide computational support to our high throughput screening and chemistry groups including management of the cheminformatics and bioinformatics databases. This position demands excellent communication skills.

E-mail inquiries to: [richard.kozack@serono.com](mailto:richard.kozack@serono.com)

## Bioinformatics Scientist

Energetic and creative individual needed to perform data mining and analysis in support of our projects in functional genomics and reproductive biology. Proficiency with bioinformatics data mining tools and public domain databases required. A strong background in molecular biology and experience with programming and relational databases a plus.

E-mail inquiries to: [richard.kozack@serono.com](mailto:richard.kozack@serono.com)

## Receptor Molecular Pharmacologist

This position requires a strong background in receptor pharmacology and biochemistry. Applicants will hold a Ph.D. in Biochemistry, Pharmacology or a related discipline, with at least 3 years' experience in the design, validation and implementation of receptor based binding assays. Experience working within a lead discovery group with familiarity in compound profiling, pharmacophore modeling and scaffold selection is helpful.

E-mail inquiries to: [bill.brondyk@serono.com](mailto:bill.brondyk@serono.com)

## Enzymologist

The position requires a strong background in enzymology and state-of-the-art enzyme assay technologies. Will work closely with a variety of cross functional project teams to provide essential enzymological experience and insight. Ph.D. and at least 3 years' experience needed in the design, optimization and implementation of enzyme based assays. Industrial experience working within a lead discovery group is a plus.

E-mail inquiries to: [bill.brondyk@serono.com](mailto:bill.brondyk@serono.com)

## High Throughput Screening and Automation Programmer

The candidate will have experience in development of screening assays as well as writing software for machine automation within a robotic drug screening environment. Must have expertise in Visual Basic and ActiveX with a demonstrated ability to develop applications for automated data processing as applied to high throughput screening for drug candidates.

E-mail inquiries to: [david.evans@serono.com](mailto:david.evans@serono.com)

## Compound Control/Database Scientist

Will maintain the internal HTS compound bank performing such responsibilities as compound ordering, login, databasing, selection, weighing, and plating. The position requires direct interaction with chemistry, screening, in vitro and in vivo testing and purchasing. Applicants will hold a BS in Chemistry or a related discipline. Experience working within a drug discovery compound acquisition/screening group with familiarity in compound banking and chemical databasing RS<sup>2</sup> is a plus.

E-mail inquiries to: [david.evans@serono.com](mailto:david.evans@serono.com)



### **In vivo Pharmacologist**

We are seeking an experimental pharmacologist with proven experience in in vivo animal models (preferably models related to reproduction or cancer). An excellent understanding of current molecular pharmacological techniques as well as functional pharmacological assays and their application to drug discovery is essential. Ph.D. or equivalent degree and experience in drug development within the pharmaceutical or biotechnology industry is essential.

E-mail inquiries to: sean.mckenna@serono.com

### **Postdoctoral Position Hormone-dependent Transformation**

Will work on essential signal transduction pathways leading to hormone-dependent cell transformation and metastasis. The successful candidate will have a strong background in endocrinology and its relationship to hormone-dependent malignancies.

E-mail inquiries to: stephen.palmer@serono.com

### **Postdoctoral Position - Molecular Endocrinology**

Will identify and study the biological significance of components of intra-ovarian paracrine/autocrine regulatory systems. This work is closely linked to our functional genomics program. Candidates must have proven success with cloning and expression of recombinant proteins.

E-mail inquiries to: robert.campbell@serono.com

### **Research Scientist - Signal Transduction**

This key new position is to study kinase- and phosphatase-based signal transduction pathways. Must have Ph.D., a strong background in cell signaling, and a proven track record in the identification, molecular cloning and functional characterization of novel signal transduction components.

E-mail inquiries to: steve.arkinstall@serono.com

### **Research Scientist - Male Reproductive Biology**

Will study factors controlling male fertility. With knowledge of testicular cell culture and differentiation, this key scientist will work closely with our Signal Transduction and Reproductive Genomics Group to elucidate molecular mechanisms regulating spermatogenesis.

E-mail inquiries to: stephen.palmer@serono.com

### **Research Scientist Reproductive Biology and Development**

Will study the molecular regulation of ovarian function. The project involves the manipulation of candidate regulatory systems emerging from our highly productive functional genomics project. Candidates should hold a Ph.D. or Ph.D./M.D. with a strong background in molecular methods to elucidate signaling relationships in situ. A clear aptitude for performing fine surgical manipulations and rigorous histological assessment of tissues is essential.

E-mail inquiries to: robert.campbell@serono.com

### **Research Scientist - Neuroendocrinology**

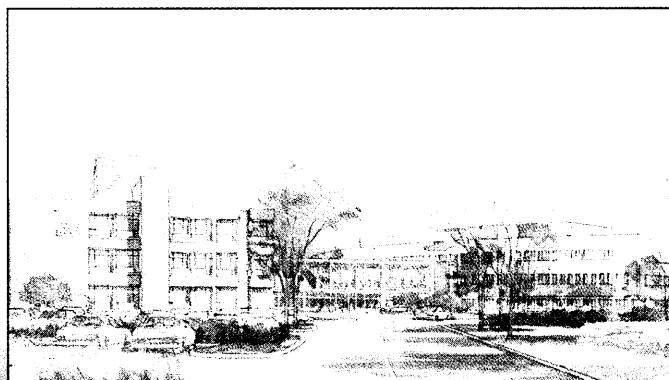
Ph.D. scientist with a strong background in neuroendocrine regulatory mechanisms. Will conduct research to identify and assess novel neuroendocrine mechanisms regulating reproductive function. Proven success in applying biochemical and molecular approaches to neuroendocrine physiology is required.

E-mail inquiries to: mark.tepper@serono.com

### **Postdoctoral Position Reproductive Genomics**

Will study the role of cytokines in reproductive function. The successful candidate will be expected to work within our functional genomics group and apply current technologies (microarray analysis, high throughput sequencing) to investigate molecular processes underlying cytokine action on gonadal function. A background in molecular biology and reproductive biology is desired.

E-mail inquiries to: grace.wong@serono.com



Serono's future 200,000 sq. ft. suburban Boston campus.

### **Serono**

Attn: Human Resources

280 Pond Street, Randolph, MA 02368

Fax: (781) 986-7873

For a closer look at Serono, please visit us at:

**www.seronusa.com**

An Equal Opportunity Employer

**SERONO**  
Research & Development



MAYO CLINIC

**POSTDOCTORAL RESEARCH; SIGNAL TRANSDUCTION  
TRANSPLANTATION BIOLOGY RESEARCH PROGRAM**

A position is available beginning immediately for a postdoctoral research fellow to work with Dr. Karen E. Hedin of the Transplantation Research Program, in the Departments of Surgery and Immunology, at the Mayo Clinic in Rochester, Minnesota.

Research will focus on characterizing the molecular mechanisms and biological impact of chemokine signal transduction in T lymphocytes and endothelial cells, and on understanding how these signaling pathways regulate important biological processes, including lymphocyte immune activation, cytokine gene expression, endothelial cell activation, tumor formation, and the rejection of transplanted organs.

Applicants must have a Ph.D. and/or M.D. and experience using molecular biological and/or biochemical laboratory techniques. A background in signal transduction or immunology would be helpful. The ideal applicant will be excited about doing cutting-edge basic science research within an interactive group of basic and clinical scientists that are focused on developing practical approaches to xenotransplantation. For more information, visit the website of Dr. Hedin at: [http://www.mayo.edu/research/people/3/31804\\_hedin/](http://www.mayo.edu/research/people/3/31804_hedin/) and the website of the Mayo Transplantation Biology Research Program at: [http://www.mayo.edu/research/transplantation\\_biology/resources/](http://www.mayo.edu/research/transplantation_biology/resources/). To apply, please send a letter of application and curriculum vitae to:

**Karen E. Hedin, Ph.D.**  
Mayo Clinic  
Transplantation Research  
Medical Sciences Building, 2nd Floor  
Rochester, MN 55905

*Mayo Foundation is an affirmative action and equal opportunity employer and educator.*

**RESEARCH POSITIONS  
AT  
THE SCRIPPS RESEARCH  
INSTITUTE**

We are recruiting Ph.D.'s & M.D.'s to participate in NIH-funded research projects relating to the cellular and molecular mechanisms underlying transbilayer movement of phosphatidylserine and other plasma membrane phospholipids in apoptotic or immune injured cells. Projects include investigation of transcriptional regulation, molecular structure, and function of phospholipid scramblase and other phospholipid transport proteins, and analysis of knockout mice. Expertise in either molecular and cellular biology, animal physiology, protein chemistry, or structural biology desired. Interested individuals are invited to visit our website <http://www.scripps.edu/mem/biochem/Sims/>.

Letters of interest along with curriculum vitae and references should be sent to:

**Peter J. Sims, M.D., Ph.D.**  
Professor  
Dept of Molecular & Experimental  
Medicine, MEM-275  
The Scripps Research Institute  
10550 North Torrey Pines Road  
La Jolla, CA 92037  
email: [psims@scripps.edu](mailto:psims@scripps.edu)



**St. Jude Children's  
Research Hospital**  
ALBAC - Danny Thomas, Founder

**DIRECTOR  
HUMAN APPLICATIONS LABORATORY  
Cell and Gene Therapy (Job Code: 1616-SCI)**

The Director is responsible for the accurate and efficient performance of all work assignments in the Human Applications Laboratory of the Transplantation and Gene Therapy Program and is expected to maintain extensive knowledge and expertise in the preparation of cellular products for clinical applications. You will be responsible for the development of new procedures to be performed within the laboratory and directly supervise operation of the Cell Culture Laboratory. We will rely on you to promote a positive work climate and overall team effort. This position is subject to extended hours and call-back as needed.

Successful candidate will possess a PhD and six years postdoctoral experience with at least four years in a cGMP laboratory. Extensive knowledge of laboratory procedures with specific knowledge of cell handling procedures and cGMP regulations is required. Knowledge of hematopoietic stem cell processing is helpful. Must have a proven ability to supervise others and communicate effectively.

**St. Jude Children's Research Hospital** is an internationally renowned research and treatment center for children with catastrophic diseases – primarily pediatric cancers. If you would like to be considered for this role, please forward resume, including JOB CODE, by e-mail, fax or mail to: **St. Jude Children's Research Hospital, Human Resources Department, 332 North Lauderdale, Memphis, TN 38105. Fax: 901-495-3123. E-mail: [patty.puckett@stjude.org](mailto:patty.puckett@stjude.org)**

**[www.stjude.org/hr](http://www.stjude.org/hr)**  
Equal Opportunity Employer

**Associate Professor/Professor  
Institute of Chemical Toxicology  
Wayne State University**

Tenure-track faculty positions are available at the rank of associate professor/professor in the Institute of Chemical Toxicology at Wayne State University. The Institute offers a research-intensive environment and is home to the NIEHS-funded Environmental Health Sciences Center in *Molecular and Cellular Toxicology with Human Applications*. The EHS Center offers facility core support in cell culture/transfection/infection techniques, transgenics/gene deletion, imaging and cytometry, and molecular genetics. Research areas of interest include receptor-mediated intracellular signaling, mechanistic research on intracellular and extracellular signaling components, regulation of gene expression, cell cycle control, and DNA damage and repair. Highly competitive salaries, start-up funds and contemporary facilities are available. Additional information may be found at [www.wayne.edu/ehsctr](http://www.wayne.edu/ehsctr) or [www.wayne.edu/ict](http://www.wayne.edu/ict). Wayne State University is a partner in the annual multi-million dollar Michigan Life Sciences Corridor initiative. Applicants should send a curriculum vitae, a brief statement of research interests and the names of three references to: **Dr. Raymond F. Novak, Director**

**Institute of Chemical Toxicology  
2727 Second Avenue  
Detroit, MI 48201**

*Wayne State University is an equal  
opportunity/affirmative action employer*





Novartis Pharmaceuticals Corporation, a Novartis group company, researches, develops, manufactures and markets leading innovative prescription drugs used to treat a number of diseases and conditions, including central nervous system disorders, organ transplantation, metabolic & cardiovascular, infectious, cancer and arthritis. We seek to improve peoples' lives by pioneering novel healthcare solutions-help us to achieve that vision as a member of our team. Currently, we seek to fill the following positions based in **Summit, NJ**:

### **SR. SCIENTIST/LAB HEAD, INFECTIOUS DISEASES**

As a lead member of our Infectious Disease Department, you will be responsible for the buildup and supervision of a molecular biology/biochemistry lab to support the discovery of new anti-infective agents. Active participation in the identification and selection of new biological targets, mainly based on genomics information of infectious organisms is expected, as well as the scientific coordination of internal activities with external research collaborations. The qualified candidates' background will include a Ph.D. in Molecular Biology or Biochemistry, a working knowledge in microbiology and several years of postdoctoral experience. Additionally, you must be proficient in developing and implementing assays for identification and/or optimization of new lead compounds. Experience or a strong interest in bioinformatics would be highly desirable. Supervisory skills, excellent interpersonal and communication abilities and experience with multidisciplinary interactions in a team-based setting are required. Please refer to position HB-7797 on resume and envelope, or as the subject of your e-mail.

### **POSTDOCTORAL FELLOWSHIPS - ONCOLOGY**

Currently, we have the following two postdoctoral positions available within our Oncology Department. These positions will involve working within a department of multidisciplinary scientists involved in the identification of new therapies for the treatment of cancer. The qualified candidates will have a Ph.D. in Biochemistry, Molecular, or Cellular Biology and a background in Oncology. Communication skills and an ability to work within a team environment are essential. These postdoctoral positions, which encourage creative thinking and offer ample opportunities for publication and research presentations, will be for three years.

#### **Investigation of Novel Signal Transduction Targets**

In this position, you will investigate the role of a novel kinase in the MAP kinase pathway and attempt to understand its biological activities and role in growth control. These studies involve identification of pathway members using state-of-the-art microprotein analysis, cell cycle analysis, transformation assays and microarray expression analysis. Since these studies are likely to contribute to the validation of a new target drug discovery, the candidate should also be interested in learning about the drug discovery process. The candidate should also have a background in signal transduction with significant experience in Molecular Biology, Biochemistry and Mammalian cell culture techniques. Please refer to position HB-7667 on resume and envelope, or as the subject of your e-mail.

#### **Therapeutic approaches through Chromatin Remodeling**

In this position, you will focus on the study of epigenetic mechanisms (e.g. chromatin modifications) in cell cycle regulation, differentiation and apoptosis and elucidate the role of these processes in tumorigenesis. Microarray analysis will identify genes that mediate the anti-proliferative effects of chromatin remodeling agents. Additional responsibilities will include working to elucidate mechanisms of selective gene activation mediated by histone acetylation and DNA methylation. The role of chromatin remodeling in tumor suppressor silencing and reactivation will be addressed. The successful candidate should have a strong background in regulation of gene expression, with skills in Molecular Biology, Biochemistry and Mammalian cell culture techniques. Please refer to position HB-7660 on resume and envelope, or as the subject of your e-mail.

### **POSTDOCTORAL FELLOWSHIPS - RESEARCH**

#### **Core Technologies/HTS**

As a member of our Core Technologies/Research Department, you will be responsible for a project to examine and compare the different assay technologies currently employed in high throughput screening. Additionally, you will be responsible for the design and analysis of experiments; developing several versions of biochemical assays using traditional and novel homogeneous assay technologies; utilizing semi-automated instrumentation to evaluate sub-libraries of our compound collection in these assays; and collaborating with program teams in the therapeutic areas to establish function correlates. The qualified candidate will have a Ph.D. degree in Biochemistry, Biology or related discipline; experience in running biochemical assays, particularly enzymatic and binding, and be proficient in utilizing software for HTS data analysis, such as Excel, GraphPad or SigmaPlot. Preference will be given to those candidates with experience in utilization of fluorescent assay technologies. Expertise in biochemistry and enzymology is desired. Good communication and teamwork skills are essential. Please refer to position HB-7716 on resume and envelope, or as the subject of your e-mail.

#### **Metabolic & Cardiovascular Disease**

Working within a department of multidisciplinary sciences, you will be involved in the research of type II diabetes. These projects will contribute to a better understanding of the mechanisms of insulin resistance. In this position you will be involved in the study of insulin signal transduction pathways with the goal of identifying novel proteins that impact and regulate this system. The qualified candidates will have a Ph.D. in Biochemistry, Molecular, or Cellular Biology with experience in signal transduction and/or transcriptional regulation. An interest in diabetes and metabolic diseases is preferred; strong communication skills and an ability to work within a team environment are essential. These postdoctoral positions, which encourage creative thinking and offer ample opportunities for publication and research presentations, will be for two years. Please refer to position HB-7796 on resume and envelope, or as the subject of your e-mail.

#### **Discovery Technologies/Enzyme Based Screening**

Working within a dynamic, multidisciplinary team from multiple disease areas, you will be responsible for our targeted screening of enzymes and receptors using small rationally designed libraries. A strong background in enzymology and excellent laboratory skills are required. Additional opportunities exist for assay optimization for medium to high throughput screening and/or diversity and structure based library design depending on the interests of the candidates. The qualified candidate will have a Ph.D. in Biochemistry, Chemistry, or a related discipline. Strong communication skills are essential. We are committed to providing a stimulating research environment for the chosen candidate with opportunities for internal and external presentation and publication of research. Please refer to position HB-7356 on resume and envelope, or as the subject of your e-mail.

We offer competitive salaries, comprehensive benefits and the excitement of having a significant impact on the programs of an international leader. **PRINCIPALS ONLY:** send your resume/curriculum vitae and letter of interest, indicating position code on resume AND envelope, or as the subject of your e-mail, to: R&D Staffing, Novartis Pharmaceuticals Corporation, 556 Morris Avenue, Building SEF 1029, Summit, NJ 07901; e-mail: novartisr&cd@recruitmentsolutions.com. We are an equal opportunity employer M/F/D/V. We appreciate your interest in our Company. Unfortunately, we will only be able to respond to those candidates chosen for interviews or additional follow-up.



**the future**  
*happens here first*

**Bioscience**

#### POSTDOCTORAL OPPORTUNITIES

We have openings for 4 postdoctoral fellows to work on an exciting research project, funded by the National Human Genome Research Institute (NHGRI), at Roche Bioscience (Palo Alto, CA) and Roche Molecular Systems (Alameda, CA). This groundbreaking project will employ recently developed tools and utilize novel methodology for identifying genetic susceptibility loci regulating complex traits in experimental mouse genetic models of human disease. Novel SNP-based genotyping methodology, gene expression microarrays and advanced bioinformatic tools will be used to greatly accelerate identification of regulatory genetic loci. We are eager to hear from highly motivated individuals with a doctoral degree and a background in genetics, bioinformatics, or genomics who are interested in creating the science that will combat diseases such as emphysema, polycystic kidney disease and osteoporosis.

Apply today by e-mailing your resume and a letter supporting your candidacy, indicating Job 50500GF-S, to [geri.filippini@roche.com](mailto:geri.filippini@roche.com). You may also fax to (650) 424-8159. As an equal opportunity employer, we are committed to workforce diversity.

If you would like to explore our opportunities firsthand, please visit our website at

[www.roche.com/bioscience](http://www.roche.com/bioscience)

## Expanding the Powers of Research



**St. Jude Children's Research Hospital** is an internationally renowned research and treatment center for children with catastrophic diseases – primarily pediatric cancers. The scientists at St. Jude are committed to biomedical research that seeks to understand the molecular causes of disease, improve diagnosis and treatment, minimize immediate and long-term side effects, and to ultimately find a cure for those diseases.

We have recently embraced a 5-year, \$1 billion expansion project that will support our continuing research by building on our existing strengths. This expansion brings new and exciting career opportunities for motivated professionals in the following areas:

- Senior Research Technologists
- Research Technologists
- Research Lab Specialists

St. Jude is located in Memphis, Tennessee, a city rich in history and culture stretching from the banks of the mighty Mississippi to the rolling green hills of eastern Shelby County. Learn more about St. Jude, our available positions and our home in Memphis, by visiting our web site. For immediate consideration, please forward your resume including **JOB CODE: VH/SC**, to:

**St. Jude Children's Research Hospital**  
Human Resources Department  
332 North Lauderdale  
Memphis, TN 38105  
E-mail: [virgil.holder@stjude.org](mailto:virgil.holder@stjude.org)  
Fax: 901-495-3123



**St. Jude Children's  
Research Hospital**  
ALBAC - Danny Thomas, Founder

[www.stjude.org/hr](http://www.stjude.org/hr)

*An equal opportunity employer. Photo courtesy of  
St. Jude Biomedical Communications Department.*



**COLUMBIA UNIVERSITY'S**  
**BIOSPHERE 2**  
Announces

**Faculty Positions for Earth  
Semester Programs & Research  
Positions in Drylands Biodiversity  
at Its Western Campus  
The Biosphere 2 Center, Arizona**

Columbia University will expand its Arizona campus education programs over the next five years. In addition to the initial focus on Earth Science, Conservation Biology, and Environmental Policy & Management, the education programs will include drylands biodiversity, astronomy and astrophysics, environmental chemistry and engineering, and a professional master's program. The Biosphere 2 Center (B2C) facility is supported by a variety of laboratories on a 250+ acre campus located at the base of the Santa Catalina Mountains, just north of Tucson. Several academic and research positions are now open, and will remain open until filled.

**FACULTY POSITIONS:** Columbia University's Earth Semester Program is a 16-credit, interdisciplinary, undergraduate immersion semester in environmental science and policy. We are recruiting, at all ranks, to teach in the Earth Semester and related summer programs. Faculty appointments are made through Columbia's Department of Earth and Environmental Science. Open searches are now being conducted for faculty in the areas of Earth Science (especially climate, biogeochemistry, hydrology, & soils) and Environmental Policy (especially international, economics, ethics, water policy, & conservation issues). Interdisciplinary background and experience in southwestern issues are helpful; a PhD (or equivalent) is required. We are seeking individuals committed to excellence in teaching and research.

**RESEARCH POSITIONS:** A newly established drylands research program is seeking to fill 2 positions: a one-year renewable **Postdoctoral Researcher** and a **Research Scientist** (at any rank), with backgrounds in drylands research in any area of biodiversity or biocomplexity (e.g. systematics, biogeography, biodiversity-oriented ecology, conservation biology). We are seeking candidates who are interested in working with other researchers on site, and at Columbia's NY campus, on issues in southwestern biodiversity. Teaching opportunities are available in both of these appointments. For additional information about this research program contact Dr. Rick Brusca, 520-896-6435, [rbrusca@bio2.edu](mailto:rbrusca@bio2.edu).

**ALL APPLICATIONS:** A letter of interest highlighting the applicant's educational philosophy and research interests, and names of 3 references should accompany a C.V. Review of applications will continue until the positions are filled. Materials for all positions should be sent to: **Human Resources, Biosphere 2 Center, P.O. Box 689, Oracle, AZ 85623.** [www.bio2.edu](http://www.bio2.edu).

Columbia University's Biosphere 2 Center is an Equal Opportunity Employer. Minorities and women are encouraged to apply.

On September 5-8th, 2000 in Grand Rapids, Michigan, leading members of the life science community will participate in a symposium entitled "Cancer & Molecular Genetics in the Twenty-first Century". This very special event will herald the inauguration of the Van Andel Research Institute by featuring distinguished scientists sharing their vision for research dedicated toward improving human health.

# Cancer & Molecular Genetics in the Twenty-first Century

September 5-8, 2000  
Grand Rapids, Michigan

## CO-ORGANIZERS

**George F. Vande Woude, Ph.D.**  
Van Andel Research Institute

**Michael S. Brown, M.D.**  
University of Texas Southwestern Medical Center

## SYMPOSIUM 2000 SPEAKERS

**James Allison, Ph.D.**  
University of California, Berkeley

**Richard Axel, M.D.**  
Columbia University College of Physicians and Surgeons

**David Baltimore, Ph.D.**  
California Institute of Technology

**Elizabeth Blackburn, Ph.D.**  
University of California San Francisco

**David Botstein, Ph.D.**  
Stanford University

**Michael Brown, M.D.**  
University of Texas Southwestern Medical Center

**Suzanne Cory, Ph.D.**  
The Walter and Eliza Hall Institute of Medical Research

**Titia de Lange, Ph.D.**  
Rockefeller University

**Renato Dulbecco, M.D.**  
The Salk Institute for Biological Studies

**Ronald Evans, Ph.D.**  
The Salk Institute for Biological Studies

**Gwendolyn Fyfe, M.D.**  
Genentech, Inc.

**Joseph Goldstein, M.D.**  
University of Texas Southwestern Medical Center

**Edward Harlow, Ph.D.**  
Harvard Medical School

**Tony Hunter, Ph.D.**  
The Salk Institute for Biological Studies

**Richard Klausner, M.D.**  
National Cancer Institute

**George Klein, M.D., D.Sc.**  
The Karolinska Institute

**Stanley Korsmeyer, M.D.**  
Dana-Farber Cancer Institute

**David Lane, Ph.D.**  
University of Dundee

**Arnold Levine, Ph.D.**  
The Rockefeller University

**Richard Lifton, M.D., Ph.D.**  
Yale University

**David Livingston, M.D.**  
Dana-Farber Cancer Institute

**Tom Maniatis, Ph.D.**  
Harvard University

**Paul Marks, M.D.**  
Memorial Sloan-Kettering Cancer Center

**Frank McCormick, Ph.D.**  
University of California San Francisco

**Tony Pawson, Ph.D.**  
Samuel Lunenfeld Research Institute, Mt. Sinai Hospital

**Bruce Ponder, Ph.D.**  
University of Cambridge

**Janet Rowley, M.D.**  
The University of Chicago Medical Center

**Joseph Schlessinger, Ph.D.**  
New York University Medical Center

**Dennis Slamon, M.D., Ph.D.**  
University of California Los Angeles

**Phillip Sharp, Ph.D.**  
Massachusetts Institute of Technology

**Chuck Sherr, M.D., Ph.D.**  
St. Jude Children's Research Hospital

**Bruce Stillman, Ph.D.**  
Cold Spring Harbor Laboratory

**Shirley Tilghman, Ph.D.**  
Princeton University

**Robert Tjian, Ph.D.**  
University of California, Berkeley

**Harold Varmus, M.D.**  
National Institutes of Health

**Craig Venter, Ph.D.**  
Celera Genomics

Due to limited space  
your early registration  
is encouraged



Van Andel Research Institute

Founded by Jay and Betty Van Andel

201 Monroe Avenue NW, Suite 400

Grand Rapids, MI 49503

616.235.8242

Fax 616.235.8245

[www.vari.org](http://www.vari.org)

## Associate Scientists

### Selectively Replicating Viruses

Located in Richmond California, Onyx Pharmaceuticals, Inc. is the world leader in the discovery and development of selectively replicating viruses as novel cancer therapies. Our mission is to change the way human cancers are treated. Our continued success has created an excellent opportunity for an experienced, hands-on scientist to contribute to the success of our viral research program.

Candidates must possess a Ph.D.; 3+ years of postdoctoral experience in a relevant field; extensive experience and knowledge of molecular/cell biology and virology; and excellent written/verbal communication skills. Significant scientific achievements proven by a solid publication record are desired. Capabilities in conducting innovative and creative viral vector design are highly desirable. Experience in adenovirus research and/or cancer biology are a plus.

We offer excellent salaries and benefits, and a collaborative, interdisciplinary work environment. To apply, please send/fax/email your resume, CV, and a list of references to: **ONYX Pharmaceuticals, Attn: Job# 20-21-JS, 3031 Research Drive, Richmond, CA 94806-5206; fax: (510) 222-9758; email: hking@onyx-pharm.com.** Include your resume & references as text in the body of your email. NO ATTACHMENTS PLEASE. Resumes without a job# will not be considered. EOE

**ONYX**  
PHARMACEUTICALS

[www.onyx-pharm.com](http://www.onyx-pharm.com)



## MAYO CLINIC POSTDOCTORAL POSITION

Positions are available for postdoctoral fellows interested in developing mouse models for human cancer. The laboratory is interested in the role of mutated nucleoporins, transcriptional coactivators and mitotic checkpoint genes in the development of breast or colorectal cancer. Individuals with Ph.D. in biological or biomedical sciences and a strong interest in gene targeting and ES cell technology are encouraged to apply. Salary will be determined by the successful candidate's experience. There is also an attractive benefit package. Mayo Clinic is a non-profit physician led clinical practice integrated with education and research in a unified multi-campus system. Applications, including a curriculum vitae, summary of past accomplishments and the names of three referees, should be sent to:

**Jan van Deursen, Ph.D.**

**Mayo Clinic**

**Pediatric and Adolescent Medicine**

**Guggenheim-10**

**200 First St., SW**

**Rochester, MN 55905**

**e-mail: vandeursen.jan@mayo.edu**

*Mayo Foundation is an affirmative action and equal opportunity employer and educator.*

## SCIENTIFIC PROGRAM MANAGER

Major international health foundation is seeking a Scientific Program Manager to work in our Research Department. The successful candidate will assist in the planning of the research grants program, training grants program, projects and collaborations. Will help determine program priorities and funding levels as well as track and prepare analyses of research requirements. Coordinate programs and committees. Assist in the supervision of the grant administration process.

Post doctoral scientific research experience or equivalent is a must. PhD, MD or equivalent professional degree is preferred. Excellent written, verbal and interpersonal skills are essential.

Please forward your resume and salary requirement to:

**Carmel Simone, HR Director**

**The Juvenile Diabetes Foundation International**

**120 Wall St, 19th Flr,**

**New York, NY 10005-4001**

**or Fax to: (212) 785-9595**

**EOE M/F/D/V**



ALZA, an integrated, commercial pharmaceutical company, is focused on expanding the therapeutic value of our drug delivery technology around the world. Moving forward in our role as a developer, manufacturer and marketer of breakthrough products, we remain committed to improving the lives and health of people everywhere. Join us at our new facility in Mountain View as we continue to bring innovations to market for millions of people in the new millennium!

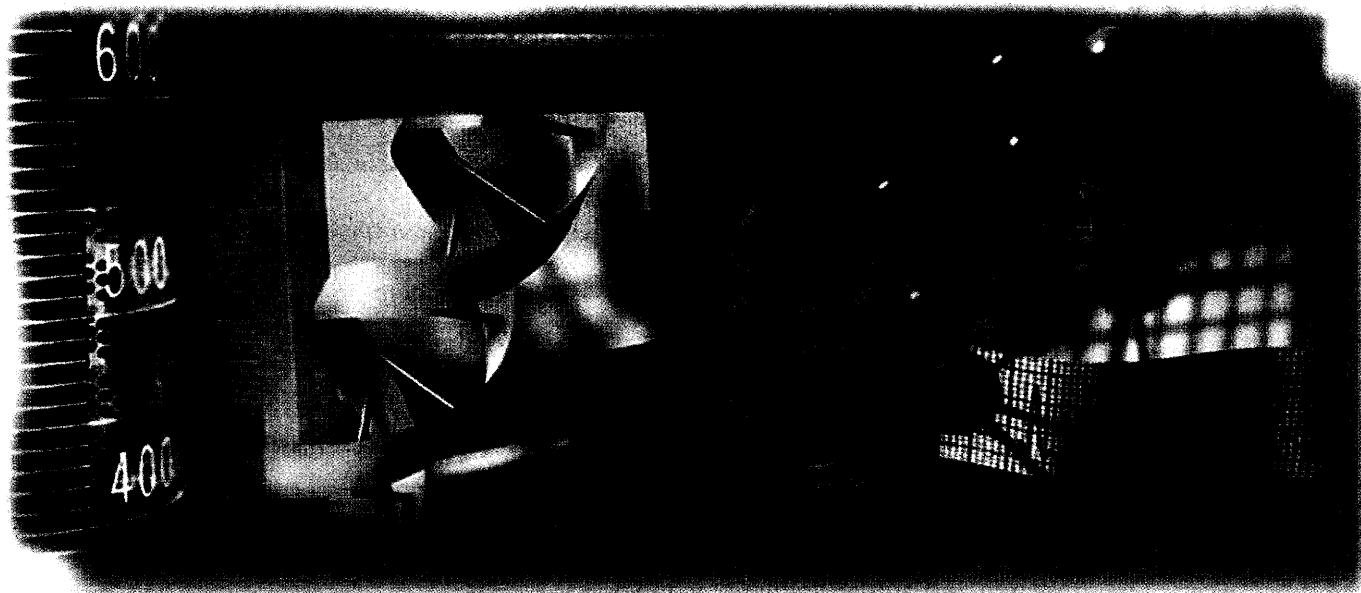
### STAFF/RESEARCH SCIENTIST

Interact with project team members on study design to prepare research and toxicology study protocols in accordance with regulatory guidelines. Your qualifications must include a PhD in Toxicology, Pharmacology, or a related field and 2-5 years experience in a pharmaceutical, contract manufacturing, or government environment.

Please send resume, indicating Job Code 280, to ALZA Corporation, HR Dept., 1900 Charleston Road, PO Box 7210, Mountain View, CA 94039-7210; fax: (650) 564-5656; email: [jobs@alza.com](mailto:jobs@alza.com) (ASCII files only); Job Hotline: (650) 564-5319. Our hiring managers will review all qualified resumes. ALZA is proud to be an EOE.

**[www.alza.com](http://www.alza.com)**





## Help Shape the future of pharmaceutical innovation.

At Schering-Plough Research Institute, our scientists are discovering innovative therapeutic agents that challenge humankind's most debilitating diseases. And we're doing it at our state-of-the-art Kenilworth and Union research campuses in North Central New Jersey, less than an hour from New York City, where you can enjoy the benefits and prestige of working for a global leader. Join us now as we shape the future of pharmaceutical innovation.

### INFECTIOUS DISEASE RESEARCH

#### Section Leader - Anti-bacterial/ Anti-fungal Drug Discovery

Ph.D. in Microbiology or related biological science with a minimum of 10 years experience in molecular biology/genetics of either bacterial or fungal pathogens. Leadership skills and a background in drug discovery and development are highly desired to direct a team concentrating on mechanism of action and mechanism of resistance for new agents. **Job Code: XHXDD0068**

#### Section Leader

MD/Ph.D. in Infectious Disease/Microbiology or related biological science with a minimum of 10 years experience in drug discovery/development. Position requires an understanding of *in vivo* or *in vitro* drug evaluation and an appreciation of pathogenesis and host responses to infection. Will direct a team involved with *in vitro* and *in vivo* drug evaluation, pharmacokinetics, pharmacodynamics, pathogenesis and host response to infection. **Job Code: XHXDD0070**

### IMMUNOLOGY

#### Research Associate

BS/MS in Biology or related discipline with experience in conducting *in vivo* models of autoimmune disease as well as isolating and characterizing leukocytes, flow cytometry, immunohistochemistry, histology, tissue culture and/or general immunological methodology (e.g., cytokine ELISAs and cell proliferation assays). Will participate in projects directed toward discovery of potential therapeutics for autoimmune diseases, such as arthritis, psoriasis and multiple sclerosis. **Job Code: XHXDD0002**

#### Postdoctoral Fellow

MD/Ph.D. candidate to study the biological role of viral chemokines, perform targeted mutagenesis of orphan GPCRs and focus on analysis of several transgenic models, including the recently described model for Kaposi's Sarcoma (JEM 191:445-454; 2000) **Job Code: XHXTM0016**

### Ph.D. Postdoctoral Scientist - Signal Transduction/Genomics

Ph.D. with background and/or education in Biochemistry, Molecular Biology or equivalent and up to 3 years postdoctoral experience required. This fellowship will focus on analysis of a novel MAPK module utilizing traditional as well as cutting-edge technologies such as large-scale DNA arrays and sequence databases. Training will be provided in signal transduction and genomics. Research experience in signal transduction a plus. Publications history highly desired. **Job Code: XHXTM99995**

### BIOTECH DEVELOPMENT

#### Scientist

BS/MS in Biology, Cell Biology or equivalent with 5-10 years laboratory experience. Positions in the Process Research Group in Biotechnology Development to provide technical support in the area of mammalian cell line maintenance, including the evaluation and implementation of new preservation techniques and the development of novel methods to monitor cell banks for viability, purity and genetic changes. **Job Code: XHXBD2014**

#### Associate Scientist

BS Biological Science with 4-7 years experience in protein purification and characterization or MS with 2-5 years experience. Recent advances in the cell culture production and purification process require an experienced individual for the Purification Scale-up and Production Group to support process development activities and GMP production of biotechnology products. **Job Code: XHXBD2002**

### CHEMICAL DEVELOPMENT

#### Senior Scientist

Ph.D. Organic Chemistry with 0-4 years post doc experience in organic synthesis. Organic Chemist with demonstrated aptitude for solving R&D problems by thesis or industrial accomplishments. Familiarity with modern spectroscopic and analytical techniques required. **Job Code: XHXC2004**

### Assistant Scientist

BS/MS Organic Chemistry with 0-4 years industrial experience. Background in synthetic organic chemistry and a demonstrated use of NMR, IR and HPLC required to support the Chemical Process Research and Development group. **Job Code: XHXCD2012**

### CLINICAL AND SCIENTIFIC SYSTEMS

#### Manager-Scientific Systems (Discovery)

MS/Ph.D. level scientific track record, life sciences or physical sciences or equivalent experience and 10 years development and support of scientific software systems. Will set strategy to meet Discovery Research's needs for information systems. Supervisory and project leadership experience a must. Knowledge of C, C++, Java, Fortran and VB required. **Job Code: XHXRI2008**

#### Lead Systems Analyst—QA and Validation

Responsible for reviewing the existing validation approach and providing guidance to clinical systems management to assure compliance with SOPs and the system development methodology. Must possess at least 2 years experience in QA, System Validation, and application testing. **Job Code: XHXRI2005**

#### Senior Systems Analyst

Responsibilities include analyzing, designing and implementing solutions to assist in existing clinical systems, validating data integrity and improving production reports of clinical trial data. 5-7 years of application development experience required. Oracle 7.3 or higher, PL/SQL, SAS, Access and PowerBuilder essential. **Job Code: XHXRI9928**

#### Senior Systems Analyst—Structural Chemistry

BS/MS/Ph.D. in Chemistry and experience maintaining standard structure elucidation software packages required. Responsible for installing and maintaining extensive suite of research applications, including packages from the following vendors: MSI, Tripos, Varian, Bruker and Cambridge. Will provide technical support for the research computing environment. **Job Code: XHXRI9938**

We offer an excellent compensation package that includes a competitive salary, a cash incentive bonus program, profit sharing and 401(k). Comprehensive benefits include: group insurance and retirement programs, flexible work arrangements, education assistance, and health and wellness programs. For prompt, confidential consideration, we invite you to forward your resume, which MUST include the Job Code for your position of interest, to: E-mail: [spisc@research.com](mailto:spisc@research.com) or send to: Human Resources, Schering-Plough Research Institute, 2015 Galloping Hill Road, Kenilworth, NJ 07033-1300. We are an equal opportunity employer. We regret we are unable to respond to each resume. Only those selected for an interview will be contacted.

For additional information,  
or to apply online, visit our website at:

[www.sp-research.com](http://www.sp-research.com)



Schering-Plough  
Research Institute

Using Science for Human Advantage



# HOWARD HUGHES MEDICAL INSTITUTE

The Howard Hughes Medical Institute conducts biomedical research in the areas of cell biology, genetics, immunology, neuroscience and structural biology at over seventy locations around the United States. HHMI regularly has positions open for research and administrative personnel.

## Laboratory Positions:

- Postdoctoral Positions
- Research Specialists/Technicians
- Research Secretaries

## Administrative Positions:

- Managers
- Administrative Assistants
- Purchasing Coordinators
- Receiving Clerks

Institute employees enjoy competitive salaries and an excellent benefits package. HHMI is an equal opportunity employer. Please visit our website at [www.hhmi.org/jobs](http://www.hhmi.org/jobs) for a listing of available positions.

## GRANTS

### BURROUGHS WELLCOME FUND

*Awards provide \$750,000 to support research linking the laboratory bench and patient bedside.*

*Open to U.S. and Canadian clinical scientists.*

*The application deadline for the 2001 award series is September 1, 2000.*

*The Burroughs Wellcome Fund is an independent private foundation dedicated to advancing the medical sciences by supporting research and other scientific and educational activities.*

P.O. Box 13901  
21 T.W. Alexander Dr.  
Research Triangle Park, NC 27709-3901  
Telephone (919) 991-5100 Fax (919) 991-5160  
Website: [www.bwfund.org](http://www.bwfund.org)

### CLINICAL SCIENTIST AWARDS IN TRANSLATIONAL RESEARCH

These awards are intended to foster the development, productivity, and mentoring capacity of established physician-scientists who will strengthen translational research—the two-way transfer between work at the laboratory bench and clinical medicine. The awards provide \$750,000 over five years (\$150,000 per year). It is anticipated that up to 10 awards will be made.

Applications must be submitted by degree-granting U.S. or Canadian medical schools on behalf of individual candidates. Candidates from institutions other than medical schools—including schools of veterinary medicine, public health, and pharmacy—will be considered only if they can demonstrate a plan to provide the patient connection essential for translational research.

Candidates must be U.S. or Canadian citizens or permanent residents, have an M.D. or M.D.-Ph.D. degree, and hold an appointment or joint appointment in a subspecialty of clinical medicine. In exceptional circumstances, non-M.D. candidates will be considered if their work is likely to contribute significantly to the clinical enterprise. Candidates must be established, independent tenure-track investigators at the late assistant professor or the associate professor level (or hold an equivalent tenure-track position).

### ADDITIONAL BWF FUNDING OPPORTUNITY FOR BIOMEDICAL SCIENTISTS

Career Awards in the Biomedical Sciences provide approximately \$500,000 over four to six years to bridge postdoctoral training and initial faculty appointment (application deadline: October 1, 2000).

Complete program information is available on the BWF's website at [www.bwfund.org](http://www.bwfund.org)

RESEARCH FUNDING FOR  
PHYSICIAN-SCIENTISTS



## INITIATIVE SPARKS INITIATIVE.

Innovation works at Biogen. The creativity and ambition of our workplace sparks our teams to take responsibility, move on intelligent risks, and drive innovative decisions that are changing not only the science of medicine, but the lives of people with serious diseases. If you're ignited by taking initiative, you'll meet your match at Biogen.

[www.biogen.com](http://www.biogen.com)

**BIODGEN**

DELIVERING ON THE PROMISE OF BIOTECHNOLOGY.

### SCIENTIST/ ASSOCIATE SCIENTIST NEUROSCIENCE

We are seeking an innovative neuroscientist to participate in the identification and validation of new molecules relevant to neurodegenerative diseases. Extensive molecular and cellular techniques, including Northern blots, PCR, gene cloning, *in situ* hybridization, immunocytochemistry and neuronal cell culture will be used in conjunction with animal and/or *in vitro* models of disease to examine the function of candidate molecules. Qualified candidates will possess a PhD and relevant post doc experience or MS and 6-8 years experience in Neuroscience or Molecular Biology. Team orientation and the ability to work toward deadlines are essential.

Foster your initiative and creativity at Biogen. We have one of the strongest financial profiles in the industry and our compensation and benefits package, including equity participation, is unmatched. For consideration, please forward your resume to: Biogen, Inc., Attn: Human Resources, Source Code: RC-A079-SCI, 14 Cambridge Center, Cambridge, MA 02142; Fax: (617) 679-2546; Email: [resumes@biogen.com](mailto:resumes@biogen.com) (Source Code ONLY must appear in the subject line). Biogen is an Equal Opportunity Employer. No phone calls, please.

## Molecular Targets for Cancer Prevention and Treatment

### Funding Opportunities in Drug Discovery

Modern biology has suggested a new strategy for cancer drug discovery. Drugs that target the molecular differences between tumor and normal cells may be less toxic and more effective than currently available treatments. Likewise, understanding the molecular steps that characterize premalignant changes should help us identify agents that reverse these changes or prevent the development of cancer. The convergence of new knowledge with new technologies will transform the process of drug discovery, development, and clinical testing. The National Cancer Institute (NCI) announces the following three funding initiatives in an effort to engage the entire cancer research community in the discovery and development process:

### "Molecular Target Drug Discovery for Cancer" Program

The NCI wishes to provide researchers working on cancer mechanisms with the resources to develop evidence that a new cancer-relevant molecule or pathway is a promising target for drug discovery. Such evidence will establish credentials of a molecule or pathway as suitable for prevention or treatment discovery efforts. Investigators are encouraged to identify and validate novel targets and to develop assays for pilot screening efforts that will demonstrate the feasibility of screening for ligands of the intended target. To pursue these studies, NCI is offering Cooperative Agreements (CA-00-002), Exploratory grants (PAR-00-060), Small Business Grants (PAR-00-061) and Supplements (PAR-00-062) to existing NCI grants. Please refer to the NIH guide at: <http://grants.nih.gov/grants/guide/rfa-files/RFA-CA-00-002.html> and to <http://dtp.nci.nih.gov/> for more details. Applications are due July 18, 2000.

### "Molecular Target Laboratories" (MTLs)

The NCI intends to establish MTLs to mount an intensive program of ligand discovery for cancer-related targets. The immediate benefits of ligand identification will be a resource of chemical probes for biological studies of cancer, including physiological and biochemical monitoring. In addition, it is expected that the resources generated by this program will build a platform for drug discovery, and for imaging resource construction. The ultimate products of the MTLs are envisioned to be chemical libraries, chemical probes for biological studies, cancer-relevant target assays, and information. This information will be made publicly available expeditiously and systematically. Further details are available at <http://www.ncicrf.gov/mtl>. A draft solicitation is available from Ms. Heather Wells by phone at 301-846-1520 or by fax at 301-846-5414.

### "Interdisciplinary Research Teams for Molecular Target Assessment"

Once suitable cancer treatment and prevention agents are identified, it will be necessary to confirm the effects of these agents in appropriate model systems and in proof-of-principle clinical trials. This initiative will support research teams to build and validate the tools necessary to assess the clinical effect of drugs on their molecular targets. A variety of tools may be needed, including molecular assays and non-invasive imaging techniques. For more information, consult the NIH guide at <http://grants.nih.gov/grants/guide/rfa-files/RFA-CA-00-001.html>. The due date for applications in response to this initiative (CA-00-001), which will use the cooperative specialized center award mechanism (U54), was recently extended to June 20, 2000 (NIH Guide, NOT-CA-00-009).



## HERCULES

## Biotransformation

Hercules Incorporated is seeking Post-Doctorates to join our Research & Development team engaged in biotransformation of natural materials (under the direction of Dr. Barry Marrs) at our Research Center in Wilmington, Delaware.

### Biologist/Enzymologist

The postdoctoral research entails directed evolution of enzymes. The specific project involves development of novel mutagenesis strategies and computational tools to improve the performance of enzymes. Experience in molecular biological techniques and/or bioinformatics, with a background in enzymology or protein biochemistry is preferred. Experimental procedures include molecular cloning, protein expression, high throughput screening, assay development, and programming.

### Bio-Synthetic Chemist

The prospective candidate needs a Ph.D. in chemistry, biochemistry, or a related discipline with relevant experience in enzyme-mediated reactions or structure modifications. Responsibilities include synthesis of polymers and carbohydrates by enzymatic and chemo-enzymatic methods, purification and separation of products, and characterization through chemical and biochemical analysis. Familiarity with enzyme isolation, purification, assays, and reactions is essential.

Permanent residency status in the U.S. is required, or otherwise authorized by the Attorney General to be employed.

Hercules manufactures chemical specialty products used in a variety of home, office, and industrial products. Its businesses are Pulp and Paper, BetzDearborn, Aqualon, Resins, Food Gums and FiberVisions. The corporation's focus is on sustainable, long-term growth in shareholder value, driven by concentration on the customer, new product growth, and continuous improvement in manufacturing costs. For more information, visit the Hercules website at [www.herc.com](http://www.herc.com).

Interested candidates should send a detailed resume to the following address:

**Hercules Incorporated**  
**Research Center**  
**Human Resources**  
**500 Hercules Road**  
**Wilmington, DE 19808-1599**  
or e-mail [technology@herc.com](mailto:technology@herc.com)  
Job Ref. Code: Postdoc

**Hercules Incorporated is an Equal Opportunity Employer. No candidate will be discriminated against on the basis of race, sex, national origin, age, color, religion, veteran status, disability, or any other protected class.**

## NANOBIOTECHNOLOGY CENTER

### Research and Training Opportunities

The Nanobiotechnology Center (NBTC), supported by the STC Program of the National Science Foundation, was established to foster interdisciplinary research which probes the potential and the limits in the exploration of biology through the tools and processes of nanofabrication. We are committed to disseminating discoveries to students of all ages and to help educate a new breed of scientists who will translate across the fields of biology, engineering and physical sciences. We also want to partner with the private-sector to insure that the advances made by the NBTC are available to help drive the emergence of new industries and spur economic development. Cornell University is the lead institution with partners at the Wadsworth Center (New York State Department of Health), Princeton University, Oregon Health Sciences University, Clark Atlanta University and Howard University.

Six programs, *Bioselective Surfaces, Molecular Motors, Molecular Filtration, Sparse Cell Isolation, Molecular Templates and Microanalysis of Biomolecules* constitute the research effort.

Opportunities exist for:

**Research Associates**  
**Research Support Specialists**  
**Postdoctoral Associates**  
**Graduate Research Assistants**

Appointments will be made through the respective institutions. For more information, please visit our website at [www.nbtc.cornell.edu](http://www.nbtc.cornell.edu)

**CORNELL**  
UNIVERSITY

*Cornell University is an Affirmative Action/Equal Opportunity Employer and Educator and Welcomes Nominations of, and Applications from, Women and Minorities.*

<http://www.cornell.edu>



## Center for Immunology & Microbial Disease

### Albany Medical College

### Faculty Positions in Immunology

The Center for Immunology & Microbial Disease at Albany Medical College invites applications for two tenure-track faculty positions at the Assistant Professor level from individuals who have a doctoral degree, postdoctoral experience, and demonstrated research productivity. We are particularly interested in applicants with expertise in immunology as related to protection from microbial disease. The successful candidates will be expected to establish independent, extramurally funded research programs and participate in the teaching of medical and graduate students. The Institution's new Strategic Research Plan approved by the Board of Directors is designed to promote and expand biomedical research at Albany Medical College by recruiting new faculty who will receive competitive salaries, attractive start-up packages, newly renovated research laboratories, and access to outstanding core facilities. In addition, the Center has established close relationships with the New York State Wadsworth Laboratories and the Trudeau Institute, providing a diverse environment that is rich in immunology and infectious disease expertise. Albany Medical College is located in a mid-sized city within the New York Capital Region, and has easy access to Boston, New York City, and the Adirondack Mountains.

Applicants should send by June 15, 2000, their curriculum vitae, a statement of research plans, and three letters of reference to:

**Dennis W. Metzger, Ph.D.**  
**Professor and Director**  
**Center for Immunology & Microbial Disease**  
**Albany Medical College**  
**47 New Scotland Avenue, MC-151**  
**Albany, NY 12208**

For further information about the Center, visit  
[www.amc.edu/Academic/Research/imd.htm](http://www.amc.edu/Academic/Research/imd.htm)

*An Equal Opportunity/Affirmative Action Employer. Women and minorities are encouraged to apply.*

## MAYO CLINIC

### Director of Research Computing Facility

The Mayo Clinic in Rochester, Minnesota (<http://www.mayo.edu>) is seeking a Director of its Research Computing Facility. The Research Computing Facility (RCF) (<http://www.mayo.edu/research/ref>) is a highly prized core component of the Mayo Clinic research infrastructure that provides information technology services to the diverse Mayo research community. The 25 members of the RCF staff collaborate with approximately 500 career scientists and clinicians actively engaged in research and interact with the larger Information Technology group that supports foundation-wide computing. The Director is expected to provide leadership in formulating strategic planning initiatives for information technology applied to research with a strong focus on informatics related to biological and medical information. The plethora of available biological and medical data requires the integration of computing with research experimentation. Informatics support is vital to scientists and physicians in order to "visualize" their data and compare it with genomic, structural, and literature information. The ideal RCF director will be a visionary with considerable current knowledge of computer technology (hardware and software), web development, informatics, as well as genomics and biology. The Director must also be a proven leader and manager, with excellent skills in organization and budgeting, as well as a demonstrated appreciation for the importance of customer service in a research environment. A capacity to communicate and work effectively with research staff and senior administration is essential. This is a full time professional position with a competitive compensation and benefits package.

The Mayo Clinic is located in Rochester, Minnesota (<http://www.rochesterusa.com>), approximately an hour from the Minnesota/St. Paul metropolitan area. Rochester has excellent schools, a cosmopolitan cultural atmosphere, growing economy, clean environment, and has been rated one of the best places to live in the USA by Money Magazine.

Candidates should have a Ph.D. in Computer Science, Bioinformatics, Computational Biology, or a closely aligned quantitative science, with significant professional experience in management and leadership in a research or clinical environment, as well as demonstrated knowledge of technological advancements. Applications will be accepted until the position is filled, but preference will be given to applications received by May 31, 2000. Potential applicants for this position should submit a cover letter expressing their interest and qualifications, their curriculum vitae or resume and three letters of recommendation to:

Daniel J. Schaid, Ph.D., Chair, RCF Director Search Committee  
Harwick 7  
Mayo Clinic  
200 First Street SW  
Rochester, MN 55905

E-mail: [schaid@mayo.edu](mailto:schaid@mayo.edu) Fax: (507) 284-9542

*Mayo Foundation is an affirmative action and equal opportunity employer and educator.*

#### National Institutes of Health National Institute of Mental Health

**Molecular Biologist.** The Section on Neuroendocrine Immunology and Behavior plans and conducts research on neural mechanisms underlying neural-immune communications, and the relationship between neuroendocrine stress responses and susceptibility and resistance to inflammatory disease and will function both as a highly skilled specialist in molecular biology with primary responsibility for one or more research projects, and as a lab manager. Incumbent will utilize existing animal models to investigate the pathophysiologic, genetic, and molecular basis of susceptibility and resistance to inflammatory disease. Specific techniques include linkage and segregation studies in animal models involving DNA microsatellite screening, PCR, DNA sequencing, expression library screening, molecular biological techniques necessary for molecular cloning, identification of mutations, determination of functional relevance of these mutations, etc. Expertise with the experimental approaches employed in the visualization of gene products such as *in situ* hybridization histochemistry and immunohistochemistry is advised. Candidates should be U.S. citizens, have a Ph.D. and the equivalent of 3 - 5 years postdoctoral experience. Salary is competitive and based upon experience. For more information on how to apply, please contact:  
**Rene Williams (301) 496-7268; or e-mail: [williamr@intr.nimh.nih.gov](mailto:williamr@intr.nimh.nih.gov).**

**NIH is an Equal Opportunity Employer**

#### HEALTH SCIENTIST ADMINISTRATOR

##### Respiratory Sciences

**HL-00-0038**

The National Heart, Lung, and Blood Institute, NIH, is seeking an experienced pulmonary cell/molecular biologist, physiologist, biochemist, or geneticist for the Airways Diseases Program, Division of Lung Diseases to provide administrative scientific support in the management and development of the branch's extramural grant program.

Candidates must have an M.D., Ph.D. or equivalent and a desire to pursue an administrative non-laboratory career track. He/She must demonstrate experience in any of the following: genetics, cellular and molecular biology, and respiratory diseases; plus the following knowledge, skills, and abilities (KSAs): (1) Scientific knowledge and research expertise in any of the following: genetics, respiratory cell and molecular biology, physiology, biochemistry, pulmonary medicine, environmental lung disease, and obstructive airways disease; (2) Ability to manage a scientific research project; (3) Ability to communicate orally and in writing with co-workers and those outside the organization; (4) Ability to lead individuals/groups to accomplish a project.

Applicants must be U.S. Citizens. Submit a Standard Form 171, Application for Federal Employment; OF-612, Optional Application for Federal Employment; current curriculum vitae/bibliography or other format to: **National Heart, Lung, and Blood Institute, Personnel Office, Building 31, Room 5A28, 31 Center Drive, MSC 2484, Bethesda, MD 20892-2484.** KSAs must be addressed on a separate sheet of paper or on the KSA Supplemental Form NIH-2252-3. In addition to specific information required in this job vacancy announcement, your application/C.V. must contain the specific required information reference in the Office of Personnel Management OF-510, Applying for a Federal Job. This announcement, HL-00-0038, opens March 13, 2000 and closes May 26, 2000. All applications must be postmarked by May 26, 2000 to be considered. For additional information, contact Ms. Robin Easter at (301) 496-6477.

**Postdoctoral Positions**  
**Reeve-Irvine Center for Nervous System Regeneration Research**  
**University of California, Irvine**

Postdoctoral positions are available as part of the continuing development of the Reeve-Irvine Research Center for Nervous System Regeneration Research. The community of scientists at the University of California at Irvine engaged in studies of aspects of nervous system regeneration are listed below. Stipend levels are highly competitive.

**Susan Bryant and David Gardiner:** Molecular mechanisms of nerve requirement for axolotl limb regeneration; molecular analysis of spinal cord regeneration in axolotls.

**Anne Calof:** Molecular regulation of neuronal stem cell proliferation and differentiation, in vitro and in transgenic model systems.

**Carl Cotman:** Mechanisms of axonal degeneration via local apoptosis and inflammatory mechanisms in the recovery from spinal cord injury.

**Christine Gall:** Neurotrophic factor regulation of chronic nerve compression injury.

**Hans Keirstead:** Demyelination and transplantation strategies in the study of axonal and myelin regeneration.

**Arthur Lander:** Molecular mechanisms of axon growth and growth-inhibition; transgenic and gene-knockout approaches.

**Vernon W.H. Lin:** Spinal cord plasticity and repair strategies, functional electric and magnetic stimulation.

**Ronald Meyer:** Optic nerve regeneration; axonal interactions with glia and extracellular matrix.

**Richard T. Robertson:** Mechanisms of target selection of regenerating central axons.

**Oswald Steward:** Genetic modulation of regeneration, synapse growth and plasticity.

**John H. Weiss:** Excitatory amino acid physiology, and cellular mechanisms of neurodegeneration and neuroprotection.

Applicants should include a curriculum vitae, list of publications, a brief summary of training goals, and names and addresses of at least three individuals who can provide letters of recommendation. Applications may be sent attention to one of the participating faculty at the address below.

**Debra Caputo**  
**Reeve-Irvine postdoctoral search**  
**Dept. of Anatomy & Neurobiology**  
**University of California**  
**364 Med Surge II**  
**Irvine, CA 92697-1275**

*UCI is an Equal Opportunity employer, committed to excellence through diversity.*

**POST-DOCTORAL  
BIOCHEMIST/CHEMIST  
PROTEIN CHIP/ARRAY TECHNOLOGY  
PROTIVERIS, INC.**

Protiveris, Inc., a start-up biotechnology company located in Rockville, Maryland, is looking for a postdoctoral biochemist to develop a new type of silicon chip technology.

This position has been created as a joint venture/partnership between Protiveris, Inc. and a major pharmaceutical company to develop and test new antibody and protein attachment methodologies onto silicon or silicon-coated metal microsensor surfaces. The successful candidate must have expertise in one or more of the following areas: working with proteins or antibodies and biomolecule deposition chemistry. Knowledge of protein labeling, single molecule detection and protein-protein interactions would be an advantage.

This position is for one year in the first instance, and will involve travel to England for a period of at least 4-6 weeks for training, with the opportunities of other visits as required/necessary.

Protiveris, Inc. offers a competitive salary, medical, and retirement benefits, as well as a stock option plan.

For more information please contact:

**John Peeters, Ph.D.**  
**President**  
**Protiveris, Inc.**  
**9700 Great Seneca Highway**  
**Rockville, MD 20850**  
**Tel: (301) 738-7800**  
**Fax: (301) 738-8800**  
**Email: Protiveris@aol.com**

**POSTDOCTORAL POSITIONS  
IN CANCER BIOLOGY  
AND CANCER IMMUNOLOGY**

Two postdoctoral positions are available immediately to study the role of shed tumor glycolipids in the tumor-host interaction and cell signaling, and to participate in translational studies aimed at the development of novel anti-tumor therapies. Experience in immunology or molecular biology preferred. Research is conducted in the Center for Cancer and Transplantation Biology in the Children's Research Institute at Children's National Medical Center in Washington, DC, with an academic appointment at the George Washington University. Send curriculum vitae and names and addresses of three references to:

**Stephan Ladisch, MD**  
**Scientific Director**  
**Children's Research Institute**  
**Children's National Medical Center**  
**111 Michigan Avenue, NW**  
**Washington, DC 20010**

FAX (202) 884-3929  
email [sladisch@cnmc.org](mailto:sladisch@cnmc.org)

*Children's National Medical Center is an Equal Opportunity/Affirmative Action Employer. Qualified women, minorities, veterans, and disabled persons are encouraged to apply.*



The University of New Mexico

**VICE PROVOST FOR RESEARCH  
THE UNIVERSITY OF NEW MEXICO**

The University of New Mexico invites nominations and expressions of interest for the position of Vice Provost for Research. Under limited supervision and reporting to the Provost, the Vice Provost directs the operation of research services and provides leadership in developing and fostering research and scholarship in the University.

UNM, a Carnegie Research I university, is the largest and most comprehensive of the state's institutions of higher education. Founded in 1889, the University serves a diverse student population of nearly 31,000 on five campuses (approximately 24,250 at its Albuquerque main campus). UNM is well poised to participate in the further development of the Rio Grande Research Corridor, in collaboration with the nearby national and federal laboratories and other research organizations in the region. The University operates on a budget of nearly \$1 billion of which \$219 million is attributed to research and sponsored projects. UNM is the fastest growing university in federal research funding, based on 1990-98 research and development expenditures, as reported by the National Science Foundation.

Minimum qualifications for this position include a record of accomplishment that would merit appointment at the rank of tenured full professor in an academic department at the University of New Mexico and five or more years of experience directly related to the duties and responsibilities specified for the position. For a complete listing of the position description including qualifications, duties, responsibilities, and application procedure you may access the posting on our home page at <http://www.unm.edu/~oeounm/facpost.htm>. You may also request a copy of the announcement from **Dr. Nancy Middlebrook, Search Coordinator, Scholes Hall Room 235, University of New Mexico, Albuquerque, NM 87131**, (505)277-5064, [ndm@unm.edu](mailto:ndm@unm.edu).

*The University of New Mexico is an Equal Opportunity/Affirmative Action Employer/Educator*

For information about UNM see <http://www.unm.edu>

**NATIONAL INSTITUTES OF HEALTH  
PUBLIC HEALTH SERVICE  
DEPARTMENT OF HEALTH AND HUMAN SERVICES**

The National Institutes of Health, Office of Science Policy, Office of Biotechnology Activities (OBA), Office of the Director invites applications for the following positions. These are temporary appointments. Appointments are made initially for up to 5 years. Additional 1- to 5-year extensions may be made.

**Medical Officer (Internist), M.D.**

**Medical Officer (Pediatrician), M.D.**

**Health Scientist Administrator (Virologist), Ph.D.**

**Health Scientist Administrator (Molecular Biologist), Ph.D.**

**Clinical Trials Coordinator, R.N.**

Applicants must have leadership experience in a research organization that has a scientific, health or biomedical focus. This experience must reflect an ability to transform complex research in the biomedical and behavioral sciences into clear and cogent communications directed toward researchers, health care providers, and targeted segments of the public.

**Mandatory Qualifications** - For the M.D., experience in clinical trial analysis and data review is required. For the Ph.D., knowledge of gene transfer research is highly desirable. For the R.N., a degree or diploma is required from a professional nursing program approved by the legally designated State accrediting agency. Applicants for the R.N. must also have active and current registration as a professional R.N. in a State, the District of Columbia, the Commonwealth of Puerto Rico, or a territory in the United States.

**Salary Range** - Salary is negotiable. Please provide salary requirements.

Interested applicants should submit either a Curriculum Vitae and Bibliography, an Optional Application for Federal Employment (OF-612), or any other written format but must include a written statement addressing the mandatory and/or desirable qualifications for the position for which they are applying. Questions should be addressed to HowardS@od.nih.gov or 301-594-8247. Applicants may browse the NIH Home Page at <http://www.nih.gov> or the OBA Home Page at <http://www.nih.gov/od/oba> for information on the Office of Biotechnology Activities.

Applications which are mailed in should be addressed to the **National Institutes of Health, Office of the Director, Executive Office, Attention: Aletha Barham, Bldg. 2/Room 1E16J 2 Center Drive, MSC 0205, Bethesda, Maryland 20892-0205**. Applicants may also e-mail materials to [Barhama@od.nih.gov](mailto:Barhama@od.nih.gov) or fax materials to 301-402-1368.

**APPLICATIONS MUST BE RECEIVED NO LATER THAN MAY 19, 2000  
NIH IS AN EQUAL OPPORTUNITY EMPLOYER**

**NATIONAL INSTITUTES OF HEALTH  
NATIONAL EYE INSTITUTE**

**Job Opportunities**

The National Eye Institute Intramural Program at the NIH campus, Bethesda, MD., is seeking highly qualified Postdoctoral Fellows, Research Associates and Staff Scientists in the following areas:

- Molecular Biology
- Cell Biology
- Immunology
- Psychophysics
- Biochemistry
- Epidemiology
- Biostatistics

**Salaries range from \$29,000 to \$118,400 per annum, based on experience and type of appointment.**

NEI offers an extensive benefits package that you may be eligible for, depending on the appointment mechanisms: Health Benefits, Life Insurance, Retirement Benefits, Annual and Sick Leave, Formal Training Program, Recruitment Bonus, Retention Allowance, Relocation Allowance, Loan Repayment Program, and Travel Benefits.

Candidates interested in specific job opportunities at the NEI may visit the NEI web site at <http://www.nei.nih.gov/> listing the most current positions available.

**NIH/NEI is an Equal Opportunity Employer**

**TENURE TRACK INVESTIGATOR  
GERONTOLOGY RESEARCH CENTER  
NATIONAL INSTITUTE ON AGING**

The Intramural Research Program of the National Institute on Aging (NIA), Baltimore, Maryland, invites applications for a tenure track investigator position within the Laboratory of Immunology at the Gerontology Research Center. Applicants must have a record of scientific accomplishments, including excellence in laboratory research and qualifications of a Ph.D. in Immunology or a related science background. The successful candidate will develop an independent research program focused on assessing complex interrelationships of endogenous and exogenous factors in age-related defects in lymphocyte functions. Candidates with extensive experience in signal transduction research and molecular biological techniques are encouraged to apply. Starting salary commensurate with qualifications and experience. Applicants should send curriculum vitae, bibliography, and 1,000 word overview of a proposed program along with three letters of reference to:

Chair, LI, Tenure Track Search Committee  
c/o Karen Maben, Personnel Office  
National Institute on Aging, NIH  
Box 26, 5600 Nathan Shock Drive  
Baltimore, MD 21224  
Attn: NIA-00-10  
Applications are due by June 5, 2000



## POSITIONS OPEN

### SECTION HEAD MALARIA RESEARCH Laboratory of Parasitic Diseases

The National Institute of Allergy and Infectious Diseases (NIAID), NIH, seeks individual to serve as head of a section on malaria research in the Laboratory of Parasitic Diseases. This position requires a world leader in malaria research to establish a new program and will be **TENURE OR TENURE TRACK** for a Ph.D. or M.D. with significant experience. Section will emphasize the basic research in one or more disciplines including biochemistry, physiology, cell biology, immunology, pathogenesis, or an integrated program in malaria. Space, technical, and postdoctoral fellow support as well as ample budget for supplies and equipment committed. Salary depends on qualifications/experience. A complete application consists of curriculum vitae, bibliography, four letters of reference, detailed statement of research interests, and five copies of five selected publications. Must be submitted or postmarked by May 26, 2000 to: **Audrey Davis, Office of Human Resources Management, NIAID, Building 31, Room 7A27, 31 Center Drive, MSC 2520, Bethesda, MD 20892-2520.** Please reference Vacancy Announcement Number NIAID-00-068. U.S. citizenship not required. NIH is an Equal Opportunity Employer.

### EXTENSION SPECIALIST ESTUARINE ECOLOGY

Applicants are sought for a new 12-month, tenure-track **ASSISTANT PROFESSOR** position. A Ph.D. in estuarine/marine ecology or closely related field is required. Expertise in water quality as it pertains to productivity of natural estuarine and nearshore coastal waters is essential. The appointee will develop and carry out a statewide educational program in estuarine ecology and provide leadership for a broad group of Extension personnel involved with fisheries habitat and water quality along the coast of Florida. This person will conduct collaborative research leading to publication in refereed journals and extramural funding. He/she will also participate in graduate and undergraduate teaching programs. Applicants should submit a letter of application and curriculum vitae, as well as the names, mailing and e-mail addresses, and telephone numbers for five professional references. All items must be postmarked by June 30, 2000. Send application materials to: **Estuarine Specialist Search, Department of Fisheries and Aquatic Sciences, University of Florida, 7922 N.W. 71st Street, Gainesville, FL 32653-3071.** Equal Opportunity/Affirmative Action Employer.

**RESEARCH ASSISTANT PROFESSOR** (non-tenure track) for an education, research, and health care center located in northwestern Ohio. Job duties: assisting the Laboratory Director in supervision of research projects of all personnel in the laboratory for conducting independent research to include identification of novel antigens, gene cloning, evaluating gene expression, engineering recombinant proteins, mapping epitopes, and developing vaccines against fungal infections. Work with animal models and evaluate immunoresponses of animals, protein and glycolipid purification and chemistry, enzymology, mass spectroscopy, quantitative RT-PCR. Ph.D. in molecular biology. Two years of experience required. Forty hours a week; 8 a.m. to 5 p.m. Monday through Friday; \$49,500 per year. Send two résumés and cover letters (no calls) to **ES Sp. Prgms., REF#5888jd., Ohio Bureau of Employment Services, P.O. Box 1618, Columbus, OH 43216.**

**RESEARCH ASSOCIATE** position available to study the role of vascular mediators in intrauterine growth restriction and preeclampsia using animal models. Candidates must have a B.S./M.S. and a strong interest in animal surgery. Experience in molecular biology would be helpful but is not required. Please send curriculum vitae and the names of three references to: **Larry G. Thaete, Ph.D., Division of Maternal-Fetal Medicine, Evanston Northwestern Healthcare Research Institute, 2650 Ridge Avenue, Suite 1600 WH, Evanston, IL 60201.**

## POSITIONS OPEN

### CHAIR AND TENURED ASSOCIATE OR FULL PROFESSOR Department of Veterinary Pathobiology College of Veterinary Medicine University of Minnesota

Applications and nominations are invited for the position of Chair and Tenured Associate or Full Professor of the Department of Veterinary Pathobiology. Rank (Associate or Full Professor) will depend on qualifications and experience consistent with collegiate and University policy. The appointee will be responsible to the Dean of the College of Veterinary Medicine for administering and managing the affairs of the Department and be able to (1) provide administrative leadership, both in professional and graduate education, and in developing competitive research programs; (2) have an understanding of future trends in veterinary research and education; and (3) participate in Departmental research and teaching initiatives. The Department includes 29 faculty in the disciplines of anatomy, biochemistry, pathobiology, immunology, parasitology, microbiology, functional and comparative genomics, pharmacology, molecular biology, and avian health and occupies modern laboratory and teaching facilities. The College of Veterinary Medicine is located on the Twin Cities campus in St. Paul with the opportunity for interaction with colleagues from many other units of the University, including the College of Biological Sciences; the College of Agricultural, Food, and Environmental Sciences; and the Academic Health Center, which includes the Medical and Dental schools and the College of Pharmacy.

Candidates must have completed a Ph.D. or equivalent degree from a foreign institution and must qualify for the rank of tenured Associate or Full Professor appointment within the Department of Veterinary Pathobiology. The candidate will also be expected to have a strong record of teaching and research accomplishments appropriate to the mission of the Department of Veterinary Pathobiology and have evidence of leadership abilities with an understanding of administrative activities and functions. A D.V.M. degree or equivalent from a foreign institution, previous administrative experience including financial and human resource management, and proven ability to implement change and motivate others will be considered as desired qualifications and experience for this position.

Applicants must submit a cover letter describing administrative experience, leadership skills, a vision statement for a department of basic veterinary research, and the applicant's teaching philosophy; curriculum vitae; and names, addresses, and telephone numbers of three professional references. Applications will be reviewed beginning June 15, 2000, and continue until the position is filled. Approximate start date will be September 15, 2000. Please send application materials to: **Dr. Trevor R. Ames, c/o Nancy Rush, College of Veterinary Medicine, University of Minnesota, 1365 Gortner Avenue, Room 225, St. Paul, MN 55108.** Further information is available at the College of Veterinary Medicine website: <http://www.cvm.umn.edu>.

The University of Minnesota is an Equal Opportunity Educator and Employer.

Research positions (**RESEARCH ASSISTANT PROFESSOR, POSTDOCTORAL, GRADUATE STUDENT, and RESEARCH ASSISTANT**) to study (1) DNA repair proteins, (2) synergistic effect of metal and PAH in DNA damage and mutagenesis, (3) roles of gene activity and chromosome structure in DNA repair, (4) changes in gene expression by metal and PAH treatments using microarray technique (Affymetrix GeneChip®), and (5) roles of DNA damage and repair in human cancer. Experience in molecular biology, biochemistry, and genetics. Laboratories are located in a beautiful rural setting in Sterling Forest, Tuxedo, New York. Curriculum vitae and references by e-mail: [tang@env.med.nyu.edu](mailto:tang@env.med.nyu.edu) or by mail to: **Dr. Moon-shong Tang, Department of Environmental Medicine, New York University, Tuxedo, NY 10987.**

## POSITIONS OPEN

### FACULTY POSITION DEVELOPMENTAL NEUROBIOLOGY

The Division of Neuroscience at the Oregon Regional Primate Research Center (ORPRC)/Oregon Health Sciences University (OHSU) invites applications for a position of **ASSISTANT/ASSOCIATE SCIENTIST**. The position will be based in the Cooley Cellular and Molecular Biology Center of the ORPRC and will include a joint appointment in a basic science department of the OHSU School of Medicine and faculty membership in the neuroscience graduate program. Qualifications include a Ph.D. degree, appropriate postdoctoral experience, and a strong publication record. Applicants who are applying molecular genetic approaches to fundamental problems in neural development are particularly encouraged to apply. The successful candidate will be expected to establish and maintain an extramurally funded research program with international visibility, as well as be willing to develop a line of research utilizing nonhuman primates. Please send curriculum vitae, a statement of research interest and long-range goals, and the names of three references to:

**Dr. Sergio R. Ojeda**  
Division of Neuroscience  
Oregon Regional Primate Research Center/  
Oregon Health Sciences University  
505 N.W. 185th Avenue  
Beaverton, OR 97006  
Telephone: 503-690-5303  
FAX: 503-690-5384  
E-mail: [ojedas@ohsu.edu](mailto:ojedas@ohsu.edu)  
Website: <http://www.ohsu.edu/orprc>  
Affirmative Action/Equal Opportunity Employer.

### FACULTY POSITION DIVISION OF PHARMACEUTICS THE OHIO STATE UNIVERSITY

The Division of Pharmaceutics invites applications for a tenure-track position at the **ASSISTANT or ASSOCIATE PROFESSOR** level. Applicants should have a Ph.D. degree in pharmaceutics, pharmaceutical chemistry, or a closely related field of biomedical or molecular life sciences research. Preference will be given to applicants who have a professional degree in pharmacy and teaching experience, especially in a college of pharmacy. The individual selected will be expected to teach at the undergraduate and graduate levels; maintain a creative, extramurally funded independent research program; and participate in committee and service functions.

Applicants should provide a letter of application, curriculum vitae, the names and addresses of three references, and a statement of research interests and professional goals. Please contact: **Dr. William L. Hayton, Division of Pharmaceutics, College of Pharmacy, The Ohio State University, 500 West 12th Avenue, Columbus, OH 43210-1291.** E-mail: [hayton.1@osu.edu](mailto:hayton.1@osu.edu). Evaluation of applications will begin June 1, 2000. The Ohio State University is an Equal Opportunity/Affirmative Action Employer. Women, minorities, Vietnam-era veterans, disabled veterans, and individuals with disabilities are encouraged to apply.

**SENIOR RESEARCH AND DEVELOPMENT CHEMIST**, organic synthesis: Design and carry out small- and large-scale syntheses of nucleosides and steroids. Forty-hour week; 9 a.m. to 5 p.m. Competitive salary offered. Requires Ph.D. in chemistry and one year of experience in job offered or as research associate or research and development chemist in organic synthesis. Experience to include work in nucleoside and steroid fields and supervision of lesser-degreed chemists. Must have proof of legal authority to work permanently in the United States. Interested applicants should send résumé and cover letter referencing Job #100 to: **Nitin Shah, Chem-Implex International Inc., 935 Dillon Drive, Wood Dale, IL 60191.**

# Director, National Oceanographic Data Center

(A Senior Executive Service Position  
in the Federal Government)

National Environmental Satellite, Data and  
Information Service

National Oceanic and Atmospheric Administration

Silver Spring, Maryland

\$115,811 - 130,200 annually • NOAA#00-05

The candidate selected for this position is responsible for the direction and administration of all National Oceanographic Data Center activities and must possess the following:

1. In-depth knowledge of one or more of the physical sciences (e.g., oceanography, physics, chemistry or meteorology).
2. In-depth knowledge of and experience with current and advanced technological developments in the acquisition, processing and dissemination of marine environmental data.
3. In-depth knowledge of and experience working with national and/or international programs which are sources and constituents of marine environmental data.
4. Knowledge of applicable legislation and the Federal, state and/or local programs which impact requirements for environmental information services and ocean and coastal issues.

Please contact 301/713-0530 x106  
(301/713-0973[TDD])

(Internet: address: [dede.epstein@hrmo.noaa.gov](mailto:dede.epstein@hrmo.noaa.gov))  
for an announcement package, including mailing instructions—referring to the announcement number - OR- you may access the entire full-text vacancy from NOAA's Executive Resources Homepage (see below).  
Incomplete applications will not be considered.

<http://www.rdc.noaa.gov/~hrmo/er-home.htm>

This vacancy will close on  
June 12, 2000



"NOAA Values a  
Diverse Workforce  
and is an  
Equal Opportunity  
Employer"



## RxKinetix, Inc.

RxKinetix, Inc. is an emerging Boulder County company focused on the development and commercialization of proprietary drug delivery systems. These systems include the use of supercritical fluids in the preparation of fine powders for pulmonary, mucosal and parenteral administration, and the use of reverse thermogelation polymers for mucosal and parenteral administration. We are currently seeking to fill the following positions:

### Scientist - Protein Chemist:

This position will be responsible for the development and characterization of new protein/peptide formulations using the company's proprietary technologies. Qualified applicants must have Ph.D. in chemistry, biochemistry or related field plus 3 years industrial pharmaceutical experience, a working knowledge of analytical and protein chemistry and must be able to develop and execute complex experimental designs with minimal supervision. **Job Code: PROTEIN**

### Scientist - Formulation Chemist:

This position will be responsible for the development and characterization with respect to release rates, stability, and functional integrity of therapeutic agents in biodegradable polymer formulations using the company's proprietary technologies. Qualified applicants must have Ph.D. in chemistry, biochemistry or related field plus 3 years industrial pharmaceutical experience preferably in formulation development, a working knowledge of analytical chemistry and must be able to develop and execute complex experimental designs with minimal supervision. **Job Code: FORMULATION**

### Scientist - Immunologist:

This position will be responsible for the development of new vaccine formulations using the company's proprietary technologies. Qualified applicants will have a Ph.D. in immunology or related field plus 3 years industrial pharmaceutical experience preferably with vaccines. **Job Code: IMMUNO**

### Director of Manufacturing:

This position will be responsible for management of the manufacturing of preclinical and clinical materials both on-site and through contract manufacturing arrangements. Qualified applicants must have a minimum of a B.S. in a scientific or engineering discipline plus 8 years of industrial pharmaceutical manufacturing experience, an in-depth understanding of cGMP regulations and a strong regulatory background. **Job Code: MFG**

### Director/Manager of Business Development:

This position will be responsible for the management of on-going business negotiations, development of new business contacts and market research. Qualified applicants should have a scientific background with at least 2 years of industrial experience in pharmaceutical business development. **Job Code: BUSINESS**

### Project Manager(s):

These positions will be involved in the management of internal scientific projects and external collaborations. Qualified applicants must have a scientific background with at least 2 years experience in technical project management. **Job Code: PROJECT**

RxKinetix, Inc. offers competitive salaries, a 401K plan, health benefits, and stock options. Please send resumes via mail to RxKinetix, Inc., Attn: Human Resources, 1172 Century Dr. Suite 260, Louisville, CO 80027; via fax to (303) 926-1906; or via e-mail to [info@rxkinetix.com](mailto:info@rxkinetix.com).

*RxKinetix is an Equal Opportunity Employer*

## POSITIONS OPEN

### AQUATIC ENTOMOLOGIST OREGON STATE UNIVERSITY

The Department of Entomology invites applications for a tenure-track position in aquatic entomology at the rank of **ASSISTANT PROFESSOR**. Applicants with a research focus in biology, physiology, behavior, ecology, conservation, or systematics of aquatic insects are preferred. The successful candidate is expected to teach and advise in the Department's undergraduate/graduate instructional programs. We seek individuals with evidence of external funding and a strong record of publication. Ph.D. required at time of appointment. Further information may be obtained from the Departmental website: <http://www.ent.orst.edu/entomology/jobs>. Applicants should send a letter of interest, statements of research and teaching goals, curriculum vitae, reprints, and names of three references to: **Dr. Tim Schowalter, Search Committee Chair, 2046 Cordley Hall, Oregon State University, Corvallis, OR 97331-2907**. Review of applications begins May 31, 2000; open until filled. *Oregon State University is an Affirmative Action/Equal Opportunity Employer with a policy of being responsive to dual-career needs.*

### ASSISTANT/ASSOCIATE/ FULL PROFESSOR

**Rutgers, The State University of New Jersey**  
The Department of Animal Sciences seeks candidates for a tenure-track position in farm animal transgenics. The candidate will be expected to establish a successful research program that will utilize transgenic and other innovative molecular techniques in developing new animal production opportunities for agriculture. He/she will have the opportunity to interact with faculty from the Biotechnology Center for Agriculture and the Environment, the University of Medicine and Dentistry of New Jersey, and the extensive pharmaceutical/biotechnology industry centered in New Jersey. Rank and salary commensurate with qualifications. Submit letter of application, research/teaching interests, and names of three references to: **J. P. Advis, D.V.M., Ph.D., Chair of Search Committee, Animal Sciences, 84 Lipman Drive, Rutgers University, New Brunswick, NJ 08901. E-mail: [advjs@aesop.rutgers.edu](mailto:advjs@aesop.rutgers.edu)**. *Rutgers is an Equal Opportunity/Affirmative Action Employer.*

### CLINICIAN/SCIENTIST

Academic **RESEARCH FACULTY POSITION** available at Columbia University in the Neurological Institute of Columbia-Presbyterian Medical Center. The Division of Pediatric Neurology and the Colleen Giblin Research Laboratories for Pediatric Neurology seek a clinician/scientist who is trained in clinical medicine and in basic research techniques to investigate genetically determined diseases that affect the developing nervous system. The applicants must have a strong background in basic research and must have completed medical school education. Demonstrated expertise in all aspects of modern neuroscientific research must be evident with a special interest in the GLUT-1 deficiency syndrome. Applicants should send curriculum vitae, a letter describing their interests and plans, and the names of three references to: **Dr. Darryl C. De Vivo, Director of Pediatric Neurology, The Neurological Institute, 710 West 168th Street, New York, NY 10032**. *Columbia University is an Equal Opportunity/Affirmative Action Employer.*

### PH.D., DIRECTOR-IMMUNO. DIAG.

Research and Development. Location is southern New Jersey. Individual will be hands-on to procure antigens for antibody detection and development of reagent formulations and procedures for multiple proprietary tests, utilizing particle immunofiltration platforms targeted to point-of-care medical markets. Reports to Chief Technical Officer. Open compensation range plus options. Hands-on person with strong immunochemistry experience with *in vitro* products. Reply to: **Don Koontz, Akers Laboratories; e-mail: [donald.koontz@gte.net](mailto:donald.koontz@gte.net); FAX: 1-941-922-0649**.

## POSITIONS OPEN

The Centers for Disease Control and Prevention, National Center for Infectious Diseases, Division of Bacterial and Mycotic Diseases, Respiratory Diseases Branch, in Atlanta, Georgia, invites applications for the position of **LABORATORY SECTION CHIEF**. The Respiratory Diseases Branch has approximately 80 employees, 60 of whom work in the laboratories. Incumbent will be responsible for planning and implementing all laboratory activities pertaining to bacterial respiratory pathogens including projects on community-acquired antimicrobial resistance: research, surveillance, outbreak support, and reference services related to *Streptococcus pneumoniae*, Group A and B *Streptococci*, *Legionella*, respiratory chlamydia and mycoplasma, and immunologic activities pertaining to *Streptococcus pneumoniae*, *Haemophilus influenzae*, *Neisseria meningitidis*, and Group B *Streptococcus*. The Laboratory Section Chief will report directly to the Branch Chief and will supervise and coordinate the activities of three existing laboratory groups: the immunology section, the respiratory bacterial diagnostics laboratory, and the streptococcal reference laboratory. Candidates for this position must meet the basic qualifications for the GS-15 level of the federal civil service. They must have an earned Doctoral degree in medicine, microbiology, or related field with significant experience in management of a large laboratory-based research program. Excellent communication and interpersonal skills, a substantial record of publications in peer-reviewed journals, and national and international recognition as an expert on bacterial respiratory pathogens are essential. Annual salary will be commensurate with qualifications and will be in the range of \$77,614 to \$157,000. Interested applicants should send curriculum vitae to: **Ms. Benita Minor, CDC, 1600 Clifton Road, Mailstop C-19, Atlanta, GA 30333. E-mail: [BMINOR@cdc.gov](mailto:BMINOR@cdc.gov)**. The closing date for receipt of applications is May 30, 2000. *Centers for Disease Control and Prevention is an Equal Opportunity Employer and has a smoke-free environment.*

### ACADEMIC HEMATOPATHOLOGIST DEPARTMENT OF PATHOLOGY University of Pittsburgh School of Medicine

Tenure-track positions (all professional ranks) are available immediately for clinician/investigators with strong basic research programs and/or potential. Candidates are expected to develop and sustain a funded research program in molecular mechanisms relevant to hematopathology while contributing to the service and teaching (graduate, resident, and fellow) missions of the Department of Pathology. The position will be in the section of Laboratory Medicine (Division of Hematopathology Division Director: **Dr. Steven H. Swerdlow**). The Division supports significant and challenging functions in adult lymph node service, adult and pediatric bone marrow service, flow cytometry, and general and special hematology laboratories. Candidates are expected to actively participate in all aspects of the above service as necessary. The applicant should be Board-certified in AP, CP, or AP/CP and Board-eligible/certified in hematopathology. The research endeavors will be the primary focus of effort. For more information about the Department, please see website: <http://path.upmc.edu>. Interested candidates should mail curriculum vitae and description of existing research programs to: **Dr. Alan Wells, Vice Chair for Laboratory Medicine, Department of Pathology, University of Pittsburgh, Pittsburgh, PA 15261**. *The University of Pittsburgh is an Equal Opportunity/Affirmative Action Employer organization.*

A **POSTDOCTORAL POSITION** is available immediately to study intercellular signaling mechanisms using *Drosophila* as a model system. A Ph.D. in molecular biology, genetics, or related discipline is required. Laboratory is located on the NIH campus in Bethesda, Maryland. Please send curriculum vitae, brief summary of research experience, and the names of three references to: **Deborah Hursh, Ph.D., Division of Cell and Gene Therapies, CBER/FDA, HFM-521, 1401 Rockville Pike, Rockville, MD 20852-1448. Telephone: 301-827-0670; e-mail: [hursh@cber.fda.gov](mailto:hursh@cber.fda.gov)**.

## POSITIONS OPEN

### GENE DISCOVERY IN BLOOD CELL DEVELOPMENT AND ALLERGIC INFLAMMATION

**POSTDOCTORAL POSITIONS** are available immediately for scientists interested in gene discovery projects studying the molecular regulation of hematopoietic development and inflammatory cell activation in allergic diseases. Projects are using cDNA microarray and genomic strategies to identify and characterize cytokine-mediated signaling pathways and transcriptional regulators relevant to myeloid differentiation, lineage-specific gene expression, and granulocyte activation and studying their roles in myeloid progenitor cell development and inflammation using knockout, transgenic, and *in vitro* models. Recent Ph.D. or M.D. graduates or more experienced individuals with molecular biology backgrounds in using cDNA microarrays, genomics, subtraction cloning, differential display, or yeast 1 and 2 hybrid cloning systems strongly preferred. Mail curriculum vitae and names of three references to: **Steven Ackerman, Ph.D., Department of Biochemistry and Molecular Biology (MC536), A-312 College of Medicine West, University of Illinois at Chicago, 1819 West Polk Street, Chicago, IL 60612. FAX: 312-996-5623**.

*University of Illinois at Chicago is an Affirmative Action/Equal Opportunity Employer.*

### ASSOCIATE PRINCIPAL SCIENTIST BIOPHYSICAL RESEARCH AND CLAIMS DEPARTMENT Mary Kay Cosmetics

Requirements: The position requires a Ph.D. in biochemistry or related biological science plus one to three years of experience in an academic or industrial laboratory. Knowledge of skin biology, statistical analysis, and effects of cosmetics on skin is desired. The incumbent will design, perform, interpret, and report results from studies on human panelists to determine efficacy of materials and will perform studies to support product efficacy claims. The individual will also work with formulation chemists to select key ingredients for inclusion into product prototypes and will contribute to applied research teams in skin aging, moisturization, oil control, and pigmentation. On occasion, the individual will interact with Product Marketing personnel and with the Mary Kay independent sales force to translate experimental findings to product positioning and claims.

Mary Kay Cosmetics offers an excellent compensation/benefits package. Interested candidates should forward their resumes/curriculum vitae to: **Mary Kay, 1330 Regal Row, Dallas, TX 75247, Attention: L. Pennington. FAX: 214-905-6997; e-mail: [Lori.Pennington@MaryKay.com](mailto:Lori.Pennington@MaryKay.com)**.

### FACULTY POSITIONS CANCER RESEARCH Nebraska

The Department of Oral Biology of the University of Nebraska Medical Center (UNMC) College of Dentistry is expanding its research focus in cancer biology. Three full-time (12-month) **TENURE-TRACK FACULTY POSITIONS** are available beginning July 1, 2000. Selected candidates will be expected to build strong, externally funded research programs in the molecular mechanisms of cancer. Competitive salaries, start-up packages, and modern research laboratories are included. A Ph.D. or equivalent and postdoctoral experience are required with academic rank commensurate with qualifications. Collaboration with researchers at the UNMC Eppley Institute for Research in Cancer is anticipated. Review of applicants will continue until the position(s) are filled. Send curriculum vitae; selected reprints; a statement of research plans; and the names, addresses, and telephone numbers of three references to: **Office of the Dean, Position #0-0050, UNMC College of Dentistry, 40th and Holdrege, Lincoln, NE 68583-0740**. *UNMC is an Equal Opportunity/Affirmative Action Employer.*





**POSITION ANNOUNCEMENT**  
**RUMINANT NUTRITIONIST AT ILRI - WEST AFRICA**  
**Ref: RN/04/2000**

ILRI is seeking a highly motivated ruminant nutritionist with farming systems experience to lead research on feed utilisation and animal nutrition in West Africa. This position provides an excellent opportunity for multi-partner, multi-disciplinary research on the improvement of feed utilisation to increase meat and milk production and to improve nutrient cycling in mixed crop-livestock farming systems. This research is conducted in collaboration with animal nutritionists, agronomists, plant breeders, ecologists, social scientists and economists at ILRI, the International Institute for Tropical Agriculture (IITA), the International Crops Research Institute for the Semi-Arid Tropics (ICRISAT), national agricultural research systems of West Africa, and research organisations in developed countries. The work involves: 1) Collaborative work on feeding systems to improve meat and milk production and the cycling of nutrients in mixed farms in the semi-arid and sub-humid zones; 2) Collaborative work on the genetic improvement of feed quality of crop residues (pearl millet, sorghum, maize, cowpea, cassava); and 3) Collaborative work in participatory studies on farmers' perceptions of feed quality and the potential for adopting crop cultivars improved for feed quality. This research will be designed to complement other research activities in the Production-to Consumption Project on market oriented crop-livestock systems of West Africa and to contribute to the Livestock Feeds and Nutrition Programme of ILRI.

**Qualifications:**

A PhD, degree or equivalent with specialisation in ruminant nutrition and livestock feeds and a significant publication record are required. Candidates should have analytical skills, at least five (5) years of experience in relevant research, good understanding of farming systems in developing countries and some project management experience. Good communication and interpersonal skills, an ability to perform in a multi-disciplinary and multi-cultural research environment and fluency in spoken and written English are essential. Ability to speak French is highly desirable.

**Location**

IITA, Ibadan (Nigeria), with frequent travel to Kano (northern Nigeria) and some travel to the Sahelian countries.

**Conditions**

The contract for this position will be for an initial three-year term with the possibility of extension. Salary, dependent on experience, will be paid in US dollars. ILRI provides excellent benefits including employer-paid medical, life and disability insurance and retirement benefits. Relocation, annual leave travel, education allowances and a housing allowance for accommodation are also provided.

**Applications**

Applications including CV and the names and addresses of three should be sent to the **Human Resources Manager, ILRI, P.O. Box 30709, Nairobi, Kenya; Telephone: 254-2-630743; Fax: 254-2-631499; e-mail: ILRI-KENYA@cgiar.org**. The name and reference number of the position should be quoted. Screening of applications will begin on 2 June 2000 and will continue until the post is filled.

To find more about ILRI, visit our Website at <http://www.cgiar.org/ilri>.

*ILRI is an equal opportunity employer.  
Qualified women and professionals from developing countries are particularly encouraged to apply.*

[www.jcu.edu.au](http://www.jcu.edu.au)

## **Faculty of Science and Engineering**

James Cook University offers unparalleled opportunities for research in the tropics, with its Townsville and Cairns campuses located close to a broad range of stunning environments, from rainforests to wetlands, savannas to mangroves and mountains to reefs.

## **Professor of Marine Biology** **Townsville**

Located beside the Great Barrier Reef, the University has an internationally recognised research and teaching program in tropical marine biology and aquaculture. The current staff (14 in Marine Biology, 4 in Aquaculture) have a strong publication record and are highly successful in gaining competitive research funding (\$7.3 M in 1997-99). Marine Biology is highly placed in national evaluations of undergraduate teaching programs and has a large postgraduate program. Applications are invited for the Chair in Marine Biology within the School of Marine Biology and Aquaculture. The appointee will have an internationally recognised research output, track record in research funding, teaching and postgraduate training, and senior administrative experience. Expertise in whole organism biology, community or evolutionary ecology is essential to complement existing strengths in coral reef and fish ecology. The appointee will be required to provide academic leadership and promote the School within the University, nationally and internationally, and serve terms as Head of School.

**Enquiries to:** Associate Professor Garry Russ, telephone (07) 4781 4432, email [Garry.Russ@jcu.edu.au](mailto:Garry.Russ@jcu.edu.au)

**Employment Type:** Appointment will be on a continuing basis subject to a probationary period.

**Salary:** Professor - Academic Level E - \$90,041 per annum. Benefits include employer superannuation contribution, attractive options for salary packaging and generous relocation allowances where applicable.

**Information packages including selection criteria and application procedures may be obtained from**  
<http://jobs.jcu.edu.au/> or by contacting the **Recruitment Officer, Human Resources, James Cook University, Townsville Qld 4811.**  
**Telephone: (07) 4781 5012; Facsimile: (07) 4781 5644; email [jcu.recruitment@jcu.edu.au](mailto:jcu.recruitment@jcu.edu.au)**

Applications close on 23 June 2000.

Please quote reference number 0041.

Equal Opportunity in Employment is University Policy

The University reserves the right to appoint by invitation or not to make an appointment.

JCU0853

>>Always thinking ahead>>

JAMES COOK UNIVERSITY



**JCU**

## POSITIONS OPEN

### CURATOR: RANK OPEN CURATOR OF PALEONTOLOGY (DINOSAURS) The Field Museum

The Department of Geology seeks a productive colleague with an innovative, specimen-based research program in which the *Dinosauria* is a major component, including systematics, phylogenetics, morphologic evolution, and ecology. The successful candidate will have a Ph.D. and a record of scientific achievement and a willingness to build a strong field program. The position entails curation, especially of the dinosaurian portion of the paleoherpetological collection. Curators participate in a wide range of public learning programs (including exhibits, mentoring, and informal education); development; administrative; and service activities. Participation in undergraduate and graduate education at area universities also is strongly encouraged.

The search is targeted at the **ASSISTANT CURATOR** level, but exceptional candidates at more senior ranks will be considered. Please include curriculum vitae, statement of research objectives, and copies of relevant publications. Direct applications to (and arrange for three letters of reference to be sent to): **Search Committee, Department of Geology, The Field Museum, Roosevelt Road at Lake Shore Drive, Chicago, IL 60605-2496**. Please ensure that all of the listed items (except copies of publications) are also sent as e-mail attachments. The preferred word processing application is Microsoft Word, although WordPerfect is also acceptable. **E-mail: dinosrch@fmnh.org**. Consideration of applications will begin May 30, 2000. For information about the Field Museum, visit **website: <http://www.fmnh.org/>**. The Field Museum is an Equal Opportunity Employer.

The Department of Radiation Oncology, Case Western Reserve University School of Medicine, has an opening for a basic scientist at the level of **INSTRUCTOR**. The qualified candidate will develop an independent research program, and develop a breast cancer research program in pharmacology, molecular biology, endocrinology, and radiation oncology. Applicants must hold a Ph.D., and have a significant number of peer-reviewed publications in top-rated breast cancer related journals. Knowledge of gene cloning and microarray technology are strongly encouraged. She/he will have the potential for development of independent research, possibly leading to a position at the Assistant Professor level. Please send curriculum vitae and three letters of recommendation to: **Timothy J. Kinsella, M.D., Department of Radiation Oncology, 11100 Euclid Avenue, B181, Cleveland, OH 44106-6068**. *CWRU is an Equal Opportunity/Affirmative Action Employer.*

**ELECTROPHYSIOLOGIST** needed immediately for full-time position at Brooks Air Force Base in San Antonio, Texas. Applicant should have at least one year of postdoctoral experience. This will be an exciting opportunity for a researcher to help establish an electrophysiology laboratory and conduct basic research in neurological function. *All applicants must be a U.S. citizen.* Applicants selected will be subject to a government security investigation and must meet eligibility requirements for access to classified information. Please send curriculum vitae to: **Dept TD, Veridian Engineering, Inc., 9601 McAllister Freeway, San Antonio, TX 78216**. FAX: 210-308-7498. *Veridian is an Equal Opportunity/Affirmative Action Employer.*

**POSTDOCTORAL POSITION** available immediately for cloning of human brain tumor suppressor gene. Candidates should have substantial genomics experience. Forward a letter of interest and curriculum vitae to: **Dr. David Louis, Molecular Neuro-Oncology Laboratory, Massachusetts General Hospital, Building 149, 13th Street, 5th Floor, Charlestown, MA 02129**.

## POSITIONS OPEN

### TEACHING/RESEARCH POSTDOCTORALS DEPARTMENT OF ECOLOGY AND EVOLUTIONARY BIOLOGY University of Kansas

Three teaching/research Postdoctoral positions, one in each of three intradepartmental programs: (1) ecology and population biology; (2) plant biology; (3) systematics, macroevolution, and biodiversity. Appointments for two years at salary of \$28,000 to \$33,000 per year. Successful candidates would be expected to complement the research programs of one or more departmental faculty and teach or participate in about three courses per year.

Required qualifications: (1) Ph.D. in systematics, plant biology, ecology, or population biology; (2) research in one of these areas; and (3) ability to teach courses in general biology and/or other areas. Preferred: Demonstrated teaching and research experience.

Initial review of applications: 1 June 2000 and continues until positions are filled. Application materials: (1) Curriculum vitae; (2) concise statements of (a) current research and (b) teaching experience and interests, including summary of courses applicant is qualified to teach; (3) copies of selected publications if available; (4) the names of at least three persons to be contacted for references. Submit materials to: **Ms. Berry Clemens, Department of Ecology and Evolutionary Biology, University of Kansas, Lawrence, KS 66045-2106**. Telephone: 785-864-5889; FAX: 785-864-5860; e-mail: [bclemens@ukans.edu](mailto:bclemens@ukans.edu). *KU is an Equal Opportunity/Affirmative Action Employer.*

### PHYSIOLOGY FACULTY POSITION

A full-time position at the **ASSISTANT** or **ASSOCIATE PROFESSOR** level is available in the Department of Physiology of the College of Medical Sciences at Nova Southeastern University. Responsibilities include participation in team-taught courses to health professions students. The position requires a Ph.D. in physiology or an M.D. Individuals with teaching experience in endocrinology at the medical school level will be given special consideration. Although primarily a teaching position, opportunities for research do exist. Salaries are competitive and dependent upon qualifications. Fringe benefits are generous. The College of Medical Sciences is located in the new Health Professions Division facility on the Fort Lauderdale campus. Position available immediately. Please send/e-mail or FAX a letter of interest, curriculum vitae, copies of graduate transcripts and the names, addresses, and telephone numbers of three professional references to: **(HLF) Nova Southeastern University, Office of Human Resources, 3301 College Avenue, Fort Lauderdale, FL 33314**. FAX: 954-262-3813; e-mail in MS Word or Word/Note Pad format: [nsujobs@nsu.nova.edu](mailto:nsujobs@nsu.nova.edu); website: [www.nova.edu](http://www.nova.edu). *Affirmative Action/Equal Opportunity Employer.*

**POSTDOCTORAL POSITION** in prostate cancer research to investigate signal transduction and tumor suppressor pathways. A recent graduate with a background in molecular and cellular biology preferred. Send curriculum vitae and names of references to: **Dr. Young E. Whang, Lineberger Comprehensive Cancer Center, CB #7295, University of North Carolina, Chapel Hill, NC 27599-7295**. FAX: 919-966-8212; e-mail: [ywhang@med.unc.edu](mailto:ywhang@med.unc.edu).

## POSITIONS OPEN

Two funded **POSTDOCTORAL POSITIONS** are available, for three years, to investigate the role of chromatin in transcriptional activation (*Nature* 389: 251, 1997; *Nature* 399:694, 1999), in the laboratories of **Karolin Luger** website: <http://raven.bmb.colostate.edu/> and **David Tremethick** website: <http://jcsmr.anu.edu.au/dbmb/chromatre.htm>. There is an option of spending time in both laboratories. A Ph.D. in molecular biology or biochemistry with a proven publication record in internationally recognized journals is required. Applications with curriculum vitae and the names and addresses of two referees should be sent to: **Dr. Karolin Luger, Department of Biochemistry and Molecular Biology, Colorado State University, Fort Collins, CO 80523-1870**, e-mail: [kluger@lamar.colostate.edu](mailto:kluger@lamar.colostate.edu) or **Dr. David Tremethick, John Curtin School of Medical Research, Australian National University, PO Box 334, ACT 2601, Australia**, e-mail: [david.tremethick@anu.edu.au](mailto:david.tremethick@anu.edu.au). Closing date is June 30, 2000.

### POSTDOCTORAL POSITION IN ECOLOGY AND ENVIRONMENTAL SCIENCE

The Center for Environmental Analysis (CEA) at California State University, Los Angeles, seeks a Postdoctoral Marine Ecologist. Collaboration with field ecologists, geographic information systems analyst, and simulation modeler analyzing demographic landscapes of benthic species. Experience with intertidal field surveys, geographic information systems, spatially explicit modeling, or spatial statistics preferred. Participation in National Center for Ecological Analysis and Synthesis workgroup. CEA conducts basic and applied research in ecosystems of Southern California website: <http://cea-crest.calstatela.edu>. The appointment is one year renewable, and the salary ranges from \$37,000 to \$41,000 per year plus benefits. Send curriculum vitae, three references, relevant publications, and inquiries to:

**Dr. Carlos Robles, Director  
CEA-CREST  
California State University, Los Angeles  
5151 State University Drive, BS-140  
Los Angeles, CA 90032  
Telephone: 323-343-2067  
E-mail: [crobles@calstatela.edu](mailto:crobles@calstatela.edu)**

The University of Pittsburgh School of Medicine, Ophthalmology, and Visual Sciences Research Center has multiple positions available at the **POSTDOCTORAL FELLOW/RESEARCH ASSOCIATE** (Ph.D./M.D.) level to work in each of the following areas: virology, cell biology, and immunology. Positions are available in the laboratories of **Dr. Paul R. Kinchington** (molecular biology of herpes viruses), **Dr. Nirmala SundarRaj** (corneal cell biology), and **Dr. Robert L. Hendricks** (viral immunology). Interested applicants should send curriculum vitae and names of three references to: **Ms. Judith Smith, Department of Ophthalmology, Eye and Ear Institute, 203 Lothrop Street, Pittsburgh, PA 15213-2588**. *The University of Pittsburgh is an Affirmative Action/Equal Opportunity Employer.*

### MEDICAL WRITER

Physicians' Education Resource (PER) is seeking a medical writer to join its team. PER is a medical education company specializing in the field of oncology. Successful candidates will write manuscripts from original data, report highlights from cancer meetings, and edit or rewrite author-submitted manuscripts. This position requires a Ph.D. in a biomedical science. Send résumé and salary requirements to: **3535 Worth Street, Dallas, TX 75246**. FAX: 214-820-8844; e-mail: [angeliag@baylordallas.edu](mailto:angeliag@baylordallas.edu).

## ANNOUNCEMENTS



**Inflammation Research  
Association's  
10<sup>th</sup> National Conference**

**September 24-28, 2000  
The Homestead, Hot Springs, VA**

**ABSTRACT DEADLINE  
EXTENDED  
TO JUNE 2, 2000 !**

**The Changing Face of Inflammation:  
Strategies for the New Millennium  
Symposia topics:**

**Molecular Signalling  
Matrix Metalloproteinases and ADAMs  
Orphan Receptors: Novel Target  
Identification and Validation  
New Drugs for Inflammatory, Allergic,  
and Immunologic Diseases**

**Plenary Speaker:**  
**Michael Weinblatt, M.D.**  
**"Treatment of RA in the New Millennium"**

**For registration, abstract submission,  
and additional program information,  
visit the IRA website:  
[www.inflammationresearch.org](http://www.inflammationresearch.org)**

## EUROPEAN OPPORTUNITIES

**Professor of Environmental Science  
& Director of the Environmental  
Research Group of the South East  
Institute of Public Health**

**KING'S  
College  
LONDON  
Founded 1829**

**Division of Life Sciences**

**School of Health and Life Sciences**

The Division of Life Sciences within the School of Health and Life Sciences invites applications for the joint position of Professor of Environmental Science and Director of the Environmental Research Group (ERG) of the South East Institute of Public Health (SEIPH). Applicants should have an international reputation as an atmospheric scientist or as an environmental scientist with research interests that complement those in the Division of Life Sciences.

It is a newly created post which has arisen through the amalgamation of SEIPH-ERG with the Division of Life Sciences. The Professor of Environmental Science will have responsibility for developing and managing the activities of SEIPH-ERG in liaison with senior staff of the group and with staff in the Division engaged in environmental science research. SEIPH-ERG has established itself at the forefront of air quality management in the UK, and as a national provider of ambient air quality monitoring services. Staff in the Division are working with a range of technologies including immunochemical techniques, molecular and biochemical probes, remote sensing, management modelling tools and risk based models of environmental hazard assessment.

The appointee will be expected to contribute to the continuing development of the strong research base in environmental science in the Division of Life Sciences, by providing leadership in research, monitoring and technical services, demonstration projects and communication of risk-based assessment and management strategies to the user community.

The School of Health and Life Sciences is housed in brand new research and teaching facilities in the Franklin-Wilkins Building, which is part of the College's Waterloo Campus.

Applications (10 copies) together with the names of three referees, should be received no later than Friday, 26th May 2000 by Mrs Nalini Pandya, Senior Personnel Assistant, King's College London, James Clerk Maxwell Building, 57 Waterloo Road, London SE1 8WA, telephone 020 7848 3467, e-mail: [nalini.pandya@kcl.ac.uk](mailto:nalini.pandya@kcl.ac.uk) from whom an application form and Further Particulars are available.

*Equality of opportunity is College policy*

## EUROPEAN OPPORTUNITIES



**UPPSALA UNIVERSITET  
The Linnaeus Centre for Bioinformatics**

Uppsala University and the Swedish University of Agricultural Sciences are announcing the following positions at the Linnaeus Centre for Bioinformatics:

**CHAIR in BIOINFORMATICS**

Ref No: UFV-PA 2000/1747

**Three ASSOCIATE PROFESSORS in BIOINFORMATICS**

Ref No: UFV-PA 2000/1748, 1749, 1750

The Linnaeus Centre for Bioinformatics has been founded by Uppsala University and the Swedish University of Agricultural Sciences and is funded by a strategic initiative by the Knut and Alice Wallenberg Foundation. The objectives of the centre are to lay the foundation for a centre-of-excellence, to bring together scientists from biomedical disciplines on the one hand, computer and information science on the other, and to co-ordinate and improve teaching in bioinformatics. Substantial resources including PhD and postdoctoral positions are available within this programme.

A presentation of the Linnaeus Centre for Bioinformatics is found on <http://linnaeus.bmc.uu.se>. Information about the application procedure can be obtained from Anita.Ljungstrom@uadm.uu.se, fax +46 18 4711999, phone +46 18 4711865 or [www.uu.se](http://www.uu.se).



## SYMPOSIA



**PLURIPOTENT STEM CELLS:  
PROPERTIES, THERAPEUTIC PERSPECTIVES  
AND ETHICAL QUESTIONS**

**International symposium organized by the  
Marcel Mérieux Foundation**

**Les Pensières, Veyrier-du-Lac (near Annecy, French Alps)  
21-23 June 2000**

*The purpose of the symposium is to define the state of the art in pluripotent stem cells research in animals and humans and promote collaboration; to discuss the therapeutic applications of pluripotent stem cells; to facilitate discussion between bioethicists and researchers, towards the harmonisation of regulation relating to research and therapeutics concerning embryonic stem cells.*

**Information and registration  
Fondation Mérieux**

Web site: <http://www.fond-merieux.org>  
17 rue Bourgelat, BP 2021, 69227 Lyon Cedex 02, France.  
Fax: 33 (0)4 72 40 79 50  
E-mails: [bdodet@fond-merieux.org](mailto:bdodet@fond-merieux.org) &  
[symposium@fond-merieux.org](mailto:symposium@fond-merieux.org)

## POSITIONS OPEN

The Lymphocyte Biology Section of the Laboratory of Immunology, NIAID, NIH, conducts basic research on immune recognition by T lymphocytes and on the interactions of T lymphocytes and antigen-presenting cells. The Section is seeking a well-trained **MOLECULAR IMMUNOLOGIST** to support its efforts in molecular biology and biochemistry. A successful candidate will have substantial experience in recombinant DNA and immunological methods including but not limited to: plasmid vector construction; mutagenesis; plasmid isolation; DNA sequencing; generation and purification of fusion proteins; transfection; retroviral stock preparation and cell infection; recombinant baculovirus generation and use for protein preparation; monoclonal antibody purification; DNA, RNA, and protein gel electrophoresis; immunoprecipitation; Western blotting; Southern blotting; PCR; design of PCR primers; RT-PCR; immunofluorescence microscopy; flow cytometry; tissue culture; lymphoid cell isolation; lymphocyte activation assays; and ELISA assays. The successful candidate will have opportunities for authorship on scientific publications and public data presentations based on his/her performance and productivity in the laboratory.

The GS position requires U.S. citizenship as a permanent position. Mail résumé and three letters of recommendation to: **Joann Martin, NIAID, Building 31, Room 7A27, 31 Center Drive, Bethesda, MD 20892. Telephone: 301-496-4634.** Please include Announcement Number AI-00-082. Please call the above number for the detailed vacancy announcement. Closing date June 2, 2000.

NIH is an Equal Employment Opportunity Employer.

## MICROBIOLOGIST

Baylor University, a private comprehensive university of 13,000 students, seeks a Microbiologist for a tenure-track position at the **ASSISTANT PROFESSOR** level beginning fall 2000. Applicants must have a Ph.D. and use modern approaches to examine biological processes. Position responsibilities: (1) teach a course in bacteriology, (2) teach an introductory microbiology course for nursing majors, (3) establish a research program involving undergraduate and graduate students, (4) develop an upper-level course in your specialty to alternate with a basic course, and (5) participate in departmental and university service activities. Baylor is renowned for excellence in teaching balanced with quality faculty and student research. To ensure full consideration, a complete application should be received by June 5, 2000. Applications will be reviewed beginning June 6, 2000, and will be accepted until the position is filled. A complete application consists of: application letter, statements of teaching philosophy and research interests, curriculum vitae, graduate and undergraduate transcripts, and three reference letters. Send materials to: **Dr. David Eldridge, Search Committee Chair, Department of Biology, Baylor University, Waco, TX 76798-7388. Telephone: 254-710-2911; FAX: 254-710-2969; e-mail: David.Eldridge@baylor.edu; website: http://www.baylor.edu.** Baylor University is a Baptist university affiliated with the Baptist General Convention of Texas. As an Affirmative Action/Equal Employment Opportunity Employer, Baylor encourages minorities, women, veterans, and persons with disabilities to apply.

A **POSTDOCTORAL POSITION** is available to investigate T cell-dependent immunity and tolerance. Expertise in immunology, signal transduction, and/or cell adhesion is desirable.

Trudeau Institute is a well-financed, modern, not-for-profit biomedical research institute with an international reputation for excellence. Located in the heart of the Adirondack Mountains overlooking beautiful Saranac Lake, Trudeau offers competitive salary and fringe benefits, the possibility of on-site housing, and a collaborative research environment focussed on basic immunology and infectious disease.

Please send curriculum vitae, addresses of three references, and a letter describing research interests to: **Stephen T. Smiley, Ph.D., P.O. Box 59, Saranac Lake, NY 12983.** Further information is available at website: [www.trudeauinstitute.org](http://www.trudeauinstitute.org).

## POSITIONS OPEN



The USDA, Agricultural Research Service, Plant Sciences Institute, Horticultural Crops Quality Laboratory, Beltsville, Maryland, is seeking a permanent full-time **RESEARCH FOOD TECHNOLOGIST/PLANT PHYSIOLOGIST**, GS-12/13. Salary is commensurate with experience (\$51,204 to \$79,155 per year) plus benefits. *Must be U.S. citizen.* Conducts food technology research to improve methods for maintaining microbial safety and quality of fresh-cut fruits and vegetables that are cut, sliced, or diced and then packaged for commercial and retail use without further preparation. Develops packaging technology and postharvest handling systems and implements strategies discovered from research on the interactions among human pathogens, plant pathogens, and their fruit and vegetable hosts to maintain microbial safety during preparation and marketing. Basic research includes elucidation of the regulatory mechanisms involved in plant senescence processes, including chlorophyll degradation, membrane changes, water loss, content of various volatile compounds, susceptibility to decay, and texture/flavor changes as these processes relate to quality and microbial safety. Appropriate qualifying education in food technology/plant physiology and/or professional research experience is required. For research program information, contact: **Dr. Ken Gross; Telephone: 301-504-6128; e-mail: kgross@arsr.arsusda.gov.** To address specific qualification requirements and application instructions, applicants **MUST** call **Telephone: 301-504-1484** to request announcement ARS-DOE-0224 or via Internet at website: <http://www.ars.usda.gov/afm/hrd/resjobs.htm>. Applications must be postmarked by July 31, 2000. *USDA/ARS is an Equal Opportunity Employer and Provider.*

**SCIENTIFIC COPY EDITORS:** Two Copy Editors are needed for the prestigious monthly journals *Nature Neuroscience* and *Nature Immunology*. Successful applicants will work closely with editors and authors to make complex technical manuscripts clear, concise, consistent with our style, and accessible to nonspecialist readers. Applicants should have a biology degree, excellent literary abilities, routine computer skills, an eye for detail, and the ability to meet regular deadlines. Graduate course work or laboratory experience in neuroscience or immunology is an advantage. Copy editing experience is helpful, but a talent for working with words is more important. These full-time positions in our Manhattan office offer competitive salary and benefits, a lively work environment, exposure to important developments in biomedical sciences, and the opportunity to have a substantial influence on a major scientific journal. Please send cover letter stating which position you are applying for, plus curriculum vitae and scientific text on which you have worked, to: **Jennifer Fosmire, Nature America, 345 Park Avenue South, New York, NY 10010-1707. FAX: 212-696-0978; e-mail: j.fosmire@natureny.com** before Monday, 22 May 2000.

## POSTDOCTORAL RESEARCH POSITIONS HIV BINDING AND FUSION: VACCINES

Our laboratory studies the process of HIV envelope protein-mediated binding and fusion towards the development of broadly neutralizing vaccine immunogens (*Science* 283:357, 1999). Ongoing projects include: (1) biochemical, structural, functional, and immunogenic analysis of fusion-related envelope mutations and purified envelope intermediates/complexes; and (2) isolation of broadly neutralizing monoclonal antibodies. Salary commensurate with experience and position (M.S. plus experience considered for staff position). The University of Montana-Missoula is located on the western slope of the Rocky Mountains between Glacier and Yellowstone Parks. Send curriculum vitae and names of three references to: **Jack Nunberg; FAX: 406-243-6425; e-mail: nunberg@selway.umt.edu.** *Affirmative Action/Equal Employment Opportunity.*

## POSITIONS OPEN

### ASSOCIATE RESEARCH SCIENTIST Columbia University Department of Neurology

A position is available in a laboratory studying cell biology of neurodegeneration associated with Parkinson's disease and related disorders. We are particularly interested in the exploration of cell culture models of Parkinson's disease. A variety of knockout and transgenic systems are available to the candidate, as well as novel electrochemical/physiological technologies developed by our group. The preferred candidate should hold an M.D. or Ph.D. and have experience in cell or molecular biology, electrochemistry, or biophysics coupled with interest in mechanisms involved in neurodegeneration. Application, including curriculum vitae and references and a description of research interests and experience, should be sent to:

**Dr. David Sulzer  
Assistant Professor  
Columbia University  
Department of Neurology  
650 West 168th Street, BB-305  
New York, NY 10032**

*Columbia University is an Affirmative Action/Equal Opportunity Employer.*

The Centers for Disease Control and Prevention, National Center for Infectious Diseases, Division of Bacterial and Mycotic Diseases, Atlanta, Georgia, invites applications for the position of **ASSOCIATE DIRECTOR OF SCIENCE**. The Division of Bacterial and Mycotic Diseases consists of approximately 300 employees. This position will be responsible for the planning and coordinating of a national program to improve the identification, investigation, diagnosis, prevention, and control of bacterial and mycotic diseases. Candidates for this position must meet the basic qualifications for the GS-15 level of the federal civil service and have a Doctorate degree in medicine, microbiology, or related field with significant experience in management of a laboratory-based, research-type program. Excellent communication and interpersonal skills along with a record of publications and national recognition are essential. Annual salary of \$77,614 to ??? depends on the qualifications. Applicants may send curriculum vitae to: **Benita Minor, CDC, HRMO, 1600 Clifton Road, Mailstop C-19, Atlanta, GA 30333. E-mail: BMINOR@cdc.gov.** All curriculum vitae/applications must be postmarked no later than May 30, 2000. *Centers for Disease Control and Prevention is an Equal Opportunity Employer and has a smoke-free environment.*

## CHIEF TECHNOLOGY OFFICER

Nanotechnology incubator company is seeking an **ACCREDITED SCIENTIST** from private enterprise or academia to head up their Science Review Board. This position will be responsible for overseeing all technology development for the company, including review and enhancement of all new and cutting-edge technologies in various scientific disciplines for viability in development and commercialization. Candidates should have exceptional multidiscipline scientific credentials with willingness to use their scientific expertise as a tool to break barriers. This ground-floor opportunity will enable the right candidate to participate in generous salary, stock option, profit sharing, and bonus programs within this new public company. Please send résumé to: **Molecular Robotics, Inc., Encino, CA. FAX: 818-817-7663; e-mail: info@molecular-robotics.com.**

## SENIOR/ASSOCIATE SCIENTIST

Senior/Associate Scientist with skills in histology, electron microscopy, immunohistochemistry, *in situ* hybridization, etc., is sought by the Division of Infectious Diseases. Individuals interested in pursuing research activities are encouraged to apply. Please send curriculum vitae to: **Dr. Saul Tzipori, Division of Infectious Diseases, Tufts University School of Veterinary Medicine, 200 Westboro Road, North Grafton, MA 01536. E-mail: stzipori@infonet.tufts.edu.**



## CALL FOR POSITIONS

### Telethon Scientists

The Telethon Foundation, Italy, is seeking applicants in the field of genetic diseases (cancer is excluded) for 10 positions at the following career levels:

#### 7 positions of Assistant Telethon Scientists

Candidates must have finished post doctoral training, or equivalent, have a good record of productivity tangibly demonstrated by their publications in international journals and are expected to carry out an independent research program.

#### 2 positions of Associate Telethon Scientists

For scientists with about 5 years of independent work experience. Candidates must have a strong publication record, have already established the beginning of international reputation through their independent work and are expected to develop a vigorous and independent research program.

#### 1 position of Telethon Scientist

Candidates must be highly productive scientists but with the potential of further scientific growth. They must have a well established international reputation for scientific excellence and be recognized leaders in their field. They must have the proven ability to initiate, stimulate and conduct innovative research and to provide scientific leadership both nationally and internationally.

Each position will be awarded a five-year renewable contract and will be supported by a substantial research grant. There are no citizenship restrictions. Prearranged and formal agreement with Italian research institutes or Universities are mandatory for these positions. Three letters of recommendation that consider both research potential and general professional achievements are needed. Further information can be obtained as of 27th March from: **Fondazione Telethon**, Via P. Santacroce 5, 00167 Rome, Italy. Tel: +39 06 66596, Fax: +39 06 66015436, email: [telethon@mail.telethon.it](mailto:telethon@mail.telethon.it). For more details, please visit the following website address as of 27th March, 2000: <http://www.telethon.it/>

**Closing date for applications is 16th June, 2000.**



## Max Planck Institute

for Evolutionary Anthropology

### Associate Research Professor (C3) position Department of Primatology

Applications are invited for a 5 year position with strong likelihood of tenure in the Department of Primatology of the newly founded Max Planck Institute for Evolutionary Anthropology in Leipzig, Germany. This Institute currently comprises 4 departments (primatology, evolutionary genetic, linguistic, comparative and development psychology) for an innovative and integrated approach to the questions about human origins. We are looking for an outstanding candidate to lead an active, independent research program on the behavioural ecology of Great Apes. The focus of the department of Primatology are questions related to the evolution of sociality and the evolution of intelligence/culture by means of integrated field studies and genetic analyses. For further information on our research see <http://www.eva.mpg.de/primat.html>

Applications with curriculum vitae, a list of publications and research plan should be submitted to Christophe Boesch, Personnel Administration, Max Planck Institute for Evolutionary Anthropology, Inselstrasse 22, 04103 Leipzig, Germany, no later than June 30, 2000.

## ROSLIN INSTITUTE

Roslin Institute is a major UK centre for Biological Research in Laboratory and Farm Animals.

### Postdoctoral Positions: Nuclear reprogramming

Postdoctoral positions are available at Roslin Institute (Edinburgh, UK) to investigate the role of epigenetic factors in determining successful reprogramming after somatic cell nuclear transfer. One project will examine genome-wide changes in DNA methylation while the other will focus on the methylation and expression of imprinted genes. Both will investigate whether incomplete epigenetic reprogramming in sheep embryos contributes to the low efficiency and abnormal phenotypes resulting from somatic cell nuclear transfer. Candidates with experience of methylation/imprinting analysis and an interest in embryonic development are invited to contact Dr Lorraine Young ([Lorraine.Young@bbsrc.ac.uk](mailto:Lorraine.Young@bbsrc.ac.uk)) informally for further information.

This research is part of a program funded by Geron Bio-Med and the two post-doctoral research posts are being established to join an existing team of more than 20 scientists.

Successful candidates will have access to excellent facilities. These posts are available immediately.

Salary will be commensurate with experience.



Application forms can be obtained from the Personnel Office, Roslin Institute, Roslin, Midlothian EH25 9PS, Scotland UK. Tel: 0131 527 4481. Fax 0131 440 0434. Please quote ref no RI 12/99. Closing date for applications 19 May 2000.

Roslin Institute is an Equal Opportunities Employer



*Fort Dodge Animal Health, a global leader in the manufacturing of veterinary pharmaceuticals and biologicals, is seeking qualified candidates for the following position at our Fort Dodge, Iowa facility.*

### **VIROLOGY PROJECT LEADER**

Fort Dodge Animal Health currently has an immediate opening for a Project Leader in Viral Research and Development. This position requires a motivated and productive Ph.D. virologist with expertise in viral antigen preparation, pathogenesis and molecular virology.

A strong background in cellular and humoral immunology and a basic understanding of animal vaccinology are required. Post doctoral and industry experiences will be beneficial.

The responsibilities will include but not be limited to the planning, organization and supervision of in vivo and in vitro experimental studies for animal vaccine development resulting in USDA licensure.

In return for your expertise, we offer a competitive compensation package including a company sponsored pension and 401(k) plan. For consideration please send resume and cover letter to:

**Fort Dodge Animal Health  
Human Resources  
PO Box 518  
Fort Dodge, IA 50501**

EOE M/F/D/V

Pre-employment physical  
and drug screening required.



### **PROGRAM OFFICER: ELECTRONIC AND OPTO-ELECTRONIC**

The Office of Naval Research (ONR) is seeking a qualified individual to plan sponsored basic/applied research together with exploratory and advanced development programs and projects in the broad areas of electronic and opto-electronic materials, structures, and device processing. The sponsored efforts are conducted principally at U.S. universities and industry or Federal laboratories. This is a Federal Civil Service position at the GS-13/14/15 level (\$60,890-\$110,028), depending on individual qualifications.

As Program Officer in the broad areas of electronic and opto-electronic materials, structures, and device processing, the incumbent plans, evaluates, directs, and coordinates broad basic and applied research and advanced development projects essential to the Navy and Department of Defense. The incumbent will conceive, organize, direct, and defend integrated science and technology programs in their specific areas. Specific technical and programmatic fields or applications include, but are not limited to, wide bandgap and 6.1 angstrom lattice parameter semiconductors, and magnetic materials, semiconductor processing, and semiconductor structures (e.g., heterojunctions, contacts, quantum effects, etc.).

For detailed information on qualifications and how to apply, applicants may download a copy of Announcement # HRSCC-00-0225 from the Human Resources Center (HRSC) web site (<http://www.donhr.navy.mil>) or from ONR's web site (<http://www.onr.navy.mil/hr>). Those applicants who do not have access to the Internet may request a copy of the vacancy announcement from ONR's Vacancy Hotline at 703-696-0972. Applications must be in the HRSC Office by close of business 9 June 2000 or postmarked as of that date. For technical information concerning this position, applicants may contact Mr. Max Yoder at 703-696-4216.

U.S. CITIZENSHIP REQUIRED      AN EQUAL OPPORTUNITY EMPLOYER

### **Cancer Center Director**

Dartmouth Medical School and Dartmouth-Hitchcock Medical Center seek a Director for the Norris Cotton Cancer Center, an NCI-designated Comprehensive Cancer Center. Outstanding candidates having M.D. and/or Ph.D. degree(s) with scientific and clinical expertise are encouraged to apply. Essential qualifications are a strong record of clinical, research and administrative accomplishments in cancer-related areas. The Director works collaboratively with students, staff, faculty and the several communities of the Dartmouth-Hitchcock system to build on existing excellence in the teaching, research, and clinical programs of the Cancer Center. The Director oversees Dartmouth's Cancer Center Core Grant and an evolving strategic plan in prevention screening and cancer care provided in the extensive region served by the Cancer Center. Letters of application should include a curriculum vitae with a summary of relevant research, clinical and administrative experiences and the names of at least three references. Send letters of application to:

**Cancer Center Director Search  
Committee  
c/o K.C. Waterman,  
Dartmouth Medical  
School Administration,  
One Rope Ferry Road,  
Hanover, NH 03755.**

*Dartmouth, an equal opportunity/affirmative action employer, strongly encourages applications from women and minority candidates.*

### **SCIENTIFIC PROGRAM DIRECTOR**

National Multiple Sclerosis Society, NYC, is seeking a Scientific Program Director to manage research fellowship programs. Will help determine program priorities, funding levels, prepare analyses of research requirements, and coordinate committee activities.

Ph.D., MD or equivalent professional degree in biomedical science plus postdoctoral research or administrative experience required. Excellent written, verbal and interpersonal skills are essential.

Please fax your resume and salary history & requirements to: (212) 476-0535 or send to: **National Multiple Sclerosis Society, 733 Third Avenue, New York, NY 10017, Attn: Human Resources.** Only candidates selected for further consideration will be contacted.  
EOE M/F/D/V



**NATIONAL  
MULTIPLE SCLEROSIS  
SOCIETY**

### **UNIVERSITY OF VERMONT ASSISTANT/ASSOCIATE/ FULL PROFESSORS EUKARYOTIC GENETICIST/ DEVELOPMENTAL GENETICIST**

The Department of Microbiology and Molecular Genetics invites applications for two tenure-track faculty positions. We are soliciting applicants who have demonstrated superior productivity in the area of eukaryotic genetics. Potential research areas include genetic/genomic approaches to the study of development and/or human disease using model systems such as mice, nematodes, or fungi and/or human tissues/cells/cell lines. Opportunities for collaborative research exist both within and outside the Department in somatic cell genetics and biology, signal transduction, cell-cycle control, pathogenesis, protein-nucleic acid interactions, and structural biology. Candidates must hold a doctoral degree, have had postdoctoral research experience, and will be expected to establish a vigorous, independent research program as well as contribute to the Department's teaching responsibilities. Details about the Department and the University may be accessed at <http://salus.med.uvm.edu/mmg/mmg.html>. Applicants should submit a curriculum vitae, a description of research interests, and have three letters of reference sent to: **Dr. Douglas I. Johnson, Search Committee Chair, Department of Microbiology and Molecular Genetics, Stafford Hall, University of Vermont, Burlington, VT 05405.** Review of applications will begin immediately and continue until the positions are filled.

*The University of Vermont is an equal opportunity, affirmative action employer. Women and minorities are encouraged to apply.*



**Medicines for Malaria Venture**

**Medicines for Malaria Ventures (MMV)  
Funding Opportunities**

**CALL FOR LETTERS OF INTEREST**

- 1. Malaria Drug Discovery Research Proposals**
- 2. Malaria Drug Development Proposals**

MMV was recently established in Geneva as an Independent Foundation committed to the sustainable discovery and development of affordable antimalarial chemotherapies into the 21<sup>st</sup> century. It is based on a partnership between several public sector agencies, philanthropic organisations and the pharmaceutical industry. The venture will operate under the umbrella of the World Health Organisation Roll Back Malaria Project.

Last year three major drug discovery projects involving academic and industrial research groups were selected for funding at a combined total of \$4 million per year. In addition, several projects were selected for smaller 'seedcorn' grants. Generous donations from several agencies now enable MMV to initiate a second round of project support for the year 2000. Two categories are defined for this years proposals.

- 1 Malaria drug discovery projects** that are directed toward the identification of a candidate compound for entry into preclinical development
  - Projects may be at an early or late stage of the discovery process but must clearly outline the steps that will be followed and the issues that will be addressed to identify a candidate molecule.
  - Most projects selected for funding last year were based on a partnership between an academic centre and a pharmaceutical company. However, this should not be seen as restrictive and applications are also welcome from stand-alone academic groups or from biotechnology and other pharmaceutical companies. The key determinant for funding will be the perceived chance of project success.
  - Where it is thought that a project would benefit from the establishment of a partnership, MMV will make efforts and offer its services to facilitate this.
- 2 Malaria drug development projects** where a single molecule or combination (perhaps with a back-up compound) has been identified with demonstrably acceptable preclinical properties and a potential for clinical development.
  - The molecule (or combination) may be at either a preclinical or clinical stage of development. It must have a well documented activity in an appropriate animal model and / or in humans. Full details of available data, including preliminary chemistry, formulation, analytics, toxicology and ADME (adsorption, distribution, metabolism, excretion) should be provided.
  - An established partnership or organisation to take forward the candidate drug through clinical development to registration is desirable, but not an essential prerequisite for funding, as MMV can assist in organising preclinical and clinical development to registration.

Application for funding is initially requested through submission of a 3 page letter of interest to reach MMV offices by September 30<sup>th</sup>, 2000. Further details outlining the desired content of such a letter for either category (drug discovery or drug development) can be obtained by directing enquiries to MMV offices (see below) or can be obtained from the MMV web site ([www.malariamedicines.org](http://www.malariamedicines.org))

Subsequent to the letter of interest, a pre-selection of projects will be made by an Expert Scientific Advisory Committee. The Principle Investigators of these projects will then be asked to prepare a more detailed written proposal and representatives of the project teams will be invited to Geneva for an oral presentation of their projects to the committee in early 2001.

**For further information please contact:**  
**Medicines for Malaria Venture, MMV Office (L 249),**  
**Tropical Disease Research (TDR), World Health Organisation**  
**CH-1211 Geneva 27, Switzerland**

**Fax: +41 22 791 4854**

**E-mail: [mmv@who.int](mailto:mmv@who.int)**

*MMV gratefully recognises the funding and support it has received from the following organisations: Bill and Melinda Gates Foundation, Global Forum for Health Research, International Federation of Pharmaceutical Manufacturers Associations, Rockefeller Foundation, Roll Back Malaria Partnership, Swiss Agency for Development and Cooperation, The Netherlands Minister for Development Cooperation, United Kingdom Department for International Development, World Bank, World Health Organisation*



## POSITIONS OPEN

**A POSTDOCTORAL POSITION** is available in the Department of Medicine at Vanderbilt University School of Medicine. Ongoing projects involve the study of signal transduction and cross-talk pathways downstream of TGF $\beta$  family and Wnt receptors and include cDNA microarray and proteomics technologies to study the patterns of cellular responses to these ligands, functional and biochemical characterization of a novel receptor, and characterization of transcriptional regulation of Wnt and TGF $\beta$ -dependent cellular differentiation. Applicants should have a background in cell biology and/or protein biochemistry, with facility using molecular biological techniques. Starting date August 1, 2000. Please send curriculum vitae and names of three references, along with a separate one-page outline of your research interests, to: **Mark de Caestecker, M.D., Ph.D., Nephrology Division, Vanderbilt University School of Medicine, S-3223 Medical Center North, Nashville, TN 37232-2372.**

## CELLULAR AND MOLECULAR IMMUNOLOGY HARVARD MEDICAL SCHOOL

**POSTDOCTORAL POSITION** is available at the Brigham and Women's Hospital to study the cellular and molecular mechanisms by which glycolipid antigens activate T cells and dendritic cells (*Immunol. Rev.* 172:285; *Nature* 404:884). The ideal applicant will have a Ph.D. or M.D. with a background in cellular immunology, bacteriology, molecular biology, or lipid chemistry and have a desire to expand skills in these areas. Highly motivated applicants should forward a letter describing research interests and curriculum vitae electronically to: **Branch Moody, M.D., bmoody@rics.bwh.harvard.edu** or by post at: **Division of Rheumatology and Immunology, Smith 514, 1 Jimmy Fund Way, Boston, MA 02115.**

## POSTDOCTORAL POSITION HARVARD MEDICAL SCHOOL

NIH-funded Postdoctoral position available immediately to study Ca<sup>2+</sup>/calmodulin signaling in cancer and diabetes. We have identified new calmodulin targets in these cascades. See website: <http://rics.bwh.harvard.edu/sackslab>. Background in biochemistry, molecular biology, or cell biology. U.S. citizen/permanent resident with Ph.D. within past three years. Send curriculum vitae and three references to:

**Dr. David B. Sacks**  
Brigham and Women's Hospital/  
Harvard Medical School  
Thorn 530  
75 Francis Street  
Boston, MA 02115  
FAX: 617-278-6921  
E-mail: [dsacks@rics.bwh.harvard.edu](mailto:dsacks@rics.bwh.harvard.edu)

**POSTDOCTORAL POSITION** available immediately to study signal transduction underlying synaptic plasticity in auditory brain stem nuclei following cochlear lesions and hearing loss. Ph.D. degree in biochemistry/neuroscience/pharmacology is required. Experience with cell signaling pathways is preferred. Techniques include brain microdissection, transmitter release assays, receptor binding, tissue lysis, Western blotting, and immunohistochemistry. Send résumé and two letters of recommendation to: **Dr. Steven J. Potashner, Professor, Department of Neuroscience, University of Connecticut Health Center, 263 Farmington Avenue, Farmington, CT 06030 U.S.A. E-mail: [sjp@neuron.uchc.edu](mailto:sjp@neuron.uchc.edu).**

**POSTDOCTORAL POSITION** available immediately to study resistance in chili pepper to Phytophthora root rot. Candidates should have a Ph.D. and a strong background in molecular genetics. Send curriculum vitae and names and contact information for three references to: **Dr. James P. Prince, Department of Biology, California State University-Fresno, Fresno, CA 93740. FAX: 559-278-3963; e-mail: [jamespr@csufresno.edu](mailto:jamespr@csufresno.edu). An Equal Opportunity/Affirmative Action Employer.**

## POSITIONS OPEN

### POSTDOCTORAL POSITION PROTEIN CRYSTALLOGRAPHY CORNELL UNIVERSITY

A Postdoctoral position is available for an investigator to use single crystal X-ray diffraction techniques, including synchrotron radiation and MAD phasing, to investigate the structures of enzymes. Knowledge of crystallographic techniques, including data processing, phase determination and improvement, model building, and protein structure refinement, is necessary. Experience in protein production and crystallization is highly desirable. Candidates having strong skills in molecular biology and protein biochemistry with interest in learning techniques for structural biology will also be considered. Current goals of the laboratory include structure-based drug design, elucidation of catalytic mechanisms, evolution of protein function, evolution of biosynthetic pathways, and application of synchrotron radiation to protein crystallography. Current projects include enzymes of purine and pyrimidine nucleotide metabolism, enzymes of cofactor biosynthesis, and enzymes of polyamine biosynthesis. A recent Ph.D. in chemistry, biochemistry, biophysics or a closely related field is required. Salary will be commensurate with qualifications and experience. All appointments are for one year, with a possible extension for two additional years. Applications will be accepted until the position is filled. The candidate should forward a cover letter with curriculum vitae, copies of relevant publications, and contact information for three references to: **Prof. Steven E. Ealick, Baker Laboratory, Department of Chemistry and Chemical Biology, Cornell University, Ithaca, NY 14853-1301 U.S.A. E-mail: [sec3@cornell.edu](mailto:sec3@cornell.edu); FAX: 607-255-1227; Telephone: 607-255-7961.**

**POSTDOCTORAL POSITION** in microbial pathogenesis available to investigate heme acquisition systems used by *Haemophilus influenzae*. Emphasis will be placed on identification and characterization of *H. influenzae* outer membrane proteins, which interact directly with human heme carrier proteins and on *H. influenzae* gene products involved in the regulation of expression of these proteins. Experience with recombinant DNA techniques is required; this project makes extensive use of mutant analysis in conjunction with a relevant animal model. Position includes salary, fringe benefits, and the opportunity to work in a dynamic research environment. Position available after June 1, 2000. Send curriculum vitae and the names and telephone number of three references to: **Dr. Eric J. Hansen, Department of Microbiology, The University of Texas Southwestern Medical Center at Dallas, 5323 Harry Hines Boulevard, Dallas, TX 75390-9048. FAX: 214-648-5905. E-mail: [hansen01@utsw.swmed.edu](mailto:hansen01@utsw.swmed.edu). University of Texas Southwestern is an Equal Opportunity/Affirmative Action Employer.**

**POSTDOCTORAL POSITION** to study transcriptional regulation of intestinal and pancreatic endocrine cell differentiation. Projects include mechanisms of transcriptional repression by cyclins and analysis of endocrine cell lineage in transgenic mice (*Genes Dev.* 12:820, 1998; *Development* 126:4149-4156, 1999). Experience in molecular biology and/or transgenic mouse models is essential. Send curriculum vitae and the names of references to: **Andrew B. Leiter, M.D., Ph.D., GI Division #218, New England Medical Center, 750 Washington Street, Boston, MA 02111; e-mail: [ALeiter@lifespan.org](mailto:ALeiter@lifespan.org). Equal Opportunity Employer.**

**RESEARCH ASSOCIATE** needed to conduct research in molecular pharmacology and biological chemistry. Specific duties include research on protein stability, structure, function, and evolutionary constraints with a focus on  $\beta$ -lactamases. Ph.D. in microbiology or biochemistry required. Experience with site-directed mutagenesis, gene cloning and analysis, protein expression and purification, enzyme kinetics assays, circular dichroism, fluorescence, protein structure graphics, and computer programming. Send résumé to: **Brian Shoichet, Northwestern University, Department of MPBC, 303 East Chicago Avenue, Chicago, IL 60611.**

## POSITIONS OPEN

**POSTDOCTORAL POSITION** in biochemistry/physiology is available August 1, 2000. Our laboratory is studying the mechanism of steroid hormone-induced cataracts. We are particularly interested in rapid-nongenomic hormone actions on ocular lens epithelial cells. We will be examining the effects of steroids on calcium flux, using Fura-2-fluorescence, apoptosis, and cell differentiation. Some experience with fluorometry, along with a background in biochemical techniques and tissue culture, would be helpful. The salary ranges from \$32,000 plus fringe benefits with consideration for prior relative postdoctoral experience. Please send curriculum vitae, a brief description of your research background, and names of three references to:

**Richard J. Cenedella, Ph.D.**  
Chair, Department of Biochemistry  
Kirkville College of Osteopathic Medicine  
800 West Jefferson Street  
Kirkville, MO 63501

Kirkville College of Osteopathic Medicine is an Affirmative Action/Equal Opportunity Employer.

**SENIOR SCIENTIST:** Oncology Xenogen Corporation, a new, exciting biotech company in the San Francisco Bay area employing a patented bioluminescent technology to monitor infectious disease and cancer *in vitro* and in the living organism and a leader in the field of molecular biophotonics, has an opening for a Senior Scientist in its oncology group. This is an opportunity to apply and expand Xenogen's *in vivo* monitoring and tracking in the area of carcinogenesis. The successful candidate will have expertise in molecular biology as it applies to analyzing the multiple pathways involved in tumor cell growth, invasion, and metastasis as well as familiarity with animal tumor models and pathology. The position requires a Ph.D. and postdoctoral experience. Industry experience is a plus. Refer to Job #DJ021. FAX or mail résumés to: **Human Resources Department, Xenogen Corporation, 860 Atlantic Avenue, Alameda, CA 94501. FAX: 510-291-6196. Equal Opportunity Employer.**

### POSTDOCTORAL FELLOW MOLECULAR CARDIOLOGY PROGRAM Weill Medical College of Cornell University

Position available to study genetics of human cardiovascular disease, including identification of disease genes for familial cardiac tumors and aortic aneurysm disease and study of transcription factors in human cardiogenesis. Exceptionally motivated applicants (Ph.D., M.D., M.D./Ph.D.) with experience in molecular biology and/or genetics should send letter of interest, curriculum vitae, and three references to: **Craig T. Basson, M.D., Ph.D., Director, Molecular Cardiology Laboratory, Weill Medical College of Cornell University, 525 East 68th Street, New York, NY 10021. FAX: 212-746-2222; e-mail: [ctbasson@med.cornell.edu](mailto:ctbasson@med.cornell.edu). Equal Opportunity Employer.**

**ASSISTANT RESEARCH SCIENTIST.** The candidate should have a Ph.D. degree; one to two years of research experience in behavioral pharmacology of opioids and pain including (1) evaluation of analgesics in monkeys, (2) development of primate pain models, and (3) performing biochemical assays correlative to behavioral studies; and evidence of ability to obtain external funding. Send curriculum vitae and three reference letters to: **Dr. James H. Woods, Department of Pharmacology, University of Michigan, 1301 MSRB3, Ann Arbor, MI 48109-0632. The University of Michigan is a nondiscriminatory Affirmative Action Employer.**

**POSTDOCTORAL POSITION** available to study TGF $\beta$  signaling in skin carcinogenesis using transgenic/knockout models. Requires molecular biology skills. Experience in knockout constructs and ES cells is desirable. Contact: **Xiao-Jing Wang, Associate Professor, Department of Dermatology, Baylor College of Medicine, Houston, TX 77030. E-mail: [xwang@bcm.tmc.edu](mailto:xwang@bcm.tmc.edu).**

# Serono Pharmaceutical Research Institute



The Institute is an affiliate of The Ares-Serono Group which has its Executive Headquarters in Geneva (Switzerland) and is a leading multinational engaged in research, development and marketing of products in the biotechnology field. The Institute is a state-of-the-art centre of scientific excellence. Its research is directed towards the identification of novel molecular mechanisms underlying disease and the discovery of new drugs.

We are recruiting highly motivated and creative individuals for the following positions available immediately

## STAFF SCIENTIST AND POSTDOCTORAL POSITIONS

### In Neurodegenerative Diseases.

Two positions are available to study the molecular mechanism of protein misfolding and aggregation in neurodegenerative disorders, such as Alzheimer's and prion diseases. The successful candidates will join a team working on the development of novel strategies to prevent protein conformational changes implicated in amyloid formation (Nature Med 4: 822-826, 1998; The Lancet 355: 192-197, 2000).

The candidates should have a strong background in neurobiology, peptide chemistry or pharmacology. Experience with Alzheimer's or prion-related diseases would be an added advantage.

Informal enquiries can be directed to Dr. Claudio Soto ([claudio.soto@serono.com](mailto:claudio.soto@serono.com)) or by visiting our web site at [www.spri.serono.com](http://www.spri.serono.com). Job code: CS.

## POSTDOCTORAL FELLOWSHIPS

### In Immunology / Molecular Biology for the following research topics :

**Genes associated with autoimmune and fibrotic diseases:** The successful candidate will use differential gene expression strategies to identify novel candidates. Practical experience in fibroblast cell biology and knowledge of fibrotic diseases is necessary. Some molecular biology training would be useful though not essential.

Informal enquiries can be directed to Dr. Christine Power ([christine.power@serono.com](mailto:christine.power@serono.com)). Job code: CP.

**Molecules that influence apoptosis during inflammatory responses:** The successful candidate will identify mechanisms associated with recently discovered proteins. Excellent working knowledge in basic immunology is required.

Informal enquiries can be directed to Dr. Yolande Chvatchko ([yolande.chvatchko@serono.com](mailto:yolande.chvatchko@serono.com)). Job code: YC.

**Molecules controlling dendritic cell responses:** The successful candidate will work with recently identified proteins as well as generate new tools in order to modify antigen presentation events in vivo. Extensive working knowledge of dendritic cell biology is a plus.

Informal enquiries can be directed to Dr. Marie Kosco-Vilbois ([marie.kosco-vilbois@serono.com](mailto:marie.kosco-vilbois@serono.com)). Job code: MKV.

Applicants for all the above-mentioned positions must have a PhD or MD/PhD. The successful candidates will be expected to publish. If you are interested, please send your curriculum vitae with a list of publications and the names of three referees to the Personnel Department of the Institute. (quoting the job code and the advertisement source)

## Serono Pharmaceutical Research Institute

Ares-Serono International S.A.  
14, chemin des Aulx  
1228 Plan-les-Ouates/Geneva

Telephone +41 22 706 96 66  
Telefax +41 22 794 69 65  
E-Mail [spri.jobs@serono.com](mailto:spri.jobs@serono.com)

## POSITIONS OPEN

**POSTDOCTORAL SCIENTIST and SENIOR RESEARCH ASSISTANT** positions available in the Center for Genomic Sciences (CGS). Several professional and technical positions are currently open for enthusiastic researchers at various educational and skill levels in molecular biology and genomic sciences. Become an integral member of an exciting and successful research team with the potential for rapid career advancement. CGS focuses on the application of state-of-the-art technology to answering important clinical problems and is a multidisciplinary research unit jointly directed by scientists and clinicians. Ongoing projects include: disease gene mapping and cloning, gene structural and mutational analyses, and studies on the heritability of infectious disease susceptibility. Several ongoing projects utilize global gene expression technologies including: characterization of pathogen and host expressomes during chronic bacterial infection, wound healing processes, and model systems developed to characterize the downstream physiological effects of mutations associated with inherited and somatic genetic diseases. Competitive salaries and an excellent working environment are two of the benefits you will receive; in addition, the Pittsburgh area has been repeatedly rated as one of the most desirable metropolitan areas in the U.S.A. The Center for Genomic Sciences has recently moved into 4,500 square feet of renovated laboratory space, which has been equipped with over \$2 million worth of instrumentation. For consideration, send curriculum vitae and names of three references to: **Garth D. Ehrlich, Ph.D., Executive Director, Center for Genomic Sciences, Room 1030, South Tower, Allegheny General Hospital, 320 East North Avenue, Pittsburgh, PA 15212. E-mail: gehrich@wpahs.org. Equal Opportunity Employer. Smoke-free/drug-free workplace.**

## POSTDOCTORAL RESEARCH ASSOCIATE POSITION

Postdoctoral Research Associate to participate in epidemiological study of body composition and cardiovascular disease risk factors. Primary focus is analyzing data collected in ongoing studies and to collaborate on manuscripts. Opportunities exist for expanding the scope of the research. Doctorate required (by starting date) in epidemiology, genetic epidemiology, sports medicine, biostatistics, exercise physiology, anthropology, human biology, nutrition, or a related field. Analytical background and research interests compatible with this team preferred. Ability to work independently and cooperatively within a team of established investigators is essential. Current research interests within this team include genetic epidemiology, aging, biostatistical methods for serial analyses, and the role of changes in body composition throughout the life span in the development of cardiovascular and other age-related diseases. Review begins May 1, 2000. Open until filled. Apply to: **Chair, Postdoctoral Search Committee, Division of Human Biology, Wright State University SOM, 3171 Research Boulevard, Kettering, OH 45420-4014. FAX: 937-775-1456; website: <http://www.med.wright.edu/som/academic/divhum>. Equal Opportunity/Affirmative Action Employer.**

## POSTDOCTORAL POSITIONS IN IMMUNOLOGY BAYLOR COLLEGE OF MEDICINE

Postdoctoral positions are immediately available in the Department of Immunology to study the somatic genetics of *in vivo* immune responses, antigen-driven lymphocyte differentiation, and germinal center biology. Applicants should have a Ph.D. and/or M.D. degree and experience in molecular and cell biology. Please send curriculum vitae and names and addresses of three references to: **Biao Zheng, M.D., Ph.D., Department of Immunology, M929/DeBakey Building, Baylor College of Medicine, One Baylor Plaza, Houston, TX 77030. E-mail: bzheng@bcm.tmc.edu. Baylor College of Medicine is an Equal Opportunity/Affirmative Action/Equal Access Employer.**

## POSITIONS OPEN



**POSTDOCTORAL POSITIONS** in molecular cell biology, biochemistry, and cardiovascular physiology in the Center for Cardiovascular Sciences at Albany Medical College. Qualified applicants may be eligible for support by an institutional NHLBI training grant. Albany Medical College is located on the University Heights Campus within Albany, which is also home to the Axelrod Institute (Wadsworth Center for Laboratories and Research), Albany College of Pharmacy, and Albany College of Law. Albany is the gateway to the Adirondack Park in upstate New York and is within easy driving distance to Boston, New York City, Montreal, and numerous recreational sites in southern Vermont and western Massachusetts. Positions are available in the following laboratories: (1) **Dr. Paul Black:** fatty acid transport, activation, and intracellular trafficking with a focus on the structure-function of transport proteins and acyl CoA synthetases (e-mail: [blackp@mail.amc.edu](mailto:blackp@mail.amc.edu)). (2) **Dr. Concetta DiRusso:** ligand interactions in fatty acid trafficking and fatty acid-mediated transcriptional regulatory pathways (e-mail: [dirussoc@mail.amc.edu](mailto:dirussoc@mail.amc.edu)). (3) **Dr. David Jourdh'euil:** biochemistry and cell biology of reactive metabolites derived from molecular oxygen and nitric oxide with a focus on nitric oxide regulation of tissue free radical injury in the cardiovascular system (e-mail: [jourdh@mail.amc.edu](mailto:jourdh@mail.amc.edu)). (4) **Dr. Victor Rizzo:** biochemistry and molecular genetics of caveolae and caveolin in signaling and transport (e-mail: [rizzov@mail.amc.edu](mailto:rizzov@mail.amc.edu)). (5) **Dr. Harold Singer:** intracellular signaling by protein kinases with a focus on the structure-function of CaM kinase II isozymes (e-mail: [singerh@mail.amc.edu](mailto:singerh@mail.amc.edu)). (6) **Dr. Peter Vincent:** regulation of endothelial monolayer integrity by growth factors and inflammatory cytokines (e-mail: [vincenp@mail.amc.edu](mailto:vincenp@mail.amc.edu)).

A Ph.D. in a biomedical science and experience in molecular biology, cell biology, and/or protein biochemistry is required. Send curriculum vitae and e-mail addresses for at least two references to one of the faculty above or to: **Jo Anne La Plante (e-mail: [laplanj@mail.amc.edu](mailto:laplanj@mail.amc.edu)), Center for Cardiovascular Sciences, Albany Medical College, MC-8, 47 New Scotland Avenue, Albany, NY 12208. AMC is an Equal Opportunity Employer.**

Viral immunology and vaccine development: Two **POSTDOCTORAL POSITIONS** are available. The first position will involve the development of prophylactic/immunotherapeutic approaches to diseases caused by human papillomaviruses, including construction and preclinical immunogenicity testing of nonreplicating vectors for improved antigen presentation and/or delivery of immunomodulatory genetic elements. The second position will involve the study of immune responses to respiratory viral pathogens. Applicants should have demonstrated expertise in molecular biology, immunology, or virology. Please send curriculum vitae and contact information for three references to: **Robert Rose, Ph.D., University of Rochester Medical Center, Department of Medicine, Box 689, 601 Elmwood Avenue, Rochester, New York 14642. E-mail: [robert\\_rose@urmc.rochester.edu](mailto:robert_rose@urmc.rochester.edu).**

An NIH-funded **POSTDOCTORAL POSITION** to study calcium-triggered exocytosis and compensatory endocytosis (Vogel et al., *PNAS* 96: 5019, 1999; Smith et al., *JCB* 148:755, 2000) using two-electrode voltage clamp, patch clamp, and multiphoton microscopy is available immediately. Experience in electrophysiology, membrane trafficking, cell imaging, or molecular biology is desirable, but self-motivation is the most important factor. Send cover letter (but no form letters), curriculum vitae, and the names of three references to: **Steve Vogel, Medical College of Georgia, Institute of Molecular Medicine and Genetics, 1120 15th Street CB 2803, Augusta, GA 30912-2630. E-mail: [stevev@immag.mcg.edu](mailto:stevev@immag.mcg.edu). Medical College of Georgia is an Affirmative Action/Equal Opportunity Educational Institution.**

## POSITIONS OPEN

## FACULTY POSITION COMPUTATIONAL BIOLOGIST STANFORD UNIVERSITY SCHOOL OF MEDICINE

### Department of Genetics

**ASSOCIATE PROFESSOR** (research) in the Department of Genetics, Stanford University School of Medicine. Appointment is for six years (renewable; nontenure track). The position requires about 10 years of experience and a proven track record in designing and maintaining computation resources for biological data. Doctoral degree in biology and/or computation is essential as is the ability to communicate effectively at a professional level with both Ph.D. biologists and computational specialists. The position involves a balance between research service and original research. The position carries responsibilities for directing a Web-accessible national resource database (Saccharomyces Genome Database) and a variety of evolving gene-expression databases (e.g., Stanford Microarray Database) supporting local research. These responsibilities involve the supervision of about 20 professional staff, including biological data curators and computational specialists. Research areas include sequence analysis, analysis of gene expression data, gene ontology, and comparative genomics.

Candidates should send their curriculum vitae, bibliography, statement of research interests, and the names of three references to: **Dr. David Botstein, Search Committee Chairman, c/o Louann Kosmerl, Department of Genetics, Stanford University School of Medicine, 300 Pasteur Drive, L329, Stanford, CA 94305-5120. Stanford University is committed to increasing representation of women and members of minority groups on its faculty and particularly encourages applications from such candidates.**

**POSTDOCTORAL POSITION** available immediately to study biochemistry/cell biology of tissue remodeling proteins (see website: <http://southmed.usouthal.edu/com/biochem/aronsen.html>). Experience in molecular biology and protein biochemistry desirable. Salary: \$26,000. Possible three-year appointment. Send curriculum vitae, three letters of reference, and reprints to:

**Dr. Nathan N. Aronson  
Professor and Chair  
Department of Biochemistry and  
Molecular Biology  
MSB 2146  
University of South Alabama  
Mobile, AL 36688-0002**

Mayo Clinic clinical biochemistry **POSTDOCTORAL FELLOWSHIPS**. Seeking applicants for two-year ComACC-approved Fellowship directed toward qualified individuals (Ph.D. or M.D. required) pursuing careers in clinical biochemistry. Individuals completing the program are eligible for certification by the American Board of Clinical Chemistry. Applications on file by October 1, 2000, will be considered for appointment beginning in July 2001. Contact: **Thomas P. Moyer, Ph.D., Division of Clinical Biochemistry and Immunology, Mayo Clinic, Rochester, MN 55905** for more information. Mayo Foundation is an Affirmative Action and Equal Opportunity Employer and Educator.

## COURSES & TRAINING

Announcing an intensive one-day workshop on **MICROARRAY IMAGE ANALYSIS** and two-day workshop on **MICROARRAY DATA MINING**. These bioinformatics workshops will cover both theoretical and practical aspects of the science. For more information about the workshops, updates on future workshops, and registration procedures visit website: [www.biodiscovery.com](http://www.biodiscovery.com), Telephone: 310-966-9366 or FAX: 310-966-9346. Additional questions can be directed to: **Dr. Alexander Kuklin, e-mail: [akuklin@biodiscovery.com](mailto:akuklin@biodiscovery.com).**

## ANNOUNCEMENTS

Announcing the 11th International Congress of Histochemistry and Cytochemistry (ICHC 2000)

### CELL BIOLOGY AND IMAGING TOOLS FOR THE NEW CENTURY

September 3-8, 2000, York, United Kingdom

Come to the beautiful medieval city of York and enjoy the city as well as 27 scientific symposia addressing latest developments in histochemistry and imaging for cell biology and pathology. For further details of the meeting, bursaries, registration online, and abstract submission, visit the ICHC 2000 website: <http://www.med.ic.ac.uk/external/ichc2000>.

## GLOBAL OPPORTUNITIES

### TENURE-TRACK POSITION X-RAY CRYSTALLOGRAPHY

The Institute of Biochemistry at National Chung Hsing University in Taiwan is looking for a new member with expertise in X-ray crystallography. The position will be filled at the ASSISTANT, ASSOCIATE, or FULL PROFESSOR level. Applicants must have a Ph.D. degree and a minimum of two years of postdoctoral experience related to aspects of biomolecule structure determination using X-ray diffraction methodology or equivalent. In addition to establishing strong, independent research programs, the candidate is expected to participate in professional teaching curriculums. Young talented scientists, originally from Taiwan and currently in a Ph.D. program, with outstanding and promising research projects are encouraged to apply. A joint effort from Academia Sinica and NTU will promote such a junior scientist to prominent laboratories for one to two years of training with pay and future recruitment. Please send curriculum vitae including two letters of reference, a list of publications, and a description of research plans by August 31, 2000, to: The Faculty Search Committee, National Chung Hsing University, College of Life Science, Institute of Biochemistry, Taichung, Taiwan 40227 R.O.C. NTU is an Equal Opportunity Employer but will not consider applicants originating from communist countries.

## MARKETPLACE

### The World of Science Online

- Science Electronic Marketplace
- Science's Next Wave
- Science NOW
- Science Professional Network

**Science**  
[www.scienceonline.org](http://www.scienceonline.org)

Rapid HIV-1 p24 Antigen Test  
\$150/50 Tests (minimum)



STRICTLY FOR  
NON-HUMAN  
RESEARCH

- Highly Specific and Sensitive**
- Sensitivity in 1 pg/test range
  - Tissue Culture/Serum/Plasma p24
  - Results in less than 5 minutes

Immune Diagnostics, Inc. Call: 800-573-1700

Circle No. 70 on Readers' Service Card

**2 min DNA  
Clean-up & Concentrate**  
for PCR, enzyme reactions, "dirty" DNA, etc.

**Improved Gel DNA Recovery**  
for perfect ligations & sequencing, etc.

ZYMO RESEARCH 1-888-882-9682 [www.zymo.com](http://www.zymo.com)

Circle No. 7 on Readers' Service Card

## MARKETPLACE

**DNA Sequencing** as low as

**\$12/run**

**Genotyping/Genetic Analysis**

Call for details

1-800-654-4671 <http://www.ana-gen.com> **ANA-GEN**  
Ana-Gen Technologies, Inc.

Circle No. 51 on Readers' Service Card

**Entelechon**

**Synthetic  
Genes**

Starting at

**3.50 EUR /bp**

with

**2 weeks**

delivery time

**[www.entelechon.com](http://www.entelechon.com)**

Circle No. 69 on Readers' Service Card

**CLONING & EXPRESSION**

**Rapid Full Length Cloning of Genes  
Guaranteed Gene Expression in Bacteria, Yeast,  
Insect, and Mammalian Systems  
High Purity and Bulk Protein Purification**

**ExpressGen, Inc.**

1-877-CLONING [www.expressgen.com](http://www.expressgen.com)

Circle No. 55 on Readers' Service Card

YOUR SPECIALIST FOR THE ANALYSIS  
OF GENETICALLY MODIFIED RODENTS

**frimorfo**

WE KEEP YOU IN FOCUS™

[www.frimorfo.com](http://www.frimorfo.com) [info@frimorfo.com](mailto:info@frimorfo.com)

Tel: +41 26 300 8530; Fax: +41 26 300 9668; Chemin du Musée 12/1700 Fribourg, Switzerland

Circle No. 4 on Readers' Service Card

**Vapor Pressure  
Osmometer**

The preferred method of  
measuring the osmolality  
of any biological fluid.

**WESCOR, INC. 1-800 453-2725**

Circle No. 23 on Readers' Service Card

## MARKETPLACE

**POLYCLONAL ANTIBODIES**

**QUICK QUOTE**

MOST QUOTES IN AN HOUR

**FAST DELIVERY**

PEPTIDE TO ANTISERUM IN 70 DAYS

100% SATISFACTION GUARANTEED

**...MADE EASY!**

**NEW ENGLAND**

**PEPTIDE, INC.**

Tel: 888-343-5974

Fax: 978-343-5940 [www.newenglandpeptide.com](http://www.newenglandpeptide.com)

Circle No. 5 on Readers' Service Card

**Custom  
Antibodies • Peptides**

**No Hidden Charges!**

**Custom Antibodies from \$1295 include:**

- Free consultation and tech support
- HPLC purification, MS & HPLC analysis, N/C-terminal modifications, 4-6mg peptide, 100+µL serum, ELISA & more

**Custom peptides from mg to >10g**

**HPLC purification available up to 98+%**

800-435-2080 • Fax: 508-435-2199

**biosource.com BIOSOURCE**  
INTERNATIONAL

Circle No. 22 on Readers' Service Card

## FIXATIVE FOR MOLECULAR BIOLOGY

Streck's S.T.F. is a unique formulation that allows a laboratory to perform esoteric molecular diagnostic tests with one solution.

### CELL & MOLECULAR BIOLOGY FIXATIVE



U.S. Patents 5,196,182 and 5,260,048

♦ Over 40 publications

describe S.T.F.'s use in:

- ISH • FISNA
- TUNEL • CIA
- in situ PCR/RT-PCR

(Ask for the S.T.F. publication list.)

♦ Certified RNase and DNase-free and non-cross-linking.

♦ Enhances viral detection & quantification systems.

### HISTOPATHOLOGY

- ♦ Enhances tissue morphology and nuclear detail.
- ♦ Improves immunohistochemistry without antigen retrieval.

**STRECK  
LABORATORIES, INC.**

(800) 843-0912

Circle No. 25 on Readers' Service Card

**HSA RECOMBINANT**  
HIGH PURITY PATHOGEN FREE  
Numerous Applications:  
• Cell & Tissue Culture • Product Formulation  
• Protein Stabilization • Pharmaceutical R&D  
Technical data and pricing available at  
**[www.newcenturypharm.com](http://www.newcenturypharm.com)**  
New Century Pharmaceuticals, Inc. 256-461-0024

Circle No. 46 on Readers' Service Card

**StemSpan™ SFEM**

**Serum-Free Expansion Medium**

Optimized for Growth of Human or Murine:

Hematopoietic Progenitors • Dendritic Cells

Tel: (604) 877-0713 Toll-free Tel: 1-800-567-0322  
Fax: (604) 877-0704 Toll-free Fax: 1-800-567-2899  
[info@stemcell.com](mailto:info@stemcell.com) [www.stemcell.com](http://www.stemcell.com)

**StemCell  
Technologies Inc.**

Circle No. 2 on Readers' Service Card

# MARKETPLACE



**MORE PRODUCTS  
ON PREVIOUS PAGE**

**your Single-Source  
Antibody Authority**

**STRATEGIC  
BIOSOLUTIONS**

**Custom Antibody Services**

• Polyclonal • Monoclonal  
• Synthesis Development • Assays Production  
• Purification • Conjugation

**800.481.9737**  
www.strategicbiosolutions.com

Circle No. 60 on Readers' Service Card

New on our  
**WEBSITE**  
Synthetic chemokines

And more than  
**7000 peptides,**  
biochemicals and other life  
science products for you.

**www.bachem.com**

Circle No. 47 on Readers' Service Card

**Highly Purified Salt Free  
Oligonucleotides**

**Custom DNA Synthesis**

**HPSF (Highly Purified Salt Free) Grade**

- ❖ Failure products removed ❖ Salt Removed
- ❖ MALDI-TOF production QC
- ❖ No Metal Ions ❖ Modifications available

Starting at \$0.49/base for HPSF Grade  
(0.01 µmol scale) Volume discounts available.

**Never a purification or setup fee!**  
**For reactions that work...every time!**

**MWG  
BIOTECH**  
Online Ordering & Tracking

Toll Free: 877-694-2832 info@mwgbiochem.com  
http://www.mwgbiochem.com

Circle No. 45 on Readers' Service Card

**Full Spectrum Gene Services** *Remove the limits!*

**GENE** synthesis, codon optimization, sequencing,  
cloning, library, mutagenesis, expression,  
**MUTATION SCREENING**, tailoring...& more!

de novo gene synthesis as low as \$5/bp

**SEQUENCING \$15** special plasmid, PCR  
/RUN genome, SNP...

**Plasmid Purification** ultrapur, large scale for gene therapy

800-214-7722. CustomerService@ElinBiopharm.com

Circle No. 52 on Readers' Service Card

**XX IDT®**  
INTEGRATED DNA TECHNOLOGIES, INC.

**Premier Specialty Synthesis**  
Molecular Beacons, RNA,  
Antisense Oligos & More

**1-800-328-2661 - www.idtdna.com**

Circle No. 53 on Readers' Service Card

# MARKETPLACE

## Custom Peptides & Antibodies

**Best Service & Price! Compare and Save!**

**Alpha Diagnostic (800) 786-5777**

**Fax (210) 561-9544; info@4adi.com**

**Web site: http://www.4adi.com**

Circle No. 57 on Readers' Service Card

## QUALITY DNA SYNTHESIS

**MALDI-TOF Mass Spectrometry Quality Control**

Fluorescent Dyes & Other Modifications  
Gene Construction & Sequencing Services  
Custom RNA Oligos & Antisense DNA Oligos  
Custom Primers for PCR & Sequencing  
Long Oligos (up to 150-mers)  
**Competitive Pricing**

**MIDLAND**

The Midland Certified Reagent Company

**1-800-247-8766 • FAX: 1-800-359-5789**

**www.mcrc.com • email: mcrc@oligos.com**

Circle No. 54 on Readers' Service Card

**3 O.D. Select Oligos**

**Just \$0.60/base\***

Order through our Web site and we'll ship your  
3 O.D. Select oligos in just 24-48 hours. Every  
oligo is QC'd by PAGE analysis, and each batch  
is performance-tested by mass spec.

\*Desalted only. Oligos must be 10 to 35 bases in length. No modifica-  
tions or additional purification. Web orders only. Offer valid in U.S. only.

**SIGMA  
GENOSYS**

North America: 1-877-710-1504 • email: gorderentry@sial.com

Circle No. 48 on Readers' Service Card

**TriLink BioTechnologies**  
Superior Quality with Unparalleled Service

**Molecular Beacons**

See the TriLink difference  
Experience Matters

www.trilinkbiotech.com 800-863-6801

Circle No. 50 on Readers' Service Card

**MERLIN® CORE SERVICES**

**Plasmid Purification**  
Endotoxin Removal  
Any Amount

**1-800-4-BIO-101 • www.bio101.com**

Circle No. 58 on Readers' Service Card

# MARKETPLACE

**BIO•SYNTHESIS, INC.**

**PEPTIDES\***

Milligrams to Grams  
Desalted to >95% purity  
HPLC and Mass Spec included  
High Tri-put  
Fast Turnaround  
\* Also available: **Antipeptide Antibodies**  
www.biosyn.com **1-800-227-0627**

20% OFF  
Call for details!

Circle No. 56 on Readers' Service Card

**Quality Peptides & Antisera**  
Friendly, Personal Service  
www.genosys.com

**Custom Peptide Synthesis**

- sequence analysis
- IG, >70%, >80%, >95% purity
- scales from 2 mg-1 g
- synthesis up to 120 residues
- variety of modifications available
- mass spec & HPLC on every peptide
- satisfaction guaranteed

**Polyclonal Antisera Service**

- antigen design assistance
- synthesis, conjugation and sera collection
- flexible protocol

**SIGMA  
GENOSYS**

North America 1-877-710-1502  
information@sial.com

Europe (+44) (0) 1223 839000  
info@sigma-genosys.co.uk

Circle No. 49 on Readers' Service Card

**Custom  
DNA Sequencing**

- ❖ Long Reads❖
- ❖ Plasmid Inserts❖
- ❖ Sequence Done in a Week❖
- ❖ Single Strand as low as❖  
\$20.00 for < 500 bases
- ❖ Double Strand❖  
\$30.00 up to 450 bases  
\$45.00 up to 650 bases  
\$70.00 up to 1600 bases

**Inquire about Large Inserts and Genome  
Sequencing.**

**MWG  
BIOTECH**

Toll Free: 877-694-2832 info@mwgbiochem.com  
http://www.mwgbiochem.com

Circle No. 44 on Readers' Service Card

**Custom Peptides**

**\$14/residue** 3 days turn around  
Free Mass Spec  
HPLC/UV Trace  
8-17 residues  
20-50 mg (Desalted)

Please inquire for modified peptides  
Tel: 800-597-7873  
925-371-1070  
Fax: 925-371-1156  
email: peptide@peptidogenic.com

**PeptidoGenic** The Peptide Engineering Specialist

Circle No. 3 on Readers' Service Card

**Custom DNA**

Purified and delivered in 48 Hours  
http://www.resgen.com

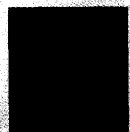
**Research Genetics**  
**1-800-533-4363**

Circle No. 59 on Readers' Service Card

## Discover A Clear Array Of Possibilities. Introducing ExpressChip™ From Mergen.



ExpressChip 



New and powerful tools to accelerate research and drug discovery into the next millennium. Introducing the ExpressChip DNA Microarray System from Mergen. Leading edge products and services designed to serve the exacting needs of life scientists working in pharmaceutical research, academia and biotechnology.

The ExpressChip System, developed to profile the differential expression of thousands of genes simultaneously, offers high detection sensitivity with consistent, reliable, and cost effective results. In an easy-to-use format, the ExpressChip System provides the speed and flexibility to fully complement your research needs. Choose from our standard systems pre-spotted with DNA sequences functionally important for cell growth and disease development. Or, customize your own ExpressChip System. All ExpressChip systems are backed with a variety of expert services including probe preparation, hybridization and detection, scanning and data processing—all designed to continuously keep you up-and-running.

The ExpressChip DNA Microarray System from Mergen. Discover an endless array of new possibilities. To reserve your ExpressChip System or to learn more, visit us on the web at [www.mergen-ltd.com](http://www.mergen-ltd.com), or call toll-free at 1-877-4MERGEN (463-7436).



MERGEN LTD.



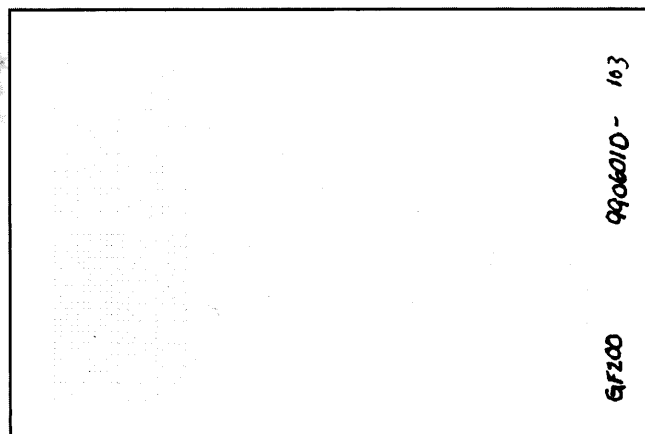
# GENEFILTERS<sup>®</sup> MICROARRAYS

## CONSISTING OF THE DNA INSERTS FROM TENS OF THOUSANDS OF SEQUENCE VALIDATED CLONES

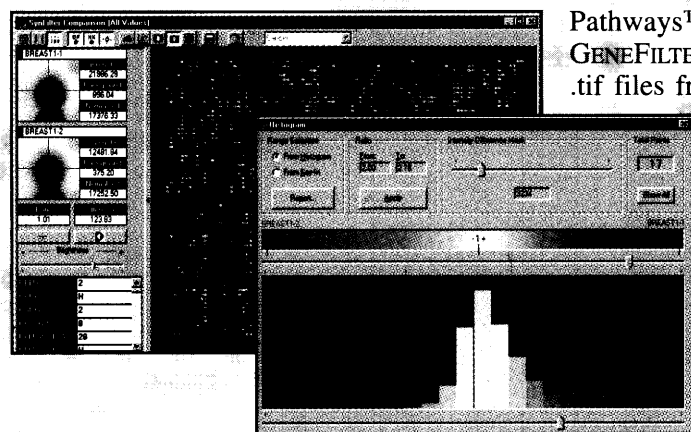
GENEFILTERS microarrays contain DNA from over 5,000 different genes spotted onto positively charged nylon membranes. Over 30,000 human genes are represented in our growing collection of sequence validated I.M.A.G.E./LLNL clones<sup>1</sup> chosen from the UniGene<sup>2</sup> set. In addition to six GENEFILTERS microarrays representing the entire human collection, individual GENEFILTERS microarrays are available which represent only named human genes or only genes that have been shown to be expressed in a particular human tissue. Two releases of rat GENEFILTERS microarrays are also available. Together the rat microarrays represent over 10,000 rat genes.<sup>3</sup>

GENEFILTERS microarrays offer the opportunity to carry out sophisticated, genome-wide gene expression experiments. Standard hybridization methods with <sup>32</sup>P and a phosphor imaging system produce data which can be analyzed using Pathways<sup>™</sup> analysis software. GENEFILTERS microarrays can be probed up to five times. For a complete description of each of the GENEFILTERS microarrays, see our web site at <http://www.resgen.com>.

Ref: 1. Lennon, G., Auffray, C., Polymeropoulos, M., Soares, M.B. (1996) *Genomics* 33, 151-152.  
2. <http://www.ncbi.nlm.nih.gov/UniGene/index.html>  
3. <http://ratEST.uiowa.edu>



(Actual Size)



Pathways<sup>™</sup> software was designed specifically for use with GENEFILTERS microarrays. The software imports and stores .gel or .tif files from phosphor imaging systems, and locates, calculates, and stores the spot intensities from those files. The software is capable of analyzing images from single membranes or graphically comparing two different images. A histogram tool allows selection of genes with differential expression. The internal database provides instant, on-screen identification of each spot as it is selected.

| Cat. No. | Description                    |
|----------|--------------------------------|
| GF200    | Human GENEFILTERS Release I    |
| GF201    | Human GENEFILTERS Release II   |
| GF202    | Human GENEFILTERS Release III  |
| GF203    | Human GENEFILTERS Release IV   |
| GF204    | Human GENEFILTERS Release V    |
| GF205    | Human GENEFILTERS Release VI   |
| GF211    | Human Named Genes GENEFILTERS  |
| PW200    | Pathways <sup>™</sup> Software |

| Cat. No. | Description                 |
|----------|-----------------------------|
| GF300    | Rat GENEFILTERS Release I   |
| GF301    | Rat GENEFILTERS Release II  |
| GF221    | Human Prostate GENEFILTERS  |
| GF223    | Human Ovary GENEFILTERS     |
| GF225    | Human Breast GENEFILTERS    |
| GF227    | Human Colon GENEFILTERS     |
| ID1001   | DermArray Human Skin array* |

For pricing and additional information, please visit our website at <http://www.resgen.com>

\* Co-developed with IntegriDerm, Inc.; Enriched with genes expressed in keratinocytes, melanocytes, fibroblasts and genes involved in drug metabolism & pharmacology. Special conditions for use apply.  
© GENEFILTERS is a U.S. registered trademark of Research Genetics, Inc. (Huntsville, AL).  
© Research Genetics and Accelerating Discovery are U.S. registered trademarks/service marks of Research Genetics, Inc. (Huntsville, AL).  
™ Pathways is a trademark of Research Genetics, Inc. (Huntsville, AL).

## Research Genetics.

### Accelerating Discovery.

2130 Memorial Pkwy, SW • Huntsville, AL • 35801

U.S. or Canada 800-533-4363

Worldwide 256-533-4363

FAX 256-536-9016

<http://www.resgen.com>

Research Genetics - An Invitrogen Company

Circle No. 21 on Readers' Service Card