

NEW PRODUCTS

RIBONUCLEASE INHIBITOR

Ambion

For more information call 800-888-8804 or **circle 147** on the Reader Service Card

SUPERase-In RNase Inhibitor inhibits the most common and troublesome ribonucleases, including RNase A forms (RNase A, B, C), RNase T1, and RNase 1. It can be used in applications

where ribonuclease contamination could be problematic, including in vitro transcription and translation, cDNA synthesis, reverse transcriptase polymerase chain reaction, and preparation of ribonuclease-free antibodies.

GENE DELIVERY SYSTEM

The *TransIT In Vivo* Gene Delivery System contains a unique polymer formulation that facilitates efficient delivery of exogenous DNA complexes into tissues of live mice. This easy-to-use

PanVera

For more information call 800-791-1400 or **circle 148** on the Reader Service Card

system consists of two components: a proprietary polymer formulation that complexes with the DNA to be delivered and a dilution/injection reagent for delivering the DNA into the animal. The DNA is injected into the animal via the tail vein and is optimized for use in the laboratory mouse.

DETECTION SYSTEM FOR NUCLEIC ACID BLOTS

The UltraSNAP (Biotin) Detection System makes use of alkaline phosphatase and the DuoLuX Substrate for the chemiluminescent or fluorescent detection of biotinylated DNA and RNA

probes. The system contains specially formulated reagents optimized to provide high sensitivity with low background in applications such as Southern or Northern hybridization, dot blotting, or plaque and colony screening.

Vector Laboratories

For more information call 650-697-3600 or **circle 149** on the Reader Service Card

LITERATURE

Owl Electrophoresis Products is a 16-page, four-color brochure on the most popular Owl DNA and protein systems as well as a complete listing of accessories for the systems. Included are all the gel migration patterns for Owl's complete line of precasted polyacrylamide gels. The new high-throughput horizontal system, the Millipede, and the easy-to-load multi-load system are also detailed in the brochure.

Owl Separation Systems

For more information call 800-242-5560 or **circle 150** on the Reader Service Card

Newly offered instrumentation, apparatus, and laboratory materials of interest to researchers in all disciplines in academic, industrial, and government organizations are featured in this space. Emphasis is given to purpose, chief characteristics, and availability of products and materials. Endorsement by *Science* or *AAAS* of any products or materials mentioned is not implied. Additional information may be obtained from the manufacturers or suppliers named by circling the appropriate number on the Reader Service Card and placing it in a mailbox. U.S. postage is free.

DNA samples

DNA samples from a

global collection network

We can meet your sample needs from inventory or by exercising our Global Collection Network on your behalf. We are adding samples, disease states, and collection sites on a regular basis.

GenomicsCollaborative

has a growing collection of DNA and serum matched to phenotypic data from patients with high prevalence diseases. These samples are available to support your research.

Some examples of samples we currently have, and are actively collecting, in the following disease states are:

- Cardiovascular disease (hyperlipidemia, hypertension, AMI stroke)
- Cancers (Breast, Ovarian, Colon, Prostate, Leukemia, Lymphoma)
- Diabetes
- Asthma
- Renal failure

All material is:

- Collected under IRB approved protocols and compliant with GCP
- Processed and stored under GCP conditions

For information regarding our current inventory of samples and disease states please contact us.

GenomicsCollaborative

1-877-GENOMIX, extension 248 (877-436-6649)
email: getsamples@DNArepository.com
www.DNArepository.com

Don't get your signals crossed!

www.stke.org

Feeling overwhelmed by all of the information that is constantly being published on signal transduction?

The editors of *Science* and the technical staff of Stanford University's HighWire Press have your solution—*Science's* Signal Transduction Knowledge Environment (STKE).

Benefits Include:

VIRTUAL JOURNAL

Say goodbye to scanning dozens of tables of contents every week.

THE CONNECTIONS MAP

Having trouble keeping track of a thousand and one protein kinases? Not anymore.

**CONTINUOUSLY UPDATED
REVIEWS**

Original content that is updated as frequently, and as extensively, as developments in the field warrant.

Come to www.stke.org to improve your signal-to-noise ratio.

Science's
stke

Signal Transduction
Knowledge Environment
a product of *Science* &
Stanford University Libraries

Science



Classified Advertising

UNITED STATES

Display Classified Advertising

Bren Peters Kathleen Clark
Tel: 202-326-6541 Tel: 202-326-6555
Fax: 202-289-6742

Kristine von Zedlitz (West Coast Sales)
Tel: 415-956-2531

E-mail: science_displayads@aaas.org

Line Classified Advertising

Jody Fenty Christina Geiger
Tel: 202-326-6722 Tel: 202-326-6532
Fax: 202-289-1451

E-mail: science_classifieds@aaas.org

Online Classified Advertising

Beth Dwyer
Tel: 202-326-6534
Fax: 202-289-6742
E-mail: bdwyer@aaas.org

www.sciencecareers.org

Ad Materials: Send to: *Science Classified Advertising*, 1200 New York Avenue, NW, Room 911, Washington, DC 20005

EUROPE

Line, Display, and Online Classified Advertising

Deborah Cummings
Tel: +44 (0) 1223 326 500
Fax: +44 (0) 1223 326 532
E-mail: european_ads@science-int.co.uk

Ad Materials: Send to: Advertising Dept., Bateman House, 82-88 Hills Road, Cambridge CB2 1LQ, United Kingdom

To obtain information on deadlines, editorial features, and bonus distribution schedules, call our sales office or visit *Science Careers* at www.scienceonline.org and click on "To Advertise." All advertising is subject to publisher's approval.

Every employment ad placed in *Science* will be featured in our job database online for 4 weeks. Call to find out how to link to thousands of additional job seekers online with *Science Careers*.

Line ads are not agency commissionable. Ads submitted should not include any bold, italicized, or abbreviated words. *Science* will edit and typeset ads according to *Science* style requirements. *Science* cannot provide proofs of typeset line ads. *Science* will provide an estimated cost of line ads at time of placement. This is an approximate cost only. Please provide contact name, telephone, billing information, and purchase order numbers with your order.

To Subscribe to *Science* call:
202-326-6417 or 1-800-731-4939

POSITIONS OPEN

BIOMATERIALS, TISSUE ENGINEERING, DRUG DELIVERY, AND GENE THERAPY The University of Connecticut Health Center

The University of Connecticut Health Center is seeking to fill a **TENURE-TRACK FACULTY POSITION** in The Center for Biomaterials. The Center for Biomaterials' primary research focus is material-tissue interfacial behavior, which includes tissue response at the cellular and molecular level, modification and characterization of both cell and material surfaces, nanofabrication and biomimetics, development of bioinspired biomaterials, and tissue and cellular engineering. Research in the Center comprises basic and applied biological and material science projects, which are intended to elucidate mechanisms and result in new biomedical technologies. Applicants with expertise in polymer synthesis, structural biology, drug delivery, gene therapy, or the biology of cell receptors are encouraged to apply.

The Center for Biomaterials facilitates multidisciplinary opportunities to collaborate with existing strong research groups in the Institute of Materials Science and the Schools of Medicine, Dental Medicine, Engineering, and Pharmacy. Significant support is available for research and laboratory space and start-up. The new faculty member will also participate in the development and teaching of a new graduate program in biomedical materials. All Center faculty are encouraged to interact with the significant biomaterials industry located in Connecticut and neighboring states.

A Ph.D., M.D., D.M.D. or equivalent in bioengineering, chemical engineering, or related field is required. Academic rank is open and will be commensurate with accomplishments. The search will remain open until the vacancy is filled. Candidates are sought who have demonstrated outstanding research achievement and the ability to attract external research support.

Applicants should send curriculum vitae; copies of recent significant publications; and brief descriptions of current research, future plans, and funding experience to: **Dr. James D. Bryers, The Center for Biomaterials, MC 1615, University of Connecticut Health Center, 263 Farmington Avenue, Farmington, CT 06030-1615.** For any additional information, interested persons should contact **Dr. Bryers** at e-mail: JBryers@nso2.uchc.edu.

An Affirmative Action/Equal Opportunity Employer; Minorities/Females/Persons With Disabilities/Veterans.

The Department of Biology and Microbiology at the University of Wisconsin Oshkosh seeks two full-time, one-year-only **ACADEMIC STAFF LECTURERS** in the following specialties: (1) vertebrate physiologist to teach human and animal physiology lecture/laboratories and assist in introductory biology; (2) environmental biologist/ecologist to teach introductory environmental biology lecture/laboratories, ecology laboratories, and assist in introductory biology. Both positions begin 1 September 2000. Ph.D. preferred; M.S. required; teaching experience desirable. Send letter of application, curriculum vitae, three letters of recommendation, and transcripts to: **Chair, Department of Biology and Microbiology, University of Wisconsin Oshkosh, Oshkosh, WI 54901** by 31 May 2000. *The University of Wisconsin Oshkosh is an Affirmative Action/Equal Opportunity Employer.*

RESEARCH ASSOCIATE POSITION available immediately to study protein-protein interactions of electron transfer proteins by high-resolution, 800MHz, multidimensional NMR. A Ph.D. in chemistry or biophysics and postdoctoral experience with NMR of proteins required. Candidates should be highly motivated and able to work independently. Send résumé and three letters of reference to: **Dr. Zuiderweg, Department of Chemistry, University of Michigan, Ann Arbor, MI 48105.** E-mail: zuiderwe@umich.edu or collaborator: **Dr. Waskell, Department of Anesthesiology, University of Michigan, Ann Arbor, MI 48105.** FAX: 734-213-6985; Telephone: 734-769-7100, extension 5858; e-mail: waskell@umich.edu. *We are an Equal Opportunity Employer.*

POSITIONS OPEN

DEPARTMENT OF BIOLOGY MCGILL UNIVERSITY

McGill University invites applications from potential nominees for a 2001 Natural Sciences and Engineering Research Council of Canada (NSERC) University Faculty Award (UFA) in biology. The Department is interested in applications which complement the Department's strengths in cell, molecular, and developmental biology; neurobiology; ecology; evolution; and conservation biology.

The UFA program aims to increase the representation of women in the sciences. In accordance with the terms of NSERC's UFA program, this advertisement is directed only to women who are Canadian citizens or permanent residents of Canada or will be by 1 November 2000 and who have not previously held a tenure-track appointment at a Canadian University. Further information on the NSERC University Faculty Award program is available from NSERC at website: http://www.nserc.ca/programs/schol4_e.htm.

Completed applications must reach NSERC by November 1, 2000, and therefore are required at McGill as soon as possible and no later than August 15, 2000. Successful applicants to the competition will be appointed at the **ASSISTANT PROFESSOR** level (tenure track) in the Department. Potential applicants are invited to contact the Department as soon as possible to determine whether applications in their field of research would be encouraged. Information on the Department and McGill University can be found at website: <http://www.mcgill.ca/Biology/biology1.htm>.

Completed applications will consist of full curriculum vitae (including evidence of relevant formal training), statements of teaching specializations and research interests, three confidential letters of recommendation sent directly to the Department, completed NSERC Personal Data form (Form 100), and Application for a Grant form (Form 101). Please send applications to: **Ms. Louise Sabaz, Chair's Secretary, Department of Biology, McGill University, 1205 Docteur Penfield Avenue, Montreal, Quebec H3A 1B1 Canada.** E-mail: louise@bio1.lan.mcgill.ca.

FACULTY

UNDERGRADUATE EDUCATION: Qualified candidate should possess an earned doctorate, as well as a record of excellence in teaching at the middle and/or secondary school level in science education and an ongoing program of research. The successful candidate will be instrumental in building a relationship with the Science Department to develop a cross-discipline science education effort. May also teach foundation and methods courses in education; develop field sites in local school districts; supervising student field experiences including student teaching; advising students; and serving on department, school, college, and university committees. Additional teaching responsibilities may include educational psychology and educational technology (fall 2000). Applicants should submit a letter of application, curriculum vitae, and a list of references, along with other supportive documentation that may be helpful. Deadline: May 22, 2000. Please send documentation to: **Rosemary Molloy, Manager of Employment, Human Resources, Rider University, 2083 Lawrenceville Road, Lawrenceville, NJ 08648-3099.** Visit Rider on the Internet. Website: www.rider.edu. *Rider University is an Equal Opportunity/Affirmative Action Employer and does not discriminate on the basis of age, race, sexual orientation, national origin, religion, or any other nonjob-related criteria.*

VISITING ASSISTANT PROFESSOR MOLECULAR NEUROBIOLOGY

Haverford College Biology seeks a one-year leave replacement (Ph.D. required) for 2000-2001 to teach lecture and laboratory courses in neurobiology and molecular biology and to supervise senior research projects. Details and application procedures can be found at website: www.haverford.edu/biology.

SHARE THE VISION

"In looking at the next several years, Wyeth-Ayerst's pipeline of products ranks among the best in the pharmaceutical industry."

Los Angeles • Seattle • Menlo Park • Palo Alto

It's a vision of hope and of bettering the world. At each of our facilities, we're working to make this vision a reality. And, as part of Wyeth-Ayerst, which is the pharmaceutical division of American Home Products, one of the world's leading research-based companies, we deliver. If you're interested in a career in using your pharmaceutical and scientific knowledge to help us help the world, join our **Pearl River, NY** facility:

Our future, and yours, is more exciting than ever.

Share our vision in the following role:

Principal Research Scientist I, Microbiology

The ideal candidate will be involved in the discovery of novel bioactive natural products for medical applications. You will carry out research on the production of secondary metabolites, as well as alter microbial products by biosynthetic pathway manipulation and biotransformation.

To qualify, the candidate must possess a Ph.D. in Microbiology or a related discipline with a minimum of eight years' industrial experience. Familiarity with flask and bioreactor fermentations is also essential. A strong background in the biosynthesis of microbial products is mandatory, and expertise in the genetics of secondary metabolism is a plus.

Wyeth-Ayerst offers competitive compensation and benefits programs including stock options, child-care subsidies, flex-time, business casual Fridays, educational assistance and professional development programs. Please forward your resume with salary requirements to: **Wyeth-Ayerst, Reference OPSCI, P.O. Box 7886, Philadelphia, PA 19101-7886**. Fax in fine mode to: (610) 989-4854. E-mail: jobs@RAMAIL1.wyeth.com (ASCII format, no attachments, subject: resume).

No phone calls please. Principals only. Equal Opportunity Employer. M/F/D/V.

For more information, please visit us at: www.wyethjobs.com



A division of American Home Products

POSTDOCTORAL POSITION

A postdoctoral position is available to study signal transduction pathways involved in the regulation of the arachidonic acid-specific cytosolic phospholipase A2. Molecular and cell biology approaches will be used to investigate the calcium-dependent translocation of the phospholipase to specific membranes. A recent Ph.D. is required with experience in membrane trafficking preferred.

Submit CV to:

Christina Leslie, Ph.D.
National Jewish Medical
and Research Center
1400 Jackson Street, B121

Denver, CO 80206

Fax (303) 398-1775

E-mail: mccollum1@njc.org

NATIONAL JEWISH
Medical and Research Center

AAVEOE

Program Analyst

(One-Year Appointment)

The Howard Hughes Medical Institute, a leading biomedical research organization, is seeking a **Program Analyst** to assist in the development/implementation of policies and procedures for the Precollege Science Education Program. This one-year appointment is located in **Chevy Chase, MD**.

Responsibilities include processing applications; coordinating awards processes; assisting in the design/implementation of program databases and assessment projects; reviewing annual financial/program reports from grantee institutions; developing program Web page/publication information; designing/directing scientific computer animations and interactive multimedia teaching modules; organizing the annual meeting of Program Directors; conducting program activity research; and responding to program inquiries.

Position requires a Ph.D. in a Biological Science and preferably 2 years' work experience, ideally in an area of research administration, grants management or science education; effective management, organizational and communication skills; and strong computer skills (2D/3D Graphic and Multimedia authoring tools, client/server and web-based database applications).

HHMI offers a competitive salary and excellent benefits package. Please send your resume and salary requirements to: **HHMI, Attn: Human Resources, 4000 Jones Bridge Road, Chevy Chase, MD 20815-6789**, fax: (301) 215-8937, or visit: www.hhmi.org

More information on this program is available at: www.hhmi.org/precollege

HHMI is an equal opportunity employer.

HHMI
HOWARD HUGHES MEDICAL INSTITUTE



MAYO CLINIC - ROCHESTER CANCER INVESTIGATOR

Excellent facilities and research environment are available for an established or highly promising investigator in the field of cancer biology or viral pathogenesis as related to cancer. The successful applicant will have full privileges within the Mayo Cancer Center, and substantial institutional support will be directed to the development and sustained operation of his/her laboratory; faculty rank will be commensurate with background and experience. Individuals engaged in the study of hematologic malignancy, virology, or having experience with the development and application of molecular genetic methods to the study of cancer are particularly encouraged to apply. For information on research programs in the Division of Experimental Pathology, see: www.mayo.edu/research/experimental_pathology/people/ Send curriculum vitae, bibliography and names of three references to:

C. David James, Ph.D.

Division of Experimental Pathology

Mayo Clinic

200 First St. SW

Hilton Building, Room 820-D

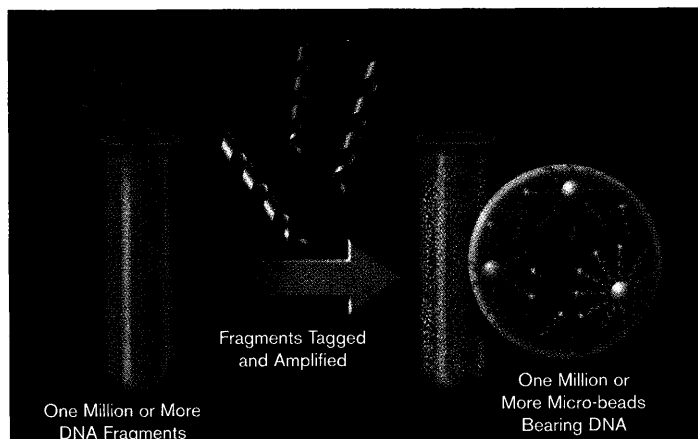
Rochester, MN 55905

Mayo Foundation is an affirmative action and equal opportunity employer and educator.

*Redefining the process of genomics
and genetics in discovery*

LYNX

We are a leader in the development and application of novel technologies for the discovery of gene expression patterns and genomic variations important to the pharmaceutical, biotechnology and agricultural industries.



Our technologies are based on Megaclone, our method for cloning DNA molecules onto micro-beads. Megaclone technology involves the attachment of approximately 100,000 copies of each DNA molecule in a sample onto its own micro-bead. All such million or more micro-beads, containing essentially all of the different DNA molecules from a sample, are simultaneously generated and assembled into a Megaclone library. As a result, each different DNA molecule in the original sample is represented by at least one micro-bead within the library. This library can capture essentially the entire set of expressed genes without any handling of individual DNA molecules.

Technologies we have developed that leverage the power of Megaclone are:

- **Massively Parallel Signature Sequencing, or MPSS** – which generates simultaneously, from a million or more Megaclone micro-beads, sequence information that uniquely identifies a sample's DNA molecules without the need for individual conventional sequencing reactions.
- **Megasort** – which enables researchers to focus on potential target genes by permitting, from a single experiment, the direct physical isolation of nearly all the genes differentially expressed between samples.

We are also developing the following application based on Megaclone:

- **Megatype** – which, when fully developed, should enable a single experiment to yield directly, without individual genotyping, those disease- or trait-associated single nucleotide polymorphisms, or SNPs, that differentiate large populations of genomes.

We are also working on a new separation technology in the area of proteomics to provide high-resolution analysis of complex mixtures of proteins from cells or tissues of interest.

Come join our team and help us redefine the process of genomics and genetics in discovery. We are seeking highly motivated individuals for the following positions:

- | | |
|----------------------|--|
| •Research Associates | •Electrical Engineers |
| •Scientists | •Mechanical Engineers |
| •Senior Scientists | •Bioinformatics Applications Development |
| •Project Leaders | •Sample Tracking Leads |
| •Informatics | |

To learn more about these career opportunities, please visit us at:

www.lynxgen.com

We offer an excellent compensation and benefits package, and we are an Equal Opportunity Employer.

Lynx Therapeutics, Inc. Attn: HR Department, 25861 Industrial Blvd., Hayward, CA 94545
Fax – 510.670.9302

Megaclone, Megasort and Megatype are all trademarks and MPSS is a registered trademark of Lynx Therapeutics, Inc.

Faculty Positions in Nuclear Structure and Function

University of Connecticut School of Medicine

The newly created Department of Genetics and Developmental Biology at the University of Connecticut School of Medicine is seeking highly qualified individuals with an outstanding background in the application of fluorescent techniques to the analysis of nuclear geometry and gene expression. Areas of interest include but are not limited to interphase structure and organization, RNA synthesis and processing, DNA replication, chromosome dynamics in mitosis and meiosis as well as genetic and epigenetic mechanisms of gene regulation. Our current faculty includes five recent recruits working in diverse areas such as RNA processing and editing, signal transduction, skeletal biology, cell fusion and genetic imprinting.

Applications are invited for positions at the Assistant, Associate or Full Professor level. Successful applicants will enjoy superb resources including generous start-up funds and space in a new research building. There are state-of-art core facilities for mouse transgenics and ES cell manipulation, nucleic acid sequencing, flow cytometry as well as an outstanding Center for Biomedical Imaging Technology that offers fluorescence widefield, confocal, 2-photon, and scanning probe microscopies as well as image processing expertise. Faculty will be expected to establish independent and innovative research programs that will attract extramural funding and to actively contribute to a rich scientific environment.

Candidates should apply by submitting a curriculum vitae and names of three references by July 31, 2000 to Marc Lalande, PhD., Professor and Chair, Department of Genetics and Developmental Biology.



University of Connecticut
Health Center/School of Medicine
263 Farmington Avenue • Farmington, CT 06030-3301

An Affirmative Action/Equal Opportunity Employer M/F/H/V/D.



SENIOR RESEARCH TECHNICIAN Immunochemistry

At the Lindsley F. Kimball Research Institute of the New York Blood Center, science fuses with humanity to create exciting advances which improve health worldwide. Currently, we offer an excellent opportunity for a Senior Research Technician. The candidate will perform expression analysis of blood group antigens and genetically manipulate monoclonal antibodies.

Position requires a B.S. in biological sciences with at least 3 years of lab experience. Your background must include working experience with molecular biological techniques, including plasmid construction and PCR; tissue culture, (transfection and cloning); and biochemical techniques, (Western blotting and immunoprecipitation).

We offer a competitive salary and a comprehensive benefits package. Please fax (212) 468-2082; email: careers@ccmail.nybc.org, or forward resume, to: Human Resources Dept.-MK/RT, New York Blood Center, 150 Amsterdam Ave., New York, NY 10023. EOE M/F/V/D.

△ Lindsley F. Kimball
Research Institute
A Division of the New York Blood Center

Assistant Professor

The Department of Physics and Applied Physics at the University of Massachusetts Lowell invites applications for a tenure-track faculty position in Radiological Sciences at the Assistant Professor level to begin September, 2000. The University offers a B.S. degree in Physics with a Radiological Health Physics option, an M.S. degree in Radiological Sciences and Protection, and a Ph.D. degree in Physics with a Radiological Sciences option. The University of Massachusetts Lowell is part of the Commonwealth of Massachusetts university system and maintains a Radiation Laboratory that includes 1MW research reactor, a 5.5 MV Van de Graaff accelerator, and laboratories for nuclear instrumentation, radiochemistry, dosimetry, and other applications. The successful applicant would be engaged in teaching and research in radiological sciences and protection, particularly research that would use and support the facilities at the Radiation Laboratory, and must possess the Ph.D. degree in Radiological Sciences and Protection, Health Physics, or a closely related area and have a strong background in the physical sciences with good ability in applied mathematics, including statistics. Certification by the American Board of Health Physics is desirable; an uncertified candidate would be expected to pursue certification as he/she became eligible. A curriculum vitae, copies of several recent publications, a statement of research and teaching interests not to exceed three pages, and the names of three references should be forwarded to the person named below. Application Deadline: 5/15/2000. Send Applications to: Prof. James Egan, Chair Department of Physics and Applied Physics, University of Massachusetts Lowell, One University Avenue, Lowell, MA 01854. Additional Information: Contact Human Resources for additional information.



The University of Massachusetts Lowell is an Equal Opportunity/Affirmative Action, Title IX, H/V, ADA 1990 Employer. Executive Order 11246, 41 CFR60-741 4, 41 CFR60-250 4, 41 CFR60-1 40, and 41 CFR60-1.4 are hereby incorporated.

University of Southern California-University of California Los Angeles Research Center for Alcoholic Liver and Pancreatic Diseases

FOUR postdoctoral positions funded by a new Training Grant from the NIAAA are available immediately to study the pathogenesis of alcoholic liver and pancreatic diseases. The main emphasis of the program is on elucidating at the cellular and molecular level how ethanol sensitizes and primes the liver and pancreas for injury.

Areas of research include the effects of alcohol on:

1. TNF and NF-kappaB induced cell signaling and apoptotic cell death in the liver (Neil Kaplowitz, John Vierling) and pancreas (Steve Pandol).
2. Retinoic acid and PPAR-gamma signaling in non-parenchymal cells (Hide Tsukamoto).
3. Cytokine induced inflammatory response (Steve Pandol).
4. Hepatitis C viral infection (Michael Lai).
5. Proteasome function and apoptosis (Samuel French).
6. Methionine metabolism (Shelly Lu).
7. Pancreatic function (Travis Solomon).

For details see http://www.usc.edu/medicine/alcohol_center/. The candidates must be US citizens or permanent residents with less than five years previous postdoctoral experience.

Send applications including a CV and names of 3 referees to:

Maria Runnegar
Keck School of Medicine
University of Southern California
1333 San Pablo Street, MMR-412
Los Angeles, CA 90033

Tel: 323-442-3121 or 323-442-3231, Fax: 323-442-3126
email: runnegar@hsc.usc.edu

USC-UCLA are equal opportunity employers.



Howard Hughes Medical Institute International Program of Research Grants

Argentina, Brazil, Canada, Chile, Mexico, and Venezuela

The Howard Hughes Medical Institute is accepting applications for biomedical research grants under its International Research Scholars Program. The Institute expects to make 40 to 50 grants—each for a term of five years and providing from \$50,000 to \$90,000 annually. The grant term is anticipated to be from early 2002 to the end of 2006.

Eligible Countries

The Howard Hughes Medical Institute is accepting applications for international research grants from six countries: Argentina, Brazil, Canada, Chile, Mexico, and Venezuela.

Eligible Scientists

An applicant must

- have a Ph.D. and/or M.D. degree;
- hold a full-time appointment at a nonprofit, scientific research organization in any one of the eligible countries;
- have made significant contributions to basic, disease-oriented, or patient-oriented biomedical research;
- not be a citizen or permanent resident of the United States;
- devote most of his/her professional time to research and teaching;
- show promise of continuing research contributions in the future;
- provide evidence of his/her research achievements by listing references for a minimum of three scientific articles published since 1995 in international, peer-reviewed, English-language, biomedical journals;
- have a research career that is still developing; and
- have no major administrative duties.

Eligible Research Areas

The grants are for fundamental biomedical research on basic biological processes and disease mechanisms. Research must be in one of the following broad fields: cell biology and regulation, genetics, immunology, neuroscience, or structural biology. *Clinical trials and research on health education, health care delivery, or health care services are not eligible.*

Other Requirements

Applicants must have Web access to apply to the competition and, if awarded, to fulfill reporting requirements. Applications will be accepted only through HHMI's Web-based competition system.

Program announcements and the application/competition system are available on the Web at www.hhmi.org/latamcan.htm. All applications must be submitted via HHMI's Web-based competition system by November 15, 2000. Awards will be announced in late 2001.

www.hhmi.org/latamcan.htm

www.hhmi.org/international

www.hhmi.org/grants

www.hhmi.org

*Competition information and
access to the online application forms*

HHMI International Program home page

HHMI Grants home page

HHMI home page

The Howard Hughes Medical Institute welcomes applications from all qualified candidates and encourages women and members of minority groups to apply.

www.hhmi.org/latamcan.htm

A Work of Art

Delicate brush strokes come together in a heavenly masterpiece. It's beautiful sights like this that Alcon helps people see everyday. As global leader in the development of ophthalmic and vision care products, we're committed to preserving and restoring the vision of people around the world.

Senior Scientist

Alcon is seeking a flexible, broadly-trained individual to join our R&D division, to develop appropriate in vitro and in vivo test models that mimic cellular processes and clinical ocular disease states. The individual will be responsible for in vitro and in vivo drug evaluations to identify compound leads with potential for clinical development, writing of test reports/summaries/publications, as well as monthly, semi-annual and annual progress reports. We prefer candidates with a Doctorate degree in the scientific/technical discipline (Biochemistry/Pharmacology) and a minimum of 3-5 years, preferably 6-8 years of experience.

Alcon professionals enjoy state-of-the-art facilities in a business casual environment. Our company offers competitive salaries and a wide array of excellent benefits, including a very generous Profit Sharing Trust Plan (401K) and the Alcon Retirement Plan. Our beautiful 160-acre campus is located in Fort Worth, Texas, renowned for its warm climate, low cost of living, and no state income tax. For additional information about Alcon, please visit our website at www.alconlabs.com or fax your resume to (817) 551-4629, email bryan.rice@alconlabs.com

Alcon

Opportunities In Sight



EOE, M/F/D/V

Pre-employment drug testing.

www.alconlabs.com

ANNOUNCEMENTS

New Funding Opportunities for Dystonia Research

The Dystonia Medical Research Foundation is initiating new funding opportunities for dystonia research. The recent identification of a common mutation in the DYT1 gene, which encodes the novel protein TorsinA, provides the first molecular entry into understanding the pathogenesis of primary, early-onset dystonia. Research grants are being sought to develop important tools for DYT1 dystonia research; these include cell culture models of DYT1 dystonia; genetic animal models of DYT1 dystonia, including transgenic and knock-in/knock-out mice, *Drosophila*, *C. elegans*, and Zebrafish models. In addition, a new contract funding mechanism is being initiated to support the development of both antibodies to TorsinA and the related TorsinB, and pure recombinant TorsinA protein.

Contract applications will be reviewed each year on a 6-month rolling basis with the first deadline of June 30; the 2nd deadline of December 30. Grant applications for highly relevant dystonia research will be accepted by June 30 for review. **Funding for research grants will be \$40,000 for one-year pilot studies, and up to \$75,000 per year for up to 2 years for other research grants. Applications will also be considered for larger projects, with funding up to \$150,000 per year.**

Please submit a letter of intent for both contract and research grant applications to the Scientific Director at:

Dystonia Medical Research Foundation

One East Wacker Drive, Suite 2430, Chicago, IL 60601
Phone: 312-755-0198 • Fax: 312-803-0138
E-mail: dystonia@dystonia-foundation.org

Opportunities Await You at Marshfield Clinic.

GENETIC EPIDEMIOLOGIST

- Tenure Track Position -

The Marshfield Medical Research Foundation seeks applications for a tenure track position in the field of genetic epidemiology. Both new and more established investigators are welcome to apply.

Candidates must hold a doctorate degree in statistics, genetics, epidemiology or related field. At least 2 years postdoctoral experience preferred.

Marshfield boasts a rapidly growing, vibrant research environment with strong programs in both genetics and epidemiology. Send curriculum vitae and the names of three references to:

Mary Treichel
Marshfield Clinic

1000 North Oak Avenue
Marshfield, WI 54449

1-800-782-8581, extension 1-9774
Fax 715-221-9779

E-mail: treichel@mfidclin.edu
Website: www.marshfieldclinic.org



MARSHFIELD CLINIC

Sorry. Not an underserved area.
An equal opportunity/affirmative action employer m/f/h/v

Associate Professor/Professor

DEPARTMENT OF PHARMACOLOGICAL AND PHYSIOLOGICAL SCIENCE

Saint Louis University Health Sciences Center

Saint Louis University, a Catholic Jesuit Institution dedicated to education, research and health care, is seeking applicants for faculty positions in the Department of Pharmacological and Physiological Science at Saint Louis University School of Medicine. The positions are tenure track appointments at the Associate Professor or Professor level. We offer an environment rich in senior level scientific experience, start-up funds, laboratory space and a record of highly successful and continuing extramural research funding. Preference will be given, but not restricted, to individuals with demonstrated experience in the application of modern techniques in research of the nervous or endocrine systems. Interested persons should send a curriculum vitae, three letters of reference and a description of research interests and objectives to:

Dr. Thomas C. Westfall

Professor and William Beaumont Chair
Department of Pharmacological and Physiological Science
Saint Louis University School of Medicine
1402 South Grand Boulevard
St. Louis, MO 63104

*Saint Louis University is an Equal Opportunity/Affirmative Action Employer.
Women and minorities are encouraged to apply.*



the University of Health Sciences

**ANATOMIST
MOLECULAR GENETICIST/
BIOLOGIST
PHARMACOLOGIST**

The University of Health Sciences College of Osteopathic Medicine invites applications for three **ASSISTANT OR ASSOCIATE PROFESSOR** faculty positions which are available immediately.

ANATOMY

Under the direction of the Chair of Anatomy, this individual will teach human gross anatomy (lecture and laboratory dissection) and histology in the Department of Anatomy. Qualified candidates will have a Ph.D. in Anatomy or related discipline with experience in teaching anatomy and histology. All inquiries will receive a written response and submitted information will be forwarded to Robert E. Stephens, Ph.D., Chair, Search Committee.

**MOLECULAR GENETICIST/
BIOLOGIST**

Under the direction of the Chair of Biochemistry, this individual will teach molecular genetics/biology. Qualified candidates will have a doctorate degree and postdoctoral research and teaching experience. All inquiries will receive a written response and submitted information will be forwarded to Douglas R. Rushing, Ph.D., Chair, Search Committee.

PHARMACOLOGIST

Under the direction of the Chair of Pharmacology, this individual will teach medical pharmacology. Qualified candidates will have a Ph.D. in Pharmacology or a Pharm.D. degree and postdoctoral teaching and research experience. All inquiries will receive a written response and submitted information will be forwarded to Douglas R. Rushing, Ph.D., Chair, Search Committee.

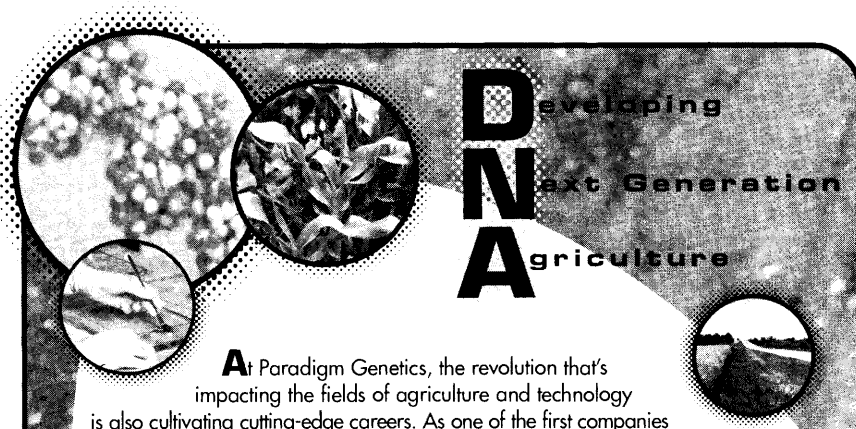
The candidates filling these positions must have a strong interest and commitment to teaching medical students. Research and/or other scholarly activities are expected in addition to teaching and University service. We are looking for positive team players with exemplary professional and personal characteristics.

Salary and rank will be commensurate with experience and qualifications. We offer an outstanding benefits package including dollar for dollar match on the retirement plan. Applications will be reviewed until successful candidates are identified. Please send a letter of interest, curriculum vitae, a statement of teaching philosophy, a statement of research interests, and the names, addresses, and telephone numbers of three references to:

Susan M. Schmidt
Assistant Director of Human Resources
the University of Health Sciences
1750 Independence Ave.
Kansas City, MO 64106-1453
E-mail: cencyeart@alum.uhs.edu
in word format only, please
Phone: 1-800-234-4847
Fax: 816.283.2285
www.uhs.edu

EOE

D Developing
Next Generation
Agriculture



At Paradigm Genetics, the revolution that's impacting the fields of agriculture and technology is also cultivating cutting-edge careers. As one of the first companies to apply the functional genomics approach, we continue to lead the protection of world's food and fiber crops against weeds, insects and disease, through the development of unique and powerful computer capabilities. At Paradigm, when it comes to cultivating your career with abundant achievement, the possibilities are endless.

Research Scientist - Library Construction

Develop and coordinate a team to construct cDNA and genomic libraries. Responsible for protocol development, troubleshooting, technology transfer and implementing and expanding upon state-of-the-art technologies. Ph.D. or equivalent experience in Molecular Biology, Genetics, Microbiology or related discipline required. Technical Expertise in molecular biology is essential, with emphasis on PCR, gene cloning methods, and library construction. Excellent communication and teamwork skills are a must. **Job # SCI/APR/DNA272P**

Research Scientist - Sense Cloning

Develop and coordinate the implementation of a process for cloning full-length genes. Focus will be the production of sequence-verified sense clones. Responsible for management of a multidisciplinary team, protocol development, integration of various technical and analytical tasks and quality control. Ph.D. or equivalent experience in Molecular Biology, Genetics, Microbiology or related discipline; technical expertise in molecular biology, with emphasis on PCR, gene cloning methods, and DNA sequence analysis; and excellent communication and teamwork skills are required. **Job # SCI/APR/DNA273P**

HTS Assay Development - Project Leader and Associates

Seeking several highly-qualified candidates to join our Assay Design/Development Group. This group is responsible for all aspects of HTS design and development from gene cloning through validation and installation (screening excluded). Technologies and formats include, enzyme, receptor binding, reporter gene, phage display, and immunological. Industrial experience essential. Experience with various expression systems, purification techniques, enzyme kinetics, immunochemistry, and robotics is preferable. Project Leader position requires a Ph.D. with 5+ years of industrial experience or MS/BS with industrial experience; project management and supervisory experience; and a working knowledge of the design and delivery of HTS assays. Associates need MS/BS with 5+ years of industrial experience. **Job # SCI/APR/BIO100**

Head of Metabolic Profiling

The metabolic profiling group is developing an industrialized platform for high throughput analysis of small molecules in various plant and fungal tissue. We are seeking a highly motivated senior individual with considerable industry experience with both "hands-on" and project management experience. Significant working knowledge of LC/MS and GC/MS with specific emphasis on separation methods is required as well as a broad background in general analytical chemistry methods. Additional experience with various data analysis software and reporting programs is desired. Excellent supervisory and communication skills are a must. This is a senior and critical position within our company and therefore requires a high level of competence, enthusiasm, ambition, and a "do it" attitude. A Ph.D. in Chemistry, Biochemistry or a related field with a minimum of 10 years of industrial experience is required. **Job # SCI/APR/BIO267P**

At Paradigm Genetics, there's a lot of room to cultivate both your professional and personal life. Located in North Carolina's prestigious Research Triangle Park, we offer a high standard of living with year-round recreational activities, and proximity to the city, oceans and mountains. You'll also enjoy a competitive salary and comprehensive benefits package with stock options and more. Please send resume indicating job number to: **Paradigm Genetics, Human Resources, E-mail: resumes@paragen.com or apply on-line at www.paragen.com.** No phone calls please. Principals only. EOE



Unlimited Possibilities Await @
www.paragen.com

Expansion of our clinical development programs has created new opportunities for individuals eager to apply their experience within a stimulating, small company setting in the following areas:

Clinical Research Associate

This person would perform clinical research management for a multi center Phase I/II study. 2-4 years prior experience with clinical protocol operations under GCP, as well as excellent communication skills, is a must. Experience with clinical trial data management and protocol documentation would be helpful. Travel would be expected up to 40%. An RN or BS degree in Biology, at least 2 years relevant experience, and demonstrated oral and written communication skills are required.

Protein Biochemistry

This position bridges research and process development to develop and apply methods for the production and characterization of a protein for human therapeutic use. This position requires prior experience in purification process development. Candidates should be familiar with quantitative measures of protein activity, purity, and structure such as HPLC, mass spectrometry and capillary electrophoresis. Prior training should include knowledge of cGMP and an advanced degree in biochemistry (MS or PhD) and 3-5 years experience.

Analytical Biochemist, Research

This position would involve the characterization of recombinant proteins and synthetic peptides to support the use of these polypeptides in clinical research. Previous experience with quantitative measures of protein activity, purity, and structure are essential. Familiarity with techniques for measuring pharmacologic effects of drugs such as proteomics analysis would be helpful. Educational training would include an MS in biochemistry and 3-5 yrs industrial experience or a PhD.

Neurobiologist

This position will lead the characterization of neuropeptide drug candidates using in vitro and in vivo experimental techniques. Candidates should have a PhD and experience using assays to measure chemical and peptidergic factors regulating neural function. Experience in neuro-immunology and/or neuro-endocrinology would be helpful. Managing and initiating external collaborations and working independently will require good communication and problem solving skills.

Immunobiologists, MS and PhD levels

These positions would investigate in vivo and in vitro measures to characterize protein drug candidates that block T cell co-stimulation. Experience with cell-based assays that characterize T cell reactivity and in vivo assays that model T cell-based diseases would be required. The senior position would manage external collaborations in preparation for clinical research. Training would include an advanced degree in Immunology (MS or PhD) and 3-5 years of experience.

Pharmacology/Toxicology

Coordinate the design, placement and execution of non-clinical pharmacology studies to support drug development. Provide technical input to disease-based animal models. Prior experience should include familiarity with techniques needed for ADME testing of clinical drug products. Some experience in formulation and drug delivery would be helpful. Training should include an MS/PhD and 5 years of industrial experience.

Repligen is located in Needham, MA. Competitive salary and benefits packages include equity participation in a publicly traded company. Send resumes to Human Resources, 117 Fourth Avenue, Needham, MA 02494, email hr@repligen.com, or fax 781-453-0048.

RepliGen

PROJECT LEADER - SUPPORT (Ad Code # 098E)

Pioneer Hi-Bred International, Inc., a world leader in agricultural genetics, has an opportunity for a Project Leader in our Information Management Department at our Johnston, Iowa offices.

This position will lead efforts to provide software solutions for functional genomics research. This person will work closely with scientists in Johnston and Wilmington, DE to define information management needs for this expanding research field, as well as work with software development professionals to implement and support information management solutions. The focus of the position will be on functional genomics research including expression and genetic analysis of germplasm.

The position requires a Ph.D. or equivalent experience in molecular biology, biochemistry, molecular genetics, plant biology or related. Experience with gene expression techniques and genetic analysis of mutants is strongly desirable. Familiarity with map-based cloning, genetic mapping or a research statistical package is an advantage.

For consideration, please send a scannable resume and cover letter to:

Employment Services - Ad Code # 098E

Pioneer Hi-Bred International, Inc.

400 Locust Street, Suite 700

PO Box 14454

Des Moines, IA 50306-3454

or Email: jobs@phibred.com

Visit www.pioneer.com or call our Employment Hotline 1-800-247-6803 ext. 4000 for information on scannable resumes and this and other Employment Opportunities.



PIONEER

Equal Opportunity Employer

TENURE AND TENURE-TRACK FACULTY POSITIONS BIOMEDICAL RESEARCH FOUNDATION OF THE ACADEMY OF ATHENS

The Biomedical Research Foundation of the Academy of Athens, Greece, invites applications for tenured and tenure-track member positions at levels equivalent to Assistant, Associate and Full Professor to lead laboratory research groups. We are seeking candidates with research accomplishments in the fields of Molecular Biology, Immunology, Genetics, Virology, Biochemistry, Biotechnology, and Pharmacology. Candidates must hold a M.D. degree or a Ph.D. degree from any discipline in the life sciences and should have established a research record demonstrating scientific excellence. Successful candidates are expected to develop outstanding independent research programs. Very attractive start-up packages have been committed for the successful candidates. The Research Centers of the Foundation are located in a new research building complex in a suburb of Athens. Interested applicants should provide a summary of their research interests, a curriculum vitae including current grant support, and the names and contact information of three professional references. The application deadline is August 1, 2000. Applications should be sent to:

**Mr. E. Karayannopoulos
Biomedical Research Foundation
of the Academy of Athens
Xenophontos 10
Athens 105-57
Greece**

For further information, please contact the Chairman of the Search Committee, Dr. G. Stamatoyannopoulos, telephone (206) 543-3526, fax (206) 543-3050, email: gstam@u.washington.edu



**St. Jude Children's
Research Hospital**

ALSAC • Danny Thomas, Founder

FACULTY MEMBER Assistant/Associate Level

The Molecular Pharmacology Department at St. Jude Children's Research Hospital has an opening for a faculty member at the Assistant/Associate level. Candidates are sought with an interest in developing an independent research program in any area related to the treatment of childhood cancers. Outstanding applicants with a track record in any area relevant to cancer treatment will be considered. Candidates at the Associate Member level should have an established research program supported by peer-reviewed grants.

The Molecular Pharmacology Department is a basic science department at St. Jude Children's Research Hospital. The department has major strengths in signal transduction, anti-cancer drug design, DNA topoisomerases, and model systems for dissecting the mechanisms of action of anti-tumor agents. Opportunities are also available for collaboration with other basic science departments in the areas of biochemistry, genetics, tumor cell biology, structural biology, virology, and developmental neurobiology, and with clinical programs involved in the treatment of solid tumors and hematological malignancies. A generous start-up package is available for an outstanding candidate. St. Jude Children's Research Hospital was founded by Danny Thomas, and continues to receive support for research and clinical programs through the fund-raising efforts of the American Lebanese Syrian Associated Charities (ALSAC).

Please send a curriculum vitae, a three page description of proposed research, and three letters of recommendation to: **John L. Nitiss, Ph.D., Chair, Faculty Search Committee, Molecular Pharmacology Department, St. Jude Children's Research Hospital, 332 N. Lauderdale, Memphis, TN 38105.**

www.stjude.org

Equal Opportunity Employer

Pharmaceutical

Knowledge, strength, and compassion.

This may be the most meaningful work you'll ever do. With us, you'll represent some of today's most promising pharmaceutical products aggressively working toward improving world health. A multi-national company, SmithKline Beecham is comprised of exceptional people who work with dedication and passion.

Regional Medical Associate

We currently have an opening that covers the San Francisco Bay area. The high energy individual we seek will establish relationships with a broad range of healthcare providers in both academic and patient care communities, act as an educator providing scientific/clinical information on our products, and identify/develop customer opportunities. Additionally, you will source new opportunities for support grants and design/ deliver symposia and continuing education seminars for healthcare providers (e.g., MDs, RPhs, RNs).

To qualify, a PharmD or PhD along with excellent communication skills are necessary. Pharmacology, toxicology, microbiology, or related life science backgrounds are preferred. 35% travel is required.

Make a difference, contribute toward change, and be recognized for it. Please forward two copies of your resume to: Ad Code: MDZZ22, SmithKline Beecham, P.O. Box 13668, Sacramento, CA 95813. Indicating Ad Code is essential. Principals only, no agencies, please. No phone calls, please.

*Developing talent through equality
of opportunity, M/F/D/V.*

Realize your potential



SmithKline Beecham
Pharmaceuticals

Looking for brilliant career opportunities?



Then look here...
www.sciencecareers.org

- Job Search • Job Alerts • Employer Profiles
- Advice and Perspectives
- Meetings and Announcements
- Academic Connections

Science Careers
www.sciencecareers.org

University of California, Davis Center for Neuroscience Postdoctoral Positions

Positions are available for qualified Ph.D.'s or M.D.'s in a wide variety of areas of neuroscience. The Center for Neuroscience is home to more than 40 resident and affiliated faculty who have well-equipped laboratories investigating the nervous systems at the cellular, molecular, systems and cognitive levels:

Cognitive Neuroscience:

Kathleen Baynes, Ph.D., William Jagust, M.D., Richard Maddock, M.D., Thomas Nordahl, M.D., Beth Ober, Ph.D., Bruno Olshausen, Ph.D., Andrew Yonelinas, Ph.D.

Cellular and Molecular Neuroscience:

Robert Berman, Ph.D., Marie Burns, Ph.D., Tsung-Yu Chen, M.D., Ph.D., William DeBello, Ph.D., Fredrick Gorin, M.D., Ph.D., Linda Hall, Ph.D., Andrew Ishida, Ph.D., Bruce Lyeth, Ph.D., Isaac Pessah, Ph.D., Martin Wilson, Ph.D.

Developmental Neuroscience:

Leo Chalupa, Ph.D., Kimberley McAllister, Ph.D.

Systems/Behavioral Neuroscience:

David Amaral, Ph.D., Kenneth Britten, Ph.D., Barbara Chapman, Ph.D., Edward Jones, M.D., Ph.D., Leah Krubitzer, Ph.D., Brian Mulloney, Ph.D., Gregg Recanzone, Ph.D., Karen Sigvardt, Ph.D., Mitchell Sutter, Ph.D., Martin Usrey, Ph.D.

Central facilities are state of the art. Opportunities exist for collaborative research involving two or more laboratories in a stimulating and congenial environment. *The University of California is an Equal Opportunity Employer.* Inquiries should be directed to the individual faculty member, UC Davis, Center for Neuroscience, 1544 Newton Court, Davis, CA 95616 or to the Director, Edward G. Jones, M.D., Ph.D., <http://neuroscience.ucdavis.edu/>

GLOBAL OPPORTUNITIES



Announcement Regarding Entrustment of an Industrial Science and Technology Research and Development Project

The New Energy and Industrial Technology Development Organization (NEDO) is planning to start the latter phase of the "Human-Friendly and Supportive Robot System" project launched in FY1998, based on funds provided by the Ministry of International Trade and Industry (MITI) of Japan. In the latter phase of the project, development of application systems using robot platforms developed in the initial phase will be conducted. NEDO invites applications from organizations interested in participating in the project — a public announcement calling for applications was made on April 13, 2000. Details regarding application procedures, a project outline, and the date and place of the explanatory meeting are posted on NEDO's home page (<http://www.nedo.go.jp>) and were published in *Tsūsanshō Kōhō* on April 13, 2000.

Applied Technology Development Department
Fax: 81-3-3987-9396

**New Energy and Industrial Technology
Development Organization (NEDO)**
Sunshine 60 Building 29F, 3-1-1 Higashi-Ikebukuro
Toshima-ku, Tokyo, Japan



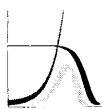
Postdoctoral Scientist in Ecosystem Studies Nitrogen Cycling in Contrasting Landscapes and Watersheds

The Ecosystems Center of the Marine Biological Laboratory announces the immediate availability for a POSTDOCTORAL SCIENTIST in ECOSYSTEMS STUDIES. This position is intended to promote synthesis, comparisons and collaboration among the Center's existing research programs in N cycling. Current research on N cycling at the Center ranges from the Arctic to the Tropics and from terrestrial ecosystems and watersheds to the coastal zone. The research of the Postdoctoral Scientist may involve cross-site comparisons, experimentation and/or modeling. The broad aim of the research should be to promote our general understanding of similarities and differences in N cycling among contrasting ecosystems, landscapes and watersheds and the responsiveness of these systems to anthropogenic change. Up to three years of support is available including supplies and travel costs. A Ph.D. is required and experience in nitrogen cycling.

Interested persons should write to:

Marine Biological Laboratory
ATTN: Human Resources reference code [PDS NC]
7 MBL Street
Woods Hole, MA 02543-1015
email: humanres@mbi.edu

Please include a resume and the names and contact information of three persons with whom we might discuss your experience and qualifications. A brief (less than one page), general statement of research interests may also be included. Additional information about the Ecosystems Center and its programs may be found at <http://ecosystems.mbl.edu/>.



Max Planck Institute for Demographic Research

Directors: Prof. James W. Vaupel, Ph.D.
Prof. Dr. philos. Jan M. Hoem

The Max Planck Institute for Demographic Research, Rostock, Germany, seeks a

Dean

for a proposed Max-Planck Inter-University School for Demographic Research.

This new school, which is in the process of being organized by the Max Planck Institute in collaboration with a consortium of scholars in Germany and other European countries, is intended to provide graduate education in demographic research. If the school is approved, courses will be offered in English in Rostock and other European cities and via the Internet, starting perhaps as early as October 1, 2000. About 15-20 new graduate students may enroll in the program of the School each year.

Applicants should:

- Have a Ph.D. degree or equivalent in demography or a related field,
- Have considerable teaching experience, preferably including Ph.D.-level courses in demographic research,
- Be actively engaged in demographic research,
- Have some experience in academic administration, and
- Be fluent in reading, writing, and speaking English.

The Dean of the School will be expected to:

- Play a leadership role in establishing and maintaining the School and its curriculum,
- Develop an expanded program for the School to include scholars from Central and Eastern Europe and perhaps later from North America and elsewhere,
- Teach a graduate course in Rostock every winter semester,
- Help advise the School's students, supervise their research, and assist them with fund-raising and job placement, especially students based in Rostock,
- Lead a seminar series in Rostock every winter semester focused on presentation and discussion of student research,
- Coordinate the consortium of European scholars associated with the School,
- Devote substantial effort to research at the Max Planck Institute for Demographic Research.

Applications from qualified women are strongly encouraged. Preference will be given to disabled applicants, all else being equal. The contract will be for five years, with the possibility of extension. Remuneration will be in accordance with German salary scales at level BAT Ia or b. It would be highly desirable if an applicant could start work no later than September 2000.

For further information, please see www.demogr.mpg.de or contact Dr. Reinhard Nuthmann, Head of Research Administration, at nuthmann@demogr.mpg.de.

Applications should be received on or before May 3. Please send a letter and CV to:

Prof. James W. Vaupel, Executive Director
Max Planck Institute for Demographic Research
Doberaner Straße 114
D-18057 Rostock
Germany



THE UNIVERSITY OF HONG KONG

香港



大學

The University of Hong Kong is one of the leading international comprehensive research universities in the Asia-Pacific region, with more than 100 departments and sub-divisions of studies and learning. There is currently an enrolment of more than 15,000 students (6,000 at postgraduate level). Research students come from more than 40 countries. The medium of instruction is English. The University is committed to its vision of globalisation, together with excellence in scholarship and research.

Institute of Molecular Biology

Applications are invited for appointments as (1) Principal Investigator (Ref: RF-1999/2000-273); and (2) Investigator (Ref: RF-1999/2000-274) in the Institute of Molecular Biology, tenable from 1 June 2000 or as soon as possible thereafter. The appointments will initially be made on a fixed-term basis of three years, with a possibility of renewal.

The Institute of Molecular Biology was established in 1989 to promote molecular biology research at the University. In 2000, it moved into the new Kadoorie Biological Sciences Building which houses all the essential equipment for recombinant DNA and cell culture experiments, various biochemical, physiological and morphological analysis as well as facilities for transgenic animal development. The University has a sizeable community of molecular biologists for exchange of ideas and collaboration.

Applicants should have a PhD degree; extensive experience in structure function studies of proteins with a solid background in virology/immunology; and an excellent publication record. Experience in HIV and chemokine research, and traditional Chinese Medicine is desirable. Applicants for post 1 should have at least ten years' relevant post-doctoral research experience, and for post 2, at least five years' relevant post-doctoral research experience.

Annual salaries [attracting 15% (taxable) terminal gratuity] are on the following scales, with starting salary depending on qualifications and experience: Principal Investigator HK\$861,180 - HK\$1,156,860 (9 points) (approx. US\$110,840 - US\$148,900); Investigator HK\$403,740 - HK\$925,980 (15 points) (approx. US\$51,970 - US\$119,180) (US dollar equivalents as at 3 April 2000).

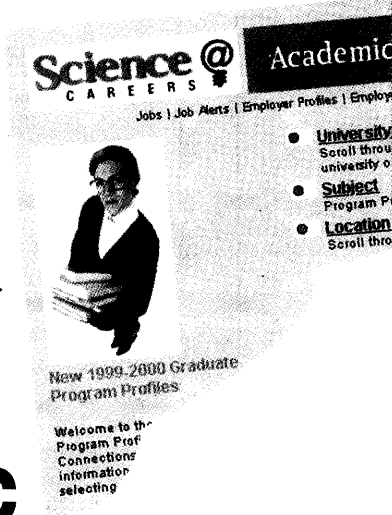
At current rates, salaries tax will not exceed 15% of gross income. The appointments carry leave, medical and dental benefits, an allowance for children's education in Hong Kong, and, in most cases, a financial subsidy under the Home Financing Scheme for reimbursing either the actual rental payment or the mortgage repayment up to the relevant maximum entitlement may be provided.

Further particulars and application forms can be obtained at <http://www.hku.hk/apptunit/>; or from the Appointments Unit (Senior), Registry, The University of Hong Kong, Hong Kong (Fax (852) 2540 6735 or 2559 2058; E-mail: apptunit@reg.hku.hk). Closes **31 May 2000**.

The University is an equal opportunity employer and enjoys a smoke-free environment

GRADUATE PROGRAM DIRECTORS:

Science offers an online solution to your student recruitment needs. →



ACADEMIC CONNECTIONS

Here are **just a few** of the schools with graduate programs currently listed:

- Albert Einstein College of Medicine
- Arizona State University
- Colorado State University
- Cornell University
- Duke University
- Emory University
- Johns Hopkins University
- Mt. Sinai Graduate School of Biological Science
- University of Texas at Austin
- University of Toronto
- Vanderbilt University
- Washington University

Drive traffic to your school's web site by including your graduate program on the leading scientific web site.

U.S.: **Bren Peters**
 Phone 202-326-6541
 Fax 202-289-6742
 E-mail science_displayads@aaas.org

Europe: **Debbie Cummings**
 Phone +44 (0) 1223 326 500
 Fax + 44 (0) 1223 326 532
 E-mail european_ads@science-int.co.uk

Science

www.sciencecareers.org

Click on **Academic Connections**

Associate Professor/Professor Institute of Chemical Toxicology Wayne State University

Tenure-track faculty positions are available at the rank of associate professor/professor in the Institute of Chemical Toxicology at Wayne State University. The Institute offers a research-intensive environment and is home to the NIEHS-funded Environmental Health Sciences Center in *Molecular and Cellular Toxicology with Human Applications*. The EHS Center offers facility core support in cell culture/transfection/infection techniques, transgenics/gene deletion, imaging and cytometry, and molecular genetics. Research areas of interest include receptor-mediated intracellular signaling, mechanistic research on intracellular and extracellular signaling components, regulation of gene expression, cell cycle control, and DNA damage and repair. Highly competitive salaries, start-up funds and contemporary facilities are available. Additional information may be found at www.wayne.edu/ehsctr or www.wayne.edu/ict. Wayne State University is a partner in the annual multi-million dollar Michigan Life Sciences Corridor initiative. Applicants should send a curriculum vitae, a brief statement of research interests and the names of three references to: **Dr. Raymond F. Novak, Director**

Institute of Chemical Toxicology
 2727 Second Avenue
 Detroit, MI 48201

Wayne State University is an equal opportunity/affirmative action employer

Chart the right course for your career.



Steer to these coordinates...
www.sciencecareers.org

Science Careers can help you navigate through the myriad career options with its fast, **searchable jobs database** and other useful career information.

Science Careers
www.sciencecareers.org

NATIONAL INSTITUTE OF NURSING RESEARCH
DEPUTY DIRECTOR/DIRECTOR OF EXTRAMURAL ACTIVITIES
Announcement Number: NR 00-0025

The National Institute of Nursing Research (NINR), National Institutes of Health, is seeking applications for the position of Deputy Director/Director of Extramural Activities. This position is located in Bethesda, MD, and is a permanent, full-time, civil service position in the Senior Executive Service (SES). Annual salary range is \$115,811 to \$130,200 per year commensurate with qualifications. A recruitment bonus of up to 25% of base pay may be available to a non-federal candidate. A relocation bonus of up to 25% of base pay (subject to approval) may be available to a permanent Federal employee who must relocate to accept this position. A one year probationary period must be served by the individual selected if not currently or previously in the SES.

The Deputy Director/DEA shares responsibility with the Director, NINR, for the management of scientific, fiscal, and personnel resources. Acts as the Director, NINR, in the absence of the Director. Collaborates with the Director and Executive Officer in the continuing review and evaluation of ongoing programs to determine problem areas and appropriate actions. Meets with leading scientists and academic leaders to develop appropriate programs to meet objectives, including establishing and maintaining ongoing working relationships with other government agencies and nursing organizations. Shares responsibility with the Director and Executive Officer for supervising daily operations of the Institute. Directs the public liaison and science policy activities, including information collection and dissemination, legislative analysis and coordination, and program planning and evaluation. Formulates, interprets, and coordinates policies regarding scientific direction of NINR. Directs the operation of the Division of Extramural Activities, including activities of the areas of program direction, grants, and contract management and scientific review.

Applicants must possess a Bachelor's degree in Nursing or in the biomedical or health sciences, with a Ph.D. highly desirable. In addition applicants must possess research-related managerial and research experience which demonstrates the following mandatory qualifications: (1) ability to provide leadership/management and vision to a research program of national scope and complexity with extensive managerial and executive level responsibilities, including management of a culturally diverse workforce; establishing and maintaining relations with key individuals and groups; developing and executing organizational, budgetary, and human resource plans; and resolution of major operational issues and planning of program objectives, and (2) a high degree of scientific prominence and expertise in policy development regarding biomedical/behavioral research such that the individual can readily command the attention of the nursing research community to stimulate interest in and support of the NINR biomedical/behavioral research agenda.

Send applications to Ms. Cherry Earl, National Institutes of Health, National Institute of Nursing Research, 31 Center Drive - MSC 2178, Room 5B13, Bethesda, MD 20892-2178. For application information and requirements contact Ms. Earl at NINR on (301) 402-2631. Deadline for applications is May 19.

Public Health Service Commissioned Officers interested in performing the duties of the position within the Commissioned Corps may submit a resume to the above address.

- Applicants may browse the NIH Home Page to view the full text vacancy announcement at <http://helix.nih.gov:8001/jobs/>
- OPM requires applicants to address separately five executive qualifications for appointment to the SES. Information about these qualifications can be requested from the above address or found at <http://www.opm.gov/ses/qualify.html>
- Applicants may browse the NINR Home Page at <http://www.ninr.nih.gov>
- Applicants may e-mail materials to Cherry_Earl@nih.gov

NIH is an Equal Opportunity Employer

Science Advisor

Neuroscience at the New Millennium - Be a Part of It!

The National Institute of Neurological Disorders and Stroke, National Institutes of Health, seeks a neuroscientist to support its efforts to reduce the burden of neurological disease. Position in strategic planning/reporting/legislative office requires a doctorate degree or equivalent level of experience in neuroscience.

Successful candidates will have demonstrated ability in written and oral communications and in analysis of scientific and public policy issues.



Salary range \$51,204 to \$79,155,
depending on qualifications.
US citizenship required.

For application by fax call (800) 728 JOBS,
request Fax#5016 or via the NINDS homepage:
<http://www.ninds.nih.gov/hrb>

Announcement #NS-00-0218.

For questions contact Mr. Jones at (301) 496-6334.
Applications are due by 5/19/00.

NINDS is an Equal Opportunity Employer.

TENURE TRACK POSITIONS IN NEUROSCIENCE (HNV00-4)

National Institute of Environmental Health Sciences
National Institutes of Health
Research Triangle Park, North Carolina

The National Institute of Environmental Health Sciences, National Institutes of Health, in Research Triangle Park, North Carolina, is currently in the process of expanding its intramural research program in Environmental Neuroscience. The Division of Intramural Research is recruiting for positions that will complement or expand ongoing research activities in neuropharmacology, neuroimmunology, signal transduction, synaptic plasticity, reproductive and developmental toxicology, and neurotoxicology. Excellent opportunities for collaborations are available both within the Institute, the clinical facilities at NIH, and at surrounding universities and government agencies. Qualified candidates must have a Ph.D., M.D. or equivalent degree in the biomedical sciences, demonstrated research productivity, and capability of establishing an innovative research program. Successful candidates will be appointed as tenure track investigators and expected to establish an independent research program. Time before tenure review will be dependent upon qualifications, but not exceed 6 years. Salary is commensurate with experience. Federal benefits apply. Applications are invited in the following research areas:

- Developmental Neurobiology
- Clinical Neuroscience/Neuropathology
- Environmental Medicine and Neurodegeneration
- Cellular/Molecular Neurotoxicology
- Neuroendocrinology

Applicants should send curriculum vitae with bibliography, statement of research plans, and three letters of recommendation. Applications received after July 15, 2000 will be used as needed. Final acceptance of applications is October 1, 2000.

Mr. Phil Hanson (hanson1@niehs.nih.gov) (HNV00-4)
Human Resource Management Branch
P.O. Box 12233, Maildrop EC-11
Research Triangle Park, NC 27709
(919-541-7811)

NIEHS/NIH is an Equal Opportunity Employer

POSITIONS OPEN

ASSISTANT/ASSOCIATE PROFESSOR IN VIROLOGY

The Department of Microbiology and Immunology at the University of Oklahoma Health Sciences Center invites applications for a tenure-track position at the Assistant Professor or Associate Professor level in the discipline of virology. The successful candidate will be expected to develop an extramurally funded research program and participate in team-taught medical, dental, and graduate courses in the area of virology. The Department consists of 15 full-time faculty and maintains a multimillion-dollar research budget generated from more than 40 extramural grants and contracts. An outstanding training program is in place that supports 14 postdoctoral trainees and 33 graduate students. The Department was awarded a nonhuman primate research resource program whose resources are available for investigator-initiated studies. The Department already has a strong research component in herpes viruses and HIV. Individuals in these areas are encouraged to apply; however, outstanding scientists in all areas of virology will be considered. A close working relationship exists among renowned immunologists within the Department, the Oklahoma Medical Research Foundation, and the Dean McGee Eye Institute and provides the potential for additional interactions with prospective faculty candidates. For an overview of the Department, visit our website: www.ouhsc.edu/mi/. Minimum qualifications for this position are a Ph.D. in biological sciences. The preferred candidate will also possess postdoctoral experience in virology. Submit curriculum vitae, description of research interests, teaching experience, and the names of three references to: **Chair of the Search Committee, Department of Microbiology and Immunology, P.O. Box 26901, University of Oklahoma Health Sciences Center, Oklahoma City, OK 73190.** Applications will be reviewed beginning September 1, 2000. *The University of Oklahoma is an Equal Opportunity/Affirmative Action Employer. Applications from women and ethnic minorities are strongly encouraged.*

FACULTY POSITIONS DEPARTMENT OF NEUROBIOLOGY AND ANATOMY University of Rochester

Applications are invited for tenure-track ASSISTANT/ASSOCIATE PROFESSOR positions. The Department maintains a leading role within an extensive multidisciplinary neuroscience community and is now recruiting faculty with research interests in network or cellular processing of sensory, motor, and integrative functions; adaptive plasticity and learning; and neuroengineering. Applicants should have a Ph.D. and/or M.D. and should have established an independent research laboratory following training in neuroscience. Successful candidates will participate in teaching activities in the graduate neuroscience program and in the medical school and will build a productive, independent, and externally supported research program. Competitive start-up packages are included. Salary is commensurate with rank and experience. Appointments may begin after August 2000. Applications, including curriculum vitae, statement of career goals, at least three letters of recommendation, and several publications, should be sent to: **Gary D. Paige, M.D., Ph.D., Chair, Department of Neurobiology and Anatomy, University of Rochester, 601 Elmwood Avenue, Box 603, Rochester, NY 14642.** *The University of Rochester is an Equal Opportunity/Affirmative Action Employer.*

PROFESSOR or ASSOCIATE PROFESSOR in biochemistry and molecular biology at Finch UHS/Chicago Medical School. Preference given to research interests in protein structure/function. Candidates must have an established, independent, and exciting research program with current extramural funding. For details, visit website: www.finchems.edu/biochem/Biochem.html or send curriculum vitae and three reference letters to: **Dr. K. E. Neet, Chairman, Finch UHS/Chicago Medical School, 3333 Green Bay Road, North Chicago, IL 60064.**

POSITIONS OPEN

TENURE-TRACK FACULTY POSITIONS IN MEDICAL SCIENCES FACULTY OF MEDICINE Memorial University of Newfoundland

Applications are invited for a tenure-track faculty position in **CARDIOVASCULAR PHYSIOLOGY** in the Division of Basic Medical Sciences, Faculty of Medicine, Memorial University of Newfoundland, St. John's, Newfoundland, Canada. The Division consists of approximately 35 faculty members with research strengths in cancer research, cardiovascular/renal science, immunology, and neuroscience. Applicants must hold an M.D. or Ph.D. degree and post-doctoral training. The successful candidate is expected to develop an externally funded research program. The candidate will participate in medical undergraduate and graduate teaching, including physiology and pharmacology topics involving the cardiovascular, renal, and respiratory systems. Additional information regarding the Faculty of Medicine and Memorial University of Newfoundland may be found at websites: <http://aorta.library.mun.ca/med/> and <http://www.mun.ca/>.

Memorial University is the largest university in Atlantic Canada. As the Province's only university, Memorial plays an integral role in the educational and cultural life of Newfoundland and Labrador. Offering diverse undergraduate and graduate programs to almost 16,000 students, Memorial provides a distinctive and stimulating environment for learning in St. John's, a very safe, friendly city with great historic charm, a vibrant cultural life, and easy access to a wide range of outdoor activities.

To apply, send curriculum vitae, description of research interests, and the names of three references to: **Associate Dean, Division of Basic Medical Sciences, Faculty of Medicine, Health Sciences Centre, Memorial University of Newfoundland, St. John's, Newfoundland A1B 3V6 Canada.** Application review will begin June 26, 2000. *In accordance with Canadian immigration requirements, priority will be given to Canadian citizens and permanent residents of Canada. Memorial University is committed to the principles of Employment Equity and welcomes applications from all qualified candidates.*

Diabetes FACULTY POSITIONS (TENURE TRACK) are available in a newly formed Center for Diabetes Research at the Indiana University School of Medicine. The School has embarked on a major initiative to enhance basic diabetes research. Faculty would have primary appointments in an appropriate basic science department and would be expected to develop an externally funded basic research program with direct relevance to diabetes and its complications. Areas of interest include but are not limited to molecular mechanisms of insulin signaling and hormone action, molecular and cellular aspects of metabolic control, proteomic or genomic approaches to diabetes research, and islet cell biology. Successful candidates would also participate in training medical and graduate students. The levels of the positions are open, and competitive space and start-up funding are available. Please send applications to: **Dr. Peter J. Roach, Director, Center for Diabetes Research, Van Nuys Medical Science Building, MS405A, 635 Barnhill Drive, Indiana University School of Medicine, Indianapolis, IN 46202.** Telephone: 317-274-1582; e-mail: diabetes@iupui.edu.

WETLAND HABITAT/ WILDLIFE ECOLOGIST

ASSISTANT/ASSOCIATE PROFESSOR to develop strong research program in wetland habitats/wildlife in the South. Ph.D. in wildlife, ecology, or related field with a commitment to quality teaching. Tenure-track, 12-month position. Apply by July 1, 2000 with teaching and research statement, curriculum vitae, reprints, and three recommendations to: **Frank Rohwer, Chair, Wildlife Search Committee, Forestry, Wildlife, and Fisheries, Louisiana State University, Baton Rouge, LA 70803-6200.** Telephone: 225-388-4146; e-mail: frohwer@lsu.edu. *Equal Opportunity Employer.*

POSITIONS OPEN

ASSISTANT PROFESSOR OF TOXICOLOGY DEPARTMENT OF ENVIRONMENTAL HEALTH SCIENCES Division of Toxicological Sciences Johns Hopkins School of Hygiene and Public Health

The Department of Environmental Health Sciences has openings for tenure-track Assistant Professors in the Division of Toxicological Sciences. Applicants must be trained in the field of mechanistic toxicology. They should have research interests and accomplishments using chemical, molecular, biochemical, and/or cell biological approaches to understanding the mechanisms of toxicity caused by environmental chemicals that affect human health. Successful applicants will be expected to establish independent research programs and to participate with the other faculty in the Department's/Division's teaching programs and mentoring of pre- and postdoctoral students. Information regarding the Department of Environmental Health Sciences and the Division of Toxicological Sciences can be obtained through the Department's website: <http://www.jhsph.edu/ehs>.

Interested individuals should send curriculum vitae, a succinct statement of research accomplishments and future plans for developing an independent research program, and the names of three individuals who can be contacted for references by mail (or by e-mail as an attachment in Word or Word Perfect) to:

**Director
Division of Toxicological Sciences
Department of Environmental Health Sciences
The Johns Hopkins School of Hygiene and
Public Health
615 North Wolfe Street
Baltimore, MD 21205-2179
E-mail: facserch@jhsph.edu**

Equal Opportunity/Affirmative Action Employer. Women and minorities are encouraged to apply.

CHEMISTRY DEPARTMENT ONE-YEAR TEMPORARY/ORGANIC

Grinnell College invites applications for a one-year position in organic chemistry at the **ASSISTANT PROFESSOR** level beginning August 2000. The appointee will be expected to teach organic chemistry with laboratories and participate in teaching introductory chemistry with laboratories. A Ph.D. in organic chemistry or a related field is required. Laboratory facilities and instrumentation for teaching and research are excellent. In their letters of application, candidates should address their interest in teaching in an undergraduate, liberal arts environment that emphasizes close faculty-student interaction. To be assured of consideration, send curriculum vitae, undergraduate and graduate transcripts, and a statement of teaching interests/philosophy. Arrange to have three letters of recommendation sent to: **Martin Minelli, Chair, Department of Chemistry, Grinnell College, Grinnell, IA 50112-0806.** Telephone: 515-269-3007 or 3047; FAX: 515-269-4285; e-mail: minelli@grinnell.edu. Applications will be reviewed as received and considered until the position is filled. For information about Grinnell College, see our website: www.grinnell.edu. *Grinnell College is an Equal Opportunity/Affirmative Action Employer committed to employing a highly qualified staff that reflects the diversity of the nation. No applicant shall be discriminated against on the basis of race, national or ethnic origin, age, gender, sexual orientation, marital status, religion, creed, or disability.*

University of Florida seeks an **ASSISTANT/ASSOCIATE PROFESSOR** in the Department of Medicine, Division of Endocrinology. M.D. degree, Board certified, Board eligible in internal medicine and/or endocrinology. The responsibilities will consist of patient care. Recruiting deadline: April 28, 2000. Anticipated starting date: July 1, 2000. Please submit curriculum vitae and three letters of recommendation to: **Josef Vesely, M.D., Box 100277, JHMHG, Gainesville, FL 32610.**

The University of Florida is an Affirmative Action/Equal Opportunity Employer.

Research Psychophysicist Position

Genetics and Clinical Services Branch National Eye Institute

The National Eye Institute, Division of Intramural Research, Ophthalmic Genetics and Clinical Services Branch (OGCSB) has opened a tenured position for a research scientist (Ph.D. or M.D.) in the Eye Services Section. Preference will be given to applicants with extensive training and experience in psychophysical techniques, and in the application of non-invasive test procedures to the study of chorioretinal degenerations and related ocular disorders. The successful candidate will be expected to develop an independent research program with emphasis on the diagnosis of retinal degenerative and vascular diseases, and the evaluation of therapeutic measures in the management of these conditions. The OGCSB encourages strong interaction between clinical and laboratory scientists in the design and development of innovative approaches for the detection, classification, and therapy of ocular diseases, and in carrying out controlled clinical research protocols.

Applicants should send a cover letter, C.V., statement of research interests, and three letters of reference to:

NIH, National Eye Institute Attention:

Cheryl Wild

Building 31, Room 6A18

31 Center Drive - MS 2510

Bethesda, Maryland 20892-2510

Applicants with access to E-mail may transmit their materials to the following E-mail address: CWild@nei.nih.gov. Application materials may be Faxed to (301) 496-3958. (Please limit Faxed materials to no more than 10 pages). **Applications must be received by June 1, 2000.** Candidates must be either U.S. Citizens or Permanent Residents.

SELECTION OF THIS POSITION WILL BE BASED SOLELY ON MERIT, WITH NO DISCRIMINATION FOR NON-MERIT REASONS SUCH AS RACE, COLOR, RELIGION, GENDER, NATIONAL ORIGIN, POLITICAL AFFILIATION, MARITAL STATUS, DISABILITY, AGE, SEXUAL ORIENTATION, OR MEMBERSHIP OR NONMEMBERSHIP IN AN EMPLOYEE ORGANIZATION.

NIH IS AN EQUAL OPPORTUNITY EMPLOYER

MEETINGS

Biomedical Research

Crystallography

American Crystallographic Association



*Golden
Anniversary
Meeting*

**July 22 - 27, 2000
St. Paul, MN**

Special Session

A special session celebrating recent accomplishments of the Howard Hughes Medical Research Institute will feature speakers P. Bjorkman, S. Burley, A. Brünger, S. Harrison, W. Hol, J. Kuriyan, D. Leahy, N. Pavletich, F. Quiocho, S. Sprang, T. Steitz and C. Wolberger. Dr. Purnell W. Choppin, Past President, HHMI, will be presented with the ACA Public Service Award for 2000.

Microsymposia

Twenty-three symposia on crystallographic applications in chemistry, materials sciences, and molecular biology.

Workshops

SHELX for Twins and Macromolecular Structures. Full day workshop intended for both macromolecular and small moiety crystallographers. Details on SHELX at <http://shelx.uni-ac.gwdg.de/SHELX/>

Use and Applications of the Cambridge Structural Database. Demonstrations of the new CSD search software ConQuest and the knowledge-based library IsoStar.

www.hwi.buffalo.edu/aca/

Research Fellow

Laboratory of Molecular Biology, DIR,
NIDDK, National Institutes of Health

A Research Fellow Position is available to study the mechanism of recombination reactions and other complex DNA reactions by using physico-chemical and optical techniques. Candidates must have a Ph.D. with postdoctoral experience, or equivalent research/technical training. Strong background in optical instrumentation, DNA enzymology, or molecular biochemistry is desirable. The successful candidate will be involved in the development and use of the instruments and methods to study macromolecular interactions using fluorescence labeled proteins and nucleic acids at the single molecule level. Salary is commensurate with experience and qualifications. Send curriculum vitae, publication list and three letters of recommendation to the address below no later than May 31, 2000.

Dr. Kiyoshi Mizuuchi
Section on Genetic Mechanisms
Laboratory of Molecular Biology, NIDDK
National Institutes of Health
Building 5, Room 237
5 Memorial Drive, MSC 0540
Bethesda, MD 20892-0540.
Kmizu@helix.nih.gov

POSITIONS OPEN

POSTDOCTORAL FELLOWSHIPS in reproductive biology: NIH-supported training opportunities in an interdepartmental, multidisciplinary program in a vital medical center. Research areas include molecular aspects of growth and differentiation during embryogenesis, endocrine control and regulation of corpus luteum and endometrium, role of growth factors and oncogenes in growth and differentiation, regulation of ovarian function in human and primates, perimenopause and menopause, regulation of uterine leiomyoma, mechanisms regulating alternative RNA splicing in sexual differentiation, hormone regulation of spermatogenesis, effects of chemotherapy and radiation on germ cells, molecular mechanisms controlling gene activity in the intracellular signaling; and calcium dynamics in testis and uterus, relationship of oncogene-regulated gene function to development and differentiation, regulation of growth factors by hormones, matrix components and gravity, regulation of gene expression during placental development, regulation by steroids of cancers of the male and female reproductive tracts; and regulation by androgens of gene expression, the regulation and function of homeobox transcription factors in male and female reproductive tissues, molecular basis of cell-to-cell communication. Send curriculum vitae and two references to: **Dr. B. Sanborn, Department of Biochemistry and Molecular Biology, University of Texas Houston Medical School, P.O. Box 20708, Houston, TX 77225. E-mail: Barbara.M.Sanborn@uth.tmc.edu; website: www/bmb.med.uth.tmc.edu/repro/training.html.** The UTHSC is an Equal Opportunity Employer. The Training Program encourages applications from individuals from underrepresented minorities. Applicants must be U.S. citizens or permanent residents.

OFFICE OF THE CHANCELLOR SPECIAL ASSISTANT TO THE CHANCELLOR University of California, Santa Cruz

This Cabinet-level position provides high-level staff support for the Chancellor in several areas, including issues related to science and higher education policy; relations with public, nonprofit, and corporate leaders in science, technology, and higher education; relations with local, state, and national scientific societies and educational associations; and special projects in science, technology, and higher education policy on campus and with outside organizations and institutions. Excellent written and oral communication skills, the ability to manage multiple complex projects, and facility for working in team settings are essential. Strong preference will be given to persons with Doctoral degrees in scientific disciplines, persons with advanced professional degrees, and persons with government or public policy experience. Salary commensurate with qualifications and experience. For full job description, please see website: http://www2.ucsc.edu/staff_hr/employment/jobcat/msp.html. Applications received by April 25, 2000, will be given preference. Candidates should send a letter of interest and curriculum vitae or résumé to: **Leslie A. Sunell, Ph.D., Assistant Chancellor, Office of the Chancellor, 1156 High Street, University of California, Santa Cruz, CA 95064.** The University of California is an Affirmative Action/Equal Opportunity Employer committed to excellence through diversity.

Three positions for **POSTDOCTORAL FELLOWS** specialized in one of the following areas are available immediately. (1) Molecular biology study of K channels in vascular smooth muscle cells using techniques like gene cloning, sequencing, transfection, and yeast two-hybridization; (2) patch clamp study on whole-cell and single-channel K currents; and (3) herb extraction and drug purification. Applicants must have a recent Ph.D. degree within three years. The Fellowships support for two to three years. Submit curriculum vitae and names of three references to: **Dr. Rui Wang, Department of Physiology, University of Saskatchewan, Saskatoon, SK S7N 5E5 Canada. FAX: 306-966-6532; e-mail: wangrui@duke.usask.ca.**

POSITIONS OPEN

POSTDOCTORAL FELLOWSHIPS

Postdoctoral Fellowships in molecular mechanisms of microbial pathogenesis are available at Emory University to U.S. citizens or permanent residents. Training is available with **Rafi Ahmed, Gordon Churchward, Richard Compans, Mark Feinberg, Mary Galinski, Ben Gold, Linda Gooding, Bruce Levin, James Madara, Charles Moran, Leslie Real, June Scott, William Shafer, David Stephens, Igor Stojiljkovic, Bernard Weiss, and Kirk Ziegler.** Candidates must have the Ph.D., M.D., D.O., or D.V.M. degree and a demonstrated interest in laboratory research. Submit curriculum vitae, bibliography, and have three reference letters sent to: **Dr. June Scott, Department of Microbiology and Immunology, Emory University School of Medicine, Atlanta, GA 30322.** Emory University is an Equal Employment Opportunity/Affirmative Action Employer.

MOLECULAR/CELLULAR BIOLOGIST BIOLOGY: ONE-YEAR LEAVE REPLACEMENT

The Biology Department of Grinnell College invites applications for a one-year sabbatical replacement position at the level of **ASSISTANT PROFESSOR** beginning August 2000. Duties will include teaching an introductory course in molecular genetics (including laboratory), assisting with laboratories in an introductory cell biology course, teaching an upper-level course in the candidate's area of expertise, and teaching a course for nonscience majors. A Ph.D. is required, and postdoctoral experience is preferred. In their letters of application, candidates should address their interest in undergraduate teaching in a liberal arts environment that emphasizes close faculty-student interaction. Excellent facilities and financial support for student-faculty research are available. Send curriculum vitae, three letters of recommendation, and copies of all transcripts to: **Dr. Bruce Voyles, Molecular/Cellular Biologist Search Committee, Department of Biology, Grinnell College, Grinnell, IA 50112-0806. E-mail: voyles@grinnell.edu; FAX: 515-269-4285.** For more information about the Department and College, visit our website: www.grinnell.edu. Applications will be reviewed as received and considered until the position is filled. Grinnell College is an Equal Opportunity/Affirmative Action Employer committed to employing a highly qualified staff that reflects the diversity of the nation. No applicant shall be discriminated against on the basis of race, national or ethnic origin, age, gender, sexual orientation, marital status, religion, creed, or disability.

ECOLOGIST

The Wilderness Society (TWS) seeks a **FOREST ECOLOGIST** to bring science and research to our "Northern Rockies" efforts to (1) protect wilderness, roadless areas, and forest ecosystems; (2) restore ecologically healthy ecosystems; and (3) evaluate and develop management prescriptions based on TWS's forest vision principles. Position located in Boise, Idaho. Will participate in the science program of the Yellowstone to Yukon conservation initiative and work on national forest management issues. Advanced degree in ecology or closely related discipline required. Knowledge of issues in fire restoration, forest health, watershed integrity, species viability, and invasive exotics preferred. Demonstrated commitment to wilderness and public land protection essential. Ability to work with coalitions, governmental scientists, planners, and managers is important. Ability to seek outside funding an advantage. TWS offers a competitive compensation and benefits package. Submit a cover letter, résumé, writing sample, and names of three references to: **Dr. G. Thomas Bancroft, The Wilderness Society, 900 17th Street N.W., Washington, DC 20006** (more information: e-mail: tom.bancroft@twsw.org). Deadline: May 12, 2000. Conservation: Please see The Wilderness Society's listing under Ecologist. The Wilderness Society is an Equal Employment Opportunity.

POSITIONS OPEN

POSTDOCTORAL POSITIONS on an NIH-funded interdisciplinary training grant are available to individuals interested in intracellular signaling, gene transcription, mitogenesis, lipid metabolism, and several other biological processes involved in a variety of cardiovascular diseases. Candidates will have the opportunity to work in the laboratory of one of the 13 preceptors in the Departments of Biochemistry, Medicine, Pharmacology, and Physiology. Visit our website: <http://www.utmcm.edu/pharmacology/training.html> for each preceptor's research interests. Applicants must be U.S. citizens or permanent residents. Candidates must have an M.D., and/or Ph.D. degree in one of the biological sciences. Send résumé with names of three references to: **Dr. Tarun B. Patel, Department of Pharmacology, University of Tennessee, The Health Science Center, 874 Union Avenue, Memphis, TN 38163. FAX: 901-448-4828.** University of Tennessee is an Equal Employment Opportunity/Affirmative Action/Title VI/Title IX/Section 504/Americans With Disabilities Act/Age Discrimination in Employment Act Employer.

UNIVERSITY OF FLORIDA

The Division of Hematology/Oncology of the Department of Medicine at the University of Florida, College of Medicine, seeks applicants for a tenure-track faculty position at the **ASSISTANT, ASSOCIATE, or PROFESSOR** level with interests in breast, GU, GI, lung, or CNS solid tumor malignancies. The individual will be expected to establish a program of clinical or translational research and participate in the active clinical services and teaching activities of the Division. The individual will be expected to interact with laboratory investigators in the Cancer Center and to collaborate in multidisciplinary disease-focused working groups. Board-certification eligibility in internal medicine and medical oncology is required. Salary and benefits commensurate with experience. Recruiting deadline: May 1, 2000. Anticipated starting date: July 1, 2000. Reply with curriculum vitae to: **John R. Wingard, M.D., Division of Hematology/Oncology, Box 100277, Gainesville, FL 32610.** Affirmative Action/Equal Opportunity Employer.

POSTDOCTORAL POSITIONS MOBILE SELF-SPLICING INTRONS

Dynamics of self-splicing introns are studied at the levels of RNA, DNA, and protein accessories. Projects include analysis of catalytic RNAs, DNA-based intron mobility, and intron evolution using genetic, biochemical, and structural approaches. Broad choices of projects. Experience in genetics, DNA recombination, RNA splicing, protein structure, and/or nucleic acid chemistry desirable. Competitive, federally funded salary (through Health Research, Inc.).

Candidates forward curriculum vitae and three letters of reference to: **Dr. Marlene Belfort, Wadsworth Center, New York State Department of Health and Department of Biomedical Sciences, State University of New York, Box 22002, Albany, NY 12201-2002. FAX: 518-474-3181; Telephone: 518-473-3345; e-mail: carl@wadsworth.org.** An Affirmative Action/Equal Opportunity Employer.

FLUORESCENCE-ACTIVATED CELL SORTER (FACS) HPLC FACILITY MANAGER

RESEARCH ASSOCIATE LEVEL. Applicant must have experience with protein purification by HPLC and/or operating a flow cytometer/cell sorter. Good computer skills (Windows) required. Experience with automated DNA synthesis and sequencing is desirable. Permanent position (salary range: \$29,500 to \$81,000) depending on qualifications. Attractive benefits. Send curriculum vitae and three references to: **Dr. T. Schmidt-Glenewinkel, Department of Biological Science, Hunter College of CUNY, 695 Park Avenue, New York, NY 10021.** An Equal Opportunity/Affirmative Action/ICRA/Americans With Disabilities Act Employer.

MAYO CLINIC

Director of Research Computing Facility

The Mayo Clinic in Rochester, Minnesota (<http://www.mayo.edu>) is seeking a Director of its Research Computing Facility. The Research Computing Facility (RCF) (<http://www.mayo.edu/research/ref>) is a highly prized core component of the Mayo Clinic research infrastructure that provides information technology services to the diverse Mayo research community. The 25 members of the RCF staff collaborate with approximately 500 career scientists and clinicians actively engaged in research and interact with the larger Information Technology group that supports foundation-wide computing. The Director is expected to provide leadership in formulating strategic planning initiatives for information technology applied to research with a strong focus on informatics related to biological and medical information. The plethora of available biological and medical data requires the integration of computing with research experimentation. Informatics support is vital to scientists and physicians in order to "visualize" their data and compare it with genomic, structural, and literature information. The ideal RCF director will be a visionary with considerable current knowledge of computer technology (hardware and software), web development, informatics, as well as genomics and biology. The Director must also be a proven leader and manager, with excellent skills in organization and budgeting, as well as a demonstrated appreciation for the importance of customer service in a research environment. A capacity to communicate and work effectively with research staff and senior administration is essential. This is a full time professional position with a competitive compensation and benefits package.

The Mayo Clinic is located in Rochester, Minnesota (<http://www.rochesterusa.com>), approximately an hour from the Minnesota/St. Paul metropolitan area. Rochester has excellent schools, a cosmopolitan cultural atmosphere, growing economy, clean environment, and has been rated one of the best places to live in the USA by Money Magazine.

Candidates should have a Ph.D. in Computer Science, Bioinformatics, Computational Biology, or a closely aligned quantitative science, with significant professional experience in management and leadership in a research or clinical environment, as well as demonstrated knowledge of technological advancements. Applications will be accepted until the position is filled, but preference will be given to applications received by May 31, 2000. Potential applicants for this position should submit a cover letter expressing their interest and qualifications, their curriculum vitae or resume and three letters of recommendation to:

Daniel J. Schaid, Ph.D., Chair, RCF Director Search Committee
Harwick 7
Mayo Clinic
200 First Street SW
Rochester, MN 55905

E-mail: schaid@mayo.edu Fax: (507) 284-9542

Mayo Foundation is an affirmative action and equal opportunity employer and educator.

RESEARCH FELLOW/ IMMUNOLOGY

At the Lindsley F. Kimball Research Institute of the New York Blood Center, science fuses with humanity to create exciting advances which improve health worldwide. An opportunity currently exists for a PhD to join this distinct environment, comprised of 60 scientists in 15 independent departments.

Participate in an NIAID-funded research project studying protective immunity in humans against *Onchocerca volvulus* larvae. The successful applicant will conduct extensive immunological studies on individuals exposed to infection to find correlates with protection, and to analyze cellular immune responses to distinct recombinant proteins which are potential candidates for vaccine development.

Requires a PhD, an established record in immunologic research, and a background in molecular techniques. The appointed individual must also be independent, creative, and self-motivated, with demonstrated expertise in human cellular immunology and the ability to travel to Africa.

We offer a competitive salary and a comprehensive benefits package. Please fax (212) 468-2082; email: careers@ccmail.nybc.org, or forward resume, to: Human Resources Dept.-MK/RF, New York Blood Center, 150 Amsterdam Ave., New York, NY 10023. Website: www.nybloodcenter.org. EOE M/F/V/D

▲ Lindsley F. Kimball

Research Institute

A Division of the New York Blood Center

HARVARD MEDICAL SCHOOL-McLEAN HOSPITAL ALCOHOL AND DRUG ABUSE RESEARCH CENTER

Post-doctoral research training fellowships (National Research Service Awards from NIDA, NIH) will be available at the Alcohol and Drug Abuse Research Center and Harvard Medical School for the academic year beginning in July, 2000. The Alcohol and Drug Abuse Research Center is a multidisciplinary program that includes basic, preclinical, clinical and treatment-related research. The research program is especially concerned with drug abuse problems in women and the role of gender in the abuse-related, neuroendocrine and analgesic effects of drugs. Trainees may participate in research on the behavioral pharmacology of substance abuse; the neuroendocrine consequences of cocaine, heroin and alcohol abuse; the effects of drug abuse on the brain as assessed by brain imaging techniques (MRI, MRS and fMRS); evaluation of novel analgesics in models of thermal algesia and hyperalgesia and evaluation of the safety and effectiveness of new pharmacotherapies for the treatment of drug abuse. McLean Hospital is an affiliate of the Harvard Medical School and the Massachusetts General Hospital and is located in Belmont, MA, a suburb of Boston. Salary is commensurate with experience (PGY 1 to PGY 7).

Please send a *curriculum vitae*, reprints of some recent papers, a brief statement about your research interests and goals, and the names, addresses, telephone and fax numbers of three references to: **Jack H. Mendelson, Professor of Psychiatry (Neuroscience)** and **Dr. Nancy K. Mello, Professor of Psychology (Neuroscience), Co-Directors, Alcohol and Drug Abuse Research Center, McLean Hospital, 115 Mill Street, Belmont, MA 02478.**

POSITIONS OPEN

APTAMER DEVELOPMENT POSITION RANK: OPEN

Sylvanus, Inc., is a start-up company with the mission of developing advanced testing products for medical and environmental applications. We are currently organizing a research team that will focus on combinatorial detection chemistries and array technologies. Our initial NIH-funded project will involve collaborations with government, industry, and academic institutions. We are currently looking for an experienced **APTAMER DEVELOPMENT SCIENTIST** to help lead our research effort.

The successful candidate will have at least two years of aptamer selection and characterization experience; a Ph.D. in molecular biology, biochemistry, or a relevant field; and a record of pertinent publications and/or patents. Experience with phage display, peptide libraries, and array technologies is desirable. Position, title, compensation, and equity participation will be commensurate with qualifications. Please send a detailed résumé to: **Human Resources, Sylvanus, Inc., P.O. Box 848, Pittsboro, NC 27312.**

MEDICAL RESEARCH ANALYST

ECRI, a nonprofit health services research agency, seeks M.D. with excellent writing and analytical ability to manage abstraction of data from clinical literature for online database of clinical practice guidelines (National Guideline Clearinghouse). Candidates must have five to 10 years of clinical and/or medical research experience. Excellent written and oral communication skills, problem-solving ability, and working knowledge of Windows applications is required. Send, FAX, or e-mail your cover letter and résumé to: **ECRI, Department VC, 5200 Butler Pike, Plymouth Meeting, PA 19462. Telephone: 610-567-1208; e-mail: hr@ecri.org. Equal Opportunity Employer/Affirmative Action.**

SCIENCE WRITING INTERN

The American Society of Plant Physiologists seeks a science writing and publishing intern for a period of nine to 12 months to gain extensive hands-on experience in science writing, journal production, and scholarly publishing. ASPP publishes *Plant Physiology* and *The Plant Cell*.

The intern will work with staff science writers on front-section columns in the journals and gain hands-on experience with peer-review and journal production processes.

See our website: <http://aspp.org/JOBs/fell.htm> for details. Mailing address: **ASPP, 15501 Monona Drive, Rockville, MD 20855-2768. Deadline: May 26, 2000. Start date: September 2000.**

COLUMBIA UNIVERSITY STAFF ASSOCIATE

A position is open in the Department of Pathology for a Staff Associate with experience in ultrastructural pathology research. The candidate should have experience in all aspects of tissue fixation and processing, electron microscopy, and laboratory maintenance. A Bachelor's degree plus four years of experience are required. Qualified applicants should submit curriculum vitae and the names of two references to: **Charles C. Marboe, M.D., Department of Pathology, PH-15 West, College of Physicians and Surgeons of Columbia University, 630 West 168th Street, New York, NY 10032. Columbia University takes Affirmative Action toward Equal Employment Opportunity.**

SENIOR RESEARCH ASSOCIATE; nontenure-track position. Ph.D. in molecular biology or neurobiology, with at least one postdoctoral training (two to four years). Knowledge of Western, Northern, and Southern blots; RT-PCR analysis; DNA cloning; and gel shifts. Ability to work with *in vivo* and *in vitro* models; sophisticated knowledge of neuropharmacology and anatomy is essential. Mid \$40,000. Send résumé and three letters of recommendation to: **Dr. Vanya Quinones-Jenab, Department of Psychology, Hunter College, 695 Park Avenue, New York, NY 10021.**

POSITIONS OPEN



RESEARCH IN PHYTONUTRIENTS AGRICULTURAL RESEARCH SERVICE U.S. DEPARTMENT OF AGRICULTURE Beltsville Human Nutrition Research Center Phytonutrients Laboratory

The Phytonutrients Laboratory of the Beltsville (Maryland) Human Nutrition Research Center has an opening for a **SCIENTIST** to conduct research concerning the health effects of organic micronutrients (phytonutrients) that are available from common foods of plant origin. Incumbent will plan and conduct research studies individually or as part of a team. A Ph.D. or equivalent is desirable in human nutrition, biochemistry, physiology, immunology, or a related field. Preference given to candidates who have research experience in organic micronutrients. Incumbent must have a record of independent research and must have demonstrated scholarly achievement, including publications on phytonutrients or related topics in peer-reviewed journals. *Applicants must be U.S. citizens.* Salary range: \$51,204 to \$110,028. May request application materials from: **Beverly Jacobs; Telephone: 301-504-1350; website: www.ars.usda.gov.** Refer to Announcement Number ARS-XOE-0189. Specific questions regarding the positions may be directed to: **Dr. Beverly Clevidence; Telephone: 301-504-8396; e-mail: Clevidence@bhnrc.arsusda.gov.** Closing date: June 1, 2000. *ARS is an Equal Opportunity/Affirmative Action Employer/Provider.*

SENIOR SCIENTIST/SCIENTIST

Chr. Hansen, Inc., a global leader in the processing of food ingredients for the food and dairy industries, has an opportunity for a Senior Scientist/Scientist to join our BioSystems Research and Development group in our Milwaukee, Wisconsin, offices.

While working as part of our multidisciplinary group, you will apply your research skills in the areas of microbial physiology, fermentation, and genetics to discover, characterize, and scale up new bacterial strains for animal and human products. The successful candidate will have expertise in one or more areas of microbial physiology, biochemistry, and molecular biology. Knowledge of statistics a plus. Candidates should have experience in small-scale computer-controlled fermentations as well as commercial medium development. Experience with downstream processing (freezing, freeze-drying) a plus. Candidates must be able to work on multiple projects and have experience working in GLP and GMP environments. Qualified candidates will have a Ph.D. in microbiology or related field with at least three years of relevant laboratory experience.

As a leader in our industry, we offer a professional challenge, a comprehensive benefits package, and a competitive salary. For confidential consideration, please submit a résumé with a complete salary history to:

**Chr. Hansen, Inc.
9015 West Maple Street
Milwaukee, WI 53214
Attention: Employment Manager
Equal Opportunity Employer.**

RESEARCH ASSOCIATE POSITIONS IN IMMUNOLOGY

Research Associate positions are available immediately to investigate the role of TNF family members in the regulation of immune responses. Experience in molecular biology and immunology is required. Please send curriculum vitae and names of three references to: **Yang-Xin Fu, M.D., Ph.D., Department of Pathology, N401, MC6027, University of Chicago, 5841 South Maryland, Chicago, IL 63637. E-mail: yfu@midway.uchicago.edu. University of Chicago is an Equal Opportunity Employer.**

POSITIONS OPEN

MetaPhore Pharmaceuticals, a research-driven pharmaceutical company focusing on the development of novel metal-based strategies for the treatment of human diseases, is seeking qualified scientists in following areas: **B.S./M.S. RESEARCH ASSOCIATE/pharmacology.** We are seeking a motivated and dedicated scientist to address antiinflammatory and pain-relieving properties of lead molecules. Qualified candidates must have a B.S./B.A. or M.S. degree in biology/pharmacology and a minimum of two years of laboratory experience with *in vivo* and biochemical techniques. **POSTDOCTORAL RESEARCH FELLOWS/pharmacology.** We are seeking qualified and motivated individuals interested in elucidating the roles of free radicals in inflammation and pain. A Ph.D. in pharmacology/biology with a strong background in *in vivo* techniques is required, with expertise in biochemistry a plus. Opportunities for collaborating within the company and with academic laboratories are available, and the expectation is that results of such collaborations will be published in leading journals. **SENIOR RESEARCH SCIENTIST/pharmacology.** This person will play a key role in the design/development/execution of animal models to evaluate both the efficacy of lead candidates and to address their mechanism-based activity and must have a Ph.D. in pharmacology with more than two years of postdoctoral experience with pharmacological experience. Expertise in the areas of inflammation, pain, CV pathology, or tumor biology are desired. Interested applicants should send curriculum vitae with the names of three references (to provide letters) to: **Ms. D. Schaller, MetaPhore, 1910 Innerbelt Business Center Drive, St. Louis, MO 63114.** We have recently moved into a modern, approximately 20,000 square foot research facility with excellent access to major universities, transportation, shopping, and residential areas. We offer a competitive compensation package and a comprehensive benefits and retirement package. Visit our website: www.metaphore.com. *An Equal Opportunity Employer.*

The Laboratory for Membrane Transport at Harvard Medical School has an opening for a **RESEARCH ASSOCIATE/SENIOR RESEARCH ASSOCIATE** at the level of Ph.D. or equivalent. The successful applicant will coordinate an anticancer drug discovery program that involves design, synthesis, screening, and pharmacodynamic analysis of novel target-specific anticancer agents. Candidates must have a solid knowledge of organic synthetic chemistry and pharmacology. She or he must be experienced in (1) solid-phase coupling; (2) modern separation and analytical instrumentation, such as HPLC and LC-MS; and (3) identification and implementation of state-of-the-art techniques in the field. These techniques include high-throughput analytical methods and bioinformatics for the analysis of large numbers of compounds leading to the rapid characterization of leads. We seek a scientist who possesses a distinguished academic record, excellent laboratory skills, and proven problem-solving abilities in addition to the interpersonal and management skills necessary to coordinate an intensive, cooperative drug discovery effort. Salary and benefits are competitive and commensurate with his/her qualifications. Qualified candidates should forward curriculum vitae, statement of research experience, and names of three references to: **Dr. Jose Halperin, M.D., Laboratory for Membrane Transport, Harvard Medical School, 240 Longwood Avenue, C1-607, Boston, MA 02115. E-mail: Jose_Halperin@hms.harvard.edu.**

POSTDOCTORAL POSITIONS. Two positions are available immediately to study ion channels in gastrointestinal smooth muscle. The project involves cloning and expression of ion channels. One position is for a trained molecular biologist familiar with cloning ion channels, and the second is for an electrophysiologist familiar with patch clamp techniques. Please send curriculum vitae and contact information for three references to: **Dr. Hamid I. Akbarali, Research 151, Harvard Medical School, West Roxbury VA Medical Center, 1400 VFW Parkway, West Roxbury, MA 02132. E-mail: hakbarali@hms.harvard.edu.**

**Biology of Aging Program
National Institute on Aging**

POSITIONS AVAILABLE

**Branch Chief, Systems Branch,
GS 15
Health Scientist Administrators,
GS 13/14**

The Biology of Aging Program, National Institute on Aging, National Institutes of Health, seeks to fill three vacancies: Branch Chief, Systems Branch and two Health Scientist Administrators. The Biology of Aging Program plans, implements, and supports fundamental molecular, cellular, genetic, and physiological research on the mechanisms of normal aging and age-related pathologies in humans and animal models. This includes investigations of the gradual or programmed alterations of structure and function which characterize normal aging, as well as investigations of the abnormal changes which are risk factors for or accompany age-related disease states. The ultimate goal is to develop molecular interventions to reduce and/or delay age-related degenerative processes in humans.

Candidates for both positions must have a Ph.D. or M.D. or equivalent, a minimum of two years of postdoctoral research training, and knowledge of research in one of the following areas: biochemistry, immunology, muscle biology, bone biology, cartilage biology, cell biology or genetics. Experience in gerontology is desirable but not necessary. U.S. citizenship is required.

The Branch Chief, Systems Branch will serve in a dual capacity as Chief of the Systems Branch and as Health Scientist Administrator for one of the following program areas: Musculoskeletal Biology Program or the Immunology Program. The incumbent will assist the Associate Director, BAP, in the formulation, development, and administration of activities within the BAP, and supervise the Health Scientist Administrators within the Systems Branch. The incumbent will also be responsible for developing and administering a scientific program area. The salary range is (GS-15) \$84,638 - \$110,028. (Announcement number NIA-00-916)

The Health Scientist Administrator serves as Program Director for one of the following program areas: Cell Structure and Function Program, Musculoskeletal Biology Program, or the Immunology Program. The incumbent will be responsible for developing and administering a scientific program area through reviewing literature, convening workshops, and managing a grants portfolio. The salary range is (GS-13) \$60,890 - \$79,155; or (GS-14) \$71,954 - \$93,537. (Announcement number NIA-00-915)

The application deadline is May 15, 2000. For a complete vacancy announcement, see web site <http://careerhere.nih.gov/>, click on current vacancies, enter the announcement number (either of two above), click on find. Review the requirements listed, send a resume and address the three areas (KSAs) on which each applicant will be evaluated. If you have questions after you read the announcement, contact Marian Patten, NIA Personnel Office, 301-496-5347.

NIH is an Equal Opportunity Employer.



**CHIEF, SCIENCE POLICY BRANCH
OFFICE OF SCIENCE POLICY AND COMMUNICATIONS
NATIONAL INSTITUTE ON DRUG ABUSE
NATIONAL INSTITUTES OF HEALTH
DEPARTMENT OF HEALTH AND HUMAN SERVICES**

The National Institute on Drug Abuse (NIDA) invites applications for a Supervisory Health Scientist Administrator/Medical Officer, career Civil Service series GS-601-15/GS-602-15 with an annual salary range of \$84,638 - \$110,028. Physicians may also be eligible for a Physicians' Comparability Allowance of up to \$30,000 per year. A recruitment bonus of up to 25% of base pay may be available to a non-Federal selected candidate. The position is located in Bethesda, Maryland.

The incumbent serves as Chief of the Science Policy Branch in the Office of Science Policy and Communications. The Chief is responsible for conceptualizing, developing, directing, and implementing a science-based strategic planning and policy process for NIDA. This includes coordinating the planning activities of four research divisions; soliciting and integrating input from the scientific community, professional organizations, and treatment and prevention practitioners; conducting analyses, developing options, and making recommendations to the Associate and Institute Directors, NIDA on research priorities. The incumbent's activities directly affect the planning, justification, and assessment of the Institute's entire research and research training budget of more than \$600 million. He/She conducts and oversees analyses of new and existing key policy issues related to drug abuse and addiction, including research training, basic biological and behavioral research, bioethics, prevention, treatment research including pharmacotherapy and health services research. The Chief provides Institute leadership in the areas of research training activities, Congressional relations, and science education initiatives.

Qualification requirements include the following: a Ph.D. or equivalent doctoral degree in academic field pertinent to health science, a Doctor of Medicine or Osteopathy degree from a school in the U.S. or Canada, a Master's Degree in a pertinent health or social science; a professional background in the scientific administration of biomedical and/or behavioral research; and knowledge of research methodology.

NIH job vacancies are posted on the NIH website at <http://careerhere.nih.gov>. Detailed information is provided in a vacancy announcement number DA-00-0017A. To request a copy please call the NIDA Jobs Line at (301) 443-9663. Applications must be submitted to: Attn: Maryann Postorino, (NIDA-00-0017A), National Institutes of Health, NIDA Human Resources Office, 6001 Executive Boulevard, Room 5128, MSC 9587, Bethesda, MD 20892-9587.

NIH is an Equal Opportunity Employer. Selection for this position will be based solely on merit, without discrimination for non-merit reasons such as race, color, religion, sex, national origin, politics, marital status, sexual orientation, physical or mental handicap, age or membership or non-membership in an employee organization.



MAYO CLINIC

**POSTDOCTORAL RESEARCH; SIGNAL TRANSDUCTION
TRANSPLANTATION BIOLOGY RESEARCH PROGRAM**

A position is available beginning immediately for a postdoctoral research fellow to work with Dr. Karen E. Hedin of the Transplantation Research Program, in the Departments of Surgery and Immunology, at the Mayo Clinic in Rochester, Minnesota.

Research will focus on characterizing the molecular mechanisms and biological impact of chemokine signal transduction in T lymphocytes and endothelial cells, and on understanding how these signaling pathways regulate important biological processes, including lymphocyte immune activation, cytokine gene expression, endothelial cell activation, tumor formation, and the rejection of transplanted organs.

Applicants must have a Ph.D. and/or M.D. and experience using molecular biological and/or biochemical laboratory techniques. A background in signal transduction or immunology would be helpful. The ideal applicant will be excited about doing cutting-edge basic science research within an interactive group of basic and clinical scientists that are focused on developing practical approaches to xenotransplantation. For more information, visit the website of Dr. Hedin at: http://www.mayo.edu/research/people/3/31804_hedin/ and the website of the Mayo Transplantation Biology Research Program at: http://www.mayo.edu/research/transplantation_biology/resources/. To apply, please send a letter of application and curriculum vitae to:

Karen E. Hedin, Ph.D.

Mayo Clinic

Transplantation Research

Medical Sciences Building, 2nd Floor

Rochester, MN 55905

Mayo Foundation is an affirmative action and equal opportunity employer and educator.

POSITIONS OPEN

SCHOOL OF PUBLIC HEALTH UNIVERSITY OF CALIFORNIA, BERKELEY

POSTDOCTORAL RESEARCH APPOINTMENTS are occasionally available with individual faculty members in the School of Public Health of the University of California at Berkeley. Appointments are normally made for one year, with the possibility of renewal for a second year. Highly qualified persons may apply for positions to be assumed at the time of or shortly after the completion of doctoral studies. A list of current Berkeley School of Public Health faculty and their areas of research interests is available on the World Wide Web. To view this list, access the School of Public Health website: <http://sph.berkeley.edu>; refer to the Directory and then to Faculty Profiles for a listing of the School of Public Health faculty. Arrangements should be made for one confidential letter of reference to be sent by the person best able to judge the applicant's research achievements and potential. Applications should include a résumé; a brief statement of research experience, interests, and goals; and the names and the addresses of two additional references. The application should be sent directly to the faculty member with whom the applicant prefers to be associated at the following address:

School of Public Health
University of California
c/o 140 Warren Hall
Berkeley, CA 94720-7360

The University of California is an Equal Opportunity/Affirmative Action Employer.

POSTDOCTORAL RESEARCH ASSOCIATE

Position is available for the study of ion channels in nematodes (*C. elegans* and *O. dentatum*). The project is to use patch clamp and single-channel recording techniques to study the physiology and pharmacology of muscle ion channels. The project is exciting and capitalizes on the knowledge gained from the *C. elegans* genome project and focuses on how ion channels can modify their properties (plasticity and drug resistance). A Ph.D. is required. Applicants are asked to submit a letter of interest, curriculum vitae, three references, and names of contacts to:

Dr. Richard J. Martin
Professor and Chair
Department of Biomedical Sciences
College of Veterinary Medicine
Iowa State University
Ames, IA 50011-1250
Telephone: 515-294-2470
E-mail: rjmartin@iastate.edu

Iowa State University is an Affirmative Action/Equal Opportunity Employer.

POSTDOCTORAL POSITIONS are immediately available for candidates interested in tumor suppressors and signal transduction with major emphasis on gap junction protein cx43 and UV signal transduction pathway. Candidates should have a strong background in cell biology, cancer biology, and molecular biology. Candidates with experience in adeno-associated virus system, gap junction, growth factor receptors, and oxidative stress are particularly encouraged to apply. Please contact: **Ruo-Pan Huang, M.D., Ph.D.,** Division of Research, Department of Gynecology and Obstetrics, Emory University School of Medicine, 1639 Pierce Drive, Room 4219, Atlanta, GA 30322.

POSTDOCTORAL FELLOW

To work on regulation of brain thrombosis in stroke models in mice. Previous experience in stroke modeling and basic molecular techniques required. Neuroprotective, antiinflammatory, and antithrombotic effects of novel, naturally occurring anticoagulant proteins will be studied in different knockout models for coagulation factors in relation to expression of hemostasis-related genes, development of secondary thrombosis, and blood flow. Salary commensurate with experience. Contact: **Brenda Kavanaugh;** e-mail: Brenda_Kavanaugh@urmc.rochester.edu; FAX: 716-273-1132.

POSITIONS OPEN

POSTDOCTORAL POSITIONS CENTER FOR BIOLOGICS EVALUATION AND RESEARCH

Food and Drug Administration

The Laboratory of Bacterial Toxins, Division of Bacterial, Parasitic, and Allergenic Products, is searching for **POSTDOCTORAL CANDIDATES** to fill two positions. The candidates will work as part of a Division effort to investigate the function, genetics, and regulation of virulence factors of *Bacillus anthracis* to provide a science base for regulating novel vaccine strategies as countermeasures to bioterrorism. The appointments are for one to three years with a salary of \$29,000 to \$32,000. The laboratories are located on the NIH campus. The mailing address is: **FDA/CBER, 1401 Rockville Pike, Suite 200 North, Rockville, MD 20852-1448** with attention to the appropriate investigator contact listed below.

Biosynthesis of cell surface carbohydrates encoded by the *B. anthracis* genes: The laboratory is searching for a recent graduate in biochemistry, molecular biology, or related fields to investigate the biosynthesis of cell surface carbohydrates encoded by the *B. anthracis* genes. The candidate should have experience with molecular biology techniques, protein expression, and enzymology. Experience with membrane proteins or glycoconjugates would be helpful but is not essential. Contact: **Dr. Vann, HFM-437.**

Virulence mechanisms in *B. anthracis*: The laboratory is searching for a recent graduate in molecular biology, bacteriology, or related fields to study virulence mechanisms in the bacterial pathogen *B. anthracis* with an emphasis on the identification and characterization of genes involved in iron acquisition and iron-dependent regulation. The candidate should have experience with recombinant DNA techniques. Contact: **Dr. Schmitt, HFM-437.**

FELLOWSHIP AVAILABLE SCHOOL OF MEDICINE DEPARTMENT OF PHYSIOLOGY Temple University

A **POSTDOCTORAL POSITION** is available immediately to study the activation mechanisms of platelets and leukocytes by nucleotides. The applicant should have a Ph.D. and/or M.D. in biological sciences with experience in cell culture, signaling mechanisms, and molecular biology. Experience with knockout mice is a plus. Fellowship commensurate with experience. Curriculum vitae with names, telephone numbers, and e-mail addresses of three references should be sent to: **kunapuli@nimbus.temple.edu** or FAXED to: **Dr. S. P. Kunapuli; FAX: 215-707-4003.**

POSTDOCTORAL POSITION available in molecular toxicology. The successful candidate will study molecular mechanisms in membrane transport of Hg²⁺ and Cd²⁺ in the kidney. Experience in molecular biological techniques required. Send curriculum vitae to:

Dr. Rudolfs K. Zalups
Division of Basic Medical Sciences
Mercer University School of Medicine
1550 College Street
Macon, GA 31207
E-mail: zalups.rk@gain.mercer.edu

Mercer University is an Equal Opportunity/Affirmative Action Employer.

POSTDOCTORAL POSITION available immediately for NIH-funded project studying the pathogenesis of Kaposi's sarcoma (KS). Areas of interest include (1) apoptosis proteins in KS and (2) the role of HHV-8 in the pathogenesis of KS. Candidates must have a Ph.D. and/or M.D. with experience in tissue culture and molecular biology preferred. To join our committed group of investigators, send curriculum vitae, a brief description of research experience, and names of three references to: **Dr. K. E. Foreman, Cardinal Bernardin Cancer Center, Room 302, Loyola University Medical Center, 2160 South First Avenue, Maywood, IL 60153.** An Equal Opportunity Employer/Educator.

POSITIONS OPEN

POSTDOCTORAL POSITIONS Estrogen Receptor Transcriptional Pathways/Estrogen Receptor Roles in Mammary Development University of California San Francisco

For investigators with (1) an interest in mechanisms of transcription or in the role of hormones in development and cancer and (2) experience in genetic or biochemical analysis of protein function or with transgenics. E-mail curriculum vitae and references to: **kushner@itsa.ucsf.edu** or write: **Peter Kushner, MRU 1119 HSW, University of California, San Francisco, CA 94143-0540.**

For samples of our work, see: **Webb, P., et al., Molecular Endocrinology 13:1672-1685; Shiao, A. K., et al., Cell 95:927-937; Feng, W.-J., et al., Science 280:1747-1749; Paech, K., et al., Science 277:1508-1510. Affirmative Action/Equal Opportunity Employer/Minorities/Females/Disabled/Veterans.**

POSTDOCTORAL POSITIONS MASSACHUSETTS GENERAL HOSPITAL HARVARD MEDICAL SCHOOL

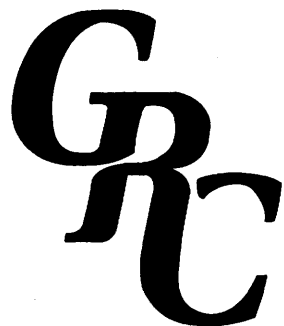
Three Postdoctoral positions are available immediately to study the role of reactive oxidizing species (ROS) in apoptosis (**Dr. K. D. Held**), mutagenesis (**Dr. H. L. Liber**), and gene expression (**Dr. I. E. Kochevar**). In the studies, ROS are generated by oxidizing chemicals, ionizing radiation, and/or photosensitizing dyes plus light. Background in cellular/molecular biology is necessary, and experience in cell signaling studies, particularly related to oxidative stress, is desirable. Please send curriculum vitae and names of three references to: **Dr. K. D. Held, Radiation Oncology, Cox 302, Massachusetts General Hospital, Boston, MA 02114. E-mail: kheld@partners.org.** *Massachusetts General Hospital/Harvard Medical School is an Equal Opportunity/Affirmative Action Employer.*

UNIVERSITY OF FLORIDA

The Division of Hematology/Oncology of the Department of Medicine at the University of Florida, College of Medicine, seeks applicants for a tenure-track faculty position at the **ASSISTANT, ASSOCIATE, or PROFESSOR** level with interests in breast, GU, GI, lung, or CNS solid tumor malignancies. The individual will be expected to establish a program of clinical or translational research and participate in the active clinical services and teaching activities of the Division. The individual will be expected to interact with laboratory investigators in the Cancer Center and to collaborate in multidisciplinary disease-focused working groups. Board-certification eligibility in internal medicine and medical oncology is required. Salary and benefits commensurate with experience. Recruiting deadline: May 1, 2000. Anticipated starting date: July 1, 2000. Reply with curriculum vitae to: **John R. Wingard, M.D., Division of Hematology/Oncology, Box 100277, Gainesville, FL 32610.** *Affirmative Action/Equal Opportunity Employer.*

POSTDOCTORAL POSITION available in a laboratory studying the structure and function of NADH-quinone oxidoreductases. Successful applicants should have good molecular biology skills (DNA/RNA). Please see website: <http://www.scripps.edu/biochem/yagi/> for details. Send letter of interest, curriculum vitae, and the names of three references to: **Dr. Takao Yagi, Department of Molecular Experimental Medicine, The Scripps Research Institute, MEM256, 10550 North Torrey Pines Road, La Jolla, CA 92037.**

POSTDOCTORAL POSITION available to work on viral vectors for tumor gene therapy and gene transfer into stem cells. Expertise in molecular and cell biology is required. Applicants should send their curriculum vitae to: **Andre Lieber, University of Washington, Division of Medical Genetics, Box 357720, Seattle, WA 98195. E-mail: lieber00@u.washington.edu; FAX: 206-685-8675.** *The University is an Equal Opportunity/Affirmative Action Employer.*



GORDON RESEARCH CONFERENCES

Conferences at the Frontiers of the Biological, Chemical and Physical Sciences

- The full 2000 Summer and Fall GRC schedule appeared in the February 11, 2000 issue of **SCIENCE**.

visit the *frontiers of science* at:

WWW.GRC.URI.EDU

Our web site contains the complete schedule of current and upcoming Conferences.
Apply directly from the web! Check it out now, Conferences fill up fast!

POSITIONS OPEN

ASSISTANT PROFESSOR UNIVERSITY OF PENNSYLVANIA

The Department of Animal Biology at the University of Pennsylvania is soliciting applications for a tenure-track faculty position at the Assistant Professor level. The Department has a strong commitment to basic biomedical research and is located at the heart of Penn's Philadelphia campus in an interactive scientific environment. Scientists with research interests in the areas of cell signaling and signal transduction are encouraged to apply, but all outstanding candidates in the fields of cell biology, cancer biology, genetics, functional genomics, reproductive biology, and molecular pharmacology will be considered. Applicants must have a Ph.D., M.D., V.M.D., or equivalent degree, along with postdoctoral training, and should be prepared to establish an independent extramurally funded research program. Applicants can also expect to participate in teaching in the Department and in Universitywide graduate programs.

Interested candidates should submit curriculum vitae, a statement of research interests, and three letters of reference to: **Ms. Judy C. Bennett, Search Committee Coordinator, University of Pennsylvania School of Veterinary Medicine, 3800 Spruce Street, Philadelphia, PA 19104-6046. FAX: 215-573-6810; e-mail: jbennett@vet.upenn.edu.** Deadline for applications is May 23, 2000. *The University of Pennsylvania is an Equal Opportunity/Affirmative Action Employer.*

POSTDOCTORAL POSITION: streptococcal gene expression associated with adhesion in experimental biofilms. Available immediately. Ph.D. with experience in molecular biology required. Send curriculum vitae, a statement of research and career goals, and contact information for three references to: **Dr. Mark C. Herzberg, Department of Preventive Sciences, 17-164 Moos Tower, 515 Delaware Street S.E., University of Minnesota, Minneapolis, MN 55455. E-mail: mcherzb@tc.umn.edu.** *Equal Opportunity Employer.*

POSITIONS OPEN

The Division of Infectious Diseases at Stanford University is seeking an **ASSISTANT PROFESSOR** in the research line. The successful candidate should be expert in bioinformatic analysis of infectious agents, particularly of HIV. The applicant will be responsible for integrating Stanford University's genomic and bioinformatics resources into the broader HIV research program and will collaborate with laboratory scientists and clinical investigators to strengthen ongoing research focusing on HIV genetic diversity and treatment. The successful candidate will also collaborate with other Divisional faculty in informatics systems relevant to their research in the genomics of infectious agents. The applicant should demonstrate both a record of research accomplishment and an ability to attain external funding. In addition, candidates must be Board-certified in infectious diseases and internal medicine and should be prepared to participate in clinical activities of the Division. Qualified applicants should submit curriculum vitae and names of three references to: **Julie Parsonnet, M.D., Chief, Division of Infectious Diseases and Geographic Medicine, Room S156, Stanford Medical School, Stanford, CA 94305-5107.** *Our medical school is committed to increasing representation of women and members of minority groups among its faculty and particularly encourages applications from such candidates.*

OPPORTUNITY TO THRIVE IN ENTREPRENEURIAL ENVIRONMENT

Seeking life sciences Ph.D. or M.D. from U.S. university to join dynamic, growing consultancy that provides regulatory documents and technical manuscripts to the pharmaceutical industry. Ability to rapidly assimilate new information and write highly technical documents with clarity is an absolute requirement. Starting salary and benefits up to \$110,000 for the right applicant. FAX, e-mail, or mail cover letter and curriculum vitae to: **Howard Goldsweig, M.D., Qualus, 420 East 51st Street, Suite A, New York, NY 10022. FAX: 212-223-0893; e-mail: hgoldsweig@qualus.com.**

POSITIONS OPEN

POSTDOCTORAL POSITIONS available to study the pathogenesis of HIV and human cytomegalovirus (CMV). Areas of HIV research examine factors that impact on mother-to-infant transmission and the role of macrophages, dendritic cells, and chemokine receptor genotypes in HIV pathogenesis including CNS impairment. Research projects on CMV study the cell types, molecular mechanisms, and pathogenic significance of CMV latency and reactivation. Spoken and written fluency in English required. Applicants should provide curriculum vitae and three letters of recommendation to: **Stephen A. Spector, M.D., University of California, San Diego, Stein Research Building, 9500 Gilman Drive, La Jolla, CA 92093-0672. FAX: 858-534-7411; e-mail: saspector@ucsd.edu.**

POSTDOCTORAL POSITIONS CENTER FOR CARDIOVASCULAR RESEARCH

Washington University School of Medicine

Positions available in molecular cell biology laboratory to study mechanisms of fatty acid and cholesterol trafficking in mammalian cells. Send curriculum vitae and names of two references (with e-mail/FAX) to: **Dr. J. Schaffer, Washington University School of Medicine, 660 South Euclid Avenue, Box 8086, St. Louis, MO 63110. E-mail: jschaff@imgate.wustl.edu; FAX: 314-362-0186.**

NIH-funded **POSTDOCTORAL POSITIONS** are available to study cytokine signal transduction and novel cytokine-inducible genes. Candidates with experience or background in molecular biology, biochemistry, or knockout/transgenic animals should send their curriculum vitae plus names and addresses of three references to: **Dr. Yu-Chung Yang, Department of Pharmacology, Case Western Reserve University School of Medicine, 10900 Euclid Avenue, W353, Cleveland, OH 44106-4965. Telephone: 216-368-6931; FAX: 216-368-3395; e-mail: yxy36@po.cwru.edu.**

POSITIONS OPEN

POSTDOCTORAL TRAINING ENVIRONMENTAL TOXICOLOGY

POSTDOCTORAL FELLOWSHIPS in environmental toxicology supported by the National Institute of Environmental Health Sciences (NIEHS) are available at Oregon State University. The training grant faculty mentors are affiliated with the Department of Environmental and Molecular Toxicology, two NIEHS research centers (Environmental Health Sciences Center and Marine/Freshwater Biomedical Sciences Center), both at OSU, and the Oregon Health Sciences University in Portland. Successful candidates will engage in research with an emphasis on mechanisms of toxicity of environmental agents. NIEHS fellowships are available on a competitive basis to applicants (*U.S. citizens and permanent residents*) with a Doctoral degree in chemistry, biochemistry, pharmacology, toxicology, or the biological sciences.

To apply for an NIEHS fellowship, send curriculum vitae, academic records, and three letters of reference to: **David E. Williams, Ph.D., Director, NIEHS Training Grant in Toxicology, Department of Environmental and Molecular Toxicology, 1007 ALS, Oregon State University, Corvallis, OR 97331-7301. Telephone: 541-737-3277; FAX: 541-737-5077; e-mail: David.Williams@orst.edu.**

Application closing date is June 15, 2000. Positions are available as early as July 1, 2000. *Oregon State University is an Affirmative Action/Equal Opportunity Employer and has a policy of being responsive to the needs of dual-career couples.*

DIRECTOR MORPHOLOGY CORE

The University of California and the Veterans Affairs Medical Center, San Francisco, are recruiting a Director of the Morphology Core for their program project in keratinocyte differentiation. The Director will be responsible for routine light and electron microscopic preparation and analysis, immunocytochemistry at the light and electron microscopic level, isotopic and nonisotopic *in situ* hybridization, and quantitative analysis of microscopic images using digital imaging technology in support of the five projects in this program project. The Morphology Core occupies its own well-equipped laboratory and is supported by a technician under the supervision of the Director. The successful candidate will have a Ph.D. in cell biology or related area and hands-on experience in these techniques, preferably in skin. Please send your curriculum vitae and names/telephone numbers of three references to: **Daniel Bikle, M.D., Ph.D., VA Medical Center, 111N, 4150 Clement Street, San Francisco, CA 94121.**

POSTDOCTORAL POSITIONS are available immediately to study regulation of NMDA receptor gene expression. Research project entails promoter analysis. Molecular and cell biology techniques including cell culture and transfection are required. Applicants with knowledge of primer extension, methylation, and deletion analysis are preferred. Send complete curriculum vitae and three letters of recommendation to: **Dr. Maharaj K. Ticku, Department of Pharmacology, University of Texas Health Science Center at San Antonio, 7703 Floyd Curl Drive, San Antonio, TX 78229-3900. FAX: 210-567-4226; e-mail: TICKU@UTHSCSA.EDU.** UTHSCSA is an Equal Employment Opportunity/Affirmative Action Employer.

POSTDOCTORAL POSITION in signal transduction available to study the stress-induced NF- κ B and JNK pathways (see **Lee et al., Cell 88:213, 1997; Zhao and Lee, JBC 274:8355, 1999**). Experience in molecular biology required. Send curriculum vitae and the names of three references to: **Dr. Frank Lee, Department of Pathology and Laboratory Medicine, University of Pennsylvania School of Medicine, 218 John Morgan Building, Philadelphia, PA 19104. FAX: 215-573-2272; e-mail: franklee@mail.med.upenn.edu.** Equal Opportunity Employer.

POSITIONS OPEN

MCV/VCU

Medical College of Virginia
Virginia Commonwealth University

ASSISTANT/ASSOCIATE PROFESSOR OF RESEARCH

The Department of Surgery, Division of General Surgery, at the Medical College of Virginia/Virginia Commonwealth University, is seeking applicants for the faculty position of Assistant/Associate Professor of Research.

Successful candidate will have a Ph.D. in basic science with a strong background in molecular biology. The position will require knowledge of cell culture techniques, experience studying signal transduction mechanisms, and facility in measuring second messengers such as intracellular calcium. The ideal candidate should also have experience with state-of-the-art microscopic techniques such as confocal microscopy. An ability to work with others and a willingness to collaborate when appropriate is required. A commitment to scholarship and serious investigation, as demonstrated by peer-reviewed publications and a track record in acquiring external funding, is highly recommended. Experience working in a culturally diverse environment is highly preferred.

Please send curriculum vitae to:

Thomas H. Casey, Ph.D.
Associate Professor of Surgery
and Health Administration
Department of Surgery
Post Office Box 980629
Richmond, VA 23298-0629
FAX: 804-828-8063
E-mail: cfaraone@hsc.vcu.edu

Medical College of Virginia/Virginia Commonwealth University is an Affirmative Action/Equal Employment Opportunity Employer. Women, minorities, and persons with disabilities are encouraged to apply.

STAFF FELLOW/SENIOR STAFF FELLOW POSITIONS Platelet Research

We are seeking applicants to study platelet signal transduction, platelet metabolism during storage, and *in vivo* and *in vitro* models of platelet efficacy. Applicant should have M.D. or Ph.D. in biochemistry, physiology, or related areas. Experience in platelet biology and flow cytometry is desirable but not required. Position requires regulation of blood products for transfusion in addition to research. *Applicants must be U.S. citizens or U.S. permanent residents.*

Send curriculum vitae and names of three references to: **Jaroslav Vostal, M.D., Ph.D., Laboratory of Cellular Hematology, Center for Biologics Evaluation Research, FDA, HFM-335, 1401 Rockville Pike, Rockville, MD 20892. FAX: 301-402-2780; e-mail: vostal@cber.fda.gov.**

POSTDOCTORAL POSITIONS at Yale University Department of Pharmacology. Positions available for structure-function studies of biogenic amine transporters to identify domains involved in binding and translocation. Interest in transport and experience in molecular biology or electrophysiology preferred. Send curriculum vitae and three letters of reference to: **Dr. Gary Rudnick, Department of Pharmacology, Yale University School of Medicine, 333 Cedar Street, P.O. Box 208066, New Haven, CT 06520-8066.**

POSTDOCTORAL POSITION is currently available at the University of Kentucky Medical Center, Lexington, Kentucky, U.S.A., to study mechanisms of injury to brain endothelial cells and disruption of blood brain barrier in relationship to HIV infection. Strong background in cellular/molecular biology is required. Please submit curriculum vitae and the names and telephone numbers of three references to: **Dr. Michal Toborek, University of Kentucky Medical Center, Department of Surgery/Neurosurgery, Lexington, KY 40536 U.S.A. FAX: 606-323-1093; e-mail: mjtobo00@pop.uky.edu.**

POSITIONS OPEN

POSTDOCTORAL AND RESEARCH ASSISTANT PROFESSOR POSITIONS The University of Illinois at Chicago

Several research positions are currently available for biophysical studies of the structure and function of proteins of the serpin gene superfamily. Positions at the Postdoctoral Associate/Fellow level, which require a Ph.D. and/or M.D., are available for several NIH-funded projects including a newly funded program project grant aimed at understanding key serpin regulators of blood coagulation, inflammation, apoptosis, and host defense. Projects are headed by **Drs. Peter Gettins and Karl Volz** in the College of Medicine and **Drs. Steven Olson and Philip Patston** in the College of Dentistry. The approaches emphasized are NMR, X-ray crystallography, spectroscopy, rapid kinetics, and thermodynamics. Experience in biophysical and molecular biology studies of proteins is desirable. One position is available at the Research Assistant Professor level, which involves oversight of protein and molecular biology core facilities. This position requires a Ph.D. and several years of experience with the molecular biology and protein expression/purification of recombinant proteins. The positions offer a stimulating research environment with an established collaborative team of investigators and state-of-the-art equipment. Further information is available at **website: www.uic.edu/depts/mcbbp/gettins.htm**. Applicants should send their curriculum vitae and three letters of reference to: **Ms. Barbara Poltzer, Department of Biochemistry and Molecular Biology M/C 536, University of Illinois at Chicago College of Medicine, 1853 West Polk Street, Chicago, IL 60612. FAX: 312-413-0364.** UIC is an Affirmative Action/Equal Opportunity Employer.

RESEARCH ASSOCIATE/ POSTDOCTORAL FELLOW CARDIOVASCULAR GENE THERAPY

Research Associate position in the laboratory of molecular cardiovascular biology at Duke University Medical Center is available on or after July 1, 2000. This position will study the role of G proteins signaling in pathological vascular smooth muscle proliferation using both *in vitro* and *in vivo* models. They will join a team of basic and clinical scientists committed to gene therapy approaches in the treatment of cardiovascular disease. Please send curriculum vitae, letter of research experience, and three reference names to: **Dr. Walter J. Koch, Department of Surgery, DUMC Box 2606, Durham, NC 27710. FAX: 919-684-5714; e-mail: koch0002@mc.duke.edu.**

POSTDOCTORAL POSITION WASHINGTON UNIVERSITY SCHOOL OF MEDICINE

Postdoctoral position to study the role of protein palmitoylation in cell signaling, using genetic and biochemical approaches (see **MBOC 11:957; JBC 275: 2191**). Candidates with a background in yeast genetics or biochemistry are preferred. Please send curriculum vitae and names and addresses of three references to: **Maurine Linder, Ph.D., Department of Cell Biology and Physiology, Washington University School of Medicine, Campus Box 8228, 660 South Euclid Avenue, St. Louis, MO 63110. E-mail: mlinder@cellbio.wustl.edu.** Washington University is an Equal Opportunity Employer.

POSTDOCTORAL POSITION

Position available immediately to investigate mitochondrial DNA damage and the generation of oxidative stress in normal brain and spinal cord after irradiation. Studies will be conducted using both *in vivo* and *in vitro* models of the CNS and may be expanded to include other forms of radiation-induced normal tissue injury. Experience in PCR-based procedures, biochemistry, and/or immunohistochemistry is preferred. Contact: **Philip Tofilon, Ph.D., Department of Experimental Radiation Oncology, The University of Texas M.D. Anderson Cancer Center, 1515 Holcombe Boulevard, Houston, TX 77030. FAX: 713-794-5369; e-mail: ptofilon@notes.mdacc.tmc.edu.**

2001:02

fellowships

AMERICAN ASSOCIATION FOR THE ADVANCEMENT OF SCIENCE

Science Policy Opportunities in Washington, DC >>>

The American Association for the Advancement of Science invites applications for one year public policy fellowships, which will bring scientists to Washington, DC, beginning in September 2001, to work in the Congress, the Department of State, the Agency for International Development, the Environmental Protection Agency, the Department of Agriculture, the Food and Drug Administration, the Department of Defense, and the RAND Science and Technology Policy Institute. The programs are designed to provide each Fellow with a unique public policy learning experience and to bring scientific backgrounds and external perspectives to decision-making in the U.S. Government. Applicants must be U.S. citizens and must have a Ph.D. at the time of application (January 2001) from any physical, biological, or social science or any relevant interdisciplinary field. Federal employees are not eligible for the fellowships. Stipends vary, with most in the \$50,000 range.

Application Deadline >>> January 10, 2001

Information >>> For further information & application instructions call, e-mail, or visit our Web Site.

Phone 202/326 6700 • E-mail science_policy@aaas.org • Web fellowships.aaas.org



AMERICAN ASSOCIATION FOR THE
ADVANCEMENT OF SCIENCE

EUROPEAN OPPORTUNITIES

axxima

Axxima Pharmaceuticals AG, Munich - Martinsried, Germany, is a young and growing pharmaceutical company that develops novel small molecule drugs for

the treatment of infectious diseases. Axxima uses an innovative approach of generating Firewalls Against Infections™. The Company is looking for a

Vice President of Research

to manage Axxima's target discovery and validation process, involving platform technologies (genomics, proteomics and bioinformatics), target validation and early assay development.

The Job: Your main objective will be the discovery and validation of molecular targets for drug development. To this end, you will develop and manage a dedicated and highly experienced team of in-house researchers and external academic and corporate collaborators. As part of the top management team you will take part in making all relevant business and management decisions for the Company.

The Candidate: You are a balanced, open, communicative, and insightful individual with the ability to work independently. You can effectively lead and manage in an international, cross-cultural and dynamic setting: you are a "people person". While a documented record of achievements in signal transduction research would be favorable, familiarity with state of the art cell and molecular biology is expected. Excellent command of English, written and spoken, is required and a basic understanding of German is helpful.

If you are interested, please send all relevant information to:

Axxima Pharmaceuticals AG, Human Resources, Am Klopferspitz 19, 82152 Martinsried, Germany
Tel: +49-89-740 165-0, mail@axxima.com; www.axxima.com.

POSITIONS OPEN

POSTDOCTORAL FELLOWSHIP RNA PROCESSING

A Postdoctoral Fellowship is available at the Yale School of Medicine in the laboratory of **Susan Baserga, M.D., Ph.D.**, to study RNA processing in the yeast *S. cerevisiae*. Our research focuses on the RNA-protein and protein-protein complexes that process the precursors to the ribosomal RNAs (*Mol. Cell. Biol.* 19:5441, 1999; *RNA* 5:1597, 1999; *J. Biol. Chem.*, in press). Candidates should hold a Ph.D., but prior experience in yeast genetics is not necessary. Applicants must be U.S. citizens or permanent residents. Curriculum vitae with names of three references may be sent to: **Susan Baserga, M.D., Ph.D.**, Yale School of Medicine, Department of Therapeutic Radiology, Hunter 317, P.O. Box 208040, New Haven, CT 06520-8040. E-mail: susan.baserga@yale.edu.

POSTDOCTORAL POSITIONS MOLECULAR TOXICOLOGY

NIH-supported positions are available in the Nicholas School of the Environment at Duke University to study the effects of environmental toxicants (transition metals, chlorpyrifos, dieldrin) on signal transduction pathways and gene expression. Experimental systems include mammalian cell culture, *C. elegans*, and zebrafish. Candidates must have a strong background in cell and molecular biology.

For a more complete description of the research projects, go to website: <http://www.env.duke.edu/other/jonf/index.html>. Send a cover letter, curriculum vitae, and three letters of reference to: **Jonathan H. Freedman, Ph.D.**, Box 90328, Duke University, Durham, NC 27708-0328. E-mail: hr.duke.edu. Duke University is an Equal Opportunity/Affirmative Action Employer.

POSTDOCTORAL POSITION

Department of Physiology, The University of Tennessee, Memphis: Position immediately available to study local and global calcium signaling in arterial smooth muscle modulation of sarcolemmal ion channels and regulation of cellular contractility (for review, see *Am J. Physiol.* 278:C235-256, 2000). Qualifications: Ph.D. in physiology or related field. Experience with patch clamp, confocal microscopy, or calcium fluorescence beneficial. Please send curriculum vitae and three letters of reference to: **Jonathan H. Jaggar, Ph.D.**, Department of Physiology, University of Tennessee, Memphis, 894 Union Avenue, Memphis, TN 38163. The University of Tennessee is an Equal Employment Opportunity/Affirmative Action/Title VI/Title IX/Section 504/Americans With Disabilities Act/Age Discrimination in Employment Act Employer.

POSTDOCTORAL POSITION UNIVERSITY OF PITTSBURGH SCHOOL OF MEDICINE

A position is available to study the molecular mechanisms of membrane traffic, with special emphasis on clathrin-mediated endocytosis (see *JBC* 274:17794-17805; *PNAS* 96:8907-8912; *JBC* 275:6479-6489). A strong background in cell biology, protein biochemistry, and/or molecular biology is required. To apply, send curriculum vitae and names of three references and their e-mail/FAX addresses to: **Wendy Bell, c/o Dr. Linton Traub**, Department of Cell Biology and Physiology, University of Pittsburgh School of Medicine, S362 BST, 3500 Terrace Street, Pittsburgh, PA 15261. E-mail: wenbell+@pitt.edu; FAX: 412-648-2004.

POSTDOCTORAL POSITION available immediately to study regulation and perform structure-function analysis of proteasomes from eukaryotic microorganisms. Experiences in molecular biology, biochemistry, and cell biology are required. Must have a recent Ph.D. and/or M.D. degree. Send curriculum vitae and names of three references to: **Dr. C. C. Wang**, Department of Pharmaceutical Chemistry, University of California, San Francisco, CA 94143-0446. FAX: 415-476-3382; e-mail: ccwang@cgl.ucsf.edu.

POSITIONS OPEN

POSTDOCTORAL POSITION

A Postdoctoral position is available to develop novel agents that target vascular endothelium leading to growth inhibition of tumors or accelerated repair at sites of injury. Basic science and drug development studies are envisioned. Applicants with experience in protein engineering, pharmacology, immunology, biochemistry, molecular biology, and related subjects are encouraged to apply. Salary will be commensurate with level of experience of the applicant. Interested individuals should send curriculum vitae and three letters of reference to:

Dr. Philip E. Thorpe
Department of Pharmacology
The University of Texas Southwestern
Medical Center at Dallas
5323 Harry Hines Boulevard
Dallas, TX 75390-9111

The University of Texas Southwestern Medical Center at Dallas is an Equal Opportunity Employer.

POSTDOCTORAL POSITION in biological oceanography available September 1, 2000, to analyze long time-series data sets from deep ocean, exploring relationships to satellite imagery. Participate in development of remote optical/chemical sensing systems for long-term monitoring in deep ocean. Background in biological and chemical oceanography with marine engineering and systems modeling experience desirable. Ph.D. in related field required. Rank and salary commensurate with experience and based on University of California salary scales. Website: <http://smithlab.ucsd.edu>. Applications considered beginning 1 May 2000; job open until filled. Send curriculum vitae, immigration status, and three letters of reference to: **Dr. K. L. Smith**, Scripps Institution of Oceanography, University of California San Diego, 9500 Gilman Drive, La Jolla, CA 92093-0202. E-mail: ksmith@ucsd.edu. Affirmative Action/Equal Opportunity Employer.

A **POSTDOCTORAL POSITION** is available immediately to study the intracellular signaling mechanisms related to lymphocyte activation and differentiation. Current projects aim at understanding several inhibitory signaling pathways for T cell activation (*Nature* 403:216, 2000). Experimental approaches include generating gene-targeted mouse models and subsequent analysis using various molecular and cellular biological techniques. Strong motivation in research and experience in molecular biology, immunology, and/or biochemistry are required. Send curriculum vitae and three recommendation letters to: **Dr. Hua Gu**, Laboratory of Immunology, National Institute of Allergy and Infectious Diseases, NIH, 12441 Parklawn Drive, Room 125, Rockville, MD 20852 U.S.A. E-mail: hgu@niaid.nih.gov. Closing date: April 28, 2000.

NIH is an Equal Employment Opportunity Employer.

POSTDOCTORAL POSITIONS for studies on (1) functions and regulatory mechanisms of protein-tyrosine kinases, (2) roles of protein kinase C in mast cell activation, and (3) mechanisms of degranulation. Molecular and cell biological techniques, transgenic and mast cell knockout techniques, and mouse allergic disease models are used. Highly motivated individuals with a recent M.D. or Ph.D. degree are welcome to apply. The positions are immediately available. E-mail your curriculum vitae to: **Dr. Toshiaki Kawakami** at e-mail: toshi_kawakami@liai.org at La Jolla Institute for Allergy and Immunology, San Diego, CA.

POSTDOCTORAL POSITION in HIV/AIDS neuropathogenesis to study virus/neuronal cell interactions, neuronal apoptosis, and vector transduction of neurons and glia. Requires background in molecular virology, neurobiology, or related area. Submit letter, curriculum vitae, three references to: **Dennis L. Kolson, M.D., Ph.D.**, c/o Ms. Emily Deane, Department of Neurology, 280C Clinical Research Building, University of Pennsylvania, Philadelphia, PA 19104-6140. FAX: 215-573-2029; e-mail: kolsond@mail.med.upenn.edu.

POSITIONS OPEN

THE CHRISTOPHER TIETZE FELLOWSHIP

The Population Council announces the Christopher Tietze Fellowship in reproductive epidemiology, offered for a one-year period at the Population Council in New York City. Applicants should have strong research interest in the safety and effectiveness of fertility-regulating methods and should submit a memorandum of not more than 1,000 words that outlines a research topic, its significance, and a work plan for accomplishing the research. Applications will be reviewed by a panel of scholars and scientists whose research interests are close to those of Christopher Tietze. The Advisor to the Fellowship recipient will be **Irving Sivin, Senior Scientist at the Center for Biomedical Research of the Population Council**. Application deadline is June 30, 2000. The award will be announced August 1, 2000. The Center for Biomedical Research of the Population Council is located on the campus of Rockefeller University and provides excellent facilities for research. Please send curriculum vitae and names and addresses of three references, along with the memorandum outlining the research plan, to: **The Fellowship Secretary, Population Council, Center for Biomedical Research, 1230 York Avenue, New York, NY 10021 U.S.A.** E-mail: sivin@popcbr.rockefeller.edu. Applications from women and minorities are encouraged.

POSTDOCTORAL POSITIONS IN AIRWAY CELL PHYSIOLOGY AND DISEASE

Department of Physiology
University of Massachusetts Medical School

Two postdoctoral positions (NIH funding) are available for two years to study: (1) the role of intercellular Ca^{2+} signaling between airway epithelial and smooth muscle cells in asthma and (2) the regulation and dysfunction of airway mucociliary activity in cystic fibrosis. Experience in microscopy, Ca^{2+} imaging, electrophysiology, tissue culture, and molecular biology desirable. Details at: website: <http://www.ummed.edu/dept/sanderson.lab>. Send curriculum vitae and statement of interests to: **Dr. Michael J. Sanderson**, Department of Physiology, University of Massachusetts Medical School, 55 Lake Avenue North, Worcester, MA, 01655.

SENIOR RESEARCH SCIENTIST AND POSTDOCTORAL FELLOW POSITIONS Long Island Jewish Medical Center North Shore/LIJ Health Systems

Exciting opportunity to join an expanding group of cell and molecular biology researchers at North Shore-LIJ Health System studying gene therapy and therapeutic angiogenesis. Candidates should have Ph.D. in molecular or cell biology and *in vivo* experience. Competitive salary commensurate with experience and qualifications.

Send curriculum vitae to: **Nancy McCarthy, Department of Radiation Oncology, Laboratory for Translational Research, LIJ Medical Center, New Hyde Park, NY 11040**. Long Island Jewish is a teaching affiliate of the Albert Einstein College of Medicine. Please visit us at website: www.northshorelij.com. Equal Opportunity Employer/Minorities/Females/Disabled/Veterans.

METROHEALTH MEDICAL CENTER CASE WESTERN RESERVE UNIVERSITY

Two NIH-funded **POSTDOCTORAL POSITIONS** are available to examine the molecular mechanisms of c-erbB-2/HER-2/neu-overexpression and mammary carcinoma. The study will investigate the transcription machinery that regulates c-erbB-2 and device molecular tools to suppress cancer. Candidates with strong molecular biology background should send curriculum vitae and names of three references to: **Perry Kannan, Ph.D.**, MetroHealth Medical Center/R-650, 2500 MetroHealth Drive, Cleveland, OH 44109. FAX: 216-778-2770; e-mail: pkannan@research.metrohealth.org.

**Protein Toxin-based Therapeutics
Title 42
Staff Scientist Position**

Applications are invited for a staff scientist to work collaboratively in a program to develop recombinant, mutated bacterial protein toxins and fusion proteins as therapeutic agents and vaccines. The individual selected will have overall responsibility for construction, expression, purification, and initial characterization of recombinant fusion proteins. The staff scientist will also conduct collaborative research to create and develop additional novel therapeutic fusion proteins. Collaborations will be established to move promising candidate materials toward clinical use. Applicants should have a Ph.D., M.D., or D.D.S. and relevant postdoctoral experience in molecular biology and biochemistry. Preference will be given to candidates having experience working with bacterial, plant, or animal proteases. The candidate will work under the supervision of a tenured senior investigator. Initial appointment is for five years. Salary ranges from \$60,890 - \$79,155.

To be considered, send a curriculum vitae and bibliography, a 1-2 page summary of research interests and goals, and have three letters of recommendation sent to:

Esther Cohen
National Institutes of Health
NIDCR Human Resources
Management Branch
31 Center Drive, MSC 2290
Building 31, Room 2C39
Bethesda, MD 20892-2290
301-496-6971

Applications will be accepted until May 22, 2000.
NIH is an equal opportunity employer.



The Faculty of Science (Mathematisch-naturwissenschaftliche Fakultät) of the University of Zurich invites applications for a full

Professorship in Theoretical Astrophysics

in the institute of theoretical physics. The new professor will establish an active research program in astrophysics or cosmology. She or he will find a stimulating environment with important experimental activity in solar and stellar high energy astrophysics and dark matter searches at ETH and PSI. Collaboration with these groups and other theorists is expected.

The new professor will participate in the teaching of theoretical physics at all levels and supervise diploma and PhD students.

Candidates with a recognised scientific record in theoretical astrophysics or cosmology are asked to send their curriculum vitae, list of publications, and a summary of their research interests to the Dean of the Faculty of Science (Mathematisch-naturwissenschaftliche Fakultät), Prof. Dr. K. Brassel, University of Zurich, Winterthurerstrasse 190, CH-8057 Zurich by June 30, 2000. Please visit our website at <http://www-theorie.physik.unizh.ch>.

The University encourages female candidates to apply with a view towards increasing the proportion of female professors.



**UNIVERSITY
OF BRISTOL**

Professor in Physiology

This is a newly created post designed to complement the Department and University's strengths in cardiovascular research. You will be an outstanding scientist carrying out internationally recognised cardiovascular research, have an interest in ion channel function, and will wish to collaborate with our scientists and clinicians having these interests.

Informal enquiries to Professor P. Max Headley, telephone + 44 (0) 117 928 7802, E-Mail max.headley@bris.ac.uk Further information about the department is at <http://www.bris.ac.uk/Depts/Physiology>

For further details telephone (0117) 954 6947, minicom (0117) 928 8894 or E-Mail Recruitment@bris.ac.uk (stating postal address ONLY) quoting reference 6362.

The closing date for applications is 19th May 2000.

www.bristol.ac.uk

AN EQUAL OPPORTUNITIES EMPLOYER



The Faculty of Medicine of the University of Lausanne and the "Hospices cantonaux" invite applications for the position of

Director of experimental electrophysiology, MD or PhD at the Division of Cardiology at the CHUV (University Hospital) Lausanne, Switzerland with professorial rank

The candidates must:

- be experienced in basic electrophysiology;
- be familiar with sophisticated PC applications and computer modelling;
- have proven high level of scientific ability;
- collaborate with engineers and clinicians in the development of new therapeutic strategies within the field of rhythm troubles, arrhythmias;
- have proven teaching abilities and be able to independently conduct research programs;
- have high managerial and collaboration skills.

The candidates should send their documents before May 15, 2000 (curriculum vitae, list of publications, and usual documents) to Professor B.C. Rossier, Dean of the Faculty of Medicine, Rue du Bugnon 21, CH - 1005 Lausanne.

Detailed information and the job specifications can be obtained through the Chief of the Division of Cardiology, Professor L. Kappenberger, CH - 1011 Lausanne-CHUV.

POSITIONS OPEN

SENIOR SCIENTIST: BIOPURIFICATION PENSACOLA, FLORIDA

Pall Corporation is a worldwide leader in separation technology for biopharmaceutical manufacturing. Our Membrane Technology Center in Pensacola, Florida, has an immediate opportunity for a **SENIOR BIOPURIFICATION SCIENTIST** responsible for the evaluation and development of applications for membrane adsorbers for use in the purification of biopharmaceuticals.

Candidates with either an M.S. and/or a Ph.D. degree(s) in biochemistry or a related field and having at least three years of relevant bioprocessing experience will be considered. Extensive knowledge and experience of chromatographic separation techniques as they are practiced within the biopharmaceutical industry is required. This is a "hands-on" position, responsible for the development of scalable biopurification processes for a variety of proteins, nucleic acids, and virus particles. The Senior Scientist will also provide technical support and training to sales personnel, technical field representatives, and customers. Excellent written and verbal communication skills are required.

Pall Corporation offers a competitive compensation and benefits package. For confidential consideration, please send résumé and salary history to: **Pall Membrane Technology Center, Human Resources Department, 8780 Ely Road, Pensacola, FL 32514. E-mail: Cheryl_Gould@Pall.com; FAX: 850-479-7769.** An Equal Opportunity Employer. Pall Membrane Technology Center is a drug-free workplace. All new hires must successfully complete a preemployment drug screen as a condition of employment.

POSTDOCTORAL POSITIONS are available to study stress signaling in mammalian cells. Current work is aimed at isolating and characterizing new genes and their encoded proteins involved in the network of the universal stress response. Detailed information on our work is available at [website: http://cbrc-a12.mgh.harvard.edu/azresearch.html](http://cbrc-a12.mgh.harvard.edu/azresearch.html). The Postdoctoral Fellows will join a highly interactive team in a new research center with state-of-the-art facilities. Requirements include a recent Ph.D. or M.D./Ph.D.; experience in molecular biology, proteomics, or knockout/transgenic mice is highly desirable. Send curriculum vitae and three letters of reference to: **Antonis S. Zervos, Ph.D., Associate Professor, Center for Discovery of Drugs and Diagnostics (CD3)/Department of Molecular Biology and Microbiology, University of Central Florida, 12722 Research Parkway, Orlando, FL 32826-3227. E-mail: azervos@mail.ucf.edu.** UCF is an Equal Opportunity Employer/Affirmative Action Employer. As an agency of the State of Florida, UCF makes all application materials, including transcripts used in final screening, available to the public upon request.

USER RESEARCH SUPPORT ENGINEER (COORDINATOR, RESEARCH PROGRAMS/SERVICES)

The National High Magnetic Field Laboratory at Florida State University is seeking candidates to fill a technical/user support staff position in the Instrumentation and Operations group. Candidates should have a background in physics along with some mathematics. Specific qualifications include a B.S. or B.A. in physics or closely related field, although other combinations of education/experience will be considered. Candidates must have significant hands-on experience with mechanical systems. Experience with electronic and cryogenic systems is desired but not required. The successful candidate will join a dynamic group involved in the operation of high-field magnets and associated systems. They will be expected to work alongside and provide technical support to the users and staff of the NHMFL. Persons interested in being considered for this position should send a résumé with names and contact information for three references to: **Dr. Scott Hannahs, NHMFL-FSU, 1800 East Paul Dirac Drive, Tallahassee, FL 32310.** Reference Position Numbers 63924 and 64254. The NHMFL at Florida State University is an Equal Opportunity/Affirmative Action Employer.

POSITIONS OPEN

POSTDOCTORAL POSITIONS HEMATOPOIESIS AND LEUKEMIA Harvard Medical School

Postdoctoral positions available immediately for M.D. and/or Ph.D. Projects include evaluation of transcription factor mutations found in human leukemias in cell line and murine models and role of chromatin in hematopoiesis. FAX or mail curriculum vitae and three letters of reference to: **Dr. Daniel G. Tenen, Harvard Institutes of Medicine, Room 954, 77 Avenue Louis Pasteur, Boston, MA 02115. FAX: 617-667-3299.** U.S. citizenship or permanent residency status absolutely required.

MEDICAL GENETICS PROGRAM DEPARTMENT OF MEDICINE

The Department of Medicine at the University of California, Irvine, College of Medicine, is seeking two faculty members to join an actively expanding, multidisciplinary medical genetics program. Both positions are tenure track at the level of **ASSISTANT PROFESSOR** and will be funded in part by a grant awarded from the Howard Hughes Foundation to support a University of California-Irvine Center for Complex Diseases. Start-up funds and research space will be commensurate with the level of the appointment and individual requirements. One position will be available in the Division of Endocrinology, Diabetes, and Metabolism and the other in the Division of Hematology/Oncology. The Division of Endocrinology has strong research interests in diabetes and its complications, women's health, and mechanisms of hormone action. The Division of Hematology/Oncology, an integral component of the NCI-designated Comprehensive Cancer Center at UC Irvine, has strong research interests in cancer epidemiology, carcinogenesis, and oncogenic signal transduction. There are collaborative interactions between the two divisions as well as with clinicians and scientists in a wide area of disciplines, including epidemiology, developmental and cell biology, molecular biology and biochemistry, microbiology and molecular genetics, pediatrics, psychology, and pharmacology. Candidates will possess an M.D. or M.D./Ph.D. degree(s) and have interest, knowledge, and experience in genetic research in cancer biology or multigene diabetes/endocrine disorders. Interested applicants should send curriculum vitae and names and addresses of three references to: **Murray Korc, M.D., Chief, Division of Endocrinology, Diabetes, and Metabolism, Department of Medicine, Medical Science I, C240, Irvine, CA 92697-4075.** The University of California is an Equal Opportunity Employer committed to excellence through diversity.

MEMBRANE PROTEIN MOLECULAR BIOLOGY Oregon Health Sciences University

Opportunities exist for **POSTDOCTORAL RESEARCH** in projects on the molecular biology and biochemistry of membrane proteins. We use heterologous expression of the Na,K-ATPase in insect cells to produce mutant proteins for studies in trafficking, structure-function relations, and assembly of this protein. We are in a highly interactive modern department in a very attractive environment in one of the most desirable cities in the United States. Applicants with a Ph.D. or equivalent with experience in molecular biology, protein chemistry, or cell biology should send curriculum vitae and names of three references to:

Professor Jack H. Kaplan, Ph.D., F.R.S.
Department of Biochemistry and
Molecular Biology, L224
Oregon Health Sciences University
3181 Southwest Sam Jackson Park Road
Portland, OR 97201-3098
E-mail: kaplanj@ohsu.edu

POSITIONS OPEN

NEWBIOTICS, INC.

NewBiotics, Inc., is a biopharmaceutical company devoted to the discovery and development of novel therapeutics that overcome common drug-resistance mechanisms in cancer and infectious diseases. We are currently seeking the following scientific professionals:

RESEARCH SCIENTIST, ENZYMOLOGY: The successful candidate will have a Ph.D. degree in chemistry/biochemistry or a related discipline. At least two years of experience in assay development using HPLC and UV-Vis spectrophotometry is required. Hands-on experience with enzyme kinetics and inhibition analysis a must. Good communication skills and ability to work on a team are essential. Job Code: RSE0413.

RESEARCH SCIENTIST, MICROBIOLOGY: The successful candidate will have a Ph.D. in microbiology or related scientific discipline with two years of experience required. Well versed in practical and theoretical microbiology along with experience in beta-lactamase-containing microbes is highly desirable. Job Code: RSM0413.

Please send your résumé along with a cover letter referencing the job code to:

NewBiotics, Inc.
Attention: Suzanne Swirsky
11760-R Sorrento Valley Road
San Diego, CA 92121
FAX: 858-259-8645
E-mail: sswirsky@newbiotics.com

NewBiotics, Inc., is an Equal Opportunity Employer located in San Diego. We offer competitive benefits and salary as well as stock options.

The University of California at Los Angeles School of Dentistry seeks highly qualified applicant with expertise in cancer immunology to a **TENURE-TRACK APPOINTMENT** available immediately. Responsibilities include instruction of predoctoral, postdoctoral, and graduate students; and the oversight of a central cell-sorting laboratory. The candidate must have a Ph.D. or D.D.S. (D.M.D.)/Ph.D., have a record of published research in immunology, and extramural funding is required. Applicants should submit curriculum vitae, a research statement, and the names of three references by June 1, 2000, to: **Dr. Robert Chiu, Chair, Faculty Search Committee, UCLA School of Dentistry, Room 63-050 CHS, Box 951668, Los Angeles, CA 90095-1668.** The University of California is an Equal Opportunity/Affirmative Action Employer. All qualified applicants are encouraged to apply, including women and minorities.

RESEARCH ASSOCIATE DUKE UNIVERSITY MEDICAL CENTER

NIH-supported **POSTDOCTORAL POSITION** available immediately to study the molecular basis for Factor V-membrane interactions and regulation of the prothrombinase complex in hemostasis and thrombosis (see [website: http://www.canctr.mc.duke.edu/Dr.WilliamKane](http://www.canctr.mc.duke.edu/Dr.WilliamKane)). The successful candidate must have published experience in biochemistry and molecular biology. Experience in plasmon resonance, molecular modeling, and protein isolation (FPLC) is also desired. Send curriculum vitae and names of three references to: **William H. Kane, M.D., Ph.D., Division of Hematology, DUMC-3656, Duke University Medical Center, Durham, NC 27710. E-mail: william.kane@duke.edu.** Duke is an Equal Opportunity Employer.

A **POSTDOCTORAL POSITION** in retinal neurobiology is available to study synaptic plasticity in the vertebrate retina. The project employs electrophysiological (patch clamp and intracellular recording), neurochemical (HPLC), and anatomical (light and confocal microscopy; dye injection) techniques to investigate a circadian rhythm in neuronal light responses in fish and rabbit retinas. Please send curriculum vitae, a description of research experience, and the names and addresses of three references to: **Dr. Stuart Mangel, Department of Neurobiology, University of Alabama School of Medicine, CIRC 425, 1530 Third Avenue South, Birmingham, AL 35294-0021 U.S.A. E-mail: mangel@nrc.uab.edu.** The University of Alabama at Birmingham is an Equal Opportunity/Affirmative Action Employer.

POSITIONS OPEN

RESEARCH SCIENTIST POSITIONS

Molecular Staging Inc. is an exciting new biotechnology company dedicated to the development of novel methods for gene discovery and diagnostics. We are seeking highly motivated candidates for several positions.

DNA POLYMERASE ENZYMOLOGIST

You will develop novel DNA amplification methods. Extensive research experience required with the use of DNA polymerases. Experience with other replication proteins is highly desirable (helicases, RT, DNA binding proteins, nucleases, DNA repair, and recombination enzymes). Must be very experienced in enzyme assay design and development. Experience also helpful with PCR; DNA sequencing; enzyme kinetics; binding studies; DNA and nucleic acid analysis and detection (spectroscopy, fluorescence, radioactive labeling), and cloning methods (restriction digests, hybridization, electrophoretic methods).

MICROARRAY DEVELOPMENT

You will develop microarray technology for proteomics and genomics applications. Candidates must possess a Ph.D. in molecular biology or related area and have at least two years of postdoctoral experience. Experience in microarrays, immunoassays development, or automation hardware and software is highly preferred. Previous experience in the biotechnology or diagnostic industry is highly desirable. Preference will be given to those individuals who can program in Perl, Vscript, HTML, and/or C/C++ and have extensive experience with Oracle and/or SQL.

Submit curriculum vitae complete with publications and references to: **Attention Recruitment**, Molecular Staging Inc., 66 High Street, Guilford, CT 06437. E-mail: jobs@molecularstaging.com; website: www.molecularstaging.com.

POSTDOCTORAL RESEARCH OPPORTUNITIES

Applications are invited for a new postdoctoral research program affiliated with the Walther Cancer Institute to conduct research in the Indiana Molecular Biology Institute at Indiana University. The program will be centered on basic biological mechanisms relevant to cancer research. We anticipate that the position will open July 1, 2000. For full details, see website: <http://www.bio.indiana.edu/research/imcb/opportunities.html>.

Applicants must identify potential sponsor(s) and send curriculum vitae with three letters of reference to: **Dr. Rudolf A. Raff, Director, Indiana Molecular Biology Institute, Indiana University, Jordan Hall 322A, 1001 East Third Street, Bloomington, IN 47405.**

Indiana University is an Equal Opportunity/Affirmative Action Employer.

COURSES & TRAINING

SUMMER COURSE: SPINAL CORD INJURY RESEARCH July 6-28, 2000

Directed by Oswald Steward
Reeve-Irvine Research Center
University of California at Irvine

Announcing an intensive four-week laboratory and lecture course covering spinal cord injury (SCI) research techniques. Intensive hands-on laboratory sessions will train participants in current experimental models, pathophysiology of SCI, techniques for evaluating cellular and molecular reactions to SCI, and functional outcome measures. Seminars by visiting lecturers will cover special topics in SCI research. For more information, contact: **Maura Hofstadter**; Telephone: 949-824-3993; e-mail: mhofstad@uci.edu.

POSITIONS OPEN

POSTDOCTORATES AND/OR GRADUATE STUDENTS RNA BIOCHEMISTRY

Four positions are available to study viral DNA packaging motor involving hexamer RNA. Contact: **Peixuan Guo, Professor of Molecular Virology, Purdue Cancer Center, Hansen, West Lafayette, IN 47907.** Telephone: 765-494-7561; e-mail: guo@vet.purdue.edu.

EUROPEAN OPPORTUNITIES

The University of Bayreuth seeks to fill the **DEPARTMENTAL CHAIR** in the Department of Biogeography of the University of Bayreuth, Germany. This is a full-time, tenured position (C4) in the faculty of biology, chemistry, and geosciences. Teaching responsibilities include courses in the biology, geocology, and geography programs. Candidates should have (1) tenure or the equivalent of "habilitation" in the German university systems and (2) outstanding research programs in ecology and geosciences. It is expected that she/he will collaborate in the interdisciplinary research programs of the University within these areas. The deadline for application is May 31, 2000. Individuals who wish to be considered for this position should submit comprehensive curriculum vitae, a teaching record, a statement of research interests, and a maximum of five reprints to: **Dean of the Faculty of Biology, Chemistry, and Geosciences, University of Bayreuth, D-95440, Bayreuth, Germany.**

MARKETPLACE

The World of Science Online

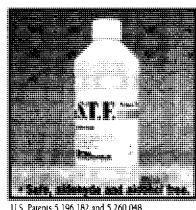
- Science Electronic Marketplace
- Science's Next Wave
- Science NOW
- Science Professional Network

Science
www.scienceonline.org

FIXATIVE FOR MOLECULAR BIOLOGY

Streck's S.T.F. is a unique formulation that allows a laboratory to perform esoteric molecular diagnostic tests with one solution.

CELL & MOLECULAR BIOLOGY FIXATIVE



U.S. Patents 5,396,182 and 5,250,048

- ♦ Over 40 publications describe S.T.F.'s use in:
 - ISH • FISNA
 - TUNEL • QIA
 - *in situ* PCR/RT-PCR
- (Ask for the S.T.F. publication list.)
- ♦ Certified RNase and DNase-free and non-cross-linking.
- ♦ Enhances viral detection & quantification systems.

HISTOPATHOLOGY

- ♦ Enhances tissue morphology and nuclear detail.
- ♦ Improves immunohistochemistry without antigen retrieval.



(800) 843-0912

Circle No. 50 on Readers' Service Card

**2 min DNA
Clean-up & Concentrate**
for PCR, enzyme reactions, "dirty" DNA, etc.

Improved Gel DNA Recovery
for perfect ligations & sequencing, etc.

ZYMO RESEARCH 1-888-882-9682 www.zymor.com

Circle No. 4 on Readers' Service Card

MARKETPLACE

New Antibodies!
Phospho-Caveolin (P-Tyr14)
Caveolin-1a & 1B, Caveolin-2, Caveolin-3
Guaranteed reliability, specificity, satisfaction!
BD Transduction Laboratories
1-800-227-4063 or www.translab.com

Circle No. 55 on Readers' Service Card

Full Spectrum Gene Services *Remove the limits!*
GENE synthesis, codon optimization, sequencing, cloning, library, mutagenesis, expression, **MUTATION SCREENING**, tailoring... & more!
de novo gene synthesis as low as \$5/bp
SEQUENCING \$15/RUN special plasmid, PCR genome, SNP...
Plasmid Purification ultrapure, large scale for gene therapy
800-214-7722. CustomerService@ElimBiopharm.com

Circle No. 35 on Readers' Service Card

DNA	PEPTIDES
Call for prices	\$15.00/residue
Gene Synthesis, Site Mutagenesis, Protein Expression as low as \$500	
Sequencing: \$25 per run	
Custom Anti-peptide Antibody (including peptide synthesis) \$850	
GENEMED SYNTHESIS 800.344.5337 Fax: 650.952.9540 http://www.genemedsyn.com	

Circle No. 53 on Readers' Service Card

F · S · T
FINE SCIENCE TOOLS
SURGICAL & DISSECTING INSTRUMENTS

WWW.FINESCIENCE.COM
800-521-2109

Circle No. 54 on Readers' Service Card

CLONING & EXPRESSION
Rapid Full Length Cloning of Genes
Guaranteed Gene Expression in Bacteria, Yeast, Insect, and Mammalian Systems
High Purity and Bulk Protein Purification
ExpressGen, Inc.
1-877-CLONING www.expressgen.com

Circle No. 32 on Readers' Service Card

QUALITY CUVETTES!!!
Inexpensive Electroporation Cuvettes
Each sterile package includes a free pipette for easy sample removal!
BTX 1-800-289-2465
FAX: 619-597-9594

Circle No. 37 on Readers' Service Card

MARKETPLACE



**MORE PRODUCTS
ON PREVIOUS PAGE**

**your Single-Source
Antibody Authority**

**STRATEGIC
BIOSOLUTIONS**

Custom Antibody Services

Polyclonal • Monoclonal
• Hybridoma Development • Assays Production
• Vaccine Production • Purification • Conjugation

800.481.9737
www.strategicbiosolutions.com

Circle No. 26 on Readers' Service Card

**BIOSOURCE
INTERNATIONAL**

Custom Antibodies & Peptides

No Hidden Charges!

Custom Antibodies from \$1295 include:

- Free consultation and tech support
- HPLC purification, MS & HPLC analysis, N/C-terminal modifications, 4-6mg peptide, 100-ml serum, ELISA & more

custom peptides from mg to 10g

HPLC purification available up to 98+%

800-435-2080 • Fax: 508-435-2199
Order on-line: www.qcb.com

Circle No. 51 on Readers' Service Card

POLYCLONAL ANTIBODIES

QUICK QUOTE
MOST QUOTES IN AN HOUR

FAST DELIVERY
PEPTIDE TO ANTISERUM IN 70 DAYS

100% SATISFACTION GUARANTEED

**NEW ENGLAND
PEPTIDE, INC.**

Tel: 888-343-5974
Fax: 978-343-5940 www.newenglandpeptide.com

Circle No. 2 on Readers' Service Card

**Highly Purified Salt Free
Oligonucleotides**

Custom DNA Synthesis

HPSF (Highly Purified Salt Free) Grade

- ✦ Failure products removed
- ✦ Salt Removed
- ✦ MALDI-TOF production QC
- ✦ No Metal Ions
- ✦ Modifications available

Starting at \$0.49/base for HPSF Grade
(0.01 µmol scale) Volume discounts available.

Never a purification or setup fee!
For reactions that work...every time!

MWG BIOTECH

Online Ordering & Tracking

Toll Free: 877-694-2832 info@mwgbiochem.com
<http://www.mwgbiochem.com>

Circle No. 34 on Readers' Service Card

XX IDT®
INTEGRATED DNA TECHNOLOGIES, INC.

Premier Specialty Synthesis

*Molecular Beacons, RNA,
Antisense Oligos & More*

1-800-328-2661 • www.idtdna.com

Circle No. 30 on Readers' Service Card

MARKETPLACE

Custom Peptides & Antibodies

Best Service & Price! Compare and Save!

Alpha Diagnostic (800) 786-5777

Fax (210) 561-9544; info@4adi.com

Web site: <http://www.4adi.com>

Circle No. 29 on Readers' Service Card

QUALITY DNA SYNTHESIS

MALDI-TOF Mass Spectrometry Quality Control

Fluorescent Dyes & Other Modifications

Gene Construction & Sequencing Services

Custom RNA Oligos & Antisense DNA Oligos

Custom Primers for PCR & Sequencing

Long Oligos (up to 150-mers)

Competitive Pricing

MIDLAND

The Midland Certified Reagent Company

1-800-247-8766 • FAX: 1-800-359-5789

www.mcrc.com • email: mcrc@oligos.com

Circle No. 31 on Readers' Service Card

3 O.D. Select Oligos

Just \$0.60/base*

Order through our Web site and we'll ship your 3 O.D. Select oligos in just 24-48 hours. Every oligo is QC'd by PAGE analysis, and each batch is performance-tested by mass spec.

*Desalted only. Oligos must be 10 to 35 bases in length. No modifications or additional purification. Web orders only. Offer valid in U.S. only.

**SIGMA
GENOSYS**

North America: 1-877-710-1502 • email: gordentry@sigma.com

Circle No. 25 on Readers' Service Card

TriLink BioTechnologies
Superior Quality with Unparalleled Service

Modified NTPs

See the TriLink difference

Experience Matters
800-863-6801

www.trilinkbiotech.com

Circle No. 36 on Readers' Service Card

MERLIN® CORE SERVICES

Plasmid Purification

Endotoxin Removal

Any Amount

1-800-4-BIO-101 • www.bio101.com

Circle No. 28 on Readers' Service Card

MARKETPLACE

BIO-SYNTHESIS, INC.

**CUSTOM POLYCLONAL
ANTIBODIES**

Each package includes:

- Synthesis of Peptide & Purification
- K.I.H. Conjugation
- Immunization of 2 rabbits
- ELISA testing

**We can also analyze your protein
at FREE of charge.**

www.biosyn.com **1-800-227-0627**

Circle No. 52 on Readers' Service Card

Quality Peptides & Antisera

Friendly, Personal Service

www.genosys.com

Custom Peptide Synthesis

- sequence analysis
- IG, >70%, >80%, >95% purity
- scales from 2 mg-1 g
- synthesis up to 120 residues
- variety of modifications available
- mass spec & HPLC on every peptide
- satisfaction guaranteed

Polyclonal Antisera Service

- antigen design assistance
- synthesis, conjugation and sera collection
- flexible protocol

**SIGMA
GENOSYS**

North America

1-877-710-1502

ginformation@sial.com

Europe

(+44) (0) 1223 839000

info@sigma-genosys.co.uk

Circle No. 24 on Readers' Service Card

Custom DNA Sequencing

✦ Long Reads ✦

✦ Plasmid Inserts ✦

✦ Sequence Done in a Week ✦

✦ Single Strand as low as ✦

\$20.00 for < 500 bases

✦ Double Strand ✦

\$30.00 up to 450 bases

\$45.00 up to 650 bases

\$70.00 up to 1600 bases

**Inquire about Large Inserts and Genome
Sequencing.**

**MWG
BIOTECH**

Toll Free: 877-694-2832 info@mwgbiochem.com
<http://www.mwgbiochem.com>

Circle No. 33 on Readers' Service Card

Custom Peptides

\$14/residue

3 days turn around

Free Mass Spec

HPLC/UV Trace

8-17 residues

20-50 mg (Desalted)

Please inquire for modified peptides

Tel: 800-597-7873

925-371-1070

Fax: 925-371-1156

email: peptide@peptidogenic.com

PeptidoGenic *The Peptide Engineering Specialist*

Circle No. 1 on Readers' Service Card

Express Peptides

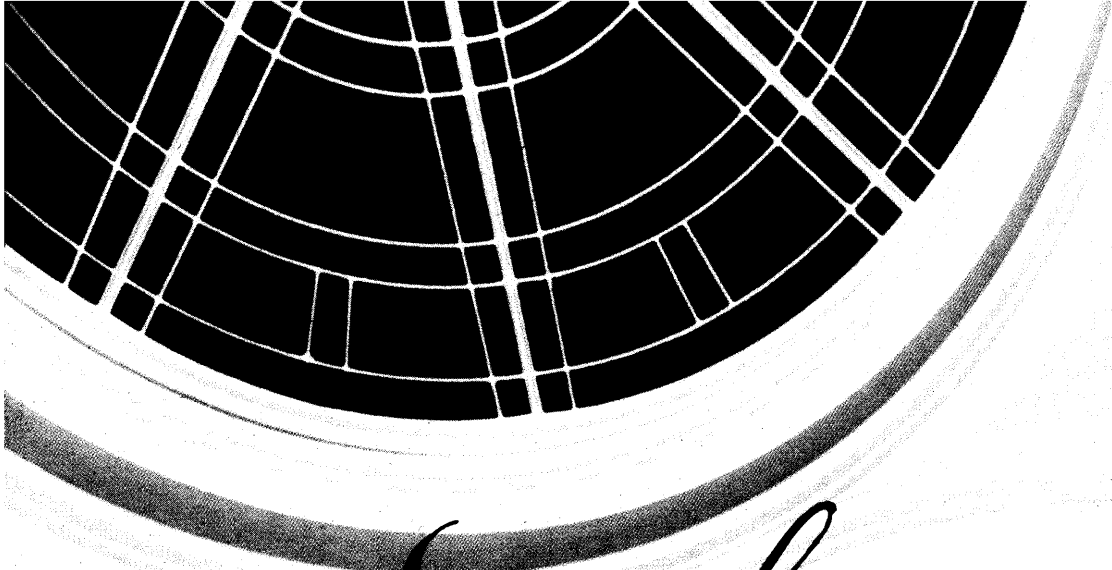
20mg in 5 days

\$18 per residue

Research Genetics

1-800-533-4363

Circle No. 27 on Readers' Service Card



*need 100 oligos...
or 100,000 oligos?*



Operon Technologies, The DNA Company, has developed a revolutionary new tool: proprietary, high-throughput, scalable synthesizers. Our new 10nmol scale oligos are salt-free, ready to use, and of exceptional quality.

With list prices starting at \$0.48 per base, genomic research has just gotten easier.

OPERON
OPERON TECHNOLOGIES, INC.

(800) 688-2248

dna@operon.com

<http://www.operon.com>

Circle No. 16 on Readers' Service Card

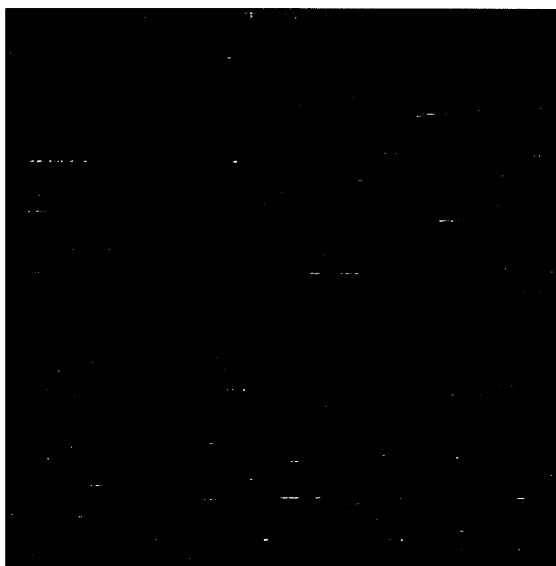
Gene Expression Analysis with Affymetrix® GeneChip® Probe Arrays

Research Genetics performs gene expression analysis using the Affymetrix GeneChip platform, a powerful tool for monitoring gene expression. Researchers can obtain highly reproducible, high-quality, differential expression results with high sensitivity of low copy-number transcripts.

Sample preparation and results

Research Genetics will provide a detailed protocol for preparing the sample, which requires isolation of RNA, synthesis of cDNA, and an in vitro transcription reaction to generate a biotin-labeled cRNA sample for hybridization.

Once we receive the labeled samples, a series of quality control tests, including hybridization of the sample to the GeneChip test array will be done. Expression analysis results are generally achieved within 3 weeks of receipt of the arrays and viable samples. Results include complete expression profiles for each sample as well as a detailed report of transcripts with significantly changed expression. A sample report is available on our website.



Now offering the following arrays for individual sale*:

- Human HuGeneFL array
- Mouse Mu11K subarray B
- Rat Genome U34A array

* Includes the array, sample evaluation, hybridization and analysis.

For pricing and additional information, please visit our website at <http://www.resgen.com>.

Other Expression Analysis Arrays Available

Differential expression analysis can be performed using any of the GeneChip expression analysis arrays currently available from Affymetrix, including the human Hu40K Portfolio, the mouse Mu19K and Mu11K Sets, the Rat Genome U34 Set and the yeast Ye6100 Set. Additional information available at <http://www.resgen.com>. For specific details, please contact Rhonda Snyder (rsnyder@resgen.com) or Donna Brown (donna@resgen.com).

®Affymetrix and GeneChip are U.S. registered trademarks used by Affymetrix, Inc. (Santa Clara, CA)

® Research Genetics and Accelerating Discovery are U.S. registered trademarks/service marks of Research Genetics, Inc. (Huntsville, AL).

Research Genetics®

Accelerating Discovery®

2130 Memorial Pkwy, SW • Huntsville, AL • 35801

U.S. or Canada 800-533-4363

Worldwide 256-533-4363

U.K. 0-800-89-1393

FAX 256-536-9016

<http://www.resgen.com>

Circle No. 18 on Readers' Service Card