

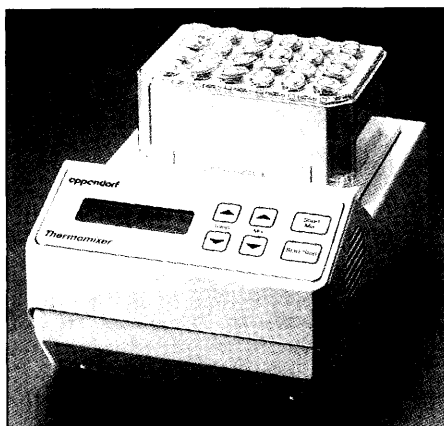
NEW PRODUCTS

THERMOMIXER

The Thermomixer R combines heating, cooling, and mixing for maximum application versatility. Simultaneous mixing and incubation accelerates reaction processes and eases users' workload by combining these tasks in one compact unit. The temperature range from 13°C below room temperature to 99°C allows for flexibility, including low-temperature applications such as DNA ligations.

Brinkmann Instruments

For more information call 516-334-7500 or **circle 147** on the Reader Service Card



Four interchangeable blocks provide flexibility to accommodate 24 micro test tubes of 0.5-, 1.5-, and 2.0-ml, as well as 96-well or other microplates. The racks are autoclavable and freezer safe.

SMALL-VOLUME NUCLEIC ACID MEASUREMENT

The Gene Spec I is for scanning and quantifying DNA/RNA samples as small as 1 µl. It measures samples in less than 8 seconds and displays results in a complete ultraviolet (UV) spectrum. From a sample's absorbance, the 260- to 280-nm ratio and the RNA, single-stranded DNA, double-stranded DNA, and protein concentrations are determined instantly. Cuvettes are available in 1-, 2-, 5-, 10-, 20-, and 50-µl sizes. The choice of background correction includes fixed-wavelength and tangent methods. Because the instrument records a complete UV absorbance spectrum, users can determine whether the absorbance measured is a nu-

Hitachi Genetic Systems

For more information call 510-337-2038 or **circle 148** on the Reader Service Card

cleic acid or an impurity. The instrument's operations are controlled through a personal computer, allowing upgrades of the accompanying software and secondary processing of spectra. Data and spectra can be displayed instantly or stored in one of 20 channels and printed later.

PROTEIN-PROTEIN INTERACTION DETECTION

This mammalian two-hybrid assay kit makes use of hybrid genes to detect protein-protein interactions via the activation of reporter gene expression. This system makes it possible to confirm protein-protein interactions discovered in nonmammalian systems. The system is available as a vector kit containing the bait vector, target (prey) vector, reporter vector, and three control vectors. (All plasmid vectors are available separately.) This assay makes use of the sensitive, convenient luciferase reporter plasmid pFR-Luc.

Stratagene

For more information call 800-424-5444 or **circle 149** on the Reader Service Card

LITERATURE

NucleoVision is a brochure describing image analysis systems configured with a charge-coupled device video camera and GelExpert software featuring image capture, processing, annotation, analysis, and archiving for fluorescent and chemiluminescence applications. GelExpert Analysis modules include one-dimensional, two-dimensional, free object quantification, microbial colony counting, densitometric analysis, protein and fluorescent gel analysis, and genotyping.

NucleoTech

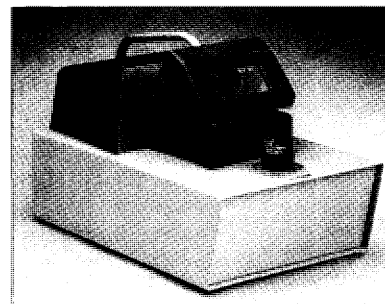
For more information call 888-869-4080 or **circle 150** on the Reader Service Card

Newly offered instrumentation, apparatus, and laboratory materials of interest to researchers in all disciplines in academic, industrial, and government organizations are featured in this space. Emphasis is given to purpose, chief characteristics, and availability of products and materials. Endorsement by *Science* or AAAS of any products or materials mentioned is not implied. Additional information may be obtained from the manufacturers or suppliers named by circling the appropriate number on the Reader Service Card and placing it in a mailbox. U.S. postage is free.

For Fresh/Fresh Fixed Tissue Sectioning...

Vibratome® The Genuine Article

- A truly vibrating blade moves in a *true arcuate* cutting path (not just oscillating) for better sections
- The largest bath accommodates the broadest range of tissue specimens
- The widest range of blade angles allows the cutting of any tissue
- The most extensive selection of accessories gives maximum versatility
- Durable and reliable – yet easily, quickly and economically serviced if needed
- Order it *your way* with either manual operation or with built-in automation and/or refrigeration.



Ask your colleagues and check us out.



TECHNICAL
PRODUCTS
INTERNATIONAL, INC.

832 MIDPOINT DRIVE / O'FALLON, MISSOURI 63366 U.S.A.
(636) 379-8066 (800) 729-4421 FAX (636) 978-9991

www.techprodint.com
e-mail: tpi@techprodint.com

Responding to Allegations of Research Misconduct *Inquiry, Investigation and Outcomes*

June 4-5, 2000 St. Charles, IL

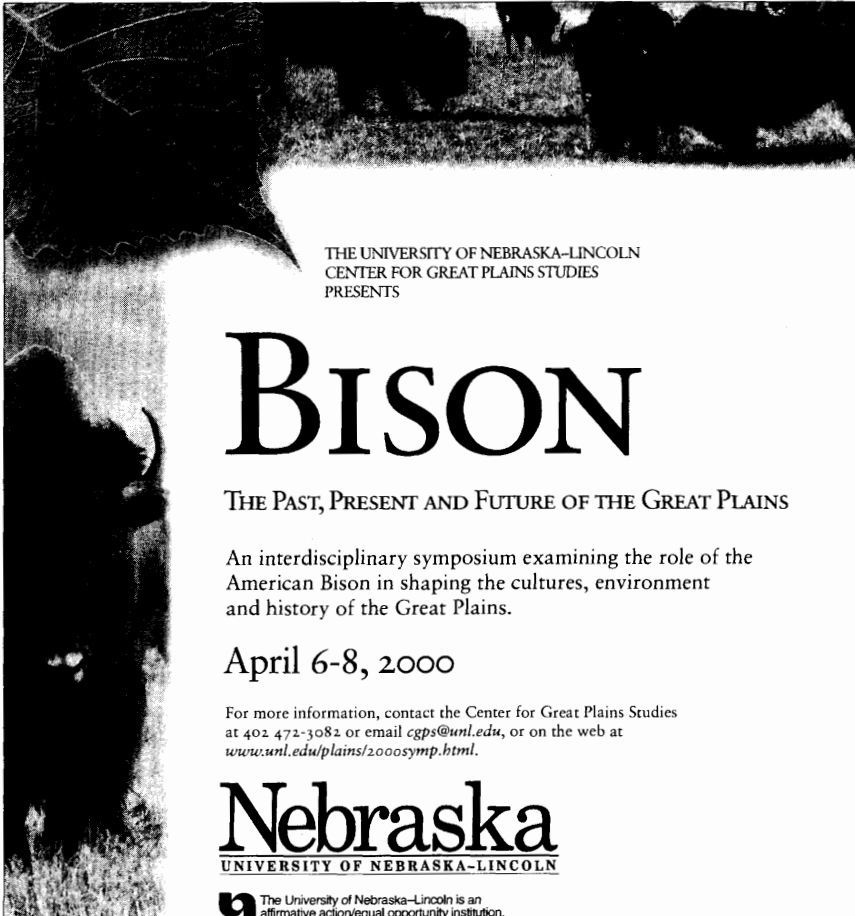
Join your colleagues at a one-and-a-half-day practicum on research misconduct where participants will have ample opportunity to obtain hands-on experience and interact with colleagues and government officials. The practicum will help improve the understanding of policies, procedures and methods for responding to allegations of research misconduct.

Topics to be covered include the revised government definition of research misconduct and policy for pursuing allegations, what to do when someone brings an allegation, who should be involved, what evidence needs to be gathered, how to conduct an inquiry and investigation, how institutional regulations relate to those of the federal government, how to secure and retain records, and who to inform of the outcome.

The practicum is intended for an audience of faculty, university and medical school administrators and counsel, researchers, and others who might have to deal with allegations of research misconduct.

Registration is limited. Registration and other information can be found at: <http://www.aaas.org/spp/dspp/sfrr/projects/practica.htm> or contact Rachel Gray, American Association for the Advancement of Science, 1200 New York Ave., NW, Washington, DC 20005, Tel: 202-326-7106, Fax: 202-289-4950 or E-mail: rgray@aaas.org.

<http://www.aaas.org/spp/dspp/sfrr/projects/practica.htm>



THE UNIVERSITY OF NEBRASKA-LINCOLN
CENTER FOR GREAT PLAINS STUDIES
PRESENTS

BISON


THE PAST, PRESENT AND FUTURE OF THE GREAT PLAINS

An interdisciplinary symposium examining the role of the American Bison in shaping the cultures, environment and history of the Great Plains.

April 6-8, 2000

For more information, contact the Center for Great Plains Studies at 402-472-3082 or email cgps@unl.edu, or on the web at www.unl.edu/plains/2000symp.html.

Nebraska
UNIVERSITY OF NEBRASKA-LINCOLN

 The University of Nebraska-Lincoln is an affirmative action/equal opportunity institution.

Circle No. 41 on Readers' Service Card

Thinking about
**SUBSCRIBING or
RENEWING?**

Have your credit card handy
and ring us on
toll-free:

+44 (0) 1223 326500
USA:
+1 202 326 6417

Or email us your details at
membership@aaas.org

**SUBSCRIPTIONS
MADE EASY**

Science

Classified Advertising

To obtain information on rates, deadlines, editorial features, and bonus distribution schedules, call our sales office or visit *Science Careers* at www.scienceonline.org and click on "How to Advertise." All advertising is subject to publisher's approval.

UNITED STATES

Display Classified Advertising

Bren Peters
Tel: 202-326-6541
Fax: 202-289-6742
E-mail: science_displayads@aaas.org

Line Classified Advertising

Christina Geiger Kathleen Clark
Tel: 202-326-6532 Tel: 202-326-6722
Fax: 202-289-6742
E-mail: science_classifieds@aaas.org

Line ads are not agency commissionable. Ads submitted should not include any bold, italicized, or abbreviated words. *Science* will edit and typeset ads according to *Science* style requirements. *Science* cannot provide proofs of typeset line ads. *Science* will provide an estimated cost of line ads at time of placement. This is an approximate cost only. Please provide contact name, telephone, billing information, and purchase order numbers with your order.

Online Classified Advertising

Beth Dwyer
Tel: 202-326-6534
Fax: 202-289-6742
E-mail: science_internet@aaas.org

Every employment ad placed in *Science* will be featured in our job database online for 4 weeks. Call to find out how to link to thousands of additional job seekers online with *Science Professional Network*.

www.scienceonline.org

Ad Materials: Send to: *Science Classified Advertising*, 1200 New York Avenue, NW, Room 911, Washington, DC 20005

EUROPE

Line, Display, and Online Classified Advertising

Deborah Cummings
Tel: +44 (0) 1223 326 500
Fax: +44 (0) 1223 326 532
E-mail: european_ads@science-int.co.uk

Ad Materials: Send to: Advertising Dept., Bateman House, 82-88 Hills Road, Cambridge CB2 1LQ, United Kingdom

Discounts: A 3% cash discount is granted to all prepaid ads.

Credit Cards: *Science* accepts American Express, MasterCard, and VISA. Discount does not apply to credit cards.

Cancellations: Deadline for cancellation is Tuesday, 10 days prior to issue date.

To Subscribe to *Science* call:
202-326-6417 or 1-800-731-4939

POSITIONS OPEN

DEAN, FACULTY OF SCIENCE UNIVERSITY OF WATERLOO

Applications and nominations are sought for this position. The faculty consists of five academic units: biology, chemistry, earth sciences, physics, and the only English-language school of optometry in Canada. The faculty currently has approximately 350 graduate students, 2,400 undergraduates, 135 faculty positions, and five research Chairs. Annual research funding is about \$22 million. All five academic units offer strong graduate programs, including those offered jointly with the University of Guelph through the Guelph-Waterloo Centre for Graduate Work in Chemistry (GWC)² and the Guelph-Waterloo Physics Institute (GWP). The faculty pioneered cooperative science programs and offers a number of distinctive undergraduate and graduate programs.

The successful candidate will have a proven record of scholarship, teaching, and administration in order to qualify for a **TENURED APPOINTMENT** at the **SENIOR LEVEL**. Applications and nominations will be treated in confidence. They are to be submitted by April 28, 2000, and accompanied by: an up-to-date curriculum vitae; the names and addresses of three references in a position to comment on a candidate's academic credentials and administrative experience; an outline of the talents, experience, and ideas a candidate would bring to the deanship; and should be directed, by mail or FAX to:

Emily Barnes
Associate University Secretary
Needles Hall
University of Waterloo
Waterloo, ON
N2L 3G1 Canada
FAX: 519-888-6337

The initial five-year appointment will begin on July 1, 2001. The full text of Policy 45 (Dean of a Faculty) is available electronically at website: <http://www.adm.uwaterloo.ca/infocsec/Policies/policy45.html>. In accordance with Canadian immigration requirements, this advertisement is directed to Canadian citizens and permanent residents.

POPULATION ECOLOGIST

The Department of Biology at the University of Memphis invites applications for a tenure-track position at the **ASSISTANT PROFESSOR** level for a Population Ecologist with research and teaching interests in the general areas of population ecology/biology, ecological genetics, and evolutionary biology; the taxon is open. Applicants must have a Ph.D., postdoctoral experience or an equivalent is desirable. Successful candidates will develop strong extramurally funded research programs, direct M.S. and Ph.D. students, and teach effectively at both graduate and undergraduate levels. Applicants should submit a letter of application; curriculum vitae; a concise description of research and teaching interests; three reprints; and names, telephone numbers, and e-mail addresses of at least four references to: **Dr. Jerry O. Wolff, Department of Biology, The University of Memphis, Memphis, TN 38152-6081. Telephone: 901-678-2758; FAX: 901-678-4746; e-mail: jwolff@memphis.edu**. Evaluation of applications will begin April 24, 2000, and continue until the position is filled.

The University of Memphis is an Affirmative Action/Equal Opportunity Employer. Women and minority candidates are encouraged to apply.

TENURE-TRACK FACULTY APPOINTMENT is available for research in molecular biochemistry, molecular genetics, molecular neuroscience, and related areas at any academic rank. This position is for research and teaching. Applications will be accepted until the position is filled. In responding, please send a curriculum vitae with a description of plans for an independent research program and request that three references send letters to: **Dr. Gerry Litwack, Chairman, Department of Biochemistry and Molecular Pharmacology, Jefferson Medical College, Thomas Jefferson University, Room 350 BLSB, 233 South 10th Street, Philadelphia, PA 19107. Equal Opportunity Employer.**

POSITIONS OPEN

RANK OPEN BIOINFORMATICS AND COMPUTATIONAL BIOLOGY

The Department of Biometry and Epidemiology (DBE) at the Medical University of South Carolina (MUSC) invites applications for a **TENURE-TRACK POSITION** in bioinformatics and computational biology, with a focus on functional analysis of genomic data. The Department offers numerous opportunities for collaboration with colleagues in basic science and clinical departments and in various centers on campus. The computational biology activities in the Medical University of South Carolina are supported by the Departments of Pharmacology, Biochemistry, and others.

The successful applicant will be expected to pursue an independent research program and collaborate with investigators in the basic and clinical sciences. Rank and salary will be commensurate with the applicant's qualification and experience. Applications should include a curriculum vitae with bibliography, names, and addresses of three references; three representative reprints; and a brief description of research plans. They should be addressed to: **Eberhard O. Voit, Professor and Chair of Bioinformatics Search Committee, Department of Biometry and Epidemiology, P.O. Box 250551, Medical University of South Carolina, 135 Rutledge Avenue, Charleston, SC 29425. E-mail: VoitEO@MUSC.edu**. Evaluation of applications will begin immediately, but the search will remain open until the position is filled. *Medical University of South Carolina is an Equal Opportunity/Affirmative Action Employer; women and minorities are encouraged to apply.*

The Department of Ophthalmology in the School of Medicine at Stanford University invites applicants for a faculty position as **ASSISTANT PROFESSOR** in the research line in the area of advanced microsurgical technologies. This is a non-tenure-track appointment. The successful candidate is expected to hold a Doctoral degree in physics or a related technical field and have at least two years of postdoctoral experience in biomedical applications. The successful applicant will be expected to establish an independent research program with strong extramural grant support. He/she will also be expected to establish a laboratory for the advancement of microsurgical technology. Thus, applicants should have advanced research skills in relevant areas that might include laser effects on tissue, electrical effects, and remote control or visualization. Experience with ophthalmic laser applications is encouraged. Applicants should submit a curriculum vitae, a concise summary of past research activities, and three letters of reference by April 1, 2000, to:

Prof. Michael Marmor
Chairman, Search Committee
Department of Ophthalmology
Stanford University School of Medicine
Stanford, CA 94305

Stanford University is committed to increasing representation of women and members of minority groups on its faculty and particularly encourages applications from such candidates.

FACULTY POSITION

The Pennington Biomedical Research Center at Louisiana State University invites applications for a faculty position at **ASSISTANT PROFESSOR, INSTRUCTOR, or RESEARCH ASSOCIATE** level. Applicants should have a Ph.D. or equivalent degree with a strong background and expertise in molecular and cell biology. The individual selected will participate in ongoing studies aiming to elucidate signaling pathways for cyclooxygenase gene expression. Rank and competitive salary will be commensurate with the applicant's qualifications. Applicants should submit a curriculum vitae and names of three references to: **Ms. Evelyn Bennett, Pennington Biomedical Research Center, 6400 Perkins Road, Baton Rouge, LA 70808. Further information may be obtained by Telephone: 225-763-2518; e-mail: HwangDH@pbrc.edu**. *Pennington Biomedical Research Center is an Affirmative Action/Equal Opportunity Employer.*

Cortical Function

The Department of Neurosurgery at Upstate Medical University is seeking a scientist with interests in human and animal cortical mechanisms relating to sensory, motor, or higher cognitive functions. Facilities include a new human performance center and an MR machine dedicated to research endeavors. There is excellent departmental support for this position. This is a tenure track position at the Assistant or Associate Professor level. The successful candidate will have a significant publication history and a demonstrated ability to generate outside funding. *Upstate Medical University is an equal opportunity employer. Women and minorities are encouraged to apply.*

Experimental Neuro-oncology

The Department of Neurosurgery at the Upstate Medical University is offering a position for a scientist interested in the cellular mechanisms related to central nervous system neoplasia. This is a named (The Robert and Molly King Neuroscientist) position with excellent departmental support and will be an integral part of the academic efforts of the department. The successful candidate will have a proven publication and funding record and will qualify at least for an Associate Professor rank. *Upstate Medical University is an equal opportunity employer. Women and minorities are encouraged to apply.*

Qualified applicants interested in either position should contact:

Charles J. Hodge, M.D.
Department of Neurosurgery
Upstate Medical University
750 East Adams Street
Syracuse, New York 13210
(315) 464-5510
e-mail: hodgec@upstate.edu

The Cleveland Clinic Foundation

Head Section of Orthopaedic Surgery Research

The Cleveland Clinic's Foundation Departments of Biomedical Engineering and Orthopaedic Surgery seek applicants for a senior staff/faculty position as Head of the newly created Section of Orthopaedic Surgery Research. The Section Head will develop a new research and development program between the two departments; and recruit 3 additional experts in musculoskeletal research. The successful candidate will have Ph.D. and/or M.D. with strong background in engineering and an ability to work closely with orthopaedic surgeons.

The Cleveland Clinic Foundation is an EEO/AA employer. Applicants submit a letter of application, complete curriculum vitae and list of three references to:

J. Fredrick Cornhill, D.Phil., Chairman
Department of Biomedical Engineering, ND-20
The Cleveland Clinic Foundation
9500 Euclid Avenue
Cleveland, OH 44195

The Department of Biological Sciences at the University of Pittsburgh

is currently seeking qualified applicants for two visiting faculty positions at the rank of Lecturer in Biological Sciences. The positions are outside of the tenure stream. One of the positions would include teaching duties in INTRO BIOLOGY and DEVELOPMENTAL BIOLOGY. This position also would involve teaching a summer workshop for high school teachers and participating in outreach activities during the regular academic year. The second position is for a specialist in COMPUTATIONAL BIOLOGY/INSTRUCTIONAL TECHNOLOGY. The duties involved in this position include coordinating departmental computing and educational technology and teaching a course in Computational Biology.

Applicants for either position should have a Ph.D. in Biological Sciences. Those applying for the position in Computational Biology also should have strong computer skills. For each position, some team teaching may be required. For more information about our department, visit our homepage at <http://www.pitt.edu/biology>. The positions will be on a 12-month basis, subject to annual review, and they will be full-time. Initial appointments may be for 1-3 years depending on the qualifications and experience of the candidate. The appointments require administrative approval. Submit a letter of interest, curriculum vitae, and three letters of reference to: **Faculty Search Committee, Department of Biological Sciences, A234 Langley Hall, University of Pittsburgh, Pittsburgh, PA 15260.**

Applications must be received by April 15, 2000.

The University of Pittsburgh is an Affirmative Action, Equal Opportunity Employer.



THE
SCRIPPS
RESEARCH
INSTITUTE

Department of Neurobiology POSTDOCTORAL POSITION - La Jolla, California

Position involves studying the aspects of molecular, cellular and developmental neurobiology. Some major areas of interest are the control of neural stem cell differentiation, synaptic biochemistry, mRNA localization and translation, as well as regulatory mechanisms that control gene transcription in neurons. Applicants should have a strong background in cellular and/or molecular biology. Salary commensurate with qualifications and experience. Applicants should send a short statement of research interests, a curriculum vitae, and the names of three references to: Attn: Dr. Gerald M. Edelman, Chairman, The Scripps Research Institute, 10550 North Torrey Pines Road, La Jolla, California 92037.

TSRI is an Affirmative Action/Equal Opportunity Employer.

www.scripps.edu

POSTDOCTORAL RESEARCH at

The Wistar Institute

The Wistar Institute, an independent research organization located on the University of Pennsylvania campus, has NIH Training Grant-supported positions available immediately for postdoctoral research in "Immunobiology of Vaccines." Selected candidates will train with immunologists, virologists, structural biologists, and chemists in the field of vaccine design and development. Candidates must be US citizens or permanent residents with a maximum of 3 years postdoctoral training.

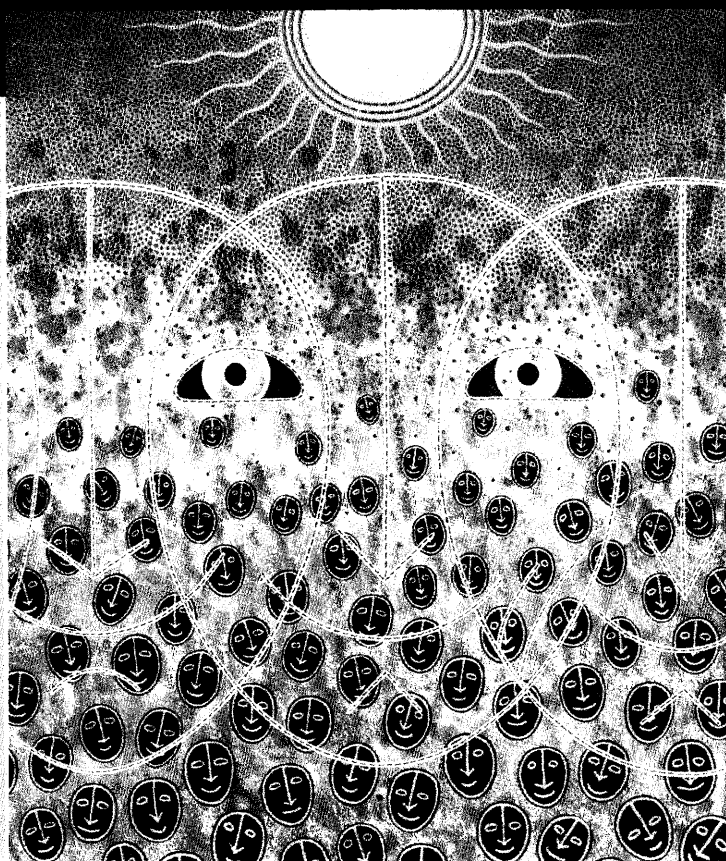
If you possess the creativity, intelligence, and motivation necessary to meet the high expectations of our trainers, A. Caton (tolerance), W. Gerhard (viral immunology), E. Gonczol (viral vaccines), H.C.J. Ertl (vaccines to viruses and cancer), E. Heber-Katz (autoimmunity), C. Hunter (immunity to T. Gondii), R. Marmorstein (structure of oncoproteins), P. Offit (immunity to rotavirus), L. Otvos (peptide vaccines), P. Scott (immunity to Leishmania), Carl June (viral immunology) and Katherine High (gene therapy), then please forward your C.V. and three letters of recommendation to:

Christina Cole, The Wistar Institute, 3601 Spruce Street, Philadelphia, PA 19104. Minority applicants are strongly encouraged to apply. EOE/AA/M/F/D/V.



www.wistar.penn.edu

the new face IN P H A R M A C E U T I C A L S



VICE PRESIDENT

Molecular Oncology

DIRECTORS

Ligand Identification

Pharmacogenomics

ASSOCIATE DIRECTORS

Medicinal Chemistry

SENIOR SCIENTISTS

In Vitro Metabolism

Molecular Pathology

Informatics

SENIOR RESEARCH ASSOCIATES

GPCR

Synthetic Chemistry

Analytical Chemistry

Molecular Biology

SCIENTISTS

GPCR

Enzymology

Inflammation/Coagulation

**Lead Optimization
Programs**

Pathology

In Vivo Pharmacology

Protein Purification

**Expression Profiling
Development**

Informatics

RESEARCH ASSOCIATES

Enzymology

Pathology

RESEARCH INVESTIGATOR

Vascular Surgery

Millennium has a new vision for the future of medicine. That drug development be perfectly precise. That all patient therapies be totally individualized. That every disease be targeted at its core. We will succeed in realizing this vision for one thousand reasons—our people. Expertise, insight, synergy and above all passion unite us in creating a better way to cure disease and allow us to have fun in the process. Further, our recent merger with LeukoSite, Inc.—which brings commercialization expertise and a rich pipeline of potential products—leapfrogs Millennium toward our vision of building the pharmaceutical company of tomorrow. The face of the future never looked brighter.

Join us in building the biopharmaceutical company of the future at our Cambridge, MA, facilities. Please respond by sending only one resume using only one of the following methods, indicating the positions you are interested in. Mail your resume to: Millennium Pharmaceuticals, Resume Processing Center, Source Code SC31000, PO Box 798, Burlington, MA 01803. Email: millennium@webhire.com. Fax: (800) 370-6925. A source code must be included with all submissions. We are an equal opportunity employer committed to discovering the individual in everyone.

Visit our website for complete details on these and other opportunities:

www.mlnm.com

Transcending the limits of medicineSM

 **MILLENNIUM[®]**



St. Jude Children's Research Hospital

ALSAC • Danny Thomas, Founder

DEPARTMENT OF DEVELOPMENTAL NEUROBIOLOGY

The Department of Developmental Neurobiology at St. Jude Children's Research Hospital is dedicated to the investigation of fundamental questions in contemporary neurobiology. Postdoctoral positions are available in the laboratory of Dr. Tom Curran to investigate the role of the Reelin pathway in the control of brain development (Sheldon et al., *Nature* 389:730-733, 1997; Rice et al., *Development* 125:3719-3729, 1998; Homayouni et al., *J Neuroscience* 19:7507-7515, 1999; D'Arcangelo et al., *Neuron* 24:471-479, 1999). A position is also available to investigate the mechanism of cell transformation by the *fos* oncogene (Bakin and Curran, *Science* 283:387-390, 1999).

The campus provides a state-of-the-art research environment including new, custom-designed laboratories and core facilities for molecular biology, peptide and protein chemistry, genomics, microarray analysis of gene expression and transgenic/knockout technology. The research towers presently house approximately 300 doctoral level scientists who provide a rich and interactive scientific environment.

Interested candidates should visit our web site at www.stjude.org/education for detailed information and application forms. Applicants should send a completed application and three letters of recommendation to: Tom Curran, Ph.D., Chairman, Department of Developmental Neurobiology, St. Jude Children's Research Hospital, 332 N. Lauderdale, Memphis, TN 38105-2794.

St. Jude Children's Research Hospital is an equal opportunity employment/affirmative action employer.



MAYO CLINIC POSTDOCTORAL POSITIONS

Positions available at the computer-aided molecular design (CAMD) lab for postdoctoral fellows to develop novel angiogenesis inhibitors and to study chromophores of green fluorescent proteins using ab initio/molecular mechanics calculations, spectroscopic analyses, and organic syntheses. Applicants must have strong total-synthesis experience and/or quantum mechanics and molecular mechanics background. Preference will be given to applicants with their own fellowships or with experience of Beowulf-class computer systems. The CAMD lab has records of developing biologically active molecules and novel methods for zinc protein molecular dynamics simulations and for virtual screen of chemical databases. It has state-of-the-art synthetic equipment, a cluster of dedicated Origin 2000 and 200 servers (16xR10K, 8xR12K, 200Gb disk, and 3Gb memory), and four Octane graphics. Recent patents and publications by the CAMD lab are available from [ftp.mayo.edu](ftp:mayo.edu) (name: anonymous, cd pub/camd). Applications including curriculum vitae, two relevant papers, and two recommendation letters should be sent to:

Yuan-Ping Pang, Ph.D.
Computer-Aided Molecular Design
Mayo Clinic
Guggenheim 711A
200 First Street SW
Rochester, MN 55905
e-mail: pang@mayo.edu

Mayo Foundation is an affirmative action and equal opportunity employer and educator.

ANNOUNCEMENTS

NATIONAL SPACE BIOMEDICAL RESEARCH INSTITUTE *Research Announcement*

The National Space Biomedical Research Institute (NSBRI) announces an opportunity to participate in the core research program of the NSBRI. The release date for this announcement is February 22, 2000.

NSBRI Research Announcement 00-01
An Opportunity to Participate in the Core
Research Program of the
National Space Biomedical Research Institute:
Expansion of Current Research Teams

This announcement is available electronically via the Internet at <http://www.nsbri.org>

Letter of Intent Due: April 14, 2000
Proposals Due: June 16, 2000

Paper copies of this Announcement are available to those who do not have access to the Internet by calling 713-798-7412 or by writing to:

R. J. White
NSBRI

One Baylor Plaza, NA-425
Houston, TX 77030.

Life Made Better

The members of the Bristol-Myers Squibb Pharmaceutical Research Institute share one goal—to discover and develop best-in-class, cost-effective medicines that enhance and extend human life.

Neurosciences

Director, Pain Research, Ph.D./M.D.: Implement and coordinate strategic as well as tactical decisions in pain programs. Strong theoretical knowledge of pain research and an understanding of pain models in the analgesic drug discovery process, is required. 5-10 years relevant experience is desirable. **Job Code: PRDF164PM**

Behavioral Pharmacologists

Cognition, Ph.D.: Possess a strong working knowledge in the cognitive behavioral neurosciences. Lead a team of scientists in the discovery of novel cognitive enhancers. Design, validate and implement behavioral models which evaluate cognitive improvement after drug treatment. 1-3 years relevant postdoctoral experience required. **Job Code: PRCC164FY**

Pain, B.S./M.S. (2): Perform various behavioral models which evaluate analgesic drug action. 1-3 years experience handling animals in either an academic or industrial environment is desired. **Job Code: PRCC164CC**

Electrophysiologists

Ion Channels, Ph.D.: Experience in ion channel biology and methods to assay ion channel activity. Expertise with fluorescence assay technology, patch clamp or oocyte recordings, along with a firm background in Neurosciences and at least 2 years of postdoctoral experience, is desired. **Job Code: PRCC164SD**

B.S./M.S. (3): Experience with brain slice electrophysiology, and an understanding of techniques for evaluating the effects of ion channel modulators expressed in xenopus oocytes and mammalian cells, including two-electrode voltage clamp and whole-cell patch clamp. Experience with in vivo electrophysiological techniques to perform whole-cell and single unit recordings. 1-3 years experience is desired. **Job Code: PRCC164VG**

Receptor Pharmacologists, B.S./M.S. (2): Experience in cell culture techniques, radioligand binding, scintillation proximity assays, radioimmunoassay, second messenger assays (adenylate cyclase, inositol phosphate turnover, calcium flux), as well as computer skills for data analyses. Experience with laboratory robotics is considered an asset. 1-3 years experience in either an academic or industrial setting is desired. **Job Code: PRCC164IA**

Protein Biochemistry, B.S./M.S.: Experience in characterizing and isolating novel proteins for protein analysis. Use of UV/vis and fluorescence spectrophotometry, gel electrophoresis and western blot analysis, as well as chromatographic methods including ion exchange, gel filtration and affinity. A working knowledge of molecular biological, cell culture, & immunological assays with 1-3 years relevant experience is desired. **Job Code: PRCC164SV**

Genitourinary Diseases

In Vivo Pharmacologist, Ph.D.: Will guide drug discovery efforts in the Genitourinary Diseases and possess relevant experience with design, implementation and performance of in situ/in vivo urogenital models. A minimum of 3-4 years experience in either an academic or industrial setting is desired. **Job Code: PRCC164NL**

Electrophysiologists, B.S./M.S. (2): Experience with a variety of techniques using smooth muscle cells, including whole-cell voltage clamp techniques as well as fluency with fluorescence and imaging techniques. 2-3 years of relevant experience with these smooth muscle techniques is desired. **Job Code: PRCC164STNL**

Smooth Muscle Pharmacologists, B.S./M.S. (2): Experience with the design, validation and implementation of various in vitro smooth muscle functional assays or biochemical techniques. 2-3 years of relevant experience is desired. **Job Code: PRCC164GD**

Send resumes to:
**Bristol-Myers Squibb
Pharmaceutical Research Institute
P.O. Box 5101, 5 Research Parkway
Wallingford, CT 06492-7661
Fax: (203) 677-7762**

*We use resume-scanning technology.
Please submit on plain white bond paper using
standard type and fonts (no italics, graphics
or staples please).*



Bristol-Myers Squibb

Pharmaceutical Research Institute

100 Scientific Vacancies

with USDA's
Agricultural
Research Service



Consider a research science position with the Agricultural Research Service (ARS), USDA's principal in-house research agency. Here your work could touch the lives of every person—opening up a new multi-million dollar export market for U.S. crops; discovering ways to make industrial products from renewable resources; or helping ensure that we always have a safe, nutritious, abundant food supply and quality environment.

Vacancy announcements and application procedures at

WWW.ARS.USDA.GOV/AFM/HRD/RESJOBS

ARS offers a competitive scientific environment, excellent benefits, and opportunity for advancement. Openings exist in many disciplines at locations throughout the United States.



U.S. Department of Agriculture • Agricultural Research Service

ARS is an equal opportunity employer.

Biostatistician/Data Analyst

Innovative biotechnology company in Santa Fe, New Mexico seeks biostatistician/statistician/data analyst for data monitoring, analysis, and modeling. Must be familiar with basic and intermediate statistical analyses, including multivariate regression and ANOVA; clustering and discriminant techniques; and factor analysis. Should be familiar with Microsoft Excel and with statistical packages such as Statistica, SAS, or SPSS. A major job goal is to model associations between patterns of data (especially gene expression profiles) and toxicological endpoints, so that predictive models of drug toxicity can be derived. Experience with exploratory analysis techniques and data mining in general, as well as with computer database architecture and computer data transformation would be helpful. Should be detail-oriented and results-oriented, with willingness to methodically monitor and refine data as necessary. M.S. or Ph.D. in Biostatistics, Statistics, Computational Science, or Applied Mathematics, with some knowledge of genetics or biology is preferred. Competitive salary commensurate with experience and/or demonstrable competence. Website: www.phase1tox.com.

Send resume or vita and self-descriptive cover letter to:

Dr. Sam Hicken

PHASE-1 Molecular Toxicology

2904 Rodeo Park Drive East

Santa Fe, NM 87505

shicken@phase1tox.com

Muon Collider and Neutrino Factory Fellowships

Fermilab is currently accepting applications for Muon Collider/Neutrino Factory fellowships from individuals who possess two or more years of experience beyond their Ph.D. Candidates will develop the detector designs and establish the physics feasibility of Muon Collider/Neutrino Factory detectors. Initial work will be in the area of detector simulation, followed by R&D on detector hardware systems.

Two methods of operation of the fellowship are available. The first one, a full-time appointment, will be funded fully by the fellowship program for up to two years. The second scheme will allow candidates to work half time on an experimental program of their choice and the other half on the Muon Collider/Neutrino Factory. In this scheme, the candidate will be responsible for securing half salary from an institution engaged in the experimental program. Both fellowships are also open to faculty members planning sabbatical or other leaves at Fermilab.

Appointments are for one year, renewable to two years. Salaries will be commensurate with experience. Successful candidates will be based at Fermilab.

All applications should include a curriculum vita, publication list and the names of three references. Applications and requests for information should be directed to: **Dr. Rajendran Raja**, Fermi National Accelerator Laboratory, M.S. 122, P.O. Box 500, Batavia, IL 60510-0500, U.S.A. E-mail: raja@fnal.gov



Fermilab

Fermilab is an Equal Opportunity/Affirmative Action
Employer M/F/D/V



An Employee-Owned Company

SAIC Frederick

A Division of Science Applications
International Corporation

PRE-SOLICITATION NOTICE

In the past few years, striking scientific and technological advances have had a profound effect on cancer treatment. Increasing detail in the molecular description of cells, the ability of chemists to synthesize highly diverse collections of compounds, the manipulation of genetic sequences, and the most exciting promise of imaging are among the recent advances.

Together, these advances have enabled a fundamental re-conceptualization of the process of discovery of a new generation of effective interventions for cancer. The basic step is the identification of specific ligands for key components of critical biological pathways.

The discovery, assembling, and exploitation of a rich collection of ligands for components of essential cellular processes will expedite the discovery and development of drugs for cancer prevention and treatment.

To meet this requirement, Science Applications International Corporation (SAIC), as the operator of a Federally Funded Research and Development Center (FFRDC) for the National Cancer Institute (NCI), wishes to contract for a selection of Molecular Target Laboratories (MTLs) rich in scientific expertise for the purpose of identifying ligands that may be used:

- As chemical probes for biological processes
- As probes that can be imaged for physiological and biochemical monitoring
- As potential candidates for clinical trials

This is intended to be a multi-year program with an initial one-year contract with multiple option years. It is also expected that multiple awards will be made.

It is anticipated that the MTLs will derive drug candidates, imaging probes, and perturbational probes for biology. In time, the MTLs may also acquire or redirect their capacity to enable translation of drug candidates and imaging probes from the laboratory to the clinic, and may eventually contain fully developed programs in ligand discovery, drug and probe development, and possibly clinical testing.

Each MTL shall have:

- Capability to allow design and implementation of biological, synthetic, or biochemical screens
- Chemistry for library synthesis
- Practice of high-throughput screening
- Resynthesis
- Radiochemical and imaging expertise
- Biological testing (at least at the in vitro level)
- Demonstrated capacity to include molecules for cancer treatment and imaging or diagnostics as successful outcomes of their research programs
- An independent business management system to support MTL activities

The ultimate products of the MTLs will be repositories of chemicals, assays, and information:

- Cancer-relevant target assays, suitable for high-throughput screening of chemical libraries. These assays will not be claimed as intellectual property and will be made publicly available as described below.
- Chemical libraries: these will constitute the principal sources of chemical diversity to be interrogated by the biological assays developed in the MTLs. This collection of libraries will constitute an invaluable public resource and will therefore be made available by the MTLs to qualified research groups in a manner to be established by the MTLs and the NCI.
- Chemical probes for biological studies. Ligands with important biochemical or phenotypic effects will be placed into a repository and made available to qualified research groups
- Information: the identification of biologically active small molecules and the relation of particular chemical structures to biochemical activity and cellular phenotype. This information will be maximally useful to the research community to the extent that it is made publicly available expeditiously and systematically. To accomplish this goal, the MTLs will work with SAIC and NCI to construct a publicly available database relating chemical structure to biological function. This database will be populated with data from research projects in the MTLs as soon as possible after discovery, verification and IP review. This database will also incorporate data from other qualified research groups in the cancer research community wishing to contribute to it. NCI envisages that it will, in time, serve a role for ligand discovery efforts analogous to that of DNA sequence databases for gene discovery.

The NCI wants to ensure that new technologies that may be developed by MTLs under this Contract are made available, as much as possible, to the research community for further research and development. It is anticipated that this will more rapidly and effectively lead to products of benefit to the public. The National Institutes of Health (NIH) recognizes the rights of contractors/subcontractors normally to elect and retain title to subject inventions developed with Federal funding under the provisions of the Bayh-Dole Act. However, to address the Government's present interest in the availability of the new technology developed under this Contract, the NIH is invoking the provision of the Bayh-Dole Act at 35 U.S.C. § 202 (a)(ii) that enables the Government to restrict or eliminate the right to retain title "in exceptional circumstances when it is determined by the agency that restriction or elimination of the [contractor/subcontractor's] right to retain title to any subject invention will better promote the policy and objectives of [the Bayh-Dole Act]". Therefore, respondents are advised that a Determination of Exceptional Circumstances (DEC) along with the associated deviated FAR clauses will be used for this Initiative. The respondents should note that the DEC will enable the NCI to either elect title to inventions developed by the MTL under this Initiative, or to grant greater rights to such inventions to the MTL. The finalized version of the deviated FAR clauses will be available before final award of any potential contracts.

There will be a pre-solicitation conference held on Tuesday, March 14th to further discuss the goals of this initiative, IP issues and DEC guidelines and considerations. Further details and a registration form are available at <http://www.ncicrf.gov/mtl>. A draft solicitation is available by contacting Ms. Heather Wells at phone: 301-846-1520 or via fax: 301-846-5414.

Potential offerors are invited to submit questions to Ms. Wells, prior to the pre-solicitation conference. Questions received will be addressed in the final solicitation.

We're

Research.
Nursing.
Finance.
Operations.
Management.
Allied Health.

We're Carolinas HealthCare

[We're more than you think]

**Research Fellow
Department of General Surgery
Cannon Research Center**

We have an opening for a postdoctoral fellow in bioengineering as it relates to tissue engineering. The research center is part of the Carolinas Medical Center located in Charlotte, NC, an academic teaching center with 11 medical and surgical residency programs. Our faculty holds academic appointments at UNC Chapel Hill, UNC Charlotte and Clemson University.

The focus of the project is the study of autologous cellular constructs for the development of a soft tissue for use in plastic and reconstructive surgery. Experience in the interface between cells and biomaterials required. This project is a collaborative effort with researchers at the University of Michigan, University of Massachusetts, Harvard, MIT and Reprogenesis, Inc. The fellowship is under the supervision of Craig Halberstadt, Ph. D. and Walter Holder, M.D.

We offer a competitive salary and benefits package. Interview and relocation assistance are available. Please send, fax or email resume to: **Carolinas HealthCare System, Attn: Employment Services/DR, PO Box 32861, Charlotte, NC 28232-2861 or call (800) 671-0650; fax: (704) 355-3336; email: hrempldiv@carolinas.org** (please indicate position in subject line).



Carolinas HealthCare System

We are an Equal Opportunity/Affirmative Action Employer

www.carolinas.org



MAYO CLINIC

**POSTDOCTORAL FELLOWSHIP
ONCOLOGY RESEARCH**

A postdoctoral position is available immediately to study the human checkpoint proteins, hRad9, hHus1, hRad1, and hRad17. Ongoing studies include characterizing the biochemical and cellular functions of these proteins in the activation of DNA damage-inducible checkpoints.

Applicants should have a Ph.D. with experience in molecular biology and biochemistry. Send a full curriculum vitae with name, address and phone number of three references.

Larry M. Karnitz, Ph.D.
**Division of Developmental Oncology
Research
Mayo Clinic
200 First Street SW
Rochester, MN 55905
e-mail: karnitz.larry@mayo.edu**

Mayo Foundation is an affirmative action and equal opportunity employer and educator.

ANNOUNCEMENTS

NEUROSCIENCE

THE EJLB FOUNDATION SCHOLAR RESEARCH PROGRAMME

The EJLB Foundation awards each year up to seven (7) grants for research projects in all areas of neuroscience that pertain directly or indirectly to schizophrenia and mental diseases. Specific areas of support in the past have included: developmental neurobiology, synaptic mechanisms, systems and cognitive neuroscience, and clinical studies on the genetic and physiopathologic aspects of neurological and psychiatric disorders.

Eligibility for such grants is restricted to young scientists who are pursuing an independent research career and have given evidence of having significant potential. It is also a requirement that these scientists (i) have earned an MD and/or a Ph.D. degree; (ii) have completed their post-graduate training; and (iii) have been admitted after **June 15, 1995** as faculty members of a leading university, or an affiliated non-profit research centre, in Canada or elsewhere in the world.

Each grant is of CAN\$300,000, is disbursed over three (3) years and is non-renewable.

The next closing date for receipt of letters of intent is **May 1, 2000**.

Full details regarding this programme and required letter of intent forms may be obtained from:

**The EJLB Foundation
1350 Sherbrooke Street West - Suite 1050
Montréal, Québec
CANADA H3G 1J1**

Fax (for inquiries only 514-843-4080).

MAMMALIAN GENOTYPING SERVICE

The Mammalian Genotyping Service is funded by the National Heart, Lung, and Blood Institute to assist in linkage mapping of genes which cause or influence disease. Genotyping is carried out using short tandem repeat polymorphisms at Marshfield, Wisconsin under the direction of Dr. James Weber. Capacity of the Service is currently about 5,000,000 genotypes (DNA samples times polymorphic markers) per year and growing. Although the Service was initially established for genetic projects dealing with heart, lung, and blood diseases, the Mammalian Genotyping Service will now consider all meritorious applications.

To ensure that the most promising projects are undertaken, investigators must submit brief applications that are evaluated by a scientific advisory panel. At this time, only projects involving humans, mice or rats and only projects with > 10,000 genotypes will be considered. DNA samples must be in hand at the time of application. **There are no genotyping fees for approved projects.** Application deadlines are every six months.

View instructions online:

<http://www.marshmed.org/genetics>

Call or e-mail for an application:

(715) 389-3525

cywinski@mflidelin.edu

Upcoming Deadlines:

March 31, 2000

September 30, 2000

Your work means



He can enjoy an active lifestyle.

It's our solid dedication, vision and constant search for answers that allow us to touch millions of people around the world every day. As a major division of Fortune 500 American Home Products Corporation, we help people lead healthier lives through the development of innovative pharmaceutical, vaccine and nutritional products. We achieve this through our superior research, manufacturing, sales and marketing capabilities. Enjoy the freedom to develop your own career while having the support of a valuable team.

Postdoctoral research positions are available immediately in the Drug Metabolism Division at Wyeth-Ayerst Research in Princeton, NJ and Chazy, NY. The selected individuals will join a team of scientists who are conducting basic research and developing new technologies in drug metabolism and toxicology to provide innovative approaches to improve the drug discovery and development process.

Postdoctoral Fellowships

Biotransformation

Princeton, New Jersey (Three Positions)

Reactive Intermediates

Responsible for the development of innovative screening methods to detect reactive metabolites by LC/MS for lead optimization. Ideal candidate will be a drug metabolism chemist interested in conducting research in active metabolite characterization, biological reactive intermediates, SAR, automation, NMR and mass spectrometry. Strong background in in vitro drug metabolism, reactive metabolite trapping, protein chemistry and synthetic organic chemistry required. Experience with NMR a plus.

Drug Disposition

Responsible for the exploration and development of in vitro and/or in vivo models to determine the roles of transporters in hepatic drug uptake, biliary excretion and drug-drug interactions. Transporters of interest may include the organic anion transporting polypeptide (OATP) and organic cation transporter (OCT) for hepatic uptake, and the canalicular multi-specific organic anion transporter (cMOAT) for biliary excretion. Background in biochemistry, molecular biology or related disciplines required, with experience in cell culture and/or protein expression.

Pharmacogenetics

Working closely with our in-house genomics and genetics experts, this project will focus on the impact on drug disposition of genetic variability in genes encoding proteins that play a critical role in determining the disposition of drugs in animals and man. In addition, position will focus on new ways to utilize pharmacogenetics to support lead selection and optimization in drug discovery. Targets of potential interest include the phase I and phase II drug metabolizing enzymes and the drug transporters mentioned above. A strong background in molecular biology and experience in modern genomic technologies (e.g. expression profiling, oligonucleotide arrays, gene sequencing) desired.

Investigative Toxicology

Chazy, New York

The successful candidate will be responsible for developing, validating and implementing rodent post-implantation whole embryo culture technology as an in vitro model to screen potential new drug candidates for developmental defects and to investigate mechanisms of reproductive toxicity at the cell and molecular level. Other responsibilities include preparing embryo culture SOPs and protocols, training technical staff in embryo culture techniques, and assisting with routine laboratory operations. Ph.D in Biological Sciences or a related discipline required. Doctoral training and independent research experience with rodent post-implantation embryo culture and related cellular and molecular biology techniques essential.

Wyeth-Ayerst offers competitive compensation and benefits programs. Please forward your resume with salary requirements, referencing **Job Code: OPSCI** to: **Wyeth-Ayerst, P.O. Box 7886, Philadelphia, PA 19101-7886. Fax in fine mode to: (610) 989-4854. E-mail: jobs@RAMAIL1.wyeth.com** (ASCII format, no attachments, subject: resume).

No phone calls please. Principals only. Equal Opportunity Employer. M/F/D/V.

For more information, visit us at:
<http://company.monster.com/wyay/>



A division of American Home Products

Bringing results home.

Join A Leader in PHARMACEUTICAL INNOVATION

At Schering-Plough Research Institute, our scientists are discovering innovative therapeutic agents that challenge humankind's most debilitating diseases. And we're doing it at our Kenilworth, NJ state-of-the-art research campus where you can enjoy the benefits and prestige of working for a global leader. Join us now as we shape the future of pharmaceutical innovation.

Ph.D. Associate Principal Analytical Chemist

Job Code: XHXP9935

BS/BA Assistant Analytical Chemist-HPLC/GC

Job Code: XHXP2005

Ph.D. Analytical Chemist-Dissolution

Job Code: XHXP9817

BS Associate Analytical Chemist-HPLC

Job Code: XHXP2012

BS/MS Analytical Chemist-Toxicology Dosing

Job Code: XHXP2009

BS/MS Analytical Chemist-Cleaning Qualification

Job Code: XHXP2010

BS/BA Assistant Scientist-HPLC/GC

Job Code: XHXP2006

For additional information or to apply online, visit our web site at www.sp-research.com

We offer an excellent compensation package that includes a competitive salary, a cash incentive bonus program, comprehensive benefits, profit sharing and 401(k). Competitive benefits include group insurance and retirement programs, flexible work arrangements, education assistance, and health and wellness programs. For prompt, confidential consideration, we invite you to forward your resume which MUST include the Job Code for your position of interest. **E-mail: sprisc@search.com or mail to: Human Resources-DE, Schering-Plough Research Institute, 2015 Galloping Hill Road, Kenilworth, NJ 07033-1300.** We are an equal opportunity employer. We regret we are unable to respond to each resume. Only those selected for an interview will be contacted.



**Schering-Plough
Research Institute**

Using Science for Human Advantage

MEETINGS

NATO ADVANCED STUDY INSTITUTE (ASI) PLANT RESPONSES TO BIOTIC AND ABIOTIC STRESS: MOLECULAR MECHANISMS AND IMPLICATIONS FOR AGRICULTURE

MAY 15-27, 2000, Roscoff, France

Postdoctoral fellows and advanced graduate students from NATO and NATO Partner countries are invited to apply to an ASI focused on current advances in how plants respond to biotic and abiotic stress at the molecular and cellular level. A few junior independent investigators will also be accepted. Formal scientific sessions and workshops on state-of-the-art techniques in cell biology and biotechnology, and their application to agriculture, will be integrated with poster presentations and informal interactions among participants.

Speakers: *Signal Perception:* E. Kondorosi (Hungary), J. Jones (UK); *Apoptosis:* J. Dangel (USA), P. Hooykaas (The Netherlands); *Cellular Signaling:* U. Bonas (Germany), R. Kahmann (Germany), S. Lazarowitz (USA); *Host Response to Viruses:* J. Carrington (USA); *Symbiosis and Pathogenicity:* T. Bisseling (The Netherlands), J. Dénarié (France); *Heavy Metal and Salt Stress:* H. Bohnert (USA), L. Herrera-Estrella (Mexico), M. L. Guerinot (USA); *Biocontrol:* B. Lugtenberg (The Netherlands); *Dessication Tolerance:* D. Bartels (Germany); *Heat and Cold Response:* M. Thomashow (USA), D. R. Wagner (USA); *Oxidative Stress:* R. Last (USA), D. Inzé (Belgium).

Stipends for travel and lodging will be provided based on need. All attendees should present a poster. A number of these will be selected for talks in the formal sessions. Curriculum Vitae (2 pages), statement of interest and research abstract should be Emailed or sent to: **Dr. Sondra G. Lazarowitz, Cornell University, Dept. of Plant Pathology, 334 Plant Science Bldg., Ithaca, NY 14853 (Email: SGL5@cornell.edu).**

Deadline for applications is March 30, 2000.

nature biotechnology

seeks an **ASSISTANT EDITOR**

This is an exciting opportunity to contribute directly to the ongoing development of this influential journal. The Assistant Editor will focus on manuscript selection and peer review, but will also have an opportunity to contribute to all aspects of the journal, including commissioning, writing and web development. Close contact with the biotechnology community will be essential, including travel to international meetings and conferences.

Based in our growing New York City office, the successful applicants will join a large and dynamic editorial and publishing team responsible for *Nature Genetics*, *Nature Structural Biology*, *Nature Medicine*, *Nature Neuroscience* and *Nature Biotechnology* and will enjoy a close working relationship with the London-based *Nature* and *Nature Cell Biology* teams. The atmosphere is hard working, fast-paced and friendly.

Applicants should have a Ph.D., a strong research background in either industrial or academic research, a broad understanding of and interest in the field, excellent literary skills, an enthusiasm for and commitment to the communication of science and an appreciation of the history and evolution of molecular biology into biotechnology.

To apply, please submit a CV (including current salary), a short (700-900 words) News & Views-style article on an exciting and news-worthy recent development in any area of biotechnology, and a short cover letter explaining your interest in the post, to: **Dr. A. Marshall, Nature Biotechnology, 345 Park Avenue South, New York NY 10010 (fax 212.696.6935; email biotech@natureny.com)** to arrive as soon as possible and **not later than March 20th.**

PE Biosystems

A PE Corporation Business

At PE Corporation we're committed to ensuring that biological information plays a pivotal role in the future of medicine and the well being of humankind. From genomic information to instrument systems, we enable Science for Life. PE Biosystems, a division of PE Corporation, is currently recruiting in Foster City, California for the following positions:

Bioinformatics Scientist I/II/Senior, Synthesis and Arrays - R&D

Req. #XHX-000-13219

You will facilitate the development and design of gene expression microarray systems, supporting the selection of optimal oligonucleotide probes. Working closely with experimental researchers and other members of the Bioinformatics team, the candidate will be responsible for curating and mining the appropriate genomic databases for suitable transcripts for probe design, and the development of algorithms and custom scripts to automate data retrieval, analysis and visualization.

This position requires a M.S./Ph.D. in Bioinformatics, Molecular Biology, Computer Science, or related field, and 1-5 years of experience in computational biology/bioinformatics projects. To qualify, the candidate must have practical knowledge in the use of genomic databases (GenBank, UniGene, TIGR gene index), hands-on experience with the relevant sequence analysis tools (e.g. GCG, Blast/FASTA, Mfold), demonstrated computer skills including experience with scripting languages (e.g. Perl), and excellent understanding of the basis of nucleic acid structure and gene expression profiling. Additional programming skills (Java, C++, C), and database development experience (Oracle, SQL, XML) is a plus.

Scientist I/II, Synthesis and Arrays - R&D

Req. #XHX-000-09219

As part of a newly created multidisciplinary team, you will participate in the development and implementation of high throughput systems for analysis gene expression data using DNA hybridization array technologies. The successful candidate will design and develop bioanalytical assays based upon the combining of several new technologies.

The ideal candidate will have a Ph.D. in Biochemistry or Molecular Biology (or related field). Experience with gene expression profiling in higher organisms, PCR, primer and probe design, cDNA preparation and labeling, DNA hybridization arrays, quantitative TaqMan assays, and novel assay development is highly desirable. Strong organizational skills, attention to detail and accuracy, and the ability to work in a team environment are essential.

Interested candidates should Email their resumes to: pecorpad@resume.isearch.com. For more information on this and other career opportunities, visit our website at www.pecorporation.com. PE Corporation is an Equal Opportunity Employer and welcomes diversity in the workplace.

Every day, we defy the odds.

SmithKline Beecham, a world-class leader in Research and Development, continues to pioneer innovative pharmaceutical and healthcare products and services. We have the following opportunities available at our suburban state-of-the-art Philadelphia, PA facility.

Life-Cycle Management and Drug Delivery Systems Group

Drug Targeting

The PhD we seek will lead a multi-disciplinary team investigating approaches for drug targeting. The successful candidate must have a PhD in pharmaceuticals, cell biology, pharmacology or biochemistry with 5 or more years of relevant experience in the pharmaceutical or related industry. Preference will be given to individuals who have formulation design, pharmacokinetics and drug targeting experience and the ability to work in a multi-disciplinary team. If you have demonstrated leadership abilities, strong written and verbal communication skills and the desire to join a world-class organization, you are encouraged to apply. (Ad Code: 2K0053)

Pharmaceutical Scientist

The senior level pharmaceutical development scientist we seek will lead a multi-disciplinary team involved in novel dosage form design. The successful candidate should have a chemistry, engineering or pharmaceutical background with 5 or more years of experience in the pharmaceutical or related industry. Working knowledge of cGMPs, regulatory requirements for laboratory operations and documentation together with strong written and verbal communication skills are essential. If you are an individual looking for an opportunity to work in a world-class organization, are willing to travel internationally and possess excellent interpersonal skills and demonstrated leadership capabilities, SmithKline Beecham is the place for you. (Ad Code: 2K0054)

Anti-Infectives Research Department

Antibacterial Research

Our Anti-Infectives Research Department is pioneering innovative research into novel and unexploited antimicrobial targets. Two Post-Doctoral positions exist within the Microbial Systems Group. We wish to recruit individuals to carry out fundamental research into the mechanism of action of experimental anti-microbial compounds. One candidate must have experience in molecular biology, biochemistry, and bacterial genetics. Experience with pathogenic Gram-positive bacteria is preferable; experience with a variety of bacteria is highly desirable. Responsibilities will include the isolation of resistant mutants and the identification and characterization of the resistance determinants. The second candidate should have experience with protein purification, protein biochemistry, enzymology and enzyme kinetics. Ligand fishing and/or instrumental analysis experience is highly desirable. Responsibilities will include devising biochemical approaches toward elucidating the mode of action of anti-microbial compounds. All applicants for the positions above should possess excellent communication skills and a desire to play a pivotal role in a multi-disciplinary team. (Ad Code: 2K0227A)

SmithKline Beecham is dedicated to an innovative workplace and supports you with career long opportunities and learning. We offer a competitive benefits and compensation package. For confidential consideration, please forward your scannable resume to: SmithKline Beecham, c/o National Resume Processing, (Ad Code), P.O. Box 1070, Burlington, MA 01803. Indicating Ad Code is essential. Principals only, no agencies, please. For a full listing of current opportunities, or to submit a resume online, visit our website at www.sb.com/careers

Developing talent through equality of opportunity, M/F/D/V.



SmithKline Beecham
Pharmaceuticals

Realize your potential

Memorial Sloan-Kettering Cancer Center Faculty Position in Brain Tumor Research

The Department of Neurology and the Cell Biology Program of MSKCC seek a candidate to fill a tenure-track faculty position who is interested in developing an independent laboratory research program focused on the biology of brain tumors. MSKCC provides an interdisciplinary research environment, which affords interactions with both clinical investigators and basic scientists. Laboratory experience with demonstration of a productive research program is required. Applicants should have an MD and/or Ph.D. degree. Academic rank will be commensurate with experience and training.

Please submit a curriculum vitae, research plan, and letters of recommendation by May 1, 2000 to: **Lisa DeAngelis, MD and Joan Massague, Ph.D., c/o Linda Stevenson, Memorial Sloan-Kettering Cancer Center, 1275 York Ave, Box 399, NY, NY 10021. EOE/AA**



**Memorial Sloan-Kettering
Cancer Center**

The Best Cancer Care. Anywhere.



Professor and Director Center for Cardiovascular Sciences

Albany Medical College invites applications for a senior leadership position at the level of tenured Professor in the Center for Cardiovascular Sciences. The successful applicant will build a new cardiac research group and co-direct, with Dr. Harold A. Singer, the interdisciplinary research and graduate programs in the Center. He/she will have a PhD, MD, or MD/PhD and a nationally recognized and funded program in cardiac development, molecular genetics of heart failure, or a related area of cardiac research. Existing research programs in the Center include vascular cell signaling, vascular reactivity, smooth muscle cell proliferation, endothelial barrier function, inflammatory lung disease, nitric oxide biology/chemistry, and heart failure.

Formation and growth of the Center for Cardiovascular Sciences is part of the AMC Strategic Research Plan to develop outstanding interdisciplinary research and graduate training programs. Faculty in the Center have exciting opportunities for collaboration with clinician scientists in the new Heart and Vascular Institutes and with basic scientists at neighboring institutions, including the New York State Wadsworth Laboratories, Rensselaer Polytechnic Institute, SUNY Albany, and the Trudeau Institute.

Albany Medical College is located in a mid-sized city within the New York Capital Region, and offers diverse cultural and recreational attractions with easy access to Boston, New York City, and the Adirondack Mountains.

For further information about the Center and Albany Medical College, please visit www.amc.edu. Applicants should submit a current curriculum vitae and description of research interests by April 21 to:

Dr. Dennis W. Metzger
Chair, CCS Director Search Committee
Director, Center for Immunology and Microbial Disease
Albany Medical College (MC151)
47 New Scotland Ave.
Albany, New York 12208

An Equal Opportunity/Affirmative Action Employer. Women and Minorities are encouraged to apply.

nature genetics

Invites applications for the post of **EDITOR**

The publishers of *Nature*, *Nature Genetics*, *Nature Structural Biology*, *Nature Medicine*, *Nature Biotechnology*, *Nature Neuroscience*, *Nature Cell Biology* and *Nature Immunology* are seeking a successor to Dr. Barbara Cohen, who is leaving after six successful years with the group. We are looking for a successor who will continue to develop *Nature Genetics* and build on its reputation as the leading international journal of genetics.

The Editor is responsible for the day-to-day and long-term editorial content of the title, working closely with an experienced team based in our New York office and with colleagues in our London, Tokyo and other offices. To ensure that the journal continues to meet the needs of its expanding readership, regular contact with the international genetics community is required. Planning and managing editorial resources, as part of the senior management team of the Nature group, is an integral part of this job.

The ideal candidate will have a higher degree in a relevant field, excellent scientific judgment, a broad-based knowledge and understanding of the genetics research community, strong leadership and management skills and significant editorial experience. Above all we are looking for someone with the right sort of vision and leadership with respect to the expanding role of genetics within the scientific community and beyond.

This is a rare opportunity to lead one of today's most successful science journals and to play an important part in the growing Nature Publishing Group.

Applications, including a curriculum vitae, a succinct (up to 1,000 words) assessment of the strengths and weaknesses of *Nature Genetics*, and an informative cover letter explaining your interest in and suitability for this job, should be sent to Dr. Adrian J. Ivins, Publisher, Nature America Inc., 345 Park Avenue South, New York, NY 10010, email a.ivins@natureny.com Fax 212.545.0873, **to arrive by Friday, March 17th, 2000.**

WE'VE GOT CAREERS



With a new state-of-the-art facility in Research Triangle Park, NC, Covance Biotechnology Services provides the biotechnology and pharmaceutical industry with world-class process development and cGMP manufacturing for recombinant products. Join us as we put our clients' products and your career onto the fast-track. We are currently recruiting for the following key position:

■ QC SCIENTIST (REPORTING TO THE TECHNICAL MANAGER)

In this position, the individual will be responsible for managing the QC Laboratory area, ensuring high quality assessment of tests, timely review and release of results, and maintenance of laboratory per cGMPs. Minimum requirements include a BS/BA degree and 8+ years of experience in the biotechnology or pharmaceutical industry, or a Master's degree and 5+ years of experience.

Please send resume to: **Covance Biotechnology Services, Vice President, Human Resources, 3000 Weston Parkway, Cary, NC 27513; FAX: (919) 678-0555; E-mail: biotechcareers@covancebio.com** Only those selected for further consideration will be contacted. **PRINCIPALS ONLY.** Covance is an equal opportunity employer.

COVANCE

THE DEVELOPMENT SERVICES COMPANY

Shaping Solutions

Visit us on the Web at: www.covance.com



CONFERENCE ANNOUNCEMENT

THE HUMAN BRAIN PROJECT/ NEUROINFORMATICS

June 1-2, 2000

Natcher Conference Center, National Institutes of Health, Bethesda, Maryland

Neuroinformatics combines the concepts and principles developed in neuroscience research with those from the fields of computer science and information technology (informatics) research. The creation of an information management system for neuroscience will allow scientists to more easily integrate data about the brain and nervous system into new knowledge.

Specific Goals of the Conference: • Provide updates on current developments in Neuroinformatics research from Human Brain Project Grantees; • Present novel or innovative methodological strategies, databases, and tools in Neuroinformatics research; • Offer new opportunities for investigators to become more informed and involved in the field of Neuroinformatics research.

Call for Abstracts: Abstracts for computer demonstrations and poster presentations will be selected from among those abstracts submitted by *April 15, 2000*. Limited funds are available to help defray travel costs for predoctoral students, postdoctoral fellows and investigators submitting abstracts for poster or electronic demonstrations that are not currently supported by the Human Brain Project.

Registration Deadline: *May 1, 2000*

Speakers: M. Arbib, G. Ascoli, R. Bajcsy, J. Bower, J. Brinkley, A. Dale, M. Ellisman, J. Futrelle, D. Gardner, J. Gee, J. George, N. Goddard, K. Harris, E. Herskovits, R. Jacobs, D. Kennedy, P. Luther, J. Mazziotta, R. McGrath, A. Reiss, D. Rottenberg, L. Seligman, R. Sidman, D. Van Essen, S. Wong

For registration information, contact: Lisa Gail, Conference Planner, BL Seamon and Associates, Inc., 4221 Forbes Boulevard, Suite 245, Lanham, MD 20706; Phone: (301) 577-0244; FAX: (301) 577-5261; LisaG@blseamon.com. You may register on-line at www.blseamon.cc

For more information about the Human Brain Project and the most recent detailed information on the 2000 Conference (registration, hotels, abstract submission, etc.) please visit our homepage at www.nimh.nih.gov/neuroinformatics/index.cfm.



National Institute of Mental Health
National Institutes of Health
Department of Health and Human Services

**Chief, Behavioral and Integrative
Neuroscience Research Branch (GS-15)**

Applications are being accepted for a position in the Division of Neuroscience and Basic Behavioral Science. This Division is responsible for NIMH funding of extramural research grants in the areas of basic and clinical neuroscience, genetics, therapeutics development, and basic behavioral science, as well as research training in these areas. The Behavioral and Integrative Neuroscience Research Branch is a major component of the Division, with an annual budget of approximately \$60 million. The Branch Chief will plan and administer a broadly based nationwide program of support for neuroscience research at the behavioral and integrative level. Current scientific areas of emphasis include: basic behavioral and systems neuroscience, cognitive neuroscience, and theoretical and computational neuroscience. Responsibilities will include evaluation of the portfolio of extramural grants, participation in funding decisions, and the development and implementation of policies related to resource allocation. Applications for this position will be accepted through May 5, 2000. Applicants should have a Ph.D. or M.D. degree, or equivalent training, in a discipline related to neuroscience. They should have experience conducting neuroscience research at the postdoctoral level or as an independent investigator. GS-15 civil service positions have a salary range from \$84,638 to \$110,028 per annum (with locality pay). Physicians may be eligible for an additional Physician's Comparability Allowance (PCA) between \$5,000-\$20,000 a year. Full federal fringe benefits apply to this position. Relocation expenses may be paid. Alternate appointment mechanisms in the Public Health Service Commissioned Corps may be used. Copies of the full text vacancy announcement are available

via the World WideWeb:
<http://www.nimh.nih.gov/orm/pmb/jobs.htm>

Please refer to announcement number NIMH-00-0012. Interested candidates may contact Ms. Margot Darby, NIMH Personnel Management Branch, at (301) 443-9094. Applications will be accepted if postmarked by the closing date and received within 5 working days.

NIH is an Equal Opportunity Employer

NATIONAL INSTITUTES OF HEALTH National Institute of Allergy and Infectious Diseases

Tenure/Tenure-Track Position

The Laboratory of Intracellular Parasites, NIAID, Rocky Mountain Laboratories, Hamilton, Montana, has a tenure/tenure-track position available to pursue independent studies applying contemporary cell biology approaches to characterize signal transduction between intracellular parasites and the eukaryotic host cell that serve to regulate membrane trafficking and vesicle maturation in the host cell. Preference will be given to those candidates with experience or interest in facultative intracellular bacteria. The candidate will utilize cell culture models to define: (i) membrane trafficking and vacuole biogenesis in infected eukaryotic cells, (ii) characterize eukaryotic cell signaling pathways that are activated in response to infection by specific intracellular parasites, and (iii) identify bacterial factors secreted by the pathogen to modify these host responses. Candidates for the tenure-track position must hold a Ph.D., D.V.M., or M.D. degree and have a minimum of 2 years post-doctoral experience in relevant areas of investigation. Experience in cellular biology, molecular biology, and cell culture models of infection is preferred. Resources and appointment mechanism will be commensurate with experience.

A curriculum vitae, bibliography, brief statement of research interests and three letters of reference must be submitted by April 7, 2000, to Dr. Tom G. Schwan, Chairman of the Search Committee, c/o Lakeasha Mingo, Executive Secretary, Building 20, Room 4A26, 10 Center Drive, Bethesda, Maryland 20892-1356.

The NIH is an Equal Opportunity Employer

it's

the people, the complex challenges, the stimulating environment. The opportunity to work independently while contributing to a team. The opportunity to make a difference - to leave your mark. It's about **food, health, hope** and an exciting future as we merge with Pharmacia and Upjohn.

PhD Biochemist/Molecular Biologist

We require a PhD scientist with 1-3 years of academic or industrial experience, who is trained in biochemistry as well as cellular and molecular biology to elucidate signal transduction pathways during immune cell activation in vitro and in vivo. Training in the activation of transcription factors and/or cell cycle regulation desired. Experience/training in cloning, transfection technology, EMSA analysis, and other molecular applications to elucidation of signalling pathways necessary. Strong computer skills with particular emphasis on data analysis and graphics desirable. Ability to work in a challenging team environment required.

Searle is the pharmaceutical sector of the Monsanto Company. This position is located in St. Louis, MO. We offer a competitive salary, and benefits package including tuition reimbursement and 401(k). For fastest consideration please submit your resume to: Staffing - Ad Code 00-0586, 700 Chesterfield Parkway, MailZone BB5B, Chesterfield, MO 63198. EEO/AA Employer M/F/D/V. Please visit our website at: www.searle-ican.com.

SEARLE

i
can
Make A
Difference.

Postdoctoral Research Associates Mammalian Gene Expression

Rohm and Haas Company and Argonex, Inc. have recently formed the joint venture, RHeoGene LLC. The primary research focus of RHeoGene is to develop tools for human gene therapy applications, including ligand-inducible gene expression systems. We have immediate openings for Postdoctoral Fellows at the Corporate Research Center in Spring House, PA - near Philadelphia.

Projects will center on development and optimization of ligand-receptor interactions in mammalian cell culture and animal models; mutagenesis and molecular evolution of receptors for improved properties; and analysis of inducible gene expression in transgenic animals.

Qualifications include a Ph.D. degree in molecular biology or biochemistry, or a related science, as well as research experience and publications illustrating strong scientific capability. Research independence, team skills, and the ability to thrive in an interdisciplinary setting are also essential. Experience in nuclear receptor molecular biology or transcription factors is desirable.

Rohm and Haas offers a highly competitive compensation program, including relocation assistance and profit sharing. We are committed to the professional development of our Technology staff. Please forward your CV or resume to: **Technical Recruiting #200, Rohm and Haas Research Laboratories B-70, 727 Norristown Road, Spring House, PA 19477-0904**, or by e-mail to techstaff@rohmhaas.com



An Equal Opportunity Employer M/F/D/V.

CLONTECH

ASSOCIATE SCIENTIST

CLONTECH Laboratories, Inc., a dynamic, Bioscience Division of Becton Dickinson, manufactures innovative products for life science research. Our mission is to be a global leader in high-quality innovative products for the life science market. Our strategy is to establish sound expertise and leadership in the areas of Molecular Biology, Cell Biology, Nucleic Acid Chemistry, and Enzymology.

We are currently seeking an ASSOCIATE SCIENTIST to be responsible for the identification and characterization of novel apoptotic or cancer-specific genes. Requirements include a Ph.D. in Molecular or Cell Biology with preferably 1-2 years post-doctoral experience. Excellent skills in general molecular biology and a strong background in the characterization of gene function in mammalian cells are also essential.

Due to our continuing success and growth, we are always seeking innovative, creative research scientists and other personnel for positions in Molecular Biology, Cell Biology, and related fields. We place emphasis on the development of our employees to meet the challenges of our industry as we strive to create an infrastructure that emphasizes quality, innovation, fiscal stability, and moral responsibility to our customers, and the community.

CLONTECH offers competitive salaries and a full medical/dental benefits package including 401(k), Section 125 Flexible Spending Account, Bonus Program, Educational Reimbursement, Life Insurance and Short and Long Term Disability coverage. Please forward your resume/C.V. to:

**Clontech Laboratories
Human Resources Department
1020 East Meadow Circle
Palo Alto, CA 94303-4320
FAX: 650-354-0775
Email: HR@Clontech.com**

Please visit our website at
www.clontech.com

*Equal Opportunity/Affirmative
Action Employer*

TENURE-TRACK POSITION LABORATORY OF HUMAN CARCINOGENESIS

The Laboratory of Human Carcinogenesis (LHC), Division of Basic Sciences, National Cancer Institute, National Institutes of Health, has a long tradition of excellence in the investigation of the molecular carcinogenesis and epidemiology of human cancer. The Laboratory now invites applications for a tenure-track position to study the molecular epidemiology of human cancer. The applicant should have the potential to develop an independent research program that utilizes basic research discoveries to investigate gene-environment interactions in human carcinogenesis.

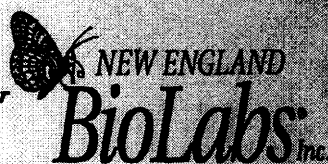
This position is available for a Ph.D., M.D., or M.D./Ph.D. with a salary commensurate with education and experience. A one or two-page statement of research interests and goals should be submitted in addition to three letters of recommendation and a curriculum vitae to:

Ms. Shirley Swindell
Administrative Laboratory Manager
LHC, DBS, NCI
Building 37, Room 2C01
Bethesda, MD 20892-4255
phone: 301-496-2048
Fax: 301-496-0497
email: swindels@exchange.nih.gov

Applications must be postmarked by June 9, 2000.

NIH IS AN EQUAL OPPORTUNITY EMPLOYER

New England Biolabs,
a world leader in the
manufacture and supply
of reagents for Molecular
and Cell Biology, has
the following position
available.



Postdoctoral Fellow:

Position available for a recent Ph.D. Candidate should have a strong background in biochemistry, microbiology or molecular biology and experience in gene cloning, protein overexpression, purification, crystallization, site-directed mutagenesis, and enzyme kinetics. Projects will include protein engineering of restriction enzymes and DNA polymerases.

Send a resume and three references to:

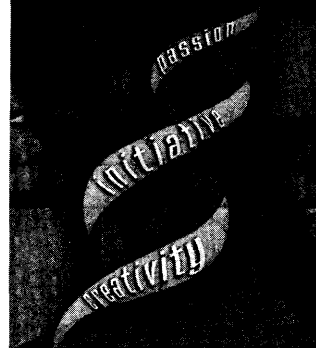
Dr. Shuang-Yong Xu
New England Biolabs, Inc.
32 Tozer Road
Beverly, MA 01915

An Equal Opportunity Employer

Genentech's people share some pretty uncommon traits. Not surprising when you consider the scope of our mission—creating breakthrough medicines for conditions like cystic fibrosis, stroke, growth disorders, cancer and heart attacks. It demands a very special kind of person. Someone who will take risks, accept responsibility, and constantly seek creative solutions.

Consider what you expect from a career and from yourself. Expect the extraordinary? Then share your traits with us.

Inquire Within



POSTDOCTORAL OPPORTUNITIES

The Genentech Postdoctoral Program consists of more than 50 researchers and is a vibrant and intensive environment for advanced scientific training. Here, you will have the chance to conduct basic research in areas of our scientific interest, publish in scientific journals and present work at scientific meetings. As one of the nation's most prolific scientific facilities, publishing at a rate of approximately 250 papers a year, Genentech offers an exceptional range of postdoctoral opportunities. With close to 3,000 patents and another 2,000 pending, Genentech provides a proven pathway for your work to reach the true benefactor—the patient. The following opportunities are available for candidates with a PhD and/or MD and a strong background in the appropriate field.

Protein NMR

Working in our Protein NMR group, you will design, synthesize and characterize structured peptides by NMR spectroscopy and other biophysical techniques. These molecules will be used as scaffolds for mimicking protein epitopes. In addition, you will analyze highly structured peptide antagonists of protein-protein interactions derived from phage display libraries in order to understand their stability and mode of action. Aside from peptide studies, the group undertakes solution studies of proteins and protein/protein or protein/ligand complexes. You must be familiar with the principles and practices of protein NMR spectroscopy and peptide structure determination. Peptide synthesis and/or molecular modeling/design experience is advantageous.

The NMR facility is part of the Protein Engineering Department and complements protein engineering, protein crystallography and modeling efforts. The facility includes dedicated 800, 600, and 500 MHz spectrometers, SGI computers, and a fully equipped protein expression and purification lab. Manager: Dr. Nick Skelton. Job Code: SCI862

Molecular Biology

As part of the Molecular Biology team, you will use genomic strategies to study the function of novel secreted proteins and receptors of potential therapeutic value. This will include establishing suitable models for the study of human disease united with gene expression analysis using DNA microarrays. Experience in molecular biology and/or genomics, and cellular biology would be advantageous. Manager: Dr. Victoria Smith. Job Code: SCI200

Assay and Automation Technology

A position is available in our Assay and Automation Technology Department for a creative postdoctoral fellow to explore and develop novel nucleic acid and antibody-based technologies for comparative gene expression analysis and tumor markers discovery. The successful candidate will combine a strong background in molecular biology with experience in protein chemistry and cell biology. Manager: Dr. Jean-Philippe Stephan. Job Code: SCI484

We offer industry leading benefits and a dynamic environment dedicated to of scientific progress. To apply for any of the above positions, send your resume, indicating appropriate Job Code, to: Genentech, Inc., Human Resources, PO Box 1950, South San Francisco, CA 94083-1950 (plain typefaces, please) or email your resume to jobs@gene.com (ASCII files only with a maximum line width of 76 characters). We cannot accept faxed resumes. EOE.

www.gene.com

Genentech, Inc.

incredible people
extraordinary science

POSITIONS OPEN

BIOLOGY FACULTY CLARKE COLLEGE

Clarke College, a growing Catholic coeducational liberal arts college in Dubuque, Iowa, seeks qualified candidates for two nine-month, full-time, tenure-track **ASSISTANT PROFESSOR** positions in its six-person Biology Department beginning in the fall of 2000.

Neuroscience: Earned Ph.D. required. Candidates should be specialists in neuroscience to teach courses for physical therapy and biology majors. Other responsibilities may include general biology with attendant laboratories, physiology laboratory courses, and supervision of undergraduate research projects.

Gross Anatomy/Anatomy and Physiology: Earned Ph.D. required. Candidates should be specialists in gross anatomy with cadaver dissection to teach the human gross anatomy course for physical therapy students and have a strong background in physiology to teach the anatomy and physiology course. Other responsibilities include supervision of undergraduate research projects.

Screening of candidates continues until positions are filled. Please send a letter of introduction; transcripts; a curriculum vitae; statements of research interest and teaching philosophy; three reference letters; and the names, addresses, and telephone numbers of three references to: **Human Resources Department, Clarke College, 1550 Clarke Drive, Dubuque, IA 52001-3198.**

Clarke is an Equal Opportunity Employer.

DIRECTOR OF RESEARCH

The Department of Neurological Surgery at the University of Southern California, Keck School of Medicine, Los Angeles, California, is seeking a candidate for appointment at the rank of **ASSOCIATE PROFESSOR/PROFESSOR** on tenure track beginning July 2000. The successful candidate will be the Director of Research in the Neurological Surgery Laboratory and will have an established track record in research and research support in an area of molecular biology, neurogenetics, or neural regeneration (stem cell biology).

Please submit a curriculum vitae to:

**Martin H. Weiss, M.D.
Professor and Chairman**

**Martin H. Weiss Chair in Neurological Surgery
Department of Neurological Surgery
LAC and USC Medical Center
1200 North State Street, P.O. Box 786
Room 5046**

**Los Angeles, CA 90033
Telephone: 323-226-7421
FAX: 323-226-7833
E-mail: weiss@hsc.usc.edu**

University of Southern California, Keck School of Medicine, is an Equal Opportunity/Affirmative Action Employer.

FACULTY POSITION UNIVERSITY OF FLORIDA COLLEGE OF MEDICINE

The Division of Hematology/Oncology of the Department of Internal Medicine at the University of Florida College of Medicine seeks applicants for tenure-track faculty at the **ASSISTANT/ASSOCIATE PROFESSOR** level with interests in breast, GU, GI lung, or CNS solid tumors malignancies. The individual will be expected to establish a program of clinical or translational research and participate in the active clinical services and teaching activities of the Division. The individual will be expected to interact with laboratory investigators in the Cancer Center and to collaborate in multidisciplinary disease-focused working groups. Board-certification eligibility in internal medicine and medical oncology are required. Recruiting deadline: March 31, 2000. Anticipated starting date: July 1, 2000. Candidates should send curriculum vitae to: **John R. Wingard, M.D., Division of Hematology/Oncology, University of Florida, 1600 S.W. Archer Road, P.O. Box 100277, Gainesville, FL 32610.** An Equal Opportunity/Affirmative Action Employer.

POSITIONS OPEN



COMPUTATIONAL SCIENCE INITIATIVE FACULTY OPENINGS

The University of Wisconsin-Madison seeks three or more (**TENURE-TRACK** or **TENURED**) **FACULTY** members, beginning on or after August 2000, in a new interdisciplinary computational science initiative. Preference will be given to candidates whose research and teaching combines computational science with a science or arts discipline.

Unless confidentiality is requested in writing, information regarding applicants and nominees must be released upon request. Finalists cannot be guaranteed confidentiality. For details, please see our announcement at website: <http://www.engr.wisc.edu/tmp/compsci>.

The University of Wisconsin-Madison is an Affirmative Action/Equal Opportunity Employer. Women and minorities are urged to apply.

PROFESSOR OF ATMOSPHERES, OCEANS, AND CLIMATE SCIENCES Massachusetts Institute of Technology

The Department of Earth, Atmospheric, and Planetary Sciences at Massachusetts Institute of Technology invites applications for **FACULTY POSITIONS** in the area of atmospheric, oceanic, and climate sciences. Rank and salary are open, but we particularly encourage potential junior faculty to apply. We seek creative applicants with broad research interests who have a strong understanding of fundamental physical and dynamical processes. The position is open to outstanding candidates in all areas of meteorology, oceanography, and climate research. The applicant may have any focus: theoretical, experimental, or observational; applicants capable of initiating and/or taking full advantage of the interdisciplinary nature of the Department are encouraged to apply. An enthusiasm for teaching at the graduate and undergraduate level is essential at MIT.

Interested individuals should send curriculum vitae and names of three references to: **Ron Prinn, Department Head, Attention AOC Search, Department of Earth, Atmospheric, and Planetary Sciences, Massachusetts Institute of Technology, 54-918, 77 Massachusetts Avenue, Cambridge, MA 02139-4307.** MIT is a nonsmoking environment. *MIT is an Equal Opportunity/Affirmative Action Employer.*

DEAN OF THE COLLEGE OF AGRICULTURE, FORESTRY, AND NATURAL RESOURCE MANAGEMENT

The University of Hawaii at Hilo is actively seeking applicants to fill the Dean of the College of Agriculture, Forestry, and Natural Resources Management. We seek an energetic, team-oriented individual to provide innovative administrative leadership for the teaching, research, and service functions of the College. The Dean will provide leadership for developing and implementing short- and long-range educational plans for the College; be responsible for coordinating budget and personnel management; actively participate in student recruitment; provide University and statewide leadership for teaching and applied research; and work closely with other units on the University of Hawaii Hilo campus, the College of Tropical Agriculture and Human Resources (CTAHR) at University of Hawaii Manoa, Community College agriculture programs, state, federal, and county agencies, various commodity groups within the agricultural industry, business leaders, community groups, and other regional organizations in building a highly competitive program. Salary is commensurate with qualifications. Continuous recruitment until a candidate is selected. For complete information, please visit our website: www.uhh.hawaii.edu; e-mail: audreyf@hawaii.edu; Telephone: 808-974-7444. An Equal Opportunity/Affirmative Action Institution.

POSITIONS OPEN

BOTANY FACULTY: Lake Superior State University (LSSU) is seeking applicants for an academic year (nine-month) tenure-track position in plant systematics beginning August 2000. Candidates should have field-oriented experience with vascular plant taxonomy and the flora of the Great Lakes region. Teaching responsibilities may include introductory botany, field botany, plant morphology, and population genetics and evolution. The position offers excellent opportunities for leadership in interdisciplinary initiatives through the Gale Gleason Environmental Institute and for collaboration with agencies in Michigan and Ontario, utilizing LSSU's close proximity to large tracts of wetland, forest, and shoreline habitats under various ecological conditions. LSSU is a small undergraduate teaching university with teaching loads of 12 hours per semester. Other duties include advising, participation in committees, and community service.

Qualifications: An earned Doctorate in botany or closely related discipline with preference given to candidates familiar with Great Lakes flora. Candidates must have a demonstrated commitment to and potential for excellence in undergraduate education and interest in involving undergraduates in research. Experience in developing and managing multidisciplinary environmental/ecological projects a plus. Excellent oral and written communication skills are also required.

Submit a letter of application, curriculum vitae, list of three references, and University employment application to: **Botany Faculty Search, Human Resources Office, Lake Superior State University, 650 West Easterday Avenue, Sault Ste. Marie, MI 49783.** Application information can be FAXED to: 906-635-2111; e-mail: humanresources@aw.lssu.edu. For additional information, contact the **Human Resources Office** at Telephone: 906-635-2213. Visit our website: <http://www.lssu.edu> for additional information about LSSU and the local community. Review of applications will begin April 10, 2000, and continue until the position is filled. An Equal Opportunity/Affirmative Action Employer. Women and minorities are encouraged to apply.

FACULTY POSITION DEVELOPMENTAL AND CELL BIOLOGY University of California, Irvine Tenure Track

The Department of Developmental and Cell Biology at the University of California, Irvine, invites both nominations and applications from distinguished investigators in the field of mammalian genetics. We are seeking applicants at the **ASSOCIATE PROFESSOR** level or above who are committed to maintaining a vigorous research program and participating in the development of new research infrastructure and initiatives. Candidates should have demonstrated ability to lead an innovative and productive research program and should be willing to teach at the graduate and undergraduate levels. Please submit a curriculum vitae, publication list, synopsis of research and teaching interests, and arrange for three letters of reference to be sent to: **Search Committee, Developmental and Cell Biology, 5207 Bio Sci II, University of California, Irvine, Irvine, CA 92697-2300, U.S.A.** by April 10, 2000. Please visit our departmental website: <http://www.bio.uci.edu/units/dc/faculty/>.

University of California, Irvine, is an Equal Opportunity Employer committed to excellence through diversity.

University of Florida seeks a **CLINICAL ASSISTANT PROFESSOR/CLINICAL ASSOCIATE PROFESSOR** in the Department of Medicine, Division of Dermatology. M.D. degree; B.C./B.E. in dermatology. The responsibilities will include patient care in the dermatology clinics, required teaching, and academic contributions. Recruiting deadline: March 31, 2000. Anticipated starting date: July 1, 2000. Please submit curriculum vitae and three letters of recommendation to: **Francisco A. Ramos-Caro, M.D., Box 100277 JHMHC, Gainesville, FL 32610.**

The University of Florida is an Affirmative Action/Equal Opportunity Employer.

Post-Doctoral Research Fellowship

A Post-Doctoral position is available within the Heritable Disorders Branch (HDB), National Institute of Child Health & Human Development (NICHD), National Institutes of Health (NIH), to study the gene therapy of dominant genetic bone disorder by hammerhead ribozymes. We have developed a knock-in mouse model for non-lethal osteogenesis imperfecta that is being used to approach gene therapy by suppression of mutant mRMA. Project involves *in vitro*, in cellulo and murine investigations, including development of transgenic mice expressing ribozymes and expression constructs to increase colocalization and efficiency.

A strong background in molecular biology and experience with murine models is desired. Candidates should have a Ph.D. or M.D. and less than 5 years of post-doctoral experience. Interested applicants should send a CV and three references by May 31, 2000 to: **Dr. Joan Marini, Heritable Disorders Branch, NICHD, Bldg. 10, Rm 9S241, 10 Center Drive, MSC-1830, Bethesda, MD 20892; FAX 301-402-0234; e-mail: oidoc@helix.nih.gov.**

NIH is an Equal Opportunity Employer.

NIH

The National Institute of Dental and Craniofacial Research Health Science Administrator

The National Institute of Dental and Craniofacial Research is seeking applicants for two Health Scientist Administrator positions in the Division of Extramural Research (GS-13/14).

The first position is for a Program Administrator in the Craniofacial Anomalies and Injuries Branch. Areas of interest to the branch are craniofacial development, tooth and bone formation and anomalies, oral clefts, and other anomalies of the craniofacial region. Independent research experience in the areas of molecular and developmental biology, human genetics and/or genomics is desirable. **Application deadline for this position is April 3, 2000.**

The second position, in the Chronic Diseases Branch, involves providing scientific expertise and logistical support in the oversight and development of research initiatives related to salivary glands and new technologies for oral fluid diagnostics for the DER scientific staff, grantees, and collaborators. He/she functions as the primary technical and scientific advisor in salivary gland research and oral fluid diagnostics for the Chronic Diseases and Bioengineering, Biomimetics, and Tissue Engineering Branches. Thus, preference will be given to candidates with experience in exocrine gland research or clinical laboratory diagnostics. **Application deadline for this position is May 1, 2000.**

Responsibilities for both positions will include evaluation of a portfolio of extramural grants, participating in funding decisions, policy development and implementation, and coordination with other programs, both within and outside of the NIDCR.

Applicants should have a D.D.S., Ph.D., or M.D. degree, or equivalent training, in a discipline related to the position. They should have experience conducting independent research in the area of interest. These civil service positions have a starting salary of \$60,890 (GS-13) and \$71,954 (GS-14). Physicians may be eligible for a Physician's Comparability Allowance (PCA) up to \$20,000 per year.

Copies of the full text vacancy announcements may be found on the World Wide Web at: <http://www.nidcr.nih.gov/opportunities/joblist.htm>. Interested candidates may contact Ms. Darla Yonder, Human Resources Management Branch, at (301) 496-6971 or by Email: Darla.Yonder@nih.gov. Applications will be accepted if postmarked, emailed, faxed or hand carried by the close of business on the deadline date.

U.S. Citizenship is required. NIH is an equal opportunity employer.

FACULTY POSITION COLUMBIA UNIVERSITY

The Columbia Genome Center (CGC) and the Department of Medical Informatics (MI) are jointly recruiting an expert in computational genomics/bioinformatics to apply for a tenured or tenure-track faculty position (depending upon qualifications). Applicants should have a PhD, or MD/PhD, in medical informatics, computer science, or a closely related field, and minimum of 5 years further experience in the area of computational molecular biology, with significant achievements in computational biology, medical informatics, or computer science. Candidate should have outstanding academic credentials and demonstrated ability to teach effectively at the graduate level. The successful candidate will serve as Head of both the informatics section of the CGC and the bioinformatics section in MI. The candidate will be expected to build and lead a research program and faculty in computational biology that spans molecular biology, medical informatics, and computer science. The appointee will also be responsible for academic duties associated with graduate level programs.

Interested applicants should send CV, a short statement of research plans, and the names of three references to:

**Dr. Conrad Gilliam
Columbia Genome Center
1150 St. Nicholas Ave
College of Physicians and Surgeons
at Columbia University
New York, NY 10032**

Email: TCG1@columbia.edu. Fax: (212) 304-5515. *Columbia University is an Equal Opportunity Employer/Affirmative Action Employer.*

Tenure-Track Faculty Positions Center for Vascular Biology

University of Connecticut Health Center

The University of Connecticut Health Center in Farmington, CT has recently undergone major expansion and has acquired a modern 130,000 sq. ft. Academic Research building. As part of our strategic plan, we have formed a new Center for Vascular Biology. The Center has committed an entire floor of the new research building, which is contiguous with the Department of Physiology. The major goal of the Center is to recruit outstanding scientists (*Cell Biologists, Biochemists, Developmental Biologists*) in Vascular Biology, each of whom are expected to establish robust, externally-funded research programs of distinction. The new faculty will join a group of interactive scientists interested in both basic and clinical problems of relevance to Cardiovascular disease. Faculty are expected to participate in MD, PhD and MD/PhD training programs. Numerous opportunities for interactions in basic and clinical Departments, in the new Centers for Immunotherapy, Molecular Medicine, Microbial Pathogenesis, Biomedical Imaging Technology as well as in the new Departments of Genetics/Developmental Biology and Neuroscience exist. Highly competitive start-up funds, brand new space and modern research facilities will be provided. The University already operates state-of-the-art core facilities for mouse transgenics, nucleic acid sequencing, flow cytometry, electron microscopy, confocal microscopy, and fluorescence imaging.

Currently, three new tenure-track positions (*Assistant/Associate Professor level*) are open. Areas of interest include, but are not limited to, angiogenesis, endothelial and vascular smooth muscle cell biology, growth factors and cytokines, signal transduction, gene expression, cell biology, developmental vascular biology, cell adhesion molecules, matrix biology, vascular genomics and proteomics and gene therapy. Applications are invited from scientists (*PhD and/or MD*) who are using modern methods to address current problems in vascular biology and medicine in the broadest sense. Candidates should apply by submitting a curriculum vitae, copies of five selected publications, and names of three reference to **Dr. Timothy Hla, Director, Center for Vascular Biology...or** email: hla@sun.uchc.edu FAX: 860-679-1269. The search will remain open until the positions are filled.



University of Connecticut
Health Center

263 Farmington Avenue, MC-3501, Farmington, CT 06030

An Affirmative Action/Equal Opportunity Employer M/F/PwD/V.

POSITIONS OPEN

THE LEONARD H ROBINSON ENDOWED CHAIR IN PATHOLOGY

The University of Alabama at Birmingham

The Department of Pathology at the University of Alabama at Birmingham is pleased to announce the availability of the Leonard H Robinson Endowed Chair in Pathology. We are inviting applications from qualified candidates at the **ASSOCIATE PROFESSOR/FULL PROFESSOR** level to occupy the Chair. This is a full-time, tenured position through the Department of Pathology, Schools of Medicine and Dentistry. The candidate should have a Doctoral degree (Ph.D., M.D., D.D.S., D.V.M., or M.D./Ph.D.) in a discipline in the biomedical sciences. Candidates should have outstanding funded research programs in the general area of bone and/or matrix biology and whose specific interests are in cell signaling mechanisms. Dedication to the academic missions of the Department and University is considered essential. The University of Alabama at Birmingham is a leading research institution consistently ranked in the top 20 institutions in the country in NIH research funding. Outstanding centers and core facilities for advanced microscopy, molecular genetics, and macromolecular structure are among the attractions at the Institution. The deadline for applications for the Leonard H Robinson Endowed Chair in Pathology is May 15, 2000. Individuals that wish to be considered for the Endowed Chair should submit a comprehensive curriculum vitae, statement of research interests, and the names of at least three individuals that will serve as references to: **Dr. Thomas M. Lincoln, Vice Chair for Research and Chair of the Search Committee, The Department of Pathology, University of Alabama at Birmingham, Volker Hall Room G-001, Birmingham, AL 35294-0019.** *The University of Alabama is an Affirmative Action/Equal Opportunity Employer. Women and minority applicants are encouraged to apply.*

EDITOR-IN-CHIEF OF BIOSCIENCE

The American Institute of Biological Sciences, a nonprofit professional association in Washington, D.C., seeks an individual to work full-time in the AIBS office as Editor-in-Chief of its flagship, peer-reviewed monthly publication, *BioScience* (in print and on-line, see [website: www.aibs.org](http://www.aibs.org)), and as Manager of its Publications Department. Responsibilities for *BioScience* include managing editorial/production staff and budgets; directing editorial policy and solicitation/peer review of manuscripts; maintaining editorial consistency/quality; and direct substantive editing of writing by scientists, journalists, and freelancers. Requires a Ph.D. in the sciences, preferably in organismal/integrative biology; a minimum of five years of experience in professional editing/publishing; superb oral/written communication skills; and a business-savvy approach. The successful candidate will be a team-oriented leader/innovator who thrives in a fast-paced environment and seeks growth beyond the status quo. Excellent benefits include health care/retirement plan. Send cover letter, résumé, writing samples, salary history, and salary requirements to: **Dr. Richard O'Grady, Executive Director, AIBS, 1444 Eye Street, N.W., Suite 200, Washington, DC 20005. FAX: 202-628-1509; e-mail: rogrady@aibs.org.**

ASSISTANT PROFESSOR OF MEDICINE RENAL DIVISION

Washington University School of Medicine

The Renal Division at Washington University School of Medicine seeks to recruit a Scientist to a research nontenure-track position. Candidate (Ph.D.) should be well trained in and committed to a career in biomedical research and able to function as an integral part of a laboratory with a longstanding interest in the regulation of kidney development, growth, and regeneration. Send a curriculum vitae to: **Marc R. Hammerman, M.D., Director, Renal Division, Washington University School of Medicine, Box 8126, 660 South Euclid Avenue, St. Louis, MO 63110.** *Washington University is an Equal Opportunity Employer/Affirmative Action Employer; Minorities/Females/Disabled/Veterans.*

POSITIONS OPEN

FACULTY POSITIONS IN EPIDEMIOLOGY

Description: The Department of Veterinary Anatomy and Public Health, College of Veterinary Medicine, Texas A&M University (TAMU), requests applications for two 12-month, fully budgeted, tenure-track faculty positions in epidemiology at the **ASSISTANT/ASSOCIATE PROFESSOR** level. The College of Veterinary Medicine, College of Medicine, and School of Rural Public Health have initiated a program in rural public health, including multidimensional graduate training/research in cardiovascular, molecular, social, cancer, environmental, injury, and infectious disease epidemiology. This unique inter-institutional program provides in-depth training in statistics/epidemiological methods and research in human and animal populations in the rural environment.

Requirements: Successful candidates must hold an advanced degree in epidemiology from a nationally recognized program. Prior postdoctoral and teaching experience and a professional degree in veterinary medicine or medicine is highly desirable but not mandatory.

Duties: Both positions will be 70% research and 30% teaching/academic service. The successful candidates will develop extramurally funded research and will develop a team-taught graduate course in epidemiology of infectious diseases or other specialty areas. The successful candidates must develop cooperative interactions with faculty in clinical medicine, food safety, and/or infectious disease health care and research. Salary is commensurate with training and experience.

To apply: Please provide a letter of application detailing research and teaching interests and experience, along with a vision of how your program will complement the focused areas listed above. Provide a current résumé and names, addresses, and telephone numbers of three references to: **Dr. Gerald Bratton, Chair of Search Committee, Department of Veterinary Anatomy/Public Health, College of Veterinary Medicine, Texas A&M University, College Station, TX 77843-4458.** For additional information, **Telephone: 979-845-3430; e-mail: gbratton@cvm.tamu.edu.** Deadline for application is May 15, 2000, or until positions are filled.

Texas A&M University is an Equal Opportunity/Affirmative Action Employer committed to excellence through diversity.

CHAIR AND PROFESSOR OF PHYSICS

Applications and nominations are invited for Chair of the Department of Physics, College of Arts and Sciences, East Carolina University. Appointment will be at the level of **PROFESSOR** with tenure. Candidates must have background sufficient to lead a new Ph.D. program in biomedical physics (now in its second year) to national distinction. Preference will be given to candidates who can work collaboratively with our medical school and with other departments within the University. Qualifications for the position include an earned Ph.D. in physics; administrative experience; and a strong research record in biomedical physics, biological physics, medical physics, or related fields.

In addition to the Ph.D. program, the Department offers a Master of Science Degree in applied physics and medical physics. Current research interests in the Department include acoustics, atomic, molecular, optical, and solar physics, along with applications of these fields to biology and medicine. Further information is available at the Department **website: <http://dept.physics.ecu.edu>.**

Salary and resources will be highly competitive. Screening will begin May 10, 2000, and applications will be accepted until the position is filled. Current references must be provided upon request. Official transcript required upon employment. Send application to: **Dr. Carson W. Bays, Chair, Physics Search Committee, College of Arts and Sciences, East Carolina University, Greenville, NC 27858-4353. E-mail: bayscw@mail.ecu.edu.**

An Equal Opportunity/Affirmative Action University. Accommodates individuals with disabilities. Applicants must comply with the Immigration Reform and Control Act.

POSITIONS OPEN

The Department of Medicine at the University of Florida Health Science Center in Jacksonville invites applications and nominations for the position of a full-time tenure-track **PROFESSOR** and **ASSOCIATE CHAIR** or **ASSOCIATE PROFESSOR** and **ASSOCIATE CHAIR**. The newly formed Shands Jacksonville (formerly University Medical Center and Methodist Medical Center) is a 760-bed teaching institution that serves as the urban campus affiliated with the University of Florida College of Medicine. The Associate Chair is the senior academic position on the Jacksonville campus, with full responsibility for the academic and administrative functions of the Department. Salary and benefits are excellent. This position will serve as the chief academic, administrative, and financial officer for the Department in Jacksonville. Candidates should be Board-certified, and a record of academic and administrative leadership is essential. Please submit curriculum vitae and three letters of recommendation to: **Phillip P. Toskes, M.D., Department of Medicine, Box 100277, Gainesville, FL 32610-0277.** Recruiting deadline: March 17, 2000. Anticipated start date: July 1, 2000.

The University of Florida is an Affirmative Action/Equal Opportunity Employer.

TENURE-TRACK ASSISTANT PROFESSOR OF BIOLOGY MOLECULAR BIOLOGY

The Moorhead State University Biology Department invites applications for an Assistant Professor (tenure track) to begin August 24, 2000. Qualifications: Ph.D. with broad training in molecular biology and potential for excellence in undergraduate teaching. Teaching responsibilities: courses in molecular biology, biotechniques, liberal studies, and laboratory sections. Additional responsibilities: participation in the biotechnology program and research involving undergraduates. Visit **website: <http://www.mnstate.edu/biology/search.htm>** for vacancy notice and standard application form. Send résumé, graduate and undergraduate transcripts, statements of teaching philosophy and research interests, three current letters of reference, and standard application form to: **Dr. Mary A. Shimabukuro, Department of Biology, Moorhead State University, Moorhead, MN 56563. E-mail: biolsrch@mnstate.edu; FAX: 218-236-2018; Telephone: 218-287-5000.** Screening of completed applications will begin April 10, 2000. *Moorhead State University is an Equal Opportunity Employer and Educator.*

VISITING ASSISTANT PROFESSOR OF MICROBIOLOGY AND IMMUNOLOGY

The California College of Podiatric Medicine seeks a one-year leave replacement (Ph.D. required) for the 2000-2001 academic year, with possible extension to two years. Teaching responsibilities include a course in microbiology during the fall semester, including a laboratory and immunology course during the spring semester. Send cover letter, curriculum vitae, names and telephone numbers of three references, and statement of teaching and research interests to: **Sandra L. Piccini, Director of Human Resources, California College of Podiatric Medicine, 1210 Scott Street, San Francisco, CA 94115** by Friday, April 14, 2000. *California College of Podiatric Medicine is an Equal Opportunity/Affirmative Action Employer; women and minority candidates especially encouraged to apply.*

POSTDOCTORAL POSITION is available to study calcium signaling in vascular smooth muscle and neurons. Use very high spatial/temporal resolution imaging methods to examine organization and regulation of calcium stores and mechanisms of local release in normal/transgenic/transfected tissue. Applicant should have prior experience in vascular physiology or neurophysiology; imaging experience desirable. Fellowship available for U.S. citizens/permanent residents. Send curriculum vitae and contact information of three references to: **Dr. Mordecai P. Blaustein, Department of Physiology, University of Maryland Medical School, 655 West Baltimore Street, Baltimore, MD 21201. E-mail: mblauste@umaryland.edu.**

Solutions for Genomic Research

Incyte Pharmaceuticals is a leading provider of an integrated platform of genomic technologies designed to aid in the understanding of the molecular basis of disease. Our platform includes database products, genomic data management software, microarray-based gene expression services, and related reagents and services—information management tools critical to the pharmaceutical and biotechnology industries for drug discovery and development. The employees of Incyte provide the tremendous energy, talent and expertise that will help us revolutionize the world of healthcare. We're looking for individuals who share our vision and want to play a role in defining a new industry as we build our global organization.

DIRECTOR, RESEARCH BIOINFORMATICS

As our Director, you will plan and direct the Best View of the Genome Research Initiative, exploring ways we can maximally benefit from the emerging human genome by making use of all available public and proprietary Incyte information. You will guide this process and ensure that appropriate algorithms, viewing tools and databases are applied and developed as appropriate. An important component of the job is publication in peer-reviewed journals and the development of practical methods to exploit the resulting analysis. Requires a PhD in Bioinformatics or related subject and 8+ years management experience. You must also have extensive experience in the analysis of eukaryotic (preferably human) genomic sequences, together with a proven publication track record.

You'll find we offer competitive salaries, an outstanding benefits package and significant opportunities for professional growth. For the straightest line to a career in genomics, go directly to our website at www.incyte.com. Or send your resume to: Incyte Pharmaceuticals, Inc., 3174 Porter Dr., REF: SD3966GM, Palo Alto, CA 94304, fax 650/845-4176, email employ@incyte.com. Incyte is proud to be an equal opportunity employer, and recognizes the talent of its diverse workforce.

www.incyte.com



SENIOR SCIENTIST/ SCIENTIST

FibroGen is a private biotechnology company focused on developing novel antifibrotic pharmaceutical and recombinant human/animal biomaterials. We leverage our extracellular matrix biology expertise and comprehensive intellectual property portfolio with an extensive internal and external research and development effort. Our business model is driven by the near-term market introduction of recombinant collagens and biosynthetic gelatins with longer-term drug development programs addressing major unmet medical needs in dermal scarring, deep organ fibrosis and tissue regeneration.

We currently have an excellent opportunity in our South San Francisco facility for a dedicated Scientist to participate in programs designed to develop novel therapeutics for the treatment of abnormal scarring and fibrotic lesions. Ideal candidates will possess a Ph.D. or equivalent; post doctoral experience; demonstrated success developing therapeutics in the pharmaceutical/biotech industry; a solid background in cell and molecular biology; and excellent written/verbal communication skills. Experience working in a project managed environment and interfacing with other companies on joint projects are desirable.

We offer a competitive compensation & benefits package, including equity participation. If you enjoy the challenge of a start-up, and thrive in a world of first class science, please send CV or resume to:

FIBROGEN, INC.
HR DEPARTMENT
ATTN: JOB# S0310-S
225 GATEWAY BLVD.
SOUTH SAN FRANCISCO, CA 94080
FAX: (650) 866-7204
EMAIL: HR@FIBROGEN.COM

www.fibrogen.com

FIBROGEN

FibroGen is proud to be an Equal Opportunity Employer

Post-Doctorate Opportunities With Dupont Pharmaceuticals...

Cardiovascular Sciences Department

The DuPont Pharmaceuticals Company is a multinational, multibillion dollar research-based company recognized worldwide for superior service to customers and contributions to mankind. Our efforts are at the leading edge of science, medicine and technology in bringing novel solutions to major unmet medical needs. We currently have Post-Doctorate opportunities available in our Cardiovascular Sciences Department in Wilmington, DE.

The first position is in the field of Molecular Cardiology, researching heart failure through cellular, molecular and biochemical strategies and in vivo disease models. A PhD in cardiac related research areas with cellular and biochemical expertise is required; experience in monitoring signal transduction mechanism in cardiac cells is desired.

The second position offers an opportunity to study the role of nuclear hormone receptors in metabolic diseases. Candidates will hold a PhD in molecular or cellular biology. Experience in transcription based assays, bioinformatics, mRNA and protein analyses, in situ hybridization and gene transfer techniques is desired.

Along with an competitive compensation and benefits, we offer excellent facilities with state-of-the-art technology and the opportunity to gain pharmaceutical discovery research experience. Interested candidates should forward their resume to: **The DuPont Pharmaceuticals Company, Human Resources, E400-2413, P.O. Box 80400, Wilmington, DE 19880-0400; e-mail: AMSResume@dupontpharma.com.** An equal opportunity employer, M/F/D/V.



DuPont Pharmaceuticals Company

POSITIONS OPEN

THERMOFLUIDS FACULTY POSITION DEPARTMENT OF MECHANICAL ENGINEERING

Massachusetts Institute of Technology

The Department of Mechanical Engineering at MIT invites applications for a thermofluids faculty position in the general area of energy, power systems, and thermal science and engineering. Applications at all levels—**ASSISTANT PROFESSOR**, **ASSOCIATE PROFESSOR** with and without tenure, and **FULL PROFESSOR** with tenure—will be considered. Applicants must hold an earned Doctorate in mechanical engineering or a related discipline and must have both a demonstrated ability to carry out outstanding research and a strong record of or promise for exceptional teaching.

Applicants should send a curriculum vitae, a one- or two-page statement of research interests, one or two representative publications, and complete contact information for at least three references to the following address:

Chair, Thermofluids Faculty Search
Department of Mechanical Engineering
Room 3-173
Massachusetts Institute of Technology
Cambridge, MA 02139-4307

Preference will be given to applications received before July 14, 2000. MIT is an Equal Opportunity/Affirmative Action Employer. Women and underrepresented minorities are especially encouraged to apply.

MICROBIAL BIOTECHNOLOGIST

The Institute for Microbial and Biochemical Technology at the U.S. Department of Agriculture (USDA) Forest Products Laboratory is seeking a permanent full-time Research Scientist GS-12/13 (\$50,139 to \$77,507). Salary will be commensurate with experience. The successful candidate will establish an independent research and development program to discover and implement novel enzymes or microbial processes that underlay technologies for improving utilization of wood or wood fiber. Preferred applicants will have completed all requirements for a Ph.D. degree in an appropriate field and will have postdoctoral experience. Demonstrated fundamental research productivity on enzymes applicable to pulp and paper technology and writing successful grant proposals are essential for this position. U.S. citizenship required; a noncitizen may be hired if there are no qualified U.S. citizens available. Applications must be postmarked by April 10, 2000. Contact: **Dr. Thomas W. Jeffries**; Telephone: 608-231-9453; e-mail: twjeffri@facstaff.wisc.edu. for additional information and an application packet, or access the complete vacancy announcement on-line at website: <http://www.usajobs.opm.gov>. The U. S. Department of Agriculture is an Equal Opportunity Provider and Employer.

BASIC MUSCULOSKELETAL SCIENTIST

The Department of Orthopaedics at the New Jersey Medical School invites applications for a **TENURE-TRACK FACULTY POSITION**. Applicants with research interests in all areas of orthopaedic science will be encouraged. We are especially interested in applicants with research programs in tissue engineering and the study of cell-material interactions. Applicants must have a Ph.D. or its equivalent and at least two years of postdoctoral experience. Currently basic research efforts in the Department focus on the study of biomaterials for skeletal repair; the molecular biology and biomechanics of bone healing, and the molecular analysis of skeletal development. Applicants should send their curriculum vitae, the names of three references, and a statement of research interests to: **Fred F. Behrens, M.D., Chairman, Department of Orthopaedics, UMDNJ-New Jersey Medical School, Doctors Office Center, Suite 5200, Newark, NJ 07103.**

UMDNJ is an Affirmative Action/Equal Opportunity Employer; Minorities/Females/Handicapped/Veterans, and is a member of the University Health System of New Jersey.

POSITIONS OPEN

ASSOCIATE/ASSISTANT PROFESSOR DEPARTMENT OF PHARMACEUTICS UNIVERSITY OF WASHINGTON

The Department of Pharmaceutics of the School of Pharmacy at the University of Washington invites applications for an **ASSOCIATE/ASSISTANT PROFESSOR** position (tenured/tenure track). The Department is interested in the following areas: pharmacogenetics/pharmacogenomics, drug biotransformation, drug transport, or drug delivery. Within these areas, the Department is interested in *in vitro* to *in vivo* translational research. Qualifications include a Ph.D., at least one year of postdoctoral experience (Assistant Professor), or with at least three years of an active research program in the pharmaceutical sciences or bioengineering (Associate Professor). The successful candidate will be expected to develop an independent research program with extramural support and to teach in the graduate (Ph.D.) and the professional (Pharm.D.) programs in the areas of pharmacokinetics, biopharmaceutics, or drug delivery. The faculty members of the Department are highly interactive with basic and clinically related research in drug transport, drug metabolism, drug delivery, and vaccine development. All applications should include a curriculum vitae, a brief description of past research accomplishments and future research plans, and three letters of reference to: **The Chair, Search Committee, Department of Pharmaceutics, Box 357610, University of Washington, Seattle, Washington 98195.** For additional information, contact: **Dr. Unadkat** at Telephone: 206-543-9434; e-mail: pceut@u.washington.edu; website: <http://depts.washington.edu/pceut/>.

The University of Washington is an Affirmative Action/Equal Opportunity Employer. The University of Washington is building a culturally diverse faculty and strongly encourages applications from female and minority candidates.

POSTDOCTORAL POSITION HARVARD MEDICAL SCHOOL

A Postdoctoral position is available immediately to study the biochemistry of proteases implicated in the etiology of Alzheimer's disease (see *Nature* 398:513 and *Biochemistry* 38:11223). The applicant must demonstrate a strong record of achievement in enzymology and/or the chemistry of integral membrane proteins. Experience in cell and molecular biology is also highly desirable. The successful candidate will work well in an interdisciplinary environment ranging from synthetic chemistry to molecular and cell biology. Send curriculum vitae and three letters of recommendation to: **Dr. Michael S. Wolfe, Center for Neurologic Diseases, Brigham and Women's Hospital, 77 Avenue Louis Pasteur, Boston, MA 02115.** E-mail: wolfe@cnd.bwh.harvard.edu.

POSTDOCTORAL POSITIONS are immediately available to study T cell-defined tumor antigens and to develop novel strategies for immunotherapy of cancer in animal tumor models (see *Science* 284:1351, 1999; *JEM* 189:1659, 1999). Experience in molecular biology, immunology, and mouse tumor models is desirable. Please send curriculum vitae and names of three references to: **Rongfu Wang, Ph.D., c/o Gloria Levin, Center for Cell and Gene Therapy, Baylor College of Medicine, 6621 Fannin Street, MC3-3320, Houston, TX 77030.** E-mail: rongfuw@bcm.tmc.edu. FAX: 713-770-4668. An Equal Opportunity/Affirmative Action Employer.

POSITIONS OPEN

DIRECTOR, CENTRE FOR RESEARCH AND TREATMENT OF ATHEROSCLEROSIS University of Manitoba

The Department of Internal Medicine, Faculty of Medicine, University of Manitoba, and the Winnipeg Regional Health Authority Medicine Program invite applications for the position of a Clinician Scientist to direct the newly established Centre for Research and Treatment of Atherosclerosis based at the Health Sciences Centre. The successful candidate will receive a cross-appointment in an appropriate basic science department in the Faculty of Medicine.

This will be a geographical full-time contingent position at the rank of **ASSISTANT PROFESSOR** commencing July 1, 2000, or as soon as possible thereafter.

The position is primarily for research with limited clinical activities. Opportunity will exist for teaching in both undergraduate and postgraduate programs at faculty, departmental, and sectional levels in addition to community education programs.

Candidates must have senior specialty qualifications in one of the specialties of internal medicine in the country of current practice and be eligible for registration with the College of Physicians and Surgeons of Manitoba. Certification by the Royal College of Physicians and Surgeons of Canada in one of the specialties of internal medicine is preferred.

The applicant must have an excellent record of research productivity and is expected to conduct independent research.

Salary will be commensurate with experience and academic qualifications. Applications, accompanied by curriculum vitae, three letters of reference, and a list of publications, should be sent to: **Dr. D. Mymin, Section of Cardiology, Room GF328, Health Sciences Centre, 820 Sherbrook Street, Winnipeg, Manitoba R3A 1R9 Canada.** Closing date for receipt of applications is May 15, 2000.

The University of Manitoba encourages applications from qualified women and men, including members of visible minorities, aboriginal peoples, and persons with disabilities. In accordance with Canadian immigration requirements, priority consideration will be given to Canadian citizens and permanent residents.

VISITING ASSISTANT PROFESSOR ANIMAL PHYSIOLOGY

The Department of Biological Sciences, Butler University, invites applications for a nine-month visiting position to start in August 2000. Candidates must have a Ph.D. and a strong commitment to undergraduate teaching, including an interest in directing student research. Teaching responsibilities each semester include a course in animal physiology plus one course in zoology or introductory biology. Experience with computer-based laboratories supporting inquiry-based learning is a plus. This position will be readvertised at the tenure-track level for fall 2001. For information on the university, please visit our website: www.butler.edu. Send cover letter, curriculum vitae, names and telephone numbers of three references, and statement of teaching and research interests to: **Dr. Tom Dolan, Department of Biological Sciences, Butler University, 4600 Sunset Avenue, Indianapolis, IN 46208** by March 31, 2000. *Butler is committed to diversity and encourages minority and female candidates.*

University of Michigan, Department of Anesthesiology, is recruiting faculty at the **TENURED ASSOCIATE PROFESSOR** level. The Department is especially interested in faculty with Ph.D. or M.D./Ph.D. with an ongoing funded research program. Applicants should be knowledgeable in the areas of host defense, immunological challenge, and modulators of arousal state control. Interested candidates should apply to: **Ralph Lydic, Ph.D., Department of Anesthesiology, 7433 Medical Sciences Building I, Box 0615, Ann Arbor, MI 48109-0615.** The University of Michigan is a nondiscriminatory Affirmative Action/Equal Opportunity Employer. Minorities and women are encouraged to apply.

Advanced Medicine, Inc.



We are looking for truly exceptional Scientists to join our Biochemistry team. You must love science, and exhibit a strong sense of responsibility for identifying new drugs to improve people's lives. This is a real opportunity to work with a great organization that someday will be legendary not only for its success, but also for the teamwork and dedication of its members.

Located in the San Francisco Bay Area, Advanced Medicine Inc. is a progressive biopharmaceutical company led by experienced, forward-thinking management and advisors from the top ranks of the health care business and academic communities. We are dedicated to the discovery and development of novel therapeutic drugs and approaches. Our rapid progress has created exciting opportunities for several experienced, self-motivated researchers to join our expanding multidisciplinary R&D team.

Senior Scientist - Microbiology/Biochemistry

In this key role, you will be responsible for leading a team of researchers. Both classical assays of in vitro potency (MIC, MBC, Time-kill, PAE) and mechanism of action studies will be pursued. Candidates must possess a Ph.D. in Microbiology or Biochemistry and 5 years of industry experience. Experience and aptitude for designing and performing in vitro experiments to evaluate anti-infectives is preferred. Postdoctoral experience desired. (Job# S0310-SSMB)

Scientist - Ion Channel/Biochemistry

You will develop high-throughput assays ion channel activity; contribute to new target evaluation, exploratory research and lead-optimization projects; and collaborate closely with colleagues in our Chemistry and Pharmacology groups on integrated project teams. Candidates must possess a Ph.D. or MS and 2-5 years of postdoctoral and/or industrial experience; a solid background in molecular biology/physiology; significant experience with the cloning, expression and functional analysis of ion channels; the ability to excel in a team-oriented environment; and excellent analytical and written/verbal communication skills. (Job# S0310-SICB)

Research Assistants/Associates - Biochemistry

As a member of our Biochemistry group, you will analyze the biological activity of our innovative pharmaceuticals and help develop physiologically relevant assays. Candidates must possess a BS in biochemistry or related field, 0-5 years of relevant experience, and excellent analytical and organizational skills. (Job# S0310-RAAB)

Beyond attractive compensation and benefits, we will provide you with a scientifically challenging and rewarding environment, a pathway for personal and professional growth, and significant equity participation. Please forward your resume with references and a cover letter to: **Advanced Medicine Inc., HR Department, Attn: (Job Code ____), 901 Gateway Blvd, South San Francisco, CA 94080; fax (650) 827-8690; email: career@advmedicine.com. EOE**

www.advmedicine.com



The Picower Institute for Medical Research

POSTDOCTORAL INVESTIGATOR

The Picower Institute for Medical Research is a privately held research facility whose mission is to apply the insights gained from laboratory and disease-oriented research to the cure of disease and the improvement of human health. Our scientists conduct "cutting-edge" research and are at the forefront of their fields. To assist in the forward movement of the institute, we are seeking a professional to work in our Cytokine Biology Laboratory.

You'll investigate the role of cytokines and chemokines in inflammatory disease-related pathogenesis. Opportunities will include characterization of receptor and signaling pathways, transcriptional regulation, and effector and target cell responses. *You should have a Ph.D. and a minimum of 2 years' experience in biochemistry and/or molecular biology.*

In return for your zeal, passion, and dedication to the field, we will provide a very competitive salary, outstanding benefits including a generous 403(b) plan, and a forward thinking environment. For confidential consideration, please send a scannable c.v. (e-mail preferred), with salary requirement, to: **HR Dept.-PDI/S, THE PICOWER INSTITUTE FOR MEDICAL RESEARCH, 350 Community Drive, Manhasset, NY 11030, U.S.A.; Fax #: (516) 869-0629; e-mail: hr@picower.edu.**

Visit our website: **www.picower.edu**

We are an equal opportunity/affirmative action employer.

Associate Director, Biology and Senior Research Associate Ontogen Corporation

Ontogen Corporation (www.ontogen.com), a drug discovery and development company, currently has openings for a highly qualified Associate Director and Senior Research Associate in the biological sciences group. The successful Associate Director candidate will develop and run high-throughput primary and secondary assays for small molecule therapeutics in the fields of immunology, inflammation and (or) diabetes. In addition, the Associate Director will participate in the planning and execution of all programs within Biology. Requirements include a Ph.D. with post-doctoral experience in a biological science, plus 5 or more years' industry experience in high throughput screening (HTS) and small molecule drug discovery in immunology, inflammation or diabetes. The successful Senior Research Associate candidate will work with the Biology team to develop and run primary and secondary drug discovery assays. Requirements are a Bachelor's degree (± MS) in Biology plus 4 or more years' industry experience, including enzyme/cell HTS assay development and implementation. Good communication skills and the ability to work in a multi-disciplinary team environment are essential for both positions.

Ontogen, founded in 1992, is currently a privately held company which has established itself as a leader in the rapidly developing field of automated organic synthesis directed at drug discovery. Utilizing its strong resources in engineering, chemistry, biology, and information sciences the company's mission is to discover and develop small molecule therapeutics from its rapidly expanding small molecule libraries. The company has carried out several successful corporate collaborations in addition to in-house discovery projects. One in-house oncology project moved from first compound synthesis to clinical Phase I in 18 months, demonstrating the power and efficiency of our highly integrated approach.

Ontogen's state-of-the-art facility is located in Carlsbad, thirty miles north of San Diego. The company offers competitive compensation and benefits, including a stock option plan. Interested candidates should send, e-mail or fax resumes to: **Human Resources, Ontogen Corporation, 6451 El Camino Real, Carlsbad, California 92009; E-mail: hr@ontogen.com; Fax: (760) 930-0200.** Ontogen is an Affirmative Action/Equal Opportunity Employer.

POSITIONS OPEN

MEDICAL UNIVERSITY OF SOUTH CAROLINA DEPARTMENT OF PHYSIOLOGY AND NEUROSCIENCE

Tenure-Track Position in Age-Related Neurodegeneration

The Department of Physiology and Neuroscience at the Medical University of South Carolina seeks to fill one **TENURE-TRACK POSITION**. Rank will be commensurate with experience, and the candidates must have a Ph.D. or M.D., a minimum of three years of postdoctoral training, and evidence of the ability to sustain an extramurally funded research program. We are seeking an individual with strong research interests in age-related diseases (primarily Parkinson's and/or Alzheimer's disease) and experience in behavioral neuroscience is preferable, but all outstanding candidates are encouraged to apply. Candidates should send a curriculum vitae, summary of research interests, and a list of at least three individuals to contact as references to: **Lotta Granholm-Bentley, D.D.S., Ph.D., Search Committee, Department of Physiology and Neuroscience, Medical University of South Carolina, 167 Ashley Avenue, Suite 607, Charleston, SC 29425**. Review of applications will begin on April 1, 2000, and continue until the positions are filled. For further information, contact: e-mail: heissenc@musc.edu; website: www2.musc.edu/PGY/PGY.html. *Medical University of South Carolina is an Equal Employment Opportunity/Affirmative Action Employer.*

DEPARTMENT OF MEDICINE UNIVERSITY OF CALIFORNIA SAN FRANCISCO

The Department of Medicine at the University of California San Francisco is recruiting for the position of Clinical Investigator in the Cardiology Division.

Candidates must have demonstrated skills and expertise in clinical research using molecular biology techniques applied to the study of human heart failure. Preference will be given to individuals with experience in the application of imaging techniques to the study of apoptosis and other basic mechanisms of progression of heart failure. The appointment will be made at the level of **ASSOCIATE** or **FULL PROFESSOR** (depending on qualifications) in the in-residence series. Candidates should be Board-certified in internal medicine and in cardiovascular diseases.

Please send curriculum vitae to: **William Grossman, M.D., Chief of Cardiology, University of California San Francisco Medical Center, 505 Parnassus Avenue, Box 0124, San Francisco, CA 94143-0124**. *University of California San Francisco is an Affirmative Action/Equal Opportunity Employer. The University undertakes Affirmative Action to assure Equal Employment Opportunity for underutilized minorities and women, for persons with disabilities, and for Vietnam-era veterans and special disabled veterans.*

The Centers for Disease Control and Prevention, National Center for Infectious Diseases, Division of Bacterial and Mycotic Diseases, Atlanta, Georgia, invites applications for the position of **ASSOCIATE DIRECTOR OF SCIENCE**. The Division of Bacterial and Mycotic Diseases consists of approximately 300 employees. This position will be responsible for the planning and coordinating of a national program to improve the identification, investigation, diagnosis, prevention, and control of bacterial and mycotic diseases. Candidates for this position must meet the basic qualifications for the GS-15 level of the federal civil service and have a Doctorate degree in medicine, microbiology, or related field with significant experience in management of a laboratory-based research-type program. Excellent communication and interpersonal skills, along with a record of publications and national recognition, are essential. Annual salary of \$77,614 to \$157,000 depends on the qualifications. Applicants may send curriculum vitae to: **Benita Minor, CDC, HRMO, 1600 Clifton Road, Mail Stop C-19, Atlanta, Georgia 30333**. E-mail: bminor@cdc.gov. All curriculum vitae/applications must be postmarked no later than May 30, 2000. *Center for Disease Control is an Equal Opportunity Employer and has a smoke-free environment.*

POSITIONS OPEN

CAREER DEVELOPMENT OPPORTUNITY IMMUNOGENETICS AND TRANSPLANTATION

The Department of Pathology and Laboratory Medicine, Emory University School of Medicine, is seeking a **CANDIDATE** for a Laboratory Director's training program (ASHI approval pending) in clinical histocompatibility and immunogenetics. The laboratory provides support for solid organ and bone marrow transplant programs at Emory University as well as organ transplantation at several outside institutions. The HLA laboratory is fully accredited for serologic, flow cytometric, and molecular HLA testing services. In addition, we have a strong commitment to investigational pursuits in several areas of immunology and molecular immunogenetics. The training program will include both "hands-on" and didactic sessions in areas related to clinical HLA testing and immunogenetics. Active participation in ongoing basic and clinical research projects would be required, with the expectation of academic productivity. Trainees will be prepared for a stimulating career combining clinical expertise with a strong commitment toward academic excellence. The position requires a Ph.D. and/or M.D. with at least two years of postdoctoral training in immunology, molecular biology, or cell biology. Interested individuals should send their curriculum vitae and list of three references to:

Robert A. Bray, Ph.D.
Department of Pathology
Emory University Hospital, Room F-149
1364 Clifton Road
Atlanta, GA 30322

Emory University is an Affirmative Action/Equal Opportunity Employer.

The Department of Molecular Genetics and Biochemistry invites applications for a tenure-track **ASSOCIATE PROFESSOR** position in the area of immunoparasitology/molecular parasitology. A Ph.D. or M.D. degree is required. The successful candidate is expected to have demonstrated excellence in teaching; research interests in the immunology and pathogenesis of parasitic diseases and/or opportunistic fungal infections associated with AIDS, with particular emphasis on vaccine development and development of new animal models of parasitic and fungal diseases; a distinguished record of productivity; a consistent record securing extramural funding; and be an integral contributor to the overall research efforts of the Department. The successful applicant will participate in teaching microbiology and immunology to medical and graduate students and participate in programs to integrate undergraduate science students in research efforts.

Applications accepted until April 30, 2000. Applicants should submit a letter of interest, curriculum vitae, statement of research and teaching interests, and the names of three references to: **Dr. Joseph C. Glorioso, Professor and Chairman, Department of Molecular Genetics and Biochemistry, University of Pittsburgh School of Medicine, E1240 Biomedical Science Tower, Pittsburgh, PA 15261**. Telephone: 412-648-8106; FAX: 412-624-8997.

The University of Pittsburgh is an Affirmative Action/Equal Opportunity Employer.

A **POSTDOCTORAL POSITION** is available in the laboratory of **K. V. Venkatachalam, Ph.D.** Research involves molecular cloning, expression, and characterization of petromyzonol sulfotransferase from lampreys. The candidate will be a Ph.D. with strong experience in protein purification, enzymology, and molecular biology. Please send a letter of research interests; curriculum vitae; copies of graduate transcripts; and the names, addresses, and telephone numbers of three professional references.

We offer competitive compensation and outstanding benefits. Please send or e-mail résumé with salary history to: (HLE) Nova Southeastern University, Office of Human Resources, 3301 College Avenue, Fort Lauderdale, FL 33314. E-mail (in Microsoft Word or Word/Note Pad format) to: nsujobs@nsu.nova.edu. *Affirmative Action/Equal Opportunity Employer. Visit our website: www.nova.edu.*

POSITIONS OPEN

RESEARCH ENTOMOLOGIST. U.S. Department of Agriculture (USDA), Agricultural Research Service, is seeking a Research Entomologist to conduct research on the behavioral and chemical ecology of key pests and beneficial arthropods associated with deciduous tree fruit production. Incumbent will be responsible for studying and analyzing behavior of pests and incorporating the results into commercially applicable integrated orchard management programs. Incumbent will work closely with federal, state, and private research scientists in the United States and internationally to develop new tactics for manipulating arthropod behavior to minimize pest damage in orchards and reduce the use of conventional pesticides. This research is expected to significantly contribute to basic and applied knowledge of arthropod behavior and chemical ecology. This is a permanent full-time position located at the Appalachian Fruit Research Station in Kearneysville, West Virginia. *Must be U.S. citizen.* Ph.D. in entomology or closely related field is desired. Salary range: \$42,724 to \$58,031 plus benefits. For further information, contact: **Maryanne Cage**; Telephone: 304-725-3451, extension 332; e-mail: Mcase@ars.usda.gov. Applications must be postmarked by March 31, 2000. *Equal Opportunity Employer.*

BIOLOGY DEPARTMENT THE CATHOLIC UNIVERSITY OF AMERICA Washington, DC 20064

The Department of Biology, with a Ph.D. granting graduate program, has a tenure-track opening at the level of **ASSISTANT PROFESSOR**. Investigators studying molecular aspects of developmental biology, immunology, or neurobiology are particularly encouraged to apply. However, strong candidates asking novel, creative questions in any area of molecular and cellular biology will receive full consideration. The successful candidate will develop a competitive extramurally funded research program and will teach at both undergraduate and graduate levels. Please submit a statement describing research interests, a curriculum vitae, and the names of three references by April 30, 2000, to: **Dr. James Greene, Chair, Faculty Search Committee, Department of Biology, The Catholic University of America, Washington, DC 20064**. For more information on this position, the Department, and the University, see our website: <http://www.cua.edu>.

SCIENTIFIC CURATORS PROTEOME INC.

Proteome is a rapidly growing company at the forefront of the bioinformation revolution that provides comprehensively curated protein databases to the pharmaceutical industry and to academia. We have many openings for Scientific Curators, who collect and integrate protein information for our multispecies databases. Candidates must have training in mammalian or model systems, a wide knowledge of cell or molecular biology or related fields, excellent writing skills, and a Ph.D. Curators may work full- or part-time, on-site or remotely, which offers maximum personal flexibility. For consideration, please send a cover letter and curriculum vitae to: **Human Resources, Proteome Inc., 100 Cummings Center, Suite 435M, Beverly, MA 01915**. E-mail: hr@proteome.com; FAX: 978-921-3971. See website: <http://www.proteome.com> for more information. *An Equal Opportunity Employer.*

GRA: LANDSCAPE ECOLOGY/ REMOTE SENSING

Ph.D. ASSISTANTSHIP for NASA-sponsored study of global change in the Yellowstone area. Desired qualifications: M.S., experience in classifying land cover from spectral data, and knowledge of landscape ecology. Send cover letter, curriculum vitae, GRE scores, and the contact information for three references by 7 April 2000 to: **Dr. Andrew Hansen, Biology Department, Montana State University, Bozeman, MT 59717**. E-mail: hansen@montana.edu. Position depends on funding.

Discovery at AstraZeneca R&D Södertälje is a fully integrated unit comprising of more than 250 staff. Discovery research is carried out at our main site in Södertälje, as well as in Novum Research Park at Huddinge University Hospital.

AstraZeneca has recently announced a new R&D Strategy and following this a number of positions have arisen to further strengthen AstraZeneca R&D Södertälje as a Center of Excellence in Drug Discovery for analgesia and neurological disorders.

The Chemistry Department is in a phase of significant expansion. This will provide employment opportunities for chemists with skills in organic, medicinal, combinatorial, and analytical chemistry and in cheminformatics.

The research is project oriented and in close co-operation with colleagues in the biological disciplines.

We are currently seeking candidates for five positions working in different phases of the drug discovery process.

Research Scientists – Organic/ Medicinal/Combinatorial Chemistry

The successful candidates will work in drug discovery teams and primarily be engaged with the design and synthesis of substances for biological testing and on development of synthetic methods. Relevant background is a PhD degree in organic chemistry or BS/MS degree with at least two additional years of experience in the field.

We believe you should have a pronounced interest in practical synthetic work.

The Lead Discovery Department plays a key role in the lead generation process with responsibility for high quality and high speed testing of compounds. We are currently seeking candidates for several positions.

Section Head

The position involves leading a section with main responsibility for development and implementation of high throughput/high capacity screening assays. The successful candidate should have a strong scientific background in cell biology/molecular pharmacology/biochemistry combined with several years of practical experience of high throughput/high capacity screening activities.

Research Scientists

The positions involve working as a member in teams focusing on ion channels and enzymes as drug targets. The successful candidates should possess a PhD or BS/MS degree with several years of research experience, in cell biology/molecular pharmacology/ biochemistry. Experience and interest in new technologies, such as high capacity assay technologies and/or fluorescent and luminescent based technologies is highly desirable for some of the positions.

Good communication skills, high motivation and commitment to work effectively in a team-based environment are essential for all positions.

We welcome your application to be a member of a research-intensive unit.

For further information, please contact for Chemistry - Jan-Erik Nyström +46 8 553 254 39, jan-erik.nystrom@astrazeneca.com, and for Lead Discovery - Nina Mohell +46 8 553 281 18, nina.mohell@astrazeneca.com.

Your written application, marked with position, should be sent to AstraZeneca R&D Södertälje, Ulla Eriksson, Human Resources, 151 85 Södertälje. Closing date for applications March 20, 2000.

AstraZeneca is one of the world's leading pharmaceutical companies, with approximately 50,000 employees. Operations are based on innovative research and development of pharmaceuticals in a number of major therapeutic areas. AstraZeneca has a highly developed marketing organisation around the globe, with a number of world-leading products. Production is conducted in some 20 countries. For further information, see: www.astrazeneca.com.

AstraZeneca R&D Södertälje conducts research and development with focus on the two therapeutic areas CNS and Pain Control. The site has approximately 1.500 employees.



POSITIONS OPEN

MAINE EPSCoR DIRECTOR

The State of Maine's Experimental Program to Stimulate Competitive Research (EPSCoR) Committee seeks a statewide EPSCoR Director to coordinate and facilitate the activities of the state's EPSCoR steering committee, called the Research Capacity Committee (RCC). Working directly with the RCC, the Director advises and assists the RCC; actively participates in the development and implementation of the state's EPSCoR strategy; gathers and distributes information on EPSCoR opportunities; and acts as a point of contact for individuals and organizations interested in EPSCoR. A three-person management team, consisting of the Chancellor of the University of Maine System (UMS), the President of the Maine Science and Technology Foundation (MSTF), and the Chair of the RCC, appoints the Director and oversees the Director's activities. The Director reports directly to the Chair of the RCC.

The Director shall have a Ph.D. in a science or engineering discipline and demonstrated competency in the discipline; have demonstrated experience in the evaluation of scientific or engineering projects that have evolved from basic and fundamental research; have demonstrated experience in the management and administration of federally funded research or grants programs or comparable experience; have excellent verbal and written communication skills; be competent in the use of personal computers, electronic mail, and databases; be able to work in a collaborative manner; and demonstrate a comfort working within a political environment.

A full job description is available on-line at [website: http://www.mstf.org](http://www.mstf.org). Letters of application, a résumé, and three references should be received not later than April 7, 2000, by the Chairman, Research Capacity Committee, at: **Maine Science and Technology Foundation, 77 Sewall Street, Augusta, Maine 04330. Equal Opportunity Employer.**

RESEARCH ASSOCIATE

Our Wound Healing Research Laboratory has recently developed a unique animal model of controlled ischemia/reperfusion injury in skin. This model may be used to study the etiology, prevention, and treatment of skin ulcerations such as pressure ulcers. We need the assistance of an experienced Ph.D. Cell Biologist, Biochemist, or related specialist to further characterize and develop this model of a chronic wound. This one-year renewable **RESEARCH FELLOWSHIP** will pay \$25,100 plus fringe benefits and will begin July 1, 2000. *Applicants must be U.S. citizens or permanent residents with excellent oral and written skills in English.* Please send a detailed résumé by May 1, 2000, to:

George T. Rodeheaver, Ph.D.
Director, Wound Healing Laboratory
University of Virginia Health System
P.O. Box 801351
Charlottesville, VA 22908-1351
E-mail: gtr3s@virginia.edu

The University of Virginia is an Equal Opportunity Employer.

SCIENTIST

The UW-Madison Cardiology Section is seeking a full-time Ph.D. Scientist to supervise a research laboratory that studies the molecular mechanism of acute and chronic cardiac contractile dysfunction. The successful candidate will supervise two to three technicians, one to two Postdoctoral Fellows, and four to six undergraduate students. Research will involve animal surgical, biophysical, biochemical, and molecular biological methodologies. The successful candidate will also be expected to develop independent research themes and pursue independent funding. Apply with letter of interest and curriculum vitae to: **Matthew R. Wolff, M.D., Department of Medicine, H6/336 CSC 3248, 600 Highland Avenue, Madison, WI 53792.** *The University of Wisconsin is an Affirmative Action/Equal Employment Opportunity Employer and has an open records law.*

POSITIONS OPEN



RESEARCH SCIENTIST

The U.S. Department of Agriculture (USDA), Agricultural Research Service (ARS), Parasite Biology and Epidemiology Laboratory, Beltsville, Maryland, is seeking a **RESEARCH BIOLOGIST/MICROBIOLOGIST**. The successful applicant will initiate a research program to determine the prevalence and zoonotic potential of *Ciardia* in livestock and will participate in other studies on zoonotic diseases. Candidates should have knowledge and/or experience in microbiology or parasitology, epidemiology, and/or molecular biology. A Ph.D. is desirable, and *candidates must be U.S. citizens*. Salary range is \$42,724 to \$55,541 (for a GS-11) to \$51,204 to \$66,564 (for a GS-12). The vacancy announcement (ARS-DOE-0197) may be viewed on the ARS website: www.ars.usda.gov/afm/hrd/resjobs. The announcement opens February 28, 2000, and closes April 10, 2000. For an application package and a copy of the announcement, **Telephone: 301-504-1484. ARS is an Equal Opportunity Provider and Employer.**

ASSISTANT PROFESSOR OF MEDICINE RENAL DIVISION

Washington University School of Medicine

The Renal Division at Washington University School of Medicine seeks to recruit a Scientist to a tenure-track position. Candidate (M.D., Ph.D., or M.D./Ph.D.) should be well trained in and committed to a career in biomedical research and able to function independently as demonstrated by prior publications and funding. We can provide an outstanding start-up package and protected time. For M.D. candidates, clinical training in nephrology is not essential. Candidates' science must be of high quality and relate to transplant immunology. Send a curriculum vitae and a brief summary of research plans to: **Marc R. Hammerman, M.D., Director, Renal Division, Washington University School of Medicine, Box 8126, 660 South Euclid Avenue, St. Louis, MO 63110.** *Washington University is an Equal Opportunity Employer/Affirmative Action Employer; Minorities/Females/Disabled/Veterans.*

RESEARCH ASSOCIATE position available to study the effect of UVB on human skin. M.S. degree and experience in molecular biology techniques, cell culture, and radiation biology required. Salary is commensurate with education and experience. Interested applicants should submit curriculum vitae to: **Dr. Dan Spandau, Hackney Dermatopathology Research Laboratory, 975 West Walnut Street, Room 349, Indiana University School of Medicine, Indianapolis, Indiana 46202-5121. FAX: 317-278-2815.** *Indiana University is an Affirmative Action/Equal Opportunity Employer/Minorities/Females/Disabled.*

We seek a Ph.D., Director-Immuno. Diag. Research and Development. Location is southern New Jersey. Individual will be hands-on to procure antigens for antibody detection and development of reagent formulations and procedures for multiple proprietary tests, utilizing particle immunofiltration platforms targeted to point-of-care medical markets. Reports to Chief Technical Officer. Open compensation range plus options. Hands-on person with strong immunochemistry experience with *in vitro* products. Reply to: **Don Koontz, Akers Laboratories; e-mail: donald.koontz@gte.net; FAX: 1-941-922-0649.**

Phillips Academy, an independent residential secondary school, seeks a **VISITING SCHOLAR** in molecular biology. Primary responsibilities include teaching advanced students, supervising student independent research projects, and collaborating with colleagues on professional and curriculum development. Appointment for one to three years. Send cover letter, résumé, and references to: **Philip Zaeder, Dean of Faculty, Phillips Academy, 180 Main Street, Andover, MA 01810-4161. Equal Opportunity Employer.**

POSITIONS OPEN

DIRECTOR, CENTER FOR EARTH AND ENVIRONMENTAL SCIENCE SEARCH EXTENDED

Plattsburgh State University of New York is searching for an experienced leader dedicated to quality academic programs. The Center for Earth and Environmental Science is a multidisciplinary academic unit offering B.A. and B.S. degrees in environmental science and geology to some 300 majors. The position of Director is a 12-month, tenure-track appointment as **PROFESSOR** or **ASSOCIATE PROFESSOR** and reports to the Dean of Arts and Science. Qualifications: earned Doctorate in a field related to the disciplinary orientation of the Center; a demonstrated record of academic and administrative leadership in higher education, including supervisory experience of faculty and staff; and a record of excellence in teaching, scholarship, and service. Preference will be given to individuals with an interdisciplinary perspective. Responsibilities: provide leadership to the Center in achieving its goals; representing the Center to the University, the community, agencies, and organizations; responsible for its academic and administrative operations, including 16 full-time and four part-time faculty, as well as on- and off-campus facilities; and teaching one course each semester in his/her area of expertise.

Salary: \$65,000 minimum, dependent upon qualifications and experience; excellent benefits. Review of applications begins March 31, 2000, and continues until position is filled. Please send or FAX application; statement of teaching and administrative philosophy; plus research interests, vitae, transcripts, and three letters of reference to: **Chair, Search Committee (PJ# 2358-SCI), c/o Human Resources, Plattsburgh State University of New York, 101 Broad Street, Plattsburgh, New York 12901-2681. FAX: 518-564-5060.**

Plattsburgh State University is an Affirmative Action/Equal Opportunity Employer. Applications from women and minority candidates are especially welcome.

ASTHMA RESEARCH: The Department of Pediatrics at Oregon Health Sciences University is recruiting an M.D. or M.D./Ph.D. **PHYSICIAN-SCIENTIST** in asthma research. The position, titled the "American Lung Association of Oregon Asthma Professorship," is endowed through a unique partnership between the American Lung Association of Oregon and the University. Preferred candidates will be Pediatric Pulmonologists or Allergists who have basic research programs in an area relevant to pediatric asthma. While the ideal applicant will have a record of independent research funding, junior faculty candidates with significant potential for independent research will be considered. The primary faculty appointment will be in the Division of Pediatric Pulmonology, which currently consists of three full-time faculty and includes an ACGME-approved Fellowship program and a strong clinical base. The Department of Pediatrics provides clinical care in the new Doernbecher Children's Hospital and conducts a range of molecular biological research in 20,000 square feet of new research laboratories adjacent to the Children's Hospital. Send letter of inquiry and curriculum vitae to: **Charles Roberts, Ph.D., Chief, Division of Pediatric Research, Oregon Health Sciences University, 3181 S.W. Sam Jackson Park Road, Portland, OR 97201. E-mail: robertsc@ohsu.edu. Oregon Health Sciences University is an Equal Opportunity Employer/Affirmative Action Employer.**

RESEARCH ASSOCIATE POSITION: Department of Embryology, Carnegie Institution of Washington, Baltimore, Maryland 21210. Participate in and help oversee the next phase of the BDGP single P element mutagenesis project (see *Genetics* 153:135-177). Duties include managing day-to-day production of new insertions, maintaining strain database, interfacing with BDGP bioinformatics group, and assisting PI in selection of lines to retain. Ph.D. and experience in *Drosophila* research required. Reply to: **E-mail: BDGP Research Associate, BDGPjob@ciwemb.edu.**

The McKnight Foundation

POSITION ANNOUNCEMENT PROGRAM MANAGER

The McKnight Foundation
Collaborative Crop Research Program

The McKnight Foundation, a private philanthropic organization in Minnesota, established the Collaborative Crop Research Program in 1993 to support research and training devoted to improving food security and human nutrition in the developing countries of Asia, Africa, and Latin America. The program links researchers in countries that lack the resources for comprehensive scientific studies with agricultural scientists in advanced laboratories of developed countries. Through these collaborations, the Foundation invests in nurturing and retaining scientific leadership in selected developing countries and strengthening their agricultural research capacity.

PURPOSE OF POSITION

The person in this position will provide hands-on management for a global portfolio of research and training projects related to food security in developing countries. He or she will report to the chair of the program oversight committee, comprised of leading agricultural scientists.

PRINCIPAL DUTIES AND RESPONSIBILITIES

- Facilitate productive working relationships among project partners, including the negotiation of workplans and budgets.
- Contribute to ensuring attainment of scientific and training excellence in the program.
- Assist in assessing partnerships' scientific progress and developing their evaluation plans.
- Promote communications across partnerships.
- Facilitate proactive, substantive, and productive relationships among partnerships, the oversight committee, and the Foundation.
- Conduct annual site visits to all project sites.
- Mentor relationships within program at all levels.
- Assist in preparation of oversight committee agendas.

QUALIFICATIONS AND EXPERIENCE

- Extensive international agricultural environmental experience consistent with program themes, including programmatic, training, publications, and fiscal management experience in scientific research.
- Willingness and ability to engage in extensive international travel in developing countries.
- Broad interdisciplinary knowledge.
- Fluency in written and spoken English; multi lingual fluency desirable.
- Goal orientation; committed to getting things done.
- Ability to work with people at all levels and in many cultures.
- Ability to troubleshoot and solve a variety of problems.

APPLICATION PROCESS

Interested candidates should submit a CV and letter, explaining suitability for this position and compensation requirements, to The McKnight Foundation Collaborative Crop Research Program, University of Wisconsin, 680 Russell Laboratories, 1630 Linden Drive, Madison, WI 53706 USA. Review of applications will begin May 15, 2000. EEO/AA Compliant.

GLOBAL OPPORTUNITIES



THE AUSTRALIAN NATIONAL UNIVERSITY

FACULTY OF SCIENCE

DIVISION OF BOTANY AND ZOOLOGY

Lecturer in Invertebrate Zoology (Behaviour, Ecology or Genetics) (Level B)

Salary range: Lecturer (Level B) \$A48,858 - \$A57,645 pa

Ref: FS 16.2.1

We are seeking an outstanding scientist to fill a standard position in invertebrate zoology. We are most interested in a candidate that can strengthen one of the existing research groups in the Division, for example in: evolutionary and behavioural ecology, molecular ecology, population and evolutionary genetics, plant/invertebrate interactions. The successful applicant will be involved in developing, organising and contributing to undergraduate units in zoology, in supervision of honours and graduate students, and also will be expected to develop a strong independent research program. Position available from 1 July 2000.

Enquiries: Prof Andrew Cockburn, Head, Division of Botany and Zoology, telephone: (61 2) 6249 2866, email: Andrew.Cockburn@anu.edu.au Additional information: <http://online.anu.edu.au/BoZo/>

Contact: Further particulars, including selection criteria, should be obtained before applying from the Staffing Recruitment Officer, telephone: (61 2) 6249 3346; fax: (61 2) 6249 5011, email: employment.services@anu.edu.au

Closing date: 7 April 2000.

Information on how to apply may be obtained from the ANU Web page - <http://www.anu.edu.au/hr/jobs> or by telephoning/emailing the contact. All applications should be addressed to the Staffing Recruitment Officer, Chancery 2A, Australian National University, CANBERRA ACT 0200. Applications from suitably qualified women are particularly welcome.

0072

EUROPEAN OPPORTUNITIES



The MAX PLANCK INSTITUTE FOR PSYCHOLOGICAL RESEARCH, MUNICH, GERMANY

offers the opportunity to set up two Junior Research Groups for the Experimental Study of Action. The institute's research program focuses on relationships between cognition, volition, and action, with special emphasis on action control and action perception. At present, this program is mainly pursued from a Cognitive and Experimental Psychology perspective. The Junior Research Groups are invited to join this program, with independent contributions from their perspectives.

The institute offers two positions for a:

Leader of a Junior Research Group

The successful candidate will have several years of post-doctoral experience in research addressing relationships between cognition, volition, and action in humans, animals, or artificial systems. We invite applications from candidates who have their background and their record of accomplishments in fields complementary to Cognitive Psychology, like, e.g., Infant Development, Motivation and Volition, Dynamic Modeling / Robotics etc. Candidates should not be older than 35 years and will be appointed at the Associate Professor level (C2/C3) for a five-year period. Adequate laboratory space and funds for laboratory set-up and operation will be provided, along with salary support for one post-doctoral scientist, one technician, and fellowships for two graduate students.

The Max Planck Society is an equal-opportunity employer and especially encourages applications from women. Applicants should submit their c.v., bibliography, the names of three references (with email address), and a brief description of their future research plans to:

*Prof. Dr. Wolfgang Prinz, Max-Planck-Institut für Psychologische Forschung,
Amalienstr. 33, D-80799 München, E-Mail: Prinz@mpipf-muenchen.mpg.de
Website: <http://www.mpipf-muenchen.mpg.de>*

Deadline for application: 07.04.2000

POSITIONS OPEN

SHIMADZU SCIENTIFIC INSTRUMENTS (SSI) provides analytical solutions to laboratories with a wide range of state-of-the-art instrumentation and software. Due to our growth and success, the following three opportunities are available: **FIELD TECHNICAL SUPPORT** in Indianapolis, New England, and the Midwest (Minnesota, Missouri, and Colorado).

The incumbents will assist the sales efforts by installing instruments and training customers in their uses at customer sites. Provide technical support for the region. Assist on demonstrations, sales calls, and installations and train customers and regional personnel, as well as help customers adapt methodology for our instruments.

The ideal candidate will have a minimum of a B.S. degree in chemistry or a closely related field, at least two years of laboratory experience, and excellent customer service skills.

Anyone interested in applying for this position, send résumé and salary history to: **Shimadzu Scientific Instruments, Inc., 7102 Riverwood Drive, Columbia, MD 21046, Attention: Department SM7300. E-mail to: Gerardi@Shimadzu.com; FAX: 410-309-0365; website: www.shimadzu.com. Equal Opportunity Employer.**

POSTDOCTORAL POSITION available to study the role of Src family tyrosine kinases in the immune system, epithelia, and brain. Work will involve genetic approaches using mouse knockouts and knock-ins, as well as conventional biochemical methods for studying signal transduction pathways. See, for example, *J. Exp. Med.* **190**:1189-1195, 1999 or *J. Cell Biol.* **141**:1449-1465, 1998. Candidate must have M.D. or Ph.D. degree. Please send curriculum vitae and three references to: **Paul L. Stein, Ph.D., Department of Dermatology, University of Pennsylvania, 415 Curie Boulevard, Philadelphia, PA 19104. FAX: 215-898-0201; e-mail: steinp@mail.med.upenn.edu. Equal Opportunity Employer.**

The Department of Biomedical Sciences, CVMNAH, Tuskegee University, invites applications for a **POSTDOCTORAL POSITION** in toxicology. Expertise in antioxidative enzymes and the effects of toxicants on reproduction are required.

Qualifications include a Ph.D. or equivalent and postdoctoral experience in toxicology or biochemistry. Interested persons should send a curriculum vitae and a statement of research interests to: **Velma W. Moore, Employment Manager, Office of Human Resources, Room 101, Kresge Center, Tuskegee University, Tuskegee, AL 36088. FAX: 334-724-4319.**

POSTDOCTORAL POSITION in molecular pharmacology available immediately to study the effects of neurotoxins and local anesthetics on cloned sodium channels. Expertise in electrophysiology, pharmacology, or site-directed mutagenesis is preferred. Send curriculum vitae and names of three references to: **Dr. Ging Kuo Wang, Department of Anesthesia, Brigham and Women's Hospital/Harvard Medical School, 75 Francis Street, Boston, MA 02115. FAX: 617-730-2801; e-mail: wang@zeus.bwh.harvard.edu.**

RESEARCH ASSOCIATES, Today's Staffing, St. Louis, MO U.S.A. We place biologists and chemists for a Fortune 100 company. Ideal focus would be molecular and analytical techniques. These opportunities through *Today's Staffing* are assignments that will last from three to 12 months in length. There is no relocation cost reimbursement. We offer competitive pay plus benefits. Please e-mail résumés to: **ashley.m.penny@monsanto.com** or Telephone: **636-737-7200.**

POSTDOCTORAL POSITION available in atomic force microscopy (AFM) of biomaterials. Applicants are encouraged to propose AFM research on biomaterials in their area of expertise. Applicants can e-mail or mail curriculum vitae and references to: **E-mail: hhansma@physics.ucsb.edu** or mail: **H. G. Hansma, Department of Physics, University of California, Santa Barbara, CA 93106. An Equal Opportunity/Affirmative Action Employer.**

POSITIONS OPEN

POSTDOCTORAL POSITIONS available at Johns Hopkins in training in basic research in molecular and cell biology related to GI and hepatology in the following areas: enterotoxin interactions with epithelial cells using confocal/multiphoton microscopy, cytokine signaling and hepatocyte proliferation, structure/function and regulation of Na/H exchanger gene family, mitochondrial uncoupling activity and hepatocyte biology, and transcriptional regulation of intestinal differentiation and carcinogenesis.

Candidates must have a Ph.D. and/or M.D. and U.S. citizens or permanent residents are preferred in order to qualify for NIH training grant support. Send curriculum vitae and area of interest to: **GI Division, The Johns Hopkins University School of Medicine, 918 Ross Research Building, 720 Rutland Avenue, Baltimore, MD 21205-2195, Attention: Helen McCann. FAX: 410-955-9677. Equal Opportunity Employer.**

A **POSTDOCTORAL POSITION** is available immediately to study epigenetic and stochastic gene regulation in the immune system. Projects include efforts to identify trans and cis determinants of allelically independent cytokine gene regulation (**Bix M., Locksley R., Science** **281**:1352-1354, 1998; **Bix M., Wang Z., Thiel B., Schork N., Locksley R., Journal of Experimental Medicine** **188**:1-11, 1998). Highly motivated recent Ph.D. recipients with training in molecular genetics and wishing to transition to a career in immunology are especially encouraged to apply. Please send a curriculum vitae, statement of research interests, and the names and addresses of three references to: **Mark Bix, Ph.D., Department of Immunology, University of Washington, Box 357650, Seattle, WA 98195-7650. E-mail: mbix@u.washington.edu. The University of Washington is an Equal Employment/Affirmative Action Employer.**

PREDOCTORAL POSITIONS

Positions for graduate students in an interdisciplinary Ph.D. program in microbiology, plant molecular biology, and bioengineering are available for fall 2000 in the Departments of Tropical Medicine and Medical Microbiology, Plant Molecular Physiology, Biosystems Engineering, and Microbiology. Fellowship funding: Department of Education, Graduate Assistance in Areas of National Need Program (75%) and University of Hawaii (25%). Contact: **S. P. Chang, Ph.D., Department of Tropical Medicine, University of Hawaii at Manoa, 3675 Kilauea Avenue, Honolulu, HI 96816. E-mail: sandrac@hawaii.edu. Women and members of underrepresented groups in higher education are urged to apply.**

POSTDOCTORAL POSITION (NIH-funded) available to study T cell fate decisions (differentiation, memory, survival) during *in vitro* and *in vivo* immune responses, including transplantation models. Projects include characterization of alloreactive TCR transgenic mice, biochemical analysis of anergic T cells, and retroviral gene delivery into T cells to modulate immune responses. Candidates should hold Ph.D. (or equivalent) in immunology. Please send curriculum vitae (including names of three references) to: **Laurence A. Turka, University of Pennsylvania, 700 CRB, 415 Curie Boulevard, Philadelphia, PA 19104-6144. FAX: 215-573-2880; e-mail: turka@mail.med.upenn.edu. Equal Opportunity/Affirmative Action Employer.**

A **POSTDOCTORAL POSITION** with an excellent salary is available. Our research uses a genome-scale approach to study abnormal silencing of genes by CpG island methylation in human tumors. Future research will investigate the tumor type-specificity of CpG island methylation patterns (*Nat. Genet.*, p. 132-138, February 2000) and will involve clinical correlations for improved cancer classification and diagnosis. Candidates would be personable and motivated and have experience in cell or molecular biology or related fields. A curriculum vitae along with names of three references may be sent to: **Joe Costello, Ph.D., University of California, San Francisco, 2340 Sutter Street, Box 0128, San Francisco, CA 94115. E-mail: jcostello@cc.ucsf.edu.**

POSITIONS OPEN

POSTDOCTORAL POSITION available to investigate mechanisms of very rapid enzymic reactions with emphasis on the physical biochemistry of proton transfer. Studies emphasize carbonic anhydrases and superoxide dismutases from many sources, including thermophiles (*Biochemistry* **38**:11686-11692, 1999; *Biochemistry* **37**:7649-7655, 1998). Current approaches include scanning stopped-flow spectrophotometry, mass spectrometry, pulse radiolysis, isotope effects, and magnetic resonance. A background in physical biochemistry is preferred. Send curriculum vitae and names of three references to: **Dr. David N. Silverman, College of Medicine, Box 100267, University of Florida, Gainesville, FL 32610-0267. Website: http://www.med.ufl.edu/pharm/facdata/silvermn/silvermn/html. University of Florida is an Affirmative Action/Equal Opportunity Employer.**

POSTDOCTORAL RESEARCH ASSOCIATE

Department of Psychiatry, University of Illinois at Chicago (UIC), seeks individual to study the neurobiology of alcoholism. Candidate should have experience in molecular biology techniques, specifically gene cloning, sequencing, and RNase protection assay. RT-PCR, *in situ* hybridization. Minimum requirements: M.D. or Ph.D. in biological sciences or neuroscience; two years of experience and training in a neuroscience research laboratory. Send curriculum vitae, names of three references, and a brief description of your research experience to: **Subhash Pandey, Ph.D., Department of Psychiatry, University of Illinois at Chicago, 1601 West Taylor Street (M/C 912), Chicago, IL 60612. E-mail: Spandey@uic.edu.**

POSTDOCTORAL POSITION(S)

Postdoctoral position(s) are available immediately to work on mechanistic studies of ovarian cancer and other funded projects. Candidates should have a recent Ph.D. degree with a strong background in molecular biology or protein biochemistry. Experience in gene regulation and signaling pathways is particularly desirable. Applicants are invited to send curriculum vitae, summary of research interests and experience, and three references to: **Dr. Samuel Mok, Laboratory of Gynecologic Oncology, Brigham and Women's Hospital, Harvard Medical School, 221 Longwood Avenue, BLI-449, Boston, MA 02115. E-mail: scmok@rics.bwh.harvard.edu. Brigham and Women's Hospital and Harvard Medical School are Equal Opportunity Employers.**

POSTDOCTORAL TRAINING in genomics/proteomics/functional genomics. Highly self-motivated individuals to: (1) study mechanisms underlying the regulation by which physical inactivity alters the expression of genes that increase the risk of atherosclerosis, Type 2 diabetes, and obesity (see *J. Appl. Physiol.* **88**:774-787, 2000); and (2) study molecular regulation of skeletal muscle mass by altered mechanical loading and by aging using animal and tissue culture models. Submit curriculum vitae, three letters of reference, and a statement of career goals and why this position interests you to: **Frank Booth, Ph.D., Department of Veterinary Biomedical Sciences, E102, Veterinary Medical Building, University of Missouri, Columbia, MO 65211. E-mail: boothf@missouri.edu.**

POSTDOCTORAL POSITION HARVARD MEDICAL SCHOOL

Position available to study genes responsible for human neurodegenerative diseases. Projects focus on molecular mechanisms of neuronal apoptosis and the role of the presenilin genes in Notch and Wnt signaling. For reference, see *PNAS* **96**:6959, 1999; *Nature* **395**:698, 1998; *Neuron* **16**:921, 1996. Experience in molecular and cell biology is required. Send curriculum vitae, a brief description of research experience, and names of three references to: **Dr. Bruce Yankner, Children's Hospital, Enders 260, 300 Longwood Avenue, Boston, MA 02115. FAX: 617-738-1542. Equal Opportunity Employer. Permanent residency or U.S. citizenship required.**

IRRI

INTERNATIONAL RICE RESEARCH INSTITUTE

Position Announcement for
Plant Physiologist

The International Rice Research Institute (IRRI) is seeking a highly motivated plant physiologist to join its research staff. IRRI, located in Los Baños, Philippines, is supported by the Consultative Group on International Agricultural Research (CGIAR) as a nonprofit, autonomous organization engaged in research and outreach on rice-related technology.

The plant physiologist will conduct research to understand the response of rice in rainfed lowland ecosystems to environmental factors, particularly abiotic stresses such as submergence and salinity. Areas of investigation will include processes at the biochemical, cellular, and whole plant levels. The incumbent is expected to work closely with other specialists in agronomy, genetics, and plant breeding to apply physiological understanding that will allow the development of improved rice germplasm and production technologies. Responsibilities also include collaborating with scientists in developing countries and advanced research institutions and contributing to IRRI's program of degree and nondegree training in plant physiology.

Candidates should have 1) a Ph.D. degree in plant physiology/biochemistry or a related discipline; 2) a minimum of 2 years' postdoctoral experience; 3) a proven capacity to independently design and conduct innovative, problem-oriented research; 4) demonstrated ability to work cooperatively; and 5) spoken and written English fluency. Experience with rice or other cereals is desirable.

The position is at IRRI headquarters. Salary and benefits are internationally competitive. IRRI offers children's education allowances, medical insurance, and other attractive benefits. The Institute provides a gender-sensitive work environment and particularly welcomes women applicants. Applicants should send a comprehensive curriculum vitae and details of three referees (including email and/or fax address) to:

Dr. Shaobing Peng
Chair, Search Committee
International Rice Research Institute
MCPO Box 3127
1271 Makati City, Philippines
Phone: +63-2-845-0563
Fax: +63-2-891-1292
E-mail: s.peng@cgiar.org

Applications will be accepted until March 31, 2000, or until a suitable applicant pool is established.

Please refer to code **IRY2K-PP-02**.

EU-FP5 RTD Project: HPRI-1999-CT-50015

Five Positions**Extension of Capabilities for MAD
Experiments at Synchrotron Infrastructures**

Applications are invited for a number of pre/postdoctoral positions within a Fifth Framework Programme (FP5) RTD project focused on increasing the range of energies used to measure anomalous diffraction on biological macromolecules by providing appropriate beamlines, experimental stations and detectors as well as on establishing routine use of gases such as xenon as the means of obtaining the phasing information required for structure solution. This includes development of experimental methods as well as software to optimise the use of the data.

Positions are available immediately and are funded for up to three years. Competitive salaries and benefits are offered according to the national global allowance figures suggested under the EU postdoctoral programmes. FP5 financed projects offer unique opportunities for cooperative, trans-national research. For general information see <http://www.cordis.lu/fp5> and <http://www.cordis.lu/improving/>

Positions are available for the following tasks:

1. Optimisation of the experimental set-up at the Elettra diffraction beamline (XRD1) for MAD experiments at low energies, implementation of kappa-goniostat and development of semi-empirical absorption correction software. Experience in protein crystallography, computing and programming is an advantage. Elettra is a third generation synchrotron radiation facility in Trieste, Italy. The XRD1 light source is a multipole wiggler with a useful range from 4 to 25 keV. The optical design is suited to accurate wavelength changes required by the MAD technique.

Kristina Djinoic Carugo, Structural Biology Lab., Sincrotrone Trieste in Area Science Park, S.S. 14 Km 163,5, 34012 Basovizza (TS), Italy. Phone: (+39) 040375 8059, FAX: (+39) 040375 8029. E-mail: djinoic@elettra.trieste.it

2. Developing the experimental set-up for derivatising protein crystals in high pressure cells using xenon and other gases. Experience in protein crystallography is an advantage.

Thierry Prange or Roger Fourme, LURE, Centre Universitaire, EP 34 - 91898 Orsay Cedex, France. E-mail: prange@lure.u-psud.fr

3. Design and implementation of beamline modifications at the EMBL Hamburg Outstation to allow experiments to be carried out at the xenon K edge. Installation and testing of devices for derivatisation of protein crystals using gases. Experience of instrumentation and/or protein crystallography is desirable. The Hamburg Outstation provides access to, and support for, four crystallographic beamlines. In addition to a strong research programme in Structural Biology, the Outstation has an outstanding record in methods and instrument development.

Paul Tucker, EMBL Hamburg Outstation, c/o DESY, Notkestrasse 85, D-22603 Hamburg, Germany. FAX: (+49) 40 89902149. E-mail: tucker@embl-hamburg.de

4. Development of instrumentation and techniques to produce isomorphous derivatives of protein crystals with gases, such as krypton and xenon. Special emphasis will be given to the development of automatic techniques yielding reproducible results, as well as to applications and gases requiring very high pressures. While much of the hardware has already been constructed, emphasis will be given to testing this hardware with a range of protein crystals. Experience of protein crystallography is desirable though not strictly required. Pre-doctoral candidates are invited to apply as well. The laboratory has a strong commitment to structural biology, and is well equipped for protein crystallography as well as a variety of biophysical techniques.

Christoph Kratky, Institut fuer Chemie, Physikalische Chemie/Strukturbiologie, Karl-Franzens-Universitaet, Graz, Austria. Phone: (+43) 316 380 5417, FAX: (+43) 316 380 9850. E-mail: Christoph.Kratky@kfunigraz.ac.at

5. Design and implementation of optimal data collection strategies to maximise the MAD phasing signal. Interfacing of data processing and phasing in the SHARP program. Customisation, installation and support of the software at the participating synchrotron facilities. Post-doctoral experience in crystallographic computing and in the collection and processing of diffraction data at synchrotron radiation sources would be a serious advantage.

Gerard Bricogne, Structural Studies Division, MRC Laboratory of Molecular Biology, Hills Road, Cambridge CB2 2QH, England. FAX: (+44) 1223 213556. E-mail: gb10@mrc-lmb.cam.ac.uk

Applications should include a complete CV, a list of publications and a short statement of research interest. In addition please ensure that 2 letters of reference are forwarded directly to the laboratory of interest. Women are encouraged to apply.

Closing date for applications is 24 March 2000.

POSITIONS OPEN

POSTDOCTORAL RESEARCH FELLOWSHIPS THE CHILDREN'S HOSPITAL OF PHILADELPHIA

National Institutes of Health Training Grant

Positions are available immediately for cardiovascular research areas involving extracellular matrix, calcification, arterial injury, cardiac development, cardiac arrhythmias, heart valve disease, gene therapy, and tissue engineering. Applicants should send curriculum vitae and references to:

Robert J. Levy, M.D.

Director, Cardiology Research Laboratories
Children's Hospital of Philadelphia
FAX: 215-590-5454

E-mail: levyr@email.chop.edu

The Children's Hospital of Philadelphia, an affiliate of the University of Pennsylvania School of Medicine, is an Equal Opportunity Employer.

POSTDOCTORAL POSITION immediately available. NovaFlora, Inc., a biotechnology company focused on ornamental plants, has an opening for a Plant Molecular Biologist. Applicants should have expertise in a wide range of molecular biological activities, including cloning, hybridization, plasmid construction, library construction, and screening, as well as a variety of PCR-based methods. Expertise in plant tissue culture and plant transformation is desired but not essential. The successful applicant will join a team seeking to develop novel ornamental plants using genes that confer dwarfing, early flowering, and altered plant habit. Interested applicants should e-mail the names of three references, a résumé, and a cover letter describing their scientific background and future goals to: E-mail: info@novaflora.com; mail: c/o Human Resources, NovaFlora, Inc., 3401 Market Street, Suite 350, Philadelphia, PA 19104. Telephone: 215-387-5060; FAX: 215-387-5455; website: www.novaflora.com.

POSTDOCTORAL POSITION to study the structure-function relationships of human thromboxane A₂ receptors is available. The studies combine molecular biology, protein purification, photoaffinity labelling, and peptide sequencing of the proteolytic fragments of the receptors using state-of-the-art mass spectrometry. Preference given to applicants with experience in molecular biology and protein purification. Send curriculum vitae to: Perry V. Halushka, Ph.D., M.D., Medical University of South Carolina, Department of Pharmacology, 96 Jonathan Lucas Street, P.O. Box 250623, Charleston, SC 29425. FAX: 843-792-0816; e-mail: halushpv@musc.edu. Medical University of South Carolina is an Affirmative Action/Equal Opportunity Employer.

POSTDOCTORAL POSITION UNIVERSITY OF PITTSBURGH

A Postdoctoral position is available to study the molecular basis of melanoma development. Specifically, the project will focus upon the analysis of genes that are differentially expressed in the various stages of the progression pathway of melanoma. Interested individuals with substantial experience in molecular biology and/or molecular genetics are invited to submit their curriculum vitae and the names and addresses of three references to: Dorothea Becker, Ph.D., Department of Pathology, University of Pittsburgh, BST E1050, 211 Lothrop Street, Pittsburgh, PA 15213 U.S.A.

POSTDOCTORAL POSITIONS available to study gene regulation in development, using transgenic and mutant mice. Emphasis is on growth defects in the skeleton and nervous system. Please send curriculum vitae and names of three references to: Dr. Claudia Kappen, Associate Professor, Center for Human Molecular Genetics, Munroe-Meyer Institute, 985455 Nebraska Medical Center, Omaha, NE 68198-5455. E-mail: ckappen@unmc.edu. The University of Nebraska Medical Center is an Equal Opportunity/Affirmative Action Employer. Women, minorities, and persons with disabilities are encouraged to apply.

POSITIONS OPEN

ADHESION MOLECULES SICKLE CELL DISEASE

The individual selected for this immediate **POSTDOCTORAL** opportunity will have the opportunity to study the role of adhesion molecules in sickle cell disease in the laboratory of **Dr. Paul Frenette**, in collaboration with the laboratory of **Dr. Barry Collier** at Mount Sinai School of Medicine. Candidates with a background in molecular/cellular biology and experience with murine models are strongly encouraged to apply. Send curriculum vitae, a brief description of research experience, and names of three references to:

Dr. Paul S. Frenette
Department of Medicine (Hematology)
Box 1079

Mount Sinai School of Medicine
One Gustave L. Levy Place
New York, NY 10029
FAX: 212-849-2574

E-mail: paul.frenette@mssm.edu
Website: www.mssm.edu

We are an Equal Opportunity Employer fostering diversity in the workplace.

University of Pennsylvania School of Medicine. **POSTDOCTORAL POSITIONS** available: (1) neurophysiology in behaving monkeys to study roles of brain monoaminergic systems in cognitive processes, and (2) neurophysiology in rats to study roles of monoamine systems in circadian processes and sleep, and (3) behavioral pharmacology in behaving rats to study roles of monoamine systems in drug abuse. Positions are within the Laboratory of Neuromodulation and Behavior (G. Aston-Jones, director), an interdisciplinary group of Neuroscience Researchers. Applicants must have a strong academic background with appropriate experience. Competitive salary and benefits. Send curriculum vitae and names of three references to: Dr. Gary Aston-Jones, Professor, Department of Psychiatry, University of Pennsylvania, VAMC (151), University and Woodland Avenues, Philadelphia, PA 19104.

A **POSTDOCTORAL POSITION** is available to study protein RNA interactions in gene expression and regulation. There are three ongoing projects to understand mechanisms for (1) an RNA helicase, (2) an RNA transporter protein, and (3) a tRNA splicing endonuclease. Although X-ray crystallography is the primary tool used in these studies, other biochemical and biophysical techniques are also employed. Interested candidates should have a Ph.D. in biochemistry, biophysics, molecular biology, or other related fields. Please send a curriculum vitae and three names of references to:

Dr. Hong Li
Institute of Molecular Biophysics
Florida State University
Tallahassee, FL 32301
E-mail: hongli@sb.fsu.edu

POSTDOCTORAL POSITION: Retinal Electrophysiologist. A NEI-funded position is available immediately to study the visual and biophysical response properties of retinal ganglion cells in normal and glaucomatous eyes. Applicants should have strong *in vitro* intracellular recording skills. U.S. citizens/permanent residents only. Send curriculum vitae, statement of research interests, and three references to: Arthur J. Weber, Ph.D., Department of Physiology, Michigan State University, East Lansing, MI 48824. E-mail: weberar@msu.edu. Michigan State University is an Affirmative Action/Equal Opportunity Employer.

Research position: **POSTDOCTORAL FELLOW.** Molecular/Cell Biologist; Ph.D./M.D. Study protein-protein interactions and mechanisms of gene transaction. U.S. citizen or permanent resident only. Immediate opening. Curriculum vitae, three references, statement of interest to: George W. Cox, Ph.D., Pharmacology Department, Room C2007, Uniformed Services University of Health Sciences, 4301 Jones Bridge Road, Bethesda, MD 20814-4799.

POSITIONS OPEN

POSTDOCTORAL POSITIONS

Positions available (Ph.D. or M.D.) for research in an NIH-sponsored training program at the Cardeza Foundation for Hematologic Research, Thomas Jefferson University. Areas of interest include angiogenesis, cytoskeletal structure and the role of the filamins, gene expression by endothelial and smooth muscle cells, biology of the platelet and endothelial GpIb complexes, megakaryopoiesis, oxygen-regulated gene expression, and lipid-binding proteins in thrombosis. Please send curriculum vitae and three letters of recommendation to:

Dr. Sandor S. Shapiro
Cardeza Foundation for Hematologic Research
1015 Walnut Street
Philadelphia, PA 19107-5099
E-mail: sanantol@jefflin.tju.edu

U.S. citizenship or permanent residency required. Equal Opportunity Employer.

POSTDOCTORAL POSITIONS available immediately to study protein synthesis/translational control. Emphasis is on a novel translation factor identified in yeast and mammals (see *Science* 280:1757, 1998; *PNAS* 96:4342, 1999). Additional projects examine translational behavior by yeast and mammalian kinases and inhibition of these kinases by viral regulators. Studies will involve biochemistry, molecular biology, and genetics in yeast and mammalian systems. Applicants must have a Ph.D. and/or M.D. and less than five years of postdoctoral experience. Send curriculum vitae and names and e-mail addresses of three references to: Thomas E. Dever, Laboratory of Eukaryotic Gene Regulation, NICHD, NIH, 6 Center Drive, MSC 2716, Bethesda, MD 20892-2716 U.S.A. FAX: 301-496-8576; e-mail: tdever@box-t.nih.gov.

POSTDOCTORAL POSITION, cell cycle regulation and development, Weis Center for Research: Position available to study cell cycle regulation and/or development in the laboratory of **Stephen A. Osmani** at the Weis Center for Research. For recent references, see: *EMBO J.* 18:6994-7001, 1999; *Mol. Biol. of the Cell* 10:3661-3674, 1999; *J. Biol. Chem.* 274:23565-23569, 1999; *J. Cell Biol.* 141:1575-1587, 1998. Experience in fungal genetics, molecular biology, or biochemistry a plus but a strong publication record most important. Please send curriculum vitae, copies of publications, and names of three references to: Julie A. Brosius (SAO), Position #S-7063, Weis Center for Research, The Pennsylvania State University, College of Medicine, Danville, PA 17822-2617. Résumés accepted until May 1, 2000. Affirmative Action/Equal Opportunity Employer.

POSTDOCTORAL FELLOWSHIP: molecular biology of Alzheimer's disease. Solid experience in molecular biology required. Work will involve utilizing laser capture microdissection, RNA amplification, array technology, and a variety of additional methods to analyze, validate, and expand on data from large-scale arrays. The goal of the work will be to contribute to our understanding of the molecular cascade(s) leading to the neurobiological devastation of Alzheimer's disease. Opportunity for advancement exists. Funds available limited to U.S. citizens or permanent residents only. Send résumé, statement of research interests, and names of at least three references to: Paul D. Coleman, Ph.D., University of Rochester Medical Center, 601 Elmwood Avenue, Box 645, Rochester, NY 14642. E-mail: Paul.Coleman@urmc.rochester.edu.

Bioinformatics **POSTDOCTORAL POSITION** is immediately available for a DNA-chip project. Background in computer science (programming, database, and Internet gene databases) is required. Knowledge in molecular biology and biochip technologies is desirable. Require permanent residency or U.S. citizenship. Please send curriculum vitae and names of three references to: Professor Xiaolian Gao, Department of Chemistry, University of Houston, TX 77204-5641. E-mail: xgao@uh.edu.



GPC AG

Human Resources Department
Fraunhoferstrasse 20 • D-82152 Martinsried
Tel.: 089 85652600 • Fax: 089 85652610
E-mail: human.resources@gpc-ag.com • <http://www.gpc-ag.com>

GPC AG, a leading biotechnology company in the Munich area, is working to bridge the gap between gene and drug discovery. Our bioinformatics group provides the tools for mining biological knowledge from the data generated by GPC's high-throughput experimental technologies. We are seeking flexible, creative, and motivated computing and bioinformatics professionals with a strong interest in working in a cutting-edge biological research environment.

We are looking for

Bio-Applications Manager

Responsible for installation, management and support of biological applications and databases at GPC, especially for DNA and protein sequence analysis. Will create a scientific user environment, and support scientists in its use.

Familiarity with sequence analysis software such as GCG is required, as is familiarity with DNA and protein sequence databases and other public data resources. The position requires an Bachelor's or comparable degree (FH/Uni in Germany) in Biology, Computer Science or a related field; an advanced degree in Molecular Biology is preferred. Prior experience with Unix, shell scripting, and Perl is strongly preferred. Knowledge of SQL, HTML/CGI, or Java is desirable but not required.

Data Management Associate

Responsible for facilitating the management of laboratory data, for scanning and analyzing image data and for performing data quality control. Will work closely with laboratory and computing staff to ensure optimal data flow through laboratory and analysis systems.

A Bachelor's or comparable degree (FH/Uni in Germany) in Biology or a related field is required. Familiarity with Oracle databases, SQL, Perl/Unix shell scripting, image analysis, or data quality control would be helpful, but can also be acquired on the job.

GPC AG rewards its team members not only by providing a stimulating and demanding working environment, but also through a stock option program by which every employee can share in GPC's success. If you wish to form part of a premier biotechnology company in Germany's attractive south, then please send your application in English including a full CV.

MEETINGS



**KEELE
UNIVERSITY**

*offers excellent non-clinical courses in
the School of Postgraduate Medicine
based at North Staffordshire Hospital*

MSc in Cell Engineering

A new exciting field linking cell biology and engineering – options in neural bioengineering, biomaterials/biomechanics, tissue engineering of cartilage and bone, non-invasive monitoring of cells.

MSc in Biomedical Engineering

Options in physiological measurement and medical imaging, biomedical signal processing/modelling, equipment management, combined with a hospital based research project.

*MSc Administrator, Biomedical Engineering,
Postgraduate Medicine, Keele University,
Hartshill, Stoke, ST4 7QB, UK., 01782 554253,
bea04@keele.ac.uk
<http://www.keele.ac.uk/depts/stm/postgrad/MSCBIO.htm>*

**Creating the
bridge between
green and red
biotechnology...**

**... by providing
plants as bioreactors
for large scale pro-
duction of peptides
and proteins which
have use in (bio-)
medical and techni-
cal applications.**

MPB Cologne GmbH is a young, rapidly growing biotech enterprise with over 30 employees. It is engaged in applied research in plant and protein biotechnology. Foreign proteins are being expressed in transgenic plants for commercial production and for engineering resistance to bacterial and fungal pathogens. In its major business area, Molecular Farming, MPB Cologne cooperates with partners and clients in an international network in R&D and production.



Research Directors

Responsibility for the scientific management and strategic direction of MPB's innovative research and technology development is your contribution to foster successful growth of MPB Cologne. Both positions require several years of experience in the respective field and strong leadership skills.

Plant Molecular Biology

You are highly qualified in plant molecular biology and molecular breeding with broad research experience, preferably in an industrial environment. Knowledge in potato and rape seed technology is advantageous.

Protein Biotechnology

You have several years of industrial experience in protein characterization and purification. Skills in downstream processing and scale-up are essential. Knowledge of plant processing is preferred.

Send your resume to:

MPB Cologne GmbH,
Neurather Ring 1, 51063 Köln, Germany
Please quote ref. no. RDS0251
fax: +49 (0)2 21/6 47 01-99
e-mail: jobs@mpb-cologne.com
www.mpb-cologne.com

POSITIONS OPEN

POSTDOCTORAL RESEARCH ASSOCIATE Molecular Genetics of *Pseudomonas aeruginosa*

Applications are invited for a Postdoctoral Research Associate position available May 1, 2000. An individual is sought to conduct NIH-funded studies on intercellular signaling by the opportunistic pathogen *Pseudomonas aeruginosa*. *P. aeruginosa* uses multiple chemical signals to sense and respond to its environment, including a novel molecule referred to as the pseudomonas quinolone signal (PQS) (*Proc. Natl. Acad. Sci. U.S.A.* 96:11,229-11,234). PQS activates multiple virulence determinants and is intertwined in the quorum-sensing hierarchy of *P. aeruginosa*. The incumbent will work on elucidating the genetic requirements for PQS production and will extend studies on PQS bioactivity. Applicants should provide curriculum vitae, a letter describing future career goals, and names and complete addresses of three references by mail to: **Everett C. Pesci, Ph.D., Chair, Postdoctoral Screening Committee, Department of Microbiology and Immunology, The Brody School of Medicine at East Carolina University, Greenville, NC 27858-4354.** East Carolina University is an Equal Opportunity/Affirmative Action/Equal Access Employer. Accommodates individuals with disabilities. Applicants must comply with the Immigration Reform and Control Act.

POSTDOCTORAL POSITION

The Connective Tissue Research Group at the Samuel Lunenfeld Research Institute is seeking a **POSTDOCTORAL FELLOW** in experimental bone biomechanics to work in a dynamic, multidisciplinary research programme on the quality of bone in aging and disease and the long-term effects of drugs and trace elements on the skeleton. We are also a participant in the University of Toronto programme on mouse models of human diseases.

The candidate must hold a Ph.D. in engineering. Some experience with mechanical and material properties of bone or other connective tissue and/or biomaterials would be an advantage. The position is available immediately, with a maximum duration of three years.

Interested candidates: Please submit your résumé in confidence to: **Professor Marc D. Grynpas, Samuel Lunenfeld Research Institute, Mount Sinai Hospital, 600 University Avenue, Room 840, Toronto, ON M5G 1X5 Canada.** FAX: 416-586-1554; e-mail: grynpas@mshri.on.ca.

POSTDOCTORAL FELLOW, INSTRUCTOR OR RESEARCH ASSISTANT PROFESSOR, Weis Center for Research: Multiple positions are available for highly motivated Ph.D. or M.D./Ph.D. holders to work on G protein-mediated signaling pathways that control cell growth and differentiation. These pathways will be studied in embryonic stem cell cultures and animal models. Level of appointment and salary will be commensurate with years of research experience. Special consideration will be given to applicants with experience in gene regulation, ribozyme, or gene "knockout" strategies; ES cell differentiation; and/or microarray analysis. The Weis Center for Research is located in a safe, family oriented setting within a three-hour drive of Philadelphia, Baltimore, and New York. Send a description of your research interests, curriculum vitae, and three references to: **Julie Brosius (jdr), Weis Center for Research, Position #S-7065, The Pennsylvania State University, College of Medicine, Danville, PA 17222-2600.** Résumés accepted until positions are filled. Affirmative Action/Equal Opportunity Employer.

POSTDOCTORAL FELLOWSHIP position available to study regulation of gene expression by steroid hormone receptors in the female reproductive tract. Experience in molecular biology and histology is required. Candidates with experience in gene knockout technology are preferred. Send curriculum vitae and names and addresses of three references to: **Dr. Indrani Bagchi, Center for Biomedical Research, Population Council at the Rockefeller University, 1230 York Avenue, New York, NY 10021.**

POSITIONS OPEN



TEXAS A&M UNIVERSITY CARDIOVASCULAR RESEARCH INSTITUTE

POSTDOCTORAL POSITIONS in cell signaling and gene expression. The Division of Molecular Cardiology at the College of Medicine, Texas A&M University System Health Science Center, has multiple Postdoctoral positions to work in the areas of gene expression and cellular signaling in the newly established Cardiovascular Research Institute. The position will provide the opportunity to learn appropriate techniques and other skills needed to develop an independent research career. Applicants with a Ph.D. and/or M.D. and with research experience in molecular and cellular biology, developmental biology, and/or human or mouse genetics will be given preference, although a broad spectrum of research interests will be considered. Competitive salaries and benefits will be provided. Applicants should submit a curriculum vitae, description of research interests, and three letters of reference to: **Kenneth M. Baker, M.D., Molecular Cardiology Search Committee, College of Medicine, Texas A&M University System Health Science Center, 1901 South First Street, Building 162, Temple, TX 76704.**

Texas A&M University is an Equal Opportunity/Affirmative Action Employer.

POSTDOCTORAL POSITIONS available in the Division of Hematology, Duke University Medical Center. One-to-three-year positions funded by an NIH research training grant are open in the following programs:

Dr. Telen: red cell adhesion, regulation of adhesion receptor activity, and antiadhesive drug development for human disease; **Dr. Arcasoy:** cytokine receptor signal transduction and regulation of hematopoiesis; **Dr. Kane:** Factor V structure, function, and genetics; **Dr. Ortel:** structure-function relationships in coagulation Factor VIII and molecular mechanisms of hemophilia A and antiphospholipid antibody syndromes; **Dr. Greenberg:** thrombosis, angiogenesis, and vascular obstruction in sickle cell disease; and **Dr. Weinberg:** nitric oxide biology relative to leukemia, infection, and inflammation.

Applicants should submit a letter of interest, curriculum vitae, and the names and contact information for at least two references to: **Dr. M. Telen, Box 2615, Duke University Medical Center, Durham, NC 27710.** E-mail: telen002@mc.duke.edu; FAX: 919-681-7688.

To be eligible, candidates must be either a U.S. citizen or a U.S. permanent resident before applying. Duke is an Equal Opportunity Employer.

POSTDOCTORAL RESEARCH POSITIONS

The newly formed Neonatal Laboratory at Northwestern University Medical School is seeking highly qualified Postdoctoral Researchers to join a group studying the structure and function of nitric oxide synthase. Positions available beginning May 1, 2000.

Qualifications: Ph.D. in biochemistry or molecular and cellular biology research required. Experience with protein purification essential. Please send curriculum vitae and three references to:

Stephen M. Black, Ph.D.
Research Director, Division of Neonatology
c/o Department of Pediatrics W 140
Northwestern University Medical School and
Children's Memorial Hospital
303 East Chicago Avenue
Chicago, IL 60611
E-mail: steveblack@nwnu.edu

Northwestern University is an Affirmative Action/Equal Opportunity Employer. Hiring is contingent upon eligibility to work in the United States. Women and minorities are encouraged to apply.

POSITIONS OPEN

POSTDOCTORAL POSITIONS IN PHARMACOLOGY

Applications are invited for Postdoctoral positions in the Department of Pharmacology at Weill Medical College of Cornell University. General areas of research include: (1) enzymology and mechanisms of novel retinoid signaling (**Jochen Buck, M.D., Ph.D.**); (2) nitric oxide and cell signaling (**Steven Gross, Ph.D.**); (3) Vitamin A cancer prevention and treatment (**Lorraine Gudas, Ph.D.**); (4) molecular pharmacology of pain, analgesia/opioid tolerance (**Charles Inturrisi, Ph.D.**); (5) organ, cellular, and subcellular cardiovascular pharmacology (**Roberto Levi, M.D.**); (6) genetic analysis of adenylyl cyclase function (**Lonny Levin, Ph.D.**); (7) the pharmacology and clinical pharmacology of gossypol (**Marcus Reidenberg, M.D.**); (8) dioxin, cytochrome P450, and cell signaling (**Arleen Rifkind, M.D.**); (9) developmental opioid pharmacology (**Hazel Szeto, M.D., Ph.D.**); and (10) genetic animal models of CNS diseases (**Miklos Toth, M.D., Ph.D.**).

Complete descriptions of research programs are available on website: www-users.med.cornell.edu/~llevin/GPIP/PharmProgram.html. Applicants should direct their inquiries to: **Ms. Conti, Department of Pharmacology, Weill Medical College, 1300 York Avenue, New York, NY 10021.** FAX: 212-746-8858. Weill Medical College is an Equal Opportunity Employer/Affirmative Action/Minorities/Females/Disabled/Veterans.

POSTDOCTORAL/RESEARCH ASSOCIATE POSITION EVOLUTIONARY BIOLOGY

The Plant Genome Initiative at Rutgers University (website: <http://pgir.rutgers.edu/>) seeks an applicant who applies evolutionary studies to comparative genomics in cereal plants (see National Science Foundation Award #9975618 for abstract). Applicants with experience in large molecular weight DNA analysis, DNA sequencing, and computational tools are preferred. Requirements include a Ph.D. in evolutionary biology or related field and good writing skills because of the opportunity to publish extensively. Candidates with Postdoctoral experience would qualify for Research Associate level. Please e-mail: messing@waksman.rutgers.edu or mail your application and ask three references to e-mail or mail their recommendations to: **Dr. Joachim Messing, Director, Waksman Institute, Rutgers, The State University of New Jersey, 190 Frelinghuysen Road, Piscataway, NJ 08854-8020.** Rutgers University is an Equal Opportunity/Affirmative Action Employer.

A **POSTDOCTORAL ASSOCIATE** position is available for the study of structure function relationships involving cardiac myosin heavy chains (cMHC). The project is to develop transgenic and knock-in/knockout mice involving point mutations in the cMHC gene to allow both *in vivo* and *in vitro* study of the contractile properties of the mutant proteins, including single molecule mechanics. The successful candidate must have had hands-on experience with the molecular biological techniques involved with generation of gene constructs suitable for *in vivo* study. Experience with animal use is desirable. Send or e-mail curriculum vitae; brief summary of research experience; and names, addresses, telephone, and FAX numbers of three references to: **Dr. Robert B. Low, Department of Molecular Physiology and Biophysics, Given E-217, University of Vermont, Burlington, VT 05405.** E-mail: rlow@zoo.uvm.edu.

POSTDOCTORAL FELLOWSHIP available to work on novel delivery systems for CNS gene therapy. Research is supported by a newly funded NIH grant and will include the use of phage display technology, adenovirus vectors, and cell culture methods. Send curriculum vitae and names of three references to: **Dr. Steve Dewhurst, Department of Microbiology, University of Rochester Medical Center, 601 Elmwood Avenue, Box 672, Rochester, NY 14642.** E-mail: stephen_dewhurst@urmc.rochester.edu.

POSITIONS OPEN

POSTDOCTORAL AND RESEARCH ASSISTANT PROFESSOR Positions in Molecular Pharmacology

The Department of Pharmacology, University of Illinois College of Medicine at Chicago, is accepting applications for several positions at the levels of Postdoctoral Research Associate and Research Assistant Professor. Openings are available in the following areas:

Asrar B. Malik: regulation of endothelial barrier function; redox regulation of endothelial adhesivity. **Randal A. Skidgel:** structure, function, and sorting of regulatory peptidases; regulation of nitric oxide production.

Oscar Colamonici: protein structure analysis of the cytoplasmic domain of cytokine receptors; functional genomics.

Richard D. Ye: G protein-coupled receptors and leukocyte activation.

More detailed descriptions of our research programs can be found at [website: www.uic.edu/depts/mcph](http://www.uic.edu/depts/mcph). We offer state-of-the-art core facilities, cutting-edge research opportunities in an intellectually stimulating environment, and highly competitive salaries. M.D. or Ph.D. required. Positions to begin May 1, 2000, or until filled. For fullest consideration, interested candidates should send a cover letter identifying interest in particular laboratories, curriculum vitae, and the names of three references to:

Research Opportunities
c/o Aileen Baker
Department of Pharmacology
College of Medicine, University of Illinois
835 South Wolcott
Room E403 (M/C 868)
Chicago, IL 60612

University of Illinois at Chicago is an Affirmative Action/Equal Opportunity Employer.

NATIONAL INSTITUTES OF HEALTH NATIONAL INSTITUTE OF ALLERGY AND INFECTIOUS DISEASE Laboratory of Immunogenetics

POSTDOCTORAL POSITIONS are available to study basic cellular and molecular mechanisms underlying B lymphocyte activation and regulation. Studies are focused on but not limited to the B cell antigen receptor and its role in initiation of signal transduction, MHC Class II antigen processing, and immunological memory. The National Institutes of Health offers an exceptional training environment for young research scientists, providing both the resources and stimulating colleagues conducive to success. Interested individuals may apply by sending a curriculum vitae and the names of three references to: **Dr. Susan Pierce, Laboratory Immunogenetics, NIAID/NIH/Twinbrook II, Room 200B, 12441 Parklawn Drive, Rockville, MD 20852 U.S.A.** E-mail: spierce@niaid.nih.gov. Telephone: 301-496-9589; FAX: 301-402-0259.

POSTDOCTORAL and RESEARCH ASSOCIATE POSITIONS available immediately to participate in NIH-supported studies regarding regulation of gene expression by insulin and growth factors (*JBC* 273:6482-6487, 1998; *JBC* 274:17184-17192, 1999). Studies examine (1) signaling by protein kinase pathways to nuclear targets mediating effects on gene expression, and (2) the role of forkhead transcription factors in mediating effects of insulin on gene expression in cell culture and transgenic models. Experience with basic techniques in molecular and cellular biology, protein-protein interaction, and/or transgenic/knockout models is required. Send curriculum vitae and three references to: **Dr. Terry Unterman, University of Illinois at Chicago/VA West Side, Room 5A122A Research (MP 151), 820 South Damen Avenue, Chicago, IL 60612.** FAX: 312-455-5877; e-mail: unterman@uic.edu. *The University of Illinois at Chicago is an Equal Opportunity/Affirmative Action Employer.*

GLOBAL OPPORTUNITIES

Medical University of the Americas. Several **FULL-TIME** and **M.D. SCHOLARSHIP** positions available in all areas of the basic sciences (anatomy, histology, biochemistry, microbiology, neurosciences, physiology, medical psychology, genetics, pharmacology, pathology, clinical medicine, and physical diagnosis). Full-time positions require M.D. or Ph.D.; salary \$33,000 to \$45,000 United States dollars tax-free. M.D. scholarship positions require a Ph.D. and provide part-time salary and free tuition for the entire M.D. degree. All positions are on the Caribbean island of Nevis. Write or call: **Dr. David Fredrick, P.O. Box 241084, Charlotte, NC 28224.** Telephone: 704-521-8868; FAX: 704-521-9464; e-mail: medschool@mindspring.com; website: www.medicaluniversity.org.

FELLOWSHIPS



POSTDOCTORAL FELLOWSHIP IN MOLECULAR GENETICS OF DIABETES NATIONAL INSTITUTES OF HEALTH

The Clinical Diabetes and Nutrition Section of the National Institute of Diabetes and Digestive and Kidney Diseases, located in Phoenix, Arizona, is seeking a junior- or senior-level **POSTDOCTORAL SCIENTIST**. The two-year fellowship is available in March 2000. Candidates must have either a Ph.D. or a M.D. with significant experience in molecular genetics and/or physiology. The recipient will work towards identifying novel genes that predispose Pima Indians to Type 2 diabetes. Please send curriculum vitae and statement of research interests to: **Leslie Baier, Ph.D., NIDDK, NIH, 4212 North 16th Street, Phoenix, AZ 85016.** FAX: 602-200-5225. E-mail: Lbaier@phx.niddk.nih.gov.

MARKETPLACE

COVANCE BERKELEY ANTIBODY COMPANY

Meeting Your Immunology Needs

Innovative Antibody Products

- Epitope Tags
- Cellular Markers
- Receptors
- Cytoskeletal Proteins
- Cell Surface Proteins
- Signal Transduction
- Transcription Factors

Toll Free: 800-922-2226

immunology.products@covance.com

<http://www.babco.com>

Circle No. 68 on Readers' Service Card

LABELED DNA

cGMP DNA,
Reasonable
Prices



FAM, TAMRA,
ROX, AP, FITC,
Rhodamine,
biotin, molec.
probes dyes,
etc.

1-800-562-5544

www.syntheticgenetics.com

Circle No. 49 on Readers' Service Card

MARKETPLACE

DNA SYNTHESIS

From \$0.50 per base for 3-10 OD

DNA SEQUENCING

As low as \$12 / Run



Circle No. 44 on Readers' Service Card

DNA Sequencing as low as \$12/run

Genotyping/Genetic Analysis

Call for details

1-800-654-4671

<http://www.ana-gen.com>

ANA-GEN
Ana-Gen Technologies, Inc.

Circle No. 59 on Readers' Service Card

QUALITY CUVETTES!!!

Inexpensive Electroporation Cuvettes
Each sterile package includes a free
pipette for easy sample removal!



1-800-289-2465

FAX: 619-597-9594

Circle No. 60 on Readers' Service Card

CLONING & EXPRESSION

Rapid Full Length Cloning of Genes
Guaranteed Gene Expression in Bacteria, Yeast,
Insect, and Mammalian Systems
High Purity and Bulk Protein Purification

ExpressGen, Inc.

1-877-CLONING www.expressgen.com

Circle No. 45 on Readers' Service Card



Custom Antibodies & Peptides

No Hidden Charges!

Custom Antibodies from \$1295 include:

- Free consultation and tech support
- HPLC purification, MS & HPLC analysis, N/C-terminal modifications, 4-6mg peptide, 100+ml serum, ELISA & more

Custom peptides from mg to 10g
HPLC purification available up to 98+%!

800-435-2080 • Fax: 508-435-2199

Order on-line: www.qcb.com

Circle No. 50 on Readers' Service Card

PRECLINICAL SERVICES

A new service oriented CRO
High quality, fast, animal testing
Perry Scientific • San Diego, California
858 467-9600 www.perryscientific.com

Circle No. 51 on Readers' Service Card

MARKETPLACE



**MORE PRODUCTS
ON PREVIOUS PAGE**

RNA Oligonucleotides

Reliable Quality and Yields Guaranteed

\$7.50 / Base

(0.2 μmole, \$24 set-up)

www.dharmacon.com

(303) 415-9880 • (800) 235-9880



Circle No. 2 on Readers' Service Card

2 min DNA Clean-up & Concentrate

for PCR, enzyme reactions, "dirty" DNA, etc.

Improved Gel DNA Recovery

for perfect ligations & sequencing, etc.

ZYMO RESEARCH 1-888-882-9682 www.zymor.com

Circle No. 5 on Readers' Service Card

Full Spectrum Gene Services Remove the limits!

GENE synthesis, codon optimization, sequencing,
cloning, library, mutagenesis, expression,
MUTATION SCREENING, tailoring... & more!

de novo gene synthesis as low as \$5/bp

SEQUENCING \$15 plasmid, PCR

Plasmid Purification ultrapure, large scale for gene therapy

800-214-7722, CustomerService@ElimBioPharm.com

Circle No. 52 on Readers' Service Card



TriLink BioTechnologies

Superior Quality with Unparalleled Service

Modified NTPs

See the TriLink difference

Experience Matters

www.trilinkbiotech.com

800-863-6801

Circle No. 53 on Readers' Service Card

Custom DNA Sequencing

- ♦ Long Reads ♦
- ♦ Plasmid Inserts ♦
- ♦ Sequence Done in a Week ♦

♦ Single Strand as low as ♦

\$20.00 for < 500 bases

♦ Double Strand ♦

\$30.00 up to 450 bases

\$45.00 up to 650 bases

\$70.00 up to 1600 bases

Inquire about Large Inserts and Genome Sequencing.



Toll Free: 877-694-2832 • info@mwgbio.com
http://www.mwgbio.com

Circle No. 46 on Readers' Service Card

XX IDT®
INTEGRATED DNA TECHNOLOGIES, INC.

Premier Specialty Synthesis

Molecular Beacons, RNA,

Antisense Oligos & More

1-800-328-2661 • www.idtdna.com

Circle No. 42 on Readers' Service Card

MARKETPLACE

Custom Peptides & Antibodies

Best Service & Price! Compare and Save!

Alpha Diagnostic (800) 786-5777

Fax (210) 561-9544; info@4adi.com

Web site: http://www.4adi.com

Circle No. 54 on Readers' Service Card

QUALITY DNA SYNTHESIS

MALDI-TOF Mass Spectrometry Quality Control

Fluorescent Dyes & Other Modifications

Gene Construction & Sequencing Services

Custom RNA Oligos & Antisense DNA Oligos

Custom Primers for PCR & Sequencing

Long Oligos (up to 150-mers)

Competitive Pricing

MIDLAND

The Midland Certified Reagent Company

1-800-247-8766 • FAX: 1-800-359-5789

www.mrcr.com • email: mrcr@oligos.com

Circle No. 43 on Readers' Service Card

3 O.D. Select Oligos

Just \$0.60/base

Order through our Web site and we'll ship your 3 O.D. Select oligos in just 24-48 hours. Every oligo is QC'd by PAGE analysis, and each batch is performance-tested by mass spec.

*Desalted only. Oligos must be 10 to 35 bases in length. No modifications or additional purification. Web orders only. Offer valid in U.S. only.



North America: 1-877-710-1504 • email: gorderentry@sigma.com

Circle No. 57 on Readers' Service Card

POLYCLONAL ANTIBODIES

QUICK QUOTE

MOST QUOTES IN AN HOUR

FAST DELIVERY

PEPTIDE TO ANTISERUM IN 70 DAYS

100% SATISFACTION GUARANTEED

Fax: 978-343-5940 • www.newenglandpeptide.com

...MADE EASY!

NEW ENGLAND

PEPTIDE, INC.

Tel: 888-343-5974

Circle No. 3 on Readers' Service Card

MERLIN® CORE SERVICES



Plasmid Purification

Endotoxin Removal

Any Amount

1-800-4-BIO-101 • www.bio101.com

Circle No. 58 on Readers' Service Card

MARKETPLACE

BIO-SYNTHESIS, INC.



CUSTOM POLYCLONAL ANTIBODIES

Each package includes:

- * Synthesis of Peptide & Purification
- * ALH Conjugation
- * Immunization of 2 rabbits
- * ELISA testing

We can also analyze your protein at FREE of charge.

www.biosyn.com 1-800-227-0627

Circle No. 48 on Readers' Service Card

Quality Peptides & Antisera

Friendly, Personal Service

www.genosys.com

Custom Peptide Synthesis

- sequence analysis
- IG, >70%, >80%, >95% purity
- scales from 2 mg-1 g
- variety of modifications available
- mass spec & HPLC on every peptide
- satisfaction guaranteed

Polyclonal Antisera Service

- antigen design assistance
- synthesis, conjugation and sera collection
- flexible protocol

SIGMA

GENOSYS

North America

1-877-710-1502

ginformation@sigma.com

Europe

(+44) (0) 1223 839000

info@sigma-genosys.co.uk

Circle No. 56 on Readers' Service Card

Highly Purified Salt Free

Oligonucleotides

Custom DNA Synthesis

PSF (Purified Salt Free) & HPSF (Highly Purified Salt Free) Grade

♦ Failure products removed ♦ Salt Removed

♦ MALDI-TOF production QC

♦ No Metal Ions ♦ Modifications available

Starting at \$0.49/base for PSF Grade

(0.01 μmol scale) Volume discounts available.

Never a purification or setup fee!
For reactions that work...every time!



Online Ordering & Tracking

Toll Free: 877-694-2832 • info@mwgbio.com
Fax: 978-343-5940 • www.mwgbio.com

Circle No. 47 on Readers' Service Card

Custom Peptides

\$14/residue

3 days turn around

Free Mass Spec

HPLC/UV Trace

8-17 residues

20-50 mg (Desalted)

Please inquire for modified peptides

Tel: 800-597-7873

925-371-1070

Fax: 925-371-1156

email: peptide@peptidogenic.com

PeptidoGenic The Peptide Engineering Specialist

Circle No. 1 on Readers' Service Card

Express Peptides

20mg in 5 days

\$18 per residue

Research Genetics

1-800-533-4363

Circle No. 55 on Readers' Service Card

BIO WHITTAKER
A **CAMBREX** Company

the
WORLD Center
for Cell Culture
Excellence



**Standardize
Your Research!
Call Your Clonetics®
Technical Specialist
Today.**

For Technical Information:
US & Canada (800) 852-5663
All other locations:
(301) 898-7025 ext. 7510

**"Ask About Our New
User Discount"**

TO PLACE AN ORDER CALL:
(800) 344-6618
FAX: (301) 845-1008
E-MAIL: cs@biowhittaker.com
Internet:
www.biowhittaker.com, or
www.clonetics.com



©1999 BioWhittaker, Inc., A Cambrex Company.
All rights reserved.

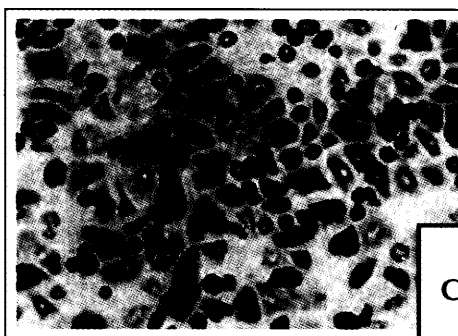
Clonetics® Normal Human Cryopreserved Hepatocytes!

Applications:

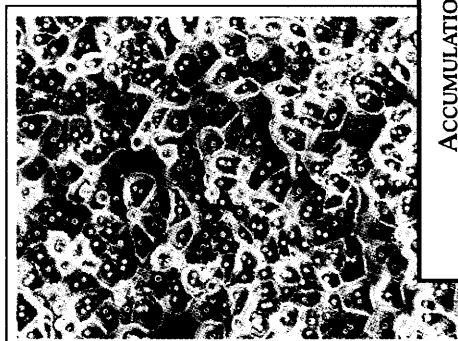
- Drug Metabolism Testing
- Toxicology Studies
- Drug Discovery
- Basic Research
- Transfection

Hepatocyte Features:

- Available Cryopreserved or Plated
- Serologically Negative for Hepatitis B and C, and Syphilis
- Multiple Lots Available, Expressing Various Enzyme Profiles
- Available with Clonetics Hepatocyte Culture Medium (HCM™)
- Tested for P450 Enzyme Activity after 4-5 Days of Culture
 - CYP1A1/1A2 (EROD; induced w/3-Methylcholanthrene)
 - CYP3A4 (Induced w/Rifampicin)
 - CYP2C9 (Basal Activity)
- ECOD
- Uncoupled Phase II 7-Hydroxycoumarin conjugation
- Albumin Expression

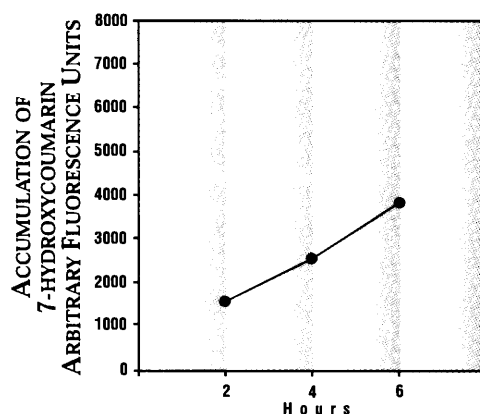


▲ Albumin Staining: after 1 day of culture.



▲ Human Hepatocytes plated on collagen in HCM.

**ECOD ACTIVITY OF NORMAL HUMAN
CRYOPRESERVED HEPATOCYTES OVER TIME**



Circle No. 63 on Readers' Service Card

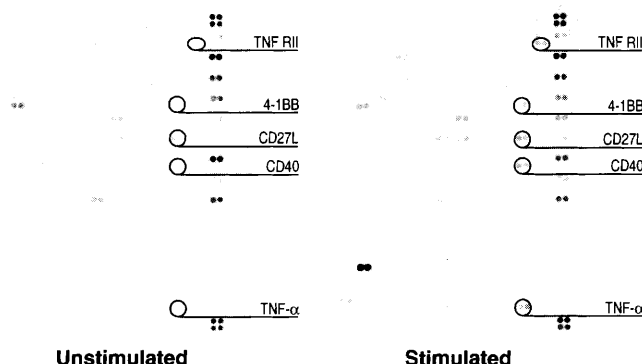
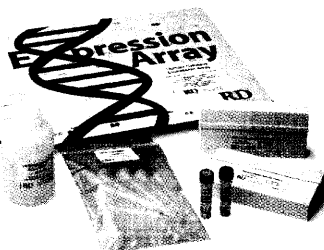
Molecular Biology

REAGENTS

DNA ARRAYS • RNA QUANTITATION • PRIMER PAIRS • PROBE COCKTAILS

Expression Arrays

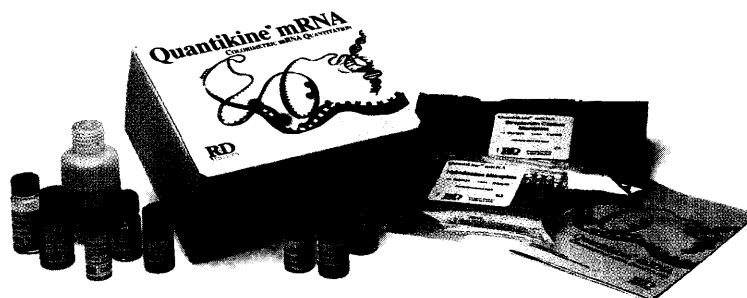
- Semiquantitative analysis of mRNAs using several different housekeeping control cDNAs
- All cloned cDNAs are sequenced and contain no repetitive elements
- Identify differentially expressed mRNAs by comparing expression profiles from different samples



The Human Cytokine cDNA Array (Catalog # GA001) shows RNA expression of TNF Superfamily genes in unstimulated and stimulated cells. Stimulated cells show an increase of 3.0, 26, 2.3, 130, and 8.6 fold for TNF RII, 4-1BB, CD27L, CD40 and TNF- α , respectively. Radiolabeled cDNA was made using poly (A)⁺ RNA, ³²P labeled nucleotide and Cytokine-specific Primers (Catalog # GAC11).

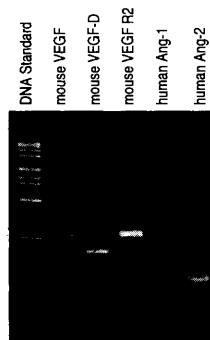
Quantikine[®] mRNA

- Quantitate multiple targets at once
- Runs in less than 5 hours
- Less sample RNA than Northern Blot or RPA
- Uses a conventional microplate reader
- Non-radioactive • Non PCR-based



Primer Pairs[™] & Probe Cocktails

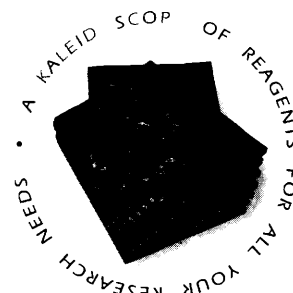
- R&D Systems' Primer Pairs have been carefully tested to identify optimum amplification conditions so you spend less time optimizing PCR*.
- Probe Cocktails are available labeled with biotin or digoxigenin** or unlabeled with 5'- and 3'-hydroxyl groups.



RT-PCR* products were amplified from first-strand cDNA samples representing sources known to express the respective mRNA. Products were analyzed on a 2.0% agarose-TAE gel and visualized with ethidium bromide staining.

*PCR is covered by US Patent Numbers 4683195 and 4683202 assigned to Hoffmann-LaRoche.

**licensed from Boehringer Mannheim GmbH.



FOR RESEARCH USE ONLY. NOT FOR USE IN DIAGNOSTIC OR THERAPEUTIC PROCEDURES.

North America
R&D Systems, Inc.
McKinley Place NE
Minneapolis, MN 55413, USA
Tel: 612 379-2956
Free: 1-800-343-7475
Fax: 612 379-6580
info@randsystems.com

Europe
R&D Systems Europe Ltd.
4-10 The Quadrant, Barton Lane
Abingdon, OX14 3YS, UK
Tel: +44 (0)1235 529 449
Free: 0800 37 34 15
Fax: +44 (0)1235 533 420
info@randsystems.co.uk

Germany
R&D Systems GmbH
Borsigstrasse 7
65205 Wiesbaden, Germany
Tel: +49 (0)6122 90980
Free: 0800 909 4455
Fax: +49 (0)6122 909819
info@randsystems.de

Europe Free Phone
Belgique/België: 0800 10 468 614
Danmark: 80 01 85 92
France: 0800 90 72 49
Nederland: 060 225607
Norge: 800 11033
Sverige: 020 79 31 49
Switzerland: 0800 55 2482

R&D
SYSTEMS
1-800-343-7475
www.randsystems.com

Circle No. 26 on Readers' Service Card