

## Our Line of Panorama Gene Arrays Has Expanded (*again!*)

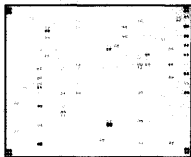
Our Panorama Human Apoptosis Gene Arrays let you monitor the differential expression of almost two hundred genes found to be involved in the apoptotic pathways. These include genes from the following families:

- Apoptosis-Related Factors
- Apoptosis Suppressors
- Bcl-2 Related
- Caspase and Caspase Substrates
- Cell Cycle Regulators
- Cytokines, Growth Factors, & Receptors
- Neuronal Factors
- Signal Transduction Proteins
- TNF Superfamily

*The genes are spotted in duplicate on nylon membranes and analyzed using standard molecular biology techniques.*

Product Numbers:	PRAP0002	2 Panorama Human Apoptosis Gene Arrays
	PRLA0001	Panorama Apoptosis cDNA Labeling & Hybridization Kit
	GPAP0001	Human Apoptosis cDNA Labeling Primers

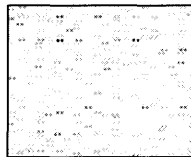
### Related Products



#### Panorama Mammalian Gene Arrays

Genes are spotted in duplicate on nylon membranes.

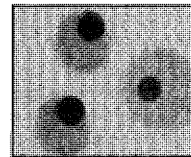
- Human Cytokine
- Human Apoptosis
- Mouse Cytokine (coming soon)
- Mouse Apoptosis (coming soon)



#### Panorama Microbial Gene Arrays

PCR-amplified open reading frames representing all protein coding sequences, arrayed in duplicate on nylon hybridization membranes.

- *E. coli* • *B. subtilis* • *H. pylori* (coming soon)
- *C. jejuni* (coming soon)



#### Microbial ORFmers

PCR primer pairs designed to amplify most of the ORF with an average length of ~1 kb.

- *E. coli* • *B. subtilis*
- *H. pylori* • *C. jejuni*
- *M. tuberculosis*
- *B. burgdorferi*

**SIGMA**  
GENOSYS

Sigma-Genosys, The Woodlands, Texas: Phone: 877-260-0763 or 281-363-3693 [ginformation@sial.com](mailto:ginformation@sial.com)  
 Cambridge, U.K.: Phone (+44)(0)1223 839000 • [info@sigma-genosys.co.uk](mailto:info@sigma-genosys.co.uk)  
 Hokkaido, Japan: Phone: 81 133 73 5005 [genosys@genosys.co.jp](mailto:genosys@genosys.co.jp) • [www.genosys.com](http://www.genosys.com)  
 Australia: Phone: 61 2 9841 0555 • [Sigmaa@ibm.net](mailto:Sigmaa@ibm.net)

*These products have been manufactured by Sigma-Genosys using recombinant DNA supplied by R&D Systems.*  
 Circle No. 12 on Readers' Service Card

# NEW PRODUCTS

## SINGLE NUCLEOTIDE POLYMORPHISM SCORING

The DASH (Dynamic Allele Specific Hybridization) system is a new method for single nucleotide polymorphism (SNP) scoring. It enables rapid and accurate scoring of SNP occurrences in a population of samples. It reports SNP occurrences by detecting DNA denaturation temperature changes via fluorescence quenching in a 96-well microtiter plate format. The DASH system includes Windows-based application-specific software, protocols for sample preparation, and a specially adapted fluorescence microtiter plate reader. The DASH reader measures fluorescence intensity while heating samples through a range of denaturation temperatures, downloading the data to a personal computer.

### Dynex Technologies/Hybaid

For more information call 703-803-1478 or **circle 143** on the Reader Service Card

## EVAPORATION SYSTEM

The redesigned RapidVap N<sub>2</sub> Evaporation System directs a stream of nitrogen or dry gas downward onto the surface of the samples to speed evaporation and help remove the solvent as it evaporates. The instrument

### Labconco

For more information call 816-333-8811 or **circle 144** on the Reader Service Card

offers a more efficient automatic alternative to Kuderna-Danish and rotary evaporators. The combination of vortex action, heat, and nitrogen blowdown accelerate evaporation. The

Teflon-coated aluminum sample block holds eight large samples of up to 450 ml each. The redesigned system has improved chemical compatibility. Up to nine different protocols can be entered into memory.

## ACTIVATED SLIDES FOR DNA IMMOBILIZATION

The 3D-Link Activated Slides for DNA immobilization are designed to enable users to easily produce high-quality microarrays. The slides make use of a reactive, three-dimensional surface chemistry to immobilize amine-terminated polymerase chain reaction products and oligonucleotides. Endpoint attachment orients the DNA while the polymeric coating holds it away from the surface of the slide, making

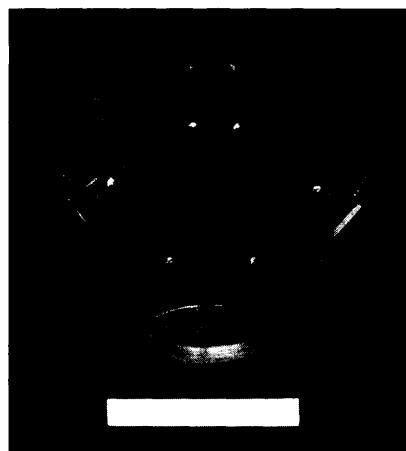
### SurModics

For more information call 800-755-7793 or **circle 145** on the Reader Service Card

the DNA readily available for hybridization. A uniform, consistent coating prevents the slide-to-slide and lot-to-lot variability commonly found in other slide preparations. Additional advantages of these slides include lower backgrounds, a stable covalent bond between the DNA and the surface of the slide, and endpoint attachment of the capture DNA.

## TUNABLE LIGHTING SYSTEM

The flexibility of the LT 9500 Illumatool Tunable Lighting System allows researchers to observe a wide range of samples, including green-fluorescent protein (GFP) expressed in living plants, animals, and bacteria; fluorescent-stained gels; and 96-well plates. The device provides a safe alternative to ultraviolet radiation, thus reducing damage to biological samples. Standard features include wavelength con-



trol between 390 nm and 750 nm, variable illumination control from 0% to 100%, and a 100% white light mode. The wavelength control can be used to produce an optimized intense cool excitation light.

## SYSTEM FOR DIFFICULT TEMPLATES

The GC-RICH PCR (polymerase chain reaction) System can overcome templates that are GC-rich, have repeats, or exhibit high secondary structure. The system's Taq DNA polymerase, special proofreading enzyme, and unique GC-

### Lighttools Research

For more information call 760-632-0677 or **circle 146** on the Reader Service Card

RICH resolution solution can amplify templates up to 5 kb in length that are difficult or impossible to amplify by standard methods.

## LITERATURE

*Crystal Reference Guide* is designed to help users determine the best materials for their infrared sampling needs. The guide covers the major considerations in choosing materials, such as frequency range, solubility of the sample, refractive index, reactivity with the sample, and mechanical and thermal characteristics. The guide features 17 infrared crystal materials with specifications and spectra. The guide also covers such topics as how to select an infrared transmission window and how to calibrate infrared absorption cells.

### Spectra-Tech

For more information call 800-THE-FTIR or **circle 148** on the Reader Service Card

*Vibration Control 2000* catalog features expanded product offerings and custom capabilities of vibration isolation systems. Prod-

### Newport Corp

For more information call 800-222-6440 or **circle 149** on the Reader Service Card

ucts include vibration isolation workstations, optical table systems, new active isolation systems, and a full line of original equipment—manufacturer pneumatic isolators. The catalog includes performance charts, specifications, and technical reference guides.

*Immunogold* newsletter is a new publication that not only provides product listings available in the labeling field but also serves as a source of valuable technical information. The newsletter includes frequently asked questions and answers on immunolabeling as well as descriptions of sample protocols and a troubleshooting guide.

### Electron Microscopy Sciences

For more information call 215-646-1566 or **circle 150** on the Reader Service Card

### Roche

For more information call 800-428-5433 or **circle 147** on the Reader Service Card

Newly offered instrumentation, apparatus, and laboratory materials of interest to researchers in all disciplines in academic, industrial, and government organizations are featured in this space. Emphasis is given to purpose, chief characteristics, and availability of products and materials. Endorsement by *Science* or AAAS of any products or materials mentioned is not implied. Additional information may be obtained from the manufacturers or suppliers named by circling the appropriate number on the Reader Service Card and placing it in a mailbox. U.S. postage is free.

## Classified Advertising

To obtain information on rates, deadlines, editorial features, and bonus distribution schedules, call our sales office or visit *Science* Careers at [www.scienceonline.org](http://www.scienceonline.org) and click on "How to Advertise." All advertising is subject to publisher's approval.

### UNITED STATES

#### Display Classified Advertising

Bren Peters Kristin Westapher  
Tel: 202-326-6541 Tel: 202-326-6555  
Fax: 202-289-6742  
E-mail: [science\\_displayads@aaas.org](mailto:science_displayads@aaas.org)

#### Line Classified Advertising

Christina Geiger Kathleen Clark  
Tel: 202-326-6532 Tel: 202-326-6722  
Fax: 202-289-6742  
E-mail: [science\\_classifieds@aaas.org](mailto:science_classifieds@aaas.org)

Line ads are not agency commissionable. Ads submitted should not include any bold, italicized, or abbreviated words. *Science* will edit and typeset ads according to *Science* style requirements. *Science* cannot provide proofs of typeset line ads. *Science* will provide an estimated cost of line ads at time of placement. This is an approximate cost only. Please provide contact name, telephone, billing information, and purchase order numbers with your order.

#### Online Classified Advertising

Beth Dwyer  
Tel: 202-326-6534  
Fax: 202-289-6742  
E-mail: [science\\_internet@aaas.org](mailto:science_internet@aaas.org)

Every employment ad placed in *Science* will be featured in our job database online for 4 weeks. Call to find out how to link to thousands of additional job seekers online with *Science* Professional Network.

[www.scienceonline.org](http://www.scienceonline.org)

**Ad Materials:** Send to: *Science* Classified Advertising, 1200 New York Avenue, NW, Room 911, Washington, DC 20005

### EUROPE

#### Line, Display, and Online Classified Advertising

Deborah Cummings  
Tel: +44 (0) 1223 326 500  
Fax: +44 (0) 1223 326 532  
E-mail: [european\\_ads@science-int.co.uk](mailto:european_ads@science-int.co.uk)

**Ad Materials:** Send to: Advertising Dept., Bateman House, 82-88 Hills Road, Cambridge CB2 1 LQ, United Kingdom

**Discounts:** A 3% cash discount is granted to all prepaid ads.

**Credit Cards:** *Science* accepts American Express, MasterCard, and VISA. Discount does not apply to credit cards.

**Cancellations:** Deadline for cancellation is Tuesday, 10 days prior to issue date.

To Subscribe to *Science* call:  
202-326-6417 or 1-800-731-4939

### POSITIONS OPEN

#### ASSISTANT/ASSOCIATE PROFESSOR PHARMACOLOGY

Department of Pharmaceutical Sciences  
Campbell University School of Pharmacy

The Department of Pharmaceutical Sciences announces an immediate opening for a full-time faculty position at the Assistant or Associate Professor level. Applications will be accepted until the position is filled. The successful candidate should have a Ph.D. in pharmacology with expertise in cellular/molecular methodologies. Teaching and postdoctoral research experiences and background in pharmacy are desirable but not required. The candidate will serve as part of a multidisciplinary team with responsibilities for teaching in undergraduate, Pharm.D., and graduate-level pharmacology courses; areas of emphasis will be autonomic, cardiovascular, and endocrine pharmacology. The successful candidate will establish an active independent research program, which incorporates undergraduate and graduate research training. The School of Pharmacy, a highly progressive and model program in pharmacy education, offers the entry-level Pharm.D. degree, as well as a B.S. degree in pharmaceutical sciences and a B.S. and M.S. in clinical research. Campbell University is a private Christian university located approximately 35 miles south of Research Triangle Park in central North Carolina. Its student-oriented focus facilitates excellent academic and professional interactions. Applicants should include a letter of interest, curriculum vitae, statement of research interests, and the names and addresses of three references to: **Dr. Kathy D. Webster, Pharm.D., Ph.D., Associate Professor, Department of Pharmaceutical Sciences, Campbell University School of Pharmacy, P.O. Box 1090, Buies Creek, NC 27506. Telephone: 910-893-1704; FAX: 910-893-1697; e-mail: [kwebster@camel.campbell.edu](mailto:kwebster@camel.campbell.edu).** *Campbell University is an Equal Opportunity Employer.*

#### FACULTY POSITION BONE CELL BIOLOGY

The Division of Nephrology, Bone, and Mineral Metabolism at the University of Kentucky seeks a faculty member with an interest in bone cell biology. The successful candidate is expected to utilize *in vitro* bone cell models to examine functional aspects of bone turnover. The appointment may be made at the level of **ASSISTANT** or **ASSOCIATE PROFESSOR**, depending upon the qualifications of the candidate selected. For Assistant Professor, candidates are expected to have demonstrated significant research accomplishments; have the potential to develop a strong, extramurally funded research program; and be an integral contributor to the overall research efforts of the Division. For appointment as Associate Professor, demonstration of continuous excellence in research and extramural support are required. Applicants must hold an advanced degree and have completed postdoctoral training. Interested persons should forward a curriculum vitae and statement of research interests/plans and arrange for three letters of recommendation to be sent to: **Dr. Hartmut H. Malluche, Chief, Division of Nephrology, Bone, and Mineral Metabolism, University of Kentucky Medical Center, 800 Rose Street, Room MN564, Lexington, KY 40536-0298.**

#### RESEARCH ASSOCIATE LAHEY CLINIC

A Research Associate is wanted to join an immunology-molecular biology group studying both clinical and basic aspects of HCV infection. Candidates must have completed postdoctoral training. Expertise with transgenic mouse models and lipid metabolism required for project on HCV cell entry in human LDL receptor transgenic mice.

Applicants should send letter of interest and curriculum vitae, along with two letters of reference, to: **Vincent Agnello, M.D., Director, Immunology Research, Lahey Clinic, 41 Mall Road, Burlington, MA 01805.** *Equal Opportunity Employer.*

### POSITIONS OPEN

#### PROFESSOR/CHAIR DEPARTMENT OF BIOLOGICAL SCIENCES

Bowling Green State University seeks an individual with an outstanding research program to chair its Department of Biological Sciences. Anticipated start date: July 2001; earlier start date negotiable. The Department has a faculty of 30 with primary strengths in three areas: molecular biology/biochemistry, neurosciences, and ecology. The Department supports a growing Ph.D. program (94 graduate students) and 600 undergraduate majors. High-quality staff and facilities are available to support excellence in research and instruction. Candidates must possess qualifications for rank of or promotion to **TENURED FULL PROFESSOR**; administrative experience or evidence of organizational leadership potential is required. Research area should enhance existing strengths (see [website: www.bgsu.edu/departments/biology](http://www.bgsu.edu/departments/biology)). Credentials received on or before April 3, 2000, will be given first consideration, but credentials will be accepted until position is filled. A curriculum vitae; statement of professional goals and administrative experience/philosophy; and three current, original reference letters should be submitted to:

**Ms. Debra Freyman, Administrative Assistant  
Chair, Search Committee  
Department of Biological Sciences  
Bowling Green State University  
Bowling Green, OH 43402  
E-mail: [dfreyma@bgnet.bgsu.edu](mailto:dfreyma@bgnet.bgsu.edu)**

*Bowling Green State University is an Affirmative Action/Equal Employment Opportunity Employer and encourages applications from women, minorities, veterans, and persons with disabilities.*

**NEUROBIOLOGY:** Whitman College seeks a Neurobiologist for a one-year appointment as a **VISITING ASSISTANT PROFESSOR** starting August 2000. The successful applicant will teach one semester of the introductory course "Biological Principles" with laboratory, an upper-level neurobiology course with laboratory, and an upper-level developmental biology course with laboratory. Supervision of student theses will also be expected. Ph.D. preferred. Whitman College has a strong commitment to undergraduate teaching, research, and student advising in a liberal arts environment. Send three letters of recommendation, transcripts from all postsecondary institutions, and statement of teaching and research interests to: **Kendra J. Golden, Chair of the Search Committee, Biology Department, Whitman College, 345 Boyer Avenue, Walla Walla, WA 99362. Telephone: 509-527-5210; FAX: 509-527-5904; e-mail: [golden@whitman.edu](mailto:golden@whitman.edu).** Closing date: March 24, 2000. Further information about Whitman College: [website: http://www.whitman.edu/](http://www.whitman.edu/). *Equal Opportunity Employer. Candidates must be lawfully employable in this country as a result of citizenship, visa, or resident alien status.*

#### VISITING ASSISTANT PROFESSOR BIOLOGY DEPARTMENT WILLIAMS COLLEGE

Three-year visiting position beginning July 1, 2000, for a broadly trained Cell/Molecular Biologist to teach courses in genetics, molecular biology, and/or biochemistry. Normally, faculty members teach one course and two laboratories each semester. Support will be provided to establish a research program involving undergraduates. Ph.D. required; some postdoctoral experience is desirable. Please send curriculum vitae, statement of teaching and research experience and interests, and have three letters of reference forwarded by March 15, 2000, to: **Dan Lynch, Chair, Department of Biology, Williams College, Williamstown, MA 01267.**

*An Equal Opportunity/Affirmative Action Employer, Williams College especially welcomes applications from women and minority candidates.*

**Aventis Pharmaceuticals**



**Our challenge is life.**

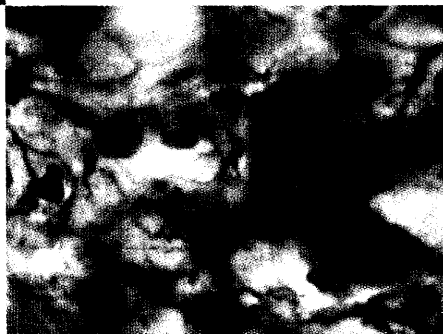
***Excellence***



***Dedication***



***Vision***



Hoechst Marion Roussel and Rhone-Poulenc Rorer have adopted the name Aventis Pharmaceuticals to create:

***A new world class leader in the pharmaceutical industry.***

Aventis Pharmaceuticals is dedicated to extending and enhancing human life through the discovery, development, manufacture, and sales of pharmaceutical products. Aventis offers the power of global forces in pharmaceutical products and services, an excellent financial standing and a vision for the future that is unmatched in the industry.

At our North American Strategic Research Center in Bridgewater, New Jersey we have combined the excellence and dedication of our former respiratory research areas to form the **Aventis Respiratory and Rheumatoid Arthritis Disease Group**. The focus and goal for this group will be the successful search for novel, oral, anti-allergy, anti-inflammatory and disease modifying compounds in the battle against asthma, COPD, and rheumatoid arthritis.

## **Section Leader for Histopathology**

Under the direction of the Head of Pharmacology & Pathology, the Section Leader is responsible for the leadership of the Histopathology/Cytopathology team charged with developing innovative protocols, e.g., image analysis/quantitation, molecular histology, immunohistochemistry, etc., for the analysis of compound efficacy in both animal & cellular models. Our ideal candidate must possess a Ph.D., (preferably with a strong component of histopathology or anatomy), with a minimum of 5 years relevant research experience most probably garnered in the pharmaceutical industry. Significant experience in the development and analysis of animal models of respiratory disease, together with a record of outstanding accomplishment in the industrial applications of histopathology & cytopathology is also essential. We are particularly interested in candidates with a knowledge of, and interest in, histomorphometric techniques.

This is an opportunity for an exceptional leader to join an exceptional team, dedicated to creating a center of excellence in experimental pulmonary pathology.

**Become part of the most exciting growth company in the pharmaceutical industry. Please send a c.v. and a cover letter indicating your career accomplishments, position of interest and reference ad code: 2000BW0008 to:**

**Aventis Pharmaceuticals  
B103H**

**P.O. Box 6800  
Bridgewater, NJ 08807-0800  
email: [jobs@aventis.com](mailto:jobs@aventis.com)**

**Visit our website for further information:  
[www.aventispharma-us.com](http://www.aventispharma-us.com)**

Aventis Pharmaceuticals is proud to be an equal opportunity employer committed to a diverse workforce.

The Office of Therapeutics Research and Review (OTRR), Center for Biologics Evaluation and Research (CBER), Food and Drug Administration (FDA) is searching for a candidate for the position of Director, Division of Therapeutic Proteins. The Director will manage a scientific and administrative team of approximately 50 people based at the NIH in Bethesda, MD. The Division is responsible for pre-market evaluation of protein therapeutics, angiogenesis inhibitors, tumor vaccines and several other classes of products. The division conducts a research program to support these regulatory efforts, and development of appropriate standards and policies. The director interacts with high level government and pharmaceutical industry officials and with leaders of scientific, academic, health, and medical organizations. **Qualifications:** All applicants must be U.S. or naturalized citizens. Candidates must also possess a M.D. and/or Ph.D. degree with subsequent training and professional experience in scientific research and management. **Physician:** Applicants must have a Doctor of Medicine or equivalent degree from an accredited institution and additional clinical and/or research training. Graduates of foreign medical schools must submit a copy of their permanent Education Commission for Foreign Medical Graduates (ECFMG) certificates. **Location:** Offices and laboratories are located on the campus of the National Institutes of Health in Bethesda, Maryland. **Salary:** **Physicians:** Salary range for Civil Service positions at the GS-15 level is \$84,638 to \$110,028 per annum. Physician may also be eligible for either a Physician's Comparability Allowance of \$4000 to \$20,000 per annum, or Physician Special Pay up to \$157,000 based on experience, qualifications and medical specialty. **Scientists** (other than physicians): Salary range for Civil Service position at GS-15 is \$84,638 to \$110,028 per annum. Scientists may be eligible for the Senior Biomedical Research Service, which pays up to a maximum of \$157,000. Position may be filled by appointment in the U.S. PHS Commissioned Corps with commensurate salary and benefits. **To Apply:** Please send a curriculum vitae, resume **OR** an SF-171 to:

**Food and Drug Administration, CBER**  
1401 Rockville Pike, HFM-123  
Rockville, Maryland 20852-1448  
Source Code: (00-DTP-1)

**APPLICATIONS MUST BE RECEIVED OR POSTMARKED BY APRIL 3, 2000.**

For more information, call Lisa Durphy at (301)827-1286.

**FDA IS AN EQUAL OPPORTUNITY EMPLOYER AND HAS A SMOKE FREE ENVIRONMENT.**

### **Systems Neuroscience Tenure-Track Assistant Professor Department of Neuroscience University of Minnesota**

The newly formed Department of Neuroscience at the University of Minnesota-Twin Cities is seeking a faculty member at the assistant professor level to strengthen its existing programs in systems neuroscience. Areas of interest include sensorimotor integration, visual and auditory processing, and oculomotor control. Applications from individuals using multidisciplinary and novel experimental approaches are particularly welcomed. The ideal candidate will complement existing departmental strengths in motor control, somatosensory systems, and functional brain imaging. Starting date is Fall, 2000. For more information see <http://www.neurosci.umn.edu>.

Candidates must have a Ph.D. and/or M.D. degree. Desired experience includes at least two years of postdoctoral or equivalent experience, and a strong publication record. Successful candidates must be able to secure permanent resident status or be U.S. citizens. Candidates will be expected to develop a vigorous, independent research program that will lead to external funding. The ability to interact collaboratively among a variety of disciplines will be strongly encouraged, and teaching of undergraduate, graduate, and/or professional students will be expected. Please send a curriculum vitae, a statement of research interests, and three letters of recommendation that consider both research and teaching potential to:

**Search Committee**  
c/o Ms. Kirsti Hendricksen  
University of Minnesota  
Department of Neuroscience  
Jackson Hall Room 6-145  
321 Church St., S.E.  
Minneapolis, MN 55455 USA  
or [hendr056@tc.umn.edu](mailto:hendr056@tc.umn.edu)

Electronic versions of the required information may be e-mailed but must be followed with a hard-copy for the official search files. The review process for applications will begin April 15, 2000 and continue until the position is filled.

*The University of Minnesota is an equal opportunity educator and employer.*

### **MARINE PHYTOPLANKTON ECOLOGIST**



The Department of Organismic Biology, Ecology and Evolution (OBEE) and the campus-wide Institute of the Environment (IoE) at UCLA invite applications for an **open rank, tenure-track, joint faculty position in Marine Phytoplankton Ecology**. We seek an integrative scientist who uses a variety of approaches to document and study the role and significance of coastal and oceanic phytoplankton in relation to local and global material and energy cycles. The successful candidate's research program should include one or more of the following aspects of basic and applied science: collection and analysis of coastal and global field data, laboratory experimentation, remote sensing techniques, and numerical modeling. Current faculty strengths are in marine biology, climatology, watershed chemistry, physical oceanography, pelagic and coastal wetlands ecology, thus facilitating opportunities for multidisciplinary interactions in research and teaching.

The IoE (<http://www.ioe.ucla.edu>) is a campus-wide academic unit that is devoted to interdisciplinary research and teaching related to environmental issues at local, regional, and global scales. OBEE (<http://www.lifesci.ucla.edu/bio/>) has 23 faculty, whose research ranges from cellular to evolutionary biology, including strong research programs in animal behavior, evolution, and ecology. Candidates are expected to maintain a vigorous research program and to contribute to both undergraduate and graduate teaching in both the IoE and OBEE. UCLA offers support to faculty, including access to extensive research facilities and related start-up resources.

Send CV, statements of research and teaching interests, and the names and addresses of three references by **March 31, 2000** to **Chair, Marine Ecologist Search, Department of Organismic Biology, Ecology and Evolution, University of California, Box 951606, Los Angeles, CA 90095-1606.**

*The University of California is an Equal Opportunity Employer committed to excellence through diversity.*



### **POSTDOCTORAL FELLOWSHIPS**

The Center for AIDS Research at Duke University Medical Center has positions open for postdoctoral fellows to perform cutting edge research in the areas of AIDS pathogenesis, murine reconstitution in AIDS, HIV vaccine development, mucosal immunity and HIV-related opportunistic infections. Start date is September 2000.

The specific senior investigators and the areas of interest that are available for postdoctoral positions include:

- Dr. Michael Greenberg, HIV Pathogenesis
- Dr. Barton F. Haynes, HIV Vaccine Development, Immune Reconstitution in HIV Infection, Thymus and T Cell Immunobiology
- Dr. Celia Labranche, HIV Pathogenesis, HIV co-receptor usage
- Dr. Hua-Xin Liao, HIV Vaccine Development
- Dr. David Montefiori, HIV Pathogenesis and HIV Vaccine Development
- Dr. Herman Staats, HIV Vaccine Development and Mucosal Immunity
- Dr. Kent Weinhold, HIV Pathogenesis and Host-Virus Interactions

Candidates should send a letter of indicating interest along with a current curriculum vitae and the names of three references to: **Barton F. Haynes, M.D., Center for AIDS Research Director, Box 3258, Duke University Medical Center, Durham, NC 27710.**

**Duke University  
Medical Center**

Duke University Is An Equal Opportunity/Affirmative Action Employer

# Life Made Better

**The** members of the Bristol-Myers Squibb Pharmaceutical Research Institute share one goal—to discover and develop best-in-class, cost-effective medicines that enhance and extend human life.

## Microbiology Wallingford, CT

**Antifungal Drug Discovery Scientist:** Ph.D. with 5-10 years experience in Fungal Biology (Genetics, Biochemistry, Physiology) to identify and develop novel antifungal agents; target identification, assay development, and lead selection. Experience with multidisciplinary interactions in team-based settings desired. **Job Code: PRMA159MF1**

**Associate Antifungal Drug Discovery Scientist:** Ph.D. with 2-5 years experience in Fungal Biology (Genetics, Biochemistry, Physiology) to identify and develop novel antifungal agents; target identification, assay development and lead selection. **Job Code: PRMA159MF2**

## Metabolism & Pharmacokinetics Wallingford, CT

**Preclinical Pharmacokinetic Research Scientist:** Ph.D. in a pharmaceutical science with 3-5 years experience in preclinical pharmacokinetics study design, execution and data interpretation for differing therapeutic areas. Familiarity with models/techniques to facilitate generation of pharmacokinetic information desired. Background in drug metabolism preferred. **Job Code: PRMA159JK**

**Assistant/Associate Research Scientist:** B.S./M.S. in Pharmaceutical Sciences/Analytical Chemistry/Biochemistry with 1-4 years experience to participate in multi-disciplinary drug discovery & provide metabolism and pharmacokinetics support. Familiarity with in vitro and in vivo metabolism, bioanalytical methods development and validation; analysis of drugs in biological fluids using HPLC and/or LC-MS. **Job Code: PRMA159LZ**

## World Wide Medicines Mt. Vernon, Indiana

**Sr. Research Investigator:** Ph.D. D.V.M. or equivalent degree in toxicology or related science with 3-5 years experience in the design, execution, data analysis and interpretation of general toxicology studies to serve as a Study Director on various types of preclinical safety studies for new drug candidates. Experience in the drug development process, knowledge of GLP regulations and ICH guidelines are required. **Job Code: PREM159SF**

## Biopharmaceuticals & Drug Delivery New Brunswick, NJ

**Sr. Research Scientist/Principle Scientist:** Ph.D. in Pharmaceuticals, Physical Chemistry, Chemical Engineering, Polymer Chemistry or related field with 5-10 years industry experience in solid dosage form development and evaluation of conventional and alternative drug delivery technologies. Experience in the development of controlled/sustained-release and site specific/targeted delivery essential; statistics for data treatment is required. Extensive knowledge in solid, semisolid and liquid formulation development with particular emphasis on polymer technologies. **Job Code: PRGG159RS**

## Analytical R&D New Brunswick, NJ

**Atomic Spectroscopist:** B.S./M.S./Ph.D with 2-4 years experience in the operation and theory of AA, GFAAS, ICP, ICP-MS, laser ablation, ETV and microwave digestion. Hands-on skill in operating, maintaining, troubleshooting and developing state-of-the-art equipment used in quantitative and qualitative determination of trace metals in a variety of sample matrixes. Knowledge of GMP essential; analysis of pharmaceutical solids and formulations highly desired. **Job Code: PRGG159NL**

## Virology Wallingford, CT

**Biochemist/Molecular Virologist:** Ph.D. in Biochemistry or Molecular Biology with 6-8 years experience to define unique viral targets for antiviral intervention, and collaborate with other research groups in the design and development of novel antiviral agents. Experience in Enzymology or Receptor Biology preferred; previous experience working with viruses a plus. **Job Code: PRMA159PL**

**Associate Research Biochemist:** B.S./M.S. with 2-4 years experience to develop and perform antiviral intervention assays and collaborate with other research groups in the development of novel antiviral agents. Biochemistry, Molecular Biology or Virology background is highly desirable. **Job Code: PRMA159PL**

For Wallingford positions, send resumes to:  
**Bristol-Myers Squibb  
Pharmaceutical Research Institute  
P.O. Box 5101, 5 Research Parkway  
Wallingford, CT 06492-7661  
Fax: (203) 677-7762**

For New Brunswick & Indiana positions, send resume to:  
**Bristol-Myers Squibb  
Pharmaceutical Research Institute  
P.O. Box 4000, Princeton, NJ 08543-4000  
Fax: (609) 581-8841**

*We use resume-scanning technology. Please submit on plain white bond paper using standard type and fonts (no italics, graphics or staples please).*



**Bristol-Myers Squibb**

Pharmaceutical Research Institute

www.bms.com

Bristol-Myers Squibb is proud to be an equal opportunity employer, M/F/D/V.



# 100 Scientific Vacancies

with USDA's  
Agricultural  
Research Service



Consider a research science position with the Agricultural Research Service (ARS), USDA's principal in-house research agency. Here your work could touch the lives of every person—opening up a new multi-million dollar export market for U.S. crops; discovering ways to make industrial products from renewable resources; or helping ensure that we always have a safe, nutritious, abundant food supply and quality environment.

*Vacancy announcements and application procedures at*

**WWW.ARS.USDA.GOV/AFM/HRD/RESJOBS**

**ARS offers a competitive scientific environment, excellent benefits, and opportunity for advancement. Openings exist in many disciplines at locations throughout the United States.**



U.S. Department of Agriculture • Agricultural Research Service

ARS is an equal opportunity employer.

*The blueprint for success is here.*

Lexicon Genetics is a genomics-based biopharmaceutical company focused on harnessing the power of molecular genetics for the discovery of novel gene-based therapeutics. Our proprietary gene trapping technology provides rapid and efficient access to the transcribed portion of the genome and enables the elucidation of gene function by insertional mutagenesis at an unprecedented rate. In addition, our rapidly expanding homologous recombination program efficiently generates custom alleles (e.g. subtle mutations, knock-ins, conditional mutations) in the mouse germ line using our proprietary KO system.

In our Genomics Laboratories, we seek to fill the following positions:

## FUNCTIONAL GENOMICS SCIENTISTS

Currently we have several opportunities for team-oriented scientists to work on defining gene function using homologous recombination and high throughput gene trapping technologies. Experience with molecular biology, homologous recombination, cDNA library manipulation and phenotypic analysis of rodent models is desirable.

Lexicon Genetics employees enjoy a pleasant working environment in The Woodlands, TX located 30 miles north of Houston where a full range of cultural experiences awaits. We are interested in expanding our team with talented and motivated candidates. Lexicon provides an outstanding benefits package and rewarding career opportunities as well as an unique opportunity to contribute to the genomics field.

Please send your resume and cover letter, to: **Human Resources, LEXICON GENETICS INC., 4000 Research Forest Drive, The Woodlands, TX 77381-4287, Fax (281) 364-3207**  
Email: [resume@lexgen.com](mailto:resume@lexgen.com)  
For more information on our company please visit our website at: [www.lexgen.com](http://www.lexgen.com) E.O.E.



## MAYO CLINIC POSTDOCTORAL POSITIONS

Positions available at the computer-aided molecular design (CAMD) lab for postdoctoral fellows to develop novel angiogenesis inhibitors and to study chromophores of green fluorescent proteins using ab initio/molecular mechanics calculations, spectroscopic analyses, and organic syntheses. Applicants must have strong total-synthesis experience and/or quantum mechanics and molecular mechanics background. Preference will be given to applicants with their own fellowships or with experience of Beowulf-class computer systems. The CAMD lab has records of developing biologically active molecules and novel methods for zinc protein molecular dynamics simulations and for virtual screen of chemical databases. It has state-of-the-art synthetic equipment, a cluster of dedicated Origin 2000 and 200 servers (16xR10K, 8xR12K, 200Gb disk, and 3Gb memory), and four Octane graphics. Recent patents and publications by the CAMD lab are available from [ftp.mayo.edu](ftp://ftp.mayo.edu) (name: anonymous, cd pub/camd). Applications including curriculum vitae, two relevant papers, and two recommendation letters should be sent to:

**Yuan-Ping Pang, Ph.D.**  
Computer-Aided Molecular Design  
Mayo Clinic  
Guggenheim 711A  
200 First Street SW  
Rochester, MN 55905  
e-mail: [pang@mayo.edu](mailto:pang@mayo.edu)

*Mayo Foundation is an affirmative action and equal opportunity employer and educator.*

**Aventis Pharmaceuticals**



**The  
One  
to watch.**

**Our challenge is life.**

*Hoechst Marion Roussel and Rhone-Poulenc Rorer have adopted the name Aventis Pharmaceuticals to create:*

*A new world class leader in the pharmaceutical industry.*

*Aventis Pharmaceuticals is dedicated to extending and enhancing human life through the discovery, development, manufacture, and sales of pharmaceutical products. Aventis offers the power of global forces in pharmaceutical products and services, an excellent financial standing and a vision for the future that is unmatched in the industry.*

*At our North American Strategic Research Center in Bridgewater, New Jersey we have combined the excellence and dedication of our former respiratory research areas to form the Aventis Respiratory and Rheumatoid Arthritis Disease Group. The focus and goal for this group will be the successful search for novel, oral, anti-allergy, anti-inflammatory and disease modifying compounds in the battle against asthma, COPD, and rheumatoid arthritis.*

*Become part of the most exciting growth company in the pharmaceutical industry. Please send a c.v. and a cover letter indicating your career accomplishments, position of interest and reference ad code: 2000BW0006 to:*

**Aventis Pharmaceuticals**

**B103H**

**P.O. Box 6800**

**Bridgewater, NJ 08807-0800**

**email: [jobs@aventis.com](mailto:jobs@aventis.com)**

**Visit our website for further information:**

**[www.aventispharma-us.com](http://www.aventispharma-us.com)**

Two key leadership positions are now available for:

## **Head of Respiratory Pharmacology Head of Rheumatoid Arthritis Pharmacology**

Both of these positions require a Ph.D. or an M.D. with at least 10 years postdoctoral experience and a minimum of 5 years relevant research experience, preferably within the pharmaceutical industry. Candidates must have an industry wide reputation and be recognized as an expert in the fields of pharmacology & pathology, as well as in the pathophysiology of respiratory diseases and Rheumatoid Arthritis. Each must have a successful track record of compound drug discovery through to phase I of clinical trials.

The successful candidates will lead, manage, and motivate large teams of highly qualified scientists. They must be comfortable with delivering results regularly, and be able to organize and prioritize both short and long-term projects. Highly developed verbal and written communication skills are essential as each is expected to represent their group at corporate & industry conferences. These are the department heads who will add to our portfolio of projects, and to our list of compounds in preclinical & clinical phases of development.

Aventis Pharmaceuticals is proud to be an equal opportunity employer committed to a diverse workforce.





## St. Jude Children's Research Hospital

ALSAC • Denny Thomas, Founder

**The Department of Immunology at St. Jude Children's Research Hospital** invites applications from postdoctoral graduates interested in the following research areas: (1) the development of vaccine and/or immunotherapeutic strategies, (2) regulation and manipulation of the quality of the host response to vaccination and infection, (3) the identification and characterization of genes that are abnormal in patients with defects in B cell development. Positions are available in the laboratories of Mary Ellen Conley, M.D., Christopher Coleclough, Ph.D., Peter C. Doherty, Ph.D., and Julia Hurwitz, Ph.D.

Applicants interested in applying may go to the St. Jude Children's Research Hospital web page ([www.stjude.org/education](http://www.stjude.org/education)) and complete the fellowship application, or submit your curriculum vitae, along with 3 letters of reference, to the **Department of Immunology, St. Jude Children's Research Hospital, 332 N. Lauderdale, Memphis, TN 38105.**

*St. Jude Children's Research Hospital is an  
Equal Opportunity/Affirmative Action Employer.*

*Our client, located in the Greater Boston area, is a dynamic, fast-growing pharmaceutical company focused on diagnostics. The following two positions are available in the Pharmacology department:*

### GROUP LEADER

Successful candidates must have a Ph.D. in Pharmacology, Toxicology or a closely related biological area, and 4+ years of industry experience. Direct experience with animal models required. Experience with cardiovascular models desired. Supervisory experience and excellent communication skills necessary.

### ANIMAL TECHNICIAN

Newly created position for candidate with a BS or MS Scientific Degree and 4+ years experience. Proficiency in animal surgical models required and knowledge of cardiovascular diseases a plus.

Our client offers an outstanding benefits package including stock options, competitive salary and career advancement.

Qualified candidates please submit resume and cover letter in confidence to:  
**Dept. 2010029.**

### ADVANCE NOTICE CLASSIFIED

**P.O. Box 593, Peabody, MA 01960  
Fax: (978) 531-7875**

*Our client is an equal opportunity employer.  
Advance Notice is not a placement agency.  
All responses are forwarded unopened.*



## ASSISTANT/ASSOCIATE/ FULL PROFESSORS

The Center for AIDS Research at Duke University Medical Center has positions open for basic scientists to perform cutting edge research in AIDS and AIDS-related research areas. The Center for AIDS Research is an internationally renowned interdisciplinary and interdepartmental organization comprised of members of both basic and clinical science departments at Duke University Medical Center dedicated to developing new therapies for HIV, to understanding HIV pathogenesis, to devising strategies for immune reconstitution in AIDS, and to developing a HIV vaccine.

We are looking for M.D. or M.D./Ph.D. Tenure Track Faculty for Basic or Translational Research Positions in areas of HIV Pathogenesis, HIV Vaccine Development, AIDS Related-Pathogen Microbial Pathogenesis, and Mucosal Immunity in HIV Pathogenesis. Start date is July 2000.

Candidates should send a letter of interest along with a current curriculum vitae and the names of three references to: **Barton F. Haynes, M.D., Center for AIDS Research Director, Box 3258, Duke University Medical Center, Durham, NC 27710.**

## Duke University Medical Center

Duke University Is An Equal Opportunity/Affirmative Action Employer

## All your career needs is the right chemistry.

Over 50 years of stability and commitment. A proven track record of success. State-of-the-art laboratories and equipment. The best scientists in the field. Employee development programs. Vision, drive and enthusiasm. That's the mix you'll find at Sigma-Aldrich, the world's largest manufacturer and distributor of research chemicals.

The Molecular and Cellular Biology fields are areas in which we are continuing to meet the dynamic needs of our scientific customers. We are currently seeking scientists for our Media Development and Recombinant Protein Expression Teams.

### Recombinant Protein Expression

PhD or equivalent experience in Molecular Biology or related field with a proven track record of developing methods and/or products. Expertise in protein expression in mammalian cell systems highly preferred, other expression systems such as baculovirus and bacterial desirable. Excellent project and team management skills required.

### Media Development

PhD or equivalent experience in Cell Biology or related field with a minimum of five years of experience with mammalian cell culture techniques. Experience with recombinant protein expression, bioreactors and glycosylation studies desirable. Prior success in developing media for the pharmaceutical and biotech industries desired. Knowledge of serum-free media formulation for CHO cell lines or other industrial platforms desired. Excellent project and team management skills required.

Our benefits package includes the following: Excellent 401(k) and pension plan, comprehensive medical, dental, life and disability insurance, relocation and tuition reimbursement. Interested candidates are encouraged to submit a resume to:

Sigma-Aldrich Corporation  
Attn: Human Resources (AD-Cell Bio)  
3050 Spruce Street  
St. Louis, MO 63103  
Fax: (314) 286-7863 or (888) 435-7370  
[www.sigma-aldrich.com](http://www.sigma-aldrich.com)



**SIGMA-ALDRICH  
CORPORATION**

Equal Opportunity Employer

# EXCITING RESULTS.



*At Abbott  
Laboratories,  
we have a  
positive impact  
on countless  
lives.*

*An EOE,  
we are  
committed  
to employee  
diversity.*

At **Abbott Laboratories**, we make it a practice to explore new ideas and develop them into products and services that improve the health care industry. The results have been astounding: breakthrough AIDS tests and treatments, some of the world's most effective nutritional products, highly successful antibiotics, and advanced diagnostic instruments. But here's the most exciting part of it all: We make a positive impact on countless lives.

Help us improve lives – join Abbott in one of the following roles:

## RESEARCH BEHAVIORAL PHARMACOLOGIST

In this key role, the qualified candidate will design and conduct behavioral neuroscience experiments, perform surgical manipulations, analyze and interpret data, and maintain records. Individuals must possess a Ph.D. in Neuroscience or Psychology, experience in small animal/stereotaxic surgery and neurochemical and/or neuroanatomical techniques, and some supervisory experience is required. Must have basic statistical and computer skills, knowledge of pharmacology and behavioral neuroscience, and extensive experience with animal models of psychiatric and neurological diseases. Good oral and written communication skills and the ability to work as part of a team are essential. (Ad Code: 2K-KDA0112)

## PHARMACOLOGIST/PHYSIOLOGIST

The qualified candidate will profile the effects of novel therapeutics on cardiovascular function/disease state progression. Specific responsibilities include administering drugs and collecting/analyzing/graphing physiological data. BS/MS degree, at least 2 years pharmacology/physiology experience, and the ability to assist in the design of experiments and interpretation of results are required. Proficiency in the fundamentals of PC operation, data acquisition systems, and data analysis software is essential. Experience performing in vitro assays is a distinct plus. Individual will work in a dynamic team-oriented environment but will be expected to function independently. Excellent verbal/written and interpersonal skills, along with superior documentation skills are essential. (Ad Code: 99-KDA4135)

## CRYSTALLOGRAPHIC COMPUTING SPECIALIST

In this role, a qualified candidate would be responsible for facilitating the establishment and maintenance of the computing environment by working closely with system administrators and the crystallography group. Efforts will include the identification, acquisition, installation and maintenance of crystallography software as well as developing key software tools in concert with other scientific and technical development efforts for projects that improve Abbott Laboratories' competitive advantage in the area of structural biology. Additionally, you will be responsible for developing web-based tools intended to aid the crystallography group in both accessing crystallographic software holdings and exporting the results of the crystallographic experiment to the project team colleagues. Qualifications include a PhD and two years post graduate experience in crystallography. The individual must also possess good communication skills and the ability to work collaboratively with both the crystallography group and IT personnel. (Ad Code: 2K-WKB0023)

Push the limits of your skills and talents with Abbott Laboratories – a company on the cutting-edge of tomorrow. In return for your commitment to innovation, we offer a competitive compensation and benefits package. **To learn more about this exciting opportunity, or to respond online, please visit us at [www.abbott.com/ad](http://www.abbott.com/ad) and enter Ad Code: (insert from above). Or by mail to Abbott Laboratories, Ad Code: (insert from above), Dept. 583, Bldg. AP9A, 100 Abbott Park Road, Abbott Park, IL 60064-3537.**

[www.abbott.com](http://www.abbott.com)

**ABBOTT**  
**LABORATORIES**  
Quality Health Care Worldwide

## CHAIRPERSON

### DEPARTMENT OF ENVIRONMENTAL AND OCCUPATIONAL HEALTH

The Graduate School of Public Health, University of Pittsburgh, invites applications or nominations for the position of Chairperson of the Department of Environmental and Occupational Health. The Department includes research and pre- and post-doctoral training programs in cellular, molecular and computational toxicology, biomarkers, risk assessment, radiation health, and occupational and environmental medicine.

The successful candidate must be a distinguished investigator with an earned doctorate related to environmental and occupational health, with a documented commitment to academic excellence, a sustained sponsored research program, demonstrated excellence in graduate and post graduate education, and an ability to communicate effectively with various constituencies.

Applications / nominations will be accepted until position is filled. Send a complete curriculum vitae, a vision statement and at least four professional references to:

Office of the Dean  
Graduate School of Public Health  
University of Pittsburgh  
111 Parran Hall, 130 DeSoto Street  
Pittsburgh, PA 15261

*The University of Pittsburgh is an Affirmative Action, Equal Opportunity Employer.*

## Postdoctoral Research Positions

There are two postdoctoral positions available. Both are two-year positions funded by grants from the NIH.

Job #229-NSC will work on further developing Ambion's patented Armored RNA® technology improving the efficiency of the in vivo RNA packaging system (see Pasloske et al., J. Clin. Microbiol. 36: 3590). Candidates who have studied viral assembly and RNA-protein interactions are preferred.

Job #-230NSC will work on one of two projects: develop technology to recover RNA from archival clinical tissue samples or develop a high throughput assay for RNA integrity.

Ambion is a 10 year old company in Austin, Texas with over 100 employees. As "The RNA Company", Ambion markets products and kits for the isolation, detection, quantification and synthesis of RNA. Many of Ambion's products are based on novel, patented technologies developed at Ambion. The R&D department is a diverse, highly interactive group of scientists that provides a stimulating training environment.

We offer a stimulating work environment, competitive salary and benefits, 401(k) plan, employee stock option and bonus plans.

EOE

M/F/D/V

**Ambion®**  
THE RNA COMPANY™

Ambion, Inc., Attention: HR-Job#, 2130 Woodward St., #200, Austin, TX 78744-1832; tel(512)651-0200 fax(512)651-0201; e-mail: resumes@ambion.com.

# New Millennium, New Look, Great Resources!

**Science Careers web site  
has 2 great ways to help  
you find a job.**

**1. Job Alerts** Sign up for Job Alerts by posting your criteria for a job. Every week, *Science Careers* will send you job postings that match those criteria. It doesn't get any easier.

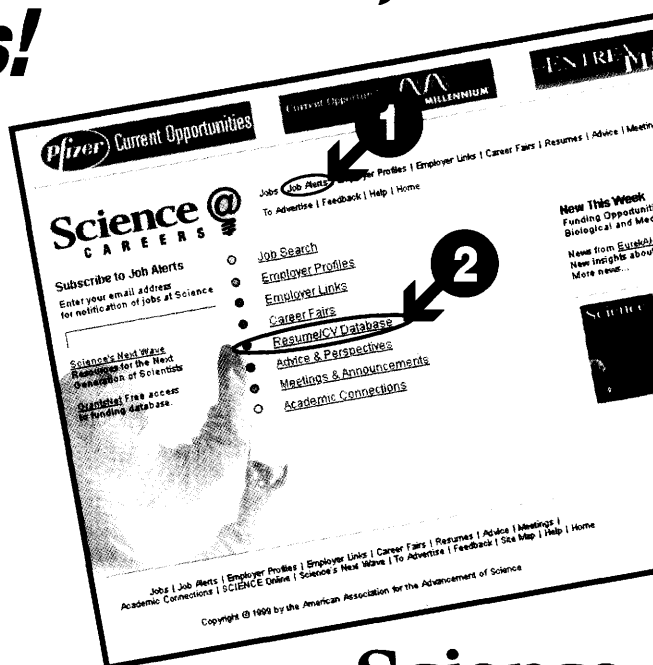
## 2. Resume/CV Database

[www.sciencecareers.org](http://www.sciencecareers.org)

\* FORMERLY  
SPN

This database allows you to post your credentials for access by hiring managers from leading universities and biopharma organizations.

**Sign up for both today.**



**Science**  
Discover your future.

**Three Tenure Track or Tenured Basic  
Neuroscience Investigators  
Mood and Anxiety Disorders Program  
National Institute of Mental Health**

The newly established Mood and Anxiety Disorders Program of the National Institute of Mental Health Intramural Research Program is recruiting scientists for three tenure track or tenured basic positions. These positions are located within laboratories and branches specializing in neuroplasticity, molecular pathophysiology and behavioral genetics. The candidates must have a Ph.D and/or M.D. with an established record of scientific accomplishment and possess a strong publication record. Preference will be given to applicants with expertise in the following areas: (1) neurophysiology, (2) neuroplasticity, or (3) molecular neuropharmacology with relevance to the pathophysiology, etiology, and treatment of mood and anxiety disorders. Applicants should send a curriculum vitae, statement of research interests, and have three letters of recommendation sent by **March 15, 2000** to:

Dr. Dennis Charney  
Chair, Search Committee for  
Basic Neuroscience Investigators in the  
Mood and Anxiety Disorders Program  
NIMH, Bldg. 10, Room 4N222  
9000 Rockville Pike, Bethesda, MD 20892

**NIH is an Equal Opportunity Employer**

**MEETINGS**



**Forefronts in Nephrology  
Symposium - Gene Therapy**

Satellite Symposium to the  
American Society of Gene Therapy Meeting  
May 31 - June 4, 2000

*Co-Organizers:*  
Paul E. Klotman, MD and Savio Woo, PhD

**June 5 - 6, 2000  
Hyatt Regency Beaver Creek  
Beaver Creek, Colorado**

*The objective of this symposium is to bring together scientific leaders in Gene Therapy and Nephrology to review our current understanding of Gene Therapy and future application to Renal Diseases. In focused oral sessions, gene therapy will be discussed in relation to the state-of-the-art treatment of kidney diseases.*

**Attendance is by application only**  
Please contact Professional Meeting Planners  
for application and more information.  
Phone: 781-279-9887 or 800-378-6857  
email: leppich@pmpmeeting.com  
*Exhibit opportunities available*

# **PE Biosystems**

*A PE Corporation Business*

At **PE Biosystems** we're committed to ensuring that biological information plays a pivotal role in the future of medicine and the well being of humankind. From genomic information to instrument systems, we enable Science for Life. We are currently recruiting for the following positions.

**Electrophoresis/Instrument Systems** *Req. # XHX00-000820*

Be responsible for instrument system development and chemistry integration on new and existing DNA electrophoresis instruments. This includes integration of DNA sequencing and fragment analysis chemistries with the instrument and optimization of methodologies. The qualified candidate will be expected to trouble shoot chemistry problems to their cause, develop and implement solutions, both in our labs and at external test sites. This position requires a MS or PhD with 2+ years relevant experience. Must have good trouble shooting skills and be able to develop systems solutions to complex chemical and mechanical problems. A good working knowledge of robotics, electrophoresis, automation, PCR, DNA sequencing and DNA fragment analysis is a plus.

**Comparative Sequencing Scientist** *Req. # XHX00-000821*

Conduct research on the use of fluorescent sequencing chemistries for comparative sequencing applications. This may involve developing protocols and/or new chemistries, testing chemistries on a variety of sequencing platforms, and coordinating efforts in chemistry development with hardware and software development. Present results at Scientific meetings and seminars. Position requires a MS or PhD in Biochemistry or Molecular Biology or related field with 5+ years industrial experience. The ideal candidate should have experience with DNA sequencing, comparative sequencing and other methods of mutation detection, PCR and should be familiar with both Mac and NT Platforms.

**DNA Sequencing Chemistries** *Req. # XHX00-000783*

Conduct research on fluorescent sequencing chemistries with particular emphasis on maximizing convenience and ease of handling. Coordinate efforts with marketing and other R & D groups. This position requires a MS or PhD in Biochemistry or Molecular Biology or related field with 5+ years of industrial experience. The ideal candidate should have knowledge of protein chemistry and methods of handling proteins and be skilled in biochemical and analytical methods.

**Projects Manager, Development Engineering** *Req. # XHX00-000751*

Work with Product Managers, Service Specialists and Manufacturing to prioritize, plan and direct R&D efforts. Attend Quality Team and other intradepartmental meetings to help track product issues. Direct teams of engineers and scientists to accomplish product enhancement goals. Hire and direct consultants or independent contractors to complete tasks and/or projects as necessary. Coordinate with Product Test, Manufacturing Engineering, Manufacturing, Purchasing, Scheduling, Technical Publications, Safety and other support groups for the smooth transition of projects from R&D into sustained manufacturing. Smooth the transition from new product development to the support phase. Reduce development cycle times. Candidates must demonstrate a solid understanding of a variety of technical disciplines including mechanical engineering, molecular biology, biochemistry, Physics and/or software engineering. Good understanding of design and manufacturability, manufacturing systems and experience in an ISO 9000 development environment a plus. Demonstrated project and people management skills a must.

**Product Manager/Product Line Manager** *Req. # XHX00-000528*

This is an outstanding opportunity for an experienced marketing professional to join the PE Biosystems' team responsible for one of the most successful life science product lines ever. This person will provide a central focus for worldwide information and direction concerning the development and promotion of a DNA Analyzer instrument system. Requires 4 to 7 years of experience in product management or strategic marketing. Position is located in Foster City, California.

Interested candidates should specify the Req.# and Email their resumes to: [pecorpad@resume.isearch.com](mailto:pecorpad@resume.isearch.com). For more information on this and other career opportunities, visit our website at [www.pcorporation.com](http://www.pcorporation.com). PE Corporation is an Equal Opportunity Employer and welcomes diversity in the workplace.

## POSITIONS OPEN

### ASSISTANT PROFESSORSHIPS MOLECULAR PHYSIOLOGY AND BIOPHYSICS

Baylor College of Medicine

Applications are invited for three tenure-track positions as **ASSISTANT PROFESSOR** of molecular physiology and biophysics. Applications for Senior faculty positions from individuals with outstanding credentials also will be considered. The Department has an active Ph.D. program and a strong emphasis on basic research, as detailed on our website: <http://www.bcm.tmc.edu/physio/>. Research is facilitated by excellent core facilities and a longstanding tradition of collaborative interaction. We are particularly interested in recruiting individuals who work in the fields of physiological genomics, molecular motors, signal transduction, and biophysical approaches to ion transport and homeostasis. However, other areas of physiologic expertise also will be considered. Successful candidates must hold a Ph.D., M.D., or equivalent degree; must have a clear record of scientific excellence; and must hold or be competitive for external research funding. Individuals will be expected to establish an independent research program and to participate in teaching of graduate and medical students. Salaries and start-up packages are highly competitive. Send curriculum vitae, a description of research plans, and three letters of reference to: **Ms. Lynda Attaway, Department of Molecular Physiology and Biophysics, Baylor College of Medicine, One Baylor Plaza, Houston, TX 77030. E-mail: lattaway@bcm.tmc.edu.** Baylor College of Medicine is an Equal Opportunity Employer. Underrepresented minorities and women are encouraged to apply.

### CHAIR, DEPARTMENT OF HUMAN GENETICS University of Alabama at Birmingham

The University of Alabama School of Medicine is seeking applications and nominations for the position of **PROFESSOR AND CHAIR** of the Department of Human Genetics. The successful candidate will provide leadership for a new Universitywide interdisciplinary Center for Human Genetics. A major new building (100,000 NSF) dedicated to genetics will house the Department and Center.

The applicant must have a Ph.D., M.D., or equivalent degree; a commitment to graduate and medical education; and a demonstrated record of leadership in administrative and academic activities. The successful candidate should be internationally recognized and have an outstanding record of scientific accomplishment with an ongoing, independent, and well-supported research program.

The Search Committee is headed by **Robert P. Kimberly, M.D., Professor of Medicine**. Interested applicants should submit their curriculum vitae, including the names of three references, to:

**Amy Thompson, Director  
Administrative Services  
University of Alabama School of Medicine  
Medical Dean's Office-MEB 310  
1530 Third Avenue South  
Birmingham, AL 35294-3293**

*The University of Alabama at Birmingham is an Affirmative Action/Equal Opportunity Employer.*

**ACADEMIC HEPATOLOGIST** Mayo Clinic Rochester invites applications from academic hepatologists at the **ASSISTANT PROFESSOR** level with expertise in transport and functional genomics related to transport. The applicant must be Board-certified in gastroenterology and have received at least three additional years of postdoctoral research experience. The individual must also have a track record of securing research funding. Submit current curriculum vitae; statement of research interests and long-term goals; and copies of first authored publications, along with at least three letters of reference, to: **Keith D. Lindor, M.D., Division of Gastroenterology and Hepatology, Mayo Clinic, 200 First Street S.W., Rochester, MN 55905.** Mayo Foundation is an Affirmative Action/Equal Opportunity Employer and Educator.

## POSITIONS OPEN

### DEPARTMENT OF BIOLOGY BATES COLLEGE

The Department of Biology at Bates College, a selective liberal arts college of 1,600 students, has a two-year **TEMPORARY ASSISTANT PROFESSOR POSITION** open for an animal physiologist beginning September 2000.

Applicants should have demonstrated interest as well as competence in teaching undergraduate biology majors and non-majors. The successful candidate will teach animal physiology with a laboratory, additional introductory- and advanced-level courses in his/her field of expertise, and may participate in the Department's core curriculum. He/she will also be expected to conduct research involving Bates undergraduates. The Department seeks applicants whose research and teaching interests involve the tissue or whole-organism level of biological organization. A Ph.D. or equivalent is required. Postdoctoral training and/or teaching experience at the undergraduate level is desirable.

Review of applications begins March 17, 2000, and will continue until the position is filled. Applicants should submit a cover letter; curriculum vitae; a statement of teaching experience, interests, and philosophy; a statement of research interests; undergraduate and graduate transcripts; and three letters of recommendation. Applications should be sent to:

**Animal Physiology Search Committee Chair  
(#R2340)  
Secretarial Services  
Bates College  
2 Andrews Road, 7 Lane Hall  
Lewiston, ME 04240  
Website: [www.bates.edu](http://www.bates.edu) and  
[www.bates.edu/acad/depts/biology/](http://www.bates.edu/acad/depts/biology/)**

*Bates College values a diverse college community and seeks to assure Equal Opportunity through a continuing and effective Affirmative Action program.*

### NEUROSCIENCE FACULTY POSITION DEPARTMENT OF PSYCHIATRY PENN STATE COLLEGE OF MEDICINE

Applications are invited for a tenure-track **ASSOCIATE or FULL PROFESSOR POSITION**, which requires a Ph.D. degree. Candidates should document experience in applying molecular and cellular approaches to the study of neurohumoral regulation or genetics of behavioral and physiological states.

A clear record of capability for generating extramural research support and for working as an independent investigator is required. Outstanding laboratory and core facilities and ample start-up funds are available. Salary is competitive. Rank and salary will be commensurate with experience and productivity. Joint appointment with a basic science department or the Neuroscience Program is encouraged.

Please send curriculum vitae, a brief summary of present and future research interests, three representative reprints, and the names and addresses of three references to: **Edward O. Bixler, Ph.D., Department of Psychiatry, The Pennsylvania State University College of Medicine, Hershey, PA 17033.** Deadline for receipt of applications is April 7, 2000. *Affirmative Action/Equal Opportunity Employer.*

**ASSISTANT/ASSOCIATE RESEARCH PROFESSOR**, Institute of Marine and Coastal Sciences/Rutgers, The State University of New Jersey. Grant-funded position reporting to the Center Director; serves as Science Director for the National Undersea Research Program for the Mid-Atlantic Bight. Maintains own research program in area of expertise in marine sciences and participates in teaching programs for undergraduate and graduate students. Send résumé and the names of three references by March 31, 2000, to: **Michael P. De Luca, Rutgers, The State University of New Jersey, Institute of Marine and Coastal Sciences, 71 Dudley Road, New Brunswick, NJ 08901-8521.** Rutgers is an Equal Opportunity/Affirmative Action Employer.

## POSITIONS OPEN

### ASSISTANT PROFESSOR EXPERIMENTAL PATHOLOGY Temple University School of Medicine

The Department of Pathology and Laboratory Medicine at the Temple University School of Medicine is currently seeking an individual for a research position at the Assistant Professor level. The investigator will hold a position in the Fels Institute for Cancer Research. This position will be in the Division of Experimental Pathology. In particular, qualified candidates are sought in any of the following areas: (1) hormonal carcinogenesis, (2) environmental carcinogenesis, (3) gene targeting/immunotherapy of cancer, and (4) resistance to cancer chemotherapy. The incumbent will be associated with the Ph.D. program in the Department and should have a track record of independent research and research funding. This position will augment the section of molecular pharmacology in the Temple University Comprehensive Cancer Center. Candidates should submit a curriculum vitae and the names of three references to: **Henry Simpkins, M.D., Ph.D., Professor and Chairperson, Department of Pathology and Laboratory Medicine, Temple University School of Medicine, 3401 North Broad Street, Philadelphia, PA 19140.** Temple University is an Equal Opportunity/Affirmative Action Employer and strongly encourages applications from women and minorities.

**ASSOCIATE/ASSISTANT PROFESSOR OF BIOLOGY.** Wheeling Jesuit University seeks an Associate or Assistant Professor of biology to join the tenure-track faculty beginning with the academic year 2000-2001. Teaching responsibilities include the upper-class major course in cell and molecular biology (lecture and laboratory) and elective courses in molecular genetics and microbiology, as well as other courses in the department. Along with a full teaching load, the successful applicant is expected to encourage and to supervise undergraduate research. Minimum requirements include a Ph.D. in molecular biology, cell biology, or a closely related field; and experience teaching undergraduates. Wheeling Jesuit University offers a baccalaureate degree in biology. It is a Catholic Jesuit liberal arts university whose faculty members share a strong commitment to teaching undergraduate students and preparing them for postgraduate study. Construction of a new science building is about to begin. Please send a letter of application, curriculum vitae, statement of instructional philosophy, and the names of three references by March 15, 2000, to: **Director of Human Resources, Wheeling Jesuit University, 316 Washington Avenue, Wheeling, WV 26003.** No phone calls, please. *Affirmative Action/Equal Opportunity Employer.*

University of Michigan, Department of Anesthesiology, is recruiting faculty at the **TENURED ASSOCIATE PROFESSOR** level. The Department is especially interested in faculty with Ph.D. or M.D./Ph.D. with an ongoing funded research program. Applicants should be knowledgeable in the areas of host defense, immunological challenge, and modulators of arousal-state control. Interested candidates should apply to: **Ralph Lydic, Ph.D., Department of Anesthesiology, 7433 Medical Sciences Building I, Box 0615, Ann Arbor, MI 48109-0615.** The University of Michigan is a nondiscriminatory Affirmative Action/Equal Opportunity Employer. Minorities and women are encouraged to apply.

**TENURE-TRACK FACULTY APPOINTMENT** available for research in molecular biochemistry, molecular genetics, molecular neuroscience, and related areas at any academic rank. This position is for research and teaching. Applications will be accepted until the position is filled. In responding, please send a curriculum vitae with a description of plans for an independent research program and request three references send letters to: **Dr. Gerry Litwack, Chairman, Department of Biochemistry and Molecular Pharmacology, Jefferson Medical College, Thomas Jefferson University, Room 350 BLSB, 233 South 10th Street, Philadelphia, PA 19107.** Equal Opportunity Employer.

**Chart the  
right course  
for your  
career.**



**Steer to these coordinates...**  
**[www.sciencecareers.org](http://www.sciencecareers.org)**

**Science Careers** can help  
you navigate through the myriad  
career options with its fast,  
**searchable jobs database** and  
other useful career information.

**Science Careers**  
**[www.sciencecareers.org](http://www.sciencecareers.org)**



ICAgen, Inc. is a leader in the discovery and development of small molecule drugs that target ion channels in a wide variety of therapeutic areas. Located in the Research Triangle Park, North Carolina, close to the resources of three major universities, the company has assembled a world class group of electrophysiologists, chemists, molecular biologists, and pharmacologists and is adding key new members to the team. We are seeking extraordinary molecular biologists to join our Molecular Discovery Group. Primary activities will be the molecular cloning and characterization of novel ion channels, receptors and modulators.

**Sr. Scientist (Job Code: MBASS322)**

Applicants must have completed a recent Ph.D. or equivalent program, and possess two-plus years of postdoctoral or industry experience with training in molecular biology and genetics, cell biology or enabling genomic technologies. Additional consideration will be given to candidates with experience in biophysical analyses of ion channels. Candidates must have demonstrated excellence in scientific research, possess extensive technical expertise, have strong communication skills and the ability to facilitate discovery in a dynamic teamwork environment.

**Scientist (Job Code: MBAS529)**

Join the Molecular Discovery Group in a challenging and rewarding position. ICAgen has several opportunities for motivated and energetic scientists. Candidates must be experienced with general DNA and RNA protocols and facile with standard molecular techniques including DNA/RNA isolation, nucleic acid sequencing, PCR, subcloning, and mammalian cell tissue culture. Tissue culture responsibilities include transfection, establishment and maintenance of permanent cell lines. BS with three years experience required, MS desirable.

ICAgen provides a comprehensive compensation and benefits package including competitive salaries, stock options, medical and dental plan, and a 401(k) retirement plan. For consideration, please submit your resume or CV and salary history directly to: **ICAgen, Inc., P.O. Box 14487, Research Triangle Park, NC, 27709, Attn: Human Resources** and include the appropriate job code with your cover letter. ICAgen, Inc. is an equal opportunity employer.



**UNIVERSITY OF MICHIGAN - OPEN POSITION**  
**DIRECTOR, UNIT FOR LABORATORY ANIMAL MEDICINE**

The University of Michigan invites applications for the position of Director of the Unit for Laboratory Animal Medicine (ULAM). The successful applicant will direct the service, research and instructional activities of ULAM. The mission of ULAM is to foster and support biomedical research and instruction at the University. The Director reports to the Dean of the Medical School and to the Vice President for Research. The Director, in concert with the Vice President for Research, is responsible for animal care and use activities on the Ann Arbor, Dearborn and Flint campuses of the University. More than 55,000 animals, housed in 35 buildings, are utilized in research and instruction on the three campuses. The program is AAALAC accredited. The ULAM faculty has an active research program and a long history of veterinary postdoctoral training in laboratory animal/comparative medicine. ULAM has a faculty of seven and a staff of 75 administrative, supervisory and animal care personnel. Administrative support for the institutional Animal Care and Use Committee is part of ULAM's responsibility. Qualifications for the position include a Doctorate of Veterinary Medicine from an accredited institution, be licensed in at least one state and board certified by the American College of Laboratory Animal Medicine. The candidate should possess a national reputation of the highest quality in laboratory animal/comparative medicine, have leadership ability, strong interpersonal and communication skills, outstanding academic credentials, be an advocate for the humane use of animals in research, have a track record promoting interdisciplinary research and excellence as an administrator. The successful applicant will have the opportunity for a tenure track faculty appointment in a Medical School department or unit that best fits his/her professional background and experience. Salary is competitive and commensurate with qualifications and experience. Applicants are invited to send a letter of interest, curriculum vitae, and names of four references to:

**Steven A. Goldstein, Ph.D., c/o Jan Rosan**  
**Associate Dean for Research and Graduate Studies**  
**4130B Medical Science Building 1**  
**1301 Catherine, Ann Arbor, Michigan, 48109-0624.**

*The University of Michigan is an Affirmative Action/Equal Opportunity Employer.*



## POSITIONS OPEN

### PROFESSOR OF MEDICAL GLYCOSCIENCE

The University of Georgia Complex Carbohydrate Research Center (CCRC) is seeking a senior, established Professor for a **TENURE-TRACK POSITION** in medical glycoscience. We seek a faculty member who will establish and expand a "cutting-edge" research program in cooperation with CCRC faculty working in analytical, synthetic, plant, microbial, and medical glycoscience. Demonstrated creativity, leadership, experience in multidisciplinary research, and the ability to open new avenues of research investigation and collaboration are essential. The successful candidate will join a 12-member faculty, be provided with an office and laboratories in the CCRC building, and have access to outstanding analytical expertise and facilities. Applications received by April 15, 2000, are assured consideration. Salary negotiable. Applicants should send a letter of interest, a curriculum vitae and publication list, and a description of research interests to: **Dr. Peter Albersheim and Dr. Alan Darvill, Directors, Complex Carbohydrate Research Center, University of Georgia, 220 Riverbend Road, Athens, GA 30602-4712, U.S.A. E-mail: palbersh@ccrc.uga.edu or adarvill@ccrc.uga.edu.** An Affirmative Action/Equal Employment Opportunity Institution.

### ASSISTANT PROFESSOR IN MOLECULAR BIOLOGY/GENETICS OF COMPLEX CARBOHYDRATES IN PLANTS

The University of Georgia Complex Carbohydrate Research Center (CCRC) is seeking an **ASSISTANT PROFESSOR** for a tenure-track position in molecular biology and/or molecular genetics of complex carbohydrates in plants. We seek a faculty member who will develop an innovative research program using molecular genetics to investigate the roles of carbohydrates in plant growth and development and/or host-pathogen interactions. Demonstrated research creativity, teaching excellence, and a willingness and ability to participate in a multidisciplinary environment are essential. The successful candidate will occupy laboratory and office space in the CCRC building and have access to outstanding analytical facilities and expertise. Applications received by April 1, 2000, are assured of consideration. Salary negotiable. Applicants should send a letter of interest, a curriculum vitae and publication list, a description of research interests, and the names and addresses of four references to: **Dr. Debra Mohnen; Search Chair, Complex Carbohydrate Research Center, University of Georgia, 220 Riverbend Road, Athens, GA 30602-4712, U.S.A. Inquiries can be sent by e-mail: dmohnen@ccrc.uga.edu or adarvill@ccrc.uga.edu.** Affirmative Action/Equal Employment Opportunity.

### GROUP LEADER POSITIONS FOR BIOLOGICAL SCIENCES

Shanghai Institutes for Biological Sciences (SIBS), a consortium of research institutes of Chinese Academy of Sciences (for details, see advertisements in *Science*, 9 May 1999, and *Nature*, 13 May 1999), now invites applications for Group Leader positions in biochemistry and molecular biology, cell and developmental biology, neuroscience, pharmaceutical science, plant science, bioinformatics, and biotechnology. The SIBS will provide a package (in general) including competitive salary (RMB \$50,000 to \$100,000 per year), housing benefits (RMB \$300,000), and start-up fund (RMB \$2,000,000). Applicants should have a Ph.D. degree or equivalent and significant postdoctoral research accomplishment. Interested candidates should submit a curriculum vitae, a summary of accomplishments, a research proposal (two to four pages), up to five reprints, and three letters of recommendation to: **Mr. Fudi Ni, Shanghai Institutes for Biological Sciences, 319 Yue-Yang Road, Shanghai 200031 China. Telephone: +86-21-64337504; e-mail: fdni@sibs.ac.cn.** Applications received before April 15, 2000, will be considered for appointment in 2001.

## POSITIONS OPEN

### ASSISTANT/ASSOCIATE PROFESSOR PHARMACOLOGY AUBURN UNIVERSITY

The Department of Pharmacology Sciences at Auburn University's School of Pharmacy invites applications for a 12-month, tenure-track faculty position as Assistant/Associate Professor in Pharmacology. Auburn University is a land grant university and is the only publicly funded college of pharmacy in Alabama. The University places a high priority on quality undergraduate and professional teaching, with a tradition of excellence in research, graduate education, outreach, and service. The Doctor of Pharmacy, Master's of Science, and Doctor of Philosophy degrees are offered within the School and Department. Candidates must have a demonstrated interest in education of health professionals, graduate students, and research. Applicants must have a Ph.D. or equivalent degree in pharmacology or related areas. Demonstrated research abilities in neuropharmacology and related areas are preferred. Postdoctoral training and a professional degree in pharmacy are desirable but not essential. The successful candidate will be actively involved in professional and graduate teaching and is expected to develop an independent and collaborative research program. Review of applications will begin April 15, 2000, and continue until a candidate is recommended for appointment. The position is available August 1, 2000. Candidates should submit by mail a letter of application, curriculum vitae, a detailed description of research abilities and plans, and three letters of reference to:

**William R. Ravis, Ph.D., Head and Chairperson  
Pharmacology Search Committee  
Department of Pharmacological Sciences  
403 Pharmacy Building  
Auburn University, AL 36849-5503  
Telephone: 334-844-4037  
FAX: 334-844-8331**

*Auburn University is an Equal Opportunity/Affirmative Action Employer. Women and minorities are encouraged to apply.*

### RESEARCH ASSISTANT PROFESSOR DEPARTMENT OF ANATOMY AND CELL BIOLOGY Brody School of Medicine East Carolina University

Fixed-term position at the **RESEARCH ASSISTANT PROFESSOR** level to begin May 15, 2000. Candidates must have a Ph.D. or equivalent with at least four years of productive postdoctoral experience in molecular and developmental biology. The Department seeks applicants who can apply molecular, physiological, and biophysical approaches to the study of ion channel properties and barrier functions in intestine and kidney. Although not required, a strong interest in animal models of human disease is preferred. Starting funds and space are available, but candidates will be expected to establish an independent program and attract extramural funding in the future. This position is for a nine-month appointment, and departmental salary support is a maximum of three years. Send curriculum vitae, description of research experience, and addresses of three references by May 1, 2000, to: **Dr. Jack E. Brinn, Chair, Department of Anatomy and Cell Biology, Brody School of Medicine, East Carolina University, Greenville, NC 27858.** Affirmative Action/Equal Employment Opportunity Employer; accommodates individuals with disabilities.

### POSTDOCTORAL POSITIONS WASHINGTON UNIVERSITY SCHOOL OF MEDICINE, ST. LOUIS

Three projects: (1) cytokine signal transduction and red blood cell development, (2) oncogene cooperativity in leukemia models, (3) regulation of cell proliferation and differentiation by LIM proteins. See website: <http://128.252.178.164>. Send curriculum vitae and references to: **Dr. Gregory Longmore, Washington University School of Medicine, 660 South Euclid, Box 8125, St. Louis, MO 63110. E-mail: longmorg@medicine.wustl.edu.** An Equal Opportunity/Affirmative Action Employer.

## POSITIONS OPEN

**GENETIC TOXICOLOGIST:** The Department of Biological Sciences and the Border Biomedical Research Center (BBRC) at the University of Texas at El Paso are seeking a Genetic Toxicologist at the **ASSISTANT or ASSOCIATE PROFESSOR** level. The successful candidate will be expected to develop an independent research program in genetic toxicology. Although the research area is open, preference will be given to individuals who are focusing on the role of genetic variation on susceptibility to environmentally related diseases in human populations or animal models. The Department of Biological Sciences offers a Ph.D. in pathobiology; research facilities include molecular biology and analytical chemistry, analytical cytology, tissue culture, and sequencing, as well as aquatic and small animal facilities. Teaching responsibilities involve both undergraduate and graduate courses. Requirements for this position include a Ph.D. or equivalent degree and at least three years of postdoctoral research experience. Applicants should submit a curriculum vitae, a concise description of their research program or plan, and the names of three references to: **Dr. Pablo Arenaz, Chair, Search Committee, Department of Biological Sciences, The University of Texas at El Paso, El Paso, TX 79968-0519.** Review of applications will begin April 15, 2000, and continue until a suitable candidate has been found. *The University does not discriminate on the basis of race, color, national origin, sex, religion, age, disability, or sexual orientation in employment or the provision of services.*

**GENETICIST:** Hartwick College, a nationally ranked, selective liberal arts and sciences institution with approximately 1,450 students, located in upstate New York, seeks candidates for a full-time, tenure-track position beginning September 2000. We are seeking a Geneticist to teach genetics and upper-level courses in immunology and molecular biology of the cell. Cell culture experience is desirable. Successful applicant must demonstrate excellence in undergraduate teaching, establish a research program involving undergraduate students, and be willing to seek external funding for research. Ph.D. required. Please send a statement of teaching and research interests, curriculum vitae, and three letters of recommendation to: **M. Richard Segina, Chair, Department of Biology, Hartwick College, Oneonta, NY 13820.** The College permits "shared positions," so partners may apply individually or for one shared appointment. Review of applications will begin immediately and continue until position is filled. *Hartwick College is an Equal Opportunity Employer. Women and members of underrepresented groups are especially encouraged to apply.*

**Science Educator and Organismal Biologist: ASSISTANT/ASSOCIATE PROFESSOR.** Joint appointment (tenure track, fall 2000); a joint appointment with the School of Education and the College of Arts and Sciences (Biology). The candidate must have a Ph.D., teaching experience and a record of publications in the life sciences, and knowledge of curriculum and methodology issues in science education. Preference will be given to those with experience in teaching science at the secondary level. Responsibilities will include teaching in the secondary education program and in biology and environmental studies. Candidates should send curriculum vitae and names of three references to: **Dr. Snauwaert, Harvey Hall, Adelphi University, Garden City, NY 11530.** Adelphi University is an Affirmative Action/Equal Opportunity Employer. Women and minority candidates are encouraged to apply.

### ENERGY SYSTEMS AND POLICY INITIATIVE FACULTY OPENINGS

The University of Wisconsin-Madison seeks four (tenure-track or tenured) **FACULTY MEMBERS** beginning on or after August 2000 in a new interdisciplinary energy systems and policy initiative. Preference will be given to candidates whose research and teaching combines energy-related science and technology with energy policy.

Finalists cannot be guaranteed confidentiality. For details, please see our Web announcement at website: <http://www.engr.wisc.edu/tmp/energy/>. The University of Wisconsin-Madison is an Affirmative Action/Equal Opportunity Employer. Women and minorities are urged to apply.



*The NCI Technology Development & Commercialization Branch (TDCB) has fellowship opportunities available to qualified candidates in one of the fastest growing fields, technology transfer. These fellowship opportunities let you combine your science background with a new career in the technology transfer field. Candidates must possess an advanced degree in the sciences and/or a law degree.*

## Fellowship Opportunities in Technology Transfer

The TDCB is responsible for negotiating agreements and promoting research partnerships between NCI scientists and outside parties such as universities and biotechnology/pharmaceutical companies. These research partnerships allow for federally funded research findings to be further developed and commercialized.

***Candidate will be responsible for:***

- Drafting and negotiating Cooperative Research and Development Agreements (CRADAs) for NCI scientists and their industrial/academic research partners;
- Planning and negotiating Material Transfer Agreements, Clinical Trial Agreements and other technology transfer agreements;
- Development of technology transfer educational programs for scientists;
- Overseeing patent related issues for NCI scientists;
- Other duties as pertaining to intellectual property and technology transfer.

Stipends and health insurance are provided. Candidate must be a U.S. citizen or resident alien eligible for citizenship within 4 years. Candidate must have received most current degree within the last 8 years. To apply: Submit a copy of your resume or CV and a statement of interest explaining why you are interested in the TDCB fellowship program. Also, include two letters of recommendation.

***Fax: Attention: TDCB Fellowship Coordinator (fax# 301-402-2117) or mail Technology Development & Commercialization Branch, National Cancer Institute, 6120 Executive Blvd., Suite 450, Rockville, MD 20852, ATTN: TDCB Fellowship Coordinator.***

***Applications are accepted year round.***

### **Chief, Neuroimaging Branch Mood and Anxiety Disorders Program National Institute of Mental Health**

The Mood and Anxiety Disorders Program of the National Institute of Mental Health Intramural Research Program invites applications for a tenured senior investigator to be Chief, Neuroimaging Branch. The candidate is expected to develop an independent research program utilizing advanced neuroimaging techniques (PET, MRI, MRS, MEG) to study the pathophysiology, etiology, and treatment of mood and anxiety disorders. The candidate must have a M.D. and/or Ph.D and broad research experience, including a record of high scientific achievement as an independent investigator; experience in direct administration of a research program; and national and international recognition. Applicants should send a curriculum vitae, statement of research interests, and have six letters of recommendation sent by **March 15, 2000** to:

Dr. Dennis Charney  
Chair, Search Committee for the Chief  
Neuroimaging Branch  
NIMH, Bldg. 10, Room 4N222  
9000 Rockville Pike  
Bethesda, MD 20892

**NIH is an Equal Opportunity Employer**

### **Two Tenure Track or Tenured Clinical Investigators Neuroimaging Branch Mood and Anxiety Disorders Program National Institute of Mental Health**

A newly established Neuroimaging Branch of the Mood and Anxiety Disorders Program of the National Institute of Mental Health Intramural Research Program is recruiting scientists for two tenure track or tenured positions. The candidates must have a M.D. and/or Ph.D with an established record of scientific accomplishment and possess a strong publication record. Preferences will be given to applicants with expertise in the area of neuroimaging with relevance to the pathophysiology, etiology, and treatment of mood and anxiety disorders in children, adolescents, and adults. Applicants should send a curriculum vitae, statement of research interests, and have six letters of recommendation sent by **March 15, 2000** to:

Dr. Dennis Charney  
Chair, Search Committee for Clinical  
Investigators in the Neuroimaging Branch  
NIMH, Bldg. 10, Room 4N222  
9000 Rockville Pike, Bethesda, MD 20892

**NIH is an Equal Opportunity Employer**

### **Two Tenure Track or Tenured Investigators Experimental Therapeutics and Pathophysiology Branch National Institute of Mental Health**

The Experimental Therapeutics and Pathophysiology Branch of the National Institute of Mental Health Intramural Research Program invites applications for two tenure track or tenured senior investigators. The candidates are expected to develop an independent research program to plan and conduct clinical research studies on the pathophysiology, etiology, and treatment of mood and anxiety disorders in children, adolescents and adults. The candidates must have a M.D. and/or Ph.D with broad research experience, including a record of high scientific achievement as an independent investigator; experience in direct administration of a research program; and national and international recognition. Applicants should send a curriculum vitae, statement of research interests, and have six letters of recommendation sent by **March 15, 2000** to:

Dr. Dennis Charney  
Chair, Search Committee for Senior  
Investigators for the Experimental  
Therapeutics and Pathophysiology Branch  
NIMH, Bldg. 10, Room 4N222  
9000 Rockville Pike, Bethesda, MD 20892

**NIH is an Equal Opportunity Employer**

## POSITIONS OPEN

**DIRECTOR, INSTITUTE FOR ENVIRONMENTAL SCIENCE AND POLICY.** University of Illinois at Chicago has a significant opportunity for the Director to establish and develop the recently approved Institute for Environmental Science and Policy. The ideal candidate will be a leader who can create a dynamic synergy in interdisciplinary research across the several collaborating colleges. Applicant must have a Doctoral degree or equivalent, a breadth of knowledge across several disciplines, a distinguished research program, and be tenurable. The Institute's strengths currently are in the areas of conservation and sustainable development, environmental restoration, biosphere response to global and environmental change, and the interaction of pollutants with the ecosystem. The ideal candidate will have extensive research relationships with federal agencies such as NIH, NSF, EPA, and NOAA and have the capacity to serve as a liaison to industry partners and the media. The University of Illinois at Chicago ([website: http://www.uic.edu](http://www.uic.edu)) is an ambitious, urban, state-supported Research I institution with world-renowned programs in medicine, public health, engineering, urban planning, business, architecture, and liberal arts, all of which are represented within the Institute. Send a cover letter, complete curriculum vitae, and the names and addresses of at least three references to: **Mr. Anthony Halford, Office of the Vice Chancellor for Research (MC 672), University of Illinois at Chicago, 1737 West Polk Street, 304 AOB, Chicago, IL 60612-7227.** For fullest consideration, submit application by May 1, 2000.

*The University of Illinois at Chicago is an Affirmative Action/Equal Opportunity Employer.*

## RESEARCH ENTOMOLOGIST

The Institute of Pacific Islands Forestry, Pacific Southwest Research Station, U.S. Department of Agriculture (USDA) Forest Service, seeks applicants for a permanent position to conduct research on biocontrol agents for release on plant species invasive in native Hawaiian ecosystems and oversee operation of Hawai'i Volcanoes National Park Quarantine Facility as part of the Invasive Species Team. This position is GS 12/13; salary range is \$54,000 to \$83,500, including cost-of-living adjustment (COLA). *Candidates must be U.S. citizens.* Application information is available at [website: www.usajobs.opm.gov](http://www.usajobs.opm.gov) and from: **Personnel Management, PSW Research Station, P.O. Box 245, Berkeley, CA 94701, Attention: PSW-DEMO 134-00. Telephone: 510-559-6350; FAX: 510-559-6352; e-mail: pm/psw@fs.fed.us.** Questions regarding the position can be directed to: **Dr. Julie S. Denslow; Telephone: 808-933-8121; FAX: 808-933-8120; e-mail: julie.denslow@gte.net.** Deadline for receipt of applications is April 3, 2000.

*The U.S. Department of Agriculture is an Equal Opportunity/Affirmative Action Employer.*

**SUPERVISORY PHYSICAL SCIENTIST, ZP-1301-V** (equivalent to GS-15). Salary: \$85,795 to \$111,532 (supervisory pay potential: \$118,324 through performance pay increases). The Office of Oceanic and Atmospheric Research, Forecast Systems Laboratory, is seeking a highly qualified Scientific Manager to fill the position of **CHIEF, INTERNATIONAL DIVISION (ID)**, which currently has 23 employees in three branches. The Division conducts an international program of science and technology. Applicants should possess a Ph.D. or equivalent in physical science or a closely related discipline. The ID Chief directs a program of scientific and technical interaction with governments and organizations around the globe. To obtain complete information on this position and application forms, contact: **U.S. Department of Commerce, NOAA/MASC Human Resources Division, 325 Broadway, Boulder, CO 80303. Telephone: 303-497-6615; website: <http://www.masc.noaa.gov>.** Reference Vacancy #MASC/NOAA 00-015LR, closing March 31, 2000. *Equal Opportunity Employer.*

## POSITIONS OPEN

### NATURAL RESOURCES FACULTY DIRECTOR OF ADIRONDACK AQUATIC INSTITUTE

Paul Smith's College, the College of the Adirondacks, is conducting a search for a faculty member in the Division of Natural Resources, Liberal Arts, and Sciences, who will also serve as Director of the Adirondack Aquatic Institute (AAI) of Paul Smith's College. The Adirondack Aquatic Institute was established in 1992 and works within the 6 million acre Adirondack Park to understand, preserve, and protect the aquatic resources of the Adirondacks through research and education. Information about the AAI is available through the College [website: http://www.paulsmiths.edu](http://www.paulsmiths.edu).

The successful candidate will be responsible for teaching in the College's baccalaureate program in natural resources; directing and promoting the activities of the Institute; and seeking funding to assist in the support of the AAI and associated research projects, preferably involving undergraduate students. Areas of expertise should include at least two of the following: limnology; stream ecology; environmental simulation modeling; computer applications in science; lake or watershed management; GIS. Requirements include Ph.D., research and teaching experience in an area related to the aquatic sciences, and a track record of successful grant applications.

To apply, send a curriculum vitae; statement of research and teaching interests; selected reprints; and names, addresses, and telephone numbers of three persons qualified to prepare letters of reference to: **Director of Personnel, Paul Smith's College, P.O. Box 265, Paul Smiths, NY 12970. FAX: 518-327-6161; e-mail: [personnel@paulsmiths.edu](mailto:personnel@paulsmiths.edu).** Review of applications will begin immediately and continue until an appointment is made. *Paul Smith's College values diversity in the college community and seeks to assure Equal Opportunity through a continued Affirmative Action program.*

**ASSISTANT EXTENSION ENTOMOLOGIST,** Department of Entomology, University of California, Riverside. Two-year position available immediately with a possibility of continued employment. Eleven-month position that involves both research and extension responsibilities. Ph.D. in entomology or a related discipline, with graduate training or postdoctoral experience utilizing techniques to investigate and manage field insect pest populations. Will work on the management of insect pests in grapes, with emphasis on the management of the glassy-winged sharpshooter and the limiting of the spread of Pierce's disease. Conduct applied research on the management of pest insects and extend this information to clientele including but not limited to growers, pest control advisors, government agencies, etc. Applicants should send curriculum vitae, transcripts, statement of research interests, reprints, manuscripts in press, and names of five references to: **Dr. Nick C. Toscano, Search Committee Chair, Department of Entomology, University of California, Riverside, CA 92521. E-mail: [nick.toscano@ucr.edu](mailto:nick.toscano@ucr.edu).** Review of applications will commence March 15, 2000; however, this position will remain open until filled. Information about the Department can be found at Department [website: http://cnas.ucr.edu/~ento/index.html](http://cnas.ucr.edu/~ento/index.html). *The University of California is an Equal Opportunity/Affirmative Action Employer.*

## MEDICAL WRITERS

Looking for a new career opportunity? Love science and medicine but want to do more with the business side of your brain? Leading medical company based in New York City has an immediate opening for **MEDICAL WRITERS.** Familiarity with development of biological/biomedical sciences manuscripts essential. Ph.D. or advanced degree in the biological sciences preferred. The ability to write clearly and concisely is essential. You will be expected to work on your own initiative and interface with physicians, clients, and program directors. Some travel may be required. Please send résumé to: **Human Resources Department, 12th Floor, 16 West 22nd Street, New York, NY 10010.**

## POSITIONS OPEN

Ferring is an international pharmaceutical company specializing in products for the treatment of hormone-related disorders ([website: www.ferring.com](http://www.ferring.com)). Ferring is continuing to discover and develop new drugs and is dedicated to an innovative workplace. The biology department at the San Diego Division of Ferring has an immediate opening for a self-motivated **SCIENTIST** to join a multidisciplinary discovery team.

The successful candidate will be responsible for the development, validation, and implementation of *in vitro* screening assays and new technologies to support drug discovery programs. Qualified candidates should be Receptor Pharmacologists with a solid background in receptor-ligand/receptor-drug interactions (G-protein-coupled receptors). The successful applicant will also participate in team efforts to identify and validate novel, therapeutically relevant targets. Experience in receptor autoradiography would be an advantage.

An individual with a Ph.D., prior experience in the biotechnology or pharmaceutical industry, and the ability to act quickly and independently is preferable. Important qualities also include the desire and ability to interact with other ongoing projects within and across the departments and excellent data management/reporting and communication skills.

Ferring Research Institute Inc. offers competitive compensation and benefits packages. Qualified applicants are encouraged to apply in writing. Closing date: March 31, 2000. Send or FAX a cover letter, résumé, salary history, and the names of three references to: **Ferring Research Institute Inc., 3550 General Atomics Court, 2-442, San Diego, CA 92121. FAX: 858-455-3190.**

## ASSISTANT PROFESSOR POSITIONS DÉPARTEMENT DE SCIENCES BIOLOGIQUES Université de Montréal

The Département de sciences biologiques, Université de Montréal, invites applications for Assistant Professor positions, effective June 1, 2000, and June 1, 2001. The candidate must have a Ph.D., postdoctoral experience, and must be able to teach in French in his/her specialty. We are looking for candidates in the fields of: plant biology; animal biology; and ecology, environment, and evolution. More information can be obtained at the following [website: www.fas.umontreal.ca/BIOL/](http://www.fas.umontreal.ca/BIOL/).

Applicants should send their curriculum vitae, a description of the proposed research, reprints, and arrange for three reference letters to be sent before March 31, 2000, to:

**Thérèse Cabana, Chairman  
Département de sciences biologiques  
Université de Montréal  
C.P. 6128, Succ. Centre-ville  
Montréal, QC, H3C 3J7 Canada  
E-mail: [cabanat@ere.umontreal.ca](mailto:cabanat@ere.umontreal.ca)**

*In accordance with Canadian immigration requirements, priority will be given to Canadian citizens and permanent residents in Canada. Université de Montréal is committed to a program of access to equity in employment for women.*

## WEB-CONTENT DEVELOPMENT

Inventive scientists sought! Exciting opportunity to join a fast-paced, pre-IPO company spanning two of the hottest industries, Internet and biotechnology. Energetic people with experience in biological techniques, innovative approaches to solving scientific problems, and with an eye for emerging scientific fields should apply.

Qualifications: Ph.D. with expertise in molecular biology, protein chemistry, cell biology, or immunology; disciplined and well organized; strong written and interpersonal skills; and basic computer knowledge desired. Positions also available for M.S. with two to four years of experience in the life sciences. Competitive compensation package and full benefits. If interested, please e-mail your cover letter and résumé to e-mail: [chris@vbio.com](mailto:chris@vbio.com); FAX: 520-962-5365 (Attention: Chris). This is in San Francisco.



**MOUNT SINAI  
SCHOOL OF  
MEDICINE**

## POSTDOCTORAL OPPORTUNITIES

Mount Sinai School of Medicine is a leader in medical education and research. To enable us to maintain our high standards, we are seeking individuals for the following postdoctoral opportunities:

### Signal Transduction in Neurons

This postdoctoral position is available immediately, and offers the opportunity to study mechanisms of G protein-mediated modulation of neuronal calcium channels. Areas of interest include receptor-G protein coupling, mechanisms of desensitization and G protein-mediated activation of tyrosine kinases. Individuals with experience in biochemistry or molecular biology are strongly encouraged to apply. Please reply with C.V. and names and addresses of three references to: Dr. Maria A. Diverse, Dept. of Pharmacology, Box 1215 at the address below; or e-mail [diverm01@doc.mssm.edu](mailto:diverm01@doc.mssm.edu)

### Taste Transduction

These NIH-funded positions, which are available immediately, involve the study of the role in taste transduction of the G protein gustducin and its interacting partners (Nature Neuroscience 2:1055, 1999; Nature 381: 796, 1996; Nature 376: 80, 1995; Nature 376: 85, 1995; Nature 357: 563, 1992). Projects involve the generation and analysis of transgenic mice to study mammalian taste transduction mechanisms. A strong background in molecular biology required. Experience with transgenic techniques and animal husbandry desirable. Please reply with C.V., names and addresses of three references and a statement of research interests to: Drs. Robert F. Margolskee & Sami Damak, Department of Physiology and Biophysics, Howard Hughes Medical Institute at The Mount Sinai School of Medicine, Box 1677 at the address below; Fax: 212 849 2599; e-mail: [Damak@inka.mssm.edu](mailto:Damak@inka.mssm.edu). For more information about this research, please visit <http://www.hhmi.org/science/neurosci/margolskee.htm> or <http://www.mssm.edu/physbio/local/primfac/margolskee.html>

### Rheumatology/Amyloid Diseases and Cryoglobulinemia

This postdoctoral position is in an established laboratory with a primary interest in the Amyloid diseases and Cryoglobulinemia. The qualified candidate will have a Ph.D. and postdoctoral experience in Molecular Biology, Biochemistry, Pathology or Microbiology. A variety of molecular and biochemical techniques will be employed, including hybridization and blotting, isolation of proteins and peptides, and sequence analysis. As a member of this established laboratory, you should be willing and able to assume an independent role in the design, execution and interpretation of experimental work. Reply with C.V./resume to: Peter D. Gorevic, M.D., Samuel Bronfman Department of Medicine, Division of Rheumatology, Box 1224 at the address below; or fax (212) 849-2574.

### Neurophysiology

A postdoctoral position in mammalian neurophysiology is available immediately. Working with Ehud Kaplan, Larry Sirovich, Bruce Knight and others, the research involves cortical organization and dynamics; and using optical imaging, electrophysiology, and computer simulations and analysis. Experience in (quantitative) neurophysiology and computer literacy are definite assets. For more information about our research interests, visit <http://camelot.mssm.edu/~udi>. Reply with C.V. and names of 3 references (with a phone number or email) to: Dr. Ehud Kaplan, Box 1183 at the address below; Fax: (212) 289-5945; or e-mail (preferred) [kaplane@rockvax.rockefeller.edu](mailto:kaplane@rockvax.rockefeller.edu)

**Mount Sinai School of Medicine, One Gustave L. Levy Place, New York, NY 10029.**

We are an equal opportunity employer fostering diversity in the workplace.

**For more information about Mount Sinai School of Medicine, visit our website:**

**<http://www.mssm.edu>**



THE DONALD DANFORTH PLANT SCIENCE CENTER  
IN ST. LOUIS, MISSOURI ANNOUNCES  
OPPORTUNITIES FOR POSITIONS IN  
STRUCTURAL BIOLOGY AND BIOCHEMISTRY

ROGER N. BEACHY, PH.D.  
PRESIDENT

DONALD DANFORTH  
PLANT SCIENCE CENTER

The new Donald Danforth Plant Science Center located in St. Louis is soliciting applications from outstanding candidates in the fields of X-ray crystallography, NMR spectroscopy, cryo electron microscopy and biochemistry. Successful candidates need not have previously worked on plant related problems, but must have a willingness to do so. Appointments at all levels will be considered, but for the X-ray position, preference will be given to candidates at the Associate or Full Professor levels with experience in biochemistry and/or an interest in structural genomics. In the field of cryo electron microscopy, the successful candidate will be interested in solving the structure of higher order aggregates, and in determining the low resolution structure of membrane proteins. In the field of biochemistry, areas of interest include metabolic and signaling processes in plants, and plant functional genomics. Emphasis is placed on interdisciplinary research and a strong willingness to tackle cutting edge problems. A strong start-up package will be provided.

Please send your curriculum vitae and four letters of reference to: Admission Committee/Str-Bch, Ms. Billie Broecker, Human Resources, Donald Danforth Plant Science Center, 7425 Forsyth, Box 1098, St. Louis, Missouri 63105.

*The Donald Danforth Plant Science Center is an equal opportunity/affirmative action employer and encourages applications from underrepresented groups, including minorities, women and people with disabilities.*

Visit our website at [www.danforthcenter.org](http://www.danforthcenter.org).

**Mitotix** is a biotechnology company developing cell-cycle based biotherapeutics for cancer, cardiovascular and infectious diseases.

**MOLECULAR BIOLOGIST**

We are seeking a molecular biologist to join our Tumor Apoptosis program. This position requires a PhD and 1-3 years of postdoctoral training. The individual will work independently in a team-oriented environment in cutting-edge drug discovery research. The ideal candidate will be proficient in molecular biology techniques and mammalian tissue culture, preferably with a background in retroviral vectors, tumor biology, apoptosis or genetic screens.

**Mitotix** offers competitive salaries, benefits and a chance to work in an exciting scientific environment. Please send resume to:  
**Human Resources, Mitotix, Inc.,**  
Job Code: SC00, One Kendall Sq.,  
Bldg. 600, Cambridge, MA 02139;  
Fax: (617) 225-0005.  
[www.mitotix.com](http://www.mitotix.com) EOE.



**Mitotix**  
INCORPORATED



challenge innovation teamwork

The Face of Pfizer

careers that matter

**P**fizer Central Research is the R&D division of Pfizer Inc, a global, research-based pharmaceutical company at the forefront of a dynamic, rapidly growing industry. We're known for both our unparalleled drug development pipeline and the respect and resources we give to our people. If that appeals to you, maybe yours could be the new Face of Pfizer. Join us in the following opportunity at our Central Research facility in Groton, Connecticut.

**RESEARCH SCIENTIST—ANIMAL HEALTH**

Working with Animal Health Discovery Project teams, you'll help define screening strategies to increase understanding of the ADME liabilities of newly synthesized compounds in different therapeutic areas for companion animals and livestock. You'll also supervise BS/MS scientists, conduct *in vitro* and *in vivo* studies to nominate compounds for development and support early- and late-stage development compounds. This position requires a DVM or a PhD in Chemistry, Biology, or a related field, along with postdoctoral experience and strong computer, communication and team skills. Working knowledge of Phase I/Phase II drug metabolism processes, pharmacokinetics, and analytical chemistry is also essential, and knowledge of GLP is desired. Ad Code: 0000821SCI



**Central Research**

Life is our life's work.

**Department of  
Pathology**

**S**tanford University Postdoctoral Position is available immediately to identify genes that influence the development and function of mouse and human mast cells using cDNA microarrays. The importance of these genes in mast cell development and function, and in mast cell-associated disease processes and protective host responses, will be further characterized using molecular, cellular, and *in vivo* cell transplantation approaches. Excellent state-of-the-art genomic and microarray facilities are available. Applicants should have a strong background in molecular biology and cell biology. Stanford University is an Affirmative Action/Equal Opportunity Employer. Please send curriculum vitae and names of three references to: Stephen J. Galli, M.D., Chair, Department of Pathology, Stanford University School of Medicine, L-235, 300 Pasteur Drive, Stanford, CA 94305. FAX: 650-725-6902. Email [sgalli@leland.stanford.edu](mailto:sgalli@leland.stanford.edu).



**Stanford University**

**Post-Doctoral Research Fellowship  
in Endocrinology at the  
National Institutes of Health**

Post-doctoral position available in the Molecular Regulation and Neuroendocrinology Section, Clinical Endocrinology Branch, NIDDK at the NIH. Our laboratory studies transcriptional regulation by thyroid hormone and steroid hormone receptors and molecular mechanisms of thyroid cancer. We currently are using cDNA microarrays, transgenic and knockout mice, and green fluorescent proteins to study these areas. Strong background in molecular biology required. Applicants must have a Ph.D and/or M.D. as well as 0-5 years post-doctoral experience. Candidates must be U.S. citizens or permanent residents. Please send c.v. and three references to:

**Paul M. Yen, M.D.**

**Mol. Regulation and Neuroendocrinology  
Section, Clinical Endocrinology Branch,  
NIDDK/NIH, Building 10, Room 8D12,  
9000 Rockville Pike, Bethesda, MD 20892  
TEL: 301-594-6797; FAX: 301-402-4136  
e-mail: pauly@bdg10.nidk.nih.gov**

**NIH is an Equal Opportunity Employer**

**POST-DOCTORAL FELLOWSHIP**

A Post-Doctoral position is available for an experienced molecular biologist with an interest in cell cycle regulation and cancer. Working knowledge of protein biochemistry and cell biology is required. The successful candidate will have an opportunity to study various aspects of cell cycle regulation with an emphasis on mammalian polo related kinases.

This position is part of the Biological Mechanisms Section of the Laboratory of Leukocyte Biology, Division of Basic Sciences of the National Cancer Institute and is located at the Frederick Cancer Research & Development Center in Frederick, MD. The National Institutes of Health is an equal opportunity employer and encourages all qualified women and minorities to apply. Selection for this position will be based solely on merit, with no discrimination for nonmerit reasons such as race, marital status, physical disability, age, sexual orientation or membership or non-membership in an employee organization. Salary for this position will begin at \$31,500.

Interested candidates should submit a CV and the names of three references to:

**Douglas K. Ferris, Ph.D.  
Biological Mechanisms Section  
Laboratory of Leukocyte Biology  
NCI-FCRDC  
Bldg. 567, Rm. 218  
Frederick, MD 21702-1201**

Your curriculum vitae and names of references also may be faxed to 301-846-7034 or e-mailed to: ferris@ncifcrf.gov

# Bringing the Art of Science to Life

Bringing the art of science to life is the foundation of Novartis Pharmaceuticals, where we are making significant strides in healthcare solutions. We research, develop, manufacture and market leading innovative drugs used to treat a number of diseases and conditions. We seek to improve people's lives – help strengthen our foundation as a member of our team.

## Postdoctoral Fellowships

### Metabolic & Cardiovascular Disease Research

**HB-6517**

Working within a department of multidisciplinary scientists involved in research of type II diabetes, these projects will contribute to a better understanding of the mechanisms of insulin resistance. This position will involve the study of insulin signal transduction pathways with the goal of identifying novel proteins that impact and regulate this system. The qualified candidates will have a Ph.D. in biochemistry, molecular, or cellular biology with experience in signal transduction and/or transcriptional regulation. An interest in diabetes and metabolic diseases is preferable; strong communication skills and an ability to work within a team environment are essential. These postdoctoral positions, which encourage creative thinking and offer ample opportunities for publication and research presentations, will be for two years.

### Arthritis Research

**HB-7348**

We are looking for an individual committed to scientific excellence to participate in an ongoing project involving intracellular signaling pathways, particularly those involving lipid mediators. The specific goal of this project is to gain a better understanding of Phospholipase D activation and the role of small GTPases of the Arf and Rho families along with other regulators using molecular and biochemical tools. The successful applicant will be encouraged to publish, present findings at international meetings, and take advantage of the rich scientific community in the NYC area. The position requires a Ph.D. in biochemistry, molecular biology or cellular biology with experience in signal transduction pathways preferred. Evidence of publication-quality research, along with strong communication skills, is essential.

### Discovery Technologies/Enzyme Based Screening

**HB-7356**

Working within a dynamic, multi-disciplinary team from multiple disease areas, you will carry out targeted screening of enzymes and receptors using small rationally designed libraries. A strong background in enzymology and excellent laboratory skills are required. Additional opportunities exist for assay optimization for medium to high throughput screening and/or diversity and structure based library design. Depending on the interests of the candidate. The qualified candidates will have a Ph.D. in biochemistry, chemistry, or a related discipline. Strong communication skills are essential. We are committed to providing a stimulating research environment for the chosen candidate with opportunities for internal and external presentation and publication of research.

We offer a highly competitive salary and compensation package. For consideration, please forward your resume/curriculum vitae and letter of interest, indicating requisition # on all correspondence, to: R&D Staffing, Novartis Pharmaceuticals Corporation, 556 Morris Ave., Bldg. 133, Room 1029, Summit, NJ 07901; or email in text (.txt) format with your resume in the body of the email to: [novartisr&d@recruitmentsolutions.com](mailto:novartisr&d@recruitmentsolutions.com) We are an equal opportunity employer. Unfortunately, we will only be able to respond to those candidates who meet our qualifications. Please visit our website at [www.pharma.us.novartis.com](http://www.pharma.us.novartis.com)

 **NOVARTIS**  
The Spirit of Discovery



## The transition from theory to practical application transforms molecules to medicines.

Schering-Plough is a leader in the pharmaceutical industry with a consistent record of new product development for the US and international markets. At Schering-Plough Research Institute, in North Central New Jersey, we are looking for qualified professionals to join our Biotechnology Facilities to develop and perfect innovative methods to bring quality pharmaceutical products to market.

### PRINCIPAL ENGINEER

Responsible for supervising and providing technical leadership and direction in the development and scale-up of current and new and innovative technologies for purifying biopharmaceuticals, supporting clinical manufacturing and process technology transfer to off-shore facilities. The position requires a PhD in Biochemical Engineering or related field, with 3-6 years' relevant experience in fermentation, cell culture and downstream processing. **Job Code: XHXB9932**

### ASSOCIATE ENGINEER

The successful candidate will support process characterization, scale-up, and purification optimization work associated with ongoing off-shore manufacturing operations. Position requires a BS in Biochemical Engineering or related field with 2-4 years' experience or MS in Biochemical Engineering or related field with 0-2 years' experience in protein purification and characterization. **Job Code: XHXB2004**

### ASSOCIATE SCIENTISTS

**Cell Biologist** - Work on engineering of cell lines and protein expression projects for antibodies, receptors, or novel secreted proteins. BS/MS in Cell Biology, Biochemistry or Biotechnology required with 2-5 years' experience in cell biology including mammalian cell culture and protein expression. **Job Code: XHXB9917**

**Biological Scientist** - The successful candidate will support process characterization, scale-up, and purification optimization work associated with ongoing off-shore manufacturing operations. A background in protein purification and characterization is needed for this position within the Purification Scale-Up and Production group. BS/MS in Biological Science required, as is 4-7 years' experience. **Job Code: XHXB2005**

### SCIENTISTS

Challenging positions available for exceptional candidates with BS/MS in microbiology, cell biology or related field, with 5-10 years of mammalian cell culture experience. Expertise in cell line maintenance and testing needed to effectively support the fermentation development of ongoing mammalian cell culture and microbial projects. **Job Code: XHXB2001**

We offer an excellent compensation package, including a competitive salary, bonus, comprehensive benefits and relocation assistance. For consideration, we invite you to send your resume, which **MUST** include the Job Code for your position of interest, to: **Email: [SPRISC@search.com](mailto:SPRISC@search.com)** or send to: **Schering-Plough Research Institute, Human Resources-AR, 2015 Galloping Hill Road, Kenilworth, NJ 07033-1300**. You may also apply online at our website: **[www.sp-research.com](http://www.sp-research.com)**. We are an equal opportunity employer. We regret that we are unable to respond to each resume. Only those selected for an interview will be contacted.



**Schering-Plough  
Research Institute**

Using Science for Human Advantage

### UNIVERSITY OF MASSACHUSETTS MEDICAL SCHOOL Faculty Positions-Vascular Biology Department of Medicine

The Department of Medicine at the University of Massachusetts is seeking research scientists working in the area of vascular biology. Scientists working on basic mechanisms of growth and development of vessels as well as those working on problems related to cardiac disease and neurovascular disease and neovascularization are encouraged to apply. Generous start-up packages, space in our new state of the art research building, and long-term salary support will be offered to outstanding scientists (M.D.s or Ph.D.s) working in these areas. The University of Massachusetts is an affirmative action/equal opportunity employer with a strong commitment to fairness and diversity; accordingly, U Mass actively seeks and encourages applications from all individuals; independent of gender, race, ethnicity, culture, sexual orientation, age, or disability.

Applicants for these tenure-track positions are requested to send a curriculum vitae, bibliography, names of 3 references, and statement of research interests to:

**Robert Finberg, M.D.**  
**Chair, Department of Medicine**  
**University of Massachusetts Medical School**  
**55 Lake Ave North**  
**Worcester, MA 01655+**

### POSTDOCTORAL POSITION

Position immediately available to study the role of mitochondrial mutations and dysfunction in lung disease. Expertise in mutation analysis, bioenergetics and molecular biology are required. The successful candidate should have a Ph.D. in pharmacology, biochemistry, molecular biology, or related discipline. Refer to job #600-48 and send detailed curriculum vitae and three references to:

Dr. Brian J. Day  
National Jewish Medical  
and Research Center  
1400 Jackson Street, B121  
Denver, CO 80206  
Fax: 303-398-1775  
Email: [mccolluml@njc.org](mailto:mccolluml@njc.org)

**NATIONAL  
JEWISH**  
Medical and Research Center



## Unit Head

## Animal Production Unit

FAO/IAEA Agriculture and  
Biotechnology Laboratory

The International Atomic Energy Agency is seeking an experienced animal scientist/veterinarian to lead the Animal Production Unit in laboratory-based activities in the fields of immunoassay, biochemistry and molecular biology in relation to animal production and disease diagnosis. The Laboratory is based at Seibersdorf, 40 Km south-east of Vienna, Austria.

The appointee will participate in the development of the Animal Production and Health Subprogramme, and plan, implement and manage the research, development, training and service activities of the Laboratory Unit, including managing the financial, physical and personnel resources, and implement the quality system of the Unit to meet the relevant ISO Standards/guidelines. He/she will also be responsible for managing the inventory, production, dispatch and technical support for FAO/IAEA assay kits and related materials, as well as organising and directing training courses and fellowship training in support of Programme objectives. The Unit Head will also undertake a personal research programme in support of agreed objectives.

The successful applicant will have a relevant advanced University degree (Ph.D., D.V.M., or equivalent), with at least 15 years experience in the development and application of analytical or diagnostic laboratory techniques, with a focus on immunoassay and/or immuno-chemistry, including 3 years in the development, standardisation and/or transfer of analytical or diagnostic techniques. He/she will be familiar with animal production and disease related problems which are amenable to laboratory-oriented solutions, have an understanding of quality systems and standards, and a proven capability of personnel management in small teams. Fluency in spoken and written English is essential.

Initial contract of three years, with total annual emoluments of approximately US\$59,000. Additional allowance for dependants; travel and removal expenses; assignment and repatriation grants; six weeks annual leave per year. **Applicants should send their curriculum vitae quoting Vacancy Notice No. 99/086 to the Division of Personnel, International Atomic Energy Agency, P.O. Box 100, Wagramerstr. 5, A-1400 Vienna, Austria, before 23 March, 2000.**

**Full details of the Vacancy Notice can be found on the IAEA Website at: [www.iaea.org/worldatom/Jobs/99p086.html](http://www.iaea.org/worldatom/Jobs/99p086.html)**

SEARLE

the people, the complex challenges, the stimulating environment. The opportunity to work independently while contributing to a team. The opportunity to make a difference - to leave your mark.

It's about food, health, hope and an exciting future as we merge with Pharmacia and Upjohn.

## Research Scientist, Cardiovascular Disease

We are looking for a scientist to study the role of aldosterone receptor antagonists in congestive heart failure. You will have a leadership role in exploring the physiology and pharmacology of aldosterone in cardiovascular disease as well as have input and exposure to novel targets in cardiovascular research. Ph.D. or MD plus postdoctoral experience in a related scientific field required. Expertise in cardiac and/or cardiovascular physiology, as well as hands on experience with animal models of cardiovascular disease is essential. Familiarity with mineralocorticoid pharmacology is a plus. This position is located in Creve Coeur, IL. **Ad Code: 99-2504**

## Senior Research Scientist, Vascular Biology

Senior level scientist (Ph.D. and/or MD) required to develop a program to study the role of vascular inflammation in atherosclerosis. You will have a leadership role on a team that will develop new disease models, investigate novel therapies, and develop drugs to control chronic and acute vascular inflammation. Ph.D. or MD plus postdoctoral experience in a related scientific field, and at least 5 years of academic or industrial experience essential. Expertise in the cell biology of atherosclerosis, as well as an understanding of underlying lipid disorders, will be required. Familiarity with inflammatory mechanisms, including gene regulation, and experience with animal and clinical models of atherosclerosis are necessary. Leadership skills required. This position is located in Creve Coeur, IL. **Ad Code: 99-1866**

## Research Scientist, Vascular Biology

We are looking for a scientist to study the role of vascular inflammation in atherosclerosis as a member of a research team that will develop new disease models, investigate novel therapies, and develop drugs to control chronic and acute vascular inflammation. Ph.D. plus postdoctoral experience in a related scientific field required, combined with a familiarity with inflammatory mechanisms, including gene regulation. Expertise in the cell biology of atherosclerosis, as well as an understanding of underlying lipid disorders, is desired, as is experience with animal and clinical models of atherosclerosis. This position is located in Creve Coeur, IL. **Ad Code: 00-0410**

## Biochemist/Cell Biologist, Ph.D.

Working on novel tumor target projects, you will contribute both at the bench and intellectually to the characterization and validation of potential tumor antigens using a variety of biochemical, cellular and molecular approaches. At least 3 years of post-doctoral experience and a background in oncogenesis, signal transduction, or tumor biology is required. You will be responsible for aspects of target validation and proof of concept studies using in vitro and in vivo approaches. Experience in animal tumor models is preferred. This position is located in Chesterfield, MO. **Ad Code: 00-0441**

Searle is the pharmaceutical division of the Monsanto Company. We offer a competitive salary and benefits package including tuition reimbursement and 401(k). For fastest consideration, please submit your resume in scannable format to: [monsanto@aon-hros.com](mailto:monsanto@aon-hros.com), ad code selected from above on your subject line and cover letter. Or mail to: Monsanto Staffing, Ad Code selected from above, 700 Chestefield Parkway, Mail Zone: BB5B, Chesterfield, MO 63198. EEO/AA Employer M/F/D/V. Visit us on the web at [www.searle-ican.com](http://www.searle-ican.com)

# CREATING IMPACT.



*Accommodating the  
world's health care  
needs is an everyday  
occurrence at  
Abbott Laboratories.*

*An EOE, we are committed  
to employee diversity.*

Abbott Laboratories is a global, diversified company dedicated to the discovery, development, manufacture and marketing of healthcare products and services. We are committed to improving people's lives by providing cost-effective healthcare products and technologies while meeting the needs of a constantly evolving marketplace through continuous innovation.

Help us improve lives - join Abbott International in one of the following opportunities:

## Associate Medical Directors

### • Oncology • Urology • Anti Infection •

We have 3 positions available for Associate Medical Directors in the areas of Oncology, Urology, and Anti Infection. The selected candidates will evaluate potential products for in-licensing, determine the need for clinical studies, identify study objectives, and design/write clinical protocols. You will review all clinical sections of the Registration Package, participate in writing the product labeling elements, identify elements to successfully market products, and interact with affiliates, necessary regulatory offices, key opinion leader and colleagues on all product related information as well as review/approve all clinical trials slated to the product. Some involvement with international product development plans is expected. Position requires candidates to have a MD/DO with post-graduate training in either Oncology, Infectious Disease or Immunology, or Urology as well as experience in clinical research, and board certification/equivalent. Knowledge of a foreign language and medical practices outside the United States is a plus. 30% travel is anticipated. (Ad Code: 99-JDP0215)

## International Director of Quality Management

The qualified candidate will ensure all medical, clinical, regulatory, pharmacovigilance activities are carried out optimally, in terms of quality and cost/time effectiveness. The Director will manage the function and provide leadership to the affiliates. You will also support all managers and affiliate Medical Directors in establishing, reviewing, and improving a quality system relevant to their activity, develop new methods for a cost/time effective execution of the trials, regulatory submissions and adverse events reporting systems, prevent quality issues by establishing and maintaining all relevant processes, sort issues detected by auditors and prevent any new occurrence. (Ad Code: 99-JDP2575)

With such a prominent presence around the world, the opportunity for professional advancement is limitless. At Abbott Laboratories, we reward our employees with a competitive compensation and benefits package. **For immediate consideration, please respond online at: [www.abbott.com/ad](http://www.abbott.com/ad) and enter Ad Code: (insert from above). Or by mail to: Abbott Laboratories, Ad Code: (insert from above), Dept. 6PP, Bldg. AP34, 200 Abbott Park Road, Abbott Park, IL 60064. E-mail: [delores.patterson@abbott.com](mailto:delores.patterson@abbott.com)**

**ABBOTT  
LABORATORIES**  
Quality Health Care Worldwide

[www.abbott.com](http://www.abbott.com)

## Chief, Laboratory of Genes and Behavior Mood and Anxiety Disorders Program National Institute of Mental Health

The Mood and Anxiety Disorders Program of the National Institute of Mental Health Intramural Research Program invites applications for a tenured senior investigator to be Chief, Laboratory of Genes and Behavior. The candidate is expected to develop an independent research program to plan and conduct research studies into the genetics underlying animal behaviors relevant to the pathophysiology and etiology of mood and anxiety disorders. The candidate must have a M.D. and/or Ph.D with broad research experience, including a record of high scientific achievement as an independent investigator, experience of direct administration of a research program, and national and international recognition. Applicants should send a curriculum vitae, statement of research interest, and have three letters of recommendation sent by **March 15, 2000** to:

Dr. Dennis Charney  
Chair, Search Committee for the Chief  
Laboratory of Genes and Behavior  
NIMH, Bldg. 10, Room 4N222  
9000 Rockville Pike, Bethesda, MD 20892

**NIH is an Equal Opportunity Employer**

## Chief, Laboratory of Molecular Pathophysiology Mood and Anxiety Disorders Program National Institute of Mental Health

The Mood and Anxiety Disorders Program of the National Institute of Mental Health Intramural Research Program invite applications for a tenured senior investigator to be Chief, Laboratory of Molecular Pathophysiology. The candidate is expected to develop an independent research program emphasizing the cellular and molecular determinants of mood disorders. The research within the Laboratory will utilize a spectrum of molecular and neuropharmacological techniques and facilitate the design and conduct of clinical research studies of the pathophysiology, etiology, and treatment of mood disorders. The candidate must have a M.D. and/or Ph.D with a record of high scientific achievement as an independent investigator and national and international recognition. Applicants should send a curriculum vitae, statement of research interests, and have three letters of recommendation sent by **March 15, 2000** to:

Dr. Dennis Charney  
Chair, Search Committee for the Chief  
Laboratory of Molecular Pathophysiology  
NIMH, Bldg. 10, Room 4N-222  
9000 Rockville Pike, Bethesda, MD 20892

**NIH is an Equal Opportunity Employer**

## Chief, Laboratory of Neuroplasticity Mood and Anxiety Disorders Program National Institute of Mental Health

The Mood and Anxiety Disorders Program of the National Institute of Mental Health Intramural Research Program invites applications for a tenured senior investigator to be Chief, Laboratory of Neuroplasticity. The candidate is expected to develop an independent research program emphasizing the mechanisms and regulation of structural and functional changes in the mature brain. The candidate must have a M.D. and/or Ph.D with a record of high scientific achievement as an independent investigator and national and international recognition. Applicants should send a curriculum vitae, statement of research interests, and have three letters of recommendation sent by **March 15, 2000** to:

Dr. Dennis Charney  
Chair, Search Committee for the Chief  
Laboratory of Neuroplasticity  
NIMH, Bldg. 10, Room 4N222  
9000 Rockville Pike  
Bethesda, MD 20892

**NIH is an Equal Opportunity Employer**

## NATIONAL INSTITUTES OF HEALTH

### Developmental Therapeutics Program, National Cancer Institute

#### Postdoctoral Research Positions

Postdoctoral fellowships for candidates with less than three years of experience are available to work within a multidisciplinary program to develop and study new targeted therapeutics for cancer. Potential areas of research include studies focused on mechanisms mediating drug-drug interactions and cell death, identifying novel targets of drug action as well as designing and developing novel antibody targeting agents. Applicants should have backgrounds in molecular and cellular biology or proteomics. Experience with antibody engineering and phage display would be a strong asset. Stipend ranges from \$31,500 - \$36,390, commensurate with experience. Please send curriculum vitae and three references to:

Ms. Lisa Gray  
Screening Technologies Branch, DTP, NCI  
Building 431A  
Frederick Cancer Research and  
Development Center  
National Cancer Institute  
Frederick, MD 21702  
E-mail: lgray@mail.ncifcrf.gov

*NCI/NIH is an Equal Opportunity Employer*



Biacore, Inc. (<http://www.biacore.com>), the global leader in developing, manufacturing and marketing of unique and innovative products to detect and monitor biomolecular binding, is building its team. In order to meet current and future customer needs, we are currently looking for dedicated professionals in our Applications area.

#### APPLICATION SCIENTISTS

Responsibilities include: customer training and telephone support, product demonstrations and seminars, and the development of new applications for biomolecular characterization. B.S. to Ph.D., minimum five years laboratory experience in Biochemistry, Biophysics, Protein Characterization, and/or Assay Development. Strong written and verbal skills required. Instrument background and knowledge of kinetics would be a plus. Ph.D. to be placed in the **Boston** area representing the Northeast and in the **Washington, DC** area representing the Southeast. Travel required.

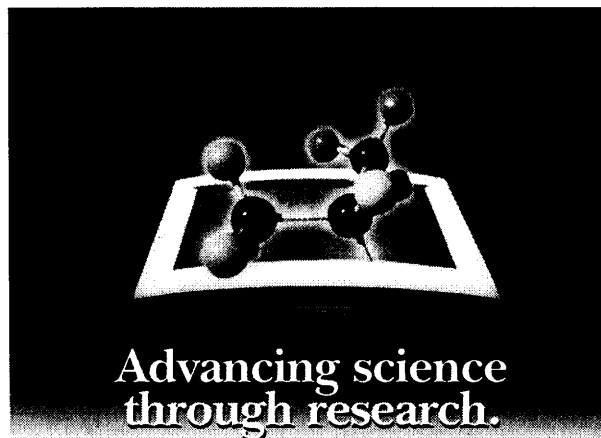
An Application Scientist with the above qualifications is needed to provide **telephone technical support** and applications support. This support position will be located in **Central New Jersey**.

Send resume with references and salary history to:

Human Resources, Biacore, Inc.  
200 Centennial Avenue, Suite 100  
Piscataway, NJ 08854

Please note the location you are responding to and if relocation would be considered.

*We are an equal opportunity employer m/f/d/v.*



Parke-Davis, a Division of Warner-Lambert Company, is devoted to discovering, developing, manufacturing, and marketing quality pharmaceutical products. Through the work of the finest scientific talent and dedication, we have demonstrated an excellent record of innovation through the use of great science to discover drugs for unmet medical needs. Currently, we have the following opportunity:

### ASSOCIATE SCIENTIST/ SR. ASSOCIATE SCIENTIST JOB CODE: HS/00-0087SC

In this position, you will develop and validate methods for dosage forms while providing input regarding potential improvement in project test methods. In addition, you will be responsible for planning near-term laboratory activities to complete timely testing of assigned samples; implementing and complying with cGMPs; ensuring that all laboratory work is performed safely and advising supervisor of any unsafe circumstances; summarizing data for trend evaluation and/or report generation, as requested; and keeping up to date with literature relating to methods development and analytical technology.

Candidate must have a familiarity with standard analytical chemistry laboratory techniques, some instrumentation (HPLC), and computer software such as Microsoft Word and Excel. Additionally, you must be self-motivated and have excellent written and verbal communication skills.

**Associate Scientist requirements:** BS degree in Chemistry or a Pharmaceutical Science with 5 - 6 years' related experience or an MS degree with 0 - 2 years' related experience.

**Senior Associate Scientist requirements:** BS degree in Chemistry or a Pharmaceutical Science with 7 - 8 years' related experience or an MS degree with 3 - 5 years' industrial experience in analysis of new drug products.

We offer competitive salaries, outstanding benefits, and an environment that is conducive to professional growth. Please send your resume indicating JOB CODE, to: Warner-Lambert Resume Processing Center, P.O. Box 549231, Suite 24, Waltham, MA, 02454-9231; Fax: 877-663-2497; or E-mail: [warnerlambert7@hiresystems.com](mailto:warnerlambert7@hiresystems.com)

 **PARKE-DAVIS**  
A Warner-Lambert Division

## POSITIONS OPEN

### NUCLEAR MAGNETIC RESONANCE (NMR) LABORATORY SERVICES COORDINATOR DEPARTMENT OF CHEMISTRY Stanford University

Outgoing and experienced nuclear magnetic resonance **SCIENTIST** to operate and maintain NMR spectroscopy laboratory and collaborate with researchers. Facility operates with several Varian spectrometers. Individual will be responsible for (1) implementation, development, and teaching of NMR methods for small molecules and macromolecules; (2) upkeep of facility spectrometers; (3) instruction and collaboration with researchers; (4) maintenance of hardware and software resources related to NMR data acquisition and processing; and (5) helping write proposals to maintain state-of-the-art facilities and instrumentation. Qualifications: Ph.D. in chemistry or biophysics with strong experience and knowledge of NMR spectroscopy; experience in maintenance of NMR hardware and operating software (UNIX, VNMR, FELIX). Significant experience in modern 2D, heteronuclear, and relaxation methods desirable. Good communication skills important. Salary commensurate with experience.

Applications accepted through March 31, 2000. Send letter/curriculum vitae to:

**Sue Learned-Driscoll**  
Department of Chemistry  
Stanford University  
Stanford, CA 94305-5080  
Telephone: 650-723-3508  
FAX: 650-725-0259  
E-mail: sld@leland.stanford.edu

*Stanford University is an Equal Opportunity/Affirmative Action Employer and encourages applications from women and minorities.*

### POSTDOCTORAL ASSOCIATES AND ASSISTANT RESEARCH PROFESSOR in Carcinogenesis and Prevention

Positions are available for scientists with strong background in biochemistry, molecular/cell biology, immunology, or molecular pathology to study the mechanisms of carcinogenesis and its prevention in cell lines, animal models, and humans. Position and salary are commensurate with experience. Excellent opportunities for career development. Qualified scientists may also develop their own research grants. Send curriculum vitae, statement of research interests, and names of three references to: **Dr. Chung S. Yang, Laboratory for Cancer Research, College of Pharmacy, Rutgers, The State University, Piscataway, NJ 08855-8020. E-mail: csyang@rci.rutgers.edu. Equal Opportunity Employer.**

A limited number of 18-month, nonrenewable **POSTDOCTORAL FELLOWSHIPS** are available beginning January 1, 2001. Applicant research interests should focus on marine biodiversity/biocomplexity or practical applications of these themes, including marine biology/biological oceanography, drug discovery, natural products chemistry, aquaculture, wild dolphin research, and development of new technologies to study the oceans. Fellowships include a two-to-three week teaching requirement. Application deadline is 15 April 2000. Stipends are \$27,072 annually; modest supply and travel budget. Eligible for group health coverage. Applications available from: **Johnson Marine Education Center, Harbor Branch Oceanographic Institution, Inc., 5600 U.S. 1 North, Ft. Pierce, FL 34946 U.S.A. Website: <http://www.hboi.edu/education.html>. Equal Employment Opportunity/Affirmative Action Employer.**

**POSTDOCTORAL POSITIONS** open immediately to develop gene therapy approaches for treating rheumatoid arthritis, diabetes, and cancer. Candidates with experience in virology, immunology, or animal models of disease are encouraged to apply. Please send curriculum vitae and names of three references to: **Paul D. Robbins, Ph.D., Department of Molecular Genetics and Biochemistry, University of Pittsburgh, School of Medicine, E1240 BSTWR, Pittsburgh, PA 15261. E-mail: probb@pop.pitt.edu.**

## POSITIONS OPEN

### EXECUTIVE DIRECTOR SUSAN SAMUELI CENTER FOR COMPLEMENTARY AND ALTERNATIVE MEDICINE University of California, Irvine College of Medicine

The University of California, Irvine, College of Medicine, is seeking an individual with demonstrated administrative and scientific accomplishment to be Executive Director of its new Susan Samuelli Center for Complementary and Alternative Medicine. The Director will assume the major intellectual leadership position in the Center. A successful candidate should have an internationally recognized research program and a track record of peer-reviewed funding, preferably from the NIH or DVA, along with a history of leading research efforts that bridge bench and clinical sciences in a multidisciplinary approach. The Director will be expected to maintain an active research program and recruit additional junior faculty for a research and a data analysis unit; conference and curriculum development and teaching will also be required. Substantial resources, including an endowment, are available to support this initiative. Priority will be given to an applicant who can relate integrative research to clinical problems, specifically in the area of complementary and alternative medicine. The position of Director is at the rank of **ASSOCIATE or FULL PROFESSOR** in the Department of Medicine or Department of Family Medicine. Salary and benefits will be determined commensurate with background and experience.

The Susan Samuelli Center for Complementary and Alternative Medicine investigates the efficacy of various therapeutic modalities considered to be a part of complementary and alternative medicine, including herbs and homeopathic medicine, as they relate to areas such as cardiovascular health, autoimmune diseases, neuromuscular health, cancer treatment and prevention, menopause, and aging. Acupuncture as a therapeutic modality is a focus of study at the Center. Additionally, the Center educates new physicians and the community to understand and evaluate complementary and alternative therapies and serves as a science-based resource for medical professionals and alternative practitioners.

Qualifications for the position of Director include M.D. or M.D./Ph.D.; strong academic background of research and teaching in an academic medical center; at least five years of experience in academic administration; demonstrated success in administering multidisciplinary programs in a complex organizational environment; evidence of superior communication skills; proven ability to establish effective partnerships across organizational divisions and campus locations; experience working effectively with advisory boards; demonstrated commitment to collaboration and cooperation; strong scientific background rooted in the NIH, both as grant recipient and as study section reviewer; and expertise and experience with complementary and alternative medicine, including understanding of the importance of integrating science-based knowledge of alternative therapies with traditional medicine.

Interested parties should send a résumé and names and addresses of three references to: **John C. Longhurst, M.D., Ph.D., Chair, Department of Medicine, Interim Co-Director, Susan Samuelli Center for Complementary and Alternative Medicine, University of California, Irvine, College of Medicine, Building 200, Suite 720, Route 81, Orange, CA 92868-4076. The University of California is an Equal Opportunity Employer committed to excellence through diversity.**

**POSTDOCTORAL RESEARCH FELLOWSHIPS** at Harvard University for Ph.D.s or M.D.s with experience in molecular or cell biology for NIH-funded research that dissects the molecular mechanisms of cellular exocytosis in vascular cells. Available immediately. Send curriculum vitae and names of three references to: **Dr. Guy L. Reed, Cardiovascular Biology, Harvard SPH II-127, 677 Huntington Avenue, Boston, MA 02115. E-mail: reed@cvtlab.harvard.edu.**

## POSITIONS OPEN

### FACULTY POSITION DEPARTMENT OF BIOLOGICAL SCIENCES WELLESLEY COLLEGE

The Department of Biological Sciences at Wellesley College, a liberal arts institution located 10 miles west of Boston, Massachusetts, with a student body of 2,200, invites applications for a one-year sabbatical leave replacement position beginning fall 2000. This position will be at the **VISITING ASSISTANT PROFESSOR** level.

Courses to be taught include advanced vertebrate physiology, intermediate cellular physiology, and introductory biology. A Ph.D. and commitment to the teaching of undergraduates are required.

Review of completed applications will begin March 8, 2000. Applicants should send their curriculum vitae, copies of undergraduate and graduate transcripts, a statement of teaching philosophy and experience, two letters of recommendation, and the name of one additional reference to:

**Chair, Faculty Search Committee  
Department of Biological Sciences  
Wellesley College  
Wellesley, MA 02481**

*Wellesley College is an Equal Opportunity/Affirmative Action Employer.*

### POSTDOCTORAL POSITIONS GEORGETOWN UNIVERSITY MEDICAL CENTER

A Postdoctoral position is available immediately to study the biochemical and molecular aspects of *ataxia-telangiectasia* and prostate cancer. The projects include biochemical analysis, isolation of novel genes, and clinical translation studies for gene therapy. Recent Ph.D. training in molecular or cellular biochemistry. Prefer experience in these areas and less than five years of postgraduate. Send curriculum vitae and names of three references to: **Miya Jung, Ph.D., Associate Professor, Department of Radiation Medicine, Division of Radiation Research, Georgetown University Medical Center, 3790 Reservoir Road N.W., E211A, The Research Building, Washington, DC 20007-2197. FAX: 202-687-0400.**

*Georgetown University is an Equal Opportunity/Affirmative Action Employer.*

### FISH ECOLOGIST

The U.S. Geological Survey Cooperative Fisheries and Wildlife Research Unit at Utah State University announces the availability of a position for a freshwater fish population Ecologist with a lentic focus. Expertise and interests in quantitative analysis of food webs, bioenergetics modeling, and habitat analyses of native and introduced aquatic species desirable. Must be able to work effectively with state and federal resource agencies to address applied management issues, be an effective teacher in his/her specialty, and maintain a strong graduate program. Applicants should have a strong publication record. To apply, contact the Federal Office of Personnel Management (OPM), website: [www.opm.gov](http://www.opm.gov), using the "usajobs" link. Also, send statement of interest, curriculum vitae, and the names of three references to: **Search Committee Chair, Department of Fisheries and Wildlife, Utah State University, Logan, UT 84322-5210. E-mail: fishnwlw@cc.usu.edu. U.S. Geological Survey is an Equal Opportunity/Affirmative Action Employer.**

A **POSTDOCTORAL POSITION** is available at the University of Florida College of Medicine in July 2000 to study molecular pathogenesis of viral hepatitis and hepatocarcinogenesis. Ph.D. degree or equivalent is required. Send résumé and three references to:

**Chen Liu, M.D., Ph.D.  
c/o Kay Lewis, Department of Pathology  
University of Florida College of Medicine  
Box 100275 JHMC  
Gainesville, Florida 32610-0275**



## Executive Director

### Division of Earth and Ecosystem Sciences (DEES) Desert Research Institute – Las Vegas and Reno

DRI, an independent environmental research institute of University and Community College System of Nevada (UCCSN), recently reorganized into three Divisions (Hydrologic Sciences, Atmospheric Sciences, and Earth and Ecosystem Sciences), and two new interdisciplinary centers (Watershed Environmental Sustainability and Arid Lands Environmental Management). The Director of DEES will report to our president and play a lead role in developing the scientific direction of this newly reorganized Division of approximately 50 faculty and staff, a \$4.8M budget, and research programs in archaeology, biogeochemical cycling, ecosystem ecology, geomorphology, geochronology, landscape dynamics, microbial ecology, paleoecology, plant ecology and physiology, soil science, and remote sensing.

The Executive Director must have strong scientific and administrative leadership, personnel skills, and an international scientific reputation to enhance DRI's academic prestige and financial standing; serve as faculty mentor and collaborator; facilitate cooperative teaching/research with UCCSN's Universities at Reno and Las Vegas; and work with sponsors to further our strategic goals.

Review of applications begins April 1, 2000, and continues until the position is filled. For details about the requirements of the position, application procedures, who to contact if you have questions, and more about DRI, visit us at: [www.dri.edu/AboutDRI.html](http://www.dri.edu/AboutDRI.html) and click on the *Employment Opportunities* link. DRI is an AA/EEO employer that employs only U.S. citizens and those authorized to work in the U.S.

*At Monsanto, we share a common goal - to help people lead longer, healthier lives. We are pioneering the use of life-science technologies to understand how the connections between human health, nutrition and agriculture can be used to develop products to improve the quality of life for everyone, everywhere.*

## ANALYTICAL BIOCHEMIST

Ag Regulatory Sciences of Monsanto Company is seeking a candidate to join a group in the Product Safety Center responsible for analytical and project management support for the compositional analyses of nutrients, anti-nutrients, vitamins, secondary metabolites and other components of Monsanto's new crops derived through biotechnology.

You will serve as a study director for compositional analyses and nutritional evaluations, working with field biologists to generate samples, analytical chemists to conduct the analyses and statisticians to evaluate the data. As new products enter development with a variety of quality traits you will develop and apply analytical tools to assess the impact of the new trait on compositional and nutritional equivalence.

BS or MS in biochemistry, food science or related field with at least 2-3 years of experience in metabolic biochemistry, analytical biochemistry or food compositional analysis required. Prior experience with GLP will be an asset. Interested candidates must also be self-motivated and possess a strong interest in working on a team with diverse customers.

This position is based in St. Louis, MO. We offer a competitive salary and benefits package including tuition reimbursement and 401(k). For fastest consideration, please submit your resume in scannable format to: [monsanto@aon-hros.com](mailto:monsanto@aon-hros.com), Ad Code: 00-0706 on your subject line and cover letter. Or mail to: Monsanto-00-0706, PO Box 1262, Findlay, OH 45840. You will receive a postcard acknowledging receipt of your resume. EEO/AA Employer M/F/D/V. Please visit our website at [www.monsanto.com](http://www.monsanto.com)

MONSANTO

Food • Health • Hope™



## Looking for brilliant career opportunities?



Then look here...  
[www.sciencecareers.org](http://www.sciencecareers.org)

- Job Search • Job Alerts • Employer Profiles
- Advice and Perspectives
- Meetings and Announcements
- Academic Connections

Science Careers  
[www.sciencecareers.org](http://www.sciencecareers.org)

## GLOBAL OPPORTUNITIES

SAMSUNG

### SAMSUNG BIOMEDICAL RESEARCH INSTITUTE/ SUNGKYUNKWAN UNIVERSITY SCHOOL OF MEDICINE FACULTY POSITIONS IN MOLECULAR MEDICINE

As a part of major reorganization and expansion of Samsung Biomedical Research Institute/Sungkyunkwan University School of Medicine, SBRI/SUSOM is soliciting applications from outstanding candidates for faculty/staff positions in several research fields. SBRI/SUSOM is building a core group of faculty as well as the supporting facilities in preparation for the post-genomic era, which, in concert, will strengthen the existing programs in the SBRI/SUSOM. SBRI/SUSOM seeks to hire three to five faculties with expertise in the fields of **population genetics (including disease gene analysis and SNPs)** and **protein chemistry (including proteomics)**. The positions are not limited to these two fields only. Outstanding individuals in other fields are cordially invited to apply for a position if his or her expertise has a direct relevance to **molecular medicine**. A strong emphasis will be placed on identifying exceptionally talented, broadly trained individuals with strong experimental background who are interested in teaching and collaborative research. The successful applicants are expected to develop active externally funded research programs. This position will be provided with highly competitive start-up funds and laboratory spaces. Salary and benefits are commensurate with experiences. Applicants should provide Curriculum Vitae, list of publications, statement of future research interests, and should also arrange to have three letters of recommendation sent to:

Dr. Joo-Bae Park  
Department of Molecular Cell Biology  
Sungkyunkwan University School of Medicine  
300 Chunchundong Jangangu  
Suwon 440-746, Korea



## POSITIONS OPEN



**OKLAHOMA  
MEDICAL  
RESEARCH  
FOUNDATION**

### FACULTY POSITION OKLAHOMA MEDICAL RESEARCH FOUNDATION

The Cardiovascular Biology Research Program at the Oklahoma Medical Research Foundation in Oklahoma City has a faculty position available for an outstanding applicant with research interests that complement those of existing members of our program, such as vascular cell biology, inflammation, animal models, or atherosclerosis. We offer an attractive recruitment package and an excellent working environment. While the position is open to candidates of any rank, preference will be given to Investigators in the early stages of their careers. Applicants should hold a Ph.D. and/or M.D. and demonstrate potential as independent scientists. Interested applicants should contact: **Dr. Charles T. Esmon**; e-mail: [cyb@omrf.ouhsc.edu](mailto:cyb@omrf.ouhsc.edu). Include your curriculum vitae, a research summary, and the names of three references as an attachment file. Please visit our website: [www.omrf.ouhsc.edu/CVB](http://www.omrf.ouhsc.edu/CVB). *Affirmative Action/Equal Opportunity Employer.*

### PRINCIPAL INVESTIGATOR

Stem Cell Laboratories is a biotechnology company located in metropolitan New York that is dedicated to the development of human stem cell-based therapeutics. We are looking for an energetic and innovative Principal Investigator to lead a research team working on human stem cell isolation, lineage commitment, differentiation, *ex vivo* expansion, and transplantation. The ideal candidate would have a strong background in both molecular biology and CNS and/or skin stem cell biology. To qualify, candidates are required to have a Doctorate degree (Ph.D. or M.D.) in a related field and two to three years of experience in academic or biotechnology industries. Good presentation skills and the ability to work closely with collaborators in a dynamic research environment are a must. Stem Cell Laboratories offers its employees an outstanding compensation package, which includes a comprehensive benefits package, stock options, and 401(k). For immediate and confidential consideration, please send curriculum vitae including salary requirements, summary of past accomplishments, and the names of references to: **Stem Cell Laboratories, 381 Fifth Avenue, Second Floor, New York, NY 10016**. FAX: 212-684-8947; e-mail: [stemcell@bway.net](mailto:stemcell@bway.net). No agencies or phone calls, please.

A **POSTDOCTORAL POSITION** is available to investigate roles for thrombin in immunity. Expertise in immunology, signal transduction, or cell adhesion is desirable.

Trudeau Institute is a well-financed, not-for-profit biomedical research institute with an international reputation for excellence, located in the heart of the Adirondack Mountains overlooking beautiful Saranac Lake. The Institute offers competitive salary and fringe benefits, the possibility of on-site housing, and a collaborative research environment focused on basic immunology and infectious disease.

Please send a curriculum vitae, addresses of three references, and a letter describing research interests to: **Stephen T. Smiley, Ph.D., P.O. Box 59, Saranac Lake, NY 12983**. Further information is available at website: [www.trudeauinstitute.org](http://www.trudeauinstitute.org).

**POSTDOCTORAL POSITION** available immediately to study the development of allergic asthma using a primate model. Emphasis is on characterization of the pulmonary immune response. Applicants with experience in flow cytometry, tissue culture, and immunohistochemistry are preferred. Curriculum vitae and the names of three references should be sent to: **Dr. Lisa A. Miller, Department of Anatomy, Physiology, and Cell Biology, School of Veterinary Medicine, University of California, Davis, Davis, CA 95616**. E-mail: [lmiller@ucdavis.edu](mailto:lmiller@ucdavis.edu).

## POSITIONS OPEN

**VETERINARY PATHOLOGIST.** The School of Veterinary Medicine at Tufts University invites applications for faculty position(s) in the Department of Biomedical Sciences. Primary responsibilities include teaching, research, and diagnostic services associated with the teaching hospital. The successful candidates will be joining a well-established, multidisciplinary research program concerned with many and diverse aspects of enteric infections of the normal and the immunodeficient host. Candidates must have a D.V.M. (or equivalent) and/or pathogenesis of infections of the gastrointestinal tract. Preference will be given to candidates with Board certification/eligibility in veterinary anatomic pathology and advanced academic training. Candidates for **ASSOCIATE PROFESSOR** should have a demonstrated ability to compete for extramural research funding. Review of applications will begin immediately, and the search will continue until the positions are filled. Interested applicants should submit a letter of application with a statement of career goals, curriculum vitae, and the names of three or more references to: **Dr. Sawkat Anwer, Professor and Chair, Department of Biomedical Sciences, Tufts University School of Veterinary Medicine, 200 Westboro Road, North Grafton, MA 01536**.

*Tufts University is an Affirmative Action/Equal Opportunity Employer.*

### COMPUTATIONAL BIOLOGIST

The Parker Hughes Institute, a nonprofit research organization dedicated to eradicating cancer, AIDS, and diseases of the immune system, is seeking a Computational Biologist to direct an innovative research program modeling complex interactions in biological systems. Applicants should have an advanced degree in computer science, cell biology, or molecular biology with at least three years of experience in the complementary field. Experience with hidden Markov models, other probabilistic methodology, Bayesian networks, and database design is required. Applicants should have demonstrated competence in at least one object-oriented programming language. Proficiency in HTML, PERL, or Java would be an asset.

The Parker Hughes Institute offers a competitive salary and benefit package. Interested applicants should reply to:

**Parker Hughes Institute  
Attention: Human Resources**

P.O. Box 8178

St. Paul, MN 55108

FAX: 651-697-1057

E-mail: [HumanResources@ih.org](mailto:HumanResources@ih.org)

Website: [www.hughesinstitute.org](http://www.hughesinstitute.org)

*Equal Opportunity Employer.*

### POSTDOCTORAL POSITION DEVELOPMENTAL NEUROSCIENCE

NIH-supported position is available now in the Departments of Neurology and Pharmacology at Yale University to study molecular and cellular aspects of mammalian nervous system development. Emphasis is placed on the role of synaptic activity in shaping interneuronal connectivity. Studies include the use of transgenic animals and recombinant viral vectors. A record of accomplishment is important, and a strong desire to learn new techniques and do creative science is critical. Send letter describing experience and interest, along with curriculum vitae and names of three references, to: **Robert Kalb**; e-mail: [rgk2@email.med.yale.edu](mailto:rgk2@email.med.yale.edu).

**POSTDOCTORAL RESEARCH ASSOCIATE.** Starting date flexible. To carry out research on enzyme kinetics and mechanisms. Send curriculum vitae, two letters of reference, and statement of research interests to: **R. Pollack, Department of Chemistry and Biochemistry, University of Maryland, Baltimore County, Baltimore, MD 21250**. E-mail: [pollack@umbc.edu](mailto:pollack@umbc.edu). Applications will be received until a suitable candidate is found. *University of Maryland, Baltimore County, is an Equal Opportunity/Affirmative Action Employer, and applications from qualified women and individuals with disabilities are especially encouraged.*

## POSITIONS OPEN



**FRED  
HUTCHINSON  
CANCER  
RESEARCH  
CENTER**

### ELECTRON MICROSCOPY SPECIALIST II

**ELECTRON MICROSCOPY SPECIALIST** with strong interpersonal skills and ability to work in diverse environment to provide support for sample preparation, examination, and photography for high-production, full service laboratory. Speed, dexterity, and expertise in cutting are critical. Must have at least five years of experience in cutting thin sections from variety of tissues. Scanning electron microscopy experience is a plus. Salary dependent on experience plus benefits. More information at website: [www.fhrcr.org](http://www.fhrcr.org). Include Job #SD-10483 with cover letter and résumé/curriculum vitae and e-mail, FAX, or mail to: **Fred Hutchinson Cancer Research Center/Human Resources, 1300 Valley Street, Seattle, WA 98109**. E-mail: [jobresponses@fhrcr.org](mailto:jobresponses@fhrcr.org); FAX: 206-667-4051; Telephone: 206-667-6861. *Fred Hutchinson Cancer Research Center is an Equal Opportunity Employer.*

### POSTDOCTORAL POSITION VIROLOGY GROUP

#### Veterinary Infectious Disease Organization

Postdoctoral position is available immediately for an ongoing project to work on the molecular biology of animal adenoviruses with emphasis on their development as vectors for vaccine delivery and human gene therapy. Candidates should have a Ph.D. with a strong background in molecular biology and virology. Experience with molecular techniques and virus vectoring is desirable.

The Veterinary Infectious Disease Organization (VIDO), a research institute at the University of Saskatchewan, provides excellent opportunities to collaborate with other scientists in bacteriology, virology, and immunology. VIDO has well-equipped laboratory and animal facilities and offers a stimulating research environment. The successful candidate will be expected to work in a team-based research environment.

Interested candidates should direct applications, including a curriculum vitae and names of three references, to: **Dr. Suresh Tikoo, Program Manager or Joyce Sander, Manager, Human Resources, Veterinary Infectious Disease Organization, 120 Veterinary Road, Saskatoon, SK S7N 5E3 Canada**. FAX: 306-966-7478; e-mail: [tikoo@sask.usask.ca](mailto:tikoo@sask.usask.ca) or [sanderj@sask.usask.ca](mailto:sanderj@sask.usask.ca).

*The University of Saskatchewan is committed to the principles of Employment Equity and welcomes applications from all qualified candidates, including aboriginal people, persons with disabilities, visible minorities, and women.*

A two-year **POSTDOCTORAL POSITION** is available to participate in multidisciplinary research projects investigating the evolution of host-pathogen biology and the global declines of amphibians. The position requires residence at field sites in Central America, where the applicant will use observational and experimental approaches to understand amphibian population dynamics, and the causes and extent of population declines will be used. Successful applicants must hold a Ph.D. in biology or a related field and have demonstrated experience in observational and experimental methods related to population biology. In addition, fluency in Spanish, field experience in Latin America, and experience with amphibians are preferred. Send curriculum vitae, copies of publications, statement of research interests and career goals, and three letters of recommendation to: **Karen R. Lips, Department of Zoology, Southern Illinois University Carbondale, Mail Code 6501, Carbondale, IL 62901-6501**. FAX: 1-618-453-2806; e-mail: [klips@zoology.siu.edu](mailto:klips@zoology.siu.edu). Application review begins April 1, 2000. *Southern Illinois University Carbondale is an Affirmative Action/Equal Opportunity Employer.*

## EUROPEAN OPPORTUNITIES

**United Nations Framework Convention on Climate Change**, Bonn, Germany, seeks manager, P-5 level, minimum annual salary US\$59,963 + post adjustment, to direct staff, financial resources and activities of the Methodology subprogramme. The ideal candidate should be familiar with policy and technical issues relevant to the Convention and will be required to: provide leadership to the methodological work of the secretariat; direct secretariat work programmes on GHG inventories, projections and impacts/adaptation methods; support sessions of the Subsidiary Body for Scientific and Technological Advice (SBSTA) and ensure Governments are provided with necessary support and documents; represent the secretariat at international meetings; ensure the cooperation of all components of the Science and Technology programme with relevant international organisations and national institutions, including the IPCC, and perform other duties, as assigned, including replacing the Coordinator of the S & T programme during absences.

**Requirements:** Advanced university degree in economics, engineering, environmental sciences or a related discipline. Extensive governmental experience of policy-making in climate change area. In depth knowledge of IPCC activities, including methodologies for the estimation of greenhouse gas emissions. At least 10 years relevant experience, of which 3 - 5 at international level with managerial experience at a comparable (senior) level. Fluency in English. Working knowledge of French and other United Nations languages desirable.

**Applications to Chief of Administration, UNFCCC secretariat, P.O. Box 260124, 53175 Bonn, Germany, preferably by facsimile to 49-228-815-1999 or by E-mail to: ekeip@unfccc.de for attention: Chief of Administration. Deadline for application: 10 March 2000.**

Full announcement available on: <http://www.unfccc.de>. Applications will NOT be acknowledged as received. Contract will only be made with an applicant if the secretariat requires additional information or decides to invite an applicant for interview.

## EUROPEAN OPPORTUNITIES



UNIVERSITY OF  
OXFORD

### E.P. Abraham Professorship of Cell Biology

The electors intend to proceed to an election to the E.P. Abraham Professorship of Cell Biology with effect from as early a date as may be arranged.

The University wishes to recruit a senior outstanding research leader in any relevant branch of the subject to fill this newly-established chair, based in the Sir William Dunn School of Pathology.

A non-stipendiary fellowship at Lincoln College is attached to the professorship.

**Applications (ten copies, or one only from overseas candidates), naming three persons who have agreed to act as referees on this occasion, should be received not later than 6th March 2000 by the Registrar, University Offices, Wellington Square, Oxford OX1 2JD, from whom further particulars may be obtained. Further particulars may also be accessed on the Web (URL: <http://www.admin.ox.ac.uk/fp/>).**

**The University is an Equal Opportunities Employer.**

## GLOBAL OPPORTUNITIES



**International Livestock Research Institute**

Consultative Group on International Agricultural Research

### POSITION ANNOUNCEMENT

#### RUMINANT NUTRITIONIST AT ILRI-INDIA Ref: RN/01/2000

The International Livestock Research Institute is recruiting a highly motivated senior ruminant nutritionist to lead the plant and animal level research on feed resources and animal nutrition in South Asia. This research is conducted in collaboration with plant breeders and social scientists at the International Crops Research Institute for the Semi-Arid Tropics (ICRISAT), plant and animal scientists in the national agricultural research systems of India, and research organizations in developed countries. The work involves: 1) Collaborative work with Biochemists, Crop Breeders and Molecular Geneticists on the genetic improvement of feed quality of pearl millet and sorghum residues, including the identification of quantitative trait loci associated to feed quality, 2) Collaborative work with Breeders and Agronomists in the planning and execution of multi-local studies aimed at evaluating the effects of genetic, environmental and genotype-environment interactions on feed traits of pearl millet and sorghum residues, and 3) Collaborative work with Economists and Social Scientists in participatory studies on farmers' perceptions on feed quality and the potential for adopting crop cultivars improved for feed quality.

#### Qualifications:

A Ph. D. degree or equivalent, with appropriate specialisation in animal nutrition and livestock feeds, and a significant publication record are required. Candidates are expected to have at least 5 years of experience in relevant research and some project management experience. Good communication and interpersonal skills, an ability to perform in a multi-disciplinary and multi-cultural research environment and fluency in spoken and written English are essential. A good understanding of farming systems research involving animals in developing countries is desirable.

#### Location:

ICRISAT, Patancheru, Andhra Pradesh, India

#### Conditions:

The contract for this position will be for an initial three-year term with the possibility of extension. Salary, dependent on experience, will be paid in US dollars. ILRI provides excellent benefits including employer-paid medical, life and disability insurance and retirement benefits. Relocation, annual leave travel and education allowances are also provided. A housing allowance is also provided.

#### Applications:

Applications including CV and names of three referees should be sent to the Human Resources Manager, ILRI, P.O. Box 30709, Nairobi, Kenya; Telephone: 254-2-630743; Fax: 254-2-631499; e-mail: [ILRI-KENYA@cgiar.org](mailto:ILRI-KENYA@cgiar.org). The name and reference number of the position should be quoted. Screening of applications will begin on 24<sup>th</sup> March 2000 and will continue until the post is filled.

**To find more about ILRI, visit our Website at  
<http://www.cgiar.org/ilri>**

*ILRI is an equal opportunity employer.  
Qualified women and professionals from developing  
countries are particularly encouraged to apply.*

## POSITIONS OPEN

### COLUMBIA UNIVERSITY COLLEGE OF PHYSICIANS AND SURGEONS

A **POSTDOCTORAL POSITION** is available at Columbia University. We are studying physiological events involved in early stages of cortical development. Methods include patch clamp recording, neuroanatomical methods, calcium imaging in brain slices, and molecular biological approaches. Experience in patch clamp recording is preferred but not required. Additional training in molecular biology is desirable. Send curriculum vitae and names of three references to:

**Arnold R. Kriegstein, M.D., Ph.D.**  
Department of Neurology  
Columbia University  
College of Physicians and Surgeons  
630 West 168th Street, Box 31  
New York, NY 10032

*Columbia University is an Affirmative Action/Equal Opportunity Employer.*

### ROLE OF MOLECULAR CHAPERONES IN ENDOCYTOSIS

**EVAN EISENBERG, M.D., PH.D.**

A **POSTDOCTORAL POSITION** is available to study the functions of the Hsp70 class of molecular chaperones, in particular their role in endocytosis. We have discovered two unique J-domain proteins that regulate the dissociation of clathrin from clathrin-coated vesicles by Hsc70 and are studying their function using cell transfection, confocal microscopy, and knockouts in both *C. elegans* and mice. We are also interested in other factors that affect clathrin binding to clathrin-coated pits and vesicles. Experience in molecular biology is required. Applicants must have a Ph.D. and/or M.D. and not more than five years of postdoctoral experience. Contact: **Cellular Physiology Section, NHLBI, Building 3, Room B1-22, 3 Center Drive MSC 0301, Bethesda, MD 20892-0301. Telephone: 301-496-2846; FAX: 301-402-1519; e-mail: eisenbee@nhlbi.nih.gov. NIH is an Equal Opportunity Employer.**

### RESEARCH SCIENTISTS

Reddy U.S. Inc. is a company engaged in drug discovery research using molecular/genomic and proteomic approaches for treatment of diabetes, cardiovascular, and inflammatory diseases. The company, located in the suburbs of Atlanta, has openings for **SCIENTISTS** (Job Code RS 101) and **SENIOR SCIENTISTS** (Job Code SS 102). Candidates must have a Ph.D. and at least two years of postdoctoral experience in molecular biology. Good communication skills and ability to work in a team environment are required. The company offers a competitive salary and a comprehensive benefits package. Please FAX résumé to: **404-320-6840. Equal Opportunity Employer.**

Two **POSTDOCTORAL POSITIONS** are available to study macromolecular complexes in NF kappa B/I kappa B signaling and mRNA transport pathways, using X-ray crystallography and biochemistry. Candidates with strong background in X-ray crystallography and/or biochemistry are preferred. Send curriculum vitae and names and addresses of three references to: **Dr. Gourisankar Ghosh, Department of Chemistry and Biochemistry, University of California-San Diego, La Jolla, CA 92093-0359. FAX: 858-534-7042; e-mail: gghosh@chem.ucsd.edu.**

**POSTDOCTORAL POSITION** available to study cardiac transcriptional regulation and cardiac development. We utilize molecular techniques, including transgenic mouse models and knockouts, to investigate disease-causing pathways. Contact: **Jeffery D. Molkenin, Ph.D., Children's Hospital Medical Center, Division of Molecular Cardiovascular Biology, 3333 Burnet Avenue, Cincinnati, OH 45229-3039. FAX: 513-636-5958.**

## POSITIONS OPEN

Two **POSTDOCTORAL FELLOWSHIPS** are available in protein structure and function. Topics include allosteric enzymes and enzyme-catalyzed reactions. Send information to: **William N. Lipscomb, Department of Chemistry and Chemical Biology, Harvard University, 12 Oxford Street, Cambridge, MA 02138. Telephone: 617-495-4098; FAX: 617-495-3330; e-mail: lipscomb@chemistry.harvard.edu.**

**RESEARCH (POSTDOCTORAL/ASSOCIATE) POSITION** available immediately to study molecular mechanisms of phospholipase-D signaling and endothelial cell permeability. The position requires a Ph.D. or M.D. degree with experience in molecular biology and cell signaling. Send a cover letter and full curriculum vitae with names and addresses of three references to:

**V. Natarajan, Ph.D.**  
Professor of Medicine  
Johns Hopkins University School of Medicine  
Division of Pulmonary and Critical Care  
Asthma and Allergy Center  
5501 Hopkins Bayview Circle  
Baltimore, MD 21224  
E-mail: vnataraj@welch.jhu.edu

### POSTDOCTORAL POSITIONS

Postdoctoral positions are available within the newly formed Institute of Molecular Cardiology at Stony Brook. Salary is \$27,000 to \$32,000/year. This Institute is focused on a multidisciplinary approach to understanding cardiac function. Candidates with training in any of the following areas are encouraged to apply: electrophysiology, molecular biology, or protein chemistry of ion channels or transporters. Interested applicants should write to: **Dr. Ira Cohen or Dr. David McKinnon, HSC, Institute of Molecular Cardiology, Department of Physiology and Biophysics, SUNY Stony Brook, NY 11794-8661. Affirmative Action/Equal Opportunity Employer.**

**POSTDOCTORAL POSITIONS** in immunology/molecular genetics available immediately to carry out genetic and functional characterization of unique immunodeficient HD-/- mouse strain. Our previous work demonstrates that the HD gene is of critical importance in the decision-making process that gives rise to the alternate CD4 helper and CD8 killer T cell lineages (*Science* 286:1149-1153, 1999). Strong backgrounds in molecular biology and cellular immunology are required, respectively. Send a résumé to: **Dietmar Kappes, c/o Human Resources, Fox Chase Cancer Center, 7701 Burholme Avenue, Philadelphia, PA 19111. FAX: 215-728-2682. Equal Opportunity Employer.**

**POSTDOCTORAL POSITIONS** currently available for individuals interested in the design of novel transcription factors and DNA-modifying enzymes. New approaches towards regulation of angiogenesis and the correction of genetic diseases will be developed. See *PNAS* 95:14628. Requires a Ph.D. with a background in molecular biology. Send curriculum vitae and three references to: **Professor C. F. Barbas, Department of Molecular Biology, BCC 515, The Scripps Research Institute, 10550 North Torrey Pines Road, La Jolla, CA 92037. FAX: 858-784-2583; e-mail: carlos@scripps.edu; website: http://www.scripps.edu/mb/barbas/index.html.**

**POSTDOCTORAL POSITION** available to study the action of the Arf6 GTPase on membrane traffic and the actin cytoskeleton. A strong background in cell and molecular biology is required. Candidates should have a Ph.D. or M.D. and fewer than three years of postdoctoral experience. Send curriculum vitae and names of three references to: **Dr. Julie Donaldson, Laboratory of Cell Biology, NHLBI, NIH, Building Three, Room B122, Bethesda, MD 20892. E-mail: jdonalds@helix.nih.gov. NIH is an Equal Opportunity Employer.**

## POSITIONS OPEN

### BIOSTATISTICIAN

The Parker Hughes Institute seeks a senior Biostatistician to conduct statistical analysis and prepare statistical reports for multidisciplinary research projects and for clinical studies. Duties will include: (1) review protocols and provide statistical guidance, (2) prepare statistical analysis, (3) plan and analyze data subsets, (4) create and modify programs to review or summarize, and (5) provide input on study designs.

Position requires an advanced degree in biostatistics or a related field and three to five years of experience. Must have superior communication and organizational skills.

The Parker Hughes Institute is a nonprofit research organization dedicated to eradicating cancer, AIDS, and diseases of the immune system. We offer a competitive salary and benefit package. Salary will be commensurate with experience. Please respond to:

**Parker Hughes Institute**  
Attention: Human Resources  
P.O. Box 8178  
St. Paul, MN 55108  
FAX: 651-697-1057

E-mail: [HumanResources@ih.org](mailto:HumanResources@ih.org)  
Website: [www.hughesinstitute.org](http://www.hughesinstitute.org)

*Equal Opportunity Employer.*

### RESEARCH ASSOCIATES POSTDOCTORAL FELLOWS

The Division of Nephrology of the University of Florida College of Medicine has a number of openings at the Postdoctoral and Research Associate level in the study of protein structure, signaling, electrophysiology, or cell death, using state-of-the-art technologies such as microarray and molecular imaging in a very dynamic academic environment. Candidates must have a Ph.D. or an M.D. degree and be a permanent resident or U.S. citizen with hands-on experience in cellular and molecular biological techniques. Please send curriculum vitae, statement of research goals, and three letters of reference to:

**Stephen L. Gluck, M.D.**  
Chief, Division of Nephrology  
University of Florida College of Medicine  
P.O. Box 100224  
Gainesville, FL 32610-0224  
FAX: 352-392-3581

Application deadline: March 31, 2000.

**STAFF SCIENTIST.** The Ernest Gallo Clinic and Research Center, a biomedical research institution affiliated with the University of California, San Francisco, is undergoing substantial growth and expansion of its laboratories. We seek innovative and dynamic individuals for the following positions: Staff Scientists at all levels (B.S./M.S. or Ph.D.) interested in using microarrays to identify genes involved in drug addiction in *Drosophila*. The successful applicants should possess good molecular biology skills (DNA/RNA), strong analytical/computational skills, and working experience with performing gene expression analyses is preferred (for further information, visit our website: <http://gallo.ucsf.edu>). Please send a curriculum vitae, description of prior research, and names of two academic references to: **Human Resources, Ernest Gallo Clinic and Research Center, University of California, San Francisco, 5856 Horton Street, Suite 200, Emeryville, CA 94808. FAX: 510-801-7943; e-mail: [hr@gallo.ucsf.edu](mailto:hr@gallo.ucsf.edu). We are an Equal Opportunity Employer/Affirmative Action Employer committed to workforce diversity.**

### POSTDOCTORAL POSITIONS

Positions are available to study the function, pharmacology, and regulation of cardiovascular voltage-gated ion channels, as well as their remodeling in disease. Candidates must have strong prior experience in basic electrophysiology/patch clamp techniques. Send curriculum vitae, description of research interests, and name/telephone number/e-mail addresses of three references to: **Dr. Katherine Murray, Department of Pharmacology, Room 559 MRBII, Vanderbilt University School of Medicine, Nashville, TN 37232-6602.**

*The Future  
is our  
Mission*

Forschungszentrum Jülich 

We are the largest interdisciplinary research centre in Germany: 4300 members of staff are working on solutions to major problems in the field of „matter“, „energy“, „information“, „life“ and „environment“.  
As a member of the Hermann von Helmholtz Association of German Research Centres (HGF) we are characterized by a high degree of commitment to the public.

For the Strategy Fund Project of the Hermann von Helmholtz Association „Gene Function Analysis“ are immediately available at the Institut für Biologische Informationsverarbeitung

## **TWO POSTDOCTORAL POSITIONS (Biologist, Biochemist or Physicist)**

- code 005/2000 -

The purpose of the project is to gain insight into the function of neuronal „pacemaker“ channels in normal and diseased states, into cellular control mechanisms of their activity and into channel structure. Applicants should have a strong background (PhD) in molecular biology, biochemistry, biophysics or electrophysiology.

Further particulars may be obtained from Prof. Kaupp  
(Tel.: ++49/24 61/61 40 41).

The fixed-term positions will be initially limited to 30 June 2002.

You will find further information at our website <http://www.fz-juelich.de> under „jobs“. The Research Centre would like to increase the number of women staff and therefore encourages qualified candidates to apply. Applications from suitably qualified disabled persons are welcomed. The salary and social benefits will conform to the provisions of the Federal Collective Agreement for Public Employees (BAT).

Please send applications with the relevant documentation to:  
Forschungszentrum Jülich GmbH, PR-Personalbetreuung,  
D-52425 Jülich, Tel.: ++49/24 61/61 53 58.



UNIVERSITY OF  
OXFORD

### Department of Physics Professorship of Experimental Physics and Philip Wetton Professorship of Astrophysics

The respective boards of electors intend to proceed to elections to the Professorship of Experimental Physics, which falls vacant with effect from 1st October 2000 upon the retirement of Professor PGH Sanders, and to the newly-established Philip Wetton Professorship of Astrophysics with effect from 1st October 2000 or such later date as may be arranged.

#### Professorship of Experimental Physics

The Professor of Experimental Physics will be expected to lead an independent research programme in Atomic or Laser Physics and to take a leading role in the teaching and administration of the Sub-department of Atomic and Laser Physics.

A non-stipendiary fellowship at St Hugh's College is attached to this professorship.

#### Philip Wetton Professorship of Astrophysics

The Philip Wetton Professorship of Astrophysics is a newly-established chair made possible by a generous benefaction from Mr Philip Wetton. The new chair complements the long-established Savilian Professorship, currently held by J. Silk, and preference will be given to candidates whose research interests include an area of observational astronomy.

A non-stipendiary fellowship at Christ Church is attached to this professorship.

Applications for each post (ten copies, or one only from overseas candidates), naming three persons who have agreed to act as referees on this occasion, should be received not later than 17th April 2000 by the Registrar, University Offices, Wellington Square, Oxford OX1 2JD, from whom further particulars may be obtained. Further particulars may also be accessed on the Web (URL: <http://www.admin.ox.ac.uk/fp/>).

The University is an Equal Opportunities Employer.

## GRANTS

## Individual Grants / Tenure-track Positions

### in Functional genomics and Combinatorial chemistry

The Swedish Foundation for Strategic Research announces for competition three individual grants, each of SEK 10 million (appr. USD 1.2 million), to young outstanding scientists in the following areas:

*Functional genomics (two grants, one intended for functional genomics studies using C. elegans)*

*Combinatorial organic chemistry (one grant)*

Applications are invited from researchers in Sweden as well as in other countries. The grant holders are expected to build up a research group and perform innovative research at a Swedish university for a period of five years. The grant holders will be able to choose among the following Swedish universities: Chalmers University of Technology, Göteborg University, Karolinska Institutet, Linköping University, Lund University, Stockholm University, The Swedish University of Agricultural Sciences, Umeå University and Uppsala University; and furthermore Södertörns University College for the grant holders in Functional genomics, and the Royal Institute of Technology for the grant holder in Combinatorial chemistry. Part of the grant may be used for the recipient's own salary. Provided the project gets a positive evaluation after the five year-period a tenured position will be available for the grant holder at the university chosen.

An application including future research plans, previous research accomplishments, a CV, and three personal references are to be the Foundation at hand by 15 May, 2000.


For guidelines and further information on the application procedure, please visit the web site of the Foundation, [www.stratresearch.se](http://www.stratresearch.se) where you will also find information about the programme *Individual grants for the advancement of research leaders* with application deadline 2 May, 2000.

*Chaired by former Swedish Prime Minister Ingvar Carlsson, the Swedish Foundation for Strategic Research is an independent major funding body working outside the Swedish government budget. Financing research in natural science, engineering and medicine it was established by a parliamentary decision in 1994 with a capital of SEK 6 000 million (appr. USD 750 million) from the earlier wage-earner funds.*

*The primary goal of the Foundation is to promote the development of vigorous research environments of the highest international standard with a view to enhancing Sweden's long-term competitiveness. The Foundation maintains informal co-operation with Swedish research councils and other agencies financing basic and applied research.*

*The total expenditure of the Foundation is some SEK 1 000 million (USD 125 million) per year in the period 2000-2002.*

*Through an active investment policy and favourable stock exchange development, the capital assets of the Foundation amount to SEK 12 000 million as of January 2000. According to its statutes, the activities of the Foundation may in due course result in the expenditure of all its assets. Presently the lifetime of the Foundation is expected to reach well into the 2020s.*

 **Stiftelsen för Strategisk Forskning**

Box 70483, SE-107 26  
STOCKHOLM, SWEDEN

## POSITIONS OPEN

### POSTDOCTORAL POSITIONS

#### Cell Membrane Structure Cytoskeletal Structure Physiology

Cell membrane structure: Postdoctoral position available immediately to study cell membrane structure. Ph.D. in chemistry, biochemistry, or related areas. Experience with EPR required. Cytoskeletal structure: Postdoctoral position available immediately to study cytoskeletal structure and signal transduction in blood cells. Ph.D. in molecular biology, biochemistry, or related areas. Experience with protein phosphorylation and signal transduction required. Physiology: Postdoctoral position available immediately to study platelet function *in vivo*. Ph.D. in biology and/or DVM. Experience with *in vivo* models required.

Send curriculum vitae and names of three references to: **Tom Reid, M.D., Ph.D., Department of Resuscitation Medicine, Transfusion Medicine, and Hemostasis Section, Walter Reed Army Institute of Research, Silver Spring, MD 20910. FAX: 301-319-9965; e-mail: thomas.reid@na.amedd.army.mil.**

The Center for Environmental Literacy at Mount Holyoke College invites applications for two full-time (12-month) Mellon Foundation **POSTDOCTORAL FELLOWSHIPS** in landscape ecology. One position requires expertise in GIS. Successful candidates will spend 50% time developing resources to integrate environmental and ecological principles throughout the curriculum and teaching a one-semester seminar in area of specialty. The remaining 50% time is free for personal research.

Mount Holyoke College, the nation's oldest continuing liberal arts college for women, provides high-quality teaching and research for students of diverse backgrounds. To apply, send curriculum vitae, research and teaching interests, and names of three references to: **Thomas Millette, Department of Earth and Environment, Mount Holyoke College, South Hadley, MA 01075.** Applications will be reviewed beginning March 30, 2000. Positions start July 1, 2000, and are renewable for up to three years. *Mount Holyoke College is an Affirmative Action/Equal Opportunity Employer.*

### POSTDOCTORAL/ASSOCIATE RESEARCH SCIENTIST POSITIONS COLUMBIA UNIVERSITY

The Department of Physiology solicits applications from M.D. or Ph.D. researchers in the following areas of investigation: cell and molecular biology, cellular physiology and immunology, membrane biochemistry, neurodegenerative diseases, tumor regression genes, vascular biology, and cell calcium. Send curriculum vitae, a brief letter of interest, and names and addresses of three references to: **Samuel C. Silverstein, M.D., Department of Physiology, Columbia University, 630 West 168th Street, New York, NY 10032.** Visit our website: <http://cpmcnet.columbia.edu/dept/physio/physio.html>. *Columbia University is an Affirmative Action/Equal Opportunity Employer.*

**POSTDOCTORAL POSITION** available to study the role of the *ataxia-telangiectasia* protein in regulating cell cycle progression and DNA repair. Ph.D. with experience in molecular cloning and cell culture required. Send curriculum vitae and names of three references to: **Dr. B. D. Price, D810A, Dana-Farber Cancer Institute, 44 Binney Street, Boston, MA 02115. E-mail: brendan\_price@dfci.harvard.edu.** *Affirmative Action/Equal Opportunity Employer.*

**POSTDOCTORAL POSITION** available immediately to study the role of neurotrophins (NGF and BDNF) in asthma, using novel transgenic/knockout mouse models. Experience in molecular biology, lung biology, or transgenic models desirable. Send curriculum vitae and names of references to: **Gary Hoyle, Ph.D., Department of Medicine, SL-9, Tulane University School of Medicine, 1430 Tulane Avenue, New Orleans, LA 70112.**

## POSITIONS OPEN



### TEXAS A&M UNIVERSITY CARDIOVASCULAR RESEARCH INSTITUTE

**POSTDOCTORAL POSITIONS** in cell signaling and gene expression. The Division of Molecular Cardiology at the College of Medicine, Texas A&M University System Health Science Center, has multiple Postdoctoral positions to work in the areas of gene expression and cellular signaling in the newly established Cardiovascular Research Institute. The position will provide the opportunity to learn appropriate techniques and other skills needed to develop an independent research career. Applicants with a Ph.D. and/or M.D. and with research experience in molecular and cellular biology, developmental biology, and/or human or mouse genetics will be given preference, although a broad spectrum of research interests will be considered. Competitive salaries and benefits will be provided. Applicants should submit a curriculum vitae, description of research interests, and three letters of reference to: **Kenneth M. Baker, M.D., Molecular Cardiology Search Committee, College of Medicine, Texas A&M University System Health Science Center, 1901 South First Street, Building 162, Temple, TX 76704.**

*Texas A&M University is an Equal Opportunity/Affirmative Action Employer.*

### COLLEGE OF PHYSICIANS AND SURGEONS IMMUNOLOGY TRAINING PROGRAM Columbia University

The Immunology Training Program at the College of Physicians and Surgeons of Columbia University announces the availability of **POSTDOCTORAL FELLOWSHIPS** in molecular, cellular, and clinical immunology. Program faculty include **Kathryn Calame, Gerald Siu** (biology of B and T cells); **Leonard Chess, Robert Winchester** (autoimmunity and tolerance); **Wayne Hendrickson** (structural biology); **Paul Rothman, Christian Schindler** (signaling); **Raphael Clynes, Steven Greenberg, Eugene Marcantonio, Samuel Silverstein, David Stern** (innate immunity); **Jeremy Luban, Howard Shuman** (microbial immunity); **Richard Baer, Riccardo Dalla Favera, Steven Goff** (neoplastic transformation of B and T cells). For additional information, see website: <http://cpmcnet.columbia.edu/dept/immune/>. Applicants must be U.S. citizens or green card holders with an M.D., Ph.D., or equivalent degree. To apply, send curriculum vitae including names, telephone and FAX numbers, and e-mail and mailing addresses of three references to: **Samuel C. Silverstein, M.D., Immunology Training Program, Columbia University, Room 11-511, Physicians and Surgeons Building, 630 West 168th Street, New York, NY 10032 U.S.A.** *Columbia University takes Affirmative Action toward Equal Employment Opportunity.*

### POSTDOCTORAL POSITION CANCER MOLECULAR BIOLOGY

Strang Cancer Prevention Center is affiliated with the Weill Medical School of Cornell University and situated on The Rockefeller University campus. Applications are invited for the study of the breast and ovarian cancer susceptibility gene, BRCA1, and its role in transcriptional activation. For further information, see *Proc. Natl. Acad. Sci.* **93:13595-13599, 1996** and *Proc. Natl. Acad. Sci.* **95:2302-2306, 1998** or contact: **Dr. Alvaro Monteiro** at e-mail: [monteia@rockvax.rockefeller.edu](mailto:monteia@rockvax.rockefeller.edu). Applications with a curriculum vitae and names of three references should be sent to: **Kenneth W. Meyer, PHR, Director of Human Resources, Strang Cancer Prevention Center, 428 East 72nd Street, New York, NY 10021 U.S.A.** *Strang Cancer Prevention Center is an Equal Opportunity Employer.*

## POSITIONS OPEN

### POSTDOCTORAL POSITIONS IN NEUROENDOCRINOLOGY

Two NIH-funded **POSTDOCTORAL POSITIONS** will be available in May 2000 for recent Ph.D. awardees to study hypothalamic control of anterior pituitary function. One position requires published expertise with patch clamping to study the effects of hypothalamic peptides on ion channel regulation in pituitary cells (see *Endocrinology* **138:3141, 1997; ibid.** **139:5164, 1998**). The second position requires knowledge of neuroanatomy and published experience with immunocytochemical and *in situ* hybridization approaches in order to study effects of anterior pituitary hormones on hypothalamic neuronal activity (see *Brain Research* **802:141, 1998; Endocrinology **141:366, 2000**). A molecular biological background would be desirable for each position. *Both positions require citizenship or permanent residency status.* Please send curriculum vitae and names of three references to: **Dr. Marc E. Freeman, Department of Biological Science, Florida State University, Tallahassee, FL 32306-4340. E-mail: freeman@neuro.fsu.edu.****

### SENIOR POSTDOCTORAL RESEARCHER HIV VACCINE PROJECT Keck/University of Southern California School of Medicine

An experienced **MOLECULAR BIOLOGIST** (Ph.D.) is sought to supervise expression vector development and viral gene cloning. The candidate must be highly motivated with recent publications using recombinant technology. Excellent communication skills are required. This is an opportunity to bring a novel vaccine concept to clinical trials.

Please submit curriculum vitae and names/addresses of three references to:

**H. Weisbuch  
The Keck/USC School of Medicine  
2011 Zonal Avenue, Room HMR 712  
Los Angeles, CA 90033  
FAX: 323-442-1952  
E-mail: [weisbuch@hsc.usc.edu](mailto:weisbuch@hsc.usc.edu)**

*Equal Opportunity Employer.*

### POSTDOCTORAL RESEARCH ASSOCIATE RESEARCH ASSISTANT

Postdoctoral and Research Assistant positions available to study inflammation in the pathogenesis of bacterial infection and alkali burn. Requirements: molecular biology, immunology, and small animal handling.

Send letter of research background and goals and names of three references to: **Dr. Linda Hazlett, Professor and Chair, Department of Anatomy and Cell Biology, Wayne State University School of Medicine, 540 East Canfield Avenue, Detroit, MI 48201. E-mail: [lhazlett@med.wayne.edu](mailto:lhazlett@med.wayne.edu).** *Wayne State University is an Equal Opportunity/Affirmative Action Employer. All buildings, structures, and vehicles at WSU are smoke free. Wayne State University—people working together to provide quality service.*

**POSTDOCTORAL POSITION** available for studying T cell homeostasis and memory, developing immune therapies for cancers, and investigating mechanisms of autoantibody-mediated autoimmune diseases. A strong background in molecular biology and immunology is preferred. Send curriculum vitae and names of three references to: **Jianzhu Chen, Center for Cancer Research, Massachusetts Institute of Technology, E17-128, 40 Ames Street, Cambridge, MA 02139 U.S.A. E-mail: [jchen@mit.edu](mailto:jchen@mit.edu).**

**POSTDOCTORAL POSITION** immediately available to work on the immunology and immunotherapy of cancer. A strong background in immunology is essential. Send letter, curriculum vitae, and three references to: **Dr. Philip S. Low, Department of Chemistry, 1393 Brown Building, Purdue University, West Lafayette, IN 47907-1393. E-mail: [plow@purdue.edu](mailto:plow@purdue.edu).** *Purdue University is an Equal Employment Opportunity/Affirmative Action Employer.*

## POSITIONS OPEN

### POSTDOCTORAL FELLOW POSITION CANCER RESEARCH

The Laboratory of Molecular Neuro-Oncology is dedicated to understanding how genetic alterations occurring during the malignant progression of human cancer elicit malignant biological behavior. Projects involve PCR, cloning, transfection, and functional analyses of genes involved in this process in human cancer cells. For related examples, see *Nature Genetics* 8:171-176, 1994; *Proc. Natl. Acad. Sci.* 92:1008-1012, 1995; *J. Exp. Med.* 186:1201-1212, 1997; *Oncogene* 16:321-326, 1998; *Oncogene* 18:1447-1456, 1999; or *Cancer Res.* 59:5479-5482, 1999.

Successful candidates will be highly motivated, hold a Ph.D. in molecular or cellular biology (or a related area), and possess excellent written and verbal English skills. Experience with recombinant DNA technology (PCR, cloning, sequencing, DNA/RNA/protein analysis, expression studies) and cell culture is desired. Experience with models of angiogenesis, adenovirus gene therapy, and yeast two-hybrid system is an advantage.

Competitive compensation and benefits available. Applicants should send an introductory letter indicating career objectives, curriculum vitae, and three references by March 31, 2000, to:

**Erwin G. Van Meir, Ph.D.**  
Director, Molecular Neuro-Oncology Laboratory  
Department of Neurosurgery  
Emory University School of Medicine  
Winship Cancer Institute  
Room B-5103, Building B, The Emory Clinic  
1365-B Clifton Road, N.E.  
Atlanta, GA U.S.A. 30322  
Telephone: 404-778-5227; FAX: 404-778-5240  
E-mail: [evanmeir@emory.edu](mailto:evanmeir@emory.edu)  
Website: <http://www.emory.edu/WHSC/neurosurgery/faculty/vanmeir/vanmeir.htm>  
Equal Employment Opportunity/Minorities-Females Employer.

Dartmouth College has several **POSTDOCTORAL POSITIONS** immediately available within a multi-disciplinary research program focused on the cellular and molecular toxicology of toxic metals.

There are two principal research areas. The first area will investigate cell signaling pathways in pulmonary airway epithelial and vascular endothelial cells exposed to noncytotoxic levels of toxic metals (especially arsenic, chromium, and nickel) that culminate in altered expression of genes that regulate profibrotic or angiogenic phenotypes. Current studies in cultured cells will be expanded into *in vivo* molecular models (A. Barchowsky). The second area will investigate the role of steroid hormone-mediated signaling and subsequent alterations in gene expression in mediating the carcinogenic effects of toxic metals, especially arsenic and chromium (J. W. Hamilton). Experience in cell culture and molecular biology techniques is required.

For additional information regarding the overall research program, visit the Dartmouth Superfund Program website: [www.dartmouth.edu/~dcsbrp/](http://www.dartmouth.edu/~dcsbrp/). To apply for or obtain additional information regarding these positions, contact: **Carol Watson, Dartmouth Superfund Office, Department of Pharmacology and Toxicology, Dartmouth Medical School, 7650 Remsen, Hanover, NH 03755-3835.** E-mail: [carol.watson@dartmouth.edu](mailto:carol.watson@dartmouth.edu). Dartmouth College is an Affirmative Action/Equal Opportunity Employer.

### POSTDOCTORAL POSITION

Available immediately to conduct research on the active sites of dehydrogenases and other nucleotide-binding enzymes using site-directed mutagenesis and affinity labeling. Recent Ph.D. in biochemistry and/or molecular biology required. Send curriculum vitae and three references to: **Dr. Roberta F. Colman, Department of Chemistry and Biochemistry, University of Delaware, Newark, DE 19716.** An Equal Opportunity/Affirmative Action Employer.

## POSITIONS OPEN

A **POSTDOCTORAL POSITION** is available at the Endocrinology and Reproduction Research Branch (ERRB), National Institutes of Child Health and Human Development (NICHD), National Institutes of Health (NIH), to study signal transduction pathways that are regulated by inositol phospholipids. The successful candidate will have access to a wide range of techniques, including molecular biology, biochemistry, and live-cell imaging with confocal microscopy.

The initial appointment will be for two years, extendable for up to five years. Applicants must have a Ph.D. or M.D. degree and should be proficient in one or more of the above techniques. Interested applicants should submit a curriculum vitae and bibliography, as well as the names of two potential references, before May 31, 2000, to: **Dr. Tamas Balla, ERRB, NICHD, NIH, Building 49, Room 6A 35, 49 Convent Drive, Bethesda, MD 20892-4510 U.S.A.** E-mail: [tambal@box-t.nih.gov](mailto:tambal@box-t.nih.gov).  
NIH is an Equal Opportunity Employer.

### POSTDOCTORAL FELLOWSHIPS HARVARD MEDICAL SCHOOL MASSACHUSETTS GENERAL HOSPITAL

Positions available to study skeletal development *in vivo* and *in vitro*. Major focus on the roles of Indian hedgehog, PTHrP, and other growth factors on cartilage and bone in transgenic, knockout, and knock-in mice. Strong background in cell and developmental biology important. Additional desirable skills: expertise in ES cell technology, signal transduction, and mouse anatomy/physiology.

Please send curriculum vitae, one-page summary of career goals, and three references to: **Dr. Gino V. Segre, Endocrine Unit, Massachusetts General Hospital, 50 Blossom Street, Boston, MA 02114.** Telephone: 617-726-3966; FAX: 617-726-7543; e-mail: [segre@helix.mgh.harvard.edu](mailto:segre@helix.mgh.harvard.edu). Harvard Medical School/Massachusetts General Hospital are Affirmative Action/Equal Opportunity Employers.

## EUROPEAN OPPORTUNITIES

The DFG-funded Special Research Program SFB 533 in Munich on "Light-Induced Structural Dynamics in Biopolymers" has been extended for three years.

Several positions are available at the University, The Technical University, and at the Max Planck Institute for Biochemistry for **GRADUATE STUDENTS AND POSTDOCTORATES** in the fields of molecular biology, biochemistry, femtochemistry, ultrafast and NMR spectroscopy, and theoretical biophysics.

Contact website: <http://129.187.115.12/sfb533/english/index.html> or the secretary, Ms. Haame. Telephone +49-89-17861-225; FAX: ext. -171.

## MARKETPLACE

### The World of Science Online

- Science Electronic Marketplace
- Science's Next Wave
- Science NOW
- Science Careers

**Science**

[www.scienceonline.org](http://www.scienceonline.org)

### LABELLED DNA

cGMP DNA,  
Reasonable  
Prices

**synthetic  
genetics**

1-800-562-5544

[www.syntheticgenetics.com](http://www.syntheticgenetics.com)

FAM, TAMRA,  
ROX, AP, FITC,  
Rhodamine,  
biotin, molec.  
probes dyes,  
etc.

Circle No. 49 on Readers' Service Card

## MARKETPLACE

### CLONING & EXPRESSION

**Rapid Full Length Cloning of Genes  
Guaranteed Gene Expression in Bacteria, Yeast,  
Insect, and Mammalian Systems  
High Purity and Bulk Protein Purification**

**ExpressGen, Inc.**

1-877-CLONING [www.expressgen.com](http://www.expressgen.com)

Circle No. 43 on Readers' Service Card

H  
S  
A

### RECOMBINANT

HIGH PURITY PATHOGEN FREE

Numerous Applications:

- Cell & Tissue Culture
- Product Formulation
- Protein Stabilization
- Pharmaceutical R&D

Technical data and pricing available at  
[www.newcenturypharm.com](http://www.newcenturypharm.com)

New Century Pharmaceuticals, Inc. 256-461-0024

Circle No. 41 on Readers' Service Card

### DNA SYNTHESIS

✦ \$0.80 per base for 5-10 OD

### DNA SEQUENCING

✦ As low as \$14 / Run



Circle No. 40 on Readers' Service Card

### 2 min DNA Clean-up & Concentrate

for PCR, enzyme reactions, "dirty" DNA, etc.

---

### Improved Gel DNA Recovery

for perfect ligations & sequencing, etc.

ZYMO RESEARCH 1-888-882-9682 [www.zymor.com](http://www.zymor.com)

Circle No. 8 on Readers' Service Card

## Normal Human Cells for Biomedical Research

[www.cascadebio.com](http://www.cascadebio.com)

**Cascade Biologics, Inc.**  
email: [info@cascadebio.com](mailto:info@cascadebio.com) 800-778-4770

Circle No. 42 on Readers' Service Card



# MARKETPLACE



**MORE PRODUCTS  
ON PREVIOUS PAGE**

## Cell Enrichment by Negative Selection

**StemSep™ & RosetteSep™**

Two Cell Separation Options  
From the Experts in Negative Cell Selection

Tel: (604) 877-0713 Toll-free Tel: 1-800-667-0322  
Fax: (604) 877-0704 Toll-free Fax: 1-800-567-2839  
info@stemcell.com www.stemcell.com



Circle No. 4 on Readers' Service Card

## DNA

Call for prices

## PEPTIDES

\$15.00/residue

**Gene Synthesis,  
Site Mutagenesis, Protein  
Expression** as low as \$500

**Sequencing:** \$25 per run

**Custom Anti-peptide Antibody**  
(including peptide synthesis)  
**\$850**

**GENEMED SYNTHESIS**  
800-344-5337 Fax: 650-952-9540 http://www.genemedsyn.com

Circle No. 26 on Readers' Service Card

## POLYCLONAL ANTIBODIES

**QUICK QUOTE**  
MOST QUOTES IN AN HOUR  
**FAST DELIVERY**  
PEPTIDE TO ANTISERUM IN 70 DAYS  
100% SATISFACTION GUARANTEED  
Fax: 978-343-5940 www.newenglandpeptide.com

**...MADE EASY!**  
**NEW ENGLAND  
PEPTIDE, INC.**  
Tel: 888-343-5974

Circle No. 6 on Readers' Service Card

## Highly Purified Salt Free Oligonucleotides

### Custom DNA Synthesis

**PSF (Purified Salt Free) &  
HPSF (Highly Purified Salt Free) Grade**

- ❖ Failure products removed ❖ Salt Removed
- ❖ MALDI-TOF production QC
- ❖ No Metal Ions ❖ Modifications available
- Starting at \$0.49/base for PSF Grade  
(0.01 µmol scale) Volume discounts available.

**Never a purification or setup fee!**  
**For reactions that work...every time!**

**MWG BIOTECH**  
Online Ordering & Tracking

Toll Free: 877-694-2832 http://www.mwgbio.com  
http://www.mwgbio.com

Circle No. 45 on Readers' Service Card

**XX IDT®**  
INTEGRATED DNA TECHNOLOGIES, INC.

Premier Specialty Synthesis  
Molecular Beacons, RNA,  
Antisense Oligos & More  
1-800-328-2661 - www.idtdna.com

Circle No. 38 on Readers' Service Card

# MARKETPLACE

## Custom Peptides & Antibodies

**Best Service & Price! Compare and Save!**

Alpha Diagnostic (800) 786-5777

Fax (210) 561-9544; info@4adi.com

Web site: http://www.4adi.com

Circle No. 37 on Readers' Service Card

## QUALITY DNA SYNTHESIS

**MALDI-TOF Mass Spectrometry Quality Control**

Fluorescent Dyes & Other Modifications  
Gene Construction & Sequencing Services  
Custom RNA Oligos & Antisense DNA Oligos  
Custom Primers for PCR & Sequencing  
Long Oligos (up to 150-mers)  
**Competitive Pricing**

**MIDLAND**

The Midland Certified Reagent Company

1-800-247-8766 • FAX: 1-800-359-5789

www.mrcr.com • email: mrcr@oligos.com

Circle No. 39 on Readers' Service Card

## 3 O.D. Select Oligos

Just \$0.60/base

Order through our Web site and we'll ship your  
3 O.D. Select oligos in just 24-48 hours. Every  
oligo is QC'd by PAGE analysis, and each batch  
is performance-tested by mass spec.

\*Desalted only. Oligos must be 10 to 35 bases in length. No modifica-  
tions or additional purification. Web orders only. Offer valid in U.S. only.

**SIGMA  
GENOSYS**

North America: 1-877-710-1504 • email: gorderentry@sial.com

Circle No. 33 on Readers' Service Card

**TriLink BioTechnologies**  
Superior Quality with Unparalleled Service  
**<sup>35</sup>S and <sup>3</sup>H**

**Radiolabeled Oligonucleotides**

www.trilinkbiotech.com

Experience Matters  
800-863-6801

Circle No. 31 on Readers' Service Card

## MERLIN® CORE SERVICES



**Plasmid Purification**  
**Endotoxin Removal**  
**Any Amount**

1-800-4-BIO-101 • www.bio101.com

Circle No. 36 on Readers' Service Card

# MARKETPLACE

TRY THE NEW WAY TO CELEBRATE Y2K!!!

BIO-SYNTHESIS, INC.

**\$12.00/oligo**

**Don't Count Bases! Count Oligos!**

~ Turnaround Time: 12-48 hours  
~ 50nmole, >5 ODE, up to 25 bases  
~ Full Q.C. and reliable quality

or **\$18.00/oligo (up to 35 bases)**

www.biosyn.com **1-800-227-0627**

Please be sure to mention this ad!

Offer is good thru 02/2000

Circle No. 46 on Readers' Service Card

## Quality Peptides & Antisera

Friendly, Personal Service  
www.genosys.com

### Custom Peptide Synthesis

- sequence analysis
- IG, >70%, >80%, >95% purity
- scales from 2 mg - 1 g
- variety of modifications available
- mass spec & HPLC on every peptide
- satisfaction guaranteed

### Polyclonal Antisera Service

- antigen design assistance
- synthesis, conjugation and sera collection
- flexible protocol

**SIGMA  
GENOSYS**

North America

1-877-710-1502

ginformation@sial.com

Europe

(+44) (0) 1223 839000

info@sigma-genosys.co.uk

Circle No. 32 on Readers' Service Card

## Custom DNA Sequencing

❖ Long Reads ❖

❖ Plasmid Inserts ❖

❖ Sequence Done in a Week ❖

❖ Single Strand as low as ❖

\$20.00 for < 500 bases

❖ Double Strand ❖

\$30.00 up to 450 bases

\$45.00 up to 650 bases

\$70.00 up to 1600 bases

**Inquire about Large Inserts and Genome  
Sequencing.**

**MWG BIOTECH**

Toll Free: 877-694-2832 http://www.mwgbio.com  
http://www.mwgbio.com

Circle No. 44 on Readers' Service Card

## Custom Peptides

\$14/residue

Please inquire for modified peptides

3 days turn around

Free Mass Spec

HPLC/UV Trace

8-17 residues

20-50 mg (Desalted)

Tel: 800-597-7873

925-371-1070

Fax: 925-371-1156

email: peptide@peptidogenic.com

**PeptidoGenic** The Peptide Engineering Specialist


Circle No. 34 on Readers' Service Card

## Custom Sequencing

**SEQEXPRESS - \$29/run**  
<http://www.resgen.com>

**Research Genetics**  
**1-800-533-4363**

Circle No. 35 on Readers' Service Card



# IS THERE A WEAK LINK IN YOUR PROJECT?

MIDLAND has more than 20 years of experience and is a leader in the synthesis, purification and quality verification of MODIFIED OLIGONUCLEOTIDES. All custom oligonucleotide synthesis include MALDI-TOF mass spectral analysis at no additional charge. This analysis verifies that the observed mass of your oligonucleotide is within 0.2% of the theoretical mass — the presence of the desired modification is easily verified.

Our Molecular Biology Group offers a full range of services from gene construction and DNA sequencing to mutagenesis and custom molecular cloning.

#### WE OFFER:

- FLUORESCENT DYES such as fluorescein, 6-FAM, HEX, TET, TAMRA, ROX, cyanine dyes, DABCYL, coumarin and carboxyrhodamine in either single-label or dual-label formats.
- Oligos with HAPTEN modifications with biotin and other modifiers.
- ANTISENSE oligonucleotides with phosphorothioate backbones, mixed backbones and 2-O-methyl RNA, as well as functionalized oligonucleotides with 5' or 3' amino or thiol groups. Hundreds of modifications are available.

Let MIDLAND take the weak link out of your next project. Call 800.247.8766 today or email us at [info@oligos.com](mailto:info@oligos.com).

## MIDLAND

THE MIDLAND CERTIFIED REAGENT CO.

THE MIDLAND CERTIFIED REAGENT CO.

1.800.247.8766 • FAX: 1.800.359.5789

3112-A W. Cuthbert Ave. • Midland, Texas 79701

Order online at [www.mcrc.com](http://www.mcrc.com)

Circle No. 29 on Readers' Service Card

# Capture Your World

## Micro, Macro, and More!

### With the *Kodak Digital Science™* Microscopy Documentation System 120 (MDS 120)

- **Megapixel resolution**—1280 x 960—  
with 24-bit color for sharp, vibrant images.
- **Unmatched versatility**—whether it's through  
the microscope or in the field, you get  
point-and-shoot simplicity.
- **Publication-quality digital images** immediately  
available for reports, presentations, web pages, and more.
- **An incredibly affordable price**—thousands less than  
most other systems.
- **No-risk guarantee** ensures your satisfaction.

For more information, call (877) SIS-HELP  
(877-747-4357) toll-free in the U.S. and  
Canada or +1 203 786-5657 for  
worldwide direct.

**Kodak** *ds*  
digital science™

For a product tour, specifications, and more images, visit

**[kodak.com/go/mds120g](http://kodak.com/go/mds120g)**

Kodak, Digital Science, and the ds monogram symbol are trademarks.  
© Eastman Kodak Company, 1999

Circle No. 30 on Readers' Service

