

# NEW PRODUCTS

## MINI-CHROM MONOCHROMATORS

Mini-Chroms are compact, Fastie-Ebert monochromators with a 74-mm path length. They can be configured with a wide selection of gratings from ultraviolet to infrared. They are suitable for OEM applications and for general spectroscopy. They can be used with a wide selection of accessories. Their resolution and stray light is comparable to many larger, conventional monochromators.

### Optometrics USA

For more information call 978-772-1700 or **circle 147** on the Reader Service Card

## THERMAL CYCLER

The Touchgene thermal cyclers compile, edit, and store complex protocols using a touch-sensitive front screen. The screen can show the operator a real-time graphic plot of both

### Techné

For more information call 800-225-9243 or **circle 148** on the Reader Service Card

block/sample temperature and a program summary. A universal heated lid incorporates a quick release mechanism, adjustable pressure regulation, and temperature control. Interchangeable blocks accommodate in situ 0.2- and 0.5-ml tubes and 96-, 192-, and 384-well microplates.

## BOLT-DOWN CELL HOLDER

The Bolt Down Holder (BDH) for use with transmission cells is superior to conventional round holders because it keeps cells sealed longer. The BDH and the EZ-Flow cell can hold 50 psi. The holder also prevents cells from cracking due to the back pressure created from the injection of samples. The BDH is supplied with a variety of spacers to create cells of varying path lengths. It can be used in a wide variety of applications including with both high- and low-viscosity liquids and temperature studies for both quantitative and qualitative analysis.

### Spectra-Tech

For more information call 203-944-6224 or **circle 149** on the Reader Service Card

## LITERATURE

*Biomass News* is a free newsletter covering new methodology, products, services, and publications in biotechnology. A recent issue features a "Technical Help Line" with answers to frequently asked questions in fermentation and cell culture, an applications report on scaling up human embryonic kidney 293 cells, and details of a controller retrofit service available to breathe new life into outmoded fermenters.

### New Brunswick Scientific

For more information call 800-631-5417 or **circle 150** on the Reader Service Card

Newly offered instrumentation, apparatus, and laboratory materials of interest to researchers in all disciplines in academic, industrial, and government organizations are featured in this space. Emphasis is given to purpose, chief characteristics, and availability of products and materials. Endorsement by *Science* or AAAS of any products or materials mentioned is not implied. Additional information may be obtained from the manufacturers or suppliers named by circling the appropriate number on the Reader Service Card and placing it in a mailbox. U.S. postage is free.

# TRI Reagent® Solutions For TOTAL RNA ISOLATION

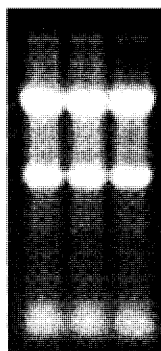
The classic single-step method has been significantly improved to provide higher yields, a shorter protocol and higher quality RNA from difficult sources! (Anal. Biochem. 225:163. 1995. Biotechniques. 19:942. 1995.)

TRI REAGENT® • for cells and tissues      TRI REAGENT® LS • for liquid samples      TRI REAGENT® BD • for whole blood and plasma

## MRC

MOLECULAR RESEARCH CENTER, INC.  
5645 Montgomery Rd.  
Cincinnati, OH 45212  
Phone: 513-841-0900  
888-841-0900  
Fax: 513-841-0080  
E-mail: info@mrcgene.com

Visit our website at:  
<http://www.mrcgene.com>



- Can be used to simultaneously isolate RNA, DNA and proteins.
- Isolates high quality RNA in less than one hour.
- Costs less than \$1 per sample (100 mg tissue or 10<sup>7</sup> cells; 0.1 - 0.8 mg of total RNA)
- Effective with cells, tissues, liquid samples and blood.
- Isolated RNA is ready for Northern blotting, RT-PCR, and other applications.

International distributors available in the following countries: Australia, Austria, Benelux, Canada, China, France, Germany, Greece, Hong Kong, India, Indonesia, Israel, Italy, Japan, South Korea, Malaysia, Philippines, Poland, Singapore, Spain, Switzerland, Taiwan, Turkey, United Kingdom, Vietnam. See our website for information. Unlisted countries, contact MRC at the US phone: (513) 841-0900.

Circle No. 24 on Readers' Service Card

# It's a BLAST

(and a whole lot more)

**ClustalW**

**Motifs**

**GenBank**

**Fasta**

**Prime**

**SWISS-PROT**

**Flip 6 frames**

**and much more...**

**BIO**NAVIGATOR<sup>™</sup>.COM



**Now there is a  
web site where  
you can do  
all BLAST  
comparisons  
and perform  
comprehensive  
analysis as well.**

## **It's called BioNavigator.com**

From the first BLAST to the final Phylogeny tree, BioNavigator.com makes sequence analysis fast and easy. There's no need to cut and paste results from one program to another. BioNavigator.com integrates the databases and sequence analysis programs you need on one Web-based workspace. So you can submit BLAST results directly to other analysis programs without any tedious formatting problems.

You don't need any specialized software. In fact, you don't need any software at all. If you have access to the Web, you can access BioNavigator.com from any computer, any time you want. And once you're logged on BioNavigator.com, you'll find a complete suite of databases and analysis tools, instructive tutorial and protocols, comprehensive technical support, and 14-days free unlimited access to BioNavigator.com.

**So BLAST away. Register today for a free trial at**  
**[www.bionavigator.com](http://www.bionavigator.com)**



**BIOINFORMATICS**

6900 Koll Center Parkway, Suite 401-Pleasanton, CA 94566

Telephone: (925) 426-9966 - Freecall: (877) EBIOINFO - Freefax: (888) 588-7446 - Email: [info@ebioinformatics.com](mailto:info@ebioinformatics.com) - Internet: [www.ebioinformatics.com](http://www.ebioinformatics.com)

Circle No. 49 on Readers' Service Card

## Classified Advertising

To obtain information on rates, deadlines, editorial features, and bonus distribution schedules, call our sales office or visit *Science Careers* at [www.scienceonline.org](http://www.scienceonline.org) and click on "How to Advertise." All advertising is subject to publisher's approval.

### UNITED STATES

#### Display Classified Advertising

Bren Peters Kristin Westapher  
Tel: 202-326-6541 Tel: 202-326-6555  
Fax: 202-289-6742  
E-mail: [science\\_displayads@aaas.org](mailto:science_displayads@aaas.org)

#### Line Classified Advertising

Christina Geiger Kathleen Clark  
Tel: 202-326-6532 Tel: 202-326-6722  
Fax: 202-289-6742  
E-mail: [science\\_classifieds@aaas.org](mailto:science_classifieds@aaas.org)

Line ads are not agency commissionable. Ads submitted should not include any bold, italicized, or abbreviated words. *Science* will edit and typeset ads according to *Science* style requirements. *Science* cannot provide proofs of typeset line ads. *Science* will provide an estimated cost of line ads at time of placement. This is an approximate cost only. Please provide contact name, telephone, billing information, and purchase order numbers with your order.

#### Online Classified Advertising

Beth Dwyer  
Tel: 202-326-6534  
Fax: 202-289-6742  
E-mail: [science\\_internet@aaas.org](mailto:science_internet@aaas.org)

Every employment ad placed in *Science* will be featured in our job database online for 4 weeks. Call to find out how to link to thousands of additional job seekers online with *Science* Professional Network.

[www.scienceonline.org](http://www.scienceonline.org)

**Ad Materials:** Send to: *Science* Classified Advertising, 1200 New York Avenue, NW, Room 911, Washington, DC 20005

### EUROPE

#### Line, Display, and Online Classified Advertising

Deborah Cummings  
Tel: +44 (0) 1223 326 500  
Fax: +44 (0) 1223 326 532  
E-mail: [european\\_ads@science-int.co.uk](mailto:european_ads@science-int.co.uk)

**Ad Materials:** Send to: Advertising Dept., Bateman House, 82-88 Hills Road, Cambridge CB2 1 LQ, United Kingdom

**Discounts:** A 3% cash discount is granted to all prepaid ads.

**Credit Cards:** *Science* accepts American Express, MasterCard, and VISA. Discount does not apply to credit cards.

**Cancellations:** Deadline for cancellation is Tuesday, 10 days prior to issue date.

To Subscribe to *Science* call:  
202-326-6417 or 1-800-731-4939

### POSITIONS OPEN

#### VICE PRESIDENT FOR RESEARCH AND DEAN OF THE GRADUATE SCHOOL University of Nevada, Reno

The University of Nevada, Reno, invites nominations and applications for the position of Vice President for Research and Dean of the Graduate School (VPR/GD). We seek a dynamic individual who understands the importance of research and graduate education in a rapidly growing, public, land-grant institution. The VPR/GD is the chief research and graduate academic officer for the university, responsible for the development and administration of the university's research/scholarly activities and graduate education. The successful candidate must exhibit a distinguished record in their academic field and be qualified to hold a tenured professorship in a department of the university. We seek an individual who is able to demonstrate administrative experience with increasing levels of responsibility, preferably in a multidisciplinary research university. Additional information about the city, UNR, and this position can be found at [website: http://www.unr.edu](http://www.unr.edu). Applications must be received by March 1, 2000, to ensure full consideration. This position is available July 1, 2000. Applicants should submit a letter of interest that describes their qualifications for the position; a curriculum vitae, and the names, addresses, and telephone numbers of three references to:

Dr. David P. Westfall  
Vice President for Academic Affairs  
Chair of the VPR/GD Search Committee  
Mail Stop 005  
University of Nevada, Reno  
Reno, NV 89557

*Equal Opportunity/Affirmative Action Employer.*

**BIOLOGY:** Two tenure-track ASSISTANT PROFESSOR positions to start August 2000. Ph.D. and evidence of excellence in teaching required. Successful candidates will direct M.S. students in their research. Availability of positions contingent upon funding. (1) Physiologist with research specialty in some aspect of animal physiology to teach general biology, anatomy/physiology, and senior/graduate-level physiology. (2) Plant Community Ecologist to conduct active research in midcontinental plant community ecology and teach plant ecology, plant systematics, local flora, and introductory biology. Applicants should have experience in GIS and other modern ecological techniques, with research to interface with an active environmental program. Deadline for applications: March 1, 2000. Send transcripts, curriculum vitae, publications, statements of teaching/research interests, and three reference letters to: Dr. L. M. O'Flaherty, Department of Biological Sciences, Western Illinois University, 1 University Circle, Macomb, IL 61455. *Western Illinois University is an Affirmative Action/Equal Opportunity Employer. We are interested in receiving applications from a broad spectrum of people including minorities, women, and persons with disabilities.*

#### UNIVERSITY OF FLORIDA

Seeks an eminent scholar for the Department of Medicine, Division of Nephrology. M.D. or M.D./Ph.D. degree; national and international authority on dialysis and end-stage renal disease. The successful candidate will be expected to sustain an active research program in this area and to serve as DIRECTOR OF THE END-STAGE RENAL DISEASE PROGRAM and Chronic Dialysis section. This is a tenure-track position. Salary and benefits commensurate with experience. Recruiting deadline: July 1, 2000. Anticipated starting date: February 25, 2000. Please submit curriculum vitae and other information to: Dr. R. Tyler Miller, Associate Professor, Division of Nephrology, Box 100224, Gainesville, FL 32610. *An Affirmative Action/Equal Opportunity Employer.*

### POSITIONS OPEN

#### DIRECTOR OF RESEARCH AND DEVELOPMENT UNIVERSITY OF NEBRASKA MEDICAL CENTER

#### Olson Center for Women's Health Department of Obstetrics and Gynecology

The Department of Obstetrics and Gynecology at the University of Nebraska Medical Center is seeking a Director of Research and Development for the Olson Center for Women's Health. The Olson Center for Women's Health, which resides within the Department of Obstetrics and Gynecology, is a multidisciplinary women's health center with endowments for education and research. Professional responsibilities for this position will include leading the Department of Obstetrics and Gynecology's clinical research efforts and facilitating and coordinating collaborative research between departments within the College of Medicine and the medical center at large. The ideal candidate for this position will possess a Ph.D. degree or M.D. degree. Equivalent degrees in biostatistics, epidemiology, or public health are also acceptable. Academic rank for this tenure-track position is open and dependent on qualifications and experience. Candidates currently active in independent investigation are preferred, and current grant support is desirable but not required. Interested individuals should forward their curriculum vitae to: John T. Repke, M.D., Chris J. and Marie A. Olson Professor and Chairman, Department of Obstetrics and Gynecology, Chairman, Advisory Committee, Olson Center for Women's Health, University of Nebraska Medical Center, 983255 Nebraska Medical Center, Omaha, NE 68198-3255. Telephone: 402-559-2711; FAX: 402-559-2712; e-mail: [jrepke@unmc.edu](mailto:jrepke@unmc.edu). UNMC is an Affirmative Action/Equal Opportunity Employer.

#### MASSACHUSETTS INSTITUTE OF TECHNOLOGY LECTURER IN CHEMISTRY

The Massachusetts Institute of Technology invites applications for a full-time Lecturer in chemistry for the 2000-2001 academic year. Responsibilities will include teaching in both the introductory integrated chemistry laboratory course and the accelerated general chemistry course. Qualified candidates will have completed a Ph.D. in chemistry, have demonstrated excellence in teaching, outstanding organizational and interpersonal skills, and a strong commitment to undergraduate education. Applications from recent Ph.D.s interested in pursuing careers in undergraduate education are especially welcome. Send curriculum vitae, statement of teaching philosophy and approach, and three letters of reference to: Dr. M. R. Diamond, Department of Chemistry, MIT, Department of Chemistry, Room 2-204, Cambridge, MA 02139. Applications received by February 18, 2000, will get first consideration. On-line applications welcome; send to e-mail: [diamondm@mit.edu](mailto:diamondm@mit.edu). MIT is an Equal Opportunity/Affirmative Action Employer and encourages applications from minorities and women.

**ASSISTANT PROFESSOR OF BIOLOGY:** Portland State University seeks a broadly trained Vertebrate Biologist with a focused interest in field work to fill a full-time, tenure-track position. The candidate's research interests should fall within the areas of ecology/evolution. Annual teaching includes vertebrate zoology, mammalogy, or ornithology; one term of principles of biology; and every other year an advanced course in his or her area of specialty. The successful candidate will be expected to establish an independent research program that will attract extramural funding and provide research training for undergraduate and graduate students. Postdoctoral experience is desired; an earned Doctorate is required. Detailed information about the position is available at [website: http://www.orgbio.pdx.edu/](http://www.orgbio.pdx.edu/). Closing date for receipt of applications is March 17, 2000. Send a current curriculum vitae, three letters of reference, and a statement of research and teaching interests to: Chair, Vertebrate Biology Search, Department of Biology, P.O. Box 751, Portland State University, Portland, OR 97207-0751. PSU is an Affirmative Action/Equal Opportunity Institution.

## Using Our Vision To Make A Difference

Roche

Diagnostics

The Center of Excellence at Roche Diagnostics Corporation, located in an outstanding world-class facility in Indianapolis, is seeking a senior level leader for its basic research group. Once fully staffed, there will be 3 senior and 6 junior Ph.D.-level scientists reporting to the Research Fellow. The group of researchers will be charged with the development of basic science programs to explore fundamental issues related to the product lines. Research in the field of immunochemically-based analytical systems will be a target, including but not restricted to: (1) surface phenomena governing assay systems, (2) new and more sensitive biosensors and (3) novel bioanalytical assays to determine analytes in various body fluids.

The successful candidate will have a demonstrated record of excellence in carrying out a successful research program in either an academic or an industrial setting and should be a recognized expert in the physical chemistry, structure and function of proteins. The successful candidate will also have demonstrated leadership qualities and excellent communications and people skills to be able to handle this highly interdisciplinary position.

We offer an excellent compensation and benefit program including 401(k). Qualified candidates should send a resume to: **Roche Diagnostics, PCN - 401022, 9115 Hague Road, Indianapolis, IN 46250, or e-mail to Roche@webhire.com.** Principals only please. Roche is committed to providing equal opportunity to a diverse workforce.

[www.roche.com](http://www.roche.com)



### MAYO CLINIC POSTDOCTORAL POSITION

A postdoctoral position is available immediately with an active group investigating the immune response to Theiler's virus. The central focus of this research effort is to understand the role of virally encoded peptides that are recognized by cytolytic T lymphocytes in inducing resistance versus susceptibility to demyelinating disease in a mouse model of multiple sclerosis. A PhD, MD or DVM degree is required and experience in virology, in vitro assays of cellular immunology and basic methods of molecular biology is preferable. Send a curriculum vitae, description of research experience, and the names and addresses of three references to:

**Moses Rodriguez, MD**  
(rodriguez.moses@mayo.edu)  
Or

**Larry Pease, PhD**  
(pease.larry@mayo.edu)  
Department of Immunology  
Mayo Clinic  
200 First Street SW  
Rochester, MN 55905

*Mayo Foundation is an affirmative action and equal opportunity employer and educator.*

### POSTDOCTORAL FELLOWSHIPS Functional Magnetic Resonance Imaging

The Medical College of Wisconsin (MCW), a leader in biophysics and neuroscience fMRI research, announces research opportunities in **COGNITIVE NEUROSCIENCE and fMRI BIOPHYSICS**. With more than 50 individuals and 15 NIH grants dedicated to fMRI research, the intellectual and research environment is outstanding.

1) **Cognitive Neuroscience and Drug Abuse** (E. Stein). This position studies the interactions of nicotine and cocaine with affective processes, drug craving mechanisms and drug interactions with such cognitive processes as attention, working memory, and central executive functions. Background in cognitive neuroscience, drug abuse or pharmacology desirable.

2) **Physiology and Biophysics of fMRI Signal** (J. Hyde, K. Donahue). These studies use animal and human experimental and mathematical modeling to examine the biophysical basis of fMRI contrast mechanisms, with particular attention to the nature and role of physiological fluctuations in the BOLD signal. Background is physiology, physics and mathematics desirable.

3) **Physiological and Biophysical Transduction Mechanisms of the fMRI Signal** (E. Stein, A. Greene, A. Hudetz). These studies utilize animal models to determine the mechanisms by which neuronal activity-induced changes in CBF, CBV, and oxygenation contribute to the fMRI signal. Emphasis is on the mechanisms of neuronal cerebrovascular coupling. Background in animal physiology desirable.

For positions 1-3, contact: **Elliot A. Stein, Ph.D., Dept. of Psychiatry, MCW, 8701 Watertown Plank Rd., Milwaukee, WI 53226. Email [estein@mcw.edu](mailto:estein@mcw.edu).**

4) **Temporal Information Processing** (S. Rao). These studies are designed to determine the brain systems that support temporal information processing in healthy humans and patients with Parkinson's disease and ADHD. Emphasis is on the role of dopaminergic and cholinergic systems in timekeeping. Background in cognitive neuroscience (attention, working memory, and/or motor control) desirable. Contact: **Stephen M. Rao, Ph.D., Dept. of Neurology, MCW, 9200 W. Wisconsin Ave., Milwaukee, WI 53226. Email [srao@mcw.edu](mailto:srao@mcw.edu).**

See: <http://borg.psych.mcw.edu> or <http://www.biophysics.mcw.edu/bri-mri/bri-mri.html>.

*Equal Opportunity Affirmative Action Employer M/F/D/V*



MOUNT SINAI  
SCHOOL OF  
MEDICINE

## Cancer Proteomics

Mount Sinai School of Medicine is a leader in medical education and research. Our Cancer Proteomics Program has the following positions available immediately at the post-doctoral or instructor levels.

### Protein Purification

The successful candidate will be responsible for protein purification, protein concentration, and 2D-gel separation of proteins for the discovery of cancer specific protein markers. Qualifications include a Ph.D. in Chemistry or Biochemistry with strong background in 2D-gel analysis of proteins and protein chemistry. Background in mass spectrometry and LC separation is an advantage but not required.

### Gene Expression

The successful candidate will be responsible for gene expression and purification of signaling molecule complexes in an effort to characterize the mechanisms of oncogenesis and apoptosis. Qualifications include a Ph.D. with strong background in protein expression and protein purification. Experience in cancer biology and apoptosis is an advantage but not required.

If interested, please send your C.V. and the names of three references, indicating position of interest, to: **Dr. Stuart A. Aaronson, Director, Derald H. Ruttenberg Cancer Center, Box 1130, Mount Sinai School of Medicine, One Gustave L. Levy Place, New York, NY 10029-6574; Fax: (212) 987-2240; E-mail: [zhaoy01@doc.mssm.edu](mailto:zhaoy01@doc.mssm.edu)** We are an equal opportunity employer fostering diversity in the workplace.



**FY 2000 Grants for International Joint Research  
in the Areas of  
Materials, Global Environment and International Standard Development**

The New Energy and Industrial Technology Development Organization (NEDO), a government affiliated agency subsidized by the Ministry of International Trade and Industry (MITI), has been conducting the International Joint Research Grant Program. This program aims to promote advancement of the international level of industrial technology and enhancement of international researcher exchange, and the results achieved are expected to create the basis for new key industrial technology. In this regard, NEDO will provide grants to international joint research teams which conduct excellent, innovative and original research in the areas of materials, global environment and international standard development. For the global environment area, this program will be carried out jointly with the Research Institute of Innovative Technology for the Earth (RITE).

#### Requirements

- 1) Each team must, in principle, be composed of four (4) or more researchers.
- 2) Each team must consist of researchers of two (2) or more different nationalities.
- 3) The affiliates (where the joint research will be performed) must be located in two (2) or more countries.
- 4) Each team must appoint a research coordinator and an accounting coordinator from among its members. (A research coordinator can also serve as the accounting coordinator). The accounting coordinator's research institute and research location must be in Japan, and he/she must be able to communicate with NEDO in Japanese.

Research Area	Field of Research	Amount of Each Grant in FY 2000	Number of Themes to be Adopted	Recipient of Applications
Materials	<u>Basic research</u> concerning the investigation, elucidation and practical use of materials which will lead to the creation of new industries	about 24,000,000 yen	5 themes	N E D O (Note A)
International Standard Development	<u>Practical research</u> aiming at establishment of international standards to contribute to improvement of industrial technology	about 20,000,000 yen	1 theme	
Global Environment (Practical Research)	<u>Practical research</u> on technology concerning the production, generation and use of oil-alternative energy, excluding electric power generation technologies, which contributes to conservation and improvement of the global environment	about 30,000,000 yen	1 theme	R I T E (Note B)

For FY2000, there will be no announcement for the energy and global environment (basic research) areas.

The application period will be from January 18, 2000 to March 17, 2000. (All applications must reach NEDO by the deadline).

#### Recipient of Applications

##### Note A: Materials and International Standard Development areas

International Joint Research Division,  
Industrial Technology Department  
New Energy and Industrial Technology  
Development Organization (NEDO)  
Sunshine 60, 29F, PO Box 1151 1-1, Higashi-Ikebukuro, 3-chome,  
Toshima-ku, Tokyo 170-6028 Japan  
Telephone: +81-3-3987-9357  
Facsimile: +81-3-5952-0082  
E-mail: [nedogrant@nedo.go.jp](mailto:nedogrant@nedo.go.jp)  
Web: <http://www.nedo.go.jp/itd/grant-e/ENG.HTM>

##### Note B: Global Environment area

Research Proposals Reception Section,  
Research Planning Department  
Research Institute of Innovative  
Technology for the Earth (RITE)  
9-2, Kizugawadai, Kizu-cho, Soraku-gun,  
Kyoto 619-0292 Japan  
Telephone: +81-774-75-2302  
Facsimile: +81-774-75-2314  
E-mail: [proposal@rite.or.jp](mailto:proposal@rite.or.jp)  
Web: <http://www.rite.or.jp/>

#### Notes

1. This program is subject to availability of appropriated government funds.
2. Please note that the grant amount and number of themes to be adopted may be changed.
3. To ensure the innovativeness of proposed research themes, up to two (2) applications using the same research plan are acceptable.
4. Regarding an application, if it does not follow the instructions described in the International Joint Research Application Guidebook or the proposed research has no relevancy to the above areas, it will not be considered.



## Pre-Doctoral Training Program in Cancer Biology

**MOUNT SINAI  
SCHOOL OF  
MEDICINE**

Mount Sinai School of Medicine is a leader in medical education and research. Our Derald H. Ruttenberg Cancer Center seeks applicants for its Pre-Doctoral Training Program in Cancer Biology. This newly-established program is funded by the National Cancer Institute and is committed to the education of outstanding cancer biologists. Research areas include:

- oncogenes and signalling pathways
- tumor suppressors and cell cycle
- transcription factors
- differentiation and development
- metastasis and cell adhesion
- DNA replication and repair

The approaches employed are varied, ranging from basic molecular and cell biology to translational efforts involving patients. The curriculum includes advanced courses in basic and clinical cancer biology. This multi-disciplinary training program combines research in the biology of cancer with a curriculum that challenges trainees to consider how their research may be translated into improvements in the diagnosis and treatment of cancer.

The mission of the Mount Sinai Graduate School of Biological Sciences is to provide a rigorous educational experience in biomedical sciences to outstanding research-oriented students. Students enter without a formal commitment to a particular training area. Although students may have a strong interest in cancer biology, they are allowed and encouraged to consider new combinations of interests during their first year.

Applications and further information may be obtained from:

**Training Program in Cancer Biology**  
**Derald H. Ruttenberg Cancer Center, Box 1130**  
**Mount Sinai School of Medicine**  
**One Gustave L. Levy Place**  
**New York, NY 10029-6574**  
**Fax: 212-849-2446**  
**E-mail: traininggrant@mssm.edu**



University  
of Alberta

**TENURE TRACK - GENETICS**  
**Department of**  
**Medical Genetics**  
 Faculty of Medicine and Dentistry

The Department of Medical Genetics invites applications from outstanding scientists or clinical scientists investigating any aspect of molecular genetics and biology related to human disease or animal models, for tenure track positions. Studies of developmental pathways, cytogenetics, and complex traits are among the areas of interest. Applicants must have a PhD or PhD/MD, with postdoctoral training, and be able to establish a strong independent research program. Appointments are expected primarily at the level of Assistant or Associate Professor, in accordance with qualifications and experience of the candidates.

This new department, in the faculty of Medicine and Dentistry, occupies newly renovated facilities, including research laboratories, and clinical and diagnostic services. Department information is available on: <http://www.medgen.med.ualberta.ca>.

The first closing date for applications is March 31, 2000. Candidates are invited to submit a resume, research plan, and names of three references to:

**Diane W. Cox, Professor and Chair**  
**Dept. of Medical Genetics, 839 Medical Sciences Building**  
**Edmonton, Alberta, Canada, T6G 2H7**

*The University of Alberta is committed to the principle of equity in employment. As an employer, we welcome diversity in the workplace and encourage applications from all qualified individuals.*

nature  
*genetics*

## Seeks an **Assistant Editor**

to join its editorial team in New York City. Applicants should have a strong research background in genetics or genomics, a broad interest and understanding of biomedical science, excellent literary skills and a strong commitment to the communication of science. Expertise in statistics and/or population genetics would be advantageous.

This is a superb opportunity to enter the world of scientific publishing while staying at the forefront of modern research. The successful candidate will contribute to all aspects of the editorial process including manuscript selection, writing for the journal and attending conferences.

We offer a competitive salary and excellent working conditions within a dynamic editing and publishing group that is also responsible for Nature, Nature Structural Biology, Nature Medicine, Nature Biotechnology, Nature Neuroscience and Nature Cell Biology.

Please submit a curriculum vitae (with three references), a concise letter outlining your credentials, and a short (500 words) News & Views-type article on an exciting recently published paper in any area of genetic research, to: The Editor, Nature Genetics, 345 Park Avenue South, New York, NY 10010-1707 (Fax 212 545 8341, e-mail: natgen@natureny.com) no later than 31 January 2000.



Nature America, Inc.  
 345 Park Ave. South  
 New York, NY 10010



**MOUNT SINAI  
SCHOOL OF  
MEDICINE**

# Post-Doctoral Opportunities

Mount Sinai School of Medicine is a leader in medical education and research. We have the following opportunities available for experienced research professionals.

## Molecular Virology

The Jack & Lucy Clark Department of Pediatrics has an opportunity available to study viral-host interactions important in herpes simplex virus invasion of cells. Experience in molecular virology preferred. Reply with C.V. and three references (name and phone number or e-mail address) to: **Betsy C. Herold, M.D., Jack & Lucy Clark Department of Pediatrics, Box 1657; E-mail: betsy\_herold@mssm.edu**

## Function and Metabolism of Presenilins and APP

A position is available to study the expressions, function and metabolism of Presenilins and APP in transgenic mice and neuronal cell lines (APP and Presenilins play an important role in Alzheimer's neurodegeneration). Projects include elucidation of the function of PS1 at the synaptic adherens junctions. Experience in molecular biology and/or biochemistry is required. Reply with C.V. and names of three references to: **Dr. N.K. Robakis, Department of Psychiatry and Fishberg Research Center for Neurobiology, Box 1229; Fax: (212) 831-1947; E-mail: nikolaos.robakis@mssm.edu**

## Vascular, Renal and Neuronal Biology

A new research division seeks investigators experienced in cell/molecular biology, immunology, and/or whole animal research to work in vascular, renal and neuronal biology. Must possess a Ph.D. or M.D. and be fluent in English. Reply with C.V. to: **Ina Katz, Box 1640; Fax: (212) 849-2652.**

## Biochemistry and Molecular Biology

Several post-doctoral positions are available immediately in the following research areas: DNA unwinding and helicase activities in mammalian DNA replication; Cell cycle control of initiation of mammalian DNA replication; and Role of HIV-1 in control of JC virus DNA replication in the human brain. A Ph.D. and strong background in biochemistry and molecular biology are required. Reply with C.V. and names, addresses, phone numbers and e-mail addresses of three references to: **Edward M. Johnson, Ph.D., Departments of Pathology, Biochemistry and Molecular Biology and The Derald H. Ruttenberg Cancer Center, Box 1194; Fax: (212) 534-7491.**

## Cell and Molecular Biology

A dynamic laboratory, housed in a state-of-the-art research facility, is seeking self-motivated and creative M.D. and/or Ph.D. fellows with expertise in cell and molecular biology, with an interest to investigate the use of genes in treatments of complex diseases. Reply with C.V., bibliography and three letters of recommendation to: **Dr. Savio L.C. Woo, Professor and Director, Institute for Gene Therapy and Molecular Medicine, Box 1496; Fax: (212) 849-2572.**

We offer an excellent salary, comprehensive benefits package and a challenging work environment. Please send C.V. following "Reply to" information for your position of interest to: **Mount Sinai School of Medicine, One Gustave L. Levy Place, New York, NY 10029-6574.** We are an equal opportunity employer fostering diversity in the workplace.

# nature medicine

## seeks research editors

These are full-time positions within an established editorial team based in New York City.

Applicants should have a strong research background in the biomedical sciences, a broad understanding and interest in biomedical research, excellent literary skills and a commitment to the communication of science. Expertise in immunology and/or infectious diseases is particularly welcome.

This is an exciting opportunity to play a key part in a top-ranked science journal while staying at the forefront of modern research. Although the successful candidates will focus on research manuscript selection and communication with authors and referees, they will participate in all aspects of the editorial process, including commissioning articles, writing and attending conferences.

We offer a highly competitive salary and excellent working conditions within a dynamic editing and publishing group that is also responsible for *Nature*, *Nature Genetics*, *Nature Structural Biology*, *Nature Biotechnology*, *Nature Neuroscience* and *Nature Cell Biology*.

Please submit a CV (with names of three references), a concise letter outlining your credentials, and a 500-word *News & Views*-style article on a recent exciting and newsworthy development in any area of biomedical research to: The Editor, *Nature Medicine*; 345 Park Avenue South, New York, NY 10010-1707 (FAX 212-683-5751; e-mail [medicine@natureny.com](mailto:medicine@natureny.com)) to arrive as soon as possible and **no later than 11 February 2000**.



Nature America, Inc.  
345 Park Ave. South  
New York, NY 10010



## MAYO CLINIC GMP VECTOR PRODUCTION FACILITY

Production Manager and Production/Quality Control Staff are sought to operate a new GMP Vector Production Facility established to support preclinical and phase I clinical gene therapy studies at Mayo Clinic, Rochester, Minnesota. A range of different viral and nonviral vectors will be produced in the facility. Experience in molecular biology, cell culture and/or laboratory management is required. Previous relevant experience is essential. Competitive salary and benefit package available.

Applications along with curriculum vitae and bibliography should be sent to:

**Stephen J. Russell, MD, PhD**  
c/o Ms. Maureen Craft  
Mayo Clinic  
Guggenheim 18th Floor  
200 First Street Southwest  
Rochester, MN 55905

Informal inquiries should be directed to Dr. Stephen J. Russell by e-mail at: [sjr@mayo.edu](mailto:sjr@mayo.edu). The deadline for applications is February 11, 2000.

For more information about the Mayo Clinic Molecular Medicine Program you can visit our website at: <http://www.mayo.edu/research/mmp/>. For more information about Rochester, Minnesota and Mayo Foundation, you can visit the websites at: <http://www.rochester.mn.com/> and: <http://www.mayo.edu/>.

*Mayo Foundation is an Affirmative Action and Equal Opportunity Employer and Educator.*

## ANNOUNCEMENTS

### NATIONAL SPACE BIOMEDICAL RESEARCH INSTITUTE

#### *Special Announcement to Institutions*

The National Space Biomedical Research Institute (NSBRI) announces an opportunity to participate in the core research program of the NSBRI. The release date for this announcement is December 28, 1999.

#### NSBRI Announcement 99-02

An Opportunity to Participate in the Core Research Program of the National Space Biomedical Research Institute: Formation of New Research Teams

This announcement is available electronically via the Internet at <http://www.nsbri.org>

Letter of Intent Due: March 17, 2000  
Proposals Due: May 5, 2000

Paper copies of this Announcement are available to those who do not have access to the Internet by calling 713-798-7412 or by writing to:

**R. J. White, NSBRI**  
One Baylor Plaza  
NA-425  
Houston, TX 77030





NRC is a dynamic, nationwide R&D organization committed to helping Canada realize its potential as an innovative and competitive nation. Our strengths are: outstanding people, core science and engineering expertise and information, research programs focused on key technologies and technology diffusion. Combining our strengths with those of industrial and academic partners, we foster Canada's emerging national system of innovation. **You can make a difference at NRC!**

## **Protein or Physical Biochemist/Structural Biologist**

**The Plant Biotechnology Institute (PBI)**  
**Saskatoon, Saskatchewan**

**Reference Number 64-99-43**

This is a continuing position.

### **Your Challenge**

You will build a dynamic research program in the area of protein structure/function that personifies scientific excellence. You will provide scientific leadership within PBI and NRC and will plan, perform and supervise the core research and the externally funded collaborative project research in your laboratory. You will manage project resources, develop external research contracts and collaborations, and attract external research support.

### **Your Credentials**

You possess a Ph.D. in physical biochemistry, biophysics, structural biology or other closely related area. You will have a minimum of 2 years of postdoctoral experience studying protein structure/function relationships, and experience in designing, and conducting experiments in this field. You will have a strong publication record in peer reviewed journals, demonstrating expertise. You will have a good understanding of x-ray diffraction methods in theory and practice as they relate to protein structure, proficiency in the operation of structure modeling and bioinformatics software and knowledge of NMR applications to macromolecular structure. You are strongly encouraged to submit a brief (max. 2 pages) description of current/future research interests relevant to the position.

## **Cell/Developmental Biologist**

**The Plant Biotechnology Institute (PBI)**  
**Saskatoon, Saskatchewan**

**Reference Number 64-99-44**

This is a continuing position.

### **Your Challenge**

You will conduct and direct research in one of the following areas: molecular aspects of plant cell and developmental biology/physiology, including cell/tissue differentiation; organ development; embryogenesis; and/or seed development. You should be prepared to establish a lead position for PBI in the area of research chosen. Your responsibilities will include interacting strongly with existing PBI research groups to provide expertise and support in developmental biology/physiology as needed, and establishing links with external university, government and industry partners for funding, planning, conducting and assessing joint/collaborative research activities.

### **Your Credentials**

You possess a Ph.D. and post-doctoral training in the area of developmental biology/physiology and/or cell biology including tissue culture techniques and transformation. You will have extensive experience in conducting research in one of the above noted areas, with emphasis on utilizing molecular approaches to address problems in these disciplines. You will have experience in conducting and managing research projects, supervising research staff, preparing and implementing research plans, and in preparing manuscripts and publishing research results. You will have knowledge of plant development, including embryogenesis and/or organogenesis; plant cell biology and plant anatomy; whole plant physiology; recombinant DNA technology/molecular biology; plant biochemistry and DNA and protein sequence analysis. You will have the ability to establish and cultivate a new research program in plant cell/developmental biology at PBI, and to develop a leading international position in the chosen area of research within five years.

Knowledge of English is required for both positions and an Enhanced Reliability Check will be conducted.

Salary range for both positions will be commensurate with qualifications. Relocation assistance will be determined in accordance with NRC's relocation policy.

As an employer who values diversity in its workforce, we encourage candidates to self identify as members of the following designated groups: women, visible minorities, Aboriginal peoples and persons with disabilities.

To explore one of these opportunities, send your application by February 25, 2000, **indicating the appropriate reference number to: Joey Weir, Human Resources Assistant, 435 Ellice Ave., Winnipeg, MB, R3B 1Y6, (204) 984-6270 or by fax at (204) 984-6299. You can apply on our Web site at [www.nrc.ca/careers](http://www.nrc.ca/careers).**

*We thank all those who apply and advise that only those selected for further consideration will be contacted.*

*Vous pouvez obtenir ces renseignements en français.*



National Research Council Canada  
Conseil national de recherches Canada

Canada



Discovery, Dedication, Determination.

You'll find them at Roche.

Drug Discovery

At Hoffmann-  
La Roche, our  
passion for discovery  
is surpassed only by  
our pledge to help  
people live longer,  
healthier lives.  
This commitment  
to new product  
development has  
made us one of the  
most successful  
pharmaceutical  
companies for over  
a century.

To enhance our potential to broaden the scope of compounds that can be analyzed for biological activity, and ultimately, to be used as a treatment or cure, we are seeking an energetic individual to develop and apply molecular modeling tools and approaches to diverse problems in drug discovery.

### **APPLICATIONS MOLECULAR MODELER/COMPUTATIONAL CHEMIST**

You will work closely with project teams to discover, design and optimize new drugs, and to provide new opportunities for streamlining the drug discovery process. In addition, you will work closely with the chemistry teams to develop computational tools, which will be applied to a variety of problems in drug discovery.

To qualify, you must have a Ph.D. in Chemistry, Biophysics or a related discipline; extensive research experience in applying molecular modeling techniques to problems in molecular structure or recognition; and proficiency in the computational methodologies and theories for drug design. Experience in some of the following areas is particularly desirable: molecular docking, structure-based ligand design, homology modeling, combinatorial chemistry library design and analysis, and pharmacophore hypothesis generation. As an integral member of our dynamic discovery teams you should also possess excellent communication skills.

As one of *NJ Monthly's* "Best Companies to Work for in New Jersey," we offer competitive salaries and an outstanding benefits package that includes on-site childcare and a state-of-the-art fitness center. For consideration, please forward your resume and salary requirements, specifying Job Code 99-000-1539-DG, to: **R&D Human Resources, Bldg 123/5, Hoffmann-La Roche, Inc., 340 Kingsland Street, Nutley, NJ 07110; fax: 973-235-2767; e-mail: nutley.research@roche.com.** We appreciate your interest in Hoffmann-La Roche but can only respond to qualified candidates. Hoffmann-La Roche is an equal opportunity employer fully committed to diversity in the workplace.

For more information, please visit our web site at [www.RocheUSA.com](http://www.RocheUSA.com)

Roche

### **University of California, Davis Director, Center for Mind Sciences**

The University of California at Davis invites applications and nominations for the position of Director of the Center for Mind Sciences.

The newly established Center for Mind Sciences is a campuswide unit involving faculty from four different colleges/schools on the Davis campus. The Center will provide research space, seminar programs, support for graduate students, postdoctoral associates and distinguished visitors. The Davis campus has made a major commitment to the further development of mind sciences through the Center. Following the hiring of the Director, the campus is prepared to make ten additional appointments associated with the Center over a five year period.

We seek as Director an outstanding individual in the field of mind sciences with a proven record of achievement in research who has a vigorous research program focused on mind science rather than one of the more established disciplines (such as cognitive neuroscience, psychology, and philosophy) and who employs a broader and more integrative approach to exploring questions than is often used by a traditional cognitive neuroscientist, psychologist or philosopher. Whereas cognitive science typically includes cognitive psychology, computer science and linguistics at its core, the CMS Director will unite neuroscience, social sciences and medicine in interdisciplinary efforts drawing upon expertise from evolutionary psychology, ethology, human development and anthropology in order to study how evolution and development shape the architecture of the mind.

The Director's position involves a faculty appointment at the professorial level in an academic department in one of the colleges/schools with programs in mind science. The appointment carries an administrative stipend. The Director must also be well qualified to teach both lower and upper division undergraduate courses and graduate courses. The Director of the CMS will report to the Dean of the Division of Social Sciences.

The University of California, Davis and the Division of Social Sciences are interested in candidates who are committed to the highest standards and professional activities, and to the development of a campus climate that supports equality and diversity. The University of California is an affirmative action/equal opportunity employer. The position will remain open until filled. To ensure full consideration, applicants should send a letter of interest or nomination, curriculum vitae, and the names of at least three references by February 15, 2000. Mail applications to:

Mind Sciences Search Committee  
c/o Sproul Social Sciences Administration  
One Shields Avenue  
University of California, Davis, CA 95616  
530/752-1291

For general information, email [labyrns@ucdavis.edu](mailto:labyrns@ucdavis.edu) (Lesley Byrns, Search Administrator)

## **Deputy Editor**

**Physiological Genomics**, a new research journal published by The American Physiological Society, has an immediate need for a Deputy Editor to be based in Boston, Massachusetts. Responsibilities include:

- recruitment of articles through direct contact with the scientific community
- writing of research commentaries
- coordinating the receipt and review of manuscripts
- close coordination with authors, editors, and publisher
- representation of the journal at scientific meetings

The ideal candidate will possess an advanced degree in the biomedical sciences or science journalism or closely related discipline, 2-6 years related work experience, excellent writing skills to communicate complex concepts clearly, and strong editorial and interpersonal skills.

Brigham and Women's Hospital/ Harvard University and The American Physiological Society offer an outstanding compensation and benefits package. Please forward your resume, writing sample, and salary requirements to:

Dr. Victor Dzau, Editor-in-Chief  
**Physiological Genomics**  
c/o The American Physiological Society  
Publications Department  
9650 Rockville Pike  
Bethesda, MD 20814-3991  
EOE



## NEW PRODUCTS ARE YOUR LIFEBLOOD. OURS TOO.

When we at Johnson & Johnson ask "what's new?", we're not speaking casually. We're reflecting a belief we all share—innovation is key. Because it is our ongoing innovation of products that help people, like Risperdal and Retin-A, that leads to the ongoing success of Johnson & Johnson, the world's leading health care products and services company.

If you have an intense desire to make our next innovation your claim to fame, opportunities are now open at the following operating company.

## ETHICON

**Ethicon, Inc.**, located in Somerville, New Jersey, develops and markets innovative products for surgeons, such as sutures, and medical devices for sports medicine and women's health care.

### Staff/Principal Engineer

Directing the design and fabrication of medical diagnostic and therapeutic devices from conception through deployment using external and internal resources, your primary responsibilities will include interacting with surgeons and technologists to expose new surgical procedures and technologies. Specific responsibilities will include working with patent attorneys to analyze intellectual properties of new business opportunities; creating patent portfolio for new technologies and devices; and working with Marketing and New Business Development to create new product strategies.

Successful candidates will have an MS or Ph.D. in electrical, biomedical or mechanical engineering and 5+ years of work experience in designing and developing medical devices or equipment. You must have solid knowledge of the product development cycle and be able to conduct engineering or scientific evaluations. Excellent teamwork, analytical and communication skills are a must. Knowledge of energy power sources is desirable. Some travel is necessary. **Req. Code 982355SCI**

**The Gynecare Division** of Ethicon, develops and markets products for gyne surgeons, enhancing women's health and quality of life.

### Staff-Principal Engineer

Creating and fabricating medical diagnostic and therapeutic devices using internal or external resources, your specific responsibilities will include working with surgeons and technologists to explore new surgical procedures and techniques. Additional responsibilities will include interacting with patent

attorneys to analyze intellectual properties of new business opportunities, creating patent estates for new technologies and devices, and developing new product development strategies.

To qualify, you must have an MS or Ph.D. in biomedical engineering and/or electrical engineering and 10+ years of experience designing and developing medical devices and/or equipment. You must have solid knowledge of product development cycles and SQR for the medical industry and be able to lead scientific evaluations of new products or technology concepts and development. Excellent teamwork, analytical and oral/written communication skills are a must. Some travel is necessary. **Req. Code 991866SCI**

### Senior/Staff/Principal Engineer

Directing multifunctional project teams in developing surgical devices using internal and external resources, your key responsibilities will include interacting with marketing and new business partners to create new product development strategies. Associated responsibilities will include negotiating with outside vendors or technology partners and meeting with team members, external resources and their technology partners to improve business.

Qualified candidates will have an MS or Ph.D. in biomedical, electrical or mechanical engineering and 5-10 years of experience designing and developing medical devices and/or equipment. You must have solid knowledge of product development cycles, SQR for the medical industry and a wide range of scientific and engineering assignments. The ability to conduct engineering/scientific evaluations of new product and technology concepts, prototyping and development is essential. Excellent teamwork, leadership, project planning and computer skills are a must. Some travel is necessary. **Req. Code 991828SCI**

As a valued team member, you'll receive a competitive salary and great benefits including medical/dental, a 401(k), a pension plan and a comprehensive wellness program. Please apply directly on-line at our web site [www.jnj.com](http://www.jnj.com) or forward a scannable resume, noting operating company as **Ethicon, Inc.** and **Req. Code**, to: **Johnson & Johnson Recruiting, P.O. Box 16597, New Brunswick, NJ 08906-6597**. Please note, resumes received electronically via [jnj.com](http://jnj.com) are reviewed within 24 hours. Mailed resumes are reviewed within 3 business days after receipt. We are an equal opportunity employer totally committed to diversity.

# Johnson & Johnson

FOR FURTHER DETAILED INFORMATION REGARDING JOB RESPONSIBILITIES,  
WE HIGHLY RECOMMEND YOU VISIT OUR WEB SITE.

[www.jnj.com](http://www.jnj.com)

## POSITIONS OPEN

### IMMUNOLOGY MICROBIAL PATHOGENESIS

**ASSISTANT PROFESSOR** (tenure track) in immunology and/or microbial pathogenesis at the University of Wisconsin-Madison. The selected individual will develop a competitive, extramurally funded research program focusing on the interface between foodborne pathogens or their toxins and the host immune response. The selected individual will be appointed in the most appropriate department(s) at UW-Madison and will participate in the programs of the UW-Madison Food Research Institute. Individual will collaborate with members of a campus Food Safety cluster and other faculty with related interests. Undergraduate or graduate teaching in the area of expertise and active involvement in graduate student research training is expected. Ph.D. or equivalent in immunology/microbiology and postdoctoral research is required. Please submit a résumé and a statement of research and teaching interests and have three letters of recommendation forwarded to: **Professor Michael Pariza, 140 Agriculture Hall, 1450 Linden Drive, Madison, WI 53706-1562.** To ensure consideration, applications must be received by March 31, 2000. Unless confidentiality is requested in writing, information regarding the applicants must be released upon request. Finalists cannot be guaranteed confidentiality. *The University of Wisconsin-Madison is an Equal Opportunity and Affirmative Action Employer. Women and minority candidates are especially urged to apply.*

### CANCER THERAPY AND RESEARCH CENTER

The Cancer Therapy and Research Center, an NCI-designated comprehensive research and treatment facility, has the following positions available:

**ASSOCIATE DIRECTOR OF PHARMACOLOGY:** opportunity to direct a new, preclinical pharmacology lab. Will be responsible for establishing a certified GLP pharmacokinetics laboratory to study pediatric anticancer drugs. Must possess Doctorate in pharmaceutical sciences with five or more years of experience in related field and excellent analysis and evaluation techniques.

**POSTDOCTORAL FELLOW:** will participate in research in the area of molecular pharmacology of antitumor drugs. Must have Ph.D. in biochemistry, molecular or cellular biology, or related field. Experience in nuclear matrix DNA desired but not required.

Mail résumé to: **Cancer Therapy and Research Center, 8122 Datapoint Drive, Suite 250, San Antonio, TX 78229. FAX: 210-616-5875.** Visit our website: [www.ctrc.saci.org](http://www.ctrc.saci.org). *CTRC is an Equal Opportunity/Affirmative Action Employer.*

### FACULTY POSITION IN BIOLOGICAL NMR SPECTROSCOPY

The Department of Biochemistry of the Medical College of Wisconsin invites applications for a tenure-track faculty position at the **ASSISTANT** or **ASSOCIATE PROFESSOR** level. We seek candidates capable of developing and directing strong research programs involving application of NMR spectroscopy to studies of macromolecular structure, function, and dynamics. Funds to purchase a 600-700 MHz spectrometer and a generous laboratory start-up package are available. The successful applicant will complement the strong existing structural biology group in the Department of Biochemistry ([website: www.biochemistry.mcw.edu](http://www.biochemistry.mcw.edu)) and the National Biomedical ESR center at the Medical College of Wisconsin ([website: www.biophysics.mcw.edu](http://www.biophysics.mcw.edu)). The applicant is also expected to participate in the teaching of medical and graduate students. Curriculum vitae, summary of research plan, and three letters of reference should be sent to:

**Search Committee  
Department of Biochemistry  
Medical College of Wisconsin  
Milwaukee, WI 53226  
E-mail: [NMRsearch@mcw.edu](mailto:NMRsearch@mcw.edu)**

The position is open immediately, and applications will be reviewed as they are received. *The Medical College of Wisconsin is an Affirmative Action/Equal Opportunity Employer.*

## POSITIONS OPEN

### HEAD, DEPARTMENT OF PLANT BIOLOGY UNIVERSITY OF MINNESOTA

The University of Minnesota invites applications and nominations for the position of Head of the Department of Plant Biology in the Colleges of Biological Sciences and Agricultural, Food, and Environmental Sciences. The Department currently has 15 faculty with graduate students in several graduate programs and offers an undergraduate major. The successful candidate will have a Ph.D. (or foreign equivalent), a distinguished record of research, and will be encouraged to maintain an active research program as well as participate in educational activities. The Head will lead the Department through a series of faculty searches over the next few years. For a more complete position description and information about the Department, please see the Department's website: <http://biosci.cbs.umn.edu/plantbio/pbio>. Applications will be reviewed beginning February 21, 2000. Applications will continue to be accepted and reviewed until the position has been filled. A statement of intent and curriculum vitae should be submitted to:

**Ms. Julie Ulrich, Plant Biology Head  
Search Committee  
College of Biological Sciences  
University of Minnesota  
123 Snyder Hall  
1475 Gortner Avenue  
St. Paul, MN 55108**

*The University of Minnesota is an Equal Opportunity Employer.*

### ENDOWED PROFESSORSHIP MOLECULAR PATHOGENESIS

The School of Medicine at the University of Louisville is in the midst of a major expansion in biomedical research. As part of this expansion, the Department of Microbiology and Immunology seeks to recruit a senior faculty member to fill a newly created Endowed Professorship with a research focus on molecular aspects of bacterial pathogenesis. The ideal candidate should be a nationally recognized leader in their area of expertise and would be expected to bring an active research program. An ability to establish collaborations with other faculty in areas of immunology and chronic inflammatory diseases is preferred. Generous set-up funds, a 12-month state-line salary, and a highly collaborative environment are provided. Credentials should include an exemplary publication record, evidence of sustained extramural funding, and documentation of a strong commitment to graduate and medical education. Applicants should submit a curriculum vitae, selected reprints, a statement of research plans, and arrange to have four letters of reference sent to: **Uldis N. Streips, Ph.D., Search Committee Chairman, Department of Microbiology and Immunology, School of Medicine, University of Louisville, Health Sciences Center, Louisville, KY 40292.** *The University of Louisville is an Equal Opportunity/Affirmative Action Employer.*

### RESEARCH ASSOCIATE DUKE COMPREHENSIVE CANCER CENTER (DCCC)

Applications for a Research Associate-level position as Assistant to the Director of the Hybridoma Facility are invited. Duties of the position include immunization and serum sampling of rodents and rabbits; performance of fusions; requisite cell culture; cloning and freezing of selected stocks; production and purification of immunoglobulins, isotyping, qualitative/quantitative ELISAs, and comprehensive maintenance of all records and billing. The successful candidate will have a Ph.D. in immunology, cell, or molecular biology or the equivalent, with a published record of successful hybridoma generation. A competitive benefits package and salary commensurate with experience is offered. Interested applicants should submit a curriculum vitae and representative publications (maximum of two) to: **Carol J. Wikstrand, Ph.D., Box 3156, Duke University Medical Center, Durham, NC 27710. FAX: 919-684-6791; e-mail: [wikst001@mc.duke.edu](mailto:wikst001@mc.duke.edu).**

## POSITIONS OPEN

### POSTDOCTORAL FELLOW ANATOMY

A Postdoctoral position is available to study the biochemical and molecular properties of cartilage developing in a novel hollow fiber bioreactor. This work will be part of a collaborative study to correlate the biochemical makeup of the tissue with MRI and biomechanical properties. Various treatments will be utilized, and the long-term goal is to optimize the ability to assess the proper development of cartilage *in vivo* to support therapeutic treatment of diseased cartilage and/or tissue engineering procedures. The successful candidate should possess a Ph.D. and have practical experience in immunocytochemistry; Northern and Western analysis with experience in cartilage biology desirable. The work will be directed by **Dr. Walter Horton**, who belongs to a multidisciplinary Skeletal Biology Research Group. The facility includes fully equipped laboratories along with support for cell culture, molecular research, image analysis, and transgenic studies. Please send your curriculum vitae and a letter detailing your research experience and when you will be available to: **Dr. Walter Horton, c/o Human Resources, Northeastern Ohio Universities College of Medicine, 4209 State Route 44, Rootstown, OH 44224.** *NEOUCOM is an Equal Employment Opportunity/Affirmative Action Educator and Employer.*

Troy State University's Department of Biological Sciences is seeking an Environmental Scientist at the **ASSOCIATE** or **FULL PROFESSOR** level to fill the endowed chair of the ALFA Eminent Scholar in Environmental Management and Agriculture. Applicants for this tenure-track chair must hold a Ph.D. in the environmental sciences or closely related fields. Applicants must have experience in the use of computer models and GIS for providing solutions for pollution problems, particularly runoff from agriculture and other sources. The desired appointment date is August 1, 2000; earlier starting dates are possible. Review of applications will begin immediately and continue until the position is filled. The chairholder is expected to build an active research program, secure outside funding, and direct thesis projects. The chairholder will teach courses in the environmental sciences, water quality, and related areas; the teaching emphasis is placed on graduate courses. The chairholder will have collaborative opportunities to work with the Center for Environmental Research and Service, with its emphasis on applied field and laboratory research and environmental education and service. Please send a letter of application; curriculum vitae; statement of research interests; copies of representative reprints; statement of teaching philosophy and record of previous teaching experience; and names, addresses, telephone and FAX numbers, and e-mail addresses of five references to: **Human Resources, Troy State University, Troy, AL 36082.** *Troy State is an Affirmative Action/Equal Employment Opportunity Employer and encourages applications from individuals with disabilities, females, African Americans, and other minorities.*

The Department of Ophthalmology and Visual Sciences at the University of Michigan is seeking two Board-certified or Board-eligible **OPHTHALMOLOGISTS** for faculty-level positions in a clinical practice at the W. K. Kellogg Eye Center and satellite locations. These are diverse practice opportunities in comprehensive ophthalmology. Please reply with a letter of interest, curriculum vitae, and names of three references to: **Paul A. Sieving, M.D., Ph.D., W. K. Kellogg Eye Center, 1000 Wall Street, Ann Arbor, MI 48105.** *The University of Michigan is an Equal Opportunity and Affirmative Action Employer.*



**MAYO CLINIC  
POSTDOCTORAL FELLOWSHIP**

A three year postdoctoral fellowship in the use of viral vectors for the gene therapy of cancer is available immediately in the laboratory of Dr. Richard Vile at Mayo Clinic in Rochester, Minnesota. Expertise in the construction and use of adenoviral vectors is essential and experience of retroviral vectors would be advantageous. The laboratory is focused on the development of gene transfer therapies for cancer using a range of therapeutic genes and vector systems and is situated within the Molecular Medicine Program headed by Dr. Stephen Russell.

Applications along with curriculum vitae and all relevant publications should be sent by the closing date, January 31, 2000 to:

**Richard Vile, PhD  
C/O Ms. Toni Higgins  
Mayo Clinic  
Guggenheim-18  
200 First Street SW  
Rochester, MN 55905  
Phone: 507/284-9941**

**E-mail: vile.richard@mayo.edu**

*Mayo Foundation is an affirmative action and equal opportunity employer and educator.*

**Therapeutic Genomics, Inc.** is a new company using a comprehensive genomic approach to identify novel drug targets and new drugs. We are currently recruiting scientists and research associates who will welcome the challenge of a dynamic, rapidly developing research environment. The company offers an excellent compensation and benefit package. We currently have the following research positions available:

**Senior Scientists and Scientists - Genomic Database Analysis.** Responsible for developing and implementing a discovery program using genomic database mining for the identification of novel therapeutic targets. Candidates must have expertise in database mining for pharmaceutically relevant genes. A Ph.D., M.D., or equivalent is required and a strong background in the molecular genetics of cancer is desirable. Good communication skills and ability to work in a team-oriented environment are a must.

**Bioinformatics Specialist -** Responsible for developing novel strategies for the analysis of sequence data information for the identification of pharmaceutically relevant genes using both public and private genomic databases. Must have 3 or more years experience in developing and applying sequence analysis tools and have a strong background in molecular biology. A Ph.D. or equivalent in molecular biology, computational sciences or related field is desirable.

**Senior Scientists and Scientists - Assay Development and Drug Discovery.** Responsible for the development of creative methods for medium and high throughput screening assays using novel drug targets. Significant experience in development of cell-based or non-cell-based drug screening assays or experience with screening chemical or peptide libraries is a must. Candidate must have Ph.D. or equivalent in cell biology, pharmaceutical sciences or related field.

**Research Associates -** Seeking highly motivated individuals that will enjoy working as part of a dynamic team in a growing company. Should have significant research experience in molecular biology, cell biology, assay development, bioinformatics, or gene expression analysis.

Please forward cover letter and resume to:

**Therapeutic Genomics, Inc.  
9700 Great Seneca Highway  
Rockville, MD 20850  
or send an email to [jobs@theragenomics.com](mailto:jobs@theragenomics.com)**

*We are an Equal Opportunity Employer.*

**NATIONAL INSTITUTES OF HEALTH  
NATIONAL INSTITUTE OF ALLERGY AND  
INFECTIOUS DISEASES**

**Postdoctoral Research Position**

**Starting Salary Range: \$30,000**

**Commensurate with experience/present salary**

The Laboratory of Infectious Diseases, Epidemiology Section, seeks a Postdoctoral Fellow with three years or less of postdoctoral experience in virology, molecular biology, or protein chemistry to study the mechanism of rotavirus dsRNA replication. Potential areas of research include identifying cis-acting signals in viral mRNA that promote dsRNA synthesis, locating RdRP- and protein-binding sites in the mRNA template, and characterizing the structure and role of accessory proteins in genome replication and packaging. Candidates must be U.S. citizens or permanent residents and have a Ph.D. or M.D. degree. Please send curriculum vitae and three references to:

**Dr. John T. Patton  
Laboratory of Infectious Diseases, NIAID  
Bldg. 7, Room 117  
7 Center Drive, MSC 0720  
Bethesda, MD 20892  
FAX: (301) 496-8312  
E-mail: [jpatton@niaid.nih.gov](mailto:jpatton@niaid.nih.gov)**

*NIH is an Equal Opportunity Employer*

**BIOTECHNOLOGY'S**  
Leading Edge  
leads straight to

**Lilly.**

**Lilly**  
Lilly and Company

## POSITIONS OPEN

The Department of Comparative Medicine has a faculty position available for an academically oriented Clinician with expertise in anesthesia and perioperative care, surgical models, murine colony health monitoring and maintenance, targeted mutagenesis models, or other specialized aspects of laboratory animal care and use. The appointment will be at the level of **ASSISTANT or ASSOCIATE PROFESSOR OF COMPARATIVE MEDICINE**, commensurate with the experience of the applicant. Candidates must have received the D.V.M. or V.M.D. degree from an institution accredited by the American Veterinary Medical Association. Preference will be given to candidates with Board certification in laboratory animal medicine, anesthesiology, internal medicine, surgery, or other veterinary specialty relevant to laboratory animal care. Advanced academic training, as evidenced by a M.S. or Ph.D. degree, is desirable. Applicants should have a strong interest in clinical medicine and demonstrable experience in collaborative research, as evidenced by publications in peer-reviewed journals. Experience in teaching and in supervising veterinary technicians is highly desirable. The Department of Comparative Medicine is a clinical department within the School of Medicine. In addition to its academic functions, it also provides the clinical care and management for a large, modern, AAALAC-accredited central animal facility, which includes a critical care unit staffed by veterinary technicians. Collaborative research opportunities at Stanford include organ transplantation, immunology, genetics, infectious diseases, molecular biology, noninvasive nuclear and magnetic imaging, canine inherited diseases, anesthesia, primate behavior, and transgenic mouse studies, among others. Interested candidates should send a letter containing a description of their career goals and research interests, their curriculum vitae, and names and addresses of five references to: **Linda C. Cork, D.V.M., Ph.D., Professor and Chair, Department of Comparative Medicine, 251 Campus Drive, MSOB X347, Stanford, CA 94305-5415**. Applications will be reviewed upon receipt, and searches will be continued until all positions have been filled. *Stanford University is committed to increasing representation of women and members of minority groups on its faculty and particularly encourages applications from such candidates.*

## BOTANIST

The University of the South, also known as Sewanee, invites applications for a **VISITING ASSISTANT PROFESSOR** in botany to fill a one-year sabbatical replacement in courses from among ecology, conservation, evolution, or systematics. The successful candidate will also be expected to participate in the introductory biology program. Candidates should be broadly trained in biology and should have an appreciation for the liberal arts tradition in education. The University, with an undergraduate enrollment of 1,300, has a highly selective program and is located on a botanically diverse, 10,000-acre campus on Tennessee's Cumberland Plateau. Review of applicants will begin on February 21, 2000, but applications will be accepted until a suitable replacement is found. Send a letter of application, curriculum vitae, transcripts, and three letters of reference to: **Dr. Nancy J. Berner, Chair, Biology Department, 735 University Avenue, The University of the South, Sewanee, TN 37383**. Website: <http://www.sewanee.edu/biology>; e-mail: [nberner@sewanee.edu](mailto:nberner@sewanee.edu). *The University of the South is an Equal Opportunity Employer. Minorities and women are encouraged to apply.*

**ASSISTANT PROFESSOR**, genetics. Tenure track, September 2000. Postdoctoral and teaching experience desirable. Teaching genetics and introductory cell biology. Research involving undergraduates expected. Send curriculum vitae, statements of research interests and teaching philosophy, and three letters of recommendation to: **Dr. William A. Schutt, Jr., Natural Science Division, Long Island University, Southampton College, Southampton, NY 11968**. Application review will begin February 1, 2000. Website: [www.southampton.edu](http://www.southampton.edu). *Affirmative Action/Equal Opportunity Employer.*

## POSITIONS OPEN

**FACULTY POSITIONS: VIROLOGY/BACTERIAL PATHOGENESIS.** The Department of Microbiology at the University of Texas Southwestern Medical Center is seeking new faculty (tenure track) at all levels. Faculty will be expected to develop and/or maintain front-rank, competitive, independent research programs in their chosen fields and contribute to the teaching of medical and graduate students. Attractive recruitment and/or start-up packages are available. For outstanding new **ASSISTANT PROFESSORS**, an Endowed Scholars Program offers a competitive salary, new laboratory space in an attractive and dynamic research environment, and start-up funds of \$600,000 over a four-year period; candidates should have a Ph.D. and/or M.D. degree, with at least two years of postdoctoral experience and an exceptional publication record. Some preference may be given to virology candidates with interests in STDs (e.g., HSV, CMV, HPV), but all outstanding candidates are encouraged to apply. For bacterial pathogenesis, areas of particular interest include STDs, emerging/reemerging pathogens, cellular microbiology, and opportunistic infections. Established investigators should forward a current curriculum vitae and a cover letter; junior candidates should forward a curriculum vitae, three letters of recommendation, two or three representative publications, and a brief summary of future research to: **Dr. Michael V. Norgard, Chairman, Department of Microbiology, University of Texas Southwestern Medical Center, 6000 Harry Hines Boulevard, Dallas, TX 75235-9048**. FAX: 214-648-5905. *U.T. Southwestern is an Equal Opportunity University.*

## ASSISTANT PROFESSOR DEPARTMENT OF MOLECULAR PHARMACOLOGY AND TOXICOLOGY School of Pharmacy University of Southern California

Applicants for the position of Assistant Professor are invited to join an established department with a long-standing record in extramural support and teaching excellence. An individual is sought who has exceptional promise in directing a state-of-the-art, extramurally funded research program addressing fundamental questions in pharmacology, cellular, and/or molecular biology. The position will include teaching in professional and graduate programs in biochemistry and pharmacology. The current research interests in the department include gene expression and regulation, cellular signal transduction, neurobiology/neuropharmacology, and free-radical biochemistry that exists in an environment with extensive interdepartmental and programmatic interactions in neurobiology and neurogenetics, as well as at the Cancer and Liver Centers. A research emphasis on neurobiology and neurodegenerative diseases is highly desirable. Excellent space and facilities are available. Applicants should send a description of current research and future plans; curriculum vitae; and the names, addresses and telephone numbers of three references to: **Dr. Alex Sevanian, Search Committee Chair, University of Southern California, 1985 Zonal Avenue, PSC 612, Los Angeles, CA 90089-9121**. E-mail: [asevan@hsc.usc.edu](mailto:asevan@hsc.usc.edu). *Equal Opportunity Employer/Minority/Female/Disabled.*

The Radiation Oncology Center at Washington University has an **ASSISTANT PROFESSOR** tenure-track position available. Expertise in radiobiology, DNA repair, oxidative stress, free-radical biology, or other stress responses is desired. The ability to contribute to the teaching of radiobiology to radiation oncology residents is critical. The successful applicant must have the ability to conduct independent research to attract outside funding. Apply to:

**Dr. Joseph L. Roti**  
Chief  
Section of Cancer Biology  
Associate Director  
Washington University School of Medicine  
Section of Cancer Biology  
4511 Forest Park Boulevard  
Suite 411  
St. Louis, MO 63108

## POSITIONS OPEN

York College of The City of New York seeks to fill two positions at the **ASSISTANT PROFESSOR** (tenure-track) level with a start date of fall 2000.

(1) Assistant Professor, Medical Technology, will teach professional courses in clinical specialty: cytology, immunohematology, parasitology, chemistry, histology, and hematology; research/scholarship; advise students; and assist with curriculum development and grant writing. Ph.D. or M.S. with ASCP certification or equivalent required. The successful candidate will have experience in teaching and in medical technology field and demonstrated commitment to research and scholarship (code: MT).

(2) Assistant Professor, Nursing, will teach undergraduate courses in medical surgical/adult health nursing and other related courses in the baccalaureate program for registered nurses. Conduct classroom and clinical instruction. In addition to teaching and research/scholarship, the successful candidate will be required to advise students and assist with curriculum development and grant writing. An appropriate Master's degree, licensure as a registered nurse, and appropriate specialized experience required. The successful candidate will have a commitment to research/scholarship and teaching and previous teaching and curriculum development experience. Doctorate in nursing or related area preferred; Master's degree in adult health considered (code: nursing).

These positions require the successful candidates to participate in departmental and college committees and activities and have a strong commitment to research, teaching, and scholarship. Salary range: \$32,703 to \$57,049. Send letter of application; curriculum vitae; and the names, addresses, and telephone numbers of three references by March 3, 2000, to: **Mr. Anthony Melendez, York College-Room 2H05, 94-20 Guy R. Brewer Boulevard, Jamaica, NY 11451**. FAX: 718-262-2717. Visit our website: <http://www.york.cuny.edu/~hmr> for more details, or visit CUNY website: <http://www.edu/abtuncny/cunyjobs>. *An Equal Opportunity/Affirmative Action/IRCA/Americans With Disabilities Act Employer.*

## ARTHROPOD SYSTEMATIST

The American Museum of Natural History (AMNH), Division of Invertebrate Zoology, is seeking applications for a tenure-track **CURATORIAL POSITION** in arthropod systematics. Candidates must have an earned Ph.D. at the time of appointment and a demonstrated ability to conduct original, collection-based, systematic research on insects or other terrestrial arthropods. Additional criteria used in evaluating candidates will include strength of knowledge and experience in some or all of the following areas: morphology, phylogenetic methods, monography, field work, collection management, and grant proposal preparation. The successful applicant will accept curatorial responsibility for a significant portion of the AMNH arthropod collections, be expected to contribute to the growth and development of collections associated with his or her research interests, and participate in the AMNH graduate student and postdoctoral training programs. Further responsibilities, where appropriate, may include participation in public exhibition and education programs; service on Museum committees; and divisional administration. Rank and salary commensurate with qualifications and experience.

Deadline for submission of application materials: March 15, 2000. Candidates should send curriculum vitae, statement of research goals and interests, statement of reasons for seeking employment at the AMNH, and copies of all relevant publications. Candidates should request letters of recommendation to be sent by at least three qualified references. All materials should be sent to: **Dr. Randall T. Schuh, Curatorial Search Committee Chair, Division of Invertebrate Zoology, American Museum of Natural History, Central Park West at 79th Street, New York, NY 10024 U.S.A.** For additional information, contact e-mail: [schuh@amnh.org](mailto:schuh@amnh.org). *Equal Opportunity Employer.*





## Tenure Track Investigator

The Intramural Program of the National Institute on Aging (NIA) seeks a board eligible/board certified cardiologist for an expanding clinical research program at the Gerontology Research Center in Baltimore, MD. Candidate will develop research protocols for implementation in new Clinical Trials Unit. Opportunities for collaboration with scientists from NIA, National Institute of Drug Abuse and Johns Hopkins University School of Medicine. Skills in right and left heart catheterization, temporary pacemaker placement, echocardiography and exercise testing required. Competitive salary commensurate with qualifications and experience. U.S. Citizenship required. Send CV and three letters of reference to: **Chair, Search Committee for Tenure Track Position, LCI/, C/O Teri Stachowiak, Personnel, Room 1-D09 (#99-47), 5600 Nathan Shock Drive, Baltimore, MD 21224-6825** by March 1, 2000

*NIA is an Equal Employment Opportunity Employer*

## PRESIDENT



## TEXAS TECH UNIVERSITY

The Presidential Search Committee and the Chancellor of the Texas Tech University System seek nominations and applications for the position of President of TEXAS TECH UNIVERSITY. Texas Tech, founded in 1923, is one of the leading universities in Texas and is part of the Texas Tech University System. The other system institution is the Texas Tech University Health Sciences Center (including schools of medicine, nursing, pharmacy and allied health) with campuses in Lubbock, Midland/Odessa, El Paso and Amarillo. Texas Tech University is located in Lubbock, Texas, in a community of almost 200,000 people on the South Plains of Texas.

The Texas Tech campus in Lubbock (1,839 acres in size) has a student population of more than 24,000 - including over 20,000 undergraduate and 4,000 graduate students. The University is comprised of 10 colleges and schools, including agricultural sciences and natural resources, architecture, arts and sciences, business administration, education, engineering, human sciences, and law, as well as the graduate school and honors college.

Texas Tech University offers 119 undergraduate, 99 masters and 50 doctoral degrees. Texas Tech is a Research II institution under the Carnegie Foundation classifications in effect for 1999. Texas Tech's library system is a member of the Association of Research Libraries.

The President exercises broad authority and is responsible for all aspects of university administration. The President is responsible to the Chancellor of the Texas Tech University System and the Texas Tech University System Board of Regents.

Review of applications will begin immediately and will continue until an appointment is made. Texas Tech treats inquiries, nominations, and applications for this position and others in a confidential manner. Applicants should confirm in their letters that they wish their applications to be kept confidential. Texas Tech has retained the services of Heidrick & Struggles to assist with this search. Nominations, applications and inquiries should be directed to:

**Mr. William J. Bowen**

**Heidrick & Struggles**

**Sears Tower**

**233 South Wacker Drive, Suite 7000**

**Chicago, IL 60606-6402**

**(312) 496-1000**

For more information about Texas Tech University and the presidential search, please visit: <http://www.texastech.edu>

*Texas Tech University is an Equal Opportunity Employer and encourages nominations and applications from minority and female applicants.*



## VETERINARY ANATOMIC PATHOLOGIST

The Jackson Laboratory, a not-for-profit, NIH-designated Basic Cancer Center, has an immediate opening for a board-eligible or certified veterinary anatomic pathologist. Responsibilities include disease surveillance of the extensive inbred and mutant mouse colonies in conjunction with our diagnostic microbiology laboratory, attendance to campus-wide pathology needs, and collaborative research on mutants with the Scientific Staff. Candidates should have a D.V.M., V.M.D., or equivalent degree and be eligible for veterinary licensure in Maine. Experience in pathology of the laboratory mouse is preferred but not essential, because the laboratory is a NIH-supported training center for mouse pathology. The Jackson Laboratory is located on Mt. Desert Island, surrounded by Acadia National Park, and is an EEO/AA employer.

**To apply, please send a curriculum vitae, a concise statement of present and future plans, and the names of four people to contact for**

**references to:** Human Resources, Veterinary Search Committee, The Jackson Laboratory, 600 Main Street, Bar Harbor, Maine 04609. **Fax:** 207-288-6106

**<http://www.jax.org>**

## The University of Medicine and Dentistry of New Jersey ROBERT WOOD JOHNSON MEDICAL SCHOOL Department of Physiology & Biophysics

is actively recruiting outstanding candidates for

### Six Faculty Positions

The positions, both tenured and tenure-track, will be at Assistant, Associate or Professor level with a preference for applicants using modern techniques in the areas of:

### Endocrinology Cardiovascular Physiology Cell/Renal Physiology

Individuals must possess a Ph.D. (and/or M.D.), appropriate research experience and publication record, and must be prepared to work in a dynamic environment. Ample resources are available to successful candidates. Rank and salary will be commensurate with qualifications. The proposed starting date for these positions will be August 1, 2000 or later. To be considered, applicants must have recognized national and international stature, as well as research funding for the senior positions. Successful candidates will be expected to teach Medical Physiology and Physician Assistant Physiology and to participate on Graduate School courses. All applicants are asked to provide a CV including research funding, teaching experience and interests, a list of publications, and an outline describing their proposed program of research. Candidates should also request that three (3) letters of reference be sent directly to the department. These references must be at an academic level equal to or higher than the one for which they are applying.

Applications and letters of reference must be received no later than March 15, 2000. Send to: **Nicola Partridge, Ph.D., Chair, Search Committee, UMDNJ-Robert Wood Johnson Medical School, Department of Physiology & Biophysics, 675 Hoes Lane, Piscataway, NJ 08854.** UMDNJ is an Affirmative Action/Equal Opportunity Employer, M/F/D/V, and a member of the University Health System of New Jersey. Visit our website at: <http://www.umdj.edu>



## POSITIONS OPEN

**ENVIRONMENTAL SCIENCE TENURE-TRACK ASSISTANT PROFESSOR:** The Department of Biological, Geological, and Environmental Sciences of Cleveland State University invites applications representing a broad range of environmental science, including conservation biology, ecology, physiological ecology, aquatic ecology, environmental geology, and ecotoxicology. We are particularly interested in applicants addressing questions at the community or higher level. We seek to fill this tenure-track position at the level of Assistant Professor. Applicants must hold a Ph.D., have postdoctoral or equivalent experience, and demonstrate the potential for excellence in teaching and in research in environmental science. The successful candidate will be expected to establish an independent, funded research program and to contribute to an existing focus on urban environments. The successful candidate will also be expected to teach undergraduate courses, as well as graduate courses in his or her area of expertise. The Department offers B.S. and M.S. degrees in biology and environmental science, B.A. and B.S. degrees in geology, and the Ph.D. degree through a joint program with the Lerner Research Institute of the Cleveland Clinic Foundation. No later than March 1, 2000, applicants must submit a curriculum vitae, a description of research plans and teaching interests, and arrange for three letters of recommendation to be sent to: **Dr. Barbara Modney, Chair, Environmental Science Search Committee, Department of Biological, Geological, and Environmental Sciences, Cleveland State University, 2399 Euclid Avenue, Cleveland, OH 44115-2403.** For additional information that may be helpful in preparing an application, consult the Department's website: <http://www.bges.csuohio.edu>. The Search Committee may be contacted via e-mail: [ensearch@csuohio.edu](mailto:ensearch@csuohio.edu) or Telephone: **Dr. Modney, 216-687-2448.** Cleveland State University is an Affirmative Action/Equal Opportunity Employer committed to nondiscrimination. Minorities/Females/Disabled/Veterans encouraged.

## DIRECTOR, EVERGLADES DIVISION SOUTH FLORIDA WATER MANAGEMENT DISTRICT

This key management team member directs and manages scientific, engineering, technical/support staff, and programs related to applied environmental research and modeling for the Everglades and Florida Bay regions of the District. Master's degree (Ph.D. preferred) in limnology, aquatic ecology, environmental science, water resources-related engineering, systems ecology, or related disciplines. More than seven years of progressively responsible experience with the design and implementation of research and engineering needed for aquatic resource management (South Florida experience preferred) and more than two years of supervisory experience required. Apply by mail or in person (referencing #000128) to: **3301 Gun Club Road, West Palm Beach, FL 33406.** Website: [www.sfwmd.gov](http://www.sfwmd.gov); FAX: 561-682-5100. Equal Opportunity Employer/Minorities/Disabled/Veterans.

## DEPARTMENT OF PHYSIOLOGY AND BIOPHYSICS Case Western Reserve University

The Department of Physiology and Biophysics invites applications for both **JUNIOR-** and **SENIOR-LEVEL FACULTY** positions. Suitable areas of research include but are not limited to cellular and molecular approaches to systems integrated physiology, with emphasis on cardiorespiratory systems and hypoxia. We offer a highly competitive compensation package, ample start-up funds, and state-of-the-art research facilities. Submit curriculum vitae; a brief statement of research interest(s); three representative reprints; and the names, addresses, and telephone numbers of four references to: **Marianne Sperk, Department of Physiology and Biophysics, 10900 Euclid Avenue, Cleveland, OH 44106-4970.** Case Western Reserve University is an Equal Opportunity/Affirmative Action Employer.

## POSITIONS OPEN



## UNIVERSITY OF FLORIDA TENURE-TRACK POSITION IN FUNCTIONAL GENOMICS AND BIOINFORMATICS

The University of Florida, Shands Cancer Center, invites applications for two tenure-track faculty positions at the rank of **ASSISTANT PROFESSOR** or above in functional genomics and bioinformatics. Successful applicants will join a multidisciplinary team of researchers from around the campus as members of the Cancer Center and the University of Florida Genetics Institute. Applicants will be expected to develop a competitive, independent research program with the ultimate goal of bringing the power and promise of genomic research to problems of the specific oncological diseases. Individuals studying model organisms are encouraged to apply. The successful applicants will join the faculty of the College of Medicine, with their department affiliation being determined by their specific research interests. Applicants must have an M.D. and/or Ph.D. degree and a demonstrated record of expertise either in functional genomics or bioinformatics. The application deadline is March 1, 2000, with an anticipated start date of March 15, 2000, or soon thereafter. Salary and rank will be commensurate with experience. Interested applicants should submit their curriculum vitae, a brief description of their research interests, and the names of three individuals from whom recommendations can be solicited. Send requested information to: **Dr. Richard W. Moyer, Search Committee Chair, University of Florida, Department of Molecular Genetics and Microbiology, P.O. Box 100266, Gainesville, FL 32610-0266.** The University of Florida is an Equal Employment Opportunity/Affirmative Action Employer.

**SEARCH EXTENDED:** Morehead State University is seeking applications for a tenure-track **ASSISTANT PROFESSOR** with teaching/research expertise in molecular genetics. Responsibilities: Teach undergraduate and graduate courses in genetics, vertebrate development, and general biology for majors and non-majors; supervise graduate research projects; advise and mentor biology majors; participate in seminars and special programs; and provide support for recruitment and retention efforts. Qualifications: Ph.D. in biology from an accredited institution, with expertise in molecular genetics and vertebrate development. ABDs by August 1, 2000, may be considered. Evidence of good verbal communication skills and scientific writing ability. To ensure consideration, submit letter of application, curriculum vitae, statements of teaching philosophy and research interests, official transcripts, and three letters of recommendation by February 15, 2000, to: **Office of Human Resources, Attention: Genetics #335, Morehead State University, HM 101, Morehead, KY 40351.** Equal Opportunity/Affirmative Action Employer.

## PLANT PHYSIOLOGY

Le Moyne College, a college of liberal arts and sciences in the Jesuit tradition, has a tenure-track opening at the **ASSISTANT PROFESSOR** level for the fall of 2000. Successful candidates must have a Ph.D. as well as teaching experience at the undergraduate level. We are seeking a broadly trained Plant Physiologist; preference will be given to candidates with a strong background in molecular biology. Teaching responsibilities will include plant physiology and participation in the cell and molecular biology and introductory biology courses. Applicants will be expected to maintain a modest research program and direct undergraduate research. Send curriculum vitae, statement of teaching philosophy, and three letters of reference by 29 February 2000 to: **Ms. Lynn McMartin, Director of Human Resources, 1419 Salt Springs Road, Le Moyne College, Syracuse, NY 13214-1399.** Le Moyne College is an Equal Opportunity Employer and encourages women, persons of color, and Jesuits to apply for employment.

## POSITIONS OPEN

**ASSISTANT/ASSOCIATE PROFESSOR OF PLANT PATHOLOGY.** Applications are invited for a faculty position focusing on plant-microbe interactions. The successful candidate will be allowed broad latitude in determining particular research directions although he/she will be expected to develop and sustain a nationally recognized program, which complements and enhances other departmental endeavors. Research areas of particular interest to the department include: the cellular and molecular biology of tree pathology, the genetics of arboreal microorganisms, population genetics, disease resistance mechanisms, biocontrol, ecology, hypovirulence, and emerging diseases. These subject areas are not exclusionary; the department is open to any research avenue in plant-microbe interactions for which a compelling case can be made of its relevance to the departmental enterprise. Individuals working with woody plant systems are particularly encouraged to apply. Although the position primarily carries research responsibilities, the incumbent will be expected to develop and teach an undergraduate course in forest pathology. A Ph.D. in a relevant discipline is required. Appointment at the Associate Professor level will require appropriate accomplishments. Applicants should send curriculum vitae; transcripts; sample publications; outline of proposed research; any other evidence of professional experience considered relevant; and the names, addresses (including e-mail), and telephone numbers of at least three professional references (no letters at this time) to: **Dr. David A. Smith, Department of Plant Pathology, S-305 Agricultural Science Building-North, University of Kentucky, Lexington, KY 40546-0091.** Telephone: 606-257-3901; FAX: 606-323-1961; e-mail: [dasmith@ca.uky.edu](mailto:dasmith@ca.uky.edu). Applications will be accepted until March 30, 2000, or until a suitably qualified candidate is found. No electronically transmitted applications. The University of Kentucky is an Equal Opportunity Employer.

## RESEARCH SCIENTIST TRANSGENIC MOUSE CORE FACILITY PURDUE UNIVERSITY CANCER CENTER

The NCI-designated Cancer Center at Purdue University has an immediate opening for a qualified individual to assume operational responsibility for the Cancer Center's newly expanded and fully operational Transgenic Mouse Core Facility (TMCF). The TMCF offers both knockout and conventional transgenic services to the Purdue University community. Responsibilities and duties for this position include the generation of transgenic mice by pronuclear injection; gene targeting in ES cells; and the derivation of chimeric mice, plus supervision of all support staff. The qualified candidate will have a M.S. or Ph.D. degree (Ph.D. preferred), experience in both ES cell culture and transgenic mouse procedures, plus excellent communication and interpersonal skills. Applicants should send their curriculum vitae and the names of at least three references to: **TMCF Position, Purdue Cancer Center, Hansen Life Sciences Research Building, Purdue University, West Lafayette, IN 47907-1524.** See website: <http://www.pharmacy.purdue.edu/~ccenter/> for more information. Purdue University is an Equal Opportunity/Affirmative Action Employer.

## ANESTHESIOLOGY SENIOR RESEARCH ASSOCIATE

A Senior Research Associate position is available immediately to study the mechanism of cytochrome P450 catalyzed reactions. A Ph.D. in chemistry or biochemistry and a minimum of three years of postdoctoral experience in protein chemistry and/or enzymology is required. Candidates should be highly motivated and able to work independently and to assist in training laboratory personnel. Send résumé and three letters of reference to: **Dr. L. Waskell, Research Service (11R), Veterans Administration Medical Center, Ann Arbor, MI 48105.** E-mail: [waskell@umich.edu](mailto:waskell@umich.edu).



## AWARDS

### AWARDS FOR INTERNATIONAL RESEARCH AND TRAINING FROM THE FOGARTY INTERNATIONAL CENTER (FIC) AT NIH

The following new programs are available:

#### INTERNATIONAL RESEARCH SCIENTIST DEVELOPMENT AWARDS (IRSDA)

This individual mentored research award supports basic, behavioral, social science and clinical biomedical research by postdoctoral U.S. scientists in developing countries.

#### INTERNATIONAL MALARIA RESEARCH TRAINING PROGRAM AWARD

This institutional award supports collaborative malaria research and training programs as part of ongoing, malaria research projects in Africa and other highly endemic regions of the world.

**Deadline: March 29.** Information may be obtained from the Fogarty International Center web site:  
<http://www.nih.gov/fic/opportunities/index.html>

#### CONTACT INFORMATION:

Dr. Kathleen Michels, IRSDA Program: [Kathleen\\_Michels@nih.gov](mailto:Kathleen_Michels@nih.gov)  
Dr. Barbara Sina, Malaria Program: [Barbara\\_Sina@nih.gov](mailto:Barbara_Sina@nih.gov)

Fogarty International Center  
Division of International Training and Research  
Building 31, Room B2C39  
National Institutes of Health  
Bethesda, MD 20892-2220  
Tel: 301-496-1653 Fax: 301-402-0779

## WORKSHOPS



### ABSTRACTS SOUGHT

#### Duchenne Muscular Dystrophy Workshop

The National Institute of Neurological Disorders and Stroke (NINDS) and the National Institute of Arthritis and Musculoskeletal and Skin Diseases (NIAMS) are sponsoring a workshop on Therapeutic Approaches for Duchenne Muscular Dystrophy on May 15-16, 2000. Workshop aims are to address key questions in improving treatments for Duchenne Muscular Dystrophy (DMD), identifying areas of needed scientific knowledge, impediments, and critical next steps to promote effective therapy.

Each session of the workshop will be a round table discussion of a major area relevant to therapeutic approaches. Three to four discussants will present findings that will promote discussion in that session. The anticipated number of workshop discussants is 30. The workshop organizers invite researchers in DMD and related areas to submit abstracts for these brief presentations. Therefore submitted abstracts should show how the presentation will promote a critical discussion of current knowledge of the topic. Details about the workshop agenda, and method of application can be found at: <http://DMDworkshop.nih.gov/>



**Illumina** is developing novel information-dense biological and chemical sensing systems to meet the needs of a range of emerging markets. At the heart of Illumina's technology is the BeadArray™, a randomly ordered self-assembled array of bead-based sensors. Illumina can pack tens of thousands of individual sensors into a square millimeter at the end of an optical fiber bundle. Initially, Illumina is targeting the information-intensive field of genetic variation analysis, an area of genomics research that is being accelerated by the successes of the Human Genome Project. In addition, the company is developing its optical bead-based technology for RNA expression analysis, high throughput screening, proteomics, and the detection and analysis of chemicals and complex mixtures.

We are seeking outstanding individuals for challenging positions in the following areas: molecular biology/genomics, bioinformatics, software programming, database development and administration, analytical chemistry, oligonucleotide synthesis and high-throughput oligonucleotide production, process development and engineering. Some specific positions are listed below. Positions are available at various levels, commensurate with qualifications. Please see [www.illumina.com](http://www.illumina.com) for additional information. Resumes should be sent to [jobs@illumina.com](mailto:jobs@illumina.com) or faxed to 858-587-4297.

#### SCIENTIST, Genomics / Molecular Genetics

You will develop novel, highly parallel methods for genome analysis, utilizing Illumina's bead-based array technology platform.

Qualifications: Ph.D. in Molecular Biology, Biochemistry or related field, with experience in molecular biology and nucleic acid hybridization. You must be highly innovative, with proven strong problem-solving abilities and analytical skills. Ability to communicate well and to function as part of a multidisciplinary team.

#### SCIENTIST, RNA Profiling

You will develop novel, highly parallel methods for gene expression analysis, utilizing Illumina's bead-based array technology platform.

Qualifications: Ph.D. in Molecular Biology, Biochemistry or related field, with an outstanding track record in quantitative RNA profiling. You must be highly innovative, with proven strong problem-solving abilities and analytical skills. Ability to communicate well and to function as part of a multidisciplinary team.

#### SCIENTIST, Bioinformatics

You will work closely with experimental scientists to identify, characterize, and prioritize large sets of sequences for assay development. You will also be involved in the design and development of interfaces for database query and data presentation, and data visualization and analysis tools.

Qualifications: Ph.D. in Bioinformatics or related field with 3+ years experience in database design and implementation, or similar qualifications. Expertise with Oracle or Microsoft SQL Server required, and experience with web-based browser interface design and Java programming are desired. You should have excellent analytical and organizational skills, with proven experience in designing/managing complex databases of biological sequence information. Expertise in array-based data sets and analysis are strong pluses.

#### SCIENTIST/PROGRAMMER, Data Analysis

You will work closely with experimental scientists to design and implement data analysis algorithms for highly parallel array experimentation. Strong analytical and statistical background is desired, as is a track record of finding innovative solutions to computational problems.

Qualifications: Ph.D. in Computer Science or Analytical or Computational field with 2+ years experience in data analysis, or similar qualifications. Experience with an object oriented C++ environment, or similar programming (Windows NT is preferred), and familiarity with SQL. Basic familiarity with molecular biology and understanding of heterogeneous data sets in DNA, RNA, and protein-based experimentation is a plus.

#### SCIENTIST, Analytical Chemistry

You will be responsible for developing a quantitative experimental model of Illumina's BeadArray™ technology, to provide the foundation for applications that demand high levels of experimental accuracy and reproducibility. You will identify, characterize, and minimize sources of variability and error, and optimize experimental techniques to take advantage of the built-in redundancy of Illumina's self-assembled BeadArrays™.

Qualifications: Ph.D. in Analytical Chemistry or similar qualifications. We are seeking an outstanding experimentalist experienced with fluorescence measurements. A strong background in quantitative measurement and statistical analysis is desirable.

**Illumina, Inc.** offers a highly rewarding work environment with great potential for career growth. We offer competitive salaries, stock option packages, and great benefits.

*Illumina is an Equal Opportunity Employer.*

## POSITIONS OPEN

Seeking to expand its program in molecular pathogenesis and immunity to infectious diseases, the Department of Microbiology and Immunology at Tulane University School of Medicine invites applications for a tenure-track faculty position at the **ASSOCIATE PROFESSOR** level. Essential qualifications for the position include the Ph.D. or M.D. degree and a demonstrated record of accomplishment in extramural funding, publication, and teaching. The successful candidate will join a multidisciplinary department focusing on molecular, cellular, and genetic aspects of infectious disease and host-pathogen interactions. He or she will be expected to maintain a dynamic research program and to contribute to the teaching of medical and graduate students. The Department of Microbiology and Immunology offers attractive recruitment packages, renovated laboratory space, and an interactive environment. For further information about the Department and Tulane Medical School, visit our website: <http://www.tmc.tulane.edu/departments/microbiology/default.html>. Applicants should submit a curriculum vitae, brief description of research program and career objectives, and the names of three qualified references by March 1, 2000, to: **Faculty Search Committee, Department of Microbiology/Immunology, 1430 Tulane Avenue SL-38, New Orleans, LA 70112**. *Tulane University is an Equal Opportunity/Affirmative Action Employer.*

### BIOCHEMIST RUTGERS UNIVERSITY

The Department of Biochemistry and Microbiology of Rutgers University invites applications for a tenure-track **ASSISTANT PROFESSOR** position to begin September 1, 2000. Preference will be given to candidates with expertise in enzymology and study of the molecular mechanisms of detoxification and/or toxicity of xenobiotics. The successful candidate will be expected to establish an active, externally funded research program; to participate in the graduate and undergraduate curricula; and to develop a course in an area of expertise. Send a letter of interest; curriculum vitae; statement of research interests; and the names, addresses, telephone and FAX numbers, and e-mail addresses of at least three references to: **Dr. Peter C. Kahn, Search Committee Chair, Department of Biochemistry and Microbiology, Rutgers University, 76 Lipman Drive, New Brunswick, NJ 08901**. Additional information is available on the Department's web page: <http://aesop.rutgers.edu/~dbm/>. Review of applications begins April 1, 2000, and will continue until the position is filled. *Rutgers University is an Affirmative Action/Equal Opportunity Employer. Applications from women and minorities are welcome.*

### SENIOR AND JUNIOR PHYSICIAN INVESTIGATORS

The Department of Medicine, University of Wisconsin Medical School, and the University of Wisconsin Comprehensive Cancer Center are searching for Senior and Junior Physician Investigators with interests in hematological malignancies. The Senior Physician Investigator should have a national reputation with a strong record of publications and extramural funding. The Junior Physician Investigator should have completed a productive fellowship and be a strong candidate for further career development support. Both should be Board-certified in hematology and/or medical oncology. A coordinated recruitment is possible. Possible areas of research include: epidemiology of hematological malignancies, molecular genetics and pathogenesis, development of novel therapeutic agents, and improved transplantation strategies. Please send a statement of interest and names of three references to: **Deane F. Mosher, M.D., Section of Hematology, Department of Medicine, H4/534 CSC, 600 Highland Avenue, Madison, WI 53792**. E-mail: [dfmosher@facstaff.wisc.edu](mailto:dfmosher@facstaff.wisc.edu). *The University of Wisconsin is an Equal Opportunity/Affirmative Action Employer. We are especially interested in applicants from diverse backgrounds.*

## POSITIONS OPEN

### BOTANY LOCK HAVEN UNIVERSITY OF PENNSYLVANIA

Lock Haven University of Pennsylvania invites applications for a tenure-track **INSTRUCTOR** or **ASSISTANT PROFESSOR** beginning fall 2000 in the Department of Biological Sciences. Responsibilities include teaching introductory and advanced botany courses, introductory biology for majors and non-majors, and a liberal arts seminar. The successful candidate will be expected to direct undergraduate research and manage the Departmental greenhouse. An earned Doctorate in botany or a related discipline is preferred, as well as teaching experience at the university level. Please include a statement of your teaching philosophy, along with a letter of application; résumé; unofficial transcripts; and the names, addresses, and telephone numbers of three references to: **Botany Search Committee, Department of Biological Sciences, Ulmer Hall, Lock Haven University of Pennsylvania, Lock Haven, PA 17745**. Review of applications will begin immediately; complete applications must be received by February 1, 2000, to receive full consideration. Official transcripts will be required before official appointment. In addition to the qualifications listed, the successful candidate must be able to communicate well and perform well in an interview and teaching demonstration. LHU is a member of Pennsylvania's State System of Higher Education. The University's website address is <http://www.lhup.edu>. *Lock Haven University of Pennsylvania is an Equal Opportunity/Affirmative Action Employer and encourages applications from minorities, women, veterans, and persons with disabilities.*

### UNIVERSITY OF CALIFORNIA, DAVIS POSITION #2206

The Department of Psychiatry at the University of California, Davis, is seeking applications for a full-time **ASSOCIATE PROFESSOR/PROFESSOR** ladder rank series with research expertise in the area of neuroimaging. The candidate must hold an M.D. and/or Ph.D. degree and have a demonstrated record of solid academic accomplishment, including ability to compete for extramural research support. The candidate will preferably have expertise in structural and/or functional magnetic resonance imaging and will be interested in developing a neuroimaging research program. UC Davis has made a major commitment to neuroscience research, and the Department of Psychiatry will expand its neuroimaging program in coordination with the overall growth of clinical neuroscience research. The new faculty member will be tenured in the School of Medicine. He or she will be expected to collaborate in the development of a larger functional neuroimaging research facility at UC Davis Medical Center that will serve not only his or her own research program but also the research of other clinical and basic neuroscience and medical investigators. Please send curriculum vitae, a letter summarizing past and future research directions, and the names of three references to: **Dr. David Amaral, Chair, Neuroimaging Search Committee, Department of Psychiatry, University of California Medical Center, 2230 Stockton Boulevard, Sacramento, CA 95817**. Applications will be accepted until the position is filled but not later than June 30, 2000. *The University of California, Davis, is an Equal Opportunity Employer.*

### RESEARCH ASSISTANT PESTICIDES

Seventy-lawyer firm with in-house scientist staff seeks Scientist with pesticide regulation experience. Nonspecialist, broad array of technical expertise, and ability to explain regulatory toxicology required. Experience in toxic substances or food additives acceptable. Desire experience with FIFRA, FFDCA, FQPA. Significant contact with regulatory officials and clients. Résumé to: **Keller and Heckman LLP, 1001 G Street, N.W., Suite 500 West, Washington, DC 20001**. No phone calls, please. *Equal Opportunity Employer.*

## POSITIONS OPEN

**BIOLOGICAL PHYSICS: ASSISTANT PROFESSOR IN BIOPHYSICS.** The Physics Department of Cleveland State University has an opening for a tenure-track Assistant Professor in biological physics. The starting date of the appointment is August 21, 2000. The successful applicant is expected to carry out a program of research in biological physics, secure external funding, and teach undergraduate physics courses and graduate-level courses as appropriate. Minimum qualifications are a Ph.D. in physics or biological physics and research experience in biological physics. Preferred qualifications are teaching experience and postdoctoral experience. The department offers B.S., B.A., and M.S. degrees. There are opportunities for collaboration with the Department of Biological, Geological, and Environmental Sciences; the Department of Chemistry; and the Cleveland Clinic Foundation. Salary is commensurate with qualifications and experience. A curriculum vitae, three letters of reference, and a statement of research direction should be sent to: **Professor James Lock, Search Committee Chair, Physics Department, Cleveland State University, Euclid Avenue at East 24th Street, Cleveland, OH 44115**. All application materials must be received by April 15, 2000. *Cleveland State University is an Affirmative Action/Equal Opportunity Employer committed to nondiscrimination. Minorities/Females/Disabled/Veterans encouraged.*

### SCIENCE AND GENETICS SOCIETY OF AMERICA University of California, Riverside

Tenure-track position in statistics with specialization in statistical genomics/bioinformatics at the **ASSISTANT PROFESSOR** level with an appointment involving 50% instruction and research and 50% agricultural experiment station: a nine-month appointment with a five-year support package based on writing and funding an AES project. In addition to research in the area of statistical genomics/bioinformatics, duties include teaching statistics/biostatistics at the graduate level; statistics/service courses at the undergraduate level; and advising graduate students. Evaluation of applicants will begin March 1, 2000, but the position will remain available until filled. Send letter of application describing research/teaching interests, curriculum vitae, and three letters of reference to: **Robert J. Beaver, Chair, Search Committee, Statistics Department, Riverside, CA 92521-0138**. Website: <http://cnas.ucr.edu/~stat/homepage.htm>. *The University of California is an Affirmative Action/Equal Opportunity Employer.*

### BEHAVIORAL NEUROSCIENCE DEPARTMENT OF BEHAVIORAL SCIENCE COLLEGE OF MEDICINE The Pennsylvania State University

The Department of Behavioral Science at the College of Medicine of The Pennsylvania State University announces a tenure-track position for an **ASSISTANT PROFESSOR**. Research preferences are in neural mechanisms of learning, memory, or regulatory plasticity with an interest in behavior. The candidate must demonstrate the capability for independent research and funding. Send a cover letter, including a summary of research interests and accomplishments; curriculum vitae; up to three publications; and three letters of reference to: **Search Committee, Department of Behavioral Science H181, College of Medicine, The Pennsylvania State University, Hershey, PA 17033**. Applications will be reviewed as they arrive, and the search will continue until the position is filled. Additional information about the Department of Behavioral Science can be found at website: <http://www.collmed.psu.edu/behsci/>. *Affirmative Action/Equal Opportunity Employer.*

**RESEARCH ASSOCIATE.** Ph.D. for molecular/cell biology of tissue fibrosis. Four-plus years of postdoctoral expertise in cloning and gene expression. Collagen/TGF- $\beta$ /reactive oxygen species experience is a plus. Apply to: **Dr. Nestor Gonzalez-Cadavid, Harbor-UCLA Medical Center, Urology (F-6), 1000 West Carson Street, Torrance, CA 90509**. E-mail: [ncadavid@ucla.edu](mailto:ncadavid@ucla.edu).



## Management Positions at Fox Chase Cancer Center

Recently named among the top hospitals in the nation by U.S. News & World Report, Fox Chase Cancer Center is a world renowned leader in cancer research, prevention, and treatment, and is distinguished as one of only 34 comprehensive cancer centers designated by the National Cancer Institute. Become part of our organization in one of the following management positions:

**Manager of Embryonic Stem Cell Production Facility:** High profile ground floor opportunity for an individual to be responsible for the start-up and day-to-day operation of our new ES Cell Culture facility which will generate embryonic stem cell lines with specific mutations. The qualified candidate will possess 3 or more years experience in the maintenance and manipulation of murine ES cells, including transfection, selection and identification of germ-line competent clones. As you will also advise investigators on experimental strategy, you must possess an in-depth understanding of targeting vector design.

**Manager of Transgenic Mouse Facility:** Key opportunity for managing the day-to-day operation of our Transgenic Mouse Core facility which generates both transgenic and knockout mouse lines for researchers. 5 or more years experience in all relevant procedures including pronuclear and blastocyst injection and embryo transfer. Will also supervise one or more technical specialists and advise investigators on experimental strategy.

Interested candidates should send a C.V. and two letters of reference to: **M. Green, Employment Coordinator, Human Resources, Fox Chase Cancer Center, 7701 Burholme Avenue, Philadelphia, PA 19111. Fax: 215-728-2682.** Visit our website at [www.fccc.edu](http://www.fccc.edu). Equal Opportunity Employer.



## Postdoctoral Fellowship Molecular Neuroscience Program Mayo Medical School Rochester, Minnesota

Applicants are sought for a postdoctoral fellowship in the laboratory of Dr. Anthony J. Windebank ([www.mayo.edu/research/cellular\\_neurobiology](http://www.mayo.edu/research/cellular_neurobiology)). The recipient of the fellowship will study the cellular and molecular basis of neuronal death and neuroprotective strategies with direct clinical relevance.

Applicants should hold the M.D. or Ph.D. degree and have a career interest in becoming an independent investigator. Candidates with expertise in molecular biology or biochemistry will be preferred. Please send curriculum vitae, summary of past accomplishments, and the names of three references to:

**Anthony J. Windebank, M.D.  
Molecular Neuroscience Program  
Mayo Medical School  
1501 Guggenheim Building  
200 First Street SW  
Rochester, MN 55905**

*Mayo Foundation is an affirmative action and equal opportunity employer and educator.*

## GLOBAL REACH.



## *Accommodating the world's health care needs is an everyday occurrence at Abbott Laboratories.*

At Abbott Laboratories, our 56,000 employees worldwide have devoted their careers to our mission of improving lives by discovering, developing and marketing innovative solutions across the spectrum of health care. If you seek a career, we're offering the world.

Help us improve lives - join Abbott in one of the following roles:

### Cellular Electrophysiologist

This key position will conduct in vitro electrophysiological experiments characterizing novel agents in cardiac and epithelial preparations using action potential, ionic currents, and transepithelial flux measurements. A Bachelor's degree in Physiology, Pharmacology or Biology is required (Master's preferred). Experience with/knowledge of basic cellular and in vitro electrophysiology techniques/preparations (microelectrode, whole-cell patch clamp, and transepithelial recordings) are highly beneficial. Good computer, record keeping, communication, and interpersonal skills along with the ability to work independently are essential. Ad Code: 99-KDA4193

### Senior GI Pharmacologist/Physiologist

We are seeking a uniquely qualified Senior Research Pharmacologist to assist our discovery, safety, and exploratory efforts. The selected candidate will design, oversee, and participate in the evaluation of novel compounds and mechanisms in models of gastrointestinal disease/function. A Ph.D. with at least 3 years of experience or a Master's degree with 7+ years in the in vivo assessment of GI motility, transit, nociception and acid/mucus secretion are required. We seek an aggressive, independent and creative thinker with the skills and drive to champion novel projects. Experience in molecular, cellular and in situ assays as well as a strong record of innovative research, as evidenced by publications in leading journals, is critical. Ad Code: 99-KDA4194

### Associate Pharmacologist

The selected candidate will participate under the supervision of a Sr. Biologist in the development of short-term in vivo models for the assessment of efficacy and pharmacodynamics of anti-cancer agents. Responsibilities will include the evaluation of cancer cell lines for use in in vivo tumor models and the development of appropriate alternative efficacy endpoints for novel therapies as well as data analysis and presentation of results. Qualified individuals must possess a Bachelor's degree in the Biological Sciences (Master's preferred) with at least 2 years experience and training in Pharmacology and Animal Physiology. Animal handling and surgical experience are required. Ad Code: 99-KDA4087

With such a prominent presence around the world, the opportunity for professional advancement is limitless. At Abbott Laboratories, we reward our employees with a competitive compensation and benefits package. To learn more, or to respond online, please visit us at [www.abbott.com/ad](http://www.abbott.com/ad) and enter the Ad Code: (enter from above). Or by mail to Abbott Laboratories, Ad Code: (enter from above), Dept. 583, Bldg. AP9A, 100 Abbott Park Road, Abbott Park, IL 60064-3537.



[www.abbott.com](http://www.abbott.com)

An EOE, we are committed to employee diversity.

## POSITIONS OPEN

### PRECLINICAL RESEARCH MURINE MODEL Thomas Waldmann, M.D.

The Metabolism Branch, DCS, NCI, is offering a **POSTDOCTORAL RESEARCH TRAINING FELLOWSHIP** position for an individual who would investigate new therapeutic approaches directed toward the IL-2/IL-15 and HER2/neu receptors and their signaling pathways. The approach, focusing on the IL-2 receptor, exploits the observation that the high-affinity IL-2R is not expressed by normal cells but is expressed by select leukemic cells, as well as T cells involved in allograft rejection and autoimmunity. A murine model of IL-2R expressing adult-T cell leukemia (ATL) was established by introducing cells from an ATL patient into SCID-NOD mice. Following serial transfer of these cells, the animals developed grossly enlarged spleens and leukemia of ATL cells that retained the phenotype and HTLV-I integration pattern of the patient's ATL leukemia. The candidate would be involved in the development of novel therapeutic agents and in their evaluation in the mouse ATL model, as well as in a model of HER2/neu expressing breast cancer. Agents showing promise in these murine models may move forward into clinical trials. Humanized antireceptor antibodies armed with alpha- and beta-emitting radionuclides or with toxins, as well as JAK-3 kinase-directed inhibitors, are some of the agents under investigation. Applicants should have completed a M.D. or Ph.D. and be highly motivated individuals interested in joining a progressive Clinical Research Program. Contact: **The Metabolism Branch, DCS, NCI, Building 10, Room 4N115, 10 Center Drive MSC 1374, Bethesda, MD 20892-1374.**

*The National Cancer Institute is an Equal Employment Opportunity and Affirmative Action Employer that values and fosters diversity throughout the entire organization.*

### MOLECULAR BIOLOGIST DISCOVERY RESEARCH

FMC's Agricultural Products group seeks a Molecular Biologist to work on our Target Site Identification and Assay Development Team in Discovery Research at our Princeton, New Jersey, research and development facility. The ideal candidate is an experienced Ph.D. molecular biologist with a background in genetic analysis of model organisms, preferably *C. elegans* and *Drosophila*. A familiarity with pharmacology and/or insect toxicology is preferred. Hands-on experience in areas of cDNA, library construction, PCR, and gene isolation is required. Experience in the development of expression systems is highly desirable. These expressions will be used in targeted screening and in the development of cell-based functional assays. The position will involve the isolation, cloning, sequencing, and expression of insect genes from target pest species. The candidate will work within a collaborative effort with a team of chemists, biologists, and biochemists. Excellent communication skills, both written and verbal, are expected. FMC offers interesting work in a challenging environment in which you will be required to develop and utilize all of your capabilities, along with competitive salary and comprehensive benefits. Qualified applicants should send a résumé, including salary history, to: **APG Employment Department 99-40, FMC Corporation, Box 8, Princeton, NJ 08543.**

### POSTDOCTORAL FELLOWSHIP POSITION

A Postdoctoral position is immediately available to study the regulatory mechanisms of gap junctional membrane channels and to examine the structural determinants for the putative tumor-suppressive action of a gap junctional protein. Applicants must have a strong background in molecular biology, especially in gene expression analysis, site-directed mutagenesis, and in the production of cDNA constructs. Some cell biology experience is also desirable. Send or FAX curriculum vitae and the names of three references to: **Dr. Alton L. Boynton, Director of Molecular Medicine, Northwest Hospital, 2203 Airport Way South, Seattle, WA 98134. FAX: 425-608-3026.**

## POSITIONS OPEN

### RESEARCH SCIENCE EDUCATOR UNIVERSITY OF SOUTH CAROLINA HONORS COLLEGE and College of Science and Mathematics

We seek an energetic and progressive individual with a Ph.D. in the natural sciences to enrich and coordinate an evolving research-based learning program that integrates the Honors College curriculum with undergraduate research opportunities in the College of Science and Mathematics.

The candidate should have an abiding interest in the nature of scientific inquiry, its historical and philosophical contexts, and its diverse contemporary manifestations. The person selected will be expected to teach two research-based undergraduate courses each semester and will be encouraged to establish a research program in science education or in the area of his or her scientific specialization. The position is non-tenure track, one-year appointment (with possible renewal for three years) at the **RESEARCH ASSOCIATE** level. Salary will be commensurate with experience. Tentative start dates pending final funding approval are August 2000 or January 2001. Application review will begin February 15, 2000.

Send curriculum vitae, references, and a statement of how you would contribute to a research-based learning program for undergraduates to: **Search Chair Dr. Douglas F. Williams, Associate Dean, South Carolina Honors College, University of South Carolina, Columbia, SC 29208.** Consult website: [www.sc.edu/honors](http://www.sc.edu/honors) for information about the South Carolina Honors College.

*The University of South Carolina is an Equal Opportunity Employer and specifically invites and encourages applications from women and minorities.*

### RESEARCH ASSOCIATE/ RESEARCH SCIENTIST

The Department of Statistics at The University of Chicago seeks candidates for a Research Associate/Research Scientist who will provide software and programming support for faculty and graduate students of the Department. Duties include collaborating with faculty and graduate students on research projects in computational statistics and providing computing advice and support to all members of the Department. Maintaining an independent research program on computational problems relevant to statistics will be strongly encouraged. Some current areas of interest in the Department involving large-scale computations include Monte Carlo Markov chain methods, image analysis, and statistical genetics. A Ph.D. in a quantitative discipline is required, along with extensive experience in scientific computing and familiarity with UNIX. Teaching opportunities available for qualified applicants. Some background in statistics is preferred but not essential. Postdoctoral experience preferred. Salary \$50,000 to \$70,000, depending on qualifications. Application, curriculum vitae, three letters of reference, and a brief statement of experience and interests in scientific computing to: **Michael Stein, Chairman, Department of Statistics, The University of Chicago, 5734 University Avenue, Chicago, IL 60637.** *Equal Opportunity Employer.*

### RESTORATION ECOLOGIST DESERT RESEARCH INSTITUTE (DRI) UNIVERSITY OF NEVADA SYSTEM

DRI is seeking a Restoration Ecologist at the **ASSISTANT, ASSOCIATE, or RESEARCH PROFESSOR** level, depending on experience. We seek a leader in restoration ecology of North American drylands who will obtain research funds and lead programs in dryland restoration research. For details and application instructions, visit us at website: [www.dri.edu](http://www.dri.edu) (click on "About DRI," then "Employment Opportunities") or contact: **Human Resources, DRI, 2215 Raggio Parkway, Reno, NV 89512. Telephone: 775-673-7431.** We will begin reviewing applications February 1, 2000. *DRI is an Affirmative Action/Equal Employment Opportunity Employer that hires only U.S. citizens and those eligible to work in the United States.*

## POSITIONS OPEN

### BIOLOGY POSITION

**ECOLOGIST.** Grinnell College invites applications for a two-year sabbatical replacement beginning August 2000. Candidates should be able to teach a non-majors environmental science course; an advanced course in ecology; and an advanced course in their specialty, all of which would make use of Grinnell's biological field station. A Ph.D. is required, and postdoctoral experience is preferred. Excellent facilities and financial support for student-faculty research are available. In their letters of application, candidates should address their interest in undergraduate teaching and research in a liberal arts environment that emphasizes close faculty-student interaction. Send curriculum vitae, three letters of recommendation, and copies of all transcripts to: **Jackie Brown, Ecologist Search Committee, Department of Biology, Grinnell College, Grinnell, IA 50112-0806. E-mail: [brownj@grinnell.edu](mailto:brownj@grinnell.edu); FAX: 515-269-4285.** To be assured of full consideration, applications must be complete by February 25, 2000. For further information about Grinnell College, see our website: [www.grinnell.edu](http://www.grinnell.edu). *Grinnell College is an Equal Opportunity/Affirmative Action Employer committed to employing a highly qualified staff which reflects the diversity of the nation. No applicant shall be discriminated against on the basis of race, national or ethnic origin, age, gender, sexual orientation, marital status, religion, creed, or disability.*

**RESEARCH ASSOCIATE:** Ohio Medical Research for Children Health Care. Research DNA sequencing and genomic analysis use by HIV, cancer, and vaccine research laboratories. Develop and implement state-of-the-art sequencing technology, including molecular cloning, genomic library construction, plasmid preparation and analysis, PCR and restriction fragment analysis. Generate DNA sequencing data; troubleshoot and analyze results and maintain records; prepare reports, presentations, and instruct HIV, cancer, and vaccine researchers on sequencing strategies, sample preparation, sequencing optimization, data analysis, and sequence assembly. Use and maintain ABI-interfaced automated DNA sequencer. GeneAmp PCR, PowerMacintosh, and other analytical instruments and software available. Minimum requirements: M.A., biochemistry, and three years of experience as Research Associate/Biochemist/Pharmacological Chemist; experience must be in biomedical/pharmaceutical research. In lieu of primary requirements, employer will accept B.S. plus five years of progressive experience; may have been gained before, during, or after degree. Forty-hour week, Monday through Friday, 9 a.m. to 5:30 p.m.; overtime as needed; \$33,992 per year salary. Send two copies of résumé and cover letter (no calls) to: **ES Special Programs, Reference #5216D, Ohio Bureau of Employment Services, P.O. Box 1618, Columbus, OH 43216.**

A **POSTDOCTORAL POSITION** is available immediately for an NIH-funded program to study immune responses against the hepatitis C virus. HCV frequently causes a persistent, life-long infection in humans. We are investigating how HCV-specific CD8+ and CD4+ T cells govern the outcome of infection (see *Immunity* 10(4):439-49, 1999) and new vaccine technologies to prevent chronic hepatitis C. Our laboratory is located in the Wexner Institute for Pediatric Research, a state-of-the-art facility affiliated with the Department of Pediatrics at the Ohio State University. To apply, send your curriculum vitae and the names of three references to: **Dr. Christopher M. Walker, Department of Pediatrics, Children's Research Institute, 700 Children's Drive, Room W503, Columbus, OH 43205.**

**POSTDOCTORAL POSITION** available to study the role of activity in developmental plasticity of sensory pathways. Experience with electrophysiological or neuroanatomical techniques desirable. Send curriculum vitae to: **Dr. S. L. Pallas, Department of Biology, Georgia State University, P.O. Box 4010, Atlanta, GA 30302.** *An Equal Opportunity/Affirmative Action/Equal Access Employer.*



### Editor

The American Society for Pharmacology and Experimental Therapeutics (ASPET) is seeking an Editor for a new publication in the biomedical sciences with an emphasis on the pharmacological sciences.

We are looking for a creative, energetic team player who is able to take initiative and work with a distinguished scientific editorial advisory board and with an established journal publications team. Applicants must have a Ph.D. or equivalent training in pharmacological or biomedical sciences. The ideal applicant will be proficient in writing skills. Prior publications experience would be helpful.

The Editor of this new journal will develop the journal content and format with the advice and assistance of the Editorial Advisory Board and will be responsible for soliciting and recruiting content for the print and on-line versions of the journal.

Salary will be commensurate with experience. As a constituent society of FASEB (Federation of American Societies for Experimental Biology), ASPET is able to offer a generous benefits package and a campus-like work environment in Bethesda, Maryland.

Send curriculum vitae, salary requirements, and names of three references to:

**Christine K. Carrico, Ph.D.**  
Executive Officer  
ASPET  
9650 Rockville Pike  
Bethesda, MD 20814-3995  
E-mail: [ccarrico@aspet.org](mailto:ccarrico@aspet.org)

*ASPET is an Equal Opportunity Employer.*

### Cancer Research Center of Hawai'i University of Hawai'i Maurice Sullivan Endowed Chair in Cancer Prevention and Control

The Cancer Research Center of Hawai'i, a National Cancer Institute-designated cancer center, seeks an accomplished scientist at the full professor (researcher) level to hold the Maurice Sullivan Endowed Chair in Cancer Prevention and Control Research. It is expected that the incumbent will also be appointed Program Director of the Prevention and Control Research Program. The mission of the Prevention and Control Program is to conduct research and training to reduce cancer incidence, morbidity, and mortality in Hawaii. The successful applicant will be expected to integrate medical and social science research efforts, contribute to faculty and staff development, and maintain an active research program. Other academic responsibilities include contributing to the University's teaching mission and providing service to the University, community, and profession. The Program complements other Center programs in epidemiology, molecular carcinogenesis, and anticancer properties of natural products.

Applicants should have a record of accomplishment in research related to cancer control. Minimum requirements include an M.D., Ph.D., or equivalent doctorate degree in a clinically related field and demonstration of sustained extramural research funding. Evidence of leadership, strong organizational abilities, excellent communication skills, and the ability to work effectively with community-based health professionals are also required. Salary will be commensurate with qualifications and experience.

Applicants should send a letter addressing their qualifications for the position, curriculum vitae, and list of three persons who can provide references to: **Carl-Wilhelm Vogel, M.D., Ph.D., Director, Cancer Research Center of Hawai'i, 1236 Lauhala Street, Honolulu, Hawai'i 96813; telephone: 808-586-3013; fax: 808-586-3052, e-mail: [personnel@crch.hawaii.edu](mailto:personnel@crch.hawaii.edu).**

Review of applications will begin immediately and continue until the position is filled. EEO/AA Employer.

## SCIENTIFIC & ENGINEERING OPPORTUNITIES

*Attractive salaries.  
Excellent benefits that  
include health, dental,  
pension, 401 (k) programs  
and tuition  
reimbursement. A  
progressive environment  
that's conducive to  
professional development.*

*You'll find them all at  
Bayer. Please send/fax  
your resume, indicating  
position of interest, to:*

**BAYER CORPORATION,**

**HUMAN RESOURCES**

**DEPARTMENT SCI,**

**511 BENEDICT AVENUE,**

**TARRYTOWN, NY 10591-**

**5097; FAX (914) 524-3046;**

**E-MAIL**

**[william.soltesz.b@bayer.com](mailto:william.soltesz.b@bayer.com)**

*Visit our website at*

**[www.bayerdiag.com](http://www.bayerdiag.com)**

*for additional information*

*and opportunities.*

*Equal opportunity employer M/F*

A new century. A new year. A new millennium. What better time to start fresh in these exciting scientific career opportunities with BAYER DIAGNOSTICS, one of the world's premier diagnostic companies. We make a positive difference in human health every day, and we invite you to be a part of this commitment. Currently we have the following opportunities:

### CLINICAL CHEMISTRY

MS to Ph.D. levels. Clinical Chemistry Product Development with immunoassay experience.

### HEMATOLOGY, CLINICAL CHEMISTRY REAGENT SUPPORT

Candidate will provide technical support for the clinical chemistry reagents and hematology reagents and product support team manufacturing operations. BS to Ph.D. levels in Chemistry. Experience in diagnostic reagent development, manufacturing and/or support; preferably clinical chemistry reagents.

### INFECTIOUS DISEASE

MS to Ph.D. levels. Develop immunoassays for infectious disease. Assume responsibility for major portions of projects.

### INSTRUMENT ENGINEERS

Provide instrument engineering support to include investigating and resolving systemic issues; lead systems enhancement and design change; provide support to internal customers. Minimum BS in mechanical or electrical engineering with 5+ years relevant experience. Supervisory background a plus.

*Please Note: If you don't have a prepared or up-to-date resume, we'd like to hear from you anyway. Forward a brief synopsis of your background as it relates to the above opportunities. We can only respond to individuals who meet our requirements.*

Visit [www.monster.com](http://www.monster.com) for additional opportunities at BAYER DIAGNOSTICS.



**Business Group  
Diagnostics**

## POSITIONS OPEN

The Cardiovascular Research Center at the University of Michigan invites applications for **POSTDOCTORAL FELLOWS** to train in basic and clinical cardiovascular science. Candidates must have a Ph.D. or an M.D. degree and be a permanent resident or U.S. citizen. Postdoctoral fellows will have the opportunity to learn a broad range of experimental strategies, including molecular, genetic, cellular, and integrative biological approaches. Areas of research include vascular biology, hypertension, gene therapy, cardiogenesis, heart failure, atherosclerosis, stroke, and diabetes. Applicants should send a curriculum vitae, a statement of research interests and career goals, and three letters of reference to:

**Alan Weder, M.D.**  
The Cardiovascular Research Center  
The University of Michigan Medical School  
7301 MSRB III  
1150 West Medical Center Drive  
Ann Arbor, MI 48109-0644

Application deadline: March 1, 2000. Beginning date of Fellowship: September 1, 2000. *The University of Michigan is an Affirmative Action and Equal Opportunity Educator and Employer. Minority and women candidates are strongly encouraged to apply.*

## POSTDOCTORAL POSITIONS IN FERTILIZATION AND GENE REGULATION OF SPERMATOGENESIS

The Department of Cell Biology and The Center for Recombinant Gamete Contraceptive Vaccinogens at the University of Virginia School of Medicine announces the availability of four **FELLOWSHIPS** in the areas of gamete biology, gene regulation of spermatogenesis, and contraceptive vaccine development. Applicants must hold a Ph.D., M.D., and/or D.V.M. and have advanced training in reproductive cell biology, biochemistry, or immunology. Expertise is desirable in areas of mouse *in vitro* fertilization, promoter analysis, transgenic mice, tandem mass spectrometry, molecular cloning, and protein expression. Appointments in the laboratory of **Dr. John C. Herr** will be at a rank commensurate with experience. Apply to:

**Search Committee**  
c/o Dr. John C. Herr, Ph.D.  
Director, Center for Recombinant Gamete  
Contraceptive Vaccinogens  
P.O. Box 800732, Health Systems  
University of Virginia  
Charlottesville, Virginia 22908-0732  
Telephone: 804-924-2007  
FAX: 804-982-3912  
E-mail: jch7k@virginia.edu

*The University of Virginia Health Systems is an Equal Opportunity/Affirmative Action Employer.*

## RESEARCH ASSOCIATE/ POSTDOCTORAL FELLOW

University of Colorado Health Sciences Center

Position available to join well-funded laboratory of eight investigators to study the (1) regulation of apoptosis in prostate cancer by the TRAIL protein, or (2) control of apoptosis and the cell cycle during hematopoietic transformation by the Pim oncogene, or (3) the regulation of differentiation of human promyelocytic leukemia cells by phorbol esters. Yeast and ES cell technologies are available. Ph.D. required, with a strong background in molecular/cellular biology. Excellent salary consistent with training. Application deadline is February 29, 2000. Send curriculum vitae, names, and telephone numbers of three references to: **Andrew S. Kraft, M.D.**, Chief, Division of Medical Oncology, UCHSC, 4200 East Ninth Avenue, Denver, CO 80262. *The University of Colorado is an Equal Employment Opportunity Commission Employer.*

## POSITIONS OPEN



## RESEARCH SCIENTIST

Lifecodes Corporation is a leading manufacturer and supplier worldwide of DNA products for human identity and transplantation. Our Research and Development department has an opportunity for a Research Scientist to join our Microarray Test Development group.

The successful candidate will participate in the evaluation, development, and validation of new technologies and assays for fluorescent detection of DNA polymorphisms with application in human identification and tissue transplantation.

We are seeking a newly graduated Ph.D. with broad experience in modern molecular biology techniques. One to two years of experience in DNA mutation detection assays is preferred. The successful candidate will be a team player who can handle multiple priorities and projects.

Lifecodes offers a competitive salary and benefits package. Please submit a letter and résumé to: **Lifecodes Corporation, Human Resources Department, 550 West Avenue, Stamford, CT 06902. FAX: 203-328-9598; e-mail: blane@lifecodes.com.** *We encourage diversity.*

## POSITION OPEN RESEARCH LEADER

U.S. Department of Agriculture, REE, Agricultural Research Service (ARS), Northern Plains Area, Midwest Livestock Insects Research Unit in Lincoln, Nebraska, seeks a permanent full-time scientist with demonstrated expertise in entomology to serve as Research Leader. The incumbent will be responsible for all aspects of the Unit's management including: research on integrated control technologies for stable flies and house flies and research in support of the APHIS screwworm eradication program in Central America; interaction with USDA administrators, federal action, and regulatory agencies; and cooperators in universities and industry. The incumbent will maintain a research program in his/her area of specialty. *U.S. citizenship and a Ph.D. or equivalent are required. Salary will be commensurate with experience. Comprehensive benefits package includes paid sick and annual leave, life and health insurance, and a savings and investment plan (401[K]-type). These benefits are available in addition to the federal retirement plan. For information on the research program and/or position, contact: Dr. Will Blackburn, Telephone: 970-229-5557; e-mail: blackbuw@npa.ars.usda.gov. Applications must be postmarked by January 31, 2000. USDA/ARS is an Equal Opportunity Employer.*

**POSTDOCTORAL POSITIONS**, Bone Marrow and Stem Cell Transplant Center, Emory University. Position available immediately to study the ability of allogeneic donor T cells to protect murine allogeneic bone marrow transplant recipients from infection complications. The successful candidate needs experience in mouse husbandry, flow cytometry, and immunology. Second position available for translational research to study the role of cultured CTL to treat patients with relapsed acute leukemia after allogeneic bone marrow transplantation. The successful candidate will expand CTL *in vitro*, assay activation status and cytotoxicity of CTL, and collect clinical data on the safety and antileukemic activity. Reply to: **E. K. Waller, M.D., Ph.D. Telephone: 404-727-1806; FAX: 404-727-3520; e-mail: ewaller@emory.edu.**

**POSTDOCTORAL POSITION** to investigate electrostatic binding of proteins to membranes: relevance to signal transduction. Contact: **Dr. Stuart McLaughlin, Department of Physiology and Biophysics, HSC, SUNY, Stony Brook, NY 11794-8661. FAX: 631-444-3432; e-mail: smcl@epo.som.sunysb.edu.** *The State University at Stony Brook is an Affirmative Action/Equal Opportunity Educator and Employer.*

## POSITIONS OPEN

## MIRIAM S. BECKNER POSTDOCTORAL FELLOWSHIPS IN CANCER RESEARCH

Penn State University Cancer Center at Hershey

We are pleased to announce a competition for two newly established Miriam S. Beckner Postdoctoral Fellowships in Cancer Research. These two-year Fellowships provide the opportunity for Postdoctoral Fellows to join one of approximately 20 well-established research groups focused in areas of cancer research at the Penn State University College of Medicine in Hershey. The research areas include molecular aspects of chemical and viral carcinogenesis; cancer immunology; cancer cell biology, which encompasses cell signaling, cell cycle control, and tumor suppressors; and aspects of drug discovery, prevention, and treatment. The interactive research environment and the availability of excellent core facilities provide an outstanding training environment. Applicants for these fellowships are requested to send an overview of research accomplishments and interests, a curriculum vitae, and names of three references to: **Ms. Dianne Stare, Penn State University Cancer Center, H069, Penn State University College of Medicine, 500 University Drive, Hershey, PA 17033.** *Penn State is committed to Affirmative Action, Equal Opportunity, and the diversity of its workforce.*

**POSTDOCTORAL POSITION** in protein crystallography and molecular biochemistry. The research will use X-ray analysis to characterize the effects of site-directed mutations on the structure and function of the membrane protein FepA (*Nat. Struct. Biol.* 6:56, 1999). The experiments may also involve related proteins that participate in active and specific transport of ferric siderophores. It is an NIH-funded collaborative project of **D. van der Helm** (website: <http://cheminfo.chem.ou.edu/faculty/dvdh/dvdh.html>) and **P. E. Klebba** (<http://cheminfo.chem.ou.edu/faculty/pek/pek.html>). Our goal is the full molecular description of FepA during different stages of transport in relation to its transport mechanism. Expertise in structure solution, refinement, and data collection is required. The position will include training in site-directed mutagenesis and other aspects of molecular biology, with application to the use of ESR and fluorescence spectroscopy in membrane protein biochemistry. Mail applications to: **Department of Chemistry and Biochemistry, University of Oklahoma, Norman, OK 73072.** Please submit applications in electronic format to: **Dr. D. van der Helm** at e-mail: [dvdhelm@chemdept.chem.ou.edu](mailto:dvdhelm@chemdept.chem.ou.edu) or to: **Dr. P. E. Klebba** at e-mail: [peklebba@ou.edu](mailto:peklebba@ou.edu).

**RESEARCH FELLOWSHIPS** for qualified Ph.D., M.D., or equivalent in molecular medicine at the University of Pennsylvania. Programs are available immediately for U.S. citizens/permanent residents in an NIH-funded program. Candidates have a choice of 10 established laboratories in several departments. The focus of the research is transcription/translational control, gene therapy, protein trafficking, exo/endocytosis, developmental biology, cell membrane receptors, cell signaling, immunotargeting, oxidant injury, and related areas. We provide full benefits and stipend supplementation. Website: <http://www.med.upenn.edu/ifem/pep.htm>. Applications may be submitted electronically at website: <http://www.med.upenn.edu/ifem/nrschoice.htm>. *Affirmative Action/Equal Opportunity Employer. Qualified women and minority candidates are especially encouraged to apply.*

**POSTDOCTORAL POSITION** available to investigate intercellular signaling mechanisms using *Drosophila* as a model system, with emphasis on neuronal development and disease. Current approaches include genomic microarray analysis and genetic interaction screening to study receptor tyrosine kinase signaling pathways. Please send curriculum vitae, a brief summary of research experience, and names and addresses of three references to: **Ilaria Rebay, Ph.D., Whitehead Institute for Biomedical Research, Nine Cambridge Center, Cambridge, MA 02142. E-mail: rebay@wi.mit.edu.**



### CHAIR OF MEDICAL MICROBIOLOGY AND IMMUNOLOGY

The University of California, Davis, School of Medicine seeks a full-time academic Chairperson of Medical Microbiology and Immunology. The Chair will provide prominent leadership in the development and enhancement of educational and research programs. The Chair will be responsible for strengthening the Department of Medical Microbiology and Immunology. Candidates with experience related to molecular and genetic mechanisms of microbial pathogenesis with interests in genomics and infectious diseases are highly desirable. The successful candidate will be a recognized scientist who qualifies for appointment at the Associate or full Professor level and must possess a Ph.D., M.D., M.D./Ph.D., or equivalent. The position includes an FTE in the School of Medicine and a negotiated resource package. Please forward: (1) letter describing administrative, teaching and research background; (2) curriculum vitae; and (3) names and addresses of five references to **M. Eric Gershwin, M.D., Chair, Search Committee, c/o Office of the Dean, School of Medicine, 100 MSI-C, East Health Sciences Drive, University of California, Davis, California 95616.** This position will be "Open Until Filled;" applications should be received by June 30, 2000 for full consideration.

*The University of California is an Affirmative Action/Equal Opportunity Employer.*

### Sultan Qaboos University - Sultanate of Oman College of Engineering

Sultan Qaboos University, the National University of the Sultanate of Oman, invites applications for the founding Director of the Remote Sensing and Geographic Information Systems (RSGIS) Center. The Center is a University central facility serving the Colleges of Engineering, Science, Agriculture and Arts. The primary aims of the Center include:

- Teaching courses in Remote Sensing & GIS within the University.
- Coordinating research activities within SQU.
- Providing training courses, workshops and seminars for government employees.
- Promoting collaboration with ministries, industry and institutions outside the Sultanate.

The incumbent will provide leadership for the overall organization and administration of teaching, research and service activities of the Center. The incumbent will be responsible for training, assignment and evaluation of personnel; planning and budgeting for facilities and equipment; recommending the hiring, promotion, termination and discipline of staff; liaising with relevant departments in the University, government agencies and the private sector, and seeking external funding for the Center.

Applicants should possess a Ph.D. degree in RS/GIS from a reputable university. Proficiency in spoken and written English is required. In addition, some proficiency in spoken and written Arabic would be an asset. The incumbent should have sufficient experience to be able to hold an academic position, preferably at the Associate of Full Professor level, in one of the Colleges at SQU. The position will involve 50% administration and 50% teaching/research.

Apart from a very attractive tax free base salary, the University offers free furnished accommodation, two years renewable employment contract with end of service gratuity, annual leave with return air tickets, free medical treatment in Government Hospitals in the Sultanate.

Interested candidates are requested to submit a letter of application and full C.V., quoting our Reference ADV/ENG/03/99, to:

**The Director, Personnel Affairs  
Sultan Qaboos University  
P.O. Box 50, Al-Khod - 123  
Sultanate of Oman  
Email: [personnel@squ.edu.om](mailto:personnel@squ.edu.om)**

## Faculty Position in Biological Sciences

The Department of Biological Sciences at the University of Massachusetts Lowell invites applications for a tenure-track position to begin September, 2000. We seek candidates with expertise in the areas of molecular biology, genetics and/or molecular systematics, who utilize bioinformatics/functional genomics in their research. The successful candidate will be committed to undergraduate and graduate education and is expected to participate in developing a new program in Bioinformatics & Computational Biology. The individual will develop an externally funded research program, and participate in departmental teaching. We encourage collaborative efforts between our faculty and colleagues located at the numerous academic and industrial research laboratories concentrated in the nearby Boston, Cambridge and Worcester areas. Hiring rank and salary will be commensurate with experience. A *curriculum vitae*, copies of several recent publications, a statement of research & teaching interests not to exceed three pages, and the names of three references should be forwarded to: **Professor Robert Lynch, Chair, Department of Biological Sciences, University of Massachusetts Lowell, One University Avenue, Lowell MA 01854.** Position is contingent upon funding.



*The University of Massachusetts Lowell  
is an Equal Opportunity/Affirmative Action,  
Title IX, H/V, ADA 1990 Employer.*

## FACULTY POSITIONS

The Faculty of Environmental and Forest Biology, a group of 35 scientists ranging from molecular biologists to systems ecologists, is seeking **two Assistant Professors** to fill academic year, tenure-track positions at the SUNY College of Environmental Science and Forestry. Candidates are expected to establish vigorous research programs, teach at graduate and/or undergraduate levels, guide graduate students through the doctoral level, and contribute to public service activities of the College. Salaries are commensurate with background and experience.

The **Entomologist** will establish an externally funded research program in the use of insects in the biological control of non-native, invasive insects or plants of natural habitats, including forests. Candidates should have expertise in entomology and biological control of invasive insects or plants. Teaching opportunities include an introductory course in entomology and advanced courses in biological control, invasive species biology, insect morphology or systematic entomology.

The **Mycologist** will establish an externally funded research program in restoration ecology, bioremediation, and/or mycorrhizae. Candidates should have demonstrated expertise in fungal bioremediation, basidiomycetes, mycorrhizae, rhizosphere dynamics, fungal decomposition, and/or nutrient cycling. Teaching opportunities include restoration ecology, plant-fungus interactions, basidiomycetes, bioremediation, mycorrhizae, and/or a course in the candidate's area of expertise.

Requirements for both positions include a Ph.D. in appropriate field, with teaching and postdoctoral research experience preferred. Applicants should send to the appropriate Search Chair hard copies of curriculum vitae, graduate transcripts, separate statements of research and teaching interests, reprints of relevant publications and request three letters of recommendation (fax acceptable). All application materials must arrive by March 6, 2000.

Search Chairs

**Entomologist: Dr. Stephen Teale (315) 470-6758 [sateale@mailbox.syr.edu](mailto:sateale@mailbox.syr.edu);**  
**or Mycologist: Dr. Scott Rogers (315) 470-6935 [sorogers@syr.edu](mailto:sorogers@syr.edu), SUNY College of Environmental Science and Forestry, Syracuse, NY 13210.**  
**[www.esf.edu/faculty/efb/positions](http://www.esf.edu/faculty/efb/positions).**

*SUNY ESF is an Equal Opportunity/Affirmative Action Employer. Women and minorities are strongly encouraged to apply.*

## POSITIONS OPEN

### ANNOUNCEMENT FOR TWO POSTDOCTORAL FELLOW POSITIONS Hepatic/Cardiac Metabolism and/or Electrophysiology

The Department of Anatomy, Physiology, and Pharmacology, College of Veterinary Medicine, Auburn University, invites applications for two Postdoctoral Fellow research positions to study the regulation of hepatic and cardiac glucose metabolism and myocyte electrophysiology in normal and diabetic animals. Projects specifically involve the metabolic role of PFK-2/FBPase-2 in diabetes and its alteration by various pharmacological interventions. Candidates should have a Ph.D. in life sciences with experience in biochemistry and molecular biology or patch clamp preferred. One Postdoctoral Fellow position is being funded from external sources, and continuation of employment is contingent upon availability of funds. Application review will begin February 21, 2000, and continue until candidates are selected and recommended for appointment. Please send a letter of interest and curriculum vitae with names and addresses of three references to: **Dr. Robert L. Judd, Anatomy, Physiology, and Pharmacology, 219 Greene Hall, Auburn University, AL 36849-5518.** Auburn University is an Affirmative Action/Equal Opportunity Employer. Women and minorities are encouraged to apply.

### MOLECULAR IMMUNOLOGISTS

The Receptor Cell Biology section of NIAID, NIH, is recruiting for **POSTDOCTORAL FELLOWS** for studies on natural killer cell receptor expression and function and the roles that  $\beta 1$  integrins and the hemochromatosis protein HFE play in the immune response. Salary commensurate with credentials and research experience. Qualified and interested candidates should send curriculum vitae and three letters of reference. For more information regarding these positions, contact:

**John E. Coligan, Ph.D.**  
Laboratory of Allergic Diseases  
Receptor Cell Biology Section  
NIAID/NIH/Twinbrook II, Room 205  
12441 Parklawn Drive  
Rockville, MD 20852 U.S.A.  
Telephone: 301-496-8247  
FAX: 301-480-9094  
E-mail: jcoligan@niaid.nih.gov

NIH is an Equal Opportunity Employer.

### RESEARCH ASSOCIATE MOLECULAR DIAGNOSTICS LABORATORY

The Department of Pathology of the Fox Chase Cancer Center seeks applicants for the position of Research Associate in the Molecular Diagnostics Laboratory. Responsibilities will include development and performance of clinical molecular assays to monitor patients with cancer, involvement in translational research, and supervision of laboratory proficiency. The successful applicant will have a Master's degree or Ph.D. in the biological sciences, significant experience in molecular biology, and computer proficiency. Please submit curriculum vitae with three references to: **Dr. Robin Edwards, c/o Human Resources, Fox Chase Cancer Center, 7701 Burholme Avenue, Philadelphia, PA 19111.** Equal Opportunity Employer.

**POSTDOCTORAL FELLOW.** University of Pennsylvania. A Postdoctoral position is available for studies on male germ cell genetic modification. Projects involve culture and expansion of male germ line stem cells (spermatogonia), followed by transfection and introduction of the transformed cells into the testis. (*Sem. Cell Dev. Biol.* 9:401-409, 1998; *PNAS* 96:5504-5509, 1999). A background in cell and molecular biology is preferred. Send curriculum vitae, names of three references, and a letter describing research experience to: **Dr. R. L. Brinster, School of Veterinary Medicine, University of Pennsylvania, 3850 Baltimore Avenue, Philadelphia, PA 19104.**

## POSITIONS OPEN



The Pediatric Oncology Branch (POB) is searching for a **TENURE-TRACK SCIENTIST** to conduct laboratory and clinical studies in pediatric cancer. The successful candidate will develop a translational research program aimed at developing improved therapeutic approaches to the treatment of pediatric malignancies. Candidates must be capable of running an independent laboratory program and have expertise in biomedical research. Resources will include laboratory space, equipment, and supplies, as well as support for two Postdoctoral Fellows and one technician. Candidates must have an M.D., Ph.D., or equivalent. The POB is committed to improving the outcome of children with cancer through translational research approaches. Ongoing areas of research include sarcomas, brain tumors, developmental therapeutics, and supportive care. The POB website can be accessed at: <http://www-dcs.nci.nih.gov/pedonc/Index.html>. Interested candidates should send cover letter, curriculum vitae, statement of research interests, and three letters of reference to: **Chairman, Search Committee, Pediatric Oncology Branch, NCI, Building 10, Room 13N240, 10 Center Drive, MSC 1928, Bethesda, MD 20892-1928.** The deadline for submitting applications is March 31, 2000. The National Cancer Institute is an Equal Opportunity Employer.

### BIOTECHNOLOGY KUWAIT INSTITUTE FOR SCIENTIFIC RESEARCH

Major duties: Carrying out research on biotechnology applications to solve environmental problems—microbial production, biotransformations, and biocatalysis.

Qualifications: Applicants should have a Ph.D. in biochemistry or microbiology, with a minimum of 10 years of experience in biotechnology research and development with emphasis on environmental biotechnology and/or fermentation. She or he should have experience in project management, project proposals, and staff training. She or he should have broad experience, strong leadership, and ability to expand research activities and attract research funding. Industrial experience would be an advantage. KISR offers attractive, tax-free salaries commensurate with qualifications and experience that include: gratuity, free furnished and air-conditioned accommodation, school tuition fees, six weeks of annual paid vacation, air tickets, and life insurance. Interested applicants are requested to send their curriculum vitae with supporting information no later than one month from the date of this publication to:

**Personnel Manager  
Kuwait Institute for Scientific Research  
P.O. Box 24885, 13109 Safat, Kuwait**

For further information, please visit our website: [www.kisr.edu.kw](http://www.kisr.edu.kw).

**POSTDOCTORAL POSITIONS** are available to study basic helix-loop-helix (bHLH) transcription factors in pancreatic development, function, and cancer model systems. Areas of research include but are not limited to (1) identifying bHLH binding partners and DNA binding specificities; (2) examining the role of specific signal transduction pathways; and (3) utilizing mouse genetic approaches, coupled with gene chip technology, to identify downstream target genes. A strong background in molecular and cellular biology is essential. Prior experience working with transgenic mice also is preferred. Please send a curriculum vitae and the names of three references to: **Stephen F. Konieczny, Ph.D., Department of Biological Sciences, Hansen Life Sciences Research Building, Purdue University, West Lafayette, IN 47907-1392.** Website: <http://www.bio.purdue.edu/courses/Koniecznylab/intropage.html> for more information. Purdue University is an Equal Opportunity/Affirmative Action Employer.

## POSITIONS OPEN

### POSTDOCTORAL POSITIONS BACTERIAL PATHOGENESIS/ HOST RESPONSE University of Pennsylvania

**Howard Goldfine, Ph.D.:** to study bacterial-host cell interactions during cell invasion by *Listeria monocytogenes*. This bacterium uses phospholipases and a pore-forming cytolysin to activate macrophage-signaling pathways. These activities eventually result in escape of the bacterium from the phagocytic vacuole. We seek a recent Ph.D. in biochemistry, cell biology, or microbiology, preferably with experience in signal transduction.

**Hao Shen, Ph.D.:** to study the relationship between bacterial pathogenesis and cellular immune surveillance in a murine model of listeriosis. Genetic manipulation of the bacterium and the host will be used to elucidate cellular mechanisms of immune surveillance, identify bacterial strategies for immune evasion, and dissect interactions between bacterial virulence factors and immune effector functions.

Send curriculum vitae and names and e-mail addresses of references to either: **Dr. Goldfine or Dr. Shen, Department of Microbiology, University of Pennsylvania School of Medicine, Philadelphia, PA 19104-6076.** See website: <http://www.med.upenn.edu/micro>. Equal Opportunity/Affirmative Action Employer.

### TWO POSTDOCTORAL/RESEARCH ASSOCIATE POSITIONS

For laboratory focused on experimental cancer therapy; key projects: (1) biology of marrow micro-environment, (2) dendritic cell biology, (3) tumor vascular biology, (4) rational design of combination therapy using radioimmunoconjugates in animal models, and (5) application of immunotherapy to nontumor pathophysiological conditions. Ph.D. with zero to four years of experience in cellular immunology, physiology, cell/molecular biology, and/or histochemistry/pathology. Excellent spoken and written English; good publication record required. Starting salary \$24,000 to \$32,000. Approximately 25% time to work on independent projects and funding, with the possibility of future faculty appointment. Position available immediately. Send curriculum vitae and three references to: **Dr. Rosalyn Blumenthal, Director, Tumor Biology, Garden State Cancer Center, 520 Belleville Avenue, Belleville, NJ 07109.** FAX: 973-844-7020. Equal Opportunity Employer.

### POSTDOCTORAL POSITIONS BROOKHAVEN NATIONAL LABORATORY

Opportunities to study induction of clustered damages by low-dose ionizing radiation and their repair in mammalian cells, including overproducing and knockout strains, are available within the lab of **Dr. Betsy Sutherland**; e-mail: [bms@bnl.gov](mailto:bms@bnl.gov).

A Ph.D. in biochemistry or molecular biology and experience in nucleic acid enzymology and radiation biology are desired. You must be able to travel for collaborative research. One position (as part of the BNL-NASA Heavy Ion Radiobiology Program) requires postdoctoral research.

Send curriculum vitae; research interests; names, addresses (including e-mail), and telephone numbers of three references, indicating position #MK7827, to: **M. Kipperman, Brookhaven National Laboratory, Building 185, P.O. Box 5000, Upton, NY 11973.** Visit our website: [www.bnl.gov](http://www.bnl.gov). BNL is an Equal Opportunity Employer committed to workforce diversity.

**POSTDOCTORAL POSITIONS** available immediately to study the molecular regulation of virus-induced apoptosis in the central nervous system and other aspects of viral neuropathogenesis. Experience in molecular/cellular biology and virology preferred. Send letter, curriculum vitae, and three references to: **Beth Levine, M.D., Department of Medicine, Columbia University College of Physicians and Surgeons, Physicians and Surgeons 8-444, 630 West 168th Street, New York, NY 10032.** FAX: 212-305-7290. Columbia University is an Equal Opportunity/Affirmative Action Employer.



**People Are Our Vision...**  
and our  
**purpose.**

**At Lilly, every advancement we make in science is accomplished by people for people. We bring together the brightest and most committed professionals to create breakthrough pharmaceuticals that help people all over the world lead healthier, happier lives. Our people have important work, and we give them the resources and support to help them do it. People. They're what we're all about.**

**POSTDOCTORAL POSITION IN  
MOLECULAR BIOLOGY**

Lilly Research Laboratories has a postdoctoral position available for a scientist to study the effect of natural products on global gene regulation. The postdoctoral fellow will be involved in developing microarray-based technologies for bioprofiling active natural products by monitoring differences in gene expression patterns. Initiative, independence and ability to implement technology within a team environment will be important in candidate selection. Job Code ADSCMPH40

**PH.D. MICROBIOLOGIST**

We are looking for a microbiologist to join our leadership team in Natural Products Discovery. Preference will be given to scientists knowledgeable and experienced in the areas of isolation and preservation of diverse microbial cultures, biological niches, development of growth conditions for difficult-to-cultivate organisms, and a broad molecular mechanism perspective toward biology. The candidate will be expected to develop a program to significantly expand access to new chemical diversity from natural sources. Familiarity with methods of chemical analysis as applied to extracts of natural materials and computer-based data mining tools would be beneficial. Job Code ADSCM41

To attract the best and the brightest, we offer highly competitive compensation/benefits packages, tuition reimbursement, and a friendly, positive work environment. Interested candidates should apply to: **US Recruiting and Staffing, Job Code \_\_\_\_\_, Lilly Corporate Center, DC 1818, Indianapolis, IN 46285.**

Eli Lilly and Company is an equal opportunity employer and recruits, hires, trains, and promotes persons in all job titles without regard to race, color, religion, sex, national origin, age, disability, or veteran status.



**GLOBAL OPPORTUNITIES**

**National Health Research Institutes (NHRI)  
Taiwan, R.O.C.**

**Investigator and Postdoctoral Fellow Positions**

The Division of Biotechnology and Pharmaceutical Research, National Health Research Institutes of Taiwan is embarking on an innovative and integrated drug discovery program based on molecular biology, combinatorial chemistry, structure-based drug design and high-throughput bioscreening. Applicants are invited in the areas of tumor biology, cell biology, virology, immunology, metabolic disease and mental disorder, animal models, pharmacokinetics, drug metabolism, medicinal chemistry, and combinatorial chemistry. Investigator of all ranks and postdoctoral fellow positions are available.

The National Health Research Institutes (NHRI) is a non-profit academic organization supported by the Government of the Republic of China. The purpose of NHRI is to promote and develop medical and health related research in the hope of enhancing social welfare. Through intramural and extramural programs, NHRI conducts and supports mission-oriented research in its own laboratories and in other research institutions throughout the country.

Application should include a letter of intent, curriculum vitae with a publication list, a brief research proposal, reprints of selected publications, and three reference letters. Forward your application to:

Dr. Ming-Chu Hsu, Director  
Division of Biotechnology and Pharmaceutical Research  
National Health Research Institutes  
128 Yen-Chiu-Yuan Road, Sec II, Taipei 115, Taiwan, R.O.C.  
Tel: 886-2-2653-4401 ext 6110; Fax: 886-2-2789-0264  
E-mail: mingchu@nhri.org.tw  
NHRI Web site--<http://www.nhri.org.tw>

**GLOBAL OPPORTUNITIES**

**THE UNIVERSITY OF HONG KONG**

香 港



大 學

The University of Hong Kong is one of the leading international comprehensive research universities in the Asia-Pacific region, with more than 100 departments and sub-divisions of studies and learning. There is currently an enrolment of more than 15,000 students (6,000 at postgraduate level). Research students are from more than 40 countries. The medium of instruction is English. The University is committed to its vision of globalisation, together with excellence in scholarship and research.

**Research Assistant Professorships and  
Post-doctoral Fellowships**

Applications are invited for a number of positions as Research Assistant Professor (RAP) (Ref: RF-1999/2000-176) and Post-doctoral Fellow (PDF) (Ref: RF-1999/2000-177), tenable before 30 September 2000. Appointments will be made on fixed-term contracts of 2 to 3 years.

RAP and PDF are relatively new posts created by the University with the aim of injecting fresh impetus and vigour to the University's research enterprise, in order to complement and broaden its existing research expertise in certain areas. Appointees are expected to bring in new research ideas and cutting-edge technologies.

**Research Assistant Professors**

The main focus of an RAP's duty is research. They can however be assigned teaching duties, up to 50% of the normal teaching load. Applicants should be research active and have a proven publication record. Appointments will be made usually on the first point of the 4-point salary scale HK\$43,060, HK\$46,190, HK\$49,280 and HK\$52,405 per month (approx. \$3,440, \$3,700, \$3,940 and \$4,190; sterling equivalent as at 3 January 2000). A (taxable) financial subsidy towards rented accommodation, leave, medical and dental benefits, and an allowance for children's education in Hong Kong will be offered.

**Post-doctoral Fellows**

PDFs are expected to focus on research. Applicants should be PhD degree holders. Appointments will be made usually on the first point of the 4-point salary scale HK\$30,785, HK\$33,705, HK\$36,940 and HK\$40,500 per month (approx. \$2,460, \$2,700, \$2,960 and \$3,240; sterling equivalent as at 3 January 2000). Annual leave, medical and dental benefits and an allowance for children's education in Hong Kong will be provided.

**Where posts are held**

A full listing of the research areas and the departments or academic units in which the posts are recruited will be shown on the University's website at <<http://www.hku.hk/apptunit>> from 13 January 2000.

**Procedures**

Interested applicants are strongly advised to contact, in the first instance and prior to making an application, the Head of the appropriate department or academic unit to ascertain the level of posts available and to obtain information about current research initiatives and activities.

Applicants must submit a completed University application form, which should clearly state which position they are applying for, and in which academic discipline. Applicants who are applying for both positions should fill in two sets of application forms. They should also provide further information such as details of their research experience, publications, research proposals etc.

Further particulars and application forms can be obtained on WWW at <http://www.hku.hk/apptunit>; or from the Appointments Unit (Senior), Registry, The University of Hong Kong, Hong Kong (Fax (852) 2540 6735 or 2559 2058; E-mail: [apptunit@reg.hku.hk](mailto:apptunit@reg.hku.hk)). Closes **10 February 2000**.

*The University is an equal opportunity employer and  
enjoys a smoke-free environment*

## POSITIONS OPEN

### INTERESTED IN CLINICAL OR POSTDOCTORAL RESEARCH TRAINING?

The National Institutes of Health has both! For more information, visit our website, which lists an array of clinical and postdoctoral opportunities, including tenure-track positions.

Website: <http://www.training.nih.gov>.

NIH is dedicated to building a diverse community in its training and employment programs.

### POSTDOCTORAL POSITIONS IN IMMUNOLOGY

Positions available to study the role of Class I proteins in antibody-mediated autoimmune diseases. Project 1: the role of the IgG protection receptor FcR $\gamma$  in promoting disease and in the development of FcR $\gamma$ -based therapeutics. Project 2: the role of CD8+ T cells in protecting mice from SLE-like and lymphoproliferative autoimmune diseases. The goal of training at The Jackson Laboratory is to equip promising scientists with the intellectual resources and practical know-how to establish high-quality research programs. The mouse model is the premier organism to investigate mammalian biology and disease, and The Jackson Laboratory is the world leader in the application of this model toward important biological questions. Send curriculum vitae and research interests to:

**Derry Roopenian, Ph.D.**

**The Jackson Laboratory**

**600 Main Street, Bar Harbor, ME 04609**

**E-mail: [dcr@jax.org](mailto:dcr@jax.org)**

**FAX: 207-288-6077**

Check our web page: <http://www.jax.org>. An Equal Opportunity/Affirmative Action Employer.

### RESEARCH ASSOCIATE POSTDOCTORAL POSITION DIABETES RESEARCH LABORATORY

Winthrop-University Hospital, a 591-bed, acute care teaching hospital, is affiliated with the State University of New York at Stony Brook School of Medicine. Unique postdoctoral opportunity for a Ph.D. in cell biology/biochemistry or molecular biology to study the mechanism of aortic vascular smooth muscle cell relaxation and growth by insulin. Candidates must have hands-on experience in gene cloning, Northern, Southern, transfections, DNA sequencing, PCR, gene knockouts, mammalian expression vectors, Western blot analysis, enzymatic assays, and tissue culture. Familiarity with software used for DNA analyses and graphics is required; two to three years of experience is desirable.

We offer a competitive salary and a flexible benefits program. For consideration, please send your résumé to: **Dr. N. Begum, Winthrop-University Hospital, 259 First Street, Mineola, NY 11501. FAX: 516-663-4919. Equal Opportunity Employer. Minorities/Females/Disabled/Veterans.**

### POSTDOCTORAL POSITION BIOLOGICAL SCIENCES UNIVERSITY OF DELAWARE

Several positions are available in the laboratory of **Dr. Eric Kmiec** in the Department of Biological Sciences at the University of Delaware. The research focus centers around the use of novel vectors for gene repair and gene targeting in mammalian cells, plant cells, and yeast. Experience in tissue culture and molecular biology is a must, and candidates familiar with the pathogenesis of Huntington's Disease and prostate cancer are especially encouraged to apply. Please send résumé and research history to **e-mail: [ekmiec@udel.edu](mailto:ekmiec@udel.edu) or [ccjohns@udel.edu](mailto:ccjohns@udel.edu)**. Deadline: February 18, 2000.

The University of Delaware is an Equal Opportunity Employer that encourages applications from minority group members and women.

## POSITIONS OPEN

**STAFF FELLOWSHIP POSITION.** The Laboratory of Plasma Derivatives has a **POSTDOCTORAL FELLOWSHIP** (tenure track) available. The successful candidate will work on oxidative reactions of hemoproteins (hemoglobin/myoglobin) both *in vitro* and in cultures of endothelial cells. This position offers the opportunity to participate in the development and approval process for some biological blood products. Requirements: Applicants must have a Ph.D. and be a U.S. citizen or a U.S. permanent resident. Desired: Ph.D. in biochemistry/toxicology; less than three years of postdoctoral experience; familiarity with protein chemistry techniques; with spectrophotometric techniques (UV/VIS, fluorescence, stopped-flow); and cell culture skills. The laboratory is located on the NIH campus in Bethesda, Maryland. To apply: Send a curriculum vitae or résumé with the names of three references to: **Abdu Alayash, Ph.D., CBER, FDA, 1401 Rockville Pike, HFM-345, Rockville, MD 20852-1448. E-mail: [alayash@cber.fda.gov](mailto:alayash@cber.fda.gov)**.

### POSTDOCTORAL POSITIONS AT THE UNIVERSITY OF VIRGINIA

Postdoctoral positions are available to study how the diversity of G protein  $\alpha$  and  $\beta\gamma$  subunits leads to specificity in transmembrane signaling. We are defining functional roles for  $\beta\gamma$  dimers containing divergent  $\beta$  subunits such as  $\beta_2$  using pure, recombinant proteins and cell transfection assays to monitor interaction with various  $\alpha$  subunits and effectors. Systems under study include receptor- $\alpha\beta\gamma$  coupling, regulation of Type I and II adenylyl cyclases, and activation of PLC- $\beta$  or PI 3-kinase. A Ph.D. with experience with molecular techniques, biochemistry, and protein purification is required. Application deadline: April 30, 2000. Send a curriculum vitae and a list of references to: **Dr. James C. Garrison, Department of Pharmacology, Box 448, University of Virginia Health System, Charlottesville, VA 22908. The University of Virginia is an Equal Opportunity/Affirmative Action Employer.**

**POSTDOCTORAL POSITION** available to investigate how hormonally active chemicals can alter patterns of gene and protein expression of steroid and growth factor receptors in mammary gland, ovary, uterus, prostate, and/or testes. Must have academic and research training in histomorphology, biochemistry, and molecular biology. Postdoctoral applicant will have opportunity to do research using laser-capture microdissection, RT-PCR, Southern and Western blotting, IHC, transgenic models, and to have input in research program. Send curriculum vitae and names and addresses of three references to: **Dr. Coral Lamartiniere, University of Alabama at Birmingham Department of Pharmacology and Toxicology, Volker Hall 124, 1530 Third Avenue South, Birmingham, AL 35294-0019. E-mail: [Coral.Lamartiniere@ccc.uab.edu](mailto:Coral.Lamartiniere@ccc.uab.edu). The University of Alabama at Birmingham is an Equal Opportunity/Affirmative Action Employer.**

The Department of Internal Medicine, University of Virginia, is searching for candidates for an NIH-funded **POSTDOCTORAL FELLOWSHIP** to study the molecular basis for regulation of human breast cancer cells. Ongoing research projects focus on: (1) estrogen signaling pathways, (2) transcriptional factors in cell cycle regulation, and (3) apoptosis. Qualifications: Ph.D. or M.D. required. Highly motivated individuals with background in molecular biology, protein purification, and yeast genetics are encouraged to apply. Applicants should submit a letter of application with a curriculum vitae and the names and telephone numbers of three references by April 1, 2000. The position is available immediately. Send application to: **Richard J. Santen, M.D., Division of Endocrinology, Box 334, University of Virginia Health Sciences System, Charlottesville, VA 22908. The University of Virginia is an Equal Opportunity/Affirmative Action Employer.**

## POSITIONS OPEN

**POSTDOCTORAL POSITION** available to study signal transduction and gene regulation in mammalian cells activated by bacterial products. Send curriculum vitae and names and telephone numbers of references to: **Dr. Roman Dziarski, Indiana University School of Medicine, 3400 Broadway, Gary, IN 46408. E-mail: [rdziar@iunhaw1.iun.indiana.edu](mailto:rdziar@iunhaw1.iun.indiana.edu)**.

**POSTDOCTORAL FELLOWSHIPS** available at the University of Virginia Center for the Study of Neurodegenerative Diseases to participate in NIH-funded projects centered on mitochondrial genetics and cellular function in mitochondrial transgenic (cybrid) models of Alzheimer's, Parkinson's, and related diseases. Opportunities exist for those with interests and expertise in novel DNA sequencing strategies, cell and ion imaging, neurotrophin mechanisms, cell signaling, microarray gene expression, and protein complex biophysics. Pls in the Center are: **J. P. Bennett, W. D. Parker, P. A. Trimmer, and J. B. Tuttle**. Interested individuals should e-mail curriculum vitae to: **J. P. Bennett, Jr., M.D., Ph.D. E-mail: [Bennett@virginia.edu](mailto:Bennett@virginia.edu)**. Selected applicants will be asked to provide letters of reference. Further information is available at website: <http://dana.med.virginia.edu/csnd>. The University of Virginia is an Equal Opportunity Employer.

### POSTDOCTORAL POSITIONS AVAILABLE

Two Postdoctoral positions are available to study mechanisms of transcription factor function. Avenues of research include function of specific transcription factors in enhancosome formation, B cell development, and regulation of differentiation in mammals and embryonic stem cells. Other approaches utilize the *Drosophila* system to study function of mammalian repressors *in vivo*. Experience in molecular biology, protein biochemistry, or *Drosophila* genetics is preferred. Send curriculum vitae and three letters of reference to: **Dr. Michael Atchison, Head of Laboratories of Biochemistry, University of Pennsylvania, School of Veterinary Medicine, 3800 Spruce Street, Philadelphia, PA 19104. FAX: 215-573-5189. E-mail: [atchison@vet.upenn.edu](mailto:atchison@vet.upenn.edu)**.

### POSTDOCTORAL POSITIONS UNIVERSITY OF CALIFORNIA, BERKELEY

Postdoctoral positions to study bacterial pathogenesis of the obligate intracellular pathogen *Chlamydia*. One position will focus on cellular receptors and signal transduction pathway modification following infection. The other position will focus on the molecular basis of immunity to infection. Recent Ph.D. or M.D. graduates with productive research background in microbiology, cell biology, and/or immunology are encouraged to reply. Send curriculum vitae and names of references to: **Dr. R. S. Stephens, School of Public Health, 140 Warren Hall, University of California, Berkeley, CA 94720-7360.**

### POSTDOCTORAL POSITION CORNEAL CELL BIOLOGY

Postdoctoral position available to study mucin protective and repair functions at the epithelial surface and in the tear film of the cornea. Projects will focus on expression, localization, protein interactions, biosynthesis, and functions of membrane and tear film MUC4 mucin/growth factor complex using molecular biological, biochemical, microscopic, ultrastructural, and immunological approaches. Send inquiries or applications to: **Dr. Kermit L. Carraway, Department of Cell Biology (R-124), University of Miami School of Medicine, P.O. Box 016960, Miami, FL 33101. E-mail: [kcarrawa@mednet.med.miami.edu](mailto:kcarrawa@mednet.med.miami.edu)**.

## The Wellcome Trust - Burroughs Wellcome Fund Infectious Diseases Initiative 2000

The Wellcome Trust and the Burroughs Wellcome Fund are pleased to announce a new competition for a joint initiative, first launched in 1998/99, to support large collaborative research programmes that address infectious diseases of major public health significance in the developing world. This initiative is intended specifically to foster trilateral partnerships between researchers in developing countries, the UK, and the USA or Canada.

All infectious diseases of significance in the developing world are acceptable except HIV/AIDS and malaria, for which active research programmes already exist.

### Purpose and Nature of the Initiative

The infectious diseases of the developing nations pose grave obstacles to public health and economic development. Through this initiative, the Wellcome Trust and the Burroughs Wellcome Fund aim to encourage global scientific collaborations that can provide a better understanding of these diseases and new ways of combating them. Research programmes eligible under this initiative must have a 'centre of gravity' in the developing world and build upon the respective strengths of researchers from the developing and developed worlds. Proposals are invited from existing and new trilateral collaborations where there is at least one partner in each of the following: i) a country or group of countries in the developing world, ii) the UK, and iii) the USA or Canada. It is envisaged that grants will be in excess of US\$0.5 million over a period of up to five years.

### How to Apply

Applicants must first submit a preliminary proposal for which the deadline is **31 March 2000**. Preliminary application forms, further details of this initiative and eligibility criteria may be obtained from:

**Ms Laura Chambers, Grants Officer, International Department,  
The Wellcome Trust, 183 Euston Road, London NW1 2BE, UK.  
Tel: +44 (0)20 7611 8428; Fax: +44 (0)20 7611 7288.  
Email: l.chambers@wellcome.ac.uk <http://www.wellcome.ac.uk>**

**Ms Jean Kramarik, Programs Associate, Burroughs Wellcome Fund,  
21 TW Alexander Drive, PO Box 13901, Research Triangle Park,  
NC 27709-3901, USA. Tel: +1 (919) 991 5122; Fax: +1 (919) 991 5172.  
E-mail: jkramarik@bwfund.org <http://www.bwfund.org>**



The Wellcome Trust is a Registered Charity, No. 210183, and its mission is to promote and foster research with the aim of improving human and animal health

**BURROUGHS  
WELLCOME  
FUND** 

## EUROPEAN OPPORTUNITIES



**UNIVERSITY OF  
OXFORD**

### E.P. Abraham Professorship of Cell Biology

The electors intend to proceed to an election to the E.P. Abraham Professorship of Cell Biology with effect from as early a date as may be arranged.

The University wishes to recruit a senior outstanding research leader in any relevant branch of the subject to fill this newly-established chair.

A non-stipendiary fellowship at Lincoln College is attached to the professorship.

**Applications (ten copies, or one only from overseas candidates), naming three persons who have agreed to act as referees on this occasion, should be received not later than 6th March 2000 by the Registrar, University Offices, Wellington Square, Oxford OX1 2JD, from whom further particulars may be obtained. Further particulars may also be accessed on the Web ([URL: http://www.admin.ox.ac.uk/tp/](http://www.admin.ox.ac.uk/tp/)).**

**The University is an Equal  
Opportunity Employer.**



**UNIVERSITY COLLEGE LONDON**  
*Department of Biology*

## Lectureships in Human Genetics and Human Evolution

The Department of Biology at University College London seeks two Lecturers to join its new Centre for the Study of Human Variation.

### 1) Human Genetics

Applications for the post of Lecturer (Assistant Professor equivalent) are invited from human geneticists with a proven ability to develop an internationally competitive research programme. Applications are particularly encouraged from scientists using population approaches to study the genetics of complex traits, including common disease, susceptibility to infectious disease, or drug response. Scientists who have a background and interest in related topics or human molecular genetics would also be considered.

### 2) Human Evolution

Applications for the post of Lecturer (Assistant Professor equivalent) are invited from human evolutionists with a proven ability to develop an internationally competitive research programme. Applications are particularly encouraged from scientists who use patterns of genetic variation to infer the demographic and evolutionary histories of human populations. Scientists with a background in the analysis of population genetic data will be preferred.

These appointments are part of the Department's programme of assembling a world-class research team focused on human genetic variation, including evolutionary and medical aspects. Applicants whose research will contribute to and benefit from this environment will be preferred.

Applications (including a CV, statement of research and the names, addresses and email addresses of three referees) should be sent to Dr J Woodall, Departmental Administrator, Dept of Biology, University College London, Darwin Building, Gower St, London WC1E 6BT. Informal enquiries may be addressed by email to Professor David B. Goldstein or to Professor Sue Povey ([d.goldstein@ucl.ac.uk](mailto:d.goldstein@ucl.ac.uk) or [sue@galton.ucl.ac.uk](mailto:sue@galton.ucl.ac.uk)).

The closing date for applications is Tuesday, 14th March 2000.

*Working Toward Equal Opportunity*

## POSITIONS OPEN

**POSTDOCTORAL POSITION** available to study voltage- and agonist-gated ion channels in neuronal dendrites and their impact on synaptic integration and plasticity. The laboratory uses various patch clamp and optical imaging techniques to record from the dendrites of CA1 pyramidal neurons in hippocampal slices. See website: <http://neuroscience.lsumc.edu/faculty/magee.html>. Experience with electrophysiological techniques is required. Previous experience with patch clamp, imaging, and/or brain slice physiology is preferred. Send curriculum vitae and names of three references to: **Jeff Magee, Ph.D., Neuroscience Center, LSUMC, New Orleans, LA 70112. E-mail: [jmagee@lsumc.edu](mailto:jmagee@lsumc.edu). LSU is an Equal Employment Opportunity/Affirmative Action Employer.**

**MOLECULAR BIOLOGY AND GENETICS POSTDOCTORAL/RESEARCH ASSOCIATE:** Several positions are available as part of an interdisciplinary research team, using advance technologies to determine how chromatin structure mediates development. Self-motivated individuals trained in molecular biology, genetics, and/or biochemistry are encouraged to apply. Applicants should forward their curriculum vitae and three letters of recommendation to: **Dr. Stephen Krawetz, Department of Obstetrics/Gynecology and CMMG, Wayne State University School of Medicine, 275 East Hancock, Detroit, MI 48201. WSU is an Equal Opportunity/Affirmative Action Employer.**

### POSTDOCTORAL POSITION OR RESEARCH ASSISTANT/ASSOCIATE

Protein-tyrosine phosphatases and insulin signaling. Thomas Jefferson University, Philadelphia, PA: NIH-funded project to study PTPases in insulin action using recombinant proteins, cellular transfection, transgenic models, and clinical materials from human subjects. See *JBC* 272:448; *JCI* 95:2806. Send curriculum vitae with statement of research interests and career goals with names of three references by FAX to: 215-923-7932 or e-mail: [b\\_goldstein@lac.jci.tju.edu](mailto:b_goldstein@lac.jci.tju.edu). Visit us at website: <http://employment.tju.edu>. Equal Opportunity Employer.

Two **POSTDOCTORAL POSITIONS** in developmental biology for self-motivated researchers with Ph.D. work and demonstrated skills in some of the following areas: cell biology, immunocytochemistry, molecular biology. Send curriculum vitae and three references to: **Ms. Marilinda Eller, Cellular and Molecular Biology Section, 304 Morgan Building, School of Biological Sciences, University of Kentucky, Lexington, KY 40506. Equal Opportunity Employer.**

**POSTDOCTORAL AND RESEARCH ASSOCIATE** positions available to conduct research on the role of sphingolipids as signal transducers during stress responses in *Saccharomyces cerevisiae* (*J. Biol. Chem.* 272:30196 and 273:19437; *Ann. Rev. Biochem.* 67:27). Experience with yeasts, lipids, enzymology, or signal transduction is required. Send résumé with names of three references to: **Robert Dickson, Department of Biochemistry, University of Kentucky, Lexington, KY 40536-0298.**

**POSTDOCTORAL POSITION** available for an NIH-funded project investigating the regulation of the extracellular space in the brain. Familiarity with *in vivo* and *in vitro* electrophysiological techniques is preferred. Please send a curriculum vitae and names of three references to: **Dr. Janet Stringer, Department of Pharmacology, Baylor College of Medicine, One Baylor Plaza, Houston, TX 77030. E-mail: [janets@bcm.tmc.edu](mailto:janets@bcm.tmc.edu). Affirmative Action/Equal Opportunity Employer.**

**POSTDOCTORAL POSITION** to study the molecular biology of lung morphogenesis. Basic cloning techniques, *in situ* hybridization and/or immunohistochemistry are required. Excellent benefits with possibility of promotion. Contact: **Dr. Parviz Minoo, Director of Research, Department of Pediatrics, University of Southern California School of Medicine, 1801 East Marengo Street, Los Angeles, CA 90033. E-mail: [minoo@hsc.usc.edu](mailto:minoo@hsc.usc.edu).**

## POSITIONS OPEN



### UNIVERSITY OF PITTSBURGH CANCER INSTITUTE

**POSTDOCTORAL POSITION:** A position is available immediately to study gene expression in the development of esophageal cancer. The projects will use subtractive hybridization, cDNA microarrays, and TaqMan QRT-PCR to identify changes in gene expression in the progression from normal esophagus to adenocarcinoma. Applicants should have extensive experience with procedures for RNA analysis/handling. Address applications/inquiries to: **Tony Godfrey, Ph.D., University of Pittsburgh, C-800 Presbyterian University Hospital, 200 Lothrop Street, Pittsburgh, PA 15213. E-mail: [godfreyt@msx.upmc.edu](mailto:godfreyt@msx.upmc.edu).**

**MOLECULAR OR CELL BIOLOGIST:** bone or cartilage research. The Albert Einstein Healthcare Network seeks candidates for an **ASSISTANT OR ASSOCIATE SCIENTIST** in the Department of Orthopaedics in the area of molecular or cell biology related to bone or cartilage research. The applicant must possess a Doctorate in an appropriate area and must maintain a competitively funded research program. The candidate may be eligible for a faculty appointment at Thomas Jefferson University. Applicants should submit their curriculum vitae, bibliography, brief description of their funded research activities, and three letters of reference. The materials should be sent to: **John A. Handal, M.D., Chairman, Department of Orthopaedics, Albert Einstein Healthcare Network, 5501 Old York Road, Philadelphia, PA 19141. Equal Employment/Affirmative Action Employer.**

### POSTDOCTORAL POSITION PROTEIN PHOSPHORYLATION AND CYTOSKELETAL REGULATION

A Postdoctoral position is available to participate in studies on protein phosphatases that regulate non-muscle myosin function in *Dictyostelium*. Studies will focus on identifying adapter proteins and cellular mechanisms that regulate myosin dephosphorylation during chemotactic cell migration. Individuals with experience in protein biochemistry and/or experience in signaling pathways are particularly encouraged to apply. Interested individuals should supply curriculum vitae and names of three references to: **Tom Egelhoff, Department of Physiology and Biophysics, Case Western Reserve School of Medicine, Cleveland, OH 44106-4970. FAX: 216-368-1693.**

**POSTDOCTORAL POSITIONS** available to study the mechanisms by which nuclear matrix architectural transition factors regulate extracellular matrix protein expression in connective tissue. Our laboratory is part of a musculoskeletal program project. Experience in molecular and cellular biology required. Send curriculum vitae and references to: **Dr. Joseph Bidwell, Department of Anatomy and Cell Biology, Indiana University School of Medicine, 635 Barnhill Drive-MS5035, Indianapolis, IN 46202-5120. E-mail: [jbidwell@iustd.iupui.edu](mailto:jbidwell@iustd.iupui.edu); FAX: 317-274-4233. See website: <http://www.anatomy.iupui.edu/~bidwell>.**

**POSTDOCTORAL POSITION** in immunology is available immediately to study effects of cell-cell interactions during development of lymphoid cells. Incumbent will develop molecular and cell biology methods to study stroma-B cell interactions. Experience with molecular biology, immunology, and/or tissue culture useful. Ph.D. and/or M.D. required. Laboratory is located on the NIH campus. Contact: **Steven R. Bauer, Ph.D., Division of Cell and Gene Therapies, OTRR, CBER, FDA, 1401 Rockville Pike, HFM-521, Rockville, MD 20852. E-mail: [bauer@cber.fda.gov](mailto:bauer@cber.fda.gov). Respond by March 15, 2000.**

## POSITIONS OPEN

### POSTDOCTORAL POSITIONS IN AIRWAY CELL PHYSIOLOGY AND DISEASE

Department of Physiology  
University of Massachusetts Medical School

Two postdoctoral positions (NIH funding) are available for two years to study (1) the role of intercellular  $Ca^{2+}$  signaling between airway epithelial and smooth muscle cells in asthma and (2) the regulation and dysfunction of airway mucociliary activity in cystic fibrosis. Experience in microscopy,  $Ca^{2+}$  imaging, electrophysiology, tissue culture, and molecular biology desirable. Details at: website: <http://www.ummed.edu/dept/sanderson.lab>. Send curriculum vitae and statement of interests to: **Dr. Michael J. Sanderson, Department of Physiology, University of Massachusetts Medical School, 55 Lake Avenue North, Worcester, MA, 01655.**

**POSTDOCTORAL RESEARCH FELLOWSHIP** available for studies on bone cell regulatory proteins. Experience in protein purification, basic biochemistry, molecular biology techniques, and signal transduction mechanisms desirable. Ph.D. required. Two to three years of previous postdoctoral experience desirable. Open to U.S. citizens and permanent residents only, due to *NRSA* grant. Salary and benefits competitive; possibility exists for long-term position. Send résumé, cover letter, and names of three references to: **Dr. S. Mohan, P.O. Box 7210, Loma Linda, CA 92354.**

**BIOLOGY/MAMMALIAN PHYSIOLOGY** (pending funding): **TENURE-TRACK FACULTY POSITION** at Utah Valley State College in Orem, Utah, to begin August 2000. Requires an earned Doctorate with an expertise in mammalian anatomy and physiology. College-level teaching experience preferred. First screening February 15, 2000. For more information, please Telephone: 801-222-8207 or visit website: [www.uvsc.edu/hr/employ/faculty/2705.html](http://www.uvsc.edu/hr/employ/faculty/2705.html). Affirmative Action/Equal Opportunity Employer.

**POSTDOCTORAL POSITIONS** available for studying calcium regulation in auditory sensory hair cells. Interested in mechano-sensitivity, membrane excitability, synaptic transmission? Have or want experience in single-cell physiology, electrophysiology, imaging, or cell culture? Send letter of interest; curriculum vitae; and names, telephone numbers, and e-mail addresses of three references to: **Anthony Ricci, Neuroscience Center LSUMC, 2020 Gravier Street, New Orleans, LA 70112. LSU is an Equal Employment Opportunity/Affirmative Action Employer.**

**RESEARCH ASSOCIATE OR ASSISTANT PROFESSOR** level, nontenure track, full-time research, neuromolecular studies in psychiatry. Ph.D. in biochemistry or related field; molecular experience required. Contact: **University of Louisville, Department of Psychiatry and Behavioral Sciences, Louisville, KY. Contact: Rif S. El-Mallakh, M.D. Telephone: 502-852-1124; e-mail: [rselma01@athena.louisville.edu](mailto:rselma01@athena.louisville.edu). Affirmative Action/Equal Opportunity Employer.**

**RESEARCH ASSOCIATE POSITION** available immediately to investigate the regulation of protein degradation by nitric oxide. Expertise in molecular biology required. Working knowledge of the ubiquitin-proteasome degradation pathway highly desirable. Send curriculum vitae and three letters of reference to: **Dr. Lisa Palmer, University of Virginia, Department of Pediatrics, P.O. Box 800386; Charlottesville, VA 22908. The University of Virginia is an Equal Opportunity/Affirmative Action Employer.**

**POSTDOCTORAL POSITION.** A Postdoctoral position is available to carry out the cloning and analysis of genes responsible for antibiotic biosynthesis in streptomycetes. Previous training in molecular biology is required. Prior experience with streptomycetes genetics is preferred. Send curriculum vitae and names of three references to: **Dr. R. J. Parry, Department of Chemistry MS-60, Rice University, 6100 Main Street, Houston, TX 77005-1892. E-mail: [parry@rice.edu](mailto:parry@rice.edu).**

## POSITIONS OPEN

### POSTDOCTORAL POSITIONS IN BACTERIAL GENOMICS AND BACTERIAL PATHOGENESIS

Children's Research Foundation in Columbus, Ohio, has an NIH-funded Postdoctoral position available immediately in the **Munson Laboratory** for a highly motivated individual interested in microbial genomics. The *Haemophilus ducreyi* genome effort is currently in the shotgun phase. The Fellow will work in the finishing and annotation phases of the project and initiate functional genomics studies. Applicants should have a strong background in microbial physiology or pathogenesis, as well as excellent computer skills.

A shared, NIH-funded Postdoctoral position is available immediately in the **Bakaletz and Munson Laboratories** for a highly motivated individual interested in the identification and characterization of genes involved in the pathogenesis of *Haemophilus influenzae* disease. Applicants should have a strong background in microbial pathogenesis, as well as excellent computer skills.

Competitive salary with full benefits is available. Send letter of application, curriculum vitae, and names and contact details for three references to: **Dr. Lauren O. Bakaletz, Children's Research Institute, Room W302 or Dr. Robert S. Munson, Jr., Children's Research Institute, Room W402, 700 Children's Drive, Columbus, OH 43205. E-mail: BakaletzL@pediatrics.ohio-state.edu or MunsonR@pediatrics.ohio-state.edu. Equal Opportunity Employer/Affirmative Action. Women and minorities are encouraged to apply.**

## COURSES & TRAINING

### MINORITY GRANT-WRITING COURSE

The University of Kentucky, in cooperation with the National Institute of General Medical Sciences, is offering free, Internet-based grant-writing training for faculty interested in biomedical research at minority-serving institutions. Applications are now being accepted for the next introductory workshop, August 14-15, 2000. For more information, call **Telephone: 800-490-3924** or visit **website: http://dlmedia.uky.edu/topclass**.

### FELLOWSHIP PROGRAM IN VACCINOLOGY

Clinical and laboratory training by internationally known Center for Vaccine Development faculty and research scientists.

U.S. citizenship/green card required. Call or write:

**Myron M. Levine, M.D., D.T.P.H.**  
University of Maryland School of Medicine  
Center for Vaccine Development  
685 West Baltimore Street—HSF 480  
Baltimore, MD 21201  
Telephone: 410-706-5328  
FAX: 410-706-6205

## ANNOUNCEMENTS

**MEDICAL UNIVERSITY OF SOUTH CAROLINA** offers programs leading to Ph.D. and M.D./Ph.D. degrees in each of the basic biomedical sciences (biochemistry, microbiology/immunology, pathology, pharmacology, physiology); biometry/epidemiology; pharmaceutical sciences; and molecular and cellular biology and pathobiology. Competitive stipends of \$17,000 available. Contact: **College of Graduate Studies, MUSC, P.O. Box 250617, Charleston, SC 29425. Telephone (toll-free): 1-800-589-2003.**

## GRANTS

### THE BRAIN TUMOR SOCIETY

#### BRAIN TUMOR RESEARCH GRANTS Application Deadline: April 17, 2000

The Brain Tumor Society is awarding grants to fund basic scientific research directed at finding a cure for brain tumors. Grants are awarded annually for up to a two-year period at a maximum of \$50,000 per year. Grants will be limited to research being conducted in the following states: Connecticut, Delaware, Florida, Georgia, Maine, Maryland, Massachusetts, New Hampshire, New Jersey, New York, North Carolina, Pennsylvania, Rhode Island, South Carolina, Vermont, Virginia, and Washington, D.C. For research guidelines and application, visit TBTS's website: **www.tbts.org**. Contact: **The Brain Tumor Society, 124 Watertown Street, Watertown, MA 02472-2500. Telephone: 617-924-9997, ext. 10 or 800-770-8287, ext. 10; e-mail: grants@tbts.org.**

### VHL RESEARCH GRANTS

The von Hippel-Lindau Family Alliance is calling for proposals to compete for VHL research grants up to \$30,000 annually for a maximum of three years for basic and clinical research relevant to the cause, pathogenesis, or treatment of von Hippel-Lindau disease. Deadline for submitting grant applications is April 1, 2000. Awards will begin July 1, 2000. Information and application materials can be obtained at website: **www.vhl.org**. For further information, contact: **e-mail: vhlres@vhl.org.**

## GRADUATE PROGRAMS

### 425 EAST 25TH STREET NEW YORK, NY 10010

"Applying science to solving urban health problems." Environmental and occupational health sciences; community health education; public health nutrition. Masters of Public Health and Masters of Science. Application deadline for fall 2000: April 21, 2000. Affordable tuition; scholarships and dormitories available. For more information: call us at **Telephone: 212-481-5111. Website: http://www.hunter.cuny.edu/health/uph**. Or come to one of our Open House sessions: Thursday, February 24; Wednesday, March 15; and Thursday, April 13, 2000, from 5:00-7:00 p.m.

## PROGRAMS

### INSTITUTE FOR HUMAN GENE THERAPY UNIVERSITY OF PENNSYLVANIA

The Institute for Human Gene Therapy at the University of Pennsylvania announces a program for Scientists who wish to acquire skills in gene therapy research. The Institute provides a fully integrated program that interrelates basic research and translational research and includes the necessary components to move from basic discovery in animals to proof-of-concept experiments in human beings, utilizing objective and discriminating model systems. Key elements include core facilities to support vector development and manufacturing, animal models and toxicology, clinical pathology, immunology, clinical trials, biostatistics, and quality assurance. The program is intended as a one- to two-year experience that will include laboratory work in a basic science laboratory as well as opportunities to become familiar with the technical support facilities necessary to conduct clinical gene therapy trials. Applicants should have completed a Postdoctoral Fellowship. Senior faculty willing to take a sabbatical will be considered. Partial salary support may be available. Applications should be directed to:

**James M. Wilson, M.D., Ph.D., Director**  
Room 204, Wistar Institute  
3601 Spruce Street  
Philadelphia, PA 19104-4268

Equal Opportunity/Affirmative Action Employer. We encourage minority and women candidates.

## MARKETPLACE

### glp/cGMP Synthesis

~ Specialty & Activated Reagents  
~ PEGs/Specialty Media

**Magellan Laboratories**  
**www.magellanlabs.com/(919) 465-8119**

Circle No. 41 on Readers' Service Card



Take your lab with you

Digitize protocol & notebook w/o extra effort  
**Solution & Protocol 2000™**

**www.BioMeans.com**

**Tel: (281) 403-2655**

Circle No. 13 on Readers' Service Card

### Custom DNA Sequencing

❖ Long Reads ❖  
❖ Plasmid Inserts ❖  
❖ Sequence Done in a Week ❖

❖ Single Strand as low as ❖  
\$20.00 for < 650 bases

❖ Double Strand ❖  
\$30.00 up to 450 bases  
\$45.00 up to 650 bases  
\$70.00 up to 1600 bases

Inquire about Large Inserts and  
Genome Sequencing.

**MWG-BIOTECH, Inc.**

Call: 336-812-9995 info@mwgbiochem.com  
http: www.mwgbiochem.com

Circle No. 39 on Readers' Service Card

### CUSTOM DNA or RNA LABELING

Covalent attachment of labels to any size or quantity of DNA or RNA.	Digoxin, DNP, NH <sub>2</sub> , Biotin, Cy3™, Cy5™, Rhodamine, Fluorescein
<b>Mirus</b> www.genetransfer.com	
608-238-4400	LABELIT@genetransfer.com

Circle No. 11 on Readers' Service Card



### Spider Venom

• Discovery Packs & Collections  
• Custom & Large Scale Production  
• Priced to Get Results

**Spider Pharm Inc.**

tel: 215-355-8295 fax: 253-830-9571  
chuck@spiderpharm.com http://spiderpharm.com

Circle No. 10 on Readers' Service Card

# MARKETPLACE



**MORE PRODUCTS  
ON PREVIOUS PAGE**

**Widely  
Recognized  
Original &  
Guaranteed**

**KlenTaq1** **8¢/u**

Truncated  
Taq DNA  
Polymerase  
Withstand 99°C

US Pat # 5,436,149  
Call: **Ab Peptides** 1-800-383-3362  
Fax: 314-968-8988 [www.abpeps.com](http://www.abpeps.com)

Circle No. 16 on Readers' Service Card

**NEW ENGLAND  
PEPTIDE, INC.**

888-343-5974 (phone)  
978-343-5940 (fax)  
[www.newenglandpeptide.com](http://www.newenglandpeptide.com)

**LOOKING FOR:**

- Higher Quality?
- Better Service?
- Easier Pricing?

Find the best custom peptide experience at New England Peptide, Inc.

**Custom Peptides...Made Easy**

Circle No. 14 on Readers' Service Card

**Quality Peptides & Antisera**

*Friendly, Personal Service*  
[www.genosys.com](http://www.genosys.com)

**Custom Peptide Synthesis**

- sequence analysis
- IG, >70%, >80%, >95% purity
- scales from 2 mg-1 g
- variety of modifications available
- mass spec & HPLC on every peptide
- satisfaction guaranteed

**Polyclonal Antisera Service**

- antigen design assistance
- synthesis, conjugation and sera collection
- flexible protocol

**SIGMA  
GENOSYS**

North America 1-877-710-1502  
Europe (+44) (0) 1223 839000  
[information@sial.com](mailto:information@sial.com) [info@sigma-genosys.co.uk](mailto:info@sigma-genosys.co.uk)

Circle No. 43 on Readers' Service Card

**TriLink BioTechnologies**  
Superior Quality with Unparalleled Service

**Modified NTPs**

See the TriLink difference  
Experience Matters  
[www.trilinkbiotech.com](http://www.trilinkbiotech.com) 800-863-6801

Circle No. 12 on Readers' Service Card

**XX IDT®**  
INTEGRATED DNA TECHNOLOGIES, INC.

Premier Specialty Synthesis  
Molecular Beacons, RNA,  
Antisense Oligos & More  
1-800-328-2661 - [www.idtdna.com](http://www.idtdna.com)

Circle No. 44 on Readers' Service Card

# MARKETPLACE

**DNA Primers from \$0.75 / base**

**Ransom Hill Bioscience, Inc.**  
No Setup - No Minimum - No Baloney!  
<http://www.ransomhill.com>  
[visla@pcsiner.net](mailto:visla@pcsiner.net) fax: (800) 597-8509

Circle No. 15 on Readers' Service Card

**Custom Peptides  
& Antibodies**

**Best Service & Price! Compare and Save!**

**Alpha Diagnostic (800) 786-5777**  
Fax: (210) 561-9544; [info@4adi.com](mailto:info@4adi.com)  
Web site: <http://www.4adi.com>

Circle No. 36 on Readers' Service Card

**Quality DNA Synthesis**

**MALDI-TOF Mass Spectrometry Quality Control**

Fluorescent Dyes & Other Modifications  
Gene Construction and Sequencing Services  
Custom RNA Oligos and Antisense DNA Oligos  
Custom Primers for PCR & Sequencing  
Long Oligos (up to 150-mers)

Competitive Pricing 800-247-8766

**MIDLAND**  
The Midland Certified Reagent Company  
Fax: (915) 694-2387 Email: [mcrc@oligos.com](mailto:mcrc@oligos.com)  
Website: [www.mcrc.com](http://www.mcrc.com)

Circle No. 45 on Readers' Service Card

**Highly Purified Salt-Free  
Oligonucleotides**

Custom DNA Synthesis  
**HPSF & PSF Grade**

- ❖ Failure Products Removed
- ❖ Salt Removed
- ❖ No Metal Ions
- ❖ MALDI-TOF Production QC

**Starting at \$0.49/base for  
PSF Grade (0.01µmol scale)**  
**Never a purification or  
setup fee!!!**

**MWG-BIOTECH, Inc**  
Call: 336-812-9962 [info@mwgbiochem.com](mailto:info@mwgbiochem.com)  
<http://www.mwgbiochem.com>

Circle No. 38 on Readers' Service Card

**MERLIN® CORE SERVICES**

**Plasmid Purification**  
Endotoxin Removal  
Any Amount  
1-800-4-BIO-101 • [www.bio101.com](http://www.bio101.com)

Circle No. 40 on Readers' Service Card

# MARKETPLACE

**BIO•SYNTHESIS, INC.**

**\$12.00/oligo**

**Don't Count Bases! Count Oligos!**

- ~ Turnaround Time: 12-48 hours
- ~ 50nmole, >5 ODU, up to 25 bases
- ~ Full Q.C. and reliable quality

**or \$18.00/oligo (up to 35 bases)**

[www.biosyn.com](http://www.biosyn.com) **1-800-227-0627**

Please be sure to mention this ad! Offer is good thru 10/99

Circle No. 46 on Readers' Service Card

**3 O.D. Select Oligos**

**Just \$0.60/base\***

Order through our Web site and we'll ship your 3 O.D. Select oligos in just 24-48 hours. Every oligo is QC'd by PAGE analysis, and each batch is performance-tested by mass spec.

\*Desalted only. Oligos must be 10 to 35 bases in length. No modifications or additional purification. Web orders only. Offer valid in U.S. only.

**SIGMA  
GENOSYS**

North America: 1-877-710-1504 • email: [gordentry@sial.com](mailto:gordentry@sial.com)

Circle No. 42 on Readers' Service Card

**NEW LOW PRICES**

**VOLUME DNA SEQUENCING  
CALL (800) 720-GENE**

- HIGH-THROUGHPUT GENOME SEQUENCING
- SHOTGUN SEQUENCING EXPERTISE
- NO ROYALTIES OR LICENSE FEES
- LARGE & SMALL PROJECTS ACCEPTED

**seowright**  
THE GENE DISCOVERY SUPPORT LAB

(713) 528-4363 PHONE  
(713) 528-6232 FAX  
[www.seowright.com](http://www.seowright.com)  
email: [seq@blkbbox.com](mailto:seq@blkbbox.com)

Circle No. 47 on Readers' Service Card

**Custom Peptides**

**\$14/residue**  
3 days turn around  
Free Mass Spec  
HPLC/UV Trace  
8-17 residues  
20-50 mg (Desalted)

*Please inquire for modified peptides*  
Tel: 800-597-7873  
925-371-1070  
Fax: 925-371-1156  
email: [peptide@peptidogenic.com](mailto:peptide@peptidogenic.com)

**PeptidoGenic** The Peptide Engineering Specialist

Circle No. 9 on Readers' Service Card

**Custom DNA**  
Purified & Delivered in 48 Hours  
**\$1.20 per base • Purified**  
<http://www.resgen.com>  
**Research Genetics, Inc.**  
1-800-533-4363

Circle No. 37 on Readers' Service Card

# FLUORESCENT PROBES & MOLECULAR BEACONS

- Unconditional Guarantee
- Fast Turnaround
- Competitive Prices

## A SAMPLE OF OPERON PROBES

### Dual Fluorescent Labeled Probes

- 5' label: 6-FAM, Tet or Hex
- 3' label: TAMRA or ROX

Price includes HPLC Purification

Priced as low as  
**\$220**

### Molecular Beacons

- 5' label: Fluorescein or ROX
- 3' label: Dabcyl

Price includes PAGE Purification

Priced as low as  
**\$175**

### Fluorescein Single Labeled Probes

- 3' or 5' or internally labeled

Priced as low as  
**\$50**

### Biotin Modification

- 3' or 5' or internally labeled

Priced as low as  
**\$50**

**OPERON**  
OPERON TECHNOLOGIES, INC.

1000 Atlantic Ave, Suite 108, Alameda, CA 94501

Phone: (510) 688-2248 FAX: (510) 865-5255 Customer Service Hours: 7 am to 5 pm PST E-mail: [dna@operon.com](mailto:dna@operon.com)

**order online @ [www.operon.com](http://www.operon.com)**

Circle No. 18 on Readers' Service Card



# Gene Expression Analysis with Affymetrix® GeneChip® Probe Arrays

Research Genetics performs gene expression analysis using the Affymetrix GeneChip platform, a powerful tool for monitoring gene expression. Researchers can obtain reproducible, high-quality, differential expression results with high sensitivity of low copy-number transcripts.

## Sample preparation and results

We will provide a detailed protocol for preparing the sample, which requires isolation of RNA, synthesis of cDNA, and an in vitro transcription reaction to generate a biotin-labeled cRNA sample for hybridization.

Once we receive the labeled samples, we will run a series of quality control tests, including hybridization of the sample to the GeneChip test array. Expression analysis results are generally achieved within 3 weeks of receipt of the arrays and viable samples. Results include complete expression profiles for each sample as well as a detailed report of transcripts with significantly changed expression. A sample report is available on our website.

## Now offering the following arrays for individual sale\*:

- Human HuGeneFL array \$3,990 per sample
- Mouse Mu11K subarray B \$3,650 per sample
- Rat Genome U34A array \$3,650 per sample

\* Price includes the cost of the array, sample evaluation, hybridization and analysis.

## Other Expression Analysis Arrays Available

Differential expression analysis can be performed using any of the GeneChip expression analysis arrays currently available from Affymetrix, including the human Hu40K Portfolio, the mouse Mu19K and Mu11K Sets, the Rat Genome U34 Set and the yeast Ye6100 Set. Additional information available at <http://www.resgen.com>. For specific details, please contact Rhonda Snyder ([rsnyder@resgen.com](mailto:rsnyder@resgen.com)) or Donna Brown ([donna@resgen.com](mailto:donna@resgen.com)).

©Affymetrix and GeneChip are U.S. registered trademarks used by Affymetrix, Inc. (Santa Clara, CA)

© Research Genetics and Accelerating Discovery are U.S. registered trademarks/service marks of Research Genetics, Inc. (Huntsville, AL).

**Research Genetics®**  
*Accelerating Discovery®*

**2130 Memorial Pkwy, SW • Huntsville, AL • 35801**

**U.S. or Canada 800-533-4363**

**Worldwide 256-533-4363**

**U.K. 0-800-89-1393**

**FAX 256-536-9016**

**<http://www.resgen.com>**

Circle No. 26 on Readers' Service Card