

Millions of the best minds in America have chosen the best retirement system. **TIAA-CREF.**

When it comes to planning a comfortable future, America's best and brightest turn to the expert: TIAA-CREF. With over \$250 billion in assets under management, we're the world's largest retirement system, the nation's leader in customer satisfaction,* and the overwhelming choice of people in education, research, and related fields.

Expertise you can count on.

For over 80 years, TIAA-CREF has introduced intelligent solutions to America's long-term planning needs. We pioneered the portable pension, invented the variable annuity, and popularized the very concept of stock investing for retirement. In fact, we manage the largest stock account in the world (based on assets under management).

Today, TIAA-CREF can help you achieve even more of your financial goals. With TIAA-CREF, you'll find the flexibility and choice you need, backed by a proven history of performance, remarkably low expenses, and peerless commitment to personal service.

Find out for yourself.

To learn more about the world's premier retirement organization, talk to one of our retirement planning experts at 1 800 842-2776. Or better still, speak to one of your colleagues. Find out why, when it comes to planning for tomorrow, great minds think alike.



**Ensuring the future for
those who shape it.™**

Circle No. 5 on Readers' Service Card

1 800 842-2776

tiaa-cref.org

*According to DALBAR Inc.'s most recent study, 1997 *Defined Contribution Excellence Ratings*. TIAA-CREF Individual and Institutional Services, Inc., distributes CREF certificates and interests in the TIAA Real Estate Account. Teachers Personal Investors Services, Inc., distributes the variable component of the personal annuities, TIAA-CREF Mutual Funds and tuition savings agreements. TIAA and TIAA-CREF Life Insurance Co. issue insurance and annuities. TIAA-CREF Trust Company, FSB, provides trust services. **Investment products are not FDIC insured, may lose value and are not bank guaranteed.** For more complete information, including charges and expenses, call 1 800 842-2733, ext. 5509, for prospectuses. Read them carefully before you invest or send money. ©2000 TIAA-CREF 12/99



Don't get your signals crossed!

Feeling overwhelmed by all of the information that is constantly being published on signal transduction?

The editors of *Science* and the technical staff of Stanford University's HighWire Press have your solution—*Science's* Signal Transduction Knowledge Environment (STKE).

Benefits Include:

VIRTUAL JOURNAL

Say goodbye to scanning dozens of tables of contents every week.

THE CONNECTIONS MAP

Having trouble keeping track of a thousand and one protein kinases? Not anymore.

**CONTINUOUSLY UPDATED
REVIEWS**

Original content that is updated as frequently, and as extensively, as developments in the field warrant.

Come to www.stke.org to improve your signal-to-noise ratio.

Science's
stke 

Signal Transduction
Knowledge Environment
a product of *Science* &
Stanford University Libraries

www.stke.org

Science



Science

Science is a weekly, peer-reviewed journal that publishes the best original scientific research, plus reviews and analyses of current research and science policy. Our offices in Washington, D.C., and Cambridge, U.K., welcome submissions from all fields of science and from any source.

A more detailed Information for Contributors and multilingual versions are available at www.sciencemag.org

Competition for space in *Science* is keen, and many papers are returned without in-depth review. Priority is given to papers that reveal novel concepts of broad interest. We are committed to the prompt evaluation and publication of submitted papers.

Categories of Signed Papers

Reports (up to ~2500 words or ~3 journal pages) present important new research results of broad significance. Reports should include an abstract and an introductory paragraph. A maximum of 30 references is suggested.

Research Articles (up to ~4500 words or ~5 journal pages) are expected to present a major advance. Research articles include an abstract, an introduction, and sections with brief subheadings. A maximum of 40 references is suggested.

Technical Comments (up to 500 words) discuss papers published in *Science* within the previous 6 months. The authors of the original paper are given an opportunity to reply. Comments and replies are reviewed and edited as needed. Summaries

of the discussions appear in print; full text appears online.

Science's Compass provides broadly accessible commentary by scientists and other experts on issues of interest to *Science* readers. Except for letters, items in *Science's* Compass are commissioned by the editors, but unsolicited contributions will be considered on occasion. **Letters** (up to 300 words) discuss material published in *Science* or issues of general interest. Letters can be submitted using our direct www form (www.letter2science.org—coming in February) or to science_letters@aaas.org. Letters are not routinely acknowledged and may be edited for reasons of clarity or space. Letter writers are generally not consulted before publication. **Policy Forums** (up to 2000 words) present issues in science policy. **Essays on Science and Society** (up to 2000 words) highlight diverse views of the intersection of science and society. **Books et al.** (up to 1000 words) presents reviews of current books, CD-ROMs, exhibitions, and films of interest to *Science* readers. **Perspectives** (up to 1000 words) analyze recent research developments but do not primarily discuss the author's own work. **Reviews** (4 journal pages, on average) describe new developments of interdisciplinary significance and highlight unresolved questions and future directions. All undergo review. They include an abstract, an introduction that outlines the main point, and brief subheadings. A maximum of 40 references is suggested. **Tech.Views** (up to 2000

SCIENCE CONTACT INFORMATION

Phone: (1)-202-326-6550 (USA)
(44)-1223-326500 (UK)

Faxes: (1)-202-289-7562 (USA)
(44)-1223-326501 (UK)

Internet:

science_editors@aaas.org
for general editorial queries

www.letter2science.org
for letters to the editor

science_reviews@aaas.org
to return manuscript reviews

science@science-int.co.uk
for the Europe office

words) present current techniques and review newly released software.

Manuscript Selection

Papers are assigned to an editor at *Science* who has knowledge of the field discussed in the manuscript. Most submitted papers are rated for suitability by members of the Board of Reviewing Editors (see the masthead for listing). The editors at *Science* consider this advice in selecting papers for in-depth review. Authors of papers that are not highly rated are notified promptly; within about 2 weeks. In most cases we will return only one set of original artwork. Membership in AAAS is not a factor in selection of manuscripts for publication.

Papers are reviewed in depth by two or more outside referees. It is the policy of *Science* that reviewers are anonymous. Reviewers are contacted before being sent a paper and asked to return comments within 1 week to 10 days for most papers. We are able to ask for more rapid review, as fast as 48 hours or less, for papers that require rapid assessment.

Submitting a Manuscript

For most rapid processing, submit your manuscript plus the information below through our electronic submission site: www.submit2science.org (available in February 2000). Files should be in the following formats: pdf, ps, prn, eps, doc (MSWord), or wpd (Wordperfect). Figures can be included in the text file (preferred) or sent separately. See www.submit2science.org/directions.htm for information on how to save files in these formats from many common applications.

Science can also receive manuscripts by mail. Submit a disk copy of the text and figures in the formats above and three paper copies. We can access Mac- and PC-formatted disks, Zip and Jaz disks, and CDs. Mail to **Science, 1200 New York Ave., NW, Washington, DC 20005, USA, or to AAAS Science International, Inc., Bateman House, 82-88 Hills Rd., Cambridge, CB2 1LQ, UK.**

Include with your submission a cover letter containing:

- the title of the paper and a statement of its main point.
- any information needed to ensure a fair review process and to avoid potential conflicts of interest.
- names of colleagues who have reviewed the paper.
- information about the authors' professional and financial affiliations that may be perceived to have biased the presentation.

For mail submissions, also include in the cover letter:

- Names, telephone and fax numbers, postal and e-mail addresses for all authors.
- a statement that none of the material has been published or is under consideration for publication elsewhere, including the Internet.
- names, postal and e-mail addresses, telephone and fax numbers, and fields of interest of five potential referees.
- for investigations on humans, a statement indicating that informed consent was obtained after the nature and possible consequences of the studies were explained.
- for authors using experimental animals, a statement that the animals' care was in accordance with institutional guidelines.

Also send to Science:

- three copies of any paper of yours or your co-authors that is in press or under consideration elsewhere that relates to the work submitted to *Science*.
- written permission from any author whose work is cited as a personal communication, unpublished work, or work in press, but is not an author of your manuscript.
- any suggested cover illustrations.

Selected papers are edited to improve accuracy and clarity and to shorten, if necessary. Papers cannot be resubmitted over a disagreement on interest or relative merit. If a paper was rejected on the basis of serious reviewer error, resubmission will be considered.

Conditions of Acceptance

When a paper is accepted for publication in *Science*, it is understood that:

- any reasonable request for materials and methods necessary to verify the conclusions of the experiments reported must be honored.
- archival data sets (such as sequence and structural data) must be deposited with the appropriate data bank and the identifier code should be sent to *Science* for inclusion in the published manuscript (coordinates must be released at the time of publication).
- authors agree to transfer copyright of the paper (including electronic rights) to *Science*. U.S. government employees sign the section of the form stating exemption from copyright laws.
- the paper will remain a privileged document and will not be released to the press or the public before publication. If there is a need in exceptional cases to publicize data in advance of publication, the AAAS News and Information Office (202-326-6440) must be consulted.

Authorship

By submitting a manuscript, the corresponding author accepts the responsibility that all authors have agreed to be so listed and have seen and approved the manuscript, its content, and its submission to *Science*. Any changes in authorship must be approved in writing by all the original authors.

Prior publication

Science will not consider any paper or component of a paper that has been published or is under consideration for publication elsewhere. Distribution on the Internet may be considered previously published material and may compromise the originality of the paper as a submission to *Science*.

In addition, the main findings of a paper should not have been reported in the mass media. Authors are, however, permitted to present their data at open meetings but should not overtly seek media attention. Specifically, authors should decline participation in news briefings or coverage in press releases and should refrain from giving interviews or copies of the figures or data from their presentation or from the manuscript to any reporter unless the reporter agrees to abide by *Science*'s press embargo. If a reporter attends an author's session at a meeting and writes a story based only on the presentation, such coverage will not affect *Science*'s consideration of the author's paper.

Manuscript Preparation

One page in the journal contains approximately 1000 words and one small figure. Use double-spacing throughout the text, tables, figure legends, and references and notes and leave margins of at least 2.5 centimeters. Electronic files should be formatted for U.S. letter paper.

Titles and subheadings should be descriptive clauses, not full sentences. The maximum length is 30 characters per line, three lines maximum for reports and research articles, and 100 characters for reviews.

Abstracts explain to the general reader why the research was done and why the results are important. The abstract should be 100 words or less, convey the paper's main point, and outline the results or conclusions.

Text starts with a brief introduction describing the paper's significance, which should be intelligible to readers in various disciplines. Technical terms should be defined. Symbols, abbreviations, and acronyms should be defined the first time they are used. All tables and figures should be cited in numerical order.

References and notes are numbered in the order in which they are cited, first through the text and then through the table and figure legends. Each reference should have a unique number; do not combine references or embed references in notes (this is a change from previous *Science* style). Any references to unpublished data should be given a number in the text and placed, in correct sequence, in the references and notes. Do not use *op. cit.* or *ibid.* See Information for Contributors at www.sciencemag.org for examples of reference style.

Acknowledgments, including funding information, should be gathered into a brief statement at the end of the references and notes and will be edited to conform to *Science* style.

Tables should be included at the end of the references and should supplement, not duplicate, the text. Each table should be on a separate page with its legend double-spaced above the table. The first sentence of the legend should be a brief descriptive title. Every vertical column should have a heading consisting of a title with the unit of measure in parentheses. Units should not change within a column.

Figure Legends should be double-spaced in numerical order. No single legend should be longer than one page. Nomenclature, abbreviations, symbols, and units used in a figure should match those used in the text. The figure title should be given as the first line of the legend.

Supplementary information is posted permanently on *ScienceOnline*, linked to the manuscript, and is freely available. Supplemental text (details of methods, for example), figures, and tables should be cited at the appropriate places in the text or figure or table captions and included on disk (required) and as hard copy (optional). High-resolution

and enlarged images of published figures can be included as supplemental material.

Figures should be submitted electronically, or on a disk with three hard copies. Allowable formats for submission are pdf, ps, eps, prn, doc, wpd. See www.submit2science.org/directions for information on preparing art in these formats. Authors of accepted manuscripts will receive more specific information about electronic submission of art for publication. Do not send irreplaceable artwork. Most figures will not be relabeled by *Science* and will be printed at a width of 5.5 cm (2.25 inches or 1 column) or 12.0 cm (4.75 inches or 2 columns). Some illustrations (for example, bar graphs, simple line graphs, and gels) may be reduced to a smaller width. Symbols and lettering should be large enough to be legible after reduction. Avoid wide variation in type size within a single figure. In the printed version of the figure, letters should be about 7 points (2 mm) high. We can easily include high-resolution images as supplemental material.

Graphs should be labeled on the ordinate and abscissa with the parameter or variable being measured, the units of measure, and the scale. Scales with large or small numbers should be presented as powers of 10. Definitions of symbols should usually appear in the figure legend and not in the figure. Solid or open simple symbols (●, ○, ■, □, ▲, △, ◆, and ◇) reduce well. Avoid the use of light lines and screen shading. Instead, use black-and-white, hatched, and cross-hatched designs for emphasis. Use heavy lines or boxes for emphasizing or marking off areas of the figure. If possible, use scale bars in place of, or in addition to, magnifications. In gels, the lanes should be numbered and identified by number in the figure legend.

Digital color art should be submitted as CMYK (Cyan, Magenta, Yellow, Black) rather than RGB (Red, Green, Blue). Composite figures should be labeled A, B, C. Authors are charged \$650 for publication of the first color figure and \$450 for each additional figure. There is an additional charge for color figures in the reprints.

Lettering in Helvetica font is preferable for figures. Use boldface type for axis labels and for the labels A, B, C in composite figures; use italic type only as it would be used in the text (for example, for variables and genes). The first letter of each entry should be uppercase; otherwise, use uppercase letters as they would be used in the text (for example, for acronyms).

Sequences may be reduced considerably, so the typeface in the original should be clear. There should be about 130 characters and spaces per line for a sequence occupying the full width of the printed page and about 84 characters and spaces per line for a sequence occupying two columns.

Units should be metric and follow SI convention.

NEW PRODUCTS

PLASMID PURIFICATION KIT

The Perfectprep Plasmid Purification Kit delivers transfection-grade DNA in a silica-based spin column. It offers savings of both

Eppendorf

For more information call 516-334-7500 or **circle 143** on the Reader Service Card

time and money over anion-exchange methods. The kit produces top-quality, RNA-free plasmid DNA comparable to that purified using a cesium chloride gradient.

Typical follow-up applications include manual and automated fluorescent sequencing, transfection, cloning, in vitro transcription, and microinjection.

FLUID DELIVERY SYSTEM

The Processor Plus intelligent fluid delivery system offers automated protein immunoblot processing and acrylamide gel staining in one instrument. The user can change from one method to the other simply by switching trays, selecting a programmed protocol, and pushing "start." The Processor Plus will fill and empty the tray with the right solution at the right time. Overnight processing is also simple, as the device offers programmable control of solution, volume, and processing time for up to 30 steps.

Amersham Pharmacia Biotech

For more information call 908-273-9626 or **circle 144** on the Reader Service Card

ROBOTIC LIQUID HANDLING SYSTEM

Additional integration modules are available to improve the performance and flexibility of the MultiPROBE II robotic liquid handling system in genomic applications. The system can be configured to automate all liquid handling steps employed in the processing of DNA extraction and

Packard Instrument

For more information call 800-323-1891 or **circle 145** on the Reader Service Card

plasmid preparation kits utilizing vacuum control methods. In addition, the system can be configured to automate all liquid handling steps in cycle sequencing reactions, including thermal cycling. Two new options are now available to provide further increases in performance. The Low Volume Tip option allows dispensing using standard syringe technology to volumes as low as 200 nl with accuracy and precision. The tip can also be used to dispense volumes

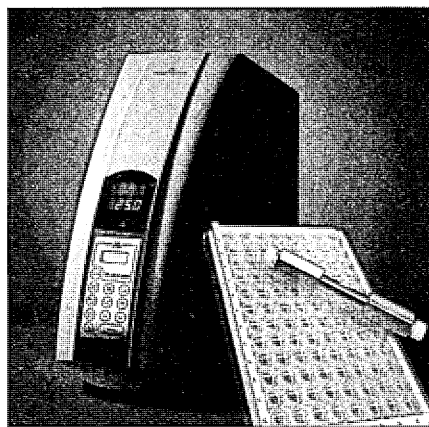
as high as 250 μ l and greater with no significant decrease in throughput. The Six-Way External Valve option allows several different system fluids to be delivered through the system. Reagents, wash solutions, and buffers can be delivered quickly and accurately.

EVAPORATIVE LIGHT SCATTERING DETECTOR

The PL-ELS 1000 evaporative light scattering detector for high-performance liquid chromatography (HPLC) in combinatorial chemistry and high-throughput screening includes model library compounds at very low concentrations. The instrument can detect compounds with no ultraviolet chromophore and permits rapid separations using extreme gradients. The

Polymer Laboratories

For more information call +44 01694 723581 or **circle 146** on the Reader Service Card



detector requires no additional equilibration time for the signal to return to the starting point, thus increasing its high-throughput capabilities.

SINGLE-HANDED TUBE UNCAPPING

The Decapitator 2 provides a one-handed method for uncapping microcentrifuge tubes. The unit provides two slots into which the user can insert the appropriate-sized tube cap. Once the tube is secured, a slight downward pressure opens the tube. It accommodates tube sizes from 0.2 to 2.2 ml and comes complete with a sturdy lab bench stand.

Drummond Scientific

For more information call 800-523-7480 or **circle 147** on the Reader Service Card

MODULAR ROOMS

UniLab Modular Rooms can be built to exact specifications and equipped with high-energy particulate air filtration, temperature/humidity control systems, optional solid wall panels, laboratory furniture, and a wide selection of lighting, door, and floor options. UniLab designs include clean rooms, environmentally controlled rooms, hazardous containment areas, isolated laboratory work areas, gauge and calibration rooms, and special equipment enclosures.

HEMCO

For more information call 800-779-4362 or **circle 148** on the Reader Service Card

AUTOMATIC PIPETTE TIP LOADING DEVICE

The Tipster automatically loads six templates of pipette tips per container, which are then transferred to tip holders by use of a pipetter tip picker. The Tipster can be used in cell culture, genetic, chemical, and medical laboratories that perform blood serum tests, as well as any laboratory that uses plastic tips to perform tests and scientific protocols. The unit accommodates most brands of tips and is easy to maintain.

Bellco Glass

For more information call 800-257-7043 or **circle 149** on the Reader Service Card

LITERATURE

A recent issue of *Solutions Magazine for Life Sciences* includes the articles "Informatics and Knowledge Management," "Lead Discovery Services at Pharmacopeia Labs," "Solutions in Drug Discovery: Computational Solutions of Neuropsychiatric Disorders," and "WebLab 1.6" (on a productivity tool for experimentalists). The magazine also includes news briefs, product briefs, and a calendar of events.

Molecular Simulations

For more information call 619-458-9990 or **circle 150** on the Reader Service Card

Newly offered instrumentation, apparatus, and laboratory materials of interest to researchers in all disciplines in academic, industrial, and government organizations are featured in this space. Emphasis is given to purpose, chief characteristics, and availability of products and materials. Endorsement by *Science* or AAAS of any products or materials mentioned is not implied. Additional information may be obtained from the manufacturers or suppliers named by circling the appropriate number on the Reader Service Card and placing it in a mailbox. U.S. postage is free.

Classified Advertising

To obtain information on rates, deadlines, editorial features, and bonus distribution schedules, call our sales office or visit *Science* Careers at www.scienceonline.org and click on "How to Advertise." All advertising is subject to publisher's approval.

UNITED STATES

Display Classified Advertising

Bren Peters Kristin Westapher
Tel: 202-326-6541 Tel: 202-326-6555
Fax: 202-289-6742
E-mail: science_displayads@aaas.org

Line Classified Advertising

Christina Geiger Kathleen Clark
Tel: 202-326-6532 Tel: 202-326-6722
Fax: 202-289-6742
E-mail: science_classifieds@aaas.org

Line ads are not agency commissionable. Ads submitted should not include any bold, italicized, or abbreviated words. *Science* will edit and typeset ads according to *Science* style requirements. *Science* cannot provide proofs of typeset line ads. *Science* will provide an estimated cost of line ads at time of placement. This is an approximate cost only. Please provide contact name, telephone, billing information, and purchase order numbers with your order.

Online Classified Advertising

Beth Dwyer
Tel: 202-326-6534
Fax: 202-289-6742
E-mail: science_internet@aaas.org

Every employment ad placed in *Science* will be featured in our job database online for 4 weeks. Call to find out how to link to thousands of additional job seekers online with *Science* Professional Network.

www.scienceonline.org

Ad Materials: Send to: *Science* Classified Advertising, 1200 New York Avenue, NW, Room 911, Washington, DC 20005

EUROPE

Line, Display, and Online Classified Advertising

Deborah Cummings
Tel: +44 (0) 1223 326 500
Fax: +44 (0) 1223 326 532
E-mail: european_ads@science-int.co.uk

Ad Materials: Send to: Advertising Dept., Bateman House, 82-88 Hills Road, Cambridge CB2 1 LQ, United Kingdom

Discounts: A 3% cash discount is granted to all prepaid ads.

Credit Cards: *Science* accepts American Express, MasterCard, and VISA. Discount does not apply to credit cards.

Cancellations: Deadline for cancellation is Tuesday, 10 days prior to issue date.

To **Subscribe** to *Science* call:
202-326-6417 or 1-800-731-4939

POSITIONS OPEN



FRED
HUTCHINSON
CANCER
RESEARCH
CENTER



FACULTY POSITION SOLID TUMOR LABORATORY RESEARCH Fred Hutchinson Cancer Research Center and University of Washington

The Fred Hutchinson Cancer Research Center (FHCRC) invites applications from laboratory-based research scientists (M.D. or Ph.D.) with interests of potential clinical relevance for the prevention, diagnosis, or treatment of solid tumors. Applicants for a faculty position as ASSISTANT, ASSOCIATE, or FULL MEMBER/PROFESSOR will be considered. The primary appointment will be in the Clinical Research Division, Fred Hutchinson Cancer Research Center. If desired, a joint appointment may be made to the full-time faculty at the University of Washington at a rank commensurate with qualifications and experience. Significant Center resources have been secured to support this new position. Candidates should send a curriculum vitae, a concise statement of research plans, and three letters of reference to: Solid Tumor Faculty Search Committee, Fred Hutchinson Cancer Research Center, 1100 Fairview Avenue North, Mailstop D2-100, P.O. Box 19024, Seattle, WA 98109-1024. Application review will begin on March 1, 2000, and will continue until the position is filled.

The Fred Hutchinson Cancer Research Center and the University of Washington are Equal Opportunity Employers committed to workforce diversity. Applications from female and minority candidates are strongly encouraged.

FACULTY POSITIONS IN BIOLOGICAL OCEANOGRAPHY at the University of Washington

The School of Oceanography at the University of Washington invites applications for two faculty positions in biological oceanography. Appointment is anticipated at the ASSISTANT PROFESSOR rank, but candidates with exceptional qualifications may be considered for appointment at the rank of ASSOCIATE PROFESSOR or PROFESSOR.

1. The role of planktonic phototrophs in marine biogeochemical cycles: We seek a person whose field research integrates biochemical, physiological, and/or molecular approaches to understand the distribution and abundance of functional groups of phytoplankton important to oceanic biogeochemical processes. The successful candidate will be expected to apply quantitative and/or modeling approaches in the research.

2. Sensory, behavioral, and functional ecology of marine zooplankton: We seek a person whose research utilizes quantitative and/or modeling approaches to investigate the roles of behavior and sensory physiology as they affect the distribution, abundance, and dynamics of zooplankton.

Ph.D. degree is required by the date of appointment. Candidates will be expected to teach at the undergraduate and graduate levels.

Applicants should send a curriculum vitae, a statement of research and teaching interests, a list of publications, recent reprints, and the names of four references to:

Professor Bruce W. Frost, Director
University of Washington
School of Oceanography
Box 357940
Seattle, WA 98195-7940

Informal requests for further information may be directed to Dr. Bruce Frost via e-mail: frost@ocean.washington.edu. Priority will be given to applications received before February 15, 2000.

The University of Washington is building a culturally diverse faculty and strongly encourages applications from women and minority candidates. The University of Washington is an Equal Opportunity/Affirmative Action Employer.

POSITIONS OPEN

TENURE-TRACK/TENURED FACULTY POSITION MEDICAL MICROBIOLOGY UCR/UCLA Program in Biomedical Sciences Division of Biomedical Sciences University of California, Riverside

The Faculty of the Division of Biomedical Sciences are seeking a colleague with a modern, competitive research program and an appropriate background to offer instruction in medical microbiology. The area of research is open, but preference will be given to those applicants who can contribute to the development of an area of research focus within the Division, particularly in the areas of molecular basis of disease and common stress pathways. Research areas of the existing faculty can be found on the website: <http://www.biomed.ucr.edu>. The level of appointment, space allocation, and initial complement funds will be commensurate with the level of professional achievement of the successful applicant. All faculty are expected to obtain and maintain a significant level of extramural grant support. The Faculty of the Division of Biomedical Sciences are responsible for instruction for the first two years of medical school and for oversight of an accelerated premedical curriculum which feeds exceptional students into the medical program. Divisional faculty also train graduate students through one of several graduate programs, including the interdepartmental graduate programs in biomedical sciences, biochemistry, and microbiology. Applications, including a letter of intent; a curriculum vitae with a statement of current and future research goals; funding history; a statement regarding teaching background/expertise; an e-mail address; and the names of three references should be submitted to: Michael B. Stemmerman, M.D., Chairman, Search Committee (Microbiology), Division of Biomedical Sciences, University of California, Riverside, CA 92521-0121. Telephone: 909-787-5705; FAX: 909-787-5504; e-mail: michael.stemmerman@ucr.edu. The position is available immediately and will remain open until filled. *The University of California is an Equal Opportunity/Affirmative Action Employer.*

FACULTY POSITION IN MICROBIAL PHYSIOLOGY

The Department of Biology, Middle Tennessee State University, invites applications for a tenure-track position (#103430). ASSISTANT/ASSOCIATE PROFESSOR, Ph.D. required by August 2000 starting date. Responsibilities include teaching general microbiology/laboratories and developing a course in microbial physiology. Research/public service is expected. Prefer research interest in bioremediation and/or microbial adhesion/biofilms. Applicant reviews begin January 31, 2000. Send application referencing position number, proof of employment eligibility, copies of transcripts, and three letters of reference to: Dr. Stephen Wright, Committee Chair, Box 60, MTSU, Murfreesboro, TN 37132. E-mail: SMWRIGHT@FRANK.MTSU.EDU. *Equal Opportunity/Affirmative Action/Americans with Disabilities Act Employer.*

FACULTY POSITION IN DEVELOPMENTAL BIOLOGY

The Department of Biology, Middle Tennessee State University, invites applications for a tenure-track position (# 103400). ASSISTANT/ASSOCIATE PROFESSOR, Ph.D. required by August 2000 starting date. Responsibilities include teaching developmental biology, cellular and molecular biology, and general biology. Research/public service is expected. Applicant reviews begin January 31, 2000. Send application referencing position number, proof of employment eligibility, copies of transcripts, and three letters of reference to: Dr. Amy Jetton, Committee Chair, Box 60, MTSU, Murfreesboro, TN 37132. E-mail: AJETTON@MTSU.EDU. *Equal Opportunity/Affirmative Action/Americans with Disabilities Act Employer.*

PIONEER HI-BRED INTERNATIONAL, INC.

...the plant genetics company.



Located near Des Moines, Iowa, Pioneer Hi-Bred's ninety-acre campus, including our recently completed laboratory expansion, offers a superb working environment. We currently have the following scientific opportunities available to suitably experienced, highly motivated individuals seeking to make an impact on the future of agriculture.

COORDINATOR (Job #99320E) Molecular Genetics Of Crop Improvement - Agronomic Traits

This person will be responsible for leading a group of scientists who are using the extensive genomic capabilities developed at Pioneer to understand the process of heterosis and to help predict corn hybrid performance. A major role is managing Ph.D. level scientists in the group and helping lead the scientific efforts of the Agronomic Traits group. The successful candidate will have had an outstanding research background in molecular genetics and an ability to understand how these tools can be applied to complex traits. Close interactions with quantitative geneticists and plant breeders will be required. Applicants should have demonstrated leadership in implementing genetic and/or genomic approaches to research in molecular biology. The successful candidate will have demonstrated ability to lead a research program, to set and achieve research goals, to develop and implement innovative new procedures in areas of basic and applied research and excellent communication skills. Applications will be accepted until the position is filled.

RESEARCH ASSOCIATE (Job #99282E)

Pioneer's Feed Improvement Group is seeking an individual to join a team responsible for developing transgene-based strategies to alter the metabolism of developing seed. This individual will contribute to the group's success by helping with transgenic plant analysis. The individual will also assist in identifying targets for modifying seed components and gene characterization. Requirements include a B. S. or M. S. degree in biochemistry or molecular biology, at least two years laboratory experience and knowledge of computers and data analysis. Experience with transgenic plant analyses including (RT)PCR, Northern, Westerns and enzyme assays is strongly desired. Candidates should work well in a team environment and have excellent communication skills.

SENIOR RESEARCH ASSOCIATE (Job #99316E)

The Soybean Transformation Group is looking for an individual to join a team that supports, plans and implements a comprehensive program to (1) optimize existing methods of soybean transformation and (2) develop novel technologies that will improve high-throughput transformation for product development and functional genomics. The essential responsibility of this position is to independently plan and implement research initiatives that complement an established, dynamic and broad-based transformation program. The duties will include optimizing existing tissue culture and transformation procedures, performing innovative research to develop improved transformation technology, participating in internal and external collaborative research, and transferring newly developed techniques to soybean transformation production teams. An M.S. or Ph.D. in Plant Sciences with a primary emphasis in the areas of plant tissue culture and transformation is desired. The successful candidate will have demonstrated recent research accomplishments in the areas of plant tissue culture and plant transformation. Previous experience with the production and analysis of transgenic crop plants and with applied aspects of Agrobacterium biology is desirable. Preferable analytical skills would include direct laboratory experience with routine nucleic acid and protein assays for the detection and quantitation of transgenes and their products. A demonstrated ability to manage, analyze, and present research data is essential. Strong organizational, interpersonal, and written and oral communication skills are essential.

RESEARCH FELLOW (Job #99317E) Product Development - Associative Genetics and Quality Trait Products

The successful candidate will be responsible for providing scientific leadership and conducting research aimed at developing methodology that utilizes population/evolutionary-statistical approaches to identify and quantify functional alleles for complex traits. The responsibilities of this position include: (i) initiating and directing advanced, state-of-the-art research which utilizes functional genomic information to understand phenotypic variation for complex traits, (ii) creating and leading a team to apply genomic-statistical approaches to develop tools to increase the efficiency of Product Development, and (iii) developing methodology to investigate and utilize sequence-based allelic variation for improved quantitative trait understanding and development of superior products. A Ph.D. in biological sciences with five to eight years' research experience in molecular, population, and statistical genetics is required along with the familiarity of claddistics and coalescent theory. The successful candidate will be able to function effectively in a highly collaborative environment, show leadership, be successful in cross-functional team environments, and possess high communication skills.

RESEARCH SCIENTIST (Job #99318E) Product Development - Associative Genetics and Quality Trait Products

The successful candidate will be responsible for planning and coordinating field-based research projects involved in validating and integrating functional genomic tools and approaches to understanding complex traits. The responsibilities of this position include: (i) initiating and coordinating field-based research projects in support of development that utilizes genomic-statistical approaches in developing phenotypic-marker association selection aids for the development of superior products, (ii) communicating and collaborating with breeders and molecular biologists in developing phenotypic bioassays and maize germplasm needed for key target traits and method development, and (iii) developing and maintaining a solid depth of maize germplasm knowledge, its developmental biology, and the impact of environment on gene function. A Ph.D. in genetics or plant breeding with three to five years' experience in both whole plant and molecular genetics is required along with experience or familiarity with plant quantitative and breeding methodologies. The successful candidate will be able to function effectively in a highly collaborative environment, show leadership, and be successful in cross-functional team environments.

SENIOR RESEARCH ASSOCIATE (Job #99319E) Product Dev. - Associative Genetics/Quality Trait Products

The successful candidate will provide computational biology support for new methodology development, which capitalize on genomic tools to improve plant breeding efficacy and product development. This individual will help design, analyze, and interpret data generated from emerging genetic technologies. The responsibilities of this position include: (i) applying and developing computational methods to analyze genomic data and expression profiles, (ii) providing computational biology support for analysis of cellular, tissue type, and whole plant gene expression profiling and quantitative genetic experiments, and (iii) assist in the planning of experiments through application of appropriate experimental design. A Ph.D. or MS in biological sciences or other related fields with at least two to three years' experience in Computational Science, Statistics, or applied mathematics. Applicants should have demonstrated computational biology skills and the ability to apply data analysis and visualization techniques to complex data sets. The successful candidate will be able to function effectively in a highly collaborative environment, be successful in cross-functional team environments, and possess high communication skills.



Pioneer Hi-Bred Int'l, Inc., is the world leader in the discovery, development and delivery of elite crop genetics.

We are committed to developing and incorporating both time-tested approaches and cutting edge technologies that will continue to make our products superior to any in the industry. Pioneer's research programs, research collaborations, extensive germplasm base and advanced

work in genomics are unmatched by our competitors.

Pioneer employs more than 400 scientists, in an environment where individual achievements and team accomplishments come together to provide a rich and rewarding work experience. We strive to give each scientist the opportunity to make a difference...to be inventive and resourceful...to make a significant contribution.

Pioneer Hi-Bred is committed to competitive compensation and excellent annual reward systems plus a comprehensive benefits package including 401(k), tuition reimbursement and relocation assistance. Des Moines is a prospering, growing city with diverse cultural, economic, industrial and consumer resources. It ranks well above the national average in quality of life including affordability and education

(www.smartcareermove.com).

For confidential consideration,

e-mail your resume and a cover letter, indicating job code to: jobsresearch@phibred.com

or send to:
Human Resources,
Pioneer Hi-Bred International, Inc.
Research & Product Development
7300 N.W. 62nd Ave.
PO Box 1004
Johnston, Iowa 50131-1004

<http://www.pioneer.com>



PIONEER

Pioneer Hi-Bred International, Inc.

©, SM, TM Trademarks, registered or applied for, of Pioneer Hi-Bred International, Inc.

© 1999, PHII

MEETINGS



Conference Announcement

MICROBICIDES 2000

March 13-16,
Hilton Alexandria Mark Center
Washington, DC

SPECIFIC GOALS OF THE CONFERENCE ARE:

- ♦ To provide updates on current research in microbicides and to review the state-of-the-art methodological, clinical, ethical, and behavioral issues in microbicide research.
- ♦ To allow opportunities for researchers and public health workers from developed and developing countries to identify practical applications for current research and clinical trials, as well as ways to extend knowledge about topical microbicides.
- ♦ To present novel or innovative work in the area of microbicides.
- ♦ To present opportunities for new investigators to become more involved in the field of microbicide research, as well as updates on advocacy for grassroots associations.

The 2½-day conference will be divided into three tracks: **Basic Science, Clinical Science, and Behavioral Science and Public Health.** The format will consist of scientific overviews and track-specific presentations with track plenary sessions, invited lectures, and presentations of original research; workshops to review issues unique to microbicides, such as trial design and outcome measures, and ethical issues in clinical trials of microbicides; and poster sessions.

TRACK A - Basic Science: Animal Models, *In vitro* Assays
TRACK B - Clinical Science: Design of Clinical Efficacy Trials
TRACK C - Behavioral Science and Public Health

For a registration brochure, contact:

MICROBICIDES 2000

% 7101 Wisconsin Avenue, Suite 1300
Bethesda, MD 20814 USA

800-749-9620 (U.S. callers only)
 301-986-4870 (collect calls for "Microbicides 2000" accepted
 between 9:00 a.m. and 5:00 p.m. eastern time)
 301-913-0351 (facsimile)
 aborlo@s-3.com (e-mail)

Assistant Professor COMPUTATIONAL BIOLOGY in the Department of Biological Sciences Simon Fraser University

The Department of Biological Sciences is seeking a tenure-track faculty member in the area of COMPUTATIONAL BIOLOGY. The appointment will be made at the Assistant Professor level with a start date on or after September 1, 2000. We seek an individual who uses mathematical tools in conjunction with experimental studies to elucidate biological processes or phenomena. Potential research areas are open, but could include theoretical ecology/evolutionary biology, computational genomics or computational neuroscience. There are many opportunities for collaboration within the faculty of science. The successful candidate will pursue a vigorous, externally funded research program that includes the training of graduate students. She or he will contribute to teaching at the undergraduate level, and develop and teach upper division undergraduate and graduate courses in their area of expertise.

A Ph.D. degree is required, and appropriate post-doctoral experience is preferred. Applicants should send, no later than March 1, 2000, a Curriculum Vitae, three representative reprints, a one-page summary of their research objectives, and three letters of reference to:

Dr. Norbert H. Haunerland, Chair
 Department of Biological Sciences
 Simon Fraser University
 8888 University Blvd.
 Burnaby, B.C. V5A 1S6
 Canada
 FAX 604-291-4312

The department web page can be accessed via <http://www.biol.sfu.ca>.

This advertisement is directed to Canadian citizens and permanent residents. This position is subject to final budgetary approval.

Simon Fraser University is committed to the principle of equity in employment and offers equal employment opportunities to qualified applicants.

FELLOWSHIPS

GRADUATE FELLOWSHIPS CENTER FOR THE STUDY OF EVOLUTION AND THE ORIGIN OF LIFE UCLA

ORIGIN OF THE UNIVERSE...
 FORMATION OF THE EARTH...
 BEGINNINGS OF LIFE...
 EVOLUTION OF THE BIOSPHERE...
 ADVENT OF *HOMO SAPIENS*...

CSEOL invites applications for five graduate fellowships for 2000-2001. *In addition to support provided Fellows by UCLA departments*, CSEOL will grant each Fellow a stipend of \$5,000 per year, *for each of the first two years* of graduate study, with no teaching or other duties. Stipends may be used for any purpose the Fellow deems appropriate – travel, lodging, attendance at scientific meetings, purchase of books, computers, research equipment – for *any purpose*, without restriction. Fellows are included in a select group of graduate students invited to interact with Center faculty in a weekly dinner/seminar/discussion series. Applicants should be planning to carry out doctoral research under the direction of a CSEOL faculty member in a subject area relating to **virtually any aspect of evolution – of the cosmos, of the solar system, of Earth, of the environment, of life, of humans.** Areas of particular interest for 2000-2001 include (1) origin and early evolution of life; (2) biochemical evolution and molecular phylogeny; and (3) planetary evolution and astrobiology. Faculty are members of the UCLA Departments of Anthropology, Atmospheric Sciences, Biology, Chemistry & Biochemistry, Computer Science, Earth & Space Sciences, Economics, Geography, History, Microbiology, Philosophy, Physics & Astronomy, Psychology, and Sociology; the School of Medicine; the School of Public Health; the Institute of Geophysics and Planetary Physics; and the Molecular Biology Institute. Fellowship applicants must apply (preferably, by 18 February 2000) both to an appropriate academic department and to CSEOL. For application forms and a list of CSEOL members, contact:

CSEOL Fellows Committee
 Geology Building, Room 5687
 University of California, Los Angeles
 Los Angeles, CA 90095-1567
 Telephone: (310) 825-1170 FAX: (310) 825-0097
 e-mail: mantonya@ess.ucla.edu



**MOUNT SINAI
SCHOOL OF
MEDICINE**

Post-Doctoral Opportunities

Mount Sinai School of Medicine is a leader in medical education and research. We have the following post-doctoral opportunities available:

Division of Endocrinology & Metabolism

- We seek post-doctoral fellows to study complex disease genetics with emphasis on autoimmune thyroid disease. NIH-funded training grant requires US citizen or permanent resident. Reply with C.V., a brief description of research experience, and the names of three references to: **Terry F. Davies, M.D., Box 1055; Fax: 212-241-4218.**

- A new bone program, sponsored by NIH, seeks highly motivated post-doctoral fellows with molecular biological skills, particularly in the area of genetically manipulated mice. The laboratory is actively researching the role of calcium signaling molecules in bone resorption and bone formation control. This is an opportunity for a candidate to enhance his/her research career in a highly interactive environment. Reply with C.V. to: **Baljit S. Moonga, M.D., Box 1055; Fax: 212-534-4820; E-mail: baljit.moonga@mssm.edu**

Institute For Gene Therapy and Molecular Medicine

- A post-doctoral position is immediately available to study the genetic aspects of stem cell biology, and their relation to aging. A solid background in molecular biology and genetics, and at least 2 years of post-doctoral experience are needed. Reply with C.V., a description of research experience, and names of three references to: **Hans-W Snoeck, M.D., Ph.D., Box 1496; Fax: 212-803-6740; E-mail: hans_snoeck@smtplink.mssm.edu**
- A post-doctoral position is available immediately to study the functions of novel genes in hematopoietic stem cells. Training in molecular cloning and background in hematopoiesis is preferable. Experience in flow cytometry is desirable. Reply with C.V. and the names and addresses of three references to: **Schickwann Tsai, M.D., Ph.D., Box 1496; Fax: 212-849-2628.**

The Derald H. Ruttenberg Cancer Center

- We seek a post-doctoral scientist to study roles of Ras-related oncogenes and phosphatidylinositol 3-kinase-dependent signaling cascades in human cancer. Highly motivated individual with strong background in protein purification, antibody generation, and immunohistochemistry is highly desirable. Reply with C.V. and list of three references with telephone numbers to: **Dr. Andrew Chan, The Derald H. Ruttenberg Cancer Center, Box 1130; Fax: 212-849-2446; E-mail: Achan@smtplink.mssm.edu**

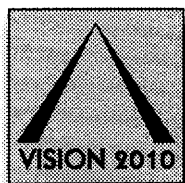
Department of Psychiatry

- Two post-doctoral positions are available in the Neuroinflammation Research Laboratories to study gene expression using DNA microarray hybridization technology. The studies are aimed at identifying genes involved in the clinical progression of Alzheimer's Disease dementia. The successful candidate must have a demonstrated knowledge of molecular biology and protein chemistry. Positions require 2+ years commitment and exceptional motivation. Reply with C.V., interests, and the names of three references to: **Guilio Maria Pasinetti, M.D., Ph.D., Neuroinflammation Research Center, Department of Psychiatry, Box 1229.**

For consideration, send C.V., following "Reply to" information for position of interest, to: **Mount Sinai School of Medicine, One Gustave L. Levy Place, New York, NY 10029-6574.** We are an equal opportunity employer fostering diversity in the workplace.

SCIENTIFIC OPPORTUNITIES

THE BAYER FACTS:



Bayer:

A premier
healthcare
company
for the
21st century.

relates to assay development. Prior research experience in tumor biology and drug discovery would be preferred. Experience in proper handling, recording and analysis of scientific data is desired along with solid computer and communication skills. Response Code: ASMW0717

■ In the highly competitive global pharmaceutical marketplace, there are many "Bayer Facts" that distinguish us as a leader. To name a few, we are part of Bayer Corporation, a \$32 billion international diversified organization and one of the most broadly-based healthcare companies in the U.S. Our Pharmaceutical Division site in WEST HAVEN, CT has worldwide responsibility for the research and development of treatments for osteoporosis; cancer; diabetes and other metabolic disorders.

CANCER DRUG DISCOVERY

SCIENTISTS

Biochemical/Cellular Assay Development - Ph.D.

■ Successful candidates will be responsible for leading a research team which will focus on the development and implementation of biochemical assays and both mechanistic/functional cell based systems for the evaluation of small molecule leads. The individual will function within a team based research environment and will need 5+ years research experience beyond a Ph.D in Biochemistry, Cell Biology or Pharmacology. Prior research experience in oncologic drug discovery is instrumental. Response Code: ASMW0654

SCIENTISTS

Biochemistry/Cell Biology/InVivo - MS/BS

■ Your overall responsibility will include the evaluation of small molecule compounds in established biochemical assays and both mechanistic/functional cell based systems. The individual will also be responsible for the development and implementation of these assay systems for such drug discovery efforts. Candidate will function within a team based research environment and will need 5+ years research experience beyond a BS or 2+ years beyond a MS in biochemistry, cell biology or pharmacology. This would include experience in enzymology and/or receptor binding and mammalian cell culture as it

OSTEOPOROSIS DRUG DISCOVERY

SCIENTISTS

Bone Pharmacologist - Ph.D.

■ Exciting opportunities to lead a laboratory group in the discovery of therapeutics for osteoporosis. The ideal candidates will develop cellular, organ culture or animal models of bone disease suitable for the study of bone biology and for the evaluation of therapeutic agents. Ph.D. in Biology, Pharmacology or Endocrinology with at least 2 years of proven experience is required. Response Code: ASMW0624

SCIENTISTS

Biologist/Biochemist - BS/MS

■ Multiple opportunities for scientists to support the discovery of therapeutics for osteoporosis. Seeking scientists who will work within the in-vivo testing group or contribute to the development of screening programs for osteoporosis therapies. BS or MS degree in Biochemistry/Biologic Science with experience in biology or histology. Response Code: ASMW0623

■ Bayer offers a competitive salary, an excellent benefits package and an on-site child care facility. Please forward your resume (indicating response code) to: **Bayer Corporation, Pharmaceutical Division, P.O. Box 3238, Scranton, PA 18505-0238.** Fax: 1-888-805-7474. E-mail: bayerpharma@alexus.com No agencies or phone calls please. For more information on Bayer, search: <http://www.bayerpharma-na.com>

■ An Equal Opportunity Employer M/F/D/V. Bayer Corp. is committed to enhancing and maintaining cultural diversity within our work environment. We appreciate your interest in our Company. Unfortunately, we will only be able to respond to those individuals chosen for interviews or additional follow-up.



Pharmaceutical
Division

Changing the world with great care.

LIJ Medical Center

From community based programs to large tertiary teaching hospitals, we're a system of unparalleled quality, resources and innovation. Be #1 with us in the following opportunity.

Become
#1 with
us

Post Doctoral - Research Position

Post Doctoral position available to investigate mechanisms of oxidative stress induced injury and signaling. Experience in animal work, cell culture, biochemistry, and molecular biology essential. Experience with HPLC desirable. Send CV and names of three references to: Dr. H. Steinberg, Division of Pulmonary/Critical Care Medicine, Rm C-20, LIJ Medical Center, 270-05 76th Ave, New Hyde Park, NY 11040. Fax: 718-470-1035, e-mail: steinberg@lij.edu. Long Island Jewish is the Long Island Campus for Albert Einstein College of Medicine.



NORTH SHORE
LONG ISLAND JEWISH
HEALTH SYSTEM



Setting New Standards in Healthcare

Visit us at www.northshorelij.com
Equal opportunity employer M/F/D/V

Neuroscience Program Director

University of Massachusetts Medical School, Worcester, MA

The University of Massachusetts Medical School invites applications for the position of Director of an Interdisciplinary Program in Neuroscience. We are seeking candidates with outstanding research programs. The position offers an exceptional opportunity and will include resources for numerous new tenure track faculty appointments with generous start-up funds and substantial space in a new state-of-the-art research building currently under construction. The successful candidate must have the vision and leadership qualities to develop and lead an outstanding multidisciplinary program that will include the twenty-five NIH-funded neuroscientists currently housed in seven departments and that will complement the newly created Neuropsychiatric Research Institute.

Interested candidates should send a curriculum vitae to Dr. H. Maurice Goodman, Chair, Neuroscience Search Committee, University of Massachusetts Medical School, Department of Physiology, 55 Lake Avenue North, Worcester, MA 01655.



The University of Massachusetts is an equal Opportunity/Affirmative Action Employer.



Respiratory Research

On the edge and leading the way. The University of Calgary is a contemporary university that builds a spirit of discovery and inquiry while delivering a dynamic life and quality learning experience.

The **RESPIRATORY RESEARCH GROUP** invites applications from outstanding investigators for five full-time academic positions at the Assistant Professor level and higher to develop vigorous independent research programs within a multidisciplinary research environment. While duties include some teaching and graduate student supervision, 75% of time will be protected for research.

- **Chair of the Respiratory Research Group** – The successful applicant will head the existing group of investigators and lead the Faculty in a new initiative of cell and molecular biology of the lung. Responsibilities include scientific leadership, recruitment and graduate education, as well as the further development of existing links with lung cell biologists in other research groups at the Universities of Calgary and Alberta. The ideal candidate will have primary interest in inflammatory mechanisms in lung disease to complement the strong clinical research base in pulmonary medicine at the University of Calgary. The Chair will participate in the other searches listed below.
- **Molecular Biology of the Lung** – The successful applicant must have a primary interest and expertise in developmental molecular biology. The ideal candidate will have substantial interest in neonatal-perinatal physiology and medicine; demonstrated interest in the role of growth factors in organogenesis will be an asset. The position also provides an opportunity to collaborate with the established investigators in developmental biology and perinatal physiology.
- **Biochemistry and Biophysics of Lung Interfaces** – Research expertise in surfactant and the interfacial properties of the lung is required.
- **Respiratory Neurobiology** – Research expertise in cellular and neurobiological investigation of control of respiration is required. The position also offers an excellent opportunity to interact with a strong group of investigators in the areas of sleep, control of respiration and respiratory muscle physiology.
- **Respiratory Epidemiologist** – Research expertise in epidemiology and population health related to respiratory diseases is required. The position offers an excellent opportunity to interact with investigators in sleep disordered breathing, asthma and interstitial lung diseases.

The Respiratory Research Group is based in the rapidly growing Faculty of Medicine which is in the process of building a major new research facility. Calgary is a vibrant, multicultural city (~850,000) near the Rocky Mountains, Banff National Park and Lake Louise.

The Group comprises 15 principal investigators and their research teams, investigating both basic and clinical aspects of respiratory disease. The group has two focuses, respiratory neurobiology and sleep and cell and molecular biology of the lung, and is currently undergoing a major expansion following a successful external review. There are strong interactions with the Alberta Asthma Centre, Edmonton, and the Alberta Lung Association Sleep Disorder Centre, Calgary. The Faculty is supporting the establishment of an endowment to support a research chair. With existing strengths in adult and paediatric respirology, asthma, sleep disorders, control of breathing, occupational and interstitial lung diseases and perinatal respiratory disorders, the group wishes to expand its expertise to include the basic cellular biology of these diseases.

Qualifications for all positions include a PhD and/or MD, at least two years of postdoctoral experience and an established record of publications and expertise in their area of research. Salary support and establishment funding are available through successful application to the Alberta Heritage Foundation for Medical Research and/or the Medical Research Council of Canada; we anticipate generous start-up funds will be available to qualified candidates. Eligibility for licensure in the Province of Alberta is also required if the selected individual will be providing patient care.

Please submit a curriculum vitae and a statement of research interests, and arrange to have three letters of reference sent directly, **by March 3, 2000 (for the Chair position) and by March 31, 2000 (for all other positions)**, to:

Dr. John E. Remmers, Professor

Departments of Medicine and Physiology & Biophysics
Faculty of Medicine
3330 Hospital Drive N.W.
Calgary, Alberta, Canada
T2N 4N1

In accordance with Canadian immigration requirements, priority will be given to Canadian citizens and permanent residents of Canada. The University of Calgary respects, appreciates and encourages diversity.



PHYSIOLOGIST/PATHOLOGIST AND ANATOMIST

New York Chiropractic College, a leading accredited college of chiropractic, has immediate openings for two full-time assistant/associate professors in the basic sciences. Located in Seneca Falls, NY, in the heart of the Finger Lakes region, NYCC is dedicated to providing students with a quality education that will enable them to deliver excellence in alternative health care.

We currently have two openings: 1) Physiologist/Pathologist – to assist in the delivery of the basic science curriculum which includes physiology, pathology, biochemistry, microbiology, 2) Anatomist/Neuroanatomist – to teach gross anatomy and neuroscience lectures and laboratories. These positions are primarily teaching; however, continued scholarly and professional development is encouraged. Current institutional research interests include biomechanics and gait analysis, human and primate functional anatomy, motor control, skeletal muscle physiology, sports medicine and performing arts medicine.

Qualified candidates must possess a Ph.D. in anatomy, physiology, biology or a related discipline. Experience teaching at an accredited graduate or professional level institution as well as familiarity with instruction methods for a health-based curriculum is desired. Interested candidates should send a cover letter indicating areas of expertise and interest and vitae to:

Office of Human Resources
New York Chiropractic College
2360 State Rt. 89
Seneca Falls, NY 13148

Applications will be accepted until suitable candidates are found.

EOE: M/F/V/D

Eisai Research Institute (ERI), conveniently located in Andover, Massachusetts is part of the global network of research facilities owned by Eisai Co. Ltd., one of Japan's major pharmaceutical companies with sales in excess of \$2.3 billion.

Eisai is committed to providing pharmaceuticals that truly benefit patients and their families and respond to the diverse health-care needs of people around the world.

ERI's four facilities offer the strength, stability, and resources of an international force in pharmaceuticals. Yet, each of these facilities is small enough to ensure that every individual will be heard and that each contribution will be quickly recognized and rewarded.

If your professional experience and educational background combine to form a record of accomplishment which sets you distinctly apart from others, take advantage of this opportunity to have an influence on Eisai's growth and success. Investigate our current vacancy and explore other possibilities.

RESEARCH INVESTIGATOR

We seek a RESEARCH INVESTIGATOR in the field of connective tissue research and inflammation, with a Ph.D. in Biochemistry. Candidate must be able to conduct *in vivo* experiments, design and develop assay systems, evaluate drug candidates, and possess technical knowledge regarding measurement techniques and cell handling abilities. Flexibility, good oral and written communication skills, ability to work independently, and excellent technical and analytical skills are required.

Our facilities in the Andover, MA area offer professional environments combined with the natural beauty of the White Mountains and the cultural advantages of Boston.

Eisai offers an outstanding compensation package including 401(k) plan.
Please include two letters of recommendation and a research summary
with your resume (CV) and fax or forward to:
Human Resources, Eisai Research Institute
One Corporate Drive, Andover, MA 01810
Fax: (978) 681-8731; E-mail: hr_eri@eisai.com

For more information

visit the Eisai Ltd. Co. Web site at: www.eisai.co.jp

We are an equal opportunity employer M/F/D/V

DIRECTOR, ATMOSPHERIC CHEMISTRY DIVISION

National Center for Atmospheric Research

The University Corporation for Atmospheric Research (UCAR) seeks applications for the position of Director of the Atmospheric Chemistry Division (ACD) at the National Center for Atmospheric Research (NCAR). UCAR intends to fill the position promptly, and seeks to have the new Division Director in place by mid-2000.

The Director of Atmospheric Chemistry Division reports to the Director of NCAR and is responsible for the overall scientific productivity, creativity, and excellence of the division; and for the formulation and execution of long- and short-range plans within the NCAR guidelines for management. The Director is also responsible for the quality of the scientific and support staff; for personnel management, including fostering UCAR's diversity goals; for planning and management of budgets and other resources; and for the development of new funding sources to support the scientific goals of the division.

The Atmospheric Chemistry Division focuses on chemical processes that are important on both global and regional scales. The ACD program includes theoretical, interpretive, and observational research. An important aspect of ACD's role as part of the national center is to help plan, lead, coordinate, and conduct large-scale research programs in collaboration with university colleagues, other national agencies, and other countries.

The successful candidate will have a Ph.D. in an appropriate physical science; or an equivalent combination of education and experience. This individual will be recognized internationally as a scientific leader in atmospheric chemistry and/or related areas, as demonstrated by a strong research record. Additionally, the successful candidate will possess demonstrated scientific acumen and leadership skills associated with the development of scientific programs.

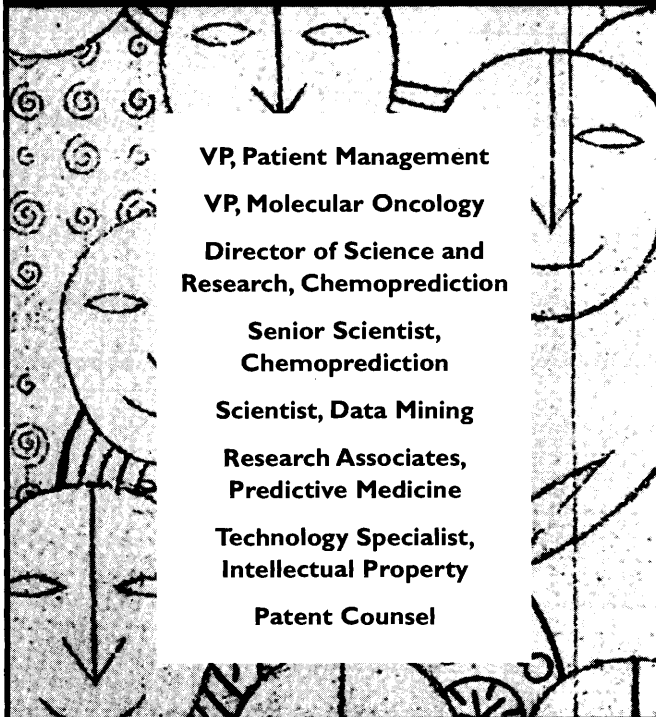
Salary Range \$8,523-\$12,785/month

Applications should be received by 15 February 2000 to receive full consideration. Applications should be accompanied by a complete curriculum vita. Address all correspondence to:

ACD Director Search Committee
(#9333)
Human Resources
University Corporation for
Atmospheric Research
P.O. Box 3000
Boulder, CO 80307

Additional information is available at:
<http://www.fin.ucar.edu/hr/employment/9333.html>

the new face IN p H a r m a c e u t i c a l s



VP, Patient Management

VP, Molecular Oncology

**Director of Science and
Research, Chemoprediction**

**Senior Scientist,
Chemoprediction**

Scientist, Data Mining

**Research Associates,
Predictive Medicine**

**Technology Specialist,
Intellectual Property**

Patent Counsel

Millennium has a new vision for the future of medicine. That drug development be perfectly precise. That all patient therapies be totally individualized. That all disease be targeted at its core. We will succeed in realizing this vision for eight hundred reasons—our people. Expertise, insight, synergy and, above all, passion unite us in creating a better way to cure disease and allow us to have fun while doing it. The face of the future never looked brighter.

Join us in building the biopharmaceutical company of the future at our Cambridge facilities. Please respond by sending your resume using only one of the following methods. Mail: Millennium Pharmaceuticals, Resume Processing Center, Source Code SC1700, PO Box 798, Burlington, MA 01803. Email: millennium@webhire.com. Fax: (800) 370-6925. A Source Code must be included with all submissions. We are an equal opportunity employer committed to discovering the individual in everyone.

Transcending the limits of medicine™

www.mlnm.com



Living Skin Bank Research Scientist

Required Qualifications: Ph.D with a minimum of two years experience in either protein and lipid biochemistry or in cell and molecular biology. Experience with tissue culture.

Preferred Qualifications: Experience in metabolic studies of retinoids and other lipid mediators, with epithelial cell biology and biochemistry, and with HPLC and protein purification.

Please send resumes to: Stony Brook University Hospital Human Resources, Three Technology Drive, UH# 7423 Suite 100, East Setauket, New York 11794-4073

Call (516) 444-4700 for a disability related accommodation.

Stony Brook is an affirmative action/equal opportunity educator and employer



MULTI-DISCIPLINARY INITIATIVES AT THE SCRIPPS INSTITUTION OF OCEANOGRAPHY

The Scripps Institution of Oceanography, University of California, San Diego, is searching for a significant number of tenured/tenure-track faculty members who will communicate or work effectively across disciplinary interfaces. The search is open to candidates at all levels, and we particularly encourage women and minorities to apply. We anticipate that a majority of the appointments will be at the Assistant Professor level. The level of appointment will be commensurate with qualifications and experience, with salary based on published UC pay scales. Applicants must hold a Ph.D. degree and will be expected to teach and supervise students, primarily at the graduate level, conduct an extramurally funded research program, and participate in administrative functions of the department and the university.

Multidisciplinary search committees concerned with the broad areas listed below will evaluate candidates for their capacity for leadership in research and teaching.

- Biology and ecology: organismal diversity, interrelations, and connections with the physics and chemistry of the ocean
- Geology and geophysics: geological, biological, and chemical dynamics of earth and ocean systems
- Earth's climate: oceanic, atmospheric, biogeochemical, and hydrological aspects
- Coastal science: physical, geological, biological, and chemical aspects

In choosing within and across areas, the Institution will stress observations, and hopes to strengthen its teaching curriculum and broad capabilities in such areas as instrumentation, platform development, remote sensing, information management, and numerical computations. Nonetheless, the excellence of the individual candidate remains the primary qualification.

Interested candidates should submit a letter of application, a curriculum vitae, a statement of research interests, and the names and addresses of three referees to:

Professor W. K. Melville, Chair
Graduate Department
Scripps Institution of Oceanography/0208
University of California, San Diego
9500 Gilman Drive
La Jolla, CA 92093-0208

The search committees will commence formal consideration of candidates on January 31, 2000, but applications will be accepted until the search is successfully completed.

UCSD is an Affirmative Action/Equal Opportunity Employer.

Merck & Co., Inc. is a leading research-driven pharmaceutical products and services company. Recently ranked by *Fortune* in the top 10 of "America's Most Admired Companies," we continually live up to our reputation with a truly unique work environment that fosters diversity and growth. We currently have two excellent career opportunities at our **Rahway, NJ** location:

Clinical Associate – Clinical Pharmacology

Merck Research Laboratories is seeking a candidate who will be responsible for writing clinical study reports and protocols with pharmacokinetic objectives and monitoring clinical studies for our Clinical Pharmacology Department. As a liaison, you will work with outside investigators and Merck Research Laboratories' departments. The successful candidate should possess a Ph.D. or the equivalent, preferably in biological or health sciences, and 1-2 years' clinical research experience in academia or industry. **Job Code: XHXMRSMLS12179.**

Senior Research Biochemist

We are also looking for a Senior Research Biochemist for our Department of Metabolic Disorders. This position involves working as a member (and potential leader) of teams focused on basic drug discovery research in the area of diabetes and related disorders (e.g. obesity, lipids). The successful candidate will have recently completed graduate training (a Ph.D. or MD) and must have a strong background in biochemistry and in vivo physiology of metabolism. A strong publication record with excellent communication and interpersonal skills are also required. **Job Code: XHXMRSMLS10799**

Merck is committed to providing employees with a stimulating work environment, as well as a competitive salary and benefits package. For consideration, please forward your resume and a cover letter, including salary requirements and appropriate **Job Code**, to: **Merck Positions, PO Box 92164, Los Angeles, CA 90009-2164. E-mail: merck@isearch.com Fax: (310) 337-3393.** We are an Equal Opportunity Employer, M/F/D/V.



Hematology Faculty Positions

The Division of Hematology is seeking two physician/scientists for full-time academic positions at the Assistant or Associate Professor level.

Primary responsibilities will be in research (75%) and patient care/teaching. Considerable start-up funds and laboratory space are available to support this expanded research effort.

Preference will be given to candidates with independent funding whose research interests are broadly related to genetics, vascular biology, hemostasis/thrombosis, and hematopoiesis. Must be board certified in Internal Medicine and board eligible/certified in Hematology and/or Oncology.

Send letter of interest and CV to:
Dr. Wadie F. Bahou
Chief of Hematology
HSC, T15/040
SUNY/Stony Brook
Stony Brook, New York
11794-8151

An affirmative
action/equal
opportunity educa-
tor and employer.



Dean of Science and Technology

The College of Staten Island of The City University of New York seeks nominations and applications for the position of Dean of Science and Technology. As head of one of the college's two academic divisions, the Dean of Science and Technology reports to the Vice President for Academic Affairs/Provost and is a member of the President's cabinet. The Dean of Science and Technology has responsibility for the academic standards of the division as a whole and specifically for the personnel, curriculum, and budgets of six academic departments (Biology, Chemistry, Computer Science, Engineering Science and Physics, Mathematics, Nursing). The division offers master's programs in Adult Health Nursing, Biology, Computer Science, Environmental Science, and Physical Therapy; and, in conjunction with the CUNY Graduate School, doctoral programs in Computer Science, Neuroscience, Physics, and Polymer Chemistry. The Dean has responsibility also for supervision of faculty recruitment, appointment, reappointment, tenure, and promotion, including the implementation of college affirmative action policies; for maintenance of the range, depth, and quality of divisional undergraduate and graduate programs, curricula, and courses, and their evaluation; for coordination of grant activity and faculty development; for divisional long-range planning and short-range implementation; for the allocation of budgets among departments.

Qualifications include an earned doctorate in a discipline represented in the division. A demonstrated record of distinction in college teaching and scholarship is required, as is a successful record of extramural funding. A minimum of three years of higher education leadership at the level of department chair or above is also expected. The search committee will be particularly interested in candidates with proven ability to manage fiscal and physical resources, with superior communication and organizational skills, and a personal and professional commitment to equal opportunity and affirmative action goals. Salary range: \$92,904 - \$112,602, commensurate with qualifications.

The College of Staten Island is one of 11 senior colleges of the City University of New York system. CSI has an enrollment of 12,000 and awards associate, baccalaureate, and master's degrees; and offers doctoral programs in Computer Science, Neuroscience, Physics, and Polymer Chemistry in conjunction with the University Graduate Center. Modern, state-of-the-art classrooms and facilities provide an outstanding learning environment on a 204-acre campus.

The position is effective September 1, 2000.

Suggestions and nominations by third parties are invited. Applicants should submit a letter of interest that draws attention to the pertinent features of their credentials, a *curriculum vitae*, the names, addresses, and telephone numbers of three references to: **Chairperson, Search Committee for Dean of Science and Technology, South Administration (1A), room 305, College of Staten Island/CUNY, 2800 Victory Blvd., Staten Island NY 10314;**

email: dileo@postbox.csi.cuny.edu

EEO/AA/ADA employer



CONFERENCES

CALL FOR PAPERS

The 16th Annual International Conference on

CONTAMINATED SOILS, SEDIMENTS & WATER

October 16-19, 2000

University of Massachusetts at Amherst

GENERAL SESSIONS

- bioremediation • chemical analysis
- cleanup standard setting
- environmental fate and modeling
- hazard exposure and risk assessment
- hydrocarbon identification • innovative technologies
- regulatory programs and policies
- site assessment/field sampling • soil chemistry
- standard remedial technologies/corrective actions
- case studies on any of the above

SPECIAL SESSIONS

- chlorinated hydrocarbons, pesticides (PCBs, etc.)
- contamination at military installations
- ecological risk assessments • heavy metals
- jet fuel contamination • MTBE • phytoremediation
- railroad sites • risk based cleanups (RBCLA)
- state regulatory programs • sediments
- environmental forensics • containment
- natural attenuation • arsenic

Deadline for Submissions is February 7, 2000

Submit your abstract online: **www.aehs.com**
or Email to **dleonard@schoolph.umass.edu**

Conference Co-Directors

Paul T. Kostecki, Ph.D., Edward J. Calabrese, Ph.D., UMass Amherst;

Hilary I. Inyang, Ph.D., UMass Lowell

Phone: (413) 545-3164

FAX (413) 545-4692





MAYO CLINIC

POSTDOCTORAL POSITIONS

Postdoctoral positions are available immediately to study the biochemical and molecular aspects of breast/ovarian cancer and the roles of tumor suppressor genes p53, BRCA1 and BRCA2. A strong background in molecular and cellular biology is essential. Prior experience in working with mice is preferred. Please send curriculum vitae and the names of three references to:

Junjie Chen, Ph.D.
Department of Radiation Oncology
Guggenheim Building, 13th Floor
Mayo Clinic
200 First St., SW
Rochester, MN 55905

*Mayo Foundation is an affirmative
action and equal opportunity
employer and educator.*

SENIOR INVESTIGATOR/UNIT HEAD

*Gerontology Research Center
National Institute on Aging*

The Personality, Stress and Coping Section (PSCS) Unit on Emotions and Psychophysiology, Laboratory of Personality and Cognition, Intramural Research Program of the National Institute on Aging invites applications for a tenured Senior Investigator.

The successful applicant as Head of the Unit on Emotions and Psychophysiology will be responsible for all aspects of planning, coordinating, and directing studies that link physiological processes, emotional reactions and enduring dispositions. The head of the program on Emotions and Psychophysiology will conduct intensive research on the role of emotions and psychophysiological processes related to psychological adaptation and health. For example, studies using sophisticated mathematical models and other tools might measure heart period variability, an indicator of the responsiveness of the organism to internal and external cues, and its association with emotional states and traits; and its stability and change across the life course. One goal of the research is to advance understanding of the specific physiological mechanisms that might offer a point of intervention to enhance regulation of emotions.

Applicants must have a record of scientific accomplishments relating emotional states and traits to physiological processes and adaptional outcomes, including experience and excellence in laboratory research and qualification of a Ph.D. in Psychology or Psychophysiology. Salary will be commensurate with experience and qualifications.

Applicant should send a CV, bibliography, 3-5 recent reprints, and 1,000 word overview of a proposed program along with 6 letters of reference to

Karen Maben, Personnel Office
National Institute on Aging, NIH
Box 26, 5600 Nathan Shock Drive
Baltimore, MD 21224

Applications must be postmarked by **February 5, 2000**

NIH IS AN EQUAL OPPORTUNITY EMPLOYER



FACULTY POSITION CHEMICAL BIOLOGY/PROTEOMICS

The newly-created **Center for Chemical Biology** at **Duke University Medical Center**, together with the **Department of Pharmacology and Cancer Biology**, invites applications for a tenure-track position at the level of Assistant or Associate Professor. We seek an individual who will establish, or has established, a dynamic research program that exploits functional proteomics to identify proteins and elucidate their functions. We are especially interested in programs that combine proteomics with the use of small molecules to explore and control regulatory networks. The successful candidate will hold an appointment in the Department of Pharmacology and Cancer Biology, and will be expected to contribute to the education mission of the Department. A statement of research interests, curriculum vitae, and three letters of reference should be sent to: **Faculty Search Committee, Center for Chemical Biology, Box 3686, Duke University Medical Center, Durham, NC 27710.**

**Duke University
Medical Center**

Duke University Is An Equal Opportunity/Affirmative Action Employer

NATIONAL INSTITUTES OF HEALTH NATIONAL EYE INSTITUTE

Job Opportunities

The National Eye Institute Intramural Program at the NIH campus, Bethesda, MD., is seeking highly qualified Postdoctoral Fellows, Research Associates and Staff Scientists in the following areas:

- Molecular Biology
- Cell Biology
- Immunology
- Psychophysics
- Biochemistry

Salaries range from \$27,500 to \$118,400 per annum, based on experience and type of appointment.

NEI offers an extensive benefits package that you may be eligible for, depending on the appointment mechanisms: Health Benefits, Life Insurance, Retirement Benefits, Annual and Sick Leave, Formal Training Program, Recruitment Bonus, Retention Allowance, Relocation Allowance, Loan Repayment Program, and Travel Benefits.

Candidates interested in specific job opportunities at the NEI may visit the NEI web site at <http://www.nei.nih.gov/> listing the most current positions available.

NIH/NEI is an Equal Opportunity Employer

POSITIONS OPEN

TENURE-TRACK/TENURED FACULTY POSITION NEUROSCIENCE

UCR/UCLA Program in Biomedical Sciences
Division of Biomedical Sciences
University of California, Riverside

The faculty of the Division of Biomedical Sciences are seeking colleagues with modern, competitive research programs and an appropriate background to offer instruction in medical neuroscience. The area of research is open, but preference will be given to those applicants who can contribute to the development of an area of research focus within the Division, particularly common stress pathways. Research areas of the existing faculty can be found on the [website: http://www.biomed.ucr.edu](http://www.biomed.ucr.edu). The level of appointment, space allocation, and initial complement funds will be commensurate with the level of professional achievement of the successful applicants. All faculty are expected to obtain and maintain a significant level of extramural grant support. The Faculty of the Division of Biomedical Sciences are responsible for instruction for the first two years of medical school and for oversight of an accelerated premedical curriculum which feeds exceptional students into the medical program. The Division also offers a Ph.D. degree in biomedical sciences. Applications, including a letter of intent; curriculum vitae; statement of current and future research goals; funding history; statement regarding teaching background/expertise; an e-mail address; and the names of three references should be submitted to: **Michael B. Stemerman, M.D., Chairman, Search Committee (Neuroscience), Division of Biomedical Sciences, University of California, Riverside, California 92521-0121. Telephone: 909-787-5705; FAX: 909-787-5504; e-mail: michael.stemerman@ucr.edu.** The positions are available immediately and will remain open until filled. *The University of California is an Equal Opportunity/Affirmative Action Employer.*

FACULTY POSITION ASSOCIATE PROFESSOR VIROLOGIST/MOLECULAR VIROLOGIST

The Wisconsin Regional Primate Research Center (WRPRC) and the University of Wisconsin Medical School are recruiting for a Ph.D., M.D., or D.V.M. Virologist at the Associate Professor or **PROFESSOR** level. The person hired will be expected to provide administrative and scientific leadership to the WRPRC Immunology and Virology Core Laboratory and conduct a strong program of research with collaborative links. She/he will also be expected to accept some teaching assignments and other duties in an academic department. Preference will be given to applicants with training and experience in molecular virology, specifically as it relates to simian models of human HIV infection. Send a letter of interest, a current curriculum vitae, and the names of three references to: **Dr. Michael N. Hart, c/o Cameron Millard, University of Wisconsin-Madison, 6120 MSC, 1300 University Avenue, Madison, WI 53706-1532** no later than February 1, 2000. Unless confidentiality is requested in writing, information regarding the applicants must be released upon request. Finalists cannot be guaranteed confidentiality. *The University of Wisconsin-Madison is an Equal Opportunity/Affirmative Action Employer and, as such, women and minorities are encouraged to apply.*

SCIENCE INSTRUCTORS

Santa Monica Community College is accepting applications for full-time, tenure-track Instructors to begin teaching fall semester 1999: (1) astronomy-closing date, February 25, 2000; (2) chemistry-closing date, March 31, 2000; and (3) general biology-closing date, March 31, 2000. Salary range: \$34,184 to \$70,330. Write to: **Academic Personnel, Santa Monica College, 1900 Pico Boulevard, Santa Monica, CA 90405. Telephone: 310-434-4336** (24-hour employment information line) for a detailed job description and district application. *Affirmative Action/Equal Opportunity Employer.*

POSITIONS OPEN

Utah State UNIVERSITY

Plants, soils, and biometeorology **DEPARTMENT HEAD** position available at Utah State University. See [website: http://personnel.usu.edu](http://personnel.usu.edu) for full description. *Affirmative Action/Equal Opportunity Employer.*

TENURE-TRACK/TENURED FACULTY POSITIONS HUMAN GROSS ANATOMY/ CELL BIOLOGY

UCR/UCLA Program in Biomedical Sciences
Division of Biomedical Sciences
University of California, Riverside

The Faculty of the Division of Biomedical Sciences are seeking colleagues with modern, competitive research programs and an appropriate background to offer instruction in human gross anatomy or histology. The area of research is open, but preference will be given to those applicants who can contribute to the development of an area of research focus within the Division, particularly common stress pathways. Research areas of the existing faculty can be found on the [website: http://www.biomed.ucr.edu](http://www.biomed.ucr.edu). The level of appointment, space allocation, and initial complement funds will be commensurate with the level of professional achievement of the successful applicants. All faculty are expected to obtain and maintain a significant level of extramural grant support. The Faculty of the Division of Biomedical Sciences are responsible for instruction for the first two years of medical school and for oversight of an accelerated premedical curriculum which feeds exceptional students into the medical program. The Division also offers a Ph.D. degree in biomedical sciences. Applications, including a letter of intent; a curriculum vitae with a statement of current and future research goals; funding history; a statement regarding teaching background/expertise; an e-mail address; and the names of three references should be submitted to: **Michael B. Stemerman, M.D., Chairman, Search Committee (Gross Anatomy/Cell Biology), Division of Biomedical Sciences, University of California, Riverside, CA 92521-0121. Telephone: 909-787-5705; FAX: 909-787-5504; e-mail: michael.stemerman@ucr.edu.** The positions are available immediately and will remain open until filled. *The University of California is an Equal Opportunity/Affirmative Action Employer.*

FACULTY POSITION DEPARTMENT OF MATERIALS SCIENCE AND ENGINEERING The Johns Hopkins University

The Department of Materials Science and Engineering at the Johns Hopkins University invites applications for a tenure-track faculty position in the areas of nanostructured materials or thin films. The successful candidate will be expected to develop an innovative research program and to teach at both the undergraduate and graduate level. Applicants should have a Ph.D. in materials science and engineering or related field and must have demonstrated ability to undertake interdisciplinary research. Postdoctoral experience is highly desirable. It is anticipated that the appointment will be at the **ASSISTANT PROFESSOR** level, although an appointment at the **ASSOCIATE** or **FULL PROFESSOR** level will be considered. Applicants should submit a detailed résumé; a statement of research plans and teaching interests; and the names, addresses (including e-mail), and telephone numbers of three references to: **Chair, Search Committee, Department of Materials Science and Engineering, 102 Maryland Hall, The Johns Hopkins University, Baltimore, MD 21218.** Information on the Department of Materials Science and Engineering can be found at [website: www.jhu.edu/~matsci/](http://www.jhu.edu/~matsci/). To ensure full consideration, applications should be received by February 1, 2000. *Johns Hopkins University is an Equal Opportunity/Affirmative Action Employer. Women and minorities are strongly encouraged to apply.*

POSITIONS OPEN

FACULTY POSITIONS IN PHARMACOLOGY AND PHYSIOLOGY

As part of an ongoing expansion in all of the basic science departments, the Department of Pharmacology and Physiology of MCP Hahnemann University School of Medicine invites applications for tenure-track faculty positions. The Department currently consists of 14 tenure-track and five research-track faculty engaged in a variety of research areas, including neuropharmacology; behavioral pharmacology; ion channel structure-function relationships; and signal transduction mechanisms in neurons, cardiac cells, and smooth muscle. For more information on the Department, please visit our [website: http://www.mcph.edu/meedschool/depts/pharm-physio/pharmphys2.html](http://www.mcph.edu/meedschool/depts/pharm-physio/pharmphys2.html). Targeted areas for recruitment include electrophysiological analysis of modulation of synaptic function and molecular approaches to signal transduction cascades. Although emphasis will be on recruitment at the **ASSISTANT PROFESSOR** level, applications for more senior ranks will be considered. Candidates should have a Ph.D. or M.D. degree, postdoctoral research training, and a good track record in publications. Successful candidates will be expected to develop and maintain an externally funded, independent research program and to participate in teaching medical and graduate students. Competitive salary support and start-up packages will be made available. Applicants should submit a curriculum vitae, a brief description of current and future research directions, a description of teaching experience, and the names and addresses of three references to: **Chair, Faculty Search Committee, Department of Pharmacology and Physiology, MCP Hahnemann University, 3200 Henry Avenue, Philadelphia, PA 19129. E-mail: ck33@drexel.edu.** *MCP Hahnemann University is an Equal Opportunity Employer. We encourage women and minority candidates to apply.*

ASSISTANT PROFESSOR NEW YORK UNIVERSITY SCHOOL OF MEDICINE Department of Chemistry

The Biochemistry Department of New York University School of Medicine seeks an outstanding candidate to fill a tenure-track position at the level of Assistant Professor. Areas of research currently represented in the Department include DNA replication, repair and recombination, signal transduction (ras/ran), cell cycle control, oxygen signaling, brain glutamate receptors, and protein folding. An X-ray crystallography group studies protein-DNA interaction. Applicants should hold a Ph.D. or M.D. degree, have at least two years of postdoctoral research experience, and a demonstrated record of productivity. The successful candidate will be expected to establish an independent research program and participate in teaching and other departmental academic activities. Applicants should submit a curriculum vitae, three letters of reference, and a brief summary of current and future research interests to: **Chair, Faculty Search Committee, Department of Biochemistry, New York University School of Medicine, 550 First Avenue, New York, NY 10016.** For information about the Biochemistry Department and New York University School of Medicine, please visit us at [website: http://www.med.nyu.edu/Biochem/HomePage.html](http://www.med.nyu.edu/Biochem/HomePage.html). *NYU is an Equal Opportunity Employer.*

The University of Colorado Museum invites applications for a tenure-track **ASSISTANT/ASSOCIATE PROFESSOR** to coordinate the Museum and Field Studies Graduate Program. Academic fields in the program include: anthropology, art history, education, biology, paleontology, and public history. Obtain details of position and application procedures at [website: http://www.Colorado.EDU/CUMUSEUM/](http://www.Colorado.EDU/CUMUSEUM/). *CU-Boulder is committed to diversity and equality in education and employment.*

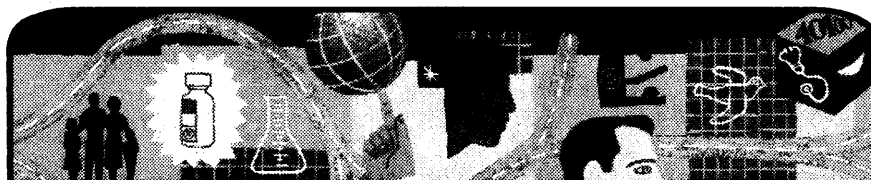
Faculty Positions in Cancer Research LSU Health Sciences Center

The Stanley S. Scott Cancer Center at LSU Health Sciences Center in New Orleans invites applications for tenure track or tenured positions at the Associate Professor or Professor level. Candidates should possess a Ph.D. or M.D. degree and have demonstrated excellence in their research as indicated by both publications and a track record of externally funded research grants. The successful applicants will be expected to pursue an independent, yet collaborative approach, addressing broad issues that relate to oncologic science. Research interests in prostate and/or lung cancer are encouraged but not required.

The search will give full consideration to applications that include a curriculum vitae (including funding grant history), four representative publications, and the names of three individuals that may be contacted for letters of reference.

Joint appointments in the Cancer Center and an appropriate Department at the LSU Medical School are anticipated. The individual Departments will be dependent on the successful applicants' expertise and interests. Laboratory space will be provided in a new state of the art facility in the heart of the Medical School complex. LSUHSC is an EOE/AA.

Interested candidates should submit their curriculum vitae to **Dr. Oliver Sartor, Director, Stanley S. Scott Cancer Center, Suite 620, 2025 Gravier Street, New Orleans, Louisiana 70112.**



Focus on the future. Then shape it.

At Boehringer Ingelheim, we believe that the future is not an event to be anticipated...but an opportunity to be shaped. We're ready to transform your innovation and drive into the power to define an industry — to develop and market breakthrough pharmaceuticals that enhance the quality of human life.

Scientist

Responsibilities will include assisting our general/safety pharmacology team in the in-vivo evaluation of new drug entities and in model development. The successful candidate will have a BA/BS/MS degree with 1-3 years' work experience and background in either physiology or pharmacology. Additional requirements include familiarity with telemetry data collection and rodent surgery techniques; knowledge of CNS, cardiovascular, pulmonary and renal physiology and pharmacology; and computer skills. **Job Code: AD-SCI/RD7099**

Molecular Biologist

Job responsibilities include assistance in the construction and development of conditional transgenic mice to support ongoing research programs at BIPI. The successful candidate must possess a BS in molecular biology or equivalent with 1-3 years of relevant laboratory experience. Experience in molecular biology techniques such as DNA/RNA isolation and purification, cloning and PCR methodologies, Southern and Northern blotting, site directed mutagenesis, and ELISA based assays is required. Experience with DNA sequence analysis software and Gene database software is advantageous. Experience in the generation of transgenic mice is desired but not essential. The candidate is expected to possess excellent verbal and written communication skills as well as a strong academic record. **Job Code: AD-SCI/RD7499**

At our **Ridgefield, CT campus**, we offer a dynamic, collaborative environment where insight, inspiration and commitment create opportunity on an entirely new scale. For immediate consideration, please email your resume and salary history to biipi@bi-careers.com OR send to Boehringer Ingelheim Staffing Center, PO Box 534, Waltham, MA 02454-0534. **Including Job Code, in your cover letter or subject line** will help us to expedite your request and avoid delays in routing your resume. Please, principals only. Unsolicited agency referrals will not be accepted. We are a proud Equal Opportunity Employer and are committed to offering a healthy, non-smoking work environment. *M/F/D/V.*



**Boehringer
Ingelheim**

Bring your future into focus:

Visit www.bi-pharm.com

BIOLOGIST/CHEMIST

Screening Technologies Branch
Developmental Therapeutics Program, DCTD
National Cancer Institute • National Institutes of Health

The Screening Technologies Branch (STB) of the Developmental Therapeutics Program is seeking candidates for a Biologist/Chemist position, GS-13/14. This is a full-time, extramural, civil service position. Investigators in STB are responsible for developing new knowledge about potential targets for anticancer drugs and investigating drug mechanisms of action. The Biologist/Chemist will collaborate with other investigators but have a high degree of independence studying mechanisms of mitosis and antimetabolic drugs. Candidates must possess a Ph.D. or M.D. degree and have relevant post-doctoral experience; U.S. citizenship is required.

The incumbent will serve as a laboratory investigator who specializes in the cell biology, biochemistry and biophysics, genetics, and pharmacology of the microtubule and microfilament components of the cytoskeleton and of other cellular components involved in mitosis. **Applicants must address the following rating criteria:** 1) Ability to organize and manage a team effort to develop new knowledge about microtubule structure, function, and/or pharmacology and/or related mechanisms of cell division and/or defining mechanisms of action of new drugs that interfere with cell division; 2) Ability to communicate in writing and verbally about scientific research activities; 3) Ability to plan, coordinate, implement and achieve research goals and priorities.

Salary range is \$58,027-\$89,142 per annum, with a potential 4.8% increase expected beginning January 2000. Benefits include health and life insurance options, retirement, paid holidays and vacation leave.

To obtain the necessary application information, please visit: <http://career-here.nih.gov>, vacancy announcement NCI-99-2346. You may also call (301) 402-2789 to request a fax copy of the vacancy announcement (Fax ID: 1894). Send application to:

NIH/NCI/HRMCB, Executive Plaza South, Suite 550
6120 Executive Blvd., MSC 7209, Rockville, MD 20852-7209
by the closing date of **February 11, 2000.**

NIH/NCI is an Equal Opportunity Employer

NATIONAL INSTITUTES OF HEALTH NATIONAL INSTITUTE OF ALLERGY AND INFECTIOUS DISEASES

Postdoctoral Research Position

Starting Salary Range: \$30,000

Commensurate with experience/present salary

The Laboratory of Infectious Diseases, Epidemiology Section, seeks a Postdoctoral Fellow with three years or less of postdoctoral experience in virology, molecular biology, or protein chemistry to study the mechanism of rotavirus dsRNA replication. Potential areas of research include identifying cis-acting signals in viral mRNA that promote dsRNA synthesis, locating RdRP- and protein-binding sites in the mRNA template, and characterizing the structure and role of accessory proteins in genome replication and packaging. Candidates must be U.S. citizens or permanent residents and have a Ph.D. or M.D. degree. Please send curriculum vitae and three references to:

Dr. John T. Patton

Laboratory of Infectious Diseases, NIAID

Bldg. 7, Room 117

7 Center Drive, MSC 0720

Bethesda, MD 20892

FAX: (301) 496-8312

E-mail: jpatton@niaid.nih.gov

NIH is an Equal Opportunity Employer

POSITIONS OPEN

BIOENGINEERING FACULTY POSITIONS

The University of Illinois at Chicago, Department of Bioengineering, invites applications for full-time, tenure-track positions at the **ASSISTANT**, **ASSOCIATE**, and **FULL PROFESSOR** levels. Desired areas of interest include cell and tissue engineering, neural engineering, and bioinformatics. The Department of Bioengineering offers B.S., M.S., and Ph.D. degrees and has a strong emphasis on graduate training and research. The present enrollment is approximately 100 undergraduate and 75 graduate students. Additionally, an M.D./Ph.D. program is offered jointly by the Department of Bioengineering and the College of Medicine. Campus facilities include the Microfabrication Applications Laboratory, the Biomedical Visualization Laboratory, the Biologic Resource Center, complete animal care facilities and extensive computer resources. These positions must be filled by the fall of 2000. The candidate is expected to establish a strong research program, develop new courses in bioengineering, and contribute to the development of the new multidisciplinary activities in the Department of Bioengineering. For fullest consideration, please send a detailed curriculum vitae, reprints of publications, a statement of research interests, and the names of three references by February 1, 2000, to: **R. L. Magin, Ph.D., Chairman, Faculty Search Committee, University of Illinois at Chicago, Department of Bioengineering (M/C 063), 851 South Morgan Street, Room 218 SEO, Chicago, IL 60607-7052.** The University of Illinois is an Affirmative Action/Equal Opportunity Employer.

RESEARCH ASSOCIATE OR RESEARCH ASSISTANT PROFESSOR

Conservation Biologist/Remote Sensing Specialist

Job description: The Missouri Resource Assessment Partnership (MoRAP) within the University of Missouri has an immediate opening for an individual to coordinate remote sensing aspects of various projects for the Partnership. The successful candidate will work with colleagues and partners on projects such as land cover classification, land cover change detection, and ecoregion-based conservation inventory and assessment.

Qualifications: Must have experience with ERDAS Imagine, ARC, ArcView or other image processing, and GIS software packages within a UNIX and/or Windows NT environment. Hands-on experience and a B.S. is required; an advanced degree is strongly preferred. A strong interest in conservation issues is essential. A history of winning grants is a plus. Candidates should be technically skilled and open to challenges.

Tentative salary: Range is \$35,000 to \$45,000. Open until filled.

Submit résumé, a copy of transcripts, a list of references, and daytime telephone number to: **Dr. David Diamond, Missouri Resource Assessment Partnership (MoRAP), 4200 New Haven Road, Columbia, MO 65201. Website: www.cerc.cr.usgs.gov/morap.** No telephone calls, please. Affirmative Action/Equal Opportunity Employer.

The University of Wisconsin-La Crosse Clinical Science Department seeks a tenure-track faculty member to teach human anatomy and neuroanatomy in the OT, PA, PT, and CRNA programs. This faculty member will be located in the La Crosse Medical Health Science Consortium's new building to be completed in June 2000, with its state-of-the-art classroom technology and dedicated cadaver laboratory. Qualifications: Doctoral degree in human anatomy or related field. For further information, please contact: **The Clinical Science Department, 116 Cowley Hall, 1725 State Street, La Crosse, WI 54601. Telephone: 608-785-6620; e-mail: zellmer.mark@uwlax.edu; website: <http://perth.uwlax.edu/vacancies>.** Review of applications will begin February 1, 2000, and continue until position is filled. UW-La Crosse is an Affirmative Action/Equal Opportunity Employer. Women, persons of color, and individuals with a disability are encouraged to apply. If you have special need/accommodation to aid your participation in our hiring process, please contact the committee above to make appropriate arrangements.

POSITIONS OPEN

FACULTY POSITION IN BIOMATERIALS THE JOHNS HOPKINS UNIVERSITY

The Department of Materials Science and Engineering at the Johns Hopkins University invites applications for a faculty position in biomaterials. Specific areas of interest include: materials for use in tissue engineering; biotechnology of materials; materials in therapies for human diseases; and materials processing, characterization, and engineering at the interface between devices and biological systems. The successful candidate will be expected to develop an innovative research program and teach at both the undergraduate and graduate level. Applicants should have a Ph.D. in materials science and engineering or a related field and must have demonstrated ability to undertake interdisciplinary research. Postdoctoral experience is highly desirable. It is anticipated that the appointment will be at the **ASSISTANT PROFESSOR** level, although an appointment at the **ASSOCIATE** or **FULL PROFESSOR** level will be considered. Applicants should submit a detailed résumé; a statement of research plans; teaching interests; and the names, addresses (including e-mail), and telephone numbers of three references to: **Biomaterials Search Committee, Department of Materials Science and Engineering, 102 Maryland Hall, The Johns Hopkins University, Baltimore, MD 21218.** To ensure full consideration, applications should be received by March 1, 2000.

Johns Hopkins University is an Equal Employment Opportunity/Affirmative Action Employer. Women and minorities are strongly encouraged to apply.

Plant ecology. Sabbatical replacement beginning fall 2000 for one-year position with the possibility of renewal for a second year. **ASSISTANT PROFESSOR** level in the Biology Department at The Colorado College, a private, undergraduate, highly selective liberal arts institution enrolling approximately 1,900 students. Responsibilities include teaching introductory botany, field-based ecology, biostatistics, and an upper-level course in area of specialty. Ph.D. required; teaching and postdoctoral experience preferred. The College seeks candidates who understand diverse perspectives and learning styles, with particular emphasis on the perspectives of women and minority groups. Applicants should send (1) cover letter that includes a description of professional background, (2) statement of teaching philosophy, (3) description of current and future research plans, (4) curriculum vitae with e-mail address, (5) copies of undergraduate and graduate transcripts, and (6) three letters of recommendation to: **Tass Kelso, Chair, Department of Biology, Colorado College, Colorado Springs, CO 80903** no later than February 15, 2000.

The Colorado College welcomes members of all groups and reaffirms its commitment not to discriminate on the basis of race, color, age, religion, sex, national origin, disability, or sexual orientation in its educational programs, activities, and employment practices.

Biology: LeTourneau University invites applicants for a tenure-track **ASSISTANT PROFESSOR OF BIOLOGY** position beginning August 2000. Applicants must possess a strong commitment to undergraduate teaching. Preference will be given to candidates with a background in at least two of the following areas: animal physiology, cell biology, comparative morphology, and/or genetics. Responsibilities include academic advising, teaching, and supervision of undergraduate research. LeTourneau University is a dynamic Christian university where the integration of faith and academic excellence is paramount. Applications will be accepted until the position is filled. Applicants who agree with the educational mission of LeTourneau University are considered without regard to race, age, sex, disabling condition, or national origin. E-mail or FAX letters of application or nomination and a statement of compatibility with the mission of the University to: **Dr. Glenn Sumrall, Provost and Vice President for Academic Affairs, LeTourneau University, P.O. Box 7001, Longview, TX 75607-7001. E-mail: sumrallg@letu.edu; FAX: 903-233-3227; website: www.letu.edu.**

POSITIONS OPEN

FACULTY POSITION AVAILABLE IMMUNOLOGY, IMMUNOPATHOLOGY

Baylor College of Medicine, Houston, Texas, is seeking an **IMMUNOLOGIST** with an independent research program to direct a newly created section of immunopathology in the Department of Pathology. The position is at the Texas Children's Hospital, where three Investigators are currently engaged in studies of immune dysregulation in a mouse model of inflammatory bowel disease and are seeking additional expertise. An M.D. pathologist with some training and interest in laboratory medicine would be most attractive, but Ph.D.s with a background in pathogenesis of disease are welcome to apply. The position is currently available, and the academic rank will be commensurate with experience. Curriculum vitae, a statement of research programs and goals, and the names of three potential references should be mailed to:

**Milton J. Finegold, M.D., Associate Chairman
Department of Pathology,
Baylor College of Medicine/
Head, Department of Pathology
Texas Children's Hospital
6621 Fannin Street, MC 1-2261
Houston, TX 77030
FAX: 713-770-1032
E-mail: finfgold@bcm.tmc.edu**

The University of California, San Diego, Department of Chemistry and Biochemistry, has a tenure-track opening in environmental chemistry (in the broadest sense, including field work) at the **ASSISTANT PROFESSOR** level. All research areas of chemistry or biochemistry focusing on environmental problems will be considered. The candidate will be expected to teach environmental chemistry in the Department's newly established major in environmental chemistry. Applicants must have a Ph.D. or equivalent degree in a field related to environmental chemistry. Candidates should send a curriculum vitae, list of publications, reprints of up to five representative papers, and a detailed (five or more pages) summary of research plans to: **Chair, Environmental Search Committee 3-613S, University of California, San Diego, Department of Chemistry and Biochemistry, La Jolla, CA 92093-0332.** Candidates should also arrange to have three letters of reference sent under separate cover. The deadline for applications is February 1, 2000, but until the position is filled, all applications received will be assured full consideration. Salary to be commensurate with qualifications and based on the University of California salary scale. UCSD is an Equal Opportunity/Affirmative Action Employer with a strong institutional commitment to the achievement of diversity among its faculty and staff.

The Department of Microbiology, Immunology, and Molecular Genetics at the Marshall University School of Medicine invites applications for a tenure-track faculty position at the **ASSISTANT PROFESSOR** level. Candidates should have a Ph.D., postdoctoral experience, and research interests in microbial pathogenesis or immunology (bacterial preferred) using a molecular approach. The successful candidate is expected to develop an independent, externally funded research program and to participate in teaching medical microbiology to graduate and medical students. State-funded salary, start-up funds, and laboratory space will be provided. Applicants should send a curriculum vitae, a brief description of research interests and future plans (limited to 500 words), a bibliography with reprints of significant publications, and three letters of recommendation by February 15, 2000, to: **Search Committee Chair, Department of Microbiology, Immunology, and Molecular Genetics, Marshall University School of Medicine, 1542 Spring Valley Drive, Huntington, WV 25704-9388.** E-mail submissions may be directed to: jackman@marshall.edu. Website: www.musom.marshall.edu. Marshall University is an Equal Opportunity/Affirmative Action Employer. Women and minorities are encouraged to apply.

**ASSISTANT PROFESSOR
DEPARTMENT OF CHEMISTRY
BALL STATE UNIVERSITY
MUNCIE, INDIANA**

A tenure-track position is available August 18, 2000. Responsibilities of the position include: teaching undergraduate and graduate classes in an area of biochemistry as well as teaching general chemistry; development of an active research program involving undergraduate and master's level students. **Minimum qualifications:** Ph.D. in biochemistry or chemistry by August 18, 2000; evidence of teaching potential; evidence of research potential. **Preferred qualifications:** postdoctoral research experience; teaching experience at the collegiate level, e.g., teaching assistant, instructor; research interests that have a focus related to biochemistry and complement the department's existing faculty research. Send letter of application, vita, three original letters of reference, undergraduate and graduate transcripts, and a description of proposed research to: Dr. Lynn Sousa, Chairperson, Department of Chemistry, Ball State University, Muncie, IN 47306. Review of applications will begin immediately and will continue until the position is filled (www.bsu.edu)

Ball State University is an equal opportunity, affirmative action employer and is strongly and actively committed to diversity within its community.

SCIENTISTS

Headquartered in Sparks, Maryland, a suburb of Baltimore, BD Biosciences (formerly Becton Dickinson Microbiology Systems) is building a comprehensive program in clinical diagnostics for oncology through its alliance with Millennium Predictive Medicine, the leader in functional genomics for diagnostics. In order to support this major effort, we are actively seeking several highly motivated and talented Scientists to assist in the design, creation, and development of screening and staging tests for a wide variety of cancers. These commercial systems will utilize tumor markers arising from our genomic partnership with Millennium Predictive Medicine and will guide physicians and pathologists in the effective treatment of cancer patients by providing individualized diagnostic and prognostic information. Highly motivated and talented professionals are sought to create molecular pathology assays based on fluorescence microscopy in the form of immunohistochemistry and in situ hybridization. These commercial systems will utilize tumor markers arising from our alliance and will guide physicians in the treatment of cancer by providing patients with individualized diagnostic and prognostic information.



To qualify, you must possess a PhD, MD, MS or BS degree with 2-5 years experience in cell biology, molecular biology, biochemistry, pathology, physiology or related field, and a proven track record (publication list) demonstrating comprehensive knowledge of cancer biology and relevant experimental techniques. First-hand experience with slide-based techniques such as immunohistochemistry, in situ hybridization, FISH, cytogenetics, fluorescent or confocal microscopy, and experience with corresponding methods for the collection and processing of tissue would be a plus.



These highly important positions command an attractive compensation package including comprehensive benefits. Relocation assistance will be provided, if necessary. For immediate consideration please e-mail, FAX or mail a detailed resume to: JRNL10. BD Biosciences, P.O. Box 8255, Gaithersburg, MD 20898. FAX: (301) 519-8403 or (888) 771-9898. e-mail: BD@alexus.com We are an equal opportunity/affirmative action employer. Minorities, females, and individuals with disabilities are encouraged to apply. VISIT our WEBSITE for a complete listing of opportunities: www.BD.com



CONFERENCES

Stem Cells and Pancreatic Development

**National Institutes of Health
Bethesda, Maryland
April 10-11, 2000**

Chairs

Douglas Melton, Irving Weissman

Speakers (committed)

David Anderson, Margaret Fuller, Helena Edlund, Fred Gage, John Gearhart, Michael German, Thomas Gingeras, Monica Justice, Klaus Kaestner, Seung Kim, Alan Koresky, Diane Mathis, Ole Madsen, Larry Gene Moss, Chris Newgard, G. Christian Overton, Terry Partridge, Danny Pipeleers, M. Alan Permutt, Nora Sarvetnick, Judith Shizuru, Jonathan Slack, Louis Tartaglia, Peter Wellauer, Leonard Zon

Registration Fee: \$65

Sponsored by: NIDDK, ADA, JDFI

For more information contact:

ComputerCraft Corporation

Phone: (301) 493-9674

Web: www.ep.nidk.nih.gov/epconferences.htm

BIOLOGY DEPARTMENT – ST. LAWRENCE UNIVERSITY

ASSISTANT PROFESSOR (TENURE-TRACK) – CELL BIOLOGY

A Ph.D. in endocrinology or a related field with a major emphasis at the cellular level is required. The successful candidate will be expected to help teach general biology on a rotational basis and to develop upper-level courses according to his/her expertise. Preferred courses might include Endocrinology, Cell Biology/Physiology, Histology, Gender and Health Issues or other related courses. As part of the general education curriculum at St. Lawrence, all first year students enroll in a team-taught course that seeks to develop skills in critical thinking, writing and research. This colleague will have the opportunity to teach in the First-Year Program.

GENERAL BIOLOGY SPECIALIST

A Masters degree in Biology or a related sub-discipline is required. The successful candidate will work in an invigorating environment with the present lab coordinator/instructor and other faculty to continue the development of our introductory courses, especially in the laboratory. This position affords the opportunity to explore varied and innovative teaching pedagogies. Experience in the use of computers and instructional technologies (especially the internet) is expected. A demonstrated ability to assist students in collaborative, investigational learning and in outcome assessment will be favored.

Please see SLU Job Postings at www.stlawu.edu/personne:http/job.htm for complete position descriptions. Interested candidates should submit a letter of application that specifies the position being applied for, a curriculum vitae, a statement of teaching experience and philosophy that reflects innovative and progressive pedagogies, a statement of research interest (tenure-track position only), and have three letters of recommendation forwarded to **Dr. T. Budd, Biology Department, St. Lawrence University, Romoda Drive, Canton, NY 13617**. Applications will be reviewed until the positions are filled.

St. Lawrence University, chartered in 1856, is the oldest coeducational university in New York State. Please see the University homepage at <http://www.stlawu.edu> and the biology homepage at <http://it.stlawu.edu/~biology> for more information. SLU is an AA/EO employer. Women, minorities, veterans, and persons with disabilities are encouraged to apply.

POSITIONS OPEN

ASSISTANT PROFESSOR OF MEDICINE MASSACHUSETTS GENERAL HOSPITAL CANCER CENTER Harvard Medical School

The Division of Hematology-Oncology and the Cancer Center of Massachusetts General Hospital seek to recruit two physician-scientists at the level of Assistant Professor of Medicine at Harvard Medical School. Candidates should have completed training in clinical oncology and established a record of laboratory investigation in cancer research in a topic including but not restricted to: cancer genetics, cellular signaling, model organisms, hematopoiesis, immunology, molecular diagnostics, and molecular therapeutics. The successful applicants will be provided with generous start-up funds and newly renovated, state-of-the-art laboratory facilities at the main MGH campus. The position involves intensive interactions with both the basic research unit at the MGH Cancer Center-Charlestown campus and the MGH Hematology-Oncology Unit, as well as active participation in cooperative research efforts of the Dana Farber-Harvard Comprehensive Cancer Center. Please forward a curriculum vitae, a brief summary of laboratory and clinical interests, and four letters of recommendation by March 1, 2000, to: **Dr. Daniel Haber, Chair, Search Committee, MGH Cancer Center, CNY7, Building 149, 13th Street, Charlestown, MA 02129.** MGH is an Equal Opportunity Employer encouraging women and minorities to apply.

MOLECULAR BIOLOGY/BONE BIOLOGY UNIVERSITY OF MARYLAND, BALTIMORE

A full-time, tenure-track faculty position is available for an individual who has broad expertise in molecular mechanisms of bone biology. The position is primarily at the **ASSISTANT or ASSOCIATE PROFESSOR** levels, but outstanding candidates at any level will be considered. Successful candidates will have a Ph.D. or equivalent, a record of outstanding research achievement, and a demonstrated ability to attract external funding. The selected candidate will be expected to sustain a vigorous research program in the molecular aspects of bone biology and interact with basic science faculty in other departments, schools, and investigators on our health sciences campus. Applicants should send a curriculum vitae, copies of their two most significant publications, brief descriptions of present research and future research plans, and the names of three to five individuals from whom recommendations can be obtained to: **Dr. Leslie P. Gartner, Chair Search Committee, Department of Oral and Craniofacial Biological Sciences, Cell and Molecular Biology Track, University of Maryland, Baltimore, 666 West Baltimore Street, Baltimore, Maryland 21201.** The University of Maryland is an Affirmative Action/Equal Employment Opportunity/Americans with Disability Act Employer. We especially encourage women and minorities to apply.

ASSISTANT PROFESSOR in ecology and evolutionary biology: The Department of Biological Science at Florida State University invites applications for a position at the Assistant Professor level. We are searching broadly and will consider any excellent candidate with research interests in ecology, evolution, or conservation biology. Teaching responsibilities will include an undergraduate course appropriate to the applicant's area and participation in the graduate program. Applicants should send a curriculum vitae, a description of research interests and goals, a statement of teaching interests, and up to three reprints. Applicants should also provide the names and contact information for three references and arrange to have letters of recommendation sent to the search committee. To receive full consideration, all application materials must be received by February 3, 2000, and should be submitted to: **Ecology and Evolutionary Biology Search Committee, Department of Biological Science, Florida State University, Tallahassee, FL 32306-1100.** E-mail: search3@bio.fsu.edu or website: <http://www.fsu.edu/~biology>. Florida State University is an Affirmative Action/Equal Opportunity Employer.

POSITIONS OPEN

ASSISTANT/ASSOCIATE PROFESSOR—SCIENCE, TECHNOLOGY, AND SOCIETY George Mason University New Century College

George Mason University's New Century College seeks to fill a tenure-track faculty position at either the Assistant or Associate Professor level to begin fall 2000. Expertise in the area of science, technology, and society, with a special emphasis on environmental studies; demonstrated excellence in interdisciplinary, undergraduate teaching; and an active research agenda are required. New Century College is committed to student-centered interdisciplinary learning, experiential learning integrated with classroom study, faculty and student collaboration, and use of emerging technologies. Review of applications will begin February 1, 2000, and continue until the position is filled. Send letter of application with a statement on teaching philosophy, curriculum vitae, and three letters of reference to:

**Sue Woodfine
Environmental Studies Search
New Century College, MSN 5D3
George Mason University
Fairfax, VA 22030-4444
Website: <http://www.ncc.gmu.edu>**

George Mason University is an Equal Opportunity Employer. Women and minorities are especially encouraged to apply.

ASSISTANT PROFESSOR OF PHARMACOLOGY AND TOXICOLOGY DRUG ABUSE

Applications are invited for an academic year, tenure-track position at the Assistant Professor level. The successful candidate should have a Ph.D. (preferably in pharmacology), or equivalent degree and several years of postdoctoral experience. The applicant will be expected to: (1) direct a vigorous, extramurally funded research program in the area of drug abuse; (2) participate in medical and graduate education in the area of neuropharmacology. Applicants should submit a curriculum vitae, a statement of research and teaching interests, and names and addresses of three references to: **Dr. Kenneth E. Moore, Chairman, Department of Pharmacology and Toxicology, Michigan State University, East Lansing, MI 48824-1317.** See our website: <http://www.phmtox.msu.edu>. Review of applications will begin in January 2000 and continue until the position is filled. *Michigan State University is an Equal Opportunity/Affirmative Action Employer and encourages applications from women and minorities.*

ASSISTANT/ASSOCIATE PROFESSOR position for proteomic scientist. The Division of Cardiology has a tenure-track faculty position available for a proteomic research scientist. The successful candidate will join a multidisciplinary group of investigators (including 10 Ph.D. faculty) to study the mechanism of myocardial ischemia/reperfusion injury. Candidates should have a Ph.D. in protein chemistry or related field and at least two years of experience in protein analysis or proteomic research. Submit curriculum vitae, statement of interests, and three references to: **Dr. Roberto Bolli, Chief, Division of Cardiology, University of Louisville, Louisville, KY 40292.** E-mail: rbolli@louisville.edu. *Equal Opportunity/Affirmative Action Employer.*

FACULTY POSITIONS available at all levels in newly established biomedical research institute located on the Johns Hopkins Bayview Campus in Baltimore, Maryland, for individuals with beginning and established research programs studying the molecular basis of human disease and basic regulatory systems in higher eukaryotes. To be considered, please send your curriculum vitae and research interests to: **Faculty Search, The Wheeler Institute for Biomedical Research, JHU Bayview Campus, Alpha Center, 5210 Eastern Avenue, Baltimore, MD 21224-2736.**

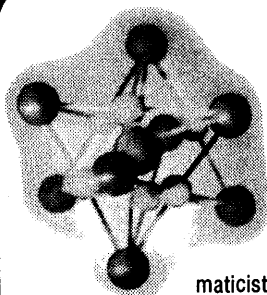
POSITIONS OPEN

ASSISTANT/ASSOCIATE PROFESSOR WAYNE STATE UNIVERSITY SCHOOL OF MEDICINE

The Department of Physiology at Wayne State University School of Medicine invites applications for tenure-track faculty positions at the level of Assistant/Associate Professor. WSU is an exciting, dynamic, urban research environment with state-of-the-art facilities and is rated in the top third of all U.S. research institutions. We are seeking talented researchers/scholars to complement the existing strengths of the Department. These are endocrinology, cardiovascular, and neurophysiology and range from the molecular/cellular to the whole-animal integrative levels. Excellent opportunities for collaboration exist with other researchers within the basic science and clinical departments. The successful candidates would be expected to have and maintain an innovative, extramurally funded research program and participate in the teaching of medical and graduate students. Highly competitive start-up funds, salaries, and research space are available. Review of candidates' applications will begin upon receipt and continue until the positions are filled. Applicants should send a curriculum vitae, research plan, and the names of three references to: **Dr. Joseph C. Dunbar, Chair, Department of Physiology, Wayne State University, 540 East Canfield, Detroit, MI 48201.** For more information regarding the Department, see our website: www.phymac.med.wayne.edu/physiology/psl.htm. *WSU is an Equal Opportunity/Affirmative Action Employer.*

ASSISTANT PROFESSOR/PLANT DEVELOPMENT, Department of Plant Sciences, The University of Arizona. This tenure-track position (80% research and 20% teaching) is available at the Assistant Professor level on August 7, 2000. The successful candidate is expected to conduct an independent research program that integrates structural and molecular genetic approaches to understand fundamental processes underlying plant development. The candidate will teach an undergraduate course in plant developmental anatomy and participate in the teaching of a graduate course in plant development. Required: Ph.D. degree in an appropriate field with a research emphasis in developmental biology. Applicants must have outstanding research and communication skills and have the ability to attract extramural grant funding. Salary: The salary will depend upon qualifications and experience. Applicants should send a curriculum vitae, statements of research and teaching interests, and arrange to have three letters of recommendation sent to: **Dr. Karen Schumaker, Chair, Plant Development Search Committee, Department of Plant Sciences, The University of Arizona, Tucson, AZ 85721.** E-mail: schumake@ag.arizona.edu. Review of applications will begin January 14, 2000, and continue until the position is filled. *The University of Arizona is an Equal Employment Opportunity/Affirmative Action Employer—Minorities/Women/Disabled/Veterans.*

ASSISTANT PROFESSOR OF BIOCHEMISTRY at Kent State University. Applications are invited for a tenure-track position in the Department of Chemistry, which is committed to quality research and teaching. No research specialization is required, and areas ranging from molecular biology to physical biochemistry will be considered. Candidates are expected to develop a nationally recognized and well-funded research program. Teaching involves both undergraduate and M.S./Ph.D. students. Applicants should have the Ph.D. degree, and postdoctoral training is desired. Curriculum vitae, graduate and undergraduate transcripts, description of research plans, statement on teaching aims, and three letters of recommendation should be sent to: **Dr. Rathindra Bose, Chairman, Department of Chemistry, Kent State University, Kent, OH 44242.** This position is expected to start in August 2000. To ensure full consideration, applications should be received by February 29, 2000. *Kent State University is committed to Affirmative Action Programs, which assure equality of opportunity for all. We are particularly interested in responses from any female or minority group candidates who meet the above criteria. Kent State University is an Equal Opportunity Employer.*



COMPUTATIONAL BIOLOGIST

SEATTLE

Join a diverse group of bioinformaticists who have helped to generate an industry-leading portfolio of potential therapeutic proteins. ZymoGenetics, Inc. is a biotechnology company located in Seattle's historic Lake Union Steam Plant. As a subsidiary of NOVO NORDISK, the world's largest producer of industrial enzymes, ZymoGenetics' mission is to identify protein therapeutic opportunities and to take selected projects as far as clinical proof of concept studies. We are currently seeking exceptional Computational Biologists to join our Bioinformatics Group.

Candidates for the positions must be passionate about developing and using innovative computational tools to discover and characterize novel therapeutic proteins. Candidates should have a strong biological background, with experience in biological structure, physiology, pathology, biochemistry or molecular biology, as well as strong computer science skills. Knowledge of UNIX and PERL is required, a background in relational database management and manipulation and SQL is a plus. Strong communication skills, particularly writing skills will be needed in formulating descriptions of novel gene products for patent applications. The applicant should be comfortable working with bench scientists. Familiarity with lab techniques is useful. Educational requirements: Ph.D in Biology, Bio-Chemistry, Bioinformatics, or Computer Science required.

Position #1, 21R199, requires knowledge of protein family classification and structural analysis. Position #2, 21R399, requires a background in genomics and expertise in extracting knowledge from large datasets.

We offer an intellectually challenging environment, state of the art, and a generous benefits package in a growth-oriented environment. For confidential consideration, forward your resume and cover letter to ZymoGenetics, Human Resources - Position # _____, 1201 Eastlake Avenue East, Seattle, WA 98102; Fax: (206) 442-6658; E-mail: jobs@zgi.com. We are an equal opportunity employer and encourage applications from women and minorities.

ZYMO GENETICS

TRAINING



MOUNT SINAI
SCHOOL OF
MEDICINE

Post-Doctoral Training Opportunities Cancer Biology

Mount Sinai School of Medicine is a leader in medical education and research. The Derald H. Ruttenberg Cancer Center seeks applications for post-doctoral training in cancer biology. Fellowships are awarded to candidates dedicated to research in cancer biology with credentials and a track record of research accomplishments. Self-motivated candidates with an M.D./Ph.D. or Ph.D. and experience in cellular and molecular biology are encouraged to apply. Training preceptors within the Cancer Center include:

Stuart A. Aaronson, M.D.

Cancer gene signaling pathways

Andrew M.L. Chan, Ph.D.

Role of Ras-related GTP-binding proteins in human cancer

Jonathan Licht, M.D.

Transcriptional factors disrupted in solid tumors and leukemia

James Manfredi, Ph.D.

Regulation of the tumor suppressor protein p53

Zhen-Qiang Pan

Ubiquitin in cancer biology

Ze'ev Ronai, Ph.D.

Regulation and function of stress kinases

For consideration, please send a brief statement of research interest and preceptor preference, C.V. and the names of three references to: **Post-doctoral Training Program, Derald H. Ruttenberg Cancer Center, Box 1130, Mount Sinai School of Medicine, One Gustave L. Levy Place, New York, NY 10029-6574; Fax: 212-987-2240; E-mail: traininggrant@mssm.edu** We are an equal opportunity employer fostering diversity in the workplace.

POSITIONS OPEN

EVOLUTIONARY BIOLOGIST FACULTY POSITION, RANK OPEN SCHOOL OF INTEGRATIVE BIOLOGY University of Illinois at Urbana-Champaign

As part of an ongoing effort to rebuild strength in evolutionary biology, the School of Integrative Biology at the University of Illinois in Urbana-Champaign invites applications for a full-time, tenure-track faculty position in evolutionary biology at the **ADVANCED ASSISTANT, ASSOCIATE, or FULL PROFESSOR** level. Candidates must have a Ph.D., current external funding, and a demonstrated record of research excellence and productivity. This position will be in the Department of Ecology, Ethology, and Evolution and is available as early as January 2001.

In addition to maintaining a vigorous, independently funded research program, the individual will be expected to develop and teach a graduate-level course in his/her specialty and participate in teaching graduate seminars and undergraduate biology. The individual will also play an active role in the newly formed campuswide graduate program in ecology and evolutionary biology administered by the school. Salary is commensurate with experience. To ensure full consideration, applications must be received by February 29, 2000. Applicants should submit a curriculum vitae, statements of research and teaching interests, up to three representative publications, and arrange to have four letters of recommendation forwarded to: **Dr. Ken N. Paige, Chair, Evolutionary Biology Search Committee, School of Integrative Biology, University of Illinois, 286 Morrill Hall, 505 South Goodwin Avenue, Urbana, IL 61801. Telephone: 217-333-3044; FAX: 217-244-1224; e-mail: k-paige@uiuc.edu; website: www.life.uiuc.edu/sib/.**

The University of Illinois is an Affirmative Action/Equal Opportunity Employer. Women and minority candidates are encouraged to apply.

The University of Illinois at Urbana-Champaign invites applications for a nine-month, tenure-track position for an **ASSISTANT/ASSOCIATE PROFESSOR** of nutrition. A Ph.D. in nutritional science, foods and nutrition, food science, biochemistry, molecular biology, or a closely related discipline is required. Responsibilities include: teaching biochemical nutrition (undergraduate and graduate level), directing graduate students (M.S. and Ph.D.), and developing an internationally recognized, independently funded research program in nutritional science. Salary commensurate with qualifications and experience. Send statement of research and teaching interests; curriculum vitae; and names, addresses and telephone numbers of at least three professional references to: **Nutrition Search Committee Chair, Department of Food Science and Human Nutrition, University of Illinois, 260 Bevier Hall, 905 South Goodwin Street, Urbana, IL 61801-4726; FAX: 217-333-8046; e-mail: cjeffery@uiuc.edu.** Position open until filled. To assure full consideration, applications should be received by February 25, 2000. The position is available beginning July 21, 2000. *The University of Illinois is an Affirmative Action/Equal Opportunity Employer.*

Faculty position in biology: The Department of Natural Sciences at the University of Houston-Downtown (UHD) seeks an **ASSISTANT PROFESSOR OF BIOLOGY**, tenure track, to begin September 1, 2000. Applicants must have an earned Doctorate in biology, with emphasis in vertebrate biology and urban ecology; the desire and ability to direct undergraduate research projects; good communication skills; and some teaching experience in biology at the college level. UHD is an urban undergraduate institution, enrollment of 8,800, located adjacent to the central business district of Houston. The department is multidisciplinary, with programs in biochemistry, biology, biotechnology, chemistry, microbiology, and physics. Send a curriculum vitae and names of at least three references to: **Chair, Biology Search Committee, University of Houston-Downtown, One Main Street, Suite N-813, Houston, TX 77002.** The application deadline is February 7, 2000.

POSITIONS OPEN

The Department of Radiation Oncology at the University of Washington seeks an individual with a Ph.D. or equivalent degree to fill the position of **ASSISTANT PROFESSOR, ASSOCIATE PROFESSOR, or FULL PROFESSOR** (depending on experience). This person will be expected to initiate a grant-supported research program in the molecular, cellular, and/or tumor biology of ionizing radiation and to be essentially self-supporting after two years. Areas of interest include but are not limited to: apoptosis, angiogenesis, DNA damage and repair, and induction of genes by radiation. We seek an imaginative and ambitious individual who is interested in both fundamental cancer biology and important problems in clinical cancer therapy and who will engage in translational as well as fundamental cancer research. The successful candidate will conduct independent research in a team environment in an outstanding medical school and will be interested in translating novel and pertinent laboratory findings into clinical applications. Opportunities exist for collaborative research with faculty at the Fred Hutchinson Cancer Research Center.

All applicants should send a current curriculum vitae including bibliography and a statement of research interests and experience, with particular attention on how his/her interests fit the position as described above, to: **George E. Laramore, Ph.D., M.D., Professor and Chair, Department of Radiation Oncology, Box 356043, University of Washington Medical Center, Seattle, WA 98195-6043.** Applications must be received no later than March 1, 2000.

The University of Washington is building a culturally diverse faculty and strongly encourages applications from female and minority candidates. The University of Washington is an Equal Opportunity/Affirmative Action Employer.

PLANT REPRODUCTIVE BIOLOGY

Washington State University School of Biological Sciences invites applications for a tenure-track **ASSISTANT PROFESSOR** position starting August 16, 2000. Preference will be given to candidates who have a whole-plant view towards increasing reproductive potential and who incorporate molecular approaches in their research. The candidate's research should address an important aspect of plant reproduction, such as regulation of assimilate partitioning to reproductive tissues, signaling mechanisms controlling reproductive development, and strategies for alteration of vegetative or sexual reproductive organs. The successful candidate will be associated with the Reproductive Biology Center and will be expected to obtain external research funds and participate in undergraduate and graduate teaching. A Ph.D. in an appropriate area is required; postdoctoral experience is preferred. Applicants should submit a curriculum vitae, summary of research interests, and names of three references to: **Chair, Plant Reproductive Biology Search Committee, School of Biological Sciences, Washington State University, Pullman, WA 99164-4236.** Review of applications will begin on February 10, 2000. *WSU is an Equal Employment Opportunity/Affirmative Action Employer. Protected group members are encouraged to apply.*

LOUISIANA COLLEGE

Biology: two positions. **ASSISTANT/ASSOCIATE PROFESSORS** (tenure track). Ph.D. required. Must have a specialization in either molecular/cell biology or in zoology/organismal biology. Must have teaching competencies in botany or zoology and in genetics, histology, or cell biology. Must be willing to teach introductory biology courses for non-majors and their corresponding laboratories. Must be able to demonstrate excellence in the classroom. Must be able to direct undergraduate research and be willing to participate in student advising. Church-related (Baptist) liberal arts college. Salary and rank commensurate with qualifications and experience. Send letter of application and résumé to: **Dr. Dennis Watson, Chair, Division of Natural Sciences and Mathematics, Box 602, College Station, Louisiana College, Pineville, LA 71359.** *Affirmative Action/Equal Opportunity Employer.*

POSITIONS OPEN

ENDOWED PROFESSORSHIP IN MOLECULAR CELL BIOLOGY

Trinity University announces a newly endowed position: the Brackenridge Distinguished Professorship of Biology. This is a tenured position at the rank of **PROFESSOR** that carries a highly competitive salary and a variety of ancillary benefits. We seek candidates whose research program is widely recognized and extramurally funded and who demonstrate the potential for meaningful and systematic involvement of undergraduates in their research program. The research area is open to any experimental system using molecular methodology to address fundamental problems in cell biology. Possible specialties include but are not limited to: development, neurobiology, signal transduction, cell cycle, protein targeting, extracellular matrix, cytoskeleton, endomembrane function, and membrane transport. Demonstrated success in and commitment to undergraduate instruction are required. The successful candidate will be expected to develop a course in her/his area of specialization and a course in modern cell biology for majors.

Trinity University is a primarily undergraduate, co-educational institution located in San Antonio, Texas. The University enrolls approximately 2,500 students and benefits from a substantial endowment. Additional information about the University and Department of Biology is available at **website: www.Trinity.edu**. Letters of nomination or applications should be sent to: **Professor Thomas L. Koppenheffer, Department of Biology, Trinity University, San Antonio, TX 78212-7200.** Review of applications will begin February 4, 2000, and continue until the position is filled. *Trinity University is an Equal Opportunity/Affirmative Action Employer. We seek and encourage nominations and applications from men and women who would enhance the diversity of the institution.*

BIOCHEMICAL/MOLECULAR PHARMACOLOGIST

Drake University College of Pharmacy and Health Sciences invites applications for a tenure-track faculty position at the **ASSISTANT PROFESSOR** level. This position will be available August 2000 pending final budgetary approval. Applicants must have a Ph.D. and postdoctoral training in an area related to biochemistry and/or molecular pharmacology. The successful candidate will be expected to develop innovative teaching and learning approaches for the classroom and to develop an ongoing, fundable research program. The candidate must have a strong commitment to teaching and research mentoring at the undergraduate level. Start-up funds and laboratory space will be provided. Applications will be reviewed until a successful applicant is identified. Applicants should send a letter of interest; curriculum vitae; a statement of teaching experience; and the names, addresses and telephone numbers of three references to: **Robert Soltis, Ph.D., College of Pharmacy and Health Sciences, Drake University, Des Moines, IA 50311. E-mail: Bob.Soltis@drake.edu.** *Drake University is an Equal Opportunity Employer.*

The Institute for Computer Applications in Science and Engineering (ICASE) at NASA Langley Research Center is seeking Ph.D.s for **STAFF SCIENTIST POSITIONS** in the area of biomimetic self-assembly. The candidate must have a strong background in the synthesis and characterization of nanomaterials fabricated by self-assembly and multidisciplinary training that includes knowledge and hands-on experience in such biological sciences-related fields as biochemistry, biomaterials, biophysics, bioengineering or biomechanics. The candidate is expected to be a research leader, with duties including project planning and implementation. *U.S. citizenship will be a major factor in the final selection.* Additional information about ICASE and this position is available via the **World Wide Web** at: **http://www.icase.edu/** and at **website: http://www.icase.edu/positions/**. Please send résumés to: **Director, ICASE, MS 132C, NASA Langley Research Center, Hampton, VA 23681-2199. E-mail: positions@icase.edu.** *ICASE is a nonprofit Equal Opportunity Employer.*



POST-DOCTORAL RESEARCH ASSOCIATES

The Blood Center of Southeastern Wisconsin, an internationally recognized leader in vascular biology, molecular hematology, transplantation immunology, and transfusion medicine research, is seeking outstanding candidates to fill NIH-funded Post-doctoral Training Grant positions at its Blood Research Institute (BRI). The BRI provides state-of-the-art facilities, and offers an excellent environment for scientific interaction and interdisciplinary collaboration. Opportunities are available with Blood Center investigators in the following areas:

John W. Adamson, MD – Stem cell biology, ex vivo expansion and transplantation; cytokine-induced platelet production.

Richard H. Aster, MD – Pathogenesis of immune disorders affecting blood cells.

David D. Eckels, PhD – The role of mutation in hepatitis C virus and modulation of the human immune response.

Jack Gorski, PhD – Molecular genetic analysis of T cell repertoires.

Cheryl Hillery, MD – Mechanisms of vaso-occlusion in sickle cell disease.

Robert R. Montgomery, MD – Molecular biology of von Willebrand factor.

Michael W. Mosesson, MD – Fibrin formation and its role in angiogenesis; mechanisms of thrombophilia in dysfibrinogenemias.

Peter J. Newman, PhD – Cell adhesion and signaling receptors in vascular cells.

Debra Newton-Nash, PhD – Protein tyrosine kinase-dependent signal transduction in T cells.

Gian P. Visentin, MD – Heparin induced thrombocytopenia; regulation of endothelial cell proliferation and angiogenesis.

Hartmut Weiler, PhD – Function of blood coagulation in development.

Because these positions are funded through an NIH Training Grant, only American citizens or permanent residents are eligible to apply. Qualified applicants should send curriculum vitae, a brief description of recent research, and the names and telephone numbers of three references to:

John W. Adamson, M.D.
Director, Blood Research Institute
The Blood Center of Southeastern Wisconsin
P.O. Box 2178
Milwaukee, WI 53201-2178

The Blood Center of Southeastern Wisconsin is an equal opportunity/affirmative action employer. Minorities and women are encouraged to apply.



CONSERVATION BIOLOGIST

The Department of Organismic Biology, Ecology and Evolution (OBEE) and the campus-wide Institute of the Environment (IoE) at UCLA invite applications for an **open rank, tenure-track, shared faculty position in Conservation Biology**. We desire an integrative biologist who uses a wide variety of approaches to document and understand the causal factors affecting biodiversity in either aquatic (marine or freshwater) or terrestrial habitats. The successful candidate's research program should include basic and applied studies that rely on both field and laboratory data. The position is open with regard to research specialization and taxonomic groups studied by the candidate. The IoE (<http://www.ioe.ucla.edu>) is a campus-wide research unit that is devoted to interdisciplinary research and teaching related to environmental issues at local, regional and global scales. OBEE (<http://www.lifesci.ucla.edu/bio/>) has 23 faculty, whose research ranges from cellular to evolutionary biology, including strong research programs in animal behavior, evolution and ecology. Candidates are expected to maintain a vigorous research program and contribute to both undergraduate and graduate teaching in both OBEE and the IoE. UCLA has outstanding academic support for faculty including access to the UC Natural Reserve System and attractive startup packages.

Send CV, statements of research and teaching interests, and the names and addresses of three references by March 1, 2000 to: **Chair, Conservation Biology Search, Department of Organismic Biology, Ecology and Evolution, University of California, Box 951606, Los Angeles, CA 90095-1606**. For more information, contact Dr. Philip Rundel at rundel@biology.ucla.edu.

The University of California is an Equal Opportunity Employer committed to excellence through diversity.



Andrew W. Mellon Post-Doctoral Fellowship in Environmental Science and Policy at Smith College

The Program in Environmental Science and Policy at Smith College, in conjunction with the Program in Public Policy, will offer a two-year Andrew W. Mellon Post-Doctoral Fellowship to begin in the fall of 2000. The Fellow will be expected to continue to develop his/her research program in environmental policy, to participate in faculty development projects, and to teach two undergraduate courses, possibly including a seminar, on environmental policy each year. The successful candidate will have completed all requirements for the Ph.D. by June 2000 and be committed to interdisciplinary teaching. Although it is expected that candidates will hold a Ph.D. in a social science discipline such as economics, political science or sociology (and will be hosted by the appropriate department), the Fellow will be expected to have sufficient scientific knowledge to develop courses relating to substantive environmental policy issues.

The Fellowship carries a competitive stipend, full benefits, funds to support research, and a moving allowance. **Interested applicants should send a letter of application, a current curriculum vitae, three current reference letters, and evidence of successful teaching to: Program in Public Policy, Attn: Jayne Mercier, Seelye Hall, Smith College, Northampton, MA 01063. All materials should have arrived at Smith no later than April 1.**

Smith College

Visit us at www.smith.edu



**Molecular
Probes**

Molecular Probes, as the premier developer and supplier of fluorescent probes for biology and related fields, has an exceptional technology portfolio. With the completion of our biosciences facility, we are seeking three top-level managers with extensive people and project management experience in industry or academia to lead the company's research and product development efforts.

CYTOMETRY SECTION HEAD

Molecular Probes is committed to extending its position as an important center for research in imaging and flow cytometry and to developing new probes and techniques that will be useful for scientific research, diagnostics and other areas. The Cytometry Section Head will have a major role in determining, coordinating and directing all of these internal and external activities and will oversee the activities of multiple research groups.

BIOANALYSIS SECTION HEAD

Molecular Probes develops fluorescence detection technology that is used in biomedical research, diagnostics, high-throughput screening and other areas. We seek a top scientist to lead all of the company's bioanalytical, molecular biology, proteomics and assay-development activities. The Bioanalysis Section Head will have a major role in determining, coordinating and directing these internal and external activities and will oversee the activities of multiple research groups.

PRINCIPAL SCIENTIST - MOLECULAR BIOLOGY

We seek an enthusiastic scientist to plan, direct and conduct research and development projects related to fluorescence detection technology and a wide variety of bioanalytical applications. Extensive experience in use of fluorescence and in managing Ph.D.-level scientists and technicians is essential.

Further details about Molecular Probes and available positions are available at www.probes.com/probes/. These positions offer competitive salaries and benefits in a financially stable company in an attractive environment. Please send resume, cover letter and list of references before March 1, 2000 to HumanResources@probes.com or mail to:

Human Resources Department
Molecular Probes, Inc.
PO Box 22010
Eugene, OR 97402-0469
Equal Opportunity Employer

POSITIONS OPEN

RESEARCH AND/OR TENURE-TRACK FACULTY positions available in The Department of Pharmacology and Toxicology, College of Pharmacy, The University of Arizona, for the 2000–2001 academic year. Applicants must have a Ph.D., M.D., or equivalent degree and postdoctoral experience. Individuals with interests in the following areas are encouraged to apply: mechanistic enzymology related to structure-based drug design; synthetic medicinal, combinatorial, or natural products chemistry; biophysical chemistry, particularly NMR, related to receptors and signal transduction. Experience or interest in the application of QSAR, computer-assisted drug design, or molecular modeling to future research should be noted. Successful applicants will be expected to develop an independent research program, obtain extramural funding, and actively participate in teaching of medicinal chemistry. Our graduate program attracts top students nationwide, and opportunities exist for participation in the Center for Toxicology, the Arizona Cancer Center, and other centers of excellence at the University of Arizona. Applications will be reviewed starting February 1, 2000, and will continue until the positions are filled. Applicants should submit an application letter, curriculum vitae, copies of two publications, a statement of research interests, and the names and contact information of three to five references to: **Medicinal Chemistry Search Committee, Department of Pharmacology and Toxicology, College of Pharmacy, The University of Arizona, P.O. Box 210207, Tucson, AZ 85721-0207.** We offer excellent benefits and competitive salaries. *The University of Arizona is an Equal Employment Opportunity/Affirmative Action Employer—Minorities/Women/Disabled/Veterans.*

LABORATORY TECHNICIAN MOLECULAR/MICROBIOLOGY/ CELL BIOLOGY

The Department of Biology at Appalachian State University invites applications for a molecular/microbiology/cell biology Laboratory Technician. Primary responsibilities will include: preparation of materials for teaching laboratories primarily in molecular and microbiology but also in cell biology and immunology; maintenance of cell lines, trouble-shooting of laboratory protocols, overseeing of common-use equipment, training of new users, ordering of laboratory supplies, and organization and maintenance of laboratory facilities. Additional duties include: scheduling user time on high-demand pieces of equipment, keeping records of equipment maintenance and maintenance schedules, overseeing student use of equipment outside of regularly scheduled laboratories, and possible laboratory teaching. The candidate will be expected to have a working knowledge of molecular techniques, cell culturing techniques, and computer skills. Additionally, the individual must have good organizational skills, the ability to work with a variety of people, and the desire to learn new techniques. The successful candidate must have a Master's degree in biology with research experience in molecular biology. Submit a letter of application, curriculum vitae, copies of transcripts, and three letters of reference by February 15, 2000, to: **Dr. Mary U. Connell, Department of Biology, P.O. Box 32027, Appalachian State University, Boone, NC 28608-2027.** Website: www.biology.appstate.edu. *Appalachian State University is an Equal Opportunity Employer.*

CHEMISTRY TENURE-TRACK SEARCH CALIFORNIA STATE UNIVERSITY Fresno

The Department of Chemistry invites applications for either of the following positions: (1) a **PH.D. CHEMIST** with research interests that can be applied to forensics or (2) a **PH.D. ORGANIC CHEMIST** or **BIOCHEMIST**. Consult website: <http://www.csufresno.edu/chem> or e-mail: **Dr. Howard Ono** at howard_ono@csufresno.edu for application details. Applications should be complete by February 7, 2000, for full consideration. *Women and minorities are encouraged to apply.*

POSITIONS OPEN

ASSISTANT PROFESSOR BACTERIAL PATHOGENESIS

The Department of Food Science and Human Nutrition (FSHN), in partnership with the National Food Safety and Toxicology Center (NFSTC) at Michigan State University, is seeking applicants to establish an internationally recognized research program on bacterial toxins or other virulence factors of interest in food safety. The research should emphasize modern molecular approaches to elucidate the mechanisms of bacterial foodborne disease. The successful candidate will participate in collaborative research programs in FSHN (academic appointment) and the NFSTC and participate in the teaching and mentoring of undergraduate and graduate students as well as Postdoctoral Fellows. FSHN and NFSTC are state-of-the-art buildings in close proximity, which house faculty offices, well-equipped laboratories, and laboratory animal facilities. A stimulating research environment emphasizing the application of basic and applied research methodologies to food safety research is provided by an internationally recognized group of faculty. Active searches are also underway to hire additional faculty in the areas of food allergy, microbial pathogenesis, and microbial evolution. Complete information on faculty, facilities, and the position can be found at the FSHN website: <http://www.msu.edu/unit/fshn/> and NFSTC website: <http://foodsafety.msu.edu/home.html>. Qualifications include a Doctoral degree in microbiology, food science, or related discipline. Postdoctoral experience is highly desirable. The application deadline is February 15, 2000, or until a suitable candidate is identified. A letter of application, brief research summary, a curriculum vitae, several representative reprints, and three letters of reference should be sent to: **Dr. John Linz, Chair, Search Committee, 234B GM Trout Food Science and Human Nutrition Building, Michigan State University, East Lansing, MI 48824.** Questions can be directed to **John Linz** via Telephone: 517-353-9624; FAX: 517-353-8963; or e-mail: jlinz@pilot.msu.edu. *Michigan State University is an Affirmative Action/Equal Opportunity Employer. Women and minority candidates are particularly encouraged to apply.*

DIRECTOR OF RESEARCH AND DEVELOPMENT University of Nebraska Medical Center Olson Center for Women's Health Department of Obstetrics and Gynecology

The Department of Obstetrics and Gynecology at the University of Nebraska Medical Center is seeking a Director of Research and Development for the Olson Center for Women's Health. The Olson Center for Women's Health, which resides within the Department of Obstetrics and Gynecology, is a multidisciplinary women's health center with endowments for education and research. Professional responsibilities for this position will include leading the Department of Obstetrics and Gynecology's clinical research efforts and facilitating and coordinating collaborative research between departments within the College of Medicine and the medical center at large. The ideal candidate for this position will possess a Ph.D. degree or M.D. degree. Equivalent degrees in biostatistics, epidemiology, or public health are also acceptable. Academic rank for this tenure-track position is open and dependent on qualifications and experience. Candidates currently active in independent investigation are preferred, and current grant support is desirable but not required. Interested individuals should forward their curriculum vitae to: **John T. Repke, M.D., Chris J. and Marie A. Olson Professor and Chairman, Department of Obstetrics and Gynecology, Chairman, Advisory Committee, Olson Center for Women's Health, University of Nebraska Medical Center, 983255 Nebraska Medical Center, Omaha, NE 68198-3255.** Telephone: 402-559-2711; FAX: 402-559-2712; e-mail: jrepke@unmc.edu. *UNMC is an Affirmative Action/Equal Opportunity Employer.*

POSITIONS OPEN

INVESTIGATOR POSITIONS AVAILABLE (TENURED OR TENURE TRACK) Hematology/Hematopoiesis/Stem Cell Biology Medicine Branch, National Cancer Institute

The Experimental Transplantation and Immunology Department of the Medicine Branch, Division of Clinical Sciences, NCI, invites applications for a laboratory-based Investigator position in hematopoiesis/stem cell biology. Candidates must have an M.D. or Ph.D.; a strong record of accomplishment; and the potential of establishing an internationally recognized, independent program in the molecular and/or cellular biology of hematopoietic stem cells. This program will have the goal of developing information, principles, and applications complementing clinical marrow transplantation efforts in the Department. Successful candidates will join the new Department of Experimental Transplantation and Immunology that includes in its membership basic, clinical-translational, and clinical investigators. This position provides full salary support and independent and substantial supply and equipment budget, along with Technician and Fellow support. *U.S. citizenship or resident alien status is required.* Applicants should send a curriculum vitae, a statement of the candidate's proposed research program, and three to five letters of recommendation to: **Ms. Rose S. Brown, Department of Experimental Transplantation and Immunology, Medicine Branch, National Cancer Institute, Building 10, Room 12N226, 9000 Rockville Pike, Bethesda, MD 20892-1906** by February 15, 2000. *NIH is an Equal Opportunity Employer.*

HERBARIUM CURATOR

The Department of Botany at the University of Georgia and the Georgia State Museum of Natural History invite applications for the position of Herbarium Curator. The successful candidate will be expected to manage the herbarium collections, including daily curation and public information requests; to supervise herbarium technical staff; and to develop a research and service program in the general area of plant systematics. The curator will also have the opportunity to teach in plant systematics courses and to supervise graduate student research. The position is non-tenure track but carries a salary and rights and privileges equivalent to other Botany faculty. More information about the Botany Department and the museum is available at website: www.botany.uga.edu/ and website: museum.nhm.uga.edu/. Candidates should have a Ph.D. in plant systematics or a related area and should submit a curriculum vitae; short statements of research, service, and teaching interests; pertinent reprints of up to five research papers; and have four letters of reference sent to: **Dr. Gary Kochert, Chair, Herbarium Curator Search Committee, Department of Botany, University of Georgia, Athens, GA 30602** before February 21, 2000. *The University of Georgia is an Equal Opportunity Employer.*

DIRECTOR, NATIONAL ZOOLOGICAL PARK SMITHSONIAN INSTITUTION Washington, D.C.

The Secretary of the Smithsonian Institution invites applications and nominations for the position of Director, National Zoological Park. Three million people visit the Zoo each year. Research and conservation programs are conducted in several departments, as well as at the Conservation and Research Center in Front Royal, Virginia, the site of international training programs. The Zoo has 350 staff members and a budget of approximately \$30 million. Applicants should have a record of success in leading a complex organization, expertise in formulating and implementing a strategic vision, interpersonal and communication skills, and experience in fund raising and building other forms of support. An advanced degree in one of the Zoo's disciplines is desirable. Materials should be sent to: **Office of the Provost, Smithsonian Institution, 1000 Jefferson Drive, S.W., MRC 009, Washington, DC 20560.** Review of applications will begin in mid-January. *The Smithsonian is an Equal Opportunity Employer.*

Unconventional Innovations Program (UIP)

Novel Technologies for Noninvasive Detection, Diagnosis, and Treatment of Cancer

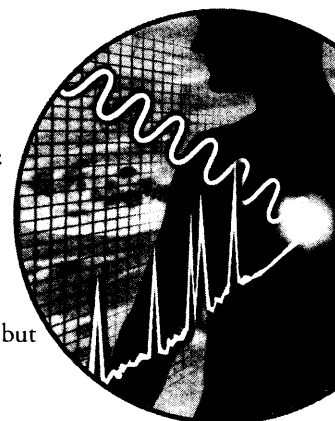
The UIP seeks revolutionary approaches to the development of multifunctional technology platforms to support minimally intrusive approaches that integrate:

- Sensing of fundamental signatures of precancers; or early, metastatic, or recurring cancers in the living body
- Transmission of signature information to an external monitor
- Controlled, specific treatment
- Monitoring of effects of treatment

The UIP particularly seeks technology platforms that integrate novel approaches to:

- | | |
|-------------------------|-------------------------|
| ■ Signature recognition | ■ Intervention delivery |
| ■ Signal generation | ■ Intervention feedback |
| ■ Signal amplification | ■ Data interpretation |
| ■ Signal transmission | |

Proposals are encouraged from investigators from a variety of disciplines including, but not limited to, biomedical research, chemistry, physics, engineering, and computational sciences; particularly as multidisciplinary teams.



For complete information on this Request for Proposals visit:

<http://amb.nci.nih.gov/RFP/07013/07013.htm>

Or request information by phone at 301/496-8620

ANNOUNCEMENTS



Announcement Regarding Entrustment of Industrial Science and Technology Research and Development Project

The New Energy and Industrial Technology Development Organization (NEDO) is planning to launch one (1) new research and development project in FY1999 based on funds provided by the Ministry of International Trade and Industry (MITI) of Japan. This new research and development project is as follows: Technology for Analysis of Protein Expression and Interaction. NEDO invites applications from organizations interested in participating in the above project. It is planned that a public announcement calling for applications was made December 27, 1999. Details regarding application procedures, project outline and the date and the place of explanatory meeting are posted on NEDO's homepage (<http://www.nedo.go.jp>) as announced in MITI International Bulletin on December 27, 1999.

Applied Technology Department Fax: 81-3-3987-9396

New Energy and Industrial Technology Development Organization

Sunshine Building 60 29F 3-1-1, Higashi-Ikebukuro, Toshima-ku, Tokyo, Japan

POSITIONS OPEN

The Department of Obstetrics and Gynecology, University of New Mexico, School of Medicine, is accepting applications for a **RESEARCH** or a **TENURE-TRACK POSITION** for immediate placement in the new Women's Health Research Center. Minimum qualifications for this position are: Ph.D. in biomedical sciences, with an emphasis on molecular and cellular biology; two to five years of laboratory experience in protein or glycoprotein biochemistry; expertise with chromatography and HPLC methodologies. Exceptional documentation skills and ability to develop scientific reports, manuscripts, and presentations based on original research. Proven ability to coordinate, execute, and interpret scientific research assignments. Strong interpersonal and communication skills and ability to work effectively with professional personnel in a medical setting. Broad knowledge of state-of-the-art technology, equipment, and/or systems pertinent to biomedical research. *Eligible to work in the United States.* For complete information (position qualifications, duties and responsibilities, and conditions of employment), you may access our home page at [website: http://www.unm.edu/~oeounm](http://www.unm.edu/~oeounm) or request a copy of the announcement from: **Theresa Everling, Search Coordinator** at e-mail: teverling@salud.unm.edu. Applications must be received by January 31, 2000. Send letter of interest and curriculum vitae to: **Theresa Everling, Search Coordinator, Department of Obstetrics and Gynecology, University of New Mexico, 2211 Lomas Boulevard N.E. ACC4, Albuquerque, NM 87131-5286. Telephone: 505-272-4155. FAX: 505-272-6385.** *University of New Mexico is an Equal Employment Opportunity/Affirmative Action Employer/Educator.*

MOLECULAR BIOLOGY/NEUROSCIENCE UNIVERSITY OF MARYLAND, BALTIMORE

The Department of Oral and Craniofacial Biological Sciences has developed a broadly based research program in the neurobiology of pain. We are recruiting for a Molecular Neurobiologist to complement the existing expertise in the Department. The position is primarily at the **ASSISTANT** or **ASSOCIATE PROFESSOR** level, but outstanding candidates at any level will be considered. Successful candidates will have a Ph.D. or equivalent, a record of outstanding research achievement, and a demonstrated ability to attract external funding. The selected candidate will be expected to sustain a vigorous research program in the molecular biology of pain and interact with departmental faculty, as well as faculty in other departments on our health sciences campus. Applicants should send a curriculum vitae, copies of their two most significant publications, brief descriptions of present research and future research plans, and the names of three to five individuals from whom recommendations can be obtained to: **Dr. Leslie P. Gartner, Chair of Search Committee, Department of Oral and Craniofacial Biological Sciences, Neuroscience Track, University of Maryland, Baltimore, 666 West Baltimore Street, Baltimore, MD 21201.** *The University of Maryland is an Affirmative Action/Equal Employment Opportunity/Americans with Disabilities Employer. We especially encourage women and minorities to apply.*

MOLECULAR OR CELL BIOLOGIST: bone or cartilage research. The Albert Einstein Healthcare Network seeks candidates for an **ASSISTANT** or **ASSOCIATE SCIENTIST** in the Department of Orthopaedics in the area of molecular or cell biology related to bone or cartilage research. The applicant must possess a Doctorate in an appropriate area and must maintain a competitively funded research program. The candidate may be eligible for a faculty appointment at Thomas Jefferson University. Applicants should submit their curriculum vitae, bibliography, brief description of their funded research activities, and three letters of reference. The materials should be sent to: **John A. Handal, M.D., Chairman, Department of Orthopaedics, Albert Einstein Healthcare Network, 5501 Old York Road, Philadelphia, PA 19141.** *Equal Employment/Affirmative Action Employer.*

POSITIONS OPEN



MOLECULAR MEDICINE RESEARCH LABORATORY

Applications are invited for **SCIENTISTS** in the following domains: Molecular biology: Ph.D. (five years of research experience) with expertise in regulation of gene expressions. Microbiology: Ph.D. (five years of research experience) with expertise in downstream processing. Organic chemistry: Ph.D. (five years of research experience) with expertise in chiral synthesis. Applicants should submit a curriculum vitae, a brief statement of research interests, copies of recent publications, and two references to: **Dr. Shrikant Mishra, Molecular Medicine Research Laboratory, USV Limited, B.S.D. Marg, Govandi Station Road, Govandi, Mumbai 400 088 India. Telephone: 91-22-556-40-48-51; FAX: 91-22-551-56-08.** Complete applications should be received before January 20, 2000. *USV Limited is a research-led institution and is an Affirmative Action/Equal Opportunity Employer.*

INVESTIGATOR POSITIONS AVAILABLE (TENURED OR TENURE TRACK)

Genetic Manipulation of Hematopoietic Stem Cells

Medicine Branch, National Cancer Institute

The Experimental Transplantation and Immunology Department of the Medicine Branch, Division of Clinical Sciences, NCI, invites applications for a laboratory-based Investigator position in hematopoiesis/stem cell gene therapy: Candidates must have an M.D. or Ph.D.; a strong record of accomplishment; and the potential of establishing an internationally recognized, independent program in genetic manipulation of hematopoietic stem cells. This program will have the goal of developing information, principles, and/or applications complementing clinical marrow transplantation efforts in the Department. Successful candidates will join the new Department of Experimental Transplantation and Immunology that includes in its membership basic, clinical-translational, and clinical Investigators. This position provides full salary support and independent and substantial supply and equipment budget, along with Technician and Fellow support. *U.S. citizenship or resident alien status is required.* Applicants should send a curriculum vitae, a statement of the candidate's proposed research program, and three to five letters of recommendation to: **Ms. Rose S. Brown, Department of Experimental Transplantation and Immunology, Medicine Branch, National Cancer Institute, Building 10, Room 12N226, 9000 Rockville Pike, Bethesda, MD 20892-1906** by February 15, 2000. *NIH is an Equal Opportunity Employer.*

BIOCHEMIST: Albion College invites applications for a tenure-track position in biochemistry for a preferred starting date of August 2000. A Ph.D. is required and postdoctoral experience preferred. The successful candidate must have a strong background in biochemistry, a strong interest in undergraduate teaching, and a commitment to establishing an undergraduate research program. Teaching responsibilities would include biochemistry, a biochemistry laboratory, advanced biochemistry, and participation in the general chemistry program. Albion College is a selective, private liberal arts college of 1,500 students located in south central Michigan, within an hour's drive of major universities. Interested candidates should send a curriculum vitae, photocopies of transcripts, a brief statement of teaching philosophy, a research proposal, and three letters of recommendation to: **Professor Dennis C. Gaswick, Chemistry Department, Albion College, Albion, MI 49224.** Review of applications will begin February 15, 2000, but applications will be accepted until the position is filled. For additional information, explore Albion College's [website: http://www.albion.edu](http://www.albion.edu). *Albion College is an Equal Opportunity Employer.*

POSITIONS OPEN

ASSOCIATE DIRECTOR PYMATUNING LABORATORY OF ECOLOGY

The Department of Biological Sciences at the University of Pittsburgh anticipates making a nontenure-track faculty appointment to serve as Associate Director of the Pymatuning Laboratory of Ecology (PLE). The position is scheduled to begin summer 2000 subject to budgetary approval. The successful candidates must have a Ph.D. or equivalent experience. Experience with biological field station operations, development, and educational programs is desirable. PLE is a growing, midsize field station in northwestern Pennsylvania that serves research and educational missions. The Associate Director will be responsible for interfacing and strategic planning with operational management of the station. This newly created position provides the exciting opportunity to contribute to both the research and education missions at PLE. In order to ensure full consideration, applications must be received by February 14, 2000. Applicants should send a curriculum vitae, along with a letter describing their interest and past professional experience in this position as it pertains to this position. Please arrange to have three letters of reference sent to:

**PLE Search Committee
Department of Biological Sciences
University of Pittsburgh
Pittsburgh, PA 15260
Telephone: 412-624-4350**

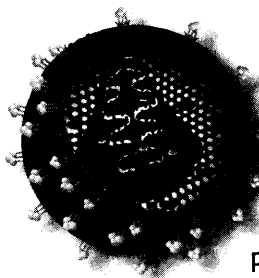
Further information on PLE and the Department of Biological Sciences is available at [website: http://www.pitt.edu/~biology](http://www.pitt.edu/~biology). *The University of Pittsburgh is an Affirmative Action/Equal Opportunity Employer. Women and members of underrepresented minority groups are especially encouraged to apply.*

ASSISTANT PROFESSOR OF BIOLOGY COORDINATOR FOR THE ELECTRON MICROSCOPY FACILITY

Hofstra University invites applications for a full-time, tenure-track faculty position in the Department of Biology. We seek an individual with a research specialization in an area mentioned below and the ability to coordinate the electron microscopy facility and teach courses in both scanning and transmission electron microscopy. The Department of Biology is a medium-sized but diverse department. All faculty are expected to teach undergraduate majors and non-majors as well as Master's students and maintain an active research program accessible to both undergraduate and Master's research students. We are especially interested in candidates with expertise in botany, ecology, microbiology/immunology, protozoology, or genetics. Candidates must have a Ph.D.; postdoctoral experience is preferred. Candidates should submit a letter of application, their curriculum vitae, statements of research and teaching interests, and have three letters of recommendation sent to the following address: **Faculty Search, c/o Dr. Dorothy E. Pumo, Department of Biology, Hofstra University, Hempstead, NY 11549-1140.** Application materials should be received by February 24, 2000. *Hofstra University is an Equal Opportunity Employer.*

POSTDOCTORAL POSITION immediately available to study the neurophysiological changes in hippocampus *in vivo* and *in vitro* after transient ischemia (Gao et al., *Neuroscience* 90:771, 1999). Applicants should have a Ph.D. with electrophysiological experience. Salary based on qualifications. Send curriculum vitae and names of references to: **Dr. Zao C. Xu, Department of Anatomy, Indiana University School of Medicine, Indianapolis, IN 46202. E-mail: zxu@anatomy.iupui.edu.**

POSTDOCTORAL POSITION available immediately to study signal transduction of an important cell surface glycoprotein associated with cancer. A chimeric receptor that is tyrosine-phosphorylated upon activation is already available and will be used. Funded by NIH. Experience in tyrosine kinases and/or adapter proteins is required. Send a résumé and names of three references to: **K. C. Kim, Ph.D., University of Maryland, Baltimore, School of Pharmacy. E-mail: kkim@umaryland.edu.**



Postdoctoral Positions

The National Cancer Institute is paving the way for new programs and discoveries at the Frederick Cancer Research and Development Center (NCI-FCRDC), National Institutes of Health, under the direction of **John M. Coffin, Ph.D.** The **HIV Drug Resistance Program (DRP)** is creating a world-class center for retrovirology research in a highly collaborative environment dedicated purely to research and supported by a wide spectrum of state-of-the-art core facilities. The emphasis of the DRP is on basic and translational research related to genetic diversity and drug resistance. As a component of its ongoing recruitment efforts, postdoctoral positions are currently available in laboratories headed by the following investigators:

Wei-Shau Hu, Ph.D.

Mechanisms of reverse transcription and recombination; RNA packaging and virus assembly; interactions between distinct viruses

Stephen H. Hughes, Ph.D.

Retroviral replication; structure and function of HIV reverse transcriptase; retroviral vectors

Vineet N. KewalRamani, Ph.D.

Virus-host interactions; development of murine models for HIV infection

Stuart F.J. Le Grice, Ph.D.

DNA/protein and RNA/protein interactions controlling reverse transcription; comparative analysis of retroviral enzymes

Vinay K. Pathak, Ph.D.

Retroviral mutations and RT template switching; RT structure and fidelity; development of gene therapy vectors

Alan Rein, Ph.D.

Molecular mechanisms of retroviral replication; interactions of retroviral proteins with nucleic acids; viral pathogenicity

Applicants must possess a Ph.D. and/or an M.D. Appointment duration is for 5 years, renewed on a yearly basis. Stipend is commensurate with education and experience, with a range of \$31,500 – \$38,020. Please submit a cover letter, CV including bibliography, and contact information for three references to Susan Beth Jordan, HIV Drug Resistance Program, NCI-FCRDC, P.O. Box B, Building 535, Room 309, Frederick, MD 21702-1201. For further information about the DRP, please visit our web site at www.ncifcrf.gov/hivdrp.

The National Cancer Institute is an Equal Employment Opportunity and Affirmative Action employer that values and fosters diversity throughout the entire organization.

COGNITIVE & MEDIA RESEARCH POSITIONS (Cambridge, MA)

Cambridge Basic Research, Nissan Technical Center North America, Inc., seeks applicants who are interested in understanding and modeling human behavior in the context of human-machine interactions in complex environments.

Research projects include perceptual and computational analyses in the areas of navigation, attention, situation awareness, intentionality, cognitive loads, decision making, HCI and motor control. The lab has a close working relationship with faculty at MIT and Harvard and houses a variety of experimental facilities, including the Nissan CBR driving simulator. (For more information, see <http://www.cbr.com/>)

Positions are available at research scientist or postdoctoral levels. Assignments will be for 2 years, renewable. PhD required. Please send a resume, a statement of research objective and the names of three references to: **Dr. Akio Kinoshita, Director, Cambridge Basic Research, Nissan Technical Center North America, Inc., 4 Cambridge Center, Cambridge, MA 02142.**

Review of applications will begin in January and will continue until the positions are filled. Nissan Technical Center North America, Inc. is the automotive development arm of Nissan Motor Co., Ltd. and is an Equal Opportunity Employer.



UNIVERSITY OF
CALGARY

The Westaim-ASRA Chair in Bacterial Biofilm Research

On the edge and leading the way. The University of Calgary is a contemporary university that builds a spirit of discovery and inquiry while delivering a dynamic life and quality learning experience.

The **Faculty of Medicine** invites applications and nominations for a full-time academic position at the Professor level as The Westaim-ASRA Chair in Bacterial Biofilm Research.

The successful candidate will be a senior investigator with a research background in biofilm research and proven leadership in education in the field. The incumbent will provide leadership in the development of biofilm research in Southern Alberta; develop and maintain a world-class program oriented towards biofilm research; promote multidisciplinary, collaborative research across disciplines, building on strengths and utilizing the existing resources available in the Faculty of Medicine; establish effective education links with groups having an interest in biofilm research; and help attract outstanding students, research associates and faculty. Calgary is a vibrant, multicultural city of ~850,000 near the Rocky Mountains, Banff National Park and Lake Louise. The Faculty is in the process of building a major new research facility. The Biofilm Research Group comprises members of the Faculties of Engineering and Science, in addition to the Faculty of Medicine. Another Chair in the Faculty of Engineering is in the process of being established.

Please submit a curriculum vitae, a statement of research interest and goals, and the names of three referees by **February 15, 2000**, to:

Dr. D. Grant Gall, Chair
Advisory Committee
Faculty of Medicine
3330 Hospital Drive N.W.
Calgary, Alberta, Canada T2N 4N1

In accordance with Canadian immigration requirements, priority will be given to Canadian citizens and permanent residents of Canada. The University of Calgary respects, appreciates and encourages diversity.

www.ucalgary.ca

POSITIONS OPEN

MAYO CLINIC RESEARCH FELLOWS. Postdoctoral research positions are available immediately in the Transplantation Biology Program at the Mayo Clinic in Rochester, Minnesota, to study the generation and regulation of immune responses to transplantation. The successful candidates will join a large multidisciplinary group of basic scientists whose work will focus on identifying the molecular mechanisms underlying transplant rejection and maintenance of immunological tolerance. Discoveries governing the regulation of immune responses may be applied to future clinical approaches to prevent transplant rejection, autoimmune disease, and immune reconstitution. Candidates must have a Ph.D. and/or M.D. Research experience in immunology, molecular biology, or cellular physiology would be helpful. Send curriculum vitae, bibliography, a description of research interests, and the names of three references to: **Laurie A. Dempsey, Ph.D., Mayo Clinic, Department of Surgery/Transplantation Biology, 200 First Avenue S.W., 2-66 Medical Sciences Building, Rochester, MN 55905.** Mayo Foundation is an Affirmative Action/Equal Opportunity Employer and Educator.

RESEARCH ASSOCIATE/ POSTDOCTORAL FELLOW UNIVERSITY OF COLORADO Health Sciences Center

Position available to join well-funded laboratory of eight investigators to study the (1) regulation of apoptosis in prostate cancer by the TRAIL protein, or (2) control of apoptosis and the cell cycle during hematopoietic transformation by the Pim oncogene, or (3) the regulation of differentiation of human promyelocytic leukemia cells by phorbol esters. Yeast and ES cell technologies are available. Ph.D. required, with a strong background in molecular/cellular biology. Excellent salary consistent with training. Application deadline is February 29, 2000. Send curriculum vitae and names and telephone numbers of three references to: **Andrew S. Kraft, M.D., Chief, Division of Medical Oncology, UCHSC, 4200 East Ninth Avenue, Denver, CO 80262.** The University of Colorado is an Equal Employment Opportunity Employer.

RESEARCH ASSOCIATE

The Emergency Resuscitation Research Center at the University of Chicago is seeking a Research Associate to serve as a highly motivated translational investigator and to join the research team of physicians, biologists, engineers, and physicists committed to improving our current treatment of cardiac arrest. Individual must have experience in large and small animal models of cardiac arrest and be adept at measuring hemodynamics in these systems. Individual should possess a degree in molecular biology and/or physiology or related fields of research, with a Ph.D., M.D., or equivalent level of experience. Academic rank and salary will be commensurate with training and experience. Send curriculum vitae to: **Lynne Harnish, Administrator for ERRC, The University of Chicago, Department of Medicine, 5841 South Maryland Avenue, MC5068, Chicago, IL 60637.** Affirmative Action/Equal Opportunity Employer.

SALES REPRESENTATIVE: Want to earn \$250,000 in three months? Lucrative (up to \$250,000), short-term (approximately three months) sales representative position available for cutting-edge protein crystal growth services to the pharmaceutical, biotechnology, and structure-based drug design industries. Compensation includes salary, travel expenses, and substantial commissions. If interested, FAX your résumé and references to: **281-280-0921**, care of Ken Jackson.

POSTDOCTORAL POSITIONS available to study molecular mechanisms underlying learning and memory and CNS injury. Experience in molecular biology or biochemistry is required. Send curriculum vitae and three references to: **P. Dash, University of Texas Medical School, Neurobiology and Anatomy, P.O. Box 20708, Houston, TX 77225.** Telephone: 713-500-5575; FAX: 713-500-0621; e-mail: pdash@nba19.med.uth.tmc.edu. Equal Opportunity Employer/Affirmative Action/smoke free.

POSITIONS OPEN

SCHOOL OF MARINE AFFAIRS UNIVERSITY OF WASHINGTON

Tenure-track ASSISTANT PROFESSOR. The School is in the College of Ocean and Fishery Sciences and offers a two-year program leading to a Master of Marine Affairs. Faculty of the School cover areas as diverse as law, economics, political science, policy analysis, anthropology, fisheries science, and oceanography. The School seeks a Ph.D. scientist, preferably in marine bioscience, to teach marine affairs courses building upon his or her specialty and to conduct policy-relevant research in which marine affairs students participate. Applicants should exhibit interest and experience in teaching and research on living marine resources as they relate to ocean and coastal management or to marine environmental questions. Examples of topics include integrated coastal management, ecosystem management, habitat protection and restoration, fisheries management, and marine protected areas. Candidates must have a strong commitment to teaching, the ability to procure external funding, a willingness and ability to participate in interdisciplinary research teams, and demonstrated excellence in written and oral communication. Preference will be given to candidates with training or experience in marine affairs and who can connect scientific research to policy development. Application instructions are available at website: <http://www.sma.washington.edu>.

RESEARCH BIOGEOCHEMIST, Smithsonian Environmental Research Center: salary range \$48,796 to \$75,433 per annum. The Smithsonian Environmental Research Center, Edgewater, Maryland, seeks a Research Biogeochemist who will develop programs emphasizing (1) the role of biogeochemical processes in connected ecosystems and receiving waters at SERC site and Chesapeake Bay region, (2) factors controlling biogeochemical processes in ecosystems at the land-sea interface, and (3) comparative studies. Candidate would be expected to work collaboratively within context of existing SERC research and education programs. To obtain an application package, Telephone: 202-287-3102 and request announcement number 99MA-1371. Please respond specifically to selective and quality ranking factors outlined in the vacancy announcement. Applications should be postmarked by February 28, 2000, and sent to: **Smithsonian Institution, Office of Human Resources, Branch 1, P.O. Box 23762, Washington, DC 20026-3762.** Further information on position and SERC can be obtained at website: <http://www.serc.si.edu>. Smithsonian Institution is an Equal Opportunity Employer.

Infectious Diseases: basic STD or HIV research. The Indiana University School of Medicine invites applications for a faculty position at the rank of **ASSISTANT PROFESSOR** in the Department of Medicine/Division of Infectious Diseases. Applicants should be Board-eligible or certified in internal medicine and infectious diseases and should demonstrate an ability to investigate basic mechanisms of STD pathogenesis or host responses to STDs or HIV. Please reply with a letter, curriculum vitae, statement of research interest, and three letters of reference to: **Dr. Stanley M. Spinola, Director, Division of Infectious Diseases, Department of Medicine, Emerson Hall, Room 435, 545 Barnhill Drive, Indianapolis, IN 46202-5124.** Indiana University is an Affirmative Action/Equal Opportunity Employer. Minorities and women are strongly encouraged to apply.

RESEARCH ASSOCIATE position available immediately to work on novel methodologies for labeling proteins and peptides with radioiodine nuclides and the "particle emitter Astatine-211. The goal of this project is to develop targeted radiotherapeutics for the treatment of brain tumors and other malignancies. Familiarity with either radiohalogenation chemistry or peptide/protein modification would be desirable. Level of appointment (**POSTDOCTORAL** or **RESEARCH FACULTY**) dependent on experience. If interested, please contact: **Professor Michael Zalutsky, Department of Radiology, Box 3808, Durham, NC 27710, U.S.A.** Telephone: 919-684-7708; e-mail: zalut001@mc.duke.edu.

POSITIONS OPEN

LABORATORY DIRECTOR

The Division of Plastic and Reconstructive Surgery at University of Southern California is beginning a new affiliation with the Cedar-Sinai Medical Center. To continue the academic pursuits of the Division, we are looking for an **INVESTIGATOR** to direct a research program at this new location. The successful candidate for this position will direct an independent laboratory effort in dedicated research space with a USC academic affiliation. It is expected that this individual's research focus will be related to the clinical discipline of plastic surgery, such as wound healing, transplant immunology, and/or bioengineering. The candidate should have an established history of academic and research productivity, be willing to train undergraduate and postgraduate trainees, and collaborate in areas of shared interest with the ongoing research efforts of the Division. The preferred candidate will have ongoing research funding, be interested in the translational aspects of basic research, and have administrative or organizational experience in laboratory or program management. The specific academic tenure status and relationship to academic departments at the main USC campus will be based on the candidate's qualifications and credentials. The position will include significant salary and laboratory support. Interested candidates should send their curriculum vitae to Dr. Randy Sherman.

Randy Sherman, M.D.
Professor and Chief

Division of Plastic and Reconstructive Surgery
USC School of Medicine
1450 San Pablo Street, Suite 2000
Los Angeles, CA 90033
FAX: 323-442-6481

ONCOGENESIS IN ADULT CNS PROGENITOR CELLS

POSTDOCTORAL POSITION available immediately for study of oncogenesis in adult mammalian CNS progenitor cells. Candidates should have substantial experience with *in vitro* CNS stem cell biology, combined with an interest in mechanisms of neoplastic transformation. Forward a letter of interest and a curriculum vitae to: **Dr. Pradeep Bhide, Developmental Neurobiology Laboratory, Massachusetts General Hospital, Building 149, 13th Street, Charlestown, MA 02129.** E-mail: bhide@helix.mgh.harvard.edu.

POSTDOCTORAL POSITION at University of California at San Diego is available immediately to investigate protease and protease inhibitor mechanisms required in the biosynthesis of peptide neurotransmitters and hormones. Expression of protease and serpin genes in cultured cells by plasmid and viral vectors will be analyzed by methods in peptide/protein biochemistry. Appropriate experience and Ph.D. degree are required. Curriculum vitae and three references to: **Dr. V. Hook, c/o M. Richards, UCSD Department of Medicine, 9500 Gilman Drive #0822, La Jolla, CA 92093-0822.** FAX: 619-543-2281; e-mail: m1richards@ucsd.edu.

POSTDOCTORAL FELLOWSHIP in proteomics. Positions available to study signal transduction mechanisms during myocardial ischemia/reperfusion. Expertise in molecular biology and protein chemistry required. Submit curriculum vitae, statement of interests, and three references to: **Dr. Roberto Bolli, Chief, Division of Cardiology, University of Louisville, Louisville, KY 40292.** E-mail: rbolli@louisville.edu. Equal Opportunity/Affirmative Action Employer.

POSTDOCTORAL FELLOWS

Postdoctoral positions are available immediately to study regulation of genes involved in resistance to anticancer drugs and apoptosis, as well as novel mechanisms of resistance. Ph.D. and background in molecular biology and biochemistry are required. Send a curriculum vitae to: **Ahmad R. Safa, Ph.D., Indiana University Cancer Center, 1044 Walnut, R4-119, Indianapolis, IN 46202.** FAX: 317-274-8046.

Associate Laboratory Director

Bechtel BWXT Idaho, LLC is the management and operating contractor for the Department of Energy's Idaho National Engineering and Environmental Laboratory (INEEL) located in Idaho Falls, Idaho. The Inland Northwest Research Alliance (INRA), a member of the LLC, is a non-profit organization formed by the Presidents of Boise State University, Idaho State University, Montana State University, the University of Idaho, the University of Montana, Utah State University and Washington State University. INRA was established for the purpose of developing research alliances between faculty at INRA institutions and INEEL and other entities and is currently seeking an Associate Laboratory Director for Environmental and Energy Sciences to manage the sciences portfolio of the INEEL and to participate in part of the overall R&D management team.

Reporting directly to the Laboratory Director at INEEL, the initial focus of the INEEL research program will be to build a highly respected and first-rate program concentrating on sub-surface science. The Associate Laboratory Director will be responsible for forming/directing multi-disciplinary research teams that can address issues related to contaminant fate and transport in the sub-surface. Solutions identified by this research program will assist in formulating key policy decisions impacting clean up at INEEL and other contaminated sites worldwide. This position will also be accountable for strengthening the overall science (e.g., materials, physics, chemistry, and geosciences) underpinning of INEEL's R&D and for fostering an advanced capability in computational science.

You must have a Ph.D. in an environmental/energy science or engineering field, the qualifications necessary to be appointed as an Adjunct/Research Professor, and eligible for DOE access authorization. In addition, you must have an excellent record of scientific achievements in an area of sub-surface science, and specifically significant research achievements related to contaminate fate and transport. You must be able to manage large, multi-disciplinary research and development programs; have experience in taking an R&D program from concept to implementation—specifically one that involves significant laboratories, equipment and/or research facilities; have a record of achievements in developing scientific collaborations between university researchers and federal or industrial researchers; and experience in building quality graduate student programs.

Please send a letter of application addressing the required and preferred qualifications, a current resume, and the names, addresses, telephone numbers and e-mail addresses of several references, to:

Mr. Paul Watrous
Bechtel BWXT Idaho, LLC
P. O. Box 1625
Idaho Falls, ID 83415-3127
Email: wwp@inel.gov

INEEL
Idaho National Engineering & Environmental Laboratory
BECHTEL BWXT IDAHO, LLC

www.inel.gov

Equal Opportunity Employer



The Aga Khan University

CHAIR OF THE DEPARTMENT OF BIOLOGICAL AND BIOMEDICAL SCIENCES

FACULTY OF HEALTH SCIENCES

The Aga Khan University, chartered in 1983, is Pakistan's first private university and presently comprises a Faculty of Health Sciences, consisting of a Medical College and a School of Nursing, a teaching hospital, and an Institute for Educational Development. A Faculty of Arts and Sciences is being planned.

At present, there are separate Basic Science Departments of Anatomy, Biochemistry, Physiology and Pharmacology, Microbiology, and Pathology. With the principal objectives of enhancing research, and facilitating the development of an integrated curriculum for the Medical College, the Board of Trustees of the University has approved a plan to merge the Basic Sciences into a Department of Biological and Biomedical Sciences, for which a Chair is sought, and a Department of Pathology and Microbiology.

The Chair of the Department of Biological and Biomedical Sciences will be responsible for stimulating and coordinating research and graduate studies in all the Basic Sciences. A new Biomedical research building has been completed, a PhD program in the Health Sciences began in October 1999, and substantial institutional research funding is being made available. There are exceptional opportunities for interdisciplinary collaborative research between the Basic Sciences, the clinical departments and the Department of Community Health Sciences. The Chair of Biological and Biomedical Sciences will also be responsible for facilitating the development of an undergraduate medical curriculum that integrates the teaching of the Basic Sciences with that of the clinical disciplines and Community Health Sciences.

The Chair of Biological and Biomedical Sciences will be accountable to the Dean of the Faculty of Health Sciences for academic leadership, budgetary control and staff development. He/she will be assisted by a Vice Chair for research and graduate studies and another for undergraduate education (both to be appointed).

Candidates must be senior academics with substantial experience in research, graduate education, undergraduate teaching and administration, and may be from any of the Basic Science disciplines. Candidates should have a PhD or equivalent; a degree in medicine is desirable but not essential. The candidate must be a strong researcher with an active research program, which should be congruent with institutional research themes, including infectious disease, etiology of coronary artery disease, genetics, nutrition and cancer.

Interested individuals are invited to forward their CV to the **Dean, Faculty of Health Sciences, The Aga Khan University, Stadium Road, P O Box 3500, Karachi, Pakistan; Fax: (92 21) 4932095/4934294; email: roger.sutton@aku.edu** from whom further information can be obtained. Applications should be received before **1 March 2000**.

POSITIONS OPEN

MRI RADIO FREQUENCY ENGINEER

The National Institutes of Neurological Disorders and Stroke, NIH, is seeking a qualified MRI Radio Frequency Engineer to work in the newly formed Laboratory of Functional and Molecular Imaging (LFMI). This is a **STAFF SCIENTIST** position whose primary duties include constructing both routine and novel radio frequency coils for high-field MRI for use with humans and animals. The Engineer will be expected to participate in research on the development of high-field MRI, as well as work in support of ongoing projects in LFMI. The LFMI is in the process of acquiring a 11.7T, 30 cm. bore animal MRI system and a 7T, 90 cm. bore human MRI system. In addition to development of radio frequency coils, the MRI Radio Frequency Engineer will help to maintain LFMI spectrometers in excellent working condition, as well as extend the performance with laboratory-built additions when necessary. Members of LFMI have access to GE 1.5 and 3T LX MRI scanners and a 4.7T, 40 cm. bore animal MRI system, all housed within the NIH *In Vivo* NMR Center. There are a large number of excellent MRI groups in the *In Vivo* NMR Center that are very interactive. A Ph.D. degree in a scientific or engineering discipline and at least two years of extensive experience that demonstrate outstanding abilities in development of MRI radio frequency coils and hardware, especially at field strengths of 3T and higher, are required. Salaries are very competitive and commensurate with experience. The full vacancy announcement, with application requirements and procedures, is available by FAX: 1-800-728-5627; request FAX i.d. #5021 or via the Internet: website: <http://careerhere.nih.gov>; reference NINDS-99-0177. Applications are due by February 11, 2000. For questions, Telephone: 301-435-5499. NIH is an Equal Opportunity Employer.

POSTDOCTORAL RESEARCH POSITION INHALATION TOXICOLOGY OF ULTRAFINE PARTICLES

An opportunity exists for an individual to participate in a research and development project involving the toxicity of ultrafine particles within DuPont's Haskell Laboratory for Toxicology and Industrial Medicine. The project involves the physical/chemical characterization of perfluoropolymer resin combustion aerosols and elucidation of their biochemical/toxicological interactions with the lung. Applicants should possess a recent Ph.D. degree in pulmonary toxicology or biochemistry, with experience in aerosol generation and characterization. The successful applicant will be expected to work independently and should have excellent communication skills. This position is available immediately. The salary will be competitive commensurate with qualifications. Please forward résumé to: Mary Jane Hudson, Haskell Laboratory, P.O. Box 50, Elkton Road, Newark, DE 19714. For further information regarding this position, contact: Rudy Valentine, Ph.D., Telephone: 302-366-5315. DuPont is an Equal Opportunity/Affirmative Action Employer.

POSTDOCTORAL RESEARCH ASSOCIATE IMMUNOLOGICAL TOLERANCE IN CNS AUTOIMMUNE DISEASE

The Department of Microbiology and Immunology at East Carolina University School of Medicine invites applications for a Postdoctoral Research Associate. The position is available immediately to study mechanisms by which regulatory CD4⁺ T cells interact with encephalitogenic T cells to induce tolerance in murine and rat models of experimental autoimmune encephalomyelitis. Position offers nationally competitive salary plus fringe benefits. Mail curriculum vitae, a letter describing research interests, and names and addresses of three references to: Dr. Mark D. Mannie, Department of Microbiology and Immunology, East Carolina University School of Medicine, Greenville, NC 27858-4354. East Carolina University is an Equal Employment Opportunity/Affirmative Action/Equal Access Employer. Applicants must comply with the Immigration Reform and Control Act.

POSITIONS OPEN



Gen-Probe, one of the largest biotechnology companies in the San Diego area, is a leading developer of DNA probe-based diagnostics utilizing transcription-mediated amplification (TMA). Our innovative people are devoted to researching new technology and developing superior products. Because of Gen-Probe's amazing growth, the following career opportunity has become available in our state-of-the-art facility. Come join our dynamic team!

SENIOR RESEARCH SCIENTIST

This individual will work in the group responsible for TMA assay integration on the Tigris instrument. Responsibilities include designing and executing experiments to optimize assay conditions on the instrument and resolve assay performance issues. Will also contribute to the planning and execution of assay and system validation studies. Other duties include supervising the work of two to four technicians. Requires a Ph.D. in biological sciences, with at least two years of postgraduate industrial diagnostic experience. M.S./B.S. degree, with a minimum of nine years of relevant experience acceptable. The ideal candidate will have a strong working knowledge of nucleic acid amplification techniques. Experience in diagnostic instrumentation, assay development on automated platforms, and assay integration highly desirable.

Gen-Probe offers dedicated professionals challenging opportunities within a fast-paced corporate environment. Candidates should send résumés to: Gen-Probe Incorporated, Attention: Human Resources Department/G99/184/AE, 10210 Genetic Center Drive, San Diego, CA 92121; FAX: 858-410-8001; e-mail: www.gen-probe.com. Please call our job line at: 858-410-8020. Website: www.gen-probe.com. Gen-Probe supports a drug-free work environment. Equal Opportunity Employer.

BIOINFORMATICS SOFTWARE TRAINER

The Genetics Computer Group, Inc. (GCG) is seeking an individual with a strong background in molecular biology, strong interpersonal skills, and experience in teaching and sequence analysis. The key aspect of this position will be presentation of training seminars on the use of GCG-supported software, including the Wisconsin Package and SeqStore. Applicants must have a minimum of a Master's degree in molecular biology or a related field, experience with sequence analysis software, and a willingness to travel. Previous teaching experience is desired. Send résumé with references to: Genetics Computer Group, Inc., 565 Science Drive, Madison, WI 53711. Telephone: 608-233-5300.

NATIONAL INSTITUTES OF HEALTH NATIONAL INSTITUTE OF CHILD HEALTH AND HUMAN DEVELOPMENT Laboratory of Cellular and Molecular Biophysics

POSTDOCTORAL POSITION available to study microbial pathogenesis in tissue-like structures and tissues *ex vivo*. Work will involve studying HIV pathogenesis in human lymphoid tissue *ex vivo* and will require skills in various virology, cell biology, and molecular biology procedures. The candidate should have a Doctoral degree and experience in at least one of the above-mentioned fields. Send curriculum vitae and the names of three references to: Dr. Leonid Margolis, Building 10, Room 10D14, NIH, Bethesda, MD 20892.

POSTDOCTORAL POSITION: molecular virology. Available immediately to investigate the role of promoters in supporting homologous genetic recombination in RNA viruses. Experience in molecular virology/molecular biology desirable. Send preference, curriculum vitae, and three references to: Dr. Jozef J. Bujarski, Plant Molecular Biology Center, Northern Illinois University, Montgomery Hall, DeKalb, IL 60115; e-mail: jbujarski@niu.edu. Affirmative Action/Equal Opportunity Employer.

POSITIONS OPEN

DIVISION HEAD DIVISION OF BIOLOGICAL SCIENCES MARSHALL UNIVERSITY

The Marshall University College of Science is seeking a highly qualified and motivated individual to lead the Division of Biological Sciences. The position will be a full-time, 12-month tenure-track appointment with an anticipated starting date of August 2000. The successful candidate will administer 25 full-time faculty members, be involved in teaching and research, and build upon current interdisciplinary initiatives involving the Departments of Biological Sciences, Chemistry, and Biomedical Sciences. Marshall is a university of over 15,000 students, dedicated to excellence in undergraduate and graduate teaching and research. We are currently growing and developing new programs to help our students meet the challenges of the future. Applicants should hold a Ph.D. in the biological sciences and possess current knowledge and research experience in molecular biology. The successful candidate must be committed to building the molecular/cellular aspect of the program while furthering the development of existing departmental strengths in ecological and organismal biology. Applications must include a curriculum vitae, statement of administrative philosophy, and the candidate's vision for biological sciences. Send names, addresses, telephone numbers, and e-mail addresses of four professional references to: **Biology Division Head Search Committee Chair, College of Science, Marshall University, Huntington, WV 25755**. For further information, consult website: <http://www.marshall.edu/cos/>; e-mail: biology@marshall.edu. Consideration of applications will begin February 1, 2000. Marshall University is an Equal Opportunity/Affirmative Action Employer; women and minority candidates are strongly urged to apply.

POSTDOCTORAL POSITIONS available immediately to study nuclear receptor function and programmed cell death. Biochemical and developmental studies include: (1) ligand-dependent function of steroid-superfamily receptors and (2) action of apoptosis regulators on cell death and proliferation. Ph.D. and experience in biochemistry or cellular biology essential. Send curriculum vitae and names and addresses of three references to: **Marilinda Eller at either Cellular and Molecular Biology Section, 304 Morgan Building, School of Biological Sciences or Chandler Medical Center, 306 HSRB, University of Kentucky, Lexington, KY 40506**. Equal Opportunity Employer.

POSTDOCTORAL POSITION available immediately to study molecular mechanisms of resistance to antimicrobials in bacteria (primarily *Streptococcus pneumoniae*). Experience with pulsed-field gel electrophoresis, polymerase chain reaction, sodium dodecyl sulfate-polyacrylamide gel electrophoresis, cloning, and antimicrobial susceptibility testing is desirable. Please send or e-mail curriculum vitae and names of three references to: **Dr. Peter C. Appelbaum, Hershey Medical Center, H160, Penn State University, Hershey, PA 17033**. FAX: 717-531-7953; e-mail: gkendall@psghs.edu. Penn State is committed to Affirmative Action, Equal Opportunity, and the diversity of its workforce.

POSTDOCTORAL POSITIONS available to signal transduction mechanism that regulates apoptosis in salivary acinar cells. Model system includes cell lines, primary cells, and transgenic/knockout mice. Experience with molecular approaches is desirable. Send curriculum vitae and the names of three references to: **Mary E. Reyland, Ph.D., Department of Oral Biology and Basic Sciences, University of Colorado Health Sciences Center, 4200 East Ninth Avenue, Box C286, Denver, CO 80262**.

POSTDOCTORAL POSITIONS to study new motifs required for K⁺ channel surface expression and association with auxiliary subunits. Experience with molecular approaches or patch clamping required. Send curriculum vitae and reference names to: **Edwin S. Levitan, Ph.D., Department of Pharmacology, University of Pittsburgh, Pittsburgh, PA 15261**. E-mail: Levitan@server.pharm.pitt.edu.

**PRIFYSGOL CYMRU, BANGOR
UNIVERSITY OF WALES, BANGOR**

School of Biological Sciences

**Postdoctoral Research Scientist
in Cell Biology/Protein Electrophoreses**

**Salary: £16,286 - £21,597
(on R&A Grade 1A) p.a.**

The above three year position is available immediately to work on the cell biology of the bacterium *Wolbachia* which is an endosymbiont of many insect species where it can cause phenomena like cytoplasmic incompatibility, parthenogenesis, feminization and male-killing (New Scientist 164 [16.10.99]: 44; Annu.Rev.Microbiol. 53 (99): 71).

Using 2-D protein electrophoresis, the interaction between *Wolbachia* and the host germ cells of *Drosophila*, especially with the paternal pronucleus inside the egg cell, will be studied to investigate the molecular mechanism of cytoplasmic incompatibility (Nature 367: 453; 391: 852). Starting salary will be dependent on experience.

Application forms are available by contacting Personnel Services, University of Wales, Bangor, Gwynedd LL57 2DG, tel. +44 (0)1248 382926/388132, e.mail. pos020@bangor.ac.uk

Please quote reference number 99/180 when applying.

Closing date for applications: Friday 21st January, 2000.

Informal enquiries can be made by contacting Henk R.Braig, e.mail. h.braig@bangor.ac.uk

Committed To Equal Opportunities

TENURE TRACK FACULTY POSITIONS

The Department of Chemistry-Biology of the Université du Québec à Trois-Rivières invites applications for two tenure-track faculty positions.

1. PLANT PHYSIOLOGY

Qualifications: Ph.D. (or equivalent diploma) in biology or in a related field with specialization in plant physiology or in plant ecophysiology and post-doctoral experience in plant physiology related to ecology or environmental questions.

2. PHYSIOLOGY OF REPRODUCTION

Qualifications: Ph.D. (or equivalent diploma) in physiology or in a related field with specialization in physiology of reproduction and post-doctoral experience in this field.

Experience and skills

A teaching experience at the undergraduate as well as graduate levels will be an asset. The candidate should also demonstrate skills to supervise students at the undergraduate and graduate levels, together with a strong leadership in research. He/she will have to develop an independent research program.

A functional knowledge of French is a mandatory requirement for these positions. Salary: According to the collective agreement. **These positions are effective for appointment by August 1, 2000.**

Application

The candidates should send **two** copies of their application package, including a *curriculum vitae*, two letters of recommendation, recent publications in their field of experience, together with a text of about two pages describing their research proposal to: **M. Michel Jacob, Doyen de la gestion des ressources, Université du Québec à Trois-Rivières, C. P. 500, Trois-Rivières (QC), Canada G9A 5h7.**

Closing date: before 5 PM, March 17, 2000.

The positions are equally offered to men and women. In accordance with Canadian immigration requirements, priority will be given to Canadian citizens and permanent residents of Canada.

WEB SITE: <http://www.uqtr.quebec.ca/DGR>



Université du Québec à Trois-Rivières

— LMU
Ludwig-Maximilians-Universität München

The Faculty of Physics invites applications for the position of

**Professor of Experimental Physics (Chair, C4)
- Condensed Matter Physics -**

A research focus on structural and functional properties of condensed matter is desirable, complementary to existing activities in the Faculty of Physics and at the recently established Center for NanoScience (CeNS).

Expected qualifications include a Ph.D. in physics, an internationally acknowledged research profile as well as excellent teaching abilities.

Applicants should not exceed the age of 52 at the time of nomination.

The University of Munich is committed to increase the female representation on its faculty and therefore particularly encourages applications from qualified female scientists. Handicapped candidates with comparable qualifications will be given preference.

Applications including a curriculum vitae, a statement of research interests, a publication list, copies of relevant certificates and names of 3 or more referees should be submitted by March 30, 2000 to the Dean of the Faculty of Physics, LMU München, Schellingstrasse 4, 80799 München, Germany.

Information about relevant activities at the LMU is available at the websites: www.cens.de and www.physik.uni-muenchen.de



**University
of Durham**

DEPARTMENT OF BIOLOGICAL SCIENCES

Professor of Ecology

Applications are invited for a Chair of Ecology in the Department of Biological Sciences within the Department's very active and internationally recognised Ecology and Environmental Biology Section. Applications will be welcomed from those with research interests in any area of ecology, although we especially seek applications from those whose interests relate to ecosystem ecology, including material and energy transfer processes and ecosystem functioning.

Applicants should have achieved international recognition for the excellence of their research, and have well-established track records both for success in obtaining research funding and for high research output.

Informal enquiries may be made in confidence to Professor Brian Huntley (tel: 0191 374 2432 or e-mail: brian.huntley@durham.ac.uk).

Reference: C072

Chair in Plant Molecular Cell Biology

A new Chair in Plant Molecular Cell Biology is available in the Department of Biological Sciences. The successful candidate will have an international reputation built upon research strengths in a relevant field, and applicants with programmes in developmental biology, cell signalling or functional genomics are particularly sought.

Durham Biological Sciences is located in a new purpose-built building with excellent research facilities for molecular and cell biology, with research strengths in plant molecular genetics and development, lipid and protein biochemistry, secondary metabolism, plant-pest/pathogen interactions and cell signalling.

Informal enquiries may be made in confidence to Professor Keith Lindsey (tel: 0191 374 7059 or e-mail: keith.lindsey@durham.ac.uk).

Reference: C073

The initial salary for both posts will be by negotiation within the professorial range.

Further details and an application form may be obtained from the Director of Personnel, University of Durham, Old Shire Hall, Durham DH1 3HP, to whom applications (5 copies) should be submitted, including the names of three referees. (Candidates outside the British Isles may submit one copy only). (Tel: 0191 374 3140, fax: 0191 374 7253 or e-mail: la.cook@durham.ac.uk).

Closing date for both posts: 28 January 2000. Please quote the appropriate reference number.

POSITIONS OPEN

POSTDOCTORAL POSITIONS (1) BIOCHEMICAL ENDOCRINOLOGY (2) NEUROBIOLOGY

Positions available immediately. (1) To isolate, structurally characterize, and assess bioactivities of novel growth hormone isoforms. Requires a Ph.D. in biochemistry, molecular biology, or endocrinology and training in some of the following: protein purification/structural analysis, *in vivo/in vitro* bioassays for hormones, radioimmunoassays, radioreceptor assays, molecular cloning/expression, signal transduction, phage display, or molecular modeling. (2) To investigate the role of neuronal activity in the development of dendritic structure and function in the rat hippocampus. Requires a Ph.D. in neurobiology and training in at least one of the following areas: *in vivo* recordings, behavioral testing, or neuroanatomy. Send curriculum vitae, two letters of reference, and statement of research interests to either: (1) **Luis S. Haro, Ph.D.** (e-mail: lharo@lonestar.utsa.edu) or (2) **Brenda Claiborne, Ph.D.** (e-mail: bclaiborne@utsa.edu), Division of Life Sciences, The University of Texas at San Antonio, 6900 North Loop 1604 West, San Antonio, TX 78249-0662. FAX: 210-458-5658. Affirmative Action/Equal Opportunity Employer.

POSTDOCTORAL POSITIONS ALBERT EINSTEIN COLLEGE OF MEDICINE, NEW YORK

Positions available immediately for individuals with exceptional immunology, cell and/or molecular biology backgrounds. **Dr. Anne Davidson:** Investigate the mechanism of action of costimulatory blockade and novel designer cytokines in human and murine SLE and in transplantation models. **Dr. Sanjeev Gupta:** Study the biology of transplanted liver cells, including stem cell, xenografting, and novel animal models. **Dr. Chaim Putterman:** Study the antigenic triggers and molecular targets of anti-DNA antibodies in SLE. Excellent English and availability for interview essential. Send statement of interests, curriculum vitae listing all publications, and addresses of three references to: **Anne Davidson, Sanjeev Gupta, or Chaim Putterman, Albert Einstein College of Medicine, Jack and Pearl Resnick Campus, 1300 Morris Park Avenue, U505, Bronx, NY 10461. Website: www.aecom.yu.edu.** Equal Opportunity Employer.

POSTDOCTORAL FELLOW/RESEARCH SCIENTIST positions in molecular neurobiology and genetics available immediately at the University of Pittsburgh School of Medicine, Department of Neurology. Disease interests include migraine genetics (*Neurology* 49:1231) and mechanisms of neuronal death in ischemia (*PNAS* 95:10954) and other diseases. We seek individuals with a variety of skills, including positional cloning, linkage analysis, cDNA cloning, viral vector construction, and animal ischemia models. Send curriculum vitae and names of three references to: **Steven Graham, M.D., Ph.D., Associate Professor of Neurology, University of Pittsburgh, S526 BST, Pittsburgh, PA 15213. E-mail: sgra+@pitt.edu.** The University of Pittsburgh is an Equal Opportunity Employer.

POSTDOCTORAL FELLOW

A Postdoctoral position is available to join an energetic laboratory focused on the molecular and developmental analyses of genes involved in development of diabetes and obesity. Research involves generation and analysis of C/EBP gene expression and metabolism in transgenic models and *in vitro* insulin signal transduction (*JCI* 103:207, 1999; *JBC* 274:13033, 1999). Applicants must have experience in cell and molecular biology and animal models of diabetes. Send curriculum vitae and details of three references to: **Dr. Jacob E. Friedman, Department of Nutrition, Case Western Reserve University School of Medicine, 10900 Euclid Avenue, Cleveland, OH 44106. Telephone: 216-368-1616; e-mail: jef8@po.cwru.edu.**

POSITIONS OPEN

INTERESTED IN CLINICAL OR POSTDOCTORAL RESEARCH TRAINING?

The National Institutes of Health has both! For more information, visit our website which lists an array of clinical and postdoctoral opportunities, including tenure-track positions.

website: <http://www.training.nih.gov>.

NIH is dedicated to building a diverse community in its training and employment programs.

POSTDOCTORAL POSITION available for a recent Ph.D. who will prepare reconstituted LDL labeled with near-infrared active dyes. Project is directed at detection by near-infrared imaging of tumors that overexpress LDL receptors and Apo-labeled liposomes. Experience with lipoprotein/liposome biochemistry required; experience with reconstitution of LDL, liposome preparation, fluorescence spectroscopy, and studies of tumor cells and *in vivo* tumors desirable. Candidate will collaborate with laboratories of **Dr. Britton Chance and Jerry Glickson** in optical imaging of tumors. Expertise in synthesis of dyes will be provided by collaborators. Contact: **Dr. Jerry D. Glickson, Department of Radiology, University of Pennsylvania, B1 Stellar-Chance Laboratories, 422 Curie Boulevard, Philadelphia, PA 19104. E-mail: glickson@mail.med.upenn.edu.** The University of Pennsylvania is an Equal Opportunity/Affirmative Action Employer. Qualified female and minority candidates are encouraged to apply.

NATIONAL EYE INSTITUTE

POSTDOCTORAL POSITION on the function, structure, and molecular evolution of the β -crystallin superfamily. A wide range of approaches is being employed, including "knockout" and natural mutant mouse models and structure/function studies of recombinant proteins. Applicants should have a Ph.D. degree, with up to five years of postdoctoral experience in relevant techniques. Preference is given to U.S. citizens or permanent residents. Candidates should send their curriculum vitae, bibliography, and names and addresses of three references to: **Dr. Graeme Wistow, Building 6, Room 331, Section on Molecular Structure and Function, National Institutes of Health, Bethesda, MD 20892-2740. E-mail: graeme@helix.nih.gov.** NIH is an Equal Opportunity Employer.

POSTDOCTORAL POSITION available April 1 to clone the genes responsible for the biosynthesis of a potential anticancer drug from a marine bryozoan. Experience in cosmid and BAC cloning preferred. Background in polyketide biosynthesis, molecular microbiology, or bacterial symbiosis desirable. Ph.D. in related field required. Rank and salary commensurate with experience and based on University of California salary scale. Website: <http://haygoodlab.ucsd.edu>. Applications considered beginning 15 February 2000; job will remain open until filled. Send curriculum vitae, immigration status, and three letters of reference to: **Dr. Margo Haygood, Scripps Institution of Oceanography, University of California San Diego, 9500 Gilman Drive, La Jolla, CA 92093-0202. E-mail: mhaygood@ucsd.edu; FAX: 858-534-7313.** UCSD is an Affirmative Action/Equal Opportunity Employer.

Two **POSTDOCTORAL POSITIONS** are available immediately to study: (1) The mechanism of CTG tract fragility and expansion, using prokaryotic and eukaryotic model systems (*Sarkar et al., Cell* 95:531-540, 1998). (2) The mechanism whereby trinucleotide repeat expansion results in heterochromatin and gene silencing. Candidates should have a Ph.D. degree with a background in molecular biology or biochemistry. Applicants should send curriculum vitae, brief description of research interests, and names of three references to: **S. Reddy, University of Southern California, IGM-Room 240, 2250 Alcazar Street, Los Angeles, CA 90033. E-mail: sitared@hsc.usc.edu; FAX: 323-442-2764.**

POSITIONS OPEN

The University of Michigan Department of Biological Chemistry and the Department of Biochemistry at Parke-Davis Pharmaceutical Research (Ann Arbor) announce a dual-mentor **POSTDOCTORAL FELLOWSHIP** in biochemistry aimed to characterize the kinetic mechanisms of the MAP/ERK kinases MEK1 and MEK2 towards their substrates ERK1 and ERK2 *in vitro* and *in vivo*. The work setting is in the Department of Biochemistry at Parke-Davis Research. Mentors will be **Megan J. Robinson, Ph.D.** (Parke-Davis) and **Kun-Liang Guan, Ph.D.** (University of Michigan). The Fellow will have access to the latest technologies available at Parke-Davis Research, as well as support from the research laboratories at both institutions. Candidates with a strong background in enzymology and enzyme kinetics are encouraged to apply. The position is available immediately. Potential candidates should provide a short summary (no more than two pages) of their interests and career goals, a curriculum vitae, and three letters of reference to:

**Megan Robinson
Warner-Lambert/Parke-Davis
2800 Plymouth Road
Ann Arbor, MI 48105
E-mail: megan.robinson@wl.com**

The University of Michigan and Parke-Davis Research are Equal Opportunity Employers.

POSTDOCTORAL POSITIONS: MOLECULAR BIOLOGY OF BACTERIAL PATHOGENESIS. Postdoctoral positions are available in the Department of Microbiology at the University of Colorado Health Sciences Center. Potential projects include analyzing structure, function, and trafficking of cholera toxin and developing chimeric cholera toxins as novel vaccines for mucosal immunization. A Ph.D. in microbiology, molecular biology, genetics, biochemistry, cell biology, or a related field is required. Research facilities and professional environment are excellent. Salary is commensurate with training and experience. Submit curriculum vitae, bibliography, and names of three professional references to: **Dr. Randall Holmes, Department of Microbiology, Campus Box B-175, University of Colorado Health Sciences Center, 4200 East Ninth Avenue, Denver, CO 80262.** The University of Colorado Health Sciences Center is committed to Equal Employment Opportunity and Affirmative Action.

POSTDOCTORAL AND GRADUATE STUDENT POSITIONS MRC Group on Molecular and Cell Biology of Lipids

Applications are invited to join a collaborative research program operating in a highly interactive environment with excellent facilities. Approaches include generation of transgenic and knockout mice, analysis of gene expression, expression of recombinant proteins, and lipid metabolic studies in mammalian cells. Research areas: molecular mechanisms regulating bile acid metabolism, cellular cholesterol efflux and HDL generation, triacylglycerol metabolism, transcriptional regulation of glycerolipid metabolism, regulation of lipid synthesis, and intracellular trafficking. Send applications with names of three references to: **Dr. Jean Vance, 328 HMRC, University of Alberta, Edmonton, Alberta T6G 2S2 Canada. E-mail: jean.vance@ualberta.ca.**

ANTICIPATED SENIOR POSTDOCTORAL RESEARCHER Veterinary Anatomy and Cell Biology

Required qualifications: Ph.D. or equivalent degree, with major course work in biological and biomedical science; must have a strong laboratory experience and background in molecular and cellular biology; three years of postdoctoral experience. Project is molecular biology of tooth eruption. Application deadline is January 21, 2000, or until candidate is selected. Submit letter of application and résumé to: **Dr. Gary Wise, Veterinary Anatomy and Cell Biology, School of Veterinary Medicine, Reference: #016526, Louisiana State University, Baton Rouge, LA 70803.** LSU is an Equal Opportunity/Equal Access Employer.

POSITIONS OPEN

POSTDOCTORAL RESEARCH ASSOCIATE/INSTRUCTOR

Position available immediately to delineate novel inhibitory neural pathways bronchial mucosal function. The person will conduct studies in animals to measure bronchial mucociliary clearance, tracheal mucus velocity, airway secretor output, ciliary beat frequency, and mucus rheology during localized administration of various specific excitatory and inhibitory agonists and antagonists in combination with and without vagal blockade. SO₂ will be used as a test irritant. This work is funded by a five-year, NIH grant that runs until December 31, 2002. Send curriculum vitae and contact information to: **Donovan Yeates, Ph.D., Pulmonary Biophysics and Bioengineering Laboratory, Department of Medicine, University of Illinois at Chicago, 1940 West Taylor Street, Room 212 BRGC (M/C 788), Chicago, IL 60612. E-mail: yeates-d@uic.edu. The University of Illinois is an Affirmative Action/Equal Opportunity Employer.**

Positions available in the Center for Dementia Research at the Nathan Kline Institute. The CDR is a world-renowned facility for dementia research situated close to New York City.

1) **POSTDOCTORAL POSITION** available in the laboratory of **Dr. Karen Duff** for a cell biologist to work on cytoskeleton-associated proteins in transgenic models of dementia. Position also available to work on transgenic models of Parkinson's disease.

2) **POSTDOCTORAL POSITIONS** available in the laboratory of **Dr. Lorenzo Refolo** to develop single-chain antibodies as a therapeutic agent in AD and to investigate the effect of dietary cholesterol on AD progression in transgenic models.

Send applications to: **Lucy Morales, The Nathan Kline Institute, 140 Old Orangeburg Road, Building 35, Orangeburg, NY 10913. E-mail: morales@nki.rfmh.org.**

GLOBAL OPPORTUNITIES

FACULTY POSITION IN HUMAN NUTRITION

The Hebrew University of Jerusalem, Faculty of Agricultural, Food, and Environmental Quality Sciences, School of Nutritional Sciences, invites applications for a full-time, tenure-track faculty position in human nutrition. Starting date is October 1, 2000. Applicants should have a Ph.D. or Ph.D./M.D. in a relevant discipline and have postdoctoral research experience with an established research record in human nutrition. Starting rank will be commensurate with qualifications.

Candidates will be expected to conduct original and independent research, applying tools of molecular biology and focusing on molecular aspects of nutrition in one of the following areas: control of nutrient metabolism in aging; nutrient effect on brain function; nutrient regulation of gene expression, digestion and metabolism; or neuroendocrinology of appetite. Candidates will be expected to attract external competitive funding. Strong leadership and communication capabilities are required, and collaborative research with other members at the Institute will be encouraged. Responsibilities include teaching (in Hebrew) of undergraduate and graduate courses in the area of human nutrition and supervising graduate students.

Please send a cover letter stating research and teaching interests; detailed résumé; a list of publications; and three letters of recommendation (with complete address, including e-mail and FAX number) by March 31, 2000, to:

**Professor Michael Naim, Chairman
Institute of Biochemistry, Food Science,
and Nutrition**

**The Hebrew University of Jerusalem
Faculty of Agricultural, Food, and
Environmental Quality Sciences
P.O. Box 12**

**Rehovot 76100, Israel
FAX: +972-8-947-6189**

E-mail: Naim@agri.huji.ac.il

POSITIONS OPEN

POSTDOCTORAL POSITIONS in streptococcal pathogenesis are available immediately for the Ph.D. candidate to research the molecular pathogenesis of Group B streptococcal infections. Send curriculum vitae, description of research interests, and three letters of reference to: **Dr. Craig Rubens, Children's Hospital and Regional Medical Center, Division of Infectious Diseases, 4800 Sand Point Way N.E. CH-32, Seattle, WA 98105. E-mail: cruben@chmc.org. Affirmative Action/Equal Opportunity Employer.**

GRADUATE PROGRAMS

GRADUATE PROGRAM IN ASTROBIOLOGY ASSISTANT/ASSOCIATE PROFESSORS UNIVERSITY OF WASHINGTON, SEATTLE

Two positions are available in any area bearing on astrobio. We particularly seek persons committed to interdisciplinarity and quality teaching and expert on early planetary formation and evolution, the prebiotic Earth, origin/early evolution of life, or micro-paleontology. Candidates may sit in any of the following Departments: Astronomy, Atmospheric Sciences, Chemistry, Geological Sciences, Geophysics, Genetics. Full information is available at **website: <http://www.washington.edu/admin/eoo/ads> and website: <http://depts.washington.edu/astrobio> or from: W. T. Sullivan, Telephone: 206-543-7773; e-mail: woody@astro.washington.edu. Deadline: 29 February 2000. Intended start: September 2000. Equal Opportunity/Affirmative Action Employer.**

GRADUATE PROGRAM IN ASTROBIOLOGY POSTDOCTORAL POSITIONS UNIVERSITY OF WASHINGTON, SEATTLE

Two two-year positions are available in any area bearing on astrobio. We particularly seek persons committed to interdisciplinarity. Candidates may sit in any of the following Departments: Aeronautics and Astronautics, Astronomy, Atmospheric Sciences, Biochemistry, Chemistry, Genetics, Geological Sciences, Geophysics, History (of Science), Microbiology, and Oceanography. Full information is available at **website: <http://www.washington.edu/admin/eoo/ads> and website: <http://depts.washington.edu/astrobio> or from: C. Leovy, Telephone: 206-543-4952; e-mail: leovy@atmos.washington.edu. Deadline: 29 February 2000. Intended start: September 2000. Equal Opportunity/Affirmative Action Employer.**

EUROPEAN OPPORTUNITIES

RESEARCH SCIENTISTS IN ADAPTIVE DECISION MAKING: The Center for Adaptive Behavior and Cognition at the Max Planck Institute for Human Development in Berlin, Germany, is seeking applicants for six-year Research Scientist positions (renewable every two years) beginning September 1, 2000. Candidates must have a Ph.D. in psychology (e.g., judgment and decision making, evolutionary, cognitive); experimental economics; evolutionary/behavioral biology; AI/computer modeling or a related field; and interest in studying the cognitive mechanisms underlying bounded, social, and ecological rationality in real-world domains. Salary is dependent on age and experience (BAT IIa/Ib; approximately DM 75,000 to DM 93,000 per year). For a detailed description of our research projects and current researchers (and announcements of our additional open pre- and postdoctoral positions), please visit our home page at **website: <http://www.mpib-berlin.mpg.de/abc> or write to Dr. Peter Todd at e-mail: ptodd@mpib-berlin.mpg.de. The working language of the center is English. Send applications (including cover letter describing research interests, curriculum vitae, three or more letters of recommendation, and reprints) by February 15, 2000, to: **Professor Gerd Gigerenzer, Center for Adaptive Behavior and Cognition, Max Planck Institute for Human Development, Lentzeallee 94, 14195 Berlin, Germany. We strongly encourage applications from women, handicapped individuals, and members of minority groups.****

GRANTS

RESEARCH GRANTS

As part of its continuing efforts to encourage the utilization of alternatives to traditional uses of laboratory animals in basic research, testing, and education, the Alternatives Research and Development Foundation is soliciting research proposals to develop such methods. Funding of up to \$40,000 each is available to support individual projects at U.S. universities and research institutions. Applications from non-U.S. institutions or investigators may be considered on a case-by-case basis. Deadline for applications is 30 April 2000, with recipients announced on 15 July 2000. For further information and application instructions, contact: **The Alternatives Research and Development Foundation, 14280 Golf View Drive, Eden Prairie, MN 55346-3000. FAX: 612-949-2619; e-mail: ardfmc@aol.com. (No telephone calls, please.)**

ANNOUNCEMENTS

Medical University of South Carolina offers programs leading to Ph.D. and M.D./Ph.D. degrees in each of the basic biomedical sciences (biochemistry, microbiology/immunology, pathology, pharmacology, physiology); biometry/epidemiology; pharmaceutical sciences; and molecular and cellular biology and pathobiology. Competitive stipends of \$17,000 available. Contact: **College of Graduate Studies, MUSC, P.O. Box 250617, Charleston, SC 29425 or Telephone: (toll-free) 1-800-589-2003.**

MARKETPLACE

The World of Science Online

- Science Electronic Marketplace
- Science's Next Wave
- Science NOW
- Science Professional Network

Science

www.scienceonline.org

emorfo®

We keep you in focus™

Rte. du Musée 12, CH-1705 Fribourg, Switzerland
Tel: +41 26 300 85 30 Fax: +41 300 96 68
info@frimorfo.com www.frimorfo.com

Specialist in the morphological study of genetically modified animals

Circle No. 38 on Readers' Service Card

Custom DNA Sequencing

- ❖ Long Reads ❖
- ❖ Plasmid Inserts ❖
- ❖ Sequence Done in a Week ❖

❖ Single Strand as low as ❖
\$20.00 for < 650 bases

❖ Double Strand ❖
\$30.00 up to 450 bases
\$45.00 up to 650 bases
\$70.00 up to 1600 bases

Inquire about Large Inserts and
Genome Sequencing.

MWG-BIOTECH, Inc.

Call: 336-812-9995 info@mwgbiochem.com
<http://www.mwgbiochem.com>

Circle No. 31 on Readers' Service Card

MARKETPLACE



**MORE PRODUCTS
ON PREVIOUS PAGE**

**NEW ENGLAND
PEPTIDE, INC.**
888-343-5974 (phone)
978-343-5940 (fax)
www.newenglandpeptide.com

LOOKING FOR:
• Custom Peptides
• Easier Pricing?
Find the best custom peptide experience at New England Peptide, Inc.

Custom Peptides...Made Easy

Circle No. 20 on Readers' Service Card

Widely Recognized Original & Guaranteed

KlenTaq I **8¢/u**
Truncated Taq DNA Polymerase
Withstand 99°C

US Pat # 5,436,149
Call: **Ab Peptides** 1-800-383-3362
Fax: 314-968-8988 www.abpeps.com

Circle No. 28 on Readers' Service Card

TriLink BioTechnologies
Superior Quality with Unparalleled Service
³⁵S and ³H
Radiolabeled Oligonucleotides

www.trilinkbiotech.com Experience Matters
800-863-6801
Circle No. 23 on Readers' Service Card

3 O.D. Select Oligos

Just \$0.60/base*

Order through our Web site and we'll ship your 3 O.D. Select oligos in just 24-48 hours. Every oligo is QC'd by PAGE analysis, and each batch is performance-tested by mass spec.

*Desalted only. Oligos must be 10 to 35 bases in length. No modifications or additional purification. Web orders only. Offer valid in U.S. only.

SIGMA GENOSYS
North America: 1-877-710-1504 • email: gorderentry@sial.com

Circle No. 18 on Readers' Service Card

XX IDT
INTEGRATED DNA TECHNOLOGIES, INC.
Premier Specialty Synthesis
Molecular Beacons, RNA,
Antisense Oligos & More
1-800-328-2661 - www.idtdna.com

Circle No. 30 on Readers' Service Card

MARKETPLACE

DNA Primers from \$0.75 / base

Ransom Hill Bioscience, Inc.
No Setup - No Minimum - No Baloney!
http://www.ransomhill.com
visla@pcsinter.net fax: (800) 597-8509

Circle No. 22 on Readers' Service Card

Custom Peptides & Antibodies

Best Service & Price! Compare and Save!
Alpha Diagnostic (800) 786-5777
Fax (210) 561-9544; info@4adi.com
Web site: http://www.4adi.com

Circle No. 26 on Readers' Service Card

Quality DNA Synthesis

MALDI-TOF Mass Spectrometry Quality Control
Fluorescent Dyes & Other Modifications
Gene Construction and Sequencing Services
Custom RNA Oligos and Antisense DNA Oligos
Custom Primers for PCR & Sequencing
Long Oligos (up to 150-mers)

Competitive Pricing 800-247-8766

MIDLAND
The Midland Certified Reagent Company
Fax: (915) 694-2387 Email: mrcr@oligos.com
Website: www.mrcr.com

Circle No. 25 on Readers' Service Card

Highly Purified Salt-Free Oligonucleotides

Custom DNA Synthesis
HPSF & PSF Grade

- ❖ Failure Products Removed
- ❖ Salt Removed
- ❖ No Metal Ions
- ❖ MALDI-TOF Production QC

Starting at \$0.49/base for PSF Grade (0.01 μmol scale)
Never a purification or setup fee!!!

MWG-BIOTECH, Inc
Call: 1-800-812-9962 info@mwgbiotech.com
http://www.mwgbiotech.com

Circle No. 32 on Readers' Service Card

MERLIN® CORE SERVICES

Plasmid Purification
Endotoxin Removal
Any Amount
1-800-4-BIO-101 • www.bio101.com

Circle No. 19 on Readers' Service Card

MARKETPLACE

BIO-SYNTHESIS, INC.
\$12.00/oligo
Don't Count Bases! Count Oligos!
~ Turnaround Time: 12-48 hours
~ 50nmole, >5 ODU, up to 25 bases
~ Full Q.C. and reliable quality
or \$18.00/oligo (up to 35 bases)
www.biosyn.com **1-800-227-0627**
Please be sure to mention this ad! Offer is good thru 10/99

Circle No. 21 on Readers' Service Card

Quality Peptides & Antisera
Friendly, Personal Service
www.genosys.com

Custom Peptide Synthesis
• sequence analysis
• IG, >70%, >80%, >95% purity
• scales from 2 mg-l g
• variety of modifications available
• mass spec & HPLC on every peptide
• satisfaction guaranteed

Polyclonal Antisera Service
• antigen design assistance
• synthesis, conjugation and sera collection
• flexible protocol

SIGMA GENOSYS
North America 1-877-710-1502 ginfo@sial.com
Europe (+44) (0) 1223 839000 info@sigma-genosys.co.uk

Circle No. 17 on Readers' Service Card

Custom Antibodies & Peptides
No Hidden Charges!
Custom Antibodies from \$1295 including:
• Free consultation and tech support
• HPLC purification, MS & HPLC analysis, N/C-terminal modifications, 4-6mg peptide, 100+ml serum, ELISA & more

Custom peptides from mg to >10g
HPLC purification available up to 98+%!

800-435-2080 Fax: 508-435-2199
Order on-line: www.qcb.com
BIO-SOURCE QCB
QCB is a division of BioSource International, Inc.

Circle No. 29 on Readers' Service Card

Custom Peptides
\$14/residue 3 days turn around
Free Mass Spec HPLC/UV Trace
8-17 residues 20-50 mg (Desalted)
Please inquire for modified peptides
Tel: 800-597-7873 Fax: 925-371-1070
Fax: 925-371-1156 email: peptide@peptidogenic.com

PeptidoGenic The Peptide Engineering Specialist

Circle No. 16 on Readers' Service Card

Express Peptides
20mg in 5 days
\$14 per residue
Research Genetics
1-800-533-4363

Circle No. 27 on Readers' Service Card

FLUORESCENT PROBES & MOLECULAR BEACONS

- Unconditional Guarantee
- Fast Turnaround
- Competitive Prices

A SAMPLE OF OPERON PROBES

Dual Fluorescent Labeled Probes

- 5' label: 6-FAM, Tet or Hex
- 3' label: TAMRA or ROX

Price includes HPLC Purification

Price as low as
\$220

Molecular Beacons

- 5' label: Fluorescein or ROX
- 3' label: Dabcyl

Price includes PAGE Purification

Price as low as
\$175

Fluorescein Single Labeled Probes

- 3' or 5' or internally labeled

Price as low as
\$50

Biotin Modification

- 3' or 5' or internally labeled

Price as low as
\$50

OPERON
OPERON TECHNOLOGIES, INC.

1000 Atlantic Ave, Suite 108, Alameda, CA 94501

Phone: (510) 688-2248 FAX: (510) 865-5255 Customer Service Hours: 7 am to 5 pm PST E-mail: dna@operon.com

order online @ www.operon.com

Circle No. 13 on Readers' Service Card

Custom Peptide Synthesis

\$14.00/residue!

Our popular custom peptide synthesis service is only \$14.00 per residue for peptides 10-20 residues in length. This service guarantees a minimum of 20mg of product and, as always, the mass spectrometry is included free of charge. Peptides will be shipped 5 days after the order is placed.

For researchers needing longer peptides or more product, we also offer a bulk synthesis service for \$39.00 per residue. Please call our custom peptide synthesis department, or send e-mail to Kelly Wasmund at kwasmund@resgen.com, for additional details on either of these services.

© Research Genetics and Accelerating Discovery are U.S. registered trademarks/service marks of Research Genetics, Inc. (Huntsville, AL).

Research Genetics.

Accelerating Discovery.

2130 Memorial Pkwy, SW • Huntsville, AL • 35801

U.S. or Canada 800-533-4363

Worldwide 256-533-4363

U.K. 0-800-89-1393

FAX 256-536-9016

<http://www.resgen.com>

Circle No. 12 on Readers' Service Card