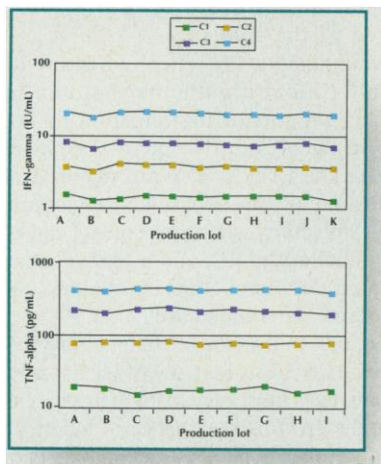


Validated for Human Serum and Plasma

- One or two plate ELISA format
- Manufactured under strict ISO9001 guidelines
- Lot- to- lot consistency
- Use of F(ab)₂ fragments
- Well referenced in literature
- Standardized to NIBSC (when available)



Show Me! Individual production lots were analyzed using 4 levels of control specimens according to standard protocol. Inter-lot CV for all controls ranged from 5.1-6.6%

For research use only.

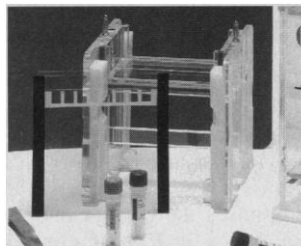


(800) 242-0607 • FAX: (805) 987-3385
e-mail:techsupport.com www.biosource.com

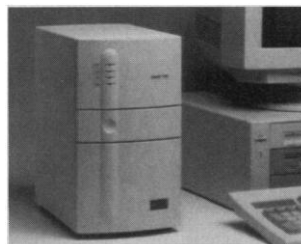
Circle No. 41 on Readers' Service Card

Carbohydrate Analysis As easy as...

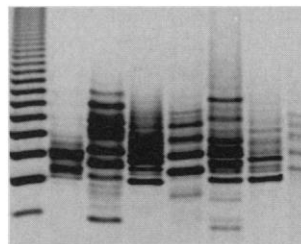
1.



2.



3.



Glyko's FACE (Fluorophore Assisted Carbohydrate Electrophoresis) technology includes everything you need to work with and analyze complex carbohydrates:

- **KITS:** precast gels, gel buffer, all reagents and manuals
- **IMAGERS:** 14-bit CCD camera; new 32 bit (V 4.0) FACE analysis software with TWAIN interface, enhanced band-finding and resolution of minor bands, and ODBC network database
- **SYSTEMS:** 450 MHz, Pentium II computer with 11 GB hard drive, 128 MB RAM, internal Zip drive, fax/modem, CD-ROM, 600 dpi color ink jet printer
- **EXPERT TECHNICAL HELP**
- **OTHER PRODUCTS AND SERVICES:**
 - Recombinant glycosidases
 - Analytical service for general FACE applications
 - Clinical lab service for Lysosomal storage diseases, plasma/urine levels of heparin
 - QC validation with FACE

1 800 33 GLYKO (334 5956) U.S. only
Phone: 1 415 884 6799, Fax: 1 415 382 3511
www.glyko.com

©1999 GLYKO, INC.

FACE is a registered trademark of Glyko, Inc. PENTUM is a registered trademark of Intel Corp.

Circle No. 79 on Readers' Service Card

ate student organizations should add intellectual property issues to their agendas.

Leonard John Deftos

Department of Medicine, University of California, San Diego, La Jolla, CA 92093, USA, and the San Diego VA Medical Center, 3350 La Jolla Village Drive, La Jolla, CA 92161, USA. E-mail: ljdefotos@ucsd.edu

References

1. L. J. Deftos, *Scientist* (8 June 1998), p. 8.
2. S. H. Patel, *Indiana Law J.* 71, 481 (1996).
3. S. R. Kulkarni, *Hastings Law J.* 47, 221 (1998).

Don't Try This at Home

In the Random Samples item "No LSD required" (17 Sept., p. 1845), it is stated that pressing gently against your eyeballs results in phosphenes that "are the result of direct stimulation of the visual cortex." These visual artifacts are actually the result of physical stimulation of the retina, which contains light-detecting photoreceptors, and not of the visual cortex. Visual cortex, which is involved in analyzing visual information col-



Painting by Andrew Harry in a series called "23 Stages of Flash-Spot Disintegration."

lected by the retina, is located several inches away toward the back of the brain. Direct physical stimulation of visual cortex would require a solid blow to the back of the head, which is not an experiment that can be recommended to those trying this at home.

Sanjay Magavi

Division of Neuroscience, Children's Hospital, 320 Longwood Avenue, Boston, MA 02115, USA

Foreign-Born Scientists

In their Policy Forum "Are the foreign born a source of strength for U.S. science?" (*Science's* Compass, 20 Aug., p. 1213), Sharon G. Levin and Paula E. Stephan present a case to show that "individuals making exceptional contributions to [science and engineering] in the United States are disproportionately drawn from the foreign born." The number of foreign-born scientists in this country has been increasing in recent decades, and according

CREDIT: ANDREW HARRY