

Giving Science a Good Rap

In response to pop icon Jimmy Buffett's song "Math Sucks" (Random Samples, 11 June, p. 1763), we would like to provide a more positive take on science and music. As Rhymin' Ryan MC Squared and DJ Alfa Helix, we are pleased to introduce the art of putting science into rhyme with our chemistry rap music group, SHM: Simple Harmonix in Motion. The freedom to express is a virtue—while Buffett has his music, SHM also has ours. By creating raps about chemical reactions and science wonders, we at SHM feel that our music has more to offer in the sense of letting people know that "science is cool." With the production of our first chemistry rap single, "Drop da Base (And PUMP UP da pH!)," our audiences not only get an introduction to acid-base chemistry but also an open invitation to engage in the world of science that is so much a part of our everyday lives. SHM performs chemistry rap music for all people to enjoy: college talent shows, family science nights, inner city schools, the general public, and friends all around the world. In the spirit of research, SHM is dedicated to creating tomorrow's science music through the fusion of chemistry and rap. The experiment of this next wave in music starts out by challenging our listeners with questions such as "Who is socially acceptable to be a rapper?" and "Who is socially acceptable to be a scientist?" An open mind for scientific rhymes will let us answer with a question: "Why not everybody?" Science deserves a good rap, and SHM will continue to provide free demos and free rap performances for fans in the name of cool science.

Ryan K. Louie (MC Squared)
Fulbright Research Fellow, Biosignal Research Center, Kobe University, 1-1 Rokkodai-cho, Nada-ku, Kobe 657-8501, Japan. E-mail: ryan@kobe-u.ac.jp

Allan M. Wong (DJ Helix)
539 Life Science Addition, University of California, Berkeley, CA 94720, USA. E-mail: awong@fruitfly.berkeley.edu

CORRECTIONS AND CLARIFICATIONS

The issue number of the issue of 30 July was incorrect on the cover and the spine. The correct issue number is 5428. The Web address of the Technical Comments in that issue, as described in This Week in *Science* (p. 639), should have been "www.sciencemag.org/cgi/content/full/285/5428/639a."

The satellite image accompanying the News Focus article by Pallava Bagla "Indian scientists question government grip on data" (30 July, p. 659) was incorrectly rotated 90 degrees clockwise.

NEW RESEARCH TOOLS FOR...

◆ Apoptosis ◆

New! TRAIL-R2, Human Recombinant Protein The extracellular domain of human TRAIL-R2 is fused to the Fc portion of human IgG₁. Useful for inhibition of rhsTRAIL (Cat. No. TR-001) mediated lysis of TRAIL sensitive cells and for immunoprecipitation of TRAIL.

Cat. No. TR-005

New! TRAIL-R2 (FITC labeled) for detection of cell-surface TRAIL by flow cytometry.

Cat. No. TR-006

New! TRAIL-R1, TRAIL-R3, and TRAIL-R4 recombinants are also available.

The best killer in the world! Anti-Fas clone IPO-4 (IgM) is very stable and a highly efficient inducer of apoptosis in Fas expressing human cells.

Cat. No. MC-061

◆ MDR ◆

New! Anti-MRP3, clones M₃II-9 and M₃II-21 react with an internal epitope of human MRP-3. Antibodies do not cross-react with human MDR1, MRP1, MRP2 or MRP-5 gene products. Useful for Western blotting, acetone or formaldehyde fixed cytospin preparations, and acetone fixed frozen sections.

Cat. Nos. MC-216, MC-217

◆ ECM ◆

Anti-α4 laminin (human) mAb clone 652B2 is useful for ELISA and for immunohistochemistry (paraffin embedded). Epitope is located within the G1-3 domains. **Cat. No. MC-802**

FOR RESEARCH USE ONLY

• We accept VISA / MasterCard •

KAMIYA BIOMEDICAL COMPANY

www.kamiyabiomedical.com
910 Industry Drive, Seattle, WA 98188
TEL: (206)575-8068
FAX: (206)575-8094

Circle No. 47 on Readers' Service Card

NEW! Version 5.0

Statistical
product of
choice ...

StatView®

Just got even better....

Logistic regression and nonlinear regression

Expanded ANOVA, MANOVA, ANCOVA, MANCOVA

Complete documentation in printed and online hypertextlinked documents

Bivariate plot smoothing and much more

StatView packs data management, statistical analyses, and presentation tools into a single, intuitive and coherent desktop software package that anyone can use with ease.

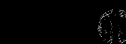
But don't let StatView's ease of use and flexibility fool you... under the intuitive interface lies a powerful suite of analyses that just got even more powerful with the release of StatView v5. And now StatView is supported by SAS Institute Inc.—the worldwide leader of statistical software, technical support, consulting and professional training services.

StatView brings its award-winning flexibility to both Macintosh and Windows (3.1, 95 and NT).

Visit our Web site at

Or call 1.415.623.2032

Or e-mail us at



SAS Institute Inc.

Circle No. 17 on Readers' Service Card