

SCIENCE'S COMPASS

Thus, given what we are now learning, to avoid investigating and reassessing the assumption of high seismic hazard at the New Madrid seismic zone would seem a mistake.

Andrew Newman

Seth Stein
Department of Geological Sciences, Northwestern University, Evanston, IL 60208, USA. E-mail: seth@earth.nwu.edu

John Weber

Department of Geology, Grand Valley State University, Allendale, MI 49401, USA

Joseph Engeln

Department of Geological Sciences, University of Missouri, Columbia, MO 65211, USA

Ailin Mao

Timothy Dixon

Rosenstiel School for Marine and Atmospheric Sciences, University of Miami, Miami, FL 33149, USA

References

1. L. Liu, M. Zoback, P. Segall, *Science* **257**, 1666 (1992).
2. A. Johnston and S. Nava, *J. Geophys. Res.* **90**, 6737 (1985).

Asking the Right Questions

Don C. Rockey, in a recent letter (*Science's* Compass, 7 May, p. 915), suggests that "professional scientists...constitute a distinct minority of those performing disease-orientated research" and goes on to say that "without a sound understanding of clinical issues (that is, clinical training),

how does one ask the appropriate questions?" We suspect that more disease-orientated research is actually conducted by Ph.D. scientists than this statement would imply. However, do such scientists ask the appropriate questions? Clearly so, unless many of the most dramatic pharmacological and behavioral advances made over the last century were only made by clinicians, which is not the case.

Physicians, physician-scientists, and basic scientists all have contributed to biomedical research through questioning and formatting hypotheses and rigorous experimentation, and then re-questioning the original hypotheses.

Mark A. Smith*

Akihiko Nunomura

Atsushi Takeda

George Perry

Institute of Pathology, Case Western Reserve University, Cleveland, OH 44106, USA. E-mail: mas21@po.cwru.edu

CORRECTIONS AND CLARIFICATIONS

In the table of contents of 16 July, on page 293, the URL was incorrect for the technical comments "Functional approaches to gene isolation in mammalian cells" by A. V. Gudkov *et al.* and by A. Kimchi *et al.* The URL

should have read, www.sciencemag.org/cgi/content/full/285/5426/299a

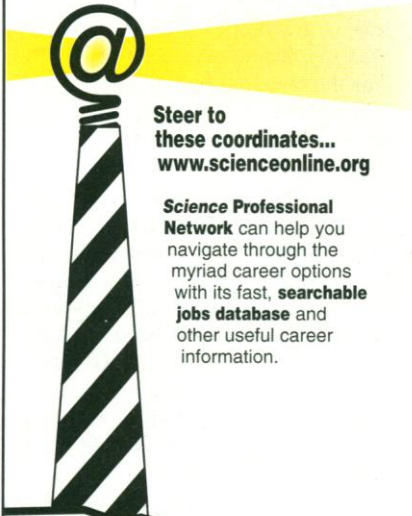
In the report "Multilineage potential of adult human mesenchymal stem cells" by M. F. Pittenger *et al.* (2 Apr., p. 143), in the legend for figure 1 (p. 144), reference 12 should have been cited (not reference 11).

In the letter "Large animals in the fast lane" by R. Miller and S. Austad (*Science's* Compass, 9 July, p. 199), in the first column under item 1, the word "smaller" was omitted. That sentence should have read, in part, "1) Within species, superior longevity is associated with smaller body size...."

In the article "NIH urged to fund centers to merge computing and biology" by David Malakoff (News of the Week, 11 June, p. 1742), Larry Hunter should have been identified as "president of the International Society for Computational Biology (www.iscb.org)."

The crystal structure coordinates for the report "Crystal structure of the human papillomavirus type 18 E2 activation domain" by S. F. Harris and M. R. Botchan (4 June, p. 1673) have been deposited in the Protein Data Bank (accession code 1QQH).

Chart the right course for your career.

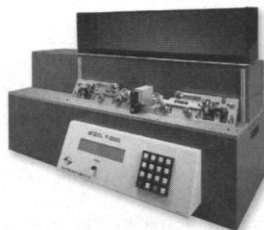


Steer to these coordinates...
www.scienceonline.org

Science Professional Network can help you navigate through the myriad career options with its fast, **searchable jobs database** and other useful career information.

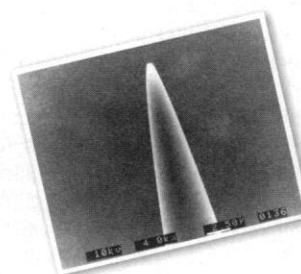
Science
Professional Network
www.scienceonline.org
Click on *Science* Careers

The Tool for Exploring the Microworld



The **P-2000 Micropipette Puller** rapidly and consistently produces micropipettes for cell physiology, nanoelectrospray, scanning microscopy and other innovative technologies. Pre-programmed to make quartz probes with tip diameters from nanometers to micrometers.

Call or write us today for more information.



Actual 1 μ m quartz capillary tip fabricated with the **P-2000**.

From the world leader in micropipette technology.



SUTTER INSTRUMENT COMPANY

51 DIGITAL DRIVE • NOVATO, CALIFORNIA • 94949 • PHONE: (415) 883-0128
FAX: (415) 883-0572 • EMAIL: INFO@SUTTER.COM • WEB: WWW.SUTTER.COM

Circle No. 24 on Readers' Service Card