

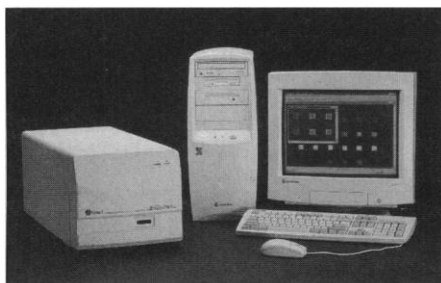
NEW PRODUCTS

INSTRUMENT FOR DNA MICROARRAY-BASED ASSAYS

The BioChip Imager is a new instrument for the research and development of DNA microarray-based assays. The instrument is based around a two-color confocal laser scanning system. The imager scans at 543 nm (CY3) and 633 nm (CY5) with a helium-neon-based laser in an "epi-fluorescence" mode. It offers excellent resolution and sensitivity. It

**Packard
Instrument**

For more
information call
800-323-1891 or
circle 144
on the Reader
Service Card



comes complete with a Pentium computer and Windows 95 software for data acquisition and analysis.

MEDIUM FOR CULTURE OF HEMATOPOIETIC CELLS

StemSpan SFEM is a serum-free medium optimized for the culture and expansion of a variety of hematopoietic cells. This medium can be used to culture both human and murine hematopoietic cells, including in vivo repopulating cells, long-term culture initiating cells, and colony-forming cells. The medium also supports the generation of dendritic cells from CD14⁺ and CD34⁺ progenitor cell populations. The medium does not contain cytokines or other growth factors, thus giving the researcher full flexibility in the preparation of customized serum-free media for various cell types and research applications.

**Stem Cell
Technologies**

For more
information call
800-667-0322 or
circle 145
on the Reader
Service Card

DUAL TRANSILLUMINATOR

The FOTO/Convertible Dual Transilluminator reduces the amount of bench space needed compared with a side-by-side dual transilluminator. This unique system makes use of an electroluminescent panel as a white light overlay to virtually double its utility. In one small footprint, it provides large 21 cm by 26 cm areas of illumination for both ultraviolet and white light, making it perfect for use in space-saving darkroom enclosures. Suitable for electronic imaging applications, the white light electroluminescent panel provides uniformity of illumination. Its intensity over the entire viewing surface is approximately 15 times more even than that of fluorescent bulb-based units. The ultraviolet base is designed for the viewing of nucleic acids in agarose and polyacrylamide gels stained with fluorescent dyes such as ethidium bromide.

FOTODYNE

For more
information call
800-362-3686 or
circle 146
on the Reader
Service Card

CONTINUED ON PAGE 2007

Fine Lines



Drawing on more than 50 years of innovative experience in the breeding and genetic testing of inbred strains, Charles River continues to point the way for the entire industry.

Charles River
LABORATORIES

Contributing to the Search for Healthier Lives™

1-800-LAB-RATS • WWW.CRIVER.COM

© Charles River Laboratories, 1999

Circle No. 9 on Readers' Service Card

cGMP Non-cGMP Product
Optimization Testing
New Zealand White
Athymic Nude
Experience Full
Purification
Protein A
In vitro
BA
F

Custom Antibody Services

- *In vitro*/*In vivo* Monoclonal Antibody Production
- Rabbit Polyclonal Antibody Production
- Hybridoma Development
- Antibody Purification
- Fragmentation
- Conjugation

Harlan
BIOPRODUCTS
FOR SCIENCE

Harlan Bioproducts for Science, Inc.
P.O. Box 29176
Indianapolis, Indiana 46229-0176
Toll Free: (800) 972-4362
Tel.: (317) 894-7536
Fax: (317) 894-9458
E-mail: hbps@harlan.com

Search our catalog and buy online—www.hbps.com

Circle No. 31 on Readers' Service Card

DNA ISOLATION KIT

The DNA Isolation Kit for Cells and Tissue is for medium- and large-scale DNA extractions. It can isolate intact genomic DNA from cultured cells, tissue, Gram-negative bacteria, mouse tails, or yeast cells in as little as 2.5 hours with just 35 min of hands-on time. The resulting DNA is suitable for rapid-cycle polymerase chain reaction (PCR), long PCR, standard PCR, sequencing, and Southern blots.

**Roche
Molecular
Biochemicals**

For more
information call
800-428-5433 or
circle 147
on the Reader
Service Card

MULTI-FUNCTION CENTRIFUGE**Jouan**

For more
information call
800-621-8820 or
circle 148
on the Reader
Service Card

The NAPCO 2028R is the flagship model of a new line of centrifuges designed for the cell culture laboratory. This hybrid refrigerated machine is capable of both high- and low-speed centrifugation. It can handle a wide variety of applications, including cell harvesting and culture refreshment, with its 4 × 280-ml swinging bucket rotor and assorted fixed angle rotors. Features include a ca-

capacity of 20 15-ml conical tubes at 3000g, a fixed angle rotor that spins six 50-ml conical tubes at over 12,500g, and sealed microtiter plate carriers and cyto-centrifugation accessories. The versatility of the system is facilitated by a rapid rotor exchange system. Rotors glide into position on the drive shaft and lock automatically, without the use of traditional nuts and wrenches. Complete rotor exchanges can be completed in less than 5 s.

LOW VOLUME REAGENT RESERVOIR

The V-Groove Low Volume Reagent Reservoir provides both low volume and bulk transfer capability for 96-channel automated dispensers. With a maximum working volume of 125 ml, the reservoir easily holds enough reagent to fill all channels of a 96-channel dispenser with 1 ml each. V-Groove reservoirs are surface-treated for en-

hanced wettability, allowing a minimum suggested working volume of 2 ml, which covers the floor of the grooves to a depth of approximately 1 mm. The ability to fill the reservoir with only 2 ml of liquid is particularly

useful when only small amounts of a precious sample are available. The reservoir is compatible with most automated dispensers and plate-handling systems. Made from virgin polypropylene, the reservoirs are certified for use in polymerase chain reaction.

LITERATURE

FMC BioProducts Catalog 1999 provides detailed information on agarose, precast gels, stains and markers, and products for DNA sequencing, mutation detection, and DNA and protein electrophoresis. This year's catalog also contains a technical section, an agarose selection guide, references, analytical specifications, and prices.

**FMC Bio-
Products**

For more
information call
800-521-0390 or
circle 150
on the Reader
Service Card

**Robbins
Scientific**

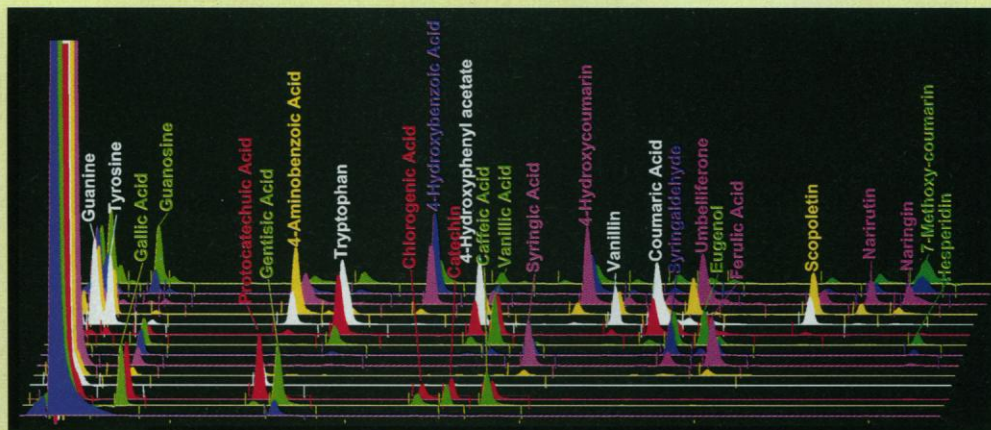
For more
information call
800-752-8585 or
circle 149
on the Reader
Service Card

Newly offered instrumentation, apparatus, and laboratory materials of interest to researchers in all disciplines in academic, industrial, and government organizations are featured in this space. Emphasis is given to purpose, chief characteristics, and availability of products and materials. Endorsement by *Science* or AAAS of any products or materials mentioned is not implied. Additional information may be obtained from the manufacturers or suppliers named by circling the appropriate number on the Reader Service Card and placing it in a mailbox. U.S. postage is free.

CLICK HERE

- Clinical
- Environmental
- Food Science
- Neuroscience
- Nutrition
- Clinical Research
- Oxidative Metabolism
- Pharmaceutical

visit our web site
www.esainc.com



THE POWER OF COULOMETRIC DETECTION

No matter what your goal, don't be held back by your analytical methods.

Coulometric detection with HPLC gives you more sensitivity than MS, the qualitative data of PDA, and the selectivity of electrochemical detection. And, it comes with a wealth of scientific and technical resources. ESA, freeing you to pursue your goals. For more information call 978-250-7000 or visit our web site at www.esainc.com.



ESA, Inc. 22 Alpha Road Chelmsford, MA 01824
T: 978-250-7000 F: 978-250-7087 www.esainc.com

Classified Advertising

To obtain information on rates, deadlines, editorial features, and bonus distribution schedules, call our sales office or visit *Science* Careers at www.scienceonline.org and click on "How to Advertise." All advertising is subject to publisher's approval.

UNITED STATES

Display Classified Advertising

Bren Peters Kristin Westapher
Tel: 202-326-6541 Tel: 202-326-6555
Fax: 202-289-6742
E-mail: science_displayads@aaas.org

Line Classified Advertising

Troy Benitez Kathleen Clark
Tel: 202-326-6740 Tel: 202-326-6722
Fax: 202-289-6742
E-mail: science_classifieds@aaas.org

Line ads are not agency commissionable. Ads submitted should not include any bold, italicized, or abbreviated words. *Science* will edit and typeset ads according to *Science* style requirements. *Science* cannot provide proofs of typeset line ads. *Science* will provide an estimated cost of line ads at time of placement. This is an approximate cost only. Please provide contact name, telephone, billing information, and purchase order numbers with your order.

Online Classified Advertising

Beth Dwyer
Tel: 202-326-6534
Fax: 202-289-6742
E-mail: bdwyer@aaas.org

Every employment ad placed in *Science* will be featured in our job database online for 4 weeks. Call to find out how to link to thousands of additional job seekers online with *Science* Professional Network.

www.scienceonline.org

Ad Materials: Send to: *Science* Classified Advertising, 1200 New York Avenue, NW, Room 911, Washington, DC 20005

EUROPE

Line, Display, and Online Classified Advertising

Deborah Cummings
Tel: +44 (0) 1223 326 500
Fax: +44 (0) 1223 326 532
E-mail: european_ads@science-int.co.uk

Ad Materials: Send to: Advertising Dept., Bateman House, 82-88 Hills Road, Cambridge CB2 1 LQ, United Kingdom

Discounts: A 3% cash discount is granted to all prepaid ads.

Credit Cards: *Science* accepts American Express, MasterCard, and VISA. Discount does not apply to credit cards.

Cancellations: Deadline for cancellation is Tuesday, 10 days prior to issue date.

To **Subscribe** to *Science* call:
202-326-6417 or 1-800-731-4939

POSITIONS OPEN



NEUROSCIENCE FACULTY POSITION TUFTS UNIVERSITY SCHOOL OF MEDICINE

Applications are invited for a tenure-track position at the **ASSISTANT** or **ASSOCIATE PROFESSOR** level to complement current programs in a broadly based Neuroscience Department. This highly interactive department, with ties to clinical research programs, trains Ph.D. and M.D.-Ph.D. students. Teaching responsibilities include courses for graduate and medical students. Neurobiologists whose interests include signal transduction, neurogenetics, sensory systems, or development are particularly encouraged to apply. Demonstrated abilities in research, teaching, and training are assets. Send a current curriculum vitae, a statement of research interests, and at least three letters of reference to: **Search Committee, Department of Neuroscience, Tufts University School of Medicine, 136 Harrison Avenue, Boston, MA 02111**. Early application is encouraged, but applications will be accepted through September 15, 1999. Department information is at website: www.neurosci.tufts.edu. *Tufts is an Equal Opportunity/Affirmative Action Employer.*

FACULTY POSITION IN MICROBIOLOGY

The Department of Biological Sciences of the Bayer School of Natural and Environmental Sciences invites applications for a full-time, tenure-track position at the rank of **ASSISTANT PROFESSOR**. Primary consideration will be given to individuals with research interests in molecular mechanisms of microbial pathogenesis or a closely related area. Applicants must have a Ph.D., postdoctoral research experience, and a commitment to both research and teaching. The successful candidate will receive a competitive start-up package and salary, and is expected to develop an extramurally funded research program involving undergraduate and graduate students. Participation in teaching undergraduate microbiology and development of a course in microbial pathogenesis is expected. Deadline for receipt of all application material is September 10, 1999. Send letter of application, curriculum vitae, representative reprints, statement of research and teaching goals, and three letters of reference to: **Dr. Peter Castirc, Department of Biological Sciences, Duquesne University, Pittsburgh, PA 15282-1521**.

Duquesne University website: <http://www.science.duq.edu>.

Duquesne University, an Equal Opportunity Employer, strongly encourages applications from women and minority candidates.

Molecular biology software support. The University of Virginia Information Technology and Communication-Academic Computing Health Sciences (ITC-ACHS) center invites applications for a **PROFESSIONAL FACULTY** position to provide support for molecular biology computing problems. Individuals with backgrounds in biological sequence analysis, genetic and other biological databases, and molecular evolution with training at the M.S. or Ph.D. level are encouraged to apply. The individual will collaborate with faculty on sequence analysis projects, participate in graduate courses on sequence analysis and molecular evolution, maintain biological sequence and genetic databases, and evaluate, install, and customize sequence analysis packages. Send a complete curriculum vitae, representative publications, and three letters of reference to: **William R. Pearson, Department of Biochemistry, Box 440 Jordan Hall, University of Virginia, Charlottesville, VA 22908**. FAX: 804-924-5069; e-mail: wrp@virginia.edu. Review of applications will begin August 1, 1999; applications will be accepted until the position is filled. *The University of Virginia is an Equal Opportunity/Affirmative Action Employer.*

POSITIONS OPEN

CHAIR OF THE DEPARTMENT OF BIOMEDICAL ENGINEERING UNIVERSITY OF VIRGINIA

Nominations and applications are invited for the position of Chair of Biomedical Engineering. This department serves as a vital bridge between the School of Engineering and Applied Science and the School of Medicine and is jointly administered. It has 11 tenure-track faculty and 19 faculty with joint appointments with strong collaborations between the two schools. An excellent educational program has a growing undergraduate curriculum in biomedical engineering and a strong graduate program with 60 students. Research is focused in medical imaging and cellular to systemic aspects of the biomechanics and biotransport of vascular, orthopedic, and neural engineering (website: <http://www.med.virginia.edu/bme/>).

This position is at the Endowed Professor level and the successful candidate is expected to have a very strong grounding in engineering or applied science as well as in biomedical sciences. The Chair will be expected to take the key leadership role in implementing a major expansion of the departmental research and educational programs. The Development Award received recently from the Whitaker Foundation will serve as the focal point for this expansion. The departmental expansion is intended to result in significant advances in biomedical engineering thrust areas such as medical imaging; *in vivo* sensing and characterization; gene therapy, including design, analysis, and delivery.

It is anticipated that this person will guide the hiring of four additional new faculty, with expertise in areas such as microsystems technology, medical imaging, genetic engineering and biotechnology, biomaterials and tissue engineering to complement targeted thrusts in cardiovascular engineering. This recruiting will, over the next four years, bring the faculty size to roughly 20 tenure and tenure-track members, with approximately half of the faculty holding tenure in each of the two schools.

The University is in the process of constructing a new Biomedical Engineering and Medical Science Building in the midst of the University of Virginia Health Sciences Center as part of a Whitaker Special Grant. In addition to the Department of Biomedical Engineering, this building will house the Cardiovascular Research Center and the Department of Pathology. The new building is a short walk from the School of Engineering complex, ensuring that the departmental teaching and research programs will retain their strong linkage to the School of Engineering and Applied Science.

Interested applicants should send a curriculum vitae and the names of three professional references to: **Dr. Milton Adams, Chair, Biomedical Engineering Chair Search Committee, A115 Thornton Hall, School of Engineering and Applied Sciences, University of Virginia, Charlottesville, VA 22903**.

The University of Virginia is an Equal Opportunity/Affirmative Action Employer. Women and minorities are encouraged to apply.

VISITING ASSOCIATE PROFESSOR. Department of Health Policy and Management, The Johns Hopkins School of Hygiene and Public Health invites applicants for a three-year position with renewal possible. The applicant will initiate and conduct research on lead poisoning prevention and teach in the area of environmental health policy. We are seeking Ph.D. applicants with experience in international environmental health policy and teaching, lead poisoning prevention in the former Soviet Union countries, and grant writing and research implementation; at least four years of work in a U.S. academic setting and collaboration with U.S. governmental agencies; and knowledge of the Russian language. Send curriculum vitae, three letters of recommendation, and statement of teaching and research interests by July 30, 1999, to: **Claire Bogdansky, Department Administrator, Department of Health Policy and Management, The Johns Hopkins School of Hygiene and Public Health, 624 North Broadway, Baltimore, MD 21205**.

RECRUITING SCIENTISTS WITH DISABILITIES

A Win Win Situation

By Peter Gwynne

Students with disabilities who major in science and engineering as undergraduates or graduates must surmount significant obstacles to complete their education. Those difficulties can be overcome most successfully by teamwork among the students, their faculty, and support organizations, according to a study that the University of Minnesota conducted last year, funded by the National Science Foundation and the American Association for the Advancement of Science (AAAS). But the next step — joining the work force — presents its own challenges. Three years ago, AAAS set up a program to guide individuals with disabilities into effective internships that may lead to permanent jobs. Some of the corporations that participate in the program have a long record of success in hiring scientists and engineers with disabilities.

Those companies notice two common factors. Because individuals with disabilities are used to dealing every day with difficulties unrelated to their work, they tend to find ready solutions to problems in their jobs. And the accommodations made for them inevitably end up proving valuable to the work force as a whole. Here, representatives of the AAAS project and IBM discuss their programs and their records of success.



Jean Morrell

WASHINGTON, D.C.: In 1996, the American Association for the Advancement of Science joined up with the National Aeronautics and Space Administration (NASA) and IBM to create Entry Point!, a program that links students with disabilities to potential employers. The program places full-time students in science, mathematics, or engineering — including Ph.D. candidates — in internships with willing companies or government agencies. It

accepts students with disabilities of all types: deafness and hearing impairment; blindness and visual impairment; dyslexia and other

learning disabilities; impaired mobility; and psychological impairments. Recent students in the program have included those with cerebral palsy, lupus, and Tourette's syndrome, as well as cancer survivors.

Students and employers must fulfill strict criteria. "Students must have a B average," explains Jean Morrell, an IBM executive on loan to the program. "If they have that, they show an employer that they have the ability to do the job." Companies, meanwhile, must offer meaningful work and support. "We're making sure that this is not a social program," Morrell continues. "We work

with the companies to make sure they give the students assignments to build their skills, and help them to discover what they want to do when they graduate." Entry Point! also expects companies to provide mentors, and necessary accommodations, such as computers adapted to the interns' disabilities.

The program has grown rapidly. It expanded from six students in 1996 to 36 in 1997 and 47 last year. This year, IBM has already placed 31 students, and NASA 19. In addition, DuPont, Maine-based UNUM Insurance Company, and Lockheed Martin have signed up as partners.

Entry Point! has benefited interns and employers. One of the first students, who had cerebral palsy and little ability to speak, typed that "for the first time in my life, my disability is no big deal." Interns offer companies a source of willing permanent employees. "A lot of students have extended from summer and turned it into a co-op experience, and several have joined IBM as full-time regular employees," says Morrell.

In fact, the entire work force stands to gain from the program. "The accommodations that managers have made for students with disabilities, like sending out meeting agendas in advance, and taking boxes and wastebaskets from hallways to allow wheelchair access, help everyone," explains Morrell. "And offices are more inviting to all employees when they are free of clutter and rearranged to accommodate a wheelchair."

Companies that actively recruit scientists and engineers with disabilities gain highly motivated employees and the opportunity to develop technology that will benefit the entire work force.

A world of difference.



SmithKline Beecham, a world class leader in Research and Development, continues to pioneer innovative pharmaceutical and healthcare products and services. We have the following opportunities available at our state-of-the-art suburban Philadelphia facilities.

Team Member

Working in our Bioformulations and Drug Delivery Department you will provide expertise in the design, evaluation and selection of modified release formulations for oral, inhalation and injectable dosage forms. You will be involved in establishing a network to evaluate lipid/polymer based approaches for drug delivery, and to develop cross-functional skills to integrate biological sciences and materials sciences to identify strategies that will enhance the product portfolio. You should possess a PhD in Chemistry, Biochemistry, Pharmaceutics or related discipline with 2 or more years of product development experience in a pharmaceutical or related industry. We have a preference for an individual with industrial experience in formulation design utilizing lipid systems to modulate drug targeting.

You should also have an experimental background in dosage form development based on integration of lipid based systems and biology. You should have no known allergies or aversion to working with animals and chemicals. (Ad Code: 981585)

Biophysical Chemist

As a member of our Structural Biology Department, you will characterize biomolecular interactions with drug candidates using microcalorimetry, analytical ultracentrifugation, and biosensors such as BIACORE. You will also help to develop innovative approaches for measuring drug interactions with novel biomolecular targets, especially proteins. You will have the opportunity to work as part of multidisciplinary teams covering a wide range of therapeutic areas. We require a MS or BS degree in biophysical chemistry, biochemistry or related field. Practical experience and theoretical knowledge of biophysical techniques applied to proteins is strongly preferred. Competency in the use of computer programs for data analysis is also preferred. (Ad Code: 991054)

Assistant Director/Associate Director

Working in our Safety Assessment Department you will develop and lead a state-of-the-art experimental hematotoxicity laboratory; identify and characterize hematotoxicity issues; and develop and implement research plans in a regulated (GLP) environment. You must possess a PhD or DVM, PhD and have 3 years of post-doctoral experience. Expertise in experimental hematology, interpretation of clinical hematology data, in vitro bone marrow cell culture/hematology/hematotoxicity assays development, and flow cytometry assay development/interpretation are valued. (Ad Code: 990874)

SmithKline Beecham is dedicated to an innovative workplace and supports you with career long opportunities and learning. We offer a competitive benefits and compensation package. To be considered for these suburban Philadelphia opportunities, please forward your scannable resume to: SmithKline Beecham, c/o National Resume Processing, (Ad Code), P.O. Box 1070, Burlington, MA 01803. Indicating Ad Code is essential. For a full listing of current opportunities, or to submit a resume online, visit our website at www.sb.com/careers

Developing talent through equality of opportunity, M/F/D/V.

Realize your Potential



SmithKline Beecham
Pharmaceuticals

Because of you



At Wyeth-Ayerst, we're leading the way for a healthier world in the following areas:

- *Women's Health*
- *Central Nervous System Disorders*
- *Oncology/Immunology*
- *Infectious Diseases*
- *Tissue Growth & Repair*
- *Hematology*

we're making a world of difference.

Wyeth-Ayerst is committed to helping people lead healthier lives through the development of innovative pharmaceutical, vaccine and nutritional products. We achieve this through our superior research, manufacturing, sales and marketing capabilities.

Enjoy the freedom to develop your own career while having the support of a valuable team. We employ the best in the business, so you're surrounded with the knowledge you need to achieve your individual goals.

To find out more about opportunities available in our Radnor/Marietta, PA; Princeton/Cherry Hill, NJ; Richmond, VA; Sanford, NC; Chazy/Rouses Point/Rochester and Pearl River, NY facilities, please send your resume to: **Wyeth-Ayerst, Reference OPSCI-0699, P.O. Box 7886, Philadelphia, PA 19101-7886.** Fax in fine mode to: (610) 989-4854. Email: jobs@RAMAIL1.wyeth.com (ASCII format, no attachments, subject: resume) For more information, visit our website at www.ahp.com/wyeth.htm

To find out more about opportunities in our **Genetics Institute** Cambridge and Andover, MA facilities, please visit our website at: www.genetics.com

Principals only. Equal Opportunity Employer. M/F/D/V

**WYETH
AYERST**

A division of American Home Products

Bringing results home.



Because individuals with disabilities are used to dealing every day with difficulties unrelated to their work, they tend to find ready solutions to problems in their jobs.

What advice does Morrell have for students with disabilities who seek supportive employers? "Don't concentrate on salary alone," she advises. "Look at the overall benefits, including medical insurance, the opportunity to take advantage of flextime working, which is very important for individuals with mobility impairments, and the ability to work at home."



Keely Kemnitz

AUSTIN, TX: In 1997, the Entry Point! program introduced computer science major Keely Kemnitz to IBM — and IBM to her. The pair made a good match. A year ago, as soon as she earned her degree, Kemnitz moved into a permanent job in the company's video and graphics department.

Kemnitz, who has been in a wheelchair since the age of 12, heard about Entry Point! from her disability counselor at South Dakota State University. "I just sent in my application and my two references, and waited for the response," she recalls. After interviewing her by phone, IBM offered her an internship at its software stress group in Rochester, Minnesota. "We tested the AS/400 to see how much of a workload it could take," she says.

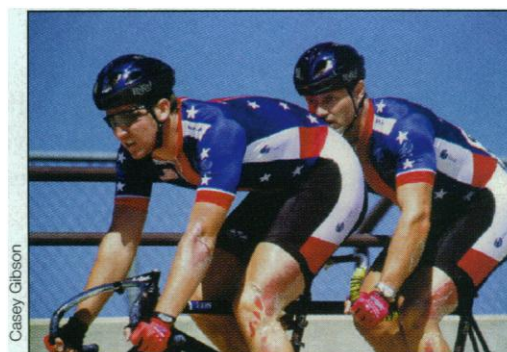
The program provided more than a physical introduction to the workplace. IBM executive Joe Peplinski, who served as Kemnitz's mentor in the program, introduced her to the realities of life in a high-technology company. "He gave me an understanding of what kind of things I needed once I graduated and got a real job," she explains. "He helped me in job-related aspects and in life after college. For example, I had wanted to drive for a long time; Joe arranged driving lessons for me, because he thought driving was necessary for my long-term self-sufficiency."

IBM also accommodated her physical requirements. "The company put in badge readers and proximity readers and doors that opened when I hit the button," said Kemnitz. "They set up a desk that was the right height for my wheelchair." Accommodations outside the office have proved equally successful. "I'm still in the process of learning to drive," she says. "I'm expecting a vehicle this month." And Kemnitz has recently bought her own house in Austin.

COLORADO SPRINGS, CO: "Our strategy is in part that, by accommodating all our disabled employees, we'll accommodate all our customers with disabilities," says Matt King, a staff application developer at IBM who is currently working in the CIO office on advocacy for employees with disabilities. "We interface with the IBM Special Needs Systems Group, a center of competency for technology development for individuals with disabilities."

The company has a long history of hiring employees with disabilities and arranging suitable accommodations for them. Education programs help sensitize managers to their needs. One manager, for example, recently showed her staff a video on etiquette with guide dogs before the arrival of an employee who is blind. King himself contacts managers of new hires with disabilities to ensure that they set up assistive technology — such as computers adapted to specific disabilities. "We try to create an environment that is attractive to employees with disabilities; it is beneficial to everyone involved," says King.

Some of the most difficult situations that King faces involve individuals who become disabled while employed by IBM. "With a new hire, you expect that the person has already dealt with the issues surrounding the disability," he explains. "That's not the case with a fully-abled employee who loses vision or is involved in an accident. We take a very individualized approach. We will offer technical solutions to employees in that situation, but helping these employees return to productive work often takes more than just providing appropriate on-the-job accommodations."



Matt King, right and Garth Blackburn, left win a silver medal at the 1998 IPC World Cycling Championships for the Disabled.

Those accommodations can work both ways. For example, providing complete keyboard access to software so that individuals with sight impairment or cerebral palsy, who have difficulty using a mouse, can use the software, has proven valuable to other computer users who need or prefer to work without the mouse. On the other hand, voice recognition technology and the Java Web language, both developed for all computer users, have made it easier for individuals who are blind to interact with computers and the Internet.

King himself has a natural connection with the situations faced by employees with disabilities. Born legally blind with retinitis pigmentosa, he lost most of his remaining vision while in college. He works out of a branch office and his home in Colorado Springs in order to train for the tandem sprint cycling event at next year's Paralympics, in Sydney, Australia. ■

For further valuable career features, go to www.scienceonline.org, click on **Science Careers**, then click on **Advice and Perspectives**.

The right people get the job done.

People like

Marty Barker,
Regulatory Affairs Associate

“I have worked for Bristol-Myers Squibb for 13 years at 3 of our company locations. What I appreciate most about my job environment at Bristol-Myers Squibb is the fact that I am held to the same high standards as everyone else; this keeps me motivated and productive. I am not treated differently from anyone else.

“The positive work experiences I’ve had at BMS have given me the confidence to succeed off the job as well. I have managed the company’s baseball team, am a certified scuba diving instructor, and have recently taken up snow skiing.”

Please contact us. Bristol-Myers Squibb uses resume-scanning technology. Please submit on plain white bond paper, using standard type and fonts (no italics, graphics or staples please).

Bristol-Myers Squibb Company
Pharmaceutical Research Institute
P.O. Box 4000
Princeton, NJ 08543-4000
FAX: 609-581-8841



Bristol-Myers Squibb

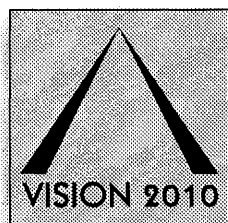
Pharmaceutical Research Institute

w w w . b m s . c o m

Equal Opportunity Employer, M/F/D/V

SCIENCE PROFESSIONALS

THE BAYER FACTS:



Bayer:

**A premier healthcare
company for the
21st century.**

In the highly competitive global pharmaceutical marketplace, there are many "Bayer Facts" that distinguish us as a leader. To name a few, we are part of Bayer Corporation, a \$32 billion international diversified organization and one of the most broadly-based healthcare companies in the U.S. Our Biological Products Division is expanding and has relocated its headquarters to the Raleigh area. Due to our expansion, we have added several exciting opportunities which are now available:

STAFF SCIENTIST/ SR. STAFF SCIENTIST

■ For the oversight of the Protein Characterization Group we are looking for a Ph.D with post-Doctoral experience in Bioanalytical Science with emphasis on protein analysis with extensive industrial experience in personnel and project management in a pharmaceutical setting. Responsibilities include the implementation of technologies as well as the coordination of the protein characterization activities of our Biological Products. The incumbent must have excellent communication skills and be capable of setting priorities, meeting milestones and feel comfortable working with interdisciplinary teams. RESPONSE CODE: CL-45

SR. RESEARCH SCIENTIST/ STAFF SCIENTIST

■ This position is responsible for the supervision of the troubleshooting group through the analytical evaluation of problems associated with the production of plasma proteins. After analyzing the problem, an analytical strategy will be developed utilizing separation technologies protein characterization and biological assays. We are seeking a Ph.D degree in Analytical Chemistry with several years of industrial experience in an pharmaceutical setting. We expect the incumbent to build up a network of intramural and extramural connections with analytical experts in order to solve a problem in the fastest and most efficient way. Good communication skills are a must. RESPONSE CODE: CL-49

PRINCIPAL ASSOCIATE RESEARCH SCIENTIST/RESEARCH SCIENTIST

■ This position provides analytical support for the development of new biological products. Responsibilities include development and validation of analytical methods for protein characterization. A Ph.D degree in Chemistry or Biochemistry is required. In depth knowledge of protein chemistry and protein analytics is expected. Excellent oral and written communication skills are required. RESPONSE CODE: CL-48

■ Bayer offers an excellent compensation package commensurate with qualifications. Please send your resume (indicating position title and response code on envelope) to: **PN/Human Resources, Bayer Corporation, 1200 New Hope Road, Raleigh, NC 27610.** No agencies or phone calls please. For more information on Bayer, search: <http://www.bayerpharmana.com>



**Pharmaceutical
Division**

Biological Products

Changing the world with great care



HOWARD HUGHES MEDICAL INSTITUTE

The Howard Hughes Medical Institute conducts biomedical research in the areas of cell biology, genetics, immunology, neuroscience and structural biology at over seventy locations around the United States.

HHMI regularly has positions open for research and administrative personnel.

Laboratory Positions:

- Postdoctoral Fellowships
- Research Specialists/Technicians
- Research Secretaries

Administrative Positions:

- Managers
- Administrative Assistants
- Purchasing Coordinators
- Receiving Clerks

Institute employees enjoy competitive salaries and an excellent benefits package. HHMI is an equal opportunity employer. Please visit our website at www.hhmi.org/jobs for a listing of available positions.

POWER OVER DISEASE

CHIRON CORPORATION is a global biopharmaceutical company focused on developing therapeutics for oncology, HIV, hepatitis and cardiovascular disease. We are currently seeking dynamic individuals to join our Emeryville location.

CARDIOVASCULAR PHARMACOLOGY

We seek an experienced Cardiovascular Pharmacologist to design and implement revascularization and ischemia studies to characterize novel protein, DNA and viral-based therapeutics. Exceptional surgical skills, knowledge of blood flow measurement, and proficiency with computers and statistical analysis are crucial to success, as are strong organizational skills. A PhD in Cardiovascular Pharmacology or a closely related field and at least 3 years PhD-level experience are required. Industry experience is highly desirable. **Job Code: 3845**

CARTILAGE/BONE BIOLOGY SCIENTIST

Capitalizing on your experience in cartilage biology, bone biology or growth factor biology, you will design osteoarthritis studies to characterize the biological activity of novel proteins. In addition to a PhD in Biology or a closely related field, you must possess at least 3 years PhD-level experience and the proven ability to publish scientific results. Demonstrated technical skills, scientific creativity and independent thought are vital to your success in this highly collaborative role. **Job Code: 3847**

DRUG METABOLISM SCIENTIST

In this new and dynamic small molecule team, you will participate in capitalizing on the exciting opportunities generated from the combinatorial and medicinal chemistry efforts leading toward IND-enabling studies. You will build a team that develops and applies exciting new technologies in *in vitro* and *in vivo* metabolism. Requires a PhD and 3-5 years industry experience. **Job Code: 3681**

SENIOR SCIENTIST—TUMOR BIOLOGY

We are seeking a dedicated Tumor Biologist to design and implement *ex vivo* and *in vivo* experiments which define the biological significance and role of novel gene products which are identified in our cancer genomic program. This position requires a PhD, preferably in Pathology, Cancer Biology or Pharmacology and 6-8 years research experience, including a background in performing *in vivo* studies. A well-organized, creative, independent thinker with exceptional technical skills, knowledge of cancer biology and a record of scientific publication is ideal for this highly collaborative role. **Job Code: 3844**

SENIOR SCIENTIST—TUMOR BIOLOGY

In this challenging role, you will be responsible for Chiron's preclinical oncology program. This will include establishing and executing experimental strategies for all discovery and IND track oncology programs; developing new animal models; and contributing to discovery, identification and development of new therapeutics. Additional duties include evaluating in-licensing opportunities and representing Chiron in academic and corporate oncology collaborations. A PhD in a scientific discipline, preferably in Pharmacology, Biology or Pathology, 6-8+ years research experience, 3-5+ years industry experience, proven supervisory ability, and an extensive background working with *in vivo* tumor models are needed. An established record of scientific publications and a command of state-of-the-art principles and theories in cancer biology are also required. Experience with protein therapeutics or gene therapy is highly desirable. **Job Code: 3776**

SCIENTIST—TUMOR BIOLOGY

Drawing upon your experience with *in vitro* cell-based assays and *in vivo* tumor biology studies, you will maintain immortalized and primary mammalian cell cultures, characterize *in vivo* activity of novel compounds in orthotopic rodent tumor models, and develop new tumor models. In addition, you will perform *in vitro* cell-based assays to characterize the activity of small molecule, protein, DNA and viral-based therapeutics. Your work will entail extensive *in vivo* and *in vitro* data analysis. You must have a PhD in Biology, Pathology or closely related field, 3-4 years related PhD-level experience, exceptional organizational skills, and demonstrated computer proficiency. Experience in immunohistochemistry and *in situ* analysis is highly desirable. **Job Code: 3846**

SENIOR SCIENTIST

You will lead basic research efforts in gene therapy of hematologic diseases. This will include directing preclinical studies in support of clinical programs for gene therapy of hemophilia A and initiating new programs for gene therapy of cardiovascular and hematologic disorders. Requires a PhD in Biochemistry, Pharmacology or Physiology with 5+ years of relevant postdoctoral experience in coagulation, thrombosis or ischemic diseases. Your background must include experience with assays for coagulation factor activity, animal models for coagulopathies, cardiovascular disease and/or angiogenesis, ELISA assays and protein purification; skill in the use of gene therapy vectors and detection of reporter gene expression *in situ* is highly desirable. We prefer 3-5 years industry background, ideally to include experience with clinical development programs working in a GLP environment. You must be able to synthesize diverse scientific fields, work in a team setting and build research programs. **Job Code: 3809**

SCIENTIST II/SR. SCIENTIST

You will establish a new macromolecular X-ray crystallography team at Chiron and strengthen our relationship with the structural biology community. You will be responsible for the preparation of crystals and the determination of high-resolution 3-dimensional structures of protein drug targets, and complexes of these targets with small molecular weight ligands. You should have a PhD in Biophysics, Biochemistry or a related field and at least 3 years post-doctoral experience in macromolecular crystallography, working with proteins and protein-ligand complexes. Experience with MAD methods and synchrotron sources, the ability to communicate well with scientists from a wide variety of disciplines, and the ability to work independently are essential. **Job Code: 3859**

www.chiron.com

To learn more about these or other exciting opportunities, please see our website at www.chiron.com.

With a worldwide presence, Chiron offers a culturally blended environment that promotes courage, candor and creative exchange. To join our global team, send your resume with salary requirements, indicating Job Code, to: Chiron Corporation, Human Resources, 4560 Horton Street, Emeryville, CA 94608. As an equal opportunity employer, Chiron honors diversity in every respect.

CHIRON

MEDICAL SCIENCE LIAISON



Biogen, Inc., winner of the 1998 National Medal of Technology®, has established a unique record of success as one of the world's premier biopharmaceutical companies. Pioneering

research by our scientists has led to the introduction of several important new medical therapies, including AVONEX® (Interferon beta-1a), the most prescribed therapy in the U.S. for relapsing forms of multiple sclerosis. We are staking our future growth on the development of our next generation of pharmaceutical products, five of which are currently being tested in human clinical trials. Today, we are seeking an experienced professional to join our expanding organization in Cambridge, MA.

DEFINING SUCCESS in BIOTECHNOLOGY

Capitalizing on your knowledge of the medical industry, you will develop and manage Phase IV studies to be conducted with major multiple sclerosis (MS) treatment centers. Your work will include supporting analysis and publication of studies, establishing educational and speaker programs, and participating in presentations. We will rely on you to maintain vital relationships with key opinion leaders in the MS neurologist community. To qualify, you must possess graduate-level training in science and/or medicine (PhD, PharmD, DVM), 5+ years experience in professional relations or the medical marketing/affairs industry, and an understanding of Clinical Research/Good Clinical Practice and FDA regulations for sponsored research. A background in Neurology and/or Immunology is preferred. A team player with excellent written and verbal communication skills and the proven ability to work independently is ideal for this position. Requires 75% travel.

Biogen has an outstanding record of leadership and accomplishment in the biotechnology field. We have one of the strongest financial profiles in the industry, and our compensation and benefits package, including equity participation, is unmatched. We've created an environment designed to attract and retain the world's most accomplished talent, and we invite you to forward your resume to: Biogen, Inc., Attn: Human Resources, Source Code: SM-MSL, 14 Cambridge Center, Cambridge, MA 02142; Fax: (617) 679-2546; Email: resumes@biogen.com (please include Source Code in the subject line). Biogen is an Equal Opportunity Employer. No phone calls, please

BIAGEN®

DELIVERING ON THE PROMISE OF BIOTECHNOLOGY®

www.biogen.com

Postdoctoral Position(s) Virology Group

Veterinary Infectious Disease Organization

Postdoctoral position(s) available immediately for an ongoing project to work on the molecular biology of animal adenoviruses with emphasis on their development as vectors for vaccine delivery and human gene therapy. Candidates should have a Ph.D. with a strong background in molecular biology and virology. Experience with molecular techniques and virus vectoring is desirable.

The Veterinary Infectious Disease Organization, a research institute at the University of Saskatchewan, provides excellent opportunities to collaborate with other scientists in bacteriology, virology and immunology. VIDO has well-equipped laboratory and animal facilities and offers a stimulating research environment. The successful candidate will be expected to work in a team-based research environment.

Interested candidates should direct applications, including a curriculum vitae and three names of references to: **Dr. S.K. Tikoo or Dr. Lorne A. Babiuk**, Veterinary Infectious Disease Organization, 120 Veterinary Road, Saskatoon, SK S7N 5E3. Fax: (306) 966-7478; E-Mail: TIKOO@SASK.USASK.CA.

The University of Saskatchewan is committed to the principles of Employment Equity and welcomes applications from all qualified candidates, including aboriginal people, persons with disabilities, visible minorities and women.

SCIENTIFIC ADMINISTRATOR

Outstanding opportunity for an articulate, focused individual to provide high-level professional staff support for all scientific aspects of the basic research, teaching, and research training programs of a major academic group, including assisting in the drafting of grant applications and progress reports to governments, foundations, and industrial sponsors; negotiating, concluding, and monitoring material transfer agreements; and having responsibility for patent-related activities. The successful candidate will attend all regular group scientific meetings and selected major national meetings, and will interact daily with the group's faculty, fellows, residents, and students, and with research collaborators around the world.

A PhD or other doctoral degree in the biomedical sciences is required, along with strong knowledge of molecular biology and recombinant DNA (knowledge of virology a plus); successful completion of a postdoctoral fellowship, plus a minimum of 3 years' additional experience in the academic, pharmaceutical, biotechnology, or governmental (e.g. NIH Intramural Program) arenas. Candidates must possess excellent verbal and written communication skills, coupled with an extraordinary ability to present data in a clear and compelling graphical manner. Candidates must have strong interpersonal skills and be comfortable interacting with a large number of scientists, from the level of senior investigator to undergraduate student.

Applicants should submit a curriculum vitae and detailed cover letter describing their interest in the position, along with 2 samples of their best writing to: **Divisional Administrator; Box 96, Room ST-505, WEILL MEDICAL COLLEGE OF CORNELL UNIVERSITY, 1300 York Avenue; New York, NY 10021.**



EEO/AA/M/F/D/V

<http://www.med.cornell.edu/jobs>

Shape the future of Pharmaceutical innovation.

At Schering-Plough Research Institute, our scientists are discovering innovative therapeutic agents that challenge mankind's most debilitating diseases. And we're doing it at our Kenilworth, NJ state-of-the-art research campus where you can enjoy the benefits and prestige of working for a global leader. Join us now as we shape the future of pharmaceutical innovation.

IN VIVO Study Director

In this highly visible role, you'll direct and conduct drug metabolism/disposition studies including design, scheduling, data analysis and reporting. Responsibilities also include *in vivo* model development, monitoring of drug disposition studies and managing/training the research efforts of Associate Scientists.

To qualify, you must have a PhD in Pharmacology, Biopharmaceutics or a related field, supported by 0-3 years' experience in drug metabolism research including models for ADME studies and reflecting your expertise in pharmacokinetics. Demonstrated written and oral communication skills are needed. (Job Code: DD9926)

PHARMACOKINETICS Computer Specialist

As an integral member of our computer-intensive Pharmacokinetics Department, you'll participate in the evaluation, implementation, validation and maintenance of our new information system.

To qualify, you must have a BS in Computer Science, Chemistry or the physical sciences and 3+ years experience in project management involving computer upgrades, preferably in the pharmaceutical industry or a scientific environment. Working knowledge of Unix networking protocols, Oracle database or NT networking protocols, and MS Windows, Excel, Word, and Slide Write are essential. Proficiency in PK analysis software and other scientific graphical data analysis and presentation tools desirable. (Job Code: DD8127)

DEPARTMENT OF IMMUNOLOGY Associate Scientists

The successful candidates will participate in projects directed toward discovery of potential therapeutics for autoimmune disease such as arthritis, multiple sclerosis and inflammatory bowel disease. To qualify, you will need a BS or MS in Immunology or a related discipline with experience in establishing and evaluating models of inflammation and/or isolating and characterizing leukocyte populations. Expertise in flow cytometry, ELISA methodologies, histology/immunohistochemistry and molecular biology is a definite plus.

(Job Code: DD9958)

DRUG DISCOVERY

Senior Scientist/Computer Specialist

As a dedicated researcher with computer expertise, you'll share the excitement of the exploratory drug discovery group of our Department of Drug Metabolism. Join a group of scientists that use Finnigan 7000 and PE-Sciex 365/3000 LC-MS systems for bioanalytical assays and metabolite identification, as well as work with MS instrument vendors on networking and LIMS issues.

To qualify, you must have a PhD in Analytical Chemistry or related field with 1+ years experience, or a BS/MS with 5+ years experience. Your background should include proficiency in networking MS data systems to PC stations, as well as experience in Windows NT. Expertise in database management and lab automation, preferably in the pharmaceutical industry, is a definite plus. In addition, strong communication skills are essential. (Job Code: DD9925)

HIGH THROUGHPUT SCREENING Biochemists - Entry Level

We have excellent opportunities for recent BS/MS Biochemistry (or related field) graduates to gain invaluable experience. We are seeking several talented biochemists to join a team of scientists involved in automated high throughput screening at the front line of new drug discovery for cancer, asthma, hepatitis, AIDS and other diseases. In addition to your degree, your background should reflect knowledge of, and experience with, enzyme and/or receptor binding assays using modern quantitative techniques. Knowledge of laboratory equipment, automation and computers will be very helpful. (Job Code: DD9974 for BS) or (Job Code: DD9967 for MS)

**FOR ADDITIONAL INFORMATION,
OR TO APPLY ONLINE, VISIT OUR
WEB SITE AT: WWW.SP-RESEARCH.COM**

Schering-Plough Research Institute is committed to the scientists who are responsible for our success. We offer an excellent compensation package that includes a competitive salary, a cash incentive bonus program, comprehensive benefits, profit sharing and 401(k). Competitive benefits include: group insurance and retirement programs, flexible work arrangements, education assistance, and health and wellness programs.

For prompt, confidential consideration, we invite you to forward your resume which MUST include the Job Code for your position of interest to: **E-mail: SPRIJobs@isearch.com** or send to: **Human Resources-JL, Schering-Plough Research Institute, 2015 Galloping Hill Road, Kenilworth, NJ 03033-0539.** We are an equal opportunity employer. We regret we are unable to respond to each resume. Only those selected for an interview will be contacted.



**Schering-Plough
Research Institute**

Using Science for Human Advantage



The Jackson Laboratory CANCER GENETICS



The Jackson Laboratory is currently recruiting both new investigators and senior scientists to establish independent research efforts within a major program to identify and clone genes determining cancer susceptibility in mice, the so-called cancer modifiers. This is a great research challenge which we believe can be accomplished by talented investigators, working in the right environment, with strong support systems. Accordingly, substantial intellectual and technical resources are committed to this initiative.

Designated a Basic Cancer Center by the National Cancer Institute, The Jackson Laboratory offers its principal investigators the opportunity to conduct research in an interactive and supportive environment. Our existing faculty has broad expertise in gene mapping, the analysis of quantitative trait loci, statistical genetics, positional cloning, and a great depth of knowledge of the inbred mouse resources available on site. The scientific services available to all members of this Cancer Center include large volume allele typing, creation of gene targeted and transgenic mice, DNA sequencing, flow cytometry, biological imaging, pathology consultation, and an extensive animal management program in our Research Animal Facility.

The Jackson Laboratory is an independent, not-for-profit research institution located in Bar Harbor, Maine, adjacent to Acadia National Park. The Laboratory hosts an array of genetics meetings, courses and workshops, making it a focal point for the mammalian genetics community. The combination of research excellence, academic interaction, a favorable family environment and idyllic location make The Jackson Laboratory a highly desirable living and working environment for scientists.

If you would like further information, please write to Ms. Rita Poirier (rsp@jax.org) in the Office of the Director, The Jackson Laboratory, 600 Main Street, Bar Harbor, ME 04609. AA/EOE

For additional details about The Jackson Laboratory, visit our web site.

<http://www.jax.org>

Research

St. Jude Children's Research Hospital, located in Memphis Tennessee, is one of the world's premier research centers for research and treatment of catastrophic diseases in children, primarily pediatric cancers. St. Jude is a learning environment offering professional growth and diversity for the research technologist where biomedical education extends beyond the laboratory and clinical experience. Workshops, seminars and lectures are regularly presented by both the St. Jude faculty and distinguished visiting investigators. Our non-faculty research staff career ladder provides several levels of promotion and financial compensation for talented and motivated technologists to advance in their field.

Senior Scientific Editor

You will edit and rewrite clinical and scientific research proposals for submission to federal and private funding agencies as well as educate faculty members about the requirements for funding proposals and grant preparation techniques. Additionally, you will train other editorial staff members in editing and revising funding proposals; edit and rewrite manuscripts for submission to biomedical or scientific journals; and supervise activities of the department as delegated by the Department Director. A Bachelor's or Master's Degree in English or the life sciences required. Knowledge of medical and scientific terminology essential. Familiarity with topics related to genetics, molecular biology, or oncology preferred. Minimum of 5 years (Master's) or 7 years (Bachelor's) or relevant experience required, including preparation of grant applications for foundations or agencies (NIH, NCI, etc.), work on peer-reviewed journals, and editing, rewriting, or writing of grant proposals or journal articles.

For additional information, please refer to our website: www.stjude.org/hr

Candidates may also call our Job Hotline at: **800-545-6292**

Resumes may be sent to:
St. Jude Children's Research Hospital
Human Resources Dept. SC618
332 N. Lauderdale, Memphis, TN 38105
Fax: 901-495-3123
E-mail: virgil.holder@stjude.org

SJCRH is an equal opportunity employer.
Photos courtesy of St. Jude Biomedical Communications Dept.



**St. Jude Children's
Research Hospital**
ALSAC • Danny Thomas, Founder

Targeted Proteomics

The Protein Center division of Memorial Sloan-Kettering Cancer Center is undertaking a strategic move towards establishing a *Targeted Proteomics* program for the study of dynamic protein modifications and protein-protein, protein-nucleic acid and protein-small molecule interactions in living cells, especially as it applies to our quest for better methods to control and cure cancer.

The Center, supported by NCI Technology Development Funds and internationally renowned for protein discovery, has positions available for PhD level biologists /chemists in the area of nanoscale protein affinity capture and display. Mass spectrometry (Bruker Reflex III; Micromass Q-ToF; Sciex API 300; Finnigan LCQ), computing and engineering facilities are excellent and a high level of collaborative work is demanded.

SENIOR STAFF SCIENTIST

We are looking for an enthusiastic scientist to take a key role in development of this program. The successful candidate has at least 5 years research experience since obtaining a PhD degree and will lead a team of postdoctoral fellows, students and support staff. Strong background in biochemistry, small scale protein purification and affinity chromatography, and basic skills in immunology and molecular biology required. Supervisory experience and some knowledge of current protein analytical chemistry a plus. Salary and rank according to qualifications.

POSTDOCTORAL FELLOWS

Positions are available in the following areas:

- technology development to affinity capture ultra-small amounts of protein for mass spectrometric ID
- isolation of protein complexes, phosphorylated proteins, drug-binding proteins and DNA-binding proteins / complexes (see *Nature* 398:824-8; *Blood* 93:2707-20; *PNAS* 96:5645-50)
- protein-DNA and protein-protein interactions at promoters, particularly during transcriptional activation of human *defensin* genes and/or involving the PU.1 factor (*JBC* 273:8727-40)

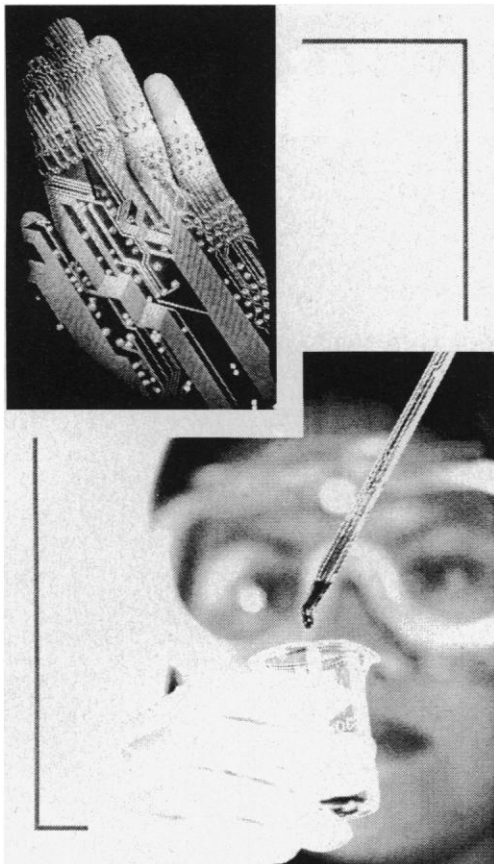
Please send inquiries, C.V. and names of 3 references to: **Paul Tempst, PhD, Professor of Molecular Biology and Director, Protein Center; Memorial Sloan-Kettering Cancer Center, 1275 York Avenue, New York, NY 10021. E-mail: p-tempst@mskcc.org**

Memorial Sloan-Kettering Cancer Center is an Equal Opportunity Employer. Smoke-free environment.

**Memorial Sloan-Kettering
Cancer Center**
The Best Cancer Care. Anywhere.
www.mskcc.org

The Many Faces of

DYNAMIC SOLUTIONS.



*At Abbott Laboratories,
our scientists are
dedicated to developing
new compounds,
treatments and
technologies that
improve the quality
of health care around
the world.*

An EOE, we are as committed to
employee diversity as to our broad range
of products and services.

There are answers and then there are solutions. Solutions like our innovative product lines including, anti-infective, cardiovascular, HIV, urology and neuroscience therapeutics – just to name a few. At Abbott Laboratories, our scientists are dedicated to developing new compounds, treatments and technologies that improve the quality of health care around the world. We have the following opportunities available within our Pharmaceutical Products Division:

Senior Research Scientist

PhD, MD or MD/PhD in Diabetes Physiology/Endocrinology or Pharmacology/Biochemistry. Must have significant research experience in the field of carbohydrate and lipid metabolism related to the pathogenesis and treatment of diabetes along with 2-6 years post-graduate background. Must also demonstrate experience with in-vivo models of diabetes and/or metabolism. (Ad Code: 99-WKB1613)

Senior Research Pharmacologist

PhD and 2-6 years post doctorate experience in Urology, Neurology or related field along with demonstrated research experience in the area of erectile dysfunction and incontinence. Must possess research expertise in urology, neurology and pharmacology. Must be experienced in experimental models used to assess erectile dysfunction and lower urinary system function, surgical techniques and cystometric procedures. Applicants should have an excellent publication record and be able to work in a team environment. (Ad Code: 99-WKB0468)

Associate Scientist

BS/MS and 2-4 years experience with murine studies. Surgical experience and familiarity with cancer and infectious disease biology and research techniques for mammalian and microbial cell culture a plus. Research experience in a drug discovery setting is also desirable. Will include analysis and reporting of data and some weekend and night work. (Ad Code: 99-WKB1397)

Push the limits of your skills and talents with Abbott Laboratories – a company on the cutting-edge of tomorrow. In return for your commitment to innovation, we offer a competitive compensation and benefits package.

*To learn more about these exciting opportunities or to respond online, please visit us at www.abbott.com/ad and enter the ad code. Or by mail to
Abbott Laboratories, Ad Code: (insert from above),
Dept. 583, Bldg. AP9A, 100 Abbott Park Road,
Abbott Park, IL 60064-3537.*

**ABBOTT
LABORATORIES**
Quality Health Care Worldwide

www.abbott.com

Looking for brilliant career opportunities?



Then look here...
www.scienceonline.org

Science Professional Network (SPN) delivers the most comprehensive listing of career opportunities in science every week.

- **Job Search** allows you to browse job listings or target your search

- **Job Alerts** delivers e-mail job announcements matching your job search criteria

- **Employer Profiles** provides overviews of major employers

- **Advice and Perspectives** offers expert career advice and highlights hot disciplines

- **Meetings and Announcements** lists important scientific events

- **Academic Connections** provides online graduate program information

Science Professional Network
www.scienceonline.org • Click on *Science Careers*

August 16-19, 1999 • The Seaport Hotel & World Trade Center • Boston, MA



Stuart L. Schreiber, Ph.D.
Harvard University

www.drugdisc.com

DRUG '99 DISCOVERY TECHNOLOGY



Leroy Hood, M.D., Ph.D.
University of Washington



George Poste, Ph.D.
SmithKline Beecham



Michael Pavia, Ph.D.
Millennium Pharmaceuticals

Followed by:



American Chemical Society Short Courses

August 19-20, 1999



For more information call (508) 481-6400, fax (508) 481-4473, email drugdisc@ibcusa.com
or mail IBC USA Conferences, 225 Turnpike Road, Southborough, MA 01772-1749

**Over
1,000**

**Attendees and
150 Exhibit Booths!**

HEALTH SCIENTIST ADMINISTRATOR (Biological Sciences)

GS-601-12/13/14 (\$48,796-\$89,142)

The Office of Scientific Review of the National Institute of General Medical Sciences, National Institutes of Health in Bethesda, MD is seeking a scientific review administrator to utilize his or her knowledge of biochemistry, biophysics, or computational biology to perform a variety of functions associated with the scientific and technical merit review of research and research training support grant award applications. The incumbent will provide guidance on the Institute's program guidelines and initiatives, and on policies and procedures of the NIH peer review system. Duties include participation in site visits, attending meetings of study sections and review committees, preparing summary statements of review group findings and recommendations, and attending Council meetings to provide information concerning the review of applications.

Qualifications: U.S. citizenship; Ph.D.; independent work in planning, organizing, and conducting biomedical research; and research program administration experience.

To obtain complete application requirements by FAX, call (800) 728-JOBS, and request fax ID#3623. The vacancy announcement may also be viewed online at: http://www.nih.gov/nigms/nigms_staff/staff.html

For further information, contact the National Institute of General Medical Sciences Personnel Office on (301) 594-2749; TDD (301) 402-6327. Applications must be postmarked by the closing date of July 12, 1999.

NIH IS AN EQUAL OPPORTUNITY EMPLOYER



AlphaGene, Inc.

AlphaGene is a rapidly growing biotechnology company developing high-quality functional genomics systems, and advanced bioinformatics. AlphaGene, Inc. is developing a strategic position in cell process/pathway development with emphasis in neurological diseases.

AlphaGene is currently recruiting candidates for the following expertise positions:

- Molecular Biology
- Differential Gene Expression
- Yeast Genetics
- High throughput PCR
- Bio-Chip Development/Production
- Neurobiology/Genetics

AlphaGene, Inc. provides an environment of excellence for both personal and professional growth. AlphaGene offers a competitive salary and benefits package. We are located in the greater Boston area, amidst strong academic institutions and a growing community of biotechnology companies. Because of our expanding growth we are looking for a variety of skill sets including BS, MS or Ph.D. Post Doctoral Scientists are welcome to apply. Qualified candidates are requested to submit their cover letters and curriculum vitae to:

AlphaGene, Inc.
260 West Cummings Park
Woburn, MA 01801
Attn: Human Resources

AlphaGene is an Equal Opportunity Employer

University of Minnesota

Program in Signal Transduction and Gene Expression [<http://biosci.cbs.umn.edu/BMBB/stage>]

The University of Minnesota Program in Signal Transduction and Gene Expression (STAGE) announces the availability of postdoctoral positions in the laboratories of selected Program faculty. Please consult the above referenced web site for links and/or contact the appropriate faculty via a letter of inquiry to **Mr. Paul Kluge, STAGE Administrator, University of Minnesota, 1479 Gortner Avenue, St. Paul, MN 55108.**

David Bernlohr; Lipid second messengers and obesity-linked insulin resistance.

Greg Connell; Trypanosome RNA editing and mammalian iron homeostasis.

Hon Cheung Lee; Calcium signaling by cyclic ADP-ribose and NAADP.

Charles Louis; Intracellular calcium signaling in health and disease.

James McCarthy; Cell adhesion molecules and signal transduction pathways in solid tissue tumor progression and metastasis.

Gary Nelsestuen; Membrane-enzyme interactions, especially those related to the blood coagulation cascade.

Michel Sanders; Estrogen regulation of gene expression in normal and cancerous cells.

Yoji Shimizu; Regulation of lymphocyte migration and adhesion by kinases and adapter proteins.

Paul Siliciano; mRNA splicing, RNA-RNA and RNA-protein interactions.

Brian Van Ness; Molecular immunology; genetics and cell interactions in lymphoid malignancies.

Timothy Walseth; Regulation of calcium mobilization by cyclic ADP-ribose and pyridine nucleotide metabolites.

The University of Minnesota is an equal opportunity educator and employer.

Ph.D. Gene Discovery

The DuPont Genome Sciences Group is seeking a Ph.D. level scientist to lead and supervise research activities of up to 6 research associates focused on full length cDNA isolation and sequencing. These activities will be coordinated with high throughput EST discovery, and will support gene discovery and functional genomics research as well as intellectual property programs targeted to agricultural and microbial biotechnology, nutrition & health, and pharmaceuticals. The successful candidate will lead a technical group and perform a key liaison role across programs.

Qualified applicants will possess demonstrated experience in molecular biology and DNA sequence analysis; however, specific experience in plant systems is not required. Requirements include: Expertise in molecular biology and DNA sequence analysis; experience in high throughput, LIMS-enabled research activities and laboratory automation; competency with Mac, PC and UNIX operating systems; experience with relational databases and laboratory-database interfaces; experience supervising technical personnel; and excellent time management, communications skills and proven ability in managing and prioritizing multiple programs.

DuPont offers a competitive salary and an outstanding benefits package. To apply, please reference job# 99AG3135 and mail your resume to: DuPont Company, Professional Staffing, 1007 Market Street, Wilmington, DE 19898 or FAX to: 1-800-631-2206/ 302-773-4745. An Equal Opportunity Employer.



The miracles of science™

East Coast Careers in Biotechnology and Pharmaceuticals A Science Advertising Supplement

Issue Date: 16 July 1999

Space Reservation Deadline: 28 June 1999

Benefits for All Advertisers

- **Bonus Distribution:** 13th Symposium of the Protein Society, 24-28, Boston, MA
- **Maximum exposure to experienced, professional scientists**

Science delivers the highest weekly circulation of any general science journal to nearly 157,000¹ subscribers and weekly readership of more than 600,000². *Science* reaches experienced, professional scientists at all educational levels — Ph.D., M.S., and B.S.

- **Editorial focus on Frontiers in Biotechnology: Plants**

¹ *Science* December 1998 BPA Int'l. Publisher's Statement.

² 6 March 1998, 23 May and 18 July 1997 Harvey Research Science Readership Survey, as applied to *Science* December 1998 BPA Int'l. Publisher's Statement, publisher's own data.

To advertise, contact:

U.S. – Bren Peters (202) 326-6541

U.K. – Debbie Cummings +44 0 1223 326 500

Australia – Keith Sandell +61 29922-2977

Japan – Mashy Yoshikawa +81 3 3235-5961

Visit us online

@ www.scienceonline.org
Click on "Science Careers"

Science
More science. More scientists.

RESEARCH ASSOCIATE II

Amgen, a leading biopharmaceutical company, is seeking an outstanding Research Associate. Amgen provides a state-of-the-art research facility in beautiful Thousand Oaks located about one hour northwest of Los Angeles. At Amgen we combine cutting-edge biological science and high-throughput technologies including genomics, automation, informatics, and combinatorial chemistry. We encourage you to join us in our future drug discovery efforts.

The successful candidate will have 4+ years biological laboratory experience with expertise in sterile techniques. The primary duties involve growing tumor cells of various origins in culture, treating the cells with various antitumor agents, examining cell toxicity using clonogenic or MTT assays and examining the mechanisms of drug interaction with cells. Must be able to handle standard laboratory equipment, such as incubators, microscope, table top centrifuge, ultra-centrifuge, etc. The most critical skills required are the ability to handle tumor cells under sterile conditions, and to perform the clonogenic assay. Experience handling spectrophotometer, running protein gels, and doing Western blots is desirable. Experience in radioimmuno, apoptosis and flowcytometry assays is desirable. MS or BS with appropriate experience preferred.

Amgen offers excellent compensation and benefits. Please mail your CV (on plain white paper using standard fonts - no bullets, italics, underlining or bold) to: **Amgen, Staffing, Ad Code: 347, P.O. Box 2569, Thousand Oaks, CA 91319-2569.** E-mail your ASCII text CV to: **jobs@amgen.com** Visit our website at **www.amgen.com** Principals only, please. EEO/AA Employer M/F/D/V

AMGEN.

*What's the
shortest distance
between two points?*

● you

● great career
opportunities

Science

**PROFESSIONAL
NETWORK**

www.scienceonline.org
Select Science Careers.

Career Opportunities and Graduate Programs for BS & MS Scientists

A *Science* Advertising Supplement

Issue Date: 13 August 1999

Space Reservation Deadline: 27 July 1999

- Maximum exposure to experienced, professional scientists

Science delivers the highest weekly circulation of any general science journal: nearly 157,000¹ subscribers, and weekly readership of more than 600,000². *Science* reaches experienced, professional scientists at all educational levels – Ph.D., M.S., and B.S.

- Largest Bonus Distribution of 1999

Over 10,000 copies of the 13 August 1999 issue will be distributed to colleges and universities with the top biology and chemistry programs around the United States. This list includes schools with historically high minority enrollment. *Science* Career Fair, 20 August 1999 in Cambridge, MA.

American Chemical Society annual meeting, 22–26 August, New Orleans, LA.

¹ *Science* December 1998 BPA Int'l. Publisher's Statement.

² 6 March 1998, 23 May and 18 July 1997 Harvey Research *Science* Readership Survey, as applied to *Science* December 1998 BPA Int'l. Publisher's Statement, publisher's own data.

To advertise, contact:

U.S. – Gabrielle Boguslawski (212) 491-1607

U.K. – Debbie Cummings +44 0 1223 326 500

Australia – Keith Sandell +61 29922-2977

Japan – Mashy Yoshikawa +81 3 3235-5961

Visit us online
@ **www.scienceonline.org**
Click on "Science Careers"

Science
More science. More scientists.

Tenure-Track Faculty Positions in Cell/Molecular Biology

Medical College of Wisconsin Department of Cell Biology, Neurobiology and Anatomy. Tenure-track faculty positions at the Assistant and/or Associate Professor level are available for cell biologist using cellular, molecular, developmental, and/or genetic approaches. Competitive salary, laboratory space, and start-up funds are available. Candidates at the Associate Professor level would be expected to have an established research program with significant extramural funding. Individual research programs in photoreceptor biology, color vision, functional imaging, cardiac development, differentiation of neural crest, muscle regeneration, early embryology of the mouse, and mitochondrial gene expression in visual cortex are already established. The successful candidate must show promise of establishing a distinguished research career using modern technical approaches and an ability to focus on fundamental questions central to the field of cell biology. The successful candidate will be expected to contribute to a team-taught cell and tissue biology course for medical students and participate in an interdisciplinary graduate program. Ph.D. or M.D., Ph.D. (or equivalent) plus additional postdoctoral experience essential. Interested individuals should send resume and names of three references to: **Dr. Joseph C. Besharse, Chairman, Department of Cell Biology, Neurobiology and Anatomy, Medical College of Wisconsin, 8701 Watertown Plank Road, Milwaukee, WI 53226-0509.**

For more information visit our website at
<http://www.mcw.edu/cellbio/>

Equal Opportunity/Affirmative Action Employer

TENURE-TRACK POSITION IN DEVELOPMENTAL SKIN BIOLOGY



NIAMS, NIH

The Laboratory of Skin Biology, Intramural Research Program (IRP) of the National Institute of Arthritis and Musculoskeletal and Skin Diseases (NIAMS) of the National Institutes of Health (NIH) in Bethesda, Maryland has an opening for a tenure-track scientist to direct an independent research program on the developmental biology of the epidermis. The successful candidate will be provided the resources needed for a vigorous program, including defined space and fellow support. Candidates should have demonstrated credentials in developmental biology and skin biology. We are particularly interested in a scientist who uses multi-disciplinary approaches to the study of skin biology, with emphasis on transgenic and knockout mice.

Candidates should have a Ph.D. and/or M.D. as well as advanced training in developmental biology and skin biology. We are seeking to recruit an individual who shows promise in pursuing an independent research program which can take advantage of interactions with existing members of the LSB group working in the areas of epidermal biochemistry, molecular biology and genetic diseases of cornification, as well as with other scientists within the NIAMS IRP and the NIH campus as a whole.

Competitive salary and benefit packages are available. Please forward a C.V., bibliography, list of 5 most important publications, copies of 2 most significant papers, a brief statement of future research (1-2 pages), and 3 letters of reference to:

**Linda Peterson
Secretary to Scientific Director
NIAMS, NIH
Building 10, Room 9N228
9000 Rockville Pike
Bethesda, MD 20892-1820**

CLOSING DATE: AUGUST 15, 1999

Postdoctoral position Gene Therapy

An Intramural Research Training Award is available immediately for a Ph.D. or M.D. to investigate the use of gene therapy in the treatment of diseases of the eye and to study the cell biology of chronic degeneration diseases of the eye. The position will offer the opportunity to study the use of various viral and non-viral vector delivery systems and the study and treatment of various models of retinal degeneration. A background in molecular biology is required. Prior experience in the study of apoptosis and cell culture is desirable. Candidates should have a Ph.D. or M.D. with less than 5 years of postdoctoral experience and must be either a U.S. citizen or permanent resident. Salary range is from \$27,500 - \$38,000 depending on postdoctoral experience. A curriculum vitae and the names of three references should be sent to:

**Karl G. Csaky, M.D., Ph.D.
National Eye Institute
National Institutes of Health
Laboratory of Immunology
Building 10 Room 10N112
Bethesda, Maryland 20892-1857
E-mail: kcsaky@helix.nih.gov
Telephone: 301-402-0896
Fax: 301-480-1122**

**Deadline date for receipt of applications is
August 15, 1999.**

NIH IS AN EQUAL OPPORTUNITY EMPLOYER

HEALTH SCIENTIST ADMINISTRATOR (Biological Sciences)

GS-601-12/13/14 (\$48,796-\$89,142)

The Division of Genetics and Developmental Biology of the National Institute of General Medical Sciences, National Institutes of Health in Bethesda, MD is seeking a program director responsible for stimulating, planning, advising, directing, and evaluating activities for a portfolio of basic biomedical research grants in the area of molecular genetics, with an emphasis on one or more of the following: the genetics of complex biological systems; genomic organization; and/or chromosomal organization and structure. Duties include providing scientific expertise in these specialized areas of genetics and advising applicants, grantees, and Institute staff regarding research aspects of grants. The incumbent also makes funding recommendations on specific research grant applications; attends meetings of study sections, review committees, and Council; and participates in site visits.

Qualifications: U.S. citizenship; Ph.D.; independent work in planning, organizing, and conducting biomedical research; and research program administration experience.

To obtain complete application requirements by FAX, call (800) 728-JOBS, and request fax ID# 3624. The vacancy announcement may also be viewed online at: http://www.nih.gov/nigms/nigms_staff/staff.html

For further information, contact the National Institute of General Medical Sciences Personnel Office on (301) 594-2749; TDD (301) 402-6327. Applications must be postmarked by the closing date of **July 6, 1999.**

NIH IS AN EQUAL OPPORTUNITY EMPLOYER



**bild der
wissenschaft**

Science
www.scienceonline.org

*Both Science and bild der wissenschaft
invite you to:*

"Dinosaurs and Neanderthals" **What can we learn from them about Evolution?**

A lecture for the public

Featuring...

- ☐ Dino-Expert Prof. Paul Sereno, *University of Chicago*
- ☐ Palaeo-Geneticist Prof. Svante Pääbo,
Max-Planck-Institut for Evolutionary Palaeontology Leipzig, Germany
- ☐ Brain-Researcher Prof. Ernst Pöppel,
Center for Human Studies, Munich, Germany

Introduction Dr. Floyd Bloom, Editor-in-Chief *Science*

Moderator Reiner Korbmann, Editor-in-Chief *bild der wissenschaft*

Presentations will be in English

29th June 1999

at 18.00 hr

**Ludwig-Maximilians
University of Munich,
Germany**

**Auditorium E 07 of
Physikalisches Institut
Schellingstrasse
(Entrance: Schellingstrasse
4, Subway: University)**

Is Science your missing link?

Subscribe to Science

- ☐ Yes, I wish to join AAAS
and receive a one year
subscription to *Science*
for only \$200

Name Address

- ☐ Yes, I wish to join AAAS
and receive a one year
subscription to *Science*,
plus *Science ONLINE* for
\$212

Country Email

Subject Discipline

Payment: ☐ I enclose a cheque made payable to AAAS for US\$ ☐ Please charge my credit card US\$

Card type VISA / Mastercard / AMEX (circle one) Card number Expiry Date

Signature Date

Fax your order to +44 (0)1223 326501

*Rates are applicable only to people ordering from outside the US, Canada and Mexico.

AAAS Membership includes 51 issues of *Science*. Prices are valid until 31/12/99. Eurocheques not accepted. \$62 plus postage allocated to *Science*. Please allow 4-6 weeks for receipt of first issue. For more information call +44 1223 326500. Data Protection: By ordering *Science* I will receive mail related to my account, however:

☐ Please do not make my name available for any offers from parties outside AAAS. ☐ Please do not make my name available for any offers from parties outside AAAS, or from other AAAS or *Science* products.

Return subscriptions to: *Science*, Science International, Bateman House, 82-88 Hills Road, Cambridge CB2 1LQ, UK

S9XC55

INTERNATIONAL ONLY*

Merck Research Laboratories, a world leader in Biological and Pharmaceutical Research, is recruiting a Ph.D.-level scientist to work in the Department of Animal Health in Rahway, New Jersey. This is an excellent opportunity for individuals interested in joining an exciting, team-oriented environment that's focused on studying diseases in domestic and agricultural animals.

Senior Research Biochemist

The successful candidate will be involved in research of G-protein coupled receptors of importance in animal health. Our goal is to determine the pharmacological effects of novel agonists and antagonists in primary cells or tissues and in animal models. The scientist will interact with a team of researchers, including chemists and veterinarians, to identify compounds suitable for clinical development for animal health. Opportunities exist for the characterization and development of new targets for animal health.

Candidate should have a Ph.D. and postdoctoral training in Biochemistry with experience in receptor biochemistry, preferably G-protein coupled receptors, and a strong publication record in peer-reviewed journals. Good analytical skills, laboratory techniques, and interpersonal and communication skills are essential. Candidate should be strongly motivated and able to work independently as well as in a team environment.

Merck Research Laboratories is located approximately 25 miles from New York City. Our salaries, benefits and growth potential are excellent. Applicants should send their CV (including names and addresses of three potential references) to **Merck & Co., Inc., P.O. Box 2000, AD #94, RY80-3, Rahway, New Jersey 07065.**

Merck Research Laboratories is an equal opportunity employer.



Launch your career to new heights with Job Alerts.



FREE one-time registration; weekly job notification!

Science's **Job Alerts** service delivers weekly notification via e-mail of job openings matching your job search criteria.

Science
Professional Network
www.scienceonline.org
Click on *Science Careers*

LINK TO THOUSANDS OF PROSPECTIVE STUDENTS WITH ACADEMIC CONNECTIONS

Highlight your college or university's graduate programs online with Academic Connections...

- Receive a direct link to your university's website.
- All graduate school program listings remain posted online for one year – until August 1999.

Academic Connections: www.scienceonline.org

Click on Science Careers.

Science
www.scienceonline.org

FOR MORE INFORMATION CONTACT:

U.S.: Bren Peters
Phone: 202-326-6541
Fax: 202-289-6742
E-mail: science_displayads@aaas.org

Europe: Debbie Cummings
Phone: 44 (0) 1223 326 500
Fax: 44 (0) 1223 326 532
E-mail: european_ads@science-int.co.uk

CHAIR OF PHYSIOLOGY UCLA SCHOOL OF MEDICINE

The UCLA School of Medicine invites applications for Chair of the Department of Physiology. The successful candidate must have an exceptional record of research accomplishment in Physiology or a related discipline and a commitment to medical and graduate student education.

The Department is committed to an integration of genetic and molecular approaches to physiological and biophysical problems with medical relevance. The Department currently has international stature with strengths in neuro-, cardiovascular, and gastrointestinal physiology and biophysics. The position provides a unique opportunity to define physiology in the 21st century.

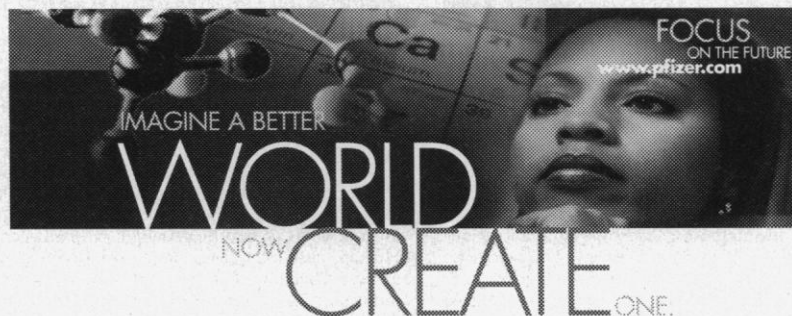
Nominations or letters of interest and curriculum vitae should be sent to: **Leena Peltonen, M.D., Ph.D., Chair, Physiology Search Committee, c/o Jeanette Lim, UCLA School of Medicine, Box 951722, Los Angeles, California 90095-1722.**

*UCLA is an Equal Opportunity/
Affirmative Action Employer.*

Jack Clark Chair in Parkinson's Disease Research Centre for Research in Neurodegenerative Diseases University of Toronto

Applications are invited for this Endowed Research Chair from experienced investigators (M.D. or Ph.D.) in the fields of biochemistry, molecular biology, cell biology, invertebrate or vertebrate model systems, neuropharmacology, gene therapy, neural transplantation, or other fields whose research can be applied to investigation of the pathobiology and treatment of Parkinson's Disease. Qualified candidates will have an established record of scientific excellence and productivity, as well as proven ability to lead a scientific research team. They will interact with the existing internationally recognized research teams at the Centre for Research in Neurodegenerative Diseases working on other neurodegenerative diseases, including Alzheimer's Disease. In accordance with its employment equity policy, the University of Toronto encourages applications from qualified women and men, members of visible minorities, Aboriginal people, and persons with disabilities. The closing date for applications is July 30, 1999. Letters of application, including a curriculum vitae, should be addressed to:

**Dr. Peter St. George-Hyslop, Director
Centre for Research in
Neurodegenerative Diseases
University of Toronto
6 Queen's Park Crescent West
Toronto, Ontario
Canada, M5S 3H2**



At Pfizer Central Research, located in Groton, CT, you'll have all the resources you need to bring new and dynamic ideas to fruition. As a company committed to innovation, we share your goal of making this world a healthier place and value the creative drive and professional expertise it takes to get there. Working together, we will continue to develop and launch the products that make such a difference in the lives of so many. At Pfizer, the power to create a better world is as immediate as it is real—and it belongs to you.

NEW LEADS BIOLOGY

SENIOR RESEARCH SCIENTIST, Ph.D.

We have an immediate opportunity for a creative scientist in our New Leads Biology group. This Scientist will develop and run a variety of high-throughput and directed assays and pursue chemical leads in selectivity and functional assays. Responsibilities include supervising 2-3 assistants and working closely with chemists and biologists throughout Pfizer Discovery as well as with outside collaborators. A Ph.D. and postdoctoral training in biochemistry or molecular pharmacology is required; pharmaceutical experience is desirable. Job Code: 9926204SCI

ASSISTANT SCIENTIST, BS/MS

We have two openings for BS/MS level Scientists in the New Leads Biology group. He/she will be involved in developing and running a variety of assays, including enzymatic, receptor-binding and whole cell assays. These assays will be used to discover lead compounds by high-throughput and directed screening, and the leads discovered will then be characterized in selectivity and functional assays. General skills needed include common biochemical techniques, use of automated instrumentation and computers. This position also requires excellent communication skills and problem solving ability. Job Code: 9922721SCI

Pfizer offers exceptional salaries and benefits, as well as tremendous growth potential. Please send your resume in confidence to: Pfizer Inc, Job Code: _____, Central Research, c/o Aon Consulting, P.O. Box 25, Findlay, OH 45839, or e-mail to: Pfizer@aon-hros.com. As an Equal Opportunity Employer, Pfizer is focused on building a diverse workforce.



LIFE IS OUR LIFE'S WORK.

ANNOUNCEMENT

DOES THIS SOUND LIKE YOU OR SOMEONE YOU KNOW?

"I have long been interested in science, and in helping people. During my training, I had a number of clinical experiences which convinced me that I wanted to specialize in immunology at the bench, but still have patient contact."

"I was always tinkering with my toys, taking them apart, trying to fit the square peg in the round hole. NIH is the only place to be for cutting-edge training, creativity, and pure excitement."

Has your interest always been to pursue medical research? Do the realities of staggering educational debt appear to prevent you from realizing your dreams? NIH offers a variety of clinical and basic science postdoctoral training fellowships that can be combined with educational loan repayment incentives. You owe it to yourself to know about these programs (or share the information with someone in need!) as you make your career decisions. You owe it to yourself to learn more about what NIH can do for you.

NIH Loan Repayment Benefits of \$35,000 per Year

NIH, the world's leading biomedical research facility, has trained thousands of qualified students in neuroscience, pathology, immunology, molecular genetics, developmental biology, cell biology, molecular biology, virology, and structural biology, to name only a few areas in our intramural research program.



For more information on the Loan Repayment Program and postdoctoral training, visit our websites at:

**<http://www.training.nih.gov> and
<http://lrp.info.nih.gov>**



Toll Free: 1-800-528-7689 • TTY: 1-888-352-3001

NIH is dedicated to building a diverse community in its training and employment programs.

POSITIONS OPEN

FACULTY POSITION IN PROSTATE BIOLOGY

Department of Molecular and
Integrative Physiology
The University of Kansas School of Medicine

The University of Kansas Medical Center invites applications for a tenure-track position at the **ASSISTANT PROFESSOR** level. The faculty member will have a primary appointment in the Department of Molecular and Integrative Physiology and a joint appointment in the Division of Urology. The successful candidate should have a record of productive research in the area of prostate biology and is expected to establish an independent research program. Outstanding candidates whose research examines the genetic, molecular, or cellular basis of prostate cancer will be given preference. Qualifications include a M.D., Ph.D., or both and postdoctoral research experience. Applications will be reviewed as received and will be accepted until August 30, 1999. To apply, submit a statement of research interests, curriculum vitae, and three letters of recommendation to: Chair, Faculty Search Committee, Department of Molecular and Integrative Physiology, University of Kansas Medical Center, 3901 Rainbow Boulevard, Kansas City, KS 66160. FAX: 913-588-7430; Telephone: 913-588-7400.

The University of Kansas Medical Center is an Equal Opportunity/Affirmative Action Employer.

JOHNS HOPKINS UNIVERSITY SCHOOL OF MEDICINE

Department of Otolaryngology—
Head and Neck Surgery

The Department of Otolaryngology—Head and Neck Surgery is recruiting a full-time basic scientist to be located in the Center for Hearing Sciences. The focus of this **TENURE-TRACK FACULTY POSITION** is cellular, genetic, and/or molecular mechanisms of hearing. Candidates should have a Ph.D. and/or M.D. degree with postdoctoral experience. The successful applicant will be expected to interact with other members of the Center, to acquire extramural funding, and to participate in the teaching of graduate students, medical students, and Residents. Applicants are asked to submit by July 31, 1999, a curriculum vitae, a description of research interests, and three letters of reference to: Dr. David K. Ryugo, Center for Hearing Sciences, Johns Hopkins University School of Medicine, 720 Rutland Avenue, Baltimore, MD 21205. Johns Hopkins University is an Equal Opportunity Employer.

Immediate opening for a **POSTDOCTORAL FELLOW** or tenure-track **ASSISTANT PROFESSOR** to study the biology and genetics of HIV drug resistance as part of a rapidly expanding AIDS research program. Candidates should be M.D., Ph.D., or equivalent, and have sufficient experience to establish an independent, funded research program. Competitive salary and start-up packages commensurate with training and experience. Send curriculum vitae, summary of research interests, and names of three references to: John W. Mellors, M.D., Chief, Infectious Diseases Division, Director HIV/AIDS Program, University of Pittsburgh, Graduate School of Public Health, 603 Parran Hall, 130 DeSoto Street, Pittsburgh, PA 15261. Telephone: 412-624-8512; FAX: 412-383-7982; e-mail: fern+@pitt.edu. The University of Pittsburgh is an Affirmative Action/Equal Opportunity Employer.

RESEARCH ASSOCIATE

Research Associate position available to Ph.D., M.D., or equivalent for studies in psychoneuroimmunology—role of stress in resistance to infection. A history of research productivity is desirable. Contact: Dr. Gerald Sonnenfeld, Professor and Chair, Department of Microbiology and Immunology, Morehouse School of Medicine, 720 Westview Drive S.W., Atlanta, GA 30310-1494. Morehouse School of Medicine is an Equal Opportunity Employer.

POSITIONS OPEN

HEMATOPATHOLOGIST AND CLINICAL CYTOGENETICIST

ASSISTANT/ASSOCIATE PROFESSOR. The Department of Pathology and Laboratory Medicine at the University of California, Los Angeles, invites applications for clinical faculty positions at the level of Assistant or Associate Professor. The Department is seeking two individuals with primary interest in hematopathology and clinical cytogenetics. Candidates must be an M.D. and Board-eligible/Board-certified. Hematopathology candidates must have experience in bone marrow, flow cytometry, hematology, and molecular pathology. Clinical Cytogeneticist candidates must have diagnostic experience that includes prenatal, postnatal, and solid tumor diagnosis. The candidates will be expected to assume teaching responsibilities and to develop a translational research program.

Qualified candidates should send their curriculum vitae, statement of interest, and a list of three references to: David A. Bruckner, Sc.D., Search Committee Chair, Department of Pathology and Laboratory Medicine, UCLA Medical Center 171315, 10833 LeConte Avenue, Los Angeles, CA 90095-1713.

University of California is an Affirmative Action/Equal Opportunity Employer. Women and members of minority groups are encouraged to apply. Hiring is contingent upon eligibility to work in the United States.

FACULTY POSITION WILDLIFE ECOLOGIST

The Faculty of Environmental and Forest Biology, a diverse faculty ranging from Molecular Biologists to Ecosystem Scientists, is seeking a Wildlife Ecologist to fill an academic year, tenure-track position at the SUNY College of Environmental Science and Forestry. The appointee will contribute to the teaching, research, and public service activities of the Faculty of Environmental and Forest Biology, and is expected to develop a vigorous, extramurally funded program in wildlife ecology that contributes substantially to undergraduate and graduate programs. Potential teaching opportunities include wildlife management, ecology, and areas of specialty. Requirements include Ph.D. in appropriate field, and the position is available by January 2000.

Applicants should send a letter of interest, hard copies of a curriculum vitae, graduate transcripts, separate statements of teaching and research interests, reprints of relevant publications, and three letters of recommendation to: Dr. Guy Baldassarre, SUNY College of Environmental Science and Forestry, 1 Forestry Drive, Syracuse, NY 13210. Telephone: 315-470-6739; e-mail: gabaldas@mailbox.syr.edu. All application materials must arrive by 15 August 1999.

Biotechnology Center, University of Illinois at Urbana-Champaign. **DIRECTOR OF DNA SERVICES.** W. M. Keck Center for Comparative and Functional Genomics. High-Throughput Sequencing and Genotyping Unit. Proposed starting date: August 9, 1999. Responsibilities: The successful candidate will direct a laboratory that offers campus-wide DNA core facility services for DNA sequencing fragment analysis and oligonucleotide synthesis. In addition, the Director will be in charge of high-throughput sequencing projects including large-scale expressed sequence tags and microbial genomes. Qualifications required: M.S. in molecular or cell biology or related field with relevant experience. Type of position and salary: Full-time, 12-month regular academic professional position. Salary is commensurate with experience. Application: Send letters of application with complete curriculum vitae and three letters of recommendation to: Dr. Barbara Whitmarsh, c/o Ms. Elaine Sampson, W. M. Keck Center, 1201 West Gregory, Urbana, IL 61801. Telephone: 217-265-5057; FAX: 217-265-5066; e-mail: esampson@staff.uiuc.edu. Deadline: For full consideration, applications should be received by 5:00 p.m. on July 16, 1999.

POSITIONS OPEN

FACULTY POSITION. The Department of Pharmacology of the College of Medical Sciences at Nova Southeastern University invites applications for a position of **ASSISTANT PROFESSOR**. The candidate should have the ability to teach in one or more areas of pharmacokinetics, cardiovascular, autonomic, or renal pharmacology. The candidates responsibilities will include participation in team-taught courses to health profession students, as well as expectations of scholarship and service. The College of Medical Sciences is located in the new Health Professions Division facility on the Fort Lauderdale campus. Salaries are competitive and benefits are generous. Position available immediately, pending approval of the Board of Trustees. Please send a letter of intent stating career goals, curriculum vitae, copies of graduate transcripts, and the names, addresses, and telephone numbers of three professional references to: Nova Southeastern University, Human Resources Department (HLF), 3301 College Avenue, Ft. Lauderdale, FL 33314. Nova Southeastern University is an Affirmative Action/Equal Opportunity Employer.

ASSISTANT PROFESSOR DEPARTMENT OF NEUROBIOLOGY

The Department of Neurobiology at the University of Alabama at Birmingham (UAB), School of Medicine invites applications for a tenure-track position at the Assistant Professor level. The Department is seeking an outstanding individual who uses a contemporary molecular biological approach to evaluate the development of receptors at the neuromuscular junction and central synapses and the signaling pathways involved. Preference will be given to candidates with established extramural (preferably NIH) funding and likelihood of collaborative interactions with other research programs in the department related to molecular basis of synapse assembly. Attractive facilities and start-up package are available. The Department currently has a strong base of Molecular and Cellular Neurobiologists studying problems of receptor and ion channel function and signal transduction in neurons and glia. Send curriculum vitae and statement of research plans and have three letters of recommendation sent to: Michael J. Friedlander, Ph.D., Professor and Chair, Department of Neurobiology, 1719 6th Avenue South, CIRC 516, University of Alabama at Birmingham, Birmingham, AL 35294-0021 by July 9, 1999. UAB is an Affirmative Action/Equal Opportunity Employer.

The Division of Nephrology of the Department of Medicine at Vanderbilt University is seeking highly talented individuals to fill three non-tenure-track positions (**CLINICAL INSTRUCTOR** and two **RESEARCH ASSISTANT PROFESSORS**). Applicants for Research Assistant Professor positions are sought who have demonstrated ability to perform independent basic research relating to the kidney and are funded by, or competitive for funding by, the NIH. Applicants for the Clinical Instructor position must have completed Nephrology Fellowship Training and be Board-certified/Board-eligible in internal medicine and nephrology. Vanderbilt offers an exciting environment in which to build a successful research and clinical career.

Candidates should send correspondence and curriculum vitae to:

Steven C. Hebert, M.D.
Ann and Roscoe R. Robinson
Professor of Medicine
Director, Division of Nephrology
C-3119 Medical Center North
Nashville, TN 37232-2372
Telephone: 615-343-2220
FAX: 615-343-2675

An Equal Opportunity/Affirmative Action Employer.

POSTDOCTORAL FELLOWSHIP

The Laboratory of Skin Biology at NIH, is seeking a postdoctoral fellow to work in the developmental and molecular aspects of epidermal differentiation. Transgenic and knock-out mice are being utilized to assess the function of structural epidermal genes and of transcription factors regulating skin differentiation. **Applicants should have** extensive experience in molecular and cellular biology. **Interested candidates** with a Ph.D., M.D., or equivalent degree and that have had less than 5 years of post-doctoral experience should send a current C.V., list of publications, and three references to:

Dr. Peter Steinert
Dr. Maria Morasso
NIH, NIAMS, Lab of Skin Biology
Building 6 Room 134
6 Center Drive MSC 2790
Bethesda, MD 20892
Telephone: (301) 402-2888
FAX: (301) 402-2886
e-mail: pemast@helix.nih.gov
morasso@nih.gov



NIH is an Equal Opportunity Employer



United States Environmental Protection Agency National Health and Environmental Effects Research Laboratory Atlantic Ecology Division

RESEARCH BIOLOGIST/ECOLOGIST/ENVIRONMENTAL SCIENTIST GS-401/408/1301-9/11/12

The U.S. Environmental Protection Agency's National Health and Environmental Effects Research Laboratory, Atlantic Ecology Division (AED), Ecological Response Branch in Narragansett, Rhode Island, is seeking qualified candidates to fill an interdisciplinary Research Biologist/Ecologist/Research Environmental Scientist position. AED's mission is to develop and evaluate theory, methods, and data needed to understand and quantify the environmental effects of anthropogenic stressors on the coastal waters and watersheds of the Atlantic seaboard. As a member of an AED research team, the incumbent will be expected to develop a research program that will quantitatively link changes in estuarine and coastal conditions with changes in landscape conditions. Specific responsibilities will include planning, developing, and conducting research studies with AED teams to develop and apply analytical tools, such as quantitative landscape ecology spatial statistics and geographic information systems, to conduct quantitative assessment across ecological resources and across spatial scales that span the entire Atlantic coast. Other responsibilities include developing and applying methods for merging data acquired by diverse monitoring programs; communicating findings at workshops, symposia, and in peer-reviewed literature; and providing technical assistance, consultation, and research support in areas of expertise to other elements of the laboratory, EPA, and other agencies.

This is a term, two-year position. U.S. citizenship is required and candidates must meet U.S. Office of Personnel Management qualification requirements. Candidates should have the required education and/or experience as described in the announcement listed below. Salary ranges from \$33,026 to \$62,260 and is commensurate with qualifications. The selected candidate will be eligible for a full benefits package, including health insurance, life insurance, retirement and vacation and sick leave. Reimbursement for relocation expenses is not authorized for this position.

HOW TO APPLY: All applicants must apply through the U.S. Office of Personnel Management (OPM) by call the OPM automated jobline on (919) 790-2822 or accessing OPM via Internet at <http://www.usajobs.opm.gov> AND requesting an OPM package for **Announcement #AR1808**. Application materials must be received by **July 16, 1999**.

The U.S. EPA is an Equal Opportunity Employer.

CENTER DIRECTOR

The U.S. Department of Agriculture (USDA) is seeking candidates for the position of Director of Plum Island Animal Disease Center (PIADC) at Greenport, New York. PIADC is the principal USDA laboratory for research and diagnosis of animal diseases which are exotic to the United States. Duties of the Director include direction and coordination of the research and diagnostic programs as well as the overall operation and management of the Center. Research is funded and administered through the Agricultural Research Service (ARS). The Foreign Animal Disease Diagnostic Laboratory is funded and administered through the USDA Animal and Plant Health Inspection Service (APHIS). The Director represents ARS and APHIS in communications in the veterinary and biomedical communities, representatives of other governmental agencies, congressional staff, livestock producers and commodity groups, news media, and the general public, on foreign animal diseases.

The successful candidate will have the D.V.M. or equivalent degree, demonstrated skill in organizing and leading multidisciplinary teams of scientists, and a strong record of personal research accomplishments. A Ph.D. or equivalent degree is highly desirable. This is a Senior Executive Service position with a salary range from \$108K to \$125K, depending on qualifications. *U.S. citizenship required.* For further information about the position please call **Ms. Wilda Martinez at 215-233-6593**. For application procedures, call **Stacy Aldrich at 301-504-1448** or e-mail saldrich@ars.usda.gov. Applications must be postmarked by July 15, 1999. Previous applicants must reapply in order to be considered.

**USDA/ARS IS AN EQUAL
OPPORTUNITY EMPLOYER.**



Agricultural
Research
Service

United States
Department of
Agriculture

STAFF SCIENTIST POSITION

Ophthalmic Genetics and Clinical Services Branch, National Eye Institute, National Institutes of Health, Bethesda, Maryland. Position available for Ph.D. with experience in protein crystallography, site-directed mutagenesis, protein expression and purification of β -crystallins, theoretical analysis of beta-structural proteins and structural interpretation of gel-filtration, and analytical centrifugation data. Knowledge of the UNIX operating system, programming languages, molecular modeling software and protein databases is essential for this position. Applicants must have at least 3 years of experience in molecular biology of β -crystallins. Salary based on education and experience beginning at \$58,000 for qualified applicants. All applications should include the following: a statement of research interest; a career synopsis, a current curriculum vitae and bibliography, and the names and addresses of references. A list of the requirements or additional information about the position may be obtained by contacting Ms. Cheryl Wild, Personnel Management Specialist, National Eye Institute, Building 31, Room 6A-18, Bethesda, Maryland 20892, telephone 301-496-4274; FAX 301-496-3958, e-mail: CWild@nei.nih.gov

Applications must be received or postmarked by **June 30, 1999**. Incomplete applications will not be considered.

Candidates must be either U.S. Citizens or Resident aliens who have a Ph.D. degree.

Selection for this position will be based solely on merit, with no discrimination for non-merit reasons such as race, color, religion, gender, national origin, political affiliation, marital status, disability, age, sexual orientation, or membership or non-membership in an employee organization.

NIH IS AN EQUAL OPPORTUNITY EMPLOYER

POSITIONS OPEN

ASSISTANT/ASSOCIATE PROFESSOR PHARMACOLOGY AND TOXICOLOGY

The Department of Pharmacology and Toxicology at the University of Louisville School of Medicine invites applications and nominations for a tenure-track Assistant or Associate Professor faculty position. The selected candidate will have a Ph.D. in pharmacology, toxicology, or related discipline, and be expected to transfer or develop a nationally recognized and independently funded research program that incorporates molecular approaches to pharmacology and/or toxicology research. The University of Louisville Health Sciences Center has established interdisciplinary research centers of excellence in genetics and molecular medicine, cancer, and environmental health science. Applicants with research interests in one or more of these areas are particularly encouraged to apply. The primary responsibilities will be in research and research training. For further information please visit our website: www.louisville.edu/medschool/pharmacology.

New research laboratories and competitive research start-up packages are available. Applicants should send a letter outlining career research goals, curriculum vitae, and the names of three individuals who can be contacted for letters of reference to: **David W. Hein, Chairman, Department of Pharmacology and Toxicology, University of Louisville School of Medicine, Louisville, KY 40292.**

Applications should be received by September 1, 1999, for full consideration, but the application process will continue until the position is filled. *The University of Louisville is an Affirmative Action/Equal Opportunity Employer. Women and minorities are particularly encouraged to apply.*

ENDOWED PROFESSORSHIP. Poultry science, Penn State. Applications are being accepted for the Walther and Maxine Ott Professorship in Undergraduate Poultry Education; an **ASSOCIATE PROFESSOR** or **PROFESSOR** tenure-track position with an appointment of 70 percent Resident education and 30 percent research or extension. The successful applicant will develop a comprehensive program focusing on novel and creative ways to educate and advise students who are interested in a poultry science career and are enrolled in the new interdepartmental animal sciences major. Candidate must have a Ph.D. in poultry science or a closely related field. Scholarship and excellence in teaching and in either research or extension required. Submit letter of application, statement of teaching and research/extension interests, complete curriculum vitae, and the names, addresses, telephone numbers, and e-mail addresses of three references to: **Dr. W. B. Roush, Department of Poultry Science, Department S, University Park, PA 16802. Telephone: 814-863-0655; e-mail: wbr@psu.edu.** Application deadline: August 15, 1999, or until position is filled. *Affirmative Action/Equal Opportunity Employer.*

The Division of Nephrology and Hypertension at the University of Cincinnati invites applications for a **SENIOR RESEARCH ASSOCIATE** or **RESEARCH ASSISTANT PROFESSOR** (depending on the qualifications). Applicants should have Ph.D. or M.D. and extensive postdoctoral or equivalent experience in kidney tubule microperfusion. The major responsibility of the successful candidate will be on characterization of the acid-base transporters in the kidney tubules. Familiarity with cell imaging techniques is desirable. Competitive salary and start-up package will be offered.

Applicants should submit a letter of interest in the position, the names of three references, and a curriculum vitae to: **Dr. Manoocher Soleimani, Professor of Medicine, University of Cincinnati Medical Center, Division of Nephrology and Hypertension, P.O. Box 670585, Cincinnati, OH 45267-0585.** Applications from women and underrepresented minorities are encouraged.

POSITIONS OPEN



CORTEX

ASSOCIATE NEUROSCIENTIST IN VIVO/BEHAVIORAL RESEARCH

Cortex Pharmaceuticals, Inc., an Irvine, California-based neuroscience company focused on novel drug therapies for the treatment of neurological and psychiatric disorders, is currently seeking an Associate Neuroscientist to perform *in vivo*/behavioral research.

A suitable candidate will have a B.S./M.S. degree with a minimum of three to five years of experience performing *in vivo*/behavioral neurobiological research. The ideal candidate will have additional experience in one or more of the following technical areas: small animal surgical and neurosurgical expertise (including brain stereotaxy), immunohistochemistry, ELISA, *in situ* hybridization, gel blot methodology (Western, Northern), or *in vitro* tissue culture.

Cortex Pharmaceuticals, Inc. offers a competitive compensation and benefits package, which includes medical, dental, vision, and life insurance, 401(k) retirement plan, and stock options. For further information, please visit our website: www.cortexpharm.com.

Interested applicants should mail a résumé or curriculum vitae by July 15, 1999 (no telephone calls please), to: **Jan Ingram-Mello, Cortex Pharmaceuticals, Inc., 15231 Barranca Parkway, Irvine, CA 92618. E-mail: jmello@cortexpharm.com.**

RESEARCH ASSISTANT PROFESSOR

The University of Utah seeks a full-time non-tenure-track Research Assistant Professor for the Department of Pathology, Division of Cell Biology and Immunology. A Ph.D. degree with postdoctoral research experience in endocytosis and organelle biogenesis including molecular biology, biochemistry, cell biology, and morphology techniques is required. Responsibilities would include directing research on the endocytic pathway in eukaryotes involving lysosome/vacuole biogenesis, organelle movement and vesicular fusion/fission. Additionally, candidates must have previous experience in grant and manuscript writing and editing, managing a laboratory of approximately 15 people, public speaking and teaching. This position is available on a year basis. Salary and benefits commensurate with experience. Send curriculum vitae, description of research interests, and the names of three references to: **Raymond A. Daynes, Ph.D., Professor and Head, Division of Cell Biology and Immunology, Department of Pathology, University of Utah Health Sciences Center, 50 North Medical Drive, Salt Lake City, UT 84132.** *The University of Utah is an Equal Opportunity/Affirmative Action Employer and encourages applications from women and minorities.*

INVESTIGATOR CRIPPLED CHILDREN'S FOUNDATION RESEARCH CENTER

The Crippled Children's Foundation Research Center (CCFRC) is seeking applicants for tenure-track positions at the **ASSISTANT** or **ASSOCIATE PROFESSOR** levels as CCFRC Investigators. Applicants should preferably have a record of productive research in the areas of immunology, signal transduction, lipid absorption and metabolism, or obesity, and have active extramural funding. The CCFRC will provide fully equipped laboratory space, supplemental research support, and a stimulating research environment. The CCFRC is located at LeBonheur Children's Hospital and is affiliated with the University of Tennessee Center for the Health Sciences in Memphis. Send a letter of application with a statement of research interests and accomplishments, curriculum vitae, and at least three names and addresses for letters of recommendation to: **Dennis D. Black, M.D., Scientific Director, Crippled Children's Foundation Research Center, 50 North Dunlap, Room 401 West Patient Tower, Memphis, TN 38103.** *An Equal Opportunity/Affirmative Action Employer.*

POSITIONS OPEN

TWO POSITIONS IOWA STATE UNIVERSITY

Plant quantitative genetics **ASSISTANT** or **ASSOCIATE PROFESSOR** to enhance a tradition of excellence in crop improvement research and education. The incumbent will conduct innovation, multidisciplinary research emphasizing quantitative and population genetics, selection theory and methodology, or evolutionary and ecological genetics. The research program will be primarily applied to the breeding and improvement of small grains.

Extension soil management and environmental soil science **ASSISTANT** or **ASSOCIATE PROFESSOR** with 70 percent extension and 30 percent research appointment to develop a strong extension and outreach program with emphasis on environmental issues in soil management as they relate to tillage, crop production, land use, and soil productivity.

Both positions available January 1, 2000. For additional information contact: **Dr. Thomas Loynachan, Interim Head, Department of Agronomy, Iowa State University, Ames, IA 50011-1010. Telephone: 515-294-7636; FAX: 515-294-3163; e-mail: teloynac@iastate.edu.** Application deadline is September 30, 1999. Details available at (Agronomy) website: http://www.iastate.edu/~hrs_info/jobs/4titles.htm#1.

Immunology, virology, vaccines. **RESEARCH SCIENTIST** (Ph.D.), **RESEARCH ASSISTANT** (M.S. or equivalent), and **POSTDOCTORAL FELLOWS** to help develop vaccines for exotic BL4 viral agents (filoviruses) and improve existing vaccines (orthopoxvirus). Research Scientist: cellular immunology of viral vaccines, especially as applied to primates, is preferred; postdoctoral experience required. Assistant(s): versatility favored, as work includes immunology, virology, molecular biology, and viral pathogenesis. Appointments in circa five-year terms, renewable. *U.S. citizenship required.* NRC Associateships, both regular (recent Ph.D.'s or M.D.'s) and senior (for established Investigators), are also available to support basic research in related areas, in three- to five-year terms. Inquiries to: **Dr. Alan Schmaljohn or Dr. Mary Kate Hart, Virology Division, U.S. Army Medical Research Institute of Infectious Diseases, Ft. Detrick, Frederick, MD 21702. FAX: 301-619-2290.**

SEARCH REOPENED

Penn State Berks-Lehigh Valley College invites applications for a tenure-track **ASSISTANT PROFESSOR** position in the Division of Science. The position requires a Ph.D. in either genetics, cell biology, or biochemistry. Responsibilities include teaching upper- and lower-division undergraduate courses at either the Berks or Lehigh Valley campuses. Expectations for the position include the development of an undergraduate research program and service to the college and community. The starting date is flexible, either spring or fall semester 2000. For additional information and application instructions refer to the college website: <http://www.bk.psu.edu/faculty/openpos.html>; e-mail: bde1@psu.edu. Deadline for receipt of applications is September 1, 1999. *Equal Opportunity Employer/Affirmative Action.*

VISITING ASSISTANT PROFESSOR OF BIOLOGY

Two full-time, temporary, non-tenure-track positions for the 1999-2000 academic year. Teaching will include general biology for majors or non-majors and a course in an area of specialty. Salary: \$25,000 plus benefits. Information about Duquesne University is available at website: www.duq.edu. Send a curriculum vitae, a summary of teaching experience, and the names of three references to: **Biology Search, Dr. Kyle W. Selcer, Department of Biological Sciences, Duquesne University, Pittsburgh, PA 15282. FAX: 412-396-5907.** Review of applications will begin immediately and will continue until the positions are filled.

Duquesne University is an Affirmative Action/Equal Opportunity Employer.



Leading-edge resources & a passion for discovery.
You'll find them at Roche.

Metabolic Diseases

Hoffmann-La Roche is a leading research-intensive pharmaceutical company that discovers, develops, manufactures and markets prescription drugs that improve, prolong and save lives. Our extremely gifted employees and an annual \$1.7 billion investment in pharmaceutical research and development have given birth to our latest discovery - Xenical®, the only prescription medication that significantly improves obesity management and obesity-related conditions.

If you are intent on contributing to the future of medicine in an open, supportive, leading-edge environment, consider one of these exceptional career opportunities in the area of metabolic diseases at our Nutley, NJ Pharmaceutical Research Center.

Ph.D. Scientist

You will utilize bioinformatic approaches in the identification and validation of novel molecular targets. With access to proprietary databases and powerful analytical tools, this position offers creative individuals a unique opportunity to synergize with the Roche Bioinformatics community, applying state-of-the-art genomics technologies to target identification.

Requirements include a minimum 2 years' postdoctoral experience and broad knowledge in the fields of non-insulin dependent diabetes mellitus (NIDDM) and obesity. Specific knowledge of one or more of the following areas is desirable: insulin secretion, insulin resistance, gluconeogenesis, and appetite suppression or energy expenditure. Aptitude in Web site development and/or scripting languages (Perl, JavaScript, VisualBasic) is a plus. **Job Code: 99-000-1300**

Principal Scientist

If selected, you will support the drug discovery process as it pertains to obesity. This will involve designing and implementing research programs that use biochemistry and molecular and cellular biology to discover novel compounds that modulate food intake and body weight. You will need a Ph.D. or equivalent advanced degree and a background in studying obesity. **Job Code: 99-000-1313**

Research Leader

You will use your knowledge of current research as well as your understanding of drug development opportunities and processes in the obesity area to assume a leadership role in obesity research. You will also participate in the drug target selection process and in the in vivo evaluation of anti-obesity drug candidates. You will need a Ph.D. (or equivalent) with 1-3 years of postdoctoral experience and 2-5 years' work experience (preferably in the pharmaceutical industry), as well as a background in obesity research and familiarity with animal models. Experience with drug development in the obesity area is desirable. **Job Code: 99-000-1279**

Principal Scientist

If selected, you will provide in vivo pharmacology support for all diabetes discovery projects and for the evaluation of licensing opportunities in the diabetes area. This will involve ensuring that appropriate animal models of diabetes are in place as needed and that necessary technical skills and analytical procedures are available to conduct all necessary in vivo/ex vivo work. You will need a Ph.D. (or equivalent) with 1-3 years of postdoctoral experience; and a background in NIDDM and familiarity with animal models of diabetes. **Job Code: 99-000-1213**

As one of NJ Monthly's "Best Companies to Work for in New Jersey," we offer our employees competitive salaries and a benefits package that includes on-site childcare and a state-of-the-art fitness center. To be considered, forward your resume, indicating job code of position of interest and salary requirements, to: **Hoffmann-La Roche, R&D Human Resources, Building 76/5th Floor, 340 Kingsland Street, Nutley, NJ 07110; FAX: 973-235-2767.** Hoffmann-La Roche is an equal opportunity employer fully committed to diversity in the workplace. www.RocheUSA.com



St. Jude Children's Research Hospital

ALSAC • Danny Thomas, Founder

DEPARTMENT OF BIOCHEMISTRY POSTDOCTORAL FELLOWSHIPS

The Biochemistry Department offers a highly interactive environment for postdoctoral research with a focus on the molecular and cellular biology of signal transduction. The research programs within the Department offer recent Ph.D. or M.D. graduates comprehensive training in a large variety of contemporary molecular and biochemical techniques. Laboratory facilities are housed in a 220,000 sq. ft. research facility. SJCRH offers very competitive salaries and fringe benefits. Current research programs within the Department include:

Paul K. Brindle: The role of transcriptional coactivators in hematopoiesis.

John L. Cleveland: Regulation of apoptosis in hematopoiesis and leukemia.

James N. Ihle: Mechanisms of hematopoietic stem cell growth regulation, differentiation and transformation.

Paul A. Ney: Mechanisms of erythroid proliferation and differentiation.

Suzanne Jackowski: Cell cycle regulation of membrane phospholipid biosynthesis.

Charles O. Rock: Fatty acid metabolism and growth factor signalling.

Brian P. Sorrentino: Hematopoietic stem cell selection, expansion, and gene transfer.

Gerard P. Zambetti: Function of wild-type and mutant p53 in tumor suppression, oncogenesis, and the cell cycle.

Applicants should submit a brief statement of research interests, curriculum vitae and the names of three references to:

Biochemistry Departmental Fellowships
The Department of Biochemistry
St. Jude Children's Research Hospital
332 North Lauderdale
Memphis, TN 38105

<http://www.stjude.org/education/default.htm>

An Equal Opportunity/Affirmative Action Employer

POSITIONS OPEN

DIRECTOR RESEARCH SERVICES VA Puget Sound Health Care System and University of Washington

The University of Washington and the Veterans Affairs Puget Sound Health Care System seek a Senior Academic Investigator to direct the VA Puget Sound Research Service. The VA Puget Sound conducts the third-largest research program in the national VA Health Care System with major strengths in biomedical, rehabilitation, and health services research. The twenty million-dollar research program includes 386 projects and 83 funded Investigators. The VA Puget Sound is an integrated Health Care System providing primary and tertiary care at campuses in Seattle and Tacoma, Washington. As a University of Washington-affiliated teaching medical center the VA offers training programs in all medical specialties, subspecialties, and in several allied health professions. The candidate should be a recognized academic scholar and proven leader in a research program with credentials acceptable for appointment at the Associate or Full Professor level at the University of Washington. Candidates from a variety of biomedical or health services research disciplines are encouraged to apply and may have an M.D. and/or Ph.D. Interested candidates should forward their curriculum vitae and list of references by July 31, 1999, to: **Thomas D. Bird, M.D., S-182-GRECC, VA Puget Sound Health Care System, 1660 South Columbian Way, Seattle, WA 98108.** *The University of Washington is building a culturally diverse faculty and strongly encourages applications from women and minority candidates. The UW and VA Puget Sound Health Care System are Affirmative Action/Equal Opportunity Employers.*

NATIONAL EYE INSTITUTE NATIONAL INSTITUTES OF HEALTH

The intramural program of the National Eye Institute invites applications for a position as a **RESEARCH SCIENTIST** within the Laboratory of Sensorimotor Research. This position may be either tenured, or tenure-track with conversion to tenure anytime within six years. Applicants will be expected to establish a research program related to understanding the neurobiology of the visual and/or oculomotor system in monkeys. The Laboratory of Sensorimotor Research is devoted to understanding the organization of the brain related to the control of eye movements and visual perception. It has excellent facilities for the study of these systems in awake behaving primates, including dedicated computer systems, a machine shop, an electronics shop, and a histology laboratory. The Laboratory also provides the opportunity to collaborate on studies of human patients with diseases related to the visual and oculomotor systems. Candidates should send a brief cover letter, curriculum vitae, bibliography, a one- or two-page statement of current research interests, copies of recent, relevant publications, and three letters of recommendation to: **Dr. Lance M. Optican, Search Committee Chair, c/o Ms. Jean Steinberg, Building 49, Room 2A50, NIH, Bethesda, MD 20892-4435.**

The deadline for applications is August 1, 1999.
NIH is an Equal Opportunity Employer.

RESEARCH ASSOCIATE position available for a Ph.D. to work in the area of cellular immunology and cancer vaccines. Must have proven track record in cellular immunology research including at least three years of postdoctoral experience and ability to develop independent research within a team structure. Send application to: **Eli Gilboa, Ph.D., Duke University Medical Center, Center for Genetic and Cellular Therapies, Box 2601, Durham, NC 27710.** (No letter, FAX, or e-mail).

MICROBIOLOGIST. DIRECTOR OF FERMENTATION AND MICROBIOLOGY (FOOD). Opportunity in Atchison, Mississippi. Develops and improves fermentation manufacturing technologies and supervises quality assurance. Ph.D. degree required. Send résumés today to: **Mr. David Rindom, 1300 Main, Atchison, KS 66002.**

POSITIONS OPEN



Invitrogen is a growing company delivering highly innovative products for gene cloning and expression. We are committed to providing life scientists with superior products and technical information.

Invitrogen currently has the following positions available in our Research and Development Department. We are looking for enthusiastic Researchers with good oral and written communication skills and the desire to be involved in the development of cutting-edge molecular biological research tools.

ASSISTANT/ASSOCIATE DIRECTOR OF CLONING TECHNOLOGIES

The successful candidate will lead a research and development group in the development of innovative new products, which utilize a variety of cloning technologies. Must be creative, versatile, and an experienced scientist with proven success in management of a group of Ph.D. scientists. Responsibilities include providing strategic vision and direction for the group's effort and collaborating with other research and development groups as well as groups from manufacturing, and sales and marketing.

The successful candidate will have a Ph.D. in biochemistry, molecular biology, or related discipline with a minimum of five years of experience in industry. Must have a minimum of two years of managerial experience.

SCIENTISTS

The successful candidates will be expected to demonstrate innovation in the investigation of novel technologies and product ideas. Responsibilities include designing experiments, evaluating test data, and preparing associated documentation for a research program.

The successful candidates will have a Ph.D. in biochemistry, molecular biology, or related discipline and zero to five-plus years of postdoctoral experience.

Invitrogen offers an aggressive benefits package and a rewarding, professional environment. Please submit your résumé via our website, FAX, or mail:

Invitrogen
Attn: Human Resources
1600 Faraday Avenue
Carlsbad, CA 92008
FAX: 760-603-7207

Website: www.invitrogen.com

Equal Opportunity Employer/Minorities/Females.

SENIOR SCIENTIST LIFE TECHNOLOGIES

Life Technologies, Inc. (LTI) is a global leader in life sciences technology development headquartered in Rockville, Maryland. We are currently seeking a Senior Scientist to manage the development of custom services related to mammalian, insect, and bacterial protein expression and purification. Background must also include the molecular biology skills of vector design, construction, the development of high-throughput applications, and management experience. Ph.D. and postdoctoral experience required with at least 10 years of experience (including postdoctoral) preferably in an industrial setting.

Mail or FAX résumés citing req #99-R1037 to: **Life Technologies, Inc., Human Resources, P.O. Box 6482, Rockville, MD 20849-9899.** FAX: 301-610-8020; website: <http://www.lifetech.com>. LTI offers excellent benefits, a good working environment, is an Equal Opportunity Employer, and promotes a drug-free workplace.

RESEARCH SCIENTISTS. Three to five years of postdoctoral experience; expertise in protein biochemistry, purification, fermentation. Résumé and references to: **Employment, ExpressGen Inc., CTP Research Center, 2201 Campbell Park Drive, Chicago, IL 60612.** FAX: 312-733-88541; e-mail: personnel@expressgen.com.

An Equal Opportunity/Affirmative Action Employer.

POSITIONS OPEN

DIRECTOR CENTER FOR BIOINFORMATICS

NASA-Ames Research Center expects to expand its present program in bioinformatics and will seek applications in the near future for the position of Director, Center for Bioinformatics and Bioinformation Processing, and is seeking letters of interest from potential candidates. Duties include directing the planning, coordination, and performance of a group of civil servants and contractors to conduct research and technology development in the areas of computation and visualization technologies, and bioinformation processing. The Director is expected to provide leadership necessary to advance ongoing research and initiate new activities consistent with the NASA Strategic Plan and the goals and objectives of the NASA's Life Sciences Programs. He/she represents and advocates bioinformatics/bioinformation processing research to Ames management, NASA Headquarters Program Directors, and the relevant scientific community. Persons applying must have senior credentials in a research field applicable to the life sciences, particularly neuroscience, cell and molecular biology, and/or gravitational and space biology, with a proven record of publications in these areas. Experience in the computer sciences is desirable with emphasis on bioinformatics or bioinformation processing.

Candidates must be U.S. citizens. Civil service salary range for this position is \$71,869 to \$109,895 per annum. Salary and GS level will be commensurate with experience. A letter of interest, curriculum vitae, list of publications, and names of three professional references should be sent to: **Kenneth A. Souza, NASA-Ames Research Center, MS 240-10, Moffett Field, CA 94035.** Responses accepted until July 23, 1999. For more information, on the present program visit the Center for Bioinformatics website: <http://lifesci.arc.nasa.gov/CGBR/TBC.html>. *NASA-Ames is an Equal Opportunity Employer.*

MEDICAL DIRECTOR OF THE NEPHROLOGY, ENDOCRINOLOGY, AND HYPERTENSION PATIENT CARE CENTER

The Department of Medicine at Vanderbilt University Medical Center has an opening for a Medical Director of the Nephrology, Endocrinology, and Hypertension Patient Care Center (PCC). The ideal candidate should at a minimum be at the Professor or Director of Medicine level who understands clearly the business of health care and who will be responsible for growing and further developing our emerging PCC concept. The candidate should have an M.D. degree and have compiled a record of outstanding achievements in one or more of the PCC areas listed above in order to be appointed at the level of Associate or Professor with tenure. The candidate is expected to have a clinical practice, lead clinical research initiatives, have a firm understanding of disease management, and be recognized as a leader in their field. He/she will be expected to participate/lead the management of clinical practices, as well as contribute to the overall development at Vanderbilt University Medical Center and Vanderbilt Medical Group. The Medical Director will also be expected to help recruit new faculty who can further Vanderbilt's strong national presence in nephrology, endocrinology, and hypertension. Send letter of interest and curriculum vitae to: **Steven Hebert, M.D., Ann and Roscoe R. Robinson Professor of Medicine, Director, Division of Nephrology, C-3119 Medical Center North, Nashville, TN 37232-2372.**

Vanderbilt University Medical Center is an Affirmative Action/Equal Opportunity Employer.

RESEARCH ASSOCIATES (M.D./Ph.D.) at the University of Chicago sought for work in (a) neurotrophin biology/central nervous system gene therapy or (b) prion diseases. Molecular/anatomical experience required. Send curriculum vitae and references to: (a) **Dr. Fernette Eide** or (b) **Dr. James Mastrianni**, FAX: 773-702-9060; e-mail: feide@drugs.bsd.uchicago.edu or jmast@drugs.bsd.uchicago.edu. *University of Chicago is an Equal Opportunity/Affirmative Action Employer.*

Tenure Track Investigator Gerontology Research Center National Institute on Aging

The Intramural Research Program of the National Institute on Aging (NIA), Baltimore, Maryland, invites applications for a tenure track investigator position at the Gerontology Research Center. Starting salary commensurate with qualifications and experience. The successful applicant will be responsible for designing and executing studies on the effects of hormone replacement therapy in men and women using a variety of methodologies, including neuropsychological evaluations, longitudinal follow-ups, short-term and long-term intervention studies, and techniques based on structural and functional neuroimaging.

Applicants must have a record of scientific accomplishments, including excellence in laboratory research and qualifications of a Ph.D. in Psychology or Neuropsychology. Applicants should send curriculum vitae, bibliography, and 1,000-word overview of a proposed program along with three letters of reference to **Chair, LPC Tenure Track Search Committee, Vacancy #AG-27, Personnel Office, National Institute on Aging, NIH, Box 26, 5600 Nathan Shock Drive, Baltimore, MD 21224-6823.**

The deadline for application is July 18, 1999.

NIH is an Equal Opportunity Employer.



MAYO CLINIC FACULTY POSITIONS IN TRANSPLANTATION BIOLOGY

Mayo Clinic is undertaking an expanded research initiative in transplantation biology. One objective of this initiative is to assemble a faculty of independent investigators who can focus diverse scientific interests on the biological and immunological hurdles to transplantation and on the development of novel approaches to overcoming those hurdles. Four scientists of the highest caliber with expertise in cellular biology, molecular or structural biology, biochemistry, immunology or virology who might want to contribute to such an integrated program are sought. The basic science research program will include opportunities to interact with clinical and pre-clinical programs. To inquire, send a cover letter describing your research interests, a curriculum vitae and the names of three references to:

Jeffrey L. Platt, M.D.
Mayo Foundation
Medical Sciences Building
Room 2-66
Rochester, MN 55905

Mayo Foundation is an affirmative action and equal opportunity employer and educator.

Forschungszentrum Karlsruhe Technik und Umwelt

Im Forschungszentrum Karlsruhe ist die Position eines

Vorstandsmitgliedes aus der Wissenschaft

zu besetzen. Die Aufgaben dieses Vorstandsbereichs umfassen – in enger Abstimmung mit den drei anderen Vorstandsbereichen – die Verantwortung für die wissenschaftsorientierten Forschungsprogramme und Institute des Zentrums sowie die Kooperation mit wissenschaftlichen Einrichtungen.

Das Forschungszentrum Karlsruhe ist Mitglied der Hermann von Helmholtz-Gemeinschaft Deutscher Forschungszentren. Es ist mit etwa 3700 Beschäftigten, davon über 1200 mit wissenschaftlich-technischer Hochschulbildung, eine der größten öffentlichen Forschungseinrichtungen in Deutschland. Zur Ergänzung der Grundfinanzierung durch die Gesellschafter Bund und Land Baden-Württemberg kommt der Einwerbung von Drittmitteln wachsende Bedeutung zu. Programmschwerpunkte sind Umweltforschung, Energietechnologien, Mikrosystemtechnik, Nanotechnologien und Medizintechnik. Die Arbeit umfaßt die gesamte Bandbreite der Forschung von reiner Grundlagenforschung bis zu anwendungsorientierter und industrienaher Entwicklung. Nähere Informationen finden Sie im Internet unter <http://www.fzk.de>.

Gesucht wird eine Persönlichkeit, die über eine überzeugende wissenschaftliche Qualifikation und Anerkennung sowie über umfangreiche Erfahrungen im Wissenschaftsmanagement verfügt. Sie sollte fähig und bereit zur kollegialen Zusammenarbeit im Vorstand sowie in der Lage sein, hochqualifizierte Wissenschaftlerinnen und Wissenschaftler kooperativ zu führen und zu motivieren.

Die Vergütung orientiert sich an der für Leitungsfunktionen im Hochschulbereich vorgesehenen Besoldung.

Bitte senden Sie Ihre Bewerbung oder Interessenbekundung bis 6 Wochen nach Erscheinen der Anzeige an den

**Vorsitzenden des Aufsichtsrates des Forschungszentrum Karlsruhe GmbH,
Herrn Ministerialdirektor Dr. Eckhard Lübbert
Bundesministerium für Bildung und Forschung,
53170 Bonn**

POSITIONS OPEN

SWINE PHYSIOLOGIST AND BEEF PHYSIOLOGIST UNIVERSITY OF NEBRASKA-LINCOLN

Department of Animal Science is seeking candidates for a Swine Physiologist and a Beef Physiologist. Both positions are 12-month, tenure-track, with 50 percent teaching and 50 percent research responsibilities at either the ASSISTANT or ASSOCIATE PROFESSOR level. Both will be required to teach courses in reproductive physiology or endocrinology at the undergraduate and graduate level. Research will be directed at improvement of and/or solving problems associated with reproductive performance of the Nebraska beef and swine industries according to the respective assignment. Research facilities for both positions will be assigned at the Animal Science Building, the Swine Unit or the Beef/Cow Unit as appropriate. Requires a Ph.D. in animal science, reproductive physiology, or endocrinology. Postdoctoral experience preferred. Must have an appreciation for the role of basic science in the advancement of animal agriculture; demonstrated evidence of collaborative efforts; demonstrated willingness to work in an interdisciplinary setting; and have demonstrated the ability to secure extramural funding.

Submit a letter of application; a detailed résumé of education (including transcripts), experience, qualifications, and publications; and the names, addresses, and telephone numbers of three references postmarked by September 1, 1999 (or until an acceptable candidate is hired), to:

Dr. Donald H. Beermann, Head
Department of Animal Science
University of Nebraska-Lincoln
P.O. Box 830908, C203 Animal Science
Lincoln, NE 68583-0908
Telephone: 402-472-3571
FAX: 402-472-6362

UNL is committed to a pluralistic campus community through Affirmative Action and Equal Opportunity; is responsive to the needs of dual-career couples; and assures reasonable accommodation under the Americans with Disabilities Act. Contact Dr. Beermann for additional information.

A POSTDOCTORAL/RESEARCH ASSOCIATE position is available immediately to study the expression and regulation of angiogenic growth factors and matrix metalloproteinases in cancer cells. Candidates should have a Ph.D. degree and experience in techniques of molecular and cellular biology. Interested candidates should send curriculum vitae, a statement of research interests, and the names and addresses of three referees to: **James R. Gnarr, Ph.D., Department of Biochemistry and Molecular Biology, Louisiana State University Medical Center, 1901 Perdido Street, Suite P7-2, New Orleans, LA 70112. E-mail: jgnarr@lsu.mc.edu.** LSUMC is an Equal Opportunity/Affirmative Action Employer.

A POSTDOCTORAL POSITION is available to study the genetic aspects of metabolic bone disorders. The laboratory is well equipped and has a collegial environment. We prefer someone with training in genetics or metabolic bone disease/mineral metabolism. Please send curriculum vitae to: **Dr. Michael Econs, 975 West Walnut Street, IB445 Indiana University School of Medicine, Indianapolis, IN 46202. E-mail: mecons@iupui.edu.**

BETH ISRAEL DEACONESS MEDICAL CENTER HARVARD MEDICAL SCHOOL

POSTDOCTORAL POSITION available immediately to study the regulation of genes in the endothelium using *in vitro* and *in vivo* model systems. Experience in molecular biology and transgenic/knock-out techniques is preferred. Send curriculum vitae and names of three references to: **Dr. William Aird, Molecular Medicine RW-663, Beth Israel Deaconess Medical Center, 330 Brookline Avenue, Boston, MA 02215. FAX: 617-667-2913; e-mail: waird@caregroup.harvard.edu.** Equal Opportunity Employer.

POSITIONS OPEN



ASSOCIATE DIRECTOR SOUTHWEST REGIONAL PRIMATE RESEARCH CENTER

The Southwest Regional Primate Research Center (SRPRC) was recently established at the Southwest Foundation for Biomedical Research (SFBR). Applications and nominations are invited for the position of Associate Director. This is a full-time administrative position, and the successful applicant will have a high level of responsibility. Applicants must have a Doctoral degree and a minimum of 10 years of experience in research and/or administration. The successful applicant will assist the Center Director in preparing and managing budgets, negotiating with funding sources, administering committees, preparing grant applications, preparing promotional literature, and fostering collaborative research involving scientists based at the Center and those based at other institutions. Information about the host institution (SFBR) can be obtained from our home page at [website: http://www.sfbr.org](http://www.sfbr.org).

Applicants should submit their curriculum vitae, a cover letter, and the names and addresses of at least three references to: **Dr. John L. VandeBerg, Southwest Regional Primate Research Center Director, c/o Director of Human Resources (928), Southwest Foundation for Biomedical Research, P.O. Box 760549, San Antonio, TX 78245-0549 USA.** Equal Opportunity Employer.

POSTDOCTORAL ASSOCIATE. National Center for Ecological Analysis and Synthesis (NCEAS)/University of California, Santa Barbara. Work with Ecologists, Statisticians, Resource Managers to evaluate international protocols for classifying species conservation status (e.g., IUCN, TNC, USFWS), and quantitative models for estimating extinction risk. Responsibilities: work with group to develop a range of population dynamics simulations, analyze data, and coordinate communication. Applicants should possess Ph.D. or equivalent experience in applied math or ecology. Programming experience in C or C++, and Matlab, S+, or other statistics/math software. Initial funding one year; possible extension for second year. All work to be conducted at NCEAS. Position open until filled. Desired start date: August 1, 1999. Send letter of application, statement of research interest, copies of publications, curriculum vitae, and names (with e-mail) of three referees. Applications should have "Extinction Risk" as subject field and e-mailed or mailed to: **Dr. S. Andelman, National Center for Ecological Analysis and Synthesis, 735 State Street, Suite 300, Santa Barbara, CA 93101-3351. E-mail: postapp@nceas.ucsb.edu.** NCEAS solicits proposals twice a year for supported activities, including working groups, sabbatical Fellows, and Postdoctoral Associates. Next deadline: August 11, 1999. Information about NCEAS and proposal guidelines at [website: http://www.nceas.ucsb.edu](http://www.nceas.ucsb.edu). The University of California is an Equal Opportunity/Affirmative Action Employer.

POSTDOCTORAL POSITION

Are you undecided whether to pursue a career in academics versus industry? Explore both options while remaining in academics. Join in our collaboration with Hoechst Marion Roussel to identify drugs targeted at orphan GPCRs. Utilize structure-function *in vitro* studies of recombinant receptors and transgenic models to expedite drug discovery. Expertise in molecular biology required. Starting date July 1999. Send curriculum vitae and three references to: **Alan Kopin, M.D., 750 Washington Street, #7703, Boston, MA 02111. E-mail: akopin@msn.com.** New England Medical Center is an Equal Opportunity Employer.

POSITIONS OPEN

POSTDOCTORAL FELLOWSHIPS

The University of California and the Veterans Affairs Medical Center, San Francisco, have positions available for two separate projects. The first seeks an individual interested in exploring the regulation of gene transcription during differentiation of normal and transformed keratinocytes. This individual will have a Ph.D. in molecular and/or cellular biology with experience in cell signaling as well as gene transcription. The second seeks an individual interested in exploring the effects of microgravity at the molecular and cellular levels on bone formation and bone cell differentiation using rodent models. This individual will have a Ph.D. in the biological sciences with experience in bone cell preparation as well as bone histomorphometry including *in situ* hybridization and immunolocalization. Please send your curriculum vitae and names of three references to: **Daniel Bikle, M.D., Ph.D., VA Medical Center (111N), 4150 Clement Street, San Francisco, CA 94121.**

POSTDOCTORAL ASSOCIATE Biophysical Mechanisms of Drug Delivery Georgia Institute of Technology

The Institute for Bioengineering and Bioscience offers two Postdoctoral positions to study (1) the mechanisms by which ultrasound transiently disrupts the membranes of viable cells to noninvasively deliver drugs and genes, and (2) the ability of microfabricated microneedles to painlessly pierce the skin and deliver proteins in animals and humans. Please send curriculum vitae to: **Dr. Mark R. Prausnitz, Schools of Chemical and Biomedical Engineering, Georgia Tech, Atlanta, GA 30332-0100. E-mail: mark.prausnitz@che.gatech.edu.** Georgia Tech is an Equal Education and Employment Opportunity Institution.

RESEARCH ASSOCIATE/INSTRUCTOR

A faculty position is available to join a group studying the molecular biology/signal transduction in hypertension. An individual is needed to determine if mutations of candidate genes for blood pressure regulation interfere with renal tubular signal transduction and ion transport. M.S. or Ph.D., with experience in molecular biology, biochemistry, or protein chemistry is required. Send letter of application, curriculum vitae, and three letters of reference to: **Division of Pediatric Nephrology, Department of Pediatrics, Georgetown University Medical Center, 3800 Reservoir Road N.W., Washington, DC 20007. FAX: 202-687-7161.** Equal Opportunity Employer/Affirmative Action.

Department of Neurological Sciences at Rush-Presbyterian-St. Luke's Medical Center is seeking two **POSTDOCTORAL CANDIDATES.** One with experience in molecular neuroanatomy to study gene expression of neurotrophins in human aging and neurodegenerative disease and a second to participate in quantitative structural and functional MRI and fMRI imaging studies in healthy aging and disease. Both full-time research positions are NIH-supported for two years with the possibility of a third. Send statement of research interests, curriculum vitae, and names of references (two to three) to: **Dr. Elliott Mufson, Department of Neurological Sciences, Rush-Presbyterian-St. Luke's Medical Center, 2242 West Harrison, Suite 200, Chicago, IL 60612.** Or to: **Dr. Leyla de Toledo-Morrell, Department of Neurological Sciences, Rush-Presbyterian-St. Luke's Medical Center, 1653 West Congress Parkway, Chicago, IL 60612.**

POSTDOCTORAL POSITION available on an NIH-funded project to study proteins and lipids that regulate the stability of a microsomal enzyme. Expertise in biochemistry or molecular biology with a background in phospholipid analysis/metabolism or protein degradation is preferred. Salary: \$28,000 to \$35,000 per year. Send curriculum vitae to: **Dr. Rick Zangar, P7-56, Pacific Northwest National Laboratory, Molecular Biosciences, P.O. Box 999, Richland, WA 99352. E-mail: richard.zangar@pnl.gov.**

STAFF OR SENIOR SCIENTIST

The Wistar Institute, the nation's oldest independent biomedical research institute, seeks a molecular biologist to join our cancer vaccine program.

Candidates must possess a Ph.D. or other related degree & a minimum of 3 years postdoctoral training. Experience in library construction and antigen cloning desirable.

Please send curriculum vitae, publication list and description of research experience to:
dherlyn@wistar.upenn.edu or Human Resources Department
Attn: Dorothee Herlyn,
The Wistar Institute,
3601 Spruce Street,
Philadelphia, PA
19104.

EOE/AA/
M/F/D/V.



DEPARTMENT OF ZOOLOGY UNIVERSITY OF GUELPH *Two Tenure Track Assistant Professorships*

MOLECULAR PHYSIOLOGY: The Department seeks the appointment of an individual with expertise in the molecular physiology of aquatic organisms, with a particular interest in environmental adaptations. Undergraduate teaching responsibilities will focus on the areas of cell physiology, histology or developmental biology.

MOLECULAR PHYLOGENETICS: The Department seeks the appointment of a molecular phylogeneticist who couples both a strong theoretical background with an ongoing empirical research program. As the Department has a particular commitment to aquatic biology, preference will be given to applicants working on freshwater or marine organisms. Undergraduate teaching responsibilities will focus on molecular evolution and, depending upon the applicant's area of expertise, cell biology, invertebrate zoology or systematics.

A Ph.D. and postdoctoral experience are required. Applicants for both positions should have a strong record of achievement in research and will be expected to develop and sustain an externally funded research program that involves the training of graduate students. The expected starting date is **July 1, 2000**. Applications, including a *curriculum vitae*, and brief (<4 pages) summary of research and teaching interests, as well as copies of up to three papers should be sent to: **Dr. Paul Hebert, Department of Zoology, University of Guelph, Guelph, Ontario, Canada N1G 2W1**. Applicants should also arrange for three letters of reference to be sent by the closing date of **August 31, 1999**. For additional information on the Department of Zoology see: <http://www.uoguelph.ca/zoology>

In accordance with Canadian Immigration requirements, priority will be given to Canadian citizens and permanent residents of Canada. The appointments are subject to final budgetary approval.

UNIVERSITY of GUELPH

The University of Guelph is committed to an employment equity program that includes special measures to achieve diversity among its faculty and staff. We therefore particularly encourage applications from qualified aboriginal Canadians, persons with disabilities, members of visible minorities and women.

Synergy of Science

Selective Genetics, Inc. develops site-specific gene therapy products for soft and hard tissue repair and regeneration. Clinical targets include musculoskeletal, revascularization, and nerve regeneration. We have the following opportunities:

• Director, Pharmacology

Provide leadership in the direction, execution and interpretation of preclinical studies, including toxicity studies to support clinical development. Requires a Ph.D. in Pharmacology or Immunology and 10 years' relevant experience with demonstrated success in transferring technology from research to Phase I/II clinical trials. **Code SDP.**

• Group Leader

Lead the process development of Gene Activated Matrix products including analytical methods for the characterization of viral and/or non-viral gene therapy vectors. Requires a Ph.D. in Biochemistry and 8+ years' experience in biomaterials, adenovirus and/or plasmid gene vectors. **Code SGL.**

• Scientist, Biomaterials

Join a small, focused interdisciplinary team of scientists with backgrounds in tissue engineering and pharmaceutical formulation developing Gene Activated Matrices for musculoskeletal applications. Requires a Ph.D. and demonstrated expertise in biomaterials. Prior pharmaceutical development experience is desirable. **Code: SSB.**

Please send/fax your resume to: **Code: (see above), Selective Genetics, Inc., 11035 Roselle St., San Diego, CA 92121; Fax: (619) 625-0050.**



SelectiveGenetics
GENE THERAPEUTICS
www.selectivegenetics.com

Rapid Access to Intervention Development "RAID"

The NATIONAL CANCER INSTITUTE is requesting applications for the following initiative: Rapid Access to Intervention Development (RAID). RAID will make available to academic investigators, on a competitive basis, the preclinical development contract resources of NCI's Developmental Therapeutics Program. The goal of RAID is the rapid movement of novel molecules and concepts from the laboratory to the clinic for proof-of-principle clinical trials. RAID will assist investigators who submit successful applications by providing any (or all) of the preclinical development steps that may be obstacles to clinical translation. These may include, for example, production, bulk supply, GMP manufacturing, formulation, and toxicology. Suitable agents for RAID will include small molecules, biologics, or vaccines. *There are two receipt dates for proposals per year, February 1 and August 1. Current applications must be received by August 2, with all materials submitted directly to the office listed below.* For information on process and procedure, visit the web site, <http://dtp.nci.nih.gov>. Inquiries are encouraged, and the opportunity to clarify issues or questions is welcome. Academic investigators may have collaborations with small-business partners and still qualify for RAID funding. Proposals to produce materials ready for use in clinical trials must have a letter of commitment to actually conduct the trial from an Institution where the clinical trial would occur. Please note that a maximum of **two** distinct proposals per investigator can be submitted per the application review date. Please contact:

RAID, Office of Associate Director
Developmental Therapeutics Program, NCI
Executive Plaza North, Suite 843
6130 Executive Blvd., Rockville, MD 20892
Tel: 301.496.8720; Fax: 301.402.0831
Email: sausville@dtpax2.ncifcrf.gov

POSITIONS OPEN



UNIVERSITY OF PENNSYLVANIA SCHOOL OF MEDICINE Molecular Mechanisms of Intestinal Development and Neoplasia

POSTDOCTORAL POSITIONS are available for Ph.D.'s in a program under the direction of **Peter G. Traber, M.D.**, which focuses on the molecular and cellular biology of the gastrointestinal system. Research interests: **Peter G. Traber, M.D.** Mechanisms of intestinal gene transcription and the function of intestinal transcription factors and co-adaptor proteins. **EunRan Suh, Ph.D.** Regulatory mechanism of CDX1 and CDX2 expression in colon cancer. **Debra Silberg, M.D., Ph.D.** The effect of ectopic and precocious expression of intestine-specific transcription factors in transgenic mice.

A strong background in molecular biology is required. Experience in transcription regulation and protein/DNA interaction is desirable. Send curriculum vitae and three references to: **EunRan Suh, Ph.D., 415 Curie Boulevard, Suite 600, University of Pennsylvania, Philadelphia, PA 19104. E-mail: suher@mail.med.upenn.edu; FAX: 215-573-2024. Equal Opportunity/Affirmative Action Employer.**

POSTDOCTORAL FELLOW POSITION CELL SIGNALING AND CARCINOGENESIS

A Postdoctoral position is available for mechanistic and applied studies of cell signaling, xenobiotic metabolism, and carcinogenesis. The research group focuses on the biosynthesis and turnover of bioactive lipids (sphingosine and ceramide) as cell mediators as well as the biological effects of naturally occurring sphingolipids (in food) and synthetic analogs. The research utilizes a wide range of techniques, including synthetic organic chemistry, signal transduction and apoptosis methodologies, quantitative analytical chemistry (HPLC and tandem mass spectrometry), gene regulation, and enzymology as applied to both *in vitro* and *in vivo* systems. Applicants should have experience with molecular biology techniques and/or carcinogenesis model systems and have the ability to work in a multidisciplinary environment. Send cover letter, curriculum vitae, and the names of three references to: **Dr. Alfred H. Merrill, Jr., Department of Biochemistry, Emory University School of Medicine, 1510 Clifton Road, Atlanta, GA 30322-3050. FAX: 404-727-5978; e-mail: amerrill@emory.edu.**

Emory University is an Equal Employment Opportunity/Affirmative Action Employer.

POSTDOCTORAL POSITION

An immediate opening is available to study the roles of proteolyzed collagen-IV in angiogenesis and macular degeneration. A strong background in biochemistry and cell biology is desired. Please send curriculum vitae, description of research experience, and three letters of reference to: **Peter C. Brooks, Ph.D., University of Southern California, School of Medicine, Department of Biochemistry and Molecular Biology, Norris Cancer Center/Topping Tower-6409, 1441 Eastlake Avenue, Los Angeles, CA 90089. FAX: 323-865-0514; e-mail: pbrooks@hsc.usc.edu.**

Positions available at **POSTDOCTORAL/INSTRUCTOR/ASSISTANT PROFESSOR** levels. Cell and molecular biology of colon cancer: lineage-specific differentiation, cell-cycle regulation, apoptosis, and alterations in initiation and progression of colon cancer. Studies encompass cell culture, unique mouse genetic models, and human populations. Application of state-of-the-art screening and imaging technologies for analysis of gene expression. Submit curriculum vitae and names of references to: **Leonard Augenlicht, Director, Molecular Oncology, Albert Einstein Cancer Center, 111 East 210th Street, Bronx, NY 10467.**

POSITIONS OPEN

BORRELIA BURGDORFERI TREPONEMA PALLIDUM

A **POSTDOCTORAL POSITION** is available to study outer-membrane proteins of *Borrelia burgdorferi*, the Lyme disease spirochete. The focus of the project shall be to use diverse genetic and protein-based approaches to identify and characterize lipid-modified and nonlipid-modified borrelial outer-membrane proteins that are differentially expressed in arthropod and mammalian hosts. Proficiency with recombinant DNA techniques is required, as is a solid understanding of membrane biology and membrane protein structure-function relationships. Knowledge of plasmid genetics is also desirable. Position includes salary (negotiable), fringe benefits, and the opportunity to work in a rapidly expanding microbial pathogenesis center located in the heart of Lyme disease country. Send curriculum vitae and the names, telephone numbers, and e-mail addresses of three references to: **Dr. Justin Radolf, Center Director, Center for Microbial Pathogenesis, University of Connecticut Health Center, 263 Farmington Avenue, Farmington, CT 06030-3710. FAX: 860-679-8130; e-mail: jradolf@up.uhc.edu.**

A **POSTDOCTORAL POSITION** is available to study outer-membrane proteins of *Treponema pallidum*, the syphilis spirochete. The focus of the project shall be to use diverse genetic and protein-based approaches to identify and characterize treponemal outer-membrane proteins that serve as potential virulence factors and vaccine targets. Proficiency with recombinant DNA techniques is required, as is a solid understanding of membrane biology and membrane protein structure-function relationships. Experience with animal models of infectious diseases is also desirable. Position includes salary (negotiable), fringe benefits, and the opportunity to work in a rapidly expanding microbial pathogenesis center. Send curriculum vitae and the names, telephone numbers, and e-mail addresses of at least three references to: **Dr. Justin Radolf, Center Director, Center for Microbial Pathogenesis, University of Connecticut Health Center, 263 Farmington Avenue, Farmington, CT 06030-3710. FAX: 860-679-8130; e-mail: jradolf@up.uhc.edu.**

POSTDOCTORAL FELLOWSHIP

In Cholinergic Pharmacology of Cholinergic Receptors in Non-Neuronal Cells
University of California-Davis

A position is available to study the molecular pharmacology of cholinergic receptors in non-neuronal cells of the skin. The Ph.D. degree in pharmacology/biochemistry and fluency in the English language are required. Applicants should be proficient in receptor-ligand binding analysis, and protein phosphorylation and enzymatic assays to use these and other standard biochemical approaches, and cell culture techniques to characterize the nicotinic and the muscarinic effects on cellular functions of skin cells.

We offer a competitive salary and excellent benefit package. Send or FAX a cover letter stating career goals, curriculum vitae, and names of references in the United States to: **Sergei A. Grandt, M.D., Ph.D., D.Sc., Department of Dermatology, University of California-Davis, 4860 Y Street, Suite 3400, Sacramento, CA 95817 USA. FAX: 916-734-6793. Equal Opportunity Employer.**

POSTDOCTORAL POSITION available immediately to study cell cycle regulation in vascular endothelial cells. (See: *Circulation* 98:2883-2890, 1998) Candidate should be highly motivated with a strong background in molecular biology. Send research interests, curriculum vitae, and three references to:

Douglas W. Losordo, M.D.
Cardiovascular Research
St. Elizabeth's Medical Center
736 Cambridge Street
Boston, MA 02135
FAX: 617-789-5029

POSITIONS OPEN



THE UNIVERSITY OF CHICAGO

POSTDOCTORAL POSITION DEVELOPMENT OF MEMORY T CELL

Available immediately to investigate the development of cytotoxic T cell memory (**Opferman et al., 1999**). A background in molecular biology or biochemistry is essential and an interest in immunology advantageous.

Please send curriculum vitae and names of three references to: **Philip G. Ashton Rickardt, Ph.D., The University of Chicago, Gwen Knapp Center for Lupus and Immunology Research, 924 East 57th Street, Room R413A, Chicago, IL 60637-5420. Affirmative Action/Equal Opportunity Employer.**

POSTDOCTORAL POSITION in molecular neurobiology/pharmacology laboratory beginning November 1, 1999, is available for the study of molecular and cellular mechanisms of inhibitory synaptic function, and its modulation by central nervous system depressant agents. Recent publications include work on receptor mutagenesis (*Nature* 389:385-389; *PNAS* 95:6504-6509), biophysical analyses of receptor kinetics (*Biophys. J.* 73:2518-2526), and analysis of GABA receptor subunit knockout mice (*PNAS* 94:4143-4148). The individual must have experience in one or more of the following: genomic/cDNA cloning, transgenics, gene targeting. Send statement of research experience, curriculum vitae, and three references to: **Dr. Neil Harrison, Ph.D., c/o Anna Adamo, Box 50, LC-203, Weill Medical College of Cornell University, 525 East 68th Street, New York, NY 10021. E-mail: aia2001@mail.med.cornell.edu.**

POSTDOCTORAL POSITIONS available to study the mechanisms of DNA repair and transcription-coupled DNA repair in relation to aging, Cockayne and Werner's syndromes. We are also interested in oxidative DNA damage processing in nuclear and mitochondrial DNA. Position limited to M.D.'s and Ph.D.'s with less than five years of postdoctoral experience. Please send curriculum vitae and three letters of reference to: **Vilhelm A. Bohr, M.D., Ph.D., Chief, Laboratory of Molecular Genetics, National Institute on Aging, National Institutes of Health, Box 1, 5600 Nathan Shock Drive, Baltimore, MD 21224-6825. FAX: 410-558-8157; e-mail: vbohr@nih.gov. NIH is an Equal Opportunity Employer.**

POSTDOCTORAL FELLOW

Two Postdoctoral positions available immediately in the laboratory of **Dr. Aviva Symes**, Uniformed Services University of the Health Sciences, Bethesda, Maryland (e-mail: asymes@usuhs.mil). One project will examine cytokine-induced changes in astrocytes after traumatic brain injury. The second project will examine the role of SHP-2 in cytokine signaling. Candidates (Ph.D.-M.D.) should either have expertise in neuroanatomy and primary cell culture or molecular biology and signal transduction. Send curriculum vitae and names of three references to: **Human Resources, PL#2990133, Henry M. Jackson Foundation, 1401 Rockville Pike, Suite 600, Rockville, MD 20852. E-mail: hr@hjf.org. Equal Opportunity Employer/Affirmative Action.**

POSTDOCTORAL RESEARCH POSITIONS at Children's Hospital-Harvard Medical School in chemokine receptors and HIV pathogenesis. Several positions are available to examine posttranslational modifications in chemokine receptors, conformationally defined epitopes identified with single-chain antibody display, and identification of mimetopes using peptide phage display. Contact: **Dr. Craig Gerard or Dr. Hyeryun Choe, e-mail: gerard_c@gonzo.tch.harvard.edu or hchoe@mcbrr.harvard.edu. U.S. citizenship required; women and minorities are encouraged to apply.**



The International Spinal Research Trust

SPINAL RESEARCH Request for proposals

Spinal Research is a grant giving charity (number 281325) based in the U.K. with the sole purpose of funding research aimed at resolving the non or partial functioning of the injured spinal cord.

The areas of ISRT research funding are identified in our Research Strategy (*Spinal Cord* (1996) 34:449-459), copies available on request. We invite proposals on **the interplay of trophic, tropic and inhibitory influences on axonal regeneration with regard to promoting extensive regrowth and establishment of appropriate connections.**

Such proposals could include:

- role of embryonic guidance molecules in the adult spinal cord
- interactions of inhibition and growth-promoting activities
- guidance and connectivity of regenerating and sprouting axons

Unless strong arguments are presented for alternative models, studies are expected to be based in the *adult mammalian* spinal cord and employ appropriate lesioning and assessment methodologies.

Applicants should submit five copies of a letter of intent (c. two sides) summarising the proposed research and background of the laboratory. Five copies of an approximate budget and curriculum vitae of the Principal Investigator(s) should be appended.

Copies of our draft updated Research Strategy are available on request. Awards seldom exceed the level of a post-doctoral salary plus laboratory consumables over three years. Following a preliminary review, detailed proposals will be requested from a limited number of applicants. Letters should arrive by 23 July 99. No faxed or electronic letters will be accepted.

Address letters of intent to: ISRT, Unit 8a Bramley Business Centre, Station Road, Bramley, Guildford, Surrey GU5 0AZ, U.K.
Tel: +44 (0)1483 898786 Fax: +44 (0)1483 898763
E-mail: research@isrthq.demon.co.uk



UNIVERSITY OF OXFORD

in association with St Catherine's College
Department of Zoology

University Lecturership in Zoology (Biodiversity)

Applications are invited for the above post, tenable from 1st October 1999, or as soon as possible thereafter. Stipend according to age, on the scale £16,655 to £31,010 per annum (under review). The successful candidate may be offered a fellowship at St Catherine's College, on the basis set out in the further particulars, in which case the combined university and college salary would be according to age on a scale up to £37,113 per annum.

Candidates will be expected to have an active research programme in biodiversity. A keen interest in undergraduate and postgraduate teaching is expected.

Further written particulars, containing details of the duties and the full range of emoluments attaching to both the university and college posts, can be obtained from Professor Paul Harvey, FRS, Department of Zoology, South Parks Road, Oxford OX1 3PS (Tel: +44(0)1865 271260; Fax: +44(0)1865 271249), to whom completed applications (eight typed copies, or one only from overseas candidates), containing a curriculum vitae, a list of publications and statement of research, and the names of three referees, should be sent by 5th July 1999. Candidates should contact their referees and ask them to send references to Professor Harvey by this closing date. Candidates will be notified if they are required for interview.

The University is an Equal Opportunities Employer.

Read All About It.....



.....www.scienceonline.org.....



EurekAlert!

Now available for the first time on *Science Professional Network*, EurekAlert!, a comprehensive website about the latest research advances in science, medicine, health, and technology. An average of 20 research news releases are posted each day on EurekAlert!

Click on "Science Careers."

Science

Real jobs. Right now.



GORDON RESEARCH CONFERENCES

Conferences at the Frontiers of the Biological, Chemical and Physical Sciences

visit the *frontiers of science* at:

WWW.GRC.URI.EDU

Our web site contains the complete schedule for the 1999 Conferences.
Apply directly from the web! Check it out now, Conferences fill up fast!

POSITIONS OPEN

POSTDOCTORAL POSITION is available at Baylor College of Medicine to study molecular mechanisms of mitotic chromosome condensation and segregation in eukaryotes. Research will involve budding yeast and cultured mammalian cells. The requirements of this position include a strong background in molecular biology and at least one of the following areas: cell biology, yeast genetics, or protein biochemistry. Please send curriculum vitae and names of three references to: **Dr. Ilia Ouspenski, Department of Cell Biology, Baylor College of Medicine, One Baylor Plaza, Houston, TX 77030. E-mail: iliao@bcm.tmc.edu.** *Baylor College of Medicine is an Equal Opportunity/Affirmative Action/Equal Access Employer.*

POSTDOCTORAL POSITION

A Postdoctoral position is available immediately to characterize the three-dimensional structure of the human Epstein-Barr virus receptor ligand binding domain. Candidates must be highly motivated and must have experience in NMR spectroscopy. Please send your curriculum vitae including a brief description of research experience, names, e-mail addresses, and telephone numbers of three references to: **Dr. Michael Overduin, C-236, University of Colorado Health Sciences Center, 4200 East 9th Avenue, Denver, CO 80262.** For more information, please visit our website: biomol.uchsc.edu.

Two NIH-funded **POSTDOCTORAL RESEARCH POSITIONS** are available immediately to study programmed cell death of spermatogonial stem cells and tubulin isoforms during sperm nuclear shaping and tail development. Ph.D. and/or M.D. degree with strong background in cell biology, molecular biology, and/or biochemistry. Send curriculum vitae and names of three references to: **Laura L. Tres, Department of Cell Biology and Anatomical Sciences, City University of New York Medical School, 138th Street and Convent Avenue, J-903, New York, NY 10031.** *An Equal Opportunity/Affirmative Action Employer.*

POSITIONS OPEN

POSTDOCTORAL POSITIONS THE CLEVELAND CLINIC FOUNDATION Department of Molecular Cardiology

Two Postdoctoral positions are available to study the structure-function and/or physiology via transgenic models of adrenergic receptors (β_2 - and α_1). Candidates should have a background in either pharmacology, molecular biology, protein chemistry, or mouse physiology. One position is part of an NIH-funded training grant in cardiovascular studies (*U.S. citizenship or permanent residence required*). Exceptional applicants may be awarded a higher-salaried Research Institute Fellowship. Please submit a curriculum vitae and names of references to: **Dianne M. Perez, NB5, The Lerner Research Institute, The Cleveland Clinic Foundation, 9500 Euclid Avenue, Cleveland, OH 44195.**

POSTDOCTORAL RESEARCH FELLOW in molecular pharmacology. Massachusetts General Hospital. A position is available in the Department of Anesthesia and Critical Care to study interactions between clinical and novel anesthetics and ligand-gated ion channels. Part of an NIH program grant with other Harvard Investigators. M.D. or Ph.D. and electrophysiology experience required. Send curriculum vitae and names of two references to: **Dr. Stuart A. Forman, M.D.-Ph.D., Department of Anesthesia and Critical Care, CLN-3, Massachusetts General Hospital, Boston, MA 02114. E-mail: forman@helix.mgh.harvard.edu.** *Equal Opportunity Employer.*

POSTDOCTORAL FELLOWSHIP opening in molecular biology/biochemistry. Project includes protein purification and molecular cloning of the gene of the purified protein, and functional studies of the protein. Candidates should have experience in both protein purification and molecular biology. Possibility of long-term position exists. Salary, benefits competitive. Send cover letter, résumé, and names of three references to: **Dr. Lau, Loma Linda University, P.O. Box 7210, Loma Linda, CA 92354.**

POSITIONS OPEN

CYCLIC NUCLEOTIDE-GATED CHANNELS

POSTDOCTORAL POSITION available immediately for a Cellular and/or Molecular Neurophysiologist to study the role of cyclic nucleotide-gated channels in neurons of the central nervous system. Candidate should have experience in intracellular or patch clamp recording in brain slices, or confocal imaging (*Curr. Opin. Neurobiol.* 7:404). Send curriculum vitae with three references to: **Frank Zufall, Ph.D., Department of Anatomy and Neurobiology, University of Maryland, 685 West Baltimore Street, Baltimore, MD 21201. E-mail: fzufa001@umaryland.edu.**

POSTDOCTORAL POSITION available to study a variety of mutant recombinant hemoglobins focusing on subunit and long-range interactions. Recent publications include *Trends in Biochemical Sciences* 24:211, 1999; *J. Biol. Chem.* 273:35032, 1998; *Blood* 90:4620, 1997. Candidates should be knowledgeable in protein and molecular biology techniques. Send curriculum vitae and names of three references to: **Dr. James M. Manning, Department of Biology, Mugar Building 414, Northeastern University, 360 Huntington Avenue, Boston, MA 02115. FAX: 617-373-4496; e-mail: jmanning@lynx.neu.edu.** *Northeastern University is an Equal Opportunity Employer.*

POSTDOCTORAL POSITION available to study the role of protein phosphorylation and protein-protein interactions in mediating effects of insulin/growth factors on gene expression (*JBC* 273: 6482, 1998; *JBC* 274:17179, 1999; *JBC* 274: 17184, 1999) in cell culture and transgenic models. Experience with molecular and cellular biology required. Please send curriculum vitae and names, telephones, and e-mail addresses for three references to: **Terry Unterman, M.D., University of Illinois at Chicago/VA West Side, 820 South Damen Avenue, Chicago, IL 60612. FAX: 312-455-5877; e-mail: unterman@uic.edu.**

**Chart the
right course
for your
career.**



**Steer to these
coordinates...
www.scienceonline.org**

Science Professional Network
can help you navigate through the
myriad career options with its fast,
searchable jobs database and other
useful career information.

**Science
Professional Network**
www.scienceonline.org
Click on *Science Careers*

EUROPEAN OPPORTUNITIES

**SCHOOL of MECHANICAL ENGINEERING
DIVISION of ENGINEERING
CENTRE for MATERIALS SCIENCE and ENGINEERING**

TWO LECTURESHIPS

Following the appointment of Professor Christopher Hall to the new Chair of Materials, applications are invited from well-qualified candidates with strong research records for two new lectureships. The successful candidates will play key roles in developing the newly-established Centre for Materials Science and Engineering, which will promote interdisciplinary materials research within the Faculty of Science and Engineering. The strategic development of Materials at Edinburgh involves a wide range of departments in engineering and physical and biological sciences. Applications are particularly welcome from those interested in establishing and leading strong interdisciplinary research programmes in fields such as: simulation of complex materials, physics of materials, nanotechnology and molecular manipulation, materials chemistry, geomaterials, materials engineering and biological materials. Interviews will be held on 22/23 July 1999.

The posts will be available immediately and are permanent.

Salary on range: £16,655 - £21,815 or
£22,726 - £29,048 per annum (under review).

Informal enquiries are welcome: please contact Professor Christopher Hall,
Tel: 0131 650 5684 or email Christopher.Hall@ed.ac.uk

Please quote REF: 776415.

Further particulars including the application procedure should be obtained from

**THE PERSONNEL DEPARTMENT,
THE UNIVERSITY OF EDINBURGH,
1 ROXBURGH STREET,
EDINBURGH EH8 9TB.**

Tel: 0131 650 2511 (24 hour answering service).

<http://www.personnel.ed.ac.uk/recruit.htm>

Closing date: 9 July 1999.



**Promoting
Excellence
in Teaching
and Research**

**Committed
to Equality of
Opportunity**

EUROPEAN OPPORTUNITIES

The Department of Applied Physics at Eindhoven University of Technology has 15 professorial chairs, with about 65 academic and 50 technical staff, and 80 graduate and 450 undergraduate students. Leading research themes are functional materials, fluid dynamics, and plasma and radiation physics.

The Department invites applications for the position of

Full professor of experimental low-temperature plasma physics

Profile

The department has two chairs on experimental plasma physics, one of which now has to be reinstalled. The two chairs, complementary but interacting, are expected to cover the full breadth of homogeneous plasma physics as well as that of heterogeneous (plasma/wall) systems. The research program should address both fundamental and applied aspects. This encompasses on the fundamental side: non-equilibrium phenomena, transport properties, and reaction kinetics; and applications such as: deposition of functional layers and nanostructural materials, particle and light sources, surface modification, and chemical conversion.

Candidates should have a high-level track record of research, teaching and fund raising in major parts of the above areas. The successful candidate is expected to be an inspiring leader, capable of launching new initiatives to keep the group at the forefront of the international community in the field. Participation in the managerial tasks of the Department will be requested.

Appointment and salary

The function is a tenure-track position, with a salary according to the normal standards for a full professorship of the Dutch Universities, depending on experience and track record. The gross monthly salary is NLG 14.738 maximum for a full-time position. When applicable, a part-time fulfilment of the position can be discussed.

Information

Further information on the contents of the position can be obtained from the chairman of the selection committee: Prof. dr. M.J. van der Wiel (ph: +31.40.247.4321; e-mail: m.j.van.der.wiel@tue.nl). Also, anyone who wishes to draw the attention of the selection committee to suitable candidates is kindly asked to contact the chairman.

Application

Application letters with CV and list of publications should be directed to: Dr. ir. V.A.M. Brabers, Managing Director of the Department of Applied Physics Eindhoven University of Technology, P.O. Box 513, 5600 MB Eindhoven, The Netherlands.



Eindhoven
University of
Technology -
Department
of Applied
Physics

POSITIONS OPEN

POSTDOCTORAL POSITION IN CELL CYCLE

The Cell and Molecular Biology Group (LS-4) in the Life Sciences Division at Los Alamos National Laboratory is seeking a Postdoctoral candidate to study the mechanisms of radiation-induced G1 phase cell cycle arrest in human fibroblasts. The NIH-funded project focuses on (1) the influence of cell adhesion on radiation arrest; and (2) the effect of TGF- β 1 and reactive oxygen species on radiation arrest. Experience in cell culture, and molecular and cell biological techniques is required. Experience in fields of cell adhesion, cell cycle, radiation effects, and/or DNA damage is desirable.

A Ph.D. completed within the last three years or soon to be completed is required. Current starting salaries range from \$39,120 to \$42,240. Further details about the Postdoctoral Program may be found at website: <http://www.hr.lanl.gov/postdoc/>. See Postdoc Job #PD994992 for submission requirements. Los Alamos National Laboratory is operated by the University of California for the U.S. Department of Energy. Affirmative Action/Equal Opportunity Employer.

POSTDOCTORAL FELLOWSHIP POSITIONS PAIN RESEARCH

The University of Texas M. D. Anderson Cancer Center, Division of Anesthesiology, has openings in September 1999 for Postdoctoral Fellowship positions in molecular mechanisms of pain and opioid tolerance. Ph.D. or M.D. degree required. Strong interactions within multidisciplinary pain research group employing a broad range of techniques. Please send inquiries, curriculum vitae, and names of three references to:

Howard B. Gutstein, M.D.
Director of Research
Division of Anesthesiology and Critical Care
University of Texas
M. D. Anderson Cancer Center
1515 Holcombe Boulevard, Box 42
Houston, TX 77030

Equal Employment Opportunity Employer/smoke-free environment.

POSTDOCTORAL FELLOW

The Department of Orthopaedic Surgery at the University of California, San Francisco has a Postdoctoral position available for the study of minimally invasive techniques for *in vivo* intervertebral disc repair. The work will be focused to achieve better understanding of the mechanical and biologic factors important for maintenance and restoration of cellular, morphological, and structural features of disc tissues using animal models. Candidates should have background in molecular biology/tissue engineering. Experience with tissue culture and mouse models preferred. Good verbal and writing skills are required. Send curriculum vitae and names of references to: **Dr. J. C. Lotz**, Department of Orthopaedic Surgery, University of California, San Francisco, 533 Parnassus Avenue, San Francisco, CA 94143-0514. FAX: 415-476-7881; e-mail: jlotz@itsa.ucsf.edu.

POSTDOCTORAL RESEARCH FELLOW POSITION UCLA Infectious Disease Division AIDS Institute

Two positions are available in a new cellular immunology laboratory studying cellular immune responses against HIV-infection. Qualified M.D. and/or Ph.D. applicants with an interest in the areas of cellular immunology/retrovirology are sought. Experience with chromium release cytotoxic assays, cellular proliferation assays, flow cytometry, tissue culture, HIV-1 isolation and propagation, and basic molecular biology are desirable. Interested candidates forward curriculum vitae and three references to: **Otto Yang, M.D.**, 37-121 CHS, Los Angeles, CA 90095-1688. E-mail: lduncan@med1.medsch.ucla.edu.

POSITIONS OPEN



POSTDOCTORAL RESEARCH ASSOCIATE MOLECULAR SIGNALING

Positions are available to study G-protein control of differentiation (**Craig C. Malbon**) and G-protein beta-subunit biology (**Hsien-yu Wang**) using microinjection, transgenic mouse technology, and mutagenesis techniques (website: www.pharm.sunysb.edu). Ph.D. and experience in molecular biology/cell signaling required. Send curriculum vitae and letters of reference to: **C. Malbon, Molecular Pharmacology, and H.-y. Wang, Physiology and Biophysics, University Medical Center, SUNY Stony Brook, NY 11794-8651. FAX: 516-444-7696; e-mail: brockner@pharm.som.sunysb.edu. Equal Opportunity Employer.**

POSTDOCTORAL POSITIONS are available in the Department of Anatomy and Cell Biology at Columbia University, to be supported by an NIH Training Grant for research in simple vertebrate and invertebrate systems. Positions are also available to study the role of regulated proteolysis in *Dicystostelium* development, organelle motility, establishment of cell polarity, molecular mechanism of hormone secretions, and cytoskeletal dynamics, as well as the molecular mechanisms underlying development of the nervous system and heart. Training Grant candidates must be citizens or noncitizen nationals of the United States or must have been lawfully admitted for permanent residence. All candidates must have a Ph.D. or M.D. Interested candidates must send a cover letter with area of interest, curriculum vitae, and three references to: **Columbia University, Anatomy and Cell Biology, Attn: Postdoctoral Slots, 630 West 168th Street, New York, NY 10032. We take Affirmative Action toward Equal Employment Opportunity. Members of underrepresented minorities are specifically encouraged to apply.**

POSTDOCTORAL POSITIONS COUPLING OF RECOMBINATION AND REPLICATION

Positions are available immediately to study mechanisms and control of chromosomal replication coupled to recombination. We use biochemical, biophysical, and genetic analyses to examine cellular proteins that initiate DNA synthesis during transposition, repair, and homologous recombination, including signal transduction mechanisms that trigger these processes. A strong background in molecular genetics, structural biochemistry, or enzymology is preferred. Applicants should send a curriculum vitae and three letters of reference to: **Dr. Hiroshi Nakai, Department of Biochemistry and Molecular Biology, Georgetown University Medical Center, 331 Basic Science, 3900 Reservoir Road N.W., Washington, DC 20007. E-mail: nakai@bc.georgetown.edu; website: <http://nrr.georgetown.edu>.**

POSTDOCTORAL POSITIONS AVAILABLE

Two (2) Postdoctoral positions for qualified individuals are available immediately to study molecular mechanisms of brain injury and invasion as applicable to the central nervous system regeneration, trauma, and brain tumors areas. Candidates must possess previous experience in cell and molecular biology, a strong motivation, and interest in biological research. Candidates should possess a Ph.D. in molecular biology. Salary is highly competitive in state-of-the-art facilities and positions are intended to be for at least two years, with possibility of an extension depending on productivity record. If interested, please contact and/or send résumé to: **Dario Marchetti, Ph.D., The University of Texas-Houston, Health Science Center, Medical School, Department of Neurosurgery, MSB 7.136, Houston, TX 77030. Telephone: 713-500-6137; FAX: 713-500-7787; e-mail: dmarchet@heart.med.uth.tmc.edu.**

POSITIONS OPEN

POSTDOCTORAL POSITIONS HARVARD MEDICAL SCHOOL

Positions available to study the viral and host mechanisms in HIV-1 and HTLV-1 infection and strategies for the gene therapy of AIDS and adult T-cell leukemia (ATL), respectively. Projects include the use of our 15 billion-member human sFv-phage display library for the isolation and *in vitro* testing of intracellular antibodies (*Gene Therapy* 4:11, 1997) as discovery tools to delineate mechanisms of viral pathogenesis. Moloney and lentiviral vectors are used for *in vivo* delivery of intracellular antibodies to evaluate their use as gene therapeutics for AIDS (*Mol. Med.* 2:96, 1997; *Human Gene Therapy* 10:1453, 1999) and ATL (*Virology* 237:209, 1997; *Gene Therapy* 5:635, 1998). Recent Ph.D. and experience in molecular virology/immunology are required. Send curriculum vitae, brief description of research experience, and names of three references to: **Dr. Wayne Marasco, Dana-Farber Cancer Institute, JF 824, 44 Binney Street, Boston, MA 02115. FAX: 617-632-3889. Equal Opportunity Employer.**

RESEARCH INSTRUCTOR, RESEARCH ASSOCIATE, AND POSTDOCTORAL POSITIONS

**The University of Texas
M. D. Anderson Cancer Center
Department of Neurosurgery**

Research Instructor, Research Associate, and Postdoctoral positions for research in molecular, cellular biology, and extracellular matrix. Ph.D. or M.D. Ph.D. and experience with brain tumors preferred.

Send curriculum vitae and three references to:

Jasti Rao, Ph.D.
Chief, Section of Invasive Programs
The University of Texas
M. D. Anderson Cancer Center
Department of Neurosurgery—Box 064
1515 Holcombe Boulevard
Houston, TX 77030

Minority and female applicants are strongly encouraged to apply. Equal Opportunity Employment Employer. Smoke-free environment.

POSTDOCTORAL POSITION available now to use electrophysiological methods to study the nervous system of *C. elegans*. Applicants should have a Ph.D. with a strong background in electrophysiological techniques and the desire to combine this with the extraordinary genetic resources available in this organism. Potential projects available in this vigorous and established laboratory include potassium channel function and calcium signaling *in vivo* and potassium channel structure/function. E-mail for more information to e-mail: jht@genetics.washington.edu. Visit the laboratory World Wide Web site at website: <http://mendel.genetics.washington.edu/~lab>. E-mail or send curriculum vitae, research summary, and three references to: **James H. Thomas, Department of Genetics, Box 357360, University of Washington, Seattle, WA 98195.**

POSTDOCTORAL POSITION is available immediately for research using the exciting and powerful technology of combinatorial peptide synthesis for the design and engineering of membrane proteins. Synthesis skills are not necessary. Send curriculum vitae and names of three references to: **William C. Wimley, Ph.D., Biochemistry SL43, Tulane University Medical Center, New Orleans, LA 70112-2669. E-mail: wwimley@mailhost.tcs.tulane.edu. Position will be open until a qualified applicant is identified. Equal Opportunity Institution.**

POSTDOCTORAL projects in T cell therapy of brain microtumor (*Immunol. Today* 19:17, 1998). Candidate should be experienced in establishing and engineering rat T cell lines. To apply, please describe reason for your interest, relevant experience, and list of English-language publications. Available immediately. Apply to: **Dr. L. Lampson, Harvard Institutes of Medicine, 77 Avenue Louis Pasteur, Boston, MA 02115.**

POSITIONS OPEN

POSTDOCTORAL FELLOWSHIP

A Postdoctoral position is available to investigate the mechanism and consequences of Ty element retrotransposition in *Saccharomyces cerevisiae*. We are especially interested in host genes that modulate Ty transposition. These mobile genetic elements are structurally and functionally related to retroviruses and are widely dispersed in nature.

The position is part of the Division of Basic Sciences of the National Cancer Institute and is located at the Frederick Cancer Research and Development Center in Frederick, Maryland. Salary range for this position is \$29,000 to \$32,000.

If interested, please send your curriculum vitae and names of three references to: **Dr. David Garfinkel, Building 539, Room 152J, P.O. Box B, NCI-Frederick Cancer Research and Development Center, Frederick, MD 21702**. Your curriculum vitae and names of references also may be sent by FAX: **301-846-6911**; e-mail: **garfinke@mail.ncifcrf.gov**.

The National Institutes of Health is an Equal Opportunity Employer and encourages all qualified women and minorities to apply. Selection for this position will be based solely on merit, with no discrimination for nonmerit reasons such as race, marital status, physical or mental disability, age, sexual orientation, or membership or nonmembership in an employee organization.

POSTDOCTORAL FELLOWS AND RESEARCH FACULTY MARINE AND ENVIRONMENTAL SCIENCE

Wrigley Institute for Environmental Studies
The University of Southern California

Catalina Island: (1) Two Postdoctoral Fellows in any area of marine and environmental science, and (2) Education Officer responsible for coordination of undergraduate programs.

University Park Campus: Postdoctoral or Research Scientists (level open) in (1) ocean biogeochemistry (with **Dr. Douglas Capone** or **Dr. Anthony Michaels**); (2) marine animal physiology (**Dr. Donal Manahan**); (3) environmental economics and policy (**Dr. Judith Kildow** and others).

Postdoctoral Fellowships funded for one to two years. Research faculty positions available at any level. Details and application information available at website: **http://wrigley.usc.edu**. Send questions to e-mail: **close@usc.edu**. Application deadline: July 23, 1999.

A POSTDOCTORAL POSITION is available for a Cell/Molecular Biologist. Non-grant-funded with benefits and opportunity for salary supplement, adjunct faculty appointment, and limited teaching. This position provides a unique opportunity in a developing program of excellence and the opportunity to develop an imaginative, externally funded research program. A Ph.D. degree and experience in cell signaling are required. Expertise in calcium-imaging and single cell analyses is highly desirable. Candidates should send a letter addressing their research accomplishments and future research plans, curriculum vitae, and arrange for at least three letters of reference to: **William B. Rhoten, Ph.D., Chairman, Department of Anatomy, Cell, and Neurobiology, Marshall University School of Medicine, 1542 Spring Valley Drive, Huntington, WV 25704-9388**. E-mail: **rhoten@marshall.edu**. Equal Employment Opportunity/Affirmative Action/ADA.

POSTDOCTORAL POSITION on type III protein secretion in bacteria. A Postdoctoral position is available to study the mechanism of type III protein secretion in *Pseudomonas syringae*. The successful candidate will characterize a novel bacterial surface appendage assembled by the *P. syringae* type III protein secretion system and determine the role of this appendage in gene regulation and protein delivery. Background in microbiology or molecular biology is required. Please send a curriculum vitae and three references to: **Dr. Sheng Yang He, Plant Research Laboratory, Michigan State University, East Lansing, MI 48824**. Michigan State University is an Equal Opportunity/Affirmative Action Employer.

POSITIONS OPEN

INTERESTED IN CLINICAL OR POSTDOCTORAL RESEARCH TRAINING?

The National Institutes of Health has both! For more information, visit our website which lists an array of clinical and postdoctoral opportunities, including tenure-track positions.

http://www.training.nih.gov

The NIH is an Equal Opportunity Employer.

POSTDOCTORAL POSITION in cell and molecular biology. The Cell Biochemistry Section at the Hormel Institute invites applications from individuals with M.D. or Ph.D. degree in physiology for a Postdoctoral position. The ideal candidate's major interest is in the molecular and cellular biology of cutaneous wound repair and proliferative skin diseases. This research will primarily involve determination of growth factor effects on cell growth and wound repair using established cellular and animal models. Send a curriculum vitae, a description of research experience, and letters from three referees to: **Dr. Zoltan Kiss, The Hormel Institute, University of Minnesota, 801 16th Avenue N.E., Austin, MN 55912**. FAX: **507-437-9606**. The University of Minnesota is committed to the policy that all persons shall have Equal Access to its programs, facilities, and employment without regard to race, color, creed, religion, national origin, sex, age, marital status, disability, public assistance status, veteran status, or sexual orientation.

FELLOWSHIP

SMOOTH MUSCLE BIOLOGISTS CALL FOR PROPOSALS

The LAM Foundation is offering POSTDOCTORAL FELLOWSHIPS for the study of the cellular and molecular basis of the abnormal smooth muscle proliferation that occurs in the disease Lymphangiomatosis (LAM). Fellowship Awards provide a maximum of \$35,000 per year renewable for up to two additional years. Pilot Project Awards of up to \$25,000 are available for the initiation of innovative research projects. Candidates must have at least two years of experience, an M.D., Ph.D., or equivalent degree, and perform the work in a laboratory with established expertise in smooth muscle biology or the genetics of tuberous sclerosis. Examples of competitive proposals include those that focus on the genetic regulation of smooth muscle growth or the development of a smooth muscle cell line that is representative of the LAM lesion. Mechanistic, hypothesis-driven approaches of all types are welcomed. Formalin-fixed LAM tissues, dispersed LAM lung cells, genetic probes, and other reagents are available. Deadline is October 1, 1999, and May 1, 2000. Contact: **The LAM Foundation, 10105 Beacon Hills Drive, Cincinnati, OH 45241**. E-mail: **lam@one.net**; website: **http://lam.uc.edu**.

EUROPEAN OPPORTUNITY

POSTDOCTORAL POSITION IMMUNOGENETICS OF PSORIASIS UNIVERSITY OF ICELAND

Available immediately for three years. Applicants must be of European Union (EU) nationality. The Postdoctoral Fellow will be working on a collaborative EU-funded project (TMR) aiming at elucidating the genetic and immunological mechanisms operating in psoriasis. Experience in cell biology or molecular immunology is required. Competence in keratin or MHC biology is also desirable but not essential. The appointment is for three years in Reykjavik, including visits to partner laboratories in London and Milan. For further information contact: **Professor Helgi Valdimarsson, Department of Immunology, National University Hospital, Landspítalinn, 101 Reykjavik, Iceland**. Telephone: +354-560-1960; FAX: +354-560-1943; e-mail: **helgivr@rsp.is**.

POSITIONS OPEN

UCLA CANCER GENE MEDICINE TRAINING PROGRAM

This Program will train M.D. and Ph.D. Postdoctoral Scientists in clinical and basic research in cancer gene medicine. The Program is open to U.S. citizens and permanent residents. Awards will be made normally for two years.

Further information and application forms are at website: **http://genemed.ucla.edu**; e-mail: **eleon@surgery.medsch.ucla.edu**.

MARKETPLACE



Science's Literature Library
www.scienceonline.org
Click on E-Marketplace.

GENE SYNTHESIS
* As Low As \$6.00/bp

CUSTOM MUTAGENESIS
* Complete Reconstruction & Verification

Retrogen
SALAD@RETROGEN.COM TEL: 609-426-0088

Circle No. 44 on Readers' Service Card

QUALITY CUVETTES!!!
Inexpensive Electroporation Cuvettes
Each sterile package includes a free pipette for easy sample removal!

BTX 1-800-289-2465
FAX: 619-597-9594

Circle No. 19 on Readers' Service Card

RNA oligonucleotides
Best Quality Highest Yields Fastest Service
\$9.50 / Base 1.5 mg / 35-mer 4 Days
(0.2 µmole)

Dharmacon Research, Inc.
www.dharmacon.com (800) 235-9880
Boulder, CO

Circle No. 41 on Readers' Service Card

Antisense OLIGOS
\$2.50/base (0.2µm)

"DNA...It's in our blood"

1-800-654-4671
ANA-GEN
http://www.ana-gen.com Ana-Gen Technologies, Inc.

Circle No. 14 on Readers' Service Card



Custom Polyclonal Antibodies
BEST PRICES • BEST ANIMALS
ANIMAL PHARM SERVICES
(800) 808-0550

Circle No. 1 on Readers' Service Card

MARKETPLACE



**MORE PRODUCTS
ON PREVIOUS PAGE**

**CUSTOM ANTIBODIES
TO PEPTIDES AND PROTEINS**

1-800-481-9737

HTI (760) 788-9691 • fax: (760) 788-9694
e-mail: antibodies@htibio.com
HTI Bio-Products, Inc. http://www.htibio.com

Circle No. 11 on Readers' Service Card



**PEPTIDE + ANTIBODIES
PACKAGE - \$1200**

β-AMYLOID(1-40) \$200/mg

ANASPEC

800-452-5530 (phone) service@anaspec.com
408-452-5059 (fax) www.anaspec.com

Circle No. 40 on Readers' Service Card

Human Dendritic Cells

Cord blood and fetal liver derived

Special introductory offer

Tel: 1-800-840-7555

Fax 301-519-4266

GenePrime

Circle No. 50 on Readers' Service Card

**NEW
LOW
PRICES**

**VOLUME DNA SEQUENCING
CALL (800) 720-GENE**

- HIGH-THROUGHPUT
GENOME SEQUENCING
- NO ROYALTIES
OR LICENSE FEES
- SHOTGUN SEQUENCING
EXPERTISE
- LARGE & SMALL
PROJECTS ACCEPTED

seqwright (713) 528-4363 PHONE
(713) 528-6232 FAX
www.seqwright.com
email: seq@blkbbox.com

Circle No. 4 on Readers' Service Card

Custom Peptides

No-obligation peptide assessment and quote.
Various quantities (from 1 mg), purities (to 95%)
and modifications at highly competitive prices.

Web: www.chirontechnologies.com

CHIRON | TECHNOLOGIES

US: East Coast Tel: 800 633 8161 Fax: 800 424 3970
US: West Coast Tel: 800 644 1866 Fax: 800 655 1866
International Tel: +61 3 9565 1111 Fax: +61 3 9565 1199
Europe Tel: +33 141 38 9400 Fax: +33 141 38 9409

Circle No. 16 on Readers' Service Card

XX-IDT®
INTEGRATED DNA TECHNOLOGIES, INC.

Premier Specialty DNA Synthesis
\$0.60 Base/100 nmole scale
Dual Labeled Probes, RNA & More
1-800-328-2661 - www.idtdna.com

Circle No. 27 on Readers' Service Card

MARKETPLACE

Custom Primers - 48 hr turnaround: \$0.69/base
50µg - Standard Purity - Ready to Use



ransom hill bioscience, inc.

http://www.ransomhill.com
no setup - no minimum - no baloney!
internet: visla@ix.netcom.com fax: (800) 597-8509

Circle No. 8 on Readers' Service Card

**Custom Peptides
& Antibodies**

Best Service & Price! Compare and Save!

Alpha Diagnostic (800) 786-5777

Fax (210) 561-9544; info@4adi.com

Web site: <http://www.4adi.com>

Circle No. 5 on Readers' Service Card

Quality DNA Synthesis

MALDI-TOF Mass Spectrometry Quality Control

Fluorescent Dyes & Other Modifications
Gene Construction and Sequencing Services
Custom RNA Oligos and Antisense DNA Oligos
Custom Primers for PCR & Sequencing
Long Oligos (up to 150-mers)

Competitive Pricing 800-247-8766



MIDLAND

The Midland Certified Reagent Company

Fax: (915) 694-2387 Email: mcrc@oligos.com

Website: www.mcrc.com

Circle No. 2 on Readers' Service Card

Smart Move!

Customized Project Support
with GLP. You Win!

PEPTIDE TECHNOLOGIES

- Peptide Synthesis:
 - Solid-Phase
 - Solution Phase
 - Multiple Simultaneous Syntheses
 - Chromogenic, Fluorogenic, Radio-labeled Peptides

- Peptide Libraries
- Peptide Sequencing (pmol level)
- Amino Acid Analysis (pmol level)
- Mass Spectrometry

**Commonwealth
Biotechnologies, Inc.**

Call Toll Free Fax On Demand 1-877-329-4224

Toll Free 1-800-735-9224

Or visit us at www.cbi-biotech.com

Circle No. 7 on Readers' Service Card

DNA SEQUENCING



**All Templates,
1 FREE RUN**

EST, low, medium, high throughput
as low as \$12/run

1-800-4-PLASMID • www.bio101.com

Circle No. 28 on Readers' Service Card

MARKETPLACE

BIO•SYNTHESIS, INC.

PEPTIDES
CUSTOM
**ANTIPEPTIDE
ANTIBODIES**
AS LOW AS
\$14.00/residue*
1-800-DNA-EXAM Fax: (972) 420-9442 www.biosyn.com biosyn@biosyn.com

Circle No. 10 on Readers' Service Card

**Quality Peptides
and Antisera**

Friendly, Personal Service

www.genosys.com

Custom Peptide Synthesis

- sequence analysis
- Ig, >70%, >80%, >95% purity
- scales from 2 mg-Ig
- variety of modifications available
- mass spec & HPLC on every peptide
- satisfaction guaranteed

Polyclonal Antisera Service

- antigen design assistance
- synthesis, conjugation and sera collection
- flexible protocol

GENOSYS

North America Europe
1-877-710-1502 (+44) (0) 1223 839000
email: info@genosys.com email: genosys@genosys.co.uk

Circle No. 45 on Readers' Service Card

Custom Antibodies & Peptides

No Hidden Charges!

Custom Antibodies from \$1295 including:

- Free consultation and tech support
- HPLC purification, MS & HPLC analysis, N/C-terminal modifications, 4-6mg peptide, 100+ml serum, ELISA & more

**Custom peptides from mg to >10g
HPLC purification available up to 98+%!**

800-435-2080
Fax: 508-435-2199
Order on-line:
www.qcb.com



QCB is a division of BioSource International, Inc.

Circle No. 46 on Readers' Service Card

**NEW ENGLAND
PEPTIDE, INC.**
888-343-5974 (phone)
978-343-5940 (fax)
www.newenglandpeptide.com

LOOKING FOR:

- Higher Quality?
- Better Service?
- Easier Pricing?

Find the best custom peptide experience at New England Peptide, Inc.

Custom Peptides...Made Easy

Circle No. 29 on Readers' Service Card

Custom DNA

Purified & Delivered in 48 Hours

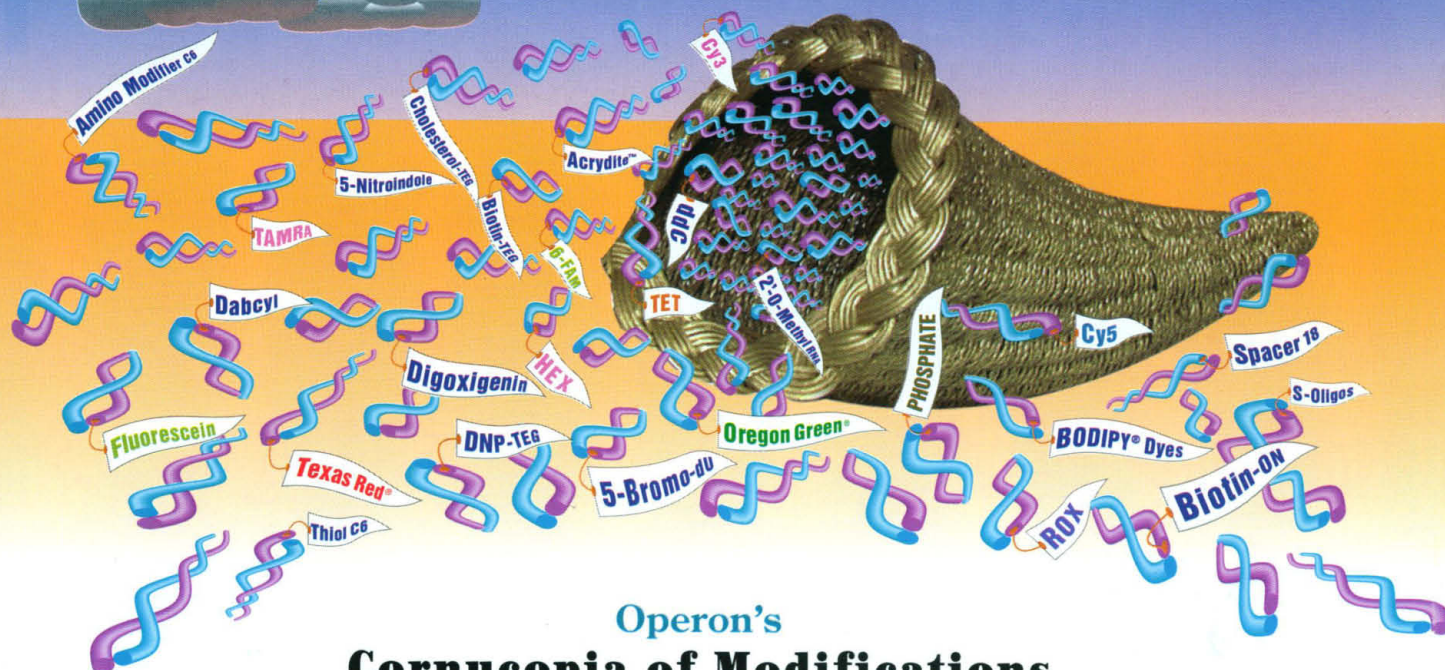
\$1.20 per base • Purified
<http://www.resgen.com>

Research Genetics, Inc.
1-800-533-4363

Circle No. 3 on Readers' Service Card

Synthetic DNA

from
Operon Technologies



Operon's Cornucopia of Modifications

Operon Technologies is pleased to offer a cornucopia of modifications available with our custom oligonucleotides. For applications that require fluorescent labels, we offer many dyes, including HEX, TET, 6-FAM, TAMRA, ROX, Cy3, Cy5, Oregon Green®, and Texas Red®. We offer phosphorothioates, propyne derivatives, and 2'-O-Methyl RNA residues which can be used to modify oligos for antisense studies. All commonly modified bases such as deoxyinosine, deoxyuridine, and deoxynuclearine, as well as many halogenated bases including 5-bromo-deoxyuridine and 5-iododeoxycytidine are available. We also offer a wide variety of modifications with aminolinkers, biotin labels, and special attachments such as digoxigenin. For a more complete list of possible modifications, please call our customer service department at 800-688-2248 and ask for our catalog.

List Prices for Custom DNA Services

Custom DNA Synthesis Prices			Purification Options		Sequence Modifications			
Scale	Price/base	Set-up	Method	Price	Modification	Price	Modification	Price
0.05 μ mole	\$0.60	\$5.00	Sephadex	free	Amino Modifier	\$25	HEX, TET, 6-FAM	\$70
0.2 μ mole	\$1.20	\$10.00	HPLC	from \$30	Biotin	\$50	Phosphate	\$25
1.0 μ mole	\$2.40	\$20.00	PAGE	from \$45	Cy3	\$70	Oregon Green®	\$125
(Larger scales available)			(Many scales available)		Cy5	\$70	ROX	\$125
					Digoxigenin	\$125	TAMRA	\$125
					Fluorescein	\$50	Texas Red®	\$125
					(Many other modifications available)			



World's Leading Supplier of Synthetic DNA

1000 Atlantic Avenue, Suite 108 • Alameda, CA 94501
Phone: 800-688-2248 • Fax: 510-865-5255 • E-mail: dna@operon.com • Web: <http://www.operon.com>

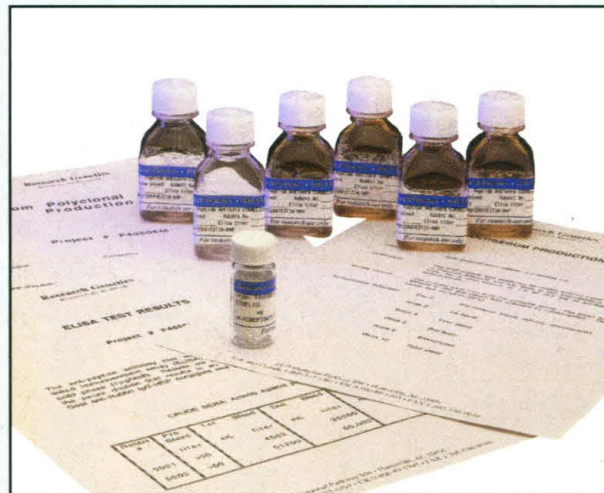
Oregon Green® and Texas Red® are registered trademarks owned by Molecular Probes, Inc.

Circle No. 37 on Readers' Service Card

Custom Antibody Production

Custom Peptide Antibody Production

Research Genetics' custom polyclonal antibody production is a start-to-finish service. Simply supply us with the peptide sequence, and we'll do the rest. Your peptide will be synthesized using Fmoc solid phase methods utilizing either multiple antigen peptide (MAP) resin technology or the traditional approach of synthesizing a linear peptide and chemically coupling it to keyhole limpet hemocyanin (KLH). The price of the standard polyclonal protocol is \$1,195. Because we are aware that each researcher's needs are different, we offer various modifications to the standard protocol. Please contact us at info@resgen.com for specific requests.



Using tested protocols, antibodies will be generated in two rabbits over a 10-week period. We will also monitor antibody titer by ELISA. Each rabbit typically provides ~80 ml of antiserum. Five mg of linear peptide or MAP peptide will also be shipped with the antiserum. With the standard protocol you will receive the following:

- Pre-immune serum bleeds 2-5 ml per animal
- One primary injection & three boosts
- Four week bleeds ~20 ml per animal
- Eight week bleeds ~20 ml per animal
- Ten week bleeds ~40 ml per animal
- Peptide 5 mg
- ELISA titers of all bleeds following ten week bleeding

Custom Peptide Synthesis

Research Genetics provides a custom peptide synthesis service for \$14.00 per residue for peptides 10-20 residues in length. This service guarantees a minimum of 20 mg of product and, as always, the mass spectrometry is included free of charge. Peptides will be shipped 5 days after the order is placed.

For researchers needing longer peptides or more product, we also offer a bulk synthesis service for \$39.00 per residue. Please call our custom peptide synthesis department, or send e-mail to kwasmund@resgen.com, for additional details on either of these services.

Research Genetics

Accelerating Discovery

2130 Memorial Pkwy, SW • Huntsville, AL • 35801

U.S. or Canada 800-533-4363 Worldwide 256-533-4363

U.K. 0-800-89-1393 FAX 256-536-9016

<http://www.resgen.com>

Circle No. 22 on Readers' Service Card