



The American Association for the Advancement of Science

invites applications for the

1998-99

AAAS Science Scholars in Higher Education for Development

Selected Scholars will spend one year at the U.S. Agency for International Development (USAID) in Washington, DC, as part of a team to conceptualize, plan, and implement international development activities in which there is collaboration between USAID and the higher education community in the U.S. and abroad.

The Scholars program is designed to provide a unique, internationally-oriented, public policy experience; to demonstrate the value of science, technology, and education in addressing important societal problems; and to make practical contributions to the more effective use of educational policy and development in the foreign affairs and international programs of the U.S. government.

Scholars must have a minimum of five years experience in higher education international program administration and have a Ph.D. in any physical, biological, or social science, or any field of engineering. The emphasis will be on selecting individuals who have substantial experience in achieving results in university-style international programming.

This new program begins January 1, 1999 at USAID. The award includes a \$75,000 stipend plus allowances for international travel, relocation to Washington, DC, and health benefits. Deadline for receipt of applications is October 1, 1998. Finalists will be interviewed in early November. U.S. citizenship is required. The award is contingent upon the selectee obtaining a security clearance.

Application information is available from:

AAAS Science Scholars in Higher Education for Development Program

Tel: 202/326-6700

E-mail: science_policy@aaas.org

<http://www.aaas.org/spp/dspp/stg/scholars.htm>

DISPLAY CLASSIFIED ADVERTISEMENTS

Call for rate and deadline information on display classified advertisements.

E-mail: science_displays@aaas.org

Ben Peters

Recruitment Display Advertising

Telephone: (202) 326-6541

FAX: (202) 289-6742

E-mail: science_displays@aaas.org

Gabrielle Boguslawski

Recruitment Advertising Sales Manager

Telephone: (718) 491-1607

FAX: (202) 289-6742

Debbie Cummings

European Recruitment Advertising

Telephone: +44 (0) 1223 302067

FAX: +44 (0) 1223 576208

E-mail: european_ads@science-int.co.uk

LINE CLASSIFIED ADVERTISEMENTS

How to Submit a Line Classified Ad:

Send your ad text to: e-mail: science_classifieds@aaas.org; fax: (202) 289-6742. You must include your telephone number, billing address, and purchase order number in your e-mail or fax. Do not bold, italicize, or abbreviate any words. *Science* will edit and typeset ads according to *Science* style. **Science cannot provide proofs of typeset line ads.** Available categories: Positions Open, Meetings, Announcements, and Courses and Training. Line advertisements are not commissionable.

Estimates: *Science* will provide a cost estimate for line ads. **This is an approximate cost only.** Purchase orders must allow for variation between estimated lines and actual typeset lines and resulting final cost.

For line advertising deadlines, call Troy Benitez, Telephone: (202) 326-6740; or Kristen Westapher, Telephone: (202) 326-6555; FAX: (202) 289-6742. E-mail: science_classifieds@aaas.org

Credit Cards: *Science* accepts American Express, MasterCard and VISA. Discount does not apply to credit cards.

Cancellations: Deadline for cancellation is Tuesday, 10 days prior to issue date.

Discounts: A 3% cash discount is granted to all prepaid ads.

Ads from Outside the U.S.: A discount of \$30 will be offered to advertisers making payment in U.S. dollars by checks drawn on U.S. banks. Contact Debbie Cummings. Telephone: +44(0) 1223 302067; FAX: +44(0) 1223 576208.

Science Professional Network: Unless otherwise instructed, all classified advertisements submitted for publication in *Science* are automatically posted on *Science's* online classified advertising service, *Science Professional Network*, at no additional charge.
www.scienceonline.org

Mail, FAX or E-mail materials to:

Science Classified Advertising

1200 New York Avenue, N.W., Room 911

Washington, DC 20005

FAX: 202-289-6742

E-mail: science_classifieds@aaas.org (please include your telephone number in e-mail)

Science reserves the right, at its discretion, to edit or decline to publish advertisements submitted to it.

POSITIONS OPEN

TENURE-TRACK FACULTY POSITIONS IN BIOENGINEERING AT RICE UNIVERSITY

The Department of Bioengineering at Rice University invites applications for two tenure-track faculty positions. One position is in the area of computational bioengineering and one is in the field of biomechanics. Applicants should have a strong multidisciplinary background in computational bioengineering or biomechanics and substantial experience in independent research and in obtaining competitive funding. For both the computational bioengineering and biomechanics positions, we are particularly interested in researchers with exceptionally strong research expertise and interest in working at both the macro level of tissues and micro/nanoscale level of cells, organelles, and molecules.

The successful applicant would establish research collaborations with institutions at the adjacent Texas Medical Center, groups at the Institute of Biosciences and Bioengineering at Rice University, and with the Keck Center for Computational Biology in Houston. Applicants would be expected to develop and teach courses in the areas of biomedical engineering and biomechanics at the undergraduate and graduate levels. Applicants should send a curriculum vitae that includes a list of publications, a statement describing their proposed research program in either biomechanics or computational bioengineering, and names of at least three references to:

Professor Larry V. McIntire
Chair

Department of Bioengineering MS 142
Rice University
P.O. Box 1892
Houston, TX 77251-1892

For full consideration, applications should be received by December 1, 1998.

Rice University is an Equal Opportunity Employer.

FACULTY POSITIONS SKIRBALL INSTITUTE OF BIOMOLECULAR MEDICINE New York University Medical Center

The Molecular Neurobiology and Molecular Pathogenesis Programs at the Skirball Institute of Biomolecular Medicine and New York University (NYU) Medical Center have tenure-track positions available at the ASSISTANT and ASSOCIATE PROFESSOR levels. We are seeking to build strong interdisciplinary programs, and are interested in outstanding individuals whose research interests and experience are based in biochemistry, genetics, cellular biology, or molecular biology. The Molecular Neurobiology Program also wishes to encourage applications from System Neurobiologists who have a strong interest in using cellular and molecular approaches to study the nervous system. Research interests of the Molecular Pathogenesis Program include immunology, microbial pathogenesis, basic cell biology, and the regulation of cell growth and differentiation. The Skirball Institute, directed by Dr. Joseph Schlessinger, is a new initiative at NYU Medical Center, consisting of programs in developmental genetics (coordinated by Alex Joyner and Ruth Lehmann), structural biology (coordinated by Joel Belasco), molecular neurobiology (coordinated by Steve Burden and Moses Chao) and molecular pathogenesis (coordinated by Dan Littman). Applicants should submit by November 1998 a curriculum vitae, a statement of research interests, and the names and addresses of three references to: Lisa Moritz, Skirball Institute of Biomolecular Medicine, New York University Medical Center, 540 First Avenue, New York, NY 10016.

PENN STATE UNIVERSITY DEPARTMENT OF CHEMISTRY

The Department of Chemistry at the Pennsylvania State University has several **TENURE-TRACK FACULTY POSITIONS** available for fall 1999. Appointees are expected to establish an exceptionally strong and highly visible research program that incorporates excellence in undergraduate and graduate education. We encourage applications from candidates in all areas of chemistry, including those that interface with other disciplines such as environmental, materials, and biological sciences. Applicants should submit a curriculum vitae, a list of publications, research plans, and arrange to have three letters of recommendation sent to: Chair of the Search Committee, Box S, Department of Chemistry, 152 Davey Laboratory, Penn State University, University Park, PA 16802. An Affirmative Action/Equal Opportunity Employer.

POSITIONS OPEN

FACULTY POSITIONS IN MICROBIOLOGY AND INVERTEBRATE ZOOLOGY

Two tenure-track positions at the ASSISTANT PROFESSOR level beginning August 1999. Candidates must be broadly trained, possess a Ph.D., have a commitment to teaching undergraduates, and the potential to develop a research program involving significant student participation. (i) The Microbiologist must have nonclinical research interests, and demonstrated expertise in molecular biology. Responsibilities include teaching courses in microbiology, molecular biology, participating in the introductory biology program, and academic advising. (ii) The Invertebrate Zoologist may have research interests in the behavior, ecology, and/or evolution of invertebrates. Expertise in both field methods and modern laboratory techniques is preferred. Responsibilities include participating in an introductory evolutionary biology course, teaching advanced courses in areas of specialty, and academic advising. Applicants for each position should send curriculum vitae, summary of teaching and research interests, and names and telephone numbers of three references to: Prof. Thomas Koppenheffer, Chair, Department of Biology, Trinity University, San Antonio, TX 78212. Application deadline is October 5, 1998. Women and minority candidates are strongly encouraged to apply. Trinity University is an Equal Opportunity/Affirmative Action Employer.

FACULTY POSITION CHEMICAL BIOLOGY University of Michigan—Ann Arbor

The Department of Chemistry at the University of Michigan invites applications for an anticipated tenure-track position at the ASSISTANT PROFESSOR level in the area of chemical biology for the 1999 academic year. We are seeking individuals who will apply the techniques and principles of contemporary chemistry and biology to examine systems of physiological importance. While the specific area of research is not critical, we are especially interested in candidates who will complement our existing research programs in either macromolecular structure/folding or mechanistic enzymology. In addition to developing a research profile of international prominence, the successful candidate should be qualified to teach both chemical biology and organic chemistry at the graduate and undergraduate levels. Interested individuals should send curriculum vitae, selected reprints, statement of research interests, and arrange to have three letters of recommendation sent to: Professor Joseph P. Marino, Chair, Department of Chemistry, University of Michigan, 930 North University, Ann Arbor, MI 48109-1055. The University of Michigan is a nondiscriminatory Affirmative Action Employer.

BIOCHEMISTRY FACULTY POSITIONS

The Department of Chemistry at Purdue University invites applications for up to three tenure-track faculty positions in biochemistry beginning in fall 1999. One position requires demonstrated expertise in biological NMR and research interests that complement ongoing work at Purdue. At least one position will be in an area of cancer-related research and involve participation in the Purdue Cancer Center Program. Applicants must have a Ph.D. and postdoctoral experience. Expectations are that successful candidates will obtain extramural funding and excel at teaching and research. Further details are available at website: <http://www.chem.purdue.edu>.

Applicants should submit a curriculum vitae, a description of proposed research, and three letters of recommendation by October 15, 1998, to: Prof. R. A. Walton, Head, Department of Chemistry, Purdue University, West Lafayette, IN 47907-1393. Purdue University is an Affirmative Action/Equal Opportunity Educator and Employer.

FACULTY POSITIONS IN IMMUNOLOGY DUKE UNIVERSITY MEDICAL CENTER

The Department of Immunology invites applications for **TENURE-TRACK** faculty positions at all levels.

Candidates working in molecular and cellular immunology, lymphocyte signal transduction, immunogenetics, and tumor immunology are encouraged to apply.

Interested individuals should send a curriculum vitae, a statement of research interest, and the names of three references to: Dr. Thomas F. Tedder, Department of Immunology, P.O. Box 3010, Duke University Medical Center, Durham, NC 27710. Website: www.duke.edu/~immune/.

Duke University Medical Center is an Equal Opportunity/Affirmative Action Employer.

All your career needs is the right chemistry.

Supportive environment. Employee development programs. Internal training and promotion. Excellent benefits and compensation. That's the mix you'll find at Sigma-Aldrich, one of the nation's largest chemical companies.

The current growth of our R&D Department will help Sigma continue to meet the dynamic needs of our industrial and research customers. Currently seeking R&D SCIENTISTS and SENIOR R&D SCIENTISTS with expertise in the following areas:

RECOMBINANT PROTEIN EXPRESSION

- M.S. or Ph.D. in Biology, Molecular Biology or related field
- 2+ years of experience in product development for recombinant protein expression in baculovirus, mammalian and/or yeast systems
- Capable of technically directing other scientists and technicians in development and manufacturing projects in a team setting

HIGH THROUGHPUT SCREENING

- M.S. or Ph.D. in Biochemistry, Molecular Biology or related field
- 5 years of experience in assay development in microtiter plate or other array format
- Capable of technically directing other scientists and technicians in development and manufacturing projects in a team setting

CELL BIOLOGY

- M.S. or Ph.D. in Biochemistry, Cell Biology or related field
- 2+ years of experience in product development for signal transduction in mammalian systems
- Capable of technically directing other scientists and technicians in development and manufacturing projects in a team setting

Our benefits package includes one of the best retirement savings plans in the St. Louis area. In addition, you will enjoy the following: excellent relocation package, comprehensive medical, dental, life and disability insurance, non-contributory pension plan and tuition reimbursement. If you are interested, please fax your resume to (314) 286-7663, e-mail to: opportunity@sial.com, or send your resume to:

Sigma Chemical Company
Human Resources (Pos. Ad-98-047-002)
3050 Spruce St.
St. Louis, MO 63103

Visit us on our homepage at:
<http://www.sigma.sial.com>



The right chemistry for your career.
Equal Opportunity Employer



St. Jude Children's
Research Hospital

ALSAC • Danny Thomas, Founder

POSTDOCTORAL POSITION SIGNALING AND MYOGENESIS

A postdoctoral position is available to study signaling and differentiation in normal and malignant myogenic cells. These NIH supported studies focus on the role of insulin-like growth factor signaling pathways in growth, survival and differentiation of normal and malignant skeletal muscle cells (J. Clin. Invest. 94:1235-1242, 1994; Cancer Res. 54:903-907, 1994; Science 277: 99-104, 1997). Candidates should have a recent Ph.D. or M.D., and a strong background in molecular biology or biochemistry.

St. Jude Children's Research Hospital (Danny Thomas Founder) is an outstanding center for biomedical research and provides an exceptional environment for scientific achievement and career development. Stipend and benefits are highly competitive.

Candidates should send a letter of interest, curriculum vitae and names of three references to: Peter J. Houghton, Ph.D., Chairman, Molecular Pharmacology, St. Jude Children's Research Hospital, 332 N. Lauderdale, Memphis, TN 38105-2794. Fax: (901) 521-1668. E-mail: peter.houghton@stjude.org

An Equal Opportunity/Affirmative Action Employer

ASSISTANT PROFESSOR TENURE-TRACK Biochemistry, Cell and Molecular Biology Dartmouth Medical School

The Department of Biochemistry at Dartmouth Medical School is recruiting an Assistant Professor in the tenure track. Applications from outstanding individuals working within the broad areas of biochemistry, cell and molecular biology will be considered. The department consists of vigorous scientists with research excellence in cell and molecular biology, and a well-established multidisciplinary graduate student program. The successful candidate is expected to establish an independent research program in a uniquely interactive research environment, and to participate in teaching graduate and medical students. Candidates should have a Ph.D. or M.D. degree and relevant postdoctoral training.

A curriculum vitae, statements of research accomplishments and research goals, and three letters of recommendation should be sent to:

Search Committee, Department of Biochemistry,
Dartmouth Medical School, 7200 Vail Bldg., Rm. 413,
Hanover, NH 03755-3844.

The review of applicants will begin Oct. 15, 1998.
Fax: 603-650-1128.

*Dartmouth is an Equal Opportunity/Affirmative
Action Employer.*

SmithKline Beecham Pharmaceuticals is at the forefront of anti-infectives research and a leader in using genomic technologies in the discovery of drugs that will shape and influence the future of world-wide health programs. Our Microbiology Research Department is committed to intensive research into new antimicrobial targets and their utility in identifying novel antimicrobial agents. Opportunities exist at the PhD, Postdoctoral Fellow, MS, and BS levels of expertise.

GENOMICS TO ANTIBIOTICS - ENSURING A HEALTHY FUTURE

Senior Investigator

We are looking for an individual with a strong background in *Helicobacter pylori* pathogenesis to lead a group of talented scientists in the discovery of new antibacterials to eradicate this organism. The successful candidate will have a sound understanding of the application of genomics and proteomics to find suitable targets for high throughput screening. A PhD qualification with 5 years of postdoctoral experience is required. (Job Code: C8-SI/S)

Investigators

PhD level positions exist for scientists with sound microbial biochemistry expertise, as well as experience in microbial and molecular genetics, to work in the *Helicobacter* Group to identify and develop antimicrobial targets. Positions are also available in the Target Characterization Group to identify and elaborate the biochemical functions of genes and their gene products shown to be implicated in the mechanism of drug resistance. (Job Code: C8-I/S)

Associate Scientists/Scientists

Successful candidates for positions in the Microbial Biochemistry Group will have a BSc degree in Biochemistry or Microbiology, with practical experience in protein purification and biochemistry, and the implementation of enzyme assays; strong communication skills; and a demonstrated ability to record and analyze experimental data. (Job Code: C8-AS/S)

Associate Scientist/Scientist/ Investigator - Infection Models

Responsibilities include conducting studies to investigate the disposition and pharmacodynamics of novel antibacterial agents in experimental models of infection. A BS, MS or PhD with expertise in the development and use of animal models of infection for the evaluation of antibacterial distribution and efficacy are essential. Working knowledge of pharmacokinetics/ pharmacodynamics and expertise in microbiology/pharmacology are preferred. (Job Code: C8-ASIM/S)

Postdoctoral Fellowship

Successful candidate will investigate novel screening formats and assay development for new antibacterial targets. To qualify, we require expertise in protein biochemistry and experience with enzymes and/or receptors. Experience in fluorescence polarization, time resolved fluorescence, resonance energy transfer, or scintillation proximity assays is preferred. (Job Code: C8-PD/S)

Located in a state-of-the-art research facility in suburban Philadelphia, SmithKline Beecham offers a competitive compensation/benefits/relocation package and a stimulating work environment to grow and excel. For confidential consideration, please forward your resume and salary requirements to: SmithKline Beecham Pharmaceuticals, (Job Code), PO Box 40047, Philadelphia, PA 19106. Indicating Job Code is essential. We are an Equal Opportunity Employer, M/F/D/V. www.sb.com



SmithKline Beecham
Pharmaceuticals



The University of Texas at Austin

Faculty Positions in Animal Virology & Gene Therapy

The Institute for Cellular and Molecular Biology and the Department of Microbiology at the University of Texas at Austin invite applications for faculty positions in Animal Virology and Gene Therapy. Outstanding candidates in all areas of Animal Virology and Gene Therapy are encouraged to apply. Positions are available at the Assistant, Associate, or Full Professor levels, depending on qualifications. Successful applicants will be expected to establish/maintain a dynamic, extramurally-funded research program and participate in teaching undergraduate and graduate students. Applicants must possess a Ph.D. and/or M.D. degree and have a record of research productivity.

Attractive start-up packages are available and include laboratory space in the newly dedicated Moffett Molecular Biology Building.

Nestled in the hill country of Texas, Austin is widely recognized as one of America's most beautiful and livable cities.

Please send curriculum vitae, summary of research interests, and three letters of reference to:

Henry R. Bose, Jr. or Jaquelin P. Dudley
Search Committee Co-chairs
Department of Microbiology
The University of Texas at Austin
Austin, TX 78712-1095

The application should be received by November 15, 1998.

Visit the The University of Texas at Austin Homepage <http://www.utexas.edu/>

The University of Texas at Austin is an Equal Opportunity Employer. Qualified women and minorities are encouraged to apply.



University of Kentucky Sanders-Brown Center on Aging and Ph.D. Program in Gerontology



The Sanders-Brown Center on Aging and Ph.D. Program in Gerontology has an extraordinary opportunity to expand its research strength in both biomedical and social and behavioral aspects of aging through a new Research Challenge Trust Fund Program. Under the auspices of this program, the Center will hire five tenure-track or tenured, distinguished faculty.

Creative, successful individuals who want to contribute to vibrant, growing research programs at the Center on Aging (a Commonwealth Center of Excellence) and participate in the teaching and service missions of the University are invited to apply. Successful candidates at a tenured level are expected to possess established, externally funded research programs, and successful candidates at the tenure track level are expected to develop and maintain innovative, externally funded research programs. Competitive start-up funds, state-funded salary commensurate with experience, and modern research facilities will be provided. Special consideration will be given to applicants who complement existing Center on Aging strengths in Alzheimer's disease and other neurodegenerative diseases, Stroke, long-term care, and rural aging.

Position 1 Alzheimer's and Neurodegenerative Diseases: Assistant, Associate, or Full Professor in molecular genetics of Alzheimer's disease and other neurodegenerative disorders.

Position 2 Alzheimer's and Neurodegenerative Diseases: Assistant, Associate or Full Professor with a focus in the social or behavioral sciences. Areas of focus might include: chronic care of residents with neurodegenerative diseases in nursing facilities, assisted living, or other long-term care settings; cognitive functioning in neurodegenerative diseases; caregiving; and service delivery (especially in rural areas).

Position 3 Health Policy and Aging: Assistant, Associate or Full Professor with strong background in social policy, program development and/or health services research on the changing landscape of health care provision for the elderly. Areas of expertise might include: health policy and neurodegenerative diseases; managed care; health care finance, rural service provision, health survey research, and rural long-term care.

Position 4 Epidemiology: Assistant, Associate or Full Professor to develop a strong program of funded research on the epidemiology of neurodegenerative diseases that will complement existing programs of research on Alzheimer's disease, other neurodegenerative diseases and Stroke.

Position 5 Neurobiology: Assistant Professor in molecular neurobiology with interest in neurodegenerative disorders and aging. Special consideration will be given to applicants with expertise in transgenic and other animal models of neurodegeneration.

Applicants must have a Ph.D., M.D. or equivalent degree. Preference will be given to candidates with postdoctoral experience. Interested individuals should send a curriculum vitae, summary of past experience, future research plans, and arrange for three letters of recommendation to be sent to: **Dr. William R. Markesbery or Dr. Graham D. Rowles, Faculty Search Committees, Sanders-Brown Center on Aging, University of Kentucky, Lexington, KY 40536-0230; telephone (606) 323-6040; FAX (606) 323-2866.**

The search committees will begin reviewing applications on October 15 and will continue until the positions are filled. *Women and minority candidates are encouraged to apply. The University of Kentucky is an Affirmative Action/Equal Opportunity Employer.*

Call for Recruiters from Industry, Academia and Non-Profit Agencies: NIH Postdoctoral Job Fair

October 6, 1998



Would you like to reach 2,500 of the world's top postdoctoral scientists?

The National Institutes of Health is sponsoring the third annual Postdoctoral Job Fair, to be held in conjunction with the NIH Intramural Research Festival at the Natcher Conference Center on the NIH campus in Bethesda, MD, from 9:00 a.m. to 5:00 p.m. on October 6, 1998. The Job Fair will give exhibitors the opportunity to meet postdoctoral fellows who are completing their research training and seeking permanent employment. We welcome representatives from domestic and foreign industry, the academic community and government and non-profit agencies that have vacant positions which demand highly skilled, highly trained professionals.

Recruiters at the Job Fair will have access to NIH's pool of 2,500 postdoctoral trainees—nearly 15% of the biomedical fellows supported by the NIH in the United States. Their research experience ranges from cutting-edge basic science to clinical investigation and the development of drugs, methods, and technology. Their expertise spans the biomedical spectrum, including:

AIDS research	cell biology	imaging	neuroscience
behavioral science	chemistry	immunology	pathology
biophysics	clinical research	informatics	pharmacology
biostatistics/epidemiology	developmental biology	molecular genetics	structural biology
biotechnology	genomics	molecular biology	virology

Postdoctoral fellows trained at NIH have traditionally become leaders in biomedical research. Many of today's trainees will follow in their footsteps, but a significant number are also interested in careers in other occupational areas where their outstanding training, creativity, and skills would be an asset.

There is no fee for exhibitors at the Job Fair, but space is limited, and early confirmation of intent to participate is recommended. Organizations wishing to recruit at this year's Job Fair should apply electronically through our web site <http://www.training.nih.gov/jobfair> by September 18, 1998. For additional information contact:

Ms. Shirley Forehand
NIH Office of Education
Bldg. 45, Rm 5AN12K
45 Center Dr. MSC 6505
Bethesda, MD 20892-6505
(301) 402-2174

National Institutes Of Health



Help Define Funding Opportunities for the National Cancer Institute

THE NATIONAL CANCER INSTITUTE (NCI) supports more than \$2 billion in cancer research annually, as the foundation of the nation's investment in cancer research.

As part of this endeavor, NCI announces the Unconventional Innovations Program (UIP) to fund development of high impact, long-range technologies to support cancer research. Initial five-year plans target \$48 million for technology platforms integrating:

- non-invasive sensing of molecular alterations *in vivo*
- transmission of information to an external monitor

- controlled intervention specific for the molecular profile
- monitoring of intervention

We are soliciting input from the research community about technologies that could fundamentally change the approach to the detection, diagnosis, and treatment of cancer. This information will help define the scope of a Broad Agency Announcement, to be issued by early 1999, to fund this research. Submit your input in the form of white papers that discuss:

- nature of the technological opportunity
- current capability of the technology

- technological barriers to meeting the defined goal
- contribution of the opportunity to a common technology platform for the non-intrusive sensing, signaling, and intervention for cancer based on tumor specific molecular or physiological profiles
- potential impact on the detection, diagnosis, and treatment of cancer

For more information and guidance, see:
<http://amb.nci.nih.gov/uiip.htm>
or

Carol Dahl, Ph.D.
Carol.Dahl@nih.gov or
301-496-1550

Advances in scientific and innovative technology.

THAT'S THE EXCITEMENT OF ALLERGAN.

Allergan, a technology driven company, is a global leader in specialty pharmaceutical products and surgical devices. We're currently seeking an individual to ensure the quality/integrity of systemic and topical toxicity studies in-house and at contract laboratories.

PRINCIPAL SCIENTIST/TOXICOLOGIST

Responsibilities include acting as a Project Representative and Study Director for development of systemic, dermal and ocular drugs and devices. Requires a Ph.D., D.V.M. or M.D. degree and 6 years directly related experience. Must have professional competence in systemic, dermal and ocular toxicology, pathology, clinical pathology, pharmacology and physiology. We require familiarity with GLP and domestic/international pharmaceutical requirements for new drug registration. Strong management, analytical, interpersonal and verbal/written communication skills are essential. DABT preferred.

We reward our employees with a competitive salary, an excellent benefits package and a great working environment. Please send resume (e-mail preferred) to: quam_debra@allergan.com If unable to e-mail, send to: **Allergan, Attn: DQ/T2-1B 2525 Dupont Dr., Irvine, CA 92612.** No phone calls please. EOE.



ALLERGAN

www.allergan.com

DIRECTOR CERCA

(Centre de Recherche en Calcul Appliqué)

CERCA is a Quebec "Centre de liaison et de transfert" created in 1992. Its main objective is to intensify technology transfer from universities to industry through the regrouping of scientists in Quebec who use numerical methods for scientific applications related to computational fluid dynamics and chemistry.

Duties

Development of CERCA policies and strategic planning; development of partnerships with industry; promotion of the activities of CERCA with the university, industry, and government communities; responsibility for the scientific activities and identification of qualified researchers; administrative and financial management; and, in particular, preparation of budgets.

Criteria

A good grasp of applied scientific computation; ability to develop a scientific program directed toward technology transfer between CERCA and industry; ability to generate industrial interest in CERCA activities; ability to supervise and motivate researchers and to create a good synergy between CERCA teams; ability to promote the achievements of CERCA; experience in research or in research management; working knowledge of French. Interested persons are invited to submit their candidacy at the latest on October 1, 1998, to:

Dr. André Biron, Associate Director
5160, Décarie Blvd., Suite 400
Montréal, Québec H3X 2H9 Canada
Fax: (514) 369-3881
biron@cerca.umontreal.ca
<http://www.cerca.umontreal.ca>



**United States Environmental Protection Agency
National Exposure Research Laboratory
Human Exposure and Atmospheric Sciences Division**

The U.S. Environmental Protection Agency (EPA) is seeking highly qualified senior scientific/engineering candidates for the **Director of the Human Exposure and Atmospheric Sciences Division (HEASD)**, National Exposure Research Laboratory (NERL) located at Research Triangle Park (RTP), North Carolina. The NERL is responsible for conducting research and development related to the exposure of people and ecosystems to a wide range of pollutants in the air, water, and soil, and to other environmental changes resulting from human activities at a wide range of scales. The HEASD conducts intramural and extramural research to characterize exposures, across the whole of the exposure assessment paradigm from pollutant source to the dose delivered to the exposed person or receptor. The principal foci of the Division's research are human exposure to chemical pollutants and atmospheric sciences. The Division's research mission encompasses aspects of all components of the exposure assessment paradigm, including exposure/source research; atmospheric processes modeling research; environmental characterization research, including characterizing microenvironmental concentrations/exposures, and defining the critical routes of exposure; exposure analysis research; and exposure/dose research. The human exposure research has both modeling and measurement aspects. It focuses on exposures to susceptible subpopulations and includes field studies of total exposure measurements, the development of probabilistic human exposure models, and the linkage of these models to environmental process models and dose models to achieve source-to-dose models. The atmospheric sciences portion of HEASD's research includes the development and application of instruments and methods to measure atmospheric pollutants and their precursors; chamber and kinetics studies of the chemistry of air pollutants; the development of source apportionment techniques; and the comprehensive profiling of emissions from on- and off-road mobile sources burning gasoline with and without fuel additives.

The Director of HEASD plans, develops, organizes, directs, and implements a highly technical and complex research and development program that has nationwide impact with an annual budget in excess of \$25M and a staff of approximately 130 employees located in RTP and Las Vegas, Nevada. The Director and scientists under the Director's supervision are the Agency's experts in the area of multipathway, multimedia human exposure to environmental contaminants and atmospheric sciences, measurement methods, chemistry, and source characterization; and, therefore, they interact and represent the Agency to a large community of scientists, both nationally and internationally, as well as to the general public and legislative leaders. Ultimately, the research performed will provide an understanding of the critical factors to be considered in developing and implementing programs for the protection of the public's health.

The preferred candidate for this position will have a doctoral degree in one of the biological, physical, or mathematical sciences or in an engineering field. Candidates must also have scientific expertise in either atmospheric sciences or human exposure to chemicals and have demonstrated leadership in scientific management of state-of-the-art programs in atmospheric sciences or human exposure to chemicals. In addition, applicants must meet the executive and technical qualifications described in the vacancy announcement. **Salary ranges from \$104,577 – \$114,486 per annum**, commensurate with the level of appointment in the Senior Executive Service.

To apply for this position, you must obtain a copy of the vacancy announcement and submit an application containing all the requested information by the closing date of the announcement. **All applications for this position must be postmarked by 9/25/98.** The vacancy announcement may be obtained by calling or writing Ms. Karen Stinson (202) 260-6374, U.S. EPA, Executive Resources & Special Programs (3641), 401 M Street S.W., Washington, DC 20460. The announcement may also be viewed on the Office of Research and Development's Internet Site at <http://www.epa.gov/ord/>.

The U.S. EPA is an Equal Opportunity Employer



The National Aeronautics & Space Administration (NASA) is accepting applications for the following Senior Executive Service (SES) vacancy:

Position: Associate Administrator for Space Science
Location: NASA Headquarters, Washington, D.C.
Salary Range: \$106,412 – \$125,900

The Associate Administrator for Space Science leads a broad Space Sciences Research Program aimed at achieving a comprehensive understanding of the universe and its origin, the solar system, and the sun-earth connection, and to communicate this knowledge to the public. The incumbent will be responsible for:

- formulation of the total Office of Space Science Program
- establishment and execution of Program policies
- management of space science programs such as space science research, flight mission technologies, flight science data analysis, flight missions including robotic exploration

In addition, the incumbent will be responsible for defending and representing the Program within NASA and to external entities such as the Office of Management and Budget and the Congress.

Significant portions of the activity involve cooperative programs with other Government agencies and international partners.

Interested persons should contact **Mr. Mitch DeShong**, NASA HQ Personnel Division, at (202) 358-1564 for additional information. The full vacancy announcement, including application requirements and instructions, can be accessed at http://www.hq.nasa.gov/hq/standalone/ssshorts/page_190.html. Applications must be received by September 14, 1998.

ANNOUNCEMENT



FUNDING AVAILABLE

CaP CURE, the Association for the Cure of Cancer of the Prostate, is soliciting proposals for its 1998/1999 funding year. The organization's goal is to find a cure for advanced prostate cancer.

Applications are competitive and accepted from individuals with or without institutional affiliation. Awards range from \$50,000 – \$200,000 for the year. Applications (3-5 pages) can be for basic research, clinical investigations or a combination and must be relevant to the treatment of advanced prostate cancer. We encourage interdisciplinary collaborations between basic scientists and clinicians. (For-profit companies are not eligible.) Applications will be accepted August 15, 1998 through September 30, 1998. Notification of awards is expected by December 1, 1998.

For consideration, request application guidelines:

CaP CURE
 1250 Fourth Street, Suite 360
 Santa Monica, CA 90401
Phone: (310) 458-2873 Fax: (310) 458-8074
(800) 757-2873 E-mail: capcure@capcure.org



DEPARTMENT OF MICROBIOLOGY

TWO FACULTY POSITIONS: STRUCTURAL BIOLOGY VIROLOGY

Tenure-track faculty positions are available at the Assistant Professor or Associate Professor level for (1) an X-ray crystallographer with interests in viral, bacterial, fungal and/or parasite systems particularly as related to pathogenesis; and (2) a Virologist. The Department of Microbiology at Duke University Medical Center has a scientifically diverse faculty who study virus life cycles, virus-host interactions, DNA replication and recombination, RNA transcription and processing, protein-nucleic acid interactions, combinatorial chemistry, Drosophila genetics, developmental biology and microbial pathogenesis. The Department is well-funded and has a strong graduate program emphasizing molecular genetics. The structural biology community at Duke utilizes a well-equipped central facility for X-ray crystallography, NMR and molecular modeling, associated with an interdepartmental Molecular Biophysics Program. The new faculty members will be expected to participate in the teaching of graduate and medical students and to contribute outstanding and innovative research programs. Information on the Department is available on the Web at <http://www.duke.edu>. Please send a curriculum vitae, statement of research interests, and arrange for three professional references to send confidential letters to: **Faculty Search Committee, (structural biology or virology) Box 3020, Department of Microbiology, Duke University Medical Center, Durham, North Carolina 27710**. Applications should be complete by October 16, 1998.

Duke University
Medical Center

Duke University Is An Equal Opportunity/Affirmative Action Employer

CONFERENCE

OCTOBER 26 - 28, 1998

The Role of Diet and Caloric Intake in Aging, Obesity, and Cancer

Opening Keynote Speaker
Dr. Bruce Ames
 University of California / Berkeley

on
Diet and Aging

Distinguished Key Speakers Include:

- Dr. Joann Manson, Harvard University School of Medicine
- Dr. Roy Walford, University of California
- Dr. Richard Weindruch, University of Wisconsin
- Dr. Walter Willett, Harvard University School of Public Health
- Dr. Gary Williams, American Health Foundation

Program Chair: **Dr. Rakesh Dixit**, Merck & Co., Inc.

Key Topics

- Caloric Restriction in Aging and Disease Prevention
- Caloric Restriction in Toxicology/Cancer Bioassays
- Caloric Intake, Genetics and Body Weight Regulation
- Obesity in Renal and Cardiovascular Diseases and Diabetes
- Dietary Fat and Risk of Breast and Prostate Cancer
- Cancer Prevention with Dietary Chemicals

Contact: SOCIETY OF TOXICOLOGY
 1767 Business Center Drive, Suite 302
 Reston, VA 20190-5332
 Phone: (703) 438-3115 Fax: (703) 438-3113
 E-mail: sothq@toxicology.org
 Visit: <http://www.toxicology.org/dietobesity.html>

HYATT REGENCY • RESTON, VA

Research Scientist/ Senior Research Scientist Pharmacology

LIGAND Pharmaceuticals Inc., a leader in gene transcription technology, is applying intracellular receptor and Signal Transducers and Activators of Transcription technology to the discovery and development of small molecule drugs for the treatment of major unmet patient needs. Currently, we seek outstanding individuals to join us in our Pharmacology Department where you will develop, validate and implement in vivo and in vitro models in the evaluation of clinical candidates for androgen action in peripheral tissues and the central nervous system.

For the Sr. Research Scientist position you must have a PhD/DVM/MD and postdoctoral training in pharmacology with at least 5 years' experience in preclinical drug development. You will prepare preclinical regulatory documentation through interdepartmental writing teams, select and monitor outside sources for in vivo general pharmacology studies as well as develop and implement in-house animal models of disease.

For the Research Scientist position you must have a Ph.D. with postdoctoral training in pharmacology and molecular neuroendocrinology and at least 3 years' experience. Familiarity with in vitro and in vivo rodent model systems is highly desired. Experience with molecular biological techniques including cloning, PCR, hybridization, cell culture and transient gene expression is preferred. Familiarity with data analysis and graphics programs is recommended.

Both positions require strong analytical, problem solving and presentation skills in addition to the ability to direct the work of others and collaborate across departments. Pharmaceutical experience is preferred.

We offer an attractive salary and benefits package, including stock options. Please indicate Dept. 740-88 and, selecting one method only, submit your resume to: **LIGAND Pharmaceuticals, 10275 Science Center Drive, San Diego, CA 92121. Fax (619) 550-7800. E-mail: jobs@ligand.com. EOE.**



LIGAND
PHARMACEUTICALS

www.ligand.com



ASSOCIATE AREA DIRECTOR

Three Senior Executive Positions with the U.S. Department of Agriculture

Associate Area Director, Beltsville Area,
Beltsville, MD, Announcement ARS-SES 98-2

Associate Area Director, Southern Plains Area,
College Station, TX, Announcement ARS-SES-98-3

Associate Area Director, Northern Plains Area,
Ft. Collins, CO, Announcement ARS-SES-98-4

The incumbent participates fully with the Area Director in the management of research programs that involve a wide variety of highly specialized scientific disciplines. These include microbiology, zoology, entomology, botany, plant pathology, plant physiology, genetics, soil science, agronomy, chemistry, agricultural engineering, and veterinary medical science. Positions require considerable flexibility and skill in providing effective research leadership to a wide variety of diverse programs and in developing systematic, coordinated plans to achieve broad goal-oriented research results and fully utilizing available resources. The incumbent must also establish and maintain effective work relationships with Federal and State agencies, cooperators, and representatives of industry and consumer groups. Salary \$105K-\$125K.

For program information contact:

Phyllis Johnson (301) 504-6078 (Beltsville);
Chuck Onstad (409) 260-9346 (College Station);

Will Blackburn (970) 229-5557 (Ft. Collins).

The complete vacancy announcement and information about how to apply is found at <http://www.ars.usda.gov/afm/hrd/vacancy/vac2.html>. Or contact **Human Resources Division Telephone: (301) 504-1448**. Applications must be received by September 30, 1998.

USDA/ARS is an Equal Opportunity Employer.

LOVELACE RESPIRATORY RESEARCH INSTITUTE

Postdoctoral Fellowships

Lovelace Respiratory Research Institute, the nation's only Institute dedicated to eradicating respiratory diseases through research aimed at understanding their causes and biological mechanisms, is committed to recruiting postdoctoral fellows for several programs. Programs targeted for recruitment include Lung Cancer, Immunology, Inhaled Drug Delivery, and Biomarkers.

Postdoctoral fellows trained as molecular biologists will participate in research projects within the lung cancer program directed toward novel gene discovery, mechanisms for gene regulation, elucidating pathways for lung cancer development, and identification of susceptibility factors for cancer. Postdoctoral fellows in the Immunology program will have the opportunity to participate in human asthma studies, use animal models of asthma, and determine the immunotoxicity of xenobiotics at the molecular level. Training in cell and molecular biology is desired for studies focused on pulmonary immunity, the role of eosinophils in airway hyperreactivity, and the evaluation of asthma drugs on the function of mast cells and basophils in the lung.

The Inhaled Drug Delivery program, working together with scientists from the lung cancer program, is focused on recruiting postdoctoral fellows to work in areas of delivery of chemopreventive drugs by inhalation to block cancer progression and in developing gene-directed therapy to treat established tumors.

The Biomarker Program is looking for candidates trained in analytical chemistry to conduct exciting studies that will identify novel biomarkers that elucidate exposure and susceptibility to environmental chemicals. Highly competitive stipends and benefits.

Send cover letter indicating program of interest and resume to: **Dr. Steven Belinsky, Director of Lung Cancer Program; Dr. David Bice, Director of Immunology Program, Dr. Alan Dahl, Director of Inhaled Drug Delivery Program, or Dr. Rogene Henderson, Director of Biomarker Program.** Address all correspondence to Lovelace Respiratory Research Institute, P.O. Box 5890, Albuquerque, NM 87185 or e-mail to hmail@lrri.org. Please refer to Job #S3098.

We are an Equal Opportunity Employer.



MAYO CLINIC DEPARTMENT OF MEDICAL GENETICS



Senior Associate Consultant Position

Mayo Clinic, Department of Medical Genetics, is seeking a clinical geneticist for its expanding clinical genetics program. All applicants must have a M.D. degree and be Board-certified or Board-eligible for certification in clinical genetics by the American Board of Medical Genetics. In addition to participating in existing clinical programs, we seek an individual to expand collaborative initiatives with the Mayo Cancer Center and/or the Molecular Medicine Program. A successful candidate will be expected to participate in education and research activities. Academic rank and salary will be commensurate with experience. Applications should be received prior to October 1, 1998.

Curriculum vitae, a cover letter detailing experience, future interests, and names of three individuals who can provide letters of recommendation should be sent to:

Gerard Vockley, M.D., Ph.D., Chair Search Committee for the Department of Medical Genetics, Mayo Clinic, 200 First Street S.W., Rochester, MN 55905
FAX: 507/284-1067

Mayo Foundation is an Affirmative Action and Equal Opportunity Employer Educator.

POST-DOCTORAL POSITION AVAILABLE FOR DNA VACCINE RESEARCH AT THE LABORATORY OF VIROLOGY, THE NEW YORK BLOOD CENTER

THE POSITION:

To investigate strategies for achievement of optimal immune responses for prophylaxis and immunotherapy of hepatitis C (HCV) infections, and elucidation of correlates of protection. DNA based, canary pox virus based, and DNA encoding lymphokine genes are under study in the mouse and chimpanzee models. Independence and independent funding are strongly encouraged. Competitive salary and excellent fringe benefits, including a housing supplement, are provided. The position can be filled immediately.

THE LABORATORY:

The Laboratory of Virology has a staff of 12 scientists and technicians engaged in various aspects of HCV and HIV research, ranging from molecular virology to immunology. The laboratory occupies 4000 sq ft of space and is well equipped for virological, molecular biological and immunological research. Weekly laboratory seminars are held. The laboratory is headed by Alfred M. Prince M.D. who has 25 years experience in HCV research.

THE INSTITUTE:

The Lindsley F. Kimball Research Institute of the New York Blood Center has a staff of about 160 in 16 laboratories engaged in investigator driven research. Central facilities include Microchemistry (oligo and peptide sequencing and synthesis, electron microscopy, animal facilities, radioisotope laboratory, and a library. The Institute is located in mid-town New York, 2-3 blocks from Rockefeller University and Cornell University Medical College. Weekly institute seminars are led during the academic year. The Institute reserves housing for fellows and staff in the nearby Rockefeller University housing complex (5 minutes walk).

TO APPLY:

To be considered for these fellowship opportunities, please forward your resume/cv, to: New York Blood Center, HR Dept-MK, 150 Amsterdam Avenue, New York, NY 10023. Fax (212) 721-7252. EOE

Lindsley F. Kimball
Research Institute
A Division of the New York Blood Center

FACULTY POSITION MOLECULAR CARDIOLOGY PROGRAM

The Molecular Cardiology Program at the University of Chicago invites applications for a tenure-track position at the Assistant or Associate Professor level. The successful candidate has an M.D. and/or Ph.D with research experience in the areas of molecular and cellular biology, developmental biology and/or human and mouse genetics.

Applicants should submit a curriculum vitae, summary of research accomplishments, and three letters of recommendation to: **Jeffrey M. Leiden, M.D., Ph.D., Molecular Cardiology Search Committee, The University of Chicago, 5841 S. Maryland, MC 6080, Room B608, Chicago, IL 60637.**



**THE UNIVERSITY
OF CHICAGO**

*An Affirmative Action/
Equal Opportunity Employer*

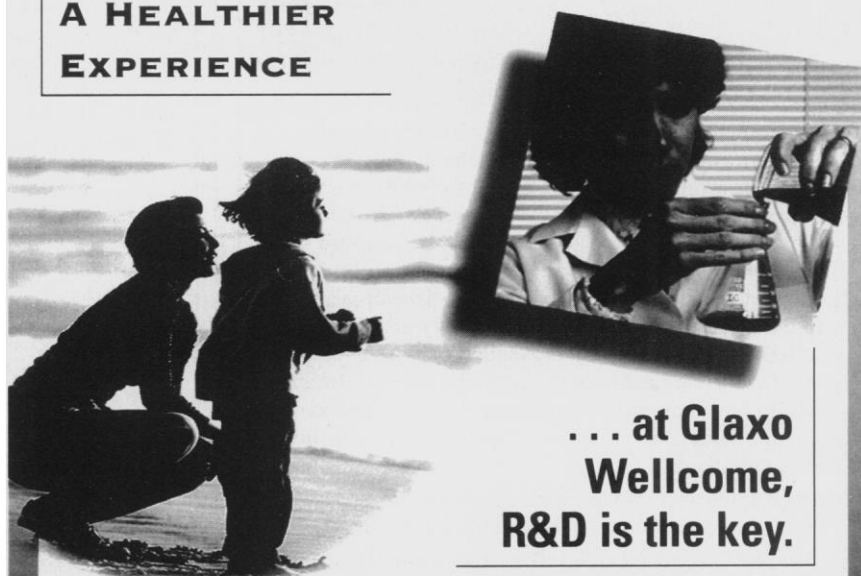
STAFF SCIENTIST

The Laboratory of Integrative and Medical Biophysics, National Institute of Child Health and Human Development, NIH, seeks an experienced, doctoral level Physical Biochemist to establish and maintain a general purpose biochemistry and cell biology facility. A principal purpose of this position is to support a group of interdisciplinary investigators whose research involves applications of physical and engineering science to biomedical problems. Present activities of the Laboratory include development of fluorescence-based methodologies for investigating cell function and for minimally invasive medical diagnosis; use of physical theory and methodologies to understand the structure and dynamics of elements of the cell cytoskeleton; studies of the physical basis of biological vesicle formation, with emphasis on clathrin-mediated endocytosis and intracellular transport; neutron and light scattering from supramolecular, nanoscopic biological assemblies (e.g., clathrin, tubulin, actin); studies of the mechanical properties of cells and tissues (e.g., cartilage, blood cells); investigations of biomimetic systems, including polymer gels and phospholipid vesicles; development of novel methodologies to extract small populations of cells from complex tissues and to perform quantitative gene analysis on the isolated cells.

QUALIFICATIONS: The successful candidate will be at least eight years post doctoral and will have a doctoral degree in biophysical chemistry or a comparable discipline. Applicants must possess a high level of expertise in the application of a wide range of biochemical, biophysical, and cell biological techniques, particularly those used to characterize the properties of macromolecules. The successful candidate must meet the following five criteria: (1) demonstrated general expertise in the area of protein biochemistry and biophysics, as evidenced by a significant number of publications of high quality, creativity, and innovation; (2) demonstrated ability to collaborate with a wide group of investigators, including scientists outside his or her immediate research group; (3) ability to analyze biophysical data quantitatively, rather than descriptively; (4) ability and experience in maintaining a laboratory in which physical instrumentation is used for biochemical characterizations; (5) ability to communicate with other scientists on methods of laboratory analysis, including participation at meetings and seminars and the training and supervision of visiting investigators and students. U.S. Citizenship or permanent residence status is required.

HOW TO APPLY: Application packages must include a curriculum vitae, bibliography, copies of selected publications, a detailed description of knowledge, skills, and abilities relating to the five criteria listed above, as well as a narrative indicating how the candidate's expertise and interests relate to the activities of the Laboratory. Candidate should arrange for letters of recommendation from three references who can provide evaluations of the applicant's professional qualifications. Application packages and letters should be sent to: Chair, LIMB(SCB) Search Committee, c/o Ms. Elinor Hochman, Bldg. 49A, Room 5A64, National Institutes of Health, Bethesda, MD 20892-4490. Applications must be postmarked by September 25, 1998. *NIH is an equal opportunity employer.*

MAKING EVERYDAY LIVING A HEALTHIER EXPERIENCE



... at Glaxo
Wellcome,
R&D is the key.

Glaxo Wellcome Inc., one of the world's largest pharmaceutical companies, is a company of people working together for a healthier world. Our breakthrough discoveries are helping people with HIV/AIDS, cancer, heart disease, asthma, migraines, epilepsy and many other diseases. Come share the challenge of leadership as we develop breakthrough medicines for everyday living. We currently have the following openings at our U.S. Corporate Headquarters located in Research Triangle Park, N.C.

RESEARCH INVESTIGATOR Virology

This individual will be responsible for providing leadership and experimental direction to antiviral drug discovery efforts for the Human Papillomaviruses. Will serve in a supervisory role and assist in assay development, compound assessment and mechanism of action studies. Major duties include day-to-day experimental design and execution; project leadership; preparation of reports/manuscripts for internal and external publication; evaluation of new targets and opportunities; performing scientific presentations internally and externally; and matrix interactions with research and clinical/commercial colleagues. Requires a Ph.D. or M.D. in Virology, Microbiology, Biochemistry or a related discipline with postgraduate experience preferred. Experience in molecular virology is required, with special emphasis on Human Papillomaviruses preferred. Please refer to Job# ASC5841-1 on all resumes.

SENIOR TOXICOLOGISTS (Two Positions)

TOXICOLOGIST (Study Director)

Will serve as an in-house Study Director in the design, conduct and report preparation for nonclinical safety studies incorporating multiple animal species and routes of compound administration. The ability to summarize study conclusions clearly and concisely regarding safety evaluations is essential, as is the ability to deal effectively with people from a wide variety of professional and technical backgrounds. Requires a Ph.D. in Toxicology (or a related discipline such as Pharmacology or Physiology) and 0-7 years experience as a Study Director, or an MS with 5 years experience as a Study Director. Board certification (DABT) and experience in pharmaceutical industry preclinical laboratory are desirable. Please refer to Job #ASC5851-1 on all resumes, and include list of three references.

TOXICOLOGIST (Toxicology Project Coordinator)

As part of a multi-disciplinary team, this individual will support and enhance the progression of drug development activities within the Medicines Safety Evaluation Department. Principal responsibilities will involve: information flow, project and documentation management, and Divisional duties which would include expertise in nonclinical safety study design and interpretation of study results. This individual will also be responsible for writing/reviewing the nonclinical (drug safety) sections of regulatory submissions (INDs, NDAs and expert reports) required by regulatory agencies worldwide. Requires a Ph.D. in Toxicology (or a related discipline) with a minimum of 7 years toxicology experience in the pharmaceutical industry. Board certification (DABT) is preferred. Experience in Safety Pharmacology is a plus. Please refer to Job #ASC5852-1 on all resumes, and include a list of three references.

Our location is just another great reason for joining Glaxo Wellcome. We are located in Research Triangle Park, NC, the world's largest planned research center, and are within easy reach of three major universities and offer outstanding cultural activities and a superb quality of life. You'll also benefit from a competitive salary and a comprehensive benefits package. For consideration, send your resume which must include position title/job# and salary history, to: Human Resources Department, Glaxo Wellcome Inc., 5 Moore Drive, Bldg. 5, Room 2520, Research Triangle Park, NC 27709. (No Phone Calls or Agency Referrals, Please). To review other openings, call our Job Line or visit our Website.

GlaxoWellcome

Breakthrough Medicines
For Everyday Living™

An Equal Opportunity Employer M/F/D/V

Website:
www.glaxowellcome.com

Job Line:
(919) 483-2565



WASHINGTON UNIVERSITY IN ST. LOUIS

School of Medicine

**Tenure Track
Assistant Professor
Developmental Biologist**

The Department of Molecular Biology and Pharmacology at Washington University School of Medicine is recruiting individuals at the level of Assistant Professor on the tenure track. We are seeking an outstanding scientist working in the area of developmental biology. Special emphasis will be given to research involving systems where genetic tools can be used to address fundamental questions dealing with development. Faculty in the Department of Molecular Biology and Pharmacology utilize a broad range of organisms including yeast, *C. elegans*, *Drosophila*, and mice to investigate cell fate specification, pattern formation, and the regulation of cell proliferation, differentiation, migration, and death. (Visit our website at <http://pharmsun.wustl.edu>.)

Interested applicants should forward a curriculum vitae and a short summary of research plans to:

**Search Committee (c/o Jeffrey I. Gordon, Head)
Department of Molecular Biology and Pharmacology
Washington University School of Medicine
660 South Euclid Avenue, Box 8103
St. Louis, MO 63110**

Applicants should also arrange to have three letters of recommendation sent to the same address.

Washington University is an Affirmative Action/Equal Opportunity Employer committed to increasing the representation of women and minority groups on its faculty.

**HEAD, DEPARTMENT OF PATHOLOGY
THE UNIVERSITY OF IOWA**

The University of Iowa College of Medicine invites nominations and applications for the position of Professor and Head of the Department of Pathology. This position offers excellent resources and institutional commitment within a major research university.

The successful candidate will head the Department of Pathology in the University of Iowa College of Medicine. The Department is committed to research, education, and clinical service, with strong faculty and staff. The clinical service is located in the University of Iowa Hospitals and Clinics, an 860-bed tertiary care hospital. The Veterans Medical Center, located adjacent to the University of Iowa Hospitals and Clinics and College of Medicine, is an affiliated program. The University of Iowa is in Iowa City, a vibrant community located in southeastern Iowa. The community offers excellent schools, quality entertainment opportunities, and Big 10 sporting events. Additional information about the research, educational, and clinical activities of the Department is available on the Web at <http://www.medicine.uiowa.edu/pathology/>.

Applicants will have an M.D. or M.D./Ph.D. and have received certification by the American Board of Pathology or have equivalent qualifications. The Search Committee seeks candidates with proven administrative and leadership ability, demonstrated commitment to education, and an outstanding record of accomplishments in biomedical research.

The Search Committee will accept nominations and applications until the position is filled. Applications should include a curriculum vitae and the names of three or more references. Please send nominations or applications to:

**Deborah L. Segaloff, Ph.D.
Chair, Search Committee for Head of Pathology
Office of the Dean, 200 CMAB
Attn: Mary Jo Young
The University of Iowa College of Medicine
Iowa City, IA 52242
E-mail: deborah-segaloff@uiowa.edu**

The University of Iowa is an Affirmative Action/Equal Opportunity Employer. Women and minorities are strongly encouraged to apply.

CHAIR

**Department of
Pathology and Laboratory Medicine**

The University of Medicine and Dentistry of New Jersey - Robert Wood Johnson Medical School seeks candidates for the position of Chair, Department of Pathology and Laboratory Medicine.

Candidates must have an M.D. degree and be Board certified and eligible for licensure in New Jersey, or have a Ph.D. degree. The desirable candidate should be of national stature with demonstrable leadership qualities; he/she must have demonstrated success in promoting excellent teaching, scholarship and research, as well as developing and implementing clinical programs.

Founded in 1961, UMDNJ-Robert Wood Johnson Medical School, with campuses in New Brunswick/Piscataway and Camden, is one of the seven academic units of UMDNJ, the University of Medicine and Dentistry of New Jersey. Located in Central New Jersey, approximately one hour from New York and Philadelphia, the region has a population of 3.0 million people. RWJMS serves as the only academic health center for the region.

Nominations should include a brief statement of the attributes and qualities of the individual which make him/her ideally suited for this position and a curriculum vitae. Please send applications to the chair of the search committee: **John B. Kostis, M.D., Professor and Chair, Department of Medicine, UMDNJ-Robert Wood**

Johnson Medical School, One Robert Wood Johnson Place, New Brunswick, NJ 08903. UMDNJ is an Affirmative Action/Equal Opportunity Employer, m/f/d/v, and a member of the University Health System of New Jersey. Women and minorities are encouraged to apply.



UNIVERSITY AT ALBANY
STATE UNIVERSITY OF NEW YORK

**PROFESSOR AND CHAIR
Department of Biological Sciences**

The University at Albany invites applications and nominations for the position of PROFESSOR and CHAIR of the Department of Biological Sciences. The Department has 30 full-time faculty and well-established M.S. and Ph.D. programs. The Department has recently embarked on a major research initiative in Comparative Functional Genomics. This initiative has strong support from the University, and the Department has been targeted for substantial resources including a number of tenure-track appointments. The new chair will have an instrumental role in the planning and design of a new, state-of-the-art research facility for the Department of Biological Sciences, which will be located in the new (200,000 sq. ft.) Life Sciences Building. There are ample opportunities for collaborative interactions with faculty of neighboring scientific institutions, including Albany Medical College, Rensselaer Polytechnic Institute, and the Wadsworth Center for Laboratories and Research of the New York State Department of Health.

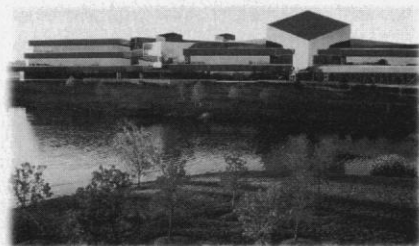
The successful candidate will have a distinguished record of scholarly activity, an internationally recognized program of sponsored research, a commitment to excellence in education and leadership skills.

The recruitment package and resources are very competitive. Applications will be reviewed as they are received. A letter of application, curriculum vitae, and names of three references should be submitted to:

**Biological Sciences Chairperson Search Committee
Office of the Provost, ADM 201
University at Albany, State University of New York
Albany, NY 12222**

The University at Albany is an Equal Opportunity/Affirmative Action Employer.

Building on a Tradition of Innovation...



... is our foundation for success and can be your vehicle for personal growth and achievement at Dow AgroSciences. One of the largest research-based agricultural and specialty products companies in the world, we are dedicated to the responsible management of pests, plants, diseases and weeds that destroy food, natural resources and personal property. Our products dramatically improve the quality and quantity of the earth's food supply and contribute to the safety, health and quality of life of the world's populations. With more than 3,000 employees in 26 countries and sales in excess of \$2 billion, Dow AgroSciences can offer you the resources that will enhance your career.

Our exceptional products have set the industry standard for quality and continue to evolve to meet the needs of a changing world. We currently seek:

Ph.D. Plant Biochemists/Physiologists

One position will be responsible for early-stage biochemical evaluation of novel herbicidal activities, and the proposal and experimental validation of new herbicidal target sites. The successful applicant will have a Ph.D. in plant biochemistry or physiology, experience in the analysis of plant metabolism, biochemical pathways or enzymes, and an excellent knowledge of plant primary metabolism and physiology. (Code WMTW-1)

A second position will be responsible for identifying xenobiotic/plant interactions which limit the translation of activity from target site inhibition to efficacious whole organism activity, within novel herbicide, fungicide and insecticide chemistries. The successful applicant will have a Ph.D. in plant physiology or biochemistry, strong analytical skills (e.g. HPLC), and a sound understanding of transport mechanisms and biochemical pathways, and their compartmentation, in plants. (Code IMJO)

For both these positions, familiarity with organic chemistry and herbicide or pesticide biology will be advantageous, as would be post-doctoral or industrial research experience.

B.S./M.S. Biochemist

This position will be responsible for the design and implementation of assays for herbicidal target sites from plants, and the purification of recombinant proteins. The successful applicant will have an M.S. in biochemistry (or a B.S. in biochemistry with relevant professional experience) and experience with enzyme assays and modern methods for protein purification and analysis. Knowledge of plant biochemistry will be advantageous. (Code WMTW-2)

We offer an excellent salary/benefits package, individualized scheduling, and a beautiful headquarters location which includes learning facilities, health and fitness programs and equipment, and a nature preserve with walking trails. Indianapolis, Indiana provides all the cultural advantages of a major metro area plus the comfortable hospitality of the Midwest. Interested candidates should send a letter of interest, resume, transcripts and references to:

Dow AgroSciences LLC
Human Resources Recruiting
(please indicate Department Code)
9330 Zionsville Road
Indianapolis, IN 46268-1054.



Be sure to visit our website at www.dowagro.com and our city's website at www.welcometoindy.com.

Dow AgroSciences offers challenging opportunities within a stimulating and diverse work environment. We are an affirmative action/equal opportunity employer.



THE UNIVERSITY OF TEXAS
MD ANDERSON
CANCER CENTER

FACULTY POSITIONS

Department of Biochemistry & Molecular Biology

Applications are invited for tenure track positions at the Assistant and Associate Professor level. The present focus of the Department is on molecular aspects of cell and developmental biology emphasizing vertebrate and invertebrate animal models. Current strengths include transcriptional regulation, developmental genetics, chromatin structure and gene expression, cellular and membrane-cytoskeletal interactions, and intracellular signaling. Applications are encouraged from outstanding individuals who will bring diverse experimental systems to complement these and related areas within the overall scope of the Department. The MDACC is located in the Texas Medical Center, offering an unusually rich scientific and training atmosphere. Please send a curriculum vitae, a description of research interests, and the names, addresses and telephone numbers of three references to: William Klein, Ph.D., Chairman
Dept. of Biochemistry & Molecular Biology, Box 117, The University of Texas M.D. Anderson Cancer Center, 1515 Holcombe Blvd., Houston, TX 77030
Deadline for applications, Dec 15, 1998.

MDACC is a smoke free environment. An Equal Opportunity Employer
Women & minorities are encouraged to apply

Staff Scientist Intramural Research Program National Institute on Aging

The Intramural Research Program of the National Institute on Aging (NIA), Baltimore, Maryland, invites applications for a position for a staff scientist at the Gerontology Research Center (GRC). Starting salary commensurate with qualifications and experience. The ideal candidate will have a solid background in confocal imaging; have experience with core fluorescence microscopy imaging, cell biology, and the application of image analysis to the study of cell structures; and the ability to further develop the technology.

Applicants must have a Doctoral degree with a record of scientific accomplishments, including excellence in laboratory research.

How to apply: Applicants should send curriculum vitae, bibliography, and three letters of reference (two from non-collaborators) to:

National Institute on Aging
Gerontology Research Center
Attn: Karen L. Maben, Box 26
Vacancy #AG-98-23
5600 Nathan Shock Drive
Baltimore, MD 21224

The deadline for this application is September 28, 1998.
NIA is an Equal Opportunity Employer.

SCIENTIST

In-Vivo Tumor Biology

Headquartered in the San Francisco Bay Area, Megabios Corporation is a progressive biotechnology company providing proprietary gene delivery systems & preclinical development expertise to create gene-based therapeutics for the treatment and prevention of genetic & acquired diseases. We currently have an excellent opportunity for a hands-on team player to assume responsibility for existing tumor biology efforts and establish new in-vivo tumor biology models aimed at utilizing gene therapy technology & Megabios' proprietary non-viral delivery systems.

Reporting to the Senior Director of Life Sciences, you will focus on developing new models and interpreting data for efficacy & pharmacokinetic studies. You will also work closely with senior investigators to expand our current tumor biology capabilities and oversee the work of technical associates. Candidates must possess a DVM or Ph.D. in biology, pharmacology, tumor biology or other relevant discipline; 3+ years of research or postdoctoral experience; AALAS Certification; knowledge of animal handling & surgical techniques for rodents (furry and nude/SCIDs) housed in barrier suites; and solid interpersonal, management and supervisory skills. Knowledge of angiogenic models & heterotopic implants is preferred.

We offer a highly competitive compensation & benefits package, and a fast-paced, team-oriented setting that values the contributions of our diverse workforce. Please send your resume to:



MEGABIOS

Megabios Corporation
HR Department
Attn: Job Code STB/MC/SCI
863A Mitten Road
Burlingame, CA 94010
Fax: 650-652-1990
Email: jobs@megabios.com
EOE

www.megabios.com

Postdoctoral Fellowship

A Postdoctoral position is available immediately under the direction of **Dr. Barbara Felber**, in the Human Retrovirus Pathogenesis Section with the ABL-Basic Research Program. Applications are sought from individuals interested in studying posttranscriptional regulation of mRNA expression and its role in retroviral pathogenesis. Emphasis is placed upon identification and characterization of distinct mRNA export pathways (*J Biol Chem* 1997, 272:11356; *Mol Cell* 1998, 1:649). The qualified candidate should have experience in molecular biology and/or protein biochemistry. More information about the ABL Basic Research Program may be found at our website: <http://nmrweb.ncicrf.gov/abl/>.

The ABL-Basic Research Program at the Frederick Cancer Research and Development Center is located in Frederick, MD (45 miles north of Washington DC) and offers a full complement of benefits, competitive postdoctoral stipends, and an excellent work environment. To apply please send a curriculum vitae, and introductory letter containing a brief description of research experience and three letters of reference to:

Human Resources Dept/BF
ABL-Basic Research Program
NCI-FCRDC
P.O. Box B, Bldg 428,
Frederick, MD 21702-1201

An Equal Opportunity/
Affirmative Action Employer

POSITIONS OPEN

FACULTY POSITIONS DIVISION OF BASIC SCIENCES Fred Hutchinson Cancer Research Center

The Division of Basic Sciences of the Fred Hutchinson Cancer Research Center is soliciting applications at the Junior faculty level. Applicants with outstanding accomplishments in any field of molecular, cellular, and/or developmental biology will be considered. Candidates should send a curriculum vitae, a concise statement of his/her research plans, and three letters of reference to:

Basic Sciences Faculty Search Committee
Fred Hutchinson Cancer Research Center
Division of Basic Sciences
Mailstop: A2M-015
1100 Fairview Avenue North
P.O. Box 19024
Seattle, WA 98109-1024

Application deadline: October 15, 1998.

FHCRC is an Equal Opportunity Employer committed to work force diversity and provides a smoke-free environment. We strongly encourage applications from women and minority groups.

FACULTY POSITION ORGANIC CHEMISTRY UNIVERSITY OF CALIFORNIA, IRVINE Department of Chemistry

Applications are invited for a tenure-track position in organic chemistry at the rank of **ASSISTANT PROFESSOR**. Interdisciplinary applicants with allied interests in areas such as biology and materials are particularly encouraged to apply. Candidates are expected to have a strong record of research accomplishments and a commitment to teaching organic chemistry at the undergraduate and graduate levels. Applicants should provide a curriculum vitae, a brief statement of research plans (approximately three pages), and three letters of recommendation to: **Professor Richard Chamberlin, Chair, Department of Chemistry, The University of California, Irvine, CA 92697-2025**. Applications must be received by October 15, 1998. Salary commensurate with experience. *The University of California is an Equal Opportunity Employer committed to excellence through diversity.*

POSITIONS OPEN

ASSISTANT PROFESSOR OF FOOD SCIENCE CORNELL UNIVERSITY 40 Percent Teaching, 60 Percent Research

Abbreviated job description: Starting date: June 1, 1999. Responsibilities: teaching an undergraduate dairy foods course and an advanced undergraduate/graduate course in an area of specialization, supervision of undergraduate students. Develop an externally funded research program in dairy food science. Areas of research interest include fermentation science (especially of dairy foods), microbial food safety of dairy and other foods (especially predictive and risk assessment aspects of microbiology), and dairy food processing. Qualifications: Ph.D. in food science or related fields (biotechnology, microbiology, fermentation, biochemistry). Experience with dairy foods research, postdoctoral research, and teaching desirable. Salary: competitive, commensurate with background and experience. An attractive fringe benefits package is available. For a complete description contact: **Dr. Joseph H. Hotchkiss, Chair, Search Committee, Department of Food Science, Cornell University, Stocking Hall, Ithaca, NY 14853-7201. Telephone: 607-255-7912; FAX: 607-254-4868; e-mail: jhh3@cornell.edu; website: <http://www.nysaes.cornell.edu/cifs/>. Cornell University is an Affirmative Action/Equal Opportunity Employer.**

Wm. Jennings Bryan Dorn VA Medical Center is recruiting an **ASSOCIATE CHIEF OF STAFF** for Research and Development. This individual will be responsible for oversight and promotion of the research efforts at the medical center and will hold a joint appointment at the University of South Carolina School of Medicine and the South Carolina Cancer Center. *Qualified candidates should be U.S. citizens and have an area of interest in both basic research and clinical trials related to the etiology and treatment of malignancies, especially prostate, colon, or lung. The appropriate candidates may have either an M.D. or a Ph.D. degree. Salary is commensurate with qualifications. Interested individuals should send a copy of their curriculum vitae to: Dr. William G. Woods, Director, South Carolina Cancer Center, 7 Richland Medical Park, Columbia, SC 29203. For more specific information Telephone: 803-695-6825. The Department of Veterans Affairs is an Equal Opportunity Employer.*

POSITIONS OPEN

CELLULAR BIOCHEMIST AT THE UNIVERSITY OF MONTANA

The Division of Biological Sciences invites applications for a new tenure-track position in cellular biochemistry at the **ASSOCIATE** (preferred) or **ASSISTANT PROFESSOR** level, to begin as early as January 1999. The successful candidate is expected to have an established, externally funded research program in eukaryotic cellular biochemistry, specifically signal transduction or the regulation of transcription or replication. It is expected that the candidate's research interests will integrate well with others in the biochemistry-microbiology group (see website: <http://www.umt.edu/biology/dbs>). The successful candidate will teach undergraduate and graduate courses in biochemistry with an emphasis in cellular biochemistry, and mentor undergraduate and graduate students. Requirements include a doctoral degree in biochemistry or closely related field, a strong record of research accomplishments including postdoctoral experience, and teaching experience. Send letter of application, curriculum vitae, statement of teaching and research interests, and three letters of reference to: **Cellular Biochemistry Search Committee, Division of Biological Sciences, The University of Montana, Missoula, MT 59812. FAX: 406-243-4184**. Deadline for receipt of all materials is October 15, 1998. *The University of Montana-Missoula is an Affirmative Action/Equal Opportunity Employer.*

BOSTON UNIVERSITY

The Department of Chemistry invites applications for a tenure-track faculty position at the **ASSISTANT PROFESSOR** level. We seek a person who will establish a vigorous and innovative research program at the intersection of organic chemistry and the biological sciences, and who will participate in the undergraduate and graduate teaching activities of the Department. The position will commence in September 1999. Candidates should submit a curriculum vitae, a description of proposed research, and arrange for three letters of recommendation to be sent directly to: **Professor Tom Tullius, Chairman, Department of Chemistry, Boston University, 599 Commonwealth Avenue, Boston, MA 02215**. The deadline for receipt of applications is October 15, 1998. *Boston University is an Equal Opportunity/Affirmative Action Employer.*

Ph.D. Research Scientist - Cardiovascular/Muscle Metabolism

Pfizer scientists are involved in some of the most critical research in the world today. As a Fortune 100 company, we have established a product pipeline that is unparalleled, and an intellectual, collaborative environment that inspires scientific achievement. Join us and become a part of the cure.

In addition to a fast-paced, yet collegial environment, we offer very competitive salaries and excellent benefits including relocation assistance. For confidential consideration, please forward resume to: **Employee Resources, Pfizer Inc, Job Code # , Central Research Division, Eastern Point Road, Groton, CT 06340. For more information about Pfizer, see us on the Internet at: <http://www.pfizer.com>.** We are an equal opportunity employer M/F/D/V.

Cardiovascular Biology Discovery Team seeks a research scientist to join them in the discovery of novel cardiovascular drugs for the treatment of congestive heart failure and ischemia reperfusion injury. Primary responsibilities include supervision of a laboratory focused on the development of experimental models to evaluate drug efficacy and new therapeutic approaches. Ph.D. or equivalent degree in Biochemistry, Pharmacology or related fields of biological sciences with 3+ years' postdoctoral experience and extensive background in cardiovascular/muscle metabolic pathways associated with normal and disease states is required. Specific training in cell biology, protein biochemistry, kinase pathways, assay development, and molecular biology is desirable. Candidates must be able to work effectively in a team environment and have strong written and oral communication skills. Pharmaceutical research experience in a drug discovery laboratory is preferred. **Job Code: 2780**

BS/MS Scientist - Cardiovascular Diseases

Cardiovascular Biology Discovery Team seeks a scientist to join them in profiling compounds and validating targets for the treatment of congestive heart failure and ischemia reperfusion injury. BS or MS degree in Biochemistry or related fields of biological sciences is required. Specific experience in in vitro cellular assays, receptor/enzyme assay development, protein biochemistry, or molecular biology is preferred. Candidates must be able to work effectively in a team environment and have strong written and oral communication skills. **Job Code: 2781**



We're part of the cure.



Public Health Service
National Institutes
of Health
National Institute of
Environmental Health
Sciences
Research Triangle Park
North Carolina

POSTDOCTORAL RESEARCH POSITION

A postdoctoral position is available in the Clinical Studies Section, Laboratory of Pulmonary Pathobiology at NIH/NIEHS to study novel genes that are involved in arachidonic acid metabolism and in the pathogenesis of cardiovascular disease and hypertension (J. Biol. Chem. 271:3460-3468, 1996; J. Biol. Chem. 272:12551-12559, 1997; Genomics 49:152-155, 1998). Emphasis is placed on delineation of the molecular mechanisms involved in gene regulation and the functional significance of the eicosanoid metabolites with respect to heart and kidney physiology. Applicants should possess a Ph.D. degree in Molecular Biology, Cell Biology, Biochemistry, or a related field, and have no more than five years of relevant postdoctoral experience. Salary will be commensurate with experience.

For prompt consideration, send, FAX, or e-mail cover letter, curriculum vitae including publication list, and the names of three people who could provide letters of reference to:

Darryl C. Zeldin, M.D., Head, Clinical Studies Section, Laboratory of Pulmonary Pathobiology, NIH/NIEHS, P.O. Box 12233, Maildrop D2-01, Research Triangle Park, NC 27709; FAX: 919-541-4133; e-mail: ZELDIN@NIEHS.NIH.GOV

NIH is an Equal Employment Opportunity Employer.

GLOBAL OPPORTUNITIES



The University of Sydney
AUSTRALIA

DEAN

Faculty of Science

Reference No. A31/01

Applications are invited for the position of Dean of Science. The appointee will hold a continuing full-time position as a Professor in a discipline area within the Faculty of Science and will act as Dean of Science, with the appropriate responsibility loading, for a period of five years in the first instance. At the conclusion of this period, the appointee may be invited to undertake a further specified period as Dean with a continuation of the appropriate responsibility loading. The Deanship becomes vacant at the end of the term of Professor Robert G Hewitt on 28 February 1999.

The University is one of the largest and most prestigious universities in Australia. The Faculty of Science is its largest Faculty; it is recognised internationally as a leader in teaching and research. Its strength comes from the diversity of its expertise, the quality of its teaching and research and its contacts with other institutions and industry. The Dean is responsible for the general management of the Faculty and for providing leadership and support for all the teaching conducted by the Faculty. The Dean is also responsible for providing leadership and support for the research activities and for the finances and staff of the units in Faculty assigned to the Dean. The appointee will be a distinguished scientist with the vision and capacity to provide leadership in the continuing process of development of the Faculty and its programs and to be an advocate for the Faculty's interests within the University and the community. The Dean is currently assisted in academic matters by ten Pro- and Associate Deans and has a Faculty administrative support structure.

Applicants are invited to outline their understanding of the Office and the role of the Dean in respect to academic and resource management, and their views on the character of the Faculty and their vision for its development, as well as addressing the following detailed selection criteria:

A record of strong leadership; an understanding of key issues in higher education; proven administrative, management and decision-making experience at a senior level; expertise in human resources and financial management and planning; an ability to work effectively in committees and as a member of the senior management structure of the University; an outstanding record of academic achievement in a field of Science, with a breadth of interests and sympathy for other research interests represented in the Faculty; the capacity to promote excellence in teaching, research and other activities; a record of promoting science, including school liaison, business and industry linkages and community outreach; excellent interpersonal and communication skills.

The salary of the Dean is that of a Professor (Level E Academic), A\$92,036 per annum (as of 1 October 1998), plus a responsibility loading for a very large size faculty of A\$21,267 per annum (as of 1 October 1998). An expense of office allowance of A\$3,469 per annum is also available, together with a fully maintained vehicle. Other conditions may be negotiated.

Membership of a University approved superannuation scheme is a condition of employment for new appointees.

Further information about the position may be obtained from the Faculty Liaison Officer, Associate Professor Chris J Durrant, School of Mathematics and Statistics, F07, University of Sydney, NSW 2006, telephone: (+61 2) 9351 3373, fax: (+61 2) 9351 4534, email: C.Durrant@maths.usyd.edu.au

Closing: 15 October 1998

Method of application for academic positions: Four copies of the application, quoting Reference No, including curriculum vitae, full list of publications and the names, addresses, fax numbers and email addresses of three confidential referees to: The Personnel Officer, College of Sciences and Technology, Carlsaw Building, (F07), The University of Sydney, NSW, 2006, Australia

The University reserves the right to appoint by invitation and not to proceed with any appointment for financial or other reasons. Equal employment opportunity and no smoking in the workplace are University policies. See <http://www.usyd.edu.au/>

POSITIONS OPEN

The Department of Microbiology at The Ohio State University invites applications for a tenure-track faculty position at the **ASSISTANT PROFESSOR** level. Innovative scientists are sought, with postdoctoral experience and documented evidence of productive high-quality research, who apply modern molecular biology techniques to study infectious disease or host-pathogen interactions. Current Department strengths emphasize bacterial systems, but outstanding applicants studying viral, fungal, or protozoal pathogenesis will be given serious consideration. Ideal applicants will have a research program and expertise that complement established faculty interests, which include cell signaling, the immune response, *in vivo* gene expression, genome analysis, and microbial physiology in host-pathogen interactions. Successful applicants will be expected to establish an extramurally funded, productive research program and to participate in both undergraduate and graduate-level teaching. This is an excellent opportunity to join an expanding research group within a very productive, interactive Department of Microbiology with a strong Ph.D. program. A competitive salary, excellent research space, and start-up resources are available. To ensure full consideration, applicants should submit a curriculum vitae, summary of future research plans, and the names of three referees by November 1, 1998, to: **Dr. K. Mark Coggeshall, Chair of Search Committee, Department of Microbiology, The Ohio State University, 484 West 12th Avenue, Columbus, OH 43210. Website: <http://www.biosci.ohio-state.edu/microbio>.** *The Ohio State University is an Equal Opportunity/Affirmative Action Employer. Women, members of minority groups, Vietnam-era veterans, and individuals with disability are strongly encouraged to apply.*

Applications are invited for a tenure-track faculty position at the **ASSISTANT PROFESSOR** level in the Department of Microbiology at The Ohio State University. We seek applicants with postdoctoral experience, documented evidence of high-quality research, and a strong commitment to teaching and research at a major research university. The successful candidate will be expected to establish a productive, independent research program with extramural support, to teach at the undergraduate level, supervise Ph.D. students, and participate in graduate education. Preference will be given to applicants with research expertise and a planned research program that emphasizes molecular approaches to microbial diversity, metabolic engineering, or environmental microbiology. A competitive salary, excellent research space, and substantial start-up resources are available. Applicants should send a curriculum vitae, summary of research plans, and the names of three referees to: **Dr. Kathleen E. Kendrick, Chair, Search Committee, Department of Microbiology, The Ohio State University, 484 West 12th Avenue, Columbus, OH 43210. Website: <http://www.biosci.ohio-state.edu/microbio/microbio.html>.** The Department guarantees full consideration for all applications received by November 1, 1998. *The Ohio State University is an Equal Opportunity/Affirmative Action Employer. Women, members of minority groups, Vietnam-era veterans, and individuals with disability are strongly encouraged to apply.*

ASSISTANT/ASSOCIATE PROFESSOR PEDIATRIC PULMONARY/AIRWAY EPITHELIAL CELL BIOLOGY University of Colorado Health Sciences Center National Jewish Medical and Research Center

The University of Colorado and National Jewish Medical and Research Center are jointly recruiting an Investigator in the area of airway epithelial cell biology. Candidates may be basic scientists or Physician-Investigators (M.D. or Ph.D. required). Interest in collaboration with Investigators working in areas relevant to cystic fibrosis, asthma, and/or airway growth and development is necessary. Send curricula vitae to either address listed below before December 1, 1998:

Frank J. Accurso, M.D.
The Children's Hospital
1056 East 19th Avenue, B-395
Denver, CO 80218

or

Robert Mason, M.D.
National Jewish Medical and Research Center
1400 Jackson Street
Denver, CO 80206

National Jewish Medical and Research Center is an Equal Opportunity Employer. Women and members of minority groups are encouraged to apply.

POSITIONS OPEN

The College of the Environment and Life Sciences at the University of Rhode Island invites applications for the following positions:

Terrestrial remote sensing. Academic-year, tenure-track position at the ASSISTANT PROFESSOR level. Ph.D. in natural or earth sciences and formal training or experience in using airborne/satellite remote sensing technology are required. Demonstrated ability or experience in teaching university-level courses is preferred. Postdoctoral training and experience in obtaining extramural research support are highly desirable. Demonstrated ability to work in multidisciplinary teams to solve environmental problems is required. Publication in peer-reviewed journals of research results using remote sensing technology to solve environmental problems is required. Duties involve teaching undergraduate and graduate courses in environmental remote sensing, research, and advising students. See website: www.edc.uri.edu/rsprof for more information. Send a letter of application, curriculum vitae, statement of teaching and research direction, official transcripts of university courses taken, and the names, addresses (postal and e-mail), and telephone numbers of five referees to: **Peter August, Search Committee Chair (Log #191173)** at the address below. Review of résumés will begin on 15 September 1998 and continue until the position is filled.

Organic contaminant hydrogeology. Academic-year, tenure-track faculty position at the ASSISTANT PROFESSOR level. A Ph.D. in hydrology, geology, or within the environmental sciences is required at the time of appointment. The following are also required: potential for developing an externally funded and nationally recognized research program in hydrogeology; an undergraduate degree (or equivalent) in geology; training and research experience in hydrogeology, organic chemistry, and contaminant transport; the ability to teach an upper-division course in environmental organic chemistry and a graduate-level course in solute/contaminant transport; a strong commitment to quality instruction. The following are preferred: postdoctorate experience; a record of peer-reviewed publications and research funding; teaching experience. For information about the Department of Geology, refer to our website: <http://www.uri.edu/cels/gel>. Interested candidates should submit a curriculum vitae, transcripts, a statement of research and teaching interests, and the names of four referees by October 30, 1998, or until position is filled to: **Anne Veeger, Search Committee Chair (Log #021336)** at the address below:

University of Rhode Island
P.O. Box G
Kingston, RI 02881

The University of Rhode Island is an Affirmative Action/Equal Employment Opportunity Employer and is committed to increasing the diversity of its faculty, staff, and students. Persons from under-represented groups are encouraged to apply.

ASSISTANT MEMBER/ ASSISTANT PROFESSOR TRANSPLANTATION BIOLOGY PROGRAM Division of Oncology

The Transplantation Biology Program at the Fred Hutchinson Cancer Research Center and the Division of Oncology at the University of Washington are seeking an academic Hematologist at the Assistant Member/Assistant Professor level. This individual should have a M.D. or M.D.-Ph.D. degree and be Board-eligible/certified. Applicants must have prior experience in autologous, allogeneic, and unrelated bone marrow transplantation and demonstrated expertise in basic laboratory research. Particular research experience in aspects of hematopoietic stem cell purification and large animal studies is desirable. The candidate would be expected to balance research obligations with clinical responsibilities, which include attending on the marrow transplant unit and active participation in management of some activities in the marrow transplant program. Research interests and accomplishments should be demonstrated by publications in peer-reviewed journals. The applicant should have a history of successful external funding support. Interested candidates may submit a curriculum vitae and a concise statement of their research plans to: **Frederick R. Appelbaum, M.D., Fred Hutchinson Cancer Research Center, 1100 Fairview Avenue North (D5-310), P.O. Box 19024, Seattle, WA 98109-1024.** The closing date for applications is September 30, 1998. *FHCRC and the University of Washington are building a culturally diverse faculty and strongly encourage applications from female and minority candidates. FHCRC and the University of Washington are Equal Opportunity/Affirmative Action Employers.*

POSITIONS OPEN

The Department of Physiology at the University of Kentucky College of Medicine invites applications for four tenure-track positions at the **ASSISTANT PROFESSOR** level. We seek individuals who will establish strong research programs that emphasize the use of molecular biological approaches to the study of the following areas: (1) signal transduction mechanisms in cardiovascular and/or pulmonary function and their responses to cardiac or respiratory diseases such as atherosclerosis or asthma; (2) mechanisms of neuronal and glial repair and injury after brain or spinal cord trauma; (3) molecular genetics of ion channels and ionic signaling in excitable cells; and (4) molecular aspects of female reproductive science including the relationship of gender to physiological function.

The successful candidates will be expected to develop an independent, federally funded research program to contribute to the medical and graduate school teaching mission. Special consideration will be given to individuals who complement existing strengths in molecular, cellular, and integrative aspects of physiology. Interactions with other faculty within the College of Medicine, the Sanders-Brown Center on Aging, the Markey Cancer Center, School of Biological Sciences, and College of Agriculture provide a particularly rich and stimulating research environment.

Applicants must have a Ph.D. or M.D. and at least three years of postdoctoral experience. Interested individuals should send curriculum vitae, a detailed statement of past experience, future research plans, and three letters of reference to: **Dr. Phyllis M. Wise, Chair, Department of Physiology, College of Medicine, University of Kentucky, Lexington, KY 40536-0298. FAX: 606-323-1070.** For information about the Department, contact website: <http://physiology.uky.edu>. Applications will be reviewed beginning October 15, 1998.

MOLECULAR BIOLOGIST

Baylor University, a private, comprehensive university of 12,000 students, seeks a Molecular Biologist for a tenure-track position at the **ASSISTANT PROFESSOR** level beginning summer 1999. Applicants must have a Ph.D. degree and be using current and innovative approaches to examine biological processes. Position responsibilities: (1) teach an upper-level course in embryology/developmental biology, teach introductory biology for majors, and develop and teach an upper-level course in area of specialty; (2) establish a research program involving undergraduate and graduate students; and (3) participate in departmental and university service activities. Baylor is renowned for excellence in teaching, balanced with quality faculty and student research. Submit, by 5 October 1998, application letter, curriculum vitae, statements of teaching philosophy and research interests, graduate and undergraduate transcripts, and names and addresses of three references to: **Dave Eldridge, Search Committee Chair, Department of Biology, Baylor University, Waco, TX 76798-7388. Telephone: 254-710-2911; FAX: 254-710-2969; e-mail: david.eldridge@baylor.edu; website: <http://www.baylor.edu>.** *Baylor University is a Baptist university affiliated with the Baptist General Convention of Texas. As an Affirmative Action/Equal Employment Opportunity Employer, Baylor encourages minorities, women, veterans, and persons with disability to apply.*

The Department of Psychology, University of Colorado, Boulder, invites applications for a tenure-track **ASSISTANT PROFESSOR** position in behavioral neuroscience, beginning August 1999. We anticipate an appointment at the level of Assistant Professor, but more **SENIOR** candidates with exceptional qualifications will be considered. We are especially interested in an individual using molecular and/or biochemical tools to study problems relating to adaptation to environmental challenge, broadly defined. Problems such as the long-term effects of early experience on stress-responsive systems, neural sensitization, addiction, and anxiety are examples. However, excellent candidates in other areas of behavioral neuroscience will be considered and are encouraged to apply. Interested persons should send a curriculum vitae, a statement of research and teaching interests, example research papers, and at least three letters of recommendation to: **Steven F. Maier, Chair, Behavioral Neuroscience Search, Department of Psychology, University of Colorado, Boulder, CO 80309-0345.** We will begin reviewing applications as they are completed (beginning in November 1998) and will continue to review applications until the position is filled. *The University of Colorado at Boulder is committed to diversity and equality in education and employment.*

Postdoctoral Research Fellowship in Biomedical Instrumentation

Departments of Engineering Science & Physiology

Two to Three Years

Vacancy 996SNC

A postdoctoral fellowship is available immediately at The University of Auckland, New Zealand.

This position has been created as part of a research programme to investigate the thermal and mechanical characteristics of small samples of living heart muscle. The programme involves the construction of a constant flow microcalorimeter to measure heat production from superfused samples of tissue having mass in the order of tens of micrograms. The resulting temperature difference between the upstream and downstream perfusate is in the order of one millidegree. To identify simultaneously the mechanical characteristic of the sample, and hence derive information about the rate of attachment of actin-myosin cross bridges, the dynamic stiffness of the muscle will be determined by measuring its force development in response to broad spectrum length perturbations. Experimental results will be interpreted using a finite element thermo-mechanical model of the muscle and the instrument.

Applicants should have a PhD and experience in developing instruments for precision low level measurements. Some familiarity with the finite element method, signal processing, or experimental physiology is desirable.

Salary will be NZ\$45,250 per annum.

Further information about the position may be obtained by contacting Dr Poul Nielsen, email: p.nielsen@auckland.ac.nz or fax 64-9-373 7468.

Two copies of resumes with details of your academic record and research experience, along with the addresses and fax numbers of two referees should be sent to the Human Resources Adviser, Faculty of Medicine and Health Science, The University of Auckland, Private Bag 92019, Auckland, New Zealand, by **Friday 11 September 1998**.

For information about The University of Auckland in general see our website: <http://www.auckland.ac.nz/appointments/>

Please quote Vacancy Number 996SNC in all correspondence.

ASSISTANT REGISTRAR,
ACADEMIC APPOINTMENTS



New Zealand

The University has an equal opportunities policy and welcomes applications from all qualified persons

Chief, Cardiology Branch National Heart, Lung, and Blood Institute National Institutes of Health

The National Heart, Lung, and Blood Institute (NHLBI), NIH invites applications for the position of Chief, Cardiology Branch, Division of Intramural Research (DIR). The Cardiology Branch Chief directs a multidisciplinary basic and clinical translational research program in the cardiovascular area, and serves in a senior administrative management capacity. This position offers an exciting opportunity to make substantial contributions to define the future of cardiovascular investigation in the DIR, NHLBI. The Chief should be an outstanding clinician/investigator, with demonstrated research productivity, leadership abilities, administrative skills, and experience in the training of fellows. The individual will provide scientific, clinical, and administrative direction to develop molecular, cell biological, and clinical aspects of cardiovascular research. In addition, he or she will plan and conduct an independent research program related to cardiovascular disorders. The Cardiology Branch is currently composed of 6 senior investigators with programs in molecular cardiology, vascular biology, peripheral vascular disease, endothelial function and dysfunction, coronary artery disease, and cardiomyopathies. Basic science expertise is complemented by strong clinical programs and state-of-the-art cardiac imaging.

Annual salary range from \$135,000–160,000 per year and additional compensation may be authorized depending on individual's qualifications. Candidates for this position must have either an M.D. or M.D.-Ph.D. degree and be Board-certified in Internal Medicine and Board-certified/eligible in Cardiology or equivalent. The successful candidate will have demonstrated previous success in both laboratory-based and clinical research relevant to the NHLBI mission.

Further information about the position and additional qualification requirements may be obtained from Mr. Don Ouellette by calling 301-496-6477. Candidates should send a curriculum vitae, bibliography, a statement of research plans, and the names, addresses, and telephone numbers of four professional references, postmarked no later than October 31, 1998, to: Mr. Don Ouellette, Personnel Management Branch, NHLBI, NIH, 31 Center Drive, MSC 2484, Building 31, Room 5A28, Bethesda, MD 20892-2484.

NIH is an Equal Opportunity Employer.

GLOBAL OPPORTUNITIES



The Defence Medical Research Institute (DMRI), a research establishment of the Ministry of Defence, Singapore, involved in biomedical and human science research, invites suitably qualified personnel to join us as **Cognitive Psychologists, Human Factors Scientists, Vision Scientists, Aviation Physiologists and Underwater Physiologists**.

Applicants must possess at least a PhD in the related field of studies. Please write/fax in with detailed resume including copies of your certificates, transcripts/detailed results, testimonials, current/expected salary, contact numbers and a non-returnable photograph to:

Head Administration Branch, DMRI
AFPN 0051, #20-04
Defence Technology Towers B
5 Depot Road, Singapore 109681
Tel: (65) 373 1858. Fax: (65) 373 1855
E-mail: dmri@pacific.net.sg

Closing date of application: 28th September 1998

POSITIONS OPEN

ASSISTANT PROFESSOR X-RAY CRYSTALLOGRAPHY UNIVERSITY OF KANSAS School of Medicine

Applications are invited for a tenure-track Assistant Professor faculty position in the Department of Biochemistry and Molecular Biology at the University of Kansas Medical Center (KUMC). Applicants should have a Ph.D. or M.D. degree with extensive postdoctoral experience in structural analysis of proteins or nucleic acids by X-ray crystallography. We are seeking an outstanding candidate who will establish a nationally competitive, independent research program. This position is part of an expanding interinstitutional program in cellular and molecular biophysics between KUMC and the University of Missouri-Kansas City. The candidate will have a laboratory and computing facilities in the Department of Biochemistry and Molecular Biology at KUMC (website: <http://www.kumc.edu/biochemistry>), and will share a state-of-the-art X-ray crystallography facility located at the University of Missouri-Kansas City (website: <http://sgl.bls.umkc.edu/xray.html>), three miles away. The candidate is expected to teach at the graduate and medical student levels. A competitive salary and generous start-up funds are available.

Applicants should submit a curriculum vitae, a description of research interests and future plans, and have three letters of recommendation sent to:

Chair, Faculty Search Committee
Department of Biochemistry and Molecular Biology
University of Kansas Medical Center
3901 Rainbow Boulevard
Kansas City, KS 66160-7421

Review of applications will begin as soon as they are received and will continue until this position is filled.

The University of Kansas is an Equal Opportunity/Affirmative Action Employer.

ASSISTANT PROFESSOR OF NEUROBIOLOGY DEPARTMENT OF BIOLOGY AND THE CENTER FOR LEARNING AND MEMORY Massachusetts Institute of Technology

MIT is seeking a Neurobiologist for the Center for Learning and Memory, with a tenure-track faculty appointment in the Department of Biology. The area of interest is broad, but we are particularly interested in candidates who are using cellular and molecular approaches to study mechanisms of synaptic function, modulation, or development.

Applicants should have significant research accomplishments, the ability to establish and maintain a vigorous research program, and a commitment to excellence in education at the undergraduate and graduate levels.

Applicants should submit a curriculum vitae and a summary of current and proposed research work, and should arrange to have three letters of recommendation sent to: Chair, Neurobiology Search Committee, Department of Biology, 68-132, Massachusetts Institute of Technology, 77 Massachusetts Avenue, Cambridge, MA 02139-4307. Applications will be considered as soon as they are complete and letters of recommendation have been received. Qualified women and minority candidates are especially encouraged to apply. MIT is an Equal Opportunity/Affirmative Action Employer. MIT is a nonsmoking environment.

University of Washington, Department of Chemistry seeks outstanding candidates for two or more tenure-track faculty appointments at the ASSISTANT PROFESSOR level. Appointments at the ASSOCIATE and FULL PROFESSOR level may also be considered in exceptional circumstances. All areas of chemistry, including chemical biology, will be considered. For the latter, individuals applying chemical methods to study biological systems and diseases are encouraged to apply to join an already strong program in chemical biology. Candidates will be expected to participate in undergraduate and graduate teaching and to develop a vigorous, externally funded research program. Applicants must have a Ph.D. or equivalent degree by date of appointment. Please submit a curriculum vitae, statement of research and teaching interests, and three letters of reference to: Professor Paul B. Hopkins, Chair, Department of Chemistry (Search), Box 351700, University of Washington, Seattle, WA 98185-1700. Priority will be given to applications received by October 2, 1998. University of Washington is building a culturally diverse faculty and strongly encourages applications from women and minority candidates. Affirmative Action/Equal Opportunity Employer.

POSITIONS OPEN

ASSISTANT PROFESSOR CHEMICAL BIOLOGY The University of Texas Southwestern Medical Center

The Department of Biochemistry at the University of Texas (UT) Southwestern Medical Center announces the opening of two tenure-track appointments at the Assistant Professor level. Preference will be given to candidates with demonstrated productivity in analytical and natural products chemistry. We are particularly interested in Ph.D. and/or M.D. scientists having expertise in (i) mass spectrometry and other cutting-edge methods of analytical chemistry; (ii) isolation and identification of novel, bioactive natural products; and (iii) use of chemical, biochemical, and molecular biological approaches to identify cellular targets and modes of action of natural products. UT Southwestern maintains state-of-the-art facilities and employs a faculty including four Nobel Laureates and eleven members of the National Academy of Sciences. The Biochemistry Department offers a vibrant environment for interdisciplinary research, generous start-up support, and participation in graduate-level teaching. For more information, visit the Chemical Biology Training Program website: <http://biochemweb.swmed.edu/training> or the UT Southwestern website: <http://www.swmed.edu>. Applicants should submit a curriculum vitae, description of research interests, and the names of three references by October 31, 1998, to: Steven McKnight, Chair, Department of Biochemistry, University of Texas Southwestern Medical Center, 5323 Harry Hines Boulevard, Dallas, TX 75235-9038. The University of Texas Southwestern Medical Center is an Affirmative Action/Equal Opportunity Employer. Women and minority candidates are encouraged to apply.

ASSISTANT/ASSOCIATE PROFESSOR CORN BREEDING AND GENETICS

The University of Minnesota has established a 12-month, tenure-track position in corn breeding and genetics supported by a permanent endowment funded by corn growers, seed corn companies, and the University. The successful applicant will conduct research on corn breeding methodology including the application of biotechnology, participate in undergraduate/graduate education, and develop improved corn germplasm consistent with changing and improving production practices. Areas for research emphasis are open; the incumbent will work with the endowment donors to establish research program directions. Ph.D. required by date of appointment. Applications should be received by November 1, 1998. Complete applications will include a résumé, copies of all transcripts, reprints (or equivalent) documenting research contributions, a one- to two-page statement of research and education interests related to this position, and the names, addresses, and telephone numbers of three references. Send to: Dr. Ronald L. Phillips, Chair, Search Committee, Department of Agronomy and Plant Genetics, University of Minnesota, 411 Borlaug Hall, 1991 Buford Circle, St. Paul, MN 55108 USA. Telephone: 612-625-1213; FAX: 612-625-1268; e-mail: phill005@maroon.tc.umn.edu.

The University of Minnesota is an Equal Opportunity Educator and Employer.

ASSISTANT PROFESSOR. Inorganic chemistry, Amherst College. A full-time tenure-track faculty position is available for a Ph.D. Inorganic Chemist beginning in July 1999. The successful candidate will be expected to teach introductory chemistry as well as inorganic chemistry at the advanced undergraduate level, and will have the opportunity to participate in interdisciplinary teaching. She or he will also be expected to establish a vigorous research program in experimental inorganic chemistry in which undergraduates can substantively participate. Amherst College is a private coeducational liberal arts college of 1,570 students and 165 faculty located in the Connecticut River Valley of Western Massachusetts and participates with Hampshire, Mount Holyoke, and Smith Colleges and with the University of Massachusetts in the Five-College Consortium. Applicants should submit a detailed curriculum vitae and a description of their teaching and research plans, and should arrange for the forwarding of three letters of reference, all to: Dr. J. N. Kushnick, Inorganic Search Chair, Department of Chemistry, Campus Box 2243, Amherst College, P.O. Box 5000, Amherst, MA 01002-5000 by October 30, 1998. Amherst College is an Affirmative Action/Equal Opportunity Employer and especially welcomes applications from women, minority, and disabled candidates.

POSITIONS OPEN

ASSISTANT MEMBER IMMUNOLOGY PROGRAM

The Immunology Program at the Fred Hutchinson Cancer Research Center and the Division of Oncology at the University of Washington are seeking a new faculty member at the ASSISTANT MEMBER/ASSISTANT PROFESSOR level. This individual should have a M.D. or M.D.-Ph.D. degree and be a Board-certified Oncologist with experience in the direct care of patients with solid tumor malignancies, as well as patients undergoing allogeneic or autologous bone marrow transplantation. The Investigator will be expected to develop a program in T-cell therapy of solid tumors, and should have expertise in cellular immunology and molecular biology. Research interests and accomplishments, as demonstrated by publications in peer-reviewed journals, should include identification of tumor antigens, isolation and cloning of tumor-reactive T cells, and genetic modification of T cells for use in therapy. The applicant should have a history of successful external funding support. Interested candidates may submit a curriculum vitae and a concise statement of their research plans to: Frederick A. Appelbaum, M.D., Fred Hutchinson Cancer Research Center, 1100 Fairview Avenue North (D5-310), P.O. Box 19024, Seattle, WA 98109-1024. The closing date for applications is September 30, 1998. FHCR and the University of Washington are building a culturally diverse faculty and strongly encourage applications from female and minority candidates. FHCR and the University of Washington are Equal Opportunity/Affirmative Action Employers.

PLANT SYSTEMATICS

The University of Mississippi (UM), Department of Biology invites applications for ASSISTANT PROFESSOR (tenure-track) in plant systematics to complement the department research focus in ecology and evolution. Ph.D. in biological sciences or related field required. Excellence in teaching and development of extramurally funded research program expected. Candidates using modern techniques to address systematic problems and with a strong background in evolutionary theory preferred. Familiarity with habitats of the southeastern United States and/or the neotropics highly desirable. Teaching duties may include freshman biology, systematics, botany, plant diversity, and graduate courses in specialty. Other duties may include advising, directing undergraduate research, and service. Participation in the growth of the UM Herbarium expected. Position available January 1999 or August 1999. Review of applications to begin immediately.

Send curriculum vitae, up to five reprints, statement of research and teaching interest and philosophy, evidence of teaching effectiveness, and names with postal and e-mail addresses of three references to: Dr. Stephen Brewer, Department of Biology, University of Mississippi, University, MS 38677 USA. Review of applications will continue until position is filled. Website: <http://www.olemiss.edu/depts/biology>. The University of Mississippi is an Affirmative Action/American with Disabilities Act/Equal Opportunity Employer. Women and minorities are especially encouraged to apply.

COMPARATIVE ANIMAL PHYSIOLOGIST. The Department of Biology at The University of West Florida invites applications for a tenure-track faculty position at the level of ASSISTANT PROFESSOR, available August 1999. We seek candidates with specialties in either invertebrate or vertebrate physiology. Expertise in the physiology of marine organisms is preferred, but excellent candidates with proficiencies in other areas that complement our existing faculty will be considered. The successful candidate is expected to assist in teaching at the lower division (anatomy and physiology), offer additional courses in their specialty (e.g., comparative/cell physiology) at both the undergraduate and graduate levels, and develop an active research program involving undergraduate and Master's students. Qualifications include Ph.D. and postdoctoral research experience. Teaching experience is desirable. Applicants should submit a statement of teaching and research interests, curriculum vitae, transcripts, and three letters of reference by October 30, 1998, to: Dr. John P. Riehm, Chair, Department of Biology, The University of West Florida, Pensacola, FL 32514. E-mail: jriehm@uwf.edu. Additional information about the university and department can be found at our website: <http://www.uwf.edu>. The University of West Florida is an Affirmative Action/Equal Opportunity Employer. Women and minorities are encouraged to apply.

Enrich Your Scientific Career

with Parke-Davis.

Enrich your career with a world-class company focused on technological advances to benefit world health, Parke-Davis Pharmaceutical Research, a division of Warner-Lambert. Headquartered in the premier academic setting of Ann Arbor, MI Parke-Davis offers the chance to reach new career heights with this research opportunity:

BACTERIOLOGIST Gram-Positive Bacterial Research

While working as part of a multidisciplinary team, you will apply your research skills in the area of microbiology/molecular biology to discover and characterize new antibiotics for human use. Qualified candidates will have a B.S. or M.S. degree in Microbiology, Genetics, Molecular Biology, or closely related field, and a minimum of 2 years' experience in gram-positive bacterial research. The successful candidate will use genetic and molecular biology approaches to identify and characterize bacterial targets, understand the function of those targets in vivo, and analyze the mechanism of action of antibacterial compounds.

We offer an attractive compensation package and a positive environment that encourages continuous growth and success. Qualified candidates please mail, fax or e-mail your resume, indicating Job Code: RJB-98120, to: **Parke-Davis Resume Processing Center, P.O. Box 92242, Los Angeles, CA 90009-2242.** Fax: (310) 337-3367. E-mail: parkedavis@isearch.com

Visit Our Website at:
www.parke-davis.com

Please submit resume on laser-quality white paper, with legible 10 point or larger type, and avoid boldface, italics, borders, etc.

Equal opportunity in action.
Smoke-free work environment.

 **PARKE-DAVIS**

GLOBAL OPPORTUNITIES

THE AUSTRALIAN NATIONAL UNIVERSITY

DIRECTOR

CENTRE FOR RESOURCE AND ENVIRONMENTAL STUDIES

The Centre for Resource and Environmental Studies, Institute of Advanced Studies at The Australian National University invites applications for the position of Director of the Centre.

The Centre conducts research and trains postgraduate students in resource and environmental studies with an emphasis on issues of national and international importance. The Centre has sixteen academic staff, ten support staff, nine visiting fellows and thirty-five postgraduate students. Members of the Centre currently have expertise in the physical, biological and social sciences and the Centre's research is interdisciplinary. The central theme of the Centre's research is the sustainability of human life-support systems. This involves renewable and non-renewable resources and their development, use, conservation, and management by individuals, institutions and governments. The Director provides academic leadership, strategic planning and research coordination and is responsible, through the Vice-Chancellor, to the Council of the University for the development, operation, administration and financial management of the Centre. The Centre is affiliated with the Departments of Geography, Geology and Forestry in the School of Resource Management and Environmental Sciences. The successful applicant will have an academic background in an area or areas appropriate to the Centre. Applicants should have interests in and a broad understanding of resource and environmental issues and of the policy process and its relationship with interdisciplinary environmental research. Experience in research management and raising external funds and a commitment to postgraduate training are required. Applications from women are encouraged. The successful candidate will be offered an appointment as Professor of the University. The term of office of the Director, normally for a period of up to seven years, will be determined by the University in consultation with the successful candidate.

Enquiries should be directed to Professor F C Jackson, Director and Chair of the Board of the Institute of Advanced Studies; Email: Frank.Jackson@anu.edu.au or Professor I White, CRES; Email: Ian.White@cres20.anu.edu.au Further particulars including selection criteria should be obtained before applying from Angela M Devlin, Secretary to the Selection Committee, tel: (61 2) 6249 5903; fax (61 2) 6249 5011 or email Angela.Devlin@anu.edu.au Applications to the Staffing Recruitment Officer, The ANU, Canberra ACT 0200, quoting reference number CRES1.7.1 including CV, list of publications, names and addresses of three referees. **Closing date** 30 September 1998.

Health care

DIRECTOR ADMINISTRATION Gaithersburg, Maryland

The American Dental Association is dedicated to promoting the public's health through its initiatives in education, research, advocacy and the development of standards.

We are currently seeking a Director of Administration at our Paffenbarger Research Center located in Gaithersburg, Maryland. The ideal candidate must have a Ph.D. and/or DDS with a minimum of 5+ years background in dental and/or materials research, technical writing and editing and prior experience in public relations, publishing (including desktop publishing) is essential. Previous experience in public speaking, grantsmanship training/success, grant administration, and proven grant success from a federal agency are a plus. Excellent supervisory and organizational and communication skills are also required. An active publication record and a background in not-for-profit are preferred.

As an employer, we are committed to developing and maintaining valuable employees. Eager and qualified candidates should send their resumes and salary history to:

ADA

AMERICAN DENTAL ASSOCIATION
Paffenbarger Research Center
Dept. DW/FE, Room A-153, Building 224
Gaithersburg, MD 20899
Equal Opportunity Employer



XENOTRANSPLANTATION—The Mayo Clinic, Rochester, MN has developed major initiatives in the area of xenotransplantation.

The **DIVISION OF INFECTIOUS DISEASES** is seeking a highly qualified BC/BE infectious diseases physician to join the infectious diseases staff at the Mayo Clinic in Rochester, Minnesota in support of these programs. The successful candidate will combine demonstrated proficiency in clinical or basic xenotransplantation research with exceptional clinical skills.

Qualified individuals for this unique opportunity should send a CV and letter of interest to:

Walter R. Wilson, M.D., Chair
Division of Infectious Diseases
Mayo Clinic
200 First Street S.W.
Rochester, MN 55905

Mayo Foundation is an Affirmative Action and Equal Opportunity Employer.

POSITIONS OPEN

MOLECULAR NEUROBIOLOGIST ASSISTANT PROFESSOR UNIVERSITY OF DENVER

The Department of Biological Sciences, University of Denver invites applications for a tenure-track position at the Assistant Professor level to begin September 1, 1999. We are seeking a Neurobiologist with expertise in both molecular and cellular aspects of neurobiology. This individual should complement our current research areas in both molecular biology and neurobiology. Candidates must have a Ph.D., postdoctoral experience, the ability to develop an independent and extramurally funded research program, and train Ph.D. and M.S. students. Teaching responsibilities may involve undergraduate courses in introductory biology, cell biology, and upper-division or graduate-level courses in molecular neurobiology. Submit curriculum vitae, three letters of reference, a statement of research and teaching interests, and two recent publications to: Prof. Robert M. Dores, University of Denver, Department of Biological Sciences, Denver, CO 80208. Applications must be received by October 15, 1998, to insure consideration. For information on the University of Denver and the Department of Biological Sciences, please visit website: www.du.edu/biology. The University of Denver is committed to enhancing the diversity of its faculty and staff, and encourages applications from women, minorities, persons with disability, and veterans.

The Department of Molecular Pharmacology at Stanford University School of Medicine invites applications for two tenure-track positions at the ASSISTANT PROFESSOR/ASSOCIATE PROFESSOR level. The appointees will interact with other faculty members who have research interests in stem cell biology, signal transduction, regulation of gene expression, protein structure, functional genomics, and combinatorial biochemistry. The appointee will be expected to develop a creative independent research program in basic science investigations of mechanisms of disease. The Department of Molecular Pharmacology has been designated to play a central role in a new Sir Norman Foster-designed research building scheduled for occupancy in 1999.

Candidates should have a Ph.D. and/or M.D. degree and postdoctoral research experience. Candidates should send curriculum vitae, a description of future research plans, and the names and addresses of three references to: Helen M. Blau, Chair, Department of Molecular Pharmacology and Director of Gene Therapy Technology Development, Stanford University School of Medicine, Stanford, CA 94305-5332. Stanford University is committed to increasing representation of women and members of minority groups on its faculty and particularly encourages applications from such candidates.

Biology. Two ASSISTANT PROFESSORS. (1) ANIMAL BIOLOGIST (begins January or August 1999) to teach comparative vertebrate anatomy and animal biology. (2) MICROBIOLOGIST (begins August 1999) to teach microbiology. Both require Ph.D. and strong commitment to undergraduate teaching and research. Priority deadline October 5, 1998. Send inquiry to: Chair, Department of Biology, University of Wisconsin-Eau Claire, Eau Claire, WI 54702-4004. E-mail: biolsrch@uwec.edu; Telephone: 715-836-4166; FAX: 715-836-5089. Equal Opportunity/Affirmative Action Employer.

University of Florida seeks a RESEARCH ASSISTANT PROFESSOR in the Department of Medicine, Division of Endocrinology. Ph.D. degree with five (5) years of experience. Background in vascular cell biology, diabetes, lipoprotein, and lipid metabolism. Grant experience required. Salary and benefits commensurate with experience. Recruiting deadline, December 31, 1998. Anticipated starting date July 1, 1999. Please reply to: Desmond Schatz, M.D., Associate Professor, Division of Endocrinology, Box 100277 JHMH, Gainesville, FL 32610. An Affirmative Action/Equal Opportunity Employer.

INVESTIGATOR

The Albert Einstein College of Medicine is seeking an Investigator with an established funded research program in experimental pathology for appointment in the Department of Pathology.

Interested candidates should send a curriculum vitae and the names of three references to: Michael B. Prystowsky, Chair, Department of Pathology, Albert Einstein College of Medicine, Jack and Pearl Resnick Campus, 1300 Morris Park Avenue, Bronx, NY 10461. An Equal Opportunity Employer.

POSITIONS OPEN

NATIONAL PROGRAM LEADER. USDA, ARS, National Program Staff, Natural Resources and Sustainable Agricultural Systems, Beltsville, Maryland, is seeking a RANGELAND SCIENTIST, BIOLOGICAL SCIENTIST, or RESEARCH AGRONOMIST. Salary commensurate with experience (\$77,798 to \$101,142). Appointment is a permanent full-time position and requires U.S. citizenship.

Incumbent functions as a National Program Leader and has primary leadership of the Grazinglands National Research Program, which encompasses the Agency's research projects related to rangelands, pastures, and forage production. Candidates must possess (1) specialized experience directly related to the position, and (2) a Bachelor's degree or higher in range management, forage management, agronomy, ecology, genetics, plant physiology, soil science, animal science, or a related subject matter field. (For specific qualifications, see vacancy announcement.) A Ph.D. is desirable. For program information, contact: Allen R. Dedrick, Telephone: 301-504-7987; FAX: 301-504-6812; e-mail: ard@ars.usda.gov. For application package with complete qualification requirements and instructions, contact: The Human Resources Division, Telephone: 301-504-1484 and request vacancy announcement number ARS-S8B-8226, or visit the ARS Vacancy website: <http://www.ars.usda.gov/afm/hrd/resjobs>. Applications must be postmarked by September 28, 1998.

USDA/ARS is an Equal Opportunity Employer.

SUPERVISORY MICROBIOLOGIST

USDA, Agricultural Research Service is seeking a RESEARCH LEADER (Supervisory Microbiologist) to lead a research unit and conduct personal research on foreign animal diseases, at the Plum Island Animal Disease Center, Orient, New York. The research unit conducts fundamental and applied research on foot-and-mouth disease, vesicular stomatitis, and other viruses as assigned, for the purpose of developing practical methods of detection and control of these important livestock diseases. Candidates must be knowledgeable in virology, molecular biology, immunology, pathogenesis of viral diseases, protein and nucleic acid biochemistry, recombinant DNA technology, monoclonal antibody technology, vaccine development, and diagnostic test evaluations. A D.V.M.-Ph.D. (or equivalent) or Ph.D. degree is desired, with at least five years of postgraduate degree experience and demonstrated accomplishments in at least one area of the disciplines listed above. Candidates must be U.S. citizens. Salary is commensurate with experience, \$67,700 to \$90,219, plus benefits. For information on the research program/position contact: Dr. Alfonso Torres, Telephone: 516-323-2500, ext. 207. For application information/instructions, please contact: Maria Martocchia, Telephone: 516-323-2500, ext. 346. ARS is an Equal Opportunity Employer.

ES CELL MICROINJECTIONIST

Experienced ES Cell Microinjectionist to work in collaborative research environment in the Cardiovascular Research Center at the University of Virginia. Must have B.S. and one-plus years of experience in chimeric mouse production, including blastocyst collection, ES cell microinjection, mouse breeding, and tail clips. Knowledge of ES cell culture, gene targeting strategies, and zygote microinjection are a plus. The individual assuming this position will interact with multiple Investigators generating murine models of important cardiovascular proteins. Send curriculum vitae and salary requirements to: Dr. Brian R. Duling, Cardiovascular Research Center, Box 56 MR-4 Building, University of Virginia Health Sciences Center, Charlottesville, VA 22908. Website: <http://hsc.virginia.edu/medicine/inter-dis/cvrc/CVRCHome.html>.

These positions are restricted to permanent residents or citizens of the United States. The University of Virginia is an Equal Opportunity Employer.

RESEARCH SCIENTIST POSITION SICKLE CELL ANEMIA RESEARCH

Applicants are sought to fill the position of Research Scientist in the Department of Biology at Morehouse College. Candidates should have a Ph.D. or M.D. and experience in research on the cell and molecular biology of sickle cell anemia. Send curriculum vitae including description of research experience to: J. K. Haynes, Ph.D., Chair, Department of Biology, Morehouse College, 830 Westview Drive S.W., Atlanta, GA 30314. Equal Opportunity Employer.

POSITIONS OPEN

ASSOCIATE RESEARCH SCIENTIST

The Division of Autoimmune and Molecular Diseases in the Department of Pediatrics at Columbia University is seeking applications for the position of Associate Research Scientist, available immediately. The successful applicant must hold an M.D. or Ph.D. degree (preference would be given to an M.D. with training in rheumatology), with at least two years of experience working with the design, execution, and interpretation of linkage and quantitative trait loci analysis in human autoimmune diseases and/or animal models of these diseases, preferably collagen-induced arthritis, and have experience with breeding congenic lines. A working knowledge of the laboratory techniques and software necessary to perform these analyses is expected. The applicant's career should be developed to a point where they are competitive for RO1-based support. Applicants should send a curriculum vitae, a brief description of research experience, and names of three references to: Dr. Robert Winchester, Director, Division of Autoimmune and Molecular Diseases, Department of Pediatrics, PH 4-477, 630 West 168th Street, New York, NY 10032.

Columbia University is an Affirmative Action/Equal Opportunity Employer. Women and members of minority groups are encouraged to apply.

CO-DIRECTOR, CENTER FOR THE NEURAL BASIS OF COGNITION UNIVERSITY OF PITTSBURGH

The University of Pittsburgh seeks a Senior Scientist to serve as Co-Director of the Center for the Neural Basis of Cognition (CNBC), a joint effort of the University of Pittsburgh and Carnegie Mellon University. Candidates should have a distinguished record of publication and grant funding in the area of cognitive neuroscience, broadly defined. Candidates from all areas of cognitive neuroscience will be considered but we are particularly interested in individuals whose work is in human functional brain imaging. The University of Pittsburgh Co-Director will work closely with Dr. James L. McClelland, Carnegie Mellon University Co-Director, in the administration of the CNBC. The successful candidate will have a primary appointment in an appropriate basic science or clinical department of the University of Pittsburgh School of Medicine to be determined by the candidate's background and interests. Candidates should apply with a letter stating their scientific interests and a curriculum vitae and bibliography to: Robert Y. Moore, M.D., Ph.D., Chair, Search Committee, Department of Neurology, University of Pittsburgh, 3471 Fifth Avenue, Suite 811, Pittsburgh, PA 15213.

The Department of Biochemistry, Duke University Medical Center invites applications for a faculty position at the level of ASSISTANT PROFESSOR. We are seeking candidates with experience in the field of biological NMR as applied to fundamental problems of enzymology, protein structure, or nucleic acid biochemistry. Send résumé, summary of research interest, and three letters of reference to: Christian R. H. Raetz, Chairman, Department of Biochemistry, Duke University Medical Center, Durham, NC 27710. Consideration of applications will commence in October 1998. Duke University is an Equal Opportunity/Affirmative Action Employer.

The Department of Biochemistry, Duke University Medical Center invites applications for a faculty position at the level of ASSISTANT, ASSOCIATE, or FULL PROFESSOR. We are looking for an outstanding candidate working in the field of mechanistic enzymology. Send résumé, summary of research interest, and three letters of reference to: Christian R. H. Raetz, Chairman, Department of Biochemistry, Duke University Medical Center, Durham, NC 27710. Consideration of applications will commence in October 1998. Duke University is an Equal Opportunity/Affirmative Action Employer.

INSTRUCTOR in molecular biology. Design and perform experiments related to gene cloning, expression, and mutagenesis. Experience in viral vectors, gene cloning, and mutagenesis leading to identification of active receptor binding sites is required. Must be capable of working independently on these projects. This person will enhance the molecular biology research in the laboratory. Interested candidates should send their curriculum vitae to: Sunil Wimalawansa, M.D., Division of General Medicine, Department of Internal Medicine, 301 University Boulevard, Galveston, TX 77555-0566. UTMB is an Equal Employment/Affirmative Action Employer/Minorities/Females/Disabled/Veterans.



EnzyMed, Inc. is the first company to fully integrate biocatalysis with organic chemistry to create a unique synthetic capability applied to pharmaceutical and agrochemical discovery. We are a rapidly growing company seeking talented individuals, who are interested in a mix of professional challenges and opportunities in an environment where their abilities and experience will make a difference.

The Iowa City area offers a superior quality of life. Being the home of the University of Iowa, the area has quality schools and numerous employment opportunities, and offers a wide variety of arts and recreational activities.

Senior Scientist, Analytical Chemistry (Code: ANA-1)
Manage all analytical functions and databases, work closely with our scientists to establish methods (HPLC, MS, TLC, etc.), and automate high-throughput analysis and purification of products from our parallel chemoenzymatic synthesis technology platform. We seek a talented and versatile scientist with a background of innovation that will directly contribute to the growth of the company and maintain its technological leadership. Candidates should have a Ph.D. in analytical chemistry and have experience in automated analysis and data processing.

Scientist, Analytical Chemistry (Code: ANA-2)
Seeking a B.S. or M.S. scientist with experience in HPLC operation, maintenance, and methods development. Additional experience with laboratory automation, mass spectrometry, and compound purification is preferred.

Senior Scientist, Microbiology (Code: MIC-1)
Further enhance EnzyMed's microbial transformation capabilities by identifying and developing synthetically useful strains. The successful candidate will have a Ph.D. in microbiology, molecular biology, or related area and experience in biotransformations or biodegradation. Expertise with PCR, new strain construction, P450 catalysis, fusion proteins, or gene shuffling is a plus.

Scientist, Microbiology (Code: MIC-2)
Help expand EnzyMed's microbial biotransformation capabilities and apply them to drug discovery using automated biocatalysis. Requires a B.S. or M.S. in a relevant major. Experience in culture maintenance, strain characterization, and biotransformation or biodegradation of organic compounds is highly desirable.

Senior Scientist, Synthetic Enzymology (Code: ENZ-1)
Help expand EnzyMed's automated biotransformation capabilities for the derivatization of complex organic molecules. We are seeking a Ph.D. scientist in chemical engineering, chemistry, biochemistry, or related area with expertise in enzymatic synthesis. Experience with enzyme or cell immobilization and non-aqueous enzymology is a plus.

Scientist, Synthetic Enzymology (Code: ENZ-2)
Help expand and apply our unique automated biocatalytic synthesis platform directed at the discovery of new pharmaceuticals and agrochemicals. We require a B.S./M.S. scientist in chemistry, chemical engineering, biochemistry, or related area having expertise in the use of biocatalysts for synthetic applications.

For consideration, mail or fax your résumé to:

EnzyMed, Inc.
2501 Crosspark Road, Suite C-150
Iowa City, IA 52242

Fax (319) 626-5410

www.enzymed.com

Please include the job code for the desired position on the envelope and cover letter.

AS BIG AS LIFE ITSELF



For nearly 20 years, Genetics Institute has discovered the breakthrough products and set the direction for an industry. The ultimate success of Genetics Institute flows from a steady stream of creativity and innovation in both science and technology. Genetics Institute's research and development divisions have become recognized scientific centers of excellence by being vigilant in the search for fresh scientific talent. One way in which we accomplish this is our Postdoctoral Fellowship Program.

The Postdoctoral Fellowship Program at Genetics Institute represents a significant commitment to maintaining and strengthening the company's scientific environment. As a Postdoctoral Fellow, you will take advantage of existing scientific expertise and use it as a foundation to develop new skills and ideas. This is your opportunity to test the limits of your intellectual and experimental skills developed during graduate school.

Genetics Institute is uniquely positioned to continue its success and growth well into the next millennium. You'll find it's a great organization for building a rewarding career.

For information on exciting job opportunities in the Postdoctoral Program at Genetics Institute, visit our web site at:

Bone/Connective Tissue Postdoctoral Fellow

A Postdoctoral position is open in the Articular Cartilage Metabolism and Repair Laboratory. The position will focus on high throughput gene expression monitoring of normal and diseased articular cartilage using the most advanced gene chip technology available. Applicants should have a Ph.D. in Molecular Biology or a closely related field. Experience in cell biology and connective tissue research are desirable but not required. **Job Code: 98-255**

Embryonic Growth Factor Postdoctoral Fellow

Postdoctoral research position available to utilize cDNA micro-arrays for gene expression monitoring and gene discovery in tissue growth and repair. To qualify you must have a recent Ph.D. in a biological or engineering science and experience in one or more of the following areas: molecular biology, developmental biology, laboratory automation, or bioinformatics. Familiarity with high throughput gene expression monitoring technologies desirable. Good communication skills and self-motivation essential. **Job Code: 98-441**

Nucleic Acid Technologies Postdoctoral Fellow

We are seeking a Postdoctoral fellow who will join our bioinformatics team and participate in the ongoing program to realize the full potential of gene expression information. We have developed high density oligonucleotide arrays for the expression monitoring of hundreds to thousands of genes in a parallel fashion. This technology is impacting a number of programs at Genetics Institute including the effort to discover function for a large collection of novel secreted proteins. Recently, we have implemented a data management system that is able to filter and report the results of numerous expression experiments with tabulated and graphical outputs. Candidates should have a Ph.D. in Life Sciences, Statistics, Mathematics or similar field and be able to communicate and contribute across the diverse disciplines involved in this program. **Job Code: 98-257**

Please send your resume to:
Genetics Institute Inc., Human Resource Department, Job Code _____,
87 CambridgePark Drive, Cambridge,
MA 02140: or fax to: (617) 876-8847.

Genetics Institute is a wholly owned subsidiary of American Home Products and offers competitive salaries and benefits, including comprehensive health care, dental and life insurance, three weeks' paid vacation, 401(k), pension plan, relocation assistance, dependent care subsidy, and an on-site exercise facility.

Genetics Institute is proud to be an equal opportunity employer, dedicated to building strength through diversity.

GENETICS INSTITUTE®

Harnessing the Body's Power to Heal™

www.genetics.com

POSITIONS OPEN

CELL BIOLOGY POSITIONS

The Department of Cell Biology has tenure-track faculty positions available at all levels for appointment in the fall of 1998. Applicants should hold a Ph.D., M.D., or equivalent degree. Candidates for senior positions should have funded and established independent research programs. Applicants using molecular, genetic, or biochemical approaches to investigate fundamental problems in cellular and developmental aspects of neurobiology are especially encouraged to apply. Opportunity exists for interactions with Investigators at the Oklahoma Center for Neuroscience, Dean A. McGee Eye Institute, and the Oklahoma Medical Research Foundation. Department responsibilities include teaching cell biology, pharmacology, and anatomy to professional and graduate students. Applicants should submit their curriculum vitae, a summary of past and proposed research, and names of three references to: **Robert E. Anderson, M.D., Ph.D., Professor and Chairman, Department of Cell Biology, University of Oklahoma Health Sciences Center, P.O. Box 26901, Oklahoma City, OK 73190. Telephone: 405-271-2377; FAX: 405-271-3548; e-mail: robert-anderson@ouhsc.edu. Visit our website: http://w3.uokhsc.edu/cell_biology. Equal Opportunity/Affirmative Action Employer.**

CHAIR of a multiple-discipline department with the following disciplines: astronomy, chemistry, geology physics, and engineering (pre). A Ph.D. in a departmental discipline or a related field, and outstanding record of teaching and research, experience in external fund raising and grantsmanship, evidence of excellence in teaching, and published research. The successful candidate will possess excellent interpersonal skills, strategic planning experience, and encourage cooperative spirit among constituent faculty. Send applications consisting of a letter of interest; résumé; research plan; and names, addresses, and telephone and FAX numbers of five references to: **Dr. Arthur Cleveland, Dean, College of Science, Columbus State University, 4225 University Avenue, Columbus, GA 31907-5645 by October 1, 1998, to receive full consideration. E-mail: cleveland_art@colstate.edu. CSU is an Affirmative Action/Equal Opportunity Employer.**

RESEARCH ASSOCIATES

The Institute for Gene Therapy and Molecular Medicine at the Mount Sinai School of Medicine has opportunities available to study the immune modulation and cancer-mediated immune tolerance. The research in this laboratory addresses the mechanisms of tumor antigen presentation, T-cell development, NK-mediated tumor killing, and immune suppressions. The scientific research results could be translated into clinical application. Highly motivated individuals with experience in cellular and molecular immunology, especially in fields of T cell inactivation, antigen presentation, and NK immunobiology are highly recommended.

Please send curriculum vitae and names of three references to: **Dr. Shu-Hsia Chen, Box 1496, Institute for Gene Therapy and Molecular Medicine, Mount Sinai School of Medicine, One Gustave L. Levy Place, New York, NY 10029-6574. E-mail: chens01@ddc.mssm.edu. We are an Equal Opportunity Employer fostering diversity in the workplace.**

NEUROPHARMACOLOGISTS

The Department of Psychiatry and Biobehavioral Sciences and the Neuropsychiatric Institute (a multidisciplinary research institute) at UCLA seek to develop a program in molecular pharmacology. Candidates must possess an M.D. or Ph.D., and demonstrated research experience in basic neuromodulatory systems and the relationship of these systems to psychiatric disorders. Applicants must qualify for appointment as **ASSISTANT** or **ASSOCIATE PROFESSOR** at UCLA. Demonstrated excellent teaching skills required. Send curriculum vitae and the names and complete addresses of three references to: **Cynthia Brooks, Manager, Academic Personnel Office, Department of Psychiatry and Biobehavioral Sciences, 760 Westwood Plaza, Los Angeles, CA 90024-1759. Equal Opportunity Employer.**

TOXICOLOGIST sought for high-profile national public interest group to evaluate the safety of food additives. Candidates must have a Ph.D. and advocacy experience. Salary commensurate with experience. Send résumé and writing samples to: **Center for Science in the Public Interest, S:TOX, 1875 Connecticut Avenue N.W., #300, Washington, DC 20009.**

POSITIONS OPEN

ASSISTANT-LEVEL Cooperative Extension (CE)/Agricultural Experiment Station (AES) academic career-track appointment (11 months). The Department of Botany and Plant Sciences, University of California, Riverside, is recruiting for a position in the area of environmental horticulture-nursery and floriculture crops. Salary commensurate with education and experience.

Applicants must have a Ph.D. in plant science discipline with expertise in areas such as soil and water science, plant stress physiology, pest management, restoration horticulture, post-harvest handling of crops, and plant improvement. Postdoctoral experience is desirable. The position has a major CE research and education component and also an AES research component. The successful candidate is expected to provide strong leadership, collaboration, and support in mission-oriented research and educational activities related to nursery and floriculture production and cropping systems in California. Activities include (1) planning and establishing statewide extension programs addressing important nursery and floriculture production concerns for exotic and native species; (2) conducting an extramurally funded research program that addresses the needs of industry; and (3) providing program leadership, technical assistance, and in-service training for UC County Farm Advisors and for appropriate industry and consumer clients. Funding opportunities exist from State and Federal agencies, California nursery and horticultural industries, and private individuals and groups.

Send letter of application, curriculum vitae, statement of research interests, transcripts, and the names and addresses of at least three references to: **Dr. Elizabeth M. Lord, Chair, Department of Botany and Plant Sciences, University of California, Riverside, CA 92521-0124. E-mail: lord@ucr.ac1.ucr.edu; FAX: 909-787-4437; website: <http://cnas.ucr.edu/~bps/homepage.htm>. Deadline: Review of files will begin in October of 1998, and will continue until the position is filled. Position available: January 1, 1999.**

The University of California, Riverside is an Affirmative Action/Equal Opportunity Employer.

RESEARCH ASSOCIATE MOLECULAR VIROLOGY UNIVERSITY OF NEBRASKA

A Research Associate position is available to study molecular interactions between RNA virus replicase complexes and their respective animal or plant hosts. The research is designed to exploit commonalities between these host-pathogen interactions to understand basic aspects of virus replication and evolution in plants and animals. A strong background in molecular biology and genetics, with a record of research experience in molecular methods are essential. A Ph.D. degree (or equivalent) by the time of appointment (early 1999) is required. Further information can be obtained from: **Dr. Roy French, Telephone: 402-472-3166; e-mail: rfrench@unlinfo.unl.edu; website: <http://ianrwww.unl.edu/aocpap>. Application materials including curriculum vitae and the names and addresses of three referees should be sent by September 30, 1998, to: **Dr. Ruben Donis, 202 VBS, University of Nebraska, Lincoln, NE 68583-0905. E-mail: rdonis@unlinfo.unl.edu. UNL is committed to Equal Employment Opportunity/Affirmative Action and the ADA. If you require an accommodation under the ADA, please Telephone: 402-472-4501.****

MOLECULAR BIOPHYSICIST

The Department of Biophysics and Biophysical Chemistry at the Johns Hopkins School of Medicine ([website: http://biophysics.med.jhmi.edu](http://biophysics.med.jhmi.edu)) seeks outstanding candidates for the position of **ASSISTANT PROFESSOR**. Appointments at more senior levels will be considered under exceptional circumstances. Applications are sought in all areas of molecular biophysics and biophysical chemistry including structural biology. Priority will be given to applications received by December 1, 1998. Please submit a curriculum vitae, a statement of research interests, and arrange to have three letters of recommendation sent to: **Search Committee, Department of Biophysics and Biophysical Chemistry, The Johns Hopkins University School of Medicine, WBSB 713, 725 North Wolfe Street, Baltimore, MD 21205. FAX: 410-502-6910. The Johns Hopkins University is an Equal Opportunity Employer.**

POSITIONS OPEN

EXECUTIVE DIRECTOR. The International Life Sciences Institute (ILSI), a worldwide nonprofit, scientific foundation, seeks an Executive Director for its Washington, D.C.-based Risk Science Institute (RSI). The ILSI RSI was established in 1985 to improve risk assessment methodology by strengthening the scientific principles on which risk assessments are based. The position responsibilities include identifying critical areas where research is needed to improve the methodology of assessing human health risks; managing ILSI RSI scientific programs; providing oversight and guidance for grants with outside agencies, including the U.S. government; proposing and administering a yearly budget; staff management and development; and identification and maintenance of funding sources for RSI programs. Requirements include a relevant degree (M.D. or Ph.D. in toxicology, pharmacology, or related science) a minimum of ten years of progressively responsible scientific and managerial experience at an executive and/or senior staff level; outstanding communication skills; knowledge of government grant and contract procedures and regulatory affairs; the ability to analyze and critique scientific documents; and the ability to work cooperatively and collaboratively with individuals at all levels. Please send résumé, including salary history and requirements, to: **The International Life Sciences Institute Administrator, 1126 16th Street N.W., Washington, DC 20036. FAX: 202-659-3859. Equal Opportunity Employer/Minorities/Females.**

MICROSCOPIST CORE FACILITY NATIONAL HEART, LUNG, AND BLOOD INSTITUTE National Institutes of Health

The Division of Intramural Research, National Heart, Lung, and Blood Institute (NHLBI) is seeking an accomplished Investigator (Ph.D. or M.D.) with experience in light and confocal microscopy. This person should have experience in the histologic analysis of heart, skeletal muscle, and brain, as well as general mammalian pathology. The individual occupying this position will be helping to evaluate a variety of transgenic mice, including those with embryonic lethal mutations; therefore, knowledge of mouse developmental biology would be useful, as would be experience with electron microscopy. The salary will be \$45,000 to \$55,000, depending on experience.

Candidates fulfilling the above criteria should send their curriculum vitae, bibliography, summary of relevant experience, and three letters of recommendation to: **Nancy Shaw, Building 10, Room 7N214, 10 Center Drive, MSC 1668, Bethesda, MD 20892-1668 postmarked no later than September 11, 1998. NIH is an Equal Opportunity Employer.**

MICROSCOPIST CONFOCAL TECHNICIAN

The Wayne Hughes Institute, a biomedical research institute in St. Paul, Minnesota is currently seeking a qualified, highly motivated individual to serve as Confocal Technician. Responsibilities will include processing samples for institute scientists, maintaining the one photon and multiphoton microscopes, and, with the Director of Imaging Facilities, determining future directions. Extensive experience with confocal microscopy and immunocytochemical staining and digital image handling is required. In addition, experience with CCD imaging and 35 mm photography is desirable. Candidates must have a B.S. or M.S. and a minimum of three years of work experience in the area of cell biology. Salary is commensurate with experience. This position is full time with overtime.

Send curriculum vitae, three references, and two to three letters of recommendation to: **The Wayne Hughes Institute, Attn: Human Resources, P.O. Box 8178, St. Paul, MN 55108. FAX: 651-697-1057. Equal Opportunity Employer.**

ASSISTANT ATTENDING IN NUCLEAR MEDICINE

Memorial Sloan-Kettering Cancer Center is seeking a Board-certified Nuclear Medicine Physician for a position as Assistant Attending in nuclear medicine. The individual should have at least three years of experience in clinical nuclear medicine, demonstrated evidence of scholarly pursuits of clinical problems, and a commitment to teaching. PET experience is highly desirable. Please send inquiries to: **Steven M. Larson, M.D., Chief, Nuclear Medicine Service, Memorial Sloan-Kettering Cancer Center, 1275 York Avenue, New York, NY 10021. Memorial Sloan-Kettering Cancer Center is an Equal Opportunity Employer.**

RESEARCH SCIENTIST, BIOINFORMATICS



Astra is an international, research-based pharmaceutical company with subsidiaries in some fifty countries. Every day millions of people all around the world use pharmaceuticals from Astra. Astra has approximately 22,000 employees, of whom a third are in Sweden. Sales in 1997 totaled approximately SEK 45 billion. For more information about Astra, see: www.astra.com

ASTRA PAIN CONTROL AB
Astra Pain Control AB in Södertälje is a research company belonging to the Astra Group, with about 300 employees. Our products dominate the world market for local anaesthetics. Through research and development we create local anaesthetic and analgesic agents.

The Department of Cellular and Molecular Pharmacology at Astra Pain Control AB is located at the Novum Research Centre, south of central Stockholm. Our research is focused on identifying and characterising new target molecules for future analgesic drugs, and on understanding the molecular mechanisms underlying pain.

We now have an immediate opening for a molecular biologist (with a PhD or MS degree) with solid experience in the field of bioinformatics. The successful candidate is used to handling the GCG software package and has considerable experience of sequence analysis and database management. Within the department you will be responsible for creating databases, database mining, and acting as our contact person with the Astra Bioinformatics Network. You should be flexible, have excellent communication skills, and be interested in working with scientists from different disciplines.

For further information, please contact Jacques Näsström (tel +46 8 553 254 37), Anders Eriksson (tel +46 8 553 254 53) or Lilian Wikström (tel +46 8 553 254 54).

Please send your application (marked "Bioinformatics") by September 11 to Astra Pain Control AB, Personnel Support & Information, Claes-Göran Persson, S-151 85 Södertälje, Sweden. Fax +46 8 553 287 90.



DIVISION of BIOLOGICAL SCIENCES INSTITUTE of CELL, ANIMAL and POPULATION BIOLOGY

OPPORTUNITIES IN IMMUNOLOGY

The Institute of Cell, Animal and Population Biology (ICAPB) is an expanding centre for basic immunology and the immunology of infectious disease, within a broad based biology department with additional strengths in evolutionary and population genetics, parasitology, behaviour and ecology. There are also close connections with departments with similar interests elsewhere in the Faculty of Science, Medicine and Veterinary Medicine. We are now seeking to appoint:

(i) A FIXED TERM LECTURER IN IMMUNOLOGY

The post is available for a fixed period to 30 September 2002. The successful applicant will be expected to teach Immunology to 3rd and 4th year (Honours) students, and will also be given ample opportunity to develop research interests independently, or in collaboration with established research groups.

Salary on scale: £16,336 - £21,436 p.a. or, exceptionally £22,332 - £28,545 p.a.

Please quote REF: 896601SI.

(ii) A RESEARCH FELLOW IN IMMUNOLOGY

We wish to recruit a research-orientated Immunologist who already holds, or has the potential to win, an externally-funded research fellowship, and whose research could be advantageously pursued within the newly refurbished facilities in ICAPB.

Further details on ICAPB can be found at <http://helios.bto.ed.ac.uk/icapb/icapb.html>

Informal enquiries about these appointments may be made to Professor RM Maizels, Head of ICAPB, (Tel: 0131 650 5511; e-mail: r.maizels@ed.ac.uk) or Dr D Gray, currently in London (Tel: 0181 740 1509; e-mail: d.gray@mailhost.rpms.ac.uk).

For the Lectureship only, further particulars including details of the application procedure should be obtained from:
THE PERSONNEL DEPARTMENT, THE UNIVERSITY OF EDINBURGH, 1 ROXBURGH STREET, EDINBURGH EH8 9TB.

Tel: 0131 650 2511 (24 hour answering service), quoting the appropriate reference number.

<http://www.personnel.ed.ac.uk/recruit.htm>

Closing date: 10 September 1998.



Promoting
Excellence
in Teaching
and Research

Committed
to Equality of
Opportunity

POSITIONS OPEN

MOLECULAR NEUROBIOLOGIST

The Department of Cell Biology and Neuroscience at Rutgers University, New Brunswick invites applications for a **TENURE-TRACK POSITION** from individuals with a record of significant research achievement in cellular neuroscience. Especially encouraged to apply are those employing state-of-the-art molecular approaches to investigate cell signaling, synaptic plasticity, or neural integration. Excellent facilities and competitive start-up funds are available in a department undergoing rapid growth. New faculty will also join a University-wide neuroscience community with strengths in neural development and regeneration, membrane excitability, neuropharmacology, and behavioral neuroscience. Successful candidates will be expected to develop an active externally funded research program, and contribute to graduate and undergraduate education. Applicants should send a curriculum vitae and a statement of research interest to: **Dr. Richard E. Triemer, Chair, Department of Cell Biology and Neuroscience, Rutgers University, Nelson Biological Laboratories, 604 Allison Road, Piscataway, NJ 08854-8082.** Review of applications will begin October 15, 1998, and continue until a suitable candidate is recruited. *Rutgers University is an Equal Opportunity/Affirmative Action Employer.*

THE FUTURE OF GENE THERAPY

Codon Pharmaceuticals is a leading molecular pharmacology company established to develop platform technology that enables site-specific gene recognition and repair, for use in the therapeutic alteration and regulation of genes for treatment of disease. We require a **PH.D.-LEVEL SCIENTIST** with expertise in gene repair and recombination.

We offer a competitive salary and benefits package. For immediate consideration, please submit a letter of application and your résumé to:

**Director of Molecular Pharmacology
Codon Pharmaceuticals, Inc.
200 Perry Parkway
Gaithersburg, MD 20877
FAX: 301-208-6997**

The Hospital for Sick Children, a health care and research centre, affiliated with the University of Toronto, has a **POSTDOCTORAL POSITION** available in the Lung-Gene Therapy Group to study gene transfer, CFTR traffic, and apoptosis. Candidates with a strong background in protein chemistry and molecular biology or electrophysiology should apply by sending their curriculum vitae (including the names and e-mail addresses of three referees) to: **Ms. A. Ambrus, c/o Dr. G. L. Lukacs, Hospital for Sick Children, Lung G5G, 555 University Avenue, Toronto, Ontario M5G 1X8 Canada.** E-mail: aambrus@sickkids.on.ca.

POSTDOCTORAL FELLOW position available to study novel protein kinases linked to inflammatory cytokine signaling. Research projects include structure-function analysis; identification of *in vivo* substrates; requirement for kinase activity in developmental acquisition of immune and inflammatory responses. Send curriculum vitae, summary of research interests and experience, and three references to: **Maureen A. Harrington, Department of Biochemistry and Molecular Biology, MS-410, Indiana University School of Medicine, 635 Barnhill Drive, Indianapolis, IN 46202-5121.**

NEUROSCIENTIST RESEARCH ASSOCIATE position to investigate regulation of the nitric oxide-guanylyl cyclase signaling pathway in relation to NO interactions with anesthesia and analgesia mechanisms in the central nervous system. Molecular biology, neuropharmacology, and neurohistochemistry experience required. Please submit your curriculum vitae and three references to: **Roger A. Johns, M.D., University of Virginia, Department of Anesthesiology, P.O. Box 10010, Charlottesville, VA 22906-0010 USA.** *An Equal Opportunity/Affirmative Action Employer.*

POSTDOCTORAL POSITION available for study of pathogenesis of vasculopathy in diabetes with emphasis on modulation of gene expression in transgenic animals. Molecular biology experience is essential. Send curriculum vitae and names of three references to: **Dr. Burton E. Sobel, University of Vermont, Colchester Research Facility, 55A South Park Drive, Colchester, VT 05446.** E-mail: lori.dales@vtmednet.org.

POSITIONS OPEN

POSTDOCTORAL RESEARCH POSITIONS IN REGULATION OF ASYMMETRIC STEM CELL KINETICS

Positions available immediately for recent graduates trained in biochemistry, cell biology, and molecular biology with interests in the function of tumor suppressor proteins and guanine ribonucleotides in asymmetric stem cell kinetics.

Research projects include investigations of p53 tumor suppressor protein function, DNA replication, cyclin kinase regulation, gene expression analyses by cDNA array techniques, isolation of cell division control genes by insertional mutagenesis, and guanine ribonucleotide metabolism.

Interested graduates should forward curriculum vitae and three letters of reference to:

**James L. Sherley, M.D., Ph.D.
Division of Bioengineering and
Environmental Health
Massachusetts Institute of Technology
Building 16, Room 755
77 Massachusetts Avenue
Cambridge, MA 02139**

A **POSTDOCTORAL POSITION** is available to study the genetic regulation of angiogenesis. A major emphasis will be on the use of subtraction hybridization techniques to isolate genes important to new vessel formation. Candidates must have experience in mammalian tissue culture and molecular biology, and ideally would have a background in vascular biology and/or development. Minimum salary: \$28,536 per annum. Please send curriculum vitae, a summary of research interests, and the names and telephone numbers of three references by August 31, 1998, to:

**Chris C. W. Hughes, Ph.D.
Department of Molecular Biology and Biochemistry
University of California, Irvine
Irvine, CA 92697-3900
FAX: 949-824-8551
E-mail: cchughes@uci.edu
Website: <http://darwin.bio.uci.edu/~cchughes/>**

UCI is an Equal Opportunity Employer committed to excellence through diversity.

POSTDOCTORAL FELLOWSHIPS

Two positions are available immediately to study cell: cell interactions and signal transduction events in hematopoietic cells. Current areas of investigation include actions of selectins and their ligands, cell cycle control in leukemic cells, and bone:bone marrow interactions. Candidates must hold a Ph.D. or equivalent degree in a biomedical science such as biochemistry, cell and molecular biology, physiology, or pharmacology. A strong background in molecular biology, biochemistry, and cell culture is also required. Salary is commensurate with experience. Send résumé and three letters of recommendation (only) to: **Ms. Kathleen Syrkowski, University of Michigan, 1150 West Medical Center, Room 3570 MSRB II, Ann Arbor, MI 48109-0688.**

RESEARCH ASSOCIATE position available to study the role of genetic polymorphism of human carcinogen-metabolizing enzymes and DNA repair enzymes in environmental carcinogenesis and toxicity. Position requires a Ph.D. or equivalent. Candidates with extensive experience in molecular biology and prior knowledge in this field are encouraged to send their curriculum vitae, statement of research interests, and names of three references to: **Dr. Jun-Yan Hong, Laboratory for Cancer Research, College of Pharmacy, Rutgers, The State University of New Jersey, 164 Frelinghuysen Road, Piscataway, NJ 08854-8020.** FAX: 732-445-0687. Salary is commensurate with experience and a comprehensive benefits package is available.

POSTDOCTORAL POSITION

Available now to investigate regulation of molecular interactions of proteoglycans, lipolytic enzymes, and lipoprotein receptors. Cell culture, molecular biology, immunochemical techniques, surface plasmon resonance, recombinant DNA, and gene inactivation techniques employed. Applicants should have Ph.D. and training in biochemistry/molecular biology/cell biology. Send résumé and names of three references to: **Dr. Andre' Ben-sadoun, Division of Biological Sciences and Nutritional Biochemistry, 321 Savage Hall, Cornell University, Ithaca, NY 14853.**

POSITIONS OPEN

POSTDOCTORAL POSITION SENSORY NEURON DEVELOPMENT Department of Biochemistry and Molecular Biology

A Postdoctoral position is available to investigate the role of the POU-domain *Bmi-3* transcription factors in sensory neuron development in the mouse. The project centers around knockout mouse models, for the *bmi-3a*, *bmi-3b*, and *bmi-3c* genes, which display defects in somatosensory, retinal, and auditory/vestibular neurons, respectively. Qualified individuals should have Ph.D. or M.D. and experience in molecular biology. Applications from individuals with training in neurodevelopment are particularly encouraged. Applicants should send their curriculum vitae, brief statement of research accomplishments, and names, addresses, and telephone numbers of three references to: **William Klein, Ph.D., Chair, Department of Biochemistry and Molecular Biology, Box 117, The University of Texas M.D. Anderson Cancer Center, 1515 Holcombe Boulevard, Houston, TX 77030.** MDACC is a smoke-free environment. *An Equal Opportunity/Affirmative Action Employer. Women and minorities are encouraged to apply.*

The Polly Loomis Endowment for Marine Biomedical Research is requesting applications for a **POSTDOCTORAL FELLOWSHIP** as part of a collaborative research partnership among **Dr. Carl Luer, Mote Marine Laboratory, Dr. Robert Langer, Massachusetts Institute of Technology, and Dr. Marsha Moses, Harvard University School of Medicine.** The Fellowship will focus on the identification of angiogenesis inhibitors from a variety of tissues and cells from sharks, skates, and rays, and will be interactive with scientists at all locations. The position will require a Protein Biochemist with expertise in current techniques for protein isolation/purification. Purified material will be evaluated for antiangiogenic activity using *in vitro* (endothelial cell proliferation) and *in vivo* (CAM and corneal pocket) assays.

Candidates must have a Doctoral degree in biochemistry or related area, be fluent in English, and eligible for employment in the United States. To apply, submit résumé and names of three references by October 30, 1998, to: **Loomis Fellowship, Box 107, Mote Marine Laboratory, 1600 Ken Thompson Parkway, Sarasota, FL 34236.**

POSTDOCTORAL POSITIONS IN CELLULAR ELECTROPHYSIOLOGY

Two Postdoctoral Research Associate positions are available immediately as part of an ongoing NIH-funded Program Project Grant investigating molecular structure and cellular electrophysiology of voltage-gated sodium channels. Projects include molecular determinants of permeation, gating, and antiarrhythmic drug action. Candidates must have a Ph.D., M.D., or equivalent degree. Familiarity with patch clamping and/or two microelectrode voltage clamp is required and experience in molecular biology techniques helpful. Send curriculum vitae, description of research experience, and names of three references to: **Jack Kyle, Ph.D., and Harry Fozzard, M.D., Department of Pharmacological and Physiological Sciences, University of Chicago, 5841 South Maryland Avenue, MC 6094, Chicago, IL 60637.** E-mail: kyle@hearts.bsd.uchicago.edu; FAX: 773-702-6789.

POSTDOCTORAL POSITION available immediately to participate in projects focusing on (1) molecular cloning of critical tumor suppressor genes/oncogenes in lung cancer; and (2) identification and characterization of genes upstream and downstream of p53, using the yeast/cell culture model systems. Applicants with a background in molecular biology/genetics, including cell culture and cell cycle analysis, should submit curriculum vitae and list of references with telephone numbers to: **Dr. Sam Thia-galingam, Genetics Program, Boston University School of Medicine, L320, 80 East Concord Street, Boston, MA 02118.** FAX: 617-638-4275; e-mail: samthia@bu.edu.

POSTDOCTORAL POSITION in protein crystallography available immediately for highly motivated individual with expertise in structural biology. Projects include ultra-high resolution crystallography of the SRP GTPase. Send curriculum vitae, brief statement of research interests, and names of three references to: **Dr. Douglas Freymann, Department of Molecular Pharmacology and Biological Chemistry, S-215, Northwestern University Medical School, Chicago, IL 60611.** FAX: 312-503-5349; e-mail: freymann@nwu.edu.

DIRECTOR VHA ETHICS CENTER

The Department of Veterans Affairs (VA) invites applications for the position of Director, Veterans Health Administration (VHA) Ethics Center. The incumbent must have attained national recognition in the field of health care ethics, and possess exceptional skill and experience in (1) providing leadership for emerging ethics-related issues relating to the provision of health care, (2) confronting and resolving medical ethics-related concerns, (3) providing professional training and education for caregivers in the area of medical ethics, (4) ensuring that research activities reflect adherence to ethical standards, (5) formulating medical and professional ethics-related policies and/or advising on their development, and (6) consulting on organizational issues involving medical ethics. The Center offers a comprehensive bioethics program, and promotes high ethical standards in health care, research, and administration by serving as a source of teaching, scholarship, planning, consulting, and troubleshooting regarding ethical issues. As such, the incumbent must have demonstrated expertise and success in the application of health care knowledge and administrative experience in these specific areas.

The veterans health care system is the largest integrated health care system in the nation providing 800,000 acute hospital admissions and over 33 million outpatient visits per year, and includes a staff of 14,000 physicians, 800 dentists, and 40,300 nurses, plus tens of thousands of other health care professional and support personnel. The individual chosen for this position will plan, coordinate, implement, and evaluate the application of medical ethics to all of VA's health care programs. The position reports to the Deputy Under Secretary for Health in the Veterans Health Administration and will be sited in either White River Junction, VT, or Washington, DC.

Applicants must be U.S. citizens and possess an active and current license to practice in their respective discipline(s). Successful candidates are expected to have appropriate professional preparation, e.g., M.D., D.D.S., Ph.D., J.D., Ed.D., Pharm.D., etc. Salaries can range from \$134,000–\$161,000 for physicians, \$114,000–\$126,000 for dentists, and \$85,000–\$105,000 for all others.

Applicants should forward a curriculum vitae and a statement of interest by October 1, 1998, to:

**Department of Veterans Affairs
Management Support Office (10A2A)
Attn: Robert McQueeney
810 Vermont Avenue N.W.
Washington, DC 20420**

The Department of Veterans Affairs is an Equal Opportunity Employer.

UNIVERSITY OF ABERDEEN

**Postdoctoral Research Fellow
(Control of Cellular Morphogenesis)**
£15,462–£17,266 per annum

Required for the DEPARTMENT OF MOLECULAR & CELL BIOLOGY to study the molecular mechanisms that control cellular morphogenesis in the pathogenic yeast, *Candida albicans*. Applicants for this 3-year post, funded by the BBSRC, should be motivated and have a Ph.D. in a relevant subject. You will join the active and well-funded Aberdeen *Candida* Group. Informal enquiries to **Professor Alistair Brown** (tel: 01224 273183, e-mail al.brown@abdn.ac.uk).

Application forms and further particulars are available from **Personnel Services, University of Aberdeen, Regent Walk, Aberdeen AB24 3FX, telephone (01224) 272727** quoting reference number ZMC003R. A 24-hour answering service is in operation.

Closing Date: 18 September 1998.

An Equal Opportunities Employer

RESEARCH SCIENTISTS

Avigen, Inc. is a leader in the development of gene therapy vectors based on adeno-associated virus (AAV) for the treatment of inherited & acquired diseases. We have a great opportunity for a number of hands-on scientists to join our research team in the areas of vector design, novel vector production methods, and development. The group functions in an open and interactive manner and the publication of scientific results is encouraged.

We have opportunities for 2–3 molecular virologists, preferably with backgrounds in herpes or adenovirus biology, to design and implement new methods for AAV vector production. Members of the group will also be involved in the development of new viral vector systems. Candidates must have a Ph.D. or M.D. and at least 3 years of postdoctoral experience in a relevant field.

We are also looking for scientists with knowledge/experience in gene expression to develop systems for tissue specific and/or controllable gene regulation for inclusion into our gene delivery vectors. Candidates must have a Ph.D. or M.D. and at least 2 years of postdoctoral experience in a relevant field.

Positions are also available for Development and Production Scientists who will be responsible for development and production of recombinant AAV vectors for clinical trials. These positions require a Ph.D. in a relevant field or equivalent; 8+ years industrial experience with small/large-scale mammalian cell cultures under GMP, including working experience with live virus production; and familiarity with current analytical methods used in biologics production characterization, and with commonly used software.

We offer very competitive salaries, benefits paid in full by the Company, stock options, 401(k), and an exciting opportunity to work with a dynamic team focused on exploring the impact of gene therapy on selected human diseases.

To apply, e-mail/send/fax résumé to: **Avigen, Inc., Human Resources, 1201 Harbor Bay Parkway, Suite 1000, Alameda, CA 94502; e-mail: sdelph@avigen.com, fax: (510) 748-7155. EOE**



POSITIONS OPEN

POSTDOCTORAL RESEARCH POSITIONS HERPESVIRUS PATHOGENESIS AND MOLECULAR BIOLOGY

Postdoctoral Fellowships are available to study (1) Epstein-Barr virus pathogenesis, (2) the contribution of EBV replicative genes to viral oncogenesis, or (3) functions of regulatory proteins of alphaherpesviruses in virus replication and pathogenesis. The positions allow interaction with a large group of Virologists/Immunologists in a Department with traditional strengths in the molecular biology of herpesvirus infection. A background in molecular and cell biology is desirable.

Send curriculum vitae, statement of research experience, and names of three references to:

John W. Sixbey, M.D. or
Dennis J. O'Callaghan, Ph.D.

Department of Microbiology and Immunology and
Feist Weiller Cancer Center
Louisiana State University Medical Center
1501 Kings Highway
Shreveport, LA 71130-3932
FAX: 318-675-5764

POSTDOCTORAL POSITIONS AVAILABLE

Two Postdoctoral positions are available in the laboratories of **Dr. George Kunos**, at the Medical College of Virginia/Virginia Commonwealth University. The first position involves the study of the role of opiomelanocortin peptides and melanocortin receptors in central cardiovascular regulation. Needed is experience in stereotaxic surgery, *in situ* hybridization, cell culture, and basic molecular biological techniques. The second position (*limited to U.S. citizens or permanent legal residents*) involves the study of the adrenergic control of lipoprotein metabolism in the liver, using biochemical and molecular biological techniques. Send curriculum vitae and names and addresses of two references to: **Dr. Kunos, Department of Pharmacology and Toxicology, P.O. Box 980613, Richmond, VA 23298-0613.** *VCU is an Equal Opportunity/Affirmative Action Employer and encourages women, minorities, and persons with disability to apply.*

POSTDOCTORAL POSITIONS RIBOZYMES AND RNA

NIH-supported Postdoctoral work is available isolating and studying new ribozymes that catalyze carbon and phosphate chemistry, as well as RNAs with other novel properties. Please send curriculum vitae, names and contact information for three scientific references, and a page-sized description of scientific interests to: **Mike Yarus, Department of Molecular, Cellular, and Developmental Biology, University of Colorado, Boulder, CO 80309-0347.** FAX: 303-492-7744; e-mail: yarus@stripe.colorado.edu.

POSTDOCTORAL POSITION at Moss Landing Marine Laboratories, Monterey Bay, California available for developing heterologous gene expression system in yeast. Requires experience in molecular biology, protein biochemistry, and manipulation of yeast cultures. Studies to include development of systems for cell transformation, functional expression of foreign proteins including membrane-bound components, and immobilization onto solid substrates. Contact: **San Jose State University Foundation, P.O. Box 720130, San Jose, CA 95172-0130.** Telephone: 404-924-1460 for application forms and details.

POSTDOCTORAL POSITION

We are seeking an individual to develop a database cataloging molecular, toxicological, and pathogenicity data in the fungal genus *Fusarium*. Candidates should have a Ph.D. in computer or biological sciences, with experience in biological databases. Interested individuals should contact: **David Geiser, Fusarium Research Center, 211 Buckhout Laboratory, Department of Plant Pathology, Penn State University, University Park, PA 16802.** E-mail: dgeiser@psu.edu. *Affirmative Action/Equal Opportunity Employer.*

POSTDOCTORAL POSITION in molecular biology of nuclear hormone receptors, primarily studying mechanisms of gene regulation by thyroid hormone, retinoid, and steroid receptors. Experience in molecular biology is required. Send curriculum vitae and letters of reference to: **Dr. Ronald Koenig, University of Michigan Medical Center, 1150 West Medical Center Drive, Ann Arbor, MI 48109-0678.** FAX: 734-936-6684; e-mail: rkoenig@umich.edu. *Equal Opportunity/Affirmative Action Employer.*

POSITIONS OPEN

POSTDOCTORAL POSITION

Available in the Imaging and Neuroscience Group of the Medical Department at Brookhaven National Laboratory to examine the effect of dopamine neuron activity on the binding of PET and SPECT radiotracers to dopamine receptors. The project will examine radiotracer binding using both *in vivo* rodent models and *in vitro* rat brain slice model. Objectives include evaluating the potential for using PET and SPECT radiotracers to monitor and quantify endogenous levels of synaptic dopamine in the brain during imaging experiments. Background in neuroscience or pharmacology required and experience with small animal studies, binding assays, and/or autoradiography preferred. Under the direction of **Dr. S. J. Gattley**, and **Dr. A. N. Gifford**. Send curriculum vitae to: **M. Kipperman, Building 185, P.O. Box 5000, Brookhaven National Laboratory, Upton, NY 11973.** Telephone: 516-344-4394/344-7069; FAX: 516-344-7170; e-mail: mrk@bnl.gov. *BNL is an Equal Opportunity Employer committed to work force diversity.*

RESEARCH/TEACHING POSTDOCTORAL FELLOWSHIP

A combined traditional postdoctoral and teaching experience make this position ideal for a Ph.D. seeking a career as a faculty member at a small liberal arts college/primarily undergraduate institution. The research investigates the mechanism for selective destabilization of secretory protein mRNAs during heat shock. Molecular biology experience is required (transient transformation, rtPCR, cloning). Teaching is four courses over two years (introductory, non-majors, 300-level). Experience as a Teaching Assistant will be helpful. Submit curriculum vitae, research and teaching statements, and the names of three references to: **Mark Brodl, Department of Biology, Knox College, Campus Box 44, Galesburg, IL 61401.** E-mail: mbrodl@knox.edu; website: http://www.knox.edu/knoxweb/about_knox/staff_openings.html.

POSTDOCTORAL POSITION

Professor Anna Marie Pyle and **Professor Arthur G. Palmer III** of Columbia University have an immediate opening for a Postdoctoral Scientist with experience in biochemistry and NMR spectroscopy. The Postdoctoral Scientist will use NMR to elucidate structures and dynamics of defined RNA domains from group II intron ribozymes. Website: <http://cpmcnet.columbia.edu/dept/gsas/biochem/>. Interested candidates should send their curriculum vitae and three letters of recommendation to: **Professor Anna Marie Pyle, Department of Biochemistry and Molecular Biophysics, Box 36, Columbia University, 630 West 168th Street, New York, NY 10032.** *Columbia University takes Affirmative Action to ensure Equal Employment Opportunity.*

POSTDOCTORAL POSITION UNIVERSITY OF LOUISVILLE

A Postdoctoral position is available immediately to study intracellular signals regulating renal calcium reabsorption. Present studies are examining activation of second messengers including MAP kinase pathways and regulation of calcium transport by the calcium-sensing receptor. Experience in biochemistry and molecular biology is required. Send curriculum vitae, statement of research interests, and names of three references to: **Dr. John Arthur, Kidney Disease Program, University of Louisville, 615 South Preston Street, Louisville, KY 40202.** E-mail: jarthur@e-mail.kdp-baptist.louisville.edu.

YALE SCHOOL OF MEDICINE

A **POSTDOCTORAL POSITION** is available to study the role of proteases and the regulation of proteases during *Drosophila* development. Applicants should have background and training in molecular and cellular biology. Send curriculum vitae with names of references to: **Carl Hashimoto, Department of Cell Biology, Yale School of Medicine, New Haven, CT 06520.** E-mail: carl.hashimoto@yale.edu.

Yale University is an Equal Opportunity/Affirmative Action Employer.

POSITIONS OPEN

POSTDOCTORAL AND TECHNICAL POSITIONS GLUCOSE TRANSPORTER PROTEIN DEFICIENCY SYNDROME Columbia University/Division of Pediatric Neurology

The Colleen Giblin Laboratory for Pediatric Neurology Research has two positions available to study a newly described form of childhood epilepsy caused by mutation of the GLUT-1 gene (*Nature Genetics* **18**:188-191, 1998). The NIH-funded research will involve genotype/phenotype correlation within an expanding patient base and the development of a transgenic knockout mouse model for the human syndrome. Some experience in molecular biology, especially with PCR, subcloning, and nucleic acid blotting techniques, is necessary. Preferences given to applicants with a background in epilepsy and/or nutrition and additional experience in tissue culture. To apply, send curriculum vitae and a summary of previous laboratory experience to: **Dr. Darryl C. De Vivo, M.D., Columbia University, Neurological Institute, 710 West 168th Street, New York, NY 10032.**

Mote Marine Laboratory in collaboration with National Geographic Society's (NGS) Sustainable Seas Expeditions seeks applications for two **POSTDOCTORAL FELLOWSHIPS** to participate in benthic faunal studies on the southwest Florida shelf (SWFS) and Florida Keys National Marine Sanctuary (FKNMS). One position may focus on reef systems in western FKNMS and another may study SWFS fauna in seagrass communities. Associates will interact with Mote scientists in Sarasota and the Florida Keys, and **Dr. Sylvia Earle**, NGS Explorer-in-Residence. Applicants must have a Ph.D. in a relevant marine science, be fluent in English, and eligible for U.S. employment. Appointments last two years, starting January 1999, with year-one review. See website: <http://www.mote.org/benthic-postdocs> for more information. Initial applications (résumé and three references) are due October 30, 1998, to: **Benthic Postdoctoral Program, Box 116, Mote Marine Laboratory, 1600 Ken Thompson Parkway, Sarasota, FL 34236.**

POSTDOCTORAL POSITION

Available now to image neuronal populations in zebrafish. Candidate will be trained in confocal calcium imaging, laser ablation, and high-speed behavioral recordings. Candidate will study the functional organization of the hindbrain's motor control systems. See: *Neuron* **17**:1145; *Histochem. J.* **30**:153. Experience in neuroscience a plus. Send curriculum vitae to: **Don O'Malley, Department of Biology, 414 Mugar, Northeastern University, Boston, MA 02115.** Inquiries to e-mail: d.omalley@nnet.neu.edu. *Affirmative Action/Equal Opportunity Employer. Northeastern University is an Equal Opportunity/Affirmative Action/Title IX Employer.*

Two **POSTDOCTORAL POSITIONS** are available immediately for NIH-funded project to study the circadian regulation of ion channel gating in photoreceptors of the retina and pineal gland. Ph.D. degree in neurophysiology, cell biology, or molecular biology required. Previous experience with patch clamp recording helpful but not essential. Applicants should send curriculum vitae, summary of research interests, and names of three references to: **Dr. Stuart E. Dryer, Department of Biology and Biochemistry, University of Houston, Houston, TX 77204-5513.**

POSITIONS IN PRIMORDIAL GERM CELL DEVELOPMENT

POSTDOCTORAL POSITIONS are available to study bone morphogenetic protein (BMP) signal transduction in mammalian primordial germ cell development. Experience in molecular biology, genetics, reproductive biology, or developmental biology are preferred. Send curriculum vitae to: **Dr. Guang-Quan Zhao, 131 Conaway Hall, University of Missouri, Columbia, MO 65211.** E-mail: zhao@missouri.edu.

A **POSTDOCTORAL POSITION** is available to study the molecular basis of bovine herpesvirus type 5 neurovirulence. Candidates with molecular virology experience will be preferred. Applicants should send their curriculum vitae, e-mail, and mailing address of at least three references to: **Dr. Shafiqul I. Chowdhury, Department of Diagnostic Medicine/Pathobiology, College of Veterinary Medicine, Kansas State University, Manhattan, KS 66506 USA.** E-mail: chowdh@vet.ksu.edu.

POSITIONS OPEN

UNIVERSITY OF PENNSYLVANIA MEDICAL CENTER

POSTDOCTORAL TRAINING in urological research for Urologists or Basic Scientists with M.D. and/or Ph.D. degrees. The Division of Urology invites applications from medical graduates with residency training in urology or Ph.D.'s for Postdoctoral training in cell and molecular biological basis of urological diseases. The research interests in the Division of Urology include study of bladder and prostate cancer, pediatric urology, erectile dysfunction, incontinence, smooth muscle regulation, signal transduction, connective tissue matrix, and smooth muscle differentiation. The annual stipend at the NIH level will be supplemented from other sources. In addition, there are provisions for health insurance, tuition for taking courses in molecular biology, and research supplies. This position is available immediately, and interested candidates should send a letter, curriculum vitae, a statement of research interests, and letters from two referees to: **Dr. Samuel K. Chacko, Director of Basic Urological Research, Division of Urology, 3010 Ravdin Courtyard Building, University of Pennsylvania Medical Center, 3400 Spruce Street, Philadelphia, PA 19104-4283.**

Two **POSTDOCTORAL POSITIONS** are available at the NCI-designated Kaplan Comprehensive Cancer Center of New York University (NYU) School of Medicine for individuals with interest and experience in drug delivery systems, *in vivo* tumor models, pharmacology of antitumor agents, molecular genetics, or gene delivery and therapy. The applicant will work in a laboratory focused on experimental cancer therapy and translational research in projects involving novel approaches to target solid tumors, particularly lung cancer, including vascular tumor targeting and aerosolized drug delivery. The applicant will have the opportunity to interact with other faculty members of the Kaplan Cancer Center who are working on related drug delivery and gene therapy projects. The applicant should have an M.D. or Ph.D. degree in pharmacology. Please send résumé and three names of references (preferably via FAX) to: **Roman Perez-Soler, M.D., Associate Director of Clinical Oncology, Kaplan Comprehensive Cancer Center, New York University School of Medicine, 550 First Avenue, New York, NY 10016. FAX: 212-263-0715.**

NYU Medical Center is an Equal Opportunity Employer.

POSTDOCTORAL POSITIONS CELL AND MOLECULAR BIOLOGY OF THE RETINA

Postdoctoral positions are available to investigate, using a multidisciplinary approach, the cellular and molecular mechanisms that regulate the survival and differentiation of photoreceptor cells during retinal development and in retinal degenerations. A background in cell, molecular, or developmental biology is highly desirable. Please send résumé and the names of three references to: **Dr. Ruben Adler, Wilmer Institute, 519 Maumenee, Johns Hopkins University School of Medicine, 600 North Wolfe Street, Baltimore, MD 21287-9257. E-mail: radler@jhmi.edu; FAX: 410-955-0749. JHU is an Affirmative Action/Equal Opportunity Employer.**

POSTDOCTORAL ASSOCIATE. Postdoctoral position available to study the mechanisms regulating cellular locomotion and chemotaxis in *Dictyostelium*. The research project will include generating cytoskeletal mutants and GFP-tagged proteins. Requires a Ph.D. in cell biology or a related field. Extensive experience in both molecular biology and microscopy is desirable. Send curriculum vitae and names of three references to: **Dr. David Soll, Department of Biological Sciences, 138 Biology Building, The University of Iowa, Iowa City, IA 52242-1324. The University of Iowa is an Affirmative Action/Equal Opportunity Employer. Women and minority candidates are encouraged to apply.**

The Food and Drug Administration, Center for Biologics Evaluation and Research, has immediate positions for **POSTDOCTORAL FELLOWS** to work in areas such as molecular biology, immunology, cell biology, biochemistry, virology, and genetics. Requires Ph.D. and/or M.D. with less than five years of postdoctoral experience. *Must be U.S. citizen or U.S. permanent resident.* Positions located on NIH campus, Bethesda, Maryland. Send curriculum vitae/résumé to: **Recruitment Staff (98026) The Food and Drug Administration/Center for Biologics Evaluation and Research, 1401 Rockville Pike, Suite 200N/HFM-123, Rockville, MD 20852-1448.**

POSITIONS OPEN

POSTDOCTORAL POSITION BROWN UNIVERSITY DIVISION OF BIOLOGY AND MEDICINE

Position available for individual interested in areas of protein structure-function, gene structure and regulation, protein-nucleic acid interactions, or molecular mechanisms of recombination. Previous experience with (or desire to learn) protein chemistry, nucleic acid biochemistry, DNA cloning, genetics, or *in vitro* systems.

Please send curriculum vitae with desired starting date and list of three references to: **Arthur Landy, Brown University, Box G-J360, Providence, RI 02912.**

Brown University is an Equal Opportunity/Affirmative Action Employer.

POSTDOCTORAL POSITION in cancer gene therapy available to investigate "suicide genes" for cancer or to treat graft-versus-host disease following leukemia therapy (for review, see: **F. Moolten, Cancer Gene Therapy 1:279-287, 1994**). Molecular biology experience is necessary; experience with tissue culture or small animal studies desirable. Send résumé and three references to: **Dr. Frederick Moolten, VA Medical Center, Bedford, MA 01730. FAX: 781-687-3527; e-mail: fmoolten@bu.edu.**

POSTDOCTORAL POSITION. NIH-supported, to study the membrane-associated interactions involved in the infection and assembly processes of the single-stranded DNA filamentous bacteriophage. Send curriculum vitae and names of three references to: **Robert E. Webster, Ph.D., Department of Biochemistry, Box 3711, Duke University Medical Center, Durham, NC 27710 by September 30. Duke University is an Equal Opportunity/Affirmative Action Employer.**

MEETING

HEPATIC INFLAMMATION AND IMMUNITY GALVESTON, TEXAS JANUARY 15-17, 1999

A multidisciplinary meeting examining unique aspects of the intrahepatic immune system and its role in health and disease. Sessions include: "The liver in health and disease": **I. Arias, A. M. Diehl, D. M. Bissell**; "Immunobiology of the liver": **T. Abo, N. Crispe, A. Bendalac, G. Teigs**; "The liver and immunologic tolerance": **P. Bertolino, A. Thompson**; "Immune response to viral infections": **C. O'Farrell, G. Dennert, F. Chisari, M. Kozel, S. Abgrinami, G. Klimpel**; "Parasitic and bacterial infections of the liver": **U. Krzych, M. Stadeker, J. Harty**; "Summary roundtable": **J. Hoofnagle, H. Johnson**. For further information and registration details, see website: <http://microbiology.utmb.edu/> or contact: **S. M. Lemon, Department of Microbiology and Immunology, University of Texas Medical Branch, Galveston, TX 77555-1019. FAX: 1-409-772-2324; e-mail: msusman@utmb.edu.**

COURSES & TRAINING

INTERESTED IN CLINICAL OR POSTDOCTORAL RESEARCH TRAINING?

The National Institutes of Health has both! For more information, visit our website which lists an array of clinical and postdoctoral opportunities, including tenure-track positions.

<http://www.training.nih.gov>

The NIH is an Equal Opportunity Employer.

SYMPOSIUM

MOLECULAR INTERACTION TECHNOLOGIES 1998, October 19-20; Cathedral Hill Hotel, San Francisco. Organizers: **S. Fields, R. Balint, J. Larrick**. Sponsor: Palo Alto Institute of Molecular Medicine, 2462 Wyandotte Street, Mountain View, CA 94043. Telephone: 650-694-1420; FAX: 650-694-7717; e-mail: paimm@netgate.net; website: www.pano.com/paimm. See *Science* April 10, May 8, June 19, 1998, for speakers.

MARKETPLACE

Science's Literature Library

www.sciencemag.org

Click on Electronic Marketplace, then click on Literature Library

ANTIBODIES

CUSTOM POLYCLONAL

Protein: \$260, Peptide: \$380

CUSTOM MONOCLONAL

1st clone: \$3240, Additional Clones: \$520 ea.

MURINE Mabs to RABBIT PROTEINS:

\$260



SPRING VALLEY LABORATORIES

Phone: 800-864-1839, FAX: 410-795-2242

Email: SpringVall@aol.com

Circle No. 20 on Readers' Service Card

APOPTOSIS ASSAY-MAb to ssDNA SENSITIVE - early and late stages SPECIFIC - no staining of necrosis APOSTAIN, Inc.

E-mail: apostain@bellsouth.net

www.apostain.com; (305) 868 3998

Circle No. 49 on Readers' Service Card

ANTIBODIES

For Research & Routine Histology

Inflammation-Endothelial Cells-

Pathological Markers

Custom Monoclonals and Polyclonals

BMA Biomedicals Ltd. (800) 634-3183 (US)

Intl: +41 61 811 6222/+41 61 811 6006 (fax) info@bma.ch

Circle No. 16 on Readers' Service Card



Custom Polyclonal Antibodies
BEST PRICES • BEST ANIMALS
ANIMAL PHARM SERVICES
(800) 808-0550

Circle No. 35 on Readers' Service Card

Diverse Small Molecules Ready for Screening

In plates, immediately available
50% academic discount, or use our
new easy access plan

ChemBridge Corporation

Website: www.chembridge.com

E-mail: chem@chembridge.com

(800) 964-6143 or (619) 451-7400

FAX: (619) 451-7401

Circle No. 31 on Readers' Service Card

MARKETPLACE



**MORE PRODUCTS
ON PREVIOUS PAGE**

CUSTOM ANTIBODIES TO PEPTIDES AND PROTEINS

1-800-481-9737

HTI (760) 788-9691 • fax: (760) 788-9694
e-mail: antibodies@htibio.com
HTI Bio-Products, Inc. http://www.htibio.com

Circle No. 13 on Readers' Service Card

Custom Peptide

\$15/residue

Free Mass Spec
Free HPLC
8-17 residues
15-35 mg

Tel: 800-597-7873
925-371-1070
Fax: 925-371-1156
email: pkim@ccnet.com

PeptidoGenic The Peptide Engineering Specialist

Circle No. 33 on Readers' Service Card

CUSTOM SHOTGUN DNA LIBRARIES

- BAC, PAC, P1, Cosmid or other large insert clones acceptable
- Random M13 or pUC18 plasmid library provided
- High quality; >95% insert ratio
- 1-2 week turnaround time
- Customer satisfaction guaranteed

DNA sequencing and mini-prep services available

seqwright TEL (713) 528-4363
FAX (713) 528-6232
www.seqwright.com
800-720-4363 seq@blkbbox.com

Circle No. 5 on Readers' Service Card

Field Nitrate Testing?

Try New NECi Nitrate Test Kit

- No Equipment Needed - All Reagents Supplied
- Any Field Sample - Enviro/Eco, Soil, Plant, Food, Beverage
- Water: Ground, Surface, Sea, Estuary, Waste & Run-off
- Accurate and Safe Nitrate Testing using Nitrate Reductase

Call Toll Free 1-888-NITRATE (648-7283) Go To...
The Nitrate Elimination Co., Inc. NECi Web
www.nitrate.com

Circle No. 21 on Readers' Service Card



PEPTIDE + ANTIBODIES PACKAGE - \$1200

β -AMYLOID(1-40) \$200/mg

ANASPEC

800-452-5530 (phone) service@anaspec.com
408-452-5059 (fax) www.anaspec.com

Circle No. 2 on Readers' Service Card

PepSets™

Low cost sets of unpurified PEPTIDES from \$33/peptide. Need high numbers of peptides for screening, mapping, analoging, SAR studies? Please call for details:

Web: www.chirontechnologies.com

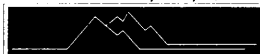
CHIRON TECHNOLOGIES

US: East Coast Tel: 800 633 8161 Fax: 800 424 3970
US: West Coast Tel: 800 644 1866 Fax: 800 655 1866
International Tel: +61 3 9565 1111 Fax: +61 3 9565 1199
Europe Tel: +33 141 38 9400 Fax: +33 141 38 9409

Circle No. 51 on Readers' Service Card

MARKETPLACE

Custom Primers - 48 hr turnaround: \$0.69/base
\$0.00 - Standard Purity - Ready to Use



ransom hill bioscience, inc.

http://www.ransomhill.com
no setup - no minimum - no baloney!
internet: visla@ix.netcom.com fax: (800) 597-8509

Circle No. 4 on Readers' Service Card

Custom Peptides & Antibodies

Best Service & Price! Compare and Save!

Alpha Diagnostic (800) 786-5777

Fax (210) 561-9544; info@4adi.com

Web site: http://www.4adi.com

Circle No. 11 on Readers' Service Card

CUSTOM DNA SYNTHESIS

PURE & SIMPLE

- Superb Technical Support
- Impeccable Quality
- World's Fastest Service
- Cap Gel & TOF Mass Spec

* Some restrictions apply. Please call for details.

MIDLAND

STILL THE UNDISPUTED #1 CUSTOM DNA SYNTHESIS SERVICE

THE MIDLAND CERTIFIED REAGENT COMPANY

Phone 1-800-247-8766 FAX 915-694-2387
email mcrco@oligos.com

Circle No. 6 on Readers' Service Card

*get
sequenced!*

with Genome Systems'
Sequencing Services

As low as \$14/run

- High-throughput Sequencing
- Shotgun Sequencing
- Genomic and cDNA/EST
- Clone Sequencing
- Custom Sequencing
- Fast & accurate service

GenomeSystemsInc™

Voice: 800. 430. 0030 or 314. 427. 3222
FAX: 314. 427. 3324
email: sequencing@genomesystems.com
World Wide Web:
http://www.genomesystems.com

Circle No. 12 on Readers' Service Card

Widely
Recognized

Original &
Guaranteed

KlenTaq1

8¢/u

Truncated
Taq DNA
Polymerase

Withstand 99°C

US Pat # 5,436,149

Call: **Ab Peptides** 1•800•383•3362
Fax: 314•968•8988 abpeps@icon-stl.net

Circle No. 3 on Readers' Service Card

MARKETPLACE

BIO•SYNTHESIS, INC.

DNA

AS LOW AS 65¢/base *

NO SET UP CHARGE

* 50 nmole scale (P+TODU)
* Just under 500 bases at the same time

1-800-DNA-EXAM 1-800-362-3926

Circle No. 27 on Readers' Service Card

DNA	PEPTIDES
Call for prices	\$15.00/residue
Gene Synthesis, Site Mutagenesis, Protein Expression as low as \$500	
Sequencing: \$25 per run	
Custom Anti-peptide Antibody (including peptide synthesis) \$850	
GENEMED SYNTHESIS 800.344.5337 Fax: 650.952.9540 http://www.genemedsyn.com	

Circle No. 8 on Readers' Service Card

Smart Move!

Check around, you'll find CBI is the most comprehensive biotech service company in the market today. We provide:

- ▶ Protein Sequencing (N- & C-Terminal)
- ▶ Automated DNA Sequencing
- ▶ DNA/RNA/PNA Synthesis
- ▶ Peptide Synthesis
- ▶ Amino Acid Analysis
- ▶ Calorimetry
- ▶ Mass Spectroscopy

Call CBI for special projects,
pricing: **1-800-735-9224**.

**Commonwealth
Biotechnologies, Inc.**
fax: 804-648-2641 cbi@i2020.net www.cbi-biotech.com

Circle No. 43 on Readers' Service Card

Anti-Asialo GM1 Ab For NK Cell Depletions

Wako **Wako BioProducts**
Wako Chemicals USA, Inc.
1600 Bellwood Road, Richmond, VA 23237
Telephone: (804) 271-7677 Facsimile: (804) 271-7791
(800) 992-9256 bioproducts@wakousa.com

Circle No. 18 on Readers' Service Card

Express Peptides

**20mg in 5 days
\$14 per residue**

Research Genetics
1-800-533-4363

Circle No. 1 on Readers' Service Card

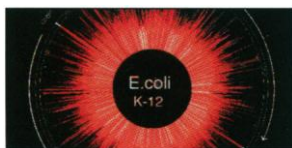
Panorama™ Gene Arrays

EXPRESSION PROFILING

A Wider View of Expression Profiling

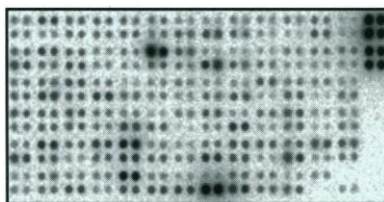
- Monitor the expression of hundreds to thousands of genes simultaneously
- Gene targets arranged in duplicate on nylon hybridization membranes
- Rapid analysis of differential gene expression
- Uses standard molecular biology techniques and equipment

S M A R T E R R E S O U R C E S F O R S M A R T E R R E S E A R C H .



E. coli ORFmers™

PCR* primers designed to amplify all E. coli ORFs—from start to stop codons. 4,290 primer pairs—representing each coding sequence—available in tubes or 96-well plates.



Panorama™ E. coli Gene Arrays

4,290 PCR-amplified open reading frames representing all E. coli protein coding sequences, arrayed in duplicate on nylon hybridization membranes.



Strep-tag® Protein Expression System

Short affinity-tag (8aa) and physiological buffers allow the purification of soluble, biologically active proteins.

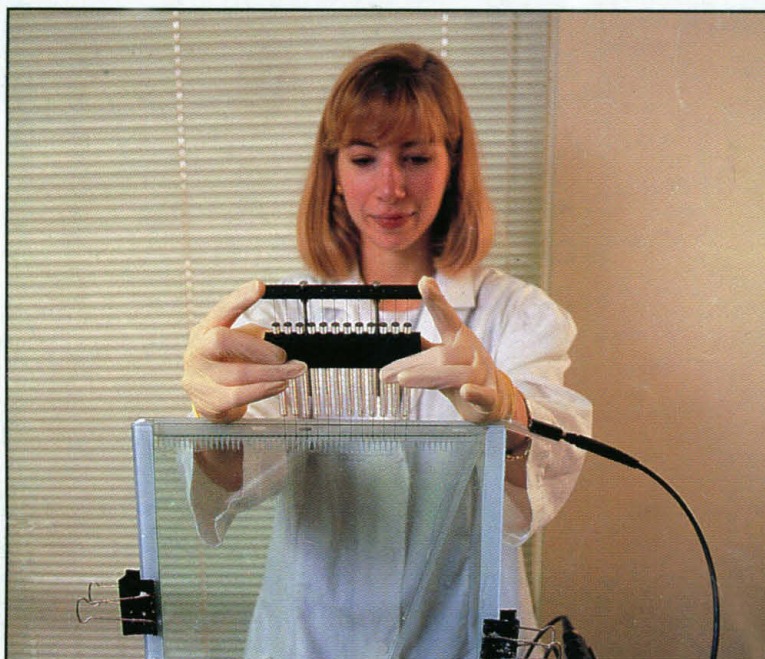
GENOSYS

Toll Free 877-260-0763 • www.genosys.com

*The PCR process is covered by U.S. patents owned by Hoffman-LaRoche, Inc.

Circle No. 39 on Readers' Service Card

Custom Genotyping of Model Organisms



Recognizing the contribution that the studies involving model organisms provide to our understanding of physiology and disease processes, Research Genetics is proud to offer genotyping of model organisms.

Genotyping of any marker which we provide as a MAPPAIR™ is included in the standard fee. Markers are labeled using a kinase reaction with ^{32}P , PCR products are run on polyacrylamide gels and x-ray film is exposed for each gel. Final data is provided in two forms: the autoradiograph for each marker on each individual and as a data file in a ready-for-analysis format. All data is confidential.

Custom genotyping of small to large projects is available. Costs for custom genotyping vary widely from project to project. The range of costs is from \$5.00 to \$14.00 depending on the size of the project. Prices are expressed as per sample per genotype. Minimum charges apply.

All projects are considered complete once 90% or more of the genotypes for that marker are determined. If it is critical for your project to determine each genotype, we suggest that you consider genotyping duplicate samples. Duplicates are charged at 35% of the standard genotype price. Please note that we do not guarantee to achieve every genotype for every sample. In any case you pay only for successful genotypes, not the number of attempted genotypes.

We request that you schedule your project at your earliest convenience. Estimation of completion times are dependent upon the size of your project and projected start date. Contact Donna Brown (donna@resgen.com) for additional information regarding any aspect of our custom genotyping service or to discuss your project requirements.

™ The use of microsatellite markers for genetic analysis is covered by U.S. and foreign patents. The exclusive right to manufacture and sell these markers has been licensed to Research Genetics, Inc.

Research Genetics

Accelerating Discovery

2130 Memorial Pkwy, SW • Huntsville, AL • 35801

U.S. or Canada 800-533-4363

Worldwide 256-533-4363

U.K. 0-800-89-1393

FAX 256-536-9016

<http://www.resgen.com>

Circle No. 29 on Readers' Service Card