

boundaries are marked in that language.

Exposing a 15-month-old to 30 minutes of speech for 21 months may have provided sufficient experience to extract cues to word boundaries, although this is not what Burt actually tested in his investigation. Denenberg seems to suggest that it is important to use a nonfluent speech, context, but it is not clear why this would be superior to a fluent speech context. Fluent speech is connected speech, as opposed to lists of isolated words. Extracting words from fluent speech is much more difficult than extracting words that are spoken in isolation, as can be attested by any researcher who has worked on automatic speech recognition devices. One of the unexpected aspects of our report was that infants did pick out the sound patterns of the words after only hearing them in fluent speech contexts. Also, contrary to Denenberg's assertion, Burt's materials do qualify as fluent speech.

Finally, when we referred to the sound patterns of the words as frequent, we were referring to their occurrences within the stories, not in infants' typical home environments. Given that Burt's materials were drawn from a drama by Sophocles, it is probable that some of the sound patterns of the words recurred often in the 20-line excerpts. As we noted in the report's introduction,

little is known about infants' long-term memory for the sound patterns of words. Our study was an initial foray into this territory, not the last word on the matter. A more elaborated picture of what infants remember about sound patterns is critical for an understanding of how they apprehend the structure of the language they are acquiring.

Peter W. Jusczyk

Department of Psychology and
Cognitive Science,
Johns Hopkins University,
Baltimore, MD 21218, USA

References

1. H. E. Burt, *J. Genet. Psychol.* **40**, 287 (1932); *ibid.* **50**, 187 (1937); *ibid.* **58**, 435 (1941).
2. P. W. Jusczyk and R. N. Aslin, *Cognit. Psychol.* **29**, 1 (1995).
3. S. Mattys and P. W. Jusczyk, in preparation.
4. P. W. Jusczyk, *Curr. Direct. Psychol. Sci.*, in press.

Corrections and Clarifications

■ The name of the deputy vice chancellor of the National University of Malaysia in the special report on Science in Southeast Asia was incorrect (6 Mar., p. 1467). He is A. H. Zakri, a plant geneticist.

■ The credit for the photo of the acorns on the cover of the 13 February issue (Caption, p. 955) should have read "M. Ahearn."

■ In the 13 February ScienceScope (p. 973), the color photo should have been credited to Marie Read.

■ The names of three coauthors of the report "Results from the Mars Pathfinder camera" by P. H. Smith *et al.* (5 Dec. 1997, p. 1758) were inadvertently omitted. They are F. Gliem and P. Rueffer at the Technical University of Braunschweig, 38106 Braunschweig, Germany, and S. Hviid at the Ørsted Laboratory, Niels Bohr Institute for Astronomy, Physics, and Geophysics, Copenhagen University, 2100 Copenhagen Ø, Denmark.

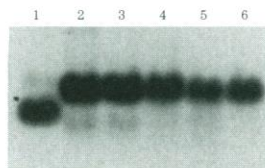
Letters to the Editor

Letters may be submitted by e-mail (at science_letters@aaas.org), fax (202-789-4669), or regular mail (*Science*, 1200 New York Avenue, NW, Washington, DC 20005, USA). Letters are not routinely acknowledged. Full addresses, signatures, and daytime phone numbers should be included. Letters should be brief (300 words or less) and may be edited for reasons of clarity or space. They may appear in print and/or on the World Wide Web. Letter writers are not consulted before publication.

Never Isolate RNA Again!

NORTHERN TERRITORY™ BLOTS

**mRNA REAL™ Blot
Probed with β -actin**
mRNA REAL™ Northern Blot III
hybridized with a probe against
Human β -actin.
Lanes 1-6: Muscle, Uterus,
Bladder, Kidney, Spleen, Lung.
(2 μ g mRNA/lane)



High-Quality Blots Save You Time.

Northern Territory™ Blots are premade and ready for hybridization. You no longer have to spend time finding hard-to-acquire tissues, isolating RNA or running and blotting RNA gels. Northern Territory™ Blots are prepared with our unique processes and stringent quality control testing to ensure the best results in your lab.

Largest Selection of RNA Blots for Northern Analysis.

- 64 blots prepared from a selection of 46 human tumor, disease, fetal, and normal tissues—we're likely to have the tissue you need.
- mRNA or Total RNA Blots.
- mRNA Blots available as Act™-N (normalized to β -actin expression) or REAL™ (mRNA equal amount loaded) to fit your research needs.
- All blots are functionally tested to ensure quality.

We've Got It All.

Extensive selection and high quality make Northern Territory™ Blots your ultimate source for hybridization-ready RNA blots. We also offer a complete line of PCR-ready cDNAs and purified mRNA and total RNA. Join the world of Discovery. Call or visit our web site today.

Circle No. 25 on Readers' Service Card

Manufactured by
BioChain Institute, Inc.

European Headquarters:
Invitrogen BV
De Schelp 12, 9351 NV Leek
The Netherlands
Tel: +31 (0) 594 515 175
Tel: +31 (0) 594 515 312
e-mail: tech_service@invitrogen.nl

United States Headquarters:
1600 Faraday Avenue
Carlsbad, California 92008
Tel: 1-800-955-6288
Fax: 760-603-7201
e-mail: tech_service@invitrogen.com
<http://www.invitrogen.com>

Invitrogen