

Choosing a
new ultraspeed
isn't as easy
as it used to be.
Fortunately.

SORVALL®
CENTRIFUGES
Expect more than performance.

Time was, if you wanted a new ultraspeed centrifuge, your options were pretty much limited to one source. But that's all changed. Because SORVALL®, the company which set the standard for superspeeds, now offers Discovery™ Series Ultracentrifuges – giving you a whole new level of ultraspeed choice, and value.

For unsurpassed performance in an easy-to-use, basic features package, choose between SORVALL Discovery 100 and Discovery 90 Ultracentrifuges. Or you can opt for the advanced Discovery 100S Ultracentrifuge with Compass™ Centrifugation Software, and get run calculation and simulation, scheduling and on-line help to guide you to more efficient separations. If smaller samples are the norm, we also offer the compact floor model RC-M150GX and RC-M120GX Micro-Ultracentrifuges. And consider other SORVALL exclusives, like our top-loading, top-access Surespin™ Swinging Bucket Rotors; flexible, time-saving STEPSAVER™ Vertical Rotor Systems; and the easy-to-use, heat-free ULTRACRIMP™ Tube Sealing System, along with our renowned Technical Service and Customer Applications support. Call today, and find out how SORVALL provides more than performance – with just the right ultraspeed solution for you.

USA: (800) 522-7746, France: (01) 69 18 77 77, Germany: 6172/87-2544
Italy: 02/25302372, UK: (01438) 342911 All other Europe, Middle East,
Africa: 44 (1438) 342900; Canada, Asia Pacific, Japan and Latin America:
(203) 270-2080 or contact your local SORVALL representative.

Internet: <http://www.sorvall.com>

Circle No. 33 on Readers' Service Card



Perfection all around

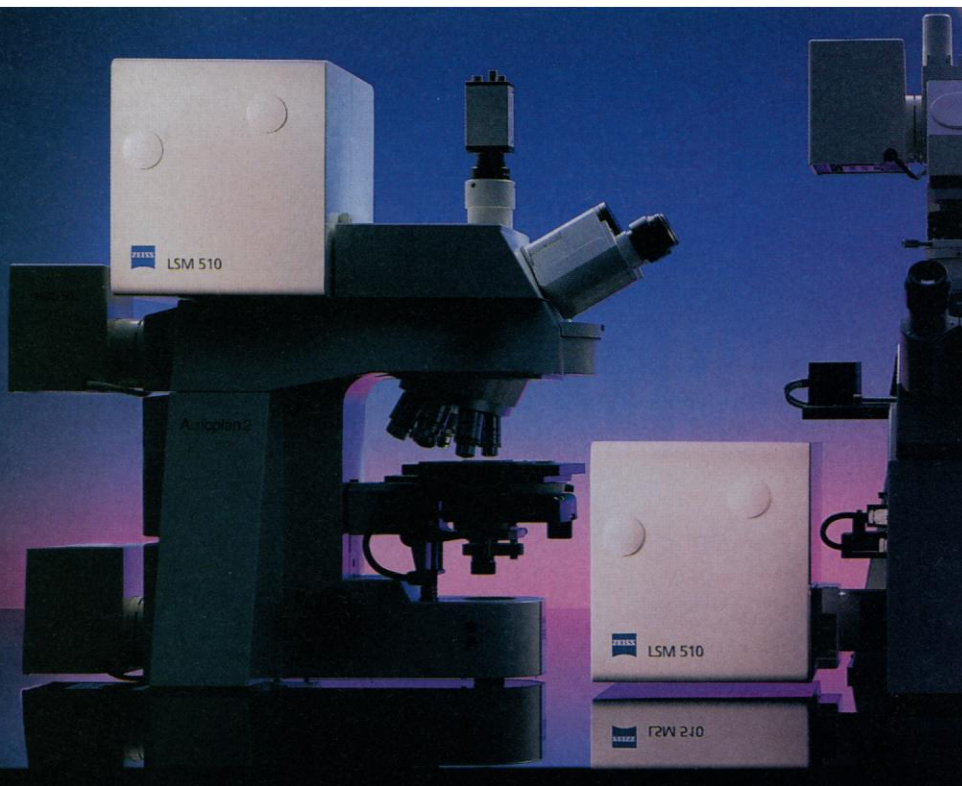
Whether your priority is flexibility or first-class technology, now you can opt for both. The **LSM 510 Laser Scanning Microscope** has it all: Unparalleled ease of operation thanks to advanced software, and a compact, quick-fitting scanning module.

Innovative scanning flexibility

Unique scanning strategies open up undreamt-of capabilities. Significant specimen characteristics no longer remain hidden.

Images of a new quality

Four simultaneous fluorescence channels, each with its own computer-controlled pinhole. 2048 x 2048 pixels, 4 x 12 bit resolution, integration, oversampling. Zeiss has thought of everything – for your benefit.



Carl Zeiss Jena GmbH · Zeiss Group · Phone: 0 36 41/64 29 36 · Fax: 0 36 41/64 31 44 · Internet: mikro@zeiss.de · <http://www.zeiss.de>

Circle No. 16 on Readers' Service Card

No more mysterious reactions...



New!

Mastercycler® gradient with gradient function

- Universal block for 96 x 0.2 ml or 77 x 0.5 ml tubes or microtiter plates 8 x 12
- The gradient function enables building up a temperature gradient of up to 20 °C across the block

New!

Mastercycler® personal

- Universal block for 25 x 0.2 ml or 16 x 0.5 ml tubes or microtiter plates 5 x 5

Mastercycler® gradient and Mastercycler® personal:
the new generation of PCR instruments.

- Universal block with excellent temperature homogeneity for either 0.2 ml or 0.5 ml tubes or microtiter plates
- Very fast temperature ramping (~ 3 °C/s), heatable lid, flexible software, PC interface and personal memory cards for use with both cyclers and lots more!



Practise of the patented polymerase chain reaction (PCR) process requires a license. The Eppendorf Thermal Cyclers are Authorized Thermal Cyclers and may be used with PCR licenses available from the Perkin-Elmer Corporation. Their use with Authorized Reagents also provides a limited PCR license in accordance with the label rights accompanying such reagents.

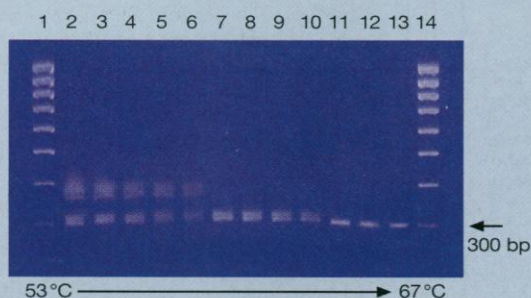
Compact and Versatile

Let's See More!

ZEISS

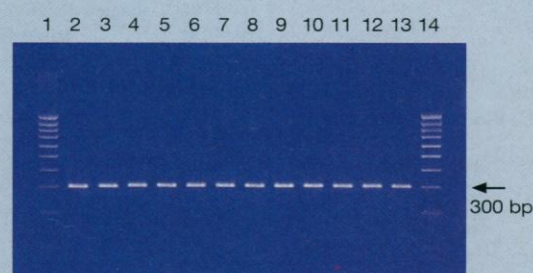
...optimize your PCR in one run!

The gradient function of the new Mastercycler[®] gradient enables rapid testing of 12 different temperatures in one experiment.



● **Fig. 1:** Experimental determination of optimal annealing temperature: The calculated primer annealing temperature was 56.5 °C, the actual annealing temperature is 63.5 °C. The ribosomal spacer region of mycoplasmas from H9 cell cultures was amplified.

Using the **gradient function** of the universal block, a gradient of 53 to 67 °C was set. The following test parameters were selected: denaturation 10 s, annealing 15 s, elongation 20 s, amount of Taq-polymerase 0.75 units; duration of entire experiment: < 1 h.



● **Fig. 2:** Amplification shown in fig. 1 performed under optimized temperature conditions. In this experiment, the universal block was set to a **uniform temperature** in the annealing phase. The outstanding temperature

homogeneity of the block guarantees reproducible PCR results.



Free retro-authorization
of Mastercycler 5330!
Ask for certificate now!

Circle No. 37 on Readers' Service Card

eppendorf

Eppendorf - Netheler - Hinz GmbH · 22331 Hamburg · Germany · Tel. +49 (40) 5 38 01-0 · Fax +49 (40) 5 38 01-556

e-mail: eppendorf@eppendorf.com · eppendorf home page: <http://www.eppendorf.com>

TRI REAGENT® Solutions for TOTAL RNA ISOLATION

- total RNA with unparalleled yield and quality.
- costs less than \$1 per sample (100 mg tissue or 10^7 cells).

TRI REAGENT®
for cells and tissues

TRI REAGENT® BD
for whole blood and plasma

TRI REAGENT® LS
for liquid samples

The classic single-step method has been significantly improved to provide higher yields, a shorter protocol, and higher quality RNA from difficult sources! In addition, TRI Reagent has made it possible to isolate simultaneously RNA, DNA and proteins.

(Anal. Biochem. 225:163. 1995. Biotechniques. 19:942. 1995.)

Isolated RNA is ready for Northern blotting, RT-PCR, and other applications.

MRC

MOLECULAR RESEARCH CENTER, INC.

**5645 Montgomery Rd.
Cincinnati, OH 45212**

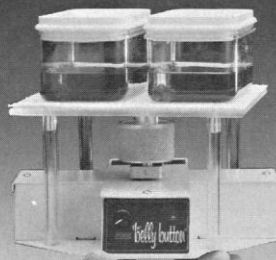
Phone: 513-841-0900, 888-841-0900
Fax: 513-841-0080

E-mail: info@mrcgene.com
Visit our website at:
<http://www.mrcgene.com>

- Australia: 800-631-093 • India: 11-642-5156
- Switzerland: 41-420-9636 • Italy: 2-26-40274
- Hong Kong: 275-77569 • Austria: 1-292-3527
- Korea: 2-294-6411 • Japan: 3-5632-9605
- France: 3-88-180722 • Israel: 8-947-2563
- Taiwan: 2-752-3350 • Canada: 905-828-2455
- Malaysia: 3-777-2611 • Turkey: 1-212-247-9296
- Germany: 6227-51308, 6172-22073
- Poland: 22-635-2455 • Spain: 1-535-3960

Circle No. 24 on Readers' Service Card

the belly button®



**A compact version
of the Belly Dancer® shaker**

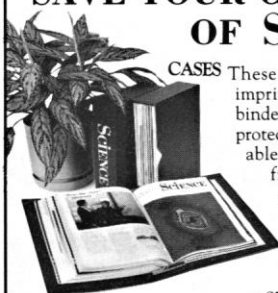
For gel & blotting techniques,
cell culture, retroviral infection
& mixing small tubes

STOVALL
LIFE SCIENCE, INC

206 G South Westgate Dr.
Greensboro, North Carolina 27407 USA
1 800-852-0102

Circle No. 22 on Readers' Service Card

SAVE YOUR COPIES OF SCIENCE



CASES These custom-made, imprinted cases and binders are ideal for protecting your valuable Science copies from damage.

Each binder or case holds one volume of Science, or 13 weekly issues

BINDER

— order four binders or cases to hold a complete year of issues. Constructed from reinforced board and covered with durable, leather-like red material and stamped in gold, the cases are V-notched for easy access; binders have a special spring mechanism to hold individual rods which easily snap in.

Cases	1 — \$ 8.95	3 — \$24.95	6 — \$45.95
Binders	1 — \$11.25	3 — \$31.85	6 — \$60.75

SCIENCE

Jesse Jones Industries, Dept. 95 SCE
499 East Erie Ave., Philadelphia, PA 19134

Enclosed is \$_____ for _____ Cases;
_____ Binders. Add \$1.50 per case/binder for postage & handling. Outside USA \$3.50 per case/binder (US funds only). PA residents add 7% sales tax.

Print Name _____

Address _____

City _____

State/Zip _____

CHARGE ORDERS (Minimum \$15): Am Ex, Visa, MC, DC accepted. Send card name, #, Exp. date.

CALL TOLL FREE 7 days, 24 hours 1-800-825-6690
Outside the US call 215-425-6600 Allow 4-6 weeks for delivery

— SATISFACTION GUARANTEED —

AAAS Travels

For members and friends of AAAS

AFRICA SAFARI

February 9-24, 1998

Join Dr. David Bygott, an authority on lions of the Serengeti, on Safari in Kenya and Tanzania. Discover lions, hippos, cheetah, elephant, giraffe, and a profusion of spectacular birdlife as you explore Amboseli and Lake Manyara National Parks and the two finest wildlife sanctuaries in East Africa, Ngorogoro Crater and the Serengeti Plains.

Highlights will include the wildebeest calving and the vast awesome beauty of the Serengeti. Trip Fee: \$4,595 (plus air)



Himalayan Kingdom of NEPAL

**November 30-
December 16, 1997**

Explore the ecological and cultural heritage of Nepal, led by Dr. Chris Carpenter. Discover the cultural diversity of the Kathmandu Valley, Pokhara with

superb views of Annapurna Himal, the birthplace of Buddha in Lumbini, the wildlife of Royal Bardiya National Park, and more.

Trip Fee: \$2,995 (plus air)



**Call For Detailed
Trip Brochures**

(800) 252-4910

AAAS Travels

BETCHART EXPEDITIONS Inc.
17050 Montebello Road
Cupertino, California 95014-5435



Academic
Press

SCIENCE

Start Your Day with inScight

Science and **Academic Press** invite you to start your day with **inScight**, the online information service devoted specifically to late-breaking science news. Located at **www.apnet.com/insight**, the site is a free service featuring daily topical news items of interest to researchers, practitioners, students, and anyone with an interest in current science issues. The experienced and preeminent news team of the weekly **Science** compiles and provides **inScight** with the day's primary science news stories which are then formatted and maintained online through the Academic Press electronic production services department.

inScight—
www.apnet.com/insight

Science—
www.sciencemag.org

Academic Press—
www.apnet.com/ or
www.europe.apnet.com/

LK/KJ/FF 18116

LK/KJ/FF 18116

FLASH!



Sutter Instrument Company manufactures a complete line of filter changing and wavelength switching instruments. We offer several complete systems from the DG-4, our 1 millisecond wavelength switcher, to the Lambda 10 series filter wheels. Our state-of-the-art design and manufacturing facility can also provide custom solutions for OEM applications. Visit our web site or contact us for more information.



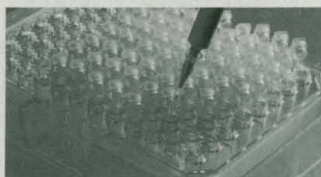
SUTTER INSTRUMENT COMPANY

40 LEVERONI COURT, NOVATO, CA 94949
PHONE: 415-883-0128 FAX: 415-883-0572
EMAIL: INFO@SUTTER.COM WEB: [HTTP://WWW.SUTTER.COM](http://WWW.SUTTER.COM)

Circle No. 11 on Readers' Service Card



● Accessories: The work tray and the accompanying frame may be used as a tube rack or for inserting tubes into the thermoblock.



New PCR tubes with contamination shield

The innovative contamination shield on the lid of the new 0.2 ml PCR tube prevents accidental contact with the inner surface of the lid during opening and closing.

The tubes also have a special hinge which allows the lid to click into a set position of approx. 90° and thus prevents overlapping with adjacent tubes.

The new, thin-walled PCR tubes from Eppendorf are available as individual tubes, and also as strips of five or eight tubes.

New Eppendorf Thermocyclers:
Mastercycler® gradient and Mastercycler® personal.
Ask for your information pack now!

eppendorf

Eppendorf - Netheler - Hinz GmbH · 22331 Hamburg · Germany · Tel. +49 (40) 5 38 01-0 · Fax +49 (40) 5 38 01-556
e-mail: eppendorf@eppendorf.com · eppendorf home page: <http://www.eppendorf.com>

Visit us at the BIOTECHNICA '97 in Hannover

Circle No. 36 on Readers' Service Card

eppendorf® is a registered trademark.
PCR (Polymerase Chain Reaction) is protected
by patent owned by Hoffmann-La-Roche.

Pharmaceutical Screening Assay Development Service

A TEST OF **Brilliance**

Only one of these little piggies is headed to market.

It's a difference so subtle you could miss it at first pass.
Just as subtle hits could be slipping by your current screening assays.

If you're not screening with ultrasensitive luminescent assays from Tropix, you could be missing critical data.

The experts at Tropix work with you to design tests of brilliance: assays perfectly suited to the parameters of your research and the realities of HTS. Of course, Tropix pioneered chemiluminescence — the most sensitive detection method available.

Bank on it. Delegating your assay development to Tropix can significantly reduce capital expenditures, discovery timelines, human resource costs and ultimately shrink your time to market.

Put Tropix to the test. Call 800-542-2369.

TROPIX

47 Wiggins Avenue
Bedford, Massachusetts 01730
USA
Tel: 617-271-0045
800-542-2369
Fax: 617-275-8581
E-mail: info@tropix.com

PE APPLIED BIOSYSTEMS

USA
Foster City, CA
Tel: 800-345-5224
415-570-6667
Fax: 415-572-2743

Europe
Langen, Germany
Tel: 49 6103 708 301
Fax: 49 6103 708 310

Canada
Mississauga, Ontario
Tel: 800-668-6913
905-821-8183
Fax: 905-821-8246

Japan
Chiba
Tel: (0473) 80-8500
Fax: (0473) 80-8505

Latin America
Mexico City, Mexico
Tel: 52-5-651-7077
Fax: 52-5-593-6223

Australia
Victoria
Tel: (03) 9212-8585
Fax: (03) 9212-8502

 **TROPIX**

PE Applied Biosystems

Tropix is a registered trademark of Tropix, Inc.
PE Applied Biosystems is a trademark of the Perkin-Elmer Corporation.
©1997 Tropix, Inc. All rights reserved. Printed in USA.

Circle No. 44 on Readers' Service Card

TECH.SIGHT

Lyophilization in an Isolator

The Dura-Stop MP Tray Lyophilizer is available in an Isolator configuration that eliminates the need for costly clean room construction while still providing the sterile environment required by pharmaceutical scientists and others. The Dura-Stop MP is available with either a -70°C or -50°C shelf temperature. Condenser temperatures range from -55°C to -85°C . FTS Systems. For information call 800-251-1531 or circle 139 on the reader service card.

Dual Laser-Induced Fluorescence Detector

The BioFocus LIF2 detector, an advanced laser-induced detector for capillary electrophoresis, offers two lasers, dual detection, and state-of-the-art sensitivity. Because the detector allows excitation with two separate, high-intensity lasers and simultaneous dual detection of emitted fluorescence it provides much greater flexibility and allows higher productivity because an unknown sample and a standard can be run at the same time for optimal internal referencing. At least 1000 times more sensitive than conventional ultraviolet absorbance detectors, the BioFocus LIF2 can detect picomolar concentrations of DNA. Bio-Rad Laboratories. For information call 510-741-1000 or circle 140 on the reader service card.

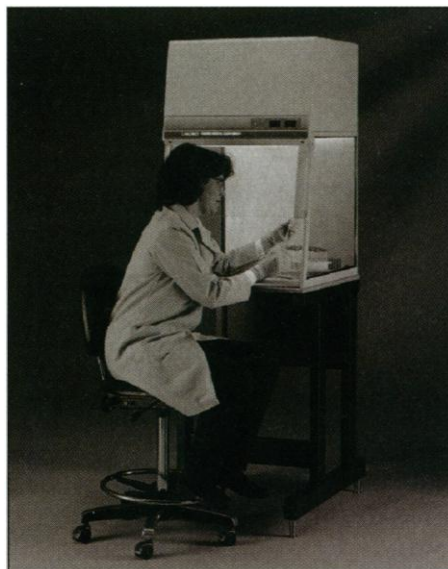
Electronic Crosslinker

The CEX-800 patented electronic ultraviolet (UV) crosslinker features electronic ballasting, which eliminates turn-on flicker and increases lamp output. This reduces crosslinking time, extends lamp life, and increases crosslinking accuracy. The intensity monitoring feature provides a real-time readout of UV lamp intensity without interrupting the cycle in use. This removes the guesswork involved when calculating crosslinking times and gives a direct indication of when the lamps need to be changed. Microprocessor-controlled photofeedback mode automatically compensates for variations in UV lamp intensity. Ultra-Lum. For information call 562-529-5959 or circle 141 on the reader service card.

Vertical Clean Bench

The Purifier Vertical Clean Bench provides a work area that meets Class 100 levels of cleanliness. It is designed for animal and plant tissue culture research, polymerase chain reaction, media preparation, drug ad-

mixture, and microelectronics inspection and repair. During operation, air is drawn through a disposable prefilter and then forced through a 99.99% efficient high-efficiency particulate air filter before flowing down through the work area and out. This compact station features a durable epoxy-coated steel and alumi-



num frame with clear safety glass side panels and an angled tempered safety glass sash that swings up for easy loading and clean-up. Two utility ports allow passage of tubing and electrical cords from equipment inside the enclosure through the back for connection to services. Labconco. For information call 800-821-5525 or circle 142 on the reader service card.

Hormone Assays

A new range of nonisotopic enzyme immunoassays to measure rat or canine hormones in plasma or serum samples includes assays for rat follicle-stimulating hormone, growth hormone, luteinizing hormone, prolactin, thyroid-stimulating hormone, and insulin and canine thyroid-stimulating hormone and luteinizing hormone. Amersham International. For information call 847-593-6300 or circle 143 on the reader service card.

Miniature Humidity and Temperature Recorder

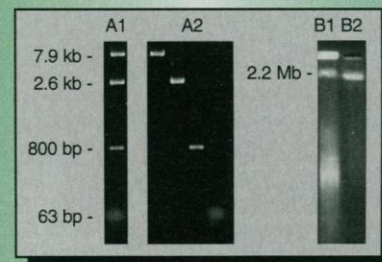
The RHTemp 101 Humidity and Temperature Recorder is a miniature, battery-powered, reusable data logger. It records simultaneously 4096 humidity measurements and 4096 temperature measurements. The tem-

(continued on page 1699)

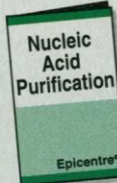
Pure, Intact DNA or RNA... it's Easy with Epicentre's GELase™ Preparation!

Epicentre's unique GELase™ Agarose Gel-Digesting Preparation offers these advantages in purifying nucleic acids from LMP-agarose gels:

- **Quantitative Yields of Any Size DNA or RNA** - from oligos to multi-megabase in size - with yields that approach 100% (see figure below).
- **Fast & Easy Procedure** - In as little as 8 minutes, GELase digests gels in many electrophoresis buffers.
- **High DNA & RNA Biological Activity** - GELase-purified DNA or RNA is intact & ready for use.
- **Economical** - The cost per DNA or RNA purification is less with GELase Preparation, compared to many β -agarases and column-based methods.



DNA from 63 bp to 7.9 kb (A1) and 2.2 megabases (B1) was separated by electrophoresis on LMP-agarose, recovered using GELase Preparation, and analyzed by electrophoresis on new LMP-agarose gels (A2 & B2). The DNA was recovered undegraded and in high yield. (Pulsed-field CHEF gels B1 & B2 courtesy of L. Chen & A. Atherly, Zoology & Genetics, Iowa State Univ., Ames, IA.)



For more information, please request our Nucleic Acid Purification Products and Techniques packet.

EPICENTRE® TECHNOLOGIES

1202 Ann Street Madison, WI 53713

800-284-8474

...when you need to be sure of the quality

Outside of the U.S. contact the distributor in your country, or call 608-258-3080 or fax 608-258-3088. E-mail: techhelp@epicentre.com

Circle No. 55 on Readers' Service Card



YOU THINK ABOUT THE VIRUS.

WE'LL THINK ABOUT THE GLOVES.

*DIAMOND GRIP™—RATED ONE OF THE BEST LOW-PROTEIN
POWDERFREE LATEX GLOVES AVAILABLE.**

**INDEPENDENT TESTS ON FILE.*

MICR⊕FLEX®
THE MOST TRUSTED NAME IN GLOVES®

ONLY SOLD THROUGH AUTHORIZED DISTRIBUTORS.
FOR A DISTRIBUTOR NEAR YOU, CALL 1-800-876-6866.

Circle No. 39 on Readers' Service Card

ASK FOR CODE SCM 0997.

(continued from page 1697)

perature range is from -40°F to $+165^{\circ}\text{F}$ with an accuracy of 0.5°C . The humidity range is from 20 to 90% relative humidity with an accuracy of 5%. The time and date of each reading is recorded automatically. The reading rate can be set from six per minute to one a day. The data can be viewed instantly in graphic or tabular format and can be exported to spreadsheet programs. **Madge-Tech.** For information call 603-456-2011 or circle 144 on the reader service card.

DNA Fragmentation Kit Detects Apoptosis

A DNA fragmentation kit based on the terminal deoxynucleotidyl transferase-mediated dUTP nick-end labeling method is the newest addition to the ApoAlert line of apoptosis detection products. The kit is based on the direct incorporation of fluorescein-dUPT at the free 3'-hydroxyl ends of DNA fragments produced during apoptosis. Direct incorporation of the fluorescein tag saves time and reduces nonspecific background. The assay can be performed on cultured cells as well as formalin-fixed, paraffin-embedded tissue sections. **Clontech.** For information call 800-662-2566 or circle 145 on the reader service card.

Optimized Electroporation Medium

Optimix is a buffer kit containing a mix of highly purified salts and other molecules that significantly aid the DNA transport process as well as improves the recovery rates for mammalian cells during and after electroporation. The molarity and selective salts mimic the cytoplasmic mix, which improves the pore healing process and increases cell survival rates. Some cell lines have seen a 100-fold increase in efficiency compared with standard buffers. **EquiBio.** For information call +44-1622-746-300 or circle 146 on the reader service card.

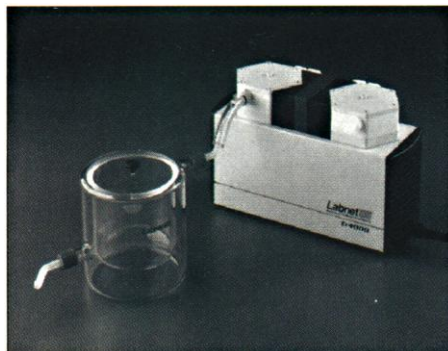
Cytokines and Growth Factors

A broad selection of recombinant human, mouse, and rat cytokines and growth factors are available for research. All are provided lyophilized with low endotoxin levels. In-

cluded are human interleukins 1 through 18, interferons, CSF, TGF- β , MCP, and MIP. Also available are mouse interleukin-18, TNF- α , IFN- γ , VEGF, rat MIP-1, interleukin-6, and more. Research applications include bioassay, functional studies, and enzyme-linked immunosorbent assay development. **Antigenix America.** For information call 800-558-1008 or circle 147 on the reader service card.

Gel Drying System

The D4000-S vacuum system is designed for optimum performance in gel drying. Components of the system include a diaphragm pump, a one-piece dry ice trap, and an attachment kit that includes all the hardware necessary to assemble the system and con-



nect it to a gel dryer. The system makes use of a dry pump with no oil or water required. All pump components that come into contact with solvent vapors are made of Teflon and Kalrez. **National Labnet.** For information call 1-888-LABNET-1 or circle 148 on the reader service card.

Literature

Maximizing Ion Trap Mass Spectrometer Sensitivity Using Low Bleed Capillary Columns is an application note. **J&W Scientific.** For information call 916-985-7888 or circle 149 on the reader service card.

Innovative Products is a catalog featuring more than 50 new monoclonal and polyclonal antibodies for cellular and molecular biologists, including monoclonal antibodies specific for epitope tags, a range of cytoskeletal antibodies, and multiple phosphorylation antibodies. **Berkeley Antibody.** For information call 510-412-8930 or circle 150 on the reader service card.

Newly offered instrumentation, apparatus, and laboratory materials of interest to researchers in all disciplines in academic, industrial, and government organizations are featured in this space. Emphasis is given to purpose, chief characteristics, and availability of products and materials. Endorsement by *Science* or AAAS of any products or materials mentioned in Tech.Sight is not implied. Additional information may be obtained from the manufacturers or suppliers named by circling the appropriate number on the Reader Service Card and placing it in a mailbox. Postage is free.

ADVANCED BIOCONCEPT

biologically
active

Fluo
peptides™
a visible advantage

Non-radioactive
fluorescent peptide
probes for G-protein
coupled receptors:

- Receptor binding
- Cellular imaging
- Flow cytometry
- Cell sorting

High affinity Fluo-peptides™
available include:

- | | |
|---------------------------|----------------------|
| • Fluo-angiotensin II™ | • Fluo-neurokinin A™ |
| • Fluo-ANP™ | • Fluo-neurotensin™ |
| • Fluo- β -amyloid™ | • Fluo-NPY™ |
| • Fluo-cholecystokinin™ | • Fluo-PACAP™ |
| • Fluo-deltorphin™ | • Fluo-PYY™ |
| • Fluo-dermorphin™ | • Fluo-somatostatin™ |
| • Fluo-galanin™ | • Fluo-substance P™ |
| • Fluo-GRP™ | • Fluo-VIP™ |

Orders: 888.FLUOTAG

Tel: 514.874.5434 Fax: 514.874.9077

mail@bioconcept.com www.bioconcept.com

Circle No. 15 on Readers' Service Card

DISPLAY CLASSIFIED ADVERTISEMENTS

Call for rate and deadline information on display classified advertisements.

E-mail: science_displays@aaas.org

Jill Steinberg
Recruitment Display Advertising
Telephone: (202) 326-6543
FAX: (202) 289-6742
E-mail: science_displays@aaas.org

Gabrielle Boguslawski
Recruitment Advertising Sales Manager
Telephone: (718) 491-1607
FAX: (202) 289-6742

Debbie Cummings
European Recruitment Advertising
Telephone: +44 (0) 1223 302067
FAX: +44 (0) 1223 576208

LINE CLASSIFIED ADVERTISEMENTS

How to Submit a Line Classified Ad:

Send your ad text to: e-mail: science_classifieds@aaas.org; fax: (202) 289-6742. You must include your telephone number, billing address, and purchase order number in your e-mail or fax. Do not bold, italicize, or abbreviate any words. SCIENCE will edit and typeset ads according to SCIENCE style. SCIENCE cannot provide proofs of typeset line ads. Available categories: Positions Open, Meetings, Announcements, and Courses and Training. Line advertisements are not commissionable.

Estimates: SCIENCE will provide a cost estimate for line ads. **This is an approximate cost only.** Purchase orders must allow for variation between estimated lines and actual typeset lines and resulting final cost.

For line advertising deadlines, call Eric Banks, Telephone: (202) 326-6555; or Troy Benitez, Telephone: (202) 326-6740; FAX: (202) 289-6742. E-mail: science_classifieds@aaas.org

Credit Cards: SCIENCE accepts American Express, MasterCard and VISA. Discount does not apply to credit cards.

Cancellations: Deadline for cancellation is Tuesday, 10 days prior to issue date.

Discounts: A 3% cash discount is granted to all prepaid ads.

Ads from Outside the U.S.: A discount of \$30 will be offered to advertisers making payment in U.S. dollars by checks drawn on U.S. banks. Contact Debbie Cummings. Telephone: +44(0) 1223 302067; FAX: +44(0) 1223 576208.

SCIENCE Professional Network: Unless otherwise instructed, all classified advertisements submitted for publication in SCIENCE are automatically posted on SCIENCE's online classified advertising service, SCIENCE Professional Network, at no additional charge.
www.sciencemag.org

Mail, FAX or E-mail materials to:
SCIENCE Classified Advertising
1200 New York Avenue, N.W., Room 911
Washington, DC 20005
FAX: 202-289-6742
E-mail: science_classifieds@aaas.org (please include your telephone number in e-mail)

SCIENCE reserves the right, at its discretion, to edit or decline to publish advertisements submitted to it.

POSITIONS OPEN



FACULTY POSITION DEPARTMENT OF MEDICAL BIOCHEMISTRY AND GENETICS

The Department of Medical Biochemistry and Genetics invites applications for a tenure-track **ASSISTANT PROFESSOR**. Appointment at a higher rank will be considered for qualified candidates. Candidates are expected to maintain a vigorous research program and participate in medical and graduate instruction. Applications from individuals with research interests in any area of biochemistry, molecular biology, or molecular genetics are encouraged. Teaching responsibilities will be in the Medical Genetics course. Review of applications will begin November 1st and continue until the position is filled. Submit curriculum vitae, description of research interests, and have three letters of references sent to: **Chair, Search Committee, Department of Medical Biochemistry and Genetics, Texas A&M University Health Science Center, College Station, TX 77843-1114.** E-mail: mbchjob@medicine.tamu.edu. Find out more about Texas A&M University at website: www.tamu.edu; find out more about our department at website: pauling.tamu.edu. *Equal Opportunity through Affirmative Action.*

FACULTY POSITION PLANT PATHOLOGIST SOILBORNE DISEASE ECOLOGY KANSAS STATE UNIVERSITY

ASSISTANT PROFESSOR. Tenure-track, 90 percent research, 10 percent teaching. Establish a strong, extramurally funded research program centered on the ecology of soil- and/or residue-borne pathogens of one or more of the major crops in Kansas (wheat, corn, sorghum, alfalfa, soybean, forage grasses, or turf grasses). Possible research areas include, but are not limited to: (1) defining interactions of plant pathogens and microbial populations associated with sustainable cropping systems, (2) studying the effect of host genotype (including transgenic plants) on these interacting populations, or (3) using genetically-engineered microbes to control soil- and/or residue-borne plant pathogens. Qualifications: Ph.D. and research experience in plant pathology, microbial ecology, microbial population genetics, or a related field; demonstrated experience in research; ability and desire to teach and to guide graduate students and postdoctoral fellows. Relevant postdoctoral experience preferred. 12-month position, available July 1, 1998, in the Department of Plant Pathology.

Send application, including transcripts, résumé, copies of relevant publications, and a summary of research interests, and have three letters of reference sent to: **Robert L. Bowden, Department of Plant Pathology, Throckmorton Hall, Kansas State University, Manhattan, KS 66506-5502.** E-mail: rbowden@plantpath.ksu.edu; website: <http://www.ksu.edu/plantpath>. Applications will be reviewed beginning December 15, 1997.

Kansas State University is an Equal Opportunity/Affirmative Action Employer.

FACULTY POSITION IN EVOLUTION AND ECOLOGY

The Department of Biology and Biochemistry at the University of Houston invites applications for a tenure-track faculty position at the **ASSISTANT, ASSOCIATE, or FULL PROFESSOR** level. Applicants in all areas of population biology will be considered, especially those using theoretical or molecular approaches to evolutionary or ecological questions. The position requires a Ph.D. degree. The faculty member will be expected to develop and maintain a nationally competitive research program, participate in graduate training, and contribute to undergraduate teaching. The Department has spacious labs with state-of-the-art equipment, strong research programs, and encourages active research collaborations among its faculty. Review of applications will begin by October 15, 1997, and continue until suitable candidates have been identified. Please submit curriculum vitae with a research plan and have three letters of reference sent to: **Dr. Arnold Eskin, Search Committee, Department of Biology and Biochemistry, University of Houston, Houston, TX 77204-5934.** UH is an Equal Opportunity/Affirmative Action Employer. Minorities, women, veterans, and persons with disabilities are encouraged to apply.

POSITIONS OPEN

FACULTY POSITION IN HEMATOLOGY STANFORD UNIVERSITY SCHOOL OF MEDICINE

The Division of Hematology invites applications from candidates who are either M.D. or M.D.-Ph.D. for a faculty position at the **ASSISTANT/ASSOCIATE PROFESSOR** level. Candidates should have independent funding, and an outstanding record of productivity in either: (a) vascular biology—thrombosis, cellular inflammation, angiogenesis; or (b) leukemia research—oncogenes, stem cell biology, lineage determination. The amount of clinical responsibility is negotiable. Newly renovated laboratory and office space will be provided, as well as generous start-up support. This position is in the Tenured Line Professoriate. The successful candidate will participate in the Program of Molecular and Genetic Medicine at Stanford.

Applicants should send a curriculum vitae, statement of research interests, and the names and addresses of three references, to: **Lawrence Leung, M.D., Chief, Division of Hematology, Room S161, Stanford University School of Medicine, 300 Pasteur Drive, Stanford, CA 94305-5112.** Stanford University is committed to increasing representation of women and members of minority groups on its faculty and particularly encourages applications from such candidates.

FACULTY POSITIONS

The Department of Molecular Biology at Vanderbilt University seeks candidates to fill two tenure-track faculty positions at the level of **ASSISTANT PROFESSOR**. For one of these positions, preference will be given to candidates with plans for research in molecular biology with an emphasis on applying tools of structural biology to important biological problems. For the second position, the emphasis will be on molecular genetics or molecular genetic approaches to important biological problems. Applicants in related areas of molecular biology that complement the interests of our current faculty might also be considered. (For information about Vanderbilt and the Department, visit our website: <http://www.molbio.vanderbilt.edu>.) The central criteria are excellence of record and the promise of future excellence in research and in teaching molecular biology at undergraduate and graduate levels. Women and minority candidates are especially encouraged to apply. Applicants should send a letter of application indicating to which of the positions she/he is applying, together with a curriculum vitae and a statement of current and future research interests, and should arrange for three letters of recommendation to be sent to: **Professor James V. Stros, Chair, Department of Molecular Biology, Vanderbilt University, Box 1820 Station B, Nashville, TN 37235, USA.** Review of applications will begin November 1, 1997, and will continue until the position is filled. *Vanderbilt University is an Affirmative Action/Equal Opportunity Employer.*

FACULTY POSITION IN COMPUTATIONAL BIOCHEMISTRY

The Department of Biology and Biochemistry at the University of Houston invites applications for a tenure-track faculty position at the **ASSISTANT, ASSOCIATE, or PROFESSOR**. The position requires a Ph.D. degree and postdoctoral experience. We are especially interested in recruiting an individual with interests in areas of bioinformatics, genomics, computational biochemistry, or structure-based drug design. The faculty member will be expected to develop and maintain a nationally competitive research program, participate in graduate training, and contribute to undergraduate teaching. The Department has substantial computational resources, spacious labs, and strong research programs. Research collaborations are encouraged among the faculty and with other research institutions in the Houston area. Review of applications will begin by October 15, 1997, and continue until suitable candidates have been identified. Please submit curriculum vitae with a research plan and have three letters of reference sent to: **Dr. Arnold Eskin, Search Committee, Department of Biology and Biochemistry, University of Houston, Houston, TX 77204-5934.** UH is an Equal Opportunity/Affirmative Action Employer. Minorities, women, veterans, and persons with disabilities are encouraged to apply.



Toxicologist

We have an immediate opening for an experienced Toxicologist at our St. Paul headquarters.

Position requires a PhD in Toxicology or related field with experience in evaluation of medical devices and drugs. Also, FDA experience in writing INDs, NDAs, IDEs, PMAs and 510(k)s. Additionally, experience in all phases of test protocol development GLPs and test monitoring required. Histopathology experience a plus.

3M provides an excellent benefits package with salary commensurate with experience. For confidential consideration, please submit your resume (no phone calls or agencies) to:

NAS REPLY SERVICE
Dept. 8MP1088
Riverview Office Tower
8009 34th Avenue South
Minneapolis, MN 55425-1619

visit our web site www.mmm.com

We Are An Equal Opportunity Employer M/F/D/V

JOHNS HOPKINS UNIVERSITY SCHOOL OF MEDICINE DEPARTMENT OF PATHOLOGY

MOLECULAR BIOLOGIST/ RESEARCH SCIENTIST

The Department of Pathology, Division of Gynecologic Pathology, invites applications for an entry level, tenure-track, faculty position to be part of an ongoing, active research program in the molecular pathogenesis of gynecological tumors. Candidates should have an outstanding record in research, an interest in gynecological tumors and be able to develop their own area of expertise within the program. Ph.D. degree is preferred. Salary will be commensurate with experience and accomplishments. The Johns Hopkins University is an EOE. WMVVDVH are encouraged to apply. Drug Free and Smoke Free.

Applications and nominations should be sent with a current C.V. (including the names of 3 references) to:

Robert J. Kurman, M.D.
Pathology Building, 711
The Johns Hopkins Medical Institutions
600 N. Wolfe Street
Baltimore, MD 21287-6417
 Closing date for applications is 12/31/97.

NEMMERS PRIZES

NORTHWESTERN UNIVERSITY

THE ERWIN PLEIN NEMMERS PRIZE IN ECONOMICS

THE FREDERIC ESSER NEMMERS PRIZE IN MATHEMATICS

\$100,000 AWARDS PRESENTED BY

NORTHWESTERN UNIVERSITY

Northwestern University invites nominations for the Erwin Plein Nemmers Prize in Economics and the Frederic Esser Nemmers Prize in Mathematics, to be awarded during the 1997-98 academic year. Each award includes payment to the recipient of \$100,000 and is given every other year.

Previous recipients were Peter A. Diamond (1994) and Thomas J. Sargent (1996) in economics and Yuri I. Manin (1994) and Joseph B. Keller (1996) in mathematics.

Candidacy for the Nemmers Prizes is open to individuals with careers of outstanding achievement in their discipline, as demonstrated by major contributions to new knowledge or the development of significant new modes of analysis. Individuals of all nationalities and institutional affiliations are eligible, except current or former members of the Northwestern University faculty and recipients of the Nobel Prize.

The 1998 recipient of either Nemmers Prize will deliver a public lecture and participate in other scholarly activities at Northwestern University for 10 weeks during the 1998-99 academic year.

Nominations for both prizes will be accepted until December 1, 1997. Nominating letters of no more than three pages should describe the nominee's professional experience, accomplishments, and qualifications for the award. A brief *curriculum vitae* of the nominee is helpful but not required. Nominations from experts in the field are preferred to institutional nominations; direct applications for the Nemmers Prize will not be accepted.

Send nominations to:

Secretary, Selection Committee for the Nemmers Prizes, Office of the Provost, Northwestern University, 633 Clark Street, Evanston, Illinois 60208-1119, U.S.A.

Northwestern University is an equal opportunity educator and employer.

POSITIONS OPEN

DIRECTOR OF THE HENRY HOOD RESEARCH PROGRAM HUMAN GENETICS/MOLECULAR MEDICINE

The Pennsylvania State University College of Medicine is seeking an outstanding scientist working in the area of human genetics or molecular medicine to serve as Director of the Henry Hood Research Program that is housed primarily in the Sigfried and Janet Weis Center for Research located in Danville, Pennsylvania. Effective July 1, 1997, the Henry Hood Research Program has been incorporated into the College of Medicine as part of the agreement to merge the clinical enterprises of the Milton S. Hershey Medical Center and The Geisinger Clinic to create the new Penn State Geisinger Health System. The Weis Center for Research, a research building dedicated in 1987, includes 65,000 square feet of laboratories, conference areas, offices, and informal meeting rooms. The Center presently has generous and fully equipped laboratory and office space for its seven professors, 11 assistant professors, 13 instructors, 15 postdoctoral fellows, and 30 research technicians who are working in the area of molecular medicine. It additionally has 8,000 square feet of space available to the new Director to initiate a program in human genetics. The new Director will have the opportunity to recruit three senior faculty to the Henry Hood Research Program, to coordinate the emerging initiatives in human genetics at the College of Medicine and the University Park campus of The Pennsylvania State University, and to facilitate clinical research in human genetics within the Penn State Geisinger Health System. Substantial resources are available for start-up funds for the new director and the new recruits as well as for support of salary, personnel, supplies, and equipment for each of the new and existing positions. The successful applicant will have academic credentials fulfilling the regulations of The Pennsylvania State University for appointment at the professorial level. Priority will be given to applicants who can relate basic research to clinical problems and therefore, an M.D. or M.D.-Ph.D. degree(s) will be a definite asset, but not an absolute requirement.

Reply with curriculum vitae to: **Leonard S. Jefferson, Ph.D., Chair, Search Committee, Senior Associate Dean for Research and Graduate Studies, The Pennsylvania State University College of Medicine, P.O. Box 850 (H175), Hershey, PA 17033-8500. We are an Equal Opportunity/Affirmative Action Employer and encourage minority and female applicants to apply.**

CHAIR, DEPARTMENT OF PHARMACOLOGY AND TOXICOLOGY

The University of North Dakota School of Medicine and Health Sciences invites applications and nominations for the position of Chair of the Department of Pharmacology and Toxicology. We seek an outstanding medical scientist with a strong research record, including extramural support, in molecular approaches to the study of pharmacology and toxicology, who will complement, expand, and strengthen existing areas of research in the Department. The candidate will be expected to participate in medical and allied health education and therefore must be committed to excellence in teaching. The applicant should also possess interpersonal and leadership skills in mentoring faculty, directing students, and performing administrative duties.

The Chair will oversee a department whose active research interests include molecular and transgenic approaches to the investigation of diabetes, cancer, heart disease, signal transduction, receptors, and ion channels. The department offers M.S., Ph.D., and M.D.-Ph.D. degrees, instructs second year medical students, and provides undergraduate service courses to nursing students and other allied health and non-majors. Further information is available at [website: http://www.und.nodak.edu/depts/pharmtox/home.htm](http://www.und.nodak.edu/depts/pharmtox/home.htm).

Review of applications will begin October 1, 1997, and the search will remain open until the position is filled. Applicants should submit a detailed curriculum vitae, a statement that addresses administrative philosophy, research goals, and teaching interests, and the names and addresses of three references to: **Dr. Edward C. Carlson, Professor and Chair of the Department of Anatomy and Cell Biology, and Chair of the Search Committee, c/o Office of the Dean, School of Medicine and Health Sciences, University of North Dakota, Box 9037, Grand Forks, ND 58202-9037.**

The University of North Dakota is an Equal Opportunity/Affirmative Action institution.

POSITIONS OPEN

DEPARTMENT HEAD DEPARTMENT OF BIOLOGICAL SCIENCES THE UNIVERSITY OF ILLINOIS AT CHICAGO

Applications and nominations are being sought for the position of Head of the Department of Biological Sciences at the University of Illinois at Chicago. The Head is the chief administrative officer of the Department, with overall responsibility for faculty and staff recruitment, budget, promotion, and instruction. The Head is expected to provide strong leadership for the Department in our research, teaching, and public service programs.

The Department of Biological Sciences has 37 faculty, over 120 graduate students, and approximately 1,100 undergraduate majors. Major subdivisions of the Department include cell and developmental biology, ecology and evolution, molecular biology, and neurobiology. UIC, a Research I institution located in the heart of Chicago, has a distinctively diverse student body of 16,000 undergraduates, 6,000 graduate, and 2,300 professional students.

The successful candidate will have an earned doctorate and be eligible for appointment at the rank of Full Professor. A strong record in research and university teaching, a demonstrated commitment to equality of opportunity, and substantial leadership and organizational skills are required. Women and minority candidates are especially encouraged to apply. The desired appointment date is August 21, 1998.

Applications should be received by November 7, 1997, to receive full consideration, although the search will proceed until the position is filled. Materials, including a full curriculum vitae and names and addresses of four references, should be directed to:

**Professor Joel S. Brown
Biological Sciences Headship Search Committee
c/o College of Liberal Arts and Sciences (m/c 228)
The University of Illinois at Chicago
601 South Morgan Street
Chicago, IL 60607-7104
Website: <http://www.uic.edu/depts/bios>**

The University of Illinois is an Affirmative Action/Equal Opportunity Employer.

FACULTY POSITION PROFESSOR AND HEAD KANSAS STATE UNIVERSITY

Professor and Head, Kansas State University invites nominations and applications for the position of Head, Department of Plant Pathology. The Head administers personnel, physical facilities, and budgets for teaching, research, and extension programs. Continuation of an active teaching or research program is possible. The Head also administers the Plant Biotechnology Center (PBC), which includes coordinating day-to-day activities and chairing the PBC Steering Committee and Advisory Boards. The PBC is an affiliation of scientists in two colleges and five departments who are working in some aspect of plant biotechnology. Applicants must have a Ph.D. in plant pathology or a closely related science, effective communication skills, and national recognition in instruction, research, or extension.

Please submit a letter of application by November 15, 1997, including a statement of leadership philosophy, curriculum vitae, and the names, addresses, and telephone numbers of five referees to: **Ned Tisserat, Department of Plant Pathology, Throckmorton Hall, Kansas State University, Manhattan, KS 66506-5502. E-mail: tissnc@plantpath.ksu.edu**. For more information concerning the position and the department, see [website: http://www.ksu.edu/plantpath](http://www.ksu.edu/plantpath).

Kansas State University is an Equal Opportunity/Affirmative Action Employer.

FACULTY POSITION, SUNY at Stony Brook. The Department of Chemistry seeks outstanding candidates for a junior or senior faculty position in the area of theoretical/computational chemistry with an interest in structural biology. The newly created Institute for Structural Biology and associated facilities provide rich opportunities of interdisciplinary research. Applicants should have a record of achievement in research and a commitment to teaching. Applications should include a curriculum vitae and statement of research interests. Candidates at the Assistant Professor level should arrange for three letters of recommendation. Review of applications will begin November 15, and will continue until the position is filled. Applications should be sent to: **Professor Iwao Ojima, Chair, Department of Chemistry, SUNY Stony Brook, NY 11794-3400. An Affirmative Action/Equal Opportunity Employer and Educator.**

POSITIONS OPEN

FACULTY POSITION, MOLECULAR BIOLOGIST. The expanding Department of Biological Sciences at Florida Atlantic University invites applications for a tenure-track position, the level of appointment to be consistent with the level of experience of the applicant. The successful applicant will receive an appointment in the Department of Biological Sciences, and the newly established Center for Molecular Biology and Biotechnology. Applicants must have an active research program in molecular biology/biochemistry, or cellular biology. Of particular interest will be research in the area of cellular responses to stress. Faculty are expected to participate in the teaching of both undergraduate and graduate courses. Please submit a résumé, pertinent reprints, a statement of research and teaching interests, and the names of three references.

Mail applications to: **Dr. Herbert Weissbach, Director, Center for Molecular Biology and Biotechnology, Department of Biological Sciences, Florida Atlantic University, 777 Glades Road, Boca Raton, FL 33431-0991. Florida Atlantic University is an Equal Opportunity/Affirmative Action Employer. The closing date is November 6, 1997.**

FACULTY POSITION IN MICROBIAL PATHOGENESIS

The Department of Biology and Biochemistry at the University of Houston invites applications for a tenure-track faculty position at the **ASSISTANT, ASSOCIATE, or PROFESSOR** level using biochemical, cellular, or genetic approaches to investigate molecular mechanisms of bacterial or fungal pathogenesis, especially of pathogen-host interactions. The position requires a Ph.D. degree and postdoctoral experience. The faculty member will be expected to develop and maintain a nationally competitive research program, participate in graduate training, and contribute to undergraduate teaching. The Department has spacious labs with state-of-the-art equipment, strong research programs, and encourages active research collaborations among its faculty. Review of applications will begin by October 15, 1997, and continue until suitable candidates have been identified. Please submit curriculum vitae with a research plan and have three letters of reference sent to: **Dr. Arnold Eskin, Search Committee, Department of Biology and Biochemistry, University of Houston, Houston, TX 77204-5934. UH is an Equal Opportunity/Affirmative Action Employer. Minorities, women, veterans, and persons with disabilities are encouraged to apply.**

NEUROSCIENCE FACULTY POSITION AT FLORIDA STATE UNIVERSITY

The Florida State University Department of Biological Science, Program in Neuroscience is seeking a Neuroscientist working at the molecular level for a nine-month, tenure-track, **ASSISTANT PROFESSOR** position. Research area within neuroscience is open, but the Program is committed to building on existing strengths in the peripheral and central processing of sensory input, including neurophysiological-neurochemical aspects, neuroendocrinological responses and developmental and regenerative neuroplasticity. Candidates must demonstrate a strong commitment to undergraduate and graduate teaching and the potential for development of a high quality, funded, independent research program in neuroscience. By December 15, interested candidates should forward a curriculum vitae, list of publications, names of three references, and a statement of research goals to: **Dr. Marc E. Freeman, Department of Biological Science, Florida State University, Tallahassee, FL 32306-4340. Florida State University is an Affirmative Action/Equal Access/Equal Opportunity Employer.**

FACULTY POSITION, Brown University. The Department of Chemistry invites applications for a three-year, renewable, tenure-track position in physical chemistry at the **ASSISTANT PROFESSOR** level. Research topics in all areas of experimental physical chemistry will be considered. The successful candidate is expected to have a Ph.D., to maintain a vigorous research program, and to excel in teaching at both the undergraduate and graduate level. Applicants should submit a complete curriculum vitae, graduate and undergraduate transcripts, a detailed statement of research plans, and three letters of recommendation. All materials should be sent to: **Professor P. M. Weber, Search Committee, Department of Chemistry, Brown University, Providence, RI 02912.** In order to receive full consideration, applications should be filled by October 15, 1997. *Brown University is an Equal Opportunity Affirmative Action Employer.*

Post-doctoral Protein Biochemist / Cell Biologist

Celltech Therapeutics is committed to the discovery and development of novel therapeutic agents to treat a range of diseases primarily linked to abnormal functioning of the immune system.

An opportunity has arisen for a highly motivated protein biochemist, ideally with cell biology experience, to join a multi-disciplinary team to investigate the function of novel cell surface proteins. Current interest is

focused on members of the adamalysin family which are involved in the localised proteolytic activation and cellular release of factors that mediate growth, apoptosis and inflammation.

You will need a PhD, possibly with some post-doctoral experience in the area of adhesion, proteinase biochemistry or cytokine biology. You will have a proven ability to purify and characterise proteins, and versatility in terms of assay development would be an asset.

You will qualify for a competitive salary, an attractive range of benefits, and further opportunities to develop your career in a successful and growing company.

Please apply with full cv to the Recruitment Officer, Celltech Group plc, 216 Bath Road, Slough, Berkshire SL1 4EN, quoting ref: 138.

CELLTECH OPERATES A NON-SMOKING ENVIRONMENT



UCB PHARMA is a pharmaceutical company within the UCB GROUP, engaged in long term research with the aim of developing new medicines for the treatment of disorders of the CNS, the cardiovascular system and the immune system.

Our Research Center, located near Brussels (Belgium), employs over 400 persons for internal research and works in close collaboration with other international academic and scientific research centers.

The PRECLINICAL RESEARCH DEPARTMENT is looking for an innovative (m/f)

◆ Research Chemist or Pharmacist analytical or physical ref. 97030

He/she will participate in medicinal chemistry research within an interdisciplinary group in a challenging research environment aimed at the discovery and elaboration of new therapeutic agents. He/she will be in charge of the lipophilicity laboratory within the Structure-Activity group.

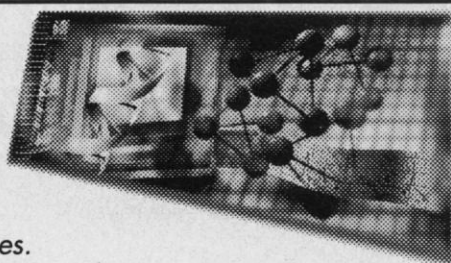
The successful candidate will be a medicinal chemist or pharmacist with a strong physical organic or analytical chemistry background at the Ph.D. level, sound experience in electrochemistry and on chromatographic systems and a demonstrated drug design orientation. Notions of statistics and QSAR are a plus. Good communication skills and good working knowledge of French and English are also necessary.

If you are interested in this position, please send your application with complete c.v., which will be treated in utmost confidence, to UCB, Mr. J. Malghem, Human Resources Manager, chemin du Foriest, B-1420 Braine-l'Alleud, Belgium. Please mention ref. 97030.



YOUR CAREER PARTNER

Working on the molecular level to conquer, treat, or prevent debilitating diseases.



DRUG DISCOVERY RESEARCH AT SCHERING-PLOUGH

At the Schering-Plough Research Institute, scientists are discovering innovative therapeutic agents that challenge humankind's most debilitating diseases. If you want to be on the cutting edge of pharmaceutical discovery, become part of an advanced multidisciplinary research group.

SENIOR SCIENTIST Immunology

We seek a talented Immunologist, with a strong desire to play a key role in a team-oriented therapeutic discovery program, to join us in pursuit of novel, targeted therapies for transplantation and autoimmune disease. This is an outstanding opportunity to be a part of a state-of-the-art research department involved in applying Cell Biology, Biochemistry and Molecular Biology to the discovery of novel therapeutics targeting T cell activation pathways. Particular emphasis has been placed on applying genomics technology to our discovery efforts.

Responsibilities will include providing Cellular Immunology expertise to our therapeutic compound and novel cytokine discovery projects. To qualify, you will need a PhD and 1-3 years of postdoctoral experience with a background in T cell activation and its role in transplantation, autoimmune disease or cancer. Demonstrated skills in cellular immunology techniques such as isolation and functional characterization of lymphocyte and hematopoietic cell subpopulations are required. Experience with molecular biology and biochemistry techniques, including plasmid construction, DNA sequencing and ELISA assays is highly desirable. To be considered for this position, please reference Dept. DD71-47-BG.

SENIOR SCIENTIST NMR Spectroscopy

We seek a talented scientist to be responsible for the development and application of NMR techniques to drug discovery research, characterization of protein-ligand interactions, and determination of structure proteins and dynamics.

To qualify, you will need a PhD in Chemistry or a related field with at least 2 years of postdoctoral experience in the use of high resolution NMR spectrometers, UNIX workstations and molecular modeling software for the structure elucidation of biological macromolecules and their complexes. Favorable skills include proficiency in the programming and application of advanced pulse sequences on high field NMR spectrometers, in-depth knowledge of high field NMR hardware and software, proficiency in the use of Biosym/MSI software, and strong UNIX and computer programming skills. Protein expression and purification experience is desirable. To be considered for this position, please reference Dept. DD97-33-SW.

We offer an excellent compensation package including a competitive salary and comprehensive benefits. For prompt, confidential consideration, we invite you to apply on-line at <http://www.sp-research.com> or send a scannable resume and cover letter, original copy only, referencing the Dept. Code for your position of interest to: Schering-Plough Research Institute, MS #1250, 2015 Galloping Hill Road, Kenilworth, NJ 07033-0539. We are an equal opportunity employer. We regret we are unable to respond to each resume. Only those selected for an interview will be contacted.



**Schering-Plough
Research Institute**

Using Science for Human Advantage

Postdoctoral Fellowships

The Mary Ingraham Bunting Institute of Radcliffe College, a multidisciplinary residential research center, offers **FELLOWSHIPS** for women scholars, scientists, artists, and writers. Office space, auditing privileges, and access to libraries and most other resources of Radcliffe College and Harvard University are provided. Residence in the Boston area and participation in the Institute community are required during fellowship appointment (September 1998).

SCIENCE SCHOLARS Fellowship Program (funded by the Office of Naval Research) is open to women who have held a Ph.D. for at least two years in the fields of astronomy, molecular and cellular biology, biochemistry, chemistry, cognitive and neural sciences, computer science, electrical engineering, geology, materials science, mathematics, physics, naval architecture and ocean engineering, oceanography, and all fields that relate to the study of oceans. *Must be a U.S. citizen.* Stipends are \$39,700 plus \$3,000 in research expenses for a year appointment starting September 15, 1998.

BIOMEDICAL RESEARCH Fellowship Program (pending renewal by The Burroughs Wellcome Fund) is open to women who have held a Ph.D. for at least two years in all fields of biomedical research. *Must be a U.S. citizen or permanent resident.* Stipends are \$39,700 plus \$3,000 in research expenses for a year appointment starting September 15, 1998.

Application deadline: October 15, 1997. Write or call for application: 34 Concord Avenue, Cambridge, MA 02138 Telephone: 617-495-8212; e-mail: Bunting_Fellowships@radcliffe.harvard.edu.

GLOBAL CAREER OPPORTUNITIES

MARSHALL SHERFIELD FELLOWSHIPS 1998

The Marshall Aid Commemoration Commission will, in addition to the 40 regular British Marshall Scholarships, offer two new post-doctoral Marshall Sherfield Fellowships in 1998.

Those selected for a Fellowship will be able to pursue independent post-doctoral research in any area of science and engineering at any British university or research institute. Applicants must be citizens of the United States of America and must hold a doctorate in a science or engineering subject. The Fellowships will comprise air fares to and from the USA, a monthly stipend, a research support grant, grants for books, equipment and travel, and other emoluments, and will be tenable for a maximum of 12 months from October 1998.

Further information and application forms are available from the Marshall Commission (Association of Commonwealth Universities, 36 Gordon Square, London WC1H 0PF, UK), the British Embassy in Washington DC, and British Consulates-General in Atlanta, Boston, Chicago, Houston, San Francisco (for details and addresses please refer to: <http://www.acu.ac.uk/marshall/sherfield.html>). Completed applications must be submitted to the British Embassy in Washington DC by 14 October 1997.

The "Flanders Interuniversity Institute for Biotechnology" (VIB) is an autonomous research institute, established in 1995, that pools the strengths of several internationally renowned biotechnology research departments from Flanders universities and research institutes.



Due to the continuous expansion of our activities, we currently seek the skills and expertise of several

MOLECULAR BIOLOGISTS

in the following departments:

1. Department of Clinical Chemistry, Microbiology and Immunology (located at the University of Ghent and supervised by **Prof. J. Plum and Dr. G. Leclercq**).

The successful candidate will work on T cell differentiation of human pluripotent haematopoietic stem cells.

Job outline:

- Study of molecular mechanisms of T cell differentiation with the emphasis on the role of homeobox genes. In addition, novel genes that are essential for T cell differentiation will be searched for.
- Transduction of stem cells with genes that are potentially crucial for T cell differentiation. Monitoring of expression of the inserted gene throughout T cell development and characterisation of the influence of the inserted gene on the process of T cell differentiation.
- Study of human immunodeficiency virus infection of mixed human-murine fetal thymic organ culture. Transduction of genes of interest in stem cells in an attempt to interfere with HIV infection of T lymphocytes.

Qualifications:

- Ph.D. with extensive background in molecular biology, experience in cellular biology and flow cytometry.
- Communication skills, team spirit, and sense of responsibility.

2. Laboratory for Molecular Ion Channel Biophysics and Pharmacology, located at the University of Antwerp, headed by **Dr. D. Snyders**.

The qualified individual will work on molecular studies of cloned and native voltage-gated potassium channels.

Job outline:

- Patch clamp, use of biochemical and molecular approaches to probe molecular determinants of permeation, gating, and drug block, as well as molecular architecture.

Qualifications:

- Ph.D. with strong background in experimental ion channel biophysics.
- Extensive experience in molecular biology.
- Creative, independent, and highly motivated.

3. Department of Immunology, Parasitology, and Ultrastructure, located at the University of Brussels, headed by **Prof. L. Wyns**

Job outline:

- Identification and engineering of antibody fragments.

Qualifications:

- Ph.D. with experience in a broad range of recombinant DNA techniques.
- relevant experience with construction and screening of antibody phage libraries and/or a strong background in antibody engineering will be an advantage.

We are also looking for a

VIROLOGIST

for the department of Microbiology and Virology at the Institute of Tropical Medicine of Antwerp and headed by **Prof. G. Van der Groen** who will work on the study of the genetic, antigenic, immunologic, and biologic variability of HIV, especially of African origin.

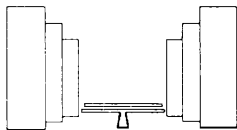
Job outline:

- Diagnosis of HIV infection, characterisation of newly emerging and naturally occurring recombinant HIV strains.
- Study of the neutralizing antibodies and epitopes and the role they play in disease protection.
- Chimeric HIV virus construction.
- Monitoring susceptibility of HIV strains belonging to different genetic clades to both existing and experimental anti-HIV compounds.
- Extensive international communication with other African, European and American research laboratories will take place. Also the work will be in constant interaction with other concurrent multidisciplinary epidemiologic and intervention studies of HIV and other STD's in Africa.

Qualifications:

- Ph.D. with extensive experience in HIV virology and serology.
- Knowledge of retrovirus molecular biology, human monoclonal antibody production, construction of chimeric HIV viruses, and screening of phage-displayed peptide libraries.
- Computer skills and management of programmes for phylogenetic analysis of nucleotide sequences is an important asset.

All positions are initially for 2 years, renewable with another 2 years, and starting as soon as possible. Applications consisting of a full CV, list of publications, and names of 3 references should be sent to: **VIB, Mrs. Marijke Lein, personnel manager, Rijvisschestraat 118 B-9052 Zwijnaarde, Belgium, e-mail: marijke.lein@vib.be**
Please mention clearly the vacancy you are applying for.



THE SALK INSTITUTE
POSTDOCTORAL POSITIONS
IN NEURAL DEVELOPMENT
AND FUNCTION

Positions are available to study neural development and function via gene-targeting/conditional mutation, molecular and cellular biology, signal transduction, and neuroanatomical approaches. Focus of areas includes the interplay of signal pathways mediated by neuregulins, neurotrophins and their receptors (CELL 69, 737-749; SCIENCE 263, 1447-1449; NATURE 378, 394-398; SCIENCE 277, 837-838). Recent Ph.D. or M.D./Ph.D. graduates with strong background in neurobiology or signal transduction are encouraged to apply. Applicants should send curriculum vitae, a brief statement of research interests, and names of three references to:

Dr. Kuo-Fen Lee
The Salk Institute
10010 N. Torrey Pines Rd.
La Jolla, CA 92037
E-mail: klee@salk.edu

THE SALK INSTITUTE IS AN EQUAL OPPORTUNITY EMPLOYER.

FACULTY POSITIONS IN
CANCER RESEARCH

Department of Pharmacology and Cancer Biology
Duke University Medical Center

The recent merger of the Departments of Pharmacology and Molecular Cancer Biology to create a single Department of Pharmacology and Cancer Biology has resulted in several new faculty positions becoming available to strengthen cancer research efforts. We seek candidates at both junior (tenure-track) and senior (tenured) levels. Successful candidates will be outstanding scientists who have expertise in modern biomedical technologies and wish to apply these technologies to cancer research.

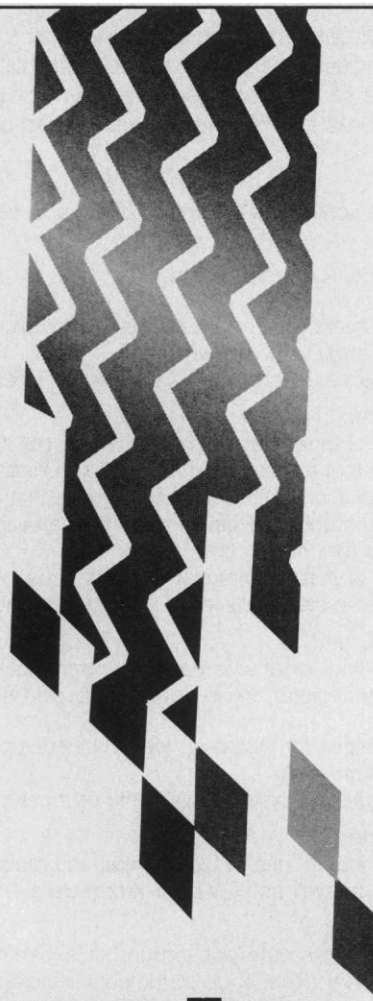
Our current department consists of 20 primary faculty with diverse interests focused primarily in the areas of Neuropharmacology and Cancer Pharmacology. Research strengths related to cancer research include receptor function and cellular signaling mechanisms, as well as regulation of normal and abnormal cell proliferation and death. For additional information on faculty research, visit our homepage at <http://pharmacology.mc.duke.edu>.

Women and underrepresented minority candidates are particularly encouraged to apply.

For full consideration candidates should send their curriculum vitae, a statement of research accomplishments and interests and three or more letters of references by November 1, 1997 to:

Anthony R. Means, Ph.D., Chairman
Department of Pharmacology and Cancer Biology
Box 3813 DUMC
Durham, NC 27710

*Duke University Medical Center
is an Equal Opportunity Employer*



Make Tracks

Want to find a new job fast?

SCIENCE Professional Network can help you find just what you're looking for with the most complete and searchable database of scientific career opportunities anywhere. See it for yourself, but buckle up first.

www.sciencemag.org

Select SCIENCE Professional Network

SCIENCE

**PROFESSIONAL
NETWORK**





UNIVERSITY OF OXFORD

Department of Biochemistry University Lectureship in Molecular Biophysics

Applications are invited for the above post, tenable from 1 October 1998 or as soon as possible thereafter. Stipend according to age on the scale £16,045 to £33,202 per annum. The successful candidate may be offered a non-tutorial fellowship by St Cross College.

Preference will be given to those working in the field of structural biology with emphasis on multimolecular interactions and complex structure and function.

Further particulars containing details of the duties and emoluments may be obtained from Professor L.N. Johnson, FRS, Laboratory of Molecular Biophysics, South Parks Road, OXFORD OX1 3QU (tel. +44 (0)1865 275365; fax +44 (0)1865 510454), email: jthorp@biop.ox.ac.uk to whom applications (8 typed copies, or one from candidates overseas) containing a curriculum vitae, a summary of research, a list of principal publications, and the names of three referees should be sent by 7 November 1997. The further particulars are also available on <http://www.admin.ox.ac.uk/tp>. Candidates will be notified if they are required for interview.

The University is an Equal
Opportunities Employer.



Professor: Chair of Physiology

Applications are invited for appointment as Professor: Chair of Physiology (RF-97/98-9), tenable from 1 September 1997.

Applicants should have outstanding academic achievement with an established international record of research and publication. The appointee is expected to maintain a strongly funded research programme that complements the research interests of the existing faculty members. Apart from scholarship and experience in state-of-the-art approaches to study physiological mechanisms at the molecular cellular and/or system levels, the appointee must also have extensive experience in the teaching of undergraduate programmes in human physiology. Experience in innovative teaching programmes is desirable. The Chair holder is expected to engender a congenial academic environment that promotes excellence in research and teaching in Physiology.

The post is available on fixed or superannuable terms, as negotiated with the appointee and attracts substantial fringe benefits such as leave, medical/dental benefits, an allowance for children's education in Hong Kong, and housing at a charge of a percentage of salary, currently 7.5%. The University reserves the right not to fill the Chair or to fill the Chair by invitation or to make an appointment at a lower level.

Annual salary will be within the non-clinical professorial range, which is not less than HK\$1M (approx. US\$129,870; US dollar equivalent as at 31 July 1997), with starting salary commensurate with qualifications and experience. The appointee on fixed terms will be given a 15% (taxable) gratuity. At current rates, salaries tax will not exceed 15% of gross income.

Further particulars and application forms can be obtained either on WWW at <http://www.hku.hk> or from the Appointments Unit, Registry, The University of Hong Kong, Hong Kong (Fax (852) 2540 6735/2559 2058; E-mail: APPTUNIT@REG.HKU.HK). **Closes 17 October 1997.**

*The University is an equal opportunity employer and
is working towards a smoke-free environment*



THE HONG KONG UNIVERSITY OF SCIENCE AND TECHNOLOGY DEPARTMENT OF BIOLOGY

Faculty Position in Cell Biology

The Hong Kong University of Science and Technology is a publicly-funded research university with strong graduate programmes. The Department of Biology is well-equipped with modern facilities and currently has 23 faculty members. Applications are invited for a faculty position at the rank of Assistant Professor/Associate Professor in the area of Cell Biology.

Applicants must have a Ph.D. degree, postdoctoral experience, and the ability to establish an independent research programme. Research experience in regulation of cell division, cell differentiation and cell death, including study of cancer, will be particularly appreciated. The candidate is expected to be able to teach biodiversity and evolution.

Salaries are highly competitive; the minimum salary for Assistant Professor is approximately US\$67,020 per annum. Generous fringe benefits including annual leave are provided; housing benefit is also provided where applicable.

Applications including a curriculum vitae, a short statement of research interests, and the names and addresses of at least 3 referees should be sent to: **The Chair of Recruitment Committee, Department of Biology, The Hong Kong University of Science and Technology, Clear Water Bay, Kowloon, Hong Kong (FAX: (852) 2358-1559) before 30 November 1997.**

THE UNIVERSITY OF THE WEST INDIES

St. Augustine, Trinidad

SENIOR LECTURER/ LECTURER IN VETERINARY PHYSIOLOGY

School of Veterinary Medicine

Applicants should have a PhD or DVM or equivalent and at least three years' teaching experience in the subject area.

ANNUAL SALARY RANGE: Senior Lecturer TT\$137,520 - TT\$147,696 - TT\$161,136; Lecturer TT\$98,928 - TT\$109,104 (B) - TT\$117,744 - TT\$127,920 plus an Institutional Allowance ranging from 10% to 20% of basic salary depending on post. Regional Allowance, Passages, Pension, Housing Allowance, Study, Travel and Book Grants. Applications naming three referees and detailing qualifications and experience should be sent to the Campus Registrar, The University of the West Indies, St Augustine, Trinidad as soon as possible. Further particulars will be sent to all applicants and are also available from the Association of Commonwealth Universities (46048), 36 Gordon Square, London WC1H 0PF, UK (tel. 0171 387 8572 ext. 206; fax 0171 813 3055; email appts@acu.ac.uk).

ASSISTANT PROFESSOR

**Kinsmen Laboratories
Division of Neurological Sciences
Department of Psychiatry
The University of British Columbia**

The University of British Columbia invites applications for a tenure track position in the Division of Neurological Sciences, Department of Psychiatry. Outstanding candidates from all areas of Neuroscience are encouraged to apply, particularly individuals with expertise in the cellular or molecular bases of neurodegenerative disorders. Candidates must hold a Ph.D and/or an M.D. degree and show clear evidence of a capacity for independent, original research. The Division of Neurological Sciences offers excellent research facilities. Generous start-up funds are available. Salary will be commensurate with qualifications and experience.

In accordance with Canadian immigration requirements, priority will be given to Canadian citizens and permanent residents of Canada. UBC hires on the basis of merit and is committed to employment equity. We encourage all qualified persons to apply.

Anticipated start date is January 1, 1998. Applicants should send a curriculum vitae, list of publications, a statement of research interests, and the names and addresses of three referees **by October 31, 1997**, to:



Dr. H.C. Fibiger, Head
Division of Neurological Sciences
Department of Psychiatry
University of British Columbia
2255 Wesbrook Mall
Vancouver, B.C. CANADA V6T 1Z3



Faculty Position:

**Genomic Instability/DNA
Recombination and
Repair/Cancer Genetics**

The UNC Lineberger Comprehensive Cancer Center is searching for individuals with promising or established research programs in the broad area genomic instability and cancer. Areas of emphasis include mammalian homologous recombination, double-strand break and cross-link repair mechanisms, DNA replication, checkpoint control and cancer genetics. One or two tenure-track appointments will be available. Primary department and rank will be determined by the applicant's qualifications. Laboratory space in the expanded Cancer Center building and generous start-up funds will be provided.

Applicants should send a curriculum vitae, a description of research plans, and three letters of reference to:

Dr. Aziz Sancar
c/o Melissa Stroud
UNC Lineberger Comprehensive Cancer Center,
CB# 7295
University of North Carolina at Chapel Hill
Chapel Hill, NC 27599-7295.

The University of North Carolina at Chapel Hill is an Affirmative Action/Equal Opportunity Employer.

Want to get your foot in the door?

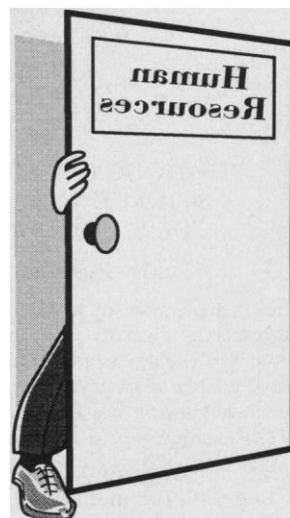
Then let SCIENCE open some doors for you by attending the **SCIENCE Career Fairs**. SCIENCE Career Fairs offer the perfect opportunity for scientific professionals to meet in person with representatives from top biotechnology and pharmaceutical companies, universities, governmental agencies, and institutions.

UPCOMING 1997 SCIENCE CAREER FAIR

Palo Alto, CA on the Stanford Campus
Tresidder Memorial Union
3 October: 11 am – 4 pm
4 October: 11 am – 3 pm

On-site registration is available. **Remember to bring multiple copies of your CV or résumé with you to the Career Fair; a copy will be necessary to gain admission to the hall.** For more information call (202) 326-7018 or check SCIENCE Career Fair Information Online: www.sciencemag.org. Admission to the event is FREE.

Do not contact Stanford directly. They are not responsible for organizing this event.



SCIENCE
CAREER FAIRS
www.sciencemag.org
(Choose SCIENCE Professional Network from the menu)



Department of Pediatrics
Midwest Children's Cancer Center

Faculty Research Position

The Midwest Children's Cancer Center is seeking individuals to expand its laboratory research. Areas of interest include molecular mechanisms of signal transduction, regulation of blood cell development and oncogenic transformation of stem cells. The use of transgenic and/or knockout mice or other innovative approaches are encouraged. Candidates will be considered at the Assistant or Associate Professor level.

The Cancer Center is affiliated with Children's Hospital of Wisconsin and the Blood Research Institute of the Blood Center of Southeastern Wisconsin. This unique environment provides researchers with access to clinical expertise of the pediatric medical staff, academic research at MCW, and the research programs at the Blood Research Institute. Significant opportunities exist for participation in the MCW Cancer Center and the new Genetics Initiative Program.

Qualified individuals are invited to send their CV with a cover letter describing their current research interests and expertise, and projects to: Dr. Bruce Camitta, Midwest Children's Cancer Center, MACC Fund Research Center, 8701 Watertown Plank Road, Milwaukee, WI 53226. EO/AAE M/F/D/V.

Postdoctoral Research at The Wistar Institute

A postdoctoral position is available to study antigen receptor mediated B lymphocyte activation using molecular genetic, biochemical, and cell biologic approaches. Current studies focus on protein tyrosine kinase dependent/regulate signal transduction (J.Biol.Chem. 272:18200) and the molecular basis of ligand induced receptor internalization (Puré & Tradelli. Proc. Natl. Acad. Sci. USA 89:114). Individuals with interests and experience in signal transduction, molecular genetics, immunology, and/or cell biology are especially encouraged to apply.

Send curriculum vitae, reprints of publications and three letters of recommendation to:

Dr. E. Puré, THE WISTAR INSTITUTE,
3601 Spruce Street,
Philadelphia, PA
19104-4268.

The Wistar Institute
is an equal opportunity employer.



THE BAYER FACTS:



Bayer:

**A premier
healthcare
company for
the 21st century.**

Our business is
to significantly
improve health
worldwide.

People are the
heart of our
company.

Our corporate
culture inspires
and commits all
to do their best.



Pharmaceutical
Division

Biological Products

SCIENTIFIC OPPORTUNITIES

■ In the highly competitive global pharmaceutical marketplace, there are many "Bayer Facts" which distinguish us as a leader. To name a few, we are part of Bayer Corporation, a \$32 billion international diversified organization and one of the most broadly-based healthcare companies in the U.S. Our Clayton, NC facility is the largest of its kind in the world and is primarily involved in the manufacture of Biological Products.

PRINCIPAL ASSOCIATE RESEARCH SCIENTIST/ RESEARCH SCIENTIST

- Assisting in directing laboratory activities, you will work at the bench as well as evaluate and develop innovative methods for viral screening and inactivation/removal. You'll also have potential to supervise other scientists.
- To qualify, you must have a PhD or MS and 4+ years of related experience in biochemistry, microbiology or virology. Familiarity with cell culture and virus propagation is essential. You must also have strong analytical, communication and interpersonal skills. Supervisory and experimental experience developing processes for biological therapeutics is a definite advantage. POSITION #96-74A

SR./PRINCIPAL ASSOCIATE RESEARCH SCIENTIST

- Based in Centennial Campus (NCSU), this position focuses on projects that require innovative approaches and creativity. You will stabilize therapeutic plasma proteins using formulation and lyophilization techniques. You'll also develop new freeze dryer cycles.
- To qualify, you must have at least an MS in life sciences or engineering and 2+ years of directly related pharmaceutical experience or a PhD. An extensive background in protein biochemistry and methods of protein stabilization is essential. You must also be proficient with analytical equipment and have strong analytical and presentation skills. POSITION # 97-10B

HEPATITIS B IMMUNIZATION IS REQUIRED FOR BOTH POSITIONS.

- Send resume (indicating Position Number) with salary history/requirements to: Human Resources Administrator/RC, Bayer Corporation, P.O. Box 507, Clayton, NC 27520. No agencies or phone calls please. For more information on Bayer search: <http://www.careermosaic.com/cm/bayer/>
- An Equal Opportunity Employer M/F/D/V. Bayer Corp. is committed to enhancing and maintaining cultural diversity within our work environment.

POSITIONS OPEN

FACULTY POSITION MOLECULAR GENETICS, BIOCHEMISTRY, AND MICROBIOLOGY

The Department of Molecular Genetics, Biochemistry, and Microbiology invites applications or nominations for two **TENURE-TRACK ASSISTANT PROFESSORS**. We seek individuals with interests in cancer biology, developmental biology, cell cycle or signal transduction, and the capability and desire to take advantage of the information being generated by the human genome project. With 26 full-time faculty, we maintain strong active research programs in disciplines including differentiation, developmental, and cancer biology; human genetics; molecular and cellular immunology; structural biology; viral and microbial pathogenesis, and membrane transport. We support an active graduate program and maintain core facilities accessible to all University faculty, for production of transgenic and knockout mice and DNA synthesis and sequencing. These opportunities are complemented by mouse physiology and pathology services in other departments and by the Barrett Cancer Center and the Cardiovascular Center providing a breadth of research opportunities unparalleled at most research institutions. Our program can be visited through our website: <http://ucmg65.med.uc.edu/>. Applicants should submit a curriculum vitae, brief description of research program, and the names of three qualified references to: **Jerry B. Lingrel, Ph.D., Professor and Chair, Department of Molecular Genetics, Biochemistry, and Microbiology, University of Cincinnati College of Medicine, 231 Bethesda Avenue, Cincinnati, OH 45267-0524.**

Affirmative Action/Equal Opportunity Employer.

RICE UNIVERSITY DEPARTMENT OF BIOCHEMISTRY AND CELL BIOLOGY FACULTY POSITIONS

Applications are invited for two tenure-track faculty positions in biological sciences, one in cell and developmental biology and one in biophysics. Cell and developmental biology may encompass animal, microbial, or plant systems, with biophysics areas including experimental, computational, and theoretical approaches. Candidates must have completed a Ph.D. or M.D.-Ph.D. program in a related field, have postdoctoral training, exhibit outstanding communication skills, and a record indicating significant potential in research and teaching. The successful candidate will be expected to develop and maintain a vigorous research program supported by extramural funding, and participate in graduate and undergraduate teaching. Emphasis in recruiting will be at the **ASSISTANT PROFESSOR** level, but highly qualified candidates at other levels will also be considered. Review of submitted applications will commence on November 1, 1997, and continue until the positions are filled. Please send letter of application, curriculum vitae, summary of past research, and statement of future research plans, and arrange for four letters of reference to be sent to:

**Faculty Search Committee
Department of Biochemistry and Cell Biology
Rice University, MS-140
6100 Main Street
Houston, TX 77005-1892**

Rice University is an Equal Opportunity/Affirmative Action Employer; women and minority candidates are encouraged to apply.

FACULTY OPPORTUNITIES

The School of Chemistry and Biochemistry of the Georgia Institute of Technology seeks to fill tenurable faculty positions in all areas of chemistry and biochemistry. Particular emphasis will be given to physical chemistry, bioorganic/medicinal or organic polymer chemistry, bioanalytical chemistry, and inorganic chemistry. Further information, as well as an on-line application, is available on our website: www.chemistry.gatech.edu. Candidates at the entry level should send an application letter, curriculum vitae, a summary of research plans, and should request graduate transcripts and three letters of reference. All materials and requests for information should be directed to: **Chairman, Faculty Search Committee, School of Chemistry and Biochemistry, Georgia Institute of Technology, Atlanta, GA 30332-0400.** We will begin evaluating applications October 15, 1997. Additional applications will be considered until the positions are filled. *Georgia Tech is a unit of the University System of Georgia and an Equal Education/ Employment Opportunity Institution.*

POSITIONS OPEN

PROFESSOR AND CHAIR DEPARTMENT OF ANIMAL SCIENCES

Rutgers, The State University of New Jersey, seeks applications for the position of Professor and Chair of the Department of Animal Sciences, Cook College. The successful candidate is expected to provide vision for the department, and lead and coordinate departmental instruction, research, and outreach programs. Other responsibilities include acting as a liaison with agricultural producers, major animal health and biomedical industries, and government. Leadership is expected for ongoing university, regional, and national initiatives. The successful candidate should be an established international scholar in Animal Science or a related discipline. Eligibility for tenured rank of Full Professor is required. Understanding of the land-grant system is essential. Evidence of leadership skills, commitment to academic excellence and scholarly achievement are critical. This position presents a unique opportunity to lead a focused and vibrant department in addressing the challenging needs of non-traditional animal agriculture in an urbanized state. Applications will be accepted until November 1, 1997, or until a suitable candidate is identified. Qualified persons should send a letter, with curriculum vitae, and the names of three persons who may be contacted to: **Dr. Larry S. Katz, Search Committee Chair, Department of Animal Sciences, Cook College—Rutgers, The State University, P.O. Box 231, New Brunswick, NJ 08903-0231.** *Rutgers University is an Affirmative Action/Equal Opportunity Employer.*

FACULTY POSITION IN CANCER IMMUNOLOGY CARDINAL BERNARDIN CANCER CENTER Loyola University Medical Center

One **ASSISTANT PROFESSOR** faculty position is available for an outstanding candidate with interests in virus-induced tumors and cancer cell biology, novel tumor markers, immunologically based detection and treatment of human malignancies, signaling pathways in cell fate determination and molecular mechanisms of transformation. Expertise is especially sought in biochemistry/protein engineering and novel, biotechnology-based translational research in the above areas.

The successful candidate will be provided with laboratory and office space in the new Cardinal Bernardin Cancer Center, and a competitive compensation and start-up funds package.

Applicants with an M.D. and/or Ph.D. should send a curriculum vitae with bibliography, and a description of research interests by September 30, 1997, to: **Michele Carbone, M.D., Ph.D., Cardinal Bernardin Cancer Center, Loyola University Medical Center, 2160 South First Avenue, Maywood, IL 60153.** *An Equal Opportunity Employer/Educator.*

SENIOR FACULTY POSITION MOLECULAR BIOLOGY

The Department of Biochemistry and Molecular Biology of the Oregon Graduate Institute of Science and Technology seeks to hire a Molecular Biologist at the **FULL or ASSOCIATE PROFESSOR** level with research interests in regulation of gene expression, molecular cell biology, cellular metabolism, and/or genomic analysis in either prokaryotes or eukaryotes. We are looking for persons with a proven record of scientific accomplishment and solid research funding. A description of departmental research interests can be found at website: <http://www.cbs.ogi.edu/>. Send curriculum vitae, names of three references, and a summary of research plans to: **Dr. James M. Cregg, Search Committee Chair, Oregon Graduate Institute, P.O. Box 91000, Portland, OR 97291-1000, USA. Telephone: 503-690-1217; FAX: 503-690-1464; e-mail: cregg@admin.ogi.edu.** *Equal Employment Opportunity/Affirmative Action Employer.*

FACULTY POSITIONS. New Jersey Neuroscience Institute (NJNI), Seton Hall University invites applications for positions at **ASSISTANT and ASSOCIATE PROFESSOR** levels. Positions are available for scientists holding a Ph.D. with interest in fMRI (especially with application to vision, cognition, or epilepsy), brain slice recording (related to epilepsy), optical imaging (for human or animal cortex), or human vestibular physiology. NJNI has excellent facilities for all of these areas. Prospective candidates should send a curriculum vitae and summary of research plans to: **Martin Gizzi, M.D., Ph.D., NJ Neuroscience Institute, 65 James Street, Edison, NJ 08818.**

POSITIONS OPEN

ASSISTANT PROFESSOR, MEDICINAL CHEMISTRY University of Minnesota Cancer Center and The College of Pharmacy

The University of Minnesota Cancer Center and the College of Pharmacy announce a new fixed-term, annually renewable Assistant Professor position. Essential qualifications include a doctoral degree in bio-organic, organic, or medicinal chemistry and a minimum two years of postdoctoral experience in at least one of those areas. The successful applicant will develop an independently funded research program in mechanistic aspects of carcinogenesis; within three years the person in this position is expected to generate a portion of his/her salary. Appropriate research areas could include, but are not limited to, cancer chemoprevention, carcinogen activation/detoxification, mechanisms of DNA adduction and repair, and signal transduction mechanisms. Additionally, the applicant will participate in the Medicinal Chemistry graduate program and teach in the College of Pharmacy professional program.

Interested individuals should submit a curriculum vitae, a summary of long-term research goals, and the names and addresses of three references to: **Stephen S. Hecht, Ph.D., Search Committee Chair, University of Minnesota Cancer Center, Box 806 Mayo, 420 Delaware Street S.E., Minneapolis, MN 55455, ATTN: Cindy Prange.** All applications must be postmarked by October 31, 1997.

The University of Minnesota is an Equal Opportunity Educator and Employer.

FACULTY POSITION MOLECULAR ANATOMY OF THE CELL

As part of the development of a new program, The Burnham Institute invites applications for faculty positions in the area of cell structure and organization. We seek scientists with research interests in the structural aspects of cell function. It is anticipated that faculty who join this new program will use methods such as protein crystallography, nuclear magnetic resonance, high resolution microscopy, or protein chemistry to probe the structure of cellular assemblies. Candidates with a commitment to excellence in research and the ability to establish independent funding research programs are encouraged to apply. Submit curriculum vitae, selected reprints, statement of research interests, and names of three references to: **Dr. Kathryn Ely, Cell Structure Search Committee, 10901 North Torrey Pines Road, La Jolla, CA 92037.** *Equal Opportunity Employer.*

FACULTY POSITION IN GENETICS

Applications are invited for a tenure-track position in the Department of Genetics at Duke University Medical Center. Although we anticipate filling this position at the **ASSISTANT PROFESSOR** level, we will consider individuals for any level appointment. We are particularly interested in those individuals that are engaged in work utilizing mammalian systems or focusing on the genetics of human disease. The facilities and environment of the Department of Genetics are excellent. Applications should include a curriculum vitae, a brief description of research accomplishments, a brief description of plans for future research, and the names of three individuals that can serve as references. Address applications to: **Genetics Search Committee, Department of Genetics, Duke University Medical Center, Box 3054, Durham, NC 27710.** *Duke University is an Equal Opportunity/Affirmative Action Employer.*

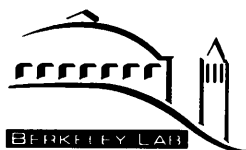
FACULTY POSITION available in magnetic resonance imaging within the Biomedical Engineering Department at the University of Michigan—Ann Arbor, Michigan. Applications are solicited for a faculty position (at all ranks) in the area of magnetic resonance imaging. Qualifications include an outstanding academic record, significant publications in major peer-reviewed journals, a doctorate in biomedical engineering or related discipline, and a demonstrated commitment to teaching and research. Potential areas of specialization include functional magnetic resonance imaging, magnetic resonance spectroscopy, and other diagnostic or therapeutic applications of MRI. Please send résumé and names of five references to: **Professor Matthew O'Donnell, Chair of Search Committee, Department of Biomedical Engineering, University of Michigan, 2350 Hayward, 3304 G.G. Brown, Ann Arbor, MI 48109-2125.**

STAFF PHYSICISTS

The Materials Sciences Division at the **Ernest Orlando Lawrence Berkeley National Laboratory** has one-year appointments (possible renewal) for Staff Physicists to join its Center for X-Ray Optics' Nanofabrication and Diffractive Optics group. Utilizing/optimizing the 100kV, Nanowriter electron-beam lithography tool for optical, electrical and magnetic experiments, the selected candidates will help develop advanced micro/nanostructures. Responsibilities include supporting electronic device research with scaling and processing aimed at producing 25nm CMOS-type structures. You will also help develop the Nanowriter for ultra-high resolution and placement accuracy efforts.

Qualified candidates will possess extensive experience with electron beam lithography systems and micro/nanostructure fabrication technology. Proven expertise with various computer systems and applications is necessary, as is a background in electronic devices and processing. Prefer a Ph.D. in Electrical Engineering, Physics or Materials Science.

Please send resume and cover letter to: **Ernest Orlando Lawrence Berkeley National Laboratory, Staffing Office, Job #JSCI/5446, One Cyclotron Road, MS 938A, Berkeley, CA 94720. E-mail: employment@LBL.gov.** Berkeley Lab is an affirmative action/equal opportunity employer committed to the development of a diverse workforce.



PHARMACEUTICAL OPPORTUNITIES

Merck Research Laboratories, a division of Merck & Co., Inc., is a world leader in biological and pharmaceutical research and is committed to developing breakthrough drugs and therapies in the shortest possible time frame; with the ultimate goal of improving world health. We are also committed to developing the careers of talented individuals throughout our organization. Currently, we have the following opportunities available for exceptional, highly motivated and accomplished scientists at our West Point, PA facility.

Virologists

Experienced Virologists are needed in analytical development to support live virus vaccine technology development and transfer to Merck's Manufacturing Division. The successful candidates will be responsible for development, validation and application of analytical methods to characterize live virus vaccines and manufacturing processes, perform assays as needed to support process development, and prepare written protocols and technical reports.

A BS/MS degree in Biology, Biochemistry or equivalent with 2 - 3 years' experience is required. A broad skill base, including knowledge of standard biochemical and molecular biological methods, enzyme immunoassays and chromatographic methods, is required. The successful candidates must have a demonstrated ability to work as part of a team and to communicate effectively both verbally and in writing. Training in good manufacturing practices and familiarity with tissue culture methods are also highly desirable. **Please indicate Ad #B-122 for this position.**

Senior Research Pharmacologist

A highly qualified Senior Research Pharmacologist is needed in the Department of Pharmacology. The selected candidate will be responsible for surgical preparation and will conduct experimentation in instrumented animal models, particularly dog and pig, with a specific focus on cardiovascular disease, including heart failure and myocardial ischemia. Research activities will include experimentation design, data analysis and interpretation. Strong written and verbal communication skills are required for data presentation and document preparation.

A Ph.D., MD degree or equivalent in Cardiovascular Physiology, Pharmacology or related area with experience in whole animal cardiovascular studies is required. **Please indicate Ad # B-123 for this position.**

Excellent salary and benefit programs accompany these positions at our modern research facilities located 25 miles northwest of Philadelphia.

Please send *curriculum vitae* with cover letter and the names of three references to: **Ad # _____, MRL Human Resources, WP42-2, Merck Research Laboratories, P. O. Box 4, West Point, PA 19486.** Only candidates considered for interviews will receive responses. We are an Equal Opportunity Employer, M/F/D/V.

To learn more about Merck, we invite you to visit our website at **www.merck.com**.



Biopsychology of Mind and Behavior

Emotion
Endocrinology
Motivation
Immunology
Sexual behavior
Neurophysiology
Cognition
Neurochemistry
Language
Neuroanatomy
Perception
Molecular Genetics
Learning

The University of Chicago is seeking to fill five positions in Biopsychology. Our primary goal is to understand behavior and the mind in relation to biological mechanisms. We construe biological mechanisms to include the endocrine and immune systems as well as the nervous system. Biopsychologists who study either animals or humans are encouraged to apply. We are open to a wide range of research areas and will ultimately select a group with diverse and complementary perspectives. Examples of areas include the reciprocal relations between any of the listed psychological processes and biological systems, with an emphasis on their evolution, development, or mediating mechanisms.

The University of Chicago is constructing a new biopsychology research facility to house these research efforts with completion expected in October of 1998. This building includes research laboratories for both human and animal behavioral studies, fully accredited animal care facilities, offices, and rooms for equipment to be shared in common. Positions are open at both junior and senior levels and evaluation of applicants will begin November 1, 1997, continuing until all positions have been filled. Applicants should submit a curriculum vitae, a conceptual summary of research and representative publications. In addition, please have three letters of reference sent to: **Biopsychology Search Committee, c/o Gwen Stevenson, 5848 S. University Avenue, Green Hall, Room 109, Chicago, Illinois 60637.** The University of Chicago is an affirmative action/equal opportunity employer.



DEPARTMENT OF PSYCHOLOGY
The University of Chicago

POSITIONS OPEN

CALIFORNIA STATE UNIVERSITY, LONG BEACH

The Department of Biological Sciences invites applications for three tenure-track faculty positions, beginning fall 1998:

MARINE ICHTHYOLOGY

Assistant/Associate Professor. The candidate must have a Ph.D. in the biological or oceanographic sciences with training and research in one or more of the following areas: physiological ecology, fisheries, population ecology, molecular systematics, or behavior. Primary teaching responsibilities include ichthyology and an advanced specialty course with field component.

IMMUNOLOGY

Assistant Professor. The candidate must have a Ph.D. in the biological sciences with training and research in immunology. All areas of immunology will be considered. Teaching responsibilities include undergraduate and graduate courses in immunology and a specialty course related to the candidate's research interests.

MICROBIAL PATHOGENESIS

Assistant Professor. The candidates must have a Ph.D. in the biological sciences with training and research in microbial pathogenesis and/or antimicrobial host defense. Preference given to candidates working with bacterial pathogens. Teaching responsibilities include a course in bacterial pathogenesis as well as an advanced course in a related area such as mechanisms of pathogenesis, antimicrobial host defense mechanisms, new and re-emerging pathogens, or intracellular bacterial pathogens.

Candidates must have a strong commitment to teaching at the undergraduate and M.S. levels and participate in introductory courses in an ethnically and culturally diverse campus community. Must have a record of published research and show potential for developing and sustaining an independent, externally funded, research program involving students. Postdoctoral or other professional research experience preferred. Research start-up funds are available. Submit a letter of application, curriculum vitae, a detailed statement of research and teaching interests, and three letters of recommendation to: **Dr. Laura Kingsford, Chair, ATTN: Marine Ichthyology Search or Immunology Search or Microbial Pathogenesis Search, Department of Biological Sciences, California State University, Long Beach, CA 90840-3702. Telephone: 562-985-4807; FAX: 562-985-8878. Screening will commence November 3, 1997. California State University, Long Beach is an Equal Opportunity/Affirmative Action/Title IX Employer.**

TWO FACULTY POSITIONS IN MICROBIOLOGY

DEPARTMENT OF BIOLOGY INDIANA UNIVERSITY, BLOOMINGTON

The Department of Biology seeks to fill two tenure-track positions in microbiology. These may be filled at any level, from ASSISTANT to FULL PROFESSOR. We invite applications from candidates working on any microbial system, prokaryotic, eukaryotic, or viral, and in any research area, including but not limited to microbial biochemistry, genetics, genomics/informatics, pathogenicity, evolution, and ecology. Significant space and a generous start-up package will be provided to the successful candidate.

These hirings are part of a major expansion of the Department of Biology into a newly renovated building in 1999, which will involve multiple hirings over the next few years in the areas of microbiology, biochemistry, cell and developmental biology, molecular evolution, and ecology. We therefore welcome applications and inquiries from two-career couples in biology, at any level, including those with partners in fields other than microbiology.

Junior candidates should send a curriculum vitae, a statement of research (past, present, and planned), and representative publications, and arrange to have three (or more) letters of recommendation sent to: **Dr. Carl Bauer, Chair, Microbiology Search Committee, Department of Biology, Indiana University, Bloomington, IN 47405. Senior candidates should send a letter of interest and curriculum vitae. Review of applications will begin November 15 and will continue until suitable candidates are identified.**

For more information about our department, see our home page at website: <http://www.bio.indiana.edu>. Indiana University is an Affirmative Action/Equal Opportunity Employer. Women, minority candidates, and couples are encouraged to apply.

POSITIONS OPEN

The Department of Psychology, University of California, Santa Barbara, invites applications for a tenure-track position (**ASSISTANT PROFESSOR**) in the area of vision science. For particulars see full advertisement in the current APS Observer, APA Monitor, or at website: <http://www.psych.ucsb.edu/position/visionfac.htm>. Deadline November 15, 1997. Equal Opportunity/Affirmative Action Employer.

PLANT POPULATION BIOLOGIST/ DIRECTOR OF THE UNIVERSITY OF CALIFORNIA BOTANICAL GARDEN

The University of California at Berkeley seeks to fill a tenured position (**ASSOCIATE** or **FULL PROFESSOR**) in the area of plant population biology. A primary responsibility of the job will be to serve as the Director of the UC Botanical Garden. The research interests of the investigator selected should be focused on evolutionary change in extant populations. The ideal person would combine the study of plant population biology with interests in population genetics and systematics. Possible areas of expertise include population genetic structure, life-history evolution, conservation genetics, evolutionary dynamics of fungal/plant interactions, and pollination biology.

Teaching assignments in Integrative Biology would involve participation in an upper division course in plant population biology or evolutionary ecology, participation in a core course in genetics or biodiversity, and graduate level seminars in the area of specialty.

The 34-acre Botanical Garden, located five minutes from central campus in Strawberry Canyon, provides opportunities for research with living plants, supplies teaching material for classes on campus, and serves as an outdoor laboratory for students. The Garden's well-documented collections are especially rich in succulents and South American, South African, European, and Asian plants as well as Californian flora. In terms of species diversity, the Botanical Garden's collection ranks among the largest in the United States.

Integrative Biology is an interactive, multidisciplinary department with an evolutionary focus. The Department is housed in the recently renovated Valley Life Science Building, which provides a diversity of a modern core facilities and also contains the University and Jepson Herbaria, the Museum of Paleontology, and the Museum of Vertebrate Zoology. The Department also has access to the field stations of the UC Natural Reserve System scattered throughout California.

Completed applications must be postmarked by October 15, 1997. The appointment commences on July 1, 1998. Applicants should submit a curriculum vitae, three publications, statements of teaching and research interests, and the names of three referees to the address below.

**Search Committee, Directorship of the
UCB Botanical Garden
Department of Integrative Biology
3060 VLSB, #3140
University of California at Berkeley
Berkeley, CA 94720-3140**

The University of California is an Affirmative Action/Equal Opportunity Employer.

UNIVERSITY OF CALIFORNIA, IRVINE TENURE-TRACK, ASSISTANT PROFESSOR

The Department of Biological Chemistry in the College of Medicine invites applications for a state-funded, tenure-track position at the Assistant Professor level. Applicants should hold the Ph.D. or Ph.D.-M.D. degree and have postdoctoral experience. Applicants with expertise in all areas of molecular biology and biochemistry are encouraged to apply. Expertise in genome-based research with medical relevance is highly desirable. Specialization can be in bioinformatics, human or model vertebrate system genetics, or biochemical basis of disease. Individual is expected to establish an independent, funded, research program of high caliber and participate in the training of graduate and medical students. A curriculum vitae, statement of research plan and teaching interests, and three letters of reference should be submitted prior to November 15, 1997, to: **Department of Biological Chemistry Search Committee, Department of Biological Chemistry, College of Medicine, D240 Med Sci I, University of California, Irvine, CA 92697-1700.**

The University of California, Irvine is an Equal Opportunity Employer.

POSITIONS OPEN

MICHIGAN STATE UNIVERSITY TENURE-TRACK APPLIED LANDSCAPE ECOLOGIST POSITION #AG-1380

The Department of Fisheries and Wildlife at Michigan State University (MSU) invites applications for a 12-month, tenure-track applied landscape ecologist position at the **ASSISTANT PROFESSOR** level. This is a collaborative position with the Wildlife Division of the Michigan Department of Natural Resources (MDNR) and the Department of Geography at MSU. This position is part of the Partnership for Ecosystem Research and Management (PERM) at MSU. A Ph.D. is required, and preference will be given to applicants with strong quantitative skills and remote sensing and GIS skills applied to landscape-scale research. Research interests and experience on the effects of land use and landscape-scale management practices on wildlife communities, land cover patterns, and ecosystem processes are desirable. Additionally, the candidate will teach a graduate level course in landscape ecology or a closely related topic and should have demonstrable ability to work effectively with state and federal agencies and conservation organizations, obtain research grants and publish findings. The candidate will also advise undergraduate and graduate students and serve on university, college, and departmental committees.

Application deadline: January 9, 1998, or until a suitable candidate is found. Salary is competitive and commensurate with education, experience, and demonstrated ability. Interested persons should submit a letter of application stating professional goals and objectives, statements of research interests and teaching philosophy, a curriculum vitae with supporting materials including transcripts, and three letters of reference to: **Dr. Henry Campa III, Search Committee Chairperson, Department of Fisheries and Wildlife, 13 Natural Resources Building, Michigan State University, East Lansing, MI 48824-1222. Telephone: 517-353-2042; FAX: 517-432-1699; e-mail: campa@pilot.msu.edu. Michigan State University is an Equal Opportunity/Affirmative Action Employer. Minority and women candidates are encouraged to apply. Disabled have the right to request and receive reasonable accommodation.**

THE ENVIRONMENTAL AND OCCUPATIONAL HEALTH SCIENCES INSTITUTE

A position is available for an **ASSISTANT/ASSOCIATE PROFESSOR**, on a tenure-track line, for a molecular toxicologist who specializes in studies of the mechanism of chemical toxicity at the molecular level. Bioscientists with backgrounds in toxicology, molecular biology, or molecular genetics are invited to respond. Candidates are expected to develop an independent research program as well as to engage in collaborative research efforts with other Institute members. We are an interdisciplinary institute devoted to research on the underlying mechanisms by which chemicals cause disease, and the application of basic science to the prevention of chemically-induced diseases. The Institute is the awardee of both NIEHS Center and training grants. The faculty line resides in the Department of Pharmacology and Toxicology of the Rutgers University College of Pharmacy; the laboratory facilities are located in the Institute. All faculty members participate in teaching undergraduate Pharmacy students and students in the Joint Graduate Program in toxicology. Applicants should send their curriculum vitae and references to: **Dr. Robert Snyder, Professor and Chairman, Department of Pharmacology and Toxicology, EOHHSI, 170 Frelinghuysen Road, Piscataway, NJ 08854-8020. Applications may also be sent via FAX: 732-445-0119; e-mail: rsnyder@cohs.rutgers.edu. Rutgers University is an Affirmative Action/Equal Opportunity Employer.**

The Department of Chemistry of The University of Chicago invites applications from outstanding individuals for the position of **ASSISTANT PROFESSOR OF CHEMISTRY**. This search is in the areas of theoretical, physical, inorganic, organic, and polymer chemistry. Postdoctoral experience is preferred. Applicants should submit a curriculum vitae, a list of publications, and a succinct outline of their research plans. Candidates should arrange for three letters of recommendation to be sent directly to: **James R. Norris, Jr., Chairman, Department of Chemistry, The University of Chicago, 5735 South Ellis Avenue, Chicago, IL 60637. Deadline for application materials is October 31, 1997. An Equal Opportunity/Affirmative Action Employer.**

WANTED
NEUROSCIENTISTS, BEHAVIORAL SCIENTISTS, EPIDEMIOLOGISTS,
PHYSIOLOGISTS, BIOPHYSICISTS, CHEMISTS, BIOCHEMISTS,
CANCER RESEARCHERS, CLINICIANS, BIOENGINEERS

TO BUILD ON 50 YEARS OF PRIDE IN PEER REVIEW

The Division of Research Grants of the National Institutes of Health is undergoing an expansion and has immediate openings for Scientific Review Administrators (SRAs) to manage the NIH peer review process, which is the foundation of NIH's successful support of high quality biomedical research.

We are seeking several highly motivated, enthusiastic individuals with strong scientific backgrounds; excellent judgment; and highly developed communication, analytic, interpersonal, organizational, and writing skills.

You will be responsible for understanding the current status and identifying future directions of your area of biomedical research; selecting members of review panels; managing study section meetings; and facilitating interactions with members and communicating the results of their deliberations and recommendations to the applicants and to the staff of the NIH funding components.

You will be richly rewarded knowing you have played a key role in moving a field of research forward.

These are GS-12, 13, or 14 Civil Service Positions, *requiring US citizenship*. The current salary range for these positions is \$45,939 to \$83,922 per year. Applicants must have earned the Ph.D. or M.D. (or have equivalent training and experience); postdoctoral research training; and a record of research accomplishment. Recruitment bonuses may be available. For positions requiring an M.D., a physician's comparability allowance is available.

Please submit a curriculum vitae and the names of three references by October 10, 1997, to:

Ellie Ehrenfeld, Ph.D.
Director, Division of Research Grants
National Institutes of Health
6701 Rockledge Drive MSC 7776
Bethesda, MD 20892-7776
E-mail: SCIREV@DRG.NIH.GOV

Selection for this position will be based on merit, with no discrimination for non-merit reasons, such as race, color, sex, national origin, marital status, handicap, age, sexual orientation, or membership/non-membership in an employee organization.

**MULTIPLE SCLEROSIS
FACULTY AND POST
DOCTORAL
FELLOWSHIP
POSITIONS**

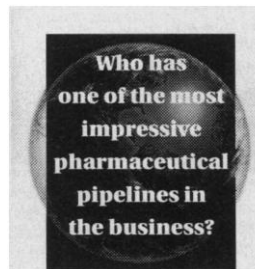
The University of Medicine and Dentistry of New Jersey, New Jersey Medical School, Department of Neurosciences, a major center for multiple sclerosis research will be offering several two-year post doctoral research fellowships as of July 1, 1998 or sooner. Individuals should have an M.D. or Ph.D. degree with a record of academic excellence.

Individuals with training in molecular biology, neurovirology, and neuroimmunology are particularly desired for the fellowship positions with opportunity for faculty advancement. Additionally, the Department is seeking to recruit a Clinical Neurologist for a faculty position. All available positions have highly competitive salaries.

Please contact **Stuart D. Cook, Professor and Chairman, UMDNJ-New Jersey Medical School, 185 South Orange Avenue H506-MSB, Newark, NJ 07103-2714.**



UMDNJ is an Equal Opportunity/Affirmative Action Employer. M/F/D/V



S e a r l e .

Today, Searle continues to produce some of the world's most outstanding pharmaceutical products. And as a quickly-expanding, wholly-owned subsidiary of the Fortune 100 Monsanto Company, we're constantly impacting the lives of people around the world, and improving the career opportunities for our professionals.

Genetic Toxicologist

The successful candidate will conduct genetic toxicology studies on new chemical entities, and perform assay development studies to improve test capabilities. This includes implementing preclinical safety study protocols; maintaining laboratory operations and ensuring that all laboratory activities are in compliance with management standards. The candidate will also independently suggest and investigate new test methodology or improvements to existing methodology or laboratory operations as well as manage the testing of compounds.

We prefer a Master's degree with 5+ years of experience in a relevant scientific area along with knowledge of genetic toxicology assays. A solid understanding of Food Laboratory Practices, GLP's, SOP's and departmental policies/procedures is desirable. Work experience in an industrial genetic toxicology laboratory for 2 or more years is a plus. The successful candidate should have excellent organization, communication and problem-solving skills to work independently in this challenging environment.

Located in suburban Chicago, Searle offers market salaries and excellent benefits including tuition reimbursement, matching 401(K) programs, and incentives based on company performance and success sharing programs! For consideration, please forward your resume to: **Searle, Job Code: TBJ3, 4901 Searle Pkwy., Skokie, IL 60077. Fax: (847) 982-7073. EEO/AA Employer M/F/D/V. Visit our web site at www.monsanto.com.**

SEARLE

POSITIONS OPEN

MARINE PHYSIOLOGIST/BIOCHEMIST

The Ocean Sciences Centre (OSC) of Memorial University wishes to make a tenure-track appointment at the rank of **ASSISTANT PROFESSOR**. The appointee will be an experimental scientist who will take advantage of our laboratory facilities, which include high quality flowing seawater. Preference will be given to someone who can develop a strong research program in the physiology or biochemistry of marine fish or other marine organisms. Duties will include teaching in either or both of the graduate programs (Aquaculture and Marine Biology), and the supervision of graduate student research.

The OSC is a research unit within the Faculty of Science which operates a variety of programmes addressing questions relevant to the cold ocean environment, including aquaculture of fish and shellfish; vertebrate and invertebrate physiology, biochemistry, and behaviour; oceanography; and seal biology. The OSC is situated 10 kilometers north of the university's main campus in St. John's, and provides excellent facilities for laboratory and field studies.

Interested persons should send a résumé, an outline of proposed research, and the names and addresses of three academic referees to:

Dr. L. W. Crim
Director, Ocean Sciences Centre
Memorial University of Newfoundland
St. John's, Newfoundland
A1C 5S7 Canada
E-mail: lcrim@morgan.ucs.mun.ca
Telephone: 709-737-3709
FAX: 709-737-3220

The closing date is November 15, 1997.

In accordance with Canadian Immigration requirements, this advertisement is directed towards Canadian citizens and permanent residents of Canada. Memorial University is committed to Employment Equity.

DEVELOPMENTAL BIOLOGIST

Baylor University, a private, liberal arts university of 12,000 students, seeks a Developmental Biologist for a tenure-track position at the **ASSISTANT PROFESSOR** level beginning 1 July 1998. Applicants must have a Ph.D. degree and be using current and innovative approaches to examine developmental processes. Position responsibilities: (1) Teach an upper-level course in embryology/development, teach introductory biology for majors, and develop and teach an upper-level course in area of specialty. (2) Establish a research program that provides training for undergraduate and graduate students. (3) Participate in departmental and university service activities. Baylor is renowned for excellence in teaching, balanced with quality faculty and student research. Submit, by 13 October 1997, application letter, curriculum vitae, statements of teaching philosophy and research interests, graduate and undergraduate transcripts, and names and addresses of three references to: **Professor Ken Wilkins, Search Committee Chair, Department of Biology, Baylor University, Waco, TX 76798-7388. Telephone: 254-710-2911; FAX: 254-710-2969; e-mail: ken.wilkins@baylor.edu; website: http://www.baylor.edu.** Baylor University is a Baptist university affiliated with the Baptist General Convention of Texas. As an Affirmative Action/Equal Employment Opportunity Employer, Baylor encourages minorities, women, veterans, and persons with disabilities to apply.

NEUROBIOLOGIST. The Zoology Department at The University of Texas at Austin invites applications for a tenure-track position at the level of **ASSISTANT PROFESSOR** to complement existing strengths in neurobiology, development, and behavior. Applications from unusually well-qualified individuals at a more senior level will also be considered. Preference will be given to candidates studying development and plasticity using cellular and/or molecular approaches. Candidates will be expected to teach at the graduate and undergraduate level. An attractive start-up package is available. Applications should include a curriculum vitae, a statement of research interests emphasizing past accomplishments and future goals, representative reprints or manuscripts, and the names, telephone numbers, and e-mail addresses of at least three references. Applications must be received by November 1, but will be considered as received. Please address applications to: **Dr. Lawrence Gilbert, Neurobiology Search Committee, Department of Zoology, University of Texas, Austin, TX 78712.** The University of Texas at Austin is an Equal Opportunity/Affirmative Action Employer.

POSITIONS OPEN

The Department of Microbiology and Immunology at the Oklahoma University Health Sciences Center invites applications for a 12-month tenure-track position at the **ASSISTANT PROFESSOR** level. Special consideration will be given to individuals with expertise in the study of gram negative pathogens; however, outstanding scientists in all areas of prokaryotic pathogenesis are encouraged to apply. A Ph.D. or equivalent degree with at least two years of postdoctoral training are required. The successful candidate will be expected to develop an extramurally funded research program in their field of study. Teaching duties will include participation in team-taught medical, dental, and graduate courses.

The Department currently has 14 full-time, tenured or tenure-track faculty with more than 40 extramural grants and contracts with a multi-million dollar yearly budget. For an overview of the Department, visit our website: **www.microbiology.uokhsc.edu.**

Submit a curriculum vitae, description of research interests and teaching experience, and names of three references to: **Rodney Tweten, Ph.D., Chair of the Search Committee, Department of Microbiology and Immunology, P.O. Box 26901, University of Oklahoma Health Sciences Center, Oklahoma City, OK 73190.** Applications will be reviewed beginning December 15, 1997. The University of Oklahoma is an Equal Opportunity/Affirmative Action Employer. Applications from women and ethnic minorities are strongly encouraged.

YONSEI UNIVERSITY FACULTY POSITIONS COLLEGE OF SCIENCE SEOUL, KOREA

Yonsei University, the leading private university of South Korea, invites applications for faculty positions in mathematics, physics, chemistry, biology, earth system sciences, and astronomy and atmospheric sciences. Up to nine appointments will be made at the **ASSISTANT** or **ASSOCIATE PROFESSOR** level. Applicants for Assistant Professor should have at least two years of postdoctoral experience before he/she takes up the position, and the successful candidates are expected to develop vigorous independent research programs and participate in the undergraduate and graduate teaching. Preferences will be given to applicants who can teach in Korean.

Interested applicants should request the application forms to: **Faculty Search Committee, College of Science, Yonsei University, Shinchon 134, Seoul 120-749 Korea. FAX: 82-2-313-2446; Telephone: 82-2-361-2559.** Application deadline is September 27, 1997. More information in our website: **http://www.yonsei.ac.kr/faculty.html/.**

University of Denver **ASSISTANT** or **ASSOCIATE PROFESSOR OF GEOGRAPHY.** Tenure-track position beginning September 1, 1998. Ph.D. required. Salary and level of appointment commensurate with experience. Expertise in natural resources management. Successful candidate is expected to support established and growing programs in geography and environmental science. Quality teaching at the undergraduate and graduate levels and development of a strong research program in natural resource management is expected. See department home page for additional details (**website: http://www.du.edu/geography/**) and application materials required.

Complete applications received by December 1, 1997, will be given full consideration.

Apply: **Donald G. Sullivan, Chair, Search Committee, Department of Geography, University of Denver, Denver, CO 80208-0183. Telephone: 303-871-2513; FAX: 303-871-2201; e-mail: dsullivan@du.edu.**

The University of Denver is committed to enhance the diversity of its faculty and staff and encourages applications from women, minorities, persons with disabilities, and veterans. See the University of Denver home page on the World Wide Web for additional information (**website: http://www.du.edu**).

ASSISTANT PROFESSOR. PLANT ECOLOGIST. The expanding Department of Biological Sciences at Florida Atlantic University invites applications for a tenure-track position. Faculty are expected to participate in the teaching of both undergraduate and graduate courses. Please submit a résumé, pertinent reprints, a statement of research and teaching interests, and the names of three references. Mail applications to: **Dr. Daniel F. Austin, Search Committee Chair, Department of Biological Sciences, Florida Atlantic University, 777 Glades Road, Boca Raton, FL 33431-0991.** Florida Atlantic University is an Equal Opportunity/Affirmative Action Employer. The closing date is 20 November 1997.

POSITIONS OPEN

COLUMBIA UNIVERSITY'S DEPARTMENT OF CHEMICAL ENGINEERING AND APPLIED CHEMISTRY

Announces two tenure-track openings to be filled, preferably at the **ASSISTANT PROFESSOR** level, by September 1998. Doctorate is required and postdoctoral experience desirable. Candidates with backgrounds in all areas broadly relevant to chemical engineering and applied chemistry will be considered. Successful candidates are expected to develop research programs that build on existing institutional strengths, are collaborative, and are capable of attracting external funding. (Inquiries and departmental information via website: **http://www.seas.columbia.edu/columbia/departments/chemical_engineering**.) Candidates should submit a plan of research and a statement of teaching objectives that demonstrate commitment to undergraduate and graduate education; three letters of recommendation; a curriculum vitae; academic transcripts; and reprints of up to two research papers representing the candidate's principal scientific efforts to date. Reply to: **Prof. Nicholas Turro, Co-Chairman, 812 Mudd Building, 500 West 120th Street, New York, NY 10027** by December 1, 1997. Columbia University is an Affirmative Action/Equal Opportunity Employer.

STRUCTURAL BIOLOGIST

The Department of Physiology and Biophysics invites applications and nominations for a tenure-track position at the **ASSISTANT, ASSOCIATE** or **FULL PROFESSOR** level. Candidates with interests in applying techniques such as NMR, X-ray, or electron crystallography, as well as electron diffraction and image reconstruction to elucidate the structure of membrane proteins, are especially encouraged to apply. Candidates must have a Ph.D. and/or M.D. degrees. Salaries and start-up funds are highly competitive. The candidate will also be invited to join the Sealy Center for Structural Biology. The Department and the Center offer excellent facilities (X-ray diffraction, computer, and NMR equipment) in a stimulating scientific environment and are deeply committed to a high quality research program in structural biology of membrane proteins. Send complete curriculum vitae, including publications list, brief statement of future research plans, names and addresses of three references to: **Dr. Javier Navarro, Chair of Search Committee, Department of Physiology and Biophysics, University of Texas Medical Branch, Galveston, TX 77555-0641.** UTMB is an Equal Opportunity/Minority/Female/Disabled/Veteran Affirmative Action Employer.

The University of California, San Diego, Department of Chemistry and Biochemistry invites applications for tenure-track and tenured faculty position in biochemistry, with a preference at the **ASSISTANT** and **ASSOCIATE PROFESSOR** level. Candidates must have a Ph.D. and a demonstrated ability for creative research and teaching at the undergraduate and graduate levels. The committee is interested in receiving applications from individuals using chemical and biochemical approaches to solve biological problems. Salary commensurate with qualifications and based on University of California pay scale. Positions subject to availability of funds. Candidates should send curriculum vitae, a list of publications, reprints of up to five representative papers, a summary of research plans, and names and addresses of three references to: **Chair, Biochemistry Search Committee 3-394, University of California, San Diego, Department of Chemistry and Biochemistry—0332, La Jolla, CA 92093-0332.** The deadline for applications is October 15, 1997, but until positions are filled all applications received will be assured full consideration. The University of California is an Equal Opportunity/Affirmative Action Employer.

Tenure-track position as **ASSISTANT PROFESSOR** of Science, Technology, and Public Policy at Princeton University. Publications or papers demonstrating ability to illuminate public policy choices through analysis of scientific/engineering as well as economic/political possibilities and constraints essential. Priority areas include: life sciences/biotechnology, environmental management/global change information/communications, and research and development. Résumé, statement of research/teaching interests, three publications, and names of three references by January 1, 1998, to: **Dean Michael Rothschild, STPP Search, Woodrow Wilson School of Public and International Affairs, Princeton University, Princeton, NJ 08544.** See also website: **www.princeton.edu/~stpp.** Affirmative Action/Equal Opportunity Employer.



TENURE-TRACK FACULTY POSITIONS DEPARTMENT OF GENETICS

The Genetics Department of the University of Pennsylvania School of Medicine is continuing its recent expansion and plans to make appointments in the molecular genetics of higher eukaryotes, including developmental genetics and human genetics. Attractive new laboratory space and resources are available. The deadline for applications is Feb. 1, 1998. Applications should include a curriculum vitae and a statement of research interests. In addition, candidates should arrange for 3 letters of recommendation to be sent to:



Chair, Search Committee
Department of Genetics
University of Pennsylvania
475 Clinical Research Bldg.
415 Curie Boulevard
Philadelphia, PA 19104-6145

An equal opportunity/affirmative action employer

RESEARCH MANAGER - (Job #AB-713) Analytical Biochemistry - DNA Core Facility

The Research Manager will be responsible for the operation of a Core Facility which provides nucleic acid sequencing, synthesis, isolation, and archiving services for scientists within Research and Product Development. This position will require not only the experience and willingness to interact closely with other scientists utilizing recombinant DNA, molecular marker, and genomics technologies, but also a demonstrated ability to conduct applied research directed toward technology improvements. We require a Ph.D. or equivalent in molecular biology or biochemistry. Previous experience with high throughput DNA sequencing, synthesis and isolation is necessary. In addition to strong technical expertise, the successful candidate must have demonstrated successful supervisory skills and the ability to work in a highly collaborative environment. Strong interpersonal and communications skills are a must. Preference will be given to candidates with previous experience managing a support facility and an in-depth understanding of plant molecular biology.

SENIOR RESEARCH ASSOCIATE - (Job #AB-714) Analytical Biochemistry - Nucleic Acid Analysis

This person will join a laboratory that is responsible for identifying and characterizing at the nucleic acid level in a wide variety of transgenic crop plants created by the various research groups within Pioneer. The primary responsibility of this position will be the evaluation and implementation of emerging technologies to further enhance our analytical capabilities. Experiments will be designed and conducted to meet clearly defined timelines. Additional responsibilities include adapting, performing and troubleshooting assay procedures already in use. We require a M.S. degree or equivalent in Molecular Biology or related field plus at least 4 years of relevant experience. Experience with a wide range of analytical nucleic acid technologies (PCR, RT-PCR, SDA, NASBA, Southern analysis and Northern analysis) is essential. Familiarity with capillary electrophoresis and use of fluorescent tags to label probe molecules will be highly desirable. Exposure to plant breeding and genetics is of value. Computer skills and the use of robotic systems to aid in high throughput sample analysis will be advantageous.

Pioneer offers an opportunity to interact among hundreds of scientists with diverse backgrounds. We offer competitive salaries and excellent, comprehensive benefits. Des Moines is a prospering heartland city that ranks well above the national averages in affordability and education. Our location provides a mix of beautiful open spaces and city life advantages. For confidential consideration send 3 copies of your cover letter and current resume, indicating job number, to: Pioneer Hi-Bred International, Inc., Attn: PERSONNEL (Job #AB-713), P.O. Box 1004, Johnston, IA 50131-1004. Applications received by October 12, 1997 will be assured of consideration, however applications will be considered until the positions are filled.

The Science of Agricultural Genetics

Pioneer Hi-Bred International, Inc., is the world leader in agricultural genetics. Founded in 1926, we are a publicly held company that invests more than \$115 million in research and product development. Pioneer brand products are grown in almost every crop-producing continent in the world. At our headquarters in Des Moines, Iowa, we're adding to our Research team.



PIONEER HI-BRED
INTERNATIONAL, INC.

An Equal Opportunity
Employer

MEETING

Current Topics in Gene Expression Systems 1997 Meeting

November 2-5, 1997
Catamaran Resort Hotel, San Diego, California

The 1997 Current Topics in Gene Expression Systems Meeting will focus on the latest advancements in gene expression technology. The most recent developments in *Pichia pastoris*, *Drosophila*, mammalian, and other expression systems will be discussed. Topics that will be covered include:

- Intracellular, Secreted, and Inducible Expression
- Posttranslational Modifications
- Downstream Processing/Fermentation
- Transgenics

Scientists are encouraged to present their work at the meeting in a oral presentation or poster. **Registration deadline is October 2, 1997.** For more information about registration or abstract submission contact Elizabeth Garon or visit the meeting web site at www.invitrogen.com/97gene_expmgtg.html.

Contact:

Elizabeth Garon
Phone: (760) 603-7208 / Fax: (760) 603-7201
e-mail: bethg@invitrogen.com

This meeting is cosponsored by
Invitrogen Corporation and
Research Corporation Technologies



U.S. Department of Agriculture (USDA)
Agricultural Research Service (ARS)

LABORATORY DIRECTOR
GS-14/15

The USDA, Agricultural Research Service (ARS), is seeking a highly motivated and articulate research scientist who can serve as Laboratory Director, and provide vision and leadership, to the ARS Appalachian Fruit Research Station, Kearneysville, WV. The mission of the Station is to identify and solve critical problems of temperate fruit production, protection, harvesting, and sorting, and to develop the science, technology, and genetic base needed to maximize productivity, cost-efficiency, and fruit quality, while minimizing the adverse effects of biotic and abiotic environment. The incumbent will be responsible for personal research (70%), and research coordination and administration (30%). The incumbent will also have the opportunity to mold and manage research programs consisting of 17 senior scientists, a 90,000 sq. ft. research laboratory and greenhouse facility, and a 550-acre research orchard. Professional experience is required in Horticulture, Entomology, Plant Physiology, Plant Pathology, and/or Agricultural Engineering. Salary is commensurate with experience, (GS-14/15) \$64,555 - \$86,059. Ph.D. is desirable. **Candidate must be a U.S. citizen.** For further information on research programs contact **Wilda H. Martinez at 215-233-6593**. For application information and forms contact **Janie E. Carr at 301-344-4569**. Applications must be post-marked by October 24, 1997.

USDA/ARS is an Equal Opportunity Employer. Women and minorities are encouraged to apply.

POSITIONS OPEN

HARVARD UNIVERSITY ASSISTANT PROFESSOR MOLECULAR AND CELLULAR BIOLOGY (MCB)

The Department of Molecular and Cellular Biology has an opening for an Assistant Professor (entry level) starting September 1998. Our department includes a broad range of fields including molecular biology, cellular biology, developmental biology, structural biology, neurobiology, molecular evolution, and molecular genetics. We are particularly, although not exclusively, interested in candidates specializing in research at the interface between chemistry and biology. Applications should include a curriculum vitae, reprints of publications, and a statement of present and future research plans (one to three pages). Complete applications and three letters of recommendation, solicited by the applicant, should be received no later than October 1, 1997, by: **MCB Search Committee, Harvard University, 7 Divinity Avenue, Cambridge, MA 02138. Telephone: 617-495-2327.** *Harvard University is an Affirmative Action/Equal Opportunity Employer. We strongly encourage applications from women and minority groups.*

UNIVERSITY OF PITTSBURGH CANCER INSTITUTE PROSTATE AND UROLOGIC CANCER CENTER

Faculty positions at the ASSISTANT or ASSOCIATE PROFESSOR level (tenure-track) are available as part of a multidisciplinary program in prostate research.

Candidates should have a Ph.D. and/or M.D. and be interested in joining a group of scientific and clinical faculty studying prostate cancer. Candidates will be judged based on their commitment to and potential for development as independent investigators.

Send curriculum vitae and list of three potential references to:

Robert H. Getzenberg, Ph.D.
Director of Research
Prostate and Urologic Cancer Center
University of Pittsburgh Cancer Institute
200 Lothrop Street, BST E-1056
Pittsburgh, PA 15213-2582

The University of Pittsburgh is an Affirmative Action, Equal Opportunity Employer.

FACULTY POSITION BIOCHEMISTRY AND BIOPHYSICS University of California, San Francisco

The Department of Biochemistry and Biophysics, University of California, San Francisco offers a tenure-track ASSISTANT PROFESSOR position. Individuals working in modern biology, including cell biology, development, biological structure, genetics, and biochemistry will be considered. Candidates should hold a Ph.D. or M.D., and will be expected to establish a dynamic research program and be a top quality teacher in graduate/professional school courses. By November 1, submit a curriculum vitae, summary of research accomplishments, description of future research plans, major publications, and three to five letters of recommendation to: **Search Committee, Biochemistry and Biophysics, University of California, San Francisco, CA 94143-0448.** *The University of California, San Francisco, is an Equal Opportunity/Affirmative Action Employer. Women and minorities are encouraged to apply.*

Department of Chemistry and Biochemistry, University of Maryland at College Park invites applications for a tenure-track or tenured position in biochemistry. Candidates at all levels will be considered (ASSISTANT, ASSOCIATE or FULL PROFESSOR). Research areas of particular interest include, but are not limited to, protein and peptide structure, folding, and design; protein targeting and secretion; and RNA structure and function. Candidates will also have the opportunity to participate in the newly-established Center for Biomolecular Structure and Organization and the campus-wide Program in Molecular and Cell Biology. Submit a curriculum vitae, a brief (three- to five-page) description of research plans, and arrange for three letters of reference to be sent to: **Prof. Douglas A. Julin, Biochemistry Search Committee, Department of Chemistry and Biochemistry, University of Maryland, College Park, MD 20742-2021.** Applications should be received by November 1, 1997, for best consideration. *UMCP encourages applications from women and members of minority groups and is an Equal Opportunity/Affirmative Action Employer.*

POSITIONS OPEN

ANIMAL PHYSIOLOGIST

Tenure-track position at the ASSISTANT PROFESSOR level beginning August 1998 for a broadly-trained physiologist with expertise in any area of current research, and a commitment to teaching and research at an undergraduate institution. Candidates must possess a Ph.D., and have the potential to develop a research program involving significant undergraduate participation. Responsibilities include teaching an advanced course addressing fundamentals of modern physiology, participation in the introductory curriculum, and academic advising. Applicants should send curriculum vitae, summary of research interests, and names and telephone numbers of three references to: **Professor Thomas L. Koppenhefer, Chair, Department of Biology, Trinity University, San Antonio, TX 78212.** Application deadline is October 6th, 1997. *Women and minority candidates are strongly encouraged to apply. Trinity University is an Equal Opportunity/Affirmative Action Employer.*

Evolutionary or Ecological Genetics. The Zoology Department at The University of Texas at Austin invites applications for a tenure-track faculty position at the level of ASSISTANT PROFESSOR in the area of evolutionary or ecological genetics. We are searching for an individual to participate in a strong graduate program in evolution, ecology, and behavior, both through an active research program as well as by teaching at the graduate and undergraduate level. Applications should include a curriculum vitae, a statement of research interests emphasizing past accomplishments and future goals, representative reprints or manuscripts, and the names, telephone numbers, and e-mail addresses of at least three references. Formal review of applications will begin December 1, 1997. Please address applications to: **Dr. Lawrence Gilbert, Evolutionary Genetics Search Committee, Department of Zoology, University of Texas, Austin, TX 78712.** *The University of Texas at Austin is an Equal Opportunity/Affirmative Action Employer.*

ASSISTANT PROFESSORSHIPS IN INORGANIC, ORGANIC, AND PHYSICAL CHEMISTRY Harvard University Department of Chemistry and Chemical Biology

Applicants are invited to apply for Assistant Professorships in inorganic, organic, and physical chemistry. Applicants should arrange to have three letters of recommendation sent independently and should provide a curriculum vitae, a list of publications, and outlines of two future research projects. Applications and supporting materials should be sent no later than 1 November 1997 to: **Professor David A. Evans, Chairman, Department of Chemistry and Chemical Biology, Harvard University, 12 Oxford Street, Cambridge, MA 02138-2902.** *Harvard University is an Affirmative Action, Equal Opportunity Employer and welcomes applications from women and minority group members.*

The Microbiology Department of The University of Texas at Austin has openings at the ASSISTANT PROFESSOR level. Excellent communications skills are a requirement. This is an outstanding opportunity to join an excellent department during a period of expansion. We are particularly interested in the fields of cell biology (not restricted to microorganisms), molecular virology, filamentous fungal biology, bacterial pathogenesis and signaling, archaea microbial physiology, and immunology. Applicants should send a curriculum vitae, a statement of research activities/future plans, and three letters of reference to: **Dr. Shinji Makino, Search Committee Chairman, Microbiology Department, The University of Texas at Austin, Austin, TX 78712-1095.** E-mail: makino@mail.utexas.edu. To be assured of full consideration, the application should be received by December 1, 1997.

The University of Texas is an Equal Opportunity/Affirmative Action Employer.

GENETICS, VISITING ASSISTANT PROFESSOR. Beginning January 1998 for one and a half years. Ph.D. required. Teach lecture and laboratories in general genetics and cell biology. Send curriculum vitae, statement of teaching philosophy, and three letters of reference by October 10, 1997, to: **Genetics Search, Department of Biology, James Madison University, Harrisonburg, VA 22807.** See also website: <http://www.jmu.edu/biology/vgenetic.html>.

JMU is an Equal Opportunity/Affirmative Action/Equal Access Employer and especially encourages applications from minorities, women, and persons with disabilities.

POSITIONS OPEN

RESEARCH ASSOCIATES MOLECULAR GENETICS/ PROTEIN BIOCHEMISTRY University of Minnesota College of Natural Resources

Two positions available immediately to characterize long-sought lignin depolymerase gene from *Trametes cinereus*, produce recombinant enzyme and develop conditions for its optimum activity. Ph.D. required in molecular biology, biochemistry, or appropriately related field. Practical experience essential in gene cloning and analyses of gene expression, or protein purification and production of recombinant enzymes through eukaryotic expression systems. Familiarity with fungal culture manipulations, (open-column) SEC, phenomenological kinetic analysis and Fortran programming would be advantageous. Excellent communication skills with ability to work both independently and as part of a team are very important. Research will be performed under direction of **Dr. Simo Sarkanen (Telephone: 612-624-6227)**, Department of Wood and Paper Science. Full time appointments with \$27,800 to \$30,800 annual salaries for one to three years contingent upon satisfactory progress and continued funding. Please send résumé describing specific research experience, graduate transcripts or academic record, copies of relevant publications, and names, addresses, telephone numbers, and e-mail addresses of three professional references to: **Dr. Glenn Howe, Search Committee Chair, Forest Genetics Group, 203 Kauffert Laboratory, University of Minnesota, St. Paul, MN 55108-6128.** Telephone: 612-624-3722; e-mail: howex003@maroon.tc.umn.edu. Applications will be reviewed beginning September 22 and continue until both positions are filled. *The University of Minnesota is an Equal Opportunity Educator and Employer.*

THE EUNICE KENNEDY SHRIVER CENTER HARVARD MEDICAL SCHOOL POSTDOCTORAL POSITION

Postdoctoral position available immediately to study development of the olfactory system in mammals. Projects include: (1) the analysis of mechanisms that regulate the migration of olfactory neurons, including cells that contain luteinizing hormone-releasing hormone (LHRH); (2) the identification of molecular cues for guidance of olfactory axons to targets in the main and accessory olfactory bulbs. Preference given to candidates with experience in molecular and cellular neurobiology. Interested applicants should send curriculum vitae, a brief description of research interests, and the names of three references to: **Dr. Gary Schwarting, The Shriver Center, 200 Trapelo Road, Waltham, MA 02154.** E-mail: gschwarting@shriverv.org. *The Shriver Center is an Affirmative Action/Equal Opportunity Employer.*

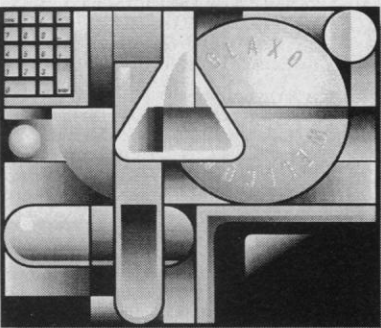
RESEARCH SCIENTIST

The Biomedical Sciences Division of the Eunice Kennedy Shriver Center for Mental Retardation, Inc. is seeking a Research Scientist (Ph.D. or M.D.) to establish a high quality, basic, and/or clinically-related research program in neuroscience relevant to mental retardation and developmental disabilities. Applicants should be at the Assistant/Associate Professor level. Start-up funds are available; however, the successful candidate will be expected to develop an independently funded research program that complements existing programs. Experience in modern cell and molecular biology is essential. Special consideration will be given to candidates using molecular genetic tools to address fundamental questions concerning developmental neurobiology and/or neurobiology of genetic disorders. The Shriver Center, located in suburban Boston, is affiliated with Massachusetts General Hospital and Harvard Medical School. Interested candidates should send curriculum vitae, a short description of research plans, and the names of three references to: **Dr. Gary Schwarting, Chairman—Search Committee, Biomedical Sciences Department, The Shriver Center, 200 Trapelo Road, Waltham, MA 02154.** Telephone: 617-642-0138; FAX: 617-893-4018; e-mail: gschwarting@shriverv.org. *The Shriver Center is an Affirmative Action/Equal Opportunity Employer.*

POSTDOCTORAL POSITION available for recent Ph.D. in biochemistry or related field, to study F1Fo ATP synthase and Complex I membrane proteins by chemical proteases and crosslinking. Applicants should send curriculum vitae, statement of interests, and names of three references to: **Dr. Steven Vik, Department of Biological Sciences, Southern Methodist University, Dallas, TX 75275-0376, USA.** E-mail: svik@mail.smu.edu.

Pharmaceutical

There's Excitement In The Journey



**We're
Breaking
New Ground
in
Research &
Development**

Glaxo Wellcome, one of the world's largest pharmaceutical companies, is an organization committed to fighting diseases and bringing innovative medicines to patients throughout the world. If you would like to share our journey while testing the limits of your own potential, join us in one of the following openings at our **Corporate Headquarters in Research Triangle Park, North Carolina.**

RESEARCH INVESTIGATOR I International Development Support

Individual will design and implement preclinical ADME studies for the registration of NCEs. Will represent the department on International Product Development Teams and review data, write/review reports, and preclinical sectional summaries used to support regulatory documents including ERC, IND, CTX, NDA and MAA submissions. Requires a Ph.D. in Chemistry, Biochemistry, Pharmacology, or a related field, with 1 year experience. Special training and expertise in pharmacokinetics is required, as is a background in drug metabolism and analytical methodology. **Please refer to Job # ASC3405-2 on all resumes.**

RESEARCH INVESTIGATOR Pharmacology

Individual will perform/direct the in vivo evaluation of compounds for antitumor activity. Will participate in the identification of novel therapeutic targets; the evaluation of research opportunities; mechanism of action and pharmacokinetics profile of active compounds; the development of in vivo models to support novel therapeutic targets; and assist in improving through-put of in vivo evaluation. Requires a Ph.D. in the Biological Sciences and 2 years postdoctoral experience. Excellent biochemistry background with experience in in vivo tumor models is required, as is experience in the areas of angiogenesis, endothelial cell biology or management of chemotherapy-induced toxicity. Excellent leadership, communication, organizational and teamwork skills are required. **Refer to Job # ASC3903-1 on all resumes.**

We offer excellent salaries and a comprehensive benefits package. For confidential consideration send your resume, which must include position title/job# and salary history to: **Human Resources Department, Glaxo Wellcome, P.O. Box 13398, Research Triangle Park, NC 27709.** (No Phone Calls or Agency Referrals, Please.) An Equal Opportunity Employer M/F/D/V

GlaxoWellcome

You'll Learn, You'll Create, You'll Discover



Pharmacia & Upjohn is among the world's largest pharmaceutical companies. We are involved in areas such as Oncology and Infectious, Metabolic, Inflammatory and Central Nervous System Diseases to help people live longer and fuller lives. If you would like an opportunity to make a difference with Pharmacia & Upjohn, as part of our Infectious Diseases Research team, contact us.

Ph.D. Microbiologist

Participate on a research team charged with discovering novel antimicrobial therapies. The team uses microbiological, biochemical, and molecular biology skills and knowledge to develop and implement in vitro assays that identify and characterize antibacterial and antifungal agents. Applicants must have the equivalent of a Ph.D. and postdoctoral experience in Microbiology or other closely related field with a good background in molecular biology and biochemistry. Candidates should have an in-depth knowledge of bacteriology and mycology and extensive research experience with demonstrated performance proficiency. Preferred applicants will have experience with pathogenic bacteria and fungi. Experience in clinical microbiology will also be an advantage. Refer to position #970451 in your correspondence.

B.S./M.S. Microbiologist

The candidate will apply microbiology and biochemistry skills and knowledge in an ongoing antimicrobial discovery program emphasizing the development and implementation of in vitro assays that identify and characterize novel antibacterial and antifungal agents. Qualified candidates must have a Master's degree in Microbiology, Biochemistry, or other closely related science and/or the equivalent combination of education and experience, and a strong record of accomplishment. Incumbents must have a good foundation in bacteriology and mycology, know microbial cell culture techniques, and be able to effectively summarize and present data orally or in written form. Refer to position #970452 in your correspondence.

B.S./M.S. Biochemist

The candidate will participate in an ongoing research program in antimicrobial drug discovery. Microbiological and molecular biological skills will be applied to basic and applied research in bacterial physiology and the development of mechanism-specific assays which will be used to discover inhibitory compounds. Qualified candidates must have a Master's degree in Microbiology, Biochemistry, or other closely related science with a strong molecular biology background, or a Bachelor's degree with a strong record of experience and accomplishment. Experience with gene cloning, expression and analysis, use of radiochemicals, and a basic knowledge of bacterial physiology are highly desirable. Refer to position #970454 in your correspondence.

At Pharmacia & Upjohn you can make a difference. Not only for the sake of your career, but also for the millions of people around the world whose lives will be enhanced by the solutions you help us provide. We offer competitive salaries and benefits. For confidential consideration please send your resume to **Pharmacia & Upjohn, (corresponding position # from above), Recruiting, 5045-88-81, 7000 Portage Road, Kalamazoo, MI 49001.** Or you may e-mail your resume (no attachments, please) to: recruit@am.pnu.com. We are an equal opportunity employer with a commitment to workplace diversity.



Pharmacia & Upjohn

POSITIONS OPEN

DEPUTY DIRECTOR U.S. ARMY RESEARCH LABORATORY DEPARTMENT OF THE ARMY

The U.S. Army Materiel Command is seeking applicants for the career Senior Executive Service position of Deputy Director, U.S. Army Research Laboratory. The Army Research Laboratory has a staff of over 2,000 composed primarily of scientists and engineers. The Laboratory reports directly to a four-star General and is headed by a permanent civilian Director. The position has an annual salary range of \$103,897 to \$123,100 depending upon individual qualifications and salary history. The individual selected will also be eligible to earn performance-related bonuses and awards.

The successful candidate will be expected to: Share responsibilities with the Director for planning, directing, and managing Army Research Laboratory programs to meet the needs of the Army and the nation well into the 21st century. Provide line authority and technical direction to over 2,000 military and civilian employees who are responsible for basic and applied research and advanced technology conducted at locations throughout the United States. Maintain an international reputation for scientific leadership and serve as a principal laboratory representative to other government agencies, private industry, academic institutions, and international organizations. Applicants should possess the following qualifications: Ability to manage a high performing laboratory responsible for research and development in the areas of information science, sensors and electron devices, weapons and material science, human engineering, vehicle technology, high performance computing, and survivability/lethality analysis. Ability to recognize the need and develop the strategy for technical programs which further Army mission performance through the application of technology. Recognized as a science or engineering expert as evidenced by professional accomplishments, publications, presentations, patents, awards, etc. *Applicants must be U.S. citizens and able to obtain a top secret clearance.* Interested individuals may obtain a complete application package for Announcement No. SES DA-13-97 by calling: **Ms. Tammy Higgins, Telephone: 703-274-9415** or by writing to: **Commander, U.S. Army Materiel Command, ATTN: AMCPE-CS, 5001 Eisenhower Avenue, Alexandria, VA 22333-0001.** Applications must be postmarked not later than 18 October 1997. *The Department of the Army is an Equal Opportunity Employer.*

ECOLOGIST/SOIL SCIENTIST/ RHIZOSPHERE BIOLOGIST

The National Research Initiative Competitive Grants Program (NRI) of the U.S. Department of Agriculture seeks a qualified scientist to serve as permanent **PROGRAM DIRECTOR** for research grants administration in the area of soil science, rhizosphere biology, or wetland, riparian, forest, or agroecology. Candidates must have an advanced degree with major study in one of the areas listed above or a closely related field. It is preferable that the candidate have a Ph.D. or equivalent specialized experience. This is a competitive vacancy, open to all United States citizens.

Closing date is October 6, 1997. Applicants will be evaluated against Quality Ranking Factors which are detailed in the Vacancy Announcement. Interested persons are urged to contact: **Dr. Anne Datko, Division Director**, for information on the position or to obtain a Vacancy Announcement. She can be reached at the NRI, CSREES/USDA, STOP 2241, 1400 Independence Avenue S.W., Washington, DC 20250-2241. Telephone: 202-401-4871; FAX: 202-401-6488; e-mail: adatko@reusda.gov. For information on application procedures/forms, contact the Human Resources Division, Telephone: 301-344-3960. The Vacancy Announcement (#WA-AG-05-97-0117) can also be obtained from the Human Resources Division or via Internet website: <http://www.reusda.gov/new/hrd/auglist/htm>. *USDA is an Equal Opportunity Employer.*

SENIOR RESEARCH SCIENTIST

Ph.D. in organic/biologic chemistry. 12-plus years experience in advanced research in macromolecular architectures and development of vectors for transfection. International recognition in materials science research. Allergy/Internal Medicine, University of Michigan Medical Center, 1520 MSRB I, 1150 West Medical Center Drive, Ann Arbor, MI 48109-0666. FAX: 313-936-2990; e-mail: cverweij@umich.edu. *A non-discriminatory Affirmative Action Employer.*

POSITIONS OPEN

DIRECTOR OF FUNCTIONAL BRAIN IMAGING THE KENNEDY KRIEGER RESEARCH INSTITUTE The Johns Hopkins School of Medicine

The Kennedy Krieger Institute, in conjunction with the Departments of Neurology, Psychiatry, and Radiology of The Johns Hopkins School of Medicine, is in search of a clinical neuroscientist to direct a research program in applying functional imaging of the child's brain to study biological causes of acquired and developmental childhood brain disabilities. The successful candidate will have access to existing industrial collaborations utilizing state-of-the-art high-speed MRI equipment and the opportunity to collaborate in cross-modality research programs that include an NIH-funded human structural neuroimaging laboratory. Applicants must have an M.D. and/or Ph.D. degree. Academic rank will be commensurate with level of experience. Interested individuals should send curriculum vitae, a brief statement of research plans, and three references to: **Ms. Karen Cox, Research Administrator, The Kennedy Krieger Research Institute, 707 North Broadway, Baltimore, MD 21205.** *An Equal Opportunity Employer.*

COGNITIVE PSYCHOLOGIST/COGNITIVE SCIENTIST, SUNY Stony Brook. The Psychology Department, State University of New York at Stony Brook, invites applications for a tenure-track **ASSISTANT PROFESSOR** position, beginning September 1, 1998. Applicants must have a record of first-rate research, and should be prepared to provide high quality teaching within our undergraduate and graduate programs. We are particularly interested in individuals with expertise in visual attention and perception, but outstanding scientists in all areas of cognitive psychology are encouraged to apply. Stony Brook has a very strong and growing group in cognition, offers an unusually supportive research environment, competitive salaries, and a seaside community 60 miles from Manhattan. Applications should be received by October 31. A curriculum vitae, selected reprints/preprints, and at least three letters of reference should be sent to: **Arthur Samuel, Chair, Cognitive Search Committee, Department of Psychology, SUNY Stony Brook, Stony Brook, NY 11794-2500.** *SUNY Stony Brook is an Affirmative Action/Equal Opportunity Employer.*

BUSINESS MANAGERS

Adult Oncology Department. Operations management for the department's research administration, which includes a significant clinical research program. Budget responsibility for \$30-\$35 million.

Cancer Biology Department. Manage lab operations and administration. Support activities in an evolving basic and translational research department. Budget responsibility for approximately \$12 million.

Requirements include: a Bachelor's degree, Master's degree preferred; five to seven years of experience in medical research administration, or related field. Knowledge of research operations; excellent financial management experience, experience in administration, administrative support of technology transfer; and an understanding of academic publishing required. Strong personnel management and communication skills. Forward résumé in confidence to: **Human Resources, Dana-Farber Cancer Institute, 44 Binney Street, Boston, MA 02115.** *Equal Opportunity Employer.*

SYSTEM PROJECT COORDINATOR

The University of Michigan Chemistry Department is seeking a unique individual to fulfill its upper level molecular modeling and computing needs. Ph.D. in chemistry with an extensive background in computer science or electrical engineering preferred; four to five years of experience in UNIX system management; two to three years of experience administering VAX/VMS and VAXcluster systems; substantial expertise in molecular modeling, molecular dynamics, molecular mechanics, and quantum mechanical calculations; extensive SGI, SUN, and other high-end computer experience; communicate effectively with computer-inexperienced users; and two years of supervisory experience. Send a résumé, a salary history, and the names of four references to: **Dr. Jack Novodoff, Department of Chemistry, University of Michigan, 930 North University, Ann Arbor, MI 48109-1055.** E-mail: novodoff@umich.edu for questions and information requests. *The University of Michigan is an Affirmative Action/Equal Employment Opportunity Employer.*

POSITIONS OPEN

SENIOR RESEARCH ASSOCIATE UMDNJ-ROBERT WOOD JOHNSON MEDICAL SCHOOL The Cancer Institute of New Jersey

The University of Medicine and Dentistry of New Jersey-Robert Wood Johnson Medical School is seeking an outstanding biostatistician to plan, organize, and direct biostatistical activities and consultative services for interim and final analysis of data related to cancer research at The Cancer Institute of New Jersey, an NCI-designated Cancer Center.

Applicants must have a Ph.D. in biostatistics or statistics with a minimum of three years of experience in designing, conducting, and analyzing clinical trials and data collection systems. Applicants with a Bachelor's degree in a relevant field may substitute additional related experience for the educational requirements on a year-for-year basis.

Please submit curriculum vitae to: **Joseph Aisner, M.D., Chief of Medical Oncology, The Cancer Institute of New Jersey, 195 Little Albany Street, New Brunswick, NJ 08901.** *UMDNJ is an Affirmative Action/Equal Opportunity Employer. Minorities/Females/Disabled/Veterans, and a member of the University Health System of New Jersey.*

RESEARCH ASSOCIATE POSTDOCTORAL FELLOW IN EXPERIMENTAL HEMATOLOGY

A position is available in the research laboratory of the Bone Marrow Transplant Program at the University of Colorado Health Sciences Center. The laboratory has basic and applied projects in experimental hematology with a focus on cellular therapy. Experience in basic cellular and molecular technique is required. A knowledge of gene transduction methodologies, hematopoietic *in vitro* assays, and small animal models is desirable. Starting salary will be commensurate with experience.

Please submit a letter of interest and curriculum vitae to: **Lance Goudzwaard, Administrator, UCHSC Bone Marrow Transplant Program, Box B-190, 4200 East Ninth Avenue, Denver, CO 80262.** FAX: 303-372-9003.

UCHSC is an Equal Opportunity and Affirmative Action Employer; we encourage minorities and women to apply for this position.

The John B. Pierce Laboratory, affiliated with Yale University, seeks **JUNIOR STAFF SCIENTISTS** with a record of extramural support in the following areas: air quality research, emphasizing pulmonary or sensory responses to airborne challenges (human or animal models); metabolism, emphasizing bioenergetics at the cellular/molecular level or protein turnover during adaptations to external challenge; neuroscience, emphasizing studies at the cellular level (areas: motor unit physiology, the neuromuscular junction, or nociception).

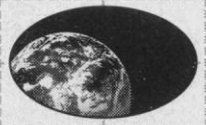
Send a curriculum vitae, reprints, and the names of three references to: **(Name of research area) Search, The John B. Pierce Laboratory, 290 Congress Avenue, New Haven, CT 06519.** *Equal Opportunity Employer.*

POSTDOCTORAL RESEARCH ASSOCIATE YALE UNIVERSITY

Position available to study interactions between biophysical and human social components of watersheds in NSF/EPA-funded project. We seek a person trained in environmental chemistry, hydrology, or the biology of freshwater systems to interact with PIs from a range of disciplines. A second Postdoctoral Fellowship will be filled by a social scientist. Send curriculum vitae, sample publications, and contact information for three references to: **Emily McDiarmid, CCWS, Yale School of Forestry and Environmental Studies, 205 Prospect Street, New Haven, CT 06511 USA.** Deadline for applications October 12, 1997.

RESEARCH ASSOCIATE in poultry science, Louisiana State University Agricultural Center. M.S. in biological science or closely related field. Candidates should have strong background in molecular biology with experience in general molecular techniques that may include cloning, DNA sequencing, and PCR. Salary range depending on qualifications. Submit résumé, academic transcript, and three references by October 3, 1997, to: **Dr. R. A. Teekell, Department of Poultry Science, LSU, Baton Rouge, LA 70803.**

LSU and Louisiana Agricultural Experiment Station are Equal Opportunity/Affirmative Action Employers.



We're redefining the way the world looks at life sciences.

We're the new life sciences company at Monsanto.

And we're even more focused on the future. That's why our entire organization, from agricultural biotechnology to pharmaceuticals to food ingredients, is dedicated to life sciences. Now, we can answer the questions, needs and demands of our ever-changing planet. After all, the world's resources are finite, but our vision for the future is limitless.

Plant Genomics & Molecular Biologist

Monsanto's Metabolic Engineering Program is currently seeking the above professional to conduct and lead research in integrating advanced genomics technologies and the metabolic engineering of crop plants for agronomic trait enhancement. The successful candidate will be part of a multi-functional program including Molecular Biologists, Biochemists and Plant Physiologists and will work in a team-based environment to genetically engineer plants. Specific responsibilities include identification of important genes to the program, gene isolation and manipulation, cDNA library construction and screening, development of scientific hypothesis and research plans, technical communication and interaction internal and external to the Program/Company.

We require a Ph.D. and postdoctoral experience (or the equivalent). Experience in Biochemistry, Genetics and Physiology is preferred. Familiarity with Bioinformatics and analysis of gene function is desirable. The preferred candidate will have strengths in the following competencies - critical thinking, innovation, strong technical and communication skills, team contribution and commitment to results and organization.

We offer a competitive compensation and benefits package. For consideration, please send your application letter and resume including contact information for at least three references to: **The Monsanto Company, Attn: Jene Alldredge, Job Code: PGS/MB, 800 N. Lindbergh Blvd., Mail Zone: C3SB, St. Louis, MO 63167. Visit our Website at www.monsanto.com. EEO/AA Employer M/F/D/V.**

Monsanto

DISCOVER A WORLD OF OPPORTUNITY.

At SmithKline Beecham - R & D individuals are challenged. Ideas flow. Creativity abounds. The result - a powerhouse of discovery comprised of some of the most gifted scientists in the world. We are among the world leaders in Research and Development and we continue to break new ground in the development of innovative products. Through the continuing efforts of more than 4,000 dedicated R&D scientists and support personnel, we continue to excel beyond all expectations. We have several opportunities for individuals with the same high standards and visions shared by all our employees.

Nonhuman Primate Immunologist

The selected individual will be responsible for supervising scientific and technical activities in the Immunotoxicology Laboratory. The principal functions will include developing and validating immune function assays in nonhuman primates using flow cytometry and molecular techniques as well as traditional immune function tests. In addition, this Individual will use animal models of disease to assess the safety of immunologically active compounds in animals on toxicity studies. The immunologist will then prepare an evaluation of immune function data to support regulatory submissions and to publish results in peer-reviewed scientific journals.

Qualified candidates will have a Ph.D. in Immunology or related field and 2-5 years' post-doctoral experience with an excellent publication record. Excellent oral and written communication skills are required as well as the ability to work independently and on teams. **Refer to Job Code K7-0512.**

Molecular Immunologist

The immunologist will supervise scientific and technical activities in the Molecular Immunotoxicology Laboratory; principal functions will include developing novel molecular immunology assays to assess for immunotoxicity, pharmacology or surrogate markers of activity for immunologically active compounds in development in rodents and non-rodent species. In addition, the selected individual will initiate investigative studies to evaluate immunotoxicity issues on development compounds and novel immunopharmacologic targets. The selected individual will then prepare an evaluation of immune function data to support regulatory submissions and to publish results in peer-reviewed scientific journals.

Qualified candidates will have a Ph.D. in Immunology or related field and 2-5 years' post-doctoral experience with an excellent publication record. Excellent oral and written communication skills are required as well as the ability to work independently and on teams. **Refer to Job Code K7-0461.**

Flow Cytometrist

The selected individual will supervise scientific and technical activities in the flow cytometry laboratory; develop and implement flow cytometry assays that meet regulatory (GLP) requirements for evaluation of pharmacologic or toxicologic activity in multiple animal species; and interpret flow cytometry data and prepare regulatory reports. In addition, the Cytometrist will serve as a consultant to safety assessment and R&D regarding application of flow cytometric methods; direct technical staff; and publish results as abstracts and manuscripts in peer-reviewed scientific journals.

Qualified candidates will have a Ph.D. in Cell Biology (or related field) with 2 years' post-doctoral experience or 5 years' experience in flow cytometry; significant technical and theoretical expertise in flow cytometry; and experience in validating assays for flow cytometry in multiple animal species. Excellent interpersonal and written and verbal communication skills are also required, and an interest and experience in hematology and/or immunology is preferred. **Refer to Job Code K7-0573.**

Located in a state-of-the-art research facility in suburban Philadelphia, SmithKline Beecham offers a competitive compensation/benefits package as well as a stimulating work environment. For confidential consideration, please forward a resume and salary requirements to: SmithKline Beecham Pharmaceuticals, Job Code _____, P.O. Box 2645, Bala Cynwyd, PA 19004. **Indicating Job Code is essential.** For more information on SmithKline Beecham, visit our Web site at www.sb.com/careers. We are an Equal Opportunity Employer, M/F/D/V.



SmithKline Beecham
Pharmaceuticals
Challenging the natural limits.

POSITIONS OPEN

PENNSTATE



PRE- AND POSTDOCTORAL TRAINING PROGRAM IN THE MOLECULAR BASIS OF CELLULAR DAMAGE AND TOXICOLOGY

The Pennsylvania State University College of Medicine announces a new NIH-funded training program in molecular approaches to toxicology. Competitive positions are available for both predoctoral (B.S.) and postdoctoral (Ph.D. or M.D.) fellowships. This program is focused on molecular mechanisms of toxicant action and transgenic model systems in toxicology. Training is directed by a steering committee of established investigators. The training faculty includes: **M. Billingsley**—molecular neurotoxicology; **R. Levenson**—transgenic models; **A. Pegg**—carcinogenesis and DNA repair; **D. Rannels**—pulmonary damage; **K. Cheng**—mutagenesis and genomic instability; **G. Clawson**—carcinogenesis and nuclear structure; **J. Connor**—metal neurotoxicology; **K. Eckert**—mutagenesis; **T. Friele**—cardiovascular toxicology; **E. Hess**—murine models of neuronal damage; **H. Isom**—hepatic gene expression and pathogenesis; **J. Lakoski**—serotonergic neurotoxicology; **S. Levison**—developmental neurotoxicology; **R. Milner**—glial and microglial injury response genes; **K. Mulder**—TGF β signaling; **Y. Ng**—cardiac cell injury; **T. Vary**—cellular responses to sepsis; and **T. Wood**—growth factors and central nervous system damage. *Candidates must meet NRSA U.S. citizenship and residency requirements.* Send inquiries and curriculum vitae to: **Dr. M. L. Billingsley, Department of Pharmacology, H078, Penn State University College of Medicine, P.O. Box 850, Hershey, PA 17033.**

Penn State is an Affirmative Action/Equal Opportunity Employer.

POSTDOCTORAL FELLOWSHIP(S) in cytokine signaling, Center for Gene Regulation, Program in Cell and Developmental Biology and Veterinary Science Department, Penn State. Position(s) available in active NIH, ACS, and corporate-sponsored program to study molecular effectors of receptor-mediated mitogenesis, differentiation, and apoptosis (including JAK and p38 kinases, stat targets, oncogene-induced apoptosis, and novel trans-gene models for Epo signaling). Forward curriculum vitae and references to: **D. M. Wojchowski, 115 Henning Building, The Pennsylvania State University, University Park, PA 16802. E-mail: dmw1@psu.edu; Telephone: 814-865-0657. Affirmative Action/Equal Opportunity Employer.**

POSTDOCTORAL POSITION available at New York University to study molecular determinants of drug addiction. The regulation of central opioid and dopamine systems and the role of critical signal transduction pathways is being investigated in several models of drug addiction. Recent Ph.D. graduates with U.S. citizenship or permanent residency send curriculum vitae and statement of research interests to: **Dr. E. Unterwald, New York University Medical Center, 550 First Avenue, HN512, New York, NY 10016.**

Marine science, **VISITING INSTRUCTOR/ASSISTANT PROFESSOR.** Sabbatical replacement for spring 1998 semester. Teach marine plants and marine science courses. Master's degree or A.B.D. (Instructor) or Ph.D. (Assistant Professor). Salary: \$15,570 to \$19,787. Salary may be higher depending on qualifications and experience, and increases in the appropriately established compensation plan. Screening begins September 29, 1997. Send letter of application, résumé, and three letters of recommendation to: **Lynn Stiles, Interim Dean, Faculty of Natural Sciences and Mathematics, The Richard Stockton College of New Jersey, AA29, Pomona, NJ 08240. Stockton is an Affirmative Action/Equal Opportunity Employer. Women and minorities are encouraged to apply. R800892**

UNIVERSITY OF FLORIDA seeks applicants for the position of **ASSISTANT SCIENTIST** in the Division of Nephrology, Department of Medicine. Ph.D. degree required and experience in patch clamp and epithelial cells. Salary and benefits commensurate with experience. Recruiting deadline: September 15, 1997. Anticipated starting date: October 1, 1997. Please reply with curriculum vitae to: **Charles Wingo, M.D., Chairman Search Committee, Division of Nephrology, Box 100224, JHMHC, University of Florida, Gainesville, FL 32610. An Equal Opportunity/Affirmative Action Employer.**

POSITIONS OPEN

POSTDOCTORAL POSITION available immediately to identify and characterize proteins and genes involved in cellular lipid transport and excretion. Experience in molecular and cellular biology is required. Send curriculum vitae and three letters of recommendation to: **Dr. John F. Oram, Department of Medicine, Box 356426, University of Washington, Seattle, WA 98115-6426. E-mail: joram@u.washington.edu.**

Two **POSTDOCTORAL POSITIONS** available for the fall of 1997 to study brain mechanisms of opiate abuse in the newly created Laboratory of Neuromodulation and Behavior, a component of the Center for Neurobiology and Behavior at the University of Pennsylvania. Position 1: to perform electrophysiology and anatomy, examining the role of forebrain norepinephrine in opiate withdrawal and craving; experience in neuroanatomy or neurophysiology is required. Position 2: to perform behavioral pharmacology experiments examining the role of nucleus accumbens dopamine in opiate dependence. Training in behavioral neuroscience is essential, with experience in stereotaxic surgery, intracerebral drug administration, and behavioral analysis of drug seeking behavior desirable. Please send curriculum vitae and names and telephone numbers of three references to: **Gary Aston-Jones, Ph.D. (for position 1), or Jon Druhan, Ph.D. (for position 2), Laboratory for Neuromodulation and Behavior, Center for Neurobiology and Behavior, Department of Psychiatry, University of Pennsylvania, 415 Curie Boulevard, Room 111, Philadelphia, PA 19104. FAX: 215-246-5314. Equal Opportunity/Affirmative Action Employer.**

POSTDOCTORAL POSITIONS available immediately in the area of marine biosynthesis at the Center for Biotechnology at Florida Atlantic University. Current studies are focused on elucidating biosynthetic pathways, isolating biosynthetic enzymes, and developing enzyme-based syntheses of bioactive marine natural products. Candidates should have completed a Ph.D. degree in natural products chemistry/biosynthesis or biochemistry and be willing to work in a team environment. Please send curriculum vitae and names of three references to: **Dr. Russell Kerr, Department of Chemistry and Biochemistry, Florida Atlantic University, 777 Glades Road, Boca Raton, FL 33431-0991. Telephone: 561-367-3356; e-mail: rkerr@acc.fau.edu. Florida Atlantic University is an Equal Employment Opportunity/Access/Affirmative Action institution.**

POSTDOCTORAL FELLOW

A Postdoctoral Fellow position is available to study the structure, function, and regulation of the transcriptional co-activator CREB-binding protein (*Journal of Biological Chemistry* 271:28138, 1996). Prior training in molecular and cellular biology required. Salary range \$27,000 to \$32,000 per annum. Applicant should send curriculum vitae and three letters of recommendation to: **John Chrivia, Department of Pharmacological and Physiological Science, Saint Louis University School of Medicine, 1402 South Grand Boulevard, St. Louis, MO 63104. Telephone: 314-268-5326; FAX: 314-577-8233; e-mail: chrivia@slu.edu. Equal Opportunity Employer.**

POSTDOCTORAL POSITION available immediately in the Department of Pathology, University of Washington, with a large NIH-funded research group focusing on interactions between various sexually transmitted diseases, particularly HIV and HPV, and neoplasia. Applicant must hold an M.D. or a Ph.D. in microbiology, pathology, pathobiology, or a related field and have experience in *in situ* hybridization and/or immunocytochemistry. Send curriculum vitae, cover letter, and names, addresses, and telephone numbers of three references to: **Dr. Nancy Kiviat, Box 359933, 325 Ninth Avenue, Seattle, WA 98104.**

POSTDOCTORAL POSITION in Insect Olfaction available immediately. Applicants must have experience in intracellular recordings in the central nervous system, good quantitative and data analysis skills, and an interest in olfactory coding. Send letter of interest, curriculum vitae, and names, telephone numbers, and e-mail addresses of three references to: **Dr. Wayne Getz, Division of Insect Biology, 201 Wellman Hall, University of California, Berkeley, CA 94720-3112. FAX: 510-642-7428; e-mail: getz@nature.berkeley.edu.**

POSITIONS OPEN



Thomas
Jefferson
University

Jefferson
Medical
College

POSTDOCTORAL POSITION available immediately. The successful applicant will study cell-type specific retroviral vectors and their entry into target cells. Applicant should have a solid background in molecular biology (e.g., cloning, tissue culture, site-directed mutagenesis). Please send résumé to: **Dr. Ralph Dornburg, Thomas Jefferson University, Division of Infectious Diseases, Jefferson Alumni Hall, 1020 Locust Street, Philadelphia, PA 19107.**

Two **POSTDOCTORAL RESEARCH ASSOCIATE** positions, funded by NIH, are available October 1, 1997, to study the acute and chronic aspects of the negative effect of alcohol on cardiovascular neurobiology. Studies will involve hemodynamic and electrophysiologic measurements in chronically instrumented conscious rats as well as central administration of drugs to investigate the role of central sympathetic pathways in the interaction. Candidates must have a Ph.D., M.D., D.V.M., or equivalent degree. Familiarity with molecular neurobiology and/or patch-clamping is desirable. Send curriculum vitae, description of research experience, and names of three references to: **Dr. Abdel A. Abdel-Rahman, Department of Pharmacology, East Carolina University School of Medicine, Greenville, NC 27858. Federal law requires proper documentation of identity and employability at the time of employment. Affirmative Action/Equal Employment Opportunity.**

POSTDOCTORAL POSITION

Several Postdoctoral positions are available to study fundamental functional and molecular properties of heart cells. The research focus is to understand the role of cellular receptors and intracellular signal transduction mechanisms on contractility and growth in normal and aging heart models. The project uses an integrated strategy involving biochemistry, molecular biology, gene transfection, microfluorescent imaging of Ca²⁺, and confocal microscopy. Successful candidates must have a Ph.D. with a strong background of publishing in molecular sciences or physiology and a commitment to training in molecular approaches. Send curriculum vitae and names of three references to: **Dr. Terry B. Rogers, Department of Biochemistry, University of Maryland School of Medicine, 108 North Greene Street, Baltimore, MD 21201. FAX: 410-706-6676.**

TROPICAL ECOLOGY PROGRAM

Postdoctoral or advanced Master's degree position available to supervise field research program on drought stress, flammability, and productivity of Amazon forests, including forest rainfall exclusion experiment. Based in Brazil. Portuguese or Spanish required. Expertise in one or more of the following: Granier sapflow, TDR soil moisture, IRGA soil respiration, gas chromatography, Li-Cor 2000 LAI. Deadline: October 1. Begin winter or spring. Send letter, résumé, and list of three references to: **Tropical Search, The Woods Hole Research Center, P.O. Box 296, Woods Hole, MA 02543. A smoke-free institution.**

POSTDOCTORAL POSITION available from February, 1998, at the University of Pittsburgh Cancer Institute to study natural killer cells and their use in immunotherapy of cancer in animal models. Individuals with knowledge of cellular immunology, cell traffic, immunohistochemistry, and animal tumor models will be preferred.

Please send, FAX, or e-mail your curriculum vitae, names of three references, and a letter indicating why you are interested in the position to: **Dr. Per H. Basse, University of Pittsburgh Cancer Institute, Biomedical Science Tower, Room W939, 200 Lothrop Street, Pittsburgh, PA 15213. FAX: 412-624-7737; e-mail: basse@pop.pitt.edu.**

POSTDOCTORAL/RESEARCH ASSISTANTS

Postdoctoral (two year, possible extension) and Research Assistant (three year, half-time) for modeling H₂O, CO₂, and VOC exchange of forests and shrublands, Research Assistants for sapflow in beech and respiration of Amazon riparian forest. Send statement of interests, curriculum vitae, and three references to: **John Tenhunen, Department of Plant Ecology II (BITOK), University of Bayreuth, 95440 Bayreuth, Germany. E-mail: john.tenhunen@bitok.uni-bayreuth.de.**

GENETICS AND HUMAN GENETICS Faculty Positions at Michigan State University

The Department of Zoology invites applications for two TENURE-TRACK positions in these areas: (1) Genetics, ASSISTANT PROFESSOR, with expertise in any area of basic animal genetics. (2) Human Genetics, RANK OPEN, with expertise in basic human genetics. This position may hold special interest for geneticists wanting to participate in the MSU Center for Hearing Research, but applicants with other interests are also encouraged to apply. A joint appointment in the Department of Pediatrics and Human Development in the College of Human Medicine is expected for the human genetics position. MSU also hope to make several additional faculty appointments in the areas of animal and human genetics during the next few years.

Applicants should have an active research program and a commitment to excellence in both research and teaching. The Department of Zoology has faculty with expertise in ecology, evolution, animal behavior, cell and developmental biology, and genetics. The Graduate Program in Genetics is a cross-departmental Ph.D. program with sixty participating faculty in all areas of genetic research. The Center for Hearing Research is an interdisciplinary project that involves faculty from several programs, including the College of Human Medicine, and includes research on inherited forms of hearing impairment.

Applicants at the Assistant Processor rank must have postdoctoral experience with demonstrated productivity and potential for independent research. Applicants at the Associate Professor and Professor ranks must have a commensurate record of productivity.

Screening begins November 1, 1997. Send curriculum vitae, statements of research and teaching interests, and three letters of reference to: **Genetics Faculty Search Committee, 203 Natural Science Building, Michigan State University, East Lansing, MI 48824.** Applicants should indicate which of the two positions they would like to be considered for.

Women and minority scientists are especially encouraged to apply. Michigan State University is an Affirmative Action/Equal Opportunity Employer.

At Wyeth-Lederle Vaccines and Pediatrics, a member of the Wyeth-Ayerst family, we're pioneering the design, manufacture, and marketing of vaccines that are changing lives — right now!

Here, you'll help improve the quality of a lot of lives, including your own. Our research facility, located in a suburb of Rochester, NY is within easy reach of some of New York State's most attractive cultural, educational and recreational activities.

PRINCIPAL RESEARCH SCIENTIST

You will manage the hybridoma facility to provide monoclonal antibody reagents in support of the research and development of bacterial and viral vaccines for humans. Responsibilities include staff supervision, as well as close interaction with other departments to ensure timely development, characterization and production of appropriate antibodies and their effective utilization in testing methods.

Candidates must have a Ph.D. or equivalent, 8 years of related research experience in immunology and good interpersonal skills; experience with cell culture and hybridoma technology is preferred.

At Wyeth-Lederle you'll enjoy a professional atmosphere and the kind of salary and benefits package you would expect from an industry leader. Please send your resume to: **Human Resources Department, Wyeth-Lederle Vaccines and Pediatrics, 211 Bailey Road, West Henrietta, NY 14586-9728.** An Equal Opportunity Employer.



Wyeth-Lederle Vaccines and Pediatrics
Protecting Families Through Immunization®



Washington

WASHINGTON UNIVERSITY IN ST. LOUIS

Department of Genetics Model Organism Geneticists

The Department of Genetics plans to hire one or more tenure track faculty members studying genetics in model organisms such as *Drosophila*, *C. elegans*, yeast, etc. Excellent opportunities exist in our department to interact with other scientists studying model organisms and with the Washington University Genome Sequencing Center.

Responsibilities include establishment of a strong and interactive research program and a commitment to graduate and/or medical student education.

Applicants should send a curriculum vitae and a statement of current and future research plans and arrange for the submission of three letters of reference by November 1 to:

Robert Waterston, M.D., Ph.D.
Department of Genetics Search Committee
Box 8232
Washington University School of Medicine
4566 Scott Avenue
St. Louis, MO 63110



Washington

WASHINGTON UNIVERSITY IN ST. LOUIS

Department of Genetics Vertebrate Geneticists

The Department of Genetics plans to hire one or more tenure track faculty members studying vertebrate genetics. Special consideration will be given to applicants using mouse or zebrafish experimental systems. Excellent opportunities exist in our department to interact with other scientists studying model organisms and with the Washington University Genome Sequencing Center.

Responsibilities include establishment of a strong and interactive research program and a commitment to graduate and/or medical student education.

Applicants should send a curriculum vitae and a statement of current and future research plans and arrange for the submission of three letters of reference by November 1 to:

Robert Waterston, M.D., Ph.D.
Search Committee
Department of Genetics
Box 8232
Washington University School of Medicine
4566 Scott Avenue
St. Louis, MO 63110

FACULTY POSITION IN STRUCTURAL BIOLOGY

WHITEHEAD INSTITUTE FOR BIOMEDICAL RESEARCH AND DEPARTMENT OF BIOLOGY MASSACHUSETTS INSTITUTE OF TECHNOLOGY



Candidates are sought for a faculty position in the field of Structural Biology at the Whitehead Institute. Preference will be given to candidates at the level of Assistant Professor (tenure track). The successful candidate will be expected to conduct an active research program and to participate in the Department's teaching program. Applicants should have significant research accomplishments in the use of X-ray crystallographic approaches to study problems in biology.

Send a curriculum vitae, a summary of your proposed research program, and arrange to have three to five letters of recommendation sent by November 14, 1997 to: Dr. Peter S. Kim, Chair, Structural Biology Search Committee, Whitehead Institute for Biomedical Research, Department of Biology, Massachusetts Institute of Technology, Nine Cambridge Center, Cambridge, MA 02142.

An Equal Opportunity/Affirmative Action Employer



WHITEHEAD INSTITUTE

POSITIONS OPEN

UNIVERSITY OF COLORADO HEALTH SCIENCES CENTER POSTDOCTORAL FELLOW/RESEARCH ASSOCIATE

To examine the mechanism of action of anticancer drugs by studying their ability to inhibit cell cycle regulatory components and/or modulate apoptosis using tissue culture and transgenic animal models. Significant experience in molecular and cellular biology is desirable. Refer to ad #279. Please send curriculum vitae, statement of interest(s), and names of three references to: **Andrew S. Kraft, M.D.**, 4200 East 9th Avenue, Denver, CO 80262. FAX: 303-315-5502.

UCHSC is an Equal Opportunity/Affirmative Action Employer.

POSTDOCTORAL POSITION available to study the phospholipase C-dependent phototransduction of the horseshoe crab, *Limulus*. The large size of these photoreceptors allows direct stimulation of intermediate transduction states with 10 ms resolution through intracellular injection; the high chemical gain allows observation of the activity of rhodopsin, G protein, and phospholipase C molecules. Candidate should have a background in electrophysiology. Send curriculum vitae with three references to: **Dr. John E. Lisman, Department of Biology, Vollen Center for Complex Systems, Brandeis University, Waltham, MA 02254-9110**. E-mail: lisman@binah.cc.brandeis.edu. *Brandeis University is an Equal Opportunity Employer.*

Two **POSTDOCTORAL POSITIONS** are available immediately to study the regulation of acid-adaptive gene expression in the oral pathogen *Streptococcus mutans*. Initial emphasis will be given to the regulation of ATPase transcription and an inducible DNA repair system. The positions require a Ph.D. in microbiology, microbial genetics, biochemistry, or related fields. Send curriculum vitae, a letter describing previous research, and three letters of recommendation to: **Dr. Robert Quivey, Department of Dental Research, University of Rochester, Box 611, 601 Elmwood Avenue, Rochester, NY 14642**. E-mail: robert_quivey@urmc.rochester.edu. *An Equal Opportunity Employer.*

POSTDOCTORAL RESEARCH ASSOCIATE

Seeking qualified candidates to study vitamin K-dependent posttranslational biosynthesis of γ -carboxyglutamic acid in the marine cone snail and the structure/function of novel conotoxins that contain this amino acid. Joint position between Furie laboratories in Boston and the Marine Biological Laboratory. Recent Ph.D. with background in molecular biology and protein biochemistry. Send or e-mail curriculum vitae to: **Human Resources, MBL, 7 MBL Street, Woods Hole, MA 02543**. E-mail: bfurie@mbi.edu.

Affirmative Action/Equal Opportunity/nonsmoking.

POSTDOCTORAL POSITION available immediately to investigate regulation, trafficking, and structure/function relationships of proteins involved in fat storage and release (see *J. Biol. Chem.* 272:9378-9387, 1997). A Ph.D. or M.D. and experience in cellular and molecular biology is required. Send curriculum vitae, bibliography, and names of three references to: **Dr. Dawn Brasaemle, Department of Biochemistry, MCP/Hahnemann School of Medicine, Allegheny University of the Health Sciences, 2900 Queen Lane, Philadelphia, PA 19129**. FAX: 215-843-8849. *Affirmative Action/Equal Opportunity Employer.*

POSTDOCTORAL POSITION available to study human cytomegalovirus infection in polarized epithelial cells. Project focuses on mechanism of asymmetrical infection of epithelial cells and signals for transport of envelope glycoproteins and virion egress. Previous research experience in cellular biology and molecular virology desirable. Interested candidates should submit curriculum vitae and names of three references to: **Dr. Lenore Pereira, University of California San Francisco, HSW-604, San Francisco, CA 94143-0512**. An Equal Opportunity/Affirmative Action Employer.

A **POSTDOCTORAL POSITION** is currently available to characterize the *Rps1* locus of soybean. *Rps1* carries six functional *Rsp1* alleles that confer resistance of soybean to the fungal pathogen *Phytophthora sojae*. Interested candidates with experience in molecular biology and a publication record are encouraged to apply with three letters of references to: **Dr. Madan K. Bhattacharyya, Division Plant Biology, Noble Foundation, P.O. Box 2180, Ardmore, OK 73402**. FAX: 405-221-7380; Telephone: 405-221-7390. *The Noble Foundation is an Equal Opportunity Employer.*

POSITIONS OPEN

POSTDOCTORAL FELLOWSHIP for a Protein Biochemist with a recent Ph.D. to study myosin light chain phosphatase by mutagenesis and biophysical techniques. Send curriculum vitae and three references to: **Dr. Terence Tao, Boston Biomedical Research Institute, 20 Staniford Street, Boston, MA 02114**. E-mail: postdoc@bbri.harvard.edu.

MRI POSTDOCTORAL POSITIONS

Positions are available immediately in the Laboratory for Functional Magnetic Resonance Research at the John P. Robarts Research Institute, an affiliate institute of the University of Western Ontario. The Laboratory has a state-of-the-art Varian/Siemens UNITY INOVA 4 T whole body research scanner (24-hours-a-day access) in a dedicated facility. Research includes numerous studies in functional imaging and spectroscopy of the brain (neuroscience, hardware, sequences) and a newly evolving program in heart imaging. The lab is well supported by the NIH, the MRC (Canada), the McDonnell-Pew Foundation, the Ontario Laser and Lightwave Research Centre, and Siemens Medical Systems. Superb hardware and technical support is available and research animal and patient access is available through the Faculty of Medicine and the London Health Sciences Centre. The ideal candidates will have a strong background in NMR imaging and/or spectroscopy. Familiarity with Varian Vnmr software would be an asset. Successful applicants will be encouraged to apply for competitive awards in their first year. The potential exists to convert these into staff positions at a later date for exceptional candidates. Please reply with a curriculum vitae and the names of two references to: **Dr. Ravi S. Menon (fMRI, spectroscopy) or Dr. Maria Drangova (cardiac imaging), Laboratory for Functional Magnetic Resonance Research, The John P. Robarts Research Institute, P.O. Box 5015, 100 Perth Drive, London, Ontario N6A 5K8 Canada**. Telephone: 519-663-3408; FAX: 519-663-3403.

UNIVERSITY OF COLORADO HEALTH SCIENCES CENTER POSTDOCTORAL FELLOW/RESEARCH ASSOCIATE

To study the induction of hematopoietic differentiation versus the suppression of apoptosis by protein kinase and phosphatase cascades (SAPK/JNK). Extensive experience in molecular biology is highly desirable. Refer to ad #157. Please send curriculum vitae and the names of three references to: **Dr. Andrew S. Kraft, Chief, Division of Medical Oncology, 4200 East 9th Avenue, Denver, CO 80262**. FAX: 303-315-5502.

UCHSC is an Equal Opportunity/Affirmative Action Employer.

THE HEISER PROGRAM FOR RESEARCH IN LEPROSY AND TUBERCULOSIS

Beginning **POSTDOCTORAL RESEARCH FELLOWSHIPS** in leprosy and tuberculosis available in amounts up to \$28,000 per year, plus other allowances, and **RESEARCH GRANTS** in leprosy only in amounts up to \$25,000. Applicants should have M.D., Ph.D., or equivalent degree. Application deadline February 1, 1998, for awards to be activated July through December 1998. For information and forms write: **The Heiser Program, 450 East 63rd Street, New York, NY 10021**. FAX: 212-688-6794.

POSTDOCTORAL POSITIONS available at Stanford University to study: mechanism of action of tolerance-inducing HLA-derived peptides; molecular characterization of a cytolytic molecule, granulysin; and functional/transcriptional regulation of the chemokine RANTES. Experience in molecular biology, protein chemistry, and/or cellular immunology required. Send curriculum vitae and three letters of reference to: **Alan Krensky, M.D.**, or **Carol Clayberger, Ph.D.**, FAX: 650-498-6077; e-mail: mln.aln@forsythe.stanford.edu. *Stanford University is an Equal Opportunity Employer.*

Two **POSTDOCTORAL POSITIONS** available immediately to study the biochemistry of (i) methanogenesis and (ii) degradation of aromatic compounds. Send curriculum vitae and the names of three references to: **Dr. Stephen W. Ragsdale, Department of Biochemistry, N114 Beadle Center, University of Nebraska, Lincoln, NE 68588-0664**. *The University of Nebraska is an Affirmative Action/Equal Opportunity Employer.*

POSITIONS OPEN

POSTDOCTORAL POSITION. Immediate availability to study the effect of homocysteine on endothelial cell nitric oxide action and metabolism. These studies will direct particular attention toward oxidative stress as a mediator of homocysteine pathology. Proposed candidate should have an established background in cell culture and endothelial cell biology. Please send curriculum vitae and names of three references to:

John F. Keaney, Jr., M.D.
Whitaker Cardiovascular Institute
80 East Concord Street, W507
Boston, MA 02118
E-mail: jkeaney@bu.edu

POSTDOCTORAL POSITION IN PHYSIOLOGY/SURGERY—MAYO CLINIC. Position available immediately in an NIH training grant to study neural regulation of water and electrolyte absorption-secretion. Applicants must have a Ph.D. or M.D. degree with expertise in methods involving Ussing chamber work and *in vitro* transport studies. Applicants must be a U.S. citizen or permanent resident. Send résumé and letters of reference to: **Michael G. Sarr, M.D., Mayo Clinic/Mayo Foundation, GI Research Unit, Alfred Building, Second Floor, 200 First Street S.W., Rochester, MN 55905**. *Mayo Foundation is an Affirmative Action and Equal Opportunity Educator and Employer.*

POSTDOCTORAL POSITION available immediately to study peptide and protein aggregation in the context of amyloid diseases such as Alzheimer's. Projects will involve peptide synthesis, protein expression, molecular modeling, magnetic resonance (ESR and NMR), CD, FTIR, EM, and AFM. Ph.D. applicants should have experience with two or more of these techniques. Send curriculum vitae and two letters of recommendation to: **Professor A. L. Fink, Department of Chemistry and Biochemistry, University of California, Santa Cruz, CA 95064**.

POSTDOCTORAL FELLOW MOLECULAR IMMUNOLOGY

A Postdoctoral position available for studies of human immunogenetics and autoimmune diseases, focused on MHC/TCR interactions, mechanisms of T cell activation. The candidate should have experience with manipulation of transgenic mice and molecular biology. Highly interactive environment. Send curriculum vitae and names of three references to: **Dr. William Kwok, Virginia Mason Research Center, 1000 Seneca Street, Seattle, WA 98101, USA**.

AWARDS

1997 ROSENSTIEL AWARD FOR MARINE BIOLOGY AND FISHERIES

The Rosenstiel School of Marine and Atmospheric Science of the University of Miami is soliciting nominations for the 23rd Annual Rosenstiel Award in Oceanographic Science. The Rosenstiel Award recognizes outstanding achievement and distinction in oceanographic science. To accommodate the multidisciplinary nature of oceanographic studies, the award rotates among various fields on an annual basis. The 1997 award will be made for contributions in the broad area of marine biology and fisheries. The closing date for receiving nominations is December 1, 1997.

Nominations should include a curriculum vitae and names of three references. Send to: **Dr. Sharon L. Smith, Chair, Rosenstiel Award Committee, Division of Marine Biology and Fisheries, 4600 Rickenbacker Causeway, Miami, FL 33149**. E-mail: ssmith@rsmas.miami.edu.

CONFERENCE

CONTAMINATED SOILS CONFERENCE

October 20-23, 1997, the University of Massachusetts at Amherst will host the 12th Annual Conference on Contaminated Soils. This year's conference focuses on issues including: federal issues, radionuclide contamination, railroad/diesel, analysis, site assessment, environmental fate, remediation, phytoremediation, risk-based corrective action, risk-based cleanup standards, brownfields, heavy metals, innovative technologies, sediment contamination, state regulatory issues, human health risk assessment and effects, and ecological risk assessment. For more information please contact: **Robyn Blain at Telephone: 413-545-2934; e-mail: rblain@bio.umass.edu**.

BURROUGHS WELLCOME FUND

*Awards provide
physician-scientists
with \$750,000 to support
translational research*

*Awards provide scientists
early in their careers with
\$195,000 to support basic
research in pharmacology
and toxicology*

4709 Creekstone Dr., Suite 100
Durham, NC 27703
Tel: (919) 991-5100 Fax: (919) 941-5884
E-mail: mailback@bwfund.org

BIOMEDICAL
FUNDING OPPORTUNITIES

CLINICAL SCIENTIST AWARDS IN TRANSLATIONAL RESEARCH

These awards, which represent a restructuring of BWF's Scholar Award in Experimental Therapeutics program, foster the development of physician-scientists who will strengthen translational research—the two-way transfer between work at the laboratory bench and clinical medicine. The awards provide \$150,000 per year for five years. Candidates should be U.S. or Canadian scientists who have an M.D. or M.D./Ph.D. degree and hold an appointment or joint appointment in a subspecialty of clinical medicine.

NEW INVESTIGATOR AWARDS IN THE PHARMACOLOGICAL AND TOXICOLOGICAL SCIENCES

In recognition of the shared interests of the fields of pharmacology and toxicology, BWF has united its support in these areas under a new program—the New Investigator Awards in the Pharmacological and Toxicological Sciences. The awards provide \$65,000 per year for three years. Candidates should be U.S. or Canadian scientists who have an M.D. or Ph.D. degree and were appointed within the past three years to a tenure-track position as an assistant professor or its equivalent. Candidates need not have appointments within established programs in pharmacology or toxicology.

The application deadline for both programs is November 3, 1997.

BWF is an independent private foundation established to advance the medical sciences by supporting research and other scientific and educational activities.

Program information is available on BWF's website at <http://www.bwfund.org>

ENDOWED CHAIR IN CARDIOVASCULAR SURGERY RESEARCH

The Division of Cardiovascular and Thoracic Surgery, in the Department of Surgery, at the University of South Florida, in conjunction with the Sun Coast Chapter of the American Heart Association, is seeking an established investigator for an Endowed Chair. Qualifications include an outstanding research record, a history of peer-reviewed grant support, and academic accomplishments to meet appointment at the Associate or Full Professor rank. A minimum of five years of service as an Assistant Professor is required to qualify for an appointment as Associate Professor; as well as five years as an Associate Professor, to qualify for appointment as Professor. Position may be tenure-track earning.

Experience in collaborative research with clinicians is desirable and individuals with active grant support will be given preference.

The University of South Florida has a well established record in research with particular strengths in molecular mechanisms of signal transduction and cytokine biology.

Send inquiries and current curriculum vitae, along with three references, to:

**Larry C. Carey, M.D., Chair
Eminent Scholar Search Committee
College of Medicine
University of South Florida
12901 Bruce B. Downs Blvd., MDC—Box 16
Tampa, FL 33612-4799**

Applications must be postmarked by deadline date of November 1, 1997.

USF is an Equal Opportunity/Affirmative Action/Equal Access Institution. For disability accommodations contact Mimi Costello, 813/974-7094/TDD 813/974-2215 a minimum of five working days in advance. According to Florida law, applications and meetings regarding the same are open to the public.

ASSISTANT PROFESSOR OF GENETICS

Applications are invited for a tenure-track position in the Department of Genetics with research and teaching interests in the **molecular genetics of model organisms**. Individuals utilizing higher eukaryotic organisms (including mouse, zebra fish, *C. elegans* and *Drosophila*) are encouraged to apply. Exceptional individuals working with prokaryotes will also be considered. Candidates using functional genomics to understand complex genetic problems are also encouraged to apply. The candidate will be expected to develop a strong creative research program and a commitment to teaching at the undergraduate and graduate levels. Complete applications received by January 15, 1998, will be given full consideration. Please send a curriculum vitae, a brief statement of research interests, and three letters of reference solicited by the applicant to:

**Molecular Genetics Search Committee
Department of Genetics
Life Sciences Building
University of Georgia
Athens, GA 30602-7223**

The University of Georgia is an Equal Opportunity/Affirmative Action Employer. Women and minorities are encouraged to apply.

For more information about the Department of Genetics, please visit our website: www.genetics.uga.edu.

HOT CAREERS ^{through} 2005

A Special Advertising Supplement • 26 September 1997

A Profile of Hot Careers

SCIENCE takes you into the scientific workplace of the future with profiles of current and emerging career opportunities. New and seasoned scientific professionals are sure to read this special supplement to help them prepare for the future job market.

- **ISSUE COVER STORY:** Computers in Science
- **BONUS DISTRIBUTION:** SCIENCE Career Fair, 3-4 October, Palo Alto, CA
- **HARVEY U.S. READERSHIP SURVEY:** Free to full-page advertisers

Consulting

Neuroscience

**Combinatorial
Chemistry**

Bioinformatics

**Bioprocessing
Engineering**

Genomics

All ads placed
in SCIENCE appear on
SCIENCE Professional Network
absolutely FREE!

SCIENCE Career Fair

**3-4 October 1997
Stanford University Campus
Palo Alto, CA**

THE West Coast Scientific Recruitment Event... Participate in this SCIENCE Career Fair to meet talented scientists actively seeking new career opportunities.

Harvey Study

Receive feedback about your advertisement from SCIENCE subscribers.

Representatives from the Harvey Research firm meet in-person with 100 life science subscribers to measure readership and recall, and also to record verbatim comments.

CALL FOR DETAILS:

U.S.: Gabrielle Boguslawski
Tel: (718) 491-1607
Fax: (202) 289-6742

EUROPE: Debbie Cummings
Tel: +44 (0) 1223 302067
Fax: +44 (0) 1223 576208

JAPAN: Masayoshi Yoshikawa
Tel: (+81) 3 3235-5961
Fax: (+81) 3 3235-5852

AUSTRALIA: Keith Sandell
Tel: (+61) 02 922-2977
Fax: (+61) 02 922-1100

E-mail: science_classifieds@aaas.org

SCIENCE
www.sciencemag.org

Fujisawa Research Institute of America, Inc. is a wholly owned subsidiary of Fujisawa Pharmaceutical Company, LTD. - Osaka, Japan. As we continue our pursuit of innovative pharmaceutical products, we are seeking visionary professionals to play an integral role with us at our **Evanston, IL** facility.

MOLECULAR PHARMACOLOGIST

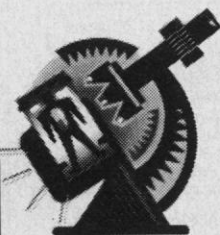
Applicants must have a Ph.D Degree with at least 3 to 5 years of postdoctoral experience in molecular pharmacology or molecular biology and show evidence of a firm commitment to a career in independent research. Strong working experience with gene cloning, gene quantification and functioning cloned genes is preferred. We are particularly interested in considering experienced individuals who wish to apply techniques of molecular biology to fundamental problems of pharmacological interest. Strong computer skills a plus.

POSTDOCTORAL RESEARCH FELLOW

A 2 year term with a possible extension is available for the study of the molecular mechanism of signal transduction in the β cells of the pancreatic islets, which leads to insulin production and drug related toxicity. The successful candidate will have a Ph.D or M.D. Degree with solid experience in molecular biology and biochemistry focusing on questions of signal transduction.

Please submit your resume with salary history indicating position of interest to: **Human Resources, Dept. PB, FUJISAWA, Three Parkway North Center, Deerfield, IL 60015. FAX: (847) 317-1245.** No phone calls, please. (AA/EOE; Minorities are encouraged to apply)

Fujisawa



ASSISTANT/ASSOCIATE PROFESSOR IN ERGONOMICS AND SAFETY

The Department of Environmental Health at the Harvard School of Public Health invites applications for a faculty appointment. The most important quality of the successful candidate will be a record of independent research. We welcome applicants with traditional, nontraditional, or innovative research interests related to ergonomics and safety, with emphasis on preventing injuries in the workplace. We encourage applicants with the ability to integrate those interests with other programs in the School, including epidemiology, risk assessment, injury prevention, exposure assessment, industrial hygiene, bioengineering, physiology, or biological mechanisms of injury.

The successful candidate will be expected to teach graduate students and postgraduates in these fields and to develop an independent research program that complements ongoing research in the Department. The candidate would also provide leadership in the Liberty Mutual-Harvard Program in Occupational Safety and Health, and would help develop a Master's and doctoral program in ergonomics and safety. Applicants should send a statement of current and future research interests, curriculum vitae, and the name of three references to:

**Dr. Thomas Smith, Chair
Ad Hoc Search Committee
Harvard School of Public Health
665 Huntington Avenue
Boston, MA 02115**

Harvard University is committed to increasing the number of women and minorities in its faculty and encourages applications from such candidates.



Assistant Professor, Department of Neurobiology Harvard Medical School

The Department of Neurobiology at Harvard Medical School invites applications for a tenure-track position at the Assistant Professor level.

We seek individuals using genetics and cellular physiology to address fundamental questions in developmental neurobiology, whether in invertebrates or vertebrates. However, applications emphasizing other approaches in developmental neurobiology are also welcome. *We encourage women and minorities to apply.*

We seek applications from individuals who will develop strong, independent research programs who are also interested in an exchange of ideas and information among scientists taking diverse approaches to the study of nervous systems.

Applicants should submit, by October 31, 1997, a curriculum vitae, a statement of research plans, and arrange for three letters of recommendation to be sent to:

**Professor Gerald D. Fischbach
Chairman, Search Committee
Department of Neurobiology
Harvard Medical School
220 Longwood Avenue
Boston, MA 02114**

Harvard Medical School is an Equal Opportunity/Affirmative Action Employer

TENURE TRACK POSITION IN LABORATORY OF SIGNAL TRANSDUCTION AT THE NATIONAL INSTITUTE OF ENVIRONMENTAL HEALTH SCIENCES

The National Institute of Environmental Health Sciences (<http://www.niehs.nih.gov>), National Institutes of Health, seeks to appoint an outstanding scientist in the Laboratory of Signal Transduction (<http://www.niehs.nih.gov/dirlst/home.htm>). Candidates with demonstrated potential for creative research in the biological sciences may apply, but priority will be given to applicants utilizing cellular, molecular or genetic approaches to study signal transduction pathways, for example, phosphorylation-dephosphorylation cascades. In addition to establishing an independent program for basic research, the successful candidate will have the opportunity to interact with investigators studying diverse problems in the field of signal transduction, including receptor mechanisms, G-proteins, inositol phosphates, calcium signalling, ion channels, cell growth and differentiation, apoptosis, gene regulation and cancer biology. Excellent space and research support will be provided. Salary will be commensurate with experience and qualifications of the candidate.

Interested parties should send a curriculum vitae with bibliography and a brief statement of research interests, and should arrange for three letters of recommendation to be sent by 11/21/97 to: **Ms. Dara Trupe, Human Resource Management Branch (HNV97-14), National Institute of Environmental Health Sciences, National Institutes of Health, P O Box 12233 (MD EC-11), Research Triangle Park, NC 27709; 919-541-7513; e-mail: trupe@niehs.nih.gov**

NIEHS/NIH is an Equal Opportunity Employer

Immunologist

Tanox Biosystems, Inc., a growing biotechnology company in Houston, has an immediate opening for a scientist/senior scientist. The candidate will lead an existing, integrated team of scientists in research and development of vaccines for allergy. Highly motivated candidates must have a Ph.D. or M.D. degree with 3-5 years of research experience in recombinant and synthetic vaccines. The candidate should be a hands-on researcher with knowledge and experience in humoral and cellular immunity, vaccine design, immunological assays for antibody and T cell responses, and animal studies. Experience in recombinant DNA techniques is desirable.

Tanox Biosystems, Inc. offers a highly competitive compensation and benefits package, including medical, dental, and vision health plans, and a 401(k) plan. Please send résumé in confidence to: **Vice President of Administration, Dept. 1020, Tanox Biosystems, Inc., 10301 Stella Link, Houston, TX 77025.** Visit our website at www.tanox.com.



CUSTOM ANTIBODIES TO PEPTIDES AND PROTEINS

- Purification • Conjugation
- ELISA Titration



HTI BIO-PRODUCTS, INC.

Phone (800) 481-9737

Fax (619) 788-9694

e-mail antibodies@htibio.com

http://www.htibio.com

Circle No. 18 on Readers' Service Card

RAPID, SIMPLE CHROMOSOME FISH

Have you tried our innovative Cell & Tissue Chromosome FISH Kits?

Ingen Laboratories, Inc.

www.ingenlabs.com Phone: (888) 343-1361
Ingen@ingenlabs.com FAX: (505) 345-8157

Circle No. 35 on Readers' Service Card

BioSource International

• Custom Oligos
• 0.2mm Scale of Synthesis
• Other Services Available - Please Inquire
• Expires 10/31/97 • Use Quote #KY90 No Set-up Fee!
Order On-Line:
www.keydna.com **KEYSTONE LABS**
Fax: 800-786-4362 • e-mail: dna@keydna.com • Tech: 800-242-0607

Circle No. 42 on Readers' Service Card

Widely Recognized
Original & Guaranteed

KlenTaq1

8¢/u
Truncated
Taq DNA
Polymerase
Withstand 99°C

US Pat # 5,436,149
Call: **Ab Peptides** 1-800-383-3362
Fax: 314-968-8988 abpeps@icon-stl.net

Circle No. 2 on Readers' Service Card

Custom Polyclonal Antibodies

BEST PRICES • BEST ANIMALS

ANIMAL PHARM SERVICES
INCORPORATED
(800) 808-0550

Circle No. 17 on Readers' Service Card

NEW for 1997 Cell Systems

Serum-Free Human Cell Systems
Dermal Melanocyte Cells

1-800-697-1211 www.cellsystems.com

Circle No. 10 on Readers' Service Card

Custom Primers - 48 hr turnaround: \$1.00/base
5 ODU - Standard Purity - Ready to Use



ransom hill bioscience, Inc.

http://www.ransomhill.com

no setup - no minimum - no baloney!

Internet: vlsia@ix.netcom.com fax: (800) 597-8509

Circle No. 8 on Readers' Service Card

Custom Peptides And Antibodies

100% Guarantee; No Antibody, No \$\$

Alpha Diagnostic Intl. Inc.

(800) 786-5777; Fax (210) 561-9544

Email: info@4adi.com

Web Site: www.4adi.com

Circle No. 46 on Readers' Service Card

XX IDT
INTEGRATED DNA TECHNOLOGIES, INC.

Custom DNA Synthesis

95¢ / Base

100 nmole Scale

No Set-up Fee

Column Purified

24 Hour Shipping

Ask about our
group discount programs!

E-mail: orders@idtdna.com

Web Site: http://www.idtdna.com

Fax: 1-319-626-8444

Phone: 1-800-328-2661

Circle No. 4 on Readers' Service Card

CUSTOM **DNA** SYNTHESIS

PURE & SIMPLE

- Superb Technical Support
- Impeccable Quality
- World's Fastest Service
- Cap Gel & TOF Mass Spec

* Some restrictions apply. Please call for details.

MIDLAND
STILL THE UNDISPUTED #1 CUSTOM DNA SYNTHESIS SERVICE

THE MIDLAND CERTIFIED REAGENT COMPANY
Phone 1-800-247-8766 FAX 915-694-2387
email mcrc@oligos.com

Circle No. 6 on Readers' Service Card

EASY WEB ORDERING

http://www.biosyn.com

biosyn@onramp.net

PRIMERS

PURIFIED

NO SET UP FEES
65¢
/base

50 nmole
Full QC
Guaranteed Quality
Just order > 400 bases
at the same time

PEPTIDES

FREE MASS SPEC

NO SET UP FEES
15⁰⁰
/residue

10-20 mgs
8-15 residues
Shipped in 5 days

**ANTIPEPTIDES ANTIBODY
PRODUCTION SERVICES & MORE**

BIO-SYNTHESIS

TEL: 800-227-0627 FAX: 972-420-0442

Circle No. 7 on Readers' Service Card

Human Liver Cell Systems



ACTIVTox

HTS and IVTox Applications

act@amphioxus.com, 1-800-777-2707

Circle No. 38 on Readers' Service Card

CELL CULTURE

Your best source in the world for
Human Cells, Animal Cells, and Cell Lines.
Guaranteed quality, responsive technical support.

Cell Applications, Inc.

1-800-645-0848; Email: cellappl@aol.com

Circle No. 45 on Readers' Service Card

DNA Sequencing

as low as \$40/run

Single & Double Stranded DNA

Plasmid or PCR DNA

Fast Turn Around

1-800-OLIGOS-1
http://www.ana-gen.com

ANA-GEN
Ana-Gen Technologies, Inc.

Circle No. 19 on Readers' Service Card

Custom DNA

Purified & Delivered in 48 Hours

\$1.20 per base • Purified

http://www.resgen.com

Research Genetics, Inc.

1-800-533-4363

Circle No. 3 on Readers' Service Card

A TASTY REDUCTION IN THE PRICE OF ZUCCHANA.



SUCH A DEAL ON DNA. JUST 60¢ A BASE.

Attention shoppers. You don't have to settle for second best, to save a bunch. Buy the Zucchini, and you get both price and quality. No compromises.

Operon now makes custom DNA on the 0.05 μ mole scale for just 60¢ per base, with a \$5 set-up fee. Larger scales are also very affordable.

We offer a complete range of modifications, so you can enjoy "one-stop-shopping" for all your custom DNA needs. And at Operon, you can order by phone, fax, e-mail or just visit our

web site at www.operon.com. Shopping for custom DNA has never been easier.

Fast turnaround, high purity, unconditional

Custom DNA Synthesis Prices		
Scale	Price/base	Set-up
0.05 μ mole	\$0.60	\$5.00
0.2 μ mole	\$1.20	\$10.00
1.0 μ mole	\$2.40	\$20.00

guarantee, and great prices. No wonder Operon is the market leader in custom oligos. So if you're in the market for DNA, put the Zucchini on your shopping list today! Operon. Anything is possible.



OPERON

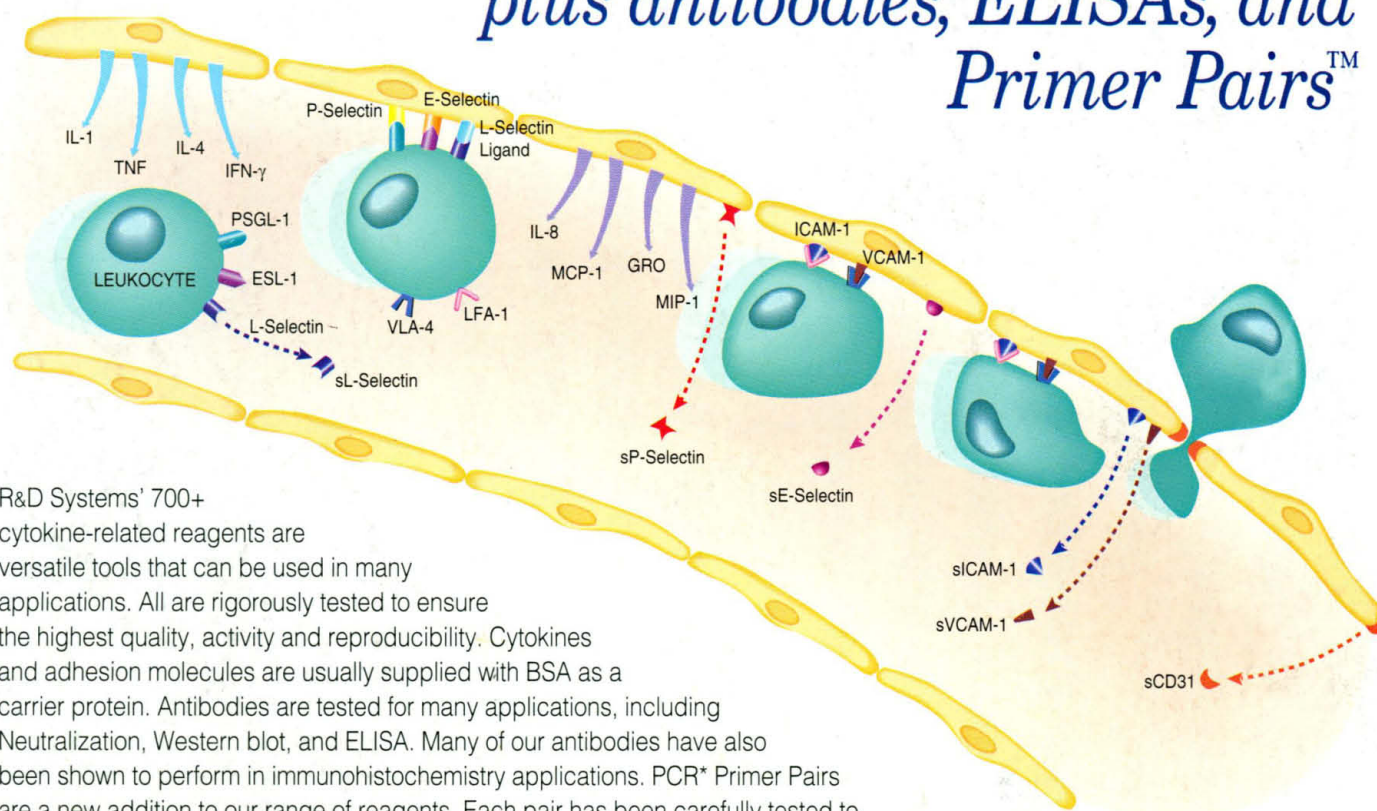
WORLD'S LEADING SUPPLIER OF SYNTHETIC DNA

Phone: (800) 688-2248 or (510) 865-8644 • Fax: (510) 865-5255 • e-mail: dna@operon.com • Web: <http://www.operon.com>
©1996 Operon Technologies, Inc., 1000 Atlantic Avenue, Alameda, CA 94501, USA. NIHBP 263-00033233

Circle No. 50 on Readers' Service Card

Adhesion Molecules and Cytokines

plus antibodies, ELISAs, and Primer Pairs™



R&D Systems' 700+ cytokine-related reagents are versatile tools that can be used in many applications. All are rigorously tested to ensure the highest quality, activity and reproducibility. Cytokines and adhesion molecules are usually supplied with BSA as a carrier protein. Antibodies are tested for many applications, including Neutralization, Western blot, and ELISA. Many of our antibodies have also been shown to perform in immunohistochemistry applications. PCR* Primer Pairs are a new addition to our range of reagents. Each pair has been carefully tested to identify optimum amplification conditions.

ADHESION MOLECULES	Human ELISA	Recombinant human protein	Anti-human polyclonal antibody	Anti-human monoclonal antibody	PCR Primer Pairs
sICAM-1	✓	✓	✓	✓	✓
sVCAM-1	✓	✓	✓	✓	✓
sE-Selectin	✓	✓	✓	✓	✓
sL-Selectin	✓	✓		✓	✓
sP-Selectin	✓	✓		✓	✓
sCD31 (PECAM-1)	✓	✓		✓	

*PCR is covered by US Patent Nos 4683195 and 4683202 assigned to Hoffmann-LaRoche

CYTOKINES	Human ELISA	Recombinant human protein	Anti-human polyclonal antibody	Anti-human monoclonal antibody	PCR Primer Pairs
IFN-γ	✓	✓	✓	✓	✓
IL-1α	✓	✓	✓		✓
IL-1β	✓	✓	✓	✓	✓
IL-4	✓	✓	✓	✓	
IL-8	✓	✓	✓	✓	✓
MCP-1	✓	✓	✓	✓	✓
MIP-1α	✓	✓	✓	✓	
MIP-1β	✓	✓	✓	✓	
TNF-α	✓	✓	✓	✓	✓

FOR RESEARCH USE ONLY. NOT FOR USE IN DIAGNOSTIC OR THERAPEUTIC PROCEDURES.

North America
R&D Systems, Inc.
614 McKinley Place NE
Minneapolis, MN 55413, USA.
Tel: 612 379-2956
Fax: 612 379-6580
info@rndsystems.com

Europe
R&D Systems Europe Ltd.
4-10 The Quadrant, Barton Lane
Abingdon, OX14 3YS, UK.
Tel: +44 (0)1235 551100
Fax: +44 (0)1235 533420
info@rndsystems.co.uk

Germany
R&D Systems GmbH
Borsigstrasse 7
65205 Wiesbaden, Germany
Tel: +49 (0)6122 90980
Fax: +49 (0)6122 909819
info@rndsystems.co.uk

Japan
Funakoshi, Co., Ltd.
9-7, 2-Chome
Hongo, Bunkyo-ku
Tokyo 113, Japan
Tel: 81-3 5684-1622
Fax: 81-3 5684-1633

International Distributors — Argentina: (54-1) 942-3654. Australia: (61-2) 9521-2177. Austria: 01 292 35 27.
Chile: (56-2) 671-9369. Greece: 031 322 525. Hong Kong: (852) 2649-9988. Israel: (972-9) 764-8787. Italy: 39 2 25 75 377.
Korea: (82-02) 569-0781. Mexico: (52-5) 612-0085. New Zealand: (64-9) 377-3336. Spain: 34 1 535 39 60. Poland: 48 22 720 44 54.
Portugal: 01 352 87 74. South Africa: 021 981 1560. Taiwan: (866-02) 368-3600. Venezuela: (58-2) 239-07-80.

Europe Free Phone — Belgique/België: 0800 10 468. Denmark: 80 01 85 92. France: 0800 90 72 49. Nederland: 060 225607.
Norge: 800 11033. Sverige: 020 79 31 49. Switzerland: 0800 55 2482.

Circle No. 52 on Readers' Service Card

R&D
SYSTEMS

1-800-343-7475

 www.rndsystems.com