



THE KEY TO HIGH THROUGHPUT SCREENING IS FLUORESCENCE POLARIZATION

Imagine an FP instrument capable of processing 40,000 samples per day that is highly sensitive, yet easy to use. Now, combine that instrument with outstanding technical support, service, and chemistry, and you've discovered Jolley Consulting and Research, Inc. With the FPM-1 and the Fluorolite FPM-2, Jolley Consulting can get you set up and running in no time, processing more samples than you ever thought possible.

Discover what makes Jolley Consulting the source for high throughput screening with Fluorescence Polarization.

Visit our Web site at www.jolley.com
or call 1-800-685-0401 for
more information.



JOLLEY CONSULTING AND RESEARCH, INC.
683 E. CENTER ST. GRAYSLAKE, IL 60030 USA



Circle No. 8 on Readers' Service Card

AP Academic
Press

SCIENCE

Start Your Day with inScight

Science and **Academic Press** invite you to start your day with **inScight**, the online information service devoted specifically to late-breaking science news.

Located at www.apnet.com/inscight, the site is a free service featuring daily topical news items of interest to researchers, practitioners, students, and anyone with an interest in current science issues. The experienced and preeminent news team of the weekly **Science** compiles and provides **inScight** with the day's primary science news stories which are then formatted and maintained online through the Academic Press electronic production services department.

In addition to providing daily science news, **inScight** features a daily-updated network of links to related newsmakers, associations, and appropriate science subjects. Stories are archived for easy searchable reference. For key word descriptions, the service incorporates the **Academic Press Dictionary of Science and Technology**, a comprehensive reference of more than 130,000 entries.

*Start your day off right,
with inScight!*

**inScight—
www.apnet.com/inscight**

**Science—
www.sciencemag.org** K/KJ/FF 18116

**Academic Press—
www.apnet.com/ or
www.europe.apnet.com/**

LK/KJ/FF 18116

TECH.SIGHT



Ultraviolet Hand Lamps

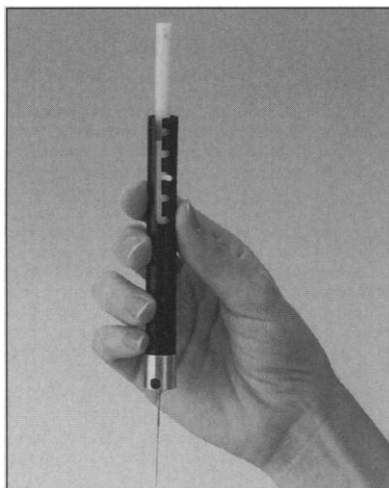
The E-Series ultraviolet (UV) lamps are small and portable, so they can be moved wherever they are needed. The lamps can save laboratory personnel extra trips to the darkroom to use a UV transilluminator, eliminate lines, and even negate the need for an additional transilluminator. The 14 models offer long wave (365 nm), medium wave (312 nm), or a combination of wavelengths. The lamps enhance the visualization of faint DNA bands and are essential when isolating the DNA bands on a cesium chloride solution. **Spectronics.** For information call 800-274-8888 or circle 139 on the reader service card.

PRODUCTS

■

Portable Field Sampler

The SPME Portable Field Sampler allows fast, cost-effective sampling of air or water in the field. The sampler eliminates the need to ship bag samples or water containers to the lab. The adsorbed volatile or semivolatile compounds remain on the sampler's solid-phase microextraction fiber



until they are thermally desorbed, up to 3 days after sampling. During shipment, the fiber is isolated within a protective needle and a built-in septum seal. The fiber can typically be used for 50 to 100 extractions/desorptions. **Supelco.** For information call 800-359-3041 or circle 140 on the reader service card.

Micro Rotary Evaporator

This Micro Rotary Evaporator features easy-to-use controls and a display for monitoring rotation speed and bath actual and set temperatures. The high-torque motor is belt-driven and rotates glassware from 0 to 250 rpm. The bath is constructed of stain-

less steel; bath temperatures range from ambient to 100°C. A safety limiter turns the bath off automatically if it should run dry. **Labconco.** For information call 816-333-8811 or circle 141 on the reader service card.

Antibodies

A monoclonal antibody (mAb) is available to human CD166, also known as activated lymphocyte cellular adhesion molecule, which is found on activated lymphocytes, neurons, neural tissue, epithelial and endothelial cells, fibroblasts, and many malignant cell lines. Specificities for mAbs to rat cellular adhesion markers include rat ICAM, ICAM receptor, PECAM, LECAM, C-CAM, VLA-4, CD11a, CD11b, and CD11c. **Antigenix America.** For information call 800-558-1008 or circle 142 on the reader service card.

Custom antibodies made in chickens are available. Hens mount vigorous immune responses to most mammalian gene products, even highly conserved ones. Antibodies can be isolated from eggs laid by hens injected with antigens, yielding about 75 mg of immunoglobulin. **Aves Labs.** For information call 503-245-1858 or circle 143 on the reader service card.

The mAb TUJ1 is highly reactive with class III beta tubulin, which is synthesized exclusively by neurons. It can be used to study neuron, axon, and tract development in the brain. **BABCO.** For information call 800-92-BABCO or circle 144 on the reader service card.

The mAb 12G5 is specific to fusin, a molecule that is strongly chemotactic for monocytes and lymphocytes and functions as a cofactor for infection with T-cell tropic strains of HIV-1, is available in a purified format and as a conjugate for flow cytometry. **PharMingen.** For information call 800-848-MABS or circle 145 on the reader service card.

Gridded Microscope Slides

Gridded Microscope slides and cover slips make it easy to locate an organism or cell. The cover slips are 1 by 1 inch squares, imprinted with a 5-mm-diameter center ring. In the center of the ring there is a laser-

etched 1 by 1 mm grid. The grids are divided into 100 small squares, each measuring 0.1 by 0.1 mm. The 3 by 1 inch slides are available in four different types and have an indexed grid on the reverse side of the frosted end. The ink is resistant to solvents and stains. **Electron Microscopy Sciences.** For information call 215-646-1566 or circle 146 on the reader service card.

Gel-Loading Pipette

An electrophoresis gel-loading pipette is designed to precisely deliver samples up to 50 µl. Suitable for a variety of applications, the pipette features an autoclavable polycarbonate plastic tip that is finely tapered and virtually unbreakable. It is available in 10-, 25-, and 50-µl capacities. **Drummond Scientific.** For information call 800-523-7480 or circle 147 on the reader service card.

Literature

Molecular & Cellular Pathology Products includes more than 250 monoclonal and polyclonal antibodies, the OptiMax Plus Automated Cell Stainer and supplies, DNA and messenger RNA probe test kits, and enhanced biotin-streptavidin detection systems for use in immunohistochemistry and in situ hybridization. **BioGenex.** For information call 800-421-4149 or circle 148 on the reader service card.

The Revolutionary Quick Column Connecting System is an eight-page brochure on a chromatography breakthrough that explains how the Connex System works, how convenient it is for column installation, and how to easily convert a gas chromatograph to it. **J&W Scientific.** For information call 916-985-7888 or circle 149 on the reader service card.

DMA 7e Dynamic Mechanical Analyzer is a color brochure on a device for the mechanical analysis of solid and near-solid samples. It provides the performance and flexibility necessary for the characterization of a broad range of materials from soft samples such as thin films and single filament fibers to hard samples such as composites and ceramics. **Perkin-Elmer.** For information call 800-762-4000 or circle 150 on the reader service card.

Newly offered instrumentation, apparatus, and laboratory materials of interest to researchers in all disciplines in academic, industrial, and government organizations are featured in this space. Emphasis is given to purpose, chief characteristics, and availability of products and materials. Endorsement by *Science* or AAAS is not implied. Additional information may be obtained from the manufacturers or suppliers named by circling the appropriate number on the Readers' Service Card and placing it in a mailbox. Postage is free.

DISPLAY CLASSIFIED ADVERTISEMENTS

Call for rate and deadline information on display classified advertisements.

E-mail: science_displays@aaas.org

Jill Steinberg
Recruitment Display Advertising
Telephone: (202) 326-6543
FAX: (202) 289-6742
E-mail: science_displays@aaas.org

Gabrielle Boguslawski
Recruitment Advertising Sales Manager
Telephone: (718) 491-1607
FAX: (202) 289-6742

Debbie Cummings
European Recruitment Advertising
Telephone: +44 (0) 1223 302067
FAX: +44 (0) 1223 576208

LINE CLASSIFIED ADVERTISEMENTS

How to Submit a Line Classified Ad:

Send your ad text to: e-mail: science_classifieds@aaas.org; fax: (202) 289-6742. You must include your telephone number, billing address, and purchase order number in your e-mail or fax. Do not bold, italicize, or abbreviate any words. SCIENCE will edit and typeset ads according to SCIENCE style. **SCIENCE cannot provide proofs of typeset line ads.** Available categories: Positions Open, Meetings, Announcements, and Courses and Training. Line advertisements are not commissionable.

Estimates: SCIENCE will provide a cost estimate for line ads. **This is an approximate cost only.** Purchase orders must allow for variation between estimated lines and actual typeset lines and resulting final cost.

For line advertising deadlines, call Eric Banks, Telephone: (202) 326-6555; or Troy Benitez, Telephone: (202) 326-6740; FAX: (202) 289-6742. E-mail: science_classifieds@aaas.org

Credit Cards: SCIENCE accepts American Express, MasterCard and VISA. Discount does not apply to credit cards.

Cancellations: Deadline for cancellation is Tuesday, 10 days prior to issue date.

Discounts: A 3% cash discount is granted to all prepaid ads.

Ads from Outside the U.S.: A discount of \$30 will be offered to advertisers making payment in U.S. dollars by checks drawn on U.S. banks. Contact Debbie Cummings. Telephone: +44(0) 1223 302067; FAX: +44(0) 1223 576208.

SCIENCE Professional Network: Unless otherwise instructed, all classified advertisements, except for Positions Wanted ads, submitted for publication in SCIENCE are automatically posted on SCIENCE's online classified advertising service, SCIENCE Professional Network, at no additional charge.
www.sciencemag.org

Mail, FAX or E-mail materials to:
SCIENCE Classified Advertising
1200 New York Avenue, N.W., Room 911
Washington, DC 20005
FAX: 202-289-6742
E-mail: science_classifieds@aaas.org (please include your telephone number in e-mail)

SCIENCE reserves the right, at its discretion, to edit or decline to publish advertisements submitted to it.

POSITIONS OPEN

PROFESSOR AND CHAIR DEPARTMENT OF PSYCHIATRY AND BEHAVIORAL SCIENCE

The George Washington University Medical Center (GWUMC) is seeking a Professor and Chair for the Department of Psychiatry and Behavioral Science. The Department provides comprehensive inpatient and outpatient care through capitated contracts and fee-for-service; has extensive liaison with other clinical departments; plays a central role in all four years of the education of medical students; has a fully accredited and successful residency training program in adult psychiatry with strong links to the child psychiatry training program at Children's National Medical Center; and contains an internationally regarded research program on family process, prevention of mental disorders, psychiatric aspects of chronic medical disorders, and behavioral genetics. The successful candidate will provide leadership for maintaining and expanding clinical services; enhance liaison with other clinical departments, particularly primary care, obstetrics, and the neurological departments; support and broaden undergraduate and postgraduate training in psychiatry; and encourage the development of additional areas of psychosocial and/or neuroscience research. The successful candidate must hold the M.D. or D.O. degree, be certified in psychiatry, and have demonstrated distinction in clinical and academic areas most relevant to the Department and its development. Review of applications will begin on September 1, 1997 and continue until the position is filled.

Applicants should submit a complete curriculum vitae, including bibliography, to: David Reiss, M.D., Chair of the Search Committee, Division of Research, Department of Psychiatry and Behavioral Sciences, George Washington University Medical Center, 2300 I Street, NW, Room 613, Washington, DC 20037. The GWUMC is an Equal Opportunity/Affirmative Action Employer. Applications from women and minorities are encouraged.

FACULTY POSITION SCHOOL OF KINESIOLOGY UNIVERSITY OF ILLINOIS AT CHICAGO

The School of Kinesiology at the University of Illinois at Chicago is seeking a tenured or tenure-track faculty who can add to the scholarly mission of the unit in the area of nerve/muscle biology. Successful applicants will be those who have demonstrated an ability to carry out independent research and work in a team environment. The scholarly mission of the unit is to contribute to knowledge related to movement in areas such as physical activity, health, and exercise over the lifespan. Appointments will be considered at all academic levels. Applicant materials should include a curriculum vitae, a brief statement of research interests, selected reprints, and names of three references. Inquiries should be directed to: Professor Warren Palmer, Search Committee Chair, School of Kinesiology (M/C 194), The University of Illinois at Chicago, 901 West Roosevelt Road, Chicago, Illinois 60608. E-mail inquiries may be directed to: kinase@uic.edu. Full consideration will be given to those applications received as of December 15, 1997 and the search will remain open until the position is filled. The University of Illinois at Chicago is an Equal Opportunity/Affirmative Action Employer.

BIOCHEMISTRY FACULTY POSITION UNIVERSITY OF WISCONSIN-MADISON

The Biochemistry Department, University of Wisconsin-Madison, invites applications for a position at the Assistant (tenure-track) or Associate (tenured) Professor level. We are particularly interested in applications from individuals whose research is in the area of eukaryotic biochemistry, especially animal systems. Applicants in other research areas will be considered. The successful candidate is expected to develop or continue a vigorous independent research program and participate in the undergraduate and graduate teaching programs of the department. Applications, including curriculum vitae, list of publications, summary of past work and accomplishments, and a statement of plans for future research, should be sent to: Professor Hector F. DeLuca, Chairman, Department of Biochemistry, University of Wisconsin-Madison, 420 Henry Mall, Madison, WI 53706-1569. In addition, applicants should arrange for three letters of reference to be mailed to the same address. To assure consideration, all application materials should be received by September 30, 1997. The University is an Affirmative Action/Equal Opportunity Employer, and encourages applications from women and minorities.

POSITIONS OPEN

FACULTY POSITION THE DEPARTMENT OF PATHOLOGY AND THE CELL ADHESION AND MATRIX RESEARCH CENTER The University of Alabama at Birmingham

The Department of Pathology and The Cell Adhesion and Matrix Research Center invites applications from qualified candidates for a full-time, tenure-track faculty position at the rank of Assistant or Associate Professor in the Department of Pathology. The successful candidate must hold a Ph.D. or M.D., Ph.D. degrees and have postdoctoral experience with a record of publications in mainstream journals. He/she will be expected to establish an independent, extramurally funded research program and to participate in departmental and graduate education activities of the Molecular and Cellular Pathology Graduate Program and the Cell Adhesion and Matrix Research Center. Candidates with expertise in molecular mechanisms of cell adhesion are especially welcome to apply. A competitive salary, newly renovated laboratory space, and start-up package are available. UAB is ranked in the top 20 institutions in NIH-funded research and offers a highly interactive environment with state-of-the-art facilities. Applicants should submit a current curriculum vitae with a statement of research interests and three letters of reference to: Joanne E. Murphy-Ullrich, Ph.D., Chair, Search Committee, Department of Pathology, G038 Volker Hall, 1670 University Boulevard, Birmingham, AL 35294-0019. Applications must be received by August 15, 1997. UAB is an Affirmative Action/Equal Opportunity Employer. Women and minority applicants are encouraged to apply.

CHAIRPERSON, DEPARTMENT OF BIOCHEMISTRY

The Northeastern Ohio Universities College of Medicine (NEOUCOM) invites applications and nominations for the position of Professor and Chairperson, Department of Biochemistry. The Department of Biochemistry is one of seven basic science departments within the College of Medicine that has had as its research focus the molecular aspects of cytochrome enzymes. The search, however, will not be limited to this research area. Department faculty have major responsibilities for the education of medical students and are members of the graduate faculty in programs leading to the Ph.D. through the School of Biomedical Sciences at Kent State University. Applicants should hold a Ph.D. and/or M.D. degree, be an active participant in medical and graduate education, have a strong record of scientific and scholarly achievements and extensive experience in obtaining extramural funding. The ideal candidate will have excellent interpersonal and communication skills and the leadership qualities necessary to promote collaborative interactions in education and research with clinical and graduate faculty. Institutional commitment will include a competitive salary, start-up financial package, and recruitment resources. Send letter of application accompanied by a curriculum vitae and three letters of reference by October 1, 1997 to:

John Docherty, Ph.D.
Chairperson, Biochemistry Search Committee
Department of Microbiology/Immunology
P.O. Box 95
Rootstown, OH 44272


NEOUCOM is an Affirmative Action/Equal Opportunity Employer.

BIOCHEMISTRY FACULTY POSITION TULANE UNIVERSITY SCHOOL OF MEDICINE

Tenure-track, Assistant or Associate Professor, Ph.D. required. Successful candidate is expected to enhance Department's graduate training program and interests in mechanisms of action and structure-function relationships of macromolecules. Teaching medical students is also to be expected. For Assistant Professor, evidence of independent productivity and innovative thinking are essential criteria. For Associate Professor, experience in graduate education, leadership potential, and an established extramurally funded research program are also essential. Please send curriculum vitae, statement of research interests, and names of four references (letters only if asked) to: Faculty Search, Department of Biochemistry SL-43, Tulane University School of Medicine, 1430 Tulane Avenue, New Orleans, LA 70112. Applications will be reviewed until position is filled. Equal Employment Opportunity/Affirmative Action Employer. Minorities/Females/Veterans encouraged to apply.

You have the ability to impact the future...

Wyeth-Ayerst Research, a major division of Fortune 100 American Home Products Corporation, has three opportunities at our Pearl River, New York pharmaceutical research facility.



...in Infectious Diseases Research
3 Senior Research Scientists, Biology, Ph.D.

The first position is for an individual to lead a group responsible for development of novel screens against targets from a number of viruses. In this position, you will direct work on protein expression, purification, and screen development, and will be closely involved in lead selection through design and use of secondary assays. This position includes interaction with other groups within the company at each stage of the discovery and development process. The selected candidate will have a Ph.D. with 8 years postdoctoral experience that includes working with protein chemistry, biochemistry, screen development, and virology. Supervisory experience is required.
Position #OPSCI-2268.

In the second position, the selected scientist will work towards development of inhibitors of RSV. This will involve performing basic research on RSV, developing new screens for viral targets, and interpreting screen results. The ideal candidate will have a Ph.D. with 5 years experience with RSV or a related virus.
Position #OPSCI-2560.

In the third position, the selected scientist will work towards development of inhibitors of HCV. You will work as part of a team performing basic research on HCV, developing new screens against HCV targets, and interpreting screen results. The ideal candidate will have a Ph.D. with 2-4 years related experience in biochemistry, enzymology or molecular biology. Experience with hepatitis C or related virus preferred.
Position #OPSCI-2562.

Wyeth-Ayerst offers an excellent compensation and benefits package in a highly professional environment. Please send your resume with salary requirements and Position # to:
Wyeth-Ayerst Research, Human Resources Dept., P.O. Box 7886, Philadelphia, PA 19101-7886, or fax your resume (in fine mode if possible) directly into our centralized Research resume database at (610) 989-4854. E-mail: jobs@RAMAIL1.wyeth.com (ASCII format, no attachments, subject: resume). Principals Only. Equal Opportunity Employer, M/F/D/V.



TENURED & TENURED TRACK INVESTIGATORS

LABORATORY OF GENETICS NATIONAL INSTITUTE ON AGING

The Intramural Research Program of the National Institute on Aging (NIA), Baltimore, Maryland invites nominations and applications for **two positions for independent investigators** within its Laboratory of Genetics, newly established under the direction of David Schlessinger, Ph.D. One position is for a senior (tenured) scientist; the other is for a tenure-track scientist. Starting salary commensurate with qualifications and experience.

THE TENURED INVESTIGATOR will be responsible for conducting and coordinating an interactive research program on genetically-determined embryological events and processes involved in aging phenomena. Novel approaches using extensive genomic work are encouraged. Examples are programs on determinants of the commitment of immortal embryonic cells to mortal cells in developmental pathways; of the determination of the size and residual growth capacity of tissues and organs; and of pathways of organ development and the pathophysiology, or especially premature age-associated diseases and disabilities, caused by their interruption by inherited gene modifications. The ideal candidate will have demonstrated an interest in relevant studies in a mammalian model.

THE TENURE-TRACK INVESTIGATORS will be responsible for conducting and coordinating a research program on the biochemical/genetic analysis of the critical process in inherited conditions that affect longevity and aging. Examples are studies of global "aging syndromes" like Werner's and Cockayne's, or of longevity determinants in aging mouse or human populations. Programs on the genetic basis for aging phenomena in lower organisms, or on genetic regulation of the balance of synthetic and turnover process in organ systems (osteoporosis, etc.), will also be considered.

Applicants must have a Doctoral Degree with a record of scientific accomplishments, including both excellence in laboratory research and qualifications that demonstrate competence in the organization leadership of a group of investigators.

HOW TO APPLY: Applicants should send curriculum vitae, bibliography and 1,000 word overview of a proposed program along with names, address and telephone numbers of three references to:

NATIONAL INSTITUTE ON AGING
 Gerontology Research Center
 Attn: Karen L. Maben - Box 26
 4940 Eastern Avenue
 Baltimore, MD 21224

The Deadline for applications is July 31, 1997
 NIA is an Equal Opportunity Employer

Reach a New Level of Research Freedom at Parke-Davis.

At Parke-Davis Pharmaceutical Research Division of Warner-Lambert Company, inspired science and a strategy of innovation has made us a leader in the pharmaceutical industry. Here's the chance you've been waiting for, to research important new drug discoveries that will have world-wide impact.

POSTDOCTORAL FELLOWSHIP Pathology & Experimental Toxicology

This is a great opportunity to join our acclaimed laboratory research staff to study the role of the mitochondrial genome in the mechanisms of toxicity. In this capacity, you'll investigate various age-related changes in mitochondrial function and ascertain the susceptibility of the organelle to various toxicants. In addition, you'll study the ability of chemical compounds to induce mitochondrial genome alterations and determine their effects on health and survival.

Qualifications include a PhD in Toxicology, Biochemistry, Cellular Biology or a related field, and experience in laboratory research on mitochondrial function and genetics. You must be able to design and conduct molecular biological assessments, perform mitochondrial functional and biochemical assays, and possess superior communication skills. Experience with fluorescence confocal microscopy and fluorescent probes is desirable. **Job Code: RJB-974138**

POSTDOCTORAL POSITIONS Regulation of Gene Expression

Postdoctoral positions are available in the Department of Cell Biology at Parke-Davis for highly motivated and independent individuals interested in the regulation of gene expression. The department consists of a highly interactive group of scientists dedicated to understanding mechanisms underlying metabolic, cardiovascular and proliferative diseases. Research opportunities are available in the laboratories of:

Todd Leff - Regulation of gene expression by metabolic and hormonal signals.

Bruce Markham - Transcriptional regulation related to the development and pathological states of cardiac muscle.

Dale Oxender - Transport of proteins and peptides into and out of the nucleus.

Applicants should be recent M.D. or Ph.D. graduates with a strong background in molecular and cellular biology or related area. The Department of Cell Biology provides an excellent research environment with exceptional facilities, seminar series and support services. Interaction with our colleagues at nearby University of Michigan and other academic institutions are encouraged. **Job Code: TH-974102**

Join the dedicated professionals at Parke-Davis and enjoy a new level of research freedom, competitive salaries, benefits and career growth potential. For consideration, mail, fax or e-mail resume* and cover letter, indicating the Job Code of interest, to:

**Parke-Davis Pharmaceutical Research,
Human Resources Department, 2800
Plymouth Road, Ann Arbor, MI 48105.
Fax: (313) 998-3394. Email:
resume@aa.wl.com**



PARKE-DAVIS

*Submit resume on laser-quality white paper, with legible 10 pt or larger type, and avoid boldface, italics, borders, etc.

Equal opportunity in action. Smoke-Free work environment.



Tenure Track Faculty Position ASSISTANT/ASSOCIATE PROFESSOR IN BIOCHEMISTRY Brown University

The Department of Molecular Biology, Cell Biology and Biochemistry at Brown University invites applications for a tenure track position (renewable) at the rank of Assistant or Associate Professor to be appointed July 1, 1998. Requirements are a Ph.D. or M.D. degree, at least two years of postdoctoral experience and demonstrated excellence in research. The successful candidate will be expected to establish an independent, vigorous, externally-funded research program in the area of protein biochemistry, including the application of advanced physical techniques to basic studies of molecular structure and function, intermolecular interactions, and/or enzymology. Applicants should be willing to contribute to a team-taught course in biochemistry and a graduate-level seminar in their area of specialty, as well as to be an active member of our NIH-funded predoctoral training program.

The Search Committee will give full consideration to applications received by August 15, 1997 that include a curriculum vitae, description of research interests, and three letters of reference for Assistant Professor level, five letters of reference for Associate Professor level. Application materials should be sent to: **Biochemistry Search Committee Chair, c/o Ms. Fae Best Carletti, Department of Molecular Biology, Cell Biology and Biochemistry, Brown University, Providence, RI 02912.** Letters of reference should be sent under separate cover to the same address.

Brown University is an Affirmative Action/Equal Opportunity Employer. Qualified women, minorities and protected persons are encouraged to apply.

IF YOU ARE READING THIS AD

YOU'RE PROBABLY LOOKING FOR A NEW JOB...

...and you need all the advice you can get. SCIENCE Professional Network's online interactive Career Workshops offer discussions about finding the career opportunity you really want - and keeping it. Moderator John Timpane, Ph.D. and his expert guests share savvy, practical guidance with both novice and experienced job-seekers, and you can join in the dialogue too!

This month's topic is, "Interviewing Skills and Job Negotiation for Minority Scientists." Join John and his guest, Ron King, Ph.D., Chief of the Technology Transfer Office at the National Center for Human Genome Research in Bethesda, MD, as they discuss the unique challenges faced by minority scientists in the biotechnology and pharmaceuticals industry.

CAREER Workshops

SCIENCE
www.sciencemag.org



THE ARA PARSEGHIAN MEDICAL RESEARCH FOUNDATION

Announces An Unrestricted R.F.A. For Innovative Research Related To Niemann-Pick Disease Type C

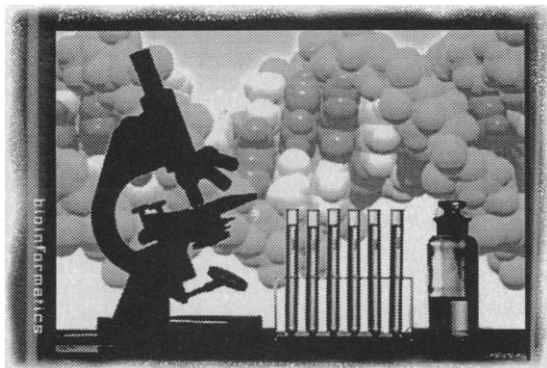
The Ara Parseghian Medical Research Foundation announces a major program initiative directed toward understanding the molecular basis of Niemann-Pick Type C (NP-C) disease and/or devising novel therapeutic strategies to combat NP-C disease. NP-C disease is an autosomal recessive cholesterol storage disorder characterized by progressive neurological dysfunction. As described in this issue of SCIENCE, the gene responsible for NP-C disease has been identified, providing exciting new insights into the pathogenesis of this disorder. The Foundation will initially fund meritorious research proposals for up to a two-year period at a maximum of \$125,000/year. Researchers who have never worked on NP-C disease with applicable expertise in molecular biology, neuroscience, cell biology, yeast genetics, protein biochemistry, and pharmacology are encouraged to apply. All proposals that are considered relevant to NP-C disease will be considered. Particular areas of emphasis include:

- Elucidation of the function of the NP-C1 gene.
- Function of the NP-C1 gene in the CNS and elucidation of the pathogenetic basis of NP-C disease in the CNS.
- Identification of the genes that suppress the NP-C phenotype and/or activate alternative metabolic pathways.
- Design of a cell-based (yeast or mammalian) phenotypic complementation assay suitable for industrial-scale screening of pharmaceutical compounds

The application deadline is September 15, 1997 with funding to begin January 1, 1998. A review of relevant scientific literature is available through the Foundation for researchers new to the field who are interested in submitting a proposal. For information and application forms, please contact: **Grants Administrator, The Ara Parseghian Medical Research Foundation, 1760 East River Road, Suite 115, Tucson, Arizona 85718. Telephone: 520-577-5106; FAX: 520-577-5212.**

Bioinformatics Specialists

Bridgewater, N.J., Paris, France, and Frankfurt, Germany Facilities



To help integrate bioinformatics into biotechnology will reap rich rewards right now... and for years to come!

Hoechst Marion Roussel

A member of the Hoechst Group

Hoechst 

A global leader in the pharmaceutical industry

Short-term, you'll increase performance of existing and developing processes. Long-term, you'll enhance and accelerate target identification and selection processes. This is the future that awaits you at Hoechst Marion Roussel, one of the world's largest global pharmaceutical companies.

Responsibilities include conception, design and performance of bioinformatics experiments to assist in discovering new therapeutic approaches; participation in reviews and planning of further experimentation; guiding/assisting internal and external biotechnology staff in experiment design and analysis and keeping abreast of scientific literature.

Ph.D. in Bioinformatics, Biostatistics, Molecular Biology or related field required. Experience in evaluating and implementing novel algorithms for DNA, genomic and protein analysis preferred, as are skills in statistical methods/analysis and differential gene expression studies. Software development/integrational skills and essential knowledge of UNIX computing environment necessary.

For these opportunities, we offer highly competitive salaries and industry leading comprehensive benefits package. To apply, please mail or E-mail a scannable resume with salary history/requirements to our **U.S. Resume Processing Center in Kansas City: Reference #1997BW0007. P.O. Box 9970, Kansas City, MO 64134-0970. E-mail: jobs@hmrl.com**
An Affirmative Action Employer, M/F/D/V.

POSITIONS OPEN

FACULTY POSITION IN HEMATOPOIESIS UNIVERSITY OF MIAMI SCHOOL OF MEDICINE

The Department of Microbiology and Immunology and the Sylvester Cancer Center at the University of Miami, School of Medicine invite applications for a tenure-track faculty position at the Assistant or Associate Professor level for investigators with research interests in the development of hematopoietic stem cells at the level of primitive stem cells or lymphoid progenitors. Special consideration will be given to candidates who are interested in oncogenesis and stem cell manipulation. The chief criteria for candidates are proven excellence in research and the potential to develop an externally funded research program.

All applicants who wish to be considered for the position at the level of Associate Professor should have an established, funded research program.

Interested applicants should send a current curriculum vitae, a statement describing research achievement and future research plans, names and addresses of three references to:

Dr. Thomas Malek
Chairman, Hematopoiesis Search Committee
Department of Microbiology and Immunology
University of Miami School of Medicine
P.O. Box 016960 (R-138)
Miami, FL 33101

The University of Miami is an Equal Opportunity/Affirmative Action Employer.

FACULTY POSITION INFECTIOUS DISEASES

The Department of Diagnostic Medicine/Pathobiology invites applications for a tenure-track position at the ASSISTANT/ASSOCIATE/FULL PROFESSOR levels in the College of Veterinary Medicine beginning in November 1997. Salary and rank are commensurate with qualifications and experience. Applicants should have a Ph.D. degree and additional research training or experience. Preference will be given to persons with a D.V.M. degree or equivalent. We seek a faculty colleague who will pursue a vigorous research program in an area of infectious diseases, collaborate with other departmental scientists, and contribute to a quality teaching effort. The research area is open, but applicants using molecular-based approaches to solve problems in infectious disease are sought. Interested individuals should submit an application letter containing a statement of research and teaching interests, a curriculum vitae, and three letters of recommendation to: **Dr. George C. Stewart, Chair of the Search Committee, Department of Diagnostic Medicine/Pathobiology, College of Veterinary Medicine, Kansas State University, Manhattan, KS 66506. Telephone: 913-532-4419; e-mail: stewart@vet.ksu.edu.** Screening of applicants will begin September 15, 1997, and the search will continue until a suitable candidate is found. *Kansas State University is an Equal Opportunity/Affirmative Action Employer.*

The Department of Dermatology at Cornell University Medical College is recruiting a **FACULTY MEMBER** with a primary interest in investigative science. The level of appointment will depend on the candidate's experience and background. Experience in immunology and/or molecular biology is desirable. The candidate should have a Ph.D. or M.D. degree. The candidate will be expected to participate in teaching and a joint appointment in a basic science department is possible. Candidates interested in the relationship of their research to clinical problems are particularly desirable. Respond to: **Richard D. Granstein, M.D., Chair, Department of Dermatology, Cornell University Medical College, 525 East 68th Street, Room F-340, New York, NY 10021. Cornell University is an Equal Opportunity/Affirmative Action Employer.**

INFECTIOUS DISEASES—FACULTY

B.C./B.E. in internal medicine and infectious diseases required. Majority of time involves clinic work including Minority Outreach Intervention Project. Will participate in teaching, committees, and medical staff meetings. Serve as an attending physician in internal medicine; participate in infectious diseases residency program. Interested candidates should submit curriculum vitae to: **Burton Andersen, M.D., Chief, Section of Infectious Diseases, Department of Medicine, The University of Illinois at Chicago, 840 South Wood Street (M/C 787), Chicago, IL 60612. The University of Illinois is an Affirmative Action/Equal Opportunity Employer.**

POSITIONS OPEN

VISITING ASSISTANT PROFESSOR ANIMAL PHYSIOLOGIST

St. Lawrence University, chartered in 1856, is the oldest continuously coeducational institution of higher learning in New York State. An independent, private university firmly committed to undergraduate liberal arts education and cross-cultural opportunities, St. Lawrence University offers a unique learning environment. The University's 1900 students come from most U.S. states and more than two dozen other countries. Canton, the St. Lawrence River Valley, the nearby Adirondack State Park, and the cities of Ottawa and Montreal provide the University community many social, cultural, and outdoor recreation activities. SLU's homepage is at <http://www.stlawu.edu>.

The Biology Department of St. Lawrence University continues the search to fill a one-year position as a visiting assistant professor to begin fall 1997. We are seeking an **ANIMAL PHYSIOLOGIST** with a demonstrated competence to teach a laboratory course in introductory animal physiology along with three other courses within the successful candidate's area of expertise. A Ph.D. (or A.B.D.) is required, along with a commitment to teaching at the undergraduate liberal arts level. Candidates should submit a curriculum vitae, a statement of teaching philosophy and interest, and have three letters of recommendation forwarded to:

Dr. T. Budd
Biology Department
St. Lawrence University
Romoda Drive
Canton, NY 13617

For more information, e-mail: tbudd@vm.stlawu.edu. The review of candidate files will begin immediately and continue until the position is filled.

St. Lawrence University is an Affirmative Action/Equal Employment Opportunity Employer. Women, minorities, and persons with disabilities are encouraged to apply.

UNIVERSITY OF CALIFORNIA, DAVIS ENDOWED PROFESSORSHIP

School of Medicine has a full-time position available in the tenured track as an **ASSISTANT/ASSOCIATE PROFESSOR**. Appointment will be in the Department of Internal Medicine, Nephrology and Human Physiology, one of the basic sciences departments. Candidates must possess a Ph.D. and interests in molecular or cellular biology, as related to inflammation in vascular biology. Applicants at the associate professor level must have an established, externally funded research program. Applicants at the assistant professor level must have postdoctoral experience with the potential to build a solid research program based on externally funded support as well as documented productivity. The responsibilities for this position include development of an active, innovative, independent research program and participation in graduate education. Address inquiries to: **George A. Kaysen, M.D., Ph.D., TB 136, University of California, Davis, CA 95616.** Position open until filled, but not later than October 31, 1997. Anticipate starting date of July 1, 1998.

The University of California is an Affirmative Action/Equal Opportunity Employer.

MOLECULAR BIOLOGIST/BIOCHEMIST

(1) **RESEARCH ASSISTANT PROFESSOR** to study transcription factors in hormone action and aging. Postdoctoral experience in DNA-protein interaction and cell transfection is required. Knowledge of DNA software and database programs will be useful. (2) **POSTDOCTORAL FELLOW** to work on purification, characterization, and cloning of novel transcription factors. Experience in protein/enzyme purification is required. Send curriculum vitae and names of three referees to: **Arun K. Roy, Ph.D., Professor of Cellular and Structural Biology, The University of Texas Health Science Center at San Antonio, 7703 Floyd Curl Drive, San Antonio, TX 78284-7762. The University of Texas Health Science Center at San Antonio is an Equal Employment Opportunity/Affirmative Action Employer.**

RESEARCH ASSISTANT PROFESSOR position available August 1, 1997. Ph.D. in genetics, two years postdoctoral experience with yeast PSI factor required. Salary negotiable. Apply with curriculum vitae and names of three references to: **Dr. S. Liebman, University of Illinois at Chicago (M/C 567), 900 South Ashland Avenue, Chicago, IL 60607, by July 31st. Affirmative Action/Equal Opportunity Employer.**

POSITIONS OPEN

ASSISTANT/ASSOCIATE PROFESSOR OF PLANT BIOLOGY UNIVERSITY OF CALIFORNIA, DAVIS

The Section of Plant Biology at the University of California, Davis, invites applications for a tenure-track position at the Assistant/Associate Professor level. This position could also include an initial appointment as an Assistant/Associate Plant Biologist in the Agricultural Experiment Station. The search is seeking applicants whose research area encompasses studies of the plant cytoskeleton and/or early events in plant signal transduction. Since the Section places a high priority on teaching, candidates will be expected to demonstrate excellent communication skills in order to participate fully in undergraduate and graduate teaching and curriculum development. Applicants should forward a curriculum vitae, a statement of teaching interests, a description of past research accomplishments including relevant reprints, and a clearly focused description of proposed future research goals. The applicant should also provide the names, telephone, and e-mail addresses of three references. The position will be open until filled, but all application materials must be received no later than September 30, 1997, to be assured full consideration. Applications should be submitted to: **Dr. Steven Theg, Chair, Cytoskeletal Search Committee, Section of Plant Biology, University of California Davis, Davis, CA 95616. E-mail for questions: plb-search@ucdavis.edu. The University of California, Davis, is an Affirmative Action/Equal Opportunity Employer with a strong institutional commitment to the development of a climate that supports equality of opportunity and respect for differences.**

AQUATIC ECOLOGIST, ASSISTANT PROFESSOR: The Department of Natural Resources and Environmental Sciences at the University of Illinois, Urbana-Champaign invites applications for a tenure-track position in aquatic ecology. Applicants should have a Ph.D. in aquatic ecology or a related natural resources field. Research should address natural resource sustainability and environmental problems. Teaching responsibilities will include courses in aquatic ecology.

Applications must be received by October 1, 1997, and should include a letter of application, statement of teaching and research interests, curriculum vitae, five abstracts, and names, addresses, and telephone numbers of four references. Applications from women and minority candidates are encouraged. Position available January 1, 1998. Salary commensurate with qualifications and experience.

Send applications to: **Ms. Joyce Canaday, Department of NRES, W-503 Turner Hall, 1102 South Goodwin Avenue, Urbana, IL 61801. Telephone: 217-333-2771 or FAX: 217-244-3219.**

The University of Illinois is an Affirmative Action/Equal Opportunity Employer.

HEARING RESEARCH SCIENTIST SENIOR LEVEL

The Department of Otolaryngology at Wayne State University invites applications for a tenure-track academic appointment from a qualified scientist wishing to continue in hearing research. Qualifications for the position include a Ph.D. or M.D. and postdoctoral fellowship with experience and success in independent funding. Responsibilities will include establishing an independent laboratory, moderate teaching, and departmental committee work. Academic appointment and compensation will be related to training and experience. Letter of inquiry, recent reprints, and curriculum vitae should be sent to: **Robert H. Mathog, M.D., Professor and Chairman, Department of Otolaryngology, Wayne State University, 4201 St. Antoine, 5 E UHC Detroit, MI 48201. Wayne State University is an Equal Opportunity/Affirmative Action Employer. All buildings, structures, and vehicles at WSU are smoke-free. Wayne State University—People working together to provide quality service.**

MICROBIOLOGIST. The Department of Biology, Sonoma State University, invites applications from broadly trained microbiologists with expertise in molecular techniques for a tenure-track, **ASSISTANT** or **ASSOCIATE PROFESSOR** position beginning spring or fall 1998. See full announcement on our webpage: www.sonoma.edu/biology for application requirements, or request it from: **Dr. Colin O. Hermans, Chair, FAX: 707-664-3012; e-mail: colin.hermans@sonoma.edu.** Applications postmarked by August 15, 1997 will receive priority consideration. Applications will be accepted until a final postmark date of September 19, 1997. *An Affirmative Action/Equal Opportunity Employer.*



GEORGETOWN UNIVERSITY MEDICAL CENTER

Postdoctoral Research Opportunities in Breast Cancer Research - Search Reopened

An integral component of the Specialized Programs of Research Excellence (SPORE) in Breast Cancer grant awarded to the Lombardi Center is the training of new investigators for a career in translational research. The goals of the program include the development of individuals having the capability to move basic research findings into applied research settings with patients and populations. Two postdoctoral positions are immediately available. Successful applicants will have the opportunity to choose a mentor from among an interactive group of 14 peer-reviewed and funded investigators who are currently committed to breast cancer research at Georgetown University. Research programs cover the development of novel anticancer therapies, the evaluation of prognostic indicators, dissemination of the genetic and molecular mechanisms that underlie the malignant progression, prevention models, loss of estrogen sensitivity, and increased metastatic potential of breast cancer cells. Complete descriptions of individual research programs are available upon request. Salary is competitive and commensurate with qualifications and experience.

Applications from women and minorities are encouraged. Applicants should have a Ph.D. or an M.D. Please send curriculum vitae, a short statement of research interests and goals, and the name and addresses of three references to: **Breast Cancer SPORE Postdoctoral Training Program, C/O Marc E. Lippman, M.D., The Lombardi Cancer Center, Research Building, 3980 Reservoir Rd. NW, Washington, DC 20007-2197. Closing date: September 15, 1997.**

A National Cancer Institute Designated Comprehensive Cancer Center.

THE NEUROSCIENCES INSTITUTE SAN DIEGO, CA

The Neurosciences Institute is an independent, not-for-profit organization at the forefront of research on the brain. Located in San Diego, the Institute is also the home of the Neurosciences Research Program and serves as an international meeting place for neuroscientists; Fellows have opportunities to interact with visitors from many institutions worldwide.

FELLOW IN THEORETICAL NEUROBIOLOGY

Applications are invited for positions as Junior Fellow in Theoretical Neurobiology. Since 1987, the Institute has had a research program dedicated to developing biologically based, experimentally testable theoretical models of neural systems. Current projects include information-theoretical analysis of neural signaling, large-scale simulations of neuronal networks and the design of behaving automata. Junior Fellows will have opportunities for collaborations with Senior Fellows in Theoretical Neurobiology and colleagues at the Institute in developing neural modeling and theoretical approaches to understanding brain function. Fellows in Theoretical Neurobiology will have daily opportunities to interact with Fellows in Experimental Neurobiology.

Applicants should be at the postdoctoral level with strong backgrounds in information theory, neural networks, or theoretical neuroscience. Experience in computer modeling is especially welcome. Positions are now available.

Fellows will receive stipends appropriate to their qualifications and experience. Candidates should send a short statement of research interests, a curriculum vitae, and the names of three references to: **Dr. Gerald M. Edelman, Director, The Neurosciences Institute, 10640 John Jay Hopkins Drive, San Diego, California 92121.**

NATIONAL CANCER INSTITUTE NATIONAL INSTITUTES OF HEALTH, PUBLIC HEALTH SERVICE CANCER PREVENTION FELLOWSHIP PROGRAM

The Division of Cancer Prevention and Control (DCPC), NCI, is accepting applications for the Cancer Prevention Fellowship Program (CPFP). The purpose of the program is to train individuals from a multiplicity of health science disciplines in the field of cancer prevention and control. The program provides for: Master of Public Health training (at accredited one year university programs); Participation in the DCPC Cancer Prevention and Control Academic Summer Course (open to physicians and scientists interested in specialized instruction on the principles and practice of cancer prevention and control); Working at DCPC directly with individual preceptors on cancer prevention and control projects; Brief field assignments in cancer prevention and control programs at other institutions. Funding permitting, Fellows will be accepted for up to three years of training, beginning July 1, 1998. Benefits include selected relocation and travel expenses, paid federal holidays, and participatory health insurance.

ELIGIBILITY

M.D., D.D.S., or D.O. from a U.S., territorial, or Canadian Medical School. Foreign medical graduates must have current USMLE or ECFMG certification and appropriate experience, e.g., one year residency in a training program approved by the Accreditation Council for Graduate Medical Education.

OR

Ph.D. or other doctoral degree in a related discipline (epidemiology, biostatistics, and the biomedical, nutritional, public health or behavioral sciences). Foreign education must be comparable to that received in accredited U.S., territorial, or Canadian institutions.

PLUS

The applicant must be a citizen or resident alien of the United States eligible for citizenship within four years. For details and an application catalog either call, fax, e-mail, or send a postcard or letter with your name, home address, and where you heard about the program to:

Douglas L. Weed, M.D., M.P.H., Ph.D.

Director

**Cancer Prevention Fellowship Program
Division of Cancer Prevention and Control
National Cancer Institute**

Executive Plaza South, Suite T-41

6130 Executive Blvd. MSC 7105

Bethesda, MD 20892-7105

Further Inquiries: Mrs. Barbara Redding

Telephone (301) 496-8640

Fax (301) 402-4863

Email reddingb@dcpcpn.nci.nih.gov

Deadline for receipt of applications: September 1, 1997

NIH is an Equal Opportunity Employer

POSITIONS OPEN

RESEARCH BIOLOGIST ANNOUNCEMENT #ARO611 ECOLOGIST ANNOUNCEMENT #ARO612

The U.S. Environmental Protection Agency (EPA) is seeking qualified candidates for the positions of Research Biologist, GS-0401-11, and Ecologist (Benthic), GS-0408-11, in the Gulf Ecology Division, National Health and Environmental Effects Research Laboratory. The Research Biologist incumbent will participate in multidisciplinary research in characterizing/assessing/predicting effects of environmental stressors on estuarine plants and algal, and develop and technically lead research programs to investigate issues related to the ecology of harmful algal blooms and/or submerged aquatic vegetation. The Ecologist (Benthic) incumbent will participate in multidisciplinary research in characterizing/assessing/predicting effects of environmental stressors on benthic estuarine communities, and develop and technically lead research programs in benthic ecology in the Gulf of Mexico in relation to contaminated sediments, coastal eutrophication, and ecological indicators. These are permanent, full-time positions in Gulf Breeze, Florida. *U.S. citizenship is required*, and candidates must meet U.S. Office of Personnel Management qualification requirements, including specific educational course work. Salary is commensurate with qualifications and ranges from \$37,507 to \$48,761.

How to apply: All applicants must apply through the U.S. Office of Personnel Management (OPM) by calling the OPM automated jobsline: 919-790-2822 or 912-757-3000 and requesting an OPM application package for Announcement #ARO611 (Research Biologist) or Announcement #ARO612 [Ecologist (Benthic)], or by accessing OPM via the Internet at: <http://www.usajobs.opm.gov> and requesting an OPM application package for Announcement #ARO611 or #ARO612. Requests for OPM application materials must be made no later than July 22, 1997.

EPA is an Equal Opportunity Employer.

BIOLOGICAL CONTROL OF INSECTS ENTOMOLOGIST

The U.S. Department of Agriculture, Agricultural Research Service, Pest Management and Agricultural Systems Research Unit located in Sidney, Montana is seeking a **RESEARCH ENTOMOLOGIST**, GS-11/12/13 (\$37,507 to \$69,492 per annum, salary commensurate with experience) to conduct research on ecological methods of insect pest management. The scientist will serve as a member of a team conducting research to obtain knowledge about the biology and cultural management of insect pests that attack northern Great Plains agricultural crops. A Ph.D. in entomology is highly desirable; however, all applicants for this position must have a degree with at least 16 semester hours in entomology and one year of specialized experience that has provided the knowledge, skills, and abilities to develop, conduct, and document a scientific research project concerning insect biological control. *This is a competitive, permanent appointment and U.S. citizenship is required.* For information concerning the position, contact: **Research Leader, Northern Plains Agricultural Research Laboratory**, Telephone: 406-482-2020; e-mail: canderso@sidney.ars.usda.gov. For application procedures/forms please contact: **Charlotte Anderson**, Telephone 406-482-9432 or FAX: 406-482-9450. **USDA/ARS/HRD/WOB, 6305 Ivy Lane, Room 220, Greenbelt, MD 20770-1435.** Application must be postmarked by August 4, 1997. *ARS is an Equal Opportunity Employer.*

CANCER RESEARCH MOLECULAR IMMUNOLOGIST/ MOLECULAR BIOLOGIST

GenQuest, a new cancer genomics company focusing on the development of novel therapeutics and diagnostics is seeking doctoral-level **SCIENTISTS** (Ph.D., M.D., or equivalent) to work in its New York City facility. Successful applicants will have two to three years postdoctoral or industrial experience in recombinatorial phage display libraries, antibody engineering, CDR mutagenesis, etc. Expertise in current methodologies for gene cloning and screening and promoter isolation and characterization will also be considered. Competitive salary benefits, including stock options. Please send curriculum vitae, statement of research interests, and names of three references by August 15, 1997 to: **GenQuest Inc., 1124 Columbia, Suite 464, Seattle, WA 98104.** FAX: 206-667-5715. *An Equal Opportunity Employer.*

POSITIONS OPEN

BIOINFORMATICS HEAD

SBI is a rapidly growing technology-based company creating sophisticated protein structural information database products and supercomputational drug discovery technologies and services for the pharmaceutical industry. We are seeking a Director/Vice President of Bioinformatics to devise new, and extend current, biopharmaceutical applications of SBI's technology, and to serve as a public interface/corporate spokesman for technical issues.

The candidate we are seeking is an internationally recognized leader in some aspect of bioinformatics; has special expertise relevant to critical analysis of protein drug targets; has training in molecular biology, medicinal chemistry, and/or computational methodologies in biology; and has the ability to enthusiastically engage collaborative partners from pharmaceutical and biotech companies, and coordinate cross-disciplinary research efforts.

Substantial equity participation. Flexibility, teamwork, and a focus on technical leadership are essential aspects of the job and our corporate culture. Please send your curriculum vitae with a cover letter to: **Structural Bioinformatics, Inc., Attn: HR, 10929 Technology Place, San Diego, CA 92127.** FAX: 619-451-3828; e-mail: cgaran@strubix.com; website: <http://www.strubix.com>.

GRASSHOPPER ENTOMOLOGIST

The U.S. Department of Agriculture, Agricultural Research Service, Pest Management and Agricultural Systems Research Unit located in Sidney, Montana is seeking a **Research Entomologist**, GS-11/12/13 (\$37,506 to \$69,492 per annum, salary commensurate with experience) to conduct research on the biology and control of grasshoppers in agroecosystems. The scientist will serve as a member of a team conducting research on the biological, chemical, and cultural tactics for suppression of grasshoppers on rangeland and food/forage crops in the northern Great Plains. Research objectives include: the characterization of the damage potential of grasshoppers under standard and novel tillage systems, the development of monitoring techniques that detect grasshopper movements between non-crop and crop areas, the development of efficient tactics that can suppress local sources of chronic infestations. A Ph.D. in entomology is highly desirable; however, all applicants for this position must have a degree with at least 16 semester hours in entomology and one year of specialized experience that has provided the knowledge, skills, and abilities to develop, conduct, and document a scientific research project concerning insect ecology. *This is a competitive, permanent appointment and U.S. citizenship is required.* For information concerning the position, contact: **Research Leader, Northern Plains Agricultural Research Laboratory**, Telephone: 406-482-2020. E-mail: canderso@sidney.ars.usda.gov. For application procedures/forms please contact: **Charlotte Anderson**, Telephone: 406-482-9432; FAX: 406-482-9450. **USDA/ARS/HRD/WOB, 6305 Ivy Lane, Greenbelt, MD 20770-1435.** Application must be postmarked by August 4, 1997. *ARS is an Equal Opportunity Employer.*

GRECC DIRECTOR. Director of the Geriatric Research Education and Clinical Center at the Veterans Affairs Medical Center at Little Rock, Arkansas. M.D.'s or M.D./Ph.D.'s with an established record of research productivity in diseases of the elderly, including health service research, are invited. Expertise in some area of clinical geriatrics is also required. The selected applicant will have a joint appointment at the University of Arkansas for Medical Sciences (UAMS) at the level of full professor and will also serve as the Vice Chair of the recently founded Donald W. Reynolds Department of Geriatrics. Interested candidates should send a description of their special interest areas, curriculum vitae, and a list of references to: **Stavros C. Manolagas, M.D., Ph.D., University of Arkansas School of Medicine, Slot 587, 4301 West Markham, Little Rock, AR 72203.** Closing date for applications is August 31, 1997. *Equal Opportunity Employer.*

POSTDOCTORAL POSITIONS. Microvascular physiology of the renal medulla. Fluorescent videoimaging for study of transport and endothelial cell, smooth muscle interactions. Patch clamp study of channel architecture. Molecular studies of transporter and receptor expression. Curriculum vitae and references to: **Thomas L. Pallone, Division of Nephrology, UMMS, 22 South Greene Street, Baltimore, MD 21201-1595.** *The University of Maryland is an Equal Opportunity Employer.*

POSITIONS OPEN

TENURE-TRACK PRINCIPAL INVESTIGATOR

The Lab of Receptor Biology and Gene Expression (LRBGE), Division of Basic Sciences, NCI, is recruiting for a tenure-track Principal Investigator to develop an independent research program. The proposed research should focus on the study of gene regulation in the context of chromatin and the nuclear environment. Appropriate areas would include: chromatin structure and gene regulation; the biology and function of nuclear receptors; gene expression and chromosomal domains; regulation of cell cycle; transcription from nucleoprotein templates; and structure of the interphase nucleus. The candidate should have completed a Ph.D. or M.D./Ph.D. program in an area of basic biomedical research, as well as a period of postdoctoral study in an allied field. The appointee will be provided with a complete start-up package, including technical and postdoctoral support, supplies and equipment necessary for the proposed research, and space appropriate for the program. The deadline for applications is September 1, 1997; candidates should submit a current curriculum vitae, bibliography, description of proposed research, and three letters of recommendation to:

Ms. Lisa Kelly, Administrative Officer
ARC 41, OIM, NCI
Room A100, Building 41
Division of Basic Sciences
National Cancer Institute
Bethesda, MD 20892-5055
Telephone: 301-496-1841
FAX: 301-435-2779

NCI is an Equal Opportunity Employer. Selection will be based on merit only.

DIRECTOR, RADIATION SAFETY/ CHEMISTRY LABORATORY COORDINATOR EAST TENNESSEE STATE UNIVERSITY

The position of Director of Radiation Safety and Laboratory Coordinator, Department of Chemistry is available at East Tennessee State University. The position is responsible to the Associate Vice President for Research. A Master's degree in chemistry, biology, biomedical sciences, or physics is required. The position is available immediately. A candidate for the position should have knowledge of state and federal regulations regarding radioactive materials, knowledge of health protection standards and practices, knowledge of basic techniques of radioactive waste disposal, knowledge of instruments used for radiation measurement, the ability to select and interpret appropriate personnel monitoring devices, knowledge of major instrumentation used in chemistry to permit maintenance and repair, knowledge of chemistry to permit oversight of teaching laboratories and operation of chemical stores, and strong communication and interpersonal skills. A letter of interest stating qualifications and experience, a résumé, and names, addresses, and telephone numbers of three references should be sent to: **Dr. Michael L. Woodruff, Office of Research and Sponsored Programs, Box 70565, East Tennessee State University, Johnson City, TN 37614-0565.** Review of applications will begin immediately and proceed until the position is filled.

East Tennessee State is an Equal Opportunity/Affirmative Action Employer.

DIRECTOR OF CLINICAL RESEARCH

The Deaconess Billings Clinic Research Institute is seeking a highly motivated and qualified person to assume the duties of Director of Clinical Research. As a division of the largest multispecialty health system in the state, the institute has developed a significant network of clinical investigators. The Director of Clinical Research is a new full-time position reporting to the president of the institute. The director will be responsible for recruitment of clinical studies; input on the design, analyses, and interpretation of results of the studies; and provide administrative, scientific, and medical support to collaborating physicians, investigators, and site staff. Some experience in writing publishable papers is important, as is the ability to participate at national and international scientific meetings and media events associated with the clinical studies. Requirements include an M.D. or equivalent degree and board certification or eligibility in at least one specialty (subspecialty) area including, but not limited to, general internal medicine, endocrinology, or gerontology. We offer a competitive compensation package. Send curriculum vitae and names, addresses, and telephone numbers for four references to: **Dr. Edwin V. Gaffney, President, Deaconess Billings Clinic Research Institute, 1500 Poly Drive, Billings, MT 59102.**

Setting the standards



of Quality and Service

R&D SCIENTISTS

We are Sigma-Aldrich, a St. Louis based multinational, billion dollar corporation experiencing 16% growth in sales and profits over the past 10 years. The Molecular Biology field is an area which we are continuing to meet the dynamic needs of our scientific customers.

Currently seeking Molecular Biology R&D Scientists for the development of products and technology in the areas of:

- Nucleic Acid Detection
- Nucleic Acid Isolation
- DNA Amplification
- DNA Sequencing

Positions Available:

Principle Investigator

Ph.D. with 6-10 yrs of proven technology or product development experience, capable of technically directing other scientist and technicians in development projects

Senior R&D Scientist

Ph.D. or M.S. with 2-5 yrs experience in technology or product development, capable of driving a new product from concept through commercialization

R&D Scientist

Ph.D. or M.S./B.S. with 2-3 yrs experience in molecular biology research or development support with interest in new product development

R&D Associates

B.S. with experience in molecular biology bench techniques for analytical or developmental support on new products and technology

Senior Q.C. Scientist

Ph.D. with experience in methods development and a broad understanding of molecular biology analytical techniques, capable of technically directing other chemists and technicians

Our benefits package includes one of the best retirement savings plans in the St. Louis area. In addition, you will enjoy the following: excellent relocation package, comprehensive medical, dental, life and disability insurance, non-contributory pension plan and tuition reimbursement. If you are interested, please fax your resume to (314) 286-7863, or send your resume to:

SIGMA CHEMICAL COMPANY
Human Resources
(Pos. Ad-97-047-003)
3050 Spruce Street
St. Louis, MO 63103
Visit us on our homepage at:
<http://www.sigma.sial.com>
Equal Opportunity Employer

Celebrating over 50
years of service.

SIGMA 
CHEMICAL COMPANY
P.O. BOX 14008 ST. LOUIS, MO 63178 USA

Procter & Gamble

Latin America

R & D TOXICOLOGY

The Procter & Gamble Company has an immediate entry-level opening for a PhD scientist who desires a career in toxicology to work in our R&D laboratories in Caracas, Venezuela.

P&G

Equal Opportunity
Employer

No agency referrals, please.

Applicants must be
presently authorized to
work in Venezuela on a
full-time basis.

• PhD Scientist

The successful candidate will have a PhD in toxicology, pharmacology, biochemistry, or other related biological science. Postdoctoral training in one or more of these areas is desirable. Responsibilities will include working on multifunctional business and product development teams in bringing new consumer products to the market. Specific activities include development of safety studies, safety risk assessments, and interaction with regulatory personnel. The successful candidate should have a South American citizenship and be bilingual (Spanish/English). Excellent oral and written communication skills and interpersonal skills are crucial.

Procter & Gamble is a world leader in the research, development, manufacture and marketing of a wide variety of consumer products. Annual worldwide sales exceed \$35 billion, and our R&D budget is over \$1.4 billion/year. P&G offers a competitive salary and benefits package, placing us among the top 5% of U.S. firms.

If you meet the qualifications for this position, please mail or e-mail a letter of introduction, resume, and a list of publications to:

Dr. G.D. Owens

The Procter & Gamble Company • Dept. RCL-5
Doctoral Recruiting • P.O. Box 538707
Cincinnati, OH • 45253-8707

E-mail: ruter.jm@pg.com (plain text only please)

ALTUS BIOLOGICS INC.

Altus Biologics Inc., located in Cambridge, MA, is developing and commercializing a novel form of catalyst. CLEC[®] catalysts have a variety of pharmaceutical, fine chemical, environmental and agricultural applications. Altus has introduced several commercial catalyst products to date. For chiral resolution, Altus' product line includes ChiroCLEC[™]-CR, ChiroCLEC[™]-BL, ChiroCLEC[™]-PC and ChiroCLEC[™]-EC as well as two screening kits, ChiroKit[™]-EH and ChiroKit[™]-TE. Altus' product line for peptide coupling includes PeptiCLEC[™]-TR and PeptiCLEC[™]-BL. Several new CLEC[®] products are currently in development with commercial introduction planned for later this year. We have recently expanded our company with the addition of a domestic and international sales force. If you would like to join an exciting, growing team which is changing the future of industrial chemistry from research to manufacturing, we invite you to send your resume.

■ Protein Chemist/Biochemist

We are seeking individuals at the Ph.D. and MS level to join and help lead an existing research team, dedicated to the purification, crystallization, biochemical characterization and chemical modification of proteins. You will be expected to design and implement innovative strategies for protein purification and crystallization at the mg-g scale, and chemical modification of protein crystals. Successful candidates will have a minimum of 3 years' experience in protein modification and analytical protein biochemistry. Working knowledge of molecular biology protocols would be desirable. Familiarity with protein crystallization procedures would be a distinct advantage. Strong communication and interpersonal skills are a must.

Please forward your resume, indicating job code, to: **Recruiting, Altus Biologics, Ad Code: SC-Altus, 40 Allston Street, Cambridge, MA 02139-4242.** Visit our web page at: <http://www.altus.com>. We are an equal opportunity employer.

Productive Careers From



POSITIONS OPEN

MOLECULAR BIOLOGIST

USDA, Agricultural Research Service, Eastern Regional Research Center, Dairy Products Research Unit, Wyndmoor, Pennsylvania is seeking a Molecular Biologist/Research Chemist for the microbial technology/biochemical genetics project to develop cloning vectors, promoters, and gene expression systems in dairy food fermentation microbes leading to improved nutritional, functional, and storage properties of finished foods. Candidates must have professional knowledge of microbiology and biochemical genetics. Ph.D. is desirable. *Must be U.S. citizen.* Salary is commensurate with experience (\$38,391 to \$46,012). For information on the research program and/or position, contact: **Dr. George A. Somkuti** at 215-233-6474. For information on application procedures/forms, contact: **Olga Afanador** at 215-233-6571. (Note: A written response to Selective Factors, etc., is required for consideration. Failure to provide requested information specified in the vacancy announcement will result in nonconsideration. Individuals should contact Ms. Afanador to receive a copy of the vacancy announcement, which contains these Factors, etc.) Applications in response to this advertisement should be marked ARS A7N 0134. Applications must be postmarked by 31 July 1997. *USDA/ARS is an Equal Opportunity Employer.*

NEW HUMAN BRAIN PROJECT IN AUSTRALIA fMRI PROJECT MANAGER

The Neuroscience Institute of Schizophrenia and Allied Disorders wish to appoint a scientist to implement function magnetic resonance imaging (fMRI) at a number of hospitals in New South Wales. The applicant should have hands-on experience with fMRI, or comprehensive knowledge of MRI and computer science skills, and experience in experimental psychology and statistical analysis. Formal qualifications at doctoral or Master's level in physics, computer science, or experimental psychology are desirable. The position is available for one year, with possibility of renewal subject to performance appraisal and continued funding. Salary is in accordance with NHMRC pay scales. Applications close 31 July 1997.

Inquiries and applications to: **NISAD—fMRI Program, The Garvan Institute, 384 Victoria Street, Darlinghurst, NSW 2010, Australia.** FAX: 61 02 92958407; Telephone: 61 0292958415; e-mail: **b.musty@garvan.unsw.edu.au.**

RESEARCH ASSOCIATE

The Laboratory of Experimental and Computational Biology, DBS, NCI, NIH, has postdoctoral positions available at the Frederick Cancer Research and Development Center. Applicants should have a recent Ph.D. in computational chemistry or biophysics. Work involves protein modeling, protein-protein recognition, and protein and drug docking. Applicant would work closely with **Drs. Jacob Maizel and Ruth Nussinov.** Supercomputing facilities are available. Salary commensurate with experience. Send curriculum vitae and bibliography to: **Ms. Patricia A. Beard, Laboratory of Experimental and Computational Biology, P.O. Box B, Building 469, Room 151, NCI-FCRDC, Frederick, MD 21702.** E-mail: **beard@ncifcrf.gov.** *The National Cancer Institute is an Equal Opportunity Employer. Selection for this position will be based on merit, with no discrimination for nonmerit reasons such as race, color, religion, gender, national origin, politics, marital status, physical or mental disability, age, sexual orientation, or membership or nonmembership in an employee organization.*

POSITIONS AVAILABLE MOLECULAR IMMUNOLOGY/ALLERGY

Applicants for Postdoctorate and Research Associate positions should be motivated and intelligent individuals with Ph.D. and/or M.D. Research on eosinophil biology, eosinophil trafficking in allergic disorders, the role of chemokines and their receptors in allergy and tumor responses. Techniques include cellular and molecular biology, gene discovery, mouse transgenic and homologous recombination, and immune models *in vivo*. Applicants should have experience and/or interest in these areas. Send curriculum vitae and cover letter to: **Marc Rothenberg, M.D., Ph.D., Division of Pulmonary Medicine, Allergy and Immunology, Children's Hospital Medical Center, 3333 Burnet Avenue, Cincinnati, OH 45229-3039.** E-mail: **rothm0@chmc.org**; FAX: 513-636-4615. *Affirmative Action/Equal Opportunity Institution. Women and minorities encouraged to apply.*

POSITIONS OPEN

RESEARCH CHEMIST (BIOCHEMIST)

USDA, Agricultural Research Service (ARS) announces a position for a Research Chemist (Biochemist), GS-12/13 for the Red River Valley Agricultural Research Center at Fargo, North Dakota. The successful applicant will be a member of the Plant Science Research Unit working on the discovery of new control strategies for invasive perennial weeds. The incumbent is responsible for independent research on the identification and characterization of vulnerable biochemical targets in perennial weeds that increase their susceptibility to control (biotic or abiotic) and reduce their ability to survive environmental and physiological stress or increase their attractiveness to biocontrol agents. Applicants must meet minimum education requirements, plus at least one year of research experience at the postdoctoral level equivalent to the next lower grade. Salary (\$44,953 to \$69,492) is commensurate with qualifications. For vacancy announcement No. ARS-D7W-188 and application forms, call: **Ms. Melanie Nyquist** at 701-239-1203 and for information on research, contact: **Dr. David G. Davis** at 701-239-1247. Application must be postmarked on or before July 21, 1997. *U.S. citizenship is required. ARS is an Equal Opportunity Employer. Women and minority candidates are encouraged to apply.*

STATISTICAL GENETICIST

The Department of Animal Sciences of the University of Illinois at Urbana-Champaign solicits applications for an assistant or associate professor in statistical genetics, working at the interface between quantitative and molecular genetics. Candidates should submit letters describing their research interests and career goals, their curriculum vitae, and, for assistant professor candidates, their academic transcripts.

They should also have three persons send letters of reference to: **Robert A. Easter, Head, Department of Animal Sciences, University of Illinois at Urbana-Champaign, 1207 West Gregory Drive, Urbana, IL 61801.** Telephone: 217-333-3462; FAX: 217-244-2871; e-mail: **r-easter@uiuc.edu.** Applications should be received by August 15, 1997 to ensure full consideration.

The University of Illinois is an Affirmative Action/Equal Opportunity Employer.

ASSAY VALIDATION SPECIALIST. The John Wayne Cancer Institute is offering an exciting opportunity for a scientist to work in assay development and validation to support the production of drugs and biologics following GMP. This position requires a Ph.D. in biological sciences and experience with cell culture and ELISA. Five or more years experience in biomedical research, preferably in an industrial situation. Must work productively with QS and vaccine production, be computer-literate, and possess advanced written and verbal communication skills. An understanding of federal and other regulations is advantageous. We offer a competitive salary and comprehensive benefits package. Please forward résumés to: **The John Wayne Cancer Institute, Human Resources-GG, 2200 Santa Monica Boulevard, Suite 108, Santa Monica, CA 90404.** *An Equal Opportunity Employer.*

MEDICAL

DOCTORATES, any field considered. Mature attitude, excellent teaching ability, congenial personality, and professional presence necessary. We train you for intensive laboratory instruction of surgeons. Full-time position, no sales. Travel required. Permanent instruction sites in New York City; Chicago, IL; Anaheim, CA; and Fort Worth, TX. (A full-time position is also available in the Netherlands, Europe.) Beginning salary commensurate. Write for application information to: **Director, Midas Rex Institute, 3000 Race Street, Fort Worth, TX 76111-4116.** New applicants only. *Equal Opportunity Employer.*

RESEARCH ASSOCIATE UNIVERSITY OF NEBRASKA MEDICAL CENTER

Research Associate position to conduct research in the molecular biology of bone and soft tissue tumors. Candidate should have an excellent background in PCR, mutation detection techniques, cloning, sequencing, and linkage analysis. Position requires an M.D. or Ph.D. in microbiology, biochemistry, or molecular biology. Curriculum vitae to: **Julie Bridge, M.D., UNMC, Path/Micro, 600 South 42nd, Omaha, NE 68198-3135.** *An Affirmative Action/Equal Opportunity Employer.*

POSITIONS OPEN

PHYSICAL OCEANOGRAPHER

The Department of Oceanography at the Florida State University invites applications for a nine-month, tenure-track position in physical oceanography. Candidates must have earned a Ph.D. in oceanography or a closely related field. Postdoctoral experience is preferred. The successful applicant will teach graduate and undergraduate courses, advise M.S. and Ph.D. students, and develop an independent and successful research program. Our search is open to all specialties within physical oceanography, including climate, observations, and remote sensing. The position is available from August 1998. Salary will be commensurate with experience and start-up funds will be available. Applications will be accepted until September 5, 1997. Applicants should send a current curriculum vitae, a statement of research interests, copies of up to three representative publications, and the names of three references to: **Dr. William K. Dewar, Chair, Search Committee, Department of Oceanography, Florida State University, Tallahassee, FL 32306-3048.** E-mail: **bill@ocean.ocean.fsu.edu.** Formal applications must be made by mail. *The Florida State University is an Equal Opportunity/Affirmative Action Employer.*

POSTDOCTORAL POSITION MOLECULAR CARCINOGENESIS

Postdoctoral Fellowship available immediately for a candidate with a strong background in molecular biology and an interest in signal transduction and carcinogenesis. Studies will incorporate molecular, cellular, and transgenic approaches to evaluate the *in vivo* interaction between polyamines and possible downstream effectors such as casein kinase 2 in epithelial tumorigenesis and invasiveness (*JBC*, 272:12536; *Cancer Res.* 57:2104). Experience in protein purification is desirable. The Lankenau Medical Research Center is a member of the Jefferson Health System located in suburban Philadelphia. Interested candidates are requested to send a curriculum vitae and the names and addresses of three references to: **Susan K. Gilmour, Ph.D., The Lankenau Medical Research Center, 100 Lancaster Avenue, Wynnewood, PA 19096.** FAX: 610-645-8299; e-mail: **sgilmour@voicenet.com.** *An Equal Opportunity Employer.*

WANTED! EXPERIENCED GRANT WRITERS/ REVIEWERS

National consulting firm seeks either recently or soon-to-be retired researchers with successful extramural funding records and experience at the national level as reviewers of research grant applications. Outstanding opportunity to earn substantial supplemental income from your home assisting colleagues. Send your curriculum vitae, record of past/current extramural support, a list of agencies for which you have served as a reviewer, and the names of three references with knowledge of your grant writing/reviewing skills to: **Taos Group, 1008-A Paseo del Pueblo Sur, #275, Taos, NM 87571.**

RESEARCH ASSOCIATE

A research associate position is available to investigate molecular mechanisms involved in beta-adrenergic receptor desensitization during cardiopulmonary bypass surgery. The position is funded by the NIH. Applicants with strong background in biochemistry and molecular biology are requested to send their curriculum vitae with three letters of recommendation to: **Madan M. Kwatra, Ph.D., Department of Anesthesiology, P.O. Box 3094, Duke University Medical Center, Durham, NC 27710.**

POSTDOCTORAL POSITION available immediately to study the cell biology of kidney stone formation. Investigations focus on the response of renal epithelial cells to urinary crystals and cloning of the gene encoding a novel factor involved in this process. Extensive molecular biology experience required. Send curriculum vitae and references to: **Dr. John C. Lieske, The University of Chicago, Section of Nephrology, 5841 South Maryland Avenue MC 5100, Chicago, IL 60637.** E-mail: **jlieske@medicine.bsd.uchicago.edu.** *Affirmative Action/Equal Opportunity Employer.*

A POSTDOCTORAL POSITION exists for a highly motivated individual in molecular, developmental biology of lung development and disease. Knowledge of *in situ* hybridization is a definite plus. Salary commensurate with experience. Please send résumé to: **Parviz Minoo, Ph.D., Department of Pediatrics, University of Southern California School of Medicine, W&C Hospital, 1200 North Mission Road, Los Angeles, CA 90033.** E-mail: **minoo@hsc.usc.edu.**

QBI is Israel's leading genomic biotech company with additional research facilities in Chicago and San Francisco. The company's unique disease-specific gene discovery platform is based on complementary use of functional genetic approach-based technology and transcript and protein-profiling technologies.

We are searching for several highly motivated scientists to join us at our research center at the Weizmann Scientific Park in Rehovot, Israel. If you would like to live in Israel and take part in innovative research spanning from discovery to development, this is a unique opportunity. You will join a team of scientists dedicated to basic research and to the development of new drugs and diagnostics.

Bioinformatics Scientist (Group Leader)

Working in close collaboration with our research scientists you will identify and create opportunities to find better drug targets by using and developing bioinformatics tools and databases more efficiently.

The position requires a degree in Computer Sciences, Mathematics, or Biology, demonstrated experience in developing database/information system. Candidates must have a knowledge of sequence, gene expression, mapping, and related databases and be familiar with state-of-the-art bioinformatics software.

Gene Discovery Scientist

You will participate in QBI's gene discovery program. Responsibilities will include the development of new technologies which augment the gene discovery process at QBI. It is expected that this individual will be involved in management and coordination of QBI's collaborative efforts with its corporate partners.

The position requires a Ph.D. in the biological sciences with 3 or more years of postgraduate experience.

Molecular/Cellular Biologist

You will lead the research effort directed to characterize new genes that have been selected as targets for drug development. Candidates should have an outstanding record as an independent investigator.

The position requires a Ph.D. with at least 3 years of experience.

Biochemist

You will design and conduct assay development studies and develop novel approaches for purification of protein and nucleic acids.

The position requires a Ph.D. with extensive protein biochemistry and enzymology experience, proven ability to purify proteins and nucleic acids, and at least 3 years of related experience.

Clinical Scientist

You will provide scientific leadership for our clinical development project. In this role, you will partner with clinical and related corporate teams to measure project progress, monitor variances and propose contingency plans. You will act as consultant to our research organization and apply your knowledge of FDA regulations by incorporating them into clinical project design, and into interactivity directly with FDA or similar bodies outside the U.S.A.

The position requires an M.D. with minimum 2 years of experience designing and implementing clinical studies.

The Company offers excellent salary with stock options and full relocation assistance. Please send your résumé to Dr. R. Skalter.

To apply, candidates may either FAX, e-mail, or mail to:

QBI Enterprises Ltd.

P.O. Box 741

Nes Ziona 74106

Israel

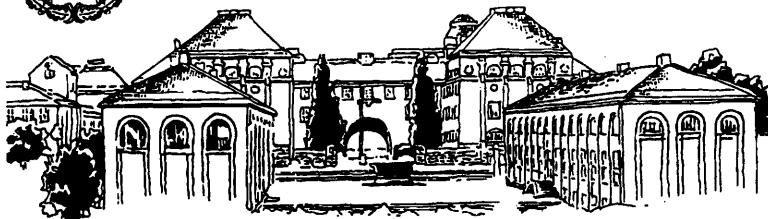
Tel: 972-8-9408147

FAX: 972-8-9406476

E-mail: skaliter@qbi.co.il



KUNGL TEKNISKA HÖGSKOLAN



Kungl Tekniska Högskolan, KTH (Royal Institute of Technology) is among the foremost technical universities in the world, and the largest centre in Sweden for education and research in our fields of work. We gain new knowledge and develop new products in cooperation with international research teams, and efforts are also made to put these results to practical use in Swedish industry as well as in society. A large proportion of our country's requirements for highly qualified staff in technology, industrial enterprise and the build-up of the social infrastructure is supplied by the architects, engineers and PhDs graduating from KTH.

School of Chemistry and Chemical Engineering Stockholm - Sweden

Official notification of the following chairs at the Royal Institute of Technology will be advertised during the autumn of 1997

All the professorships are full tenured positions

**Professor of Inorganic Chemistry
Professor of Analytical Chemistry
Professor of Chemical Reaction Engineering
Professor of Bioenergy Technology
Professor of Theoretical Chemistry
Professor of Surface Chemistry
Professor of Transport Phenomena
Professor of Polymer Materials**

A Chair in Organic Chemistry will possibly be advertised in the autumn of 1997, too.

The duties of the professors involve research, teaching of advanced courses, supervising the research work of the doctoral students and administrative responsibilities.

For further information on the positions, please contact the Dean, Professor Ivars Neretnieks, tel +46-8-790 82 29, e-mail niquel@ket.kth.se or Mrs Ulla Ek at the Office of the Dean, e-mail ullaek@k.kth.se.

POSITIONS OPEN

WAYNE STATE UNIVERSITY POSTDOCTORAL FELLOW

POSTDOCTORAL RESEARCH ASSOCIATE position available August 1997 for recent (Ph.D. or M.D./Ph.D.) graduates in cellular or molecular biology with an interest in integrin signaling. The project involves the study of signaling in tumor cells mediated by integrin which regulate apoptosis. This study will place an emphasis on prostate cancer. The work will involve state-of-the-art molecular and cellular biological techniques. Candidate should have demonstrated experience with standard molecular biology and cell biology techniques. An interest in signal transduction mechanisms is desirable. Preference will be given to candidate with demonstrated research ability and strong written communication skills. Minimum salary \$27,000 dependent upon experience. Please send brief statement of research interest, capabilities and goals, curriculum vitae, addresses, FAX/telephone numbers, and three references to: **Dr. Kenneth V. Honn, Professor, 431 Chemistry, Wayne State University, Detroit, MI 48202. E-mail: khonn@cms.cc.wayne.edu.** Wayne State University is an Equal Opportunity/Affirmative Action Employer. All buildings, structures, and vehicles at Wayne State University are smoke-free. Wayne State University—People working together to provide quality service.

POSTDOCTORAL FELLOWS DEPARTMENT OF MICRO AND IMMUNOLOGY

Temple University School of Medicine seeks two individuals for fellowship study in the area of opioid modulation of the immune system. One individual will investigate opioid-induced sepsis in a mouse model. A background in secretory immunity or cytokines is preferred for this position. The second position will involve investigating immunomodulation and sensitization to infection in ice-given opioids. This individual should have experience with molecular techniques for cytokines and neuropeptides. Candidates may forward a résumé and names of references to: **Dr. Toby K. Eisenstein, Department of Micro and Immunology, Temple University School of Medicine, 3400 North Broad Street, Philadelphia, PA 19140. FAX: 215-707-7920; e-mail: tke@astro.ocis.temple.edu.**

Equal Employment Opportunity, Minorities/Females/Disabled/Veterans.

POSTDOCTORAL FELLOW BIOGENESIS AND MOVEMENT OF SECRETORY VESICLES

POSTDOCTORAL POSITION available to investigate: 1) critical determinants in production of post-Golgi vesicles and alterations in protein kinase C binding proteins; 2) the role of nonconventional myosins in vesicle motility. Experience in signal transduction, molecular biology, and baculovirus expression protocols are preferred. Please send curriculum vitae and three references to: **Dr. David M. Terrian, Department of Cell Biology, East Carolina University School of Medicine, Greenville, NC 27858. Affirmative Action/Equal Employment Opportunity—Accommodates individuals with disabilities.**

POSTDOCTORAL POSITION

Allegheny University Hospitals, Graduate has a Postdoctoral position available immediately to study exo/endocytosis in secretory cells (e.g., melanotrophs) using novel caged compounds, imaging and capacitance measurements (*Cell Calcium*, 19:185–192, 1996). Experience with patch clamp techniques essential. Send curriculum vitae and names of three references to: **Dr. Graham Ellis-Davies, Allegheny University Hospitals, Graduate, Bockus Research Institute, 1800 Lombard Street, Philadelphia, PA 19146. E-mail: ged@ccat.sas.upenn.edu. Equal Opportunity Employer. Minorities/Females/Disabled/Veterans.**

POSTDOCTORAL POSITION available for Ph.D. to study protein kinases and signal transduction events involved in neurotransmitter/hormone-initiated secretion by epithelial cells. Background in pharmacology, physiology, cell biology, or other disciplines related to signal transduction. Expertise in one or more of the following: immunofluorescence, immunoblotting, *in vitro* kinase assays, molecular biology, cell culture. Send curriculum vitae and names of three references to: **Dr. Stephen P. Soltoff, Division of Signal Transduction, Harvard Institutes of Medicine, 330 Brookline Avenue, Boston, MA 02215. E-mail: ssoltoff@bidmc.harvard.edu.**

POSITIONS OPEN

WAYNE STATE UNIVERSITY POSTDOCTORAL FELLOW

POSTDOCTORAL RESEARCH ASSOCIATE position available August 1997 for recent (within two years of receipt of terminal degree) Ph.D. or M.D./Ph.D. graduates in cellular or molecular biology with an interest in lipid mediated signal transduction. Project involves the study of signaling mechanisms activated by Eicosanoid metabolites of arachidonic and linoleic acids in cancer cells. This study will place particular emphasis on prostate cancer. The work will involve state-of-the-art molecular and cellular biological techniques. Candidates should have demonstrated experience with standard molecular biology and cell biology techniques. An interest in signal transduction mechanisms is desirable. Preference will be given to candidates with demonstrated research ability and strong written communication skills. Minimum salary \$27,000 dependent upon experience. Please send brief statement of research interests, capabilities and goals, curriculum vitae, addresses, FAX/telephone numbers, and three references to: **Dr. Kenneth V. Honn, Professor, 431 Chemistry, Wayne State University, Detroit, MI 48202. E-mail: khonn@cms.cc.wayne.edu.** Wayne State University is an Equal Opportunity/Affirmative Action Employer. All buildings, structures, and vehicles at Wayne State University are smoke-free. Wayne State University—People working together to provide quality service.

DIRECTOR GERALDINE BRUSH CANCER RESEARCH INSTITUTE

The Geraldine Brush Cancer Research Institute (GBCRI), a division of California Pacific Medical Center (CPMC), seeks a **POSTDOCTORAL FELLOW**. This position will study the mechanisms by which helix-loop-helix transcription factors affect growth, differentiation, and invasion of normal and transformed breast cells. Applicants must have a Ph.D. degree and a strong background in molecular biology. Experience in cell biology is a plus. We offer competitive compensation and excellent benefits package. Please send curriculum vitae, summary of research experience, and the names of three references to: **Geraldine Brush Cancer Research Institute, Attn. P. Y. Desperes, Ph.D., 2330 Clay Street Stern Building, San Francisco, CA 94115. Equal Opportunity Employer.**

POSTDOCTORAL POSITIONS IN INFECTIOUS DISEASES CHILDREN'S HOSPITAL/HARVARD MEDICAL SCHOOL

Two postdoctoral positions available to work on NIH-funded research projects. The first position is to work on molecular biology of HIV RNA packaging and HIV DNA vaccine development. The second position is to work on the molecular pathogenesis of mycobacterial infection and regulation of transcription in mycobacteria. Send curriculum vitae and names of three references to: **Dr. Anna Aldovini (HIV position) or Dr. Robert Husson (mycobacteria position), Children's Hospital, Enders Room 609, 300 Longwood Avenue, Boston, MA 02115. FAX: 617-355-8387.**

POSTDOCTORAL POSITION CFTR STRUCTURE/FUNCTION

Join a multidisciplinary team studying the mechanism of ion conduction by the CFTR Chloride Channel. Requires M.D. or Ph.D. and background in electrophysiology and/or protein structure. Forward curriculum vitae and the names of three references to: **David C. Dawson, Ph.D., Department of Physiology, The University of Michigan Medical School, 7726 Medical Science II Building, Ann Arbor, MI 48109-0622. E-mail: dcdawson@umich.edu. The University of Michigan is an Affirmative Action/Equal Opportunity Institution.**

POSTDOCTORAL POSITION

Postdoctoral position available immediately for a candidate with a background in cellular and/or molecular biology to focus on the development of gene transfer vectors for the gene therapy of hematopoietic stem cell disorders such as thalassemia, sickle cell anemia, and other blood disorders. Please send applications including curriculum vitae and names of three references to: **Dr. George F. Atweh, Division of Hematology, Box 1079, Mount Sinai School of Medicine, One Gustave L. Levy Place, New York, NY 10029. FAX: 212-369-8375.**

POSITIONS OPEN

MOLECULAR HEMATOPOIESIS STRUCTURAL BIOLOGY

TWO POSTDOCTORAL POSITIONS available. The first in structural biology and functions of eosinophils to analyze structure-function relationships for eosinophil cationic proteins and enzymes, studying their mechanisms of action for inducing inflammation, tissue damage, and airways dysfunction in asthma and other allergic diseases. Experience in structural and molecular biology, protein engineering, and membrane biology preferred. The second in transcription factors in hematopoietic development to develop new methods for cloning transcription factors that regulate myeloid-specific genes using yeast 1-hybrid/2-hybrid strategies, and to study these factors in myeloid gene regulation, development, and function. Molecular biology experience in yeast genetics, gene cloning, and transcription factor research preferred. Mail curriculum vitae, three letters of reference, and two reprints to: **Professor Steven J. Ackerman, Departments of Biochemistry and Molecular Biology, and Medicine (Hem/Onc), M/C536, University of Illinois at Chicago, A-312 College of Medicine West, 1819 West Polk Street, Chicago, IL 60612. FAX: 312-996-5623. UIC is an Affirmative Action/Equal Opportunity Employer.**

POSTDOCTORAL POSITION-NIMH INTRAMURAL PROGRAM NEUROSCIENCE

Two postdoctoral positions are available immediately in the Section on Molecular Neuroscience to study molecular aspects of the chemical coding of cholinergic and monoaminergic neurotransmission. Projects involve developmental and activity-dependent regulation of genes encoding vesicular neurotransmitter transporters and co-expressed neuropeptides and secretory proteins in cell lines, primary neuroendocrine cells, and transgenic mouse models. Candidates should have obtained the Ph.D. or M.D. degree in the last five years, and have laboratory experience in molecular biology and background in neuroscience or developmental biology. Send curriculum vitae and three letters of recommendation to: **Lee Eiden, Ph.D., Section on Molecular Neuroscience, Laboratory of Cellular and Molecular Regulation, Building 36, Room 3A-17, NIMH, NIH, Bethesda, MD 20892-4090. FAX: 301-402-1748; e-mail: eido@codon.nih.gov. NIH is an Equal Opportunity Employer.**

POSTDOCTORAL POSITION available immediately to apply antibody-conjugated beads to the immunophenotyping of blood cells and for the detection, identification, and characterization of bacteria and other pathogens through the use of novel biophysical methods that are under development in our laboratory. Experience in attaching antibodies or other biomolecules to beads and cell phenotyping by flow cytometry is preferred. Send curriculum vitae, a brief description of research interests, and the names of three references to: **Dr. Peter Gascoyne, Department of Experimental Pathology, Box 89, The University of Texas M. D. Anderson Cancer Center, 1515 Holcombe Boulevard, Houston, TX 77030. FAX: 713-792-5940; e-mail: peter@solace.mdacc.tmc.edu. An Equal Opportunity Employer. Smoke-free environment.**

POSTDOCTORAL POSITION THE BURNHAM INSTITUTE LA JOLLA CANCER RESEARCH CENTER

Immediate opening for committed, aggressive postdoctorate with training and experience in biochemistry/cell biology as evidenced by high quality publications in prominent journals. Essential qualifications are background in glycobiology or glycosylation in the Golgi apparatus and routine molecular biology skills. Salary negotiable. Send curriculum vitae and three references to: **Dr. Hudson Freeze, 10901 North Torrey Pines Road, La Jolla, CA 92037.**

POSTDOCTORAL POSITION available immediately to study transcriptional regulation of mammalian liver detoxication enzymes within NIH-funded projects. Molecular biology experience and U.S. citizenship or permanent residency status required. Send letter of interest, curriculum vitae, and names of three references to: **Thomas D. Boyer, M.D., Emory University School of Medicine, Division of Digestive Diseases, 2101 Woodruff Memorial Building, 1639 Pierce Drive, Atlanta, GA 30322. FAX: 404-727-5767; e-mail: bkampb@emory.edu. Emory University is an Equal Opportunity/Affirmative Action Employer.**

Computational Chemist

Merck Sharp & Dohme is part of Merck & Co., Inc., one of the world's leading multi-national pharmaceutical companies. Merck discovers, manufactures and markets a broad range of products to improve human and animal health and has an unparalleled reputation for innovative fundamental research. Our Neuroscience Research Centre on the Herts/Essex border is one of the largest dedicated Neuroscience research facilities in the UK.

We currently have a vacancy for a Molecular Modeller, with a high level of experience of working in at least one of the following major areas:

- Molecular similarity and diversity and their application to combinatorial chemistry and the identification of trends in large datasets
- "Power" programming, particularly in delivery of analyses via the Web
- Use of bioinformatics to relate genetic to structural information.

Awareness of some other areas would be an advantage, eg: property calculations for drug-sized molecules, Modern QSAR methods,

modelling barrier transport or metabolic processes etc.

Applications are invited from those with a background in physical organic and/or theoretical chemistry, with recent strong emphasis on molecular modelling-related tasks. Some post-doctoral experience is desirable although it is possible that an exceptional candidate with less experience might fulfil the role. Good communication skills, the ability to contribute in a team environment and a strong customer focus are essential.

We offer superb laboratories equipped with the latest technology, an extremely competitive salary and an excellent benefits package, including health care insurance, contributory pension, life assurance and on-site childcare facilities.

Please write with full CV, quoting ref: CH975020, to the Personnel Department, Merck Sharp & Dohme Research Laboratories, Terlings Park, Eastwick Road, Harlow, Essex CM20 2QR.

<http://www.merck.com>



MERCK SHARP & DOHME

Research Laboratories



Klinikum der
Universität Heidelberg

Professor of biostatistics/epidemiology with a focus in international health

A tenured faculty position is open at the Dept. of Tropical Hygiene and Public Health/Medical Faculty of Heidelberg University

Candidates should have an excellent methodological background and a PhD or equivalent degree in biostatistics or epidemiology, should have extensive research experience, especially in the design, organisation and analysis of population-based studies, the analysis of risk factors, health outcome assessment, and survival analysis. Firm knowledge and experience in econometrics is especially welcome.

A strong track record in winning research projects is required. Experience in teaching is essential. Prior work on issues related to developing countries is welcome, but not essential. Fluency in English is required, fluency in French is a strong asset.

His/her tasks will include:

- research. The candidate will work on several large population-based intervention studies.
- academic tutoring. Providing advice in research design and analysis to other our graduate and postgraduate students and to other faculty members will be an integral part of his/her activities.
- teaching. He/she will teach the subject in the department's MPH course as well as in overseas schools of public health with which we cooperate. He will act as an advisor to MPH students in the design and analysis of their overseas research projects.

Candidates are requested to send a letter of application by **July 31, 1997**, with a CV containing detailed accounts of research, teaching, consulting and research fund raising activities to: **Prof. Dr. H.-G. Sonntag, Dean of the Heidelberg Medical Faculty, Im Neuenheimer Feld 346, 69120 Heidelberg, Germany.**



Max-Planck-Institut
für Molekulare Genetik Berlin

Applications are invited for a

Group Leader

The position is available at the Max-Planck-Institute for Molecular Genetics in Berlin in the department of Hans Lehrach. The successful candidate will take over an ongoing project to construct a physical and transcript map of the human X chromosome.

The project is funded by the German Human Genome Project and the European Community, and has two main components. The first is focused on generating new contig maps in PACs, BACs, and cosmids in parallel to systematic gene identification. The second is the maintenance of the integrated X chromosome Database as a support for the above experimental work and as a resource for the community. For the experimental work, current strategies involve a high throughput hybridisation approach for screening high density filters of bacterial clone libraries as well as a selected cDNA library. Sequencing facilities, FISH, high throughput gridding, picking and PCR robots are available in house, as well as excellent bio-informatics support.

The ideal candidate will have a PhD and a strong background in molecular biology with a focus on gene isolation methods. Familiarity with the UNIX environment would be an advantage. Organisational skills are required for running a multidisciplinary team and maintaining international collaborations. Applications are invited from young researchers as well as from more experienced scientists.

Salary will be according to the BAT scale (BAT IIa/Ib). For further information on the project or the position, see <http://www.mpimg-berlin-dahlem.mpg.de/~xteam> or contact **Dr. H. Roest Crolius**, e-mail: roest@mpimg-berlin-dahlem.mpg.de, tel.: +49 (0) 30 8413 1612, fax: +49 (0) 30 8413 1380. Applications with C.V. and the name of three referees should be sent by mail to: **Max-Planck-Institut für Molekulare Genetik, Personalabteilung, Ihnestraße 73, D-14195 Berlin, Germany.**

Research Scientists at the Astra



Astra is an international research-based pharmaceutical company in a period of rapid growth. The company's operations are focused on research, production and marketing of pharmaceutical products through subsidiary companies in about 40 countries. Through agents and licences Astra products are available in a large number of additional countries. The number of employees is approximately 20,000, of whom 6,600 are in Sweden. Group sales in 1996 amounted to SEK 39 bn, of which 91 percent are in markets outside Sweden.

ASTRA HÄSSLE

Astra Hässle is situated in Göteborg, Sweden and is a research company with 1,200 employees. Research is aimed at developing new pharmaceuticals for cardiovascular and gastrointestinal diseases. Seloken® (metoprolol), Plendil® (felodipine), Imdur® (isosorbide-5-mono-nitrate), Logimax® (felodipine/metoprolol) and Losec® (omeprazole) are drugs developed by Astra Hässle scientists.

For further information about Astra: www.astra.com

The Astra Structural Chemistry Laboratory (ASCL) is a new corporate competence center to provide high quality structural information on drug targets for preclinical projects in the different Astra product companies. The laboratory is currently being established at the Astra Hässle site in Göteborg, Sweden, in a new 5000 m² building. It is composed of 3 main disciplines: macromolecular crystallography (2 complete X-ray systems), macromolecular NMR (800 and 600 MHz), and protein engineering. The initial number of people in the laboratory will be 20.

We are now entering the second phase of our hiring process and have the following vacancies:

Positions in the protein engineering group:

The role of this group is to prepare well characterized proteins for structure determination by NMR and X-ray crystallography and to provide appropriate biochemical support to these activities. We now seek to recruit individuals to fill 7 positions in the areas of protein chemistry and molecular biology. All the group members must be enthusiastic to work as part of a team with other members of the ASCL and be committed to the role of this group within the laboratory. It is envisaged that the group will be working on a number of projects simultaneously, so methodical and flexible working practice and well developed organizational abilities are a prerequisite. A strong desire to rapidly learn and apply new techniques and the ability to instruct colleagues is also expected. An interest and preferably previous experience in structural chemistry projects is desirable.

Protein Chemistry (4 positions)

Each individual should have substantial experience in modern methods of protein purification from both recombinant and natural sources and be able to apply basic characterization procedures, such as a range of gel electrophoresis methods and simple activity assays. In addition, each individual will require expertise in at least one of the following areas: protein crystallization; biophysical

methods for protein characterization (e.g. light scattering, optical spectroscopy etc.); preparation of protein samples for NMR analysis; protein characterization methods (e.g. HPLC, peptide mapping and mass spectrometry); membrane protein purification and characterization. Any additional experience in molecular biology would be a positive point.

Molecular Biology (2 positions)

Each individual should have broad experience in a range of cloning methods, the application of PCR to gene manipulation and DNA sequencing methods (preferably using automated equipment). In addition, experience in using software packages to manipulate DNA sequence data and to design cloning strategies will be considered of importance. All work is directed towards development of protein expression systems and experience in at least one of the following areas is also required: vector construction for expression of proteins in prokaryotes and preferably also in lower eukaryotes; vector construction for expression of proteins in insect and mammalian cells; gene isolation; optimization of protein expression systems. Any additional experience in protein purification would be a positive point.

Protein expression (1 position)

The primary responsibilities of this position are to operate the laboratory fermentors and carry out protein expression

Structural Chemistry Laboratory

studies. Experience in optimizing growth conditions for protein production in prokaryotes and yeast using laboratory scale fermentors is required. An interest or previous experience in protein expression in cultured insect and mammalian cells would also be helpful. It is also envisaged that this individual will oversee production of media for the molecular biology group. An interest in participating in the molecular biology and/or protein chemistry activities of the group and any relevant experience would also be welcomed.

Position in the macromolecular NMR group:

Protein NMR Spectroscopist

We are now looking for a motivated PhD-level NMR spectroscopist to join the macromolecular NMR group. Experience with structure determination of isotopically labelled proteins is necessary. The NMR laboratory will be well equipped, including an 800 and a 600 MHz spectrometer. The NMR group will work in close collaboration with the X-ray crystallography and the protein engineering groups at the ASCL.

Additional positions:

A protein modeller

The successful candidate will be an established expert in protein homology modelling and structure based design with a good understanding of the role of these techniques in an industrial environment. This person will play a pivotal role in interacting with the local modelling specialists in the project teams via the application of state-of-the-art structure based design methods. For this, excellent communication skills and the willingness to transfer knowledge are prerequisites. Additionally, the selected candidate will be involved in optimising the structure based computing environment within Astra. The pro-

tein modeller will also work closely together with the different groups in the Structural Chemistry Laboratory to define protein models for molecular replacement and for the design of protein engineering experiments to improve the properties of protein samples for structural studies.

A computing support specialist

The successful candidate will be responsible for the local computing environment in the laboratory. This person will have a good knowledge of the specific software tools used in the laboratory by the X-ray crystallography and NMR experts. The ability to rapidly solve computational problems related to the structural techniques will be valued. Additionally, the selected candidate will have the task to promote the Structural Chemistry Laboratory via the implementation and maintenance of informative ASCL-pages on the Astra intranet and on the WWW. Previous involvement in structural studies is a distinct advantage.

A maintenance engineer

The primary responsibility of this position is the maintenance of the hardware environment in the laboratory. This includes diverse tasks, such as maintaining sophisticated X-ray and NMR equipment, as well as sustaining the analytical instruments used in the protein chemistry and biology labs (mass spectrometry, HPLC, CD, light scattering, ...). The selected candidate will also support the operation of additional standard laboratory equipment. Willingness to learn to support new types of instrumentation and a strong servicemindedness are essential. Previous experience in a similar role in a research laboratory is a prerequisite.

For more information, please contact Jan Hoflack, Director ASCL, jan.hoflack@hassle.se.astra.com, tel.no. +46 31 776 27 15.

For information about the macromolecular NMR position, please contact Karl Hård, Head of Protein NMR, tel.no. +46 31 776 16 04.

For the positions in the protein engineering group, please contact Nigel Darby, Head of Protein Engineering, Darby@hera.EMBL-Heidelberg.DE

Applications (in English) with full details should be marked "Protein chemistry 73/97", "Molecular Biology 74/97", "Protein Expression 75/97", "Macromolecular NMR 76/97", "Protein modelling 77/97", "Computing support 78/97", or "Maintenance engineer 79/97", as appropriate, and sent to the following address before August 31, 1997:

*Astra Hässle AB,
Human Resources,
Att. Linda Wikström,
S-431 83 Mölndal, Sweden.
Fax.no. +46 31 776 37 46.*

ASTRA
ASTRA HÄSSLE

29 August 1997

BS & MS Careers Advertising Supplement

Get BS & MS scientists excited about career opportunities at your company or university.

SCIENCE offers you a unique opportunity to tell the best science students about your employment opportunities and graduate programs in the 29 August 1997 BS & MS special advertising supplement.

All full-page advertisers receive:

- Prime placement of your ad in the editorial section of the advertising supplement.
- Feature listing in the advertiser index that will appear in the regular recruitment section of SCIENCE and SCIENCE online.
- Free link from your ad featured on our website to your e-mail or website address.
- Placement in a special reprint of the advertising supplement that will be distributed to the nation's top schools for biological and chemical sciences¹ as well as historically high -minority- enrollment institutions.
- Free year-long listing on Academic Connections, the online center for scientific graduate schools..

All advertisers receive bonus distributions to:

- SCIENCE Career Fair, 5-6 September, MIT, Cambridge, MA
- American Chemical Society Meeting, 8-10 September, Las Vegas, NV.

Advertising deadline: 12 August 1997

To reserve your space: Call Gabrielle Boguslawski, Recruitment Advertising Manager at (718) 491-1607 or fax (202) 289-6742.

SCIENCE
www.sciencemag.org

The nation's top schools for biological sciences, various chemistry disciplines and clinical medicine ranked by the Institute for Scientific Information's *Science Watch* as well as the top 20 schools from *US News & World Report's* Annual America's Best Colleges issue.



CREATING SELECTIVE THERAPIES TARGETING DISEASE AT THE SOURCE

La Jolla Pharmaceutical Company is emerging as the leader in targeting antibody-mediated diseases. Our long-term dedication to the discovery of treatments for autoimmune, inflammatory and allergic diseases is currently expanding in the development of therapeutics to treat myasthenia gravis and asthma. Our research offers the promise of minimal nonspecific effects on the immune system, while delivering selective therapies that target and eliminate disease at the source. The opportunity below is available in San Diego:

DIRECTOR - RESEARCH & DEVELOPMENT

Qualified individual will lead a research and development team in the area of myasthenia gravis and mast cell biology. Position involves planning and implementing discovery and development activities for therapeutic treatments. Requires Ph.D. in Immunology, Biochemistry, Molecular Biology or Chemistry, or M.D. and relevant experience. Must have extensive experience in the pharmaceutical or biotechnology industries; successful track record of drug discovery; record of academic and pharmaceutical project accomplishments; previous managerial and budgetary responsibilities.



The B Cell Company™

We are a dynamic company offering competitive salaries and benefits. Please send your resume to: La Jolla Pharmaceutical Co., Code: (DRD), 6455 Nancy Ridge Dr., San Diego, CA 92121. No phone calls, please. EOE.

GLOBAL CAREER OPPORTUNITIES

INSTITUT FÜR MOLEKULARE BIOTECHNOLOGIE E.V.

imb

The Institute for Molecular Biotechnology e.V. (IMB) in Jena, financed in equal part by the State of Thuringia and the German federal government, invites applications from young scientists for a

group leader position

tenable for five years.

The successful candidate will be given the opportunity to establish an independent research group, and will be expected to be active in raising additional funding for his/her research. Some additional internal support in the form of investments and personnel is available. The research program should strengthen the Institute's research in the field of molecular evolutionary biology. The salary is according to the Bundesangestellten-Tarif (on the BAT-O Ib/Ia pay scale).

The IMB currently comprises 13 independent research groups that are working in the fields of structural biology, genomics, evolutionary biotechnology, biochemistry, and molecular biology (see http://www.imb-jena.de/ANN_REP.html). It offers an excellent research infrastructure within a lively, multidisciplinary campus in the town of Jena, in the heart of the picturesque countryside of Thuringia.

Applications, including the names of three referees, should be sent to the IMB Scientific Director. The review process is scheduled to begin August 8th, 1997.

Institute for Molecular Biotechnology, P.O. Box 100813, D-07708 Jena, Germany

imb

BBI-BIOTECH RESEARCH LABORATORIES (BBI-BIOTECH), a growing biotechnology company located in Rockville, MD, is a leading supplier of contract and service support for government and private industry. On the cutting edge of Cellular and Molecular Biology, **BBI-BIOTECH's** major focus is the development of innovative diagnostic tests and reagents for infectious diseases. Come join **BBI-BIOTECH** and grow with the best.

DIRECTOR OF BIOTHERAPEUTICS

BBI-BIOTECH plans to expand its current R&D program for development of anti-HIV drugs into a Biotherapeutics Division which will take our existing patent-pending anti-HIV compounds through to clinical testing. The Director, a Ph.D. level scientist, will be expected to develop a plan to guide the program expansion to include a broad spectrum anti-viral screen, drug formulation and solubility studies, toxicology studies, SCID mice efficacy studies, and ultimately human trials. Familiarity with FDA IND submission requirements and an understanding of the biotherapeutics industry required. **Job Code RS.**

DIRECTOR OF MOLECULAR PRODUCT DEVELOPMENT

Ph.D. in Molecular Biology or related field with at least 6 years experience in a biotechnology company required. Must be familiar with the design and use of molecular diagnostic tests for infectious diseases. Extensive knowledge of production scale-up, validating, training, and requirements for FDA licensing is required. The successful candidate will direct the development of independent controls and other QC reagents used in molecular diagnostic testing. He/she will also interact with R&D to transfer new products to the manufacturing group. **Job Code MM.**

RESEARCH SCIENTIST - MOLECULAR BIOLOGY

Ph.D. in Molecular Biology or Genetics, and a minimum of 2 years of experience in genotyping, Microsatellite PCR, and linkage analysis. Must have experience using a UNIX operating system and related software for linkage analysis. Experience in PAC and BAC library screening and gene cloning is a plus. **Job Code IG.**

RESEARCH SCIENTIST - IMMUNOLOGY

An Immunologist/Immunochemist is needed to work on a variety of research projects to examine the immune status of patients with Low Natural Killer Syndrome (LNKS), a subcategory of chronic fatigue. Studies may include correlation of patients' plasma levels of L-cystine with extent of immunodeficiency, the response to lentinan therapy, and establishment of an *in vitro* model of immunodeficiency to examine factors regulating NK activity. Ph.D. in Immunology or Immunochemistry with a minimum of 2 years experience is required. **Job Code TA.**

We offer competitive salaries and benefits. Please send résumé indicating Job Code in strictest confidence to:



BBI-Biotech Research Laboratories
A Boston Biomedica Inc. Company
3 Taft Court
Rockville, MD 20850
FAX: (301) 762-1109

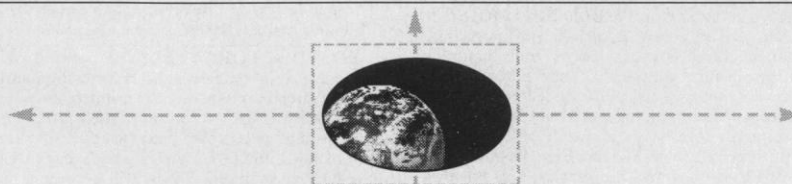


**POSTDOCTORAL
FELLOWSHIP
IN CELL BIOLOGY**

A position is available immediately in the Department of Biochemistry and Molecular Biology at the Mayo Clinic in Rochester, MN, for a qualified individual to study the role of dynamin and dynamin-like proteins in vesicle trafficking and cell motility in mammalian cells. Applicant should have an M.D. and/or Ph.D. degree, experience in cell biological or molecular techniques, *and be a U.S. citizen or permanent resident.* Send résumé to:

Mark McNiven, Ph.D.
1721 Guggenheim Building
Mayo Clinic
Rochester, MN 55905

*Mayo Foundation is an affirmative
action and equal opportunity
educator and employer.*



**We're redefining the way the
world looks at life sciences.**

We're the new life sciences company at Monsanto.

We're even more focused on the future. That's why our entire organization, from agricultural biotechnology to pharmaceuticals to food ingredients, is dedicated to life sciences. These are areas that can directly impact our future. Now, we can continuously answer the questions, needs and demands of our ever-changing planet. After all, the world's resources are finite, but our vision for its future is not.

Electron Microscopy Research Associate

Monsanto Corporate Research has an opportunity for a Research Associate in electron microscopy. The position is located in the Analytical Sciences Center (ASC) within Monsanto's Corporate Research. The ASC is an exciting, state-of-the-art research organization serving the analytical needs of Monsanto's new life sciences company.

The successful candidate will join a small team of experts involved in the structural examination of catalysts, polymers, biomaterials, or other nanophase materials. The position requires a M.S. or B.S. or equivalent in material science or a related field with 3-5 years experience in transmission electron microscopy associated with materials. A strong background in TEM and associated preparative techniques, including embedding, ultramicrotomy, and dark room procedures is essential. The successful candidate will be highly motivated, self-directed, interested in learning new skills, and effective working independently or in a team-based research environment. Excellent interpersonal, verbal and written communication skills are necessary. Experience with SEM and other imaging techniques, as well as digital imaging and image analysis are desired but not required.

Monsanto offers a competitive salary and benefits package, as well as a challenging and outstanding career opportunity in a fast-paced scientific organization. Interested applicants should send their CV or resume with the names and address of three references to: **Monsanto Company, 800 N. Lindbergh Blvd., Mail Zone: E2NA, St. Louis, MO 63167.** EEO/ AA Employer M/F/D/V. Please visit our website at www.monsanto.com.

Monsanto

POSITIONS OPEN

POSTDOCTORAL FELLOWSHIP in molecular biology available immediately for work on signal transduction mechanism in bone cells involving MAP kinase. Salary and benefits competitive. Send letter of interest, curriculum vitae, and names of three references to: **Dr. W. Lau, Mineral Metabolism Laboratory, P.O. Box 7210, Loma Linda, CA 92354.**

POSTDOCTORAL POSITION

A Postdoctoral fellow position is available immediately in the Pharmacology Division of Texas Children's Cancer Center to participate in molecular pharmacology research with emphasis on cell cycle regulation. Requires M.D. or Ph.D. degree, with experience in tissue culture, cellular immunology, and molecular biology very desirable. Send curriculum vitae, summary of research interests and experience, and at least three references to:

Stacey Berg, M.D.
Texas Children's Cancer Center
6621 Fannin Street
MC 3-3320
Houston, TX 77030
Telephone: 713-770-4588
FAX: 713-770-4202

POSTDOCTORAL POSITION IN SEATTLE

Position available to study visual transduction. Experience in biochemistry, molecular biology, and/or mass spectrometry desirable. Send curriculum vitae and names of references to:

Dr. Krzysztof Palczewski
University of Washington
Department of Ophthalmology
Health Sciences Building, Box 356485
1959 NE Pacific Street
Seattle, WA 98195-6485
E-mail: palczewsk@u.washington.edu

The University of Washington is an Equal Employment Opportunity/Affirmative Action Employer.

POSTDOCTORAL POSITION

Available immediately for a **CELL BIOLOGIST** to study regulation of cell adhesion, cytoskeletal interactions with cell adhesion molecules, and signal transduction in response to mechanical stimuli. Experience in immunofluorescence microscopy, cell culture, cell transfection, and immunologic techniques is preferred. Send curriculum vitae, summary of relevant experience, and names and addresses of three references to: **Dr. Fred Pavalko, Department of Physiology and Biophysics, 635 Barnhill Drive, Indiana University School of Medicine, Indianapolis, IN 46202.** E-mail: fpavalko@iupui.edu.

POSTDOCTORAL POSITION available to study bacterial chemotaxis and signal transduction. Candidates with a Ph.D. and experience in protein biochemistry and molecular genetic techniques are encouraged to apply. Please send curriculum vitae and names of three references to: **Dr. Philip Matsumura, University of Illinois at Chicago, Department of Micro/Immunology, 835 South Wolcott, M/C 790, Chicago, IL 60612-7344.** E-mail: philip.matsumura@uic.edu; webpage: <http://www.uic.edu/labs/matsumura/>. UIC is an Affirmative Action/Equal Employment Opportunity Employer. Women and minorities are encouraged to apply.

POSTDOCTORAL POSITION. The Stanford Center for AIDS Research is recruiting a Postdoctoral Fellow, M.D. or Ph.D., for laboratory investigation of HIV in perinatal transmission of subtype C HIV and the genotypic and phenotypic correlates of pathogenesis. Experience in molecular sequencing and/or cell culture techniques as applied to HIV is required. Please mail or FAX your curriculum vitae and names of three references to: **David Katzentein, M.D., Center for AIDS Research, 300 Pasteur Drive, S-156, Stanford, CA 94305-5107.** FAX: 415-725-2395; e-mail: davidkk@leland.stanford.edu.

POSTDOCTORAL POSITION available this fall to study the mechanism of action of cytochrome oxidase. Candidates should have experience in enzymology and in the physical characterization of metalloproteins. Send curriculum vitae to: **Dr. Graham Palmer, Department of Biochemistry and Cell Biology MS140, Rice University, Houston, TX 77005-1892.** E-mail: graham@bioc.rice.edu. Equal Opportunity Employer.

POSITIONS OPEN

POSTDOCTORAL RESEARCH ASSOCIATE

Research in regulation of glucose transporter gene expression with emphasis on lipid mediated signal transduction pathways that control both transcription of the transporter gene as well as stability of the message. Experience in molecular and cellular biology, as well as biochemistry, is preferred. Candidates must have a Ph.D. in biochemistry or a related science. Salary is commensurate with qualifications. Interested candidates should forward curriculum vitae and three letters of reference to: **Phillip H. Pekala, Ph.D., East Carolina University School of Medicine, Department of Biochemistry, Greenville, NC 27858.** Federal law requires proper documentation of identity and employability at the time of employment. It is requested that this documentation be included with application. ECU is an Equal Opportunity/Affirmative Action Employer and welcomes applications from all qualified individuals.

POSTDOCTORAL POSITION UNIVERSITY OF COLORADO, BOULDER

Applications are currently being accepted for a postdoctoral position, starting July 1, to work on the amyloid worm project. This NIH-funded research project employs transgenic *C. elegans* animals expressing human proteins to model amyloid diseases such as Alzheimer's disease (see Link, *PNAS*, 92:9368, 1995). This work will likely involve a range of techniques, including genetics, molecular biology, and microscopy. Please contact: **Dr. Christopher Link, Institute of Behavioral Genetics, Box 447, University of Colorado, Boulder, CO 80309.** E-mail: linkc@colorado.edu. The University of Colorado at Boulder supports the principle of diversity. We are particularly interested in receiving applications from women, ethnic minorities, disabled persons, veterans, and veterans of the Vietnam era.

POSTDOCTORAL POSITION available immediately to study protective immunity to parasitic nematodes and to participate in vaccine development against these infections. Experience in molecular biology and immunological techniques essential. The candidate should have a Ph.D. degree in immunology or parasitology, and research experience at the postdoctoral level is desirable. Send curriculum vitae, including summary of research experience, and names, addresses, and telephone numbers of three references to: **David Abraham, Ph.D., Thomas Jefferson University, 233 South 10th Street, Philadelphia, PA 19107.** Equal Opportunity Employer.

POSTDOCTORAL FELLOW position available immediately to investigate signal transduction and protein-protein interactions involved in cellular injury and survival associated with HIV infection of the central nervous system. Studies will involve yeast two hybrid system, *in vitro* mutagenesis, and DNA sequencing. Experience in molecular biology required. Fellow will become a member of expanding team at Harvard and Tufts to explore mechanisms of HIV CNS injury. Send curriculum vitae and names of three references to: **Bradford Navia, M.D., Ph.D., Research Laboratories in Psychiatry, P.O. Box 1007, 750 Washington, Boston, MA 02111.**

POSTDOCTORAL POSITION available to study human cytomegalovirus replication in polarized epithelial cells. Project focuses on signals for polarized transport of viral envelope glycoproteins and regulation of virion maturation and egress. Previous research experience in molecular virology and cellular biology desirable. Interested candidates should submit curriculum vitae and names of three references to: **Dr. Lenore Pereira, University of California San Francisco, HSW-604, San Francisco, CA 94143-0512.** An Equal Opportunity/Affirmative Action Employer.

POSTDOCTORAL POSITION studying nuclear protein transport. Includes *E. coli* expression of NLS-protein variants and their intracellular receptors, analysis of transportant/receptor interactions, and *in vitro* and *in vivo* transport assays. Send résumé and names of three references to: **Dr. Philip L. Paine, Laboratory of Intracellular Biophysics, St. Albert's Hall, St. John's University, 8000 Utopia Parkway, Jamaica, NY 11439.** E-mail: painep11@ix.netcom.com.

SCIENTIST POSITIONS. A biotechnology company anticipates funding for a research initiative and is now receiving applications. Interested applicants with Ph.D. degrees and training in molecular biology or microbiology/immunology can send curriculum vitae with references to: **Drs. J. Wright and A. Young, GeneSense Technologies, Inc., 100 Olivia Street, Room ON222, Winnipeg, MB, Canada, R3E 0V9.** FAX: 204-787-2190.

POSITIONS OPEN

POSTDOCTORAL POSITION available, specializing in molecular biology with background in protein chemistry. Inquiries to: **Dr. Darrel W. Stafford, Department of Biology, University of North Carolina-Chapel Hill, Chapel Hill, NC 27599-3280.**

POSTDOCTORAL POSITIONS SKELETAL MUSCLE AND AGING

Two National Institute on Aging-funded positions are available immediately for research in electrophysiology and molecular biology of skeletal muscle excitation-contraction coupling and aging. One is a postdoctoral fellowship position supported by an NIA training grant and requires applicant to be permanent resident or U.S. citizen. Interested candidates must have a doctoral degree and expertise in muscle electrophysiology and molecular biology. Applicants should send curriculum vitae and three letters of reference to: **Oswaldo Delbono, M.D., Ph.D., Department of Internal Medicine, Bowman Gray School of Medicine of Wake Forest University, Medical Center Boulevard, Winston-Salem, NC 27157.**

Wake Forest University is an Equal Opportunity/Affirmative Action Employer. Women and minorities are encouraged to apply.

POSTDOCTORAL RESEARCH ASSOCIATE IN EXPERIMENTAL ONCOLOGY

Cholinergic/adrenergic receptor pathways in tumor cells, cloning, sequencing, PCR/molecular skills, RNase protection, etc. Ph.D. plus two years of experience molecular biology desired. Supported by grant funds, available July 1. Curriculum vitae and two letters of recommendation to:

Dr. H. M. Schuller
College of Veterinary Medicine
University of Tennessee
Knoxville, TN 37901

Equal Employment Opportunity/Affirmative Action/Title VII Title IX/Section 504/ADA/ADEA Employer.

POSTDOCTORAL POSITION responsible for transgenic insertion and expression of unique enzymes in plants, and evaluation of enhanced plant resistance to insects. One year appointment, renewable up to two years; available August 1, 1997. Ph.D. in insect physiology, plant molecular biology, or related areas; experience in general molecular biology. Salary \$23,000 per year. Send curriculum vitae, publication list, and names of three references to: **Dr. Roxanne Broadway, Department of Entomology, NYS Agricultural Experiment Station, Cornell University, Geneva, NY 14456.** E-mail: rmb2@cornell.

POSTDOCTORAL POSITIONS IN GENE THERAPY

Postdoctoral positions available at the Harvard Institutes of Medicine in a research lab developing novel applications of gene therapy to treat human disorders. Qualified applicants should have significant experience in molecular biology, cell biology, or virology. Send biographical information to: **Dr. Ernest Terwilliger, Division of Experimental Medicine, Harvard Institutes of Medicine, 3rd Floor, #4 Blackfan Circle, Boston, MA 02115.** FAX: 617-859-7010.

POSTDOCTORAL POSITIONS available immediately to work on the development of artificial olfactory systems by incorporating physiological principles into engineered devices. Neuroscience interest or experience in engineering and computers required. Please send curriculum vitae and three reference letters to: **John Kauer, Ph.D., Joel White, Ph.D., Department of Neuroscience, Tufts Medical School, 136 Harrison Avenue, Boston, MA 02111.** Telephone: 617-636-5844; FAX: 617-636-0476; e-mail: jkauer@opal.tufts.edu and jwhite@opal.tufts.edu.

POSTDOCTORAL POSITION, STRUCTURAL BIOLOGY. Position immediately available to study G protein-linked signaling through phospholipase C-beta isozymes. Candidate should have a strong background in biochemistry or biophysics, preferably X-ray crystallography. Send curriculum vitae, statement of interest, and names and addresses of three references to: **Dr. John Sondek, CB# 7365, Department of Pharmacy, School of Medicine, UNC-Chapel Hill, Chapel Hill, NC 27599-7365.** E-mail: sondek@med.unc.edu.

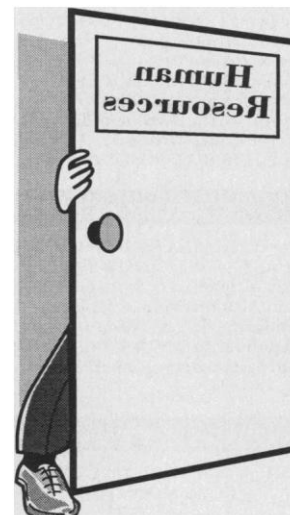
Want to get your foot in the door?

Then let SCIENCE open some doors for you by attending the **SCIENCE Career Fairs**. SCIENCE Career Fairs offer the perfect opportunity for scientific professionals to meet in person with representatives from top biotechnology and pharmaceutical companies, universities, governmental agencies, and institutions.

UPCOMING 1997 SCIENCE CAREER FAIRS

Cambridge, MA on the MIT Campus
84 Massachusetts Ave., Stratton Building
Student Center, 2nd Floor, La Salla Room
5 Sept.: 11 am – 4 pm
6 Sept.: 11 am – 3 pm

Palo Alto, CA
on the Stanford Campus
Tresidder Memorial Union
3 Oct.: 11 am – 4 pm
4 Oct.: 11 am – 3 pm



To pre-register:

Please submit your résumé or CV via FAX: (202) 289-6742, or via e-mail: careerfairs@aaas.org. Indicate the career fair location for which you are submitting. **Remember to bring multiple copies of your CV or résumé with you to the Career Fair; a copy will be necessary to gain admission to the hall.** Admission to all of the events is FREE.

Do not contact MIT or Stanford directly. They are not responsible for organizing these events.

SCIENCE CAREER FAIRS

For more information call (202) 326-7018
SCIENCE Career Fair Information Online:
www.sciencemag.org (Choose SCIENCE Professional Network from the menu)



The University of Manitoba Dean Faculty of Medicine

The University of Manitoba invites applications and nominations for the position of Dean, Faculty of Medicine. The Dean is the senior academic and administrative officer of a large faculty which has major teaching, research, and service responsibilities. The Dean is expected to provide leadership in medical and health sciences within the University and externally with respect to government and professional organizations.

The Faculty consists of: 21 departments; 117 basic science and 335 clinical full-time academic staff; 122 postdoctoral fellows and research associates; 335 support staff; 294 undergraduate students, 277 graduate students; and 363 postgraduate residents. The School of Medical Rehabilitation reports through the Faculty of Medicine.

Applicants and nominees should have outstanding leadership qualities and proven organizational and interpersonal skills. The successful candidate will have an established record of, and commitment to, scholarly activity in the medical and health sciences. The Dean should have a clear understanding of major health policy issues and health care delivery in Manitoba and Canada and will be expected to play a leading role in fostering innovations in health care delivery, medical and health education, and research. The successful candidate must be eligible for licensure in the Province of Manitoba.

The University of Manitoba encourages applications from qualified women and men, including members of visible minorities, Aboriginal peoples, and persons with disabilities. This advertisement is directed to Canadian citizens and permanent residents.

The effective date of appointment is July 1, 1998 and is normally for a term of five years. Applications (including a curriculum vitae and the names of three referees) or nominations will be received until October 17, 1997 and should be sent to: **Dr. J. S. Gardner, Vice-President (Academic) and Provost, Chair, Advisory Committee for the Dean of Medicine, Room 202 Administration Building, The University of Manitoba, Winnipeg, Manitoba, R3T 2N2. FAX: (204) 261-1318.**



DEAN



School of Forestry and Environmental Studies Yale University

Applications are invited for the position of Dean of the Yale University School of Forestry and Environmental Studies. The School of Forestry and Environmental Studies offers several of the most distinguished professional forestry, environmental, and natural resource management graduate and research programs available in the world. There are currently three masters and three doctoral degree programs offered. In 2000, the School will be 100 years old. We seek an individual with extraordinary leadership skills, scholarly credentials in the natural, social, or engineering sciences, and an outstanding record of achievement in the academic, public, or private sector.

The deadline for receipt of applications is October 1, 1997.

Please direct all inquiries to: **Professor William H. Smith, Chairman, Dean Search Committee, School of Forestry & Environmental Studies, Yale University, 205 Prospect Street, New Haven, CT 06511; phone 203-432-5794; FAX 203-432-3051; e-mail: whsmith@minerva.yale.edu.**

Yale University is an Equal Opportunity Affirmative Action Employer and applications from women and members of minority groups are encouraged.

POSITIONS OPEN

POSTDOCTORAL POSITION is available in Boston to study human virus/virus receptor interactions and virus-induced genetic events that lead to tumor development. Experience in virology, biochemistry, and cellular and molecular biology preferred. M.D. or Ph.D., Harvard Medical School appointment. Send curriculum vitae and names of three references to: **Robert Finberg, M.D.** or **Joyce Fingerroth, M.D.**, Division of Infectious Diseases, Dana-Farber Cancer Institute, 44 Binney Street, Boston, MA 02115. FAX: 617-632-4257.

CONFERENCE

THERAPEUTIC ANTIBODY TECHNOLOGY 97; Sept. 21 to 24, 1997; Holiday Inn-Union Square, San Francisco; Organizers: J. Larrick, D. Burton. Sponsor: Palo Alto Institute of Molecular Medicine, 2462 Wyandotte Street, Mountain View, CA 94043. Telephone: 415-694-4996; FAX: 415-694-7717; e-mail: paimm@netgate.net; See *Science*, May 2, 1997 for speakers.

COURSES & TRAINING

BECOME A MEDICAL DOCTOR (M.D.) IN 36 MONTHS

Classes taught in English in Belize City, Belize starting September 1997 and January 1998; E.C.F.M.G. registered—W.H.O. listed.

The Medical School is also accepting applications for qualified teaching staff.

Call or write:

Belize Medical College, U.S. Office
P.O. Box 598

Sunland Park, NM 88063
Telephone: 915-532-7958; FAX: 915-544-4353

MARKETPLACE

DNA SEQUENCING

Longest reads available

Up to 1000 bp/read

Only \$50 per read

MacConnell Research 800-466-7949

Circle No. 30 on Readers' Service Card

Fast DNA Sequencing

from NBI/Genovus

\$0.95/bp, double stranded

1-8kb in 1-3 weeks

800/747-4362 or 612/550-2012

NBI E-mail: nbi@natbio.com Web: <http://www.natbio.com>

Circle No. 32 on Readers' Service Card

50% OFF: ARACHIDONIC ACID

CALL FOR OUR CUSTOM C-14 SYNTHESIS,
'97 CATALOG TRITIUM LABELING SERVICE

American Radiolabeled Chemicals, Inc.
11624 Bowling Green Dr, St Louis MO 63146
Phone: (314) 991-4545 Fax: (314) 991-4692
E-mail: arcinc@arc-inc.com <http://www.arc-inc.com>

Circle No. 17 on Readers' Service Card

NEW for 1997

Cell Systems

Serum-Free Human Cell Systems

Venous, Arterial, Microvascular Cells

1-800-897-1211

www.cellsystems.com

Circle No. 7 on Readers' Service Card

MARKETPLACE

DNA Primers from \$0.85/base

Ready to Use
No Setup Charge
No Hidden Costs



Institutional
Discounts
Available

The Great American Gene Company

<http://www.geneco.com>

email: geneco@ix.netcom.com fax: (800) 816-5517

Circle No. 6 on Readers' Service Card

CUSTOM DNA SYNTHESIS

PURE & SIMPLE

- Superb Technical Support
- Impeccable Quality
- World's Fastest Service
- Cap Gel & TOF Mass Spec

* Some restrictions apply. Please call for details.

MIDLAND

STILL THE UNDISPUTED #1 CUSTOM DNA SYNTHESIS SERVICE

THE MIDLAND CERTIFIED REAGENT COMPANY

Phone 1-800-247-8766 FAX 915-694-2387
email mcrc@oligos.com

Circle No. 4 on Readers' Service Card

DNA Agency

High Quality Synthetic DNA

200 nanomole, \$1.00 per base, NO-SETUP

10% DISCOUNT IF PAID BY CREDIT CARD, DISCOUNT FOR LARGE CONTRACTS

1-800-249-7841/610-993-9323, Fax: 610-993-9464
E-Mail: orders@dnagency.com

Circle No. 29 on Readers' Service Card

Widely Recognized

KlenTaq1

Original & Guaranteed

8¢/u Truncated Taq DNA Polymerase Withstand 99°C

US Pat # 5,436,149

Call: **Ab Peptides** 1-800-383-3362
Fax: 314-968-8988 abpeps@icon-stl.net

Circle No. 2 on Readers' Service Card

Custom Polyclonal Antibodies

BEST PRICES • BEST ANIMALS

ANIMAL PHARM SERVICES

(800)808-0550

Circle No. 12 on Readers' Service Card

Multipin™ Peptide Synthesis Kits

Synthesize from one to hundreds of peptides simultaneously. Make your own libraries!

Wide range of options available. Please call for details:

CHIRON TECHNOLOGIES

US: East Coast Tel: 800 633 8161 Fax: 800 424 3970
US: West Coast Tel: 800 644 1866 Fax: 800 655 1866
International Tel: +61 3 9565 1111 Fax: +61 3 9565 1199
Europe Tel: +33 141 38 9400 Fax: +33 141 38 9409

Circle No. 19 on Readers' Service Card

MARKETPLACE

EASY WEB ORDERING

<http://www.biosyn.com>
biosyn@onramp.net

PRIMERS

PURIFIED

NO SET UP FEES
65¢
/base

50 nmole
Full QC
Guaranteed Quality
Just order > 400 bases
at the same time

PEPTIDES

FREE MASS SPEC

NO SET UP FEES
15.00
/residue

10-20 mgs
8-15 residues
Shipped in 5 days

ANTIPEPTIDES ANTIBODY PRODUCTION SERVICES & MORE

BIO SYNTHESIS

TEL: 800-227-0627 FAX: 972-420-0442

Circle No. 5 on Readers' Service Card

Custom Peptides

Buy 5 get one FREE*

(From \$9/residue)

10-30mg Unpurified 8-30 residues

Mass spec included

* Some restrictions may apply. Please call for details.



CHIRON TECHNOLOGIES

US: West Coast Tel: 800 644 1866 Fax: 800 655 1866

US: East Coast Tel: 800 633 8161 Fax: 800 424 3970

International Tel: +61 3 9565 1111 Fax: +61 3 9565 1199

Europe Tel: +33 141 38 9400 Fax: +33 141 38 9409

Circle No. 14 on Readers' Service Card

FREE LABTOOLS CATALOG.

Free 100-page catalog includes 30 new products.
Shakers, Rotators, Centrifuges, Magnetic & Overhead
Stirrers, Blenders, Shaking Baths, Circulator Baths,
Electro-Analyzers, Micro Slide Storage, and more.

EBERBACH LABTOOLS® 1.800.422.2558
155 YEARS OF SERVICE TO AMERICAN SCIENCE

Circle No. 10 on Readers' Service Card

DNA Sequencing

as low as \$40/run

Single & Double Stranded DNA

Plasmid or PCR DNA

Fast Turn Around

1-800-OLIGOS-1

<http://www.ana-gen.com>

ANA-GEN
Ana-Gen Technologies, Inc.

Circle No. 13 on Readers' Service Card

Express Peptides

15-40 mg in 5 days

\$18 per residue

Research Genetics, Inc.

1-800-533-4363

Circle No. 3 on Readers' Service Card

"Good morning, Gary. Did that last set of primers work OK?"

"Well, not exactly."

"You did order them from Midland, didn't you?"

"No, sir, not exactly."

"Did the molecular weights agree with the calculated values?"

"Um, well, not exactly."

"You did check the molecular weights, didn't you?"

"No, not exactly."

"You can compare calculated AND measured molecular weights, yes?"

"No, sir, not exactly."

"So, did we save any money on these primers?"

"I guess not....not exactly."

Midland makes primers and checks the molecular weight of every single primer. With a mass spectrometer. The calculated and measured values must agree to within 0.2% or the primer is resynthesized. So whether you order a single primer or hundreds of them at a time, you get primers that work.

Every time.

Exactly.

The **Midland Certified Reagent Company** is centrally located at 3112-A West Cuthbert Avenue in Midland, Texas. We welcome your technical and pricing inquiries at **800-247-8766**. Contact us by FAX at **915-694-2387**. Our e-mail address is **info@oligos.com** and our complete catalog is online at **http://www.mcrc.com**.

Antigen Affinity-purified polyclonal antibodies

HUMAN

B7-2	IL-1 α	IP-10
CD4	IL-1 β	LIF R
CD28	IL-1ra	LAP (TGF- β 1)
CNTF	IL-1 RII	MIF
CNTF R α	IL-2	MIP-1 α
Eotaxin	IL-2 R α	MIP-1 β
FGF basic	IL-2 R β	MK
FGF-5	IL-2 R γ	OSM
FGF-7	IL-3	PDGF-AA
FGF-9	IL-4	PDGF-BB
Flt-3 Ligand	IL-4 R	PDGF R α
G-CSF	IL-5	PIGF
G-CSF R	IL-5 R α	PTN
GM-CSF	IL-6	RANTES
sgp 130	IL-6 R	SCF
HB-EGF	IL-7 R	SDF-1/PBSF
HCC-1	IL-8	TGF- β 1
HRG- α	IL-10	TGF- β RII
I-309	IL-10 R	TGF- β RIII
IFN- γ	IL-11	TNF- α
IGF-I	IL-12	TNF- β
IGF-IR	IL-13	VEGF
IGF-II	IL-17	

MOUSE

CRG-2	IL-6	MIP-1 α
Eotaxin	IL-10	MIP-1 β
GM-CSF	IL-10 R	MIP-2
IFN- γ	IL-12	OSM
IL-1 β	IL-13	TNF- α
IL-1ra	KC	TNF RI
IL-2	Leptin	TNF RII
IL-3	Marc	Tpo
IL-4	MIG	VEGF
IL-5		

RAT

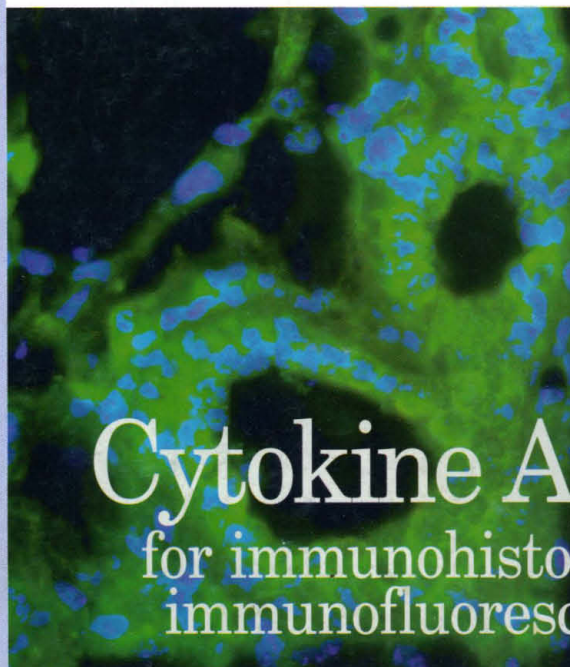
CNTF	IL-4	TNF- α
IL-1 β	IL-2	

HUMAN/MOUSE/RAT

FGF-8b	NT-4	TGF- β 2
GDNF	TGF- β	TGF- β 3
NT-3	TGF- β 1	

R&D
SYSTEMS

1-800-343-7475



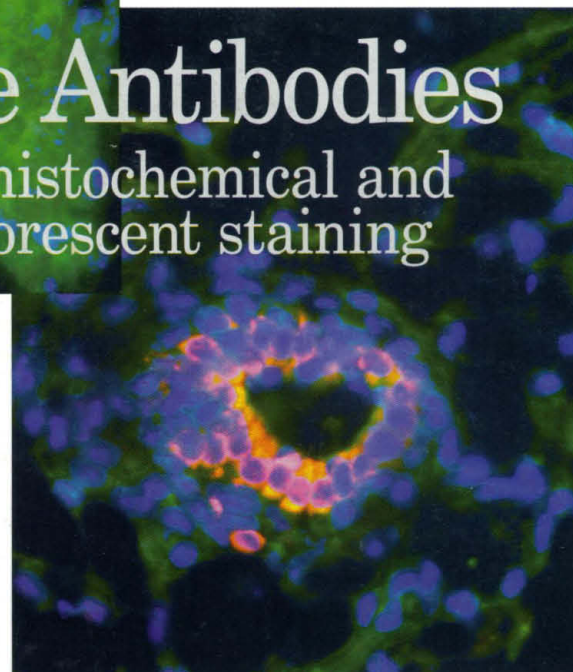
Immunofluorescent localization of active TGF- β 1 and latent TGF- β 1 complex in normal and irradiated mouse mammary gland sections using TGF- β 1 affinity purified chicken anti-TGF- β 1 antibody (Cat. # AF-101-NA and goat anti-LAP (TGF- β 1) affinity purified antibody (Cat. # AF-246-NA), respectively.

Successful identification of cytokines by immuno-

histochemical or immunofluorescent staining involves careful selection of a cytokine-specific antibody. An antigen affinity-purified polyclonal antibody pool contains more specific antibodies to the cytokine allowing for an increased intensity of the cytokine-specific stain over a monoclonal antibody with less background than a traditional polyclonal antibody.

R&D Systems has over 90 antigen affinity-purified polyclonal antibodies available, unlabeled or with a biotin label, for use in immunohistochemistry and immunofluorescence.

Mouse mammary gland cryosections were fixed with 4% para-formaldehyde and dual stained using chicken anti-TGF- β 1 antibody detected with Texas Red labeled secondary antibody and goat anti-LAP (TGF- β 1) antibody detected with fluorescein labeled secondary antibody. Nuclei were counterstained with DAPI. Normal mammary gland (LEFT - shows abundant LAP (TGF- β 1) immunostaining (green) reflecting the presence of latent TGF- β 1. Mammary gland taken from animals exposed to whole body irradiation with 5Gy 24 hours prior to processing. (BELOW - exhibits predominantly active TGF- β 1 immunoreactivity (pinkish-red). This shift is due to the loss of LAP concomitant with increased access to active TGF- β 1 and is consistent with activation of latent TGF- β 1.



FOR RESEARCH USE ONLY. NOT FOR USE IN DIAGNOSTIC OR THERAPEUTIC PROCEDURES.

North America
R&D Systems, Inc.
614 McKinley Place NE
Minneapolis, MN 55413, USA.
Tel: 612 379-2956
Fax: 612 379-6580
info@rndsystems.com

Europe
R&D Systems Europe Ltd.
4-10 The Quadrant, Barton Lane
Abingdon, OX14 3YS, UK.
Tel: +44 (0)1235 551100
Fax: +44 (0)1235 533420
info@rndsystems.co.uk

Germany
R&D Systems GmbH
Borsigstrasse 7
65205 Wiesbaden, Germany
Tel: +49 06122 90980
Fax: +49 06122 909819
info@rndsystems.co.uk

Japan
Funakoshi, Co., Ltd.
9-7, 2-Chome
Hongo, Bunkyo-ku
Tokyo 113, Japan
Tel: 81-3 5684-1622
Fax: 81-3 5684-1633

International Distributors – Argentina: (54-1) 942-3654. Australia: (61-2) 9521-2177. Austria: 01 292 35 27. Chile: (56-2) 671-9369. Greece: 031 322 525. Hong Kong: (852) 2649-9988. Israel: (972-9) 764-8787. Italy: 39 2 25 75 377. Korea: (82-02) 569-0781. Mexico: (52-5) 612-0085. New Zealand: (64-9) 377-3336. Spain: 34 1 535 39 60. Poland: 48 22 720 44 54. Portugal: 01 352 87 74. South Africa: 021 981 1560. Taiwan: (866-02) 368-3600. Venezuela: (58-2) 239-07-80.

Europe Free Phone – Belgique/België: 0800 10 468. Danmark: 80 01 85 92. France: 0800 90 72 49. Nederland: 060 225607. Norge: 800 11033. Sverige: 020 79 31 49. Switzerland: 0800 55 2482.



www.rndsystems.com

Circle No. 26 on Readers' Service Card